

VIRGINIA ELECTRIC AND POWER COMPANY
RICHMOND, VIRGINIA 23261
April 16, 2018, 2018

United States Nuclear Regulatory Commission
Attention: Document Control Desk
Washington, D. C. 20555

Serial No. 18-173
NAPS/DPM
Docket Nos. 50-338/339
72-16
72-56
License Nos. NPF-4/7
SNM-2507

VIRGINIA ELECTRIC AND POWER COMPANY (DOMINION)
NORTH ANNA POWER STATION UNIT NOS. 1 AND 2
INDEPENDENT SPENT FUEL STORAGE INSTALLATION (ISFSI)
ANNUAL RADIOACTIVE EFFLUENT RELEASE REPORT

Enclosed is the 2017 Annual Radioactive Effluent Release Report. This report is provided pursuant to North Anna Units 1 and 2 Technical Specification 5.6.3 [10 CFR 50.36a] and North Anna Independent Spent Fuel Storage Installation Technical Specification 5.5.2c [10 CFR 72.44(d)(3)].

If you have any questions or require additional information, please contact Mr. Donald R. Taylor at (540) 894-2100.

Very truly yours,



N. Larry Lane
Site Vice President

Enclosure

Commitments made in this letter: None

cc: U. S. Nuclear Regulatory Commission (w/o Enclosure)
Region II
Marquis One Tower
245 Peachtree Center Ave., NE Suite 1200
Atlanta, Georgia 30303-1257

Director, Division of Spent Fuel Management (w/o Enclosure)
Office of Nuclear Material Safety and Safeguards
U. S. Nuclear Regulatory Commission
Washington, D. C. 20555

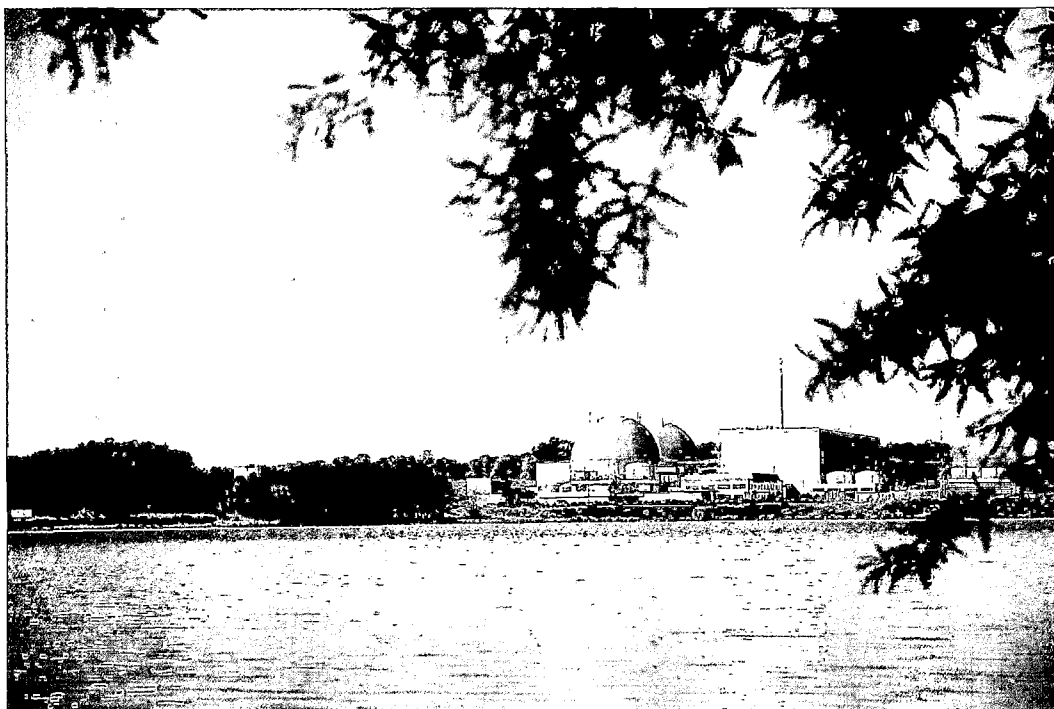
NRC Senior Resident Inspector (w/o Enclosure)
North Anna Power Station

IE48
NMSS26
NRR
NMSS

ANNUAL RADIOACTIVE EFFLUENT RELEASE REPORT

NORTH ANNA POWER STATION

(JANUARY 01, 2017 TO DECEMBER 31, 2017)



PREPARED BY:

Bradley T. Pleasants, Jr.

Bradley T. Pleasants, Jr.
Supervisor Radiological
Analysis and Instrumentation

REVIEWED BY:

Barbara J. Thompson

Barbara J. Thompson
Superintendent
Health Physics
Technical Services

APPROVED BY:

George R. Simmons

George R. Simmons
Manager
Radiological Protection and Chemistry

FORWARD

This report is submitted in accordance with North Anna Unit 1 and 2 Technical Specification 5.6.3 and North Anna Independent Spent Fuel Storage Installation (ISFSI) Technical Specification 5.5.2.c and 10CFR72.44(d)(3).

ANNUAL RADIOACTIVE EFFLUENT RELEASE REPORT
FOR THE
NORTH ANNA POWER STATION
JANUARY 01, 2017 TO DECEMBER 31, 2017

INDEX

<u>Section No.</u>	<u>Subject</u>	<u>Page</u>
1	EXECUTIVE SUMMARY.....	4
2	PURPOSE AND SCOPE.....	5
3	DISCUSSION.....	5-6
4	SUPPLEMENTAL INFORMATION.....	6-7
Attachment 1	- Effluent Release Data.....	8
Attachment 2	- Annual and Quarterly Doses.....	9
Attachment 3	- Revisions to Offsite Dose Calculation Manual (ODCM).....	10
Attachment 4	- Major Changes to Radioactive Liquid, Gaseous, and Solid Waste Treatment Systems.....	11
Attachment 5	- Inoperability of Radioactive Liquid and Gaseous Effluent Monitoring Instrumentation.....	12
Attachment 6	- Unplanned Releases.....	13
Attachment 7	- Lower Limits of Detection (LLD) for Effluent Sample Analysis.....	14-15
Attachment 8	- Results of Ground Water Protection Initiative Sample Analysis.....	16-24
Attachment 9	- Carbon-14 Calculations.....	25
Miscellaneous	- Annual Effluent Release Report Log.....	26

1.0 EXECUTIVE SUMMARY

The Annual Radioactive Effluent Release Report describes the radioactive effluent control program conducted at the North Anna Power Station and the Independent Spent Fuel Storage Installation (ISFSI) during the 2017 calendar year. This document summarizes the quantities of radioactive liquid and gaseous effluents and solid waste released from the North Anna Power Station and ISFSI in accordance with Regulatory Guide 1.21 during the period of January 1 through December 31, 2017, and includes an assessment of radiation doses to the maximum exposed member of the public due to radioactive liquid and gaseous effluents. There were no releases from the ISFSI during 2017.

There were no unplanned releases, meeting the reporting criteria of Section 6.7.2.a.3 of the Offsite Dose Calculation Manual during this reporting period. Also there were no spills or leaks meeting the voluntary communication criteria of the NEI Ground Water Protection Initiative. This will be discussed in Attachment 6.

10 CFR 50, Appendix I dose calculations were performed on the 2017 effluent release data in accordance with the Offsite Dose Calculation Manual. The results of these pathway dose calculations indicate the following:

- a. The total body dose due to liquid effluents was $6.29\text{E-}01$ mrem, which is 10.48% of the dose limit, and the critical organ dose due to liquid effluents was $6.31\text{E-}01$ mrem, which is 3.16% of the dose limit.
- b. The air dose due to noble gases was $3.57\text{E-}05$ mrad gamma, which is $1.78\text{E-}04\%$ of the annual gamma dose limit, and $3.51\text{E-}05$ mrad beta, which is $8.78\text{E-}05\%$ of the annual beta dose limit.
- c. The critical organ dose for I-131, I-133, H-3, and particulates with half-lives greater than 8 days including C-14 was $6.99\text{E-}01$ mrem, which is 2.33% of the annual dose limit. The bases of C-14 calculations are described in Attachment 9.
- d. The critical organ dose for I-131, I-133, H-3, and particulates with half-lives greater than 8 days not including C-14 was $1.37\text{E-}02$ mrem, which is $4.57\text{E-}02\%$ of the annual dose limit.

There were no major changes to either the radioactive liquid waste treatment system, or to the gaseous, and solid waste treatment systems during this reporting period.

There were no revisions to the Offsite Dose Calculation Manual during this reporting period.

Based on the levels of radioactivity observed during this reporting period and the dose calculations performed, the operations of the North Anna Nuclear Power Station Units 1 and 2 and ISFSI have resulted in negligible dose consequences to the maximum exposed member of the public in unrestricted areas.

2.0 PURPOSE AND SCOPE

The Radioactive Effluent Release Report includes, in Attachment 1, a summary of the quantities of radioactive liquid and gaseous effluents and solid waste as outlined in Regulatory Guide 1.21, "Measuring, Evaluating, and Reporting Radioactivity in Solid Wastes and Releases of Radioactive Materials in Liquid and Gaseous Effluents from Light-Water-Cooled Nuclear Power Plants", Revision 1, June 1974, with data summarized on a quarterly basis for Table 1 and 2 and on an annual basis on Table 3. The report submitted before May 1st of each year includes an assessment of radiation doses to the maximum exposed member of the public due to radioactive liquid and gaseous effluents released from the site during the previous calendar year. The report also includes a list of unplanned releases during the reporting period in Attachment 6.

As required by Technical Specification, any changes to the Offsite Dose Calculation Manual (ODCM) for the time period covered by this report are included in Attachment 3.

Major changes to radioactive liquid, gaseous and solid waste treatment systems are reported in Attachment 4, as required by the ODCM, Section 6.7.2.a.4. Information to support the reason(s) for the change(s) and a summary of the 10 CFR 50.59 evaluation are included.

As required by the ODCM, Sections 6.2.2.b.2 and 6.3.2.b.3, a list and explanation for the inoperability of radioactive liquid and/or gaseous effluent monitoring instrumentation is provided in Attachment 5 of this report.

3.0 DISCUSSION

The basis for the calculation of percent of Technical Specification for the critical organ in Table 1A of Attachment 1 is the ODCM, section 6.3.1, which requires that the dose rate for iodine-131 and iodine-133, for tritium, and for all radionuclides in particulate form with half-lives greater than 8 days shall be less than or equal to 1500 mrem/yr to the critical organ at or beyond the site boundary. The critical organ is the child's bone if C-14 is included and child's thyroid if C-14 is not included both via the inhalation pathway.

The basis for the calculation of percent of Technical Specification for the total body and skin in Table 1A of Attachment 1 is the ODCM, section 6.3.1, which requires that the dose rate for noble gases to areas at or beyond the site boundary shall be less than or equal to 500 mrem/yr to the total body and less than or equal to 3000 mrem/yr to the skin.

The basis for the calculation of the percent of Technical Specification in Table 2A in Attachment 1 is the ODCM, section 6.2.1, which states that the concentrations of radioactive material released in liquid effluents to unrestricted areas shall be limited to 10 times the concentrations specified in 10 CFR 20, Appendix B, Table 2, Column 2 for radionuclides other than dissolved or entrained noble gases. For dissolved or entrained noble gases, the concentration shall be limited to 2.0E-4 uCi/ml.

Percent of Technical Specification calculations are based on the total gaseous or liquid effluents released for that respective quarter.

The annual and quarterly doses, as reported in Attachment 2, were calculated according to the methodology presented in the ODCM. The beta and gamma air doses due to noble gases released from the site were calculated at site boundary. The maximum exposed member of the public from the releases of airborne iodine-131 and iodine-133, tritium and all radionuclides in particulate form with half-lives greater than 8 days, including carbon-14 is defined as a child, exposed through the vegetation pathway, with the critical organ being the bone. If carbon-14 is excluded from these calculations, the maximum exposed member of the public from the releases of airborne iodine-131 and iodine-133, tritium and all radionuclides in particulate form with half-lives greater than 8 days is defined as a child, exposed through the vegetation pathway, with the critical organ being the thyroid gland. The maximum exposed member of the public for calculation of total body dose from radioactive materials in liquid effluents released to unrestricted areas is defined as a child, and also as a child for the calculation of critical organ dose, which was determined to be liver. The age group is exposed via the drinking water and fish ingestion pathways.

As shown in Attachment 6, there were no unplanned releases meeting the requirements of 6.7.2.a.3 of the ODCM.

The typical Lower Limit of Detection (LLD) capabilities of the radioactive effluent analysis instrumentation are presented in Attachment 7. These LLD values are based upon conservative conditions (i.e., minimum sample volume and maximum delay time prior to analysis). Actual LLD values may be lower. If a radioisotope was not detected when effluent samples were analyzed, then the activity of that radioisotope was reported as Not Detectable (N/D) on Attachment 1 of this report. If an analysis for an isotope was not performed, then the activity was reported as Not Applicable (N/A).

4.0 SUPPLEMENTAL INFORMATION

As required by the ODCM, section 6.6.2, evaluation of the Land Use Census is performed to identify if new location(s) need be added for the radiological environmental monitoring program pursuant to the ODCM. There were no new sampling locations added. There were seven (7) changes made to the land use census in 2017. The nearest garden location in the N sector changed from 1.56 miles to 2.75 miles. The nearest garden location in the NNE sector changed from 1.22 miles to 3.21 miles. The nearest garden location in the E sector changed from 2.04 miles to 1.75 miles. The nearest garden location in the SE sector changed from 1.54 miles to 1.4 miles. The nearest garden location in the SSW sector changed from 1.33 miles to 2.37 miles. The nearest garden location in the NW sector changed from 1.28 miles to 1.09 miles. Finally, the nearest garden location in the NNW sector changed from 2.54 miles to 1.33 miles.

Section 6.6.1.b.4 of the ODCM requires identification of the cause(s) for the unavailability of milk or leafy vegetation samples, and the identification of new locations for obtaining replacement samples. All milk samples were collected as required. Vegetation samples were not collected from stations 14B, 15, 16, 23 and 26 from January through March and November through December due to seasonal unavailability. All other vegetation samples were obtained.

Attachment 8 contains the results of samples associated with ground water protection sampling undertaken at North Anna to voluntarily comply with the Nuclear Energy Institute, NEI, Ground Water Protection Initiative. In addition to the well, river, and surface water samples included as part of the Radiological Environmental Monitoring Program, North Anna obtained subsurface

water samples from various locations on the site.

Attachment 9 contains an explanation of the bases for the carbon-14 calculations performed to assess doses due to carbon-14. Doses and %TS for gaseous releases are displayed with C-14 included and without for comparison of the values.

ATTACHMENT 1
EFFLUENT RELEASE DATA
(01/17 - 12/17)

This attachment includes a summary of the quantities of radioactive liquid and gaseous effluents and solid waste, as outlined in Regulatory Guide 1.21, Appendix B, except that in accordance with Step 6.7.2.a.1 of the ODCM liquid and gaseous data is summarized on a quarterly basis and solid waste is summarized on an annual basis.

ATTACHMENT 2
ANNUAL AND QUARTERLY DOSES
(01/17 - 12/17)

An assessment of radiation doses to the maximum exposed member of the public due to radioactive liquid and gaseous effluents released from the site for each calendar quarter for the calendar year of this report, along with an annual total of each effluent pathway will be made as required by ODCM Section 6.7.2.

	<u>1st</u> <u>Quarter</u>	<u>2nd</u> <u>Quarter</u>	<u>3rd</u> <u>Quarter</u>	<u>4th</u> <u>Quarter</u>	<u>Annual</u> <u>Total</u>
Total Body					
Dose (mrem)	6.736E-2	1.661E-1	3.354E-1	5.955E-2	6.284E-1
Critical Organ					
Dose (mrem)	6.988E-2	1.663E-1	3.354E-1	5.962E-2	6.312E-1

	<u>1st</u> <u>Quarter</u>	<u>2nd</u> <u>Quarter</u>	<u>3rd</u> <u>Quarter</u>	<u>4th</u> <u>Quarter</u>	<u>Annual</u> <u>Total</u>
Noble Gas					
Gamma Dose (mrad)	5.279E-6	6.795E-6	9.318E-6	1.426E-5	3.565E-5
Noble Gas					
Beta Dose (mrad)	1.270E-5	2.775E-6	1.434E-5	5.285E-6	3.512E-5
Critical Organ					
(Child bone)					
Dose for I-131,					
I-133, H-3,					
Particulates with					
T_{1/2} > 8 days					
(including C-14) (mrem)	3.588E-1	7.044E-2	1.552E-1	1.143E-1	6.987E-1

Critical Organ					
(Child thyroid)					
Dose for I-131,					
I-133, H-3,					
Particulates with					
T_{1/2} > 8 days					
(excluding C-14) (mrem)	7.363E-3	1.700E-3	2.039E-3	2.579E-3	1.368E-2

ATTACHMENT 3

REVISIONS TO OFFSITE DOSE CALCULATION MANUAL

(ODCM)

(01/17 - 12/17)

As required by Technical Specification 5.5.1.c, revisions to the ODCM, effective for the time period covered by this report, are summarized in this attachment.

There were no revisions to the ODCM during this reporting period.

ATTACHMENT 4
MAJOR CHANGES TO RADIOACTIVE LIQUID, GASEOUS, AND SOLID
WASTE TREATMENT SYSTEMS
(01/17 - 12/17)

As required by the ODCM, Section 6.7.2.a.4, major changes to radioactive liquid, gaseous and solid waste treatment systems for the time period covered by this report are synopsised in this attachment. Supporting information as to the reason(s) for the change(s) and a summary of the 10 CFR 50.59 evaluations are included, as applicable.

There were no major changes to the radioactive liquid, gaseous, and solid waste treatment systems for 2017.

ATTACHMENT 5
INOPERABILITY OF RADIOACTIVE LIQUID AND GASEOUS
EFFLUENT MONITORING INSTRUMENTATION

(01/17 - 12/17)

As required by the ODCM, Sections 6.2.2.b.2 and 6.3.2.b.3, a list and explanation for extended inoperability of radioactive liquid and/or gaseous effluent monitoring instrumentation is provided in this attachment.

The Unit 2 High Capacity Blowdown effluent radiation monitor, 2-SS-RM-225, was out of service for greater than 30 days during the calendar year 2017. The radiation monitor was declared out of service on 02/10/2017 during calibration. The monitor was adjusted during calibration however still experienced moderate output signal spiking below the alarm setpoint. The monitor remained out of service pending evaluation of the output signal spiking issue. Evaluations by the manufacturer and Station Engineering determined that the signal spiking issue did not compromise the functionality or operability of the radiation monitor. The radiation monitor was declared fully operational and returned to service on 03/30/2017.

A system update for 2-SS-RM-225 is planned for June 2018 and will be implemented with DCP NA-17-00173. This will improve the overall equipment health for the radiation monitoring system.

ATTACHMENT 6

UNPLANNED RELEASES

(01/17 - 12/17)

As required by the ODCM, Section 6.7.2.a.3, a list of unplanned releases, from the site to unrestricted areas, of radioactive material in gaseous and liquid effluents occurring during the reporting period, is made in this attachment.

There were no unplanned releases during calendar year 2017 meeting the criteria of Section 6.7.2.a.3 of the ODCM from the site to unrestricted areas. Also, there were no spills or leaks that required voluntary communication under the criteria of the NEI Ground Water Protection Initiative, NEI 07-07. Elevated results indicated in Attachment 8 are from the on-going investigation/ mitigation for the voluntary communication made in 2010. The hydrological modeling indicates the horizontal groundwater movement around well #6 is < 1 inch per day.

ATTACHMENT 7
LOWER LIMITS OF DETECTION FOR EFFLUENT SAMPLE ANALYSIS
(01/17 - 12/17)

Gaseous Effluents:

Radioisotope	Required L.L.D. μCi/mL	Typical L.L.D. μCi/mL	
Krypton - 87	1.00E-4	2.50E-8	- 7.50E-8
Krypton - 88	1.00E-4	4.00E-8	- 2.50E-7
Xenon - 133	1.00E-4	2.00E-8	- 1.00E-7
Xenon - 133m	1.00E-4	1.00E-7	- 4.00E-7
Xenon - 135	1.00E-4	1.00E-8	- 5.00E-8
Xenon - 135m	1.00E-4	5.00E-8	- 2.00E-7
Xenon - 138	1.00E-4	9.00E-8	- 4.00E-7
Iodine - 131	1.00E-12	3.00E-14	- 1.00E-13
Iodine - 133	1.00E-10	1.00E-14	- 7.00E-13
Manganese - 54	1.00E-11	2.00E-14	- 6.00E-14
Cobalt - 58	1.00E-11	2.00E-14	- 6.00E-14
Iron - 59	1.00E-11	6.00E-14	- 1.00E-13
Cobalt - 60	1.00E-11	3.00E-14	- 1.00E-13
Zinc - 65	1.00E-11	6.00E-14	- 2.00E-13
Strontium - 89	1.00E-11	3.00E-14	- 8.00E-12
Strontium - 90	1.00E-11	3.00E-15	- 9.00E-12
Molybdenum - 99	1.00E-11	2.00E-14	- 1.00E-13
Cesium - 134	1.00E-11	2.00E-14	- 8.00E-14
Cesium - 137	1.00E-11	3.00E-14	- 8.00E-14
Cerium - 141	1.00E-11	3.00E-14	- 1.00E-13
Cerium - 144	1.00E-11	1.50E-13	- 4.00E-13
Gross Alpha	1.00E-11	7.00E-15	- 2.00E-14
Tritium	1.00E-6	4.00E-09	- 9.00E-09

ATTACHMENT 7
LOWER LIMITS OF DETECTION FOR EFFLUENT SAMPLE ANALYSIS
(01/17 - 12/17)

Liquid Effluents:

Radioisotope	Required L.L.D. μCi/mL	Typical L.L.D. μCi/mL
Krypton - 87	1.00E-5	3.00E-8 - 1.00E-7
Krypton - 88	1.00E-5	5.00E-8 - 5.00E-7
Xenon - 133	1.00E-5	3.00E-8 - 1.00E-7
Xenon - 133m	1.00E-5	9.00E-8 - 3.00E-7
Xenon - 135	1.00E-5	1.00E-8 - 5.00E-8
Xenon - 135m	1.00E-5	3.00E-8 - 2.00E-7
Xenon - 138	1.00E-5	1.00E-7 - 1.00E-6
Iodine - 131	1.00E-6	1.00E-8 - 5.00E-8
Manganese - 54	5.00E-7	1.00E-8 - 5.00E-8
Iron - 55	1.00E-6	3.00E-7 - 8.00E-7
Cobalt - 58	5.00E-7	1.50E-8 - 6.00E-8
Iron - 59	5.00E-7	3.00E-8 - 7.00E-8
Cobalt - 60	5.00E-7	1.00E-8 - 5.50E-8
Zinc - 65	5.00E-7	3.00E-8 - 6.00E-8
Strontium - 89	5.00E-8	1.00E-8 - 4.00E-8
Strontium - 90	5.00E-8	5.00E-9 - 9.00E-9
Molybdenum - 99	5.00E-7	2.00E-8 - 6.00E-8
Cesium - 134	5.00E-7	1.50E-8 - 5.00E-8
Cesium - 137	5.00E-7	1.50E-8 - 6.00E-8
Cerium - 141	5.00E-7	3.00E-8 - 9.00E-8
Cerium - 144	5.00E-7	1.00E-7 - 5.00E-7
Gross Alpha	1.00E-7	2.00E-8 - 7.00E-8
Tritium	1.00E-5	2.00E-6 - 5.00E-6

ATTACHMENT 8

RESULTS OF GROUND WATER PROTECTION INITIATIVE SAMPLE ANALYSIS (01/17 - 12/17)

The Ground Water Protection Program was established to improve North Anna's management of and response to instances where the inadvertent release of radioactive substances may result in low but detectible levels of plant-related materials in subsurface soils and water. It complies with the requirements of NEI 07-07, INDUSTRY GROUND WATER PROTECTION INITIATIVE - FINAL GUIDANCE DOCUMENT. The industry initiative is intended to improve public trust and confidence in the nuclear industry through sampling and analysis of ground water and timely and effective communication with stakeholders, including the public and local, state, and federal officials.

Samples are obtained from monitoring wells installed both inside and outside the restricted area on a quarterly basis and analyzed onsite. Annually, during the second quarter, these samples are analyzed by an Independent Lab. Samples are also obtained from sumps and yard drains on a quarterly basis and analyzed onsite. Samples may be obtained more frequently than normal, if required and may be analyzed on-site or by an Independent Lab. The required Lower Limits of Detection, LLDs, and reporting limits for the ground water detection program are those associated with the radiological environmental program as listed in Attachments 11 and 12 to VPAP-2103N.

On the following pages is a summary of the samples and results of the ground water protection program taken for calendar year 2017. All liquid results are reported in pCi/L, while soil results for tritium are reported in pCi/g of soil, wet. An "N/A" indicates a sample analysis was not performed for that sample. An "N/D" indicates an analysis was performed but the result was less than the Minimum Detectable Activity, MDA, and the required LLD. If a result is greater than the MDA, but less than the LLD the result is listed. Some of these results may be false positives, due to the analysis software or interferences from naturally occurring radioactivity. In these cases, instead of the value, an explanatory footnote is provided.

Ground water well GWP-15 was decommissioned during calendar year 2017 due to construction activities required for plant operations. It will be replaced by well GWP-15R at a later date. Therefore, no data is available for well GWP-15 in the following data tables after the second quarter of 2017.

ATTACHMENT 8
RESULTS OF GROUND WATER PROTECTION INITIATIVE SAMPLE ANALYSIS
(01/17 - 12/17)

1st Quarter 2017

Sample	Date	Sample Media	H-3 ⁽¹⁾	Gamma –Emitting Particulates ⁽¹⁾	I-131 ⁽¹⁾	Sr-89/90 ⁽¹⁾	Fe-55 ⁽¹⁾	Ni-63 ⁽¹⁾	Alpha TRU ⁽¹⁾	Pu-241 ⁽¹⁾
PZ-3	01/18/17	WATER	2488	N/A	N/A	N/A	N/A	N/A	N/A	N/A
PZ-3	02/23/17	WATER	3793	N/A	N/A	N/A	N/A	N/A	N/A	N/A
PZ-3	03/22/17	WATER	1290	N/A	N/A	N/A	N/A	N/A	N/A	N/A
GWP-3	03/21/17	WATER	<817	N/A	N/A	N/A	N/A	N/A	N/A	N/A
GWP-4	03/21/17	WATER	<817	N/A	N/A	N/A	N/A	N/A	N/A	N/A
GWP-5A	03/21/17	WATER	<817	N/A	N/A	N/A	N/A	N/A	N/A	N/A
GWP-6	01/18/17	WATER	<882	N/A	N/A	N/A	N/A	N/A	N/A	N/A
GWP-6	02/23/17	WATER	<871	N/A	N/A	N/A	N/A	N/A	N/A	N/A
GWP-6	03/23/17	WATER	1720	N/A	N/A	N/A	N/A	N/A	N/A	N/A
GWP-7	03/29/17	WATER	<901	N/A	N/A	N/A	N/A	N/A	N/A	N/A
GWP-8	03/29/17	WATER	<901	N/A	N/A	N/A	N/A	N/A	N/A	N/A
GWP-9	03/29/17	WATER	<901	N/A	N/A	N/A	N/A	N/A	N/A	N/A
GWP-13	03/29/17	WATER	<901	N/A	N/A	N/A	N/A	N/A	N/A	N/A
GWP-14	03/29/17	WATER	<901	N/A	N/A	N/A	N/A	N/A	N/A	N/A
GWP-15	03/29/17	WATER	<901	N/A	N/A	N/A	N/A	N/A	N/A	N/A
GWP-16	03/29/17	WATER	<893	N/A	N/A	N/A	N/A	N/A	N/A	N/A
GWP-17	03/29/17	WATER	<893	N/A	N/A	N/A	N/A	N/A	N/A	N/A
GWP-18	01/18/17	WATER	1678	N/A	N/A	N/A	N/A	N/A	N/A	N/A
GWP18	02/23/17	WATER	3811	N/A	N/A	N/A	N/A	N/A	N/A	N/A
GWP18	03/23/17	WATER	3850	N/A	N/A	N/A	N/A	N/A	N/A	N/A
GWP-19	03/21/17	WATER	<817	N/A	N/A	N/A	N/A	N/A	N/A	N/A
GWP-20	03/27/17	WATER	<820	N/A	N/A	N/A	N/A	N/A	N/A	N/A
GWP-21	03/29/17	WATER	<901	N/A	N/A	N/A	N/A	N/A	N/A	N/A
GWP-22	03/29/17	WATER	<901	N/A	N/A	N/A	N/A	N/A	N/A	N/A
BTW-1	03/30/17	WATER	<888	N/A	N/A	N/A	N/A	N/A	N/A	N/A
BTW-2	03/30/17	WATER	<893	N/A	N/A	N/A	N/A	N/A	N/A	N/A
BTW-4	03/30/17	WATER	<890	N/A	N/A	N/A	N/A	N/A	N/A	N/A
TTW-2	03/30/17	WATER	<895	N/A	N/A	N/A	N/A	N/A	N/A	N/A
TTW-3	03/30/17	WATER	<897	N/A	N/A	N/A	N/A	N/A	N/A	N/A
TTW-5	03/30/17	WATER	<890	N/A	N/A	N/A	N/A	N/A	N/A	N/A
Sub Surface Drains	02/21/17	WATER	<1727	N/A	N/A	N/A	N/A	N/A	N/A	N/A
U-1 Intake Storm Drains	02/08/17	WATER	<1600	N/A	N/A	N/A	N/A	N/A	N/A	N/A
U-2 Intake Storm Drains	02/08/17	WATER	<1600	N/A	N/A	N/A	N/A	N/A	N/A	N/A
Disch Canal Storm Drains	02/08/17	WATER	<1590	N/A	N/A	N/A	N/A	N/A	N/A	N/A
U-1 Mat Sump East	02/23/17	WATER	<1578	N/A	N/A	N/A	N/A	N/A	N/A	N/A
U-1 Mat Sump South	02/23/17	WATER	<1557	N/A	N/A	N/A	N/A	N/A	N/A	N/A
U-2 Mat Sump Inside	02/23/17	WATER	<1553	N/A	N/A	N/A	N/A	N/A	N/A	N/A
U-2 Mat Sump Outside	02/23/17	WATER	<1546	N/A	N/A	N/A	N/A	N/A	N/A	N/A
U-1 AB/FB GWMS	02/23/17	WATER	<1545	N/A	N/A	N/A	N/A	N/A	N/A	N/A
U-2 AB/FB GWMS	02/23/17	WATER	<1550	N/A	N/A	N/A	N/A	N/A	N/A	N/A
PZ-1	03/29/17	WATER	Insufficient Volume to Sample							
PZ-2	03/29/17	WATER	Insufficient Volume to Sample							
TTW-1	Well abandoned in place, pending decommissioning.									
TTW-4	Well abandoned in place, pending decommissioning									

(1) pCi/L

ATTACHMENT 8
RESULTS OF GROUND WATER PROTECTION INITIATIVE SAMPLE ANALYSIS
(01/17 - 12/17)

2nd Quarter 2017

Sample	Date	Sample Media	H-3 ⁽¹⁾	Gamma –Emitting Particulates ⁽¹⁾	I-131 ⁽¹⁾	Sr-89/90 ⁽¹⁾	Fe-55 ⁽¹⁾	Ni-63 ⁽¹⁾	Alpha TRU ⁽¹⁾	Pu-241 ⁽¹⁾
PZ-3	04/20/17	WATER	2519	N/A	N/A	N/A	N/A	N/A	N/A	N/A
PZ-3	05/18/17	WATER	3130	N/A	N/A	N/A	N/A	N/A	N/A	N/A
PZ-3	06/14/17	WATER	3670	N/A	N/A	N/A	N/A	N/A	N/A	N/A
PZ-3 (2)	06/14/17	WATER	2280	N/A	N/A	N/A	N/A	N/A	N/A	N/A
GWP-3	06/14/17	WATER	2030	N/A	N/A	N/A	N/A	N/A	N/A	N/A
GWP-3 (2)	06/14/17	WATER	<855	N/A	N/A	N/A	N/A	N/A	N/A	N/A
GWP-4	06/14/17	WATER	2260	N/A	N/A	N/A	N/A	N/A	N/A	N/A
GWP-4 (2)	06/14/17	WATER	<870	N/A	N/A	N/A	N/A	N/A	N/A	N/A
GWP-5A	06/14/17	WATER	<853	N/A	N/A	N/A	N/A	N/A	N/A	N/A
GWP-5A (2)	06/14/17	WATER	<853	N/A	N/A	N/A	N/A	N/A	N/A	N/A
GWP-6	04/26/17	WATER	1059	N/A	N/A	N/A	N/A	N/A	N/A	N/A
GWP-6	05/18/17	WATER	1150	N/A	N/A	N/A	N/A	N/A	N/A	N/A
GWP-6	06/14/17	WATER	2800	N/A	N/A	N/A	N/A	N/A	N/A	N/A
GWP-6 (2)	06/14/17	WATER	1300	N/A	N/A	N/A	N/A	N/A	N/A	N/A
GWP-7	06/15/17	WATER	1330	N/A	N/A	N/A	N/A	N/A	N/A	N/A
GWP-7 (2)	06/15/17	WATER	<845	N/A	N/A	N/A	N/A	N/A	N/A	N/A
GWP-8	06/14/17	WATER	1650	N/A	N/A	N/A	N/A	N/A	N/A	N/A
GWP-8 (2)	06/14/17	WATER	<859	N/A	N/A	N/A	N/A	N/A	N/A	N/A
GWP-9	06/15/17	WATER	<867	N/A	N/A	N/A	N/A	N/A	N/A	N/A
GWP-9 (2)	06/15/17	WATER	<853	N/A	N/A	N/A	N/A	N/A	N/A	N/A
GWP-13	06/14/17	WATER	<878	N/A	N/A	N/A	N/A	N/A	N/A	N/A
GWP-13 (2)	06/14/17	WATER	<850	N/A	N/A	N/A	N/A	N/A	N/A	N/A
GWP-14	06/15/17	WATER	<865	N/A	N/A	N/A	N/A	N/A	N/A	N/A
GWP-14 (2)	06/15/17	WATER	<851	N/A	N/A	N/A	N/A	N/A	N/A	N/A
GWP-15	06/14/17	WATER	<846	N/A	N/A	N/A	N/A	N/A	N/A	N/A
GWP-15 (2)	06/14/17	WATER	<848	N/A	N/A	N/A	N/A	N/A	N/A	N/A
GWP-16	06/15/17	WATER	<859	N/A	N/A	N/A	N/A	N/A	N/A	N/A
GWP-16 (2)	06/15/17	WATER	<861	N/A	N/A	N/A	N/A	N/A	N/A	N/A
GWP-17	06/14/17	WATER	<869	N/A	N/A	N/A	N/A	N/A	N/A	N/A
GWP-17 (2)	06/14/17	WATER	<850	N/A	N/A	N/A	N/A	N/A	N/A	N/A
GWP-18	04/27/17	WATER	2980	N/A	N/A	N/A	N/A	N/A	N/A	N/A
GWP-18	05/18/17	WATER	3550	N/A	N/A	N/A	N/A	N/A	N/A	N/A
GWP-18	06/15/17	WATER	3280	N/A	N/A	N/A	N/A	N/A	N/A	N/A
GWP-18 (2)	06/15/17	WATER	2330	N/A	N/A	N/A	N/A	N/A	N/A	N/A
GWP-19	06/15/17	WATER	1960	N/A	N/A	N/A	N/A	N/A	N/A	N/A
GWP-19 (2)	06/15/17	WATER	<863	N/A	N/A	N/A	N/A	N/A	N/A	N/A
GWP-20	06/15/17	WATER	<881	N/A	N/A	N/A	N/A	N/A	N/A	N/A
GWP-20 (2)	06/15/17	WATER	<852	N/A	N/A	N/A	N/A	N/A	N/A	N/A
GWP-21	06/15/17	WATER	<871	N/A	N/A	N/A	N/A	N/A	N/A	N/A
GWP-21 (2)	06/15/17	WATER	<852	N/A	N/A	N/A	N/A	N/A	N/A	N/A
GWP-22	06/15/17	WATER	<879	N/A	N/A	N/A	N/A	N/A	N/A	N/A
GWP-22 (2)	06/15/17	WATER	<843	N/A	N/A	N/A	N/A	N/A	N/A	N/A
BTW-1	06/26/17	WATER	<879	N/A	N/A	N/A	N/A	N/A	N/A	N/A
BTW-1 (2)	06/26/17	WATER	<841	N/A	N/A	N/A	N/A	N/A	N/A	N/A

BTW-2	06/26/17	WATER	<869	N/A	N/A	N/A	N/A	N/A	N/A	N/A
BTW-2 (2)	06/26/17	WATER	<845	N/A	N/A	N/A	N/A	N/A	N/A	N/A
BTW-4	06/28/17	WATER	<884	N/A	N/A	N/A	N/A	N/A	N/A	N/A
BTW-4 (2)	06/28/17	WATER	<835	N/A	N/A	N/A	N/A	N/A	N/A	N/A
TTW-2	06/28/17	WATER	<869	N/A	N/A	N/A	N/A	N/A	N/A	N/A
TTW-2 (2)	06/28/17	WATER	<832	N/A	N/A	N/A	N/A	N/A	N/A	N/A
TTW-3	06/27/17	WATER	<881	N/A	N/A	N/A	N/A	N/A	N/A	N/A
TTW-3 (2)	06/27/17	WATER	<861	N/A	N/A	N/A	N/A	N/A	N/A	N/A
TTW-5	06/28/17	WATER	<899	N/A	N/A	N/A	N/A	N/A	N/A	N/A
TTW-5 (2)	06/28/17	WATER	<844	N/A	N/A	N/A	N/A	N/A	N/A	N/A
Sub Surface Drains	05/11/17	WATER	<1550	N/A	N/A	N/A	N/A	N/A	N/A	N/A
U-1 Intake Storm Drains	05/16/17	WATER	<1531	N/A	N/A	N/A	N/A	N/A	N/A	N/A
U-2 Intake Storm Drains	05/16/17	WATER	<1531	N/A	N/A	N/A	N/A	N/A	N/A	N/A
Disch Canal Storm Drains	05/16/17	WATER	<1531	N/A	N/A	N/A	N/A	N/A	N/A	N/A
U-1 Mat Sump East	06/14/17	WATER	<1772	N/A	N/A	N/A	N/A	N/A	N/A	N/A
U-1 Mat Sump South	06/14/17	WATER	<1798	N/A	N/A	N/A	N/A	N/A	N/A	N/A
U-2 Mat Sump Inside	06/14/17	WATER	<1796	N/A	N/A	N/A	N/A	N/A	N/A	N/A
U-2 Mat Sump Outside	06/14/17	WATER	<1818	N/A	N/A	N/A	N/A	N/A	N/A	N/A
U-1 AB/FB GWMS	06/14/17	WATER	<1795	N/A	N/A	N/A	N/A	N/A	N/A	N/A
U-2 AB/FB GWMS	06/14/17	WATER	<1799	N/A	N/A	N/A	N/A	N/A	N/A	N/A
PZ-1	06/26/17	WATER	Insufficient Volume to Sample							
PZ-2	06/26/17	WATER	Insufficient Volume to Sample							
TTW-1	Well abandoned in place, pending decommissioning									
TTW-4	Well abandoned in place, pending decommissioning									

(1) pCi/L (2) Vendor Analysis

ATTACHMENT 8
RESULTS OF GROUND WATER PROTECTION INITIATIVE SAMPLE ANALYSIS
(01/17 - 12/17)

3rd Quarter 2017

Sample	Date	Sample Media	H-3 ⁽¹⁾	Gamma –Emitting Particulates ⁽¹⁾	I-131 ⁽¹⁾	Sr-89/90 ⁽¹⁾	Fe-55 ⁽¹⁾	Ni-63 ⁽¹⁾	Alpha TRU ⁽¹⁾	Pu-241 ⁽¹⁾
PZ-3	07/20/17	WATER	3640	N/A	N/A	N/A	N/A	N/A	N/A	N/A
PZ-3	08/28/17	WATER	3330	N/A	N/A	N/A	N/A	N/A	N/A	N/A
PZ-3	09/20/17	WATER	3050	N/A	N/A	N/A	N/A	N/A	N/A	N/A
GWP-3	09/20/17	WATER	977	N/A	N/A	N/A	N/A	N/A	N/A	N/A
GWP-3	10/06/17	WATER	1220	N/A	N/A	N/A	N/A	N/A	N/A	N/A
GWP-4	09/20/17	WATER	1520	N/A	N/A	N/A	N/A	N/A	N/A	N/A
GWP-4	10/06/17	WATER	1150	N/A	N/A	N/A	N/A	N/A	N/A	N/A
GWP-5A	09/22/17	WATER	<801	N/A	N/A	N/A	N/A	N/A	N/A	N/A
GWP-6	07/20/17	WATER	2610	N/A	N/A	N/A	N/A	N/A	N/A	N/A
GWP-6	08/28/17	WATER	1830	N/A	N/A	N/A	N/A	N/A	N/A	N/A
GWP-6	09/22/17	WATER	1810	N/A	N/A	N/A	N/A	N/A	N/A	N/A
GWP-7	09/22/17	WATER	873	N/A	N/A	N/A	N/A	N/A	N/A	N/A
GWP-7	10/06/17	WATER	<877	N/A	N/A	N/A	N/A	N/A	N/A	N/A
GWP-8	09/22/17	WATER	<803	N/A	N/A	N/A	N/A	N/A	N/A	N/A
GWP-9	09/20/17	WATER	<842	N/A	N/A	N/A	N/A	N/A	N/A	N/A
GWP-13	09/20/17	WATER	<966	N/A	N/A	N/A	N/A	N/A	N/A	N/A
GWP-14	09/30/17	WATER	<880	N/A	N/A	N/A	N/A	N/A	N/A	N/A
GWP-16	09/30/17	WATER	<874	N/A	N/A	N/A	N/A	N/A	N/A	N/A
GWP-17	09/30/17	WATER	<876	N/A	N/A	N/A	N/A	N/A	N/A	N/A
GWP-18	07/20/17	WATER	2900	N/A	N/A	N/A	N/A	N/A	N/A	N/A
GWP-18	08/28/17	WATER	<899	N/A	N/A	N/A	N/A	N/A	N/A	N/A
GWP-18	09/30/17	WATER	3120	N/A	N/A	N/A	N/A	N/A	N/A	N/A
GWP-19	09/20/17	WATER	<881	N/A	N/A	N/A	N/A	N/A	N/A	N/A
GWP-20	09/22/17	WATER	<793	N/A	N/A	N/A	N/A	N/A	N/A	N/A
GWP-21	09/26/17	WATER	<940	N/A	N/A	N/A	N/A	N/A	N/A	N/A
GWP-22	09/26/17	WATER	<948	N/A	N/A	N/A	N/A	N/A	N/A	N/A
BTW-1	09/30/17	WATER	<912	N/A	N/A	N/A	N/A	N/A	N/A	N/A
BTW-2	09/30/17	WATER	<904	N/A	N/A	N/A	N/A	N/A	N/A	N/A
BTW-4	09/30/17	WATER	<1039	N/A	N/A	N/A	N/A	N/A	N/A	N/A
TTW-2	09/30/17	WATER	<908	N/A	N/A	N/A	N/A	N/A	N/A	N/A
TTW-3	09/30/17	WATER	<912	N/A	N/A	N/A	N/A	N/A	N/A	N/A
TTW-5	09/30/17	WATER	<910	N/A	N/A	N/A	N/A	N/A	N/A	N/A
Sub Surface Drains	08/14/17	WATER	<1594	N/A	N/A	N/A	N/A	N/A	N/A	N/A
U-1 Intake Storm Drains	08/17/17	WATER	<1718	N/A	N/A	N/A	N/A	N/A	N/A	N/A
U-2 Intake Storm Drains	08/17/17	WATER	<1746	N/A	N/A	N/A	N/A	N/A	N/A	N/A
Disch Canal Storm Drains	08/17/17	WATER	<1693	N/A	N/A	N/A	N/A	N/A	N/A	N/A
U-1 Mat Sump East	08/31/17	WATER	<1827	N/A	N/A	N/A	N/A	N/A	N/A	N/A
U-1 Mat Sump East	09/20/17	WATER	<1798	N/A	N/A	N/A	N/A	N/A	N/A	N/A
U-1 Mat Sump South	08/31/17	WATER	<1798	N/A	N/A	N/A	N/A	N/A	N/A	N/A
U-1 Mat Sump South	09/20/17	WATER	<1820	N/A	N/A	N/A	N/A	N/A	N/A	N/A
U-2 Mat Sump Inside	08/31/17	WATER	<1773	N/A	N/A	N/A	N/A	N/A	N/A	N/A

U-2 Mat Sump Inside	09/20/17	WATER	<1798	N/A	N/A	N/A	N/A	N/A	N/A	N/A
U-2 Mat Sump Outside	08/31/17	WATER	<1754	N/A	N/A	N/A	N/A	N/A	N/A	N/A
U-2 Mat Sump Outside	09/20/17	WATER	<1792	N/A	N/A	N/A	N/A	N/A	N/A	N/A
U-1 AB/FB GWMS	08/31/17	WATER	<1766	N/A	N/A	N/A	N/A	N/A	N/A	N/A
U-1 AB/FB GWMS	09/20/17	WATER	<1803	N/A	N/A	N/A	N/A	N/A	N/A	N/A
U-2 AB/FB GWMS	08/31/17	WATER	<1756	N/A	N/A	N/A	N/A	N/A	N/A	N/A
U-2 AB/FB GWMS	09/20/17	WATER	<1779	N/A	N/A	N/A	N/A	N/A	N/A	N/A
PZ-1	09/20/17	WATER	Insufficient volume to sample							
PZ-2	09/20/17	WATER	Insufficient volume to sample							
TTW-1	Well abandoned in place, pending decommissioning									
TTW-4	Well abandoned in place, pending decommissioning									

(1) pCi/L

(2) Vendor Analysis

ATTACHMENT 8

**RESULTS OF GROUND WATER PROTECTION INITIATIVE SAMPLE ANALYSIS
(01/17 - 12/17)**

4th Quarter 2017

Sample	Date	Sample Media	H-3 ⁽¹⁾	Gamma –Emitting Particulates ⁽¹⁾	I-131 ⁽¹⁾	Sr-89/90 ⁽¹⁾	Fe-55 ⁽¹⁾	Ni-63 ⁽¹⁾	Alpha TRU ⁽¹⁾	Pu-241 ⁽¹⁾
PZ-3	10/31/17	WATER	2660	N/A	N/A	N/A	N/A	N/A	N/A	N/A
PZ-3	11/30/17	WATER	2170	N/A	N/A	N/A	N/A	N/A	N/A	N/A
PZ-3	12/29/17	WATER	1620	N/A	N/A	N/A	N/A	N/A	N/A	N/A
GWP-3	12/28/17	WATER	<1080	N/A	N/A	N/A	N/A	N/A	N/A	N/A
GWP-4	12/29/17	WATER	<918	N/A	N/A	N/A	N/A	N/A	N/A	N/A
GWP-5A	12/29/17	WATER	<918	N/A	N/A	N/A	N/A	N/A	N/A	N/A
GWP-6	10/31/17	WATER	1540	N/A	N/A	N/A	N/A	N/A	N/A	N/A
GWP-6	11/30/17	WATER	1080	N/A	N/A	N/A	N/A	N/A	N/A	N/A
GWP-6	12/29/17	WATER	1150	N/A	N/A	N/A	N/A	N/A	N/A	N/A
GWP-7	12/29/17	WATER	1490	N/A	N/A	N/A	N/A	N/A	N/A	N/A
GWP-8	12/29/17	WATER	<878	N/A	N/A	N/A	N/A	N/A	N/A	N/A
GWP-9	12/29/17	WATER	<882	N/A	N/A	N/A	N/A	N/A	N/A	N/A
GWP-13	12/29/17	WATER	<958	N/A	N/A	N/A	N/A	N/A	N/A	N/A
GWP-14	01/11/18	WATER	<769	N/A	N/A	N/A	N/A	N/A	N/A	N/A
GWP-16	01/11/18	WATER	<769	N/A	N/A	N/A	N/A	N/A	N/A	N/A
GWP-17	01/16/18	WATER	<896	N/A	N/A	N/A	N/A	N/A	N/A	N/A
GWP-18	10/30/17	WATER	2190	N/A	N/A	N/A	N/A	N/A	N/A	N/A
GWP-18	11/30/17	WATER	3638	N/A	N/A	N/A	N/A	N/A	N/A	N/A
GWP-18	12/29/17	WATER	1070	N/A	N/A	N/A	N/A	N/A	N/A	N/A
GWP-19	12/29/17	WATER	<920	N/A	N/A	N/A	N/A	N/A	N/A	N/A
GWP-20	12/29/17	WATER	<915	N/A	N/A	N/A	N/A	N/A	N/A	N/A
GWP-21	12/29/17	WATER	1200	N/A	N/A	N/A	N/A	N/A	N/A	N/A
GWP-22	12/29/17	WATER	1600	N/A	N/A	N/A	N/A	N/A	N/A	N/A
BTW-1	01/03/18	WATER	<708	N/A	N/A	N/A	N/A	N/A	N/A	N/A
BTW-2	01/03/18	WATER	<743	N/A	N/A	N/A	N/A	N/A	N/A	N/A
BTW-4	01/04/18	WATER	<695	N/A	N/A	N/A	N/A	N/A	N/A	N/A
TTW-2	01/03/18	WATER	<752	N/A	N/A	N/A	N/A	N/A	N/A	N/A
TTW-3	01/04/18	WATER	<745	N/A	N/A	N/A	N/A	N/A	N/A	N/A
TTW-5	01/04/18	WATER	<727	N/A	N/A	N/A	N/A	N/A	N/A	N/A
Sub Surface Drains	11/14/17	WATER	<1661	N/A	N/A	N/A	N/A	N/A	N/A	N/A
U-1 Intake Storm Drains	11/27/17	WATER	<1640	N/A	N/A	N/A	N/A	N/A	N/A	N/A
U-2 Intake Storm Drains	11/27/17	WATER	<1640	N/A	N/A	N/A	N/A	N/A	N/A	N/A
Disch Canal Storm Drains	11/27/17	WATER	<1640	N/A	N/A	N/A	N/A	N/A	N/A	N/A
U-1 Mat Sump East	10/25/17	WATER	<1520	N/A	N/A	N/A	N/A	N/A	N/A	N/A
U-1 Mat Sump East	01/03/18	WATER	<1846	N/A	N/A	N/A	N/A	N/A	N/A	N/A
U-1 Mat Sump South	10/25/17	WATER	<1526	N/A	N/A	N/A	N/A	N/A	N/A	N/A
U-1 Mat Sump South	01/03/18	WATER	<1825	N/A	N/A	N/A	N/A	N/A	N/A	N/A
U-2 Mat Sump Inside	10/25/17	WATER	<1518	N/A	N/A	N/A	N/A	N/A	N/A	N/A
U-2 Mat Sump Inside	01/03/18	WATER	<1803	N/A	N/A	N/A	N/A	N/A	N/A	N/A
U-2 Mat Sump Outside	10/25/17	WATER	<1516	N/A	N/A	N/A	N/A	N/A	N/A	N/A
U-2 Mat Sump Outside	01/03/18	WATER	<1838	N/A	N/A	N/A	N/A	N/A	N/A	N/A

U-1 AB/FB GWMS	10/25/17	WATER	<1529	N/A	N/A	N/A	N/A	N/A	N/A	N/A
U-1 AB/FB GWMS	01/03/18	WATER	<1789	N/A	N/A	N/A	N/A	N/A	N/A	N/A
U-2 AB/FB GWMS	10/25/17	WATER	<1530	N/A	N/A	N/A	N/A	N/A	N/A	N/A
U-2 AB/FB GWMS	01/03/18	WATER	<1824	N/A	N/A	N/A	N/A	N/A	N/A	N/A
PZ-1	12/29/17	WATER	Insufficient volume to sample							
PZ-2	12/29/17	WATER	Insufficient volume to sample							
TTW-1	Well abandoned in place, pending decommissioning									
TTW-4	Well abandoned in place, pending decommissioning									

(1) pCi/L

(2) Vendor Analysis

ATTACHMENT 9
CARBON-14 CALCULATIONS
(01/17 - 12/17)

Carbon-14, C-14, is a naturally occurring isotope of carbon produced by cosmic ray interactions in the atmosphere. Nuclear weapons testing in the 1950s and 1960s significantly increased the amount of C-14 in the atmosphere. Due to the long half-life of C-14, 5730 years, a significant portion of the C-14 from this testing is still present in the environment. C-14 is also produced in commercial nuclear reactors, but the amounts produced are much less than those produced naturally or from weapons testing.

In Regulatory Guide 1.21, Revision 2, "Measuring, Evaluating, and Reporting Radioactive Material in Liquid and Gaseous Effluents and Solid Waste", the NRC has recommended that U.S. nuclear power plants evaluate whether C-14 is a "principal radionuclide", and if so, report the amount of C-14 released. At North Anna, improvements over the years in fuel performance have resulted in a decrease in the amount and distribution of radionuclides released to the environment in gaseous effluents. As a result, C-14 has become a "principal radionuclide" for the gaseous effluent pathway at North Anna, as defined in Regulatory Guide 1.21, Revision 2. Because the dose contribution of C-14 to liquid radioactive waste is a small fraction of the dose compared to other nuclides, evaluation of C-14 in liquid effluents is not required by Regulatory Guide 1.21, Revision 2.

The quantity of gaseous C-14 released to the environment can be estimated by use of a C-14 source term scaling factor based on power generation. North Anna utilized methodology in EPRI Report, Estimation of C-14 in Nuclear Power Gaseous Effluents. Based on this document, at full capacity, North Anna would generate and release about 32.8 Ci of C-14 per year. Since the units did not operate at full power for 100% of the year, this value was corrected for the capacity factor of each unit yielding an estimated 24.1 Ci of C-14 produced and released. North Anna assumed that the fractional release of gaseous C-14 in any quarter and pathway could be approximated by the fraction of noble gasses released via that pathway in that quarter.

Most C-14 species initially produced in a Pressurized Water Reactor are organic, e.g., methane. C-14 releases in PWRs occur primarily as a mix of organic carbon and carbon dioxide released from the waste gas system. C-14 in the primary coolant is essentially all organic with a large fraction as a gaseous species. Any time the RCS liquid or gas is exposed to an oxidizing environment, a slow transformation from an organic to an inorganic chemical form can occur. Various studies documenting measured C-14 releases from PWRs suggest a range of 70% to 95% organic. North Anna used a value of 70% organic and 30% CO₂ in its calculations.

Public dose estimates from airborne C-14 were performed using dose models in NUREG-0133 and Regulatory Guide 1.109. The estimated C-14 dose impact on the maximum organ dose from airborne effluents released at North Anna is estimated to be 6.61E-02 mrem from the inhalation pathway, or 4.41E-03% TS of the 1500 mrem/yr dose rate limit and 6.19E-01 mrem from the ingestion pathway or 2.06E+00% TS of the 10CFR50, Appendix I, ALARA design objective of 15 mrem/yr per unit. In both cases the critical organ was determined to be the child's bone.

Miscellaneous

There were two entries on the Annual Effluent Release Report Log for 2017. The first entry was made to document that the Unit 2 High Capacity Blowdown Effluent radiation monitor was out of service for > 30 consecutive days. The second entry was made to document that a particulate patch was not installed in the Ventilation Vent A MGPI normal range iodine and particulate sampler for the sampling period beginning on 06/25/17 and ending on 07/01/17.

TABLE 1A
NORTH ANNA POWER STATION
ANNUAL RADIOACTIVE EFFLUENT RELEASE REPORT
SUMMATION OF ALL GASEOUS EFFLUENT RELEASES FOR (01/17 - 12/17)

	UNITS	1 ST QUARTER	2 ND QUARTER	ESTIMATED TOTAL PERCENT ERROR (%)
A. <u>Fission and Activation Gases:</u>				
1. Total Release	Curies	5.65E-02	2.88E-02	1.80E+1
2. Average Release Rate For Period	μCi/sec	7.27E-03	3.66E-03	
B. <u>Iodines:</u>				
1. Total Iodine-131 Release	Curies	0.00E+00	0.00E+00	2.80E+1
2. Average Release Rate For Period	μCi/sec	0.00E+00	0.00E+00	
C. <u>Particulate (T_{1/2} > 8 days):</u>				
1. Total Particulate (T _{1/2} > 8 days) Release	Curies	0.00E+00	0.00E+00	2.80E+1
2. Average Release Rate For Period	μCi/sec	0.00E+00	0.00E+00	
3. Gross Alpha Radioactivity Release	Curies	1.99E-07	1.83E-07	
D. <u>Tritium:</u>				
1. Total Release	Curies	1.46E+01	4.52E+00	3.10E+1
2. Average Release Rate For Period	μCi/sec	1.88E+00	5.75E-01	
E. <u>Carbon-14</u>				
1. Total Release	Curies	4.08E+00	2.08E+00	
2. Average Release Rate For Period	μCi/sec	5.19E-01	2.65E-01	
F. <u>Percentage Of Technical Specification Limits</u>				
1. Total Body Dose Rate	%	3.71E-06	8.46E-08	
2. Skin Dose Rate	%	1.42E-06	1.28E-06	
3. Critical Organ Dose Rate (with C-14)	%	1.50E-02	2.46E-03	
Critical Organ Dose Rate (without C-14)	%	7.36E-03	1.70E-03	

TABLE 1A
NORTH ANNA POWER STATION
ANNUAL RADIOACTIVE EFFLUENT RELEASE REPORT
SUMMATION OF ALL GASEOUS EFFLUENT RELEASES FOR (01/17 - 12/17)

	UNITS	3 RD QUARTER	4 TH QUARTER	ESTIMATED TOTAL PERCENT ERROR (%)
A. <u>Fission and Activation Gases:</u>				
1. Total Release	Curies	2.02E-01	4.68E-02	1.80E+1
2. Average Release Rate For Period	μCi/sec	2.54E-02	5.89E-03	
B. <u>Iodines:</u>				
1. Total Iodine-131 Release	Curies	0.00E+00	0.00E+00	2.80E+1
2. Average Release Rate For Period	μCi/sec	0.00E+00	0.00E+00	
C. <u>Particulate (T_{1/2} > 8 days):</u>				
1. Total Particulate (T _{1/2} > 8 days) Release	Curies	5.24E-06	3.59E-07	2.80E+1
2. Average Release Rate For Period	μCi/sec	6.59E-07	4.51E-08	
3. Gross Alpha Radioactivity Release	Curies	2.50E-07	0.00E+00	
D. <u>Tritium:</u>				
1. Total Release	Curies	5.21E+00	7.58E+00	3.10E+1
2. Average Release Rate For Period	μCi/sec	6.55E-01	9.53E-01	
F. <u>Carbon-14</u>				
1. Total Release	Curies	1.46E+01	3.38E+00	
2. Average Release Rate For Period	μCi/sec	1.84E+00	4.25E-01	
F. <u>Percentage Of Technical Specification Limits</u>				
1. Total Body Dose Rate	%	4.39E-06	6.48E-08	
2. Skin Dose Rate	%	2.13E-06	2.63E-06	
3. Critical Organ Dose Rate (with C-14)	%	1.00E-02	3.83E-03	
Critical Organ Dose Rate (without C-14)	%	2.04E-03	2.58E-03	

TABLE 1B
NORTH ANNA POWER STATION
ANNUAL RADIOACTIVE EFFLUENT RELEASE REPORT
MIXED MODE GASEOUS EFFLUENT RELEASES FOR (01/17 - 12/17)

NUCLIDES RELEASED	UNITS	CONTINUOUS MODE		BATCH MODE	
		1ST QUARTER	2ND QUARTER	1ST QUARTER	2ND QUARTER
Fission & Activation Gases:					
Krypton - 85	Ci	N/D	N/D	N/D	N/D
Krypton - 85m	Ci	N/D	N/D	N/D	N/D
Krypton - 87	Ci	N/D	N/D	N/D	N/D
Krypton - 88	Ci	N/D	N/D	N/D	N/D
Xenon - 131m	Ci	N/D	N/D	N/D	N/D
Xenon - 133	Ci	2.22E-02	9.41E-03	N/D	N/D
Xenon - 133m	Ci	N/D	N/D	N/D	N/D
Xenon - 135	Ci	N/D	N/D	N/D	7.01E-04
Xenon - 135m	Ci	N/D	N/D	N/D	N/D
Xenon - 137	Ci	N/D	N/D	N/D	N/D
Xenon - 138	Ci	N/D	N/D	N/D	N/D
Other (Specify)		N/D	N/D	N/D	N/D
Argon - 41	Ci	N/D	1.63E-02	N/D	2.45E-03
Total For Period	Ci	2.22E-02	2.57E-02	N/D	3.15E-03
Iodines:					
Iodine - 130	Ci	N/D	N/D	N/D	N/D
Iodine - 131	Ci	N/D	N/D	N/D	N/D
Iodine - 132	Ci	N/D	N/D	N/D	N/D
Iodine - 133	Ci	N/D	N/D	N/D	N/D
Iodine - 134	Ci	N/D	N/D	N/D	N/D
Iodine - 135	Ci	N/D	N/D	N/D	N/D
Total For Period	Ci	N/D	N/D	N/D	N/D
Particulates:					
Manganese - 54	Ci	N/D	N/D	N/D	N/D
Cobalt - 58	Ci	N/D	N/D	N/D	N/D
Iron - 59	Ci	N/D	N/D	N/D	N/D
Cobalt - 60	Ci	N/D	N/D	N/D	N/D
Zinc - 65	Ci	N/D	N/D	N/D	N/D
Strontium - 89	Ci	N/D	N/D	N/D	N/D
Strontium - 90	Ci	N/D	N/D	N/D	N/D
Cesium - 134	Ci	N/D	N/D	N/D	N/D
Cesium - 136	Ci	N/D	N/D	N/D	N/D
Cesium - 137	Ci	N/D	N/D	N/D	N/D

TABLE 1B
NORTH ANNA POWER STATION
ANNUAL RADIOACTIVE EFFLUENT RELEASE REPORT
MIXED MODE GASEOUS EFFLUENT RELEASES FOR (01/17 - 12/17)

NUCLIDES RELEASED	UNITS	CONTINUOUS MODE		BATCH MODE	
		3RD QUARTER	4TH QUARTER	3RD QUARTER	4TH QUARTER
Fission & Activation Gases:					
Krypton - 85	Ci	N/D	N/D	N/D	N/D
Krypton - 85m	Ci	N/D	N/D	N/D	N/D
Krypton - 87	Ci	N/D	N/D	N/D	N/D
Krypton - 88	Ci	N/D	N/D	N/D	N/D
Xenon - 131m	Ci	N/D	N/D	N/D	N/D
Xenon - 133	Ci	3.60E-02	N/D	1.40E-01	6.71E-03
Xenon - 133m	Ci	N/D	N/D	5.50E-04	N/D
Xenon - 135	Ci	N/D	N/D	1.02E-03	N/D
Xenon - 135m	Ci	N/D	N/D	N/D	N/D
Xenon - 137	Ci	N/D	N/D	N/D	N/D
Xenon - 138	Ci	N/D	N/D	N/D	N/D
Other (Specify)		N/D	N/D	N/D	N/D
Argon - 41	Ci	8.32E-03	4.00E-02	N/D	N/D
Total For Period	Ci	4.43E-02	4.00E-02	1.42E-01	6.71E-03
Iodines:					
Iodine - 130	Ci	N/D	N/D	N/D	N/D
Iodine - 131	Ci	N/D	N/D	N/D	N/D
Iodine - 132	Ci	N/D	N/D	N/D	N/D
Iodine - 133	Ci	N/D	N/D	N/D	N/D
Iodine - 134	Ci	N/D	N/D	N/D	N/D
Iodine - 135	Ci	N/D	N/D	N/D	N/D
Total For Period	Ci	N/D	N/D	N/D	N/D
Particulates:					
Manganese - 54	Ci	N/D	N/D	N/D	N/D
Cobalt - 58	Ci	N/D	N/D	N/D	N/D
Iron - 59	Ci	N/D	N/D	N/D	N/D
Cobalt - 60	Ci	N/D	2.76E-08	N/D	N/D
Zinc - 65	Ci	N/D	N/D	N/D	N/D
Strontium - 85	Ci	N/D	N/D	N/D	N/D
Strontium - 89	Ci	N/D	N/D	N/D	N/D
Strontium - 90	Ci	N/D	N/D	N/D	N/D
Silver-110m	Ci	N/D	N/D	N/D	N/D
Cesium - 134	Ci	N/D	N/D	N/D	N/D
Cesium - 137	Ci	N/D	N/D	N/D	N/D

TABLE 1C
NORTH ANNA POWER STATION
ANNUAL RADIOACTIVE EFFLUENT RELEASE REPORT
GROUND LEVEL GASEOUS EFFLUENT RELEASES FOR (01/17 - 12/17)

Page 1 of 4

NUCLIDES RELEASED	UNITS	CONTINUOUS MODE		BATCH MODE	
		1ST QUARTER	2ND QUARTER	1ST QUARTER	2ND QUARTER
Fission & Activation Gases:					
Krypton - 85	Ci	N/D	N/D	N/D	N/D
Krypton - 85m	Ci	N/D	N/D	3.76E-05	N/D
Krypton - 87	Ci	N/D	N/D	N/D	N/D
Krypton - 88	Ci	N/D	N/D	N/D	N/D
Xenon - 131m	Ci	N/D	N/D	3.06E-04	N/D
Xenon - 133	Ci	N/D	N/D	3.08E-02	N/D
Xenon - 133m	Ci	N/D	N/D	6.38E-04	N/D
Xenon - 135	Ci	N/D	N/D	2.42E-03	N/D
Xenon - 135m	Ci	N/D	N/D	N/D	N/D
Xenon - 137	Ci	N/D	N/D	N/D	N/D
Xenon - 138	Ci	N/D	N/D	N/D	N/D
Other (Specify)					
Argon - 41	Ci	N/D	N/D	1.13E-04	N/D
Total For Period	Ci	N/D	N/D	3.43E-02	N/D
Iodines:					
Iodine - 130	Ci	N/D	N/D	N/D	N/D
Iodine - 131	Ci	N/D	N/D	N/D	N/D
Iodine - 132	Ci	N/D	N/D	N/D	N/D
Iodine - 133	Ci	N/D	N/D	N/D	N/D
Iodine - 134	Ci	N/D	N/D	N/D	N/D
Iodine - 135	Ci	N/D	N/D	N/D	N/D
Total For Period	Ci	N/D	N/D	N/D	N/D
Particulates:					
Manganese - 54	Ci	N/D	N/D	N/D	N/D
Cobalt - 58	Ci	N/D	N/D	N/D	N/D
Iron - 59	Ci	N/D	N/D	N/D	N/D
Cobalt - 60	Ci	N/D	N/D	N/D	N/D
Zinc - 65	Ci	N/D	N/D	N/D	N/D
Strontium - 89	Ci	N/D	N/D	N/D	N/D
Strontium - 90	Ci	N/D	N/D	N/D	N/D
Cesium - 134	Ci	N/D	N/D	N/D	N/D

TABLE 1C
NORTH ANNA POWER STATION
ANNUAL RADIOACTIVE EFFLUENT RELEASE REPORT
GROUND LEVEL GASEOUS EFFLUENT RELEASES FOR (01/17 - 12/17)

NUCLIDES RELEASED	UNITS	CONTINUOUS MODE		BATCH MODE	
		3RD QUARTER	4TH QUARTER	3RD QUARTER	4TH QUARTER
Fission & Activation Gases:					
Krypton - 85	Ci	N/D	N/D	N/D	N/D
Krypton - 85m	Ci	N/D	N/D	2.21E-05	N/D
Krypton - 87	Ci	N/D	N/D	1.96E-06	N/D
Krypton - 88	Ci	N/D	N/D	1.44E-05	N/D
Xenon - 131m	Ci	N/D	N/D	2.81E-05	N/D
Xenon - 133	Ci	N/D	N/D	1.24E-02	7.61E-05
Xenon - 133m	Ci	N/D	N/D	2.67E-04	N/D
Xenon - 135	Ci	N/D	N/D	2.36E-03	N/D
Xenon - 135m	Ci	N/D	N/D	2.66E-05	N/D
Xenon-137	Ci	N/D	N/D	N/D	N/D
Xenon - 138	Ci	N/D	N/D	N/D	N/D
Other (Specify)	Ci				
Argon - 41	Ci	N/D	N/D	4.25E-04	N/D
Total For Period	Ci	N/D	N/D	1.55E-02	7.61E-05
Iodines:					
Iodine - 130	Ci	N/D	N/D	N/D	N/D
Iodine - 131	Ci	N/D	N/D	N/D	N/D
Iodine - 132	Ci	N/D	N/D	1.13E-05	N/D
Iodine - 133	Ci	N/D	N/D	6.56E-08	N/D
Iodine - 134	Ci	N/D	N/D	N/D	N/D
Iodine - 135	Ci	N/D	N/D	N/D	N/D
Total For Period	Ci	N/D	N/D	1.14E-05	N/D
Particulates:					
Manganese - 54	Ci	N/D	N/D	N/D	N/D
Cobalt - 58	Ci	1.51E-06	N/D	3.37E-07	N/D
Iron - 59	Ci	N/D	N/D	N/D	N/D
Cobalt - 60	Ci	N/D	N/D	2.23E-06	3.31E-07
Zinc - 65	Ci	N/D	N/D	N/D	N/D
Strontium - 89	Ci	N/D	N/D	N/D	N/D
Strontium - 90	Ci	N/D	N/D	N/D	N/D
Cesium - 134	Ci	N/D	N/D	N/D	N/D

TABLE 1C
NORTH ANNA POWER STATION
ANNUAL RADIOACTIVE EFFLUENT RELEASE REPORT
GROUND LEVEL GASEOUS EFFLUENT RELEASES FOR (01/17 - 12/17)

Page 4 of 4

NUCLIDES RELEASED	UNITS	CONTINUOUS MODE		BATCH MODE	
		3RD QUARTER	4TH QUARTER	3RD QUARTER	4TH QUARTER
Particulates: (cont.)					
Cesium - 137	Ci	N/D	N/D	N/D	N/D
Barium - Lanthanum - 140	Ci	N/D	N/D	N/D	N/D
Cerium - 141	Ci	N/D	N/D	N/D	N/D
Cerium - 144	Ci	N/D	N/D	N/D	N/D
Other (Specify)					
Strontium-91 (T1/2 < 8 days)	Ci	N/D	N/D	8.40E-09	N/D
Rubidium-88 (T1/2 < 8 days)	Ci	N/D	N/D	1.99E-06	N/D
Niobium-95 (T1/2 > 8 days)	Ci	N/D	N/D	7.31E-07	N/D
Ru-103 (T1/2 > 8 days)	Ci	N/D	N/D	4.26E-07	N/D
Rhodium-105 (T1/2 < 8 days)	Ci	N/D	N/D	N/D	N/D
Ruthenium-105 (T1/2 < 8 days)	Ci	N/D	N/D	N/D	N/D
Total for Period (T1/2 > 8 days)	Ci	N/D	N/D	3.73E-06	3.31E-07
Total for Period (T1/2 < 8 days)	Ci	N/D	N/D	1.99E-06	N/D
Total For Period	Ci	N/D	N/D	5.72E-06	3.31E-07
GROSS ALPHA:	Ci	2.50E-07	N/D	N/D	N/D
TRITIUM:	Ci	3.39E+00	5.53E+00	1.32E+00	4.56E-02
CARBON-14	Ci	N/D	N/D	1.12E+00	5.49E-03

TABLE 2A
NORTH ANNA POWER STATION
ANNUAL RADIOACTIVE EFFLUENT RELEASE REPORT
LIQUID EFFLUENT - SUMMATION OF ALL RELEASES FOR (01/17 - 12/17)

Page 1 of 2

	UNITS	1 ST QUARTER	2 ND QUARTER	ESTIMATED TOTAL PERCENT ERROR (%)
A. <u>Fission and Activation Products:</u>				
1. Total Release (not including tritium, noble gas, and gross alpha).	Curies	4.50E-03	1.15E-04	2.00E+01
2. Average diluted concentration during the period.	μCi/ml	1.02E-11	1.48E-13	
3. Percent of applicable limit (T.S.)	%	2.26E-05	3.05E-07	
B. <u>Tritium:</u>				
1. Total release activity.	Curies	1.90E+02	4.71E+02	2.00E+01
2. Average diluted concentration during the period.	μCi/ml	4.29E-07	6.07E-07	
3. Percent of applicable limit (T.S.)	%	4.29E-03	6.07E-03	
C. <u>Dissolved and Entrained Gases:</u>				
1. Total release activity.	Curies	0.00E+00	0.00E+00	2.00E+01
2. Average diluted concentration during the period.	μCi/ml	0.00E+00	0.00E+00	
3. Percent of applicable limit (T.S.)	%	0.00E+00	0.00E+00	
D. <u>Gross Alpha Radioactivity:</u>				
1. Total release activity.	Curies	0.00E+00	0.00E+00	2.00E+01
E. <u>Volume of waste released: (prior to dilution).</u>				
	Liters	1.01E+08	1.10E+08	3.00E+00
F. <u>Total volume of dilution water used during the period.</u>				
	Liters	4.42E+11	7.76E+11	3.00E+00

TABLE 2A
NORTH ANNA POWER STATION
ANNUAL RADIOACTIVE EFFLUENT RELEASE REPORT
LIQUID EFFLUENT - SUMMATION OF ALL RELEASES FOR (01/17 - 12/17)

Page 2 of 2

	UNITS	3 RD QUARTER	4 TH QUARTER	ESTIMATED TOTAL PERCENT ERROR (%)
A. <u>Fission and Activation Products:</u>				
1. Total Release (not including tritium, noble gas, and gross alpha).	Curies	2.78E-03	7.37E-03	2.00E+01
2. Average diluted concentration during the period.	μCi/ml	3.51E-12	1.07E-11	
3. Percent of applicable limit (T.S.)	%	3.07E-06	1.02E-05	
B. <u>Tritium:</u>				
1. Total release activity.	Curies	9.51E+02	1.69E+02	2.00E+01
2. Average diluted concentration during the period.	μCi/ml	1.20E-06	2.46E-07	
3. Percent of applicable limit (T.S.)	%	1.20E-02	2.46E-03	
C. <u>Dissolved and Entrained Gases:</u>				
1. Total release activity.	Curies	0.00E+00	0.00E+00	2.00E+01
2. Average diluted concentration during the period.	μCi/ml	0.00E+00	0.00E+00	
3. Percent of applicable limit (T.S.)	%	0.00E+00	0.00E+00	
D. <u>Gross Alpha Radioactivity:</u>				
1. Total release activity.	Curies	0.00E+00	0.00E+00	2.00E+01
E. Volume of waste released: (prior to dilution).				
	Liters	8.52E+07	8.81E+07	3.00E+00
F. Total volume of dilution water used during the period.				
	Liters	7.92E+11	6.87E+11	3.00E+00

TABLE 2B
NORTH ANNA POWER STATION
ANNUAL RADIOACTIVE EFFLUENT RELEASE REPORT
LIQUID EFFLUENT RELEASES FOR (01/17 - 12/17)

NUCLIDES RELEASED	UNITS	CONTINUOUS MODE		BATCH MODE	
		1ST QUARTER	2ND QUARTER	1ST QUARTER	2ND QUARTER
Fission & Activation Products:					
Manganese - 54	Ci	9.20E-05	N/D	N/A	N/D
Iron - 59	Ci	8.54E-05	N/D	N/A	N/D
Cobalt - 58	Ci	1.19E-03	4.84E-05	N/A	N/D
Cobalt - 60	Ci	2.28E-03	3.88E-05	N/A	N/D
Strontium - 89	Ci	N/D	N/D	N/A	N/D
Strontium - 90	Ci	N/D	N/D	N/A	N/D
Niobium - 95	Ci	3.10E-04	N/D	N/A	N/D
Antimony-124	Ci	1.70E-05	N/D	N/A	N/D
Silver - 110m	Ci	6.88E-05	N/D	N/A	N/D
Iodine - 131	Ci	N/D	N/D	N/A	N/D
Iodine - 133	Ci	N/D	N/D	N/A	N/D
Cesium - 134	Ci	N/D	N/D	N/A	N/D
Cesium - 137	Ci	1.31E-04	N/D	N/A	7.56E-06
Zirconium - 95	Ci	8.14E-05	N/D	N/A	N/D
Cerium - 141	Ci	N/D	N/D	N/A	N/D
Tellurium-125m	Ci	4.57E-05	N/D	N/A	3.82E-06
Nickel - 63 (T1/2 > 8 days)	Ci	N/D	N/D	N/A	N/D
Antimony-125	Ci	1.98E-04	N/D	N/A	1.65E-05
Total for Period	Ci	4.50E-03	8.72E-05	N/A	2.79E-05

TABLE 3
 NORTH ANNA POWER STATION
 RADIOACTIVE EFFLUENT RELEASE REPORT
 SUMMATION OF SOLID RADIOACTIVE WASTE AND IRRADIATED FUEL SHIPMENTS
 FOR 01-01-17 THROUGH 12-31-17

A. SOLID WASTE SHIPPED OFFSITE FOR BURIAL OR DISPOSAL (NOT IRRADIATED FUEL)					
1. Type of Waste	Unit	12-Month Period	Estimated Total Percent Error (%)		
a. Spent resins, sludges, filters sludge, evaporator bottoms, etc.,	m ³	2.10E+01 *	2.50E+01		
	Ci	1.54E+02	2.50E+01		
b. Dry compressible waste, contaminated equipment, etc.,	m ³	2.63E+02 **	2.50E+01		
	Ci	2.10E+00	2.50E+01		
c. Irradiated components, control rods, etc.,	m ³	0.00E+00 ***	2.50E+01		
	Ci	0.00E+00	2.50E+01		
d. Other (describe) Used oil/Blast media/Sewage/Gravel Dessicant/Soil/Construction debris Animal Carcasses	m ³	9.20E-02 ****	2.50E+01		
	Ci	1.61E-04	2.50E+01		
2. Estimate of major nuclide composition (by type of waste)	(%)	(Ci)	Estimated Total Percent Error (%)		
a.	Co-60	5.08E+01	7.82E+01	2.50E+01	
	Ni-63	2.03E+01	3.13E+01	2.50E+01	
	Cs-137	1.02E+01	1.57E+01	2.50E+01	
	Fe-55	5.58E+00	8.60E+00	2.50E+01	
	Cs-134	3.47E+00	5.35E+00	2.50E+01	
	Mn-54	2.44E+00	3.76E+00	2.50E+01	
	Co-58	1.99E+00	3.07E+00	2.50E+01	
	Sb-125	1.53E+00	2.36E+00	2.50E+01	
	Be-7	7.90E-01	1.22E+00	2.50E+01	
	C-14	5.30E-01	8.16E-01	2.50E+01	
	Ni-59	1.50E-01	2.36E-01	2.50E+01	
	H-3	1.10E-01	1.66E-01	2.50E+01	
	Cr-51	9.00E-02	1.38E-01	2.50E+01	
	Nb-95	6.00E-02	9.95E-02	2.50E+01	
	Zn-65	6.00E-02	9.72E-02	2.50E+01	
	b.	Co-60	4.59E+01	9.63E-01	2.50E+01
		Nb-95	1.73E+01	3.64E-01	2.50E+01
		Zr-95	9.74E+00	2.05E-01	2.50E+01
		Cr-51	8.96E+00	1.88E-01	2.50E+01
		Cs-137	8.30E+00	1.74E-01	2.50E+01
Co-58		6.23E+00	1.31E-01	2.50E+01	
Fe-55		4.57E+00	9.60E-02	2.50E+01	
Ni-63		3.09E+00	6.49E-02	2.50E+01	
Mn-54		1.14E+00	2.39E-02	2.50E+01	
Fe-59		8.90E-01	1.87E-02	2.50E+01	
Sb-125		6.90E-01	1.45E-02	2.50E+01	
Cs-134		5.90E-01	1.25E-02	2.50E+01	
Zn-65		5.50E-01	1.15E-02	2.50E+01	
Sn-113		3.20E-01	6.77E-03	2.50E+01	
Sb-124		3.00E-01	6.22E-03	2.50E+01	
H-3	1.50E-01	3.25E-03	2.50E+01		
c.	NONE				
d.	Co-60	6.94E+01	1.12E-04	2.50E+01	
	H-3	1.59E+01	2.57E-05	2.50E+01	
	Cs-137	4.80E+00	7.73E-06	2.50E+01	
	Fe-55	2.75E+00	4.43E-06		
	Ni-63	2.50E+00	4.03E-06		
	Co-58	1.15E+00	1.86E-06		
	Nb-95	1.09E+00	1.76E-06		
	Zr-95	5.50E-01	8.82E-07		
	Mn-54	5.30E-01	8.57E-07		
	Sb-125	4.30E-01	6.94E-07	2.50E+01	

TABLE 3
 NORTH ANNA POWER STATION
 RADIOACTIVE EFFLUENT RELEASE REPORT
 SUMMATION OF SOLID RADIOACTIVE WASTE
 AND IRRADIATED FUEL SHIPMENTS
 01-01-17 THROUGH 12-31-17

3. Solid Waste Disposition

<u>Number of Shipments</u>	<u>Mode of Transportation</u>	<u>Destination</u>
1	Truck	Clive, UT
9	Truck	Oak Ridge, TN

B. Irradiated Fuel Shipments (Disposition)

<u>Number of Shipments</u>	<u>Mode of Transportation</u>	<u>Destination</u>
0	N/A	N/A

- * (4) shipments containing resins were shipped to a licensed waste processor for final dewatering and disposal
 (1) shipment containing mechanical filters was shipped to a licensed waste facility for disposal
 (2) shipments containing mechanical filters were shipped to a licensed waste processor for processing
 (1) shipment containing resins was shipped to a licensed waste processor for processing
 (1) shipment containing sludge was shipped to a licensed waste processor for processing
- ** (6) shipments containing dry compactable waste were shipped to a licensed waste processor for processing
 (1) shipment containing dry compactable waste was shipped to a licensed waste facility for disposal
- *** None
- **** (1) shipment containing dried bird droppings and animal carcasses was shipped to a licensed waste disposal facility for processing