

F2-81

Sheet 1 of 4 *AV*

Status: Y N U

Seismic Walkdown Checklist (SWC)

Equipment ID No. Q2P17HV3095 Equip. Class¹ 7

Equipment Description CCW SUPPLY TO EXCESS LETDOWN HEAT EXCHANGER

Location: Bldg. AUXILIARY Floor El. 100 / 21 Room, Area 2201 2223 *per 45*

Manufacturer, Model, Etc. (optional but recommended) _____

Instructions for Completing Checklist

This checklist may be used to document the results of the Seismic Walkdown of an item of equipment on the SWEL. The space below each of the following questions may be used to record the results of judgments and findings. Additional space is provided at the end of this checklist for documenting other comments.

Anchorage:

1. Is the anchorage configuration verification required (i.e., is the item one of the 50% of SWEL items requiring such verification)? Y N

2. Is the anchorage free of bent, broken, missing or loose hardware? Y N U N/A

IN LINE COMPONENT

3. Is the anchorage free of corrosion that is more than mild surface oxidation? Y N U N/A

4. Is the anchorage free of visible cracks in the concrete near the anchors? Y N U N/A

5. Is the anchorage configuration consistent with plant documentation? Y N U N/A

(Note: This question only applies if the item is one of the 50% for which an anchorage configuration verification is required.)

IN LINE COMPONENT

6. Based on the above anchorage evaluations, is the anchorage free of potentially adverse seismic conditions? Y N U

¹ Enter the equipment class name from Appendix B: Classes of Equipment.

2.81

Sheet 2 of 84

Status: Y N U

Seismic Walkdown Checklist (SWC)

Equipment ID No. Q2P17HV3095 Equip. Class 7

Equipment Description GCW SUPPLY TO EXCESS LETDOWN HEAT EXCHANGER

Interaction Effects

7. Are soft targets free from impact by nearby equipment or structures? Y N U N/A

8. Are overhead equipment, distribution systems, ceiling tiles and lighting, and masonry block walls not likely to collapse onto the equipment? Y N U N/A

9. Do attached lines have adequate flexibility to avoid damage? Y N U N/A

10. Based on the above seismic interaction evaluations, is equipment free of potentially adverse seismic interaction effects? Y N U

Other Adverse Conditions

11. Have you looked for and found no other seismic conditions that could adversely affect the safety functions of the equipment? Y N U

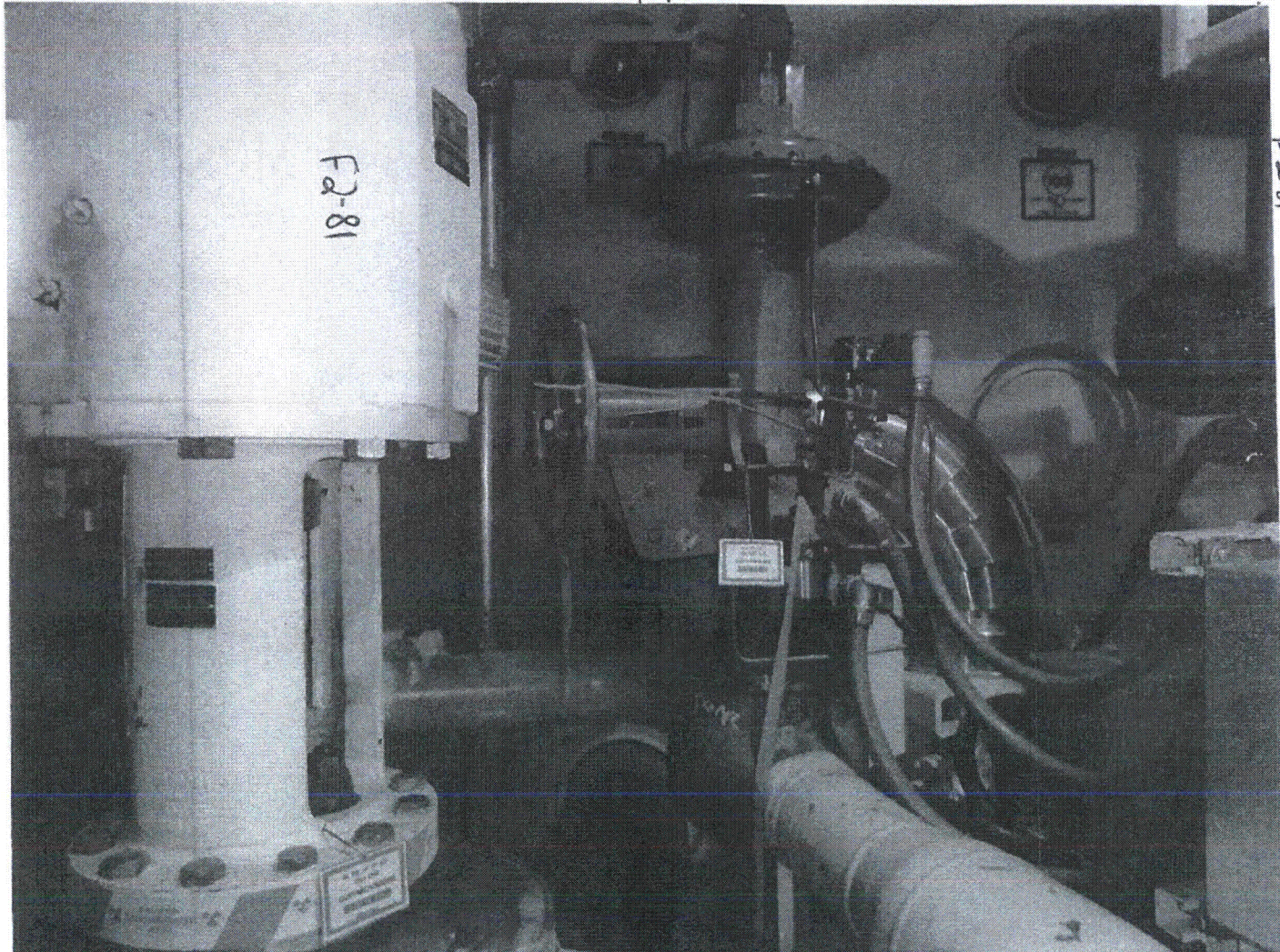
CLOSE (1" AWAY) TO 1 1/2" ANCHORED / SUPPORTED LINE.
MASS IS SO SMALL THAT IF ANY INTERACTION OCCURED THAT IT

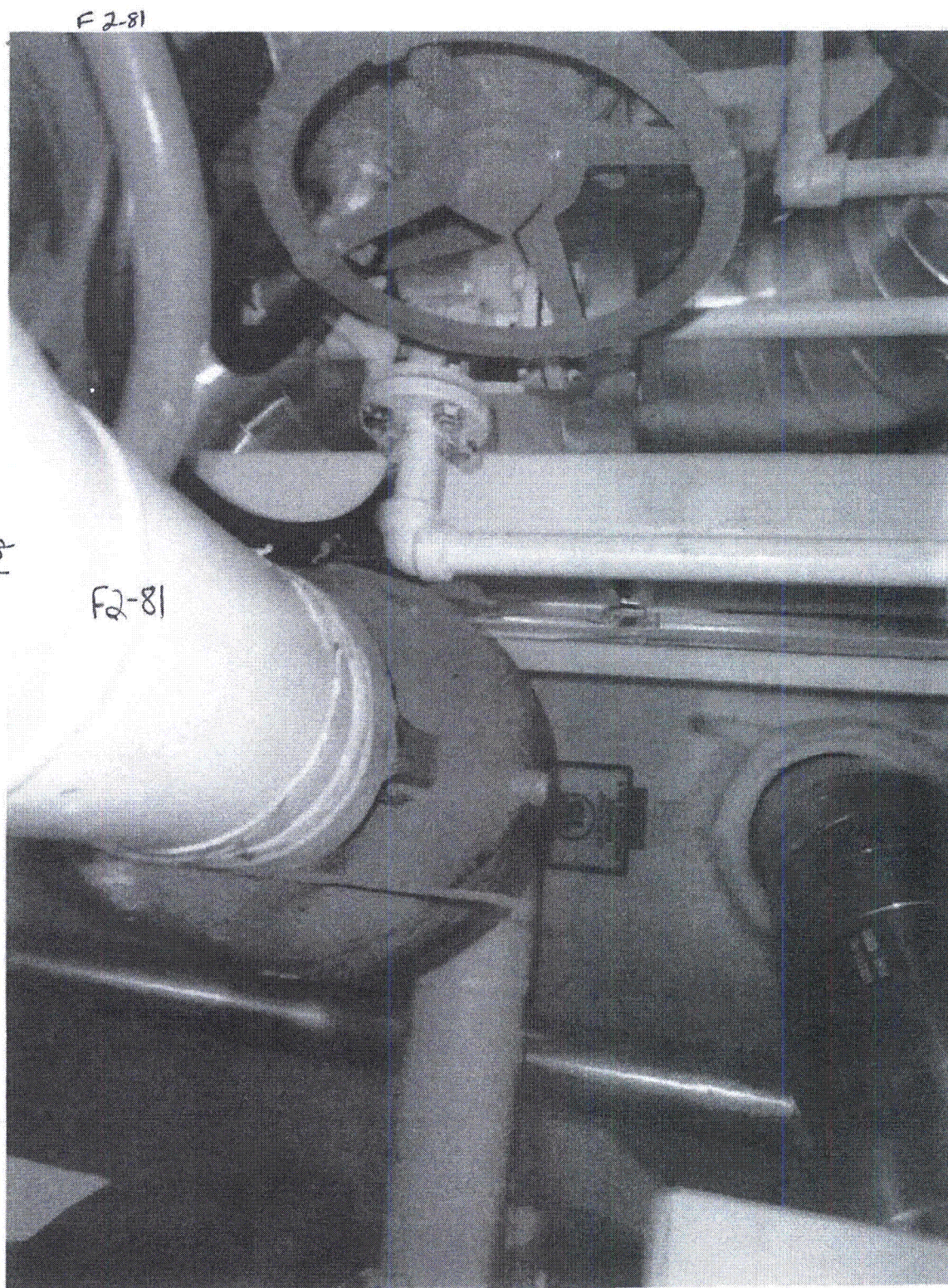
Comments (Additional pages may be added as necessary) NONE
IS NO SEISMIC CONCERN TO VALVE, OKAY

SEE FZ-8.2 FOR AWC
Q2P17HV3096B

Evaluated by: SCOTT WARDEN Scott Warden Date: 9.10.2012

Ryan Harlos RH 7/10/12





82-84

Sheet 1 of 84

Status: Y N U

Seismic Walkdown Checklist (SWC)

Equipment ID No. Q2P17HV3096B Equip. Class¹ 7

Equipment Description CCW-NON-SAFETY ISOLATION

Location: Bldg. AUXILIARY Floor El. 100 Room, Area 2161

Manufacturer, Model, Etc. (optional but recommended) _____

Instructions for Completing Checklist

This checklist may be used to document the results of the Seismic Walkdown of an item of equipment on the SWEL. The space below each of the following questions may be used to record the results of judgments and findings. Additional space is provided at the end of this checklist for documenting other comments.

Anchorage

- 1. Is the anchorage configuration verification required (i.e., is the item one of the 50% of SWEL items requiring such verification)? Y N U
Inline component, no anchorage.
- 2. Is the anchorage free of bent, broken, missing or loose hardware? Y N U N/A
- 3. Is the anchorage free of corrosion that is more than mild surface oxidation? Y N U N/A
- 4. Is the anchorage free of visible cracks in the concrete near the anchors? Y N U N/A
- 5. Is the anchorage configuration consistent with plant documentation? Y N U N/A
 (Note: This question only applies if the item is one of the 50% for which an anchorage configuration verification is required.)
- 6. Based on the above anchorage evaluations, is the anchorage free of potentially adverse seismic conditions? Y N U X
YES TAM 8-22-12

¹Enter the equipment class name from Appendix B: Classes of Equipment.

F282

Sheet 2 of 4
Status: Y N U

Seismic Walkdown Checklist (SWC)

Equipment ID No. Q2P17HV3096B Equip. Class 7

Equipment Description CCW NON-SAFETY ISOLATION

Interaction Effects

7. Are soft targets free from impact by nearby equipment or structures? Y N U N/A

8. Are overhead equipment, distribution systems, ceiling tiles and lighting, and masonry block walls not likely to collapse onto the equipment? Y N U N/A

9. Do attached lines have adequate flexibility to avoid damage? Y N U N/A

10. Based on the above seismic interaction evaluations, is equipment free of potentially adverse seismic interaction effects? Y N U

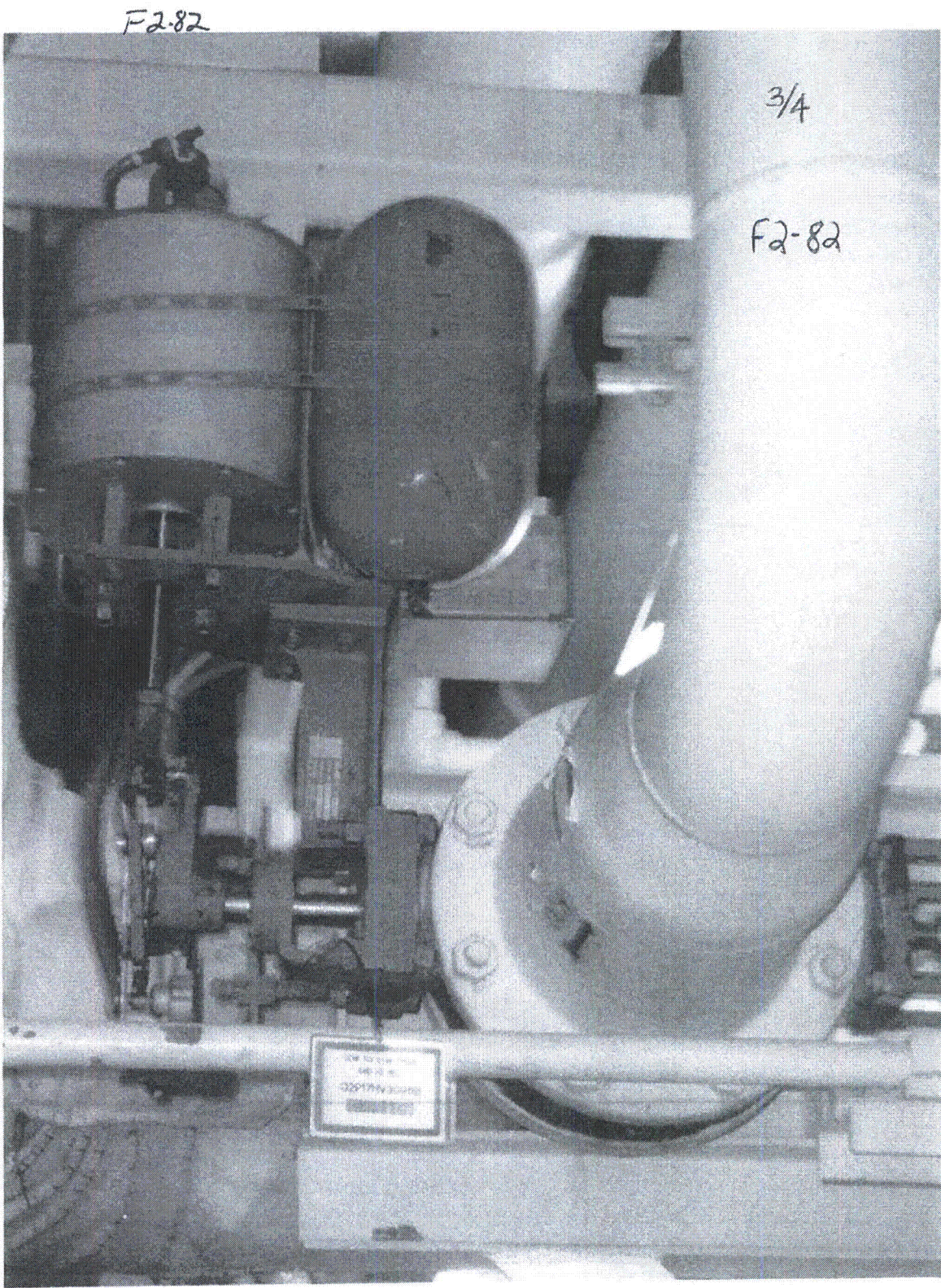
Other Adverse Conditions

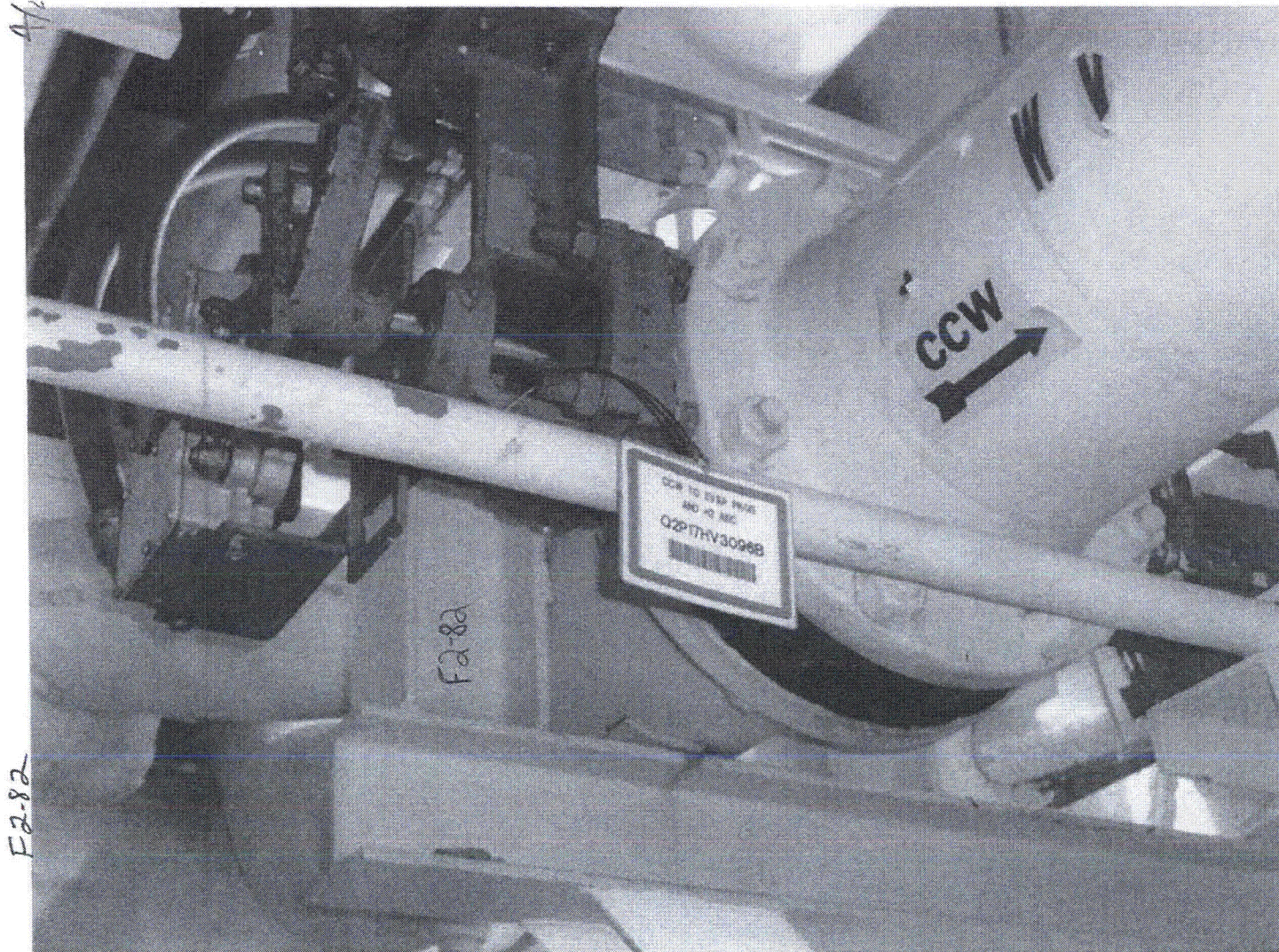
11. Have you looked for and found no other seismic conditions that could adversely affect the safety functions of the equipment? Y N U

Comments (Additional pages may be added as necessary)

Evaluated by: Laura MacLay Laura MacLay Date: 8-22-12

Terry A. Mullenix Terry A. Mullenix 8/22/12





F2-8A

Sheet 1 of 34 - *02/24/18*
 Status: Y N U

Seismic Walkdown Checklist (SWC)

Equipment ID No. Q2P17MOV3185B Equip. Class¹ 8

Equipment Description CCW INLET TO RHR HEAT EXCHANGER NO. 2

Location: Bldg. AUXILIARY Floor El. 83 Room, Area _____

Manufacturer, Model, Etc. (optional but recommended) _____

Instructions for Completing Checklist

This checklist may be used to document the results of the Seismic Walkdown of an item of equipment on the SWEL. The space below each of the following questions may be used to record the results of judgments and findings. Additional space is provided at the end of this checklist for documenting other comments.

Anchorage

1. Is the anchorage configuration verification required (i.e., is the item one of the 50% of SWEL items requiring such verification)? Y N

2. Is the anchorage free of bent, broken, missing or loose hardware? Y N U N/A
no bent

3. Is the anchorage free of corrosion that is more than mild surface oxidation? Y N U N/A

4. Is the anchorage free of visible cracks in the concrete near the anchors? Y N U N/A

5. Is the anchorage configuration consistent with plant documentation? Y N U N/A
 (Note: This question only applies if the item is one of the 50% for which an anchorage configuration verification is required.)

6. Based on the above anchorage evaluations, is the anchorage free of potentially adverse seismic conditions? Y N U

¹ Enter the equipment class name from Appendix B: Classes of Equipment.

F2-84

Sheet 2 of 34 Paul
Status: Y N U 5/24/12

Seismic Walkdown Checklist (SWC)

Equipment ID No. Q2P17MOV3185B Equip. Class 8

Equipment Description CCW INLET TO RHR HEAT EXCHANGER NO. 2

Interaction Effects

7. Are soft targets free from impact by nearby equipment or structures? Y N U N/A

8. Are overhead equipment, distribution systems, ceiling tiles and lighting, and masonry block walls not likely to collapse onto the equipment? Y N U N/A

9. Do attached lines have adequate flexibility to avoid damage? Y N U N/A

10. Based on the above seismic interaction evaluations, is equipment free of potentially adverse seismic interaction effects? Y N U

Other Adverse Conditions

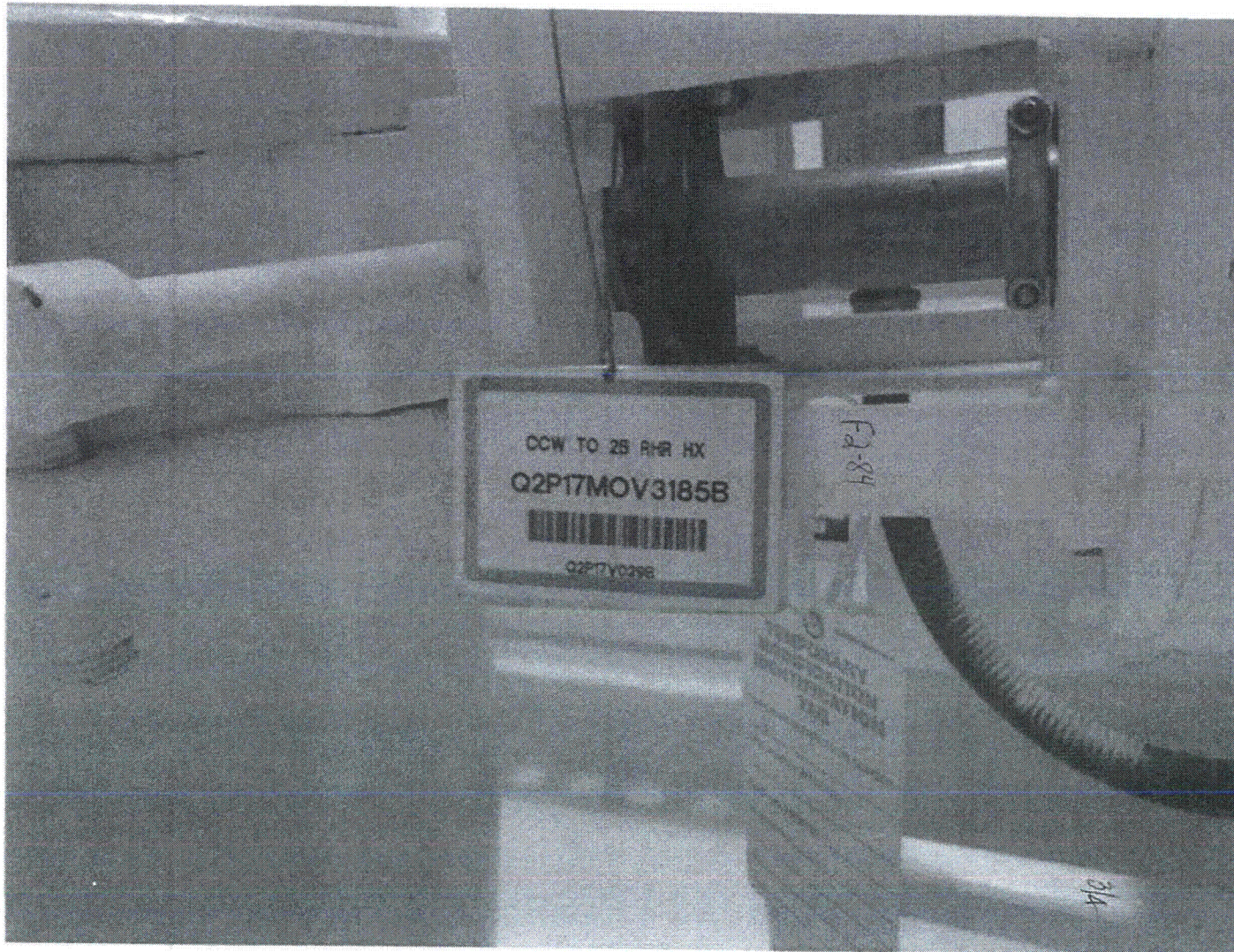
11. Have you looked for and found no other seismic conditions that could adversely affect the safety functions of the equipment? Y N U

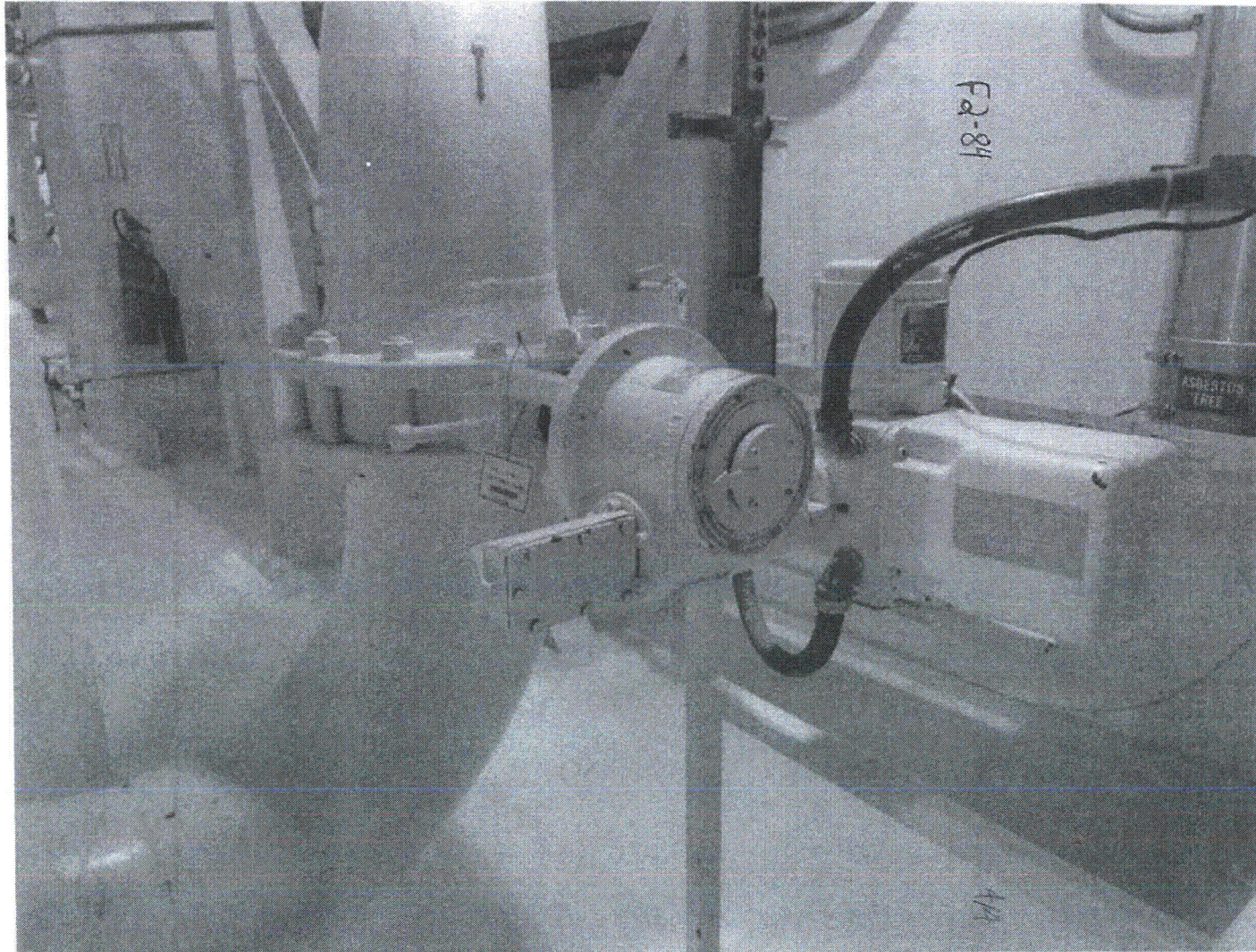
Comments (Additional pages may be added as necessary)

NONE

Evaluated by: Paul Miktus Date: 8-22-12
PAUL MIKTUS

STEPHEN YUAN Steph 8-22-12





P2-85

Sheet 1 of 84

Status: Y N U

Seismic Walkdown Checklist (SWC)

Equipment ID No. Q2P17P001C Equip. Class¹ 5

Equipment Description CCW PUMP 2C TRAIN A

Location: Bldg. AUXILIARY Floor El. 100 Room, Area: 2185

Manufacturer, Model, Etc. (optional but recommended) _____

Handwritten notes:
200
10/10/00

Instructions for Completing Checklist

This checklist may be used to document the results of the Seismic Walkdown of an item of equipment on the SWEL. The space below each of the following questions may be used to record the results of judgments and findings. Additional space is provided at the end of this checklist for documenting other comments.

Anchorage

- 1. Is the anchorage configuration verification required (i.e., is the item one of the 50% of SWEL items requiring such verification)? Y N U
- 2. Is the anchorage free of bent, broken, missing or loose hardware? Y N U N/A
- 3. Is the anchorage free of corrosion that is more than mild surface oxidation? Y N U N/A
- 4. Is the anchorage free of visible cracks in the concrete near the anchors? Y N U N/A
- 5. Is the anchorage configuration consistent with plant documentation? Y N U N/A
(Note: This question only applies if the item is one of the 50% for which an anchorage configuration verification is required.)
SEWS Package 7/93
- 6. Based on the above anchorage evaluations, is the anchorage free of potentially adverse seismic conditions? Y N U

¹ Enter the equipment class name from Appendix B: Classes of Equipment.

F285

Sheet 2 of 24

Status: Y N U O

Seismic Walkdown Checklist (SWC)

Equipment ID No. Q2P17P001C Equip. Class# 5

Equipment Description CCW PUMP 2C TRAIN A

Interaction Effects

7. Are soft targets free from impact by nearby equipment or structures? Y N U N/A

8. Are overhead equipment, distribution systems, ceiling tiles and lighting, and masonry block walls not likely to collapse onto the equipment? Y N U N/A

9. Do attached lines have adequate flexibility to avoid damage? Y N U N/A

10. Based on the above seismic interaction evaluations, is equipment free of potentially adverse seismic interaction effects? Y N U

Other Adverse Conditions

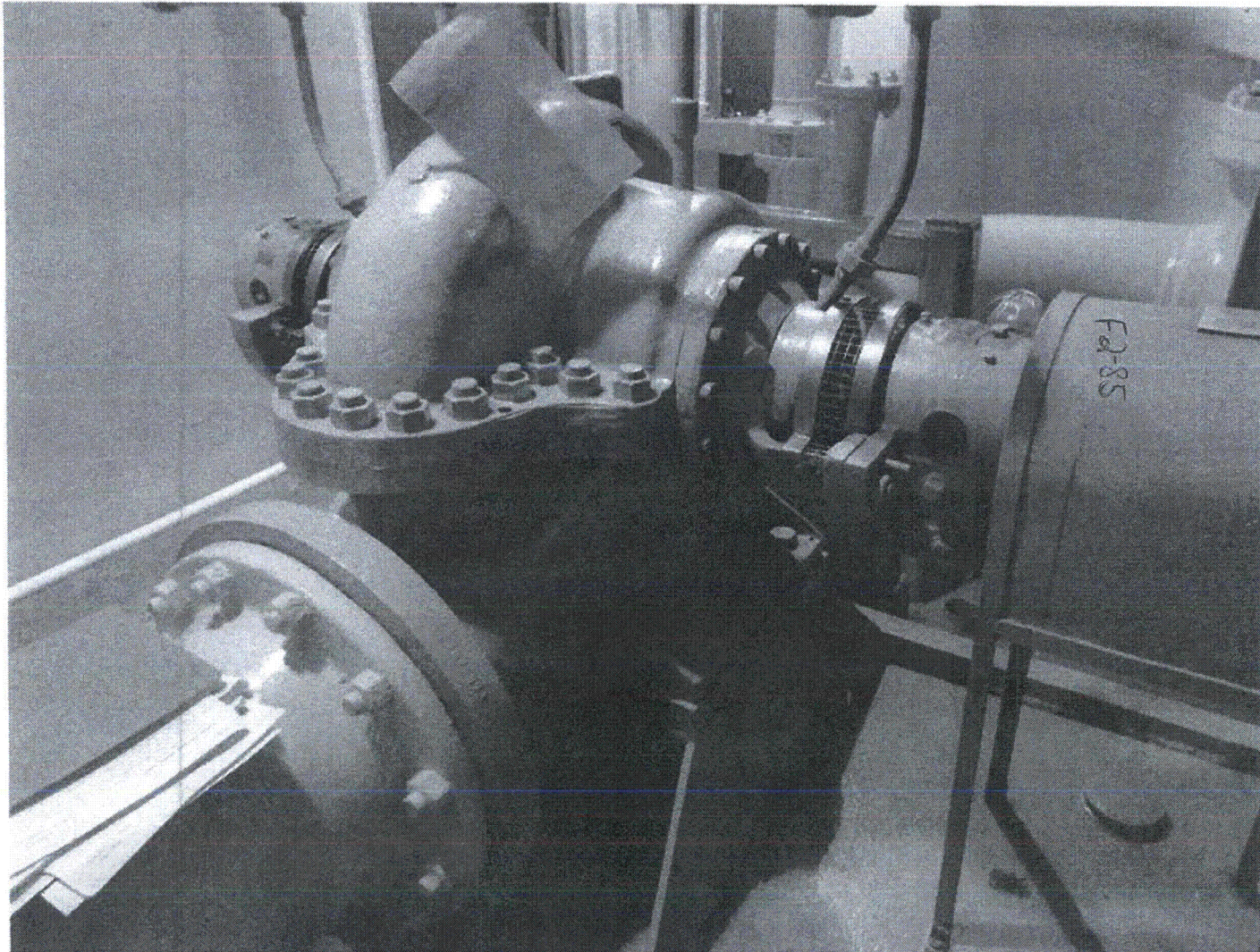
11. Have you looked for and found no other seismic conditions that could adversely affect the safety functions of the equipment? Y N U

Comments (Additional pages may be added as necessary)

Area walkby for room 2185 is with folder F2-79 (Q2P17H001B).

Evaluated by: Terry A. Mullen Date: 8/27/12
Laura Maclay Laura Maclay 8/27/12





E2-85

F2-86

8/27/12
Sheet 1 of 6

Status: Y N U

Seismic Walkdown Checklist (SWC)

Equipment ID No. Q2P17T001 Equip. Class: 21

Equipment Description SURGE TANK (CCW)

Location: Bldg. AUXILIARY Floor El. 179 Room, Area 2506

Manufacturer, Model, Etc. (optional but recommended)

Instructions for Completing Checklist

This checklist may be used to document the results of the Seismic Walkdown of an item of equipment on the SWEL. The space below each of the following questions may be used to record the results of judgments and findings. Additional space is provided at the end of this checklist for documenting other comments.

Anchorage

- 1. Is the anchorage configuration verification required (i.e., is the item one of the 50% of SWEL items requiring such verification)? Y N U
 - 2. Is the anchorage free of bent, broken, missing or loose hardware? Y N U N/A
 - 3. Is the anchorage free of corrosion that is more than mild surface oxidation? Y N U N/A
 - 4. Is the anchorage free of visible cracks in the concrete near the anchors? Y N U N/A
 - 5. Is the anchorage configuration consistent with plant documentation? Y N U N/A
(Note: This question only applies if the item is one of the 50% for which an anchorage configuration verification is required.)
- VERIFIED ANCHORAGES TO BE IN ACCORDANCE WITH CONFIGURATIONS SHOWN IN SEWS Q2P17 T001 (7-5-93)*
- 6. Based on the above anchorage evaluations, is the anchorage free of potentially adverse seismic conditions? Y N U

¹ Enter the equipment class name from Appendix B: Classes of Equipment.

F286

8/27/12
Sheet 2 of 6

Status: Y N U

Seismic Walkdown Checklist (SWC)

Equipment ID No: Q2P17T001 Equip. Class: 21

Equipment Description SURGE TANK (CCW)

Interaction Effects

7. Are soft targets free from impact by nearby equipment or structures? Y N U N/A

8. Are overhead equipment, distribution systems, ceiling tiles and lighting, and masonry block walls not likely to collapse onto the equipment? Y N U N/A

9. Do attached lines have adequate flexibility to avoid damage? Y N U N/A

10. Based on the above seismic interaction evaluations, is equipment free of potentially adverse seismic interaction effects? Y N U

Other Adverse Conditions

11. Have you looked for and found no other seismic conditions that could adversely affect the safety functions of the equipment? Y N U

Comments (Additional pages may be added as necessary)

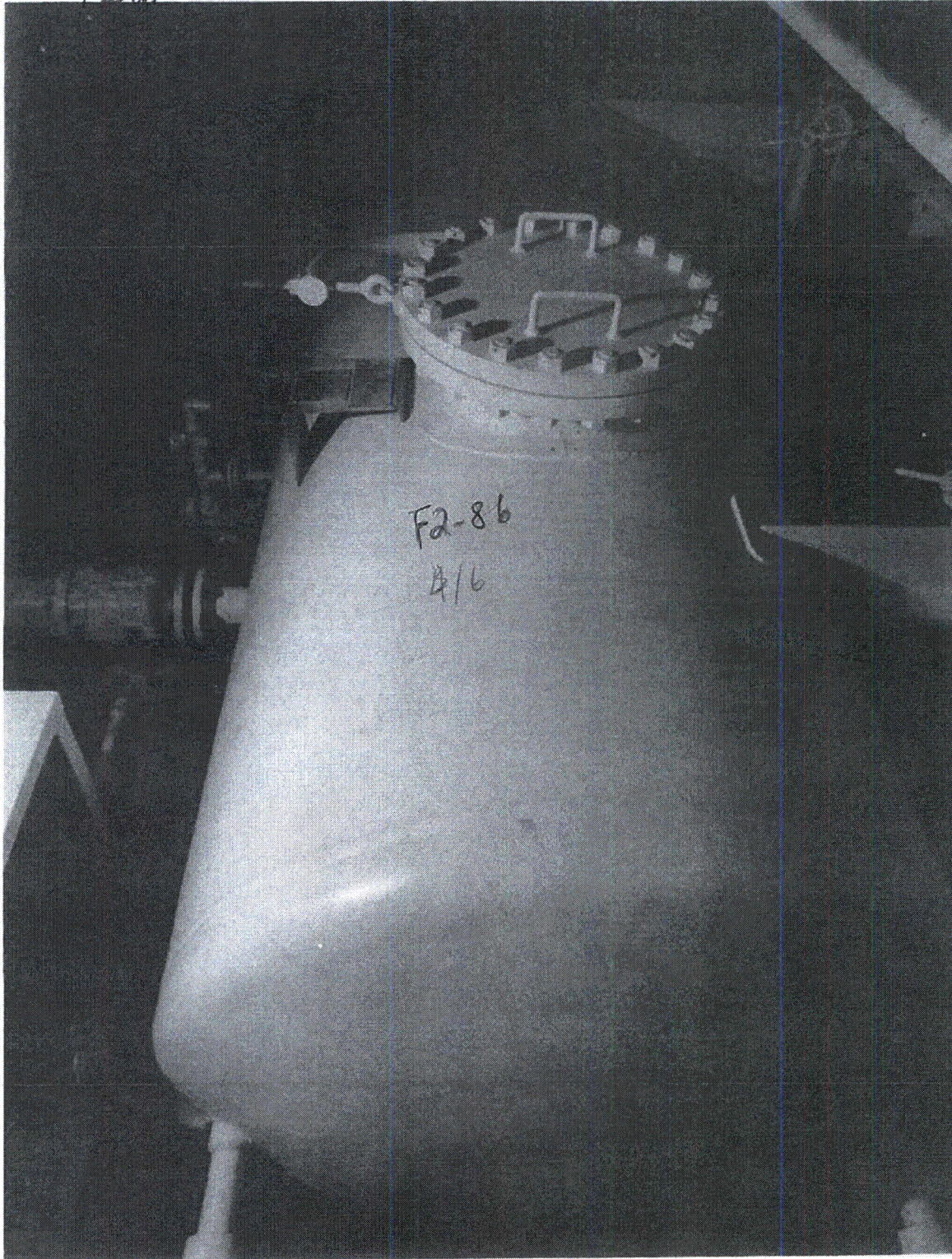
NONE

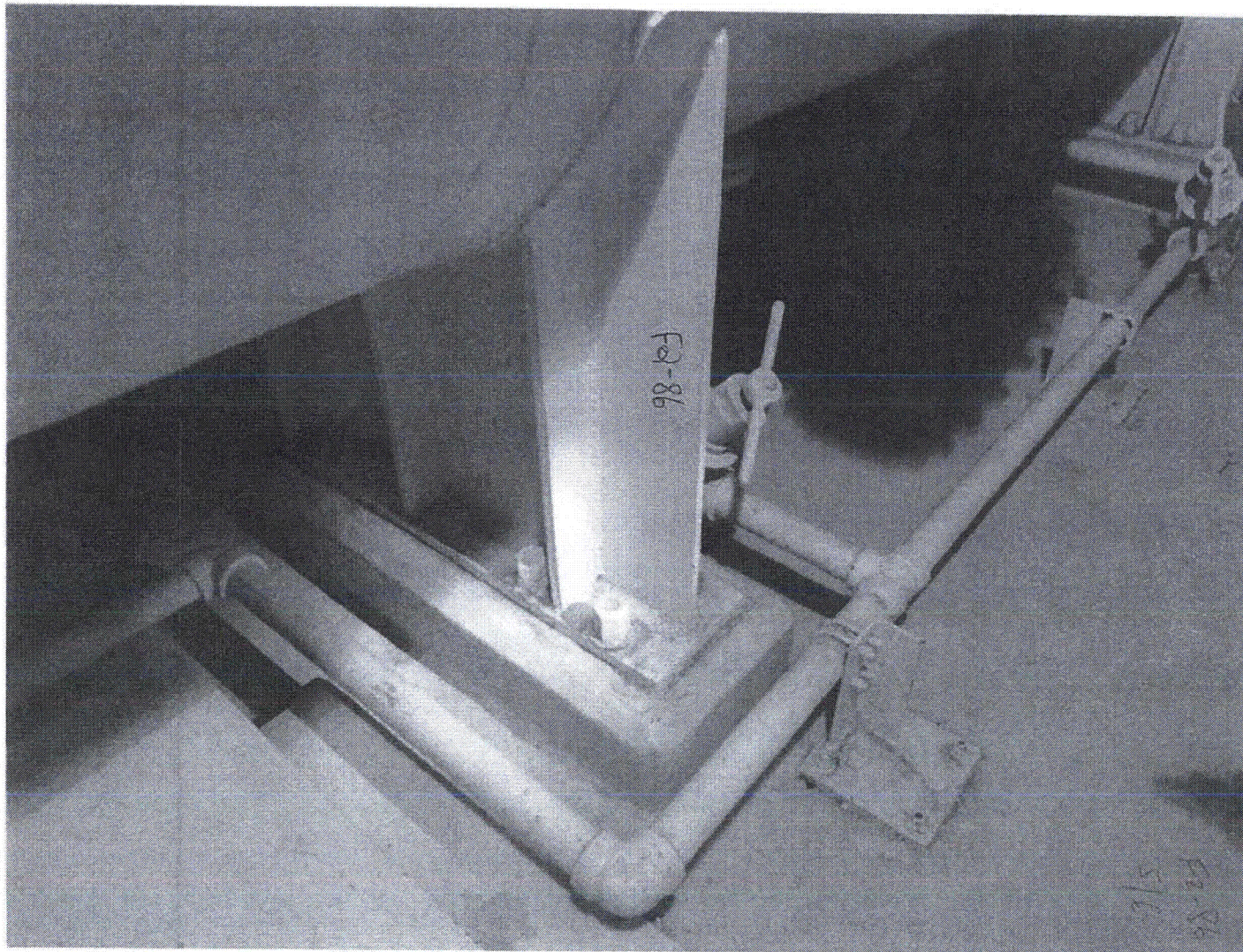
Evaluated by: P. MIKUS Paul Mikus Date: 8-29-12

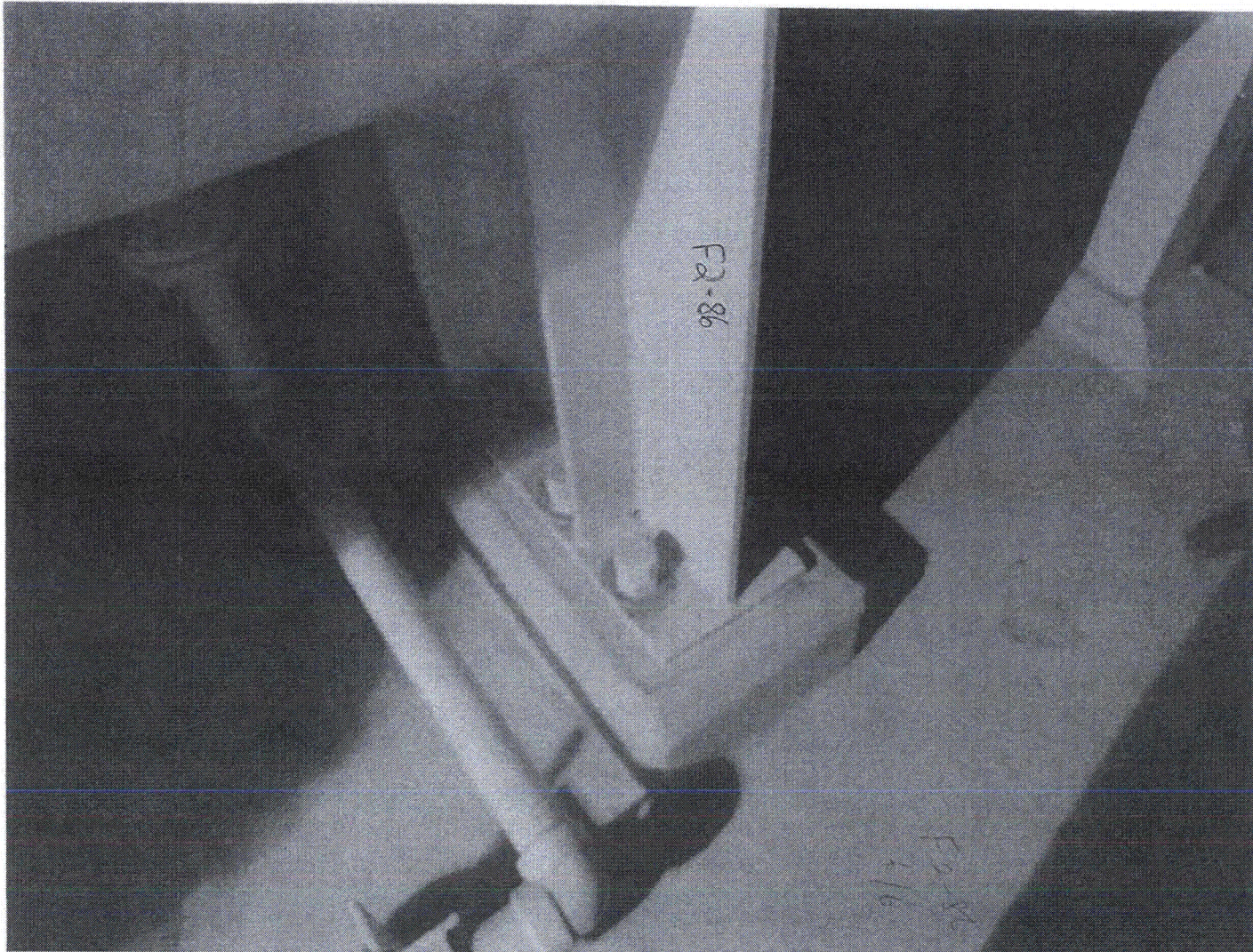
S. YUAN Stephen Yuan 8-29-12



F2-86







F2-87

Sheet 1 of 4

Status: Y N U

Seismic Walkdown Checklist (SWC)

Equipment ID No. Q2P18C002B Equip. Class: 12

Equipment Description TRAIN B EMERGENCY AIR COMPRESSOR

Location: Bldg. AUXILIARY Floor El. 100 Room, Area 2189

Manufacturer, Model, Etc. (optional but recommended)

Instructions for Completing Checklist

This checklist may be used to document the results of the Seismic Walkdown of an item of equipment on the SWEL. The space below each of the following questions may be used to record the results of judgments and findings. Additional space is provided at the end of this checklist for documenting other comments.

Anchorage

1. Is the anchorage configuration verification required (i.e., is the item one of the 50% of SWEL items requiring such verification)? Y N U

SENS For Equip. ID. NO. Q2P18C002B
2. Is the anchorage free of bent, broken, missing or loose hardware? Y N U N/A
3. Is the anchorage free of corrosion that is more than mild surface oxidation? Y N U N/A
4. Is the anchorage free of visible cracks in the concrete near the anchors? Y N U N/A
5. Is the anchorage configuration consistent with plant documentation? Y N U N/A

(Note: This question only applies if the item is one of the 50% for which an anchorage configuration verification is required.)
6. Based on the above anchorage evaluations, is the anchorage free of potentially adverse seismic conditions? Y N U

* the equipment class name from Appendix B: Classes of Equipment.

F287

Sheet 2 of 4

Status: Y N U

Seismic Walkdown Checklist (SWC)

Equipment ID No. Q2P18C002B Equip. Class: 12

Equipment Description TRAIN B EMERGENCY AIR COMPRESSOR

Interaction Effects

7. Are soft targets free from impact by nearby equipment or structures? Y N U N/A

8. Are overhead equipment, distribution systems, ceiling tiles and lighting, and masonry block walls not likely to collapse onto the equipment? Y N U N/A

9. Do attached lines have adequate flexibility to avoid damage? Y N U N/A

10. Based on the above seismic interaction evaluations, is equipment free of potentially adverse seismic interaction effects? Y N U

Other Adverse Conditions

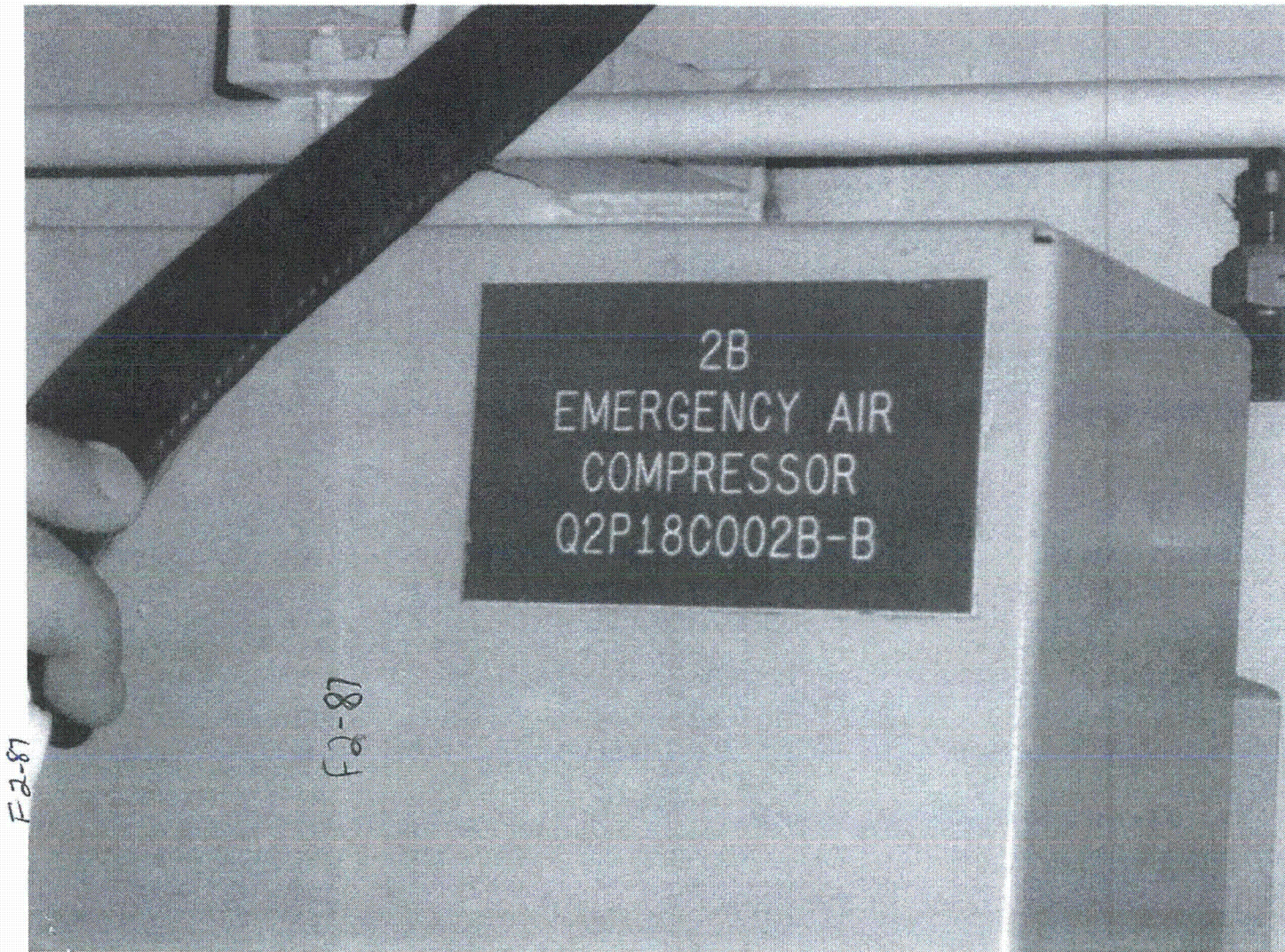
11. Have you looked for and found no other seismic conditions that could adversely affect the safety functions of the equipment? Y N U

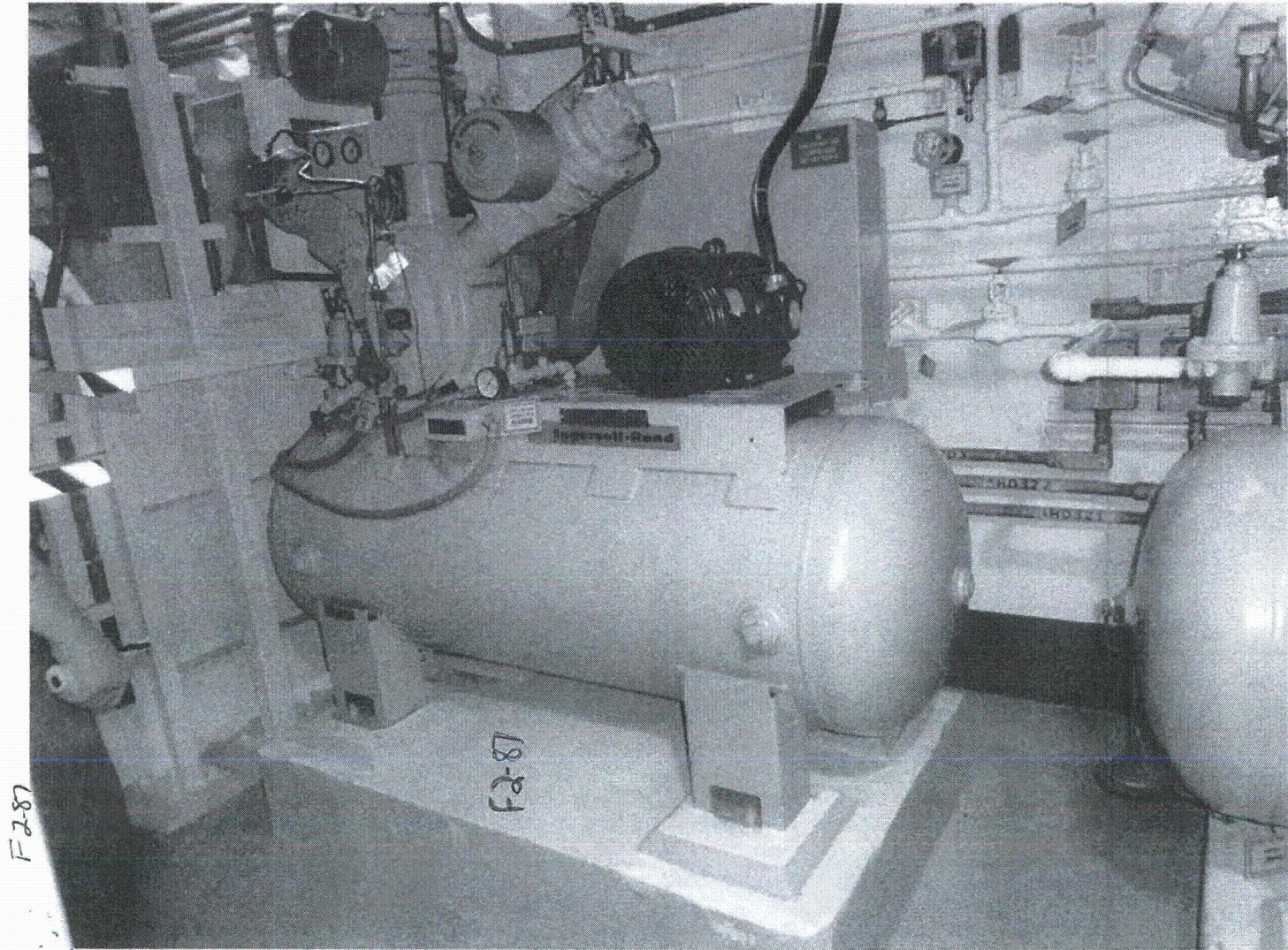
Comments (Additional pages may be added as necessary)

Valve N2P20V099 handle resting in contact w/ heat exchanger insulation. Heat exchanger is well support & lateral movement of pipe is not Credible. no operability issue.

Evaluated by: [Signature] Date: 8/21

[Signature] Ron Miranda 8/21





F2-87

F2-88

Sheet 1 of 8 ⁵
Status: Y N U ^{Good} 8/11/12

Seismic Walkdown Checklist (SWC)

Equipment ID No. Q2P19HV3611 Equip. Class¹ 7

Equipment Description CTMT INST AIR ISO

Location: Bldg. AUXILIARY Floor Bl. 100 Room, Area 2184

Manufacturer, Model, Etc. (optional but recommended) _____

Instructions for Completing Checklist

This checklist may be used to document the results of the Seismic Walkdown of an item of equipment on the SWEL. The space below each of the following questions may be used to record the results of judgments and findings. Additional space is provided at the end of this checklist for documenting other comments.

Anchorage

1. Is the anchorage configuration verification required (i.e., is the item one of the 50% of SWEL items requiring such verification)? Y N

IN LINE VALVE

2. Is the anchorage free of bent, broken, missing or loose hardware? Y N U N/A

3. Is the anchorage free of corrosion that is more than mild surface oxidation? Y N U N/A

4. Is the anchorage free of visible cracks in the concrete near the anchors? Y N U N/A

5. Is the anchorage configuration consistent with plant documentation? Y N U N/A
(Note: This question only applies if the item is one of the 50% for which an anchorage configuration verification is required.)

6. Based on the above anchorage evaluations, is the anchorage free of potentially adverse seismic conditions? Y N U

¹ Enter the equipment class name from Appendix B: Classes of Equipment.

F288

Sheet 2 of 3
Status: Y N U *John 2/2/12*

Seismic Walkdown Checklist (SWC)

Equipment ID No. Q2P19HV3611 Equip. Class: 7

Equipment Description CTMT INST AIR ISO

Interaction Effects

7. Are soft targets free from impact by nearby equipment or structures? Y N U N/A

8. Are overhead equipment, distribution systems, ceiling tiles and lighting, and masonry block walls not likely to collapse onto the equipment? Y N U N/A

9. Do attached lines have adequate flexibility to avoid damage? Y N U N/A

10. Based on the above seismic interaction evaluations, is equipment free of potentially adverse seismic interaction effects? Y N U

Other Adverse Conditions

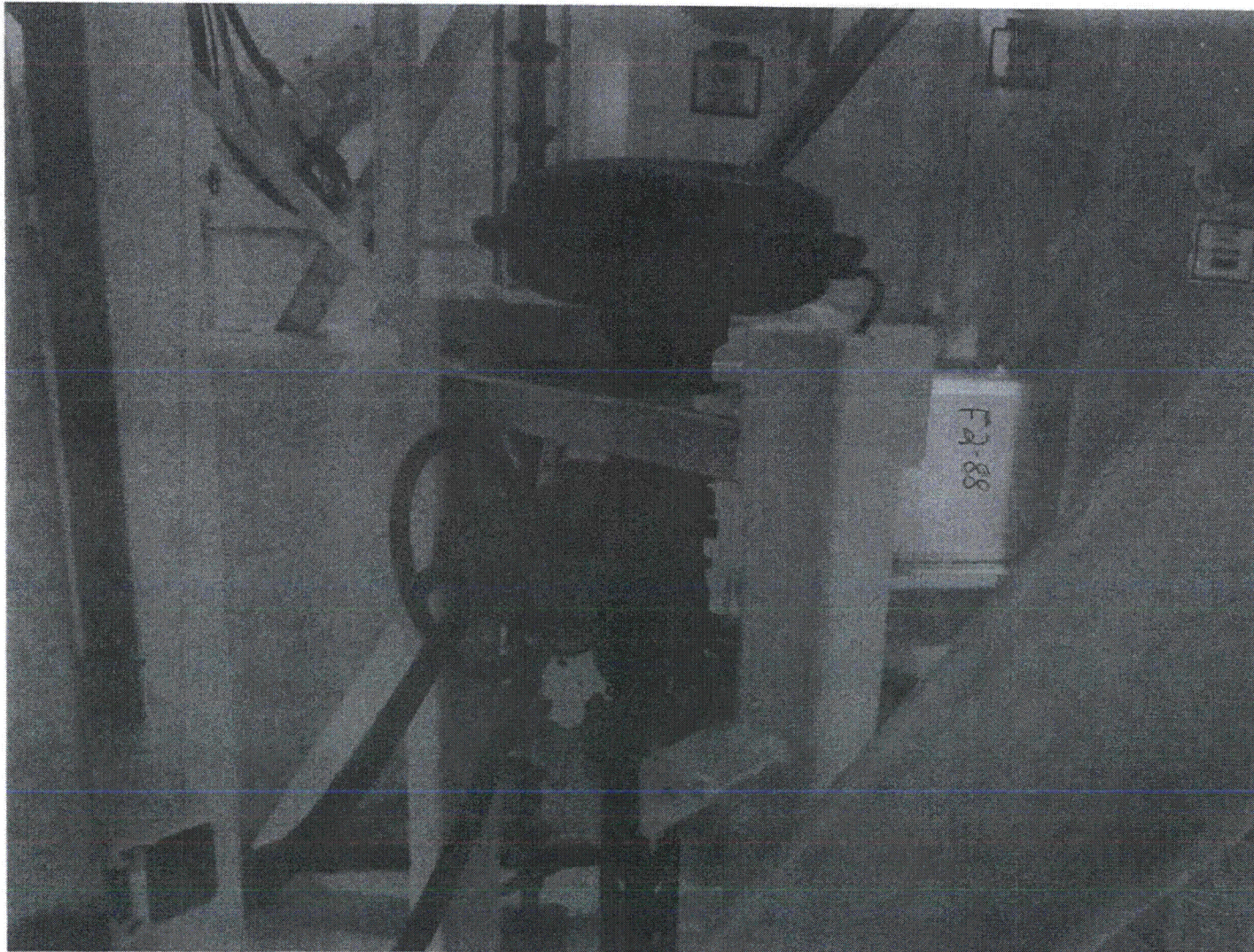
11. Have you looked for and found no other seismic conditions that could adversely affect the safety functions of the equipment? Y N U

Comments (Additional pages may be added as necessary)

Evaluated by: P. MIKTES Paul Miktes Date: 8-27-12
S. YODAN Steph 8-27-12

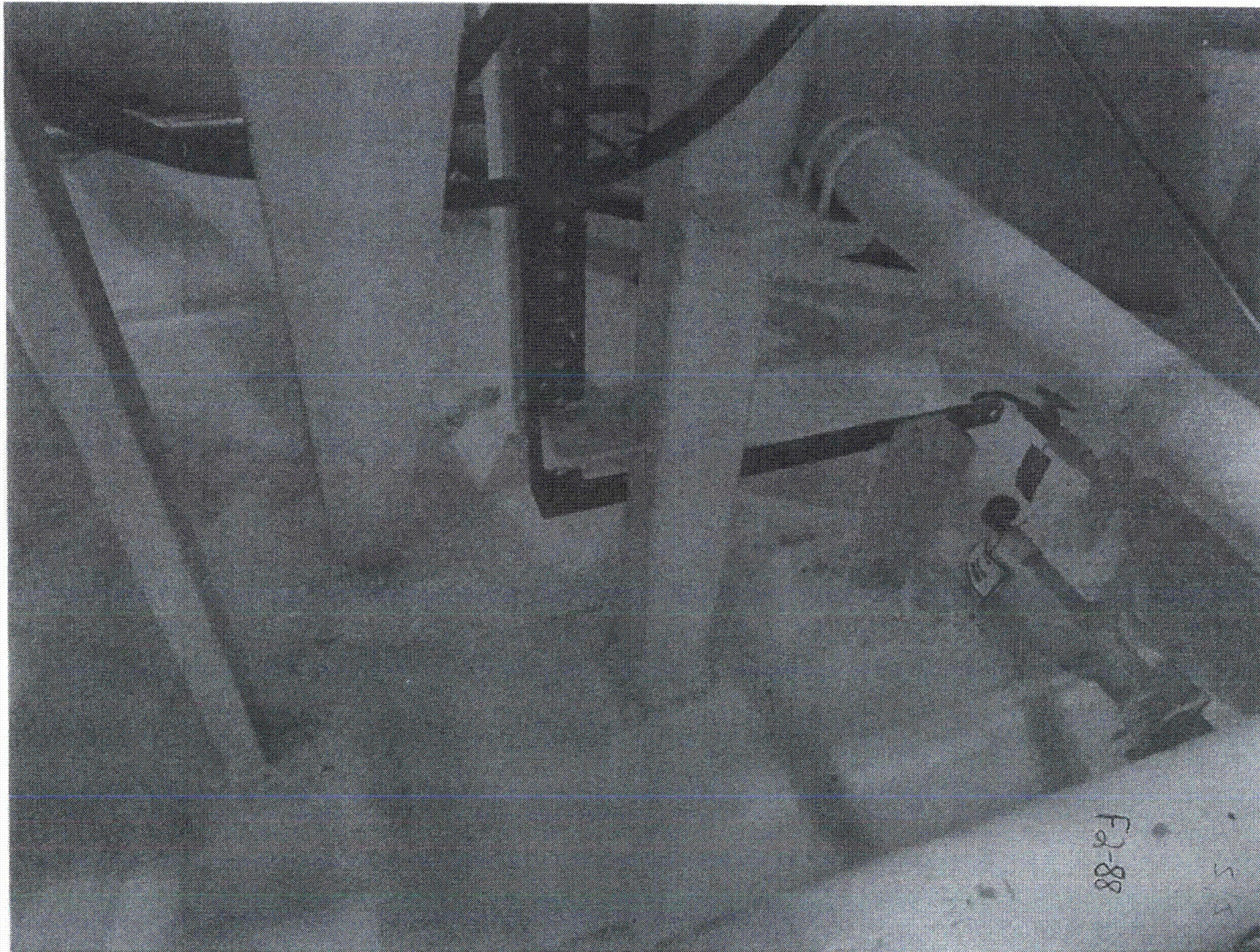


F2-88



F2-88

F2-88



F289

Sheet 1 of 4

Status: Y N U

Seismic Walkdown Checklist (SWC)

Equipment ID No. Q2R11B507, Pkg F2-89 Equip. Class: 4

Equipment Description LC TRANSFORMER 2S

Location: Bldg. DIESEL Floor El. 155 Room, Area 56C

Manufacturer, Model, Etc. (optional but recommended) _____

Instructions for Completing Checklist

This checklist may be used to document the results of the Seismic Walkdown of an item of equipment on the SWEL. The space below each of the following questions may be used to record the results of judgments and findings. Additional space is provided at the end of this checklist for documenting other comments.

Anchorage

1. Is the anchorage configuration verification required (i.e., is the item one of the 50% of SWEL items requiring such verification)? Y N

2. Is the anchorage free of bent, broken, missing or loose hardware? Y N U N/A

3. Is the anchorage free of corrosion that is more than mild surface oxidation? Y N U N/A

4. Is the anchorage free of visible cracks in the concrete near the anchors? Y N U N/A

5. Is the anchorage configuration consistent with plant documentation? Y N U N/A
 (Note: This question only applies if the item is one of the 50% for which an anchorage configuration verification is required.)
Reference SEWS package dated 5-28-94.

6. Based on the above anchorage evaluations, is the anchorage free of potentially adverse seismic conditions? Y N U

Enter the equipment class name from Appendix B: Classes of Equipment.

F2-89

Sheet 2 of 4

Status: Y N U

Seismic Walkdown Checklist (SWC)

Equipment ID No. Q2R11B507, Pkg F2-89 Equip. Class: 4

Equipment Description LC TRANSFORMER 2S

Interaction Effects

7. Are soft targets free from impact by nearby equipment or structures? Y N U N/A

8. Are overhead equipment, distribution systems, ceiling tiles and lighting, and masonry block walls not likely to collapse onto the equipment? Y N U N/A

9. Do attached lines have adequate flexibility to avoid damage? Y N U N/A

10. Based on the above seismic interaction evaluations, is equipment free of potentially adverse seismic interaction effects? Y N U

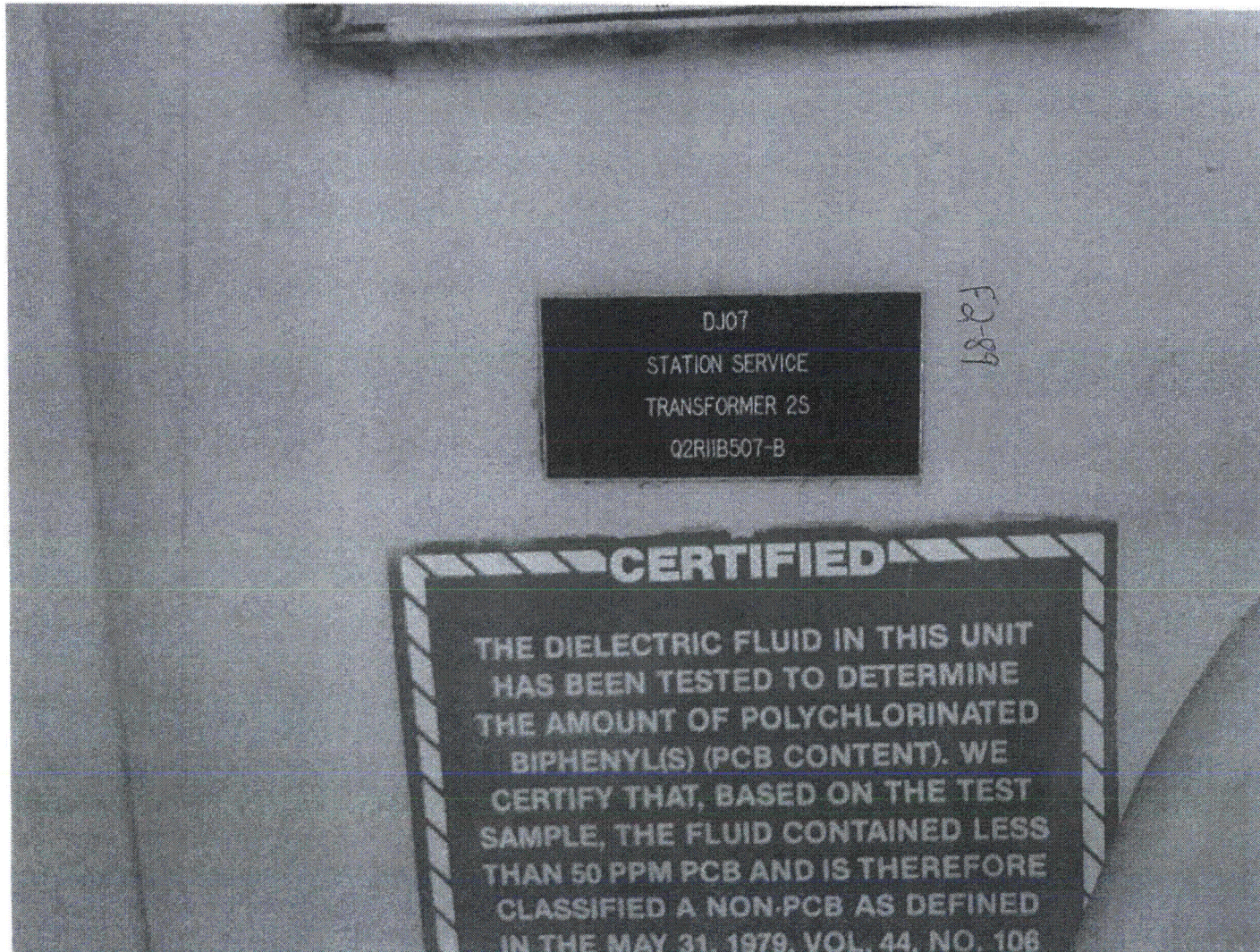
Other Adverse Conditions

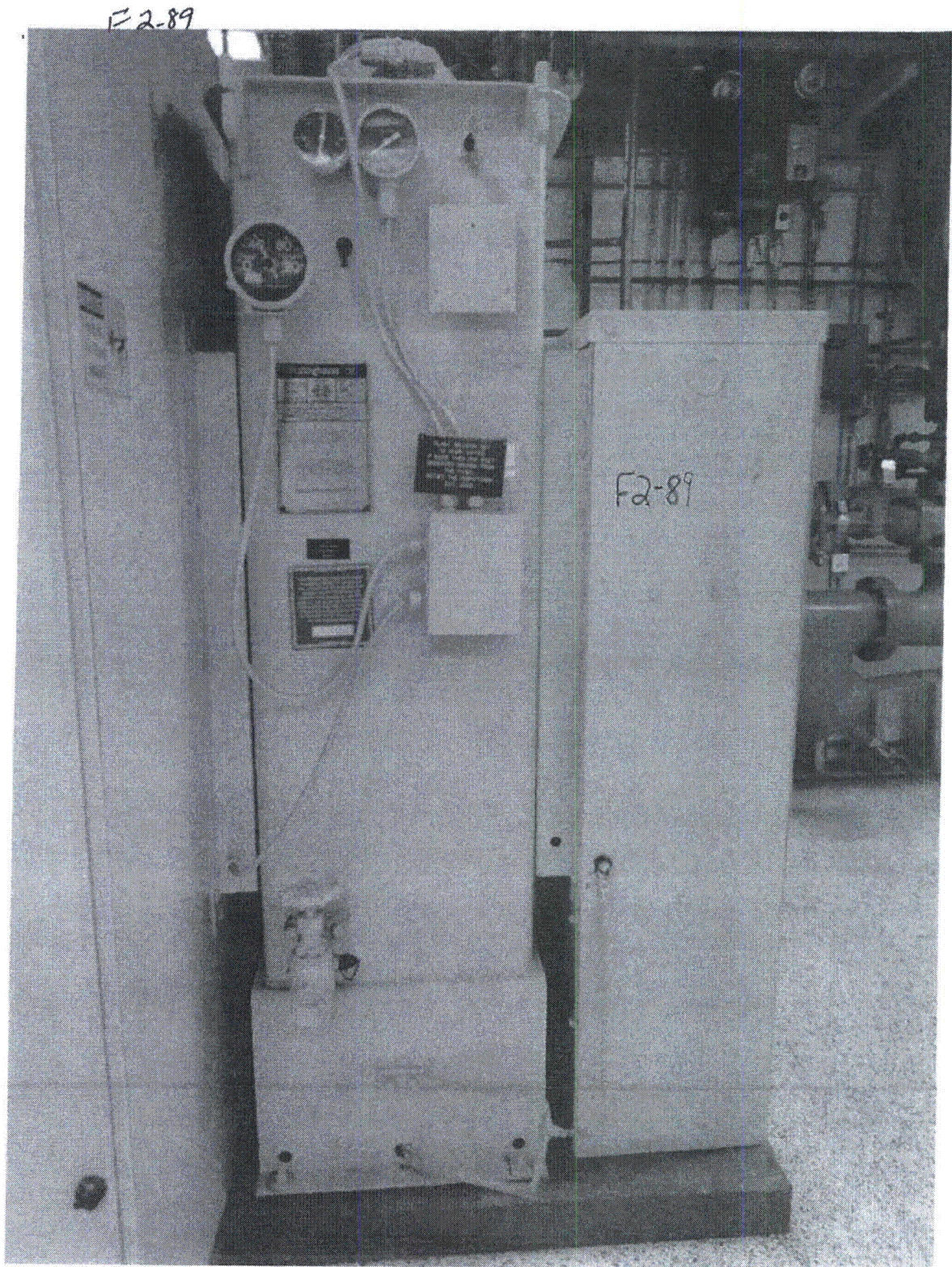
11. Have you looked for and found no other seismic conditions that could adversely affect the safety functions of the equipment? Y N U

Comments (Additional pages may be added as necessary)

*Opening the transformer for internal inspection is considered disassembly.
This package was originally signed on 8-24-12 but retyped for clarity on 10-23-12.*

Evaluated by: Terry A. Mullenix *Jerry Hlan* 10/23/12 Date: 8/24/12
Paul Smith 10/23/12 *Laura Maclay* 8/24/12
Laura Maclay by Telecon





F2-90

Sheet 1 of 4

Status: Y N U

Seismic Walkdown Checklist (SWC)

Equipment ID No. Q2R16B007 Equip. Class¹ 2

Equipment Description 600V LOAD CENTER 2E

Location: Bldg. AUXILIARY Floor El. 121 Room, Area 2229

Manufacturer, Model, Etc. (optional but recommended) _____

Instructions for Completing Checklist

This checklist may be used to document the results of the Seismic Walkdown of an item of equipment on the SWEL. The space below each of the following questions may be used to record the results of judgments and findings. Additional space is provided at the end of this checklist for documenting other comments.

Anchorage

1. Is the anchorage configuration verification required (i.e., is the item one of the 50% of SWEL items requiring such verification)? Y N
Anchorage is inside panel and cannot be verified

2. Is the anchorage free of bent, broken, missing or loose hardware? Y N U N/A

3. Is the anchorage free of corrosion that is more than mild surface oxidation? Y N U N/A

4. Is the anchorage free of visible cracks in the concrete near the anchors? Y N U N/A

5. Is the anchorage configuration consistent with plant documentation? Y N U N/A
 (Note: This question only applies if the item is one of the 50% for which an anchorage configuration verification is required.)

6. Based on the above anchorage evaluations, is the anchorage free of potentially adverse seismic conditions? Y N U

¹ Enter the equipment class name from Appendix B: Classes of Equipment.

F2-90

Sheet 2 of 4

Status: Y N U

Seismic Walkdown Checklist (SWC)

Equipment ID No. Q2R16B007 Equip. Class: 2

Equipment Description: 600V LOAD CENTER 2E

Interaction Effects:

7. Are soft targets free from impact by nearby equipment or structures? Y N U N/A

8. Are overhead equipment, distribution systems, ceiling tiles and lighting, and masonry block walls not likely to collapse onto the equipment? Y N U N/A

9. Do attached lines have adequate flexibility to avoid damage? Y N U N/A

10. Based on the above seismic interaction evaluations, is equipment free of potentially adverse seismic interaction effects? Y N U

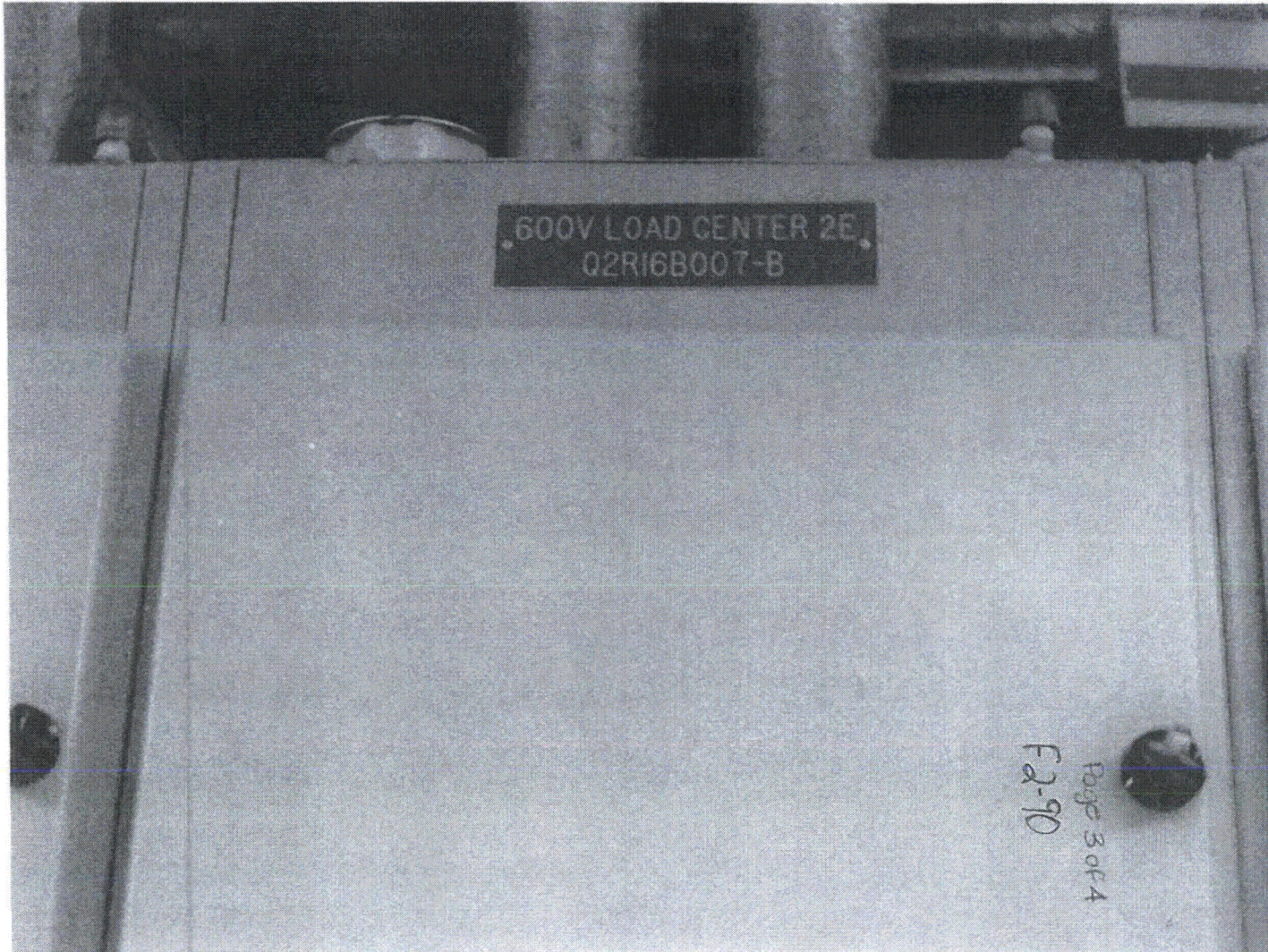
Other Adverse Conditions

11. Have you looked for and found no other seismic conditions that could adversely affect the safety functions of the equipment? Y N U

Comments (Additional pages may be added as necessary)

Evaluated by: TERRY A. MULLENBY / Jerry [Signature] Date: 8/24/2012

Laura MacLay Laura MacLay 8/24/12





F2-91

Sheet 1 of 4

Status: Y N U

Seismic Walkdown Checklist (SWC)

Equipment ID No. Q2R17B510 Equip. Class¹ 1

Equipment Description MCC-2T

Location: Bldg. DIESEL Floor El. 155 Room, Area 59

Manufacturer, Model, Etc. (optional but recommended) _____

Instructions for Completing Checklist

This checklist may be used to document the results of the Seismic Walkdown of an item of equipment on the SWEL. The space below each of the following questions may be used to record the results of judgments and findings. Additional space is provided at the end of this checklist for documenting other comments.

Anchorage

1. Is the anchorage configuration verification required (i.e., is the item one of the 50% of SWEL items requiring such verification)? Y N U

Anchorage is inside of cabinet and was not visible during the visual inspection.

2. Is the anchorage free of bent, broken, missing or loose hardware? Y N U N/A

3. Is the anchorage free of corrosion that is more than mild surface oxidation? Y N U N/A

4. Is the anchorage free of visible cracks in the concrete near the anchors? Y N U N/A

5. Is the anchorage configuration consistent with plant documentation? Y N U N/A
(Note: This question only applies if the item is one of the 50% for which an anchorage configuration verification is required.)

Reference SEWS package dated 7/8/93.

6. Based on the above anchorage evaluations, is the anchorage free of potentially adverse seismic conditions? Y N U

¹ Enter the equipment class name from Appendix B: Classes of Equipment.

F291

Sheet 2 of 84

Status: Y N U

Seismic Walkdown Checklist (SWC)

Equipment ID No: Q2R17B510 Equip. Class: 1

Equipment Description MCC 2T

Interaction Effects

7. Are soft targets free from impact by nearby equipment or structures? Y N U N/A

8. Are overhead equipment, distribution systems, ceiling tiles and lighting, and masonry block walls not likely to collapse onto the equipment? Y N U N/A

9. Do attached lines have adequate flexibility to avoid damage? Y N U N/A

10. Based on the above seismic interaction evaluations, is equipment free of potentially adverse seismic interaction effects? Y N U

Other Adverse Conditions

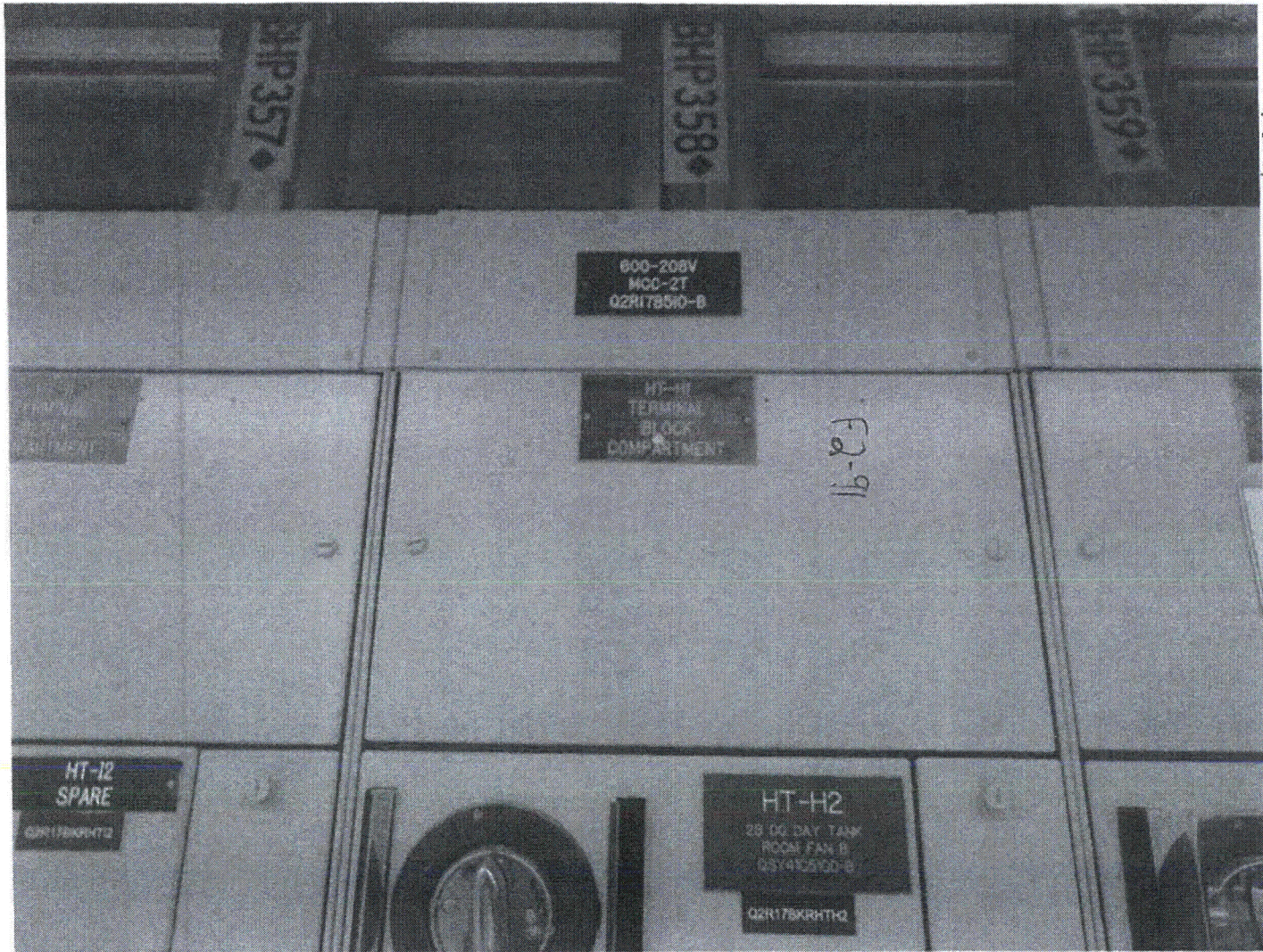
11. Have you looked for and found no other seismic conditions that could adversely affect the safety functions of the equipment? Y N U

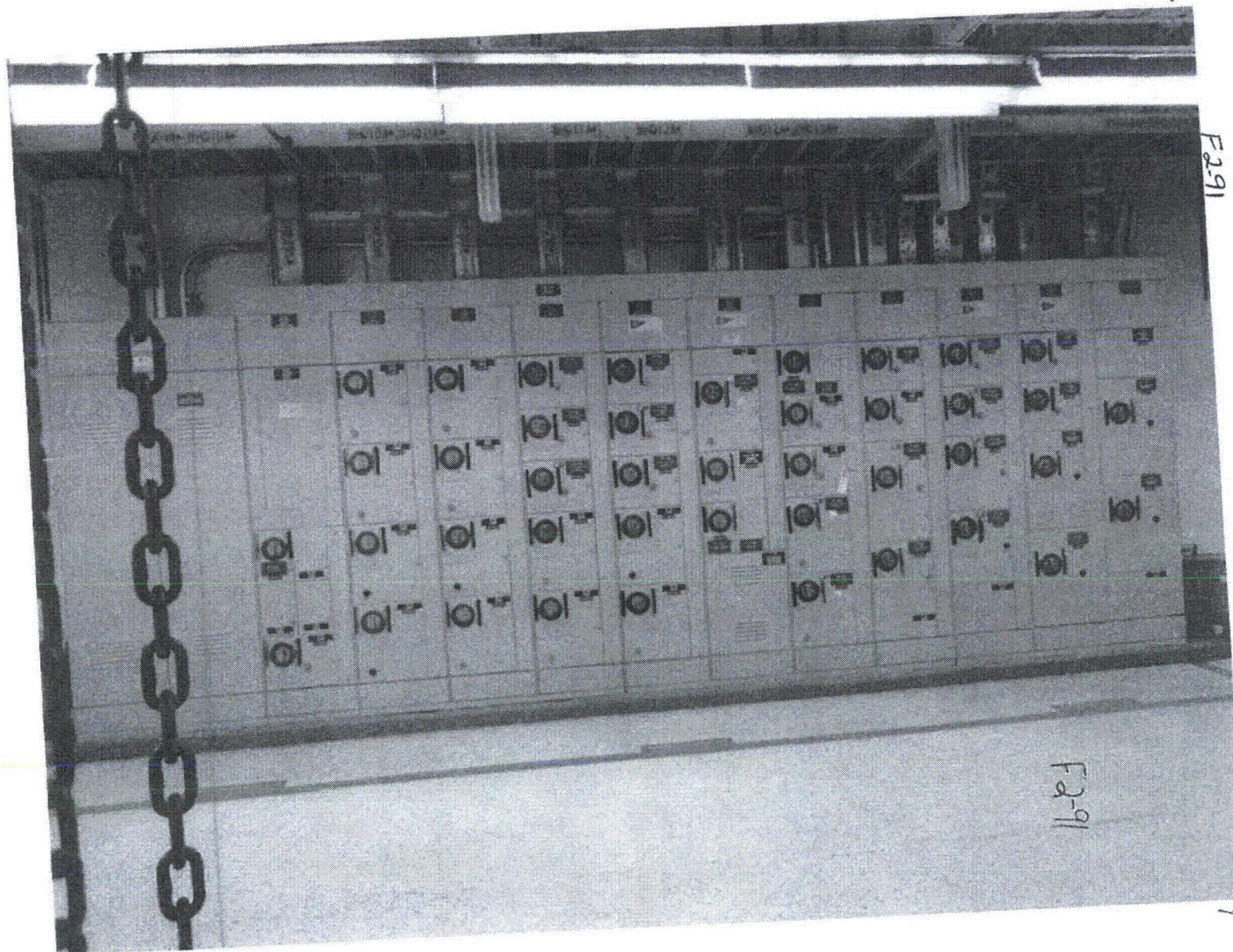
Comments (Additional pages may be added as necessary)

Area walkby for room 59 is with equipment QSY41M542D.

Evaluated by: Laura MacLay Laura MacLay Date: 8-24-12

Terry A. Mullenix Terry A. Mullenix 8/24/2012





F2-92

48 81-4
Sheet 1 of 4

Status: Y N U

Seismic Walkdown Checklist (SWC)

Equipment ID No. Q2R18B030 Equip. Class: 2

Equipment Description POWER DISCONNECT SWITCH

Location: Bldg. AUXILIARY Floor/El. 139 Room, Area 2322

Manufacturer, Model, Etc. (optional but recommended) _____

Instructions for Completing Checklist

This checklist may be used to document the results of the Seismic Walkdown of an item of equipment on the SWEL. The space below each of the following questions may be used to record the results of judgments and findings. Additional space is provided at the end of this checklist for documenting other comments.

Anchorage

- 1. Is the anchorage configuration verification required (i.e., is the item one of the 50% of SWEL items requiring such verification)? Y N
- 2. Is the anchorage free of bent, broken, missing or loose hardware? Y N U N/A
- 3. Is the anchorage free of corrosion that is more than mild surface oxidation? Y N U N/A
- 4. Is the anchorage free of visible cracks in the concrete near the anchors? Y N U N/A
- 5. Is the anchorage configuration consistent with plant documentation? Y N U N/A
(Note: This question only applies if the item is one of the 50% for which an anchorage configuration verification is required.)
- 6. Based on the above anchorage evaluations, is the anchorage free of potentially adverse seismic conditions? Y N U

ADEQUACY OF ANCHORAGE WAS VERIFIED IN SEWS Q2R18B030-A, DATED 3-20-95.

1 Enter the equipment class name from Appendix B: Classes of Equipment.

F2-92

8/28/12

Sheet 2 of 4

Status: Y N U

Seismic Walkdown Checklist (SWC)

Equipment ID No. Q2R18B030 Equip. Class 2

Equipment Description POWER DISCONNECT SWITCH

Interaction Effects

7. Are soft targets free from impact by nearby equipment or structures? Y N U N/A

8. Are overhead equipment, distribution systems, ceiling files and lighting, and masonry block walls not likely to collapse onto the equipment? Y N U N/A

9. Do attached lines have adequate flexibility to avoid damage? Y N U N/A

10. Based on the above seismic interaction evaluations, is equipment free of potentially adverse seismic interaction effects? Y N U

Other Adverse Conditions

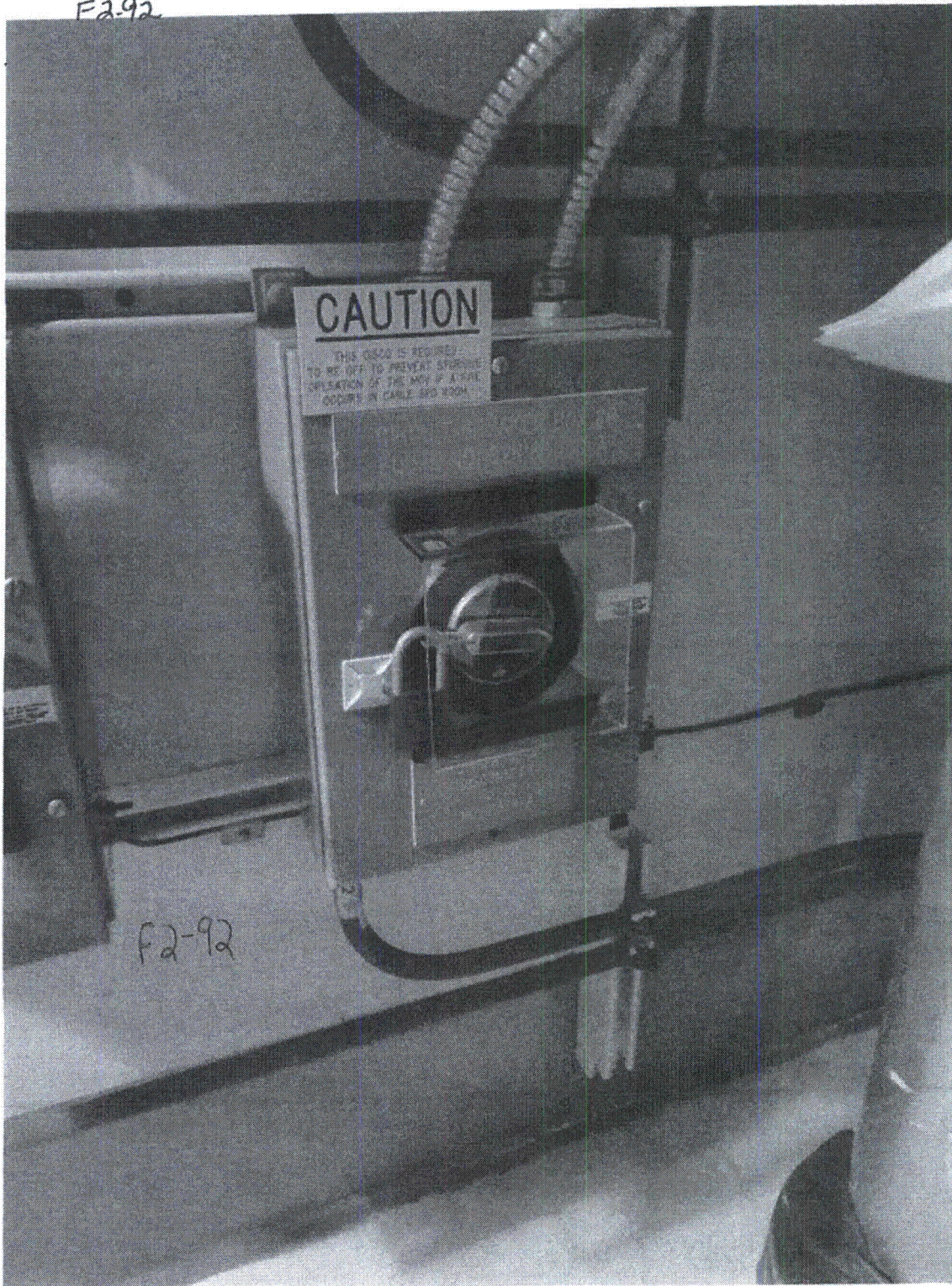
11. Have you looked for and found no other seismic conditions that could adversely affect the safety functions of the equipment? Y N U

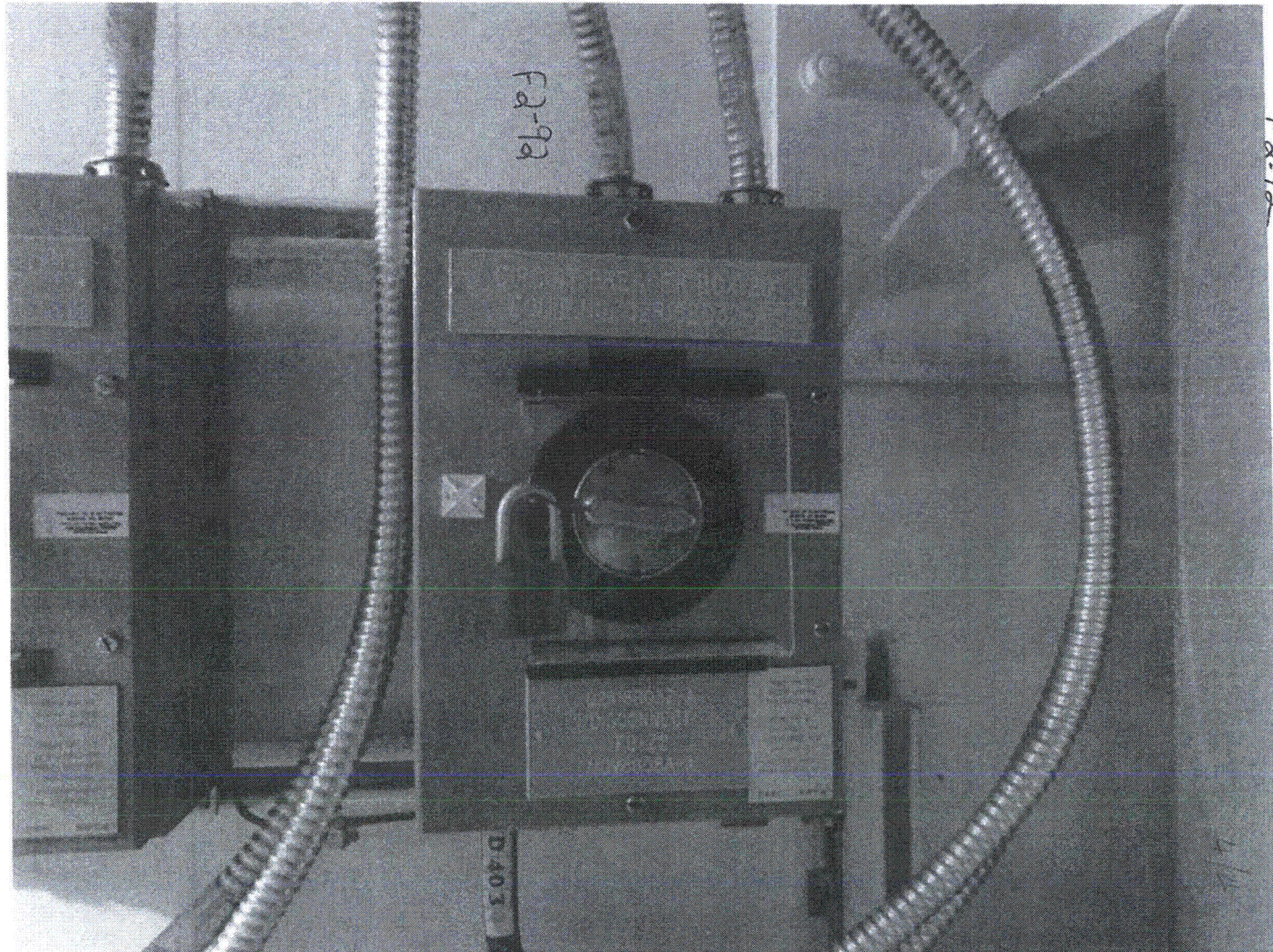
Comments (Additional pages may be added as necessary)

AWB IS IN F2-23

Evaluated by: S. YUAN Stephen Yuan Date: 8-28-12

P. MIKLOS Paul Miklos 8-28-12





F2-93

Sheet 1 of 8
 Status: Y N U *2011/01/20*

Seismic Walkdown Checklist (SWC)

Equipment ID No. Q2R18B032 Equip. Class¹ 14
 Equipment Description CIRCUIT BREAKER BOX
 Location: Bldg. AUXILIARY Floor El. 139 Room, Area 2332
 Manufacturer, Model, Etc. (optional but recommended) _____

Instructions for Completing Checklist

This checklist may be used to document the results of the Seismic Walkdown of an item of equipment on the SWEL. The space below each of the following questions may be used to record the results of judgments and findings. Additional space is provided at the end of this checklist for documenting other comments.

Anchorage

1. Is the anchorage configuration verification required (i.e., is the item one of the 50% of SWEL items requiring such verification)? Y N
2. Is the anchorage free of bent, broken, missing or loose hardware? Y N U N/A
3. Is the anchorage free of corrosion that is more than mild surface oxidation? Y N U N/A
4. Is the anchorage free of visible cracks in the concrete near the anchors? Y N U N/A
5. Is the anchorage configuration consistent with plant documentation? Y N U N/A
 (Note: This question only applies if the item is one of the 50% for which an anchorage configuration verification is required.)
6. Based on the above anchorage evaluations, is the anchorage free of potentially adverse seismic conditions? Y N U

*ANCHORAGE ADEQUACY VERIFIED IN SEWS Q2R18B032-A, DATED 7-1-93
 (BY COMPARISON TO INFORMATION CONTAINED)*

¹ Enter the equipment class name from Appendix B: Classes of Equipment

F2-93

Sheet 2 of 24 JEM
Status: Y N U 8/28/12

Seismic Walkdown Checklist (SWC)

Equipment ID No. Q2R18B032 Equip. Class 14

Equipment Description CIRCUIT BREAKER BOX

Interaction Effects

7. Are soft targets free from impact by nearby equipment or structures? Y N U N/A

8. Are overhead equipment, distribution systems, ceiling tiles and lighting, and masonry block walls not likely to collapse onto the equipment? Y N U N/A

9. Do attached lines have adequate flexibility to avoid damage? Y N U N/A

10. Based on the above seismic interaction evaluations, is equipment free of potentially adverse seismic interaction effects? Y N U

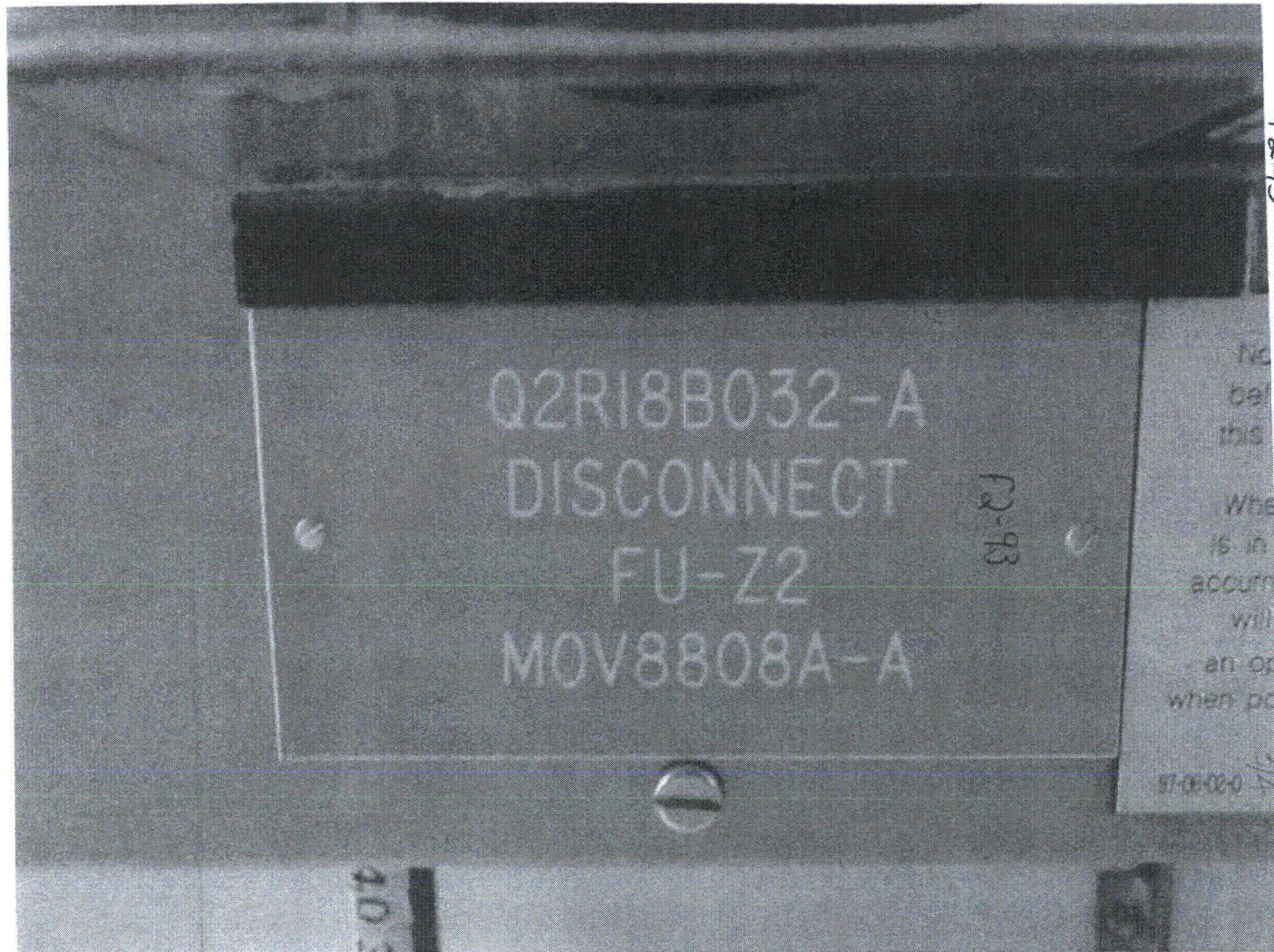
Other Adverse Conditions

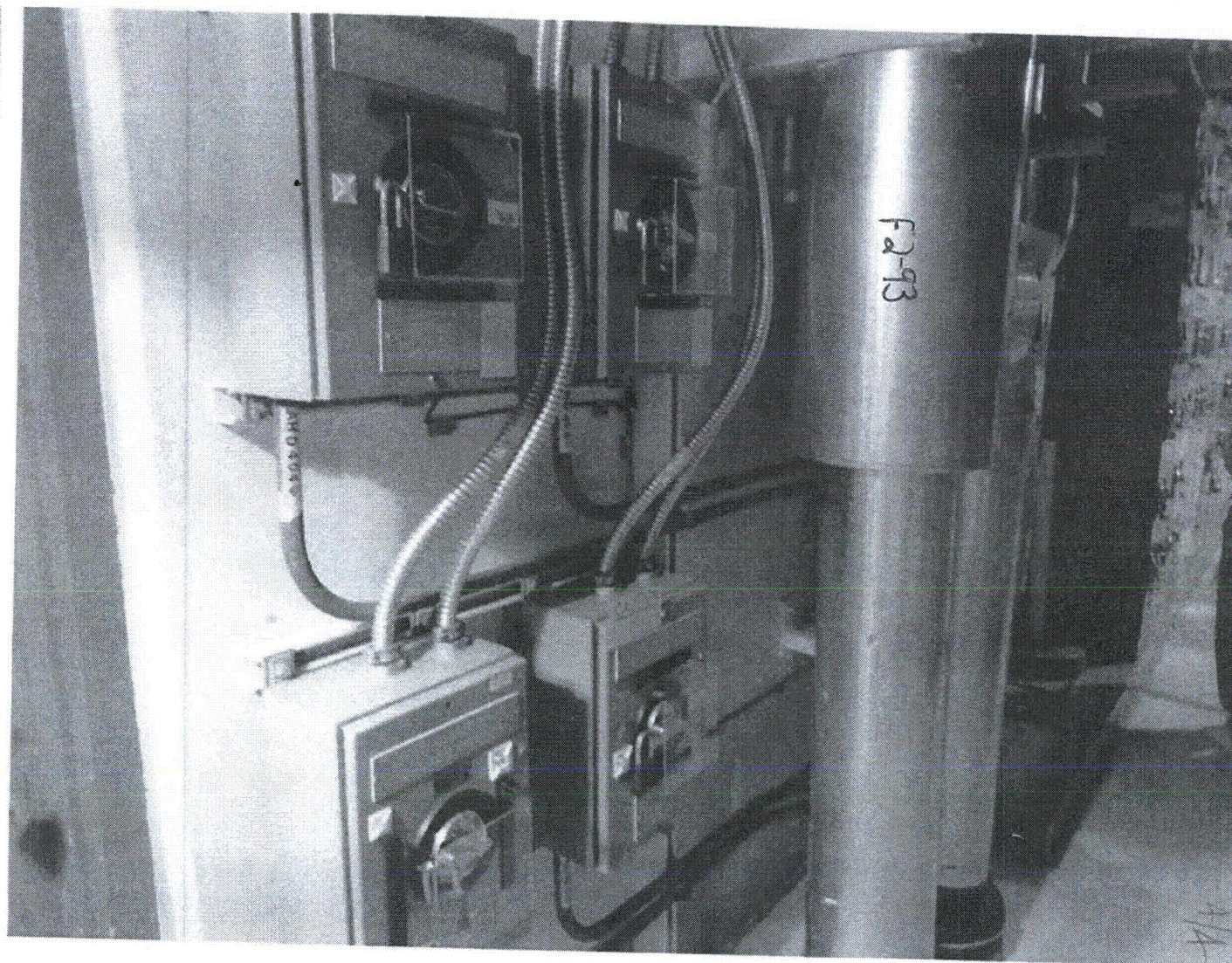
11. Have you looked for and found no other seismic conditions that could adversely affect the safety functions of the equipment? Y N U

Comments (Additional pages may be added as necessary)

AREA WALK BY FOL RM 2532 IS INCLUDED IN PKG F2-23

Evaluated by: S. YUAN Stephan Yuan Date: 8-28-12
PMIKIDS Paul Mikidas 8-28-12





F2:94

Sheet 1 of 3

Status: Y N U

Seismic Walkdown Checklist (SWC)

Equipment ID No. Q2R18B034 Equip. Class¹ 2

Equipment Description POWER DISCONNECT SWITCH 2322

Location: Bldg. AUXILIARY Floor El. 139 Room, Area 2322

Manufacturer, Model, Etc. (optional but recommended) _____

Instructions for Completing Checklist

This checklist may be used to document the results of the Seismic Walkdown of an item of equipment on the SWEL. The space below each of the following questions may be used to record the results of judgments and findings. Additional space is provided at the end of this checklist for documenting other comments.

Anchorage

1. Is the anchorage configuration verification required (i.e., is the item one of the 50% of SWEL items requiring such verification)? YES ~~Y~~ ~~N~~ ~~U~~ ~~N/A~~

2. Is the anchorage free of bent, broken, missing or loose hardware? Y N U N/A

3. Is the anchorage free of corrosion that is more than mild surface oxidation? Y N U N/A

4. Is the anchorage free of visible cracks in the concrete near the anchors? Y N U N/A

5. Is the anchorage configuration consistent with plant documentation? yes Y N U N/A

(Note: This question only applies if the item is one of the 50% for which an anchorage configuration verification is required.)

Observed top two connection clips compliant w/ photos shown SEWS for component Q2RBB034-B, bottom two connection clips are identical to top two. Also, we observed four unistrut bolts which is a typical unistrut connection. Additionally observed 12 unistrut

6. Based on the above anchorage evaluations, is the anchorage free of potentially adverse seismic conditions? Y N U but connections

in three adjacent identical circuit breakers which are also identical. Anchorage configuration is validated.

¹ Enter the equipment class name from Appendix B: Classes of Equipment.

F2-94

Sheet 2 of 3

Status: Y N U

Seismic Walkdown Checklist (SWC)

Equipment ID No. Q2R18B034 Equip. Class 2

Equipment Description POWER DISCONNECT SWITCH

Interaction Effects

7. Are soft targets free from impact by nearby equipment or structures? Y N U N/A

8. Are overhead equipment, distribution systems, ceiling tiles and lighting, and masonry block walls not likely to collapse onto the equipment? Y N U N/A

9. Do attached lines have adequate flexibility to avoid damage? Y N U N/A

10. Based on the above seismic interaction evaluations, is equipment free of potentially adverse seismic interaction effects? Y N U

Other Adverse Conditions

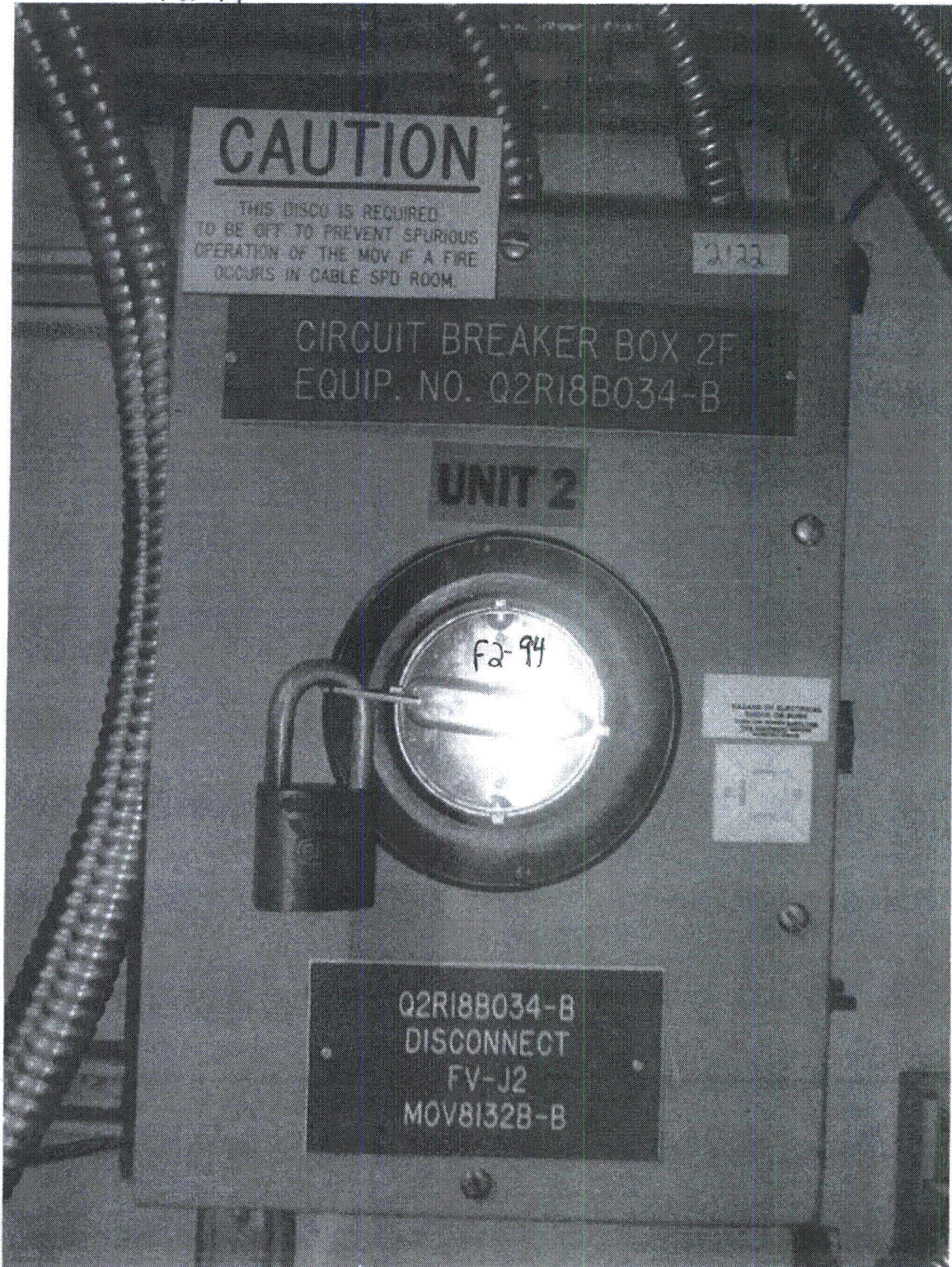
11. Have you looked for and found no other seismic conditions that could adversely affect the safety functions of the equipment? Y N U

Comments (Additional pages may be added as necessary) There are no plant drawings for the anchorage of this wall component. The SEWS SEWS Package evaluated the anchorage based on judgement. The anchorage is not specifically described. However, the anchorage is shown in a picture attached to the SEWS. The configuration of the anchorage in the field was determined to match the configuration from the picture as well as to match the anchorage configuration of other similar components in the area.

Evaluated by: Maggie Farah Date: 8/24/12

Ron Mstrand 8/24/12

F2-94



F2:95

Sheet 1 of 3

Status: Y N U

Seismic Walkdown Checklist (SWC)

Equipment ID No. Q2R18B043 Equip. Class¹ 2

Equipment Description MOV POWER DISCONNECT SWITCH

Location: Bldg. AUXILIARY Floor El. 139 Room, Area ~~2312~~ 2312

Manufacturer, Model, Etc. (optional but recommended) _____

Instructions for Completing Checklist

This checklist may be used to document the results of the Seismic Walkdown of an item of equipment on the SWEL. The space below each of the following questions may be used to record the results of judgments and findings. Additional space is provided at the end of this checklist for documenting other comments.

Anchorage

1. Is the anchorage configuration verification required (i.e., is the item one of the 50% of SWEL items requiring such verification)? Y N U *PM*

2. Is the anchorage free of bent, broken, missing or loose hardware? Y N U N/A

3. Is the anchorage free of corrosion that is more than mild surface oxidation? Y N U N/A

4. Is the anchorage free of visible cracks in the concrete near the anchors? Y N U N/A

5. Is the anchorage configuration consistent with plant documentation? Y N U N/A *PM*

COMPLIANT w/ Photo connections
(Note: This question only applies if the item is one of the 50% for which an anchorage configuration verification is required.) *Observed top two connection clips shown on SEWS for equipment Q2R18B043-B. bottom two clips are identical to the top two. Also, observed four unistrut bolts which is a typical unistrut*

6. Based on the above anchorage evaluations, is the anchorage free of potentially adverse seismic conditions? Y N U *connection. Additionally observed*

Eight unistrut bolt connections in two adjacent identical Power disconnect switch panels which are also identical. Anchorage configuration is validated.

¹ Enter the equipment class name from Appendix B: Classes of Equipment.

F2-95

Sheet 2 of 3

Status: Y N U

Seismic Walkdown Checklist (SWC)

Equipment ID No. Q2R18B043 Equip. Class 2

Equipment Description MOV POWER DISCONNECT SWITCH

Interaction Effects

7. Are soft targets free from impact by nearby equipment or structures? Y N U N/A

8. Are overhead equipment, distribution systems, ceiling tiles and lighting, and masonry block walls not likely to collapse onto the equipment? Y N U N/A

9. Do attached lines have adequate flexibility to avoid damage? Y N U N/A

10. Based on the above seismic interaction evaluations, is equipment free of potentially adverse seismic interaction effects? Y N U

Other Adverse Conditions

11. Have you looked for and found no other seismic conditions that could adversely affect the safety functions of the equipment? Y N U

Comments (Additional pages may be added as necessary) There are no Plant drawings for the anchorage of this wall component. The SOUG SEWS package evaluated the anchorage based on judgement. The anchorage is not specifically described. However, the anchorage is shown in a picture attached to the SEWS. The configuration of the anchorage in the field was determined to match the configuration from the picture as well as to match the anchorage configuration of other similar components in the area.

Evaluated by: [Signature] Maggie Farah Date: 8/24/12

[Signature] Ron Miranda 8/24/12

F295



F2-96

Sheet 1 of 84 ^{AS}

Status: Y N U

Seismic Walkdown Checklist (SWC)

Equipment ID No. Q2R21B001D Equip. Class¹ 14

Equipment Description 120V REG PANEL 2F

Location: Bldg. AUXILIARY Floor El. 139 Room, Area 2318

Manufacturer, Model, Etc. (optional but recommended) _____

Instructions for Completing Checklist

This checklist may be used to document the results of the Seismic Walkdown of an item of equipment on the SWEL. The space below each of the following questions may be used to record the results of judgments and findings. Additional space is provided at the end of this checklist for documenting other comments.

Anchorage

1. Is the anchorage configuration verification required (i.e., is the item one of the 50% of SWEL items requiring such verification)? Y N
Anchorage details are shown on SEWS for Q2R21B001D-4 (120 Reg. Panel 2F)
2. Is the anchorage free of bent, broken, missing or loose hardware? Y N U N/A
3. Is the anchorage free of corrosion that is more than mild surface oxidation? Y N U N/A
4. Is the anchorage free of visible cracks in the concrete near the anchors? Y N U N/A
5. Is the anchorage configuration consistent with plant documentation? Y N U N/A
 (Note: This question only applies if the item is one of the 50% for which an anchorage configuration verification is required.)
6. Based on the above anchorage evaluations, is the anchorage free of potentially adverse seismic conditions? Y N U

¹ Enter the equipment class name from Appendix B: Classes of Equipment.

F296

Sheet 2 of 4 ~~4~~
Status: Y N U

Seismic Walkdown Checklist (SWC)

Equipment ID No. Q2R21B001D Equip. Class¹ 14

Equipment Description 120V REG PANEL 2F

Interaction Effects

7. Are soft targets free from impact by nearby equipment or structures? Y N U N/A

8. Are overhead equipment, distribution systems, ceiling tiles and lighting, and masonry block walls not likely to collapse onto the equipment? Y N U N/A

9. Do attached lines have adequate flexibility to avoid damage? Y N U N/A

10. Based on the above seismic interaction evaluations, is equipment free of potentially adverse seismic interaction effects? Y N U

Other Adverse Conditions

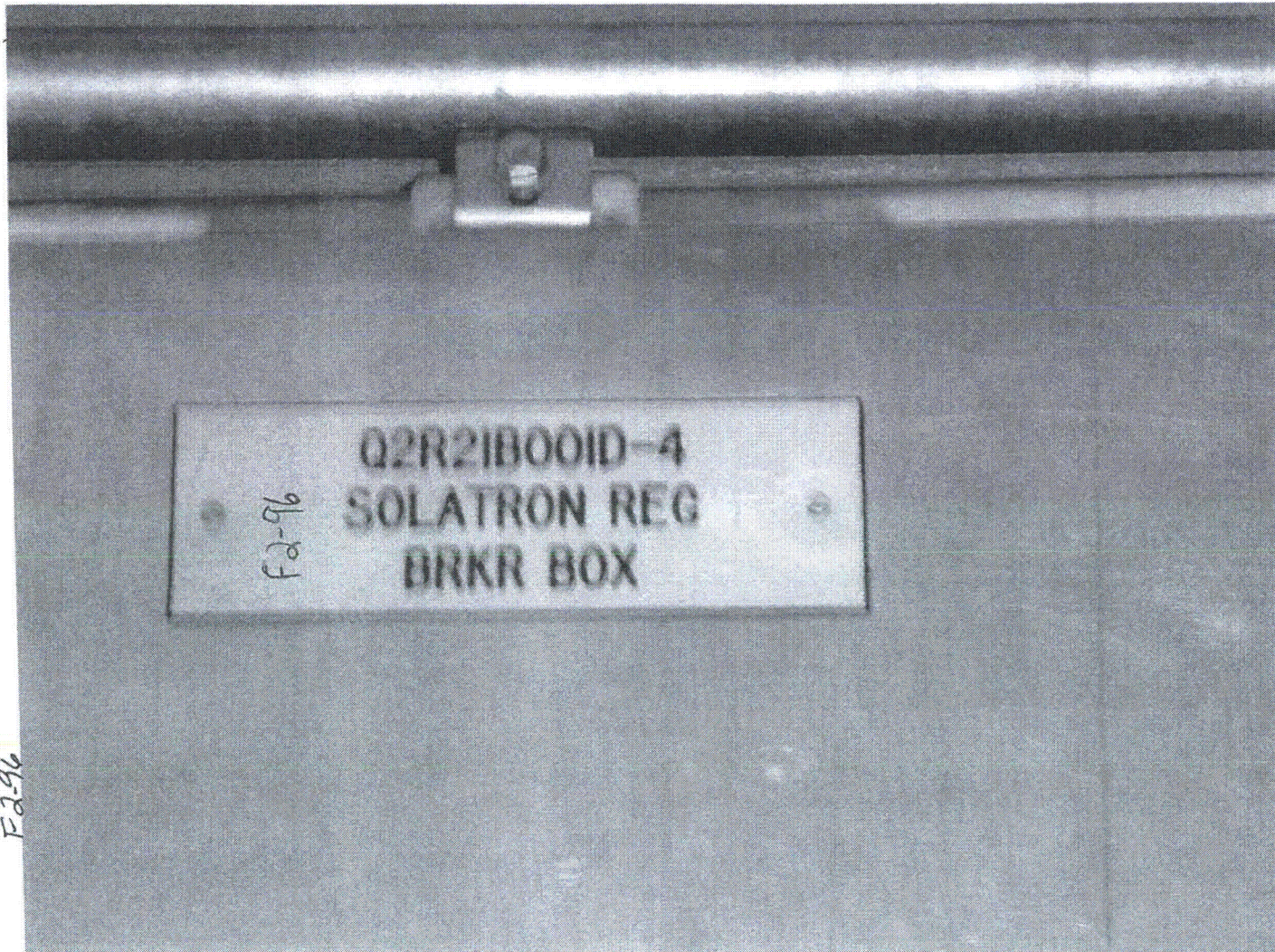
11. Have you looked for and found no other seismic conditions that could adversely affect the safety functions of the equipment? Y N U

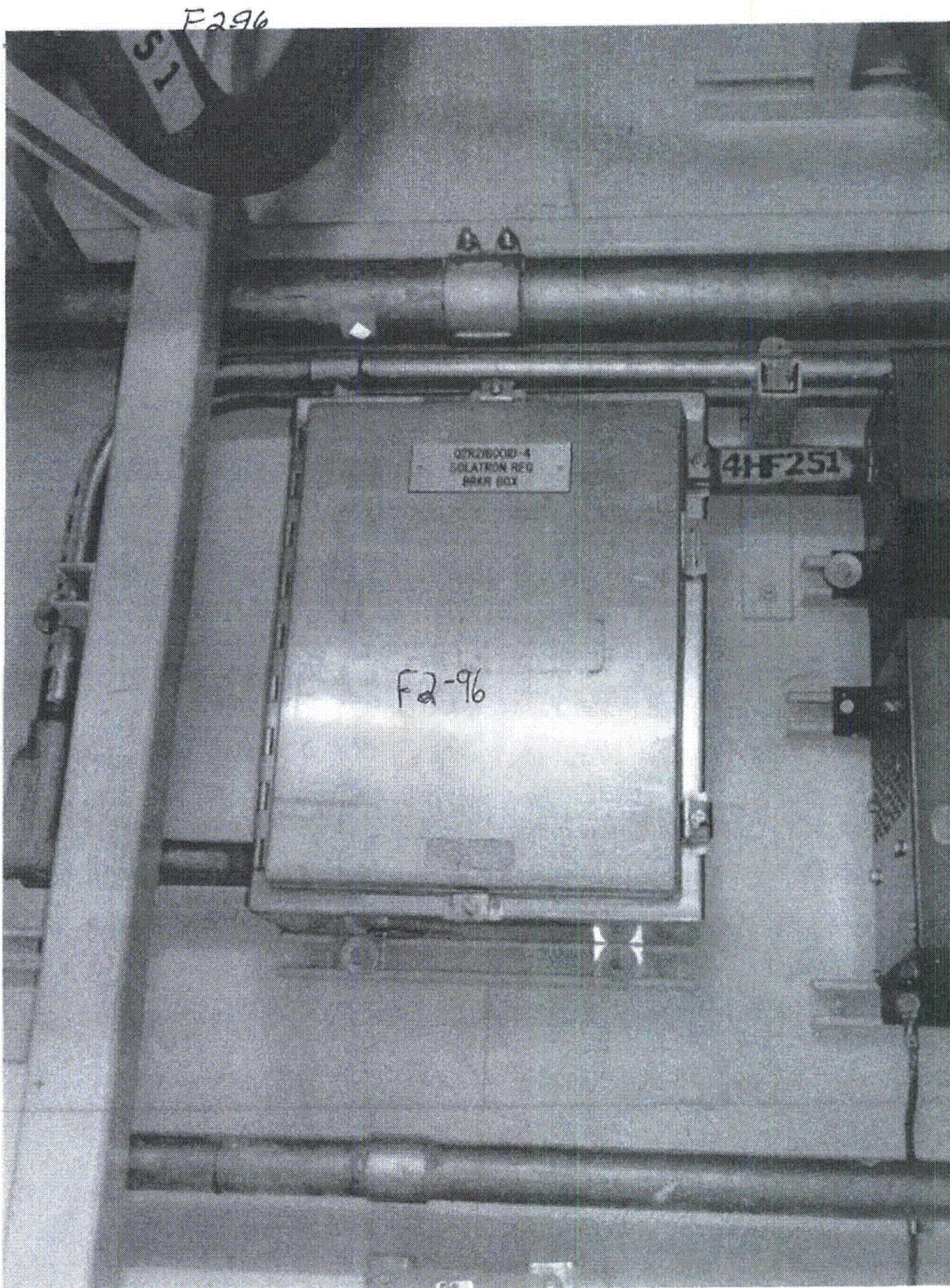
Comments (Additional pages may be added as necessary)

See component Q2H22L001D for AWS.

Evaluated by: Maggie Farah Date: 8/28/12

Ron Miranda 8.28.12





F2-97

Sheet 1 of 8⁵ pages
 Status: Y N U

Seismic Walkdown Checklist (SWC)

Equipment ID No. Q2R21E009D Equip. Class 16

Equipment Description INVERTER 2D

Location: Bldg. AUXILIARY Floor El. 121 Room, Area. 2226

Manufacturer, Model, Etc. (optional but recommended)

Instructions for Completing Checklist

This checklist may be used to document the results of the Seismic Walkdown of an item of equipment on the SWEL. The space below each of the following questions may be used to record the results of judgments and findings. Additional space is provided at the end of this checklist for documenting other comments.

Anchorage

1. Is the anchorage configuration verification required (i.e., is the item one of the 50% of SWEL items requiring such verification)? Y N

 2. Is the anchorage free of bent, broken, missing or loose hardware? Y N U N/A

 3. Is the anchorage free of corrosion that is more than mild surface oxidation? Y N U N/A

 4. Is the anchorage free of visible cracks in the concrete near the anchors? Y N U N/A

 5. Is the anchorage configuration consistent with plant documentation? Y N U N/A
 (Note: This question only applies if the item is one of the 50% for which an anchorage configuration verification is required.)
- REF SEWS FOR Q2R21E009D, DATED 6-29-93 + SEWS FOR Q2R21E009A DATED 6-29-93
6. Based on the above anchorage evaluations, is the anchorage free of potentially adverse seismic conditions? Y N U

¹ Enter the equipment class name from Appendix B, Classes of Equipment.

F297

Sheet 2 of 5 ^{30m}
Status: Y N U ^{11/12}

Seismic Walkdown Checklist (SWC)

Equipment ID No. Q2R21E009D Equip. Class: 16

Equipment Description: INVERTER 2D

Interaction Effects

7. Are soft targets free from impact by nearby equipment or structures? Y N U N/A

8. Are overhead equipment, distribution systems, ceiling tiles and lighting, and masonry block walls not likely to collapse onto the equipment? Y N U N/A

9. Do attached lines have adequate flexibility to avoid damage? Y N U N/A

10. Based on the above seismic interaction evaluations, is equipment free of potentially adverse seismic interaction effects? Y N U

Other Adverse Conditions

11. Have you looked for and found no other seismic conditions that could adversely affect the safety functions of the equipment? Y N U

Comments (Additional pages may be added as necessary)

NONE

Evaluated by: P. MIKTOS *Paul Miktos* Date: 9-10-12
S. YVAN *Stephen Yvan* 9-10-12

