

F2-48

LM 9/12

Sheet 1 of 5

Status: N U

LM 9/11

Seismic Walkdown Checklist (SWC)

Equipment ID No. Q2H21E505 Equip. Class¹ 20

Equipment Description 4.16KV SWITCHGEAR 2J LOCAL CONT PANEL

Location: Bldg. DIESEL Floor El. 155 Room, Area 56C

Manufacturer, Model, Etc. (optional but recommended) _____

Instructions for Completing Checklist

This checklist may be used to document the results of the Seismic Walkdown of an item of equipment on the SWEL. The space below each of the following questions may be used to record the results of judgments and findings. Additional space is provided at the end of this checklist for documenting other comments.

Anchorage

1. Is the anchorage configuration verification required (i.e., is the item one of the 50% of SWEL items requiring such verification)? Y N U
Anchorage is inside of concrete.
2. Is the anchorage free of bent, broken, missing or loose hardware? Y N U N/A
3. Is the anchorage free of corrosion that is more than mild surface oxidation? Y N U N/A
4. Is the anchorage free of visible cracks in the concrete near the anchors? Y N U N/A
5. Is the anchorage configuration consistent with plant documentation? Y N U N/A
 (Note: This question only applies if the item is one of the 50% for which an anchorage configuration verification is required.)
6. Based on the above anchorage evaluations, is the anchorage free of potentially adverse seismic conditions? Y N U N/A

¹ Enter the equipment class name from Appendix B: Classes of Equipment.

F2-48

09/11/12

Sheet 2 of 805

Status: YES NO U
 09/11

Seismic Walkdown Checklist (SWC)

Equipment ID No. Q2H21E505 Equip. Class' 20

Equipment Description 4.16KV SWITCHGEAR 2J LOCAL CONT PANEL

Interaction Effects

7. Are soft targets free from impact by nearby equipment or structures? YES NO U N/A
 1" gap b/t panel Q2H21E505 and U-2 4160 Bus 2J. Per Calculation SC 85-1-3347-001
 the panel is bolted at the four corners and is rigid with negligible deflections.
 The panel Q2H21E505 is also rigidly mounted with rigid conduit at the top. Therefore, 1" gap is acceptable.

8. Are overhead equipment, distribution systems, ceiling tiles and lighting; and masonry block walls not likely to collapse onto the equipment? YES NO U N/A

9. Do attached lines have adequate flexibility to avoid damage? YES NO U N/A

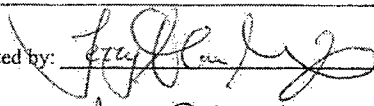
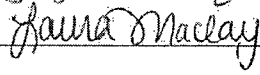
10. Based on the above seismic interaction evaluations, is equipment free of potentially adverse seismic interaction effects? YES NO U

Other Adverse Conditions

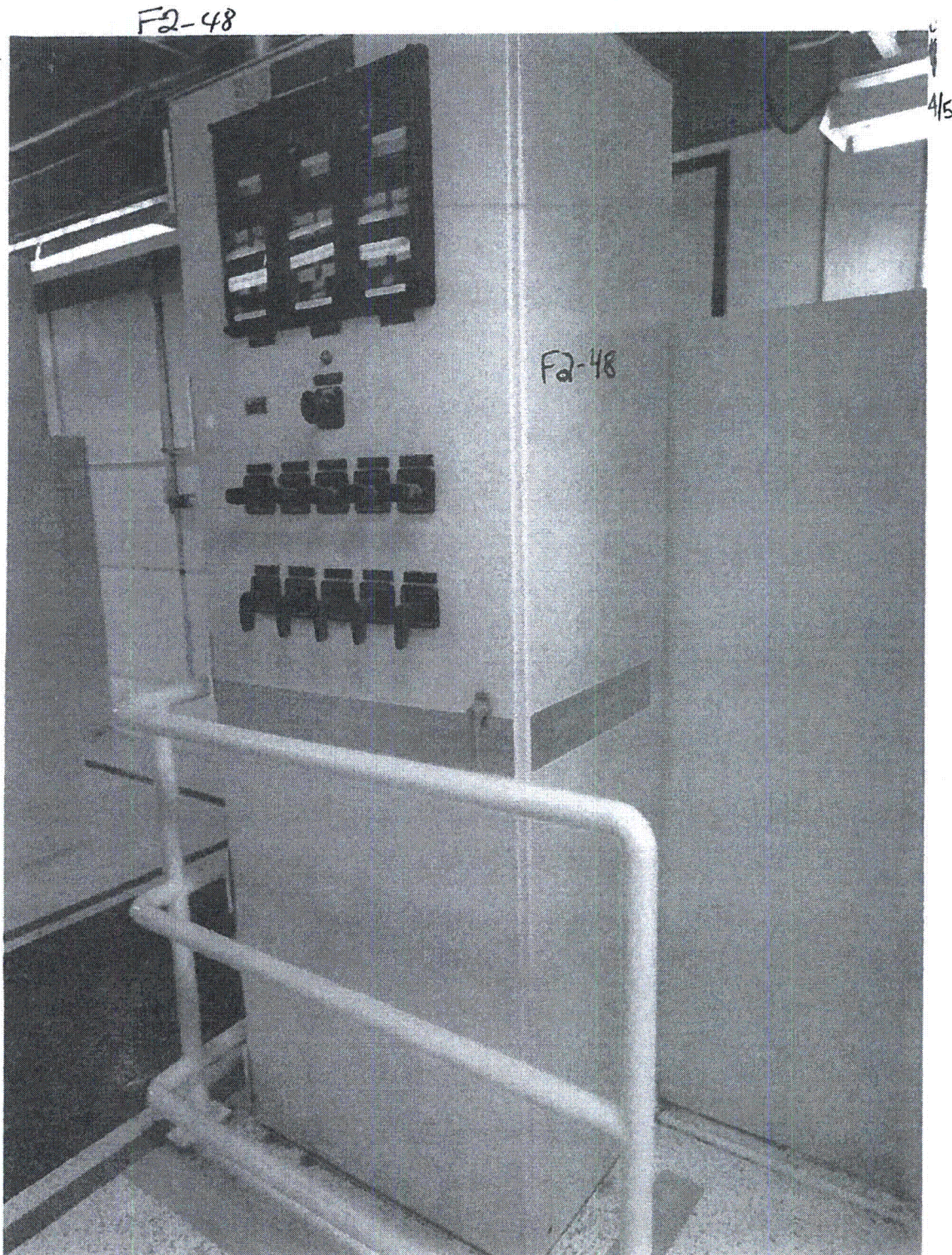
11. Have you looked for and found no other seismic conditions that could adversely affect the safety functions of the equipment? YES NO U

Comments (Additional pages may be added as necessary)

Area walk-by is in folder F2-89, equipment Q2R11B507.

Evaluated by:  TERRY A. MULCAHY Date: 9/11/2012
  Laura MacLay 9/11/12







F2-49

1991 - Overhead light is replaced by fluorescent light

Sheet 1 of 85

Status: Y N U

Seismic Walkdown Checklist (SWC)

Equipment ID No. Q2H21E507 Equip. Class¹ 20

Equipment Description 4.16KV SWITCHGEAR 2L LOCAL CONT PANEL

Location: Bldg. SW/S Floor El. 188 Room, Area 72B

Manufacturer, Model, Etc. (optional but recommended) _____

Instructions for Completing Checklist

This checklist may be used to document the results of the Seismic Walkdown of an item of equipment on the SWEL. The space below each of the following questions may be used to record the results of judgments and findings. Additional space is provided at the end of this checklist for documenting other comments.

Anchorage

1. Is the anchorage configuration verification required (i.e., is the item one of the 50% of SWEL items requiring such verification)? Y N

2. Is the anchorage free of bent, broken, missing or loose hardware? Y N U N/A
Cannot open cabinet until outage.

3. Is the anchorage free of corrosion that is more than mild surface oxidation? Y N U N/A

4. Is the anchorage free of visible cracks in the concrete near the anchors? Y N U N/A

5. Is the anchorage configuration consistent with plant documentation? Y N U N/A
 (Note: This question only applies if the item is one of the 50% for which an anchorage configuration verification is required.)

6. Based on the above anchorage evaluations, is the anchorage free of potentially adverse seismic conditions? Y N U

¹ Enter the equipment class name from Appendix B: Classes of Equipment.

F2-49

Sheet 2 of 35
 Status: Y N U

Seismic Walkdown Checklist (SWC)

Equipment ID No: Q2H21E507 Equip. Class: 20

Equipment Description: 4.16KV SWITCHGEAR 2L LOCAL CONT PANEL

Interaction Effects

- 7. Are soft targets free from impact by nearby equipment or structures? Y N U N/A

- 8. Are overhead equipment, distribution systems, ceiling tiles and lighting, and masonry block walls not likely to collapse onto the equipment? Y N U N/A

- 9. Do attached lines have adequate flexibility to avoid damage? Y N U N/A

- 10. Based on the above seismic interaction evaluations, is equipment free of potentially adverse seismic interaction effects? Y N U

Other Adverse Conditions

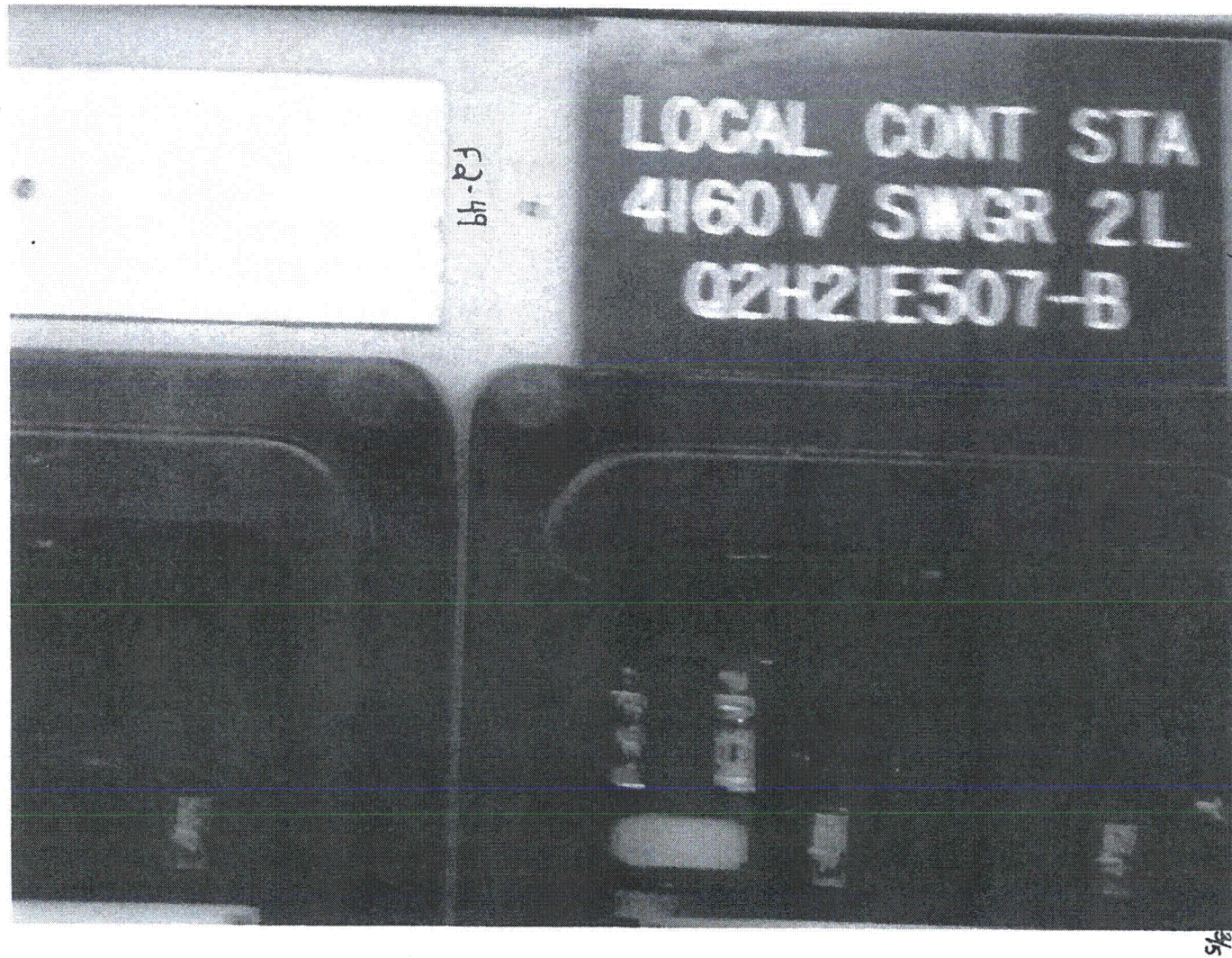
- 11. Have you looked for and found no other seismic conditions that could adversely affect the safety functions of the equipment? Y N U

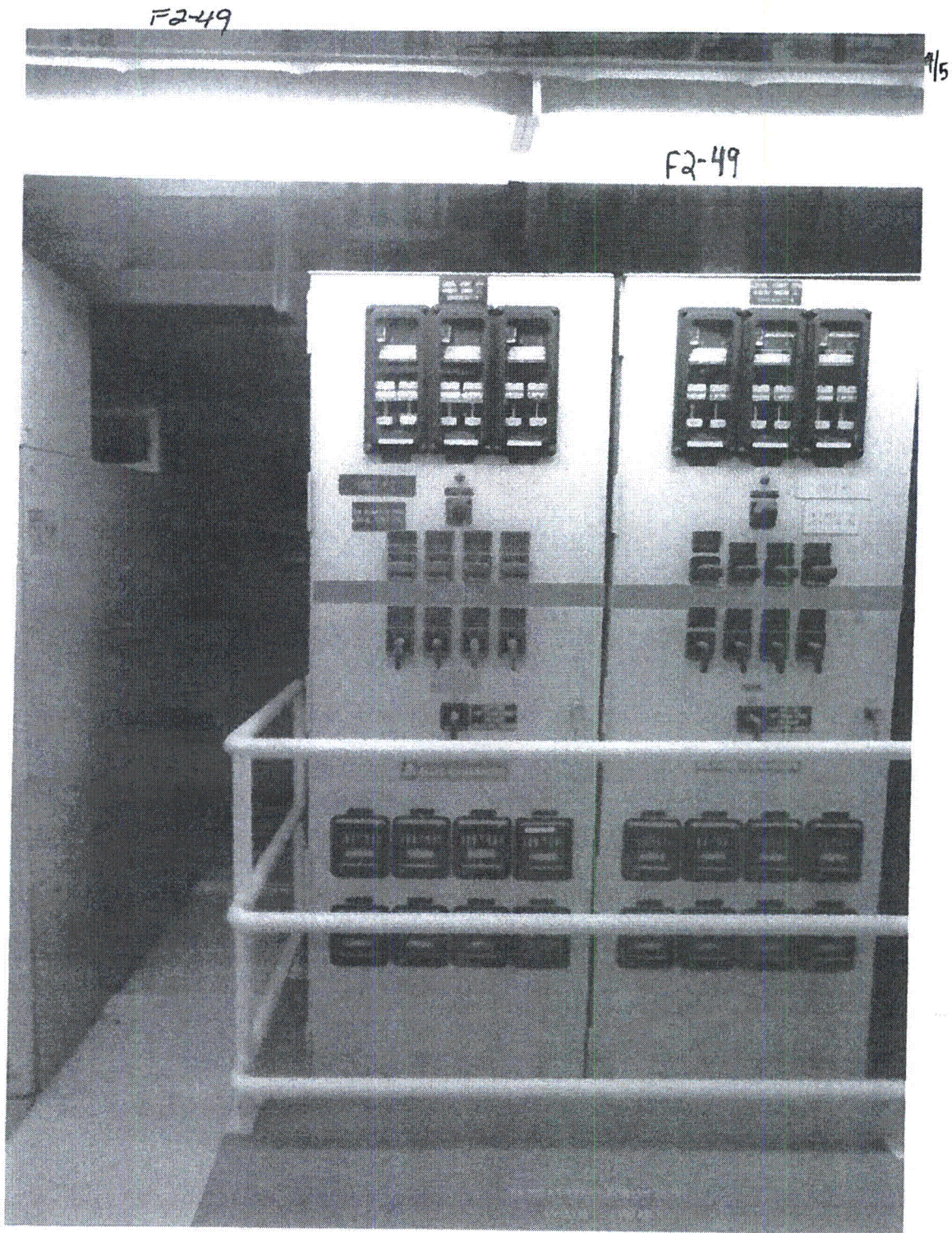
Comments (Additional pages may be added as necessary)

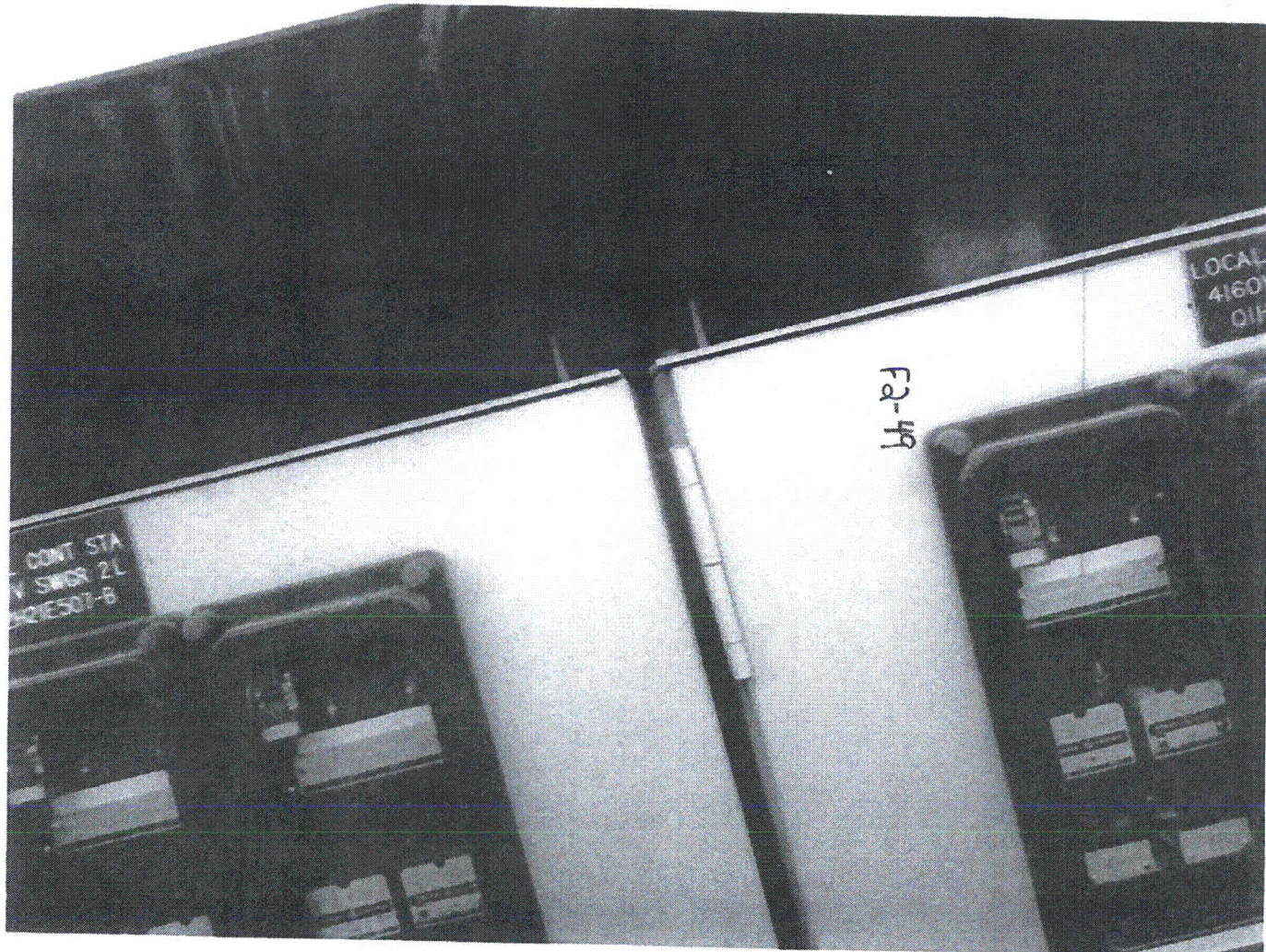
IPEE: overhead light interaction, adjacent cabinets not bolted together, lighting is ^{now} restrained with wire ties and cabinets are bolted together at the top of panels.
 Interior mounting bolts could not be confirmed as cabinet could not be opened.

Evaluated by: Laura MacLay Laura MacLay Date: 9/11/12

TERRY A. MULLENIX 9/11/2012







FA-49

FA-49

CONT STA
V SWGR 2L
201E507-6

LOCAL
4160
OIF

5/5

F 2-50

Sheet 1 of 5 AW

Status: Y N U

Seismic Walkdown Checklist (SWC)

Equipment ID No. Q2H21NBMER2619 Equip. Class¹ 20

Equipment Description: SG 1C WIDE RANGE LEVEL MCB ISOLATOR

Location: Bldg. AUXILIARY Floor/El. 121 Room, Area 2227

Manufacturer, Model, Etc. (optional but recommended) _____

Instructions for Completing Checklist

This checklist may be used to document the results of the Seismic Walkdown of an item of equipment on the SWEL. The space below each of the following questions may be used to record the results of judgments and findings. Additional space is provided at the end of this checklist for documenting other comments.

Anchorage

1. Is the anchorage configuration verification required (i.e., is the item one of the 50% of SWEL items requiring such verification)? Y N

SEWS package dated 7-3-93

2. Is the anchorage free of bent, broken, missing or loose hardware? Y N U N/A

3. Is the anchorage free of corrosion that is more than mild surface oxidation? Y N U N/A

4. Is the anchorage free of visible cracks in the concrete near the anchors? Y N U N/A

5. Is the anchorage configuration consistent with plant documentation? Y N U N/A
 (Note: This question only applies if the item is one of the 50% for which an anchorage configuration verification is required.)

SEWS package dated 7-3-93, configuration matches

6. Based on the above anchorage evaluations, is the anchorage free of potentially adverse seismic conditions? Y N U

¹Enter the equipment class name from Appendix B: Classes of Equipment.

F2-50

Sheet 2 of 5 SW
Status: Y N U

Seismic Walkdown Checklist (SWC)

Equipment ID No. Q2H21NBMER2619 Equip. Class: 20

Equipment Description: SG 1C WIDE RANGE LEVEL MCB ISOLATOR

Interaction Effects

7. Are soft targets free from impact by nearby equipment or structures? Y N U N/A

8. Are overhead equipment, distribution systems, ceiling tiles and lighting, and masonry block walls not likely to collapse onto the equipment? Y N U N/A

9. Do attached lines have adequate flexibility to avoid damage? Y N U N/A

10. Based on the above seismic interaction evaluations, is equipment free of potentially adverse seismic interaction effects? Y N U

Other Adverse Conditions

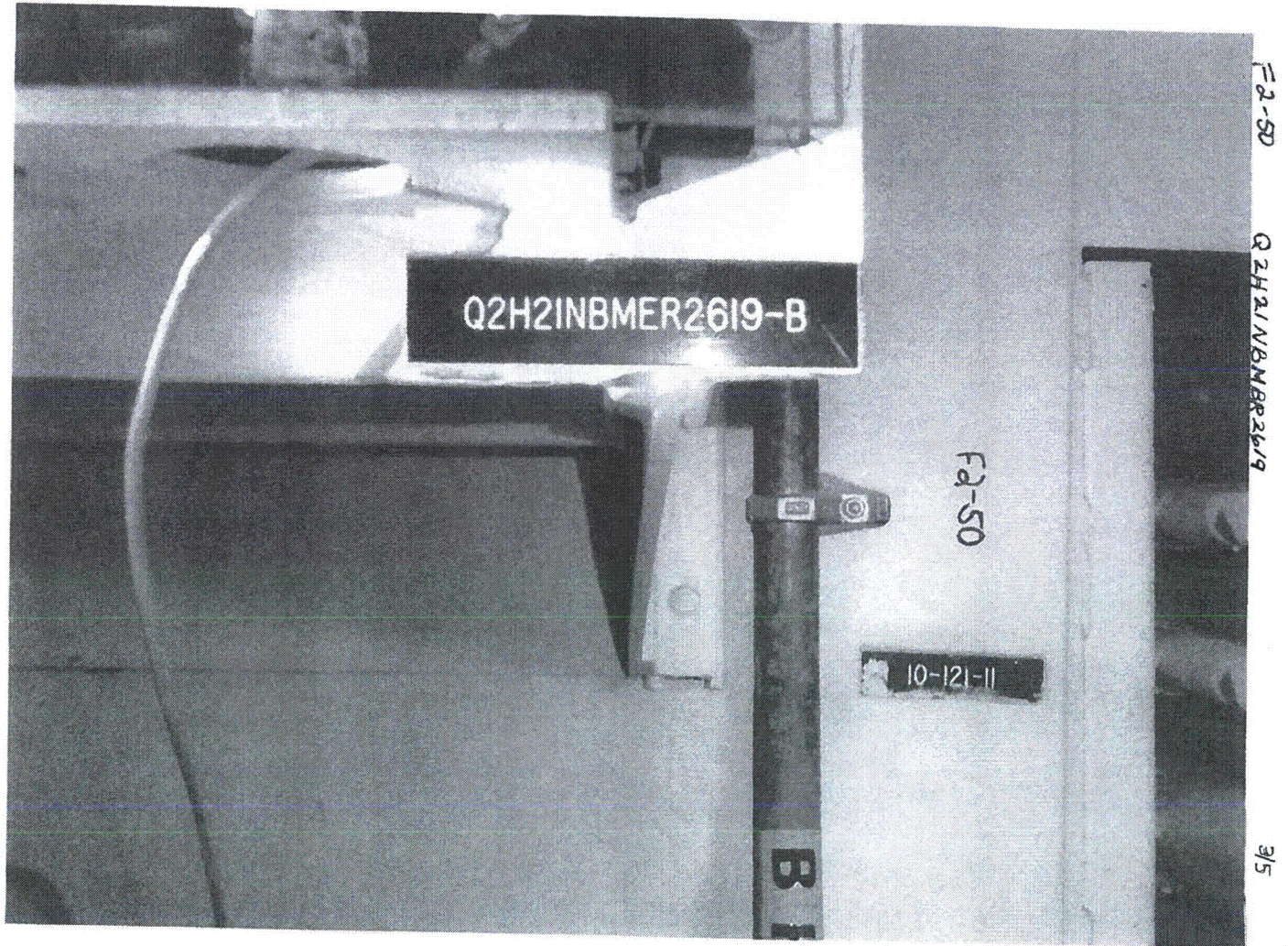
11. Have you looked for and found no other seismic conditions that could adversely affect the safety functions of the equipment? Y N U

Comments (Additional pages may be added as necessary)

NONE

Evaluated by: Scott Warden Scott Warden Date: 9.12.2012

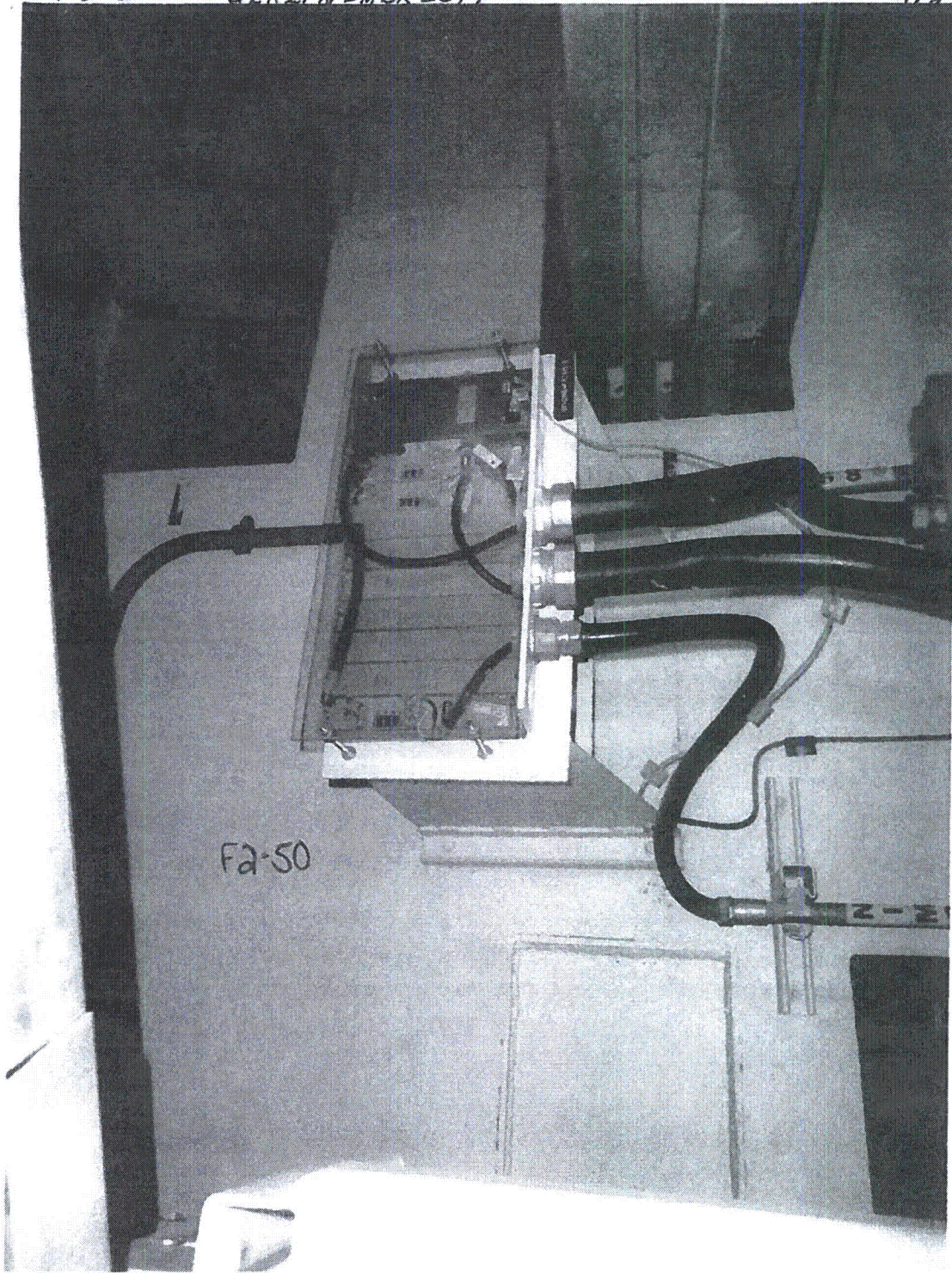
Ryan Harlos R/H 9/12/12



F2-50

Q2R21NBMBR 2619

4/5



F2-50



P2-51

Sheet 1 of 82

Status: Y N U

Seismic Walkdown Checklist (SWC)

Equipment ID No. Q2H22L001D Equip. Class¹ 20

Equipment Description MULTIPLYING RELAY CABINET 2D

Location: Bldg. AUXILIARY Floor El. 139 Room, Area 2318

Manufacturer, Model, Etc. (optional but recommended) _____

Instructions for Completing Checklist

This checklist may be used to document the results of the Seismic Walkdown of an item of equipment on the SWEL. The space below each of the following questions may be used to record the results of judgments and findings. Additional space is provided at the end of this checklist for documenting other comments.

Anchorage

1. Is the anchorage configuration verification required (i.e., is the item one of the 50% of SWEL items requiring such verification)? Y N U N/A
 Anchorage is shown on SEWS for Q2H22L001D-B (multiple Relay Cabinet 2D Train B)
2. Is the anchorage free of bent, broken, missing or loose hardware? Y N U N/A
3. Is the anchorage free of corrosion that is more than mild surface oxidation? Y N U N/A
4. Is the anchorage free of visible cracks in the concrete near the anchors? Y N U N/A
5. Is the anchorage configuration consistent with plant documentation? Y N U N/A
 (Note: This question only applies if the item is one of the 50% for which an anchorage configuration verification is required.)
6. Based on the above anchorage evaluations, is the anchorage free of potentially adverse seismic conditions? Y N U N/A

¹ Enter the equipment class name from Appendix B: Classes of Equipment.

F2-51

Sheet 2 of 2
Status: Y N U

Seismic Walkdown Checklist (SWC)

Equipment ID No. Q2H22L001D Equip. Class: 20

Equipment Description: MULTIPLYING RELAY CABINET 2D

Interaction Effects

7. Are soft targets free from impact by nearby equipment or structures? Y N U N/A

8. Are overhead equipment, distribution systems, ceiling tiles and lighting, and masonry block walls not likely to collapse onto the equipment? Y N U N/A

9. Do attached lines have adequate flexibility to avoid damage? Y N U N/A

10. Based on the above seismic interaction evaluations, is equipment free of potentially adverse seismic interaction effects? Y N U

Other Adverse Conditions

11. Have you looked for and found no other seismic conditions that could adversely affect the safety functions of the equipment? Y N U

Comments (Additional pages may be added as necessary)

Evaluated by:

Maggie Farah

Date: 8/24/12

Ron Mirande

8/24/12

F2-52

Sheet 1 of 3
 Status: Y N U

Seismic Walkdown Checklist (SWC)

Equipment ID No. Q2H22L003 Equip. Class¹ 20
 Equipment Description TRANSFER RELAY CABINET 2
 Location: Bldg. AUXILIARY Floor El. 100 Room, Area 2190
 Manufacturer, Model, Etc. (optional but recommended) _____

Instructions for Completing Checklist

This checklist may be used to document the results of the Seismic Walkdown of an item of equipment on the SWEL. The space below each of the following questions may be used to record the results of judgments and findings. Additional space is provided at the end of this checklist for documenting other comments.

Anchorage

1. Is the anchorage configuration verification required (i.e., is the item one of the 50% of SWEL items requiring such verification)? Y N
 D206888 ver. 18
 SEW dated 7-1-93
2. Is the anchorage free of bent, broken, missing or loose hardware? Y N U N/A
3. Is the anchorage free of corrosion that is more than mild surface oxidation? Y N U N/A
4. Is the anchorage free of visible cracks in the concrete near the anchors? Y N U N/A
5. Is the anchorage configuration consistent with plant documentation? (Note: This question only applies if the item is one of the 50% for which an anchorage configuration verification is required.) Y N U N/A
 Matches SEW
6. Based on the above anchorage evaluations, is the anchorage free of potentially adverse seismic conditions? Y N U

¹ Enter the equipment class name from Appendix B: Classes of Equipment.

F252

Sheet 2 of 3
Status: Y N U

Seismic Walkdown Checklist (SWC)

Equipment ID No. Q2H22L003 Equip. Class 20

Equipment Description TRANSFER RELAY CABINET 2

Interaction Effects

7. Are soft targets free from impact by nearby equipment or structures? Y N U N/A

8. Are overhead equipment, distribution systems, ceiling tiles and lighting, and masonry block walls not likely to collapse onto the equipment? Y N U N/A

9. Do attached lines have adequate flexibility to avoid damage? Y N U N/A

10. Based on the above seismic interaction evaluations, is equipment free of potentially adverse seismic interaction effects? Y N U

Other Adverse Conditions

11. Have you looked for and found no other seismic conditions that could adversely affect the safety functions of the equipment? Y N U

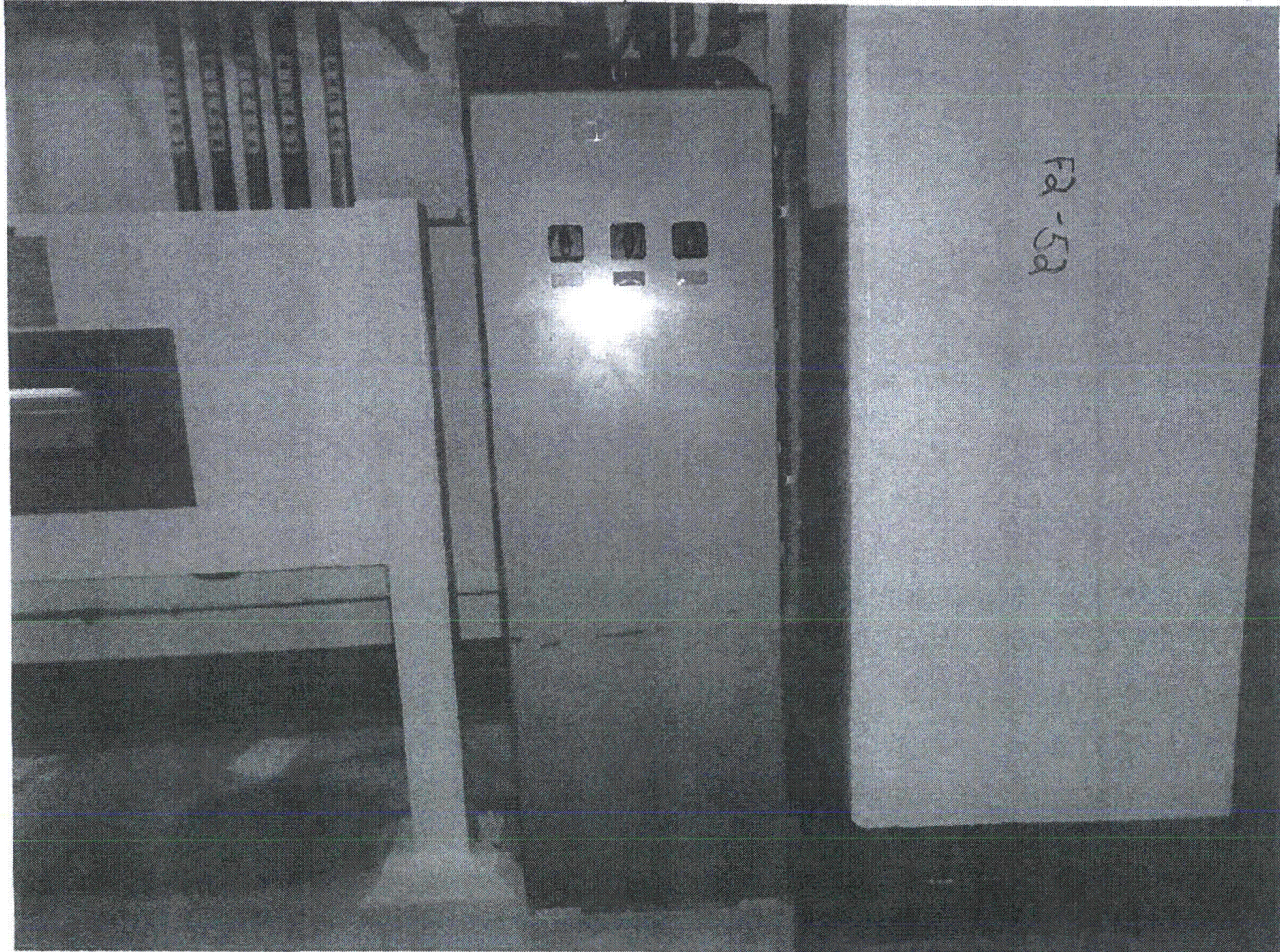
Comments (Additional pages may be added as necessary)

NONE

See Component Q2N23F13229CB (Folder 2-60) for Area Walkby

Evaluated by: SCOTT WALDEN Date: 8-28-2012

TAYLOR YOUNGBLOOD Taylor Youngblood 8-28-2012



F2-53

Sheet 1 of 5

Status: Y N U

Seismic Walkdown Checklist (SWC)

Equipment ID No. Q2H22L503 Equip. Class¹ 20

Equipment Description DIESEL LOCAL RELAY PANEL 2B

Location: Bldg. DIESEL Floor El. 155 Room, Area 0059

Manufacturer, Model, Etc. (optional but recommended) _____

Instructions for Completing Checklist

This checklist may be used to document the results of the Seismic Walkdown of an item of equipment on the SWEL. The space below each of the following questions may be used to record the results of judgments and findings. Additional space is provided at the end of this checklist for documenting other comments.

Anchorage

1. Is the anchorage configuration verification required (i.e., is the item one of the 50% of SWEL items requiring such verification)? -N *No* *10/25/12*

Anchorage is inside of panel was not visible during the visual inspection.

2. Is the anchorage free of bent, broken, missing or loose hardware? Y N U N/A

3. Is the anchorage free of corrosion that is more than mild surface oxidation? Y N U N/A

4. Is the anchorage free of visible cracks in the concrete near the anchors? Y N U N/A

5. Is the anchorage configuration consistent with plant documentation? Y N U N/A *10/25/12*

No drawings could be found that document the anchorage.

6. Based on the above anchorage evaluations, is the anchorage free of potentially adverse seismic conditions? Y N U

¹Enter the equipment class name from Appendix B: Classes of Equipment.

F253

Sheet 2 of 3⁵

Status: Y N U

Seismic Walkdown Checklist (SWC)

Equipment ID No. Q2H22L503 Equip. Class 20

Equipment Description DIESEL LOCAL RELAY PANEL 2B

Interaction Effects

7. Are soft targets free from impact by nearby equipment or structures? Y N U N/A

8. Are overhead equipment, distribution systems, ceiling tiles and lighting, and masonry block walls not likely to collapse onto the equipment? Y N U N/A

9. Do attached lines have adequate flexibility to avoid damage? Y N U N/A

10. Based on the above seismic interaction evaluations, is equipment free of potentially adverse seismic interaction effects? Y N U

Other Adverse Conditions

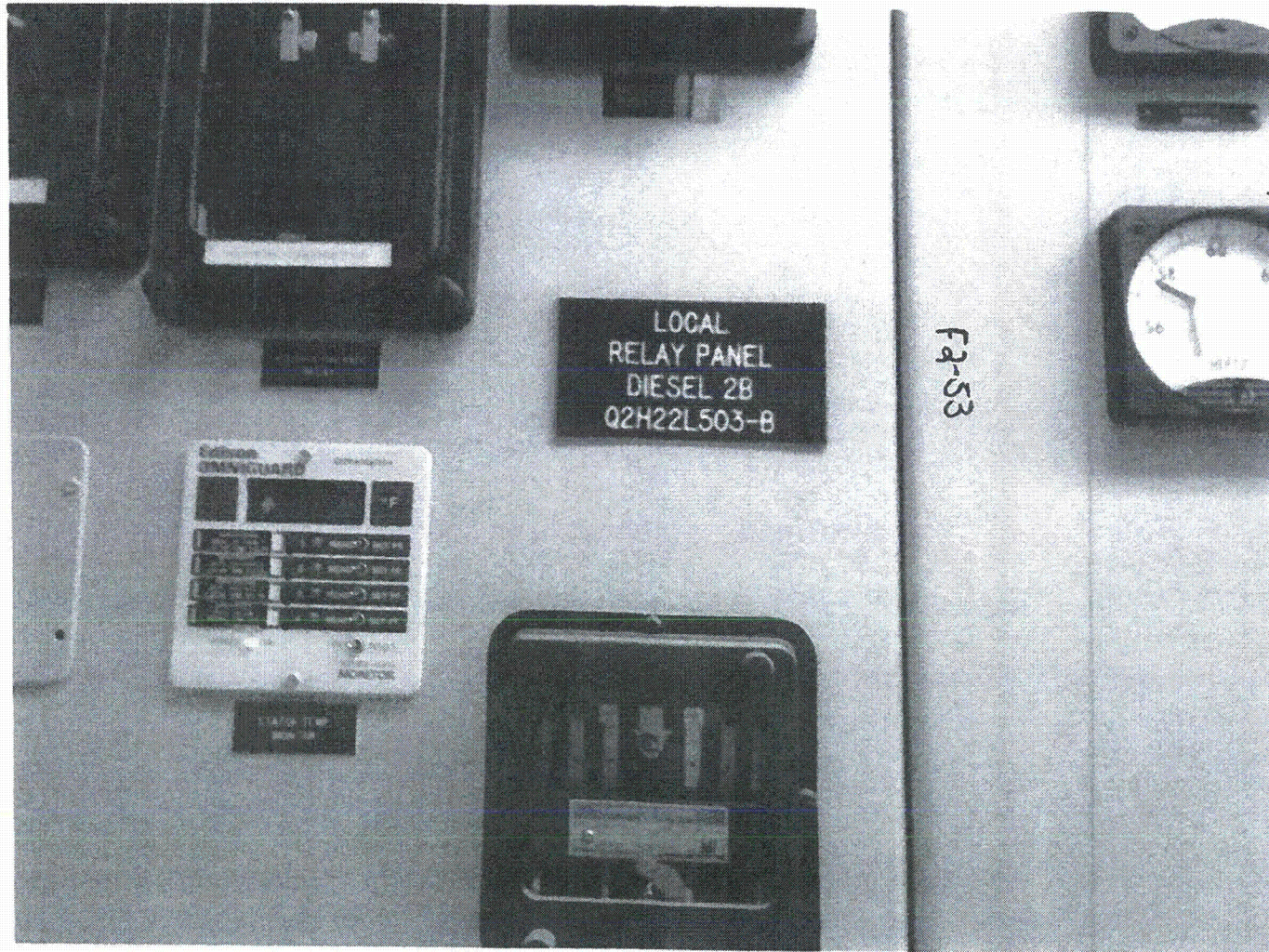
11. Have you looked for and found no other seismic conditions that could adversely affect the safety functions of the equipment? Y N U

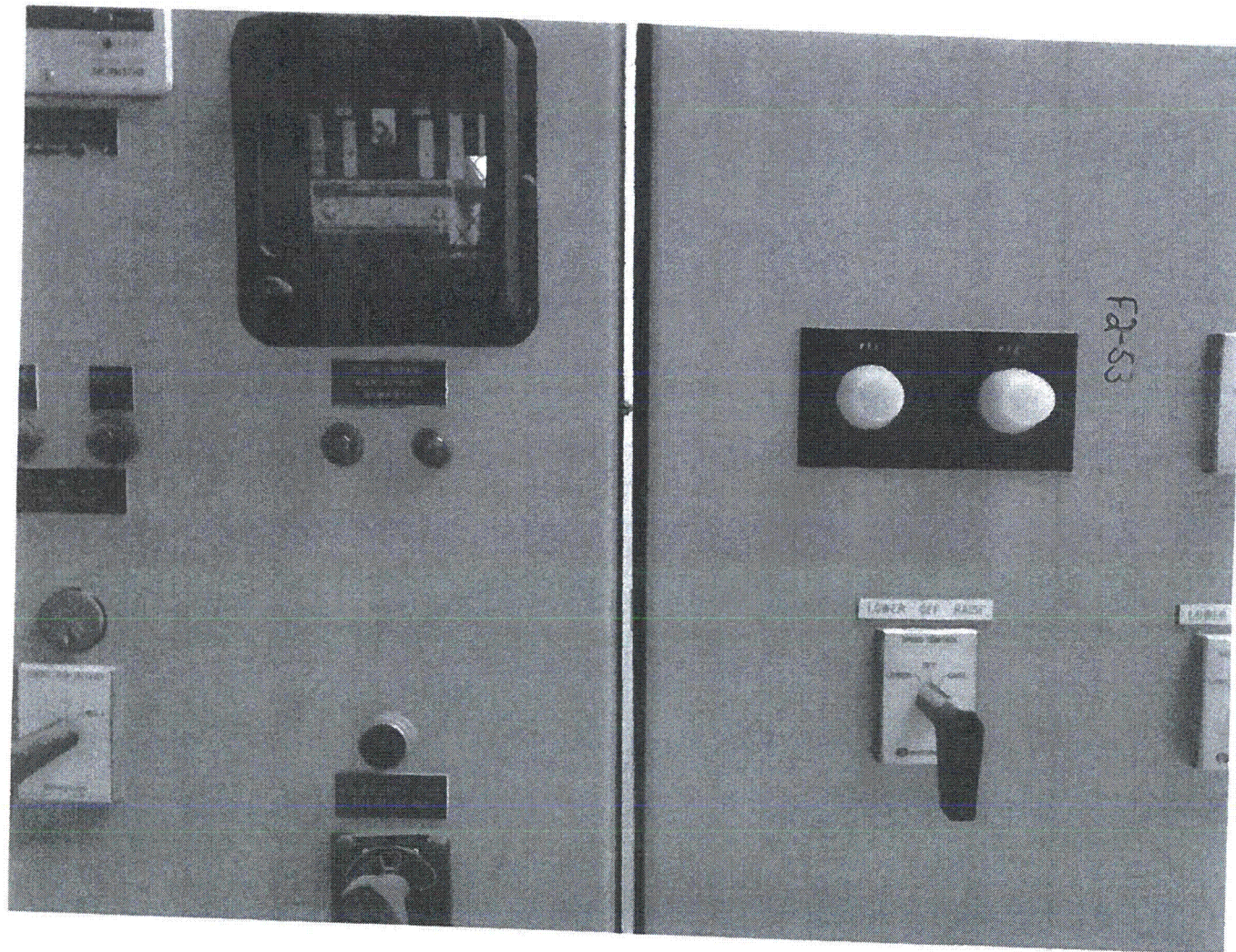
Comments (Additional pages may be added as necessary)

Area Walk-by is for Room 59 is with Equipment ID QSY41M542D (F2-109).

Evaluated by: Laura MacLay Laura MacLay Date: 8-24-12

Terry Alan Mullenix TERRY ALAN MULLENIX 8-24-12



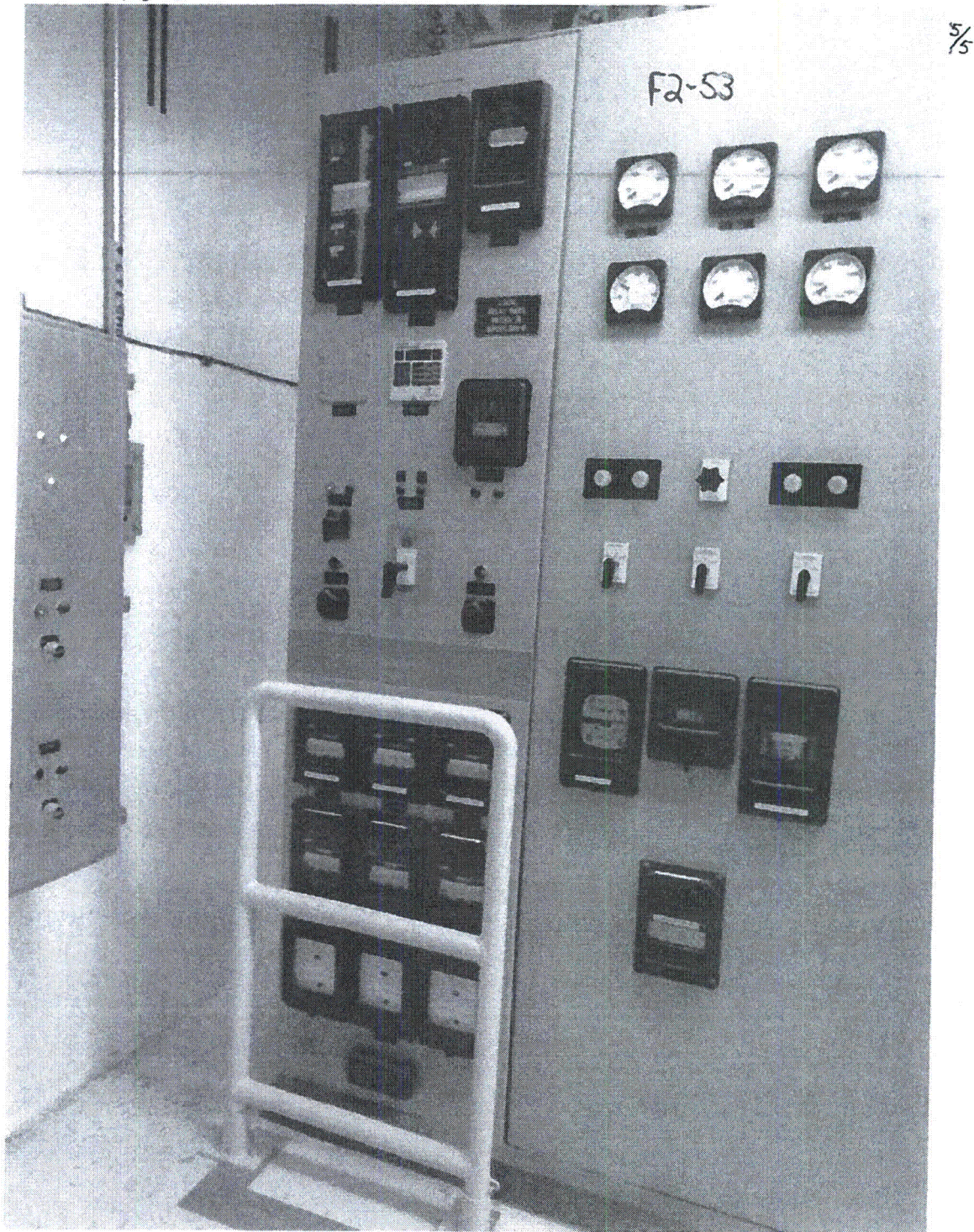


F2-S3

F2-S3

1/5

F2-53



5/5

F254

Sheet 1 of 3

Status: Y N U A

DM

Seismic Walkdown Checklist (SWC)

Equipment ID No. Q2H25L029 Equip. Class* 20

Equipment Description Termination Cabinet

Location: Bldg. AUXILIARY Floor El. 139 Room, Area 2318

Manufacturer, Model, Etc. (optional but recommended)

Instructions for Completing Checklist

This checklist may be used to document the results of the Seismic Walkdown of an item of equipment on the SWEL. The space below each of the following questions may be used to record the results of judgments and findings. Additional space is provided at the end of this checklist for documenting other comments.

Anchorage

1. Is the anchorage configuration verification required (i.e., is the item one of the 50% of SWEL items requiring such verification)? Y N

2. Is the anchorage free of bent, broken, missing or loose hardware? Y N U N/A
Anchorage not visible
RPM AD 9/13/12 9.13.12

Update: Yes, anchorage verified SAT on 9/13/12

3. Is the anchorage free of corrosion that is more than mild surface oxidation? Y N U N/A
Anchorage not visible
RPM AD 9/13/12 9.13.12

Update: Yes, anchorage verified SAT on 9/13/12

4. Is the anchorage free of visible cracks in the concrete near the anchors? Y N U N/A
Anchorage not visible
RPM AD 9/13/12 9.13.12

Update: Yes, anchorage verified SAT on 9/13/12

5. Is the anchorage configuration consistent with plant documentation? (Note: This question only applies if the item is one of the 50% for which an anchorage configuration verification is required.) Y N U N/A

6. Based on the above anchorage evaluations, is the anchorage free of potentially adverse seismic conditions? Y N U
Anchorage not visible
RPM AD 9/13/12 9.13.12

Update: Yes, anchorage verified SAT on 9/13/12 Cabinet verified SAT on 9/13/12

Evaluated by: Ryan Harris RHH 9/13/12

Scott Winkler SWW 9.13.2012

* Enter the equipment class name from Appendix B: Classes of Equipment.

F2-54

Sheet 2 of 25
Status: Y N U U

OSW

Seismic Walkdown Checklist (SWC)

Equipment ID No. Q2H25L029 Equip. Class: 20

Equipment Description TERMINATION CABINET

Interaction Effects

7. Are soft targets free from impact by nearby equipment or structures? Y N U N/A

8. Are overhead equipment, distribution systems, ceiling tiles and lighting, and masonry block walls not likely to collapse onto the equipment? Y N U N/A

9. Do attached lines have adequate flexibility to avoid damage? Y N U N/A

Observed a cable coming out of a cabinet and going to an overhead cable tray. The cable is positioned against the edge of a nearby conduit clamp. The clamp is observed to be free of sharp edges. SWES judged that there is no potential for edge of the clamp to penetrate to the outer

10. Based on the above seismic interaction evaluations, is equipment free of potentially adverse seismic interaction effects? Y N U N/A
cable insulation and cable has adequate flexibility.

Other Adverse Conditions

11. Have you looked for and found no other seismic conditions that could adversely affect the safety functions of the equipment? Y N U

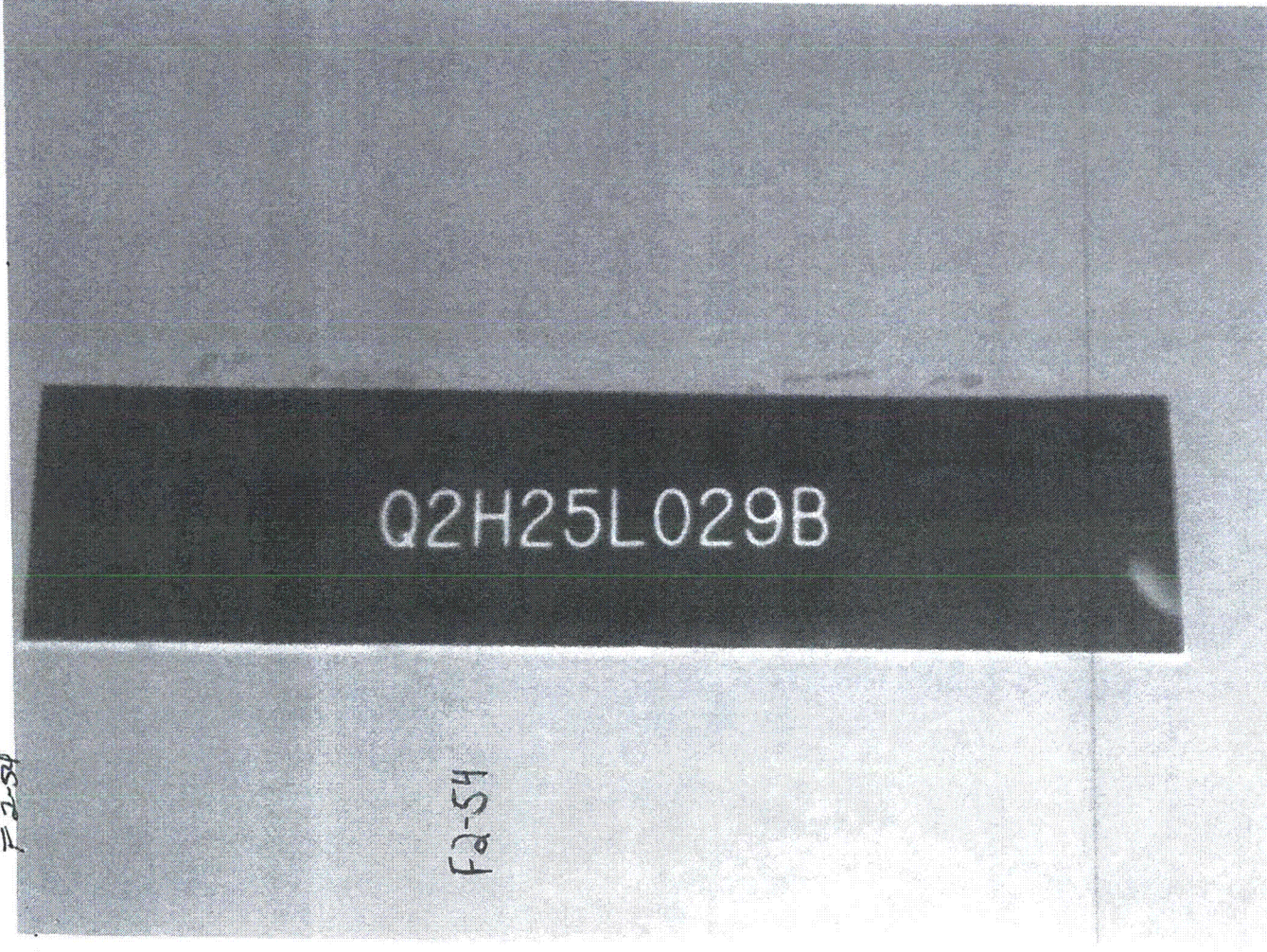
Comments (Additional pages may be added as necessary)

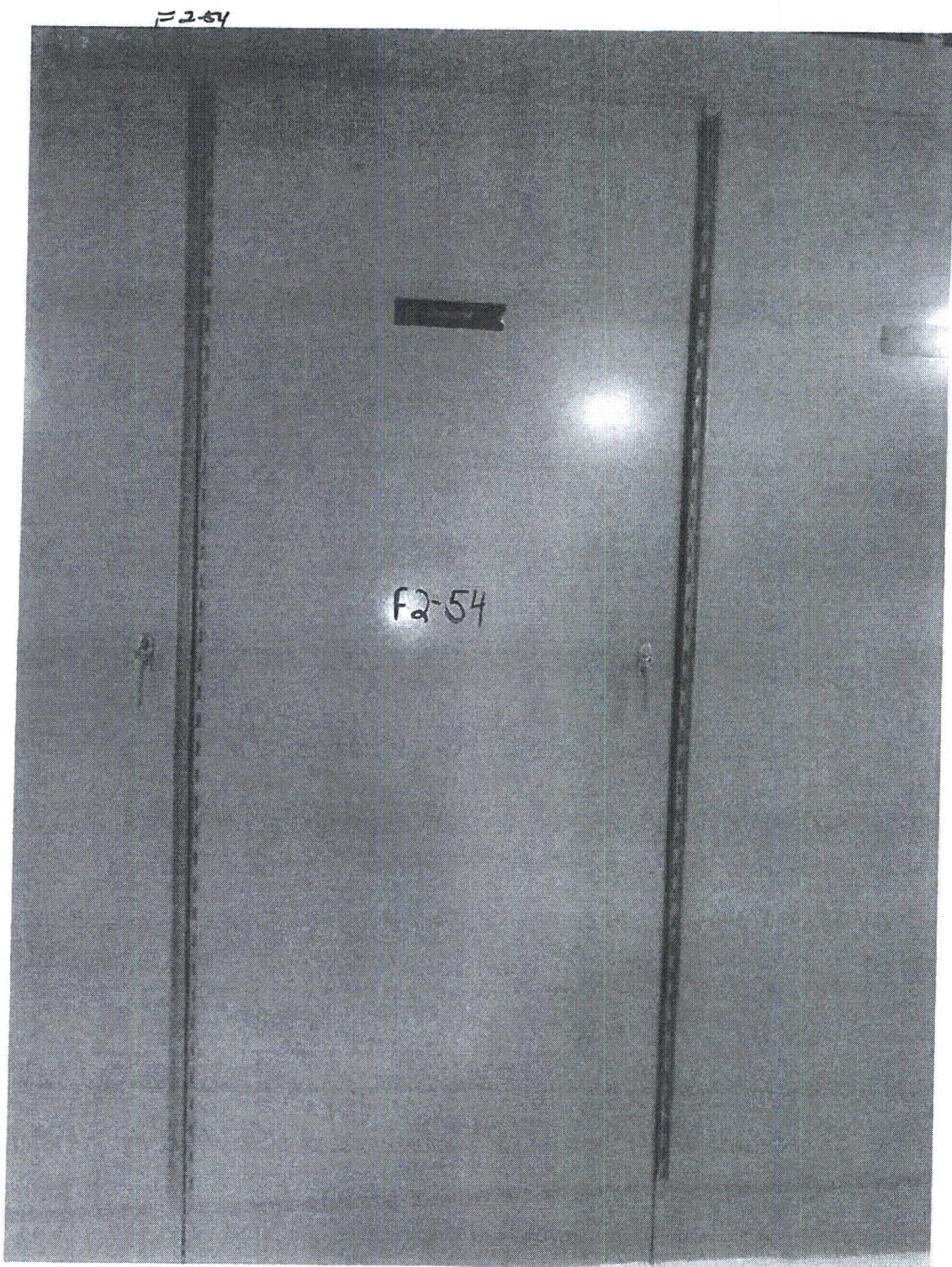
See Equipment ID No. Q2H22L001D for AWC
F2-051

Evaluated by: Maggie Farah Date: 8/24/12

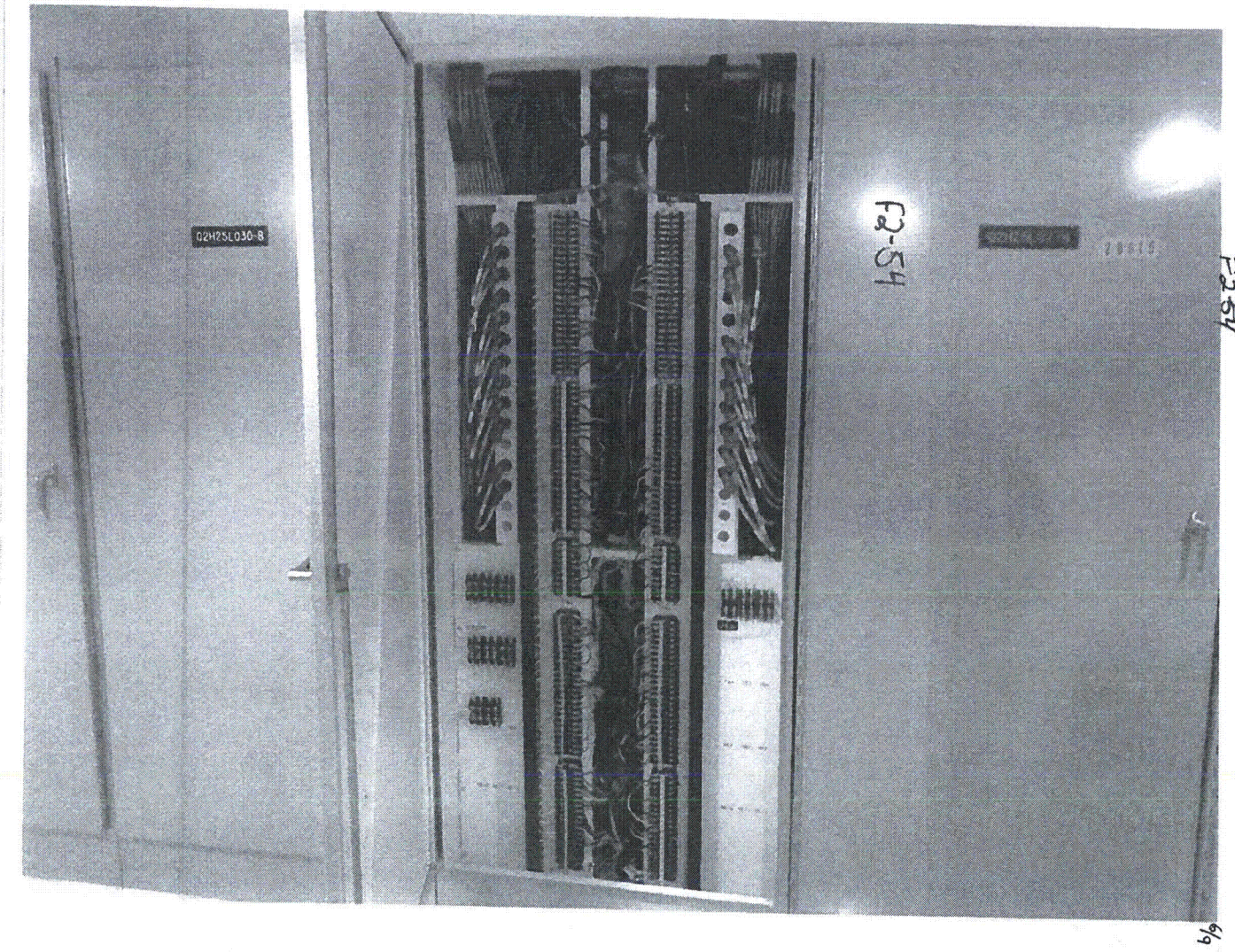
Ron Miranda Ron Miranda 8/31/12

3/9









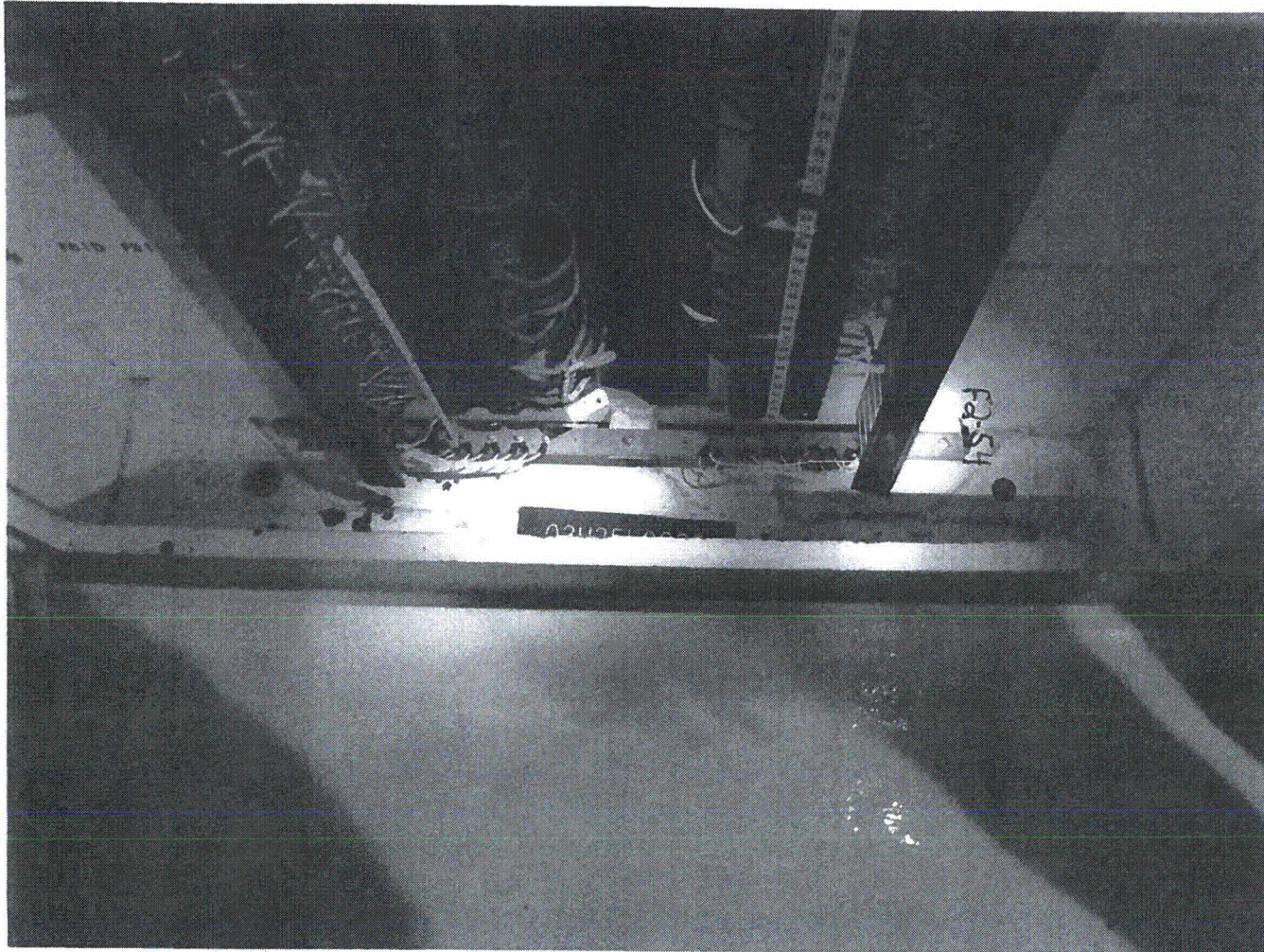




F2-84

F2-54

8/9



75-23

b/b

72-56

Sheet 1 of 4

Status: Y N U

Seismic Walkdown Checklist (SWC)

Equipment ID No. Q2N11HV3369C Equip. Class¹ 7

Equipment Description: MAIN STEAM ISOLATION VALVE

Location: Bldg. AUXILIARY Floor El. 127 Room, Area 2241

Manufacturer, Model, Etc. (optional but recommended) _____

Instructions for Completing Checklist

This checklist may be used to document the results of the Seismic Walkdown of an item of equipment on the SWEL. The space below each of the following questions may be used to record the results of judgments and findings. Additional space is provided at the end of this checklist for documenting other comments.

Anchorage

1. Is the anchorage configuration verification required (i.e., is the item one of the 50% of SWEL items requiring such verification)? Y N

2. Is the anchorage free of bent, broken, missing or loose hardware? Y N U N/A

IN-LINE COMPONENT

3. Is the anchorage free of corrosion that is more than mild surface oxidation? Y N U N/A

4. Is the anchorage free of visible cracks in the concrete near the anchors? Y N U N/A

5. Is the anchorage configuration consistent with plant documentation? Y N U N/A

(Note: This question only applies if the item is one of the 50% for which an anchorage configuration verification is required.)

IN-LINE COMPONENT

6. Based on the above anchorage evaluations, is the anchorage free of potentially adverse seismic conditions? Y N U

¹ Enter the equipment class name from Appendix B: Classes of Equipment.

F2-55

Sheet 2 of 3
Status: Y N U

Seismic Walkdown Checklist (SWC)

Equipment ID No. Q2N11HV3369C Equip. Class: 7

Equipment Description: MAIN STEAM ISOLATION VALVE

Interaction Effects

7. Are soft targets free from impact by nearby equipment or structures? Y N U N/A

8. Are overhead equipment, distribution systems, ceiling tiles and lighting, and masonry block walls not likely to collapse onto the equipment? Y N U N/A

9. Do attached lines have adequate flexibility to avoid damage? Y N U N/A

10. Based on the above seismic interaction evaluations, is equipment free of potentially adverse seismic interaction effects? Y N U

Other Adverse Conditions

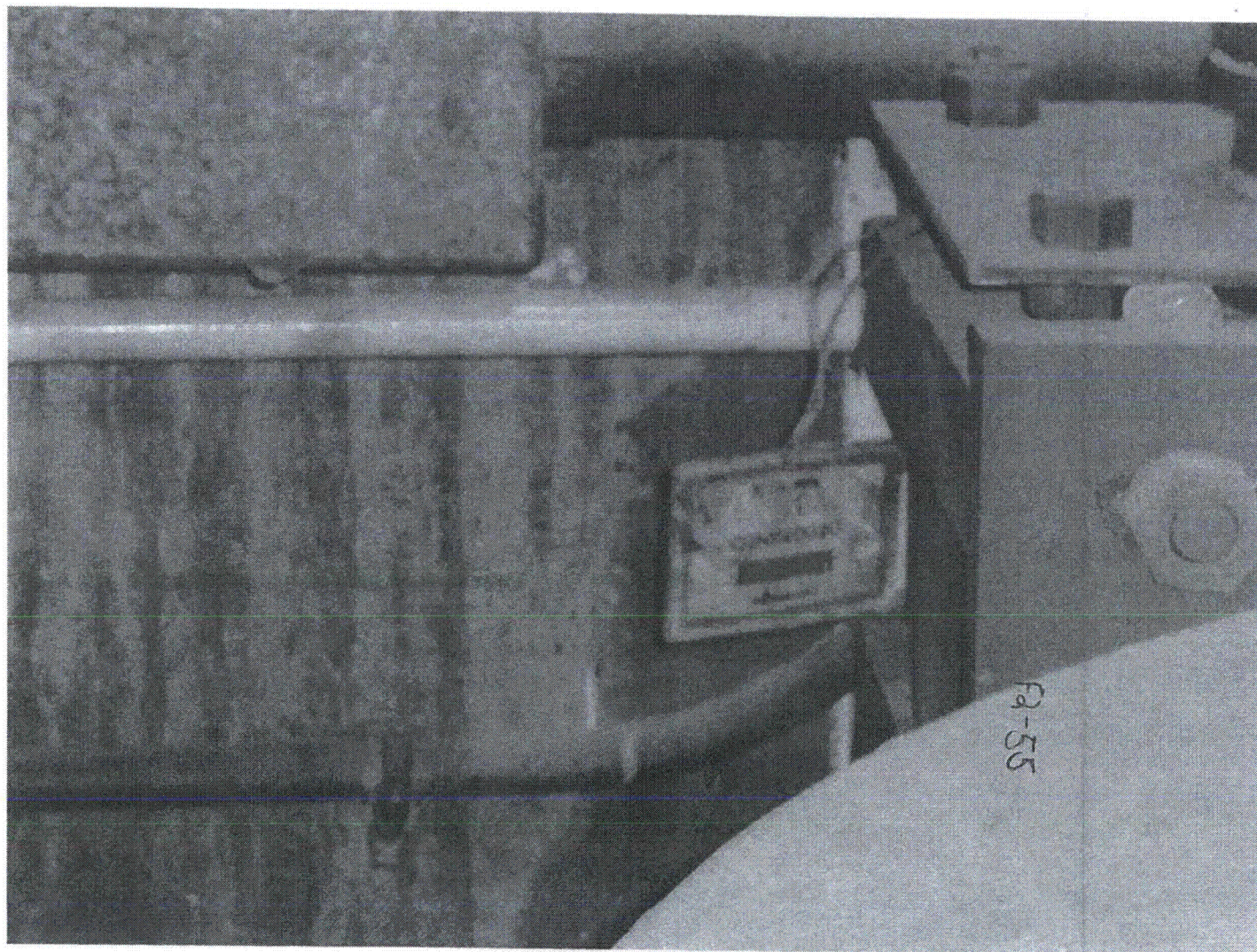
11. Have you looked for and found no other seismic conditions that could adversely affect the safety functions of the equipment? Y N U

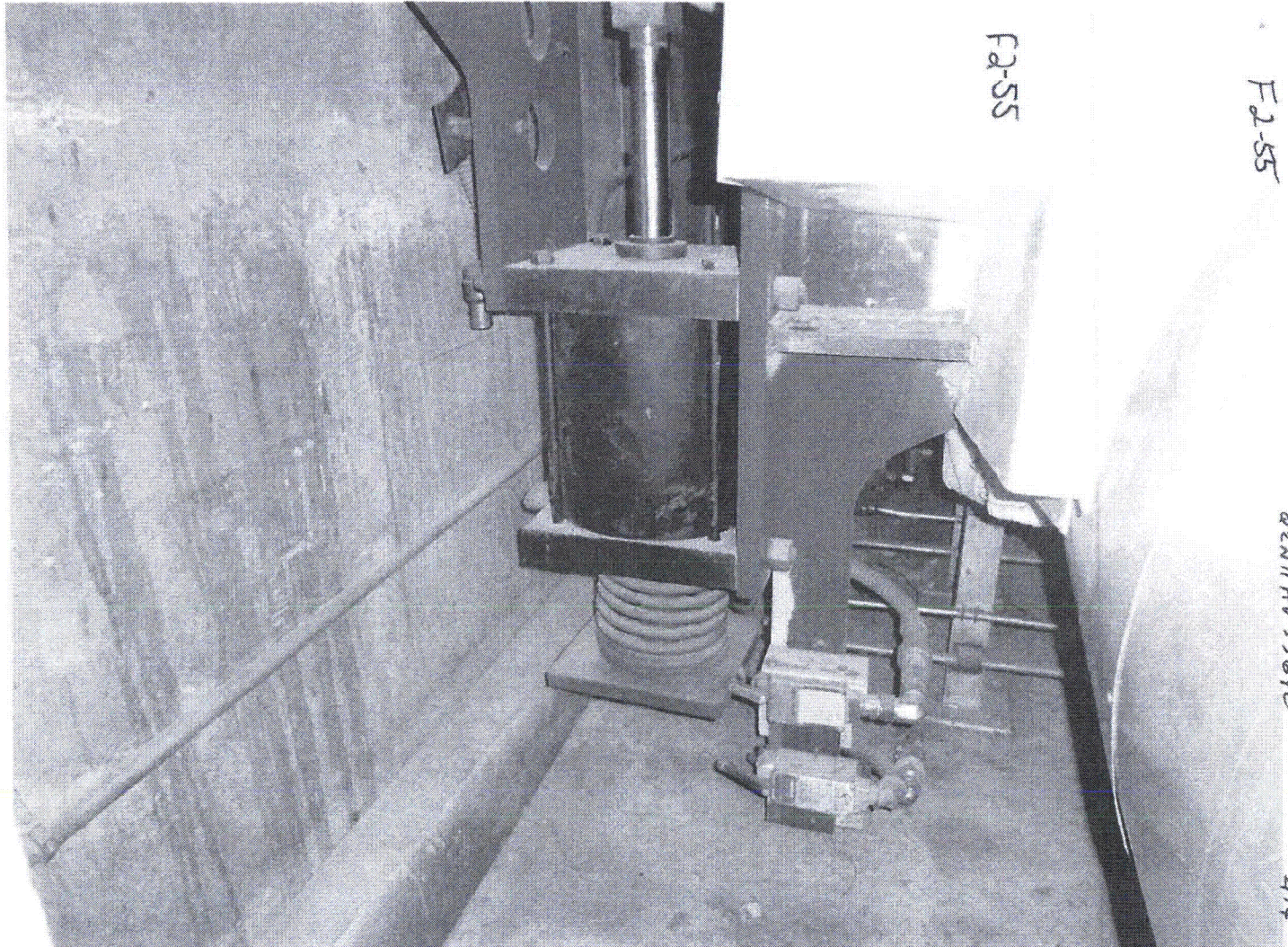
Comments (Additional pages may be added as necessary):

NONE

* See Q2N11HV3371B (Folder 2-58) for Area Walk-By Checklist

Evaluated by: Scott Warden Keith Wells Date: 8.30.2012
Crystal Lovelady [Signature] 8/30/12





82-56

Sheet 1 of 3⁵ 21
 Status: Y N U

Seismic Walkdown Checklist (SWC)

Equipment ID No. Q2N11HV3370B Equip. Class¹ 7

Equipment Description MAIN STEAM LINE ISOLATION VALVE

Location: Bldg. AUXILIARY Floor El. 127 Room, Area 2241

Manufacturer, Model, Etc. (optional but recommended) _____

Instructions for Completing Checklist

This checklist may be used to document the results of the Seismic Walkdown of an item of equipment on the SWEL. The space below each of the following questions may be used to record the results of judgments and findings. Additional space is provided at the end of this checklist for documenting other comments.

Anchorage

1. Is the anchorage configuration verification required (i.e., is the item one of the 50% of SWEL items requiring such verification)? Y N

2. Is the anchorage free of bent, broken, missing or loose hardware? Y N U N/A

IN LINE COMPONENT

3. Is the anchorage free of corrosion that is more than mild surface oxidation? Y N U N/A

4. Is the anchorage free of visible cracks in the concrete near the anchors? Y N U N/A

5. Is the anchorage configuration consistent with plant documentation? Y N U N/A
 (Note: This question only applies if the item is one of the 50% for which an anchorage configuration verification is required.)

6. Based on the above anchorage evaluations, is the anchorage free of potentially adverse seismic conditions? Y N U

¹Enter the equipment class name from Appendix B: Classes of Equipment.

F2-56

Sheet 2 of 8 *85.000*

Status: Y N U

Seismic Walkdown Checklist (SWC)

Equipment ID No. Q2N11HV3370B Equip. Class 7

Equipment Description MAIN STEAM LINE ISOLATION VALVE

Interaction Effects

7. Are soft targets free from impact by nearby equipment or structures? Y N U N/A

8. Are overhead equipment, distribution systems, ceiling tiles and lighting, and masonry block walls not likely to collapse onto the equipment? Y N U N/A

9. Do attached lines have adequate flexibility to avoid damage? Y N U N/A

10. Based on the above seismic interaction evaluations, is equipment free of potentially adverse seismic interaction effects? Y N U

Other Adverse Conditions

11. Have you looked for and found no other seismic conditions that could adversely affect the safety functions of the equipment? Y N U

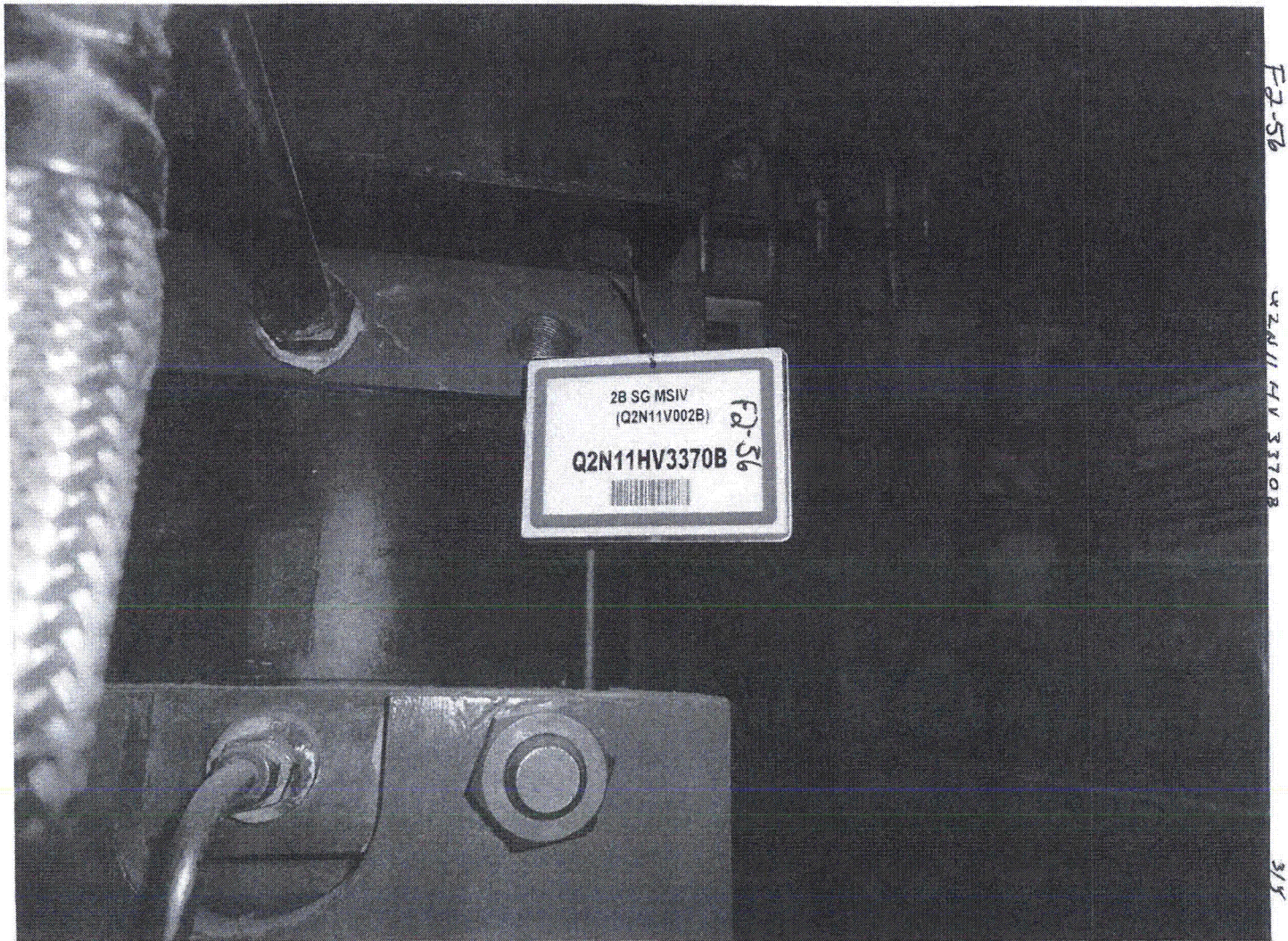
Comments (Additional pages may be added as necessary)

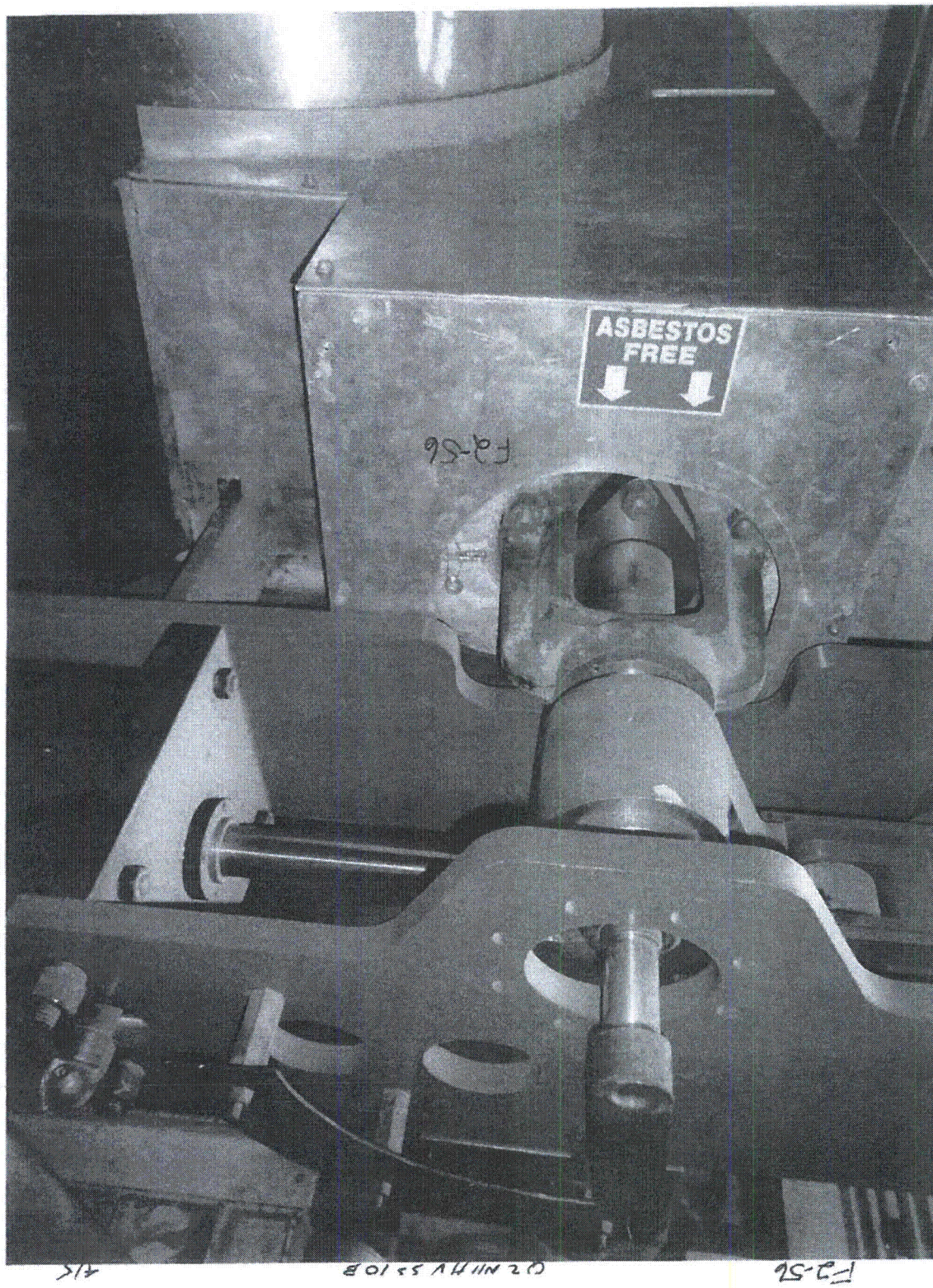
NONE

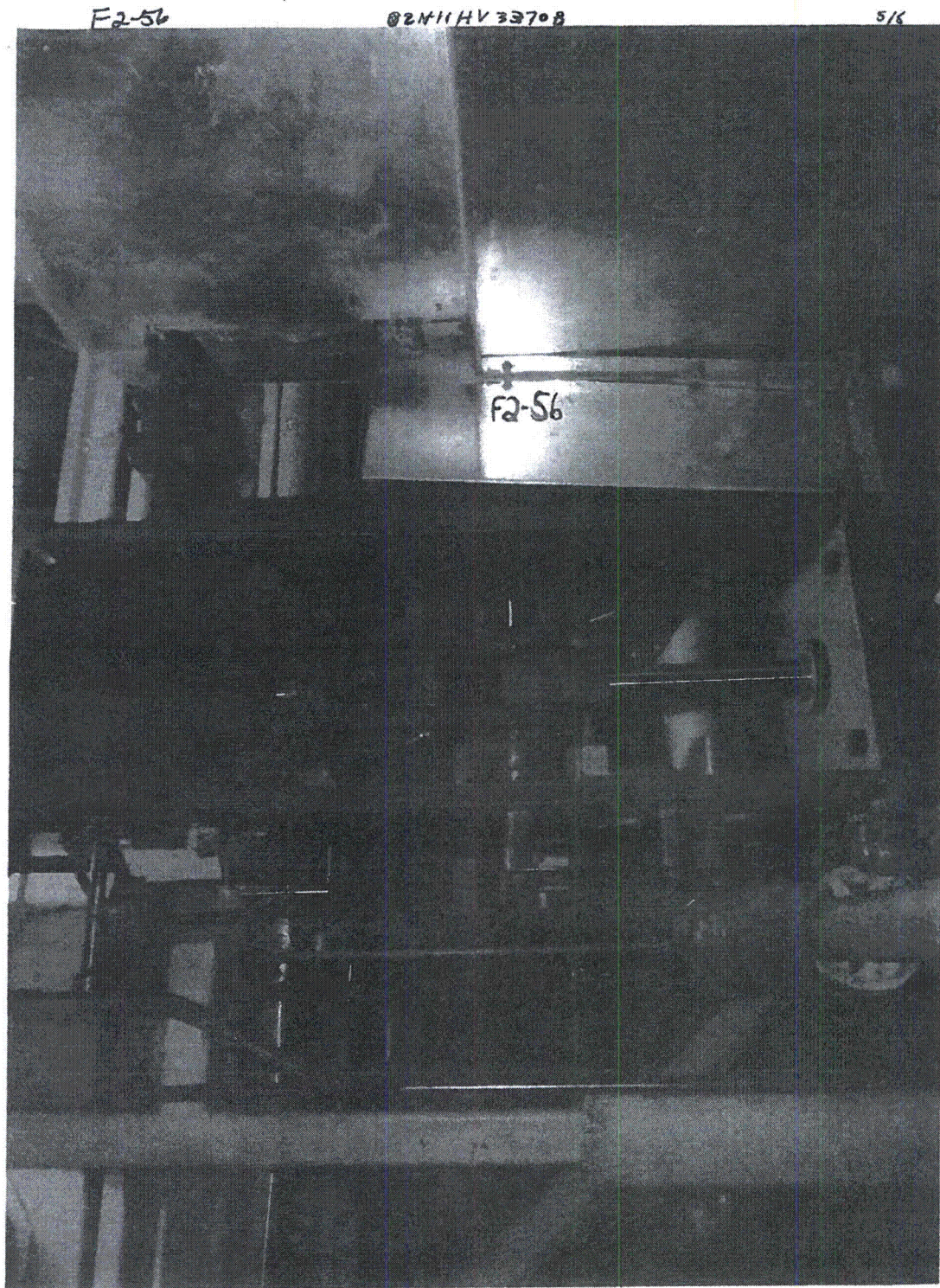
* See Q2N11PU3371B (Folder 2-58) for Area Walk-By Checklist

Evaluated by: Scott Warren Pitts Date: 8.30.2012

Crystal Lovelady [Signature] 8/30/2012







F2-57

Sheet 1 of 3 ~~4~~
 Status: Y N U

Seismic Walkdown Checklist (SWC)

Equipment ID No. Q2N11PT0484 Equip. Class¹ 18

Equipment Description SG 2B DISCHARGE PRESSURE

Location: Bldg. AUXILIARY Floor El. 130 Room, Area 2241 2462

Manufacturer, Model, Etc. (optional but recommended) 156

Instructions for Completing Checklist

This checklist may be used to document the results of the Seismic Walkdown of an item of equipment on the SWEL. The space below each of the following questions may be used to record the results of judgments and findings. Additional space is provided at the end of this checklist for documenting other comments.

Anchorage

1. Is the anchorage configuration verification required (i.e., is the item one of the 50% of SWEL items requiring such verification)? Y N

2. Is the anchorage free of bent, broken, missing or loose hardware? Y N U N/A

3. Is the anchorage free of corrosion that is more than mild surface oxidation? Y N U N/A

4. Is the anchorage free of visible cracks in the concrete near the anchors? Y N U N/A

5. Is the anchorage configuration consistent with plant documentation? Y N U N/A
 (Note: This question only applies if the item is one of the 50% for which an anchorage configuration verification is required.)

6. Based on the above anchorage evaluations, is the anchorage free of potentially adverse seismic conditions? Y N U

¹ Enter the equipment class name from Appendix B: Classes of Equipment.

F257

Sheet 2 of 4

Status: Y N U

Seismic Walkdown Checklist (SWC)

Equipment ID No. Q2N11PT0484 Equip. Class: 18

Equipment Description SG 2B DISCHARGE PRESSURE

Interaction Effects

7. Are soft targets free from impact by nearby equipment or structures? Y N U N/A

8. Are overhead equipment, distribution systems, ceiling tiles and lighting, and masonry block walls not likely to collapse onto the equipment? Y N U N/A

9. Do attached lines have adequate flexibility to avoid damage? Y N U N/A

10. Based on the above seismic interaction evaluations, is equipment free of potentially adverse seismic interaction effects? Y N U

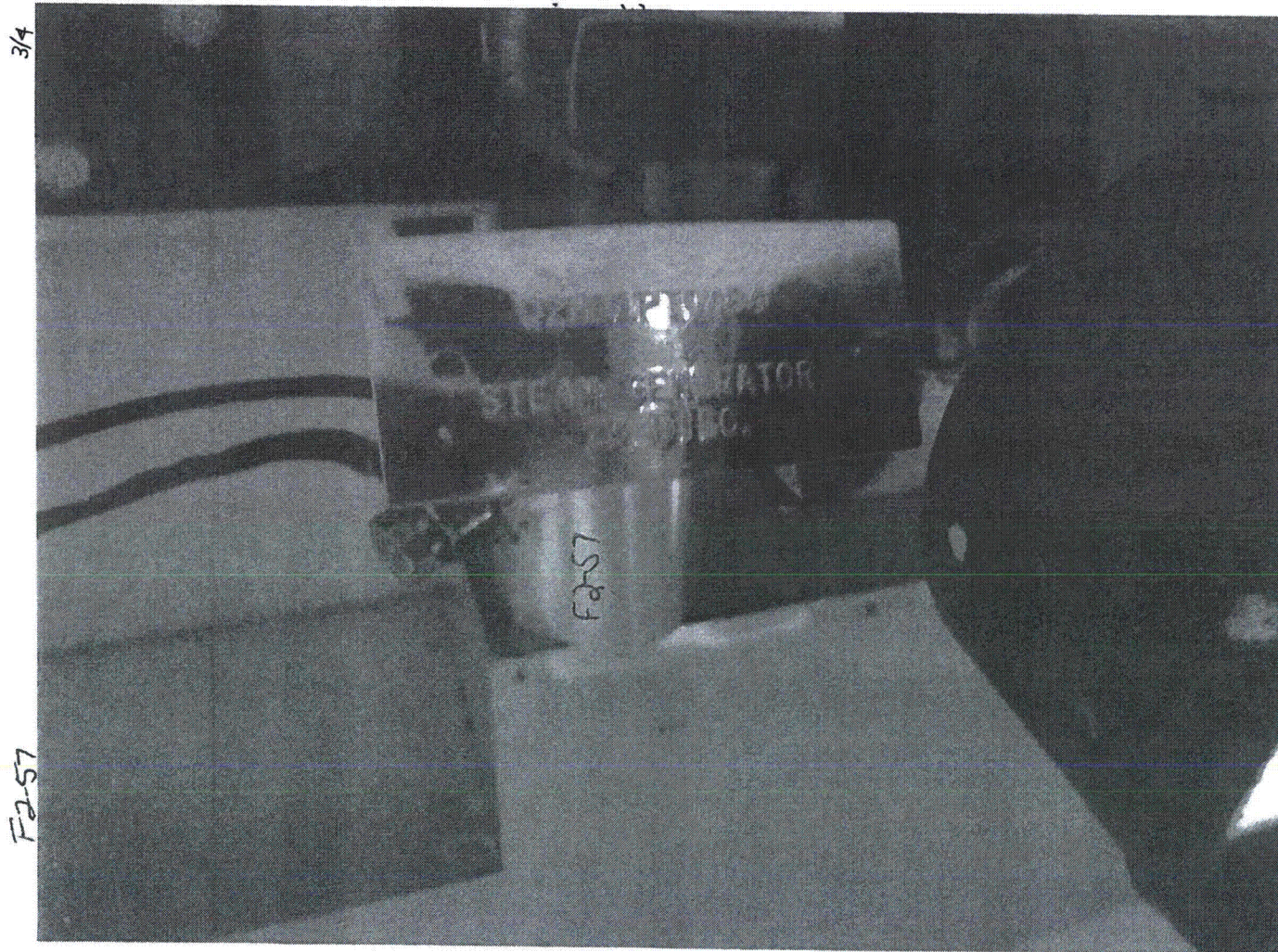
Other Adverse Conditions

11. Have you looked for and found no other seismic conditions that could adversely affect the safety functions of the equipment? Y N U

Comments (Additional pages may be added as necessary)

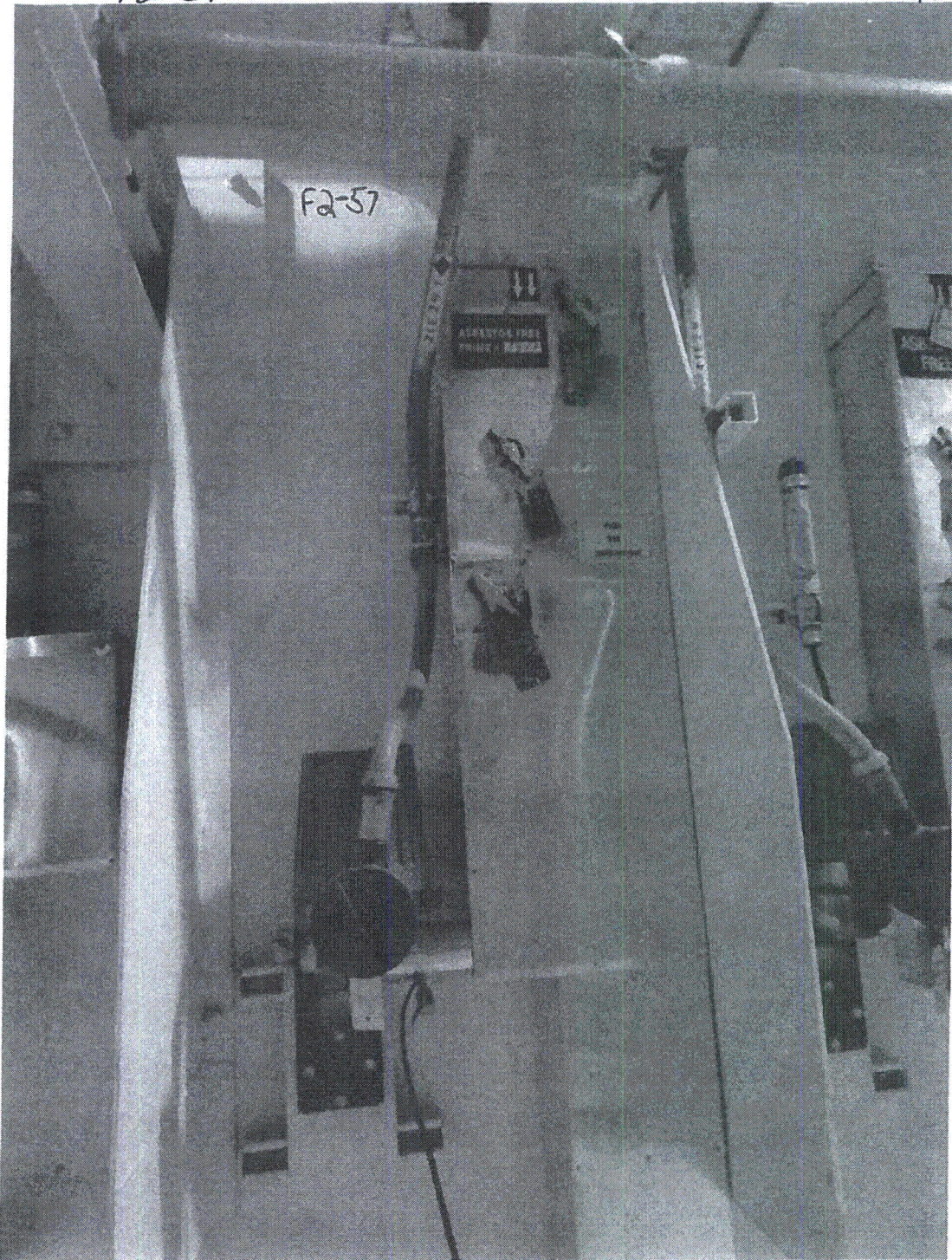
Evaluated by Maggie Farah Date: 8/30/12

Ron Mirande 8.30.12



F2-57

4/4



FE-58

Sheet 1 of 3 *PM*

Status: Y N U

Seismic Walkdown Checklist (SWC)

Equipment ID No. Q2N11PV33710/B *PM* Equip. Class: 7

Equipment Description: MAIN STEAM ATMOSPHERIC RELIEF VALVE

Location: Bldg. AUXILIARY Floor/El. 127 Room, Area 2241

Manufacturer, Model, Etc. (optional but recommended) _____

Instructions for Completing Checklist

This checklist may be used to document the results of the Seismic Walkdown of an item of equipment on the SWEL. The space below each of the following questions may be used to record the results of judgments and findings. Additional space is provided at the end of this checklist for documenting other comments.

Anchorage

1. Is the anchorage configuration verification required (i.e., is the item one of the 50% of SWEL items requiring such verification)? Y N

2. Is the anchorage free of bent, broken, missing or loose hardware? Y N U N/A

N-LINE COMPONENT

3. Is the anchorage free of corrosion that is more than mild surface oxidation? Y N U N/A

4. Is the anchorage free of visible cracks in the concrete near the anchors? Y N U N/A

5. Is the anchorage configuration consistent with plant documentation? (Note: This question only applies if the item is one of the 50% for which an anchorage configuration verification is required.) Y N U N/A

N-LINE COMPONENT

6. Based on the above anchorage evaluations, is the anchorage free of potentially adverse seismic conditions? Y N U

¹ Enter the equipment class name from Appendix B: Classes of Equipment.

F2 58

Sheet 2 of 3 ^{9a}

Status: Y N U

Seismic Walkdown Checklist (SWC)

Equipment ID No. Q2N11PV3371C/B Equip. Class: 7

Equipment Description MAIN STEAM ATMOSPHERIC RELIEF VALVE

Interaction Effects

7. Are soft targets free from impact by nearby equipment or structures? Y N U N/A

8. Are overhead equipment, distribution systems, ceiling tiles and lighting, and masonry block walls not likely to collapse onto the equipment? Y N U N/A

9. Do attached lines have adequate flexibility to avoid damage? Y N U N/A

10. Based on the above seismic interaction evaluations, is equipment free of potentially adverse seismic interaction effects? Y N U

Other Adverse Conditions

11. Have you looked for and found no other seismic conditions that could adversely affect the safety functions of the equipment? Y N U

Comments (Additional pages may be added as necessary)

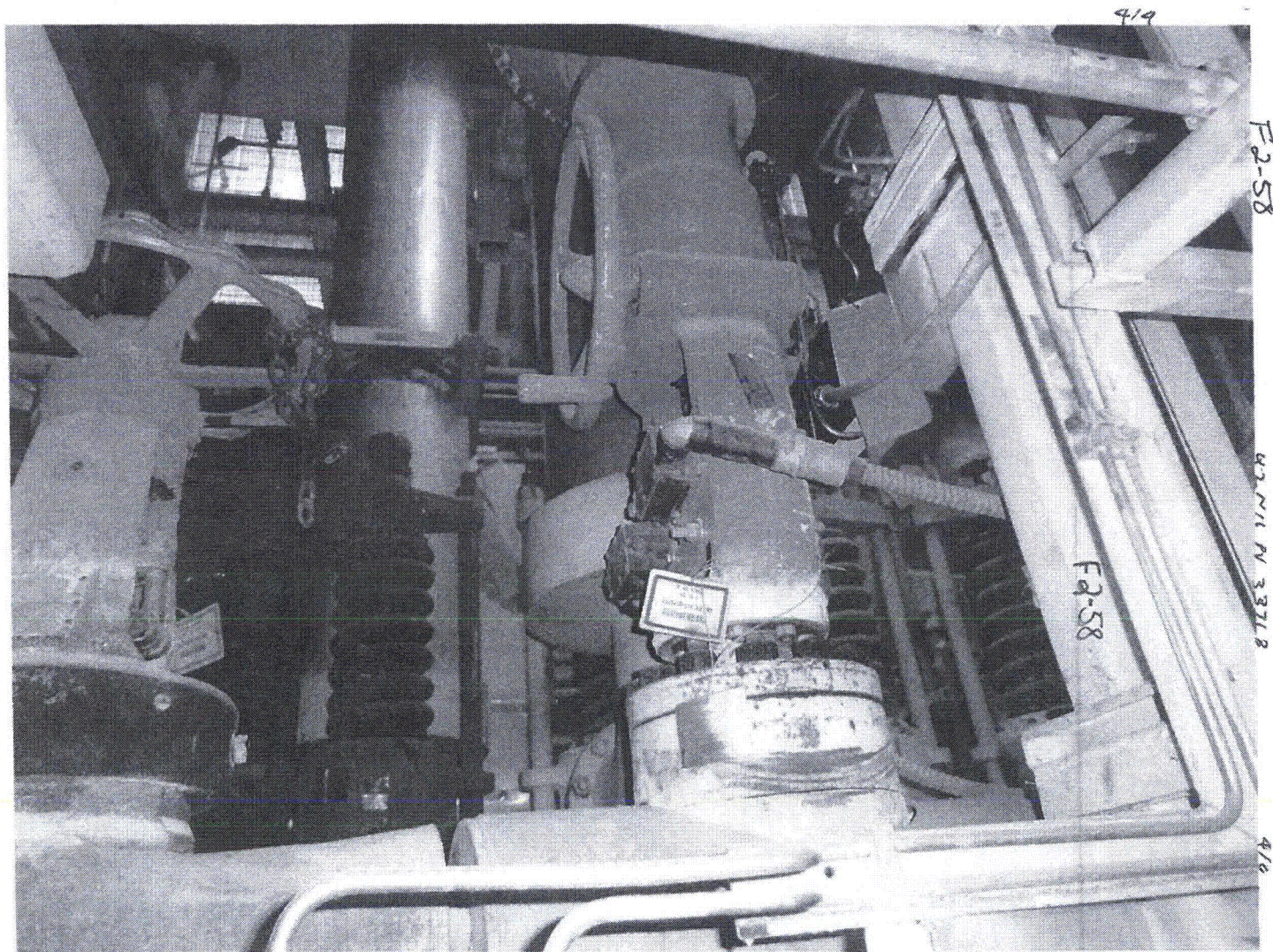
NONE

CH

Evaluated by: Scott Warner Date: 8.30.2012

Crystal Lovelady [Signature] 8/30/2012





F2-59

Sheet 1 of 3

Status: Y N U

Seismic Walkdown Checklist (SWC)

Equipment ID No. Q2N11SV3369CC Equip. Class¹ 8

Equipment Description SOLENOID FOR MAIN STEAM ISOLATION VALVE

Location: Bldg. AUXILIARY Floor El. 127 Room, Area 2241

Manufacturer, Model, Etc. (optional but recommended)

Instructions for Completing Checklist

This checklist may be used to document the results of the Seismic Walkdown of an item of equipment on the SWEL. The space below each of the following questions may be used to record the results of judgments and findings. Additional space is provided at the end of this checklist for documenting other comments.

Anchorage

1. Is the anchorage configuration verification required (i.e., is the item one of the 50% of SWEL items requiring such verification)? Y N U

2. Is the anchorage free of bent, broken, missing or loose hardware? Y N U N/A

IN-LINE COMPONENT

3. Is the anchorage free of corrosion that is more than mild surface oxidation? Y N U N/A

4. Is the anchorage free of visible cracks in the concrete near the anchors? Y N U N/A

5. Is the anchorage configuration consistent with plant documentation? (Note: This question only applies if the item is one of the 50% for which an anchorage configuration verification is required.) Y N U N/A

IN-LINE COMPONENT

6. Based on the above anchorage evaluations, is the anchorage free of potentially adverse seismic conditions? Y N U

¹ Enter the equipment class name from Appendix B: Classes of Equipment.

F2-59

Sheet 2 of 3
Status: Y N U

Seismic Walkdown Checklist (SWC)

Equipment ID No. Q2N11SV3369CC Equip. Class: 8

Equipment Description SOLENOID FOR MAIN STEAM ISOLATION VALVE

Interaction Effects

7. Are soft targets free from impact by nearby equipment or structures? Y N U N/A

8. Are overhead equipment, distribution systems, ceiling tiles and lighting, and masonry block walls not likely to collapse onto the equipment? Y N U N/A

9. Do attached lines have adequate flexibility to avoid damage? Y N U N/A

10. Based on the above seismic interaction evaluations, is equipment free of potentially adverse seismic interaction effects? Y N U

Other Adverse Conditions

11. Have you looked for and found no other seismic conditions that could adversely affect the safety functions of the equipment? Y N U

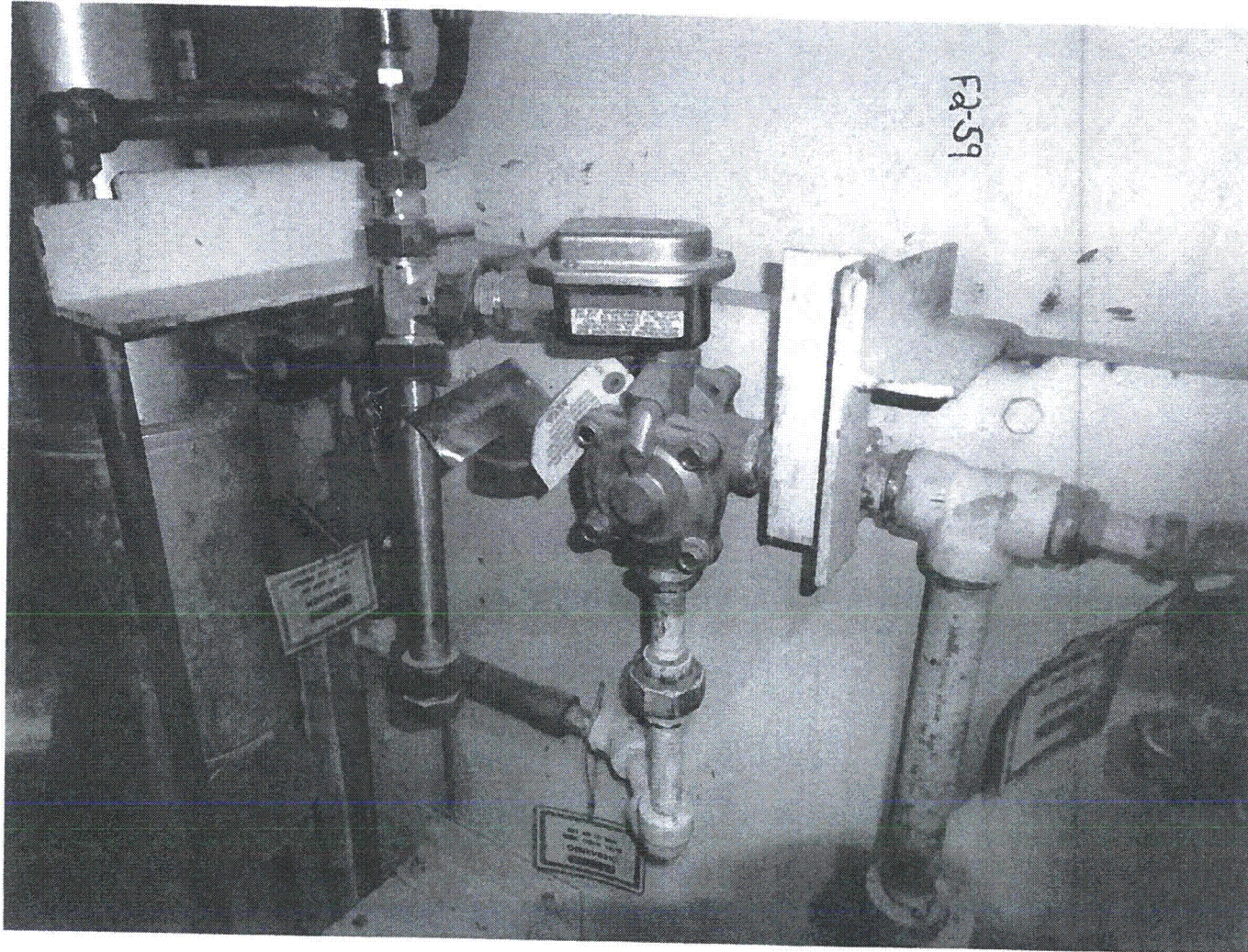
Comments (Additional pages may be added as necessary)

None

See Q2N11PV3371B (folder 2-58) for Area Walk-By Checklist

Evaluated by: Scott Walden *[Signature]* Date: 8.30.2012

Crystal Lovelady *[Signature]* 8/30/2012



F2-60

Sheet 1 of 3

Status: Y N U

Seismic Walkdown Checklist (SWC)

Equipment ID No. Q2N23FI3229CB Equip. Class¹ 18

Equipment Description FEEDWATER INTAKE FLOW INDICATION

Location: Bldg. AUXILIARY Floor El. 100 Room, Area 2190

Manufacturer, Model, Etc. (optional but recommended) _____

Instructions for Completing Checklist

This checklist may be used to document the results of the Seismic Walkdown of an item of equipment on the SWEL. The space below each of the following questions may be used to record the results of judgments and findings. Additional space is provided at the end of this checklist for documenting other comments.

Anchorage

1. Is the anchorage configuration verification required (i.e., is the item one of the 50% of SWEL items requiring such verification)? Y N

2. Is the anchorage free of bent, broken, missing or loose hardware? Y N U N/A

*bolted inside box TO STRUT anchored to wall.
Can see spring nuts inside strut, anchorage okay*

3. Is the anchorage free of corrosion that is more than mild surface oxidation? Y N U N/A

4. Is the anchorage free of visible cracks in the concrete near the anchors? Y N U N/A

5. Is the anchorage configuration consistent with plant documentation? (Note: This question only applies if the item is one of the 50% for which an anchorage configuration verification is required.) Y N U N/A

6. Based on the above anchorage evaluations, is the anchorage free of potentially adverse seismic conditions? Y N U

¹ Enter the equipment class name from Appendix B: Classes of Equipment.