

F2-AD

Sheet 1 of 3/4

Status: Y  N  U

**Seismic Walkdown Checklist (SWC)**

Equipment ID No: Q2G31H001B Equip. Class<sup>1</sup> 21

Equipment Description SFP HEAT EXCHANGER TRAIN A

Location: Bldg. AUXILIARY Floor/El. 165 Room, Area 2467

Manufacturer, Model, Etc. (optional but recommended) \_\_\_\_\_

**Instructions for Completing Checklist**

This checklist may be used to document the results of the Seismic Walkdown of an item of equipment on the SWEL. The space below each of the following questions may be used to record the results of judgments and findings. Additional space is provided at the end of this checklist for documenting other comments.

Anchorage

1. Is the anchorage configuration verification required (i.e., is the item one of the 50% of SWEL items requiring such verification)? Y  N

Dwg. D206696 Ver. 6.0

2. Is the anchorage free of bent, broken, missing or loose hardware? Y  N  U  N/A

3. Is the anchorage free of corrosion that is more than mild surface oxidation? Y  N  U  N/A

Mild rust on saddle and washers. There is no concern from a seismic event. OKAY. No effect on capacity of anchorage.

4. Is the anchorage free of visible cracks in the concrete near the anchors? Y  N  U  N/A

5. Is the anchorage configuration consistent with plant documentation? (Note: This question only applies if the item is one of the 50% for which an anchorage configuration verification is required.) Y  N  U  N/A

6. Based on the above anchorage evaluations, is the anchorage free of potentially adverse seismic conditions? Y  N  U

<sup>1</sup> Enter the equipment class name from Appendix B: Classes of Equipment.

F2-40

Sheet 2 of 4

Status:  Y  N  U

**Seismic Walkdown Checklist (SWC)**

Equipment ID No: Q2G31H001B Equip. Class: 21

Equipment Description SFP HEAT EXCHANGER TRAIN A

**Interaction Effects**

7. Are soft targets free from impact by nearby equipment or structures?  Y  N  U  N/A

8. Are overhead equipment, distribution systems, ceiling tiles and lighting, and masonry block walls not likely to collapse onto the equipment?  Y  N  U  N/A

9. Do attached lines have adequate flexibility to avoid damage?  Y  N  U  N/A

10. Based on the above seismic interaction evaluations, is equipment free of potentially adverse seismic interaction effects?  Y  N  U

**Other Adverse Conditions**

11. Have you looked for and found no other seismic conditions that could adversely affect the safety functions of the equipment?  Y  N  U

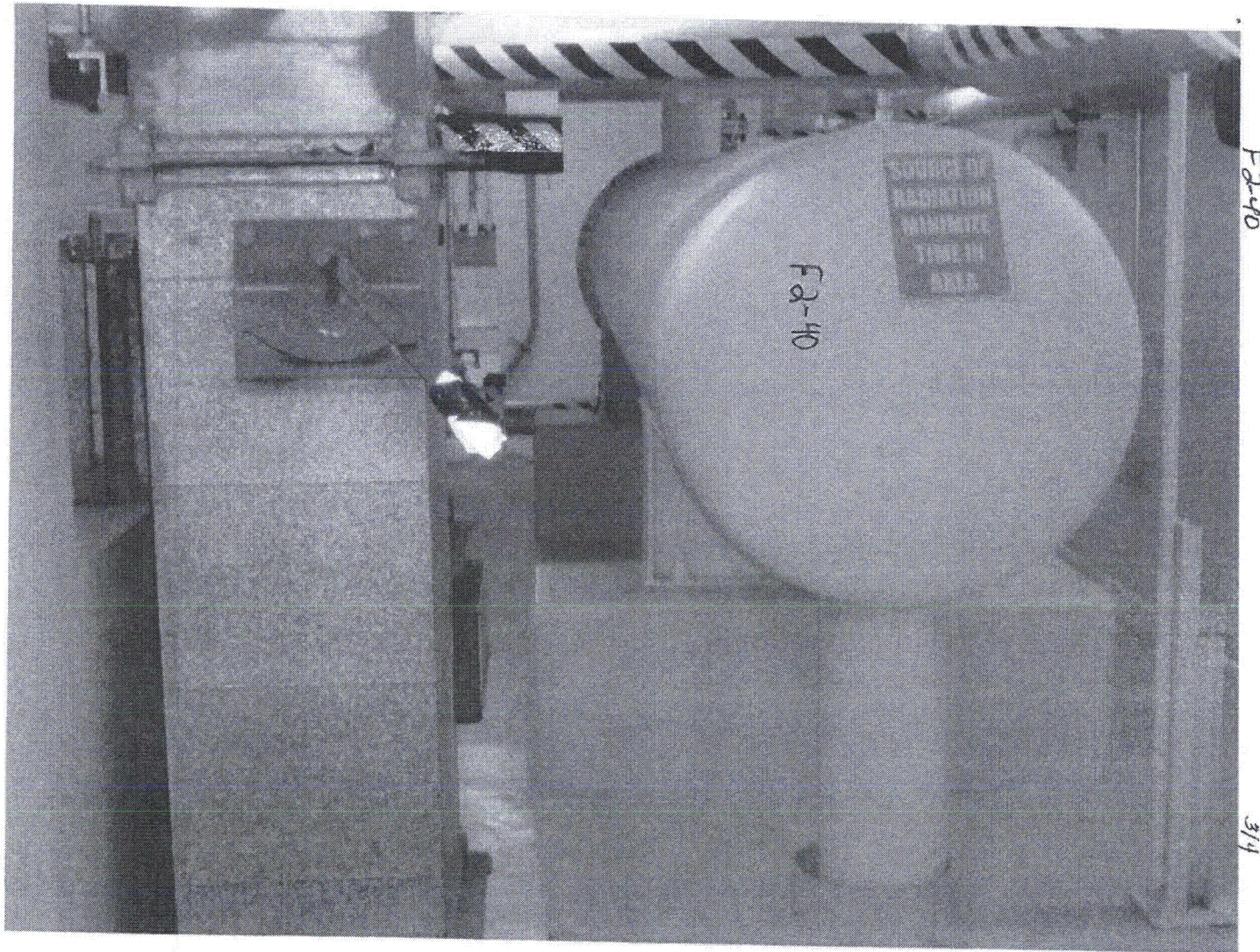
**Comments** (Additional pages may be added as necessary)

None

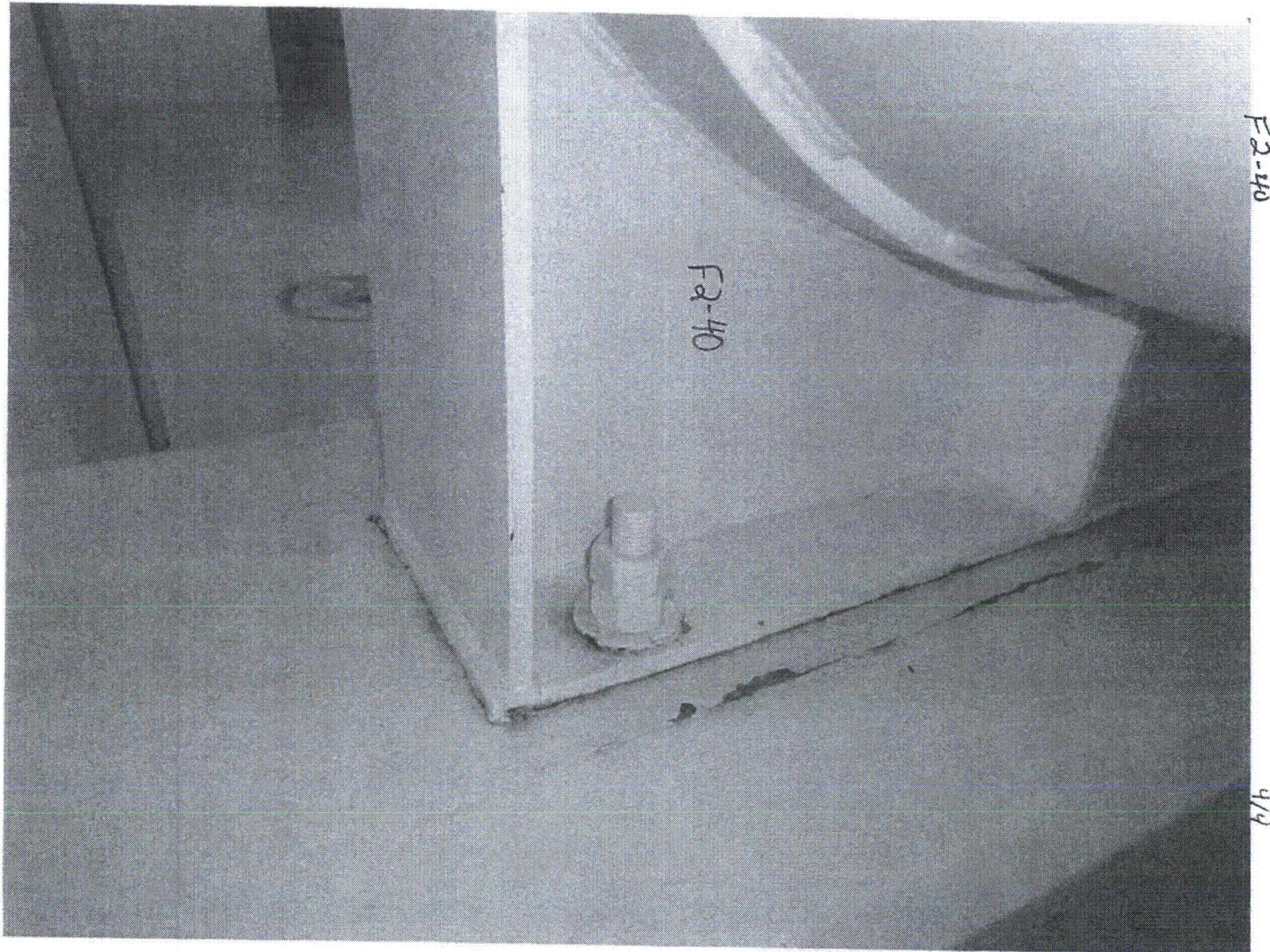
Evaluated by: Scott Warden Scott Warden Date: 8.29.2012

Crystal Lovelady [Signature] 8/29/2012











F2-41

Sheet 1 of 5 *30m*  
 Status: Y  N  U  *5/28/18*

**Seismic Walkdown Checklist (SWC)**

Equipment ID No. Q2H11NGASC2506D Equip. Class<sup>1</sup> 20

Equipment Description AUX SAFEGUARDS CABINET D

Location: Bldg: AUXILIARY Floor El. 155 Room, Area 471

Manufacturer, Model, Etc. (optional but recommended) \_\_\_\_\_

**Instructions for Completing Checklist**

This checklist may be used to document the results of the Seismic Walkdown of an item of equipment on the SWEL. The space below each of the following questions may be used to record the results of judgments and findings. Additional space is provided at the end of this checklist for documenting other comments.

**Anchorage**

1. Is the anchorage configuration verification required (i.e., is the item one of the 50% of SWEL items requiring such verification)? Y  N  U
  
  2. Is the anchorage free of bent, broken, missing or loose hardware? Y  N  U  N/A
  
  3. Is the anchorage free of corrosion that is more than mild surface oxidation? Y  N  U  N/A
  
  4. Is the anchorage free of visible cracks in the concrete near the anchors? Y  N  U  N/A
  
  5. Is the anchorage configuration consistent with plant documentation? Y  N  U  N/A   
 (Note: This question only applies if the item is one of the 50% for which an anchorage configuration verification is required.)
- ANCHORAGE CONFIGURATION VERIFIED AGAINST SEWS Q2H11NGASC2506D - A  
 DATED 6-30-93 - REF SEWS Q2H11NGASC2506C-B & Q2H11NGPIC2505A-1*
6. Based on the above anchorage evaluations, is the anchorage free of potentially adverse seismic conditions? Y  N  U

<sup>1</sup> Enter the equipment class name from Appendix B: Classes of Equipment.

F2-41

Sheet 2 of 25 JAM  
Status: Y  N  U  8/22/12

**Seismic Walkdown Checklist (SWC)**

Equipment ID No. Q2H11NGASC2506D Equip. Class' 20

Equipment Description AUX SAFEGUARDS CABINET D

Interaction Effects

7. Are soft targets free from impact by nearby equipment or structures? Y  N  U  N/A

8. Are overhead equipment, distribution systems, ceiling tiles and lighting, and masonry block walls not likely to collapse onto the equipment? Y  N  U  N/A

9. Do attached lines have adequate flexibility to avoid damage? Y  N  U  N/A

10. Based on the above seismic interaction evaluations, is equipment free of potentially adverse seismic interaction effects? Y  N  U

Other Adverse Conditions

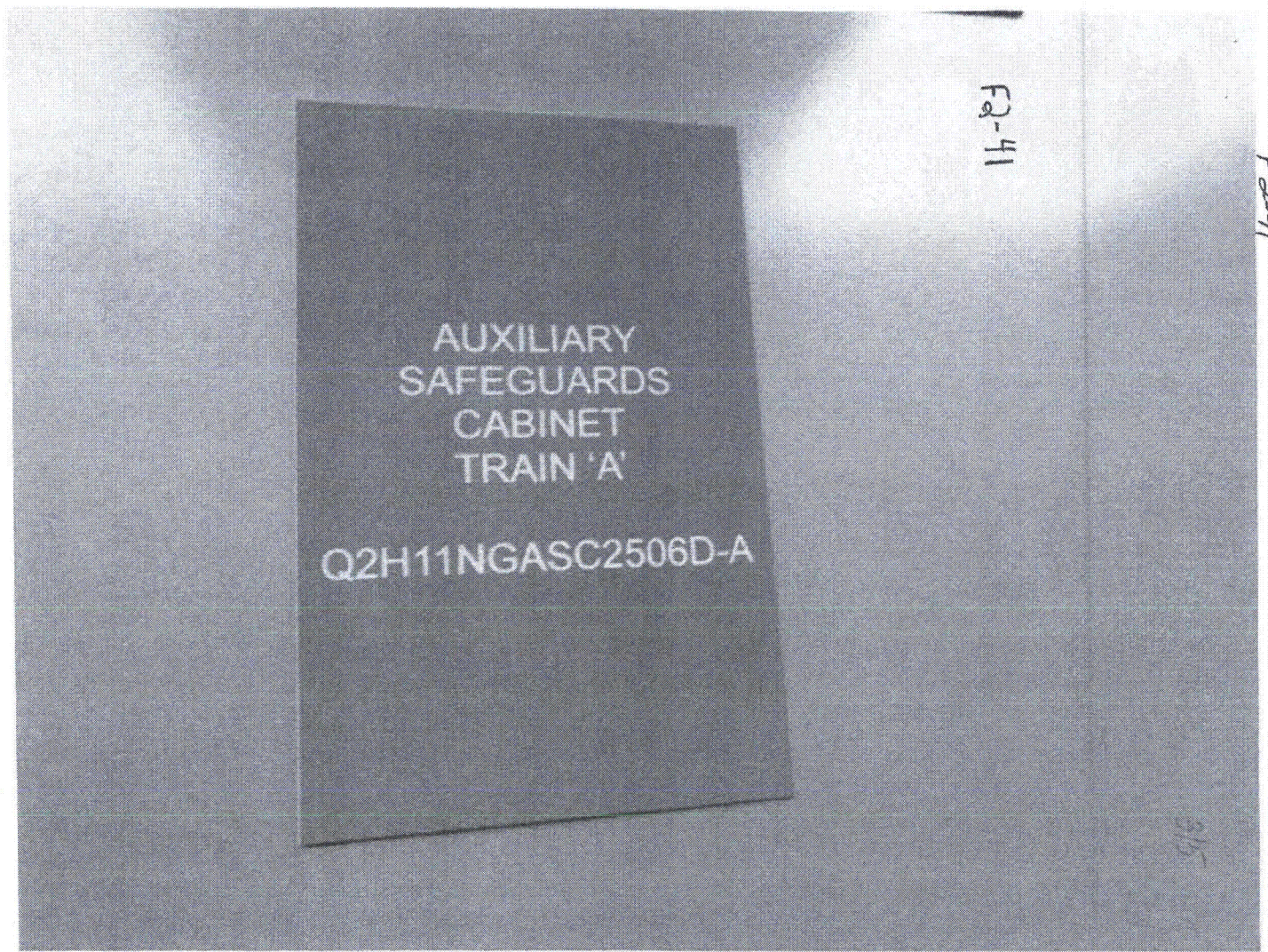
11. Have you looked for and found no other seismic conditions that could adversely affect the safety functions of the equipment? Y  N  U

Comments (Additional pages may be added as necessary)

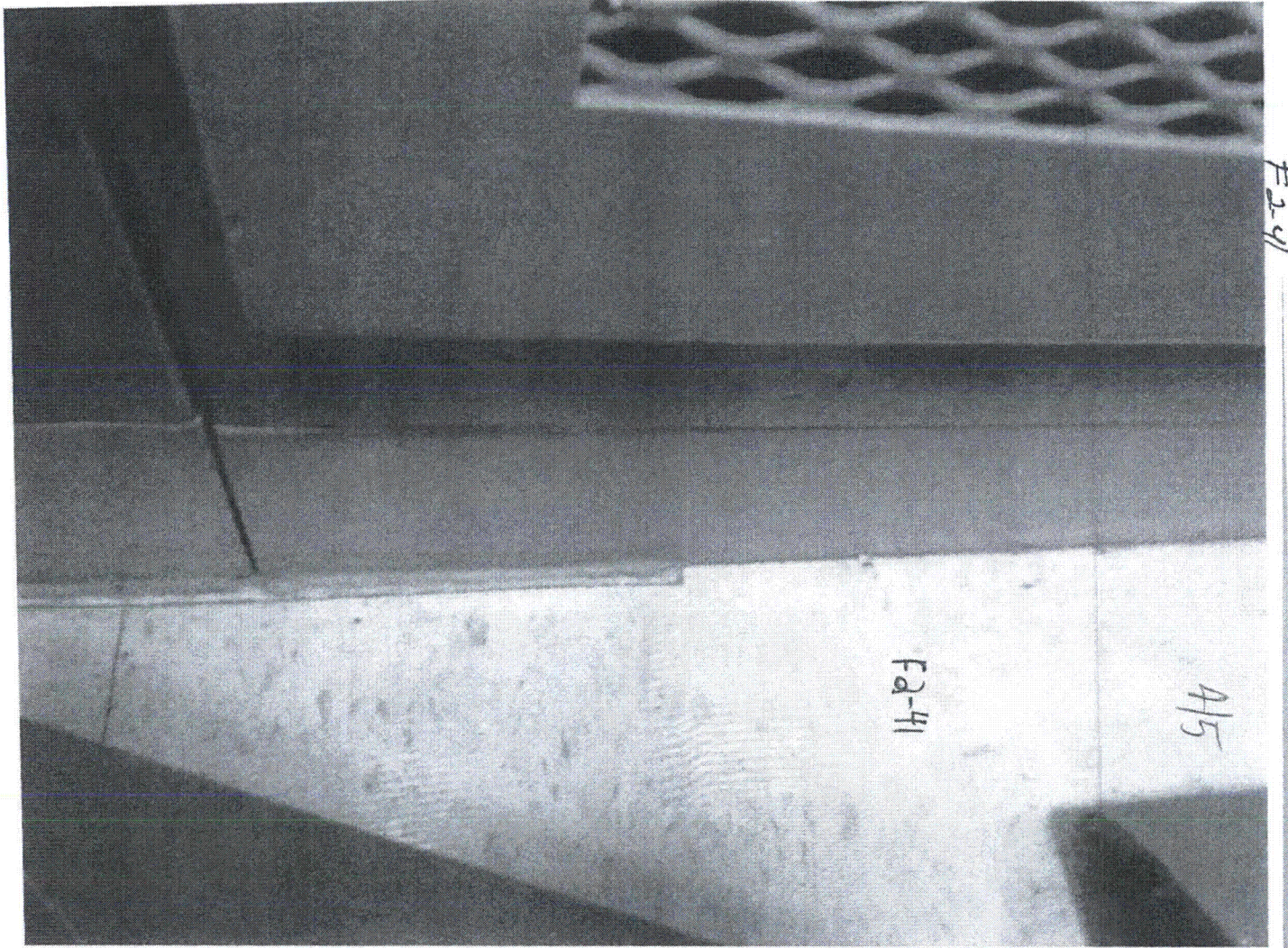
THE AREA WALK BY FOR ROOM 471 IS INCLUDED IN PACKAGE F2-42.  
MAIN CONTROL CEILING ADDRESSED IN PACKAGE F2-49

Evaluated by: S. YVAN Stephen Yvan Date: 8-28-12  
P. MIKTOS Paul Miktos 8-28-12

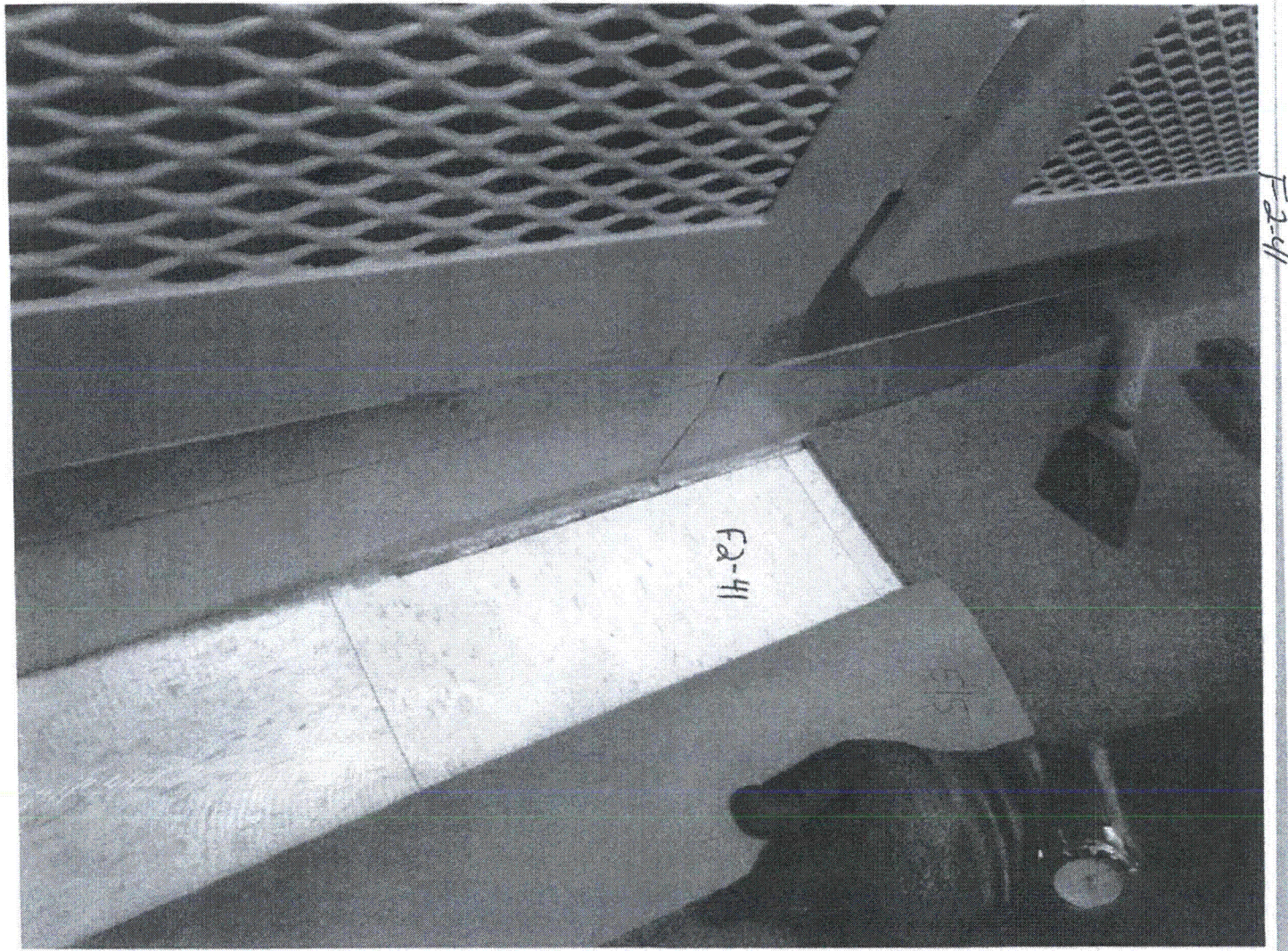












F2-42

Sheet 1 of 46 *John 8/23/12*  
 Status: Y  N  U

**Seismic Walkdown Checklist (SWC)**

Equipment ID No. Q2H11NGB2504K Equip. Class<sup>1</sup> 20

Equipment Description BOP INSTRUMENTATION CABINET K

Location: Bldg. AUX Floor El. 155 Room, Area 0471

Manufacturer, Model, Etc. (optional but recommended) \_\_\_\_\_

**Instructions for Completing Checklist**

This checklist may be used to document the results of the Seismic Walkdown of an item of equipment on the SWEL. The space below each of the following questions may be used to record the results of judgments and findings. Additional space is provided at the end of this checklist for documenting other comments.

**Anchorage**

1. Is the anchorage configuration verification required (i.e., is the item one of the 50% of SWEL items requiring such verification)? Y  N
  
2. Is the anchorage free of bent, broken, missing or loose hardware? Y  N  U  N/A
  
3. Is the anchorage free of corrosion that is more than mild surface oxidation? Y  N  U  N/A
  
4. Is the anchorage free of visible cracks in the concrete near the anchors? Y  N  U  N/A
  
5. Is the anchorage configuration consistent with plant documentation? Y  N  U  N/A   
 (Note: This question only applies if the item is one of the 50% for which an anchorage configuration verification is required.)  
*Panel is welded to embedded plate in floor. Welds are on the outside of the panel. The welds were confirmed to be consistent with the welds identified and evaluated in the SEWS package for this component dated 7/1/93. All welds were determined to be free from adverse conditions and to match plant documentation. See pages 310-5 for pictures of typical welds.*  
*4 to 6 John 8/23/12*

<sup>1</sup> Enter the equipment class name from Appendix B: Classes of Equipment.



F2-42

Sheet 2 of 46 *John*  
 Status: Y  N  U  *8/27/92*

**Seismic Walkdown Checklist (SWC)**

Equipment ID No. Q2H11NGB2504K Equip. Class: 20

Equipment Description BOP INSTRUMENTATION CABINET K

6. Based on the above anchorage evaluations, is the anchorage free of potentially adverse seismic conditions? Y  N  U

Interaction Effects

7. Are soft targets free from impact by nearby equipment or structures? Y  N  U  N/A

8. Are overhead equipment, distribution systems, ceiling tiles and lighting, and masonry block walls not likely to collapse onto the equipment? Y  N  U  N/A

*Isolated cases were found where some of the east-west spanning runners were not clipped to the north south spanning runners. However, all north south spanning runners are supported from the roof and are prevented from lateral motion. The lights, vents and other items are supported from the structure independently from the ceiling tile system. The overall configuration is consistent with the configuration identified and evaluated in the SEWS walkdown performed on 7/1/93. Due to the fact that the unclipped runners occur only in isolated cases and the fact that all tiles are supported on at least three sides, the ceiling tiles will not fall and adversely impact the panels. There are no ceiling tiles directly over any panels and the panels are all closed on the top. A corrective action report has been issued to reattach the loose runners.*

9. Do attached lines have adequate flexibility to avoid damage? Y  N  U  N/A

10. Based on the above seismic interaction evaluations, is equipment free of potentially adverse seismic interaction effects? Y  N  U

Other Adverse Conditions

11. Have you looked for and found no other seismic conditions that could adversely affect the safety functions of the equipment? Y  N  U

F242

Sheet 3 of 40  
Status: Y  N  U  8/23/12

**Seismic Walkdown Checklist (SWC)**

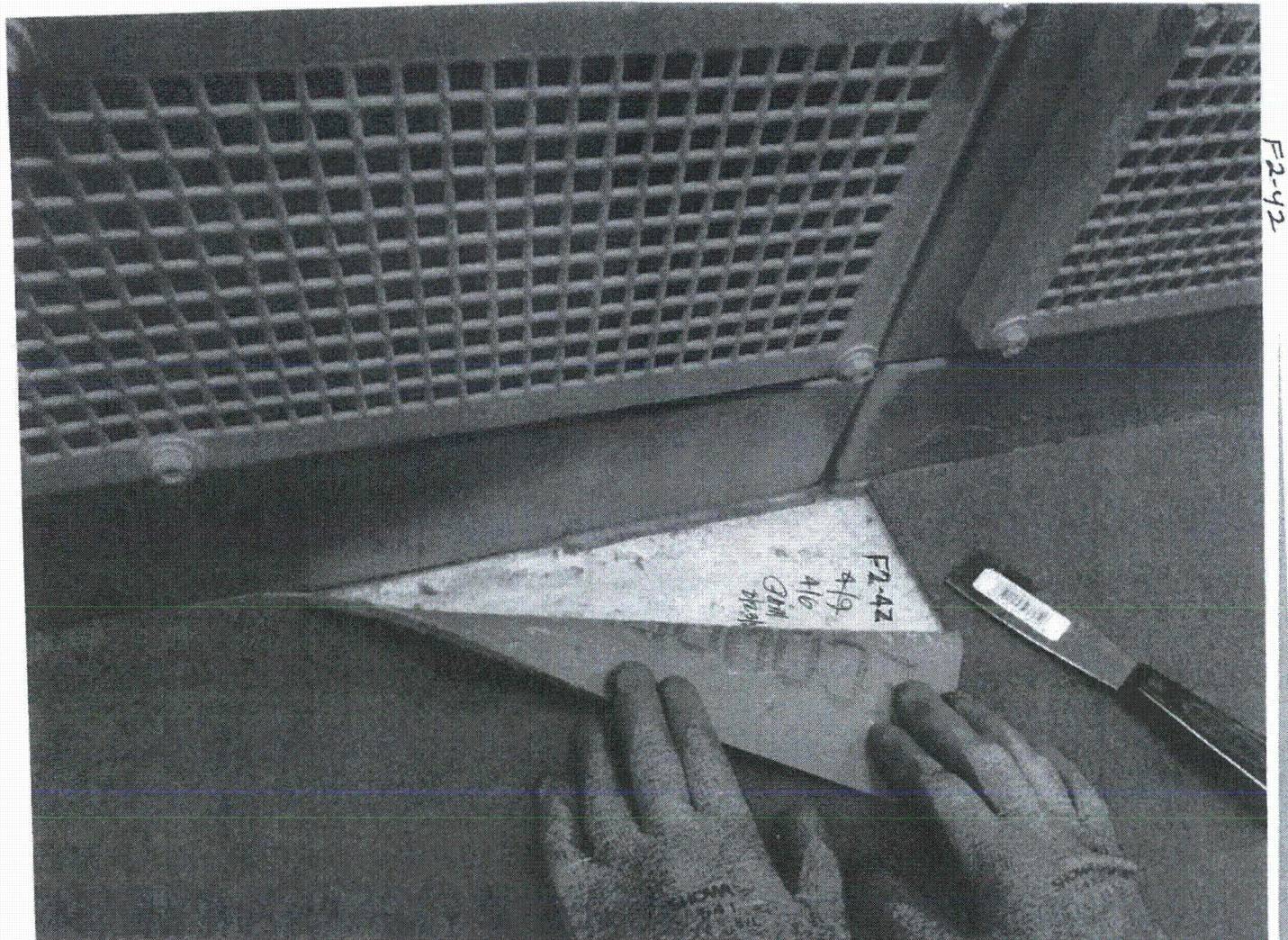
Equipment ID No. Q2H11NGB2504K Equip. Class' 20

Equipment Description: BOP INSTRUMENTATION CABINET K

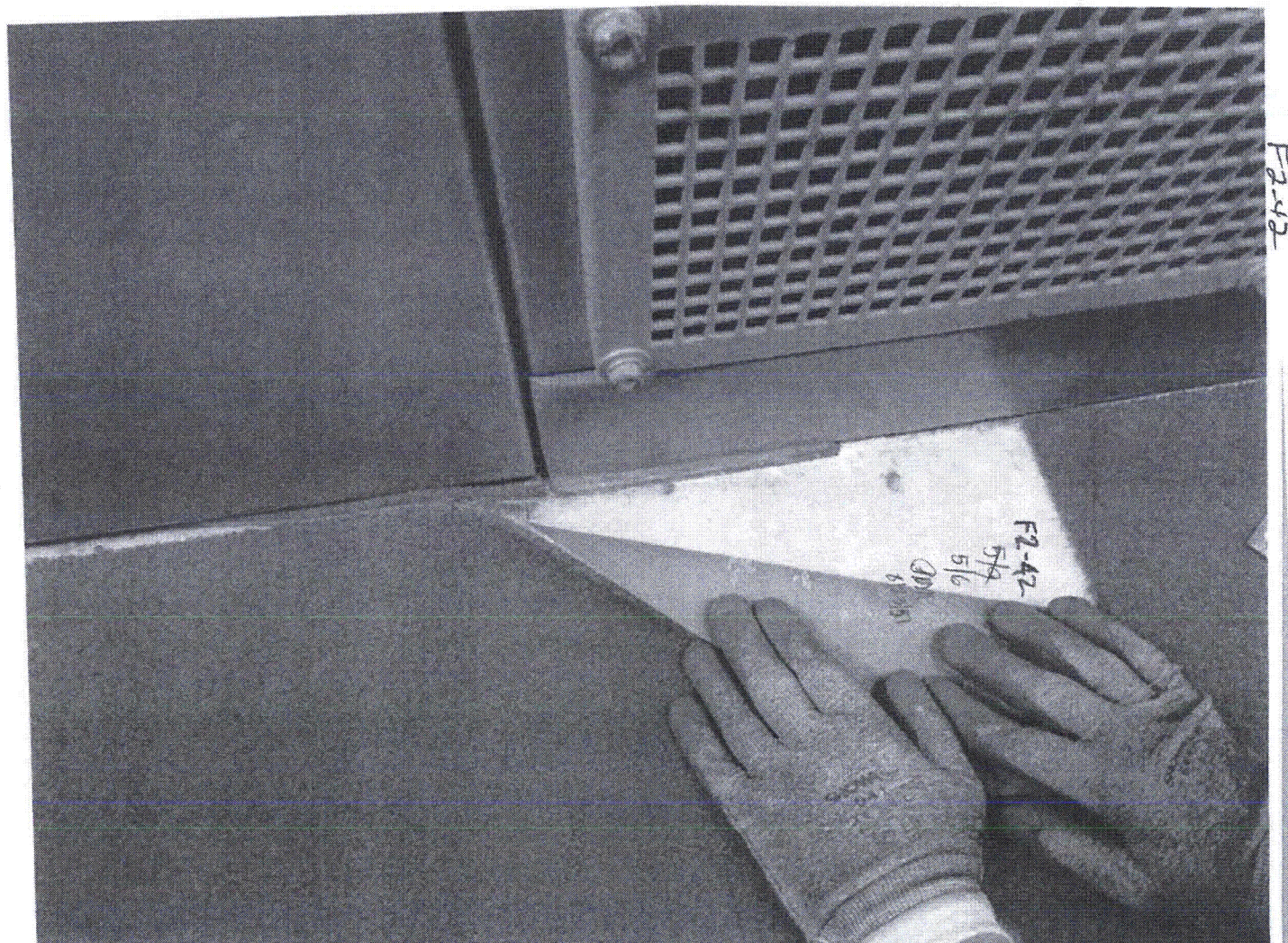
Comments (Additional pages may be added as necessary)

Evaluated by: P. MKTUS *Paul MKTUS* Date: 8-23-12  
S. YUAN *Steph YUAN* 8-23-12

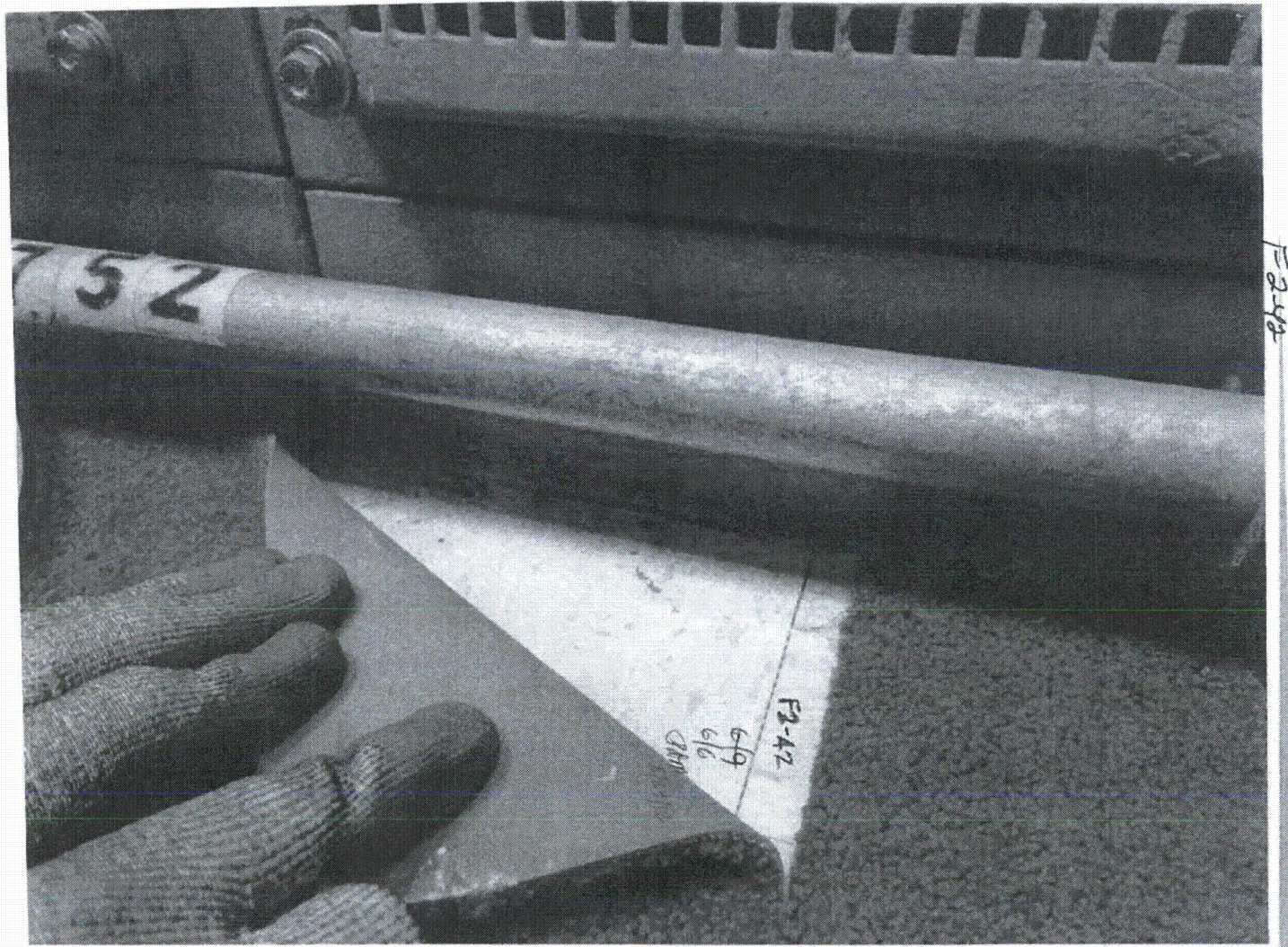














F2-43

Sheet 1 of 34  
Status: Y  N  U  *Don 8/28/02*

**Seismic Walkdown Checklist (SWC)**

Equipment ID No. Q2H11NGNIS2503A Equip. Class<sup>1</sup> 20

Equipment Description NIS EXCORÉ DETECTOR CABINET

Location: Bldg. AUXILIARY Floor El. 155 Room, Area \_\_\_\_\_

Manufacturer, Model, Etc. (optional but recommended) \_\_\_\_\_

**Instructions for Completing Checklist**

This checklist may be used to document the results of the Seismic Walkdown of an item of equipment on the SWEL. The space below each of the following questions may be used to record the results of judgments and findings. Additional space is provided at the end of this checklist for documenting other comments.

Anchorage

- 1. Is the anchorage configuration verification required (i.e., is the item one of the 50% of SWEL items requiring such verification)?  Y  N  U  *SEE COMMENT ON PAGE 2.*
- 2. Is the anchorage free of bent, broken, missing or loose hardware?  Y  N  U  N/A
- 3. Is the anchorage free of corrosion that is more than mild surface oxidation?  Y  N  U  N/A
- 4. Is the anchorage free of visible cracks in the concrete near the anchors?  Y  N  U  N/A
- 5. Is the anchorage configuration consistent with plant documentation?  Y  N  U  N/A  
(Note: This question only applies if the item is one of the 50% for which an anchorage configuration verification is required.)  
*ANCHORAGE CONFIGURATION IS PER SEWS Q2H 11NGNIS 2503A-1, DATED 7-2-99.*
- 6. Based on the above anchorage evaluations, is the anchorage free of potentially adverse seismic conditions?  Y  N  U

<sup>1</sup> Enter the equipment class name from Appendix B: Classes of Equipment.

F2-43

Sheet 2 of 4 <sup>JAM</sup> 3/28/12

Status: Y  N  U

**Seismic Walkdown Checklist (SWC)**

Equipment ID No. Q2H11NGNIS2503A Equip. Class: 20

Equipment Description NIS EXCORE DETECTOR CABINET

**Interaction Effects**

7. Are soft targets free from impact by nearby equipment or structures? Y  N  U  N/A

8. Are overhead equipment, distribution systems, ceiling tiles and lighting, and masonry block walls not likely to collapse onto the equipment? Y  N  U  N/A

9. Do attached lines have adequate flexibility to avoid damage? Y  N  U  N/A

10. Based on the above seismic interaction evaluations, is equipment free of potentially adverse seismic interaction effects? Y  N  U

**Other Adverse Conditions**

11. Have you looked for and found no other seismic conditions that could adversely affect the safety functions of the equipment? Y  N  U

**Comments** (Additional pages may be added as necessary)

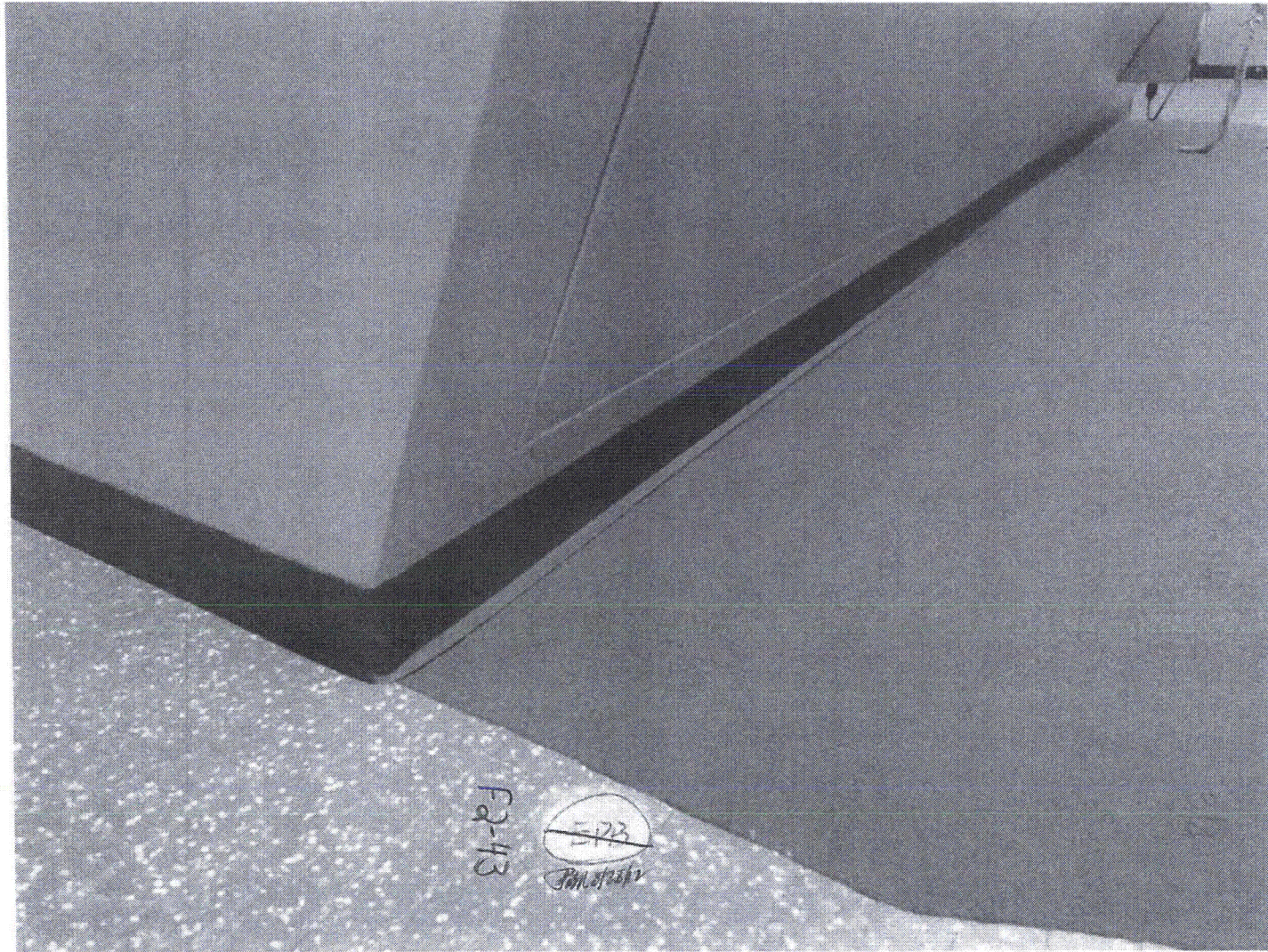
WELD INSPECTIONS OF THIS CABINET REQUIRE THE REMOVAL OF A 3" TALL, VINYL KICK PLATE. IN ADDITION, HALF OF THE WELDS UNDER THE VINYL ARE INSIDE THE MAIN CONTROL ROOM. THE ON-DUTY UNIT 2 OPERATIONS SHIFT SUPERVISOR WAS UNCOMFORTABLE WITH THE KICK PLATE REMOVAL AND DID NOT

Evaluated by: S. YUAN *[Signature]* Date: 8-28-12

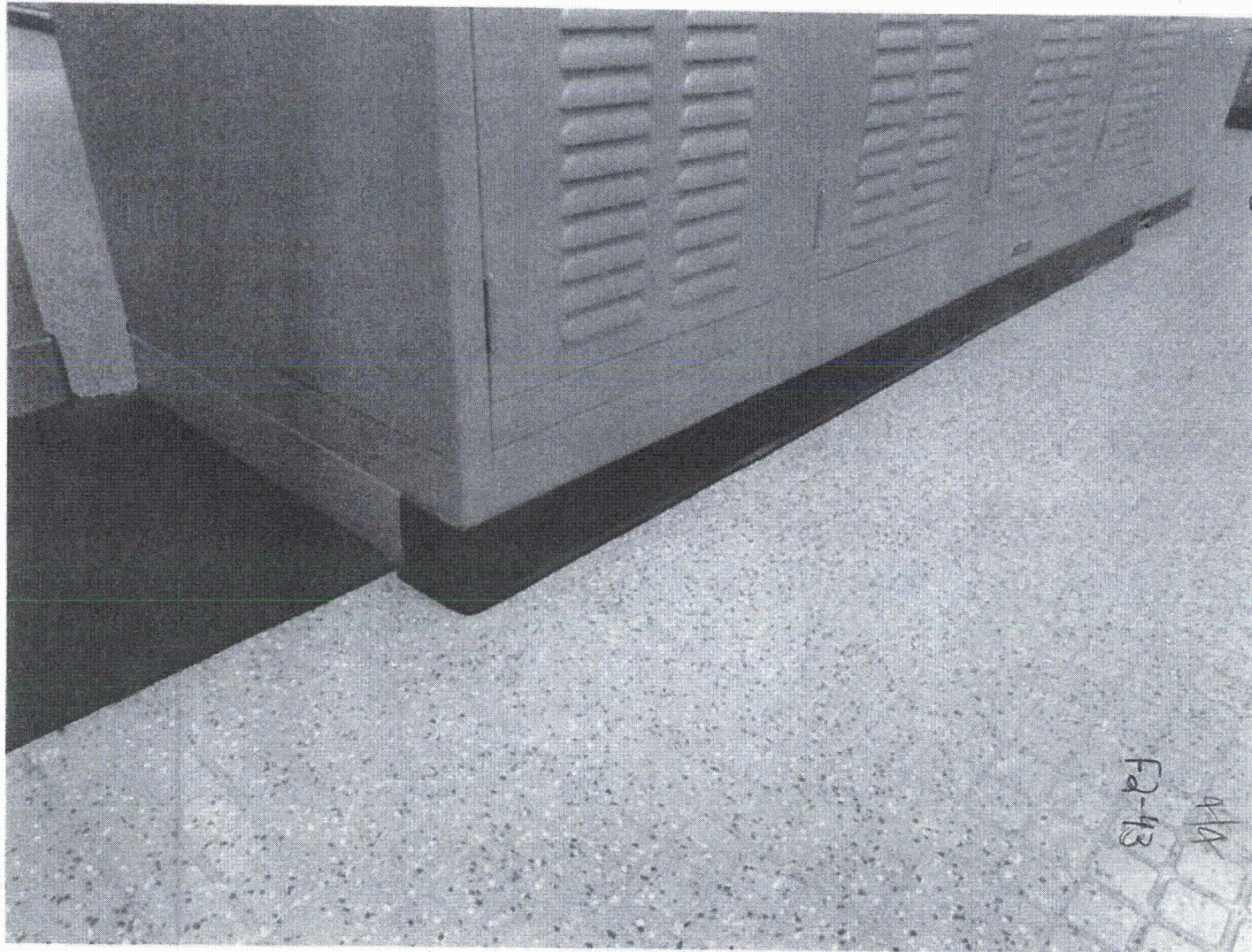
P. MIKLOS *[Signature]* 8-28-12

AGREE TO ALLOW THIS. AT THIS TIME THIS WALKDOWN IS TO BE COMPLETED DURING A FUTURE OUTAGE. THIS PKG IS ACCEPTABLE PER THE AWD FOR ROOM 416 IS IN PKG F1-091 DISCUSSION IN F1-104











F2-44

Sheet 1 of 13 *8/20/12*

Status: Y  N  U

**Seismic Walkdown Checklist (SWC)**

Equipment ID No. Q2H11NGPIC2505D Equip. Class<sup>1</sup> 20

Equipment Description Process Protection Cabinet Channel 4

Location: Bldg. Aux. Bldg Floor El. 155' Room: Area \_\_\_\_\_

Manufacturer, Model, Etc. (optional but recommended) \_\_\_\_\_

**Instructions for Completing Checklist**

This checklist may be used to document the results of the Seismic Walkdown of an item of equipment on the SWEL. The space below each of the following questions may be used to record the results of judgments and findings. Additional space is provided at the end of this checklist for documenting other comments.

**Anchorage**

1. Is the anchorage configuration verification required (i.e., is the item one of the 50% of SWEL items requiring such verification)? Y  N
  
2. Is the anchorage free of bent, broken, missing or loose hardware? Y  N  U  N/A   
*Cabinet is welded to embedded steel in the floor.*
  
3. Is the anchorage free of corrosion that is more than mild surface oxidation? Y  N  U  N/A
  
4. Is the anchorage free of visible cracks in the concrete near the anchors? Y  N  U  N/A
  
5. Is the anchorage configuration consistent with plant documentation? Y  N  U  N/A   
(Note: This question only applies if the item is one of the 50% for which an anchorage configuration verification is required.)  
*Anchorage documentation was obtained from SEWS package for this component, dated 7/1/93. Anchorage consists of welds to an embedded plate located on outside of cabinet. Carpeting was partially removed to verify that welds match documented condition and that they have no adverse seismic conditions.*

<sup>1</sup>Enter the equipment class name from Appendix B: Classes of Equipment.

F244

Sheet 2 of 413 *Part 2/12/12*

Status: Y  N  U

**Seismic Walkdown Checklist (SWC)**

Equipment ID No. Q2H11NGPIC2505D Equip. Class 20

Equipment Description Process Protection Cabinet Channel 4

6. Based on the above anchorage evaluations, is the anchorage free of potentially adverse seismic conditions? Y  N  U

Interaction Effects

7. Are soft targets free from impact by nearby equipment or structures? Y  N  U  N/A

8. Are overhead equipment, distribution systems, ceiling tiles and lighting, and masonry block walls not likely to collapse onto the equipment? Y  N  U  N/A   
*Suspended ceiling and fixtures (lights, vents, etc) inspected and determined to be seismically adequate. Isolated cases found where runners were not clipped at both ends. See walkdown package for Q2H11NGB2504K (package F2-42) and CR506358 for additional information on the control room ceiling.*

9. Do attached lines have adequate flexibility to avoid damage? Y  N  U  N/A

10. Based on the above seismic interaction evaluations, is equipment free of potentially adverse seismic interaction effects? Y  N  U

Other Adverse Conditions

11. Have you looked for and found no other seismic conditions that could adversely affect the safety functions of the equipment? Y  N  U

Comments (Additional pages may be added as necessary)

*Verified the adequacy of welds as per SEWS for Q2H11NGBR2504K-B and Q2H11NGPIC2505A-1, dated 7-1-93. The Area Walk By is included in package F2-42.*

F244

Sheet 3 of 4 <sup>13</sup> 5/29/12

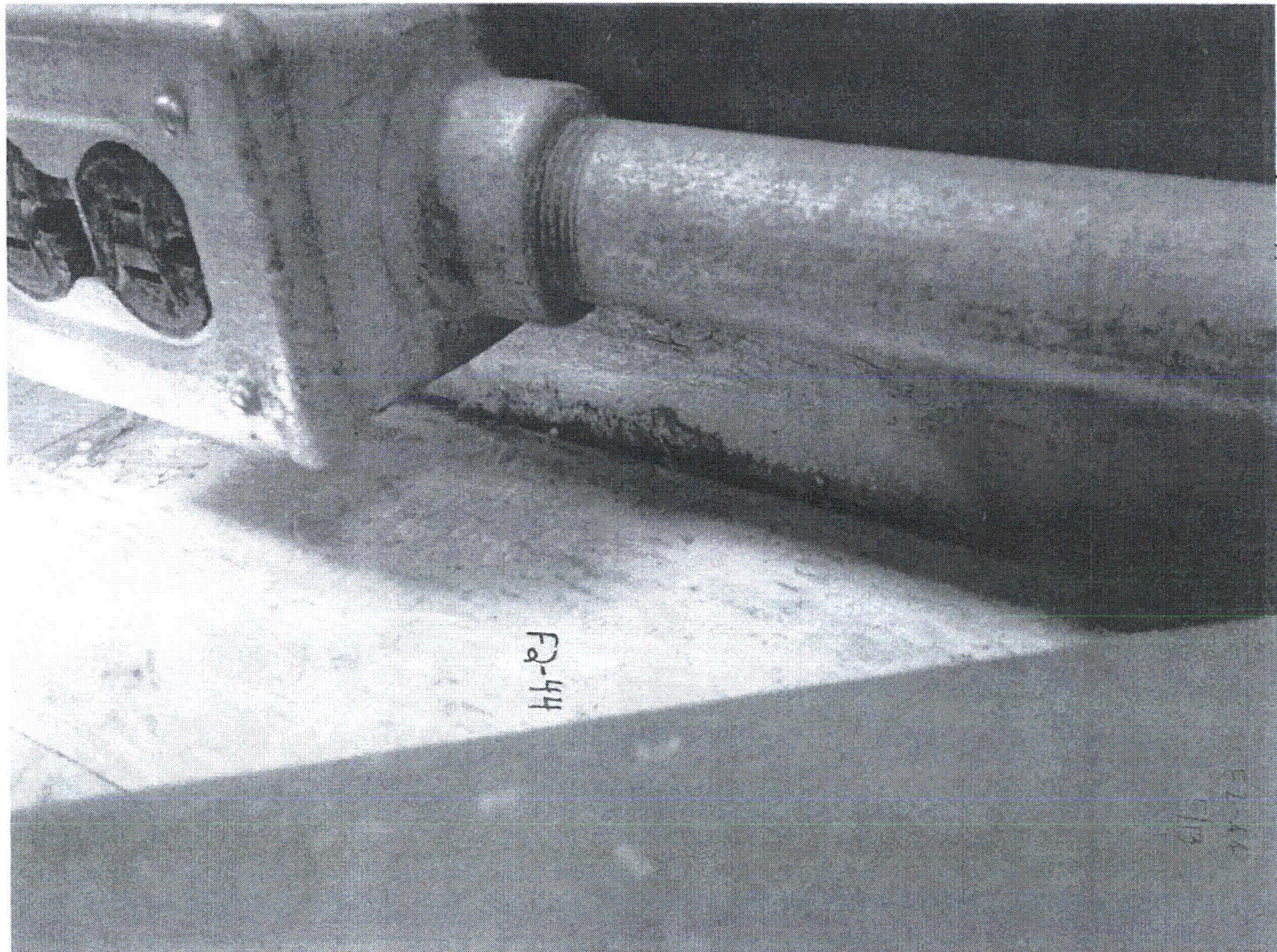
Evaluated by: P. Miktus *P. Miktus* Date: 08-23-12

S. Yuan *S. Yuan* 08-23-12

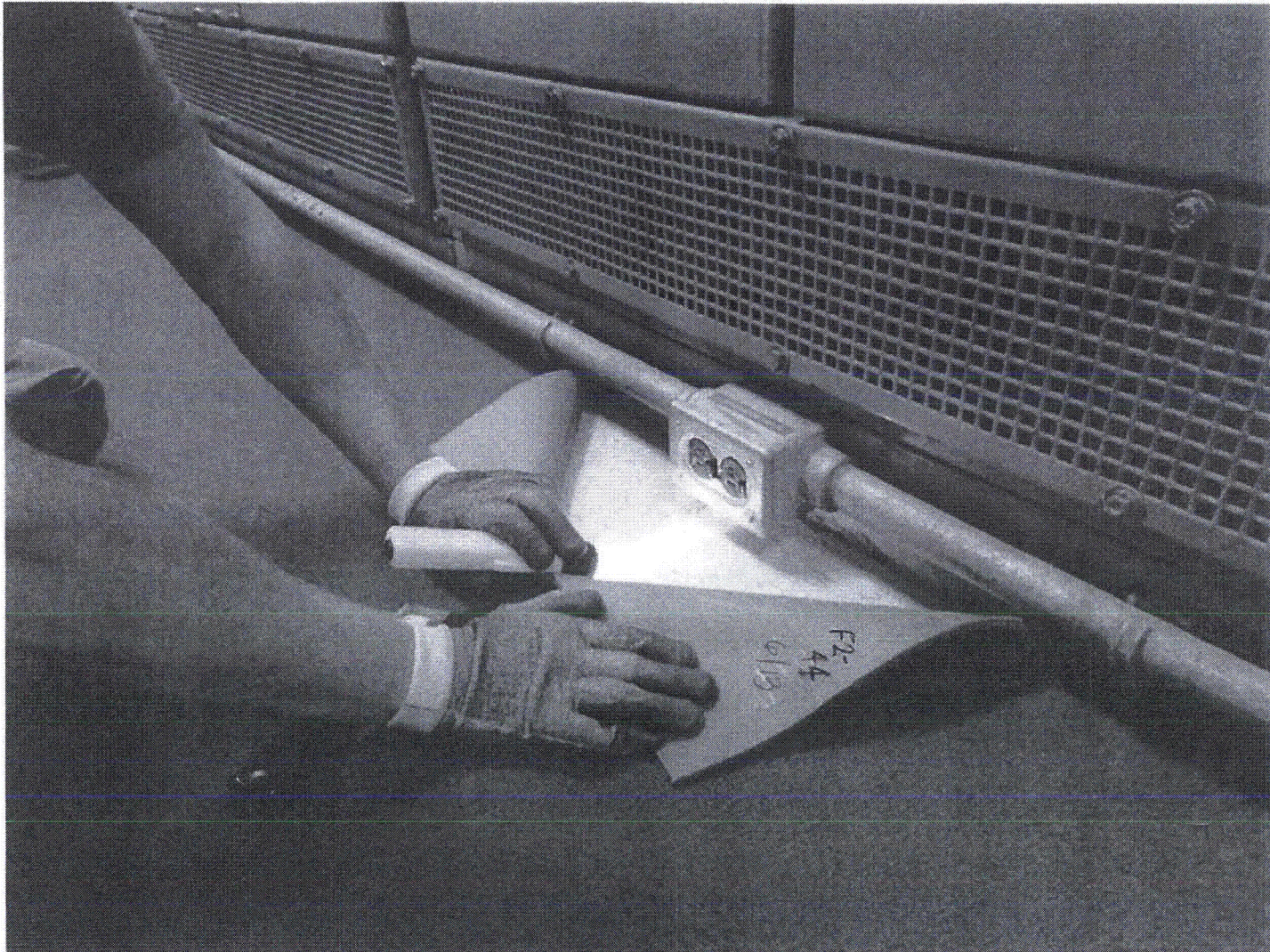




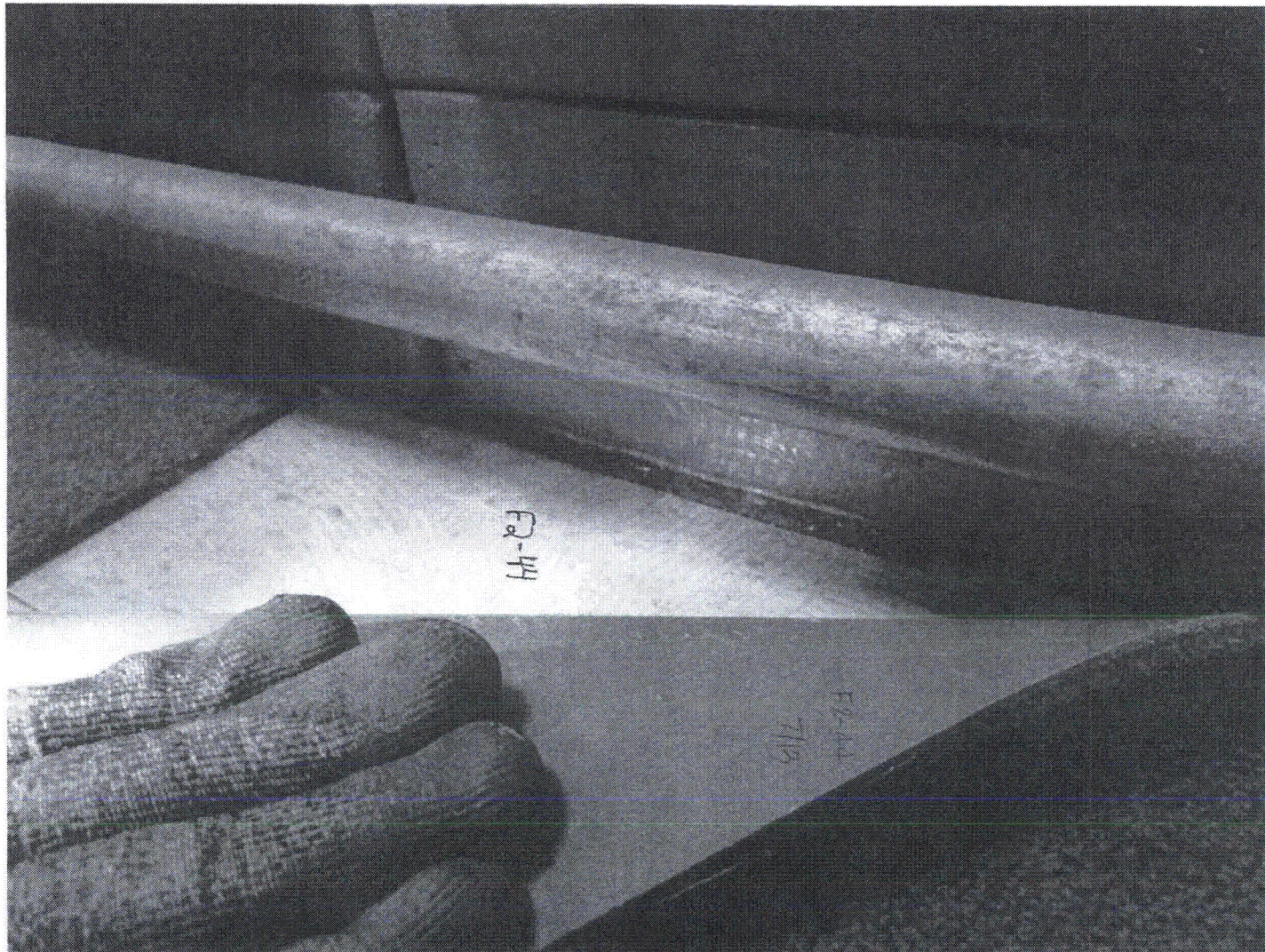




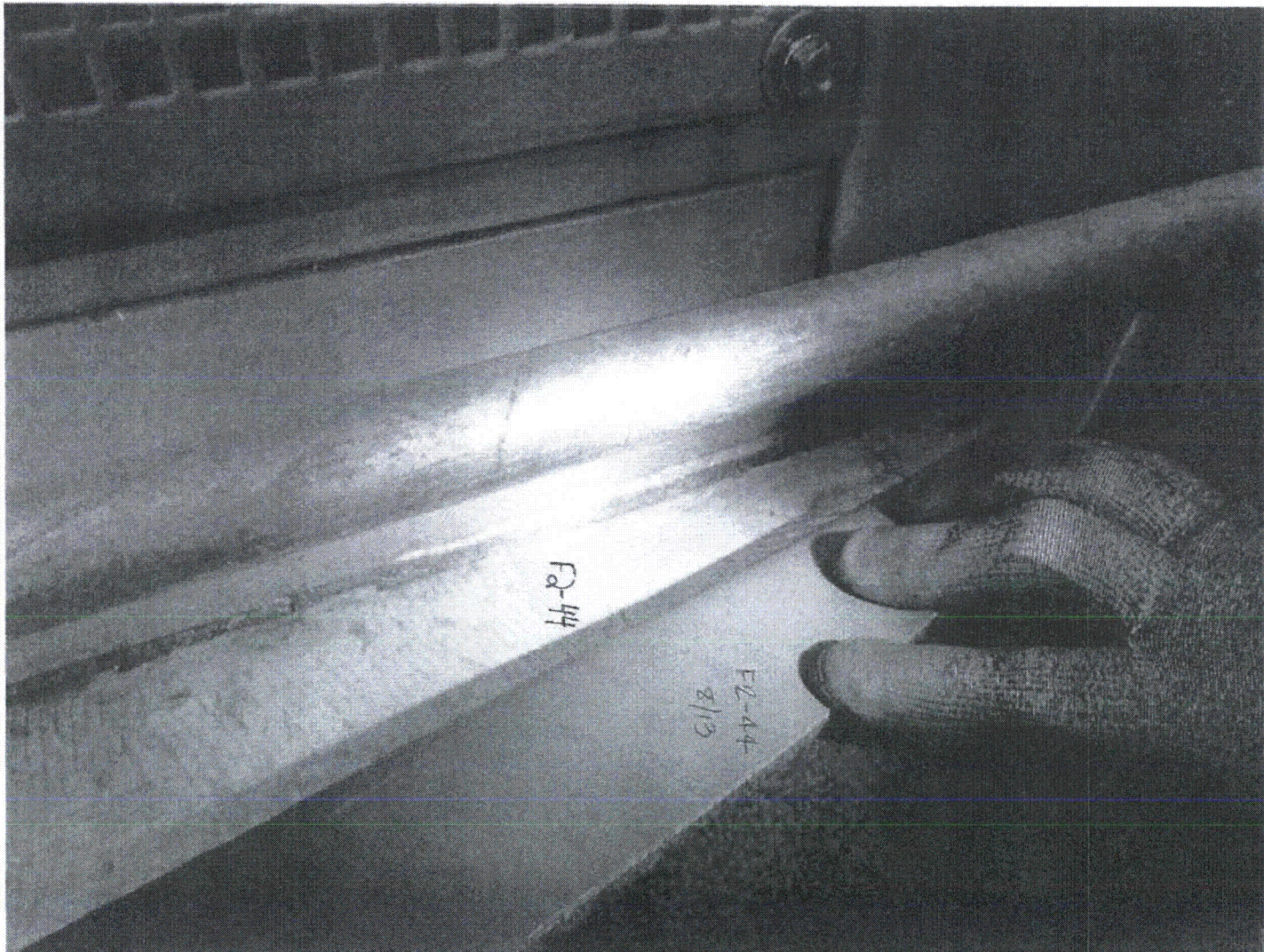




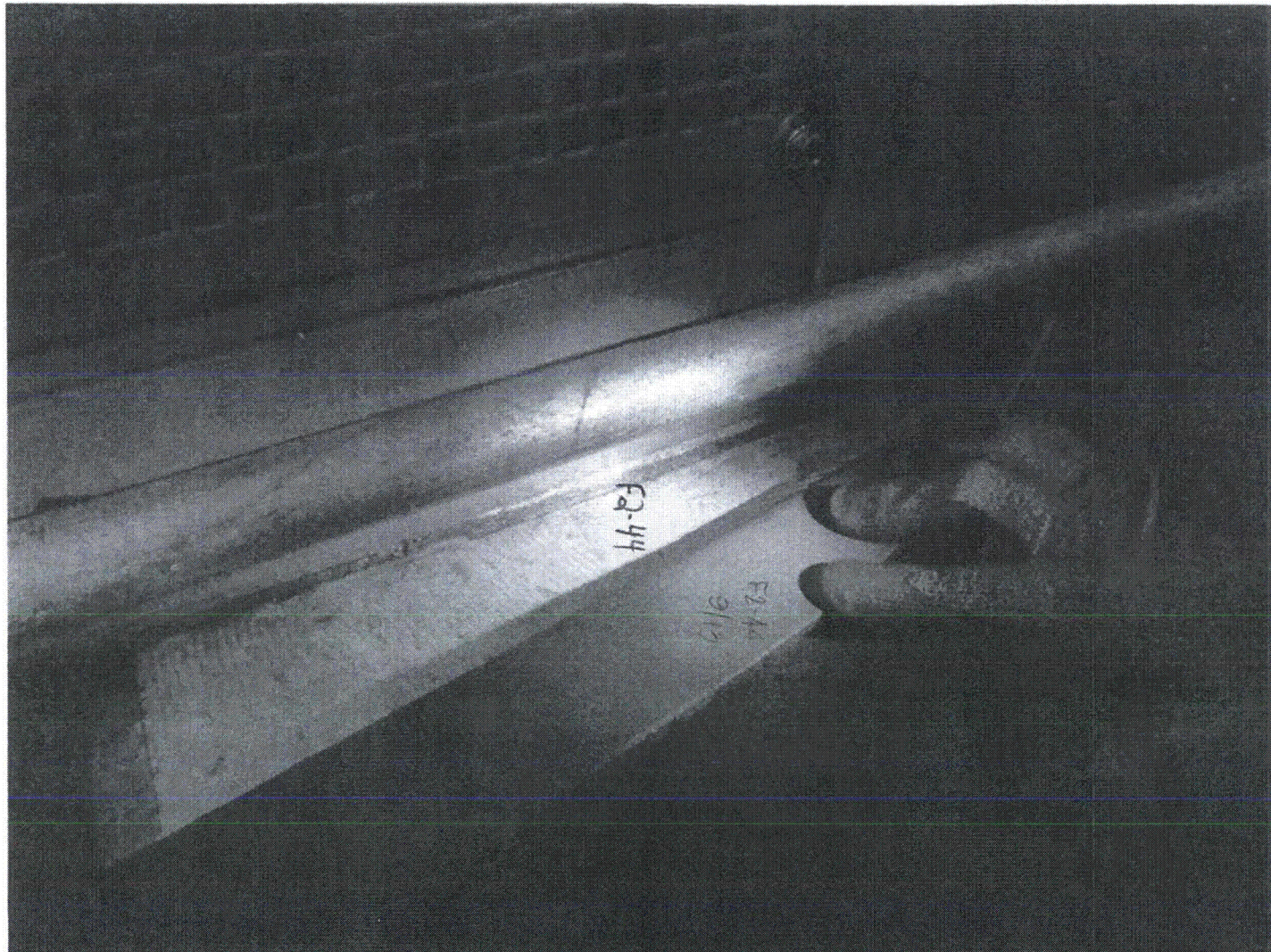




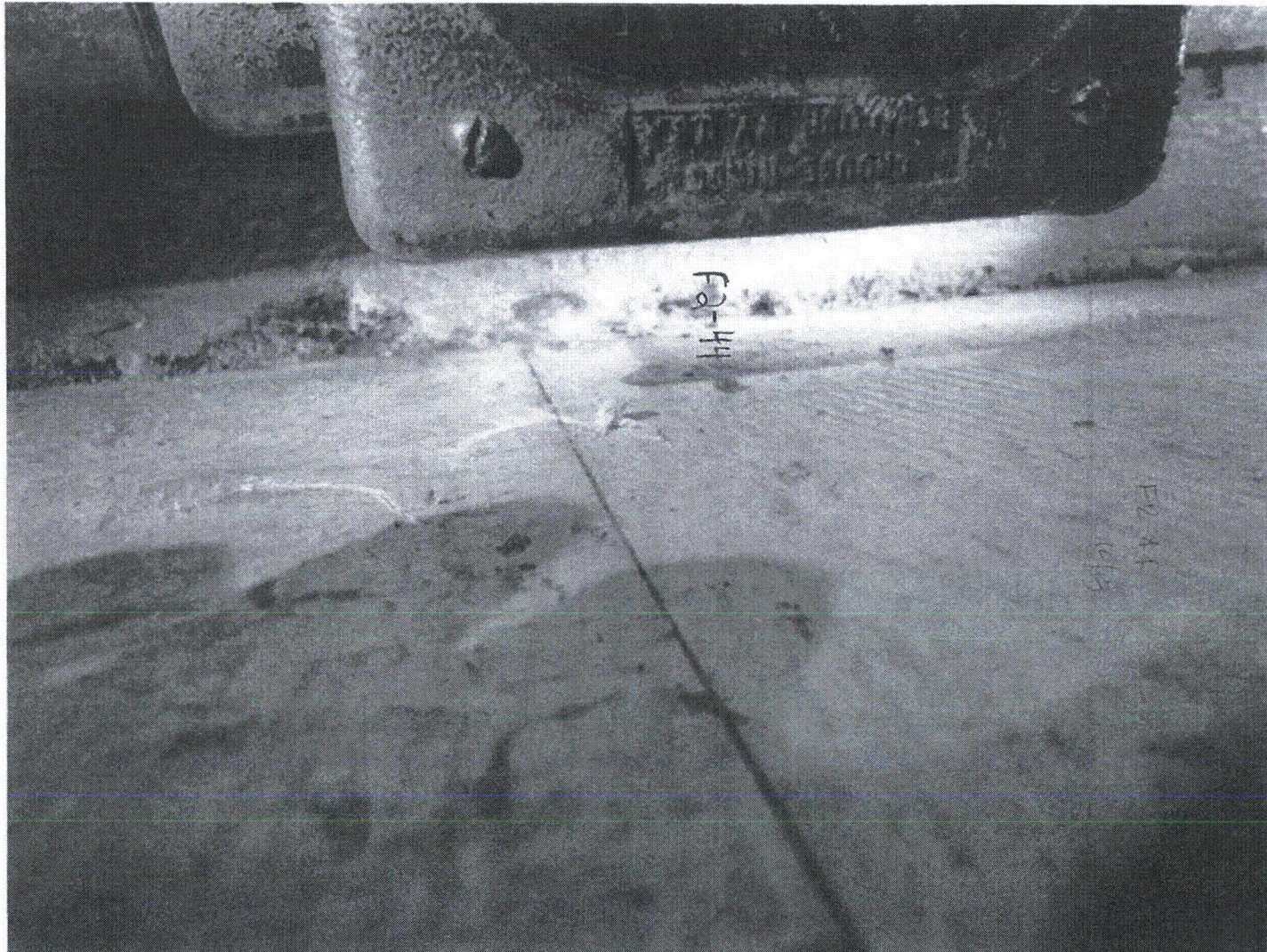




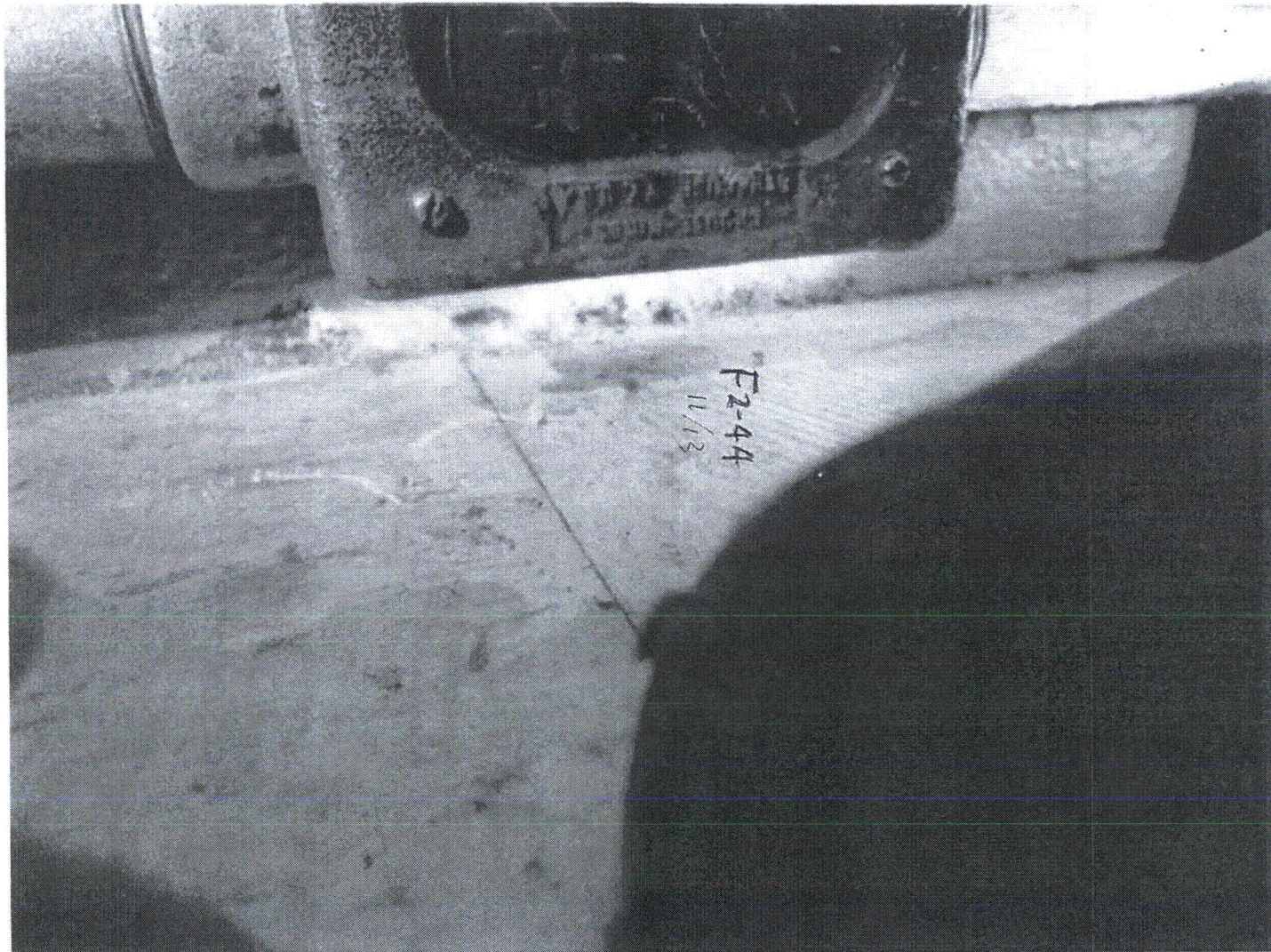




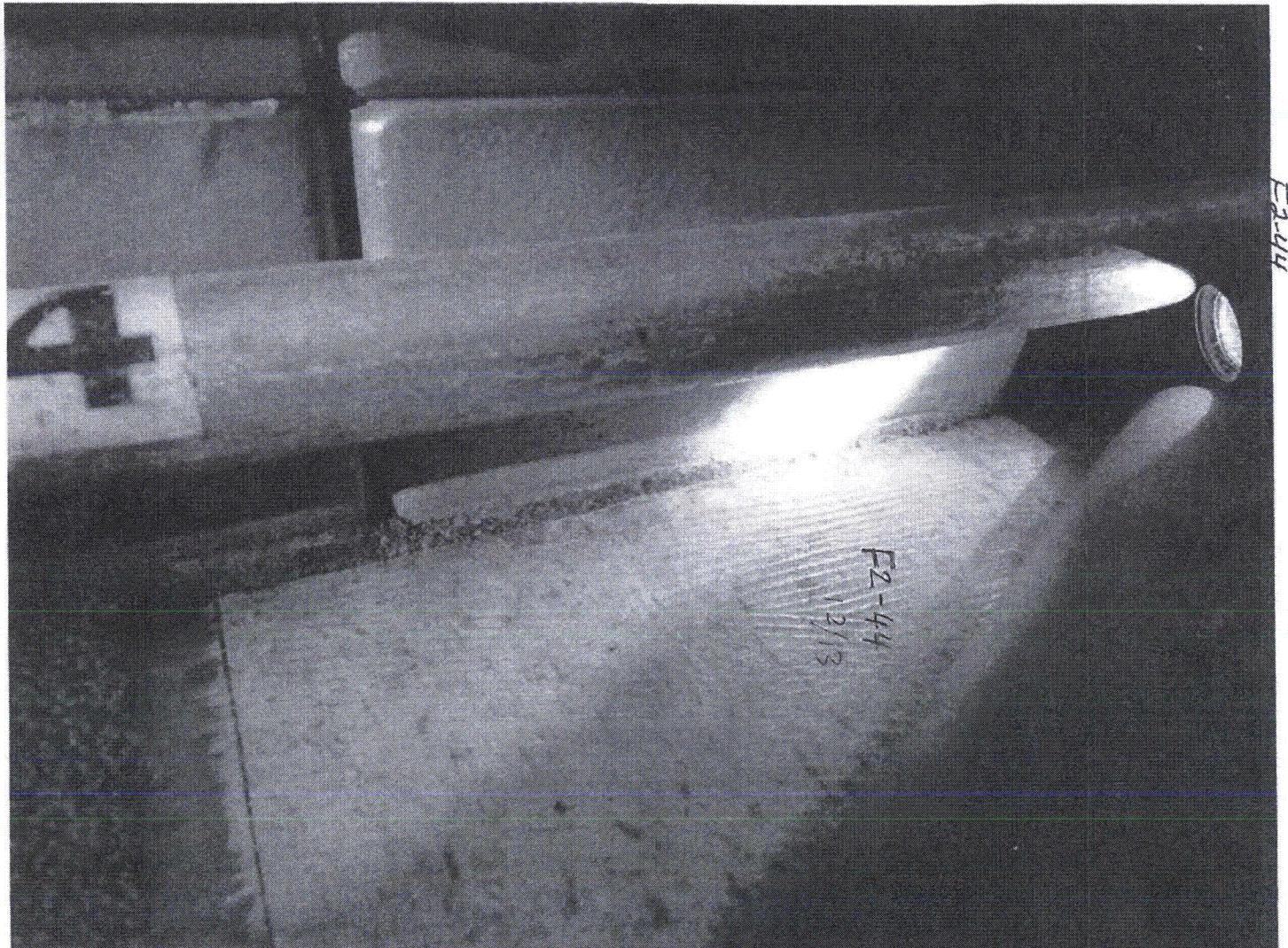




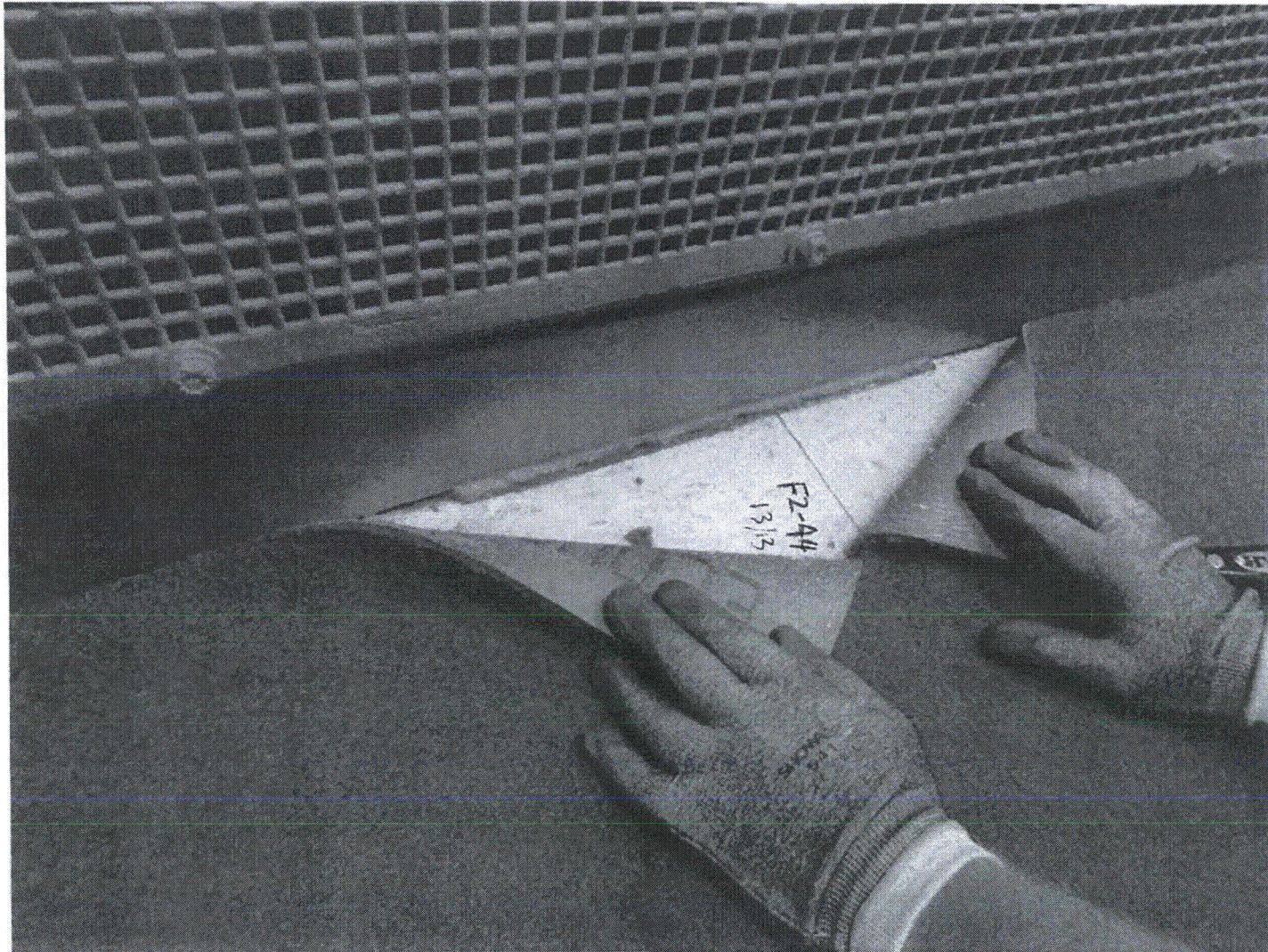














F2-45

Sheet 1 of 11 *Done*  
 Status: Y  N  U  *8/25/12*

**Seismic Walkdown Checklist (SWC)**

Equipment ID No: Q2H11NGPIC2505H Equip. Class<sup>1</sup> 20

Equipment Description Process Control Cabinet Channel 4

Location: Bldg. Aux. Bldg Floor El: 155' Room, Area \_\_\_\_\_

Manufacturer, Model, Etc. (optional but recommended) \_\_\_\_\_

**Instructions for Completing Checklist**

This checklist may be used to document the results of the Seismic Walkdown of an item of equipment on the SWEL. The space below each of the following questions may be used to record the results of judgments and findings. Additional space is provided at the end of this checklist for documenting other comments.

**Anchorage**

1. Is the anchorage configuration verification required (i.e., is the item one of the 50% of SWEL items requiring such verification)? Y  N
  
2. Is the anchorage free of bent, broken, missing or loose hardware? Y  N  U  N/A   
*Cabinet is welded to embedded steel in the floor.*
  
3. Is the anchorage free of corrosion that is more than mild surface oxidation? Y  N  U  N/A
  
4. Is the anchorage free of visible cracks in the concrete near the anchors? Y  N  U  N/A
  
5. Is the anchorage configuration consistent with plant documentation? Y  N  U  N/A   
 (Note: This question only applies if the item is one of the 50% for which an anchorage configuration verification is required.)  
*Anchorage documentation was obtained from SEWS package for this component, dated 7/1/93. Anchorage consists of welds to an embedded plate located on outside of cabinet. Carpeting was partially removed to verify that welds match documented condition and that they have no adverse seismic conditions.*

<sup>1</sup> Enter the equipment class name from Appendix B: Classes of Equipment.

F245

Sheet 2 of 4 "Control Room"

Status: Y  N  U

**Seismic Walkdown Checklist (SWC)**

Equipment ID/No. Q2H11NGPIC2505H Equip. Class: 20

Equipment Description Process Control Cabinet Channel 4

6. Based on the above anchorage evaluations, is the anchorage free of potentially adverse seismic conditions? Y  N  U

**Interaction Effects**

7. Are soft targets free from impact by nearby equipment or structures? Y  N  U  N/A

8. Are overhead equipment, distribution systems, ceiling tiles and lighting, and masonry block walls not likely to collapse onto the equipment? Y  N  U  N/A   
*Suspended ceiling and fixtures (lights, vents, etc) inspected and determined to be seismically adequate. Isolated cases found where runners were not clipped at both ends. See walkdown package for Q2H11NGB2504K (package F2-42) and CR506358 for additional information on the control room ceiling.*

9. Do attached lines have adequate flexibility to avoid damage? Y  N  U  N/A

10. Based on the above seismic interaction evaluations, is equipment free of potentially adverse seismic interaction effects? Y  N  U

**Other Adverse Conditions**

11. Have you looked for and found no other seismic conditions that could adversely affect the safety functions of the equipment? Y  N  U

**Comments** (Additional pages may be added as necessary)

*Verified the adequacy of welds as per SEWS for Q2H11NGBR2504K-B and Q2H11NGPIC2505A-1, dated 7-1-93. The Area Walk By package is included in package F2-42*



F245

Sheet 3 of 4 "Pantaleone"

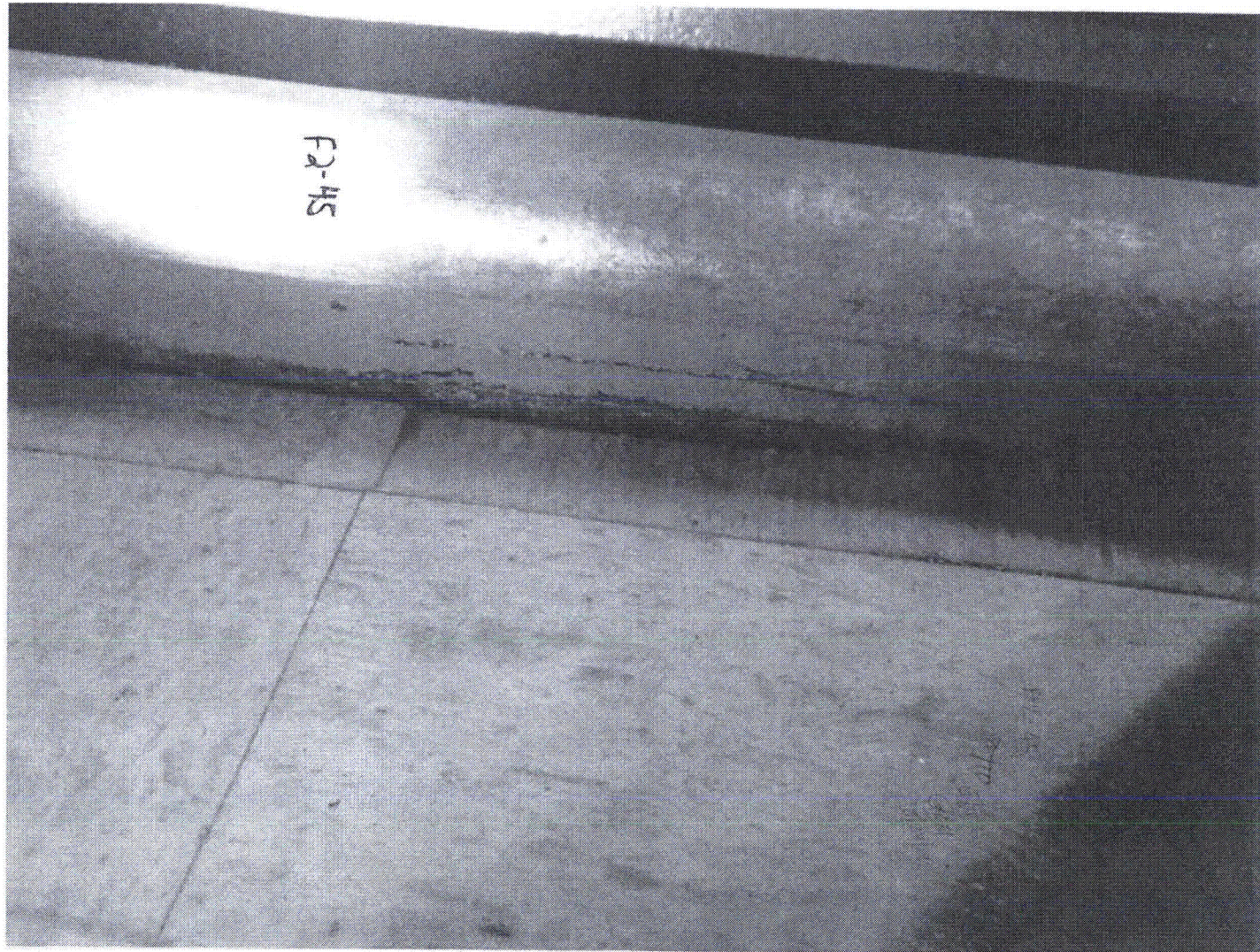
Evaluated by: P. Miktus *Paul Miktus* Date: 08-23-12

S. Yuan *Stephan Yuan* 08-23-12

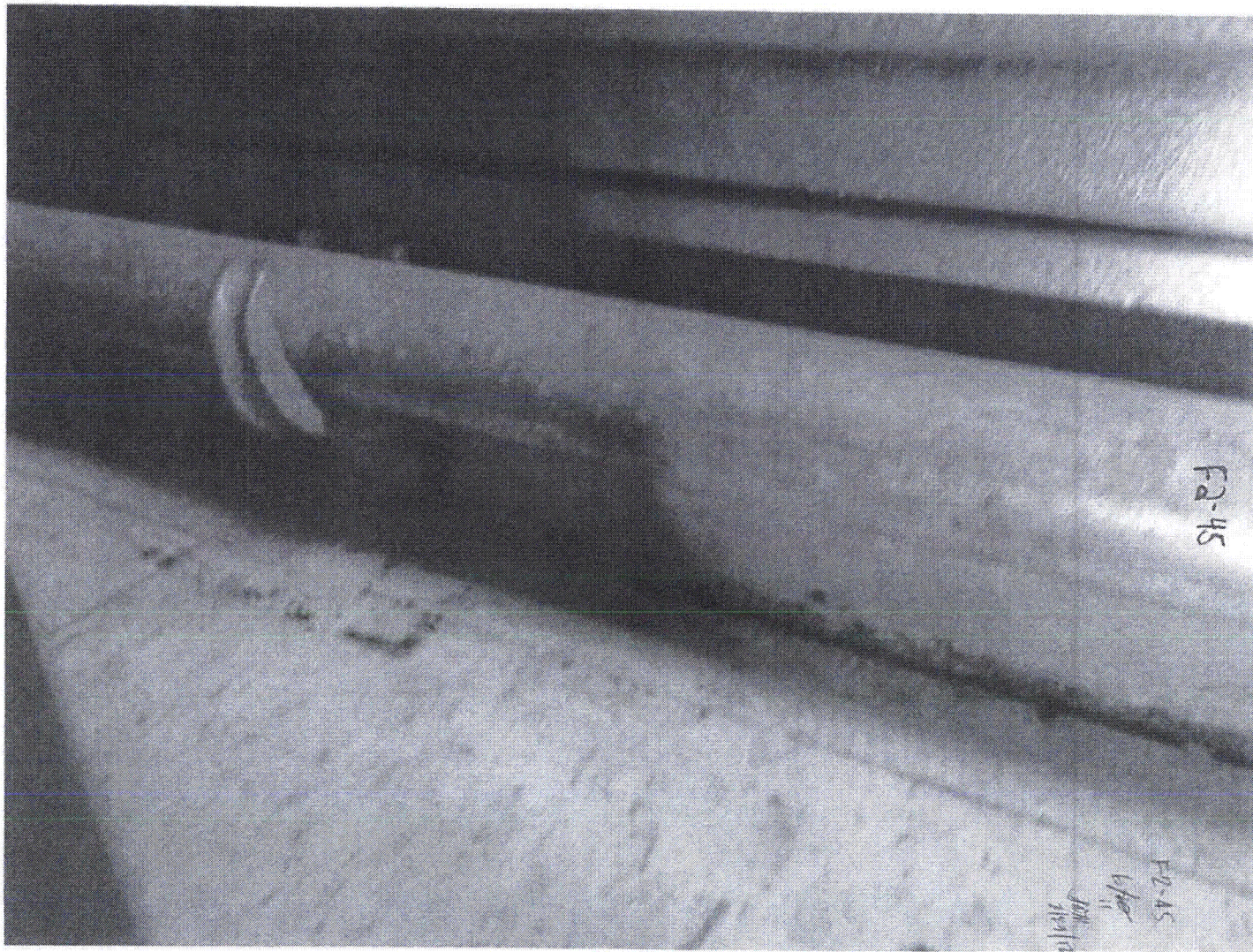




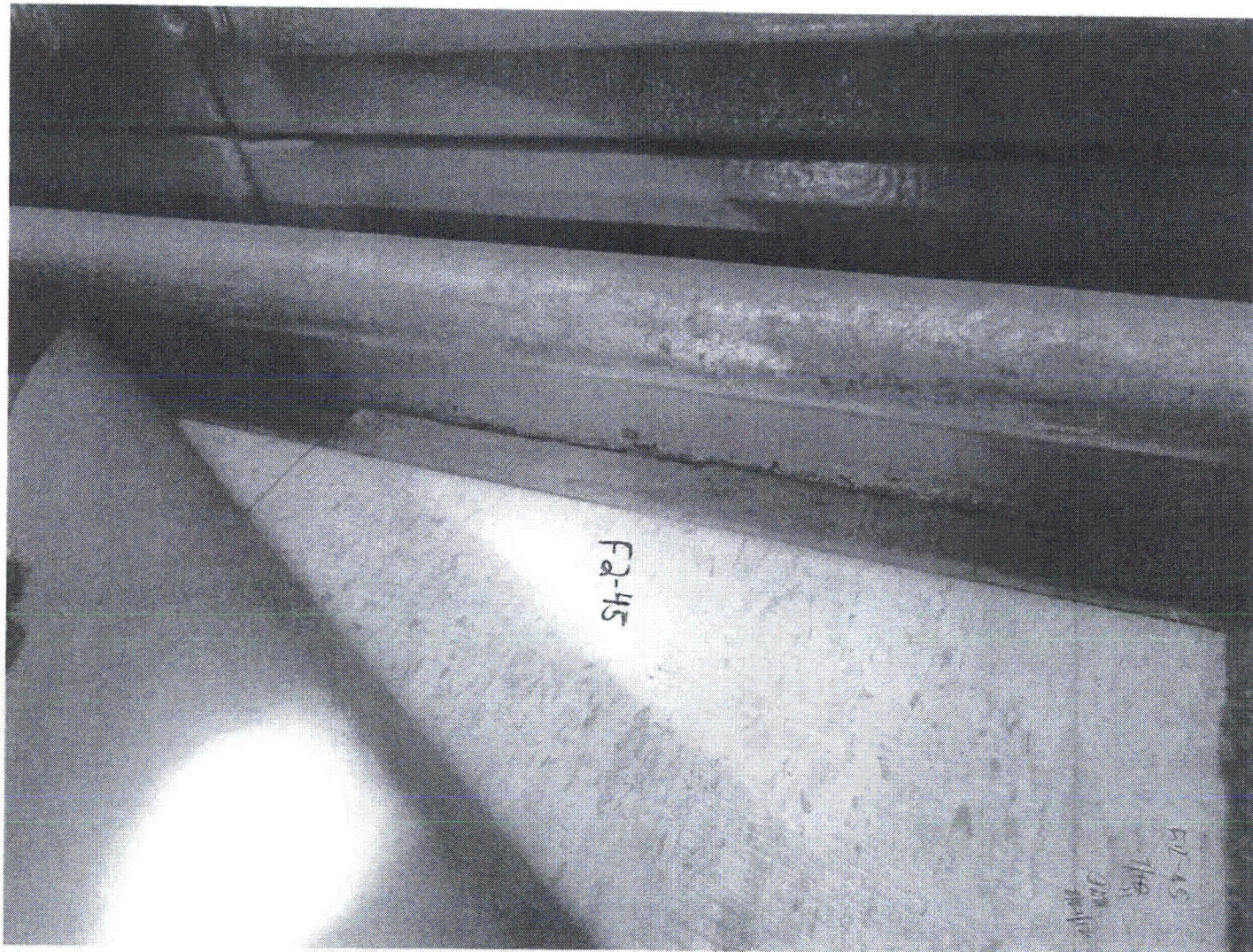




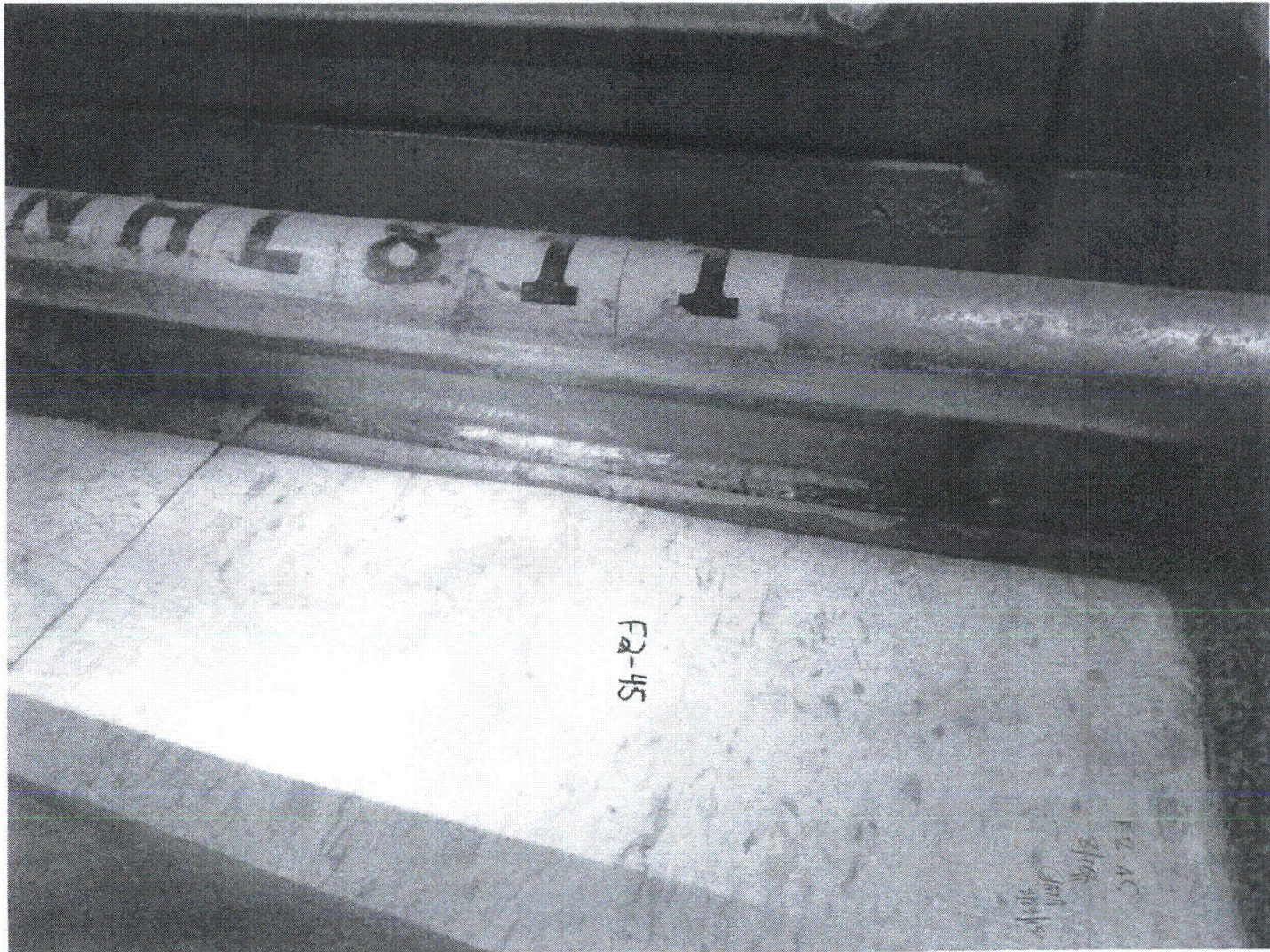








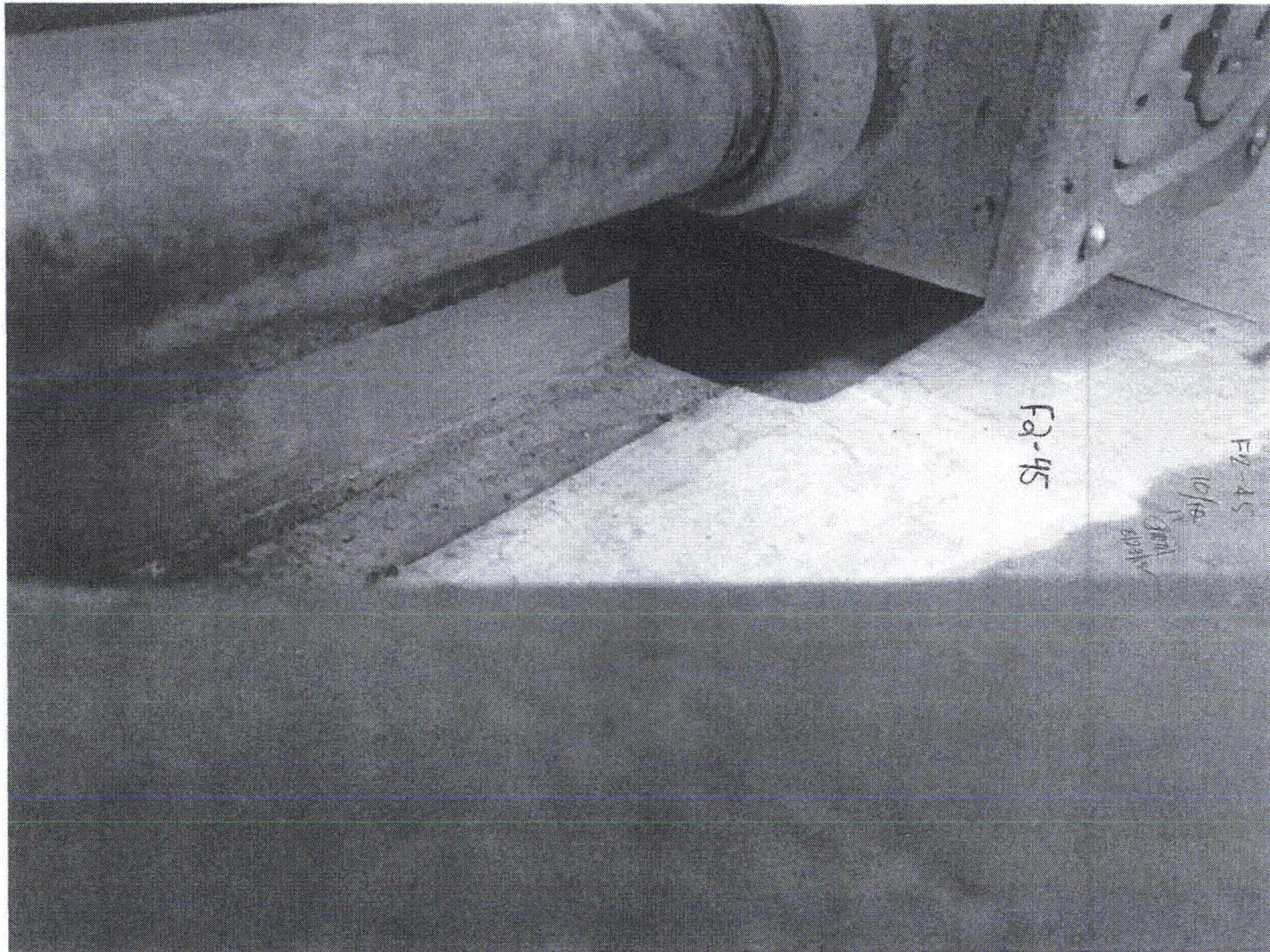




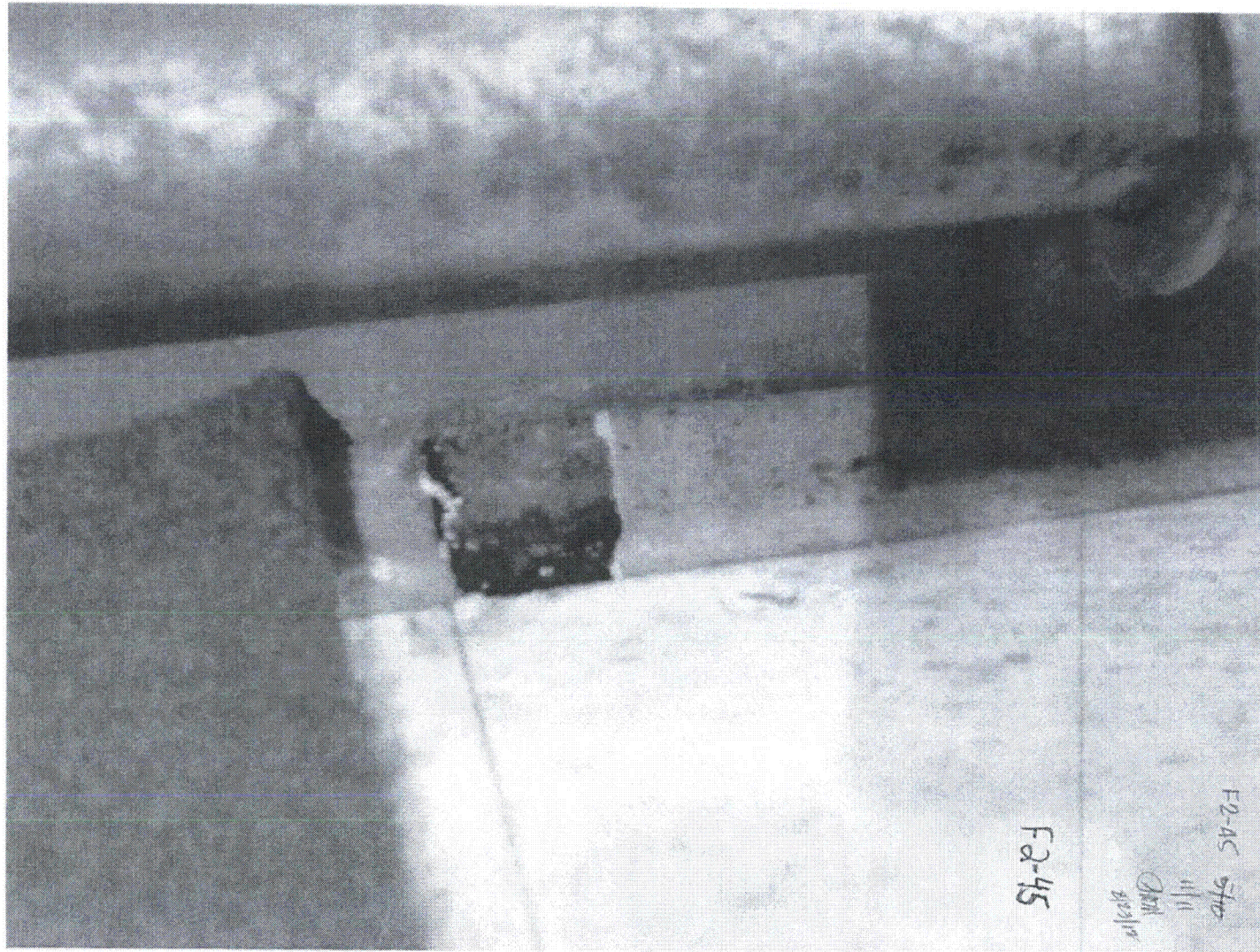














F2-46

8/28/12  
 Sheet 1 of 5

Status: Y  N  U

**Seismic Walkdown Checklist (SWC)**

Equipment ID No. Q2H11NGSSP2506N Equip. Class<sup>1</sup> 20

Equipment Description SOLID STATE PROTECTION TEST CABINET

Location: Bldg. AUXILIARY Floor El. 155 Room, Area 471

Manufacturer, Model, Etc. (optional but recommended) \_\_\_\_\_

**Instructions for Completing Checklist**

This checklist may be used to document the results of the Seismic Walkdown of an item of equipment on the SWEL. The space below each of the following questions may be used to record the results of judgments and findings. Additional space is provided at the end of this checklist for documenting other comments.

**Anchorage**

1. Is the anchorage configuration verification required (i.e., is the item one of the 50% of SWEL items requiring such verification)? Y  N
  
2. Is the anchorage free of bent, broken, missing or loose hardware? Y  N  U  N/A
  
3. Is the anchorage free of corrosion that is more than mild surface oxidation? Y  N  U  N/A
  
4. Is the anchorage free of visible cracks in the concrete near the anchors? Y  N  U  N/A
  
5. Is the anchorage configuration consistent with plant documentation? Y  N  U  N/A   
 (Note: This question only applies if the item is one of the 50% for which an anchorage configuration verification is required.)  
 REFER TO SEWS FOR Q2H11NGSSP2506N-A, DATED 7-1-93, AND SEWS FOR Q2H11NGPIC2505A4, DATED 7-1-93.
  
6. Based on the above anchorage evaluations, is the anchorage free of potentially adverse seismic conditions? Y  N  U

<sup>1</sup> Enter the equipment class name from Appendix B: Classes of Equipment.



F2-46

JM 8/28/12  
Sheet 2 of 8

Status: Y  N  U

**Seismic Walkdown Checklist (SWC)**

Equipment ID No. Q2H11NGSSP2506N Equip. Class: 20

Equipment Description SOLID STATE PROTECTION TEST CABINET

**Interaction Effects**

7. Are soft targets free from impact by nearby equipment or structures? Y  N  U  N/A

8. Are overhead equipment, distribution systems, ceiling tiles and lighting, and masonry block walls not likely to collapse onto the equipment? Y  N  U  N/A

9. Do attached lines have adequate flexibility to avoid damage? Y  N  U  N/A

10. Based on the above seismic interaction evaluations, is equipment free of potentially adverse seismic interaction effects? Y  N  U

**Other Adverse Conditions**

11. Have you looked for and found no other seismic conditions that could adversely affect the safety functions of the equipment? Y  N  U

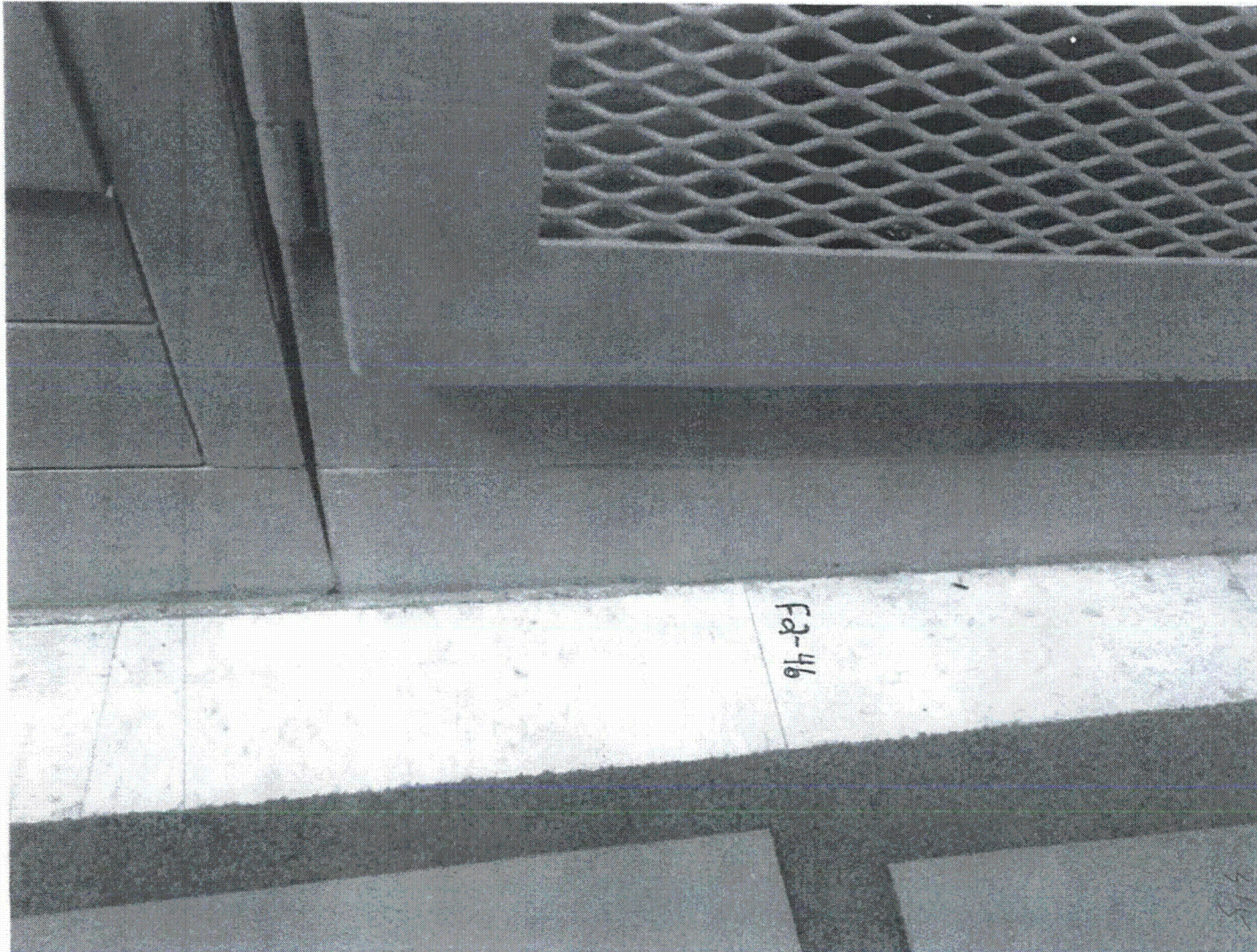
**Comments** (Additional pages may be added as necessary)

NONE

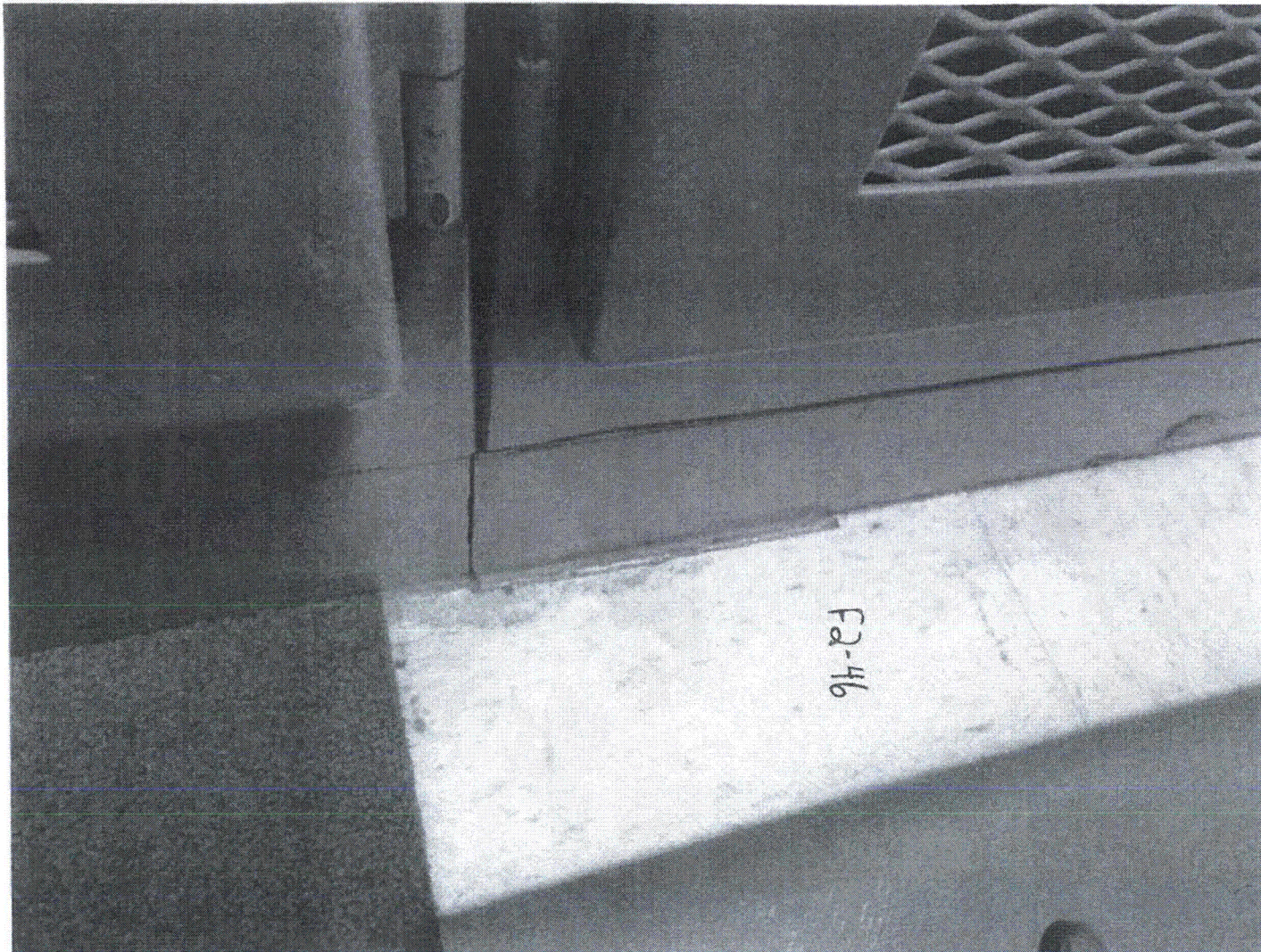
Evaluated by: S. YUAN [Signature] Date: 8-28-12

P. MIKLOS [Signature] 8-28-12

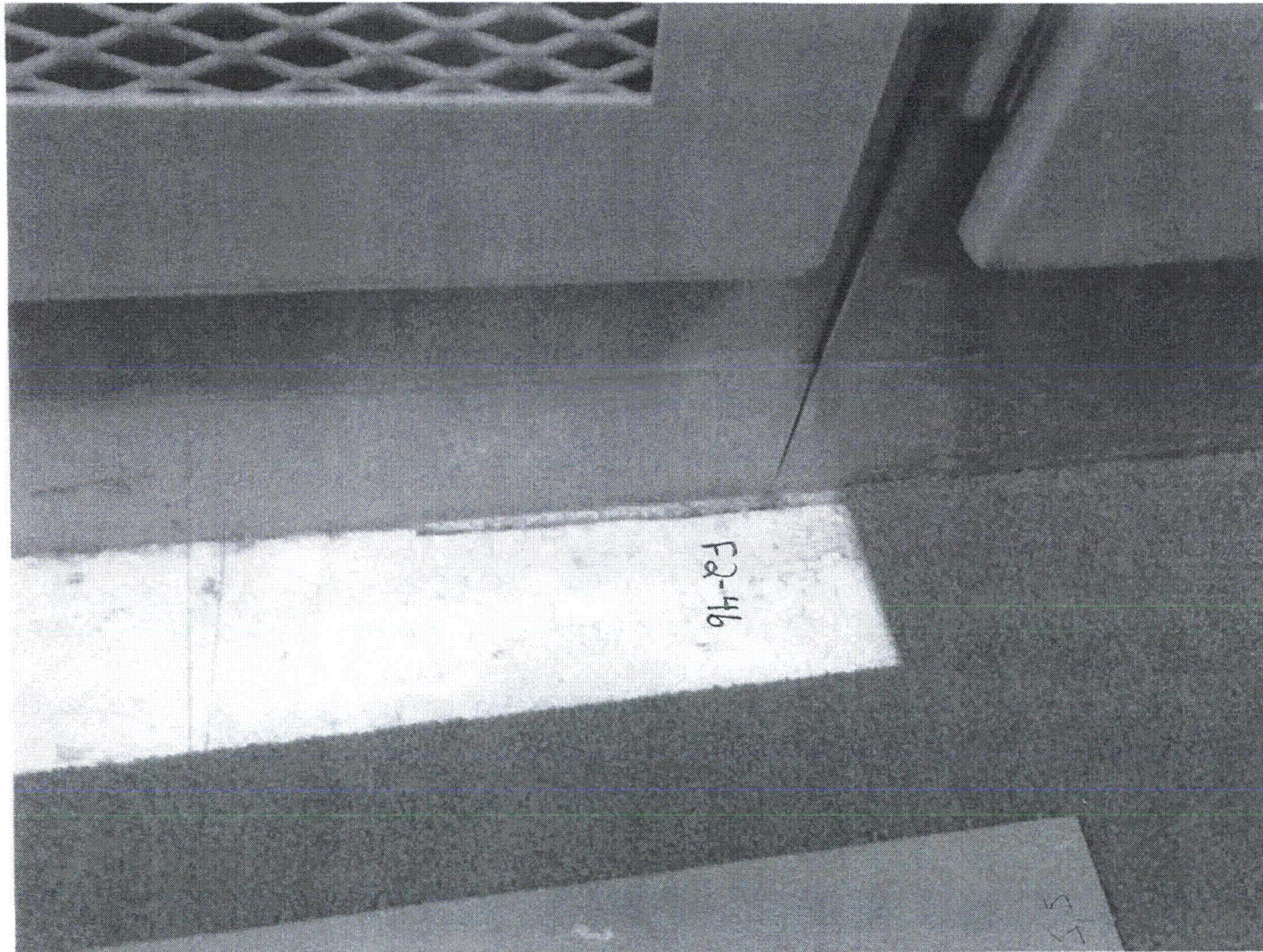














F2-47

Sheet 1 of 36

Status: Y  N  U

**Seismic Walkdown Checklist (SWC)**

Equipment ID No. Q2H21E005 Equip. Class<sup>1</sup> 20

Equipment Description 4.16KV SWITCHGEAR 2G LOCAL CONT PANEL

Location: Bldg. AUXILIARY Floor El. 121 Room, Area 2233

Manufacturer, Model, Etc. (optional but recommended) \_\_\_\_\_

**Instructions for Completing Checklist**

This checklist may be used to document the results of the Seismic Walkdown of an item of equipment on the SWEL. The space below each of the following questions may be used to record the results of judgments and findings. Additional space is provided at the end of this checklist for documenting other comments.

**Anchorage**

1. Is the anchorage configuration verification required (i.e., is the item one of the 50% of SWEL items requiring such verification)? Y  N  U   
*Anchorage is inside panel and cannot be verified until an outage.* UA 8-24-12
2. Is the anchorage free of bent, broken, missing or loose hardware? Y  N  U  N/A
3. Is the anchorage free of corrosion that is more than mild surface oxidation? Y  N  U  N/A
4. Is the anchorage free of visible cracks in the concrete near the anchors? Y  N  U  N/A
5. Is the anchorage configuration consistent with plant documentation? Y  N  U  N/A   
 (Note: This question only applies if the item is one of the 50% for which an anchorage configuration verification is required.) UA 8-22-12
6. Based on the above anchorage evaluations, is the anchorage free of potentially adverse seismic conditions? Y  N  U

<sup>1</sup>Enter the equipment class name from Appendix B: Classes of Equipment.



F247

Sheet 2 of 3

Status: Y  N  U

**Seismic Walkdown Checklist (SWC)**

Equipment ID No. Q2H21E005 Equip. Class: 20

Equipment Description 4.18KV SWITCHGEAR 2G LOCAL CONT PANEL

**Interaction Effects**

7. Are soft targets free from impact by nearby equipment or structures? Y  N  U  N/A

*Test cable N2R15G001D is wrapped around existing Siemens junction box as documented in Deficiency Report 565268 (See Pic) on 4-7-05. Conclusion: Cable and attached piece of equipment could impact panel in seismic event. not CR 504967*

8. Are overhead equipment, distribution systems, ceiling tiles and lighting, and masonry block walls not likely to collapse onto the equipment? Y  N  U  N/A

9. Do attached lines have adequate flexibility to avoid damage? Y  N  U  N/A

10. Based on the above seismic interaction evaluations, is equipment free of potentially adverse seismic interaction effects? Y  N  U


**Other Adverse Conditions**

11. Have you looked for and found no other seismic conditions that could adversely affect the safety functions of the equipment? Y  N  U

**Comments** (Additional pages may be added as necessary)

*CR 504967 was created to document the housekeeping/ test cable issue described in #7 above.*

Evaluated by: Laura MacLay Laura MacLay Date: 8-24-12

TERRY ALAN MULLENIX  8/24/2012



