

Sheet 1 of 2
 Status: Y N U

Seismic Walkdown Checklist (SWC)

Equipment ID No. 1-1511-B7-001-000 Equip. Class¹² 9 Fans

Equipment Description CTB Cavity Cool Unit Fan

Location: Bldg. CTB Floor El. 206'-6" Room, Area 14B1

Manufacturer, Model, Etc. (optional but recommended) Buffalo Forge

Instructions for Completing Checklist

This checklist may be used to document the results of the Seismic Walkdown of an item of equipment on the SWEL. The space below each of the following questions may be used to record the results of judgments and findings. Additional space is provided at the end of this checklist for documenting other comments.

Anchorage

1. Is the anchorage configuration verification required (i.e., is the item one of the 50% of SWEL items requiring such verification)? Y N U

2. Is the anchorage free of bent, broken, missing or loose hardware? Y N U N/A

3. Is the anchorage free of corrosion that is more than mild surface oxidation? Y N U N/A

4. Is the anchorage free of visible cracks in the concrete near the anchors? Y N U N/A

5. Is the anchorage configuration consistent with plant documentation? Y N U N/A
 (Note: This question only applies if the item is one of the 50% for which an anchorage configuration verification is required.)
Drawing: 1X4A102-6-4
The configuration was consistent with this drawing.

6. Based on the above anchorage evaluations, is the anchorage free of potentially adverse seismic conditions? Y N U

¹² Enter the equipment class name from Appendix B: Classes of Equipment.

Seismic Walkdown Checklist (SWC)

Equipment ID No. 1-1511-B7-001-004 Equip. Class¹² 9 Fans

Equipment Description CTB Cavity Cool Unit Fans

Interaction Effects

7. Are soft targets free from impact by nearby equipment or structures? Y N U N/A

8. Are overhead equipment, distribution systems, ceiling tiles and lighting, and masonry block walls not likely to collapse onto the equipment? Y N U N/A

9. Do attached lines have adequate flexibility to avoid damage? Y N U N/A

10. Based on the above seismic interaction evaluations, is equipment free of potentially adverse seismic interaction effects? Y N U

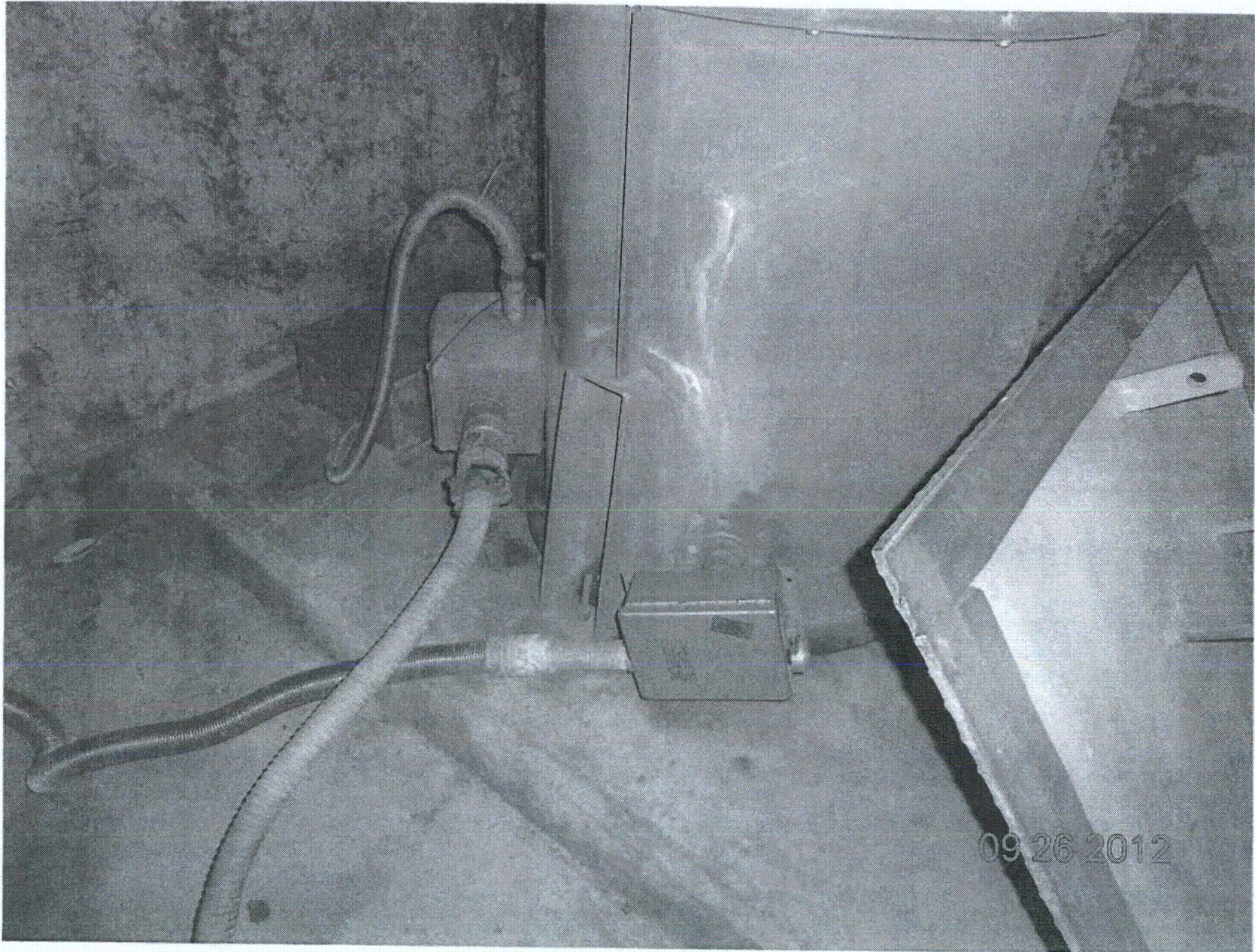
Other Adverse Conditions

11. Have you looked for and found no other seismic conditions that could adversely affect the safety functions of the equipment? Y N U

Comments (Additional pages may be added as necessary)

*None.
Area walk-by see 1-1511-E7-001*

Evaluated by: J. Lago / Frank YAO Date: 9/26/2012



Sheet 1 of 2
Status: Y N U**Seismic Walkdown Checklist (SWC)**Equipment ID No. 1-1511-B7-002-000 Equip. Class¹² 9 FansEquipment Description CTB Cavity Coal Unit FanLocation: Bldg. CTB Floor El. 206'-6" Room, Area 14A1Manufacturer, Model, Etc. (optional but recommended) Buffalo Forge**Instructions for Completing Checklist**

This checklist may be used to document the results of the Seismic Walkdown of an item of equipment on the SWEL. The space below each of the following questions may be used to record the results of judgments and findings. Additional space is provided at the end of this checklist for documenting other comments.

Anchorage

1. Is the anchorage configuration verification required (i.e., is the item one of the 50% of SWEL items requiring such verification)? Y N U

2. Is the anchorage free of bent, broken, missing or loose hardware? Y N U N/A

3. Is the anchorage free of corrosion that is more than mild surface oxidation? Y N U N/A
Only mild surface oxidation was found on some anchor bolts. Therefore, the bolts were judged to be acceptable.

4. Is the anchorage free of visible cracks in the concrete near the anchors? Y N U N/A

5. Is the anchorage configuration consistent with plant documentation? Y N U N/A
 (Note: This question only applies if the item is one of the 50% for which an anchorage configuration verification is required.)
*1X4A502-6-4 (Drawing)
 Configuration was consistent with this drawing.*

6. Based on the above anchorage evaluations, is the anchorage free of potentially adverse seismic conditions? Y N U

¹² Enter the equipment class name from Appendix B: Classes of Equipment.

Seismic Walkdown Checklist (SWC)

Equipment ID No. 1-1511-B7-002-000 Equip. Class¹² 9 Fans

Equipment Description CTB Cavity Cool Unit Fan

Interaction Effects

7. Are soft targets free from impact by nearby equipment or structures? Y N U N/A

8. Are overhead equipment, distribution systems, ceiling tiles and lighting, and masonry block walls not likely to collapse onto the equipment? Y N U N/A

9. Do attached lines have adequate flexibility to avoid damage? Y N U N/A

10. Based on the above seismic interaction evaluations, is equipment free of potentially adverse seismic interaction effects? Y N U

Other Adverse Conditions

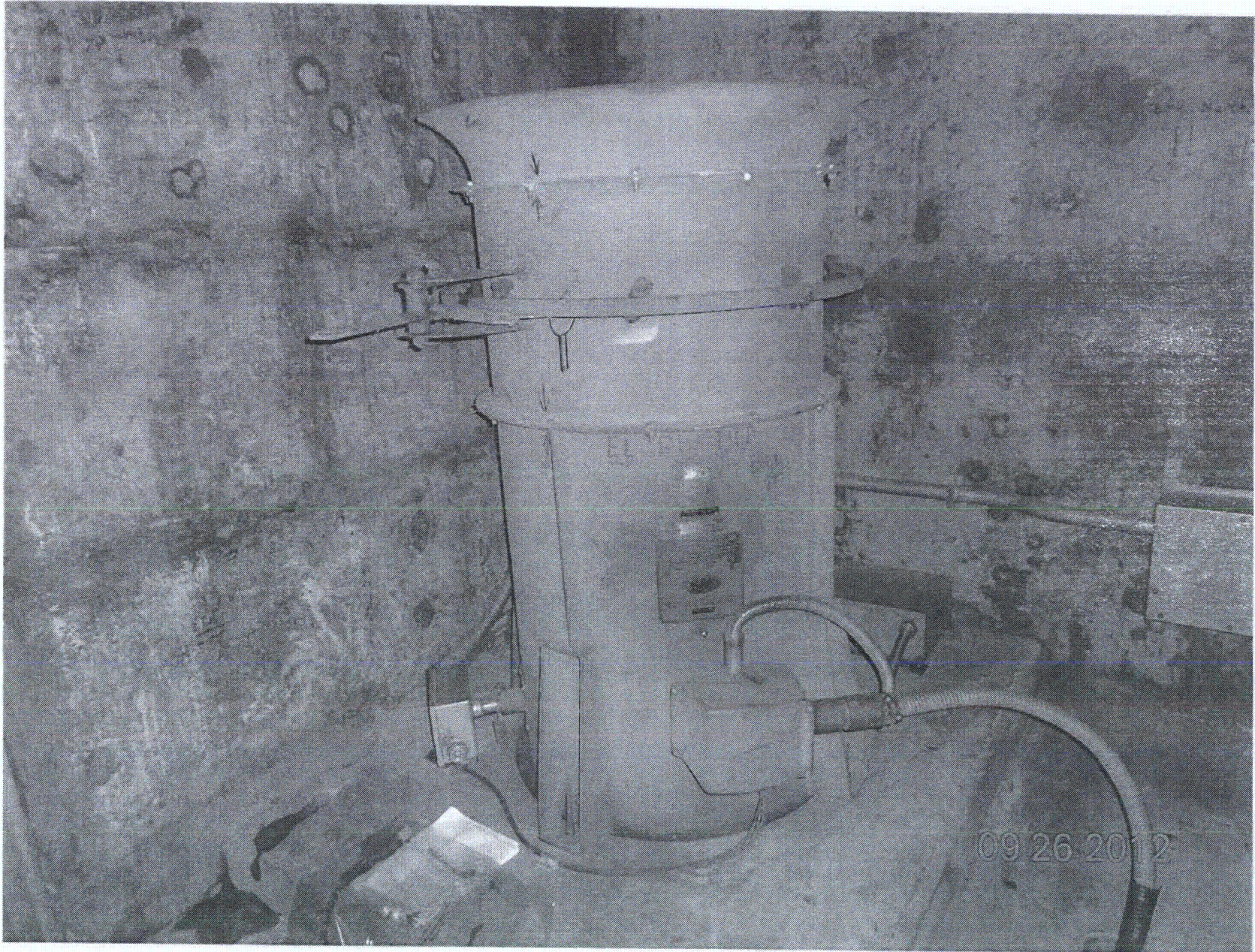
11. Have you looked for and found no other seismic conditions that could adversely affect the safety functions of the equipment? Y N U

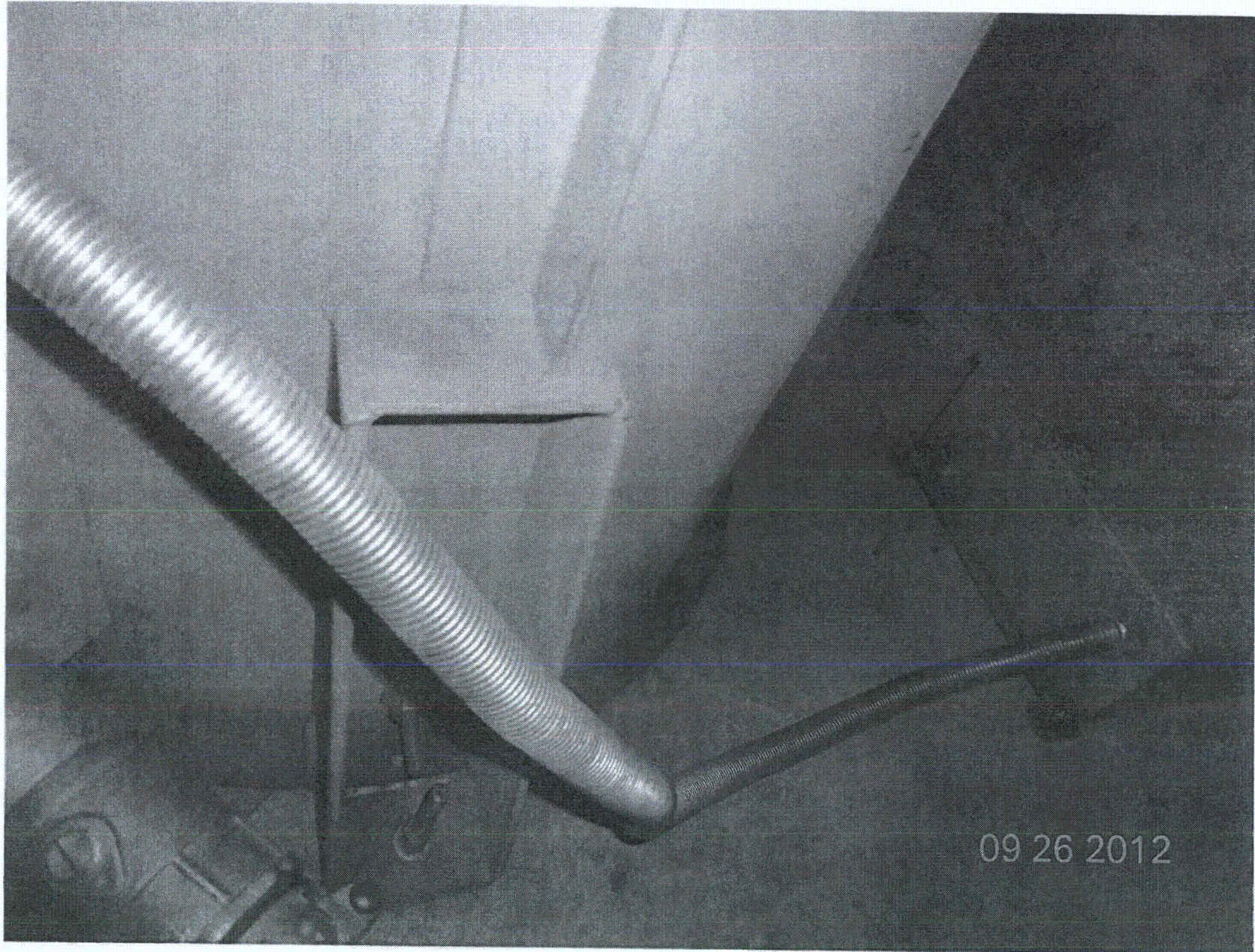
Comments (Additional pages may be added as necessary)

None. Area Walkby see 1-1511-B7-002-000

Evaluated by: Frank C Yao Date: 9/26/2012

Winston Stewart 09/26/2012





Sheet 1 of 2

Status: Y N U**Seismic Walkdown Checklist (SWC)**Equipment ID No. 1-1805-53-015X Equip. Class¹² 4Equipment Description Transformer B15XLocation: Bldg. Aux Floor/El. 119'3" Room, Area R D105

Manufacturer, Model, Etc. (optional but recommended) _____

Instructions for Completing Checklist

This checklist may be used to document the results of the Seismic Walkdown of an item of equipment on the SWEL. The space below each of the following questions may be used to record the results of judgments and findings. Additional space is provided at the end of this checklist for documenting other comments.

Anchorage

1. Is the anchorage configuration verification required (i.e., is the item one of the 50% of SWEL items requiring such verification)? Y N U
2. Is the anchorage free of bent, broken, missing or loose hardware? Y N U N/A
3. Is the anchorage free of corrosion that is more than mild surface oxidation? Y N U N/A
4. Is the anchorage free of visible cracks in the concrete near the anchors? Y N U N/A
5. Is the anchorage configuration consistent with plant documentation?
(Note: This question only applies if the item is one of the 50% for which an anchorage configuration verification is required.)
See dwg AX2D03A006, rev 16 Y N U N/A
6. Based on the above anchorage evaluations, is the anchorage free of potentially adverse seismic conditions? Y N U

¹² Enter the equipment class name from Appendix B: Classes of Equipment.

Seismic Walkdown Checklist (SWC)

Equipment ID No. 1-1805-53-D15X Equip. Class¹² 4

Equipment Description Transformer D15X

Interaction Effects

7. Are soft targets free from impact by nearby equipment or structures? Y N U N/A

8. Are overhead equipment, distribution systems, ceiling tiles and lighting, and masonry block walls not likely to collapse onto the equipment? Y N U N/A

9. Do attached lines have adequate flexibility to avoid damage? Y N U N/A

10. Based on the above seismic interaction evaluations, is equipment free of potentially adverse seismic interaction effects? Y N U

Other Adverse Conditions

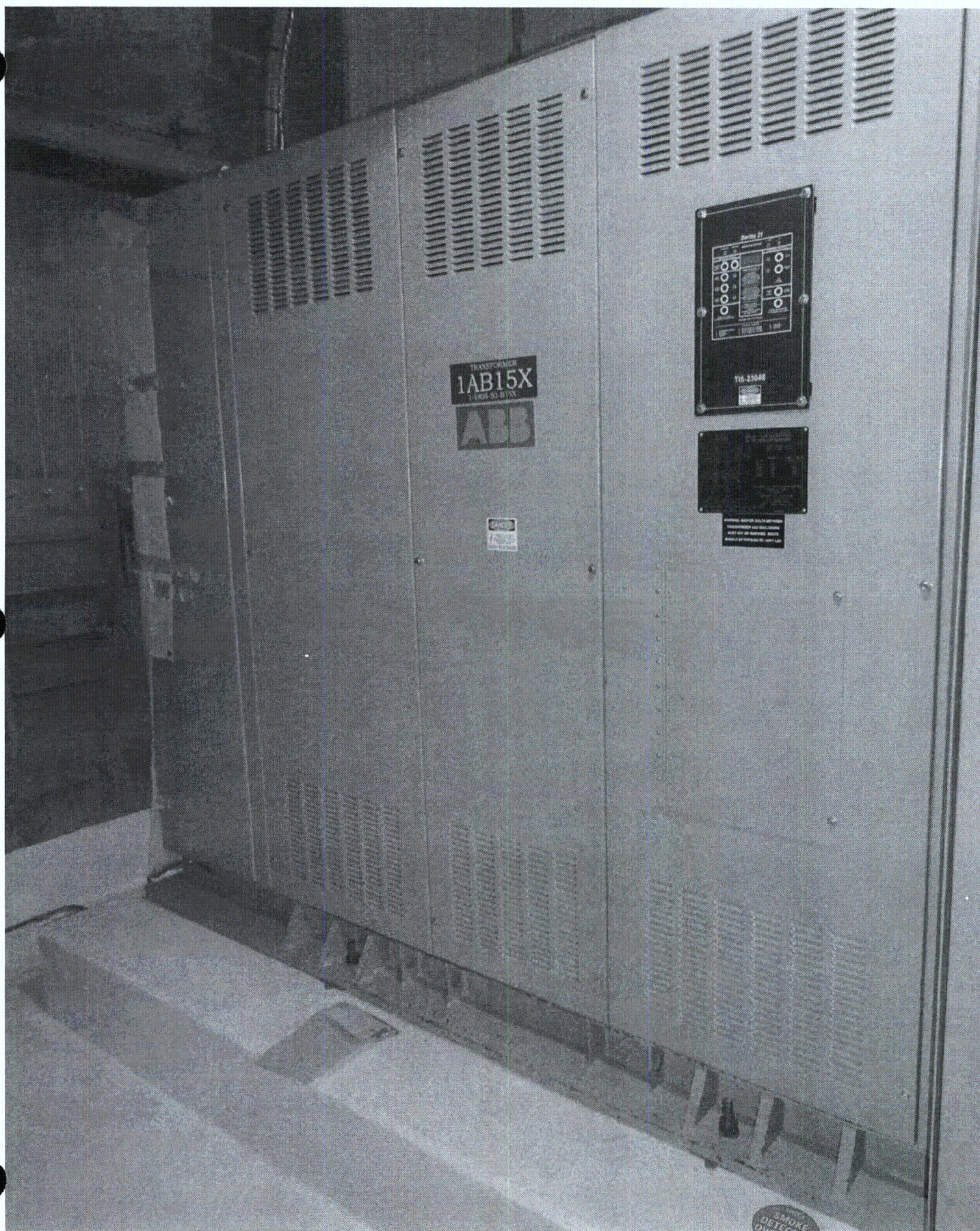
11. Have you looked for and found no other seismic conditions that could adversely affect the safety functions of the equipment? Y N U
A visual inspection of the internal components of this cabinet was performed to check for seismic adequacy to include any evidence of internal components not being adequately secured, checked for fasteners connecting adjacent cabinets were in place, and evidence of other seismic conditions. No adverse conditions were found.

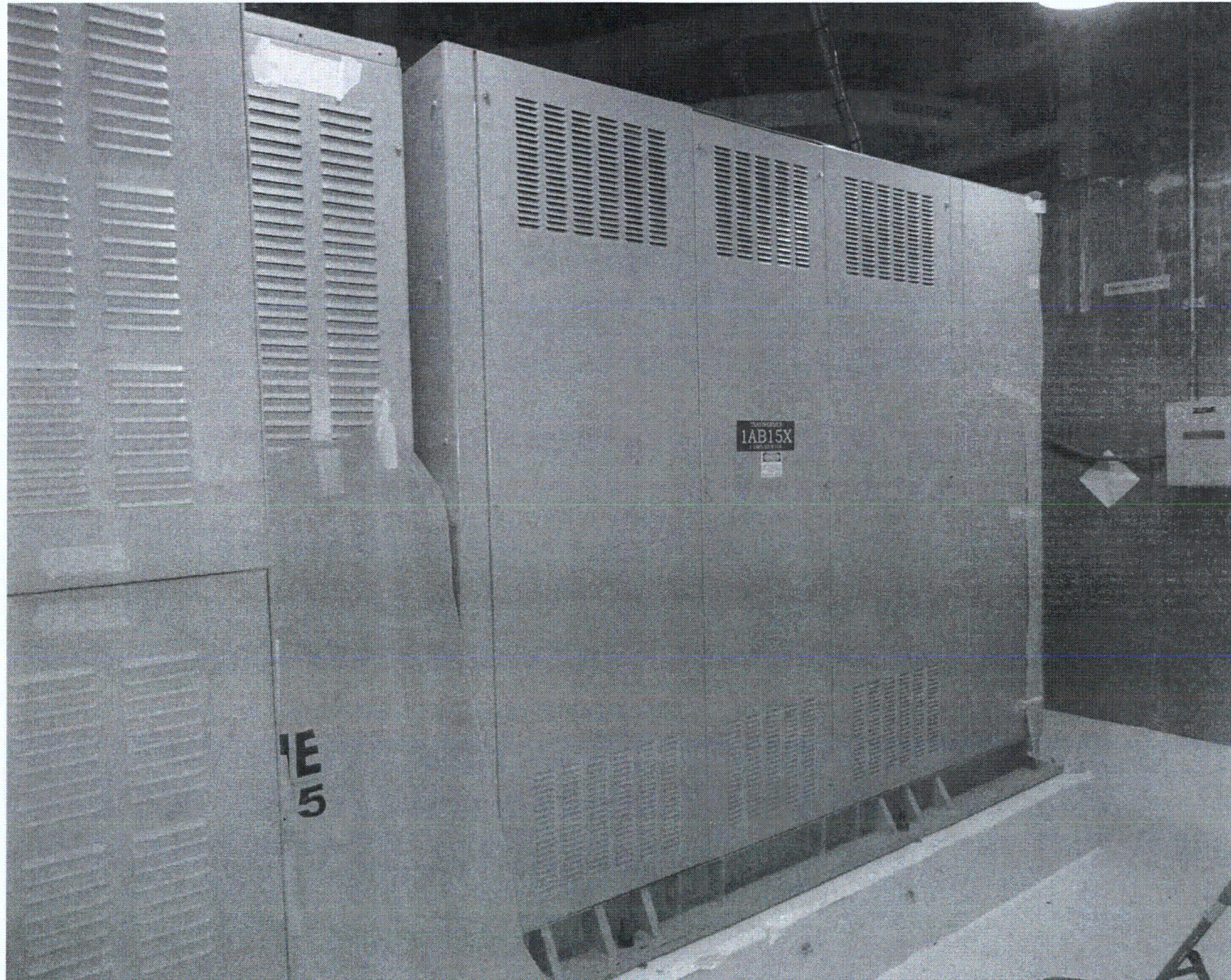
Comments (Additional pages may be added as necessary)

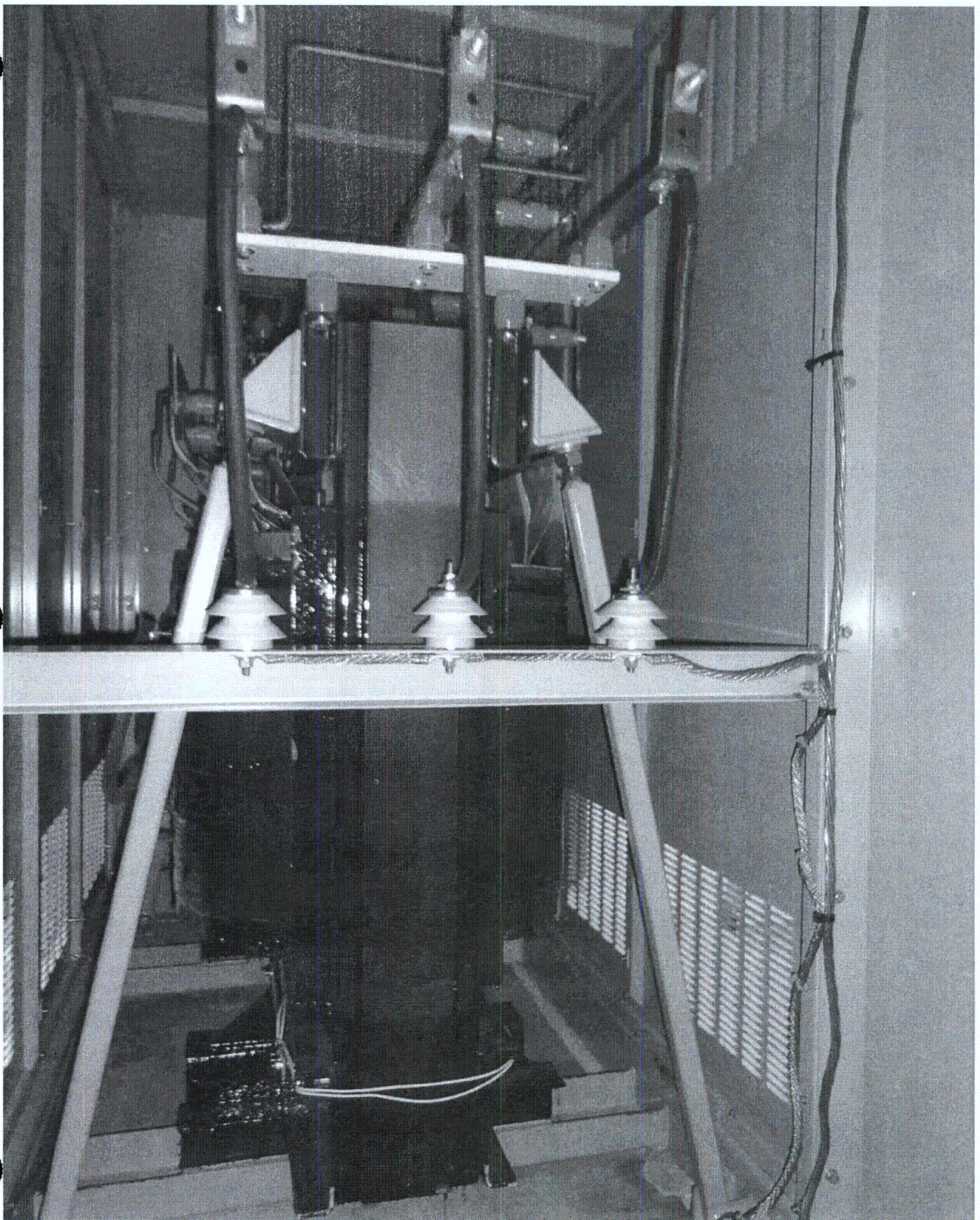
None

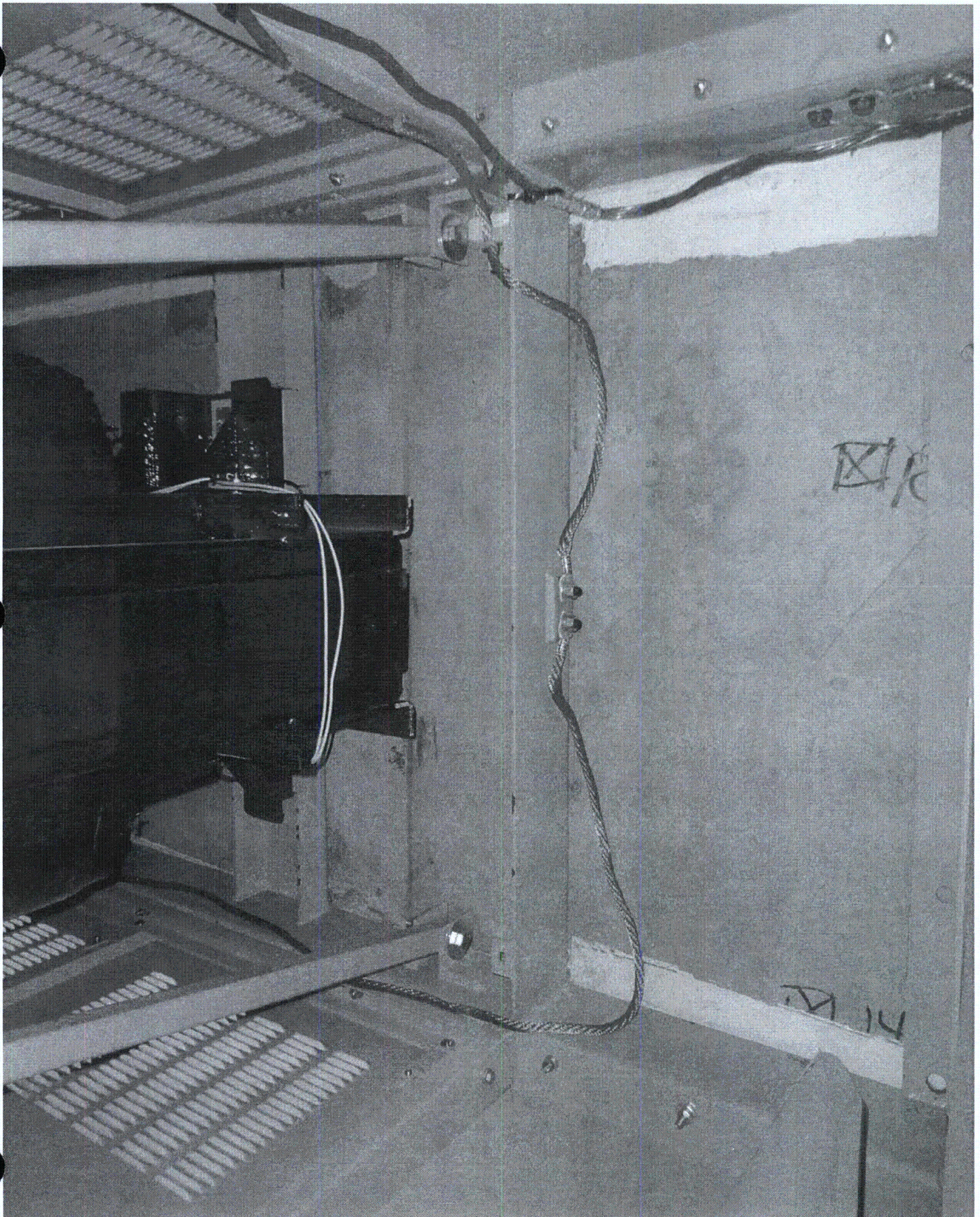
Evaluated by: José I. José R. Hernández Date: 9/27/12

[Signature] JUSTO E. CHACON 9/27/12









Sheet 1 of 2

Status: Y N U**Seismic Walkdown Checklist (SWC)**Equipment ID No. 1-1593-87-001 Equip. Class¹² 9- FANSEquipment Description AFW PUMP HOUSE SUPPLY FANLocation: Bldg. AFWP Floor El. 220'-0" Room, Area R101Manufacturer, Model, Etc. (optional but recommended) BUFFALO FORGE CO.**Instructions for Completing Checklist**

This checklist may be used to document the results of the Seismic Walkdown of an item of equipment on the SWEL. The space below each of the following questions may be used to record the results of judgments and findings. Additional space is provided at the end of this checklist for documenting other comments.

Anchorage

1. Is the anchorage configuration verification required (i.e., is the item one of the 50% of SWEL items requiring such verification)? Y N U
2. Is the anchorage free of bent, broken, missing or loose hardware? Y N U N/A
2 BOLTS MISSING - ONE ON TOP
- ONE ON RT SIDE
SEE CR # 507939
3. Is the anchorage free of corrosion that is more than mild surface oxidation? Y N U N/A
4. Is the anchorage free of visible cracks in the concrete near the anchors? Y N U N/A
5. Is the anchorage configuration consistent with plant documentation? Y N U N/A
 (Note: This question only applies if the item is one of the 50% for which an anchorage configuration verification is required.)
MISSING BOLTS
DRAWING: 2-1593-87-001-000
SEE CR # 507939
6. Based on the above anchorage evaluations, is the anchorage free of potentially adverse seismic conditions? Y N U

¹²Enter the equipment class name from Appendix B: Classes of Equipment.

Seismic Walkdown Checklist (SWC)

Equipment ID No. 1-1593-137-001 Equip. Class¹² 9- FANS

Equipment Description AFU PURCHASE SUPPLY FAN

Interaction Effects

7. Are soft targets free from impact by nearby equipment or structures? YES NO U N/A

8. Are overhead equipment, distribution systems, ceiling tiles and lighting, and masonry block walls not likely to collapse onto the equipment? YES NO U N/A

9. Do attached lines have adequate flexibility to avoid damage? YES NO U N/A

10. Based on the above seismic interaction evaluations, is equipment free of potentially adverse seismic interaction effects? YES NO U

Other Adverse Conditions

11. Have you looked for and found no other seismic conditions that could adversely affect the safety functions of the equipment? YES NO U

Comments (Additional pages may be added as necessary)

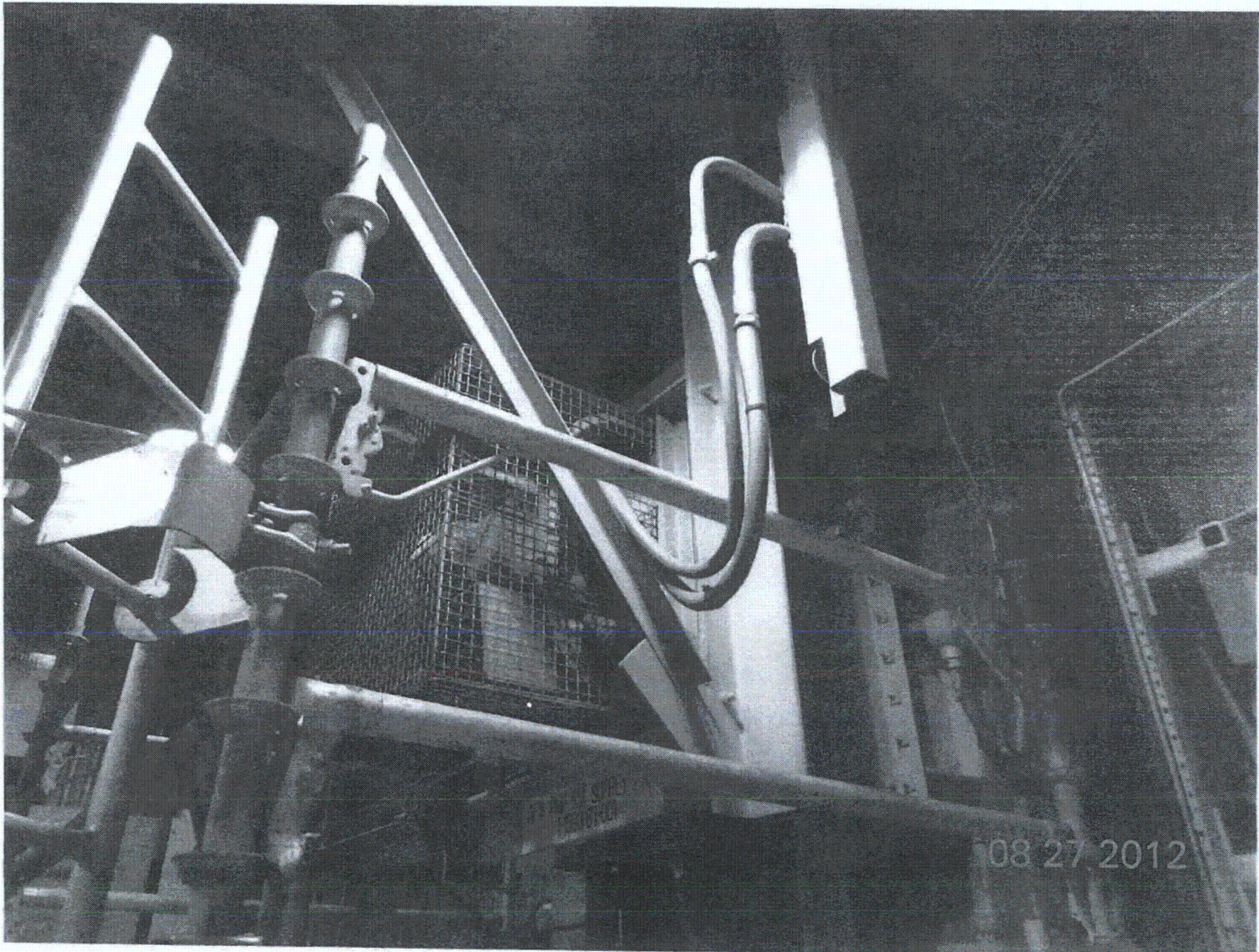
NONE

SEE 1-FW-5155 FOR AWC

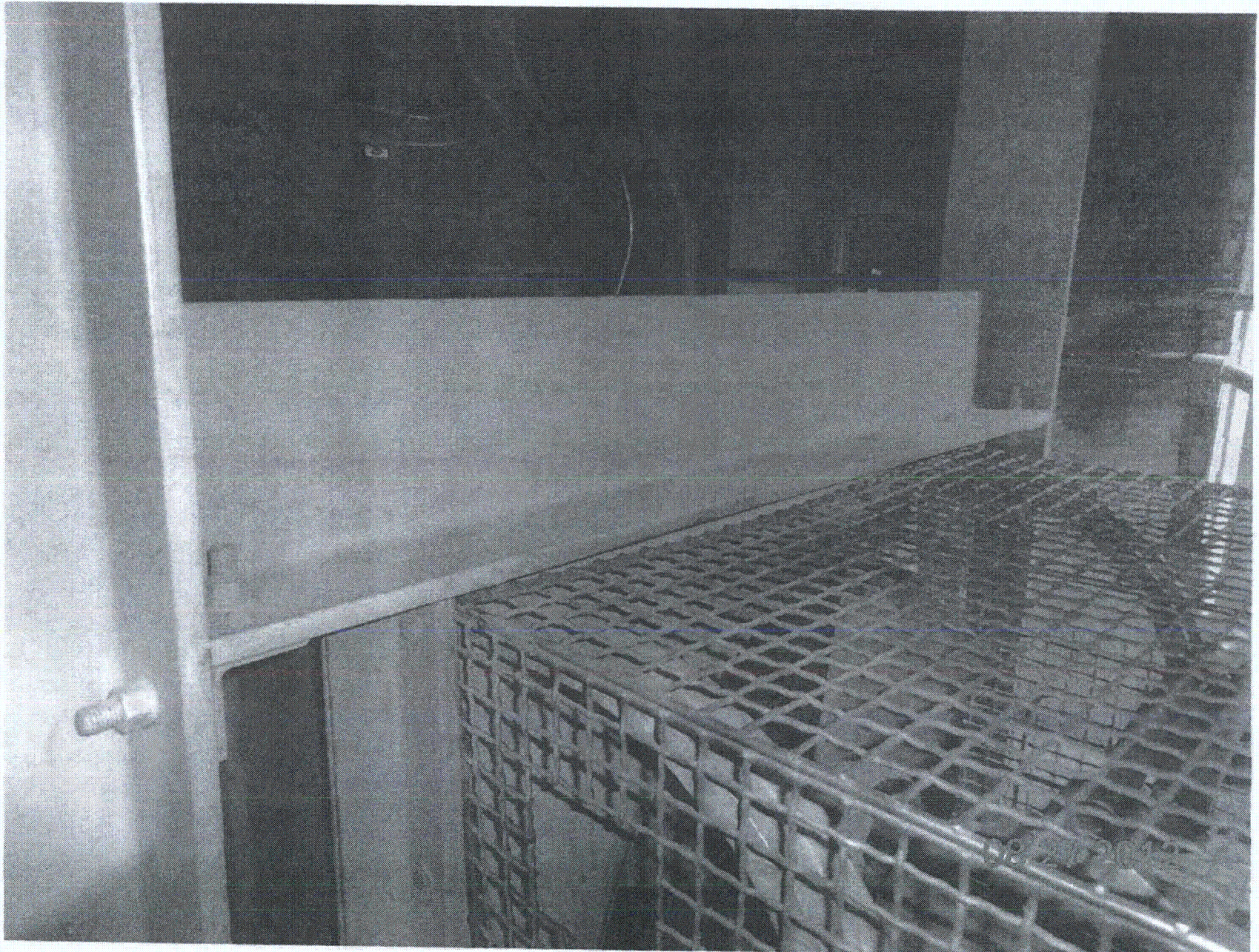
Evaluated by: James Davel / JAMES DOVEL Date: 8-27-2012

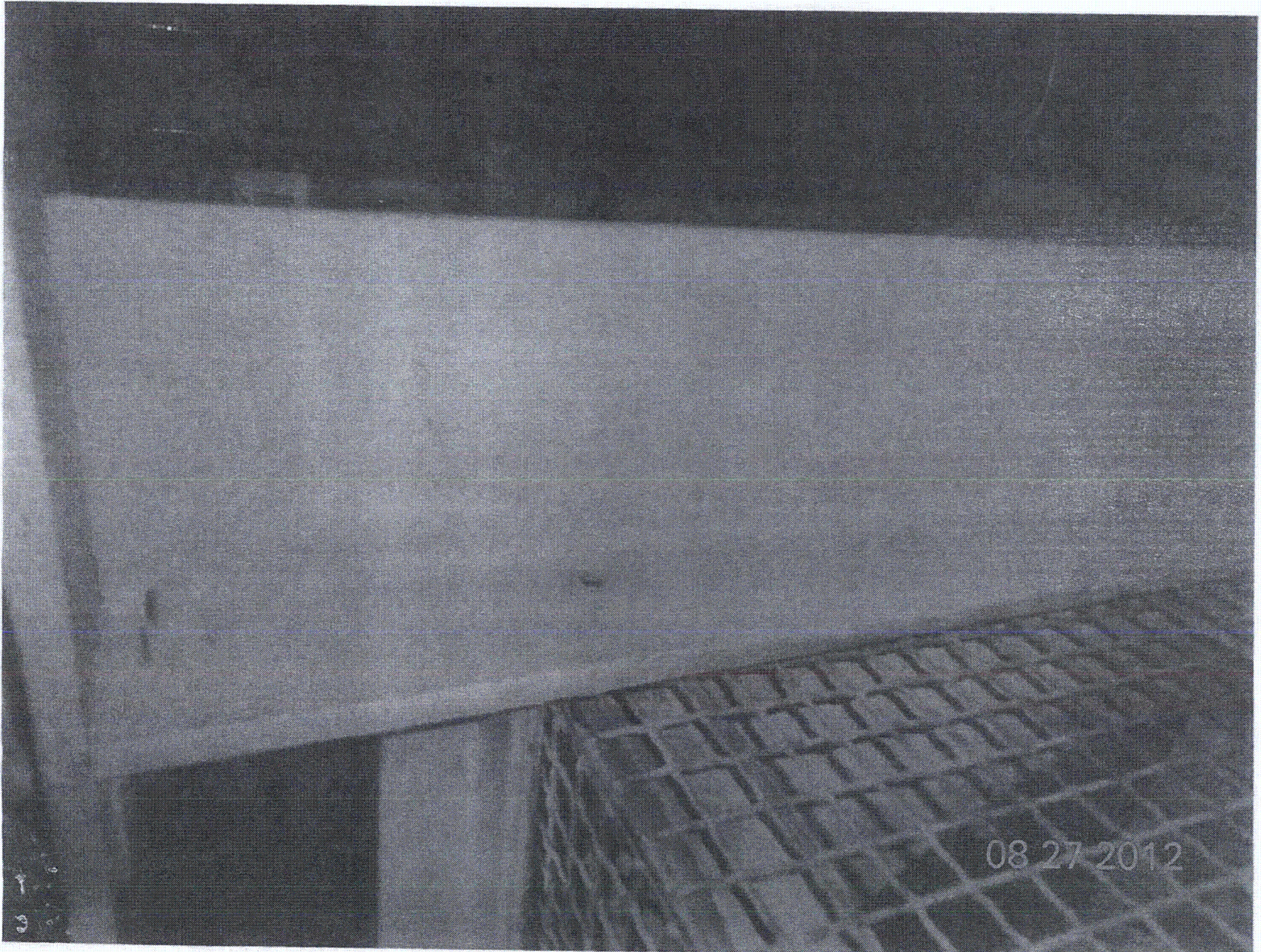
WJ AH / Winston Stewart 08/27/2012











Sheet 1 of 2

Status: Y N U

Seismic Walkdown Checklist (SWC)

Equipment ID No. 1-1213-E6-001 Equip. Class¹² 21 (Tanked Heat Exchanger)
 Equipment Description Spent Fuel Pit HX A
 Location: Bldg. A0X Floor El. 195' Room/Area R53
 Manufacturer, Model, Etc. (optional but recommended) _____

Instructions for Completing Checklist

This checklist may be used to document the results of the Seismic Walkdown of an item of equipment on the SWEL. The space below each of the following questions may be used to record the results of judgments and findings. Additional space is provided at the end of this checklist for documenting other comments.

Anchorage

1. Is the anchorage configuration verification required (i.e., is the item one of the 50% of SWEL items requiring such verification)? Y N U

2. Is the anchorage free of bent, broken, missing or loose hardware? Y N U N/A

3. Is the anchorage free of corrosion that is more than mild surface oxidation? Y N U N/A

4. Is the anchorage free of visible cracks in the concrete near the anchors? Y N U N/A

5. Is the anchorage configuration consistent with plant documentation? Y N U N/A
 (Note: This question only applies if the item is one of the 50% for which an anchorage configuration verification is required.)
SEE DWG AX2094 V009

6. Based on the above anchorage evaluations, is the anchorage free of potentially adverse seismic conditions? Y N U

¹² Enter the equipment class name from Appendix B: Classes of Equipment.

Seismic Walkdown Checklist (SWC)

Equipment ID No. 1-1213-E6-001 Equip. Class¹² 21 (Tank & HX)

Equipment Description Spent Fuel Pit HXA

Interaction Effects

7. Are soft targets free from impact by nearby equipment or structures? YES NO U N/A

8. Are overhead equipment, distribution systems, ceiling tiles and lighting, and masonry block walls not likely to collapse onto the equipment? YES NO U N/A

9. Do attached lines have adequate flexibility to avoid damage? YES NO U N/A

10. Based on the above seismic interaction evaluations, is equipment free of potentially adverse seismic interaction effects? YES NO U

Other Adverse Conditions

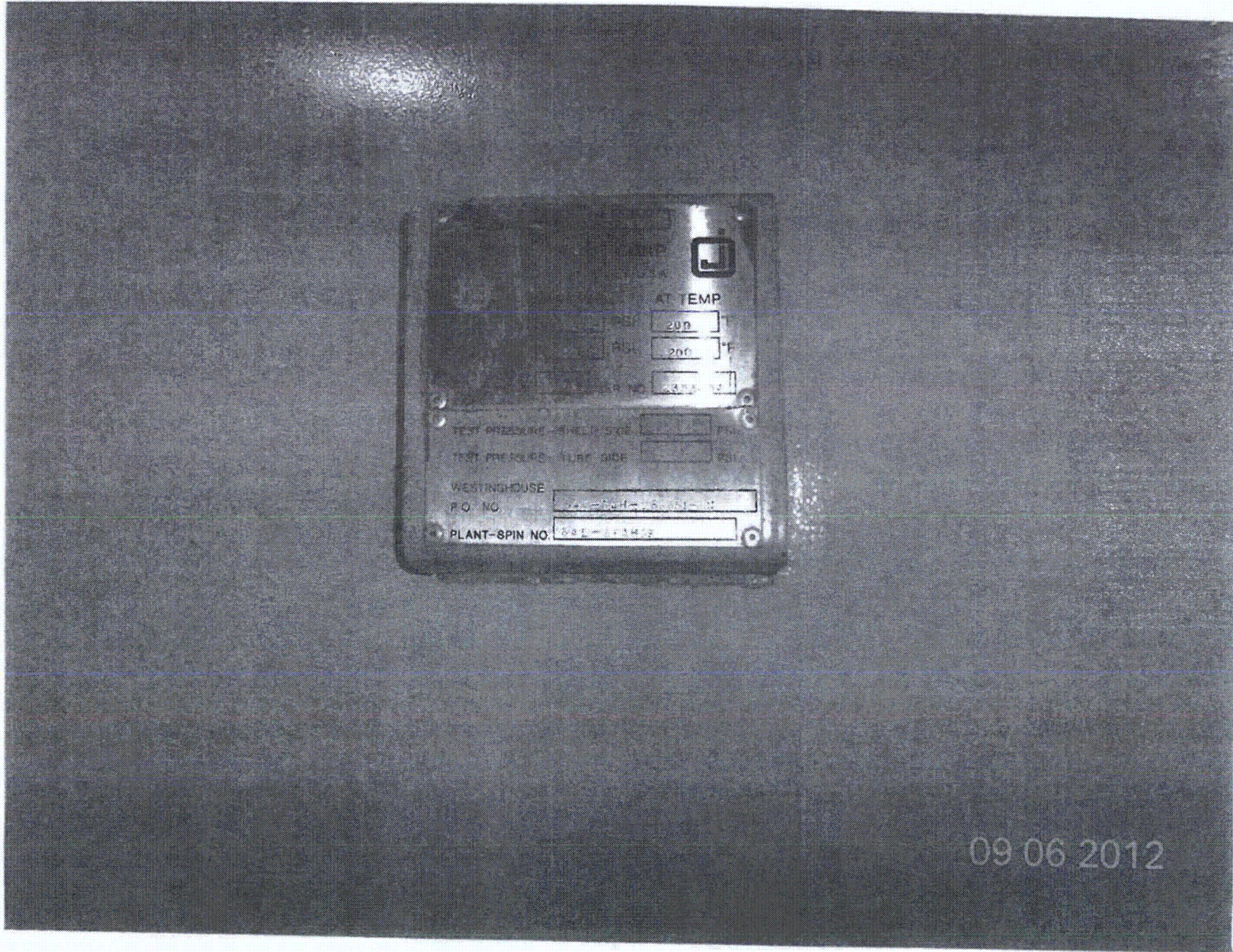
11. Have you looked for and found no other seismic conditions that could adversely affect the safety functions of the equipment? YES NO U

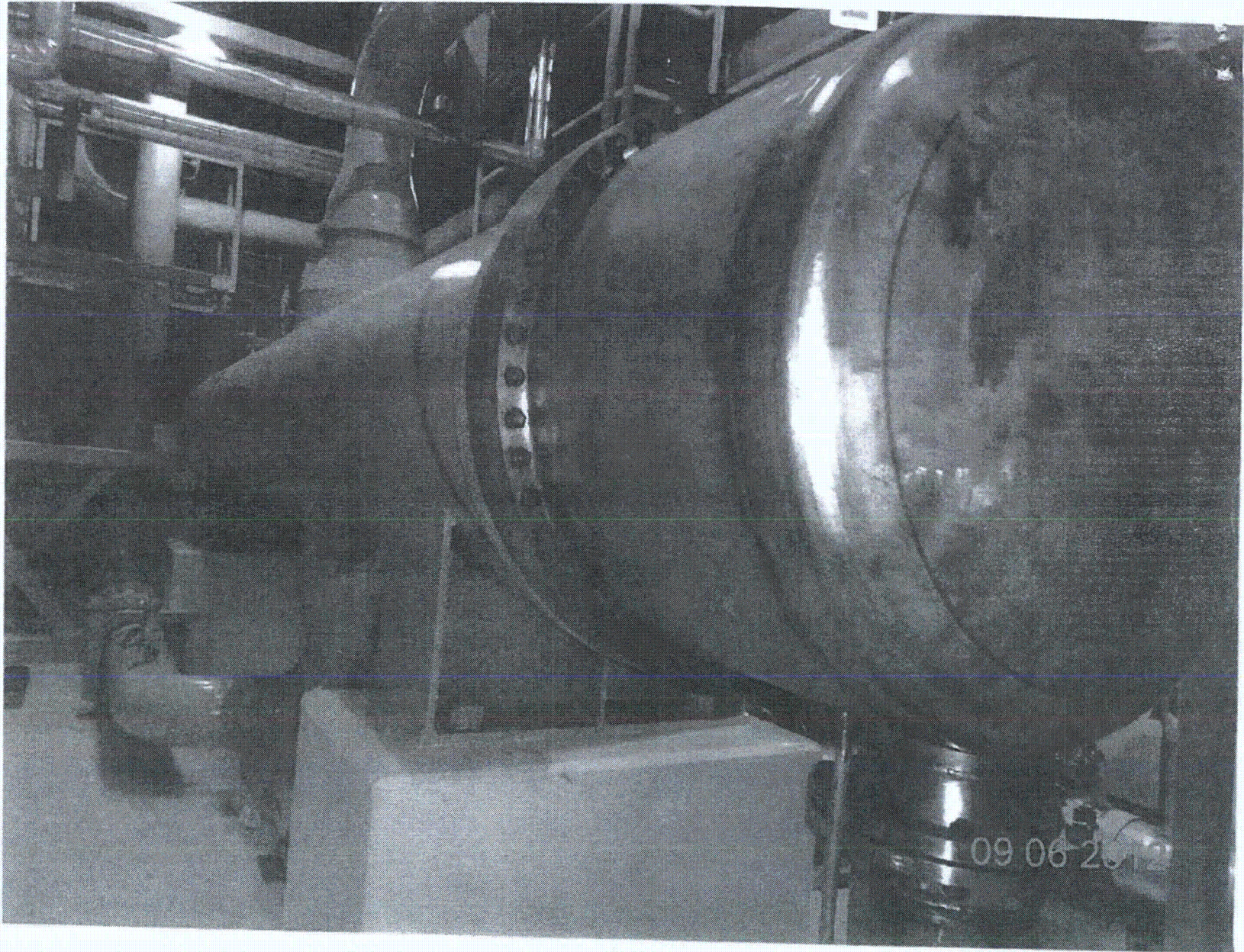
Comments (Additional pages may be added as necessary)

None

Evaluated by: James Daul / JAMES DAUL Date: 9-6-2012
Frank Yao / Frank Yao 9/6/12

< C4 >





Sheet 1 of 2
Status: Y N U

Seismic Walkdown Checklist (SWC)

Equipment ID No. 1-1213-P6-005 Equip. Class¹² 5 - PUMP (HORIZONTAL)

Equipment Description SPGR FUEL PIT COOLING PUMP B

Location: Bldg. F. H. Floor El. 200' Room, Area A07

Manufacturer, Model, Etc. (optional but recommended) GOULDS PUMPS

Instructions for Completing Checklist

This checklist may be used to document the results of the Seismic Walkdown of an item of equipment on the SWEL. The space below each of the following questions may be used to record the results of judgments and findings. Additional space is provided at the end of this checklist for documenting other comments.

Anchorage

1. Is the anchorage configuration verification required (i.e., is the item one of the 50% of SWEL items requiring such verification)? Y N U

2. Is the anchorage free of bent, broken, missing or loose hardware? Y N U N/A

3. Is the anchorage free of corrosion that is more than mild surface oxidation? Y N U N/A

4. Is the anchorage free of visible cracks in the concrete near the anchors? Y N U N/A

5. Is the anchorage configuration consistent with plant documentation? Y N U N/A
(Note: This question only applies if the item is one of the 50% for which an anchorage configuration verification is required.)

DRAWINGS: 1X6AM03-00006-5, 200-4; AX2D09A001, Rev. 12

6. Based on the above anchorage evaluations, is the anchorage free of potentially adverse seismic conditions? Y N U

¹² Enter the equipment class name from Appendix B: Classes of Equipment.

Seismic Walkdown Checklist (SWC)

Equipment ID No. 1-1213-P6-005 Equip. Class¹² 5-PUMP (HORIZONTAL)

Equipment Description SPENT FUEL PET COOLING PUMP B

Interaction Effects

7. Are soft targets free from impact by nearby equipment or structures? Y N U N/A

8. Are overhead equipment, distribution systems, ceiling tiles and lighting, and masonry block walls not likely to collapse onto the equipment? Y N U N/A

9. Do attached lines have adequate flexibility to avoid damage? Y N U N/A

10. Based on the above seismic interaction evaluations, is equipment free of potentially adverse seismic interaction effects? Y N U

Other Adverse Conditions

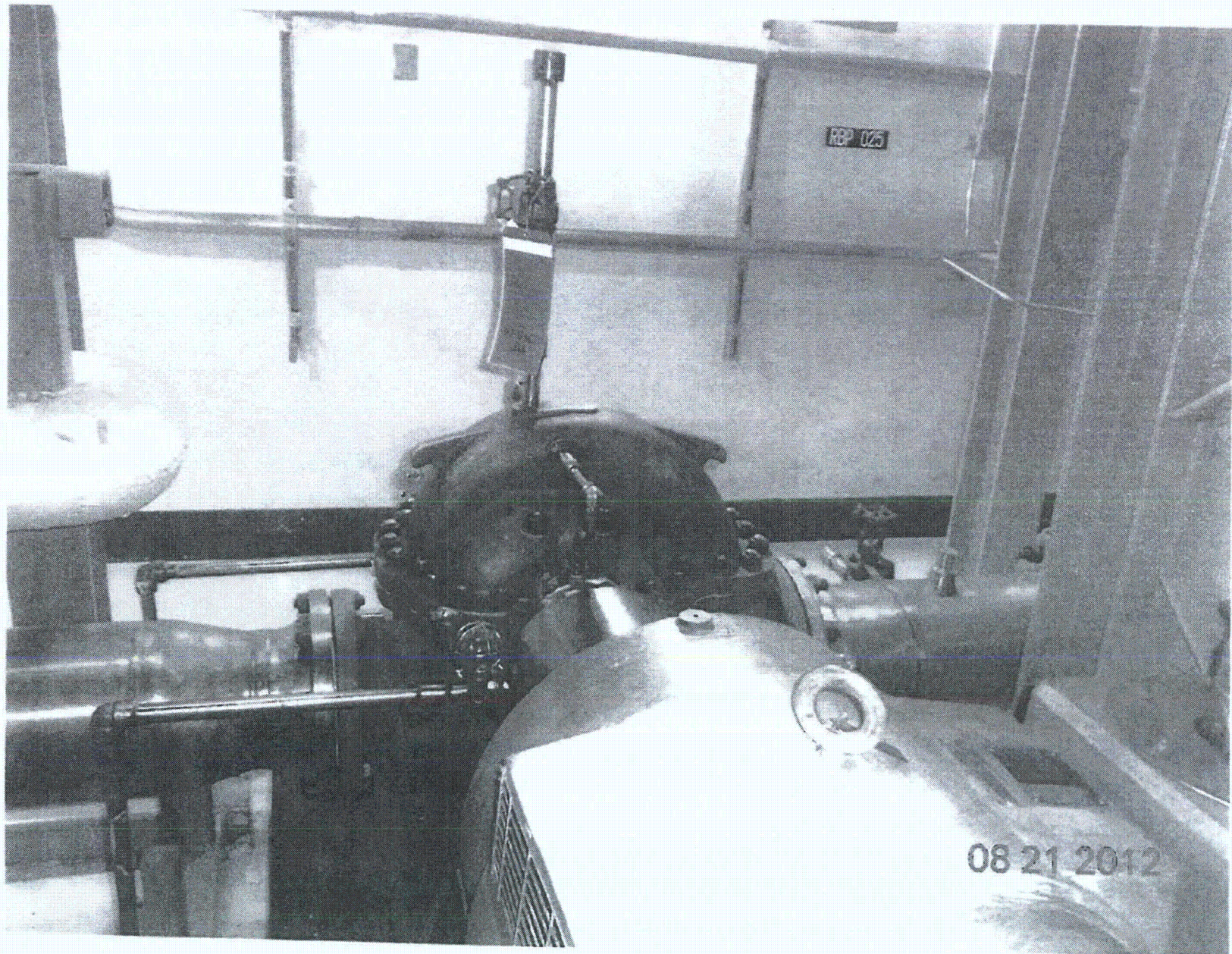
11. Have you looked for and found no other seismic conditions that could adversely affect the safety functions of the equipment? Y N U

Comments (Additional pages may be added as necessary)

None

Evaluated by: JAMES DOUGL / JAMES DOUGL Date: 8-21-2012
WINSTON STEWART / WINSTON STEWART 08/21/2012

<C4>



Sheet 1 of 2
 Status Y N U

Seismic Walkdown Checklist (SWC)

Equipment ID No. 1-1213-06-001 Equip. Class¹² Ø - OTHER

Equipment Description SFP PUMP A SUCTION ISOLATION VALVE

Location: Bldg. FHS Floor El. 195'-0" Room, Area A06

Manufacturer, Model, Etc. (optional but recommended) _____

Instructions for Completing Checklist

This checklist may be used to document the results of the Seismic Walkdown of an item of equipment on the SWEL. The space below each of the following questions may be used to record the results of judgments and findings. Additional space is provided at the end of this checklist for documenting other comments.

Anchorage

1. Is the anchorage configuration verification required (i.e., is the item one of the 50% of SWEL items requiring such verification)? Y N U

2. Is the anchorage free of bent, broken, missing or loose hardware? Y N U N/A

3. Is the anchorage free of corrosion that is more than mild surface oxidation? Y N U N/A

4. Is the anchorage free of visible cracks in the concrete near the anchors? Y N U N/A

5. Is the anchorage configuration consistent with plant documentation? Y N U N/A
 (Note: This question only applies if the item is one of the 50% for which an anchorage configuration verification is required.)
IN-LINE COMPLIANT

6. Based on the above anchorage evaluations, is the anchorage free of potentially adverse seismic conditions? Y N U

¹² Enter the equipment class name from Appendix B: Classes of Equipment.

Seismic Walkdown Checklist (SWC)

Equipment ID No. 1-1213-46-001 Equip. Class¹² Ø- OTHER

Equipment Description SFP PUMP A SUCTION ISOLATION VALVE

Interaction Effects

7. Are soft targets free from impact by nearby equipment or structures? Y N U N/A

8. Are overhead equipment, distribution systems, ceiling tiles and lighting, and masonry block walls not likely to collapse onto the equipment? Y N U N/A

9. Do attached lines have adequate flexibility to avoid damage? Y N U N/A

10. Based on the above seismic interaction evaluations, is equipment free of potentially adverse seismic interaction effects? Y N U

Other Adverse Conditions

11. Have you looked for and found no other seismic conditions that could adversely affect the safety functions of the equipment? Y N U

Comments (Additional pages may be added as necessary)

None

Evaluated by: James T. Dowel / JAMES DOWEL Date: 08-21-2012
W. Stewart / Winston Stewart 08/21/2012



AGNB

Seismic Walkdown Checklist (SWC)

Equipment ID No. 1-HU-8754B Equip. Class¹²: Ø - OTHER

Equipment Description SFP B HX OUTLET THROTTLE VALVE

Location: Bldg. FHD Floor El. 195'-0" Room, Area A07

Manufacturer, Model, Etc. (optional but recommended) Fisher Controls

Instructions for Completing Checklist

This checklist may be used to document the results of the Seismic Walkdown of an item of equipment on the SWEL. The space below each of the following questions may be used to record the results of judgments and findings. Additional space is provided at the end of this checklist for documenting other comments.

Anchorage

1. Is the anchorage configuration verification required (i.e., is the item one of the 50% of SWEL items requiring such verification)? Y N

IN-LINE COMPONENT

2. Is the anchorage free of bent, broken, missing or loose hardware? Y N U N/A

3. Is the anchorage free of corrosion that is more than mild surface oxidation? Y N U N/A

4. Is the anchorage free of visible cracks in the concrete near the anchors? Y N U N/A

5. Is the anchorage configuration consistent with plant documentation? Y N U N/A
 (Note: This question only applies if the item is one of the 50% for which an anchorage configuration verification is required.)

6. Based on the above anchorage evaluations, is the anchorage free of potentially adverse seismic conditions? Y N U

¹² Enter the equipment class name from Appendix B: Classes of Equipment.

Seismic Walkdown Checklist (SWC)

Equipment ID No: 1-HV-8754B Equip. Class¹²: Ø - OTHER

Equipment Description SFP B HX OUTLET THROTTLE VALVE

Interaction Effects

7. Are soft targets free from impact by nearby equipment or structures? Y N U N/A

8. Are overhead equipment, distribution systems, ceiling tiles and lighting, and masonry block walls not likely to collapse onto the equipment? Y N U N/A

9. Do attached lines have adequate flexibility to avoid damage? Y N U N/A

10. Based on the above seismic interaction evaluations, is equipment free of potentially adverse seismic interaction effects? Y N U

Other Adverse Conditions

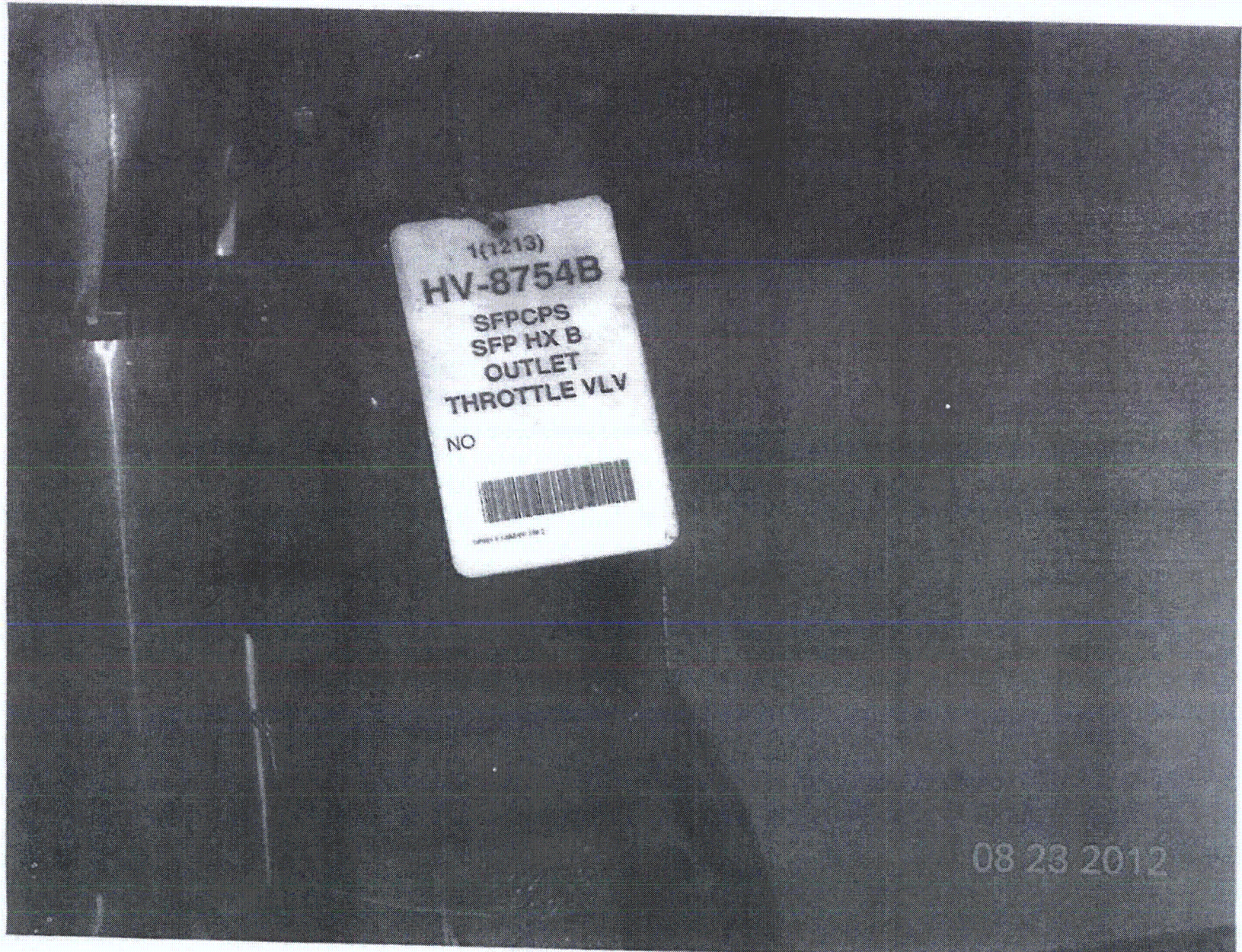
11. Have you looked for and found no other seismic conditions that could adversely affect the safety functions of the equipment? Y N U

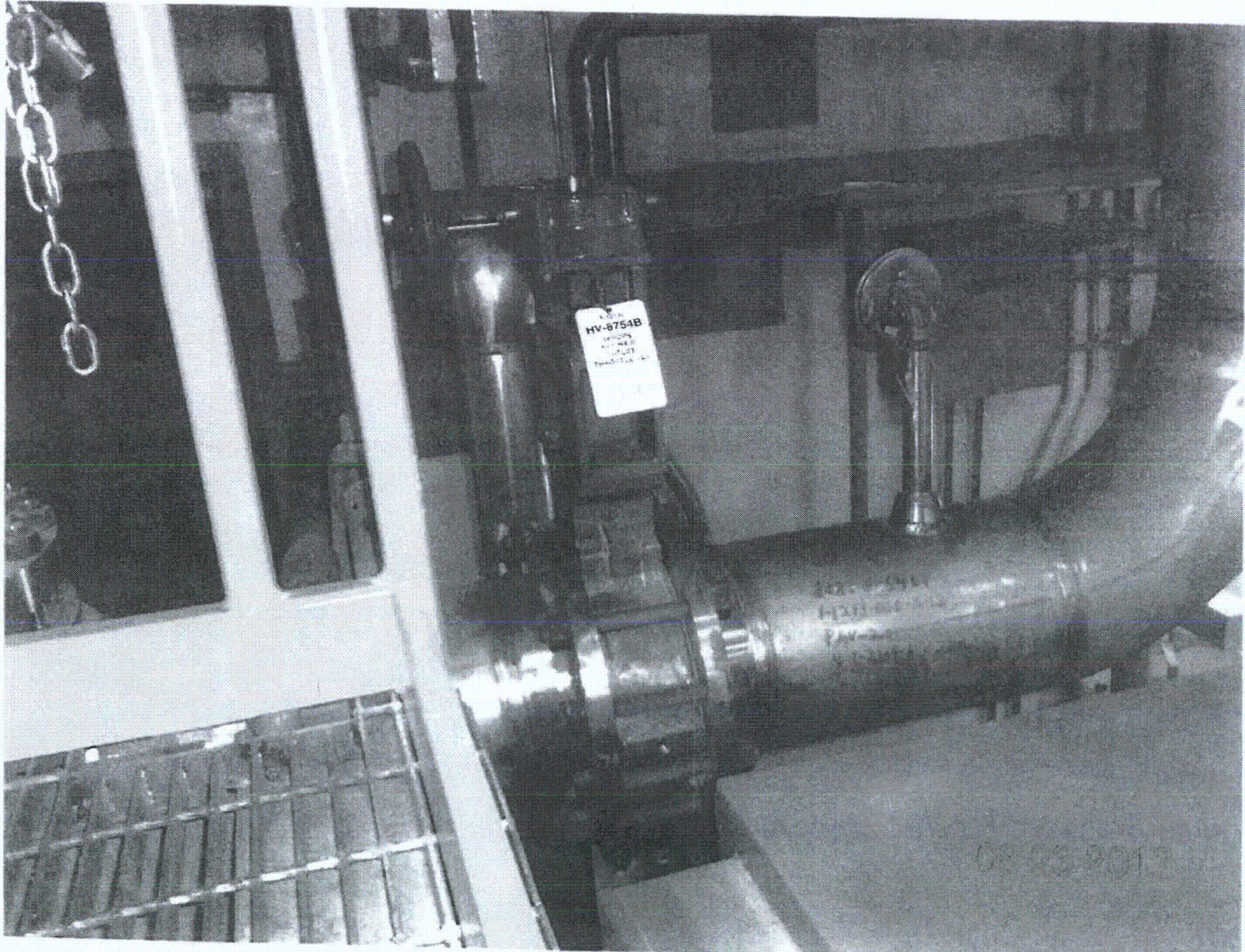
SEE 1-1213-P6-005 PACKAGE FOR AWC

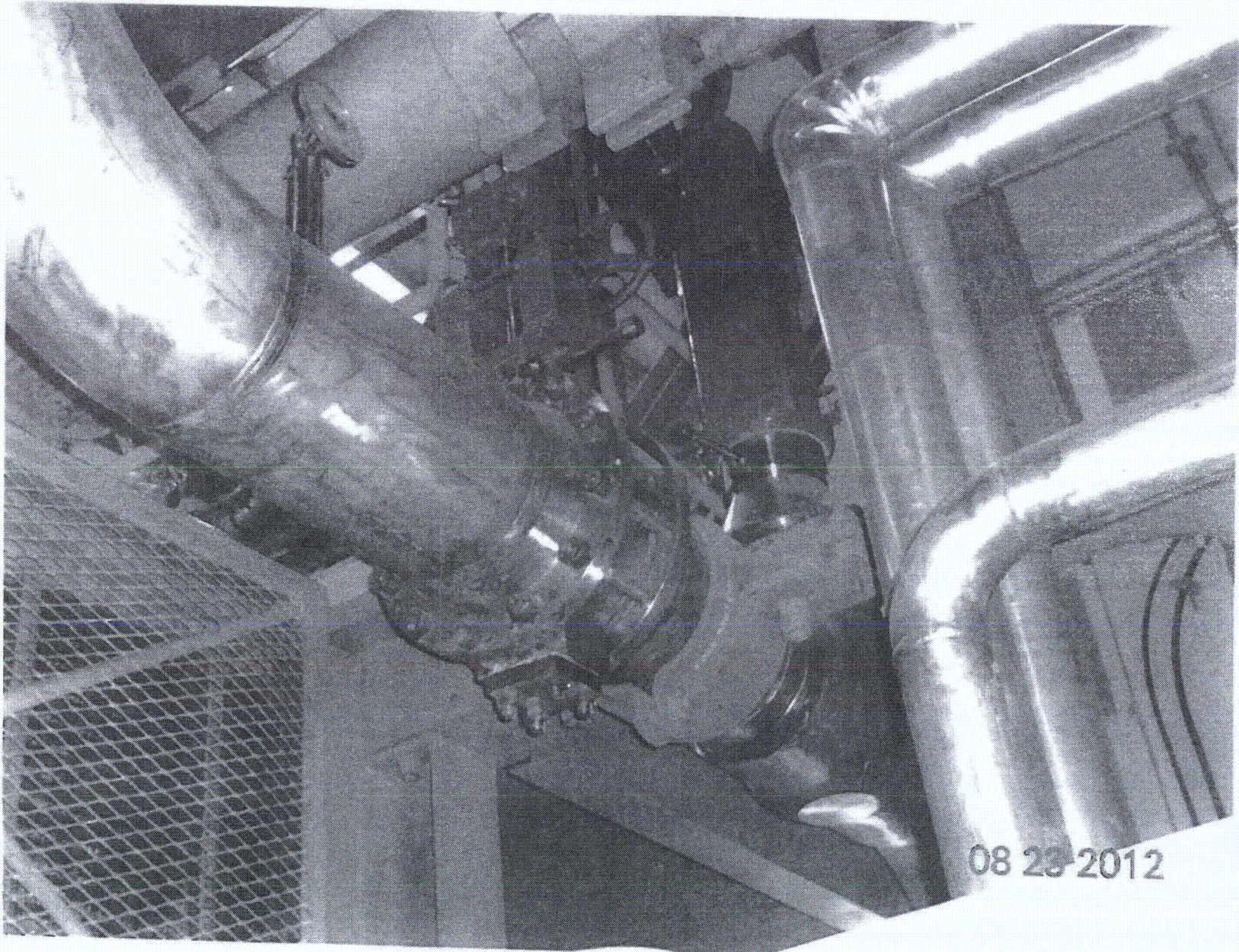
Comments (Additional pages may be added as necessary)

NONE

Evaluated by: Jamie Douel / JAMIE'S DOUEL Date: 8-23-2012
Wt. H. / WINSLOW STRANET 08/23/2012







Sheet 1 of 2

Status: Y N U

Seismic Walkdown Checklist (SWC)

Equipment ID No. 1-1213-06-025 Equip. Class¹² 0 (Other)

Equipment Description MV Manual Valve

Location: Bldg. AUX Floor El. 195' Room, Area RA 5.3

Manufacturer, Model, Etc. (optional but recommended) _____

Instructions for Completing Checklist

This checklist may be used to document the results of the Seismic Walkdown of an item of equipment on the SWEL. The space below each of the following questions may be used to record the results of judgments and findings. Additional space is provided at the end of this checklist for documenting other comments.

Anchorage

1. Is the anchorage configuration verification required (i.e., is the item one of the 50% of SWEL items requiring such verification)? Y N

IN LINE COMPONENT

2. Is the anchorage free of bent, broken, missing or loose hardware? Y N U N/A

3. Is the anchorage free of corrosion that is more than mild surface oxidation? Y N U N/A

4. Is the anchorage free of visible cracks in the concrete near the anchors? Y N U N/A

5. Is the anchorage configuration consistent with plant documentation? Y N U N/A
 (Note: This question only applies if the item is one of the 50% for which an anchorage configuration verification is required.)

6. Based on the above anchorage evaluations, is the anchorage free of potentially adverse seismic conditions? Y N U

¹² Enter the equipment class name from Appendix B: Classes of Equipment.

Seismic Walkdown Checklist (SWC)

Equipment ID No. 1-1213-06-005 Equip. Class¹² 0 (other)

Equipment Description MV Manual Valve

Interaction Effects

7. Are soft targets free from impact by nearby equipment or structures? YES NO U N/A

8. Are overhead equipment, distribution systems, ceiling tiles and lighting, and masonry block walls not likely to collapse onto the equipment? YES NO U N/A

9. Do attached lines have adequate flexibility to avoid damage? YES NO U N/A

10. Based on the above seismic interaction evaluations, is equipment free of potentially adverse seismic interaction effects? YES NO U

Other Adverse Conditions

11. Have you looked for and found no other seismic conditions that could adversely affect the safety functions of the equipment? YES NO U

Comments (Additional pages may be added as necessary)

TWO STRUTS ADJACENT TO VALVE PIPE MISSING
VALVE SUPPORTED BY SPRINGS.
PIPE OCP OO-VINCOUS THE STRUTS WERE SURTENS
THAT WERE REMOVED. NOT A SEISMIC CONCERN
SEE 1-1213-06-001 FOR AWC

Evaluated by: James J. Davel / JAMES DAVEL Date: 9-6-2012
Jul Guo / Frank YAO 9/6/12



