

Sheet 1 of 2
 Status: Y N U

Seismic Walkdown Checklist (SWC)

Equipment ID No. 1-PT-3010 Equip. Class¹² IR (INSTRUMENT RACKS)

Equipment Description SG 2 B6002 to MV Transmittal

Location: Bldg. CB Floor El. 200'-0" Room, Area RA 62

Manufacturer, Model, Etc. (optional but recommended) _____

Instructions for Completing Checklist

This checklist may be used to document the results of the Seismic Walkdown of an item of equipment on the SWEL. The space below each of the following questions may be used to record the results of judgments and findings. Additional space is provided at the end of this checklist for documenting other comments.

Anchorage

1. Is the anchorage configuration verification required (i.e., is the item one of the 50% of SWEL items requiring such verification)? Y N

2. Is the anchorage free of bent, broken, missing or loose hardware? Y N U N/A

3. Is the anchorage free of corrosion that is more than mild surface oxidation? Y N U N/A

4. Is the anchorage free of visible cracks in the concrete near the anchors? Y N U N/A

5. Is the anchorage configuration consistent with plant documentation?
 (Note: This question only applies if the item is one of the 50% for which an anchorage configuration verification is required.) Y N U N/A

6. Based on the above anchorage evaluations, is the anchorage free of potentially adverse seismic conditions? Y N U

¹² Enter the equipment class name from Appendix B: Classes of Equipment.

Seismic Walkdown Checklist (SWC)

Equipment ID No. 1-PT-3010 Equip. Class¹² IR (INSTRUMENT RACKS)
Equipment Description SG 2 B6002 to ARV Terminal

Interaction Effects

- 7. Are soft targets free from impact by nearby equipment or structures? Y N U N/A
- 8. Are overhead equipment, distribution systems, ceiling tiles and lighting, and masonry block walls not likely to collapse onto the equipment? Y N U N/A
- 9. Do attached lines have adequate flexibility to avoid damage? Y N U N/A
- 10. Based on the above seismic interaction evaluations, is equipment free of potentially adverse seismic interaction effects? Y N U

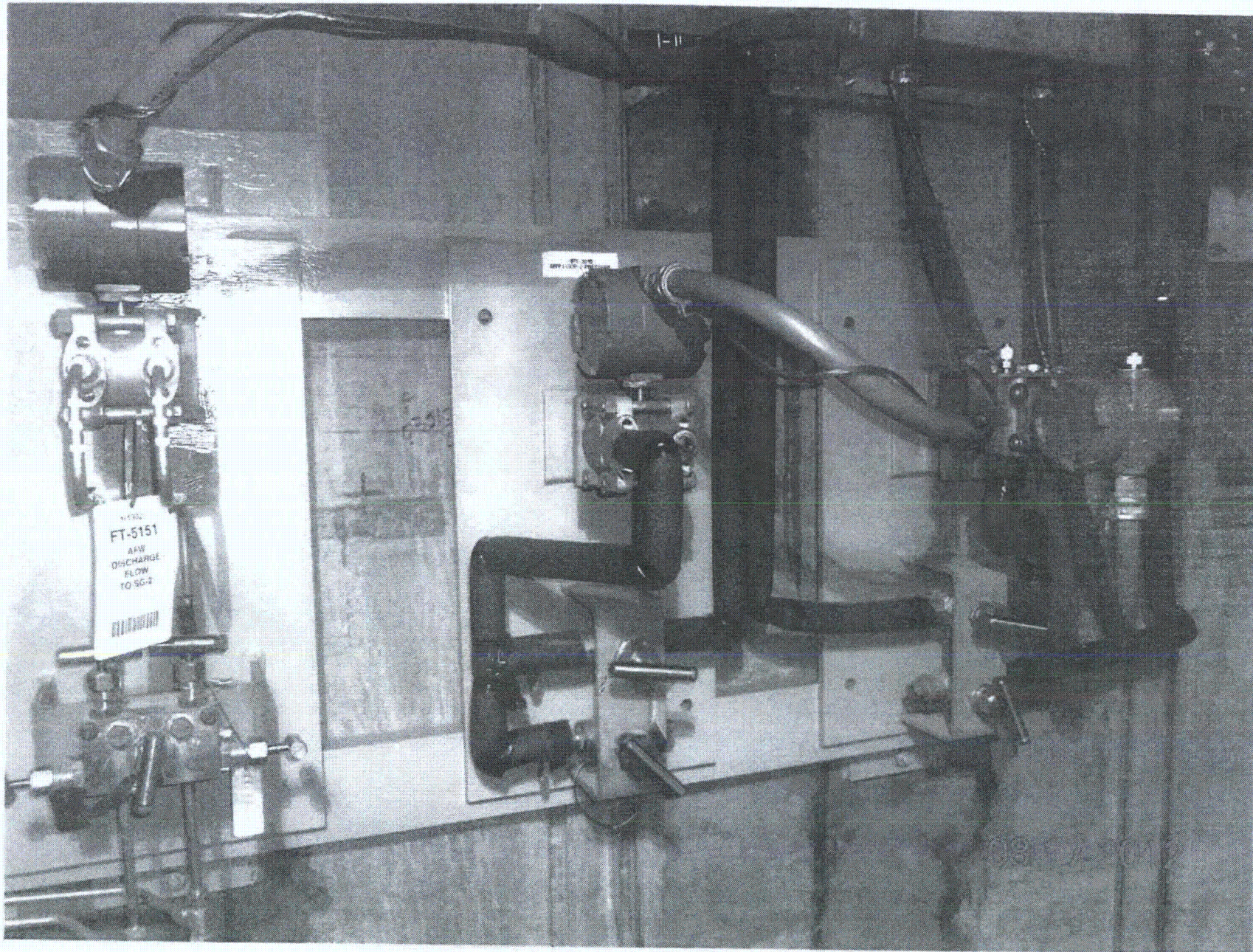
Other Adverse Conditions

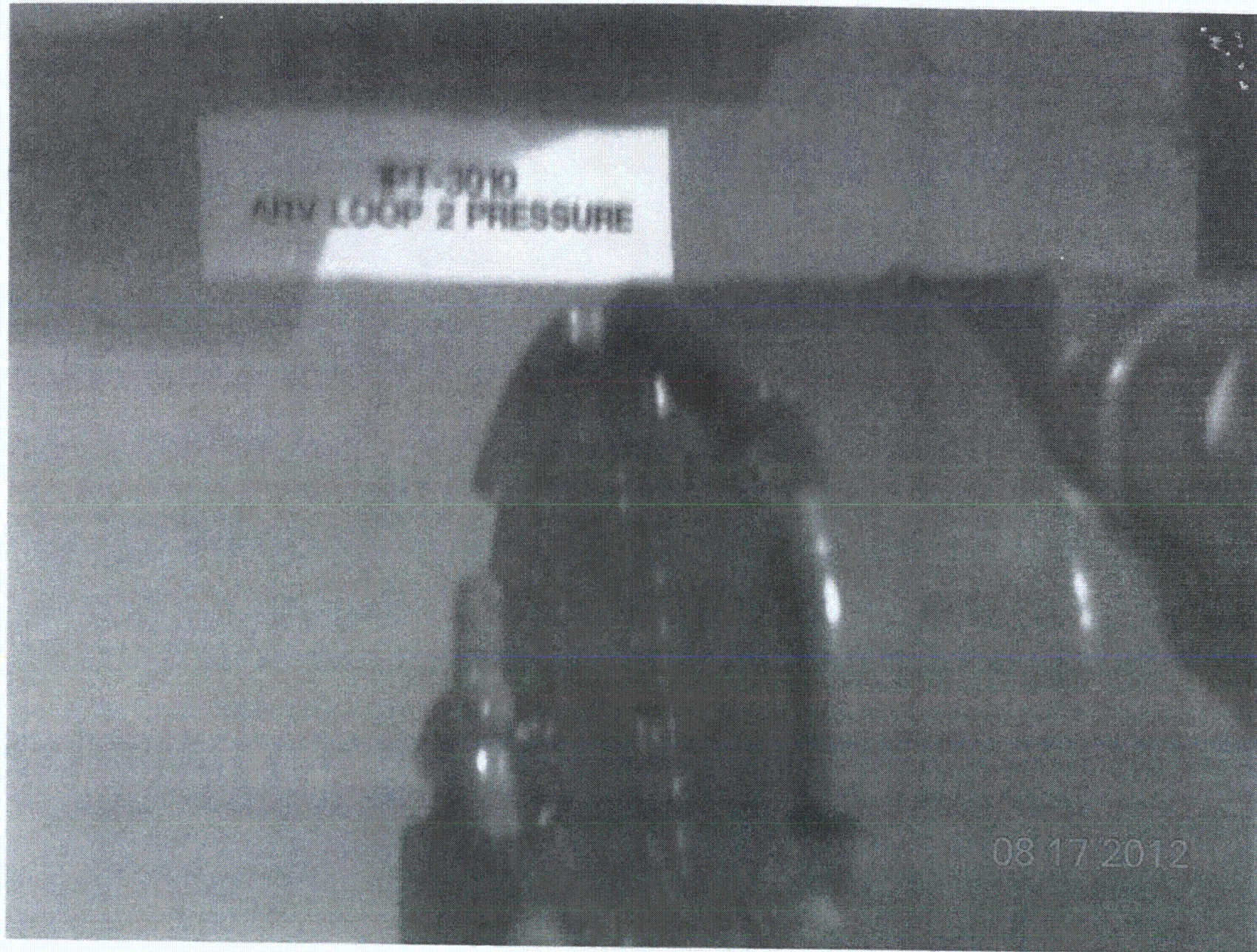
- 11. Have you looked for and found no other seismic conditions that could adversely affect the safety functions of the equipment? Y N U

Comments (Additional pages may be added as necessary)

None

Evaluated by: Frank Yao / J. Jay Date: 8/17/12
PABIMAL GANDHI / P. Ramolhi 8/17/2012





Seismic Walkdown Checklist (SWC)

Equipment ID No: 1-PV-3010 Equip. Class¹² 0 - Other

Equipment Description: ATMOSPHERIC RELIEF VALVE- SG 2

Location: Bldg. AUX-SMSUR Floor El. 220-0⁰¹ Room, Area R121

Manufacturer, Model, Etc. (optional but recommended) _____

Instructions for Completing Checklist

This checklist may be used to document the results of the Seismic Walkdown of an item of equipment on the SWEL. The space below each of the following questions may be used to record the results of judgments and findings. Additional space is provided at the end of this checklist for documenting other comments.

Anchorage

1. Is the anchorage configuration verification required (i.e., is the item one of the 50% of SWEL items requiring such verification)? Y N U

2. Is the anchorage free of bent, broken, missing or loose hardware? Y N U N/A

3. Is the anchorage free of corrosion that is more than mild surface oxidation? Y N U N/A

4. Is the anchorage free of visible cracks in the concrete near the anchors? Y N U N/A

5. Is the anchorage configuration consistent with plant documentation? Y N U N/A
 (Note: This question only applies if the item is one of the 50% for which an anchorage configuration verification is required.)

6. Based on the above anchorage evaluations, is the anchorage free of potentially adverse seismic conditions? Y N U

IN-LINE VALVE

¹² Enter the equipment class name from Appendix B: Classes of Equipment.

Seismic Walkdown Checklist (SWC)

Equipment ID No. 1- PV-3010 Equip. Class¹² Other - Class 0

Equipment Description: _____

Interaction Effects

J.D. 8/15/12

7. Are soft targets free from impact by nearby equipment or structures? Y N U N/A
EQUIPMENT ~~IS~~ ~~NOT~~ ~~LOCATED~~ ~~DIRECTLY~~ ~~ABOVE~~ ~~VALUE~~. ~~WIRE~~ ~~IS~~ ~~CONFIGURED~~ ~~SO~~ ~~THAT~~ ~~IT~~ ~~CANNOT~~ ~~INTERACT~~ ~~WITH~~ ~~SURROUNDING~~ ~~EQUIPMENT~~.

8. Are overhead equipment, distribution systems, ceiling tiles and lighting, and masonry block walls not likely to collapse onto the equipment? Y N U N/A

9. Do attached lines have adequate flexibility to avoid damage? Y N U N/A
CONDUIT & TUBING CONNECTIONS ARE FLEXIBLE

10. Based on the above seismic interaction evaluations, is equipment free of potentially adverse seismic interaction effects? Y N U

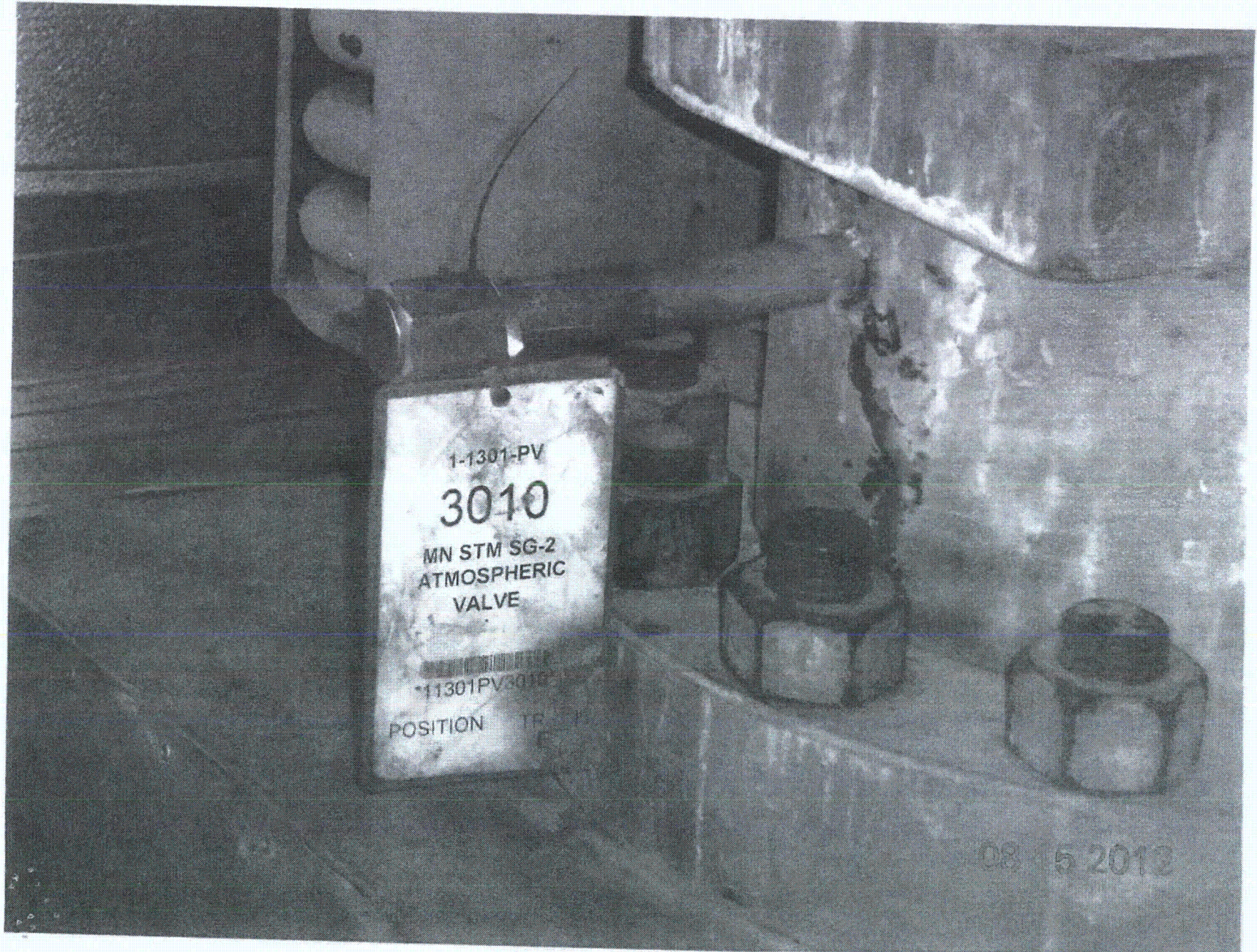
Other Adverse Conditions

11. Have you looked for and found no other seismic conditions that could adversely affect the safety functions of the equipment? Y N U

Comments (Additional pages may be added as necessary)

NONE

Evaluated by: James Douzal / JAMES DOUZAL Date: 8-15-2012
Winston Stelmach / WINSTON STELMACH 8/15/2012



Sheet 1 of 2
 Status: Y N U

Seismic Walkdown Checklist (SWC)

Equipment ID No. 1-TDC-4170 Equip. Class¹² 19- Temperature Sensors
 Equipment Description ECW COND/EVAP TEMP DEFF TO ASGW CONTROL VLV 1-TV-11740
 Location: Bldg. CONTROL Floor El. 260'-0" Room, Area R320
 Manufacturer, Model, Etc. (optional but recommended) _____

Instructions for Completing Checklist

This checklist may be used to document the results of the Seismic Walkdown of an item of equipment on the SWEL. The space below each of the following questions may be used to record the results of judgments and findings. Additional space is provided at the end of this checklist for documenting other comments.

Anchorage

1. Is the anchorage configuration verification required (i.e., is the item one of the 50% of SWEL items requiring such verification)? Y N U N/A

2. Is the anchorage free of bent, broken, missing or loose hardware? Y N U N/A

3. Is the anchorage free of corrosion that is more than mild surface oxidation? Y N U N/A

4. Is the anchorage free of visible cracks in the concrete near the anchors? Y N U N/A

5. Is the anchorage configuration consistent with plant documentation? Y N U N/A
 (Note: This question only applies if the item is one of the 50% for which an anchorage configuration verification is required.)

6. Based on the above anchorage evaluations, is the anchorage free of potentially adverse seismic conditions? Y N U

¹² Enter the equipment class name from Appendix B: Classes of Equipment.

Seismic Walkdown Checklist (SWC)

Equipment ID No. 1-TOC-4170 Equip. Class¹² 19 - Temperature Sensors

Equipment Description ECM COND/EVAP TEMP DEFF TO NSCW CONTROL ULV 1-TV-11740

Interaction Effects

7. Are soft targets free from impact by nearby equipment or structures? Y N U N/A

8. Are overhead equipment, distribution systems, ceiling tiles and lighting, and masonry block walls not likely to collapse onto the equipment? Y N U N/A

9. Do attached lines have adequate flexibility to avoid damage? Y N U N/A

10. Based on the above seismic interaction evaluations, is equipment free of potentially adverse seismic interaction effects? Y N U

Other Adverse Conditions

11. Have you looked for and found no other seismic conditions that could adversely affect the safety functions of the equipment? Y N U

Comments (Additional pages may be added as necessary)

NONE

SEE 1-1531-B7-002-000 FOR AWC

Evaluated by: James Dovel / JAMES DOVEL Date: 8-27-2012

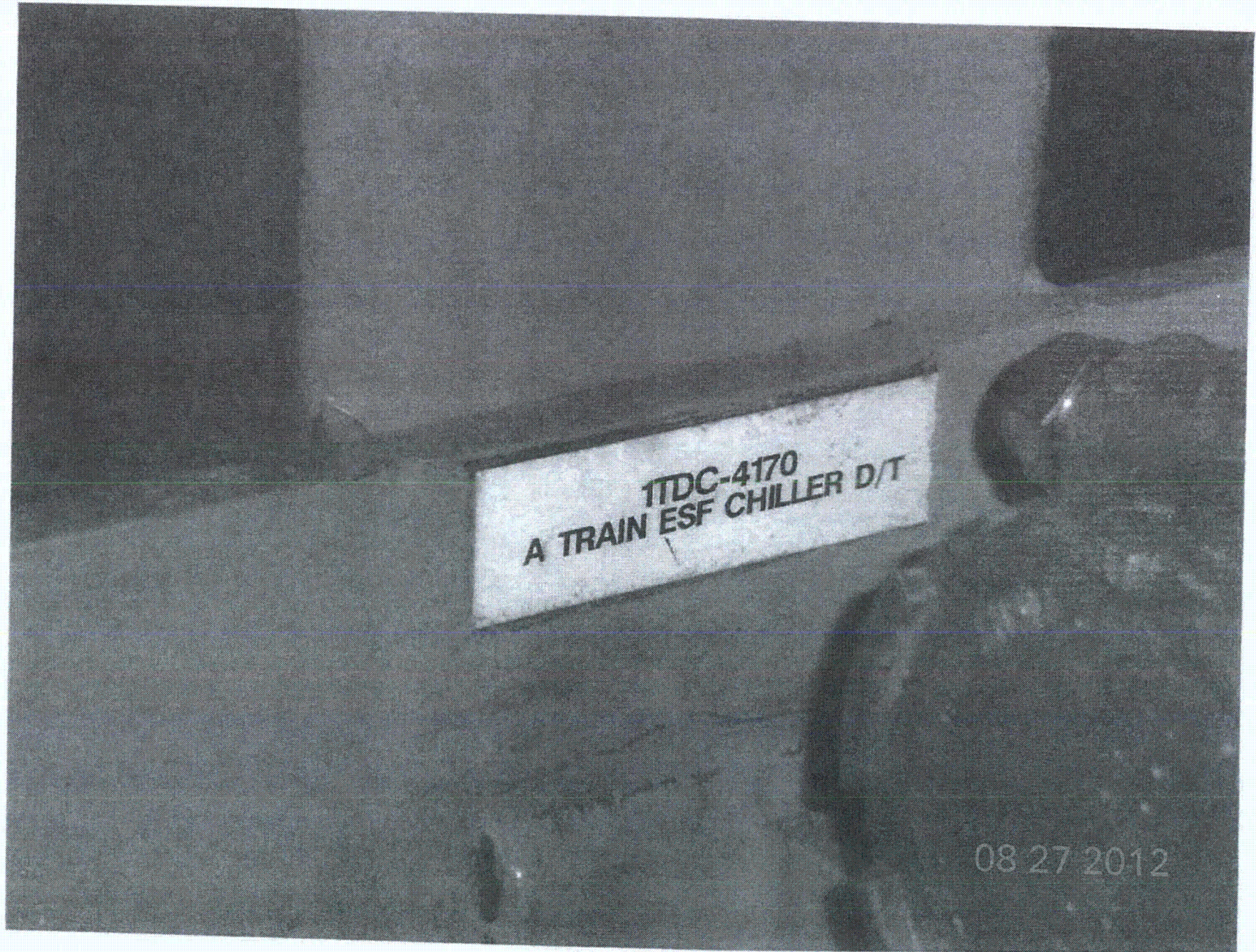
Wet Jeff / WILSON STEWART 08/27/2012

<CA>











Sheet 1 of 2
 Status: Y N U

Seismic Walkdown Checklist (SWC)

Equipment ID No. 1-TIS-12005 Equip. Class¹² 19
 Equipment Description AUX FEEDWATER PUMP B SUPPLY FAN CONTROLLER
 Location: Bldg: AFW PUMP HOUSE A Floor El. 220.0' Room, Area R102
 Manufacturer, Model, Etc. (optional but recommended) JOHNSON CONTROLS, INC.

Instructions for Completing Checklist

This checklist may be used to document the results of the Seismic Walkdown of an item of equipment on the SWEL. The space below each of the following questions may be used to record the results of judgments and findings. Additional space is provided at the end of this checklist for documenting other comments.

Anchorage

1. Is the anchorage configuration verification required (i.e., is the item one of the 50% of SWEL items requiring such verification)? Y N U

2. Is the anchorage free of bent, broken, missing or loose hardware? Y N U N/A

3. Is the anchorage free of corrosion that is more than mild surface oxidation? Y N U N/A

4. Is the anchorage free of visible cracks in the concrete near the anchors? Y N U N/A

5. Is the anchorage configuration consistent with plant documentation? (Note: This question only applies if the item is one of the 50% for which an anchorage configuration verification is required.) Y N U N/A

6. Based on the above anchorage evaluations, is the anchorage free of potentially adverse seismic conditions? Y N U

J.D. 8/23/12

¹² Enter the equipment class name from Appendix B: Classes of Equipment.

Seismic Walkdown Checklist (SWC)

Equipment ID No. 1-TIS-1005 Equip. Class¹² _____

Equipment Description Aux Feedwater Pump A Supply Fan Controller

Interaction Effects

7. Are soft targets free from impact by nearby equipment or structures? Y N U N/A

8. Are overhead equipment, distribution systems, ceiling tiles and lighting, and masonry block walls not likely to collapse onto the equipment? Y N U N/A

9. Do attached lines have adequate flexibility to avoid damage? Y N U N/A

10. Based on the above seismic interaction evaluations, is equipment free of potentially adverse seismic interaction effects? Y N U

Other Adverse Conditions

11. Have you looked for and found no other seismic conditions that could adversely affect the safety functions of the equipment? Y N U

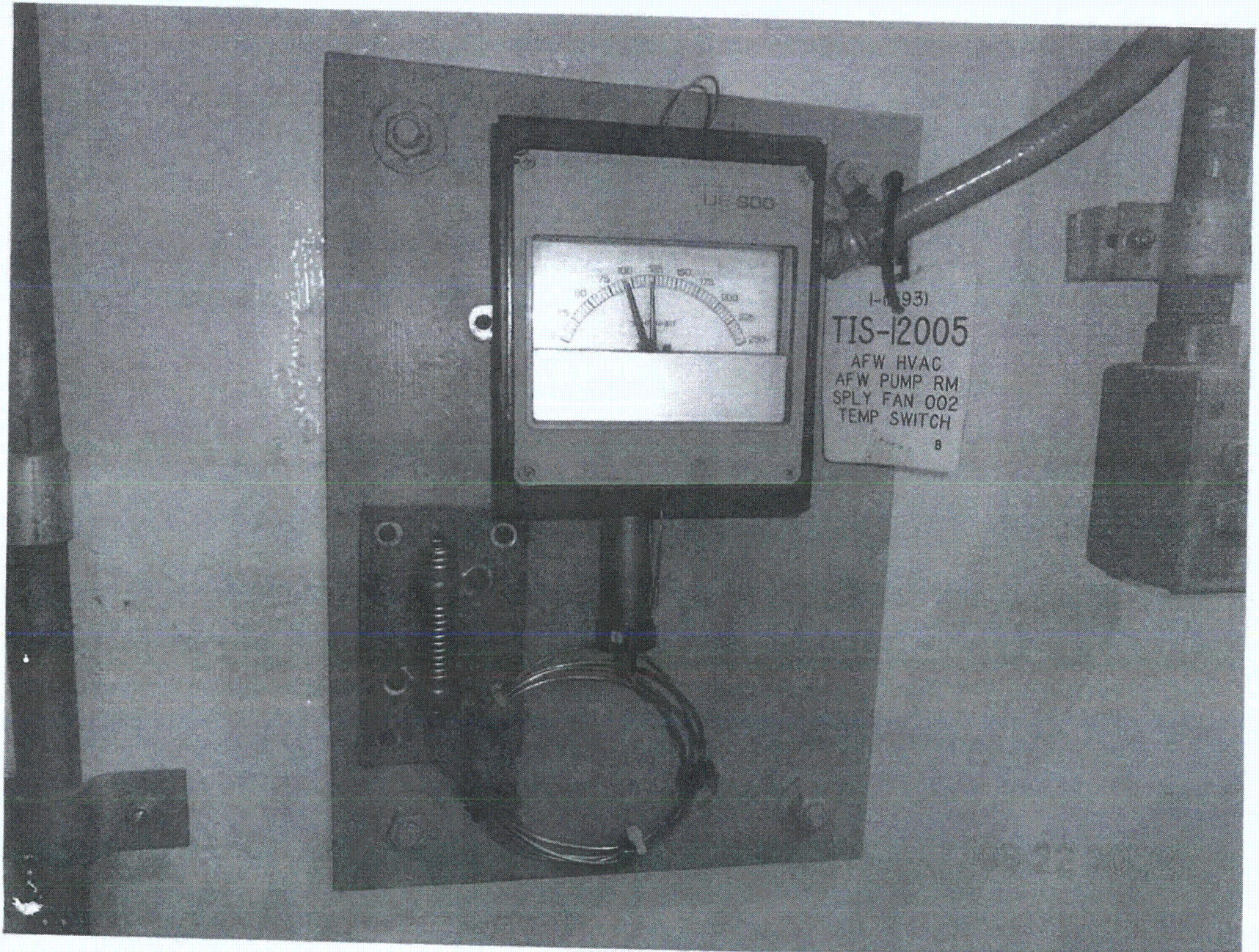
SEE 1-1593-137-002 FOR AREA WALKDOWN (AWC)

Comments (Additional pages may be added as necessary)

HORIZONTAL CRACK REMAIN EAST LOWER RIGHT CORNER OF BOARDWALK - NOT ASSOCIATED WITH ANCHORAGE

Evaluated by: James Dougl / JAMES DOUGL Date: 8-22-2012
[Signature] / JOSIE HERNANDEZ 8/22/2012

< C4 >



Sheet 1 of 2
 Status: Y N U

Seismic Walkdown Checklist (SWC)

Equipment ID No: 1-TISH-12200 Equip. Class¹² 19 - TEMPERATURE SENSOR
 Equipment Description ELECT. SWGR & MCC RM A7001 COOLER CONTROLLER
 Location: Bldg. PV AUX CENTRAL Floor El. 119'-3" Room, Area RD105
 Manufacturer, Model, Etc. (optional but recommended) JOHNSON CONTROLS, INC.

Instructions for Completing Checklist

This checklist may be used to document the results of the Seismic Walkdown of an item of equipment on the SWEL. The space below each of the following questions may be used to record the results of judgments and findings. Additional space is provided at the end of this checklist for documenting other comments.

Anchorage

1. Is the anchorage configuration verification required (i.e., is the item one of the 50% of SWEL items requiring such verification)? Y N

2. Is the anchorage free of bent, broken, missing or loose hardware? Y N U N/A

3. Is the anchorage free of corrosion that is more than mild surface oxidation? Y N U N/A

4. Is the anchorage free of visible cracks in the concrete near the anchors? Y N U N/A

{ CX5DPM027 VER. 9.0

{ CX5DPM029 VER. 3.0

5. Is the anchorage configuration consistent with plant documentation? Y N U N/A
 (Note: This question only applies if the item is one of the 50% for which an anchorage configuration verification is required.)

6. Based on the above anchorage evaluations, is the anchorage free of potentially adverse seismic conditions? Y N U

¹² Enter the equipment class name from Appendix B: Classes of Equipment.

Seismic Walkdown Checklist (SWC)

Equipment ID No. 1-TISH-12200 Equip. Class¹² 19-TEMPERATURE SENSOR

Equipment Description ELECT SWGR & MCC RM A7001 COOLER CONTROLLER

Interaction Effects

- 7. Are soft targets free from impact by nearby equipment or structures? Y N U N/A
- 8. Are overhead equipment, distribution systems, ceiling tiles and lighting, and masonry block walls not likely to collapse onto the equipment? Y N U N/A
- 9. Do attached lines have adequate flexibility to avoid damage? Y N U N/A
- 10. Based on the above seismic interaction evaluations, is equipment free of potentially adverse seismic interaction effects? Y N U

Other Adverse Conditions

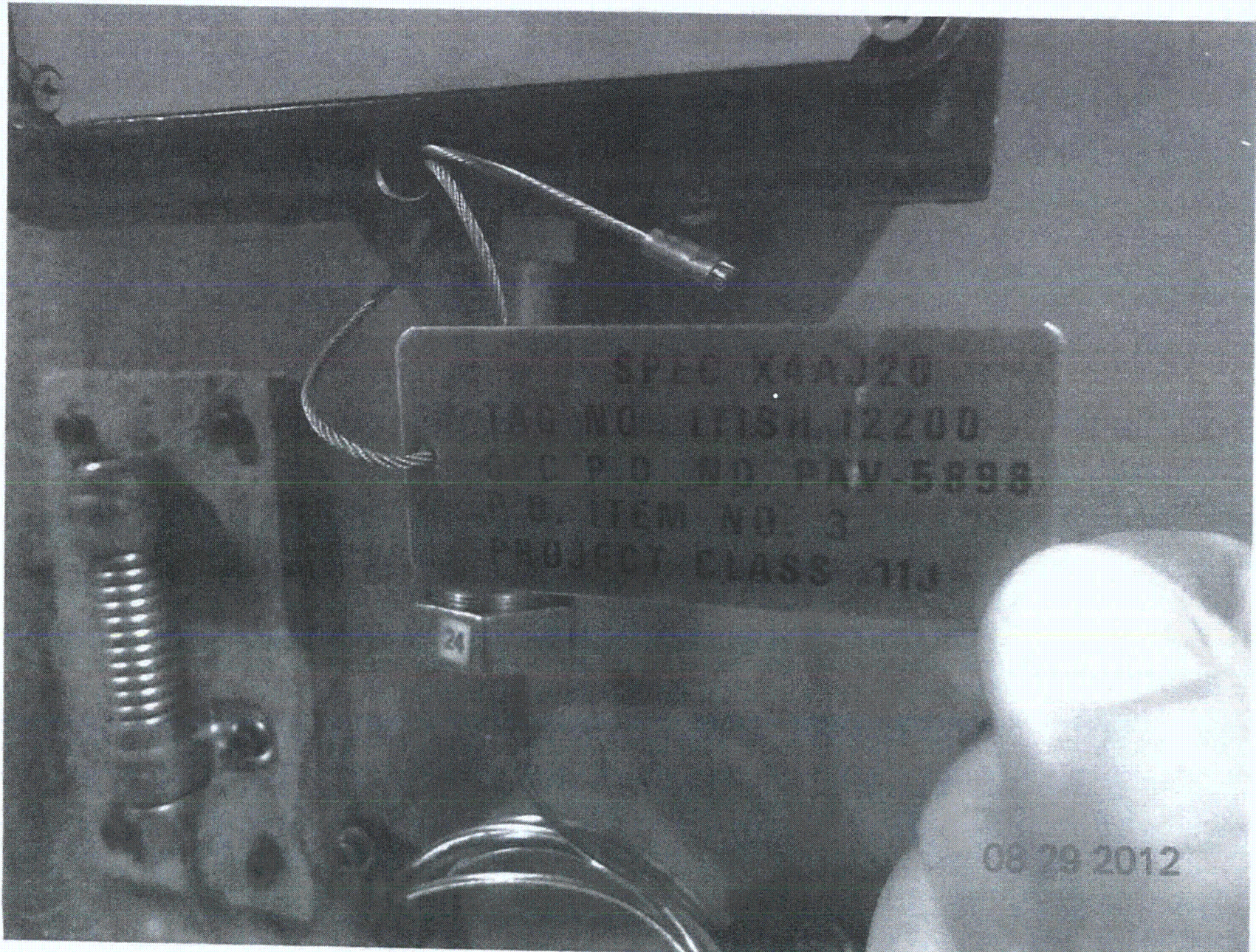
- 11. Have you looked for and found no other seismic conditions that could adversely affect the safety functions of the equipment? Y N U

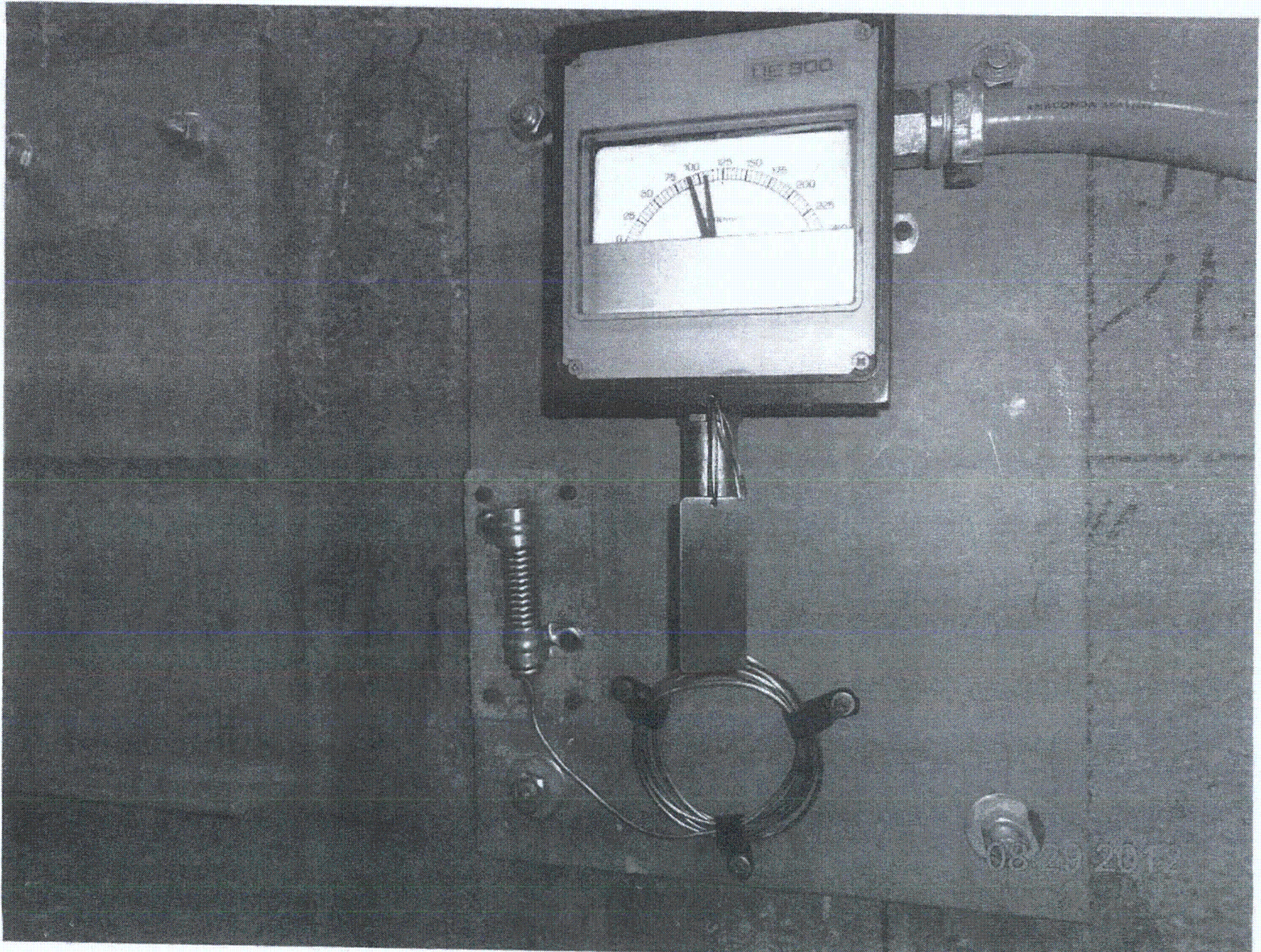
Comments (Additional pages may be added as necessary)

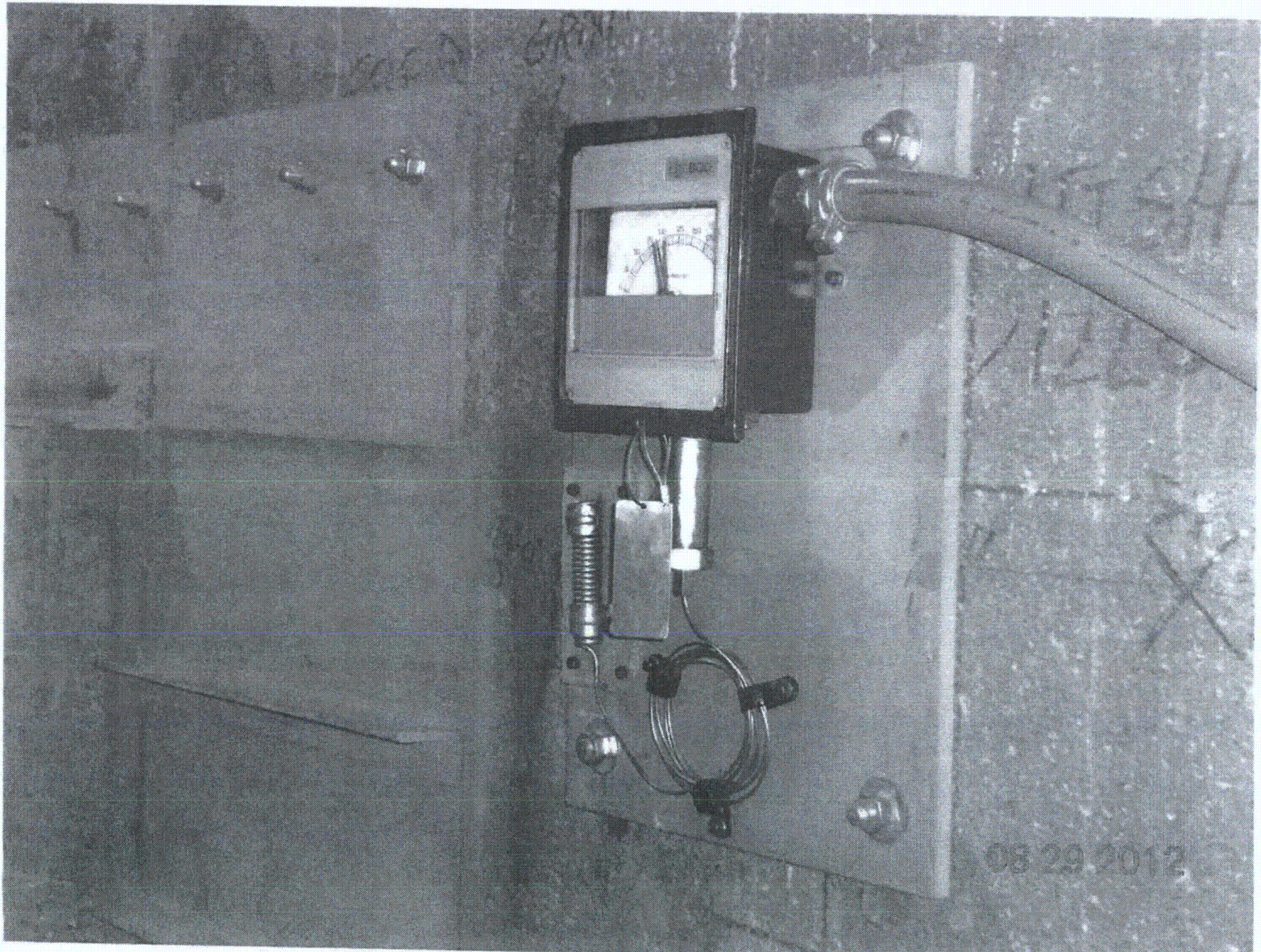
SEE 1-1805-53-B15 FOR AREA WALK-BY CHECKLIST

Evaluated by: David Lohs DAVID WOODARSKY Date: 8/29/2012
Matthew Wilkinson Matthew Wilkinson 8/29/2012

< C A >







Sheet 1 of 2
 Status: Y N U

Seismic Walkdown Checklist (SWC)

Equipment ID No. 1-TLSH-22509 Equip. Class¹² 19
 Equipment Description TB & AB Train A Tunnel Supply Fan Controller
 Location: Bldg. CB Floor El. 143-60 Room, Area RC 09
 Manufacturer, Model, Etc. (optional but recommended) _____

Instructions for Completing Checklist

This checklist may be used to document the results of the Seismic Walkdown of an item of equipment on the SWEL. The space below each of the following questions may be used to record the results of judgments and findings. Additional space is provided at the end of this checklist for documenting other comments.

Anchorage

1. Is the anchorage configuration verification required (i.e., is the item one of the 50% of SWEL items requiring such verification)? Y N U

2. Is the anchorage free of bent, broken, missing or loose hardware? Y N U N/A

3. Is the anchorage free of corrosion that is more than mild surface oxidation? Y N U N/A

4. Is the anchorage free of visible cracks in the concrete near the anchors? Y N U N/A

5. Is the anchorage configuration consistent with plant documentation? (Note: This question only applies if the item is one of the 50% for which an anchorage configuration verification is required.) Y N U N/A

6. Based on the above anchorage evaluations, is the anchorage free of potentially adverse seismic conditions? Y N U

¹² Enter the equipment class name from Appendix B: Classes of Equipment.

Seismic Walkdown Checklist (SWC)

Equipment ID No. 1-TISH-22504 Equip. Class¹² 19

Equipment Description TB 9 AB Train A Tunnel Supply Fan Controller

Interaction Effects

7. Are soft targets free from impact by nearby equipment or structures? Y N U N/A

8. Are overhead equipment, distribution systems, ceiling tiles and lighting, and masonry block walls not likely to collapse onto the equipment? Y N U N/A

9. Do attached lines have adequate flexibility to avoid damage? Y N U N/A

10. Based on the above seismic interaction evaluations, is equipment free of potentially adverse seismic interaction effects? Y N U

Other Adverse Conditions

11. Have you looked for and found no other seismic conditions that could adversely affect the safety functions of the equipment? Y N U

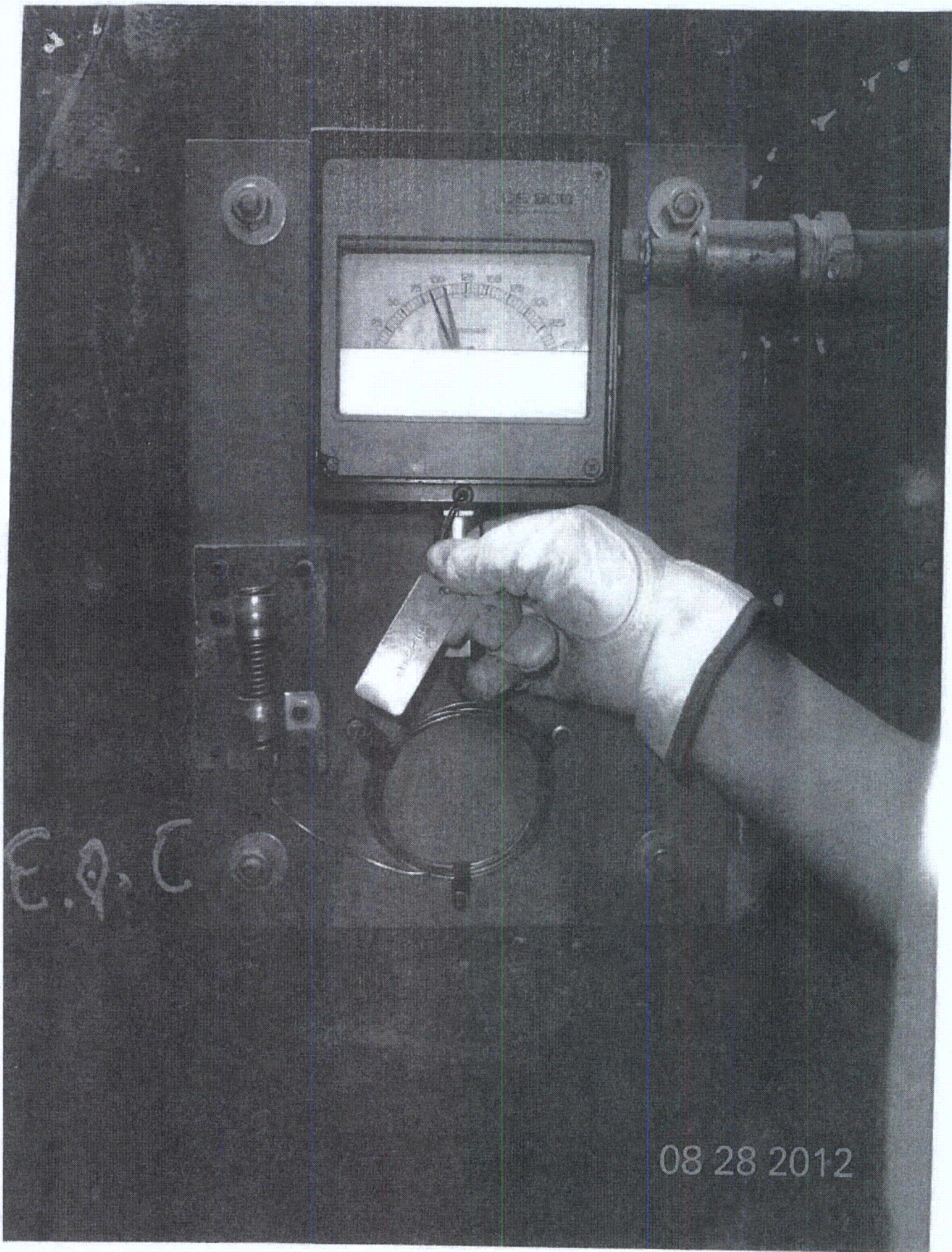
Comments (Additional pages may be added as necessary)

None.

Evaluated by: Frank YAO / [Signature] Date: 8/28/12

PARIMAL GANDHI / P. Gandhi 8/27/2012

<C4>



Seismic Walkdown Checklist (SWC)

Equipment ID No. I-TV-11740R Equip. Class¹² ~~✓~~ - OTHER

Equipment Description NSCW TO ESSENTIAL CHLDR CONDENSER (P/H) CONTROL VLV

Location: Bldg. CONTROL Floor El. 260'-0" Room, Area R320

Manufacturer, Model, Etc. (optional but recommended) FISHER

Instructions for Completing Checklist

This checklist may be used to document the results of the Seismic Walkdown of an item of equipment on the SWEL. The space below each of the following questions may be used to record the results of judgments and findings. Additional space is provided at the end of this checklist for documenting other comments.

Anchorage

1. Is the anchorage configuration verification required (i.e., is the item one of the 50% of SWEL items requiring such verification)? Y N U

2. Is the anchorage free of bent, broken, missing or loose hardware? Y N U N/A

3. Is the anchorage free of corrosion that is more than mild surface oxidation? Y N U N/A

4. Is the anchorage free of visible cracks in the concrete near the anchors? Y N U N/A

5. Is the anchorage configuration consistent with plant documentation? (Note: This question only applies if the item is one of the 50% for which an anchorage configuration verification is required.) Y N U N/A

6. Based on the above anchorage evaluations, is the anchorage free of potentially adverse seismic conditions? Y N U

¹² Enter the equipment class name from Appendix B: Classes of Equipment.

Seismic Walkdown Checklist (SWC)

Equipment ID No. 1-TV-11740R Equip. Class¹² Ø - OTHER

Equipment Description USCW TO ESSENTIAL CIRCUITRY COMPENSER (E/C) CONTROL VAL

Interaction Effects

7. Are soft targets free from impact by nearby equipment or structures? YES NO U N/A

8. Are overhead equipment, distribution systems, ceiling tiles and lighting, and masonry block walls not likely to collapse onto the equipment? YES NO U N/A

9. Do attached lines have adequate flexibility to avoid damage? YES NO U N/A

10. Based on the above seismic interaction evaluations, is equipment free of potentially adverse seismic interaction effects? YES NO U

Other Adverse Conditions

11. Have you looked for and found no other seismic conditions that could adversely affect the safety functions of the equipment? YES NO U

Comments (Additional pages may be added as necessary)

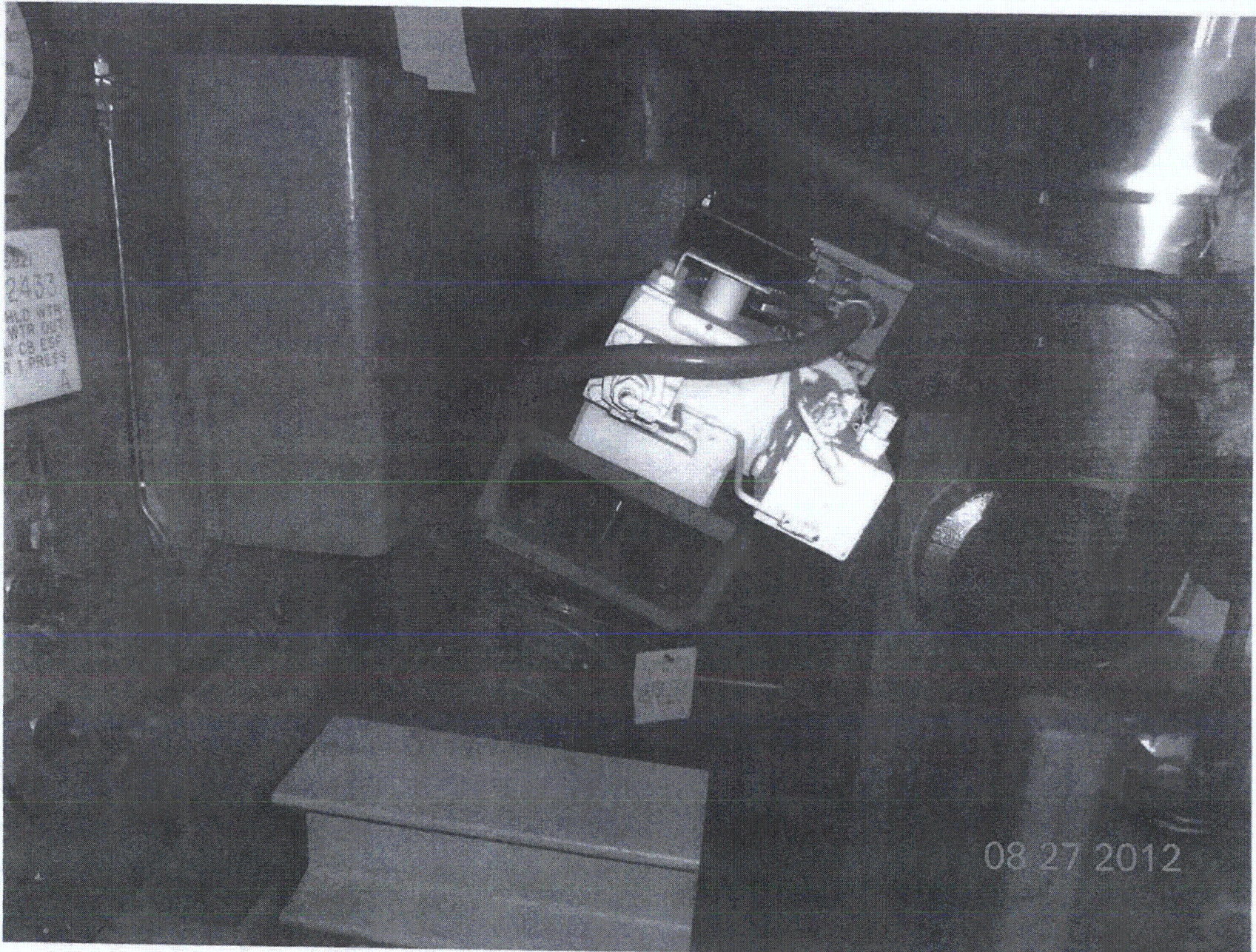
NOTE

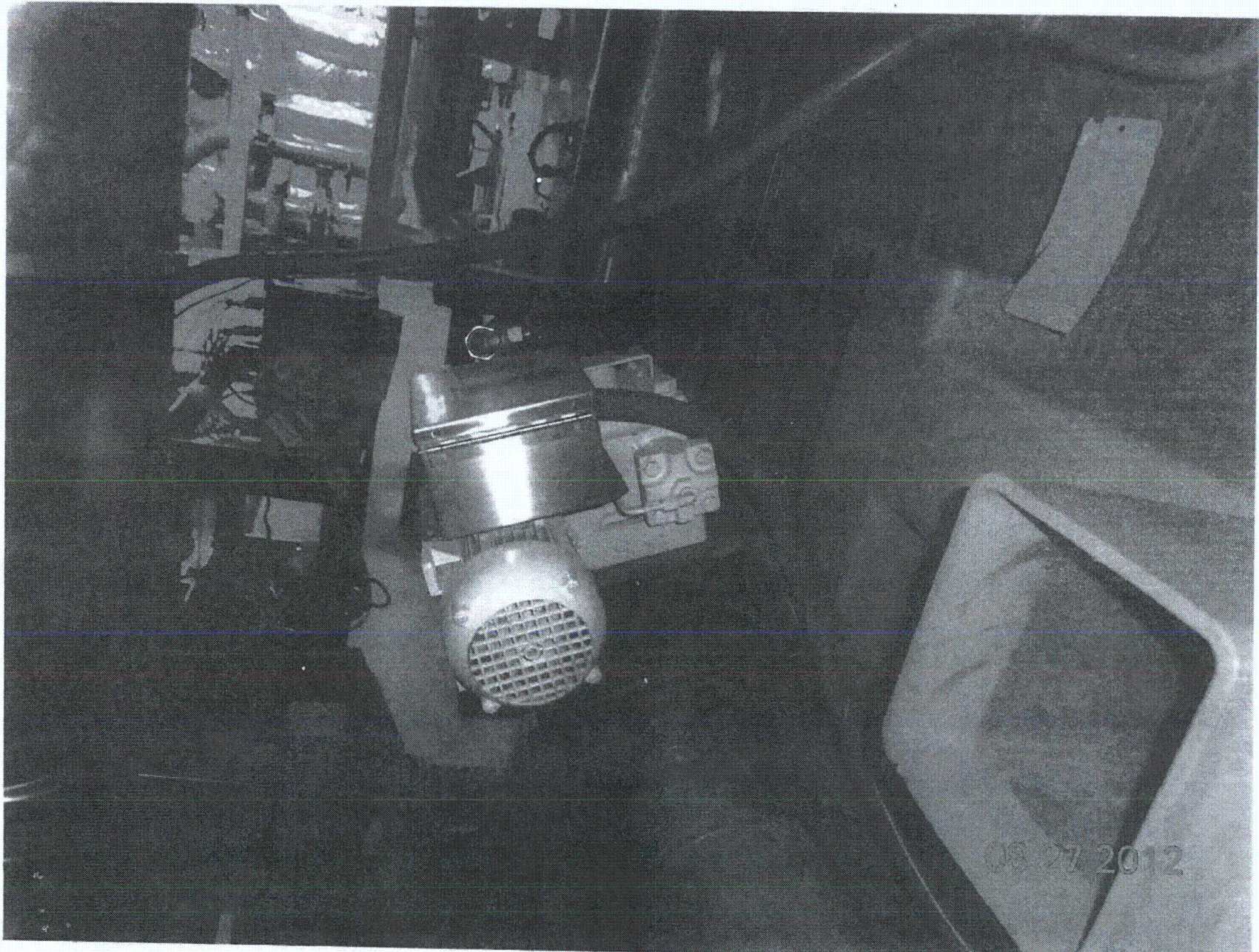
SEE 1-531-87-002-000 FOR SWC

Evaluated by: James Devel / JAMES DEVEL Date: 8-27-12

Wt Stalder / WINSTON STALDER 08/27/2012

<C4>







Seismic Walkdown Checklist (SWC)

Equipment ID No. 1-TV-12086 Equip. Class¹² Ø - OTHER

Equipment Description 06 BLOC OUTSIDE AIR DAMPER

Location: Bldg. 06 Floor El. 229-0" Room, Area R.103

Manufacturer, Model, Etc. (optional but recommended) _____

Instructions for Completing Checklist

This checklist may be used to document the results of the Seismic Walkdown of an item of equipment on the SWEL. The space below each of the following questions may be used to record the results of judgments and findings. Additional space is provided at the end of this checklist for documenting other comments.

Anchorage

1. Is the anchorage configuration verification required (i.e., is the item one of the 50% of SWEL items requiring such verification)? Y N U N/A

2. Is the anchorage free of bent, broken, missing or loose hardware? Y N U N/A

3. Is the anchorage free of corrosion that is more than mild surface oxidation? Y N U N/A

4. Is the anchorage free of visible cracks in the concrete near the anchors? Y N U N/A

5. Is the anchorage configuration consistent with plant documentation? (Note: This question only applies if the item is one of the 50% for which an anchorage configuration verification is required.) Y N U N/A

6. Based on the above anchorage evaluations, is the anchorage free of potentially adverse seismic conditions? Y N U

¹²Enter the equipment class name from Appendix B: Classes of Equipment.

Seismic Walkdown Checklist (SWC)

Equipment ID No. 1-TV-12086 Equip. Class¹² Ø - OTHER

Equipment Description DG BLOB OUTSIDE AER DAMPER

Interaction Effects

7. Are soft targets free from impact by nearby equipment or structures? Y N U N/A

8. Are overhead equipment, distribution systems, ceiling tiles and lighting, and masonry block walls not likely to collapse onto the equipment? Y N U N/A

9. Do attached lines have adequate flexibility to avoid damage? Y N U N/A

10. Based on the above seismic interaction evaluations, is equipment free of potentially adverse seismic interaction effects? Y N U

Other Adverse Conditions

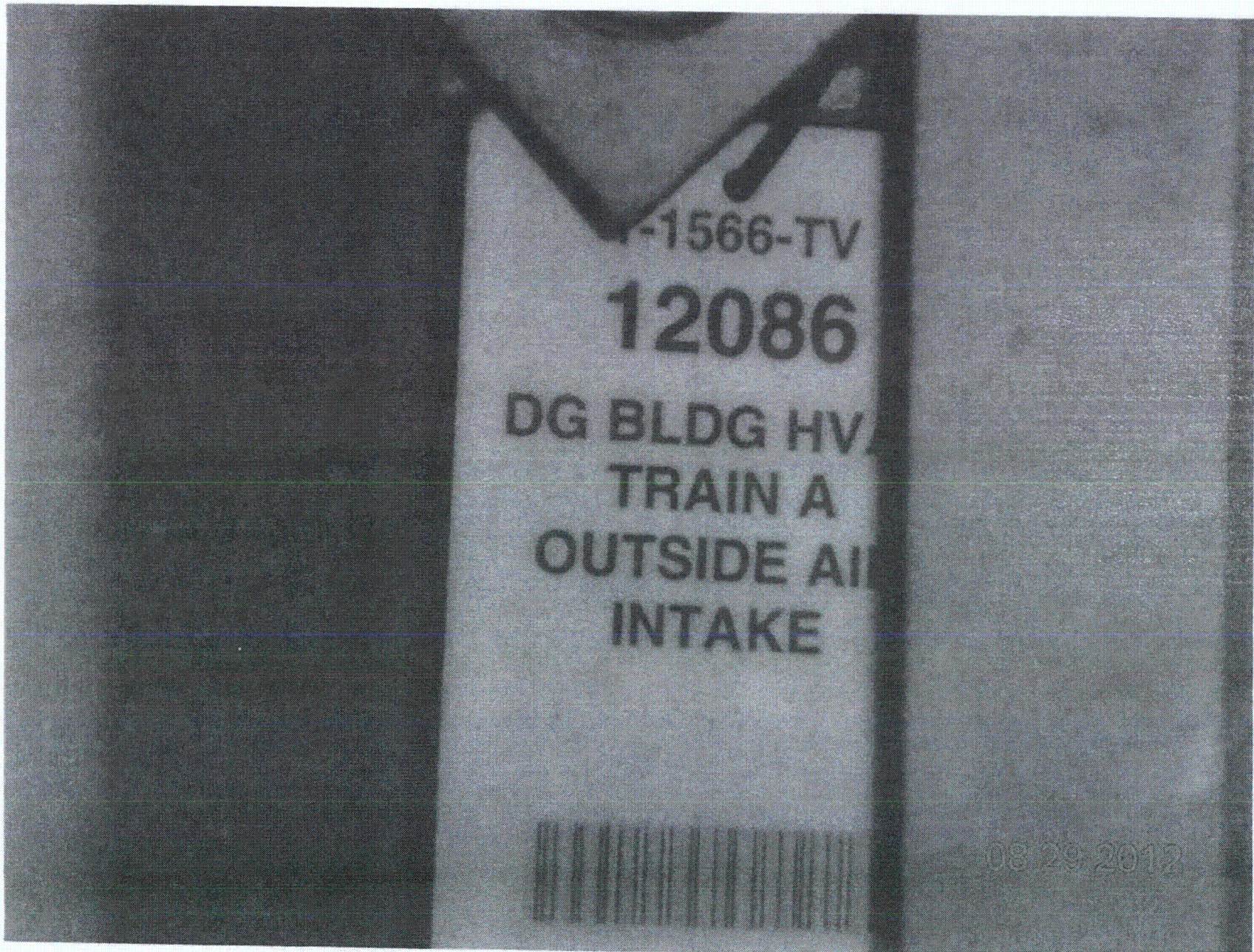
11. Have you looked for and found no other seismic conditions that could adversely affect the safety functions of the equipment? Y N U

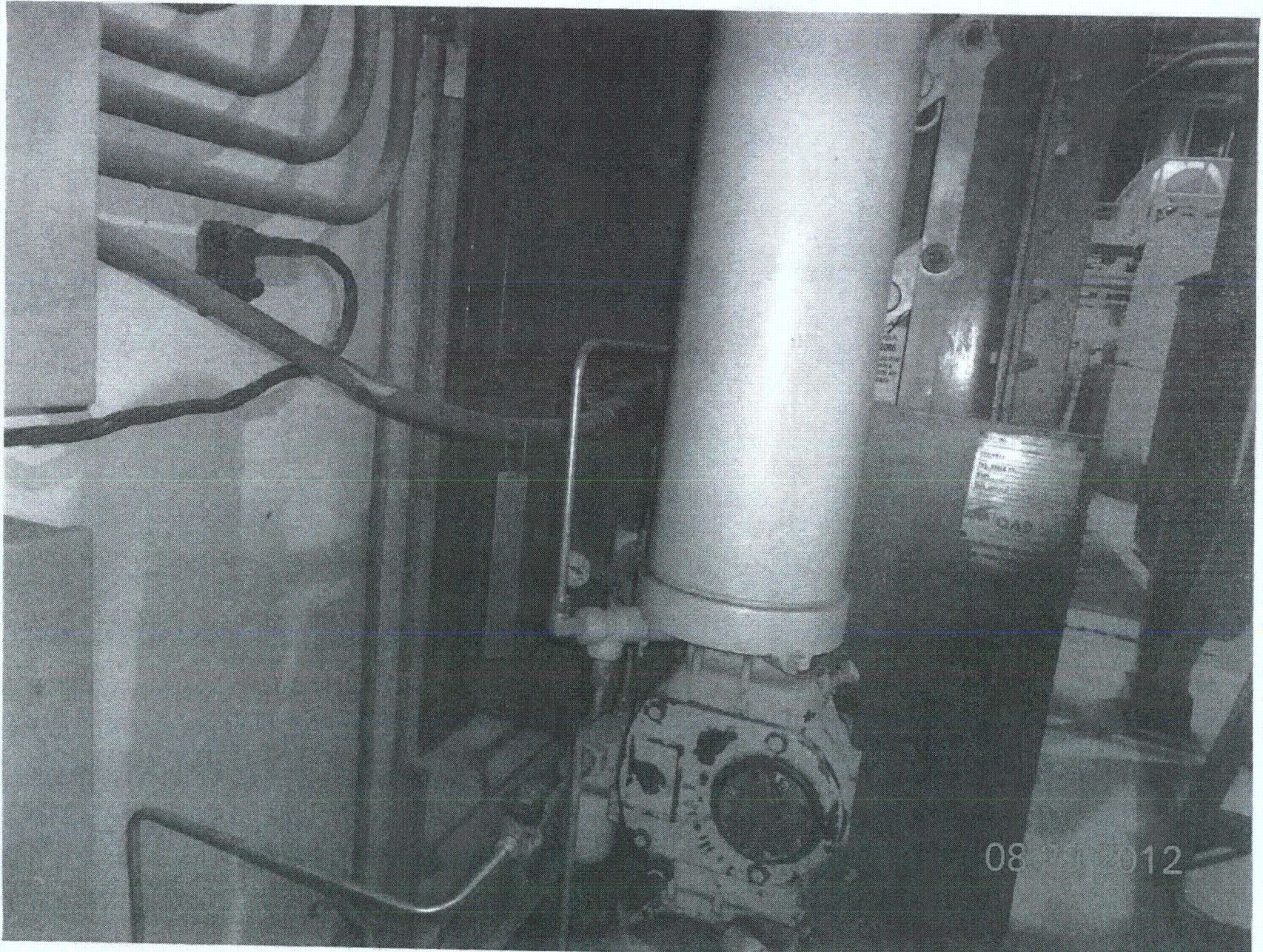
Comments (Additional pages may be added as necessary)

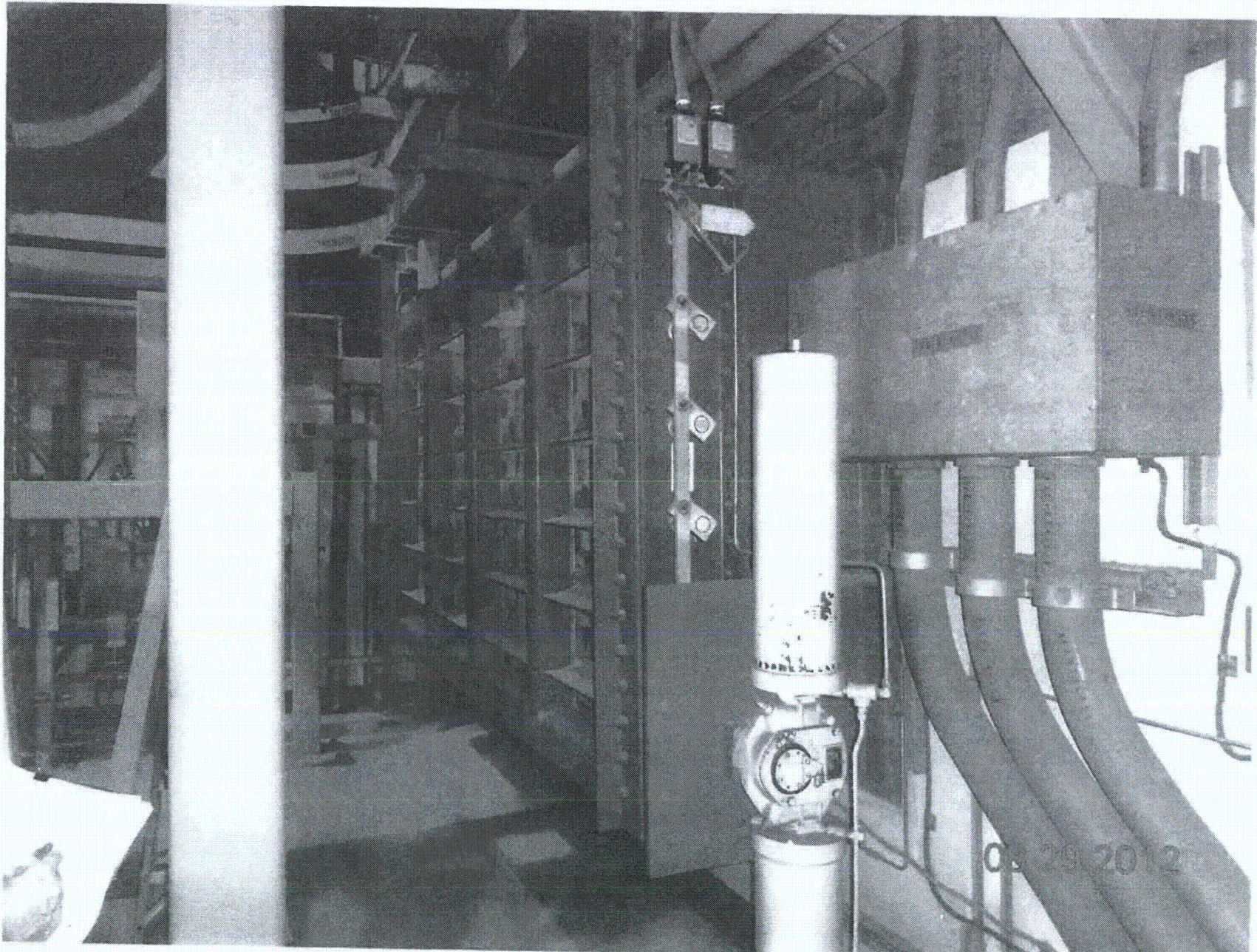
NOTE FOR SEISMIC
NOTE SHOWN STRUCTURE WITH 1-1566-TV-12086A

Evaluated by: James Dovel / JAMES DOVEL Date: 8-29-2012

Winston Stewart / Winston Stewart 08/29/2012







Sheet 1 of 2
 Status: Y N U

Seismic Walkdown Checklist (SWC)

Equipment ID No. I-TV-12125R Equip. Class¹² CLASS 8

Equipment Description ELV TEMPERATURE CONTROL VALVE (E/H)

Location: Bldg. CONTROL Floor El. 260'0" Room, Area R 312

Manufacturer, Model, Etc. (optional but recommended) FISHRE CONTROL

Instructions for Completing Checklist

This checklist may be used to document the results of the Seismic Walkdown of an item of equipment on the SWEL. The space below each of the following questions may be used to record the results of judgments and findings. Additional space is provided at the end of this checklist for documenting other comments.

Anchorage

1. Is the anchorage configuration verification required (i.e., is the item one of the 50% of SWEL items requiring such verification)? Y N U N/A

2. Is the anchorage free of bent, broken, missing or loose hardware? Y N U N/A

3. Is the anchorage free of corrosion that is more than mild surface oxidation? Y N U N/A

4. Is the anchorage free of visible cracks in the concrete near the anchors? Y N U N/A

5. Is the anchorage configuration consistent with plant documentation?
 (Note: This question only applies if the item is one of the 50% for which an anchorage configuration verification is required.) Y N U N/A

6. Based on the above anchorage evaluations, is the anchorage free of potentially adverse seismic conditions? Y N U

¹² Enter the equipment class name from Appendix B: Classes of Equipment.

Seismic Walkdown Checklist (SWC)

Equipment ID No. 1-TV-12125R Equip. Class¹² CLASS 8

Equipment Description ECW TEMPERATURE CONTROL VALVE (FIH)

Interaction Effects

7. Are soft targets free from impact by nearby equipment or structures? Y N U N/A

8. Are overhead equipment, distribution systems, ceiling tiles and lighting, and masonry block walls not likely to collapse onto the equipment? Y N U N/A

9. Do attached lines have adequate flexibility to avoid damage? Y N U N/A

10. Based on the above seismic interaction evaluations, is equipment free of potentially adverse seismic interaction effects? Y N U

Other Adverse Conditions

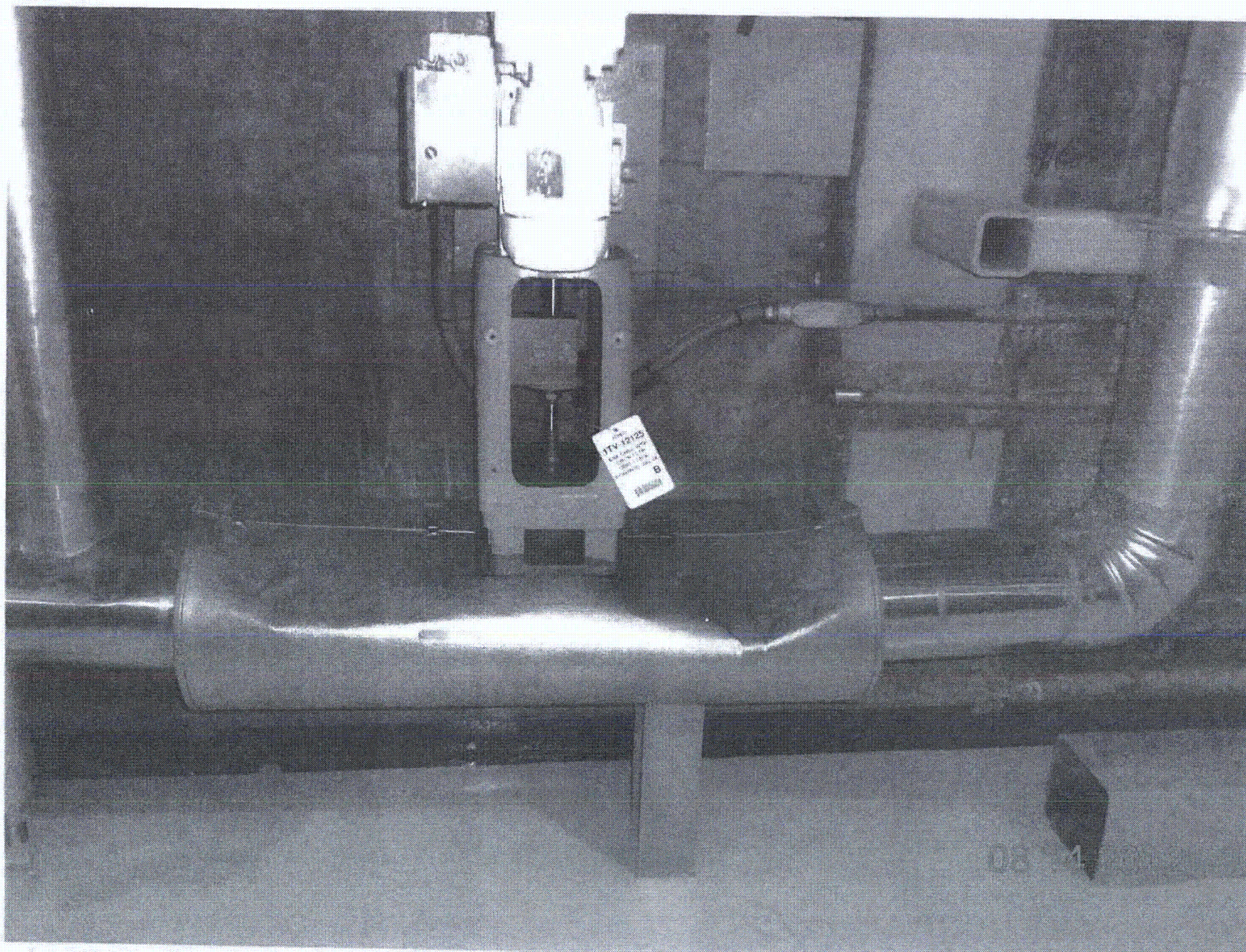
11. Have you looked for and found no other seismic conditions that could adversely affect the safety functions of the equipment? Y N U

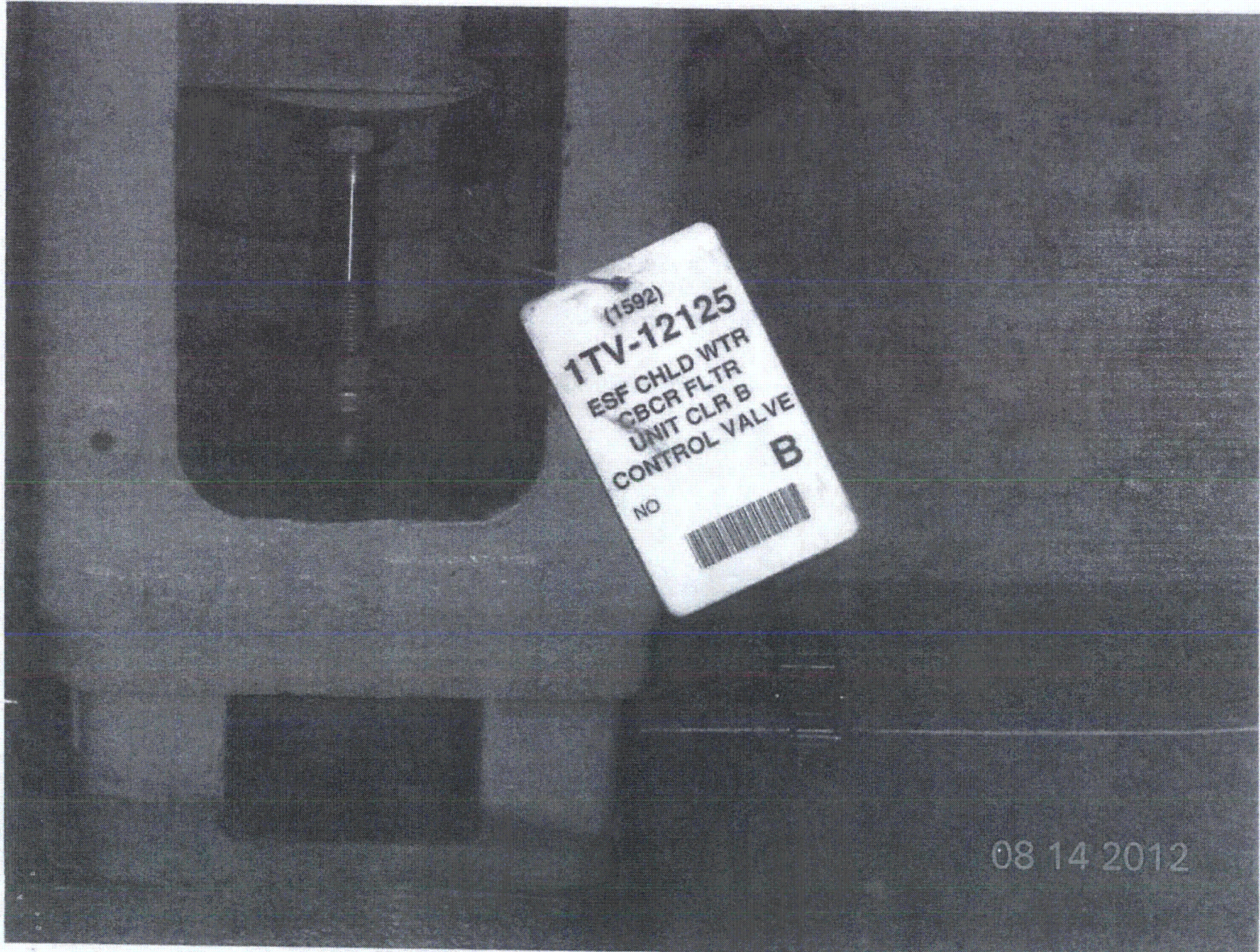
Comments (Additional pages may be added as necessary)

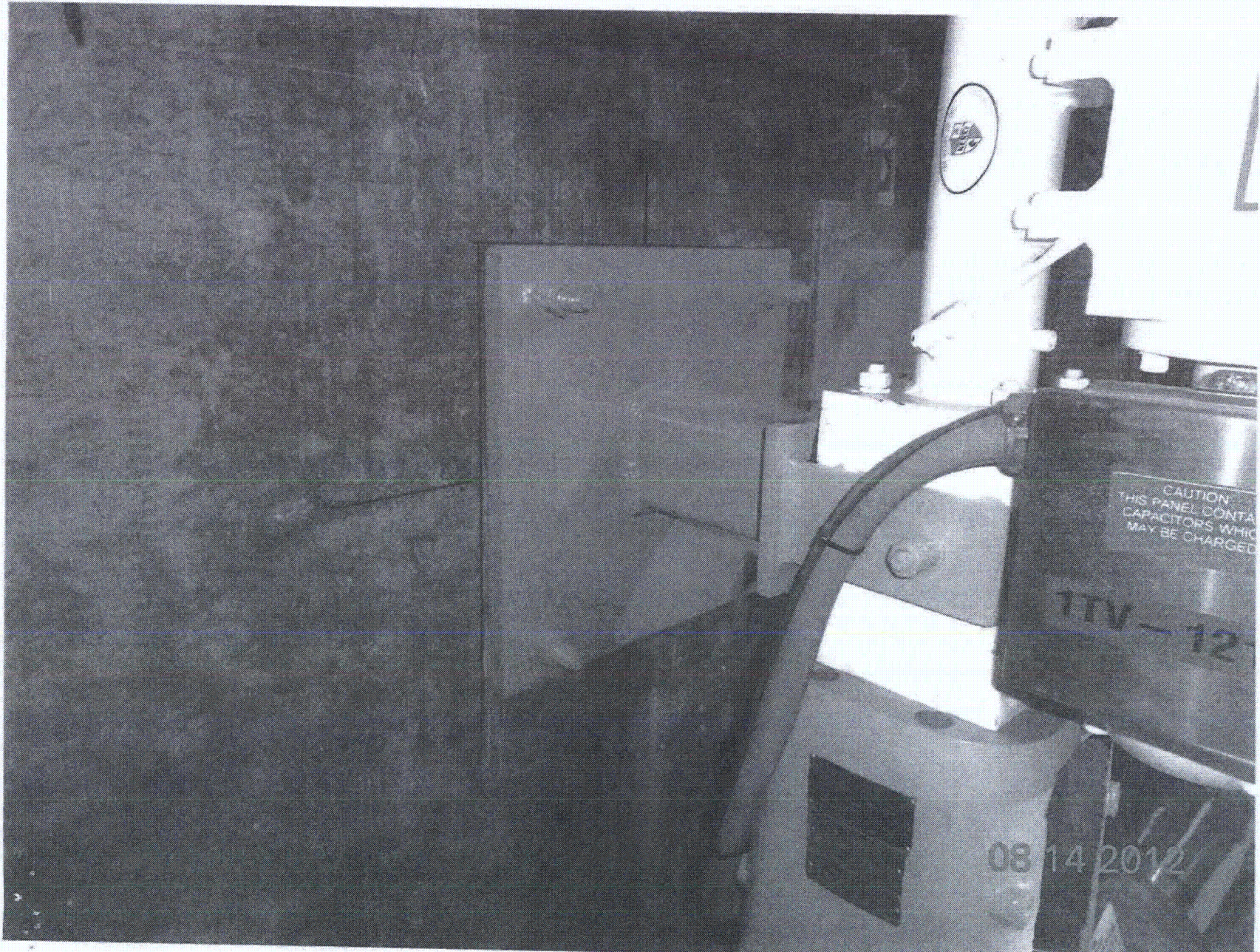
NONE

Evaluated by: James Davel / JAMES DOUZE Date: 8-14-2012

WAA / Winston Stewart 08/14/2012







Seismic Walkdown Checklist (SWC)

Equipment ID No. I-TY-11740 Equip. Class¹² 19-TEMPERATURE SENSORS

Equipment Description CONVERTER FOR TY-11740

Location: Bldg. CONTROL Floor El. 260' Room, Area R320

Manufacturer, Model, Etc. (optional but recommended) FISCHER CONTROLS

Instructions for Completing Checklist

This checklist may be used to document the results of the Seismic Walkdown of an item of equipment on the SWEL. The space below each of the following questions may be used to record the results of judgments and findings. Additional space is provided at the end of this checklist for documenting other comments.

Anchorage

1. Is the anchorage configuration verification required (i.e., is the item one of the 50% of SWEL items requiring such verification)? Y N

2. Is the anchorage free of bent, broken, missing or loose hardware? Y N U N/A

3. Is the anchorage free of corrosion that is more than mild surface oxidation? Y N U N/A

4. Is the anchorage free of visible cracks in the concrete near the anchors? Y N U N/A

5. Is the anchorage configuration consistent with plant documentation? Y N U N/A
 (Note: This question only applies if the item is one of the 50% for which an anchorage configuration verification is required.)

6. Based on the above anchorage evaluations, is the anchorage free of potentially adverse seismic conditions? Y N U

¹² Enter the equipment class name from Appendix B: Classes of Equipment.

Seismic Walkdown Checklist (SWC)

Equipment ID No. 1-TY-11740 Equip. Class¹² 19-TEMPERATURE SENSORS
 Equipment Description CONVERTER FOR TY-11740

Interaction Effects

- 7. Are soft targets free from impact by nearby equipment or structures? Y N U N/A

- 8. Are overhead equipment, distribution systems, ceiling tiles and lighting, and masonry block walls not likely to collapse onto the equipment? Y N U N/A

- 9. Do attached lines have adequate flexibility to avoid damage? Y N U N/A

- 10. Based on the above seismic interaction evaluations, is equipment free of potentially adverse seismic interaction effects? Y N U

Other Adverse Conditions

- 11. Have you looked for and found no other seismic conditions that could adversely affect the safety functions of the equipment? Y N U

Comments (Additional pages may be added as necessary)

NONE

SBE 1-1531-B7-002-000 FOR AWC

Evaluated by: James Dovel / JAMES DOVEL Date: 8-28-2012
W. Stewart / Winston Stewart 08/28/2012

