

Sheet 1 of 2
 Status: Y N U

Seismic Walkdown Checklist (SWC)

Equipment ID No. 1-FT-1802 Equip. Class¹² 18 - Instrument Racks
 Equipment Description NSCW FLOW TO CB ESS CHILLER
 Location: Bldg. CONTROL Floor El. 260'-0" Room, Area R320
 Manufacturer, Model, Etc. (optional but recommended) _____

Instructions for Completing Checklist

This checklist may be used to document the results of the Seismic Walkdown of an item of equipment on the SWEL. The space below each of the following questions may be used to record the results of judgments and findings. Additional space is provided at the end of this checklist for documenting other comments.

Anchorage

1. Is the anchorage configuration verification required (i.e., is the item one of the 50% of SWEL items requiring such verification)? Y N U

2. Is the anchorage free of bent, broken, missing or loose hardware? Y N U N/A

3. Is the anchorage free of corrosion that is more than mild surface oxidation? Y N U N/A

4. Is the anchorage free of visible cracks in the concrete near the anchors? Y N U N/A

5. Is the anchorage configuration consistent with plant documentation? Y N U N/A
 (Note: This question only applies if the item is one of the 50% for which an anchorage configuration verification is required.)

6. Based on the above anchorage evaluations, is the anchorage free of potentially adverse seismic conditions? Y N U

SBB DWG# C45D01029 VER 3.0

¹² Enter the equipment class name from Appendix B: Classes of Equipment.

Seismic Walkdown Checklist (SWC)

Equipment ID No. 1-FT-1802 Equip. Class¹² 18 - Instrument Racks

Equipment Description NSCW FLOW TO CB ESS. CHILLER

Interaction Effects

7. Are soft targets free from impact by nearby equipment or structures? Y N U N/A

8. Are overhead equipment, distribution systems, ceiling tiles and lighting, and masonry block walls not likely to collapse onto the equipment? Y N U N/A

9. Do attached lines have adequate flexibility to avoid damage? Y N U N/A

10. Based on the above seismic interaction evaluations, is equipment free of potentially adverse seismic interaction effects? Y N U

Other Adverse Conditions

11. Have you looked for and found no other seismic conditions that could adversely affect the safety functions of the equipment? Y N U

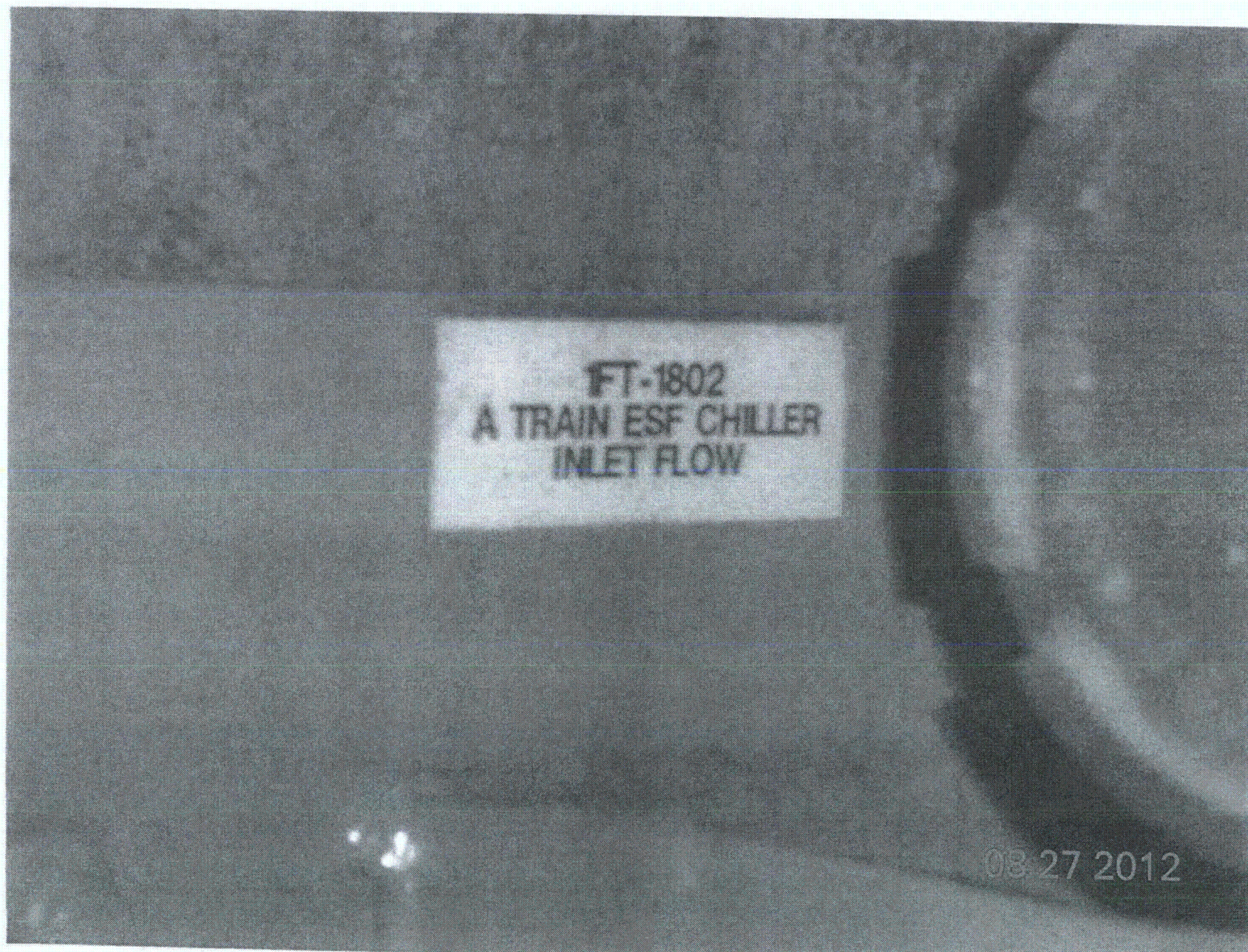
Comments (Additional pages may be added as necessary)

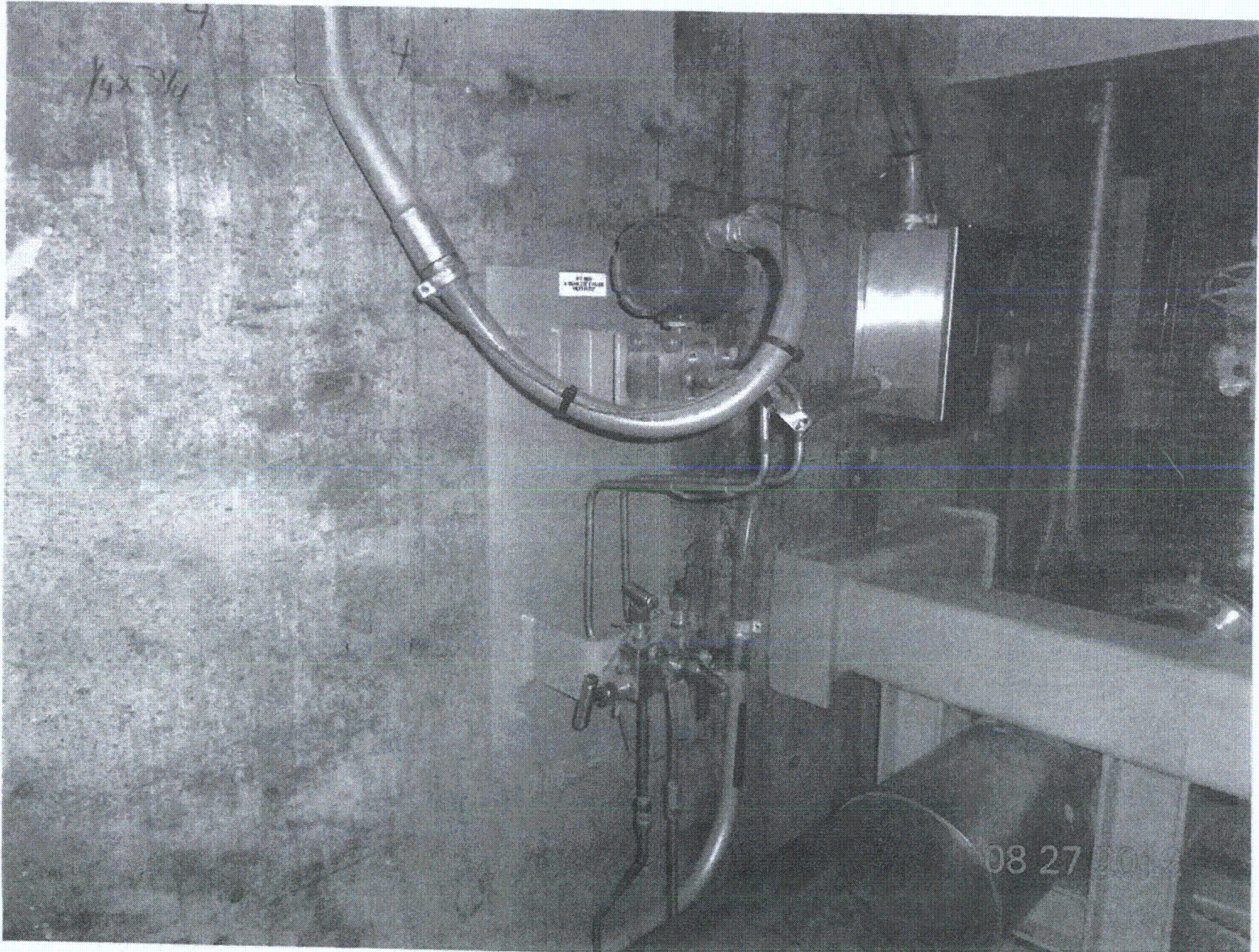
NONE

SEE 1-1531-BT-002-000 FOR AWC

Evaluated by: James Dovel / JAMES DOVEL Date: 8-27-2012

W. Stewart / WINSTON STEWART 08/27/2012





Seismic Walkdown Checklist (SWC)

Equipment ID No. 1-FT-22425 Equip. Class¹² 18 - Instrument Racks

Equipment Description ECW FLOW

Location: Bldg. CONTROL Floor El. 260.0" Room, Area R 320

Manufacturer, Model, Etc. (optional but recommended) _____

Instructions for Completing Checklist

This checklist may be used to document the results of the Seismic Walkdown of an item of equipment on the SWEL. The space below each of the following questions may be used to record the results of judgments and findings. Additional space is provided at the end of this checklist for documenting other comments.

Anchorage

1. Is the anchorage configuration verification required (i.e., is the item one of the 50% of SWEL items requiring such verification)? Y N U N/A

2. Is the anchorage free of bent, broken, missing or loose hardware? Y N U N/A

3. Is the anchorage free of corrosion that is more than mild surface oxidation? Y N U N/A

4. Is the anchorage free of visible cracks in the concrete near the anchors? Y N U N/A

5. Is the anchorage configuration consistent with plant documentation?
(Note: This question only applies if the item is one of the 50% for which an anchorage configuration verification is required.) Y N U N/A

6. Based on the above anchorage evaluations, is the anchorage free of potentially adverse seismic conditions? Y N U

¹² Enter the equipment class name from Appendix B: Classes of Equipment.

Seismic Walkdown Checklist (SWC)

Equipment ID No. 1-FT-22425 Equip. Class¹² 18 - Instrument Racks

Equipment Description ECW FLOW

Interaction Effects

7. Are soft targets free from impact by nearby equipment or structures? Y N U N/A

8. Are overhead equipment, distribution systems, ceiling tiles and lighting, and masonry block walls not likely to collapse onto the equipment? Y N U N/A

9. Do attached lines have adequate flexibility to avoid damage? Y N U N/A

10. Based on the above seismic interaction evaluations, is equipment free of potentially adverse seismic interaction effects? Y N U

Other Adverse Conditions

11. Have you looked for and found no other seismic conditions that could adversely affect the safety functions of the equipment? Y N U

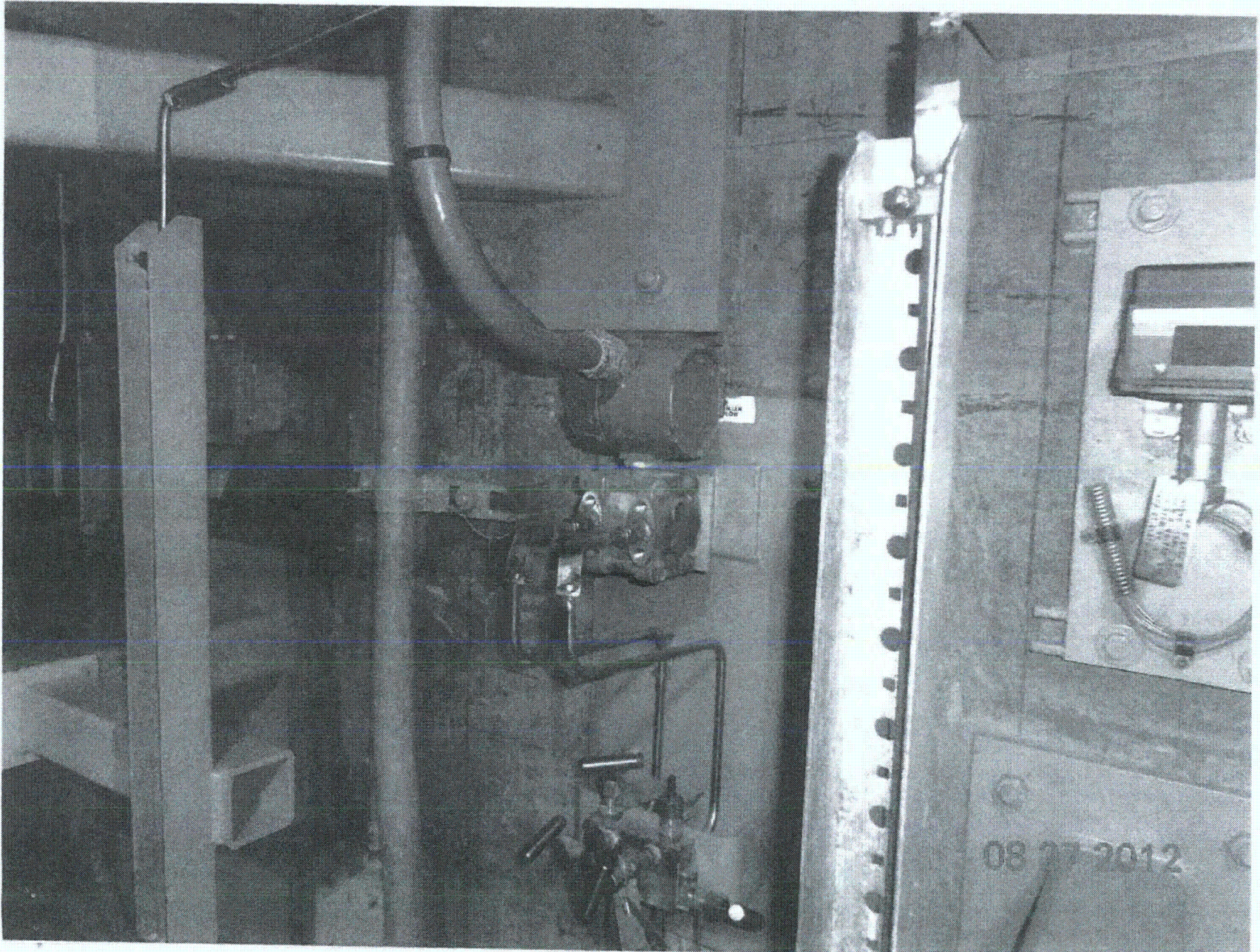
Comments (Additional pages may be added as necessary)

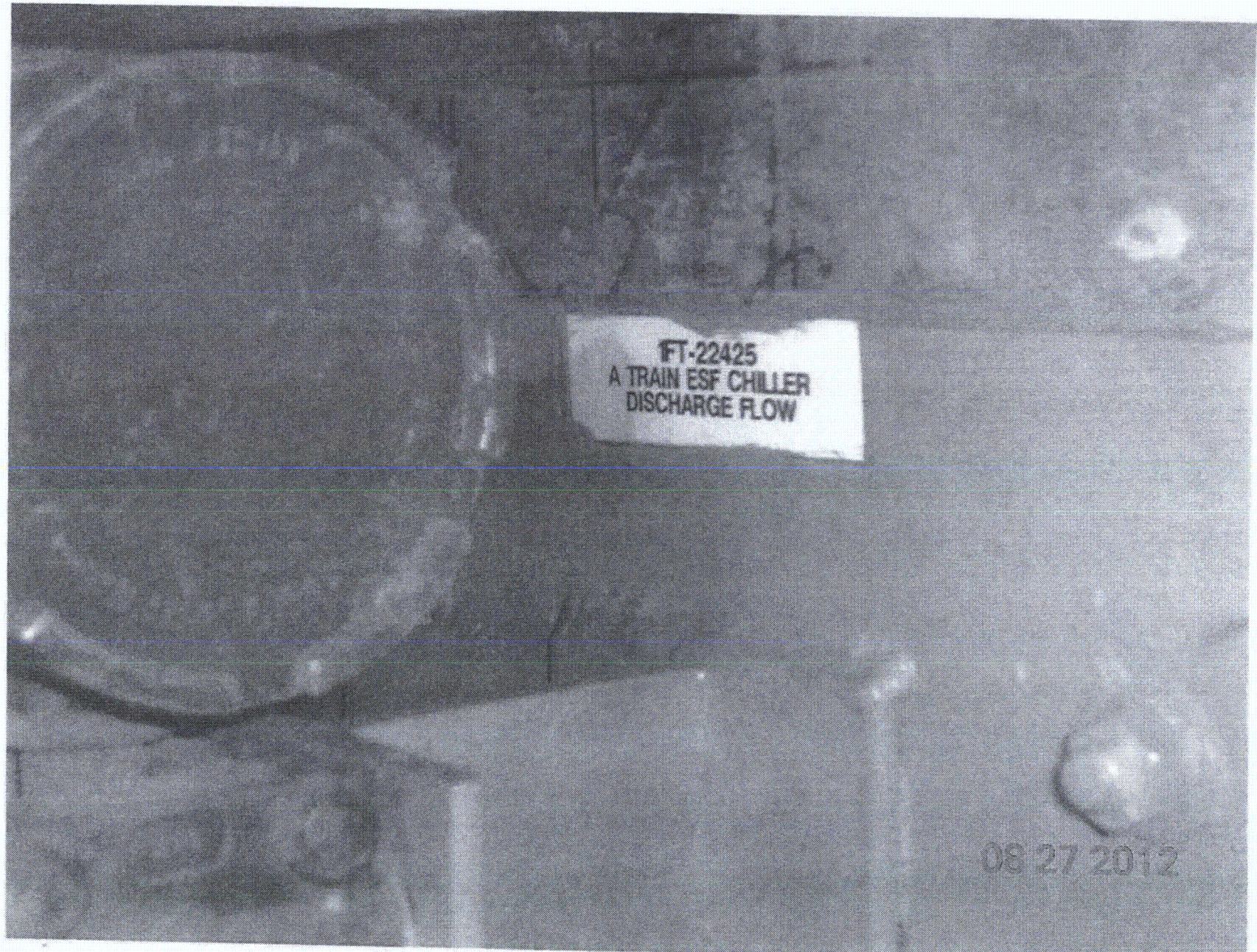
NONE

SEE 1-1531-B7-002-000 FOR AWC

Evaluated by: James Dovel / JAMES DOVEL Date: 8-27-2012
Winston Stewart / WINSTON STEWART 08/27/2012

<C4>





Seismic Walkdown Checklist (SWC)

Equipment ID No. 1-FT-5154 Equip. Class¹² 1R

Equipment Description Aux FW Pump Flows Transmitted

Location: Bldg. Aux FW 162 Floor/EL. 220w Room, Area R 102

Manufacturer, Model, Etc. (optional but recommended) _____

Instructions for Completing Checklist

This checklist may be used to document the results of the Seismic Walkdown of an item of equipment on the SWEL. The space below each of the following questions may be used to record the results of judgments and findings. Additional space is provided at the end of this checklist for documenting other comments.

Anchorage

1. Is the anchorage configuration verification required (i.e., is the item one of the 50% of SWEL items requiring such verification)? Y N U

2. Is the anchorage free of bent, broken, missing or loose hardware? Y N U N/A

3. Is the anchorage free of corrosion that is more than mild surface oxidation? Y N U N/A

4. Is the anchorage free of visible cracks in the concrete near the anchors? Y N U N/A

5. Is the anchorage configuration consistent with plant documentation? Y N U N/A
 (Note: This question only applies if the item is one of the 50% for which an anchorage configuration verification is required.)
DNG, CXSRPME29 Rev 3 Ver: 3.0
8/16/12

6. Based on the above anchorage evaluations, is the anchorage free of potentially adverse seismic conditions? Y N U

¹² Enter the equipment class name from Appendix B: Classes of Equipment.

Seismic Walkdown Checklist (SWC)

Equipment ID No. 1-FT-5154 Equip. Class¹² 18

Equipment Description AUX FW PUMP F-Lois Transm. Hal

Interaction Effects

7. Are soft targets free from impact by nearby equipment or structures? Y N U N/A

8. Are overhead equipment, distribution systems, ceiling tiles and lighting, and masonry block walls not likely to collapse onto the equipment? Y N U N/A

9. Do attached lines have adequate flexibility to avoid damage? Y N U N/A

10. Based on the above seismic interaction evaluations, is equipment free of potentially adverse seismic interaction effects? Y N U

Other Adverse Conditions

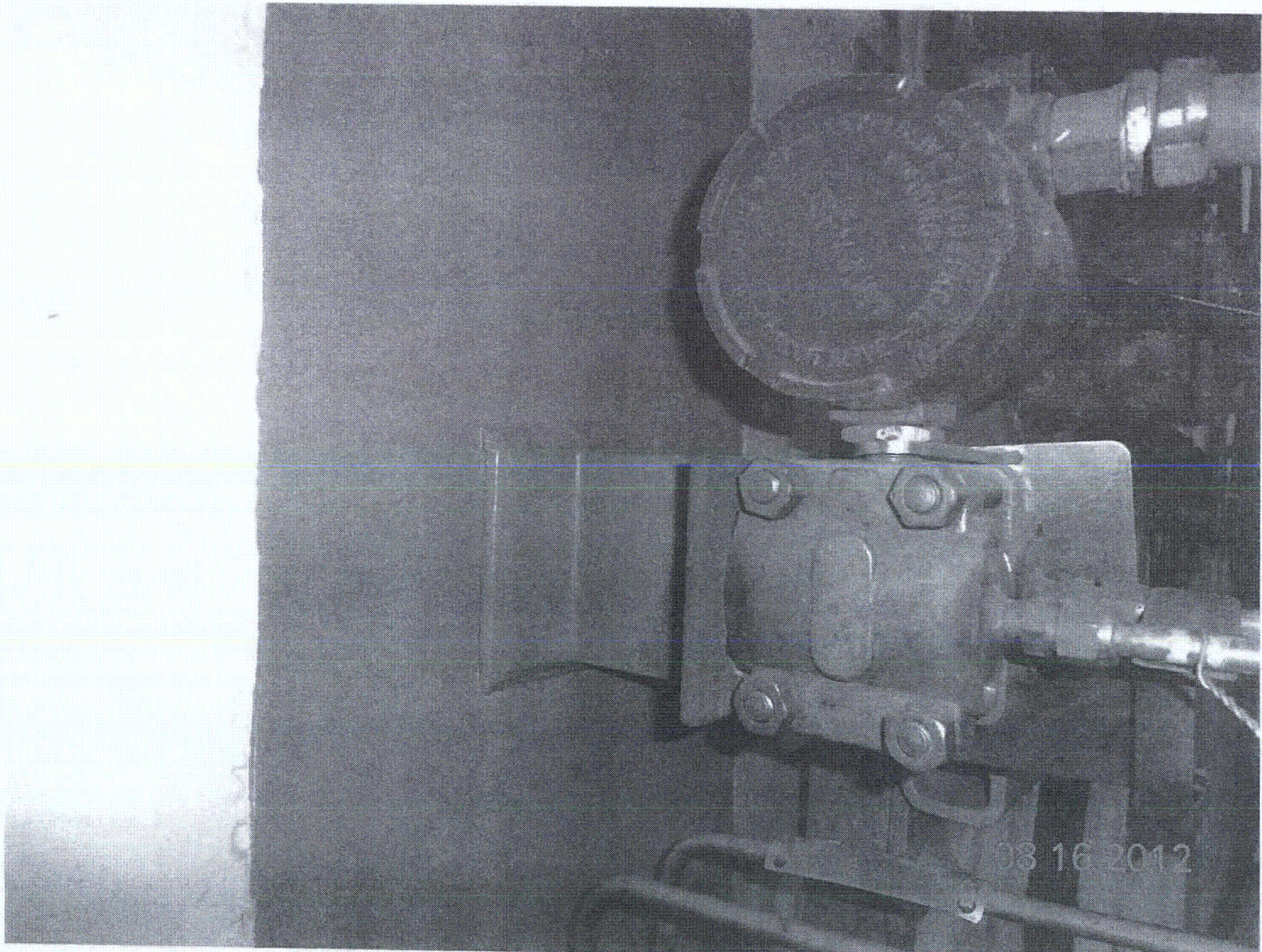
11. Have you looked for and found no other seismic conditions that could adversely affect the safety functions of the equipment? Y N U

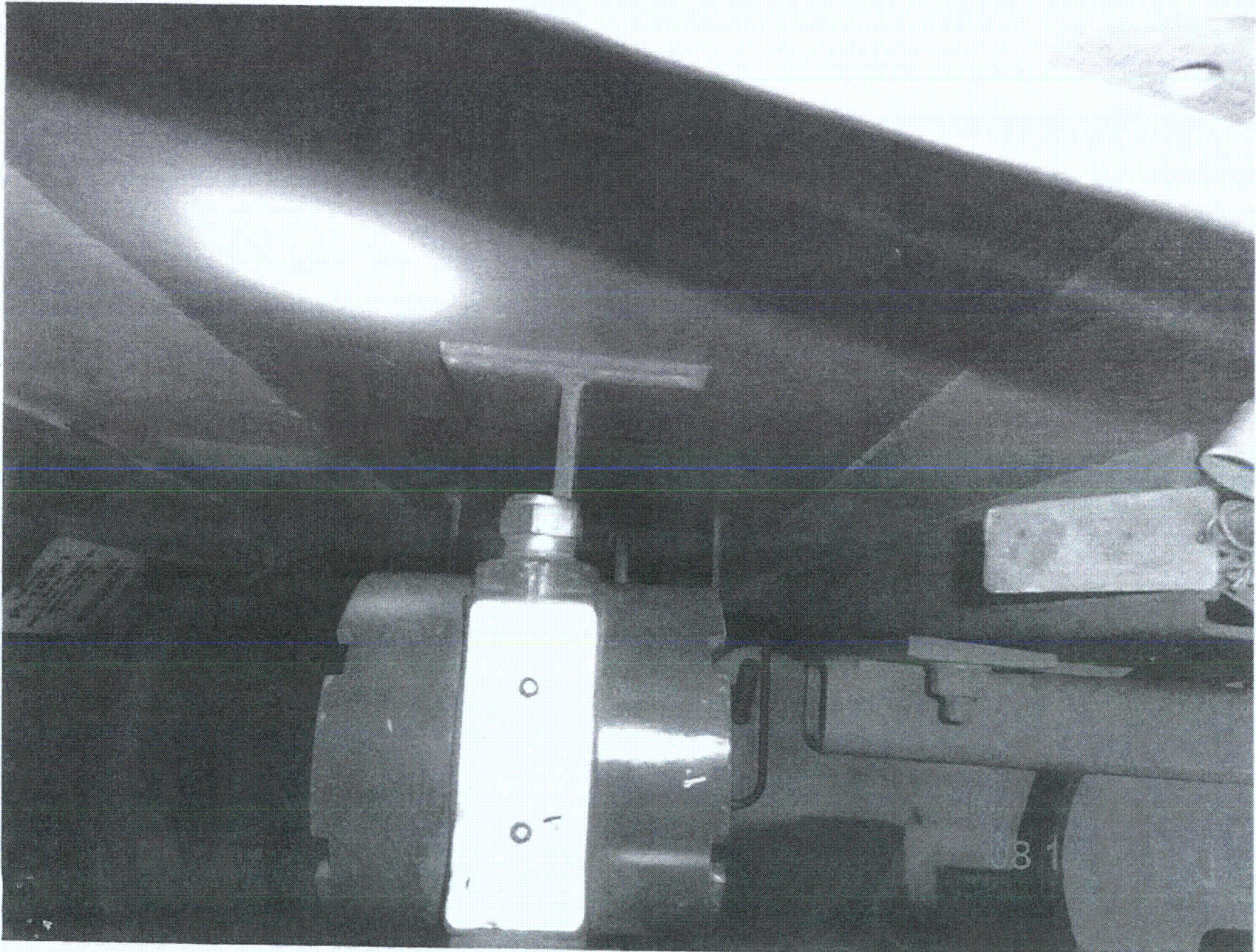
Comments (Additional pages may be added as necessary)

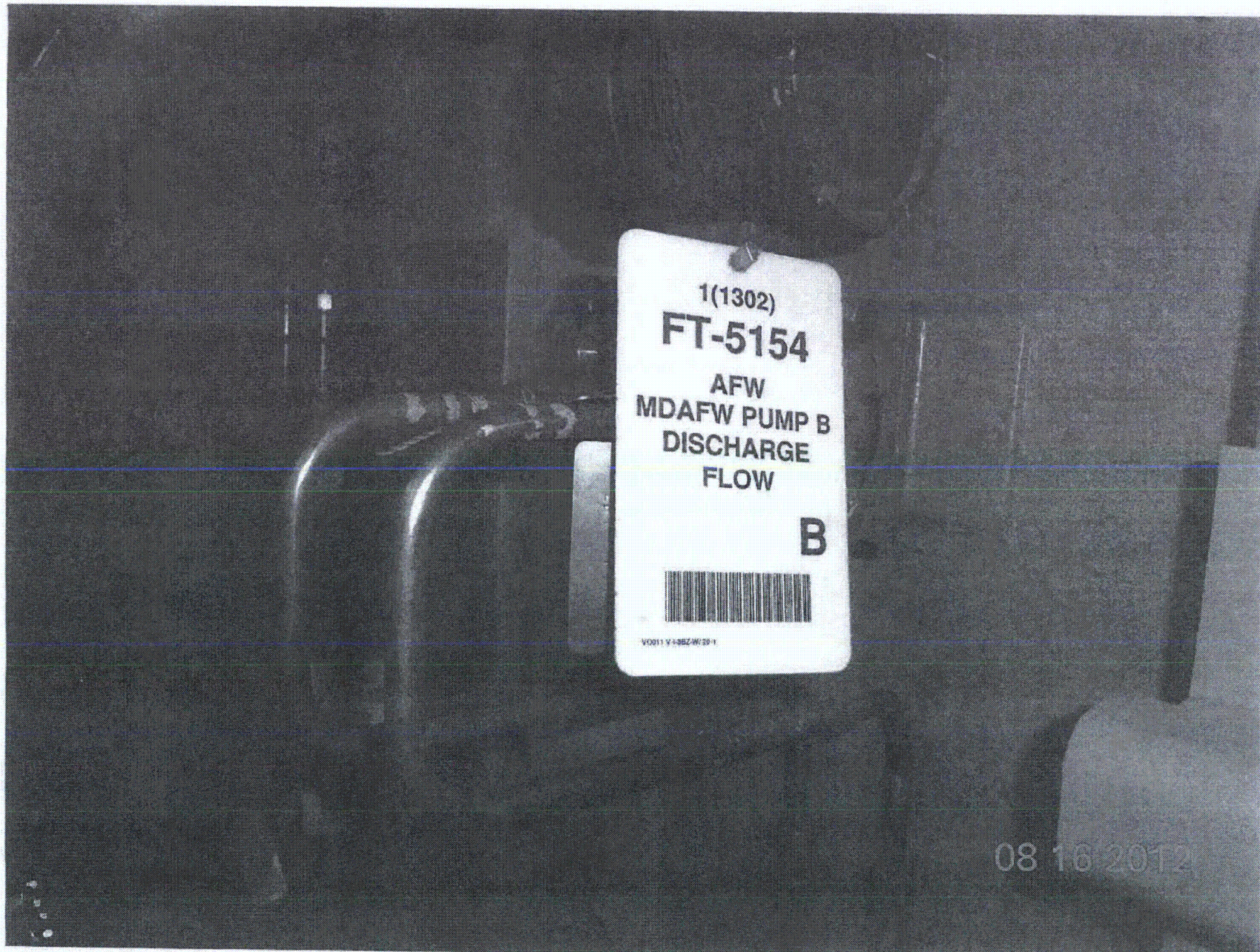
*None. For walkdown see 1-FT-5154-005
1-15-93-67-002*

Evaluated by: Frank Yao / Jul So Date: 8/16/12

PARIMAL GANDHI / P. Smith 8/16/2012







Sheet 1 of 2
 Status Y N U

Seismic Walkdown Checklist (SWC)

Equipment ID No: I-FV-5155 Equip. Class¹² P
 Equipment Description: AFW Pump A Miniflow MOV
 Location: Bldg: AFWP Hse Floor El. 220' Room, Area R101
 Manufacturer, Model, Etc. (optional but recommended) _____

Instructions for Completing Checklist

This checklist may be used to document the results of the Seismic Walkdown of an item of equipment on the SWEL. The space below each of the following questions may be used to record the results of judgments and findings. Additional space is provided at the end of this checklist for documenting other comments.

Anchorage

1. Is the anchorage configuration verification required (i.e., is the item one of the 50% of SWEL items requiring such verification)? Y N

2. Is the anchorage free of bent, broken, missing or loose hardware? Y N U N/A
Inline connection

3. Is the anchorage free of corrosion that is more than mild surface oxidation? Y N U N/A

4. Is the anchorage free of visible cracks in the concrete near the anchors? Y N U N/A
Inline connection

5. Is the anchorage configuration consistent with plant documentation? Y N U N/A
 (Note: This question only applies if the item is one of the 50% for which an anchorage configuration verification is required.)

6. Based on the above anchorage evaluations, is the anchorage free of potentially adverse seismic conditions? Y N U

¹² Enter the equipment class name from Appendix B: Classes of Equipment.

Seismic Walkdown Checklist (SWC)

Equipment ID No. I-FV-5155 Equip. Class¹² S

Equipment Description AFW Pump A Mini Flow MOV

Interaction Effects

7. Are soft targets free from impact by nearby equipment or structures? Y N U N/A

8. Are overhead equipment, distribution systems, ceiling tiles and lighting, and masonry block walls not likely to collapse onto the equipment? Y N U N/A

9. Do attached lines have adequate flexibility to avoid damage? Y N U N/A

10. Based on the above seismic interaction evaluations, is equipment free of potentially adverse seismic interaction effects? Y N U

Other Adverse Conditions

11. Have you looked for and found no other seismic conditions that could adversely affect the safety functions of the equipment? Y N U

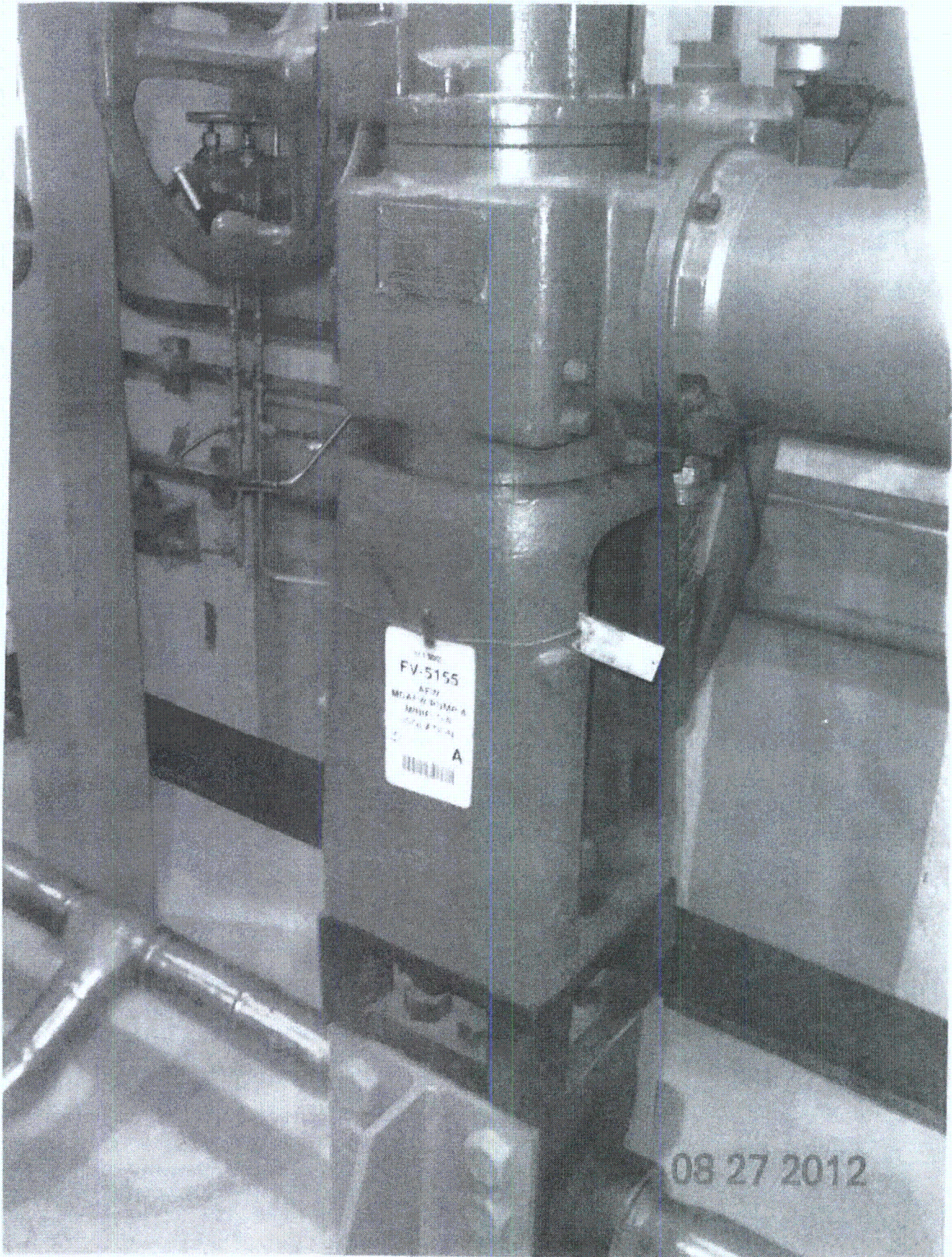
Comments (Additional pages may be added as necessary)

None

Evaluated by: Frank Yao / Zheyang Date: 8/27/2012

PARIMAL GANDHI / P. Chandu 8/27/2012

<C4>



Seismic Walkdown Checklist (SWC)

Equipment ID No. 1-HV-10958 Equip. Class¹² 7- Pneumatic - Operated Valves
 Equipment Description RWST TO SLUDGE MIXING PUMP SUCTION AOV
 Location: Bldg. RWST Floor El. 220'0" Room, Area R101
 Manufacturer, Model, Etc. (optional but recommended) Anchor / Darling Valve Company

Instructions for Completing Checklist

This checklist may be used to document the results of the Seismic Walkdown of an item of equipment on the SWEL. The space below each of the following questions may be used to record the results of judgments and findings. Additional space is provided at the end of this checklist for documenting other comments.

Anchorage

1. Is the anchorage configuration verification required (i.e., is the item one of the 50% of SWEL items requiring such verification)? Y N U

2. Is the anchorage free of bent, broken, missing or loose hardware? Y N U N/A
Inline component

3. Is the anchorage free of corrosion that is more than mild surface oxidation? Y N U N/A
See Item 2

4. Is the anchorage free of visible cracks in the concrete near the anchors? Y N U N/A
See Item 2

5. Is the anchorage configuration consistent with plant documentation? Y N U N/A
 (Note: This question only applies if the item is one of the 50% for which an anchorage configuration verification is required.)

6. Based on the above anchorage evaluations, is the anchorage free of potentially adverse seismic conditions? Y N U

¹² Enter the equipment class name from Appendix B: Classes of Equipment.

Seismic Walkdown Checklist (SWC)

Equipment ID No. 1-HV-10958 Equip. Class¹² 7-Pneumatic-Operated Valves
Equipment Description RWST TO SLUDGE MIXING PUMP SUCTION AOV

Interaction Effects

7. Are soft targets free from impact by nearby equipment or structures? Y N U N/A

8. Are overhead equipment, distribution systems, ceiling tiles and lighting, and masonry block walls not likely to collapse onto the equipment? Y N U N/A

9. Do attached lines have adequate flexibility to avoid damage? Y N U N/A

10. Based on the above seismic interaction evaluations, is equipment free of potentially adverse seismic interaction effects? Y N U

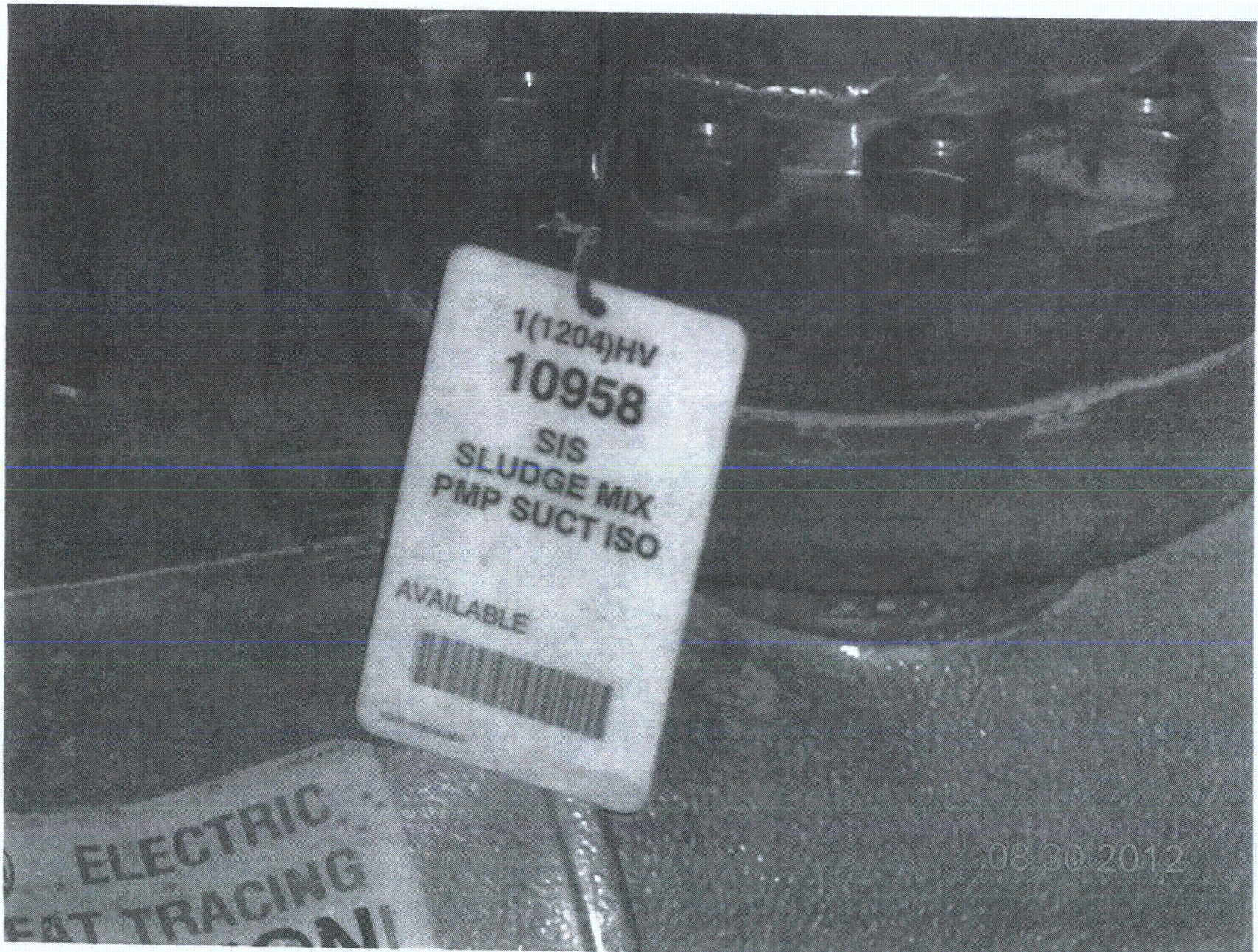
Other Adverse Conditions

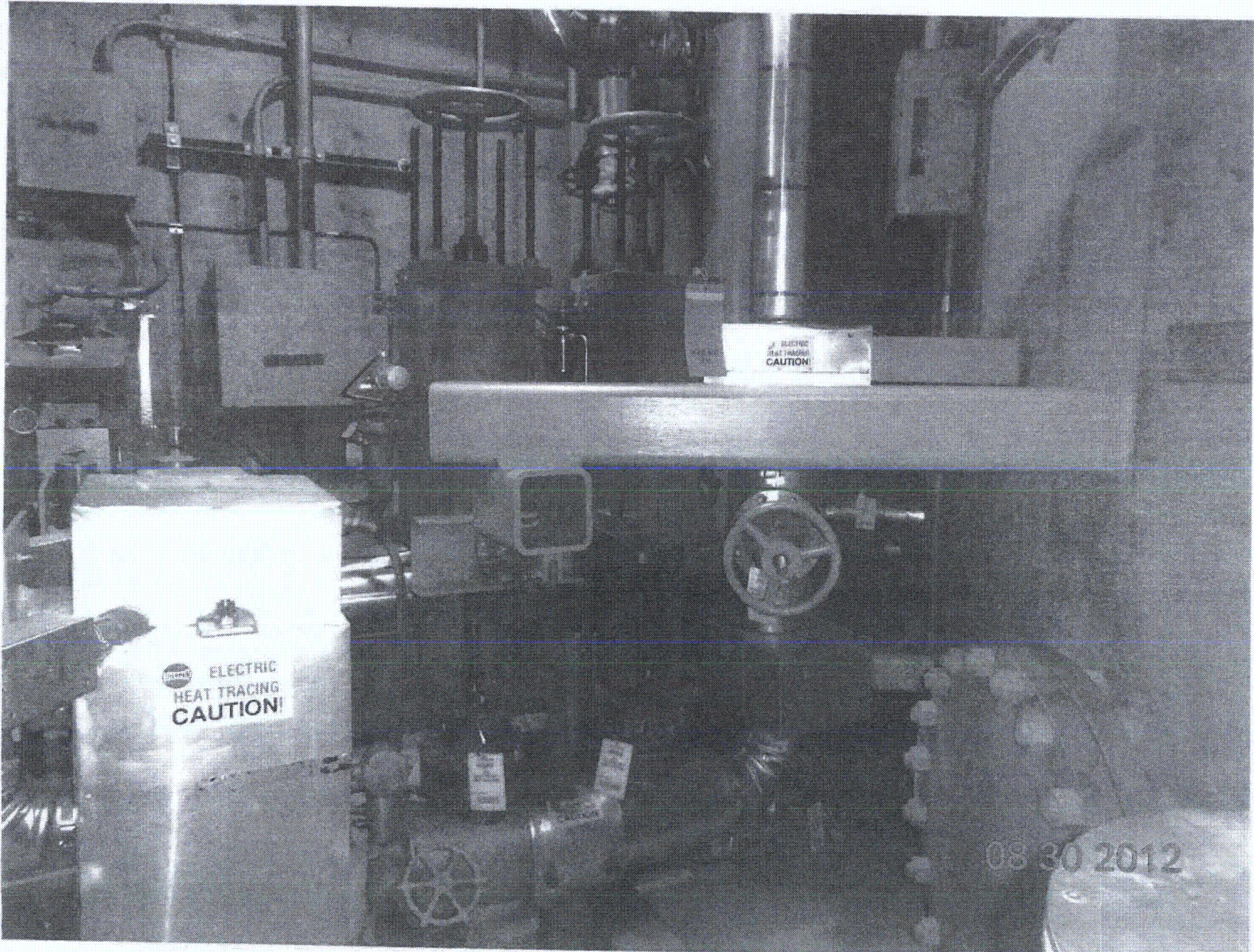
11. Have you looked for and found no other seismic conditions that could adversely affect the safety functions of the equipment? Y N U

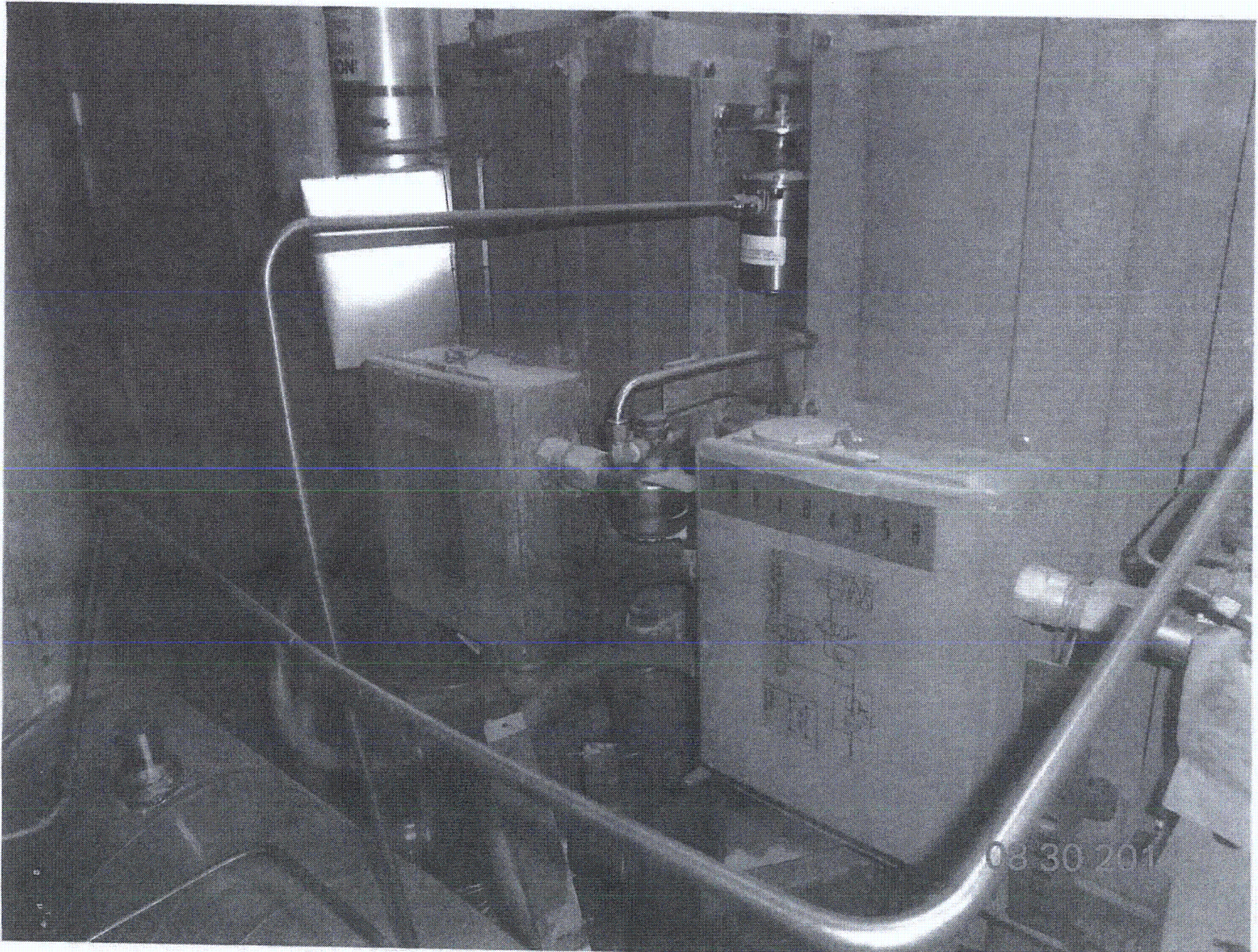
Comments (Additional pages may be added as necessary)

SEE 1-1204-TA-001 FOR AWC

Evaluated by: Frank Yoo / [Signature] Date: 8/30/12
Winston Stewart / [Signature] 05/30/2012







Seismic Walkdown Checklist (SWC)

Equipment ID No. 1-HV-11606 Equip. Class¹² 8

Equipment Description NSCW PUMP 3 DISCHARGE MOV

Location: Bldg: NSCT Floor El. 220' Room, Area R103

Manufacturer, Model, Etc. (optional but recommended) FISHER

Instructions for Completing Checklist

This checklist may be used to document the results of the Seismic Walkdown of an item of equipment on the SWEL. The space below each of the following questions may be used to record the results of judgments and findings. Additional space is provided at the end of this checklist for documenting other comments.

Anchorage

1. Is the anchorage configuration verification required (i.e., is the item one of the 50% of SWEL items requiring such verification)? Y N U

2. Is the anchorage free of bent, broken, missing or loose hardware? Y N U N/A

3. Is the anchorage free of corrosion that is more than mild surface oxidation? Y N U N/A

4. Is the anchorage free of visible cracks in the concrete near the anchors? Y N U N/A

5. Is the anchorage configuration consistent with plant documentation? (Note: This question only applies if the item is one of the 50% for which an anchorage configuration verification is required.) Y N U N/A

6. Based on the above anchorage evaluations, is the anchorage free of potentially adverse seismic conditions? Y N U

IN-LINE MOUNTED VALVE

¹² Enter the equipment class name from Appendix B: Classes of Equipment.

Seismic Walkdown Checklist (SWC)

Equipment ID No. 1-HV-11606 Equip. Class^{1a} 8

Equipment Description NSCW PUMP 3 DISCHARGE MOV

Interaction Effects

7. Are soft targets free from impact by nearby equipment or structures? Y N U N/A

8. Are overhead equipment, distribution systems, ceiling tiles and lighting, and masonry block walls not likely to collapse onto the equipment? Y N U N/A

9. Do attached lines have adequate flexibility to avoid damage? Y N U N/A

10. Based on the above seismic interaction evaluations, is equipment free of potentially adverse seismic interaction effects? Y N U

Other Adverse Conditions

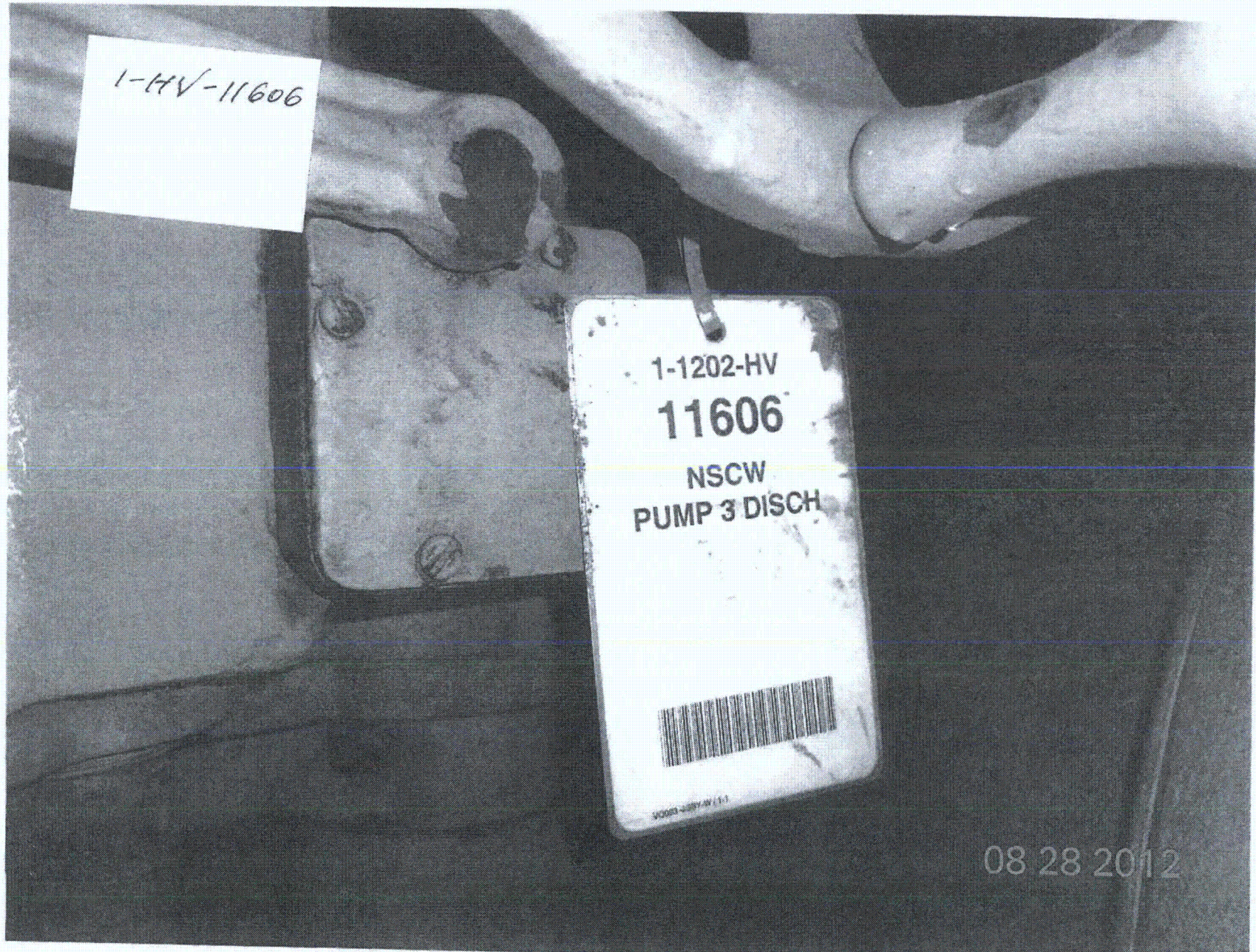
11. Have you looked for and found no other seismic conditions that could adversely affect the safety functions of the equipment? Y N U

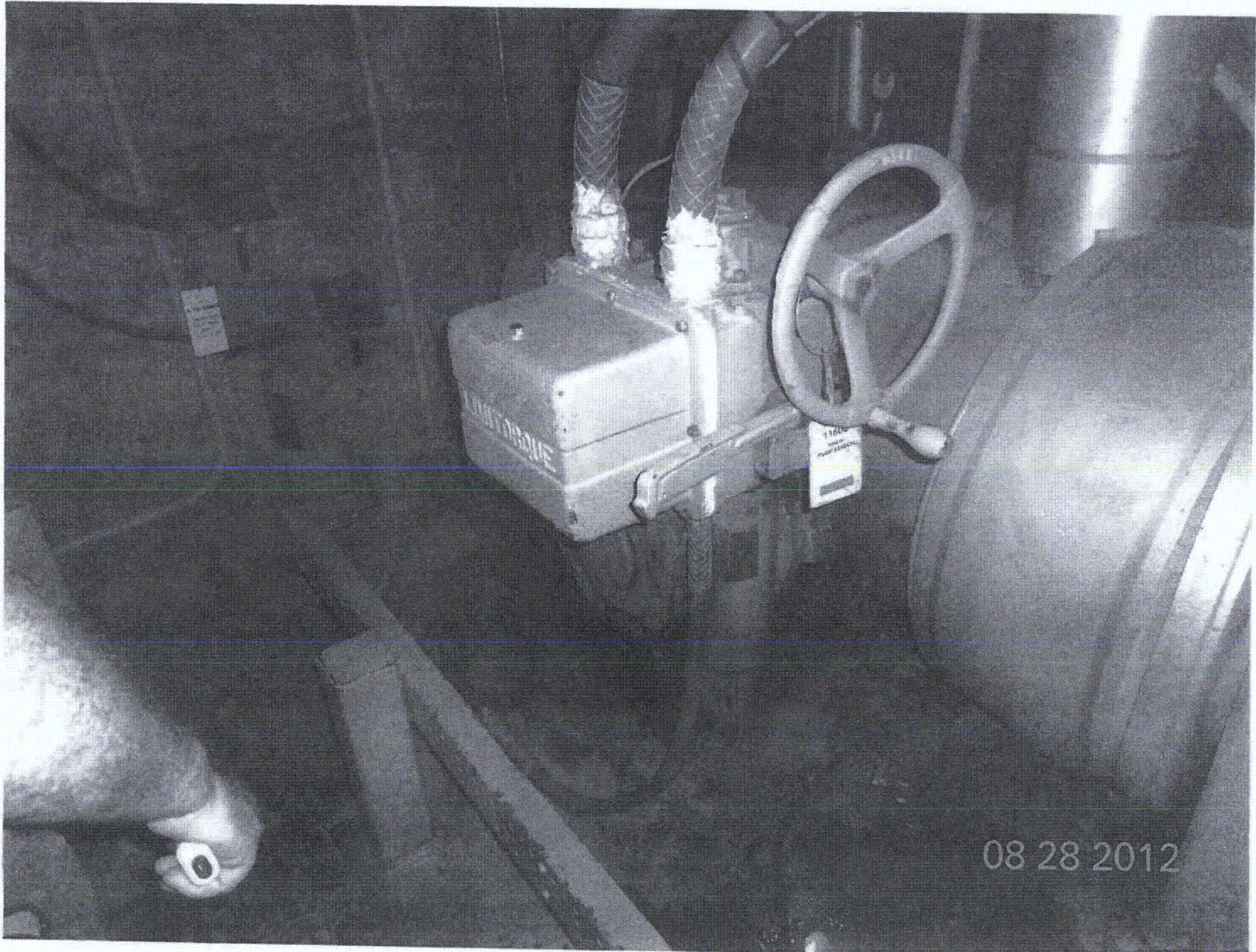
VALVE BOLTING IN GOOD CONDITION

Comments (Additional pages may be added as necessary)

NONE

Evaluated by: David Volodarsky DAVID VOLODARSKY Date: 8/28/2012
Matthew Wilkinson Matthew Wilkinson 8/28/2012





Sheet 1 of 2
 Status: Y N U

Seismic Walkdown Checklist (SWC)

Equipment ID No. 1-HV-12148 Equip. Class¹² 0

Equipment Description CBCR Normal Air Return Damper

Location: Bldg. CB Floor El. 240' Room, Area 233

Manufacturer, Model, Etc. (optional but recommended)

Instructions for Completing Checklist

This checklist may be used to document the results of the Seismic Walkdown of an item of equipment on the SWEL. The space below each of the following questions may be used to record the results of judgments and findings. Additional space is provided at the end of this checklist for documenting other comments.

Anchorage

1. Is the anchorage configuration verification required (i.e., is the item one of the 50% of SWEL items requiring such verification)? Y N U
Inline damper. No anchorage

2. Is the anchorage free of bent, broken, missing or loose hardware? Y N U N/A

3. Is the anchorage free of corrosion that is more than mild surface oxidation? Y N U N/A

4. Is the anchorage free of visible cracks in the concrete near the anchors? Y N U N/A

5. Is the anchorage configuration consistent with plant documentation? Y N U N/A
 (Note: This question only applies if the item is one of the 50% for which an anchorage configuration verification is required.)

6. Based on the above anchorage evaluations, is the anchorage free of potentially adverse seismic conditions? Y N U
Inline damper. No anchorage

¹² Enter the equipment class name from Appendix B: Classes of Equipment.

Seismic Walkdown Checklist (SWC)

Equipment ID No. 1-HV-12148 Equip. Class¹² 0 8/14/12

Equipment Description CBCR Normal Air Return Damper

Interaction Effects

7. Are soft targets free from impact by nearby equipment or structures? YES NO U N/A

8. Are overhead equipment, distribution systems, ceiling tiles and lighting, and masonry block walls not likely to collapse onto the equipment? YES NO U N/A

9. Do attached lines have adequate flexibility to avoid damage? YES NO U N/A

10. Based on the above seismic interaction evaluations, is equipment free of potentially adverse seismic interaction effects? YES NO U

Other Adverse Conditions

11. Have you looked for and found no other seismic conditions that could adversely affect the safety functions of the equipment? YES NO U

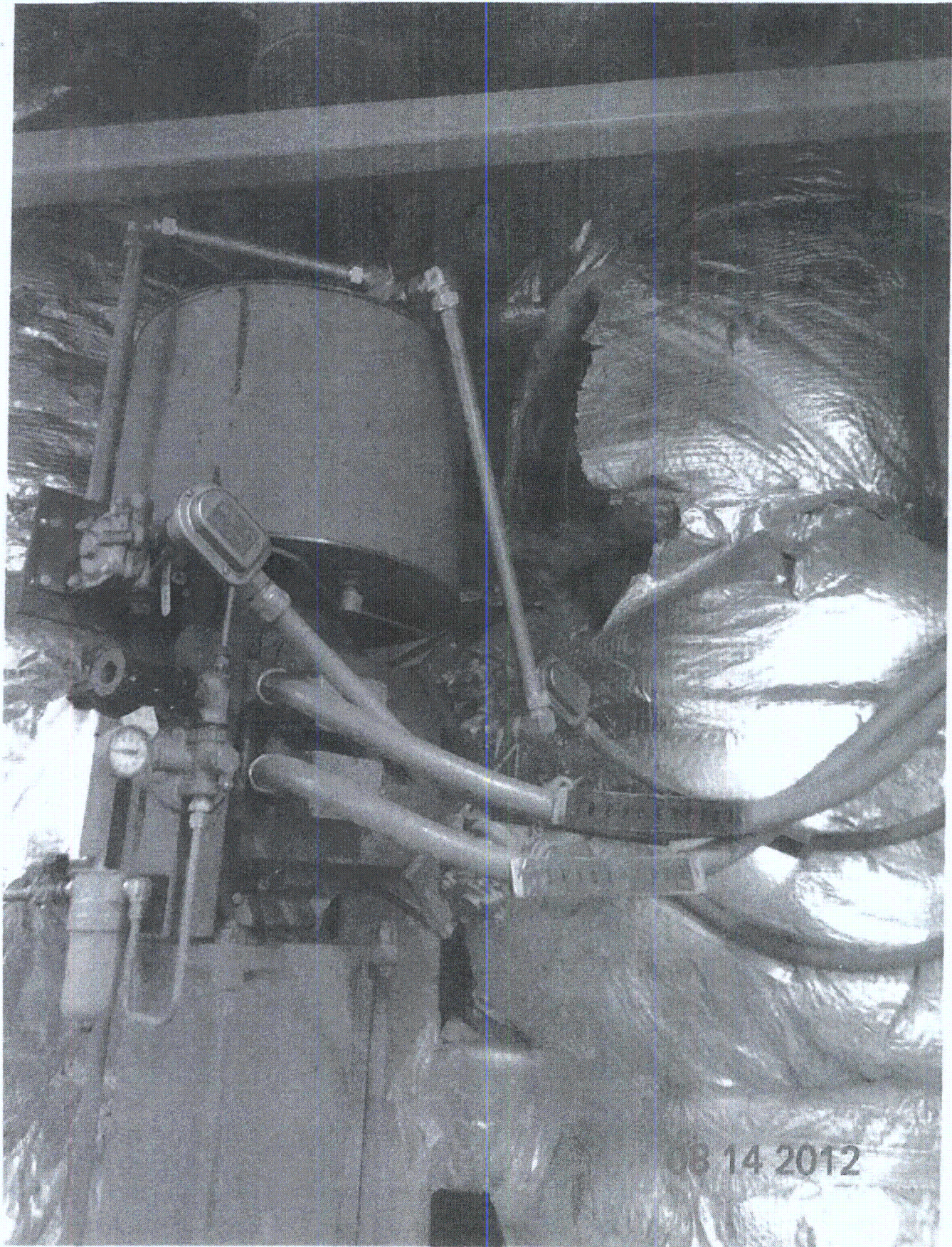
Comments (Additional pages may be added as necessary)

None

Evaluated by: Just C. Sandoval / Frank Yao Date: 8/14/2012

[Signature] / Justo S. Chacon 8/14/2012







Seismic Walkdown Checklist (SWC)

Equipment ID No. L-HV-12977 Equip. Class¹² CLASS 8

Equipment Description CTB AIR RADIATION MONITOR OUTLET SOU

Location: Bldg. AUX Floor El. 190'-0" Room, Area ROOF

Manufacturer, Model, Etc. (optional but recommended) _____

Instructions for Completing Checklist

This checklist may be used to document the results of the Seismic Walkdown of an item of equipment on the SWEL. The space below each of the following questions may be used to record the results of judgments and findings. Additional space is provided at the end of this checklist for documenting other comments.

Anchorage

1. Is the anchorage configuration verification required (i.e., is the item one of the 50% of SWEL items requiring such verification)? Y N

IN-LINE COMPONENT

2. Is the anchorage free of bent, broken, missing or loose hardware? Y N U N/A
3. Is the anchorage free of corrosion that is more than mild surface oxidation? Y N U N/A
4. Is the anchorage free of visible cracks in the concrete near the anchors? Y N U N/A
5. Is the anchorage configuration consistent with plant documentation? Y N U N/A
 (Note: This question only applies if the item is one of the 50% for which an anchorage configuration verification is required.)
6. Based on the above anchorage evaluations, is the anchorage free of potentially adverse seismic conditions? Y N U

¹² Enter the equipment class name from Appendix B: Classes of Equipment.

Seismic Walkdown Checklist (SWC)

Equipment ID No. 1-HV-12977 Equip. Class¹² CLASS 8

Equipment Description CTB AIR RADIATION MONITOR OUTLET SOV

Interaction Effects

7. Are soft targets free from impact by nearby equipment or structures? Y N U N/A

8. Are overhead equipment, distribution systems, ceiling tiles and lighting, and masonry block walls not likely to collapse onto the equipment? Y N U N/A

9. Do attached lines have adequate flexibility to avoid damage? Y N U N/A

10. Based on the above seismic interaction evaluations, is equipment free of potentially adverse seismic interaction effects? Y N U

Other Adverse Conditions

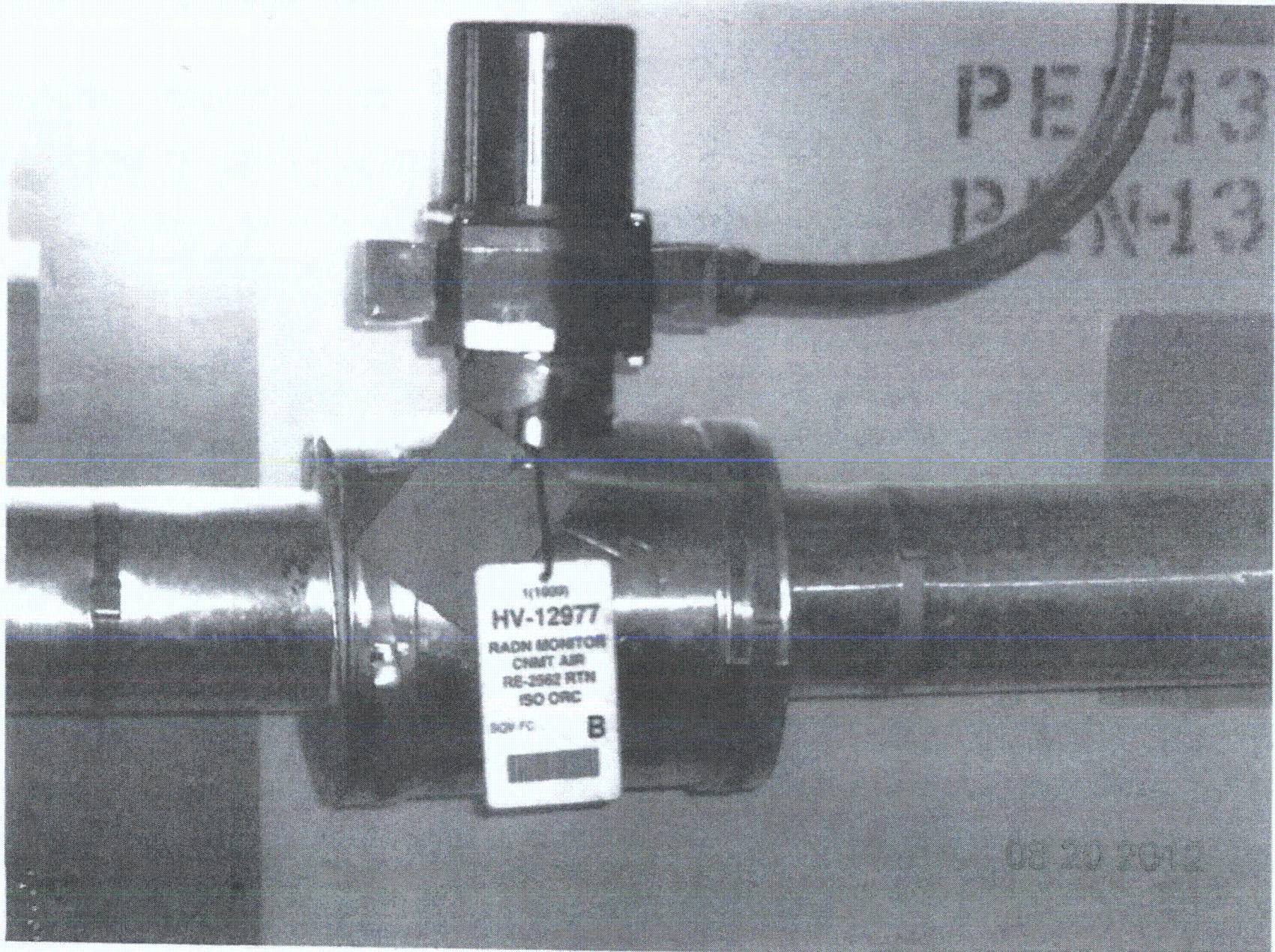
11. Have you looked for and found no other seismic conditions that could adversely affect the safety functions of the equipment? Y N U 27. 8-20-12

Comments (Additional pages may be added as necessary)

None

SEE EQUIPMENT ID NO. 1-HV-7603C FOR AWC

Evaluated by: James Donald / JAMES DONALD Date: 8-20-2012
WILSON STEWART 08/20/2012



Sheet 1 of 2
 Status: Y N U

Seismic Walkdown Checklist (SWC)

Equipment ID No. I-HV-13006B Equip. Class¹² Pneumatic Operated Valves - CLASS 7
 Equipment Description OUTBOARD MSEC. BYPASS ADV - SG 4
 Location: Bldg. AUX-5MSUR Floor El. 220'-0" Room, Area R108
 Manufacturer, Model, Etc. (optional but recommended) Fisher

Instructions for Completing Checklist

This checklist may be used to document the results of the Seismic Walkdown of an item of equipment on the SWEL. The space below each of the following questions may be used to record the results of judgments and findings. Additional space is provided at the end of this checklist for documenting other comments.

Anchorage

1. Is the anchorage configuration verification required (i.e., is the item one of the 50% of SWEL items requiring such verification)? Y N
2. Is the anchorage free of bent, broken, missing or loose hardware? Y N U N/A
3. Is the anchorage free of corrosion that is more than mild surface oxidation? Y N U N/A
4. Is the anchorage free of visible cracks in the concrete near the anchors? Y N U N/A
5. Is the anchorage configuration consistent with plant documentation? (Note: This question only applies if the item is one of the 50% for which an anchorage configuration verification is required.) Y N U N/A
6. Based on the above anchorage evaluations, is the anchorage free of potentially adverse seismic conditions? Y N U

10-HV2 COMPONENT IS NO ANCHORAGE
FLANGES BOLTS NOT USABLE DUE TO INSULATION

¹² Enter the equipment class name from Appendix B: Classes of Equipment.

Seismic Walkdown Checklist (SWC)

Equipment ID No. 1-110-130060 Equip. Class¹² Pneumatic Operated Valves - CLASS 7

Equipment Description OUTBOARD MSIV BYPASS AOV- SG 4

Interaction Effects

7. Are soft targets free from impact by nearby equipment or structures? Y N U N/A

8. Are overhead equipment, distribution systems, ceiling tiles and lighting, and masonry block walls not likely to collapse onto the equipment? Y N U N/A

9. Do attached lines have adequate flexibility to avoid damage? Y N U N/A

10. Based on the above seismic interaction evaluations, is equipment free of potentially adverse seismic interaction effects? Y N U

Other Adverse Conditions

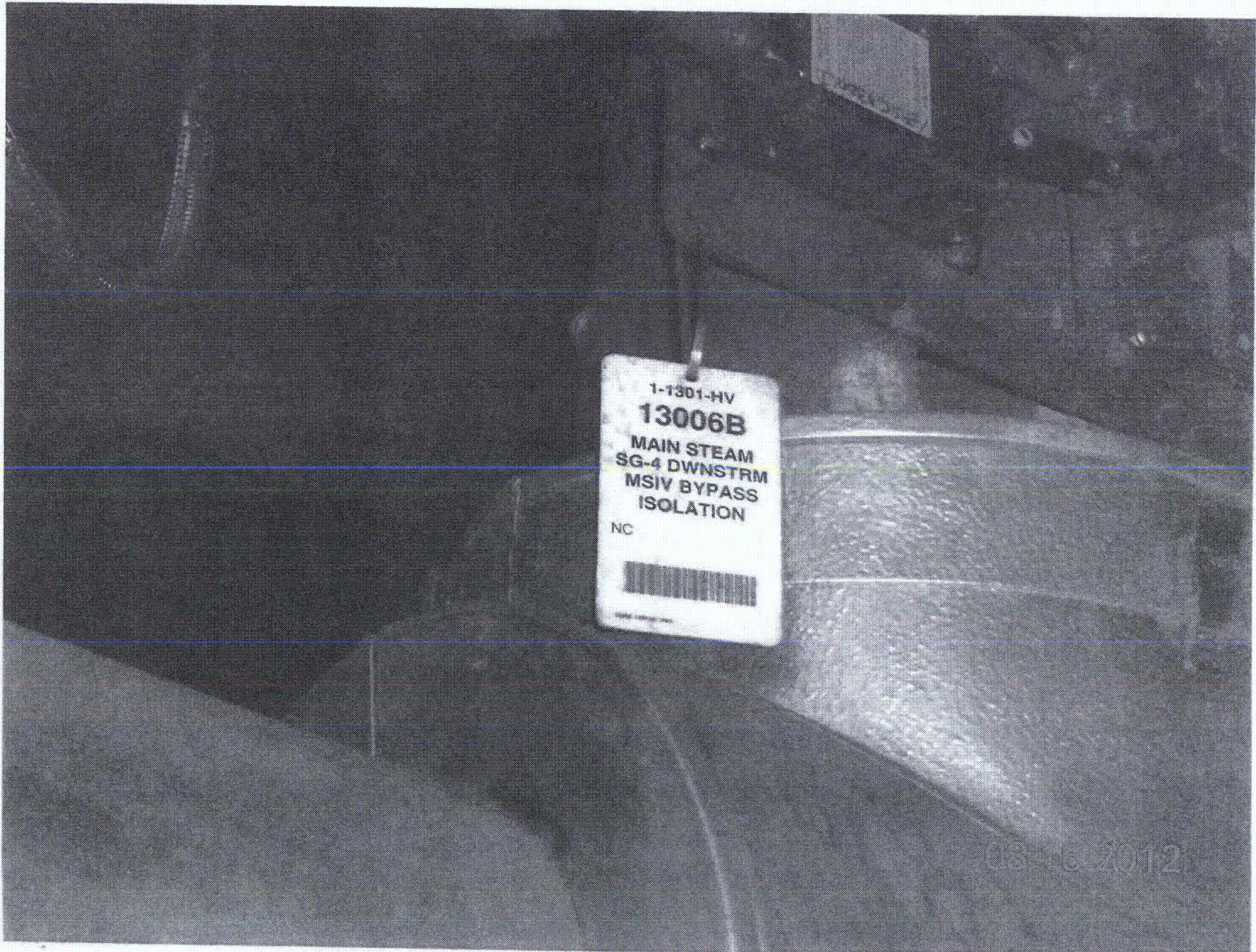
11. Have you looked for and found no other seismic conditions that could adversely affect the safety functions of the equipment? Y N U

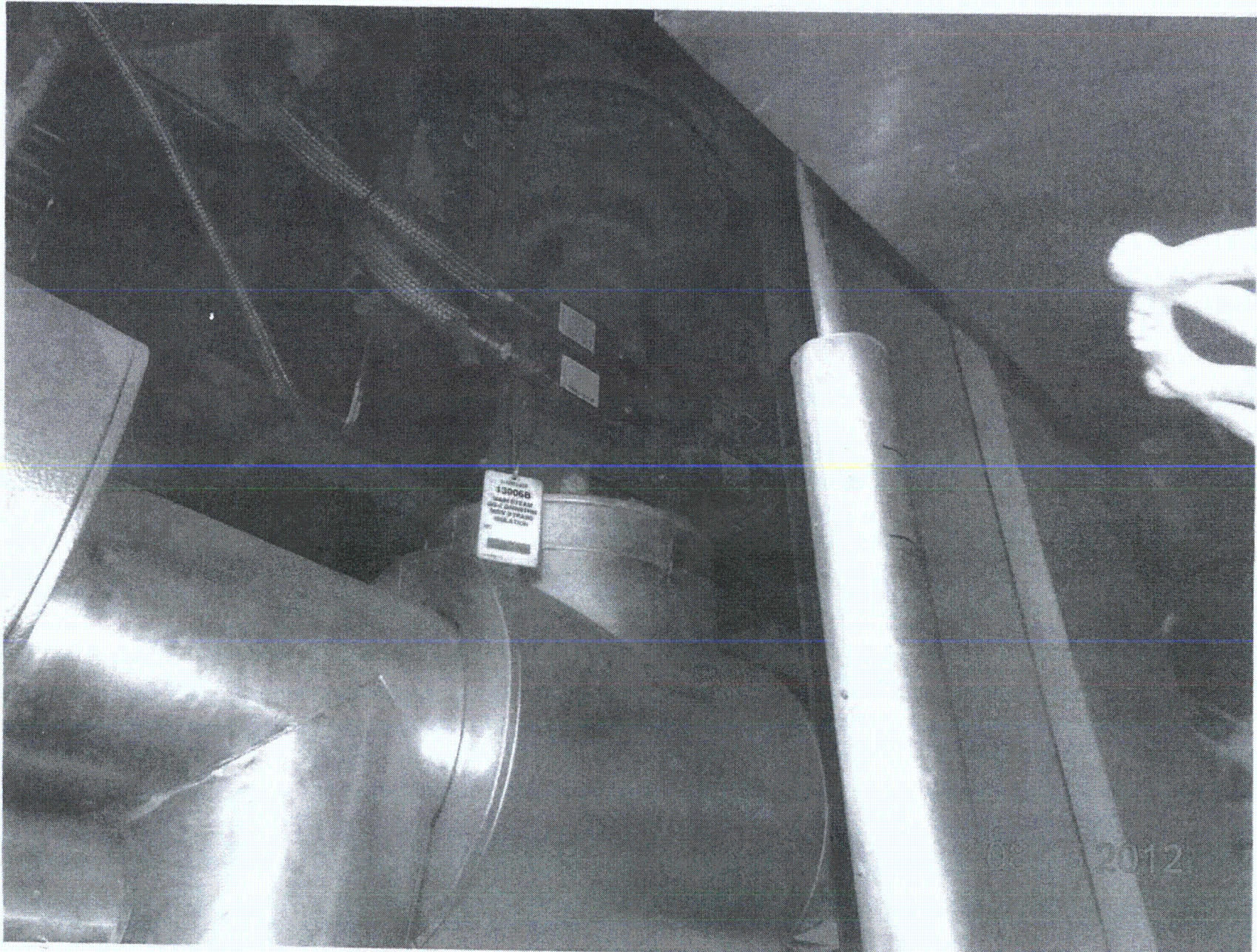
Comments (Additional pages may be added as necessary)

NONE

Evaluated by: James Dowel / JAMES DOWEL Date: 8-15-2012
W. STUBBS / WILSON STUBBS 8/15/2012

<C4>





Seismic Walkdown Checklist (SWC)

Equipment ID No. LHV-1668A Equip. Class¹² B (MOTOR OPERATED VALVE)

Equipment Description NSCV SPRAY VALVE

Location: Bldg. NSCT Floor El. 195' Room, Area R102

Manufacturer, Model, Etc. (optional but recommended) FISHER

Instructions for Completing Checklist

This checklist may be used to document the results of the Seismic Walkdown of an item of equipment on the SWEL. The space below each of the following questions may be used to record the results of judgments and findings. Additional space is provided at the end of this checklist for documenting other comments.

Anchorage

1. Is the anchorage configuration verification required (i.e., is the item one of the 50% of SWEL items requiring such verification)? Y N

2. Is the anchorage free of bent, broken, missing or loose hardware? Y N U N/A

3. Is the anchorage free of corrosion that is more than mild surface oxidation? Y N U N/A

4. Is the anchorage free of visible cracks in the concrete near the anchors? Y N U N/A

5. Is the anchorage configuration consistent with plant documentation? Y N U N/A
 (Note: This question only applies if the item is one of the 50% for which an anchorage configuration verification is required.)

6. Based on the above anchorage evaluations, is the anchorage free of potentially adverse seismic conditions? Y N U

IN-LINE VALVE

¹² Enter the equipment class name from Appendix B: Classes of Equipment.

Seismic Walkdown Checklist (SWC)

Equipment ID No. 1-HV-1668A Equip. Class¹² 8 (MOTOR OPERATED VALVE)

Equipment Description NISCW SPRAY VALVE

Interaction Effects

- 7. Are soft targets free from impact by nearby equipment or structures? Y N U N/A

- 8. Are overhead equipment, distribution systems, ceiling tiles and lighting, and masonry block walls not likely to collapse onto the equipment? Y N U N/A

- 9. Do attached lines have adequate flexibility to avoid damage? Y N U N/A

- 10. Based on the above seismic interaction evaluations, is equipment free of potentially adverse seismic interaction effects? Y N U

Other Adverse Conditions

- 11. Have you looked for and found no other seismic conditions that could adversely affect the safety functions of the equipment? Y N U

VALVE BOLTING IS ADEQUATE, NO ADVERSE CONDITION.

Comments (Additional pages may be added as necessary)

NONE

Evaluated by: David Volodarsky DAVID VOLODARSKY Date: 8/28/2012
Matthew Wilkinson Matthew Wilkinson 8/28/2012

