

Seismic Walkdown Checklist (SWC)

Equipment ID No. 1-2403-64-001-V02 Equip. Class¹² Z1 - Tanks and Heat Exchangers
~~H7 - Engine Generators~~ W.S. 8/28/12

Equipment Description DG AIR START RECEIVER

Location: Bldg. D6 Floor El. 220'-0" Room, Area R103

Manufacturer, Model, Etc. (optional but recommended) DELAVAL TURBINE INC.

Instructions for Completing Checklist

This checklist may be used to document the results of the Seismic Walkdown of an item of equipment on the SWEL. The space below each of the following questions may be used to record the results of judgments and findings. Additional space is provided at the end of this checklist for documenting other comments.

Anchorage

1. Is the anchorage configuration verification required (i.e., is the item one of the 50% of SWEL items requiring such verification)? Y N U

2. Is the anchorage free of bent, broken, missing or loose hardware? Y N U N/A
2 OF 12 BOLTS MISSING WASHERS REF CR # 540.134
SLIGHTLY OUT-OF-PLUMB A.B's (<2°)
ABOVE ITEMS ARE NOT SEISMIC CONCERNS
3. Is the anchorage free of corrosion that is more than mild surface oxidation? Y N U N/A

4. Is the anchorage free of visible cracks in the concrete near the anchors? Y N U N/A

5. Is the anchorage configuration consistent with plant documentation? Y N U N/A
 (Note: This question only applies if the item is one of the 50% for which an anchorage configuration verification is required.)
DRAWING: 1X2D07A005, Rev 6; 1X4AK01-137-5
6. Based on the above anchorage evaluations, is the anchorage free of potentially adverse seismic conditions? Y N U

¹² Enter the equipment class name from Appendix B: Classes of Equipment.

Seismic Walkdown Checklist (SWC)

Equipment ID No. 1-2403-64-001-V02 Equip. Class¹² Z1-Tanks and Heat Exchangers
H-Engine Generators W.S. 8/28/12
Equipment Description OG AIR START RECEIVER

Interaction Effects

7. Are soft targets free from impact by nearby equipment or structures? Y N U N/A

8. Are overhead equipment, distribution systems, ceiling tiles and lighting, and masonry block walls not likely to collapse onto the equipment? Y N U N/A

9. Do attached lines have adequate flexibility to avoid damage? Y N U N/A

10. Based on the above seismic interaction evaluations, is equipment free of potentially adverse seismic interaction effects? Y N U

Other Adverse Conditions

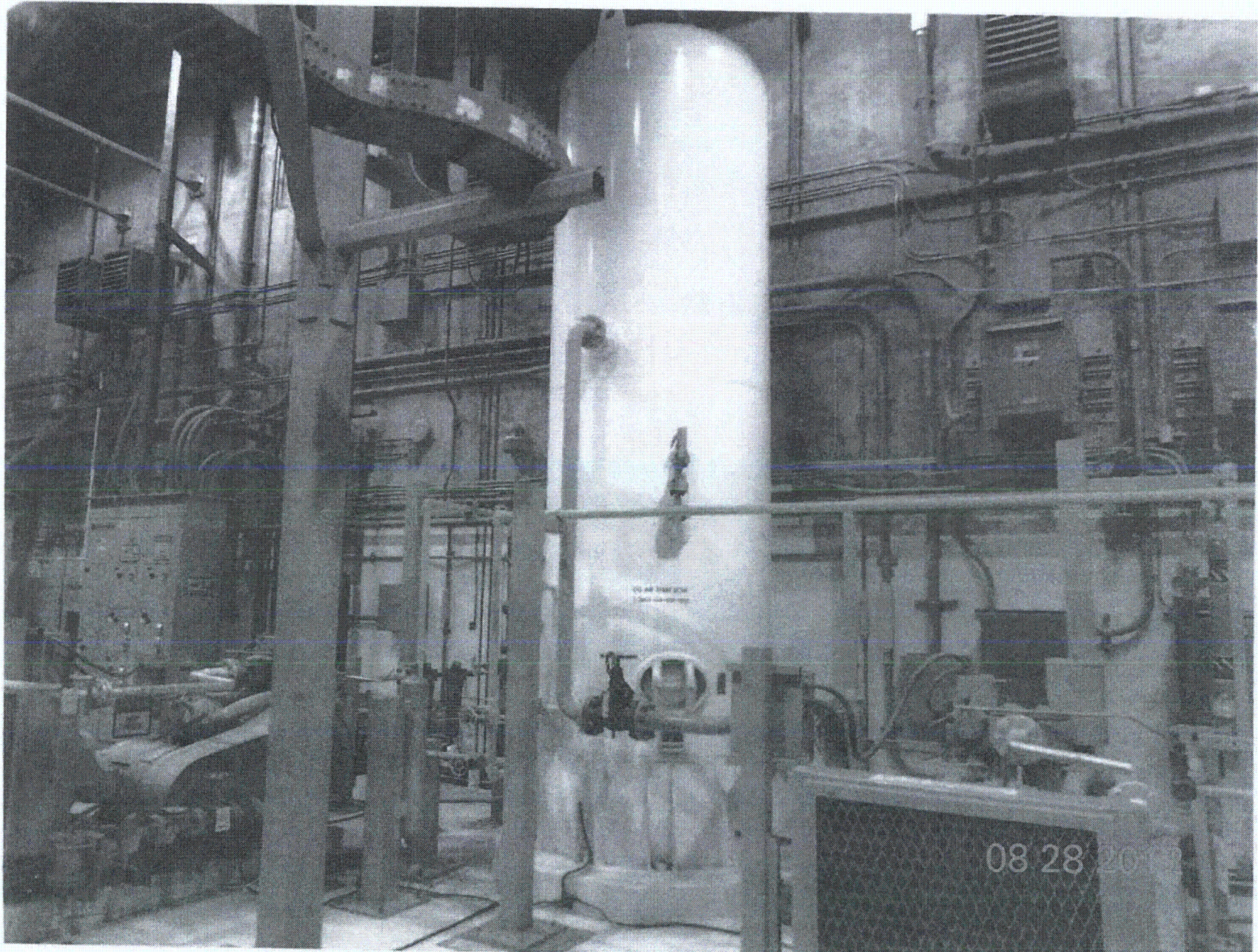
11. Have you looked for and found no other seismic conditions that could adversely affect the safety functions of the equipment? Y N U

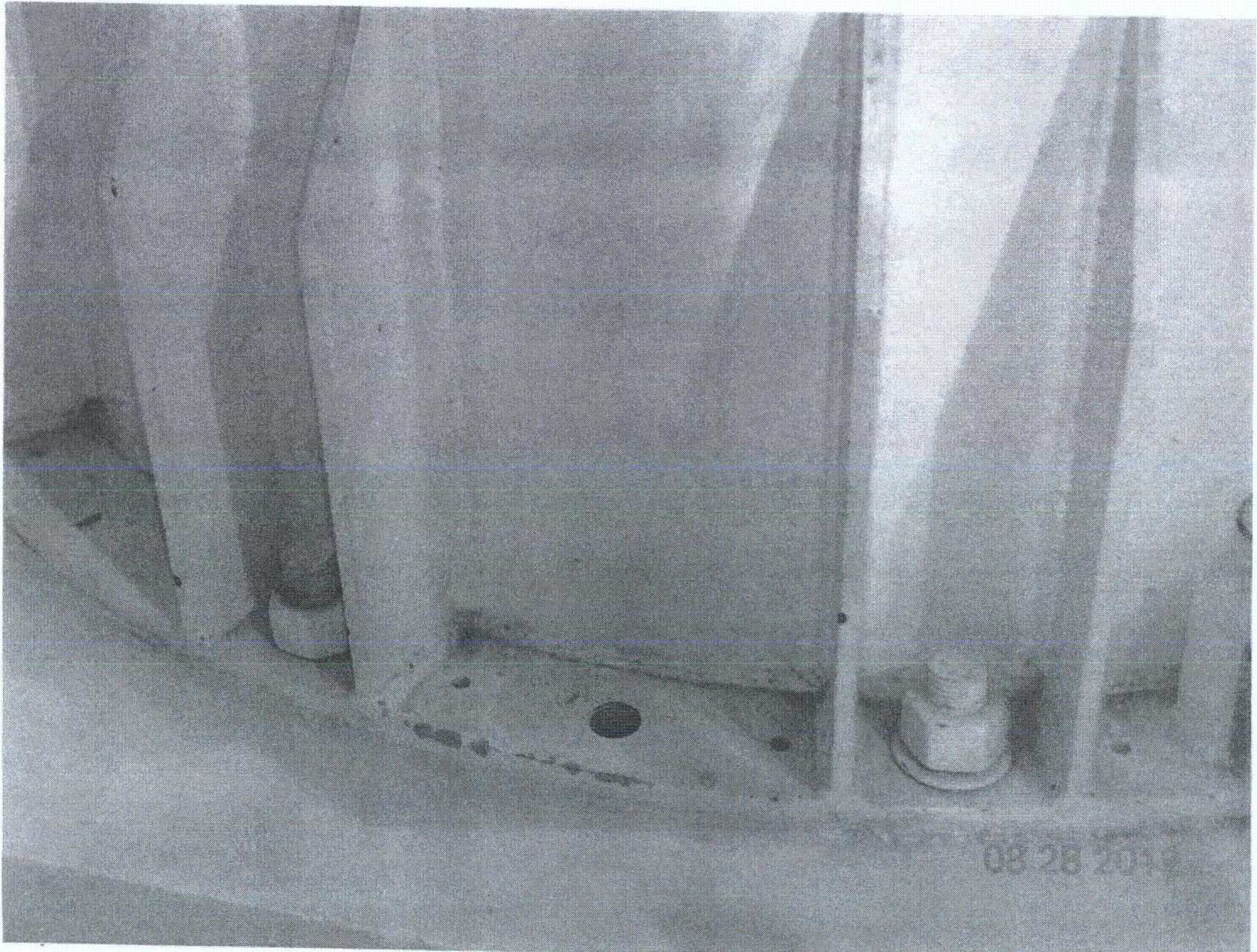
Comments (Additional pages may be added as necessary)

NONE

SEE 1-2403-64-001 FOR AWC

Evaluated by: James Dault / JAMES DOWELL Date: 8-28-2012
WST / Winston Stewart 08/28/2012





Sheet 1 of 2
 Status: N U

Seismic Walkdown Checklist (SWC)

Equipment ID No. 1-2403-P4-003 Equip. Class¹² 6 (Vertical Pump)
 Equipment Description Diesel Fuel Oil Transfer Pump
 Location: Bldg. DFOST Floor El. 211'-6" Room, Area RA-03
 Manufacturer, Model, Etc. (optional but recommended) Johnston Pumps

Instructions for Completing Checklist

This checklist may be used to document the results of the Seismic Walkdown of an item of equipment on the SWEL. The space below each of the following questions may be used to record the results of judgments and findings. Additional space is provided at the end of this checklist for documenting other comments.

Anchorage

1. Is the anchorage configuration verification required (i.e., is the item one of the 50% of SWEL items requiring such verification)? Y N U N/A

2. Is the anchorage free of bent, broken, missing or loose hardware? Y N U N/A MPW
8/15/2012

3. Is the anchorage free of corrosion that is more than mild surface oxidation? Y N U N/A MPW
8/15/2012
Notes: painted surfaces (flange, studs and nuts)

4. Is the anchorage free of visible cracks in the concrete near the anchors? Y N U N/A
*No cracks at nozzle penetration at all visible areas.
 Note: this is not actually anchorage for pump, but at tank nozzle penetration below flanged connection to pump.*

5. Is the anchorage configuration consistent with plant documentation? Y N U N/A
 (Note: This question only applies if the item is one of the 50% for which an anchorage configuration verification is required.)
*Checked flange bolts
 Drawing # IX41AF04-00010-01
 NOT required, but flange configuration is consistent with drawing*

6. Based on the above anchorage evaluations, is the anchorage free of potentially adverse seismic conditions? Y N U

¹² Enter the equipment class name from Appendix B: Classes of Equipment.

Seismic Walkdown Checklist (SWC)

Equipment ID No. 1-2403-P4-003 Equip. Class¹² 6 (vertical Pump)
Equipment Description Diesel Fuel Oil Transfer Pump

Interaction Effects

- 7. Are soft targets free from impact by nearby equipment or structures? Y N U N/A
- 8. Are overhead equipment, distribution systems, ceiling tiles and lighting, and masonry block walls not likely to collapse onto the equipment? Y N U N/A
- 9. Do attached lines have adequate flexibility to avoid damage? Y N U N/A
- 10. Based on the above seismic interaction evaluations, is equipment free of potentially adverse seismic interaction effects? Y N U

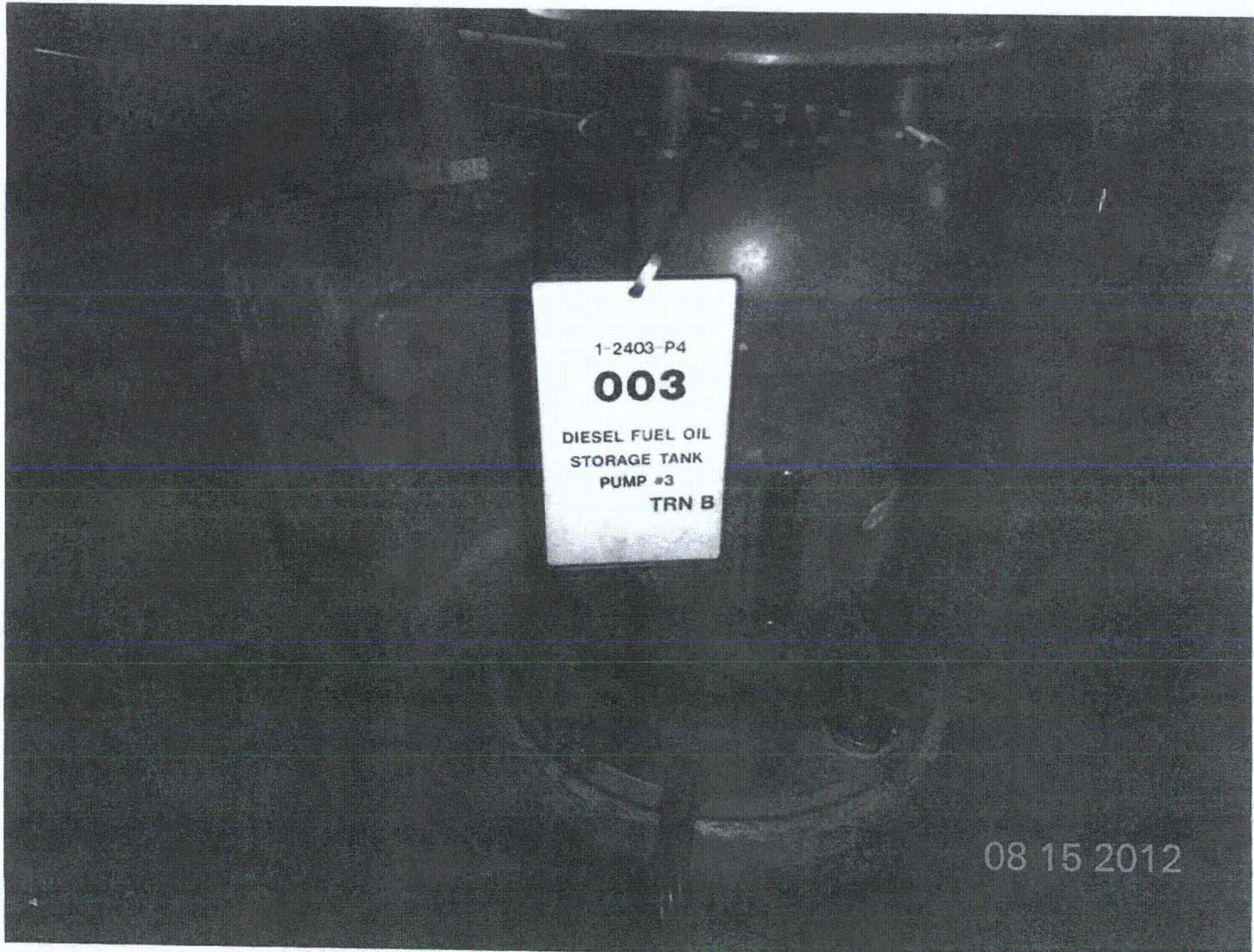
Other Adverse Conditions

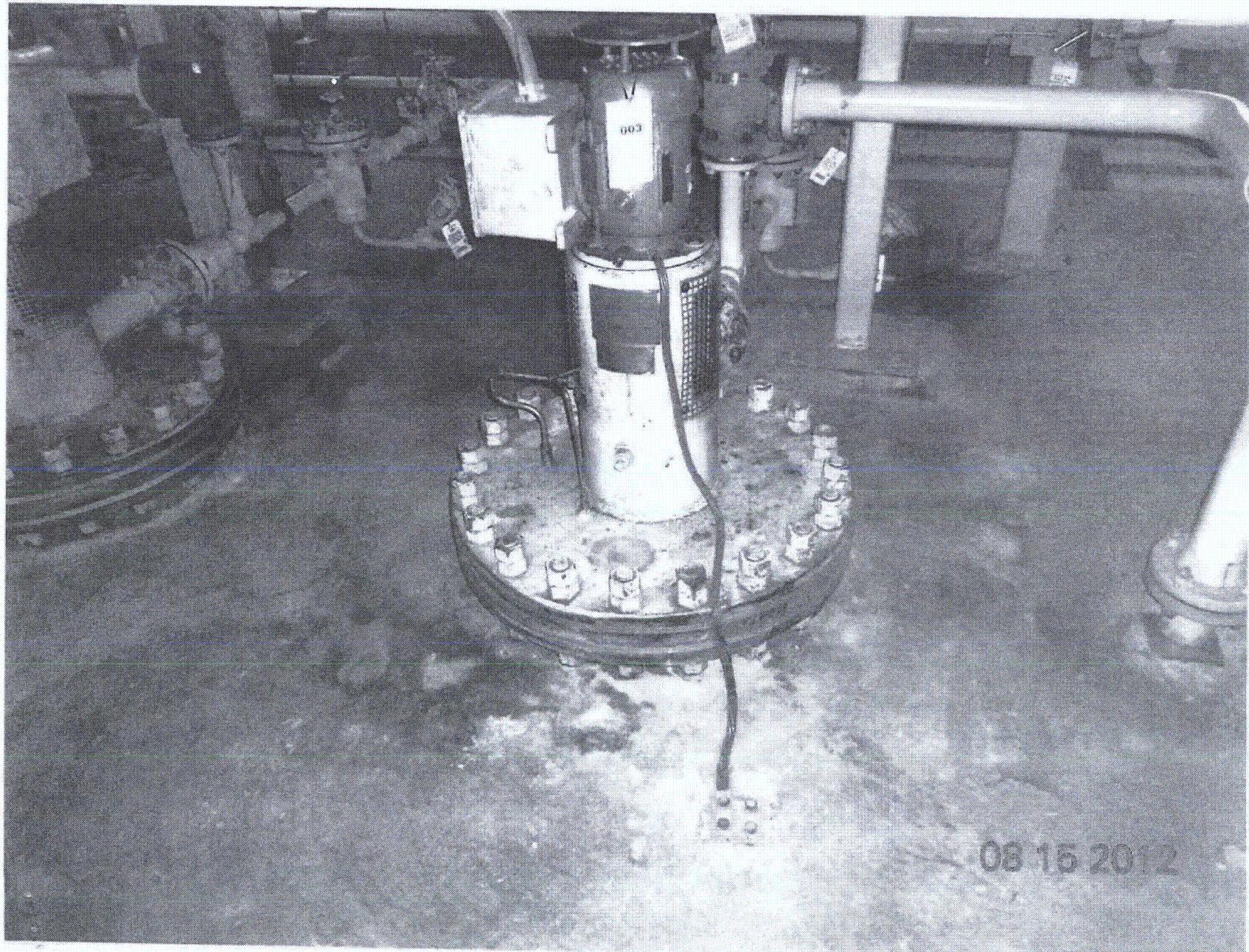
- 11. Have you looked for and found no other seismic conditions that could adversely affect the safety functions of the equipment? Y N U
No temporarily stored equipment. Clean and spacious area.

Comments (Additional pages may be added as necessary)

None

Evaluated by: *W. Stess* / Winston Stess Date: 8/15/2012
Matthew Wilkinson Matthew Wilkinson 8/15/2012





Sheet 1 of 2

Status: Y U N
 10/26/12

Seismic Walkdown Checklist (SWC)

Equipment ID No. 1-2403-P5-DG3 Equip. Class¹² 20 (INSTRUMENT & CONTROL PANEL)

Equipment Description DIESEL GENERATOR CONTROL PANEL

Location: Bldg. DG Floor El. 220' Room, Area R101

Manufacturer, Model, Etc. (optional but recommended) _____

Instructions for Completing Checklist

This checklist may be used to document the results of the Seismic Walkdown of an item of equipment on the SWEL. The space below each of the following questions may be used to record the results of judgments and findings. Additional space is provided at the end of this checklist for documenting other comments.

Anchorage

1. Is the anchorage configuration verification required (i.e., is the item one of the 50% of SWEL items requiring such verification)? Y N

2. Is the anchorage free of bent, broken, missing or loose hardware? Y N U N/A

3. Is the anchorage free of corrosion that is more than mild surface oxidation? Y N U N/A

4. Is the anchorage free of visible cracks in the concrete near the anchors? Y N U N/A

5. Is the anchorage configuration consistent with plant documentation? Y N U N/A
 (Note: This question only applies if the item is one of the 50% for which an anchorage configuration verification is required.)
IX4AK01 - 00302, VER. 13.0

6. Based on the above anchorage evaluations, is the anchorage free of potentially adverse seismic conditions? Y N U

EVALUATED BY: David Volobarsky DAVID VOLOBARSKY 9/12/2012
 (ANCHORAGE ONLY) Matthew Wilkinson Matthew Wilkinson 9/12/2012

¹² Enter the equipment class name from Appendix B: Classes of Equipment.

Seismic Walkdown Checklist (SWC)

Equipment ID No. 1-2403-PS-063 Equip. Class¹² 20 (INSTRUMENT & CONTROL PANEL)

Equipment Description DIESEL GENERATOR CONTROL PANEL

Interaction Effects

7. Are soft targets free from impact by nearby equipment or structures? Y N U N/A
COVER FOR LIGHT FIXTURE IS LOWIE - NOT SEISMIC CONCERN - SEE CR 504856
HANGING CONTROLLER CABLE IS STRAPPED TO STRUCTURAL STEEL
NOT A SEISMIC CONCERN - SEE CR 504859

8. Are overhead equipment, distribution systems, ceiling tiles and lighting, and masonry block walls not likely to collapse onto the equipment? Y N U N/A
LIGHT FIXTURES HAVE OPEN HOOK DESIGN
WILL NOT IMPACT CONTROL PANEL
NOT A SEISMIC CONCERN

9. Do attached lines have adequate flexibility to avoid damage? Y N U N/A

10. Based on the above seismic interaction evaluations, is equipment free of potentially adverse seismic interaction effects? Y N U

Other Adverse Conditions

11. Have you looked for and found no other seismic conditions that could adversely affect the safety functions of the equipment? Y N U

Comments (Additional pages may be added as necessary)

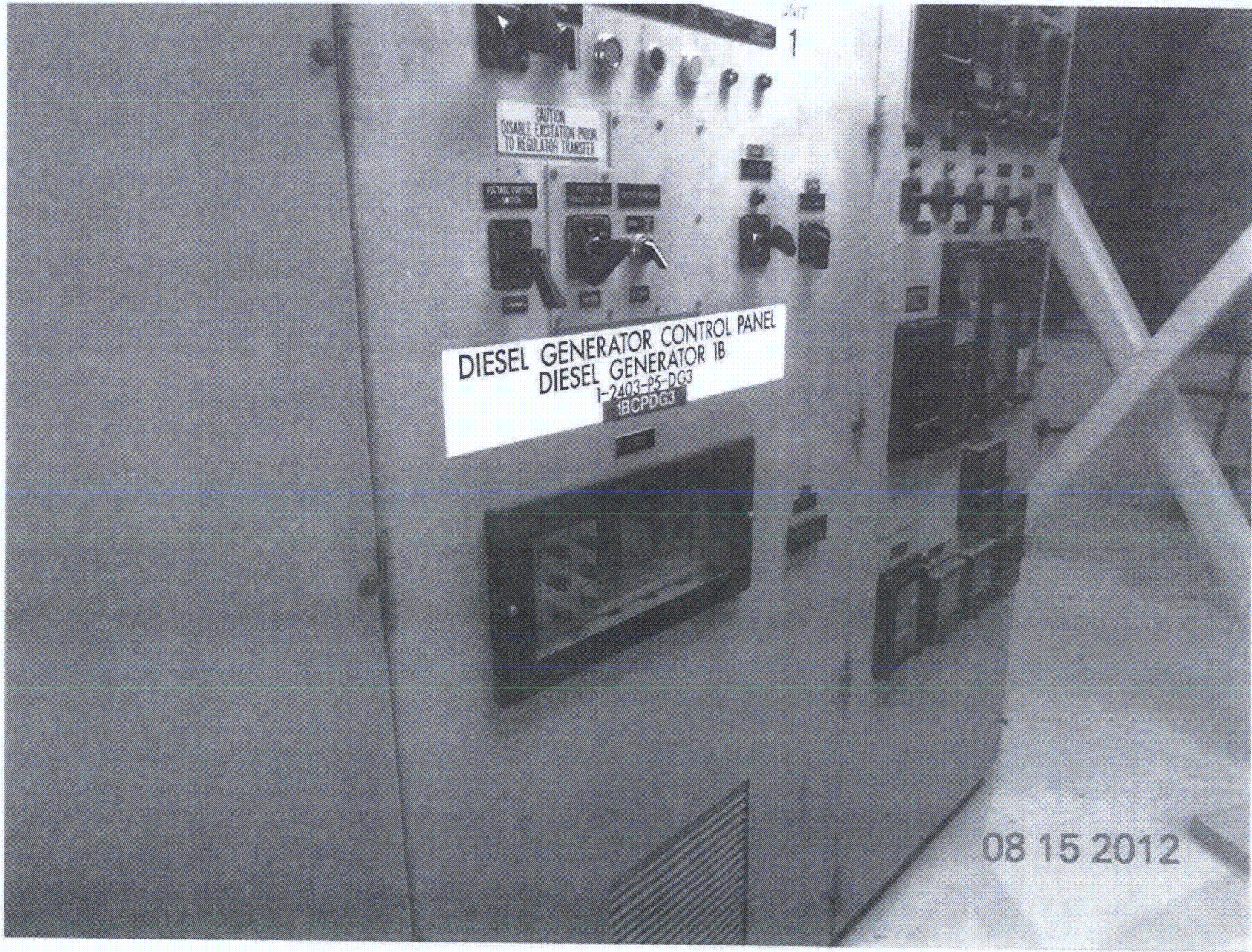
NONE

Evaluated by: James Dovel / JAMES DOVEL Date: 10-26-2012

David V. / DAVID VOLODARSKY 10-26-2012

<C4>





Sheet 1 of 2

Status: Y N U**Seismic Walkdown Checklist (SWC)**Equipment ID No. 1-2403-05-063 Equip. Class¹² 20Equipment Description Diesel Generator 10 Gen CTL PNLLocation: Bldg. 06 Floor El. 220.0' Room, Area R101

Manufacturer, Model, Etc. (optional but recommended) _____

Instructions for Completing Checklist

This checklist may be used to document the results of the Seismic Walkdown of an item of equipment on the SWEL. The space below each of the following questions may be used to record the results of judgments and findings. Additional space is provided at the end of this checklist for documenting other comments.

Anchorage (See SWC dated 8/15/12)

1. Is the anchorage configuration verification required (i.e., is the item one of the 50% of SWEL items requiring such verification)? Y N

2. Is the anchorage free of bent, broken, missing or loose hardware? Y N U N/A

3. Is the anchorage free of corrosion that is more than mild surface oxidation? Y N U N/A

4. Is the anchorage free of visible cracks in the concrete near the anchors? Y N U N/A

5. Is the anchorage configuration consistent with plant documentation? Y N U N/A
(Note: This question only applies if the item is one of the 50% for which an anchorage configuration verification is required.)

6. Based on the above anchorage evaluations, is the anchorage free of potentially adverse seismic conditions? Y N U

¹² Enter the equipment class name from Appendix B: Classes of Equipment.

Seismic Walkdown Checklist (SWC)Equipment ID No. 1-2403-P5-063 Equip. Class¹² 20Equipment Description Diesel Generator 1B GEN STL PNL**Interaction Effects** (See SWC dated 8/15/12)7. Are soft targets free from impact by nearby equipment or structures? Y N U N/A 8. Are overhead equipment, distribution systems, ceiling tiles and lighting, and masonry block walls not likely to collapse onto the equipment? Y N U N/A 9. Do attached lines have adequate flexibility to avoid damage? Y N U N/A 10. Based on the above seismic interaction evaluations, is equipment free of potentially adverse seismic interaction effects? Y N U **Other Adverse Conditions**

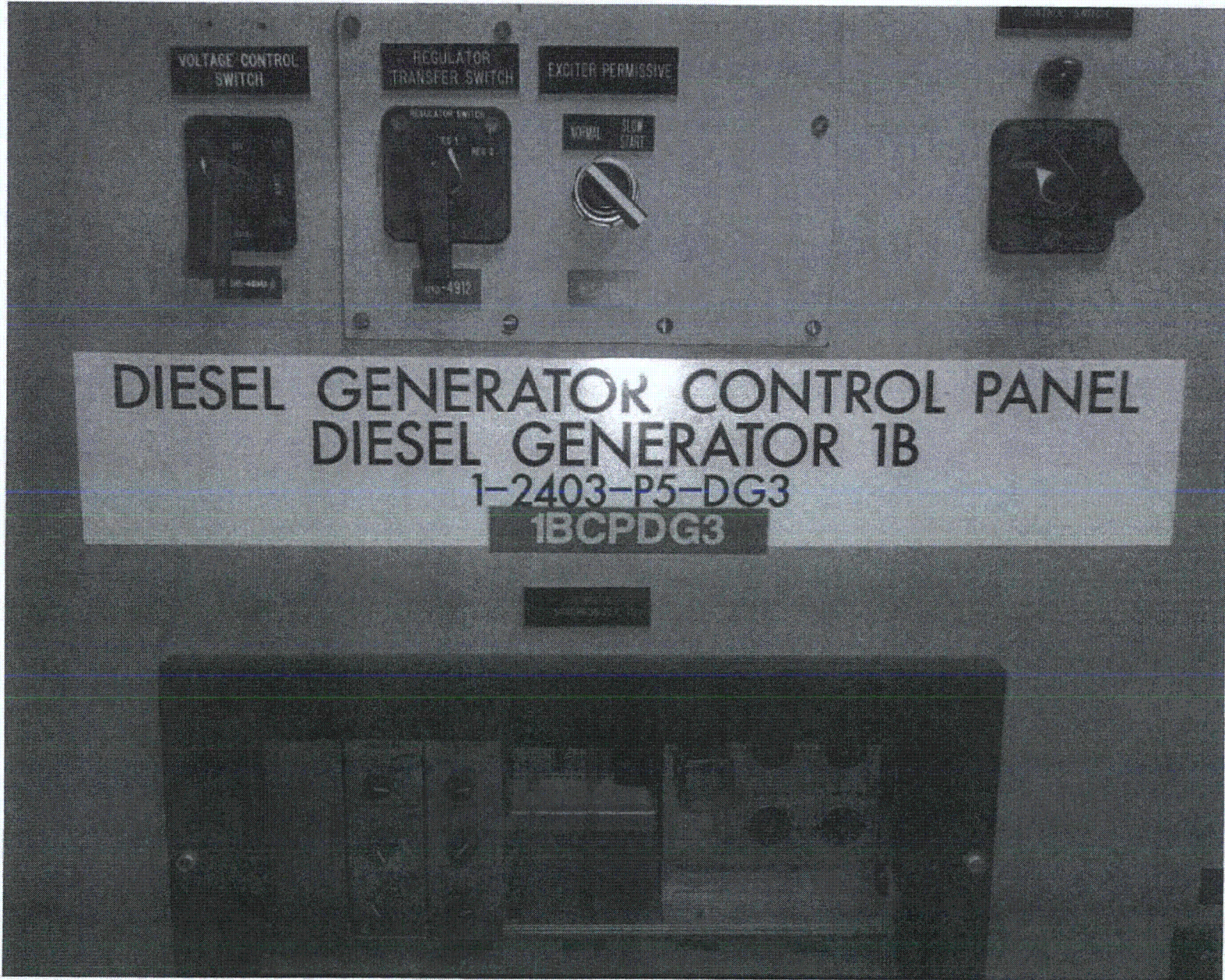
11. Have you looked for and found no other seismic conditions that could adversely affect the safety functions of the equipment? A visual inspection of the internal components of this cabinet was performed to check for seismic adequacy to include any evidence of internal components not adequately secured, checked to ensure fasteners connecting adjacent cabinets were in place, and evidence of other adverse seismic conditions were found. Some minor issues found are documented in the "Comments" section.

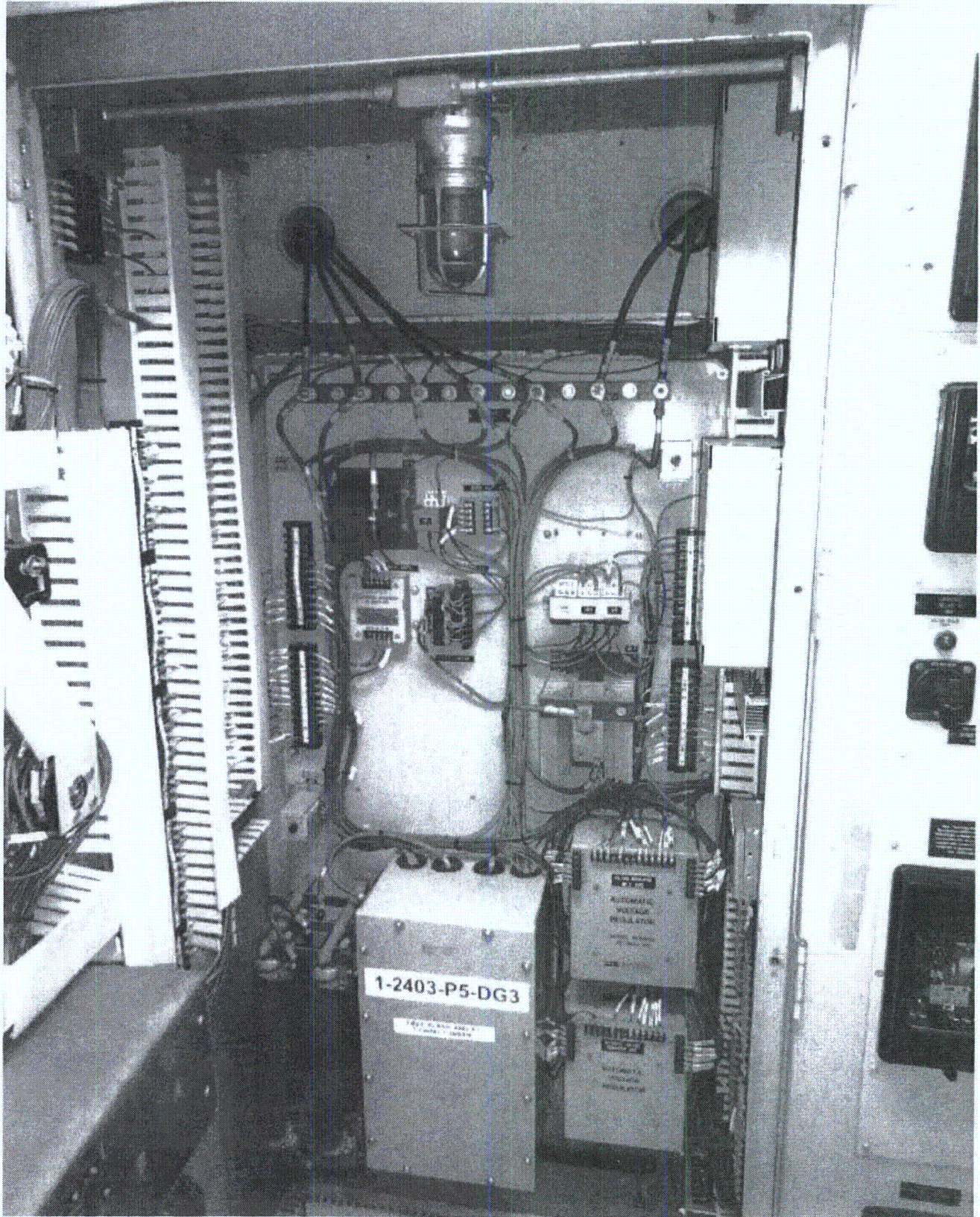
Comments (Additional pages may be added as necessary)

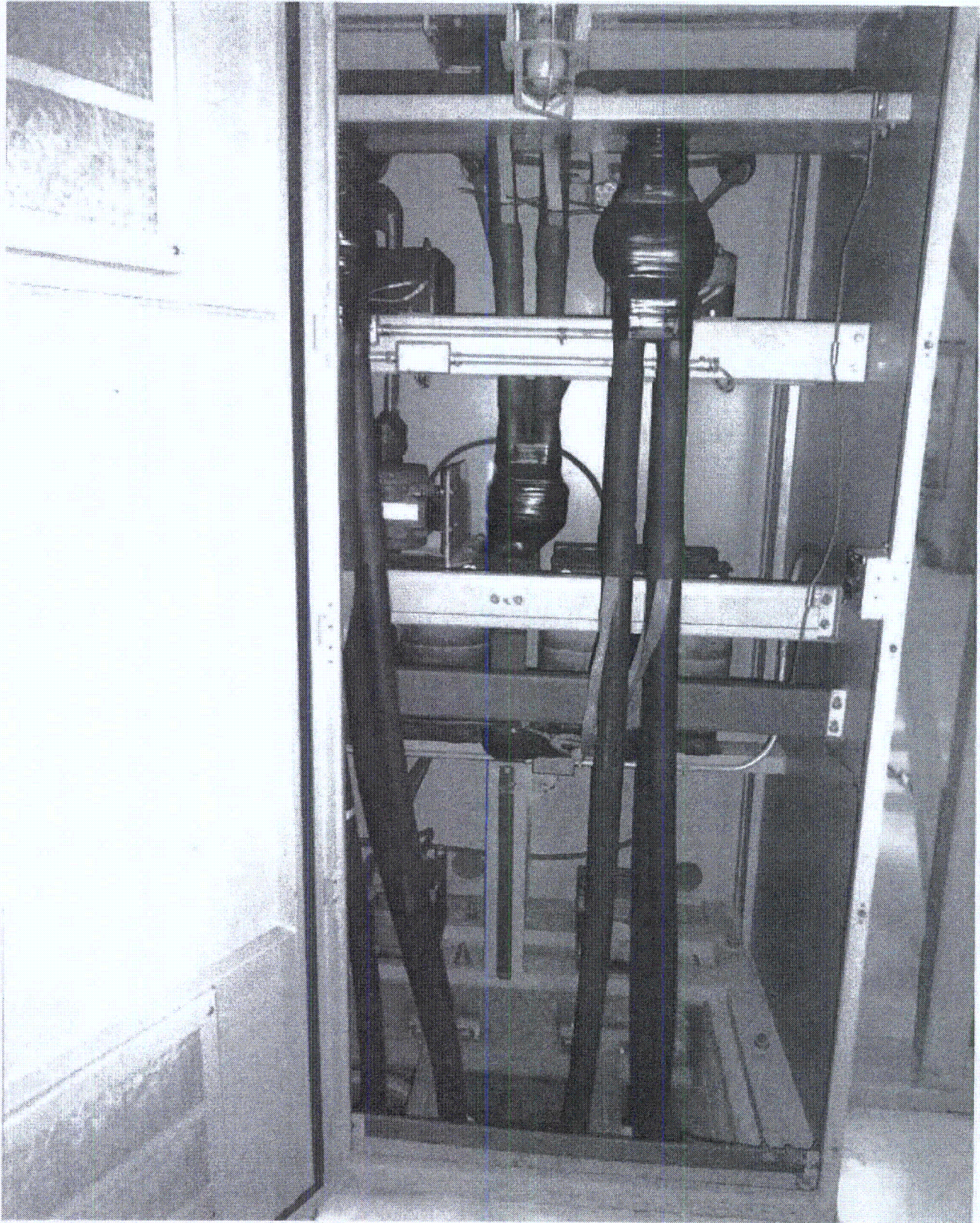
Found screws missing used to secure ventilation panel door window and a cover plate. It was judged that this condition does not represent a seismic vulnerability or concern. Reference condition report 528369

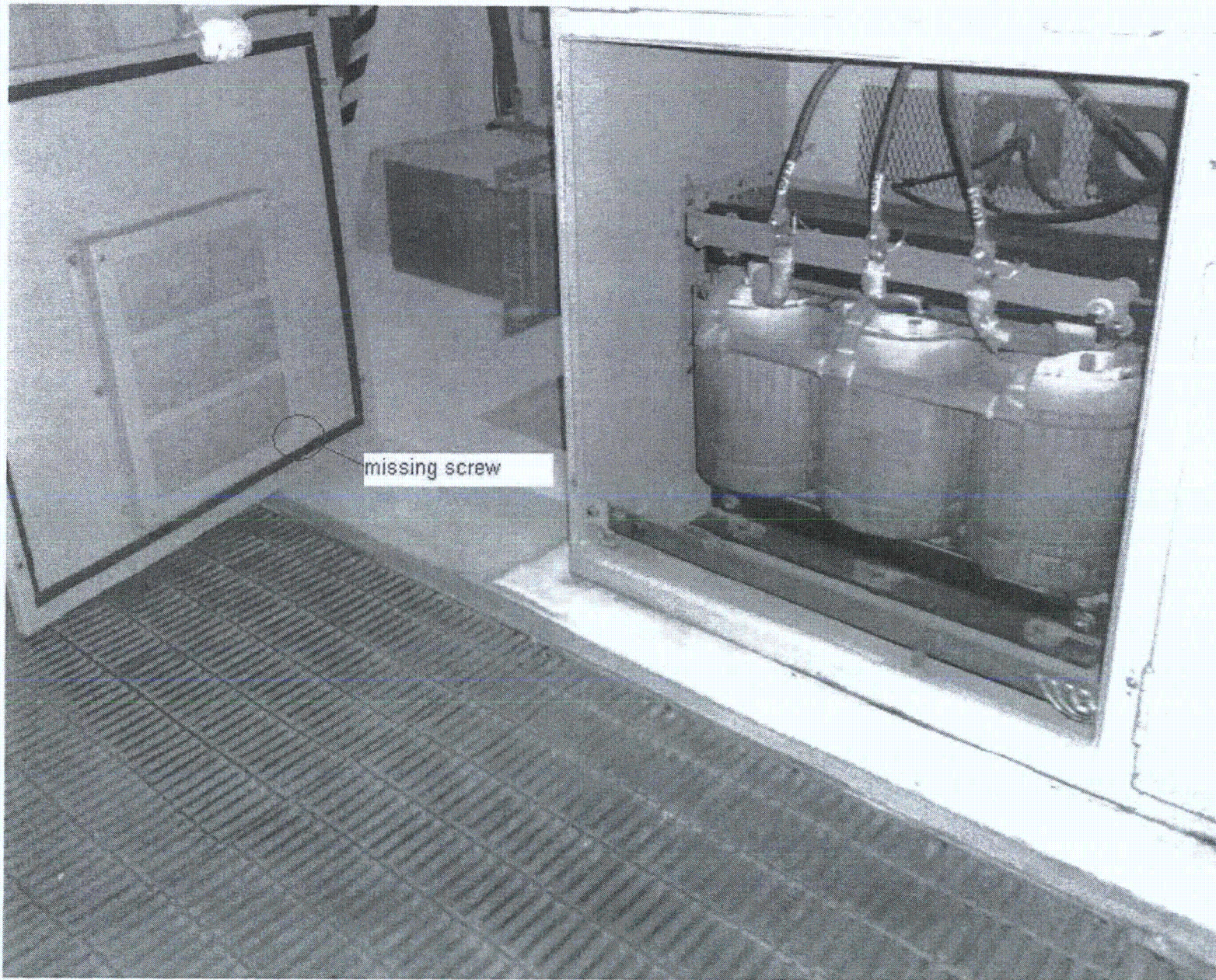
Evaluated by: Jose R. Hernandez Date: 10/01/2012Justo S. Ciacon 10/1/2012

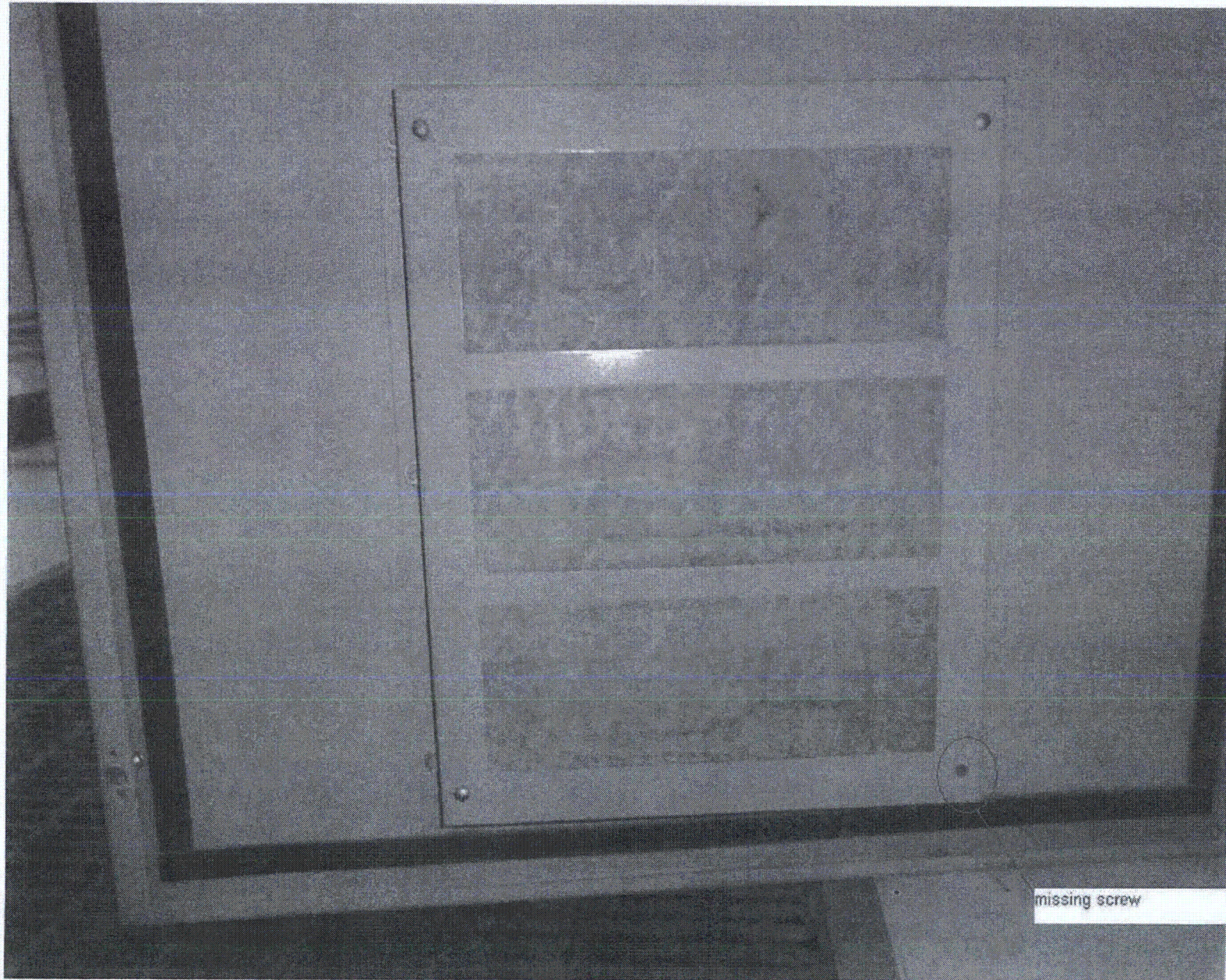
<C4>

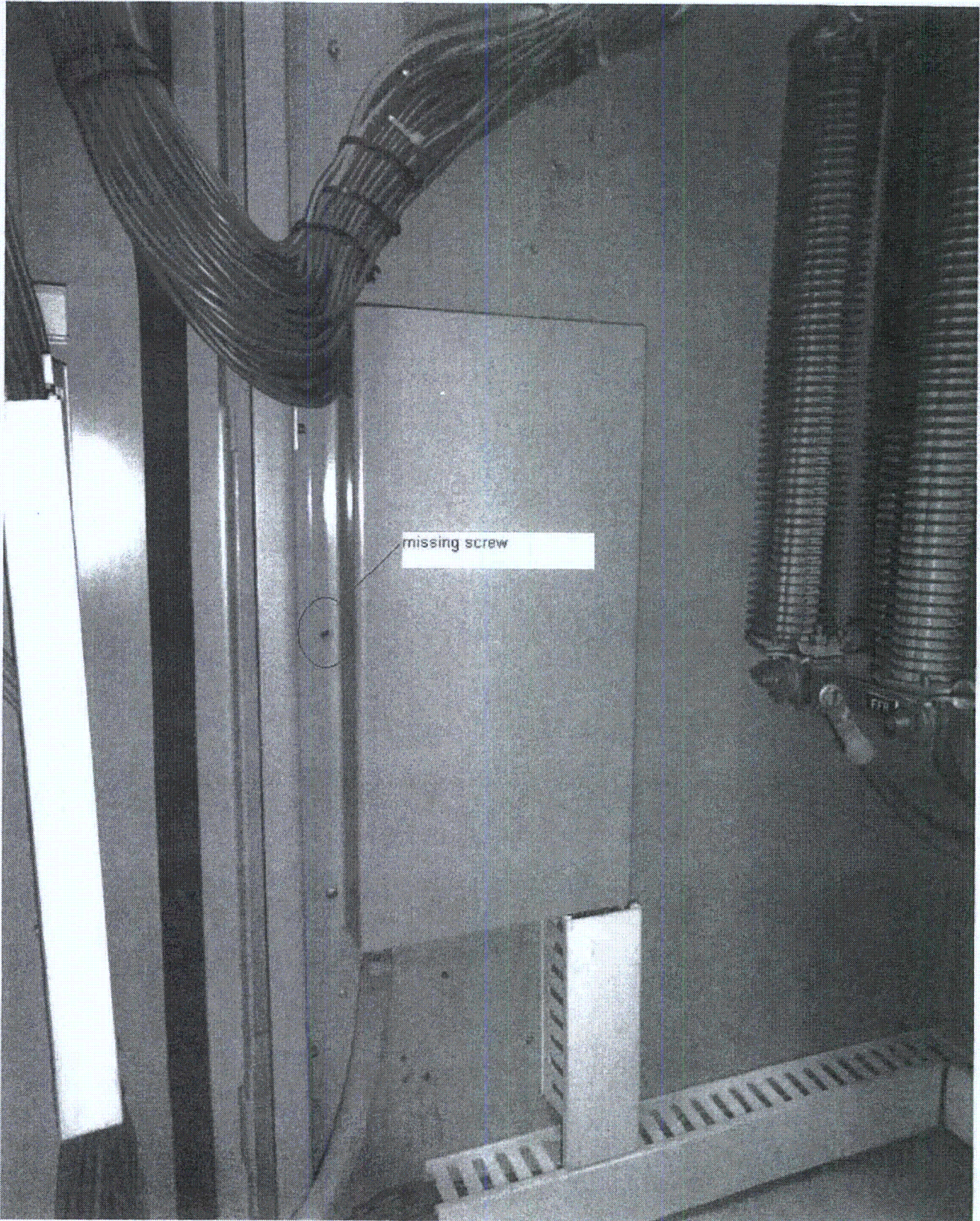












Seismic Walkdown Checklist (SWC)

Equipment ID No. 1-2403-T4-004 Equip. Class¹² 2.1 (Tanks & Hx)
 Equipment Description Diesel Fuel Oil Day Tank
 Location: Bldg. DGB Floor/El. 220' Room, Area R 102
 Manufacturer, Model, Etc. (optional but recommended) Richmond Engineering

Instructions for Completing Checklist

This checklist may be used to document the results of the Seismic Walkdown of an item of equipment on the SWEL. The space below each of the following questions may be used to record the results of judgments and findings. Additional space is provided at the end of this checklist for documenting other comments.

Anchorage

1. Is the anchorage configuration verification required (i.e., is the item one of the 50% of SWEL items requiring such verification)? Y N U

2. Is the anchorage free of bent, broken, missing or loose hardware? Y N U N/A
Good painting, no loose materials.

3. Is the anchorage free of corrosion that is more than mild surface oxidation? Y N U N/A

4. Is the anchorage free of visible cracks in the concrete near the anchors? Y N U N/A
Anchors are threaded studs to structural WF beam with double nuts above supp't saddle.

5. Is the anchorage configuration consistent with plant documentation? Y N U N/A
 (Note: This question only applies if the item is one of the 50% for which an anchorage configuration verification is required.)
Not within 50% SWEL verification sample.

6. Based on the above anchorage evaluations, is the anchorage free of potentially adverse seismic conditions? Y N U
All gaps are 1/4" max between saddle & WF beam; judged to be acceptable since shim is direct load to WF beam, where stiffeners are provided.

¹² Enter the equipment class name from Appendix B: Classes of Equipment.

Seismic Walkdown Checklist (SWC)

Equipment ID No. 1-2403-T4-004 Equip. Class¹² 21 (Tanks FITX)

Equipment Description Diesel Fuel Oil Day Tank

Interaction Effects

7. Are soft targets free from impact by nearby equipment or structures? Y N U N/A

Piping is well-supported.

8. Are overhead equipment, distribution systems, ceiling tiles and lighting, and masonry block walls not likely to collapse onto the equipment? Y N U N/A

9. Do attached lines have adequate flexibility to avoid damage? Y N U N/A

*flexible conduits attached to area equipment
large bore piping rigidly supported and attached to tank; thus no differential movement expected*

10. Based on the above seismic interaction evaluations, is equipment free of potentially adverse seismic interaction effects? Y N U

Other Adverse Conditions

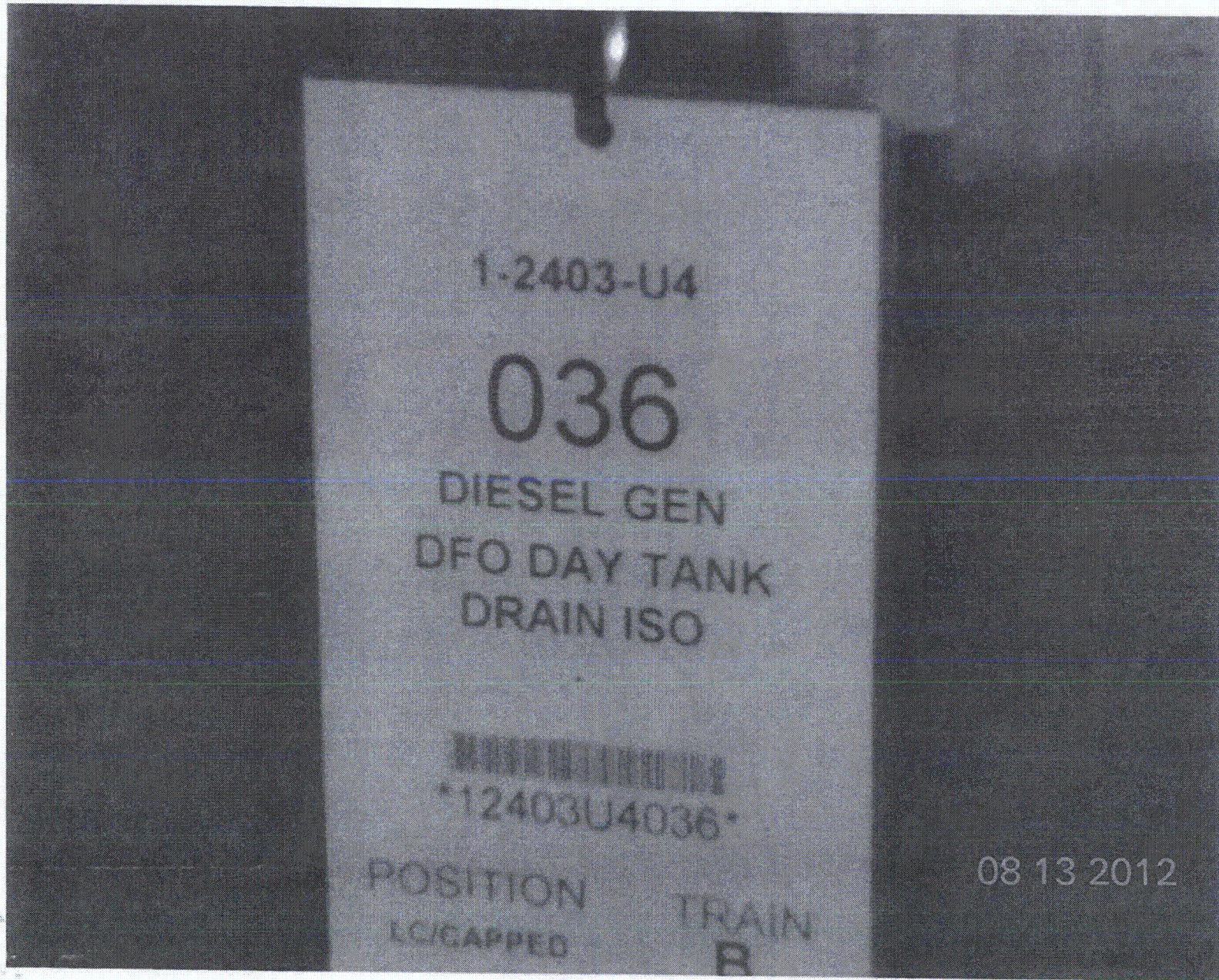
11. Have you looked for and found no other seismic conditions that could adversely affect the safety functions of the equipment? Y N U

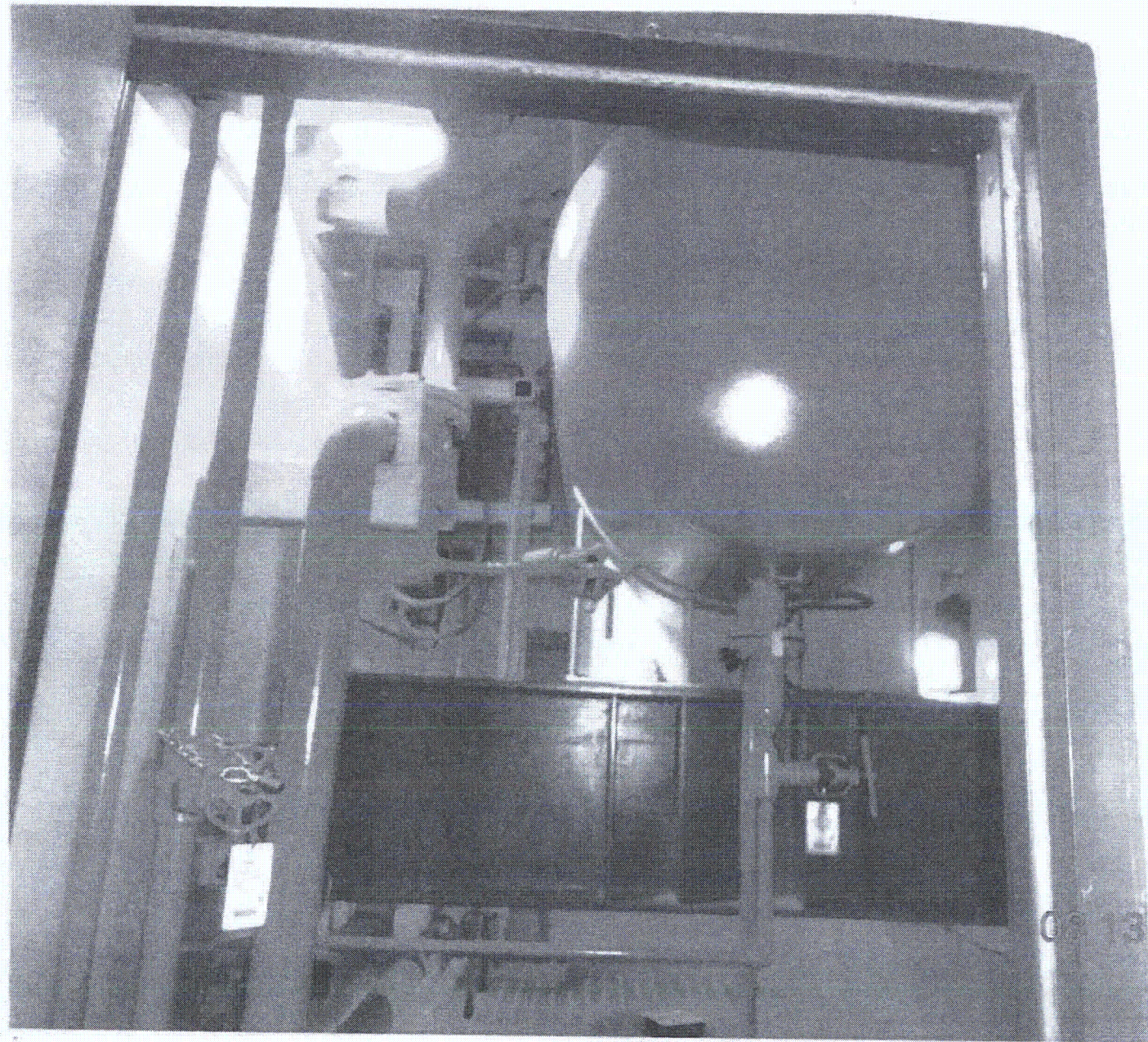
Comments (Additional pages may be added as necessary)

NONE

Evaluated by: Matthew P. Wilkinson Date: 8/13/2012

David Volo DAVID VOLODARSEY 8/13/2012





Seismic Walkdown Checklist (SWC)

Equipment ID No. 1-FIT-1640A Equip. Class¹²: 18

Equipment Description NSCW RETURN FLOW

Location: Bldg. NSCT Floor El. 195' Room, Area TUNNEL / T2A

Manufacturer, Model, Etc. (optional but recommended) _____

Instructions for Completing Checklist

This checklist may be used to document the results of the Seismic Walkdown of an item of equipment on the SWEL. The space below each of the following questions may be used to record the results of judgments and findings. Additional space is provided at the end of this checklist for documenting other comments.

Anchorage

1. Is the anchorage configuration verification required (i.e., is the item one of the 50% of SWEL items requiring such verification)? Y N U

2. Is the anchorage free of bent, broken, missing or loose hardware? Y N U N/A

3. Is the anchorage free of corrosion that is more than mild surface oxidation? Y N U N/A

4. Is the anchorage free of visible cracks in the concrete near the anchors? Y N U N/A

5. Is the anchorage configuration consistent with plant documentation? Y N U N/A
 (Note: This question only applies if the item is one of the 50% for which an anchorage configuration verification is required.)
Cx5 DP8203, sh. 2, Ver. 8

6. Based on the above anchorage evaluations, is the anchorage free of potentially adverse seismic conditions? Y N U

¹² Enter the equipment class name from Appendix B: Classes of Equipment.

Seismic Walkdown Checklist (SWC)

Equipment ID No. 1-FIT-1640A Equip. Class¹² 18

Equipment Description NSCW RETURN FLOW

Interaction Effects

7. Are soft targets free from impact by nearby equipment or structures? Y N U N/A

8. Are overhead equipment, distribution systems, ceiling tiles and lighting, and masonry block walls not likely to collapse onto the equipment? Y N U N/A

9. Do attached lines have adequate flexibility to avoid damage? Y N U N/A

10. Based on the above seismic interaction evaluations, is equipment free of potentially adverse seismic interaction effects? Y N U

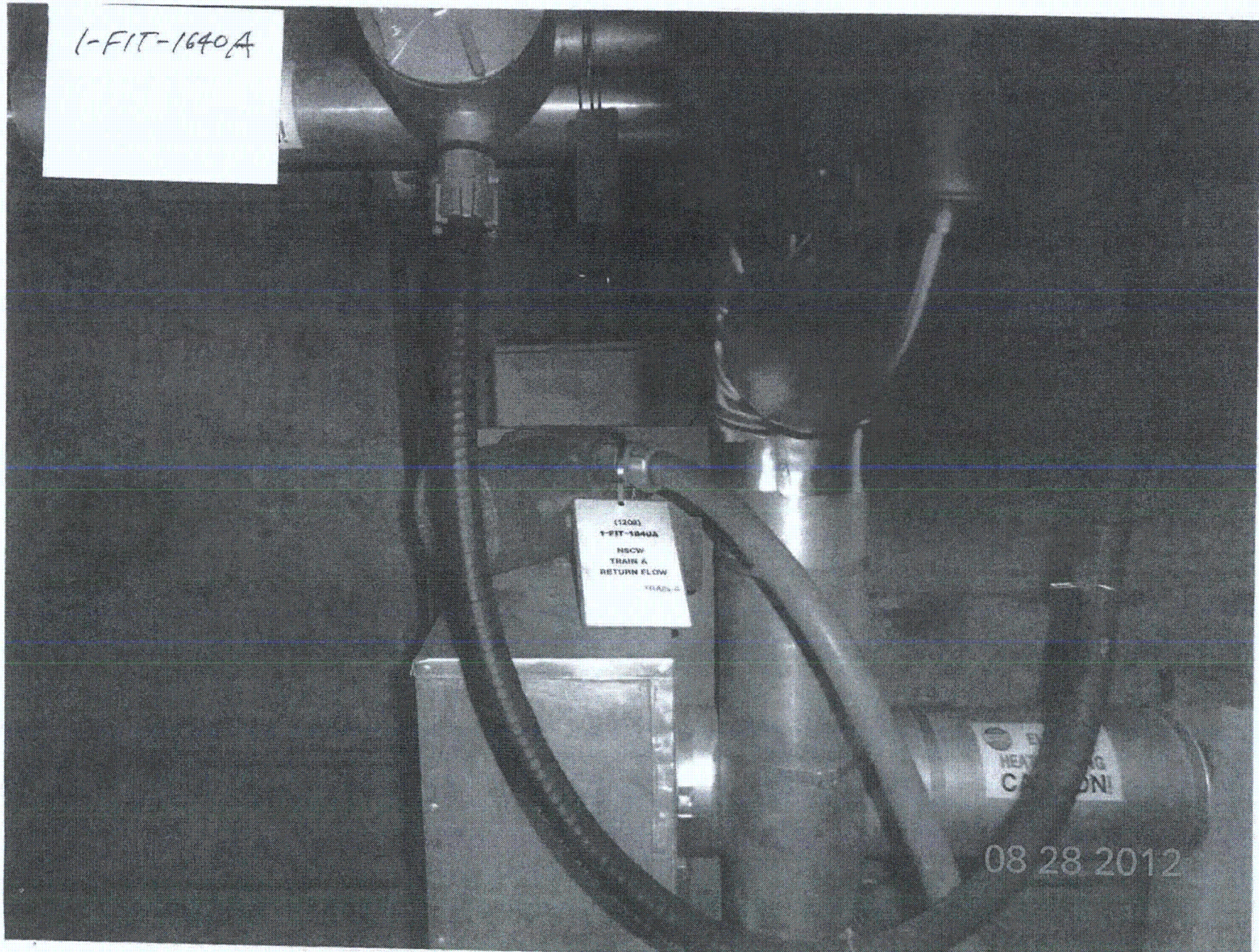
Other Adverse Conditions

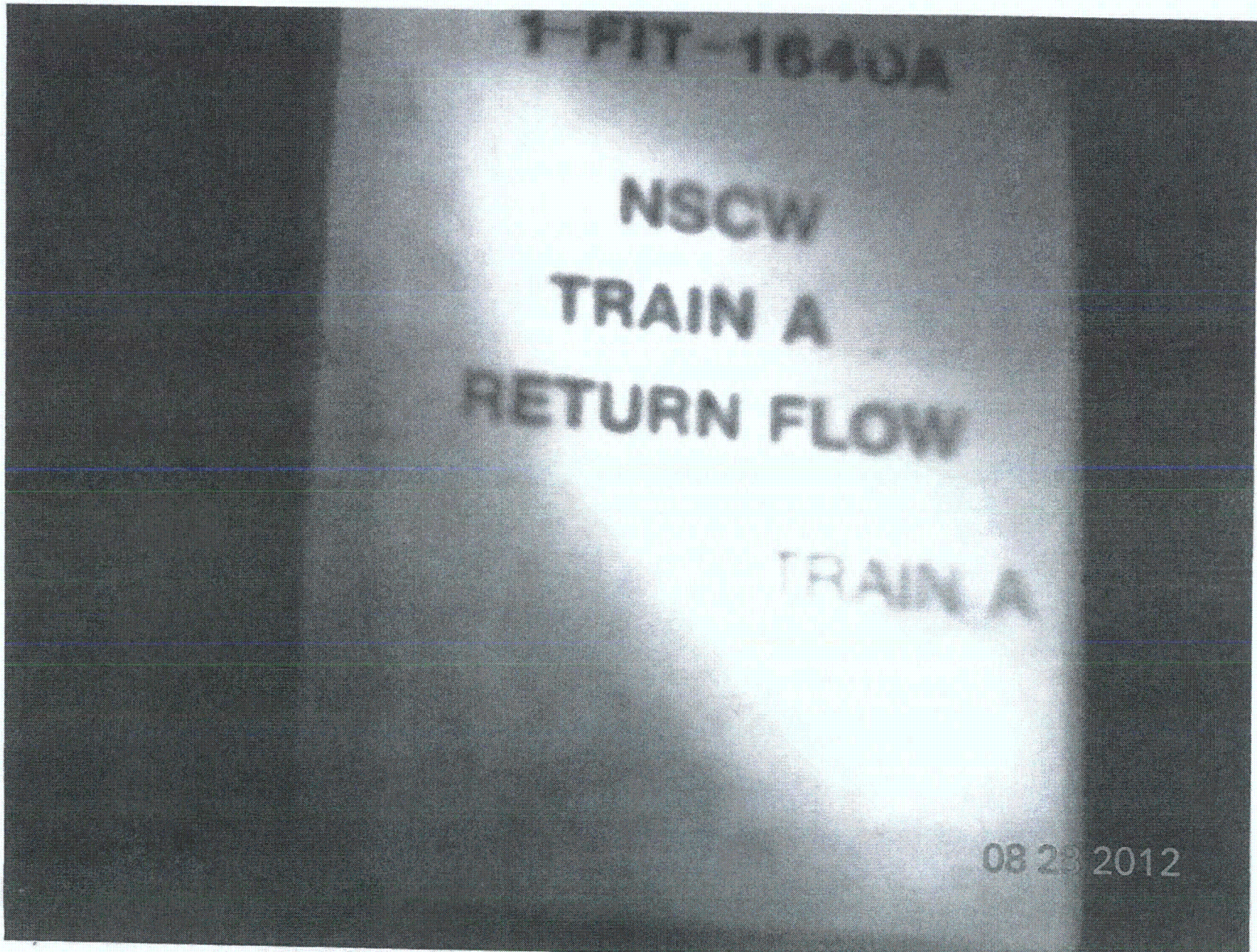
11. Have you looked for and found no other seismic conditions that could adversely affect the safety functions of the equipment? Y N U

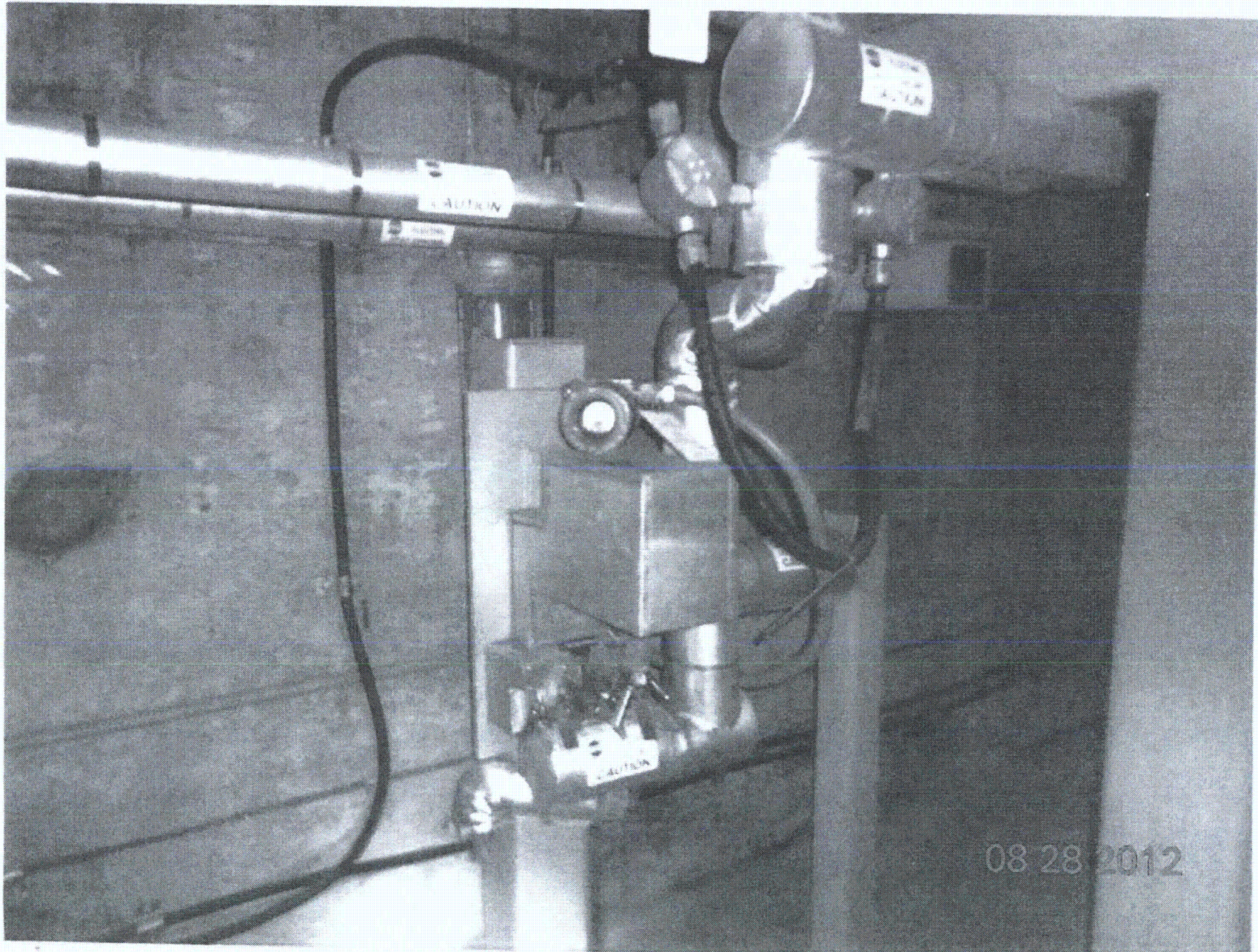
Comments (Additional pages may be added as necessary)

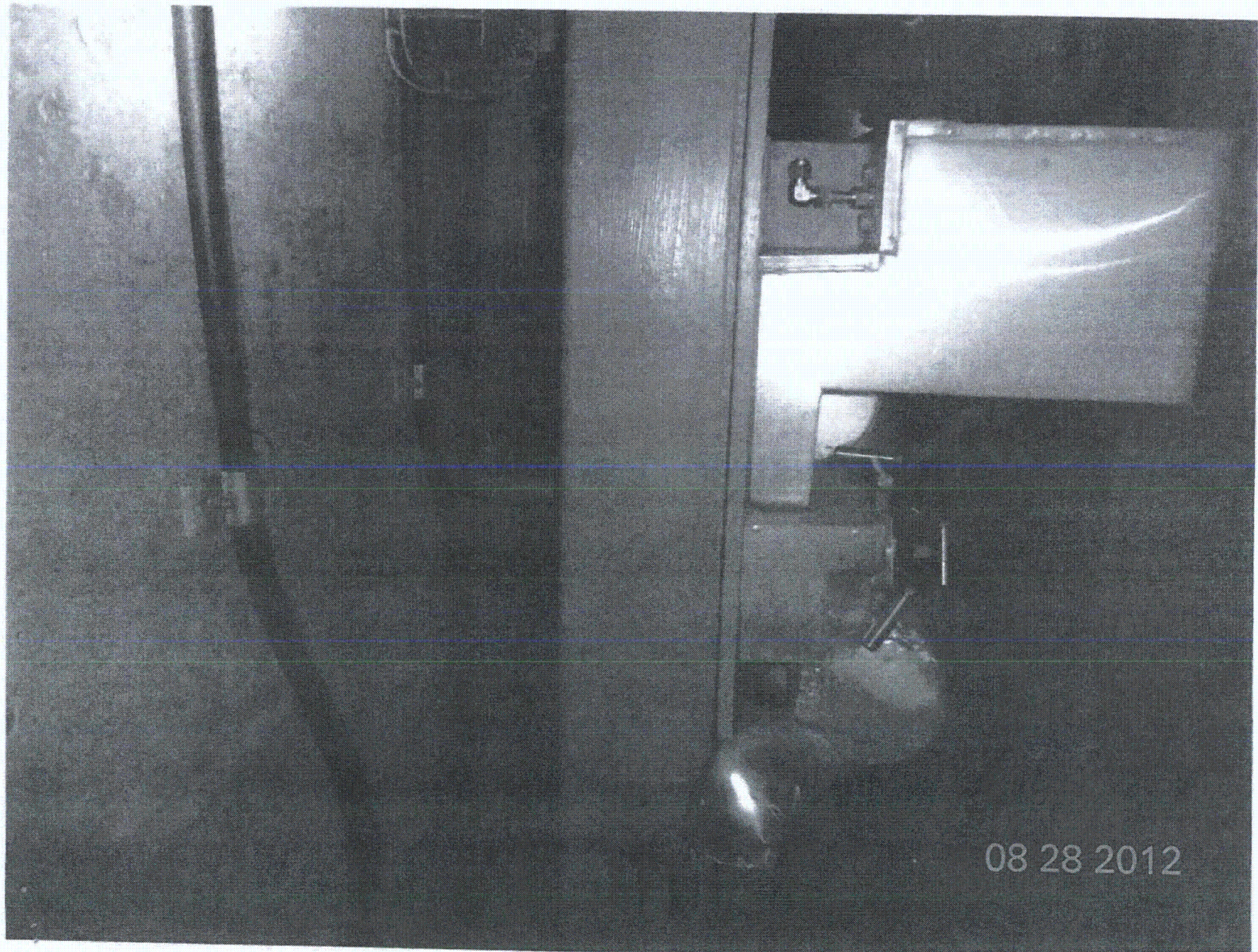
No comments.

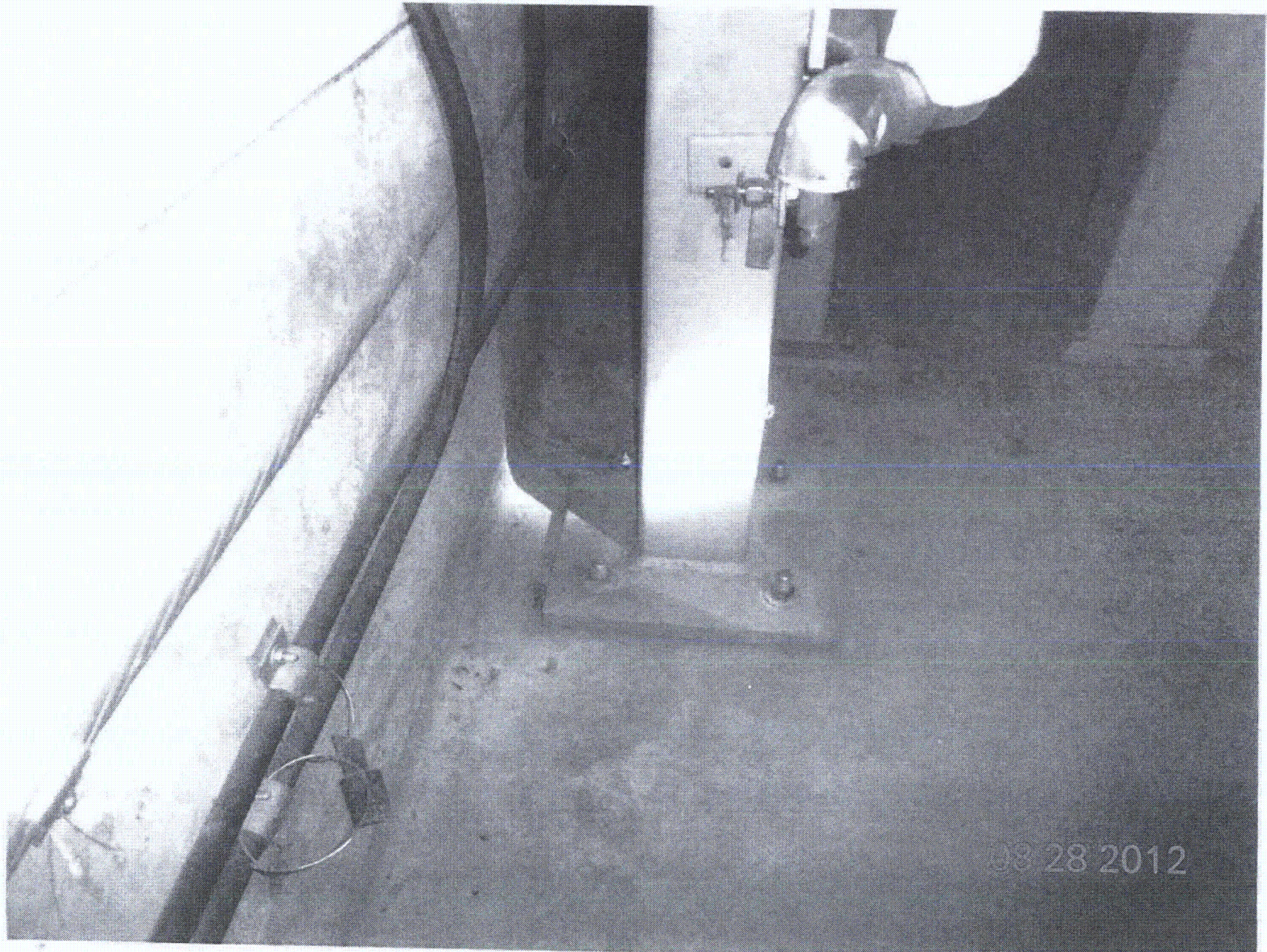
Evaluated by: Matthew Wilkinson Date: 8/28/2012
David Volodarsky DAVID VOLODARSKY 8/28/2012











Sheet 1 of 2
 Status: Y N U

Seismic Walkdown Checklist (SWC)

Equipment ID No. 1-FSL-12046 Equip. Class¹² INSTRUMENT RACKS - CLASS 18
 Equipment Description INTERLOCK FLOW SWITCH CNTRL BLD
 Location: Bldg. CONTROL Floor El. 260'-0" Room, Area R 313
 Manufacturer, Model, Etc. (optional but recommended) Johnson Controls

Instructions for Completing Checklist

This checklist may be used to document the results of the Seismic Walkdown of an item of equipment on the SWEL. The space below each of the following questions may be used to record the results of judgments and findings. Additional space is provided at the end of this checklist for documenting other comments.

Anchorage

1. Is the anchorage configuration verification required (i.e., is the item one of the 50% of SWEL items requiring such verification)? Y N
2. Is the anchorage free of bent, broken, missing or loose hardware? Y N U N/A
3. Is the anchorage free of corrosion that is more than mild surface oxidation? Y N U N/A
4. Is the anchorage free of visible cracks in the concrete near the anchors? Y N U N/A
5. Is the anchorage configuration consistent with plant documentation?
 (Note: This question only applies if the item is one of the 50% for which an anchorage configuration verification is required.)
MOUNTED TO UNISTRUT Y N U N/A
6. Based on the above anchorage evaluations, is the anchorage free of potentially adverse seismic conditions? Y N U

¹² Enter the equipment class name from Appendix B: Classes of Equipment.

Seismic Walkdown Checklist (SWC)

Equipment ID No: 1-FSC-12046 Equip. Class¹²: Instrument Racks - Class 1B

Equipment Description: INTERLOCK FLOW SWITCH CNTL BLD

Interaction Effects

7. Are soft targets free from impact by nearby equipment or structures? YES NO U N/A

8. Are overhead equipment, distribution systems, ceiling tiles and lighting, and masonry block walls not likely to collapse onto the equipment? YES NO U N/A

9. Do attached lines have adequate flexibility to avoid damage? YES NO U N/A

10. Based on the above seismic interaction evaluations, is equipment free of potentially adverse seismic interaction effects? YES NO U

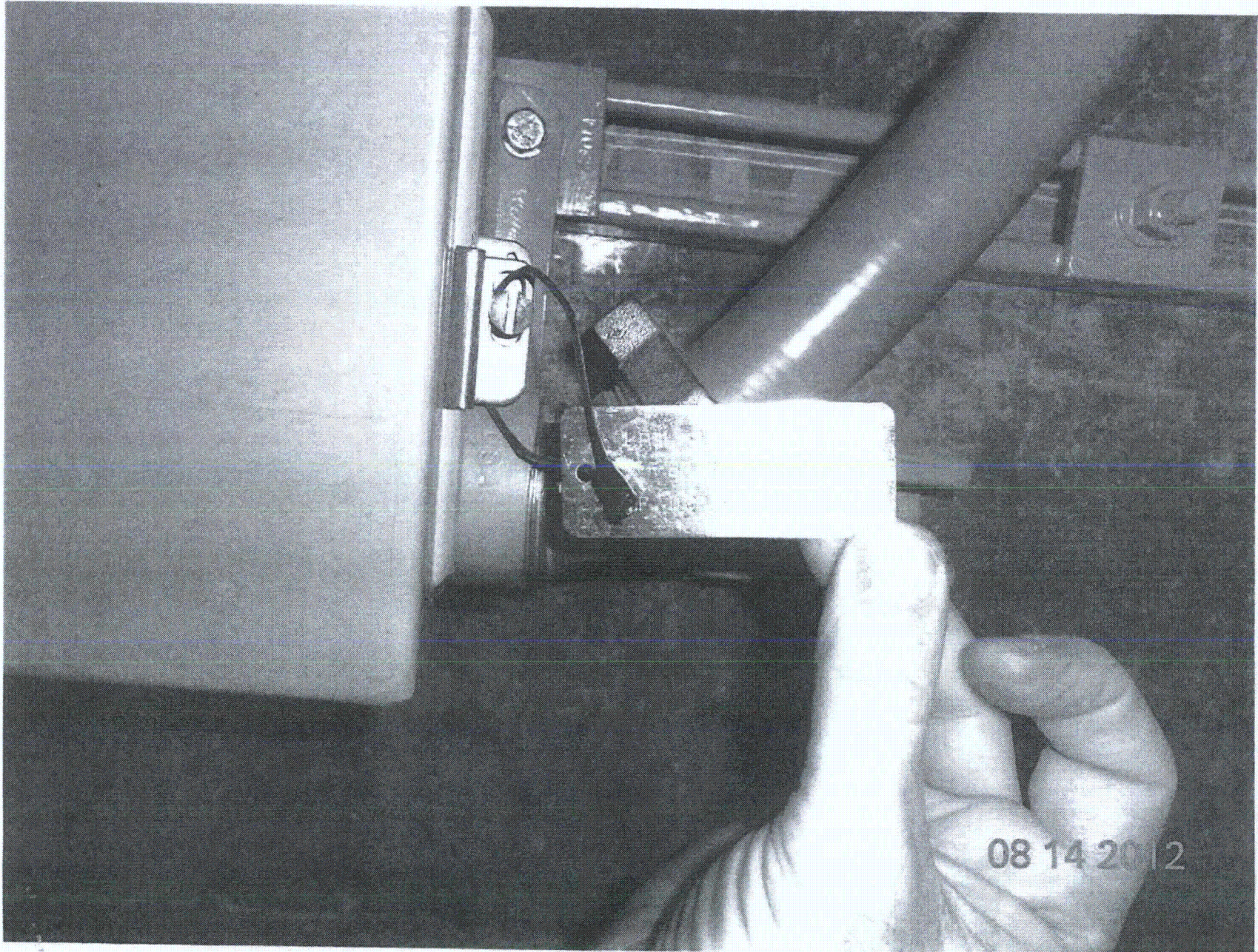
Other Adverse Conditions

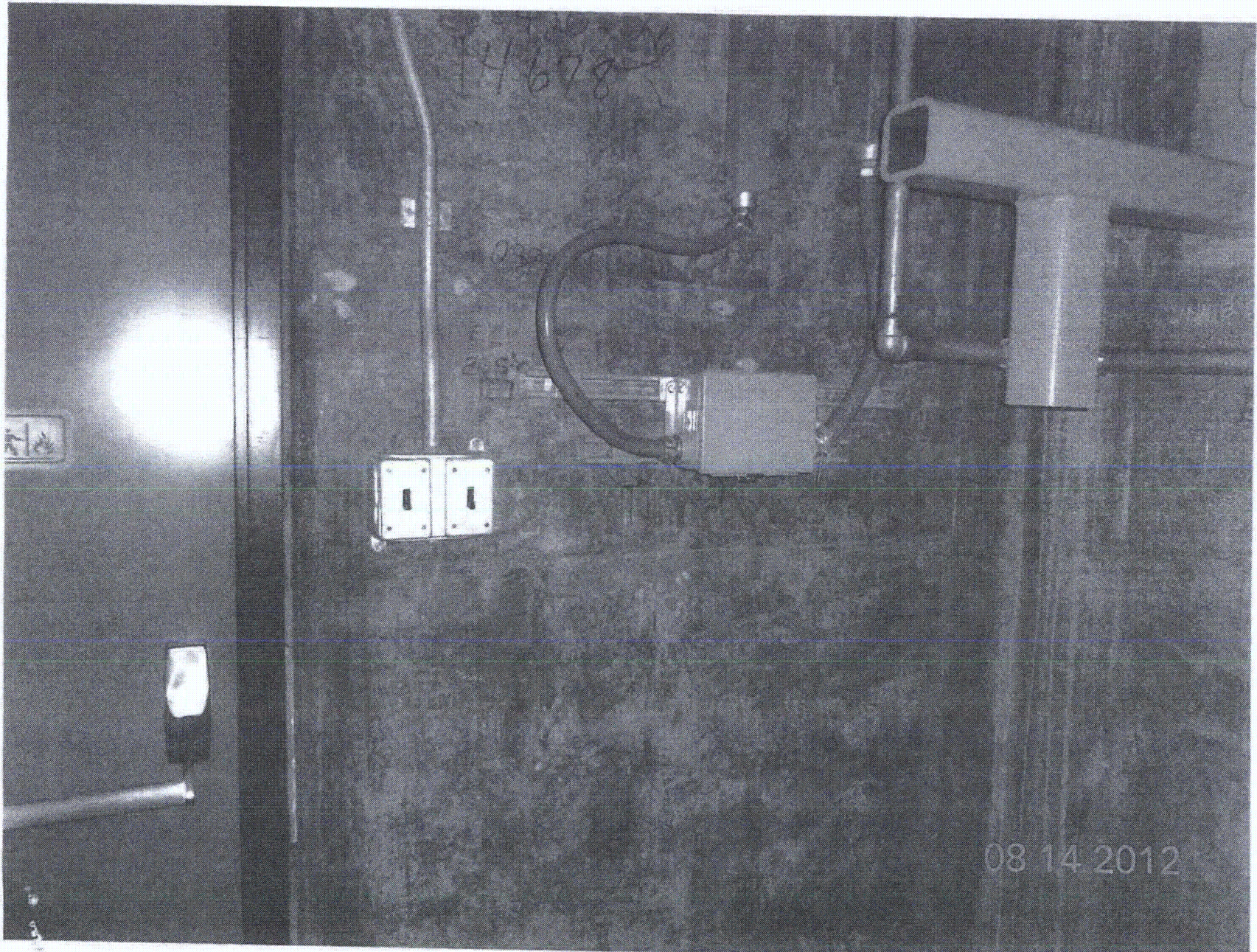
11. Have you looked for and found no other seismic conditions that could adversely affect the safety functions of the equipment? YES NO U

Comments (Additional pages may be added as necessary)

None

Evaluated by: James Dovel / JAMES DOVEL Date: 8-14-2012
W.A. Stewart / WINSTON STEWART 8/14/2012





Sheet 1 of 2
 Status: Y N U

Seismic Walkdown Checklist (SWC)

Equipment ID No. 1-FT-0142 Equip. Class¹² 18

Equipment Description REACTOR COOLANT PUMP SEALWATER FLOW LOOP 4 VALVE ^{TRANSMITTER}

Location: Bldg. F.A. Floor El. 200'-0" Room, Area RA10

Manufacturer, Model, Etc. (optional but recommended) _____

Instructions for Completing Checklist

This checklist may be used to document the results of the Seismic Walkdown of an item of equipment on the SWEL. The space below each of the following questions may be used to record the results of judgments and findings. Additional space is provided at the end of this checklist for documenting other comments.

Anchorage

1. Is the anchorage configuration verification required (i.e., is the item one of the 50% of SWEL items requiring such verification)? Y N U

2. Is the anchorage free of bent, broken, missing or loose hardware? Y N U N/A

3. Is the anchorage free of corrosion that is more than mild surface oxidation? Y N U N/A

4. Is the anchorage free of visible cracks in the concrete near the anchors? Y N U N/A

5. Is the anchorage configuration consistent with plant documentation? Y N U N/A
 (Note: This question only applies if the item is one of the 50% for which an anchorage configuration verification is required.)

6. Based on the above anchorage evaluations, is the anchorage free of potentially adverse seismic conditions? Y N U

DRAWINGS: CXSDPM030, SHEETS 1 & 2, Rev. 5; CXSDPM031-1 Rev. 5; CXSDPM031-2, Rev. 2

¹² Enter the equipment class name from Appendix B: Classes of Equipment.

Seismic Walkdown Checklist (SWC)

Equipment ID No. 1-125-0142 Equip. Class¹² 18

Equipment Description RCP SEALWATER FLOW LOOP & TRANSMITTER

Interaction Effects

7. Are soft targets free from impact by nearby equipment or structures? Y N U N/A

8. Are overhead equipment, distribution systems, ceiling tiles and lighting, and masonry block walls not likely to collapse onto the equipment? Y N U N/A

9. Do attached lines have adequate flexibility to avoid damage? Y N U N/A

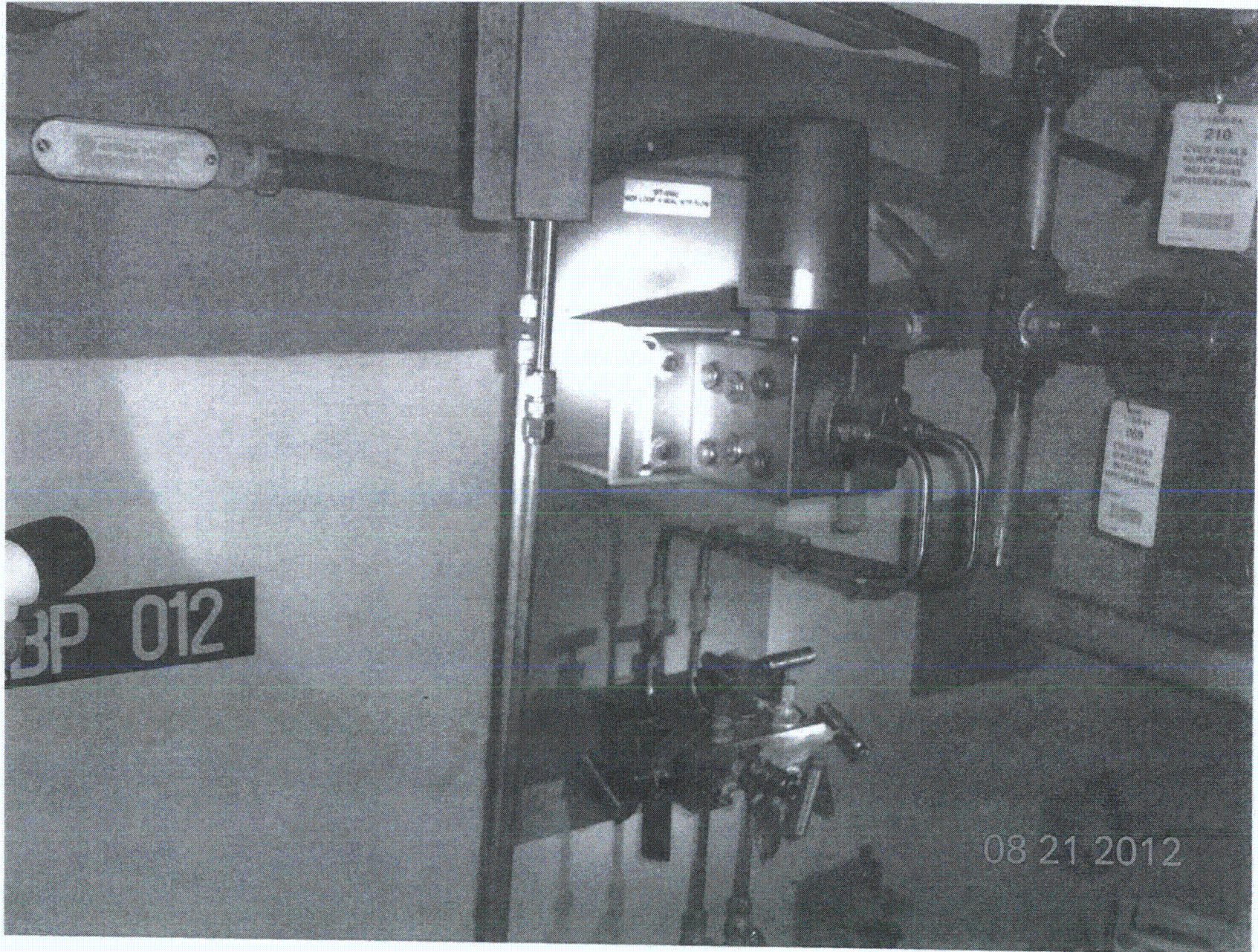
10. Based on the above seismic interaction evaluations, is equipment free of potentially adverse seismic interaction effects? Y N U

Other Adverse Conditions

11. Have you looked for and found no other seismic conditions that could adversely affect the safety functions of the equipment? Y N U

Comments (Additional pages may be added as necessary)

Evaluated by: James Dowell / JAMES DOWELL Date: 8-21-2012
[Signature] / WILSON STEWART 08/27/2012



Seismic Walkdown Checklist (SWC)

Equipment ID No. 1-FT-0619 Equip. Class¹² 18 (Instrument Rack)
 Equipment Description RHR B Flow (Transmitter)
 Location: Bldg. Aux Floor El. 119'-3" Room, Area RD53
 Manufacturer, Model, Etc. (optional but recommended) ITT Barton

Instructions for Completing Checklist

This checklist may be used to document the results of the Seismic Walkdown of an item of equipment on the SWEL. The space below each of the following questions may be used to record the results of judgments and findings. Additional space is provided at the end of this checklist for documenting other comments.

Anchorage

1. Is the anchorage configuration verification required (i.e., is the item one of the 50% of SWEL items requiring such verification)? Y N U

2. Is the anchorage free of bent, broken, missing or loose hardware? Y N U N/A

3. Is the anchorage free of corrosion that is more than mild surface oxidation? Y N U N/A

4. Is the anchorage free of visible cracks in the concrete near the anchors? Y N U N/A

5. Is the anchorage configuration consistent with plant documentation?
 (Note: This question only applies if the item is one of the 50% for which an anchorage configuration verification is required.)
Not within 50% sample. Y N U N/A

6. Based on the above anchorage evaluations, is the anchorage free of potentially adverse seismic conditions? Y N U

¹² Enter the equipment class name from Appendix B: Classes of Equipment.

Seismic Walkdown Checklist (SWC)

Equipment ID No. 1-FT-0619 Equip. Class¹² 18 (Instrument Rack)

Equipment Description RHR B Flow (Transmitter)

Interaction Effects:

7. Are soft targets free from impact by nearby equipment or structures? Y N U N/A

8. Are overhead equipment, distribution systems, ceiling tiles and lighting, and masonry block walls not likely to collapse onto the equipment? Y N U N/A

9. Do attached lines have adequate flexibility to avoid damage? Y N U N/A

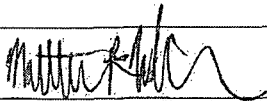
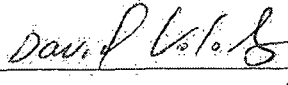
10. Based on the above seismic interaction evaluations, is equipment free of potentially adverse seismic interaction effects? Y N U

Other Adverse Conditions

11. Have you looked for and found no other seismic conditions that could adversely affect the safety functions of the equipment? Y N U

Comments (Additional pages may be added as necessary)

NONE.

Evaluated by:  Matthew Wilkinson Date: 8/14/2012
 DAVID VOLODARSKY 8-14-2012

< C 4 >

