

Sheet 1 of 2

Status: Y N U**Seismic Walkdown Checklist (SWC)**Equipment ID No. 1-1805-53-015 Equip. Class¹² ZEquipment Description 480V Switchgear 1AD15Location: Bldg. Aux/41 Floor El. 119'-3" Room, Area RD105

Manufacturer, Model, Etc. (optional but recommended) _____

Instructions for Completing Checklist

This checklist may be used to document the results of the Seismic Walkdown of an item of equipment on the SWEL. The space below each of the following questions may be used to record the results of judgments and findings. Additional space is provided at the end of this checklist for documenting other comments.

Anchorage (See SWC dated 8/29/12)

1. Is the anchorage configuration verification required (i.e., is the item one of the 50% of SWEL items requiring such verification)? Y N
2. Is the anchorage free of bent, broken, missing or loose hardware? Y N U N/A
3. Is the anchorage free of corrosion that is more than mild surface oxidation? Y N U N/A
4. Is the anchorage free of visible cracks in the concrete near the anchors? Y N U N/A
5. Is the anchorage configuration consistent with plant documentation? Y N U N/A
(Note: This question only applies if the item is one of the 50% for which an anchorage configuration verification is required.)
6. Based on the above anchorage evaluations, is the anchorage free of potentially adverse seismic conditions? Y N U

¹² Enter the equipment class name from Appendix B: Classes of Equipment.

Seismic Walkdown Checklist (SWC)

Equipment ID No. 1-1805-S3-B15 Equip. Class¹² 2

Equipment Description 480V Switchgear IAB15

Interaction Effects (See SWC dated 8/29/12)

- 7. Are soft targets free from impact by nearby equipment or structures? Y N U N/A

- 8. Are overhead equipment, distribution systems, ceiling tiles and lighting, and masonry block walls not likely to collapse onto the equipment? Y N U N/A

- 9. Do attached lines have adequate flexibility to avoid damage? Y N U N/A

- 10. Based on the above seismic interaction evaluations, is equipment free of potentially adverse seismic interaction effects? Y N U

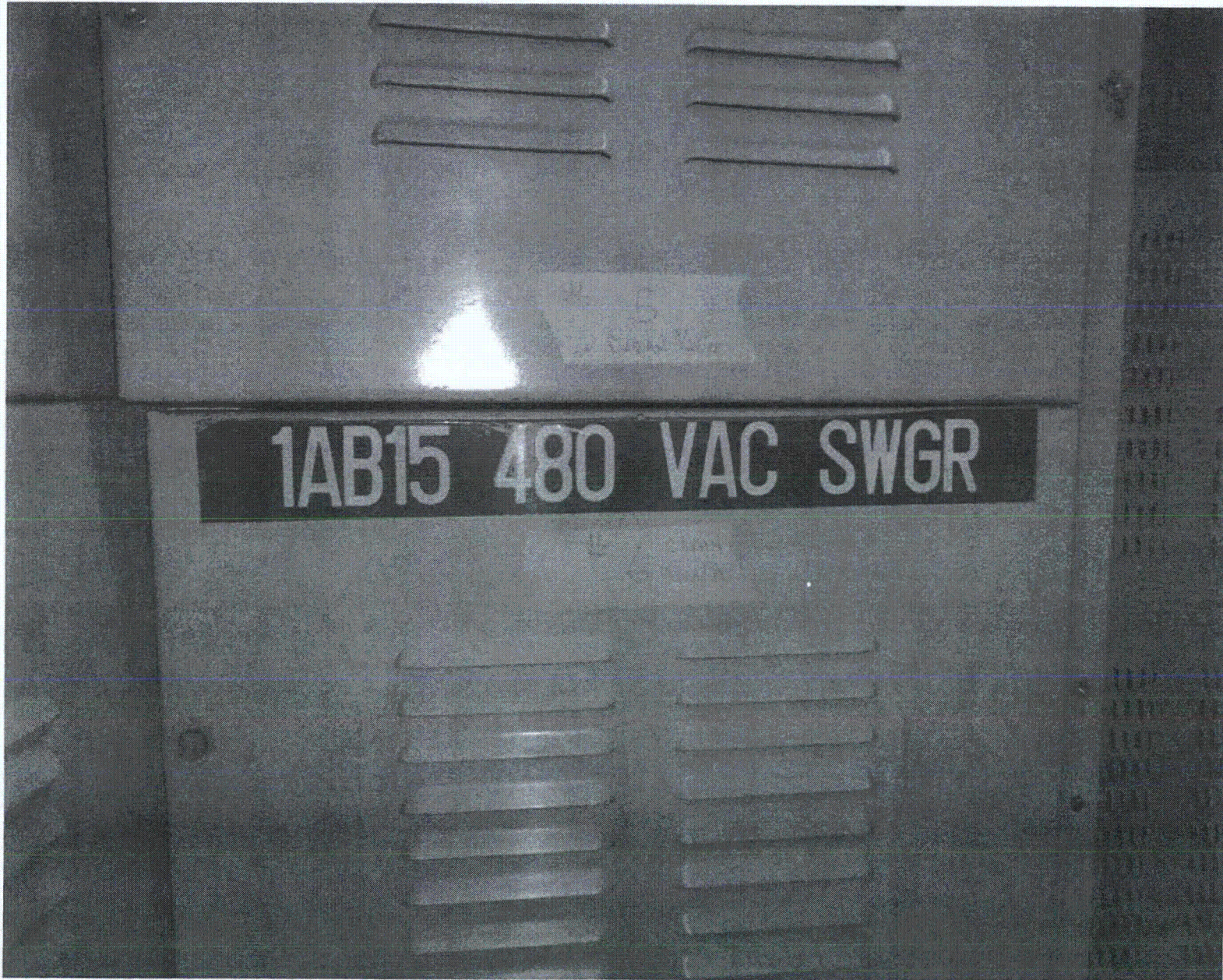
Other Adverse Conditions

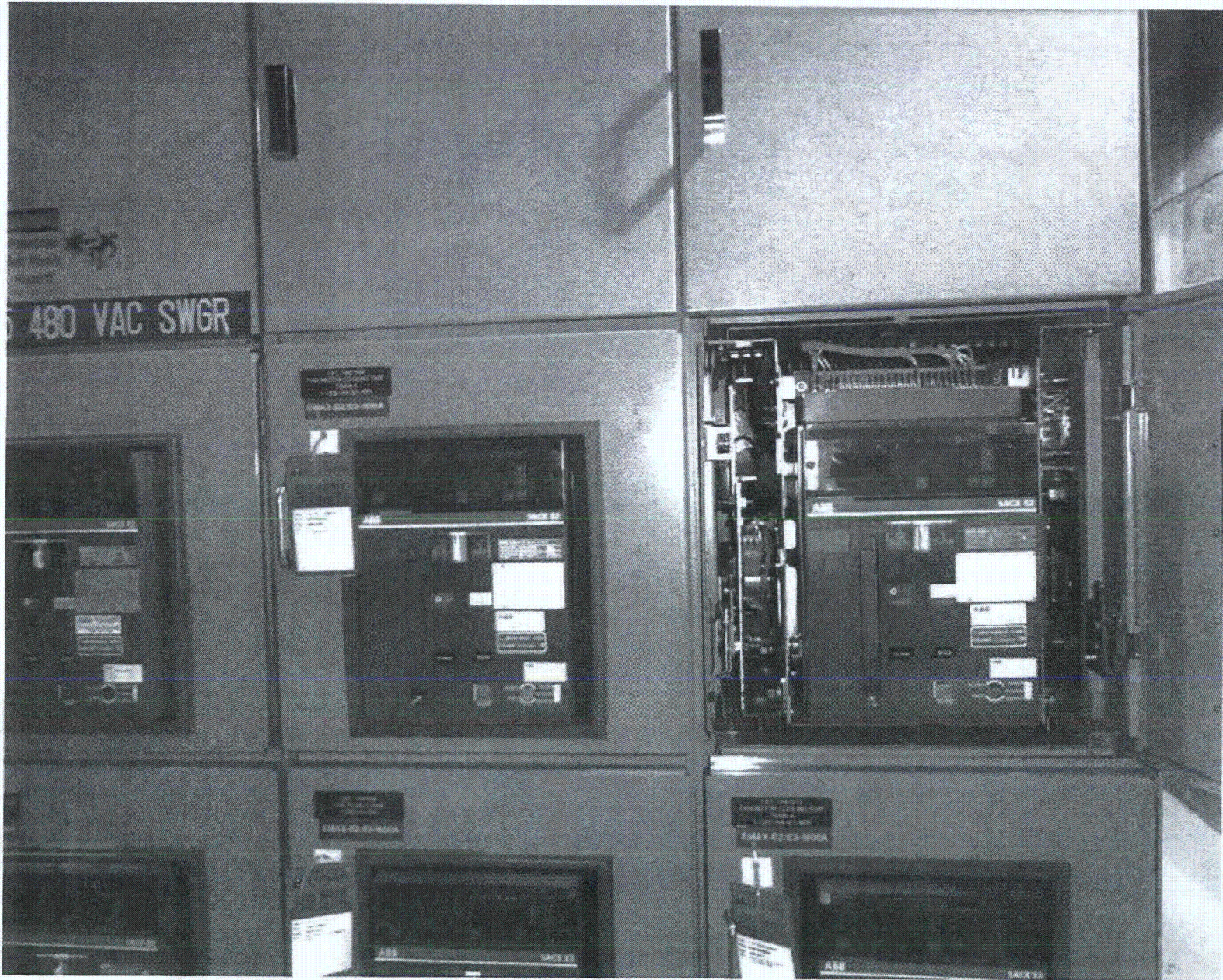
11. Have you looked for and found no other seismic conditions that could adversely affect the safety functions of the equipment? Y N U
A visual inspection of the internal components of this cabinet was performed to check for seismic adequacy to include any evidence of internal components not adequately secured, checked for fasteners connecting adjacent cabinets were in place, and evidence of other adverse seismic conditions. An interconnecting fastener was found to be missing. See "Comments" for further details.

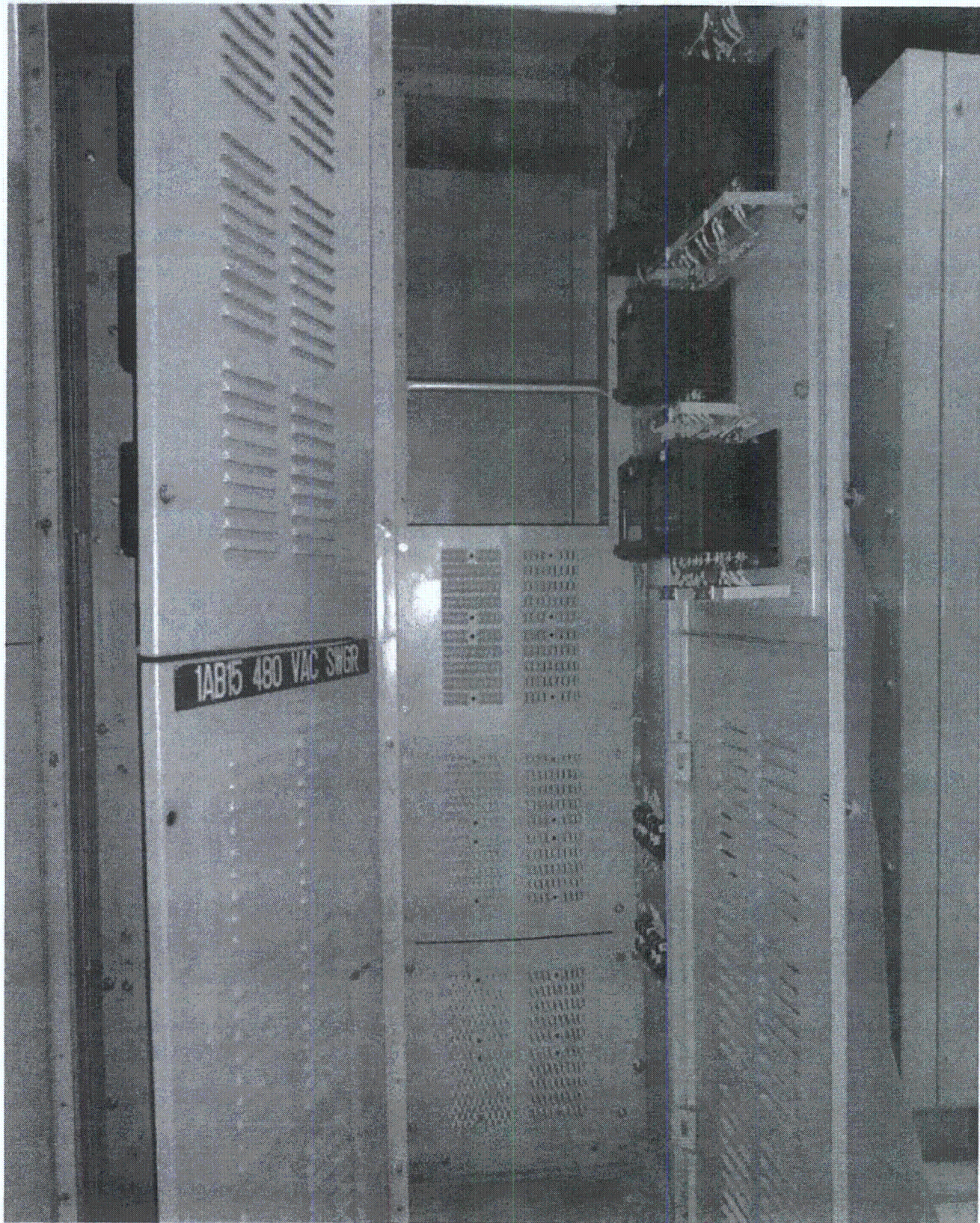
Comments (Additional pages may be added as necessary)

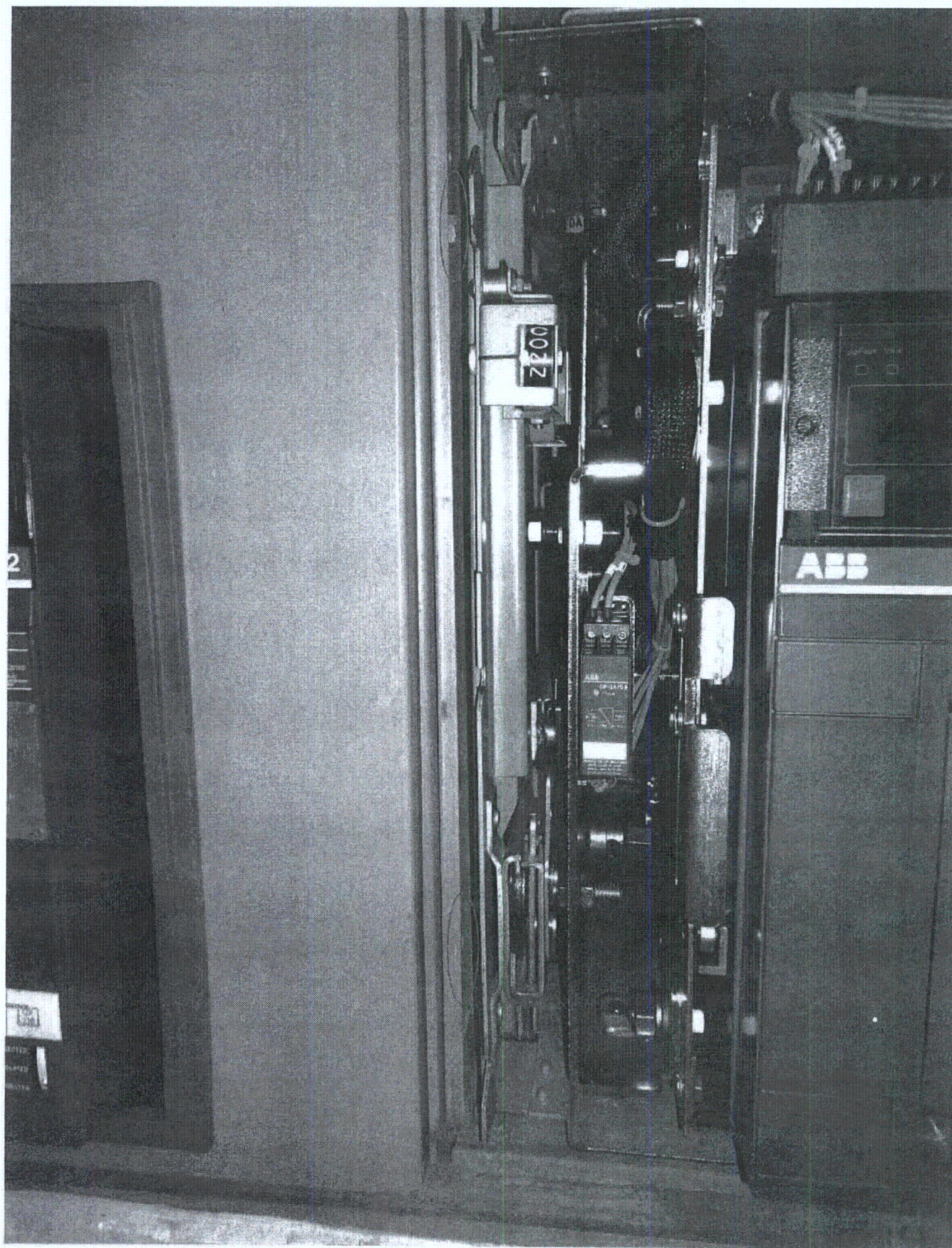
Found one (1) interconnecting fastener missing between bays IAB1510 and IAB1506 on the lower left side of IAB1510. It was judged by this seismic walkdown team that this condition must be evaluated for seismic adequacy of this cabinet. Reference condition report 525340 generated for this case.

Evaluated by: *[Signature]* / José R. Hernández Date: 9/27/12
[Signature] / Justo E. Chacon 9/27/12









Seismic Walkdown Checklist (SWC)

Equipment ID No. 1-1805-53-807 Equip. Class¹² 2
 Equipment Description 480V SWITCHGEAR 1BB07
 Location: Bldg CONTROL Floor/El. 180' Room, Area RB61
 Manufacturer, Model, Etc. (optional but recommended) _____

Instructions for Completing Checklist

This checklist may be used to document the results of the Seismic Walkdown of an item of equipment on the SWEL. The space below each of the following questions may be used to record the results of judgments and findings. Additional space is provided at the end of this checklist for documenting other comments.

Anchorage

1. Is the anchorage configuration verification required (i.e., is the item one of the 50% of SWEL items requiring such verification)? Y N U

2. Is the anchorage free of bent, broken, missing or loose hardware? Y N U N/A
MINOR OXIDATION ON A SURFACE FOR FEW WELDS, ACCEPTABLE

3. Is the anchorage free of corrosion that is more than mild surface oxidation? Y N U N/A

4. Is the anchorage free of visible cracks in the concrete near the anchors? Y N U N/A

5. Is the anchorage configuration consistent with plant documentation? Y N U N/A
 (Note: This question only applies if the item is one of the 50% for which an anchorage configuration verification is required.)
Not within 50% sample for anchorage verification.

6. Based on the above anchorage evaluations, is the anchorage free of potentially adverse seismic conditions? Y N U

¹² Enter the equipment class name from Appendix B: Classes of Equipment.

Seismic Walkdown Checklist (SWC)

Equipment ID No. 1-1805-53-807 Equip. Class¹² 2

Equipment Description 480V SWITCHGEAR 1B807

Interaction Effects

- 7. Are soft targets free from impact by nearby equipment or structures? Y N U N/A

- 8. Are overhead equipment, distribution systems, ceiling tiles and lighting, and masonry block walls not likely to collapse onto the equipment? Y N U N/A

- 9. Do attached lines have adequate flexibility to avoid damage? Y N U N/A

- 10. Based on the above seismic interaction evaluations, is equipment free of potentially adverse seismic interaction effects? Y N U

Other Adverse Conditions

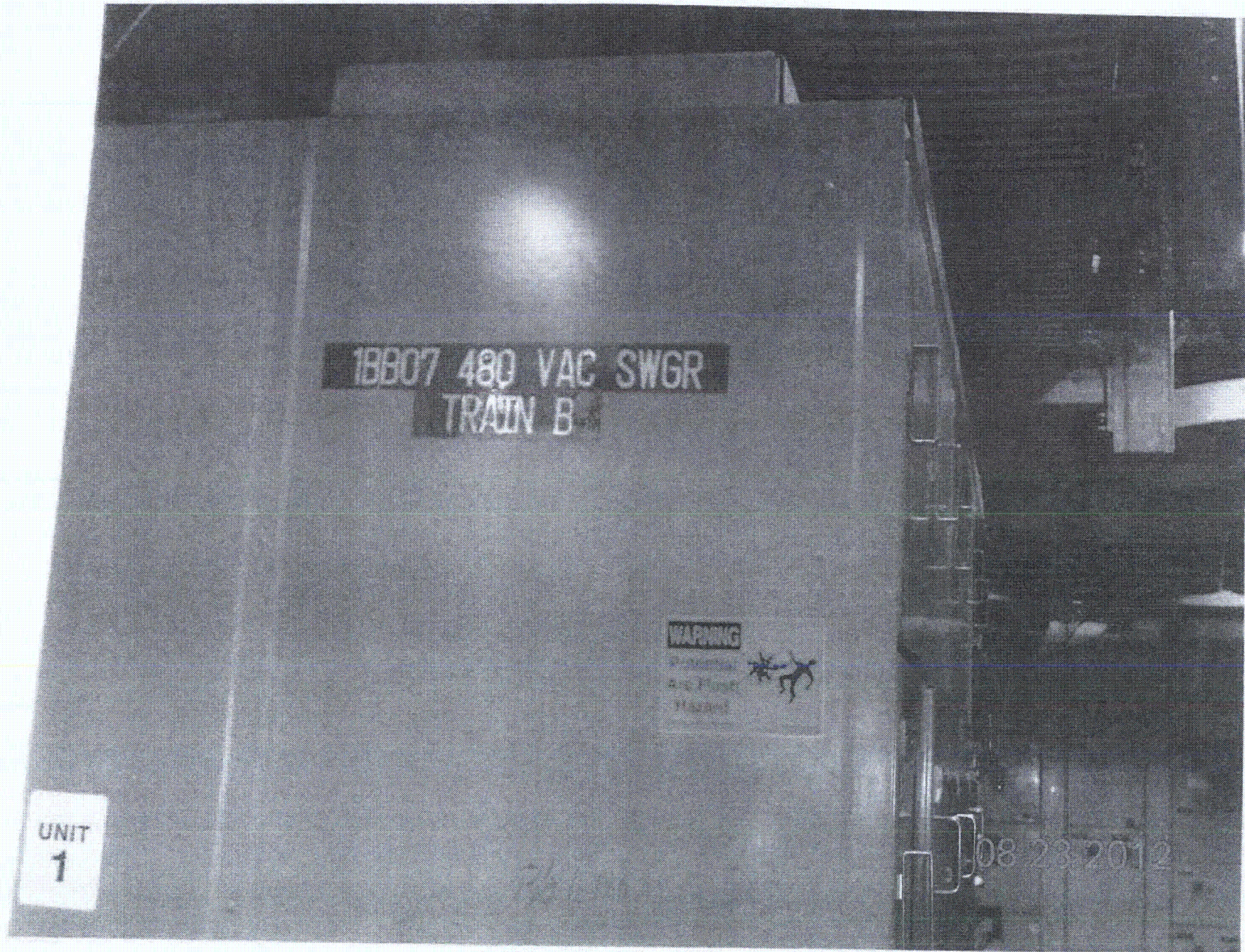
- 11. Have you looked for and found no other seismic conditions that could adversely affect the safety functions of the equipment? Y N U

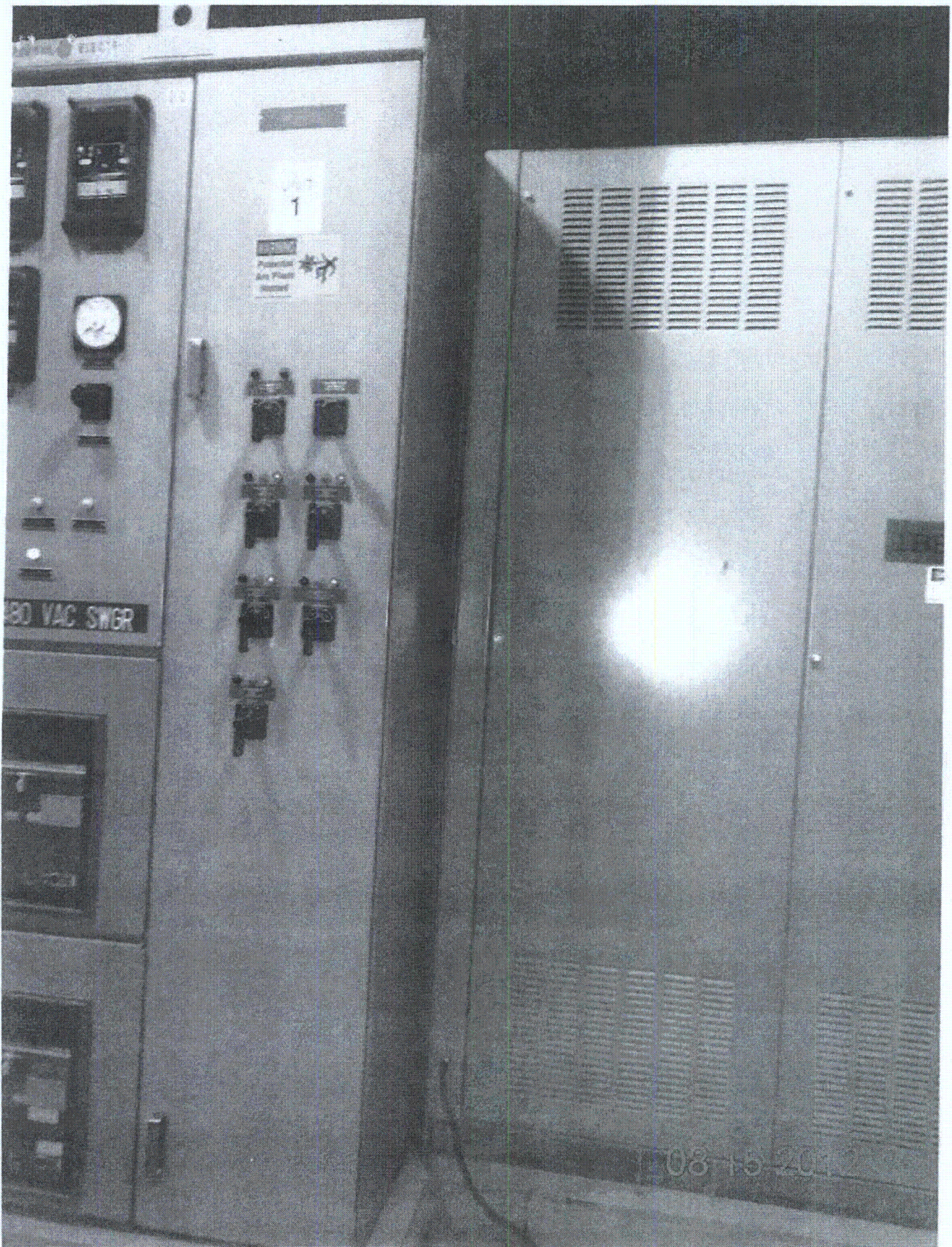
VENTILATION DUCT, SMALL CONDUIT AND ELECT GROUNDING BETWEEN 1B807 480VAC SWITCHGEAR AND 1B807X TRANSFORMER CAN BE SEEN AT 2" GAP. HOWEVER, THESE CONNECTIONS ARE NOT FIXED AT SWITCHGEAR SIDE, NO CONCERN FOR SPATIAL INTERACTION.

Comments (Additional pages may be added as necessary)

NONE

Evaluated by: David Volz Date: 8-15-2012
Matthew Wilkinson 8/15/2012





Sheet 1 of 2

Status: Y N U**Seismic Walkdown Checklist (SWC)**Equipment ID No. 1905-S3-B07 Equip. Class¹² 2Equipment Description 480V Switchgear 1BB07Location: Bldg. Control Floor/El. 180'-0" Room, Area RB61

Manufacturer, Model, Etc. (optional but recommended) _____

Instructions for Completing Checklist

This checklist may be used to document the results of the Seismic Walkdown of an item of equipment on the SWEL. The space below each of the following questions may be used to record the results of judgments and findings. Additional space is provided at the end of this checklist for documenting other comments.

Anchorage (See SWC dated 8/15/12)

1. Is the anchorage configuration verification required (i.e., is the item one of the 50% of SWEL items requiring such verification)? Y N
2. Is the anchorage free of bent, broken, missing or loose hardware? Y N U N/A
3. Is the anchorage free of corrosion that is more than mild surface oxidation? Y N U N/A
4. Is the anchorage free of visible cracks in the concrete near the anchors? Y N U N/A
5. Is the anchorage configuration consistent with plant documentation? Y N U N/A
(Note: This question only applies if the item is one of the 50% for which an anchorage configuration verification is required.)
6. Based on the above anchorage evaluations, is the anchorage free of potentially adverse seismic conditions? Y N U

¹² Enter the equipment class name from Appendix B: Classes of Equipment.

Seismic Walkdown Checklist (SWC)

Equipment ID No. 1-1805-53-007 Equip. Class¹² 2

Equipment Description 480V Switchgear 1B07

Interaction Effects (See SWC dated 9/15/12)

7. Are soft targets free from impact by nearby equipment or structures? Y N U N/A

8. Are overhead equipment, distribution systems, ceiling tiles and lighting, and masonry block walls not likely to collapse onto the equipment? Y N U N/A

9. Do attached lines have adequate flexibility to avoid damage? Y N U N/A

10. Based on the above seismic interaction evaluations, is equipment free of potentially adverse seismic interaction effects? Y N U

Other Adverse Conditions

11. Have you looked for and found no other seismic conditions that could adversely affect the safety functions of the equipment? Y N U

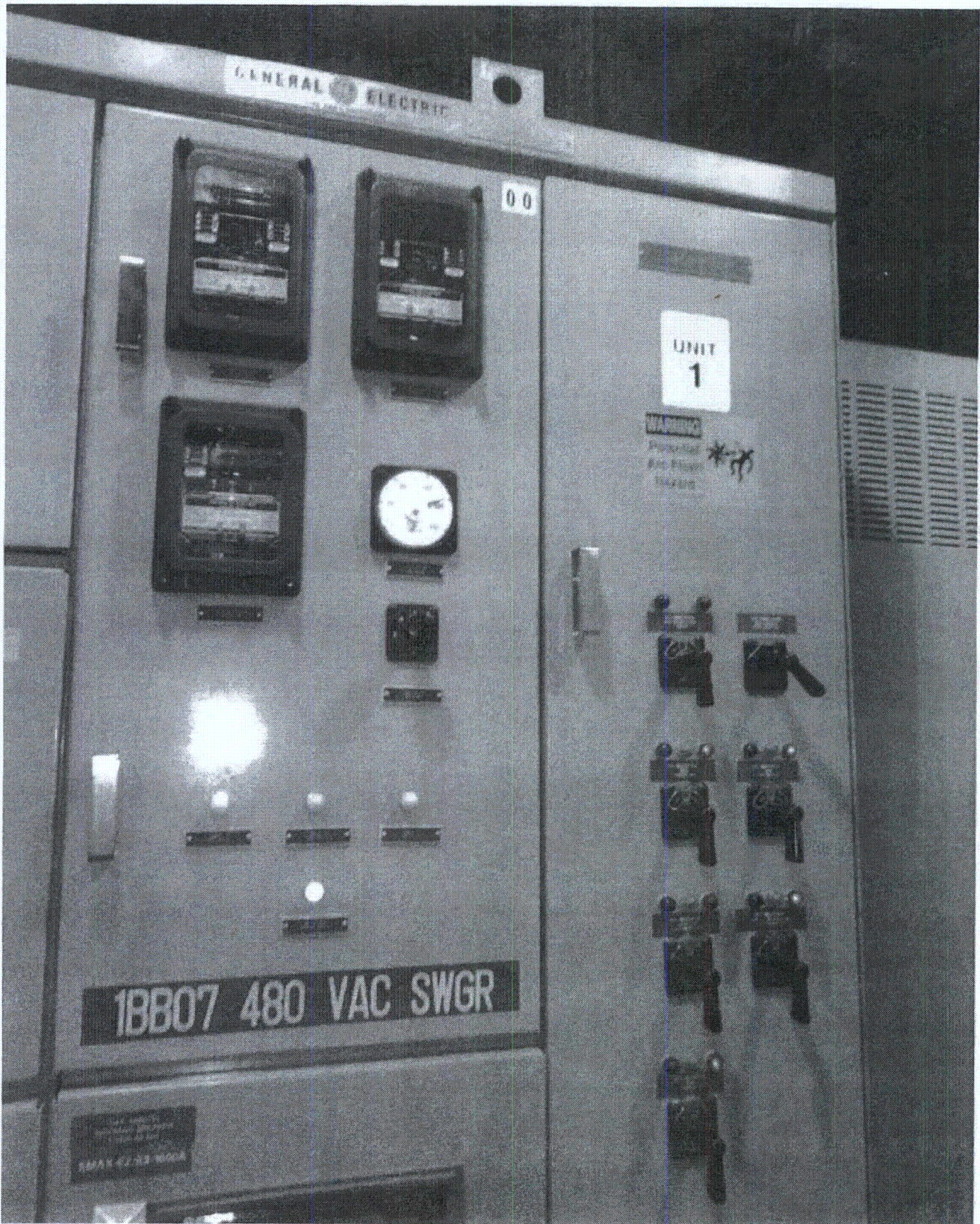
A visual inspection of the internal components of this cabinet was performed to check for seismic adequacy to include any evidence of internal components not adequately secured, checked to ensure fasteners connecting adjacent cabinets were in place, and evidence of other adverse seismic conditions. The findings are documented on the "Comments" section of this document.

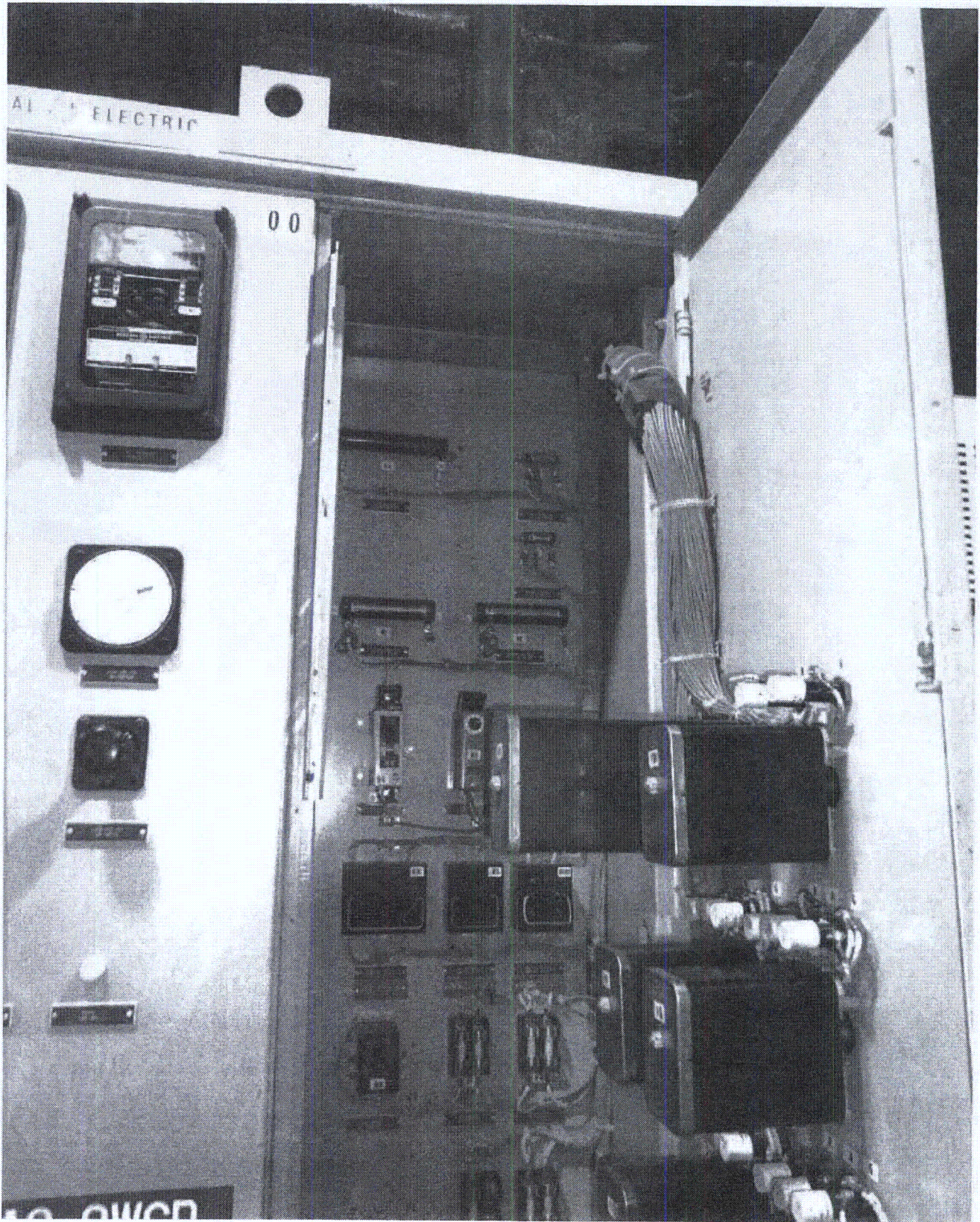
Comments (Additional pages may be added as necessary)

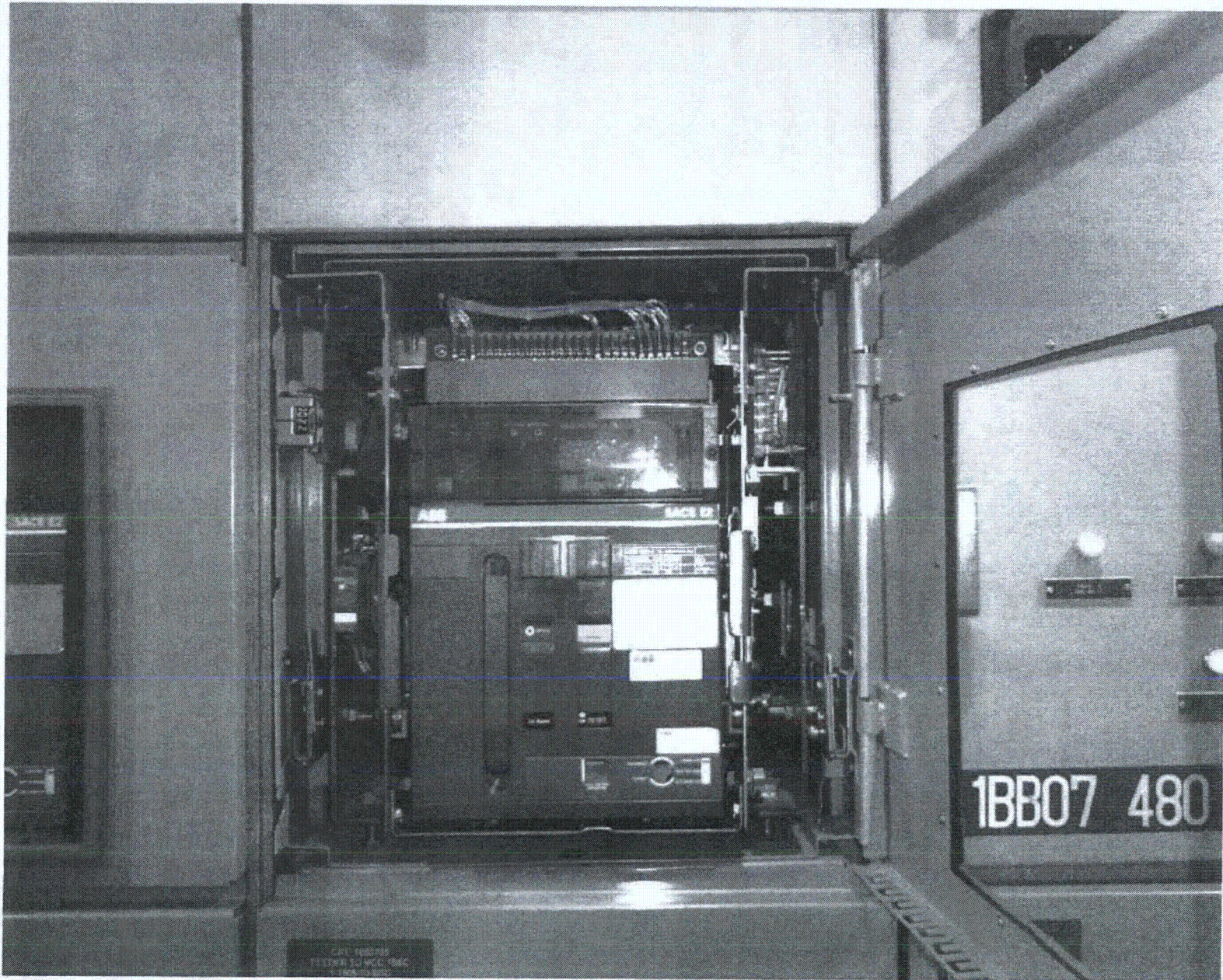
- ① Found 1 inter connecting fastener missing which connects cabinet's bays 1B0710 and 1B0714. Condition Report 527135 has been generated to evaluate seismic adequacy.
- ② Found 1 tie wrap broken used to support a cable bundle in bay 11. This is not a seismic or vulnerability concern. Ref. CR 528379
- ③ Found 2 (two) door hinge pins partially with drawn on bay 18. This is not a seismic or vulnerability concern. CR 528379

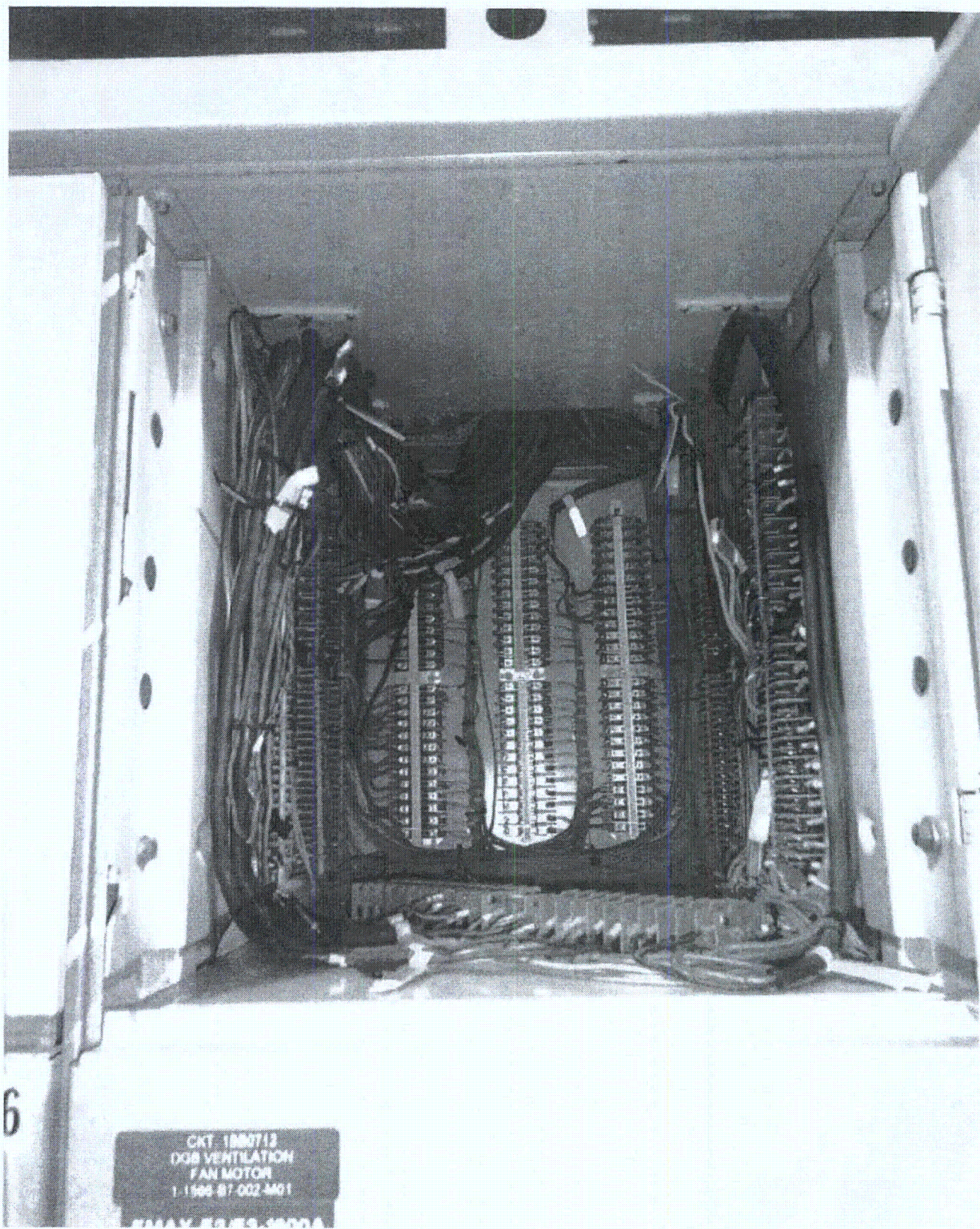
Evaluated by: [Signature] / José R. Hernández Date: 10/01/12

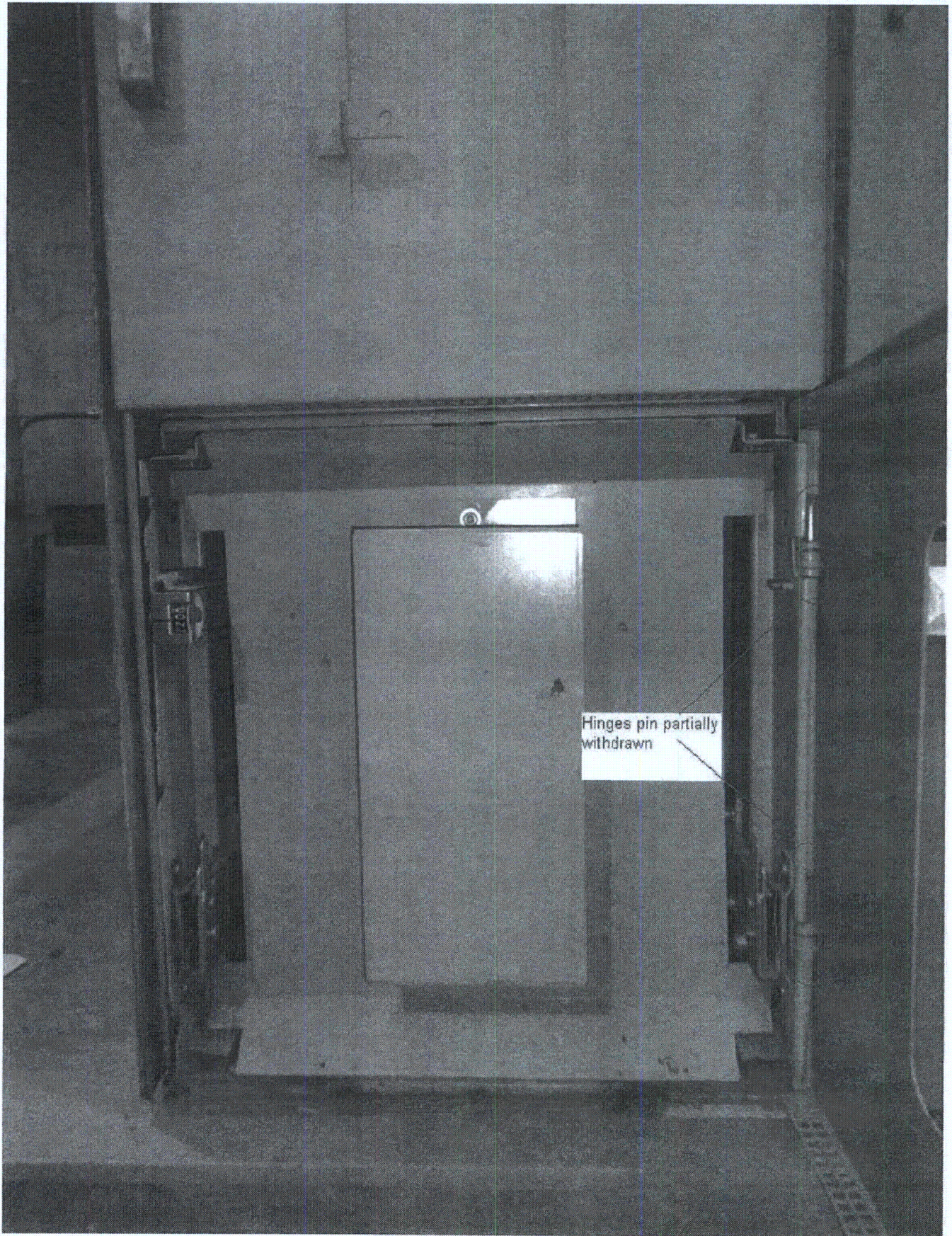
[Signature] / Justo S. Chacon 10/1/12

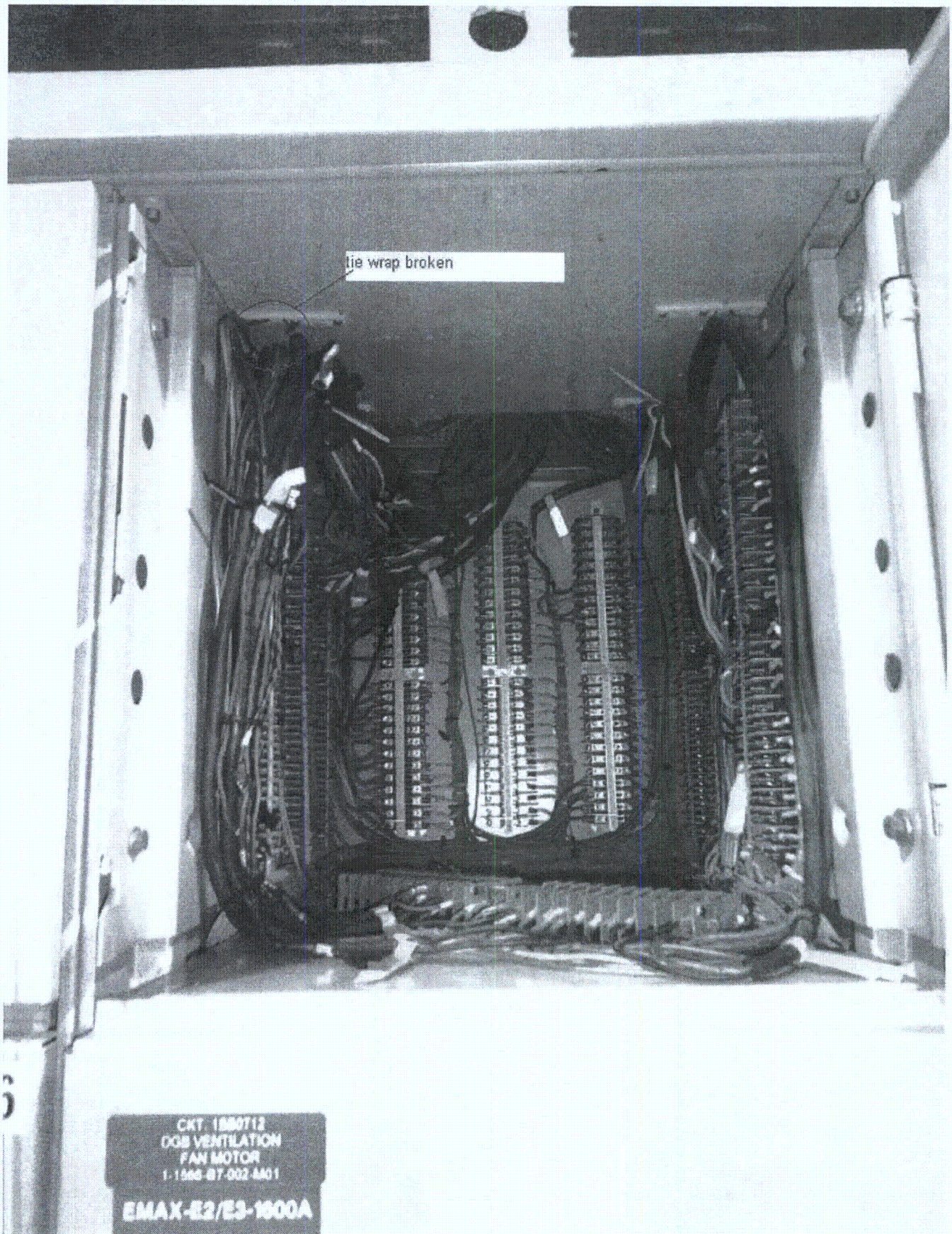


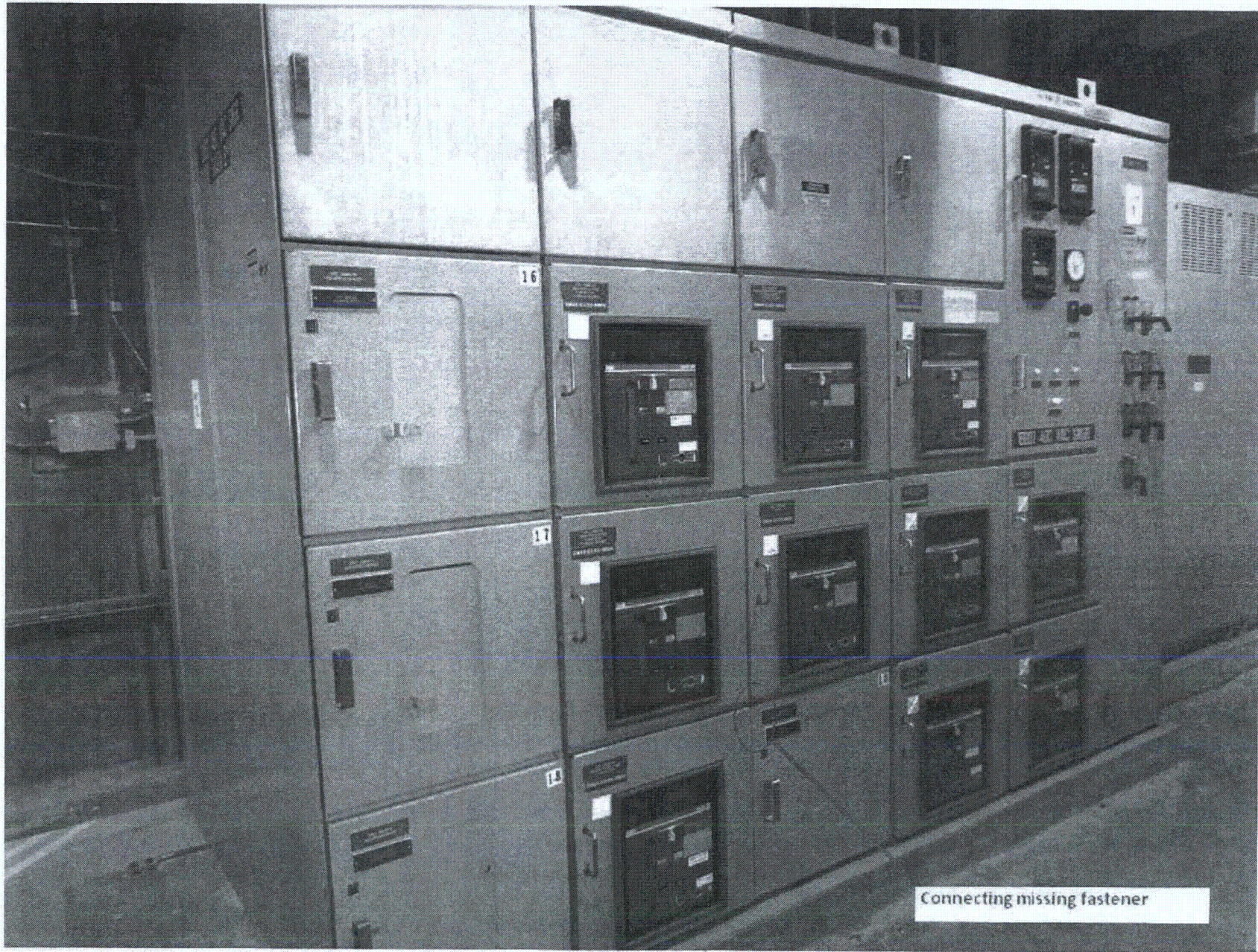














Seismic Walkdown Checklist (SWC)

Equipment ID No. 1-1806-B3-BYB Equip. Class¹² 15 (BATTERY RACKS)

Equipment Description 125 VDC BATTERY 1BD1B

Location: Bldg. CONTROL Floor El. 180' Room, Area RB 49

Manufacturer, Model, Etc. (optional but recommended) C & D BATTERIES

Instructions for Completing Checklist

This checklist may be used to document the results of the Seismic Walkdown of an item of equipment on the SWEL. The space below each of the following questions may be used to record the results of judgments and findings. Additional space is provided at the end of this checklist for documenting other comments.

Anchorage

1. Is the anchorage configuration verification required (i.e., is the item one of the 50% of SWEL items requiring such verification)? Y N U

2. Is the anchorage free of bent, broken, missing or loose hardware? Y N U N/A

3. Is the anchorage free of corrosion that is more than mild surface oxidation? Y N U N/A

4. Is the anchorage free of visible cracks in the concrete near the anchors? Y N U N/A

WELDED CONNECTION

5. Is the anchorage configuration consistent with plant documentation? Y N U N/A

(Note: This question only applies if the item is one of the 50% for which an anchorage configuration verification is required.)
WELD APPEARS TO BE UNDERSIZED AT FEW LOCATIONS. HOWEVER, CONSIDERING THE AMOUNT OF WELD AND WELD PATTERN, THE EXISTING WELDS ARE SUFFICIENT TO SUPPORT BATTERY RACK. REFER TO EQDP# X3AD01 REV.0 FOR WELD CONFIGURATION

6. Based on the above anchorage evaluations, is the anchorage free of potentially adverse seismic conditions? Y N U

¹² Enter the equipment class name from Appendix B: Classes of Equipment.

Seismic Walkdown Checklist (SWC)

Equipment ID No. 1-1806-B3-B4B Equip. Class¹² 15 (BATTERY RACKS)

Equipment Description 125 VDC BATTERY 1BDIB

Interaction Effects

7. Are soft targets free from impact by nearby equipment or structures? Y N U N/A

8. Are overhead equipment, distribution systems, ceiling tiles and lighting, and masonry block walls not likely to collapse onto the equipment? Y N U N/A

LIGHT FIXTURES ARE PROPERLY SECURED WITH CLOSURE SCREWS

9. Do attached lines have adequate flexibility to avoid damage? Y N U N/A

10. Based on the above seismic interaction evaluations, is equipment free of potentially adverse seismic interaction effects? Y N U

Other Adverse Conditions

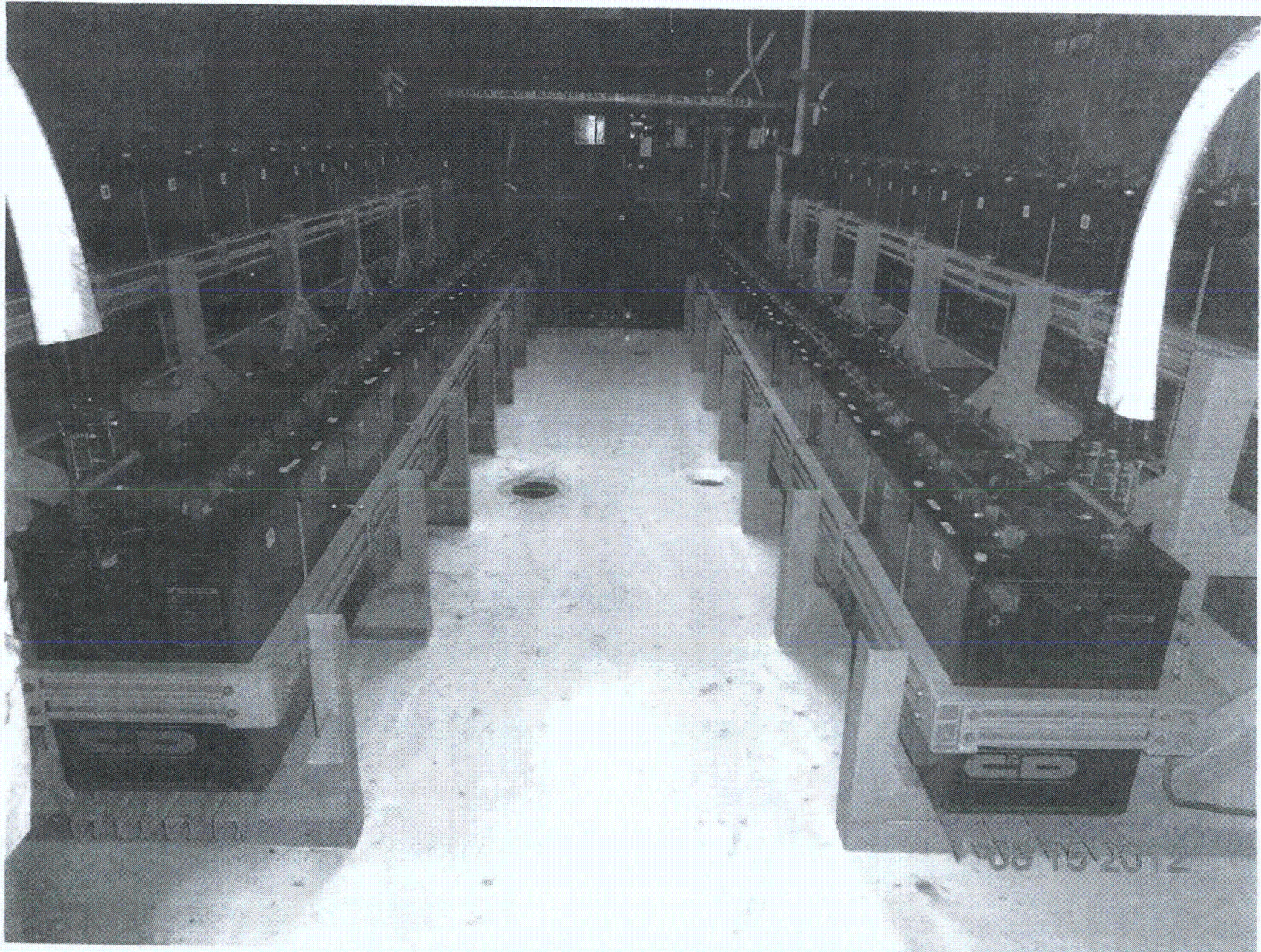
11. Have you looked for and found no other seismic conditions that could adversely affect the safety functions of the equipment? Y N U

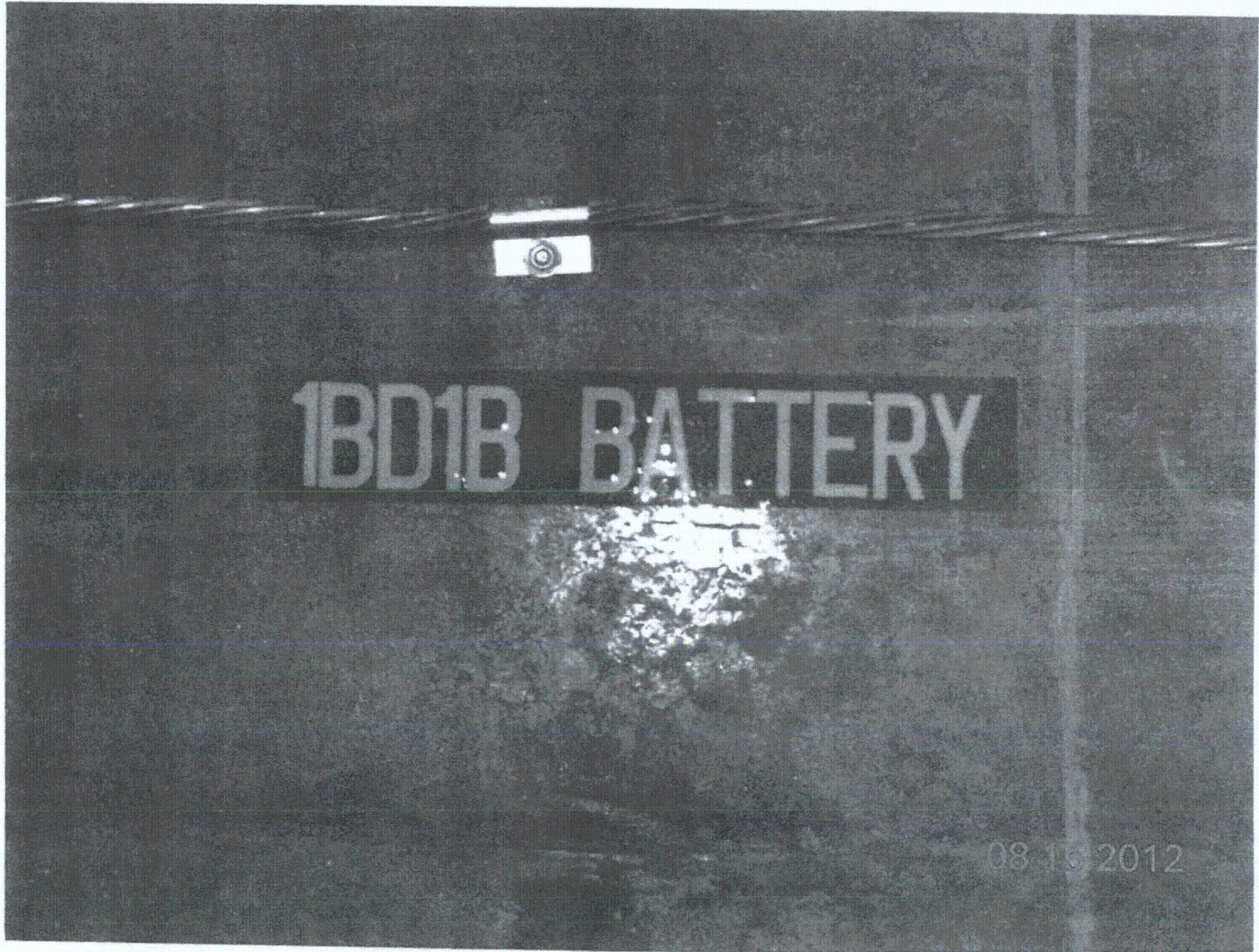
Comments (Additional pages may be added as necessary)

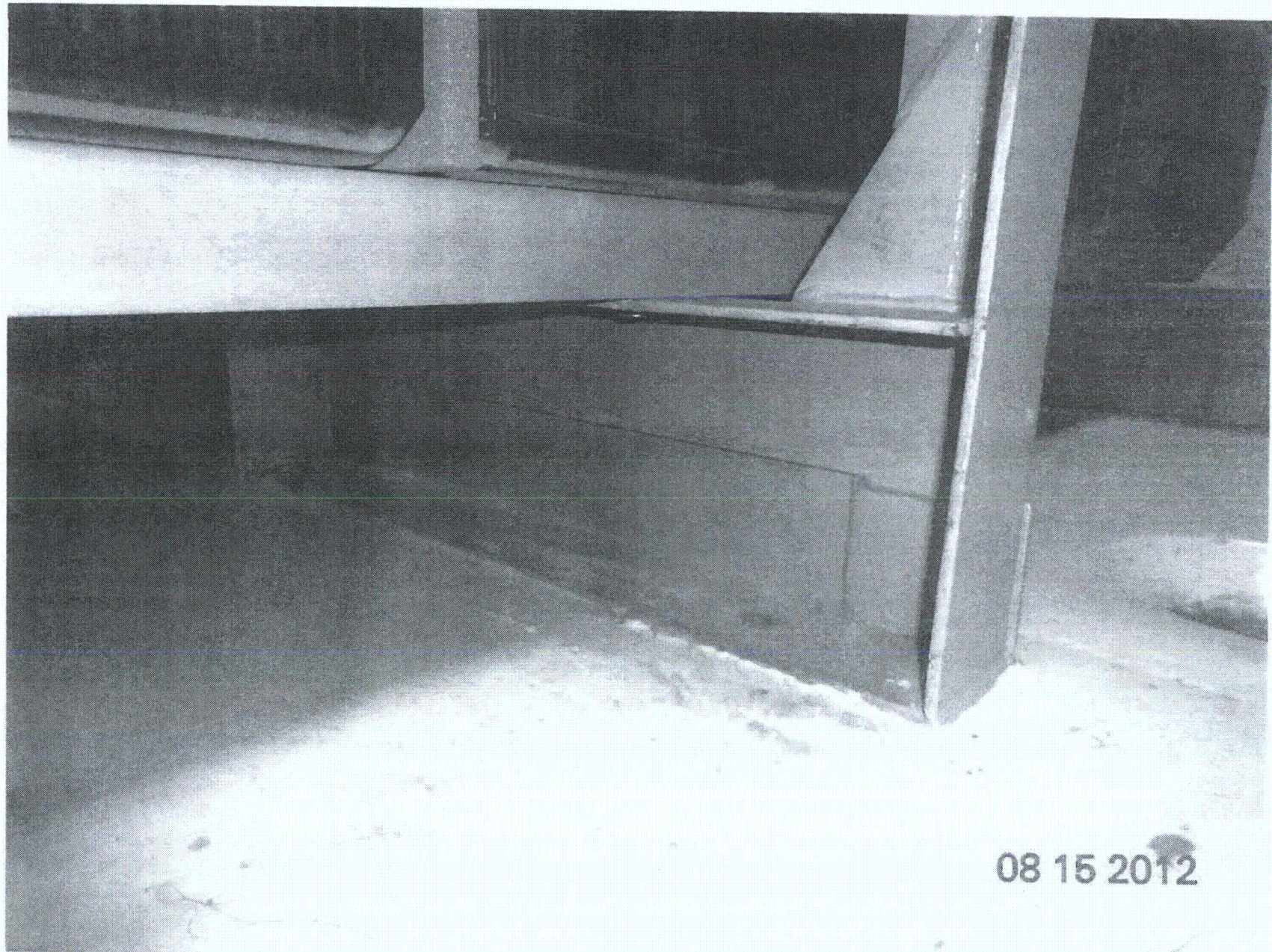
None.

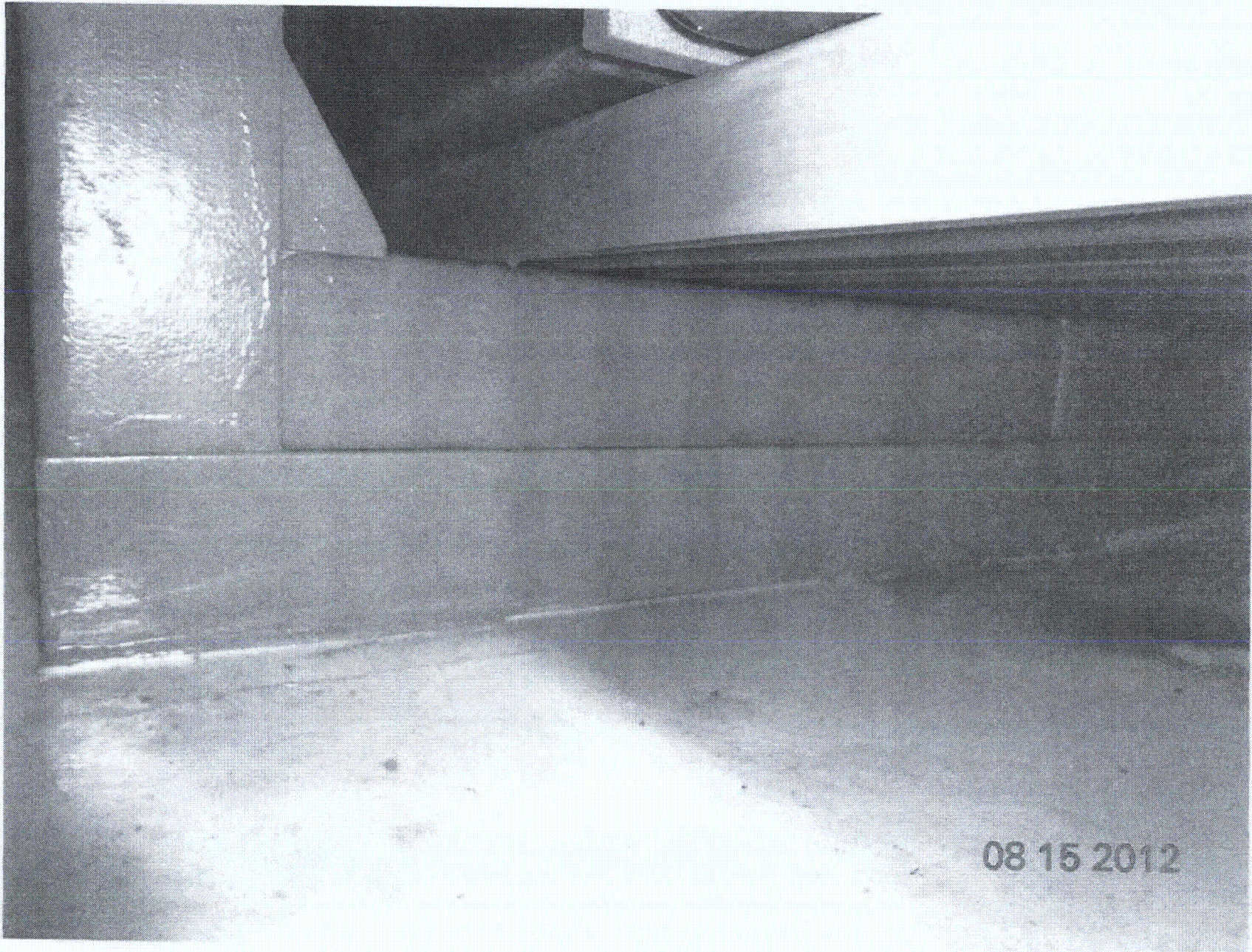
Evaluated by: David Volodarsky DAVID VOLODARSKY Date: 8-15-2012

Matthew Wilkinson Matthew Wilkinson 8/15/2012









Sheet 1 of 2
 Status: Y N U

Seismic Walkdown Checklist (SWC)

Equipment ID No. 1-1806-53-DSB Equip. Class¹² 2

Equipment Description 125 VDC SWITCHGEAR 1B01

Location: Bldg. CONTROL Floor El. 180' Room, Area RB47

Manufacturer, Model, Etc. (optional but recommended) _____

Instructions for Completing Checklist

This checklist may be used to document the results of the Seismic Walkdown of an item of equipment on the SWEL. The space below each of the following questions may be used to record the results of judgments and findings. Additional space is provided at the end of this checklist for documenting other comments.

Anchorage

1. Is the anchorage configuration verification required (i.e., is the item one of the 50% of SWEL items requiring such verification)? Y N U

2. Is the anchorage free of bent, broken, missing or loose hardware? Y N U N/A

3. Is the anchorage free of corrosion that is more than mild surface oxidation? Y N U N/A

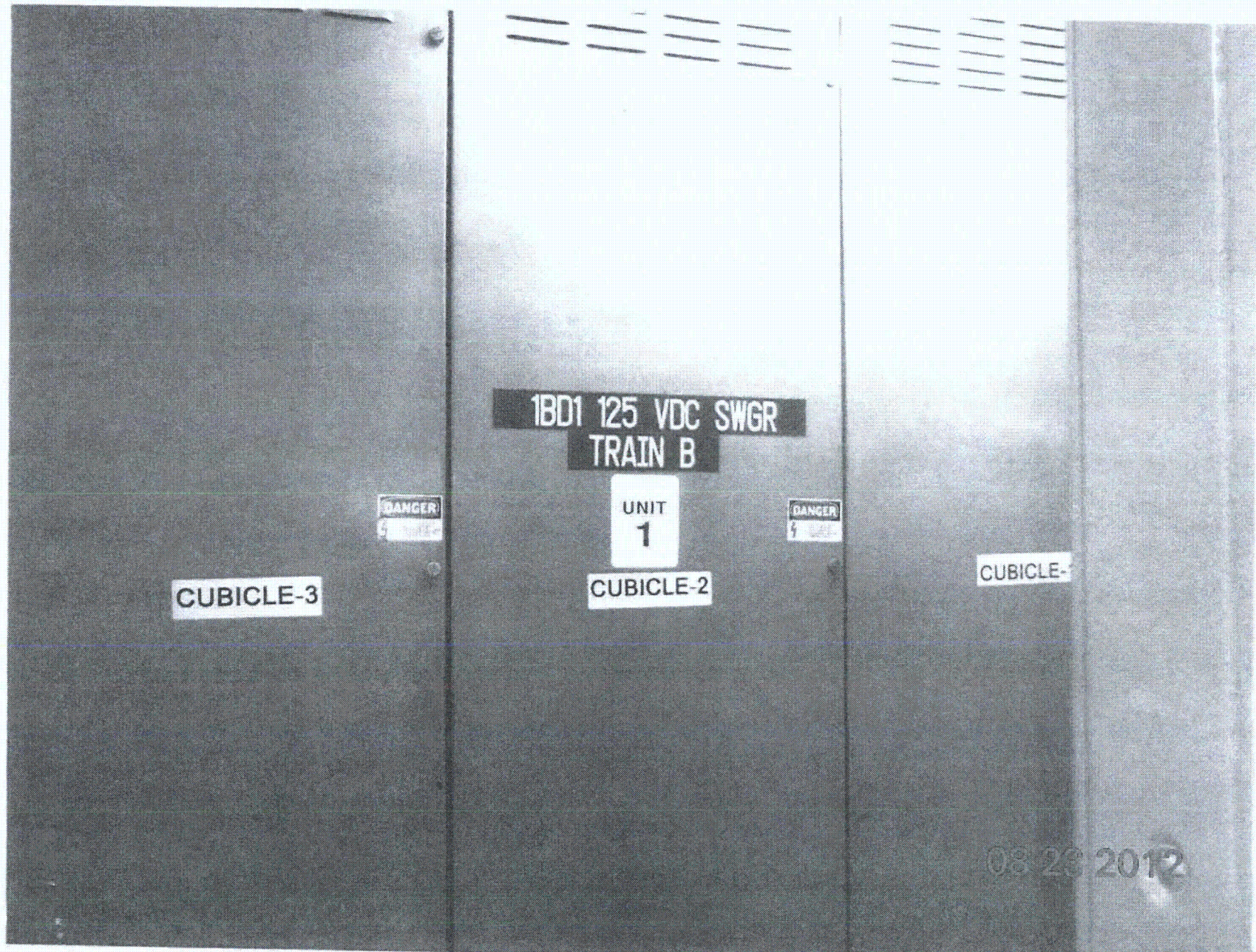
4. Is the anchorage free of visible cracks in the concrete near the anchors? Y N U N/A
WELDED CONNECTION

5. Is the anchorage configuration consistent with plant documentation? Y N U N/A
 (Note: This question only applies if the item is one of the 50% for which an anchorage configuration verification is required.)
CONSISTENT WITH DRAWING AX3AD03-00365, VER. 1.0

6. Based on the above anchorage evaluations, is the anchorage free of potentially adverse seismic conditions? Y N U

¹² Enter the equipment class name from Appendix B: Classes of Equipment.

Seismic Walkdown Checklist (SWC)Equipment ID No. 1-1806-53-DSB Equip. Class¹² 2Equipment Description 125 VDC SWITCHGEAR IBD1**Interaction Effects**7. Are soft targets free from impact by nearby equipment or structures? Y N U N/A8. Are overhead equipment, distribution systems, ceiling tiles and lighting, and masonry block walls not likely to collapse onto the equipment? Y N U N/ALIGHT FIXTURES ARE SECURED WITH CLOSURE SCREWS9. Do attached lines have adequate flexibility to avoid damage? Y N U N/A10. Based on the above seismic interaction evaluations, is equipment free of potentially adverse seismic interaction effects? Y N U**Other Adverse Conditions**11. Have you looked for and found no other seismic conditions that could adversely affect the safety functions of the equipment? Y N U**Comments** (Additional pages may be added as necessary)NONE.Evaluated by: David Volodarsky DAVID VOLODARSKY Date: 8/15/2012Matthew Wilkinson Matthew Wilkinson 8/15/2012



Seismic Walkdown Checklist (SWC)

Equipment ID No. 1-1806-53-DSB Equip. Class¹² 2

Equipment Description 125 VDC Switchgear (BD1)

Location: Bldg. Control Floor El. 200'-0" ^{11/14/12} Room, Area 180'-0" 2047

Manufacturer, Model, Etc. (optional but recommended) _____

Instructions for Completing Checklist

This checklist may be used to document the results of the Seismic Walkdown of an item of equipment on the SWEL. The space below each of the following questions may be used to record the results of judgments and findings. Additional space is provided at the end of this checklist for documenting other comments.

Anchorage (See SWC dated 8/15/12)

1. Is the anchorage configuration verification required (i.e., is the item one of the 50% of SWEL items requiring such verification)? Y N U

2. Is the anchorage free of bent, broken, missing or loose hardware? Y N U N/A

3. Is the anchorage free of corrosion that is more than mild surface oxidation? Y N U N/A

4. Is the anchorage free of visible cracks in the concrete near the anchors? Y N U N/A

5. Is the anchorage configuration consistent with plant documentation?
 (Note: This question only applies if the item is one of the 50% for which an anchorage configuration verification is required.) Y N U N/A

6. Based on the above anchorage evaluations, is the anchorage free of potentially adverse seismic conditions? Y N U

¹² Enter the equipment class name from Appendix B: Classes of Equipment.

Seismic Walkdown Checklist (SWC)

Equipment ID No. 1-1806-53-DSB Equip. Class¹²: 2

Equipment Description 125 VDC Switchgear 1BD1

Interaction Effects (See SWC dated 8/15/12)

7. Are soft targets free from impact by nearby equipment or structures? Y N U N/A

8. Are overhead equipment, distribution systems, ceiling tiles and lighting, and masonry block walls not likely to collapse onto the equipment? Y N U N/A

9. Do attached lines have adequate flexibility to avoid damage? Y N U N/A

10. Based on the above seismic interaction evaluations, is equipment free of potentially adverse seismic interaction effects? Y N U

Other Adverse Conditions

11. Have you looked for and found no other seismic conditions that could adversely affect the safety functions of the equipment? Y N U
A visual inspection of the internal components of this cabinet was performed to check for seismic adequacy to include any evidence of internal components not adequately secured, checked to ensure fasteners connecting adjacent cabinets were in place, and evidence of other adverse seismic conditions. No significant adverse conditions were found - some minor issues found are documented in the "Comments" section.

Comments (Additional pages may be added as necessary)

- Found the following minor issues:
 - ① One (1) cage nut used to secure the door closed missing.
 - ② One breaker door that could not be opened due to interference with the breaker face cover in bay 09.
- These issues were documented on the condition report 528389.

Evaluated by: [Signature] / Jose R. Hernandez Date: 10/01/12
[Signature] / Justo S. Chacon 10/01/12



