

**Seismic Walkdown Checklist (SWC)**

Equipment ID No. 1-1805-Y3-1D6E Equip. Class<sup>12</sup> 16

Equipment Description RHR 150 VLV INVERTER

Location: Bldg. CONTROL Floor El. 180 Room, Area B49

Manufacturer, Model, Etc. (optional but recommended) \_\_\_\_\_

**Instructions for Completing Checklist**

This checklist may be used to document the results of the Seismic Walkdown of an item of equipment on the SWEL. The space below each of the following questions may be used to record the results of judgments and findings. Additional space is provided at the end of this checklist for documenting other comments.

Anchorage (SEE SWC DATED 8/15/12)

- 1. Is the anchorage configuration verification required (i.e., is the item one of the 50% of SWEL items requiring such verification)?  Y  N
  
- 2. Is the anchorage free of bent, broken, missing or loose hardware?  Y  N  U  N/A
  
- 3. Is the anchorage free of corrosion that is more than mild surface oxidation?  Y  N  U  N/A
  
- 4. Is the anchorage free of visible cracks in the concrete near the anchors?  Y  N  U  N/A
  
- 5. Is the anchorage configuration consistent with plant documentation?  Y  N  U  N/A  
(Note: This question only applies if the item is one of the 50% for which an anchorage configuration verification is required.)
  
- 6. Based on the above anchorage evaluations, is the anchorage free of potentially adverse seismic conditions?  Y  N  U

<sup>12</sup> Enter the equipment class name from Appendix B: Classes of Equipment.

**Seismic Walkdown Checklist (SWC)**

Equipment ID No: 1-1805-YB-106 Equip: Class<sup>12</sup> 16

Equipment Description PAR ISO VLV INVERTER

Interaction Effects (SEE SWC DATED 8/15/12)

7. Are soft targets free from impact by nearby equipment or structures? Y  N  U  N/A

8. Are overhead equipment, distribution systems, ceiling tiles and lighting, and masonry block walls not likely to collapse onto the equipment? Y  N  U  N/A

9. Do attached lines have adequate flexibility to avoid damage? Y  N  U  N/A

10. Based on the above seismic interaction evaluations, is equipment free of potentially adverse seismic interaction effects? Y  N  U

**Other Adverse Conditions**

11. Have you looked for and found no other seismic conditions that could adversely affect the safety functions of the equipment? Y  N  U

A VISUAL INSPECTION OF THE INTERNAL COMPONENTS OF THIS CABINET WAS PERFORMED TO CHECK FOR SEISMIC ADEQUACY TO INCLUDE ANY EVIDENCE OF INTERNAL COMPONENT NOT ADEQUATELY SECURED, CHECKED TO ENSURE FASTENERS CONNECTING ADJACENT CABINETS WERE IN PLACE, AND EVIDENCE OF OTHER ADVERSE SEISMIC CONDITIONS. NO ADVERSE CONDITIONS FOUND

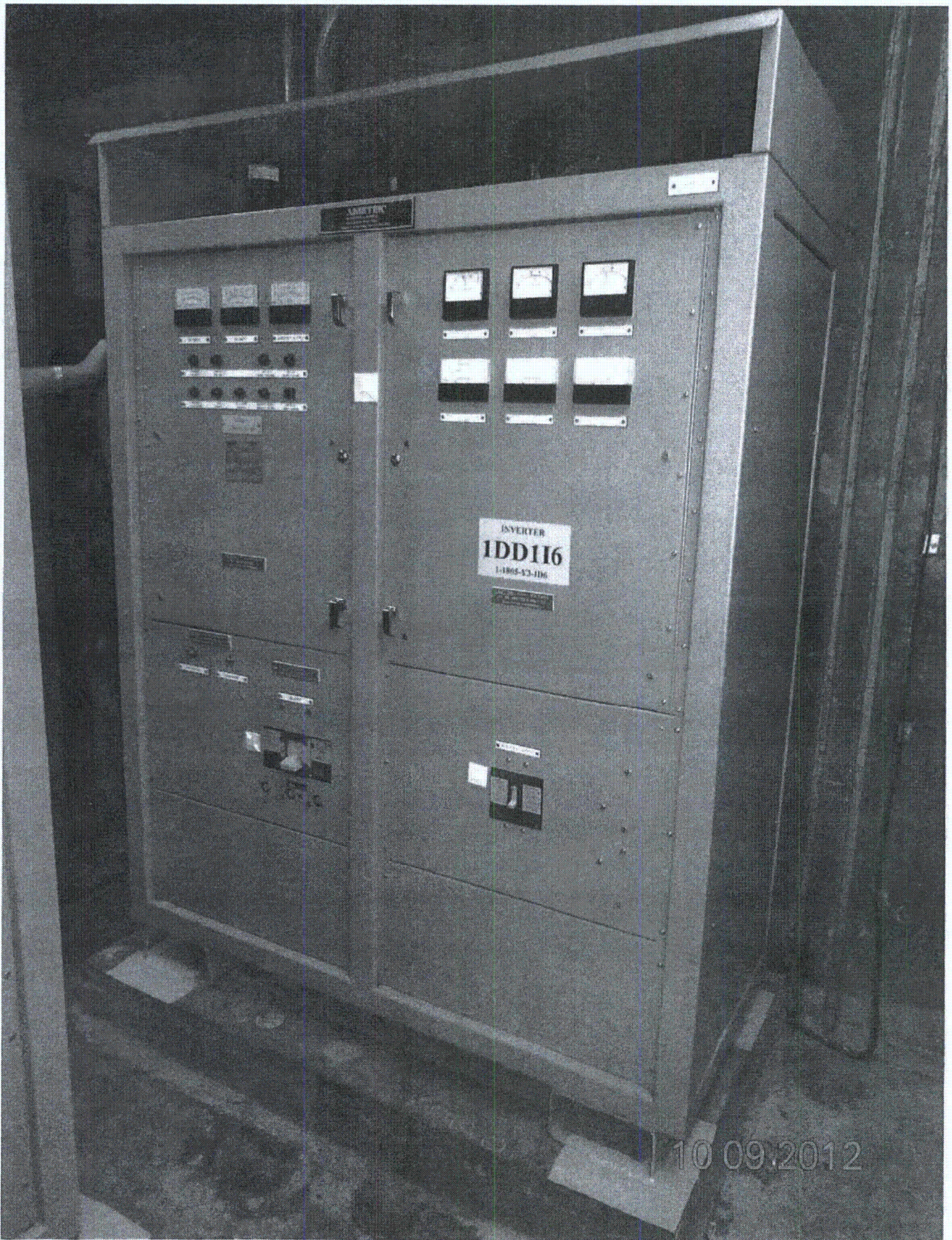
**Comments** (Additional pages may be added as necessary)

None

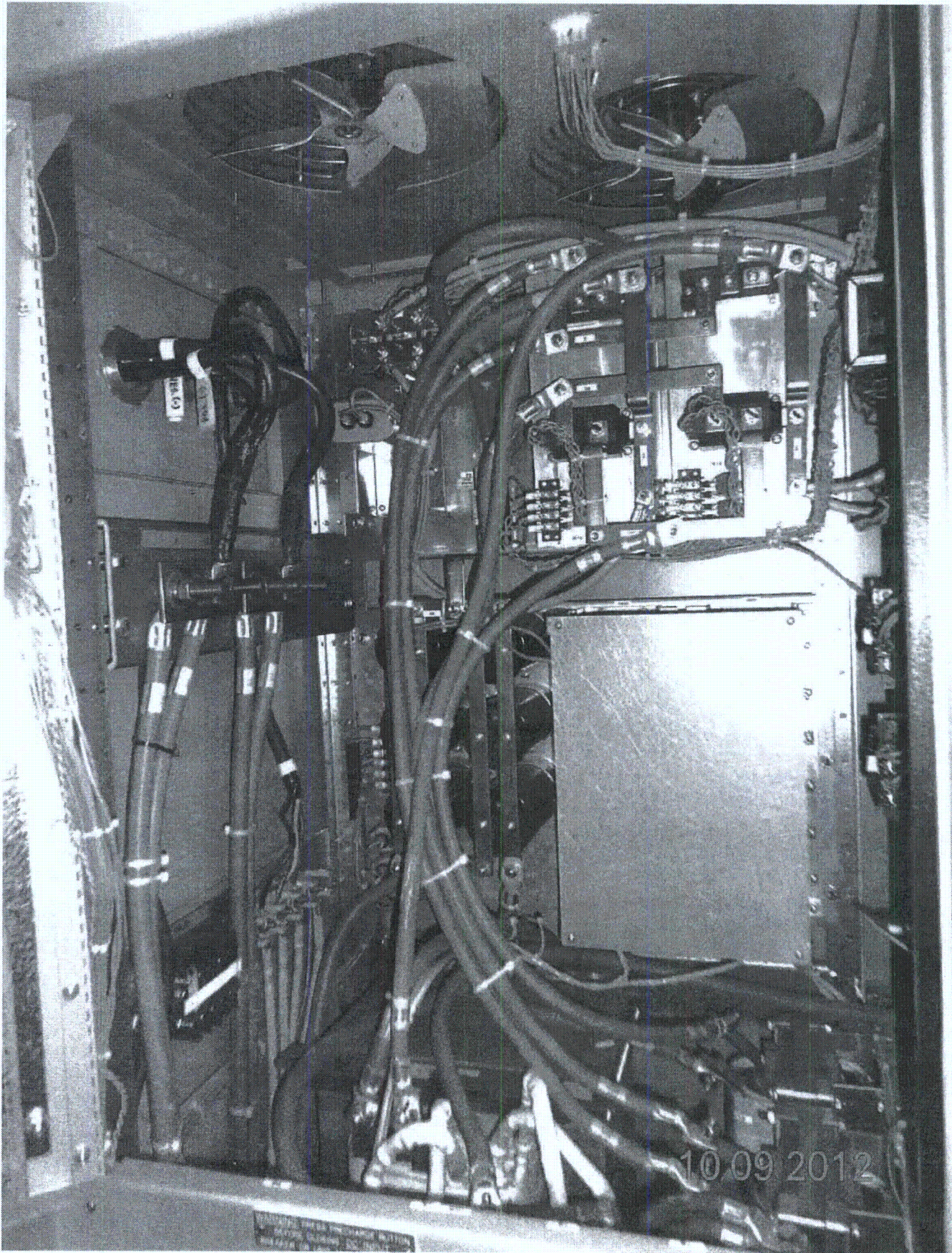
Evaluated by: [Signature] / Juan S. Oquacion Date: 10/9/12  
[Signature] / José R. Hernández 10/09/12

< C-4 >

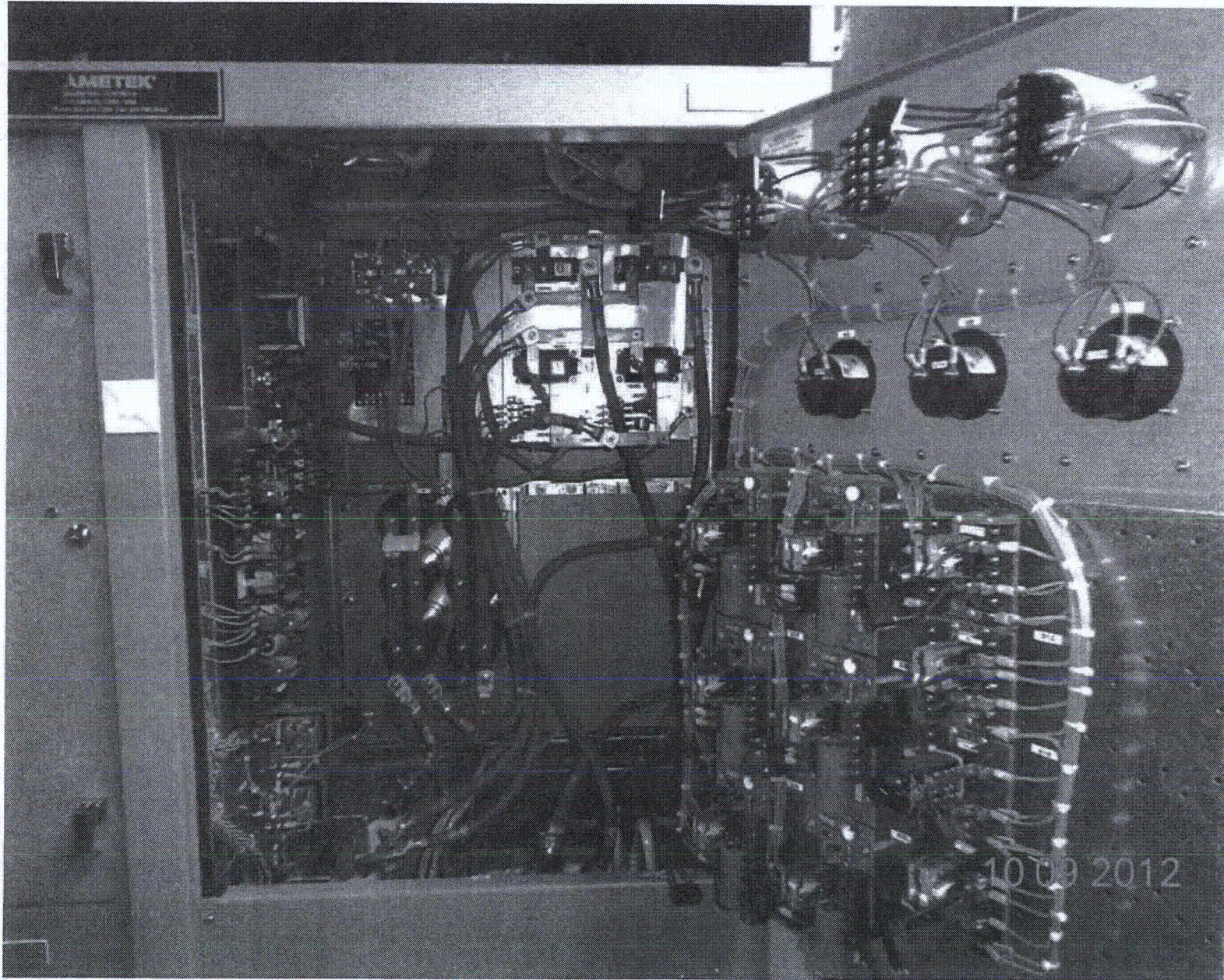














**Seismic Walkdown Checklist (SWC)**

Equipment ID No: 1-1P06-B3-CAB Equip. Class<sup>12</sup> 16  
 Equipment Description Battery Charger 1AD1CB  
 Location: Bldg. CB Floor El. 1P0 Room, Area CB 52  
 Manufacturer, Model, Etc. (optional but recommended) \_\_\_\_\_

**Instructions for Completing Checklist**

This checklist may be used to document the results of the Seismic Walkdown of an item of equipment on the SWEL. The space below each of the following questions may be used to record the results of judgments and findings. Additional space is provided at the end of this checklist for documenting other comments.

**Anchorage**

1. Is the anchorage configuration verification required (i.e., is the item one of the 50% of SWEL items requiring such verification)?  Y  N  U
  
2. Is the anchorage free of bent, broken, missing or loose hardware?  Y  N  U  N/A  
*Weld Battery Charger Base frame to embed steel at four corners*
  
3. Is the anchorage free of corrosion that is more than mild surface oxidation?  Y  N  U  N/A  
*See Item 2 note*
  
4. Is the anchorage free of visible cracks in the concrete near the anchors?  Y  N  U  N/A  
*See Item 2 note*
  
5. Is the anchorage configuration consistent with plant documentation?  Y  N  U  N/A  
 (Note: This question only applies if the item is one of the 50% for which an anchorage configuration verification is required.)
  
6. Based on the above anchorage evaluations, is the anchorage free of potentially adverse seismic conditions?  Y  N  U

<sup>12</sup> Enter the equipment class name from Appendix B: Classes of Equipment.

**Seismic Walkdown Checklist (SWC)**

Equipment ID No. 1-1806-B3-CAB Equip. Class<sup>12</sup> 16

Equipment Description Battery charger 1ADTCB

**Interaction Effects**

7. Are soft targets free from impact by nearby equipment or structures?  Y  N  U  N/A

8. Are overhead equipment, distribution systems, ceiling tiles and lighting, and masonry block walls not likely to collapse onto the equipment?  Y  N  U  N/A

9. Do attached lines have adequate flexibility to avoid damage?  Y  N  U  N/A

10. Based on the above seismic interaction evaluations, is equipment free of potentially adverse seismic interaction effects?  Y  N  U

**Other Adverse Conditions**

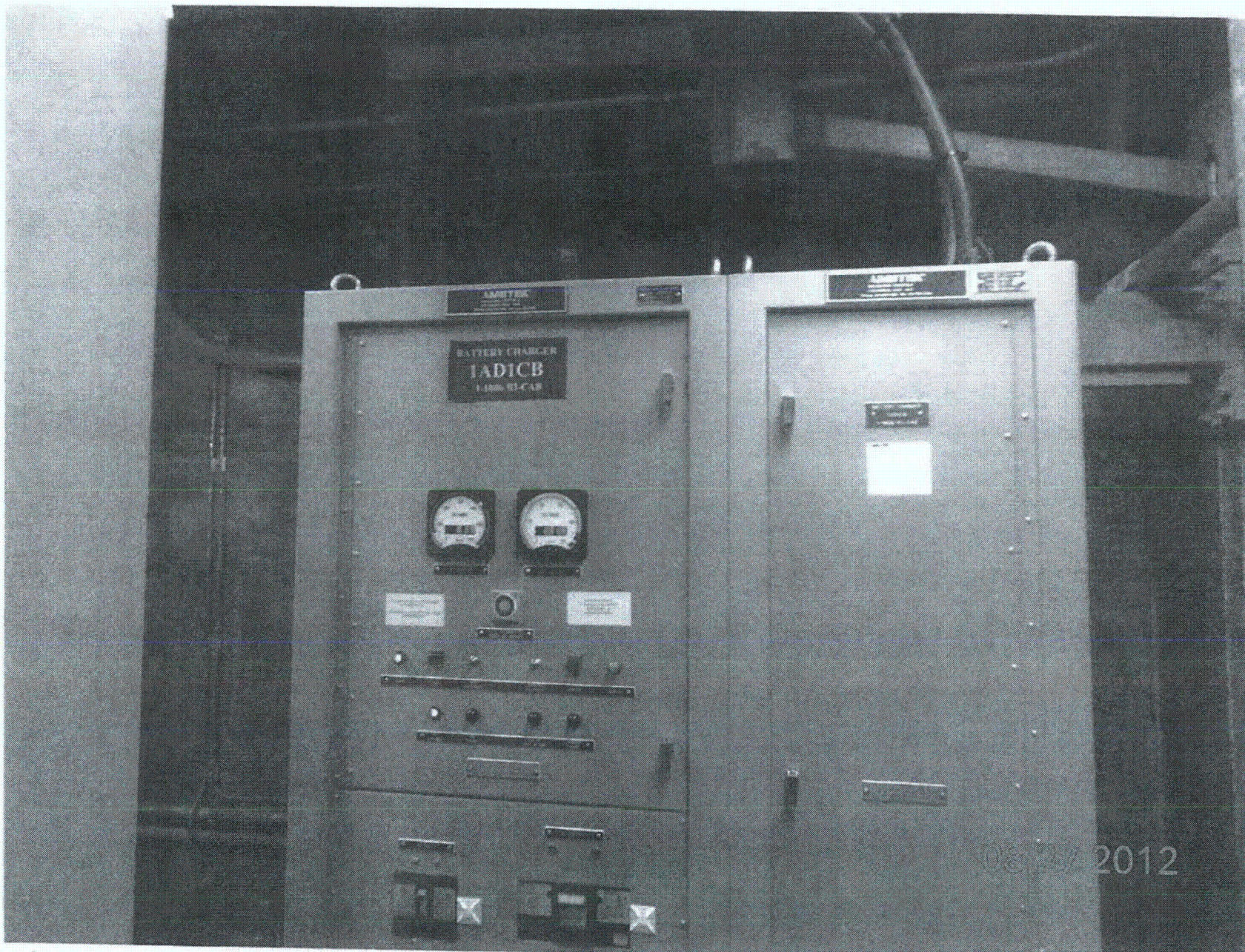
11. Have you looked for and found no other seismic conditions that could adversely affect the safety functions of the equipment?  Y  N  U

**Comments** (Additional pages may be added as necessary)

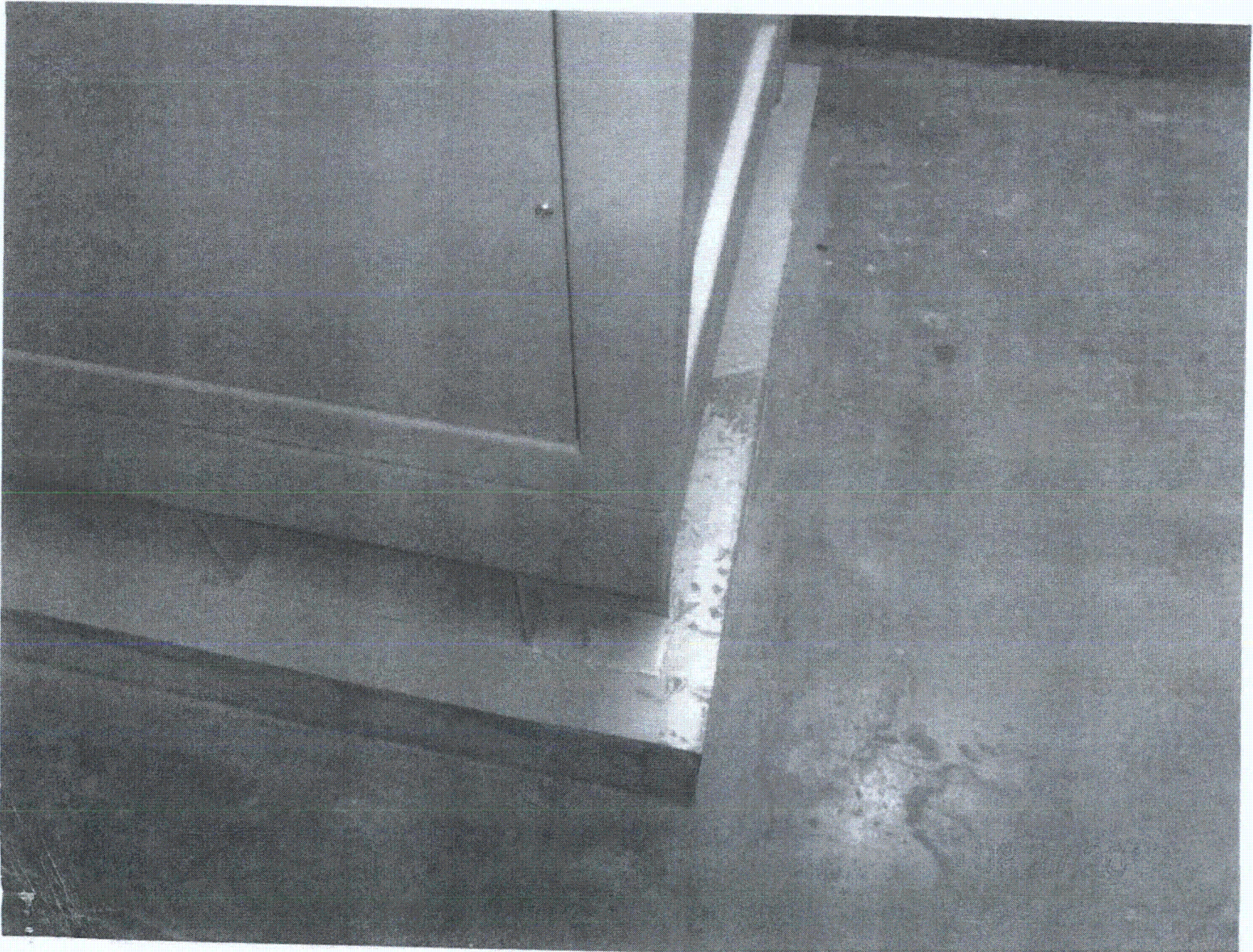
None.

Evaluated by: Frank Yao / Julie Yu Date: 8/27/2012  
PARIMAL GANDHI / P. Annaliti 8/27/2012











Sheet 1 of 2  
 Status:  Y  N  U

**Seismic Walkdown Checklist (SWC)**

Equipment ID No. 1-1806-B3-CAB Equip. Class<sup>12</sup> 16

Equipment Description Battery Charger 1AD1CB

Location: Bldg. Control Floor El. 180'-0" Room, Area RB 52

Manufacturer, Model, Etc. (optional but recommended) \_\_\_\_\_

**Instructions for Completing Checklist**

This checklist may be used to document the results of the Seismic Walkdown of an item of equipment on the SWEL. The space below each of the following questions may be used to record the results of judgments and findings. Additional space is provided at the end of this checklist for documenting other comments.

Anchorage (see SWC dated 8/27/12)

1. Is the anchorage configuration verification required (i.e., is the item one of the 50% of SWEL items requiring such verification)?  Y  N  U
  
2. Is the anchorage free of bent, broken, missing or loose hardware?  Y  N  U  N/A
  
3. Is the anchorage free of corrosion that is more than mild surface oxidation?  Y  N  U  N/A
  
4. Is the anchorage free of visible cracks in the concrete near the anchors?  Y  N  U  N/A
  
5. Is the anchorage configuration consistent with plant documentation?  
 (Note: This question only applies if the item is one of the 50% for which an anchorage configuration verification is required.)  Y  N  U  N/A
  
6. Based on the above anchorage evaluations, is the anchorage free of potentially adverse seismic conditions?  Y  N  U

<sup>12</sup> Enter the equipment class name from Appendix B: Classes of Equipment.



Seismic Walkdown Checklist (SWC)

Equipment ID No. 1-1806-B3-CAB Equip. Class<sup>12</sup> 16

Equipment Description Battery charger 1AD1CB

Interaction Effects (See SWC dated 8/27/12)

7. Are soft targets free from impact by nearby equipment or structures? Y  N  U  N/A

8. Are overhead equipment, distribution systems, ceiling tiles and lighting, and masonry block walls not likely to collapse onto the equipment? Y  N  U  N/A

9. Do attached lines have adequate flexibility to avoid damage? Y  N  U  N/A

10. Based on the above seismic interaction evaluations, is equipment free of potentially adverse seismic interaction effects? Y  N  U

Other Adverse Conditions

11. Have you looked for and found no other seismic conditions that could adversely affect the safety functions of the equipment? Y  N  U   
A visual inspection of the internal components of this cabinet was performed to check for seismic adequacy to include any evidence of internal components not adequately secured, checked to ensure fasteners connecting adjacent cabinets were in place, and evidence of other adverse seismic conditions. No adverse conditions were found.

Comments (Additional pages may be added as necessary)

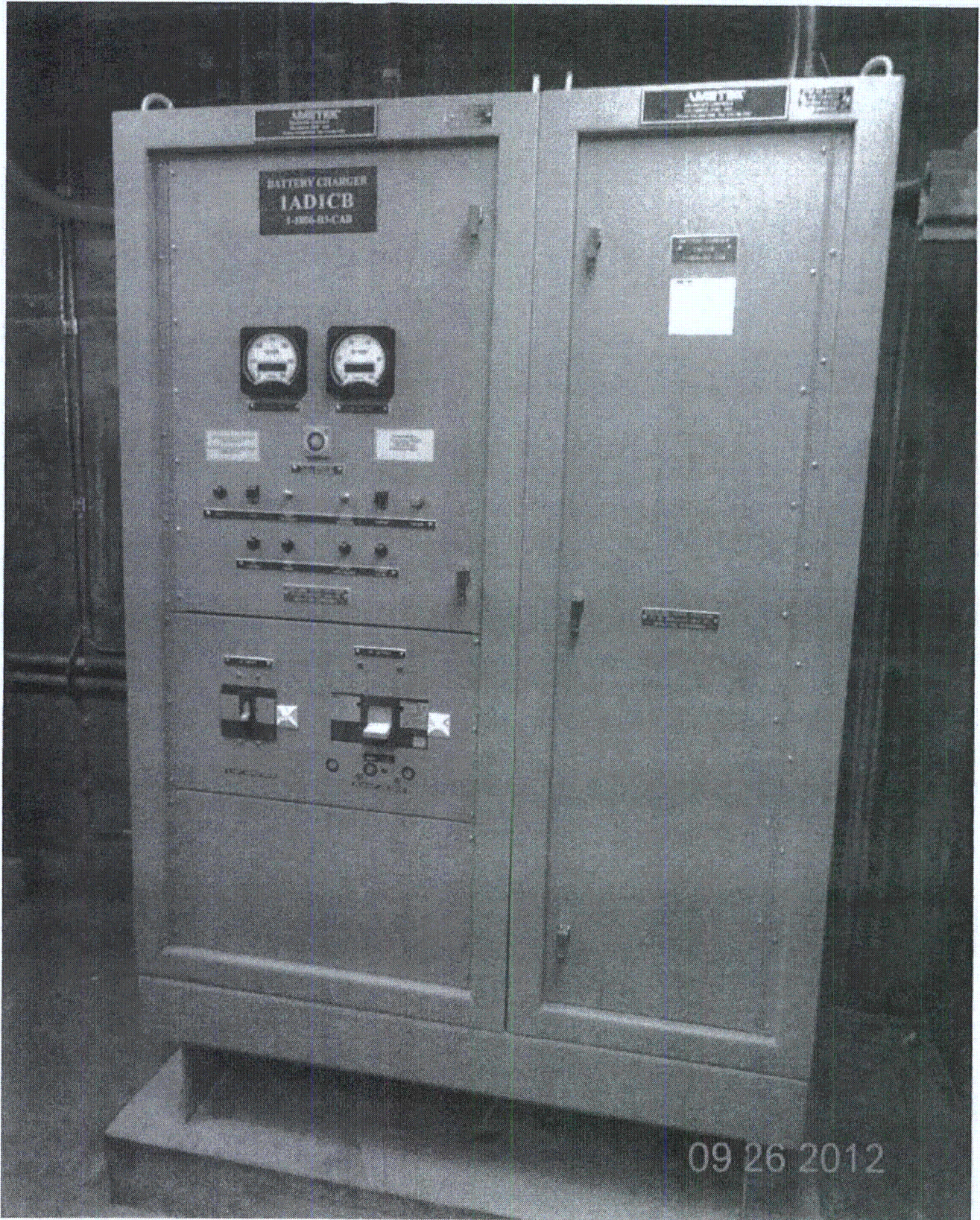
None.

Evaluated by: [Signature] / Josi R. Hernandez Date: 9/26/12

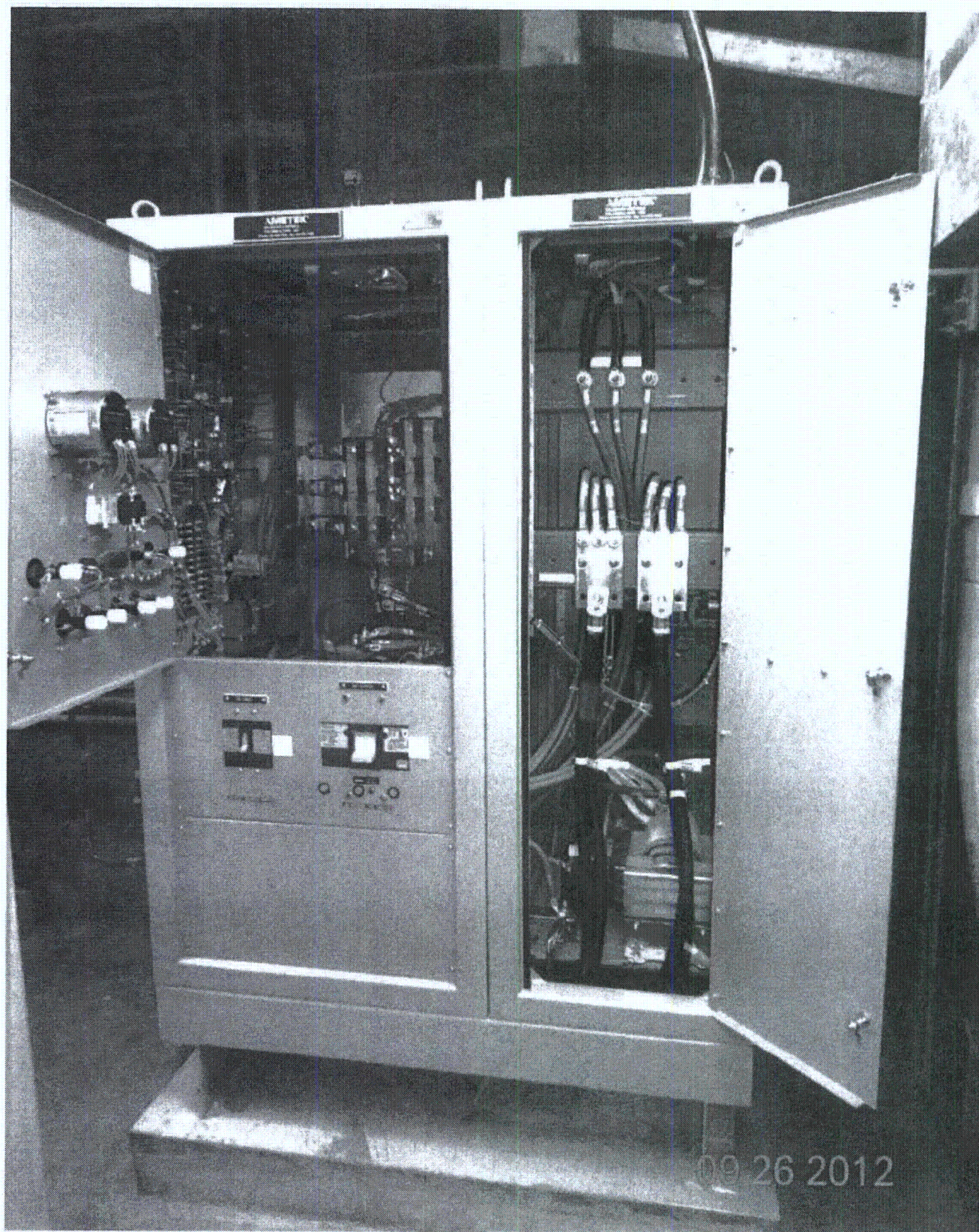
[Signature] / JUSTO S. CHACON 9/26/12

<C4>











**Seismic Walkdown Checklist (SWC)**

Equipment ID No. 1-1806-Q3-DA2 Equip. Class<sup>12</sup> 14  
 Equipment Description 125 VDC Distr. Panel LAD12  
 Location: Bldg. CB Floor El. 180' Room, Area RB 5-2  
 Manufacturer, Model, Etc. (optional but recommended) \_\_\_\_\_

**Instructions for Completing Checklist**

This checklist may be used to document the results of the Seismic Walkdown of an item of equipment on the SWEL. The space below each of the following questions may be used to record the results of judgments and findings. Additional space is provided at the end of this checklist for documenting other comments.

**Anchorage**

1. Is the anchorage configuration verification required (i.e., is the item one of the 50% of SWEL items requiring such verification)?  Y  N
  
2. Is the anchorage free of bent, broken, missing or loose hardware?  Y  N  U  N/A  
*Panel base welded to embed angles.*
  
3. Is the anchorage free of corrosion that is more than mild surface oxidation?  Y  N  U  N/A  
*See Item 2 note.*
  
4. Is the anchorage free of visible cracks in the concrete near the anchors?  Y  N  U  N/A
  
5. Is the anchorage configuration consistent with plant documentation?  Y  N  U  N/A  
 (Note: This question only applies if the item is one of the 50% for which an anchorage configuration verification is required.)  
*E&PP No. X3AF01 Rev. 2*
  
6. Based on the above anchorage evaluations, is the anchorage free of potentially adverse seismic conditions?  Y  N  U

<sup>12</sup> Enter the equipment class name from Appendix B: Classes of Equipment.

**Seismic Walkdown Checklist (SWC)**

Equipment ID No: 1-1806-B3-DA2 Equip. Class<sup>12</sup> 14

Equipment Description 125 VDC Distribution Panel

**Interaction Effects**

7. Are soft targets free from impact by nearby equipment or structures?  YES  NO  U  N/A

8. Are overhead equipment, distribution systems, ceiling tiles and lighting, and masonry block walls not likely to collapse onto the equipment?  YES  NO  U  N/A

9. Do attached lines have adequate flexibility to avoid damage?  YES  NO  U  N/A

10. Based on the above seismic interaction evaluations, is equipment free of potentially adverse seismic interaction effects?  YES  NO  U

**Other Adverse Conditions**

11. Have you looked for and found no other seismic conditions that could adversely affect the safety functions of the equipment?  YES  NO  U

**Comments** (Additional pages may be added as necessary)

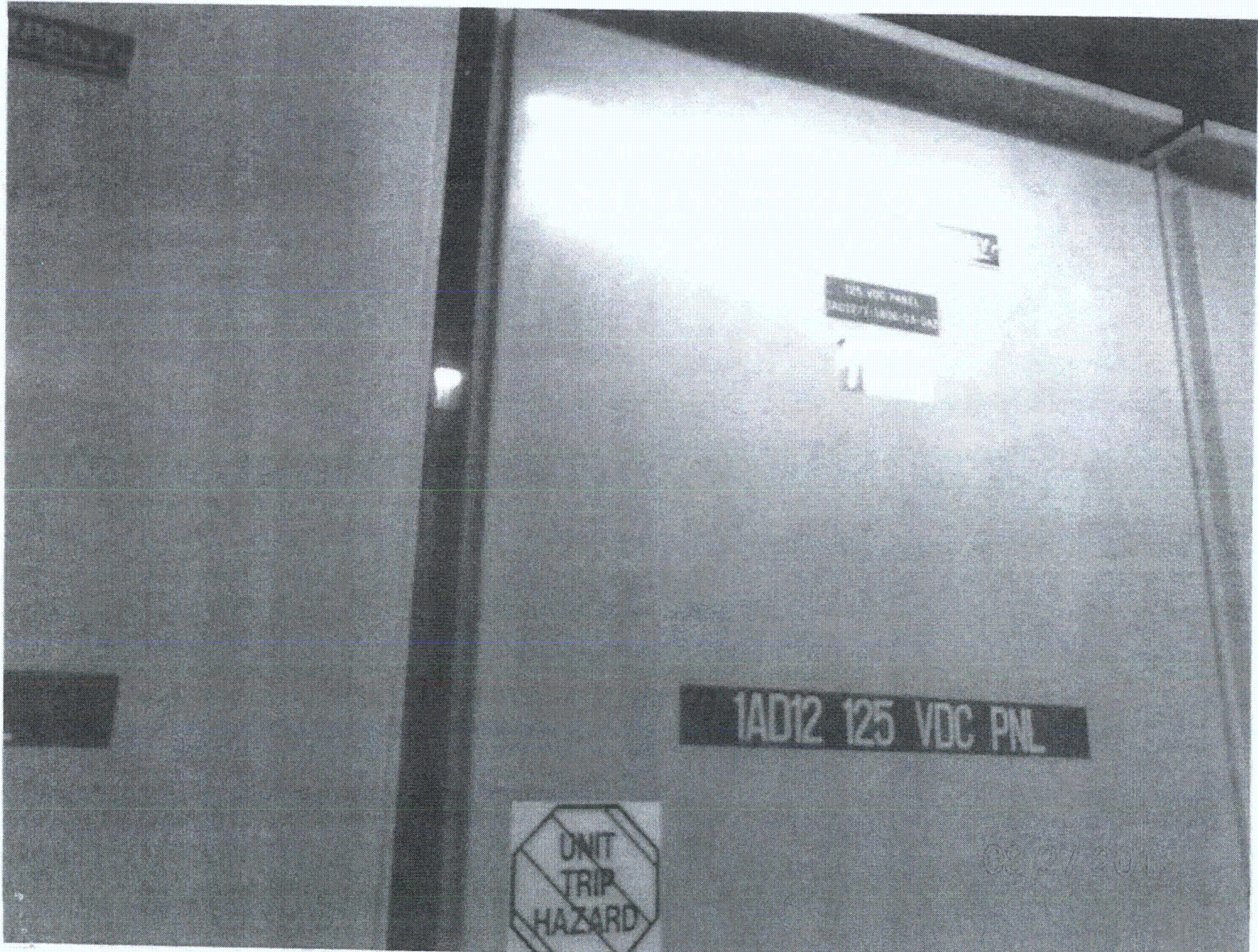
*Walkby see 1-1806-B3-CAB*

Evaluated by: Fresh/oo / J. Gandhi Date: 8/27/2012

PARIMAL GANDHI / P. Gandhi 8/27/2012

<C.4>







**Seismic Walkdown Checklist (SWC)**

Equipment ID No: 1806-Q3-DAZ Equip. Class<sup>12</sup> 14

Equipment Description 125 VDC Distribution Panel 1AD12

Location: Bldg. Control Floor El. 180'-0" Room, Area R052

Manufacturer, Model, Etc. (optional but recommended) \_\_\_\_\_

**Instructions for Completing Checklist**

This checklist may be used to document the results of the Seismic Walkdown of an item of equipment on the SWEL. The space below each of the following questions may be used to record the results of judgments and findings. Additional space is provided at the end of this checklist for documenting other comments.

**Anchorage (See SWC dated 8/27/12)**

1. Is the anchorage configuration verification required (i.e., is the item one of the 50% of SWEL items requiring such verification)? Y  N
  
2. Is the anchorage free of bent, broken, missing or loose hardware? Y  N  U  N/A
  
3. Is the anchorage free of corrosion that is more than mild surface oxidation? Y  N  U  N/A
  
4. Is the anchorage free of visible cracks in the concrete near the anchors? Y  N  U  N/A
  
5. Is the anchorage configuration consistent with plant documentation? Y  N  U  N/A   
 (Note: This question only applies if the item is one of the 50% for which an anchorage configuration verification is required.)
  
6. Based on the above anchorage evaluations, is the anchorage free of potentially adverse seismic conditions? Y  N  U

<sup>12</sup> Enter the equipment class name from Appendix B: Classes of Equipment.

**Seismic Walkdown Checklist (SWC)**

Equipment ID No. 1-1806-Q3-DA2 Equip. Class<sup>12</sup> 14

Equipment Description 125 VDC Distribution Panel 1AD12

Interaction Effects

7. Are soft targets free from impact by nearby equipment or structures? Y  N  U  N/A

8. Are overhead equipment, distribution systems, ceiling tiles and lighting, and masonry block walls not likely to collapse onto the equipment? Y  N  U  N/A

9. Do attached lines have adequate flexibility to avoid damage? Y  N  U  N/A

10. Based on the above seismic interaction evaluations, is equipment free of potentially adverse seismic interaction effects? Y  N  U

Other Adverse Conditions

11. Have you looked for and found no other seismic conditions that could adversely affect the safety functions of the equipment? Y  N  U   
A visual inspection of the internal components of this cabinet was performed to check for seismic adequacy to include any evidence of internal components not adequately secured, checked to ensure fasteners connecting adjacent cabinets were in place, and evidence of other adverse seismic conditions. One fastener that connects the inner frame is missing. See "Comments" section for details.

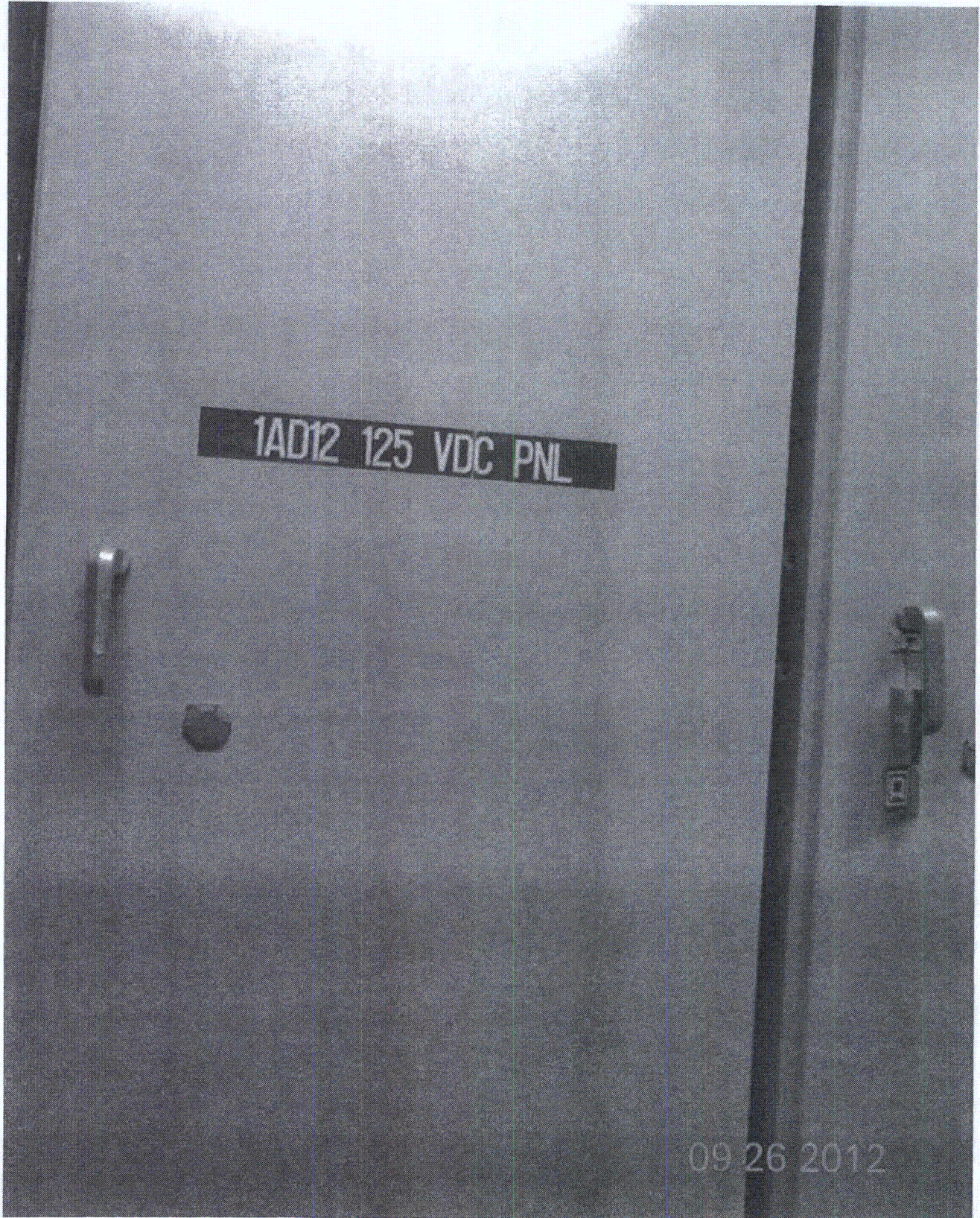
Comments (Additional pages may be added as necessary)

It was found that one (1) bolt that connects the inner frame with the cabinet was missing. An evaluation of this condition needs to be performed to determine seismic adequacy. Condition report 534560 was generated.

Evaluated by: José R. Hernández Date: 9/26/12

Justo S. Chacon / JUSTO S. CHACON 9/26/12

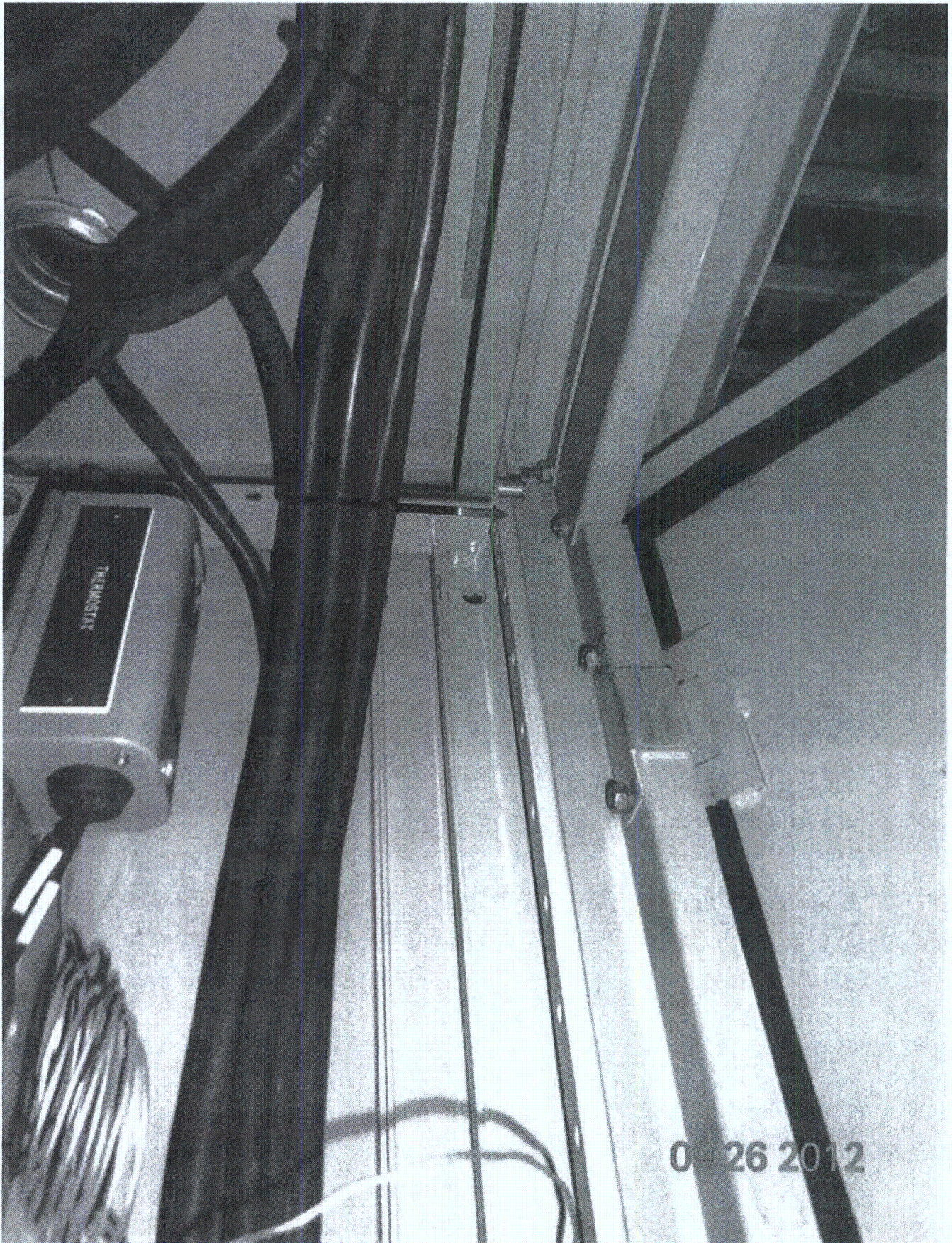




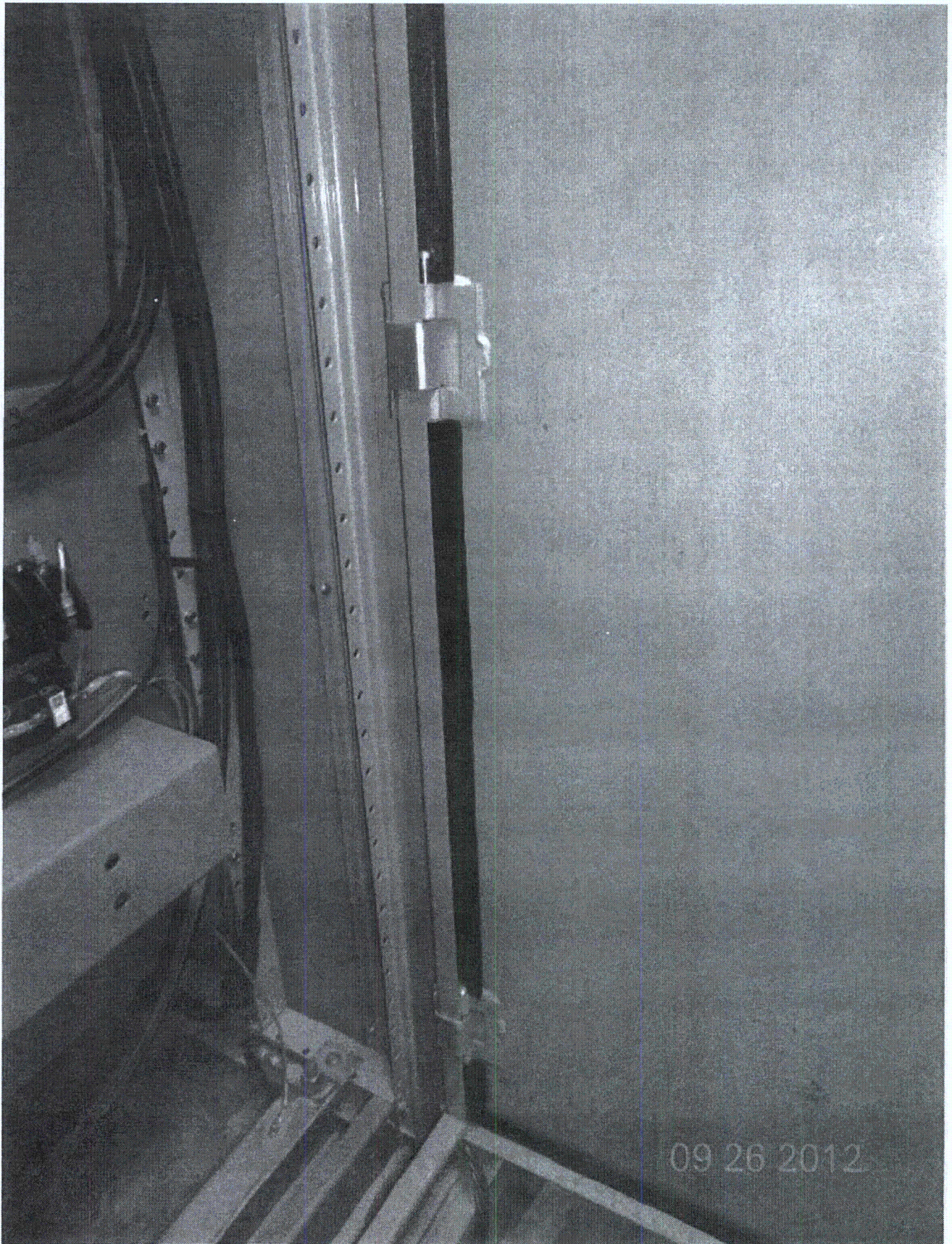














**Seismic Walkdown Checklist (SWC)**

Equipment ID No. 1-1806-53-DCB Equip. Class<sup>12</sup> 1

Equipment Description 125 VDC MCC 1ADIM

Location: Bldg. CB Floor El. 180' Room, Area RB 5-2

Manufacturer, Model, Etc: (optional but recommended) \_\_\_\_\_

**Instructions for Completing Checklist**

This checklist may be used to document the results of the Seismic Walkdown of an item of equipment on the SWEL. The space below each of the following questions may be used to record the results of judgments and findings. Additional space is provided at the end of this checklist for documenting other comments.

**Anchorage**

1. Is the anchorage configuration verification required (i.e., is the item one of the 50% of SWEL items requiring such verification)?  Y  N  U  N/A
  
2. Is the anchorage free of bent, broken, missing or loose hardware?  Y  N  U  N/A  
*MCC base welded to base.*
  
3. Is the anchorage free of corrosion that is more than mild surface oxidation?  Y  N  U  N/A  
*see item 2 note.*
  
4. Is the anchorage free of visible cracks in the concrete near the anchors?  Y  N  U  N/A  
*see item 2 note.*
  
5. Is the anchorage configuration consistent with plant documentation?  Y  N  U  N/A  
(Note: This question only applies if the item is one of the 50% for which an anchorage configuration verification is required.)
  
6. Based on the above anchorage evaluations, is the anchorage free of potentially adverse seismic conditions?  Y  N  U

<sup>12</sup>Enter the equipment class name from Appendix B: Classes of Equipment.

**Seismic Walkdown Checklist (SWC)**

Equipment ID No: 1-1806-S<sub>2</sub>-DCA Equip. Class<sup>12</sup> /

Equipment Description: 125 VDC MCC 1ADIM

**Interaction Effects**

- 7. Are soft targets free from impact by nearby equipment or structures?  Y  N  U  N/A
  
- 8. Are overhead equipment, distribution systems, ceiling tiles and lighting, and masonry block walls not likely to collapse onto the equipment?  Y  N  U  N/A
  
- 9. Do attached lines have adequate flexibility to avoid damage?  Y  N  U  N/A
  
- 10. Based on the above seismic interaction evaluations, is equipment free of potentially adverse seismic interaction effects?  Y  N  U

**Other Adverse Conditions**

- 11. Have you looked for and found no other seismic conditions that could adversely affect the safety functions of the equipment?  Y  N  U

**Comments** (Additional pages may be added as necessary)

*Walkby see Battery Charger 1-1806-B<sub>3</sub>-CAB.  
None 8/27/12*

Evaluated by: Frank Yao / J. G. S. D. Date: 8/27/12  
PARIMAL GANDHI / P. Gandhi 8/27/2012

< C.4 >







**Seismic Walkdown Checklist (SWC)**

Equipment ID No. 1-1806-S3-DCA Equip. Class<sup>12</sup> 1

Equipment Description 125 VDC MCC 1AD 1M

Location: Bldg. Control Floor El. 200<sup>0'</sup> <sup>11/14/12</sup> Room, Area RB 52

Manufacturer, Model, Etc. (optional but recommended) \_\_\_\_\_

**Instructions for Completing Checklist**

This checklist may be used to document the results of the Seismic Walkdown of an item of equipment on the SWEL. The space below each of the following questions may be used to record the results of judgments and findings. Additional space is provided at the end of this checklist for documenting other comments.

Anchorage (see SWC dated 8/27/12)

1. Is the anchorage configuration verification required (i.e., is the item one of the 50% of SWEL items requiring such verification)?  Y  N  U
  
2. Is the anchorage free of bent, broken, missing or loose hardware?  Y  N  U  N/A
  
3. Is the anchorage free of corrosion that is more than mild surface oxidation?  Y  N  U  N/A
  
4. Is the anchorage free of visible cracks in the concrete near the anchors?  Y  N  U  N/A
  
5. Is the anchorage configuration consistent with plant documentation?  Y  N  U  N/A  
 (Note: This question only applies if the item is one of the 50% for which an anchorage configuration verification is required.)
  
6. Based on the above anchorage evaluations, is the anchorage free of potentially adverse seismic conditions?  Y  N  U

<sup>12</sup> Enter the equipment class name from Appendix B: Classes of Equipment.



Seismic Walkdown Checklist (SWC)

Equipment ID No. 1-1806-53-DCA Equip. Class<sup>12</sup> 1

Equipment Description 125 VDC MCC 1AD1M

Interaction Effects (see SWC dated 8/27/12)

7. Are soft targets free from impact by nearby equipment or structures? Y  N  U  N/A

8. Are overhead equipment, distribution systems, ceiling tiles and lighting, and masonry block walls not likely to collapse onto the equipment? Y  N  U  N/A

9. Do attached lines have adequate flexibility to avoid damage? Y  N  U  N/A

10. Based on the above seismic interaction evaluations, is equipment free of potentially adverse seismic interaction effects? Y  N  U

Other Adverse Conditions

11. Have you looked for and found no other seismic conditions that could adversely affect the safety functions of the equipment? A visual inspection of the internal components of this cabinet was performed to check for seismic adequacy to include any evidence of internal components not adequately secured, checked to ensure fasteners connecting adjacent cabinets were in place and evidence of other adverse conditions. Y  N  U   
No adverse conditions were found.

Comments (Additional pages may be added as necessary)

None

Evaluated by: José R. Hernández Date: 9/27/12

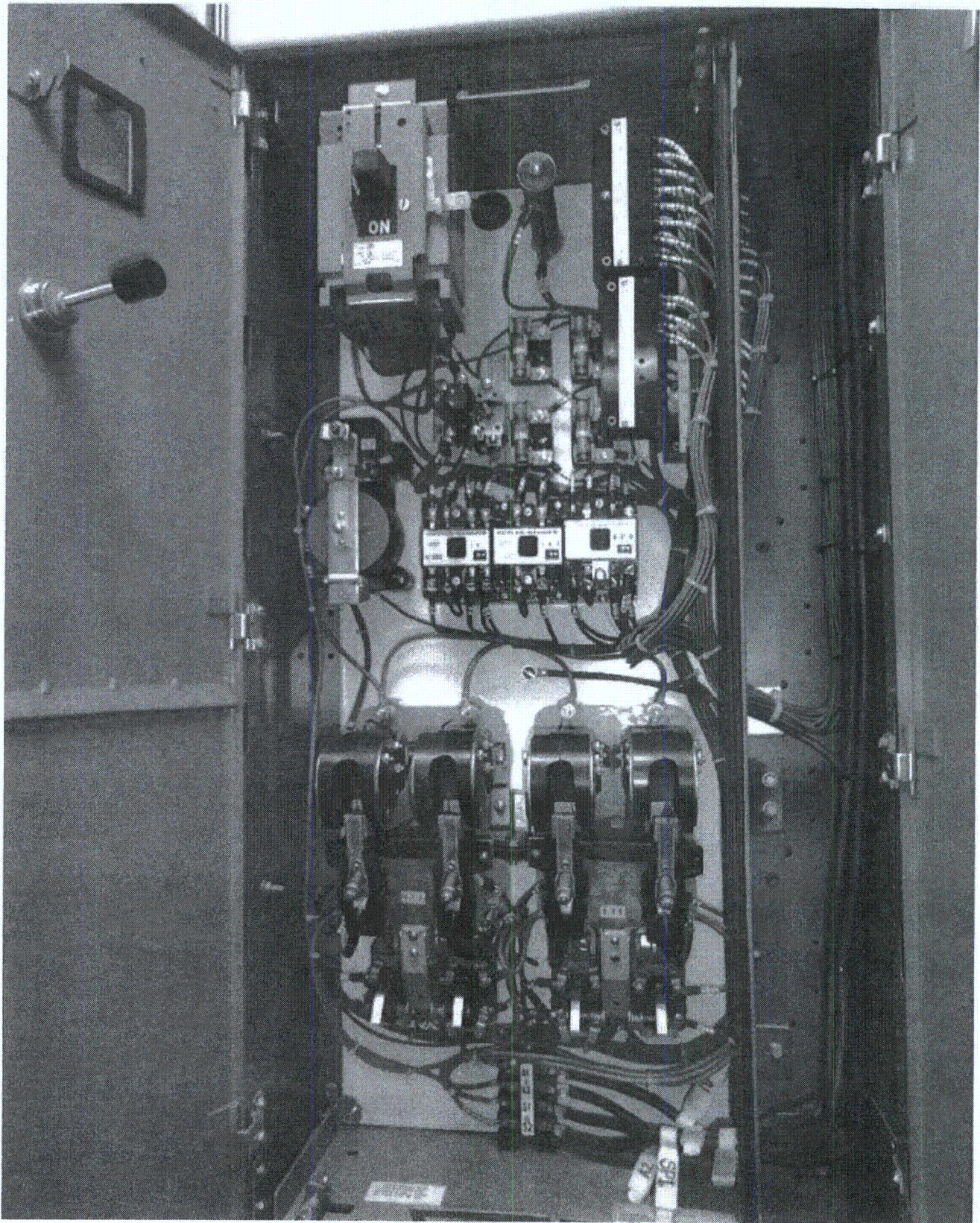
[Signature] / JUSTO S CHACON 9/27/12

<C4>











**Seismic Walkdown Checklist (SWC)**

Equipment ID No. 1-1805-53-B15 Equip. Class<sup>12</sup> 2 - LOW VOLTAGE SWITCHGEAR

Equipment Description 480V SWITCHGEAR 1A B15

Location: Bldg. AUX Floor El. 119'-3" Room, Area RD105

Manufacturer, Model, Etc. (optional but recommended) GE

**Instructions for Completing Checklist**

This checklist may be used to document the results of the Seismic Walkdown of an item of equipment on the SWEL. The space below each of the following questions may be used to record the results of judgments and findings. Additional space is provided at the end of this checklist for documenting other comments.

**Anchorage**

1. Is the anchorage configuration verification required (i.e., is the item one of the 50% of SWEL items requiring such verification)?  Y  N
  
2. Is the anchorage free of bent, broken, missing or loose hardware?  Y  N  U  N/A
  
3. Is the anchorage free of corrosion that is more than mild surface oxidation?  Y  N  U  N/A
  
4. Is the anchorage free of visible cracks in the concrete near the anchors?  Y  N  U  N/A
  
5. Is the anchorage configuration consistent with plant documentation?  Y  N  U  N/A  
 (Note: This question only applies if the item is one of the 50% for which an anchorage configuration verification is required.)  
EQDP # X3AC02, REV. 2
  
6. Based on the above anchorage evaluations, is the anchorage free of potentially adverse seismic conditions?  Y  N  U

<sup>12</sup> Enter the equipment class name from Appendix B: Classes of Equipment.

**Seismic Walkdown Checklist (SWC)**

Equipment ID No. 1-1805-53-B15 Equip. Class: 2 - Low VOLTAGE SWITCHGEAR

Equipment Description 480V SWITCHGEAR 1A B15

Interaction Effects

- 7. Are soft targets free from impact by nearby equipment or structures?  Y  N  U  N/A
  
- 8. Are overhead equipment, distribution systems, ceiling tiles and lighting, and masonry block walls not likely to collapse onto the equipment?  Y  N  U  N/A
  
- 9. Do attached lines have adequate flexibility to avoid damage?  Y  N  U  N/A
  
- 10. Based on the above seismic interaction evaluations, is equipment free of potentially adverse seismic interaction effects?  Y  N  U

Other Adverse Conditions

- 11. Have you looked for and found no other seismic conditions that could adversely affect the safety functions of the equipment?  Y  N  U  
GAP BETWEEN SWITCHGEAR & TRANSFORMER IS ≈ 2" ACCEPTABLE

Comments (Additional pages may be added as necessary)

NONE

Evaluated by: David Volodarsky DAVID VOLODARSKY Date: 8/29/2012  
Matthew Wilkinson Matthew Wilkinson 8/29/2012







