

Seismic Walkdown Checklist (SWC)

Equipment ID No. 1-1005-23-ABB Equip. Class¹² 1 (Motor Control Centers and Welded Conductors)
 Equipment Description 480 V MCC 1 ABB
 Location: Bldg. Aux Floor El. 220' Room, Area R118
 Manufacturer, Model, Etc. (optional but recommended) _____

Instructions for Completing Checklist

This checklist may be used to document the results of the Seismic Walkdown of an item of equipment on the SWEL. The space below each of the following questions may be used to record the results of judgments and findings. Additional space is provided at the end of this checklist for documenting other comments.

Anchorage

1. Is the anchorage configuration verification required (i.e., is the item one of the 50% of SWEL items requiring such verification)? Y N U N/A

2. Is the anchorage free of bent, broken, missing or loose hardware? Y N U N/A
MCC 1 ABB base frame is stitch fillet weld to embed angles.

3. Is the anchorage free of corrosion that is more than mild surface oxidation? Y N U N/A
The welds are free of corrosion.

4. Is the anchorage free of visible cracks in the concrete near the anchors? Y N U N/A
The welds are in good condition.

5. Is the anchorage configuration consistent with plant documentation? Y N U N/A
 (Note: This question only applies if the item is one of the 50% for which an anchorage configuration verification is required.)

6. Based on the above anchorage evaluations, is the anchorage free of potentially adverse seismic conditions? Y N U

¹² Enter the equipment class name from Appendix B: Classes of Equipment.

Seismic Walkdown Checklist (SWC)

Equipment ID No. 1-1805-S3-ABB Equip. Class¹² 1 (MCCs)

Equipment Description 480V MCC 1ABB

Interaction Effects

7. Are soft targets free from impact by nearby equipment or structures? Y N U N/A

8. Are overhead equipment, distribution systems, ceiling tiles and lighting, and masonry block walls not likely to collapse onto the equipment? Y N U N/A

9. Do attached lines have adequate flexibility to avoid damage? Y N U N/A

10. Based on the above seismic interaction evaluations, is equipment free of potentially adverse seismic interaction effects? Y N U

Other Adverse Conditions

11. Have you looked for and found no other seismic conditions that could adversely affect the safety functions of the equipment? Y N U

Comments (Additional pages may be added as necessary)

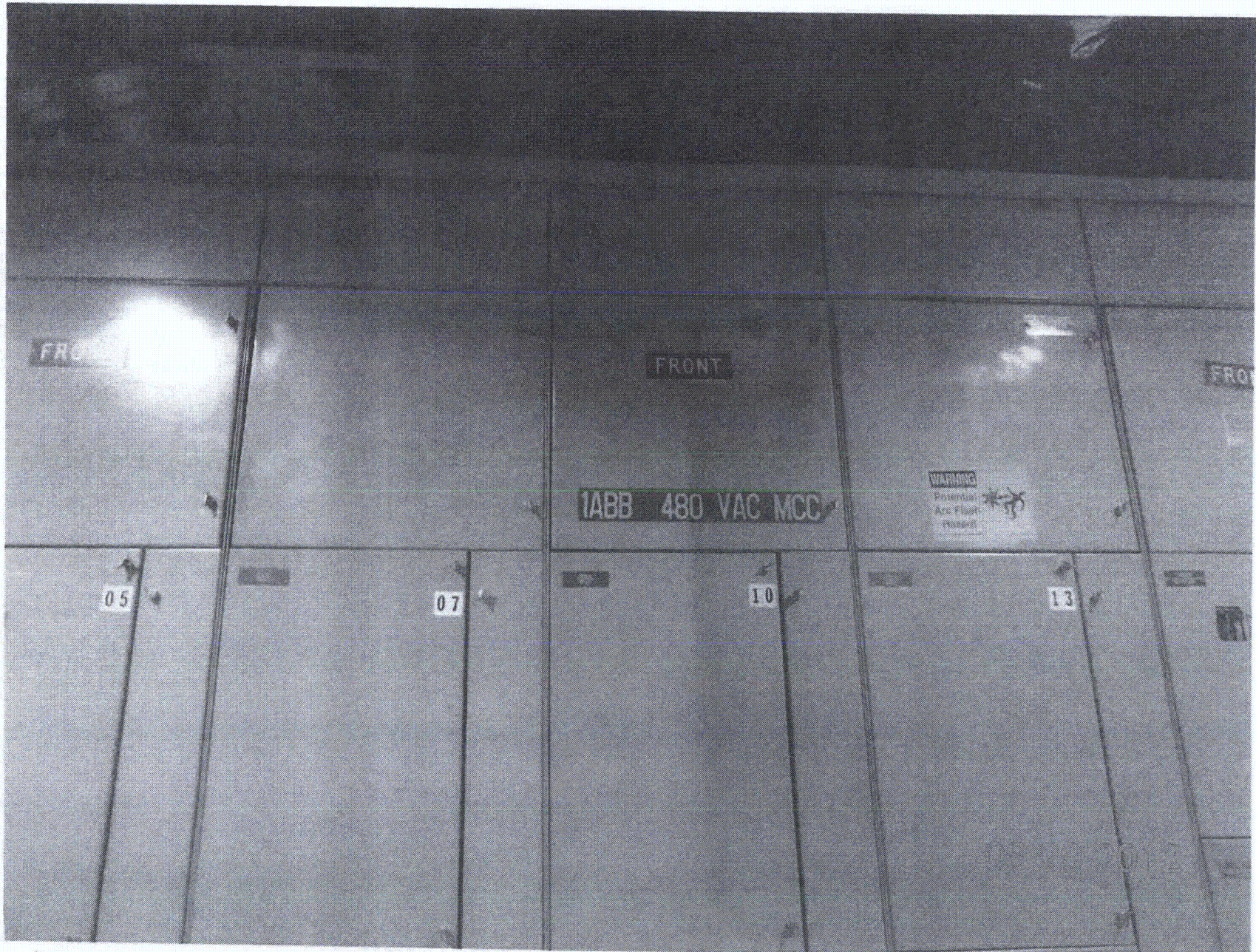
None

Evaluated by: Frank Yao / Jih Guo Date: 8/29/12

PARIMAL GANDHI / P. Gandhi 8/29/2012

< C4 >





Seismic Walkdown Checklist (SWC)

Equipment ID No. 1-1805-SS-ABE Equip. Class¹² 1

Equipment Description 480V Motor Control CTR 1ABE

Location: Bldg. Aux Floor El. 220 Room, Area 118

Manufacturer, Model, Etc. (optional but recommended) _____

Instructions for Completing Checklist

This checklist may be used to document the results of the Seismic Walkdown of an item of equipment on the SWEL. The space below each of the following questions may be used to record the results of judgments and findings. Additional space is provided at the end of this checklist for documenting other comments.

Anchorage (SEE SWC DATED 8/29/12)

- 1. Is the anchorage configuration verification required (i.e., is the item one of the 50% of SWEL items requiring such verification)? Y N U
- 2. Is the anchorage free of bent, broken, missing or loose hardware? Y N U N/A
- 3. Is the anchorage free of corrosion that is more than mild surface oxidation? Y N U N/A
- 4. Is the anchorage free of visible cracks in the concrete near the anchors? Y N U N/A
- 5. Is the anchorage configuration consistent with plant documentation? Y N U N/A
(Note: This question only applies if the item is one of the 50% for which an anchorage configuration verification is required.)
- 6. Based on the above anchorage evaluations, is the anchorage free of potentially adverse seismic conditions? Y N U

¹² Enter the equipment class name from Appendix B: Classes of Equipment.

Seismic Walkdown Checklist (SWC)

Equipment ID No. 1-1805-S3-ABB Equip. Class¹²: 1

Equipment Description: 480V MOT CONTROL CTR 1AETS

Interaction Effects (SEE SWC DATED 8/29/12)

7. Are soft targets free from impact by nearby equipment or structures? Y N U N/A

8. Are overhead equipment, distribution systems, ceiling tiles and lighting, and masonry block walls not likely to collapse onto the equipment? Y N U N/A

9. Do attached lines have adequate flexibility to avoid damage? Y N U N/A

10. Based on the above seismic interaction evaluations, is equipment free of potentially adverse seismic interaction effects? Y N U

Other Adverse Conditions

11. Have you looked for and found no other seismic conditions that could adversely affect the safety functions of the equipment? Y N U

A VISUAL INSPECTION OF THE INTERNAL COMPONENTS OF THIS CABINET WAS PERFORMED TO CHECK FOR SEISMIC ADEQUACY TO INCLUDE ANY EVIDENCE OF INTERNAL COMPONENTS NOT ADEQUATELY SECURED, CHECKED TO ENSURE FASTENERS CONNECTING ADJACENT CABINETS WERE IN PLACE, AND EVIDENCE OF OTHER ADVERSE SEISMIC CONDITIONS.

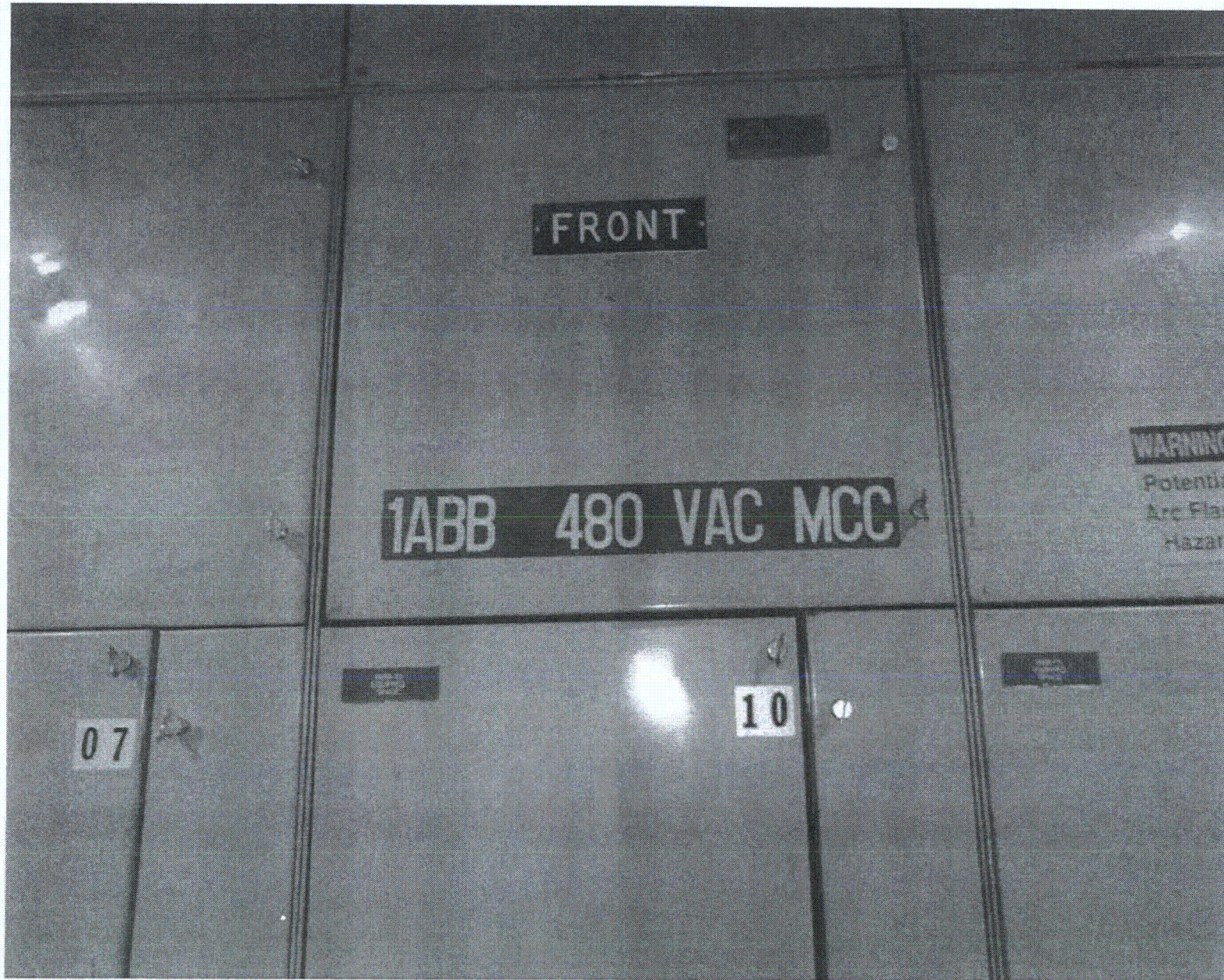
NO ADVERSE CONDITIONS WERE FOUND

Comments (Additional pages may be added as necessary)

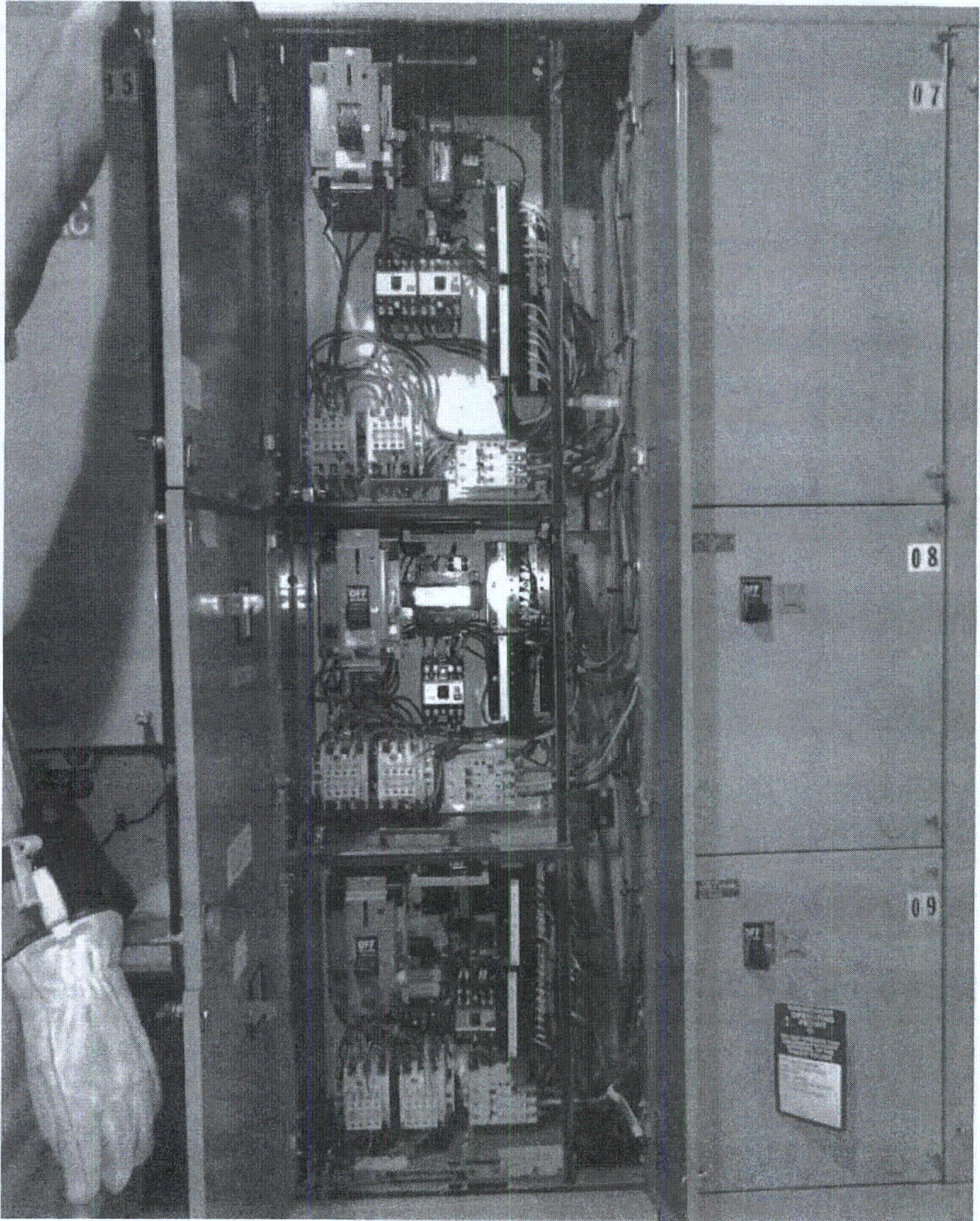
NONE

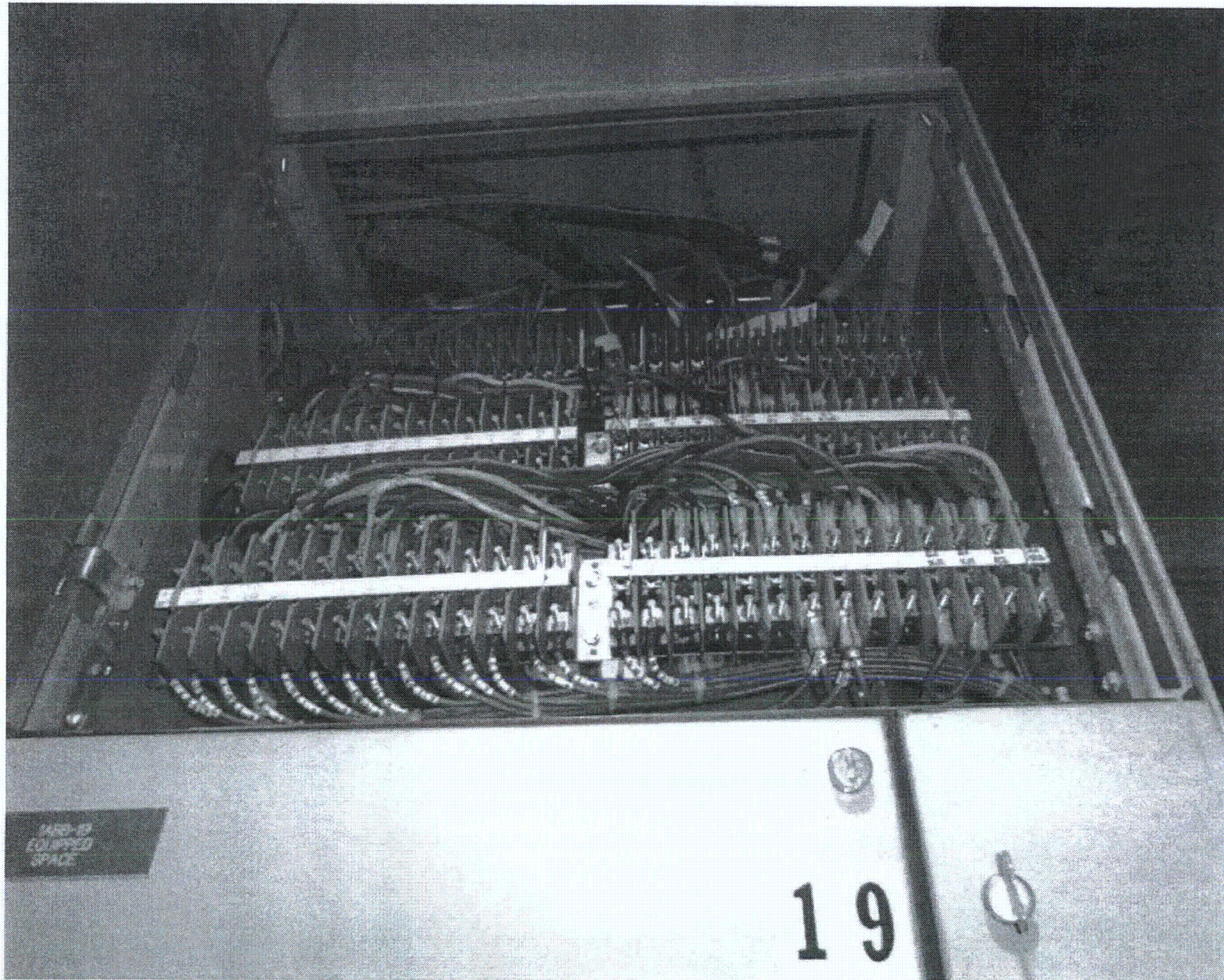
Evaluated by: JUSTO S. CHACON / [Signature] Date: 9/27/12

[Signature] / José R. Hernández 9/27/12









Sheet 1 of 2
 Status: Y N U

Seismic Walkdown Checklist (SWC)

Equipment ID No: 1-1805-S3-BBB Equip. Class¹² 1
 Equipment Description: 480 V MOT Control CTR 1BAB
 Location: Bldg: A0x Floor El. 220-0' Room, Area R116
 Manufacturer, Model, Etc. (optional but recommended) _____

Instructions for Completing Checklist

This checklist may be used to document the results of the Seismic Walkdown of an item of equipment on the SWEL. The space below each of the following questions may be used to record the results of judgments and findings. Additional space is provided at the end of this checklist for documenting other comments.

Anchorage

1. Is the anchorage configuration verification required (i.e., is the item one of the 50% of SWEL items requiring such verification)? Y N U

2. Is the anchorage free of bent, broken, missing or loose hardware? Y N U N/A
*MOT Control CTR base stitch weld to emb. channels
 DWG 1X3AC03-01394 V.7.0*

3. Is the anchorage free of corrosion that is more than mild surface oxidation? Y N U N/A

4. Is the anchorage free of visible cracks in the concrete near the anchors? Y N U N/A

5. Is the anchorage configuration consistent with plant documentation? Y N U N/A
 (Note: This question only applies if the item is one of the 50% for which an anchorage configuration verification is required.)
Dwg. 1X3AC03-01394 Ver. 7.0

6. Based on the above anchorage evaluations, is the anchorage free of potentially adverse seismic conditions? Y N U

¹² Enter the equipment class name from Appendix B: Classes of Equipment.

Seismic Walkdown Checklist (SWC)

Equipment ID No. 1-1805-S3-BBB Equip. Class¹² 1

Equipment Description 4P0 V NOT Control CTR BBB

Interaction Effects

7. Are soft targets free from impact by nearby equipment or structures? Y N U N/A

8. Are overhead equipment, distribution systems, ceiling tiles and lighting, and masonry block walls not likely to collapse onto the equipment? Y N U N/A

9. Do attached lines have adequate flexibility to avoid damage? Y N U N/A

10. Based on the above seismic interaction evaluations, is equipment free of potentially adverse seismic interaction effects? Y N U

Other Adverse Conditions

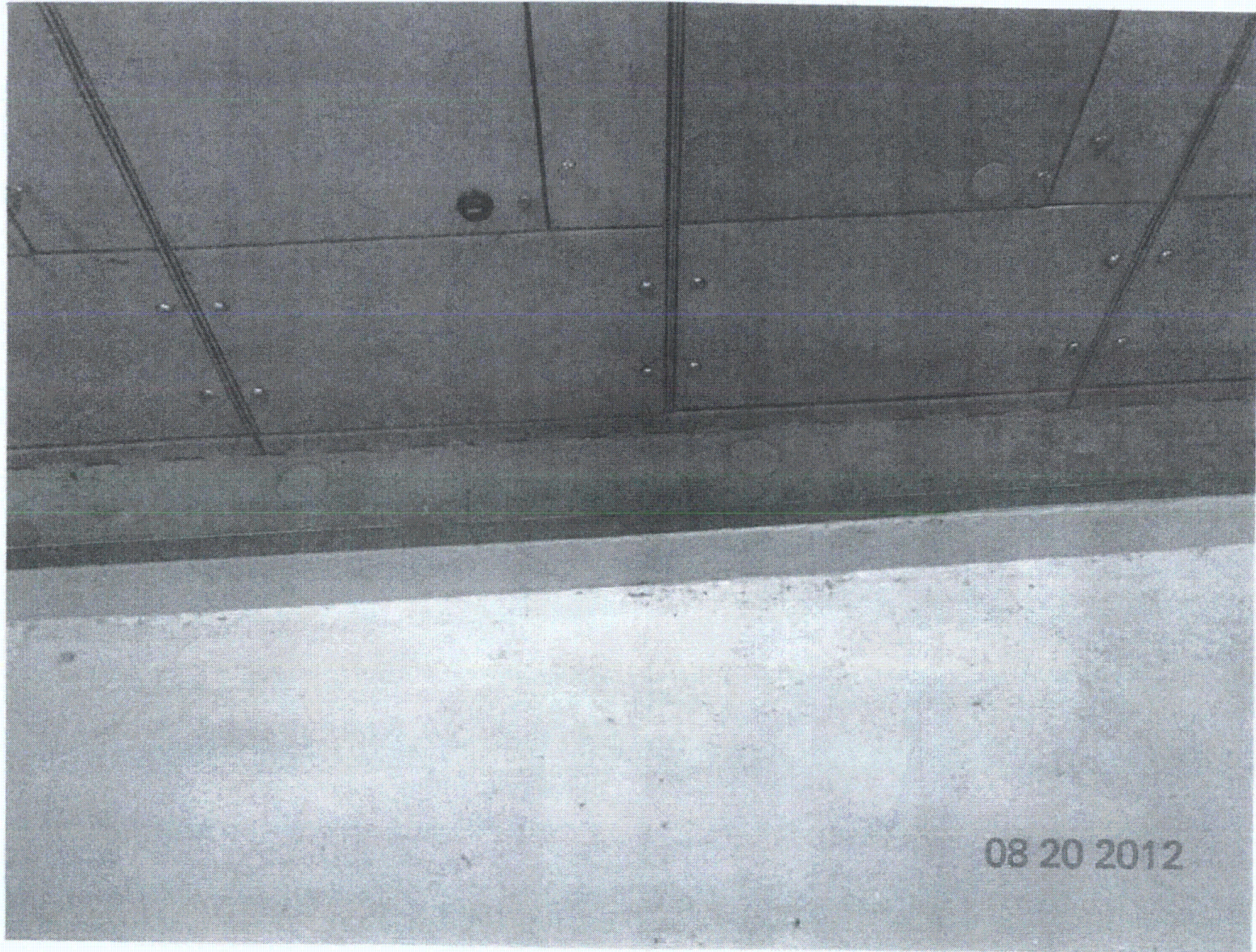
11. Have you looked for and found no other seismic conditions that could adversely affect the safety functions of the equipment? Y N U

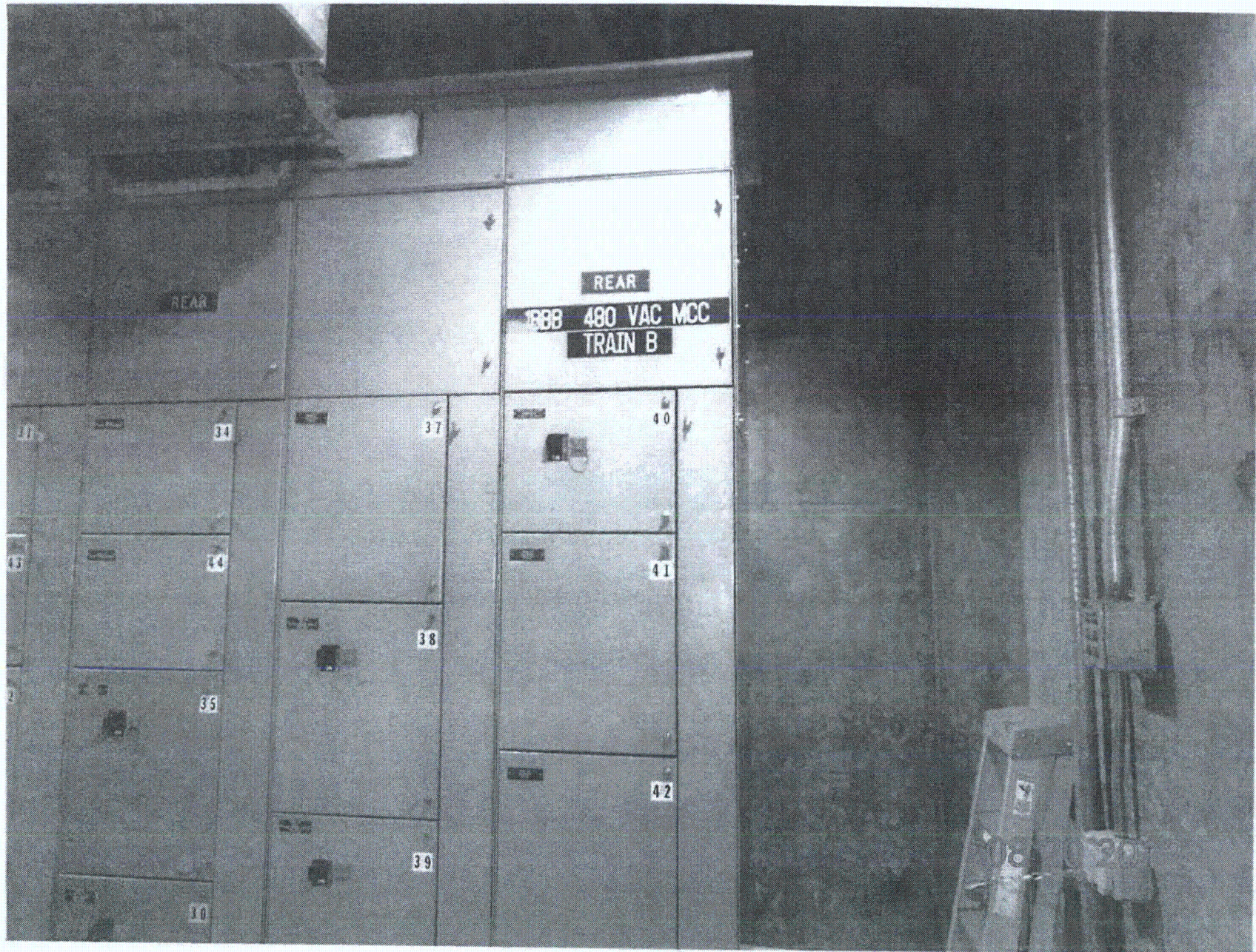
Comments (Additional pages may be added as necessary)

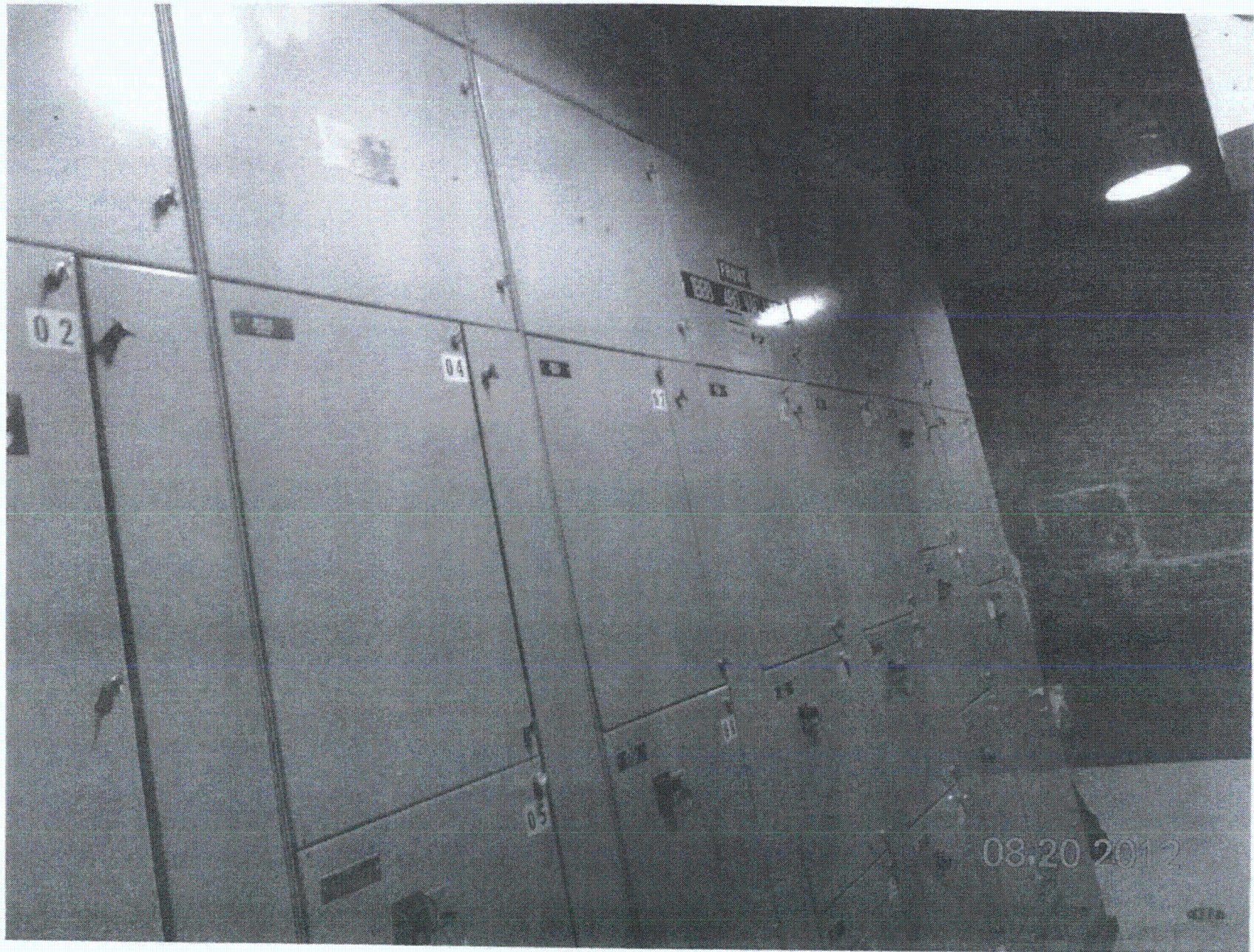
None

Evaluated by: Frank Yao / J. G. G. Date: 8/20/12

PARIMAL GANDHI / P. Gandhi 8/20/2012







Seismic Walkdown Checklist (SWC)

Equipment ID No. 1-1805-53-155B Equip. Class¹² 1

Equipment Description 480V Motor Control Cabinet 155B

Location: Bldg. Aux Floor El. 220'-0" Room, Area R116

Manufacturer, Model, Etc. (optional but recommended) _____

Instructions for Completing Checklist

This checklist may be used to document the results of the Seismic Walkdown of an item of equipment on the SWEL. The space below each of the following questions may be used to record the results of judgments and findings. Additional space is provided at the end of this checklist for documenting other comments.

Anchorage (see SWC dated 8/20/12)

1. Is the anchorage configuration verification required (i.e., is the item one of the 50% of SWEL items requiring such verification)? Y N

2. Is the anchorage free of bent, broken, missing or loose hardware? Y N U N/A

3. Is the anchorage free of corrosion that is more than mild surface oxidation? Y N U N/A

4. Is the anchorage free of visible cracks in the concrete near the anchors? Y N U N/A

5. Is the anchorage configuration consistent with plant documentation? Y N U N/A
 (Note: This question only applies if the item is one of the 50% for which an anchorage configuration verification is required.)

6. Based on the above anchorage evaluations, is the anchorage free of potentially adverse seismic conditions? Y N U

¹² Enter the equipment class name from Appendix B: Classes of Equipment.

Seismic Walkdown Checklist (SWC)

Equipment ID No. 1-1905-53-333 Equip. Class¹² 1

Equipment Description: 480V Motor Control Cabinet 1333

Interaction Effects (See SWC dated 8/20/12)

- 7. Are soft targets free from impact by nearby equipment or structures? Y N U N/A
- 8. Are overhead equipment, distribution systems, ceiling tiles and lighting, and masonry block walls not likely to collapse onto the equipment? Y N U N/A
- 9. Do attached lines have adequate flexibility to avoid damage? Y N U N/A
- 10. Based on the above seismic interaction evaluations, is equipment free of potentially adverse seismic interaction effects? Y N U

Other Adverse Conditions

11. Have you looked for and found no other seismic conditions that could adversely affect the safety functions of the equipment? Y N U
 A visual inspection of the internal components of this cabinet was performed to check for seismic adequacy to include any evidence of internal components not adequately secured, checked to ensure fasteners connecting adjacent cabinets were in place, and evidence of other adverse seismic conditions. No significant adverse conditions were found. Some minor issues found are documented on the "Comments" section.

Comments (Additional pages may be added as necessary)

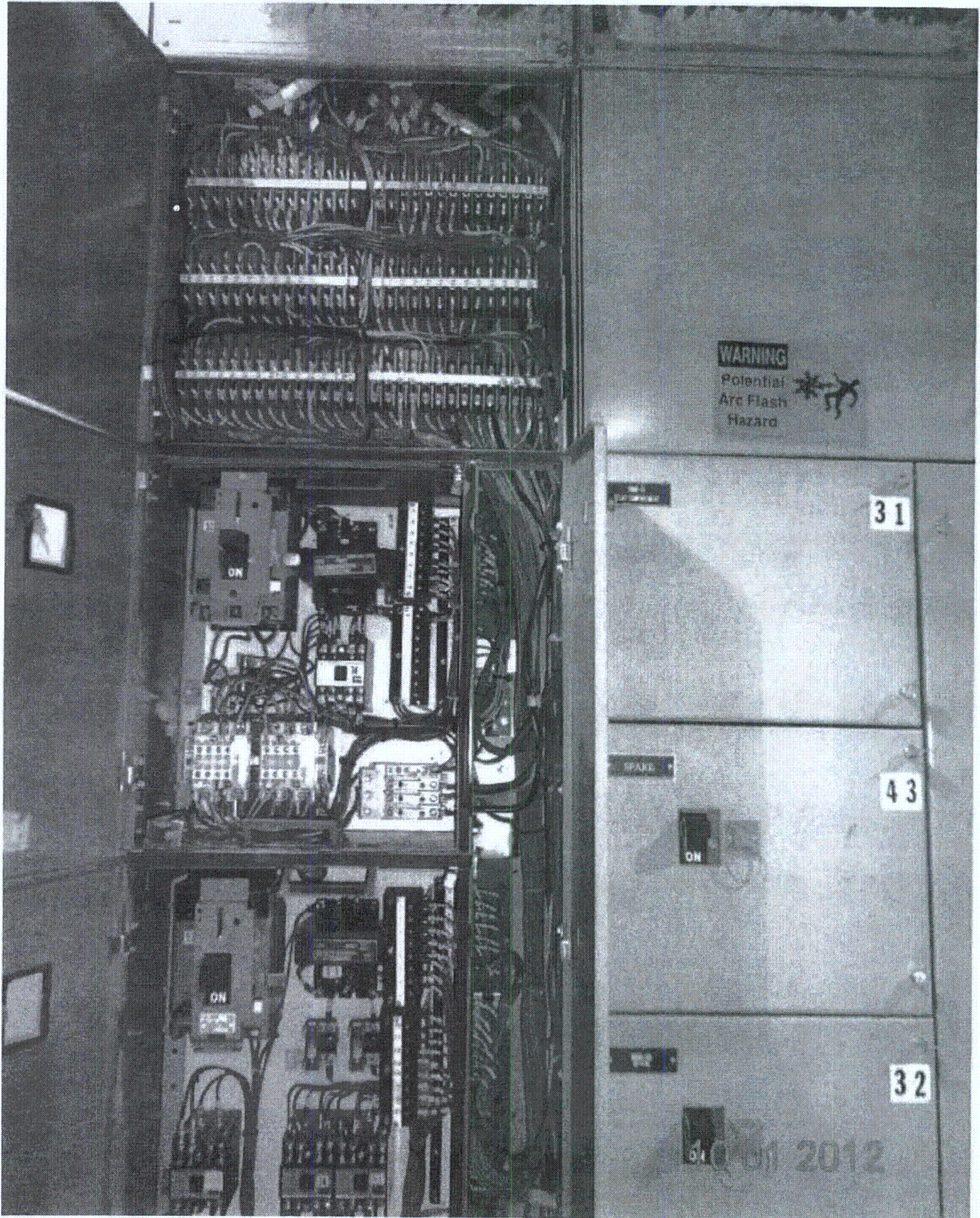
Found some missing and loose screws to secure terminal blocks and cover plates. It was judged that these conditions do not represent a seismic or operability concern. Condition report 528395 was generated.

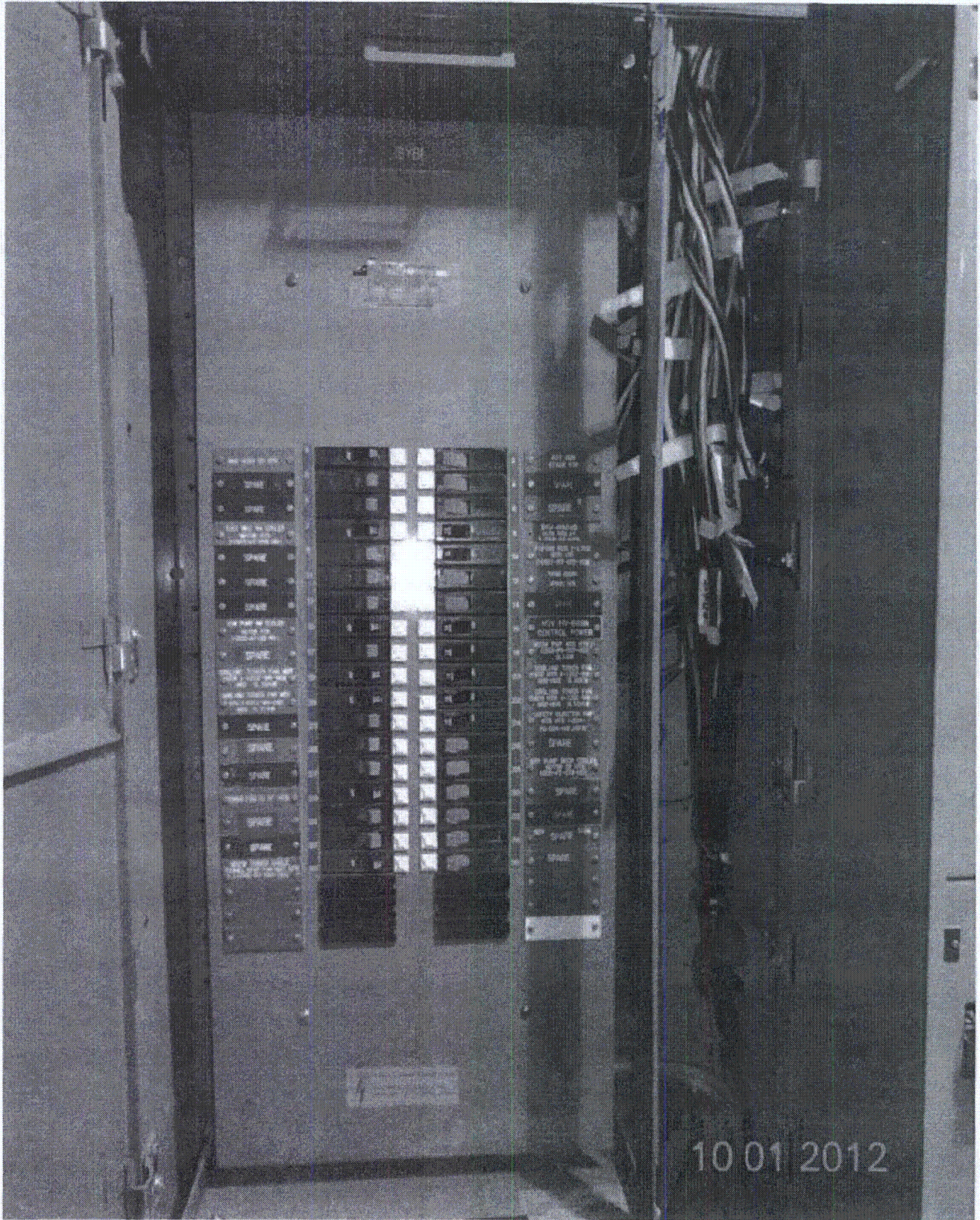
Evaluated by: [Signature] / Jose R. Hernandez Date: 10/01/12

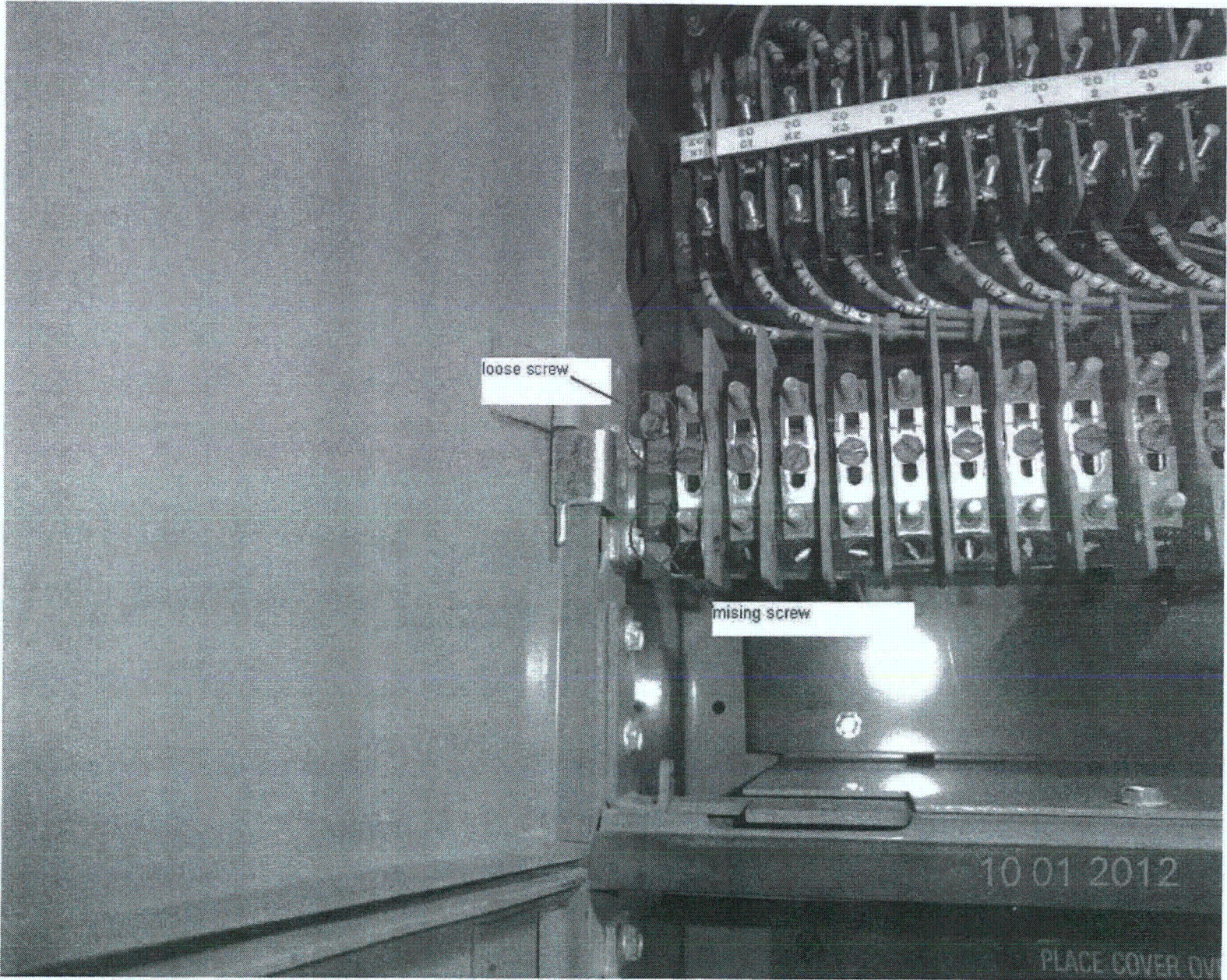
[Signature] / Justo S. Chacon 10/01/12

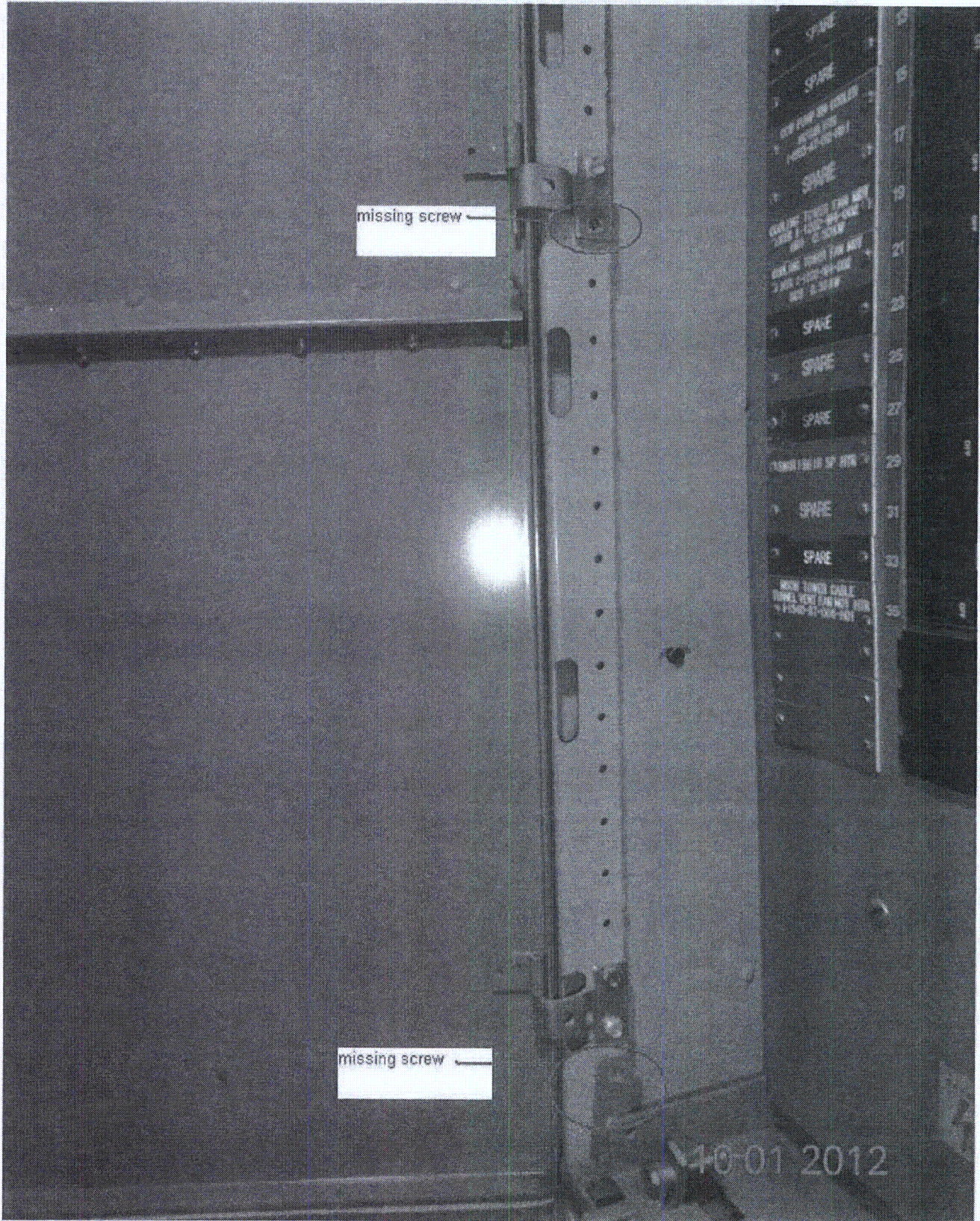
<C4>

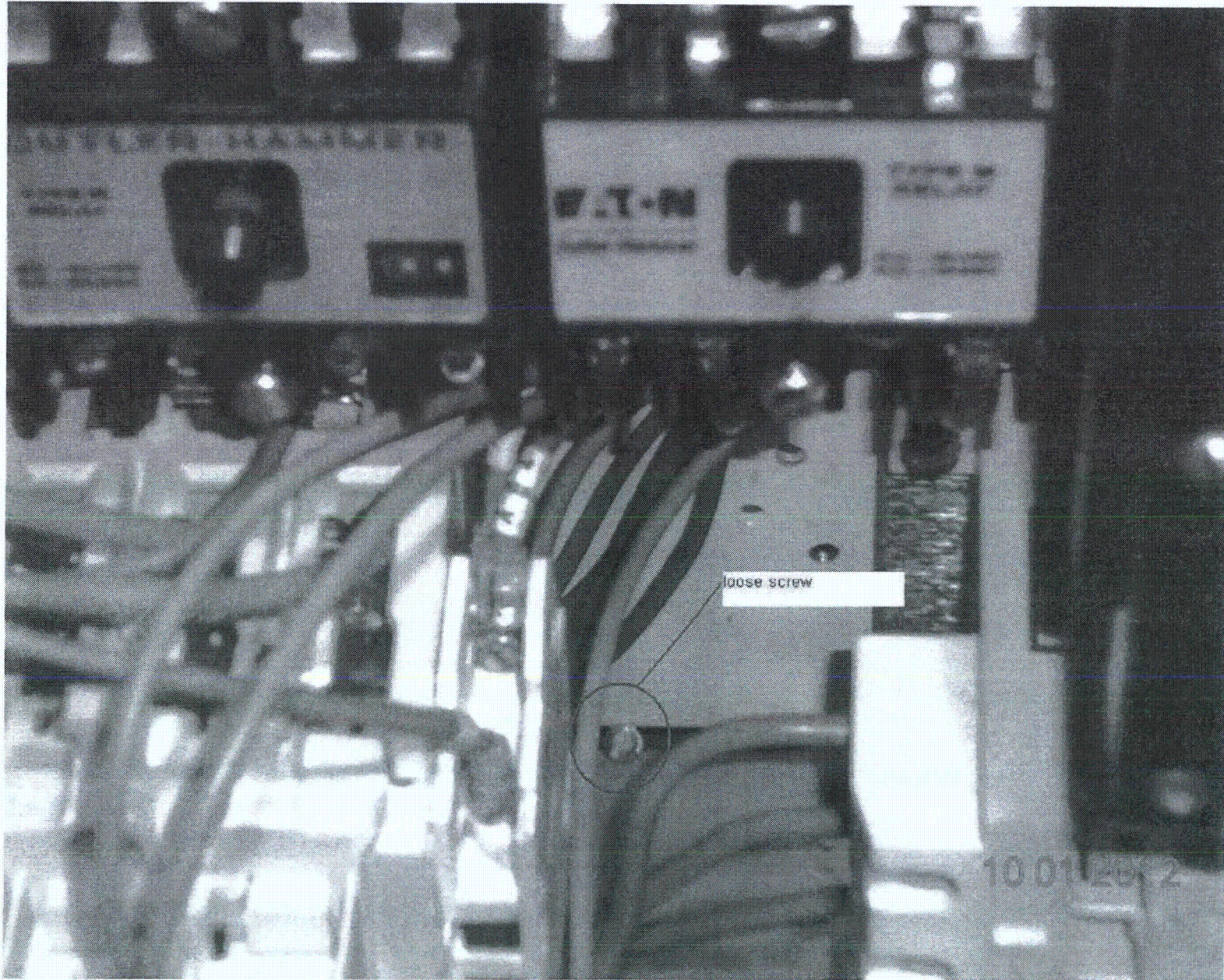












Seismic Walkdown Checklist (SWC)

Equipment ID No. 1-1805-53-RHR2A Equip. Class¹² IG (BATTERY CHARGES & INVERT)

Equipment Description STARTER / RHR HV-8702A

Location: Bldg. CONTROL Floor El. 180'-0" Room, Area R43

Manufacturer, Model, Etc. (optional but recommended) _____

Instructions for Completing Checklist

This checklist may be used to document the results of the Seismic Walkdown of an item of equipment on the SWEL. The space below each of the following questions may be used to record the results of judgments and findings. Additional space is provided at the end of this checklist for documenting other comments.

Anchorage

1. Is the anchorage configuration verification required (i.e., is the item one of the 50% of SWEL items requiring such verification)? Y N

2. Is the anchorage free of bent, broken, missing or loose hardware? Y N U N/A

3. Is the anchorage free of corrosion that is more than mild surface oxidation? Y N U N/A

4. Is the anchorage free of visible cracks in the concrete near the anchors? Y N U N/A

5. Is the anchorage configuration consistent with plant documentation? Y N U N/A
 (Note: This question only applies if the item is one of the 50% for which an anchorage configuration verification is required.)
Not within 50% sample

6. Based on the above anchorage evaluations, is the anchorage free of potentially adverse seismic conditions? Y N U
Refer to SEWS, Sh. 2 also.

¹² Enter the equipment class name from Appendix B: Classes of Equipment:

Seismic Walkdown Checklist (SWC)

Equipment ID No. 1-1805-53-RHR2A Equip. Class¹² 16 (BATTERY CHARGES & INVERT.)

Equipment Description STARTER / RHR HV-8702A

Interaction Effects

7. Are soft targets free from impact by nearby equipment or structures? Y N U N/A

8. Are overhead equipment, distribution systems, ceiling tiles and lighting, and masonry block walls not likely to collapse onto the equipment? Y N U N/A

9. Do attached lines have adequate flexibility to avoid damage? Y N U N/A

Panel and conduits are rigidly attached to wall and floor of some structure. No differential deflection expected.

10. Based on the above seismic interaction evaluations, is equipment free of potentially adverse seismic interaction effects? Y N U

Other Adverse Conditions

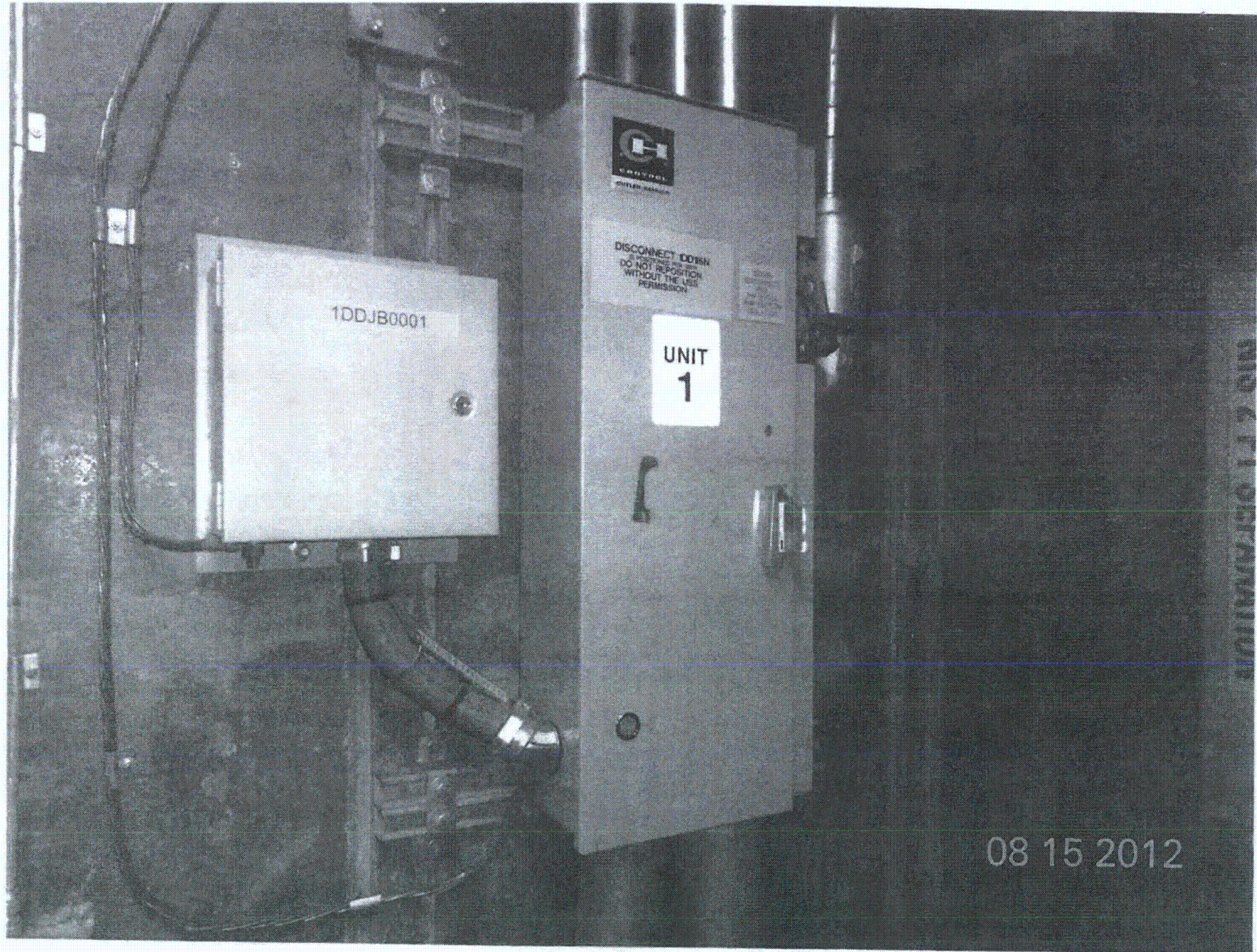
11. Have you looked for and found no other seismic conditions that could adversely affect the safety functions of the equipment? Y N U

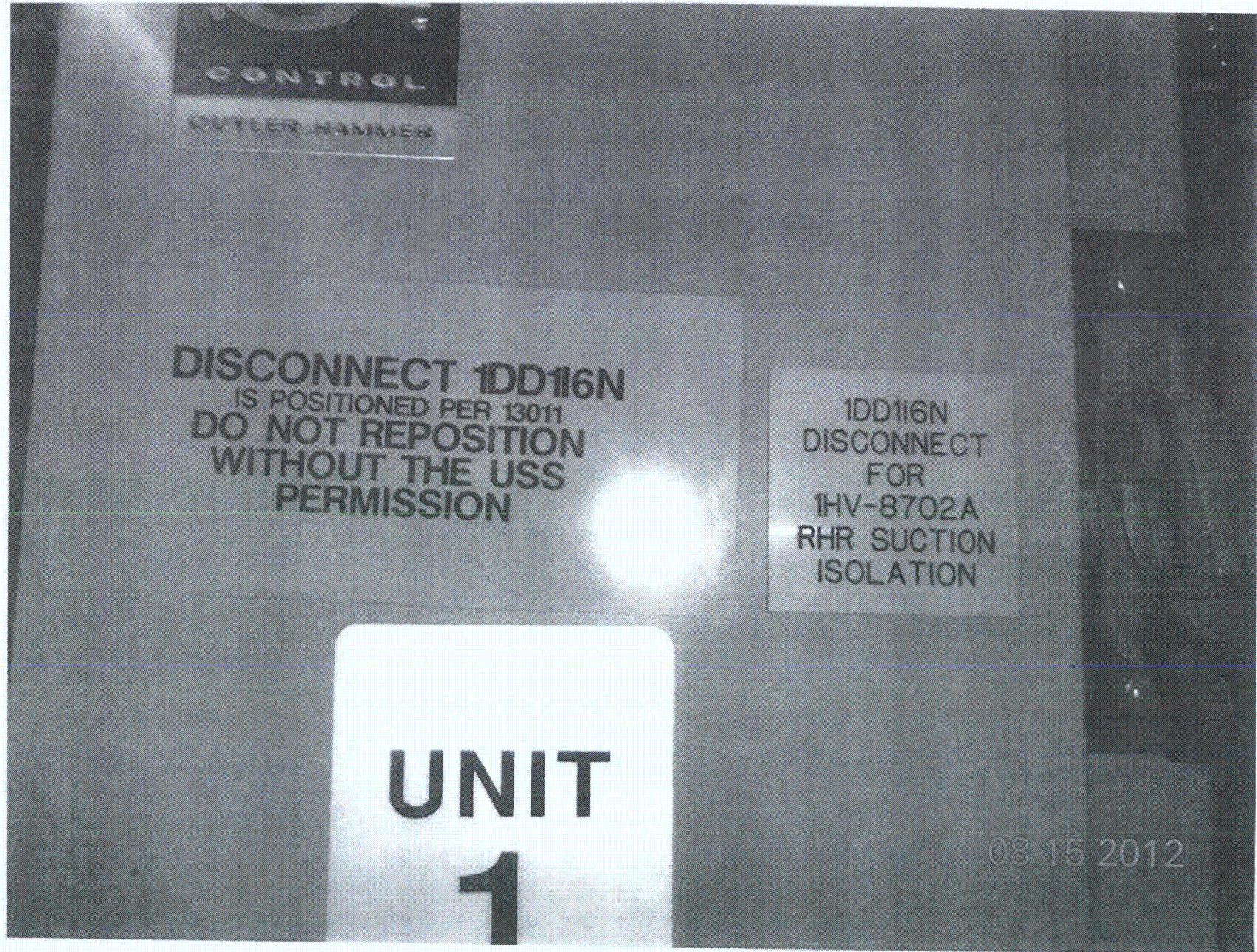
Comments (Additional pages may be added as necessary)

Refer to 1-1805-43-ID6 for Room B48 Area Walkdown Checklist (AWC).

Evaluated by: Matthew Wilkinson Matthew Wilkinson Date: 8/16/2012

David Volodarsky / DAVID VOLODARSKY 8-16-2012





Sheet 1 of 2
Status: Y N U

Seismic Walkdown Checklist (SWC)

Equipment ID No. 1-1805-S3-RHEZA Equip. Class¹²: 16

Equipment Description STARTER / RHE HV-8702A

Location: Bldg. CONTROL Floor El. 180 Room, Area B4B

Manufacturer, Model, Etc. (optional but recommended) _____

Instructions for Completing Checklist

This checklist may be used to document the results of the Seismic Walkdown of an item of equipment on the SWEL. The space below each of the following questions may be used to record the results of judgments and findings. Additional space is provided at the end of this checklist for documenting other comments.

Anchorage (SEE SWC DATED 8/15/12)

- 1. Is the anchorage configuration verification required (i.e., is the item one of the 50% of SWEL items requiring such verification)? Y N
- 2. Is the anchorage free of bent, broken, missing or loose hardware? Y N U N/A
- 3. Is the anchorage free of corrosion that is more than mild surface oxidation? Y N U N/A
- 4. Is the anchorage free of visible cracks in the concrete near the anchors? Y N U N/A
- 5. Is the anchorage configuration consistent with plant documentation? Y N U N/A
(Note: This question only applies if the item is one of the 50% for which an anchorage configuration verification is required.)
- 6. Based on the above anchorage evaluations, is the anchorage free of potentially adverse seismic conditions? Y N U

¹² Enter the equipment class name from Appendix B: Classes of Equipment.

Seismic Walkdown Checklist (SWC)

Equipment ID No. 1-1805-53-RHE2A Equip. Class¹² 16

Equipment Description STARTER / RHR HV-8702A

Interaction Effects (SEE SWC DATED 8/15/12)

7. Are soft targets free from impact by nearby equipment or structures? Y N U N/A

8. Are overhead equipment, distribution systems, ceiling tiles and lighting, and masonry block walls not likely to collapse onto the equipment? Y N U N/A

9. Do attached lines have adequate flexibility to avoid damage? Y N U N/A

10. Based on the above seismic interaction evaluations, is equipment free of potentially adverse seismic interaction effects? Y N U

Other Adverse Conditions

11. Have you looked for and found no other seismic conditions that could adversely affect the safety functions of the equipment? Y N U

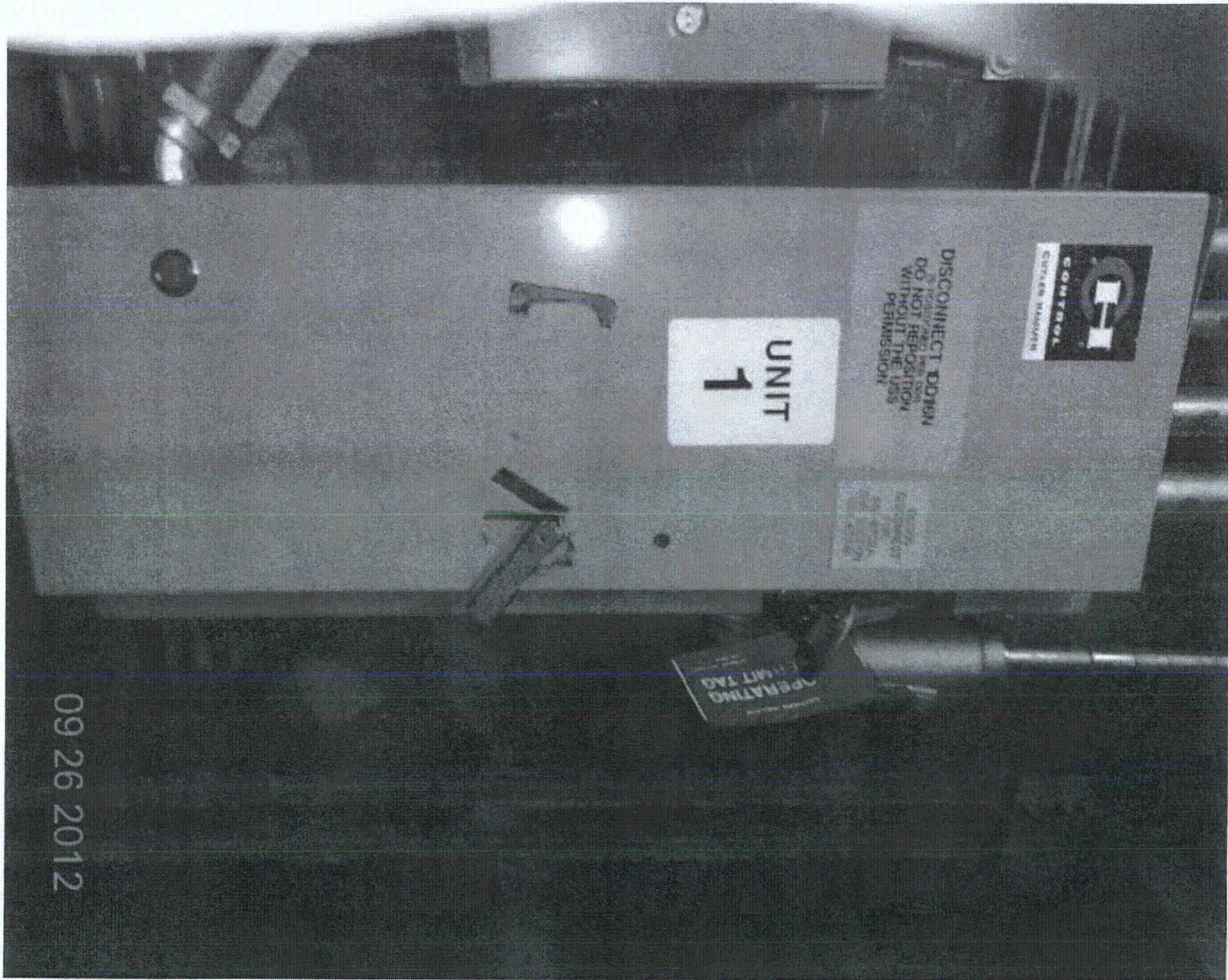
VISUAL INSPECTION OF THE INTERNAL COMPONENTS OF THIS CABINET WAS PERFORMED TO CHECK FOR SEISMIC ADEQUACY TO INCLUDE ANY EVIDENCE OF INTERNAL COMPONENTS NOT ADEQUATELY SECURED, CHECKED TO ENSURE FASTENERS CONNECTING ADJACENT CABINETS WERE IN PLACE, AND EVIDENCE OF OTHER ADVERSE SEISMIC CONDITIONS. NO ADVERSE CONDITIONS WERE FOUND.

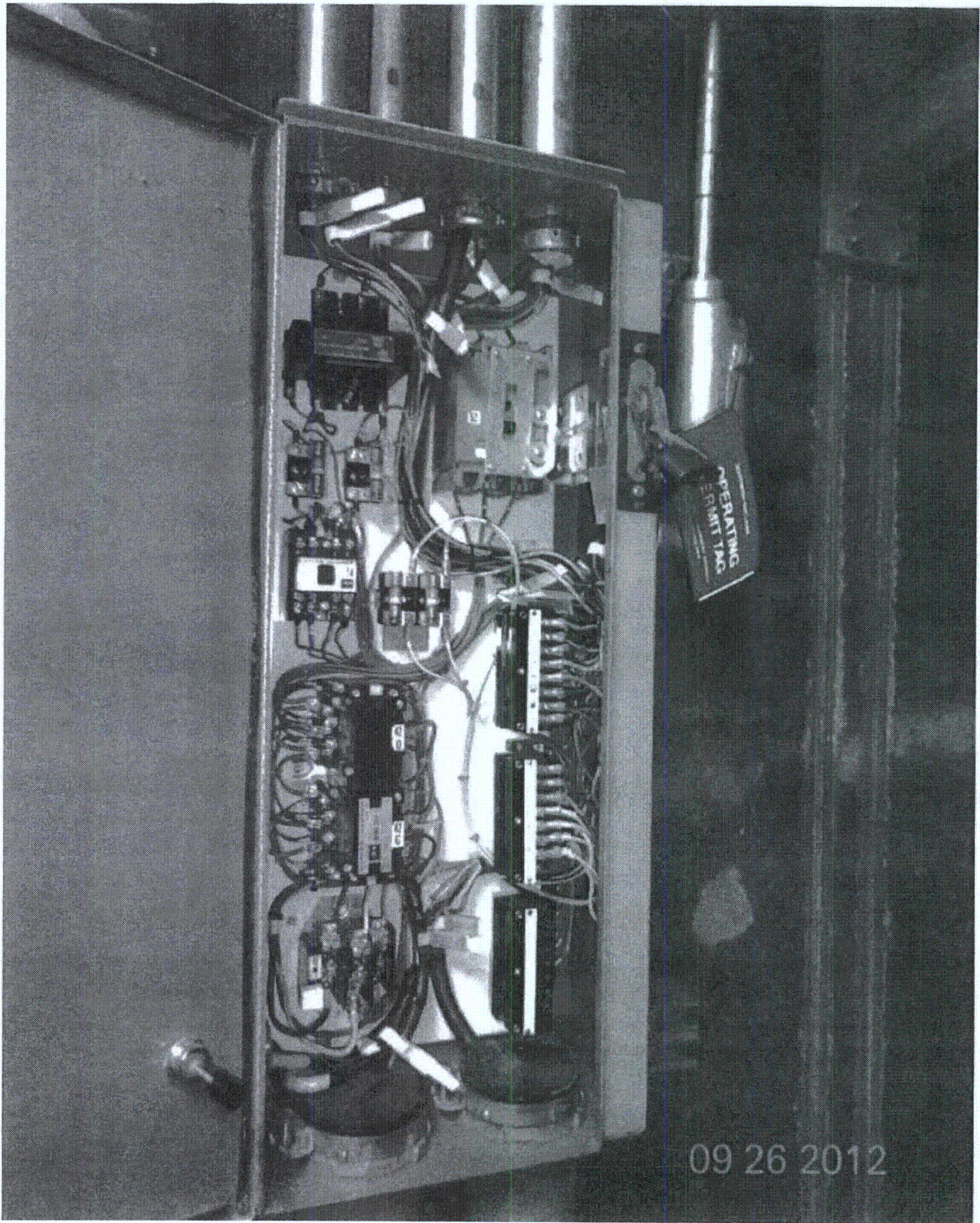
Comments (Additional pages may be added as necessary)

NONE

Evaluated by: JUSTO S. CHACON / [Signature] Date: 9/26/12

[Signature] / José R. Hernández 9/26/12





Sheet 1 of 2
 Status: Y N U

Seismic Walkdown Checklist (SWC)

Equipment ID No. 1-1805-Y3-1D6 Equip. Class¹² 16 (BATTERY CHARGES & INVERTERS)
 Equipment Description RHR ISOLATION VALVE 480V 3-PHASE INVERTER
 Location: Bldg. CONTROL Floor El. 180' Room, Area RB48
 Manufacturer, Model, Etc. (optional but recommended) AMETEK

Instructions for Completing Checklist

This checklist may be used to document the results of the Seismic Walkdown of an item of equipment on the SWEL. The space below each of the following questions may be used to record the results of judgments and findings. Additional space is provided at the end of this checklist for documenting other comments.

Anchorage

1. Is the anchorage configuration verification required (i.e., is the item one of the 50% of SWEL items requiring such verification)? Y N U
2. Is the anchorage free of bent, broken, missing or loose hardware? Y N U N/A
3. Is the anchorage free of corrosion that is more than mild surface oxidation? Y N U N/A
4. Is the anchorage free of visible cracks in the concrete near the anchors? Y N U N/A
WELDED CONNECTION TO EMBEDDED STEEL

5. Is the anchorage configuration consistent with plant documentation? Y N U N/A
 (Note: This question only applies if the item is one of the 50% for which an anchorage configuration verification is required.)
IX3AQ03B-00027, VER. 1.0

6. Based on the above anchorage evaluations, is the anchorage free of potentially adverse seismic conditions? Y N U
MINOR CONCRETE DEGRADATION AT CORNERS OF PAD BENEATH EMBEDDED CHANNELS - NOT AN ADVERSE CONDITION SINCE EQUIPMENT IS BEARING ADEQUATELY ON PAD AND LOAD PATH TO FLOOR IS NOT AFFECTED.

¹² Enter the equipment class name from Appendix B: Classes of Equipment.

Seismic Walkdown Checklist (SWC)

Equipment ID No. 1-1805-Y3-ID6 Equip. Class¹² 16 (BATTERY CHARGERS/INVERTERS)

Equipment Description RHR ISOLATION VALVE 480V 3 PHASE INVERTER

Interaction Effects

- 7. Are soft targets free from impact by nearby equipment or structures? Y N U N/A

- 8. Are overhead equipment, distribution systems, ceiling tiles and lighting, and masonry block walls not likely to collapse onto the equipment? Y N U N/A

- 9. Do attached lines have adequate flexibility to avoid damage? Y N U N/A

- 10. Based on the above seismic interaction evaluations, is equipment free of potentially adverse seismic interaction effects? Y N U

Other Adverse Conditions

- 11. Have you looked for and found no other seismic conditions that could adversely affect the safety functions of the equipment? Y N U

Comments (Additional pages may be added as necessary)

NONE

Evaluated by: David Volodarsky DAVID VOLODARSKY Date: 8/16/2012
Matthew Wilkinson Matthew Wilkinson 8/16/2012

