

Sheet 1 of 2
 Status: Y N U

Seismic Walkdown Checklist (SWC)

Equipment ID No. I-1605-95-SPB Equip. Class¹² ZO

Equipment Description SOLID STATE PROT SYS CAR-TEN B

Location: Bldg. CONTROL Floor El. 220 Room, Area 165

Manufacturer, Model, Etc. (optional but recommended) _____

Instructions for Completing Checklist

This checklist may be used to document the results of the Seismic Walkdown of an item of equipment on the SWEL. The space below each of the following questions may be used to record the results of judgments and findings. Additional space is provided at the end of this checklist for documenting other comments.

Anchorage (SEE SWC DATED 8/20/12)

1. Is the anchorage configuration verification required (i.e., is the item one of the 50% of SWEL items requiring such verification)? Y N

2. Is the anchorage free of bent, broken, missing or loose hardware? Y N U N/A

3. Is the anchorage free of corrosion that is more than mild surface oxidation? Y N U N/A

4. Is the anchorage free of visible cracks in the concrete near the anchors? Y N U N/A

5. Is the anchorage configuration consistent with plant documentation? Y N U N/A
 (Note: This question only applies if the item is one of the 50% for which an anchorage configuration verification is required.)

6. Based on the above anchorage evaluations, is the anchorage free of potentially adverse seismic conditions? Y N U

¹² Enter the equipment class name from Appendix B: Classes of Equipment.

Seismic Walkdown Checklist (SWC)

Equipment ID No. 1-1605-Q5-SPE Equip. Class¹² 20

Equipment Description SOLID STATE PROT SYS CAB - TRN B

Interaction Effects (SEE SWC DATED 8/20/12)

7. Are soft targets free from impact by nearby equipment or structures? Y N U N/A

8. Are overhead equipment, distribution systems, ceiling tiles and lighting, and masonry block walls not likely to collapse onto the equipment? Y N U N/A

9. Do attached lines have adequate flexibility to avoid damage? Y N U N/A

10. Based on the above seismic interaction evaluations, is equipment free of potentially adverse seismic interaction effects? Y N U

Other Adverse Conditions

11. Have you looked for and found no other seismic conditions that could adversely affect the safety functions of the equipment? Y N U

A VISUAL INSPECTION OF THE INTERNAL COMPONENTS OF THIS CABINET WAS PERFORMED TO CHECK FOR SEISMIC ADEQUACY TO INCLUDE ANY EVIDENCE OF INTERNAL COMPONENTS NOT ADEQUATELY SECURED, CHECKED TO ENSURE FASTENERS CONNECTING ADJACENT CABINETS WERE IN PLACE, AND EVIDENCE OF OTHER SEISMIC CONDITIONS. NO SIGNIFICANT ADVERSE CONDITIONS WERE FOUND. SOME MINOR ISSUES ARE DOCUMENTED IN THE "COMMENTS" SECTION BELOW.

Comments (Additional pages may be added as necessary)

FOUND MISSING 1/2 LOOSE SCREWS USED TO SECURE PROTECTIVE COVERS, TERMINAL BLOCKS, 1/2 ALSO A CRACKED CABLE TRAY INSIDE THE CABINET. THE SEISMIC WALKDOWN TEAM JUDGED THAT THIS CONDITION DOES NOT REPRESENT A SEISMIC OR OPERABILITY CONCERN. THESE CONDITIONS WERE REPORTED UNDER CR 527627

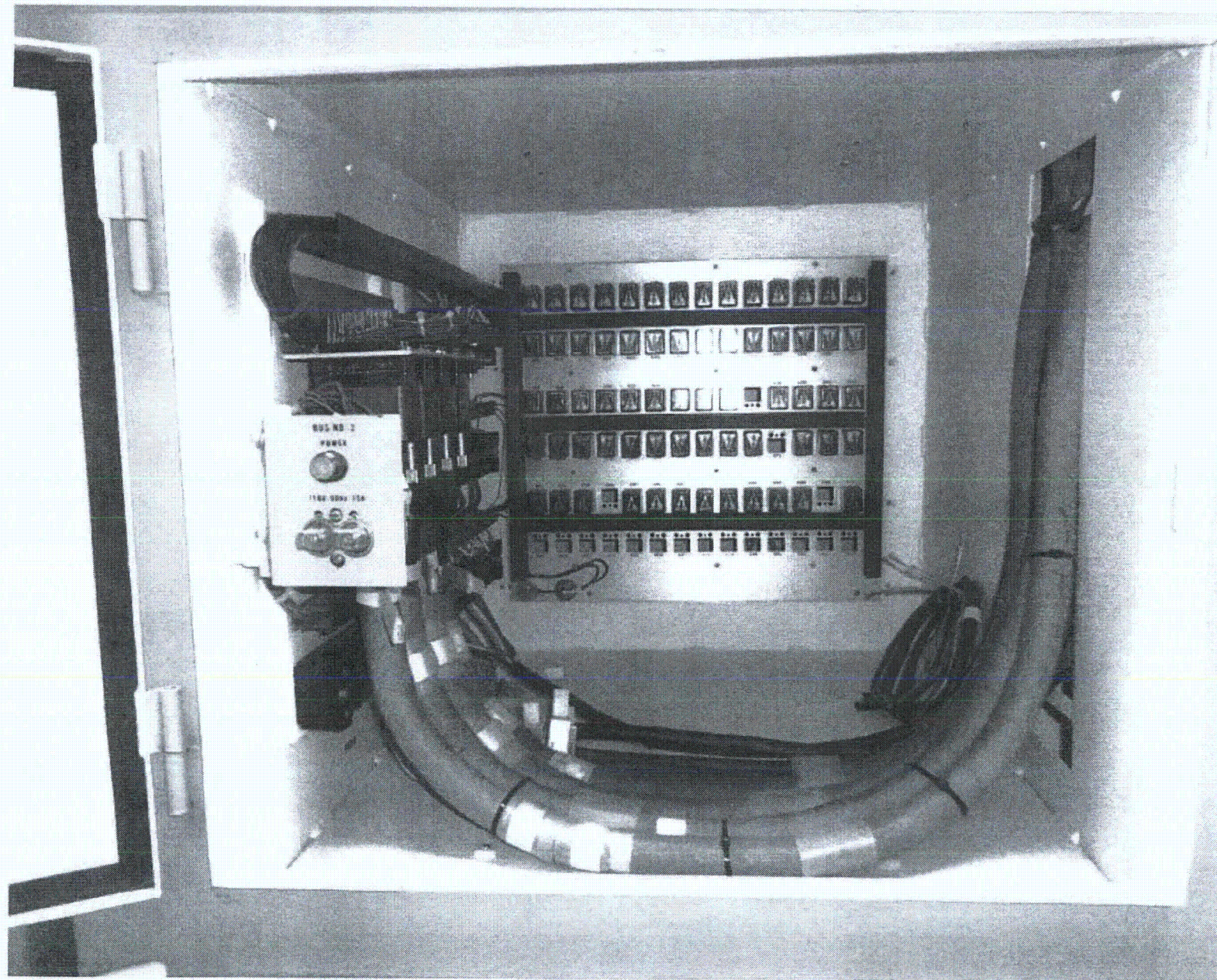
Evaluated by: Justo S. Chacon Date: 9/28/12

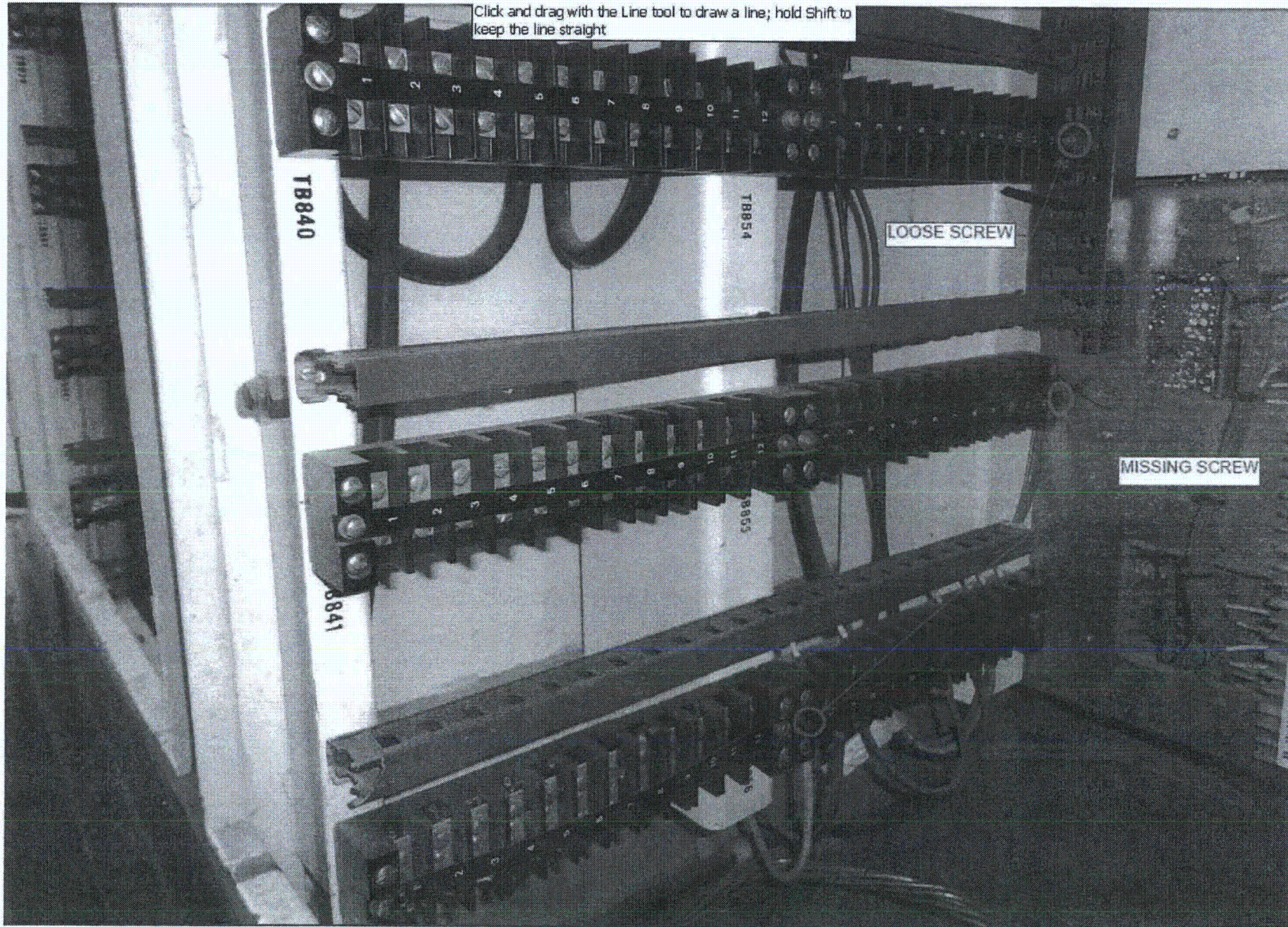
José R. Hernández 9/28/12

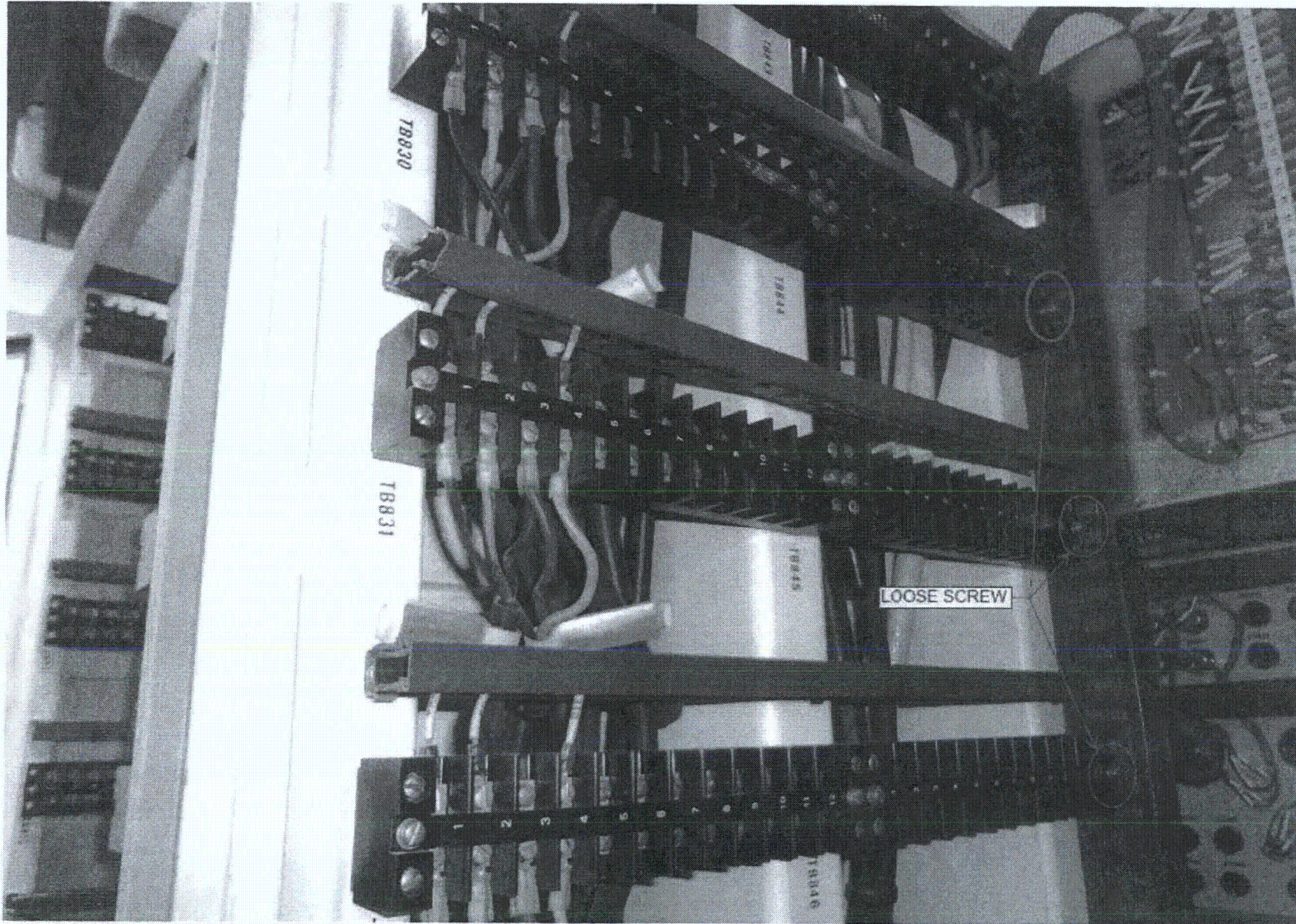
<C4>

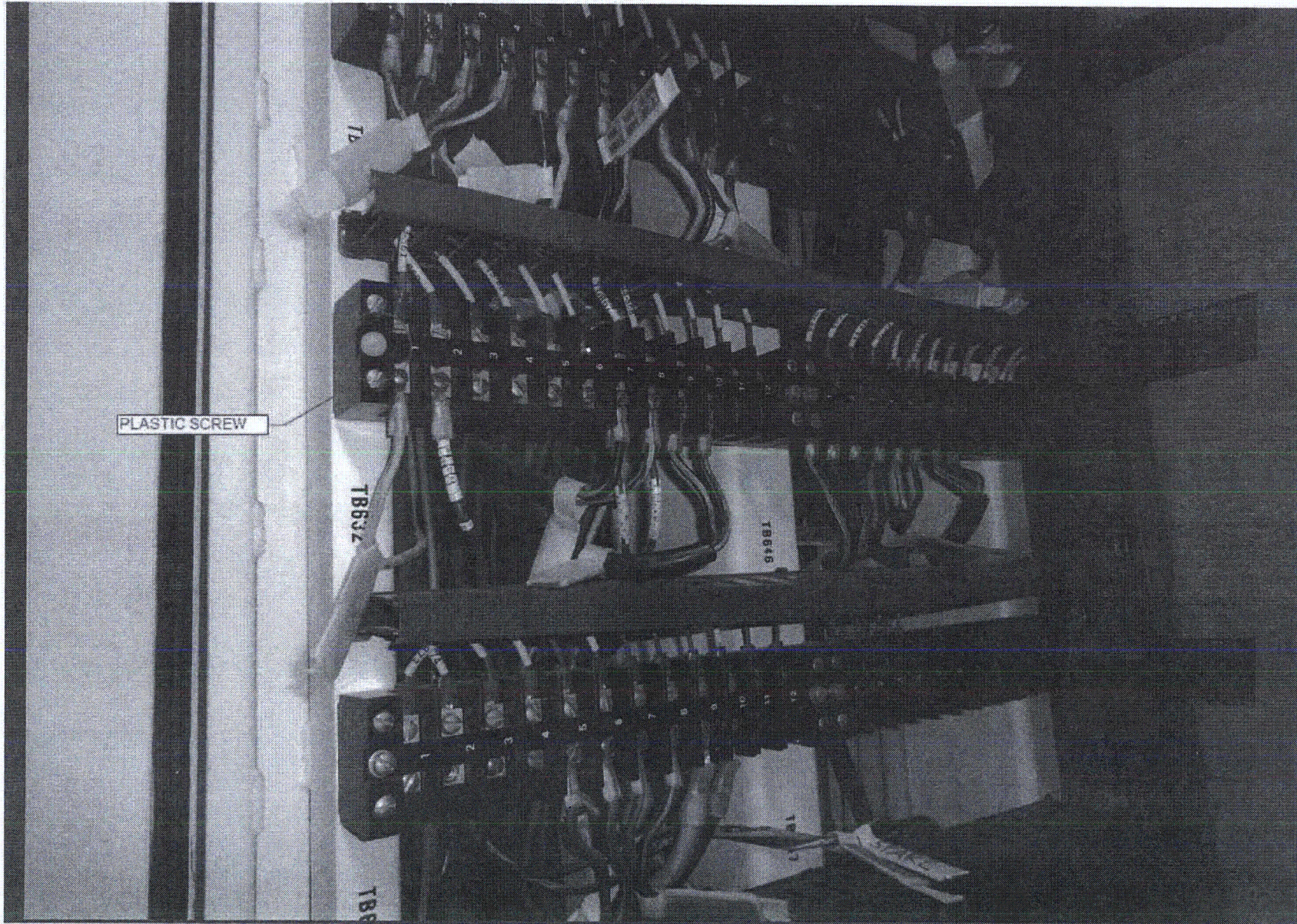


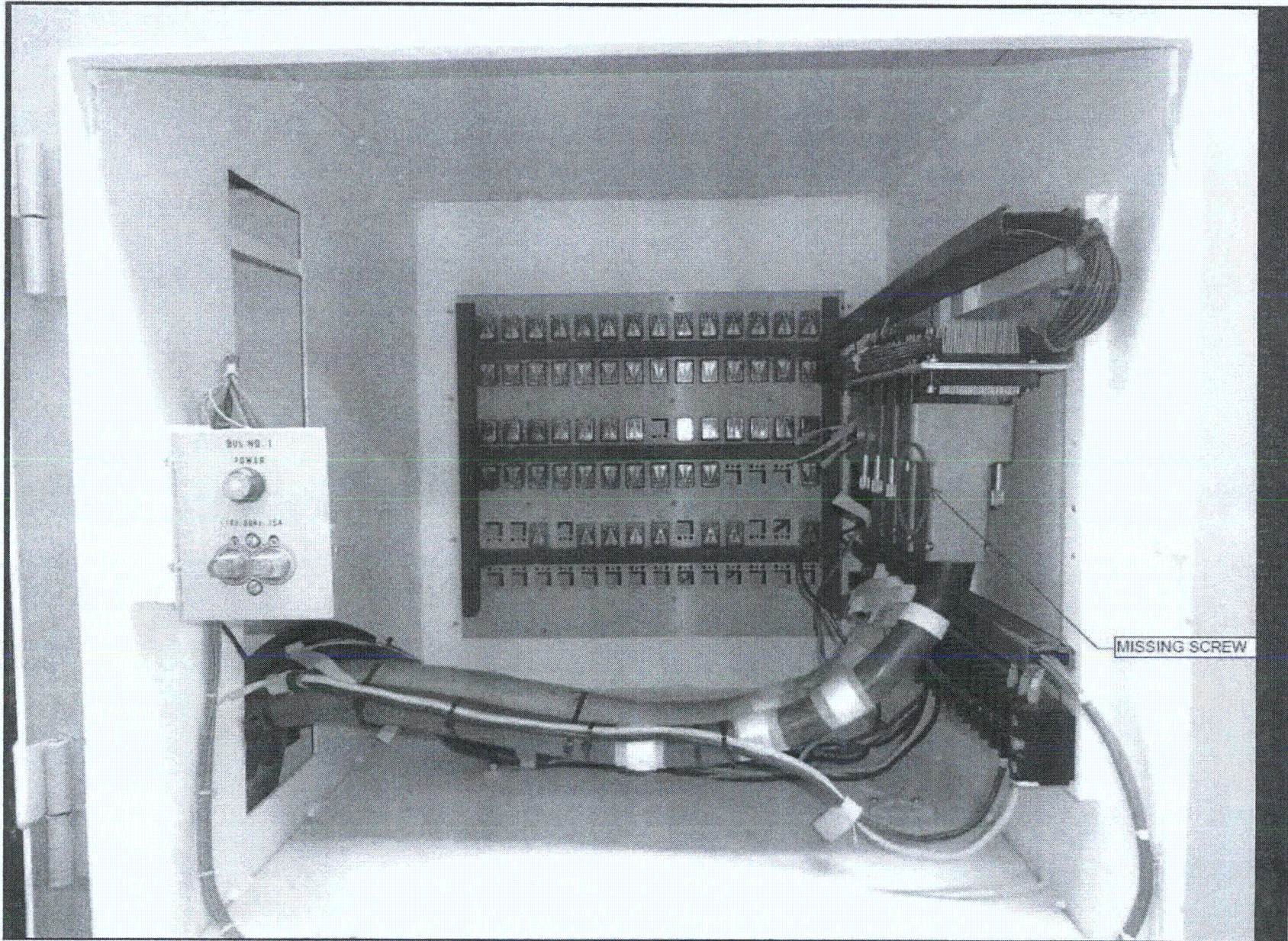


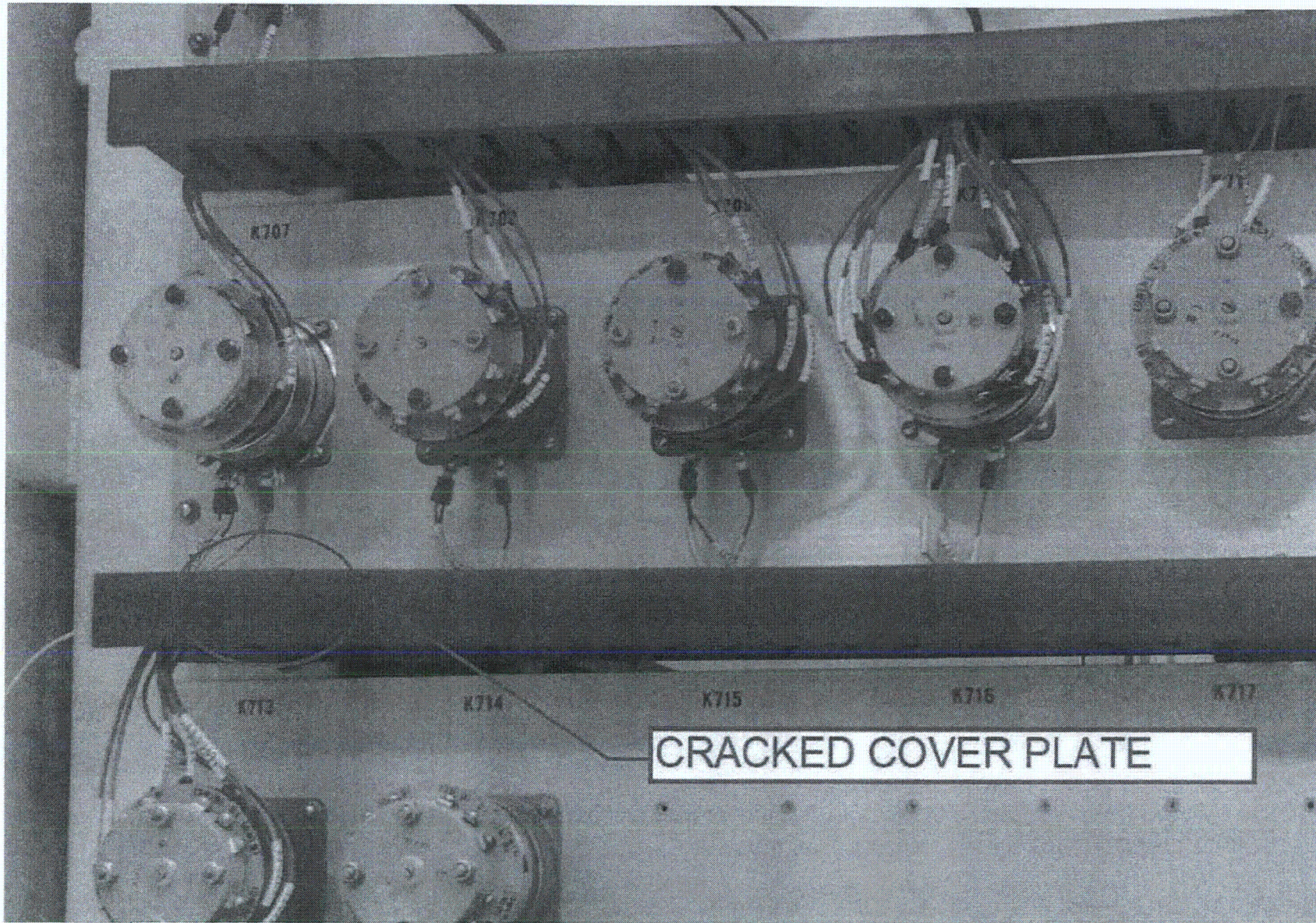












Seismic Walkdown Checklist (SWC)

Equipment ID No: 1-1623-D5-006A Equip. Class¹² 20

Equipment Description DISPLAY PROCESSING UNIT A

Location: Bldg. CONTROL Floor El. 200' Room, Area RA48

Manufacturer, Model, Etc. (optional but recommended) WESTINGHOUSE

Instructions for Completing Checklist

This checklist may be used to document the results of the Seismic Walkdown of an item of equipment on the SWEL. The space below each of the following questions may be used to record the results of judgments and findings. Additional space is provided at the end of this checklist for documenting other comments.

Anchorage

- 1. Is the anchorage configuration verification required (i.e., is the item one of the 50% of SWEL items requiring such verification)? Y N U

- 2. Is the anchorage free of bent, broken, missing or loose hardware? Y N U N/A

- 3. Is the anchorage free of corrosion that is more than mild surface oxidation? Y N U N/A

- 4. Is the anchorage free of visible cracks in the concrete near the anchors? Y N U N/A

- 5. Is the anchorage configuration consistent with plant documentation? Y N U N/A
 (Note: This question only applies if the item is one of the 50% for which an anchorage configuration verification is required.)
AX2D11A010, ver. 1A.0

- 6. Based on the above anchorage evaluations, is the anchorage free of potentially adverse seismic conditions? Y N U

¹² Enter the equipment class name from Appendix B: Classes of Equipment.

Seismic Walkdown Checklist (SWC)Equipment ID No. 1-1623-D5-006A Equip. Class²² 20Equipment Description DISPLAY PROCESSING UNIT A**Interaction Effects**

7. Are soft targets free from impact by nearby equipment or structures? Y N U N/A
8. Are overhead equipment, distribution systems, ceiling tiles and lighting, and masonry block walls not likely to collapse onto the equipment? Y N U N/A
9. Do attached lines have adequate flexibility to avoid damage? Y N U N/A
10. Based on the above seismic interaction evaluations, is equipment free of potentially adverse seismic interaction effects? Y N U

Other Adverse Conditions

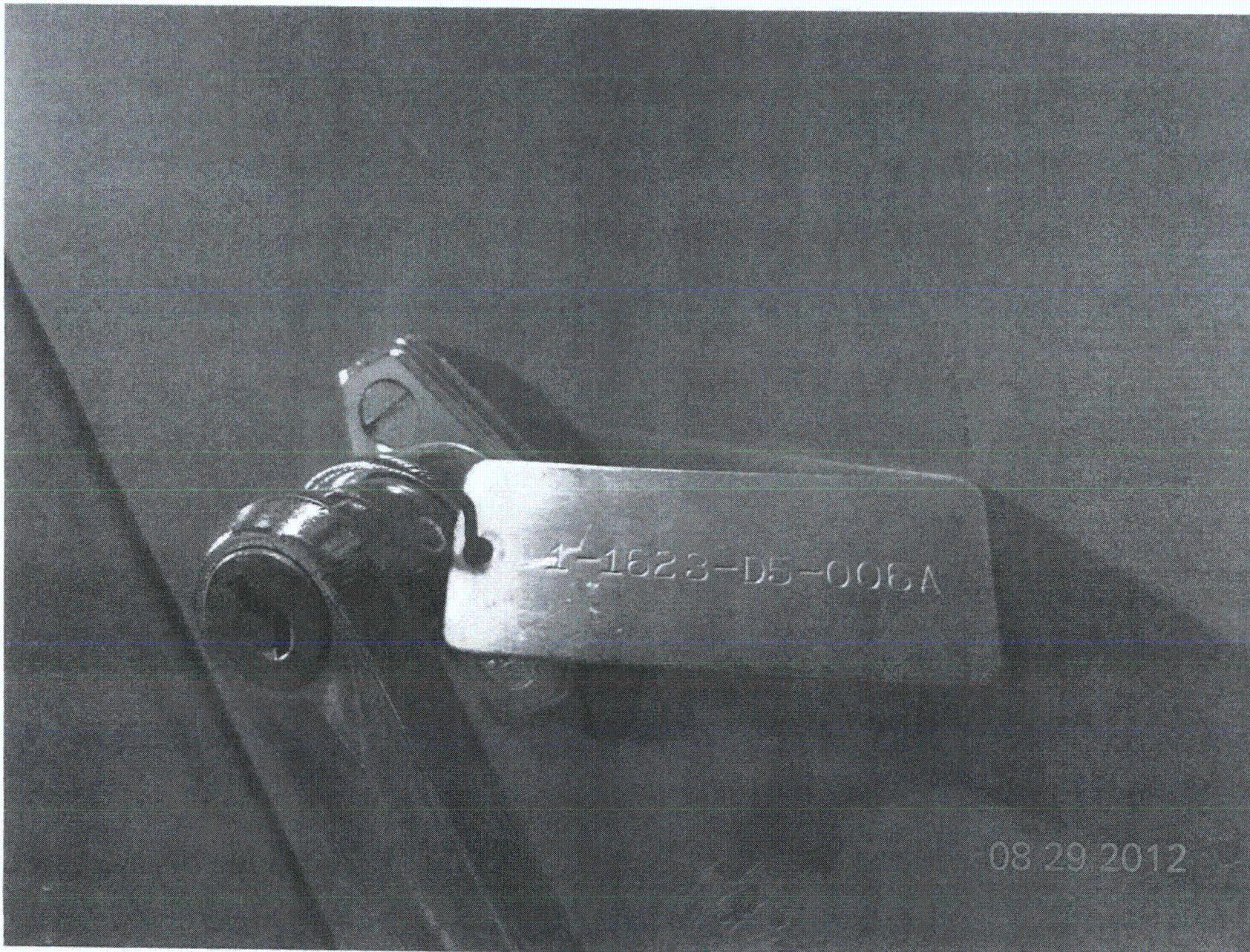
11. Have you looked for and found no other seismic conditions that could adversely affect the safety functions of the equipment? Y N U

Comments (Additional pages may be added as necessary)

None.

Evaluated by: David Volodarsky DAVID VOLODARSKY Date: 8/27/2012
Matthew Wilkinson Matthew Wilkinson 8/27/2012

< C-4 >





Seismic Walkdown Checklist (SWC)

Equipment ID No. 1-1623-DS-006A Equip. Class¹² Z0

Equipment Description: DISPLAY PROCESSING UNIT A

Location: Bldg. CONTROL Floor/El. 200 Room, Area A4B

Manufacturer, Model, Etc. (optional but recommended) _____

Instructions for Completing Checklist

This checklist may be used to document the results of the Seismic Walkdown of an item of equipment on the SWEL. The space below each of the following questions may be used to record the results of judgments and findings. Additional space is provided at the end of this checklist for documenting other comments.

Anchorage (SEE SWC DATED 8/27/12)

1. Is the anchorage configuration verification required (i.e., is the item one of the 50% of SWEL items requiring such verification)? Y N

2. Is the anchorage free of bent, broken, missing or loose hardware? Y N U N/A

3. Is the anchorage free of corrosion that is more than mild surface oxidation? Y N U N/A

4. Is the anchorage free of visible cracks in the concrete near the anchors? Y N U N/A

5. Is the anchorage configuration consistent with plant documentation? Y N U N/A
 (Note: This question only applies if the item is one of the 50% for which an anchorage configuration verification is required.)

6. Based on the above anchorage evaluations, is the anchorage free of potentially adverse seismic conditions? Y N U

¹² Enter the equipment class name from Appendix B: Classes of Equipment.

Seismic Walkdown Checklist (SWC)

Equipment ID No. 1-1623-DS-006A Equip. Class¹² 20

Equipment Description DISPLAY PROCESSING UNIT A

Interaction Effects (SEE SWC DATED 8/29/12)

7. Are soft targets free from impact by nearby equipment or structures? Y N U N/A

8. Are overhead equipment, distribution systems, ceiling tiles and lighting, and masonry block walls not likely to collapse onto the equipment? Y N U N/A

9. Do attached lines have adequate flexibility to avoid damage? Y N U N/A

10. Based on the above seismic interaction evaluations, is equipment free of potentially adverse seismic interaction effects? Y N U

Other Adverse Conditions

11. Have you looked for and found no other seismic conditions that could adversely affect the safety functions of the equipment? Y N U

A VISUAL INSPECTION OF THE INTERNAL COMPONENTS OF THE CABINET WAS PERFORMED TO CHECK FOR SEISMIC ADEQUACY TO INCLUDE ANY EVIDENCE OF INTERNAL COMPONENTS NOT ADEQUATELY SECURED, CHECKED TO ENSURE FASTENERS CONNECTING ADJACENT CABINETS WERE IN PLACE, AND EVIDENCE OF OTHER SEISMIC CONDITIONS.

NO SIGNIFICANT ADVERSE CONDITIONS WERE FOUND. SOME MINOR ISSUES ARE DOCUMENTED IN THE "COMMENTS" SECTION BELOW

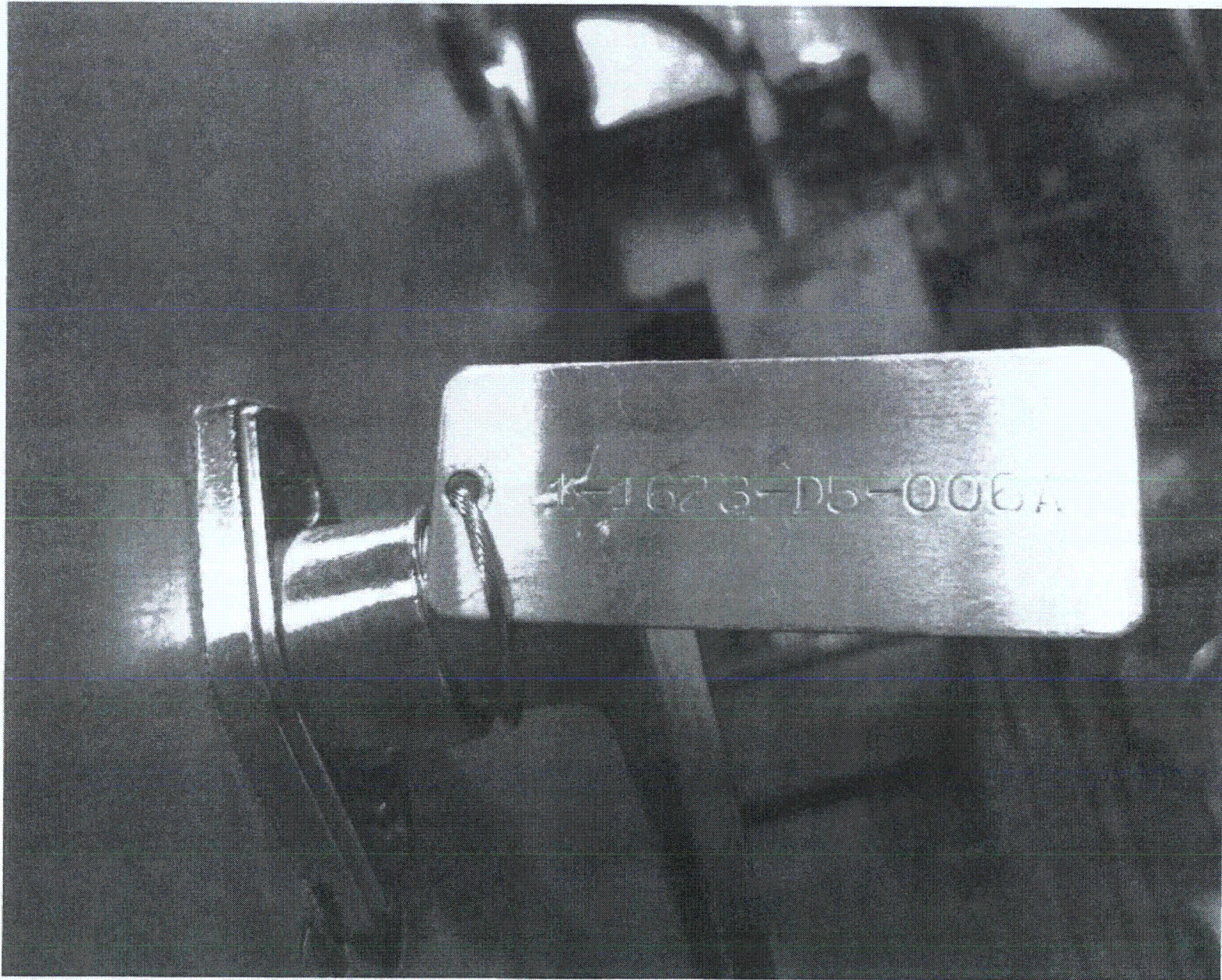
Comments (Additional pages may be added as necessary)

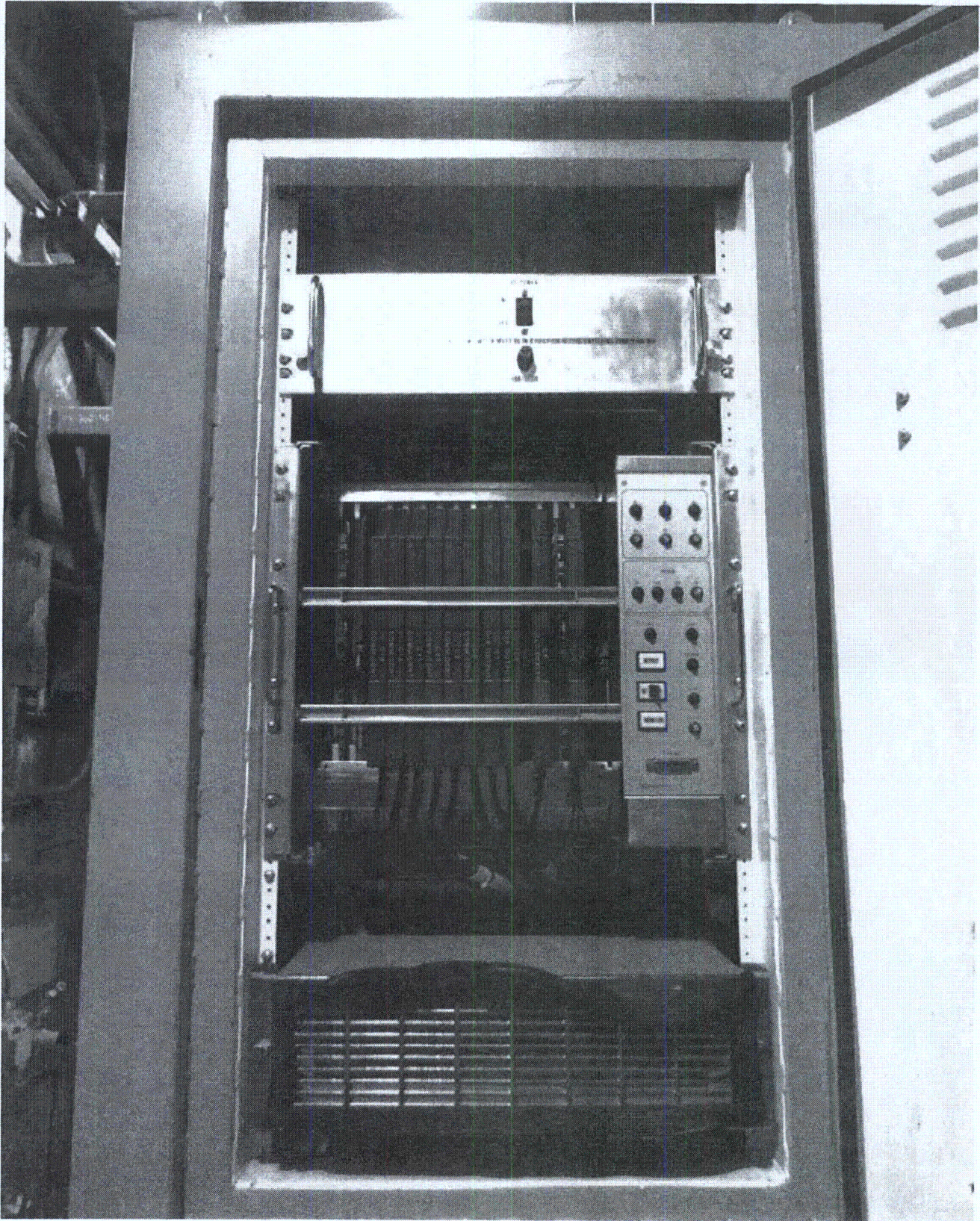
FOUND SOME SCREWS MISSING USED TO SECURE PROTECTIVE COVERS INSIDE THE CABINET. THE SEISMIC WALKDOWN TEAM JUDGED THAT THIS CONDITION DOES NOT REPRESENT A SEISMIC OR OPERABILITY CONCERN. THIS CONDITION HAS BEEN REPORTED THROUGH CR 527695

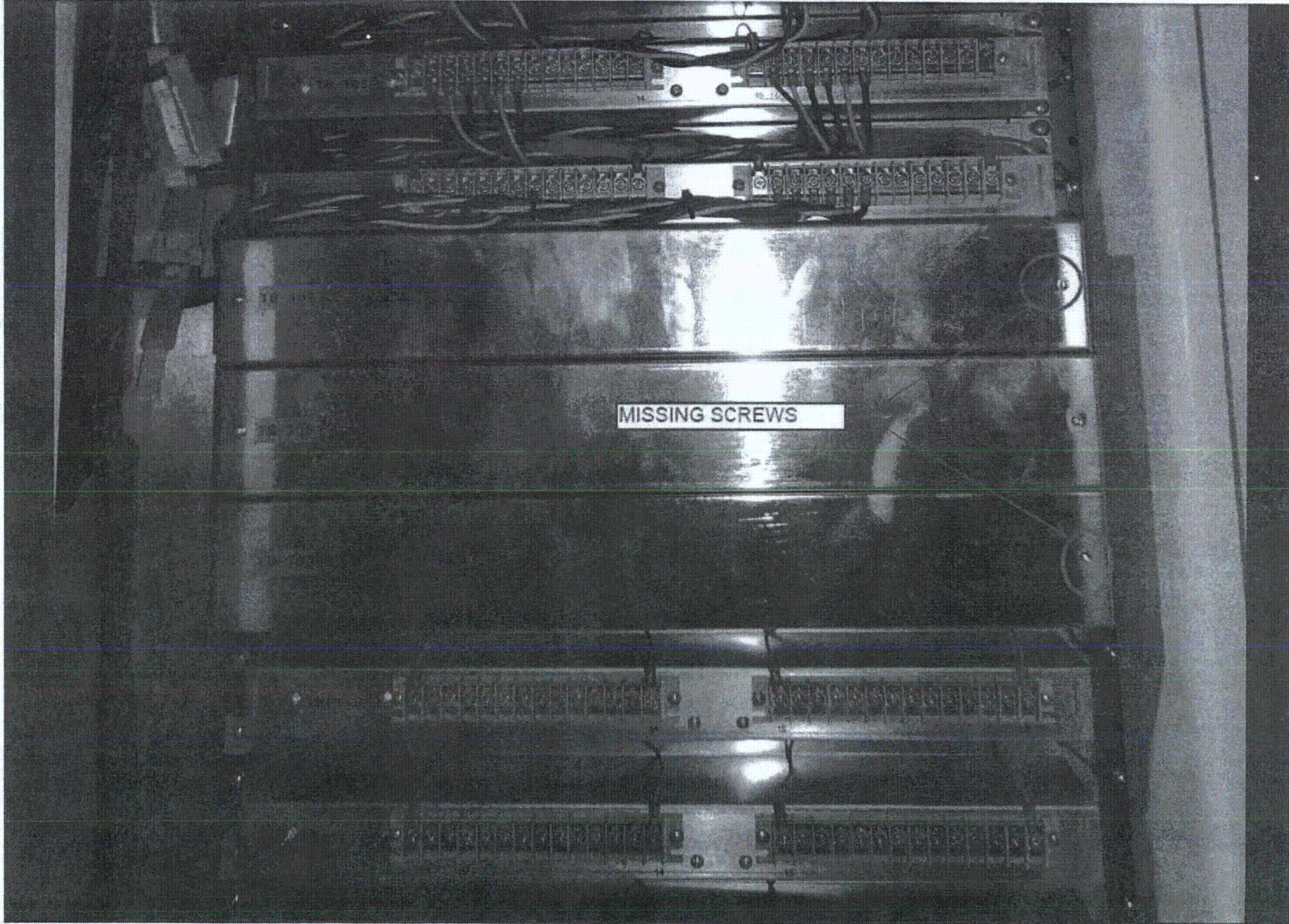
Evaluated by: JUSTO S. CHACON / [Signature] Date: 9/28/12

[Signature] / José R. Hernandez 9/28/12

< C.4 >







Sheet 1 of 2
 Status: Y N *new 9/13/12*

Seismic Walkdown Checklist (SWC)

Equipment ID No. 1-1804-S3-A02 Equip. Class¹² 3 (Medium Voltage Switchgear)
 Equipment Description 4160 V Switchgear 1AA02
 Location: Bldg. Control Floor El. 200' Room, Area RA 48
 Manufacturer, Model, Etc. (optional but recommended) Gould

Instructions for Completing Checklist

This checklist may be used to document the results of the Seismic Walkdown of an item of equipment on the SWEL. The space below each of the following questions may be used to record the results of judgments and findings. Additional space is provided at the end of this checklist for documenting other comments.

Anchorage:

1. Is the anchorage configuration verification required (i.e., is the item one of the 50% of SWEL items requiring such verification)? Y N

2. Is the anchorage free of bent, broken, missing or loose hardware? Y N U N/A
See Comment 2.

3. Is the anchorage free of corrosion that is more than mild surface oxidation? Y N U N/A
See Comment 2.

4. Is the anchorage free of visible cracks in the concrete near the anchors? Y N U N/A
Welded connection to embedded steel.

5. Is the anchorage configuration consistent with plant documentation? Y N U N/A
 (Note: This question only applies if the item is one of the 50% for which an anchorage configuration verification is required.)
*Ref. drawing 1X3AC01-00021, Ver. 9.0.
 See Comment 2.*

6. Based on the above anchorage evaluations, is the anchorage free of potentially adverse seismic conditions? Y N U
See Comment 2.

¹² Enter the equipment class name from Appendix B: Classes of Equipment.

Seismic Walkdown Checklist (SWC)

Equipment ID No. 1-1804-S3-A02 Equip. Class¹² 3 (Medium Voltage Switchgear)
 Equipment Description 4160 V Switchgear 1AA02

Interaction Effects

- 7. Are soft targets free from impact by nearby equipment or structures? Y N U N/A

- 8. Are overhead equipment, distribution systems, ceiling tiles and lighting, and masonry block walls not likely to collapse onto the equipment? Y N U N/A

- 9. Do attached lines have adequate flexibility to avoid damage? Y N U N/A
 2 ductwork extensions from the top of the cabinet appear to be rigidly connected at bays 1AA02-01 and -05. Refer to CR 517078.

- 10. Based on the above seismic interaction evaluations, is equipment free of potentially adverse seismic interaction effects? Y N U

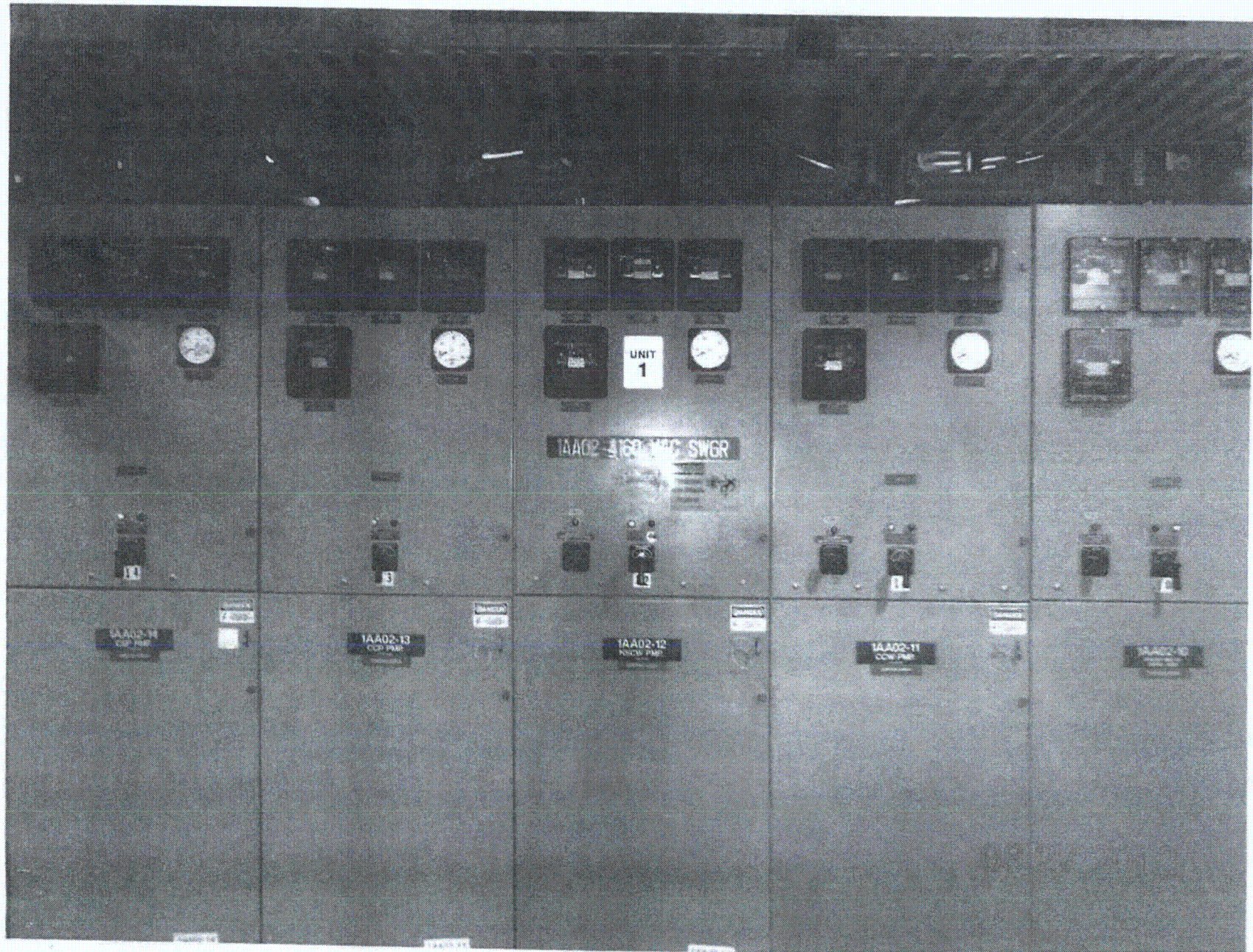
Other Adverse Conditions

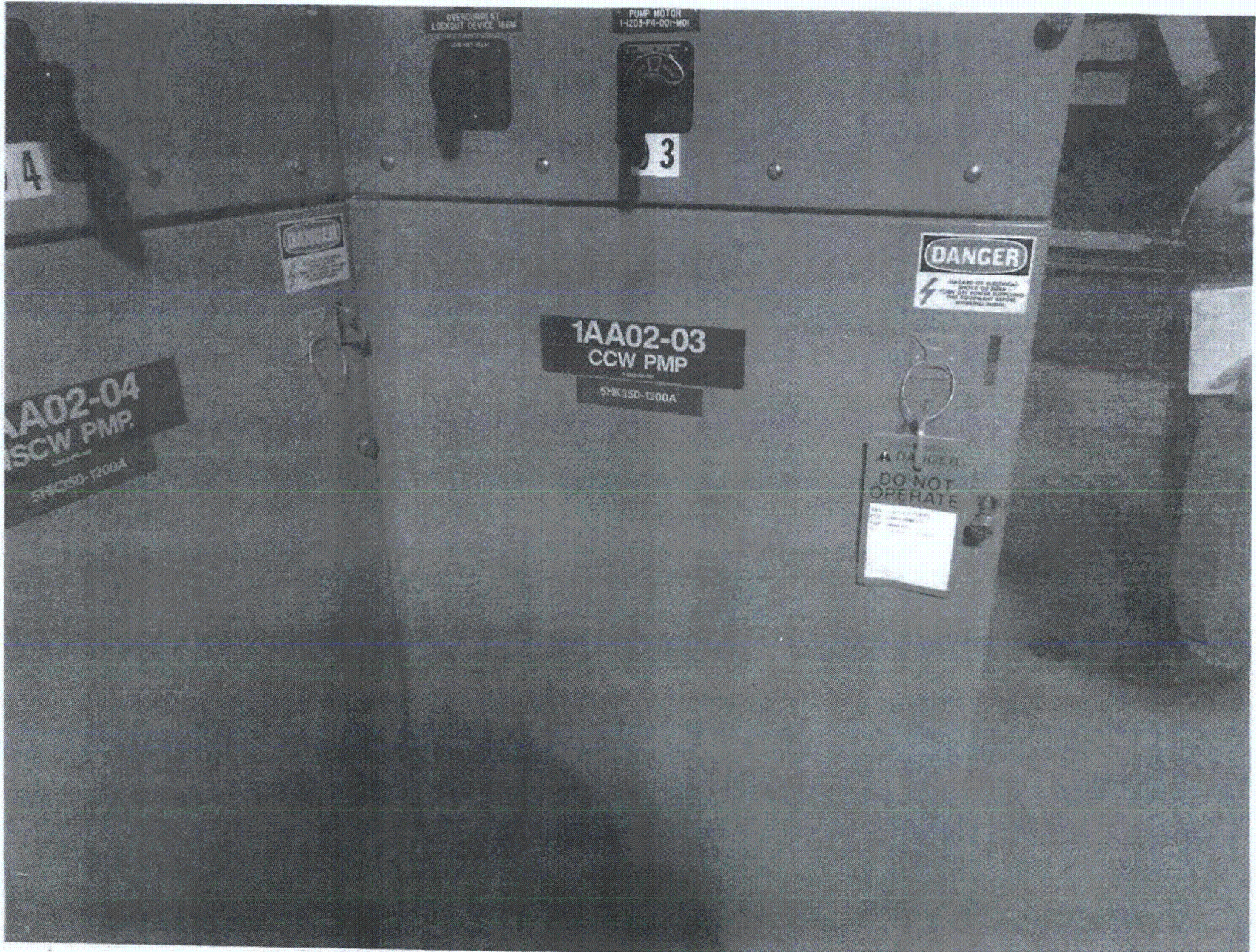
- 11. Have you looked for and found no other seismic conditions that could adversely affect the safety functions of the equipment? Y N U

Comments (Additional pages may be added as necessary)

Comment 1: SEE 1-1623-DS-006A FOR AREA WALK-BY CHECKLIST (AWC).
 Comment 2: Visual inspection of all front welds except bays 1AA02-00 and -02 was performed. Full inspection of 1AA02-03 was performed (front, rear, plug, fillet). Based on the number and good condition of inspected welds, the anchorage of the panel is determined to be acceptable. Full inspection of the anchorage is required during an outage. MWD 8/27/12

Evaluated by: Matthew Wilkinson Date: 8/27/2012
David Volodarsky DAVID VOLODARSKY 8/27/2012





Seismic Walkdown Checklist (SWC)

Equipment ID No. 1-1304-53-A02 Equip. Class¹² 3

Equipment Description 4160V Switchgear 1A02

Location: Bldg. Control Floor El. 200'-0" Room, Area RA48

Manufacturer, Model, Etc. (optional but recommended) _____

Instructions for Completing Checklist

This checklist may be used to document the results of the Seismic Walkdown of an item of equipment on the SWEL. The space below each of the following questions may be used to record the results of judgments and findings. Additional space is provided at the end of this checklist for documenting other comments.

Anchorage

1. Is the anchorage configuration verification required (i.e., is the item one of the 50% of SWEL items requiring such verification)? Y N

2. Is the anchorage free of bent, broken, missing or loose hardware? Y N U N/A

3. Is the anchorage free of corrosion that is more than mild surface oxidation? Y N U N/A

4. Is the anchorage free of visible cracks in the concrete near the anchors? Y N U N/A
See SWC dated 8/27/12

5. Is the anchorage configuration consistent with plant documentation? Y N U N/A
 (Note: This question only applies if the item is one of the 50% for which an anchorage configuration verification is required.)
Ref. drawing 1X3AC01-00021, Ver 9.0

6. Based on the above anchorage evaluations, is the anchorage free of potentially adverse seismic conditions? Y N U

¹² Enter the equipment class name from Appendix B: Classes of Equipment.

Seismic Walkdown Checklist (SWC)

Equipment ID No: 1-1804-S3-A02 Equip. Class¹² 3

Equipment Description 4160V Switchgear 1A02

Interaction Effects

7. Are soft targets free from impact by nearby equipment or structures? Y N U N/A
 See SWC dated 8/27/12

8. Are overhead equipment, distribution systems, ceiling tiles and lighting, and masonry block walls not likely to collapse onto the equipment? Y N U N/A
 See SWC dated 8/27/12

9. Do attached lines have adequate flexibility to avoid damage? Y N U N/A
 A condition report 517078 was generated for a possible case of a rigid connection on the SWC dated on 8/27/12. Technical Evaluation 519183 resulted as a related record of the condition report to investigate this possible condition. The technical evaluation was resolved on 10/22/12 resulting in a no rigid connection case. *Jose R. Hernandez 10/23/12*

10. Based on the above seismic interaction evaluations, is equipment free of potentially adverse seismic interaction effects? Y N U
 See SWC dated 8/27/12

Other Adverse Conditions

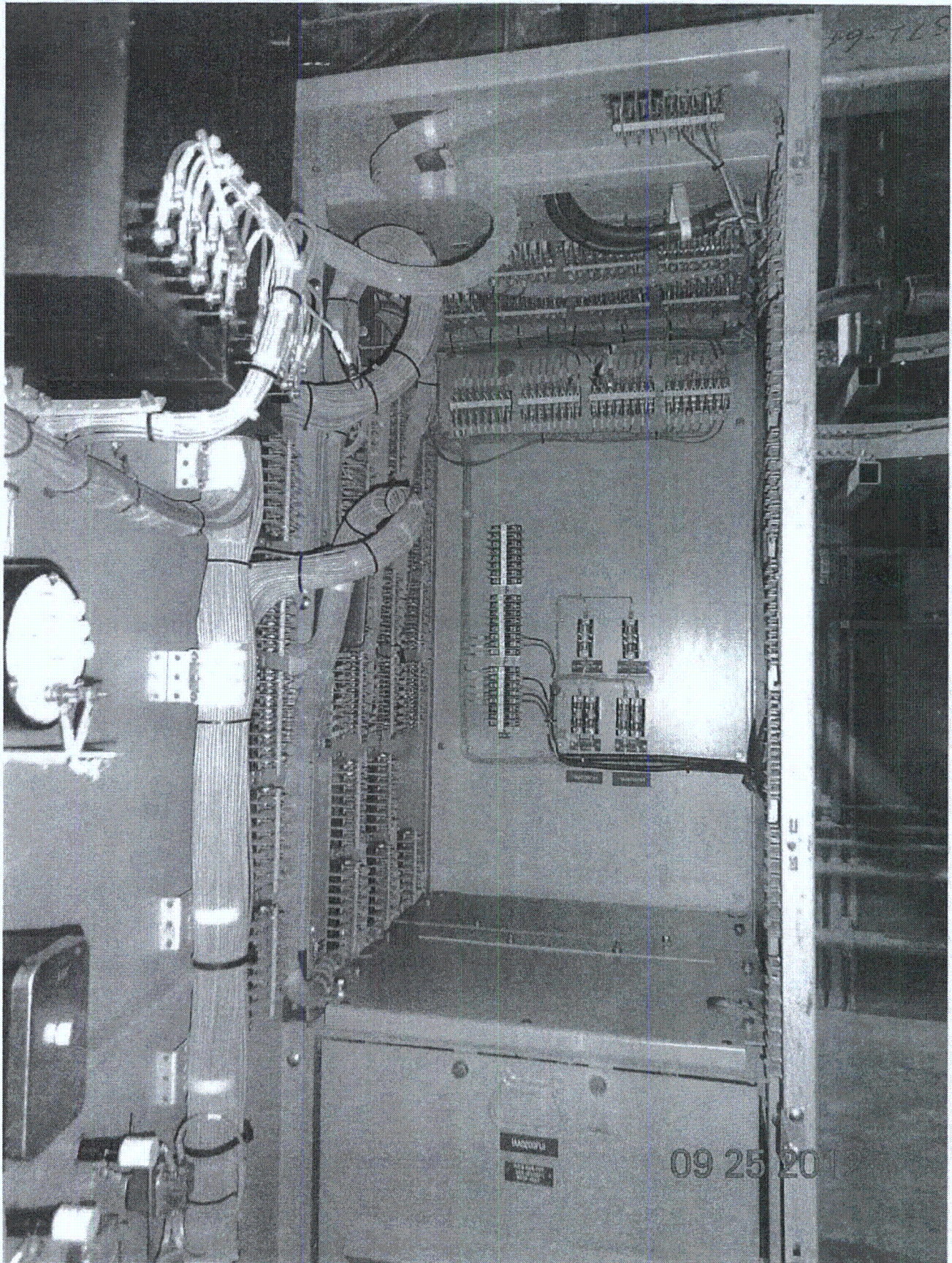
11. Have you looked for and found no other seismic conditions that could adversely affect the safety functions of the equipment? Y N U
 A visual inspection of the internal components of this cabinet was performed to check for seismic adequacy to include any evidence of internal components not adequately secured, checked to ensure fasteners connecting adjacent cabinets were in place, and evidence of other seismic conditions. No adverse conditions were found.

Comments (Additional pages may be added as necessary)

① By performing the internal inspection of this cabinet, the welds referred on comment 2 of the SWC dated on 8/27/12 it was possible to complete the anchorage verification on this component. No adverse conditions were found and the anchorage configuration is consistent with the plant configuration.

Evaluated by: *Jose R. Hernandez* Date: 9/25/12
Justo S. Chacon 9/25/12





Sheet 1 of 2
 Status: Y N U

Seismic Walkdown Checklist (SWC)

Equipment ID No. 1-1805-53-ABD Equip. Class¹² 1 - MOTOR CONTROL CENTER
 Equipment Description 480V MOT. CONTROL CTR 1ABD
 Location: Bldg. AUX Floor El. 143'-6" Room, Area RC109
 Manufacturer, Model, Etc. (optional but recommended) CUTLER-HAMMER UNITROL

Instructions for Completing Checklist

This checklist may be used to document the results of the Seismic Walkdown of an item of equipment on the SWEL. The space below each of the following questions may be used to record the results of judgments and findings. Additional space is provided at the end of this checklist for documenting other comments.

Anchorage

1. Is the anchorage configuration verification required (i.e., is the item one of the 50% of SWEL items requiring such verification)? Y N U

2. Is the anchorage free of bent, broken, missing or loose hardware? Y N U N/A

3. Is the anchorage free of corrosion that is more than mild surface oxidation? Y N U N/A

4. Is the anchorage free of visible cracks in the concrete near the anchors? Y N U N/A
WELDED CONNECTION TO EMBEDDED PLATE

5. Is the anchorage configuration consistent with plant documentation? Y N U N/A
 (Note: This question only applies if the item is one of the 50% for which an anchorage configuration verification is required.)
EQDP X3AC03, REV. 2

6. Based on the above anchorage evaluations, is the anchorage free of potentially adverse seismic conditions? Y N U

¹²Enter the equipment class name from Appendix B: Classes of Equipment.

Seismic Walkdown Checklist (SWC)

Equipment ID No. 1-1805-53-ABD Equip. Class¹² 1- MOTOR CONTROL CENTER

Equipment Description 480V MOT CONTROL CTR 1ABD

Interaction Effects

- 7. Are soft targets free from impact by nearby equipment or structures? Y N U N/A

- 8. Are overhead equipment, distribution systems, ceiling tiles and lighting, and masonry block walls not likely to collapse onto the equipment? Y N U N/A

- 9. Do attached lines have adequate flexibility to avoid damage? Y N U N/A

- 10. Based on the above seismic interaction evaluations, is equipment free of potentially adverse seismic interaction effects? Y N U

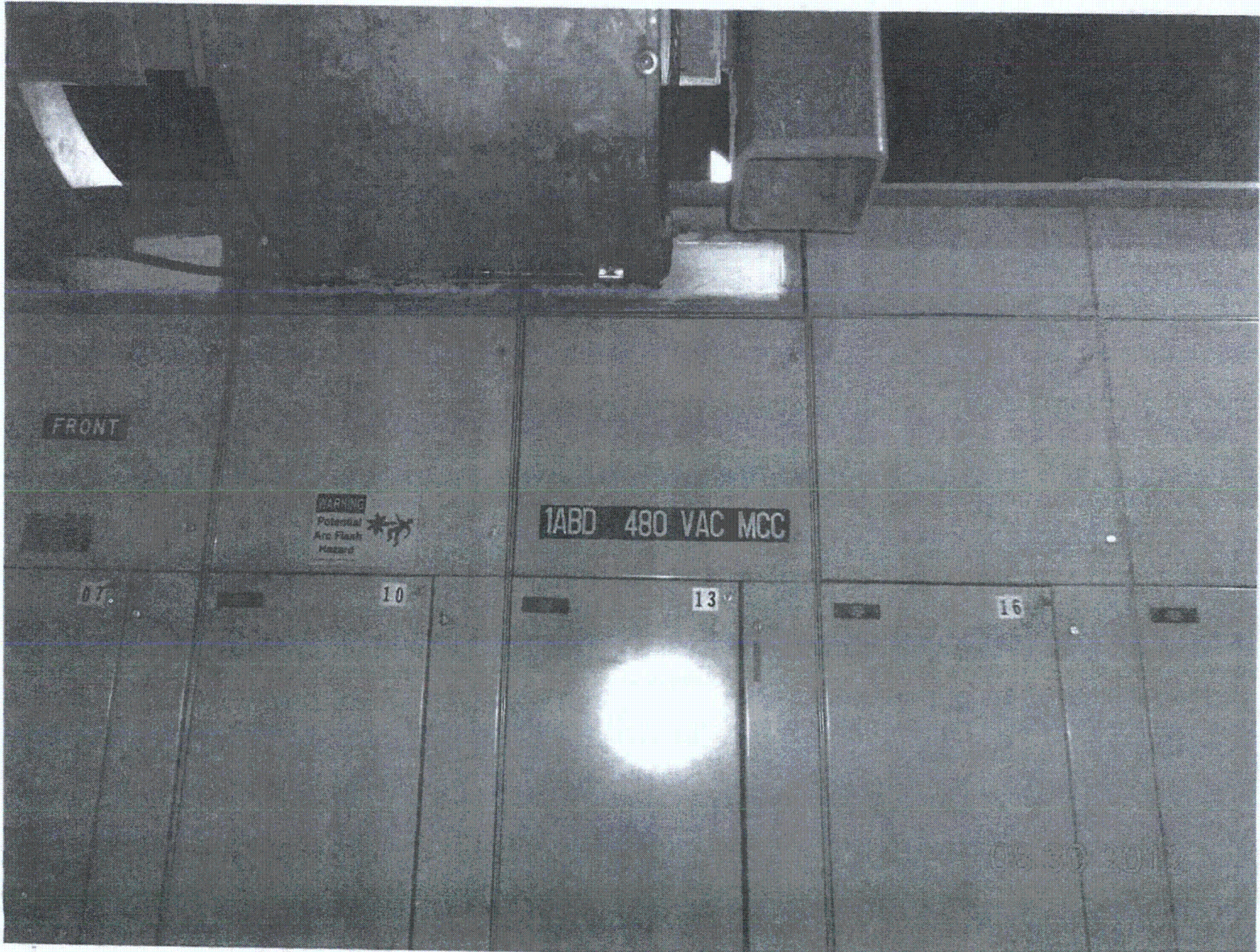
Other Adverse Conditions

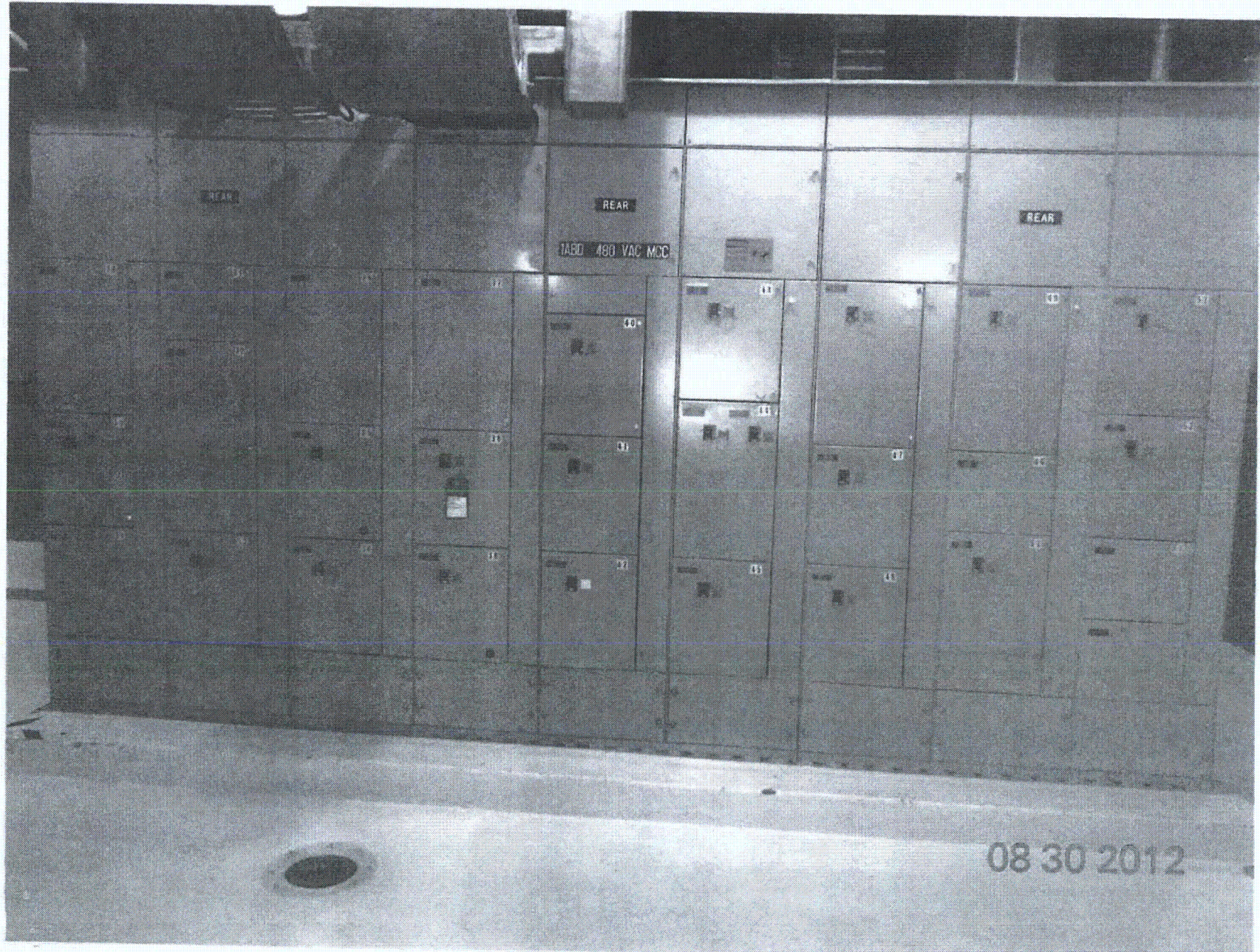
- 11. Have you looked for and found no other seismic conditions that could adversely affect the safety functions of the equipment? Y N U

Comments (Additional pages may be added as necessary)

NONE

Evaluated by: David Volodarsky DAVID VOLODARSKY Date: 8/30/2012
Matthew Wilkinson Matthew Wilkinson 8/30/2012





Seismic Walkdown Checklist (SWC)

Equipment ID No. 1-1803-53-ABD Equip. Class¹²: 1

Equipment Description 480V MCC 1ABD

Location: Bldg. Aux(U1) Floor El. 143'-6" Room, Area RC109

Manufacturer, Model, Etc. (optional but recommended) _____

Instructions for Completing Checklist

This checklist may be used to document the results of the Seismic Walkdown of an item of equipment on the SWEL. The space below each of the following questions may be used to record the results of judgments and findings. Additional space is provided at the end of this checklist for documenting other comments.

Anchorage (See SWC dated 8/30/12)

1. Is the anchorage configuration verification required (i.e., is the item one of the 50% of SWEL items requiring such verification)? Y N

2. Is the anchorage free of bent, broken, missing or loose hardware? Y N U N/A

3. Is the anchorage free of corrosion that is more than mild surface oxidation? Y N U N/A

4. Is the anchorage free of visible cracks in the concrete near the anchors? Y N U N/A

5. Is the anchorage configuration consistent with plant documentation? Y N U N/A
 (Note: This question only applies if the item is one of the 50% for which an anchorage configuration verification is required.)

6. Based on the above anchorage evaluations, is the anchorage free of potentially adverse seismic conditions? Y N U

¹²Enter the equipment class name from Appendix B: Classes of Equipment.

Seismic Walkdown Checklist (SWC)

Equipment ID No. 1-1805-53-ABD Equip. Class¹² 1

Equipment Description 480V MCC 1ABD

Interaction Effects (see SWC dated 8/30/12)

7. Are soft targets free from impact by nearby equipment or structures? Y N U N/A

8. Are overhead equipment, distribution systems, ceiling tiles and lighting, and masonry block walls not likely to collapse onto the equipment? Y N U N/A

9. Do attached lines have adequate flexibility to avoid damage? Y N U N/A

10. Based on the above seismic interaction evaluations, is equipment free of potentially adverse seismic interaction effects? Y N U

Other Adverse Conditions

11. Have you looked for and found no other seismic conditions that could adversely affect the safety functions of the equipment? A visual inspection of the internal components of this cabinet was performed to check for seismic adequacy to include any evidence of internal components not adequately secured, checked to ensure fasteners connecting adjacent cabinets were in place, and evidence of other seismic conditions. Some inconsistencies and issues were found. They are documented on the "comments" section of this checklist. Y N U

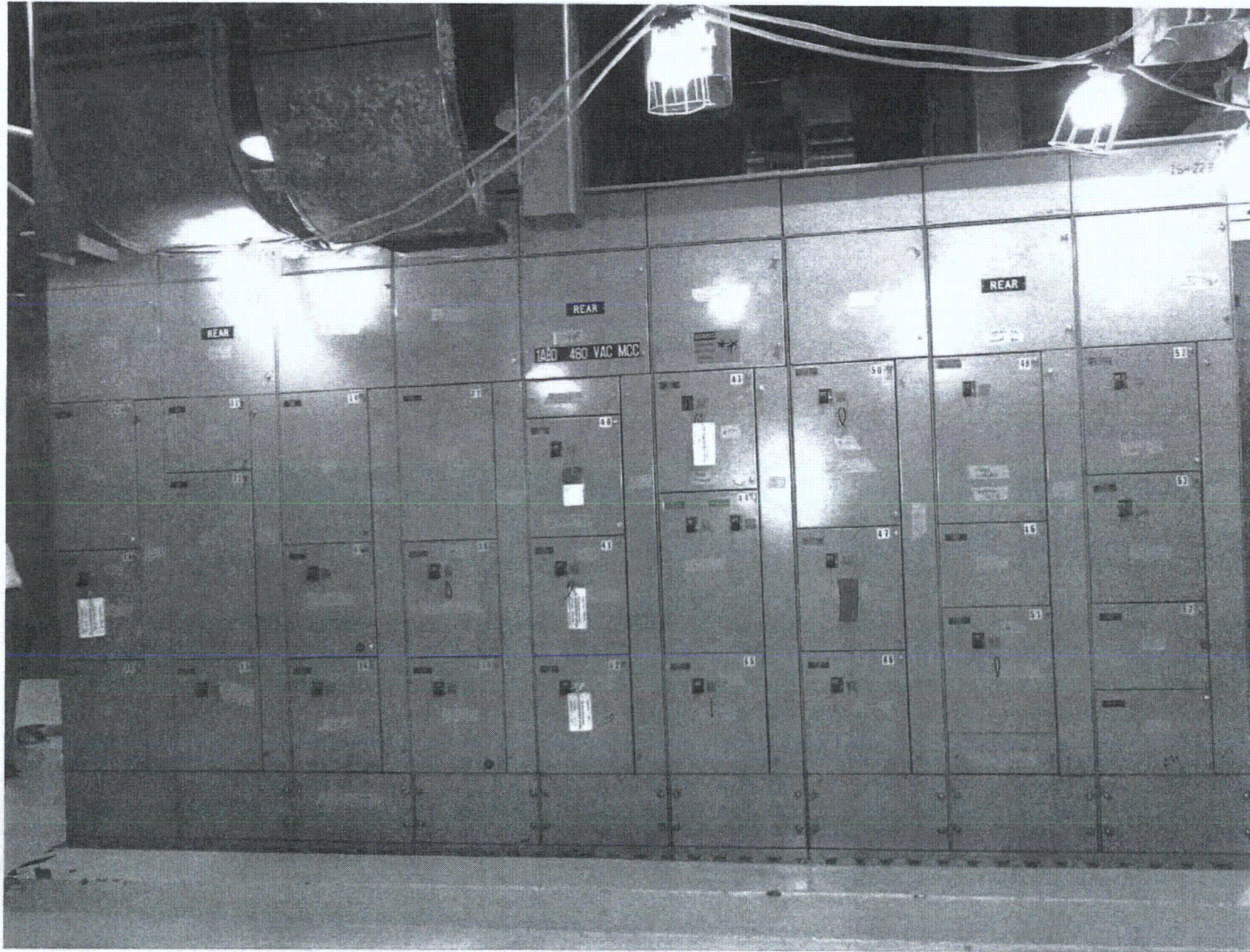
Comments (Additional pages may be added as necessary)

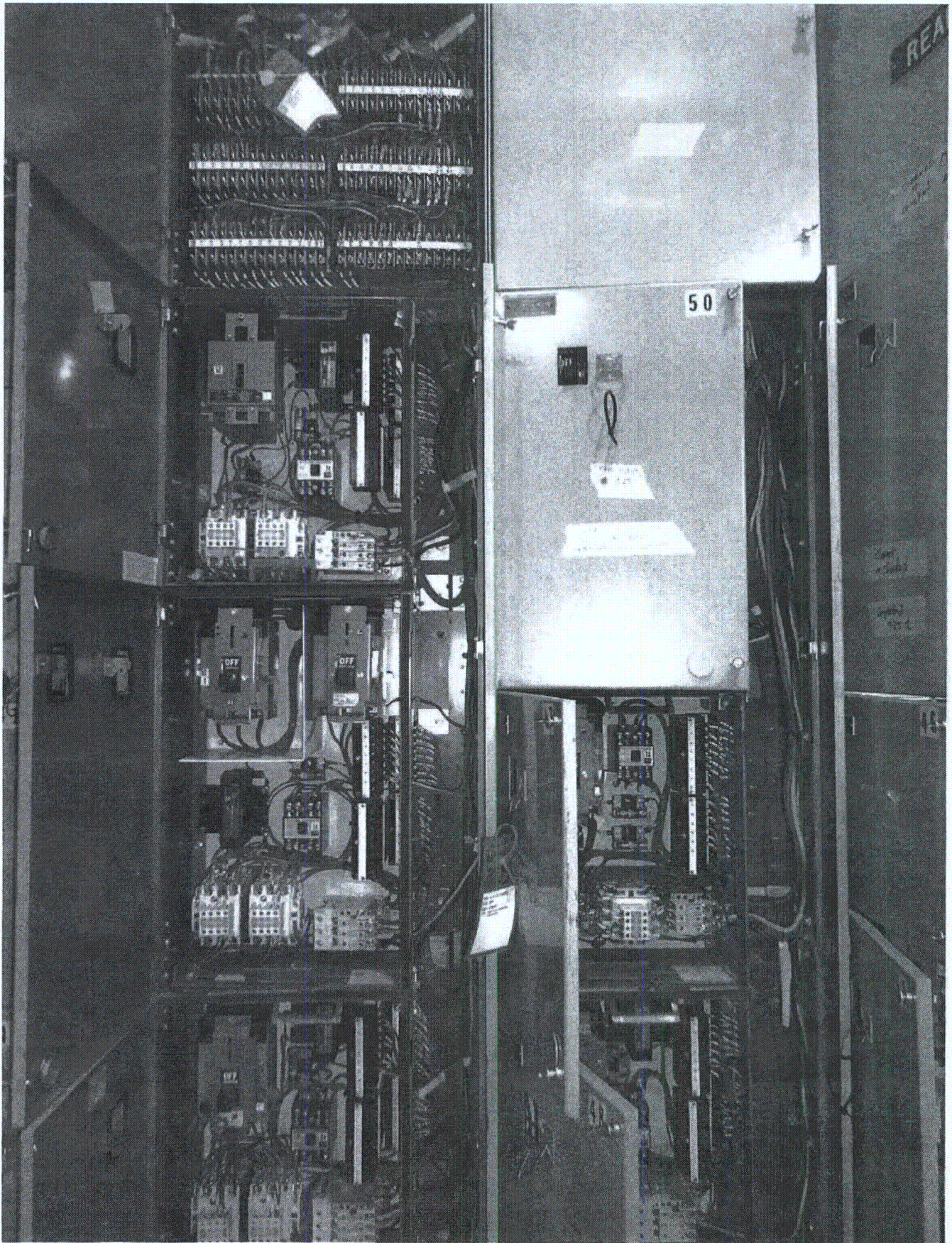
- ① There was found some missing nuts and screws used to secure cover plates and protective covers. The seismic walkdown team judged that these findings do not represent an operability or vulnerability concern.
- ② There was found some missing screws used to secure terminal blocks. The seismic walkdown judged that this condition needs to be evaluated for seismic vulnerability.

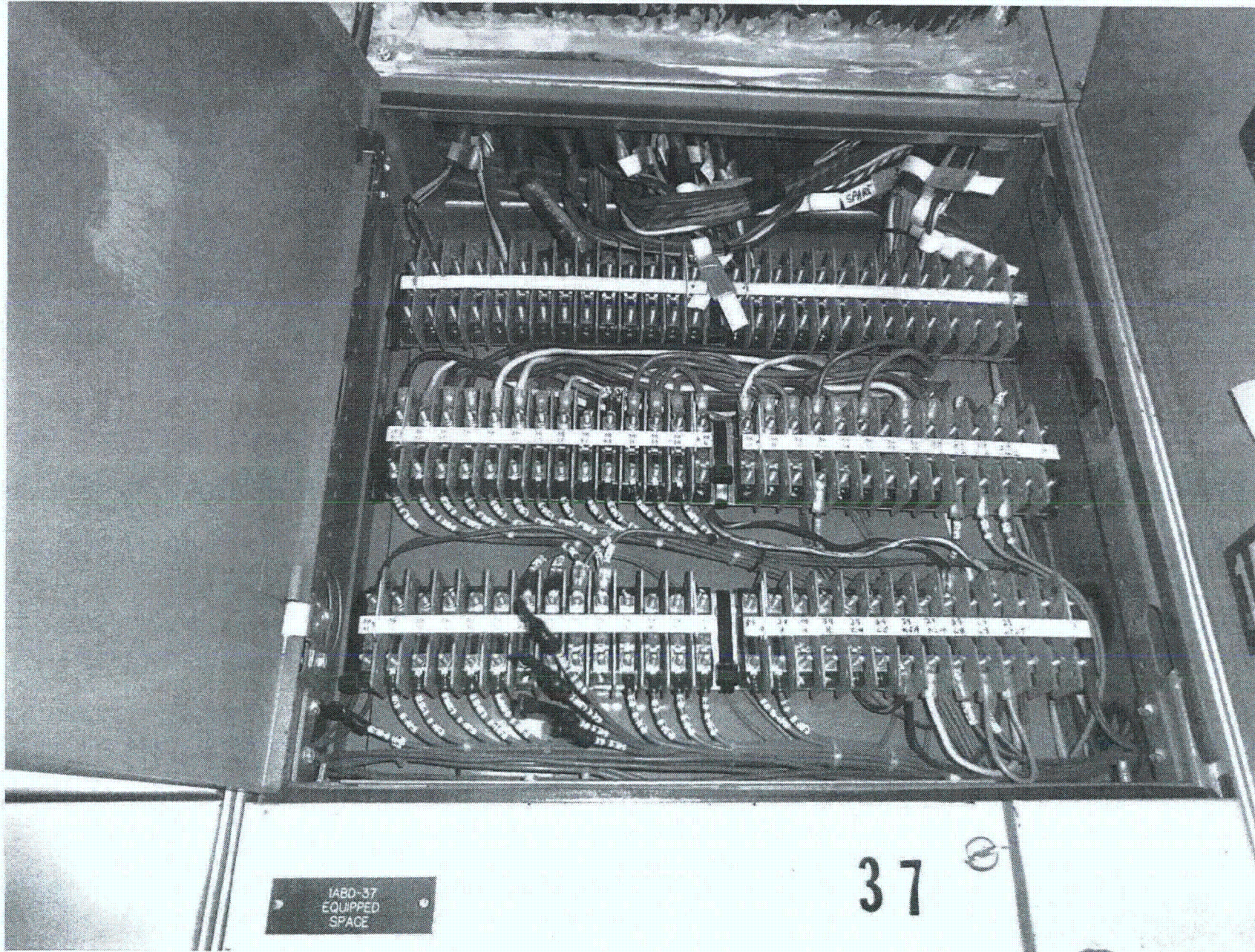
Both findings were documented on the condition report 325343.

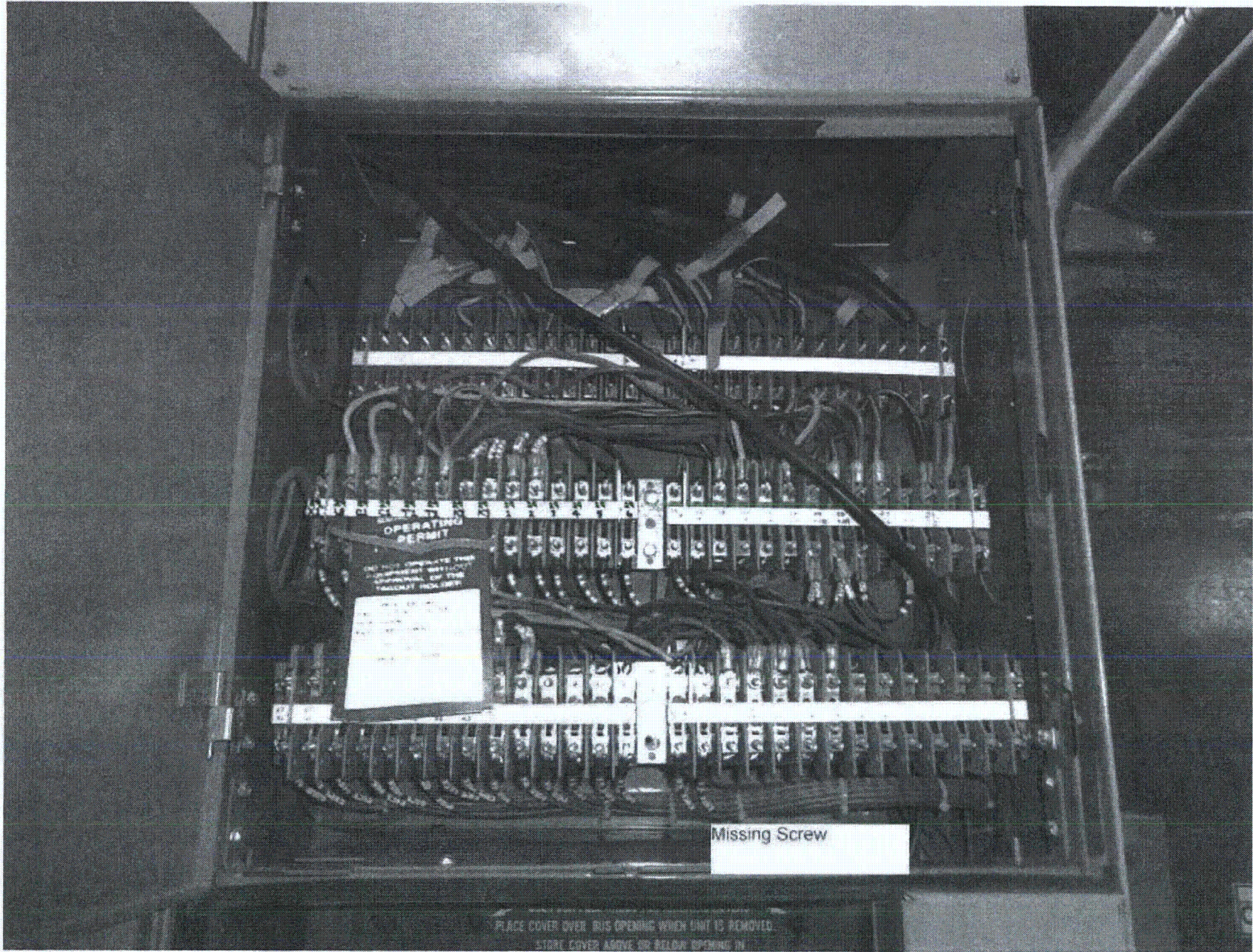
Evaluated by: [Signature] / José R. Hernández Date: 9/27/12

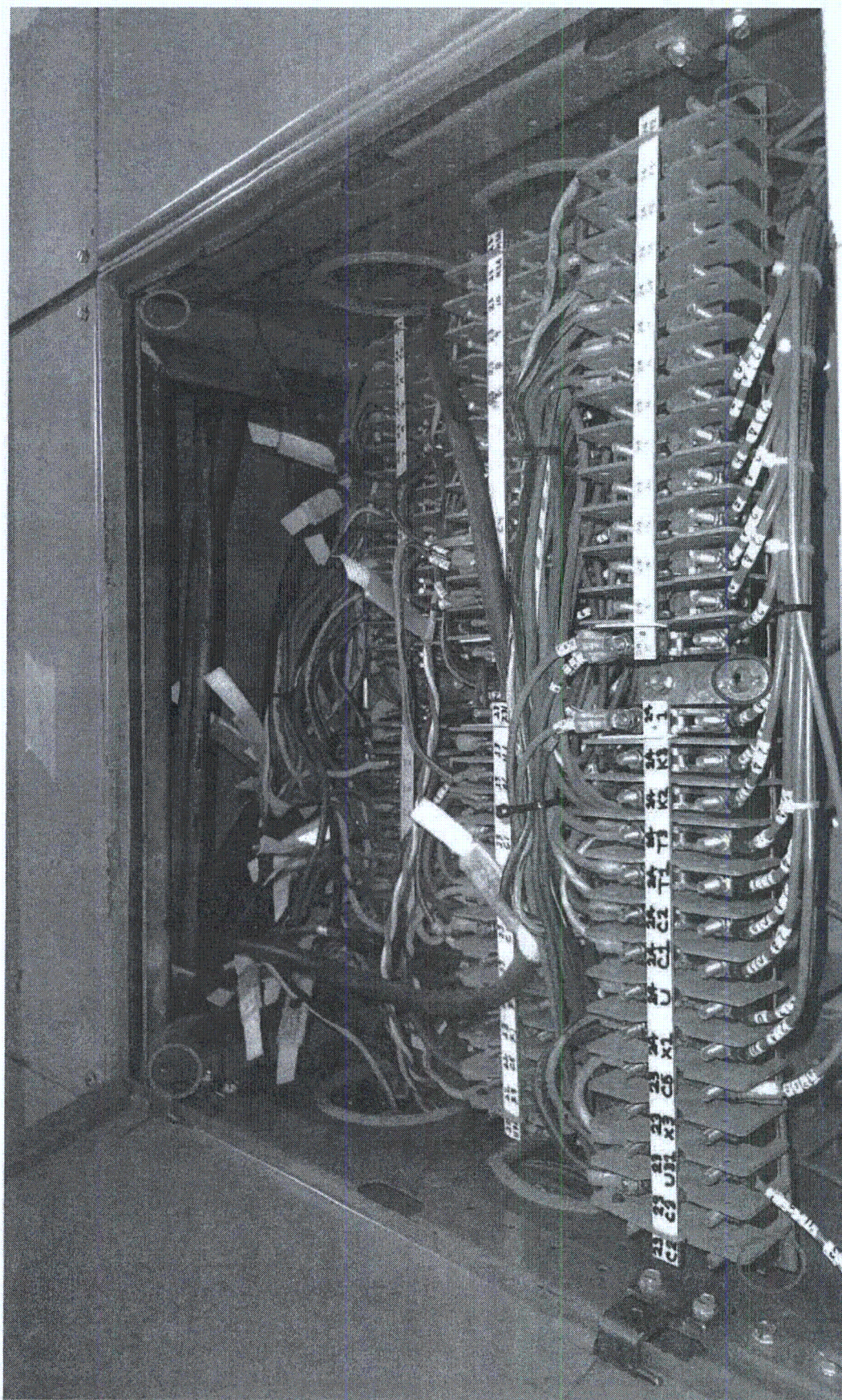
[Signature] / JUSTO S. CHACON 9/27/12











22

