

Seismic Walkdown Checklist (SWC)

Equipment ID No. 1-1555-A7-015 Equip. Class¹² 10

Equipment Description SIS Pump Room Cooler A

Location: Bldg. Aux Floor El. 180' Room, Area RB 15

Manufacturer, Model, Etc. (optional but recommended)

Instructions for Completing Checklist

This checklist may be used to document the results of the Seismic Walkdown of an item of equipment on the SWEL. The space below each of the following questions may be used to record the results of judgments and findings. Additional space is provided at the end of this checklist for documenting other comments.

Anchorage

1. Is the anchorage configuration verification required (i.e., is the item one of the 50% of SWEL items requiring such verification)? Y N U

2. Is the anchorage free of bent, broken, missing or loose hardware? Y N U N/A

3. Is the anchorage free of corrosion that is more than mild surface oxidation? Y N U N/A

4. Is the anchorage free of visible cracks in the concrete near the anchors? Y N U N/A

Anchor too wide flange.

5. Is the anchorage configuration consistent with plant documentation? Y N U N/A

(Note: This question only applies if the item is one of the 50% for which an anchorage configuration verification is required.)

1X4A J06-0027 Rev. 9.0
AX2008F069, Rev. 7
AX2008G043, Rev. 3
Ver.

6. Based on the above anchorage evaluations, is the anchorage free of potentially adverse seismic conditions? Y N U

¹² Enter the equipment class name from Appendix B: Classes of Equipment.

Seismic Walkdown Checklist (SWC)

Equipment ID No. 1-1555-A7-015 Equip. Class¹² 10

Equipment Description SIS Pump Room Cooler A

Interaction Effects

7. Are soft targets free from impact by nearby equipment or structures? Y N U N/A

8. Are overhead equipment, distribution systems, ceiling tiles and lighting, and masonry block walls not likely to collapse onto the equipment? Y N U N/A

9. Do attached lines have adequate flexibility to avoid damage? Y N U N/A

10. Based on the above seismic interaction evaluations, is equipment free of potentially adverse seismic interaction effects? Y N U

Other Adverse Conditions

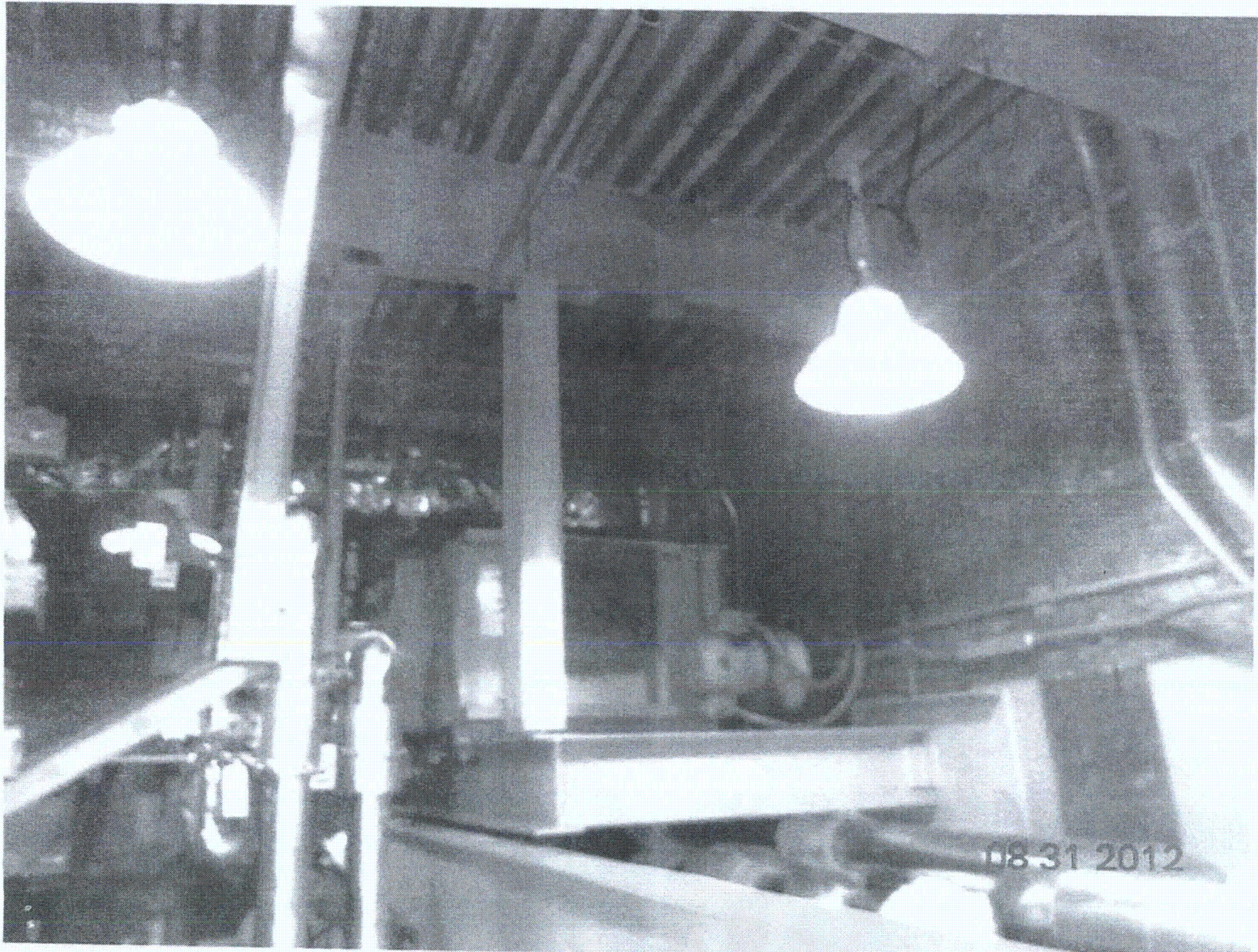
11. Have you looked for and found no other seismic conditions that could adversely affect the safety functions of the equipment? Y N U

Comments (Additional pages may be added as necessary)

None

Evaluated by: Winston Stewart / [Signature] Date: 08/31/2012
Frank Yano / [Signature] 8/31/12





Seismic Walkdown Checklist (SWC)

Equipment ID No. 1-1561-E7-001-000 Equip. Class¹² 10

Equipment Description PIDING PENETRATION AREA COOLER

Location: Bldg. AUX Floor El. 245'-0" Room, Area R210

Manufacturer, Model, Etc. (optional but recommended) _____

Instructions for Completing Checklist

This checklist may be used to document the results of the Seismic Walkdown of an item of equipment on the SWEL. The space below each of the following questions may be used to record the results of judgments and findings. Additional space is provided at the end of this checklist for documenting other comments.

Anchorage

1. Is the anchorage configuration verification required (i.e., is the item one of the 50% of SWEL items requiring such verification)? Y N U

2. Is the anchorage free of bent, broken, missing or loose hardware? Y N U N/A

3. Is the anchorage free of corrosion that is more than mild surface oxidation? Y N U N/A

**SEVERAL BOLTS HAVE MODERATE CORROSION.
 ACCEPTABLE FOR SEISMIC CONCERNS
 SEE CR# 505960**

4. Is the anchorage free of visible cracks in the concrete near the anchors? Y N U N/A

5. Is the anchorage configuration consistent with plant documentation? Y N U N/A

(Note: This question only applies if the item is one of the 50% for which an anchorage configuration verification is required.)
AX4AJ16 - 00042 VER 10.0

6. Based on the above anchorage evaluations, is the anchorage free of potentially adverse seismic conditions? Y N U

**MODERATE CORROSION ON BOLTS.
 ACCEPTABLE FOR SEISMIC CONCERNS
 SEE CR # 505960**

¹² Enter the equipment class name from Appendix B: Classes of Equipment.

Seismic Walkdown Checklist (SWC)

Equipment ID No: I-1561-E7-001-000 Equip. Class¹² _____

Equipment Description PIPING PENETRATION AREA COOLER

Interaction Effects

7. Are soft targets free from impact by nearby equipment or structures? Y N U N/A

8. Are overhead equipment, distribution systems, ceiling tiles and lighting, and masonry block walls not likely to collapse onto the equipment? Y N U N/A

9. Do attached lines have adequate flexibility to avoid damage? Y N U N/A

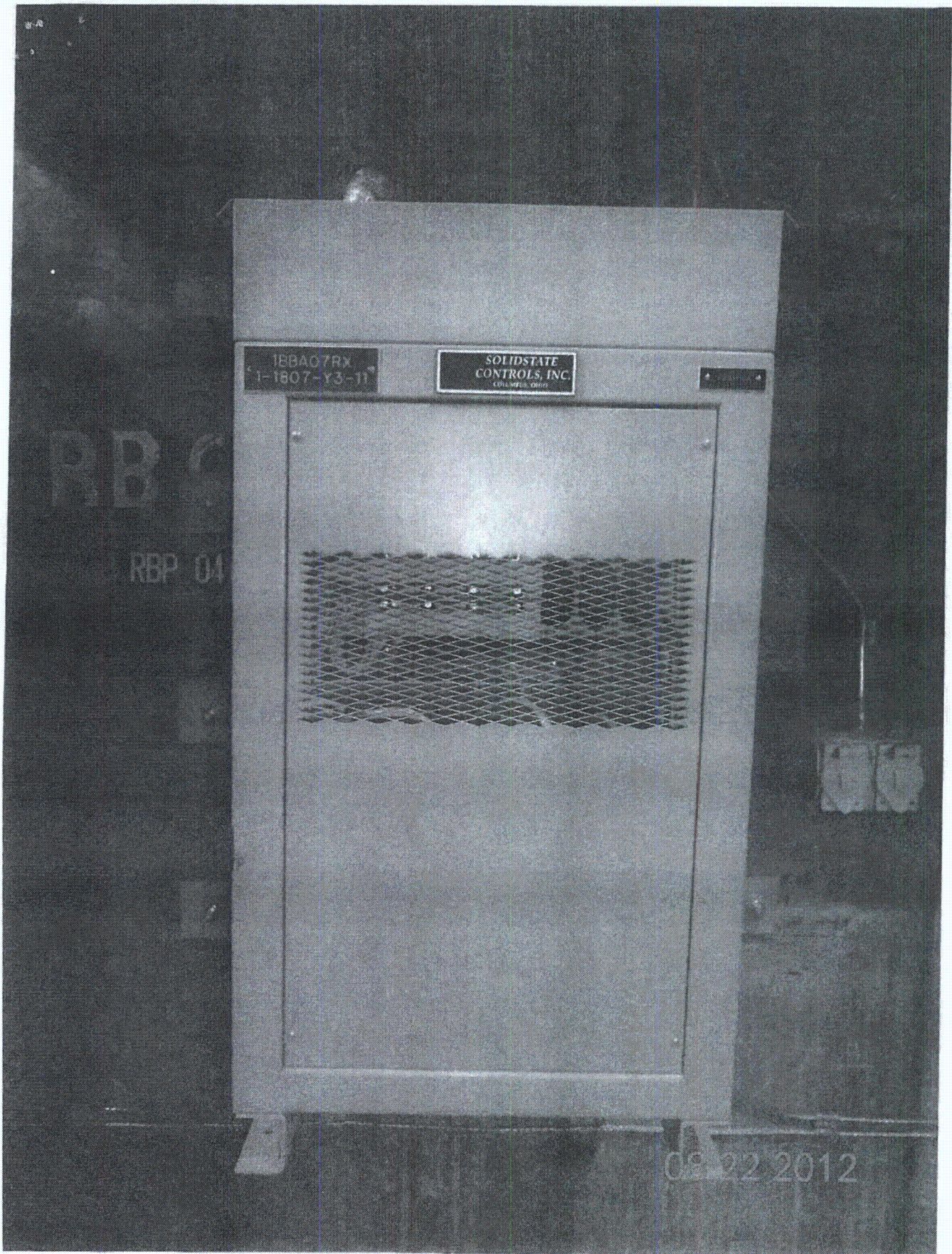
10. Based on the above seismic interaction evaluations, is equipment free of potentially adverse seismic interaction effects? Y N U

Other Adverse Conditions

11. Have you looked for and found no other seismic conditions that could adversely affect the safety functions of the equipment? Y N U

Comments (Additional pages may be added as necessary)

Evaluated by: James Dougal / JAMES DOUGAL Date: 8-22-2012
Jose Hernandez / JOSE HERNANDEZ 8/29/2012



Seismic Walkdown Checklist (SWC)

Equipment ID No. 1-1592-C7-002 Equip. Class¹² CHILLERS - CLASS II
 Equipment Description CB ESSENTIAL CHILLER
 Location: Bldg. CONTROL Floor El. 260' Room, Area R313
 Manufacturer, Model, Etc. (optional but recommended) TRANE

Instructions for Completing Checklist

This checklist may be used to document the results of the Seismic Walkdown of an item of equipment on the SWEL. The space below each of the following questions may be used to record the results of judgments and findings. Additional space is provided at the end of this checklist for documenting other comments.

Anchorage

1. Is the anchorage configuration verification required (i.e., is the item one of the 50% of SWEL items requiring such verification)? Y N

2. Is the anchorage free of bent, broken, missing or loose hardware? Y N U N/A

3. Is the anchorage free of corrosion that is more than mild surface oxidation? Y N U N/A

4. Is the anchorage free of visible cracks in the concrete near the anchors? Y N U N/A

5. Is the anchorage configuration consistent with plant documentation?
 (Note: This question only applies if the item is one of the 50% for which an anchorage configuration verification is required.) Y N U N/A
SEE DWG # AX4AJ04 - 00134 VER 1.0

6. Based on the above anchorage evaluations, is the anchorage free of potentially adverse seismic conditions? Y N U

¹² Enter the equipment class name from Appendix B: Classes of Equipment.

Seismic Walkdown Checklist (SWC)

Equipment ID No. 1-1592-C7-002 Equip. Class¹² CHILLERS - CLASS II

Equipment Description CR. ESSENTIAL CHILLER

Interaction Effects

7. Are soft targets free from impact by nearby equipment or structures? Y N U N/A

8. Are overhead equipment, distribution systems, ceiling tiles and lighting, and masonry block walls not likely to collapse onto the equipment? Y N U N/A

9. Do attached lines have adequate flexibility to avoid damage? Y N U N/A

10. Based on the above seismic interaction evaluations, is equipment free of potentially adverse seismic interaction effects? Y N U

Other Adverse Conditions

11. Have you looked for and found no other seismic conditions that could adversely affect the safety functions of the equipment? Y N U

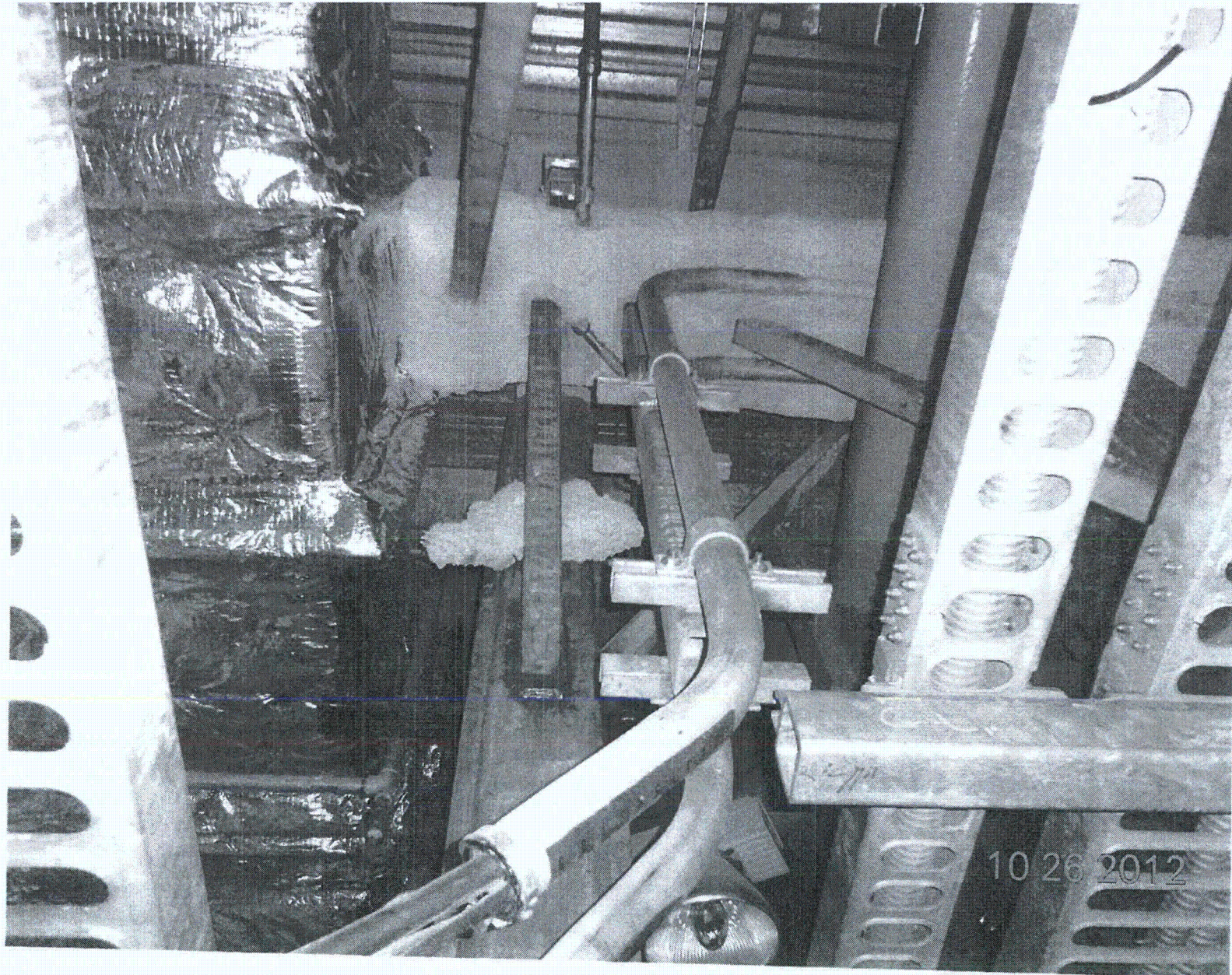
Comments (Additional pages may be added as necessary)

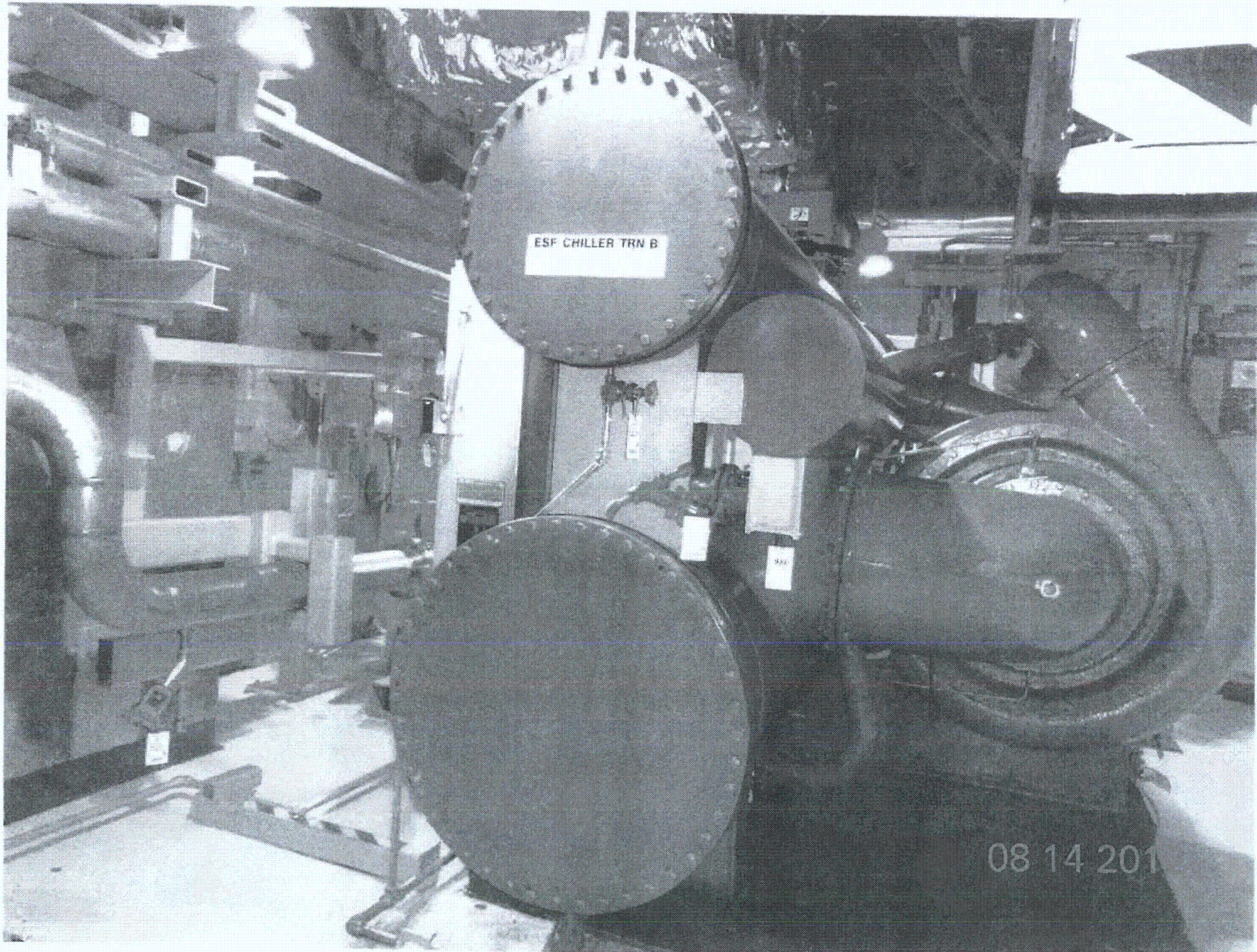
PIECE OF FIREPROOFING HAS FALLEN AND IS NOW RESTING BETWEEN THE VERTICAL POST AND DIAGONAL MEMBER OF A STRUCTURAL SUPPORT. NO POTENTIALLY ADVERSE SEISMIC INTERACTION WITH NEARBY EQUIPMENT. REF. CR 540131

(SEE 1-FSL-12046 FOR AWC)

Evaluated by: James Davel / JAMES DOVAL Date: 8-14-2012

WJ / Winston Stewart 08/14/2012





Sheet 1 of 2

Status: Y N U**Seismic Walkdown Checklist (SWC)**Equipment ID No. 1-1592-P7-002 Equip. Class¹² HORIZONTAL PUMPS - CLASS 5Equipment Description ESSENTIAL CHILLED WATER PUMPLocation: Bldg. CONTROL Floor El. 200'-0" Room, Area R313Manufacturer, Model, Etc. (optional but recommended) GOULDS PUMP, INC.**Instructions for Completing Checklist**

This checklist may be used to document the results of the Seismic Walkdown of an item of equipment on the SWEL. The space below each of the following questions may be used to record the results of judgments and findings. Additional space is provided at the end of this checklist for documenting other comments.

Anchorage

1. Is the anchorage configuration verification required (i.e., is the item one of the 50% of SWEL items requiring such verification)? Y N U
2. Is the anchorage free of bent, broken, missing or loose hardware? Y N U N/A
3. Is the anchorage free of corrosion that is more than mild surface oxidation? Y N U N/A
4. Is the anchorage free of visible cracks in the concrete near the anchors? Y N U N/A
5. Is the anchorage configuration consistent with plant documentation?
(Note: This question only applies if the item is one of the 50% for which an anchorage configuration verification is required.) Y N U N/A
 DWG # 1X4A105-00027 VBR 6.0
 (VBR002 # 4778833)
6. Based on the above anchorage evaluations, is the anchorage free of potentially adverse seismic conditions? Y N U

¹²Enter the equipment class name from Appendix B: Classes of Equipment.

Seismic Walkdown Checklist (SWC)

Equipment ID No. 1-1592-P7-002 Equip. Class¹² HORIZONTAL PUMPS - CLASS 5

Equipment Description ESSENTIAL CHILLED WATER PUMP

Interaction Effects

7. Are soft targets free from impact by nearby equipment or structures? Y N U N/A

8. Are overhead equipment, distribution systems, ceiling tiles and lighting, and masonry block walls not likely to collapse onto the equipment? Y N U N/A

9. Do attached lines have adequate flexibility to avoid damage? Y N U N/A

10. Based on the above seismic interaction evaluations, is equipment free of potentially adverse seismic interaction effects? Y N U

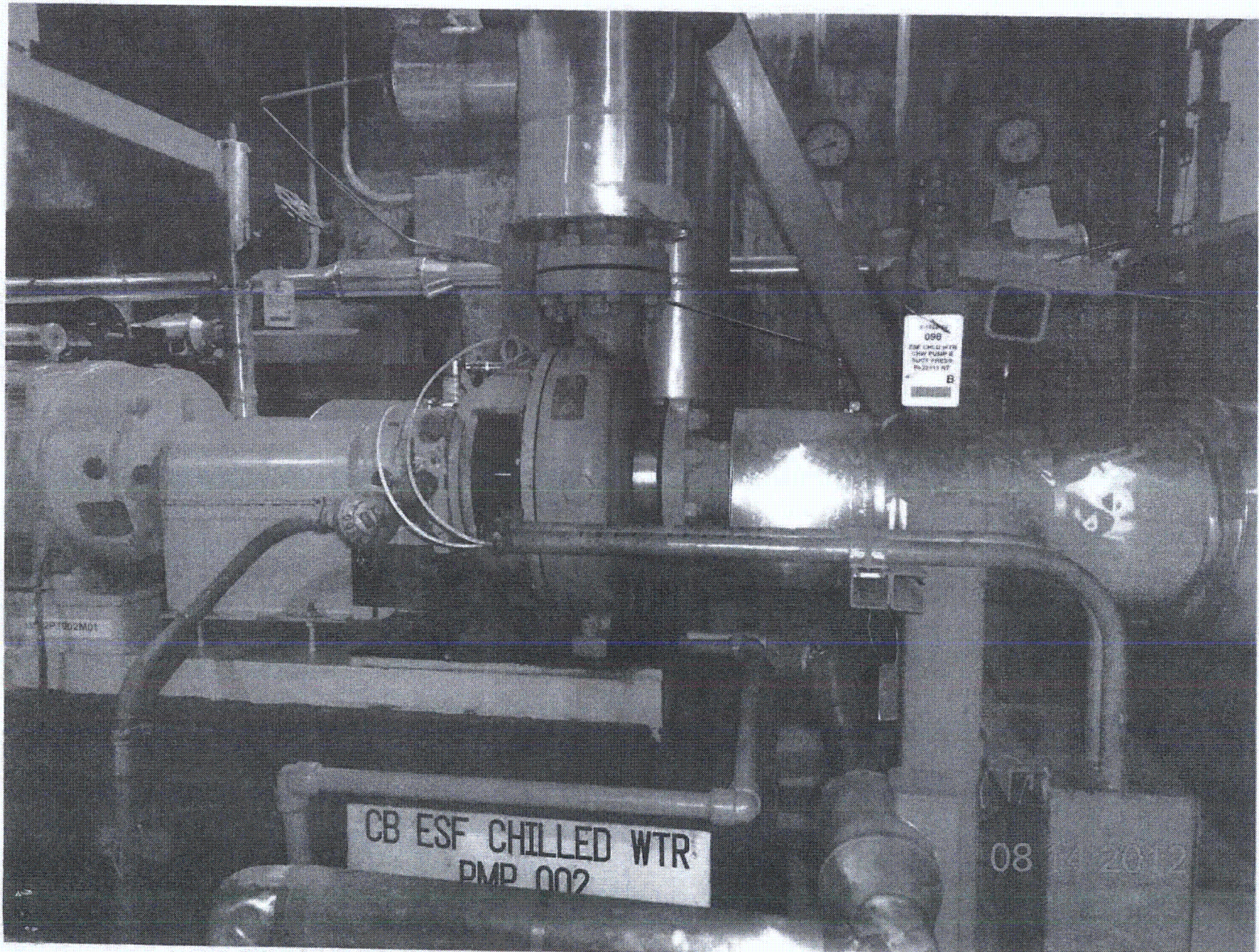
Other Adverse Conditions

11. Have you looked for and found no other seismic conditions that could adversely affect the safety functions of the equipment? Y N U

Comments (Additional pages may be added as necessary)

NONE

Evaluated by: James Dovel / JAMES DOVEL Date: 8-14-2012
Wt St / Winston Stewart 08/14/2012



Sheet 1 of 2
 Status: Y N U

Seismic Walkdown Checklist (SWC)

Equipment ID No. 1-1592-T7-002 Equip. Class¹² TANKS AND HEAT EXCHANGERS - CLASS 21
 Equipment Description ESSENTIAL CHILLED WATER EXPANSION TANK
 Location: Bldg. CONTROL Floor El. 260'-0" Room, Area R313
 Manufacturer, Model, Etc. (optional but recommended) RICHMOND ENGINEERING

Instructions for Completing Checklist

This checklist may be used to document the results of the Seismic Walkdown of an item of equipment on the SWEL. The space below each of the following questions may be used to record the results of judgments and findings. Additional space is provided at the end of this checklist for documenting other comments.

Anchorage

1. Is the anchorage configuration verification required (i.e., is the item one of the 50% of SWEL items requiring such verification)? Y N U

2. Is the anchorage free of bent, broken, missing or loose hardware? Y N U N/A

3. Is the anchorage free of corrosion that is more than mild surface oxidation? Y N U N/A

4. Is the anchorage free of visible cracks in the concrete near the anchors? Y N U N/A
ANCHORED TO STRUCTURAL FRAME

5. Is the anchorage configuration consistent with plant documentation? Y N U N/A
 (Note: This question only applies if the item is one of the 50% for which an anchorage configuration verification is required.)
TANK ATTACHES TO STRUCTURAL STEEL.
ANCHOR CONFIGURATION SHOWN ON DWG
1X4A404-00063 VER. 9.0

6. Based on the above anchorage evaluations, is the anchorage free of potentially adverse seismic conditions? Y N U

¹² Enter the equipment class name from Appendix B: Classes of Equipment.

Seismic Walkdown Checklist (SWC)

Equipment ID No. 1-1592-T7-002 Equip. Class¹² Tanks and Heat Exchangers - CLASS 21

Equipment Description ESSENTIAL CHILLED WATER EXPANSION TANK

Interaction Effects

- 7. Are soft targets free from impact by nearby equipment or structures? Y N U N/A

- 8. Are overhead equipment, distribution systems, ceiling tiles and lighting, and masonry block walls not likely to collapse onto the equipment? Y N U N/A

- 9. Do attached lines have adequate flexibility to avoid damage? Y N U N/A

- 10. Based on the above seismic interaction evaluations, is equipment free of potentially adverse seismic interaction effects? Y N U

Other Adverse Conditions

- 11. Have you looked for and found no other seismic conditions that could adversely affect the safety functions of the equipment? Y N U

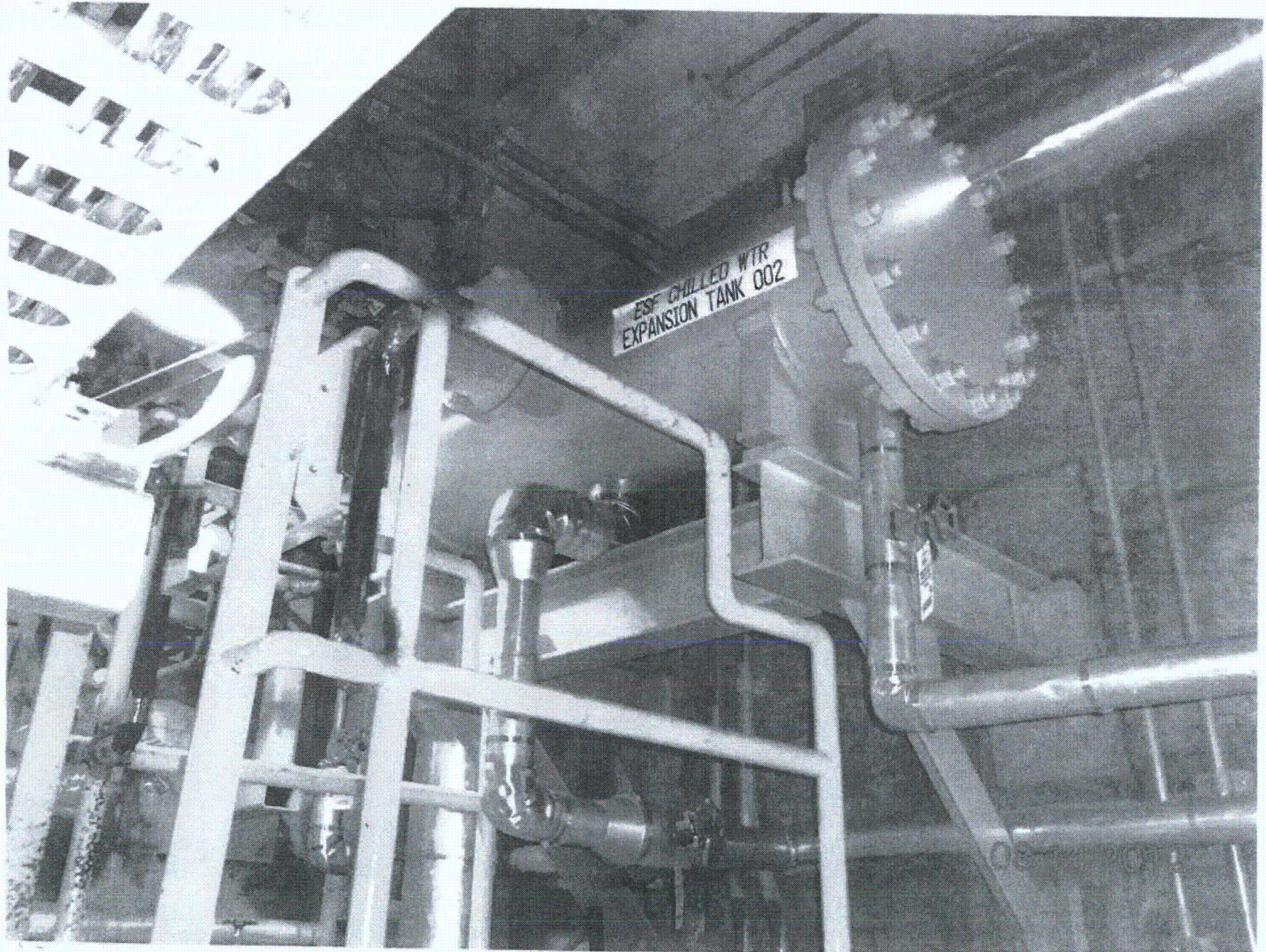
Comments (Additional pages may be added as necessary).

None

(SEE 1-ESL-12046 FOR SWC)

Evaluated by: James Doval / JAMES DOVAL Date: 8-14-2012
WST / WINSTON STEWART 8/14/2012

< C 4 >



Sheet 1 of 2
 Status: Y N U

Seismic Walkdown Checklist (SWC)

Equipment ID No. 1-1593-87-002-000 Equip. Class¹²: 9

Equipment Description AFW Pump B Supply Fan & Motor

Location: Bldg. AFWP Hse Floor El. 220'-0" Room, Area 102

Manufacturer, Model, Etc. (optional but recommended) Buffalo Forge

Instructions for Completing Checklist

This checklist may be used to document the results of the Seismic Walkdown of an item of equipment on the SWEL. The space below each of the following questions may be used to record the results of judgments and findings. Additional space is provided at the end of this checklist for documenting other comments.

Anchorage

1. Is the anchorage configuration verification required (i.e., is the item one of the 50% of SWEL items requiring such verification)? Y N U

2. Is the anchorage free of bent, broken, missing or loose hardware? Y N U N/A
Two corner bolts on right side loose out of 16 bolts.

3. Is the anchorage free of corrosion that is more than mild surface oxidation? Y N U N/A

4. Is the anchorage free of visible cracks in the concrete near the anchors? Y N U N/A

5. Is the anchorage configuration consistent with plant documentation? Y N U N/A
 (Note: This question only applies if the item is one of the 50% for which an anchorage configuration verification is required.)

6. Based on the above anchorage evaluations, is the anchorage free of potentially adverse seismic conditions? Y N U

¹² Enter the equipment class name from Appendix B: Classes of Equipment.

Seismic Walkdown Checklist (SWC)

Equipment ID No. 1-1593-B7-002 Equip. Class¹² 9

Equipment Description RTWP B Supply Fan & Motor

Interaction Effects

7. Are soft targets free from impact by nearby equipment or structures? Y N U N/A

8. Are overhead equipment, distribution systems, ceiling tiles and lighting, and masonry block walls not likely to collapse onto the equipment? Y N U N/A

9. Do attached lines have adequate flexibility to avoid damage? Y N U N/A

10. Based on the above seismic interaction evaluations, is equipment free of potentially adverse seismic interaction effects? Y N U

Other Adverse Conditions

11. Have you looked for and found no other seismic conditions that could adversely affect the safety functions of the equipment? Y N U

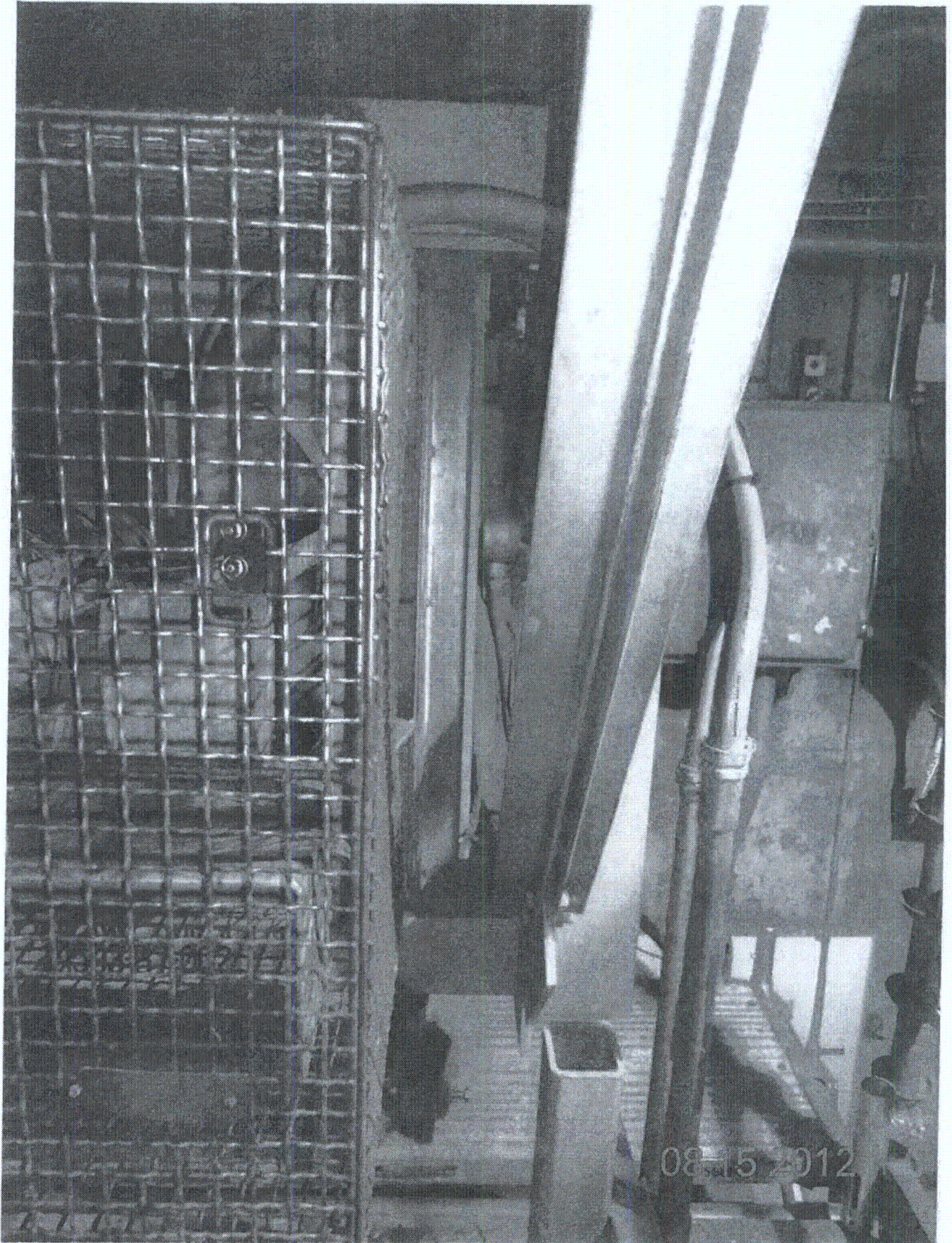
Comments (Additional pages may be added as necessary)

For loose bolts see CR 501650

Evaluated by: *Frank Yas / Felix* Date: *8/15/12*
Justin S. Cannon *[Signature]* *8/15/12*

< C.4 >









Sheet 1 of 2
 Status: Y N U

Seismic Walkdown Checklist (SWC)

Equipment ID No. 1-1602-Q5-NIR Equip. Class¹² 20 (I/C Racks)
 Equipment Description Nuclear Instrumentation Racks
 Location: Bldg: Control Floor El. 220' Room, Area R163
 Manufacturer, Model, Etc. (optional but recommended) _____

Instructions for Completing Checklist

This checklist may be used to document the results of the Seismic Walkdown of an item of equipment on the SWEL. The space below each of the following questions may be used to record the results of judgments and findings. Additional space is provided at the end of this checklist for documenting other comments.

Anchorage

1. Is the anchorage configuration verification required (i.e., is the item one of the 50% of SWEL items requiring such verification)? Y N U

2. Is the anchorage free of bent, broken, missing or loose hardware? Y N U N/A

3. Is the anchorage free of corrosion that is more than mild surface oxidation? Y N U N/A

4. Is the anchorage free of visible cracks in the concrete near the anchors? Y N U N/A

5. Is the anchorage configuration consistent with plant documentation? Y N U N/A
 (Note: This question only applies if the item is one of the 50% for which an anchorage configuration verification is required.)
IXGAS01 - 00174, Version 1.0

6. Based on the above anchorage evaluations, is the anchorage free of potentially adverse seismic conditions? Y N U

¹²Enter the equipment class name from Appendix B: Classes of Equipment.

Seismic Walkdown Checklist (SWC)

Equipment ID No. I-1602-Q5-NIR Equip. Class¹² 20 (E.C Racks)

Equipment Description Nuclear Instrumentation Racks

Interaction Effects

7. Are soft targets free from impact by nearby equipment or structures? Y N U N/A

8. Are overhead equipment, distribution systems, ceiling tiles and lighting, and masonry block walls not likely to collapse onto the equipment? Y N U N/A

9. Do attached lines have adequate flexibility to avoid damage? Y N U N/A

10. Based on the above seismic interaction evaluations, is equipment free of potentially adverse seismic interaction effects? Y N U

Other Adverse Conditions

11. Have you looked for and found no other seismic conditions that could adversely affect the safety functions of the equipment? Y N U

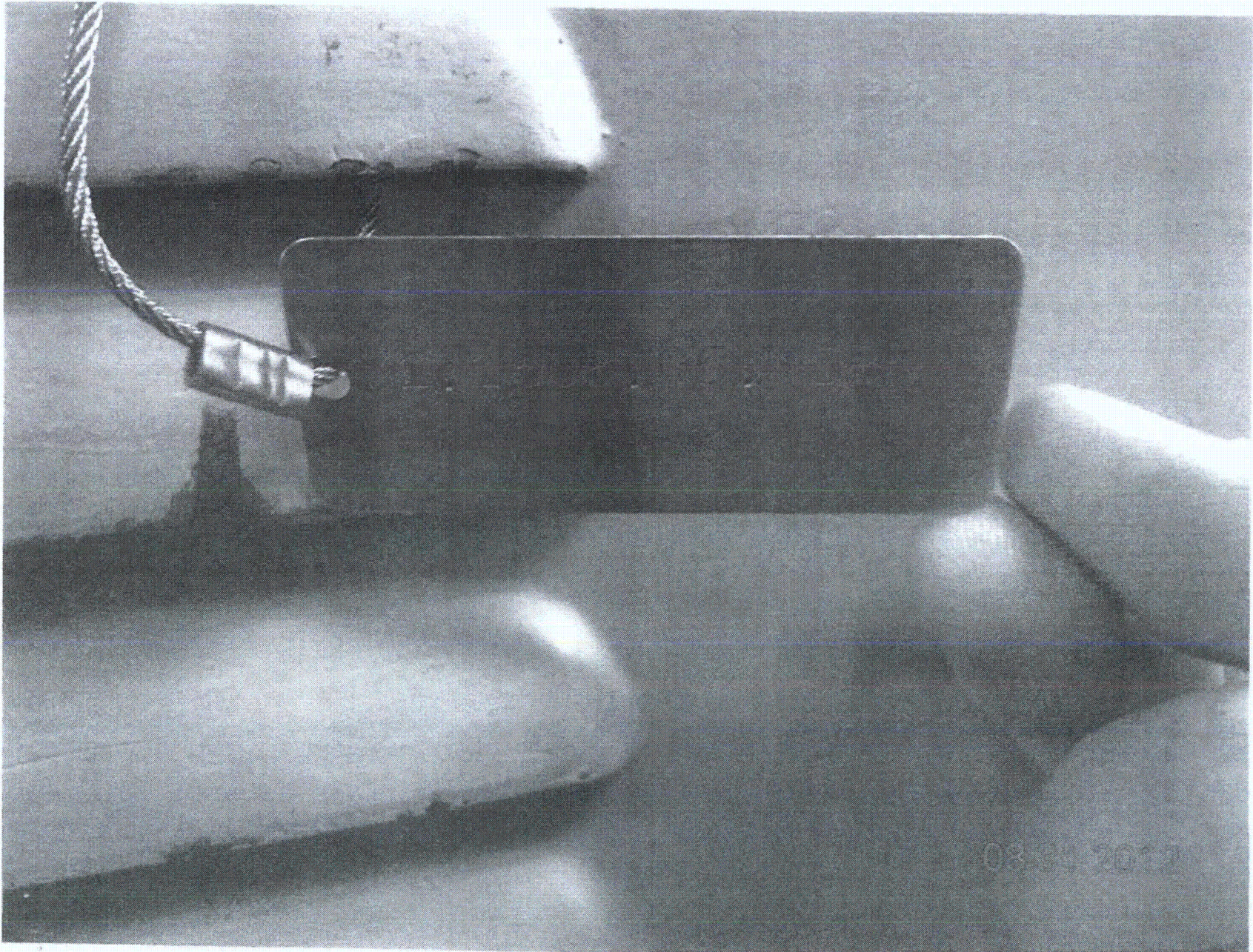
Comments (Additional pages may be added as necessary)

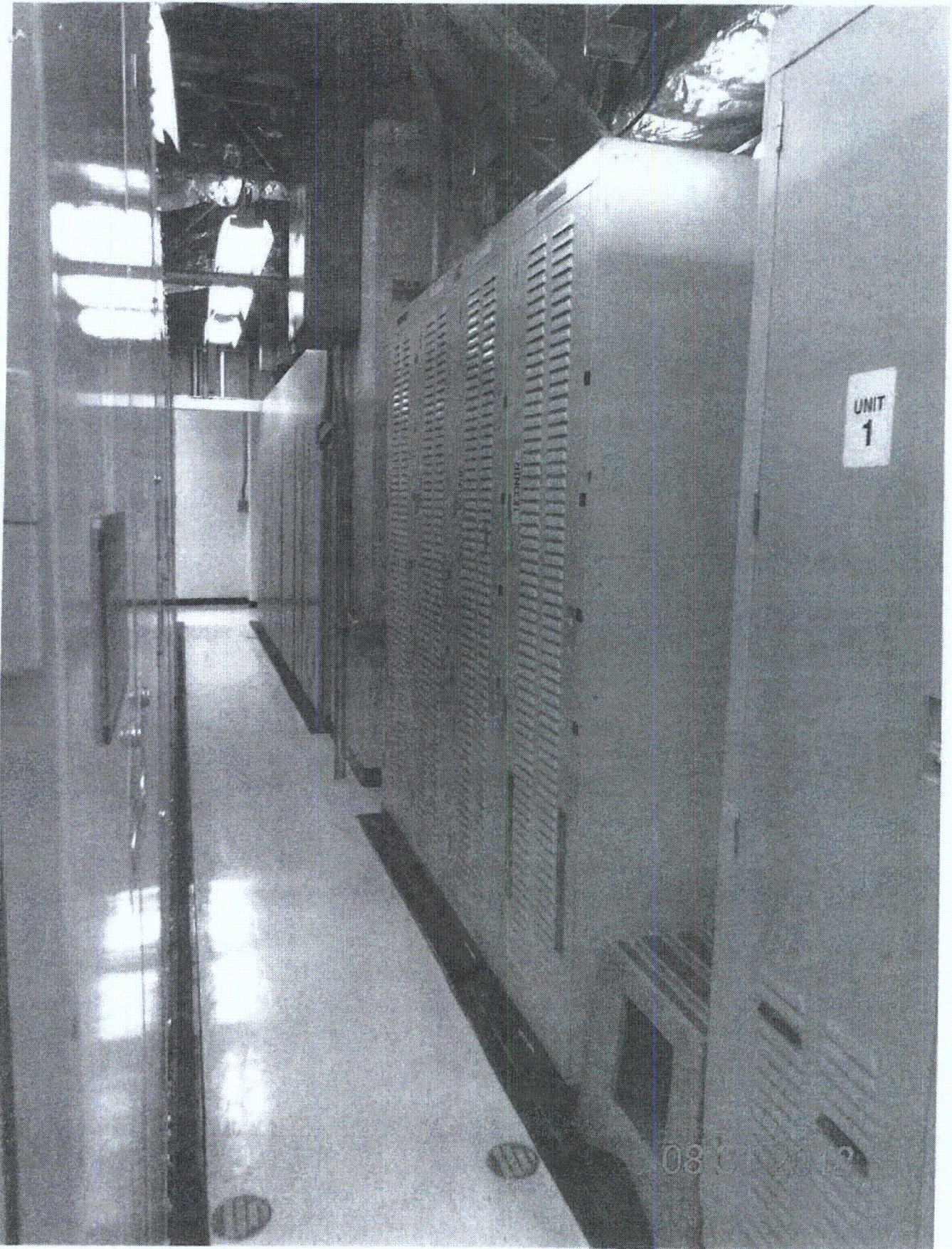
SEE I-1604-Q5-PCG FOR AREA WALK-BY

Evaluated by: Matthew Wilkinson Date: 8-31/2012

David Volodarsky DAVID VOLODARSKY 8/31/2012

<C4>





Seismic Walkdown Checklist (SWC)

Equipment ID No. 1-1602-Q5-N1R Equip. Class¹² 20

Equipment Description NUCLEAR INST RACKS

Location: Bldg. CONTROL Floor El. 220' Room, Area 103

Manufacturer, Model, Etc. (optional but recommended) _____

Instructions for Completing Checklist

This checklist may be used to document the results of the Seismic Walkdown of an item of equipment on the SWEL. The space below each of the following questions may be used to record the results of judgments and findings. Additional space is provided at the end of this checklist for documenting other comments.

Anchorage (SEE SWC DATED 8/31/12)

1. Is the anchorage configuration verification required (i.e., is the item one of the 50% of SWEL items requiring such verification)? Y N

2. Is the anchorage free of bent, broken, missing or loose hardware? Y N U N/A

3. Is the anchorage free of corrosion that is more than mild surface oxidation? Y N U N/A

4. Is the anchorage free of visible cracks in the concrete near the anchors? Y N U N/A

5. Is the anchorage configuration consistent with plant documentation? Y N U N/A
 (Note: This question only applies if the item is one of the 50% for which an anchorage configuration verification is required.)

6. Based on the above anchorage evaluations, is the anchorage free of potentially adverse seismic conditions? Y N U

¹² Enter the equipment class name from Appendix B: Classes of Equipment.

Seismic Walkdown Checklist (SWC)

Equipment ID No. 1-1602-Q5-NIR Equip. Class¹² 20

Equipment Description NUCLEAR INST RACKS

Interaction Effects (SEE SWC DATED 8/31/12)

7. Are soft targets free from impact by nearby equipment or structures? Y N U N/A

8. Are overhead equipment, distribution systems, ceiling tiles and lighting, and masonry block walls not likely to collapse onto the equipment? Y N U N/A

9. Do attached lines have adequate flexibility to avoid damage? Y N U N/A

10. Based on the above seismic interaction evaluations, is equipment free of potentially adverse seismic interaction effects? Y N U

Other Adverse Conditions

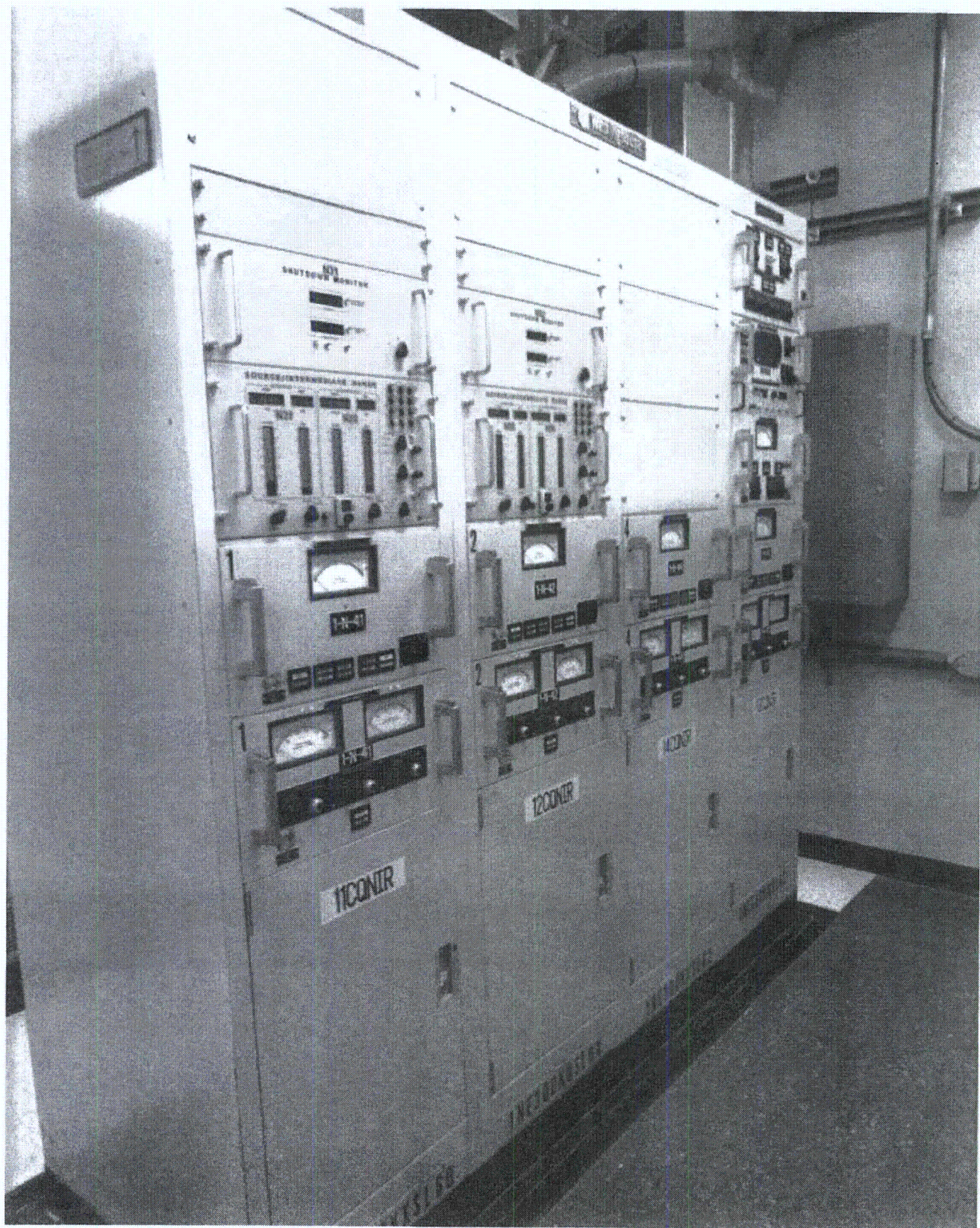
11. Have you looked for and found no other seismic conditions that could adversely affect the safety functions of the equipment? Y N U

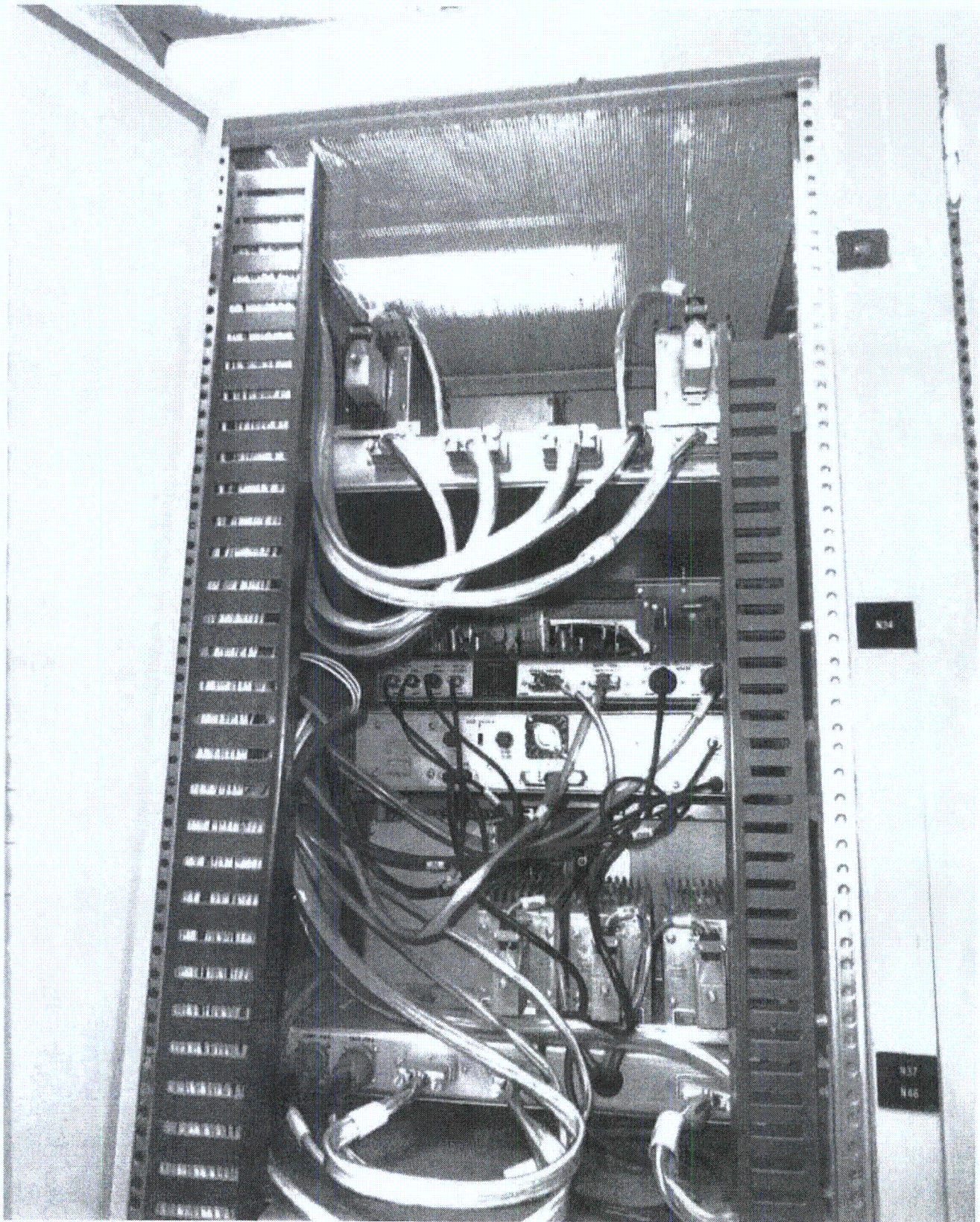
A VISUAL INSPECTION OF THE INTERNAL COMPONENTS OF THIS CABINET WAS PERFORMED TO CHECK FOR SEISMIC ADEQUACY TO INCLUDE ANY EVIDENCE OF INTERNAL COMPONENTS NOT ADEQUATELY SECURED, CHECK TO ENSURE FASTENERS CONNECTING ADJACENT CABINETS ARE IN PLACE, AND EVIDENCE OF OTHER ADVERSE SEISMIC CONDITIONS. NO ADVERSE CONDITIONS WERE FOUND.

Comments (Additional pages may be added as necessary)

NONE

Evaluated by: JUSTO S. CHACON / José N. Hernández Date: 9/28/12 / 9/28/12





Sheet 1 of 2
 Status: Y N U

Seismic Walkdown Checklist (SWC)

Equipment ID No. 1-1604-Q5-PCG Equip. Class¹² 20

Equipment Description BOP Control Panel 1

Location: Bldg. Control Floor EL. 220' Room, Area R163

Manufacturer, Model, Etc. (optional but recommended) _____

Instructions for Completing Checklist

This checklist may be used to document the results of the Seismic Walkdown of an item of equipment on the SWEL. The space below each of the following questions may be used to record the results of judgments and findings. Additional space is provided at the end of this checklist for documenting other comments.

Anchorage

1. Is the anchorage configuration verification required (i.e., is the item one of the 50% of SWEL items requiring such verification)? Y N

2. Is the anchorage free of bent, broken, missing or loose hardware? Y N U N/A

3. Is the anchorage free of corrosion that is more than mild surface oxidation? Y N U N/A

4. Is the anchorage free of visible cracks in the concrete near the anchors? Y N U N/A

5. Is the anchorage configuration consistent with plant documentation?
 (Note: This question only applies if the item is one of the 50% for which an anchorage configuration verification is required.)
Not in 50% anchorage verification sample. Y N U N/A

6. Based on the above anchorage evaluations, is the anchorage free of potentially adverse seismic conditions? Y N U

¹² Enter the equipment class name from Appendix B: Classes of Equipment.

Seismic Walkdown Checklist (SWC)

Equipment ID No. 1-1604-Q5-PCG Equip. Class¹² 20

Equipment Description BOP Control Panel 1

Interaction Effects

7. Are soft targets free from impact by nearby equipment or structures? Y N U N/A

8. Are overhead equipment, distribution systems, ceiling tiles and lighting, and masonry block walls not likely to collapse onto the equipment? Y N U N/A

9. Do attached lines have adequate flexibility to avoid damage? Y N U N/A
*No external conduit or cable connections.
Floor penetrations internal to panel.*

10. Based on the above seismic interaction evaluations, is equipment free of potentially adverse seismic interaction effects? Y N U

Other Adverse Conditions

11. Have you looked for and found no other seismic conditions that could adversely affect the safety functions of the equipment? Y N U
~ 2" gap between this and adjacent panel, acceptable.

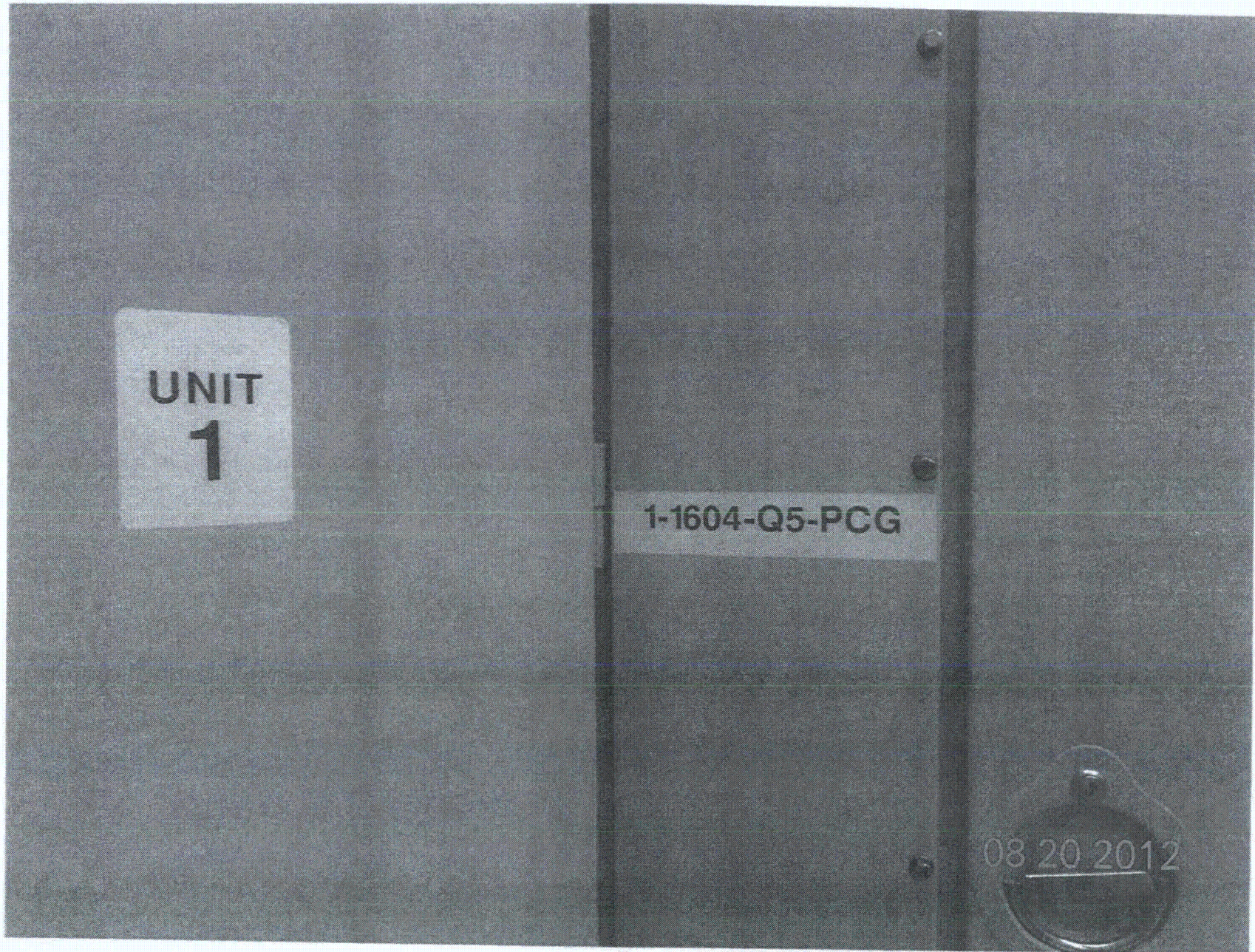
Comments (Additional pages may be added as necessary)

NONE.

Evaluated by: *Matthew Wilkinson* Matthew Wilkinson Date: 8/20/2012

David Volodarsky DAVID VOLODARSKY 8/20/2012

<C4>



Seismic Walkdown Checklist (SWC)

Equipment ID No. 1-1604-95-PC6 Equip. Class¹² Z0

Equipment Description BOP CONTROL PANEL 1

Location: Bldg. CONTROL Floor/El. Z20 Room, Area 163

Manufacturer, Model, Etc. (optional but recommended) _____

Instructions for Completing Checklist

This checklist may be used to document the results of the Seismic Walkdown of an item of equipment on the SWEL. The space below each of the following questions may be used to record the results of judgments and findings. Additional space is provided at the end of this checklist for documenting other comments.

Anchorage (SEE SWC DATED 6/20/12)

1. Is the anchorage configuration verification required (i.e., is the item one of the 50% of SWEL items requiring such verification)? Y N

2. Is the anchorage free of bent, broken, missing or loose hardware? Y N U N/A

3. Is the anchorage free of corrosion that is more than mild surface oxidation? Y N U N/A

4. Is the anchorage free of visible cracks in the concrete near the anchors? Y N U N/A

5. Is the anchorage configuration consistent with plant documentation? Y N U N/A
 (Note: This question only applies if the item is one of the 50% for which an anchorage configuration verification is required.)

6. Based on the above anchorage evaluations, is the anchorage free of potentially adverse seismic conditions? Y N U

¹² Enter the equipment class name from Appendix B: Classes of Equipment.

Seismic Walkdown Checklist (SWC)

Equipment ID No. 1-1604-Q5-PCG Equip. Class¹² Z0

Equipment Description BOP CONTROL PANEL 1

Interaction Effects (SEE SWC DATED 8/20/12)

7. Are soft targets free from impact by nearby equipment or structures? Y N U N/A

8. Are overhead equipment, distribution systems, ceiling tiles and lighting, and masonry block walls not likely to collapse onto the equipment? Y N U N/A

9. Do attached lines have adequate flexibility to avoid damage? Y N U N/A

10. Based on the above seismic interaction evaluations, is equipment free of potentially adverse seismic interaction effects? Y N U

Other Adverse Conditions

11. Have you looked for and found no other seismic conditions that could adversely affect the safety functions of the equipment? Y N U

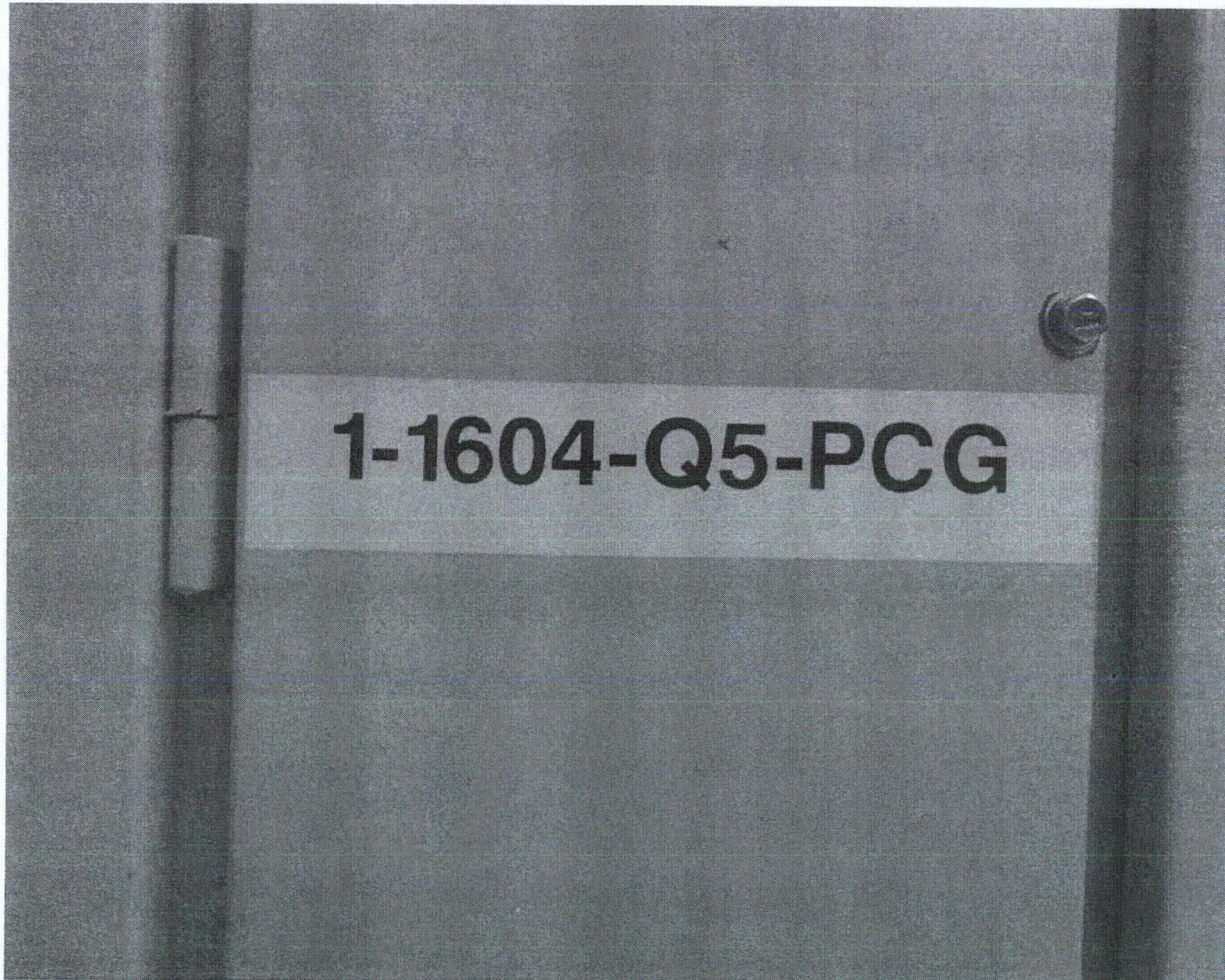
A VISUAL INSPECTION OF THE INTERNAL COMPONENTS OF THIS CABINET WAS PERFORMED TO CHECK FOR SEISMIC ADEQUACY TO INCLUDE ANY EVIDENCE OF INTERNAL COMPONENTS NOT ADEQUATELY SECURED, CHECKED TO ENSURE FASTENERS CONNECTING ADJACENT CABINETS WERE IN PLACE, AND EVIDENCE OF OTHER ADVERSE SEISMIC CONDITIONS. NO SIGNIFICANT ADVERSE CONDITIONS WERE FOUND. SOME MINOR ISSUES WERE DOCUMENTED IN THE "COMMENTS" SECTION BELOW.

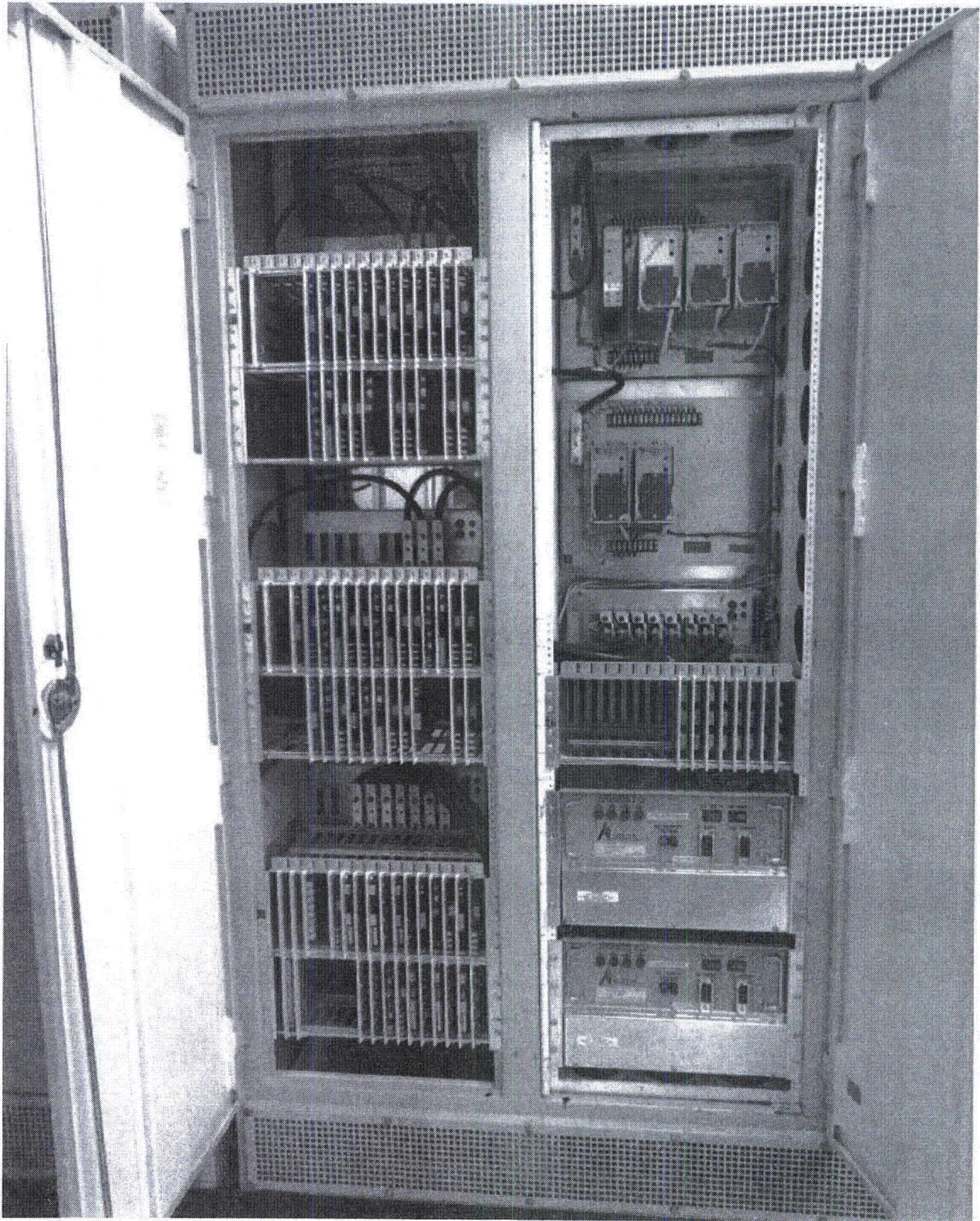
Comments (Additional pages may be added as necessary)

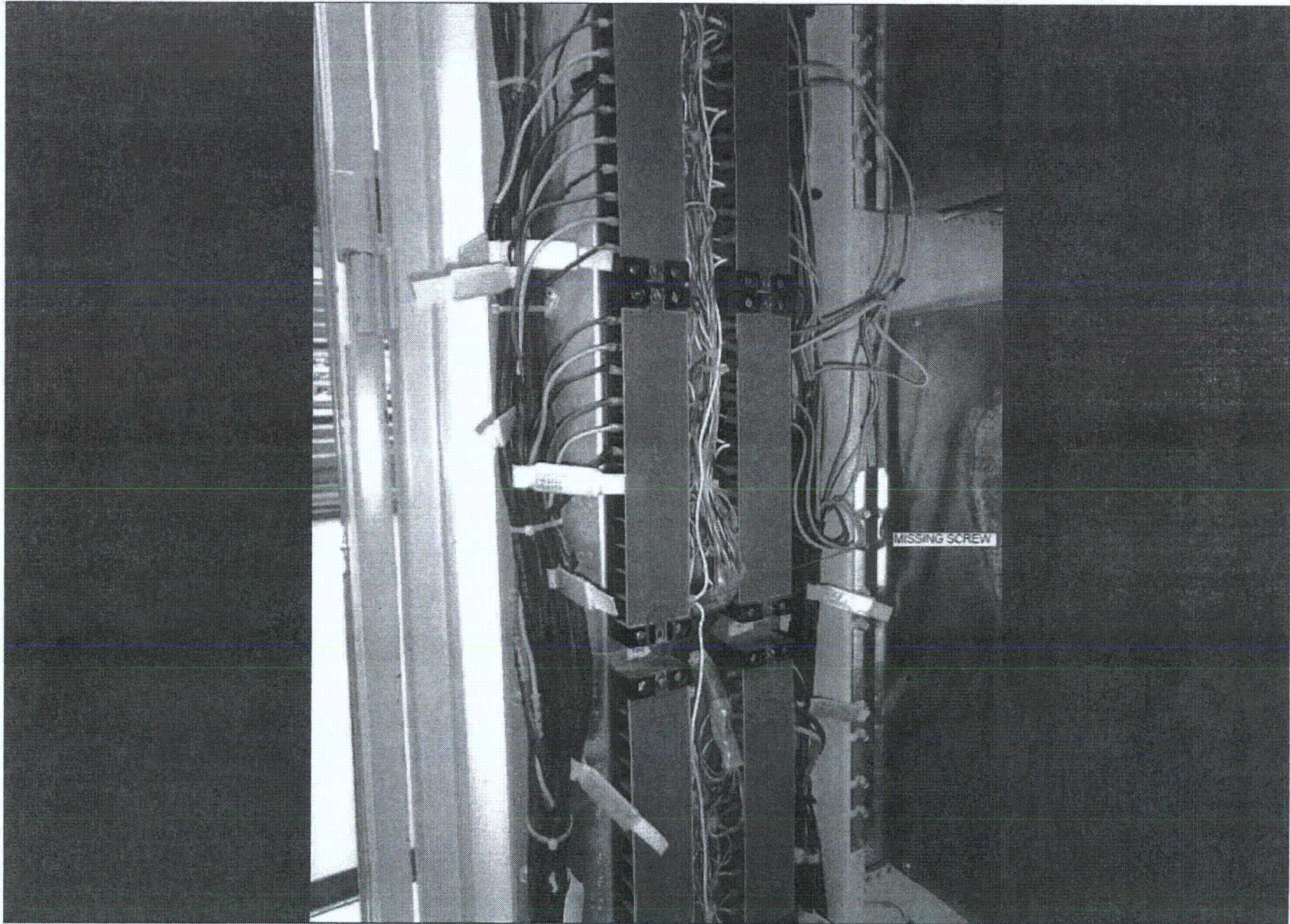
FOUND A SCREW MISSING TO SECURE PROTECTIVE COVER FOR A TERMINAL BLOCK. THE SEISMIC WALKDOWN TEAM JUDGED THAT THIS CONDITION DOES NOT REPRESENT A SEISMIC OR OPERABILITY CONCERN. THIS CONDITION HAS BEEN REPORTED UNDER CR 527624

Evaluated by: JUSTO S. CHACON / [Signature] Date: 9/28/12

[Signature] / José R. Hernández 9/28/12







Seismic Walkdown Checklist (SWC)

Equipment ID No. 1-1604-05-PS2 Equip. Class¹² 20 (I&C Panels)
 Equipment Description Process I&C Protect II
 Location: Bldg. Control Floor El. 220' Room, Area R163
 Manufacturer, Model, Etc. (optional but recommended) Westinghouse

Instructions for Completing Checklist

This checklist may be used to document the results of the Seismic Walkdown of an item of equipment on the SWEL. The space below each of the following questions may be used to record the results of judgments and findings. Additional space is provided at the end of this checklist for documenting other comments.

Anchorage

1. Is the anchorage configuration verification required (i.e., is the item one of the 50% of SWEL items requiring such verification)? Y N U

2. Is the anchorage free of bent, broken, missing or loose hardware? Y N U N/A

3. Is the anchorage free of corrosion that is more than mild surface oxidation? Y N U N/A

4. Is the anchorage free of visible cracks in the concrete near the anchors? Y N U N/A

5. Is the anchorage configuration consistent with plant documentation?
 (Note: This question only applies if the item is one of the 50% for which an anchorage configuration verification is required.)
IX6 AV 01 - 207, V3.0; AY 2011003 Rev 13 ^{MPV} 8/20/2012
 Y N U N/A

6. Based on the above anchorage evaluations, is the anchorage free of potentially adverse seismic conditions? Y N U

¹²Enter the equipment class name from Appendix B: Classes of Equipment.

Seismic Walkdown Checklist (SWC)

Equipment ID No: 1-1604-Q5-PSZ Equip. Class¹²: 20 (I & C PANELS)

Equipment Description PROCESS I & C PROTECT II

Interaction Effects

- 7. Are soft-targets free from impact by nearby equipment or structures? Y N U N/A

- 8. Are overhead equipment, distribution systems, ceiling tiles and lighting, and masonry block walls not likely to collapse onto the equipment? Y N U N/A
LIGHT IS DIRECTLY ABOVE PANEL. HOWEVER, LIGHT FIXTURE IS PROPERLY SECURED WITH CLOSURE SCREW, ACCEPTABLE.

- 9. Do attached lines have adequate flexibility to avoid damage? Y N U N/A

- 10. Based on the above seismic interaction evaluations, is equipment free of potentially adverse seismic interaction effects? Y N U

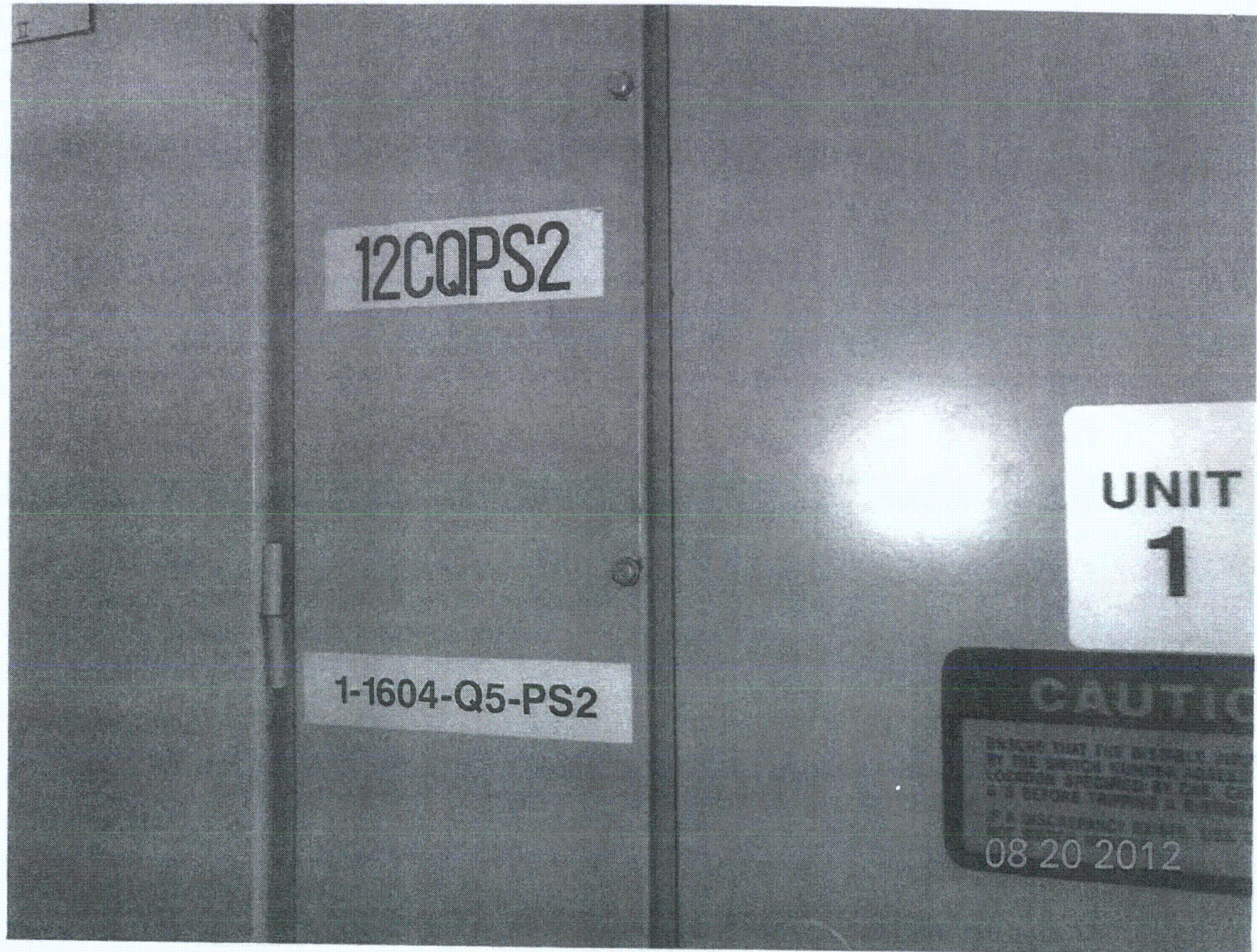
Other Adverse Conditions

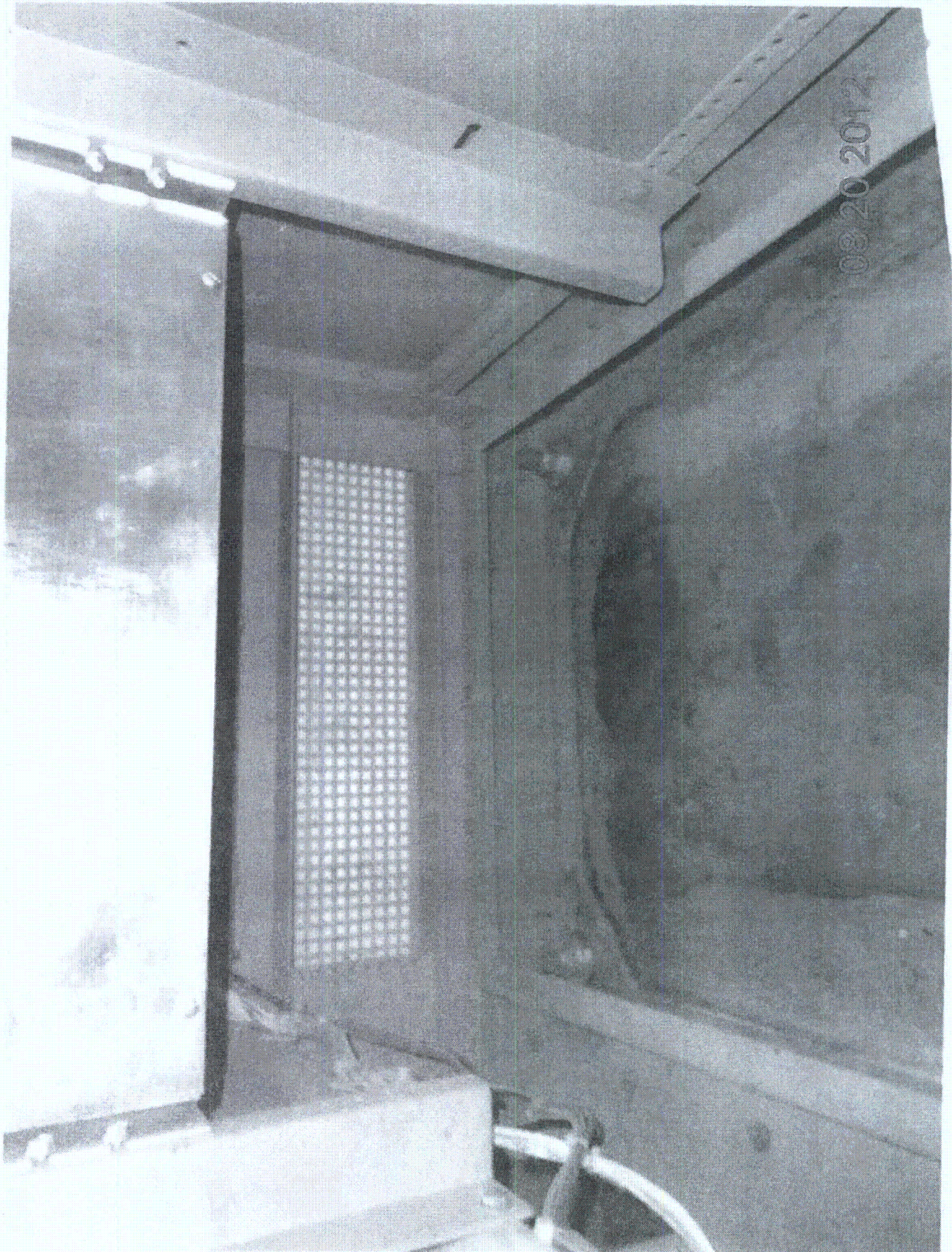
- 11. Have you looked for and found no other seismic conditions that could adversely affect the safety functions of the equipment? Y N U
2" GAP ON EACH SIDE OF CABINET TO ADJACENT CABINETS, ACCEPTABLE

Comments (Additional pages may be added as necessary)

SEE 1-1604-Q5-PCG FOR AREA WALKBY CHECKLIST.

Evaluated by: *Matthew Wilkinson* Matthew Wilkinson Date: 8/20/2012
David Volodarsky DAVID VOLODARSKY 8/20/2012





Seismic Walkdown Checklist (SWC)

Equipment ID No. 1-1604-Q5-PS2 Equip. Class¹² 20

Equipment Description PROCESS I/C PROTECT II

Location: Bldg. CONTROL Floor El. 220 Room, Area 105

Manufacturer, Model, Etc. (optional but recommended) _____

Instructions for Completing Checklist

This checklist may be used to document the results of the Seismic Walkdown of an item of equipment on the SWEL. The space below each of the following questions may be used to record the results of judgments and findings. Additional space is provided at the end of this checklist for documenting other comments.

Anchorage (SEE SWC DATED 8/20/12)

1. Is the anchorage configuration verification required (i.e., is the item one of the 50% of SWEL items requiring such verification)? Y N

2. Is the anchorage free of bent, broken, missing or loose hardware? Y N U N/A

3. Is the anchorage free of corrosion that is more than mild surface oxidation? Y N U N/A

4. Is the anchorage free of visible cracks in the concrete near the anchors? Y N U N/A

5. Is the anchorage configuration consistent with plant documentation? Y N U N/A
 (Note: This question only applies if the item is one of the 50% for which an anchorage configuration verification is required.)

6. Based on the above anchorage evaluations, is the anchorage free of potentially adverse seismic conditions? Y N U

¹² Enter the equipment class name from Appendix B: Classes of Equipment.

Seismic Walkdown Checklist (SWC)

Equipment ID No. 1-1604-05-PS2 Equip. Class¹² 20

Equipment Description PROCESS I & C PROTECT II

Interaction Effects (SEE SWC DATED 8/20/12)

7. Are soft targets free from impact by nearby equipment or structures? Y N U N/A

8. Are overhead equipment, distribution systems, ceiling tiles and lighting, and masonry block walls not likely to collapse onto the equipment? Y N U N/A

9. Do attached lines have adequate flexibility to avoid damage? Y N U N/A

10. Based on the above seismic interaction evaluations, is equipment free of potentially adverse seismic interaction effects? Y N U

Other Adverse Conditions

11. Have you looked for and found no other seismic conditions that could adversely affect the safety functions of the equipment? Y N U

A VISUAL INSPECTION OF THE INTERNAL COMPONENTS OF THIS CABINET WAS PERFORMED TO CHECK FOR SEISMIC ADEQUACY TO INCLUDE ANY EVIDENCE OF INTERNAL COMPONENTS NOT ADEQUATELY SECURED, CHECK TO ENSURE FASTENERS CONNECTING ADJACENT CABINETS ARE IN PLACE, AND EVIDENCE OF OTHER ADVERSE SEISMIC CONDITIONS. NO ADVERSE CONDITIONS WERE FOUND

Comments (Additional pages may be added as necessary)

NONE

Evaluated by: JUSTO S. CHACON / [Signature] Date: 9/28/12

[Signature] / Jose R. Hernandez 9/28/12

< C4 >

