

Seismic Walkdown Checklist (SWC)

Equipment ID No. 1-1467-PS-565 Equip. Class¹² INSTRUMENT RACKS - CLASS 1B

Equipment Description 5GB ISOL SOLENOID RACK

Location: Bldg. AUX Floor El. 100'-0" Room, Area R307

Manufacturer, Model, Etc. (optional but recommended) RELIANCE CUSTOM CONTROLS

Instructions for Completing Checklist

This checklist may be used to document the results of the Seismic Walkdown of an item of equipment on the SWEL. The space below each of the following questions may be used to record the results of judgments and findings. Additional space is provided at the end of this checklist for documenting other comments.

Anchorage

1. Is the anchorage configuration verification required (i.e., is the item one of the 50% of SWEL items requiring such verification)? Y N U

 2. Is the anchorage free of bent, broken, missing or loose hardware? Y N U N/A

 3. Is the anchorage free of corrosion that is more than mild surface oxidation? Y N U N/A

 4. Is the anchorage free of visible cracks in the concrete near the anchors? Y N U N/A

 5. Is the anchorage configuration consistent with plant documentation?
(Note: This question only applies if the item is one of the 50% for which an anchorage configuration verification is required.) Y N U N/A
- DRAWING : 1X5AG01-0015 VER 15.0
AX2008.C058 VER 11.0
6. Based on the above anchorage evaluations, is the anchorage free of potentially adverse seismic conditions? Y N U

¹²Enter the equipment class name from Appendix B: Classes of Equipment.

Seismic Walkdown Checklist (SWC)

Equipment ID No. 1-1407-PS-565 Equip. Class¹² INSTRUMENT RACKS - CLASS 1B

Equipment Description SGB ISOL SOLENOID RACK

Interaction Effects

7. Are soft targets free from impact by nearby equipment or structures? Y N U N/A

8. Are overhead equipment, distribution systems, ceiling tiles and lighting, and masonry block walls not likely to collapse onto the equipment? Y N U N/A

9. Do attached lines have adequate flexibility to avoid damage? Y N U N/A

10. Based on the above seismic interaction evaluations, is equipment free of potentially adverse seismic interaction effects? Y N U

Other Adverse Conditions

11. Have you looked for and found no other seismic conditions that could adversely affect the safety functions of the equipment? Y N U

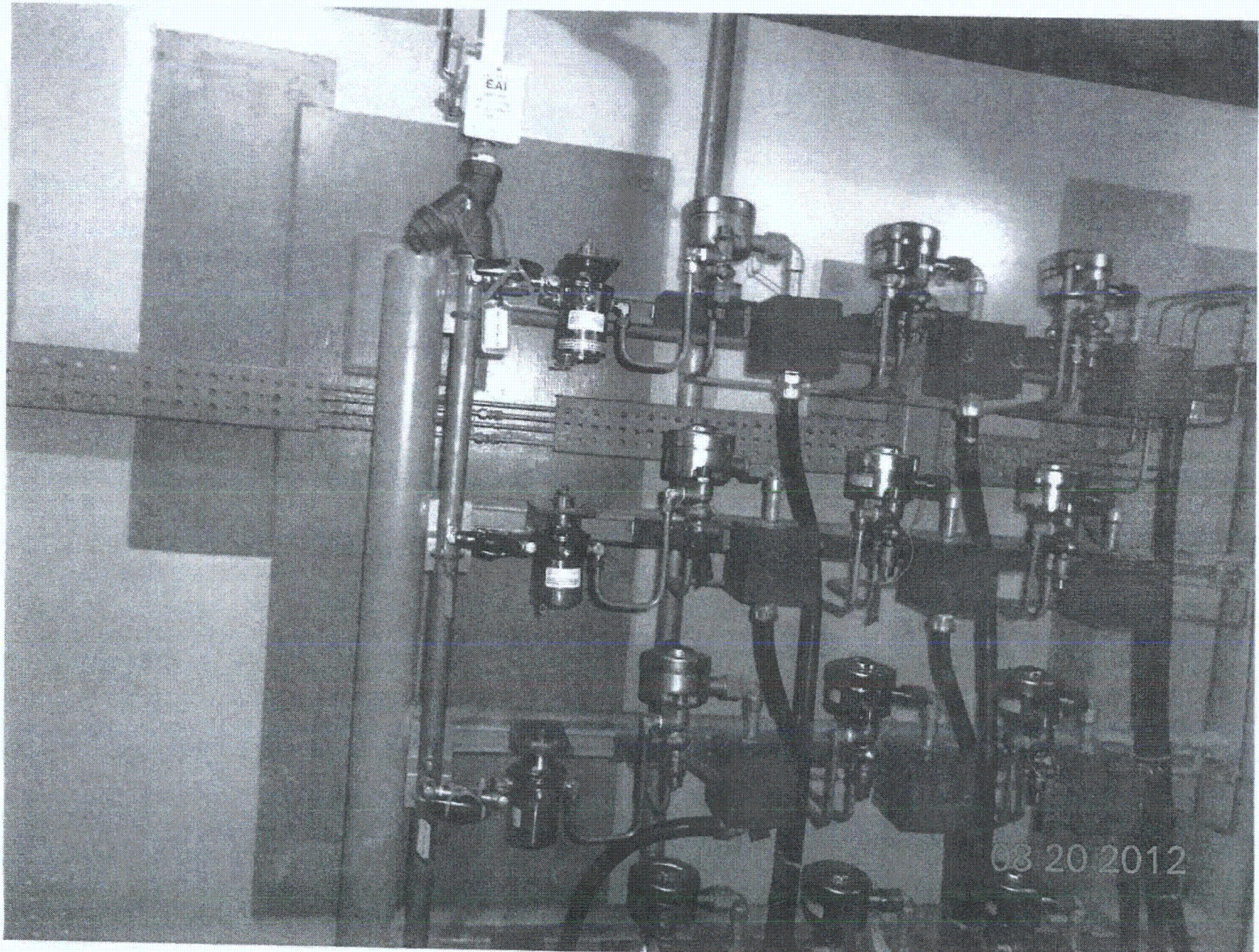
Comments (Additional pages may be added as necessary)

INSTRUMENT AIR LINE - BOLTS NUTS LOOSE @ TOP & BT
NOT A SEISMIC CONCERN
SEE CR # 505329

Evaluated by: James Davel / JAMES DOVAL Date: 8-20-2012

W. Stewart / Winston Stewart 08/20/2012





Sheet 1 of 2
 Status: Y N U

Seismic Walkdown Checklist (SWC)

Equipment ID No: 1-1500-Q5-HVC Equip. Class¹² 20 (E.C. Panels)
 Equipment Description HVAC Panel
 Location: Bldg. Control Floor El. 220' Room, Area R163
 Manufacturer, Model, Etc. (optional but recommended) Reliance Custom Controls

Instructions for Completing Checklist

This checklist may be used to document the results of the Seismic Walkdown of an item of equipment on the SWEL. The space below each of the following questions may be used to record the results of judgments and findings. Additional space is provided at the end of this checklist for documenting other comments.

Anchorage

1. Is the anchorage configuration verification required (i.e., is the item one of the 50% of SWEL items requiring such verification)? Y N U

2. Is the anchorage free of bent, broken, missing or loose hardware? Y N U N/A

3. Is the anchorage free of corrosion that is more than mild surface oxidation? Y N U N/A

4. Is the anchorage free of visible cracks in the concrete near the anchors? Y N U N/A
welded connection to embedded steel.

5. Is the anchorage configuration consistent with plant documentation? Y N U N/A
 (Note: This question only applies if the item is one of the 50% for which an anchorage configuration verification is required.)
1X5A-B01-00066, Version 14.0

6. Based on the above anchorage evaluations, is the anchorage free of potentially adverse seismic conditions? Y N U

¹² Enter the equipment class name from Appendix B: Classes of Equipment.

Seismic Walkdown Checklist (SWC)

Equipment ID No. 1-1500-Q5-HVC Equip. Class¹² 20 (I²C Panels)

Equipment Description HVAC Panel

Interaction Effects

7. Are soft targets free from impact by nearby equipment or structures? Y N U N/A

8. Are overhead equipment, distribution systems, ceiling tiles and lighting, and masonry block walls not likely to collapse onto the equipment? Y N U N/A

9. Do attached lines have adequate flexibility to avoid damage? Y N U N/A

10. Based on the above seismic interaction evaluations, is equipment free of potentially adverse seismic interaction effects? Y N U

~2" gap on each end of cabinet @ walls, acceptable.

Other Adverse Conditions

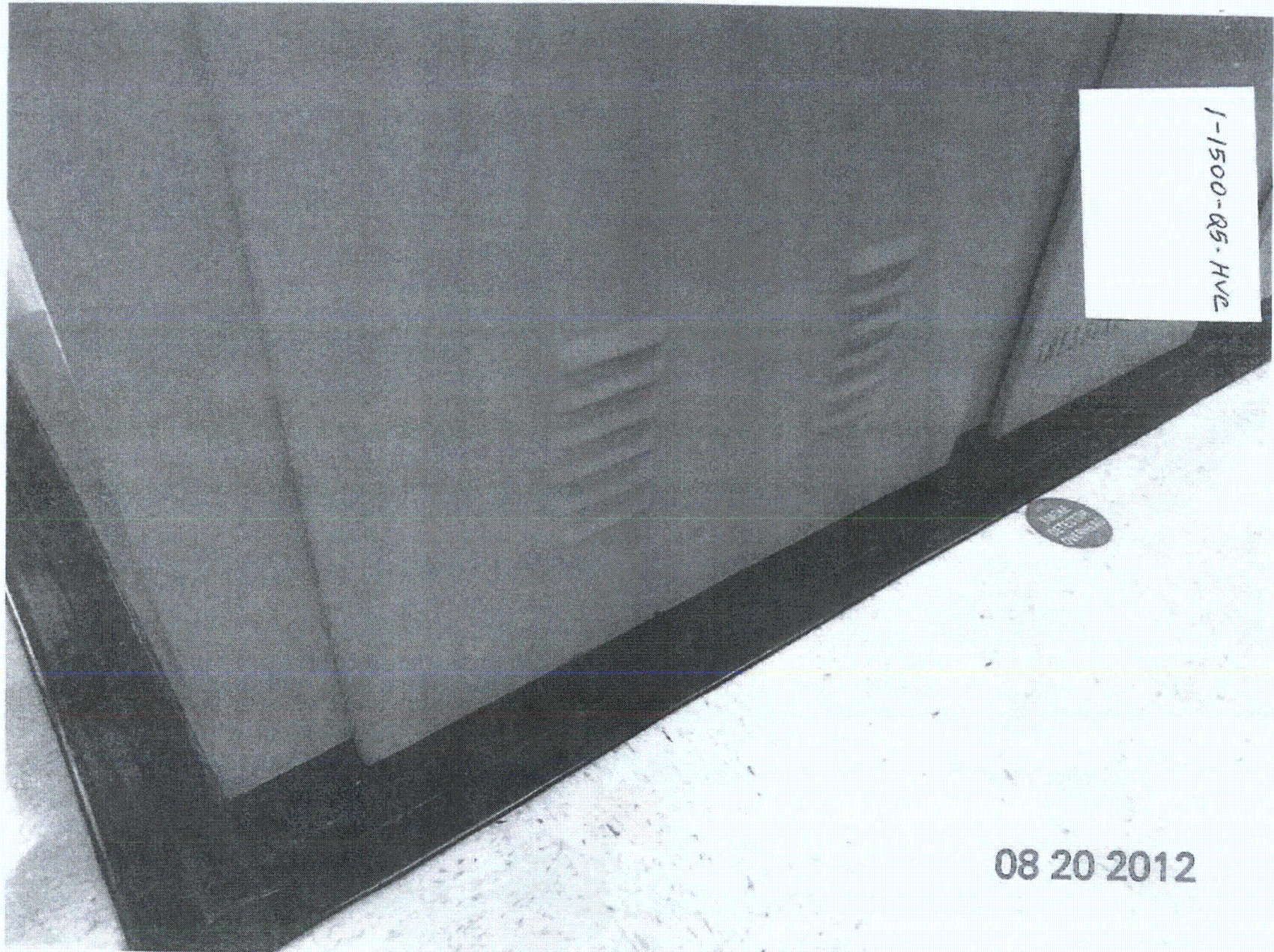
11. Have you looked for and found no other seismic conditions that could adversely affect the safety functions of the equipment? Y N U

Comments (Additional pages may be added as necessary)

SEE 1-1604-Q5-PCG FOR AREA WALKBY CHECKLIST.

Evaluated by: *Matthew Wilkinson* Matthew Wilkinson Date: 8/20/2012

David Volodarsky DAVID VOLODARSKY 8-20-2012



UNIT
1

SECTION 4

QHVC

08.20.2012

Seismic Walkdown Checklist (SWC)

Equipment ID No. I-1500-Q5-HVC Equip. Class¹² 20

Equipment Description HVAC PANEL (QHV)

Location: Bldg. CONTROL Floor El. 220 Room, Area B163

Manufacturer, Model, Etc. (optional but recommended) _____

Instructions for Completing Checklist

This checklist may be used to document the results of the Seismic Walkdown of an item of equipment on the SWEL. The space below each of the following questions may be used to record the results of judgments and findings. Additional space is provided at the end of this checklist for documenting other comments.

Anchorage (SEE SWC DATED 8/20/12)

- 1. Is the anchorage configuration verification required (i.e., is the item one of the 50% of SWEL items requiring such verification)? Y N
- 2. Is the anchorage free of bent, broken, missing or loose hardware? Y N U N/A
- 3. Is the anchorage free of corrosion that is more than mild surface oxidation? Y N U N/A
- 4. Is the anchorage free of visible cracks in the concrete near the anchors? Y N U N/A
- 5. Is the anchorage configuration consistent with plant documentation? Y N U N/A
(Note: This question only applies if the item is one of the 50% for which an anchorage configuration verification is required.)
- 6. Based on the above anchorage evaluations, is the anchorage free of potentially adverse seismic conditions? Y N U

¹² Enter the equipment class name from Appendix B: Classes of Equipment.

Seismic Walkdown Checklist (SWC)

Equipment ID No. 1-1500-R5-HVC Equip. Class¹² 20

Equipment Description HVAC PANEL (QHVAC)

Interaction Effects (SEE SWC DATED 8/20/12)

7. Are soft targets free from impact by nearby equipment or structures? Y N U N/A

8. Are overhead equipment, distribution systems, ceiling tiles and lighting, and masonry block walls not likely to collapse onto the equipment? Y N U N/A

9. Do attached lines have adequate flexibility to avoid damage? Y N U N/A

10. Based on the above seismic interaction evaluations, is equipment free of potentially adverse seismic interaction effects? Y N U

Other Adverse Conditions

11. Have you looked for and found no other seismic conditions that could adversely affect the safety functions of the equipment? Y N U

A VISUAL INSPECTION OF THE INTERNAL COMPONENTS OF THIS CABINET WAS PERFORMED TO CHECK FOR SEISMIC ADEQUACY TO INCLUDE ANY EVIDENCE OF INTERNAL COMPONENTS NOT ADEQUATELY SECURED, CHECKED TO ENSURE FASTENERS CONNECTING ADJACENT CABINETS WERE IN PLACE, AND EVIDENCE OF OTHER ADVERSE SEISMIC CONDITIONS. NO SIGNIFICANT ADVERSE CONDITIONS WERE FOUND. SOME MINOR ISSUES WERE DOCUMENTED IN THE "COMMENTS" SECTION BELOW.

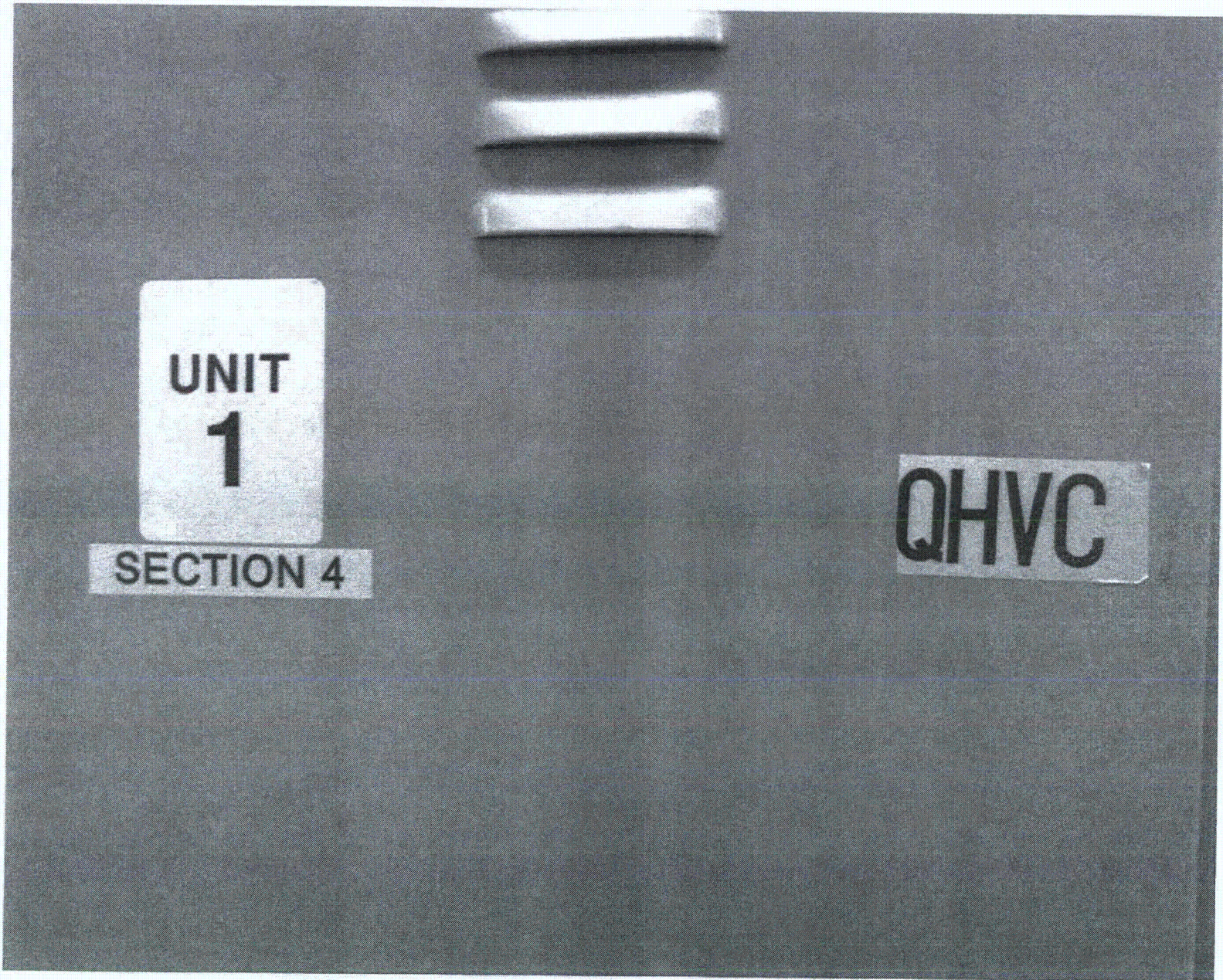
Comments (Additional pages may be added as necessary)

SOME NUTS AND SCREENS USED TO SECURE PROTECTIVE COVERS, LINK BLOCKS, & CONDUITS SUPPORT INSIDE THE CABINET ARE MISSING. THESE FINDINGS ARE OCCURRING RANDOMLY THROUGHOUT THE CABINET'S SECTIONS 1 THROUGH 4. THIS CONDITION HAS BEEN SUBMITTED UNDER THE SEISMIC WALKDOWN TEAM JUDGED THAT THIS CONDITION DOES NOT REPRESENT A SEISMIC OR OPERABILITY CONCERN. CR 527556
 ALSO FOUND 1 OF THE RODS THAT LATCHES DOOR IS MISSING. CR 527608 GENERATED

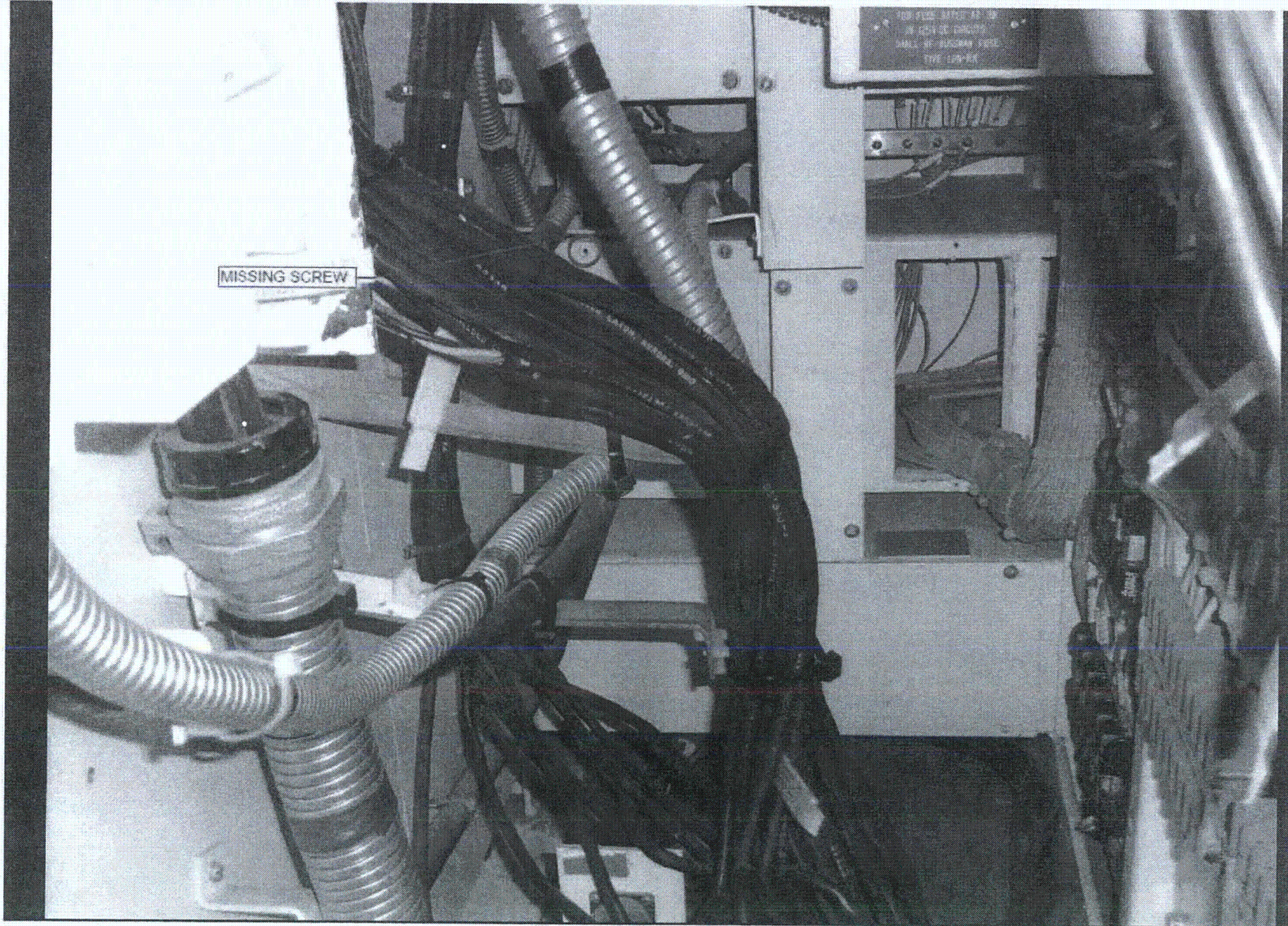
Evaluated by: JUSTO S. CHACON Date: 9/28/12

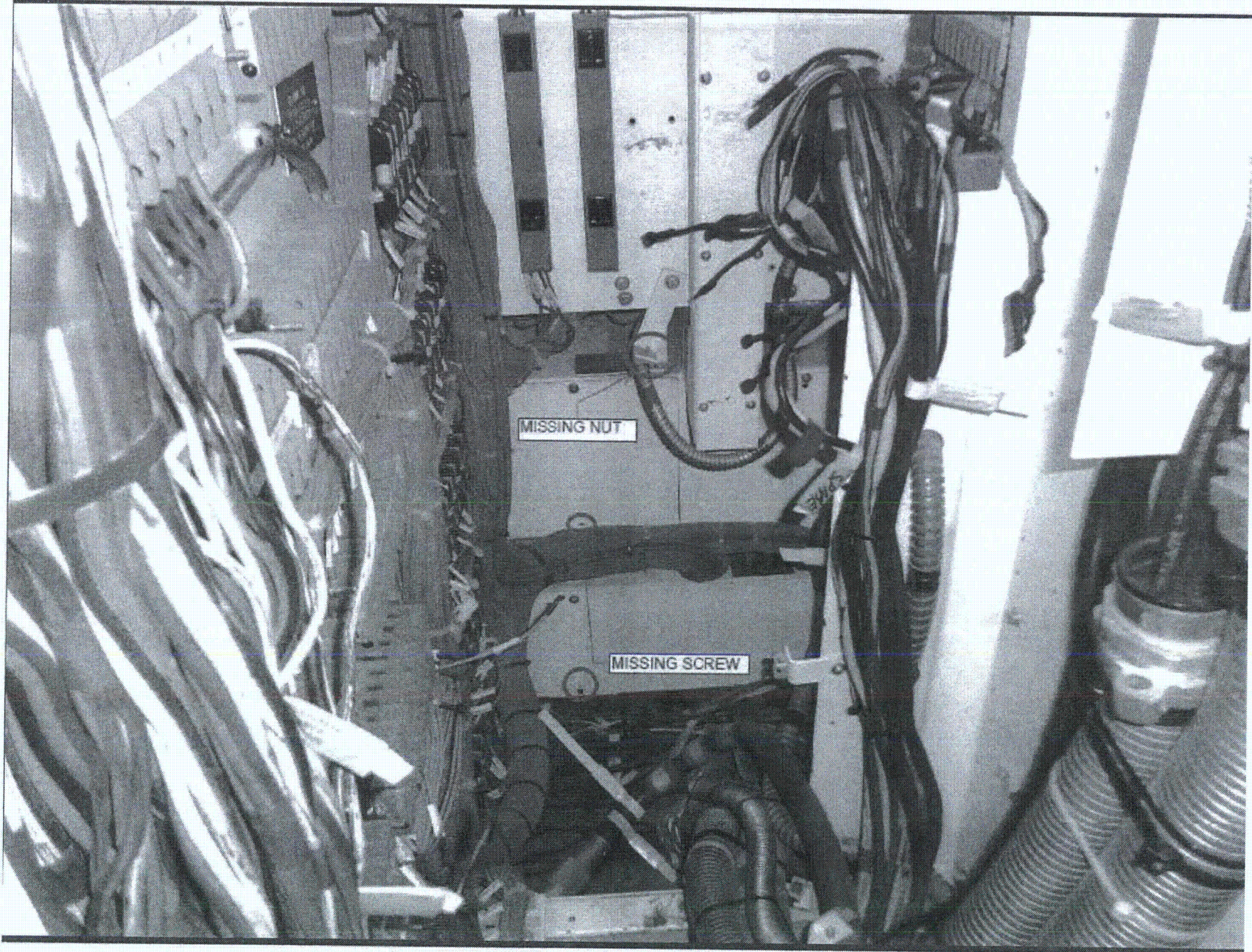
Jose R. Hernandez 9/28/12

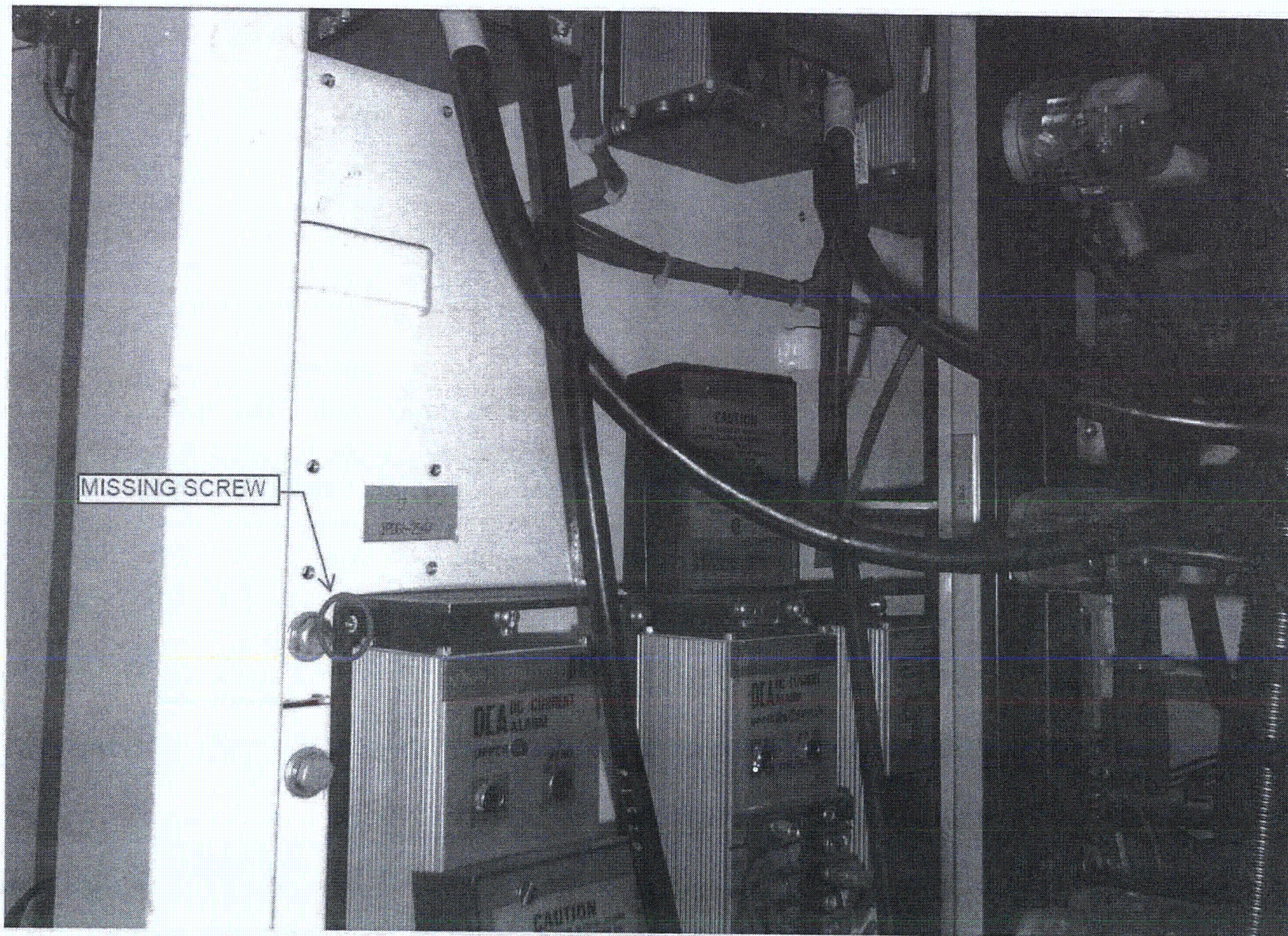
<C4>

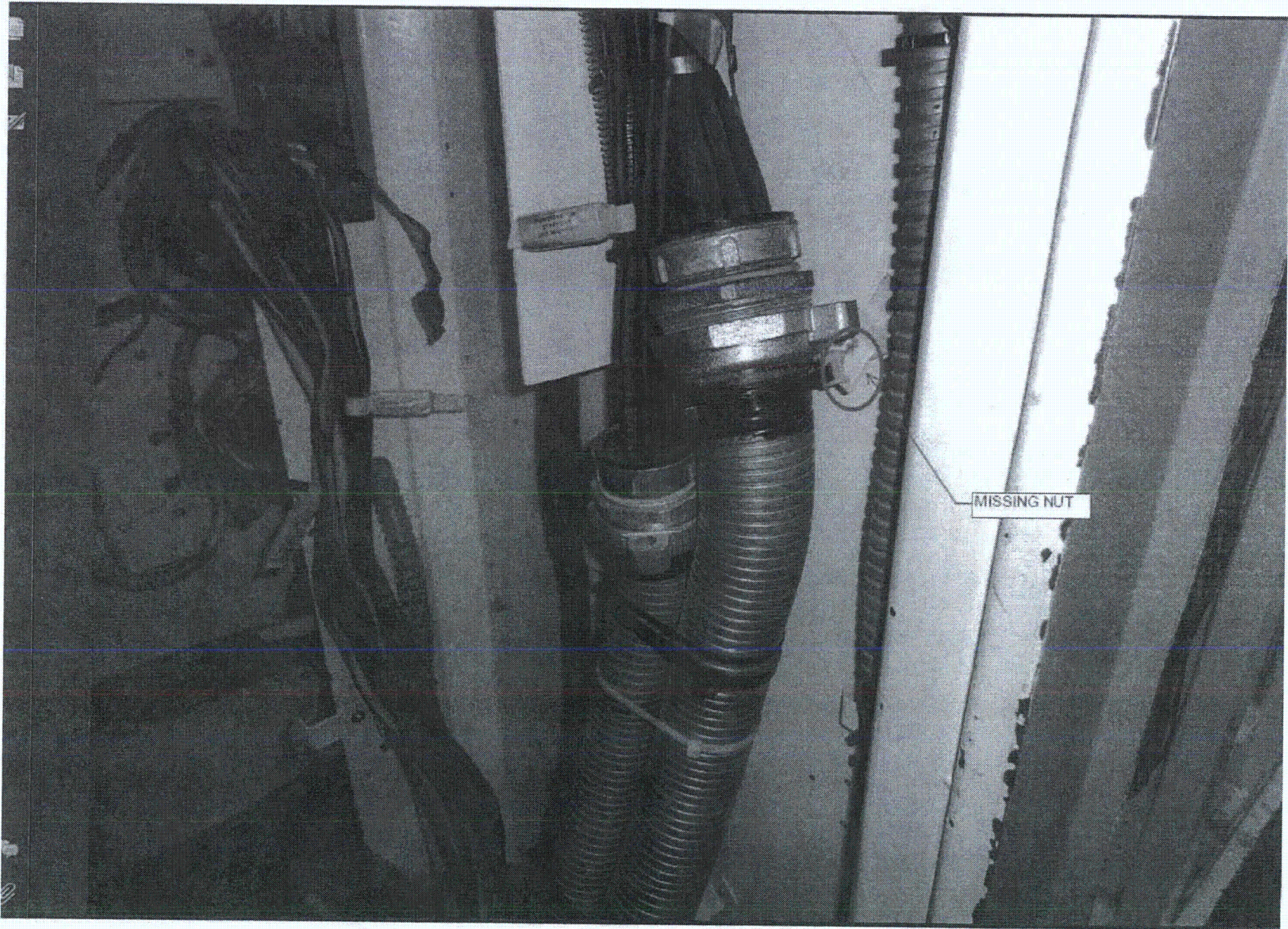


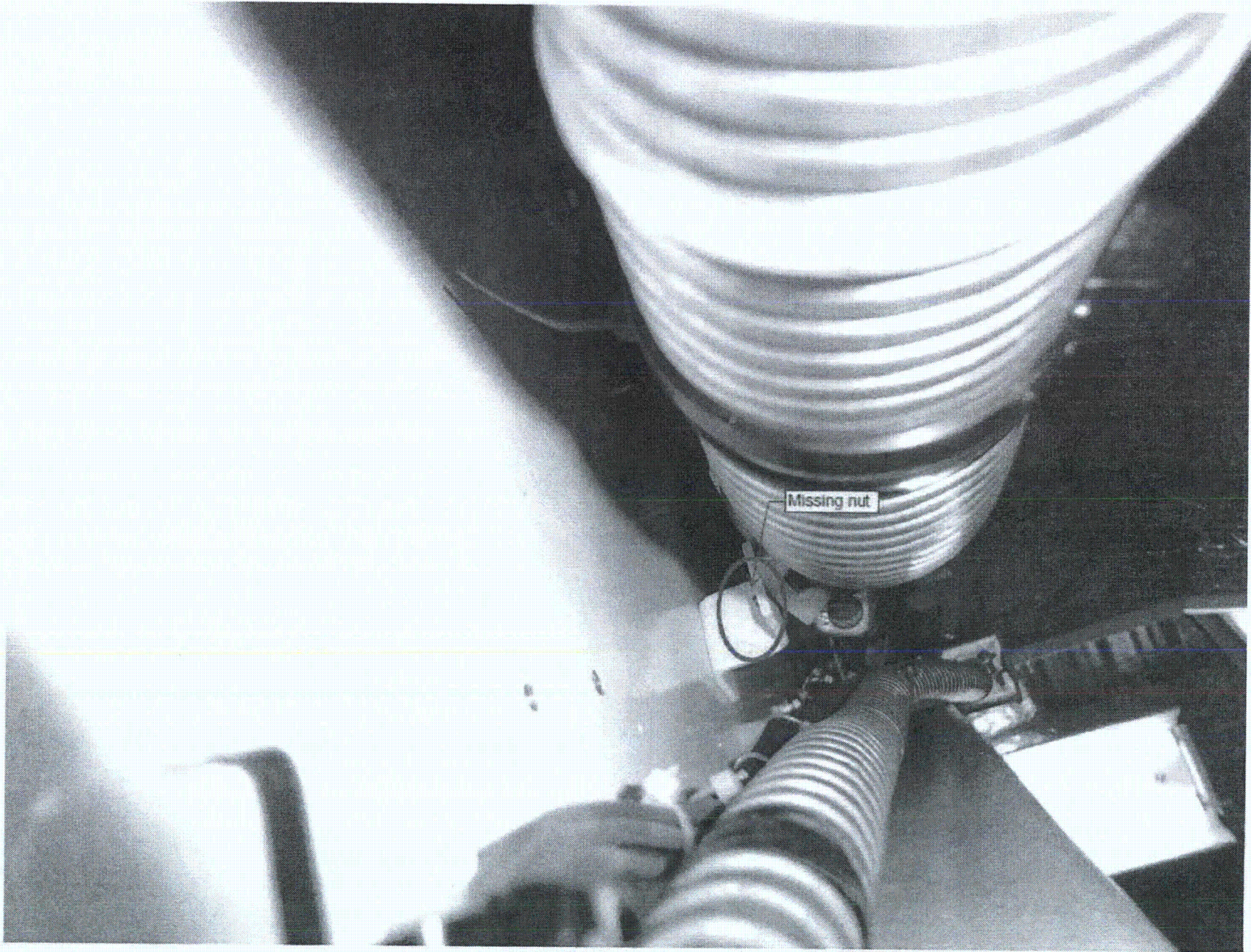


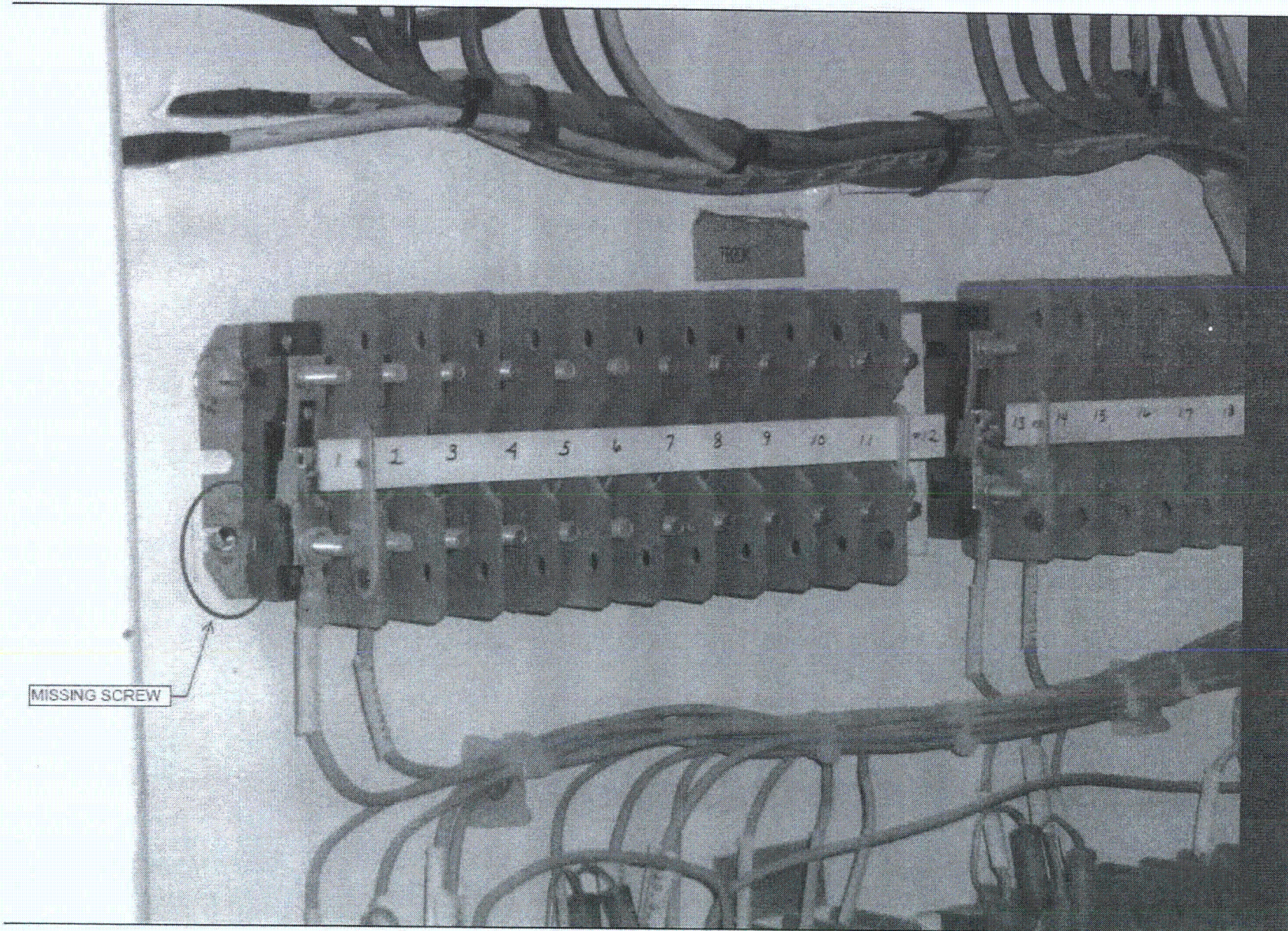


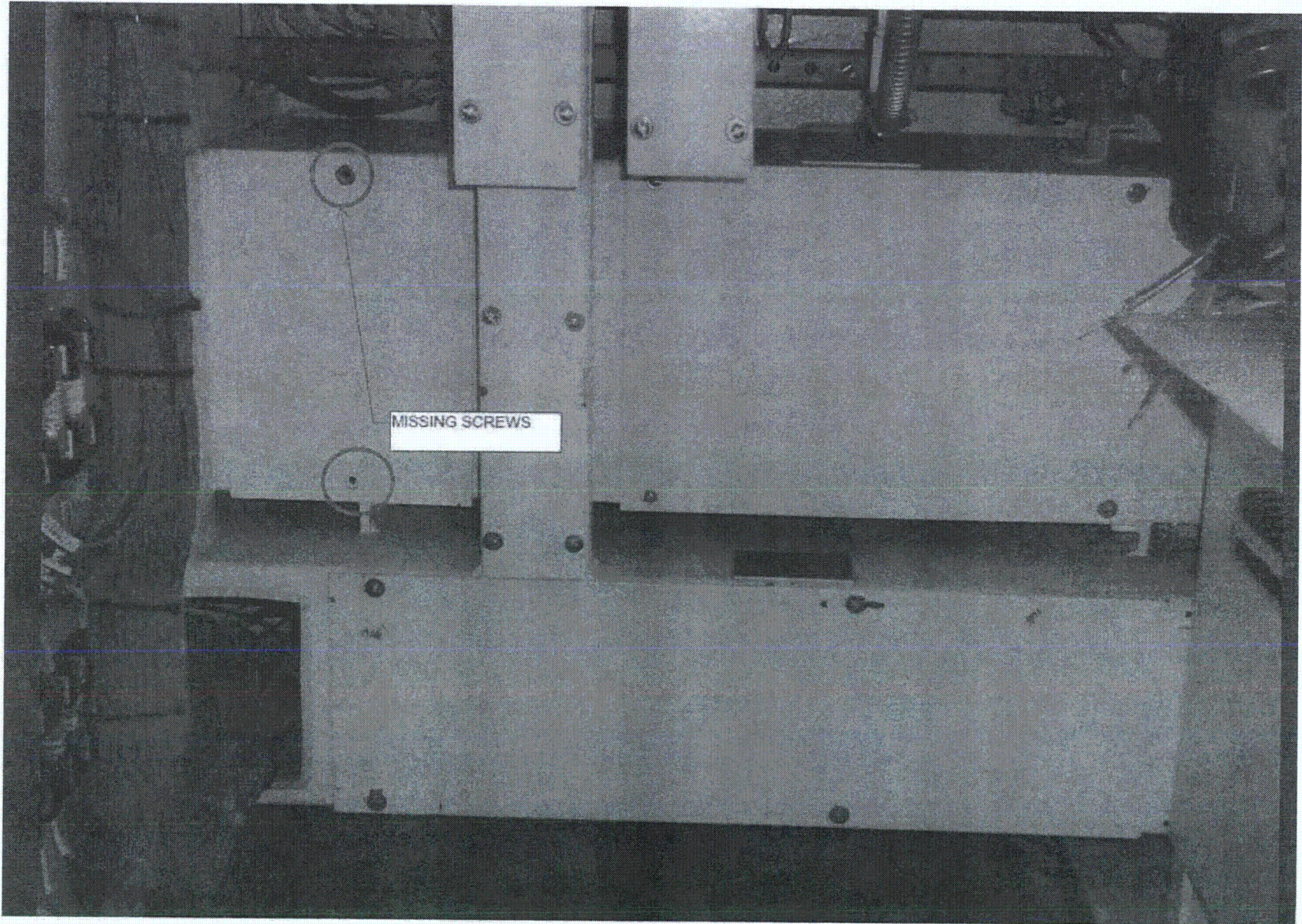


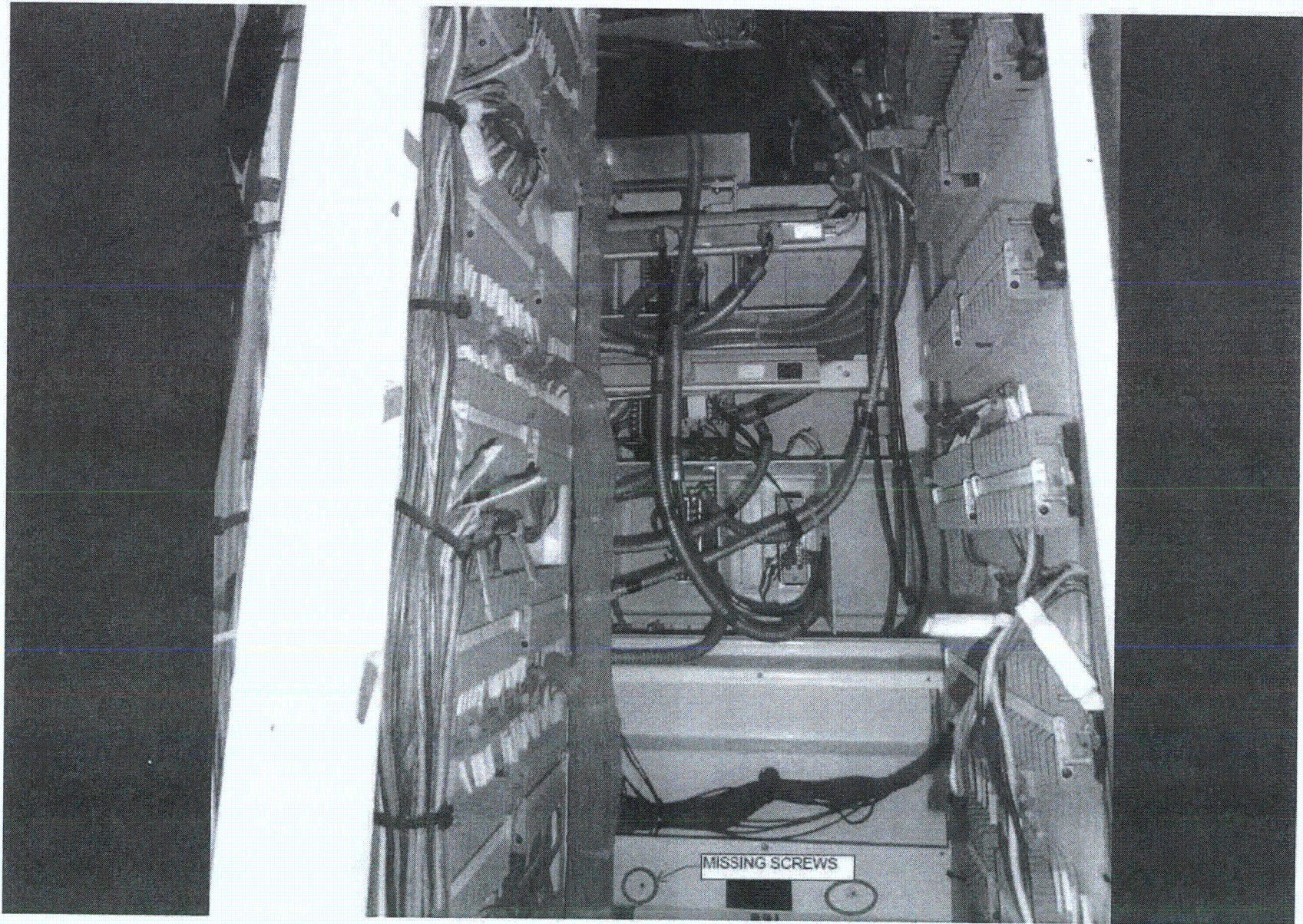


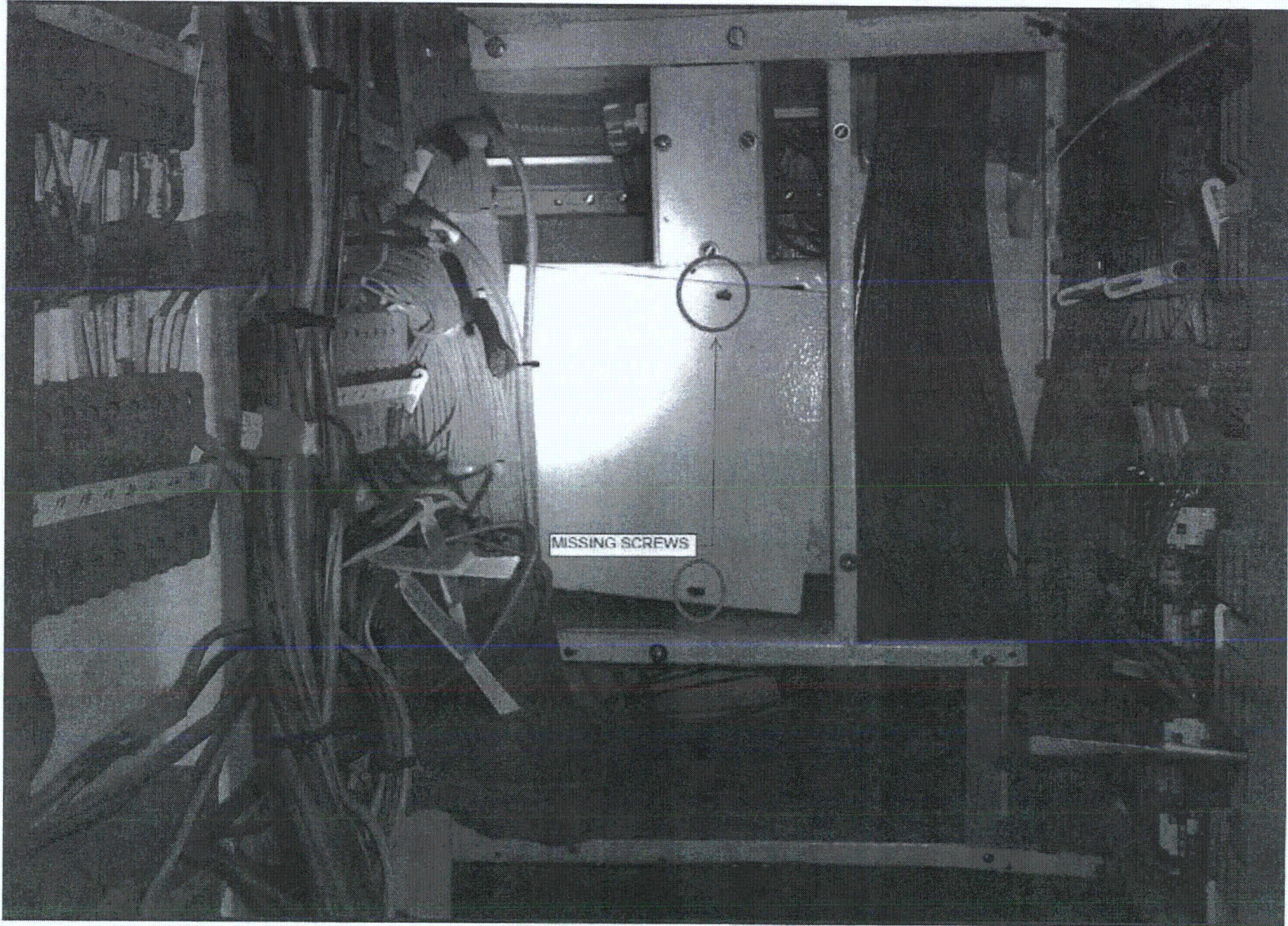


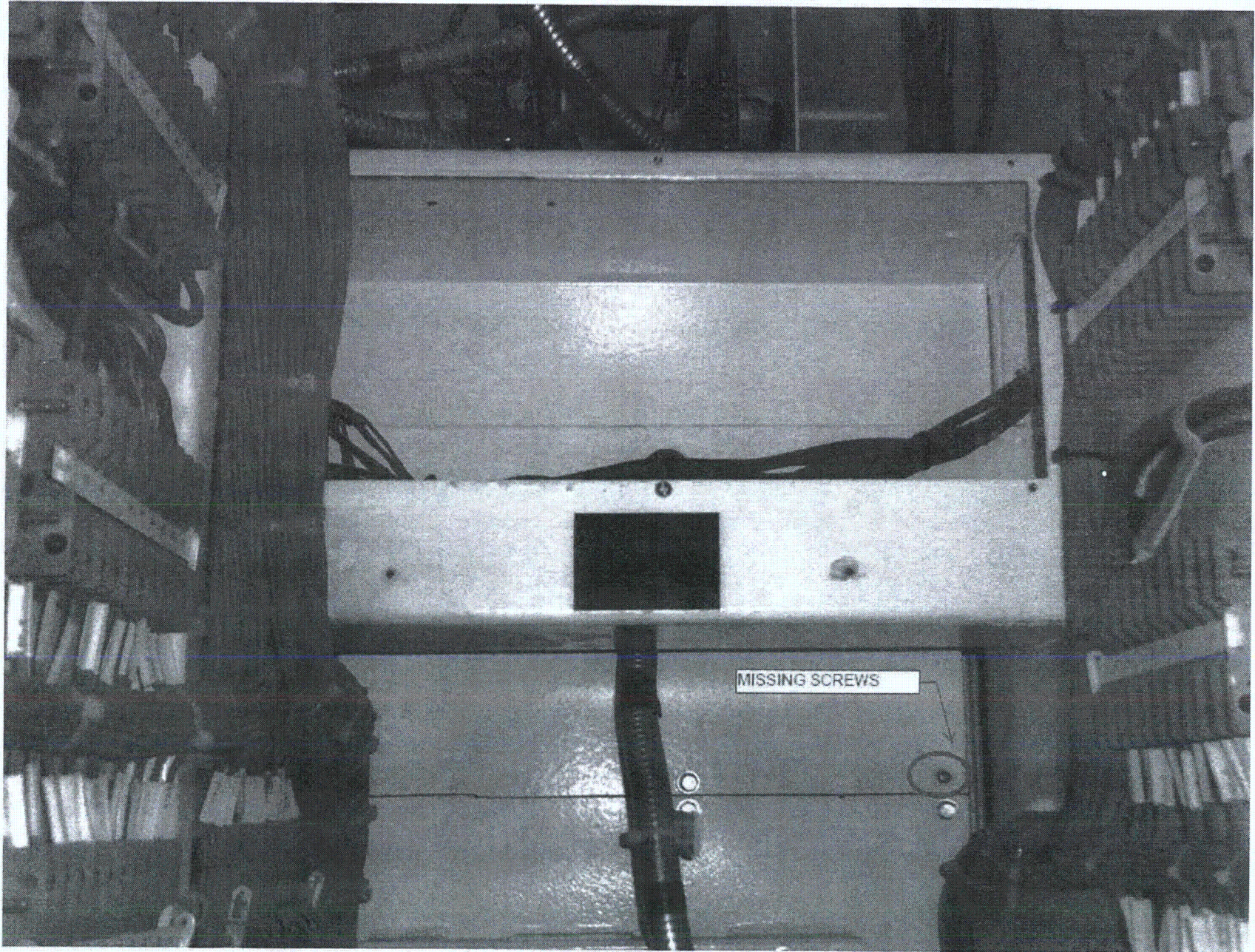


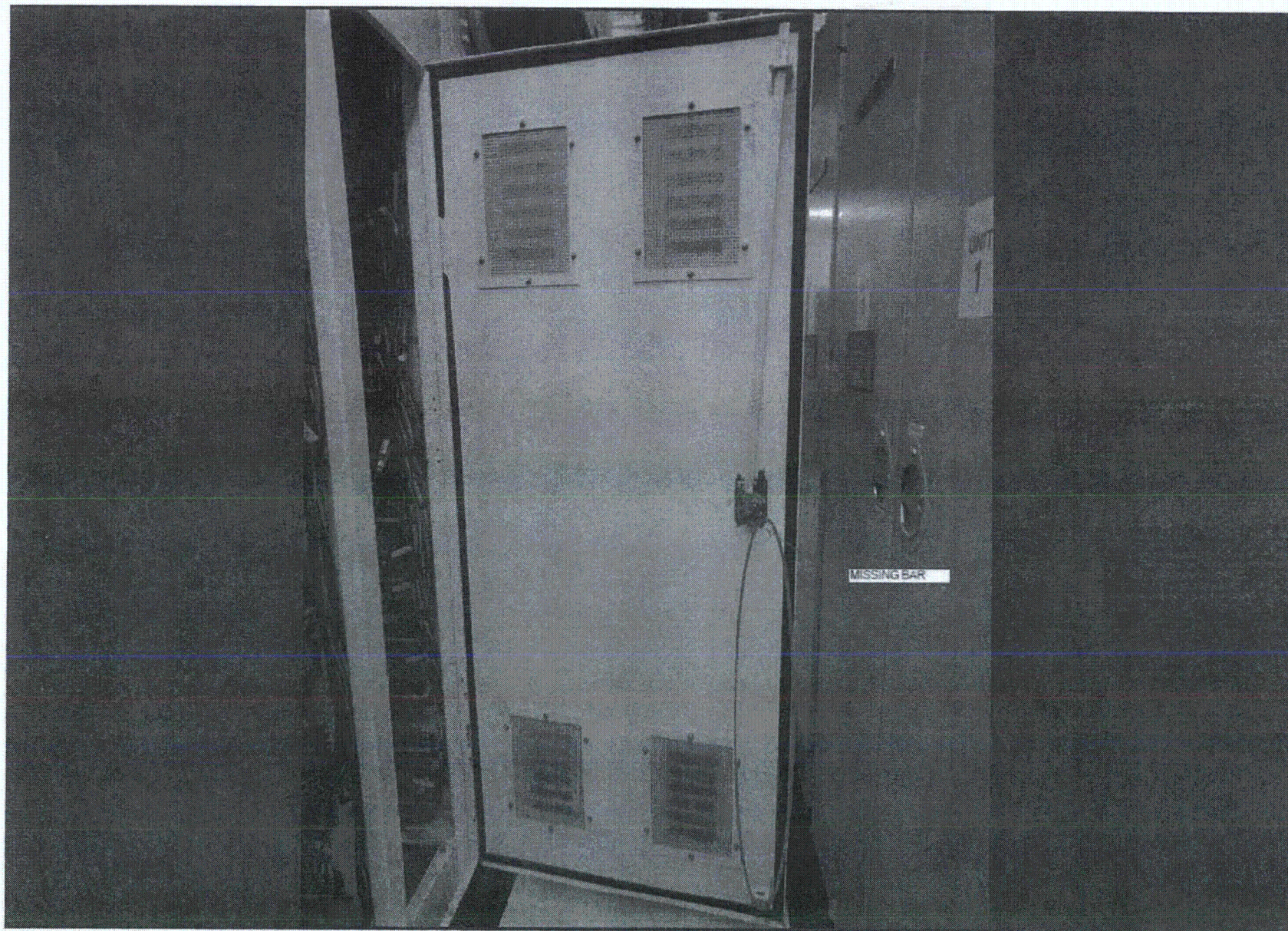












Sheet 1 of 2
 Status: Y N U

Seismic Walkdown Checklist (SWC)

Equipment ID No. 1-1531-B7-002-000 Equip. Class¹² 9 - Fans
 Equipment Description CBCR CHILLER ROOM VENT FAN
 Location: Bldg. CONTROL Floor El. 760'-0" Room, Area R320
 Manufacturer, Model, Etc. (optional but recommended) BUFFALO FORGE CO.

Instructions for Completing Checklist

This checklist may be used to document the results of the Seismic Walkdown of an item of equipment on the SWEL. The space below each of the following questions may be used to record the results of judgments and findings. Additional space is provided at the end of this checklist for documenting other comments.

Anchorage

1. Is the anchorage configuration verification required (i.e., is the item one of the 50% of SWEL items requiring such verification)? Y N U

2. Is the anchorage free of bent, broken, missing or loose hardware? Y N U N/A
 ACCESS HATCH MISSING 2 BOLTS
 NOT A SEISMIC ISSUE

3. Is the anchorage free of corrosion that is more than mild surface oxidation? Y N U N/A

4. Is the anchorage free of visible cracks in the concrete near the anchors? Y N U N/A
 FAN MOUNTED TO STEEL FRAME

5. Is the anchorage configuration consistent with plant documentation? Y N U N/A
 (Note: This question only applies if the item is one of the 50% for which an anchorage configuration verification is required.)

6. Based on the above anchorage evaluations, is the anchorage free of potentially adverse seismic conditions? Y N U

¹² Enter the equipment class name from Appendix B: Classes of Equipment.

Seismic Walkdown Checklist (SWC)

Equipment ID No. 1-1531-B7-002-WW Equip. Class¹² 9- Fans

Equipment Description CACR CHILLER ROOM VENT FAN

Interaction Effects

7. Are soft targets free from impact by nearby equipment or structures? Y N U N/A

8. Are overhead equipment, distribution systems, ceiling tiles and lighting, and masonry block walls not likely to collapse onto the equipment? Y N U N/A

9. Do attached lines have adequate flexibility to avoid damage? Y N U N/A

10. Based on the above seismic interaction evaluations, is equipment free of potentially adverse seismic interaction effects? Y N U

Other Adverse Conditions

11. Have you looked for and found no other seismic conditions that could adversely affect the safety functions of the equipment? Y N U

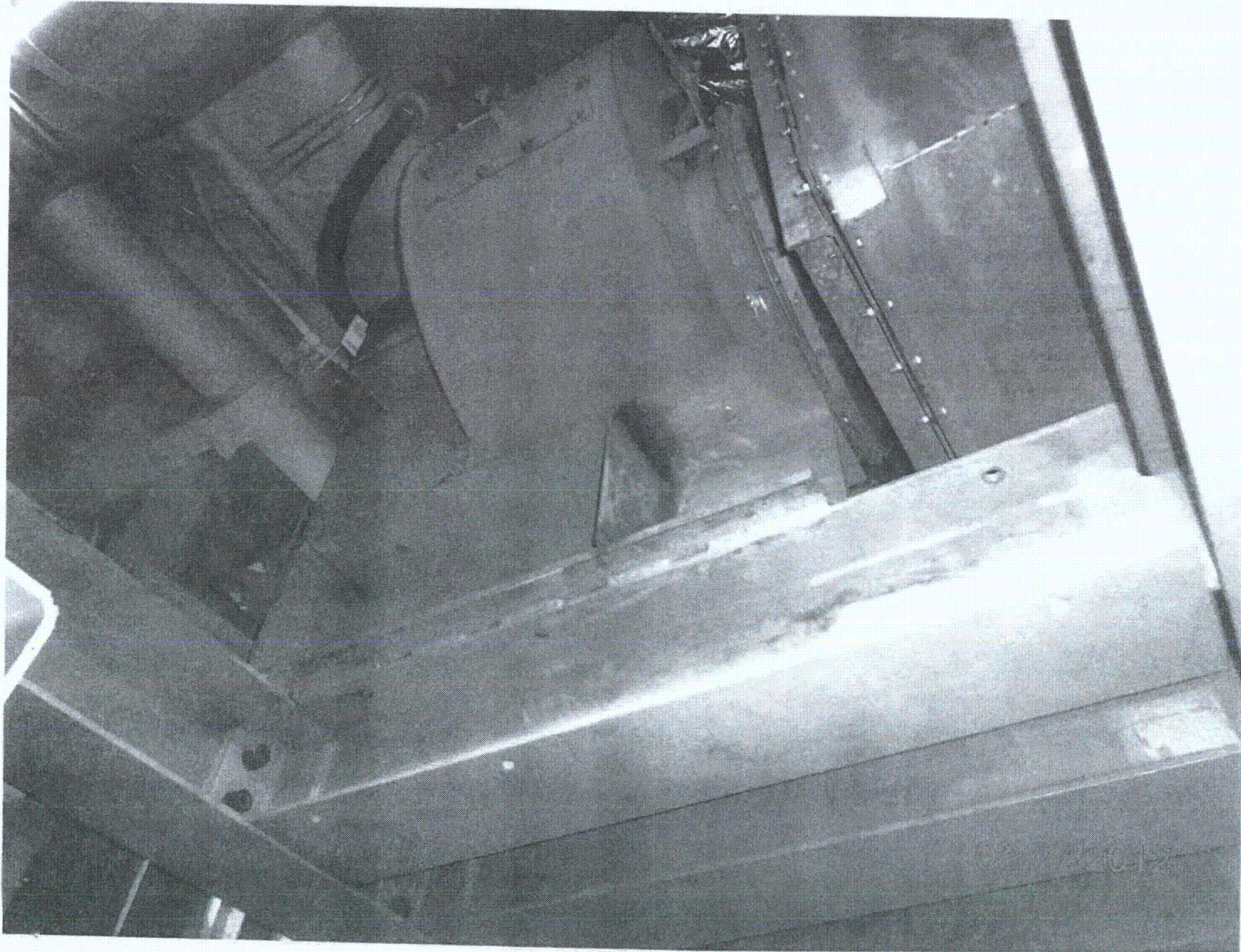
Comments (Additional pages may be added as necessary)

None

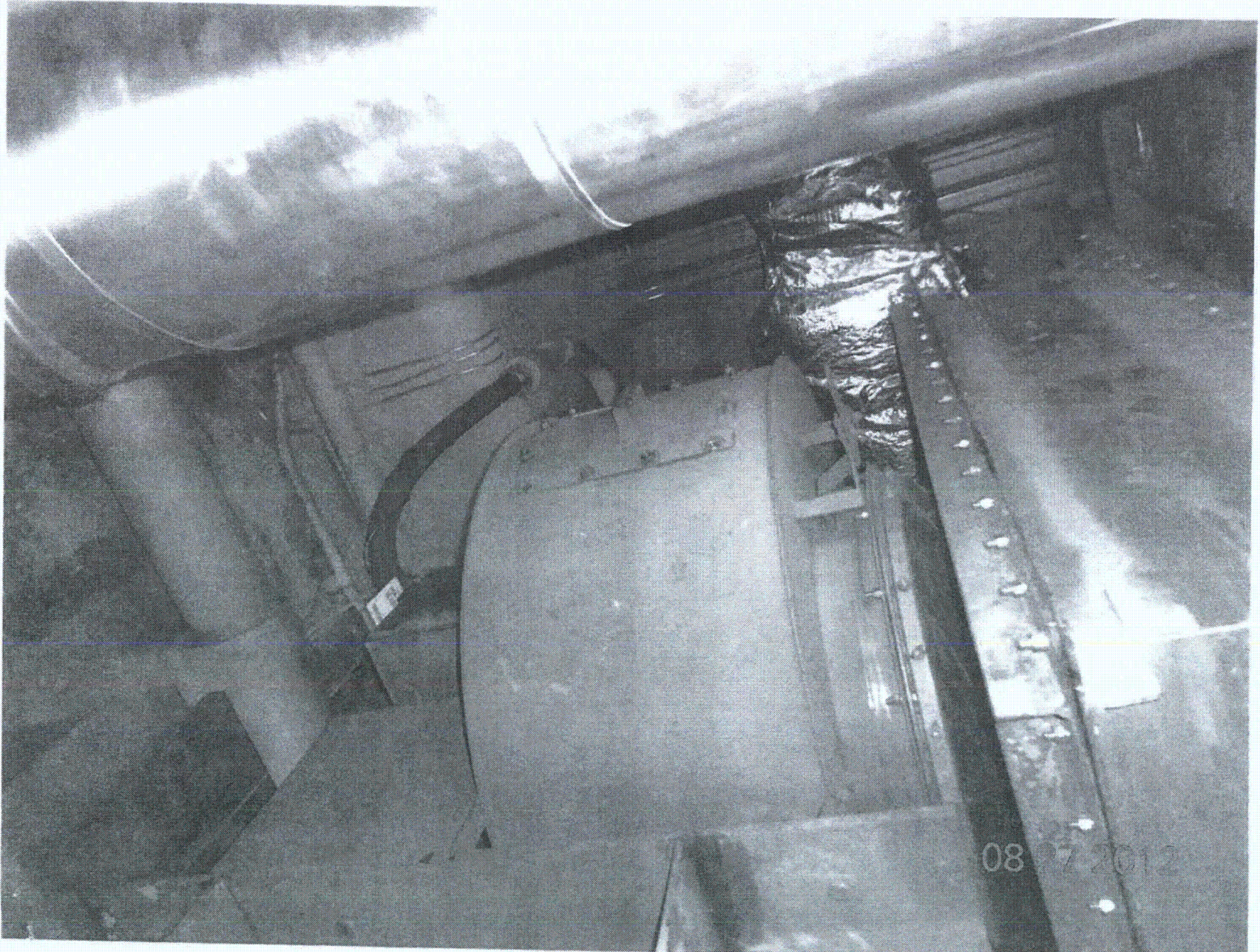
Evaluated by: James Dovel / JAMES DOVEL Date: 8-27-2012

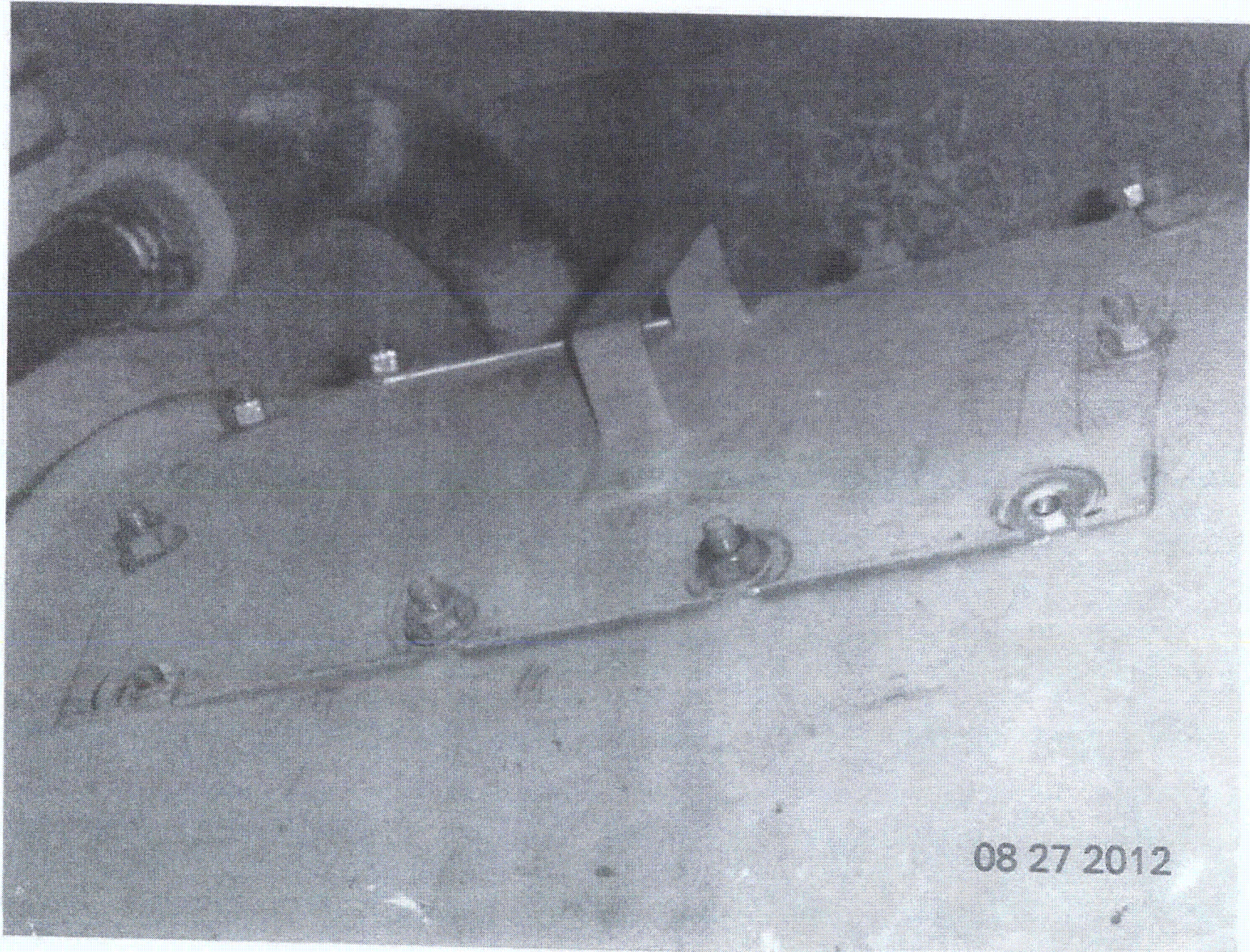
Winston Stewart / Winston Stewart 08/27/2012

<C4>









Seismic Walkdown Checklist (SWC)

Equipment ID No. 1-1532-A7-04-00 Equip. Class¹² 10 (Air Handlers)
Equipment Description CBSF Elect Equipment RM AC Unit
Location: Bldg. CB Floor El. 1st Room, Area RB 60
Manufacturer, Model, Etc. (optional but recommended) _____

Instructions for Completing Checklist

This checklist may be used to document the results of the Seismic Walkdown of an item of equipment on the SWEL. The space below each of the following questions may be used to record the results of judgments and findings. Additional space is provided at the end of this checklist for documenting other comments.

Anchorage

- 1. Is the anchorage configuration verification required (i.e., is the item one of the 50% of SWEL items requiring such verification)? Y N U
- 2. Is the anchorage free of bent, broken, missing or loose hardware? Y N U N/A
- 3. Is the anchorage free of corrosion that is more than mild surface oxidation?
See comment Y N U N/A
- 4. Is the anchorage free of visible cracks in the concrete near the anchors? Y N U N/A
- 5. Is the anchorage configuration consistent with plant documentation?
(Note: This question only applies if the item is one of the 50% for which an anchorage configuration verification is required.)
1 X 4 A J 0 6 - 0 0 0 0 5 - 1 Ver. 10.0 Y N U N/A
- 6. Based on the above anchorage evaluations, is the anchorage free of potentially adverse seismic conditions? Y N U

¹² Enter the equipment class name from Appendix B: Classes of Equipment.

Seismic Walkdown Checklist (SWC)

Equipment ID No. 1-1532-A7-001 Equip. Class¹² 10 (Air Handlers)

Equipment Description CBSF Elect. Equipment AB AC Unit

Interaction Effects

7. Are soft targets free from impact by nearby equipment or structures? Y N U N/A

8. Are overhead equipment, distribution systems, ceiling tiles and lighting, and masonry block walls not likely to collapse onto the equipment? Y N U N/A

9. Do attached lines have adequate flexibility to avoid damage? Y N U N/A

10. Based on the above seismic interaction evaluations, is equipment free of potentially adverse seismic interaction effects? Y N U

Other Adverse Conditions

11. Have you looked for and found no other seismic conditions that could adversely affect the safety functions of the equipment? Y N U

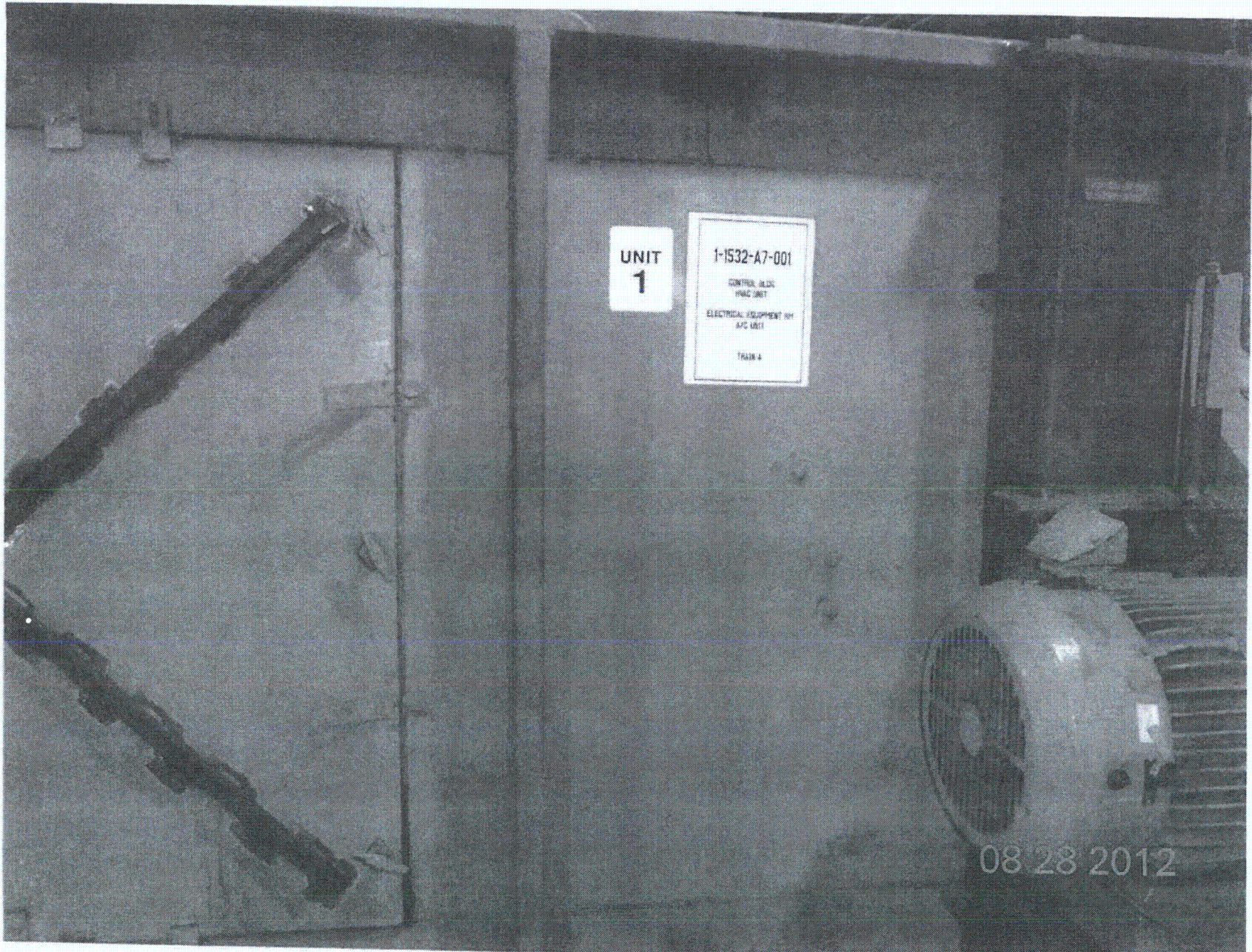
Comments (Additional pages may be added as necessary)

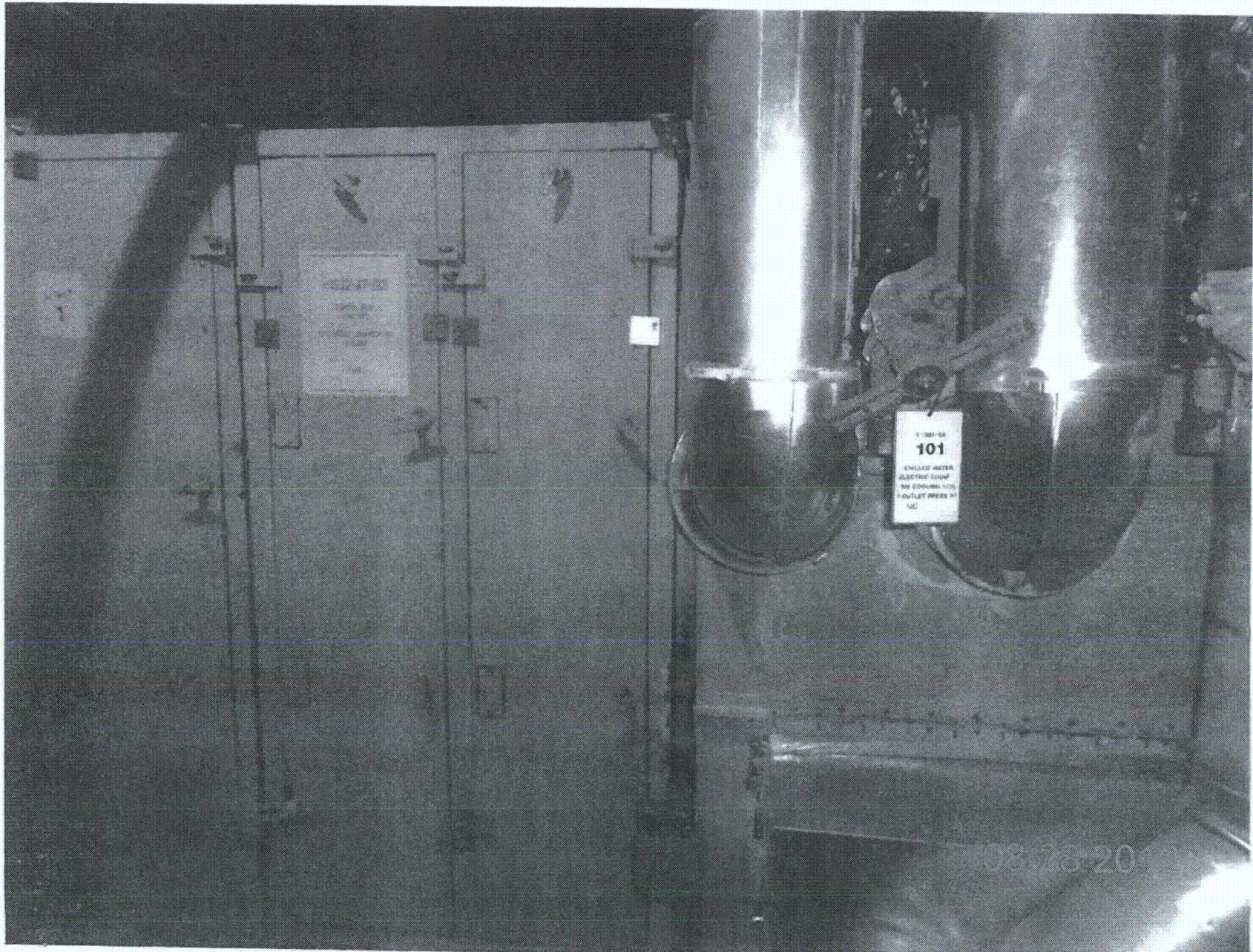
of MHC support
Anchor bolts front / back show sign of corrosion. SNEs judge the condition to be acceptable. However, initiate CR 509130 to track the condition.

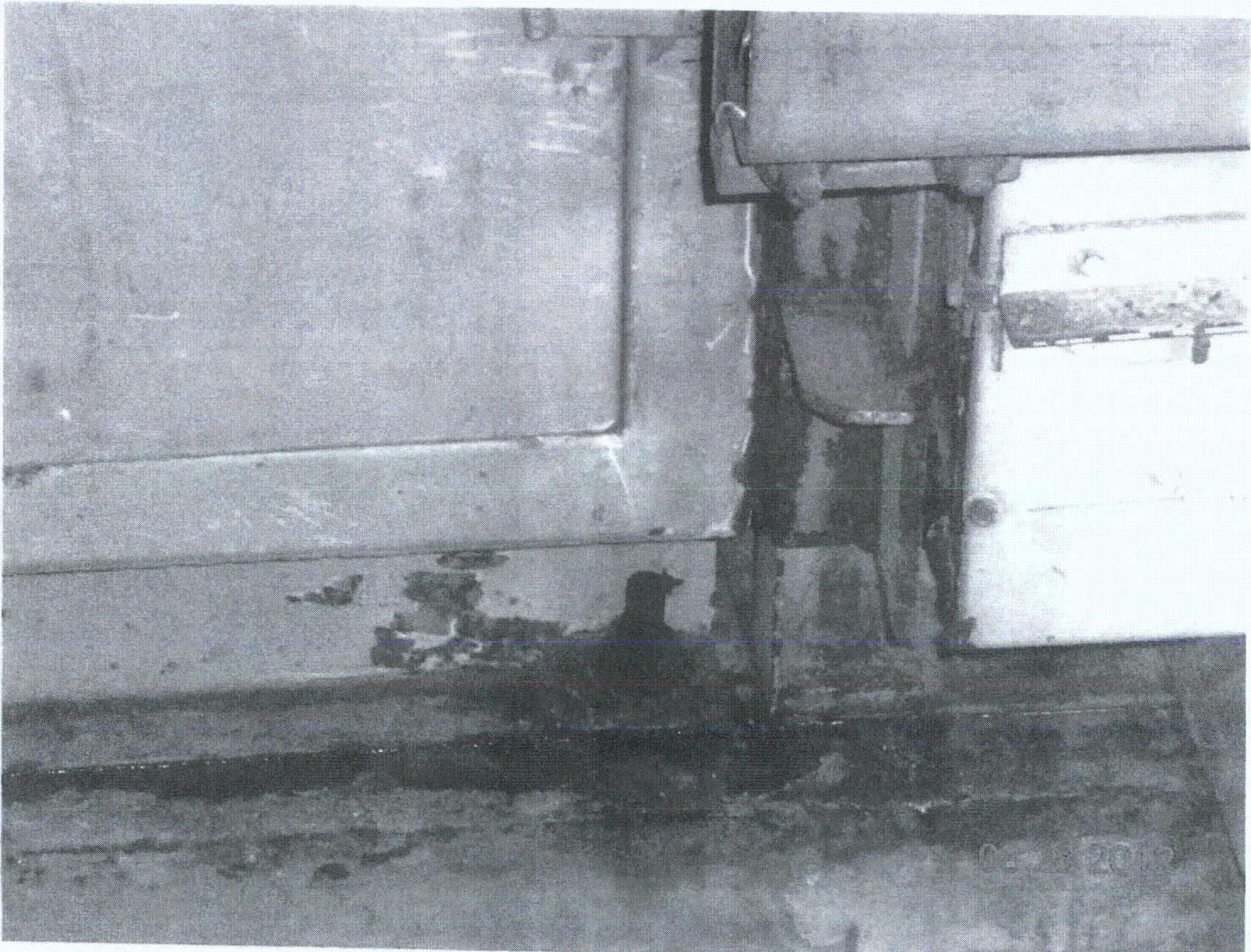
Evaluated by: Frank Yao / Frank Yao Date: 8/28/12

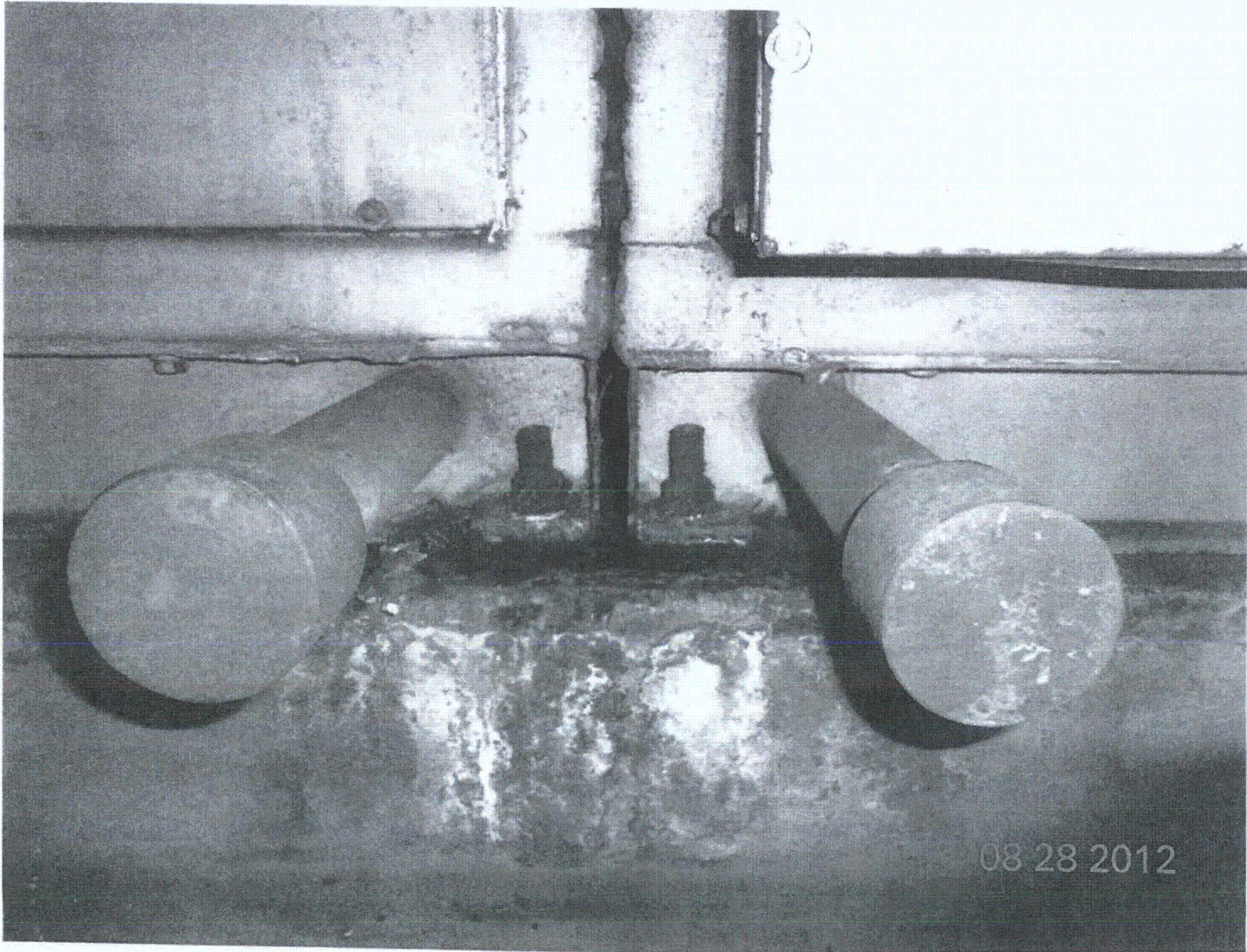
PARIMAL GANDHI / P. Gandhi 8/28/2012

<C.4>









Sheet 1 of 2
 Status: Y N U

Seismic Walkdown Checklist (SWC)

Equipment ID No. 1-1540-87-005-000 Equip. Class¹² 9 (FANS)

Equipment Description AUX BLDG TRANS A TUNNEL SUPPLY FAN UGR

Location: Bldg. AUX-TUNNEL Floor El. 245' Room, Area R 212

Manufacturer, Model, Etc. (optional but recommended) _____

Instructions for Completing Checklist

This checklist may be used to document the results of the Seismic Walkdown of an item of equipment on the SWEL. The space below each of the following questions may be used to record the results of judgments and findings. Additional space is provided at the end of this checklist for documenting other comments.

Anchorage

1. Is the anchorage configuration verification required (i.e., is the item one of the 50% of SWEL items requiring such verification)? Y N U

2. Is the anchorage free of bent, broken, missing or loose hardware? Y N U N/A

3. Is the anchorage free of corrosion that is more than mild surface oxidation? Y N U N/A

4. Is the anchorage free of visible cracks in the concrete near the anchors? Y N U N/A

5. Is the anchorage configuration consistent with plant documentation?
 (Note: This question only applies if the item is one of the 50% for which an anchorage configuration verification is required.) Y N U N/A

- 1X4A302-149-4
6. Based on the above anchorage evaluations, is the anchorage free of potentially adverse seismic conditions? Y N U

¹² Enter the equipment class name from Appendix B: Classes of Equipment.

Seismic Walkdown Checklist (SWC)

Equipment ID No. 1-1540-137-005-000 Equip. Class¹² 9 (FANS)

Equipment Description AUX BLDG TRAIN A TUNNEL SUPPLY CAN UNIT

Interaction Effects

7. Are soft targets free from impact by nearby equipment or structures? Y N U N/A

8. Are overhead equipment, distribution systems, ceiling tiles and lighting, and masonry block walls not likely to collapse onto the equipment? Y N U N/A

9. Do attached lines have adequate flexibility to avoid damage? Y N U N/A ^{D.P. 9-5-12}

10. Based on the above seismic interaction evaluations, is equipment free of potentially adverse seismic interaction effects? Y N U

Other Adverse Conditions

11. Have you looked for and found no other seismic conditions that could adversely affect the safety functions of the equipment? Y N U

Comments (Additional pages may be added as necessary).

NONE

Evaluated by: James D. Paul / James D. Paul Date: 9-5-2012
[Signature] / Jose A. Hernandez 9/5/12
<C4>

