

Sheet 1 of 2
Status: (Y) N U

Seismic Walkdown Checklist (SWC)

Equipment ID No. 1-1205-EG-002 Equip. Class¹² 21 (Tanks and Heat Exchangers)
 Equipment Description RHR HEAT EXCHANGER B
 Location: Bldg. AUX Floor El. 143'-6" Room, Area RC-91
 Manufacturer, Model, Etc. (optional but recommended) _____

Instructions for Completing Checklist

This checklist may be used to document the results of the Seismic Walkdown of an item of equipment on the SWEL. The space below each of the following questions may be used to record the results of judgments and findings. Additional space is provided at the end of this checklist for documenting other comments.

Anchorage

1. Is the anchorage configuration verification required (i.e., is the item one of the 50% of SWEL items requiring such verification)? Y N U

2. Is the anchorage free of bent, broken, missing or loose hardware? Y N U N/A

3. Is the anchorage free of corrosion that is more than mild surface oxidation? Y N U N/A

4. Is the anchorage free of visible cracks in the concrete near the anchors? Y N U N/A

5. Is the anchorage configuration consistent with plant documentation?
 (Note: This question only applies if the item is one of the 50% for which an anchorage configuration verification is required.)
Drawings AX 2006A023, Rev. 18 & AX 2004U004, Rev. 4
 Y N U N/A

6. Based on the above anchorage evaluations, is the anchorage free of potentially adverse seismic conditions? Y N U

¹² Enter the equipment class name from Appendix B: Classes of Equipment.

Seismic Walkdown Checklist (SWC)

Equipment ID No. 1-1205-EG-002 Equip. Class¹² 2.1 (Tanks and Heat Exchangers)
 Equipment Description RHR HEAT EXCHANGER B

Interaction Effects

7. Are soft targets free from impact by nearby equipment or structures? Y N U N/A

8. Are overhead equipment, distribution systems, ceiling tiles and lighting, and masonry block walls not likely to collapse onto the equipment? Y N U N/A

9. Do attached lines have adequate flexibility to avoid damage? Y N U N/A

10. Based on the above seismic interaction evaluations, is equipment free of potentially adverse seismic interaction effects? Y N U

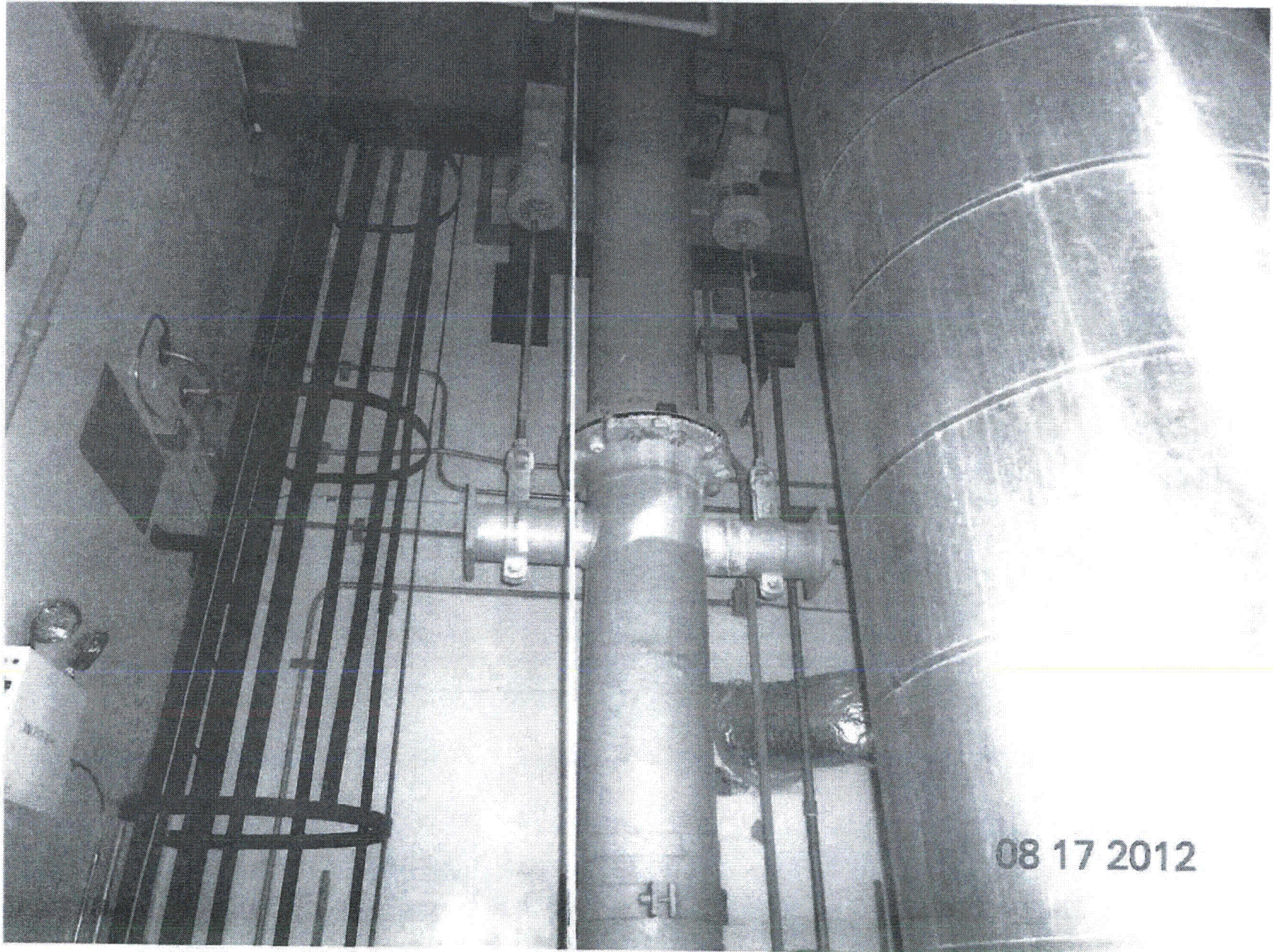
Other Adverse Conditions

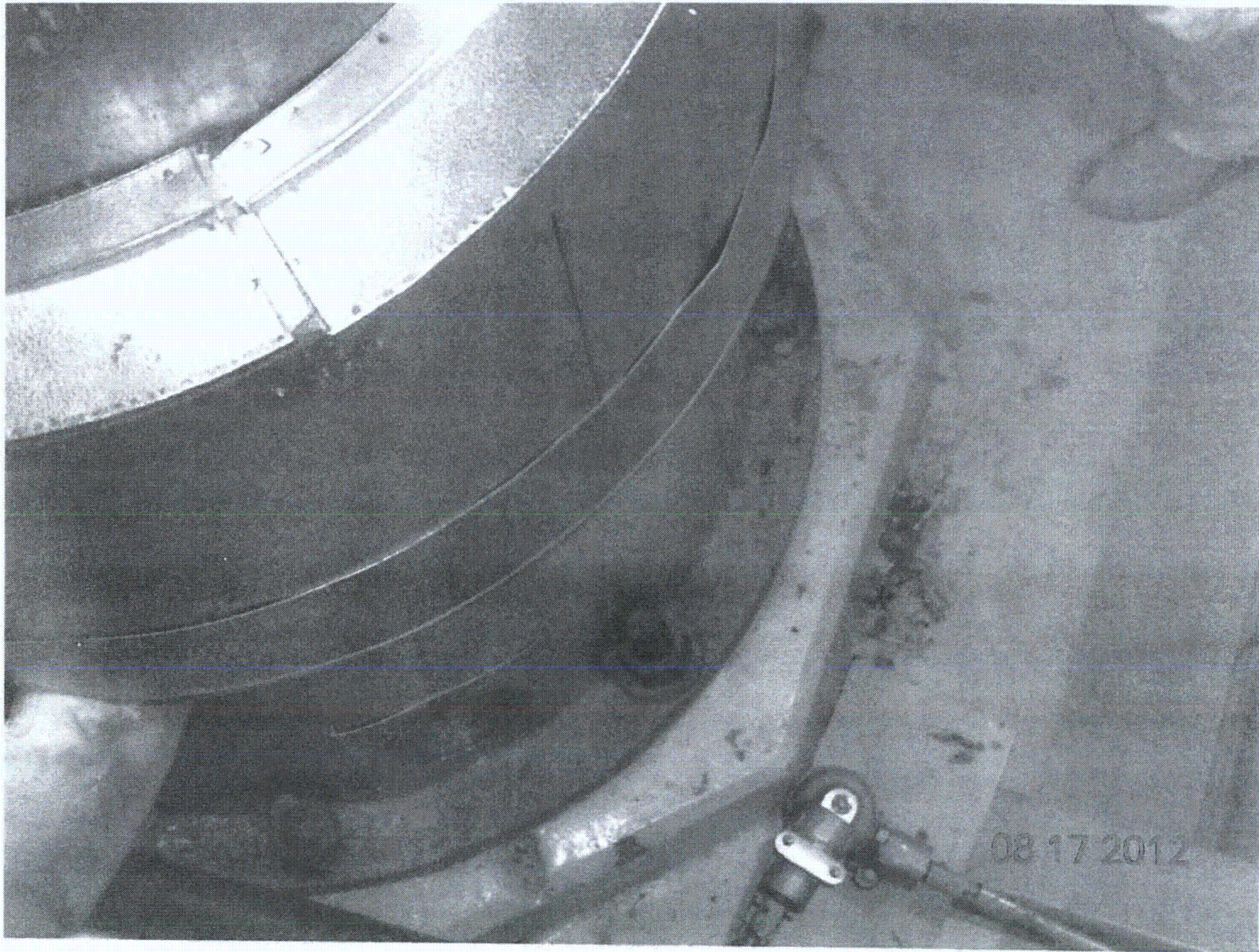
11. Have you looked for and found no other seismic conditions that could adversely affect the safety functions of the equipment? Y N U

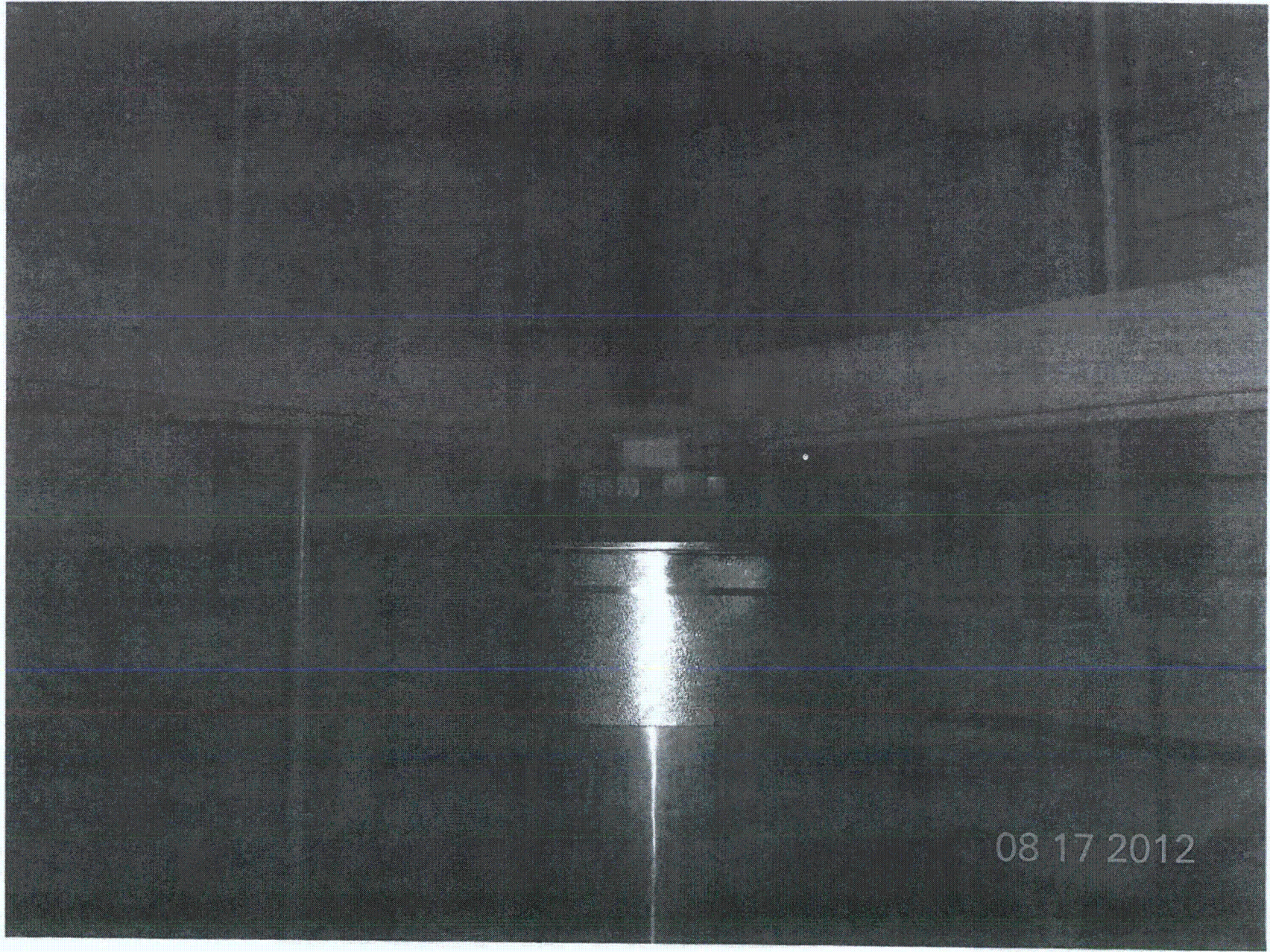
Comments (Additional pages may be added as necessary)

None

Evaluated by: *Winston Stewart* / Winston Stewart Date: *08/17/2012*
Matthew Wilkinson / Matthew Wilkinson *8/17/2012*









Sheet 1 of 2
 Status: Y N U

Seismic Walkdown Checklist (SWC)

Equipment ID No. 1-205-P6-002R Equip. Class¹² G (VERTICAL PUMPS)
 Equipment Description RHR PUMP B
 Location: Bldg. AUX Floor El. 119'-3" Room, Area 2049
 Manufacturer, Model, Etc. (optional but recommended) INGERSOLL-RAND

Instructions for Completing Checklist

This checklist may be used to document the results of the Seismic Walkdown of an item of equipment on the SWEL. The space below each of the following questions may be used to record the results of judgments and findings. Additional space is provided at the end of this checklist for documenting other comments.

Anchorage

1. Is the anchorage configuration verification required (i.e., is the item one of the 50% of SWEL items requiring such verification)? Y N U

2. Is the anchorage free of bent, broken, missing or loose hardware? Y N U N/A

3. Is the anchorage free of corrosion that is more than mild surface oxidation? Y N U N/A
 POSSIBLE BORIC ACID ON FLOOR
 NOT A SEISMIC CONCERN
 DISCUSSED WITH BORIC ACID PROGRAM OWNER - NO ISSUE

4. Is the anchorage free of visible cracks in the concrete near the anchors? Y N U N/A

5. Is the anchorage configuration consistent with plant documentation? Y N U N/A
 (Note: This question only applies if the item is one of the 50% for which an anchorage configuration verification is required.)
 VERIFIED BASED ON PAST INSPECTION DOCUMENTATION (IP REG)
 AND DWGS AXGA F02-2007 UBR. 4.0
 AX20.08A002 UBR. 25.0

6. Based on the above anchorage evaluations, is the anchorage free of potentially adverse seismic conditions? Y N U

¹²Enter the equipment class name from Appendix B: Classes of Equipment.

Seismic Walkdown Checklist (SWC)

Equipment ID No. 1-1205-P6-002R Equip. Class¹² 6 (Vertical Pumps)
Equipment Description RHR PUMP B

Interaction Effects

7. Are soft targets free from impact by nearby equipment or structures? Y N U N/A

8. Are overhead equipment, distribution systems, ceiling tiles and lighting, and masonry block walls not likely to collapse onto the equipment? Y N U N/A

9. Do attached lines have adequate flexibility to avoid damage? Y N U N/A

10. Based on the above seismic interaction evaluations, is equipment free of potentially adverse seismic interaction effects? Y N U

Other Adverse Conditions

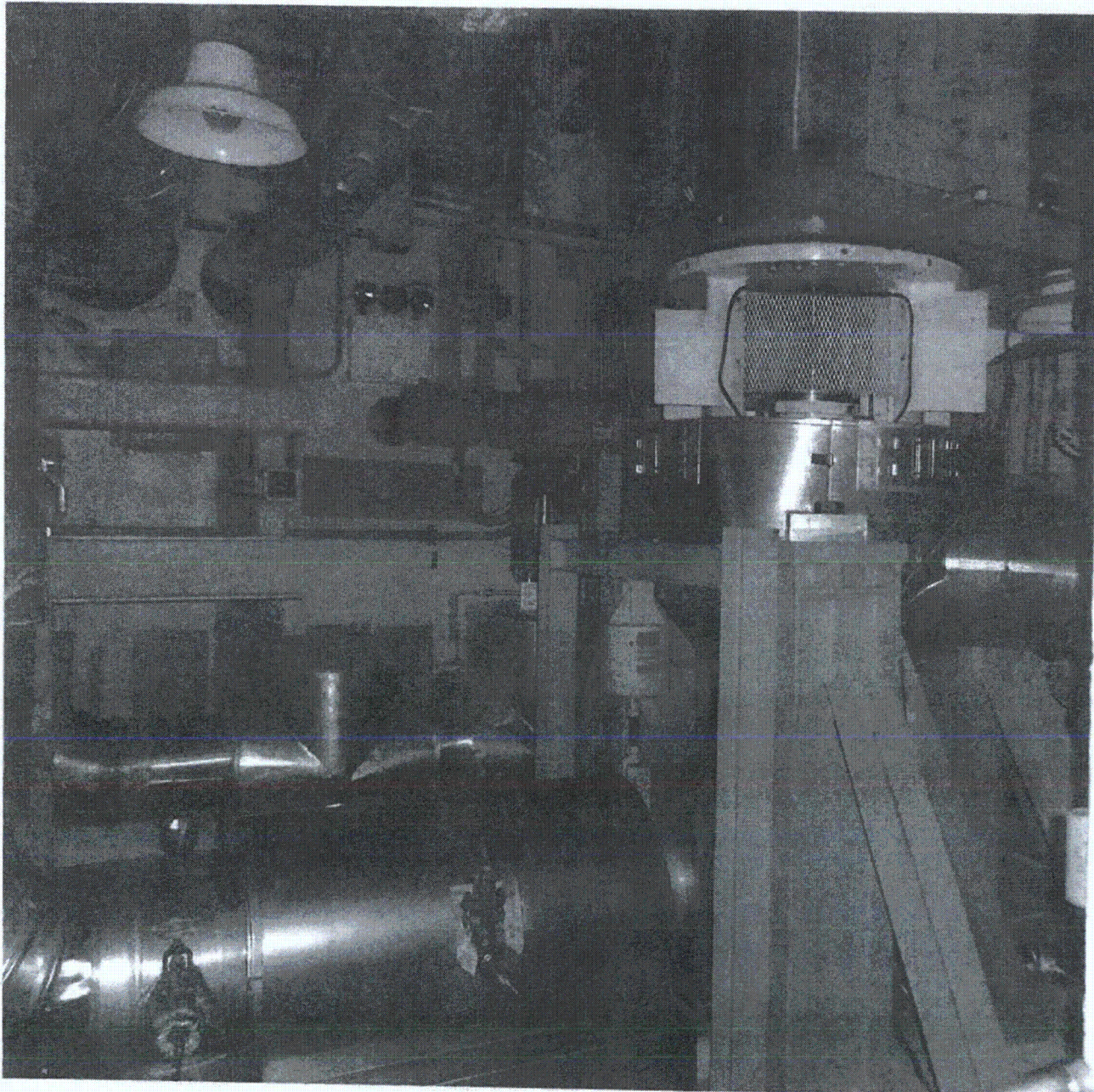
11. Have you looked for and found no other seismic conditions that could adversely affect the safety functions of the equipment? Y N U

8 bolts on mounting plate - two bolts per section. This is consistent with previous documentation.

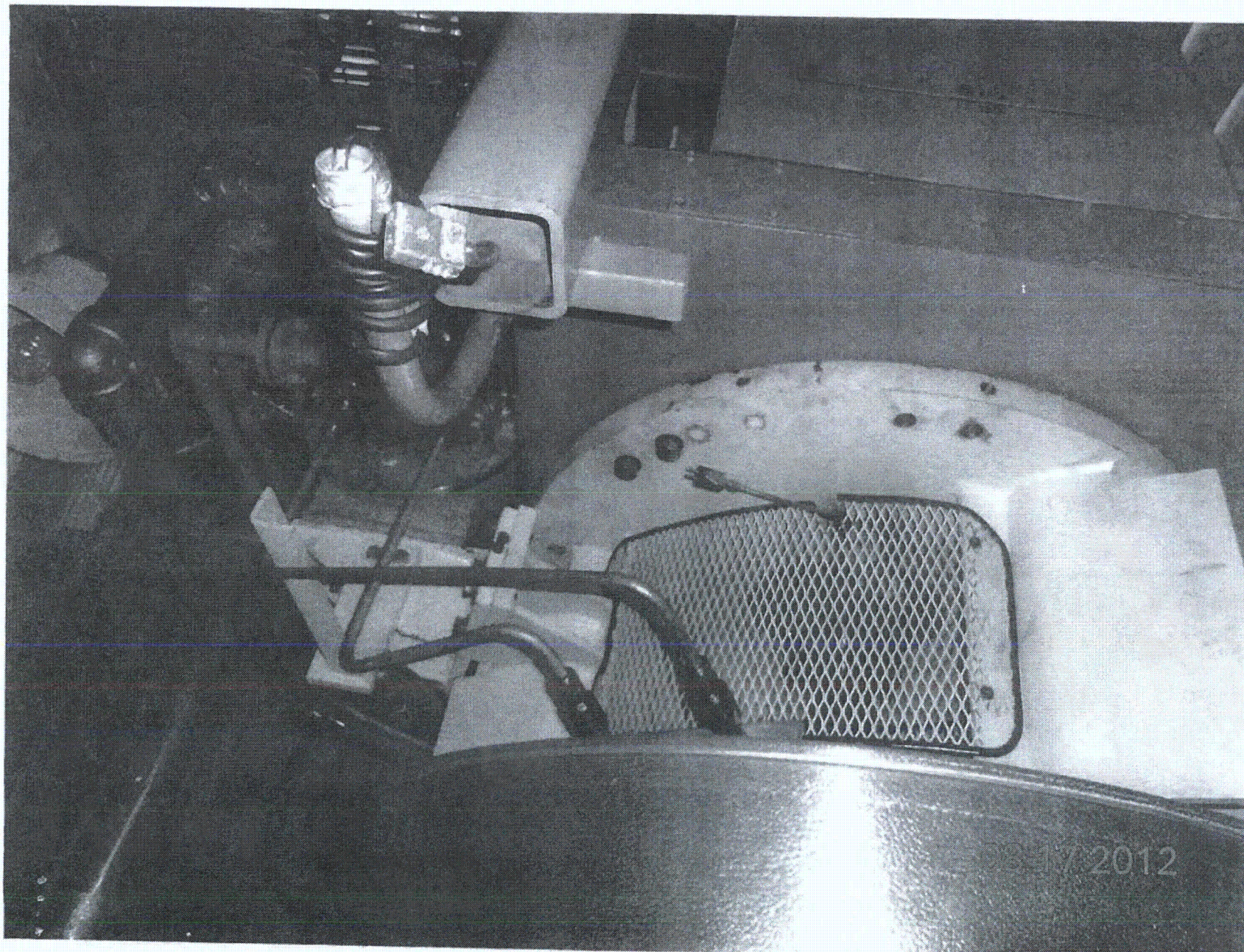
Comments (Additional pages may be added as necessary)

None

Evaluated by: *Wesley H. / Winston Stewart* Date: *08/17/2012*
Matthew Wilkinson *8/17/2012*



08 17 2012



Sheet 1 of 2

Status: Y N U

Seismic Walkdown Checklist (SWC)

Equipment ID No. 1-1206-P6-002 Equip. Class¹² 5 (Horizontal Pump)

Equipment Description Containment Spray Pump B

Location: Bldg. Aux. Floor El. 119'-3" Room, Area RD77

Manufacturer, Model, Etc. (optional but recommended) _____

Instructions for Completing Checklist

This checklist may be used to document the results of the Seismic Walkdown of an item of equipment on the SWEL. The space below each of the following questions may be used to record the results of judgments and findings. Additional space is provided at the end of this checklist for documenting other comments.

Anchorage

1. Is the anchorage configuration verification required (i.e., is the item one of the 50% of SWEL items requiring such verification)? Y N U

2. Is the anchorage free of bent, broken, missing or loose hardware? Y N U N/A

3. Is the anchorage free of corrosion that is more than mild surface oxidation? Y N U N/A

4. Is the anchorage free of visible cracks in the concrete near the anchors? Y N U N/A

5. Is the anchorage configuration consistent with plant documentation?
 (Note: This question only applies if the item is one of the 50% for which an anchorage configuration verification is required.)
IX6AD02-00011, Ver. 10.0. Y N U N/A

6. Based on the above anchorage evaluations, is the anchorage free of potentially adverse seismic conditions? Y N U

¹² Enter the equipment class name from Appendix B: Classes of Equipment.

Seismic Walkdown Checklist (SWC)

Equipment ID No. 1-1206-P6-002 Equip. Class¹² 5 (Horizontal Pump)

Equipment Description Containment Spray Pump B

Interaction Effects

- 7. Are soft targets free from impact by nearby equipment or structures? Y N U N/A
- 8. Are overhead equipment, distribution systems, ceiling tiles and lighting, and masonry block walls not likely to collapse onto the equipment? Y N U N/A
- 9. Do attached lines have adequate flexibility to avoid damage? Y N U N/A
- 10. Based on the above seismic interaction evaluations, is equipment free of potentially adverse seismic interaction effects? Y N U

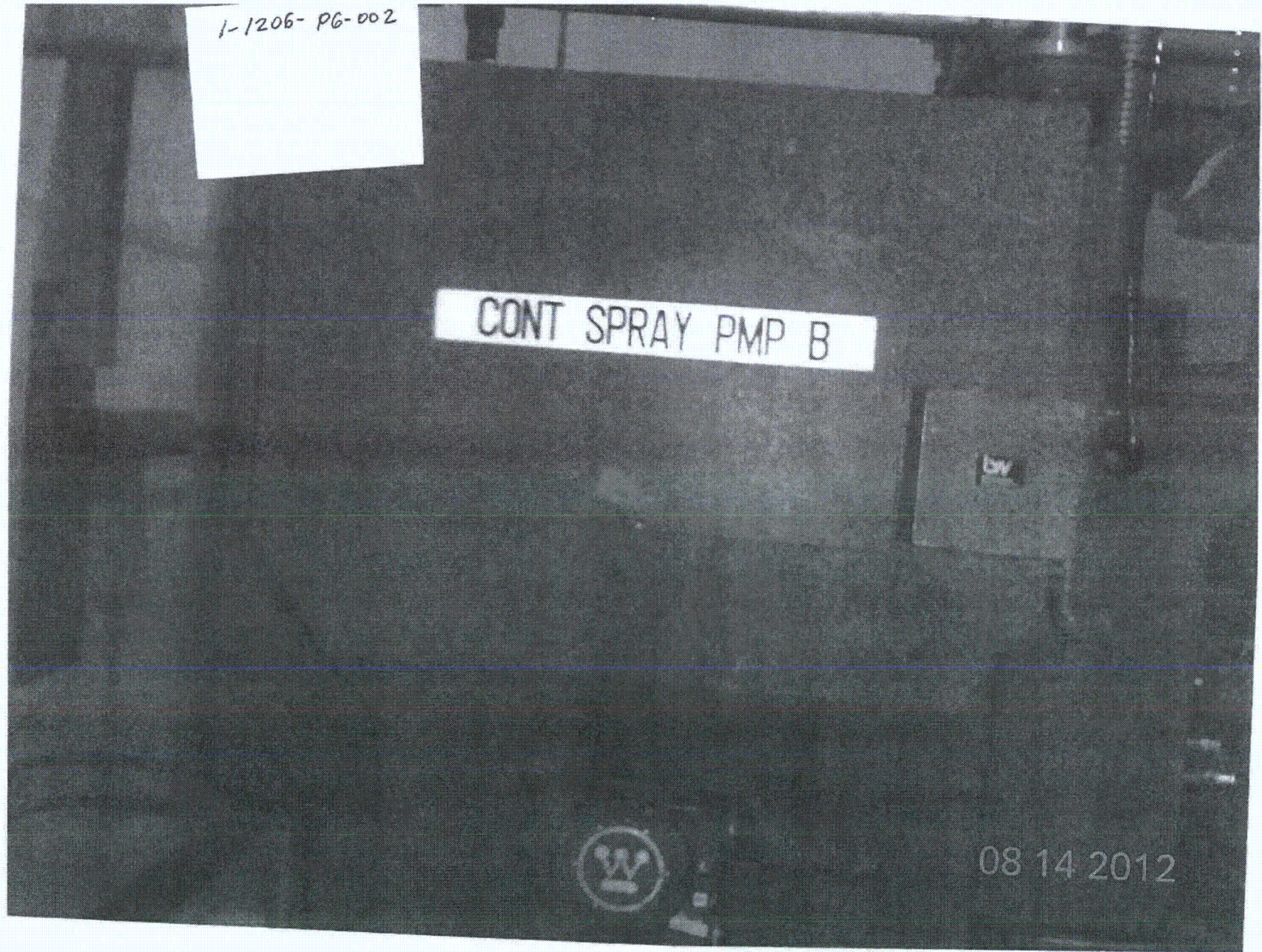
Other Adverse Conditions

- 11. Have you looked for and found no other seismic conditions that could adversely affect the safety functions of the equipment? Y N U

Comments (Additional pages may be added as necessary)

CR-501548 already written, with resolution that light fixture above equipment in room RD77 is not a seismic concern. Therefore, no additional concerns exist, and CR with resolution is acceptable.

Evaluated by: Matthew Wilkinson / Matthew Wilkinson Date: 8/14/2012
David Volodarsky / DAVID VOLDOARSKY 8/14/2012



Sheet 1 of 2
 Status: N U

Seismic Walkdown Checklist (SWC)

Equipment ID No. 1-1208-P6-003 Equip. Class¹² 5

Equipment Description CVCS CENTRIFUGAL CHARGING PUMP TRAIN B

Location: Bldg. AUX Floor-El. 143'-6" Room, Area RC 11B

Manufacturer, Model, Etc. (optional but recommended) PACIFIC PUMP DIVISION, DRESSER INDUST
165

Instructions for Completing Checklist

This checklist may be used to document the results of the Seismic Walkdown of an item of equipment on the SWEL. The space below each of the following questions may be used to record the results of judgments and findings. Additional space is provided at the end of this checklist for documenting other comments.

Anchorage

1. Is the anchorage configuration verification required (i.e., is the item one of the 50% of SWEL items requiring such verification)? Y N U

2. Is the anchorage free of bent, broken, missing or loose hardware? Y N U N/A

3. Is the anchorage free of corrosion that is more than mild surface oxidation? Y N U N/A

4. Is the anchorage free of visible cracks in the concrete near the anchors? Y N U N/A

5. Is the anchorage configuration consistent with plant documentation? Y N U N/A
 (Note: This question only applies if the item is one of the 50% for which an anchorage configuration verification is required.)
Not within 50% sample for anchor verification.

6. Based on the above anchorage evaluations, is the anchorage free of potentially adverse seismic conditions? Y N U

¹² Enter the equipment class name from Appendix B: Classes of Equipment.

Seismic Walkdown Checklist (SWC)

Equipment ID No: 1-1208-P6-003 Equip. Class¹² 5

Equipment Description CVCS CENTRIFUGAL CHARGING PUMP TRAIN B

Interaction Effects

7. Are soft targets free from impact by nearby equipment or structures? Y N U N/A

8. Are overhead equipment, distribution systems, ceiling tiles and lighting, and masonry block walls not likely to collapse onto the equipment? Y N U N/A

9. Do attached lines have adequate flexibility to avoid damage? Y N U N/A

10. Based on the above seismic interaction evaluations, is equipment free of potentially adverse seismic interaction effects? Y N U

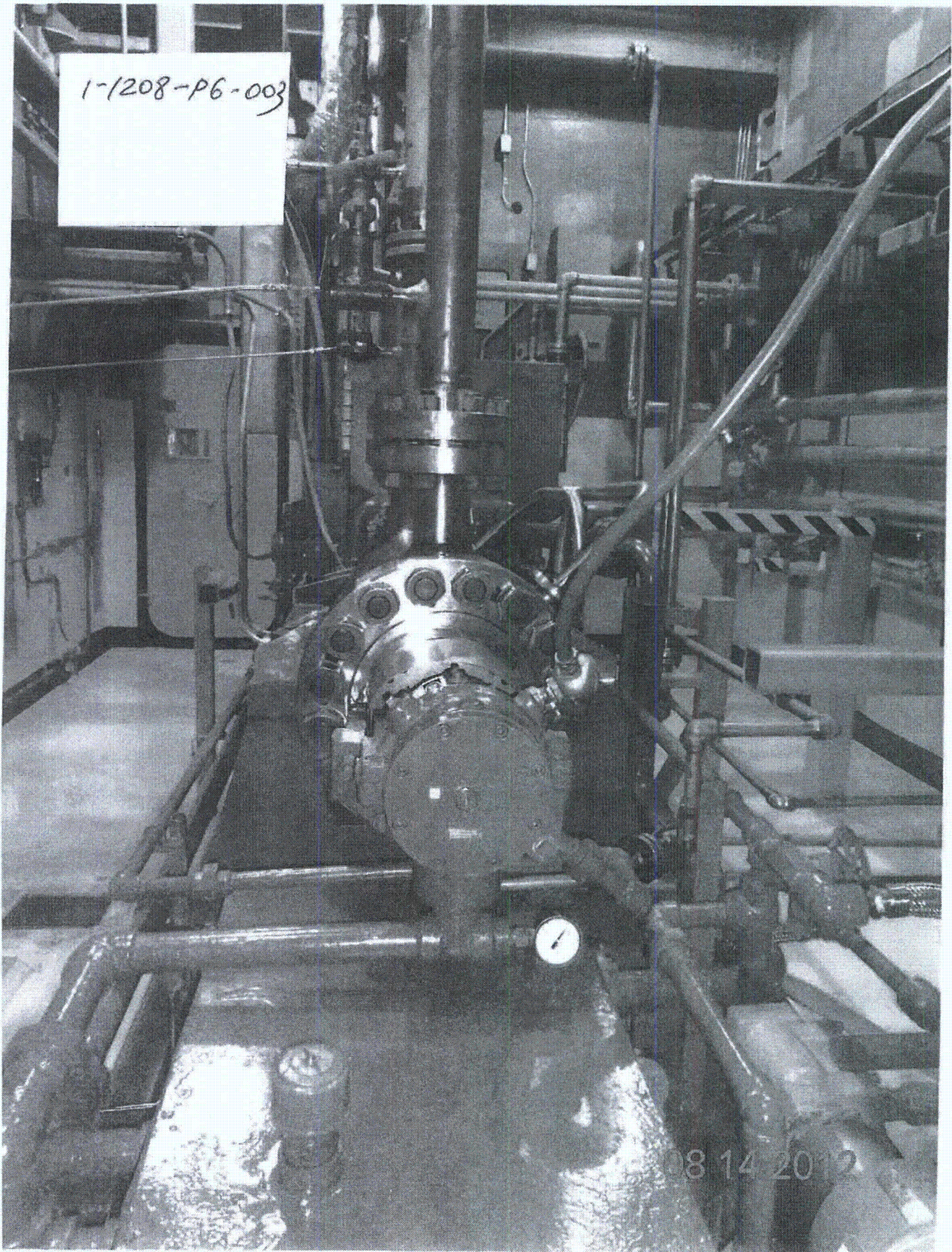
Other Adverse Conditions

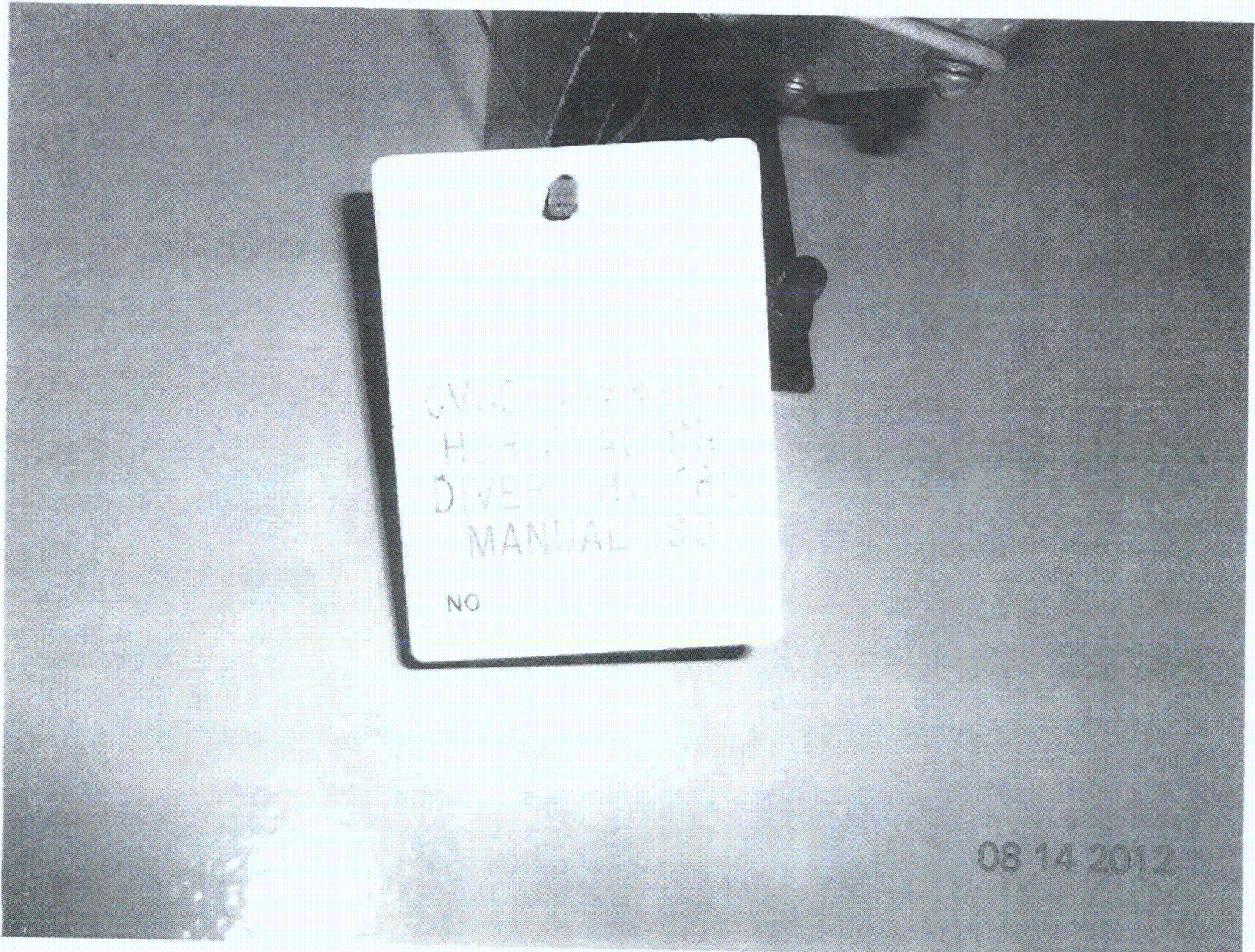
11. Have you looked for and found no other seismic conditions that could adversely affect the safety functions of the equipment? Y N U

Comments (Additional pages may be added as necessary)

None.

Evaluated by: David Voloch / DAVID VOLOCHARSKY Date: 8-14-2012
Matthew Wilkinson Matthew Wilkinson 8/14/2012





Sheet 1 of 2

Status: Y N U

Seismic Walkdown Checklist (SWC)

Equipment ID No. 1-1208-06-153 Equip. Class¹² 0 (other)

Equipment Description Manual CCP Discharge Isolation Valve with Reach Rod.

Location: Bldg. Aux Floor El. 143'-6" Room, Area RC112

Manufacturer, Model, Etc. (optional but recommended) Westinghouse

Instructions for Completing Checklist

This checklist may be used to document the results of the Seismic Walkdown of an item of equipment on the SWEL. The space below each of the following questions may be used to record the results of judgments and findings. Additional space is provided at the end of this checklist for documenting other comments.

Anchorage

1. Is the anchorage configuration verification required (i.e., is the item one of the 50% of SWEL items requiring such verification)? Y N

2. Is the anchorage free of bent, broken, missing or loose hardware? Y N U N/A

3. Is the anchorage free of corrosion that is more than mild surface oxidation? Y N U N/A

4. Is the anchorage free of visible cracks in the concrete near the anchors? Y N U N/A

This component consists of the valve, a reach rod, and a handwheel for valve operation behind a shield wall. The handwheel support baseplate was reviewed for cracks near the anchors. The reach rod supports are welded to structural steel.
5. Is the anchorage configuration consistent with plant documentation? Y N U N/A

(Note: This question only applies if the item is one of the 50% for which an anchorage configuration verification is required.)
Not within 50% sample.

6. Based on the above anchorage evaluations, is the anchorage free of potentially adverse seismic conditions? Y N U

Review of the above anchorage questions is applicable to the welded supports (to structural steel) for the reach rod, and the handwheel support with anchored baseplate to the shield wall. The valve itself is a line-mounted item.

*ML
8/19/12*

¹² Enter the equipment class name from Appendix B: Classes of Equipment.

Seismic Walkdown Checklist (SWC)

Equipment ID No. 1-1208-46-153 Equip. Class¹² 0 (Other)

Equipment Description: Manual CCP Discharge Isolation Valve with Reach Rod

Interaction Effects

7. Are soft targets free from impact by nearby equipment or structures? Y N U N/A

8. Are overhead equipment, distribution systems, ceiling tiles and lighting, and masonry block walls not likely to collapse onto the equipment? Y N U N/A

9. Do attached lines have adequate flexibility to avoid damage? Y N U N/A
Tubing attached to valve has adequate flexibility.

10. Based on the above seismic interaction evaluations, is equipment free of potentially adverse seismic interaction effects? Y N U

Other Adverse Conditions

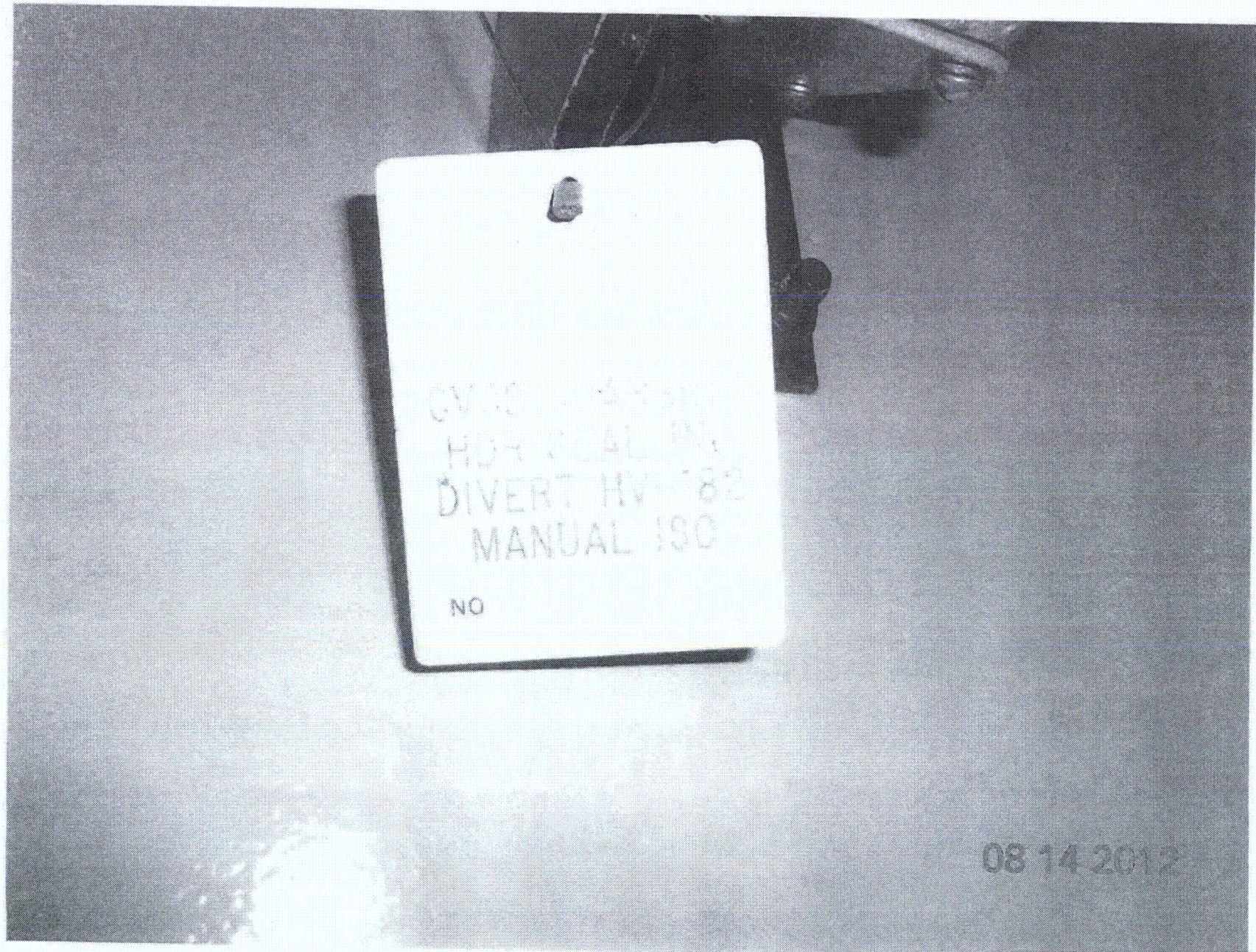
11. Have you looked for and found no other seismic conditions that could adversely affect the safety functions of the equipment? Y N U

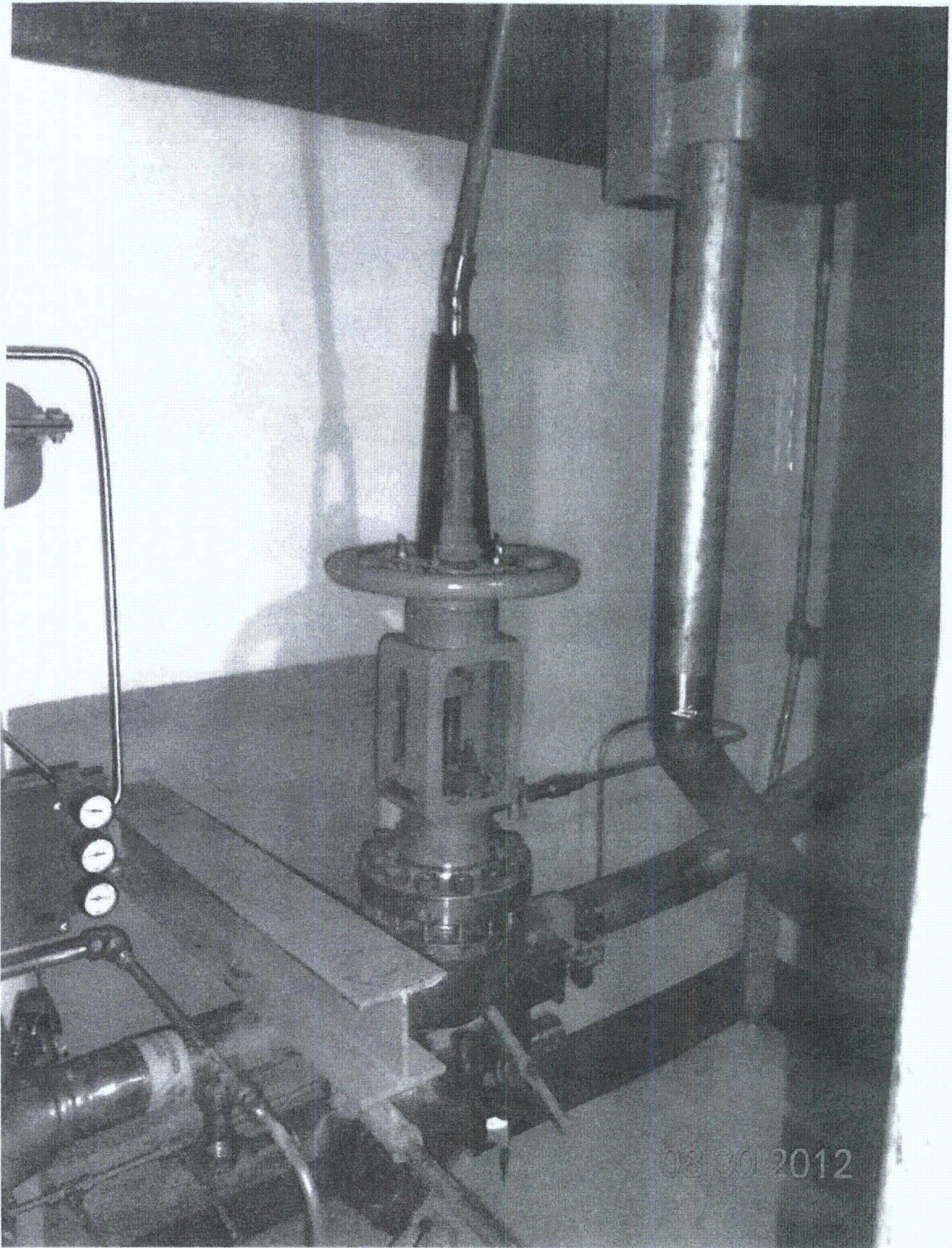
Comments (Additional pages may be added as necessary)

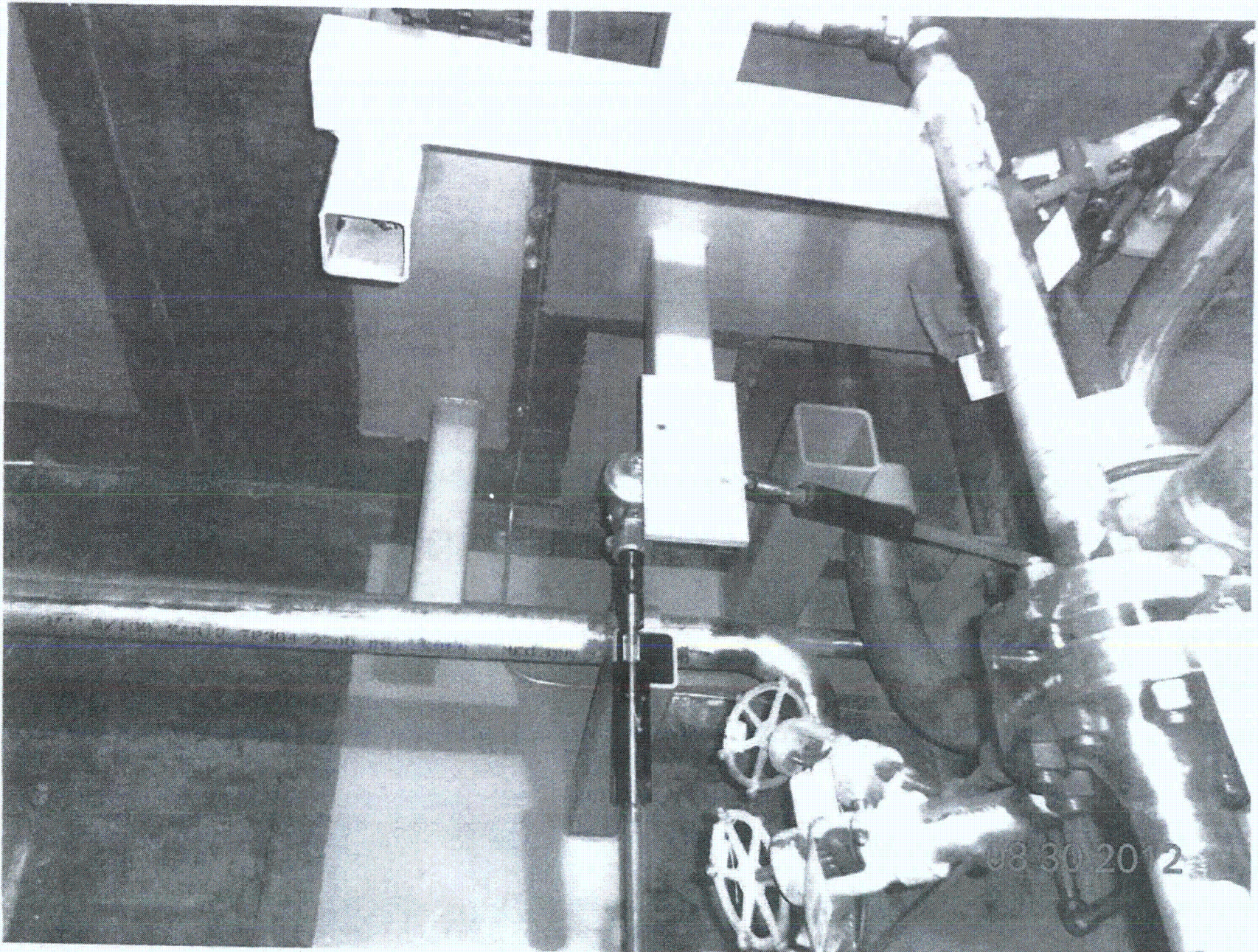
No additional comments.

Evaluated by: *Matthew Wilkinson* / Matthew Wilkinson Date: 8/14/2012

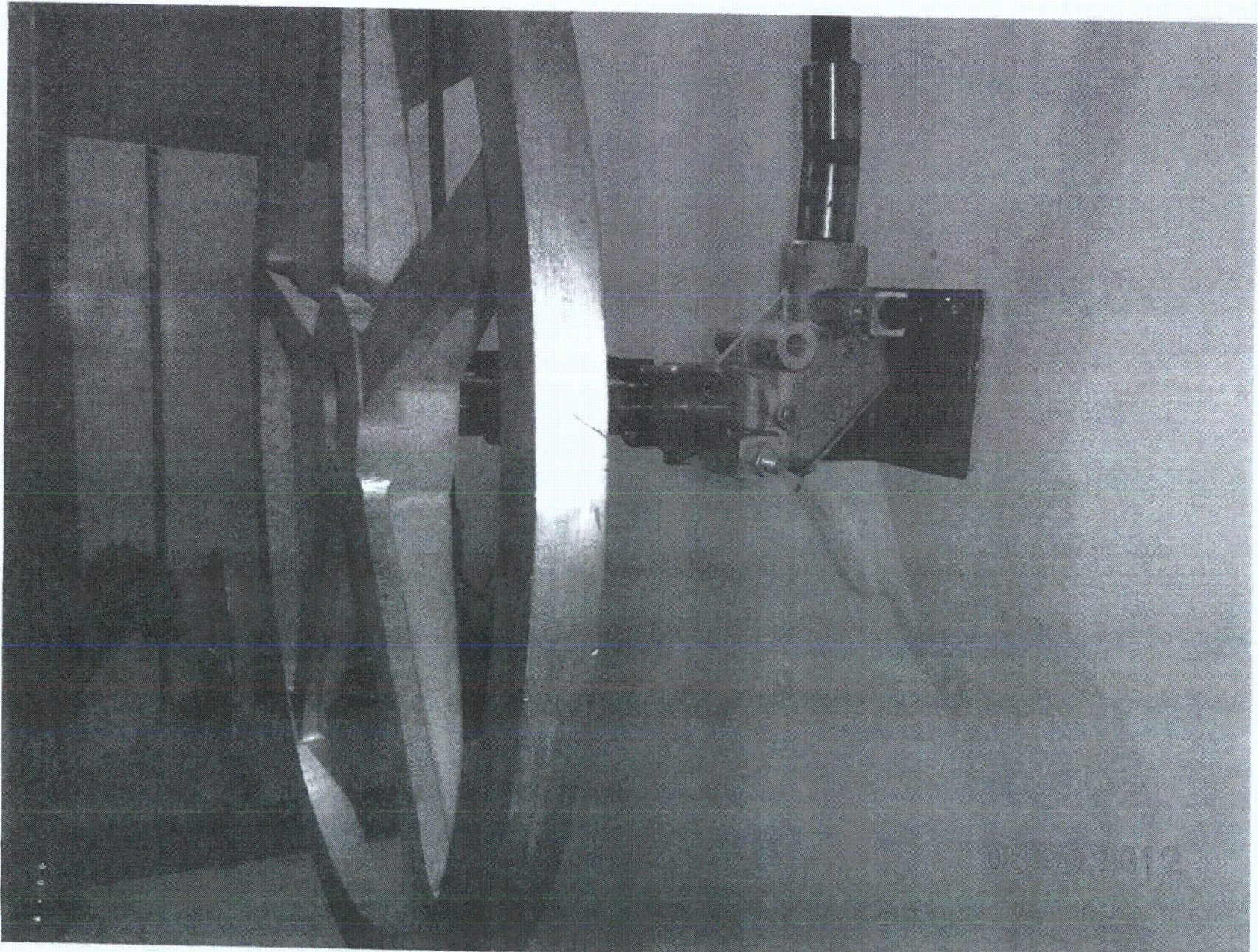
David Volodarsky / DAVID VOLODARSKY 8/14/2012











Sheet 1 of 2
 Status Y N U

Seismic Walkdown Checklist (SWC)

Equipment ID No: 1-1217-E4-002 Equip. Class¹² Z1
 Equipment Description ACCW Heat Exchanger
 Location: Bldg. AUX Floor-El. 220' Room, Area R104
 Manufacturer, Model, Etc. (optional but recommended) _____

Instructions for Completing Checklist

This checklist may be used to document the results of the Seismic Walkdown of an item of equipment on the SWEL. The space below each of the following questions may be used to record the results of judgments and findings. Additional space is provided at the end of this checklist for documenting other comments.

Anchorage

1. Is the anchorage configuration verification required (i.e., is the item one of the 50% of SWEL items requiring such verification)? Y N U N/A J.D.
8-20-12

2. Is the anchorage free of bent, broken, missing or loose hardware? Y N U N/A

3. Is the anchorage free of corrosion that is more than mild surface oxidation? Y N U N/A

4. Is the anchorage free of visible cracks in the concrete near the anchors? Y N U N/A

5. Is the anchorage configuration consistent with plant documentation?
 (Note: This question only applies if the item is one of the 50% for which an anchorage configuration verification is required.)
[X4A E01-0003, Revision 10; AX2005A100, Rev. 10]
 Y N U N/A

6. Based on the above anchorage evaluations, is the anchorage free of potentially adverse seismic conditions? Y N U

¹² Enter the equipment class name from Appendix B: Classes of Equipment.

Seismic Walkdown Checklist (SWC)

Equipment ID No. 1-1217-64-002 Equip. Class¹² 2.1

Equipment Description ACCW Heat Exchanger

Interaction Effects

7. Are soft targets free from impact by nearby equipment or structures? Y N U N/A

8. Are overhead equipment, distribution systems, ceiling tiles and lighting, and masonry block walls not likely to collapse onto the equipment? Y N U N/A

9. Do attached lines have adequate flexibility to avoid damage? Y N U N/A

10. Based on the above seismic interaction evaluations, is equipment free of potentially adverse seismic interaction effects? Y N U

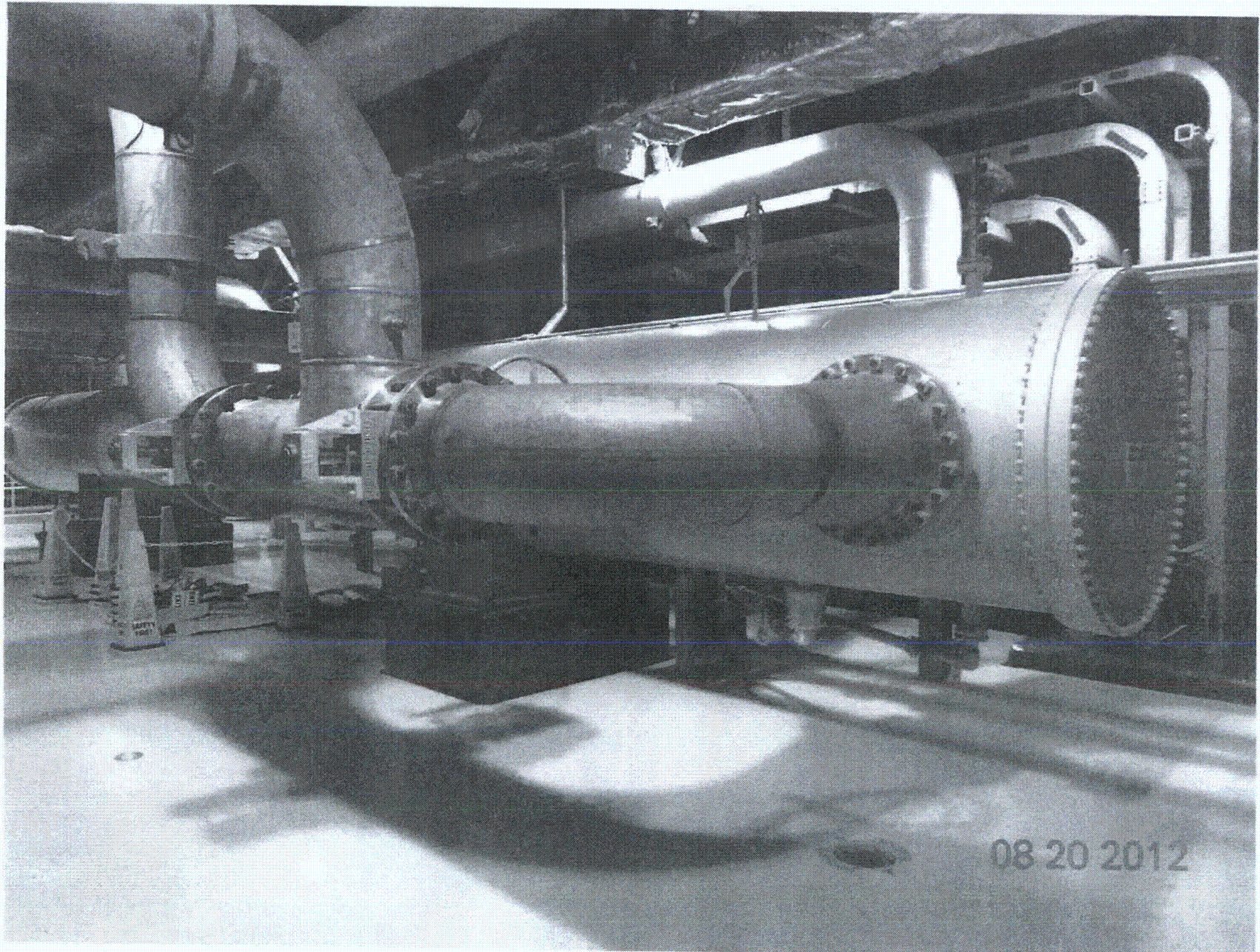
Other Adverse Conditions

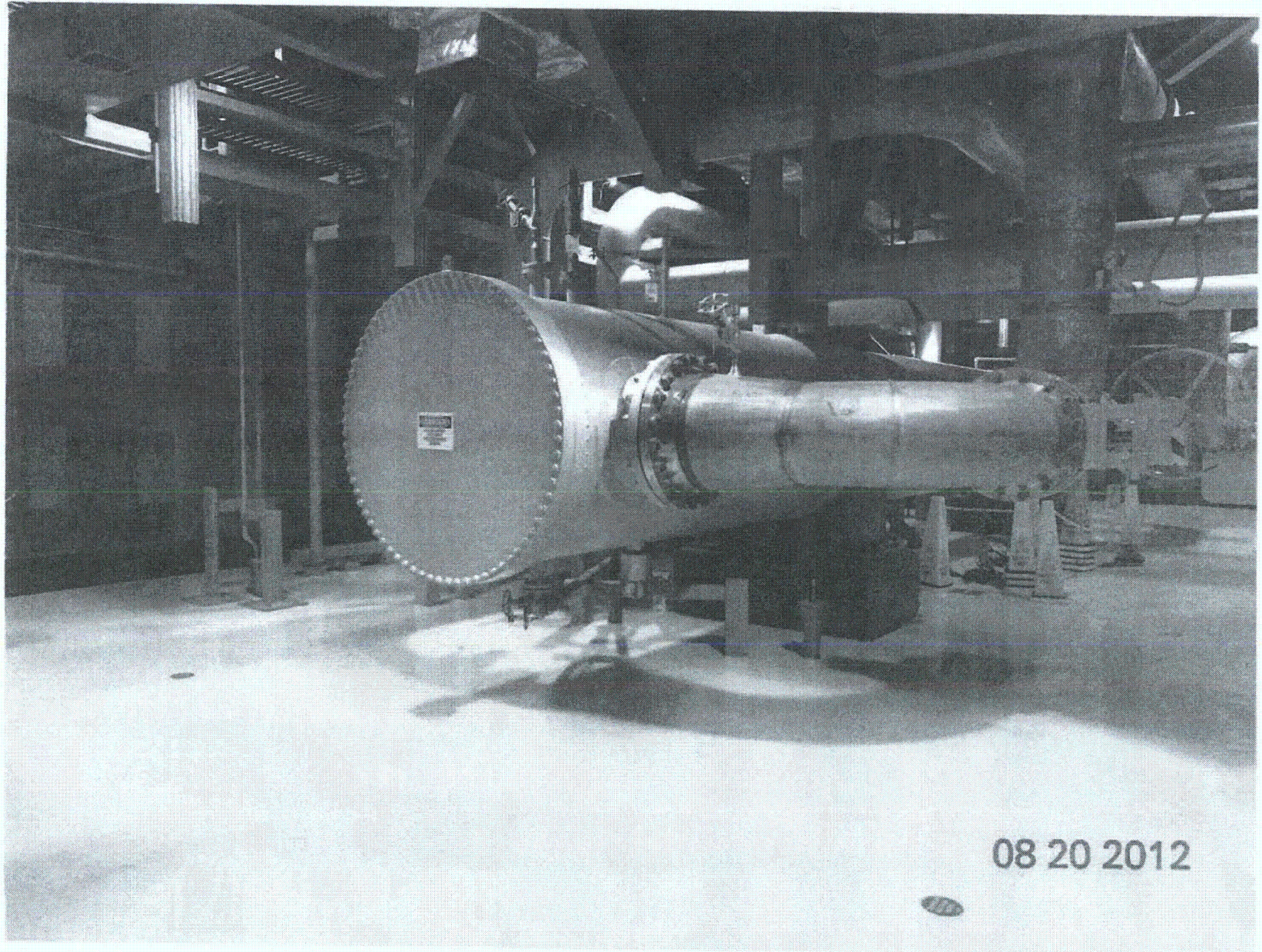
11. Have you looked for and found no other seismic conditions that could adversely affect the safety functions of the equipment? Y N U

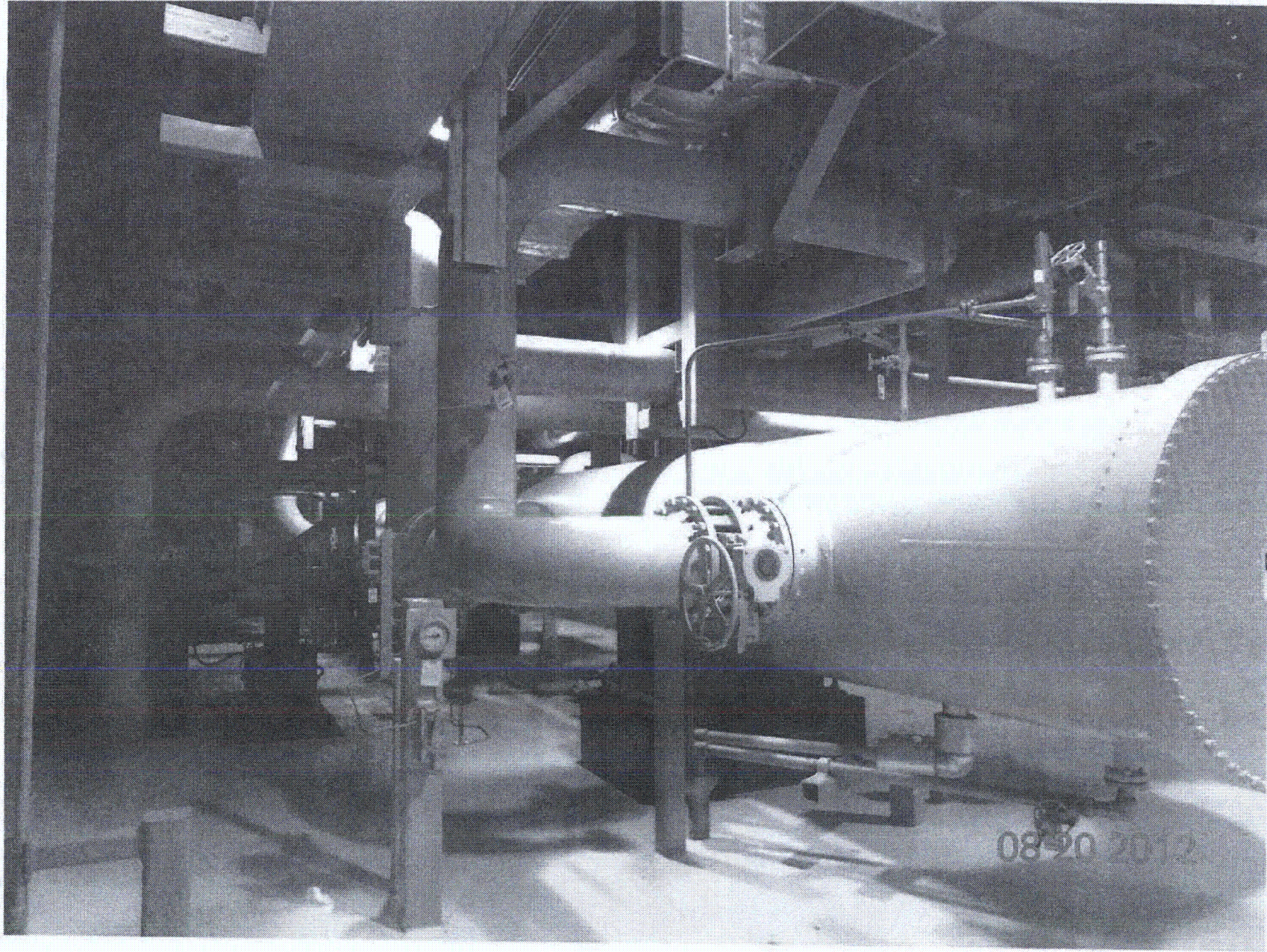
Comments (Additional pages may be added as necessary)

NONE

Evaluated by: James Dault / JAMES DOULT Date: 8-20-2012
Winston Stewart / WINSTON STEWART 08/20/2012







Seismic Walkdown Checklist (SWC)

Equipment ID No. 1-1362-P4-001 Equip. Class¹² 5

Equipment Description AFW Pump C and Turbine Driven

Location: Bldg. AFWP House Floor/El. 220'-0" Room/Area R-106

Manufacturer, Model, Etc. (optional but recommended) Ingersoll-Rand

Instructions for Completing Checklist

This checklist may be used to document the results of the Seismic Walkdown of an item of equipment on the SWEL. The space below each of the following questions may be used to record the results of judgments and findings. Additional space is provided at the end of this checklist for documenting other comments.

Anchorage

1. Is the anchorage configuration verification required (i.e., is the item one of the 50% of SWEL items requiring such verification)? Y N U

2. Is the anchorage free of bent, broken, missing or loose hardware? Y N U N/A

3. Is the anchorage free of corrosion that is more than mild surface oxidation? Y N U N/A

4. Is the anchorage free of visible cracks in the concrete near the anchors? Y N U N/A

5. Is the anchorage configuration consistent with plant documentation?
 (Note: This question only applies if the item is one of the 50% for which an anchorage configuration verification is required.)
Perp IX 4 AF 03 - 000 83 VQR. 7.0 Y N U N/A

6. Based on the above anchorage evaluations, is the anchorage free of potentially adverse seismic conditions? Y N U

¹² Enter the equipment class name from Appendix B: Classes of Equipment.

Seismic Walkdown Checklist (SWC)

Equipment ID No: 1-1302-Pq-001 Equip. Class¹² 5

Equipment Description APW Pump C and Turbine Driver

Interaction Effects

7. Are soft targets free from impact by nearby equipment or structures? Y N U N/A

8. Are overhead equipment, distribution systems, ceiling tiles and lighting, and masonry block walls not likely to collapse onto the equipment? Y N U N/A

9. Do attached lines have adequate flexibility to avoid damage? Y N U N/A

10. Based on the above seismic interaction evaluations, is equipment free of potentially adverse seismic interaction effects? Y N U

Other Adverse Conditions

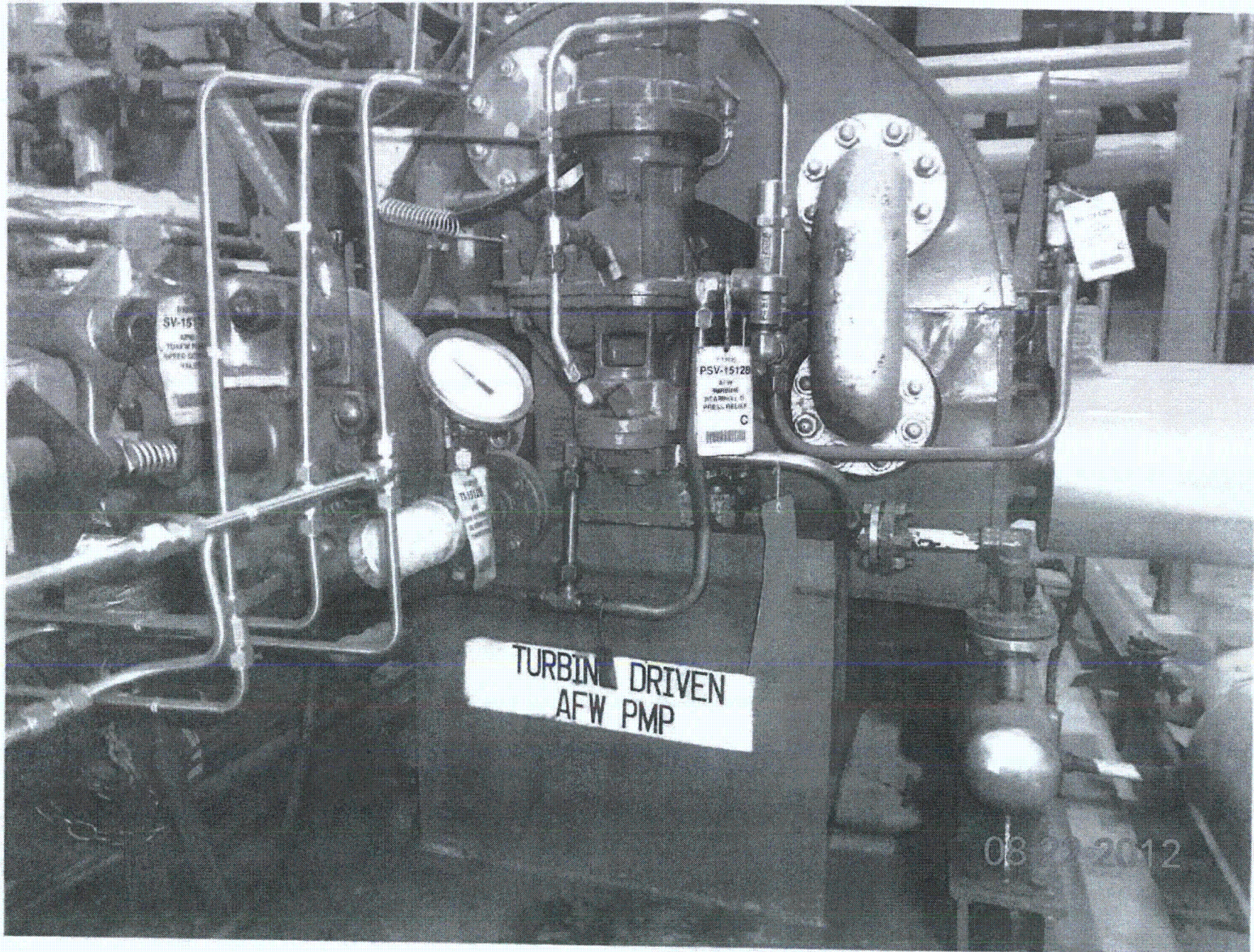
11. Have you looked for and found no other seismic conditions that could adversely affect the safety functions of the equipment? Y N U

Comments (Additional pages may be added as necessary)

NONE

Evaluated by: Frank Yoo / J. Lee Date: 8/16/12

PARIMOL GANDHI / P. Gandhi 8/16/2012



Sheet 1 of 2
 Status: Y N U

Seismic Walkdown Checklist (SWC)

Equipment ID No. 1-1302-P4-003 Equip. Class¹² 5

Equipment Description AUX FW Pump Motor Driven

Location: Bldg. AFWP Hse Floor El. 220'-0" Room, Area R101

Manufacturer, Model, Etc. (optional but recommended) _____

Instructions for Completing Checklist

This checklist may be used to document the results of the Seismic Walkdown of an item of equipment on the SWEL. The space below each of the following questions may be used to record the results of judgments and findings. Additional space is provided at the end of this checklist for documenting other comments.

Anchorage

1. Is the anchorage configuration verification required (i.e., is the item one of the 50% of SWEL items requiring such verification)? Y N *9/24 8/27/12*

2. Is the anchorage free of bent, broken, missing or loose hardware? Y N U N/A

3. Is the anchorage free of corrosion that is more than mild surface oxidation? Y N U N/A

4. Is the anchorage free of visible cracks in the concrete near the anchors? Y N U N/A

5. Is the anchorage configuration consistent with plant documentation? Y N U N/A
 (Note: This question only applies if the item is one of the 50% for which an anchorage configuration verification is required.)
IX4AF03-00081, Ver. 4.0
IX2D59A001, Ver. 9.0

6. Based on the above anchorage evaluations, is the anchorage free of potentially adverse seismic conditions? Y N U

¹² Enter the equipment class name from Appendix B: Classes of Equipment.

Seismic Walkdown Checklist (SWC)

Equipment ID No. 1-1302-14-003 Equip. Class¹² 5

Equipment Description Aux FW pump Motor Driven

Interaction Effects

7. Are soft targets free from impact by nearby equipment or structures? YES NO U N/A

8. Are overhead equipment, distribution systems, ceiling tiles and lighting, and masonry block walls not likely to collapse onto the equipment? YES NO U N/A

9. Do attached lines have adequate flexibility to avoid damage? YES NO U N/A

10. Based on the above seismic interaction evaluations, is equipment free of potentially adverse seismic interaction effects? YES NO U

Other Adverse Conditions

11. Have you looked for and found no other seismic conditions that could adversely affect the safety functions of the equipment? YES NO U

Chain basket for mono rail has enough clearance OK
Scaffold SWC 394025 is temporary erected OK

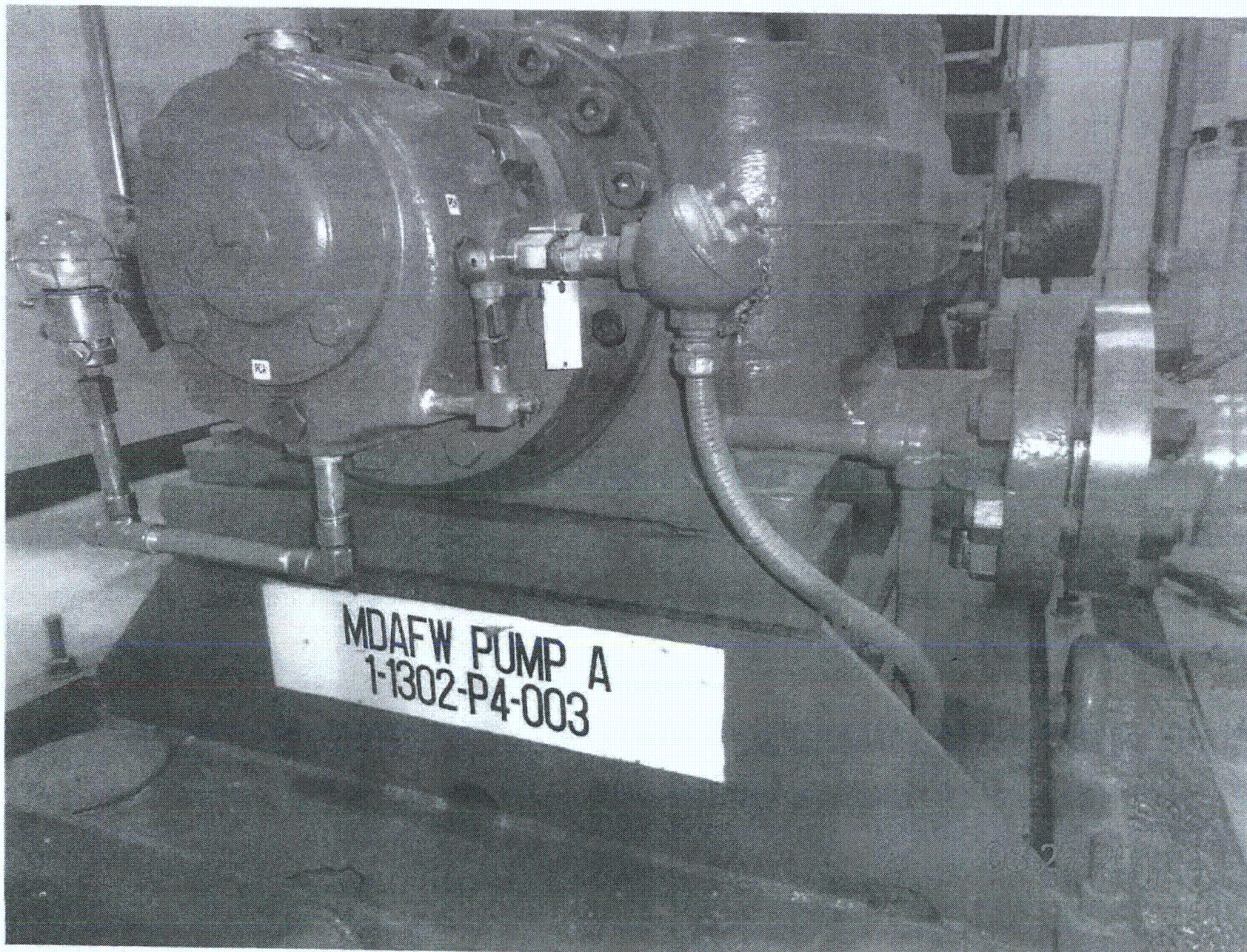
Comments (Additional pages may be added as necessary)

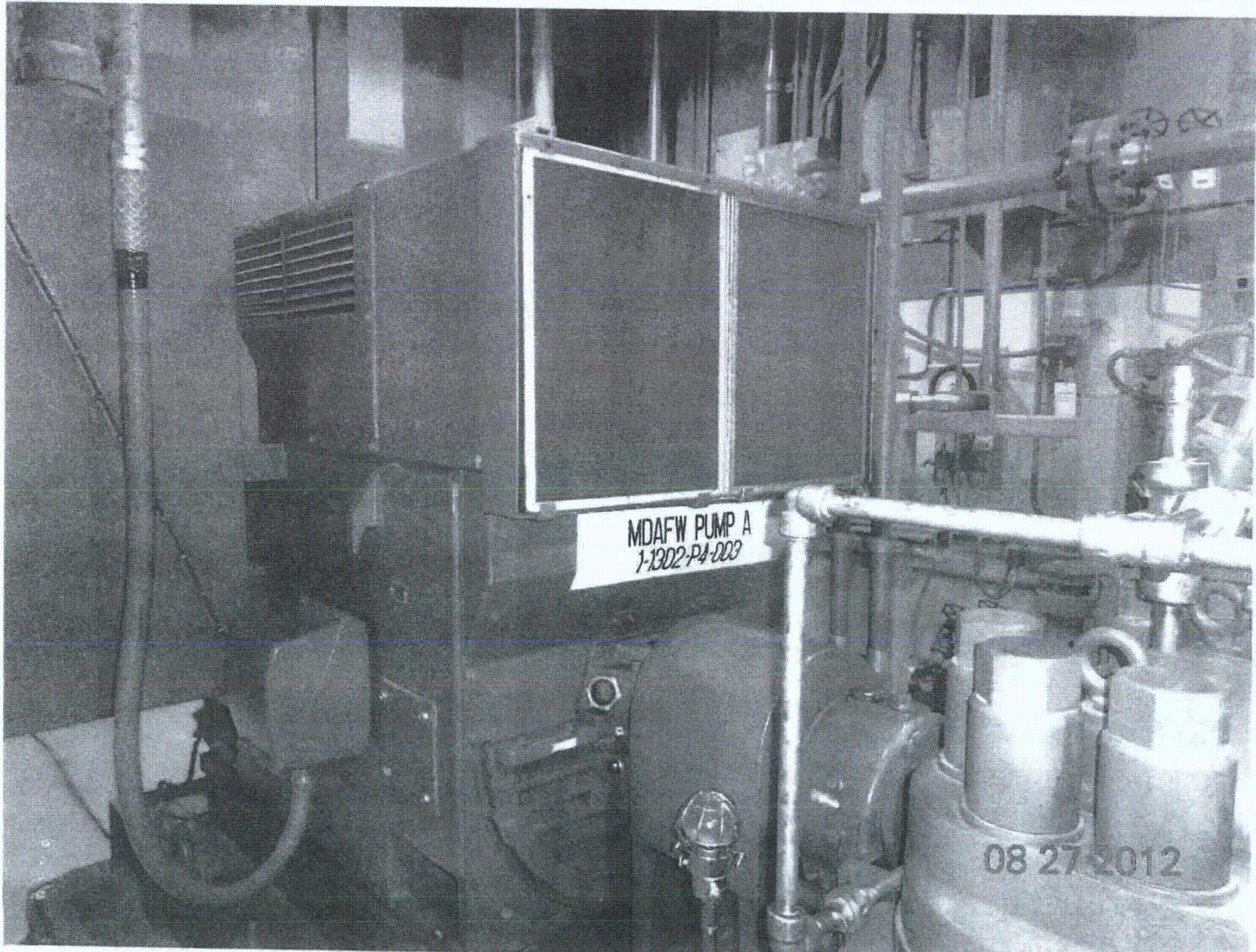
N/A
Work by Sec 1-FV 5155

Evaluated by: Indira / Frank Yoo Date: 8/27/2012

P. Gandhi / PARIMAL GANDHI 8/27/2012

<C4>





Sheet 1 of 2
 Status: Y N U

Seismic Walkdown Checklist (SWC)

Equipment ID No. 1-1302-14-001 Equip. Class¹² 21
 Equipment Description Condensate Storage Tank No. 1 (CST)
 Location: Bldg. CST No. 1 Floor El. 200'-0" Room, Area Yard, UNIT 1
 Manufacturer, Model, Etc. (optional but recommended) _____

Instructions for Completing Checklist

This checklist may be used to document the results of the Seismic Walkdown of an item of equipment on the SWEL. The space below each of the following questions may be used to record the results of judgments and findings. Additional space is provided at the end of this checklist for documenting other comments.

Anchorage

1. Is the anchorage configuration verification required (i.e., is the item one of the 50% of SWEL items requiring such verification)? Y N U N/A *per instr*

2. Is the anchorage free of bent, broken, missing or loose hardware? Y N U N/A
See comment

3. Is the anchorage free of corrosion that is more than mild surface oxidation? Y N U N/A
See comment

4. Is the anchorage free of visible cracks in the concrete near the anchors? Y N U N/A
See comment

5. Is the anchorage configuration consistent with plant documentation? (Note: This question only applies if the item is one of the 50% for which an anchorage configuration verification is required.) Y N U N/A *per instr*
See comment

6. Based on the above anchorage evaluations, is the anchorage free of potentially adverse seismic conditions? Y N U

¹² Enter the equipment class name from Appendix B: Classes of Equipment.

Seismic Walkdown Checklist (SWC)

Equipment ID No. 1-1302-14-001 Equip. Class^{1,2} 2.1

Equipment Description Co-leasite Storage Tank No. 1 (CST)

Interaction Effects

- 7. Are soft targets free from impact by nearby equipment or structures? YES NO U N/A

- 8. Are overhead equipment, distribution systems, ceiling tiles and lighting, and masonry block walls not likely to collapse onto the equipment? YES NO U N/A

- 9. Do attached lines have adequate flexibility to avoid damage? YES NO U N/A

- 10. Based on the above seismic interaction evaluations, is equipment free of potentially adverse seismic interaction effects? YES NO U

Other Adverse Conditions

- 11. Have you looked for and found no other seismic conditions that could adversely affect the safety functions of the equipment? YES NO U

Comments (Additional pages may be added as necessary)

The tank is concrete shell structure. Tank shell on top of concrete foundation has no signs of degradation or structural cracks. The hairline crack is superficial and no effect to the integrity of tank and is acceptable

Evaluated by: Frank Yao / Jit Chiu Date: 8/15/2012
PARIMAL GANDHI / P. Gandhi 8/15/2012

