

Seismic Walkdown Checklist (SWC)

Equipment ID No. 2BE24 Equip. Class¹² (21) Tanks or Heat Exchangers (Vertical)

Equipment Description RHR Heat Exchanger B *gmr 8/31/2012*

Location: Bldg. Reactor Floor El. 716 91 Room, Area R2-X8 6 *gmr 8/31/2012*

Manufacturer, Model, Etc. (optional but recommended)

Instructions for Completing Checklist

This checklist may be used to document the results of the Seismic Walkdown of an item of equipment on the SWEL. The space below each of the following questions may be used to record the results of judgments and findings. Additional space is provided at the end of this checklist for documenting other comments.

Anchorage

1. Is the anchorage configuration verification required (i.e., is the item one of the 50% of SWEL items requiring such verification)? Y N U

2. Is the anchorage free of bent, broken, missing or loose hardware? Y N U N/A

. See Comment #1

3. Is the anchorage free of corrosion that is more than mild surface oxidation? Y N U N/A

. See Comment #1

4. Is the anchorage free of visible cracks in the concrete near the anchors? Y N U N/A

. See Comment #1

5. Is the anchorage configuration consistent with plant documentation? Y N U N/A

(Note: This question only applies if the item is one of the 50% for which an anchorage configuration verification is required.)

6. Based on the above anchorage evaluations, is the anchorage free of potentially adverse seismic conditions? Y N U

¹² Enter the equipment class name from Appendix B: Classes of Equipment.

Equipment ID No. 2BE24 Equip. Class¹² (21) Tanks or Heat Exchangers (Vertical)

Equipment Description RHR Heat Exchanger B

Interaction Effects

7. Are soft targets free from impact by nearby equipment or structures? Y N U N/A

No soft targets

8. Are overhead equipment, distribution systems, ceiling tiles and lighting, and masonry block walls not likely to collapse onto the equipment? Y N U N/A

9. Do attached lines have adequate flexibility to avoid damage? Y N U N/A

10. Based on the above seismic interaction evaluations, is equipment free of potentially adverse seismic interaction effects? Y N U

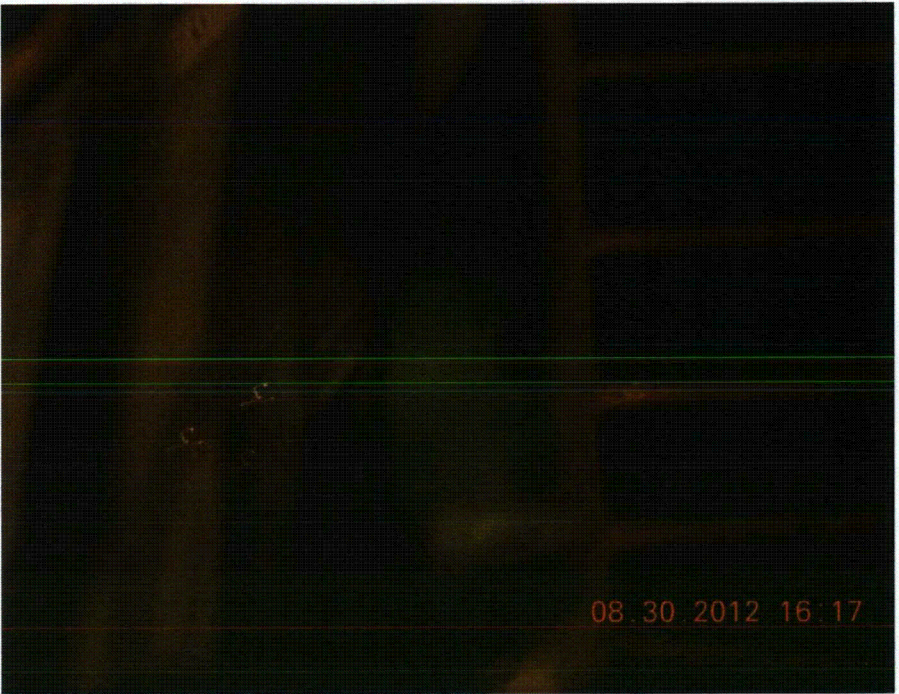
Other Adverse Conditions

11. Have you looked for and found no other seismic conditions that could adversely affect the safety functions of the equipment? Y N U

Comments (Additional pages may be added as necessary)

#1. Due to presence of load shielding and contaminated areas, could not verify 100% of anchorage. Visible anchorage consistent w/ Dwg. M-3400, Rev. 2 and in good condition.

Evaluated by: *James Wiggins* Date: 8/31/2012
KE G 8/31/2012



Seismic Walkdown Checklist (SWC)

Equipment ID No. 2BE55 Equip. Class¹² (10) Air Handlers

Equipment Description RCIC Pump Room Cooling Coil B

Location: Bldg. Reactor Floor El. 9188^{MO} 11/8/12 Room, Area R2-14

Manufacturer, Model, Etc. (optional but recommended) _____

Instructions for Completing Checklist

This checklist may be used to document the results of the Seismic Walkdown of an item of equipment on the SWEL. The space below each of the following questions may be used to record the results of judgments and findings. Additional space is provided at the end of this checklist for documenting other comments.

Anchorage

1. Is the anchorage configuration verification required (i.e., is the item one of the 50% of SWEL items requiring such verification)? Y N U

2. Is the anchorage free of bent, broken, missing or loose hardware? Y N U N/A

3. Is the anchorage free of corrosion that is more than mild surface oxidation? Y N U N/A

4. Is the anchorage free of visible cracks in the concrete near the anchors? Y N U N/A

5. Is the anchorage configuration consistent with plant documentation?
 (Note: This question only applies if the item is one of the 50% for which an anchorage configuration verification is required.) Y N U N/A
KG 9/11/2012
~~Matches OWS, No. 6280-5-971-0~~ ANCHORAGE DOES NOT MATCH DWG.
 S-971, REV. 0, BUT AS-BUILT CONFIGURATION WAS EVALUATED IN CALCULATION PS-0922, REV. 0 AND JUDGED ACCEPTABLE.
 SEE COMMENTS.
 KG 10/11/12

6. Based on the above anchorage evaluations, is the anchorage free of potentially adverse seismic conditions? Y N U

¹² Enter the equipment class name from Appendix B: Classes of Equipment.

Equipment ID No. 2BE55 Equip. Class¹² (10) Air Handlers

Equipment Description RCIC Pump Room Cooling Coil B

Interaction Effects

7. Are soft targets free from impact by nearby equipment or structures? Y N U N/A

- No soft targets

8. Are overhead equipment, distribution systems, ceiling tiles and lighting, and masonry block walls not likely to collapse onto the equipment? Y N U N/A

9. Do attached lines have adequate flexibility to avoid damage? Y N U N/A

10. Based on the above seismic interaction evaluations, is equipment free of potentially adverse seismic interaction effects? Y N U

Other Adverse Conditions

11. Have you looked for and found no other seismic conditions that could adversely affect the safety functions of the equipment? Y N U

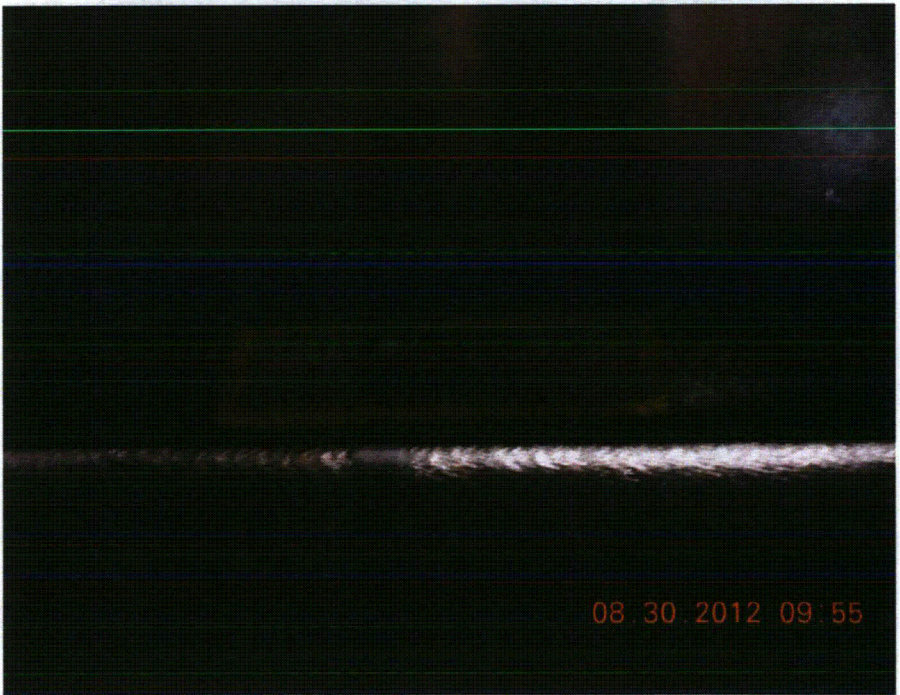
Comments (Additional pages may be added as necessary)

N/A CONFIGURATION MANAGEMENT ISSUE ADDRESSED IN IR # 1411581 *KO 10/9/12*
- 10/16/12

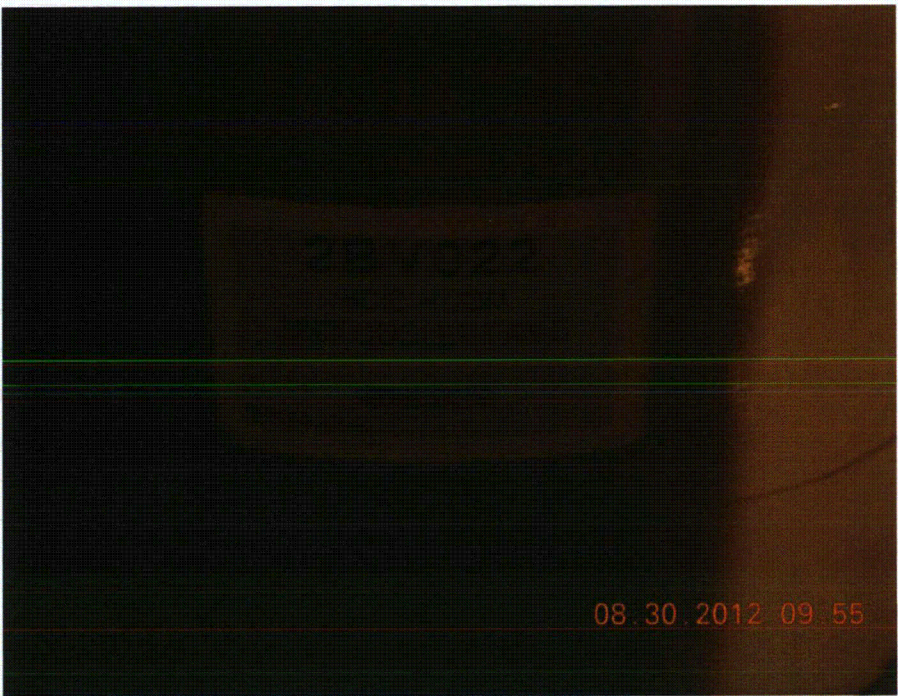
Evaluated by: *James Wiggins* Date: *9/11/2012*
Ki Get *9/11/2012*



08.30.2012 09:55



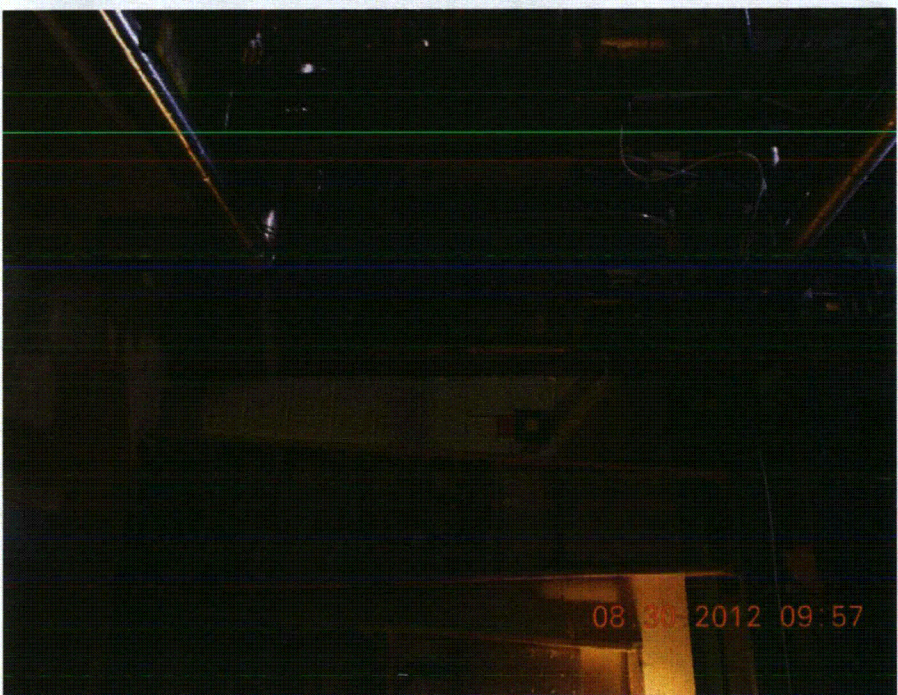
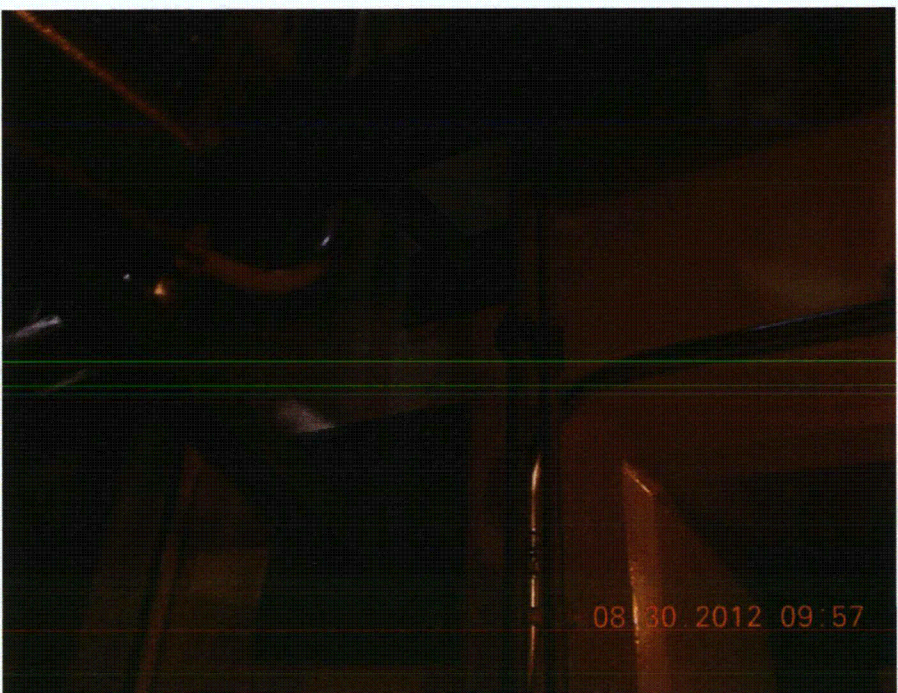
08.30.2012 09:55

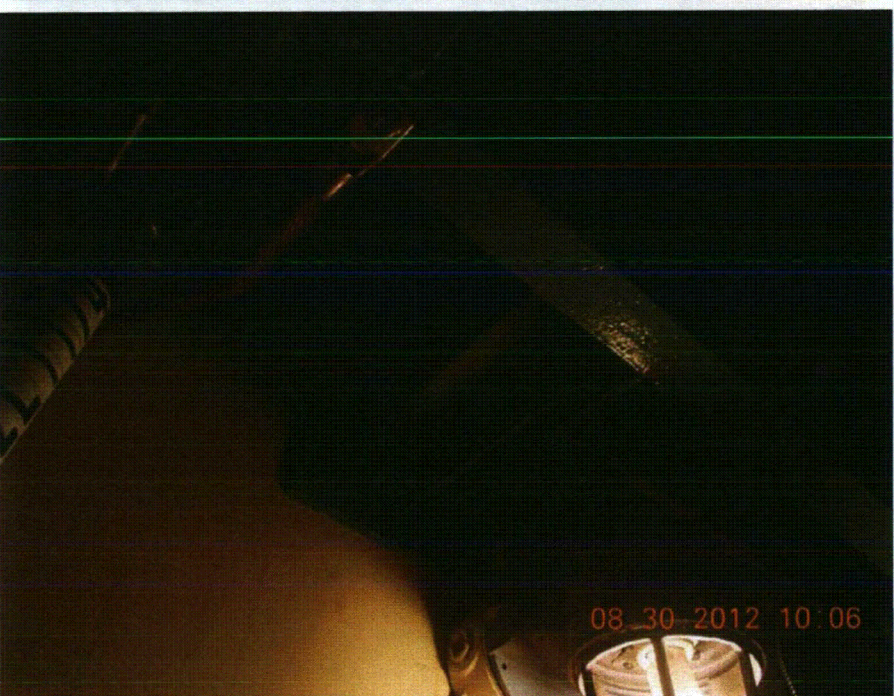
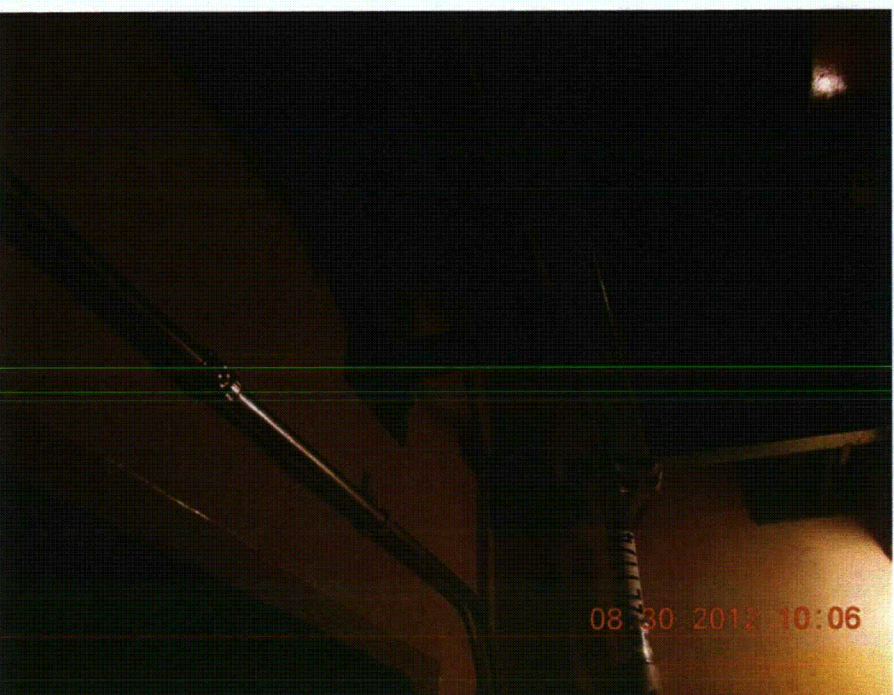
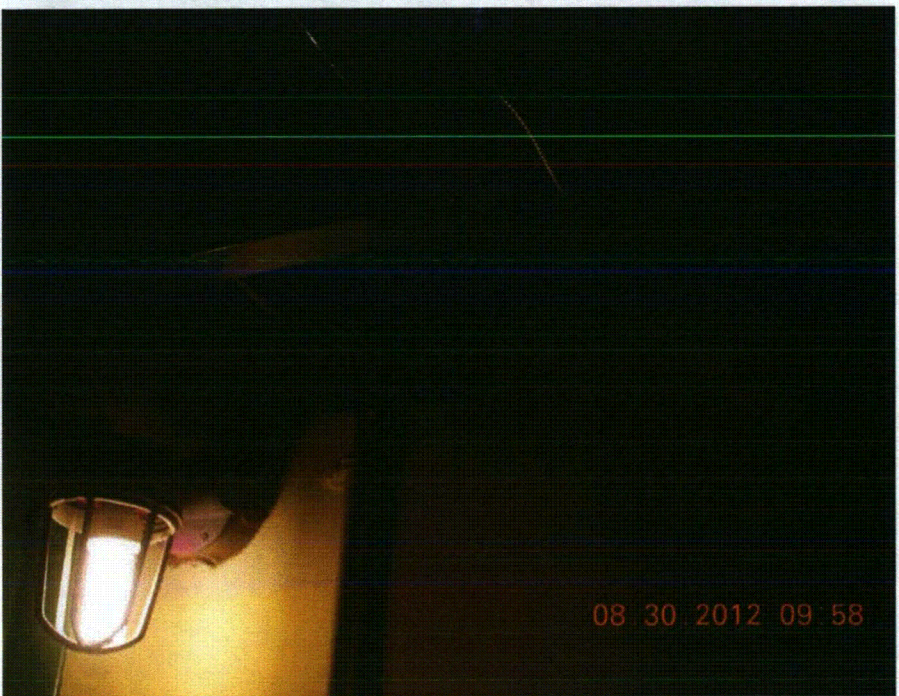
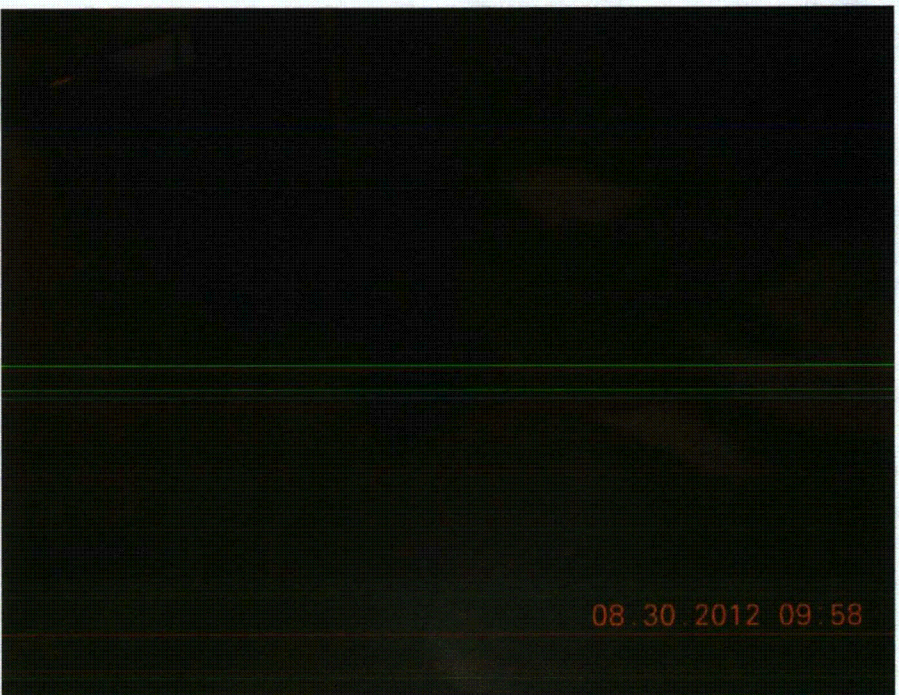


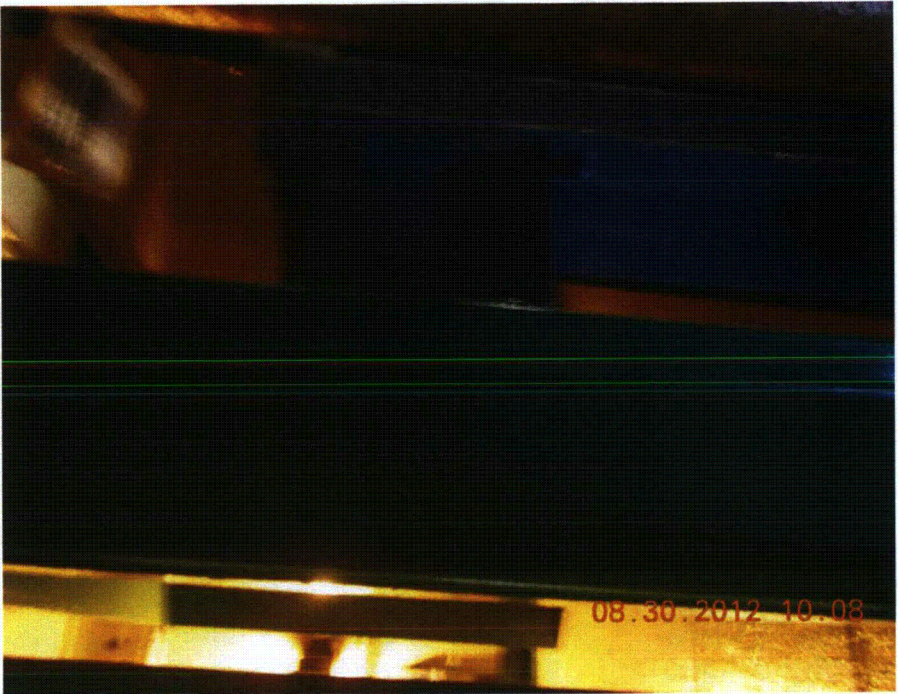
08.30.2012 09:55



08.30.2012 09:56







Seismic Walkdown Checklist (SWC)

Equipment ID No. 2BE56 Equip. Class¹² (10) Air Handlers

Equipment Description HPCI Pump Room Cooling Coil B

Location: Bldg. Reactor Floor El. 91' 88" KG 11/8/12 Room, Area R2-13

Manufacturer, Model, Etc. (optional but recommended) _____

Instructions for Completing Checklist

This checklist may be used to document the results of the Seismic Walkdown of an item of equipment on the SWEL. The space below each of the following questions may be used to record the results of judgments and findings. Additional space is provided at the end of this checklist for documenting other comments.

Anchorage

1. Is the anchorage configuration verification required (i.e., is the item one of the 50% of SWEL items requiring such verification)? Y N U

2. Is the anchorage free of bent, broken, missing or loose hardware? Y N U N/A

3. Is the anchorage free of corrosion that is more than mild surface oxidation? Y N U N/A

4. Is the anchorage free of visible cracks in the concrete near the anchors? Y N U N/A

5. Is the anchorage configuration consistent with plant documentation?
 (Note: This question only applies if the item is one of the 50% for which an anchorage configuration verification is required.)
ANCHORAGE DOES NOT MATCH DWG S-972, REV. 0, BUT AS-BUILT CONFIGURATION WAS EVALUATED IN CALCULATION PS-0922, REV. 0 AND JUDGED ACCEPTABLE. SEE COMMENTS. KG 10/9/12
 Y N U N/A

6. Based on the above anchorage evaluations, is the anchorage free of potentially adverse seismic conditions? Y N U

¹² Enter the equipment class name from Appendix B: Classes of Equipment.

Equipment ID No. 2BE56 Equip. Class¹² (10) Air Handlers

Equipment Description HPCI Pump Room Cooling Coil B

Interaction Effects

7. Are soft targets free from impact by nearby equipment or structures? Y N U N/A

No soft targets

8. Are overhead equipment, distribution systems, ceiling tiles and lighting, and masonry block walls not likely to collapse onto the equipment? Y N U N/A

Close proximity of HPCI discharge piping and scaffolding to fan hood and frame judged acceptable

9. Do attached lines have adequate flexibility to avoid damage? Y N U N/A

10. Based on the above seismic interaction evaluations, is equipment free of potentially adverse seismic interaction effects? Y N U

Other Adverse Conditions

11. Have you looked for and found no other seismic conditions that could adversely affect the safety functions of the equipment? Y N U

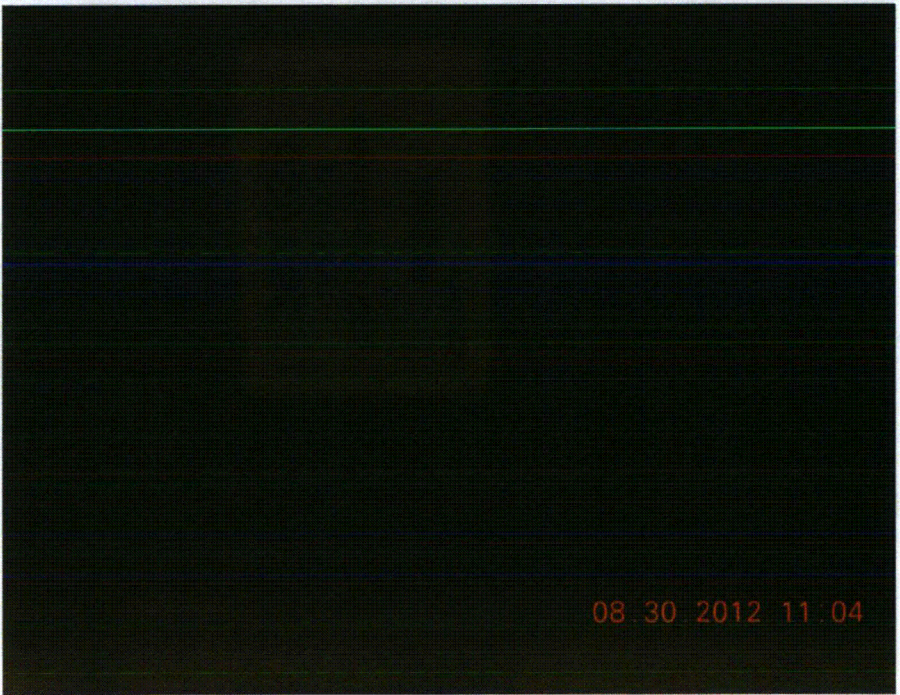
Comments (Additional pages may be added as necessary)

*N/A CONFIGURATION MANAGEMENT ISSUE ADDRESSED IN IR # 1411581 - KC 10/9/12
11/16/12*

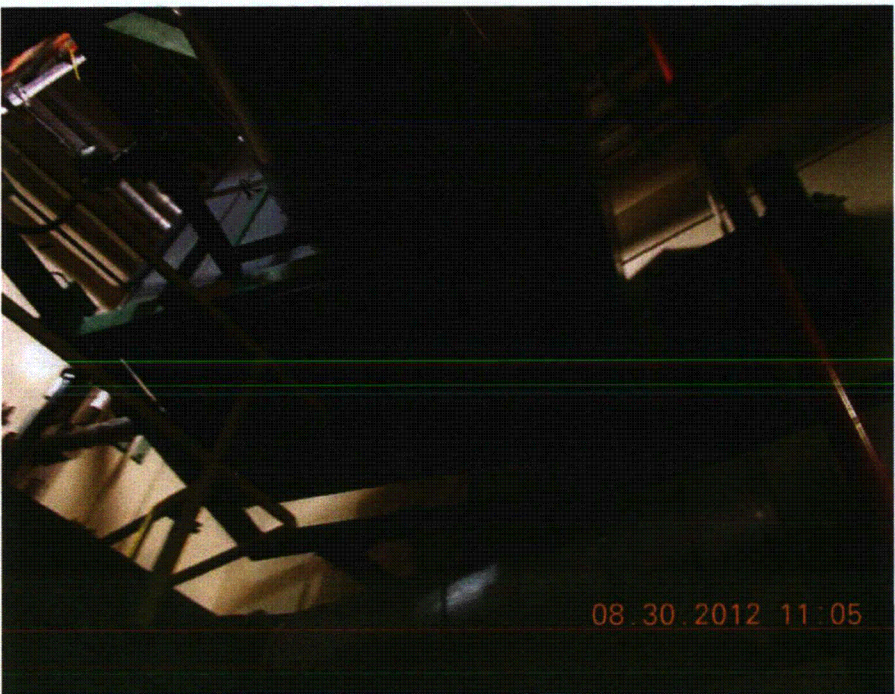
Evaluated by: *James W. Quinn* Date: *9/11/2012*
DL JG *9/11/2012*



08.30.2012 11:04



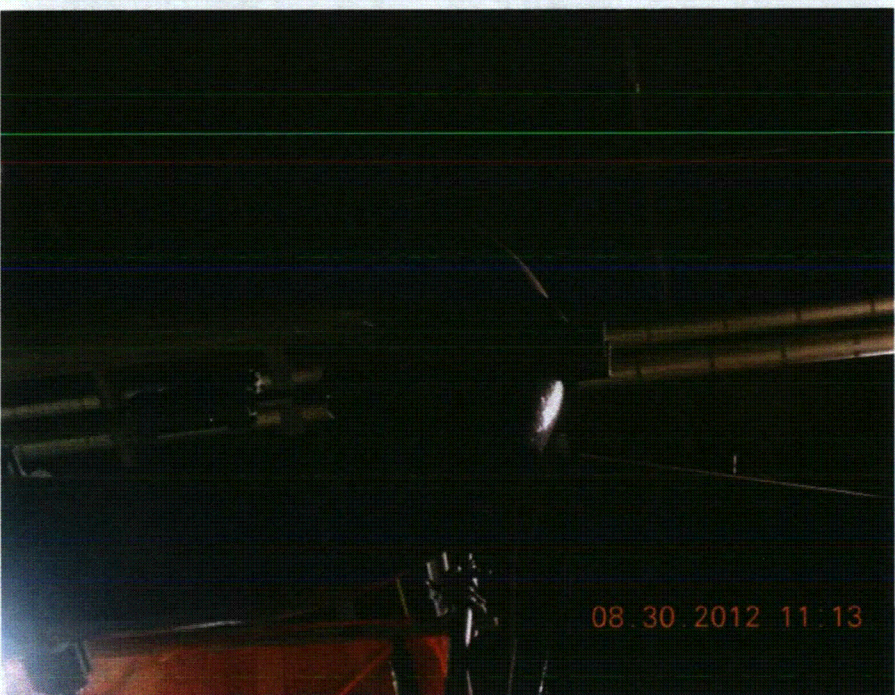
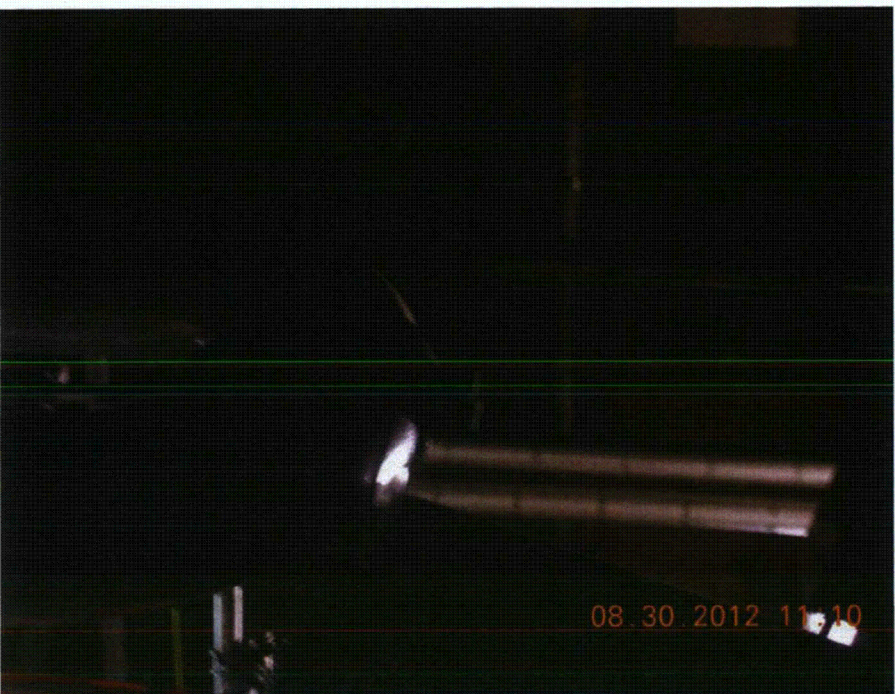
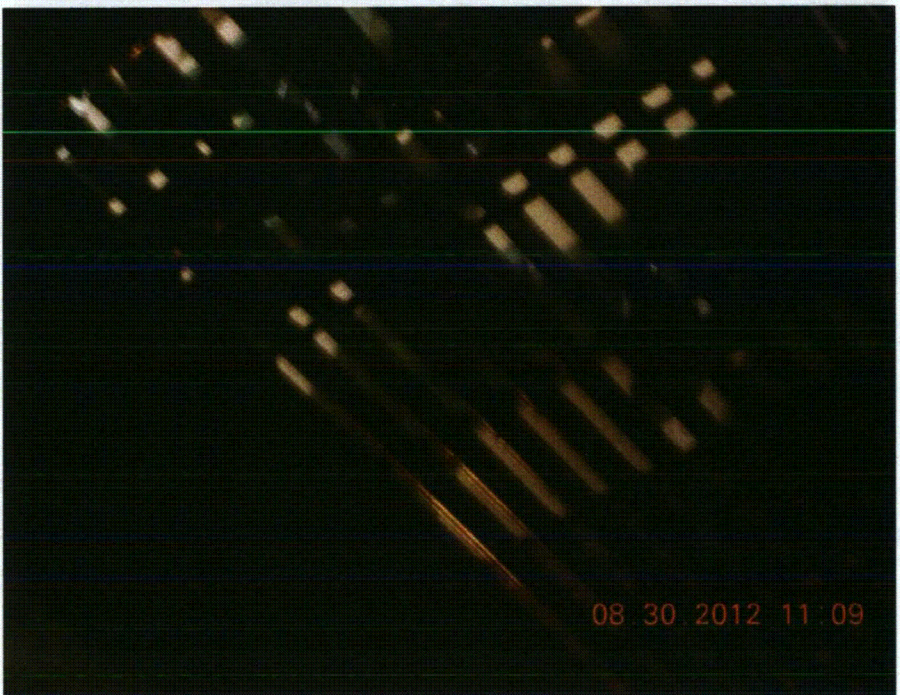
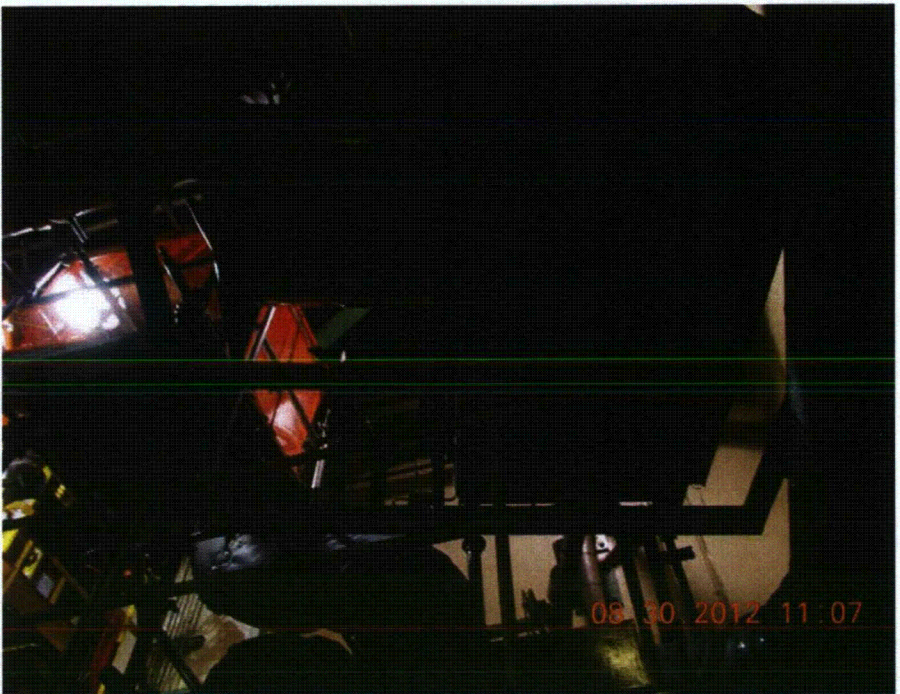
08.30.2012 11:04



08.30.2012 11:05



08.30.2012 11:05



Seismic Walkdown Checklist (SWC)

Equipment ID No. B gnr 8/31/2012 2AP037 Equip. Class¹² (06) Vertical Pumps

Equipment Description Core Spray Pump A B gnr 8/31/2012

Location: Bldg. Reactor Floor El. 91 Room, Area R2-10 gnr 8/31/2012

Manufacturer, Model, Etc. (optional but recommended) _____

Instructions for Completing Checklist

This checklist may be used to document the results of the Seismic Walkdown of an item of equipment on the SWEL. The space below each of the following questions may be used to record the results of judgments and findings. Additional space is provided at the end of this checklist for documenting other comments.

Anchorage

1. Is the anchorage configuration verification required (i.e., is the item one of the 50% of SWEL items requiring such verification)? Y N U

2. Is the anchorage free of bent, broken, missing or loose hardware? Y N U N/A

3. Is the anchorage free of corrosion that is more than mild surface oxidation? Y N U N/A

4. Is the anchorage free of visible cracks in the concrete near the anchors? Y N U N/A

5. Is the anchorage configuration consistent with plant documentation?
 (Note: This question only applies if the item is one of the 50% for which an anchorage configuration verification is required.)
. Matches Dwg. No. M-3402, Rev. 3 Y N U N/A

6. Based on the above anchorage evaluations, is the anchorage free of potentially adverse seismic conditions? Y N U

¹² Enter the equipment class name from Appendix B: Classes of Equipment.

B gnr 8/31/2012

Equipment ID No. 2AP037 Equip. Class¹² (06) Vertical Pumps

Equipment Description Core Spray Pump X B gnr 8/31/2012

Interaction Effects

7. Are soft targets free from impact by nearby equipment or structures? Y N U N/A

No soft targets

8. Are overhead equipment, distribution systems, ceiling tiles and lighting, and masonry block walls not likely to collapse onto the equipment? Y N U N/A

No overheads

9. Do attached lines have adequate flexibility to avoid damage? Y N U N/A

10. Based on the above seismic interaction evaluations, is equipment free of potentially adverse seismic interaction effects? Y N U

Other Adverse Conditions

11. Have you looked for and found no other seismic conditions that could adversely affect the safety functions of the equipment? Y N U

Comments (Additional pages may be added as necessary)

N/A

Evaluated by: James Wiggins

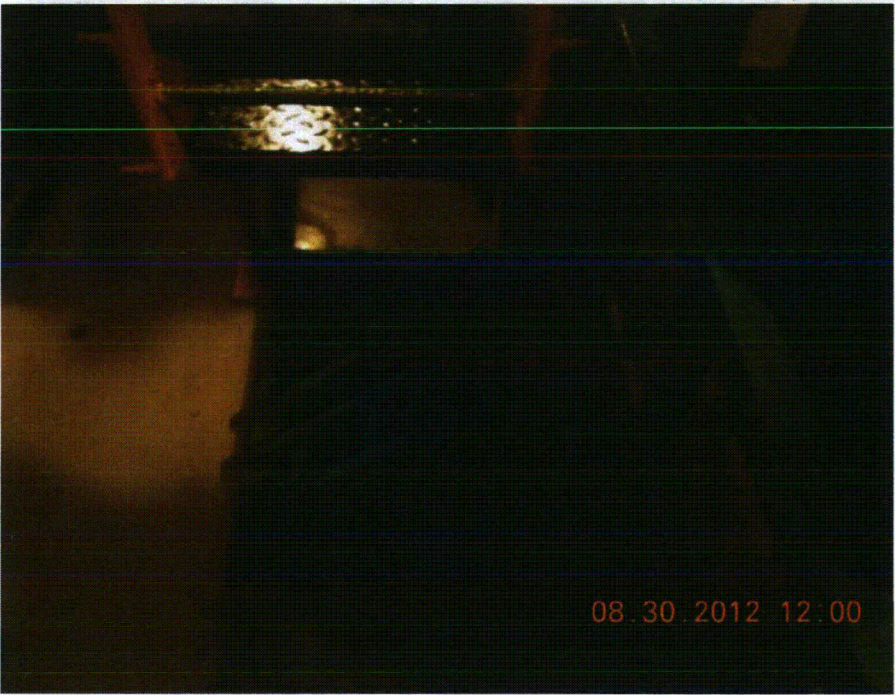
Date: 8/31/2012

X JB

8/31/2012



Equipment ID: 2BP037





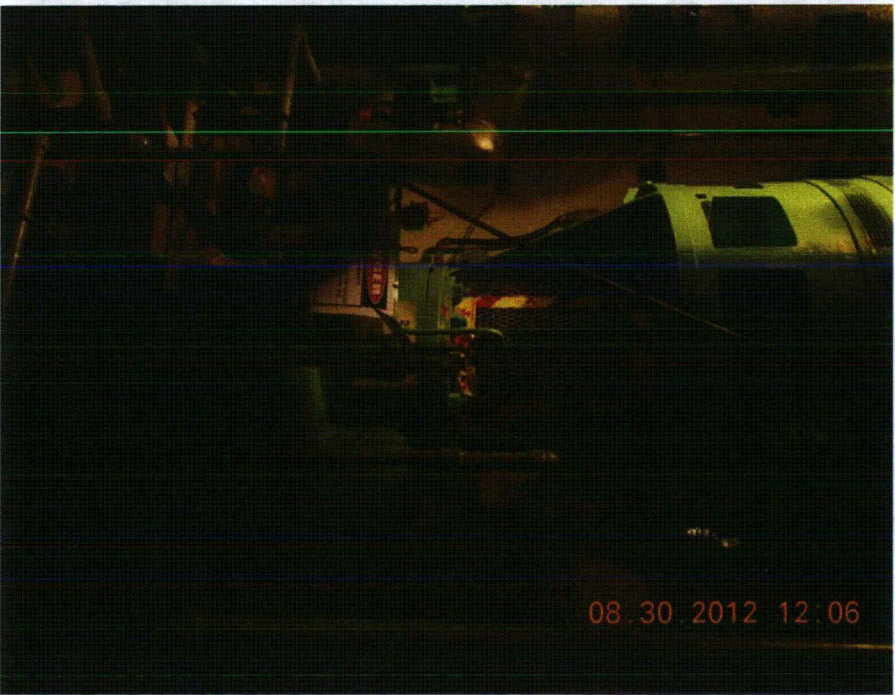
08.30.2012 12:05



08.30.2012 12:05



08.30.2012 12:05



08.30.2012 12:06

Seismic Walkdown Checklist (SWC)

Equipment ID No. 2BS377 Equip. Class¹² (21) Tanks or Heat Exchangers (Vertical)

Equipment Description Back-up N2 Supply to ADS

Location: Bldg. Reactor Floor El. 135 Room, Area R2-23

Manufacturer, Model, Etc. (optional but recommended) _____

Instructions for Completing Checklist

This checklist may be used to document the results of the Seismic Walkdown of an item of equipment on the SWEL. The space below each of the following questions may be used to record the results of judgments and findings. Additional space is provided at the end of this checklist for documenting other comments.

Anchorage

1. Is the anchorage configuration verification required (i.e., is the item one of the 50% of SWEL items requiring such verification)? Y N U

2. Is the anchorage free of bent, broken, missing or loose hardware? Y N U N/A

3. Is the anchorage free of corrosion that is more than mild surface oxidation? Y N U N/A

4. Is the anchorage free of visible cracks in the concrete near the anchors? Y N U N/A
One side of top bolted, one side of top support welded.

5. Is the anchorage configuration consistent with plant documentation? Y N U N/A
 (Note: This question only applies if the item is one of the 50% for which an anchorage configuration verification is required.)
Anchorage confirmed to DWG M-1786-5 Sheet 1 of 2 per S for a three bottle support

6. Based on the above anchorage evaluations, is the anchorage free of potentially adverse seismic conditions? Y N U

¹² Enter the equipment class name from Appendix B: Classes of Equipment.

Equipment ID No. 2BS377 Equip. Class¹² (21) Tanks or Heat Exchangers (Vertical)

Equipment Description Back-up N2 Supply to ADS

Interaction Effects

7. Are soft targets free from impact by nearby equipment or structures? Y N U N/A

8. Are overhead equipment, distribution systems, ceiling tiles and lighting, and masonry block walls not likely to collapse onto the equipment? Y N U N/A

*Damage from falling light bulb not credible.
No masonry block walls. No ceiling tiles.*

9. Do attached lines have adequate flexibility to avoid damage? Y N U N/A

10. Based on the above seismic interaction evaluations, is equipment free of potentially adverse seismic interaction effects? Y N U

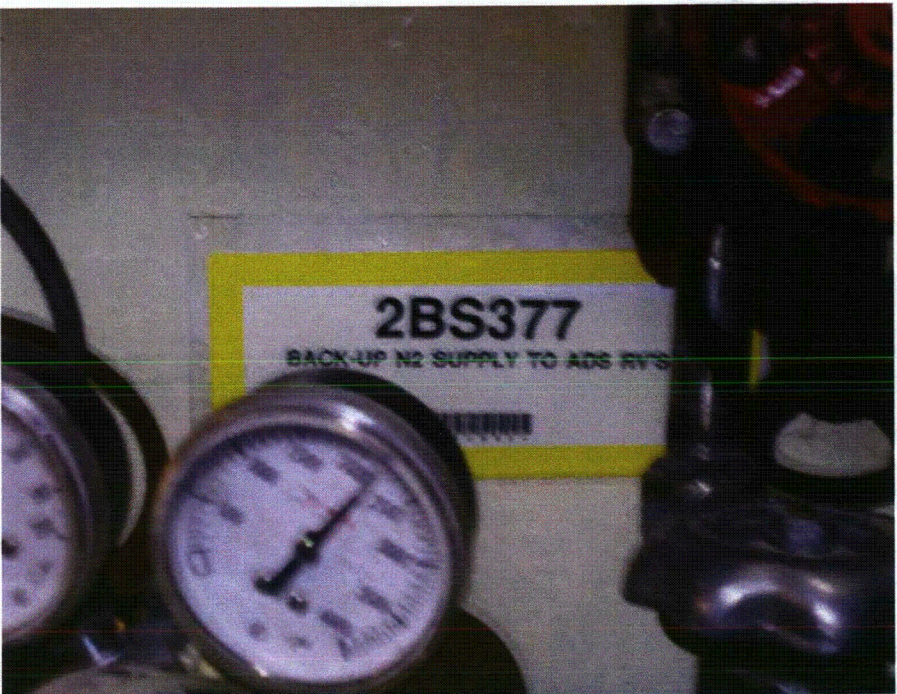
Other Adverse Conditions

11. Have you looked for and found no other seismic conditions that could adversely affect the safety functions of the equipment? Y N U

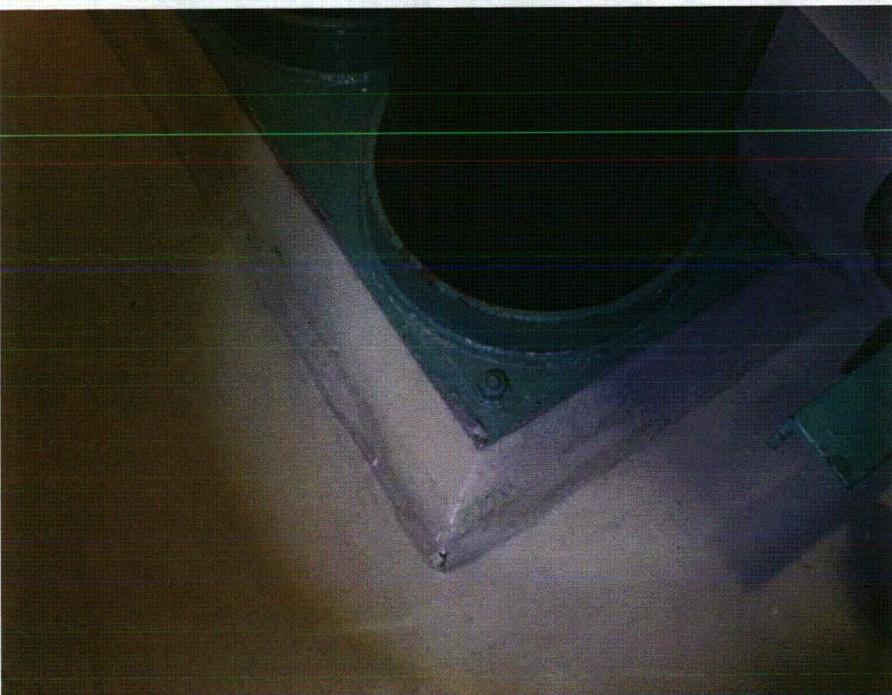
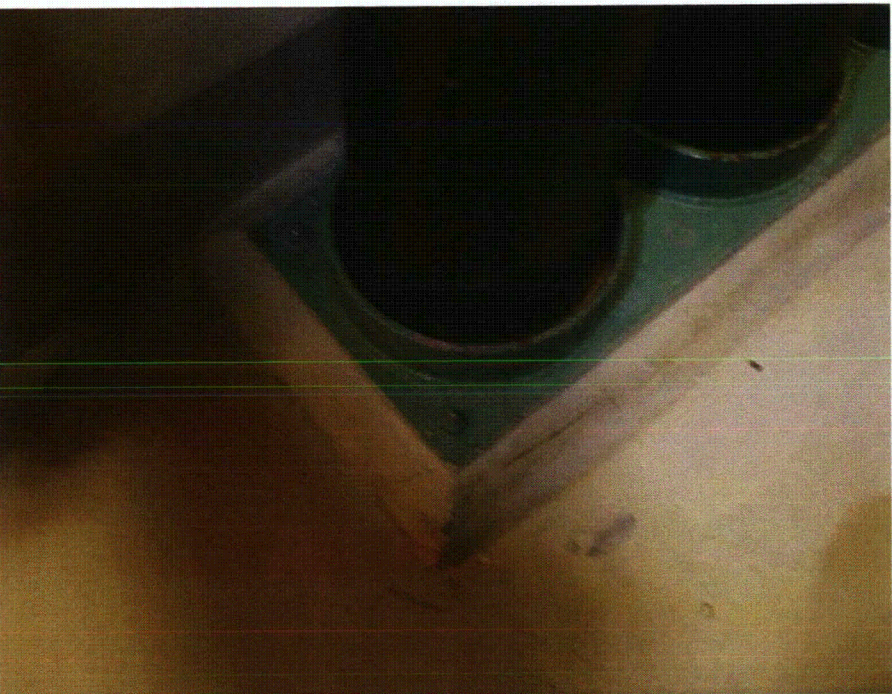
Comments (Additional pages may be added as necessary)

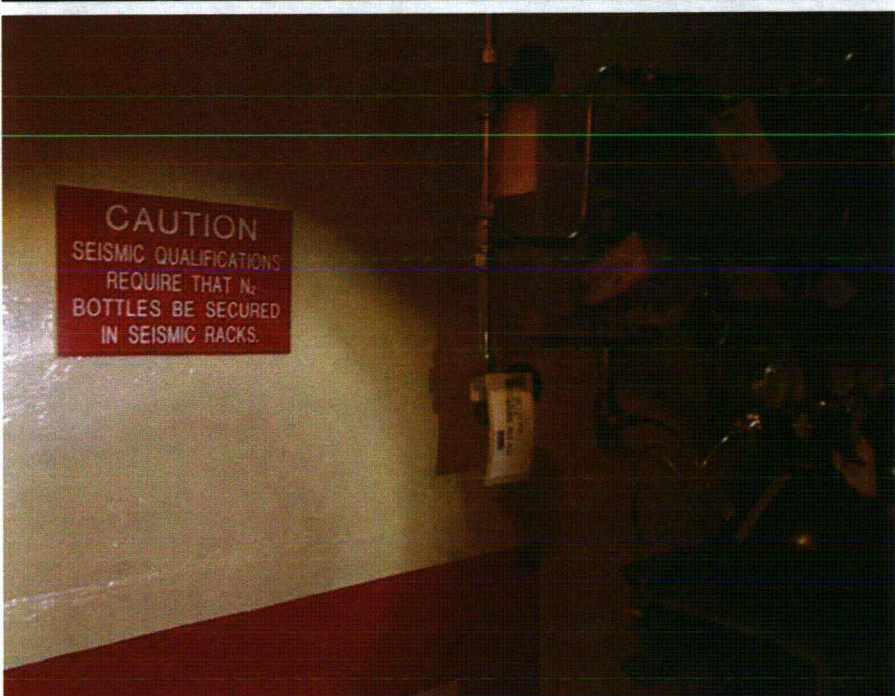
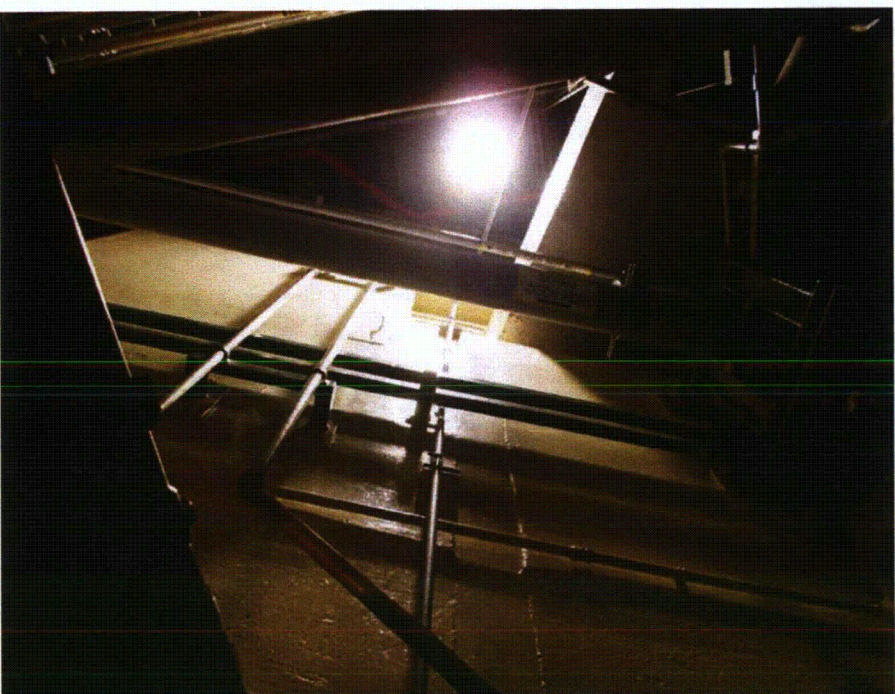
Evaluated by: *Bar Juy* Date: *9/25/12*

H. Oghbaci *9/25/12*

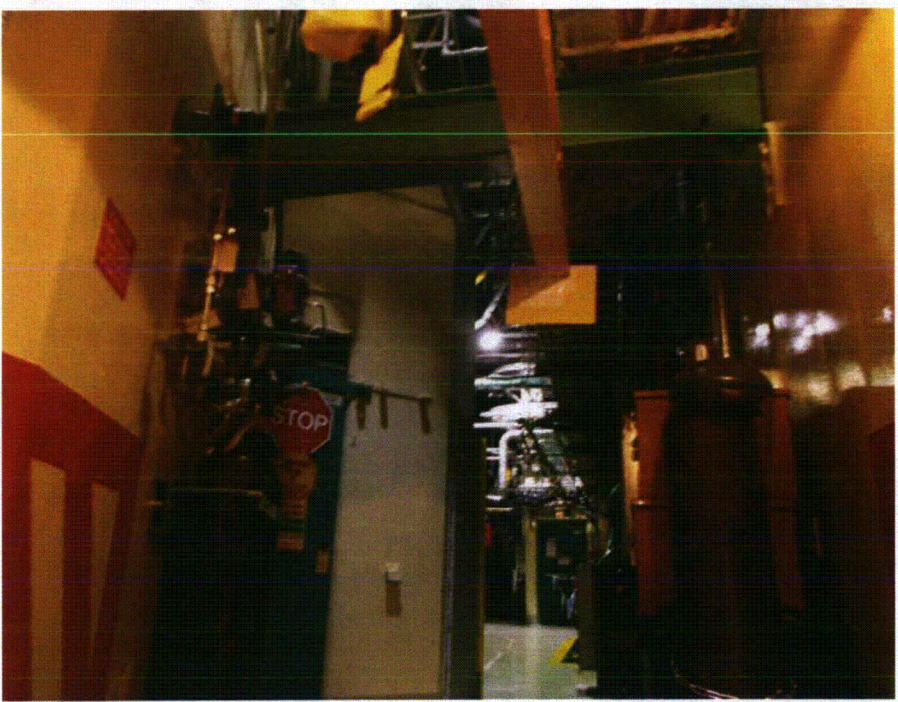


Equipment ID: 2BS377





Equipment ID: 2BSS377



Equipment ID: 2BSS377

Seismic Walkdown Checklist (SWC)

Equipment ID No. 2CP042 Equip. Class¹² (06) Vertical Pumps

Equipment Description High Pressure Service Water Pump C

Location: Bldg. Pump Structure Floor El. 112 Room, Area P/H-6

Manufacturer, Model, Etc. (optional but recommended) _____

Instructions for Completing Checklist

This checklist may be used to document the results of the Seismic Walkdown of an item of equipment on the SWEL. The space below each of the following questions may be used to record the results of judgments and findings. Additional space is provided at the end of this checklist for documenting other comments.

Anchorage

1. Is the anchorage configuration verification required (i.e., is the item one of the 50% of SWEL items requiring such verification)? Y N

2. Is the anchorage free of bent, broken, missing or loose hardware? Y N U N/A

3. Is the anchorage free of corrosion that is more than mild surface oxidation? Y N U N/A

4. Is the anchorage free of visible cracks in the concrete near the anchors? Y N U N/A

5. Is the anchorage configuration consistent with plant documentation?
 (Note: This question only applies if the item is one of the 50% for which an anchorage configuration verification is required.)
Matches Dwg. # 6280-M-11-29, Rev. 10 Y N U N/A

6. Based on the above anchorage evaluations, is the anchorage free of potentially adverse seismic conditions? Y N U

¹² Enter the equipment class name from Appendix B: Classes of Equipment.

Equipment ID No. 2CP042 Equip. Class¹² (06) Vertical Pumps

Equipment Description High Pressure Service Water Pump C

Interaction Effects

7. Are soft targets free from impact by nearby equipment or structures? Y N U N/A

No soft targets

8. Are overhead equipment, distribution systems, ceiling tiles and lighting, and masonry block walls not likely to collapse onto the equipment? Y N U N/A

9. Do attached lines have adequate flexibility to avoid damage? Y N U N/A

10. Based on the above seismic interaction evaluations, is equipment free of potentially adverse seismic interaction effects? Y N U

Other Adverse Conditions

11. Have you looked for and found no other seismic conditions that could adversely affect the safety functions of the equipment? Y N U

Comments (Additional pages may be added as necessary)

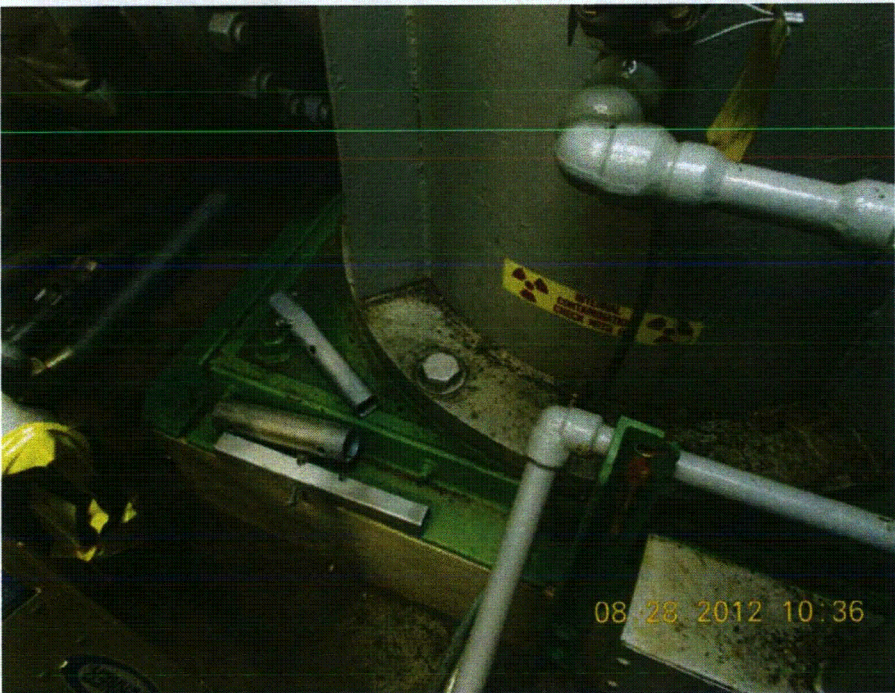
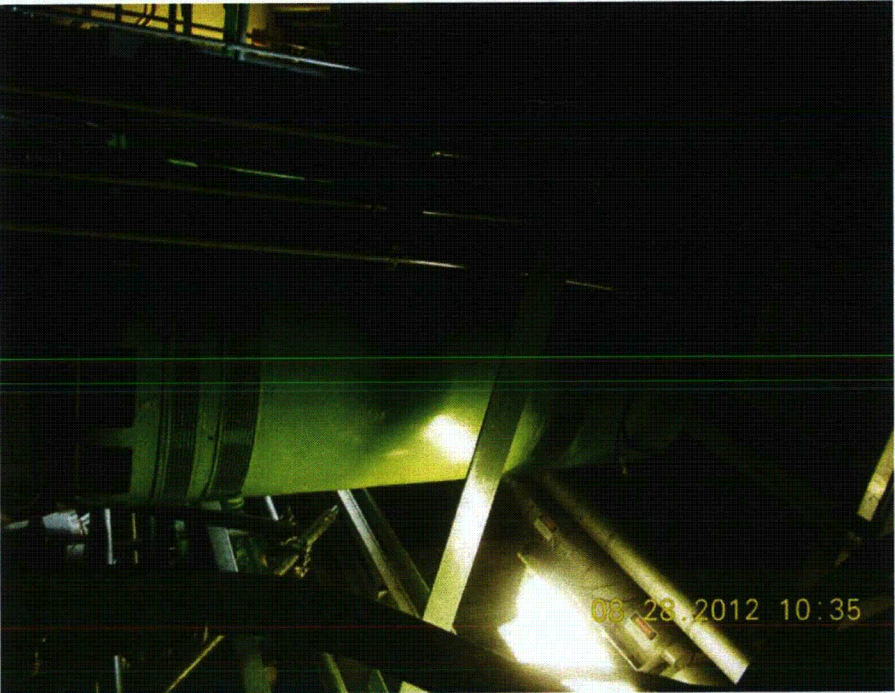
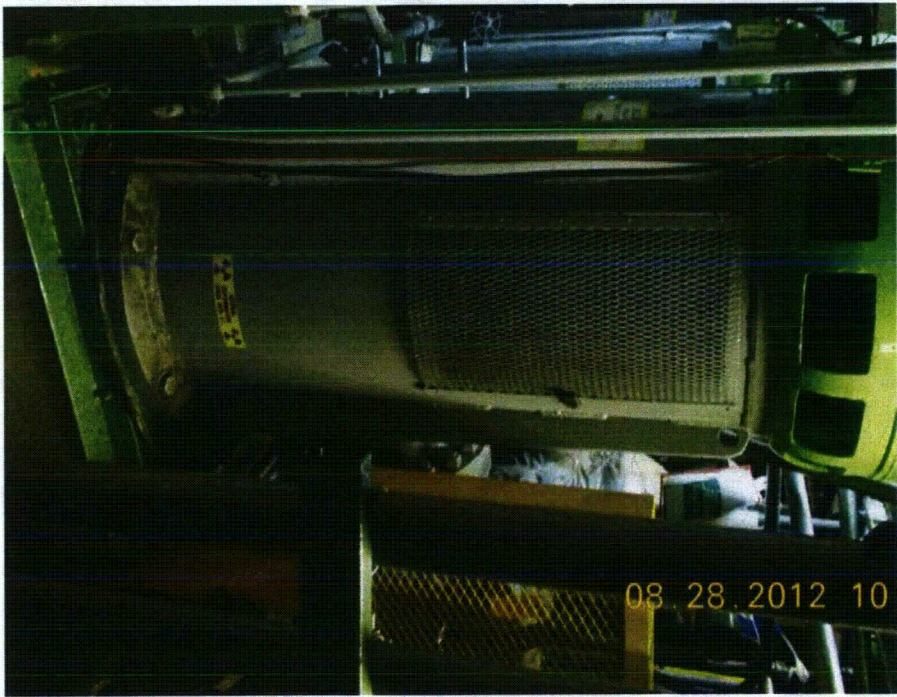
IPEEE: Crane has been secured w/ tornado tie-downs

Evaluated by: *James Wiggins*

Date: *8/29/2012*

K: JG

8/29/2012



Equipment ID: 2CP042



Seismic Walkdown Checklist (SWC)

Equipment ID No. 2DD03 Equip. Class¹² (16) Battery Chargers and Inverters

Equipment Description Battery Charger 2D

Location: Bldg. Turbine Floor El. 135 Room, Area T2-172

Manufacturer, Model, Etc. (optional but recommended) _____

Instructions for Completing Checklist

This checklist may be used to document the results of the Seismic Walkdown of an item of equipment on the SWEL. The space below each of the following questions may be used to record the results of judgments and findings. Additional space is provided at the end of this checklist for documenting other comments.

Anchorage

1. Is the anchorage configuration verification required (i.e., is the item one of the 50% of SWEL items requiring such verification)? Y N

2. Is the anchorage free of bent, broken, missing or loose hardware? Y N U N/A

3. Is the anchorage free of corrosion that is more than mild surface oxidation? Y N U N/A

4. Is the anchorage free of visible cracks in the concrete near the anchors? Y N U N/A

5. Is the anchorage configuration consistent with plant documentation? Y N U N/A
 (Note: This question only applies if the item is one of the 50% for which an anchorage configuration verification is required.)
 Matches Dwg. No. 11938-2, Rev. C and Test Report No. 42718-1
 (Test Procedure No. 543/0865/DB, Rev. B)

6. Based on the above anchorage evaluations, is the anchorage free of potentially adverse seismic conditions? Y N U

¹² Enter the equipment class name from Appendix B: Classes of Equipment.

Equipment ID No. 2DD03 Equip. Class¹² (16) Battery Chargers and Inverters

Equipment Description Battery Charger 2D

Interaction Effects

7. Are soft targets free from impact by nearby equipment or structures? Y N U N/A

8. Are overhead equipment, distribution systems, ceiling tiles and lighting, and masonry block walls not likely to collapse onto the equipment? Y N U N/A

*Block walls safety-related per PBAPS Specification No. M-701, Rev. 1.
BLOCK WALLS ARE # 40-3, -9, -15, AND -17. KG 9/11/2012*

9. Do attached lines have adequate flexibility to avoid damage? Y N U N/A

10. Based on the above seismic interaction evaluations, is equipment free of potentially adverse seismic interaction effects? Y N U

Other Adverse Conditions

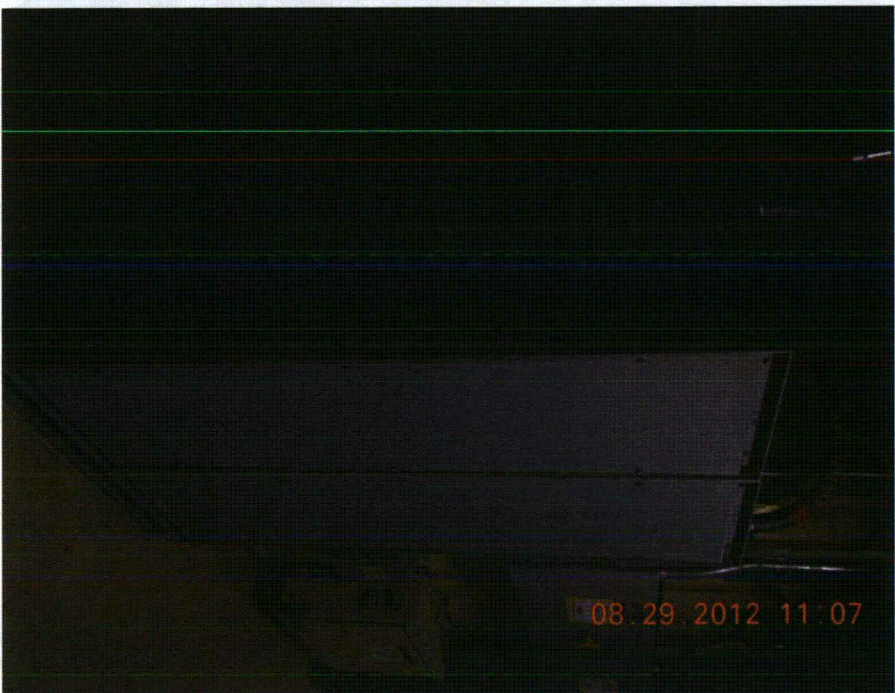
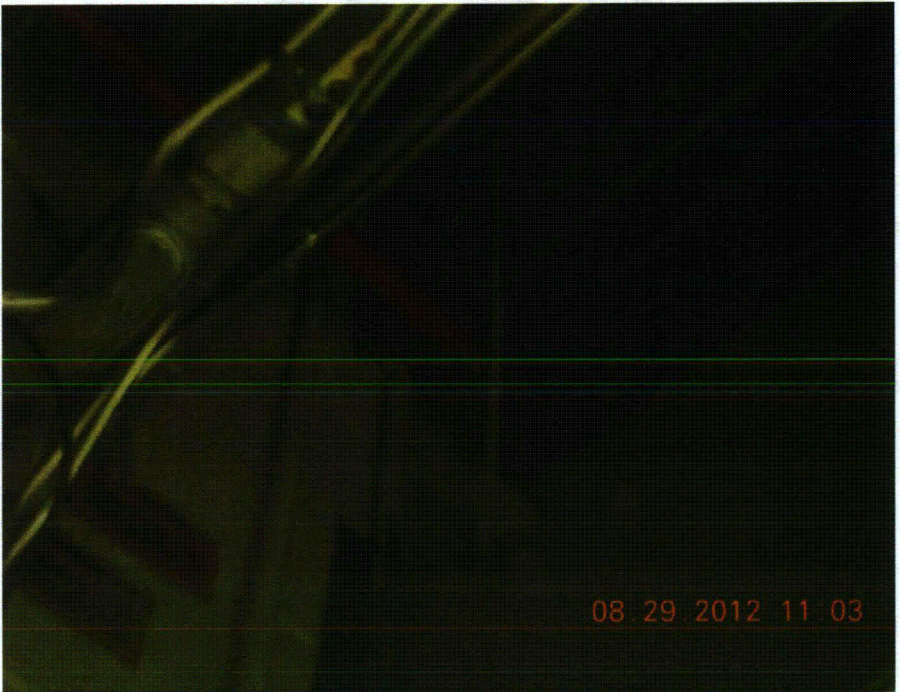
11. Have you looked for and found no other seismic conditions that could adversely affect the safety functions of the equipment? Y N U

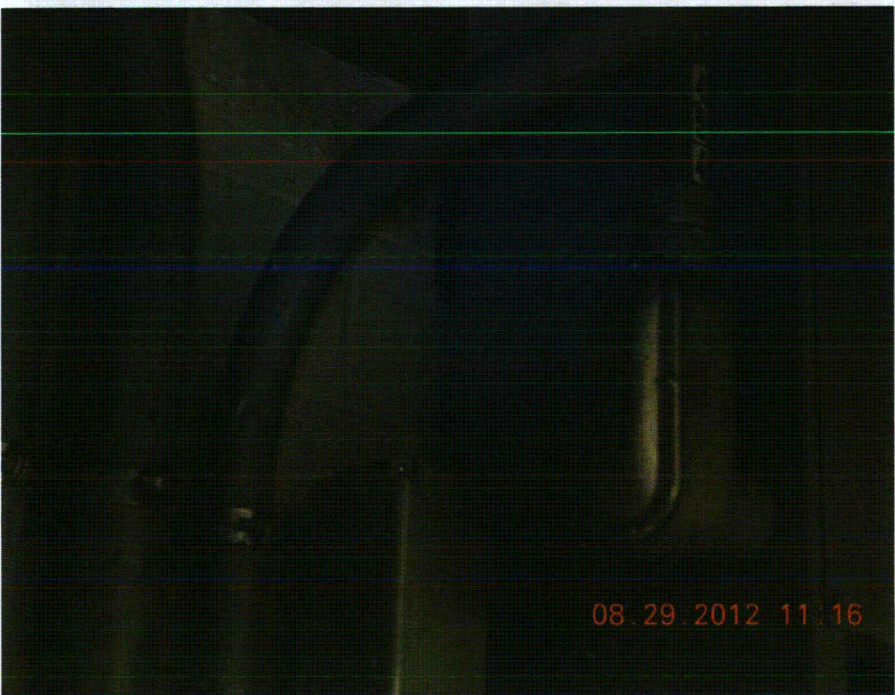
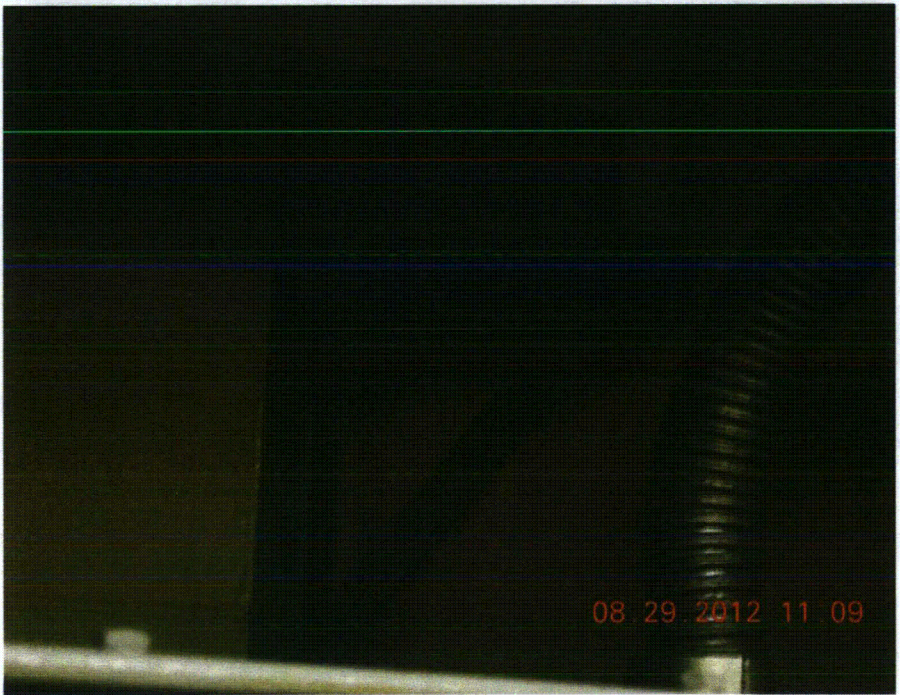
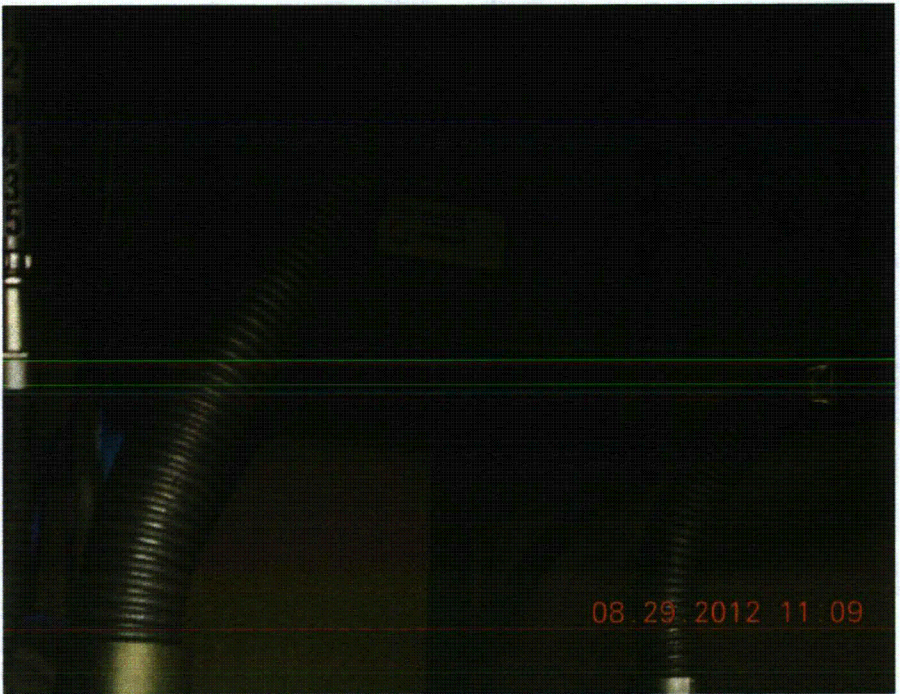
Threaded fire piping is a double-interlock pre-action system (dry piping) per DBD No. P-S-51, Rev. 10

Comments (Additional pages may be added as necessary)

N/A

Evaluated by: *James Wiggins* Date: *8/29/2012*
X. G *8/29/2012*





Seismic Walkdown Checklist (SWC)

Equipment ID No. 2DE24 Equip. Class¹² (21) Tanks or Heat Exchangers (Vertical)

Equipment Description RHR Heat Exchanger D

Location: Bldg. Reactor Floor El. 416.91 Room, Area R2-12 8

Manufacturer, Model, Etc. (optional but recommended)

Instructions for Completing Checklist

This checklist may be used to document the results of the Seismic Walkdown of an item of equipment on the SWEL. The space below each of the following questions may be used to record the results of judgments and findings. Additional space is provided at the end of this checklist for documenting other comments.

Anchorage

1. Is the anchorage configuration verification required (i.e., is the item one of the 50% of SWEL items requiring such verification)? Y N
2. Is the anchorage free of bent, broken, missing or loose hardware? *. See Comment #1* Y N U N/A
3. Is the anchorage free of corrosion that is more than mild surface oxidation? *. See Comment #1* Y N U N/A
4. Is the anchorage free of visible cracks in the concrete near the anchors? *. See Comment #1* Y N U N/A
5. Is the anchorage configuration consistent with plant documentation? (Note: This question only applies if the item is one of the 50% for which an anchorage configuration verification is required.) Y N U N/A
6. Based on the above anchorage evaluations, is the anchorage free of potentially adverse seismic conditions? Y N U

¹² Enter the equipment class name from Appendix B: Classes of Equipment.

Equipment ID No. 2DE24 Equip. Class¹² (21) Tanks or Heat Exchangers (Vertical)

Equipment Description RHR Heat Exchanger D

Interaction Effects

7. Are soft targets free from impact by nearby equipment or structures? Y N U N/A

No soft targets

8. Are overhead equipment, distribution systems, ceiling tiles and lighting, and masonry block walls not likely to collapse onto the equipment? Y N U N/A

9. Do attached lines have adequate flexibility to avoid damage? Y N U N/A

10. Based on the above seismic interaction evaluations, is equipment free of potentially adverse seismic interaction effects? Y N U

Other Adverse Conditions

11. Have you looked for and found no other seismic conditions that could adversely affect the safety functions of the equipment? Y N U

Comments (Additional pages may be added as necessary)

#1. Due to presence of lead shielding and contaminated areas, could not verify 100% of anchorage. Visible anchorage consistent w/ Dwg. M-3400, Rev. 2 and in good condition.

Evaluated by: *Janis Wiggins* Date: *8/30/2012*
JK *8/30/2012*



08.30.2012 15:42



08.30.2012 15:42

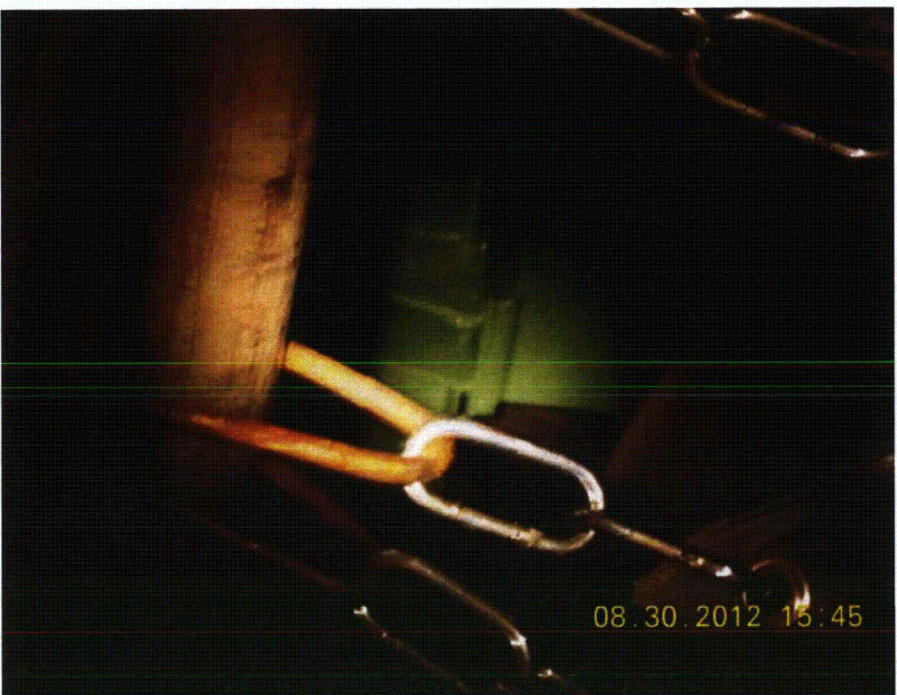
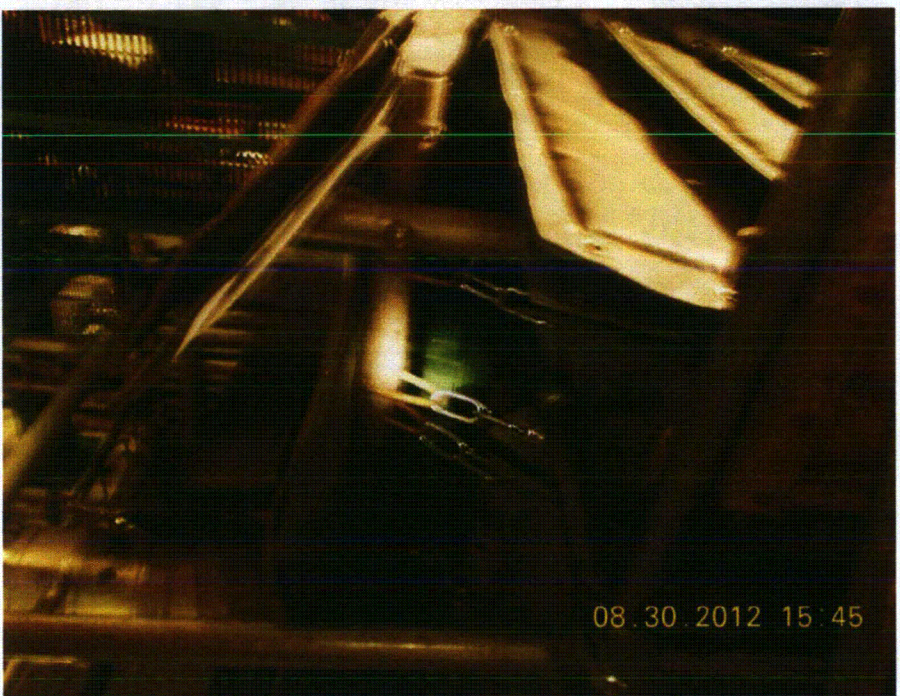
Equipment ID: 2DE24



08.30.2012 15:42



08.30.2012 15:43



Seismic Walkdown Checklist (SWC)

ICB 8/30/12

Equipment ID No. 2DP035 Equip. Class¹² (06) VERTICAL
~~(05) Horizontal Pumps~~

Equipment Description RHR Pump D

Location: Bldg. Reactor Floor El. 91 Room, Area R2-8

Manufacturer, Model, Etc. (optional but recommended) _____

Instructions for Completing Checklist

This checklist may be used to document the results of the Seismic Walkdown of an item of equipment on the SWEL. The space below each of the following questions may be used to record the results of judgments and findings. Additional space is provided at the end of this checklist for documenting other comments.

Anchorage

1. Is the anchorage configuration verification required (i.e., is the item one of the 50% of SWEL items requiring such verification)? Y N

2. Is the anchorage free of bent, broken, missing or loose hardware? Y N U N/A

3. Is the anchorage free of corrosion that is more than mild surface oxidation? Y N U N/A

4. Is the anchorage free of visible cracks in the concrete near the anchors? Y N U N/A

5. Is the anchorage configuration consistent with plant documentation?
 (Note: This question only applies if the item is one of the 50% for which an anchorage configuration verification is required.)
 Matches Orig. No. 6280-S-1149, Rev. 0 Y N U N/A

6. Based on the above anchorage evaluations, is the anchorage free of potentially adverse seismic conditions? Y N U

¹² Enter the equipment class name from Appendix B: Classes of Equipment.

lcb 8/30/12

(06) VERTICAL

Equipment ID No. 2DP035 Equip. Class¹² (05) Horizontal Pumps

Equipment Description RHR Pump D

Interaction Effects

7. Are soft targets free from impact by nearby equipment or structures? Y N U N/A

No soft targets

8. Are overhead equipment, distribution systems, ceiling tiles and lighting, and masonry block walls not likely to collapse onto the equipment? Y N U N/A

Cable trays lightly loaded and adequately secured

9. Do attached lines have adequate flexibility to avoid damage? Y N U N/A

10. Based on the above seismic interaction evaluations, is equipment free of potentially adverse seismic interaction effects? Y N U

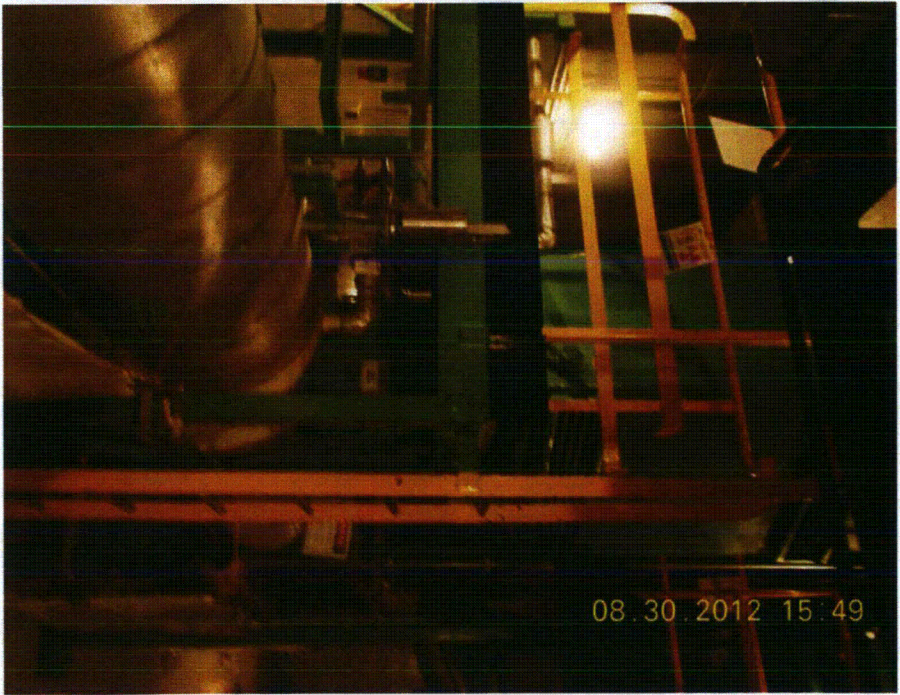
Other Adverse Conditions

11. Have you looked for and found no other seismic conditions that could adversely affect the safety functions of the equipment? Y N U

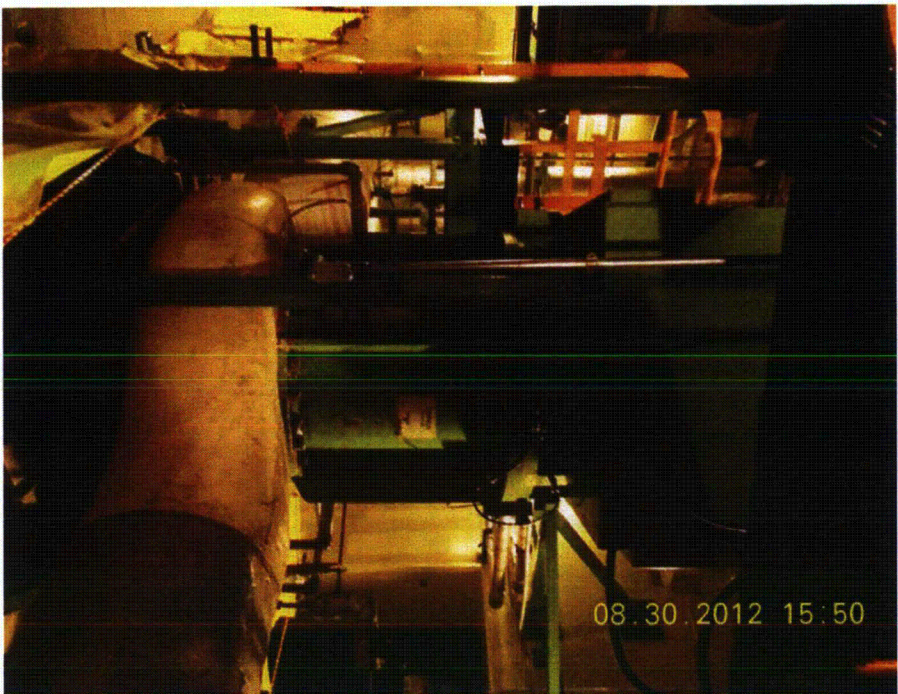
Comments (Additional pages may be added as necessary)

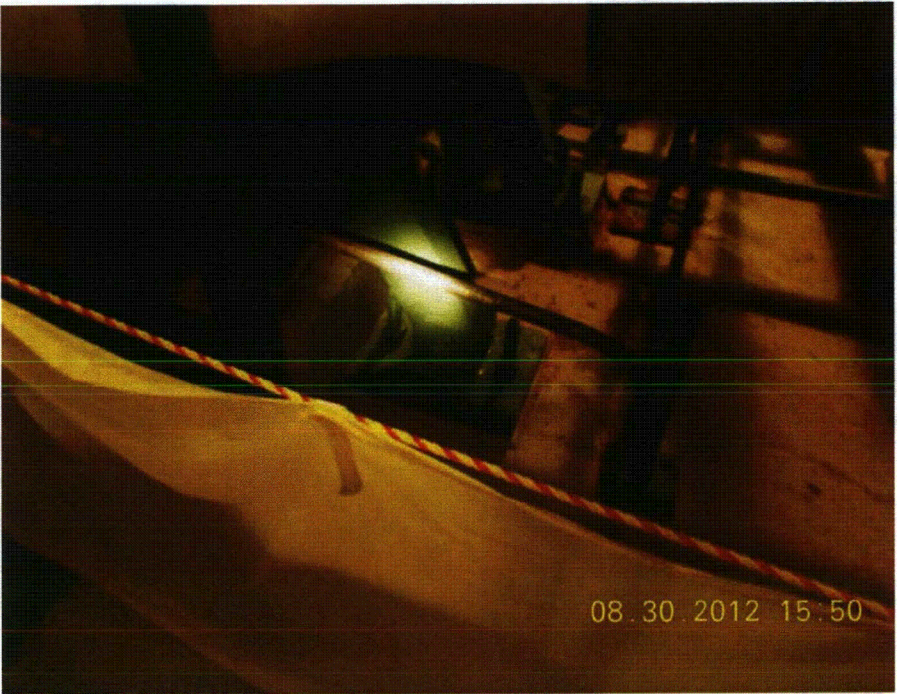
N/A

Evaluated by: James Wiggins Date: 8/31/2012
JK JS 8/31/2012



Equipment ID: 2DP035





Seismic Walkdown Checklist (SWC)

Equipment ID No. ~~2FE58~~ 2EE57 Equip. Class¹² (10) Air Handlers
 Equipment Description Core Spray g/w 8/31/2012
~~Room B Cooling Coil E~~ g/w 8/31/2012
 Location: Bldg. Reactor Floor El. 91 Room, Area R2-10
 Manufacturer, Model, Etc. (optional but recommended) _____

Instructions for Completing Checklist

This checklist may be used to document the results of the Seismic Walkdown of an item of equipment on the SWEL. The space below each of the following questions may be used to record the results of judgments and findings. Additional space is provided at the end of this checklist for documenting other comments.

Anchorage

1. Is the anchorage configuration verification required (i.e., is the item one of the 50% of SWEL items requiring such verification)? Y N U
2. Is the anchorage free of bent, broken, missing or loose hardware? Y N U N/A
3. Is the anchorage free of corrosion that is more than mild surface oxidation? Y N U N/A
4. Is the anchorage free of visible cracks in the concrete near the anchors? Y N U N/A
5. Is the anchorage configuration consistent with plant documentation?
 (Note: This question only applies if the item is one of the 50% for which an anchorage configuration verification is required.)
Matches DWG. Nos. 6280-5-968, Rev. 0 and 6280-5-975, Rev. 0
 Y N U N/A
6. Based on the above anchorage evaluations, is the anchorage free of potentially adverse seismic conditions? Y N U

¹² Enter the equipment class name from Appendix B: Classes of Equipment.

Equipment ID No. ~~2FE58~~ 2EES7 Equip. Class¹² (10) Air Handlers
Equipment Description Core Spray for 8/31/2012
~~Room B Cooling Coil E~~

Interaction Effects

- 7. Are soft targets free from impact by nearby equipment or structures? Y N U N/A
No soft targets
- 8. Are overhead equipment, distribution systems, ceiling tiles and lighting, and masonry block walls not likely to collapse onto the equipment? Y N U N/A
- 9. Do attached lines have adequate flexibility to avoid damage? Y N U N/A
- 10. Based on the above seismic interaction evaluations, is equipment free of potentially adverse seismic interaction effects? Y N U

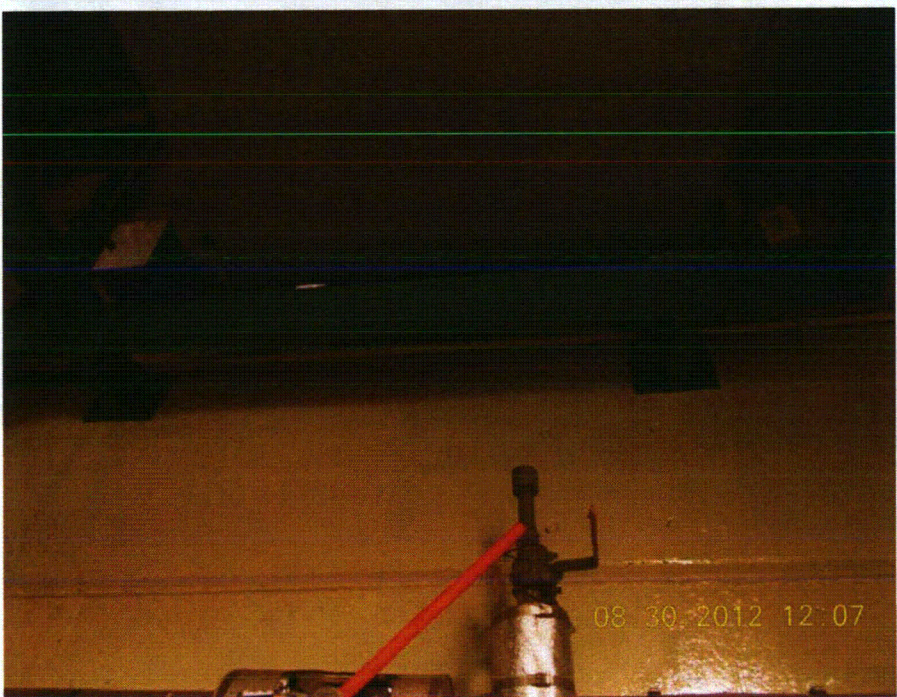
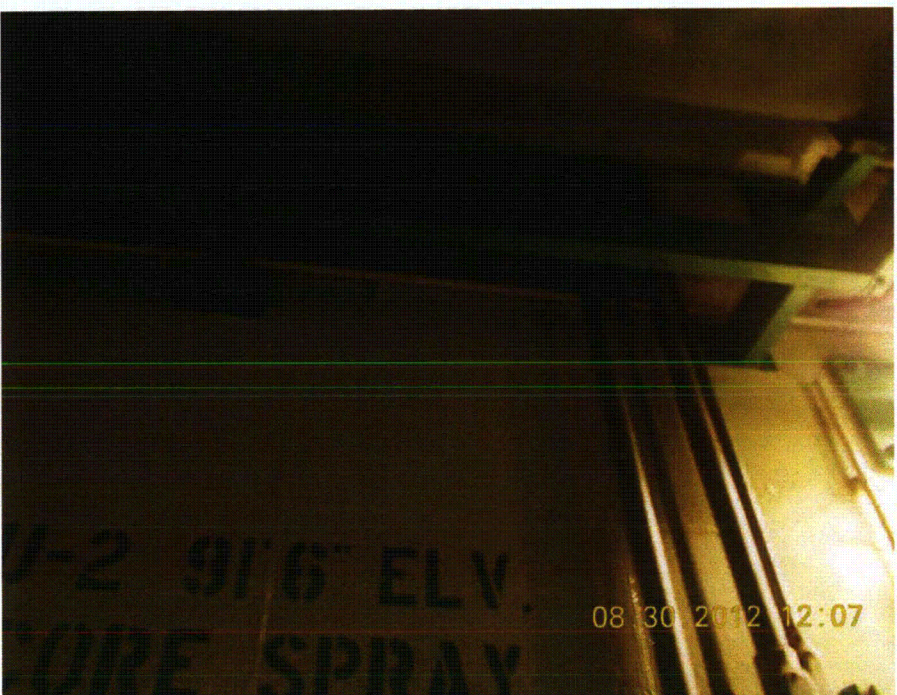
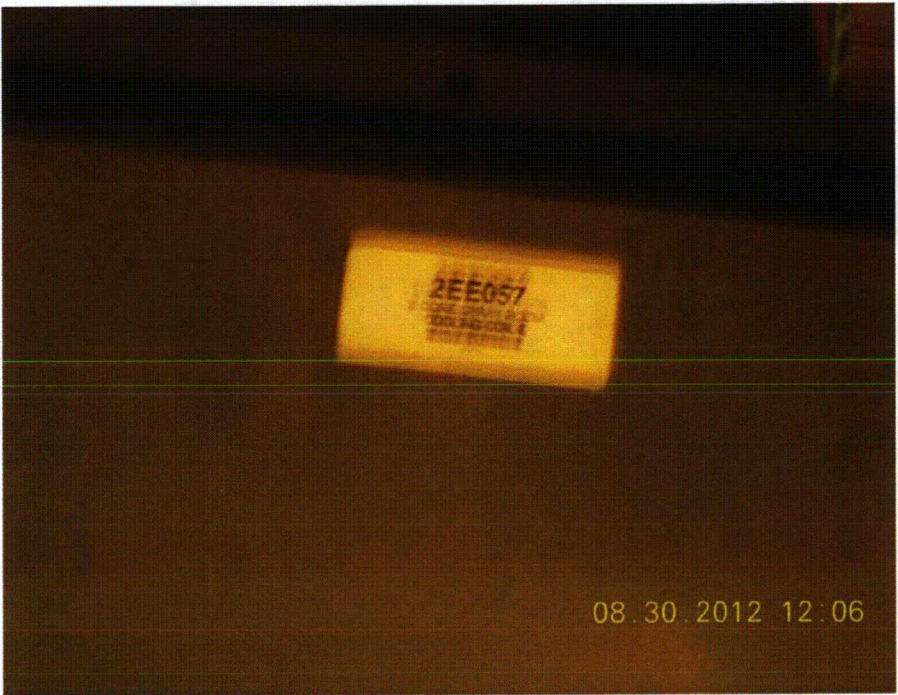
Other Adverse Conditions

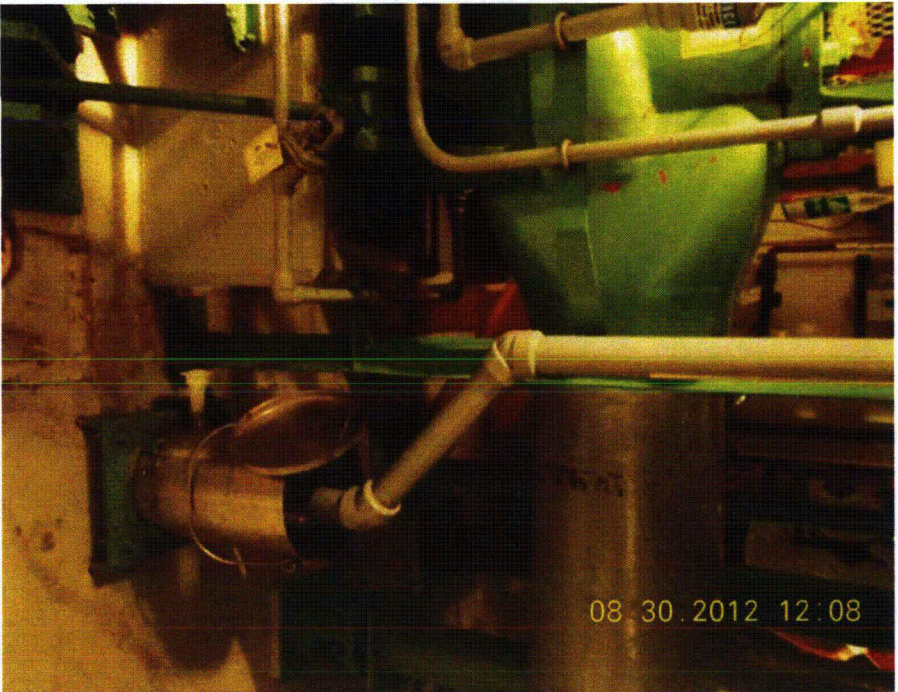
- 11. Have you looked for and found no other seismic conditions that could adversely affect the safety functions of the equipment? Y N U

Comments (Additional pages may be added as necessary)

N/A

Evaluated by: *Johnny Morgan* Date: *8/31/2012*
J. J. [Signature] *8/31/2012*





Seismic Walkdown Checklist (SWC)

Equipment ID No. 2A E57 ^{F gnr 8/31/2012} Equip. Class¹² (10) Air Handlers

Equipment Description Core Spray Room X Cooling Coil ^{B gnr 8/31/2012}

Location: Bldg. Reactor Floor El. 91 Room, Area R2-9 10 ^{gnr 8/31/2012}

Manufacturer, Model, Etc. (optional but recommended) _____

Instructions for Completing Checklist

This checklist may be used to document the results of the Seismic Walkdown of an item of equipment on the SWEL. The space below each of the following questions may be used to record the results of judgments and findings. Additional space is provided at the end of this checklist for documenting other comments.

Anchorage

1. Is the anchorage configuration verification required (i.e., is the item one of the 50% of SWEL items requiring such verification)? Y N U

2. Is the anchorage free of bent, broken, missing or loose hardware? Y N U N/A

3. Is the anchorage free of corrosion that is more than mild surface oxidation? Y N U N/A

4. Is the anchorage free of visible cracks in the concrete near the anchors? Y N U N/A

5. Is the anchorage configuration consistent with plant documentation? Y N U N/A
 (Note: This question only applies if the item is one of the 50% for which an anchorage configuration verification is required.)
Matches Dwg. No. 6280-S-968, Rev. 0

6. Based on the above anchorage evaluations, is the anchorage free of potentially adverse seismic conditions? Y N U

¹² Enter the equipment class name from Appendix B: Classes of Equipment.

F gm 8/31/2012

Equipment-ID No. 2AE57 Equip. Class¹² (10) Air Handlers

B gm 8/31/2012

Equipment Description Core Spray Room X Cooling Coil

Interaction Effects

7. Are soft targets free from impact by nearby equipment or structures? Y N U N/A

. No soft targets

8. Are overhead equipment, distribution systems, ceiling tiles and lighting, and masonry block walls not likely to collapse onto the equipment? Y N U N/A

9. Do attached lines have adequate flexibility to avoid damage? Y N U N/A

10. Based on the above seismic interaction evaluations, is equipment free of potentially adverse seismic interaction effects? Y N U

Other Adverse Conditions

11. Have you looked for and found no other seismic conditions that could adversely affect the safety functions of the equipment? Y N U

Comments (Additional pages may be added as necessary)

N/A

Evaluated by: James Wiggins

Date: 8/31/2012

Jo G

8/31/2012



08.30.2012 12:10

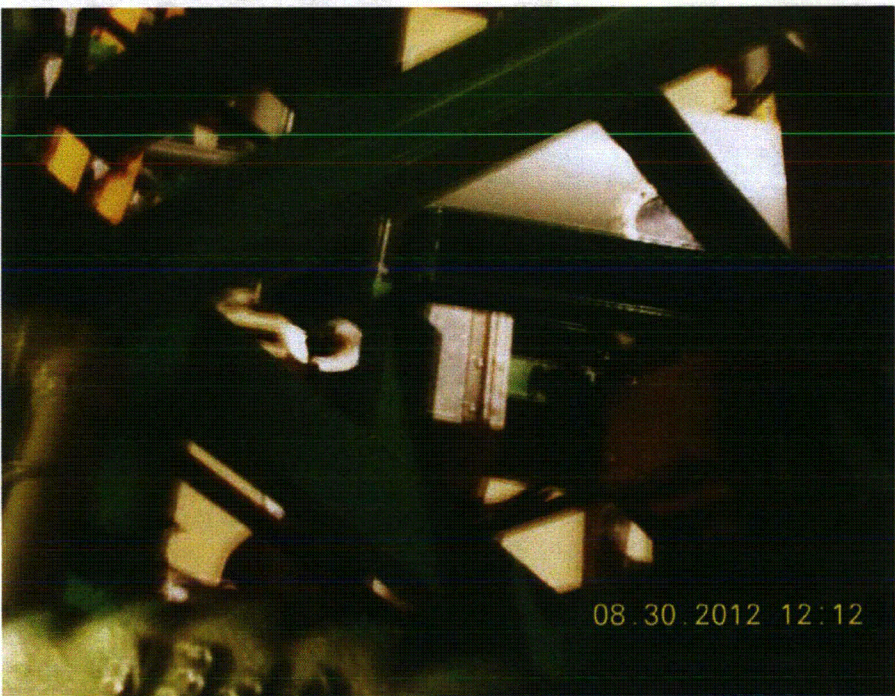


08.30.2012 12:10

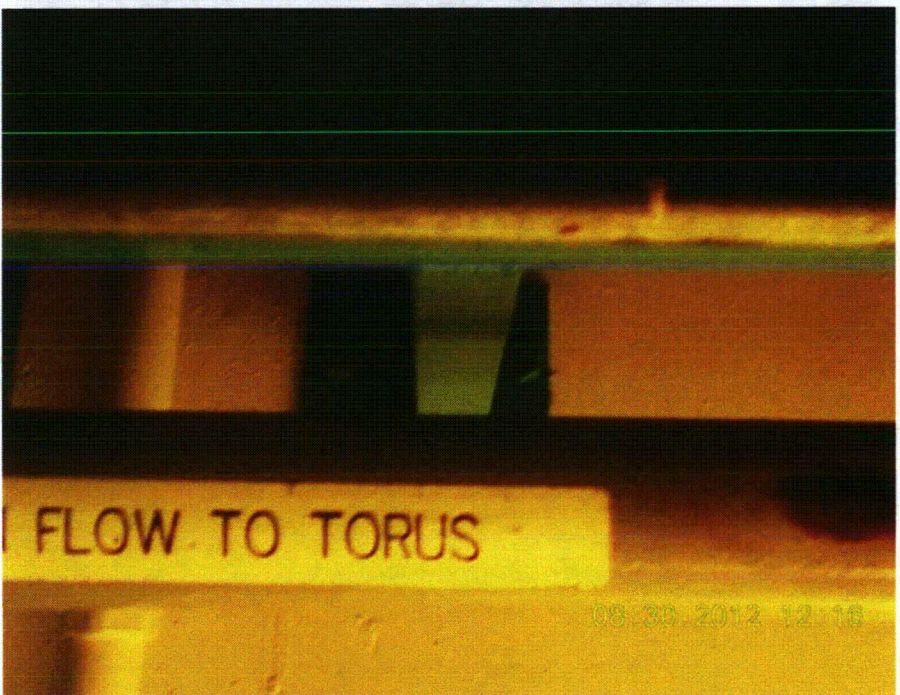
Equipment ID: 2FE057



08.30.2012 12:11



08.30.2012 12:12



Seismic Walkdown Checklist (SWC)

Equipment ID No. 2RES8 ⁶ ~~gm 9/11/2012~~ Equip. Class¹² (10) Air Handlers

Equipment Description RHR Room Cooling Coil ⁰ ~~gm 9/11/2012~~

Location: Bldg. Reactor Floor El. XI 116 Room, Area R2-6 19 ~~gm 9/11/2012~~

Manufacturer, Model, Etc. (optional but recommended) _____

Instructions for Completing Checklist

This checklist may be used to document the results of the Seismic Walkdown of an item of equipment on the SWEL. The space below each of the following questions may be used to record the results of judgments and findings. Additional space is provided at the end of this checklist for documenting other comments.

Anchorage

1. Is the anchorage configuration verification required (i.e., is the item one of the 50% of SWEL items requiring such verification)? Y N U

2. Is the anchorage free of bent, broken, missing or loose hardware? Y N U N/A U

3. Is the anchorage free of corrosion that is more than mild surface oxidation? Y N U N/A U

4. Is the anchorage free of visible cracks in the concrete near the anchors? Y N U N/A U

5. Is the anchorage configuration consistent with plant documentation? Y N U N/A U
 (Note: This question only applies if the item is one of the 50% for which an anchorage configuration verification is required.)
ANCHORAGE DOES NOT MATCH DWG S-970, REV. 0, BUT AS-BUILT CONFIGURATION WAS EVALUATED IN CALCULATION PS-0922, REV. 0 AND JUDGED ACCEPTABLE. SEE COMMENTS. KC 101912

6. Based on the above anchorage evaluations, is the anchorage free of potentially adverse seismic conditions? Y N U

¹² Enter the equipment class name from Appendix B: Classes of Equipment.

Equipment ID No. ^G 2RE58 ^{9/11/2012} Equip. Class¹² (10) Air Handlers
Equipment Description ^D RHR Room ^G Cooling Coil ^G ^{9/11/2012}

Interaction Effects

- 7. Are soft targets free from impact by nearby equipment or structures? Y N U N/A
- 8. Are overhead equipment, distribution systems, ceiling tiles and lighting, and masonry block walls not likely to collapse onto the equipment? Y N U N/A
- 9. Do attached lines have adequate flexibility to avoid damage? Y N U N/A
- 10. Based on the above seismic interaction evaluations, is equipment free of potentially adverse seismic interaction effects? Y N U

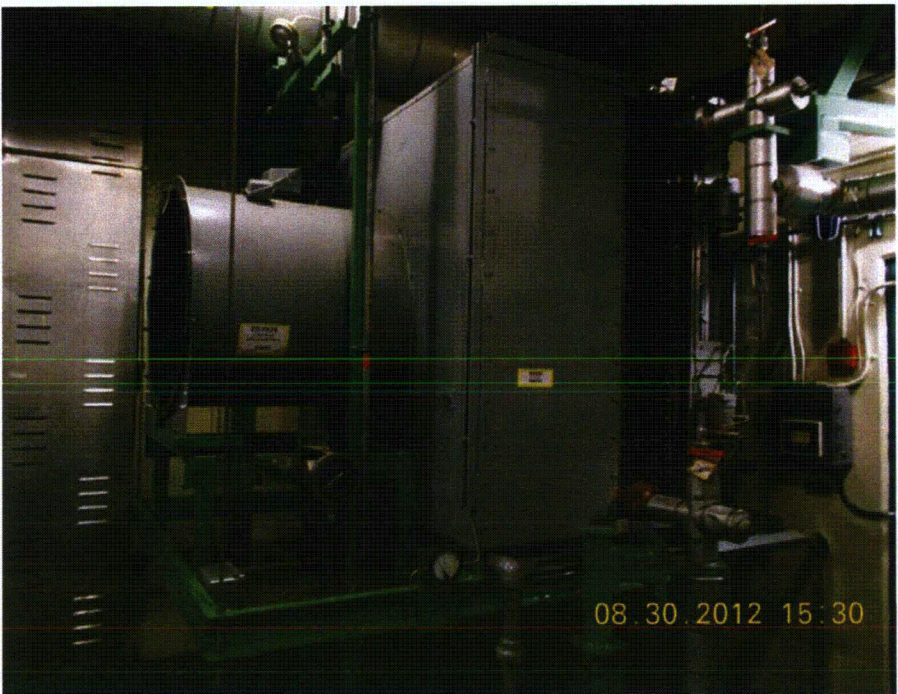
Other Adverse Conditions

- 11. Have you looked for and found no other seismic conditions that could adversely affect the safety functions of the equipment? Y N U

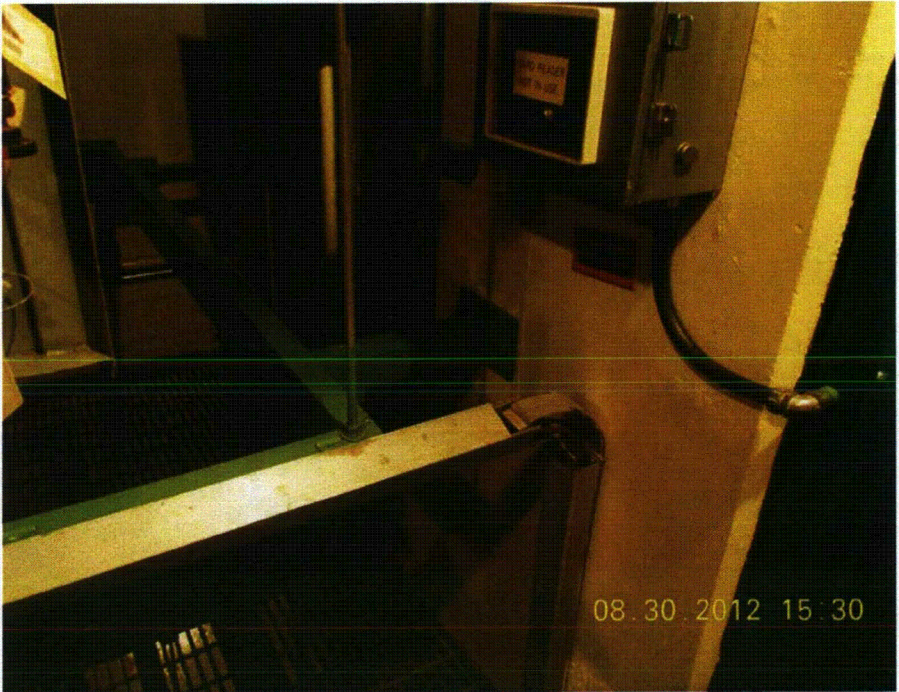
Comments (Additional pages may be added as necessary)

N/A CONFIGURATION MANAGEMENT ISSUE ADDRESSED IN IR # 1411581 ^{KG 10/9/12}
^{+10/16/12}

Evaluated by: James W. [Signature] Date: 9/11/2012
Xc [Signature] 9/11/2012



Equipment ID: 2GE058



08.30.2012 15:30



08.30.2012 15:31



08.30.2012 15:33

Seismic Walkdown Checklist (SWC)

Equipment ID No. 2GT545 Equip. Class¹² (21) Tanks or Heat Exchangers (Vertical)

Equipment Description Instrument N2 Accumulator

Location: Bldg. Drywell Floor El. 155 Room, Area D/W2-35

Manufacturer, Model, Etc. (optional but recommended) _____

Instructions for Completing Checklist

This checklist may be used to document the results of the Seismic Walkdown of an item of equipment on the SWEL. The space below each of the following questions may be used to record the results of judgments and findings. Additional space is provided at the end of this checklist for documenting other comments.

Anchorage

1. Is the anchorage configuration verification required (i.e., is the item one of the 50% of SWEL items requiring such verification)? Y N U

2. Is the anchorage free of bent, broken, missing or loose hardware? Y N U N/A

3. Is the anchorage free of corrosion that is more than mild surface oxidation? Y N U N/A
. Mild to moderate surface corrosion judged acceptable

4. Is the anchorage free of visible cracks in the concrete near the anchors? Y N U N/A
. Mounted to steel support plate

5. Is the anchorage configuration consistent with plant documentation? Y N U N/A
 (Note: This question only applies if the item is one of the 50% for which an anchorage configuration verification is required.)
Does not match Orig. # 6280 M 3237, Rev. 7 but as built configuration judged acceptable (link frame welded to support plate rather than bolted)
KG 10/6/12
SEE COMMENTS KG10/16

6. Based on the above anchorage evaluations, is the anchorage free of potentially adverse seismic conditions? Y N U

¹² Enter the equipment class name from Appendix B: Classes of Equipment.

Equipment ID No. 2GT545 Equip. Class¹² (21) Tanks or Heat Exchangers (Vertical)

Equipment Description Instrument N2 Accumulator

Interaction Effects

7. Are soft targets free from impact by nearby equipment or structures? Y N U N/A

- No soft targets

8. Are overhead equipment, distribution systems, ceiling tiles and lighting, and masonry block walls not likely to collapse onto the equipment? Y N U N/A

9. Do attached lines have adequate flexibility to avoid damage? Y N U N/A

10. Based on the above seismic interaction evaluations, is equipment free of potentially adverse seismic interaction effects? Y N U

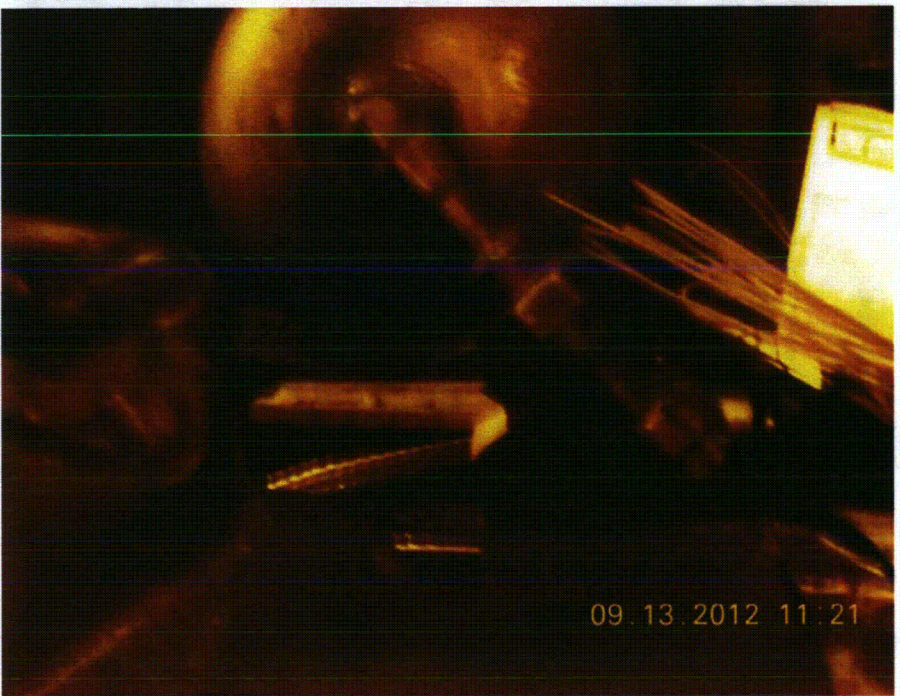
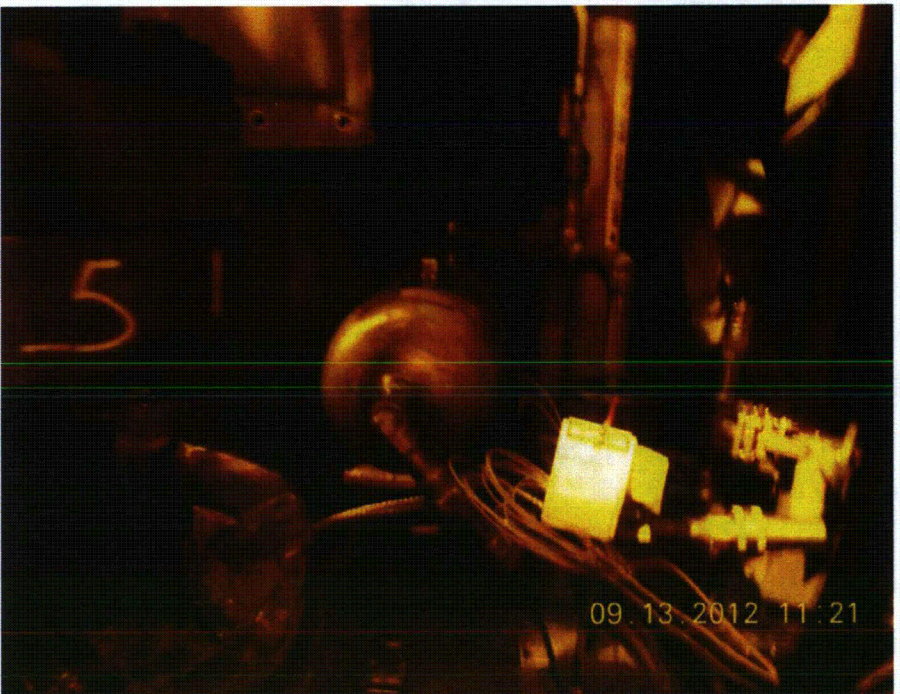
Other Adverse Conditions

11. Have you looked for and found no other seismic conditions that could adversely affect the safety functions of the equipment? Y N U

Comments (Additional pages may be added as necessary)

N/A ^{KG 10/16/12} ANCHORAGE CONSISTENT WITH DWG # 6280-M-3226, SHT. 7, REV. 3.

Evaluated by: *James Wiggins* Date: *9/13/2012*
TC *9/13/2012*



Seismic Walkdown Checklist (SWC)

Equipment ID No. K 2AT545 Equip. Class¹² (21) Tanks or Heat Exchangers (Vertical)

Equipment Description Instrument N2 Accumulator

Location: Bldg. Drywell Floor El. 155 Room, Area D/W2-27 35 gm 9/13/2012

Manufacturer, Model, Etc. (optional but recommended) _____

Instructions for Completing Checklist

This checklist may be used to document the results of the Seismic Walkdown of an item of equipment on the SWEL. The space below each of the following questions may be used to record the results of judgments and findings. Additional space is provided at the end of this checklist for documenting other comments.

Anchorage

1. Is the anchorage configuration verification required (i.e., is the item one of the 50% of SWEL items requiring such verification)? Y N U

2. Is the anchorage free of bent, broken, missing or loose hardware? Y N U N/A

3. Is the anchorage free of corrosion that is more than mild surface oxidation? Y N U N/A
 .Mild to moderate surface corrosion judged acceptable

4. Is the anchorage free of visible cracks in the concrete near the anchors? Y N U N/A
 .Mounted to steel support plate

5. Is the anchorage configuration consistent with plant documentation? Y N U N/A
 (Note: This question only applies if the item is one of the 50% for which an anchorage configuration verification is required.)
 .Matches Dwg. # 6280-M-3237, Rev. 7

6. Based on the above anchorage evaluations, is the anchorage free of potentially adverse seismic conditions? Y N U

¹² Enter the equipment class name from Appendix B: Classes of Equipment.

Equipment ID No. ^K 2AT545 ^{gar 9/13/2012} Equip. Class¹² (21) Tanks or Heat Exchangers (Vertical)

Equipment Description Instrument N2 Accumulator

Interaction Effects

- 7. Are soft targets free from impact by nearby equipment or structures? Y N U N/A
-No soft targets
- 8. Are overhead equipment, distribution systems, ceiling tiles and lighting, and masonry block walls not likely to collapse onto the equipment? Y N U N/A
- 9. Do attached lines have adequate flexibility to avoid damage? Y N U N/A
- 10. Based on the above seismic interaction evaluations, is equipment free of potentially adverse seismic interaction effects? Y N U

Other Adverse Conditions

- 11. Have you looked for and found no other seismic conditions that could adversely affect the safety functions of the equipment? Y N U

Comments (Additional pages may be added as necessary)

N/A

Evaluated by: James Wiggins Date: 9/13/2012
Z. G.B. 9/13/2012



Seismic Walkdown Checklist (SWC)

Equipment ID No. A02-03-035B⁰³³ BMF Equip. Class¹² (07) Fluid (Air/Hyd) Valves
8/30/12

Equipment Description Scram Discharge Volume Inboard Isolation Valve

Location: Bldg. Reactor Floor El. 135 Room, Area R2-24

Manufacturer, Model, Etc. (optional but recommended) _____

Instructions for Completing Checklist

This checklist may be used to document the results of the Seismic Walkdown of an item of equipment on the SWEL. The space below each of the following questions may be used to record the results of judgments and findings. Additional space is provided at the end of this checklist for documenting other comments.

Anchorage

1. Is the anchorage configuration verification required (i.e., is the item one of the 50% of SWEL items requiring such verification)? Y N

2. Is the anchorage free of bent, broken, missing or loose hardware? Y N U N/A

3. Is the anchorage free of corrosion that is more than mild surface oxidation? Y N U N/A

4. Is the anchorage free of visible cracks in the concrete near the anchors?
line-mounted valve. Y N U N/A

5. Is the anchorage configuration consistent with plant documentation?
 (Note: This question only applies if the item is one of the 50% for which an anchorage configuration verification is required.) Y N U N/A

6. Based on the above anchorage evaluations, is the anchorage free of potentially adverse seismic conditions? Y N U

¹² Enter the equipment class name from Appendix B: Classes of Equipment.

Equipment ID No. ^{033 MO} ~~A02-03-035B~~ ^{8/20/12} Equip. Class¹² (07) Fluid (Air/Hyd) Valves

Equipment Description Scram Discharge Volume Inboard Isolation Valve

Interaction Effects

7. Are soft targets free from impact by nearby equipment or structures? Y N U N/A

No soft targets

8. Are overhead equipment, distribution systems, ceiling tiles and lighting, and masonry block walls not likely to collapse onto the equipment? Y N U N/A

*Damage from falling light bulbs not credible.
No masonry walls or ceiling tiles.*

9. Do attached lines have adequate flexibility to avoid damage? Y N U N/A

10. Based on the above seismic interaction evaluations, is equipment free of potentially adverse seismic interaction effects? Y N U

*Valve Diaphragm causing touching adjacent component. MO 10/13/12
No damage credible. BME 10/16/12*

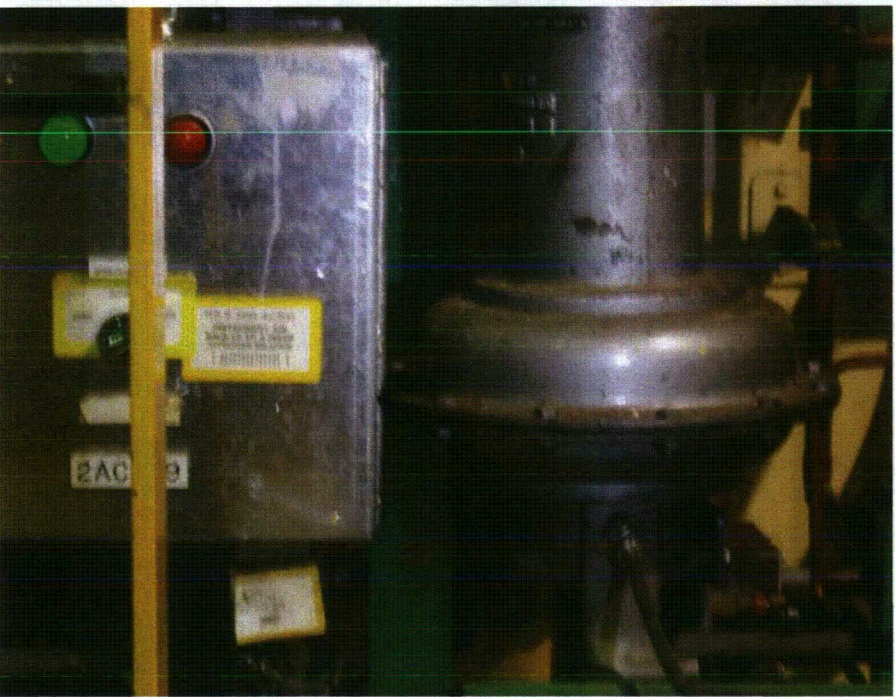
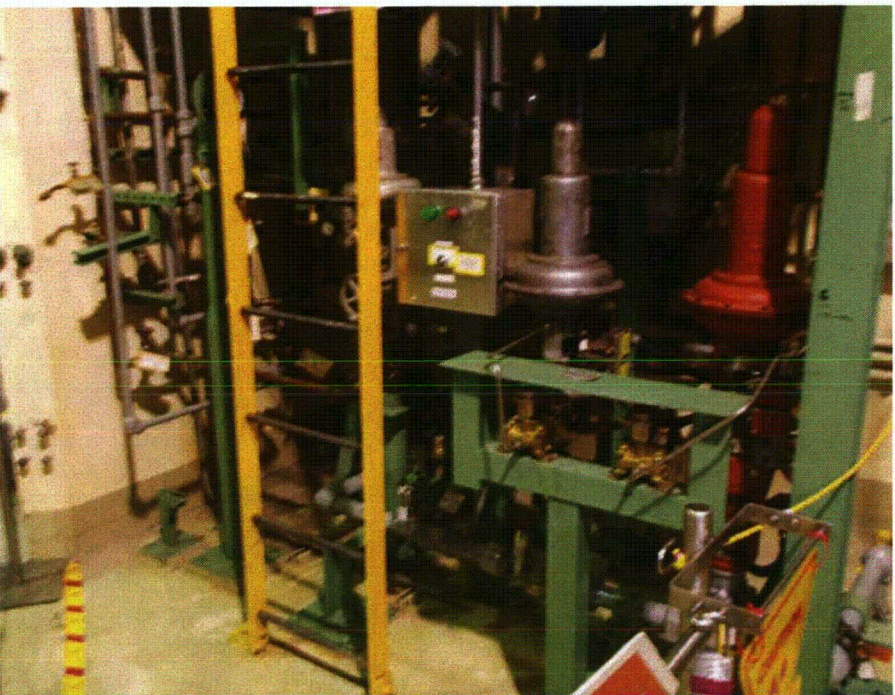
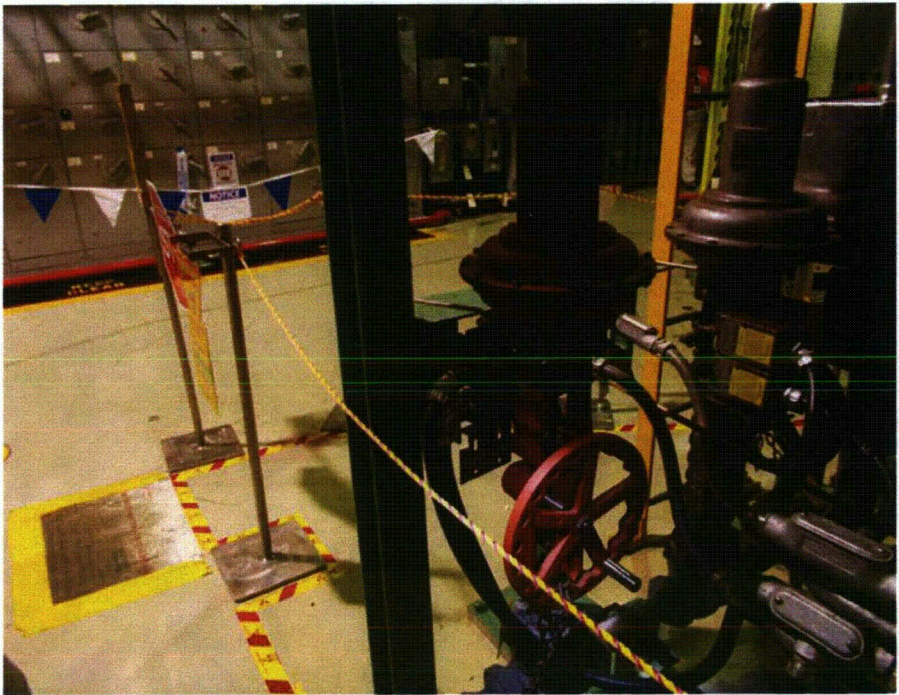
Other Adverse Conditions

11. Have you looked for and found no other seismic conditions that could adversely affect the safety functions of the equipment? Y N U

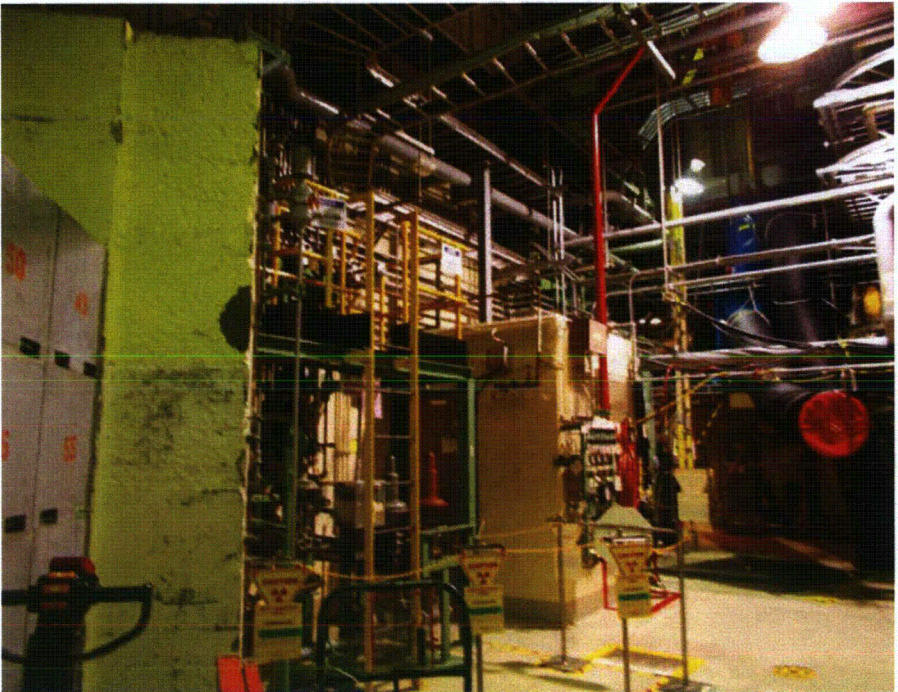
Comments (Additional pages may be added as necessary)

Evaluated by: *H. Ogilvie* Date: *10/16/12*

Ben Fry *10/16/12*



Equipment ID: AO2-03-033



Seismic Walkdown Checklist (SWC)

Equipment ID No. A02-03-032B ⁰³⁶ _{9/30/12} *BNF* Equip. Class¹² (07) Fluid (Air/Hyd) Valves

Equipment Description Scram Discharge Volume Inboard Isolation Valve

Location: Bldg. Reactor Floor El. 135 Room, Area R2-24

Manufacturer, Model, Etc. (optional but recommended) _____

Instructions for Completing Checklist

This checklist may be used to document the results of the Seismic Walkdown of an item of equipment on the SWEL. The space below each of the following questions may be used to record the results of judgments and findings. Additional space is provided at the end of this checklist for documenting other comments.

Anchorage

1. Is the anchorage configuration verification required (i.e., is the item one of the 50% of SWEL items requiring such verification)? Y N

2. Is the anchorage free of bent, broken, missing or loose hardware? Y N U N/A

3. Is the anchorage free of corrosion that is more than mild surface oxidation? Y N U N/A

4. Is the anchorage free of visible cracks in the concrete near the anchors? Y N U N/A
line-mounted valve.

5. Is the anchorage configuration consistent with plant documentation? Y N U N/A
 (Note: This question only applies if the item is one of the 50% for which an anchorage configuration verification is required.)

6. Based on the above anchorage evaluations, is the anchorage free of potentially adverse seismic conditions? Y N U

¹² Enter the equipment class name from Appendix B: Classes of Equipment.

Equipment ID No. ⁰³⁶ ~~A02-03-032B~~ ^{8/30/12} _{BMI} Equip. Class¹² (07) Fluid (Air/Hyd) Valves

Equipment Description Scram Discharge Volume Inboard Isolation Valve

Interaction Effects

7. Are soft targets free from impact by nearby equipment or structures? Y N U N/A

no soft targets.

8. Are overhead equipment, distribution systems, ceiling tiles and lighting, and masonry block walls not likely to collapse onto the equipment? Y N U N/A

*Damage from falling light bulbs not credible.
no masonry walls or ceiling tiles.*

9. Do attached lines have adequate flexibility to avoid damage? Y N U N/A

10. Based on the above seismic interaction evaluations, is equipment free of potentially adverse seismic interaction effects? Y N U

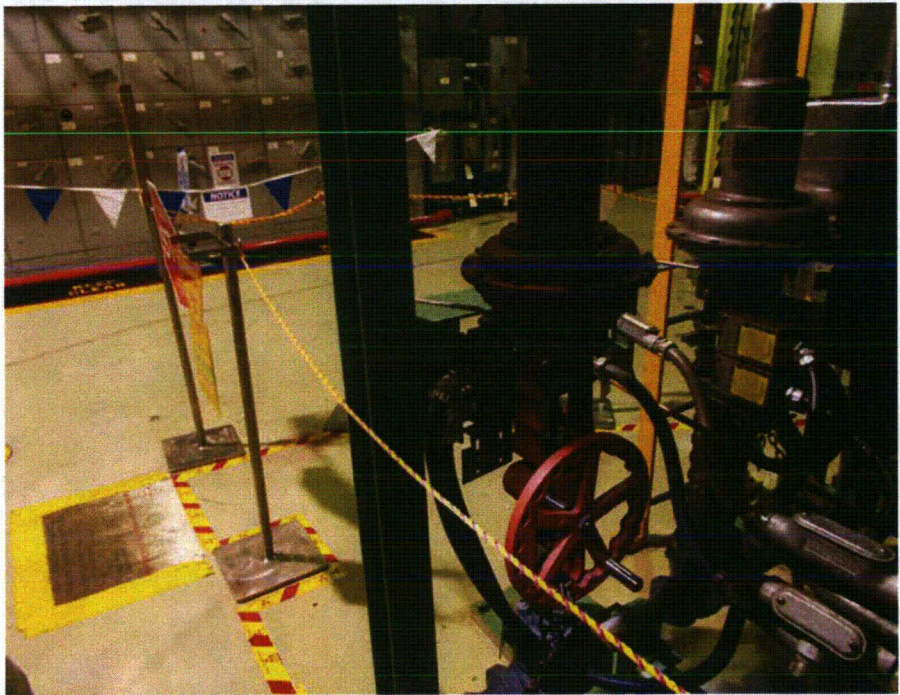
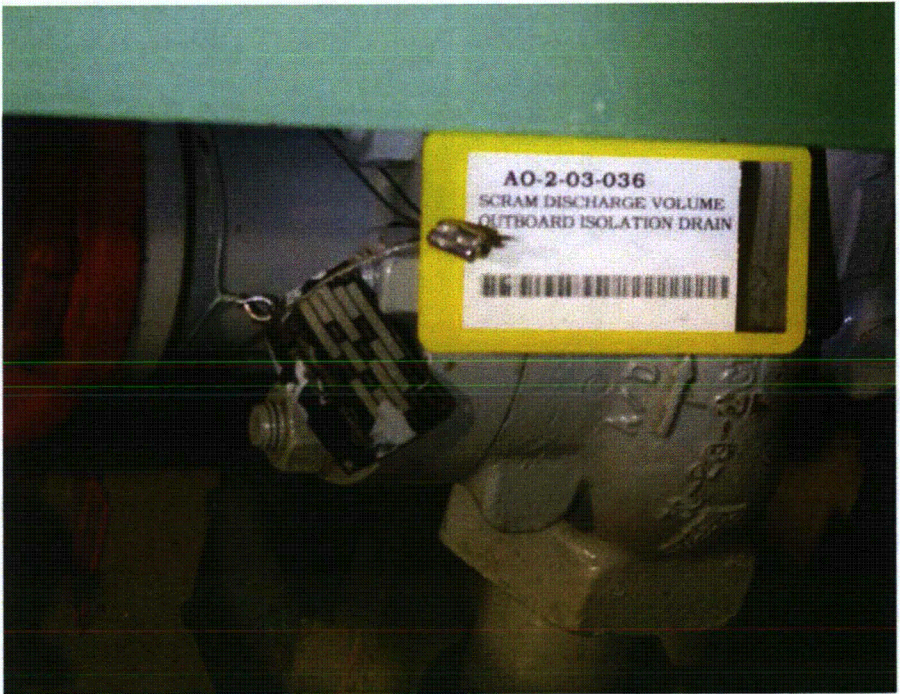
Other Adverse Conditions

11. Have you looked for and found no other seismic conditions that could adversely affect the safety functions of the equipment? Y N U

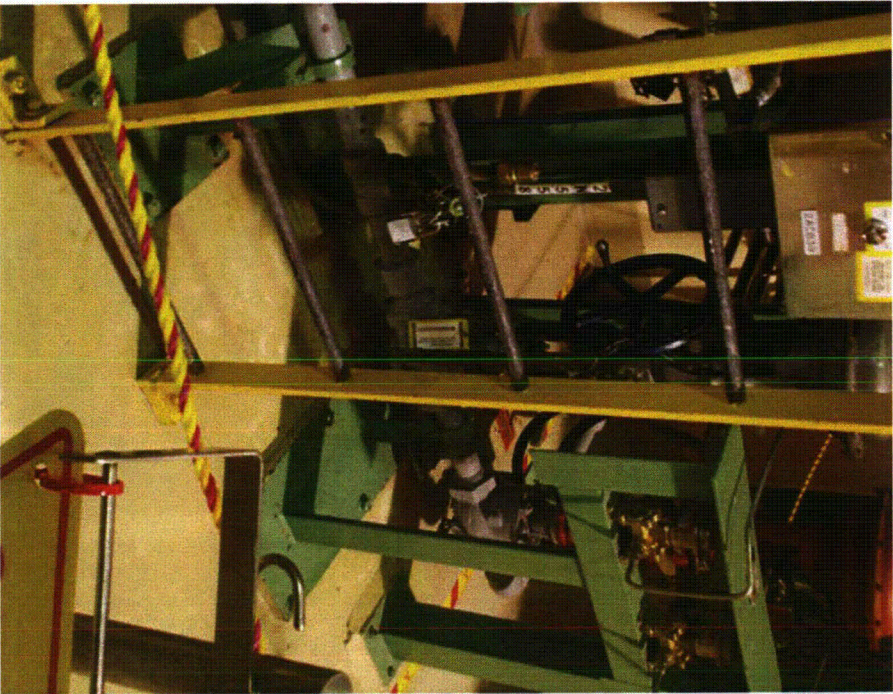
Comments (Additional pages may be added as necessary)

Evaluated by: *H. Ogibaei* Date: 8/30/12

Ben Fey 8/31/12



Equipment ID: AO2-03-036





Seismic Walkdown Checklist (SWC)

Equipment ID No. AO2-01-080 ^{A gr 9/13/2012} Equip. Class¹² (07) Fluid (Air/Hyd) Valves
 Equipment Description Inboard Main Steam Isolation Valve ^{A gr 9/13/2012}
 Location: Bldg. Drywell Floor El. 134 Room, Area D/W2-2018 ^{gr 9/13/2012}
 Manufacturer, Model, Etc. (optional but recommended) _____

Instructions for Completing Checklist

This checklist may be used to document the results of the Seismic Walkdown of an item of equipment on the SWEL. The space below each of the following questions may be used to record the results of judgments and findings. Additional space is provided at the end of this checklist for documenting other comments.

Anchorage

1. Is the anchorage configuration verification required (i.e., is the item one of the 50% of SWEL items requiring such verification)? Y N
2. Is the anchorage free of bent, broken, missing or loose hardware? Y N U N/A
 . Line-mounted
3. Is the anchorage free of corrosion that is more than mild surface oxidation? Y N U N/A
4. Is the anchorage free of visible cracks in the concrete near the anchors? Y N U N/A
5. Is the anchorage configuration consistent with plant documentation? Y N U N/A
 (Note: This question only applies if the item is one of the 50% for which an anchorage configuration verification is required.)
6. Based on the above anchorage evaluations, is the anchorage free of potentially adverse seismic conditions? Y N U

¹² Enter the equipment class name from Appendix B: Classes of Equipment.

Equipment ID No. AO2-01-080 ^{A for 9/13/2012} Equip. Class¹² (07) Fluid (Air/Hyd) Valves
Equipment Description Inboard Main Steam Isolation Valve ^{A for 9/13/2012}

Interaction Effects

- 7. Are soft targets free from impact by nearby equipment or structures? Y N U N/A
- No soft targets
- 8. Are overhead equipment, distribution systems, ceiling tiles and lighting, and masonry block walls not likely to collapse onto the equipment? Y N U N/A
- 9. Do attached lines have adequate flexibility to avoid damage? Y N U N/A
- 10. Based on the above seismic interaction evaluations, is equipment free of potentially adverse seismic interaction effects? Y N U

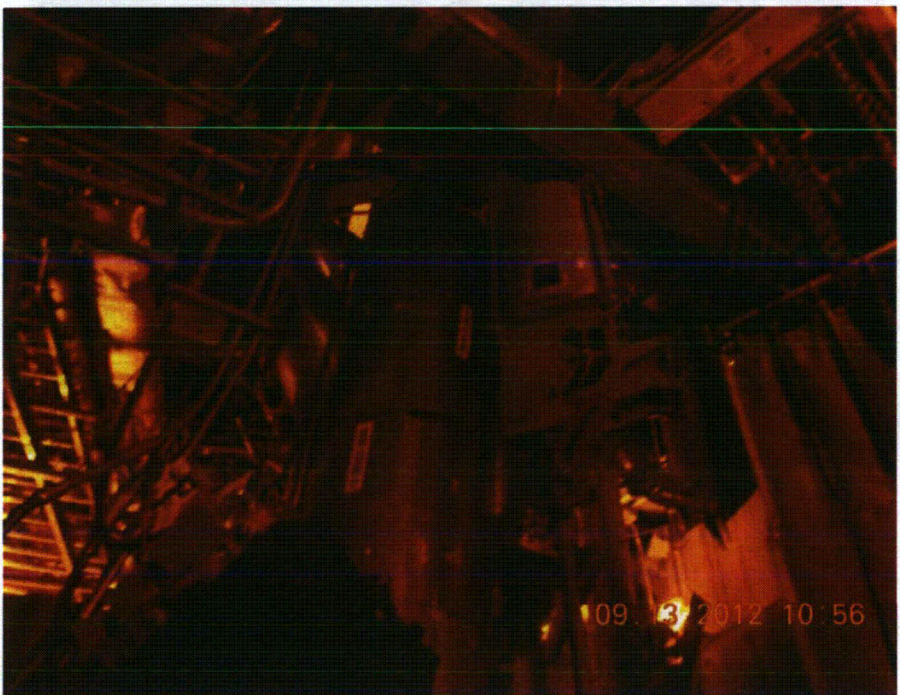
Other Adverse Conditions

- 11. Have you looked for and found no other seismic conditions that could adversely affect the safety functions of the equipment? Y N U

Comments (Additional pages may be added as necessary)

N/A

Evaluated by: *James Wiggins* Date: *9/13/2012*
JC JB *9/13/2012*



Seismic Walkdown Checklist (SWC)

Equipment ID No. AO2-01-080B Equip. Class¹² (07) Fluid (Air/Hyd) Valves

Equipment Description Inboard Main Steam Isolation Valve B

Location: Bldg. Drywell Floor El. 134 Room, Area D/W2-18

Manufacturer, Model, Etc. (optional but recommended)

Instructions for Completing Checklist

This checklist may be used to document the results of the Seismic Walkdown of an item of equipment on the SWEL. The space below each of the following questions may be used to record the results of judgments and findings. Additional space is provided at the end of this checklist for documenting other comments.

Anchorage

1. Is the anchorage configuration verification required (i.e., is the item one of the 50% of SWEL items requiring such verification)? Y N

2. Is the anchorage free of bent, broken, missing or loose hardware? Y N U N/A
Line-mounted

3. Is the anchorage free of corrosion that is more than mild surface oxidation? Y N U N/A

4. Is the anchorage free of visible cracks in the concrete near the anchors? Y N U N/A

5. Is the anchorage configuration consistent with plant documentation? Y N U N/A
(Note: This question only applies if the item is one of the 50% for which an anchorage configuration verification is required.)

6. Based on the above anchorage evaluations, is the anchorage free of potentially adverse seismic conditions? Y N U

¹² Enter the equipment class name from Appendix B: Classes of Equipment.

Equipment ID No. AO2-01-080B Equip. Class¹² (07) Fluid (Air/Hyd) Valves

Equipment Description Inboard Main Steam Isolation Valve B

Interaction Effects

7. Are soft targets free from impact by nearby equipment or structures? Y N U N/A

- No soft targets

8. Are overhead equipment, distribution systems, ceiling tiles and lighting, and masonry block walls not likely to collapse onto the equipment? Y N U N/A

- Nearby/overhead scaffold and ladder securely mounted

9. Do attached lines have adequate flexibility to avoid damage? Y N U N/A

10. Based on the above seismic interaction evaluations, is equipment free of potentially adverse seismic interaction effects? Y N U

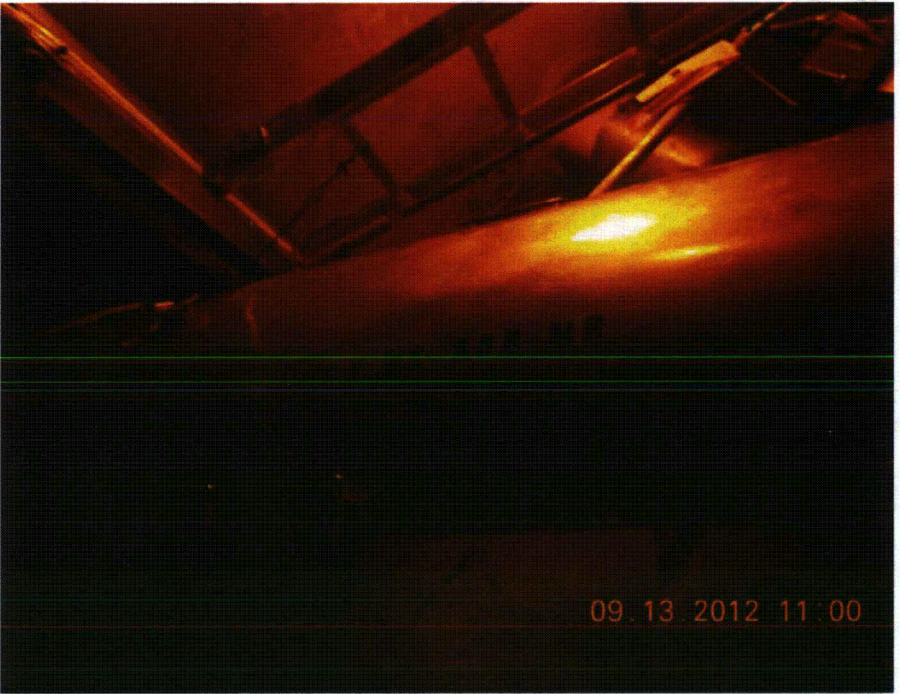
Other Adverse Conditions

11. Have you looked for and found no other seismic conditions that could adversely affect the safety functions of the equipment? Y N U

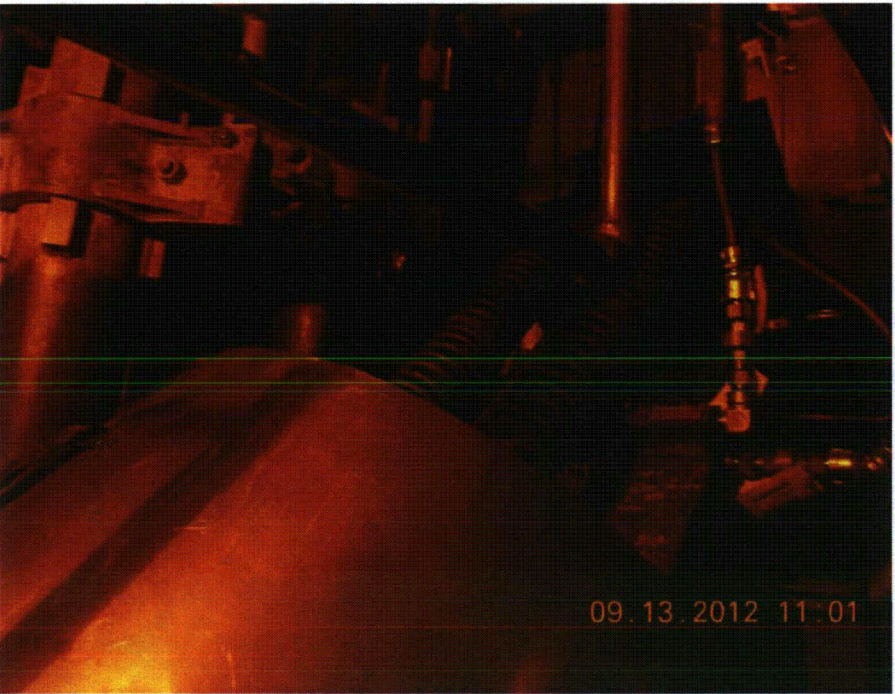
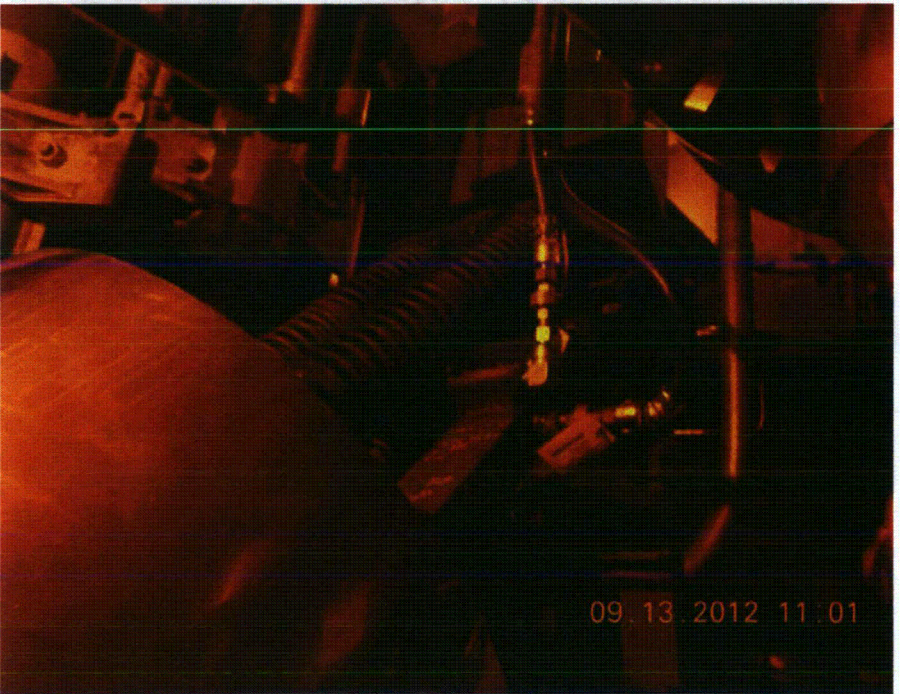
Comments (Additional pages may be added as necessary)

N/A

Evaluated by: *James Wiggins* Date: *9/13/2012*
KE JB *9/13/2012*



Equipment ID: AO2-01-080B



Seismic Walkdown Checklist (SWC)

Equipment ID No. AO2-01-086 ^{gm 9/13/2012} A Equip. Class¹² (07) Fluid (Air/Hyd) Valves

Equipment Description Outboard Main Steam Isolation Valve ^{gm 9/13/2012} A

Location: Bldg. Reactor Floor El. 135 Room, Area R2-30

Manufacturer, Model, Etc. (optional but recommended) _____

Instructions for Completing Checklist

This checklist may be used to document the results of the Seismic Walkdown of an item of equipment on the SWEL. The space below each of the following questions may be used to record the results of judgments and findings. Additional space is provided at the end of this checklist for documenting other comments.

Anchorage

1. Is the anchorage configuration verification required (i.e., is the item one of the 50% of SWEL items requiring such verification)? Y N

2. Is the anchorage free of bent, broken, missing or loose hardware? Y N U N/A
Line-mounted

3. Is the anchorage free of corrosion that is more than mild surface oxidation? Y N U N/A

4. Is the anchorage free of visible cracks in the concrete near the anchors? Y N U N/A

5. Is the anchorage configuration consistent with plant documentation?
 (Note: This question only applies if the item is one of the 50% for which an anchorage configuration verification is required.) Y N U N/A

6. Based on the above anchorage evaluations, is the anchorage free of potentially adverse seismic conditions? Y N U

¹² Enter the equipment class name from Appendix B: Classes of Equipment.

Equipment ID No. AO2-01-086^A *gmr 9/13/2012* Equip. Class¹² (07) Fluid (Air/Hyd) Valves
Equipment Description Outboard Main Steam Isolation Valve^A *gmr 9/13/2012*

Interaction Effects

- 7. Are soft targets free from impact by nearby equipment or structures? Y N U N/A
No soft targets
- 8. Are overhead equipment, distribution systems, ceiling tiles and lighting, and masonry block walls not likely to collapse onto the equipment? Y N U N/A
- 9. Do attached lines have adequate flexibility to avoid damage? Y N U N/A
- 10. Based on the above seismic interaction evaluations, is equipment free of potentially adverse seismic interaction effects? Y N U

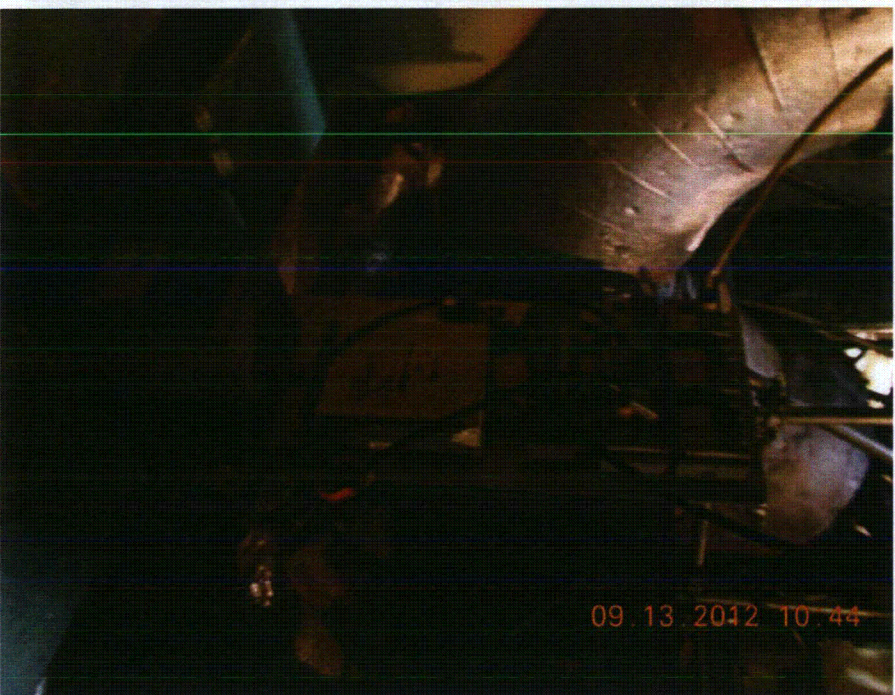
Other Adverse Conditions

- 11. Have you looked for and found no other seismic conditions that could adversely affect the safety functions of the equipment? Y N U

Comments (Additional pages may be added as necessary)

N/A

Evaluated by: *Janus Wiggin* Date: *9/13/2012*
Ki Gts *9/13/2012*



Seismic Walkdown Checklist (SWC)

Equipment ID No. 2 GW 6/29/2012 DPS0224-4 Equip. Class¹² (18) Instruments on Racks / Not on Racks

Equipment Description HPSW Pump Room DP Sensor

Location: Bldg. Pump Structure Floor El. 112 Room, Area P/H-9/6 126 10/15/2012

Manufacturer, Model, Etc. (optional but recommended) _____

Instructions for Completing Checklist

This checklist may be used to document the results of the Seismic Walkdown of an item of equipment on the SWEL. The space below each of the following questions may be used to record the results of judgments and findings. Additional space is provided at the end of this checklist for documenting other comments.

Anchorage

1. Is the anchorage configuration verification required (i.e., is the item one of the 50% of SWEL items requiring such verification)? Y N
2. Is the anchorage free of bent, broken, missing or loose hardware? Y N U N/A
3. Is the anchorage free of corrosion that is more than mild surface oxidation? Y N U N/A
4. Is the anchorage free of visible cracks in the concrete near the anchors? Y N U N/A
5. Is the anchorage configuration consistent with plant documentation? (Note: This question only applies if the item is one of the 50% for which an anchorage configuration verification is required.) Y N U N/A
6. Based on the above anchorage evaluations, is the anchorage free of potentially adverse seismic conditions? Y N U

¹² Enter the equipment class name from Appendix B: Classes of Equipment.

2 KB 8/29/2012

Equipment ID No. DPS70224-4 Equip. Class¹² (18) Instruments on Racks / Not on Racks

Equipment Description HPSW Pump Room DP Sensor

Interaction Effects

7. Are soft targets free from impact by nearby equipment or structures? Y N U N/A

No soft targets

8. Are overhead equipment, distribution systems, ceiling tiles and lighting, and masonry block walls not likely to collapse onto the equipment? Y N U N/A

9. Do attached lines have adequate flexibility to avoid damage? Y N U N/A

10. Based on the above seismic interaction evaluations, is equipment free of potentially adverse seismic interaction effects? Y N U

Other Adverse Conditions

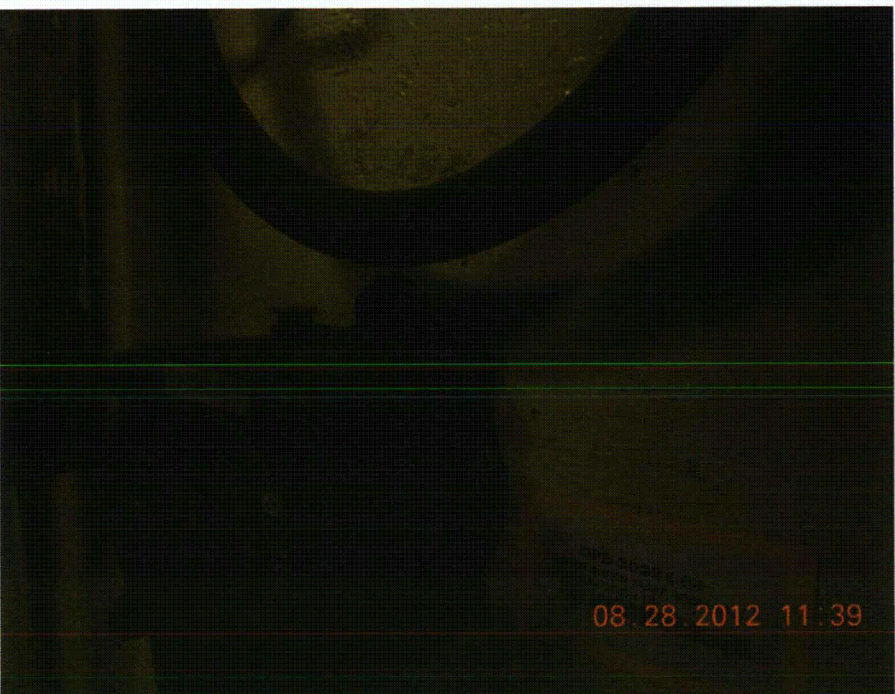
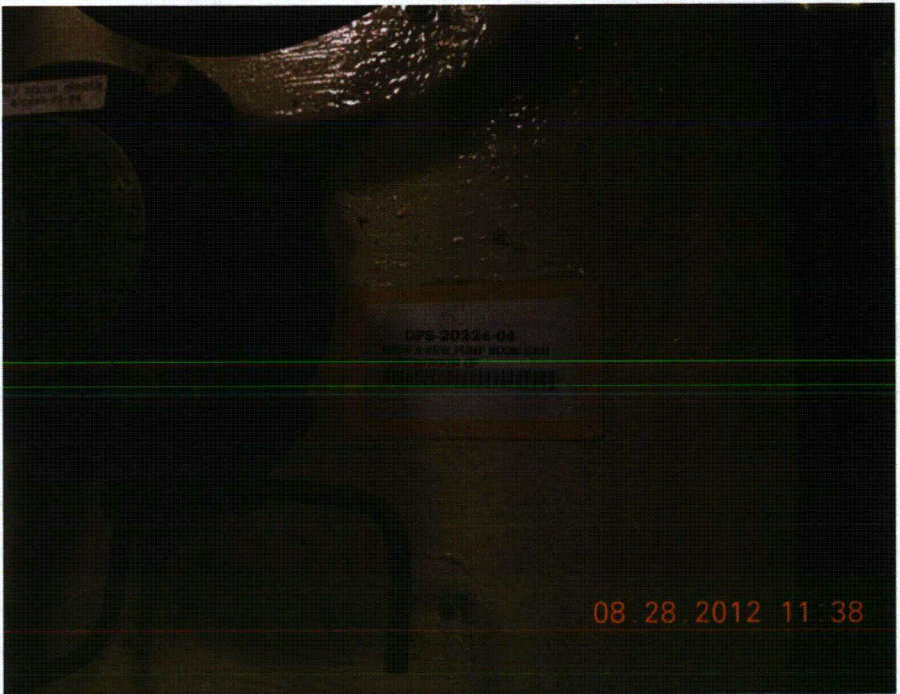
11. Have you looked for and found no other seismic conditions that could adversely affect the safety functions of the equipment? Y N U

Comments (Additional pages may be added as necessary)

N/A

Evaluated by: *James Wiggins*
JK

Date: *9/17/2012*
9/17/2012





Seismic Walkdown Checklist (SWC)

Equipment ID No. H02-23C-4513 Equip. Class¹² (07) Fluid (Air/Hyd) Valves

Equipment Description HPCI Turbine Stop Valve

Location: Bldg. Reactor Floor El. 88 Room, Area R2-13

Manufacturer, Model, Etc. (optional but recommended) _____

Instructions for Completing Checklist

This checklist may be used to document the results of the Seismic Walkdown of an item of equipment on the SWEL. The space below each of the following questions may be used to record the results of judgments and findings. Additional space is provided at the end of this checklist for documenting other comments.

Anchorage

1. Is the anchorage configuration verification required (i.e., is the item one of the 50% of SWEL items requiring such verification)? Y N

2. Is the anchorage free of bent, broken, missing or loose hardware? Y N U N/A
Line-mounted

3. Is the anchorage free of corrosion that is more than mild surface oxidation? Y N U N/A

4. Is the anchorage free of visible cracks in the concrete near the anchors? Y N U N/A

5. Is the anchorage configuration consistent with plant documentation? (Note: This question only applies if the item is one of the 50% for which an anchorage configuration verification is required.) Y N U N/A

6. Based on the above anchorage evaluations, is the anchorage free of potentially adverse seismic conditions? Y N U

¹² Enter the equipment class name from Appendix B: Classes of Equipment.

Equipment ID No. H02-23C-4513 Equip. Class¹² (07) Fluid (Air/Hyd) Valves

Equipment Description HPCI Turbine Stop Valve

Interaction Effects

7. Are soft targets free from impact by nearby equipment or structures? Y N U N/A

No soft targets per 8/30/2012

8. Are overhead equipment, distribution systems, ceiling tiles and lighting, and masonry block walls not likely to collapse onto the equipment? Y N U N/A

9. Do attached lines have adequate flexibility to avoid damage? Y N U N/A

10. Based on the above seismic interaction evaluations, is equipment free of potentially adverse seismic interaction effects? Y N U

Close proximity to scaffolding judged acceptable

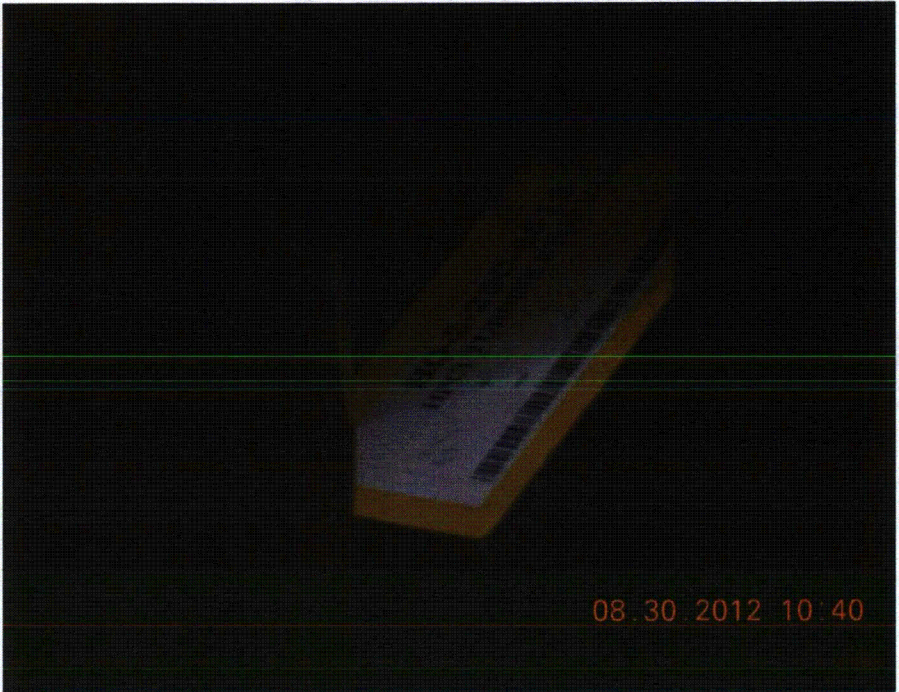
Other Adverse Conditions

11. Have you looked for and found no other seismic conditions that could adversely affect the safety functions of the equipment? Y N U

Comments (Additional pages may be added as necessary)

N/A

Evaluated by: *James W. Quinn* Date: *8/30/2012*
De Ger *8/30/2012*



08.30.2012 10:40



08.30.2012 10:41

Seismic Walkdown Checklist (SWC)

Equipment ID No. ^{BMF 8/30/12} ~~222~~ A30-23 _{HCU} Equip. Class¹² (00) Other

Equipment Description Hydraulic Control Unit

Location: Bldg. Reactor Floor El. 135 Room, Area R2-24

Manufacturer, Model, Etc. (optional but recommended) _____

Instructions for Completing Checklist

This checklist may be used to document the results of the Seismic Walkdown of an item of equipment on the SWEL. The space below each of the following questions may be used to record the results of judgments and findings. Additional space is provided at the end of this checklist for documenting other comments.

Anchorage

1. Is the anchorage configuration verification required (i.e., is the item one of the 50% of SWEL items requiring such verification)? Y N U N/A ^{BMF 9/25/12 MO 9/25/12}

2. Is the anchorage free of bent, broken, missing or loose hardware? Y N U N/A

3. Is the anchorage free of corrosion that is more than mild surface oxidation? Y N U N/A

4. Is the anchorage free of visible cracks in the concrete near the anchors? Y N U N/A

5. Is the anchorage configuration consistent with plant documentation? (Note: This question only applies if the item is one of the 50% for which an anchorage configuration verification is required.) Y N U N/A ^{BMF 9/25/12 MO 9/25/12}
Anchorage confirmed to DWG M-1-D-81-2 REV 4.

6. Based on the above anchorage evaluations, is the anchorage free of potentially adverse seismic conditions? Y N U

¹² Enter the equipment class name from Appendix B: Classes of Equipment.

BME 8/30/12

Equipment ID No. 999-30-23 Equip. Class¹² (00) Other

HCU

Equipment Description Hydraulic Control Unit

Interaction Effects

7. Are soft targets free from impact by nearby equipment or structures? Y N U N/A

8. Are overhead equipment, distribution systems, ceiling tiles and lighting, and masonry block walls not likely to collapse onto the equipment? Y N U N/A

*No ceiling tiles. No masonry walls.
Damage from falling light bulbs not credible.*

9. Do attached lines have adequate flexibility to avoid damage? Y N U N/A

10. Based on the above seismic interaction evaluations, is equipment free of potentially adverse seismic interaction effects? Y N U

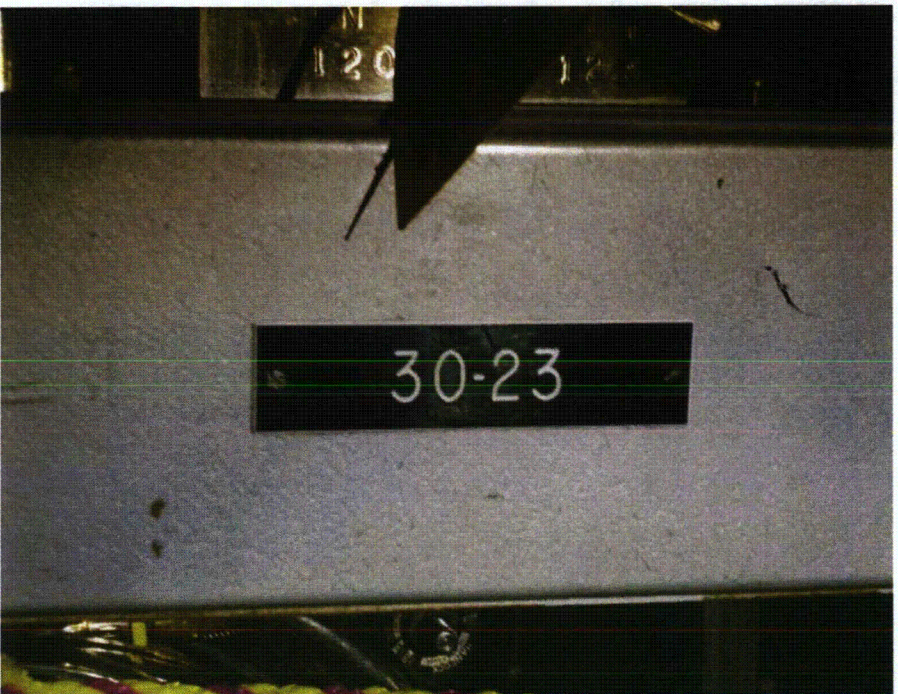
Other Adverse Conditions

11. Have you looked for and found no other seismic conditions that could adversely affect the safety functions of the equipment? Y N U

Comments (Additional pages may be added as necessary)

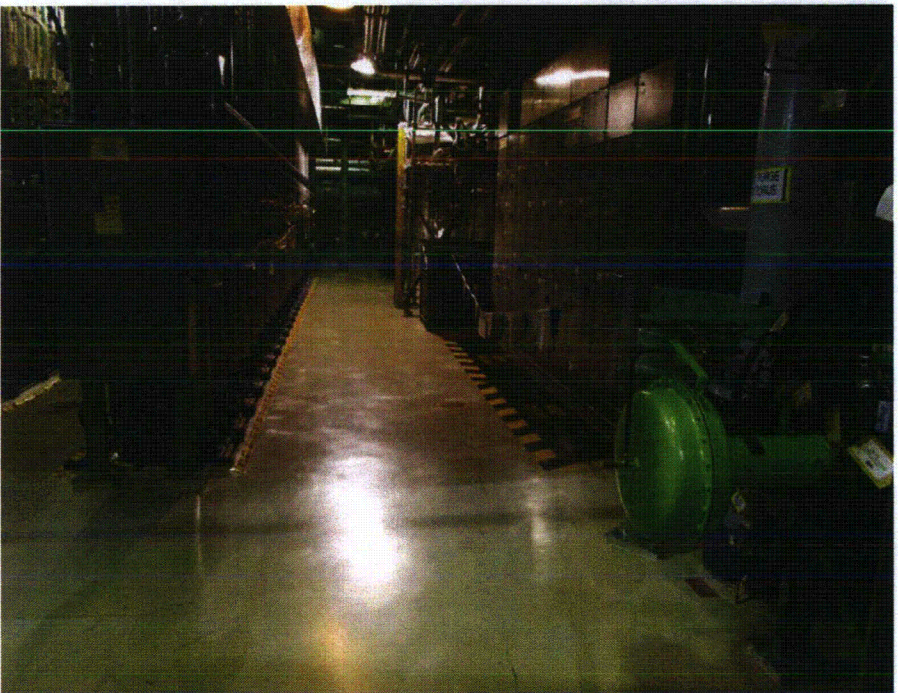
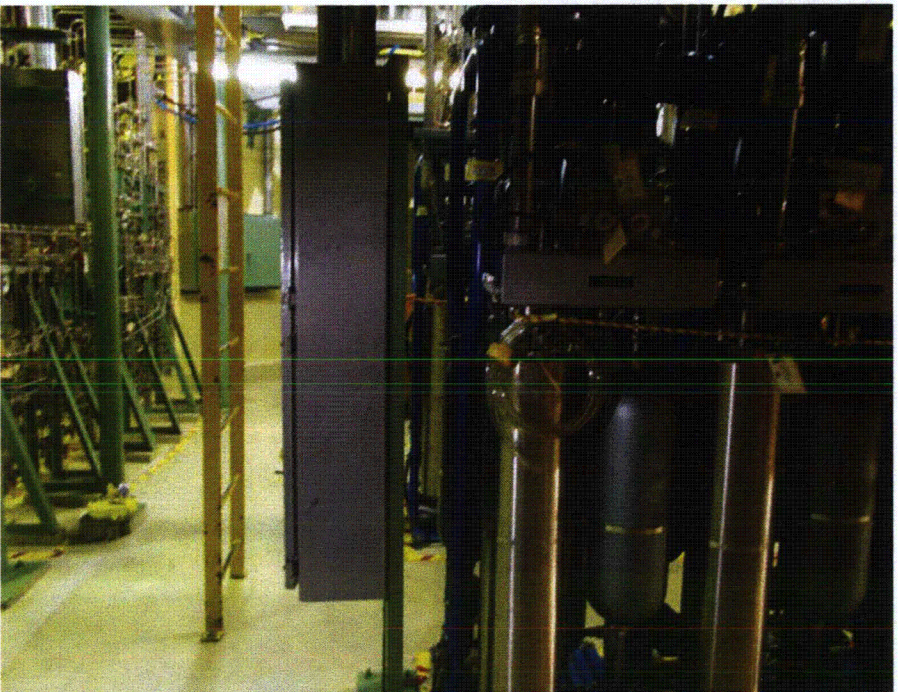
Evaluated by: *H. Ozbair* Date: 8/30/12

Ben Fry 8/30/12

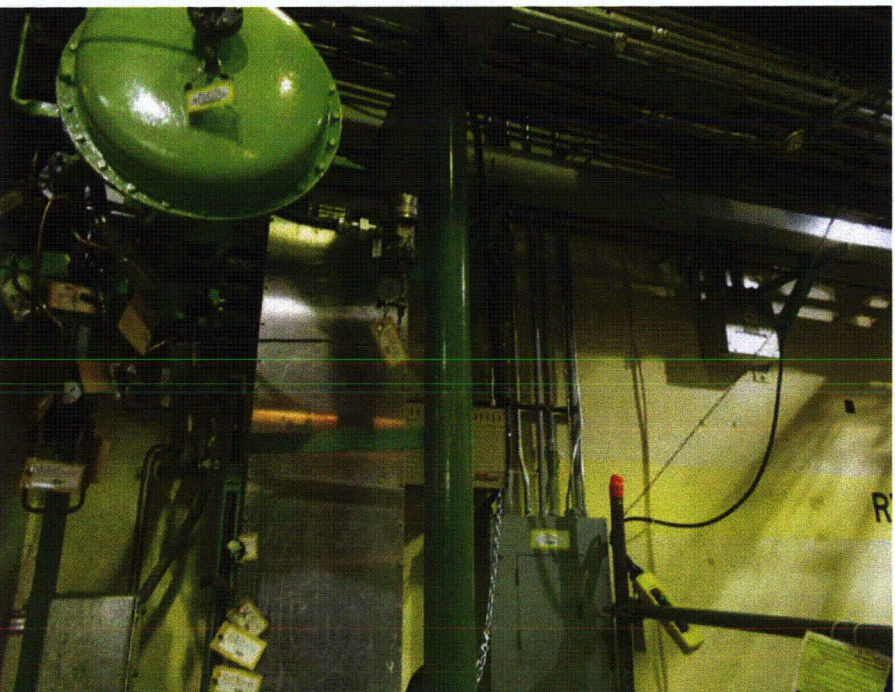


Equipment ID: HCU 30-23





Equipment ID: HCU 30-23



Seismic Walkdown Checklist (SWC)

Equipment ID No. ^{2 MO 9/25/12} LI-2-3-113 Equip. Class¹² (20) Control Panels & Cabinets

Equipment Description Reactor Water Level

Location: Bldg. Turbine Floor El. 165 Room, Area T3-100

Manufacturer, Model, Etc. (optional but recommended) _____

Instructions for Completing Checklist

This checklist may be used to document the results of the Seismic Walkdown of an item of equipment on the SWEL. The space below each of the following questions may be used to record the results of judgments and findings. Additional space is provided at the end of this checklist for documenting other comments.

Anchorage

1. Is the anchorage configuration verification required (i.e., is the item one of the 50% of SWEL items requiring such verification)? Y N

2. Is the anchorage free of bent, broken, missing or loose hardware? Y N U N/A

3. Is the anchorage free of corrosion that is more than mild surface oxidation? Y N U N/A

4. Is the anchorage free of visible cracks in the concrete near the anchors? Y N U N/A

5. Is the anchorage configuration consistent with plant documentation?
 (Note: This question only applies if the item is one of the 50% for which an anchorage configuration verification is required.) Y N U N/A

6. Based on the above anchorage evaluations, is the anchorage free of potentially adverse seismic conditions? Y N U

¹² Enter the equipment class name from Appendix B: Classes of Equipment.

Equipment ID No. ^{MO} 2 9/25/12 LI-2-3-113 Equip. Class¹² (20) Control Panels & Cabinets

Equipment Description Reactor Water Level

Interaction Effects

7. Are soft targets free from impact by nearby equipment or structures? Y N U N/A

8. Are overhead equipment, distribution systems, ceiling tiles and lighting, and masonry block walls not likely to collapse onto the equipment? Y N U N/A

*MCR ceiling consistent with Calc 26-5/2-12, Revision 0.
Calc G-106-1 could not be located, see ER 01428651.*

9. Do attached lines have adequate flexibility to avoid damage? Y N U N/A

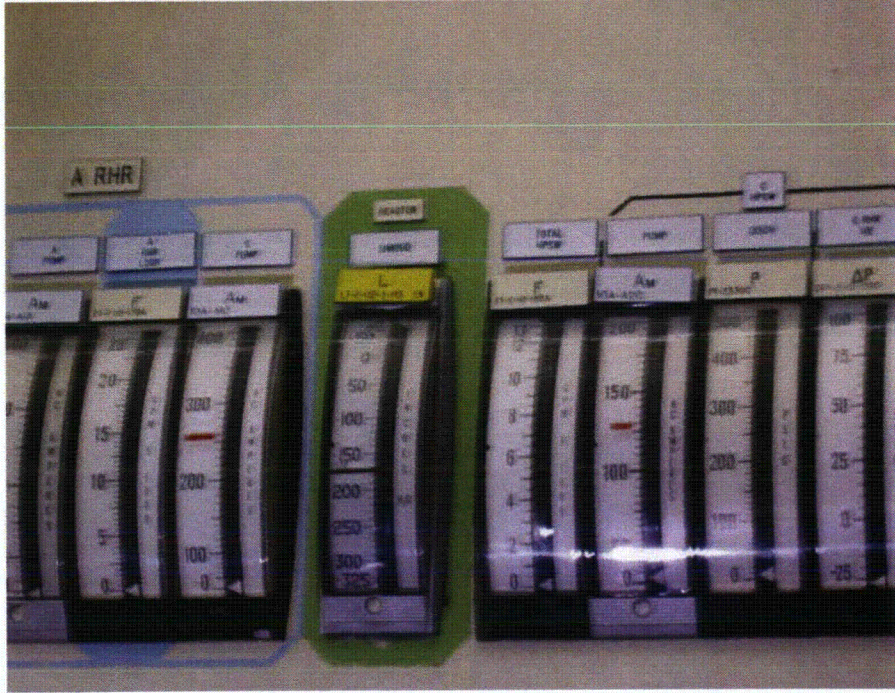
10. Based on the above seismic interaction evaluations, is equipment free of potentially adverse seismic interaction effects? Y N U

Other Adverse Conditions

11. Have you looked for and found no other seismic conditions that could adversely affect the safety functions of the equipment? Y N U

Comments (Additional pages may be added as necessary)

Evaluated by: *Bar Fry* Date: 10/19/12
H. Oghbain 10/19/12



Seismic Walkdown Checklist (SWC)

Equipment ID No. LI2-3-86 Equip. Class¹² (20) Control Panels & Cabinets

Equipment Description Reactor Vessel High Water

Location: Bldg. Turbine Floor El. 165 Room, Area T2-100

Manufacturer, Model, Etc. (optional but recommended) _____

Instructions for Completing Checklist

This checklist may be used to document the results of the Seismic Walkdown of an item of equipment on the SWEL. The space below each of the following questions may be used to record the results of judgments and findings. Additional space is provided at the end of this checklist for documenting other comments.

Anchorage

1. Is the anchorage configuration verification required (i.e., is the item one of the 50% of SWEL items requiring such verification)? Y N

2. Is the anchorage free of bent, broken, missing or loose hardware? Y N U N/A

3. Is the anchorage free of corrosion that is more than mild surface oxidation? Y N U N/A

4. Is the anchorage free of visible cracks in the concrete near the anchors? Y N U N/A

5. Is the anchorage configuration consistent with plant documentation?
 (Note: This question only applies if the item is one of the 50% for which an anchorage configuration verification is required.) Y N U N/A

6. Based on the above anchorage evaluations, is the anchorage free of potentially adverse seismic conditions? Y N U

¹² Enter the equipment class name from Appendix B: Classes of Equipment.

Equipment ID No. LI2-3-86 Equip. Class¹² (20) Control Panels & Cabinets

Equipment Description Reactor Vessel High Water

Interaction Effects

7. Are soft targets free from impact by nearby equipment or structures? Y N U N/A

8. Are overhead equipment, distribution systems, ceiling tiles and lighting, and masonry block walls not likely to collapse onto the equipment? Y N U N/A

MCR ceiling consistent with Calc 26-5/2-12, Revision 0. Calc 6-106-1 could not be located. See ER 01428651.

9. Do attached lines have adequate flexibility to avoid damage? Y N U N/A

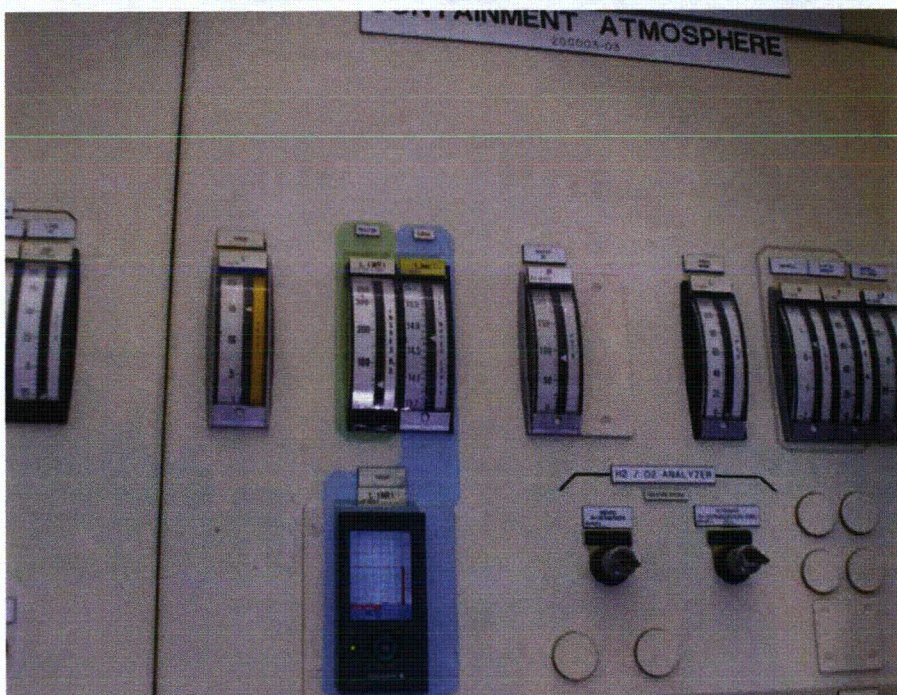
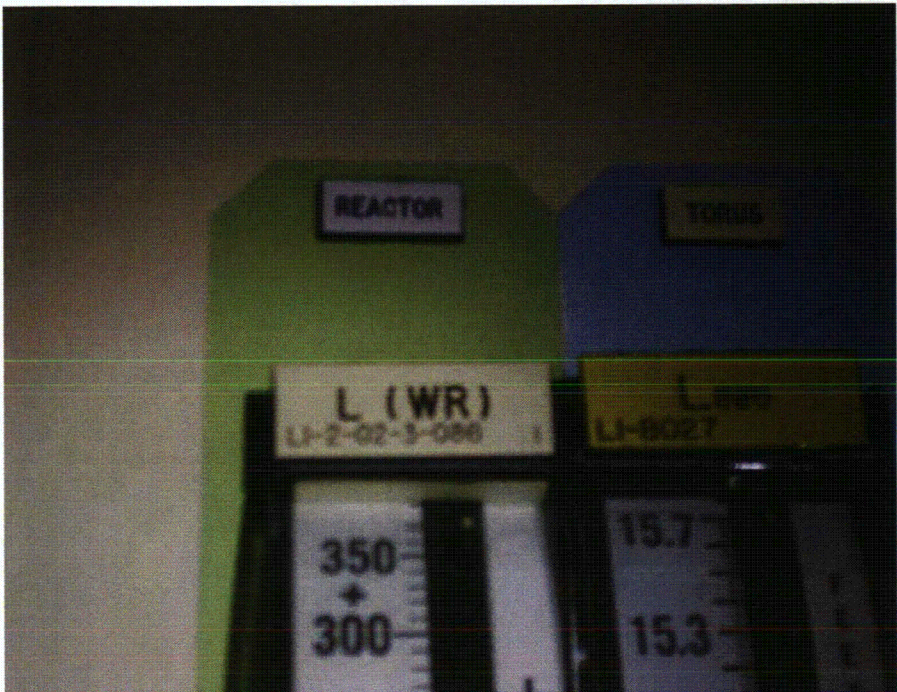
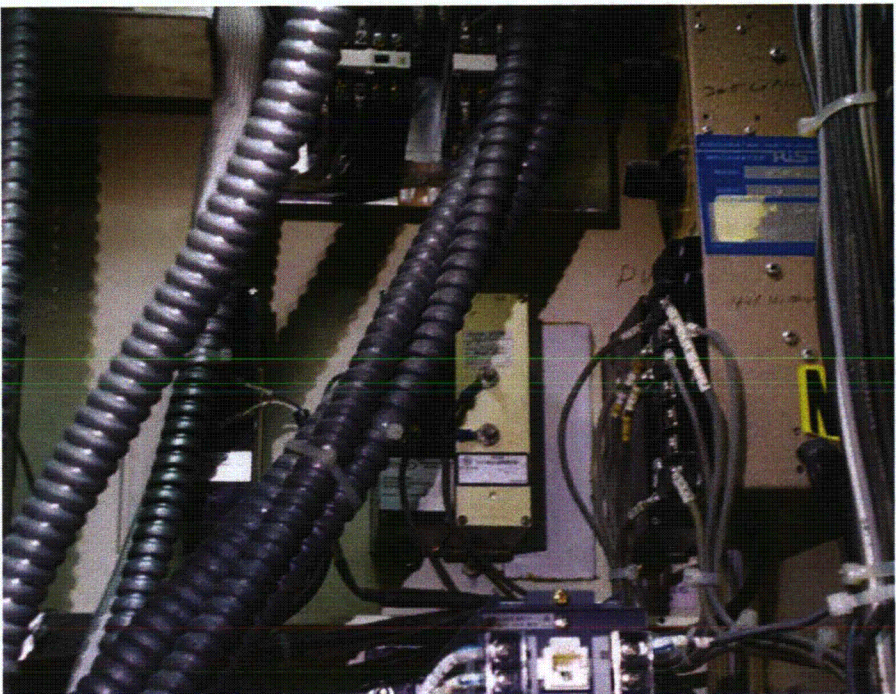
10. Based on the above seismic interaction evaluations, is equipment free of potentially adverse seismic interaction effects? Y N U

Other Adverse Conditions

11. Have you looked for and found no other seismic conditions that could adversely affect the safety functions of the equipment? Y N U

Comments (Additional pages may be added as necessary)

Evaluated by: *Ben Fay* Date: *10/19/12*
M. Oghbachi *10/19/12*



Equipment ID: LI-2-02-3-086

Seismic Walkdown Checklist (SWC)

Equipment ID No. LI-8027 Equip. Class¹² (20) Control Panels & Cabinets

Equipment Description Torus Water Level

Location: Bldg. Turbine Floor El. 165 Room, Area T2-100

Manufacturer, Model, Etc. (optional but recommended) _____

Instructions for Completing Checklist

This checklist may be used to document the results of the Seismic Walkdown of an item of equipment on the SWEL. The space below each of the following questions may be used to record the results of judgments and findings. Additional space is provided at the end of this checklist for documenting other comments.

Anchorage

1. Is the anchorage configuration verification required (i.e., is the item one of the 50% of SWEL items requiring such verification)? Y N

2. Is the anchorage free of bent, broken, missing or loose hardware? Y N U N/A

3. Is the anchorage free of corrosion that is more than mild surface oxidation? Y N U N/A

4. Is the anchorage free of visible cracks in the concrete near the anchors? Y N U N/A

5. Is the anchorage configuration consistent with plant documentation?
 (Note: This question only applies if the item is one of the 50% for which an anchorage configuration verification is required.) Y N U N/A

6. Based on the above anchorage evaluations, is the anchorage free of potentially adverse seismic conditions? Y N U

¹² Enter the equipment class name from Appendix B: Classes of Equipment.

Equipment ID No. LI-8027 Equip. Class¹² (20) Control Panels & Cabinets

Equipment Description Torus Water Level

Interaction Effects

7. Are soft targets free from impact by nearby equipment or structures? Y N U N/A

8. Are overhead equipment, distribution systems, ceiling tiles and lighting, and masonry block walls not likely to collapse onto the equipment? Y N U N/A

MCA ceiling consistent with Calc 26-5/2-12, Revision 0. Calc G-106-1 could not be located. See DL 01428651.

9. Do attached lines have adequate flexibility to avoid damage? Y N U N/A

10. Based on the above seismic interaction evaluations, is equipment free of potentially adverse seismic interaction effects? Y N U

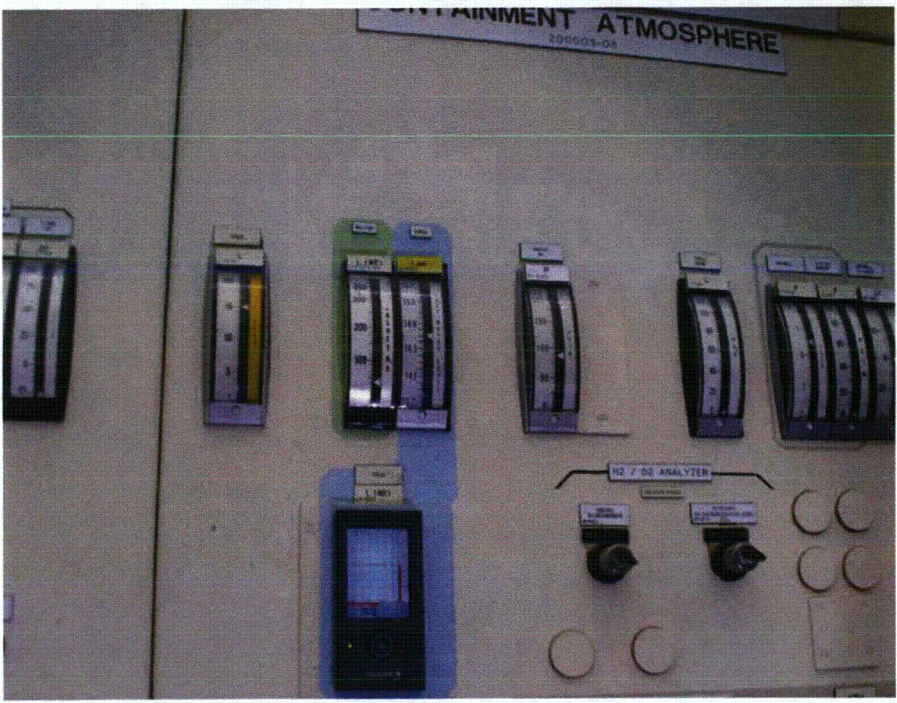
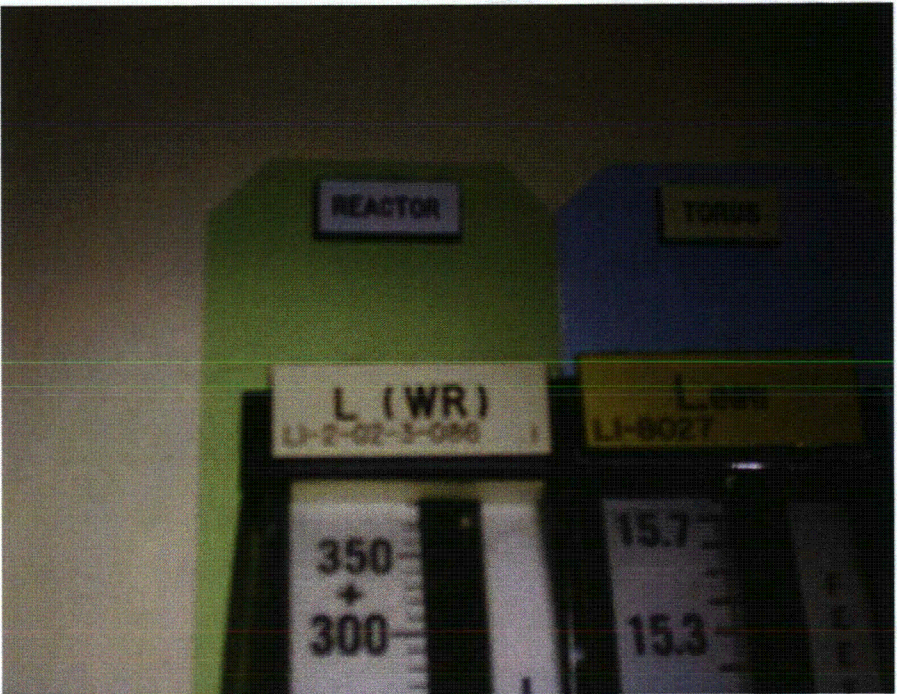
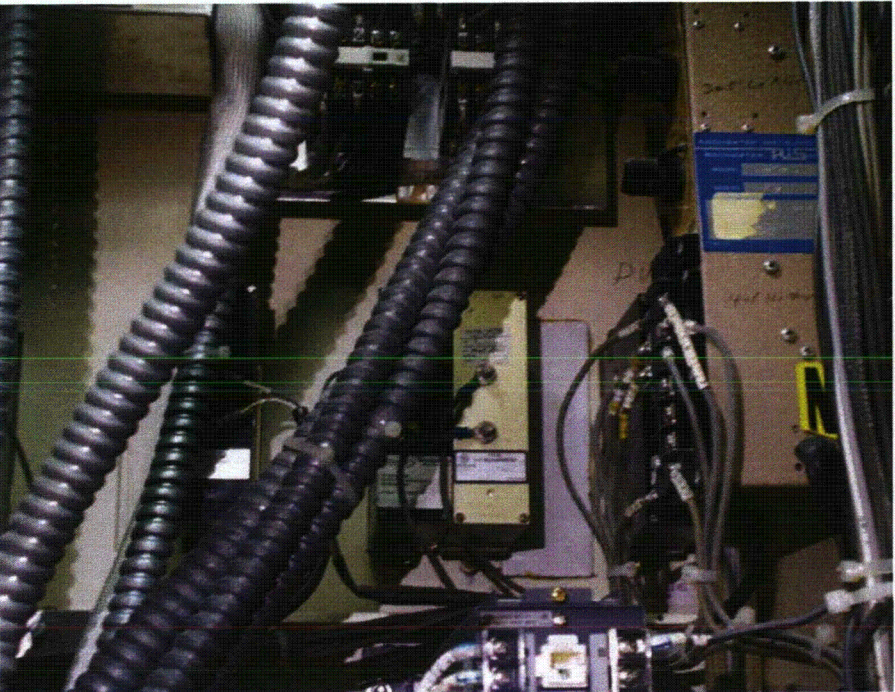
Other Adverse Conditions

11. Have you looked for and found no other seismic conditions that could adversely affect the safety functions of the equipment? Y N U

Comments (Additional pages may be added as necessary)

Evaluated by: *Ben Fujin* Date: 10/19/12

H. Ogbaei 10/19/12



Equipment ID: LI-8027