

Status: Y N U

Seismic Walkdown Checklist (SWC)

Equipment ID No.: 1-SPY

Equipment Class: (20) Instrumentation and Control Panels and Cabinets

Equipment Description: CONTAINMENT SPRAY CONTROL PANEL
P9191224 P9191225

Status: Y N U

Seismic Walkdown Checklist (SWC)

Equipment ID No.: 1-TDAB

Equipment Class: (14) Distribution Panels

Equipment Description: 250VDC TRAIN 'B' TRANSFER CABINET

Project: DC Cook 1 SWEL

Location (Bldg, Elev, Room/Area): AB1, 609.00 ft, 200

Manufacturer/Model: _____

Instructions for Completing Checklist

This checklist may be used to document the results of the Seismic Walkdown of an item of equipment on the SWEL. The space below each of the following questions may be used to record the results of judgments and findings. Additional space is provided at the end of this checklist for documenting other comments.

Anchorage

- | | | |
|----|---|---------|
| 1. | Is anchorage configuration verification required (i.e., is the item one of the 50% of SWEL items requiring such verification)?
<i>CANNOT OPEN OR SEE ANY ANCHORAGE</i> | Yes |
| 2. | Is the anchorage free of bent, broken, missing or loose hardware? | Unknown |
| 3. | Is the anchorage free of corrosion that is more than mild surface oxidation? | Unknown |
| 4. | Is the anchorage free of visible cracks in the concrete near the anchors? | Unknown |
| 5. | Is the anchorage configuration consistent with plant documentation? (Note: This question only applies if the item is one of the 50% for which an anchorage configuration verification is required.) | Unknown |
| 6. | Based on the above anchorage evaluations, is the anchorage free of potentially adverse seismic conditions?
<i>CANNOT OPEN OR SEE ANY ANCHORAGE</i> | Unknown |

Interaction Effects

Status: Y N U

Seismic Walkdown Checklist (SWC)

Equipment ID No.: 1-TDAB

Equipment Class: (14) Distribution Panels

Equipment Description: 250VDC TRAIN 'B' TRANSFER CABINET

7. Are soft targets free from impact by nearby equipment or structures? Yes

8. Are overhead equipment, distribution systems, ceiling tiles and lighting, and masonry block walls not likely to collapse onto the equipment? Yes

9. Do attached lines have adequate flexibility to avoid damage? Yes

10. Based on the above seismic interaction evaluations, is equipment free of potentially adverse seismic interaction effects? Yes

Other Adverse Conditions

11. Have you looked for and found no adverse seismic conditions that could adversely affect the safety functions of the equipment? Unknown
Could not open due to safety concern

Comments

Evaluated by:  George G Thomas Date: 10/18/12

 Neda Stoeva 10/18/12

Status: Y N U

Seismic Walkdown Checklist (SWC)

Equipment ID No.: 1-TDAB

Equipment Class: (14) Distribution Panels

Equipment Description: 250VDC TRAIN 'B' TRANSFER CABINET

Photos



P9170711



P9170712

Status: Y N U

Seismic Walkdown Checklist (SWC)

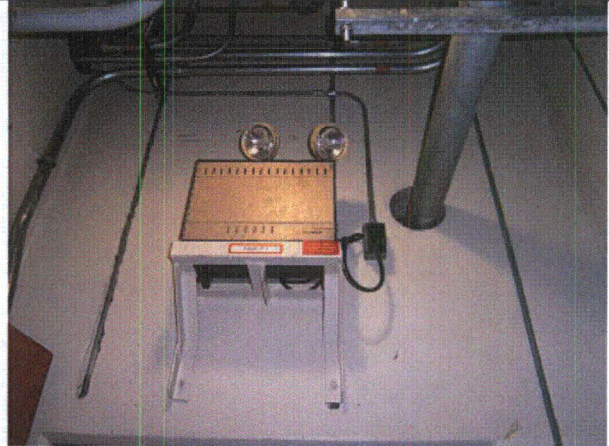
Equipment ID No.: 1-TDAB

Equipment Class: (14) Distribution Panels

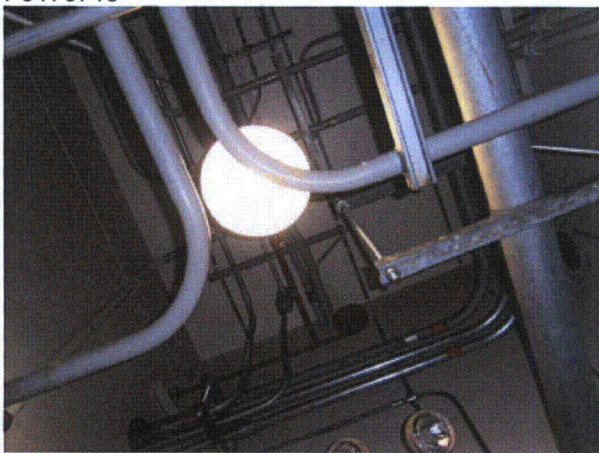
Equipment Description: 250VDC TRAIN 'B' TRANSFER CABINET



P9170713



P9170714



P9170715

Status: Y N U

Seismic Walkdown Checklist (SWC)

Equipment ID No.: 1-TR11A

Equipment Class: (4) Transformers

Equipment Description: 600VAC BUS 11A SUPPLY TRANSFORMER

Project: DC Cook 1 SWEL

Location (Bldg, Elev, Room/Area): AB1, 609.00 ft, 204

Manufacturer/Model: _____

Instructions for Completing Checklist

This checklist may be used to document the results of the Seismic Walkdown of an item of equipment on the SWEL. The space below each of the following questions may be used to record the results of judgments and findings. Additional space is provided at the end of this checklist for documenting other comments.

Anchorage

1. Is anchorage configuration verification required (i.e., is the item one of the 50% of SWEL items requiring such verification)? No

2. Is the anchorage free of bent, broken, missing or loose hardware? Yes

3. Is the anchorage free of corrosion that is more than mild surface oxidation? Yes

4. Is the anchorage free of visible cracks in the concrete near the anchors? Yes

5. Is the anchorage configuration consistent with plant documentation? (Note: This question only applies if the item is one of the 50% for which an anchorage configuration verification is required.) Not Applicable

6. Based on the above anchorage evaluations, is the anchorage free of potentially adverse seismic conditions? Yes

Interaction Effects

Status: Y N U

Seismic Walkdown Checklist (SWC)

Equipment ID No.: 1-TR11A

Equipment Class: (4) Transformers

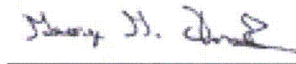
Equipment Description: 600VAC BUS 11A SUPPLY TRANSFORMER

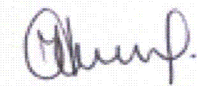
7. Are soft targets free from impact by nearby equipment or structures? Yes
8. Are overhead equipment, distribution systems, ceiling tiles and lighting, and masonry block walls not likely to collapse onto the equipment? No
Fire extinguishers on short hooks - AR 2012-11669 was issued. Block wall - OK per DWG 1-4034, Wall W-1
9. Do attached lines have adequate flexibility to avoid damage? Yes
10. Based on the above seismic interaction evaluations, is equipment free of potentially adverse seismic interaction effects? No

Other Adverse Conditions

11. Have you looked for and found no adverse seismic conditions that could adversely affect the safety functions of the equipment? Yes
Could not open - anchorage was verified.

Comments

Evaluated by:  George G Thomas Date: 10/18/12

 Neda Stoeva 10/18/12

Photos

Status: Y N U

Seismic Walkdown Checklist (SWC)

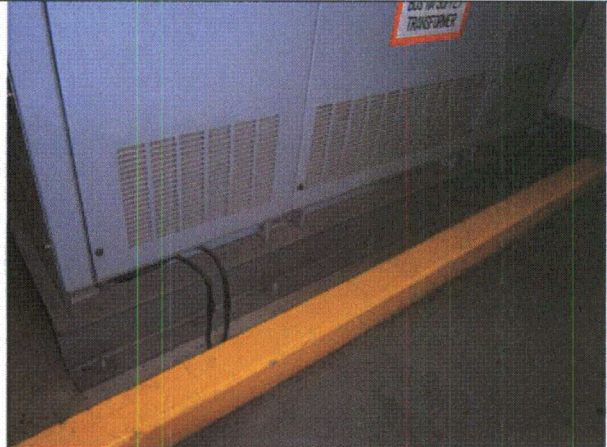
Equipment ID No.: 1-TR11A

Equipment Class: (4) Transformers

Equipment Description: 600VAC BUS 11A SUPPLY TRANSFORMER



P9170740



P9170741



P9170742



P9170743

Status: Y N U

Seismic Walkdown Checklist (SWC)

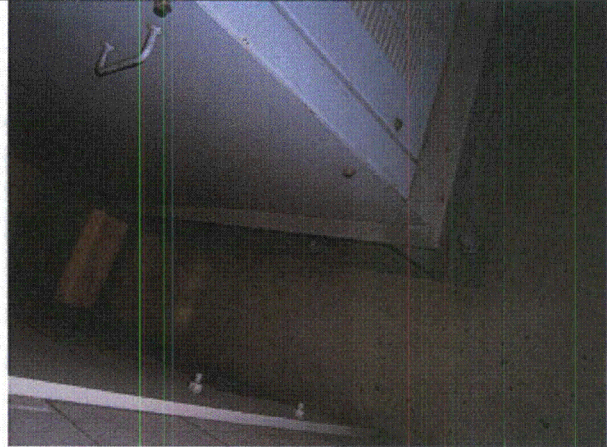
Equipment ID No.: 1-TR11A

Equipment Class: (4) Transformers

Equipment Description: 600VAC BUS 11A SUPPLY TRANSFORMER



P9170744



P9170745



P9170746

Status: Y N U

Seismic Walkdown Checklist (SWC)

Equipment ID No.: 1-TR-AFWX

Equipment Class: (4) Transformers

Equipment Description: 120/208VAC AUXILIARY FEEDWATER DISTRIBUTION PANEL

Project: DC Cook 1 SWEL

Location (Bldg, Elev, Room/Area): AB1, 587.00 ft, 122

Manufacturer/Model: _____

Instructions for Completing Checklist

This checklist may be used to document the results of the Seismic Walkdown of an item of equipment on the SWEL. The space below each of the following questions may be used to record the results of judgments and findings. Additional space is provided at the end of this checklist for documenting other comments.

Anchorage

1. Is anchorage configuration verification required (i.e., is the item one of the 50% of SWEL items requiring such verification)? Yes
SQUG 1-TR-AFWX REV0

2. Is the anchorage free of bent, broken, missing or loose hardware? Yes

3. Is the anchorage free of corrosion that is more than mild surface oxidation? Yes

4. Is the anchorage free of visible cracks in the concrete near the anchors? Yes

5. Is the anchorage configuration consistent with plant documentation? (Note: This question only applies if the item is one of the 50% for which an anchorage configuration verification is required.) Yes

6. Based on the above anchorage evaluations, is the anchorage free of potentially adverse seismic conditions? Yes

Interaction Effects

Status: Y N U

Seismic Walkdown Checklist (SWC)

Equipment ID No.: 1-TR-AFWX

Equipment Class: (4) Transformers

Equipment Description: 120/208VAC AUXILIARY FEEDWATER DISTRIBUTION PANEL

7. Are soft targets free from impact by nearby equipment or structures? Yes

8. Are overhead equipment, distribution systems, ceiling tiles and lighting, and masonry block walls not likely to collapse onto the equipment? Yes

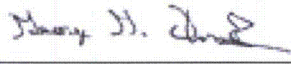
9. Do attached lines have adequate flexibility to avoid damage? Yes

10. Based on the above seismic interaction evaluations, is equipment free of potentially adverse seismic interaction effects? Yes

Other Adverse Conditions

11. Have you looked for and found no adverse seismic conditions that could adversely affect the safety functions of the equipment? Yes

Comments

Evaluated by:  George G Thomas Date: 10/18/12

 Neda Stoeva 10/18/12

Photos

Status: Y N U

Seismic Walkdown Checklist (SWC)

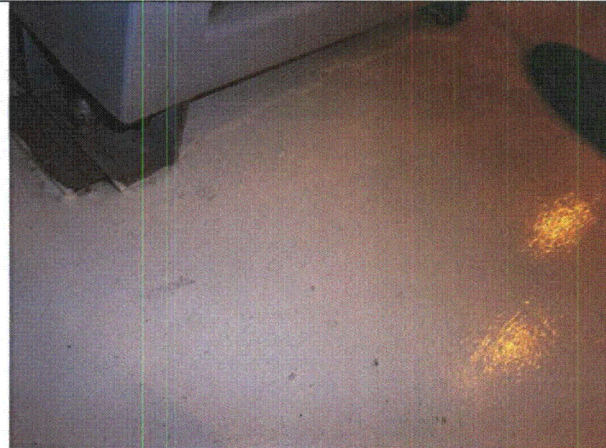
Equipment ID No.: 1-TR-AFWX

Equipment Class: (4) Transformers

Equipment Description: 120/208VAC AUXILIARY FEEDWATER DISTRIBUTION PANEL



P9130343



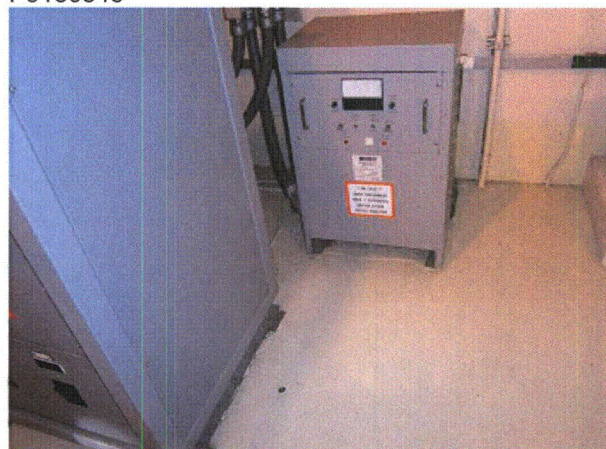
P9130344



P9130345



P9130346



Status: Y N U

Seismic Walkdown Checklist (SWC)

Equipment ID No.: 1-TR-AFWX

Equipment Class: (4) Transformers

Equipment Description: 120/208VAC AUXILIARY FEEDWATER DISTRIBUTION PANEL

P9130347

P9130348



P9130349



P9130350

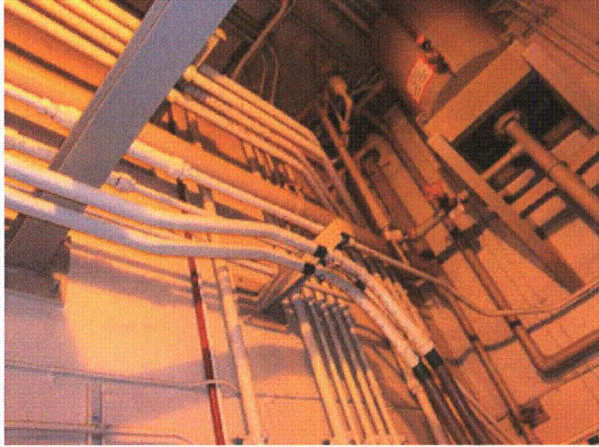
Status: Y N U

Seismic Walkdown Checklist (SWC)

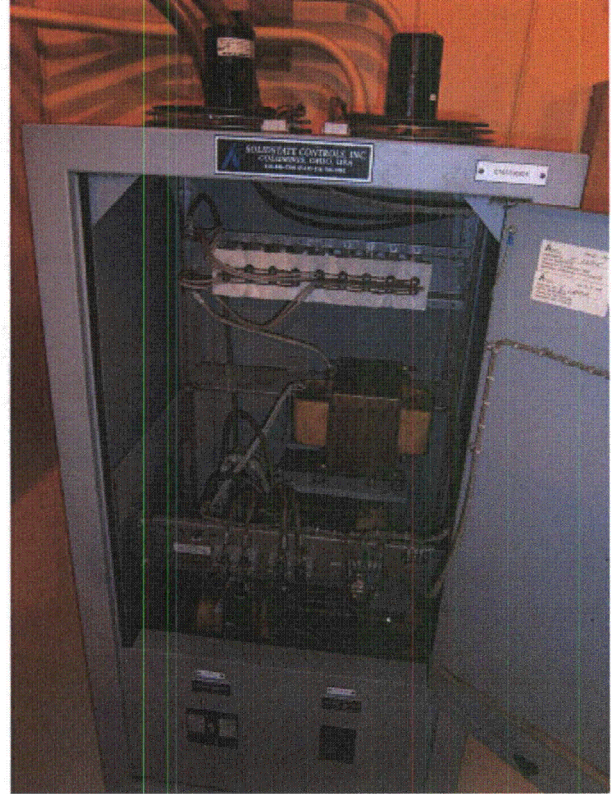
Equipment ID No.: 1-TR-AFWX

Equipment Class: (4) Transformers

Equipment Description: 120/208VAC AUXILIARY FEEDWATER DISTRIBUTION PANEL



P9130351



P9130378

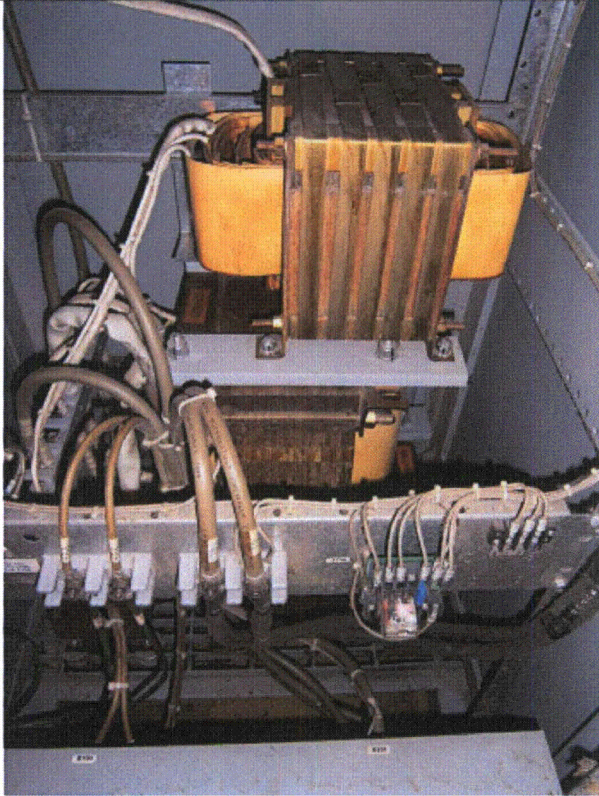
Status: Y N U

Seismic Walkdown Checklist (SWC)

Equipment ID No.: 1-TR-AFWX

Equipment Class: (4) Transformers

Equipment Description: 120/208VAC AUXILIARY FEEDWATER DISTRIBUTION PANEL



P9130379

Status: Y N U

Seismic Walkdown Checklist (SWC)

Equipment ID No.: 1-WMO-702

Equipment Class: (8) Motor-Operated and Solenoid-Operated Valves

Equipment Description: WEST ESSENTIAL SERVICE WTR PUMP PP-7W DISCH S/O VA

Project: DC Cook 1 SWEL

Location (Bldg, Elev, Room/Area): SH1, 591.00 ft, 136

Manufacturer/Model: _____

Instructions for Completing Checklist

This checklist may be used to document the results of the Seismic Walkdown of an item of equipment on the SWEL. The space below each of the following questions may be used to record the results of judgments and findings. Additional space is provided at the end of this checklist for documenting other comments.

Anchorage

1. Is anchorage configuration verification required (i.e., is the item one of the 50% of SWEL items requiring such verification)? No

2. Is the anchorage free of bent, broken, missing or loose hardware? Not Applicable

3. Is the anchorage free of corrosion that is more than mild surface oxidation? Not Applicable

4. Is the anchorage free of visible cracks in the concrete near the anchors? Not Applicable

5. Is the anchorage configuration consistent with plant documentation? (Note: This question only applies if the item is one of the 50% for which an anchorage configuration verification is required.) Not Applicable

6. Based on the above anchorage evaluations, is the anchorage free of potentially adverse seismic conditions? Yes

Interaction Effects

Status: Y N U

Seismic Walkdown Checklist (SWC)

Equipment ID No.: 1-WMO-702

Equipment Class: (8) Motor-Operated and Solenoid-Operated Valves

Equipment Description: WEST ESSENTIAL SERVICE WTR PUMP PP-7W DISCH S/O VA

7. Are soft targets free from impact by nearby equipment or structures? Yes

8. Are overhead equipment, distribution systems, ceiling tiles and lighting, and masonry block walls not likely to collapse onto the equipment? Yes

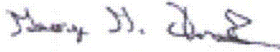
9. Do attached lines have adequate flexibility to avoid damage? Yes

10. Based on the above seismic interaction evaluations, is equipment free of potentially adverse seismic interaction effects? Yes

Other Adverse Conditions

11. Have you looked for and found no adverse seismic conditions that could adversely affect the safety functions of the equipment? Yes

Comments

Evaluated by:  George G Thomas Date: 10/18/12

 Neda Stoeva 10/18/12

Photos

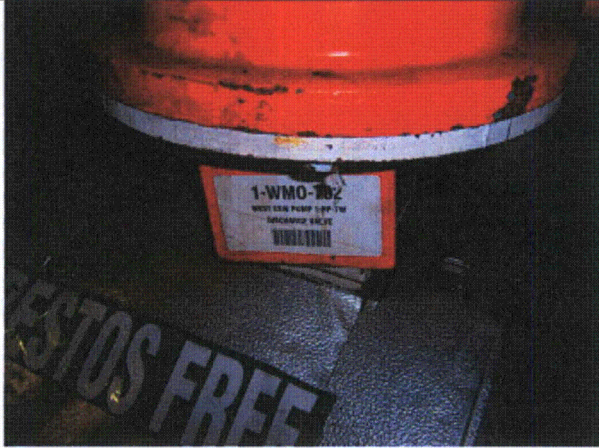
Status: Y N U

Seismic Walkdown Checklist (SWC)

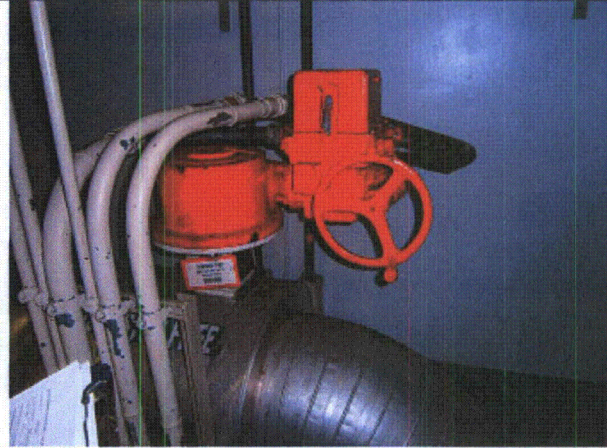
Equipment ID No.: 1-WMO-702

Equipment Class: (8) Motor-Operated and Solenoid-Operated Valves

Equipment Description: WEST ESSENTIAL SERVICE WTR PUMP PP-7W DISCH S/O VA



P9090012



P9090013

Status: Y N U

Seismic Walkdown Checklist (SWC)

Equipment ID No.: 1-WMO-715

Equipment Class: (8) Motor-Operated and Solenoid-Operated Valves

Equipment Description: WEST CONTAINMENT SPRAY HEAT EXCHANGER 1-HE-18W

Project: DC Cook 1 SWEL

Location (Bldg, Elev, Room/Area): AB1, 633.00 ft, 633

Manufacturer/Model: _____

Instructions for Completing Checklist

This checklist may be used to document the results of the Seismic Walkdown of an item of equipment on the SWEL. The space below each of the following questions may be used to record the results of judgments and findings. Additional space is provided at the end of this checklist for documenting other comments.

Anchorage

1. Is anchorage configuration verification required (i.e., is the item one of the 50% of SWEL items requiring such verification)? No

2. Is the anchorage free of bent, broken, missing or loose hardware? Not Applicable
Support for pipe OK by engineering (thread engagement of bolts) Ref DOC# A158433 01

3. Is the anchorage free of corrosion that is more than mild surface oxidation? Not Applicable

4. Is the anchorage free of visible cracks in the concrete near the anchors? Not Applicable

5. Is the anchorage configuration consistent with plant documentation? (Note: This question only applies if the item is one of the 50% for which an anchorage configuration verification is required.) Not Applicable

6. Based on the above anchorage evaluations, is the anchorage free of potentially adverse seismic conditions? Yes

Interaction Effects

Status: Y N U

Seismic Walkdown Checklist (SWC)

Equipment ID No.: 1-WMO-715

Equipment Class: (8) Motor-Operated and Solenoid-Operated Valves

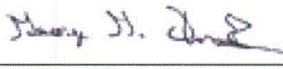
Equipment Description: WEST CONTAINMENT SPRAY HEAT EXCHANGER 1-HE-18W

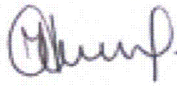
7. Are soft targets free from impact by nearby equipment or structures? Yes
8. Are overhead equipment, distribution systems, ceiling tiles and lighting, and masonry block walls not likely to collapse onto the equipment? Yes
9. Do attached lines have adequate flexibility to avoid damage? Yes
10. Based on the above seismic interaction evaluations, is equipment free of potentially adverse seismic interaction effects? Yes

Other Adverse Conditions

11. Have you looked for and found no adverse seismic conditions that could adversely affect the safety functions of the equipment? Yes

Comments

Evaluated by:  George G Thomas Date: 10/18/12

 Neda Stoeva 10/18/12

Photos

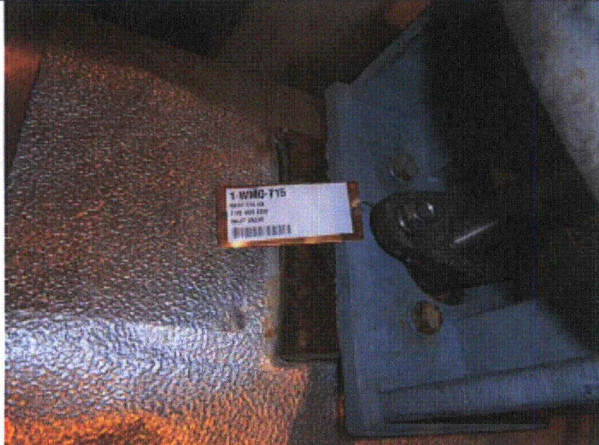
Status: Y N U

Seismic Walkdown Checklist (SWC)

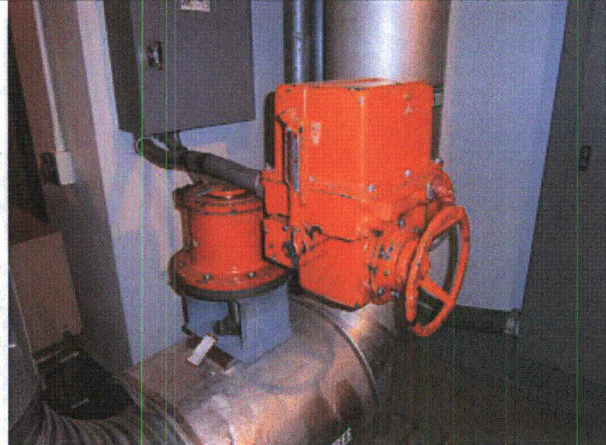
Equipment ID No.: 1-WMO-715

Equipment Class: (8) Motor-Operated and Solenoid-Operated Valves

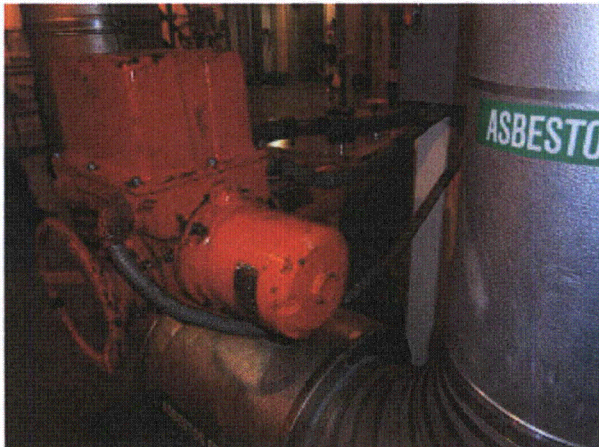
Equipment Description: WEST CONTAINMENT SPRAY HEAT EXCHANGER 1-HE-18W



P9100095



P9100096



P9100097



P9100098

Status: Y N U

Seismic Walkdown Checklist (SWC)

Equipment ID No.: 1-WMO-717

Equipment Class: (8) Motor-Operated and Solenoid-Operated Valves

Equipment Description: WEST CONTAINMENT SPRAY HEAT EXCHANGER ESSENTIAL

Project: DC Cook 1 SWEL

Location (Bldg, Elev, Room/Area): AB1, 609.00 ft, 609

Manufacturer/Model: _____

Instructions for Completing Checklist

This checklist may be used to document the results of the Seismic Walkdown of an item of equipment on the SWEL. The space below each of the following questions may be used to record the results of judgments and findings. Additional space is provided at the end of this checklist for documenting other comments.

Anchorage

- | | |
|--|----------------|
| 1. Is anchorage configuration verification required (i.e., is the item one of the 50% of SWEL items requiring such verification)? | No |
| 2. Is the anchorage free of bent, broken, missing or loose hardware? | Not Applicable |
| 3. Is the anchorage free of corrosion that is more than mild surface oxidation? | Not Applicable |
| 4. Is the anchorage free of visible cracks in the concrete near the anchors? | Not Applicable |
| 5. Is the anchorage configuration consistent with plant documentation? (Note: This question only applies if the item is one of the 50% for which an anchorage configuration verification is required.) | Not Applicable |
| 6. Based on the above anchorage evaluations, is the anchorage free of potentially adverse seismic conditions? | Yes |

Interaction Effects

Status: Y N U

Seismic Walkdown Checklist (SWC)

Equipment ID No.: 1-WMO-717

Equipment Class: (8) Motor-Operated and Solenoid-Operated Valves

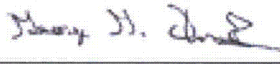
Equipment Description: WEST CONTAINMENT SPRAY HEAT EXCHANGER ESSENTIAL

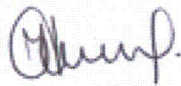
7. Are soft targets free from impact by nearby equipment or structures? Yes
8. Are overhead equipment, distribution systems, ceiling tiles and lighting, and masonry block walls not likely to collapse onto the equipment? No
Fire extinguishers by 1-WMO-717 - short hooks - AR 2012-11669 was issued.
9. Do attached lines have adequate flexibility to avoid damage? Yes
10. Based on the above seismic interaction evaluations, is equipment free of potentially adverse seismic interaction effects? No

Other Adverse Conditions

11. Have you looked for and found no adverse seismic conditions that could adversely affect the safety functions of the equipment? Yes

Comments

Evaluated by:  George G Thomas Date: 10/18/12

 Neda Stoeva 10/18/12

Photos

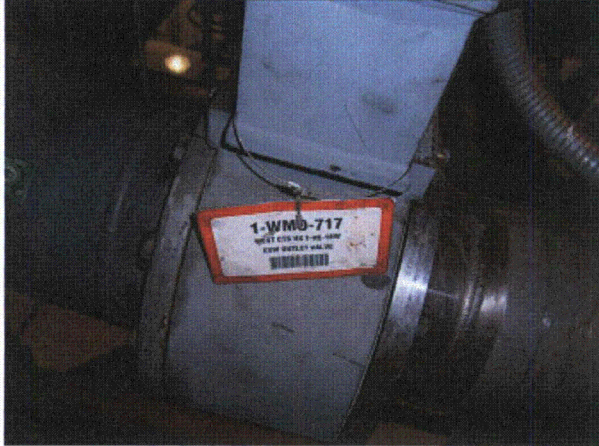
Status: Y N U

Seismic Walkdown Checklist (SWC)

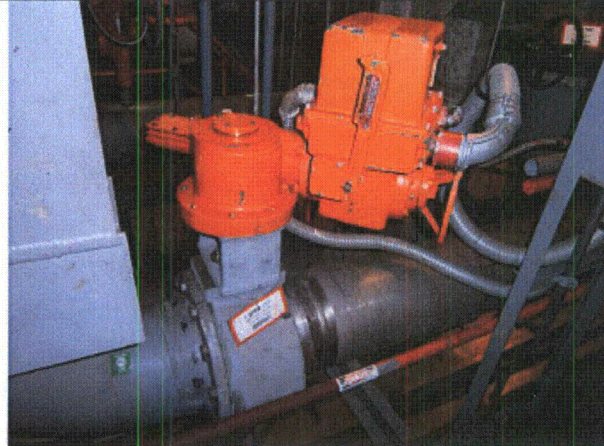
Equipment ID No.: 1-WMO-717

Equipment Class: (8) Motor-Operated and Solenoid-Operated Valves

Equipment Description: WEST CONTAINMENT SPRAY HEAT EXCHANGER ESSENTIAL



P9100087



P9100088



P9100089

Status: Y N U

Seismic Walkdown Checklist (SWC)

Equipment ID No.: 1-WMO-744

Equipment Class: (8) Motor-Operated and Solenoid-Operated Valves

Equipment Description: ESSENTIAL SERVICE WATER TO WEST MOTOR DRIVEN

Project: DC Cook 1 SWEL

Location (Bldg, Elev, Room/Area): TB1, 591.00 ft, 51

Manufacturer/Model: _____

Instructions for Completing Checklist

This checklist may be used to document the results of the Seismic Walkdown of an item of equipment on the SWEL. The space below each of the following questions may be used to record the results of judgments and findings. Additional space is provided at the end of this checklist for documenting other comments.

Anchorage

1. Is anchorage configuration verification required (i.e., is the item one of the 50% of SWEL items requiring such verification)? No

2. Is the anchorage free of bent, broken, missing or loose hardware? Not Applicable

3. Is the anchorage free of corrosion that is more than mild surface oxidation? Not Applicable

4. Is the anchorage free of visible cracks in the concrete near the anchors? Not Applicable

5. Is the anchorage configuration consistent with plant documentation? (Note: This question only applies if the item is one of the 50% for which an anchorage configuration verification is required.) Not Applicable

6. Based on the above anchorage evaluations, is the anchorage free of potentially adverse seismic conditions? Yes

Interaction Effects

Status: Y N U

Seismic Walkdown Checklist (SWC)

Equipment ID No.: 1-WMO-744

Equipment Class: (8) Motor-Operated and Solenoid-Operated Valves

Equipment Description: ESSENTIAL SERVICE WATER TO WEST MOTOR DRIVEN

7. Are soft targets free from impact by nearby equipment or structures? Yes

8. Are overhead equipment, distribution systems, ceiling tiles and lighting, and masonry block walls not likely to collapse onto the equipment? Yes

9. Do attached lines have adequate flexibility to avoid damage? Yes

10. Based on the above seismic interaction evaluations, is equipment free of potentially adverse seismic interaction effects? Yes

Other Adverse Conditions

11. Have you looked for and found no adverse seismic conditions that could adversely affect the safety functions of the equipment? Yes

Bottom unistrut left bolt missing, unistrut holds up electrical panel for 1-WMO-744 - Acceptable As Is per CR 99-9360-02

Comments

Evaluated by:  George G Thomas Date: 10/18/12

 Neda Stoeva 10/18/12

Photos

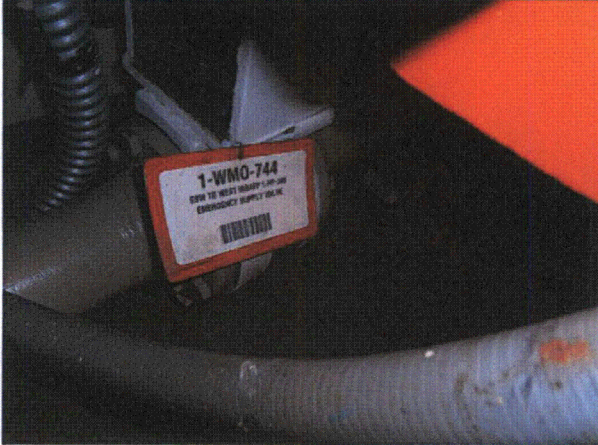
Status: Y N U

Seismic Walkdown Checklist (SWC)

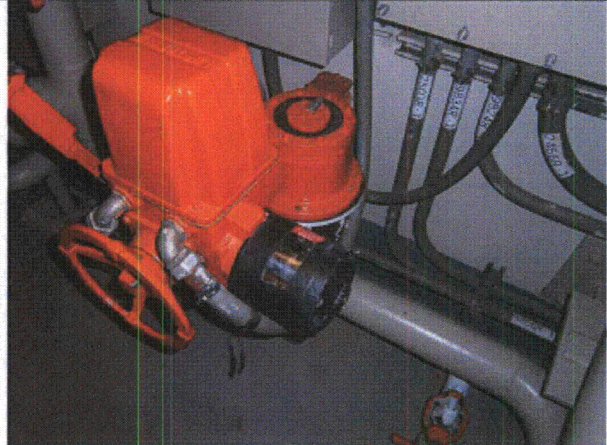
Equipment ID No.: 1-WMO-744

Equipment Class: (8) Motor-Operated and Solenoid-Operated Valves

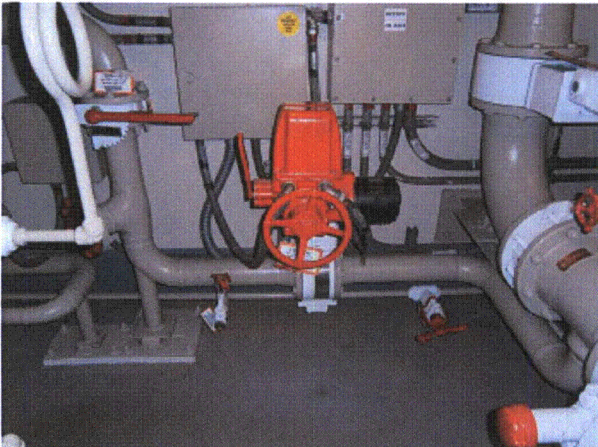
Equipment Description: ESSENTIAL SERVICE WATER TO WEST MOTOR DRIVEN



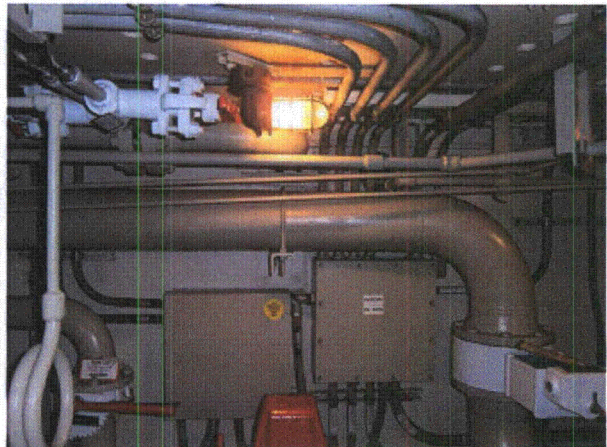
P9170013



P9170014



P9170015



P9170016

Status: Y N U

Seismic Walkdown Checklist (SWC)

Equipment ID No.: 1-WMO-753

Equipment Class: (8) Motor-Operated and Solenoid-Operated Valves

Equipment Description: ESSENTIAL SERVICE WATER TO TURBINE DRIVEN

Project: DC Cook 1 SWEL

Location (Bldg, Elev, Room/Area): TB1, 591.00 ft, 50

Manufacturer/Model:

Instructions for Completing Checklist

This checklist may be used to document the results of the Seismic Walkdown of an item of equipment on the SWEL. The space below each of the following questions may be used to record the results of judgments and findings. Additional space is provided at the end of this checklist for documenting other comments.

Anchorage

1. Is anchorage configuration verification required (i.e., is the item one of the 50% of SWEL items requiring such verification)? No

2. Is the anchorage free of bent, broken, missing or loose hardware? Not Applicable

3. Is the anchorage free of corrosion that is more than mild surface oxidation? Not Applicable

4. Is the anchorage free of visible cracks in the concrete near the anchors? Not Applicable

5. Is the anchorage configuration consistent with plant documentation? (Note: This question only applies if the item is one of the 50% for which an anchorage configuration verification is required.) Not Applicable

6. Based on the above anchorage evaluations, is the anchorage free of potentially adverse seismic conditions? Yes

Interaction Effects

Status: Y N U

Seismic Walkdown Checklist (SWC)

Equipment ID No.: 1-WMO-753

Equipment Class: (8) Motor-Operated and Solenoid-Operated Valves

Equipment Description: ESSENTIAL SERVICE WATER TO TURBINE DRIVEN

7. Are soft targets free from impact by nearby equipment or structures? Yes

8. Are overhead equipment, distribution systems, ceiling tiles and lighting, and masonry block walls not likely to collapse onto the equipment? Yes

9. Do attached lines have adequate flexibility to avoid damage? Yes

10. Based on the above seismic interaction evaluations, is equipment free of potentially adverse seismic interaction effects? Yes

Other Adverse Conditions

11. Have you looked for and found no adverse seismic conditions that could adversely affect the safety functions of the equipment? Yes

Comments

Evaluated by:  George G Thomas Date: 10/18/12

 Neda Stoeva 10/18/12

Photos

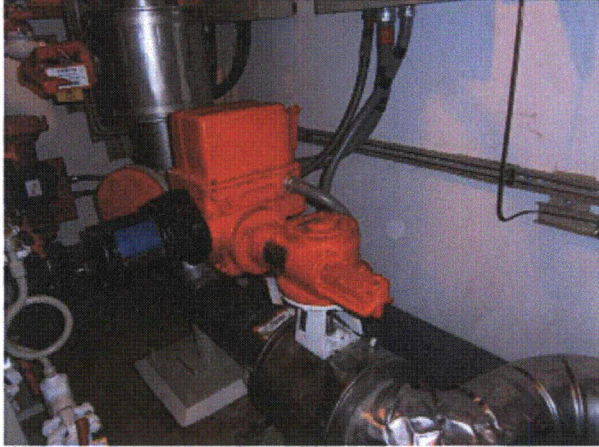
Status: Y N U

Seismic Walkdown Checklist (SWC)

Equipment ID No.: 1-WMO-753

Equipment Class: (8) Motor-Operated and Solenoid-Operated Valves

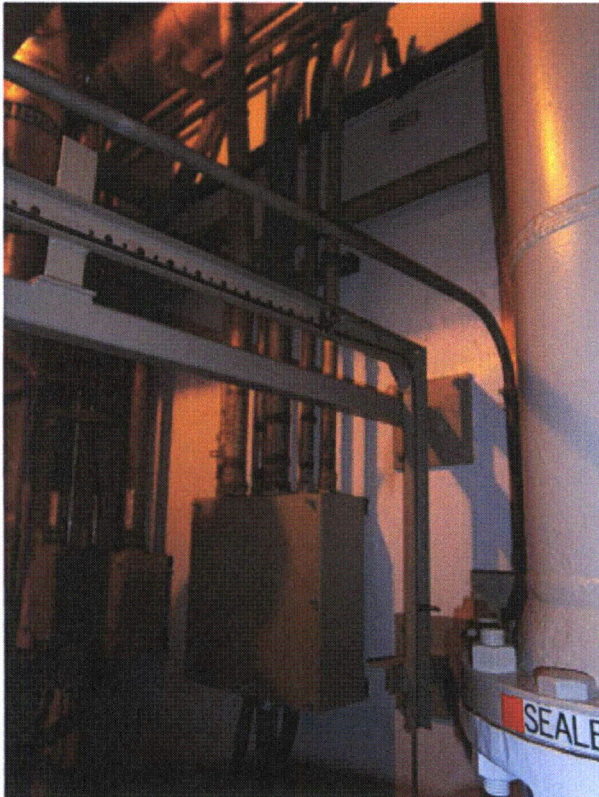
Equipment Description: ESSENTIAL SERVICE WATER TO TURBINE DRIVEN



P9170018



P9170019



P9170020

Status: Y N U

Seismic Walkdown Checklist (SWC)

Equipment ID No.: 1-WPA-702

Equipment Class: (18) Instruments on Racks

Equipment Description: WEST ESW PUMP PP-7W DISCH LOW PRES ALARM XMTR

Project: DC Cook 1 SWEL

Location (Bldg, Elev, Room/Area): SH1, 591.00 ft, 136

Manufacturer/Model:

Instructions for Completing Checklist

This checklist may be used to document the results of the Seismic Walkdown of an item of equipment on the SWEL. The space below each of the following questions may be used to record the results of judgments and findings. Additional space is provided at the end of this checklist for documenting other comments.

Anchorage

1. Is anchorage configuration verification required (i.e., is the item one of the 50% of SWEL items requiring such verification)? No
2 U-bolts

2. Is the anchorage free of bent, broken, missing or loose hardware? Yes
Vertical bolts at top of rack do not have full thread engagement, but are OK, because they are only loaded in shear

3. Is the anchorage free of corrosion that is more than mild surface oxidation? Yes

4. Is the anchorage free of visible cracks in the concrete near the anchors? Not Applicable
Mounted on instrument rack

5. Is the anchorage configuration consistent with plant documentation? (Note: This question only applies if the item is one of the 50% for which an anchorage configuration verification is required.) Not Applicable

6. Based on the above anchorage evaluations, is the anchorage free of potentially adverse seismic conditions? Yes

Interaction Effects

Status: Y N U

Seismic Walkdown Checklist (SWC)

Equipment ID No.: 1-WPA-702

Equipment Class: (18) Instruments on Racks

Equipment Description: WEST ESW PUMP PP-7W DISCH LOW PRES ALARM XMTR

7. Are soft targets free from impact by nearby equipment or structures? Yes

8. Are overhead equipment, distribution systems, ceiling tiles and lighting, and masonry block walls not likely to collapse onto the equipment? Yes

9. Do attached lines have adequate flexibility to avoid damage? Yes

10. Based on the above seismic interaction evaluations, is equipment free of potentially adverse seismic interaction effects? Yes

Other Adverse Conditions

11. Have you looked for and found no adverse seismic conditions that could adversely affect the safety functions of the equipment? Yes

Comments

Evaluated by:  George G Thomas Date: 10/18/12

 Neda Stoeva 10/18/12

Photos

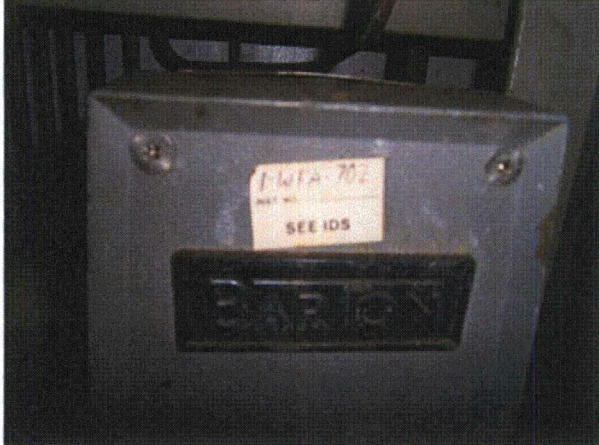
Status: Y N U

Seismic Walkdown Checklist (SWC)

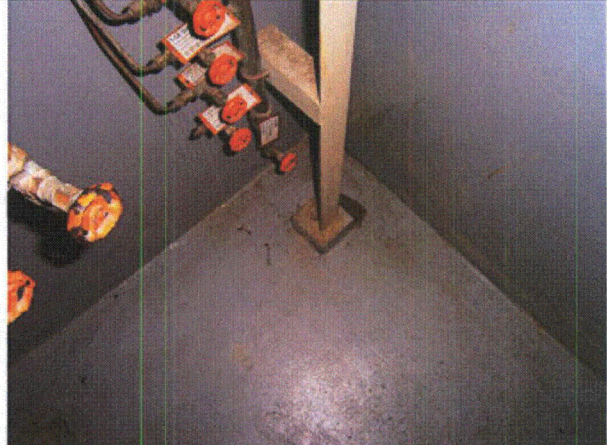
Equipment ID No.: 1-WPA-702

Equipment Class: (18) Instruments on Racks

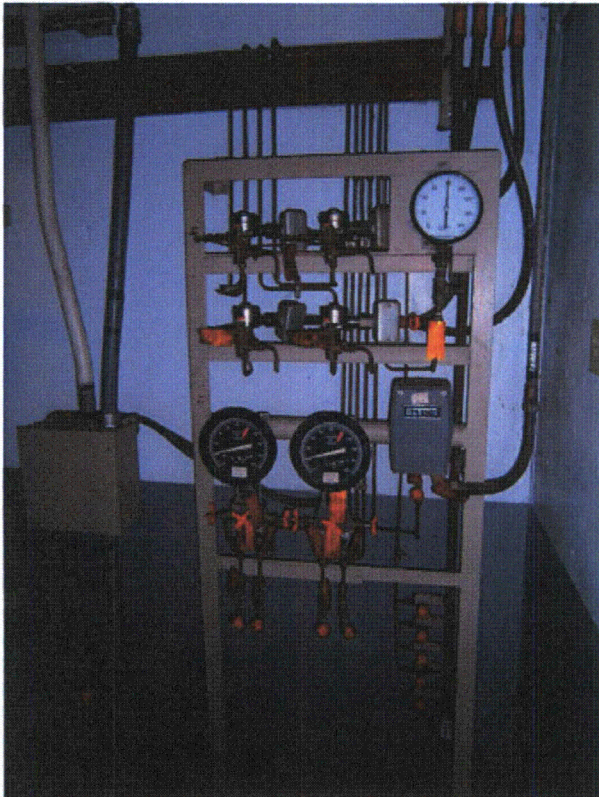
Equipment Description: WEST ESW PUMP PP-7W DISCH LOW PRES ALARM XMTR



P9090018



P9090019



P9090020



P9090021

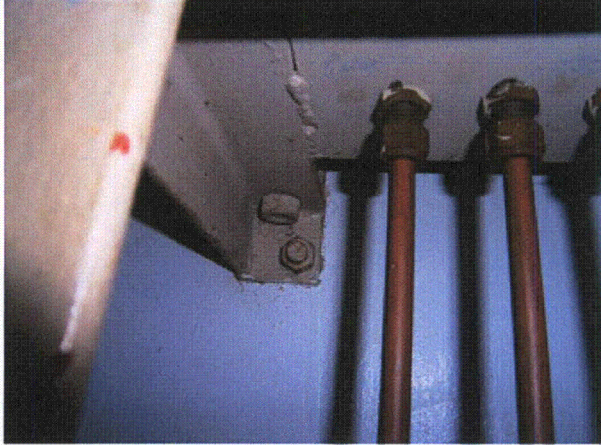
Status: Y N U

Seismic Walkdown Checklist (SWC)

Equipment ID No.: 1-WPA-702

Equipment Class: (18) Instruments on Racks

Equipment Description: WEST ESW PUMP PP-7W DISCH LOW PRES ALARM XMTR



P9090022



P9090023

Status: Y N U

Seismic Walkdown Checklist (SWC)

Equipment ID No.: 1-XPC-211

Equipment Class: (18) Instruments on Racks

Equipment Description: AB EMER DIESEL STARTING AIR RECEIVER QT-141-AB1 PRESSURE XMTR

Project: DC Cook 1 SWEL

Location (Bldg, Elev, Room/Area): AB1, 587.00 ft, 121

Manufacturer/Model:

Instructions for Completing Checklist

This checklist may be used to document the results of the Seismic Walkdown of an item of equipment on the SWEL. The space below each of the following questions may be used to record the results of judgments and findings. Additional space is provided at the end of this checklist for documenting other comments.

Anchorage

1. Is anchorage configuration verification required (i.e., is the item one of the 50% of SWEL items requiring such verification)? No

2. Is the anchorage free of bent, broken, missing or loose hardware? Yes

3. Is the anchorage free of corrosion that is more than mild surface oxidation? Yes

4. Is the anchorage free of visible cracks in the concrete near the anchors? Not Applicable
STEEL MOUNTED

5. Is the anchorage configuration consistent with plant documentation? (Note: This question only applies if the item is one of the 50% for which an anchorage configuration verification is required.) Not Applicable

6. Based on the above anchorage evaluations, is the anchorage free of potentially adverse seismic conditions? Yes
Inside 1-DGAB panel

Interaction Effects

Status: Y N U

Seismic Walkdown Checklist (SWC)

Equipment ID No.: 1-XPC-211

Equipment Class: (18) Instruments on Racks

AB EMER DIESEL STARTING AIR RECEIVER QT-141-AB1 PRESSURE

Equipment Description: XMTR

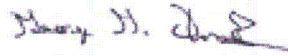
7. Are soft targets free from impact by nearby equipment or structures? Yes
8. Are overhead equipment, distribution systems, ceiling tiles and lighting, and masonry block walls not likely to collapse onto the equipment? Yes
9. Do attached lines have adequate flexibility to avoid damage? Yes
10. Based on the above seismic interaction evaluations, is equipment free of potentially adverse seismic interaction effects? Yes

Other Adverse Conditions

11. Have you looked for and found no adverse seismic conditions that could adversely affect the safety functions of the equipment? Yes

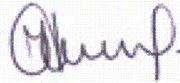
Comments

Evaluated by:



George G Thomas

Date: 10/18/12



Neda Stoeva

10/18/12

Photos

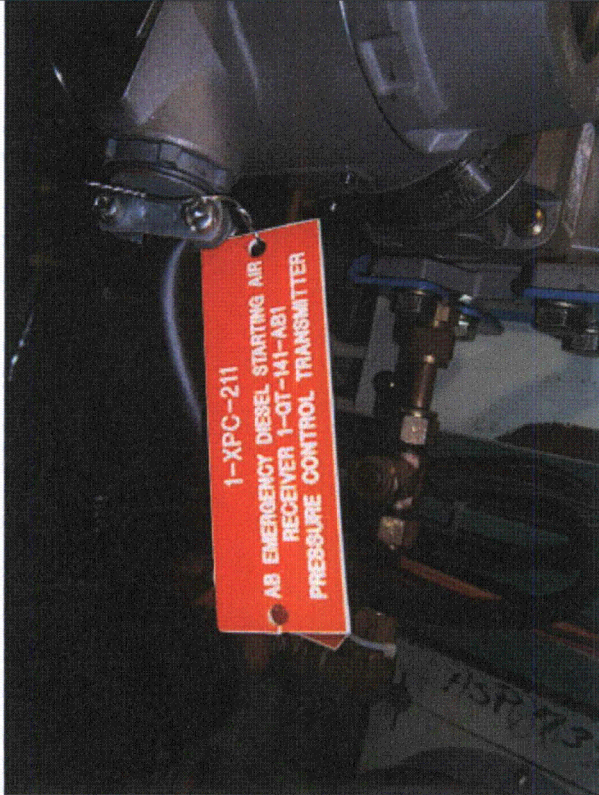
Status: Y N U

Seismic Walkdown Checklist (SWC)

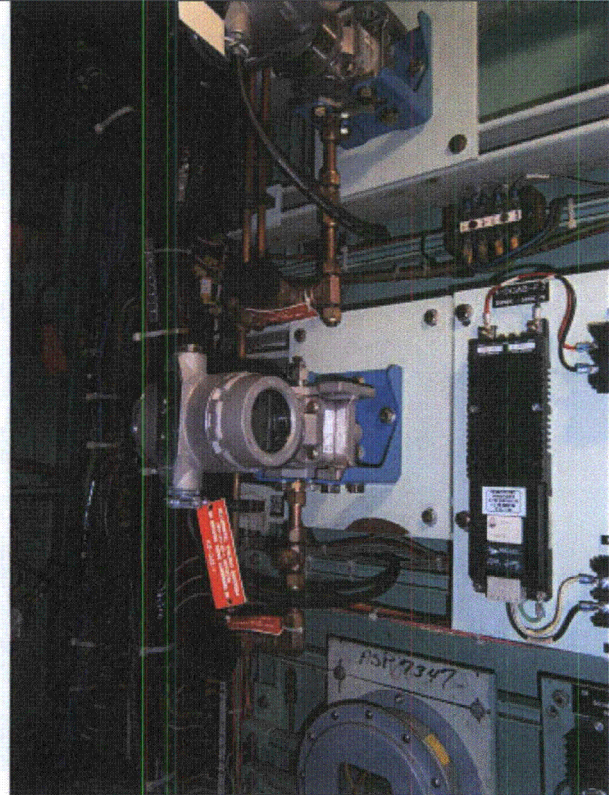
Equipment ID No.: 1-XPC-211

Equipment Class: (18) Instruments on Racks

Equipment Description: AB EMER DIESEL STARTING AIR RECEIVER QT-141-AB1 PRESSURE XMTR



P9130252



P9130253

Table C-2 Summary of Seismic Walkdown Checklists SWEL1 for DCCNP2			
COMPONENT ID	DESCRIPTION	Anchorage Verification Confirmed	PAGE
12-HE-16S	Spent Fuel Pit Heat Exchanger	Y	C-395
12-HV-ESW-4	UNIT 2 WEST ESW PUMP ROOM SUPPLY VENTILATION FAN	Y	C-399
12-PASS	POST-ACCIDENT SAMPLING LIQUID AND GAS SAMPLING	Y	C-404
12-WMO-30-PB-STA	CIRCULATING WATER INTAKE TUNNEL SHUTOFF VALVE	N	C-409
2-ABD-A	600VAC MOTOR CONTROL CENTER ABD-A	N	C-412
2-ABD-B	600VAC MOTOR CONTROL CENTER ABD-B	Y	C-418
2-ACRA-2	CONTROL ROOM VENTILATION SOUTH AIR CONDITIONING	N	C-424
2-AFWX	120/208VAC AUXILIARY FEEDWATER DISTRIBUTION PANEL	N	C-427
2-AM-A	600VAC MOTOR CONTROL CENTER AM-A	N	C-432
2-BATT-AB	PLANT BATTERY AB	Y	C-437
2-BC-AB	PLANT BATTERY BATT-AB CONTROL PANEL	N	C-441
2-BC-AB1	PLANT BATTERY BATT-AB BATTERY CHARGER #1	N	C-445
2-BC-AB2	PLANT BATTERY BATT-AB CHARGER #2	Y	C-451
2-BCTC-AB	PLANT BATTERY CHARGERS BC-AB1 AND BC-AB2 TRANSFER	N	C-455
2-BLI-130	STEAM GENERATOR OME-3-3 WIDE RANGE LEVEL INDICATOR	N	C-458
2-BLP-132	STEAM GENERATOR OME-3-1 CHANNEL III REACTOR	Y	C-462
2-CCV-AB	250VDC TRAIN 'B' CRITICAL SOLENOID VALVES	Y	C-468
2-CCW	COMPONENT COOLING WATER CONTROL PANEL	Y	C-476
2-CFI-420	COMPONENT COOLING WATER TO WEST COMPONENT COOLING	N	C-480
2-CFI-429	WEST RHR HEAT EXCHANGER HE-17W COMPONENT COOLING	Y	C-484
2-CLI-114	CONDENSATE STORAGE TANK TK-32 LEVEL INDICATOR	N	C-487
2-CRID-3	120VAC CONTROL ROOM INSTRUMENT DISTRIBUTION	Y	C-490
2-CRID-4-INV	120VAC CONTROL ROOM INSTRUMENT DISTRIBUTION SYSTEM	N	C-494
2-DGAB	AB EMERGENCY DIESEL GENERATOR OME-150-AB CONTROL	N	C-498

Table C-2 Summary of Seismic Walkdown Checklists SWEL1 for DCCNP2			
COMPONENT ID	DESCRIPTION	Anchorage Verification Confirmed	PAGE
2-DGAB-INV	AB EMERGENCY DIESEL GENERATOR OME-150-AB INVERTER	Y	C-506
2-ECR-23	CONTAINMENT LOWER VOLUME EAST AIR SAMPLE ESR-3	N	C-511
2-ESW	ESSENTIAL SERVICE WATER CONTROL PANEL	Y	C-514
2-EZC-A	600VAC MOTOR CONTROL CENTER EZC-A	N	C-519
2-EZC-A1	600VAC MOTOR CONTROL CENTER EZC-A1	Y	C-524
2-EZC-B	600VAC MOTOR CONTROL CENTER EZC-B	N	C-528
2-EZC-B1	600VAC MOTOR CONTROL CENTER EZC-B1	Y	C-533
2-FFI-240	AUXILIARY FEEDWATER TO STEAM GENERATOR OME-3-4	Y	C-536
2-HE-15W	WEST COMPONENT COOLING WATER HEAT EXCHANGER	Y	C-541
2-HE-17W	WEST RESIDUAL HEAT REMOVAL HEAT EXCHANGER	N	C-545
2-HE-18W	WEST CONTAINMENT SPRAY HEAT EXCHANGER	N	C-549
2-HV-ACRA-2	CONTROL ROOM VENTILATION SOUTH AIR CONDITIONING	Y	C-557
2-HV-AES-2	AUXILIARY BUILDING VENTILATION ENGINEERED SAFETY	N	C-561
2-HV-CEQ-1	CONTAINMENT HYDROGEN SKIMMER VENTILATION FAN #1	Y	C-567
2-HV-CEQ-2	CONTAINMENT HYDROGEN SKIMMER VENTILATION FAN #2	N	C-575
2-HV-DGX-2	AB EMERGENCY DIESEL GENERATOR ROOM VENTILATION	N	C-579
2-HV-SGRS-8	4KV ROOM 600 VOLT SWITCHGEAR TRANSFORMERS TR21A	Y	C-583
2-IFI-53	BORON INJECTION TO REACTOR COOLANT LOOP #3 FLOW	Y	C-586
2-IMO-222	WEST CONTAINMENT SPRAY PUMP PP-9W DISCHARGE TO	N	C-591
2-IMO-225	REFUELING WATER STORAGE TANK TO WEST CONTAINMENT	N	C-594
2-IMO-320	WEST RESIDUAL HEAT REMOVAL PUMP PP-35W SUCTION	N	C-597
2-IMO-331	WEST RHR TO UPPER CONTAINMENT SPRAY SHUTOFF VALVE	N	C-601
2-IMO-350	WEST RHR HEAT EXCHANGER OUTLET TO SAFETY INJECTION	N	C-604
2-IMO-52	BORON INJECTION TO REACTOR COOLANT LOOP #2 SHUTOFF	N	C-608

Table C-2 Summary of Seismic Walkdown Checklists SWEL1 for DCCNP2			
COMPONENT ID	DESCRIPTION	Anchorage Verification Confirmed	PAGE
2-IMO-911	REFUELING WATER STORAGE TANK TO CVCS CHARGING	N	C-613
2-MCAB	250VDC DISTRIBUTION PANEL MCAB	N	C-617
2-MCM-221	MAIN STEAM LEAD #2 TO AUXILIARY FEED PUMP TURBINE	N	C-621
2-MRV-243	STEAM GENERATOR OME-3-4 POWER OPERATED RELIEF	N	C-625
2-NLP-153	PRESSURIZER OME-4 PROTECTION CHANNEL 3 LEVEL	N	C-629
2-NPS-111	REACTOR VESSEL TRAIN 'B' WIDE RANGE PRESSURE	N	C-634
2-OME-150-AB-EN	AB EMERGENCY DIESEL GENERATOR ENGINE	Y	C-638
2-OME-34W	WEST ESSENTIAL SERVICE WATER STRAINER OME-34W	Y	C-644
2-PP-10W	WEST COMPONENT COOLING WATER PUMP	Y	C-648
2-PP-26S	SOUTH SAFETY INJECTION PUMP	Y	C-652
2-PP-35W	WEST RESIDUAL HEAT REMOVAL PUMP	Y	C-656
2-PP-3W	WEST MOTOR DRIVEN AUXILIARY FEEDWATER PUMP	N	C-660
2-PP-4	TURBINE DRIVEN AUXILIARY FEED PUMP	Y	C-664
2-PP-50W	WEST CENTRIFUGAL CHARGING PUMP	N	C-669
2-PP-7W	WEST ESSENTIAL SERVICE WATER PUMP	Y	C-673
2-PP-9W	WEST CONTAINMENT SPRAY PUMP	N	C-678
2-PS-A	600VAC MOTOR CONTROL CENTER PS-A	Y	C-683
2-QT-106-AB1	AB EMERGENCY DIESEL FUEL OIL TRANSFER PUMP #2	N	C-687
2-QT-107-AB	AB EMERGENCY DIESEL FUEL OIL DAY TANK	N	C-691
2-QT-130-AB2	AB EMERGENCY DIESEL JACKET WATER PUMP #2	N	C-695
2-QT-141-AB1	AB EMERGENCY DIESEL STARTING AIR RECEIVER #1	Y	C-699
2-QT-142-AB2	AB EMERGENCY DIESEL STARTING AIR COMPRESSOR #2	Y	C-704
2-QT-506	TURBINE DRIVEN AUXILIARY FEED PUMP PP-4 TRIP AND	N	C-708
2-RC	REACTOR CONTROL RODS CONTROL PANEL	Y	C-712
2-RPS-B	REACTOR PROTECTION AND SAFEGUARD ACTUATION TRAIN 'B' CABINET	N	C-716

Table C-2 Summary of Seismic Walkdown Checklists SWEL1 for DCCNP2			
COMPONENT ID	DESCRIPTION	Anchorage Verification Confirmed	PAGE
2-RPST-B	REACTOR PROTECTION AND SAFEGUARD ACTUATION	Y	C-721
2-RPSX-B	REACTOR PROTECTION AND SAFEGUARD ACTUATION	Y	C-725
2-SG	REACTOR PROTECTION AND SAFEGUARD ACTUATION	N	C-729
2-SIS	STEAM GENERATOR AND AUXILIARY FEED PUMP CONTROL	N	C-734
2-SPY	SAFETY INJECTION CONTROL PANEL	Y	C-740
2-T21A2	WEST MOTOR DRIVEN AUXILIARY FEEDWATER PUMP PP-3W	Y	C-745
2-TDAB	250VDC TRAIN 'B' TRANSFER CABINET	Y	C-751
2-WMO-704	WEST ESSENTIAL SERVICE WATER PUMP PP-7W DISCH S/O	N	C-754
2-WMO-716	WEST CONTAINMENT SPRAY HEAT EXCHANGER ESSENTIAL	N	C-757
2-WMO-718	WEST CONTAINMENT SPRAY HEAT EXCHANGER ESSENTIAL	N	C-760
2-WMO-744	ESSENTIAL SERVICE WATER TO WEST MOTOR DRIVEN	N	C-763
2-WMO-753	EMERGENCY ESSENTIAL SERVICE WATER SUPPLY TO TDAFP	N	C-766
2-WPA-703	E ESSENTIAL SERVICE WTR PP PP-7E DISCH LOW PRES	Y	C-769
2-WRV-768	E ESW PP PP-7W DISCH STN WEST BASKET B/W INLET S/O	N	C-774
2-XPC-211	AB EMER DIESEL STARTING AIR RECEIVER QT-141-AB1 PRESSURE XMTR	Y	C-777
2-XRV-222	AB EMERGENCY DIESEL REAR BANK STARTING AIR SHUTOFF	N	C-781

Status: Y N U

Seismic Walkdown Checklist (SWC)

Equipment ID No.: 12-HE-16S

Equipment Class: (21) Tanks and Heat Exchangers

Equipment Description: SPENT FUEL PIT HEAT EXCHANGER

Project: DC Cook 2 SWEL

Location (Bldg, Elev, Room/Area): AB2, 609.00 ft, 96

Manufacturer/Model:

Instructions for Completing Checklist

This checklist may be used to document the results of the Seismic Walkdown of an item of equipment on the SWEL. The space below each of the following questions may be used to record the results of judgments and findings. Additional space is provided at the end of this checklist for documenting other comments.

Anchorage

1. Is anchorage configuration verification required (i.e., is the item one of the 50% of SWEL items requiring such verification)? Yes
SQUG 12-HE-16S REV0

2. Is the anchorage free of bent, broken, missing or loose hardware? Yes

3. Is the anchorage free of corrosion that is more than mild surface oxidation? Yes
PAINTED

4. Is the anchorage free of visible cracks in the concrete near the anchors? Yes

5. Is the anchorage configuration consistent with plant documentation? (Note: This question only applies if the item is one of the 50% for which an anchorage configuration verification is required.) Yes

6. Based on the above anchorage evaluations, is the anchorage free of potentially adverse seismic conditions? Yes

Interaction Effects

Status: Y N U

Seismic Walkdown Checklist (SWC)

Equipment ID No.: 12-HE-16S

Equipment Class: (21) Tanks and Heat Exchangers

Equipment Description: SPENT FUEL PIT HEAT EXCHANGER

7. Are soft targets free from impact by nearby equipment or structures? Yes

12-SF-119S chain can swing into 12-HE-16S but is not damaging

8. Are overhead equipment, distribution systems, ceiling tiles and lighting, and masonry block walls not likely to collapse onto the equipment? Yes

9. Do attached lines have adequate flexibility to avoid damage? Yes

10. Based on the above seismic interaction evaluations, is equipment free of potentially adverse seismic interaction effects? Yes

Other Adverse Conditions

11. Have you looked for and found no adverse seismic conditions that could adversely affect the safety functions of the equipment? Yes

Comments

Evaluated by:  George G Thomas Date: 10/18/12

 Neda Stoeva 10/18/12

Photos

Status: Y N U

Seismic Walkdown Checklist (SWC)

Equipment ID No.: 12-HE-16S

Equipment Class: (21) Tanks and Heat Exchangers

Equipment Description: SPENT FUEL PIT HEAT EXCHANGER



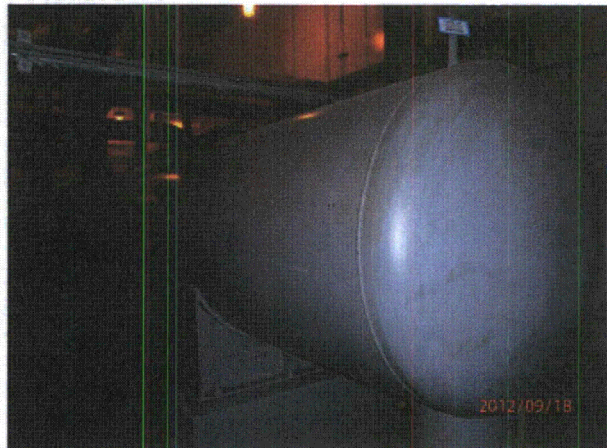
P9180664



P9180665



P9180666



P9180667

Status: Y N U

Seismic Walkdown Checklist (SWC)

Equipment ID No.: 12-HE-16S

Equipment Class: (21) Tanks and Heat Exchangers

Equipment Description: SPENT FUEL PIT HEAT EXCHANGER



P9180676

Status: Y N U

Seismic Walkdown Checklist (SWC)

Equipment ID No.: 12-HV-ESW-4

Equipment Class: (9) Fans

Equipment Description: UNIT 2 WEST ESW PUMP ROOM SUPPLY VENTILATION FAN

Project: DC Cook 2 SWEL

Location (Bldg, Elev, Room/Area): SH2, 591.00 ft, 136

Manufacturer/Model: _____

Instructions for Completing Checklist

This checklist may be used to document the results of the Seismic Walkdown of an item of equipment on the SWEL. The space below each of the following questions may be used to record the results of judgments and findings. Additional space is provided at the end of this checklist for documenting other comments.

Anchorage

1. Is anchorage configuration verification required (i.e., is the item one of the 50% of SWEL items requiring such verification)? Yes
DWG 12-5682-10

2. Is the anchorage free of bent, broken, missing or loose hardware? Yes

3. Is the anchorage free of corrosion that is more than mild surface oxidation? Yes

4. Is the anchorage free of visible cracks in the concrete near the anchors? Yes

5. Is the anchorage configuration consistent with plant documentation? (Note: This question only applies if the item is one of the 50% for which an anchorage configuration verification is required.) Yes

6. Based on the above anchorage evaluations, is the anchorage free of potentially adverse seismic conditions? Yes

Interaction Effects

Status: Y N U

Seismic Walkdown Checklist (SWC)

Equipment ID No.: 12-HV-ESW-4

Equipment Class: (9) Fans

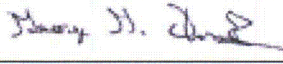
Equipment Description: UNIT 2 WEST ESW PUMP ROOM SUPPLY VENTILATION FAN

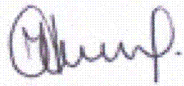
7. Are soft targets free from impact by nearby equipment or structures? Yes
8. Are overhead equipment, distribution systems, ceiling tiles and lighting, and masonry block walls not likely to collapse onto the equipment?
Ceiling mounted fan Yes
9. Do attached lines have adequate flexibility to avoid damage? Yes
10. Based on the above seismic interaction evaluations, is equipment free of potentially adverse seismic interaction effects? Yes

Other Adverse Conditions

11. Have you looked for and found no adverse seismic conditions that could adversely affect the safety functions of the equipment? Yes

Comments

Evaluated by:  George G Thomas Date: 10/18/12

 Neda Stoeva 10/18/12

Photos

Status: Y N U

Seismic Walkdown Checklist (SWC)

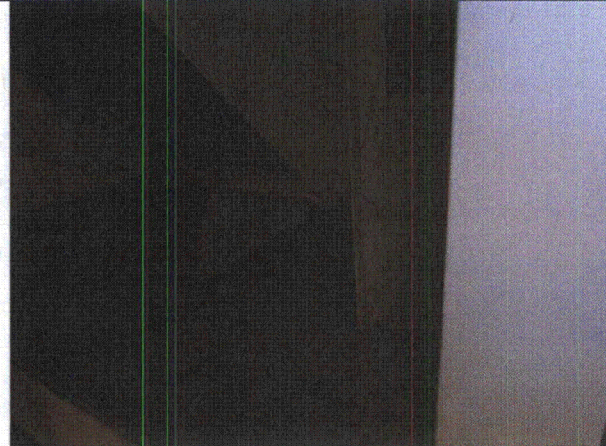
Equipment ID No.: 12-HV-ESW-4

Equipment Class: (9) Fans

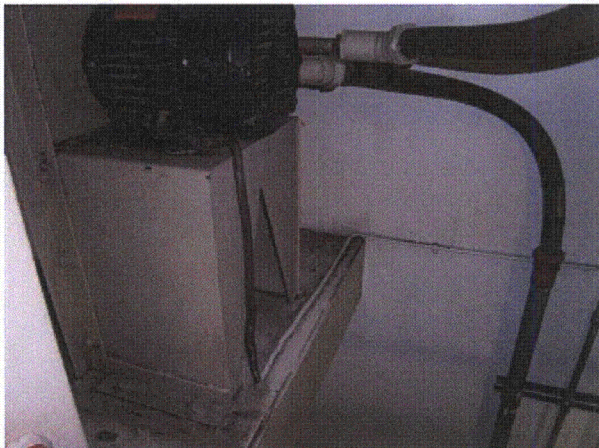
Equipment Description: UNIT 2 WEST ESW PUMP ROOM SUPPLY VENTILATION FAN



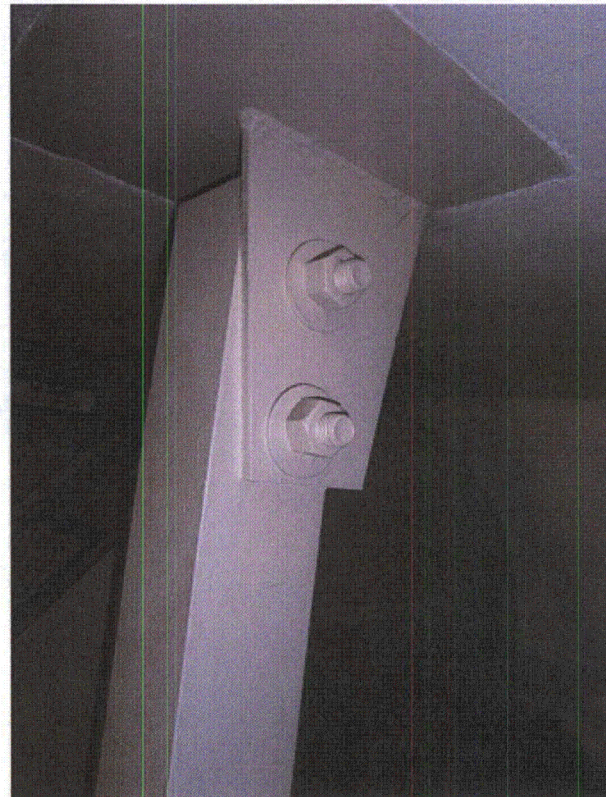
P9110302



P9110303



P9110304



P9110305

Status: Y N U

Seismic Walkdown Checklist (SWC)

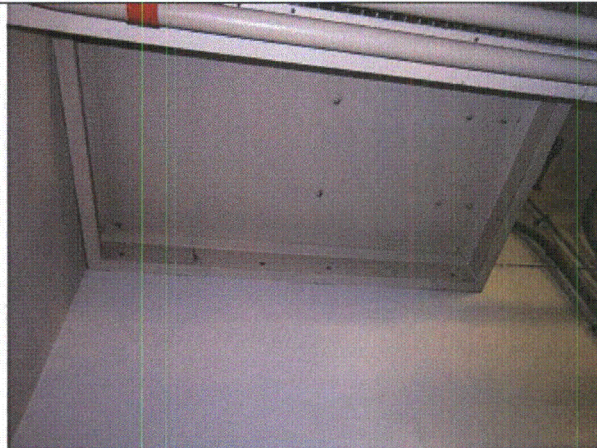
Equipment ID No.: 12-HV-ESW-4

Equipment Class: (9) Fans

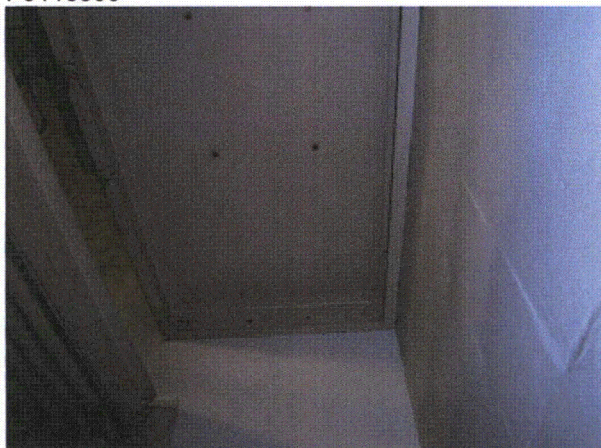
Equipment Description: UNIT 2 WEST ESW PUMP ROOM SUPPLY VENTILATION FAN



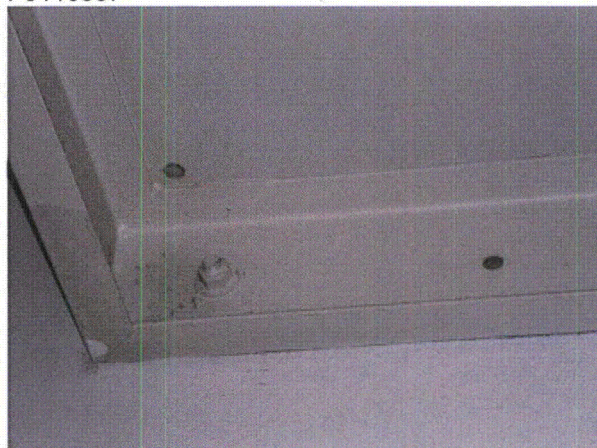
P9110306



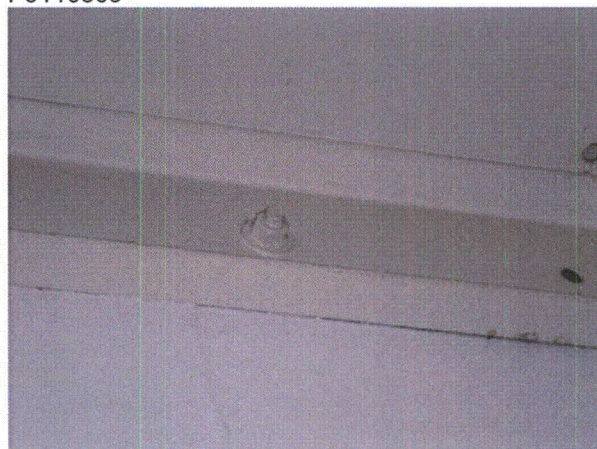
P9110307



P9110308



P9110309



Status: Y N U

Seismic Walkdown Checklist (SWC)

Equipment ID No.: 12-HV-ESW-4

Equipment Class: (9) Fans

Equipment Description: UNIT 2 WEST ESW PUMP ROOM SUPPLY VENTILATION FAN

P9110310

P9110311



P9110312

Status: Y N U

Seismic Walkdown Checklist (SWC)

Equipment ID No.: 12-PASS

Equipment Class: (20) Instrumentation and Control Panels and Cabinets

Equipment Description: POST-ACCIDENT SAMPLING LIQUID AND GAS SAMPLING

Project: DC Cook 2 SWEL

Location (Bldg, Elev, Room/Area): AB1, 587.00 ft, 35

Manufacturer/Model: _____

Instructions for Completing Checklist

This checklist may be used to document the results of the Seismic Walkdown of an item of equipment on the SWEL. The space below each of the following questions may be used to record the results of judgments and findings. Additional space is provided at the end of this checklist for documenting other comments.

Anchorage

- | | |
|--|-----|
| 1. Is anchorage configuration verification required (i.e., is the item one of the 50% of SWEL items requiring such verification)?
<i>DWG 12-3472-20 & 12-5638-5</i> | Yes |
| 2. Is the anchorage free of bent, broken, missing or loose hardware? | Yes |
| 3. Is the anchorage free of corrosion that is more than mild surface oxidation? | Yes |
| 4. Is the anchorage free of visible cracks in the concrete near the anchors? | Yes |
| 5. Is the anchorage configuration consistent with plant documentation? (Note: This question only applies if the item is one of the 50% for which an anchorage configuration verification is required.) | Yes |
| 6. Based on the above anchorage evaluations, is the anchorage free of potentially adverse seismic conditions? | Yes |

Interaction Effects

Status: Y N U

Seismic Walkdown Checklist (SWC)

Equipment ID No.: 12-PASS

Equipment Class: (20) Instrumentation and Control Panels and Cabinets

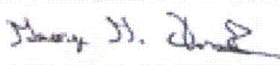
Equipment Description: POST-ACCIDENT SAMPLING LIQUID AND GAS SAMPLING

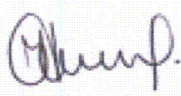
7. Are soft targets free from impact by nearby equipment or structures? Yes
8. Are overhead equipment, distribution systems, ceiling tiles and lighting, and masonry block walls not likely to collapse onto the equipment? No
Fire extinguishers on short hooks - AR 2012-11669 was issued. Block wall - OK per DWGs 12-3253 and 12-3254 Section D-4
9. Do attached lines have adequate flexibility to avoid damage? Yes
10. Based on the above seismic interaction evaluations, is equipment free of potentially adverse seismic interaction effects? No

Other Adverse Conditions

11. Have you looked for and found no adverse seismic conditions that could adversely affect the safety functions of the equipment? Yes

Comments

Evaluated by:  George G Thomas Date: 10/18/12

 Neda Stoeva 10/18/12

Photos

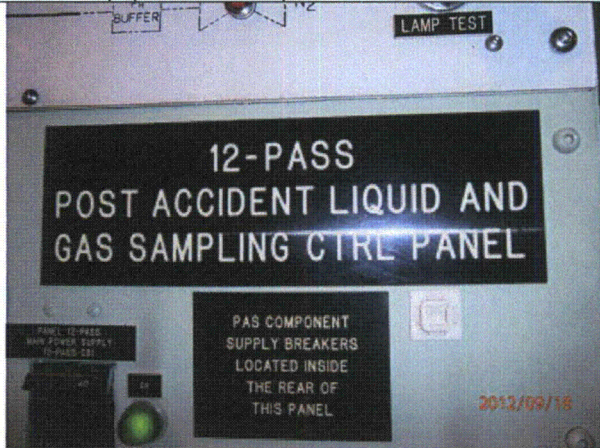
Status: Y N U

Seismic Walkdown Checklist (SWC)

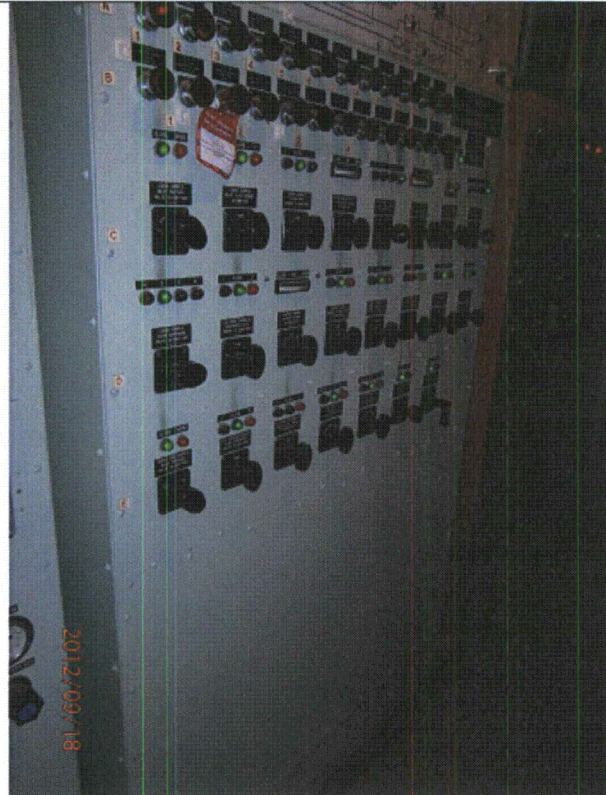
Equipment ID No.: 12-PASS

Equipment Class: (20) Instrumentation and Control Panels and Cabinets

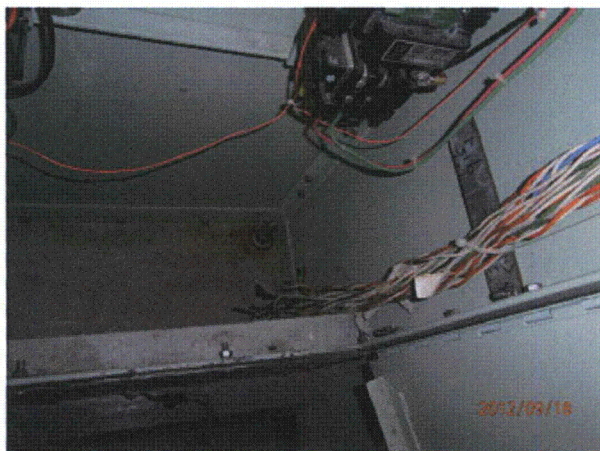
Equipment Description: POST-ACCIDENT SAMPLING LIQUID AND GAS SAMPLING



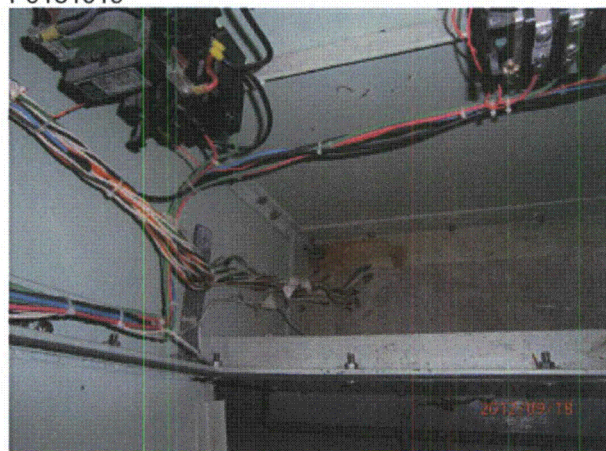
P9181018



P9181019



P9181020



P9181021

Status: Y N U

Seismic Walkdown Checklist (SWC)

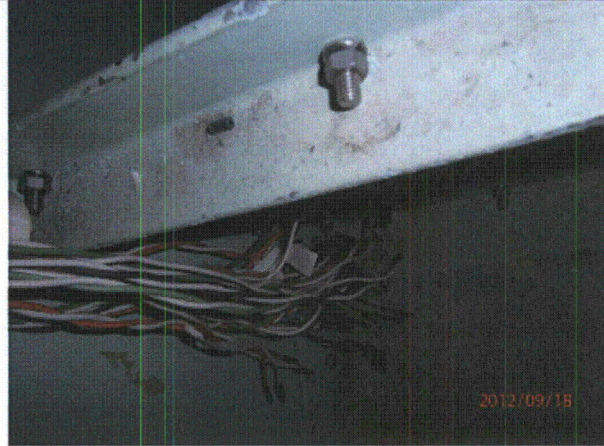
Equipment ID No.: 12-PASS

Equipment Class: (20) Instrumentation and Control Panels and Cabinets

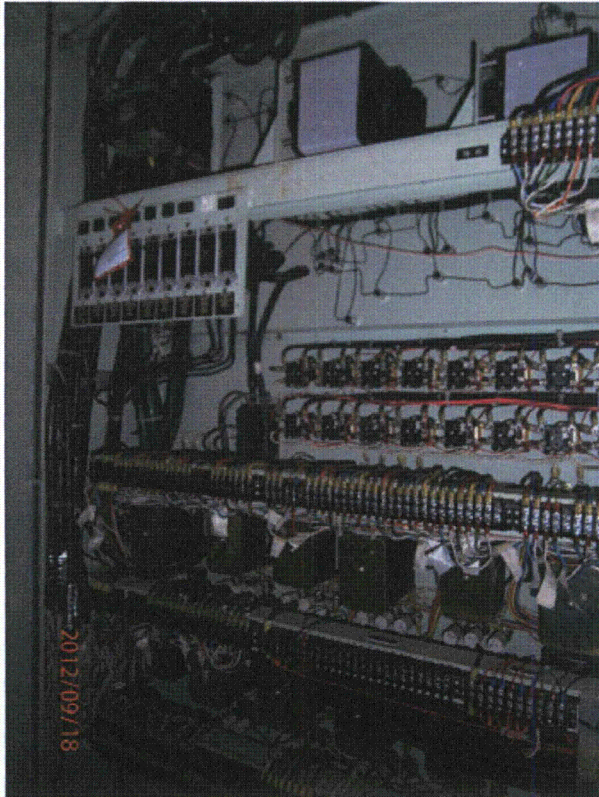
Equipment Description: POST-ACCIDENT SAMPLING LIQUID AND GAS SAMPLING



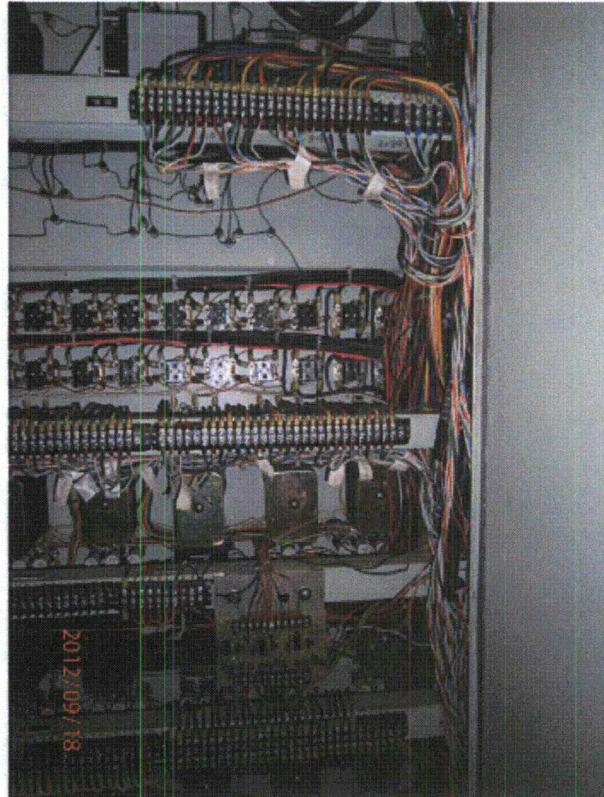
P9181022



P9181023



P9181024



P9181025

Status: Y N U

Seismic Walkdown Checklist (SWC)

Equipment ID No.: 12-PASS

Equipment Class: (20) Instrumentation and Control Panels and Cabinets

Equipment Description: POST-ACCIDENT SAMPLING LIQUID AND GAS SAMPLING



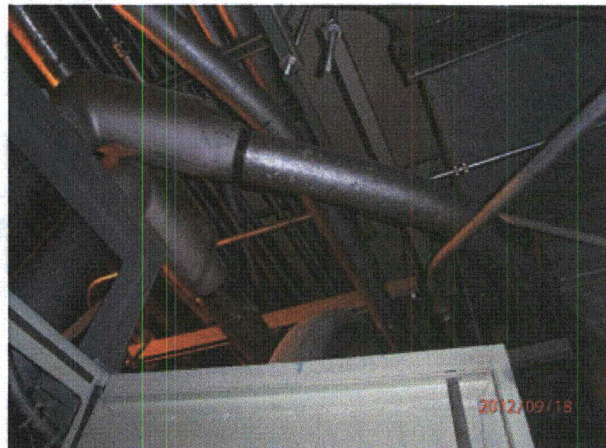
P9181026



P9181027



P9181028



P9181029

Status: Y N U

Seismic Walkdown Checklist (SWC)

Equipment ID No.: 12-WMO-30-PB-STA

Equipment Class: (8) Motor-Operated and Solenoid-Operated Valves

Equipment Description: CIRCULATING WATER INTAKE TUNNEL SHUTOFF VALVE

Project: DC Cook 2 SWEL

Location (Bldg, Elev, Room/Area): SH1, 591.00 ft, 670

Manufacturer/Model: _____

Instructions for Completing Checklist

This checklist may be used to document the results of the Seismic Walkdown of an item of equipment on the SWEL. The space below each of the following questions may be used to record the results of judgments and findings. Additional space is provided at the end of this checklist for documenting other comments.

Anchorage

- | | | |
|----|---|----------------|
| 1. | Is anchorage configuration verification required (i.e., is the item one of the 50% of SWEL items requiring such verification)? | No |
| 2. | Is the anchorage free of bent, broken, missing or loose hardware?
<i>Mounted to unistrut - tube steel supported</i> | Yes |
| 3. | Is the anchorage free of corrosion that is more than mild surface oxidation?
<i>Some corrosion on the panel itself, and 1 top right corner screw (inside panel)</i> | Yes |
| 4. | Is the anchorage free of visible cracks in the concrete near the anchors? | Not Applicable |
| 5. | Is the anchorage configuration consistent with plant documentation? (Note: This question only applies if the item is one of the 50% for which an anchorage configuration verification is required.) | Not Applicable |
| 6. | Based on the above anchorage evaluations, is the anchorage free of potentially adverse seismic conditions? | Yes |

Interaction Effects

Status: Y N U

Seismic Walkdown Checklist (SWC)

Equipment ID No.: 12-WMO-30-PB-STA

Equipment Class: (8) Motor-Operated and Solenoid-Operated Valves

Equipment Description: CIRCULATING WATER INTAKE TUNNEL SHUTOFF VALVE

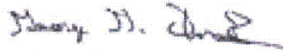
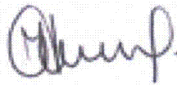
- | | |
|---|-----|
| 7. Are soft targets free from impact by nearby equipment or structures? | Yes |
| 8. Are overhead equipment, distribution systems, ceiling tiles and lighting, and masonry block walls not likely to collapse onto the equipment? | Yes |
| 9. Do attached lines have adequate flexibility to avoid damage? | Yes |
| 10. Based on the above seismic interaction evaluations, is equipment free of potentially adverse seismic interaction effects? | Yes |

Other Adverse Conditions

- | | |
|--|-----|
| 11. Have you looked for and found no adverse seismic conditions that could adversely affect the safety functions of the equipment? | Yes |
|--|-----|

Comments

2010 DEFFICIENCY TAG ON PUSH BUTTON. COMPONENT IS IN A NON-SAFETY AREA - AR 2012-11762 and AR 2012-11767 were issued.

Evaluated by:	<u></u>	George G Thomas	Date:	<u>10/18/12</u>
	<u></u>	Neda Stoeva		<u>10/18/12</u>

Photos

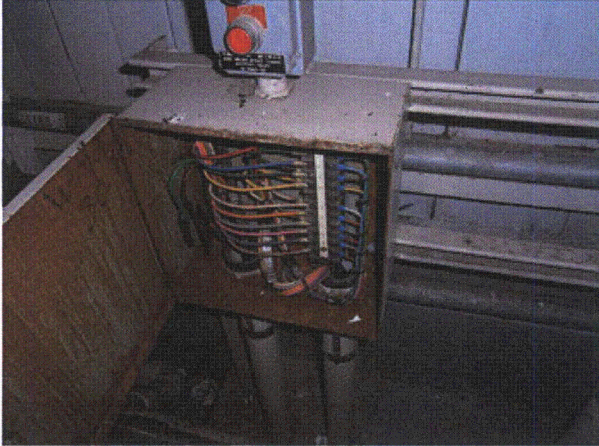
Status: Y N U

Seismic Walkdown Checklist (SWC)

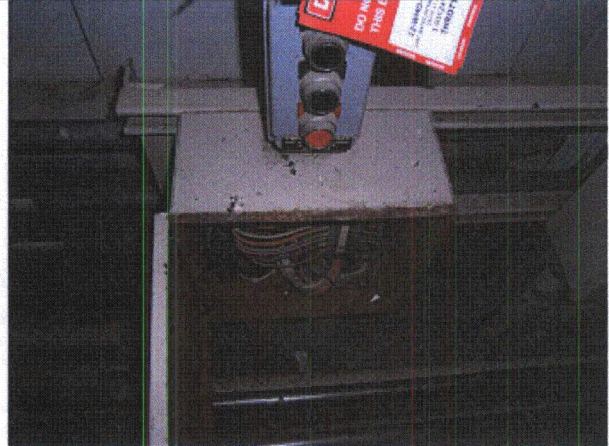
Equipment ID No.: 12-WMO-30-PB-STA

Equipment Class: (8) Motor-Operated and Solenoid-Operated Valves

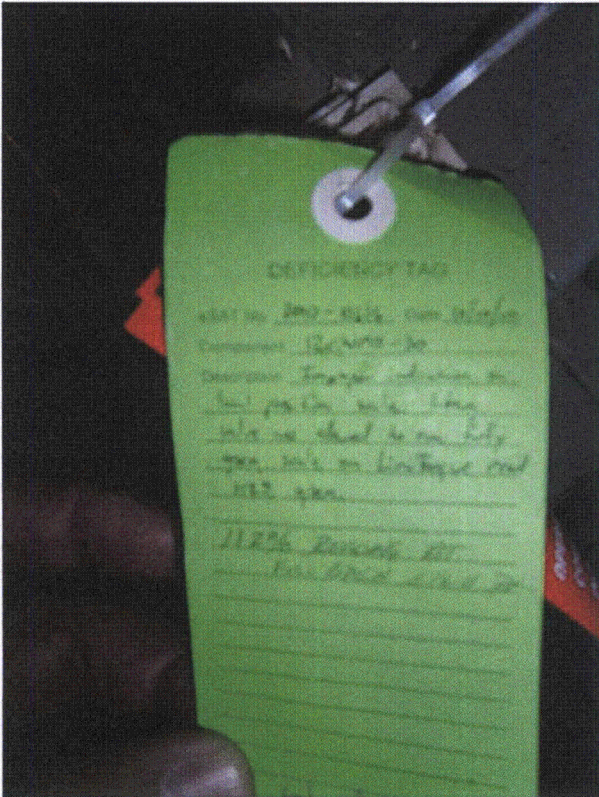
Equipment Description: CIRCULATING WATER INTAKE TUNNEL SHUTOFF VALVE



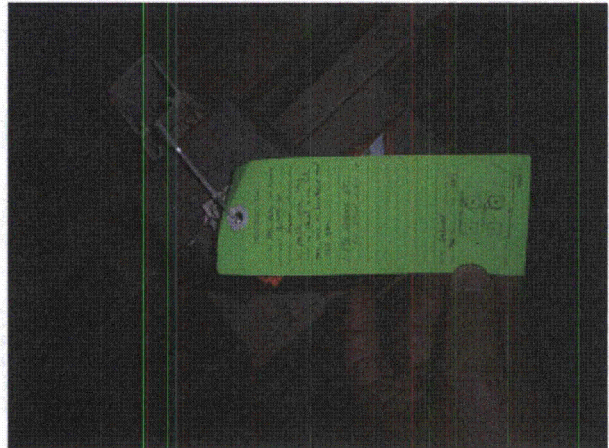
P9191386



P9191387



P9191388



P9191389

Status: Y N U

Seismic Walkdown Checklist (SWC)

Equipment ID No.: 2-ABD-A

Equipment Class: (1) Motor Control Centers

Equipment Description: 600VAC MOTOR CONTROL CENTER ABD-A

Project: DC Cook 2 SWEL

Location (Bldg, Elev, Room/Area): AB2, 587.00 ft, 121

Manufacturer/Model: _____

Instructions for Completing Checklist

This checklist may be used to document the results of the Seismic Walkdown of an item of equipment on the SWEL. The space below each of the following questions may be used to record the results of judgments and findings. Additional space is provided at the end of this checklist for documenting other comments.

Anchorage

1. Is anchorage configuration verification required (i.e., is the item one of the 50% of SWEL items requiring such verification)? No

2. Is the anchorage free of bent, broken, missing or loose hardware? Yes

3. Is the anchorage free of corrosion that is more than mild surface oxidation? Yes

4. Is the anchorage free of visible cracks in the concrete near the anchors? Yes

5. Is the anchorage configuration consistent with plant documentation? (Note: This question only applies if the item is one of the 50% for which an anchorage configuration verification is required.) Not Applicable

6. Based on the above anchorage evaluations, is the anchorage free of potentially adverse seismic conditions? Yes

Interaction Effects

Status: Y N U

Seismic Walkdown Checklist (SWC)

Equipment ID No.: 2-ABD-A

Equipment Class: (1) Motor Control Centers

Equipment Description: 600VAC MOTOR CONTROL CENTER ABD-A

7. Are soft targets free from impact by nearby equipment or structures? No

Fire extinguishers on short hooks nearby - AR 2012-11669 was issued.

8. Are overhead equipment, distribution systems, ceiling tiles and lighting, and masonry block walls not likely to collapse onto the equipment? Yes

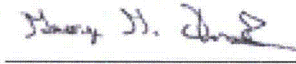
9. Do attached lines have adequate flexibility to avoid damage? Yes

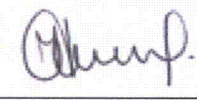
10. Based on the above seismic interaction evaluations, is equipment free of potentially adverse seismic interaction effects? No

Other Adverse Conditions

11. Have you looked for and found no adverse seismic conditions that could adversely affect the safety functions of the equipment? Yes

Comments

Evaluated by:  George G Thomas Date: 10/18/12

 Neda Stoeva 10/18/12

Photos

Status: Y N U

Seismic Walkdown Checklist (SWC)

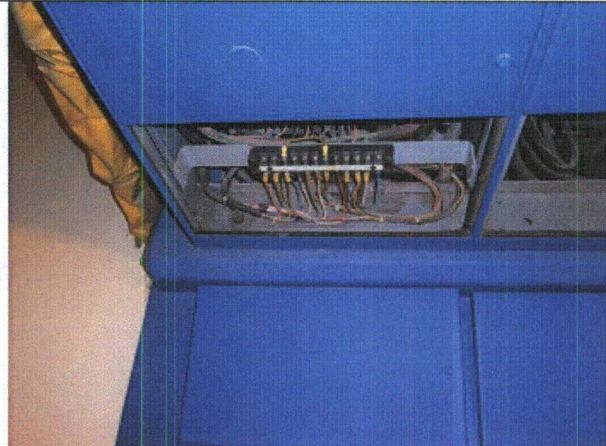
Equipment ID No.: 2-ABD-A

Equipment Class: (1) Motor Control Centers

Equipment Description: 600VAC MOTOR CONTROL CENTER ABD-A



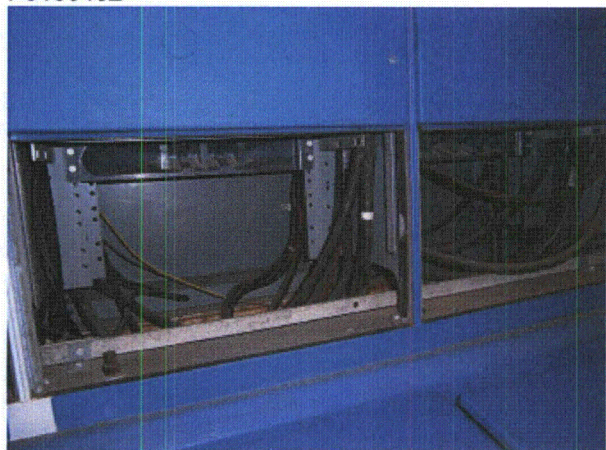
P9130401



P9130402



P9130403



P9130404

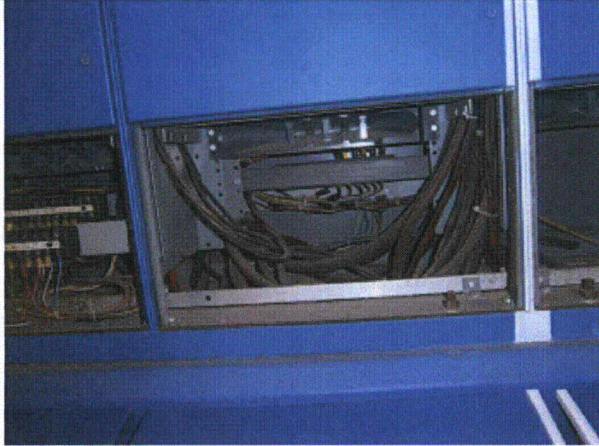
Status: Y N U

Seismic Walkdown Checklist (SWC)

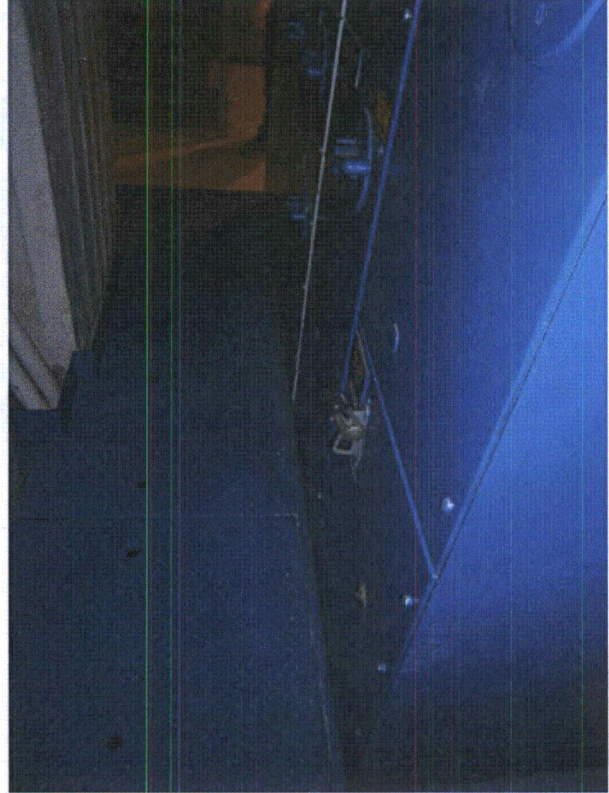
Equipment ID No.: 2-ABD-A

Equipment Class: (1) Motor Control Centers

Equipment Description: 600VAC MOTOR CONTROL CENTER ABD-A



P9130405



P9130406

Status: Y N U

Seismic Walkdown Checklist (SWC)

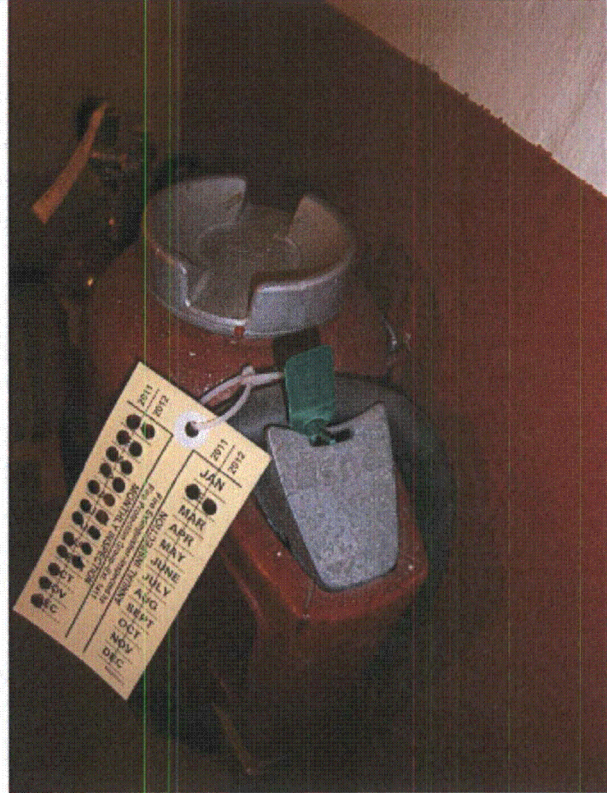
Equipment ID No.: 2-ABD-A

Equipment Class: (1) Motor Control Centers

Equipment Description: 600VAC MOTOR CONTROL CENTER ABD-A



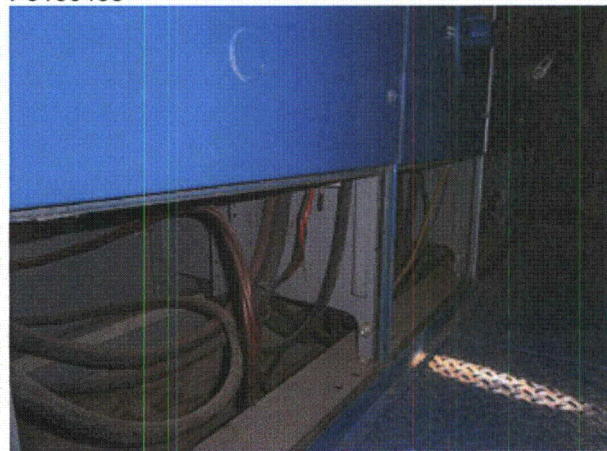
P9130407



P9130408



P9130409



P9130410

Status: Y N U

Seismic Walkdown Checklist (SWC)

Equipment ID No.: 2-ABD-A

Equipment Class: (1) Motor Control Centers

Equipment Description: 600VAC MOTOR CONTROL CENTER ABD-A



P9130428

Status: Y N U

Seismic Walkdown Checklist (SWC)

Equipment ID No.: 2-ABD-B

Equipment Class: (1) Motor Control Centers

Equipment Description: 600VAC MOTOR CONTROL CENTER ABD-B

Project: DC Cook 2 SWEL

Location (Bldg, Elev, Room/Area): AB2, 587.00 ft, 121

Manufacturer/Model: _____

Instructions for Completing Checklist

This checklist may be used to document the results of the Seismic Walkdown of an item of equipment on the SWEL. The space below each of the following questions may be used to record the results of judgments and findings. Additional space is provided at the end of this checklist for documenting other comments.

Anchorage

- | | |
|--|-----|
| 1. Is anchorage configuration verification required (i.e., is the item one of the 50% of SWEL items requiring such verification)?
<i>SQUG 2-ABD-B REV0</i> | Yes |
| 2. Is the anchorage free of bent, broken, missing or loose hardware? | Yes |
| 3. Is the anchorage free of corrosion that is more than mild surface oxidation? | Yes |
| 4. Is the anchorage free of visible cracks in the concrete near the anchors? | Yes |
| 5. Is the anchorage configuration consistent with plant documentation? (Note: This question only applies if the item is one of the 50% for which an anchorage configuration verification is required.) | Yes |
| 6. Based on the above anchorage evaluations, is the anchorage free of potentially adverse seismic conditions? | Yes |

Interaction Effects

Status: Y N U

Seismic Walkdown Checklist (SWC)

Equipment ID No.: 2-ABD-B

Equipment Class: (1) Motor Control Centers

Equipment Description: 600VAC MOTOR CONTROL CENTER ABD-B

7. Are soft targets free from impact by nearby equipment or structures? No

Fire extinguishers on short hooks nearby - AR 2012-11669 was issued.

8. Are overhead equipment, distribution systems, ceiling tiles and lighting, and masonry block walls not likely to collapse onto the equipment? Yes

9. Do attached lines have adequate flexibility to avoid damage? Yes

10. Based on the above seismic interaction evaluations, is equipment free of potentially adverse seismic interaction effects? No

Other Adverse Conditions

11. Have you looked for and found no adverse seismic conditions that could adversely affect the safety functions of the equipment? Yes

Comments

Evaluated by:  George G Thomas Date: 10/18/12

 Neda Stoeva 10/18/12

Photos

Status: Y N U

Seismic Walkdown Checklist (SWC)

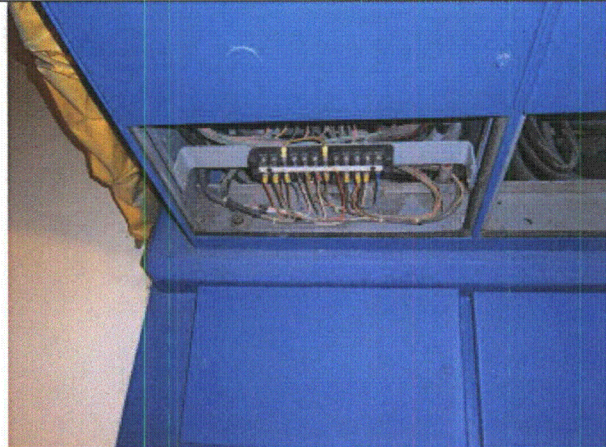
Equipment ID No.: 2-ABD-B

Equipment Class: (1) Motor Control Centers

Equipment Description: 600VAC MOTOR CONTROL CENTER ABD-B



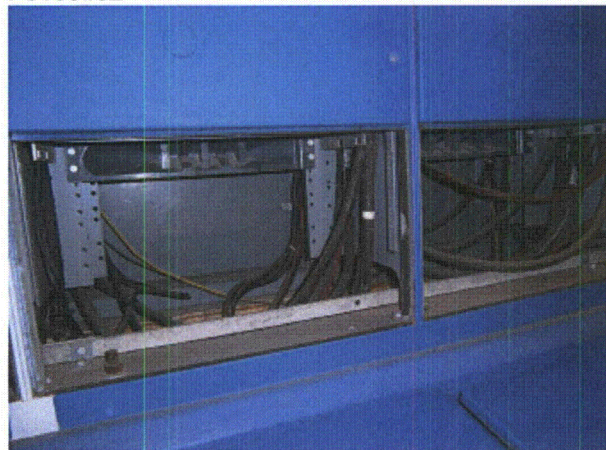
P9130401



P9130402



P9130403



P9130404

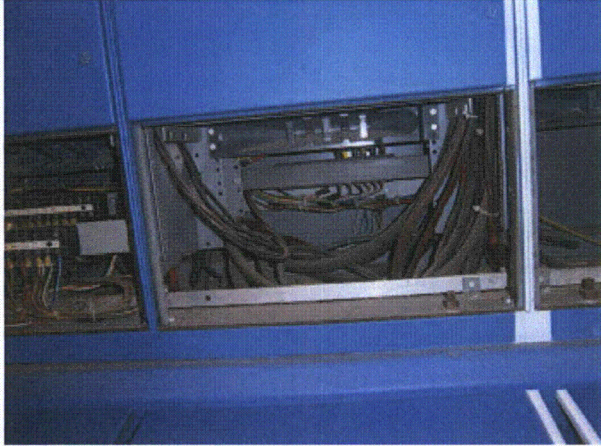
Status: Y N U

Seismic Walkdown Checklist (SWC)

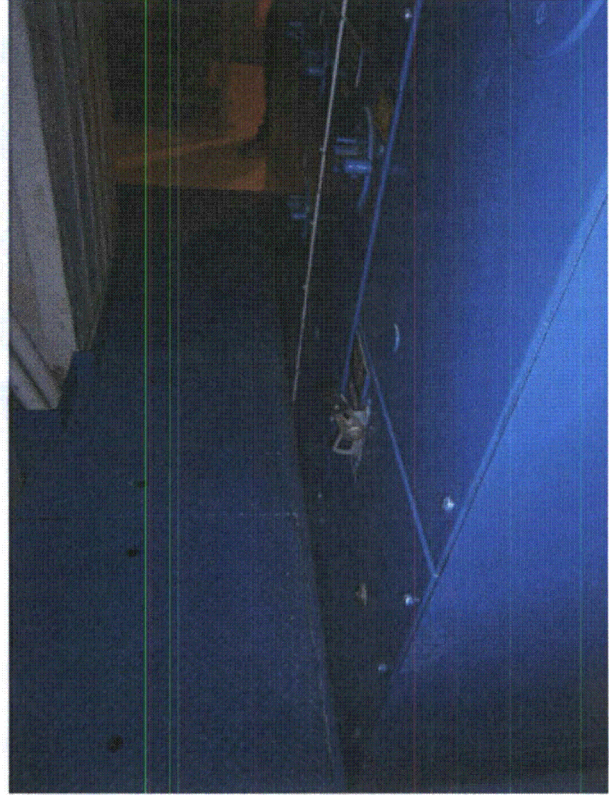
Equipment ID No.: 2-ABD-B

Equipment Class: (1) Motor Control Centers

Equipment Description: 600VAC MOTOR CONTROL CENTER ABD-B



P9130405



P9130406

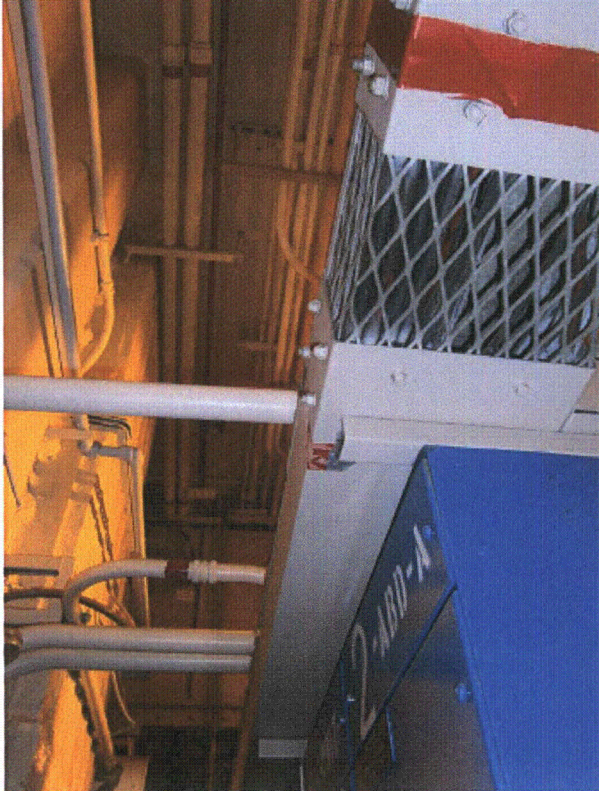
Status: Y N U

Seismic Walkdown Checklist (SWC)

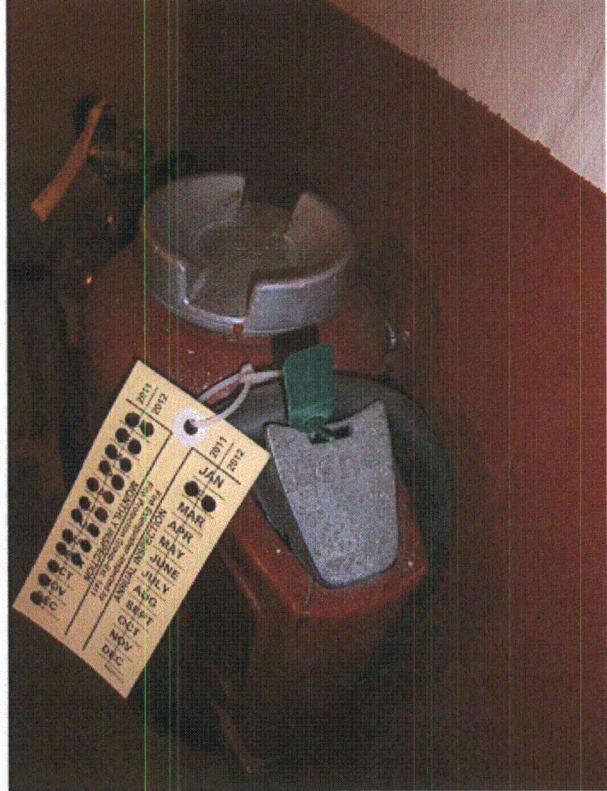
Equipment ID No.: 2-ABD-B

Equipment Class: (1) Motor Control Centers

Equipment Description: 600VAC MOTOR CONTROL CENTER ABD-B



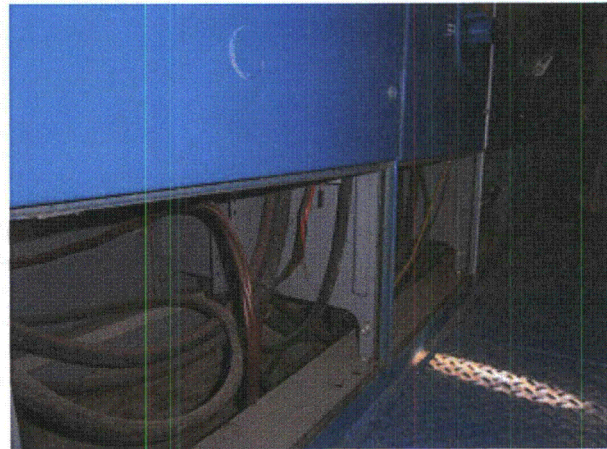
P9130407



P9130408



P9130409



P9130410

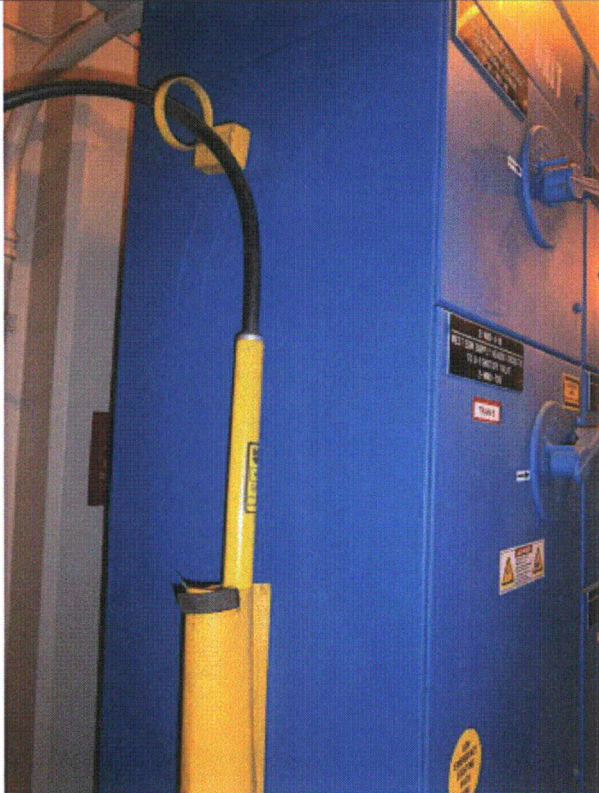
Status: Y N U

Seismic Walkdown Checklist (SWC)

Equipment ID No.: 2-ABD-B

Equipment Class: (1) Motor Control Centers

Equipment Description: 600VAC MOTOR CONTROL CENTER ABD-B



P9130428

Status: Y N U

Seismic Walkdown Checklist (SWC)

Equipment ID No.: 2-ACRA-2

Equipment Class: (20) Instrumentation and Control Panels and Cabinets

Equipment Description: CONTROL ROOM VENTILATION SOUTH AIR CONDITIONING

Project: DC Cook 2 SWEL

Location (Bldg, Elev, Room/Area): AB2, 650.00 ft, 129

Manufacturer/Model: _____

Instructions for Completing Checklist

This checklist may be used to document the results of the Seismic Walkdown of an item of equipment on the SWEL. The space below each of the following questions may be used to record the results of judgments and findings. Additional space is provided at the end of this checklist for documenting other comments.

Anchorage

- | | |
|--|----------------|
| 1. Is anchorage configuration verification required (i.e., is the item one of the 50% of SWEL items requiring such verification)? | No |
| 2. Is the anchorage free of bent, broken, missing or loose hardware? | Yes |
| 3. Is the anchorage free of corrosion that is more than mild surface oxidation? | Yes |
| 4. Is the anchorage free of visible cracks in the concrete near the anchors? | Yes |
| 5. Is the anchorage configuration consistent with plant documentation? (Note: This question only applies if the item is one of the 50% for which an anchorage configuration verification is required.) | Not Applicable |
| 6. Based on the above anchorage evaluations, is the anchorage free of potentially adverse seismic conditions? | Yes |

Interaction Effects

Status: Y N U

Seismic Walkdown Checklist (SWC)

Equipment ID No.: 2-ACRA-2

Equipment Class: (20) Instrumentation and Control Panels and Cabinets

Equipment Description: CONTROL ROOM VENTILATION SOUTH AIR CONDITIONING

7. Are soft targets free from impact by nearby equipment or structures? Yes

8. Are overhead equipment, distribution systems, ceiling tiles and lighting, and masonry block walls not likely to collapse onto the equipment? Yes

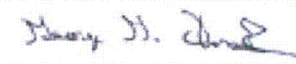
9. Do attached lines have adequate flexibility to avoid damage? Yes

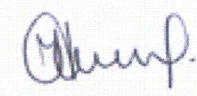
10. Based on the above seismic interaction evaluations, is equipment free of potentially adverse seismic interaction effects? Yes

Other Adverse Conditions

11. Have you looked for and found no adverse seismic conditions that could adversely affect the safety functions of the equipment? Yes

Comments

Evaluated by:  George G Thomas Date: 10/18/12

 Neda Stoeva 10/18/12

Photos

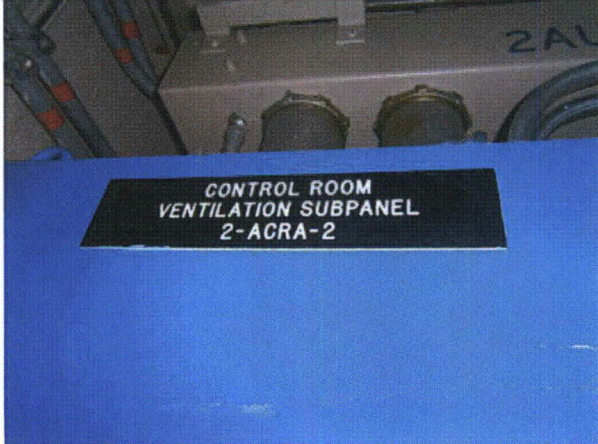
Status: Y N U

Seismic Walkdown Checklist (SWC)

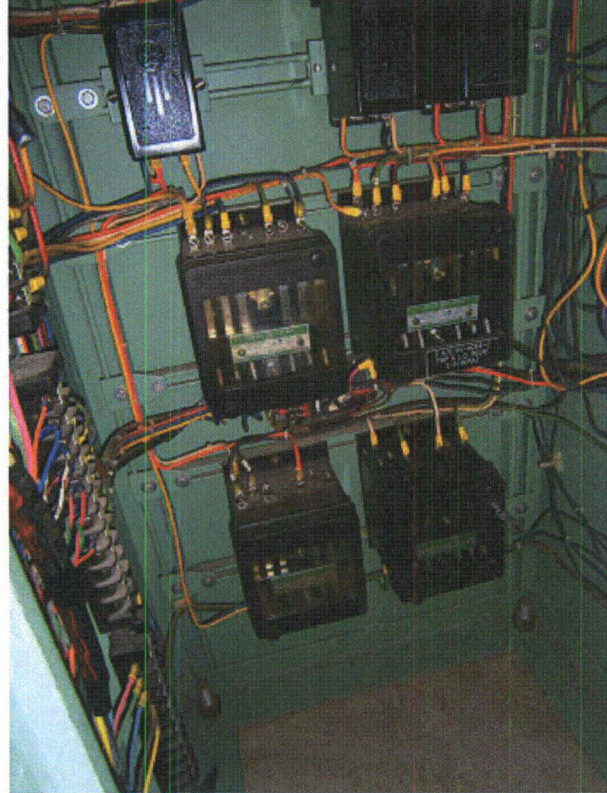
Equipment ID No.: 2-ACRA-2

Equipment Class: (20) Instrumentation and Control Panels and Cabinets

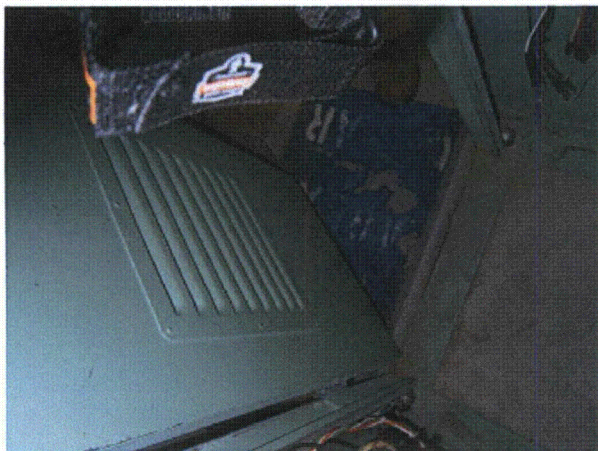
Equipment Description: CONTROL ROOM VENTILATION SOUTH AIR CONDITIONING



P9100136



P9100137



P9100138

Status: Y N U

Seismic Walkdown Checklist (SWC)

Equipment ID No.: 2-AFWX

Equipment Class: (4) Transformers

Equipment Description: 120/208VAC AUXILIARY FEEDWATER DISTRIBUTION PANEL

Project: DC Cook 2 SWEL

Location (Bldg, Elev, Room/Area): AB2, 587.00 ft, 122

Manufacturer/Model: _____

Instructions for Completing Checklist

This checklist may be used to document the results of the Seismic Walkdown of an item of equipment on the SWEL. The space below each of the following questions may be used to record the results of judgments and findings. Additional space is provided at the end of this checklist for documenting other comments.

Anchorage

1. Is anchorage configuration verification required (i.e., is the item one of the 50% of SWEL items requiring such verification)? No

2. Is the anchorage free of bent, broken, missing or loose hardware? Yes

3. Is the anchorage free of corrosion that is more than mild surface oxidation? Yes

4. Is the anchorage free of visible cracks in the concrete near the anchors? Yes

5. Is the anchorage configuration consistent with plant documentation? (Note: This question only applies if the item is one of the 50% for which an anchorage configuration verification is required.) Not Applicable

6. Based on the above anchorage evaluations, is the anchorage free of potentially adverse seismic conditions? Yes

Interaction Effects

Status: Y N U

Seismic Walkdown Checklist (SWC)

Equipment ID No.: 2-AFWX

Equipment Class: (4) Transformers

Equipment Description: 120/208VAC AUXILIARY FEEDWATER DISTRIBUTION PANEL

7. Are soft targets free from impact by nearby equipment or structures? No

Fire extinguishers on short hooks - AR 2012-11669 was issued.

8. Are overhead equipment, distribution systems, ceiling tiles and lighting, and masonry block walls not likely to collapse onto the equipment? Yes

9. Do attached lines have adequate flexibility to avoid damage? Yes

10. Based on the above seismic interaction evaluations, is equipment free of potentially adverse seismic interaction effects? No

Other Adverse Conditions

11. Have you looked for and found no adverse seismic conditions that could adversely affect the safety functions of the equipment? Yes

Comments

Evaluated by:  George G Thomas Date: 10/18/12

 Neda Stoeva 10/18/12

Photos

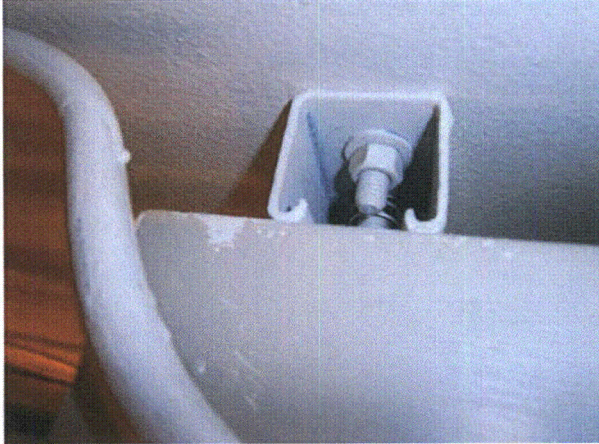
Status: Y N U

Seismic Walkdown Checklist (SWC)

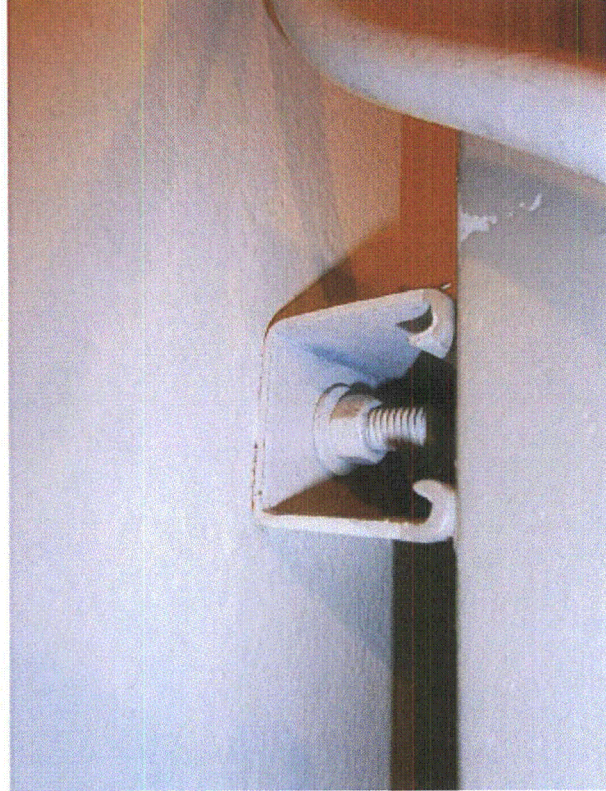
Equipment ID No.: 2-AFWX

Equipment Class: (4) Transformers

Equipment Description: 120/208VAC AUXILIARY FEEDWATER DISTRIBUTION PANEL



P9140533



P9140534

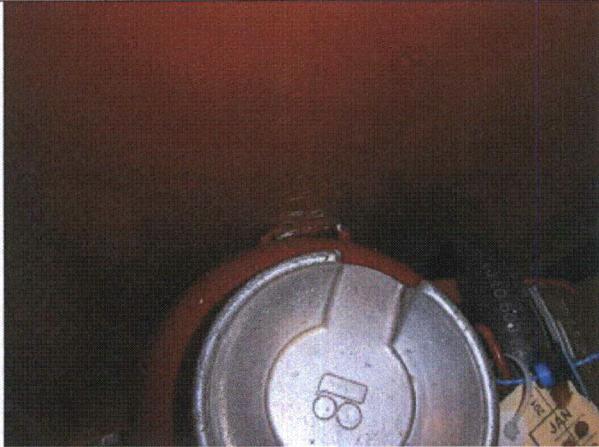
Status: Y N U

Seismic Walkdown Checklist (SWC)

Equipment ID No.: 2-AFWX

Equipment Class: (4) Transformers

Equipment Description: 120/208VAC AUXILIARY FEEDWATER DISTRIBUTION PANEL



P9140535



P9140536

Status: Y N U

Seismic Walkdown Checklist (SWC)

Equipment ID No.: 2-AFWX

Equipment Class: (4) Transformers

Equipment Description: 120/208VAC AUXILIARY FEEDWATER DISTRIBUTION PANEL



P9140537



P9140538

Status: Y N U

Seismic Walkdown Checklist (SWC)

Equipment ID No.: 2-AM-A

Equipment Class: (1) Motor Control Centers

Equipment Description: 600VAC MOTOR CONTROL CENTER AM-A

Project: DC Cook 2 SWEL

Location (Bldg, Elev, Room/Area): AB2, 633.00 ft, 633

Manufacturer/Model: _____

Instructions for Completing Checklist

This checklist may be used to document the results of the Seismic Walkdown of an item of equipment on the SWEL. The space below each of the following questions may be used to record the results of judgments and findings. Additional space is provided at the end of this checklist for documenting other comments.

Anchorage

1. Is anchorage configuration verification required (i.e., is the item one of the 50% of SWEL items requiring such verification)? No

2. Is the anchorage free of bent, broken, missing or loose hardware? Yes
External 4 bolts on each side (front and back). Internal 4 bolts (1 in each corner)

3. Is the anchorage free of corrosion that is more than mild surface oxidation? Yes

4. Is the anchorage free of visible cracks in the concrete near the anchors? Yes

5. Is the anchorage configuration consistent with plant documentation? (Note: This question only applies if the item is one of the 50% for which an anchorage configuration verification is required.) Not Applicable

6. Based on the above anchorage evaluations, is the anchorage free of potentially adverse seismic conditions? Yes

Interaction Effects

Status: Y N U

Seismic Walkdown Checklist (SWC)

Equipment ID No.: 2-AM-A

Equipment Class: (1) Motor Control Centers

Equipment Description: 600VAC MOTOR CONTROL CENTER AM-A

7. Are soft targets free from impact by nearby equipment or structures? Yes

8. Are overhead equipment, distribution systems, ceiling tiles and lighting, and masonry block walls not likely to collapse onto the equipment? Yes

9. Do attached lines have adequate flexibility to avoid damage? Yes

10. Based on the above seismic interaction evaluations, is equipment free of potentially adverse seismic interaction effects? Yes

Other Adverse Conditions

11. Have you looked for and found no adverse seismic conditions that could adversely affect the safety functions of the equipment? Yes

Comments

Evaluated by:  George G Thomas Date: 10/18/12

 Neda Stoeva 10/18/12

Photos

Status: Y N U

Seismic Walkdown Checklist (SWC)

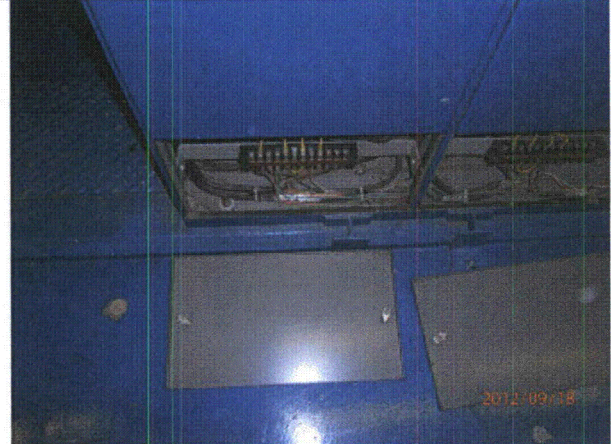
Equipment ID No.: 2-AM-A

Equipment Class: (1) Motor Control Centers

Equipment Description: 600VAC MOTOR CONTROL CENTER AM-A



P9181053



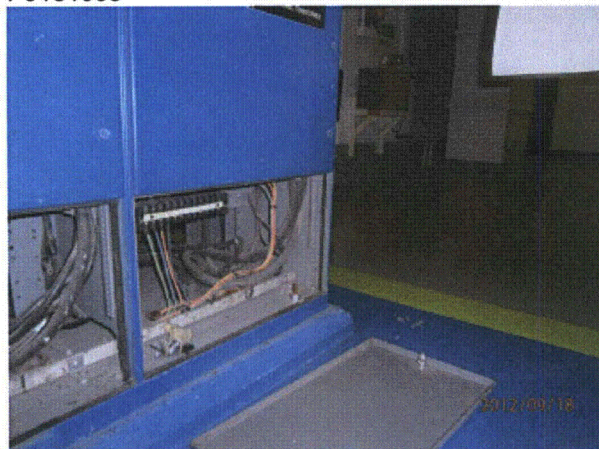
P9181054



P9181055



P9181056



Status: Y N U

Seismic Walkdown Checklist (SWC)

Equipment ID No.: 2-AM-A

Equipment Class: (1) Motor Control Centers

Equipment Description: 600VAC MOTOR CONTROL CENTER AM-A

P9181057

P9181058



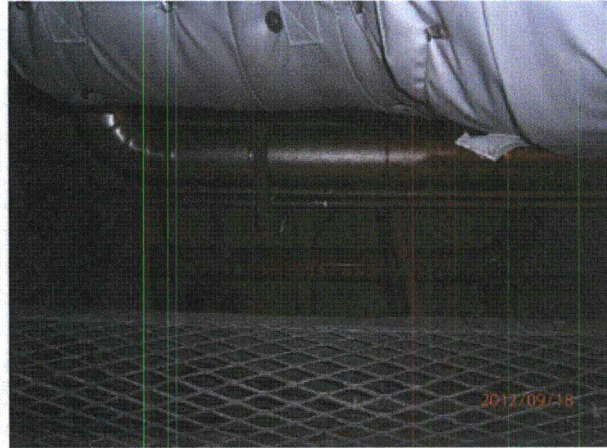
P9181059



P9181060



P9181061



P9181062

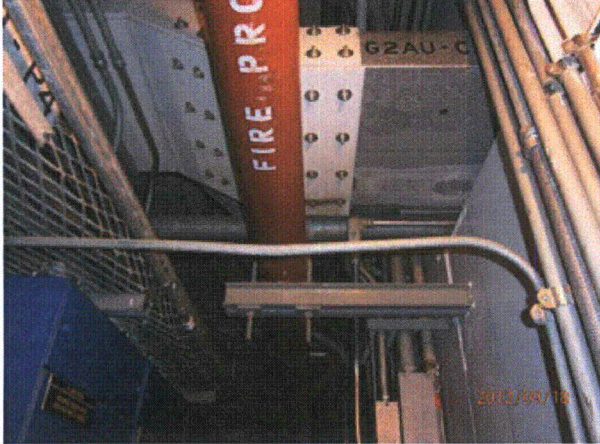
Status: Y N U

Seismic Walkdown Checklist (SWC)

Equipment ID No.: 2-AM-A

Equipment Class: (1) Motor Control Centers

Equipment Description: 600VAC MOTOR CONTROL CENTER AM-A



P9181063



P9181064