

Status:  Y  N  U

**Seismic Walkdown Checklist (SWC)**

Equipment ID No.: 1-PP-35W

Equipment Class: (6) Vertical Pumps

Equipment Description: WEST RESIDUAL HEAT REMOVAL PUMP

P9180835

Status:  Y  N  U

**Seismic Walkdown Checklist (SWC)**

Equipment ID No.: 1-PP-3W

Equipment Class: (5) Horizontal Pumps

Equipment Description: WEST MOTOR DRIVEN AUXILIARY FEEDWATER PUMP

Project: DC Cook 1 SWEL

Location (Bldg, Elev, Room/Area): TB1, 591.00 ft, 51

Manufacturer/Model: \_\_\_\_\_

**Instructions for Completing Checklist**

This checklist may be used to document the results of the Seismic Walkdown of an item of equipment on the SWEL. The space below each of the following questions may be used to record the results of judgments and findings. Additional space is provided at the end of this checklist for documenting other comments.

**Anchorage**

- |  |     |
|--|-----|
| 1. Is anchorage configuration verification required (i.e., is the item one of the 50% of SWEL items requiring such verification)?  | Yes |
| 2. Is the anchorage free of bent, broken, missing or loose hardware?   | Yes |
| 3. Is the anchorage free of corrosion that is more than mild surface oxidation?  | Yes |
| 4. Is the anchorage free of visible cracks in the concrete near the anchors?   | Yes |
| 5. Is the anchorage configuration consistent with plant documentation? (Note: This question only applies if the item is one of the 50% for which an anchorage configuration verification is required.) | Yes |
| 6. Based on the above anchorage evaluations, is the anchorage free of potentially adverse seismic conditions?  | Yes |

**Interaction Effects**



Status:  Y  N  U

**Seismic Walkdown Checklist (SWC)**

Equipment ID No.: 1-PP-3W

Equipment Class: (5) Horizontal Pumps

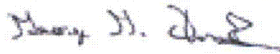
Equipment Description: WEST MOTOR DRIVEN AUXILIARY FEEDWATER PUMP

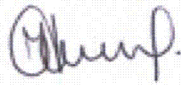
- |     |  |     |
|-----|--|-----|
| 7.  | Are soft targets free from impact by nearby equipment or structures?   | Yes |
| 8.  | Are overhead equipment, distribution systems, ceiling tiles and lighting, and masonry block walls not likely to collapse onto the equipment? | Yes |
| 9.  | Do attached lines have adequate flexibility to avoid damage?   | Yes |
| 10. | Based on the above seismic interaction evaluations, is equipment free of potentially adverse seismic interaction effects?                    | Yes |

**Other Adverse Conditions**

- |     |  |     |
|-----|--|-----|
| 11. | Have you looked for and found no adverse seismic conditions that could adversely affect the safety functions of the equipment? | Yes |
|-----|--|-----|

**Comments**

Evaluated by:  George G Thomas Date: 10/18/12

 Neda Stoeva 10/18/12

**Photos**



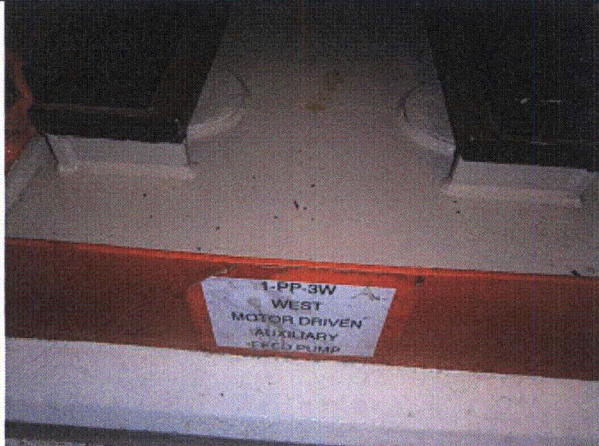
Status:  Y  N  U

**Seismic Walkdown Checklist (SWC)**

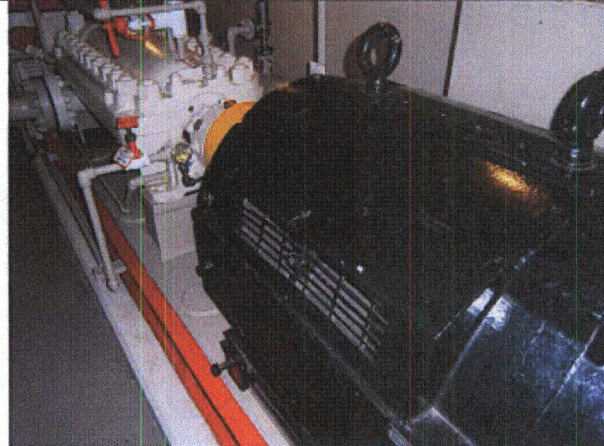
Equipment ID No.: 1-PP-3W

Equipment Class: (5) Horizontal Pumps

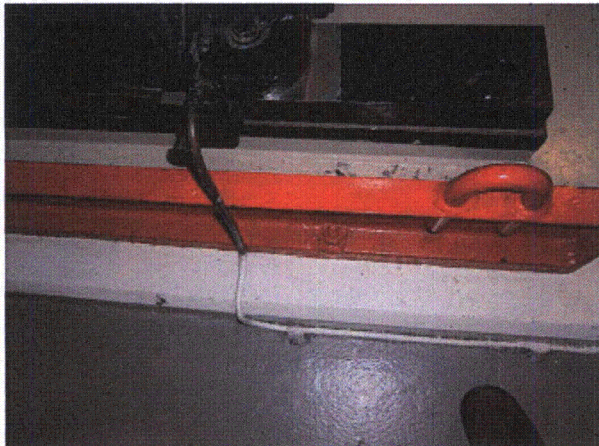
Equipment Description: WEST MOTOR DRIVEN AUXILIARY FEEDWATER PUMP



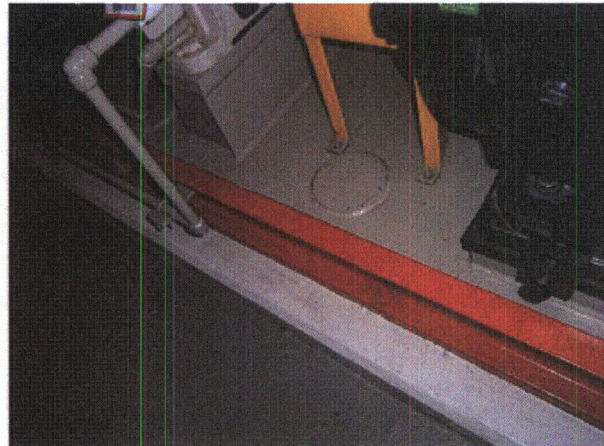
P9170002



P9170003



P9170004



P9170005





Status:  Y  N  U

**Seismic Walkdown Checklist (SWC)**

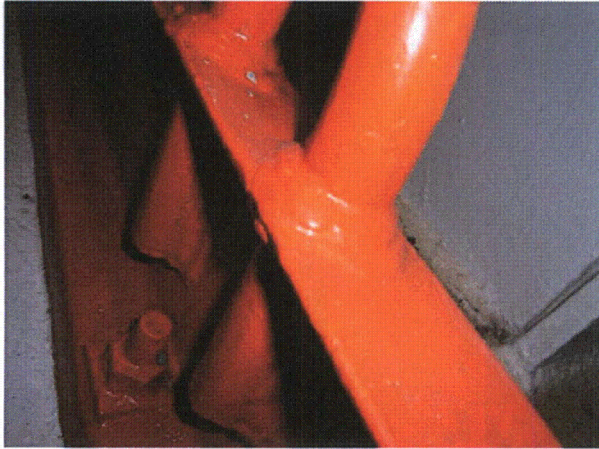
Equipment ID No.: 1-PP-3W

Equipment Class: (5) Horizontal Pumps

Equipment Description: WEST MOTOR DRIVEN AUXILIARY FEEDWATER PUMP

P9170006

P9170007



P9170008



P9170009

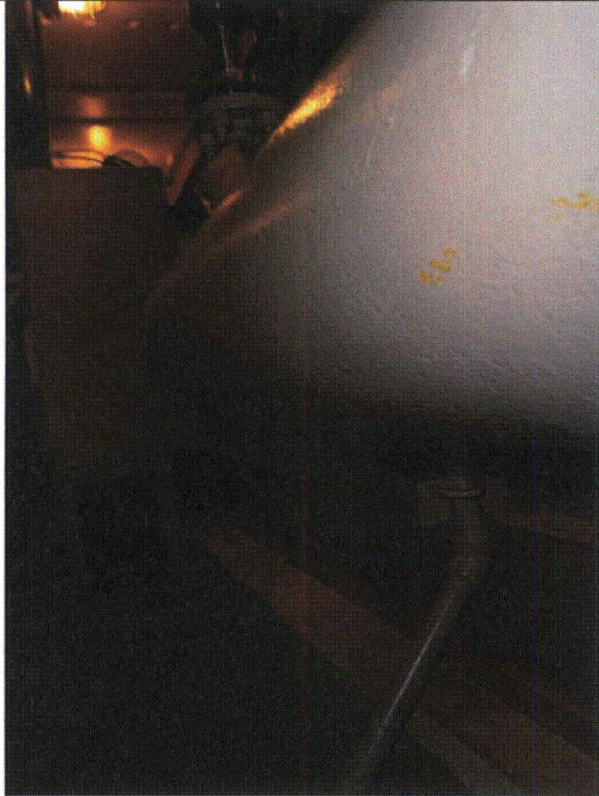
Status:  Y  N  U

**Seismic Walkdown Checklist (SWC)**

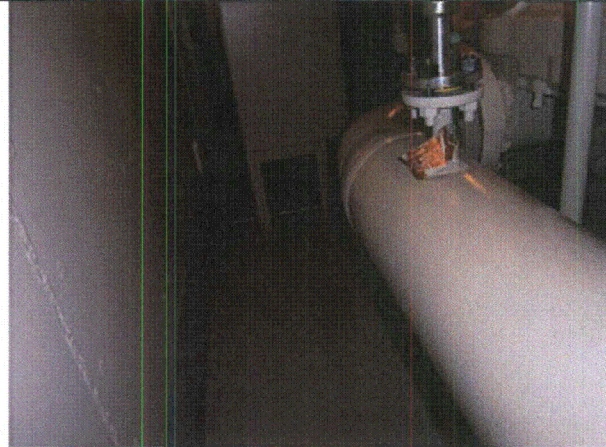
Equipment ID No.: 1-PP-3W

Equipment Class: (5) Horizontal Pumps

Equipment Description: WEST MOTOR DRIVEN AUXILIARY FEEDWATER PUMP



P9170010



P9170011



Status: Y  N  U

**Seismic Walkdown Checklist (SWC)**

Equipment ID No.: 1-PP-4

Equipment Class: (5) Horizontal Pumps

Equipment Description: TURBINE DRIVEN AUXILIARY FEED PUMP

Project: DC Cook 1 SWEL

Location (Bldg, Elev, Room/Area): TB1, 591.00 ft, 50

Manufacturer/Model: \_\_\_\_\_

**Instructions for Completing Checklist**

This checklist may be used to document the results of the Seismic Walkdown of an item of equipment on the SWEL. The space below each of the following questions may be used to record the results of judgments and findings. Additional space is provided at the end of this checklist for documenting other comments.

**Anchorage**

- 1. Is anchorage configuration verification required (i.e., is the item one of the 50% of SWEL items requiring such verification)? No
  
- 2. Is the anchorage free of bent, broken, missing or loose hardware? Yes  
*Can only see 7 out of 8 bolts, 1 bolt not visible because of other equipment in area*
  
- 3. Is the anchorage free of corrosion that is more than mild surface oxidation? Yes
  
- 4. Is the anchorage free of visible cracks in the concrete near the anchors? Yes
  
- 5. Is the anchorage configuration consistent with plant documentation? (Note: This question only applies if the item is one of the 50% for which an anchorage configuration verification is required.) Not Applicable
  
- 6. Based on the above anchorage evaluations, is the anchorage free of potentially adverse seismic conditions? Yes

**Interaction Effects**

Status: Y  N  U

**Seismic Walkdown Checklist (SWC)**

Equipment ID No.: 1-PP-4

Equipment Class: (5) Horizontal Pumps

Equipment Description: TURBINE DRIVEN AUXILIARY FEED PUMP

7. Are soft targets free from impact by nearby equipment or structures? Yes

8. Are overhead equipment, distribution systems, ceiling tiles and lighting, and masonry block walls not likely to collapse onto the equipment? Yes

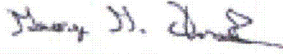
9. Do attached lines have adequate flexibility to avoid damage? Yes

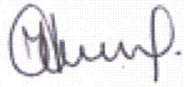
10. Based on the above seismic interaction evaluations, is equipment free of potentially adverse seismic interaction effects? Yes

**Other Adverse Conditions**

11. Have you looked for and found no adverse seismic conditions that could adversely affect the safety functions of the equipment? No  
*Wet fire protection, rod hung threaded pipe - may develop leakage at threaded joints post seismic event*

**Comments**

Evaluated by:  George G Thomas Date: 10/18/12

 Neda Stoeva 10/18/12

**Photos**



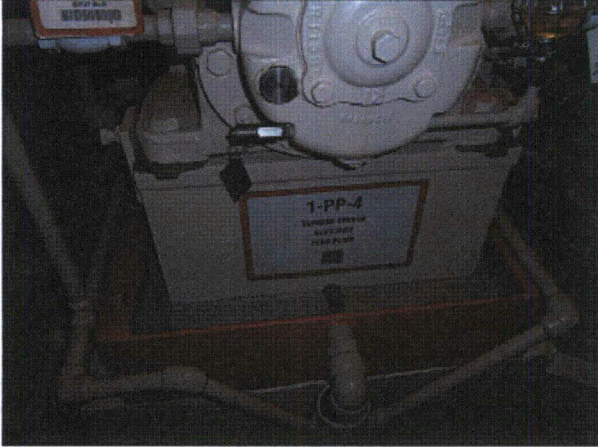
Status: Y  N  U

**Seismic Walkdown Checklist (SWC)**

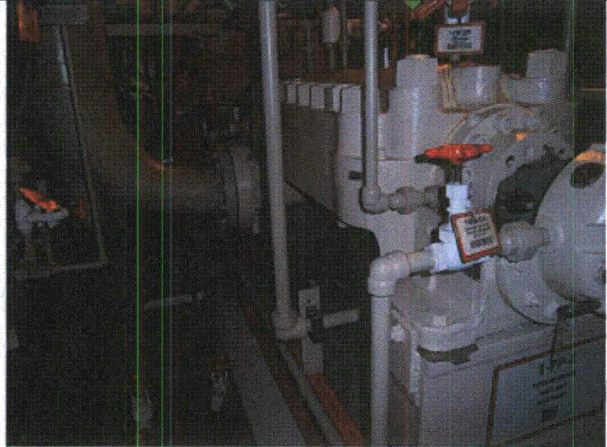
Equipment ID No.: 1-PP-4

Equipment Class: (5) Horizontal Pumps

Equipment Description: TURBINE DRIVEN AUXILIARY FEED PUMP



P9170916



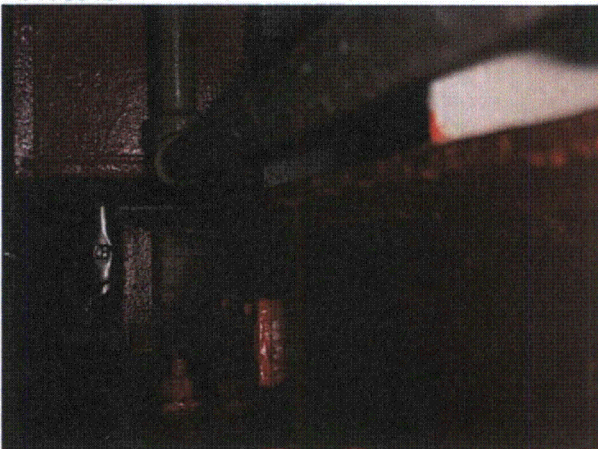
P9170917



P9170918



P9170919





Status: Y  N  U

**Seismic Walkdown Checklist (SWC)**

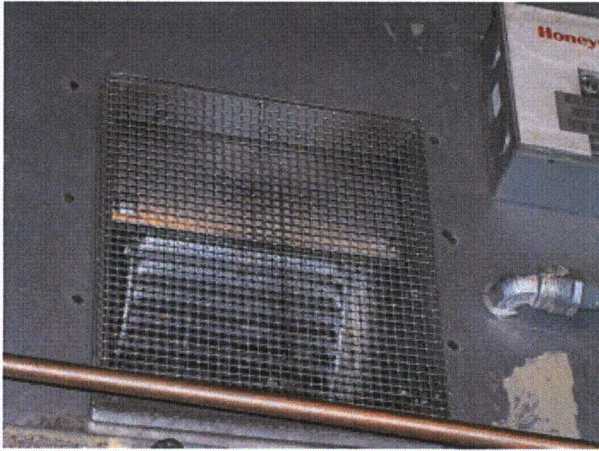
Equipment ID No.: 1-PP-4

Equipment Class: (5) Horizontal Pumps

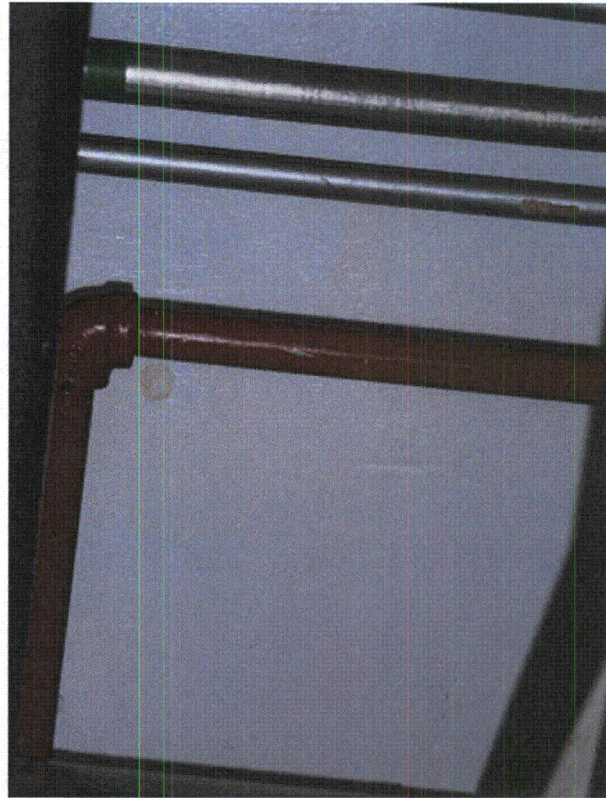
Equipment Description: TURBINE DRIVEN AUXILIARY FEED PUMP

P9170920

P9170921



P9170922



P9170923



Status: Y  N  U

**Seismic Walkdown Checklist (SWC)**

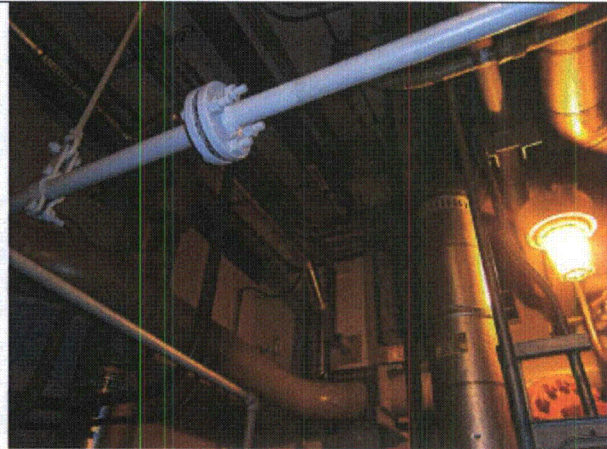
Equipment ID No.: 1-PP-4

Equipment Class: (5) Horizontal Pumps

Equipment Description: TURBINE DRIVEN AUXILIARY FEED PUMP



P9170924



P9170925

Status:  Y  N  U

**Seismic Walkdown Checklist (SWC)**

Equipment ID No.: 1-PP-50W

Equipment Class: (5) Horizontal Pumps

Equipment Description: WEST CENTRIFUGAL CHARGING PUMP

Project: DC Cook 1 SWEL

Location (Bldg, Elev, Room/Area): AB1, 587.00 ft, 41

Manufacturer/Model:

**Instructions for Completing Checklist**

This checklist may be used to document the results of the Seismic Walkdown of an item of equipment on the SWEL. The space below each of the following questions may be used to record the results of judgments and findings. Additional space is provided at the end of this checklist for documenting other comments.

**Anchorage**

1. Is anchorage configuration verification required (i.e., is the item one of the 50% of SWEL items requiring such verification)? Yes  
*SQUG 1-PP-50W REV0*
  
2. Is the anchorage free of bent, broken, missing or loose hardware? Yes  
*PAINTED*
  
3. Is the anchorage free of corrosion that is more than mild surface oxidation? Yes
  
4. Is the anchorage free of visible cracks in the concrete near the anchors? Yes
  
5. Is the anchorage configuration consistent with plant documentation? (Note: This question only applies if the item is one of the 50% for which an anchorage configuration verification is required.) Yes
  
6. Based on the above anchorage evaluations, is the anchorage free of potentially adverse seismic conditions? Yes

**Interaction Effects**

Status:  Y  N  U

**Seismic Walkdown Checklist (SWC)**

Equipment ID No.: 1-PP-50W

Equipment Class: (5) Horizontal Pumps

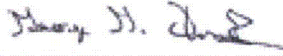
Equipment Description: WEST CENTRIFUGAL CHARGING PUMP

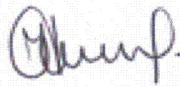
- |     |  |     |
|-----|--|-----|
| 7.  | Are soft targets free from impact by nearby equipment or structures?   | Yes |
| 8.  | Are overhead equipment, distribution systems, ceiling tiles and lighting, and masonry block walls not likely to collapse onto the equipment? | Yes |
| 9.  | Do attached lines have adequate flexibility to avoid damage?   | Yes |
| 10. | Based on the above seismic interaction evaluations, is equipment free of potentially adverse seismic interaction effects?                    | Yes |

**Other Adverse Conditions**

- |     |  |     |
|-----|--|-----|
| 11. | Have you looked for and found no adverse seismic conditions that could adversely affect the safety functions of the equipment? | Yes |
|-----|--|-----|

**Comments**

Evaluated by:  George G Thomas Date: 10/18/12

 Neda Stoeva 10/18/12

**Photos**



Status:  Y  N  U

**Seismic Walkdown Checklist (SWC)**

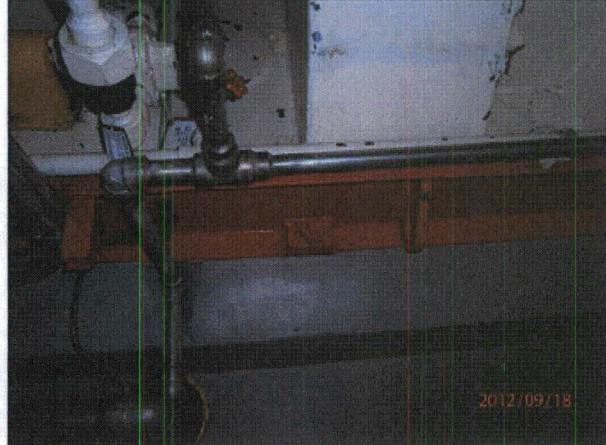
Equipment ID No.: 1-PP-50W

Equipment Class: (5) Horizontal Pumps

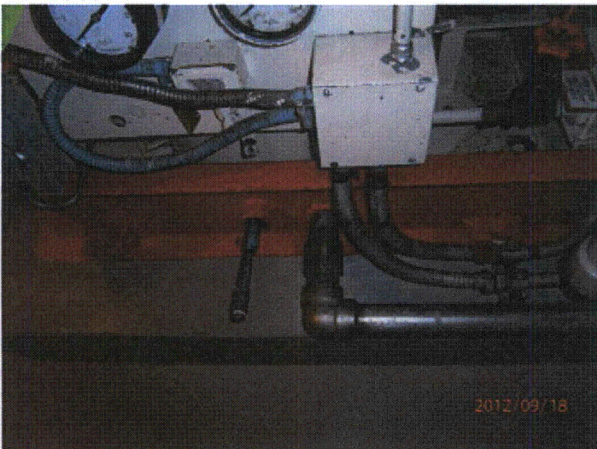
Equipment Description: WEST CENTRIFUGAL CHARGING PUMP



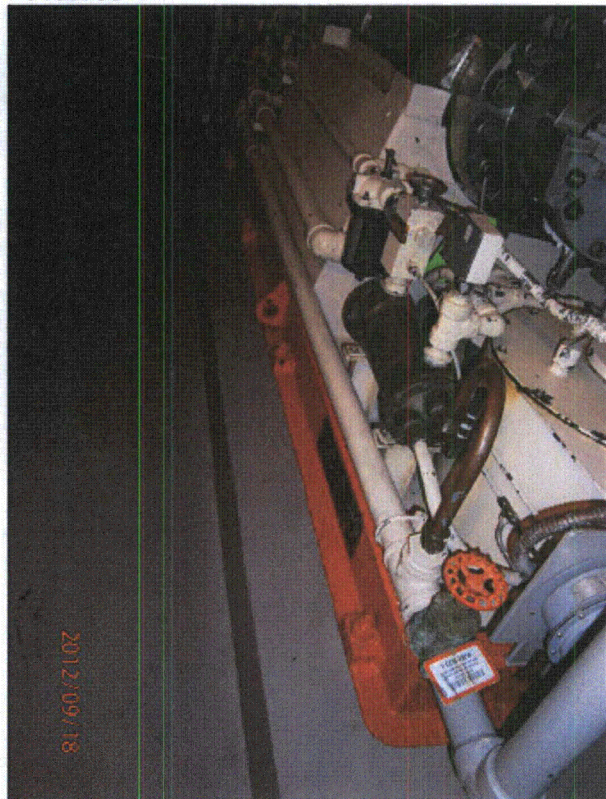
P9180699



P9180700



P9180701



P9180702



Status:  Y  N  U

**Seismic Walkdown Checklist (SWC)**

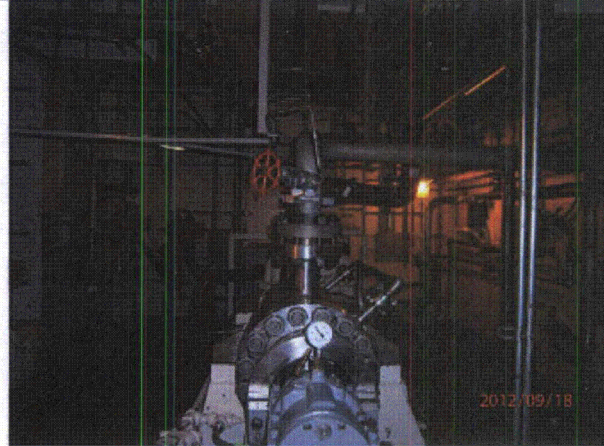
Equipment ID No.: 1-PP-50W

Equipment Class: (5) Horizontal Pumps

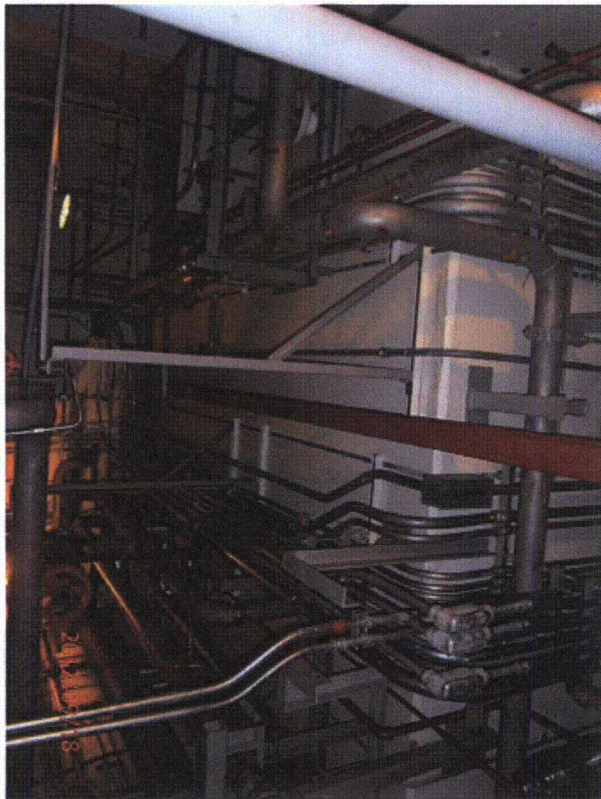
Equipment Description: WEST CENTRIFUGAL CHARGING PUMP



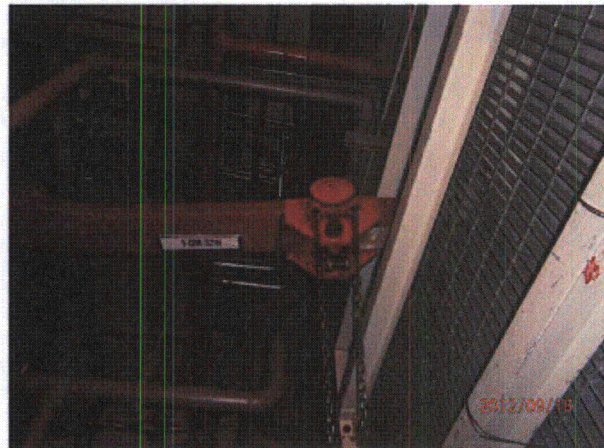
P9180703



P9180704



P9180705



P9180706

Status:  Y  N  U

**Seismic Walkdown Checklist (SWC)**

Equipment ID No.: 1-PP-7W

Equipment Class: (6) Vertical Pumps

Equipment Description: WEST ESSENTIAL SERVICE WATER PUMP

Project: DC Cook 1 SWEL

Location (Bldg, Elev, Room/Area): SH1, 591.00 ft, 136

Manufacturer/Model: \_\_\_\_\_

**Instructions for Completing Checklist**

This checklist may be used to document the results of the Seismic Walkdown of an item of equipment on the SWEL. The space below each of the following questions may be used to record the results of judgments and findings. Additional space is provided at the end of this checklist for documenting other comments.

**Anchorage**

1. Is anchorage configuration verification required (i.e., is the item one of the 50% of SWEL items requiring such verification)? Yes  
*DWG 12-3684 REV14*
  
2. Is the anchorage free of bent, broken, missing or loose hardware? Yes
  
3. Is the anchorage free of corrosion that is more than mild surface oxidation? Yes
  
4. Is the anchorage free of visible cracks in the concrete near the anchors? Yes
  
5. Is the anchorage configuration consistent with plant documentation? (Note: This question only applies if the item is one of the 50% for which an anchorage configuration verification is required.) Yes
  
6. Based on the above anchorage evaluations, is the anchorage free of potentially adverse seismic conditions? Yes

**Interaction Effects**



Status:  Y  N  U

**Seismic Walkdown Checklist (SWC)**

Equipment ID No.: 1-PP-7W

Equipment Class: (6) Vertical Pumps

Equipment Description: WEST ESSENTIAL SERVICE WATER PUMP

7. Are soft targets free from impact by nearby equipment or structures? Yes

*Permanent Scaffold around pump - Ref DWG 1-3113C. General Notes.*

8. Are overhead equipment, distribution systems, ceiling tiles and lighting, and masonry block walls not likely to collapse onto the equipment? Yes  
*Lights rod hung*

9. Do attached lines have adequate flexibility to avoid damage? Yes

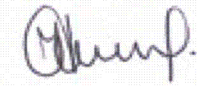
10. Based on the above seismic interaction evaluations, is equipment free of potentially adverse seismic interaction effects? Yes

**Other Adverse Conditions**

11. Have you looked for and found no adverse seismic conditions that could adversely affect the safety functions of the equipment? Yes

**Comments**

Evaluated by:  George G Thomas Date: 10/18/12

 Neda Stoeva 10/18/12

**Photos**

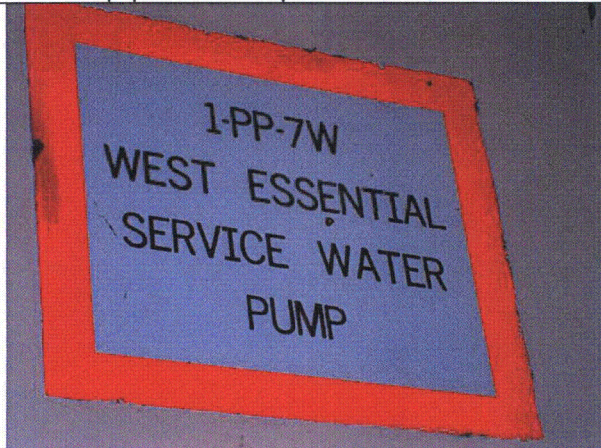
Status:  Y  N  U

**Seismic Walkdown Checklist (SWC)**

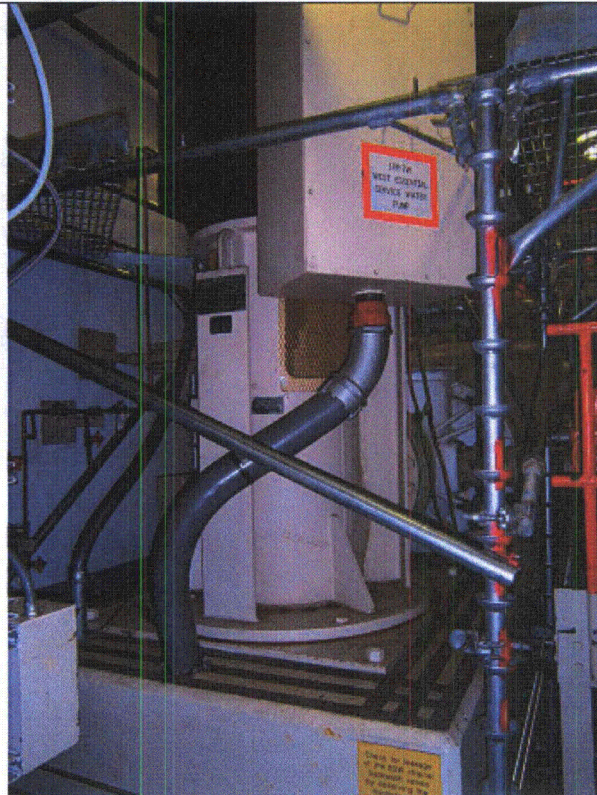
Equipment ID No.: 1-PP-7W

Equipment Class: (6) Vertical Pumps

Equipment Description: WEST ESSENTIAL SERVICE WATER PUMP



P9090002



P9090003



Status:  Y  N  U

**Seismic Walkdown Checklist (SWC)**

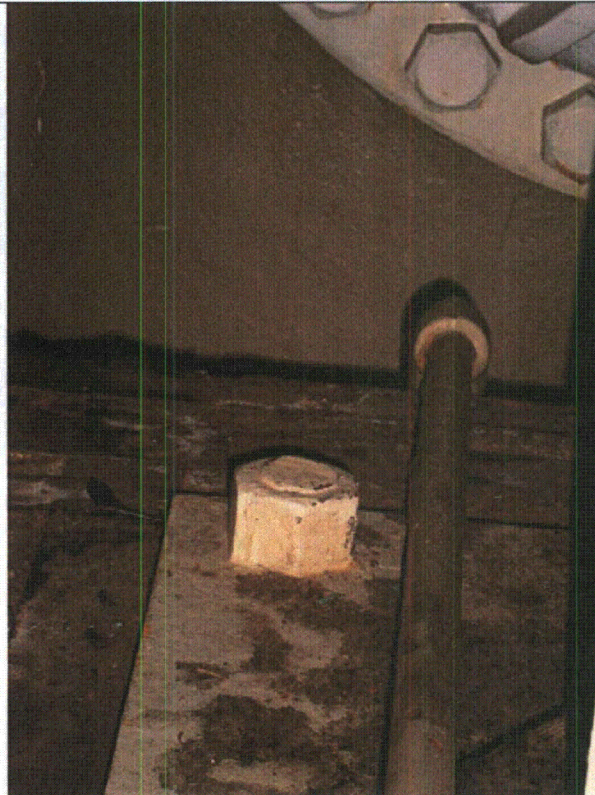
Equipment ID No.: 1-PP-7W

Equipment Class: (6) Vertical Pumps

Equipment Description: WEST ESSENTIAL SERVICE WATER PUMP



P9090004



P9090005

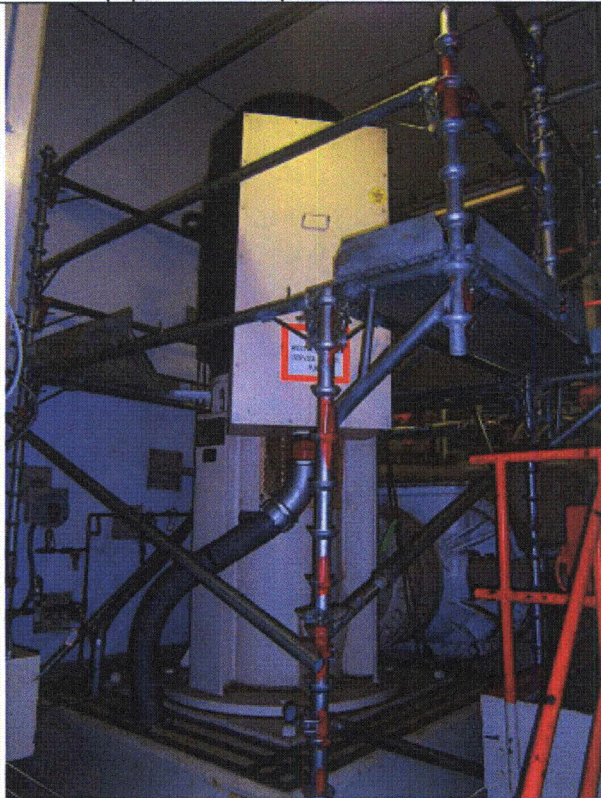
Status:  Y  N  U

**Seismic Walkdown Checklist (SWC)**

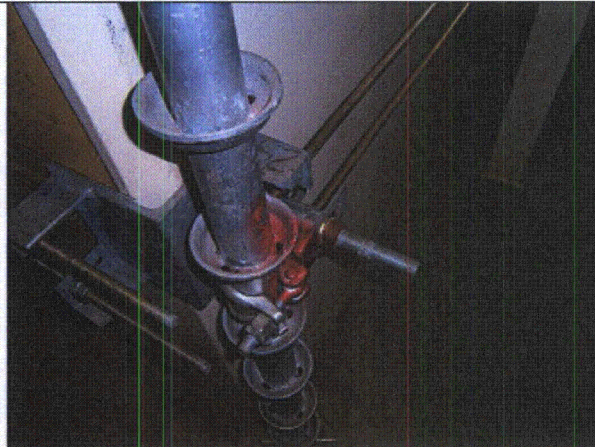
Equipment ID No.: 1-PP-7W

Equipment Class: (6) Vertical Pumps

Equipment Description: WEST ESSENTIAL SERVICE WATER PUMP



P9090006



P9090007



Status:  Y  N  U

**Seismic Walkdown Checklist (SWC)**

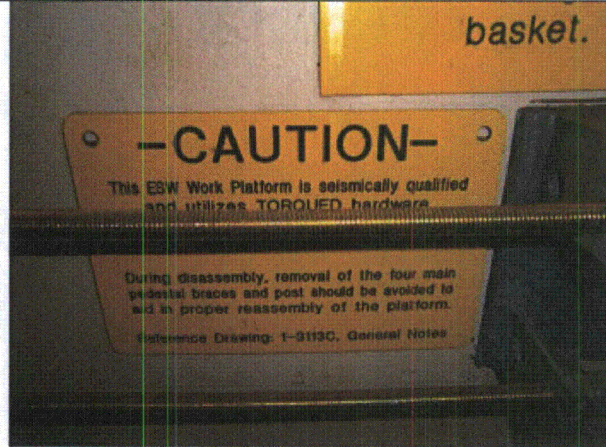
Equipment ID No.: 1-PP-7W

Equipment Class: (6) Vertical Pumps

Equipment Description: WEST ESSENTIAL SERVICE WATER PUMP



P9090008



P9090009

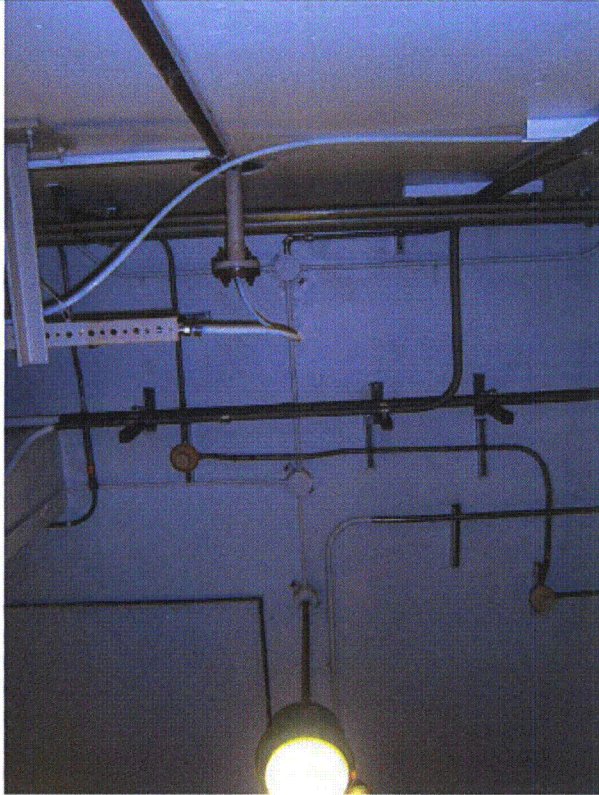
Status:  Y  N  U

**Seismic Walkdown Checklist (SWC)**

Equipment ID No.: 1-PP-7W

Equipment Class: (6) Vertical Pumps

Equipment Description: WEST ESSENTIAL SERVICE WATER PUMP



P9090010



Status:  Y  N  U

**Seismic Walkdown Checklist (SWC)**

Equipment ID No.: 1-PP-9W

Equipment Class: (6) Vertical Pumps

Equipment Description: WEST CONTAINMENT SPRAY PUMP

Project: DC Cook 1 SWEL

Location (Bldg, Elev, Room/Area): AB1, 573.00 ft, 52

Manufacturer/Model: \_\_\_\_\_

**Instructions for Completing Checklist**

This checklist may be used to document the results of the Seismic Walkdown of an item of equipment on the SWEL. The space below each of the following questions may be used to record the results of judgments and findings. Additional space is provided at the end of this checklist for documenting other comments.

**Anchorage**

1. Is anchorage configuration verification required (i.e., is the item one of the 50% of SWEL items requiring such verification)? Yes  
*SQUG 1-PP-9W REV0*
  
2. Is the anchorage free of bent, broken, missing or loose hardware? Yes
  
3. Is the anchorage free of corrosion that is more than mild surface oxidation? Yes
  
4. Is the anchorage free of visible cracks in the concrete near the anchors? Yes
  
5. Is the anchorage configuration consistent with plant documentation? (Note: This question only applies if the item is one of the 50% for which an anchorage configuration verification is required.) Yes
  
6. Based on the above anchorage evaluations, is the anchorage free of potentially adverse seismic conditions? Yes

**Interaction Effects**

Status:  Y  N  U

**Seismic Walkdown Checklist (SWC)**

Equipment ID No.: 1-PP-9W

Equipment Class: (6) Vertical Pumps

Equipment Description: WEST CONTAINMENT SPRAY PUMP

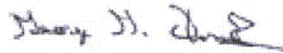
- |   |     |
|---|-----|
| 7. Are soft targets free from impact by nearby equipment or structures?   | Yes |
| 8. Are overhead equipment, distribution systems, ceiling tiles and lighting, and masonry block walls not likely to collapse onto the equipment?<br><i>Block wall behind pump (small) - OK per DWG 12-4026, Wall W-9</i> | Yes |
| 9. Do attached lines have adequate flexibility to avoid damage?   | Yes |
| 10. Based on the above seismic interaction evaluations, is equipment free of potentially adverse seismic interaction effects?   | Yes |

**Other Adverse Conditions**

- |  |     |
|--|-----|
| 11. Have you looked for and found no adverse seismic conditions that could adversely affect the safety functions of the equipment? | Yes |
|--|-----|

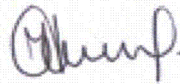
**Comments**

Evaluated by:



George G Thomas

Date: 10/18/12



Neda Stoeva

10/18/12

**Photos**



Status:  Y  N  U

**Seismic Walkdown Checklist (SWC)**

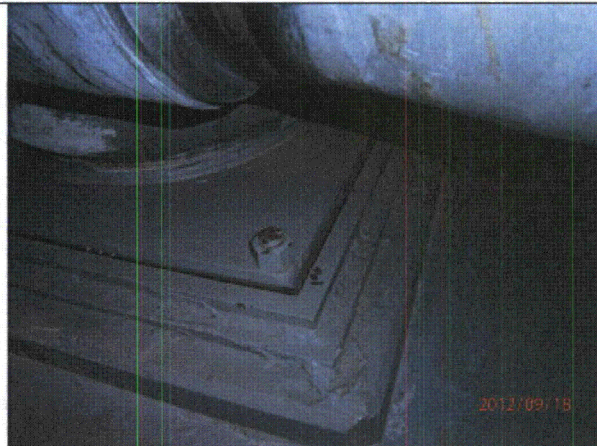
Equipment ID No.: 1-PP-9W

Equipment Class: (6) Vertical Pumps

Equipment Description: WEST CONTAINMENT SPRAY PUMP



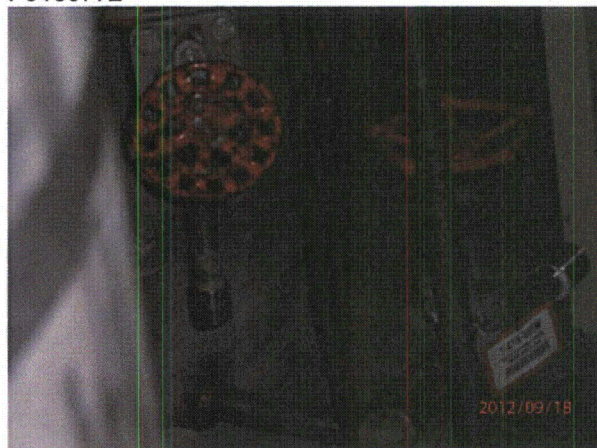
P9180771



P9180772



P9180773



P9180774



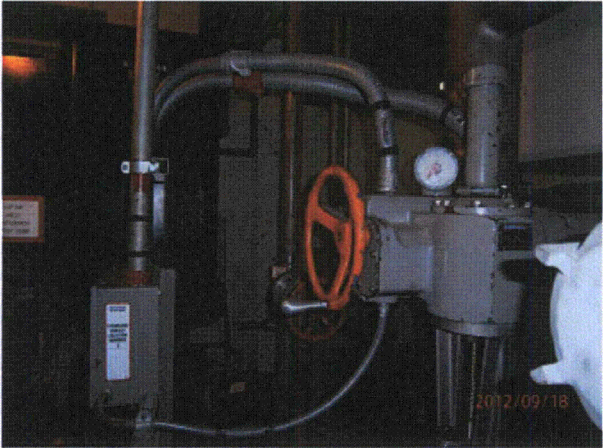
Status:  Y  N  U

**Seismic Walkdown Checklist (SWC)**

Equipment ID No.: 1-PP-9W

Equipment Class: (6) Vertical Pumps

Equipment Description: WEST CONTAINMENT SPRAY PUMP  
P9180775 P9180776



P9180777



Status:  Y  N  U

**Seismic Walkdown Checklist (SWC)**

Equipment ID No.: 1-PS-A

Equipment Class: (1) Motor Control Centers

Equipment Description: 600VAC MOTOR CONTROL CENTER PS-A

Project: DC Cook 1 SWEL

Location (Bldg, Elev, Room/Area): SH1, 594.00 ft, 221

Manufacturer/Model: \_\_\_\_\_

**Instructions for Completing Checklist**

This checklist may be used to document the results of the Seismic Walkdown of an item of equipment on the SWEL. The space below each of the following questions may be used to record the results of judgments and findings. Additional space is provided at the end of this checklist for documenting other comments.

**Anchorage**

1. Is anchorage configuration verification required (i.e., is the item one of the 50% of SWEL items requiring such verification)? No
  
2. Is the anchorage free of bent, broken, missing or loose hardware? Yes
  
3. Is the anchorage free of corrosion that is more than mild surface oxidation? Yes
  
4. Is the anchorage free of visible cracks in the concrete near the anchors? Not Applicable  
*Mounted to steel I-beam*
  
5. Is the anchorage configuration consistent with plant documentation? (Note: This question only applies if the item is one of the 50% for which an anchorage configuration verification is required.) Not Applicable
  
6. Based on the above anchorage evaluations, is the anchorage free of potentially adverse seismic conditions? Yes

**Interaction Effects**

Status:  Y  N  U

**Seismic Walkdown Checklist (SWC)**

Equipment ID No.: 1-PS-A

Equipment Class: (1) Motor Control Centers

Equipment Description: 600VAC MOTOR CONTROL CENTER PS-A

7. Are soft targets free from impact by nearby equipment or structures? Yes
8. Are overhead equipment, distribution systems, ceiling tiles and lighting, and masonry block walls not likely to collapse onto the equipment? Yes
9. Do attached lines have adequate flexibility to avoid damage? Yes
10. Based on the above seismic interaction evaluations, is equipment free of potentially adverse seismic interaction effects? Yes

**Other Adverse Conditions**

11. Have you looked for and found no adverse seismic conditions that could adversely affect the safety functions of the equipment? Yes

**Comments**

Evaluated by:  George G Thomas Date: 10/18/12

 Neda Stoeva 10/18/12

**Photos**



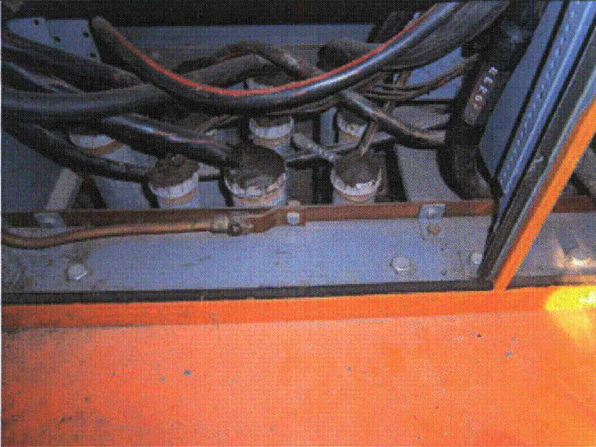
Status:  Y  N  U

**Seismic Walkdown Checklist (SWC)**

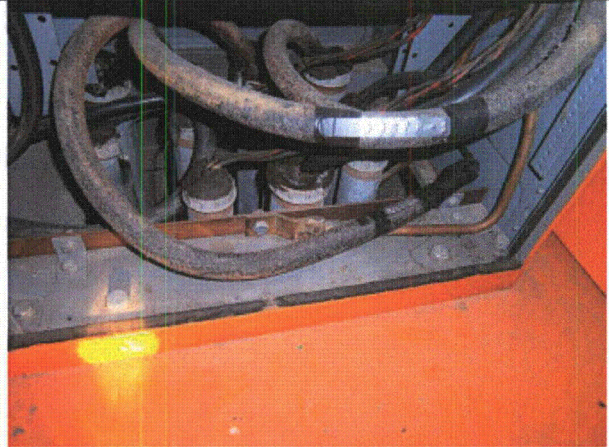
Equipment ID No.: 1-PS-A

Equipment Class: (1) Motor Control Centers

Equipment Description: 600VAC MOTOR CONTROL CENTER PS-A



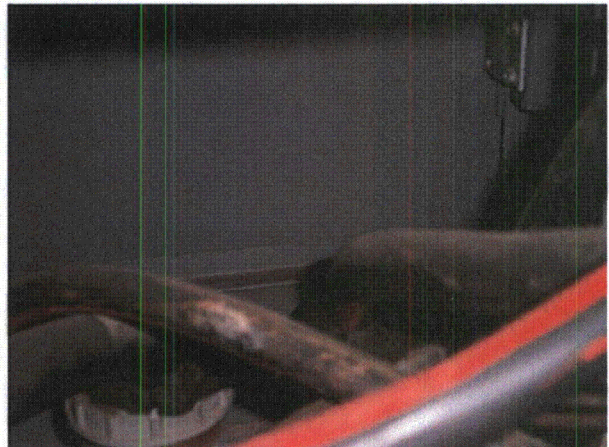
P9140563



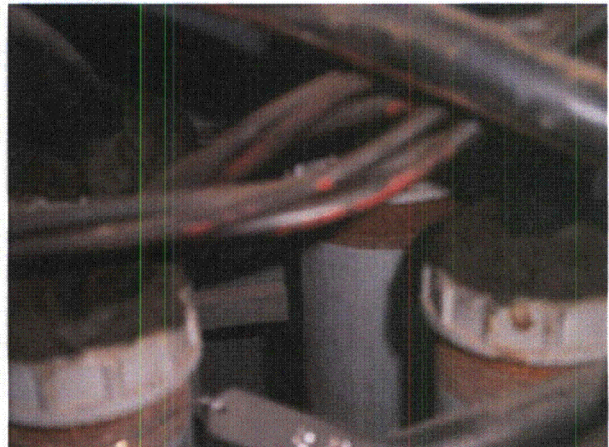
P9140564



P9140565



P9140566





Status:  Y  N  U

**Seismic Walkdown Checklist (SWC)**

Equipment ID No.: 1-PS-A

Equipment Class: (1) Motor Control Centers

Equipment Description: 600VAC MOTOR CONTROL CENTER PS-A

P9140567

P9140568



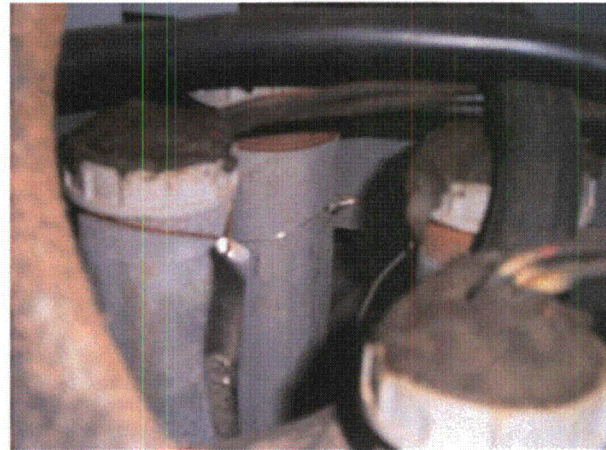
P9140569



P9140570



P9140571



P9140572



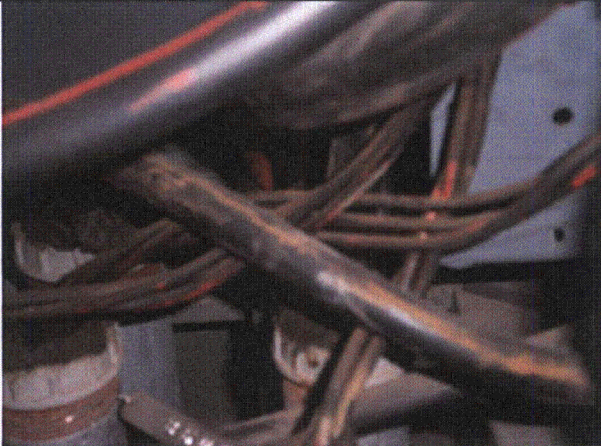
Status:  Y  N  U

**Seismic Walkdown Checklist (SWC)**

Equipment ID No.: 1-PS-A

Equipment Class: (1) Motor Control Centers

Equipment Description: 600VAC MOTOR CONTROL CENTER PS-A



P9140573



P9140574



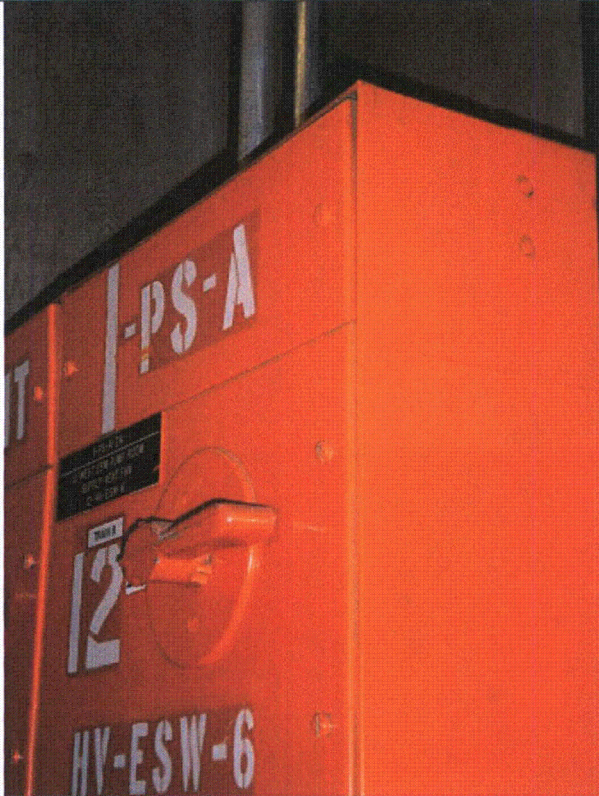
Status:  Y  N  U

**Seismic Walkdown Checklist (SWC)**

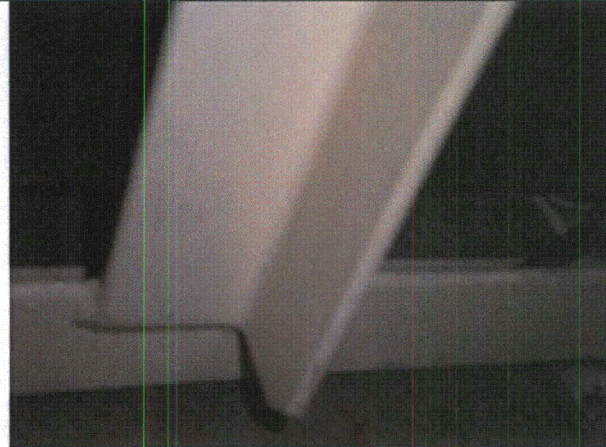
Equipment ID No.: 1-PS-A

Equipment Class: (1) Motor Control Centers

Equipment Description: 600VAC MOTOR CONTROL CENTER PS-A



P9140575



P9140576



P9140577



P9140578



Status:  Y  N  U

**Seismic Walkdown Checklist (SWC)**

Equipment ID No.: 1-QT-106-AB1

Equipment Class: (0) Other

Equipment Description: AB EMERGENCY DIESEL FUEL OIL TRANSFER PUMP #1

Project: DC Cook 1 SWEL

Location (Bldg, Elev, Room/Area): AB2, 587.00 ft, 126

Manufacturer/Model: \_\_\_\_\_

**Instructions for Completing Checklist**

This checklist may be used to document the results of the Seismic Walkdown of an item of equipment on the SWEL. The space below each of the following questions may be used to record the results of judgments and findings. Additional space is provided at the end of this checklist for documenting other comments.

**Anchorage**

1. Is anchorage configuration verification required (i.e., is the item one of the 50% of SWEL items requiring such verification)? Yes  
*SQUG 1-QT-106-AB1 REV0*
  
2. Is the anchorage free of bent, broken, missing or loose hardware? Yes
  
3. Is the anchorage free of corrosion that is more than mild surface oxidation? Yes
  
4. Is the anchorage free of visible cracks in the concrete near the anchors? Yes
  
5. Is the anchorage configuration consistent with plant documentation? (Note: This question only applies if the item is one of the 50% for which an anchorage configuration verification is required.) Yes
  
6. Based on the above anchorage evaluations, is the anchorage free of potentially adverse seismic conditions? Yes

**Interaction Effects**

Status:  Y  N  U

**Seismic Walkdown Checklist (SWC)**

Equipment ID No.: 1-QT-106-AB1

Equipment Class: (0) Other

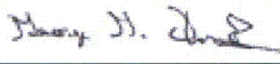
Equipment Description: AB EMERGENCY DIESEL FUEL OIL TRANSFER PUMP #1

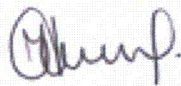
7. Are soft targets free from impact by nearby equipment or structures? Yes
8. Are overhead equipment, distribution systems, ceiling tiles and lighting, and masonry block walls not likely to collapse onto the equipment? Yes
9. Do attached lines have adequate flexibility to avoid damage? Yes
10. Based on the above seismic interaction evaluations, is equipment free of potentially adverse seismic interaction effects? Yes

**Other Adverse Conditions**

11. Have you looked for and found no adverse seismic conditions that could adversely affect the safety functions of the equipment? Yes

**Comments**

Evaluated by:  George G Thomas Date: 10/18/12

 Neda Stoeva 10/18/12

**Photos**



Status:  Y  N  U

**Seismic Walkdown Checklist (SWC)**

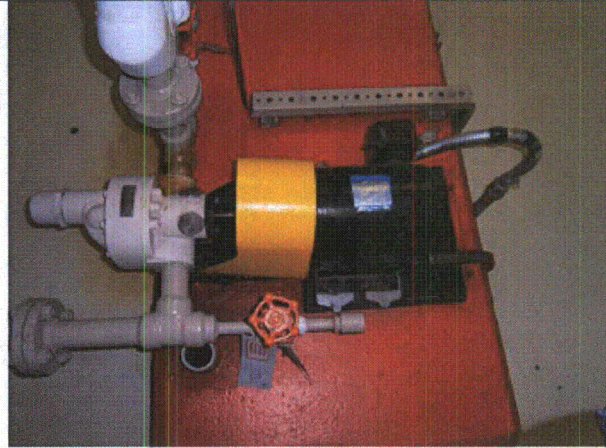
Equipment ID No.: 1-QT-106-AB1

Equipment Class: (0) Other

Equipment Description: AB EMERGENCY DIESEL FUEL OIL TRANSFER PUMP #1



P9140516



P9140517

Status:  Y  N  U

**Seismic Walkdown Checklist (SWC)**

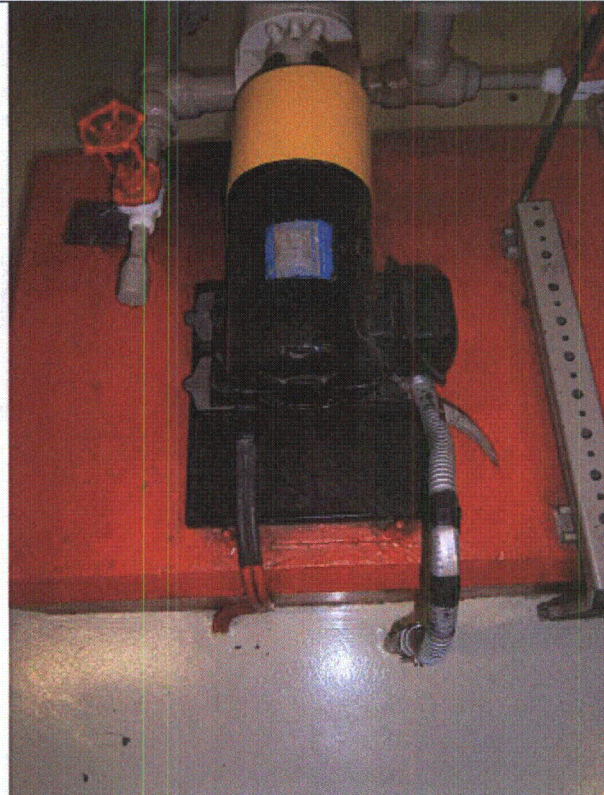
Equipment ID No.: 1-QT-106-AB1

Equipment Class: (0) Other

Equipment Description: AB EMERGENCY DIESEL FUEL OIL TRANSFER PUMP #1



P9140518



P9140519



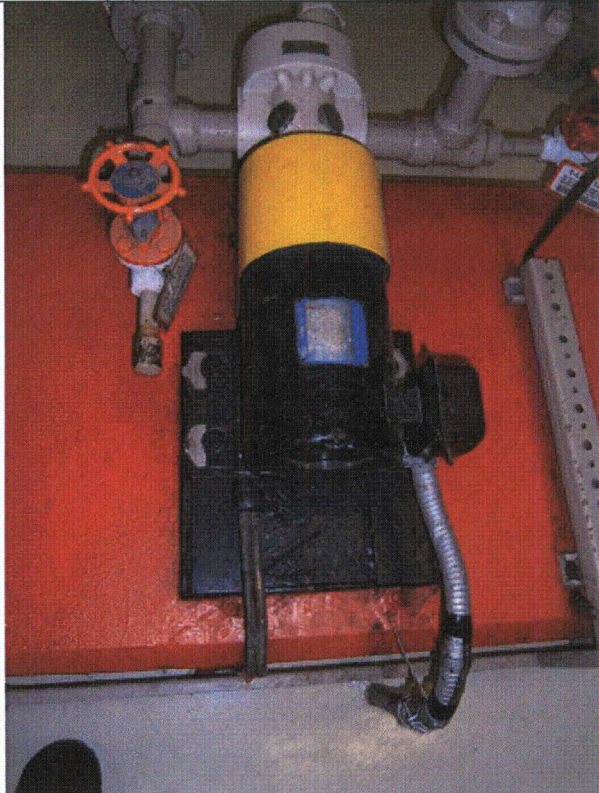
Status:  Y  N  U

**Seismic Walkdown Checklist (SWC)**

Equipment ID No.: 1-QT-106-AB1

Equipment Class: (0) Other

Equipment Description: AB EMERGENCY DIESEL FUEL OIL TRANSFER PUMP #1



P9140520

Status: Y  N  U

**Seismic Walkdown Checklist (SWC)**

Equipment ID No.: 1-QT-107-AB

Equipment Class: (21) Tanks and Heat Exchangers

Equipment Description: AB EMERGENCY DIESEL FUEL OIL DAY TANK

Project: DC Cook 1 SWEL

Location (Bldg, Elev, Room/Area): AB1, 587.00 ft, 121

Manufacturer/Model: \_\_\_\_\_

**Instructions for Completing Checklist**

This checklist may be used to document the results of the Seismic Walkdown of an item of equipment on the SWEL. The space below each of the following questions may be used to record the results of judgments and findings. Additional space is provided at the end of this checklist for documenting other comments.

**Anchorage**

- |  |     |
|--|-----|
| 1. Is anchorage configuration verification required (i.e., is the item one of the 50% of SWEL items requiring such verification)?<br><i>SQUG 1-QT-107-AB REV0</i>                                      | Yes |
| 2. Is the anchorage free of bent, broken, missing or loose hardware?   | Yes |
| 3. Is the anchorage free of corrosion that is more than mild surface oxidation?  | Yes |
| 4. Is the anchorage free of visible cracks in the concrete near the anchors?   | Yes |
| 5. Is the anchorage configuration consistent with plant documentation? (Note: This question only applies if the item is one of the 50% for which an anchorage configuration verification is required.) | Yes |
| 6. Based on the above anchorage evaluations, is the anchorage free of potentially adverse seismic conditions?  | Yes |

**Interaction Effects**



Status: Y  N  U

**Seismic Walkdown Checklist (SWC)**

Equipment ID No.: 1-QT-107-AB

Equipment Class: (21) Tanks and Heat Exchangers

Equipment Description: AB EMERGENCY DIESEL FUEL OIL DAY TANK

7. Are soft targets free from impact by nearby equipment or structures? Yes
8. Are overhead equipment, distribution systems, ceiling tiles and lighting, and masonry block walls not likely to collapse onto the equipment? No  
*Fire extinguishers on short hooks - AR 2012-11669 was issued. Block wall - OK per DWG 1-4033, Wall W-3*
9. Do attached lines have adequate flexibility to avoid damage? Yes
10. Based on the above seismic interaction evaluations, is equipment free of potentially adverse seismic interaction effects? No

**Other Adverse Conditions**

11. Have you looked for and found no adverse seismic conditions that could adversely affect the safety functions of the equipment? Yes

**Comments**

Evaluated by:  George G Thomas Date: 10/18/12

 Neda Stoeva 10/18/12

**Photos**



Status: Y  N  U

**Seismic Walkdown Checklist (SWC)**

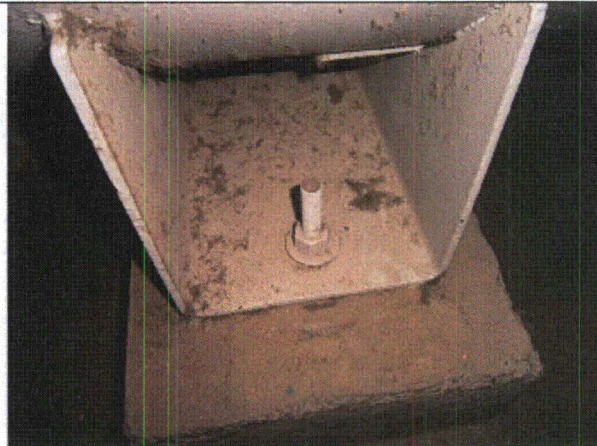
Equipment ID No.: 1-QT-107-AB

Equipment Class: (21) Tanks and Heat Exchangers

Equipment Description: AB EMERGENCY DIESEL FUEL OIL DAY TANK



P9130314



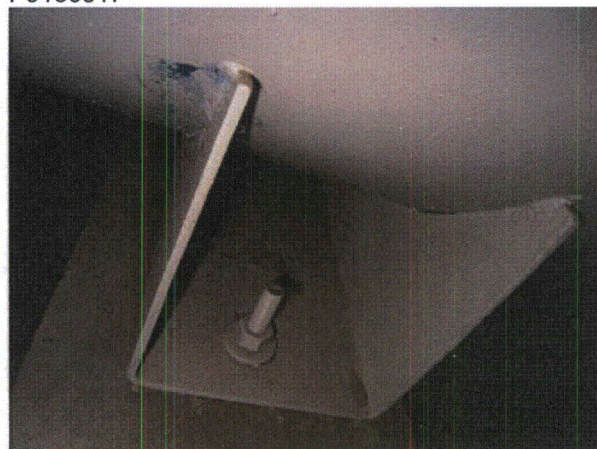
P9130315



P9130316



P9130317





Status: Y  N  U

**Seismic Walkdown Checklist (SWC)**

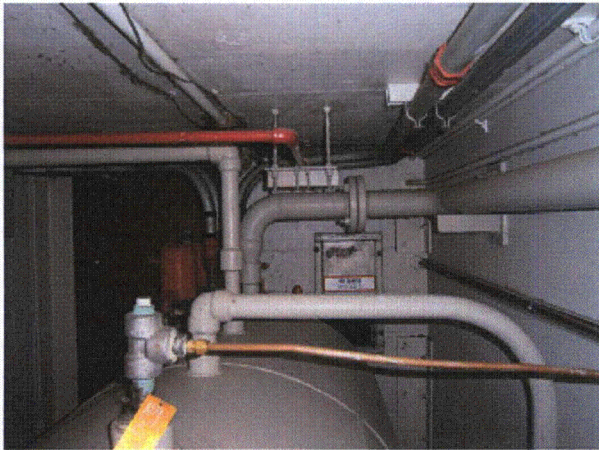
Equipment ID No.: 1-QT-107-AB

Equipment Class: (21) Tanks and Heat Exchangers

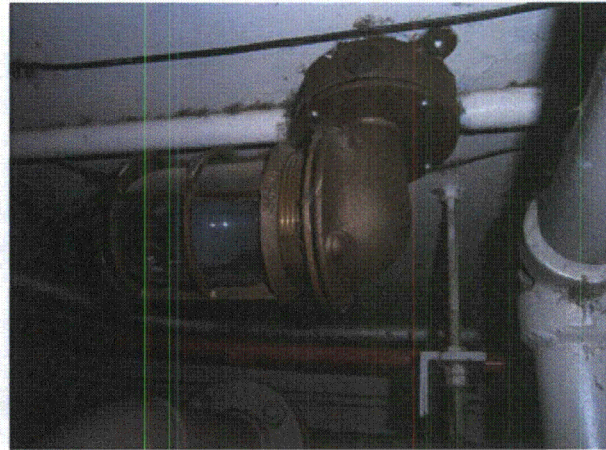
Equipment Description: AB EMERGENCY DIESEL FUEL OIL DAY TANK

P9130318

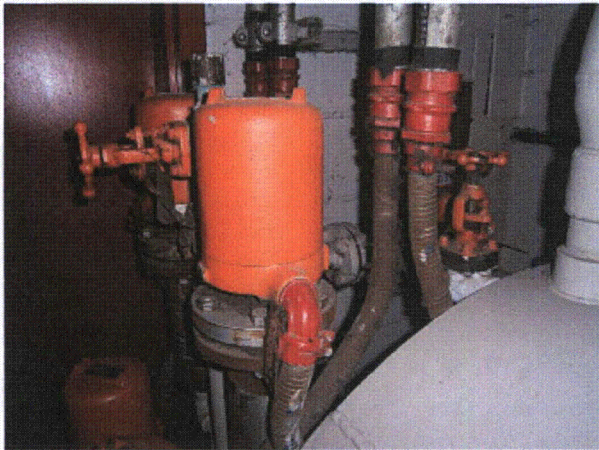
P9130319



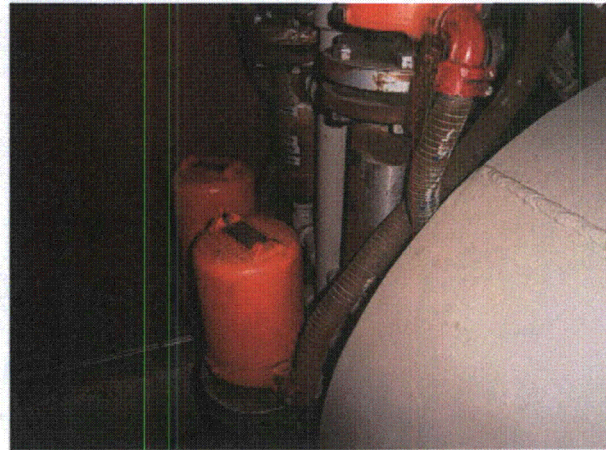
P9130320



P9130321



P9130322



P9130323

Status:  Y  N  U

**Seismic Walkdown Checklist (SWC)**

Equipment ID No.: 1-QT-130-AB2

Equipment Class: (5) Horizontal Pumps

Equipment Description: AB EMERGENCY DIESEL JACKET WATER PUMP #2

Project: DC Cook 1 SWEL

Location (Bldg, Elev, Room/Area): AB1, 587.00 ft, 121

Manufacturer/Model: \_\_\_\_\_

**Instructions for Completing Checklist**

This checklist may be used to document the results of the Seismic Walkdown of an item of equipment on the SWEL. The space below each of the following questions may be used to record the results of judgments and findings. Additional space is provided at the end of this checklist for documenting other comments.

**Anchorage**

1. Is anchorage configuration verification required (i.e., is the item one of the 50% of SWEL items requiring such verification)? Yes  
*SQUG 1-QT-130-AB2*
  
2. Is the anchorage free of bent, broken, missing or loose hardware? Yes
  
3. Is the anchorage free of corrosion that is more than mild surface oxidation? Yes  
*PAINTED*
  
4. Is the anchorage free of visible cracks in the concrete near the anchors? Yes
  
5. Is the anchorage configuration consistent with plant documentation? (Note: This question only applies if the item is one of the 50% for which an anchorage configuration verification is required.) Yes
  
6. Based on the above anchorage evaluations, is the anchorage free of potentially adverse seismic conditions? Yes

---

**Interaction Effects**



Status:  Y  N  U

**Seismic Walkdown Checklist (SWC)**

Equipment ID No.: 1-QT-130-AB2

Equipment Class: (5) Horizontal Pumps

Equipment Description: AB EMERGENCY DIESEL JACKET WATER PUMP #2

7. Are soft targets free from impact by nearby equipment or structures? Yes

8. Are overhead equipment, distribution systems, ceiling tiles and lighting, and masonry block walls not likely to collapse onto the equipment? Yes

9. Do attached lines have adequate flexibility to avoid damage? Yes

10. Based on the above seismic interaction evaluations, is equipment free of potentially adverse seismic interaction effects? Yes

**Other Adverse Conditions**

11. Have you looked for and found no adverse seismic conditions that could adversely affect the safety functions of the equipment? Yes

**Comments**

Evaluated by:  George G Thomas Date: 10/18/12

 Neda Stoeva 10/18/12

**Photos**

Status:  Y  N  U

**Seismic Walkdown Checklist (SWC)**

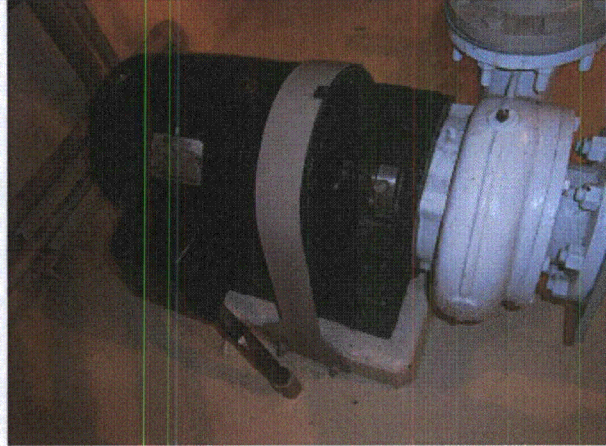
Equipment ID No.: 1-QT-130-AB2

Equipment Class: (5) Horizontal Pumps

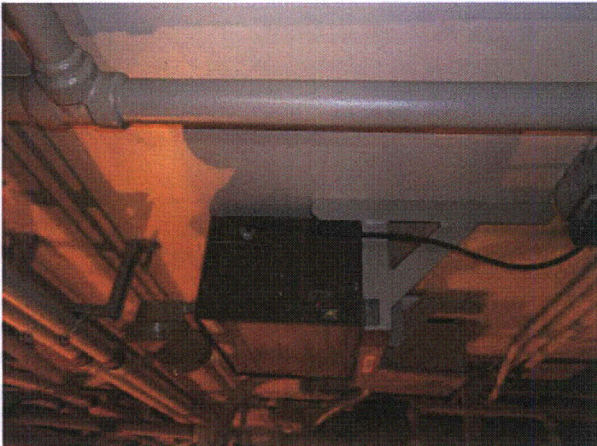
Equipment Description: AB EMERGENCY DIESEL JACKET WATER PUMP #2



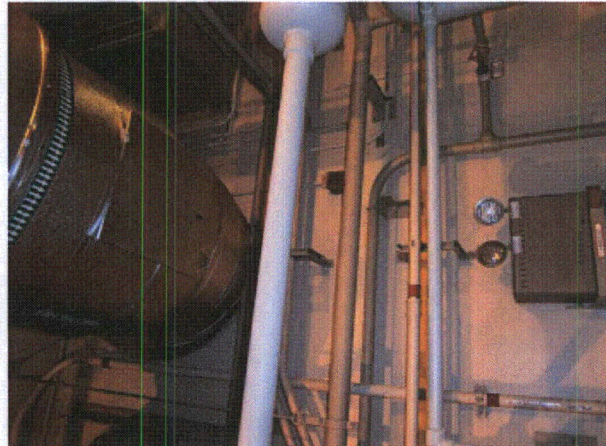
P9130309



P9130310



P9130311



P9130312



Status: Y  N  U

**Seismic Walkdown Checklist (SWC)**

Equipment ID No.: 1-QT-141-AB1

Equipment Class: (21) Tanks and Heat Exchangers

Equipment Description: AB EMERGENCY DIESEL STARTING AIR RECEIVER #1

Project: DC Cook 1 SWEL

Location (Bldg, Elev, Room/Area): AB1, 587.00 ft, 121

Manufacturer/Model: \_\_\_\_\_

**Instructions for Completing Checklist**

This checklist may be used to document the results of the Seismic Walkdown of an item of equipment on the SWEL. The space below each of the following questions may be used to record the results of judgments and findings. Additional space is provided at the end of this checklist for documenting other comments.

**Anchorage**

- |  |                |
|--|----------------|
| 1. Is anchorage configuration verification required (i.e., is the item one of the 50% of SWEL items requiring such verification)?  | No             |
| 2. Is the anchorage free of bent, broken, missing or loose hardware?   | Yes            |
| 3. Is the anchorage free of corrosion that is more than mild surface oxidation?  | Yes            |
| 4. Is the anchorage free of visible cracks in the concrete near the anchors?   | Yes            |
| 5. Is the anchorage configuration consistent with plant documentation? (Note: This question only applies if the item is one of the 50% for which an anchorage configuration verification is required.) | Not Applicable |
| 6. Based on the above anchorage evaluations, is the anchorage free of potentially adverse seismic conditions?  | Yes            |

**Interaction Effects**

Status: Y  N  U

**Seismic Walkdown Checklist (SWC)**

Equipment ID No.: 1-QT-141-AB1

Equipment Class: (21) Tanks and Heat Exchangers

Equipment Description: AB EMERGENCY DIESEL STARTING AIR RECEIVER #1

7. Are soft targets free from impact by nearby equipment or structures? Yes

8. Are overhead equipment, distribution systems, ceiling tiles and lighting, and masonry block walls not likely to collapse onto the equipment? No  
*Fire extinguishers on short hooks - AR 2012-11669 was issued. Block wall - OK per DWG 1-4033, Wall W-3*

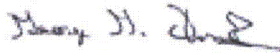
9. Do attached lines have adequate flexibility to avoid damage? Yes

10. Based on the above seismic interaction evaluations, is equipment free of potentially adverse seismic interaction effects? No

**Other Adverse Conditions**

11. Have you looked for and found no adverse seismic conditions that could adversely affect the safety functions of the equipment? Yes

**Comments**

Evaluated by:  George G Thomas Date: 10/18/12

 Neda Stoeva 10/18/12

**Photos**



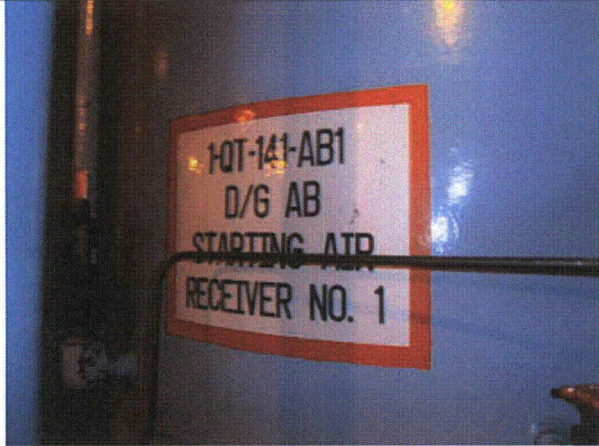
Status: Y  N  U

**Seismic Walkdown Checklist (SWC)**

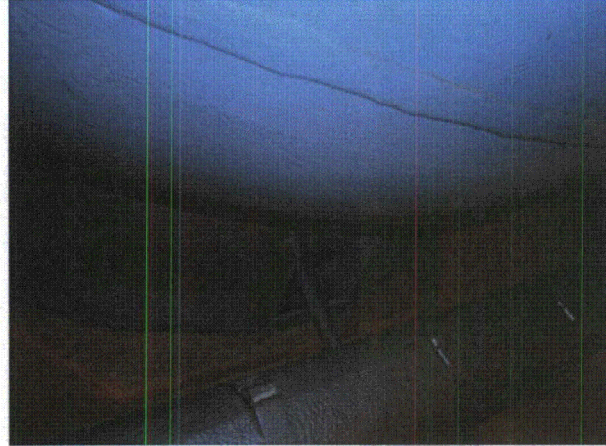
Equipment ID No.: 1-QT-141-AB1

Equipment Class: (21) Tanks and Heat Exchangers

Equipment Description: AB EMERGENCY DIESEL STARTING AIR RECEIVER #1



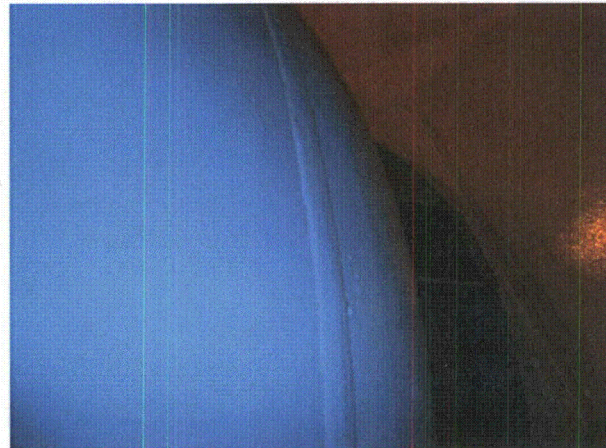
P9130325



P9130326



P9130327



P9130328



Status: Y  N  U

**Seismic Walkdown Checklist (SWC)**

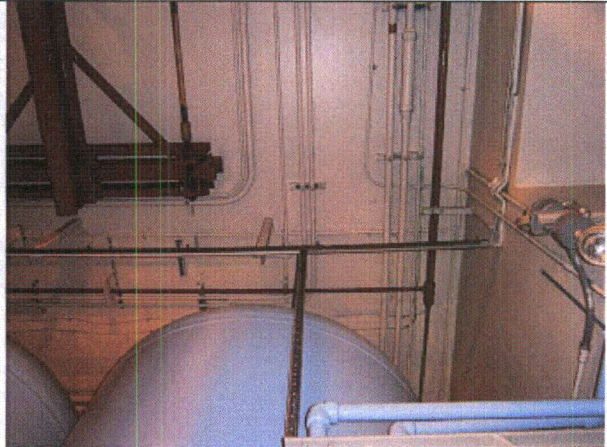
Equipment ID No.: 1-QT-141-AB1

Equipment Class: (21) Tanks and Heat Exchangers

Equipment Description: AB EMERGENCY DIESEL STARTING AIR RECEIVER #1



P9130329



P9130330



Status: Y  N  U

**Seismic Walkdown Checklist (SWC)**

Equipment ID No.: 1-QT-141-AB1

Equipment Class: (21) Tanks and Heat Exchangers

Equipment Description: AB EMERGENCY DIESEL STARTING AIR RECEIVER #1



P9130331

Status:  Y  N  U

**Seismic Walkdown Checklist (SWC)**

Equipment ID No.: 1-QT-142-AB1

Equipment Class: (12) Air Compressors

Equipment Description: AB EMERGENCY DIESEL STARTING AIR COMPRESSOR #1

Project: DC Cook 1 SWEL

Location (Bldg, Elev, Room/Area): AB1, 587.00 ft, 121

Manufacturer/Model: \_\_\_\_\_

**Instructions for Completing Checklist**

This checklist may be used to document the results of the Seismic Walkdown of an item of equipment on the SWEL. The space below each of the following questions may be used to record the results of judgments and findings. Additional space is provided at the end of this checklist for documenting other comments.

**Anchorage**

1. Is anchorage configuration verification required (i.e., is the item one of the 50% of SWEL items requiring such verification)? Yes  
*DWG 12-3462*
  
2. Is the anchorage free of bent, broken, missing or loose hardware? Yes
  
3. Is the anchorage free of corrosion that is more than mild surface oxidation? Yes
  
4. Is the anchorage free of visible cracks in the concrete near the anchors? Yes  
*Compressor on steel skid on concrete grout pad, anchored at base of skid.*
  
5. Is the anchorage configuration consistent with plant documentation? (Note: This question only applies if the item is one of the 50% for which an anchorage configuration verification is required.) Yes
  
6. Based on the above anchorage evaluations, is the anchorage free of potentially adverse seismic conditions? Yes

---

**Interaction Effects**



Status:  Y  N  U

**Seismic Walkdown Checklist (SWC)**

Equipment ID No.: 1-QT-142-AB1

Equipment Class: (12) Air Compressors

Equipment Description: AB EMERGENCY DIESEL STARTING AIR COMPRESSOR #1

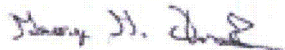
- |   |     |
|---|-----|
| 7. Are soft targets free from impact by nearby equipment or structures?   | Yes |
| 8. Are overhead equipment, distribution systems, ceiling tiles and lighting, and masonry block walls not likely to collapse onto the equipment? | Yes |
| 9. Do attached lines have adequate flexibility to avoid damage?   | Yes |
| 10. Based on the above seismic interaction evaluations, is equipment free of potentially adverse seismic interaction effects?                   | Yes |

**Other Adverse Conditions**

- |  |     |
|--|-----|
| 11. Have you looked for and found no adverse seismic conditions that could adversely affect the safety functions of the equipment? | Yes |
|--|-----|

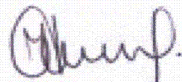
**Comments**

Evaluated by:



George G Thomas

Date: 10/18/12



Neda Stoeva

10/18/12

**Photos**

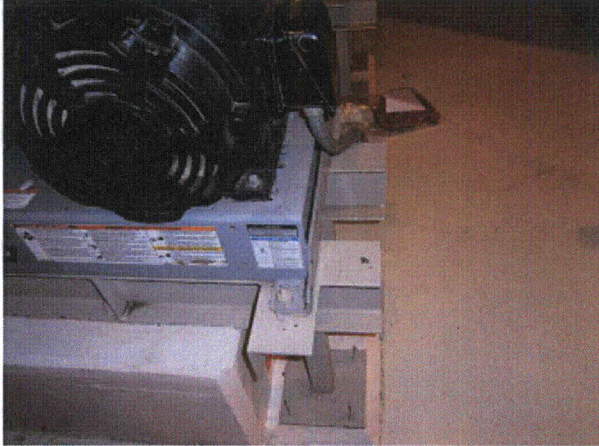
Status:  Y  N  U

**Seismic Walkdown Checklist (SWC)**

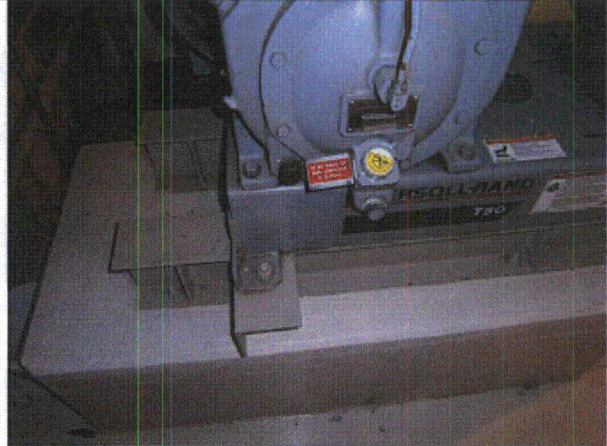
Equipment ID No.: 1-QT-142-AB1

Equipment Class: (12) Air Compressors

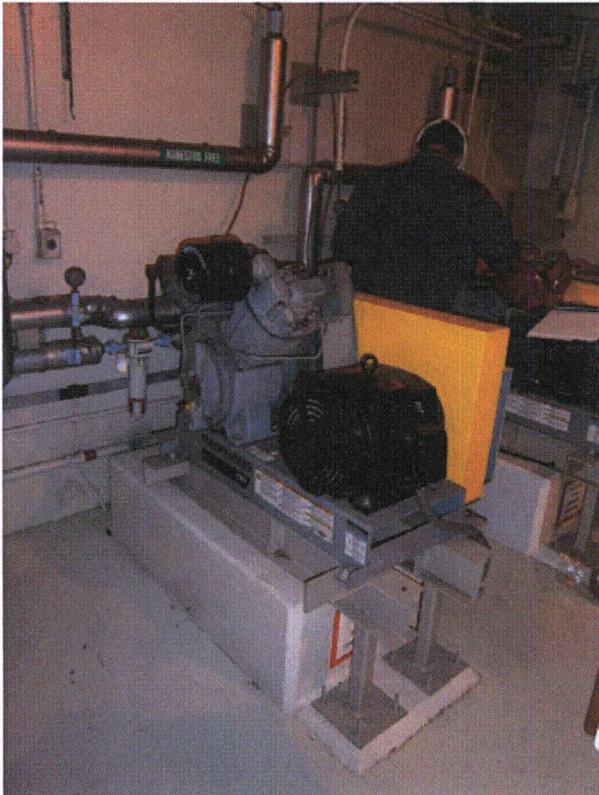
Equipment Description: AB EMERGENCY DIESEL STARTING AIR COMPRESSOR #1



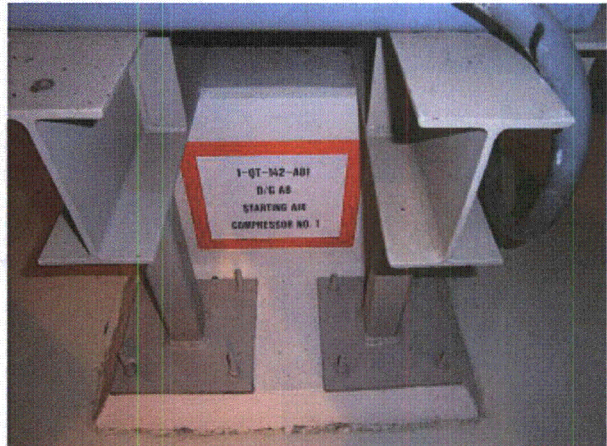
P9130333



P9130334



P9130335



P9130336



Status:  Y  N  U

**Seismic Walkdown Checklist (SWC)**

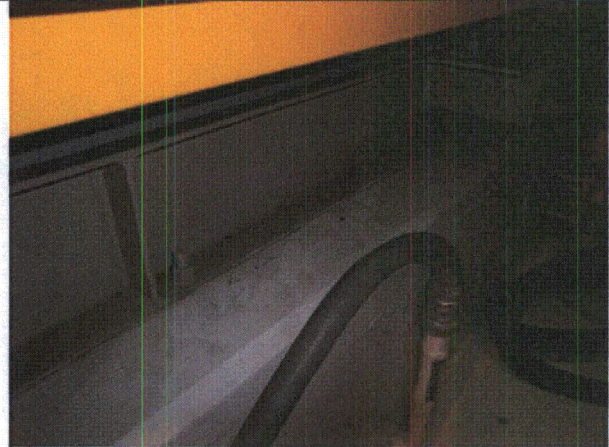
Equipment ID No.: 1-QT-142-AB1

Equipment Class: (12) Air Compressors

Equipment Description: AB EMERGENCY DIESEL STARTING AIR COMPRESSOR #1



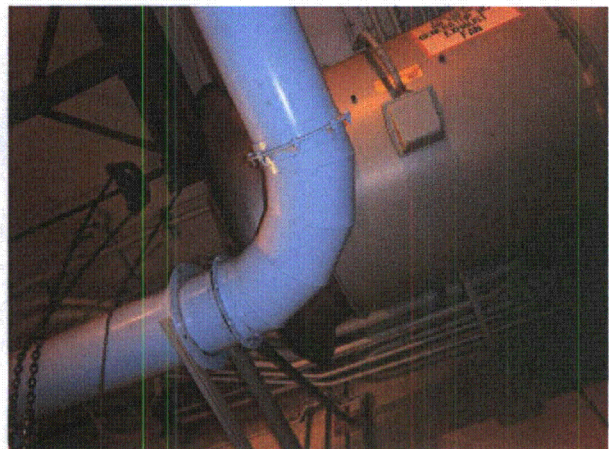
P9130337



P9130338



P9130339



P9130340

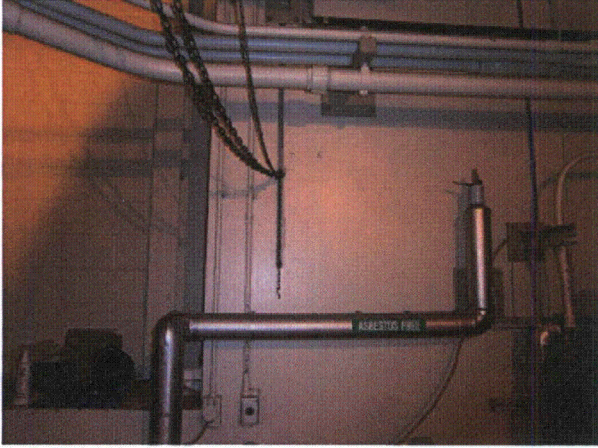
Status:  Y  N  U

**Seismic Walkdown Checklist (SWC)**

Equipment ID No.: 1-QT-142-AB1

Equipment Class: (12) Air Compressors

Equipment Description: AB EMERGENCY DIESEL STARTING AIR COMPRESSOR #1



P9130341



Status:  Y  N  U

**Seismic Walkdown Checklist (SWC)**

Equipment ID No.: 1-QT-506

Equipment Class: (8) Motor-Operated and Solenoid-Operated Valves

Equipment Description: TURBINE DRIVEN AUX FEED PUMP PP-4 TRIP AND THROTTLE VALVE

Project: DC Cook 1 SWEL

Location (Bldg, Elev, Room/Area): TB1, 591.00 ft, 50

Manufacturer/Model: \_\_\_\_\_

**Instructions for Completing Checklist**

This checklist may be used to document the results of the Seismic Walkdown of an item of equipment on the SWEL. The space below each of the following questions may be used to record the results of judgments and findings. Additional space is provided at the end of this checklist for documenting other comments.

**Anchorage**

1. Is anchorage configuration verification required (i.e., is the item one of the 50% of SWEL items requiring such verification)? No
  
2. Is the anchorage free of bent, broken, missing or loose hardware? Not Applicable
  
3. Is the anchorage free of corrosion that is more than mild surface oxidation? Not Applicable
  
4. Is the anchorage free of visible cracks in the concrete near the anchors? Not Applicable
  
5. Is the anchorage configuration consistent with plant documentation? (Note: This question only applies if the item is one of the 50% for which an anchorage configuration verification is required.) Not Applicable
  
6. Based on the above anchorage evaluations, is the anchorage free of potentially adverse seismic conditions? Yes

**Interaction Effects**

Status:  Y  N  U

**Seismic Walkdown Checklist (SWC)**

Equipment ID No.: 1-QT-506

Equipment Class: (8) Motor-Operated and Solenoid-Operated Valves

Equipment Description: TURBINE DRIVEN AUX FEED PUMP PP-4 TRIP AND THROTTLE VALVE

7. Are soft targets free from impact by nearby equipment or structures? Yes

*Right up against pipe insulation*

8. Are overhead equipment, distribution systems, ceiling tiles and lighting, and masonry block walls not likely to collapse onto the equipment? Yes

9. Do attached lines have adequate flexibility to avoid damage? Yes

10. Based on the above seismic interaction evaluations, is equipment free of potentially adverse seismic interaction effects? Yes

**Other Adverse Conditions**

11. Have you looked for and found no adverse seismic conditions that could adversely affect the safety functions of the equipment? Yes

**Comments**

Evaluated by:  George G Thomas Date: 10/18/12

 Neda Stoeva 10/18/12

**Photos**



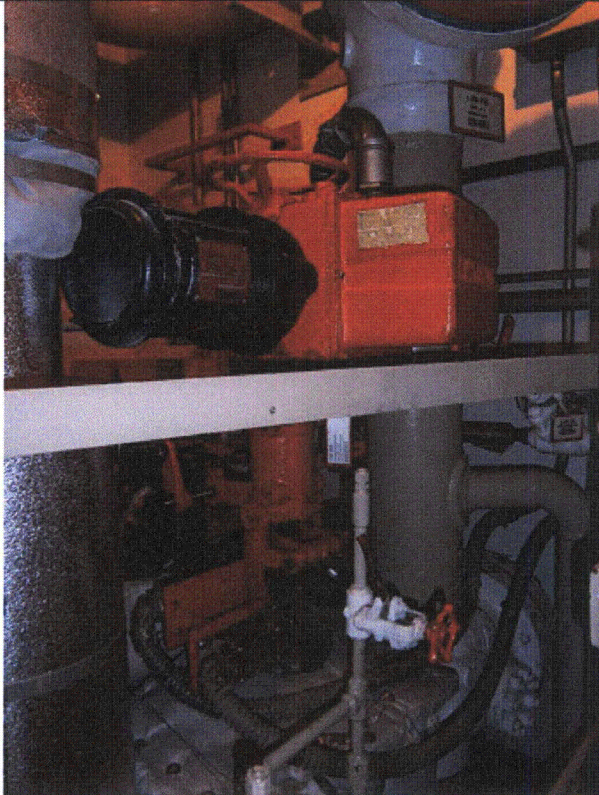
Status:  Y  N  U

**Seismic Walkdown Checklist (SWC)**

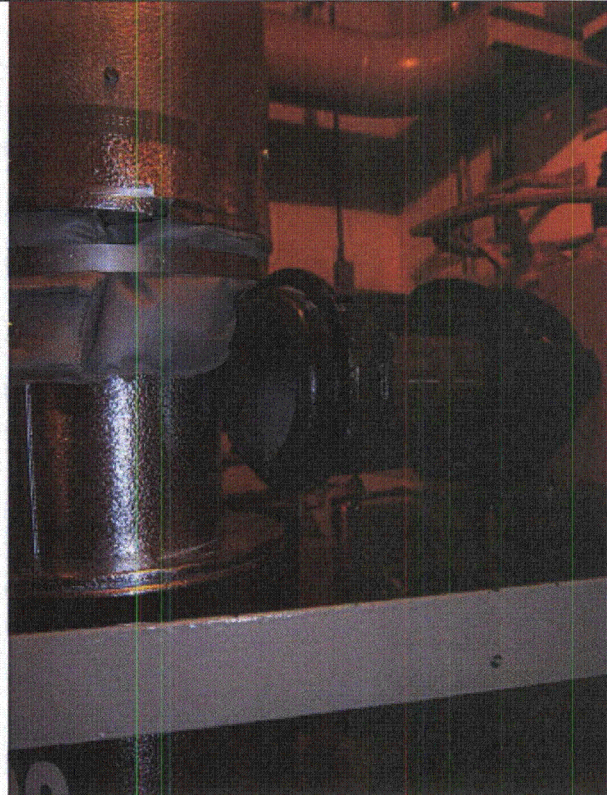
Equipment ID No.: 1-QT-506

Equipment Class: (8) Motor-Operated and Solenoid-Operated Valves

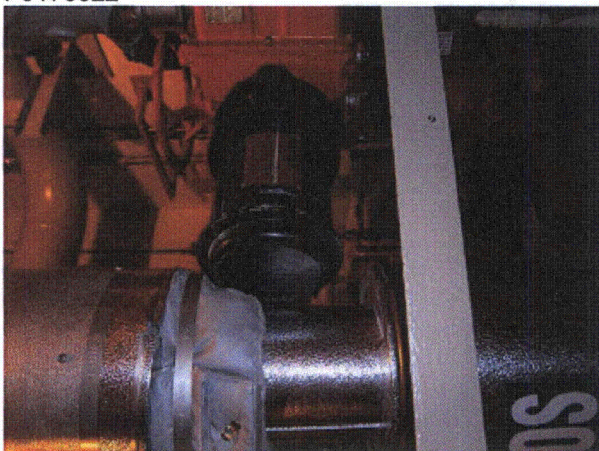
Equipment Description: TURBINE DRIVEN AUX FEED PUMP PP-4 TRIP AND THROTTLE VALVE



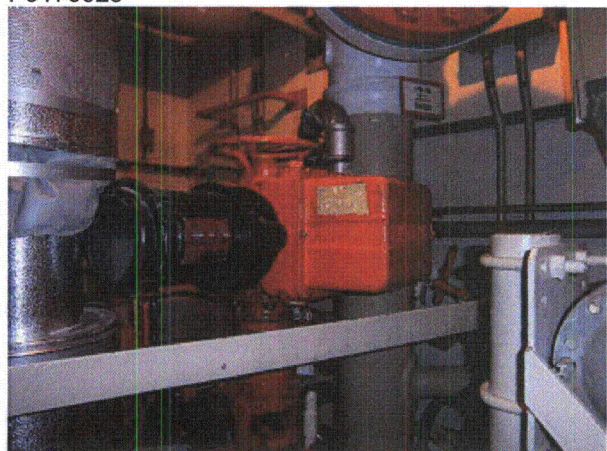
P9170022



P9170023



P9170024



P9170927



Status:  Y  N  U

**Seismic Walkdown Checklist (SWC)**

Equipment ID No.: 1-RC

Equipment Class: (20) Instrumentation and Control Panels and Cabinets

Equipment Description: REACTOR CONTROL RODS CONTROL PANEL

Project: DC Cook 1 SWEL

Location (Bldg, Elev, Room/Area): AB1, 633.00 ft, 123

Manufacturer/Model: \_\_\_\_\_

**Instructions for Completing Checklist**

This checklist may be used to document the results of the Seismic Walkdown of an item of equipment on the SWEL. The space below each of the following questions may be used to record the results of judgments and findings. Additional space is provided at the end of this checklist for documenting other comments.

**Anchorage**

- |  |                |
|--|----------------|
| 1. Is anchorage configuration verification required (i.e., is the item one of the 50% of SWEL items requiring such verification)?  | No             |
| 2. Is the anchorage free of bent, broken, missing or loose hardware?   | Yes            |
| 3. Is the anchorage free of corrosion that is more than mild surface oxidation?  | Yes            |
| 4. Is the anchorage free of visible cracks in the concrete near the anchors?<br><i>Welded to embedded plates front and back through shim plates on back and unistrut in front</i>                      | Not Applicable |
| 5. Is the anchorage configuration consistent with plant documentation? (Note: This question only applies if the item is one of the 50% for which an anchorage configuration verification is required.) | Not Applicable |
| 6. Based on the above anchorage evaluations, is the anchorage free of potentially adverse seismic conditions?  | Yes            |

**Interaction Effects**



Status:  Y  N  U

**Seismic Walkdown Checklist (SWC)**

Equipment ID No.: 1-RC

Equipment Class: (20) Instrumentation and Control Panels and Cabinets

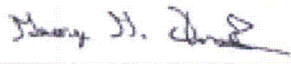
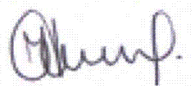
Equipment Description: REACTOR CONTROL RODS CONTROL PANEL

- |  |     |
|--|-----|
| 7. Are soft targets free from impact by nearby equipment or structures?  | Yes |
| 8. Are overhead equipment, distribution systems, ceiling tiles and lighting, and masonry block walls not likely to collapse onto the equipment?<br><i>Check ceiling tiles - OK - clipped per DWG 12-4070</i> | Yes |
| 9. Do attached lines have adequate flexibility to avoid damage?  | Yes |
| 10. Based on the above seismic interaction evaluations, is equipment free of potentially adverse seismic interaction effects?  | Yes |

**Other Adverse Conditions**

- |  |     |
|--|-----|
| 11. Have you looked for and found no adverse seismic conditions that could adversely affect the safety functions of the equipment? | Yes |
|--|-----|

**Comments**

Evaluated by:	<u></u>	George G Thomas	Date:	<u>10/18/12</u>
	<u></u>	Neda Stoeva		<u>10/18/12</u>

**Photos**

Status:  Y  N  U

**Seismic Walkdown Checklist (SWC)**

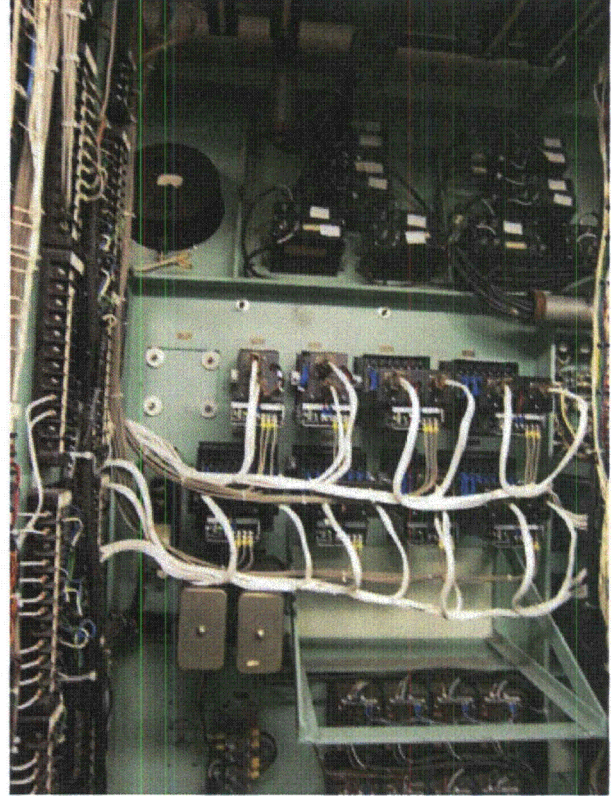
Equipment ID No.: 1-RC

Equipment Class: (20) Instrumentation and Control Panels and Cabinets

Equipment Description: REACTOR CONTROL RODS CONTROL PANEL



P9191245



P9191246



P9191247



Status:  Y  N  U

**Seismic Walkdown Checklist (SWC)**

Equipment ID No.: 1-RPS-B

Equipment Class: (20) Instrumentation and Control Panels and Cabinets

Equipment Description: REACTOR PROTECTION AND SAFEGUARD ACTUATION

Project: DC Cook 1 SWEL

Location (Bldg, Elev, Room/Area): AB1, 633.00 ft, 123

Manufacturer/Model: \_\_\_\_\_

**Instructions for Completing Checklist**

This checklist may be used to document the results of the Seismic Walkdown of an item of equipment on the SWEL. The space below each of the following questions may be used to record the results of judgments and findings. Additional space is provided at the end of this checklist for documenting other comments.

**Anchorage**

- |    |   |                |
|----|---|----------------|
| 1. | Is anchorage configuration verification required (i.e., is the item one of the 50% of SWEL items requiring such verification)?<br><i>SQUG 1-RPS-B REV0</i>  | Yes            |
| 2. | Is the anchorage free of bent, broken, missing or loose hardware?   | Yes            |
| 3. | Is the anchorage free of corrosion that is more than mild surface oxidation?  | Yes            |
| 4. | Is the anchorage free of visible cracks in the concrete near the anchors?   | Yes            |
| 5. | Is the anchorage configuration consistent with plant documentation? (Note: This question only applies if the item is one of the 50% for which an anchorage configuration verification is required.)<br><i>Panel welded to embedded plates through shim plates</i> | Not Applicable |
| 6. | Based on the above anchorage evaluations, is the anchorage free of potentially adverse seismic conditions?  | Yes            |

**Interaction Effects**

Status:  Y  N  U

**Seismic Walkdown Checklist (SWC)**

Equipment ID No.: 1-RPS-B

Equipment Class: (20) Instrumentation and Control Panels and Cabinets

Equipment Description: REACTOR PROTECTION AND SAFEGUARD ACTUATION

7. Are soft targets free from impact by nearby equipment or structures? Yes

8. Are overhead equipment, distribution systems, ceiling tiles and lighting, and masonry block walls not likely to collapse onto the equipment? Yes  
*Check ceiling tiles - OK - clipped per DWG 12-4070*

9. Do attached lines have adequate flexibility to avoid damage? Yes

10. Based on the above seismic interaction evaluations, is equipment free of potentially adverse seismic interaction effects? Yes

**Other Adverse Conditions**

11. Have you looked for and found no adverse seismic conditions that could adversely affect the safety functions of the equipment? Yes

**Comments**

Evaluated by:  George G Thomas Date: 10/18/12

 Neda Stoeva 10/18/12

**Photos**



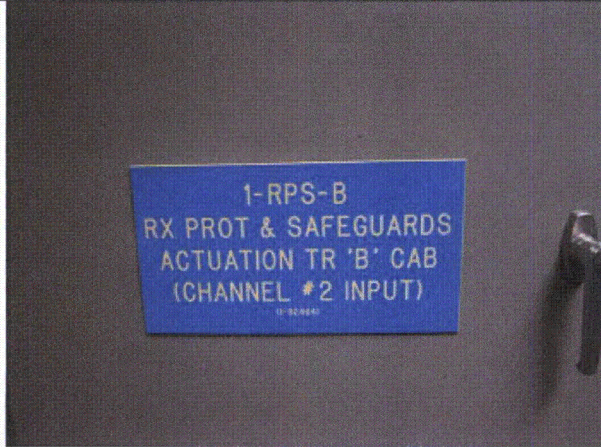
Status:  Y  N  U

**Seismic Walkdown Checklist (SWC)**

Equipment ID No.: 1-RPS-B

Equipment Class: (20) Instrumentation and Control Panels and Cabinets

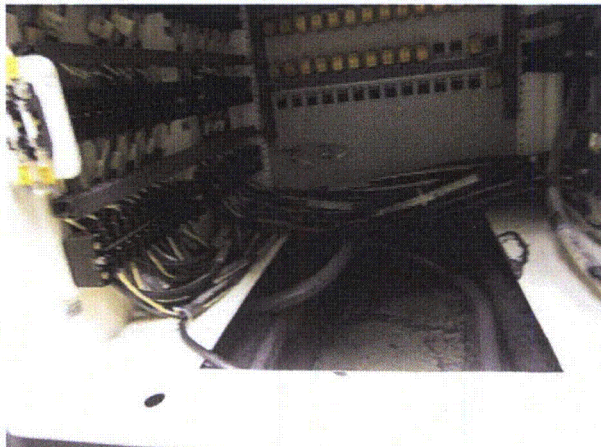
Equipment Description: REACTOR PROTECTION AND SAFEGUARD ACTUATION



P9191167



P9191168



P9191169



P9191170



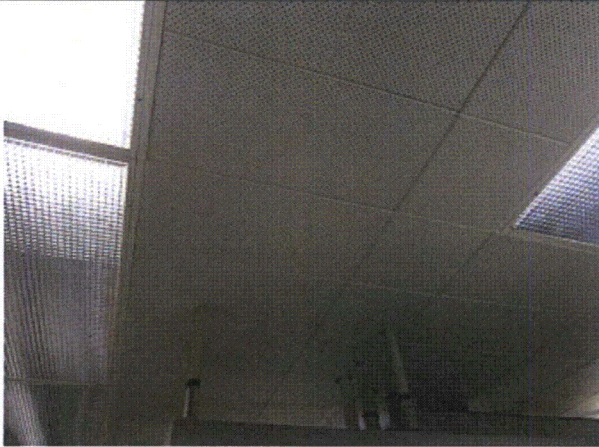
Status:  Y  N  U

**Seismic Walkdown Checklist (SWC)**

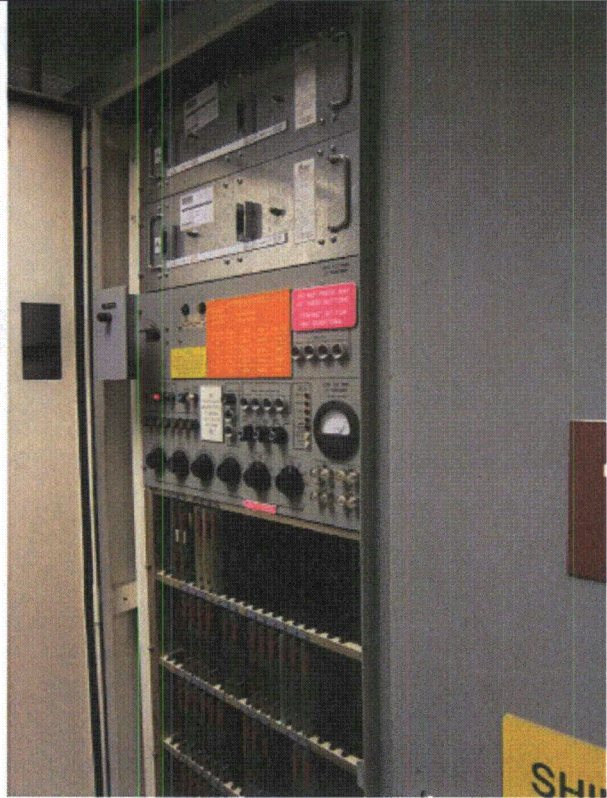
Equipment ID No.: 1-RPS-B

Equipment Class: (20) Instrumentation and Control Panels and Cabinets

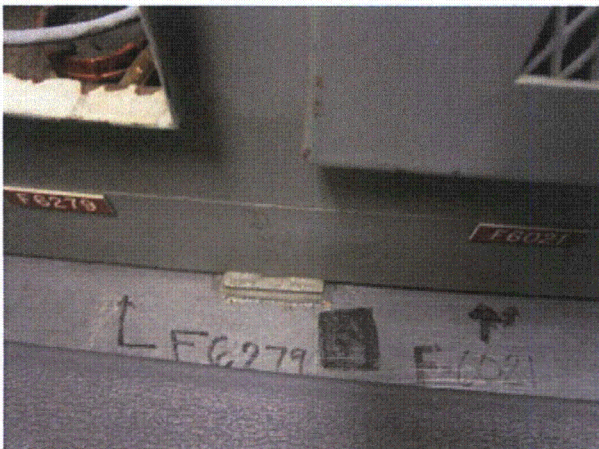
Equipment Description: REACTOR PROTECTION AND SAFEGUARD ACTUATION



P9191171



P9191172



P9191173



P9191174



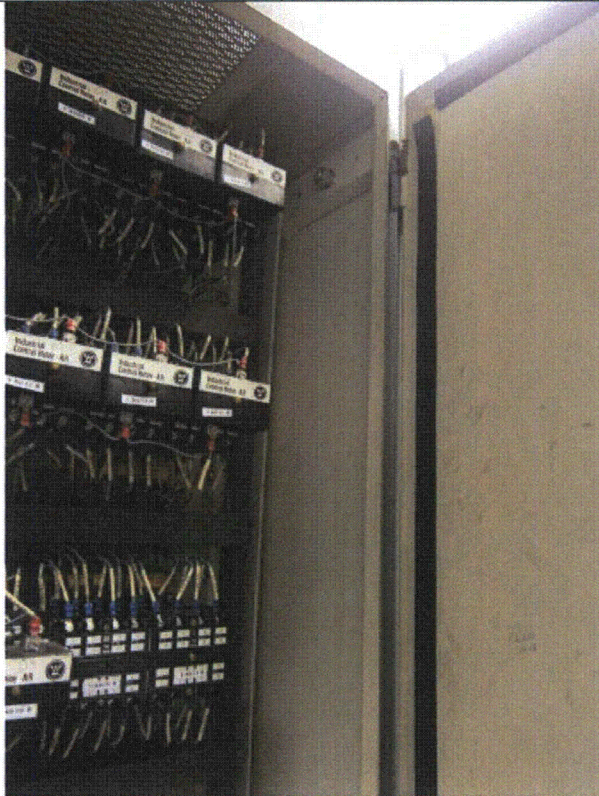
Status:  Y  N  U

**Seismic Walkdown Checklist (SWC)**

Equipment ID No.: 1-RPS-B

Equipment Class: (20) Instrumentation and Control Panels and Cabinets

Equipment Description: REACTOR PROTECTION AND SAFEGUARD ACTUATION



P9191175



P9191176



P9191177

Status:  Y  N  U

**Seismic Walkdown Checklist (SWC)**

Equipment ID No.: 1-RPST-B

Equipment Class: (20) Instrumentation and Control Panels and Cabinets

Equipment Description: REACTOR PROTECTION AND SAFEGUARD ACTUATION

Project: DC Cook 1 SWEL

Location (Bldg, Elev, Room/Area): AB1, 633.00 ft, 123

Manufacturer/Model: \_\_\_\_\_

**Instructions for Completing Checklist**

This checklist may be used to document the results of the Seismic Walkdown of an item of equipment on the SWEL. The space below each of the following questions may be used to record the results of judgments and findings. Additional space is provided at the end of this checklist for documenting other comments.

**Anchorage**

1. Is anchorage configuration verification required (i.e., is the item one of the 50% of SWEL items requiring such verification)? No
  
2. Is the anchorage free of bent, broken, missing or loose hardware? Yes
  
3. Is the anchorage free of corrosion that is more than mild surface oxidation? Yes
  
4. Is the anchorage free of visible cracks in the concrete near the anchors? Not Applicable  
*Panel welded to embedded plate through shim plates - there is spalling around top of embed plate on front right corner*
  
5. Is the anchorage configuration consistent with plant documentation? (Note: This question only applies if the item is one of the 50% for which an anchorage configuration verification is required.) Not Applicable
  
6. Based on the above anchorage evaluations, is the anchorage free of potentially adverse seismic conditions? Yes

**Interaction Effects**



Status:  Y  N  U

**Seismic Walkdown Checklist (SWC)**

Equipment ID No.: 1-RPST-B

Equipment Class: (20) Instrumentation and Control Panels and Cabinets

Equipment Description: REACTOR PROTECTION AND SAFEGUARD ACTUATION

7. Are soft targets free from impact by nearby equipment or structures? Yes

8. Are overhead equipment, distribution systems, ceiling tiles and lighting, and masonry block walls not likely to collapse onto the equipment? Yes  
*Check ceiling tiles - OK - clipped per DWG 12-4070*

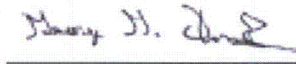
9. Do attached lines have adequate flexibility to avoid damage? Yes

10. Based on the above seismic interaction evaluations, is equipment free of potentially adverse seismic interaction effects? Yes

**Other Adverse Conditions**

11. Have you looked for and found no adverse seismic conditions that could adversely affect the safety functions of the equipment? Yes

**Comments**

Evaluated by:  George G Thomas Date: 10/18/12

 Neda Stoeva 10/18/12

**Photos**



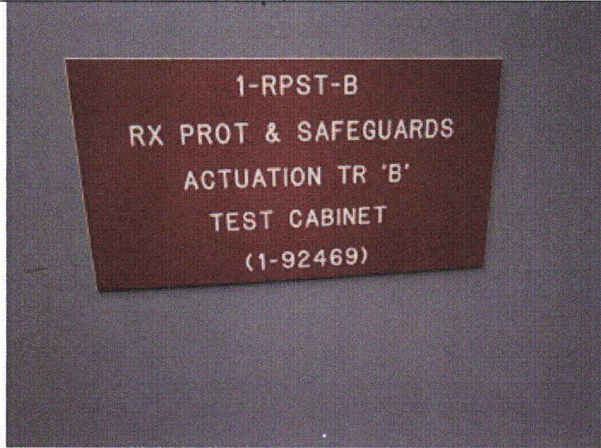
Status:  Y  N  U

**Seismic Walkdown Checklist (SWC)**

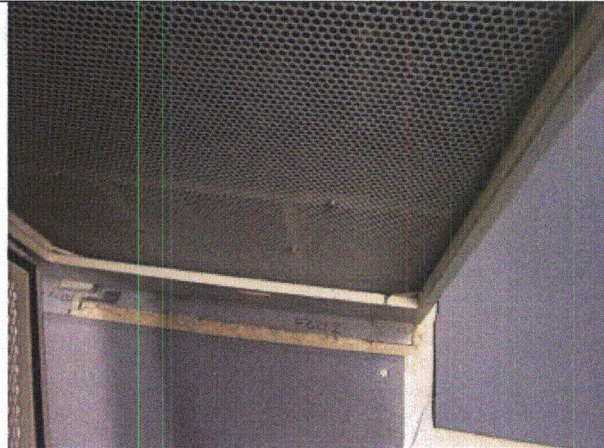
Equipment ID No.: 1-RPST-B

Equipment Class: (20) Instrumentation and Control Panels and Cabinets

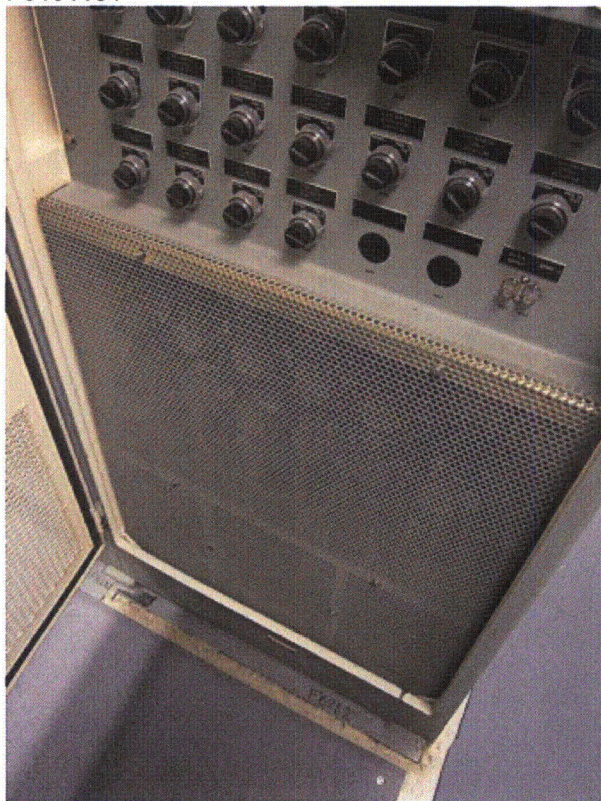
Equipment Description: REACTOR PROTECTION AND SAFEGUARD ACTUATION



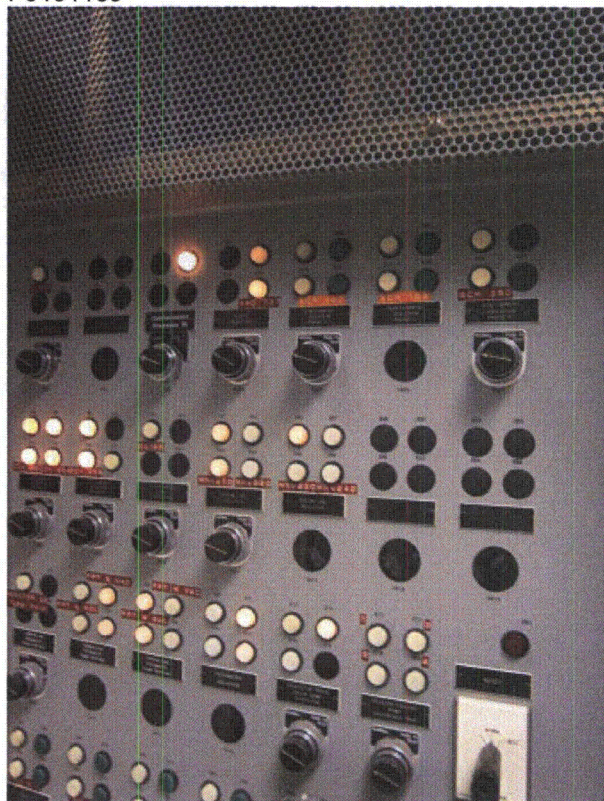
P9191184



P9191185



P9191186



P9191187



Status:  Y  N  U

**Seismic Walkdown Checklist (SWC)**

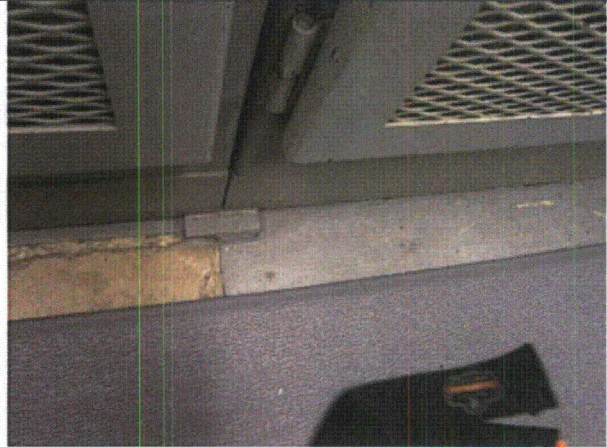
Equipment ID No.: 1-RPST-B

Equipment Class: (20) Instrumentation and Control Panels and Cabinets

Equipment Description: REACTOR PROTECTION AND SAFEGUARD ACTUATION



P9191188



P9191189



P9191190



P9191191

Status:  Y  N  U

**Seismic Walkdown Checklist (SWC)**

Equipment ID No.: 1-RPST-B

Equipment Class: (20) Instrumentation and Control Panels and Cabinets

Equipment Description: REACTOR PROTECTION AND SAFEGUARD ACTUATION



P9191192



Status:  Y  N  U

**Seismic Walkdown Checklist (SWC)**

Equipment ID No.: 1-RPSX-B

Equipment Class: (20) Instrumentation and Control Panels and Cabinets

Equipment Description: REACTOR PROTECTION AND SAFEGUARD ACTUATION

Project: DC Cook 1 SWEL

Location (Bldg, Elev, Room/Area): AB1, 633.00 ft, 123

Manufacturer/Model: \_\_\_\_\_

**Instructions for Completing Checklist**

This checklist may be used to document the results of the Seismic Walkdown of an item of equipment on the SWEL. The space below each of the following questions may be used to record the results of judgments and findings. Additional space is provided at the end of this checklist for documenting other comments.

**Anchorage**

1. Is anchorage configuration verification required (i.e., is the item one of the 50% of SWEL items requiring such verification)? No
  
2. Is the anchorage free of bent, broken, missing or loose hardware? Yes
  
3. Is the anchorage free of corrosion that is more than mild surface oxidation? Yes
  
4. Is the anchorage free of visible cracks in the concrete near the anchors? Not Applicable  
*Panel welded to embedded plates through shim plates*
  
5. Is the anchorage configuration consistent with plant documentation? (Note: This question only applies if the item is one of the 50% for which an anchorage configuration verification is required.) Not Applicable
  
6. Based on the above anchorage evaluations, is the anchorage free of potentially adverse seismic conditions? Yes

**Interaction Effects**

Status:  Y  N  U

**Seismic Walkdown Checklist (SWC)**

Equipment ID No.: 1-RPSX-B

Equipment Class: (20) Instrumentation and Control Panels and Cabinets

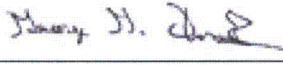
Equipment Description: REACTOR PROTECTION AND SAFEGUARD ACTUATION

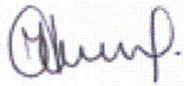
7. Are soft targets free from impact by nearby equipment or structures? Yes
8. Are overhead equipment, distribution systems, ceiling tiles and lighting, and masonry block walls not likely to collapse onto the equipment? Yes  
*Check ceiling tiles - OK - clipped per DWG 12-4070*
9. Do attached lines have adequate flexibility to avoid damage? Yes
10. Based on the above seismic interaction evaluations, is equipment free of potentially adverse seismic interaction effects? Yes

**Other Adverse Conditions**

11. Have you looked for and found no adverse seismic conditions that could adversely affect the safety functions of the equipment? Yes

**Comments**

Evaluated by:  George G Thomas Date: 10/18/12

 Neda Stoeva 10/18/12

**Photos**



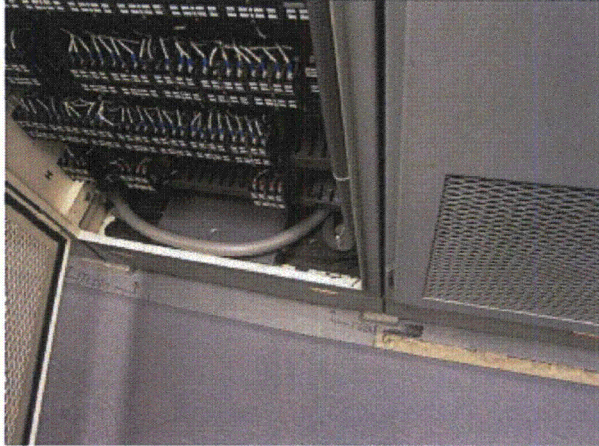
Status:  Y  N  U

**Seismic Walkdown Checklist (SWC)**

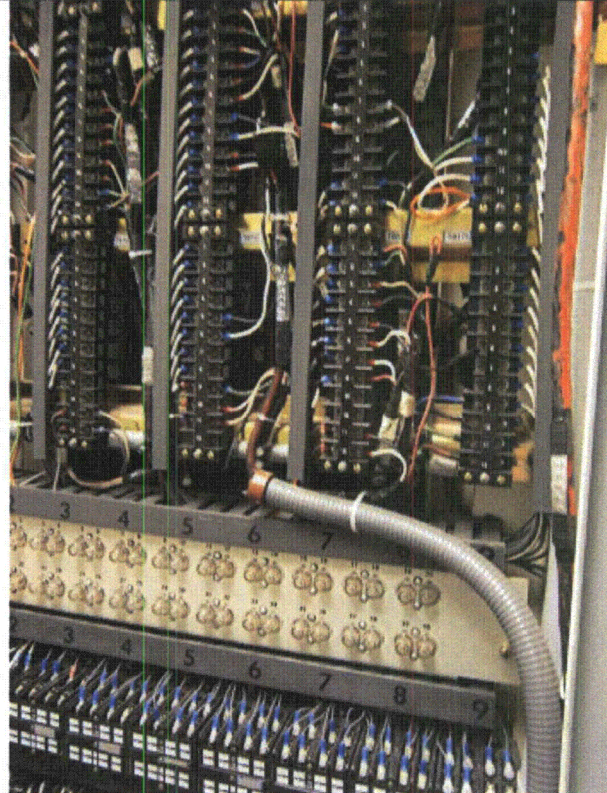
Equipment ID No.: 1-RPSX-B

Equipment Class: (20) Instrumentation and Control Panels and Cabinets

Equipment Description: REACTOR PROTECTION AND SAFEGUARD ACTUATION



P9191179



P9191180

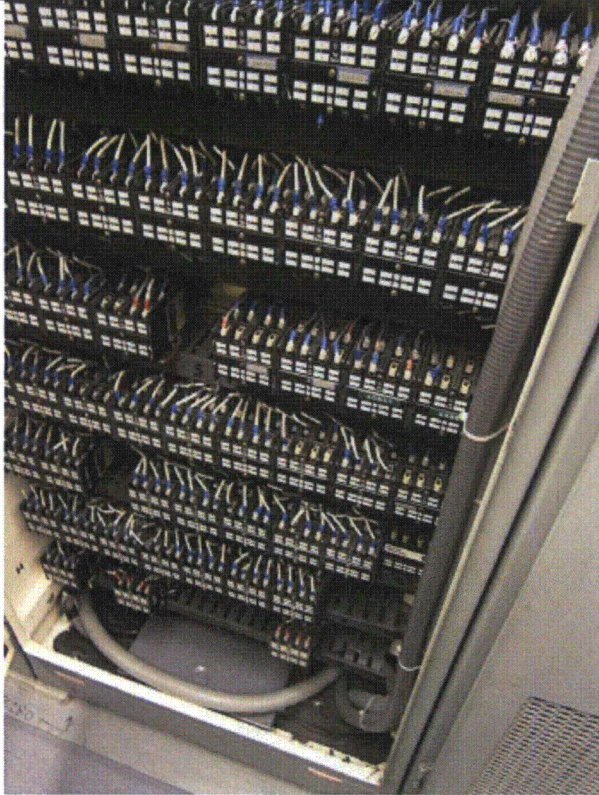
Status:  Y  N  U

**Seismic Walkdown Checklist (SWC)**

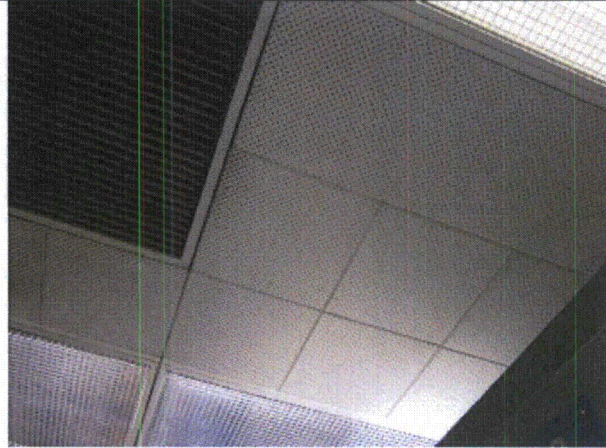
Equipment ID No.: 1-RPSX-B

Equipment Class: (20) Instrumentation and Control Panels and Cabinets

Equipment Description: REACTOR PROTECTION AND SAFEGUARD ACTUATION



P9191181



P9191182



Status:  Y  N  U

**Seismic Walkdown Checklist (SWC)**

Equipment ID No.: 1-SG

Equipment Class: (20) Instrumentation and Control Panels and Cabinets

Equipment Description: STEAM GENERATOR AND AUXILIARY FEED PUMP CONTROL

Project: DC Cook 1 SWEL

Location (Bldg, Elev, Room/Area): AB1, 633.00 ft, 123

Manufacturer/Model: \_\_\_\_\_

**Instructions for Completing Checklist**

This checklist may be used to document the results of the Seismic Walkdown of an item of equipment on the SWEL. The space below each of the following questions may be used to record the results of judgments and findings. Additional space is provided at the end of this checklist for documenting other comments.

**Anchorage**

1. Is anchorage configuration verification required (i.e., is the item one of the 50% of SWEL items requiring such verification)? Yes  
*SQUG 1-SG REV1*
  
2. Is the anchorage free of bent, broken, missing or loose hardware? Yes
  
3. Is the anchorage free of corrosion that is more than mild surface oxidation? Yes
  
4. Is the anchorage free of visible cracks in the concrete near the anchors? Not Applicable  
*Embedded plates welded to shim plates in back (3 plates) and welded to unistrut in the front*
  
5. Is the anchorage configuration consistent with plant documentation? (Note: This question only applies if the item is one of the 50% for which an anchorage configuration verification is required.) Yes
  
6. Based on the above anchorage evaluations, is the anchorage free of potentially adverse seismic conditions? Yes

---

**Interaction Effects**

Status:  Y  N  U

**Seismic Walkdown Checklist (SWC)**

Equipment ID No.: 1-SG

Equipment Class: (20) Instrumentation and Control Panels and Cabinets

Equipment Description: STEAM GENERATOR AND AUXILIARY FEED PUMP CONTROL

7. Are soft targets free from impact by nearby equipment or structures? Yes

8. Are overhead equipment, distribution systems, ceiling tiles and lighting, and masonry block walls not likely to collapse onto the equipment? Yes  
*Check ceiling tiles - OK - clipped per DWG 12-4070*

9. Do attached lines have adequate flexibility to avoid damage? Yes

10. Based on the above seismic interaction evaluations, is equipment free of potentially adverse seismic interaction effects? Yes

**Other Adverse Conditions**

11. Have you looked for and found no adverse seismic conditions that could adversely affect the safety functions of the equipment? Yes

**Comments**

Evaluated by:  George G Thomas Date: 10/18/12

 Neda Stoeva 10/18/12

**Photos**



Status:  Y  N  U

**Seismic Walkdown Checklist (SWC)**

Equipment ID No.: 1-SG

Equipment Class: (20) Instrumentation and Control Panels and Cabinets

Equipment Description: STEAM GENERATOR AND AUXILIARY FEED PUMP CONTROL



P9191249



P9191250



P9191251



P9191252



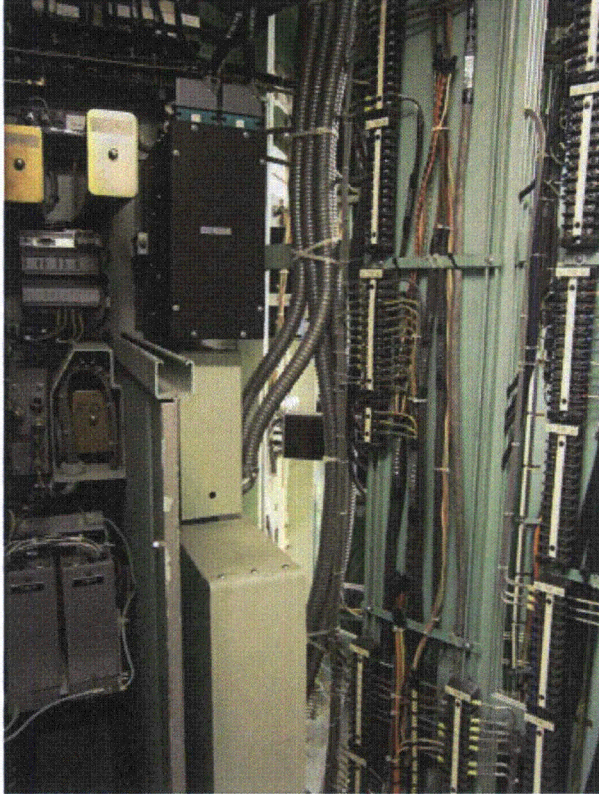
Status:  Y  N  U

**Seismic Walkdown Checklist (SWC)**

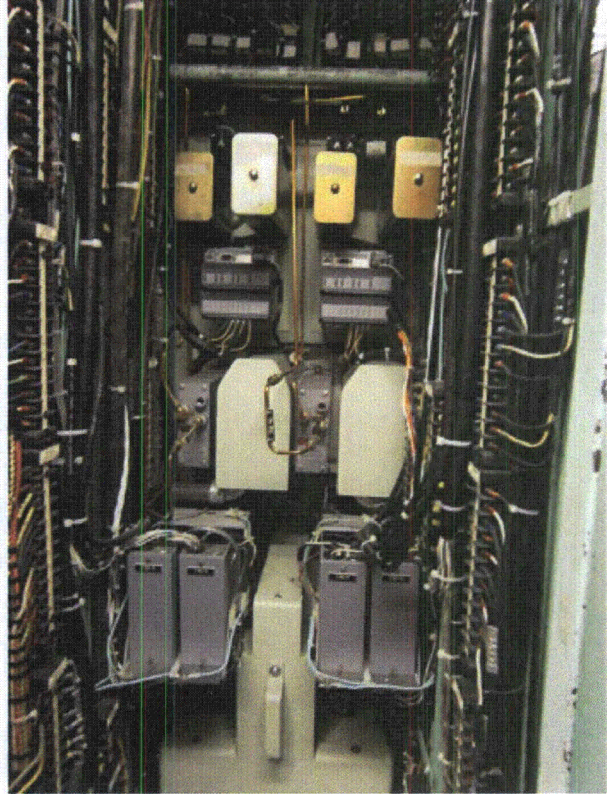
Equipment ID No.: 1-SG

Equipment Class: (20) Instrumentation and Control Panels and Cabinets

Equipment Description: STEAM GENERATOR AND AUXILIARY FEED PUMP CONTROL



P9191253



P9191254



Status: Y  N  U

**Seismic Walkdown Checklist (SWC)**

Equipment ID No.: 1-SIS

Equipment Class: (20) Instrumentation and Control Panels and Cabinets

Equipment Description: SAFETY INJECTION CONTROL PANEL

Project: DC Cook 1 SWEL

Location (Bldg, Elev, Room/Area): AB1, 633.00 ft, 123

Manufacturer/Model: \_\_\_\_\_

**Instructions for Completing Checklist**

This checklist may be used to document the results of the Seismic Walkdown of an item of equipment on the SWEL. The space below each of the following questions may be used to record the results of judgments and findings. Additional space is provided at the end of this checklist for documenting other comments.

**Anchorage**

1. Is anchorage configuration verification required (i.e., is the item one of the 50% of SWEL items requiring such verification)? Yes  
*SQUG 1-SIS*
  
2. Is the anchorage free of bent, broken, missing or loose hardware? Yes
  
3. Is the anchorage free of corrosion that is more than mild surface oxidation? Yes
  
4. Is the anchorage free of visible cracks in the concrete near the anchors? Not Applicable  
*Panel welded to embedded plate through thick shim plates*
  
5. Is the anchorage configuration consistent with plant documentation? (Note: This question only applies if the item is one of the 50% for which an anchorage configuration verification is required.) No  
*SQUG SEW package for 1-SIS was incomplete and did not contain the detailed information or sketches of the anchorage configuration. AR 2012-13310, Panel 1-SIS anchorage documentation could not be located was generated as a result*
  
6. Based on the above anchorage evaluations, is the anchorage free of potentially adverse seismic conditions? No

**Interaction Effects**

Status: Y  N  U

**Seismic Walkdown Checklist (SWC)**

Equipment ID No.: 1-SIS

Equipment Class: (20) Instrumentation and Control Panels and Cabinets

Equipment Description: SAFETY INJECTION CONTROL PANEL

7. Are soft targets free from impact by nearby equipment or structures? Yes

8. Are overhead equipment, distribution systems, ceiling tiles and lighting, and masonry block walls not likely to collapse onto the equipment? Yes  
*Check ceiling tiles - OK - clipped per DWG 12-4070*

9. Do attached lines have adequate flexibility to avoid damage? Yes

10. Based on the above seismic interaction evaluations, is equipment free of potentially adverse seismic interaction effects? Yes

**Other Adverse Conditions**

11. Have you looked for and found no adverse seismic conditions that could adversely affect the safety functions of the equipment? Yes

**Comments**

Evaluated by:  George G Thomas Date: 10/18/12

 Neda Stoeva 10/18/12

**Photos**



Status: Y  N  U

**Seismic Walkdown Checklist (SWC)**

Equipment ID No.: 1-SIS

Equipment Class: (20) Instrumentation and Control Panels and Cabinets

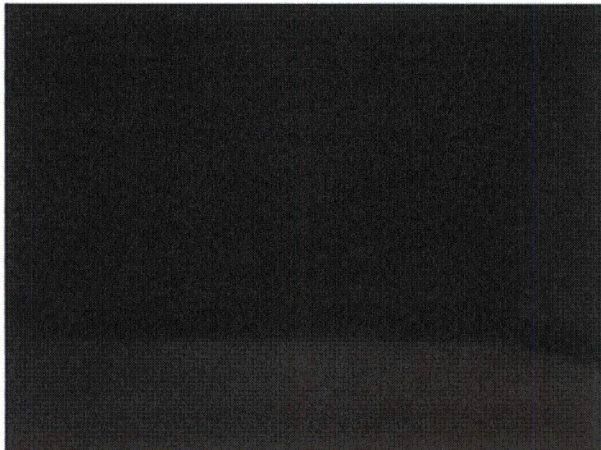
Equipment Description: SAFETY INJECTION CONTROL PANEL



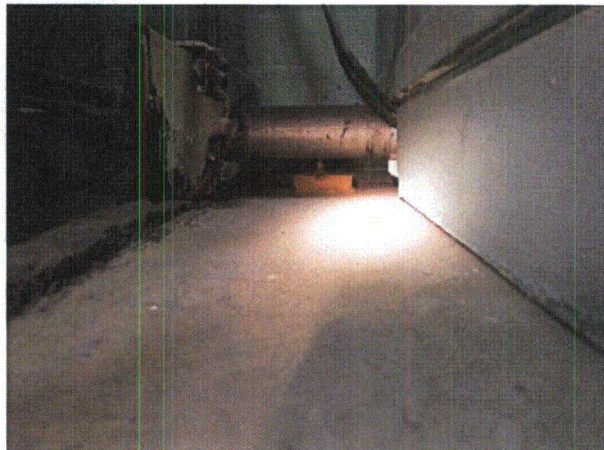
P9191208



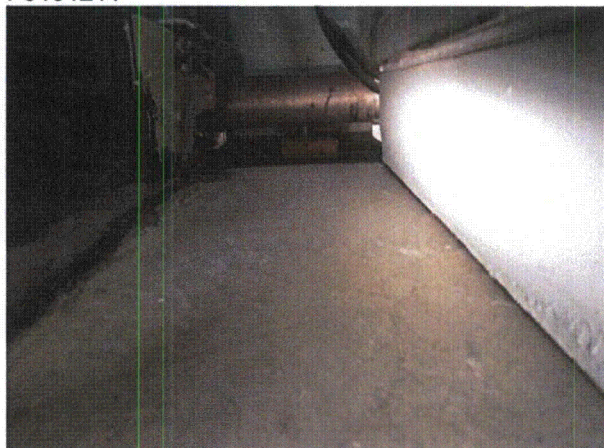
P9191209



P9191210



P9191211





Status: Y  N  U

**Seismic Walkdown Checklist (SWC)**

Equipment ID No.: 1-SIS

Equipment Class: (20) Instrumentation and Control Panels and Cabinets

Equipment Description: SAFETY INJECTION CONTROL PANEL

P9191212

P9191213



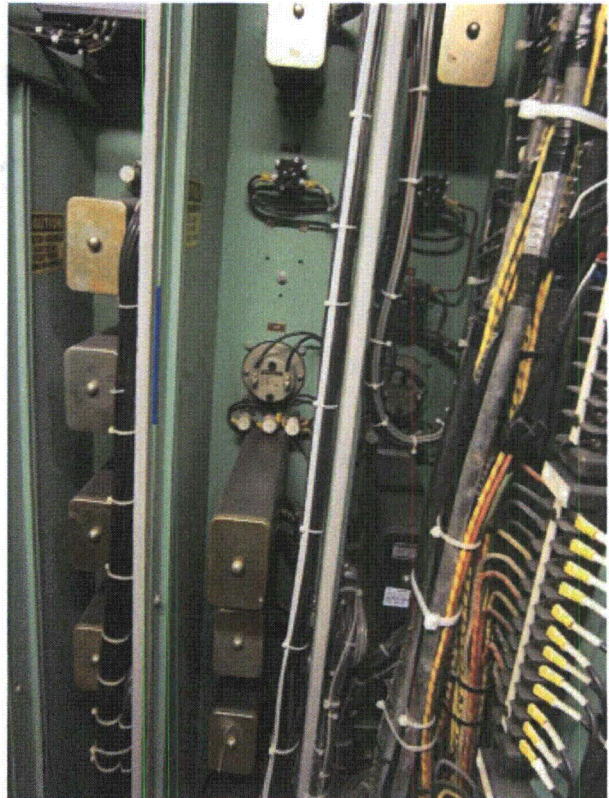
P9191214



P9191215



P9191216



P9191217



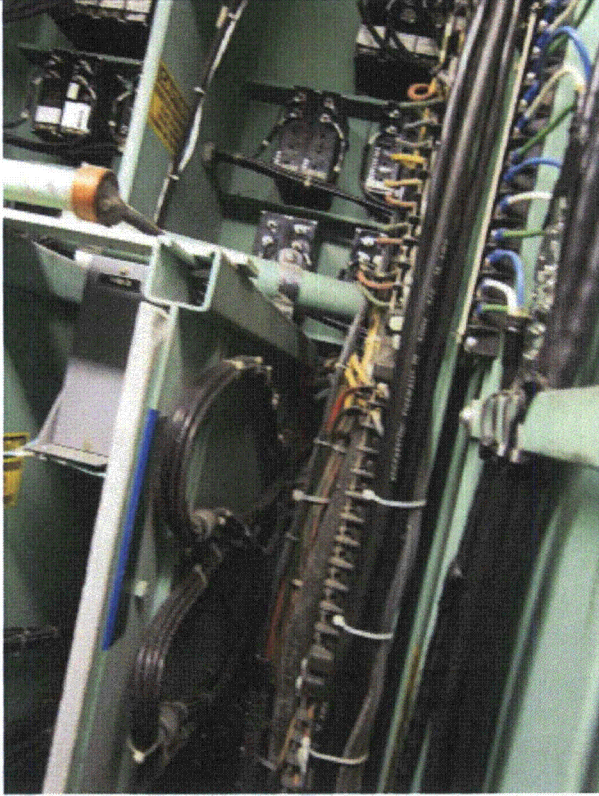
Status: Y  N  U

**Seismic Walkdown Checklist (SWC)**

Equipment ID No.: 1-SIS

Equipment Class: (20) Instrumentation and Control Panels and Cabinets

Equipment Description: SAFETY INJECTION CONTROL PANEL



P9191218

Status:  Y  N  U

**Seismic Walkdown Checklist (SWC)**

Equipment ID No.: 1-SPY

Equipment Class: (20) Instrumentation and Control Panels and Cabinets

Equipment Description: CONTAINMENT SPRAY CONTROL PANEL

Project: DC Cook 1 SWEL

Location (Bldg, Elev, Room/Area): AB1, 633.00 ft, 123

Manufacturer/Model: \_\_\_\_\_

**Instructions for Completing Checklist**

This checklist may be used to document the results of the Seismic Walkdown of an item of equipment on the SWEL. The space below each of the following questions may be used to record the results of judgments and findings. Additional space is provided at the end of this checklist for documenting other comments.

**Anchorage**

1. Is anchorage configuration verification required (i.e., is the item one of the 50% of SWEL items requiring such verification)? No
  
2. Is the anchorage free of bent, broken, missing or loose hardware? Yes
  
3. Is the anchorage free of corrosion that is more than mild surface oxidation? Yes
  
4. Is the anchorage free of visible cracks in the concrete near the anchors? Not Applicable  
*Panel welded to embedded plate through shim plates - 2 places*
  
5. Is the anchorage configuration consistent with plant documentation? (Note: This question only applies if the item is one of the 50% for which an anchorage configuration verification is required.) Not Applicable
  
6. Based on the above anchorage evaluations, is the anchorage free of potentially adverse seismic conditions? Yes

**Interaction Effects**



Status:  Y  N  U

**Seismic Walkdown Checklist (SWC)**

Equipment ID No.: 1-SPY

Equipment Class: (20) Instrumentation and Control Panels and Cabinets

Equipment Description: CONTAINMENT SPRAY CONTROL PANEL

7. Are soft targets free from impact by nearby equipment or structures? Yes

8. Are overhead equipment, distribution systems, ceiling tiles and lighting, and masonry block walls not likely to collapse onto the equipment? Yes  
*Check ceiling tiles - OK - clipped per DWG 12-4070*

9. Do attached lines have adequate flexibility to avoid damage? Yes

10. Based on the above seismic interaction evaluations, is equipment free of potentially adverse seismic interaction effects? Yes

**Other Adverse Conditions**

11. Have you looked for and found no adverse seismic conditions that could adversely affect the safety functions of the equipment? Yes

**Comments**

Evaluated by:  George G Thomas Date: 10/18/12

 Neda Stoeva 10/18/12

**Photos**



Status:  Y  N  U

**Seismic Walkdown Checklist (SWC)**

Equipment ID No.: 1-SPY

Equipment Class: (20) Instrumentation and Control Panels and Cabinets

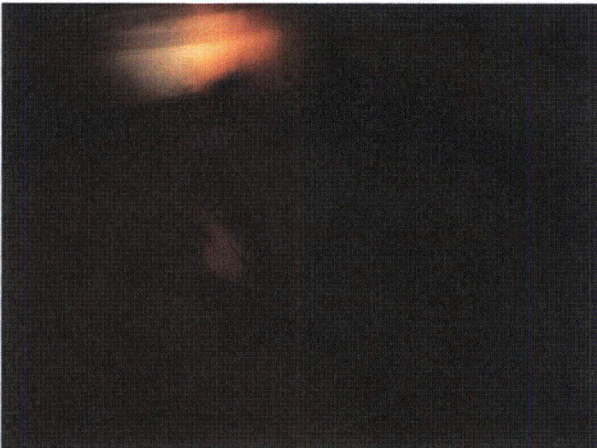
Equipment Description: CONTAINMENT SPRAY CONTROL PANEL



P9191220



P9191221



P9191222



P9191223

