

Status: Y N U

Seismic Walkdown Checklist (SWC)

Equipment ID No.: 1-DGAB

Equipment Class: (20) Instrumentation and Control Panels and Cabinets

Equipment Description: AB EMERGENCY DIESEL GENERATOR OME-150-AB CONTROL

7. Are soft targets free from impact by nearby equipment or structures? Yes

8. Are overhead equipment, distribution systems, ceiling tiles and lighting, and masonry block walls not likely to collapse onto the equipment? Yes

9. Do attached lines have adequate flexibility to avoid damage? Yes

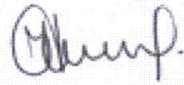
10. Based on the above seismic interaction evaluations, is equipment free of potentially adverse seismic interaction effects? Yes

Other Adverse Conditions

11. Have you looked for and found no adverse seismic conditions that could adversely affect the safety functions of the equipment? Yes

Comments

Evaluated by:  George G Thomas Date: 10/18/12



Neda Stoeva 10/18/12

Photos

Status: Y N U

Seismic Walkdown Checklist (SWC)

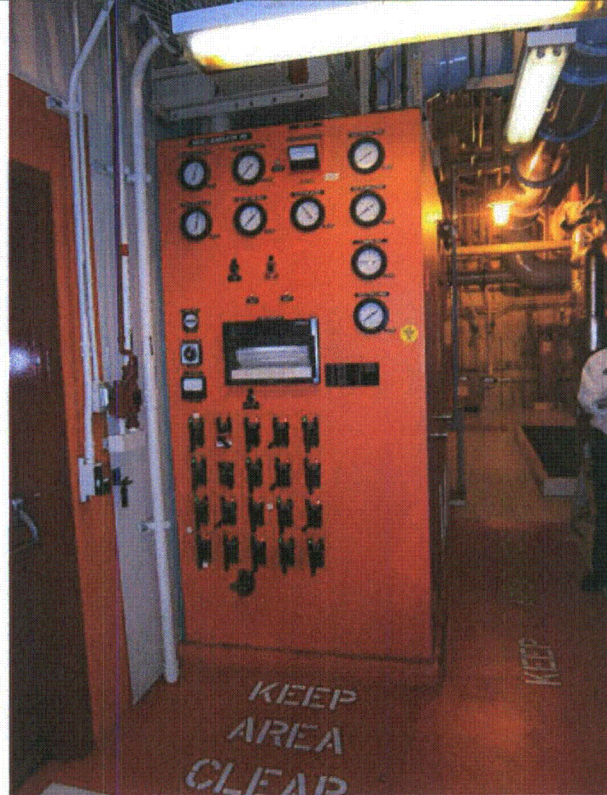
Equipment ID No.: 1-DGAB

Equipment Class: (20) Instrumentation and Control Panels and Cabinets

Equipment Description: AB EMERGENCY DIESEL GENERATOR OME-150-AB CONTROL



P9130229



P9130230

Status: Y N U

Seismic Walkdown Checklist (SWC)

Equipment ID No.: 1-DGAB

Equipment Class: (20) Instrumentation and Control Panels and Cabinets

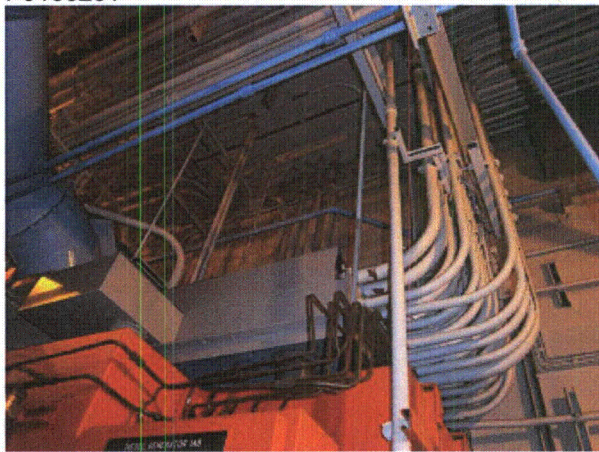
Equipment Description: AB EMERGENCY DIESEL GENERATOR OME-150-AB CONTROL



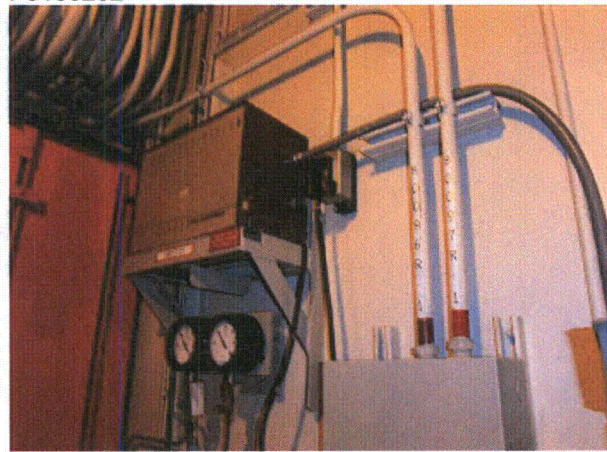
P9130231



P9130232



P9130233



P9130234

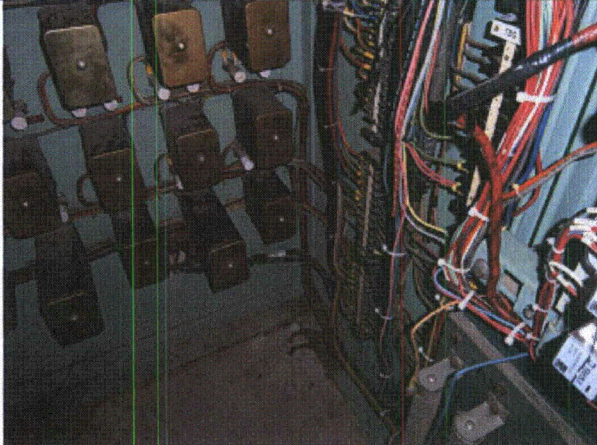
Status: Y N U

Seismic Walkdown Checklist (SWC)

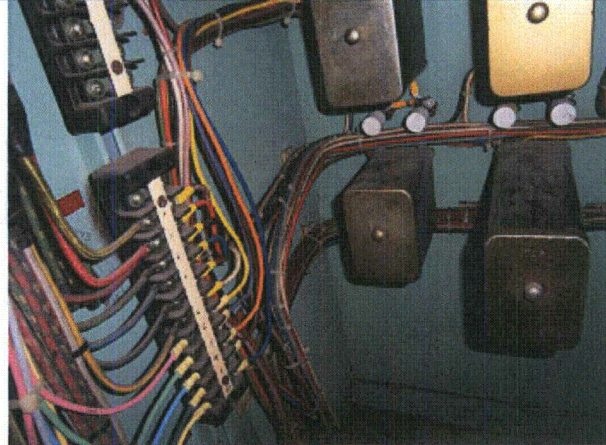
Equipment ID No.: 1-DGAB

Equipment Class: (20) Instrumentation and Control Panels and Cabinets

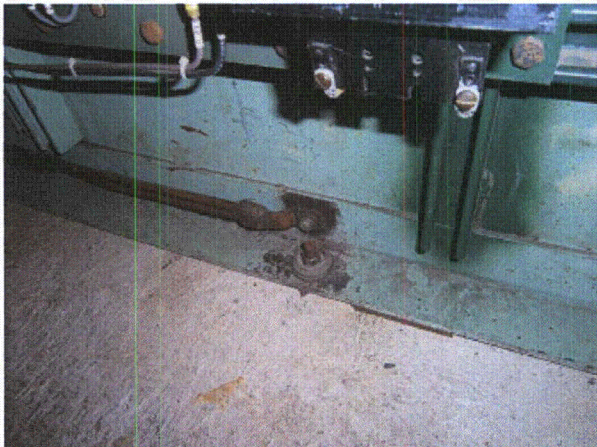
Equipment Description: AB EMERGENCY DIESEL GENERATOR OME-150-AB CONTROL



P9130235



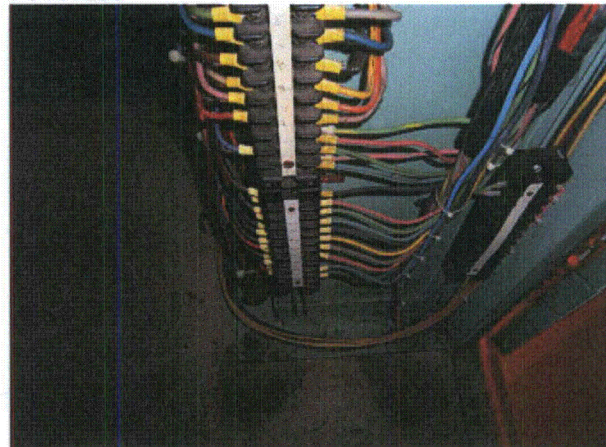
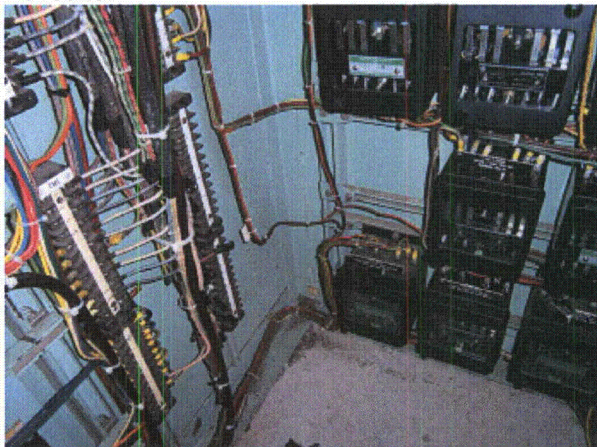
P9130236



P9130237



P9130238



Status: Y N U

Seismic Walkdown Checklist (SWC)

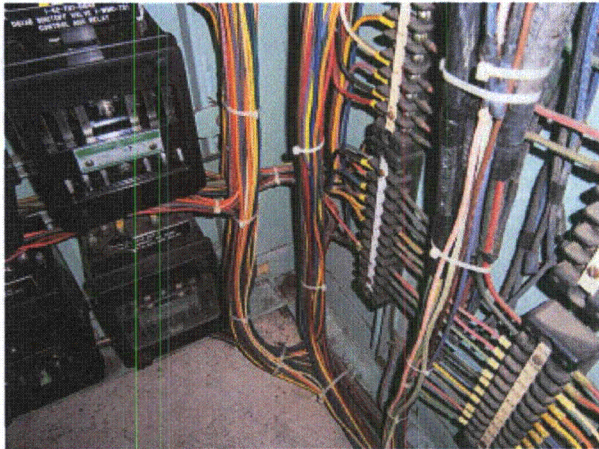
Equipment ID No.: 1-DGAB

Equipment Class: (20) Instrumentation and Control Panels and Cabinets

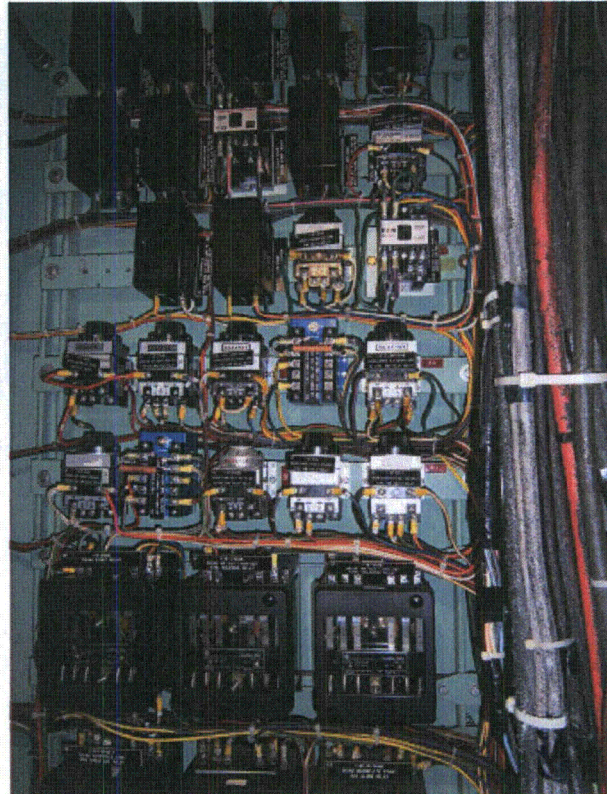
Equipment Description: AB EMERGENCY DIESEL GENERATOR OME-150-AB CONTROL

P9130239

P9130240



P9130241



P9130242

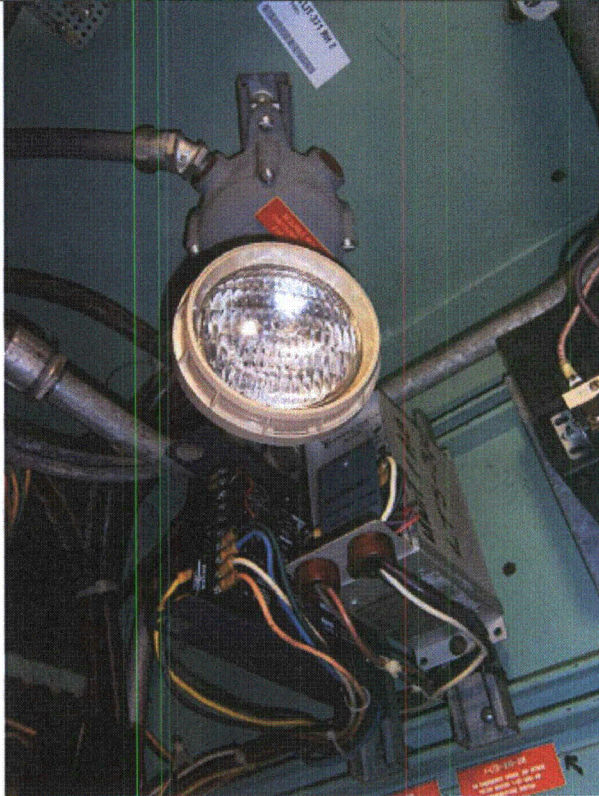
Status: Y N U

Seismic Walkdown Checklist (SWC)

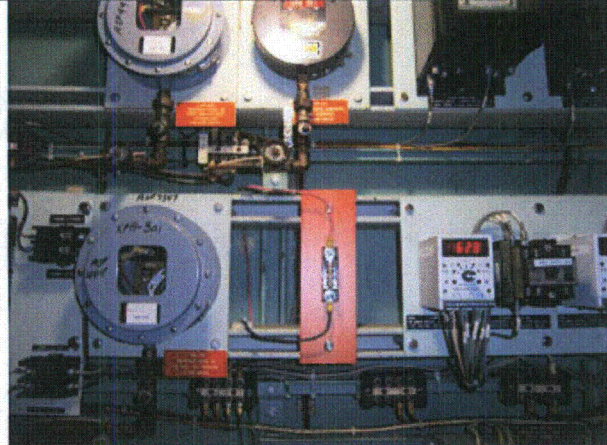
Equipment ID No.: 1-DGAB

Equipment Class: (20) Instrumentation and Control Panels and Cabinets

Equipment Description: AB EMERGENCY DIESEL GENERATOR OME-150-AB CONTROL



P9130243



P9130244

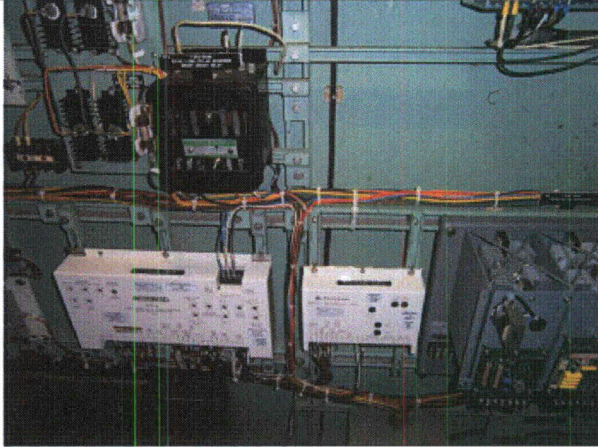
Status: Y N U

Seismic Walkdown Checklist (SWC)

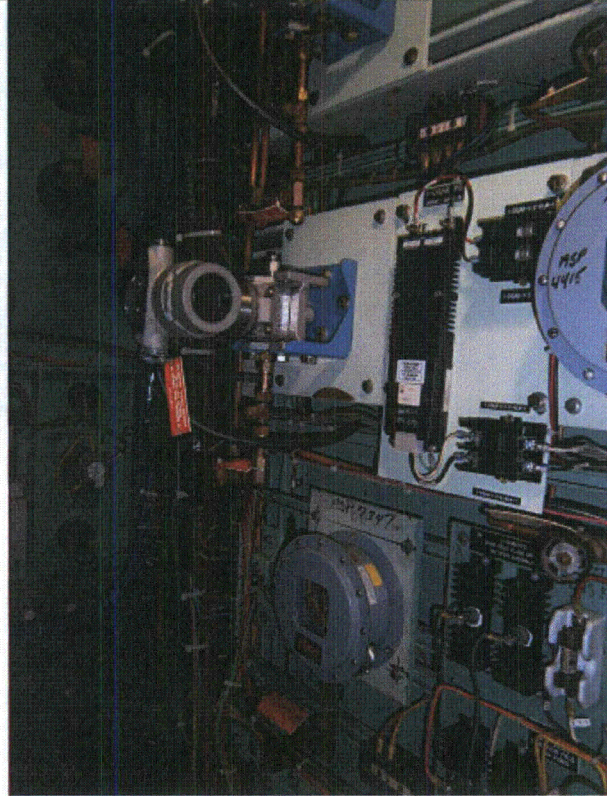
Equipment ID No.: 1-DGAB

Equipment Class: (20) Instrumentation and Control Panels and Cabinets

Equipment Description: AB EMERGENCY DIESEL GENERATOR OME-150-AB CONTROL



P9130245



P9130246

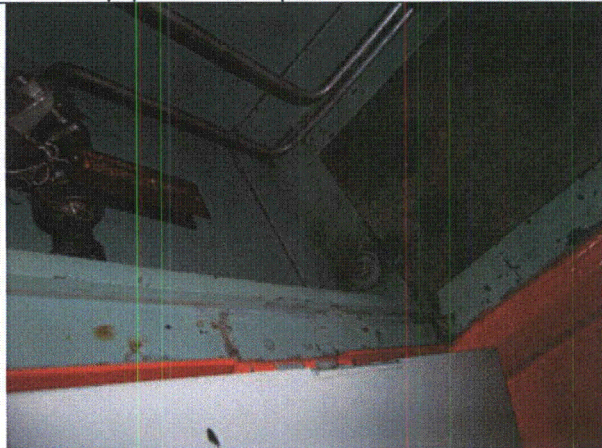
Status: Y N U

Seismic Walkdown Checklist (SWC)

Equipment ID No.: 1-DGAB

Equipment Class: (20) Instrumentation and Control Panels and Cabinets

Equipment Description: AB EMERGENCY DIESEL GENERATOR OME-150-AB CONTROL



P9130249



P9130250

Status: Y N U

Seismic Walkdown Checklist (SWC)

Equipment ID No.: 1-DGAB

Equipment Class: (20) Instrumentation and Control Panels and Cabinets

Equipment Description: AB EMERGENCY DIESEL GENERATOR OME-150-AB CONTROL



P9130254



P9130255

Status: Y N U

Seismic Walkdown Checklist (SWC)

Equipment ID No.: 1-DGAB-INV

Equipment Class: (16) Inverters

Equipment Description: AB EMERGENCY DIESEL GENERATOR OME-150-AB INVERTER

Project: DC Cook 1 SWEL

Location (Bldg, Elev, Room/Area): AB1, 587.00 ft, 121

Manufacturer/Model: _____

Instructions for Completing Checklist

This checklist may be used to document the results of the Seismic Walkdown of an item of equipment on the SWEL. The space below each of the following questions may be used to record the results of judgments and findings. Additional space is provided at the end of this checklist for documenting other comments.

Anchorage

1. Is anchorage configuration verification required (i.e., is the item one of the 50% of SWEL items requiring such verification)? No

2. Is the anchorage free of bent, broken, missing or loose hardware? Yes

3. Is the anchorage free of corrosion that is more than mild surface oxidation? YSE

4. Is the anchorage free of visible cracks in the concrete near the anchors? Yes

5. Is the anchorage configuration consistent with plant documentation? (Note: This question only applies if the item is one of the 50% for which an anchorage configuration verification is required.) Not Applicable

6. Based on the above anchorage evaluations, is the anchorage free of potentially adverse seismic conditions? Yes
Edge distance OK on bolts but looks small due to oversized washers underneath

Interaction Effects

Status: Y N U

Seismic Walkdown Checklist (SWC)

Equipment ID No.: 1-DGAB-INV

Equipment Class: (16) Inverters

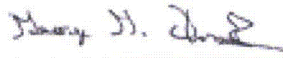
Equipment Description: AB EMERGENCY DIESEL GENERATOR OME-150-AB INVERTER

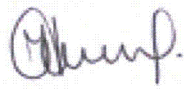
7. Are soft targets free from impact by nearby equipment or structures? Yes
8. Are overhead equipment, distribution systems, ceiling tiles and lighting, and masonry block walls not likely to collapse onto the equipment? Yes
9. Do attached lines have adequate flexibility to avoid damage? Yes
10. Based on the above seismic interaction evaluations, is equipment free of potentially adverse seismic interaction effects? Yes

Other Adverse Conditions

11. Have you looked for and found no adverse seismic conditions that could adversely affect the safety functions of the equipment? Yes

Comments

Evaluated by:  George G Thomas Date: 10/18/12

 Neda Stoeva 10/18/12

Photos

Status: Y N U

Seismic Walkdown Checklist (SWC)

Equipment ID No.: 1-DGAB-INV

Equipment Class: (16) Inverters

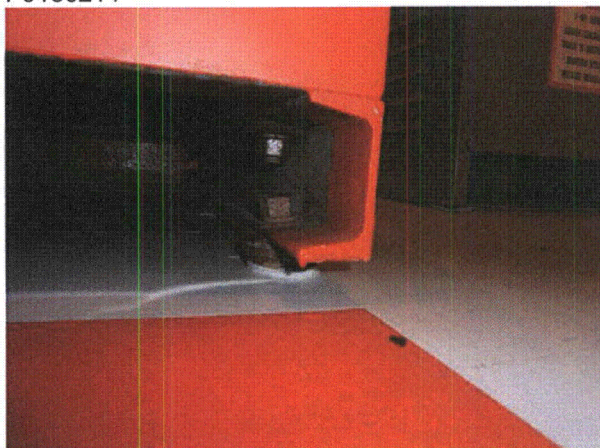
Equipment Description: AB EMERGENCY DIESEL GENERATOR OME-150-AB INVERTER



P9130214



P9130215



P9130216



P9130217



Status: Y N U

Seismic Walkdown Checklist (SWC)

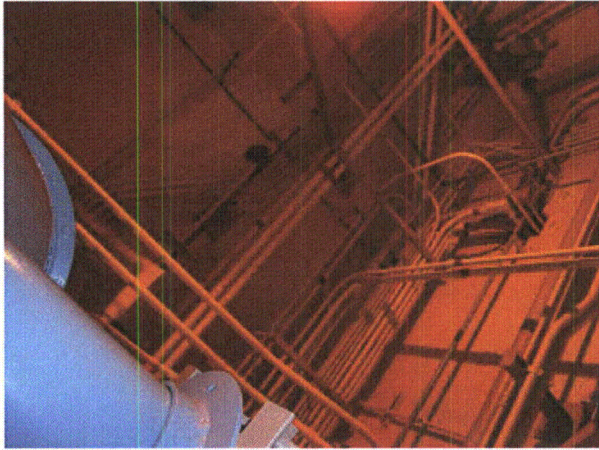
Equipment ID No.: 1-DGAB-INV

Equipment Class: (16) Inverters

Equipment Description: AB EMERGENCY DIESEL GENERATOR OME-150-AB INVERTER

P9130218

P9130219



P9130220



P9130221

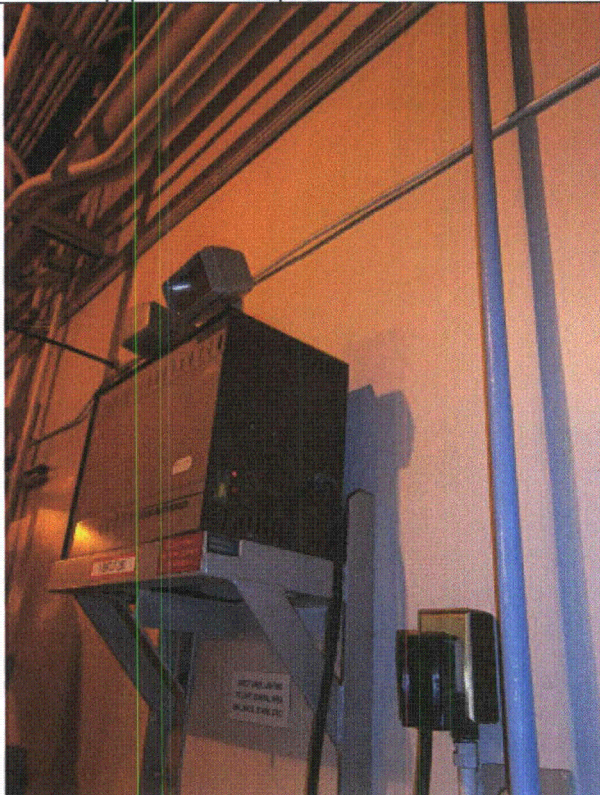
Status: Y N U

Seismic Walkdown Checklist (SWC)

Equipment ID No.: 1-DGAB-INV

Equipment Class: (16) Inverters

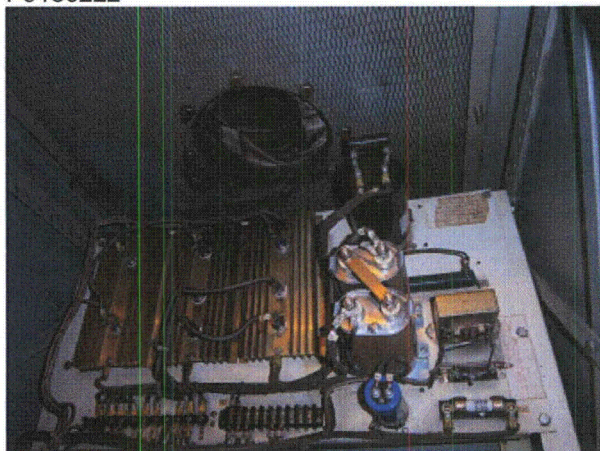
Equipment Description: AB EMERGENCY DIESEL GENERATOR OME-150-AB INVERTER



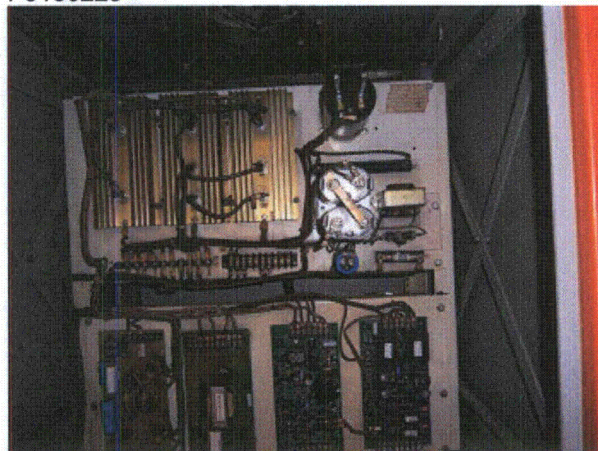
P9130222



P9130223



P9130224



P9130225

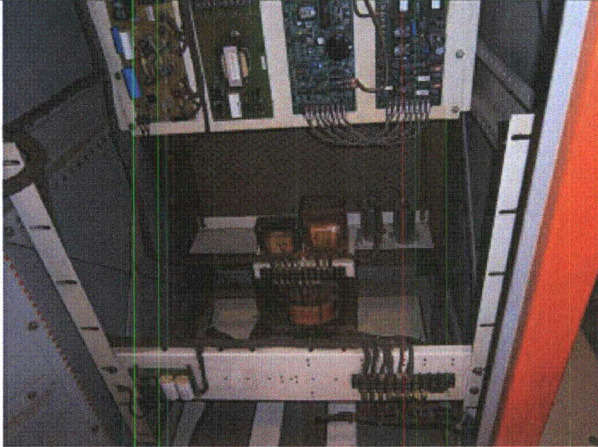
Status: Y N U

Seismic Walkdown Checklist (SWC)

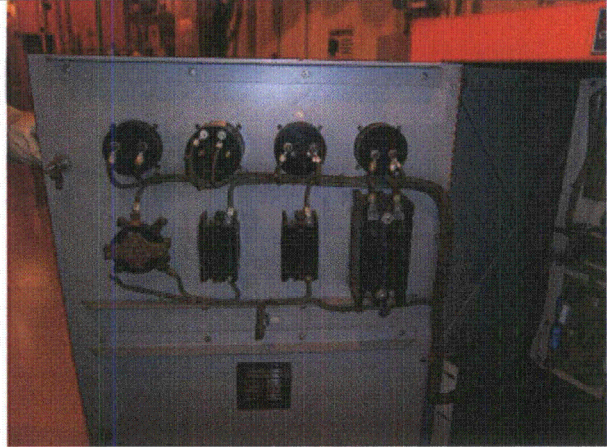
Equipment ID No.: 1-DGAB-INV

Equipment Class: (16) Inverters

Equipment Description: AB EMERGENCY DIESEL GENERATOR OME-150-AB INVERTER



P9130226



P9130227

Status: Y N U

Seismic Walkdown Checklist (SWC)

Equipment ID No.: 1-ESW

Equipment Class: (20) Instrumentation and Control Panels and Cabinets

Equipment Description: ESSENTIAL SERVICE WATER CONTROL PANEL

Project: DC Cook 1 SWEL

Location (Bldg, Elev, Room/Area): AB1, 633.00 ft, 123

Manufacturer/Model: _____

Instructions for Completing Checklist

This checklist may be used to document the results of the Seismic Walkdown of an item of equipment on the SWEL. The space below each of the following questions may be used to record the results of judgments and findings. Additional space is provided at the end of this checklist for documenting other comments.

Anchorage

1. Is anchorage configuration verification required (i.e., is the item one of the 50% of SWEL items requiring such verification)? No

2. Is the anchorage free of bent, broken, missing or loose hardware? Yes

3. Is the anchorage free of corrosion that is more than mild surface oxidation? Yes

4. Is the anchorage free of visible cracks in the concrete near the anchors? Not Applicable
Welded to embedded plate with shim plates

5. Is the anchorage configuration consistent with plant documentation? (Note: This question only applies if the item is one of the 50% for which an anchorage configuration verification is required.) Not Applicable

6. Based on the above anchorage evaluations, is the anchorage free of potentially adverse seismic conditions? Yes

Interaction Effects

Status: Y N U

Seismic Walkdown Checklist (SWC)

Equipment ID No.: 1-ESW

Equipment Class: (20) Instrumentation and Control Panels and Cabinets

Equipment Description: ESSENTIAL SERVICE WATER CONTROL PANEL

7. Are soft targets free from impact by nearby equipment or structures? Yes

8. Are overhead equipment, distribution systems, ceiling tiles and lighting, and masonry block walls not likely to collapse onto the equipment? Yes
Check ceiling tiles - OK - clipped per DWG 12-4070

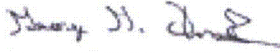
9. Do attached lines have adequate flexibility to avoid damage? Yes

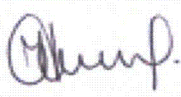
10. Based on the above seismic interaction evaluations, is equipment free of potentially adverse seismic interaction effects? Yes

Other Adverse Conditions

11. Have you looked for and found no adverse seismic conditions that could adversely affect the safety functions of the equipment? Yes

Comments

Evaluated by:  George G Thomas Date: 10/18/12

 Neda Stoeva 10/18/12

Photos

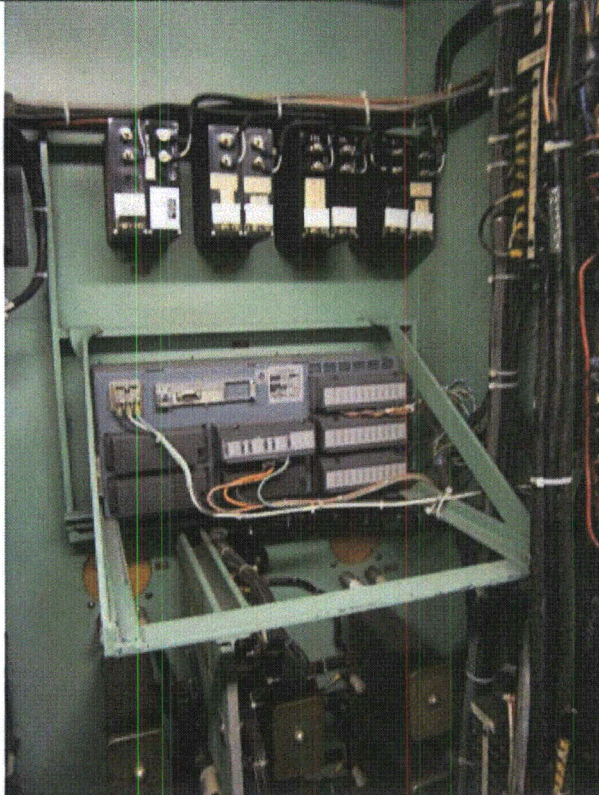
Status: Y N U

Seismic Walkdown Checklist (SWC)

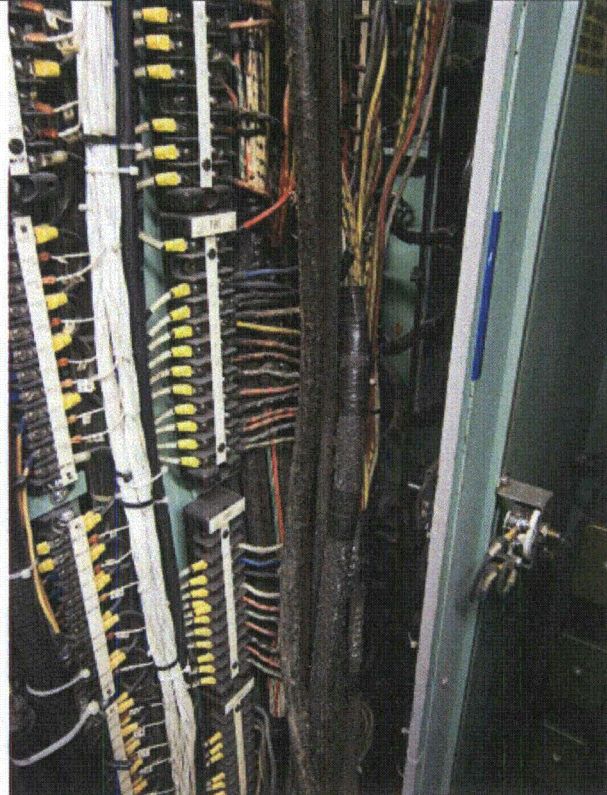
Equipment ID No.: 1-ESW

Equipment Class: (20) Instrumentation and Control Panels and Cabinets

Equipment Description: ESSENTIAL SERVICE WATER CONTROL PANEL



P9191232



P9191233

Status: Y N U

Seismic Walkdown Checklist (SWC)

Equipment ID No.: 1-ESW

Equipment Class: (20) Instrumentation and Control Panels and Cabinets

Equipment Description: ESSENTIAL SERVICE WATER CONTROL PANEL



P9191234



P9191235

Status: Y N U

Seismic Walkdown Checklist (SWC)

Equipment ID No.: 1-ESW

Equipment Class: (20) Instrumentation and Control Panels and Cabinets

Equipment Description: ESSENTIAL SERVICE WATER CONTROL PANEL



P9191236



P9191237

Status: Y N U

Seismic Walkdown Checklist (SWC)

Equipment ID No.: 1-EZC-A

Equipment Class: (1) Motor Control Centers

Equipment Description: 600VAC MOTOR CONTROL CENTER EZC-A

Project: DC Cook 1 SWEL

Location (Bldg, Elev, Room/Area): AB1, 613.00 ft, 205

Manufacturer/Model: _____

Instructions for Completing Checklist

This checklist may be used to document the results of the Seismic Walkdown of an item of equipment on the SWEL. The space below each of the following questions may be used to record the results of judgments and findings. Additional space is provided at the end of this checklist for documenting other comments.

Anchorage

1. Is anchorage configuration verification required (i.e., is the item one of the 50% of SWEL items requiring such verification)? Yes
SQUG 1-EZC-A REV0

2. Is the anchorage free of bent, broken, missing or loose hardware? Yes

3. Is the anchorage free of corrosion that is more than mild surface oxidation? Yes

4. Is the anchorage free of visible cracks in the concrete near the anchors? Yes

5. Is the anchorage configuration consistent with plant documentation? (Note: This question only applies if the item is one of the 50% for which an anchorage configuration verification is required.) Yes

6. Based on the above anchorage evaluations, is the anchorage free of potentially adverse seismic conditions? Yes

Interaction Effects

Status: Y N U

Seismic Walkdown Checklist (SWC)

Equipment ID No.: 1-EZC-A

Equipment Class: (1) Motor Control Centers

Equipment Description: 600VAC MOTOR CONTROL CENTER EZC-A

7. Are soft targets free from impact by nearby equipment or structures? Yes

8. Are overhead equipment, distribution systems, ceiling tiles and lighting, and masonry block walls not likely to collapse onto the equipment? Yes

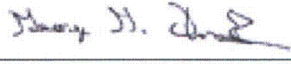
9. Do attached lines have adequate flexibility to avoid damage? Yes

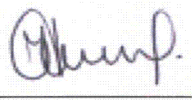
10. Based on the above seismic interaction evaluations, is equipment free of potentially adverse seismic interaction effects? Yes

Other Adverse Conditions

11. Have you looked for and found no adverse seismic conditions that could adversely affect the safety functions of the equipment? Yes

Comments

Evaluated by:  George G Thomas Date: 10/18/12

 Neda Stoeva 10/18/12

Photos

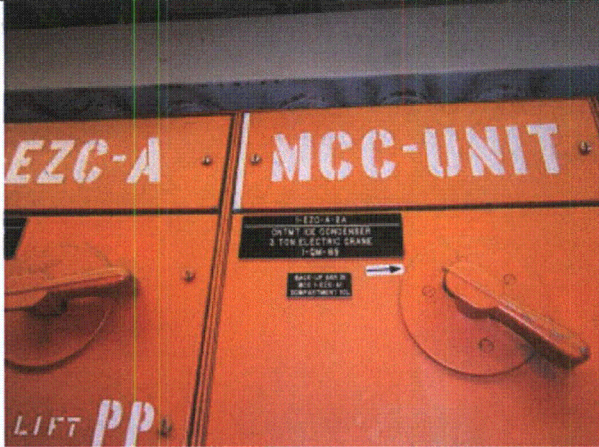
Status: Y N U

Seismic Walkdown Checklist (SWC)

Equipment ID No.: 1-EZC-A

Equipment Class: (1) Motor Control Centers

Equipment Description: 600VAC MOTOR CONTROL CENTER EZC-A



P9170586



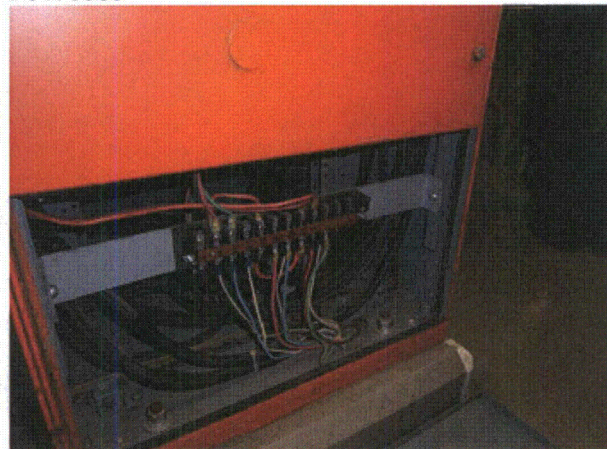
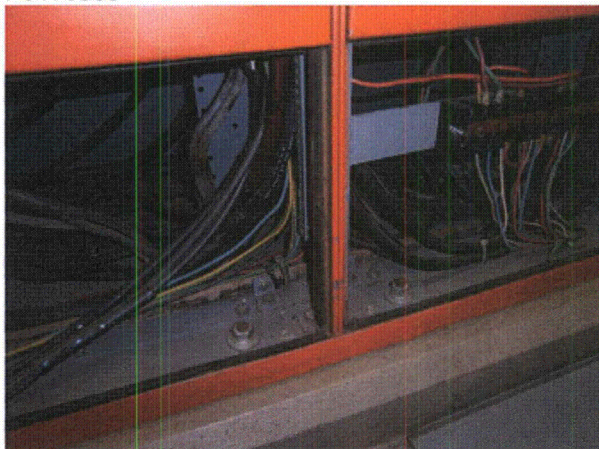
P9170587



P9170588



P9170589



Status: Y N U

Seismic Walkdown Checklist (SWC)

Equipment ID No.: 1-EZC-A

Equipment Class: (1) Motor Control Centers

Equipment Description: 600VAC MOTOR CONTROL CENTER EZC-A

P9170590

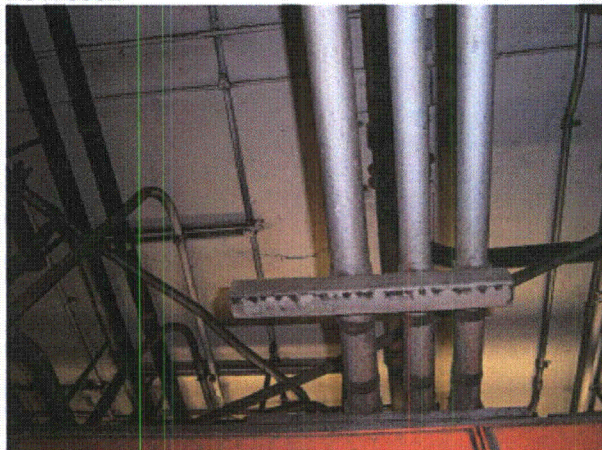
P9170591



P9170592



P9170593



P9170594



P9170595

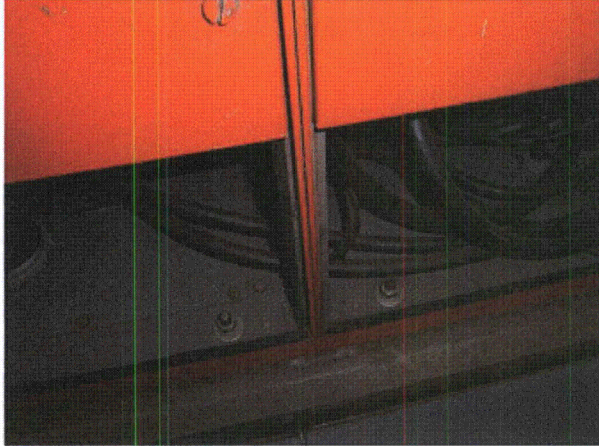
Status: Y N U

Seismic Walkdown Checklist (SWC)

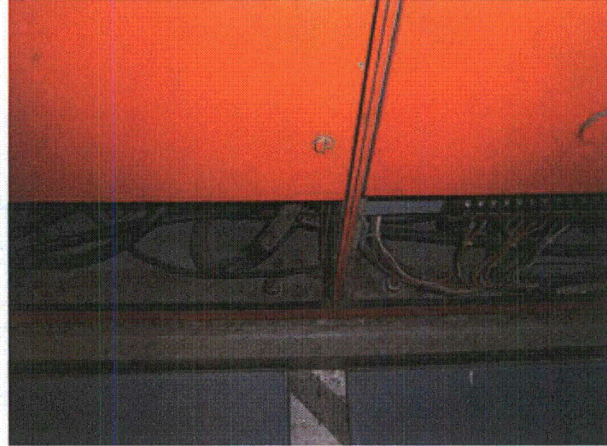
Equipment ID No.: 1-EZC-A

Equipment Class: (1) Motor Control Centers

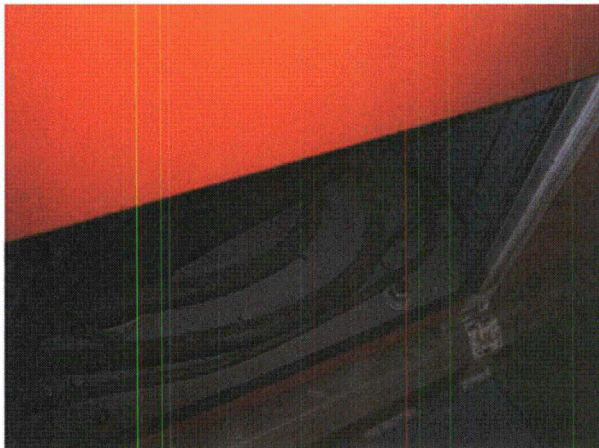
Equipment Description: 600VAC MOTOR CONTROL CENTER EZC-A



P9170596



P9170597



P9170598

Status: Y N U

Seismic Walkdown Checklist (SWC)

Equipment ID No.: 1-EZC-A1

Equipment Class: (1) Motor Control Centers

Equipment Description: 600VAC MOTOR CONTROL CENTER EZC-A1

Project: DC Cook 1 SWEL

Location (Bldg, Elev, Room/Area): AB1, 613.00 ft, 205

Manufacturer/Model: _____

Instructions for Completing Checklist

This checklist may be used to document the results of the Seismic Walkdown of an item of equipment on the SWEL. The space below each of the following questions may be used to record the results of judgments and findings. Additional space is provided at the end of this checklist for documenting other comments.

Anchorage

1. Is anchorage configuration verification required (i.e., is the item one of the 50% of SWEL items requiring such verification)? No
Attached to 1-EZC-B1

2. Is the anchorage free of bent, broken, missing or loose hardware? Yes

3. Is the anchorage free of corrosion that is more than mild surface oxidation? Yes

4. Is the anchorage free of visible cracks in the concrete near the anchors? Yes

5. Is the anchorage configuration consistent with plant documentation? (Note: This question only applies if the item is one of the 50% for which an anchorage configuration verification is required.) Not Applicable

6. Based on the above anchorage evaluations, is the anchorage free of potentially adverse seismic conditions? Yes

Interaction Effects

Status: Y N U

Seismic Walkdown Checklist (SWC)

Equipment ID No.: 1-EZC-A1

Equipment Class: (1) Motor Control Centers

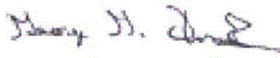
Equipment Description: 600VAC MOTOR CONTROL CENTER EZC-A1

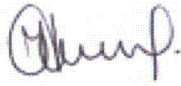
- | | | |
|-----|--|-----|
| 7. | Are soft targets free from impact by nearby equipment or structures? | Yes |
| 8. | Are overhead equipment, distribution systems, ceiling tiles and lighting, and masonry block walls not likely to collapse onto the equipment? | Yes |
| 9. | Do attached lines have adequate flexibility to avoid damage? | Yes |
| 10. | Based on the above seismic interaction evaluations, is equipment free of potentially adverse seismic interaction effects? | Yes |

Other Adverse Conditions

- | | | |
|-----|--|-----|
| 11. | Have you looked for and found no adverse seismic conditions that could adversely affect the safety functions of the equipment? | Yes |
|-----|--|-----|

Comments

Evaluated by:  George G Thomas Date: 10/18/12

 Neda Stoeva 10/18/12

Photos

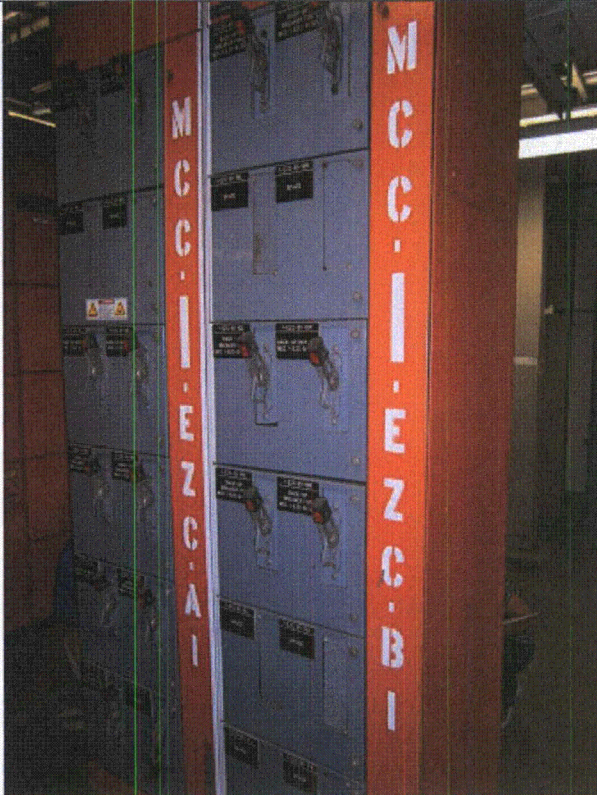
Status: Y N U

Seismic Walkdown Checklist (SWC)

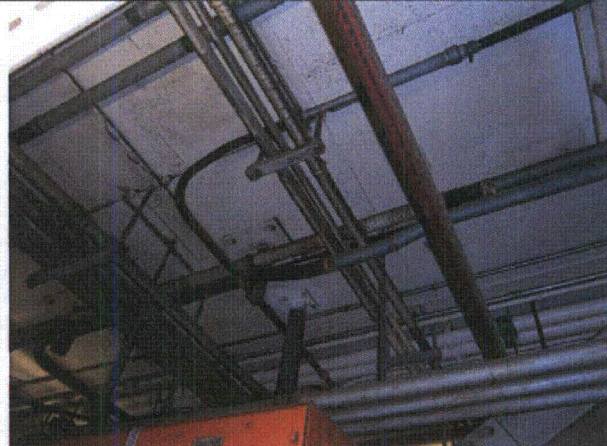
Equipment ID No.: 1-EZC-A1

Equipment Class: (1) Motor Control Centers

Equipment Description: 600VAC MOTOR CONTROL CENTER EZC-A1



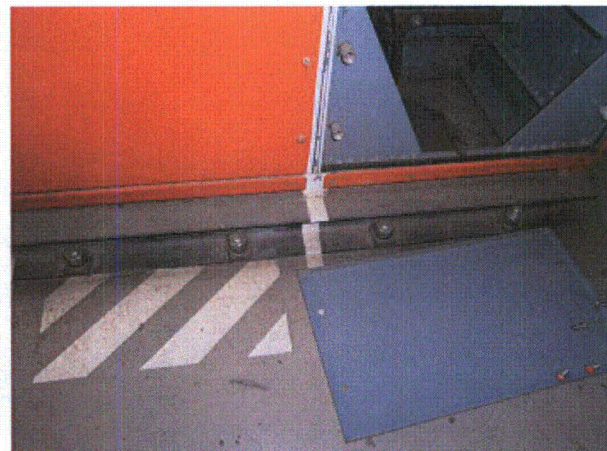
P9170600



P9170601



P9170602



P9170603

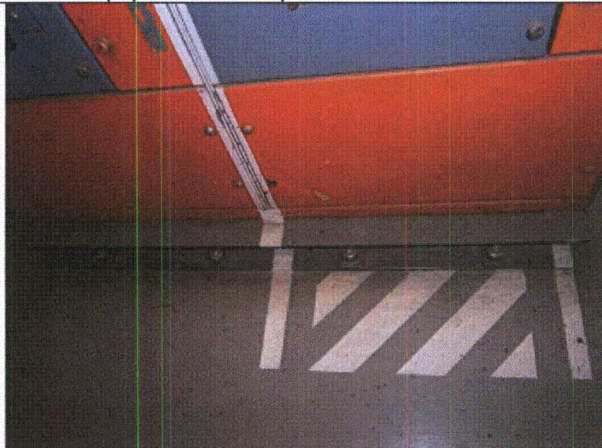
Status: Y N U

Seismic Walkdown Checklist (SWC)

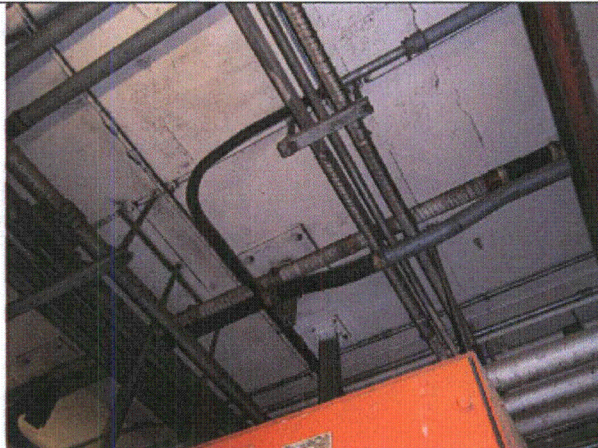
Equipment ID No.: 1-EZC-A1

Equipment Class: (1) Motor Control Centers

Equipment Description: 600VAC MOTOR CONTROL CENTER EZC-A1



P9170604



P9170605

Status: Y N U

Seismic Walkdown Checklist (SWC)

Equipment ID No.: 1-EZC-B

Equipment Class: (1) Motor Control Centers

Equipment Description: 600VAC MOTOR CONTROL CENTER EZC-B

Project: DC Cook 1 SWEL

Location (Bldg, Elev, Room/Area): AB1, 613.00 ft, 205

Manufacturer/Model: _____

Instructions for Completing Checklist

This checklist may be used to document the results of the Seismic Walkdown of an item of equipment on the SWEL. The space below each of the following questions may be used to record the results of judgments and findings. Additional space is provided at the end of this checklist for documenting other comments.

Anchorage

1. Is anchorage configuration verification required (i.e., is the item one of the 50% of SWEL items requiring such verification)? Yes
SQUG 1-EZC-B REV0

2. Is the anchorage free of bent, broken, missing or loose hardware? Yes

3. Is the anchorage free of corrosion that is more than mild surface oxidation? Yes

4. Is the anchorage free of visible cracks in the concrete near the anchors? Yes

5. Is the anchorage configuration consistent with plant documentation? (Note: This question only applies if the item is one of the 50% for which an anchorage configuration verification is required.) Yes

6. Based on the above anchorage evaluations, is the anchorage free of potentially adverse seismic conditions? Yes

Interaction Effects

Status: Y N U

Seismic Walkdown Checklist (SWC)

Equipment ID No.: 1-EZC-B

Equipment Class: (1) Motor Control Centers

Equipment Description: 600VAC MOTOR CONTROL CENTER EZC-B

7. Are soft targets free from impact by nearby equipment or structures? Yes

8. Are overhead equipment, distribution systems, ceiling tiles and lighting, and masonry block walls not likely to collapse onto the equipment? Yes

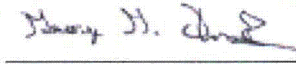
9. Do attached lines have adequate flexibility to avoid damage? Yes

10. Based on the above seismic interaction evaluations, is equipment free of potentially adverse seismic interaction effects? Yes

Other Adverse Conditions

11. Have you looked for and found no adverse seismic conditions that could adversely affect the safety functions of the equipment? Yes

Comments

Evaluated by:  George G Thomas Date: 10/18/12

 Neda Stoeva 10/18/12

Photos

Status: Y N U

Seismic Walkdown Checklist (SWC)

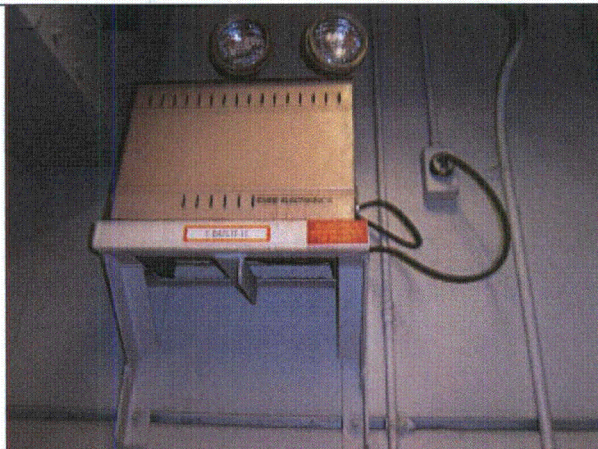
Equipment ID No.: 1-EZC-B

Equipment Class: (1) Motor Control Centers

Equipment Description: 600VAC MOTOR CONTROL CENTER EZC-B



P9170613



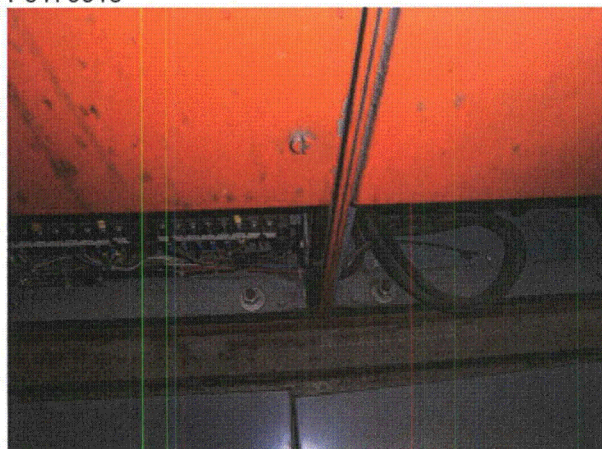
P9170614



P9170615



P9170616



Status: Y N U

Seismic Walkdown Checklist (SWC)

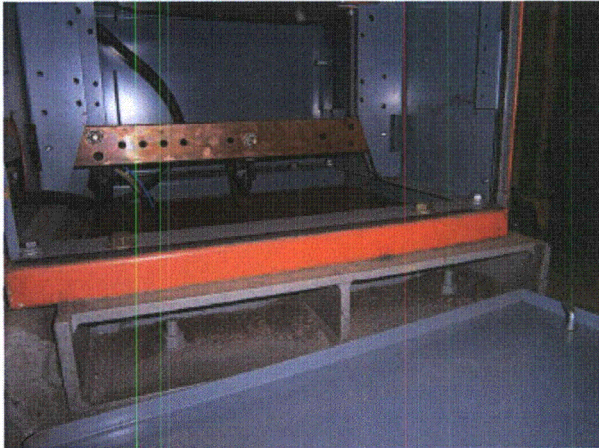
Equipment ID No.: 1-EZC-B

Equipment Class: (1) Motor Control Centers

Equipment Description: 600VAC MOTOR CONTROL CENTER EZC-B

P9170617

P9170618



P9170619



P9170620



P9170621



P9170622

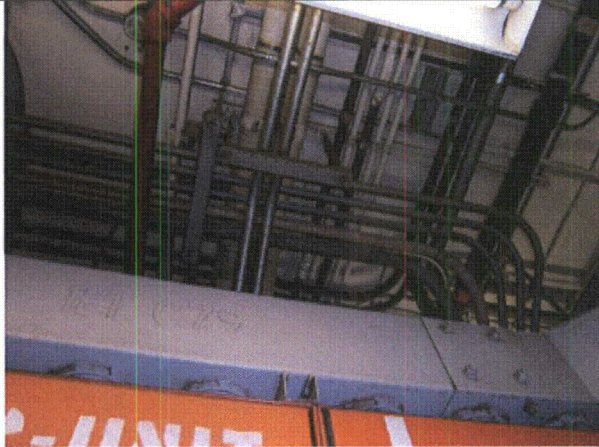
Status: Y N U

Seismic Walkdown Checklist (SWC)

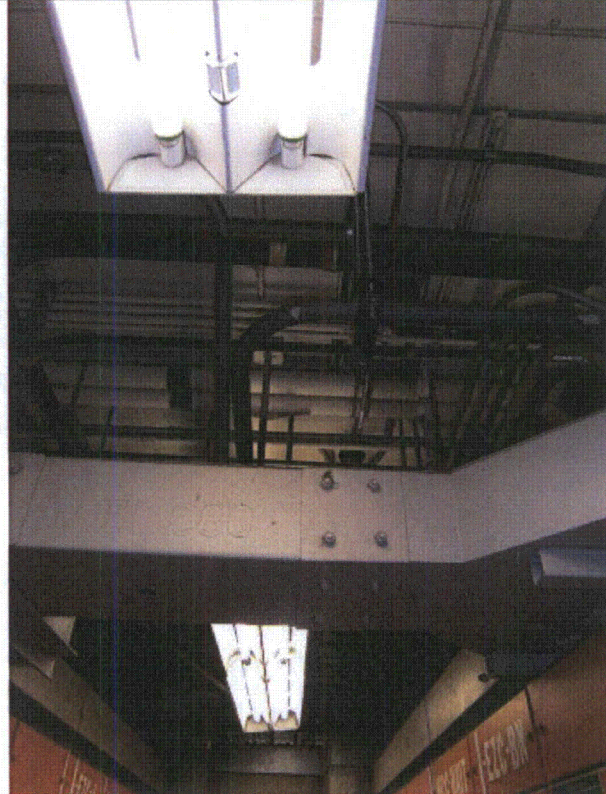
Equipment ID No.: 1-EZC-B

Equipment Class: (1) Motor Control Centers

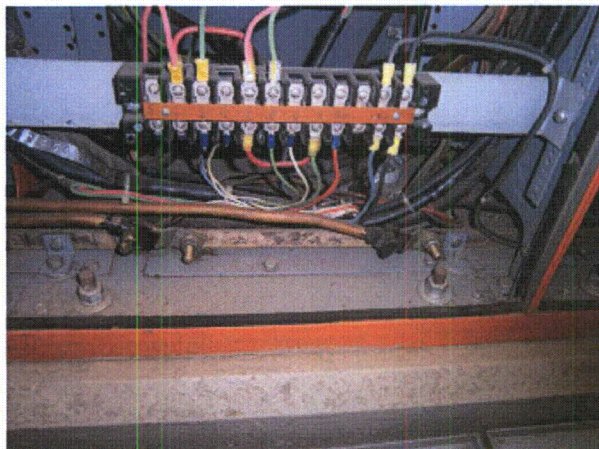
Equipment Description: 600VAC MOTOR CONTROL CENTER EZC-B



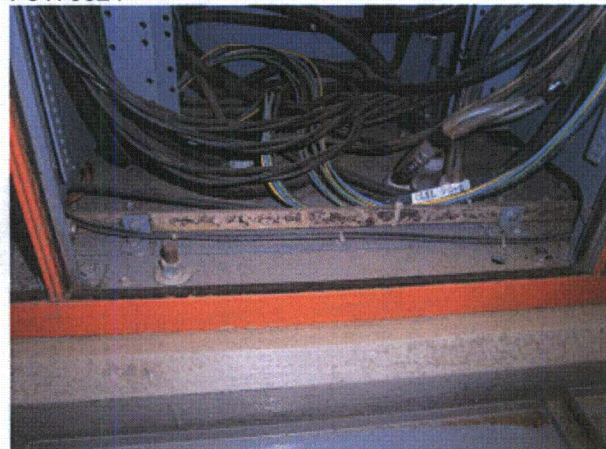
P9170623



P9170624



P9170625



P9170626

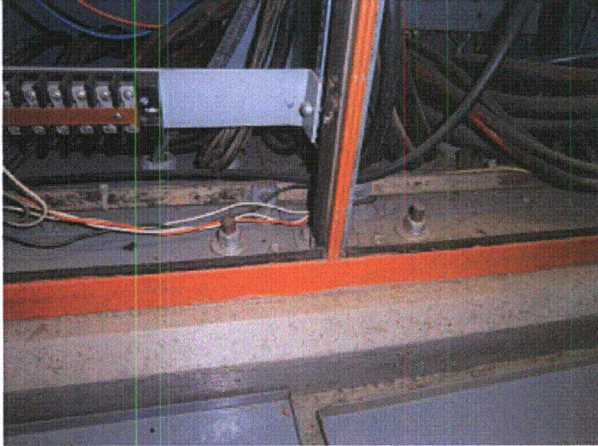
Status: Y N U

Seismic Walkdown Checklist (SWC)

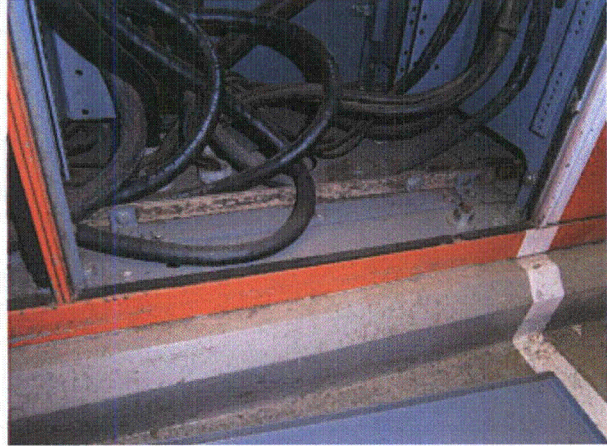
Equipment ID No.: 1-EZC-B

Equipment Class: (1) Motor Control Centers

Equipment Description: 600VAC MOTOR CONTROL CENTER EZC-B



P9170627



P9170628

Status: Y N U

Seismic Walkdown Checklist (SWC)

Equipment ID No.: 1-EZC-B1

Equipment Class: (1) Motor Control Centers

Equipment Description: 600VAC MOTOR CONTROL CENTER EZC-B1

Project: DC Cook 1 SWEL

Location (Bldg, Elev, Room/Area): AB1, 613.00 ft, 205

Manufacturer/Model: _____

Instructions for Completing Checklist

This checklist may be used to document the results of the Seismic Walkdown of an item of equipment on the SWEL. The space below each of the following questions may be used to record the results of judgments and findings. Additional space is provided at the end of this checklist for documenting other comments.

Anchorage

1. Is anchorage configuration verification required (i.e., is the item one of the 50% of SWEL items requiring such verification)? No
Attached to 1-EZC-A1

2. Is the anchorage free of bent, broken, missing or loose hardware? Yes

3. Is the anchorage free of corrosion that is more than mild surface oxidation? Yes

4. Is the anchorage free of visible cracks in the concrete near the anchors? Yes

5. Is the anchorage configuration consistent with plant documentation? (Note: This question only applies if the item is one of the 50% for which an anchorage configuration verification is required.) Not Applicable

6. Based on the above anchorage evaluations, is the anchorage free of potentially adverse seismic conditions? Yes

Interaction Effects

Status: Y N U

Seismic Walkdown Checklist (SWC)

Equipment ID No.: 1-EZC-B1

Equipment Class: (1) Motor Control Centers

Equipment Description: 600VAC MOTOR CONTROL CENTER EZC-B1

7. Are soft targets free from impact by nearby equipment or structures? Yes

8. Are overhead equipment, distribution systems, ceiling tiles and lighting, and masonry block walls not likely to collapse onto the equipment? Yes

9. Do attached lines have adequate flexibility to avoid damage? Yes

10. Based on the above seismic interaction evaluations, is equipment free of potentially adverse seismic interaction effects? Yes

Other Adverse Conditions

11. Have you looked for and found no adverse seismic conditions that could adversely affect the safety functions of the equipment? Yes

Comments

Evaluated by:  George G Thomas Date: 10/18/12

 Neda Stoeva 10/18/12

Photos

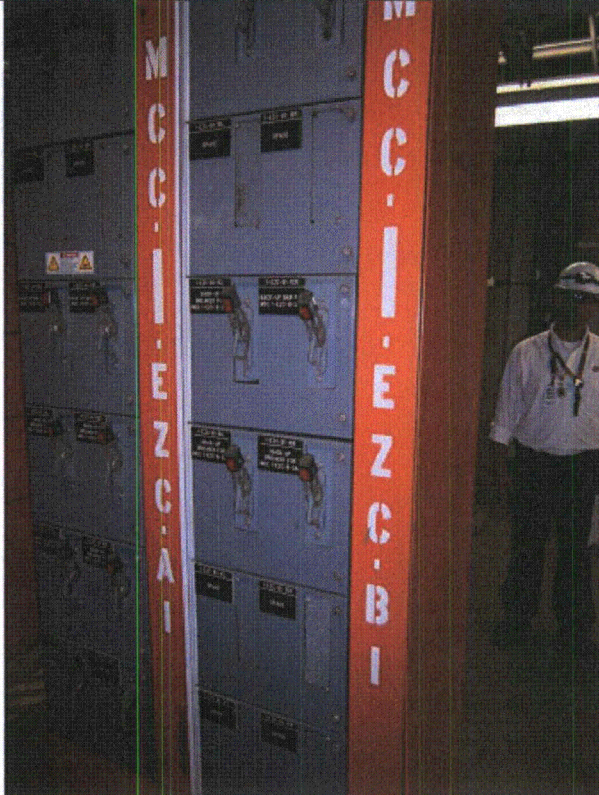
Status: Y N U

Seismic Walkdown Checklist (SWC)

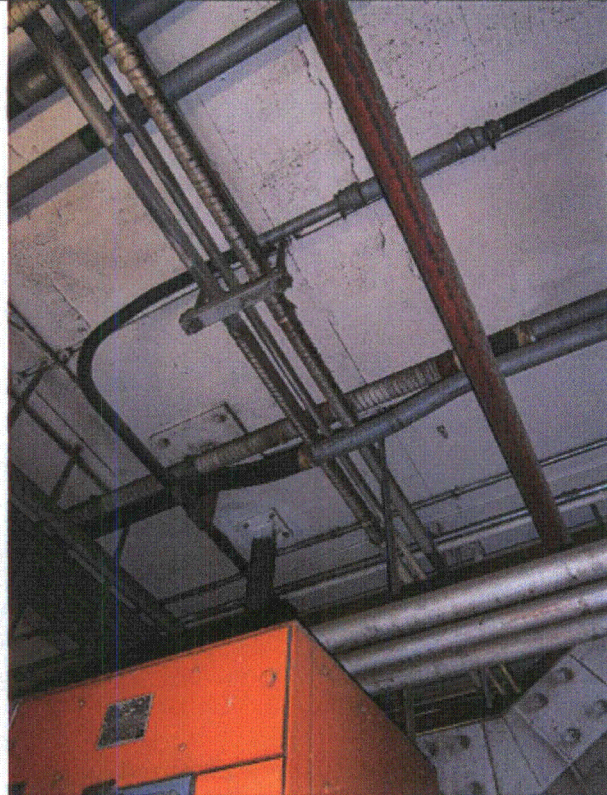
Equipment ID No.: 1-EZC-B1

Equipment Class: (1) Motor Control Centers

Equipment Description: 600VAC MOTOR CONTROL CENTER EZC-B1



P9170607



P9170608



P9170609



P9170610

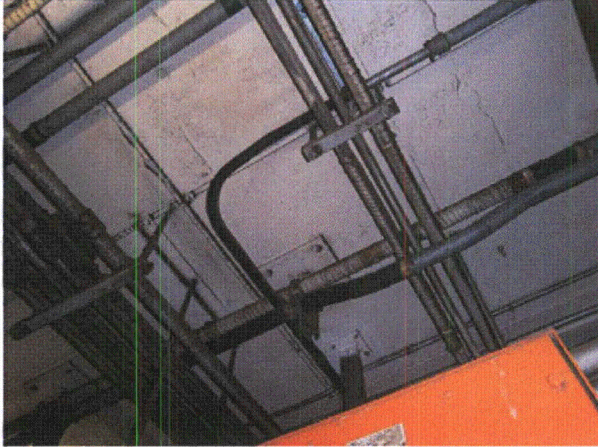
Status: Y N U

Seismic Walkdown Checklist (SWC)

Equipment ID No.: 1-EZC-B1

Equipment Class: (1) Motor Control Centers

Equipment Description: 600VAC MOTOR CONTROL CENTER EZC-B1



P9170611

Status: Y N U

Seismic Walkdown Checklist (SWC)

Equipment ID No.: 1-FFI-240

Equipment Class: (18) Instruments on Racks

Equipment Description: AUX FEEDWATER TO SG OME-3-4 FLOW INDICATOR TRANSMITTER

Project: DC Cook 1 SWEL

Location (Bldg, Elev, Room/Area): AB1, 621.00 ft, 10

Manufacturer/Model: _____

Instructions for Completing Checklist

This checklist may be used to document the results of the Seismic Walkdown of an item of equipment on the SWEL. The space below each of the following questions may be used to record the results of judgments and findings. Additional space is provided at the end of this checklist for documenting other comments.

Anchorage

1. Is anchorage configuration verification required (i.e., is the item one of the 50% of SWEL items requiring such verification)? Yes
DOCS SD-090519-001, SD-090313-001, SD-090313-002

2. Is the anchorage free of bent, broken, missing or loose hardware? Yes

3. Is the anchorage free of corrosion that is more than mild surface oxidation? Yes

4. Is the anchorage free of visible cracks in the concrete near the anchors? Yes

5. Is the anchorage configuration consistent with plant documentation? (Note: This question only applies if the item is one of the 50% for which an anchorage configuration verification is required.) Yes

6. Based on the above anchorage evaluations, is the anchorage free of potentially adverse seismic conditions? Yes

Interaction Effects

Status: Y N U

Seismic Walkdown Checklist (SWC)

Equipment ID No.: 1-FFI-240

Equipment Class: (18) Instruments on Racks

Equipment Description: AUX FEEDWATER TO SG OME-3-4 FLOW INDICATOR TRANSMITTER

7. Are soft targets free from impact by nearby equipment or structures? Yes

8. Are overhead equipment, distribution systems, ceiling tiles and lighting, and masonry block walls not likely to collapse onto the equipment? Yes

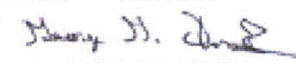
9. Do attached lines have adequate flexibility to avoid damage? Yes

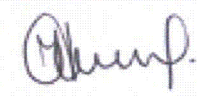
10. Based on the above seismic interaction evaluations, is equipment free of potentially adverse seismic interaction effects? Yes

Other Adverse Conditions

11. Have you looked for and found no adverse seismic conditions that could adversely affect the safety functions of the equipment? Yes

Comments

Evaluated by:  George G Thomas Date: 10/18/12

 Neda Stoeva 10/18/12

Photos

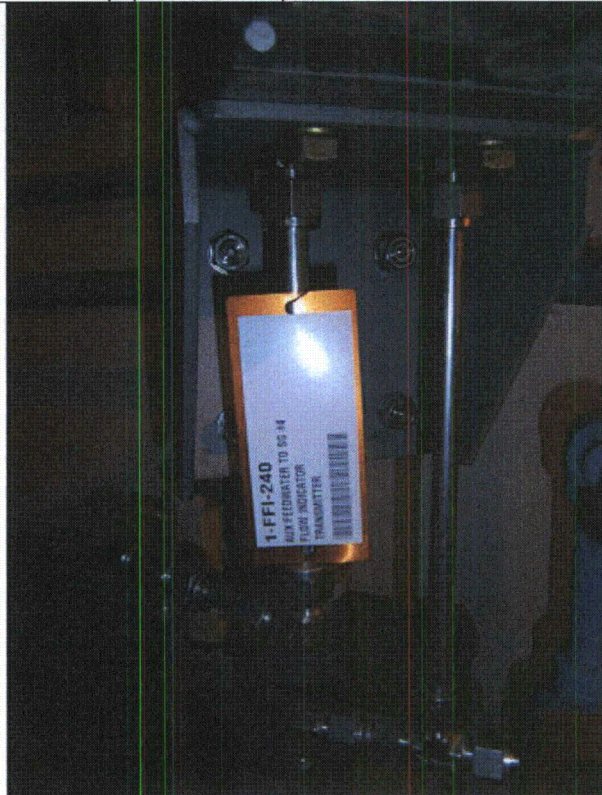
Status: Y N U

Seismic Walkdown Checklist (SWC)

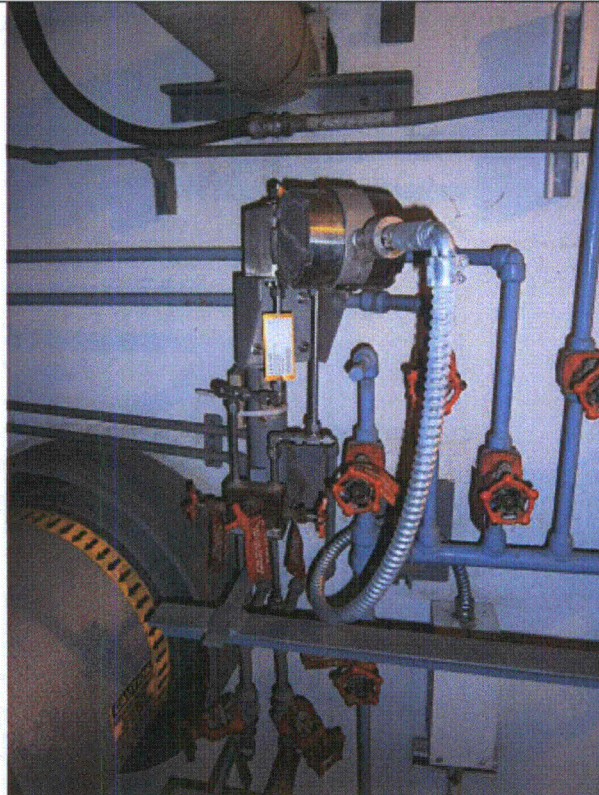
Equipment ID No.: 1-FFI-240

Equipment Class: (18) Instruments on Racks

Equipment Description: AUX FEEDWATER TO SG OME-3-4 FLOW INDICATOR TRANSMITTER



P9100281



P9100282

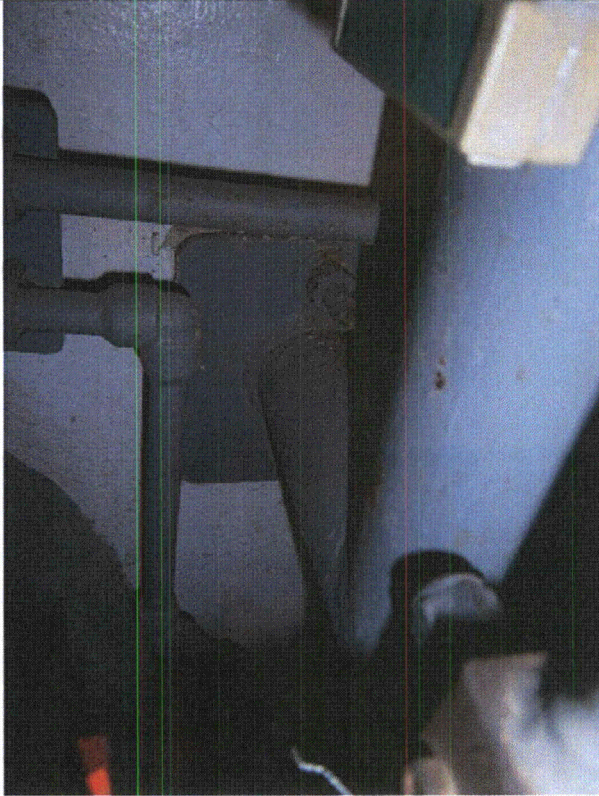
Status: Y N U

Seismic Walkdown Checklist (SWC)

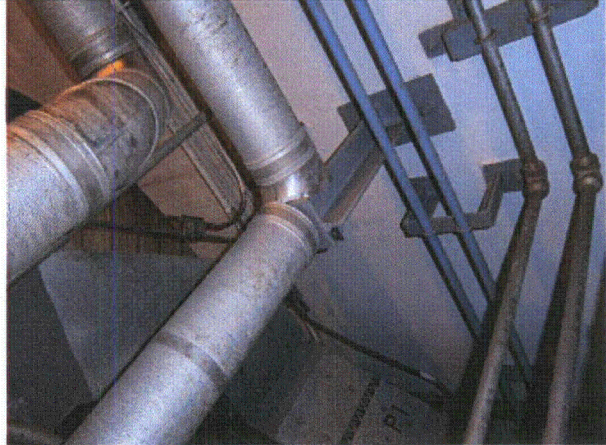
Equipment ID No.: 1-FFI-240

Equipment Class: (18) Instruments on Racks

Equipment Description: AUX FEEDWATER TO SG OME-3-4 FLOW INDICATOR TRANSMITTER



P9100283



P9100284