

Status: Y N U

Seismic Walkdown Checklist (SWC)

Equipment ID No.: 1-BATT-AB

Equipment Class: (15) Batteries on Racks

Equipment Description: PLANT BATTERY AB

Project: DC Cook 1 SWEL

Location (Bldg, Elev, Room/Area): AB1, 609.00 ft, 200

Manufacturer/Model:

Instructions for Completing Checklist

This checklist may be used to document the results of the Seismic Walkdown of an item of equipment on the SWEL. The space below each of the following questions may be used to record the results of judgments and findings. Additional space is provided at the end of this checklist for documenting other comments.

Anchorage

- | | | |
|----|---|-----|
| 1. | Is anchorage configuration verification required (i.e., is the item one of the 50% of SWEL items requiring such verification)?
<i>SQUG 1-BATT-AB REV0</i> | Yes |
| 2. | Is the anchorage free of bent, broken, missing or loose hardware? | Yes |
| 3. | Is the anchorage free of corrosion that is more than mild surface oxidation?
<i>Very minor oxidation on base plate of front plate on right side batteries</i> | Yes |
| 4. | Is the anchorage free of visible cracks in the concrete near the anchors? | Yes |
| 5. | Is the anchorage configuration consistent with plant documentation? (Note: This question only applies if the item is one of the 50% for which an anchorage configuration verification is required.) | Yes |
| 6. | Based on the above anchorage evaluations, is the anchorage free of potentially adverse seismic conditions? | Yes |

Interaction Effects

Status: Y N U

Seismic Walkdown Checklist (SWC)

Equipment ID No.: 1-BATT-AB

Equipment Class: (15) Batteries on Racks

Equipment Description: PLANT BATTERY AB

7. Are soft targets free from impact by nearby equipment or structures? Yes

8. Are overhead equipment, distribution systems, ceiling tiles and lighting, and masonry block walls not likely to collapse onto the equipment? Yes

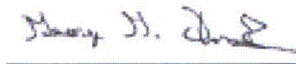
9. Do attached lines have adequate flexibility to avoid damage? Yes

10. Based on the above seismic interaction evaluations, is equipment free of potentially adverse seismic interaction effects? Yes

Other Adverse Conditions

11. Have you looked for and found no adverse seismic conditions that could adversely affect the safety functions of the equipment? Yes

Comments

Evaluated by:  George G Thomas Date: 10/18/12

 Neda Stoeva 10/18/12

Photos

Status: Y N U

Seismic Walkdown Checklist (SWC)

Equipment ID No.: 1-BATT-AB

Equipment Class: (15) Batteries on Racks

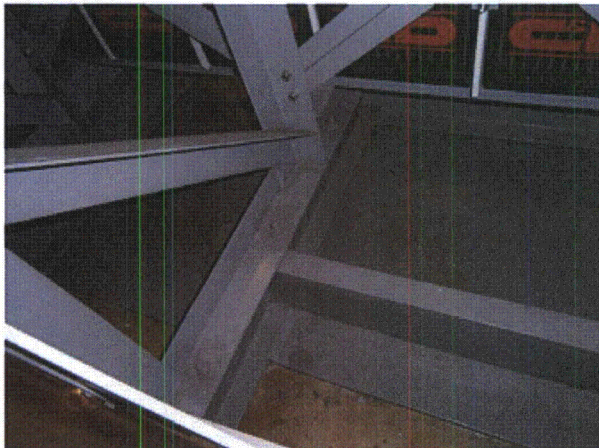
Equipment Description: PLANT BATTERY AB



P9170686



P9170687



P9170688



P9170689

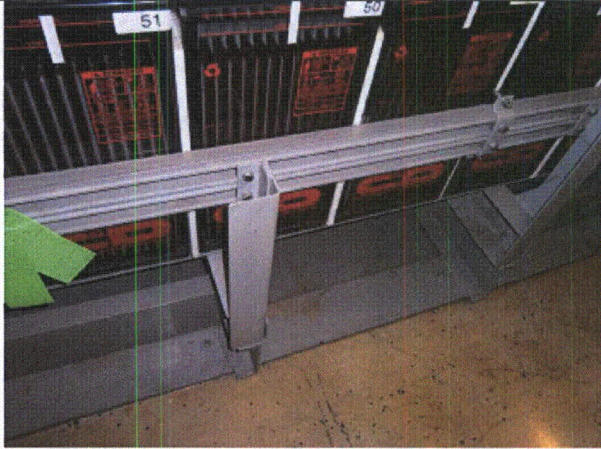
Status: Y N U

Seismic Walkdown Checklist (SWC)

Equipment ID No.: 1-BATT-AB

Equipment Class: (15) Batteries on Racks

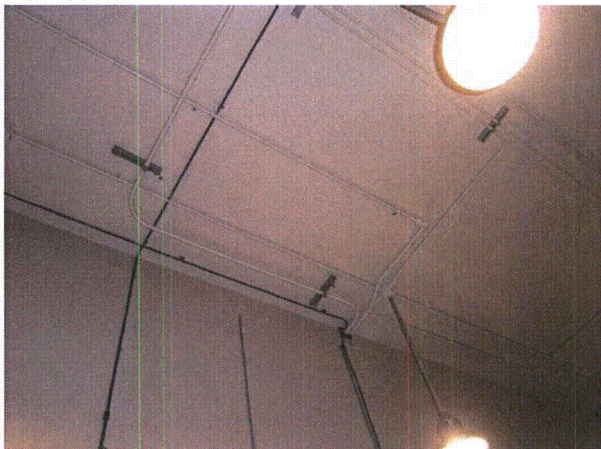
Equipment Description: PLANT BATTERY AB



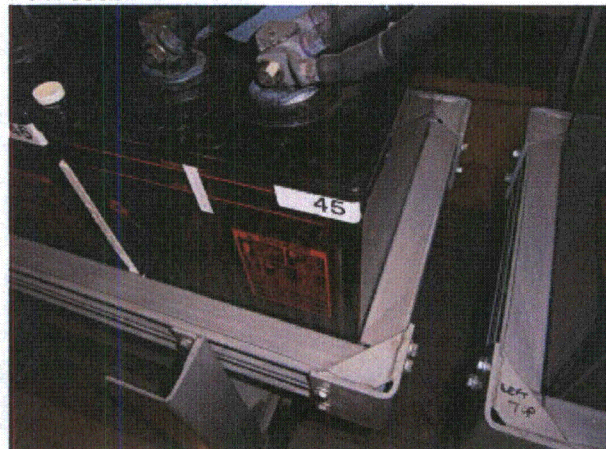
P9170690



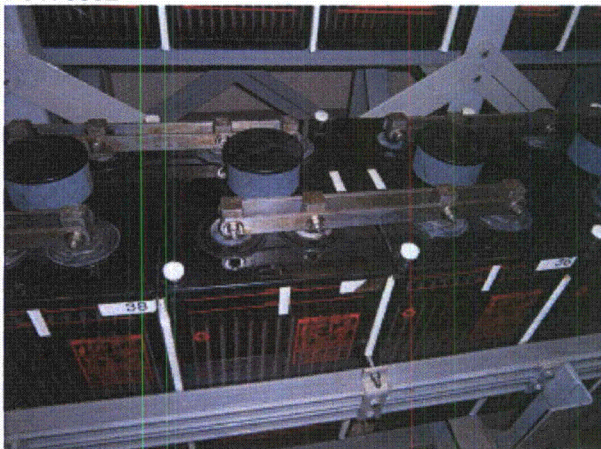
P9170691



P9170692



P9170693



Status: Y N U

Seismic Walkdown Checklist (SWC)

Equipment ID No.: 1-BATT-AB

Equipment Class: (15) Batteries on Racks

Equipment Description: PLANT BATTERY AB

P9170694

Status: Y N U

Seismic Walkdown Checklist (SWC)

Equipment ID No.: 1-BC-AB

Equipment Class: (20) Instrumentation and Control Panels and Cabinets

Equipment Description: PLANT BATTERY BATT-AB CONTROL PANEL

Project: DC Cook 1 SWEL

Location (Bldg, Elev, Room/Area): AB1, 613.00 ft, 205

Manufacturer/Model: _____

Instructions for Completing Checklist

This checklist may be used to document the results of the Seismic Walkdown of an item of equipment on the SWEL. The space below each of the following questions may be used to record the results of judgments and findings. Additional space is provided at the end of this checklist for documenting other comments.

Anchorage

- | | |
|--|-----|
| 1. Is anchorage configuration verification required (i.e., is the item one of the 50% of SWEL items requiring such verification)?
<i>DWG-PS1-91031-0</i> | Yes |
| 2. Is the anchorage free of bent, broken, missing or loose hardware? | Yes |
| 3. Is the anchorage free of corrosion that is more than mild surface oxidation? | Yes |
| 4. Is the anchorage free of visible cracks in the concrete near the anchors? | Yes |
| 5. Is the anchorage configuration consistent with plant documentation? (Note: This question only applies if the item is one of the 50% for which an anchorage configuration verification is required.) | Yes |
| 6. Based on the above anchorage evaluations, is the anchorage free of potentially adverse seismic conditions? | Yes |

Interaction Effects

Status: Y N U

Seismic Walkdown Checklist (SWC)

Equipment ID No.: 1-BC-AB

Equipment Class: (20) Instrumentation and Control Panels and Cabinets

Equipment Description: PLANT BATTERY BATT-AB CONTROL PANEL

- | | |
|---|-----|
| 7. Are soft targets free from impact by nearby equipment or structures? | Yes |
| 8. Are overhead equipment, distribution systems, ceiling tiles and lighting, and masonry block walls not likely to collapse onto the equipment? | Yes |
| 9. Do attached lines have adequate flexibility to avoid damage? | Yes |
| 10. Based on the above seismic interaction evaluations, is equipment free of potentially adverse seismic interaction effects? | Yes |

Other Adverse Conditions

- | | |
|--|-----|
| 11. Have you looked for and found no adverse seismic conditions that could adversely affect the safety functions of the equipment? | Yes |
|--|-----|

Comments

Evaluated by:  George G Thomas Date: 10/18/12

 Neda Stoeva 10/18/12

Photos

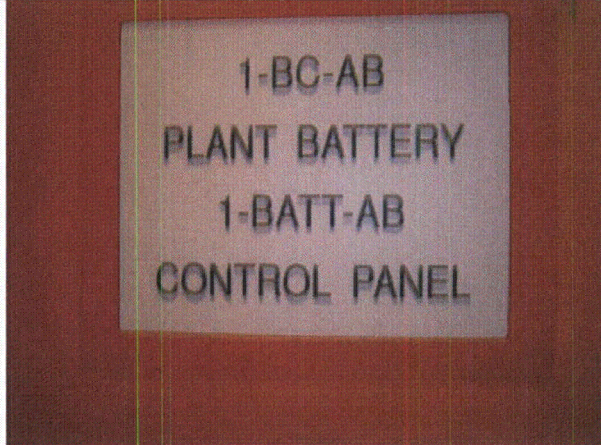
Status: Y N U

Seismic Walkdown Checklist (SWC)

Equipment ID No.: 1-BC-AB

Equipment Class: (20) Instrumentation and Control Panels and Cabinets

Equipment Description: PLANT BATTERY BATT-AB CONTROL PANEL



P9170653



P9170654

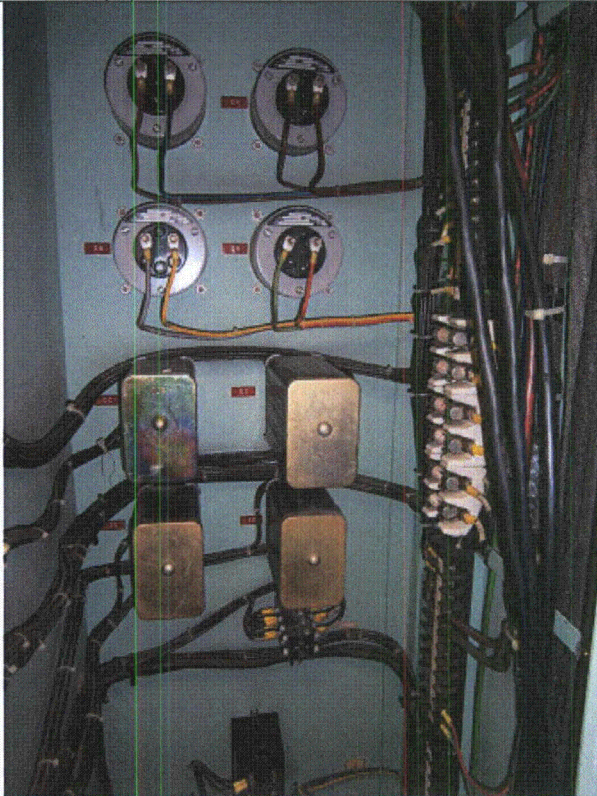
Status: Y N U

Seismic Walkdown Checklist (SWC)

Equipment ID No.: 1-BC-AB

Equipment Class: (20) Instrumentation and Control Panels and Cabinets

Equipment Description: PLANT BATTERY BATT-AB CONTROL PANEL



P9170655



P9170656



P9170657



P9170658

Status: Y N U

Seismic Walkdown Checklist (SWC)

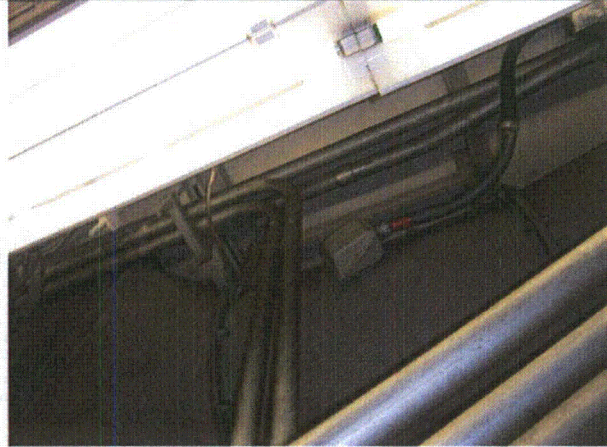
Equipment ID No.: 1-BC-AB

Equipment Class: (20) Instrumentation and Control Panels and Cabinets

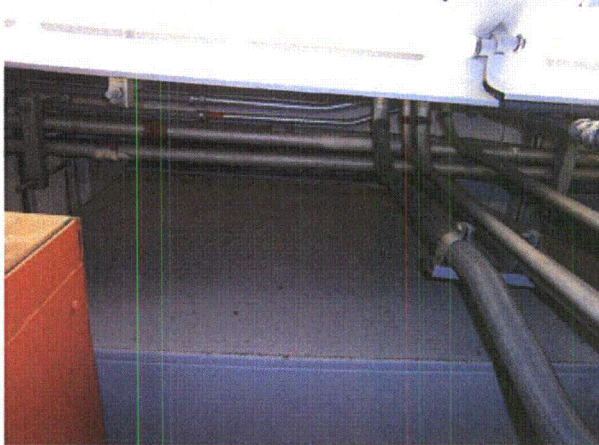
Equipment Description: PLANT BATTERY BATT-AB CONTROL PANEL



P9170659



P9170660



P9170661

Status: Y N U

Seismic Walkdown Checklist (SWC)

Equipment ID No.: 1-BC-AB1

Equipment Class: (16) Inverters

Equipment Description: PLANT BATTERY BATT-AB BATTERY CHARGER #1

Project: DC Cook 1 SWEL

Location (Bldg, Elev, Room/Area): AB1, 613.00 ft, 205

Manufacturer/Model: _____

Instructions for Completing Checklist

This checklist may be used to document the results of the Seismic Walkdown of an item of equipment on the SWEL. The space below each of the following questions may be used to record the results of judgments and findings. Additional space is provided at the end of this checklist for documenting other comments.

Anchorage

1. Is anchorage configuration verification required (i.e., is the item one of the 50% of SWEL items requiring such verification)? Yes
SQUG 1-BC-AB1 REV0

2. Is the anchorage free of bent, broken, missing or loose hardware? Yes

3. Is the anchorage free of corrosion that is more than mild surface oxidation? Yes
Painted

4. Is the anchorage free of visible cracks in the concrete near the anchors? Yes

5. Is the anchorage configuration consistent with plant documentation? (Note: This question only applies if the item is one of the 50% for which an anchorage configuration verification is required.) Yes

6. Based on the above anchorage evaluations, is the anchorage free of potentially adverse seismic conditions? Yes

Interaction Effects

Status: Y N U

Seismic Walkdown Checklist (SWC)

Equipment ID No.: 1-BC-AB1

Equipment Class: (16) Inverters

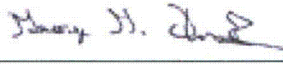
Equipment Description: PLANT BATTERY BATT-AB BATTERY CHARGER #1

7. Are soft targets free from impact by nearby equipment or structures? Yes
8. Are overhead equipment, distribution systems, ceiling tiles and lighting, and masonry block walls not likely to collapse onto the equipment? Yes
9. Do attached lines have adequate flexibility to avoid damage? Yes
10. Based on the above seismic interaction evaluations, is equipment free of potentially adverse seismic interaction effects? Yes

Other Adverse Conditions

11. Have you looked for and found no adverse seismic conditions that could adversely affect the safety functions of the equipment? Yes

Comments

Evaluated by:  George G Thomas Date: 10/18/12

 Neda Stoeva 10/18/12

Photos

Status: Y N U

Seismic Walkdown Checklist (SWC)

Equipment ID No.: 1-BC-AB1

Equipment Class: (16) Inverters

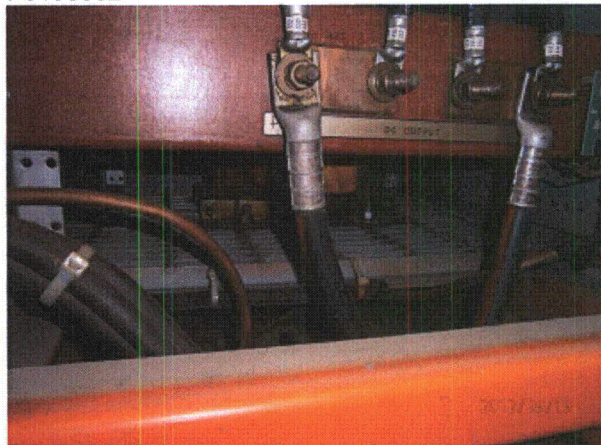
Equipment Description: PLANT BATTERY BATT-AB BATTERY CHARGER #1



P9190382



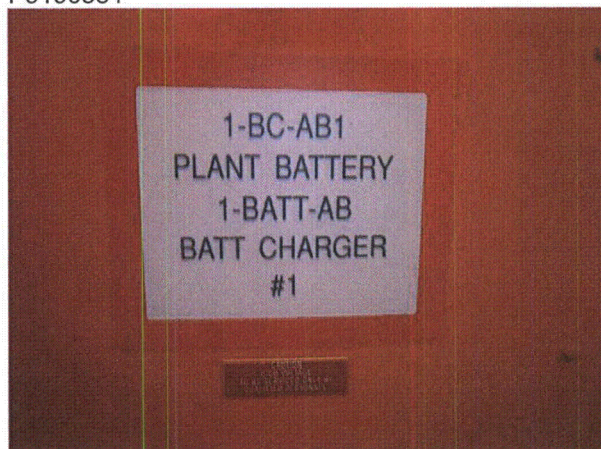
P9190383



P9190384



P9190385



Status: Y N U

Seismic Walkdown Checklist (SWC)

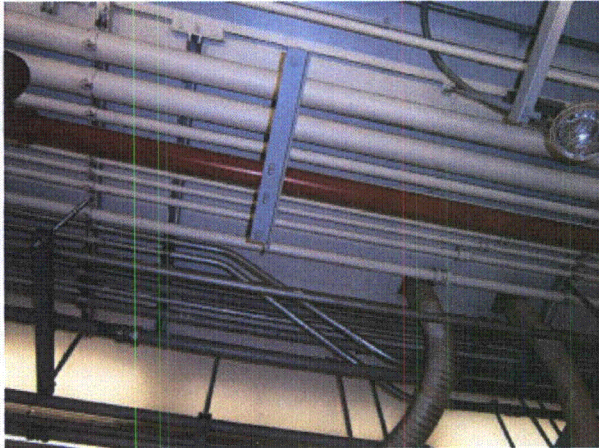
Equipment ID No.: 1-BC-AB1

Equipment Class: (16) Inverters

Equipment Description: PLANT BATTERY BATT-AB BATTERY CHARGER #1

P9170630

P9170631



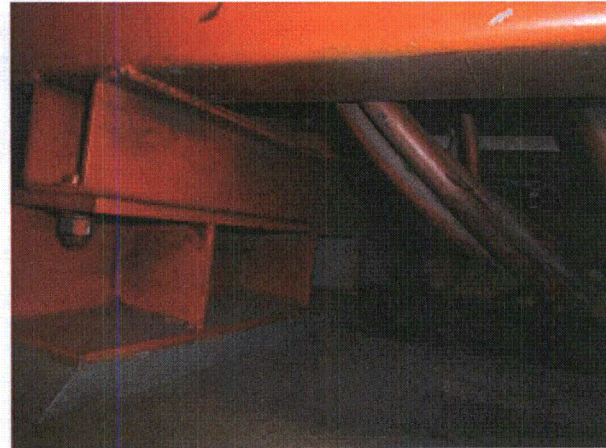
P9170632



P9170633



P9170634



P9170635

Status: Y N U

Seismic Walkdown Checklist (SWC)

Equipment ID No.: 1-BC-AB1

Equipment Class: (16) Inverters

Equipment Description: PLANT BATTERY BATT-AB BATTERY CHARGER #1



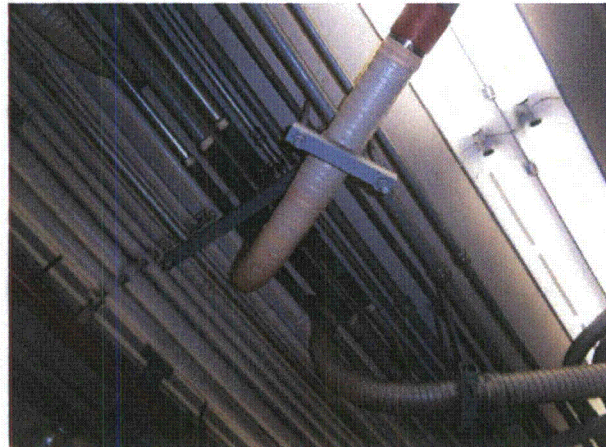
P9170636



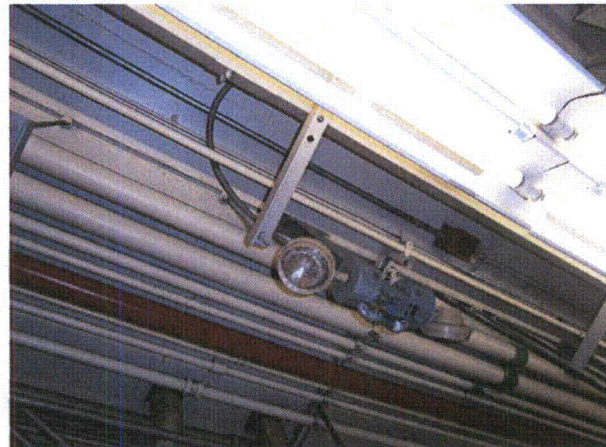
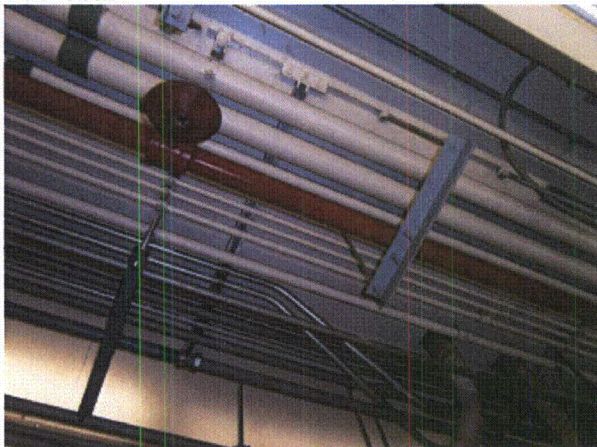
P9170637



P9170638



P9170639



Status: Y N U

Seismic Walkdown Checklist (SWC)

Equipment ID No.: 1-BC-AB1

Equipment Class: (16) Inverters

Equipment Description: PLANT BATTERY BATT-AB BATTERY CHARGER #1

P9170640

P9170641

Status: Y N U

Seismic Walkdown Checklist (SWC)

Equipment ID No.: 1-BC-AB2

Equipment Class: (16) Inverters

Equipment Description: PLANT BATTERY BATT-AB CHARGER #2

Project: DC Cook 1 SWEL

Location (Bldg, Elev, Room/Area): AB1, 613.00 ft, 205

Manufacturer/Model: _____

Instructions for Completing Checklist

This checklist may be used to document the results of the Seismic Walkdown of an item of equipment on the SWEL. The space below each of the following questions may be used to record the results of judgments and findings. Additional space is provided at the end of this checklist for documenting other comments.

Anchorage

1. Is anchorage configuration verification required (i.e., is the item one of the 50% of SWEL items requiring such verification)? No

2. Is the anchorage free of bent, broken, missing or loose hardware? Yes

3. Is the anchorage free of corrosion that is more than mild surface oxidation? Yes

4. Is the anchorage free of visible cracks in the concrete near the anchors? Yes

5. Is the anchorage configuration consistent with plant documentation? (Note: This question only applies if the item is one of the 50% for which an anchorage configuration verification is required.) Not Applicable

6. Based on the above anchorage evaluations, is the anchorage free of potentially adverse seismic conditions? Yes

Interaction Effects

Status: Y N U

Seismic Walkdown Checklist (SWC)

Equipment ID No.: 1-BC-AB2

Equipment Class: (16) Inverters

Equipment Description: PLANT BATTERY BATT-AB CHARGER #2

7. Are soft targets free from impact by nearby equipment or structures? Yes

8. Are overhead equipment, distribution systems, ceiling tiles and lighting, and masonry block walls not likely to collapse onto the equipment? No
Fire extinguishers on short hooks - AR 2012- 11669 was issued.

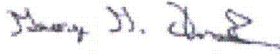
9. Do attached lines have adequate flexibility to avoid damage? Yes

10. Based on the above seismic interaction evaluations, is equipment free of potentially adverse seismic interaction effects? No

Other Adverse Conditions

11. Have you looked for and found no adverse seismic conditions that could adversely affect the safety functions of the equipment? Yes

Comments

Evaluated by:  George G Thomas Date: 10/18/12

 Neda Stoeva 10/18/12

Photos

Status: Y N U

Seismic Walkdown Checklist (SWC)

Equipment ID No.: 1-BC-AB2

Equipment Class: (16) Inverters

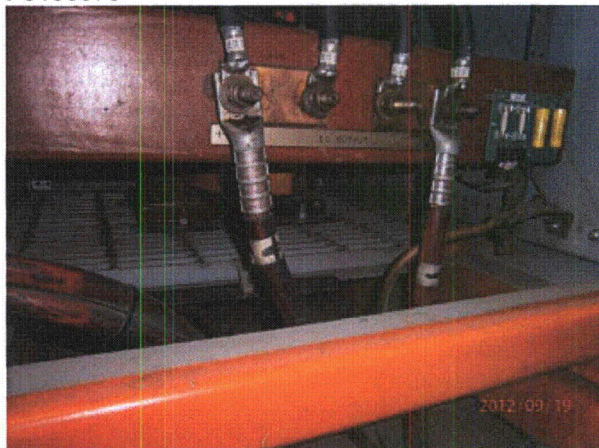
Equipment Description: PLANT BATTERY BATT-AB CHARGER #2



P9190378



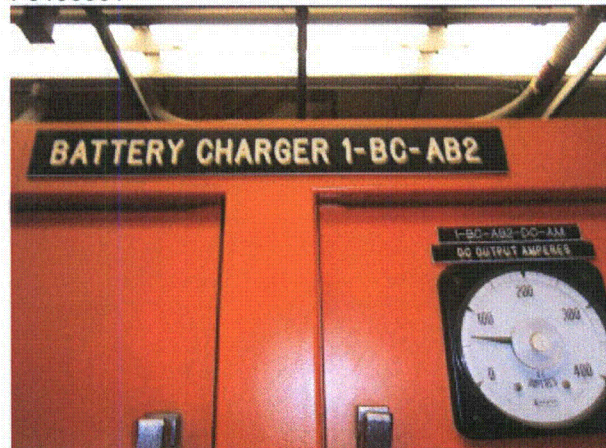
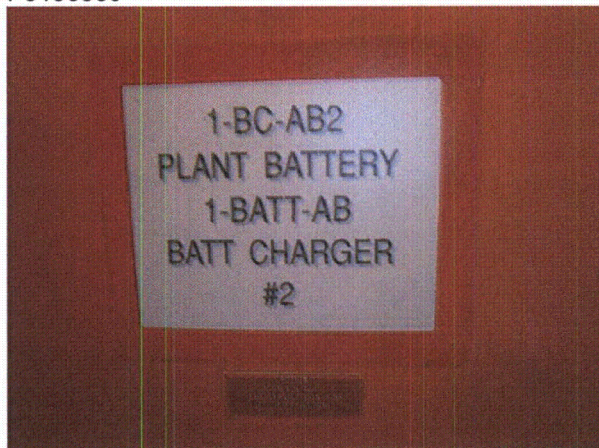
P9190379



P9190380



P9190381



Status: Y N U

Seismic Walkdown Checklist (SWC)

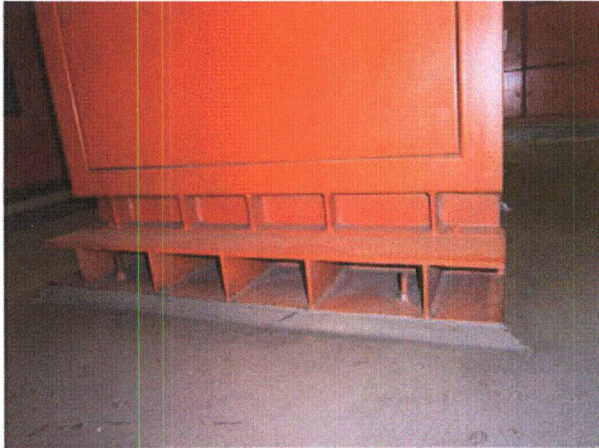
Equipment ID No.: 1-BC-AB2

Equipment Class: (16) Inverters

Equipment Description: PLANT BATTERY BATT-AB CHARGER #2

P9170643

P9170644



P9170645



P9170646



P9170647



P9170648

Status: Y N U

Seismic Walkdown Checklist (SWC)

Equipment ID No.: 1-BC-AB2

Equipment Class: (16) Inverters

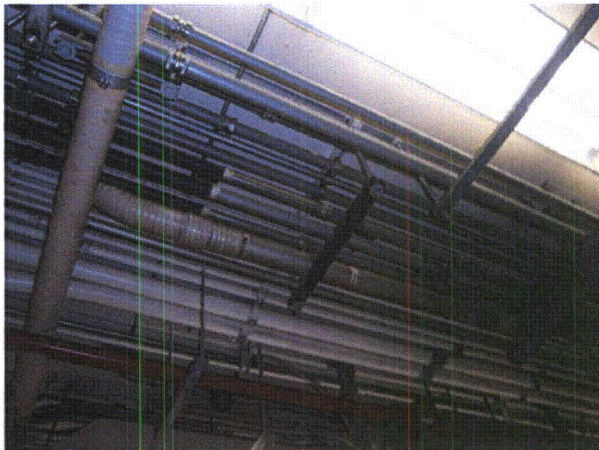
Equipment Description: PLANT BATTERY BATT-AB CHARGER #2



P9170649



P9170650



P9170651

Status: Y N U

Seismic Walkdown Checklist (SWC)

Equipment ID No.: 1-BCTC-AB

Equipment Class: (14) Distribution Panels

Equipment Description: PLANT BATTERY CHARGERS BC-AB1 AND BC-AB2 TRANSFER

Project: DC Cook 1 SWEL

Location (Bldg, Elev, Room/Area): AB1, 613.00 ft, 205

Manufacturer/Model: _____

Instructions for Completing Checklist

This checklist may be used to document the results of the Seismic Walkdown of an item of equipment on the SWEL. The space below each of the following questions may be used to record the results of judgments and findings. Additional space is provided at the end of this checklist for documenting other comments.

Anchorage

1. Is anchorage configuration verification required (i.e., is the item one of the 50% of SWEL items requiring such verification)? Yes
COULD NOT OPEN - SQUG 1-BCTC-AB REV0

2. Is the anchorage free of bent, broken, missing or loose hardware? Unknown
Cannot open - cannot see anchorage

3. Is the anchorage free of corrosion that is more than mild surface oxidation? Unknown
Cannot open - cannot see anchorage

4. Is the anchorage free of visible cracks in the concrete near the anchors? Unknown
Cannot open - cannot see anchorage

5. Is the anchorage configuration consistent with plant documentation? (Note: This question only applies if the item is one of the 50% for which an anchorage configuration verification is required.) Unknown
Cannot open - cannot see anchorage

6. Based on the above anchorage evaluations, is the anchorage free of potentially adverse seismic conditions? Unknown

Interaction Effects

Status: Y N U

Seismic Walkdown Checklist (SWC)

Equipment ID No.: 1-BCTC-AB

Equipment Class: (14) Distribution Panels

Equipment Description: PLANT BATTERY CHARGERS BC-AB1 AND BC-AB2 TRANSFER

7. Are soft targets free from impact by nearby equipment or structures? Yes

8. Are overhead equipment, distribution systems, ceiling tiles and lighting, and masonry block walls not likely to collapse onto the equipment? No
Fire extinguishers on short hooks - AR 2012- 11669 was issued.

9. Do attached lines have adequate flexibility to avoid damage? Yes

10. Based on the above seismic interaction evaluations, is equipment free of potentially adverse seismic interaction effects? No

Other Adverse Conditions

11. Have you looked for and found no adverse seismic conditions that could adversely affect the safety functions of the equipment? Unknown
Could not open due to safety concerns

Comments

Evaluated by:  George G Thomas Date: 10/18/12

 Neda Stoeva 10/18/12

Photos

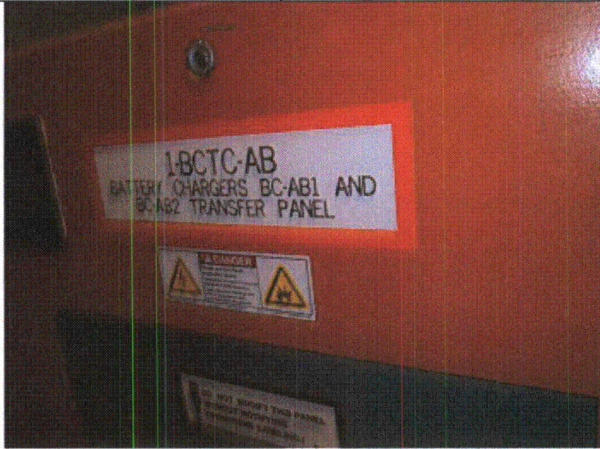
Status: Y N U

Seismic Walkdown Checklist (SWC)

Equipment ID No.: 1-BCTC-AB

Equipment Class: (14) Distribution Panels

Equipment Description: PLANT BATTERY CHARGERS BC-AB1 AND BC-AB2 TRANSFER



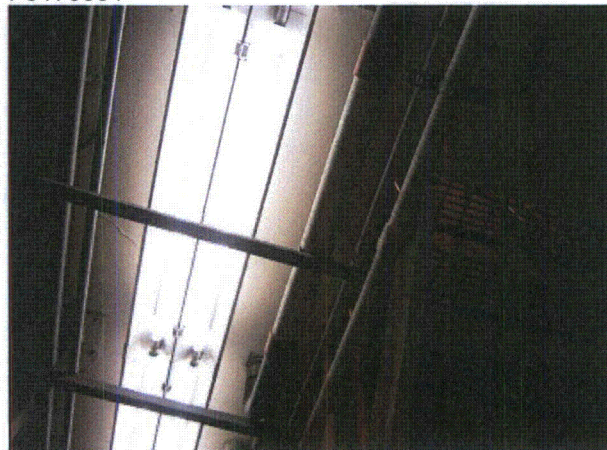
P9170663



P9170664



P9170665



P9170666

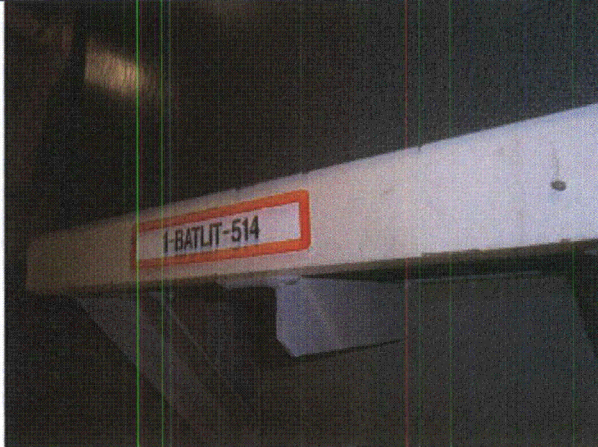
Status: Y N U

Seismic Walkdown Checklist (SWC)

Equipment ID No.: 1-BCTC-AB

Equipment Class: (14) Distribution Panels

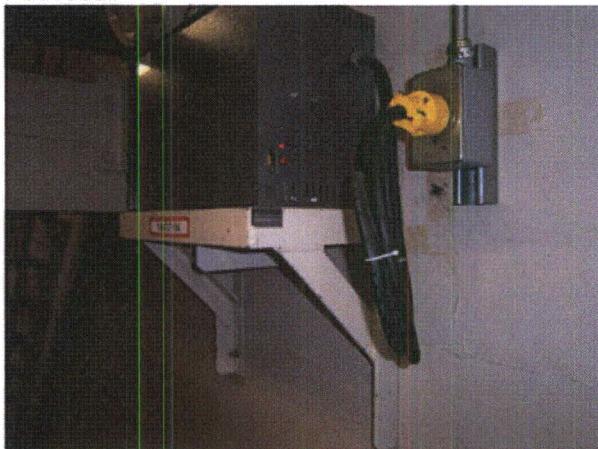
Equipment Description: PLANT BATTERY CHARGERS BC-AB1 AND BC-AB2 TRANSFER



P9170667



P9170668



P9170669

Status: Y N U

Seismic Walkdown Checklist (SWC)

Equipment ID No.: 1-BLI-130

Equipment Class: (18) Instruments on Racks

Equipment Description: STEAM GENERATOR OME-3-3 WIDE RANGE LEVEL INDICATOR
TRANSMITTER

Project: DC Cook 1 SWEL

Location (Bldg, Elev, Room/Area): CON1, 612.00 ft, 73

Manufacturer/Model: _____

Instructions for Completing Checklist

This checklist may be used to document the results of the Seismic Walkdown of an item of equipment on the SWEL. The space below each of the following questions may be used to record the results of judgments and findings. Additional space is provided at the end of this checklist for documenting other comments.

Anchorage

1. Is anchorage configuration verification required (i.e., is the item one of the 50% of SWEL items requiring such verification)? Yes

2. Is the anchorage free of bent, broken, missing or loose hardware? Yes

3. Is the anchorage free of corrosion that is more than mild surface oxidation? Yes

4. Is the anchorage free of visible cracks in the concrete near the anchors? Yes

5. Is the anchorage configuration consistent with plant documentation? (Note: This question only applies if the item is one of the 50% for which an anchorage configuration verification is required.) Yes

6. Based on the above anchorage evaluations, is the anchorage free of potentially adverse seismic conditions? Yes

Interaction Effects

Status: Y N U

Seismic Walkdown Checklist (SWC)

Equipment ID No.: 1-BLI-130

Equipment Class: (18) Instruments on Racks

STEAM GENERATOR OME-3-3 WIDE RANGE LEVEL INDICATOR

Equipment Description: TRANSMITTER

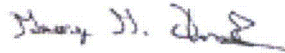
7. Are soft targets free from impact by nearby equipment or structures? Yes
8. Are overhead equipment, distribution systems, ceiling tiles and lighting, and masonry block walls not likely to collapse onto the equipment? Yes
9. Do attached lines have adequate flexibility to avoid damage? Yes
10. Based on the above seismic interaction evaluations, is equipment free of potentially adverse seismic interaction effects? Yes

Other Adverse Conditions

11. Have you looked for and found no adverse seismic conditions that could adversely affect the safety functions of the equipment? Yes

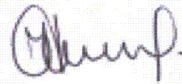
Comments

Evaluated by:



George G Thomas

Date: 10/18/12



Neda Stoeva

10/18/12

Photos

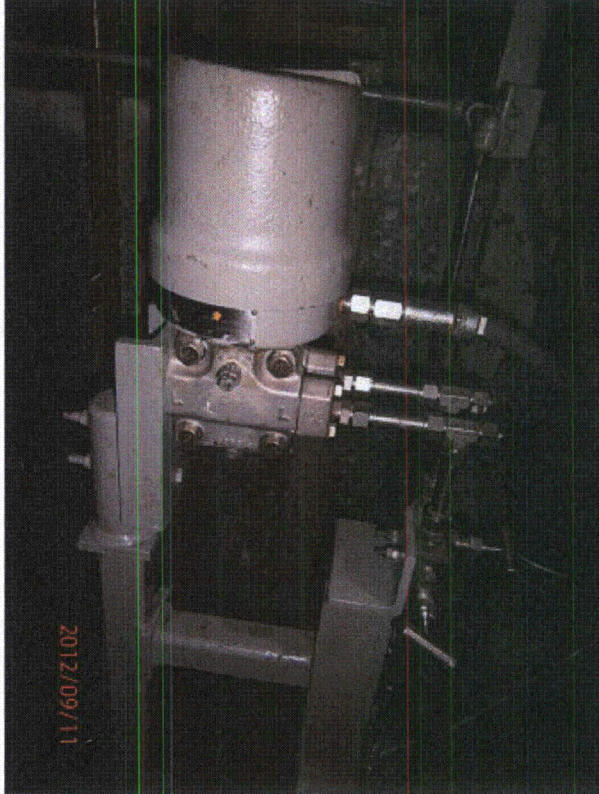
Status: Y N U

Seismic Walkdown Checklist (SWC)

Equipment ID No.: 1-BLI-130

Equipment Class: (18) Instruments on Racks

Equipment Description: STEAM GENERATOR OME-3-3 WIDE RANGE LEVEL INDICATOR
TRANSMITTER



P9110314



P9110315

Status: Y N U

Seismic Walkdown Checklist (SWC)

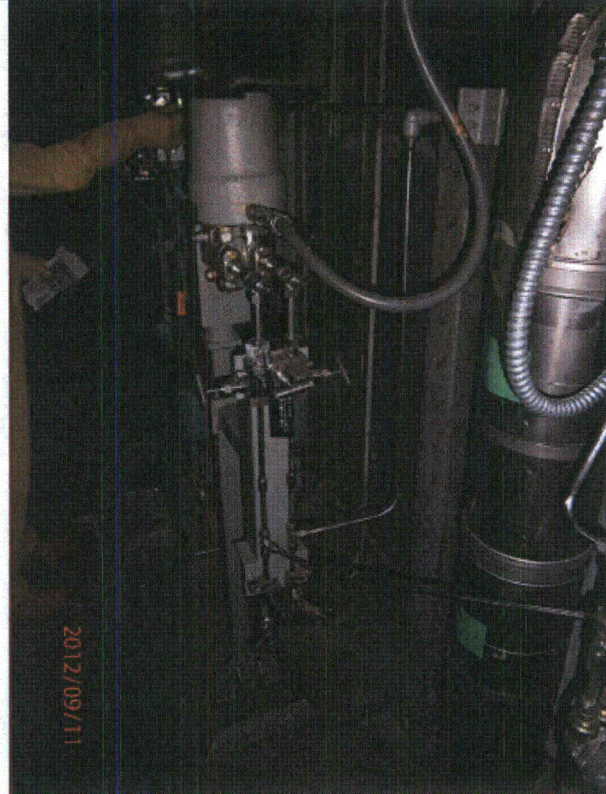
Equipment ID No.: 1-BLI-130

Equipment Class: (18) Instruments on Racks

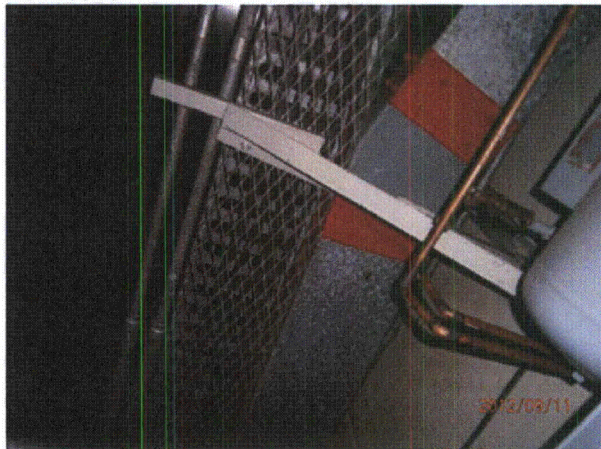
Equipment Description: STEAM GENERATOR OME-3-3 WIDE RANGE LEVEL INDICATOR
TRANSMITTER



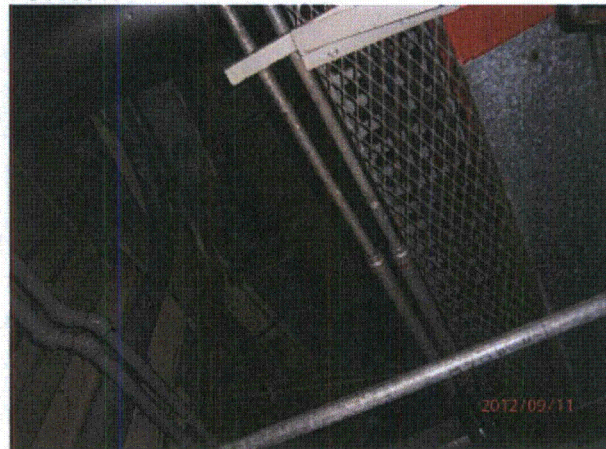
P9110316



P9110317



P9110318



P9110319

Status: Y N U

Seismic Walkdown Checklist (SWC)

Equipment ID No.: 1-BLP-132

Equipment Class: (18) Instruments on Racks

Equipment Description: STEAM GENERATOR OME-3-1 CHANNEL III REACTOR

Project: DC Cook 1 SWEL

Location (Bldg, Elev, Room/Area): CON1, 612.00 ft, 72

Manufacturer/Model: _____

Instructions for Completing Checklist

This checklist may be used to document the results of the Seismic Walkdown of an item of equipment on the SWEL. The space below each of the following questions may be used to record the results of judgments and findings. Additional space is provided at the end of this checklist for documenting other comments.

Anchorage

1. Is anchorage configuration verification required (i.e., is the item one of the 50% of SWEL items requiring such verification)? No

2. Is the anchorage free of bent, broken, missing or loose hardware? Yes

3. Is the anchorage free of corrosion that is more than mild surface oxidation? Yes

4. Is the anchorage free of visible cracks in the concrete near the anchors? Yes

5. Is the anchorage configuration consistent with plant documentation? (Note: This question only applies if the item is one of the 50% for which an anchorage configuration verification is required.) Not Applicable

6. Based on the above anchorage evaluations, is the anchorage free of potentially adverse seismic conditions? Yes

Interaction Effects

Status: Y N U

Seismic Walkdown Checklist (SWC)

Equipment ID No.: 1-BLP-132

Equipment Class: (18) Instruments on Racks

Equipment Description: STEAM GENERATOR OME-3-1 CHANNEL III REACTOR

7. Are soft targets free from impact by nearby equipment or structures? Yes

8. Are overhead equipment, distribution systems, ceiling tiles and lighting, and masonry block walls not likely to collapse onto the equipment? Yes

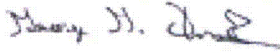
9. Do attached lines have adequate flexibility to avoid damage? Yes

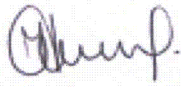
10. Based on the above seismic interaction evaluations, is equipment free of potentially adverse seismic interaction effects? Yes

Other Adverse Conditions

11. Have you looked for and found no adverse seismic conditions that could adversely affect the safety functions of the equipment? Yes

Comments

Evaluated by:  George G Thomas Date: 10/18/12

 Neda Stoeva 10/18/12

Photos

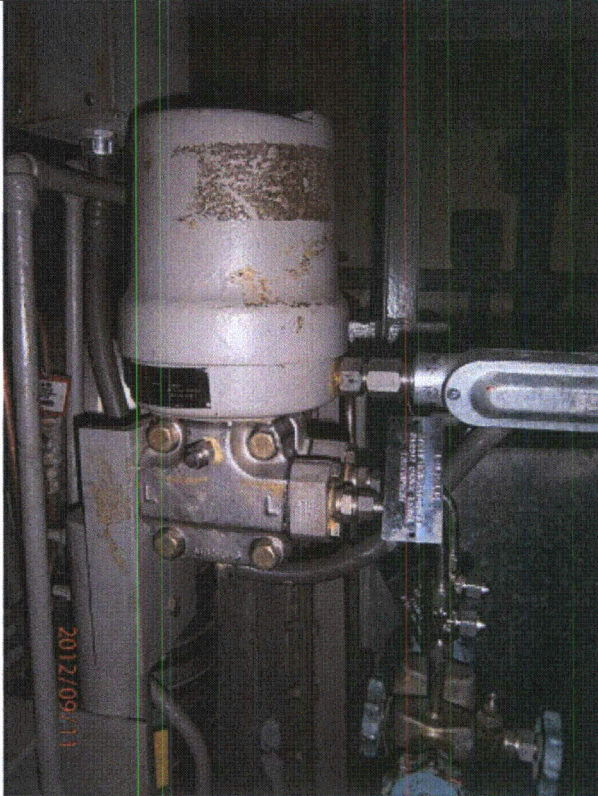
Status: Y N U

Seismic Walkdown Checklist (SWC)

Equipment ID No.: 1-BLP-132

Equipment Class: (18) Instruments on Racks

Equipment Description: STEAM GENERATOR OME-3-1 CHANNEL III REACTOR



P9110333



P9110334

Status: Y N U

Seismic Walkdown Checklist (SWC)

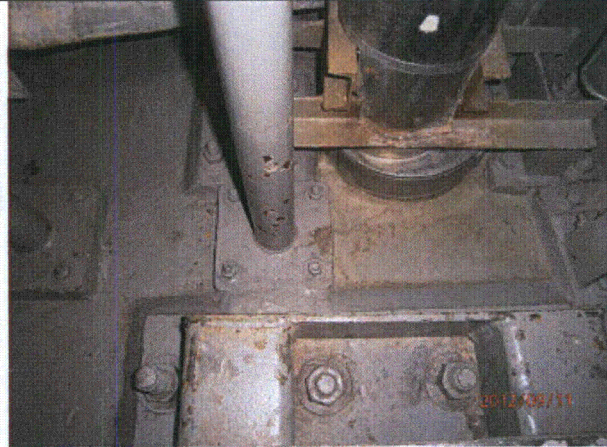
Equipment ID No.: 1-BLP-132

Equipment Class: (18) Instruments on Racks

Equipment Description: STEAM GENERATOR OME-3-1 CHANNEL III REACTOR



P9110335



P9110336

Status: Y N U

Seismic Walkdown Checklist (SWC)

Equipment ID No.: 1-CCV-AB

Equipment Class: (14) Distribution Panels

Equipment Description: 250VDC TRAIN 'B' CRITICAL SOLENOID VALVES

Project: DC Cook 1 SWEL

Location (Bldg, Elev, Room/Area): AB1, 633.00 ft, 123

Manufacturer/Model: _____

Instructions for Completing Checklist

This checklist may be used to document the results of the Seismic Walkdown of an item of equipment on the SWEL. The space below each of the following questions may be used to record the results of judgments and findings. Additional space is provided at the end of this checklist for documenting other comments.

Anchorage

- | | | |
|----|---|----------------|
| 1. | Is anchorage configuration verification required (i.e., is the item one of the 50% of SWEL items requiring such verification)? | No |
| 2. | Is the anchorage free of bent, broken, missing or loose hardware? | Yes |
| 3. | Is the anchorage free of corrosion that is more than mild surface oxidation? | Yes |
| 4. | Is the anchorage free of visible cracks in the concrete near the anchors?
<i>Unistrut mounted</i> | Not Applicable |
| 5. | Is the anchorage configuration consistent with plant documentation? (Note: This question only applies if the item is one of the 50% for which an anchorage configuration verification is required.) | Not Applicable |
| 6. | Based on the above anchorage evaluations, is the anchorage free of potentially adverse seismic conditions? | Yes |

Interaction Effects

Status: Y N U

Seismic Walkdown Checklist (SWC)

Equipment ID No.: 1-CCV-AB

Equipment Class: (14) Distribution Panels

Equipment Description: 250VDC TRAIN 'B' CRITICAL SOLENOID VALVES

7. Are soft targets free from impact by nearby equipment or structures? Yes

8. Are overhead equipment, distribution systems, ceiling tiles and lighting, and masonry block walls not likely to collapse onto the equipment? Yes
Check ceiling tiles - OK - clipped per DWG 12-4070

9. Do attached lines have adequate flexibility to avoid damage? Yes

10. Based on the above seismic interaction evaluations, is equipment free of potentially adverse seismic interaction effects? Yes

Other Adverse Conditions

11. Have you looked for and found no adverse seismic conditions that could adversely affect the safety functions of the equipment? Yes

Comments

Evaluated by:  George G Thomas Date: 10/18/12

 Neda Stoeva 10/18/12

Photos

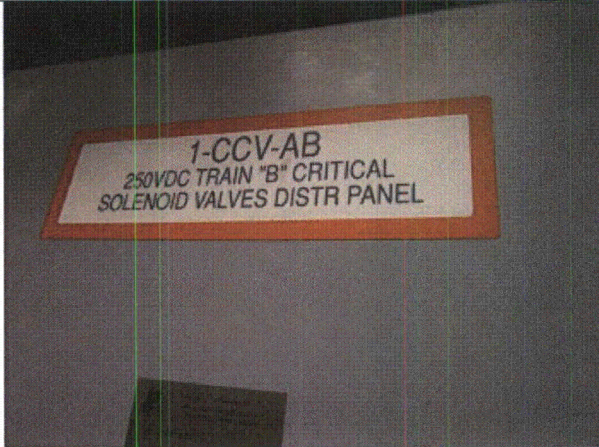
Status: Y N U

Seismic Walkdown Checklist (SWC)

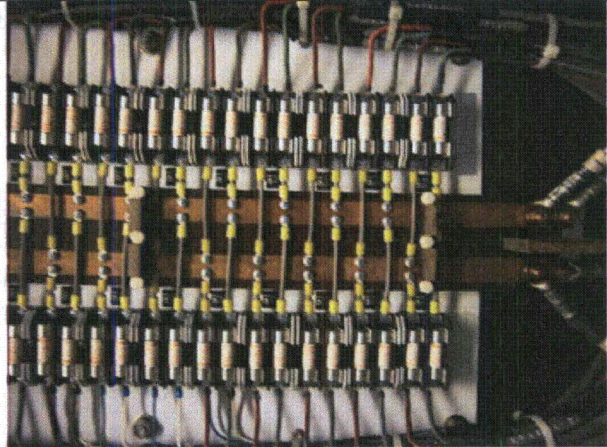
Equipment ID No.: 1-CCV-AB

Equipment Class: (14) Distribution Panels

Equipment Description: 250VDC TRAIN 'B' CRITICAL SOLENOID VALVES



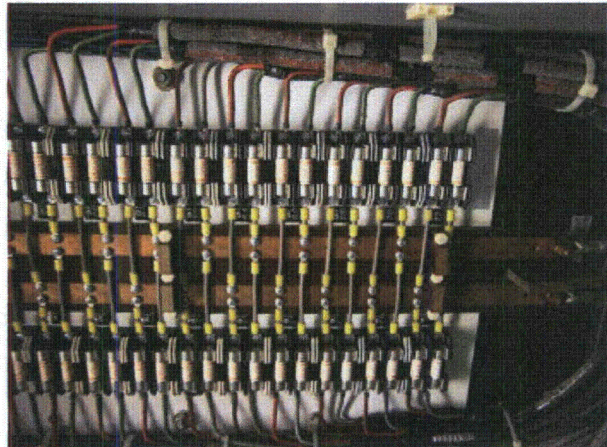
P9191255



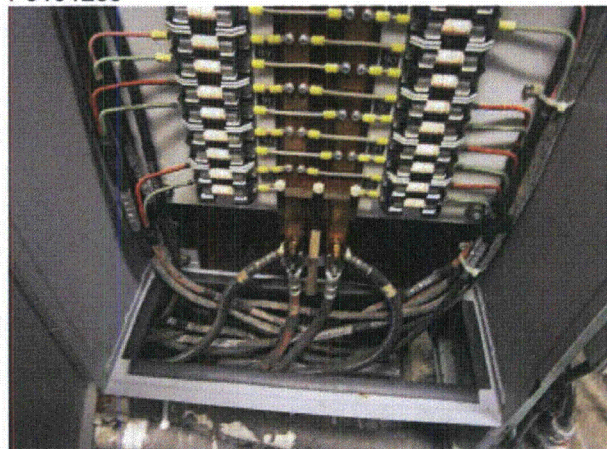
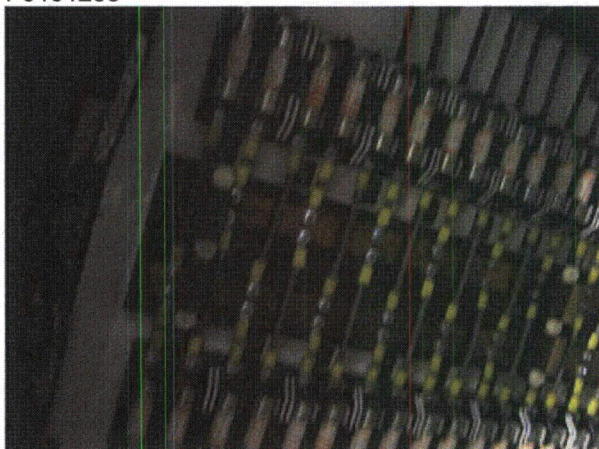
P9191257



P9191258



P9191259



Status: Y N U

Seismic Walkdown Checklist (SWC)

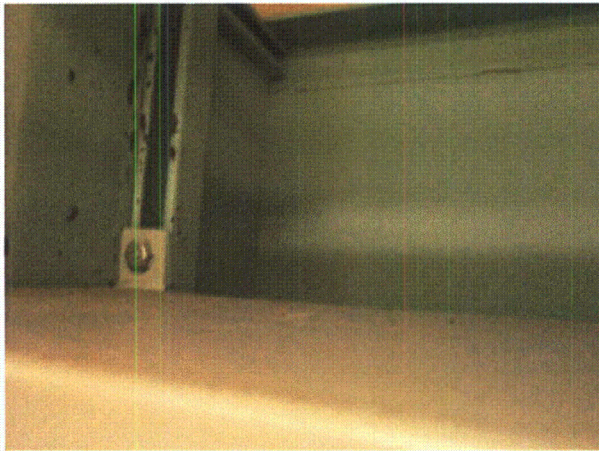
Equipment ID No.: 1-CCV-AB

Equipment Class: (14) Distribution Panels

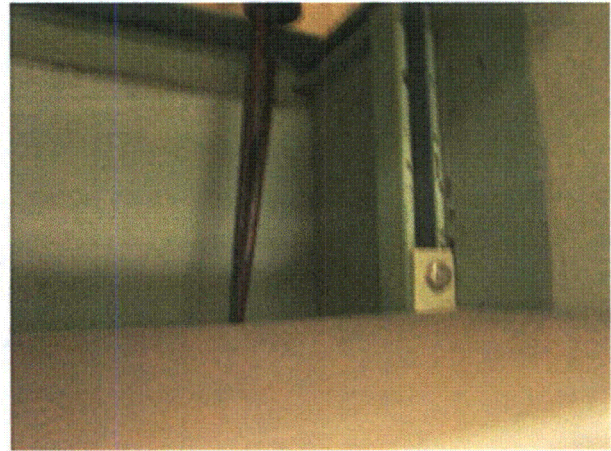
Equipment Description: 250VDC TRAIN 'B' CRITICAL SOLENOID VALVES

P9191260

P9191261



P9191262



P9191263

Status: Y N U

Seismic Walkdown Checklist (SWC)

Equipment ID No.: 1-CCW

Equipment Class: (20) Instrumentation and Control Panels and Cabinets

Equipment Description: COMPONENT COOLING WATER CONTROL PANEL

Project: DC Cook 1 SWEL

Location (Bldg, Elev, Room/Area): AB1, 633.00 ft, 123

Manufacturer/Model: _____

Instructions for Completing Checklist

This checklist may be used to document the results of the Seismic Walkdown of an item of equipment on the SWEL. The space below each of the following questions may be used to record the results of judgments and findings. Additional space is provided at the end of this checklist for documenting other comments.

Anchorage

1. Is anchorage configuration verification required (i.e., is the item one of the 50% of SWEL items requiring such verification)? No

2. Is the anchorage free of bent, broken, missing or loose hardware? Not Applicable
Panel CCW does not have its own anchorage plate

3. Is the anchorage free of corrosion that is more than mild surface oxidation? Not Applicable
Mounted through the rest of the panels around it

4. Is the anchorage free of visible cracks in the concrete near the anchors? Not Applicable

5. Is the anchorage configuration consistent with plant documentation? (Note: This question only applies if the item is one of the 50% for which an anchorage configuration verification is required.) Not Applicable

6. Based on the above anchorage evaluations, is the anchorage free of potentially adverse seismic conditions? Yes

Interaction Effects

Status: Y N U

Seismic Walkdown Checklist (SWC)

Equipment ID No.: 1-CCW

Equipment Class: (20) Instrumentation and Control Panels and Cabinets

Equipment Description: COMPONENT COOLING WATER CONTROL PANEL

7. Are soft targets free from impact by nearby equipment or structures? Yes

8. Are overhead equipment, distribution systems, ceiling tiles and lighting, and masonry block walls not likely to collapse onto the equipment? Yes
Check ceiling tiles - OK - clipped per DWG 12-4070

9. Do attached lines have adequate flexibility to avoid damage? Yes

10. Based on the above seismic interaction evaluations, is equipment free of potentially adverse seismic interaction effects? Yes

Other Adverse Conditions

11. Have you looked for and found no adverse seismic conditions that could adversely affect the safety functions of the equipment? Yes

Comments

Evaluated by:  George G Thomas Date: 10/18/12

 Neda Stoeva 10/18/12

Photos

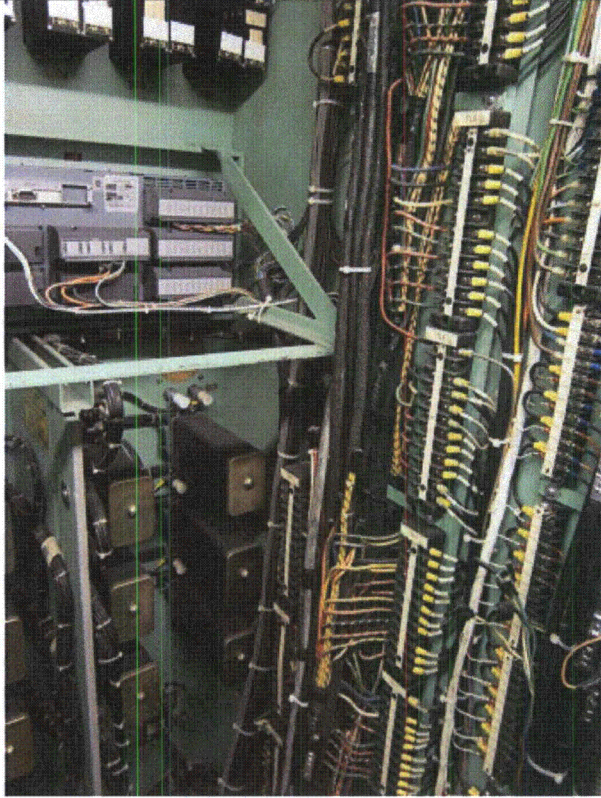
Status: Y N U

Seismic Walkdown Checklist (SWC)

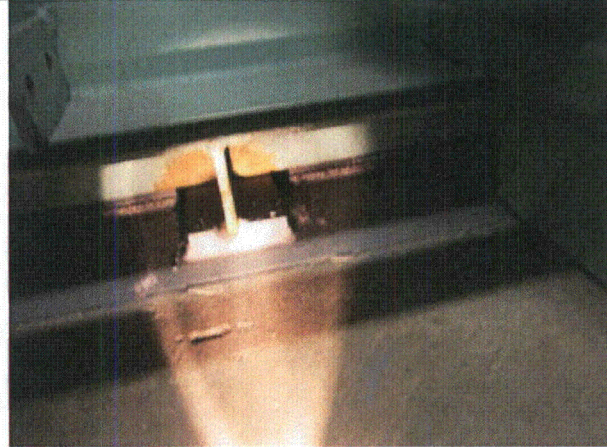
Equipment ID No.: 1-CCW

Equipment Class: (20) Instrumentation and Control Panels and Cabinets

Equipment Description: COMPONENT COOLING WATER CONTROL PANEL



P9191227



P9191228

Status: Y N U

Seismic Walkdown Checklist (SWC)

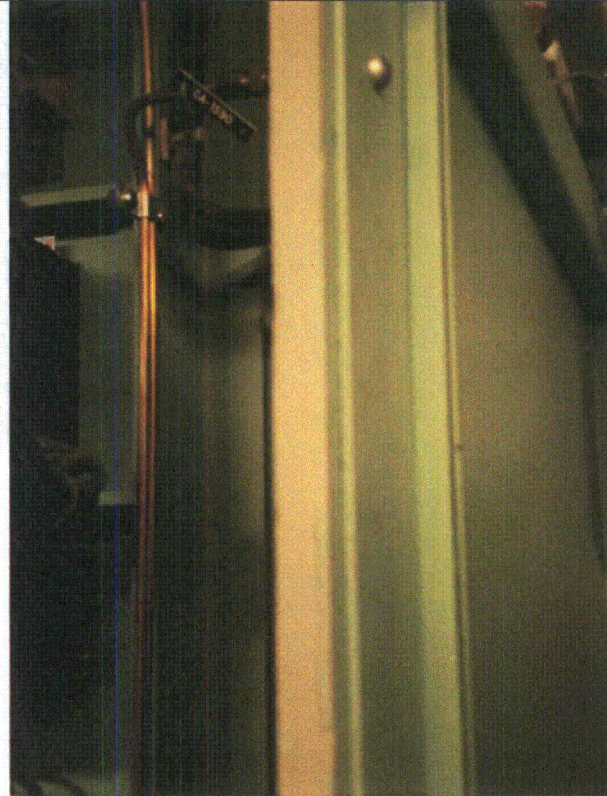
Equipment ID No.: 1-CCW

Equipment Class: (20) Instrumentation and Control Panels and Cabinets

Equipment Description: COMPONENT COOLING WATER CONTROL PANEL



P9191229



P9191230

Status: Y N U

Seismic Walkdown Checklist (SWC)

Equipment ID No.: 1-CFI-420

Equipment Class: (18) Instruments on Racks

Equipment Description: COMPONENT COOLING WATER TO WEST COMPONENT COOLING

Project: DC Cook 1 SWEL

Location (Bldg, Elev, Room/Area): AB2, 609.00 ft, 609

Manufacturer/Model: _____

Instructions for Completing Checklist

This checklist may be used to document the results of the Seismic Walkdown of an item of equipment on the SWEL. The space below each of the following questions may be used to record the results of judgments and findings. Additional space is provided at the end of this checklist for documenting other comments.

Anchorage

- | | |
|--|-----|
| 1. Is anchorage configuration verification required (i.e., is the item one of the 50% of SWEL items requiring such verification)? | Yes |
| <i>Figure 6-1. Outline Dimensional Drawing 0224.0901.3 Model 224 DPU, Yoke or Wall Mounting</i> | |
| 2. Is the anchorage free of bent, broken, missing or loose hardware? | Yes |
| 3. Is the anchorage free of corrosion that is more than mild surface oxidation? | Yes |
| 4. Is the anchorage free of visible cracks in the concrete near the anchors? | Yes |
| <i>Mounted on rack with 4 bolts on the corners</i> | |
| 5. Is the anchorage configuration consistent with plant documentation? (Note: This question only applies if the item is one of the 50% for which an anchorage configuration verification is required.) | Yes |
| 6. Based on the above anchorage evaluations, is the anchorage free of potentially adverse seismic conditions? | Yes |

Interaction Effects

Status: Y N U

Seismic Walkdown Checklist (SWC)

Equipment ID No.: 1-CFI-420

Equipment Class: (18) Instruments on Racks

Equipment Description: COMPONENT COOLING WATER TO WEST COMPONENT COOLING

7. Are soft targets free from impact by nearby equipment or structures? Yes

8. Are overhead equipment, distribution systems, ceiling tiles and lighting, and masonry block walls not likely to collapse onto the equipment? Yes

9. Do attached lines have adequate flexibility to avoid damage? Yes

10. Based on the above seismic interaction evaluations, is equipment free of potentially adverse seismic interaction effects? Yes

Other Adverse Conditions

11. Have you looked for and found no adverse seismic conditions that could adversely affect the safety functions of the equipment? Yes

Comments

Fire piping well supported, joints welded.

Evaluated by:  George G Thomas Date: 10/18/12

 Neda Stoeva 10/18/12

Photos

Status: Y N U

Seismic Walkdown Checklist (SWC)

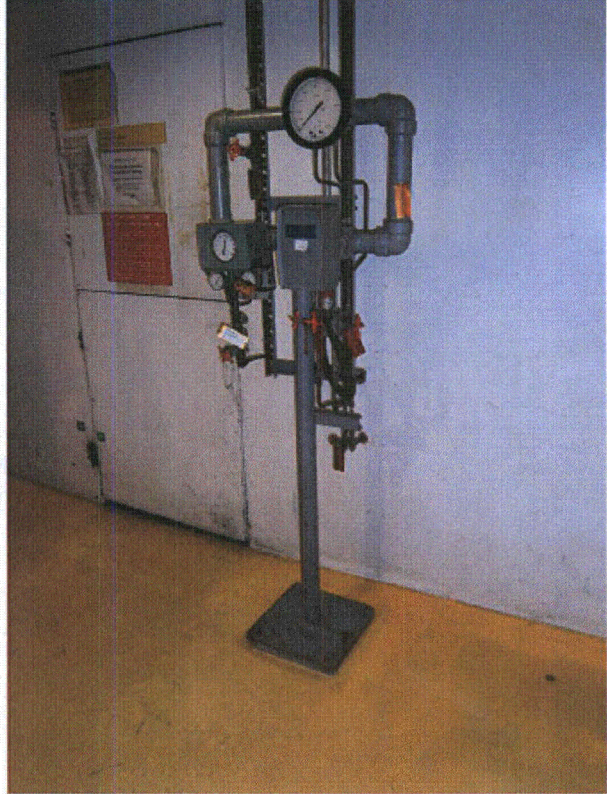
Equipment ID No.: 1-CFI-420

Equipment Class: (18) Instruments on Racks

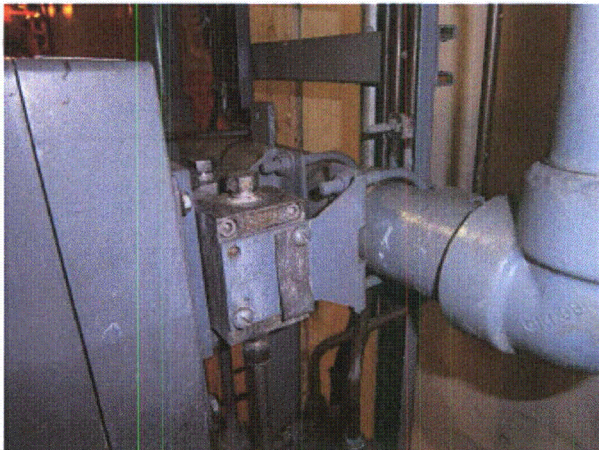
Equipment Description: COMPONENT COOLING WATER TO WEST COMPONENT COOLING



P9100003



P9100004



P9100005



P9100006

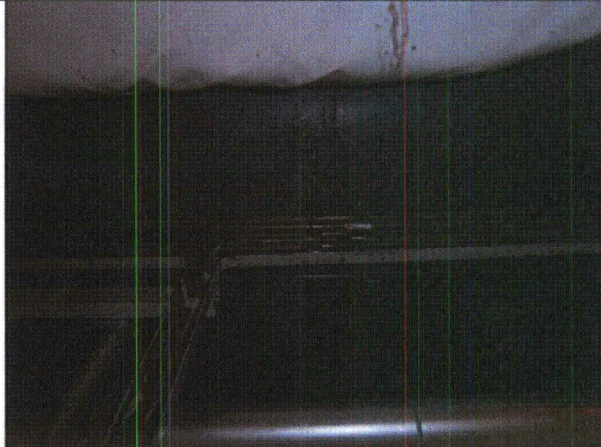
Status: Y N U

Seismic Walkdown Checklist (SWC)

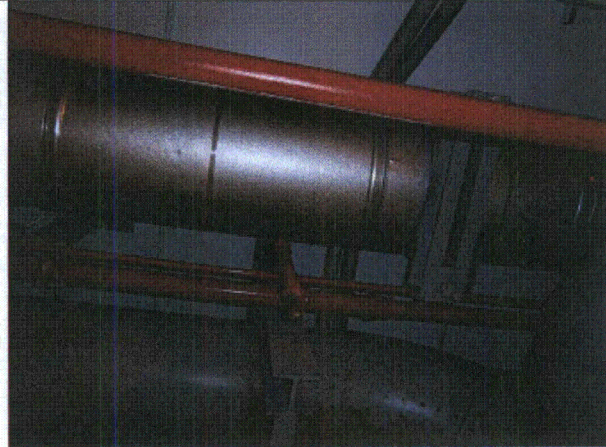
Equipment ID No.: 1-CFI-420

Equipment Class: (18) Instruments on Racks

Equipment Description: COMPONENT COOLING WATER TO WEST COMPONENT COOLING



P9100007



P9100008

Status: Y N U

Seismic Walkdown Checklist (SWC)

Equipment ID No.: 1-CFI-429

Equipment Class: (18) Instruments on Racks

Equipment Description: WEST RHR HEAT EXCHANGER HE-17W COMPONENT COOLING

Project: DC Cook 1 SWEL

Location (Bldg, Elev, Room/Area): AB1, 633.00 ft, 633

Manufacturer/Model: _____

Instructions for Completing Checklist

This checklist may be used to document the results of the Seismic Walkdown of an item of equipment on the SWEL. The space below each of the following questions may be used to record the results of judgments and findings. Additional space is provided at the end of this checklist for documenting other comments.

Anchorage

- | | |
|--|----------------|
| 1. Is anchorage configuration verification required (i.e., is the item one of the 50% of SWEL items requiring such verification)? | No |
| 2. Is the anchorage free of bent, broken, missing or loose hardware? | Yes |
| 3. Is the anchorage free of corrosion that is more than mild surface oxidation? | Yes |
| 4. Is the anchorage free of visible cracks in the concrete near the anchors? | Yes |
| 5. Is the anchorage configuration consistent with plant documentation? (Note: This question only applies if the item is one of the 50% for which an anchorage configuration verification is required.) | Not Applicable |
| 6. Based on the above anchorage evaluations, is the anchorage free of potentially adverse seismic conditions? | Yes |

Interaction Effects

Status: Y N U

Seismic Walkdown Checklist (SWC)

Equipment ID No.: 1-CFI-429

Equipment Class: (18) Instruments on Racks

Equipment Description: WEST RHR HEAT EXCHANGER HE-17W COMPONENT COOLING

7. Are soft targets free from impact by nearby equipment or structures? Yes

8. Are overhead equipment, distribution systems, ceiling tiles and lighting, and masonry block walls not likely to collapse onto the equipment? Yes

9. Do attached lines have adequate flexibility to avoid damage? Yes

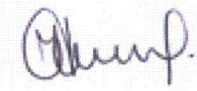
10. Based on the above seismic interaction evaluations, is equipment free of potentially adverse seismic interaction effects? Yes

Other Adverse Conditions

11. Have you looked for and found no adverse seismic conditions that could adversely affect the safety functions of the equipment? Yes

Comments

Evaluated by:  George G Thomas Date: 10/18/12

 Neda Stoeva 10/18/12

Photos

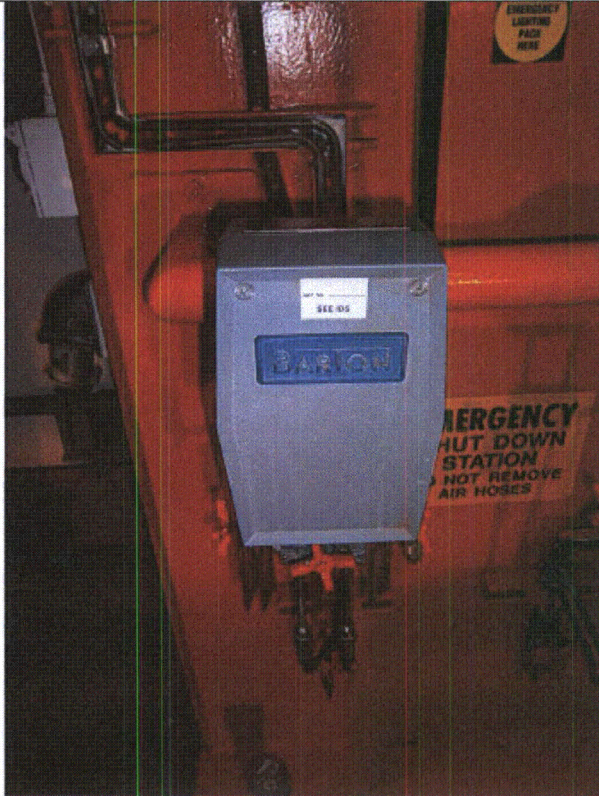
Status: Y N U

Seismic Walkdown Checklist (SWC)

Equipment ID No.: 1-CFI-429

Equipment Class: (18) Instruments on Racks

Equipment Description: WEST RHR HEAT EXCHANGER HE-17W COMPONENT COOLING



P9100120



P9100121

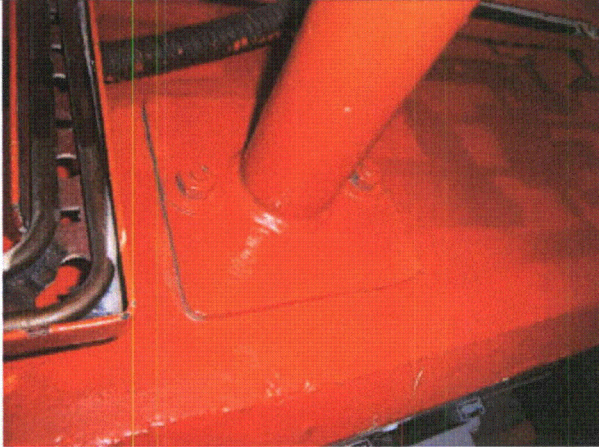
Status: Y N U

Seismic Walkdown Checklist (SWC)

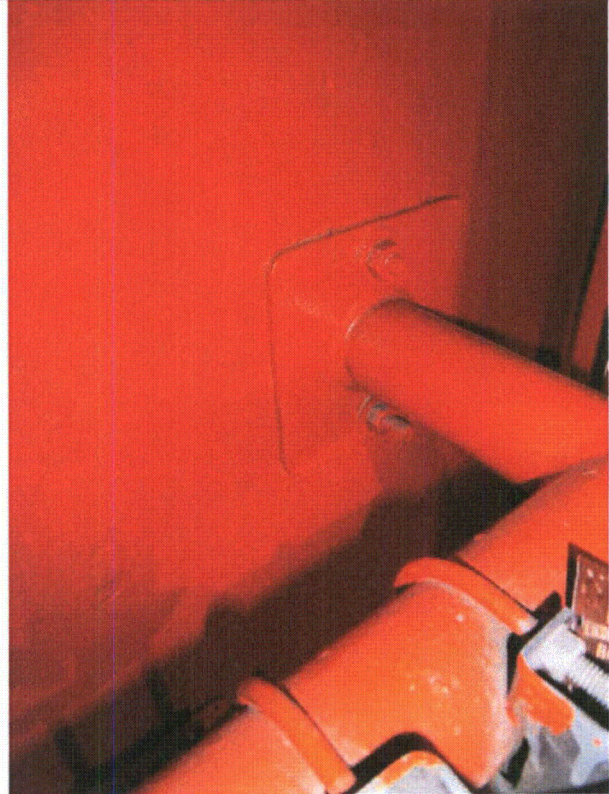
Equipment ID No.: 1-CFI-429

Equipment Class: (18) Instruments on Racks

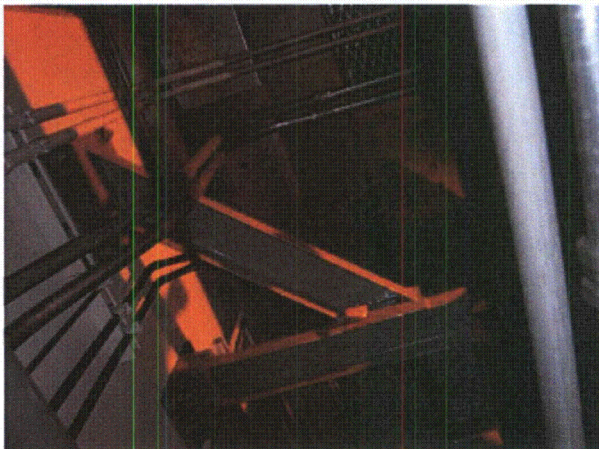
Equipment Description: WEST RHR HEAT EXCHANGER HE-17W COMPONENT COOLING



P9100122



P9100123



P9100124

Status: Y N U

Seismic Walkdown Checklist (SWC)

Equipment ID No.: 1-CLI-114

Equipment Class: (18) Instruments on Racks

Equipment Description: CONDENSATE STORAGE TANK TK-32 LEVEL INDICATOR

Project: DC Cook 1 SWEL

Location (Bldg, Elev, Room/Area): AB1, 586.00 ft, 24

Manufacturer/Model: _____

Instructions for Completing Checklist

This checklist may be used to document the results of the Seismic Walkdown of an item of equipment on the SWEL. The space below each of the following questions may be used to record the results of judgments and findings. Additional space is provided at the end of this checklist for documenting other comments.

Anchorage

1. Is anchorage configuration verification required (i.e., is the item one of the 50% of SWEL items requiring such verification)? Yes
SQUG 1-CLI-114 REV0

2. Is the anchorage free of bent, broken, missing or loose hardware? Yes

3. Is the anchorage free of corrosion that is more than mild surface oxidation? Yes

4. Is the anchorage free of visible cracks in the concrete near the anchors? Yes

5. Is the anchorage configuration consistent with plant documentation? (Note: This question only applies if the item is one of the 50% for which an anchorage configuration verification is required.) Yes

6. Based on the above anchorage evaluations, is the anchorage free of potentially adverse seismic conditions? Yes

Interaction Effects

Status: Y N U

Seismic Walkdown Checklist (SWC)

Equipment ID No.: 1-CLI-114

Equipment Class: (18) Instruments on Racks

Equipment Description: CONDENSATE STORAGE TANK TK-32 LEVEL INDICATOR

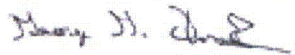
- | | | |
|-----|--|-----|
| 7. | Are soft targets free from impact by nearby equipment or structures? | Yes |
| 8. | Are overhead equipment, distribution systems, ceiling tiles and lighting, and masonry block walls not likely to collapse onto the equipment? | Yes |
| 9. | Do attached lines have adequate flexibility to avoid damage? | Yes |
| 10. | Based on the above seismic interaction evaluations, is equipment free of potentially adverse seismic interaction effects? | Yes |

Other Adverse Conditions

- | | | |
|-----|--|-----|
| 11. | Have you looked for and found no adverse seismic conditions that could adversely affect the safety functions of the equipment? | Yes |
|-----|--|-----|

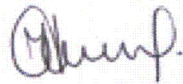
Comments

Evaluated by:



George G Thomas

Date: 10/18/12



Neda Stoeva

10/18/12

Photos

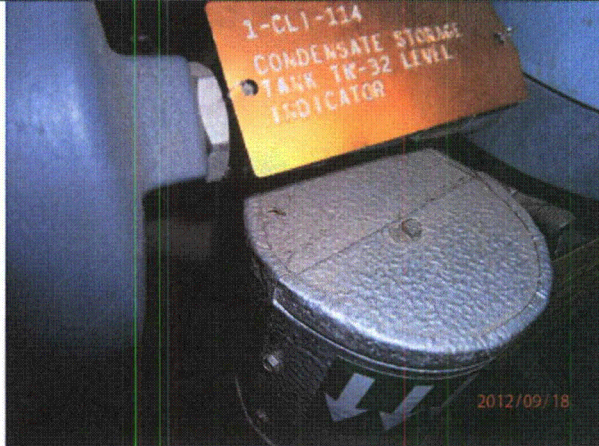
Status: Y N U

Seismic Walkdown Checklist (SWC)

Equipment ID No.: 1-CLI-114

Equipment Class: (18) Instruments on Racks

Equipment Description: CONDENSATE STORAGE TANK TK-32 LEVEL INDICATOR



P9180927



P9180928

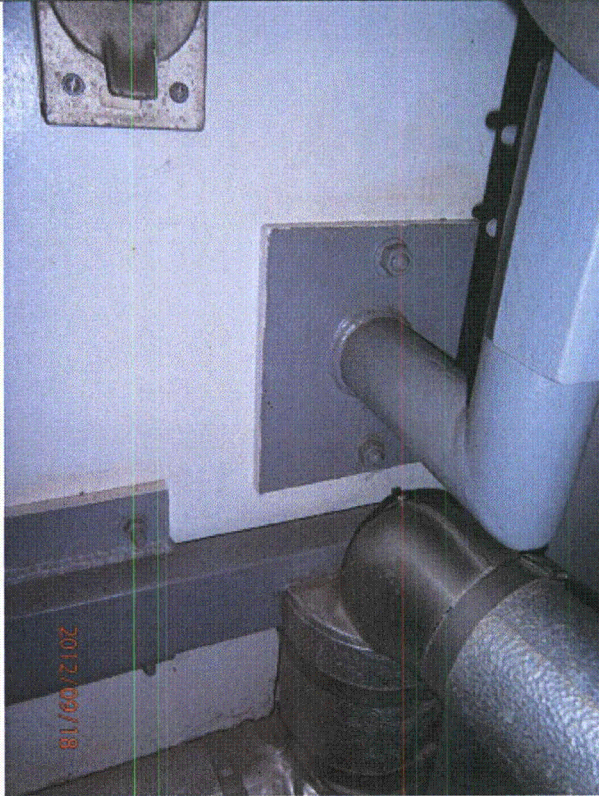
Status: Y N U

Seismic Walkdown Checklist (SWC)

Equipment ID No.: 1-CLI-114

Equipment Class: (18) Instruments on Racks

Equipment Description: CONDENSATE STORAGE TANK TK-32 LEVEL INDICATOR



P9180929



P9180930

Status: Y N U

Seismic Walkdown Checklist (SWC)

Equipment ID No.: 1-CMO-420

Equipment Class: (8) Motor-Operated and Solenoid-Operated Valves

Equipment Description: WEST CCW HEAT EXCHANGER CCW OUTLET SHUTOFF VALVE

Project: DC Cook 1 SWEL

Location (Bldg, Elev, Room/Area): AB1, 609.00 ft, 609

Manufacturer/Model: _____

Instructions for Completing Checklist

This checklist may be used to document the results of the Seismic Walkdown of an item of equipment on the SWEL. The space below each of the following questions may be used to record the results of judgments and findings. Additional space is provided at the end of this checklist for documenting other comments.

Anchorage

1. Is anchorage configuration verification required (i.e., is the item one of the 50% of SWEL items requiring such verification)? No

2. Is the anchorage free of bent, broken, missing or loose hardware? Not Applicable

3. Is the anchorage free of corrosion that is more than mild surface oxidation? Not Applicable

4. Is the anchorage free of visible cracks in the concrete near the anchors? Not Applicable

5. Is the anchorage configuration consistent with plant documentation? (Note: This question only applies if the item is one of the 50% for which an anchorage configuration verification is required.) Not Applicable

6. Based on the above anchorage evaluations, is the anchorage free of potentially adverse seismic conditions? Yes

Interaction Effects

Status: Y N U

Seismic Walkdown Checklist (SWC)

Equipment ID No.: 1-CMO-420

Equipment Class: (8) Motor-Operated and Solenoid-Operated Valves

Equipment Description: WEST CCW HEAT EXCHANGER CCW OUTLET SHUTOFF VALVE

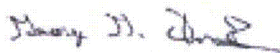
7. Are soft targets free from impact by nearby equipment or structures? Yes
8. Are overhead equipment, distribution systems, ceiling tiles and lighting, and masonry block walls not likely to collapse onto the equipment? Yes
9. Do attached lines have adequate flexibility to avoid damage? Yes
10. Based on the above seismic interaction evaluations, is equipment free of potentially adverse seismic interaction effects? Yes

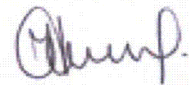
Other Adverse Conditions

11. Have you looked for and found no adverse seismic conditions that could adversely affect the safety functions of the equipment? Yes

Comments

Fire piping well supported - water

Evaluated by:  George G Thomas Date: 10/18/12

 Neda Stoeva 10/18/12

Photos

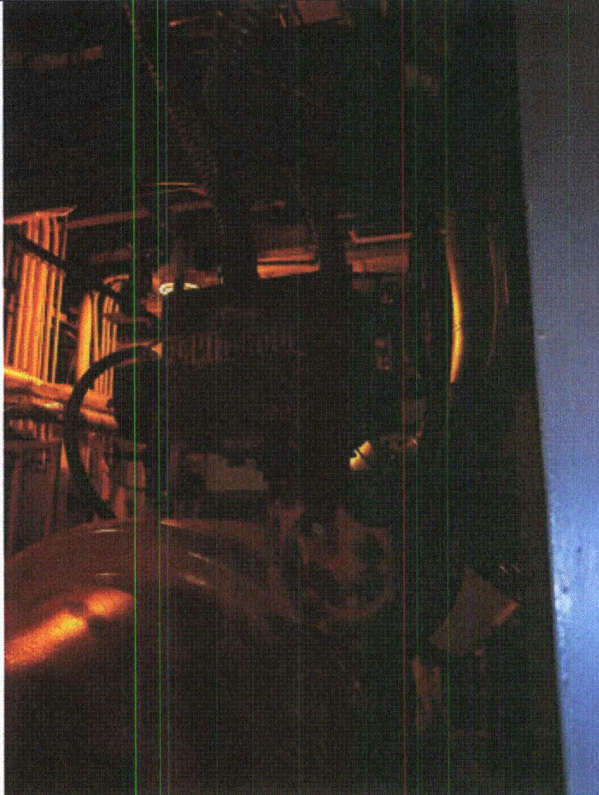
Status: Y N U

Seismic Walkdown Checklist (SWC)

Equipment ID No.: 1-CMO-420

Equipment Class: (8) Motor-Operated and Solenoid-Operated Valves

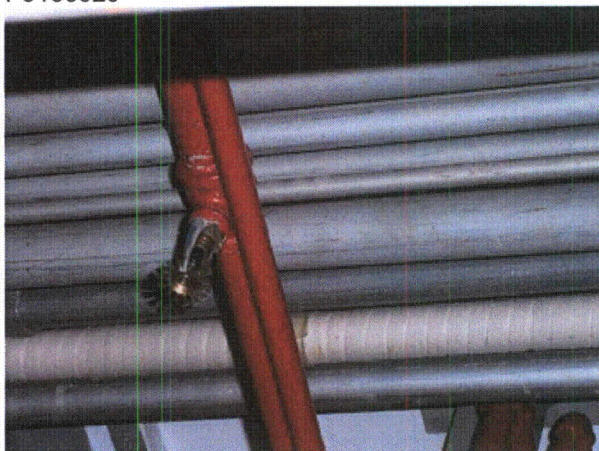
Equipment Description: WEST CCW HEAT EXCHANGER CCW OUTLET SHUTOFF VALVE



P9100020



P9100021



P9100022



P9100023

Status: Y N U

Seismic Walkdown Checklist (SWC)

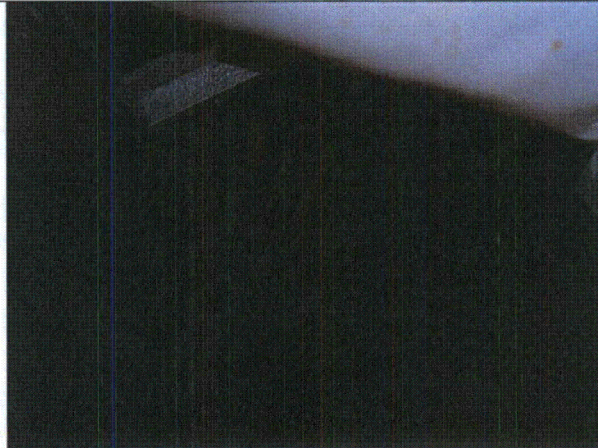
Equipment ID No.: 1-CMO-420

Equipment Class: (8) Motor-Operated and Solenoid-Operated Valves

Equipment Description: WEST CCW HEAT EXCHANGER CCW OUTLET SHUTOFF VALVE



P9100024



P9100025

Status: Y N U

Seismic Walkdown Checklist (SWC)

Equipment ID No.: 1-CRID-3

Equipment Class: (14) Distribution Panels

Equipment Description: 120VAC CONTROL ROOM INSTRUMENT DISTRIBUTION

Project: DC Cook 1 SWEL

Location (Bldg, Elev, Room/Area): AB1, 633.00 ft, 123

Manufacturer/Model: _____

Instructions for Completing Checklist

This checklist may be used to document the results of the Seismic Walkdown of an item of equipment on the SWEL. The space below each of the following questions may be used to record the results of judgments and findings. Additional space is provided at the end of this checklist for documenting other comments.

Anchorage

1. Is anchorage configuration verification required (i.e., is the item one of the 50% of SWEL items requiring such verification)? Yes

2. Is the anchorage free of bent, broken, missing or loose hardware? Yes

3. Is the anchorage free of corrosion that is more than mild surface oxidation? Yes

4. Is the anchorage free of visible cracks in the concrete near the anchors? Not Applicable
Unistrut mounted to panel, panel welded to embedded plates with shims

5. Is the anchorage configuration consistent with plant documentation? (Note: This question only applies if the item is one of the 50% for which an anchorage configuration verification is required.) Yes

6. Based on the above anchorage evaluations, is the anchorage free of potentially adverse seismic conditions? Yes

Interaction Effects

Status: Y N U

Seismic Walkdown Checklist (SWC)

Equipment ID No.: 1-CRID-3

Equipment Class: (14) Distribution Panels

Equipment Description: 120VAC CONTROL ROOM INSTRUMENT DISTRIBUTION

7. Are soft targets free from impact by nearby equipment or structures? Yes

8. Are overhead equipment, distribution systems, ceiling tiles and lighting, and masonry block walls not likely to collapse onto the equipment? Yes
Check ceiling tiles - OK - clipped per DWG 12-4070

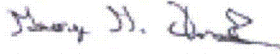
9. Do attached lines have adequate flexibility to avoid damage? Yes

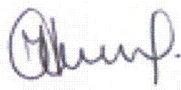
10. Based on the above seismic interaction evaluations, is equipment free of potentially adverse seismic interaction effects? Yes

Other Adverse Conditions

11. Have you looked for and found no adverse seismic conditions that could adversely affect the safety functions of the equipment? Yes

Comments

Evaluated by:  George G Thomas Date: 10/18/12

 Neda Stoeva 10/18/12

Photos

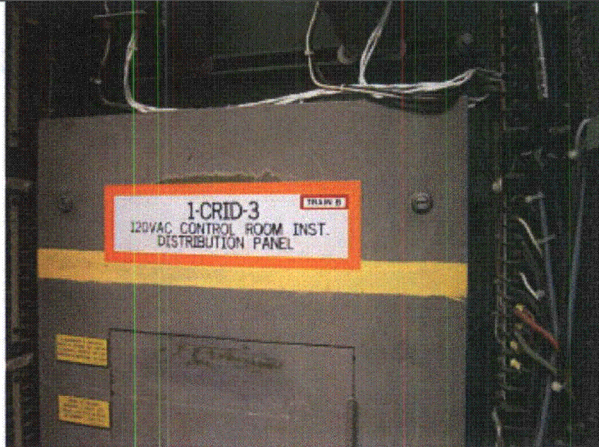
Status: Y N U

Seismic Walkdown Checklist (SWC)

Equipment ID No.: 1-CRID-3

Equipment Class: (14) Distribution Panels

Equipment Description: 120VAC CONTROL ROOM INSTRUMENT DISTRIBUTION



P9191265



P9191266

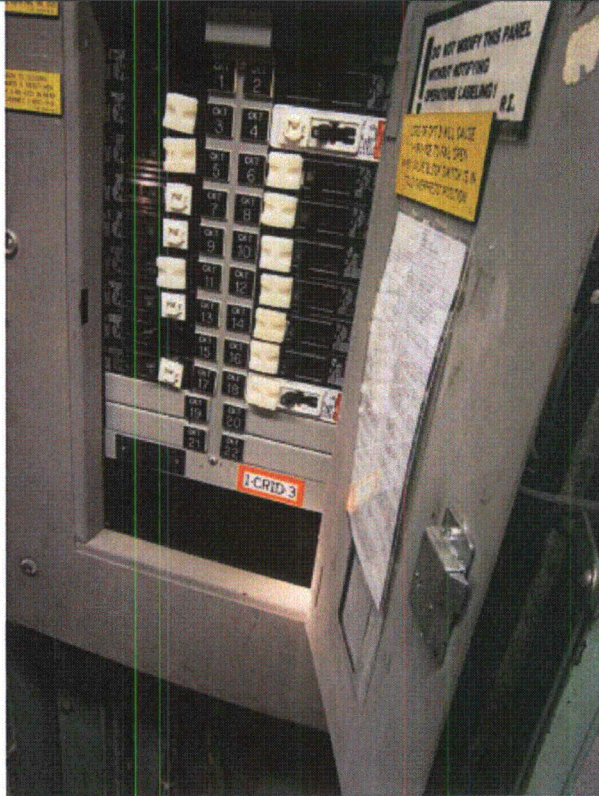
Status: Y N U

Seismic Walkdown Checklist (SWC)

Equipment ID No.: 1-CRID-3

Equipment Class: (14) Distribution Panels

Equipment Description: 120VAC CONTROL ROOM INSTRUMENT DISTRIBUTION



P9191267

Status: Y N U

Seismic Walkdown Checklist (SWC)

Equipment ID No.: 1-CRID-4-INV

Equipment Class: (16) Inverters

Equipment Description: 120VAC CONTROL ROOM INSTRUMENT DISTRIBUTION SYSTEM

Project: DC Cook 1 SWEL

Location (Bldg, Elev, Room/Area): AB1, 609.00 ft, 202

Manufacturer/Model: _____

Instructions for Completing Checklist

This checklist may be used to document the results of the Seismic Walkdown of an item of equipment on the SWEL. The space below each of the following questions may be used to record the results of judgments and findings. Additional space is provided at the end of this checklist for documenting other comments.

Anchorage

1. Is anchorage configuration verification required (i.e., is the item one of the 50% of SWEL items requiring such verification)? Yes
DWG 12-3476 REV20

2. Is the anchorage free of bent, broken, missing or loose hardware? Yes

3. Is the anchorage free of corrosion that is more than mild surface oxidation? Yes

4. Is the anchorage free of visible cracks in the concrete near the anchors? Yes

5. Is the anchorage configuration consistent with plant documentation? (Note: This question only applies if the item is one of the 50% for which an anchorage configuration verification is required.) Yes

6. Based on the above anchorage evaluations, is the anchorage free of potentially adverse seismic conditions? Yes

Interaction Effects

Status: Y N U

Seismic Walkdown Checklist (SWC)

Equipment ID No.: 1-CRID-4-INV

Equipment Class: (16) Inverters

Equipment Description: 120VAC CONTROL ROOM INSTRUMENT DISTRIBUTION SYSTEM

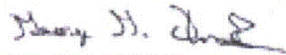
7. Are soft targets free from impact by nearby equipment or structures? Yes
8. Are overhead equipment, distribution systems, ceiling tiles and lighting, and masonry block walls not likely to collapse onto the equipment? Yes
9. Do attached lines have adequate flexibility to avoid damage? Yes
10. Based on the above seismic interaction evaluations, is equipment free of potentially adverse seismic interaction effects? Yes

Other Adverse Conditions

11. Have you looked for and found no adverse seismic conditions that could adversely affect the safety functions of the equipment? Yes
Could not open panel due to safety concerns

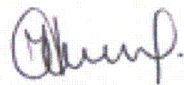
Comments

Evaluated by:



George G Thomas

Date: 10/18/12



Neda Stoeva

10/18/12

Photos

Status: Y N U

Seismic Walkdown Checklist (SWC)

Equipment ID No.: 1-CRID-4-INV

Equipment Class: (16) Inverters

Equipment Description: 120VAC CONTROL ROOM INSTRUMENT DISTRIBUTION SYSTEM



P9170724



P9170725



P9170726



P9170727

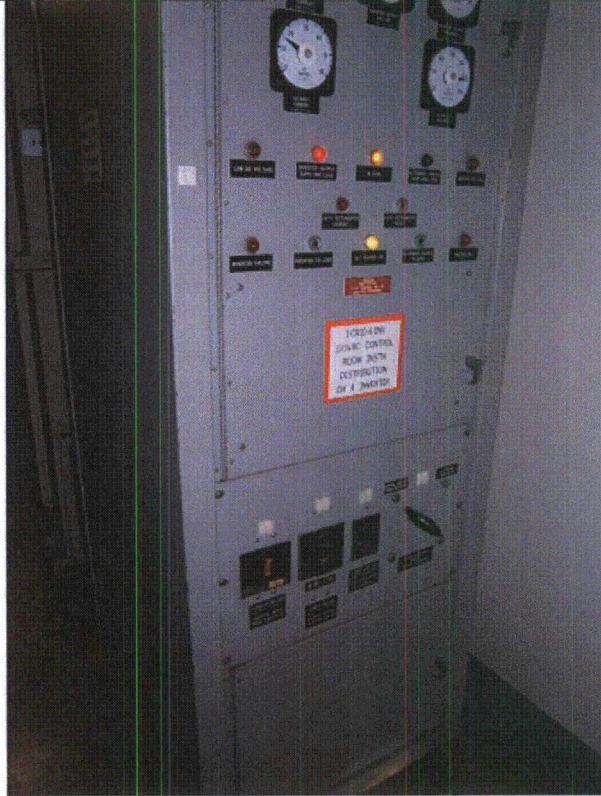
Status: Y N U

Seismic Walkdown Checklist (SWC)

Equipment ID No.: 1-CRID-4-INV

Equipment Class: (16) Inverters

Equipment Description: 120VAC CONTROL ROOM INSTRUMENT DISTRIBUTION SYSTEM



P9170728



P9170729

Status: Y N U

Seismic Walkdown Checklist (SWC)

Equipment ID No.: 1-DGAB

Equipment Class: (20) Instrumentation and Control Panels and Cabinets

Equipment Description: AB EMERGENCY DIESEL GENERATOR OME-150-AB CONTROL

Project: DC Cook 1 SWEL

Location (Bldg, Elev, Room/Area): AB1, 587.00 ft, 121

Manufacturer/Model: _____

Instructions for Completing Checklist

This checklist may be used to document the results of the Seismic Walkdown of an item of equipment on the SWEL. The space below each of the following questions may be used to record the results of judgments and findings. Additional space is provided at the end of this checklist for documenting other comments.

Anchorage

1. Is anchorage configuration verification required (i.e., is the item one of the 50% of SWEL items requiring such verification)? Yes
SQUG 1-DGAB REV0

2. Is the anchorage free of bent, broken, missing or loose hardware? Yes

3. Is the anchorage free of corrosion that is more than mild surface oxidation? Yes

4. Is the anchorage free of visible cracks in the concrete near the anchors? Yes

5. Is the anchorage configuration consistent with plant documentation? (Note: This question only applies if the item is one of the 50% for which an anchorage configuration verification is required.) Yes
Verified bolts A and B were left out of analysis

6. Based on the above anchorage evaluations, is the anchorage free of potentially adverse seismic conditions? Yes

Interaction Effects