

Status:  Y  N  U

**Seismic Walkdown Checklist (SWC)**

Equipment ID No.: 2-MCM-221

Equipment Class: (8) Motor-Operated and Solenoid-Operated Valves

Equipment Description: MAIN STEAM LEAD #2 TO AUXILIARY FEED PUMP TURBINE

Project: DC Cook 2 SWEL

Location (Bldg, Elev, Room/Area): AB2, 633.00 ft, 9

Manufacturer/Model: \_\_\_\_\_

**Instructions for Completing Checklist**

This checklist may be used to document the results of the Seismic Walkdown of an item of equipment on the SWEL. The space below each of the following questions may be used to record the results of judgments and findings. Additional space is provided at the end of this checklist for documenting other comments.

**Anchorage**

- |  |                |
|--|----------------|
| 1. Is anchorage configuration verification required (i.e., is the item one of the 50% of SWEL items requiring such verification)?  | No             |
| 2. Is the anchorage free of bent, broken, missing or loose hardware?   | Not Applicable |
| 3. Is the anchorage free of corrosion that is more than mild surface oxidation?  | Not Applicable |
| 4. Is the anchorage free of visible cracks in the concrete near the anchors?   | Not Applicable |
| 5. Is the anchorage configuration consistent with plant documentation? (Note: This question only applies if the item is one of the 50% for which an anchorage configuration verification is required.) | Not Applicable |
| 6. Based on the above anchorage evaluations, is the anchorage free of potentially adverse seismic conditions?  | Yes            |

**Interaction Effects**

Status:  Y  N  U

**Seismic Walkdown Checklist (SWC)**

Equipment ID No.: 2-MCM-221

Equipment Class: (8) Motor-Operated and Solenoid-Operated Valves

Equipment Description: MAIN STEAM LEAD #2 TO AUXILIARY FEED PUMP TURBINE

7. Are soft targets free from impact by nearby equipment or structures? Yes

8. Are overhead equipment, distribution systems, ceiling tiles and lighting, and masonry block walls not likely to collapse onto the equipment? Yes

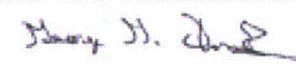
9. Do attached lines have adequate flexibility to avoid damage? Yes

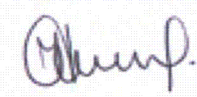
10. Based on the above seismic interaction evaluations, is equipment free of potentially adverse seismic interaction effects? Yes

**Other Adverse Conditions**

11. Have you looked for and found no adverse seismic conditions that could adversely affect the safety functions of the equipment? Yes

**Comments**

Evaluated by:  George G Thomas Date: 10/18/12

 Neda Stoeva 10/18/12

**Photos**



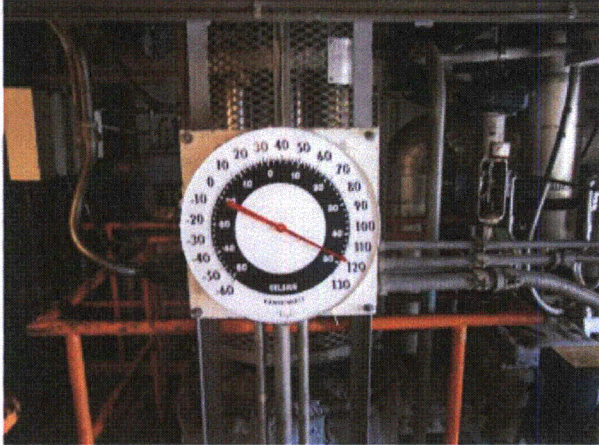
Status:  Y  N  U

**Seismic Walkdown Checklist (SWC)**

Equipment ID No.: 2-MCM-221

Equipment Class: (8) Motor-Operated and Solenoid-Operated Valves

Equipment Description: MAIN STEAM LEAD #2 TO AUXILIARY FEED PUMP TURBINE



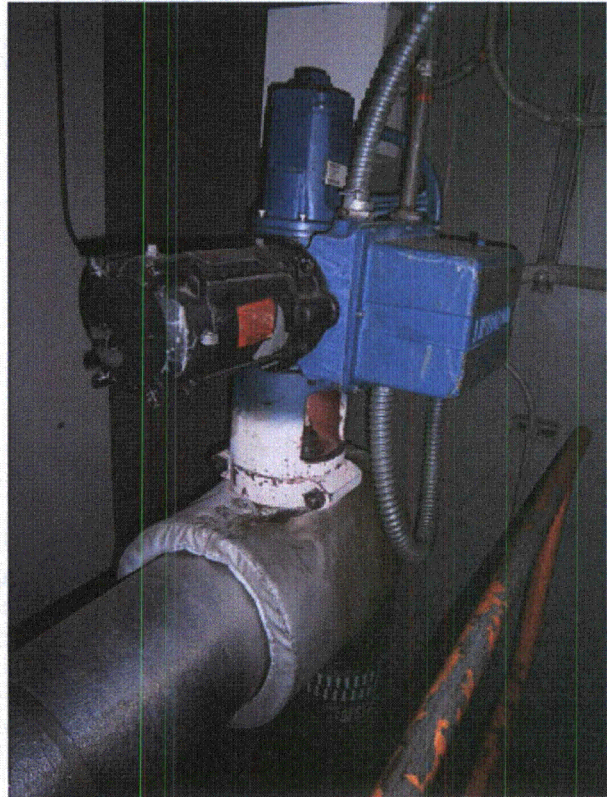
P9191284



P9191286



P9191287



P9191288

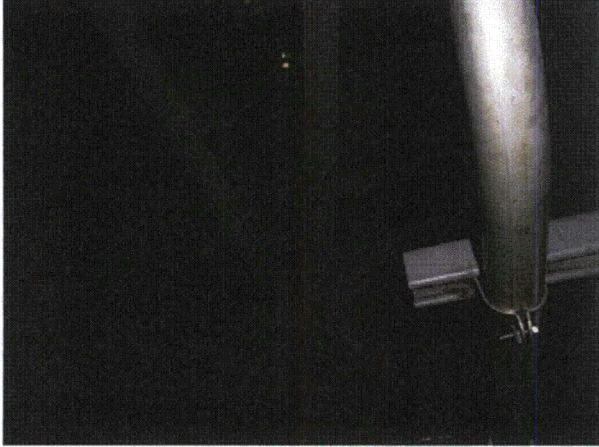
Status:  Y  N  U

**Seismic Walkdown Checklist (SWC)**

Equipment ID No.: 2-MCM-221

Equipment Class: (8) Motor-Operated and Solenoid-Operated Valves

Equipment Description: MAIN STEAM LEAD #2 TO AUXILIARY FEED PUMP TURBINE



P9191289



Status:  Y  N  U

**Seismic Walkdown Checklist (SWC)**

Equipment ID No.: 2-MRV-243

Equipment Class: (7) Fluid-Operated Valves

Equipment Description: STEAM GENERATOR OME-3-4 POWER OPERATED RELIEF

Project: DC Cook 2 SWEL

Location (Bldg, Elev, Room/Area): AB2, 621.00 ft, 10

Manufacturer/Model: \_\_\_\_\_

**Instructions for Completing Checklist**

This checklist may be used to document the results of the Seismic Walkdown of an item of equipment on the SWEL. The space below each of the following questions may be used to record the results of judgments and findings. Additional space is provided at the end of this checklist for documenting other comments.

**Anchorage**

- |  |                |
|--|----------------|
| 1. Is anchorage configuration verification required (i.e., is the item one of the 50% of SWEL items requiring such verification)?  | No             |
| 2. Is the anchorage free of bent, broken, missing or loose hardware?   | Not Applicable |
| 3. Is the anchorage free of corrosion that is more than mild surface oxidation?  | Not Applicable |
| 4. Is the anchorage free of visible cracks in the concrete near the anchors?   | Not Applicable |
| 5. Is the anchorage configuration consistent with plant documentation? (Note: This question only applies if the item is one of the 50% for which an anchorage configuration verification is required.) | Not Applicable |
| 6. Based on the above anchorage evaluations, is the anchorage free of potentially adverse seismic conditions?  | Yes            |

---

**Interaction Effects**

Status:  Y  N  U

**Seismic Walkdown Checklist (SWC)**

Equipment ID No.: 2-MRV-243

Equipment Class: (7) Fluid-Operated Valves

Equipment Description: STEAM GENERATOR OME-3-4 POWER OPERATED RELIEF

7. Are soft targets free from impact by nearby equipment or structures? Yes

8. Are overhead equipment, distribution systems, ceiling tiles and lighting, and masonry block walls not likely to collapse onto the equipment? Yes

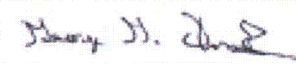
9. Do attached lines have adequate flexibility to avoid damage? Yes

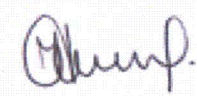
10. Based on the above seismic interaction evaluations, is equipment free of potentially adverse seismic interaction effects? Yes

**Other Adverse Conditions**

11. Have you looked for and found no adverse seismic conditions that could adversely affect the safety functions of the equipment? Yes

**Comments**

Evaluated by:  George G Thomas Date: 10/18/12

 Neda Stoeva 10/18/12

**Photos**



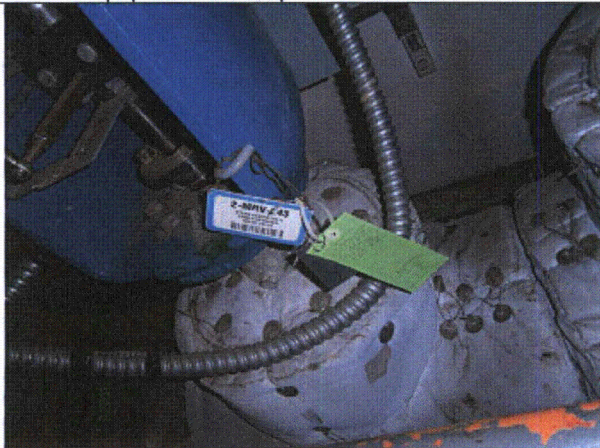
Status:  Y  N  U

**Seismic Walkdown Checklist (SWC)**

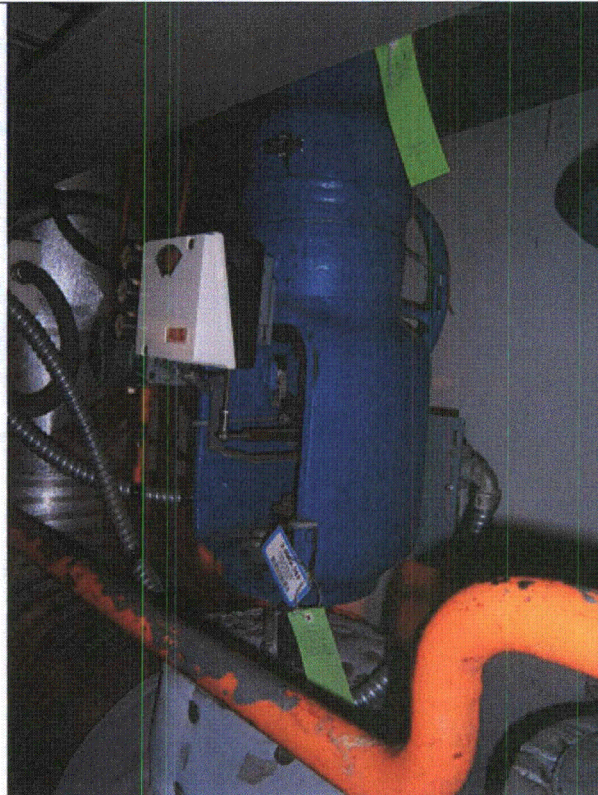
Equipment ID No.: 2-MRV-243

Equipment Class: (7) Fluid-Operated Valves

Equipment Description: STEAM GENERATOR OME-3-4 POWER OPERATED RELIEF



P9100224



P9100225

Status:  Y  N  U

**Seismic Walkdown Checklist (SWC)**

Equipment ID No.: 2-MRV-243

Equipment Class: (7) Fluid-Operated Valves

Equipment Description: STEAM GENERATOR OME-3-4 POWER OPERATED RELIEF



P9100226

Status:  Y  N  U

**Seismic Walkdown Checklist (SWC)**

Equipment ID No.: 2-NLP-153

Equipment Class: (18) Instruments on Racks

Equipment Description: PRESSURIZER OME-4 PROTECTION CHANNEL 3 LEVEL

Project: DC Cook 2 SWEL

Location (Bldg, Elev, Room/Area): CON2, 612.00 ft, 67

Manufacturer/Model: \_\_\_\_\_

**Instructions for Completing Checklist**

This checklist may be used to document the results of the Seismic Walkdown of an item of equipment on the SWEL. The space below each of the following questions may be used to record the results of judgments and findings. Additional space is provided at the end of this checklist for documenting other comments.

**Anchorage**

- |   |                |
|---|----------------|
| 1. Is anchorage configuration verification required (i.e., is the item one of the 50% of SWEL items requiring such verification)?   | No             |
| 2. Is the anchorage free of bent, broken, missing or loose hardware?<br><br><i>Only one U-bolt around pipe verify with dwgs - Pictures show that a single U-bolt in conjunction with a weld are used - OK - Documents FCN 49030-006, 2-5581J-E049030.</i> | Yes            |
| 3. Is the anchorage free of corrosion that is more than mild surface oxidation?   | Yes            |
| 4. Is the anchorage free of visible cracks in the concrete near the anchors?  | Yes            |
| 5. Is the anchorage configuration consistent with plant documentation? (Note: This question only applies if the item is one of the 50% for which an anchorage configuration verification is required.)  | Not Applicable |
| 6. Based on the above anchorage evaluations, is the anchorage free of potentially adverse seismic conditions?   | Yes            |

**Interaction Effects**



Status:  Y  N  U

**Seismic Walkdown Checklist (SWC)**

Equipment ID No.: 2-NLP-153

Equipment Class: (18) Instruments on Racks

Equipment Description: PRESSURIZER OME-4 PROTECTION CHANNEL 3 LEVEL

- 
7. Are soft targets free from impact by nearby equipment or structures? Yes
8. Are overhead equipment, distribution systems, ceiling tiles and lighting, and masonry block walls not likely to collapse onto the equipment? Yes
9. Do attached lines have adequate flexibility to avoid damage? Yes
10. Based on the above seismic interaction evaluations, is equipment free of potentially adverse seismic interaction effects? Yes

---

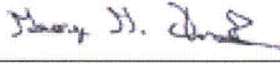
**Other Adverse Conditions**

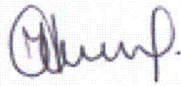
11. Have you looked for and found no adverse seismic conditions that could adversely affect the safety functions of the equipment? Yes

---

**Comments**

---

Evaluated by:  George G Thomas Date: 10/18/12

 Neda Stoeva 10/18/12

---

**Photos**



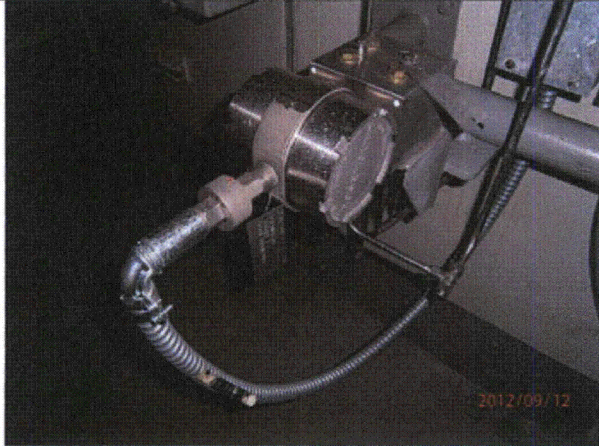
Status:  Y  N  U

**Seismic Walkdown Checklist (SWC)**

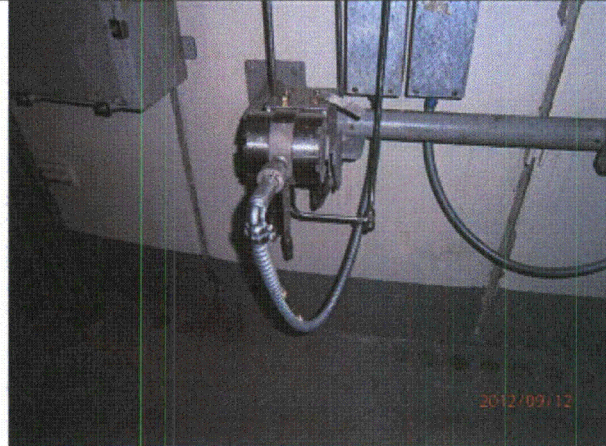
Equipment ID No.: 2-NLP-153

Equipment Class: (18) Instruments on Racks

Equipment Description: PRESSURIZER OME-4 PROTECTION CHANNEL 3 LEVEL



P9120211



P9120212



P9120213



P9120214





Status:  Y  N  U

**Seismic Walkdown Checklist (SWC)**

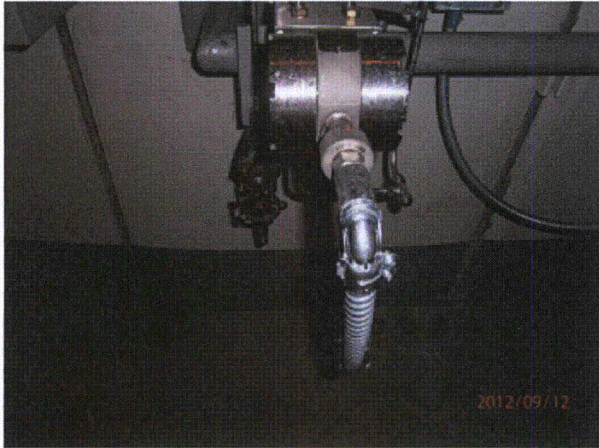
Equipment ID No.: 2-NLP-153

Equipment Class: (18) Instruments on Racks

Equipment Description: PRESSURIZER OME-4 PROTECTION CHANNEL 3 LEVEL

P9120215

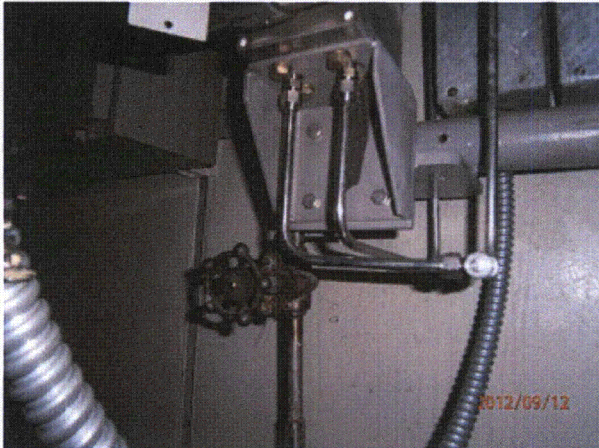
P9120216



P9120217



P9120218



P9120219



P9120220

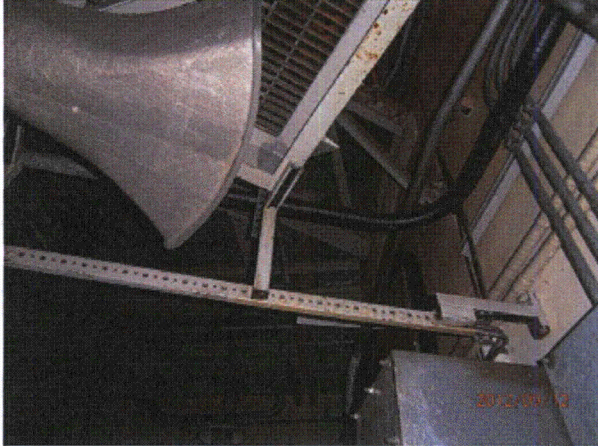
Status:  Y  N  U

**Seismic Walkdown Checklist (SWC)**

Equipment ID No.: 2-NLP-153

Equipment Class: (18) Instruments on Racks

Equipment Description: PRESSURIZER OME-4 PROTECTION CHANNEL 3 LEVEL



P9120221



Status:  Y  N  U

**Seismic Walkdown Checklist (SWC)**

Equipment ID No.: 2-NPS-111

Equipment Class: (18) Instruments on Racks

Equipment Description: REACTOR VESSEL TRAIN 'B' WIDE RANGE PRESSURE

Project: DC Cook 2 SWEL

Location (Bldg, Elev, Room/Area): AB2, 612.00 ft, 12

Manufacturer/Model: \_\_\_\_\_

**Instructions for Completing Checklist**

This checklist may be used to document the results of the Seismic Walkdown of an item of equipment on the SWEL. The space below each of the following questions may be used to record the results of judgments and findings. Additional space is provided at the end of this checklist for documenting other comments.

**Anchorage**

1. Is anchorage configuration verification required (i.e., is the item one of the 50% of SWEL items requiring such verification)? No
  
2. Is the anchorage free of bent, broken, missing or loose hardware? Yes  
*Welded plate to tube steel*
  
3. Is the anchorage free of corrosion that is more than mild surface oxidation? Yes
  
4. Is the anchorage free of visible cracks in the concrete near the anchors? Yes  
*At base of rack*
  
5. Is the anchorage configuration consistent with plant documentation? (Note: This question only applies if the item is one of the 50% for which an anchorage configuration verification is required.) Not Applicable
  
6. Based on the above anchorage evaluations, is the anchorage free of potentially adverse seismic conditions? Yes

---

**Interaction Effects**



Status:  Y  N  U

**Seismic Walkdown Checklist (SWC)**

Equipment ID No.: 2-NPS-111

Equipment Class: (18) Instruments on Racks

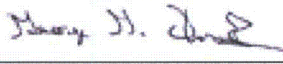
Equipment Description: REACTOR VESSEL TRAIN 'B' WIDE RANGE PRESSURE

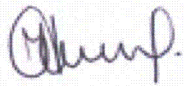
- |   |     |
|---|-----|
| 7. Are soft targets free from impact by nearby equipment or structures?   | Yes |
| 8. Are overhead equipment, distribution systems, ceiling tiles and lighting, and masonry block walls not likely to collapse onto the equipment? | Yes |
| 9. Do attached lines have adequate flexibility to avoid damage?   | Yes |
| 10. Based on the above seismic interaction evaluations, is equipment free of potentially adverse seismic interaction effects?                   | Yes |

**Other Adverse Conditions**

- |  |     |
|--|-----|
| 11. Have you looked for and found no adverse seismic conditions that could adversely affect the safety functions of the equipment? | Yes |
|--|-----|

**Comments**

Evaluated by:  George G Thomas Date: 10/18/12

 Neda Stoeva 10/18/12

**Photos**

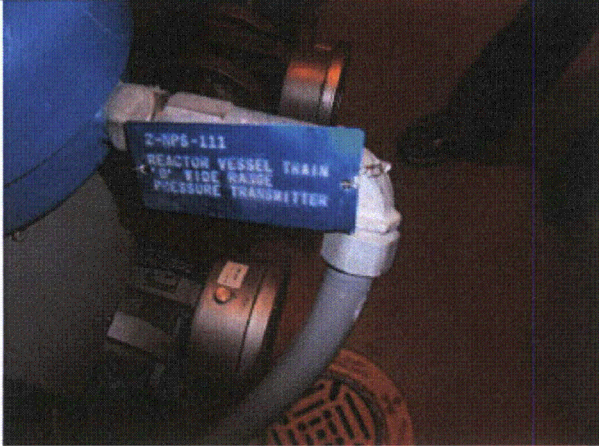
Status:  Y  N  U

**Seismic Walkdown Checklist (SWC)**

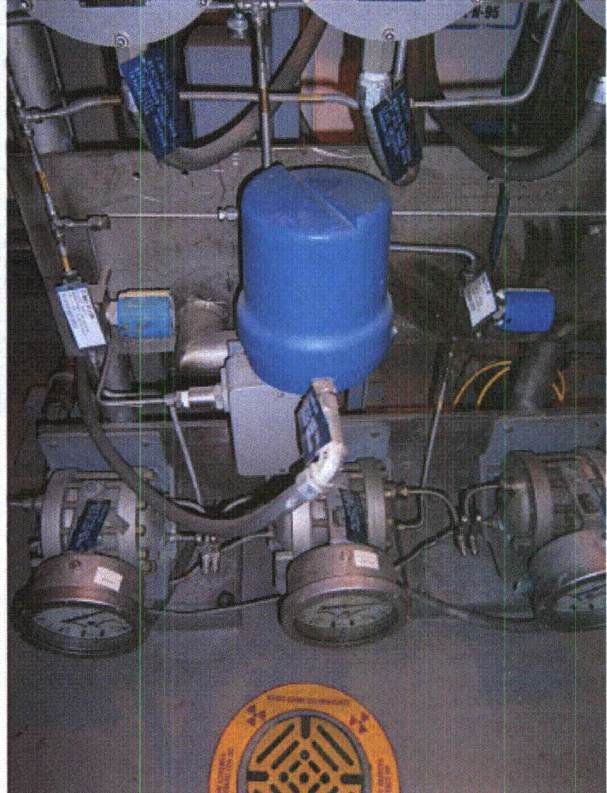
Equipment ID No.: 2-NPS-111

Equipment Class: (18) Instruments on Racks

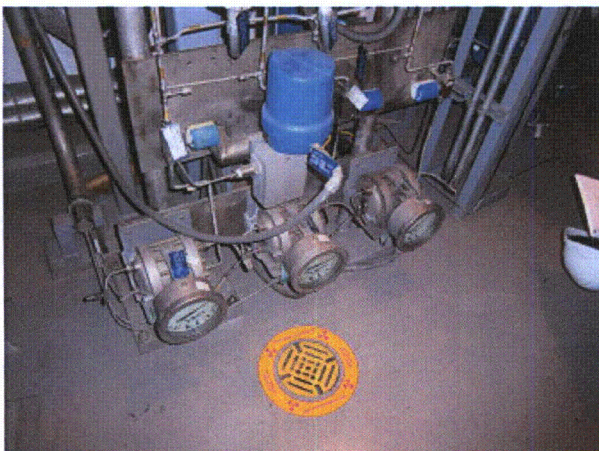
Equipment Description: REACTOR VESSEL TRAIN 'B' WIDE RANGE PRESSURE



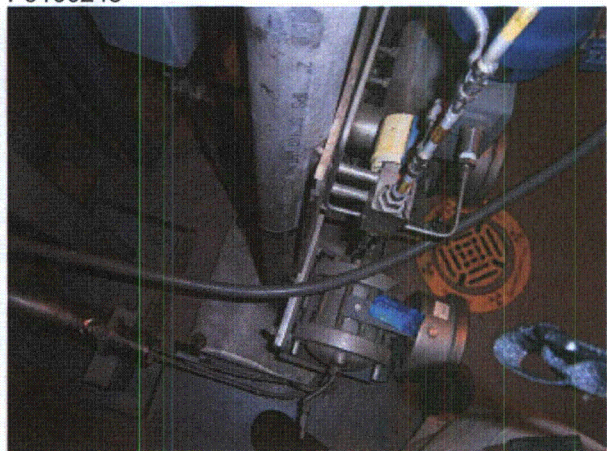
P9100242



P9100243



P9100244



P9100245



Status:  Y  N  U

**Seismic Walkdown Checklist (SWC)**

Equipment ID No.: 2-NPS-111

Equipment Class: (18) Instruments on Racks

Equipment Description: REACTOR VESSEL TRAIN 'B' WIDE RANGE PRESSURE



P9100246

Status:  Y  N  U

**Seismic Walkdown Checklist (SWC)**

Equipment ID No.: 2-OME-150-AB-EN

Equipment Class: (17) Engine-Generators

Equipment Description: AB EMERGENCY DIESEL GENERATOR ENGINE

Project: DC Cook 2 SWEL

Location (Bldg, Elev, Room/Area): AB2, 587.00 ft, 121

Manufacturer/Model: \_\_\_\_\_

**Instructions for Completing Checklist**

This checklist may be used to document the results of the Seismic Walkdown of an item of equipment on the SWEL. The space below each of the following questions may be used to record the results of judgments and findings. Additional space is provided at the end of this checklist for documenting other comments.

**Anchorage**

1. Is anchorage configuration verification required (i.e., is the item one of the 50% of SWEL items requiring such verification)? Yes  
*DWG 2-AEP-WORT-W-501812AT*
  
2. Is the anchorage free of bent, broken, missing or loose hardware? Yes  
*Thread engagemetn on middle bolt behind generator OK - evaluated by CR# 03139102*
  
3. Is the anchorage free of corrosion that is more than mild surface oxidation? Yes
  
4. Is the anchorage free of visible cracks in the concrete near the anchors? Yes
  
5. Is the anchorage configuration consistent with plant documentation? (Note: This question only applies if the item is one of the 50% for which an anchorage configuration verification is required.) Yes
  
6. Based on the above anchorage evaluations, is the anchorage free of potentially adverse seismic conditions? Yes

**Interaction Effects**



Status:  Y  N  U

**Seismic Walkdown Checklist (SWC)**

Equipment ID No.: 2-OME-150-AB-EN

Equipment Class: (17) Engine-Generators

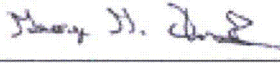
Equipment Description: AB EMERGENCY DIESEL GENERATOR ENGINE

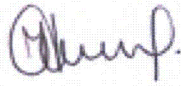
7. Are soft targets free from impact by nearby equipment or structures? Yes
8. Are overhead equipment, distribution systems, ceiling tiles and lighting, and masonry block walls not likely to collapse onto the equipment? Yes
9. Do attached lines have adequate flexibility to avoid damage? Yes
10. Based on the above seismic interaction evaluations, is equipment free of potentially adverse seismic interaction effects? Yes

**Other Adverse Conditions**

11. Have you looked for and found no adverse seismic conditions that could adversely affect the safety functions of the equipment? Yes

**Comments**

Evaluated by:  George G Thomas Date: 10/18/12

 Neda Stoeva 10/18/12

**Photos**

Status:  Y  N  U

**Seismic Walkdown Checklist (SWC)**

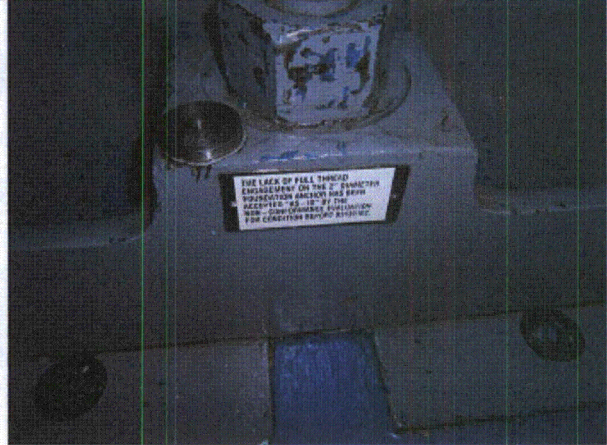
Equipment ID No.: 2-OME-150-AB-EN

Equipment Class: (17) Engine-Generators

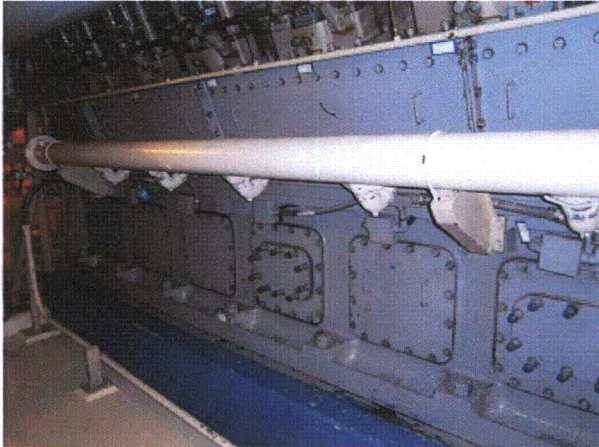
Equipment Description: AB EMERGENCY DIESEL GENERATOR ENGINE



P9130381



P9130382



P9130383



P9130384



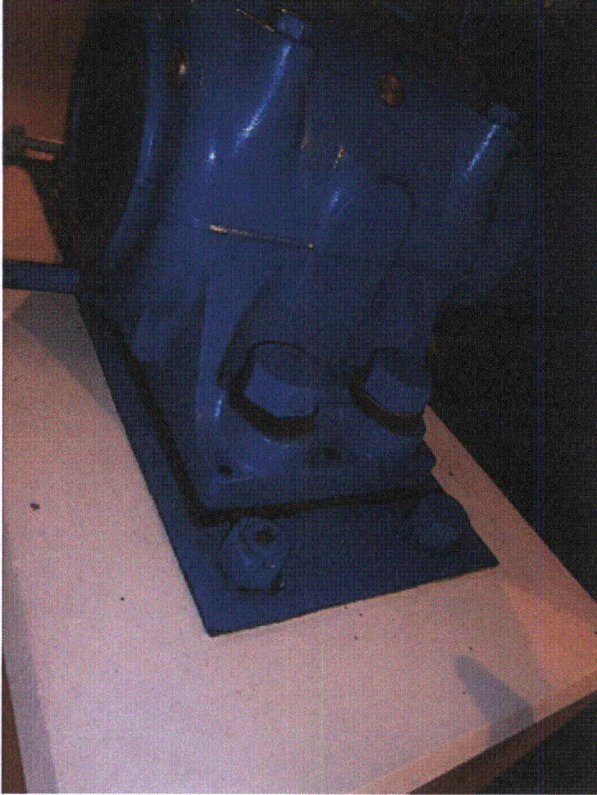
Status:  Y  N  U

**Seismic Walkdown Checklist (SWC)**

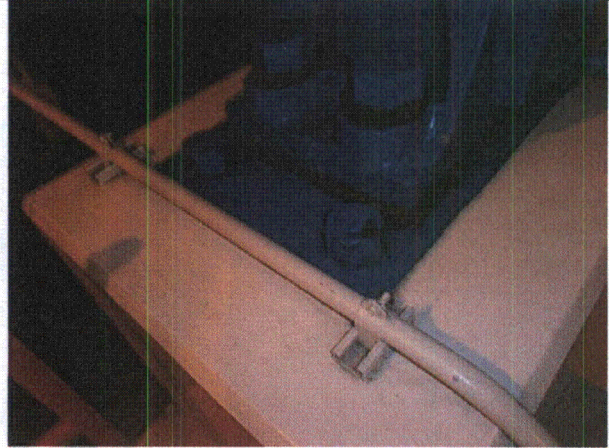
Equipment ID No.: 2-OME-150-AB-EN

Equipment Class: (17) Engine-Generators

Equipment Description: AB EMERGENCY DIESEL GENERATOR ENGINE



P9130385



P9130386



P9130387



P9130388



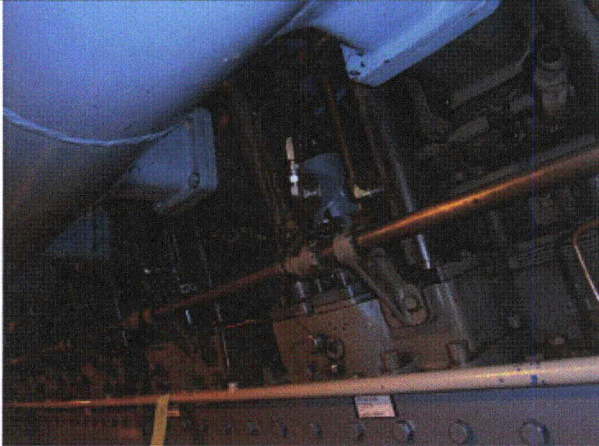
Status:  Y  N  U

**Seismic Walkdown Checklist (SWC)**

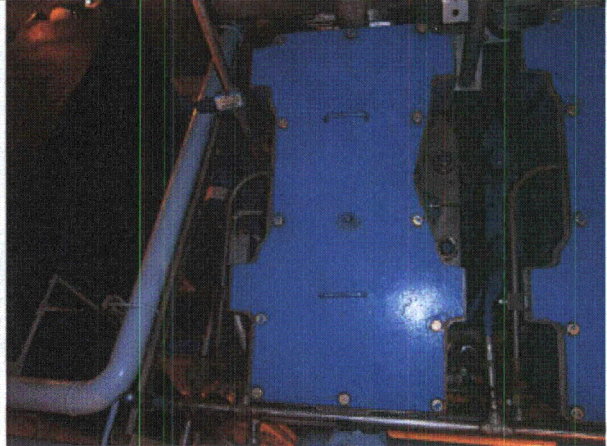
Equipment ID No.: 2-OME-150-AB-EN

Equipment Class: (17) Engine-Generators

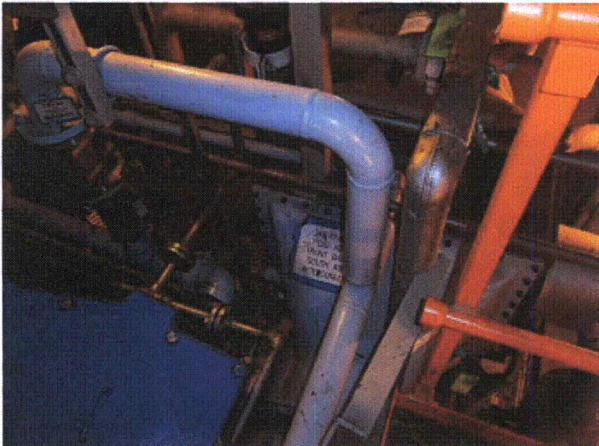
Equipment Description: AB EMERGENCY DIESEL GENERATOR ENGINE



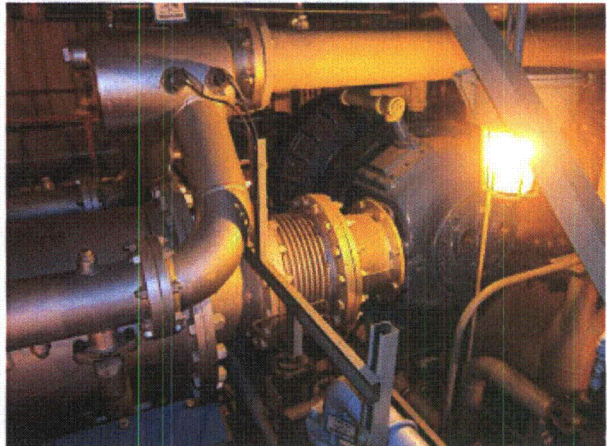
P9130389



P9130390



P9130391



P9130392





Status:  Y  N  U

**Seismic Walkdown Checklist (SWC)**

Equipment ID No.: 2-OME-150-AB-EN

Equipment Class: (17) Engine-Generators

Equipment Description: AB EMERGENCY DIESEL GENERATOR ENGINE  
P9130393

---

Status:  Y  N  U

**Seismic Walkdown Checklist (SWC)**

Equipment ID No.: 2-OME-34W

Equipment Class: (0) Other

Equipment Description: WEST ESSENTIAL SERVICE WATER STRAINER OME-34W

Project: DC Cook 2 SWEL

Location (Bldg, Elev, Room/Area): SH2, 591.00 ft, 136

Manufacturer/Model: \_\_\_\_\_

**Instructions for Completing Checklist**

This checklist may be used to document the results of the Seismic Walkdown of an item of equipment on the SWEL. The space below each of the following questions may be used to record the results of judgments and findings. Additional space is provided at the end of this checklist for documenting other comments.

**Anchorage**

1. Is anchorage configuration verification required (i.e., is the item one of the 50% of SWEL items requiring such verification)? Yes  
*DWG 12-3684 REV14*
  
2. Is the anchorage free of bent, broken, missing or loose hardware? Yes  
*1 bolt has full thread engagement but does not stick out over nut*
  
3. Is the anchorage free of corrosion that is more than mild surface oxidation? Yes
  
4. Is the anchorage free of visible cracks in the concrete near the anchors? Yes
  
5. Is the anchorage configuration consistent with plant documentation? (Note: This question only applies if the item is one of the 50% for which an anchorage configuration verification is required.) Yes
  
6. Based on the above anchorage evaluations, is the anchorage free of potentially adverse seismic conditions? Yes

**Interaction Effects**



Status:  Y  N  U

**Seismic Walkdown Checklist (SWC)**

Equipment ID No.: 2-OME-34W

Equipment Class: (0) Other

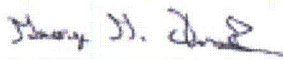
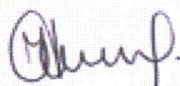
Equipment Description: WEST ESSENTIAL SERVICE WATER STRAINER OME-34W

- |     |  |     |
|-----|--|-----|
| 7.  | Are soft targets free from impact by nearby equipment or structures?   | Yes |
| 8.  | Are overhead equipment, distribution systems, ceiling tiles and lighting, and masonry block walls not likely to collapse onto the equipment? | Yes |
| 9.  | Do attached lines have adequate flexibility to avoid damage?   | Yes |
| 10. | Based on the above seismic interaction evaluations, is equipment free of potentially adverse seismic interaction effects?                    | Yes |

**Other Adverse Conditions**

- |     |  |     |
|-----|--|-----|
| 11. | Have you looked for and found no adverse seismic conditions that could adversely affect the safety functions of the equipment? | Yes |
|-----|--|-----|

**Comments**

Evaluated by:	<u></u>	George G Thomas	Date:	<u>10/18/12</u>
	<u></u>	Neda Stoeva		<u>10/18/12</u>

**Photos**

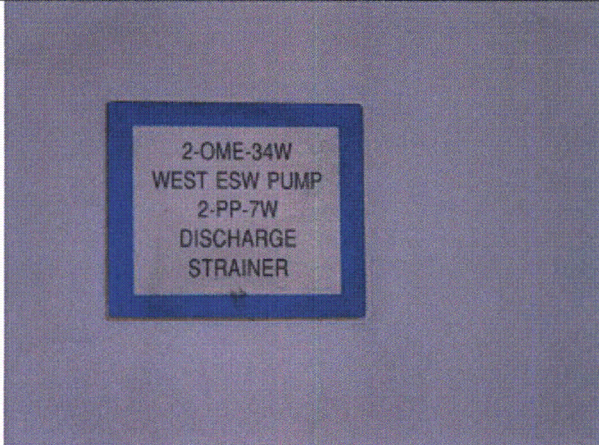
Status:  Y  N  U

**Seismic Walkdown Checklist (SWC)**

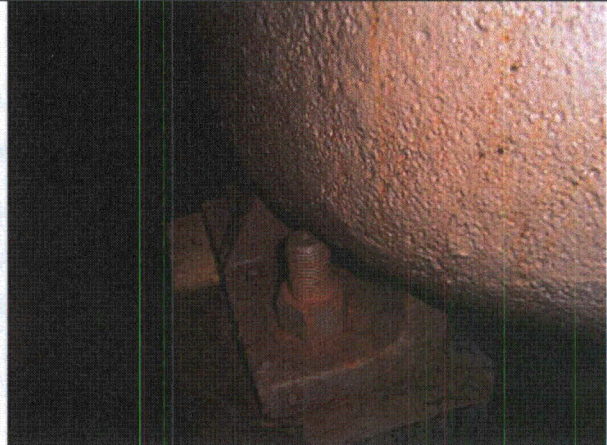
Equipment ID No.: 2-OME-34W

Equipment Class: (0) Other

Equipment Description: WEST ESSENTIAL SERVICE WATER STRAINER OME-34W



P9090058



P9090059



P9090060



P9090061



Status:  Y  N  U

**Seismic Walkdown Checklist (SWC)**

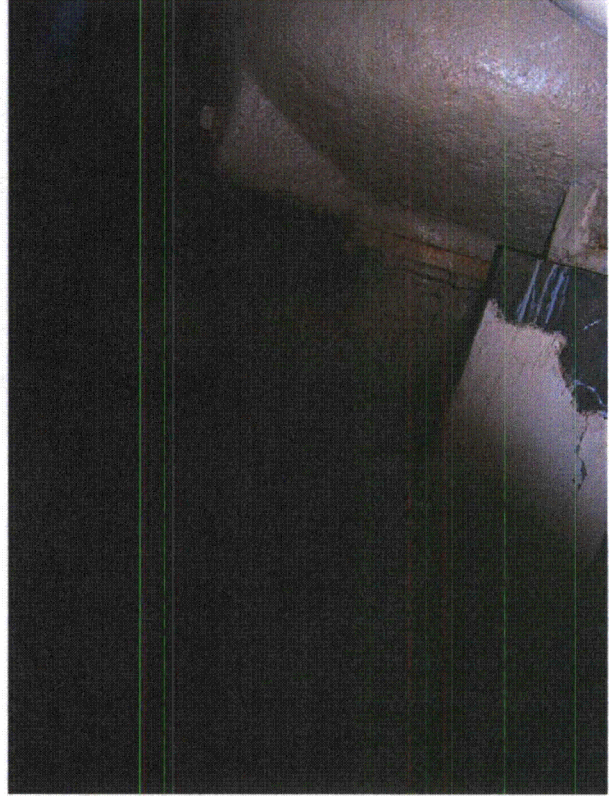
Equipment ID No.: 2-OME-34W

Equipment Class: (0) Other

Equipment Description: WEST ESSENTIAL SERVICE WATER STRAINER OME-34W



P9090062



P9090063

Status:  Y  N  U

**Seismic Walkdown Checklist (SWC)**

Equipment ID No.: 2-PP-10W

Equipment Class: (5) Horizontal Pumps

Equipment Description: WEST COMPONENT COOLING WATER PUMP

Project: DC Cook 2 SWEL

Location (Bldg, Elev, Room/Area): AB2, 609.00 ft, 609

Manufacturer/Model: \_\_\_\_\_

**Instructions for Completing Checklist**

This checklist may be used to document the results of the Seismic Walkdown of an item of equipment on the SWEL. The space below each of the following questions may be used to record the results of judgments and findings. Additional space is provided at the end of this checklist for documenting other comments.

**Anchorage**

1. Is anchorage configuration verification required (i.e., is the item one of the 50% of SWEL items requiring such verification)? Yes  
*DWG 12-3286-9 & 12-3285-24*
  
2. Is the anchorage free of bent, broken, missing or loose hardware? Yes
  
3. Is the anchorage free of corrosion that is more than mild surface oxidation? Yes
  
4. Is the anchorage free of visible cracks in the concrete near the anchors? Yes
  
5. Is the anchorage configuration consistent with plant documentation? (Note: This question only applies if the item is one of the 50% for which an anchorage configuration verification is required.) Yes
  
6. Based on the above anchorage evaluations, is the anchorage free of potentially adverse seismic conditions? Yes

---

**Interaction Effects**



Status:  Y  N  U

**Seismic Walkdown Checklist (SWC)**

Equipment ID No.: 2-PP-10W

Equipment Class: (5) Horizontal Pumps

Equipment Description: WEST COMPONENT COOLING WATER PUMP

7. Are soft targets free from impact by nearby equipment or structures? Yes

8. Are overhead equipment, distribution systems, ceiling tiles and lighting, and masonry block walls not likely to collapse onto the equipment? Yes

9. Do attached lines have adequate flexibility to avoid damage? Yes

10. Based on the above seismic interaction evaluations, is equipment free of potentially adverse seismic interaction effects? Yes

**Other Adverse Conditions**

11. Have you looked for and found no adverse seismic conditions that could adversely affect the safety functions of the equipment? Yes

**Comments**

Fire piping well supported

Evaluated by:  George G Thomas Date: 10/18/12

 Neda Stoeva 10/18/12

**Photos**

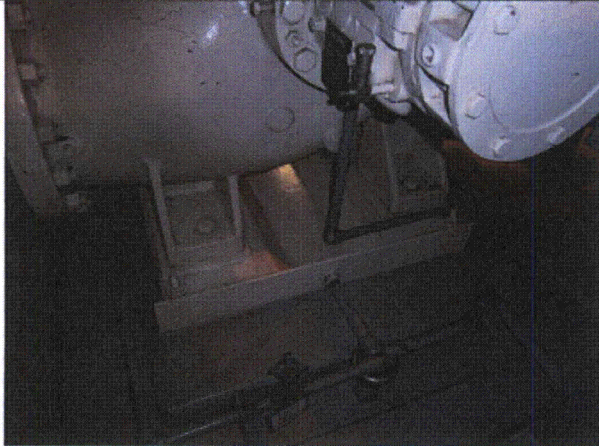
Status:  Y  N  U

**Seismic Walkdown Checklist (SWC)**

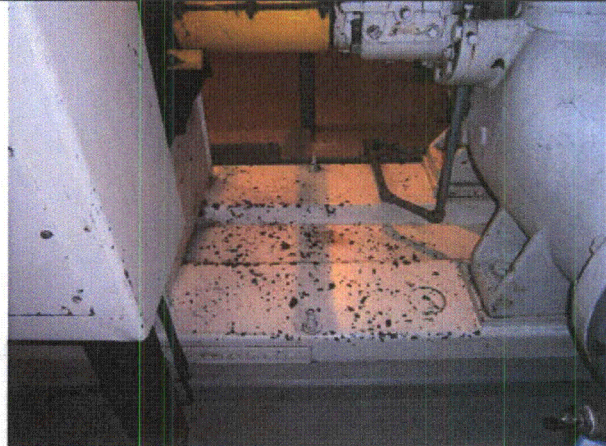
Equipment ID No.: 2-PP-10W

Equipment Class: (5) Horizontal Pumps

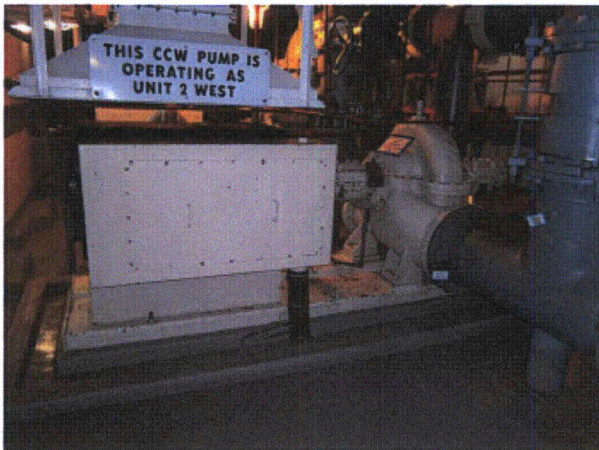
Equipment Description: WEST COMPONENT COOLING WATER PUMP



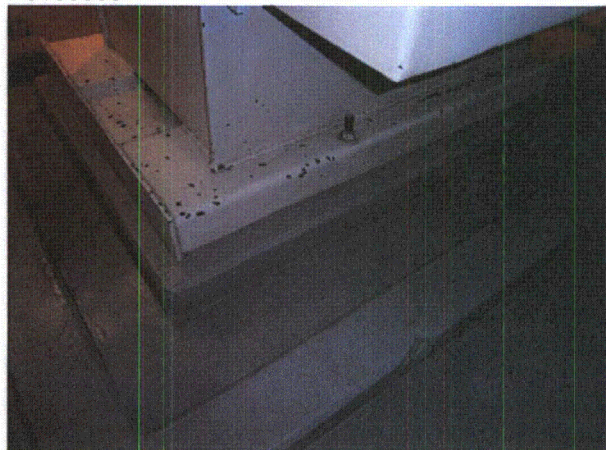
P9100059



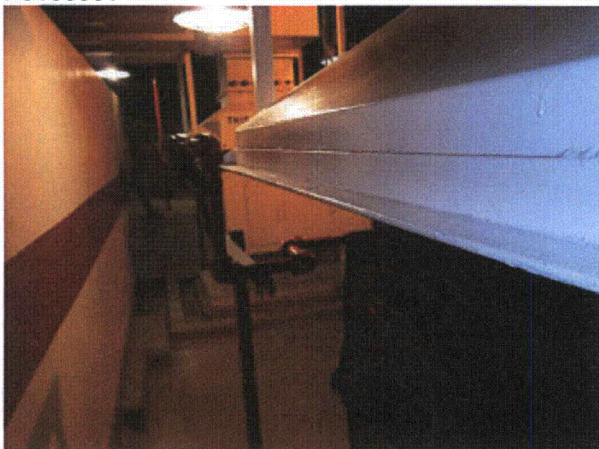
P9100060



P9100061



P9100062





Status:  Y  N  U

**Seismic Walkdown Checklist (SWC)**

Equipment ID No.: 2-PP-10W

Equipment Class: (5) Horizontal Pumps

Equipment Description: WEST COMPONENT COOLING WATER PUMP  
P9100063 P9100064

---

Status:  Y  N  U

**Seismic Walkdown Checklist (SWC)**

Equipment ID No.: 2-PP-26S

Equipment Class: (5) Horizontal Pumps

Equipment Description: SOUTH SAFETY INJECTION PUMP

Project: DC Cook 2 SWEL

Location (Bldg, Elev, Room/Area): AB2, 587.00 ft, 43

Manufacturer/Model:

**Instructions for Completing Checklist**

This checklist may be used to document the results of the Seismic Walkdown of an item of equipment on the SWEL. The space below each of the following questions may be used to record the results of judgments and findings. Additional space is provided at the end of this checklist for documenting other comments.

**Anchorage**

1. Is anchorage configuration verification required (i.e., is the item one of the 50% of SWEL items requiring such verification)? Yes
  
2. Is the anchorage free of bent, broken, missing or loose hardware? Yes
  
3. Is the anchorage free of corrosion that is more than mild surface oxidation? Yes  
*PAINTED*
  
4. Is the anchorage free of visible cracks in the concrete near the anchors? Yes
  
5. Is the anchorage configuration consistent with plant documentation? (Note: This question only applies if the item is one of the 50% for which an anchorage configuration verification is required.) Yes
  
6. Based on the above anchorage evaluations, is the anchorage free of potentially adverse seismic conditions? Yes

**Interaction Effects**



Status:  Y  N  U

**Seismic Walkdown Checklist (SWC)**

Equipment ID No.: 2-PP-26S

Equipment Class: (5) Horizontal Pumps

Equipment Description: SOUTH SAFETY INJECTION PUMP

7. Are soft targets free from impact by nearby equipment or structures? Yes

8. Are overhead equipment, distribution systems, ceiling tiles and lighting, and masonry block walls not likely to collapse onto the equipment? Yes  
*Block wall with grate - DWG 12-4026, Wall W-11*

9. Do attached lines have adequate flexibility to avoid damage? Yes

10. Based on the above seismic interaction evaluations, is equipment free of potentially adverse seismic interaction effects? Yes

**Other Adverse Conditions**

11. Have you looked for and found no adverse seismic conditions that could adversely affect the safety functions of the equipment? Yes

**Comments**

Evaluated by:  George G Thomas Date: 10/18/12

 Neda Stoeva 10/18/12

**Photos**

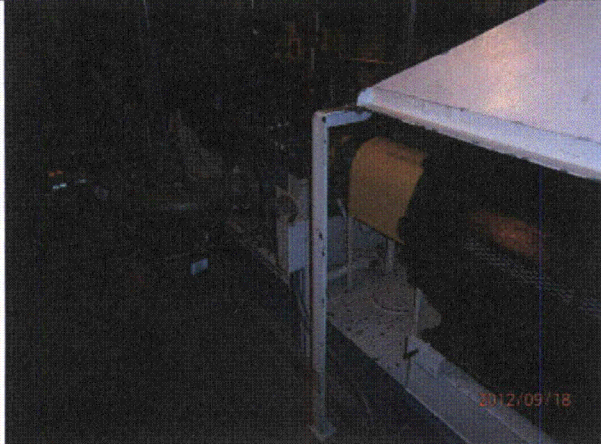
Status:  Y  N  U

**Seismic Walkdown Checklist (SWC)**

Equipment ID No.: 2-PP-26S

Equipment Class: (5) Horizontal Pumps

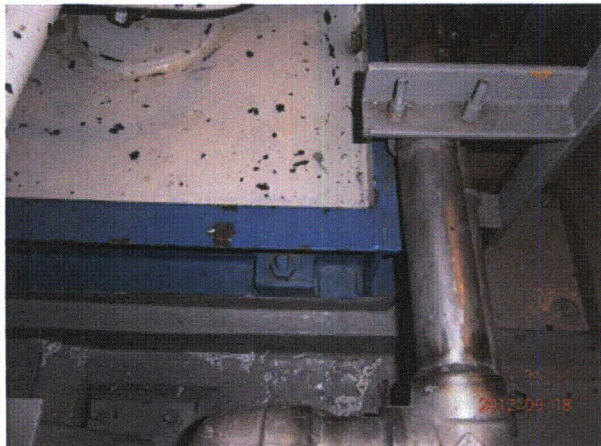
Equipment Description: SOUTH SAFETY INJECTION PUMP



P9180872



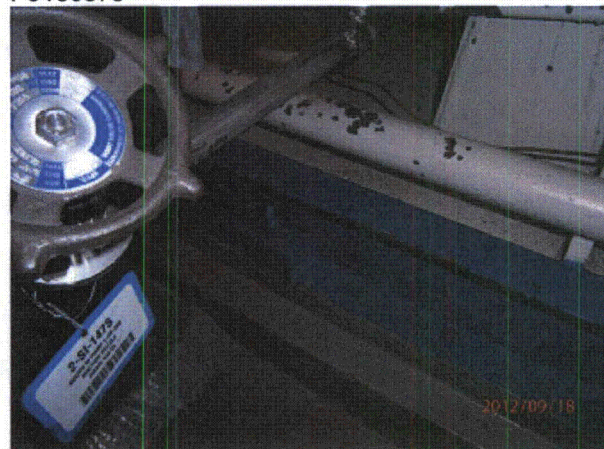
P9180873



P9180874



P9180875





Status:  Y  N  U

**Seismic Walkdown Checklist (SWC)**

Equipment ID No.: 2-PP-26S

Equipment Class: (5) Horizontal Pumps

Equipment Description: SOUTH SAFETY INJECTION PUMP  
P9180876 P9180877

---

Status:  Y  N  U

**Seismic Walkdown Checklist (SWC)**

Equipment ID No.: 2-PP-35W

Equipment Class: (6) Vertical Pumps

Equipment Description: WEST RESIDUAL HEAT REMOVAL PUMP

Project: DC Cook 2 SWEL

Location (Bldg, Elev, Room/Area): AB2, 573.00 ft, 55

Manufacturer/Model: \_\_\_\_\_

**Instructions for Completing Checklist**

This checklist may be used to document the results of the Seismic Walkdown of an item of equipment on the SWEL. The space below each of the following questions may be used to record the results of judgments and findings. Additional space is provided at the end of this checklist for documenting other comments.

**Anchorage**

- |  |     |
|--|-----|
| 1. Is anchorage configuration verification required (i.e., is the item one of the 50% of SWEL items requiring such verification)?  | Yes |
| 2. Is the anchorage free of bent, broken, missing or loose hardware?   | Yes |
| 3. Is the anchorage free of corrosion that is more than mild surface oxidation?  | Yes |
| 4. Is the anchorage free of visible cracks in the concrete near the anchors?   | Yes |
| 5. Is the anchorage configuration consistent with plant documentation? (Note: This question only applies if the item is one of the 50% for which an anchorage configuration verification is required.) | Yes |
| 6. Based on the above anchorage evaluations, is the anchorage free of potentially adverse seismic conditions?  | Yes |

**Interaction Effects**



Status:  Y  N  U

**Seismic Walkdown Checklist (SWC)**

Equipment ID No.: 2-PP-35W

Equipment Class: (6) Vertical Pumps

Equipment Description: WEST RESIDUAL HEAT REMOVAL PUMP

7. Are soft targets free from impact by nearby equipment or structures? Yes

8. Are overhead equipment, distribution systems, ceiling tiles and lighting, and masonry block walls not likely to collapse onto the equipment? Yes  
*Block wall - DWG 12-4025, Wall W-24*

9. Do attached lines have adequate flexibility to avoid damage? Yes

10. Based on the above seismic interaction evaluations, is equipment free of potentially adverse seismic interaction effects? Yes

**Other Adverse Conditions**

11. Have you looked for and found no adverse seismic conditions that could adversely affect the safety functions of the equipment? Yes

**Comments**

Evaluated by:  George G Thomas Date: 10/18/12

 Neda Stoeva 10/18/12

**Photos**

Status:  Y  N  U

**Seismic Walkdown Checklist (SWC)**

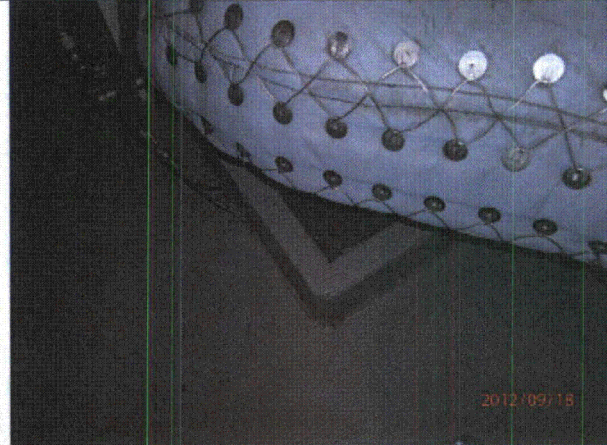
Equipment ID No.: 2-PP-35W

Equipment Class: (6) Vertical Pumps

Equipment Description: WEST RESIDUAL HEAT REMOVAL PUMP



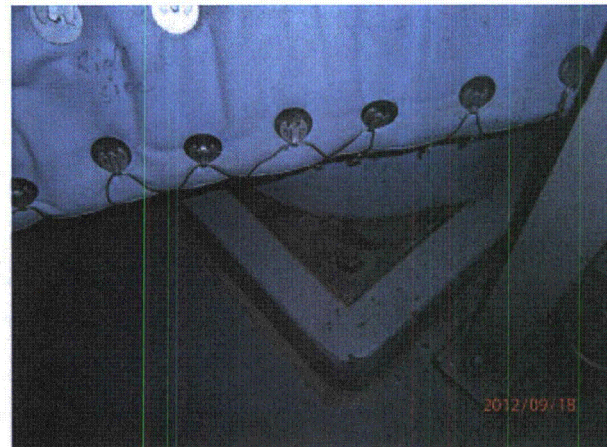
P9180851



P9180852



P9180853



P9180854



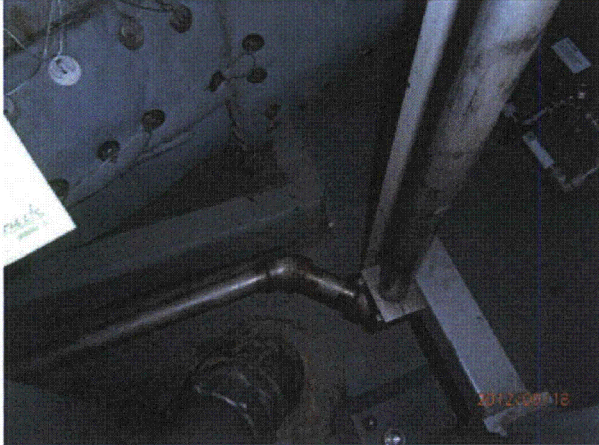
Status:  Y  N  U

**Seismic Walkdown Checklist (SWC)**

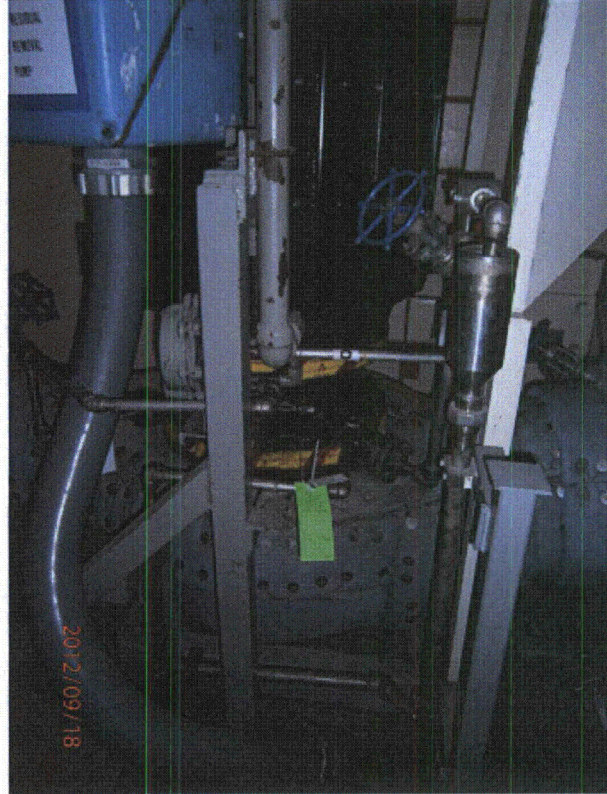
Equipment ID No.: 2-PP-35W

Equipment Class: (6) Vertical Pumps

Equipment Description: WEST RESIDUAL HEAT REMOVAL PUMP



P9180855



P9180856

Status:  Y  N  U

**Seismic Walkdown Checklist (SWC)**

Equipment ID No.: 2-PP-3W

Equipment Class: (5) Horizontal Pumps

Equipment Description: WEST MOTOR DRIVEN AUXILIARY FEEDWATER PUMP

Project: DC Cook 2 SWEL

Location (Bldg, Elev, Room/Area): TB2, 591.00 ft, 51

Manufacturer/Model: \_\_\_\_\_

**Instructions for Completing Checklist**

This checklist may be used to document the results of the Seismic Walkdown of an item of equipment on the SWEL. The space below each of the following questions may be used to record the results of judgments and findings. Additional space is provided at the end of this checklist for documenting other comments.

**Anchorage**

- |  |                |
|--|----------------|
| 1. Is anchorage configuration verification required (i.e., is the item one of the 50% of SWEL items requiring such verification)?  | No             |
| 2. Is the anchorage free of bent, broken, missing or loose hardware?   | Yes            |
| 3. Is the anchorage free of corrosion that is more than mild surface oxidation?  | Yes            |
| 4. Is the anchorage free of visible cracks in the concrete near the anchors?   | Yes            |
| 5. Is the anchorage configuration consistent with plant documentation? (Note: This question only applies if the item is one of the 50% for which an anchorage configuration verification is required.) | Not Applicable |
| 6. Based on the above anchorage evaluations, is the anchorage free of potentially adverse seismic conditions?  | Yes            |

**Interaction Effects**



Status:  Y  N  U

**Seismic Walkdown Checklist (SWC)**

Equipment ID No.: 2-PP-3W

Equipment Class: (5) Horizontal Pumps

Equipment Description: WEST MOTOR DRIVEN AUXILIARY FEEDWATER PUMP

7. Are soft targets free from impact by nearby equipment or structures? Yes

8. Are overhead equipment, distribution systems, ceiling tiles and lighting, and masonry block walls not likely to collapse onto the equipment? Yes

9. Do attached lines have adequate flexibility to avoid damage? Yes

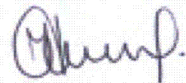
10. Based on the above seismic interaction evaluations, is equipment free of potentially adverse seismic interaction effects? Yes

**Other Adverse Conditions**

11. Have you looked for and found no adverse seismic conditions that could adversely affect the safety functions of the equipment? Yes

**Comments**

Evaluated by:  George G Thomas Date: 10/18/12



Neda Stoeva 10/18/12

**Photos**

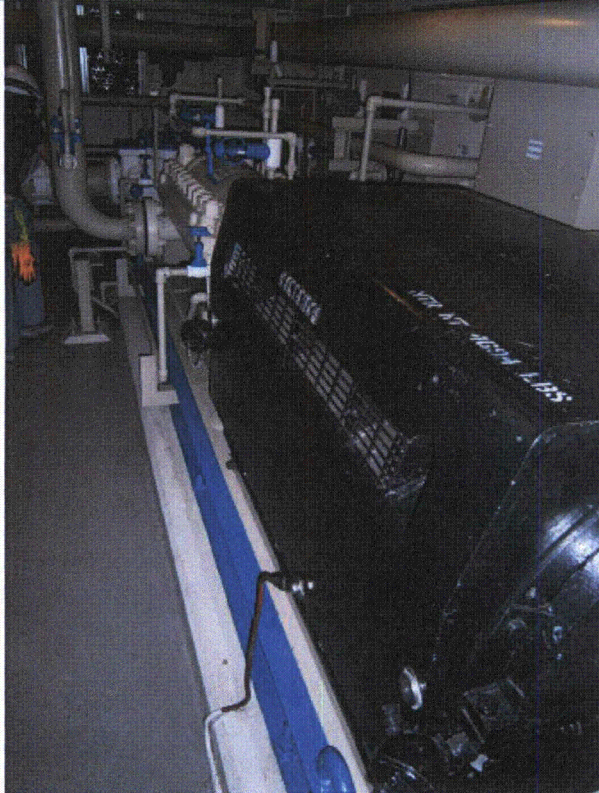
Status:  Y  N  U

**Seismic Walkdown Checklist (SWC)**

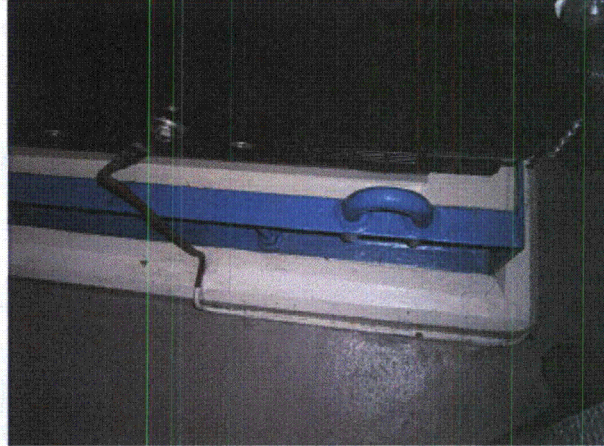
Equipment ID No.: 2-PP-3W

Equipment Class: (5) Horizontal Pumps

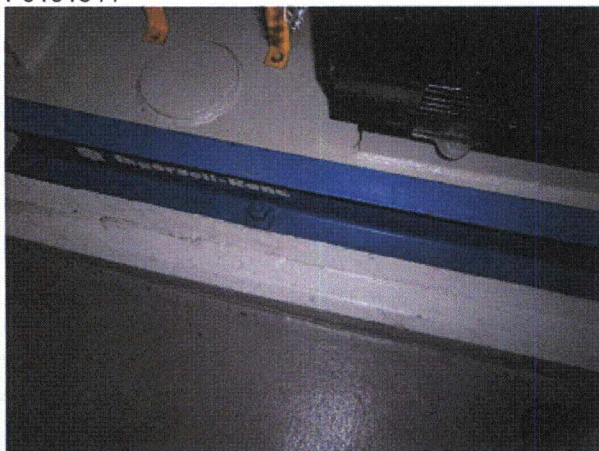
Equipment Description: WEST MOTOR DRIVEN AUXILIARY FEEDWATER PUMP



P9191344



P9191345



P9191346



P9191347



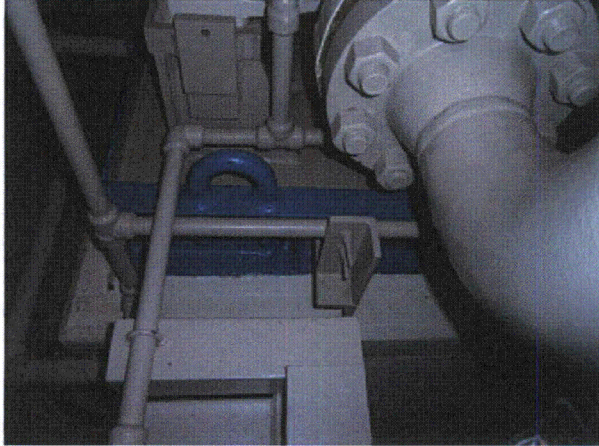
Status:  Y  N  U

**Seismic Walkdown Checklist (SWC)**

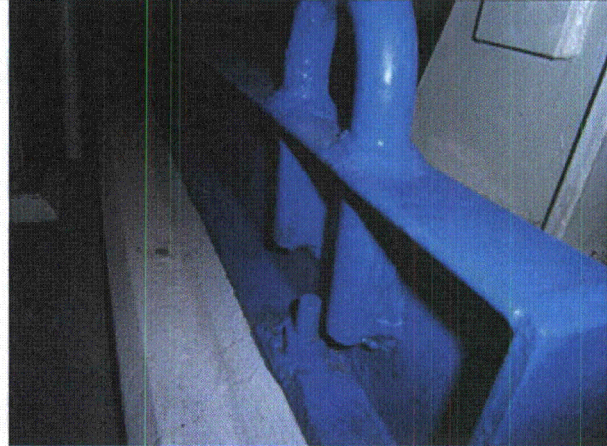
Equipment ID No.: 2-PP-3W

Equipment Class: (5) Horizontal Pumps

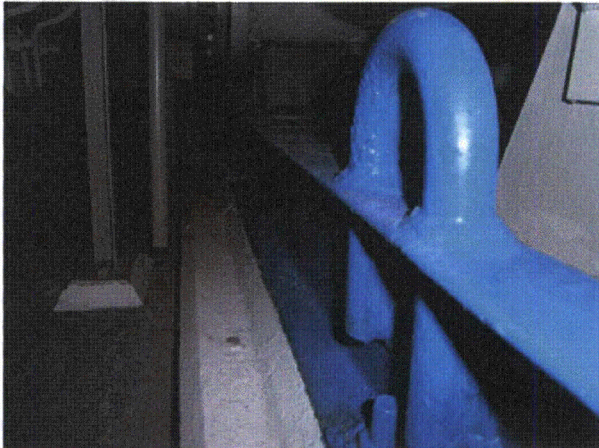
Equipment Description: WEST MOTOR DRIVEN AUXILIARY FEEDWATER PUMP



P9191348



P9191349



P9191350

Status:  Y  N  U

**Seismic Walkdown Checklist (SWC)**

Equipment ID No.: 2-PP-4

Equipment Class: (5) Horizontal Pumps

Equipment Description: TURBINE DRIVEN AUXILIARY FEED PUMP

Project: DC Cook 2 SWEL

Location (Bldg, Elev, Room/Area): TB2, 591.00 ft, 49

Manufacturer/Model: \_\_\_\_\_

**Instructions for Completing Checklist**

This checklist may be used to document the results of the Seismic Walkdown of an item of equipment on the SWEL. The space below each of the following questions may be used to record the results of judgments and findings. Additional space is provided at the end of this checklist for documenting other comments.

**Anchorage**

1. Is anchorage configuration verification required (i.e., is the item one of the 50% of SWEL items requiring such verification)? Yes  
*SQUG 2-PP-4 REV0*
  
2. Is the anchorage free of bent, broken, missing or loose hardware? Yes
  
3. Is the anchorage free of corrosion that is more than mild surface oxidation? Yes
  
4. Is the anchorage free of visible cracks in the concrete near the anchors? Yes
  
5. Is the anchorage configuration consistent with plant documentation? (Note: This question only applies if the item is one of the 50% for which an anchorage configuration verification is required.) Yes
  
6. Based on the above anchorage evaluations, is the anchorage free of potentially adverse seismic conditions? Yes

---

**Interaction Effects**



Status:  Y  N  U

**Seismic Walkdown Checklist (SWC)**

Equipment ID No.: 2-PP-4

Equipment Class: (5) Horizontal Pumps

Equipment Description: TURBINE DRIVEN AUXILIARY FEED PUMP

7. Are soft targets free from impact by nearby equipment or structures? Yes

8. Are overhead equipment, distribution systems, ceiling tiles and lighting, and masonry block walls not likely to collapse onto the equipment? Yes

9. Do attached lines have adequate flexibility to avoid damage? Yes

10. Based on the above seismic interaction evaluations, is equipment free of potentially adverse seismic interaction effects? Yes

**Other Adverse Conditions**

11. Have you looked for and found no adverse seismic conditions that could adversely affect the safety functions of the equipment? Yes

**Comments**

Evaluated by:  George G Thomas Date: 10/18/12

 Neda Stoeva 10/18/12

**Photos**

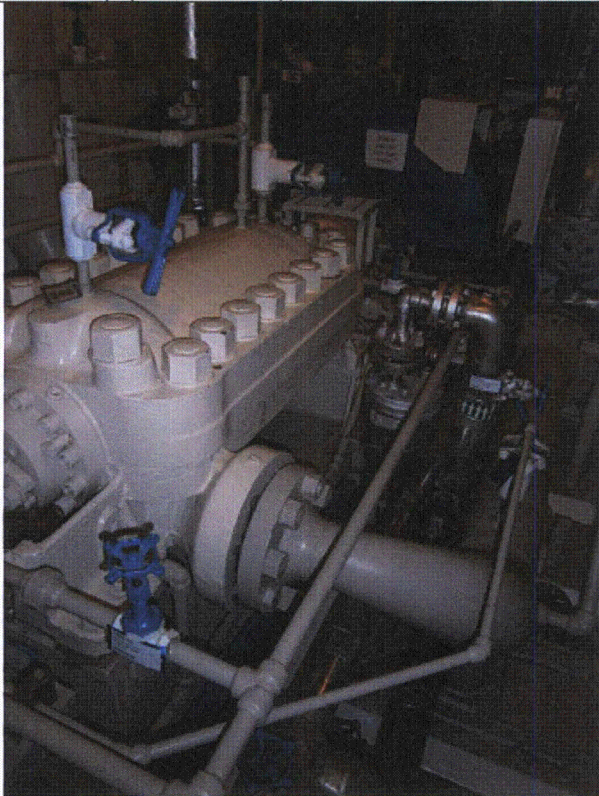
Status:  Y  N  U

**Seismic Walkdown Checklist (SWC)**

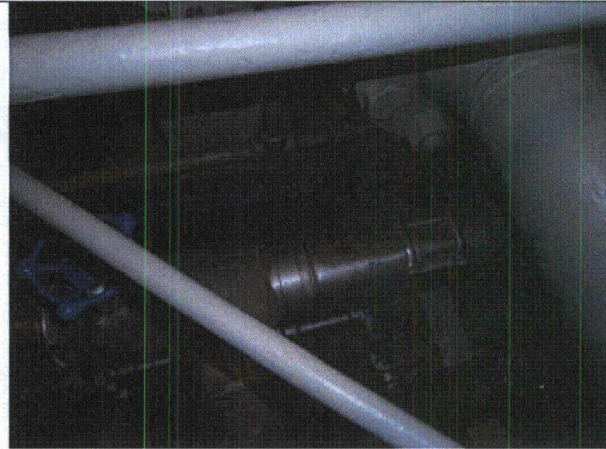
Equipment ID No.: 2-PP-4

Equipment Class: (5) Horizontal Pumps

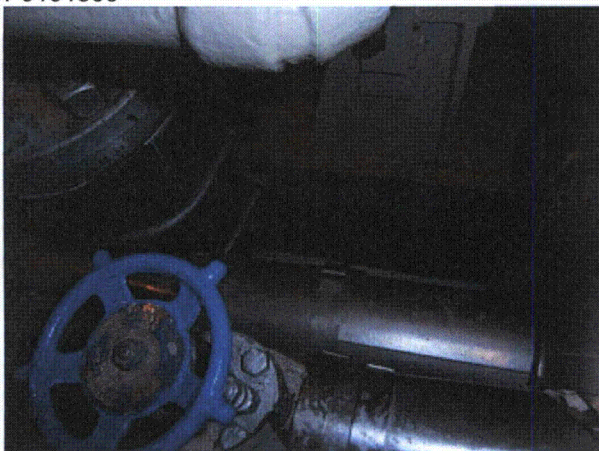
Equipment Description: TURBINE DRIVEN AUXILIARY FEED PUMP



P9191306



P9191307



P9191308



P9191309



Status:  Y  N  U

**Seismic Walkdown Checklist (SWC)**

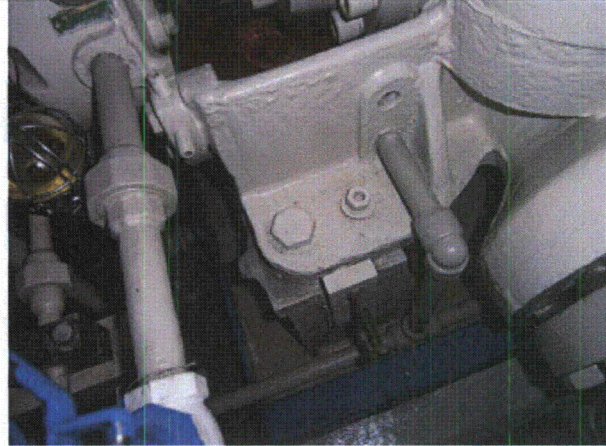
Equipment ID No.: 2-PP-4

Equipment Class: (5) Horizontal Pumps

Equipment Description: TURBINE DRIVEN AUXILIARY FEED PUMP



P9191310



P9191311



P9191312



P9191313

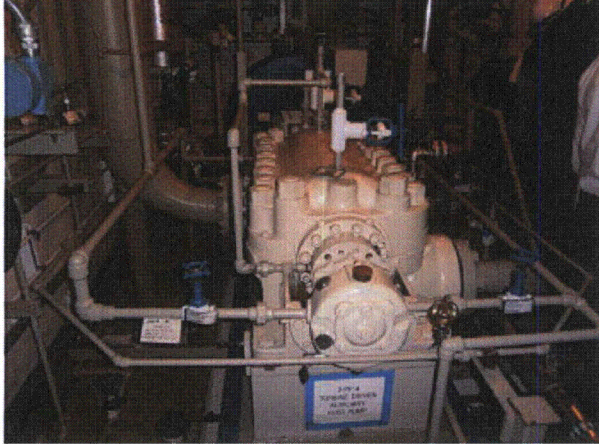
Status:  Y  N  U

**Seismic Walkdown Checklist (SWC)**

Equipment ID No.: 2-PP-4

Equipment Class: (5) Horizontal Pumps

Equipment Description: TURBINE DRIVEN AUXILIARY FEED PUMP



P9191314



Status:  Y  N  U

**Seismic Walkdown Checklist (SWC)**

Equipment ID No.: 2-PP-50W

Equipment Class: (5) Horizontal Pumps

Equipment Description: WEST CENTRIFUGAL CHARGING PUMP

Project: DC Cook 2 SWEL

Location (Bldg, Elev, Room/Area): AB2, 587.00 ft, 41

Manufacturer/Model: \_\_\_\_\_

**Instructions for Completing Checklist**

This checklist may be used to document the results of the Seismic Walkdown of an item of equipment on the SWEL. The space below each of the following questions may be used to record the results of judgments and findings. Additional space is provided at the end of this checklist for documenting other comments.

**Anchorage**

- |  |                |
|--|----------------|
| 1. Is anchorage configuration verification required (i.e., is the item one of the 50% of SWEL items requiring such verification)?  | No             |
| 2. Is the anchorage free of bent, broken, missing or loose hardware?   | Yes            |
| 3. Is the anchorage free of corrosion that is more than mild surface oxidation?  | Yes            |
| 4. Is the anchorage free of visible cracks in the concrete near the anchors?   | Yes            |
| 5. Is the anchorage configuration consistent with plant documentation? (Note: This question only applies if the item is one of the 50% for which an anchorage configuration verification is required.) | Not Applicable |
| 6. Based on the above anchorage evaluations, is the anchorage free of potentially adverse seismic conditions?  | Yes            |

**Interaction Effects**

Status:  Y  N  U

**Seismic Walkdown Checklist (SWC)**

Equipment ID No.: 2-PP-50W

Equipment Class: (5) Horizontal Pumps

Equipment Description: WEST CENTRIFUGAL CHARGING PUMP

7. Are soft targets free from impact by nearby equipment or structures? Yes

8. Are overhead equipment, distribution systems, ceiling tiles and lighting, and masonry block walls not likely to collapse onto the equipment? Yes

9. Do attached lines have adequate flexibility to avoid damage? Yes

10. Based on the above seismic interaction evaluations, is equipment free of potentially adverse seismic interaction effects? Yes

**Other Adverse Conditions**

11. Have you looked for and found no adverse seismic conditions that could adversely affect the safety functions of the equipment? Yes

**Comments**

Evaluated by:  George G Thomas Date: 10/18/12

 Neda Stoeva 10/18/12

**Photos**



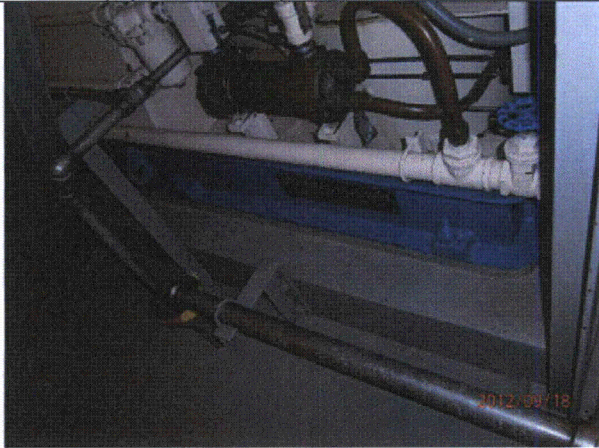
Status:  Y  N  U

**Seismic Walkdown Checklist (SWC)**

Equipment ID No.: 2-PP-50W

Equipment Class: (5) Horizontal Pumps

Equipment Description: WEST CENTRIFUGAL CHARGING PUMP



P9180739



P9180740



P9180741



P9180742



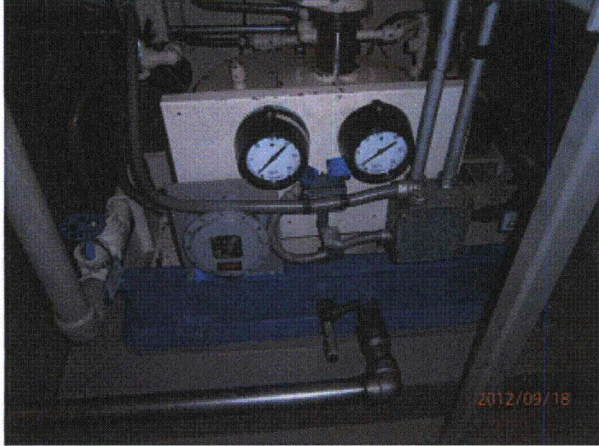
Status:  Y  N  U

**Seismic Walkdown Checklist (SWC)**

Equipment ID No.: 2-PP-50W

Equipment Class: (5) Horizontal Pumps

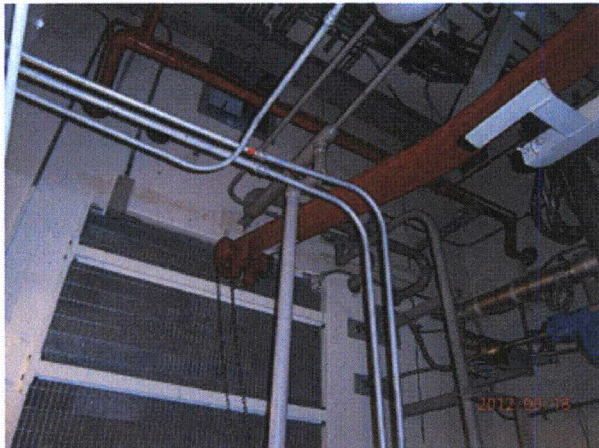
Equipment Description: WEST CENTRIFUGAL CHARGING PUMP



P9180743



P9180744



P9180745



Status:  Y  N  U

**Seismic Walkdown Checklist (SWC)**

Equipment ID No.: 2-PP-7W

Equipment Class: (6) Vertical Pumps

Equipment Description: WEST ESSENTIAL SERVICE WATER PUMP

Project: DC Cook 2 SWEL

Location (Bldg, Elev, Room/Area): SH2, 591.00 ft, 136

Manufacturer/Model: \_\_\_\_\_

**Instructions for Completing Checklist**

This checklist may be used to document the results of the Seismic Walkdown of an item of equipment on the SWEL. The space below each of the following questions may be used to record the results of judgments and findings. Additional space is provided at the end of this checklist for documenting other comments.

**Anchorage**

1. Is anchorage configuration verification required (i.e., is the item one of the 50% of SWEL items requiring such verification)? Yes  
*DWG 12-3684 REV14*
  
2. Is the anchorage free of bent, broken, missing or loose hardware? Yes
  
3. Is the anchorage free of corrosion that is more than mild surface oxidation? Yes
  
4. Is the anchorage free of visible cracks in the concrete near the anchors? Yes
  
5. Is the anchorage configuration consistent with plant documentation? (Note: This question only applies if the item is one of the 50% for which an anchorage configuration verification is required.) Yes
  
6. Based on the above anchorage evaluations, is the anchorage free of potentially adverse seismic conditions? Yes

**Interaction Effects**

Status:  Y  N  U

**Seismic Walkdown Checklist (SWC)**

Equipment ID No.: 2-PP-7W

Equipment Class: (6) Vertical Pumps

Equipment Description: WEST ESSENTIAL SERVICE WATER PUMP

7. Are soft targets free from impact by nearby equipment or structures? Yes

*Permanent Scaffold - Ref DWG 2-3113C. General Notes*

8. Are overhead equipment, distribution systems, ceiling tiles and lighting, and masonry block walls not likely to collapse onto the equipment? Yes  
*Light rod hung*

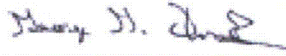
9. Do attached lines have adequate flexibility to avoid damage? Yes

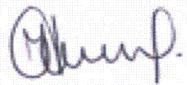
10. Based on the above seismic interaction evaluations, is equipment free of potentially adverse seismic interaction effects? Yes

**Other Adverse Conditions**

11. Have you looked for and found no adverse seismic conditions that could adversely affect the safety functions of the equipment? Yes

**Comments**

Evaluated by:  George G Thomas Date: 10/18/12

 Neda Stoeva 10/18/12

**Photos**



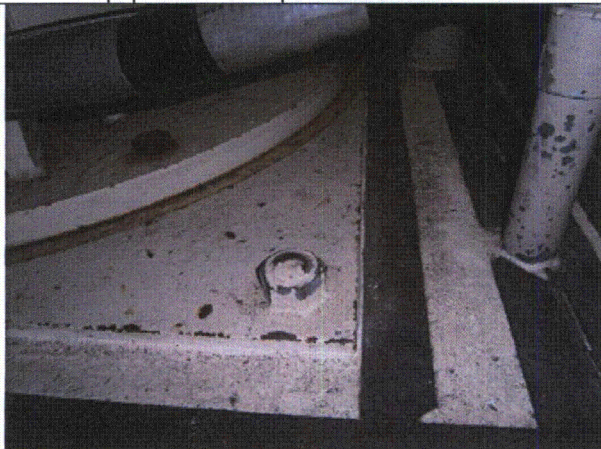
Status:  Y  N  U

**Seismic Walkdown Checklist (SWC)**

Equipment ID No.: 2-PP-7W

Equipment Class: (6) Vertical Pumps

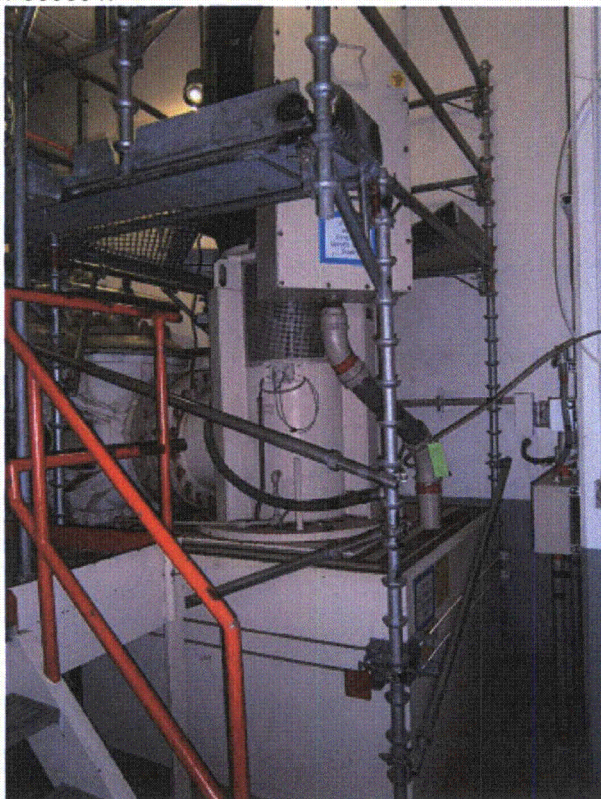
Equipment Description: WEST ESSENTIAL SERVICE WATER PUMP



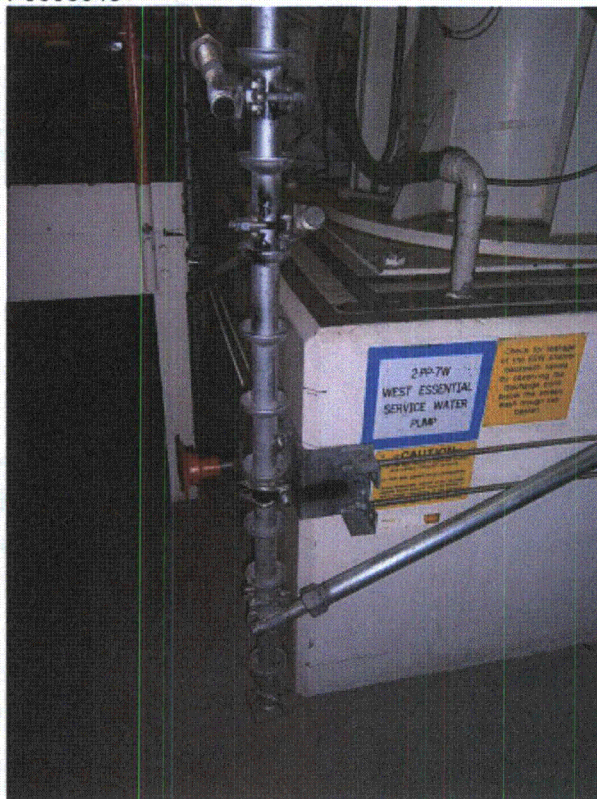
P9090047



P9090048



P9090049



P9090050



Status:  Y  N  U

**Seismic Walkdown Checklist (SWC)**

Equipment ID No.: 2-PP-7W

Equipment Class: (6) Vertical Pumps

Equipment Description: WEST ESSENTIAL SERVICE WATER PUMP



P9090051



P9090052



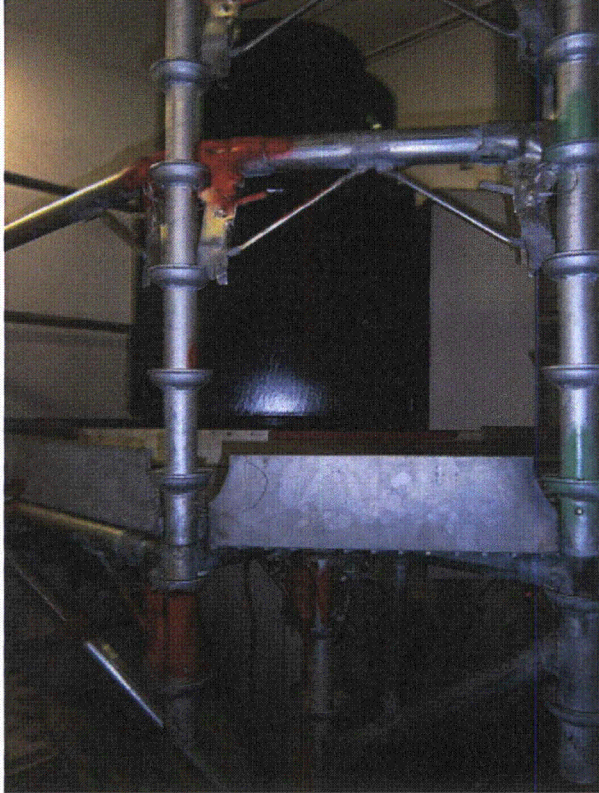
Status:  Y  N  U

**Seismic Walkdown Checklist (SWC)**

Equipment ID No.: 2-PP-7W

Equipment Class: (6) Vertical Pumps

Equipment Description: WEST ESSENTIAL SERVICE WATER PUMP



P9090053

Status:  Y  N  U

**Seismic Walkdown Checklist (SWC)**

Equipment ID No.: 2-PP-9W

Equipment Class: (6) Vertical Pumps

Equipment Description: WEST CONTAINMENT SPRAY PUMP

Project: DC Cook 2 SWEL

Location (Bldg, Elev, Room/Area): AB2, 573.00 ft, 52

Manufacturer/Model: \_\_\_\_\_

**Instructions for Completing Checklist**

This checklist may be used to document the results of the Seismic Walkdown of an item of equipment on the SWEL. The space below each of the following questions may be used to record the results of judgments and findings. Additional space is provided at the end of this checklist for documenting other comments.

**Anchorage**

- |  |                |
|--|----------------|
| 1. Is anchorage configuration verification required (i.e., is the item one of the 50% of SWEL items requiring such verification)?  | No             |
| 2. Is the anchorage free of bent, broken, missing or loose hardware?   | Yes            |
| 3. Is the anchorage free of corrosion that is more than mild surface oxidation?  | Yes            |
| 4. Is the anchorage free of visible cracks in the concrete near the anchors?   | Yes            |
| 5. Is the anchorage configuration consistent with plant documentation? (Note: This question only applies if the item is one of the 50% for which an anchorage configuration verification is required.) | Not Applicable |
| 6. Based on the above anchorage evaluations, is the anchorage free of potentially adverse seismic conditions?  | Yes            |

**Interaction Effects**



Status:  Y  N  U

**Seismic Walkdown Checklist (SWC)**

Equipment ID No.: 2-PP-9W

Equipment Class: (6) Vertical Pumps

Equipment Description: WEST CONTAINMENT SPRAY PUMP

7. Are soft targets free from impact by nearby equipment or structures? Yes

8. Are overhead equipment, distribution systems, ceiling tiles and lighting, and masonry block walls not likely to collapse onto the equipment? Yes  
*Block wall behind pump - DWG 12-4025, Wall W-22*

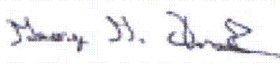
9. Do attached lines have adequate flexibility to avoid damage? Yes

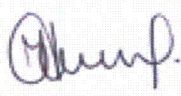
10. Based on the above seismic interaction evaluations, is equipment free of potentially adverse seismic interaction effects? Yes

**Other Adverse Conditions**

11. Have you looked for and found no adverse seismic conditions that could adversely affect the safety functions of the equipment? Yes

**Comments**

Evaluated by:  George G Thomas Date: 10/18/12

 Neda Stoeva 10/18/12

**Photos**

Status:  Y  N  U

**Seismic Walkdown Checklist (SWC)**

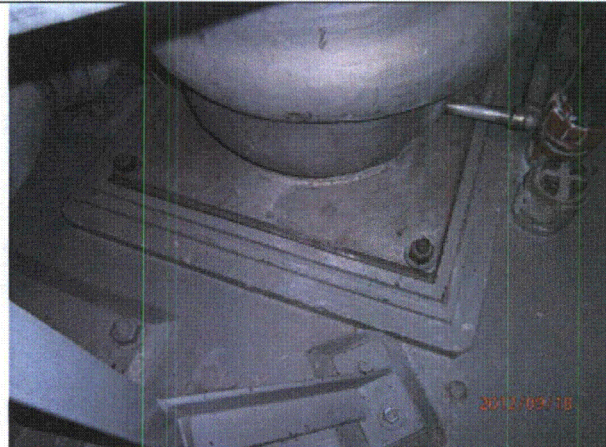
Equipment ID No.: 2-PP-9W

Equipment Class: (6) Vertical Pumps

Equipment Description: WEST CONTAINMENT SPRAY PUMP



P9180795



P9180796



P9180797



P9180798



Status:  Y  N  U

**Seismic Walkdown Checklist (SWC)**

Equipment ID No.: 2-PP-9W

Equipment Class: (6) Vertical Pumps

Equipment Description: WEST CONTAINMENT SPRAY PUMP



P9180799



P9180800

Status:  Y  N  U

**Seismic Walkdown Checklist (SWC)**

Equipment ID No.: 2-PP-9W

Equipment Class: (6) Vertical Pumps

Equipment Description: WEST CONTAINMENT SPRAY PUMP



P9180801



Status:  Y  N  U

**Seismic Walkdown Checklist (SWC)**

Equipment ID No.: 2-PS-A

Equipment Class: (1) Motor Control Centers

Equipment Description: 600VAC MOTOR CONTROL CENTER PS-A

Project: DC Cook 2 SWEL

Location (Bldg, Elev, Room/Area): SH2, 594.00 ft, 221

Manufacturer/Model: \_\_\_\_\_

**Instructions for Completing Checklist**

This checklist may be used to document the results of the Seismic Walkdown of an item of equipment on the SWEL. The space below each of the following questions may be used to record the results of judgments and findings. Additional space is provided at the end of this checklist for documenting other comments.

**Anchorage**

1. Is anchorage configuration verification required (i.e., is the item one of the 50% of SWEL items requiring such verification)? Yes  
*SQUG 2-PS-A REV0*
  
2. Is the anchorage free of bent, broken, missing or loose hardware? Yes
  
3. Is the anchorage free of corrosion that is more than mild surface oxidation? Yes
  
4. Is the anchorage free of visible cracks in the concrete near the anchors? Yes
  
5. Is the anchorage configuration consistent with plant documentation? (Note: This question only applies if the item is one of the 50% for which an anchorage configuration verification is required.) Yes
  
6. Based on the above anchorage evaluations, is the anchorage free of potentially adverse seismic conditions? Yes

---

**Interaction Effects**

Status:  Y  N  U

**Seismic Walkdown Checklist (SWC)**

Equipment ID No.: 2-PS-A

Equipment Class: (1) Motor Control Centers

Equipment Description: 600VAC MOTOR CONTROL CENTER PS-A

7. Are soft targets free from impact by nearby equipment or structures? Yes

8. Are overhead equipment, distribution systems, ceiling tiles and lighting, and masonry block walls not likely to collapse onto the equipment? Yes

9. Do attached lines have adequate flexibility to avoid damage? Yes

10. Based on the above seismic interaction evaluations, is equipment free of potentially adverse seismic interaction effects? Yes

**Other Adverse Conditions**

11. Have you looked for and found no adverse seismic conditions that could adversely affect the safety functions of the equipment? Yes

**Comments**

Evaluated by:  George G Thomas Date: 10/18/12

 Neda Stoeva 10/18/12

**Photos**



Status:  Y  N  U

**Seismic Walkdown Checklist (SWC)**

Equipment ID No.: 2-PS-A

Equipment Class: (1) Motor Control Centers

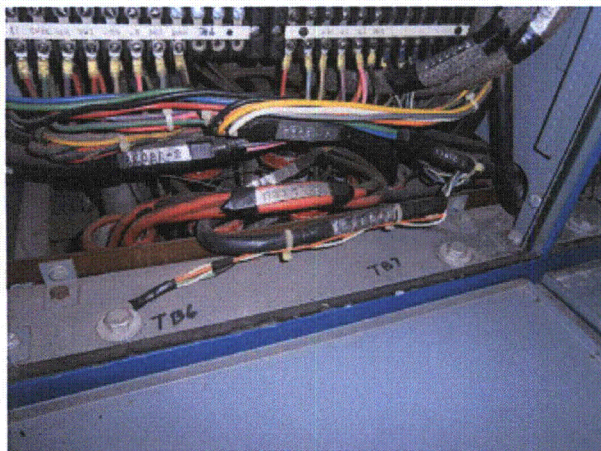
Equipment Description: 600VAC MOTOR CONTROL CENTER PS-A



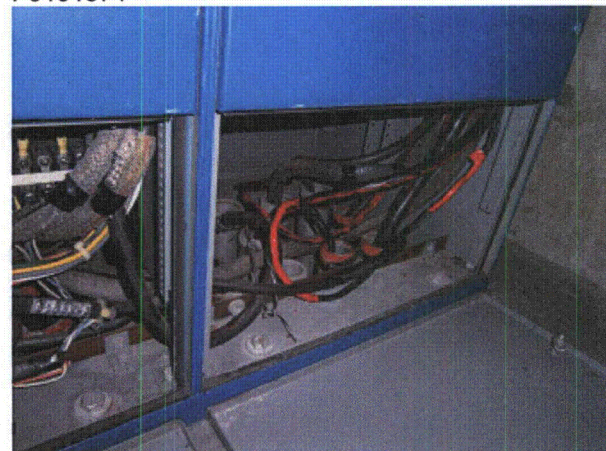
P9191373



P9191374



P9191375



P9191376



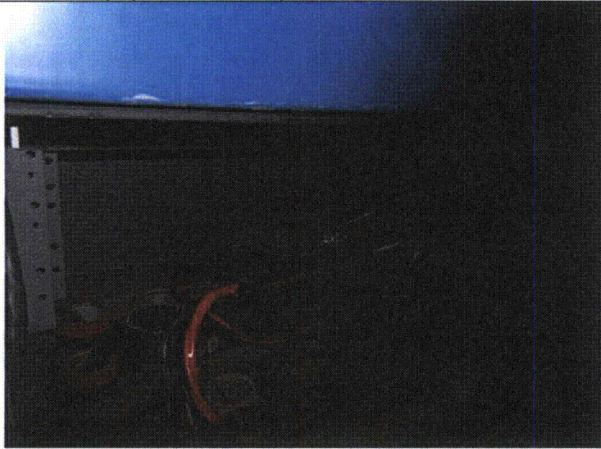
Status:  Y  N  U

**Seismic Walkdown Checklist (SWC)**

Equipment ID No.: 2-PS-A

Equipment Class: (1) Motor Control Centers

Equipment Description: 600VAC MOTOR CONTROL CENTER PS-A



P9191377



P9191378



P9191379



Status:  Y  N  U

**Seismic Walkdown Checklist (SWC)**

Equipment ID No.: 2-QT-106-AB1

Equipment Class: (0) Other

Equipment Description: AB EMERGENCY DIESEL FUEL OIL TRANSFER PUMP #2

Project: DC Cook 2 SWEL

Location (Bldg, Elev, Room/Area): AB2, 587.00 ft, 126

Manufacturer/Model: \_\_\_\_\_

**Instructions for Completing Checklist**

This checklist may be used to document the results of the Seismic Walkdown of an item of equipment on the SWEL. The space below each of the following questions may be used to record the results of judgments and findings. Additional space is provided at the end of this checklist for documenting other comments.

**Anchorage**

1. Is anchorage configuration verification required (i.e., is the item one of the 50% of SWEL items requiring such verification)? No
  
2. Is the anchorage free of bent, broken, missing or loose hardware? Yes
  
3. Is the anchorage free of corrosion that is more than mild surface oxidation? Yes  
*PAINTED*
  
4. Is the anchorage free of visible cracks in the concrete near the anchors? Yes
  
5. Is the anchorage configuration consistent with plant documentation? (Note: This question only applies if the item is one of the 50% for which an anchorage configuration verification is required.) Not Applicable
  
6. Based on the above anchorage evaluations, is the anchorage free of potentially adverse seismic conditions? Yes

**Interaction Effects**

Status:  Y  N  U

**Seismic Walkdown Checklist (SWC)**

Equipment ID No.: 2-QT-106-AB1

Equipment Class: (0) Other

Equipment Description: AB EMERGENCY DIESEL FUEL OIL TRANSFER PUMP #2

7. Are soft targets free from impact by nearby equipment or structures? Yes

8. Are overhead equipment, distribution systems, ceiling tiles and lighting, and masonry block walls not likely to collapse onto the equipment? Yes

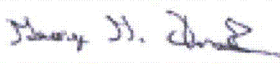
9. Do attached lines have adequate flexibility to avoid damage? Yes

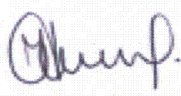
10. Based on the above seismic interaction evaluations, is equipment free of potentially adverse seismic interaction effects? Yes

**Other Adverse Conditions**

11. Have you looked for and found no adverse seismic conditions that could adversely affect the safety functions of the equipment? Yes

**Comments**

Evaluated by:  George G Thomas Date: 10/18/12

 Neda Stoeva 10/18/12

**Photos**



Status:  Y  N  U

**Seismic Walkdown Checklist (SWC)**

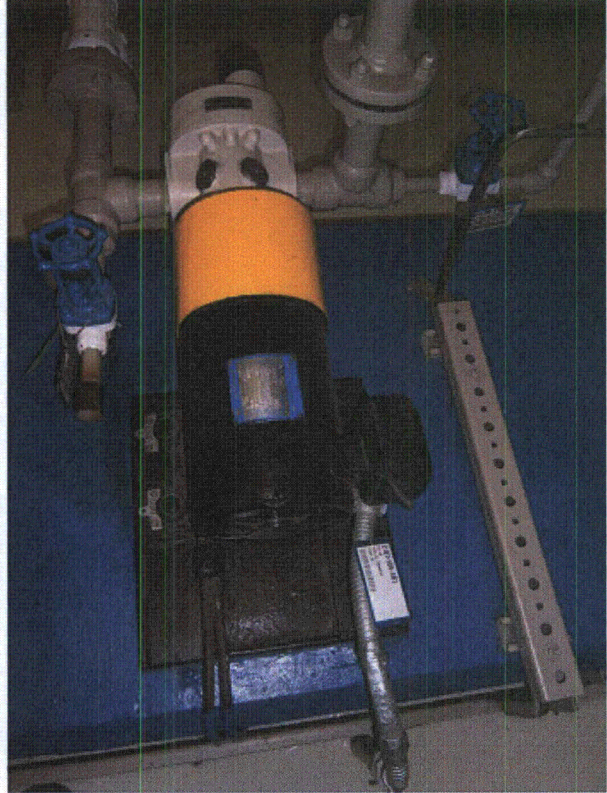
Equipment ID No.: 2-QT-106-AB1

Equipment Class: (0) Other

Equipment Description: AB EMERGENCY DIESEL FUEL OIL TRANSFER PUMP #2



P9140521



P9140522



Status:  Y  N  U

**Seismic Walkdown Checklist (SWC)**

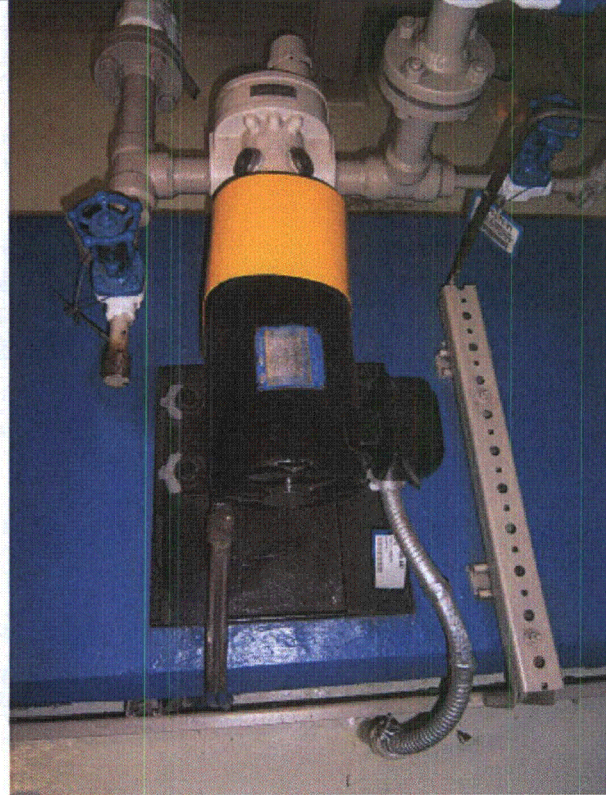
Equipment ID No.: 2-QT-106-AB1

Equipment Class: (0) Other

Equipment Description: AB EMERGENCY DIESEL FUEL OIL TRANSFER PUMP #2



P9140523



P9140524



P9140525



Status:  Y  N  U

**Seismic Walkdown Checklist (SWC)**

Equipment ID No.: 2-QT-107-AB

Equipment Class: (21) Tanks and Heat Exchangers

Equipment Description: AB EMERGENCY DIESEL FUEL OIL DAY TANK

Project: DC Cook 2 SWEL

Location (Bldg, Elev, Room/Area): AB2, 587.00 ft, 121

Manufacturer/Model: \_\_\_\_\_

**Instructions for Completing Checklist**

This checklist may be used to document the results of the Seismic Walkdown of an item of equipment on the SWEL. The space below each of the following questions may be used to record the results of judgments and findings. Additional space is provided at the end of this checklist for documenting other comments.

**Anchorage**

1. Is anchorage configuration verification required (i.e., is the item one of the 50% of SWEL items requiring such verification)? No
  
2. Is the anchorage free of bent, broken, missing or loose hardware? Yes
  
3. Is the anchorage free of corrosion that is more than mild surface oxidation? Yes
  
4. Is the anchorage free of visible cracks in the concrete near the anchors? Yes
  
5. Is the anchorage configuration consistent with plant documentation? (Note: This question only applies if the item is one of the 50% for which an anchorage configuration verification is required.) Not Applicable
  
6. Based on the above anchorage evaluations, is the anchorage free of potentially adverse seismic conditions? Yes

**Interaction Effects**

Status:  Y  N  U

**Seismic Walkdown Checklist (SWC)**

Equipment ID No.: 2-QT-107-AB

Equipment Class: (21) Tanks and Heat Exchangers

Equipment Description: AB EMERGENCY DIESEL FUEL OIL DAY TANK

7. Are soft targets free from impact by nearby equipment or structures? Yes

8. Are overhead equipment, distribution systems, ceiling tiles and lighting, and masonry block walls not likely to collapse onto the equipment? Yes  
*Block wall all the way around - reinforced - DWG 2-0436, Wall W-3*

9. Do attached lines have adequate flexibility to avoid damage? Yes

10. Based on the above seismic interaction evaluations, is equipment free of potentially adverse seismic interaction effects? Yes

**Other Adverse Conditions**

11. Have you looked for and found no adverse seismic conditions that could adversely affect the safety functions of the equipment? Yes

**Comments**

Evaluated by:  George G Thomas Date: 10/18/12

 Neda Stoeva 10/18/12

**Photos**



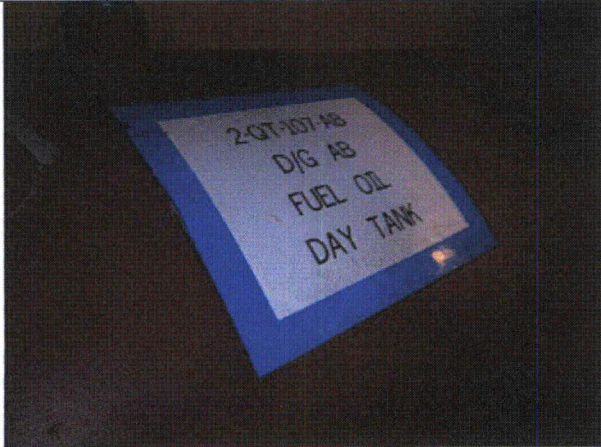
Status:  Y  N  U

**Seismic Walkdown Checklist (SWC)**

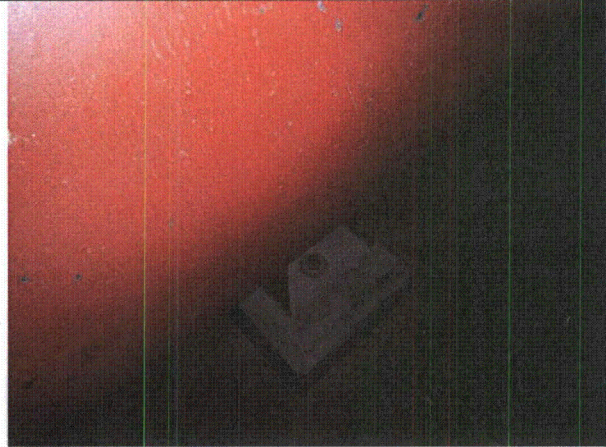
Equipment ID No.: 2-QT-107-AB

Equipment Class: (21) Tanks and Heat Exchangers

Equipment Description: AB EMERGENCY DIESEL FUEL OIL DAY TANK



P9130454



P9130455



P9130456



P9130457





Status:  Y  N  U

**Seismic Walkdown Checklist (SWC)**

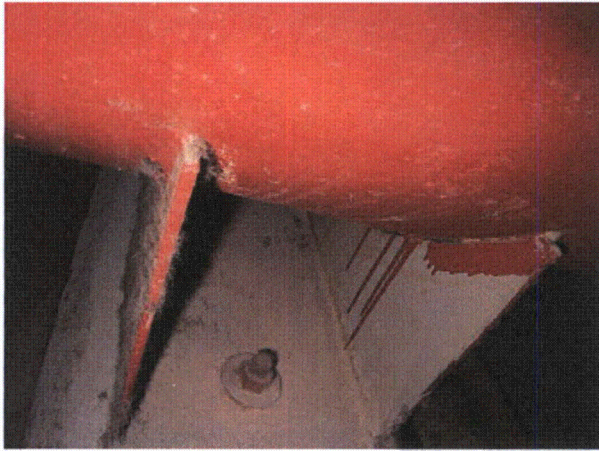
Equipment ID No.: 2-QT-107-AB

Equipment Class: (21) Tanks and Heat Exchangers

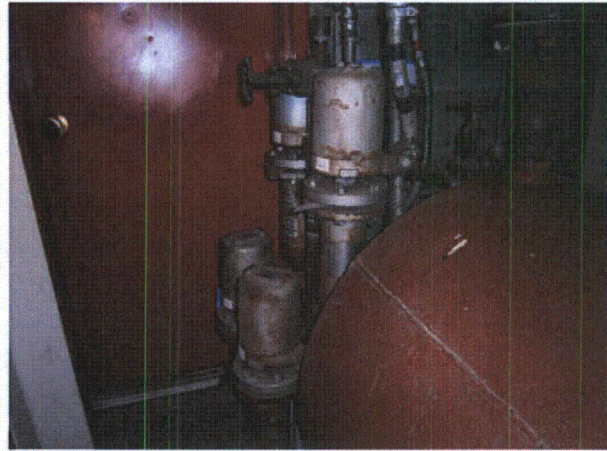
Equipment Description: AB EMERGENCY DIESEL FUEL OIL DAY TANK

P9130458

P9130459



P9130460



P9130461



P9130462



P9130463



Status:  Y  N  U

**Seismic Walkdown Checklist (SWC)**

Equipment ID No.: 2-QT-130-AB2

Equipment Class: (5) Horizontal Pumps

Equipment Description: AB EMERGENCY DIESEL JACKET WATER PUMP #2

Project: DC Cook 2 SWEL

Location (Bldg, Elev, Room/Area): AB2, 587.00 ft, 121

Manufacturer/Model: \_\_\_\_\_

**Instructions for Completing Checklist**

This checklist may be used to document the results of the Seismic Walkdown of an item of equipment on the SWEL. The space below each of the following questions may be used to record the results of judgments and findings. Additional space is provided at the end of this checklist for documenting other comments.

**Anchorage**

1. Is anchorage configuration verification required (i.e., is the item one of the 50% of SWEL items requiring such verification)? No
  
2. Is the anchorage free of bent, broken, missing or loose hardware? Yes
  
3. Is the anchorage free of corrosion that is more than mild surface oxidation? Yes
  
4. Is the anchorage free of visible cracks in the concrete near the anchors? Yes
  
5. Is the anchorage configuration consistent with plant documentation? (Note: This question only applies if the item is one of the 50% for which an anchorage configuration verification is required.) Not Applicable
  
6. Based on the above anchorage evaluations, is the anchorage free of potentially adverse seismic conditions? Yes

---

**Interaction Effects**

Status:  Y  N  U

**Seismic Walkdown Checklist (SWC)**

Equipment ID No.: 2-QT-130-AB2

Equipment Class: (5) Horizontal Pumps

Equipment Description: AB EMERGENCY DIESEL JACKET WATER PUMP #2

7. Are soft targets free from impact by nearby equipment or structures? Yes

8. Are overhead equipment, distribution systems, ceiling tiles and lighting, and masonry block walls not likely to collapse onto the equipment? Yes

9. Do attached lines have adequate flexibility to avoid damage? Yes

10. Based on the above seismic interaction evaluations, is equipment free of potentially adverse seismic interaction effects? Yes

**Other Adverse Conditions**

11. Have you looked for and found no adverse seismic conditions that could adversely affect the safety functions of the equipment? Yes

**Comments**

Evaluated by:  George G Thomas Date: 10/18/12

 Neda Stoeva 10/18/12

**Photos**



Status:  Y  N  U

**Seismic Walkdown Checklist (SWC)**

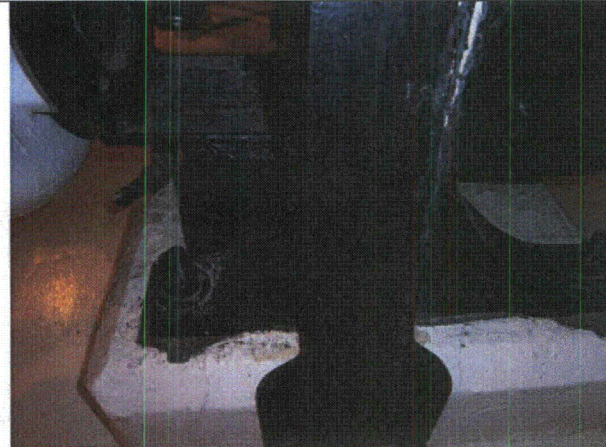
Equipment ID No.: 2-QT-130-AB2

Equipment Class: (5) Horizontal Pumps

Equipment Description: AB EMERGENCY DIESEL JACKET WATER PUMP #2



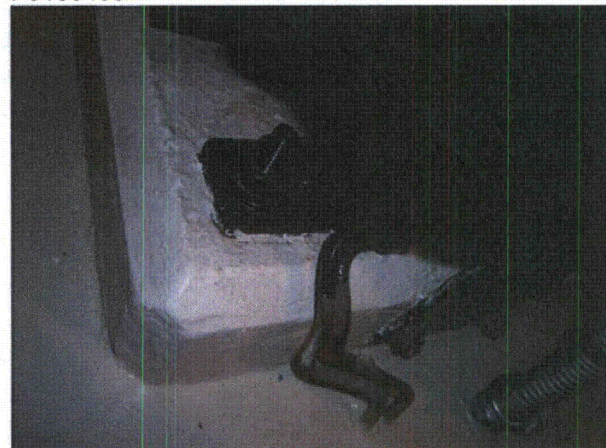
P9130437



P9130438



P9130439



P9130440

