

Status: Y N U

Seismic Walkdown Checklist (SWC)

Equipment ID No.: 2-HE-18W

Equipment Class: (21) Tanks and Heat Exchangers

Equipment Description: WEST CONTAINMENT SPRAY HEAT EXCHANGER

Project: DC Cook 2 SWEL

Location (Bldg, Elev, Room/Area): AB2, 609.00 ft, 4

Manufacturer/Model: _____

Instructions for Completing Checklist

This checklist may be used to document the results of the Seismic Walkdown of an item of equipment on the SWEL. The space below each of the following questions may be used to record the results of judgments and findings. Additional space is provided at the end of this checklist for documenting other comments.

Anchorage

1. Is anchorage configuration verification required (i.e., is the item one of the 50% of SWEL items requiring such verification)? No

2. Is the anchorage free of bent, broken, missing or loose hardware? Yes

3. Is the anchorage free of corrosion that is more than mild surface oxidation? Yes

4. Is the anchorage free of visible cracks in the concrete near the anchors? Yes

5. Is the anchorage configuration consistent with plant documentation? (Note: This question only applies if the item is one of the 50% for which an anchorage configuration verification is required.) Not Applicable

6. Based on the above anchorage evaluations, is the anchorage free of potentially adverse seismic conditions? Yes

Interaction Effects

Status: Y N U

Seismic Walkdown Checklist (SWC)

Equipment ID No.: 2-HE-18W

Equipment Class: (21) Tanks and Heat Exchangers

Equipment Description: WEST CONTAINMENT SPRAY HEAT EXCHANGER

7. Are soft targets free from impact by nearby equipment or structures? Yes

8. Are overhead equipment, distribution systems, ceiling tiles and lighting, and masonry block walls not likely to collapse onto the equipment? Yes

9. Do attached lines have adequate flexibility to avoid damage? Yes

10. Based on the above seismic interaction evaluations, is equipment free of potentially adverse seismic interaction effects? Yes

Other Adverse Conditions

11. Have you looked for and found no adverse seismic conditions that could adversely affect the safety functions of the equipment? Yes

Comments

Evaluated by:  George G Thomas Date: 10/18/12

 Neda Stoeva 10/18/12

Photos

Status: Y N U

Seismic Walkdown Checklist (SWC)

Equipment ID No.: 2-HE-18W

Equipment Class: (21) Tanks and Heat Exchangers

Equipment Description: WEST CONTAINMENT SPRAY HEAT EXCHANGER



P9180976



P9180977



P9180978



P9180979

Status: Y N U

Seismic Walkdown Checklist (SWC)

Equipment ID No.: 2-HE-18W

Equipment Class: (21) Tanks and Heat Exchangers

Equipment Description: WEST CONTAINMENT SPRAY HEAT EXCHANGER



P9180980



P9180981



P9180982



P9180983

Status: Y N U

Seismic Walkdown Checklist (SWC)

Equipment ID No.: 2-HE-18W

Equipment Class: (21) Tanks and Heat Exchangers

Equipment Description: WEST CONTAINMENT SPRAY HEAT EXCHANGER



P9180984



P9180985

Status: Y N U

Seismic Walkdown Checklist (SWC)

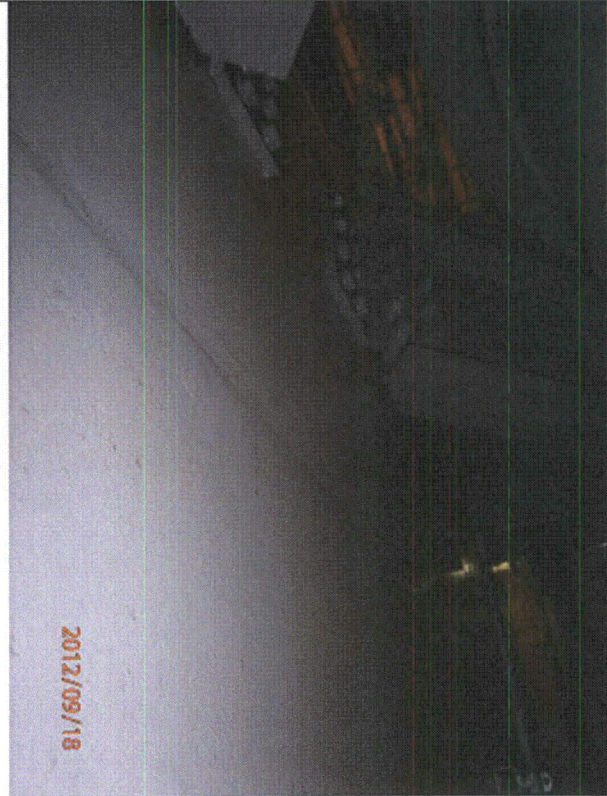
Equipment ID No.: 2-HE-18W

Equipment Class: (21) Tanks and Heat Exchangers

Equipment Description: WEST CONTAINMENT SPRAY HEAT EXCHANGER



P9180986



P9180987



P9180988



P9180989

Status: Y N U

Seismic Walkdown Checklist (SWC)

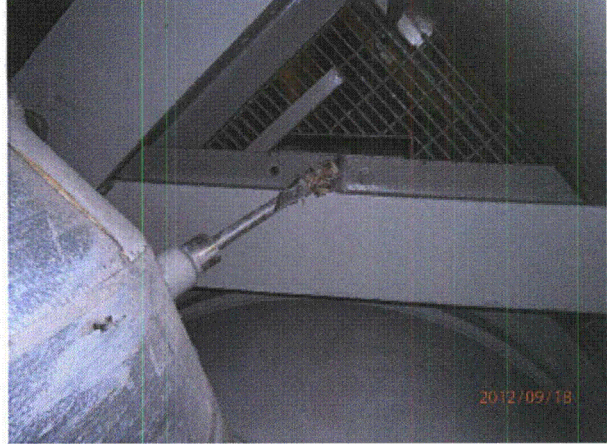
Equipment ID No.: 2-HE-18W

Equipment Class: (21) Tanks and Heat Exchangers

Equipment Description: WEST CONTAINMENT SPRAY HEAT EXCHANGER



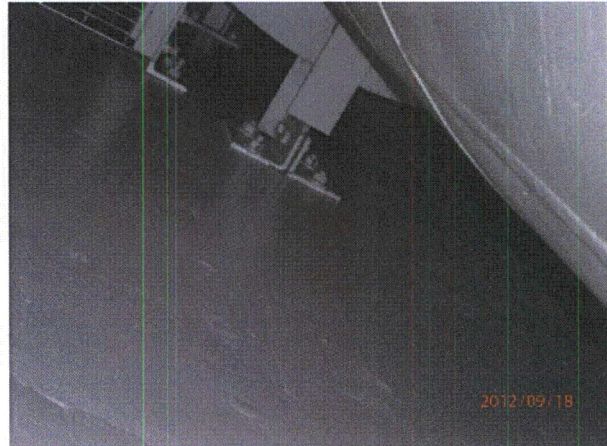
P9180990



P9180991



P9180992



P9180997

Status: Y N U

Seismic Walkdown Checklist (SWC)

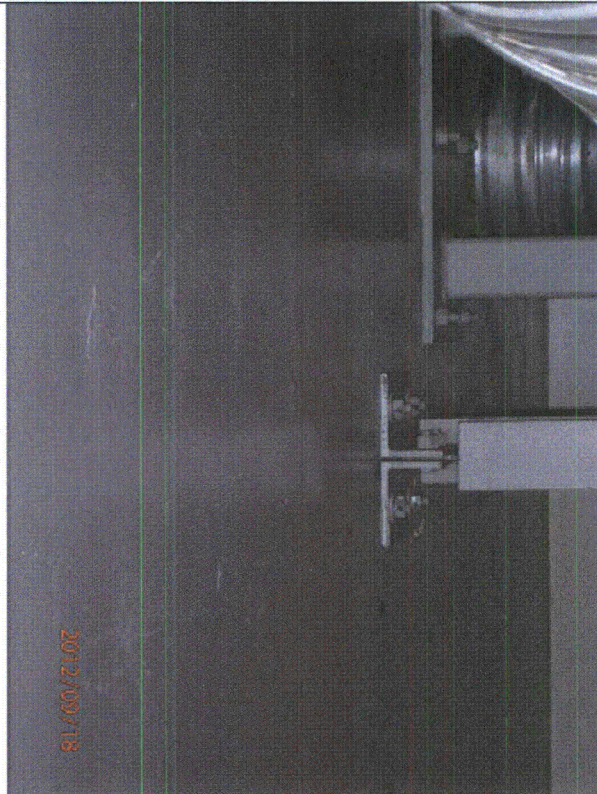
Equipment ID No.: 2-HE-18W

Equipment Class: (21) Tanks and Heat Exchangers

Equipment Description: WEST CONTAINMENT SPRAY HEAT EXCHANGER



P9180998



P9180999



P9181000

Status: Y N U

Seismic Walkdown Checklist (SWC)

Equipment ID No.: 2-HV-ACRA-2

Equipment Class: (10) Air Handlers

Equipment Description: CONTROL ROOM VENTILATION SOUTH AIR CONDITIONING

Project: DC Cook 2 SWEL

Location (Bldg, Elev, Room/Area): AB2, 650.00 ft, 129

Manufacturer/Model: _____

Instructions for Completing Checklist

This checklist may be used to document the results of the Seismic Walkdown of an item of equipment on the SWEL. The space below each of the following questions may be used to record the results of judgments and findings. Additional space is provided at the end of this checklist for documenting other comments.

Anchorage

1. Is anchorage configuration verification required (i.e., is the item one of the 50% of SWEL items requiring such verification)? Yes
DWG 12-3366 REV5

2. Is the anchorage free of bent, broken, missing or loose hardware? Yes

3. Is the anchorage free of corrosion that is more than mild surface oxidation? Yes

4. Is the anchorage free of visible cracks in the concrete near the anchors? Yes

5. Is the anchorage configuration consistent with plant documentation? (Note: This question only applies if the item is one of the 50% for which an anchorage configuration verification is required.) Yes

6. Based on the above anchorage evaluations, is the anchorage free of potentially adverse seismic conditions? Yes

Interaction Effects

Status: Y N U

Seismic Walkdown Checklist (SWC)

Equipment ID No.: 2-HV-ACRA-2

Equipment Class: (10) Air Handlers

Equipment Description: CONTROL ROOM VENTILATION SOUTH AIR CONDITIONING

7. Are soft targets free from impact by nearby equipment or structures? Yes

8. Are overhead equipment, distribution systems, ceiling tiles and lighting, and masonry block walls not likely to collapse onto the equipment? Yes

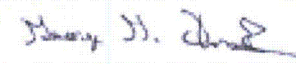
9. Do attached lines have adequate flexibility to avoid damage? Yes

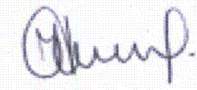
10. Based on the above seismic interaction evaluations, is equipment free of potentially adverse seismic interaction effects? Yes

Other Adverse Conditions

11. Have you looked for and found no adverse seismic conditions that could adversely affect the safety functions of the equipment? Yes

Comments

Evaluated by:  George G Thomas Date: 10/18/12

 Neda Stoeva 10/18/12

Photos

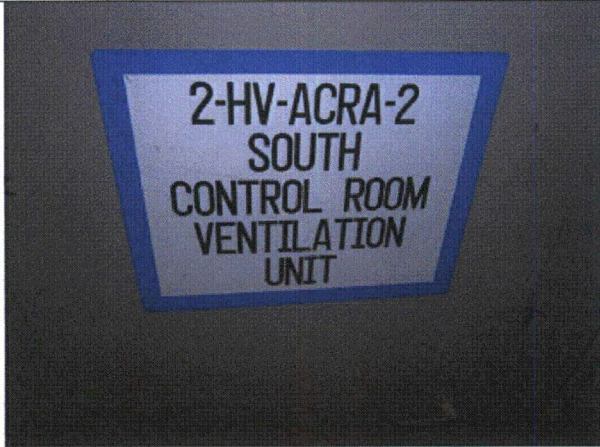
Status: Y N U

Seismic Walkdown Checklist (SWC)

Equipment ID No.: 2-HV-ACRA-2

Equipment Class: (10) Air Handlers

Equipment Description: CONTROL ROOM VENTILATION SOUTH AIR CONDITIONING



P9100140



P9100141



P9100142



P9100143



Status: Y N U

Seismic Walkdown Checklist (SWC)

Equipment ID No.: 2-HV-ACRA-2

Equipment Class: (10) Air Handlers

Equipment Description: CONTROL ROOM VENTILATION SOUTH AIR CONDITIONING
P9100144 P9100145

Status: Y N U

Seismic Walkdown Checklist (SWC)

Equipment ID No.: 2-HV-AES-2

Equipment Class: (10) Air Handlers

Equipment Description: AUXILIARY BUILDING VENTILATION ENGINEERED SAFETY

Project: DC Cook 2 SWEL

Location (Bldg, Elev, Room/Area): AB2, 633.00 ft, 8

Manufacturer/Model: _____

Instructions for Completing Checklist

This checklist may be used to document the results of the Seismic Walkdown of an item of equipment on the SWEL. The space below each of the following questions may be used to record the results of judgments and findings. Additional space is provided at the end of this checklist for documenting other comments.

Anchorage

- | | | |
|----|---|----------------|
| 1. | Is anchorage configuration verification required (i.e., is the item one of the 50% of SWEL items requiring such verification)? | No |
| 2. | Is the anchorage free of bent, broken, missing or loose hardware?

<i>2 front middle bolts on filter do not have full thread engagement - OK per SD-991215-024 pg. 12</i> | Yes |
| 3. | Is the anchorage free of corrosion that is more than mild surface oxidation? | Yes |
| 4. | Is the anchorage free of visible cracks in the concrete near the anchors? | Yes |
| 5. | Is the anchorage configuration consistent with plant documentation? (Note: This question only applies if the item is one of the 50% for which an anchorage configuration verification is required.) | Not Applicable |
| 6. | Based on the above anchorage evaluations, is the anchorage free of potentially adverse seismic conditions? | Yes |

Interaction Effects

Status: Y N U

Seismic Walkdown Checklist (SWC)

Equipment ID No.: 2-HV-AES-2

Equipment Class: (10) Air Handlers

Equipment Description: AUXILIARY BUILDING VENTILATION ENGINEERED SAFETY

7. Are soft targets free from impact by nearby equipment or structures? Yes

8. Are overhead equipment, distribution systems, ceiling tiles and lighting, and masonry block walls not likely to collapse onto the equipment? Yes
Block wall behind component filter - DWG 12-4029, Wall W-7

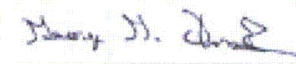
9. Do attached lines have adequate flexibility to avoid damage? Yes

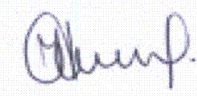
10. Based on the above seismic interaction evaluations, is equipment free of potentially adverse seismic interaction effects? Yes

Other Adverse Conditions

11. Have you looked for and found no adverse seismic conditions that could adversely affect the safety functions of the equipment? Yes

Comments

Evaluated by:  George G Thomas Date: 10/18/12

 Neda Stoeva 10/18/12

Photos

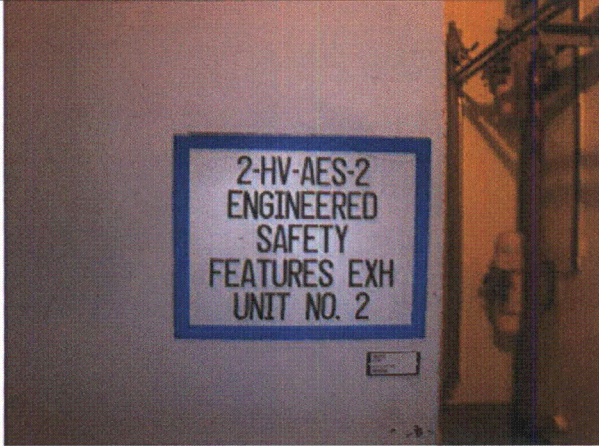
Status: Y N U

Seismic Walkdown Checklist (SWC)

Equipment ID No.: 2-HV-AES-2

Equipment Class: (10) Air Handlers

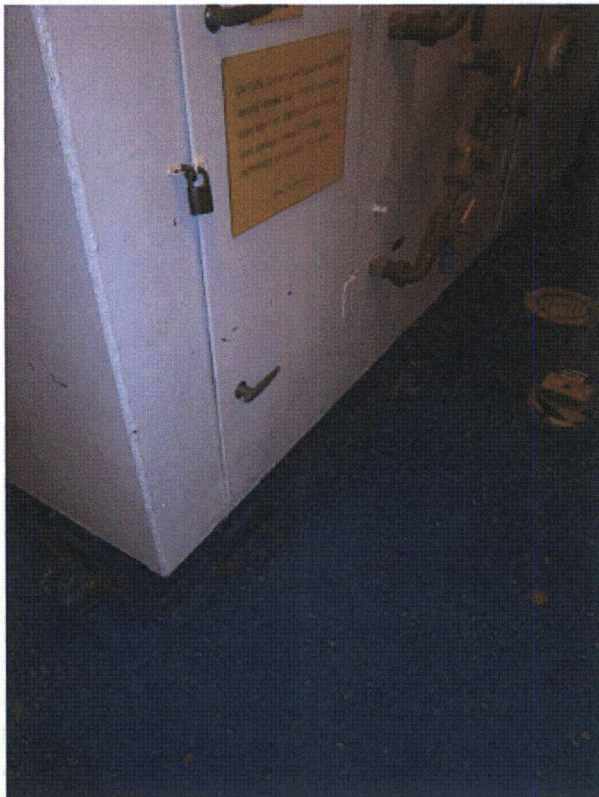
Equipment Description: AUXILIARY BUILDING VENTILATION ENGINEERED SAFETY



P9100191



P9100192



P9100193



P9100194

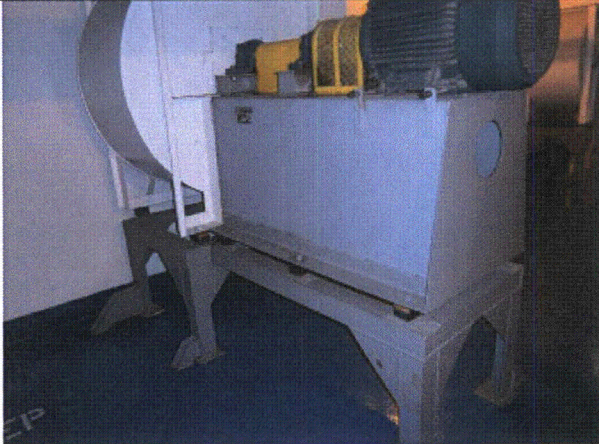
Status: Y N U

Seismic Walkdown Checklist (SWC)

Equipment ID No.: 2-HV-AES-2

Equipment Class: (10) Air Handlers

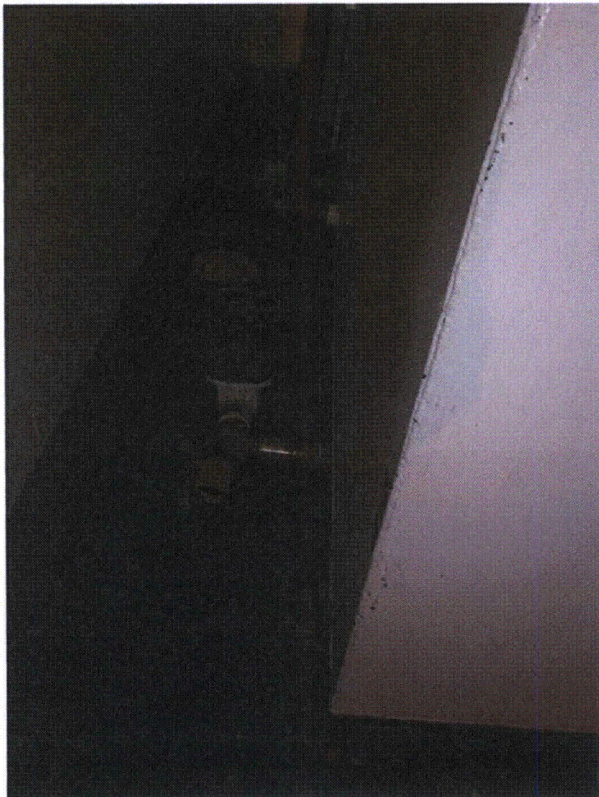
Equipment Description: AUXILIARY BUILDING VENTILATION ENGINEERED SAFETY



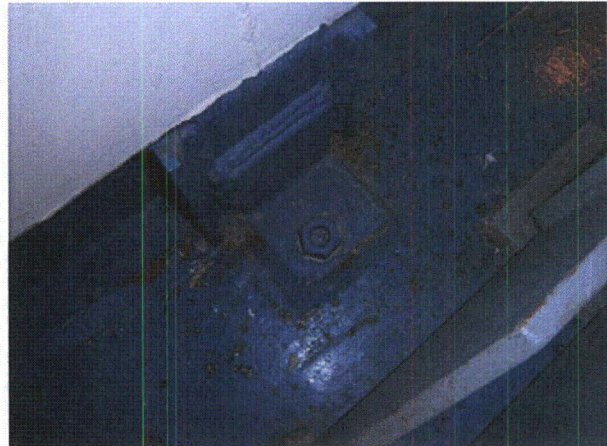
P9100195



P9100196



P9100197



P9100198

Status: Y N U

Seismic Walkdown Checklist (SWC)

Equipment ID No.: 2-HV-AES-2

Equipment Class: (10) Air Handlers

Equipment Description: AUXILIARY BUILDING VENTILATION ENGINEERED SAFETY



P9100199



P9100200

Status: Y N U

Seismic Walkdown Checklist (SWC)

Equipment ID No.: 2-HV-AES-2

Equipment Class: (10) Air Handlers

Equipment Description: AUXILIARY BUILDING VENTILATION ENGINEERED SAFETY



P9100201

Status: Y N U

Seismic Walkdown Checklist (SWC)

Equipment ID No.: 2-HV-CEQ-1

Equipment Class: (10) Air Handlers

Equipment Description: CONTAINMENT HYDROGEN SKIMMER VENTILATION FAN #1

Project: DC Cook 2 SWEL

Location (Bldg, Elev, Room/Area): CON2, 625.00 ft, 75

Manufacturer/Model: _____

Instructions for Completing Checklist

This checklist may be used to document the results of the Seismic Walkdown of an item of equipment on the SWEL. The space below each of the following questions may be used to record the results of judgments and findings. Additional space is provided at the end of this checklist for documenting other comments.

Anchorage

1. Is anchorage configuration verification required (i.e., is the item one of the 50% of SWEL items requiring such verification)? Yes
SQUG 2-HV-CEQ-1 REV0

2. Is the anchorage free of bent, broken, missing or loose hardware? Yes
Missing bolt on backside as identified in SEWS - SQUG 2-HV-CEQ-1 REV0

3. Is the anchorage free of corrosion that is more than mild surface oxidation? Yes

4. Is the anchorage free of visible cracks in the concrete near the anchors? Not Applicable
Mounted to floor grate

5. Is the anchorage configuration consistent with plant documentation? (Note: This question only applies if the item is one of the 50% for which an anchorage configuration verification is required.) Yes

6. Based on the above anchorage evaluations, is the anchorage free of potentially adverse seismic conditions? Yes

Interaction Effects

Status: Y N U

Seismic Walkdown Checklist (SWC)

Equipment ID No.: 2-HV-CEQ-1

Equipment Class: (10) Air Handlers

Equipment Description: CONTAINMENT HYDROGEN SKIMMER VENTILATION FAN #1

7. Are soft targets free from impact by nearby equipment or structures? Yes

8. Are overhead equipment, distribution systems, ceiling tiles and lighting, and masonry block walls not likely to collapse onto the equipment? Yes

9. Do attached lines have adequate flexibility to avoid damage? Yes

10. Based on the above seismic interaction evaluations, is equipment free of potentially adverse seismic interaction effects? Yes

Other Adverse Conditions

11. Have you looked for and found no adverse seismic conditions that could adversely affect the safety functions of the equipment? Yes

Comments

Evaluated by:  George G Thomas Date: 10/18/12

 Neda Stoeva 10/18/12

Photos

Status: Y N U

Seismic Walkdown Checklist (SWC)

Equipment ID No.: 2-HV-CEQ-1

Equipment Class: (10) Air Handlers

Equipment Description: CONTAINMENT HYDROGEN SKIMMER VENTILATION FAN #1



P9130260



P9130261



P9130262



P9130263



Status: Y N U

Seismic Walkdown Checklist (SWC)

Equipment ID No.: 2-HV-CEQ-1

Equipment Class: (10) Air Handlers

Equipment Description: CONTAINMENT HYDROGEN SKIMMER VENTILATION FAN #1

P9130264

P9130265



P9130266



P9130267



P9130268



P9130269

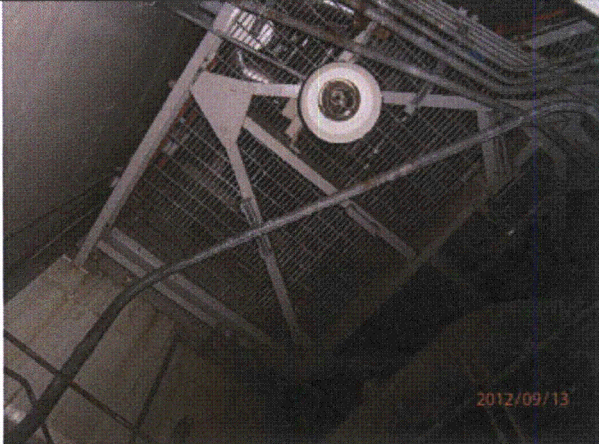
Status: Y N U

Seismic Walkdown Checklist (SWC)

Equipment ID No.: 2-HV-CEQ-1

Equipment Class: (10) Air Handlers

Equipment Description: CONTAINMENT HYDROGEN SKIMMER VENTILATION FAN #1



P9130271



P9130272



P9130273



P9130274



Status: Y N U

Seismic Walkdown Checklist (SWC)

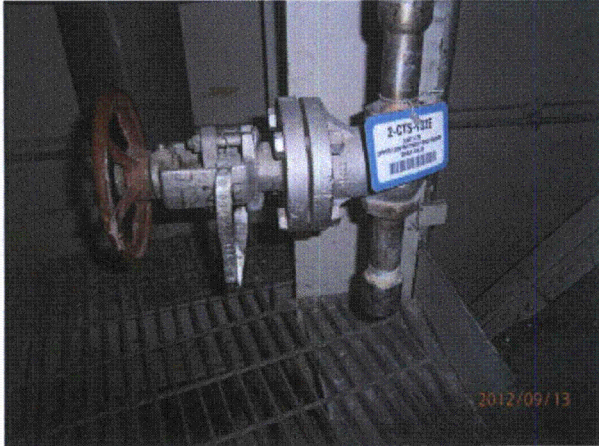
Equipment ID No.: 2-HV-CEQ-1

Equipment Class: (10) Air Handlers

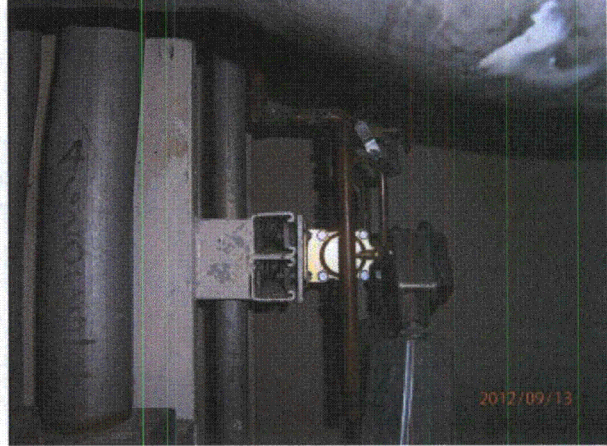
Equipment Description: CONTAINMENT HYDROGEN SKIMMER VENTILATION FAN #1

P9130275

P9130276



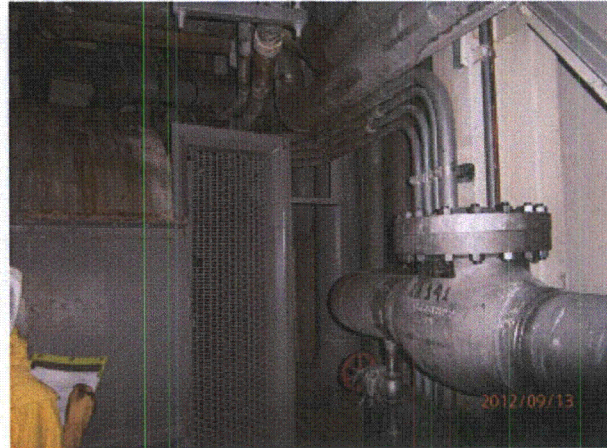
P9130277



P9130278



P9130279



P9130280

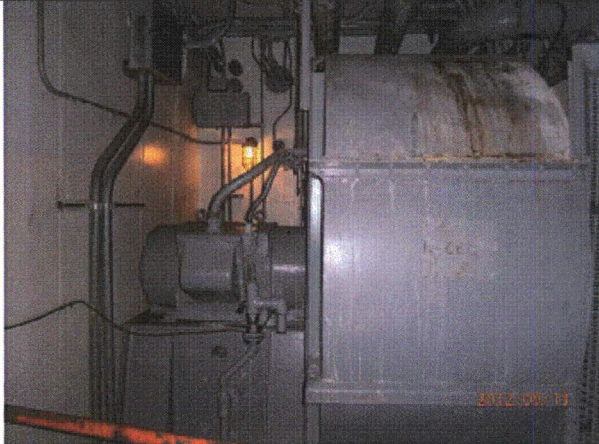
Status: Y N U

Seismic Walkdown Checklist (SWC)

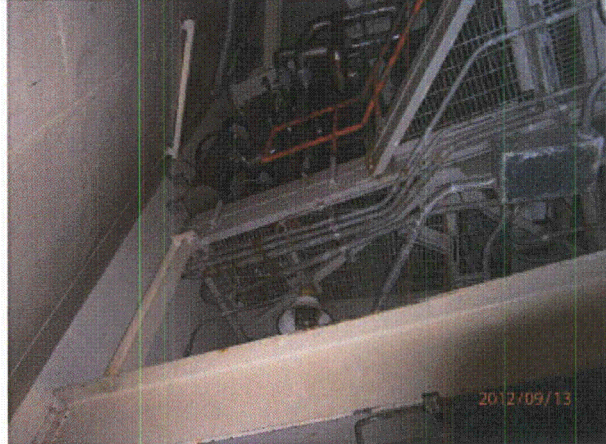
Equipment ID No.: 2-HV-CEQ-1

Equipment Class: (10) Air Handlers

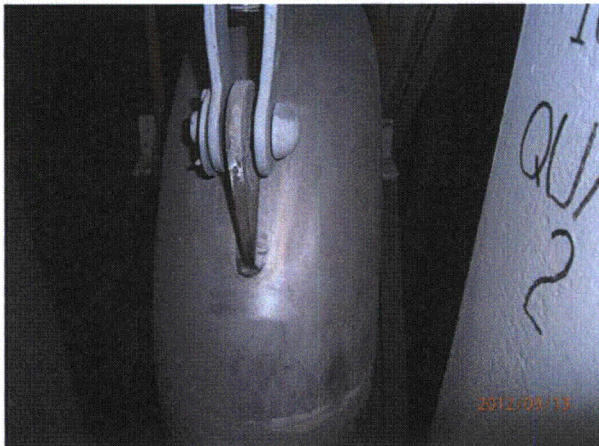
Equipment Description: CONTAINMENT HYDROGEN SKIMMER VENTILATION FAN #1



P9130281



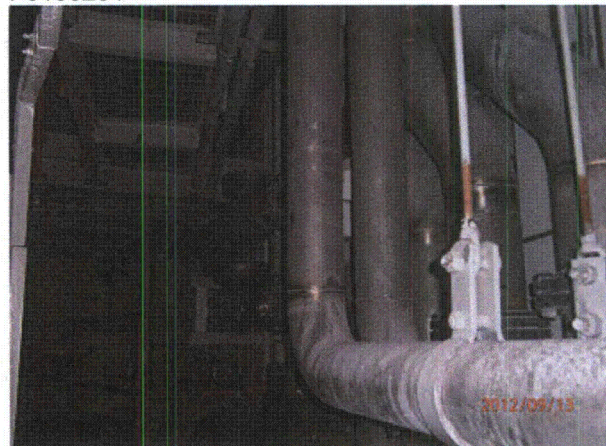
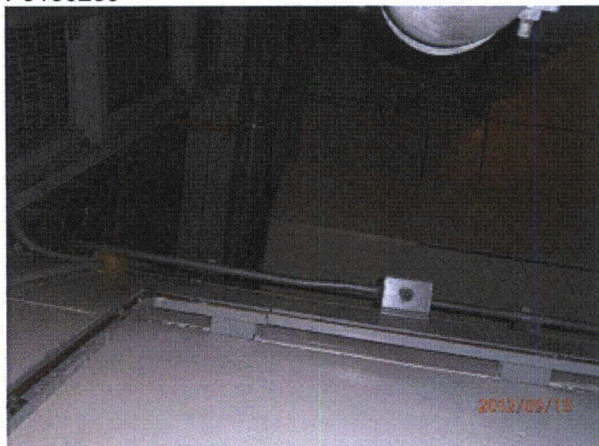
P9130282



P9130283



P9130284



Status: Y N U

Seismic Walkdown Checklist (SWC)

Equipment ID No.: 2-HV-CEQ-1

Equipment Class: (10) Air Handlers

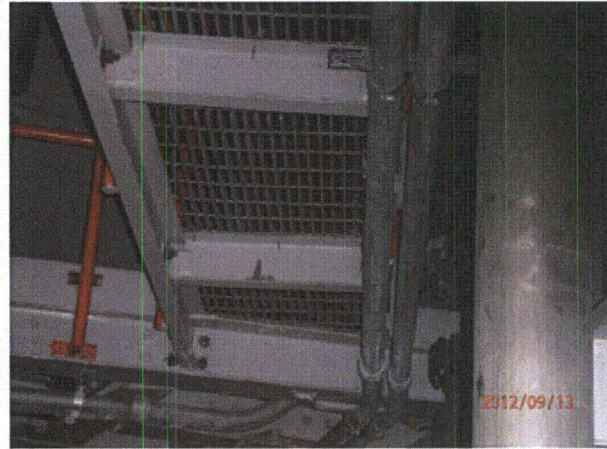
Equipment Description: CONTAINMENT HYDROGEN SKIMMER VENTILATION FAN #1

P9130285

P9130286



P9130287



P9130288



P9130289

Status: Y N U

Seismic Walkdown Checklist (SWC)

Equipment ID No.: 2-HV-CEQ-2

Equipment Class: (10) Air Handlers

Equipment Description: CONTAINMENT HYDROGEN SKIMMER VENTILATION FAN #2

Project: DC Cook 2 SWEL

Location (Bldg, Elev, Room/Area): CON2, 625.00 ft, 74

Manufacturer/Model: _____

Instructions for Completing Checklist

This checklist may be used to document the results of the Seismic Walkdown of an item of equipment on the SWEL. The space below each of the following questions may be used to record the results of judgments and findings. Additional space is provided at the end of this checklist for documenting other comments.

Anchorage

- | | |
|--|----------------|
| 1. Is anchorage configuration verification required (i.e., is the item one of the 50% of SWEL items requiring such verification)? | No |
| 2. Is the anchorage free of bent, broken, missing or loose hardware?
<i>Missing bolt on support directly below 2-VMO-101 - OK per SEWS report - SQUG 2-HV-CEQ-2 REV0</i> | Yes |
| 3. Is the anchorage free of corrosion that is more than mild surface oxidation? | Yes |
| 4. Is the anchorage free of visible cracks in the concrete near the anchors? | Not Applicable |
| 5. Is the anchorage configuration consistent with plant documentation? (Note: This question only applies if the item is one of the 50% for which an anchorage configuration verification is required.) | Not Applicable |
| 6. Based on the above anchorage evaluations, is the anchorage free of potentially adverse seismic conditions? | Yes |

Interaction Effects

Status: Y N U

Seismic Walkdown Checklist (SWC)

Equipment ID No.: 2-HV-CEQ-2

Equipment Class: (10) Air Handlers

Equipment Description: CONTAINMENT HYDROGEN SKIMMER VENTILATION FAN #2

7. Are soft targets free from impact by nearby equipment or structures? Yes

8. Are overhead equipment, distribution systems, ceiling tiles and lighting, and masonry block walls not likely to collapse onto the equipment? Yes

9. Do attached lines have adequate flexibility to avoid damage? Yes

10. Based on the above seismic interaction evaluations, is equipment free of potentially adverse seismic interaction effects? Yes

Other Adverse Conditions

11. Have you looked for and found no adverse seismic conditions that could adversely affect the safety functions of the equipment? Yes

Comments

Evaluated by:  George G Thomas Date: 10/18/12

 Neda Stoeva 10/18/12

Photos

Status: Y N U

Seismic Walkdown Checklist (SWC)

Equipment ID No.: 2-HV-CEQ-2

Equipment Class: (10) Air Handlers

Equipment Description: CONTAINMENT HYDROGEN SKIMMER VENTILATION FAN #2



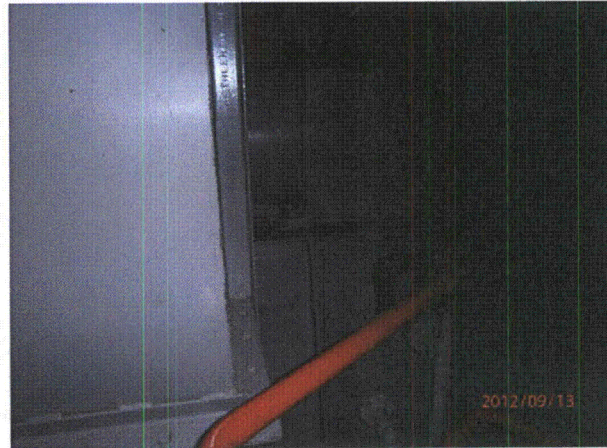
P9130291



P9130292



P9130293



P9130294



Status: Y N U

Seismic Walkdown Checklist (SWC)

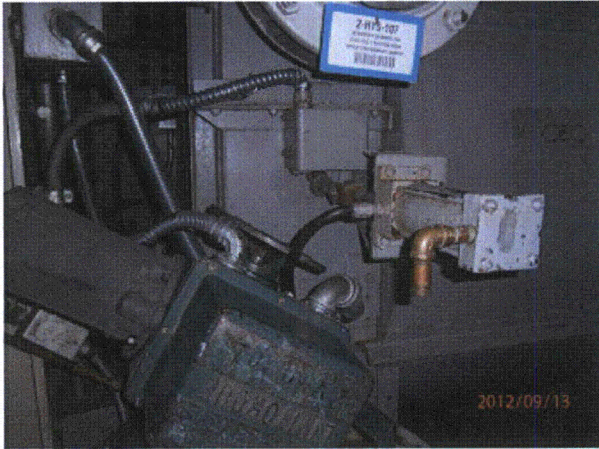
Equipment ID No.: 2-HV-CEQ-2

Equipment Class: (10) Air Handlers

Equipment Description: CONTAINMENT HYDROGEN SKIMMER VENTILATION FAN #2

P9130295

P9130296



P9130297



P9130298

Status: Y N U

Seismic Walkdown Checklist (SWC)

Equipment ID No.: 2-HV-DGX-2

Equipment Class: (9) Fans

Equipment Description: AB EMERGENCY DIESEL GENERATOR ROOM VENTILATION

Project: DC Cook 2 SWEL

Location (Bldg, Elev, Room/Area): AB2, 587.00 ft, 121

Manufacturer/Model: _____

Instructions for Completing Checklist

This checklist may be used to document the results of the Seismic Walkdown of an item of equipment on the SWEL. The space below each of the following questions may be used to record the results of judgments and findings. Additional space is provided at the end of this checklist for documenting other comments.

Anchorage

1. Is anchorage configuration verification required (i.e., is the item one of the 50% of SWEL items requiring such verification)? No

2. Is the anchorage free of bent, broken, missing or loose hardware? Yes
Limited visibility of anchorage, visible portions OK

3. Is the anchorage free of corrosion that is more than mild surface oxidation? Yes
VERY LIMITED VISIBILITY

4. Is the anchorage free of visible cracks in the concrete near the anchors? Yes
VERY LIMITED VISIBILITY

5. Is the anchorage configuration consistent with plant documentation? (Note: This question only applies if the item is one of the 50% for which an anchorage configuration verification is required.) Not Applicable

6. Based on the above anchorage evaluations, is the anchorage free of potentially adverse seismic conditions? Yes

Interaction Effects

Status: Y N U

Seismic Walkdown Checklist (SWC)

Equipment ID No.: 2-HV-DGX-2

Equipment Class: (9) Fans

Equipment Description: AB EMERGENCY DIESEL GENERATOR ROOM VENTILATION

7. Are soft targets free from impact by nearby equipment or structures? Yes

Rod hung light can swing into fan - OK, because it will not affect function of equipment

8. Are overhead equipment, distribution systems, ceiling tiles and lighting, and masonry block walls not likely to collapse onto the equipment? Yes

9. Do attached lines have adequate flexibility to avoid damage? Yes

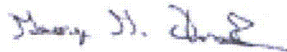
10. Based on the above seismic interaction evaluations, is equipment free of potentially adverse seismic interaction effects? Yes

Other Adverse Conditions

11. Have you looked for and found no adverse seismic conditions that could adversely affect the safety functions of the equipment? Yes

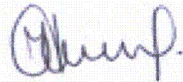
Comments

Evaluated by:



George G Thomas

Date: 10/18/12



Neda Stoeva

10/18/12

Photos

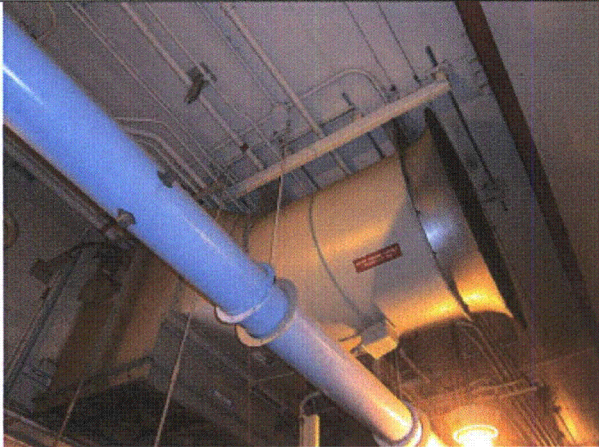
Status: Y N U

Seismic Walkdown Checklist (SWC)

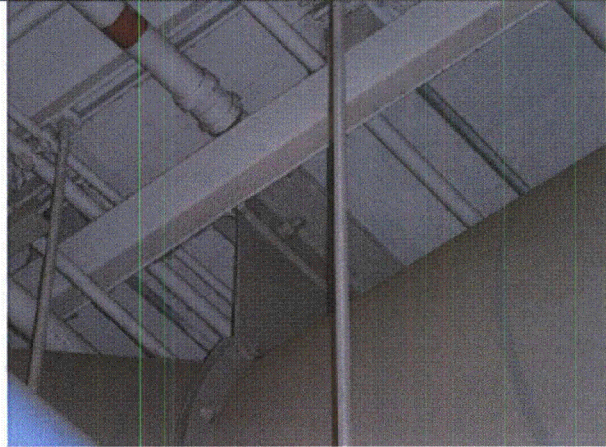
Equipment ID No.: 2-HV-DGX-2

Equipment Class: (9) Fans

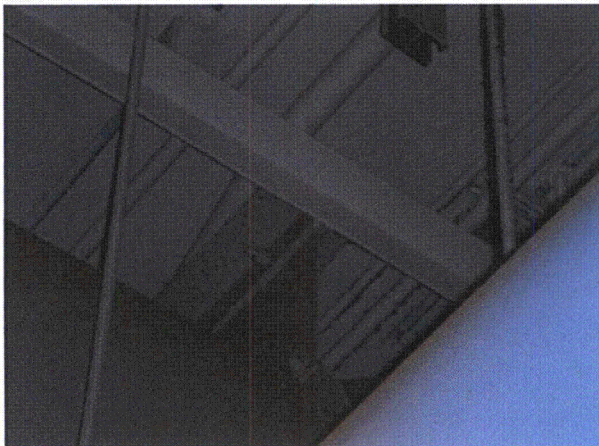
Equipment Description: AB EMERGENCY DIESEL GENERATOR ROOM VENTILATION



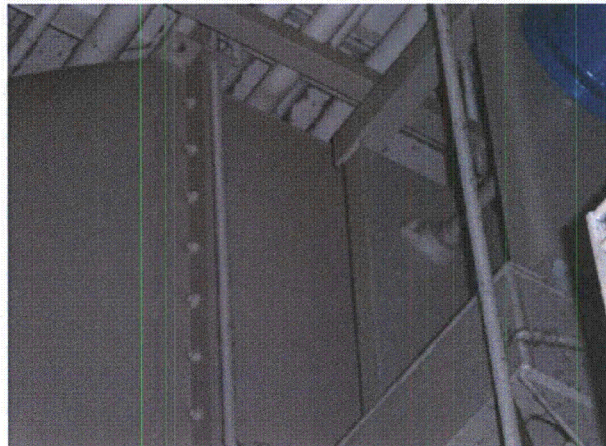
P9130430



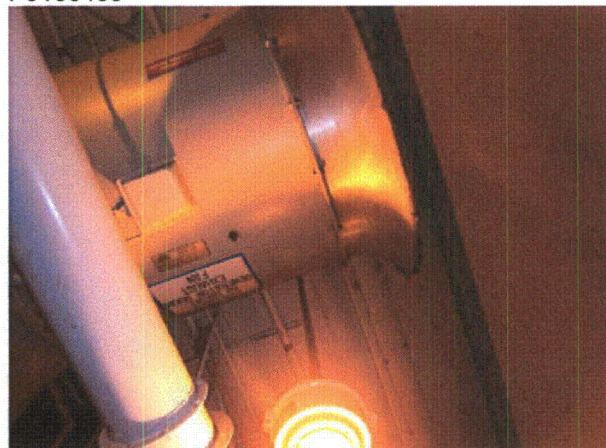
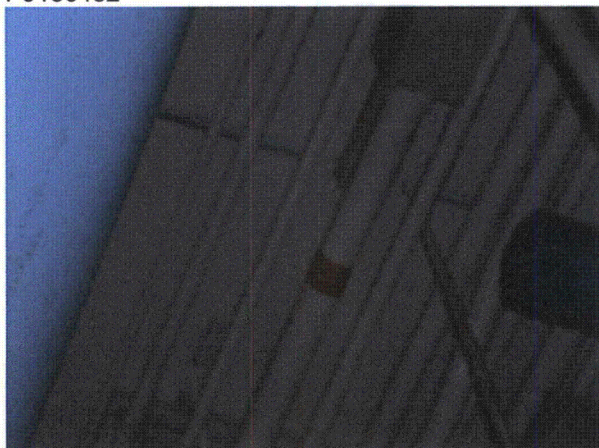
P9130431



P9130432



P9130433



Status: Y N U

Seismic Walkdown Checklist (SWC)

Equipment ID No.: 2-HV-DGX-2

Equipment Class: (9) Fans

Equipment Description: AB EMERGENCY DIESEL GENERATOR ROOM VENTILATION
P9130434 P9130435

Status: Y N U

Seismic Walkdown Checklist (SWC)

Equipment ID No.: 2-HV-SGRS-8

Equipment Class: (9) Fans

Equipment Description: 4KV ROOM 600 VOLT SWITCHGEAR TRANSFORMERS TR21A

Project: DC Cook 2 SWEL

Location (Bldg, Elev, Room/Area): AB2, 609.00 ft, 204

Manufacturer/Model: _____

Instructions for Completing Checklist

This checklist may be used to document the results of the Seismic Walkdown of an item of equipment on the SWEL. The space below each of the following questions may be used to record the results of judgments and findings. Additional space is provided at the end of this checklist for documenting other comments.

Anchorage

- | | |
|--|----------------|
| 1. Is anchorage configuration verification required (i.e., is the item one of the 50% of SWEL items requiring such verification)?
<i>SQUG 2-HV-SGRS-8 REV0</i> | Yes |
| 2. Is the anchorage free of bent, broken, missing or loose hardware? | Yes |
| 3. Is the anchorage free of corrosion that is more than mild surface oxidation? | Yes |
| 4. Is the anchorage free of visible cracks in the concrete near the anchors?
<i>Unistrut mounted</i> | Not Applicable |
| 5. Is the anchorage configuration consistent with plant documentation? (Note: This question only applies if the item is one of the 50% for which an anchorage configuration verification is required.) | Yes |
| 6. Based on the above anchorage evaluations, is the anchorage free of potentially adverse seismic conditions? | Yes |

Interaction Effects

Status: Y N U

Seismic Walkdown Checklist (SWC)

Equipment ID No.: 2-HV-SGRS-8

Equipment Class: (9) Fans

Equipment Description: 4KV ROOM 600 VOLT SWITCHGEAR TRANSFORMERS TR21A

7. Are soft targets free from impact by nearby equipment or structures? Yes

8. Are overhead equipment, distribution systems, ceiling tiles and lighting, and masonry block walls not likely to collapse onto the equipment? Yes

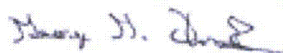
9. Do attached lines have adequate flexibility to avoid damage? Yes

10. Based on the above seismic interaction evaluations, is equipment free of potentially adverse seismic interaction effects? Yes

Other Adverse Conditions

11. Have you looked for and found no adverse seismic conditions that could adversely affect the safety functions of the equipment? Yes

Comments

Evaluated by:  George G Thomas Date: 10/18/12

 Neda Stoeva 10/18/12

Photos

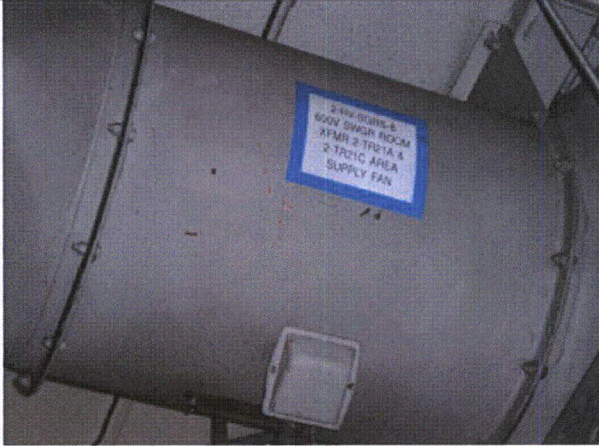
Status: Y N U

Seismic Walkdown Checklist (SWC)

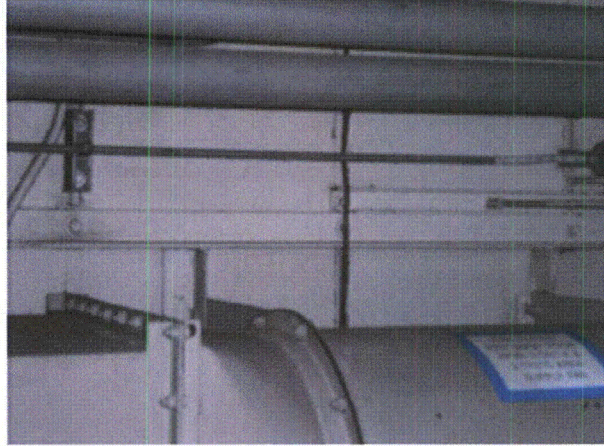
Equipment ID No.: 2-HV-SGRS-8

Equipment Class: (9) Fans

Equipment Description: 4KV ROOM 600 VOLT SWITCHGEAR TRANSFORMERS TR21A



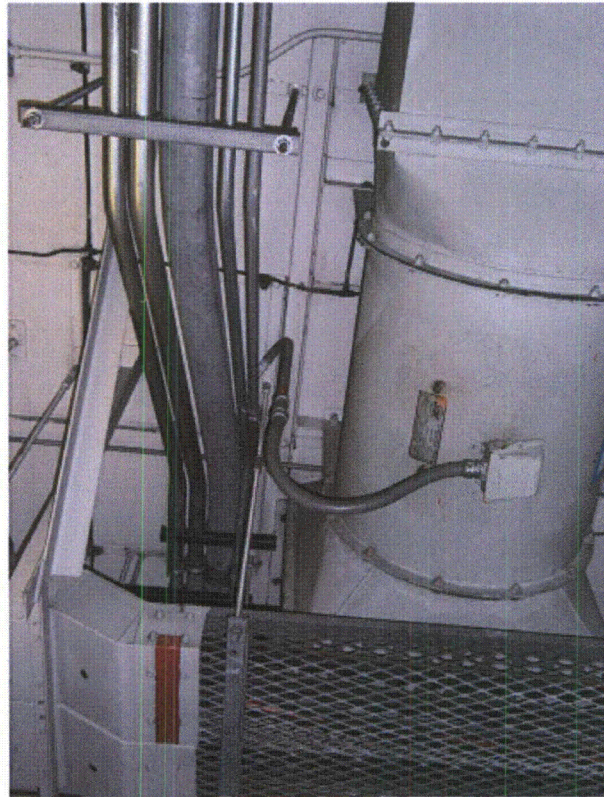
P9170876



P9170877



P9170878



P9170879

Status: Y N U

Seismic Walkdown Checklist (SWC)

Equipment ID No.: 2-IFI-53

Equipment Class: (18) Instruments on Racks

Equipment Description: BORON INJECTION TO REACTOR COOLANT LOOP #3 FLOW

Project: DC Cook 2 SWEL

Location (Bldg, Elev, Room/Area): CON2, 598.00 ft, 56

Manufacturer/Model: _____

Instructions for Completing Checklist

This checklist may be used to document the results of the Seismic Walkdown of an item of equipment on the SWEL. The space below each of the following questions may be used to record the results of judgments and findings. Additional space is provided at the end of this checklist for documenting other comments.

Anchorage

- | | |
|--|-----|
| 1. Is anchorage configuration verification required (i.e., is the item one of the 50% of SWEL items requiring such verification)? | Yes |
| 2. Is the anchorage free of bent, broken, missing or loose hardware? | Yes |
| 3. Is the anchorage free of corrosion that is more than mild surface oxidation? | Yes |
| 4. Is the anchorage free of visible cracks in the concrete near the anchors? | Yes |
| 5. Is the anchorage configuration consistent with plant documentation? (Note: This question only applies if the item is one of the 50% for which an anchorage configuration verification is required.) | Yes |
| 6. Based on the above anchorage evaluations, is the anchorage free of potentially adverse seismic conditions? | Yes |

Interaction Effects

Status: Y N U

Seismic Walkdown Checklist (SWC)

Equipment ID No.: 2-IFI-53

Equipment Class: (18) Instruments on Racks

Equipment Description: BORON INJECTION TO REACTOR COOLANT LOOP #3 FLOW

7. Are soft targets free from impact by nearby equipment or structures? Yes

8. Are overhead equipment, distribution systems, ceiling tiles and lighting, and masonry block walls not likely to collapse onto the equipment? Yes
Valve directly above but transmitter is water tight so even if fail open there is no concern.

9. Do attached lines have adequate flexibility to avoid damage? Yes

10. Based on the above seismic interaction evaluations, is equipment free of potentially adverse seismic interaction effects? Yes

Other Adverse Conditions

11. Have you looked for and found no adverse seismic conditions that could adversely affect the safety functions of the equipment? Yes

Comments

Evaluated by:  George G Thomas Date: 10/18/12

 Neda Stoeva 10/18/12

Photos

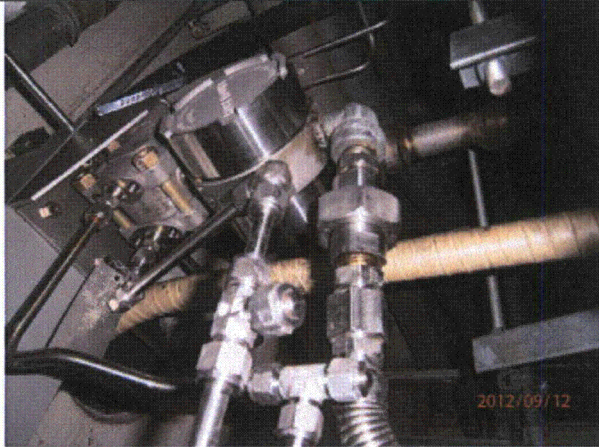
Status: Y N U

Seismic Walkdown Checklist (SWC)

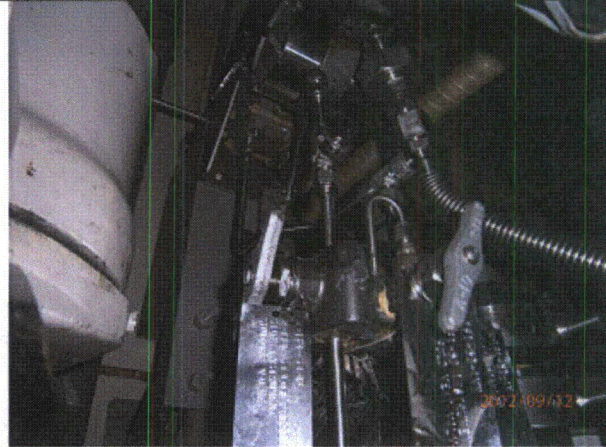
Equipment ID No.: 2-IFI-53

Equipment Class: (18) Instruments on Racks

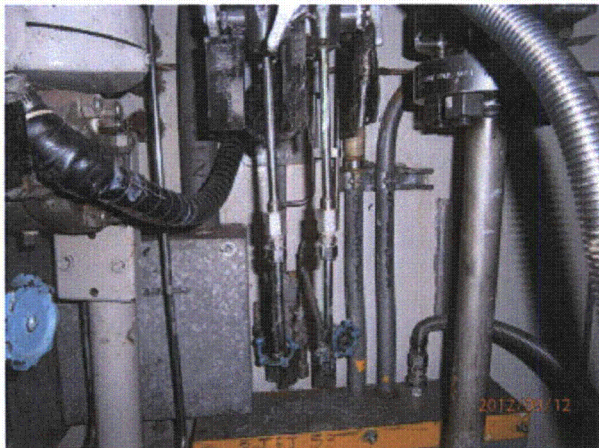
Equipment Description: BORON INJECTION TO REACTOR COOLANT LOOP #3 FLOW



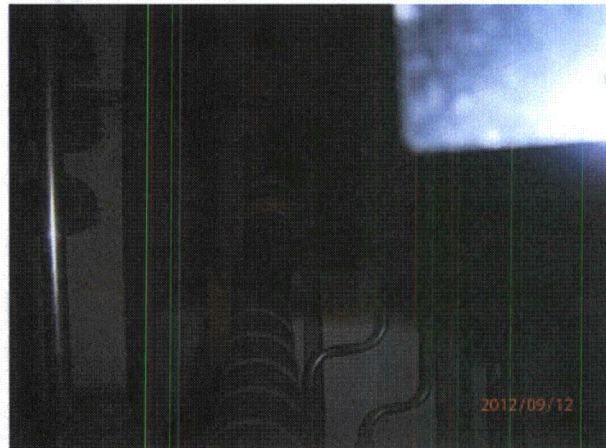
P9120166



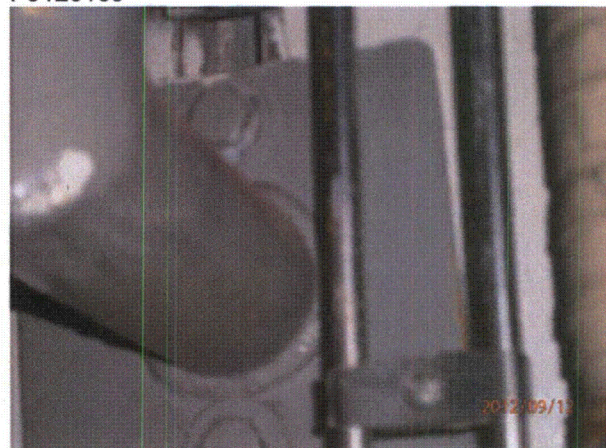
P9120167



P9120168



P9120169



Status: Y N U

Seismic Walkdown Checklist (SWC)

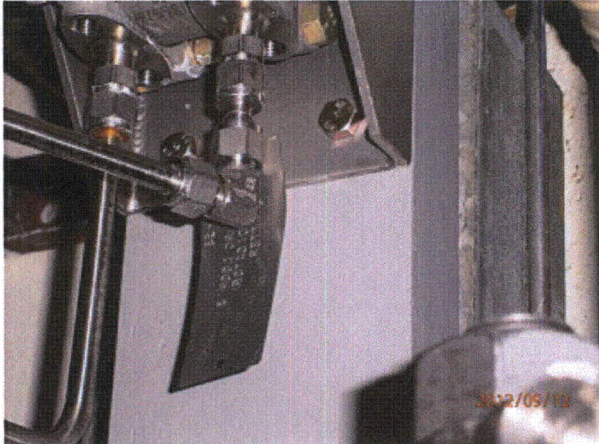
Equipment ID No.: 2-IFI-53

Equipment Class: (18) Instruments on Racks

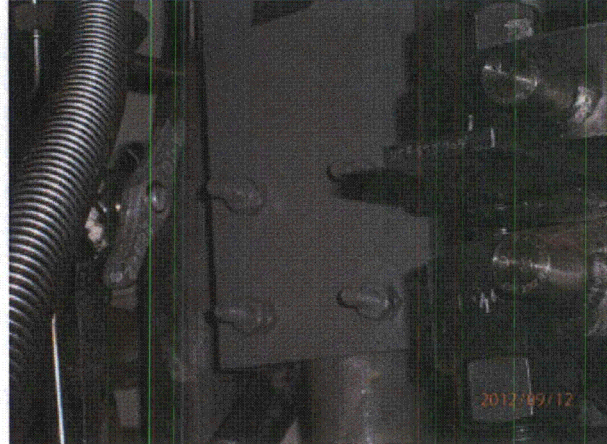
Equipment Description: BORON INJECTION TO REACTOR COOLANT LOOP #3 FLOW

P9120170

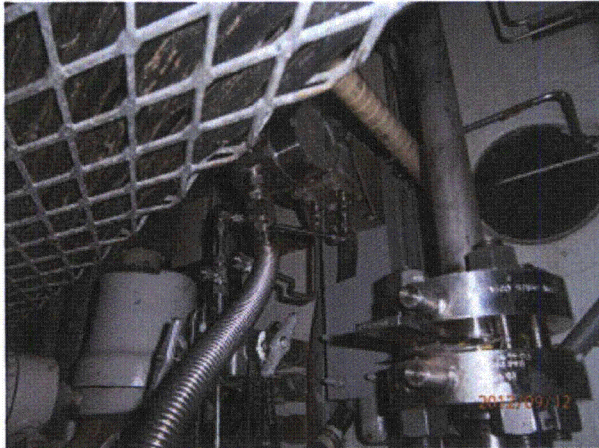
P9120171



P9120172



P9120173



P9120174



P9120175

Status: Y N U

Seismic Walkdown Checklist (SWC)

Equipment ID No.: 2-IFI-53

Equipment Class: (18) Instruments on Racks

Equipment Description: BORON INJECTION TO REACTOR COOLANT LOOP #3 FLOW



P9120176

Status: Y N U

Seismic Walkdown Checklist (SWC)

Equipment ID No.: 2-IMO-222

Equipment Class: (8) Motor-Operated and Solenoid-Operated Valves

Equipment Description: WEST CONTAINMENT SPRAY PUMP PP-9W DISCHARGE TO

Project: DC Cook 2 SWEL

Location (Bldg, Elev, Room/Area): AB2, 573.00 ft, 52

Manufacturer/Model: _____

Instructions for Completing Checklist

This checklist may be used to document the results of the Seismic Walkdown of an item of equipment on the SWEL. The space below each of the following questions may be used to record the results of judgments and findings. Additional space is provided at the end of this checklist for documenting other comments.

Anchorage

1. Is anchorage configuration verification required (i.e., is the item one of the 50% of SWEL items requiring such verification)? No

2. Is the anchorage free of bent, broken, missing or loose hardware? Not Applicable

3. Is the anchorage free of corrosion that is more than mild surface oxidation? Not Applicable

4. Is the anchorage free of visible cracks in the concrete near the anchors? Not Applicable

5. Is the anchorage configuration consistent with plant documentation? (Note: This question only applies if the item is one of the 50% for which an anchorage configuration verification is required.) Not Applicable

6. Based on the above anchorage evaluations, is the anchorage free of potentially adverse seismic conditions? Yes

Interaction Effects

Status: Y N U

Seismic Walkdown Checklist (SWC)

Equipment ID No.: 2-IMO-222

Equipment Class: (8) Motor-Operated and Solenoid-Operated Valves

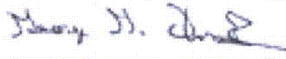
Equipment Description: WEST CONTAINMENT SPRAY PUMP PP-9W DISCHARGE TO

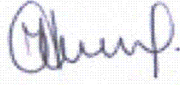
7. Are soft targets free from impact by nearby equipment or structures? Yes
8. Are overhead equipment, distribution systems, ceiling tiles and lighting, and masonry block walls not likely to collapse onto the equipment? Yes
Block wall near by - OK per DWG 12-4025, Wall W-22
9. Do attached lines have adequate flexibility to avoid damage? Yes
10. Based on the above seismic interaction evaluations, is equipment free of potentially adverse seismic interaction effects? Yes

Other Adverse Conditions

11. Have you looked for and found no adverse seismic conditions that could adversely affect the safety functions of the equipment? Yes

Comments

Evaluated by:  George G Thomas Date: 10/18/12

 Neda Stoeva 10/18/12

Photos

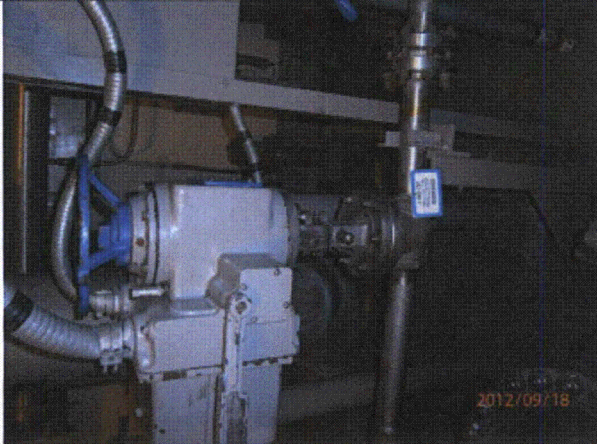
Status: Y N U

Seismic Walkdown Checklist (SWC)

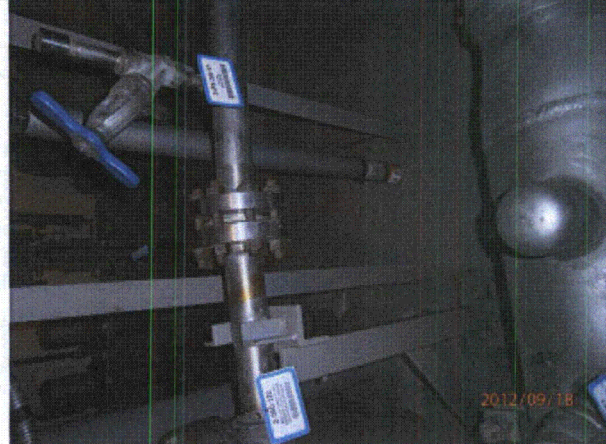
Equipment ID No.: 2-IMO-222

Equipment Class: (8) Motor-Operated and Solenoid-Operated Valves

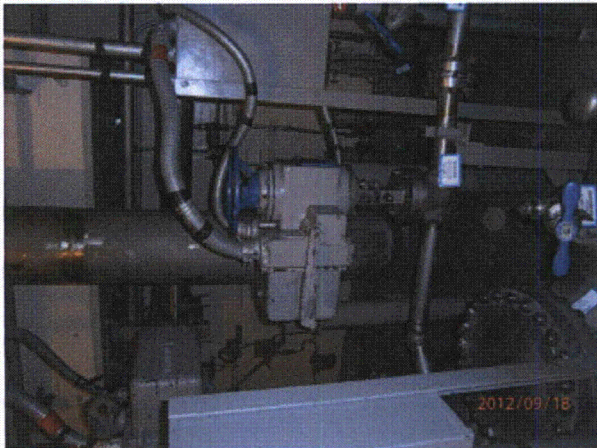
Equipment Description: WEST CONTAINMENT SPRAY PUMP PP-9W DISCHARGE TO



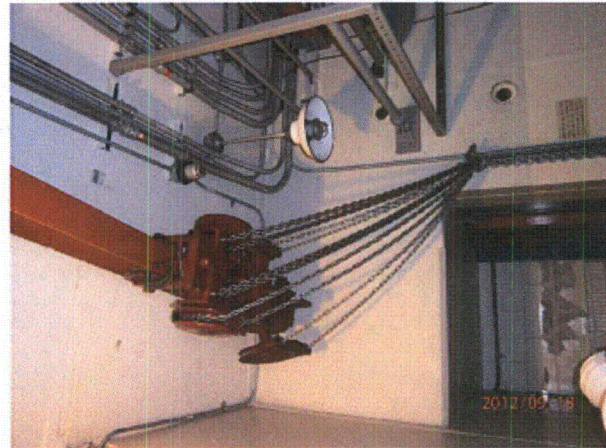
P9180821



P9180822



P9180823



P9180824

Status: Y N U

Seismic Walkdown Checklist (SWC)

Equipment ID No.: 2-IMO-225

Equipment Class: (8) Motor-Operated and Solenoid-Operated Valves

Equipment Description: REFUELING WATER STORAGE TANK TO WEST CONTAINMENT

Project: DC Cook 2 SWEL

Location (Bldg, Elev, Room/Area): AB2, 573.00 ft, 52

Manufacturer/Model: _____

Instructions for Completing Checklist

This checklist may be used to document the results of the Seismic Walkdown of an item of equipment on the SWEL. The space below each of the following questions may be used to record the results of judgments and findings. Additional space is provided at the end of this checklist for documenting other comments.

Anchorage

1. Is anchorage configuration verification required (i.e., is the item one of the 50% of SWEL items requiring such verification)? No

2. Is the anchorage free of bent, broken, missing or loose hardware? Not Applicable

3. Is the anchorage free of corrosion that is more than mild surface oxidation? Not Applicable

4. Is the anchorage free of visible cracks in the concrete near the anchors? Not Applicable

5. Is the anchorage configuration consistent with plant documentation? (Note: This question only applies if the item is one of the 50% for which an anchorage configuration verification is required.) Not Applicable

6. Based on the above anchorage evaluations, is the anchorage free of potentially adverse seismic conditions? Yes

Interaction Effects

Status: Y N U

Seismic Walkdown Checklist (SWC)

Equipment ID No.: 2-IMO-225

Equipment Class: (8) Motor-Operated and Solenoid-Operated Valves

Equipment Description: REFUELING WATER STORAGE TANK TO WEST CONTAINMENT

7. Are soft targets free from impact by nearby equipment or structures? Yes

8. Are overhead equipment, distribution systems, ceiling tiles and lighting, and masonry block walls not likely to collapse onto the equipment? Yes
Block wall near by - OK per DWG 12-4025, Wall W-22

9. Do attached lines have adequate flexibility to avoid damage? Yes

10. Based on the above seismic interaction evaluations, is equipment free of potentially adverse seismic interaction effects? Yes

Other Adverse Conditions

11. Have you looked for and found no adverse seismic conditions that could adversely affect the safety functions of the equipment? Yes

Comments

Evaluated by:  George G Thomas Date: 10/18/12

 Neda Stoeva 10/18/12

Photos

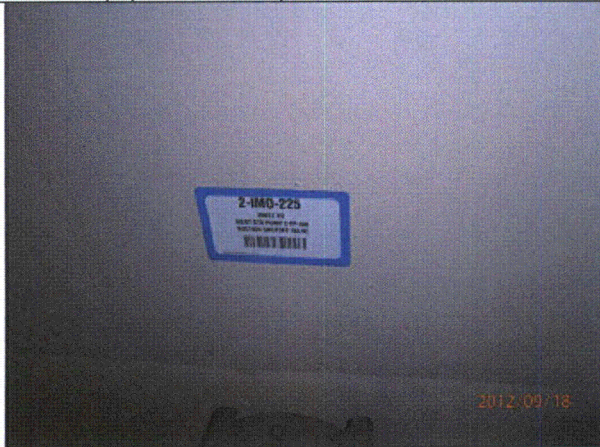
Status: Y N U

Seismic Walkdown Checklist (SWC)

Equipment ID No.: 2-IMO-225

Equipment Class: (8) Motor-Operated and Solenoid-Operated Valves

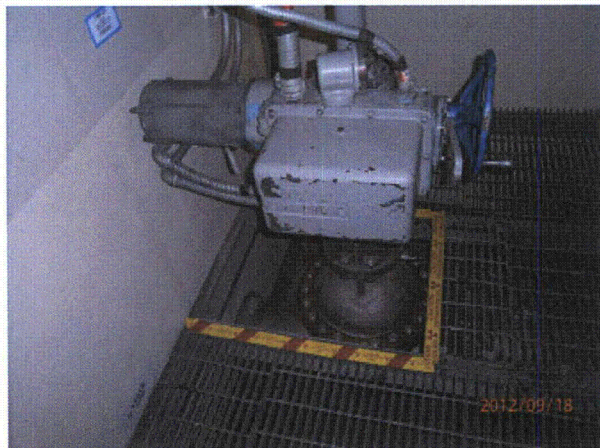
Equipment Description: REFUELING WATER STORAGE TANK TO WEST CONTAINMENT



P9180803



P9180804



P9180805



P9180806

Status: Y N U

Seismic Walkdown Checklist (SWC)

Equipment ID No.: 2-IMO-320

Equipment Class: (8) Motor-Operated and Solenoid-Operated Valves

Equipment Description: WEST RESIDUAL HEAT REMOVAL PUMP PP-35W SUCTION

Project: DC Cook 2 SWEL

Location (Bldg, Elev, Room/Area): AB2, 573.00 ft, 55

Manufacturer/Model: _____

Instructions for Completing Checklist

This checklist may be used to document the results of the Seismic Walkdown of an item of equipment on the SWEL. The space below each of the following questions may be used to record the results of judgments and findings. Additional space is provided at the end of this checklist for documenting other comments.

Anchorage

1. Is anchorage configuration verification required (i.e., is the item one of the 50% of SWEL items requiring such verification)? No

2. Is the anchorage free of bent, broken, missing or loose hardware? Not Applicable

3. Is the anchorage free of corrosion that is more than mild surface oxidation? Not Applicable

4. Is the anchorage free of visible cracks in the concrete near the anchors? Not Applicable

5. Is the anchorage configuration consistent with plant documentation? (Note: This question only applies if the item is one of the 50% for which an anchorage configuration verification is required.) Not Applicable

6. Based on the above anchorage evaluations, is the anchorage free of potentially adverse seismic conditions? Yes

Interaction Effects

Status: Y N U

Seismic Walkdown Checklist (SWC)

Equipment ID No.: 2-IMO-320

Equipment Class: (8) Motor-Operated and Solenoid-Operated Valves

Equipment Description: WEST RESIDUAL HEAT REMOVAL PUMP PP-35W SUCTION

7. Are soft targets free from impact by nearby equipment or structures? Yes

8. Are overhead equipment, distribution systems, ceiling tiles and lighting, and masonry block walls not likely to collapse onto the equipment? Yes
Block wall - look at AR# 00863253-01 - OK per DWG 12-4025, Wall W-24

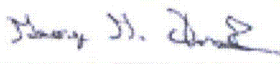
9. Do attached lines have adequate flexibility to avoid damage? Yes

10. Based on the above seismic interaction evaluations, is equipment free of potentially adverse seismic interaction effects? Yes

Other Adverse Conditions

11. Have you looked for and found no adverse seismic conditions that could adversely affect the safety functions of the equipment? Yes

Comments

Evaluated by:  George G Thomas Date: 10/18/12

 Neda Stoeva 10/18/12

Photos

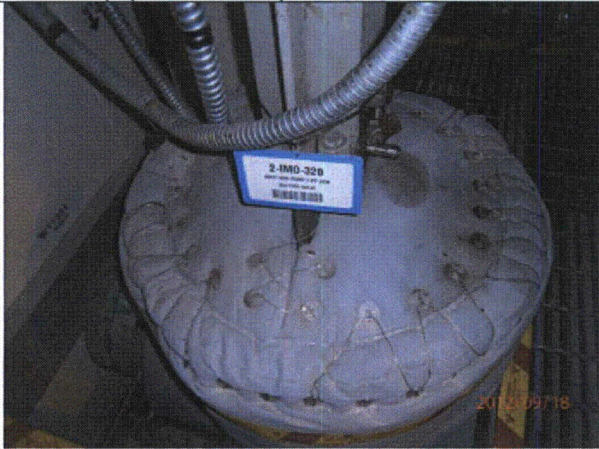
Status: Y N U

Seismic Walkdown Checklist (SWC)

Equipment ID No.: 2-IMO-320

Equipment Class: (8) Motor-Operated and Solenoid-Operated Valves

Equipment Description: WEST RESIDUAL HEAT REMOVAL PUMP PP-35W SUCTION



P9180858



P9180859

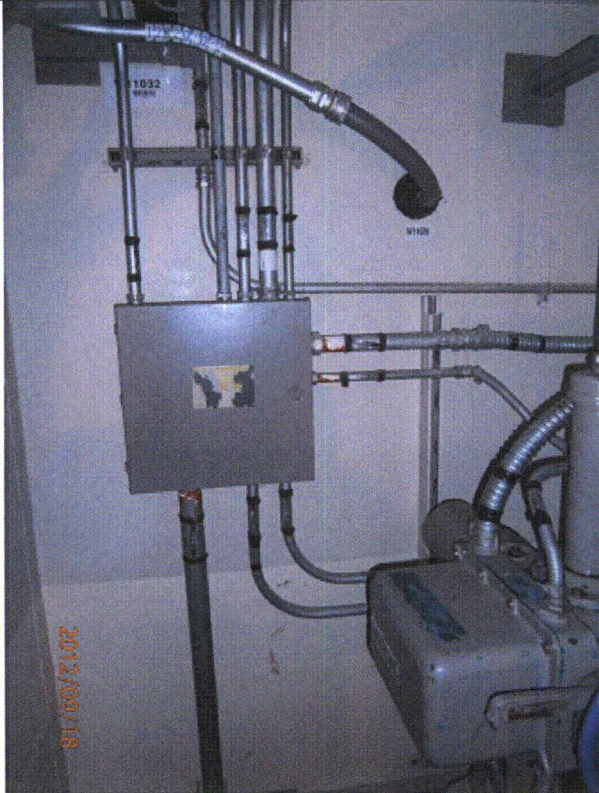
Status: Y N U

Seismic Walkdown Checklist (SWC)

Equipment ID No.: 2-IMO-320

Equipment Class: (8) Motor-Operated and Solenoid-Operated Valves

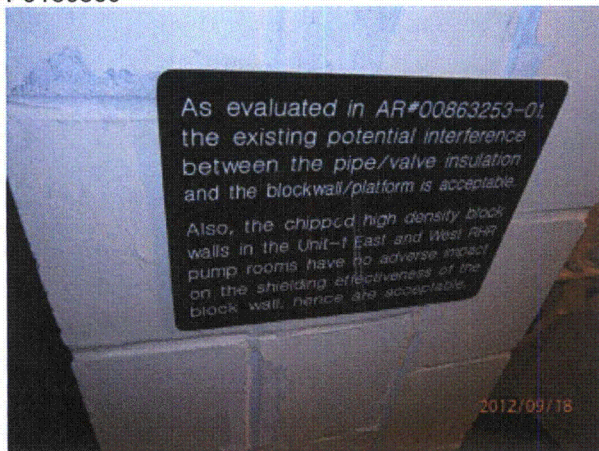
Equipment Description: WEST RESIDUAL HEAT REMOVAL PUMP PP-35W SUCTION



P9180860



P9180861



P9180862



P9180863

Status: Y N U

Seismic Walkdown Checklist (SWC)

Equipment ID No.: 2-IMO-331

Equipment Class: (8) Motor-Operated and Solenoid-Operated Valves

Equipment Description: WEST RHR TO UPPER CONTAINMENT SPRAY SHUTOFF VALVE

Project: DC Cook 2 SWEL

Location (Bldg, Elev, Room/Area): AB2, 609.00 ft, 6

Manufacturer/Model: _____

Instructions for Completing Checklist

This checklist may be used to document the results of the Seismic Walkdown of an item of equipment on the SWEL. The space below each of the following questions may be used to record the results of judgments and findings. Additional space is provided at the end of this checklist for documenting other comments.

Anchorage

1. Is anchorage configuration verification required (i.e., is the item one of the 50% of SWEL items requiring such verification)? No

2. Is the anchorage free of bent, broken, missing or loose hardware? Not Applicable

3. Is the anchorage free of corrosion that is more than mild surface oxidation? Not Applicable

4. Is the anchorage free of visible cracks in the concrete near the anchors? Not Applicable

5. Is the anchorage configuration consistent with plant documentation? (Note: This question only applies if the item is one of the 50% for which an anchorage configuration verification is required.) Not Applicable

6. Based on the above anchorage evaluations, is the anchorage free of potentially adverse seismic conditions? Yes

Interaction Effects

Status: Y N U

Seismic Walkdown Checklist (SWC)

Equipment ID No.: 2-IMO-331

Equipment Class: (8) Motor-Operated and Solenoid-Operated Valves

Equipment Description: WEST RHR TO UPPER CONTAINMENT SPRAY SHUTOFF VALVE

7. Are soft targets free from impact by nearby equipment or structures? Yes

8. Are overhead equipment, distribution systems, ceiling tiles and lighting, and masonry block walls not likely to collapse onto the equipment? Yes

9. Do attached lines have adequate flexibility to avoid damage? Yes

10. Based on the above seismic interaction evaluations, is equipment free of potentially adverse seismic interaction effects? Yes

Other Adverse Conditions

11. Have you looked for and found no adverse seismic conditions that could adversely affect the safety functions of the equipment? Yes

Comments

Evaluated by:  George G Thomas Date: 10/18/12

 Neda Stoeva 10/18/12

Photos

Status: Y N U

Seismic Walkdown Checklist (SWC)

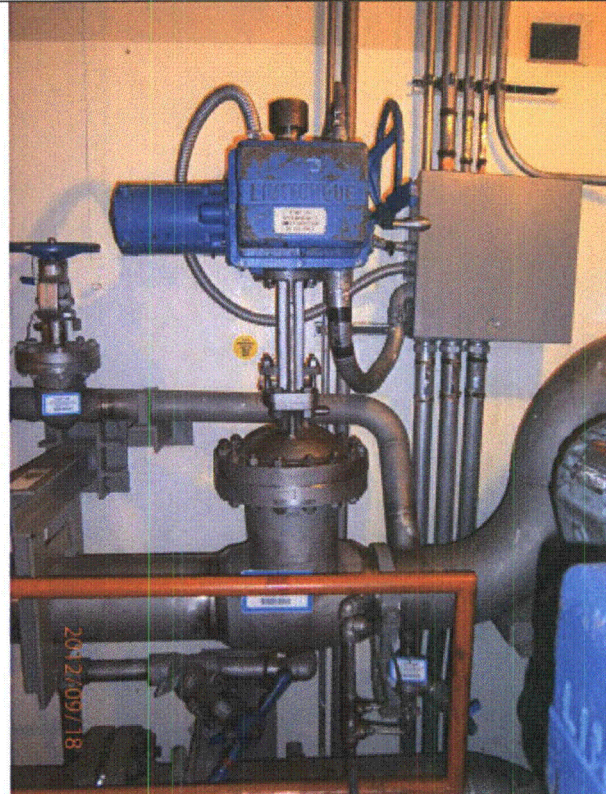
Equipment ID No.: 2-IMO-331

Equipment Class: (8) Motor-Operated and Solenoid-Operated Valves

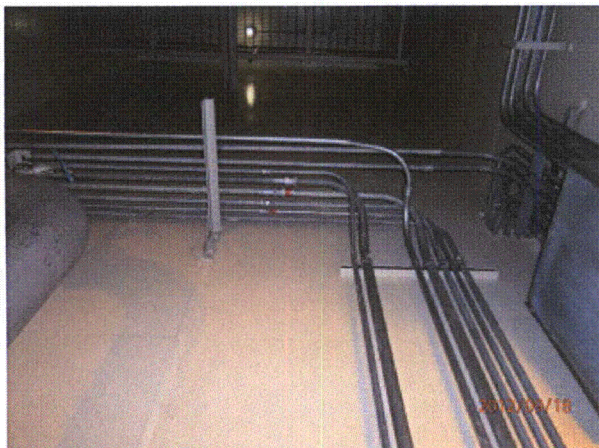
Equipment Description: WEST RHR TO UPPER CONTAINMENT SPRAY SHUTOFF VALVE



P9181140



P9181141



P9181142

Status: Y N U

Seismic Walkdown Checklist (SWC)

Equipment ID No.: 2-IMO-350

Equipment Class: (8) Motor-Operated and Solenoid-Operated Valves

Equipment Description: WEST RHR HEAT EXCHANGER OUTLET TO SAFETY INJECTION

Project: DC Cook 2 SWEL

Location (Bldg, Elev, Room/Area): AB2, 609.00 ft, 6

Manufacturer/Model: _____

Instructions for Completing Checklist

This checklist may be used to document the results of the Seismic Walkdown of an item of equipment on the SWEL. The space below each of the following questions may be used to record the results of judgments and findings. Additional space is provided at the end of this checklist for documenting other comments.

Anchorage

1. Is anchorage configuration verification required (i.e., is the item one of the 50% of SWEL items requiring such verification)? No

2. Is the anchorage free of bent, broken, missing or loose hardware? Not Applicable

3. Is the anchorage free of corrosion that is more than mild surface oxidation? Not Applicable

4. Is the anchorage free of visible cracks in the concrete near the anchors? Not Applicable

5. Is the anchorage configuration consistent with plant documentation? (Note: This question only applies if the item is one of the 50% for which an anchorage configuration verification is required.) Not Applicable

6. Based on the above anchorage evaluations, is the anchorage free of potentially adverse seismic conditions? Yes

Interaction Effects

Status: Y N U

Seismic Walkdown Checklist (SWC)

Equipment ID No.: 2-IMO-350

Equipment Class: (8) Motor-Operated and Solenoid-Operated Valves

Equipment Description: WEST RHR HEAT EXCHANGER OUTLET TO SAFETY INJECTION

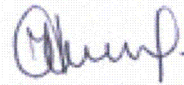
7. Are soft targets free from impact by nearby equipment or structures? Yes
8. Are overhead equipment, distribution systems, ceiling tiles and lighting, and masonry block walls not likely to collapse onto the equipment? Yes
9. Do attached lines have adequate flexibility to avoid damage? Yes
10. Based on the above seismic interaction evaluations, is equipment free of potentially adverse seismic interaction effects? Yes

Other Adverse Conditions

11. Have you looked for and found no adverse seismic conditions that could adversely affect the safety functions of the equipment? Yes

Comments

Evaluated by:  George G Thomas Date: 10/18/12



Neda Stoeva 10/18/12

Photos

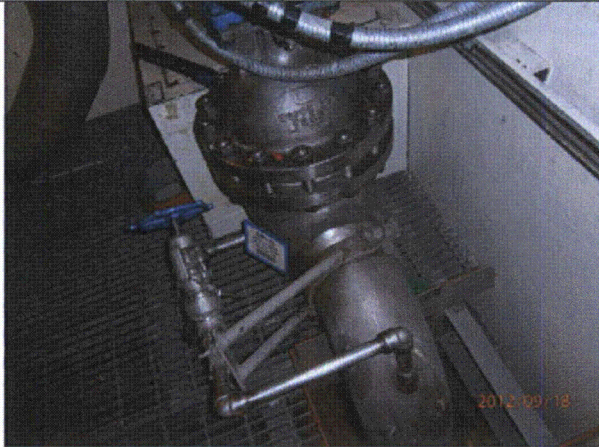
Status: Y N U

Seismic Walkdown Checklist (SWC)

Equipment ID No.: 2-IMO-350

Equipment Class: (8) Motor-Operated and Solenoid-Operated Valves

Equipment Description: WEST RHR HEAT EXCHANGER OUTLET TO SAFETY INJECTION



P9181144



P9181145

Status: Y N U

Seismic Walkdown Checklist (SWC)

Equipment ID No.: 2-IMO-350

Equipment Class: (8) Motor-Operated and Solenoid-Operated Valves

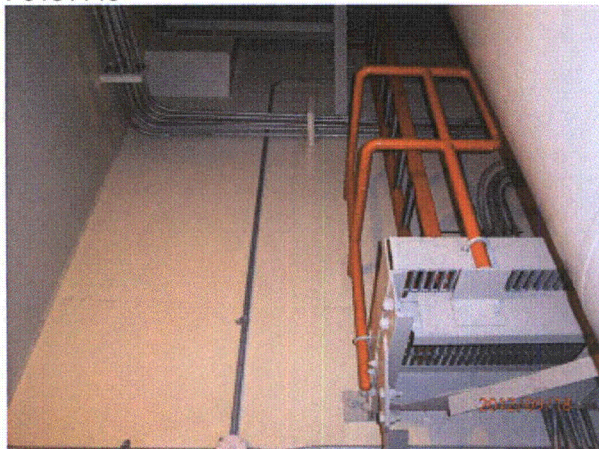
Equipment Description: WEST RHR HEAT EXCHANGER OUTLET TO SAFETY INJECTION



P9181146



P9181147



P9181148

Status: Y N U

Seismic Walkdown Checklist (SWC)

Equipment ID No.: 2-IMO-52

Equipment Class: (8) Motor-Operated and Solenoid-Operated Valves

Equipment Description: BORON INJECTION TO REACTOR COOLANT LOOP #2 SHUTOFF

Project: DC Cook 2 SWEL

Location (Bldg, Elev, Room/Area): CON2, 598.00 ft, 59

Manufacturer/Model: _____

Instructions for Completing Checklist

This checklist may be used to document the results of the Seismic Walkdown of an item of equipment on the SWEL. The space below each of the following questions may be used to record the results of judgments and findings. Additional space is provided at the end of this checklist for documenting other comments.

Anchorage

1. Is anchorage configuration verification required (i.e., is the item one of the 50% of SWEL items requiring such verification)? No

2. Is the anchorage free of bent, broken, missing or loose hardware? Yes

3. Is the anchorage free of corrosion that is more than mild surface oxidation? Yes

4. Is the anchorage free of visible cracks in the concrete near the anchors? Yes

5. Is the anchorage configuration consistent with plant documentation? (Note: This question only applies if the item is one of the 50% for which an anchorage configuration verification is required.) Not Applicable

6. Based on the above anchorage evaluations, is the anchorage free of potentially adverse seismic conditions? Yes

Interaction Effects

Status: Y N U

Seismic Walkdown Checklist (SWC)

Equipment ID No.: 2-IMO-52

Equipment Class: (8) Motor-Operated and Solenoid-Operated Valves

Equipment Description: BORON INJECTION TO REACTOR COOLANT LOOP #2 SHUTOFF

7. Are soft targets free from impact by nearby equipment or structures? Yes

8. Are overhead equipment, distribution systems, ceiling tiles and lighting, and masonry block walls not likely to collapse onto the equipment? Yes

9. Do attached lines have adequate flexibility to avoid damage? Yes

10. Based on the above seismic interaction evaluations, is equipment free of potentially adverse seismic interaction effects? Yes

Other Adverse Conditions

11. Have you looked for and found no adverse seismic conditions that could adversely affect the safety functions of the equipment? Yes

Comments

Evaluated by:  George G Thomas Date: 10/18/12

 Neda Stoeva 10/18/12

Photos

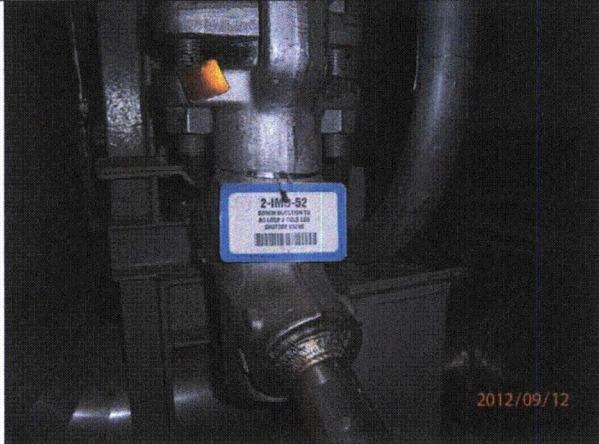
Status: Y N U

Seismic Walkdown Checklist (SWC)

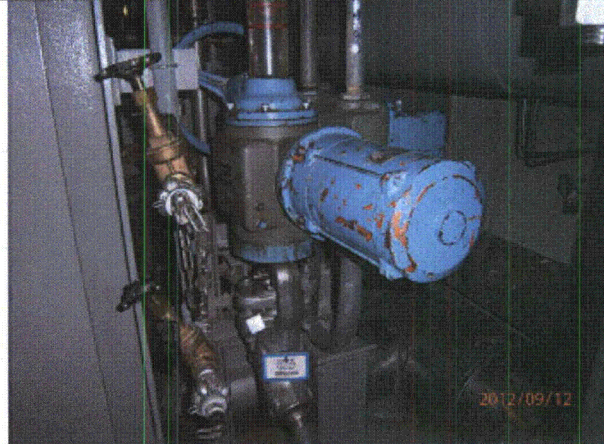
Equipment ID No.: 2-IMO-52

Equipment Class: (8) Motor-Operated and Solenoid-Operated Valves

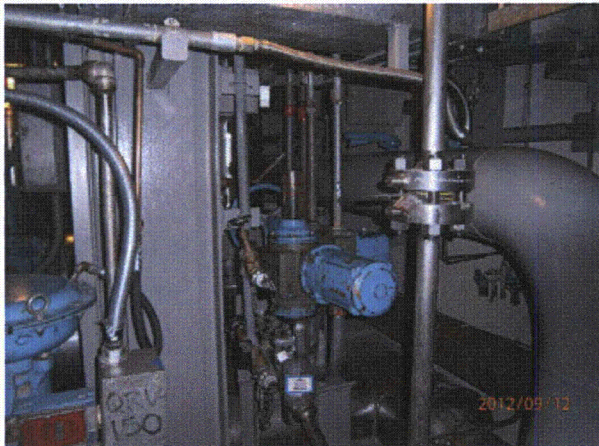
Equipment Description: BORON INJECTION TO REACTOR COOLANT LOOP #2 SHUTOFF



P9120110



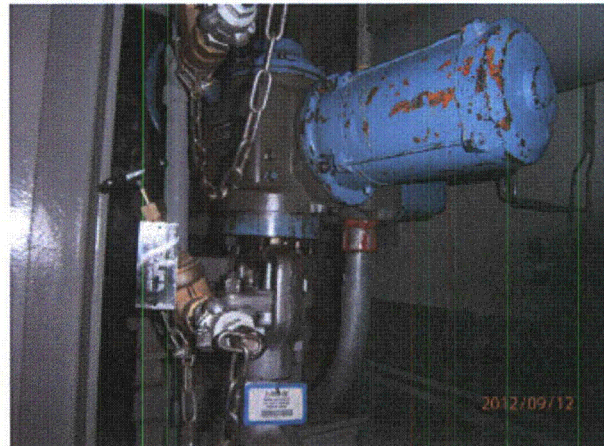
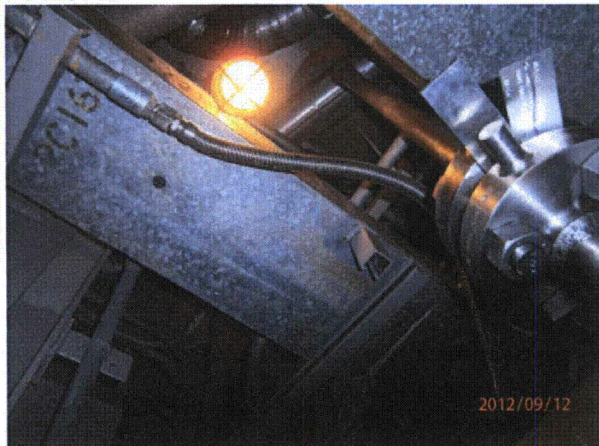
P9120111



P9120112



P9120113



Status: Y N U

Seismic Walkdown Checklist (SWC)

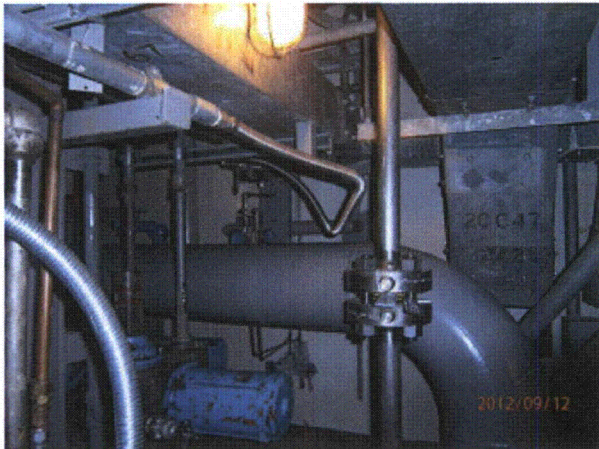
Equipment ID No.: 2-IMO-52

Equipment Class: (8) Motor-Operated and Solenoid-Operated Valves

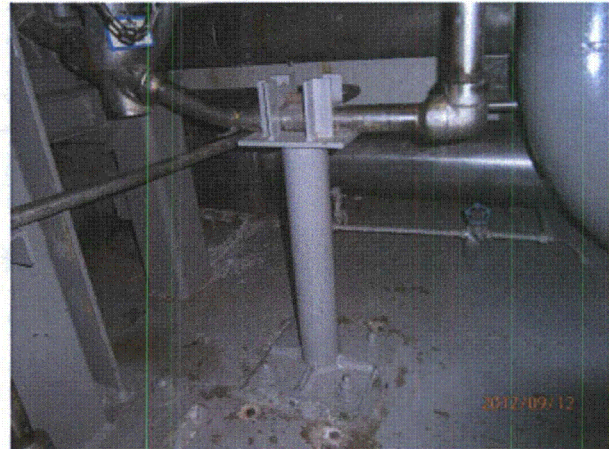
Equipment Description: BORON INJECTION TO REACTOR COOLANT LOOP #2 SHUTOFF

P9120114

P9120115



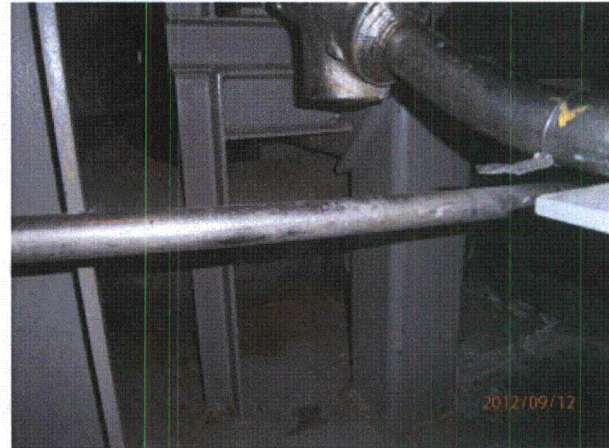
P9120116



P9120117



P9120118



P9120119

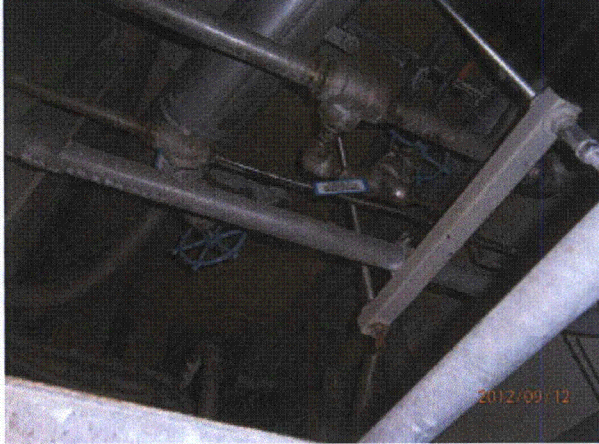
Status: Y N U

Seismic Walkdown Checklist (SWC)

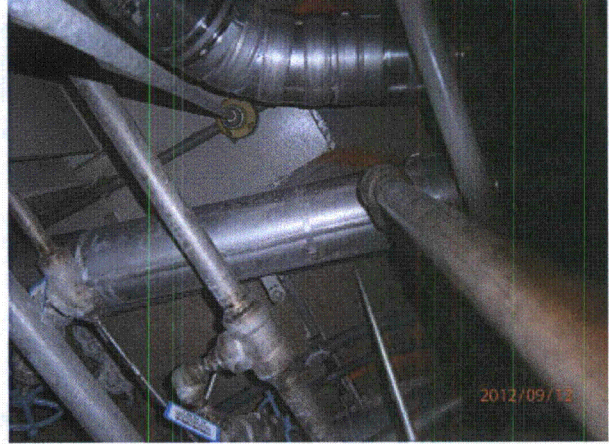
Equipment ID No.: 2-IMO-52

Equipment Class: (8) Motor-Operated and Solenoid-Operated Valves

Equipment Description: BORON INJECTION TO REACTOR COOLANT LOOP #2 SHUTOFF



P9120120



P9120121

Status: Y N U

Seismic Walkdown Checklist (SWC)

Equipment ID No.: 2-IMO-911

Equipment Class: (8) Motor-Operated and Solenoid-Operated Valves

Equipment Description: REFUELING WATER STORAGE TANK TO CVCS CHARGING

Project: DC Cook 2 SWEL

Location (Bldg, Elev, Room/Area): AB2, 587.00 ft, 40

Manufacturer/Model: _____

Instructions for Completing Checklist

This checklist may be used to document the results of the Seismic Walkdown of an item of equipment on the SWEL. The space below each of the following questions may be used to record the results of judgments and findings. Additional space is provided at the end of this checklist for documenting other comments.

Anchorage

1. Is anchorage configuration verification required (i.e., is the item one of the 50% of SWEL items requiring such verification)? No

2. Is the anchorage free of bent, broken, missing or loose hardware? Not Applicable

3. Is the anchorage free of corrosion that is more than mild surface oxidation? Not Applicable

4. Is the anchorage free of visible cracks in the concrete near the anchors? Not Applicable

5. Is the anchorage configuration consistent with plant documentation? (Note: This question only applies if the item is one of the 50% for which an anchorage configuration verification is required.) Not Applicable

6. Based on the above anchorage evaluations, is the anchorage free of potentially adverse seismic conditions? Yes

Interaction Effects

Status: Y N U

Seismic Walkdown Checklist (SWC)

Equipment ID No.: 2-IMO-911

Equipment Class: (8) Motor-Operated and Solenoid-Operated Valves

Equipment Description: REFUELING WATER STORAGE TANK TO CVCS CHARGING

7. Are soft targets free from impact by nearby equipment or structures? Yes

8. Are overhead equipment, distribution systems, ceiling tiles and lighting, and masonry block walls not likely to collapse onto the equipment? Yes

9. Do attached lines have adequate flexibility to avoid damage? Yes

10. Based on the above seismic interaction evaluations, is equipment free of potentially adverse seismic interaction effects? Yes

Other Adverse Conditions

11. Have you looked for and found no adverse seismic conditions that could adversely affect the safety functions of the equipment? Yes

Comments

Evaluated by:  George G Thomas Date: 10/18/12

 Neda Stoeva 10/18/12

Photos

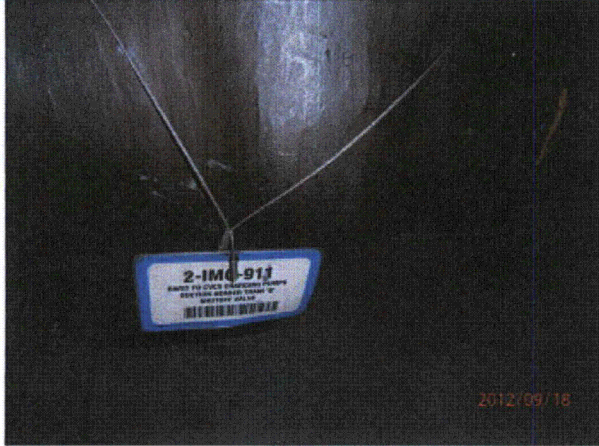
Status: Y N U

Seismic Walkdown Checklist (SWC)

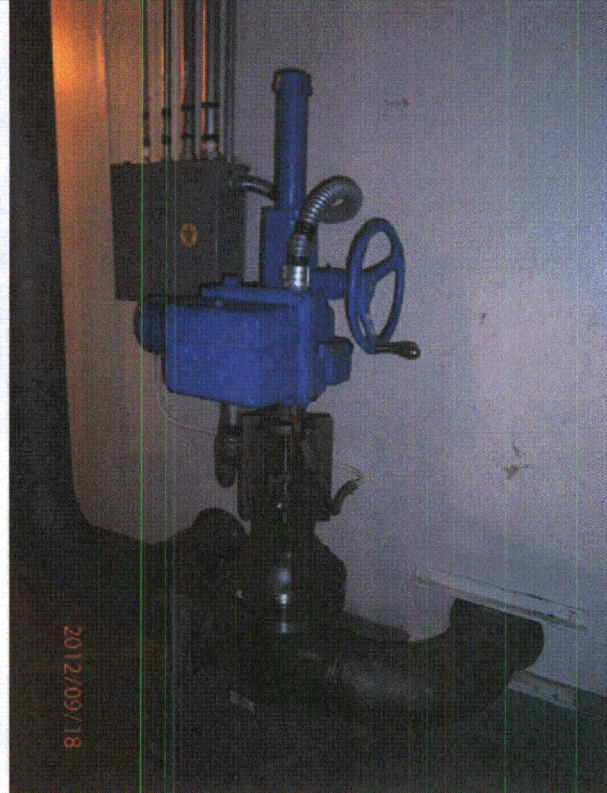
Equipment ID No.: 2-IMO-911

Equipment Class: (8) Motor-Operated and Solenoid-Operated Valves

Equipment Description: REFUELING WATER STORAGE TANK TO CVCS CHARGING



P9180760



P9180761

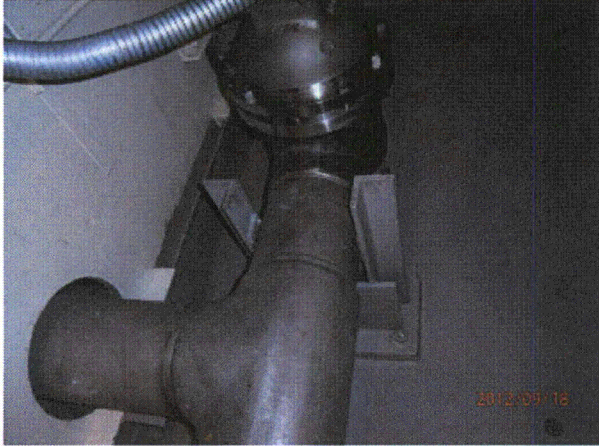
Status: Y N U

Seismic Walkdown Checklist (SWC)

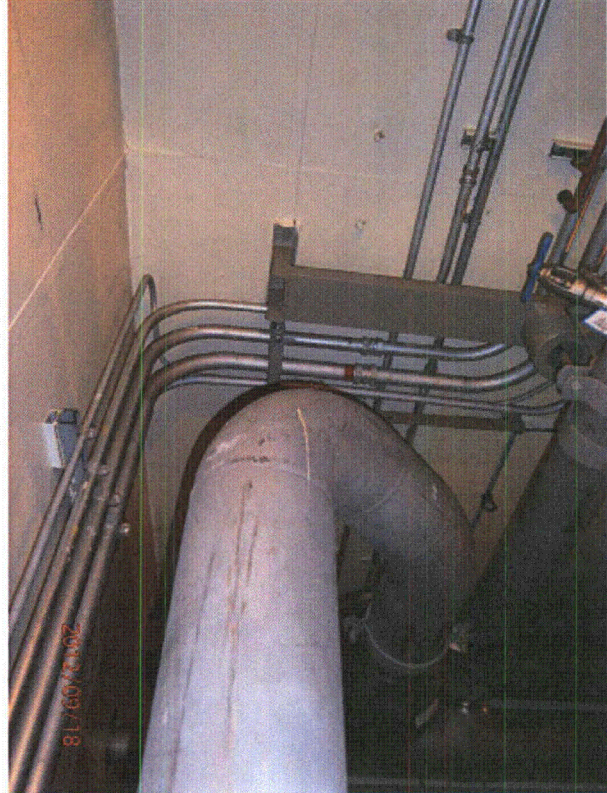
Equipment ID No.: 2-IMO-911

Equipment Class: (8) Motor-Operated and Solenoid-Operated Valves

Equipment Description: REFUELING WATER STORAGE TANK TO CVCS CHARGING



P9180762



P9180763

Status: Y N U

Seismic Walkdown Checklist (SWC)

Equipment ID No.: 2-MCAB

Equipment Class: (14) Distribution Panels

Equipment Description: 250VDC DISTRIBUTION PANEL MCAB

Project: DC Cook 2 SWEL

Location (Bldg, Elev, Room/Area): AB2, 609.00 ft, 200

Manufacturer/Model: _____

Instructions for Completing Checklist

This checklist may be used to document the results of the Seismic Walkdown of an item of equipment on the SWEL. The space below each of the following questions may be used to record the results of judgments and findings. Additional space is provided at the end of this checklist for documenting other comments.

Anchorage

1. Is anchorage configuration verification required (i.e., is the item one of the 50% of SWEL items requiring such verification)? No
CANNOT OPEN - CAN'T SEE ANCHORAGE

2. Is the anchorage free of bent, broken, missing or loose hardware? Unknown

3. Is the anchorage free of corrosion that is more than mild surface oxidation? Unknown

4. Is the anchorage free of visible cracks in the concrete near the anchors? Unknown

5. Is the anchorage configuration consistent with plant documentation? (Note: This question only applies if the item is one of the 50% for which an anchorage configuration verification is required.) Unknown

6. Based on the above anchorage evaluations, is the anchorage free of potentially adverse seismic conditions? Unknown
Cannot open - cannot see anchorage

Interaction Effects

Status: Y N U

Seismic Walkdown Checklist (SWC)

Equipment ID No.: 2-MCAB

Equipment Class: (14) Distribution Panels

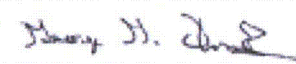
Equipment Description: 250VDC DISTRIBUTION PANEL MCAB

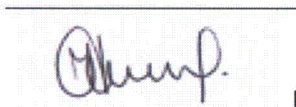
- | | | |
|-----|--|-----|
| 7. | Are soft targets free from impact by nearby equipment or structures? | Yes |
| 8. | Are overhead equipment, distribution systems, ceiling tiles and lighting, and masonry block walls not likely to collapse onto the equipment? | Yes |
| 9. | Do attached lines have adequate flexibility to avoid damage? | Yes |
| 10. | Based on the above seismic interaction evaluations, is equipment free of potentially adverse seismic interaction effects? | Yes |

Other Adverse Conditions

- | | | |
|-----|--|-----|
| 11. | Have you looked for and found no adverse seismic conditions that could adversely affect the safety functions of the equipment?
<i>CANNOT OPEN</i> | Yes |
|-----|--|-----|

Comments

Evaluated by:  George G Thomas Date: 10/18/12

 Neda Stoeva 10/18/12

Photos

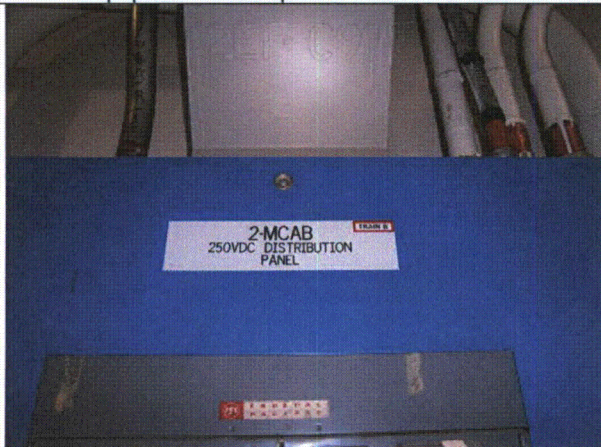
Status: Y N U

Seismic Walkdown Checklist (SWC)

Equipment ID No.: 2-MCAB

Equipment Class: (14) Distribution Panels

Equipment Description: 250VDC DISTRIBUTION PANEL MCAB



P9170853



P9170854

Status: Y N U

Seismic Walkdown Checklist (SWC)

Equipment ID No.: 2-MCAB

Equipment Class: (14) Distribution Panels

Equipment Description: 250VDC DISTRIBUTION PANEL MCAB



P9170855