

Status:  Y  N  U

**Seismic Walkdown Checklist (SWC)**

Equipment ID No.: 2-CLI-114

Equipment Class: (18) Instruments on Racks

Equipment Description: CONDENSATE STORAGE TANK TK-32 LEVEL INDICATOR

Project: DC Cook 2 SWEL

Location (Bldg, Elev, Room/Area): AB2, 586.00 ft, 24

Manufacturer/Model: \_\_\_\_\_

**Instructions for Completing Checklist**

This checklist may be used to document the results of the Seismic Walkdown of an item of equipment on the SWEL. The space below each of the following questions may be used to record the results of judgments and findings. Additional space is provided at the end of this checklist for documenting other comments.

**Anchorage**

- |                                                                                                                                                                                                        |                |
|--------------------------------------------------------------------------------------------------------------------------------------------------------------------------------------------------------|----------------|
| 1. Is anchorage configuration verification required (i.e., is the item one of the 50% of SWEL items requiring such verification)?                                                                      | No             |
| 2. Is the anchorage free of bent, broken, missing or loose hardware?<br><i>Supported off the wall</i>                                                                                                  | Yes            |
| 3. Is the anchorage free of corrosion that is more than mild surface oxidation?                                                                                                                        | Yes            |
| 4. Is the anchorage free of visible cracks in the concrete near the anchors?                                                                                                                           | Yes            |
| 5. Is the anchorage configuration consistent with plant documentation? (Note: This question only applies if the item is one of the 50% for which an anchorage configuration verification is required.) | Not Applicable |
| 6. Based on the above anchorage evaluations, is the anchorage free of potentially adverse seismic conditions?                                                                                          | Yes            |

**Interaction Effects**

Status:  Y  N  U

**Seismic Walkdown Checklist (SWC)**

Equipment ID No.: 2-CLI-114

Equipment Class: (18) Instruments on Racks

Equipment Description: CONDENSATE STORAGE TANK TK-32 LEVEL INDICATOR

7. Are soft targets free from impact by nearby equipment or structures? Yes

8. Are overhead equipment, distribution systems, ceiling tiles and lighting, and masonry block walls not likely to collapse onto the equipment? Yes

9. Do attached lines have adequate flexibility to avoid damage? Yes

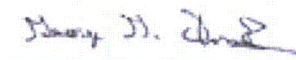
10. Based on the above seismic interaction evaluations, is equipment free of potentially adverse seismic interaction effects? Yes

**Other Adverse Conditions**

11. Have you looked for and found no adverse seismic conditions that could adversely affect the safety functions of the equipment? Yes

**Comments**

Tape - ribbon wrapped around it

Evaluated by:  George G Thomas Date: 10/18/12

 Neda Stoeva 10/18/12

**Photos**



Status:  Y  N  U

**Seismic Walkdown Checklist (SWC)**

Equipment ID No.: 2-CLI-114

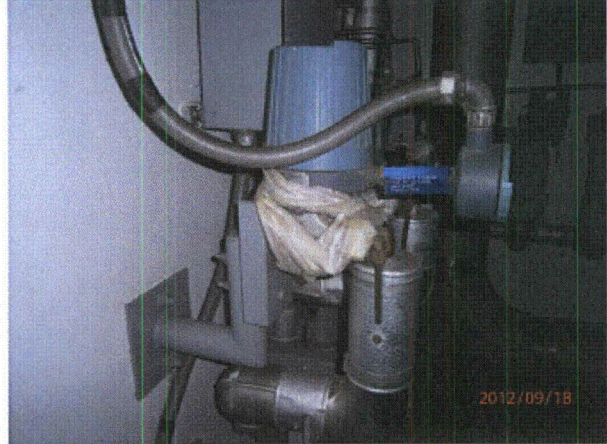
Equipment Class: (18) Instruments on Racks

Equipment Description: CONDENSATE STORAGE TANK TK-32 LEVEL INDICATOR



2012/09/18

P9180889



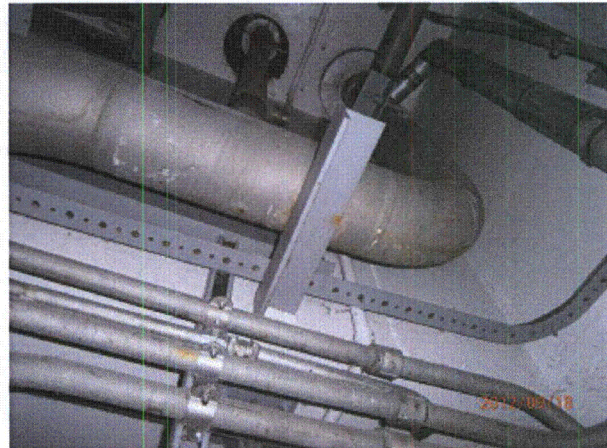
2012/09/18

P9180890



2012/09/18

P9180891



2012/09/18

P9180892

Status:  Y  N  U

**Seismic Walkdown Checklist (SWC)**

Equipment ID No.: 2-CRID-3

Equipment Class: (14) Distribution Panels

Equipment Description: 120VAC CONTROL ROOM INSTRUMENT DISTRIBUTION

Project: DC Cook 2 SWEL

Location (Bldg, Elev, Room/Area): AB2, 633.00 ft, 123

Manufacturer/Model: \_\_\_\_\_

**Instructions for Completing Checklist**

This checklist may be used to document the results of the Seismic Walkdown of an item of equipment on the SWEL. The space below each of the following questions may be used to record the results of judgments and findings. Additional space is provided at the end of this checklist for documenting other comments.

**Anchorage**

1. Is anchorage configuration verification required (i.e., is the item one of the 50% of SWEL items requiring such verification)? Yes  
*DWG 2-5540 REV5*
  
2. Is the anchorage free of bent, broken, missing or loose hardware? Yes  
*Could only see anchorage of angle to unistrut - Cannot open panel to see how it is attached to angle (whole face plate needs to be unscrewed to get in)*
  
3. Is the anchorage free of corrosion that is more than mild surface oxidation? Yes
  
4. Is the anchorage free of visible cracks in the concrete near the anchors? Not Applicable  
*Angle bolted to unistrut, part of panel welded to embedded plate*
  
5. Is the anchorage configuration consistent with plant documentation? (Note: This question only applies if the item is one of the 50% for which an anchorage configuration verification is required.) Yes
  
6. Based on the above anchorage evaluations, is the anchorage free of potentially adverse seismic conditions? Yes

---

**Interaction Effects**



Status:  Y  N  U

**Seismic Walkdown Checklist (SWC)**

Equipment ID No.: 2-CRID-3

Equipment Class: (14) Distribution Panels

Equipment Description: 120VAC CONTROL ROOM INSTRUMENT DISTRIBUTION

7. Are soft targets free from impact by nearby equipment or structures? Yes

8. Are overhead equipment, distribution systems, ceiling tiles and lighting, and masonry block walls not likely to collapse onto the equipment? Yes  
*Check ceiling tiles - Ceiling tiles OK per DWG 12-4070*

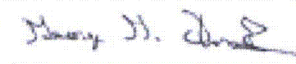
9. Do attached lines have adequate flexibility to avoid damage? Yes

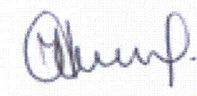
10. Based on the above seismic interaction evaluations, is equipment free of potentially adverse seismic interaction effects? Yes

**Other Adverse Conditions**

11. Have you looked for and found no adverse seismic conditions that could adversely affect the safety functions of the equipment? Yes

**Comments**

Evaluated by:  George G Thomas Date: 10/18/12

 Neda Stoeva 10/18/12

**Photos**

Status:  Y  N  U

**Seismic Walkdown Checklist (SWC)**

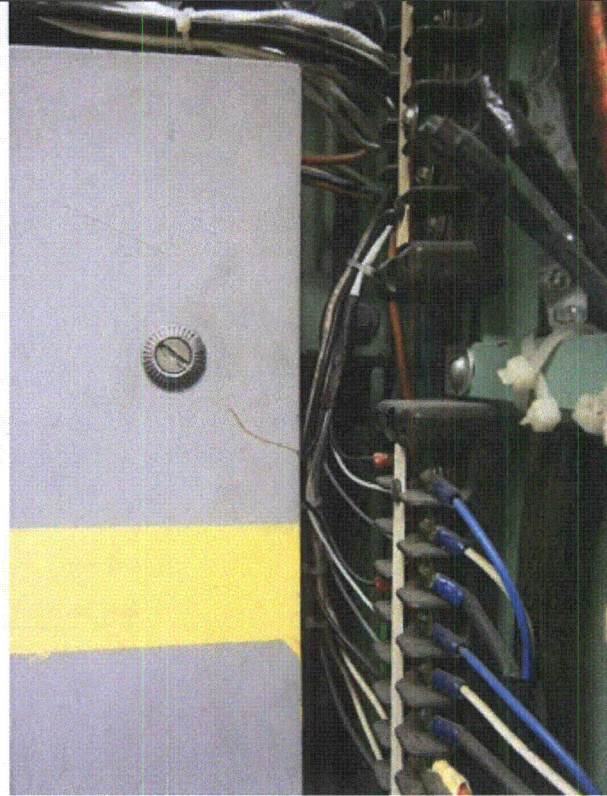
Equipment ID No.: 2-CRID-3

Equipment Class: (14) Distribution Panels

Equipment Description: 120VAC CONTROL ROOM INSTRUMENT DISTRIBUTION



P9181090



P9181091



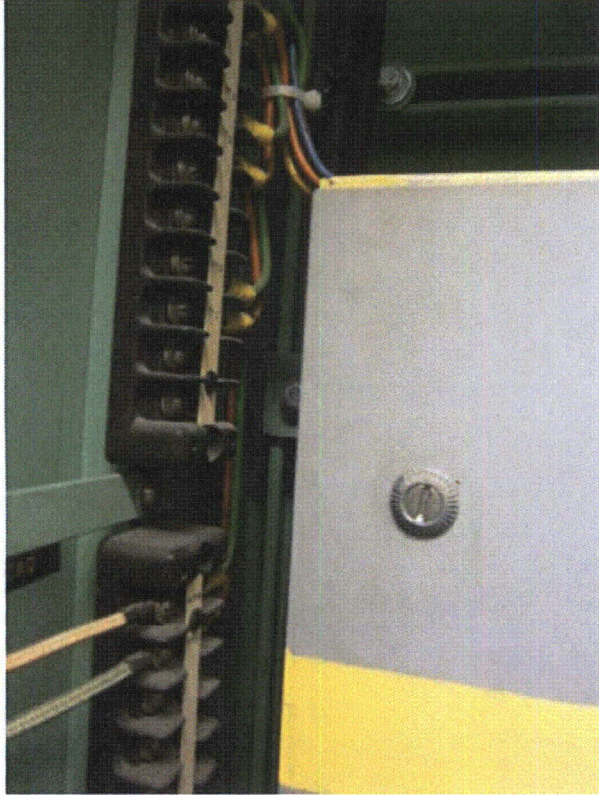
Status:  Y  N  U

**Seismic Walkdown Checklist (SWC)**

Equipment ID No.: 2-CRID-3

Equipment Class: (14) Distribution Panels

Equipment Description: 120VAC CONTROL ROOM INSTRUMENT DISTRIBUTION



P9181092

Status:  Y  N  U

**Seismic Walkdown Checklist (SWC)**

Equipment ID No.: 2-CRID-4-INV

Equipment Class: (16) Inverters

Equipment Description: 120VAC CONTROL ROOM INSTRUMENT DISTRIBUTION SYSTEM

Project: DC Cook 2 SWEL

Location (Bldg, Elev, Room/Area): AB2, 609.00 ft, 202

Manufacturer/Model: \_\_\_\_\_

**Instructions for Completing Checklist**

This checklist may be used to document the results of the Seismic Walkdown of an item of equipment on the SWEL. The space below each of the following questions may be used to record the results of judgments and findings. Additional space is provided at the end of this checklist for documenting other comments.

**Anchorage**

- |                                                                                                                                                                                                        |                |
|--------------------------------------------------------------------------------------------------------------------------------------------------------------------------------------------------------|----------------|
| 1. Is anchorage configuration verification required (i.e., is the item one of the 50% of SWEL items requiring such verification)?                                                                      | No             |
| 2. Is the anchorage free of bent, broken, missing or loose hardware?                                                                                                                                   | Yes            |
| 3. Is the anchorage free of corrosion that is more than mild surface oxidation?                                                                                                                        | Yes            |
| 4. Is the anchorage free of visible cracks in the concrete near the anchors?                                                                                                                           | Yes            |
| 5. Is the anchorage configuration consistent with plant documentation? (Note: This question only applies if the item is one of the 50% for which an anchorage configuration verification is required.) | Not Applicable |
| 6. Based on the above anchorage evaluations, is the anchorage free of potentially adverse seismic conditions?                                                                                          | Yes            |

**Interaction Effects**

Status:  Y  N  U

**Seismic Walkdown Checklist (SWC)**

Equipment ID No.: 2-CRID-4-INV

Equipment Class: (16) Inverters

Equipment Description: 120VAC CONTROL ROOM INSTRUMENT DISTRIBUTION SYSTEM

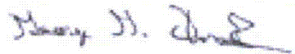
7. Are soft targets free from impact by nearby equipment or structures? Yes
8. Are overhead equipment, distribution systems, ceiling tiles and lighting, and masonry block walls not likely to collapse onto the equipment? Yes
9. Do attached lines have adequate flexibility to avoid damage? Yes
10. Based on the above seismic interaction evaluations, is equipment free of potentially adverse seismic interaction effects? Yes

**Other Adverse Conditions**

11. Have you looked for and found no adverse seismic conditions that could adversely affect the safety functions of the equipment? Yes

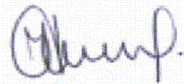
**Comments**

Evaluated by:



George G Thomas

Date: 10/18/12



Neda Stoeva

10/18/12

**Photos**



Status:  Y  N  U

**Seismic Walkdown Checklist (SWC)**

Equipment ID No.: 2-CRID-4-INV

Equipment Class: (16) Inverters

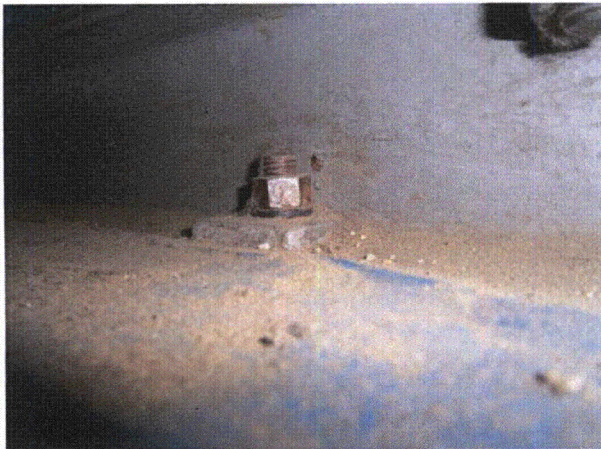
Equipment Description: 120VAC CONTROL ROOM INSTRUMENT DISTRIBUTION SYSTEM



P9170864



P9170865



P9170866



P9170867



Status:  Y  N  U

**Seismic Walkdown Checklist (SWC)**

Equipment ID No.: 2-CRID-4-INV

Equipment Class: (16) Inverters

Equipment Description: 120VAC CONTROL ROOM INSTRUMENT DISTRIBUTION SYSTEM



P9170868

Status:  Y  N  U

**Seismic Walkdown Checklist (SWC)**

Equipment ID No.: 2-DGAB

Equipment Class: (20) Instrumentation and Control Panels and Cabinets

Equipment Description: AB EMERGENCY DIESEL GENERATOR OME-150-AB CONTROL

Project: DC Cook 2 SWEL

Location (Bldg, Elev, Room/Area): AB2, 587.00 ft, 121

Manufacturer/Model: \_\_\_\_\_

**Instructions for Completing Checklist**

This checklist may be used to document the results of the Seismic Walkdown of an item of equipment on the SWEL. The space below each of the following questions may be used to record the results of judgments and findings. Additional space is provided at the end of this checklist for documenting other comments.

**Anchorage**

- |                                                                                                                                                                                                            |                |
|------------------------------------------------------------------------------------------------------------------------------------------------------------------------------------------------------------|----------------|
| 1. Is anchorage configuration verification required (i.e., is the item one of the 50% of SWEL items requiring such verification)?                                                                          | No             |
| 2. Is the anchorage free of bent, broken, missing or loose hardware?                                                                                                                                       | Yes            |
| 3. Is the anchorage free of corrosion that is more than mild surface oxidation?                                                                                                                            | Yes            |
| 4. Is the anchorage free of visible cracks in the concrete near the anchors?<br><i>Spalled concrete on 2 front left bolts is OK by SEWS documents and ANCHOR evaluation does not credit those 2 bolts.</i> | Yes            |
| 5. Is the anchorage configuration consistent with plant documentation? (Note: This question only applies if the item is one of the 50% for which an anchorage configuration verification is required.)     | Not Applicable |
| 6. Based on the above anchorage evaluations, is the anchorage free of potentially adverse seismic conditions?                                                                                              | Yes            |

**Interaction Effects**

Status:  Y  N  U

**Seismic Walkdown Checklist (SWC)**

Equipment ID No.: 2-DGAB

Equipment Class: (20) Instrumentation and Control Panels and Cabinets

Equipment Description: AB EMERGENCY DIESEL GENERATOR OME-150-AB CONTROL

7. Are soft targets free from impact by nearby equipment or structures? Yes

*ROD HUNG light can swing into panel (separate box up on top right corner - beige) but would not be damaging*

8. Are overhead equipment, distribution systems, ceiling tiles and lighting, and masonry block walls not likely to collapse onto the equipment? Yes

9. Do attached lines have adequate flexibility to avoid damage? Yes

10. Based on the above seismic interaction evaluations, is equipment free of potentially adverse seismic interaction effects? Yes

**Other Adverse Conditions**

11. Have you looked for and found no adverse seismic conditions that could adversely affect the safety functions of the equipment? Yes

**Comments**

Evaluated by:  George G Thomas Date: 10/18/12

 Neda Stoeva 10/18/12

**Photos**



Status:  Y  N  U

**Seismic Walkdown Checklist (SWC)**

Equipment ID No.: 2-DGAB

Equipment Class: (20) Instrumentation and Control Panels and Cabinets

Equipment Description: AB EMERGENCY DIESEL GENERATOR OME-150-AB CONTROL



P9140480



P9140481



Status:  Y  N  U

**Seismic Walkdown Checklist (SWC)**

Equipment ID No.: 2-DGAB

Equipment Class: (20) Instrumentation and Control Panels and Cabinets

Equipment Description: AB EMERGENCY DIESEL GENERATOR OME-150-AB CONTROL



P9140482



P9140483



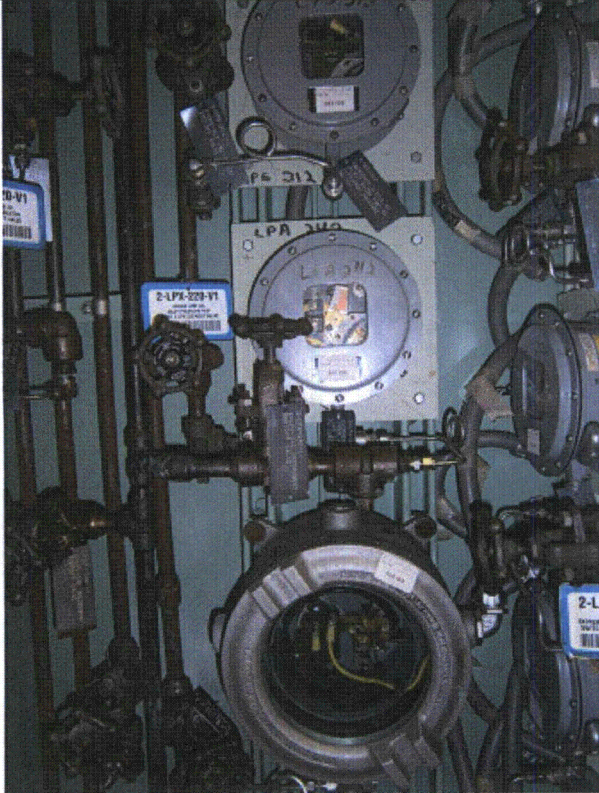
Status:  Y  N  U

**Seismic Walkdown Checklist (SWC)**

Equipment ID No.: 2-DGAB

Equipment Class: (20) Instrumentation and Control Panels and Cabinets

Equipment Description: AB EMERGENCY DIESEL GENERATOR OME-150-AB CONTROL



P9140484



P9140485



P9140486



P9130470



Status:  Y  N  U

**Seismic Walkdown Checklist (SWC)**

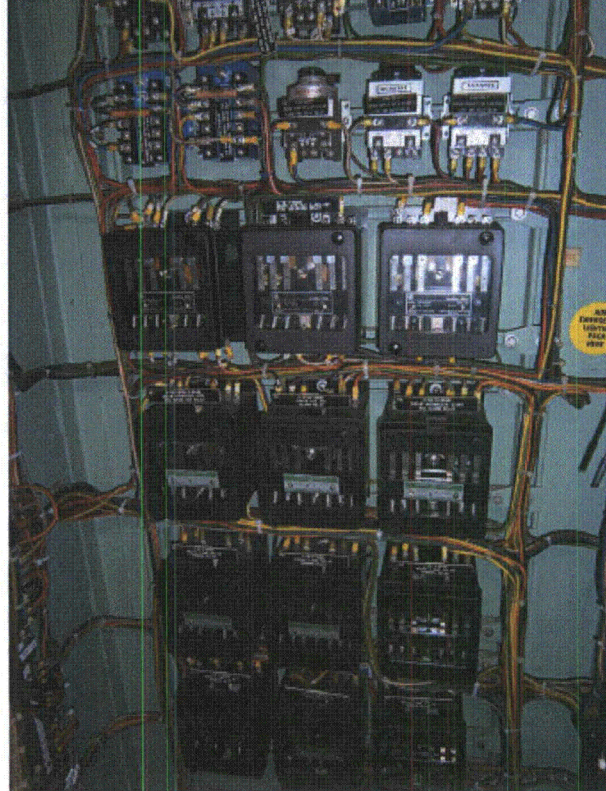
Equipment ID No.: 2-DGAB

Equipment Class: (20) Instrumentation and Control Panels and Cabinets

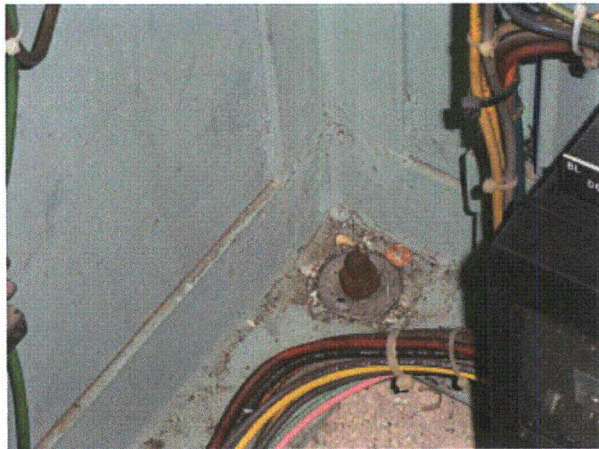
Equipment Description: AB EMERGENCY DIESEL GENERATOR OME-150-AB CONTROL



P9130471



P9130472



P9130473



P9130474



Status:  Y  N  U

**Seismic Walkdown Checklist (SWC)**

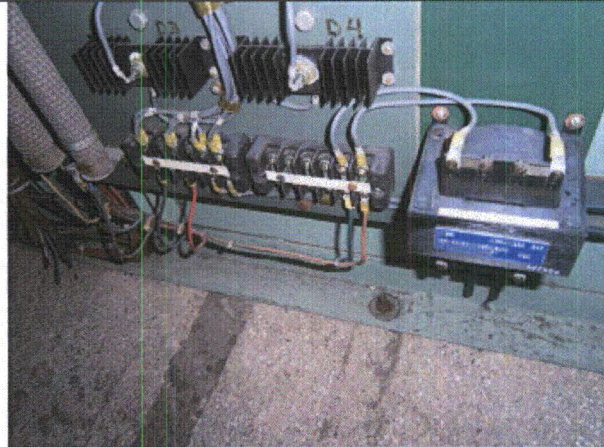
Equipment ID No.: 2-DGAB

Equipment Class: (20) Instrumentation and Control Panels and Cabinets

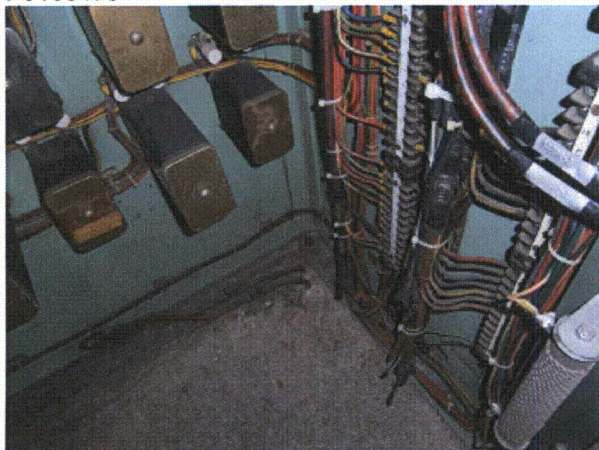
Equipment Description: AB EMERGENCY DIESEL GENERATOR OME-150-AB CONTROL



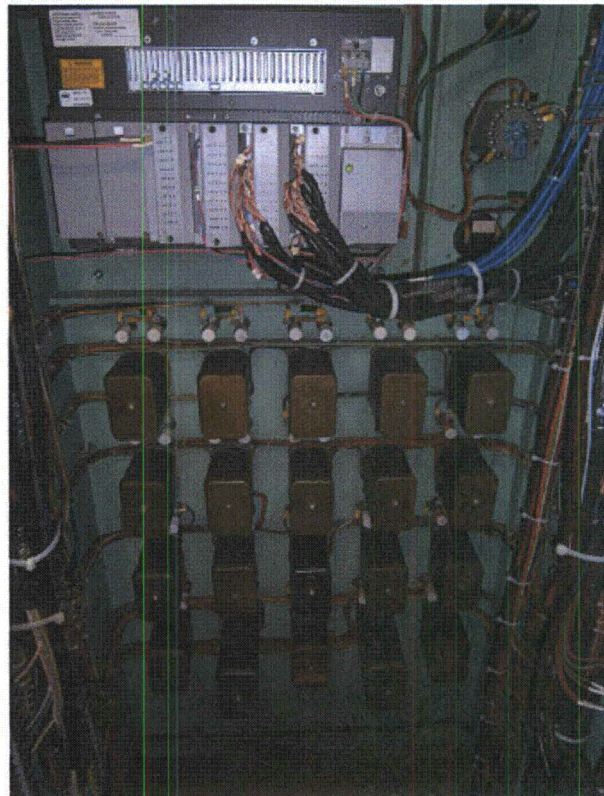
P9130475



P9130476



P9130477



P9130478



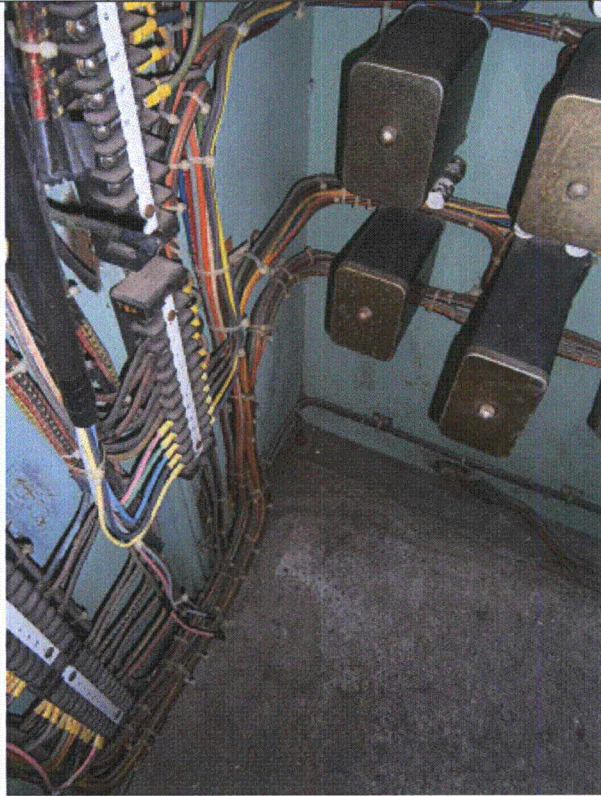
Status:  Y  N  U

**Seismic Walkdown Checklist (SWC)**

Equipment ID No.: 2-DGAB

Equipment Class: (20) Instrumentation and Control Panels and Cabinets

Equipment Description: AB EMERGENCY DIESEL GENERATOR OME-150-AB CONTROL



P9130479

Status:  Y  N  U

**Seismic Walkdown Checklist (SWC)**

Equipment ID No.: 2-DGAB-INV

Equipment Class: (16) Inverters

Equipment Description: AB EMERGENCY DIESEL GENERATOR OME-150-AB INVERTER

Project: DC Cook 2 SWEL

Location (Bldg, Elev, Room/Area): AB2, 587.00 ft, 121

Manufacturer/Model: \_\_\_\_\_

**Instructions for Completing Checklist**

This checklist may be used to document the results of the Seismic Walkdown of an item of equipment on the SWEL. The space below each of the following questions may be used to record the results of judgments and findings. Additional space is provided at the end of this checklist for documenting other comments.

**Anchorage**

- |    |                                                                                                                                                                                                     |     |
|----|-----------------------------------------------------------------------------------------------------------------------------------------------------------------------------------------------------|-----|
| 1. | Is anchorage configuration verification required (i.e., is the item one of the 50% of SWEL items requiring such verification)?<br><i>SQUG 2-DGAB-INV REV0</i>                                       | Yes |
| 2. | Is the anchorage free of bent, broken, missing or loose hardware?                                                                                                                                   | Yes |
| 3. | Is the anchorage free of corrosion that is more than mild surface oxidation?<br><i>Discoloration of back right anchor bolt - very minor rust</i>                                                    | Yes |
| 4. | Is the anchorage free of visible cracks in the concrete near the anchors?                                                                                                                           | Yes |
| 5. | Is the anchorage configuration consistent with plant documentation? (Note: This question only applies if the item is one of the 50% for which an anchorage configuration verification is required.) | Yes |
| 6. | Based on the above anchorage evaluations, is the anchorage free of potentially adverse seismic conditions?                                                                                          | Yes |

**Interaction Effects**



Status:  Y  N  U

**Seismic Walkdown Checklist (SWC)**

Equipment ID No.: 2-DGAB-INV

Equipment Class: (16) Inverters

Equipment Description: AB EMERGENCY DIESEL GENERATOR OME-150-AB INVERTER

7. Are soft targets free from impact by nearby equipment or structures? Yes
8. Are overhead equipment, distribution systems, ceiling tiles and lighting, and masonry block walls not likely to collapse onto the equipment? Yes
9. Do attached lines have adequate flexibility to avoid damage? Yes
10. Based on the above seismic interaction evaluations, is equipment free of potentially adverse seismic interaction effects? Yes

**Other Adverse Conditions**

11. Have you looked for and found no adverse seismic conditions that could adversely affect the safety functions of the equipment? Yes

**Comments**

Evaluated by:  George G Thomas Date: 10/18/12

 Neda Stoeva 10/18/12

**Photos**

Status:  Y  N  U

**Seismic Walkdown Checklist (SWC)**

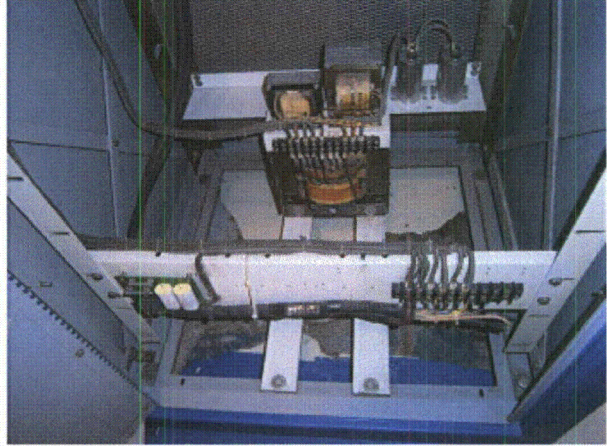
Equipment ID No.: 2-DGAB-INV

Equipment Class: (16) Inverters

Equipment Description: AB EMERGENCY DIESEL GENERATOR OME-150-AB INVERTER



P9130444



P9130445



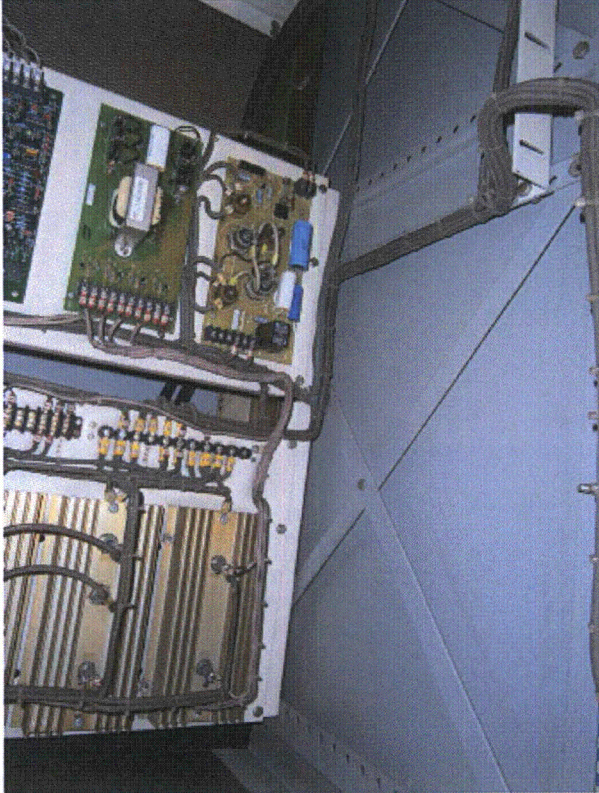
Status:  Y  N  U

**Seismic Walkdown Checklist (SWC)**

Equipment ID No.: 2-DGAB-INV

Equipment Class: (16) Inverters

Equipment Description: AB EMERGENCY DIESEL GENERATOR OME-150-AB INVERTER



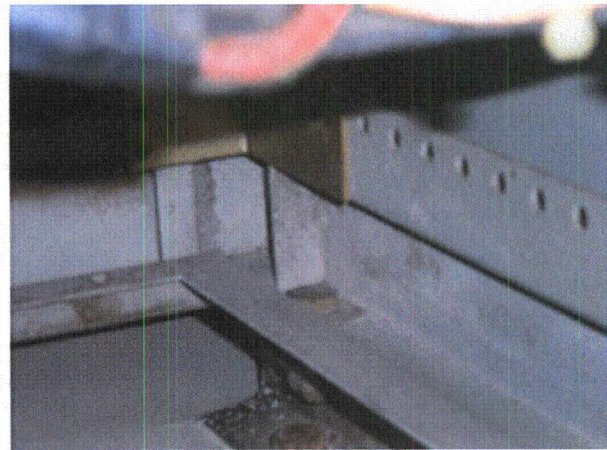
P9130446



P9130447



P9130448



P9130449



Status:  Y  N  U

**Seismic Walkdown Checklist (SWC)**

Equipment ID No.: 2-DGAB-INV

Equipment Class: (16) Inverters

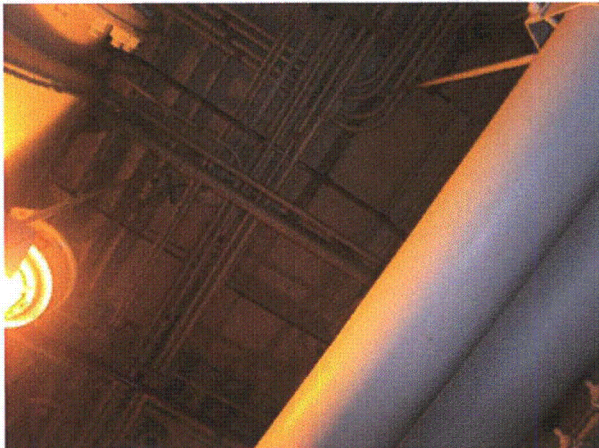
Equipment Description: AB EMERGENCY DIESEL GENERATOR OME-150-AB INVERTER



P9130450



P9130451



P9130452



Status:  Y  N  U

**Seismic Walkdown Checklist (SWC)**

Equipment ID No.: 2-ECR-23

Equipment Class: (7) Fluid-Operated Valves

Equipment Description: CONTAINMENT LOWER VOLUME EAST AIR SAMPLE ESR-3

Project: DC Cook 2 SWEL

Location (Bldg, Elev, Room/Area): AB2, 612.00 ft, 12

Manufacturer/Model: \_\_\_\_\_

**Instructions for Completing Checklist**

This checklist may be used to document the results of the Seismic Walkdown of an item of equipment on the SWEL. The space below each of the following questions may be used to record the results of judgments and findings. Additional space is provided at the end of this checklist for documenting other comments.

**Anchorage**

1. Is anchorage configuration verification required (i.e., is the item one of the 50% of SWEL items requiring such verification)? No
  
2. Is the anchorage free of bent, broken, missing or loose hardware? Not Applicable
  
3. Is the anchorage free of corrosion that is more than mild surface oxidation? Not Applicable
  
4. Is the anchorage free of visible cracks in the concrete near the anchors? Not Applicable
  
5. Is the anchorage configuration consistent with plant documentation? (Note: This question only applies if the item is one of the 50% for which an anchorage configuration verification is required.) Not Applicable
  
6. Based on the above anchorage evaluations, is the anchorage free of potentially adverse seismic conditions? Yes

**Interaction Effects**

Status:  Y  N  U

**Seismic Walkdown Checklist (SWC)**

Equipment ID No.: 2-ECR-23

Equipment Class: (7) Fluid-Operated Valves

Equipment Description: CONTAINMENT LOWER VOLUME EAST AIR SAMPLE ESR-3

7. Are soft targets free from impact by nearby equipment or structures? Yes

8. Are overhead equipment, distribution systems, ceiling tiles and lighting, and masonry block walls not likely to collapse onto the equipment? Yes

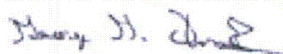
9. Do attached lines have adequate flexibility to avoid damage? Yes

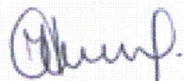
10. Based on the above seismic interaction evaluations, is equipment free of potentially adverse seismic interaction effects? Yes

**Other Adverse Conditions**

11. Have you looked for and found no adverse seismic conditions that could adversely affect the safety functions of the equipment? Yes

**Comments**

Evaluated by:  George G Thomas Date: 10/18/12

 Neda Stoeva 10/18/12

**Photos**



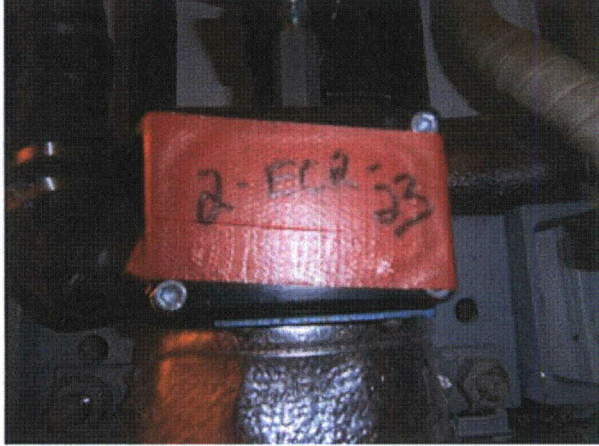
Status:  Y  N  U

**Seismic Walkdown Checklist (SWC)**

Equipment ID No.: 2-ECR-23

Equipment Class: (7) Fluid-Operated Valves

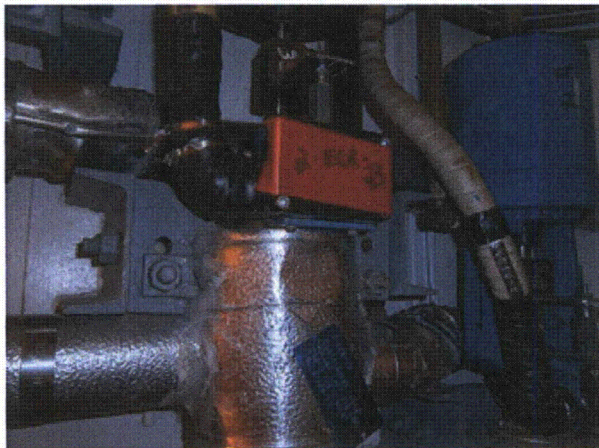
Equipment Description: CONTAINMENT LOWER VOLUME EAST AIR SAMPLE ESR-3



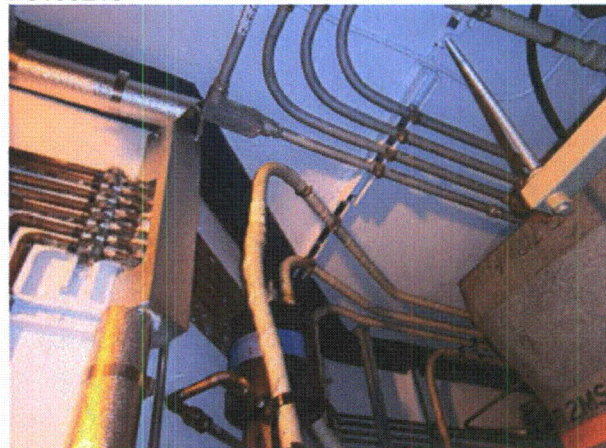
P9100212



P9100213



P9100214



P9100215

Status: Y  N  U

**Seismic Walkdown Checklist (SWC)**

Equipment ID No.: 2-ESW

Equipment Class: (20) Instrumentation and Control Panels and Cabinets

Equipment Description: ESSENTIAL SERVICE WATER CONTROL PANEL

Project: DC Cook 2 SWEL

Location (Bldg, Elev, Room/Area): AB2, 633.00 ft, 123

Manufacturer/Model: \_\_\_\_\_

**Instructions for Completing Checklist**

This checklist may be used to document the results of the Seismic Walkdown of an item of equipment on the SWEL. The space below each of the following questions may be used to record the results of judgments and findings. Additional space is provided at the end of this checklist for documenting other comments.

**Anchorage**

- |    |                                                                                                                                                                                                                                                                                                                                                                                                                                              |                |
|----|----------------------------------------------------------------------------------------------------------------------------------------------------------------------------------------------------------------------------------------------------------------------------------------------------------------------------------------------------------------------------------------------------------------------------------------------|----------------|
| 1. | Is anchorage configuration verification required (i.e., is the item one of the 50% of SWEL items requiring such verification)?<br><i>SQUG 2-CCW REV0</i>                                                                                                                                                                                                                                                                                     | Yes            |
| 2. | Is the anchorage free of bent, broken, missing or loose hardware?                                                                                                                                                                                                                                                                                                                                                                            | Yes            |
| 3. | Is the anchorage free of corrosion that is more than mild surface oxidation?                                                                                                                                                                                                                                                                                                                                                                 | Yes            |
| 4. | Is the anchorage free of visible cracks in the concrete near the anchors?<br><i>Welded to embedded plate</i>                                                                                                                                                                                                                                                                                                                                 | Not Applicable |
| 5. | Is the anchorage configuration consistent with plant documentation? (Note: This question only applies if the item is one of the 50% for which an anchorage configuration verification is required.)<br><i>SEWS identify panel 2-ESW to be larger than it is, need to check SQUG analysis to determine impact. Documentation should be updated to reflect actual size of panel. AR 2012-XXXXX was issued to address document discrepancy.</i> | No             |
| 6. | Based on the above anchorage evaluations, is the anchorage free of potentially adverse seismic conditions?                                                                                                                                                                                                                                                                                                                                   | No             |

**Interaction Effects**



Status: Y  N  U

**Seismic Walkdown Checklist (SWC)**

Equipment ID No.: 2-ESW

Equipment Class: (20) Instrumentation and Control Panels and Cabinets

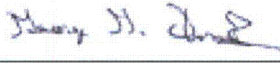
Equipment Description: ESSENTIAL SERVICE WATER CONTROL PANEL

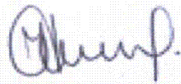
7. Are soft targets free from impact by nearby equipment or structures? Yes
8. Are overhead equipment, distribution systems, ceiling tiles and lighting, and masonry block walls not likely to collapse onto the equipment?  
*Check ceiling tiles - Ceiling tiles OK per DWG 12-4070* Yes
9. Do attached lines have adequate flexibility to avoid damage? Yes
10. Based on the above seismic interaction evaluations, is equipment free of potentially adverse seismic interaction effects? Yes

**Other Adverse Conditions**

11. Have you looked for and found no adverse seismic conditions that could adversely affect the safety functions of the equipment? Yes

**Comments**

Evaluated by:  George G Thomas Date: 10/18/12

 Neda Stoeva 10/18/12

**Photos**

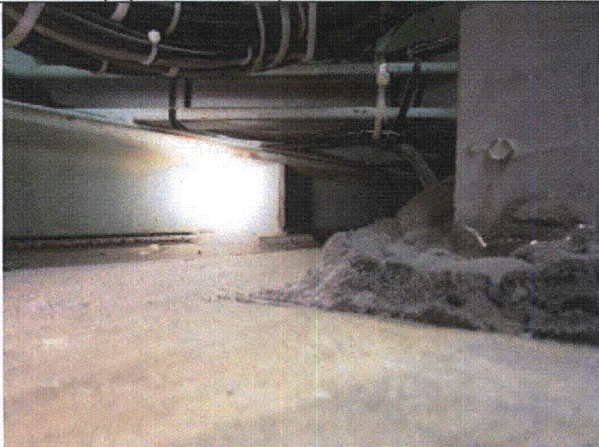
Status: Y  N  U

**Seismic Walkdown Checklist (SWC)**

Equipment ID No.: 2-ESW

Equipment Class: (20) Instrumentation and Control Panels and Cabinets

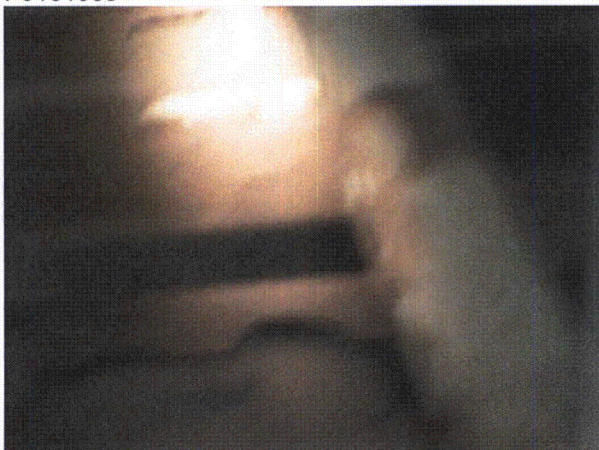
Equipment Description: ESSENTIAL SERVICE WATER CONTROL PANEL



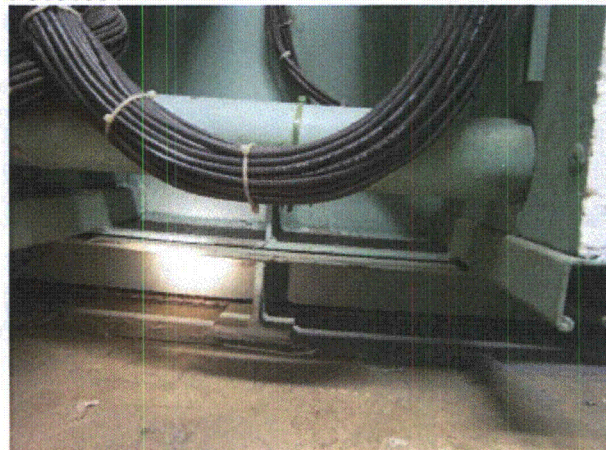
P9181053



P9181054



P9181055



P9181056



Status: Y  N  U

**Seismic Walkdown Checklist (SWC)**

Equipment ID No.: 2-ESW

Equipment Class: (20) Instrumentation and Control Panels and Cabinets

Equipment Description: ESSENTIAL SERVICE WATER CONTROL PANEL



P9181057



P9181058



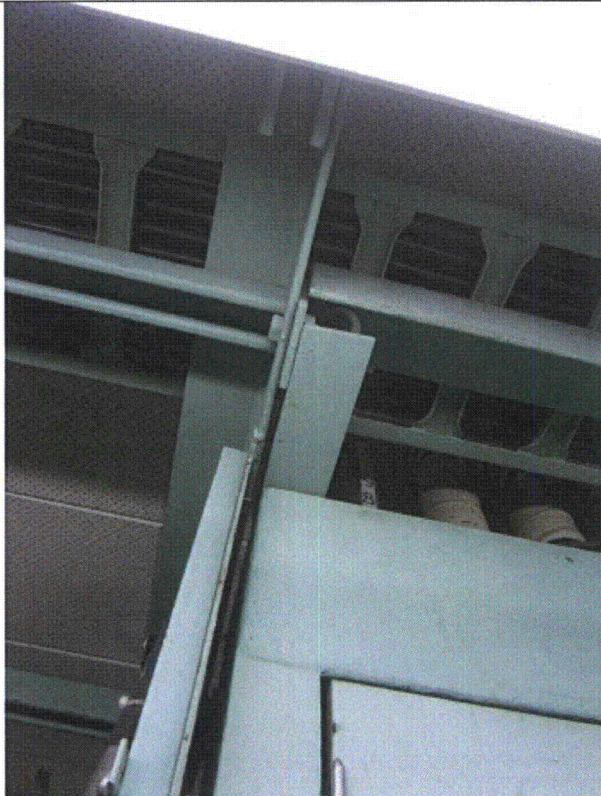
Status: Y  N  U

**Seismic Walkdown Checklist (SWC)**

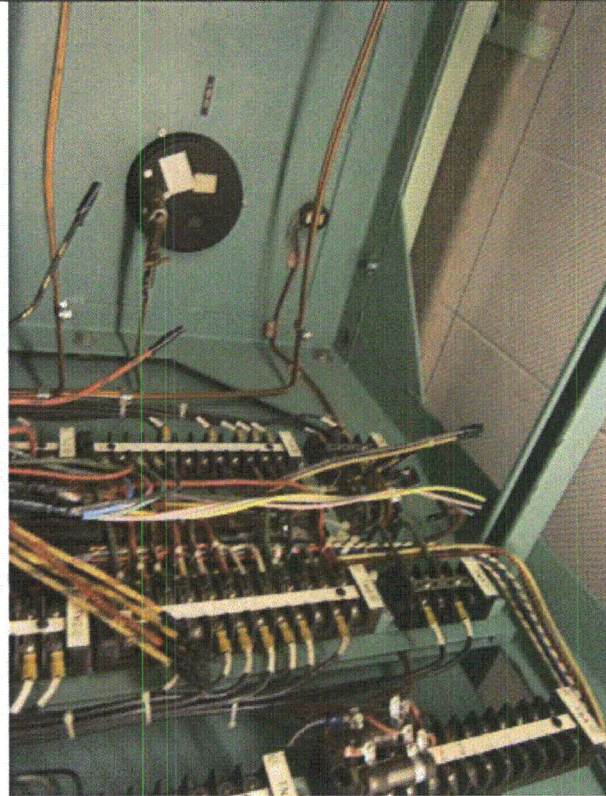
Equipment ID No.: 2-ESW

Equipment Class: (20) Instrumentation and Control Panels and Cabinets

Equipment Description: ESSENTIAL SERVICE WATER CONTROL PANEL



P9181059



P9181060



Status:  Y  N  U

**Seismic Walkdown Checklist (SWC)**

Equipment ID No.: 2-EZC-A

Equipment Class: (1) Motor Control Centers

Equipment Description: 600VAC MOTOR CONTROL CENTER EZC-A

Project: DC Cook 2 SWEL

Location (Bldg, Elev, Room/Area): AB2, 613.00 ft, 205

Manufacturer/Model: \_\_\_\_\_

**Instructions for Completing Checklist**

This checklist may be used to document the results of the Seismic Walkdown of an item of equipment on the SWEL. The space below each of the following questions may be used to record the results of judgments and findings. Additional space is provided at the end of this checklist for documenting other comments.

**Anchorage**

- |                                                                                                                                                                                                        |                |
|--------------------------------------------------------------------------------------------------------------------------------------------------------------------------------------------------------|----------------|
| 1. Is anchorage configuration verification required (i.e., is the item one of the 50% of SWEL items requiring such verification)?                                                                      | No             |
| 2. Is the anchorage free of bent, broken, missing or loose hardware?                                                                                                                                   | Yes            |
| 3. Is the anchorage free of corrosion that is more than mild surface oxidation?                                                                                                                        | Yes            |
| 4. Is the anchorage free of visible cracks in the concrete near the anchors?                                                                                                                           | Yes            |
| 5. Is the anchorage configuration consistent with plant documentation? (Note: This question only applies if the item is one of the 50% for which an anchorage configuration verification is required.) | Not Applicable |
| 6. Based on the above anchorage evaluations, is the anchorage free of potentially adverse seismic conditions?                                                                                          | Yes            |

**Interaction Effects**

Status:  Y  N  U

**Seismic Walkdown Checklist (SWC)**

Equipment ID No.: 2-EZC-A

Equipment Class: (1) Motor Control Centers

Equipment Description: 600VAC MOTOR CONTROL CENTER EZC-A

7. Are soft targets free from impact by nearby equipment or structures? Yes

8. Are overhead equipment, distribution systems, ceiling tiles and lighting, and masonry block walls not likely to collapse onto the equipment? Yes

9. Do attached lines have adequate flexibility to avoid damage? Yes

10. Based on the above seismic interaction evaluations, is equipment free of potentially adverse seismic interaction effects? Yes

**Other Adverse Conditions**

11. Have you looked for and found no adverse seismic conditions that could adversely affect the safety functions of the equipment? Yes

**Comments**

Evaluated by:  George G Thomas Date: 10/18/12

 Neda Stoeva 10/18/12

**Photos**



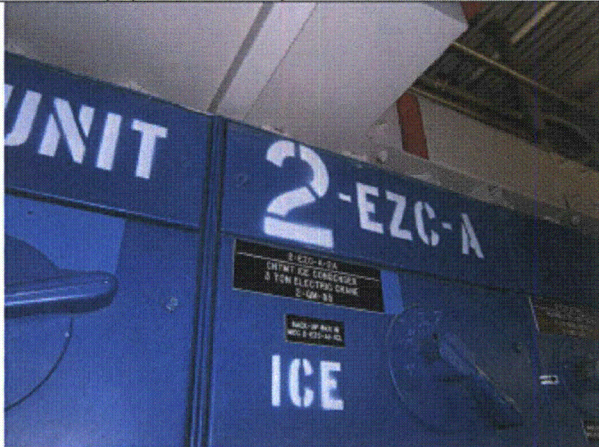
Status:  Y  N  U

**Seismic Walkdown Checklist (SWC)**

Equipment ID No.: 2-EZC-A

Equipment Class: (1) Motor Control Centers

Equipment Description: 600VAC MOTOR CONTROL CENTER EZC-A



P9170774



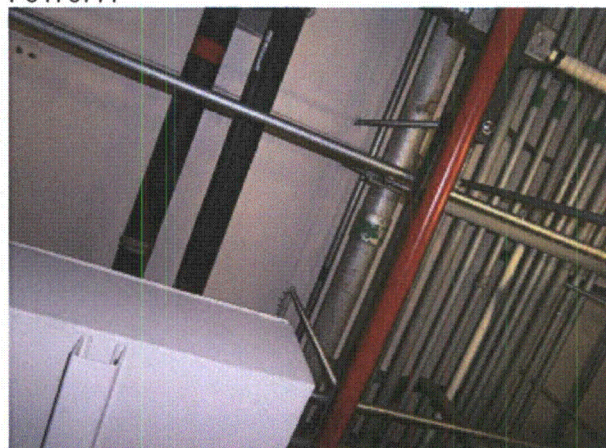
P9170775



P9170776



P9170777





Status:  Y  N  U

**Seismic Walkdown Checklist (SWC)**

Equipment ID No.: 2-EZC-A

Equipment Class: (1) Motor Control Centers

Equipment Description: 600VAC MOTOR CONTROL CENTER EZC-A

P9170778

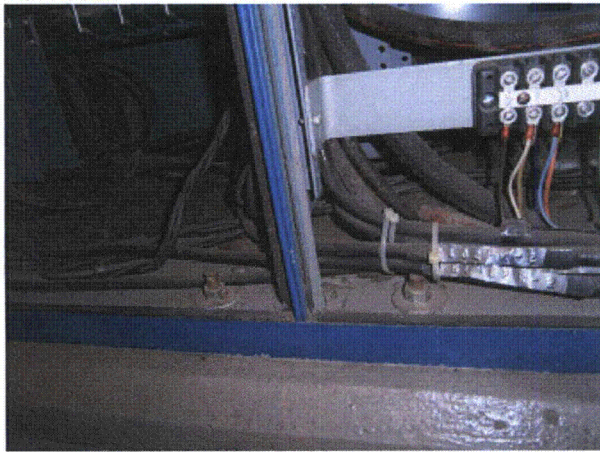
P9170779



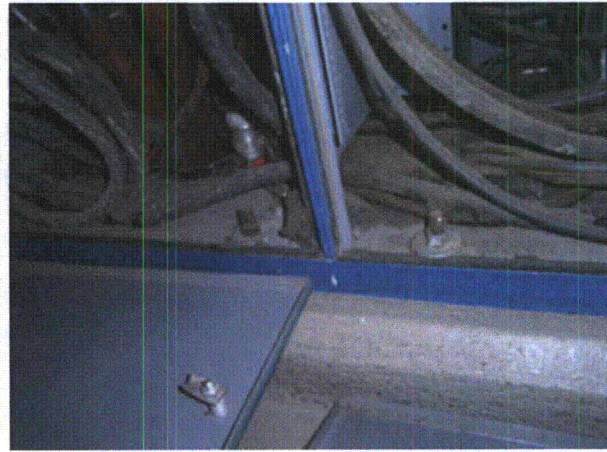
P9170780



P9170781



P9170782



P9170783



Status:  Y  N  U

**Seismic Walkdown Checklist (SWC)**

Equipment ID No.: 2-EZC-A

Equipment Class: (1) Motor Control Centers

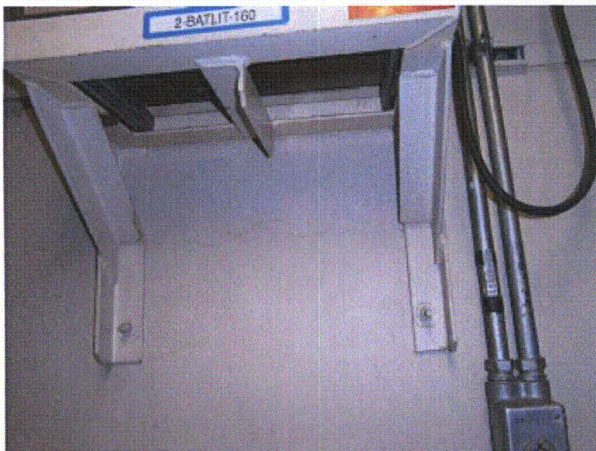
Equipment Description: 600VAC MOTOR CONTROL CENTER EZC-A



P9170784



P9170785



P9170786

Status:  Y  N  U

**Seismic Walkdown Checklist (SWC)**

Equipment ID No.: 2-EZC-A1

Equipment Class: (1) Motor Control Centers

Equipment Description: 600VAC MOTOR CONTROL CENTER EZC-A1

Project: DC Cook 2 SWEL

Location (Bldg, Elev, Room/Area): AB2, 613.00 ft, 205

Manufacturer/Model: \_\_\_\_\_

**Instructions for Completing Checklist**

This checklist may be used to document the results of the Seismic Walkdown of an item of equipment on the SWEL. The space below each of the following questions may be used to record the results of judgments and findings. Additional space is provided at the end of this checklist for documenting other comments.

**Anchorage**

1. Is anchorage configuration verification required (i.e., is the item one of the 50% of SWEL items requiring such verification)? Yes  
*DWG 12-3431A and 12-3073D*
  
2. Is the anchorage free of bent, broken, missing or loose hardware? Yes
  
3. Is the anchorage free of corrosion that is more than mild surface oxidation? Yes
  
4. Is the anchorage free of visible cracks in the concrete near the anchors? Yes
  
5. Is the anchorage configuration consistent with plant documentation? (Note: This question only applies if the item is one of the 50% for which an anchorage configuration verification is required.) Yes
  
6. Based on the above anchorage evaluations, is the anchorage free of potentially adverse seismic conditions? Yes

**Interaction Effects**



Status:  Y  N  U

**Seismic Walkdown Checklist (SWC)**

Equipment ID No.: 2-EZC-A1

Equipment Class: (1) Motor Control Centers

Equipment Description: 600VAC MOTOR CONTROL CENTER EZC-A1

7. Are soft targets free from impact by nearby equipment or structures? Yes

8. Are overhead equipment, distribution systems, ceiling tiles and lighting, and masonry block walls not likely to collapse onto the equipment? Yes  
*Ceiling light rod hung can impact panel 2-EZC-A1 & 2-EZC-B1 - NOT damaging - not that sensitive*

9. Do attached lines have adequate flexibility to avoid damage? Yes

10. Based on the above seismic interaction evaluations, is equipment free of potentially adverse seismic interaction effects? Yes

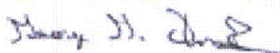
---

**Other Adverse Conditions**

11. Have you looked for and found no adverse seismic conditions that could adversely affect the safety functions of the equipment? Yes

---

**Comments**

Evaluated by:  George G Thomas Date: 10/18/12

 Neda Stoeva 10/18/12

---

**Photos**

Status:  Y  N  U

**Seismic Walkdown Checklist (SWC)**

Equipment ID No.: 2-EZC-A1

Equipment Class: (1) Motor Control Centers

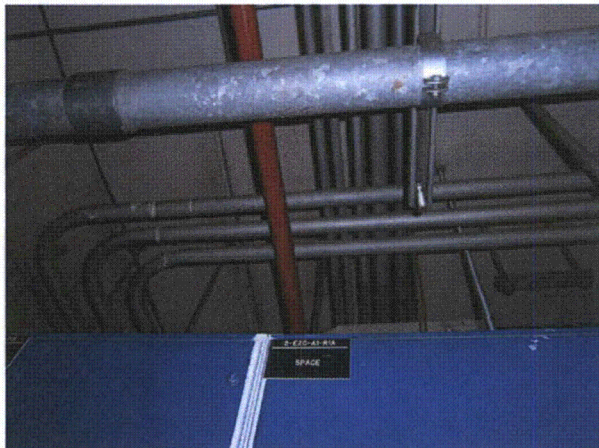
Equipment Description: 600VAC MOTOR CONTROL CENTER EZC-A1



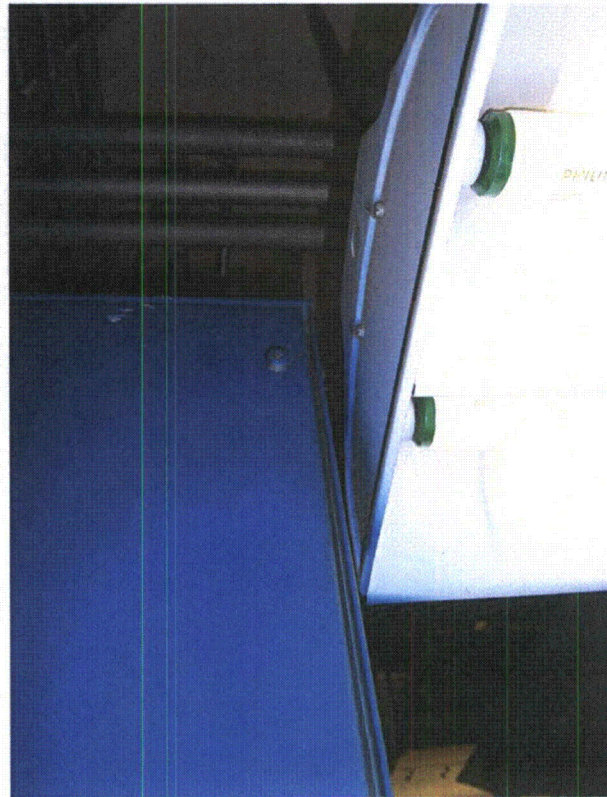
P9170788



P9170789



P9170790



P9170791



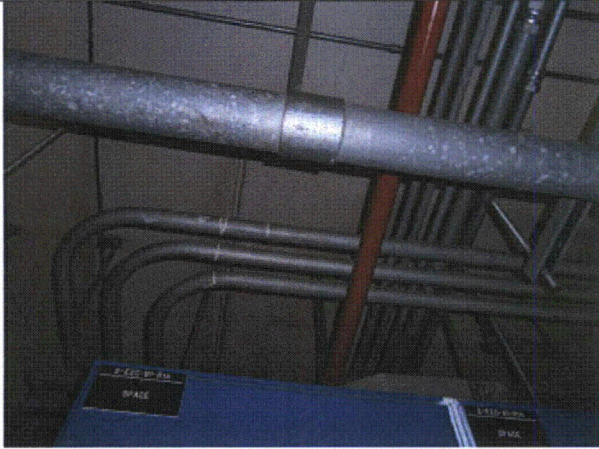
Status:  Y  N  U

**Seismic Walkdown Checklist (SWC)**

Equipment ID No.: 2-EZC-A1

Equipment Class: (1) Motor Control Centers

Equipment Description: 600VAC MOTOR CONTROL CENTER EZC-A1



P9170792

Status:  Y  N  U

**Seismic Walkdown Checklist (SWC)**

Equipment ID No.: 2-EZC-B

Equipment Class: (1) Motor Control Centers

Equipment Description: 600VAC MOTOR CONTROL CENTER EZC-B

Project: DC Cook 2 SWEL

Location (Bldg, Elev, Room/Area): AB2, 613.00 ft, 205

Manufacturer/Model: \_\_\_\_\_

**Instructions for Completing Checklist**

This checklist may be used to document the results of the Seismic Walkdown of an item of equipment on the SWEL. The space below each of the following questions may be used to record the results of judgments and findings. Additional space is provided at the end of this checklist for documenting other comments.

**Anchorage**

- |                                                                                                                                                                                                        |                |
|--------------------------------------------------------------------------------------------------------------------------------------------------------------------------------------------------------|----------------|
| 1. Is anchorage configuration verification required (i.e., is the item one of the 50% of SWEL items requiring such verification)?                                                                      | No             |
| 2. Is the anchorage free of bent, broken, missing or loose hardware?                                                                                                                                   | Yes            |
| 3. Is the anchorage free of corrosion that is more than mild surface oxidation?                                                                                                                        | Yes            |
| 4. Is the anchorage free of visible cracks in the concrete near the anchors?                                                                                                                           | Yes            |
| 5. Is the anchorage configuration consistent with plant documentation? (Note: This question only applies if the item is one of the 50% for which an anchorage configuration verification is required.) | Not Applicable |
| 6. Based on the above anchorage evaluations, is the anchorage free of potentially adverse seismic conditions?                                                                                          | Yes            |

**Interaction Effects**



Status:  Y  N  U

**Seismic Walkdown Checklist (SWC)**

Equipment ID No.: 2-EZC-B

Equipment Class: (1) Motor Control Centers

Equipment Description: 600VAC MOTOR CONTROL CENTER EZC-B

7. Are soft targets free from impact by nearby equipment or structures? Yes

8. Are overhead equipment, distribution systems, ceiling tiles and lighting, and masonry block walls not likely to collapse onto the equipment? Yes

9. Do attached lines have adequate flexibility to avoid damage? Yes

10. Based on the above seismic interaction evaluations, is equipment free of potentially adverse seismic interaction effects? Yes

**Other Adverse Conditions**

11. Have you looked for and found no adverse seismic conditions that could adversely affect the safety functions of the equipment? Yes

**Comments**

INSULATION Debris inside 2-EZC-R5A

Evaluated by:  George G Thomas Date: 10/18/12

 Neda Stoeva 10/18/12

**Photos**



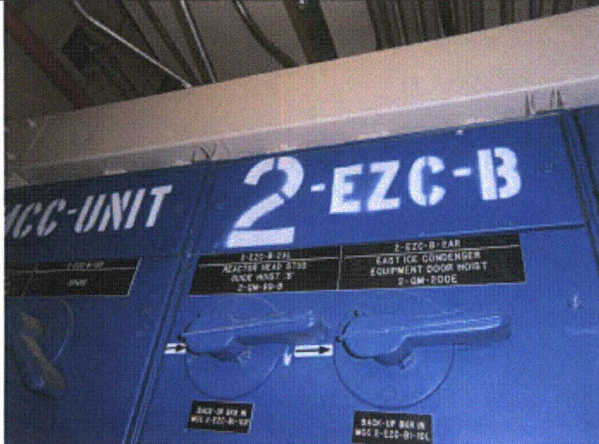
Status:  Y  N  U

**Seismic Walkdown Checklist (SWC)**

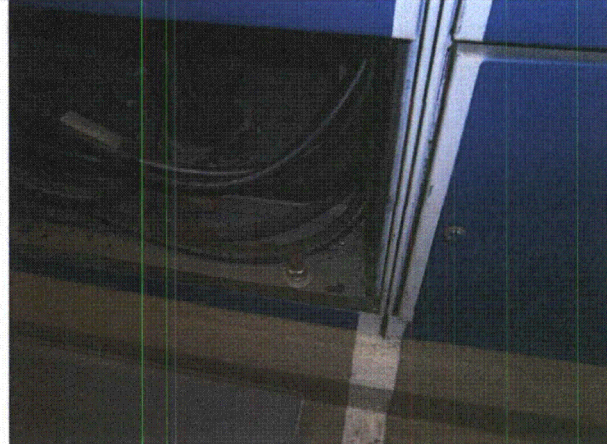
Equipment ID No.: 2-EZC-B

Equipment Class: (1) Motor Control Centers

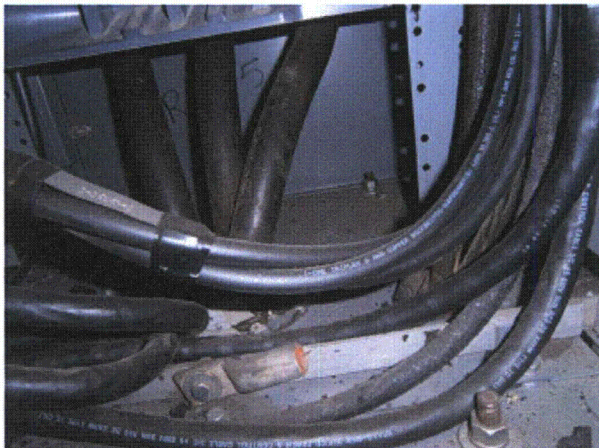
Equipment Description: 600VAC MOTOR CONTROL CENTER EZC-B



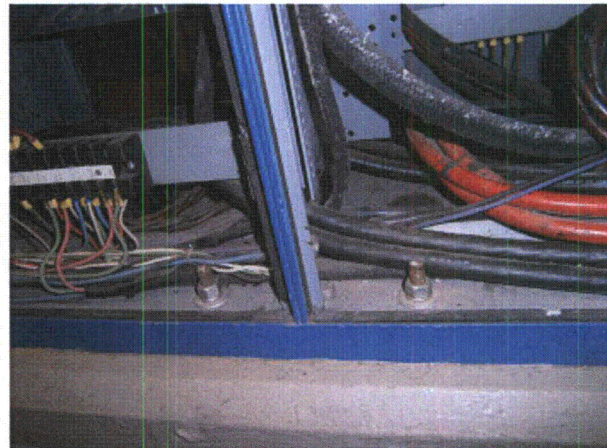
P9170762



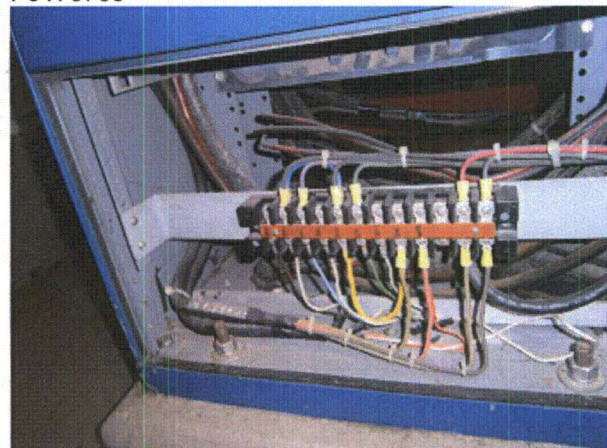
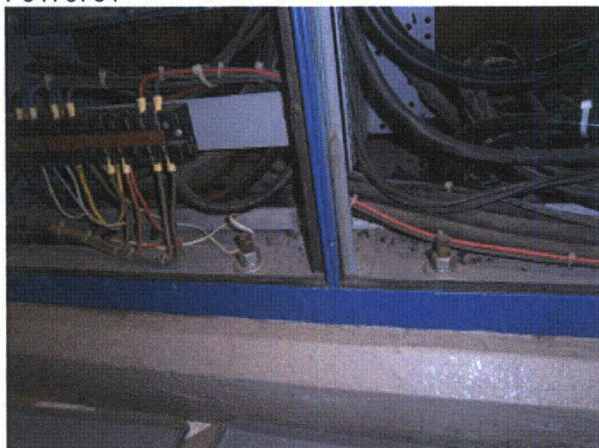
P9170763



P9170764



P9170765





Status:  Y  N  U

**Seismic Walkdown Checklist (SWC)**

Equipment ID No.: 2-EZC-B

Equipment Class: (1) Motor Control Centers

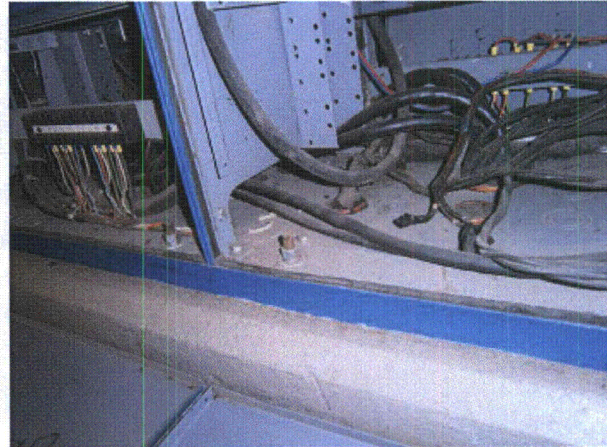
Equipment Description: 600VAC MOTOR CONTROL CENTER EZC-B

P9170766

P9170767



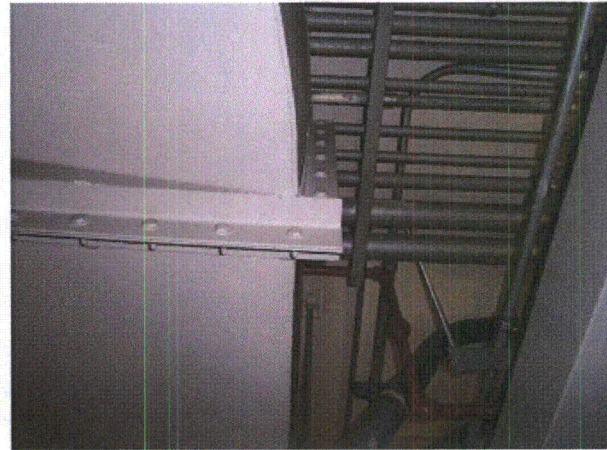
P9170768



P9170769



P9170770



P9170771

Status:  Y  N  U

**Seismic Walkdown Checklist (SWC)**

Equipment ID No.: 2-EZC-B

Equipment Class: (1) Motor Control Centers

Equipment Description: 600VAC MOTOR CONTROL CENTER EZC-B



P9170772



Status:  Y  N  U

**Seismic Walkdown Checklist (SWC)**

Equipment ID No.: 2-EZC-B1

Equipment Class: (1) Motor Control Centers

Equipment Description: 600VAC MOTOR CONTROL CENTER EZC-B1

Project: DC Cook 2 SWEL

Location (Bldg, Elev, Room/Area): AB2, 613.00 ft, 205

Manufacturer/Model: \_\_\_\_\_

**Instructions for Completing Checklist**

This checklist may be used to document the results of the Seismic Walkdown of an item of equipment on the SWEL. The space below each of the following questions may be used to record the results of judgments and findings. Additional space is provided at the end of this checklist for documenting other comments.

**Anchorage**

1. Is anchorage configuration verification required (i.e., is the item one of the 50% of SWEL items requiring such verification)? Yes  
*DWG 12-3431A and 12-3073D*
  
2. Is the anchorage free of bent, broken, missing or loose hardware? Yes
  
3. Is the anchorage free of corrosion that is more than mild surface oxidation? Yes
  
4. Is the anchorage free of visible cracks in the concrete near the anchors? Yes
  
5. Is the anchorage configuration consistent with plant documentation? (Note: This question only applies if the item is one of the 50% for which an anchorage configuration verification is required.) Yes
  
6. Based on the above anchorage evaluations, is the anchorage free of potentially adverse seismic conditions? Yes

**Interaction Effects**

Status:  Y  N  U

**Seismic Walkdown Checklist (SWC)**

Equipment ID No.: 2-EZC-B1

Equipment Class: (1) Motor Control Centers

Equipment Description: 600VAC MOTOR CONTROL CENTER EZC-B1

7. Are soft targets free from impact by nearby equipment or structures? Yes

8. Are overhead equipment, distribution systems, ceiling tiles and lighting, and masonry block walls not likely to collapse onto the equipment? Yes  
*Ceiling light rod hung can impact panel 2-EZC-A1 & 2-EZC-B1 - NOT damaging - not that sensitive*

9. Do attached lines have adequate flexibility to avoid damage? Yes

10. Based on the above seismic interaction evaluations, is equipment free of potentially adverse seismic interaction effects? Yes

---

**Other Adverse Conditions**

11. Have you looked for and found no adverse seismic conditions that could adversely affect the safety functions of the equipment? Yes

---

**Comments**

Evaluated by:  George G Thomas Date: 10/18/12

 Neda Stoeva 10/18/12

---

**Photos**



Status:  Y  N  U

**Seismic Walkdown Checklist (SWC)**

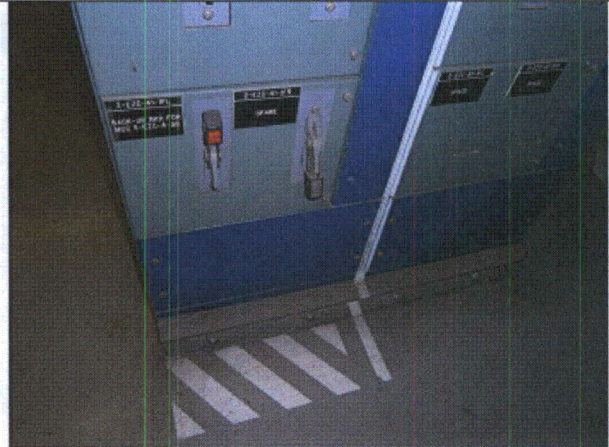
Equipment ID No.: 2-EZC-B1

Equipment Class: (1) Motor Control Centers

Equipment Description: 600VAC MOTOR CONTROL CENTER EZC-B1



P9170794



P9170795



P9170796



P9170797

Status:  Y  N  U

**Seismic Walkdown Checklist (SWC)**

Equipment ID No.: 2-FFI-240

Equipment Class: (18) Instruments on Racks

Equipment Description: AUXILIARY FEEDWATER TO STEAM GENERATOR OME-3-4

Project: DC Cook 2 SWEL

Location (Bldg, Elev, Room/Area): AB2, 621.00 ft, 10

Manufacturer/Model: \_\_\_\_\_

**Instructions for Completing Checklist**

This checklist may be used to document the results of the Seismic Walkdown of an item of equipment on the SWEL. The space below each of the following questions may be used to record the results of judgments and findings. Additional space is provided at the end of this checklist for documenting other comments.

**Anchorage**

1. Is anchorage configuration verification required (i.e., is the item one of the 50% of SWEL items requiring such verification)? Yes  
*DWG 2-5567A REV6*
  
2. Is the anchorage free of bent, broken, missing or loose hardware? Yes
  
3. Is the anchorage free of corrosion that is more than mild surface oxidation? Yes
  
4. Is the anchorage free of visible cracks in the concrete near the anchors? Yes
  
5. Is the anchorage configuration consistent with plant documentation? (Note: This question only applies if the item is one of the 50% for which an anchorage configuration verification is required.) Yes
  
6. Based on the above anchorage evaluations, is the anchorage free of potentially adverse seismic conditions? Yes

**Interaction Effects**



Status:  Y  N  U

**Seismic Walkdown Checklist (SWC)**

Equipment ID No.: 2-FFI-240

Equipment Class: (18) Instruments on Racks

Equipment Description: AUXILIARY FEEDWATER TO STEAM GENERATOR OME-3-4

7. Are soft targets free from impact by nearby equipment or structures? Yes
8. Are overhead equipment, distribution systems, ceiling tiles and lighting, and masonry block walls not likely to collapse onto the equipment? Yes
9. Do attached lines have adequate flexibility to avoid damage? Yes
10. Based on the above seismic interaction evaluations, is equipment free of potentially adverse seismic interaction effects? Yes

---

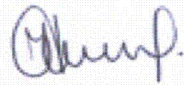
**Other Adverse Conditions**

11. Have you looked for and found no adverse seismic conditions that could adversely affect the safety functions of the equipment? Yes

---

**Comments**

Evaluated by:  George G Thomas Date: 10/18/12



Neda Stoeva 10/18/12

---

**Photos**

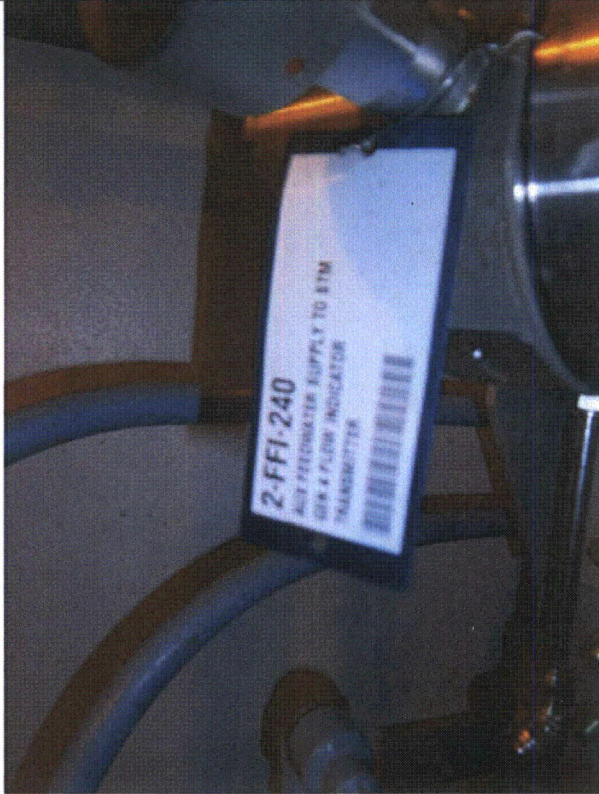
Status:  Y  N  U

**Seismic Walkdown Checklist (SWC)**

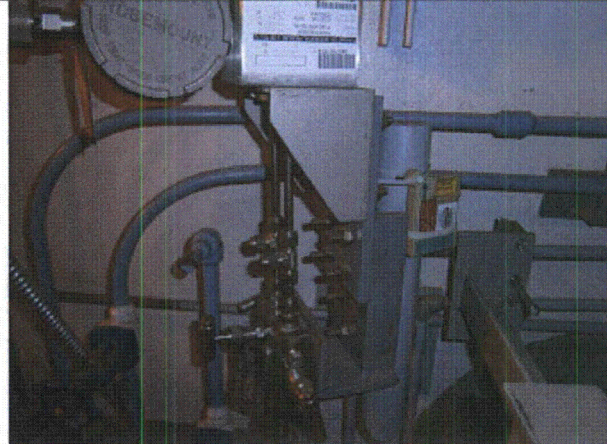
Equipment ID No.: 2-FFI-240

Equipment Class: (18) Instruments on Racks

Equipment Description: AUXILIARY FEEDWATER TO STEAM GENERATOR OME-3-4



P9100217



P9100218



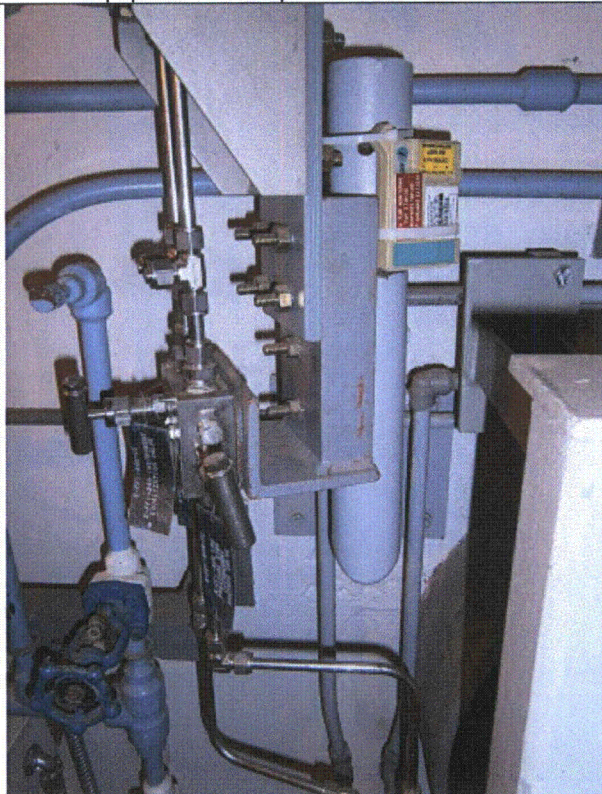
Status:  Y  N  U

**Seismic Walkdown Checklist (SWC)**

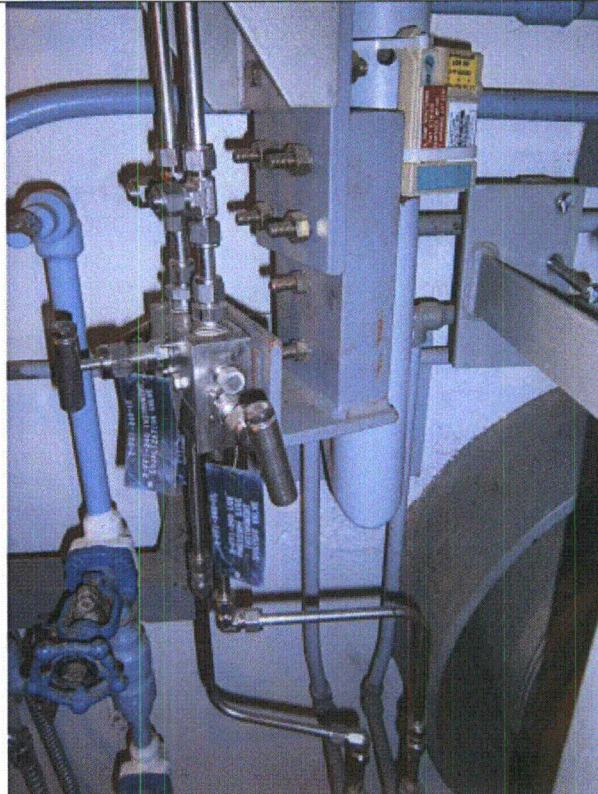
Equipment ID No.: 2-FFI-240

Equipment Class: (18) Instruments on Racks

Equipment Description: AUXILIARY FEEDWATER TO STEAM GENERATOR OME-3-4



P9100219



P9100220



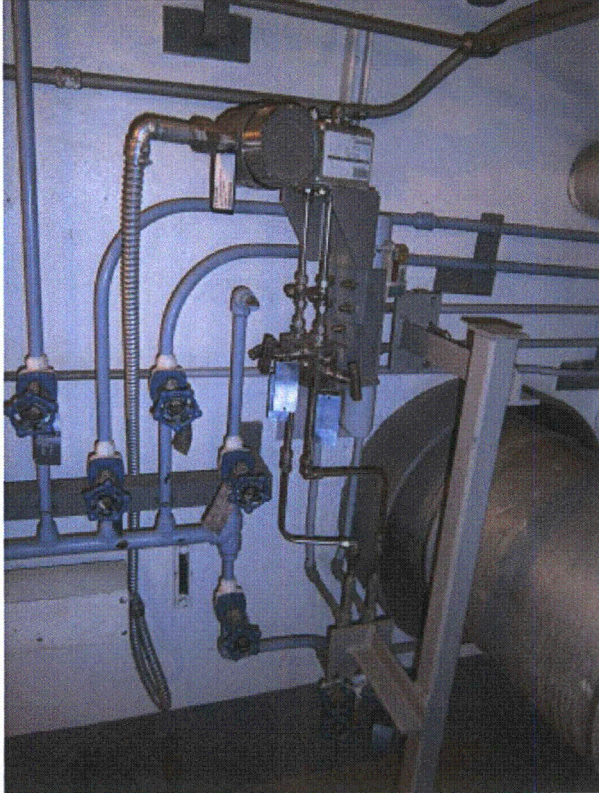
Status:  Y  N  U

**Seismic Walkdown Checklist (SWC)**

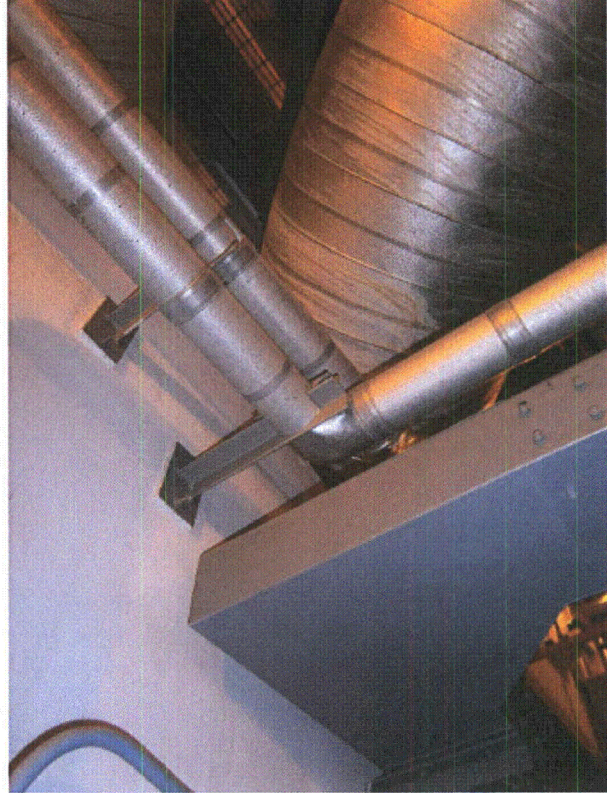
Equipment ID No.: 2-FFI-240

Equipment Class: (18) Instruments on Racks

Equipment Description: AUXILIARY FEEDWATER TO STEAM GENERATOR OME-3-4



P9100221



P9100222



Status: Y  N  U

**Seismic Walkdown Checklist (SWC)**

Equipment ID No.: 2-HE-15W

Equipment Class: (21) Tanks and Heat Exchangers

Equipment Description: WEST COMPONENT COOLING WATER HEAT EXCHANGER

Project: DC Cook 2 SWEL

Location (Bldg, Elev, Room/Area): AB2, 609.00 ft, 609

Manufacturer/Model:

**Instructions for Completing Checklist**

This checklist may be used to document the results of the Seismic Walkdown of an item of equipment on the SWEL. The space below each of the following questions may be used to record the results of judgments and findings. Additional space is provided at the end of this checklist for documenting other comments.

**Anchorage**

- |    |                                                                                                                                                                                                     |     |
|----|-----------------------------------------------------------------------------------------------------------------------------------------------------------------------------------------------------|-----|
| 1. | Is anchorage configuration verification required (i.e., is the item one of the 50% of SWEL items requiring such verification)?<br><i>DWG 12-3285 REV24</i>                                          | Yes |
| 2. | Is the anchorage free of bent, broken, missing or loose hardware?<br><i>Thread engagement of north west bolt - OK by tag - And north east bolt - DOC# not visible - OK per SD-010405-001</i>        | Yes |
| 3. | Is the anchorage free of corrosion that is more than mild surface oxidation?                                                                                                                        | Yes |
| 4. | Is the anchorage free of visible cracks in the concrete near the anchors?                                                                                                                           | Yes |
| 5. | Is the anchorage configuration consistent with plant documentation? (Note: This question only applies if the item is one of the 50% for which an anchorage configuration verification is required.) | Yes |
| 6. | Based on the above anchorage evaluations, is the anchorage free of potentially adverse seismic conditions?                                                                                          | Yes |

**Interaction Effects**

Status: Y  N  U

**Seismic Walkdown Checklist (SWC)**

Equipment ID No.: 2-HE-15W

Equipment Class: (21) Tanks and Heat Exchangers

Equipment Description: WEST COMPONENT COOLING WATER HEAT EXCHANGER

7. Are soft targets free from impact by nearby equipment or structures? Yes

8. Are overhead equipment, distribution systems, ceiling tiles and lighting, and masonry block walls not likely to collapse onto the equipment? No  
*Fire extinguishers on short hooks - AR 2012-11669 was issued.*

9. Do attached lines have adequate flexibility to avoid damage? Yes

10. Based on the above seismic interaction evaluations, is equipment free of potentially adverse seismic interaction effects? No

**Other Adverse Conditions**

11. Have you looked for and found no adverse seismic conditions that could adversely affect the safety functions of the equipment? Yes

**Comments**

Evaluated by:  George G Thomas Date: 10/18/12

 Neda Stoeva 10/18/12

**Photos**



Status: Y  N  U

**Seismic Walkdown Checklist (SWC)**

Equipment ID No.: 2-HE-15W

Equipment Class: (21) Tanks and Heat Exchangers

Equipment Description: WEST COMPONENT COOLING WATER HEAT EXCHANGER



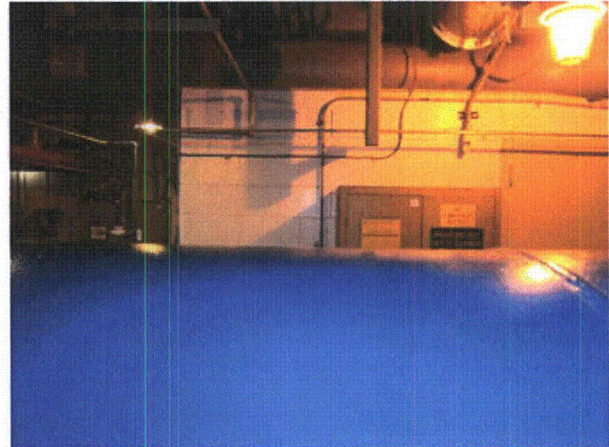
P9100047



P9100048



P9100049



P9100050



Status: Y  N  U

**Seismic Walkdown Checklist (SWC)**

Equipment ID No.: 2-HE-15W

Equipment Class: (21) Tanks and Heat Exchangers

Equipment Description: WEST COMPONENT COOLING WATER HEAT EXCHANGER  
P9100051

---



Status:  Y  N  U

**Seismic Walkdown Checklist (SWC)**

Equipment ID No.: 2-HE-17W

Equipment Class: (21) Tanks and Heat Exchangers

Equipment Description: WEST RESIDUAL HEAT REMOVAL HEAT EXCHANGER

Project: DC Cook 2 SWEL

Location (Bldg, Elev, Room/Area): AB2, 609.00 ft, 6

Manufacturer/Model: \_\_\_\_\_

**Instructions for Completing Checklist**

This checklist may be used to document the results of the Seismic Walkdown of an item of equipment on the SWEL. The space below each of the following questions may be used to record the results of judgments and findings. Additional space is provided at the end of this checklist for documenting other comments.

**Anchorage**

1. Is anchorage configuration verification required (i.e., is the item one of the 50% of SWEL items requiring such verification)? No
  
2. Is the anchorage free of bent, broken, missing or loose hardware? Yes
  
3. Is the anchorage free of corrosion that is more than mild surface oxidation? Yes
  
4. Is the anchorage free of visible cracks in the concrete near the anchors? Yes
  
5. Is the anchorage configuration consistent with plant documentation? (Note: This question only applies if the item is one of the 50% for which an anchorage configuration verification is required.) Not Applicable
  
6. Based on the above anchorage evaluations, is the anchorage free of potentially adverse seismic conditions? Yes

---

**Interaction Effects**

Status:  Y  N  U

**Seismic Walkdown Checklist (SWC)**

Equipment ID No.: 2-HE-17W

Equipment Class: (21) Tanks and Heat Exchangers

Equipment Description: WEST RESIDUAL HEAT REMOVAL HEAT EXCHANGER

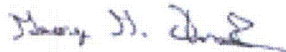
7. Are soft targets free from impact by nearby equipment or structures? Yes
8. Are overhead equipment, distribution systems, ceiling tiles and lighting, and masonry block walls not likely to collapse onto the equipment? Yes
9. Do attached lines have adequate flexibility to avoid damage? Yes
10. Based on the above seismic interaction evaluations, is equipment free of potentially adverse seismic interaction effects? Yes

**Other Adverse Conditions**

11. Have you looked for and found no adverse seismic conditions that could adversely affect the safety functions of the equipment? Yes

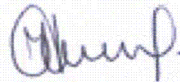
**Comments**

Evaluated by:



George G Thomas

Date: 10/18/12



Neda Stoeva

10/18/12

**Photos**



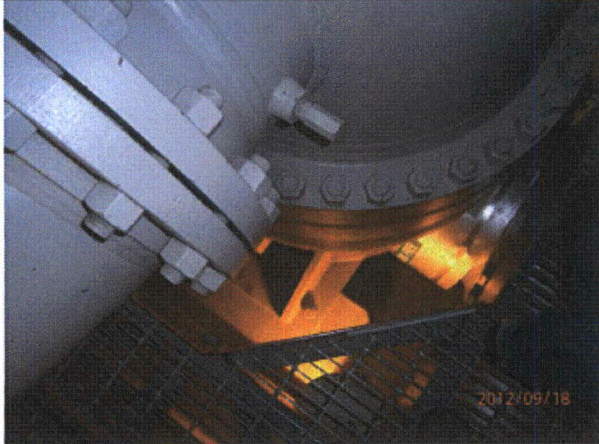
Status:  Y  N  U

**Seismic Walkdown Checklist (SWC)**

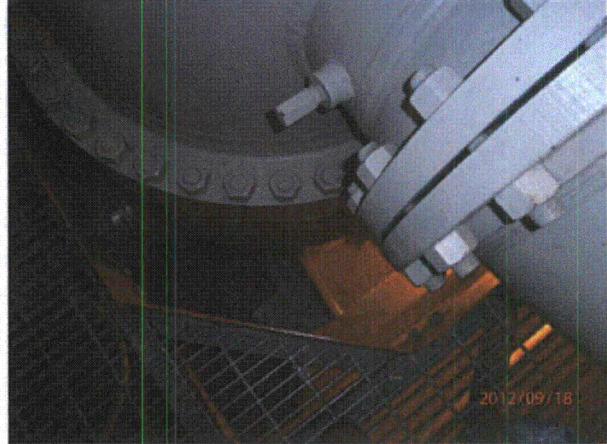
Equipment ID No.: 2-HE-17W

Equipment Class: (21) Tanks and Heat Exchangers

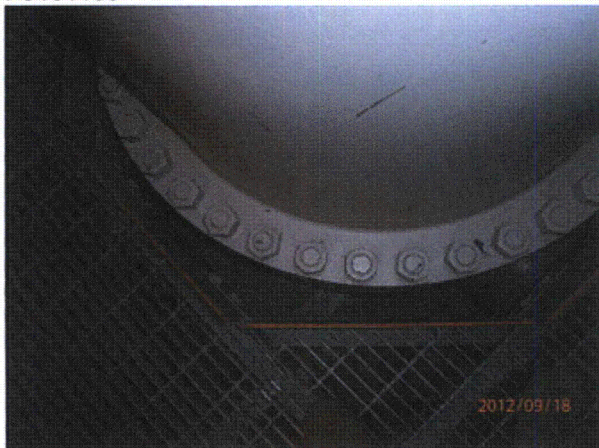
Equipment Description: WEST RESIDUAL HEAT REMOVAL HEAT EXCHANGER



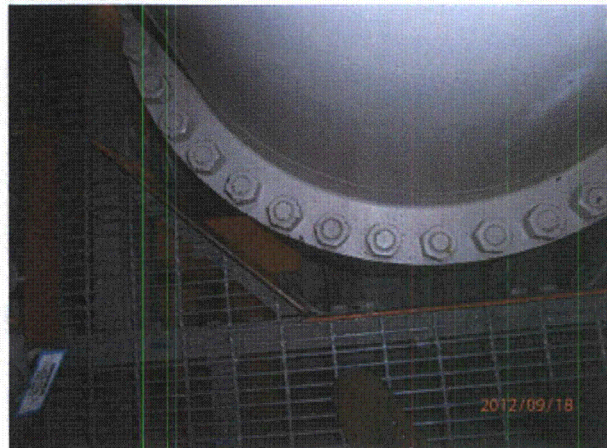
P9181130



P9181131



P9181132



P9181133





Status:  Y  N  U

**Seismic Walkdown Checklist (SWC)**

Equipment ID No.: 2-HE-17W

Equipment Class: (21) Tanks and Heat Exchangers

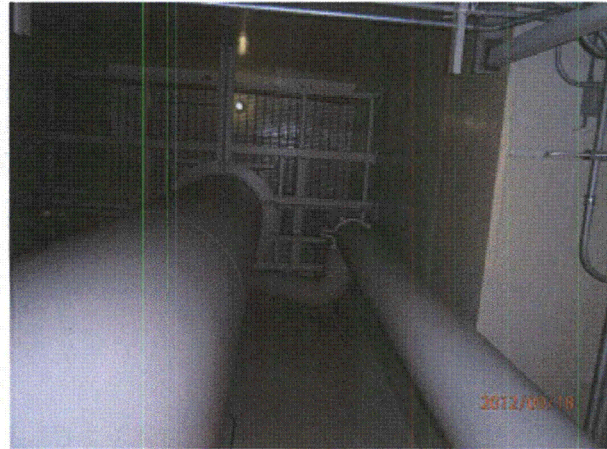
Equipment Description: WEST RESIDUAL HEAT REMOVAL HEAT EXCHANGER

P9181134

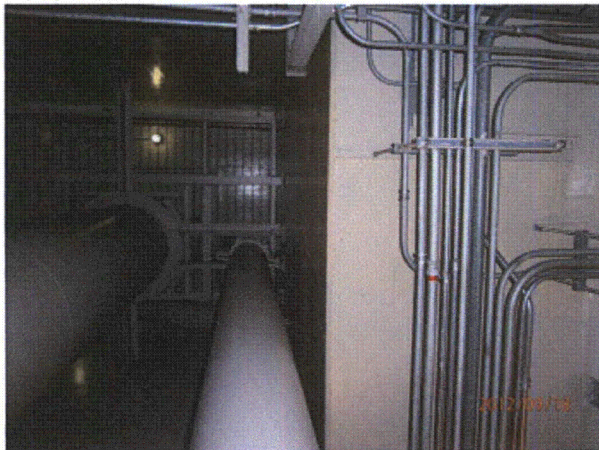
P9181135



P9181136



P9181137



P9181138