

Status: Y N U

Seismic Walkdown Checklist (SWC)

Equipment ID No.: MS-V-0001C

Equipment Class: (8) Motor-Operated and Solenoid-Operated Valves

Equipment Description: CONT ISOL B OTSG MS ISOL VALVE

Project: TMI SWEL

Location (Bldg, Elev, Room/Area): IB, 355.00 ft, 44 : IN 'C' STEAM RM

Manufacturer/Model:

Instructions for Completing Checklist

This checklist may be used to document the results of the Seismic Walkdown of an item of equipment on the SWEL. The space below each of the following questions may be used to record the results of judgments and findings. Additional space is provided at the end of this checklist for documenting other comments.

Anchorage

1. Is anchorage configuration verification required (i.e., is the item one of the 50% of SWEL items requiring such verification)? Yes

2. Is the anchorage free of bent, broken, missing or loose hardware? Yes

3. Is the anchorage free of corrosion that is more than mild surface oxidation? Yes

4. Is the anchorage free of visible cracks in the concrete near the anchors? Yes

5. Is the anchorage configuration consistent with plant documentation? (Note: This question only applies if the item is one of the 50% for which an anchorage configuration verification is required.) Yes

6. Based on the above anchorage evaluations, is the anchorage free of potentially adverse seismic conditions? Yes

Status: Y N U

Seismic Walkdown Checklist (SWC)

Equipment ID No.: MS-V-0001C

Equipment Class: (8) Motor-Operated and Solenoid-Operated Valves

Equipment Description: CONT ISOL B OTSG MS ISOL VALVE

Interaction Effects

- | | |
|---|-----|
| 7. Are soft targets free from impact by nearby equipment or structures? | Yes |
| 8. Are overhead equipment, distribution systems, ceiling tiles and lighting, and masonry block walls not likely to collapse onto the equipment? | Yes |
| 9. Do attached lines have adequate flexibility to avoid damage? | Yes |
| 10. Based on the above seismic interaction evaluations, is equipment free of potentially adverse seismic interaction effects? | Yes |

Other Adverse Conditions

- | | |
|--|-----|
| 11. Have you looked for and found no adverse seismic conditions that could adversely affect the safety functions of the equipment? | Yes |
|--|-----|

Comments

See SQ-T1-MS-V-0001C Rev 01

Minor surface crack near support, consistent with the acceptance criteria of ACI-349, therefore OK.

Status: Y N U

Seismic Walkdown Checklist (SWC)

Equipment ID No.: MS-V-0001C

Equipment Class: (8) Motor-Operated and Solenoid-Operated Valves

Equipment Description: CONT ISOL B OTSG MS ISOL VALVE

Evaluated by: *Mark S. Etre* Mark S. Etre Date: 10/24/2012
Juan A. López Juan A. López 10/9/12

Photos



100_4040



100_4041

Status: Y N U

Seismic Walkdown Checklist (SWC)

Equipment ID No.: MS-V-0002B

Equipment Class: (8) Motor-Operated and Solenoid-Operated Valves

Equipment Description: CONT ISOL B OTSG ISOL TO ATMOS

Project: TMI SWEL

Location (Bldg, Elev, Room/Area): IB, 295.00 ft, 5 : EF-P-1 RM ON MS

Manufacturer/Model:

Instructions for Completing Checklist

This checklist may be used to document the results of the Seismic Walkdown of an item of equipment on the SWEL. The space below each of the following questions may be used to record the results of judgments and findings. Additional space is provided at the end of this checklist for documenting other comments.

Anchorage

- | | |
|--|----------------|
| 1. Is anchorage configuration verification required (i.e., is the item one of the 50% of SWEL items requiring such verification)? | No |
| 2. Is the anchorage free of bent, broken, missing or loose hardware? | Not Applicable |
| 3. Is the anchorage free of corrosion that is more than mild surface oxidation? | Not Applicable |
| 4. Is the anchorage free of visible cracks in the concrete near the anchors? | Not Applicable |
| 5. Is the anchorage configuration consistent with plant documentation? (Note: This question only applies if the item is one of the 50% for which an anchorage configuration verification is required.) | Not Applicable |
| 6. Based on the above anchorage evaluations, is the anchorage free of potentially adverse seismic conditions? | Yes |

Status: Y N U

Seismic Walkdown Checklist (SWC)

Equipment ID No.: MS-V-0002B

Equipment Class: (8) Motor-Operated and Solenoid-Operated Valves

Equipment Description: CONT ISOL B OTSG ISOL TO ATMOS

Interaction Effects

- | | |
|---|-----|
| 7. Are soft targets free from impact by nearby equipment or structures? | Yes |
| 8. Are overhead equipment, distribution systems, ceiling tiles and lighting, and masonry block walls not likely to collapse onto the equipment? | Yes |
| 9. Do attached lines have adequate flexibility to avoid damage? | Yes |
| 10. Based on the above seismic interaction evaluations, is equipment free of potentially adverse seismic interaction effects? | Yes |

Other Adverse Conditions

- | | |
|--|-----|
| 11. Have you looked for and found no adverse seismic conditions that could adversely affect the safety functions of the equipment? | Yes |
|--|-----|

Comments

Anchorage check is not applicable. This is in-line equipment.

See SQ-T1-MS-V-0002B, Revision 001

Status: Y N U

Seismic Walkdown Checklist (SWC)

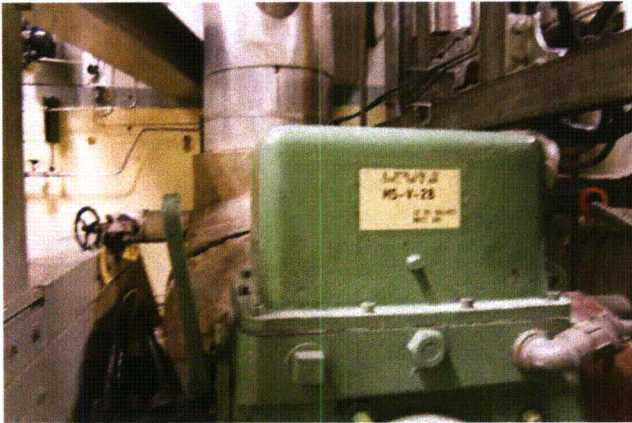
Equipment ID No.: MS-V-0002B

Equipment Class: (8) Motor-Operated and Solenoid-Operated Valves

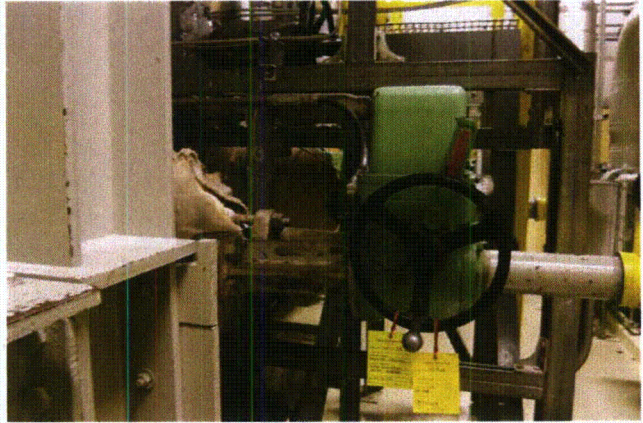
Equipment Description: CONT ISOL B OTSG ISOL TO ATMOS

Evaluated by: *Mark S. Etre* Mark S. Etre Date: 10/24/2012
Seth W. Baker Seth W. Baker 10/24/2012

Photos



100_3367



100_3368

Status: Y N U

Seismic Walkdown Checklist (SWC)

Equipment ID No.: MS-V-0004B

Equipment Class: (7) Fluid-Operated Valves

Equipment Description: ATMOSPHERIC DUMP VALVE FOR 'B' OTSG

Project: TMI SWEL

Location (Bldg, Elev, Room/Area): IB, 295.00 ft, 5 : EF-P-1 RM ON MS

Manufacturer/Model:

Instructions for Completing Checklist

This checklist may be used to document the results of the Seismic Walkdown of an item of equipment on the SWEL. The space below each of the following questions may be used to record the results of judgments and findings. Additional space is provided at the end of this checklist for documenting other comments.

Anchorage

- | | |
|--|----------------|
| 1. Is anchorage configuration verification required (i.e., is the item one of the 50% of SWEL items requiring such verification)? | No |
| 2. Is the anchorage free of bent, broken, missing or loose hardware? | Not Applicable |
| 3. Is the anchorage free of corrosion that is more than mild surface oxidation? | Not Applicable |
| 4. Is the anchorage free of visible cracks in the concrete near the anchors? | Not Applicable |
| 5. Is the anchorage configuration consistent with plant documentation? (Note: This question only applies if the item is one of the 50% for which an anchorage configuration verification is required.) | Not Applicable |
| 6. Based on the above anchorage evaluations, is the anchorage free of potentially adverse seismic conditions? | Yes |

Status: Y N U

Seismic Walkdown Checklist (SWC)

Equipment ID No.: MS-V-0004B

Equipment Class: (7) Fluid-Operated Valves

Equipment Description: ATMOSPHERIC DUMP VALVE FOR 'B' OTSG

Interaction Effects

- | | |
|---|-----|
| 7. Are soft targets free from impact by nearby equipment or structures? | Yes |
| 8. Are overhead equipment, distribution systems, ceiling tiles and lighting, and masonry block walls not likely to collapse onto the equipment? | Yes |
| 9. Do attached lines have adequate flexibility to avoid damage? | Yes |
| 10. Based on the above seismic interaction evaluations, is equipment free of potentially adverse seismic interaction effects? | Yes |

Other Adverse Conditions

- | | |
|--|-----|
| 11. Have you looked for and found no adverse seismic conditions that could adversely affect the safety functions of the equipment? | Yes |
|--|-----|

Comments

Anchorage check is not applicable. This is in-line equipment.

See SQ-T1-MS-V-0004B, Revision 001

Status: Y N U

Seismic Walkdown Checklist (SWC)

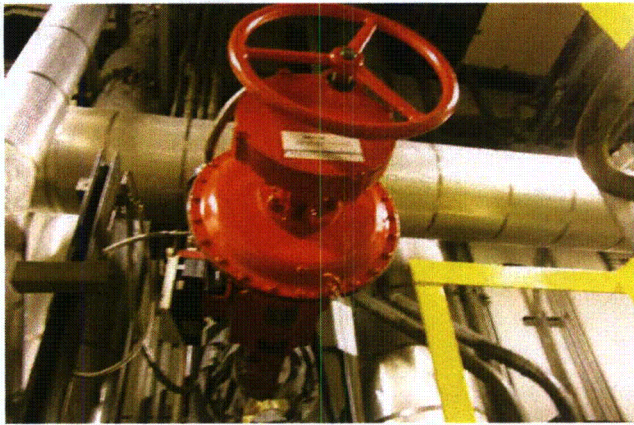
Equipment ID No.: MS-V-0004B

Equipment Class: (7) Fluid-Operated Valves

Equipment Description: ATMOSPHERIC DUMP VALVE FOR 'B' OTSG

Evaluated by: *Mark S. Etre* Mark S. Etre Date: 10/24/2012
Seth W. Baker Seth W. Baker 10/24/2012

Photos



100_3360

Status: Y N U

Seismic Walkdown Checklist (SWC)

Equipment ID No.: MU-FT-1127

Equipment Class: (18) Instruments on Racks

Equipment Description: HPI THRU MU-V-16B FLOW TRANSMITTER

Project: TMI SWEL

Location (Bldg, Elev, Room/Area): AB, 281.00 ft, 15 : 3' E. MU VLV ALLEY

Manufacturer/Model:

Instructions for Completing Checklist

This checklist may be used to document the results of the Seismic Walkdown of an item of equipment on the SWEL. The space below each of the following questions may be used to record the results of judgments and findings. Additional space is provided at the end of this checklist for documenting other comments.

Anchorage

1. Is anchorage configuration verification required (i.e., is the item one of the 50% of SWEL items requiring such verification)? Yes

2. Is the anchorage free of bent, broken, missing or loose hardware? Yes

3. Is the anchorage free of corrosion that is more than mild surface oxidation? Yes

4. Is the anchorage free of visible cracks in the concrete near the anchors? Yes

5. Is the anchorage configuration consistent with plant documentation? (Note: This question only applies if the item is one of the 50% for which an anchorage configuration verification is required.) Yes

6. Based on the above anchorage evaluations, is the anchorage free of potentially adverse seismic conditions? Yes

Status: Y N U

Seismic Walkdown Checklist (SWC)

Equipment ID No.: MU-FT-1127

Equipment Class: (18) Instruments on Racks

Equipment Description: HPI THRU MU-V-16B FLOW TRANSMITTER

Interaction Effects

7. Are soft targets free from impact by nearby equipment or structures? Yes
8. Are overhead equipment, distribution systems, ceiling tiles and lighting, and masonry block walls not likely to collapse onto the equipment? Yes
9. Do attached lines have adequate flexibility to avoid damage? Yes
10. Based on the above seismic interaction evaluations, is equipment free of potentially adverse seismic interaction effects? Yes

Other Adverse Conditions

11. Have you looked for and found no adverse seismic conditions that could adversely affect the safety functions of the equipment? Yes

Comments


See SQ-T1-MU-FT-1127, Revision 000

Evaluated by:



Mark S. Etre

Date: 10/24/2012



Seth W. Baker

10/24/2012

Status: Y N U

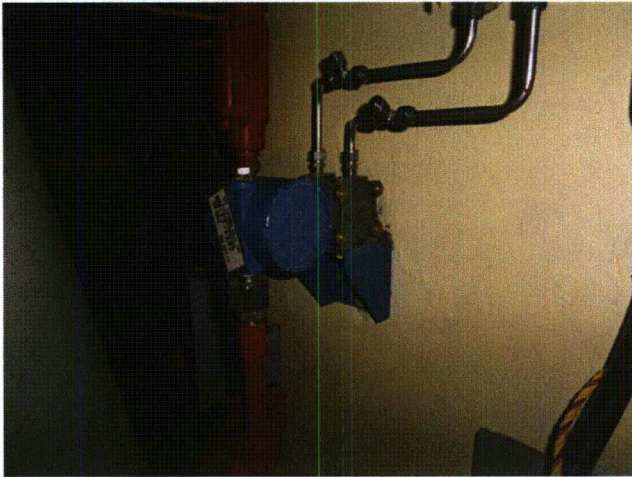
Seismic Walkdown Checklist (SWC)

Equipment ID No.: MU-FT-1127

Equipment Class: (18) Instruments on Racks

Equipment Description: HPI THRU MU-V-16B FLOW TRANSMITTER

Photos



100_3868

Status: Y N U

Seismic Walkdown Checklist (SWC)

Equipment ID No.: MU-FT-1128

Equipment Class: (18) Instruments on Racks

Equipment Description: HPI THRU MU-V-16C FLOW TRANSMITTER

Project: TMI SWEL

Location (Bldg, Elev, Room/Area): AB, 305.00 ft, 13 : ON WALL BY MU-F-4A 4' UP

Manufacturer/Model:

Instructions for Completing Checklist

This checklist may be used to document the results of the Seismic Walkdown of an item of equipment on the SWEL. The space below each of the following questions may be used to record the results of judgments and findings. Additional space is provided at the end of this checklist for documenting other comments.

Anchorage

1. Is anchorage configuration verification required (i.e., is the item one of the 50% of SWEL items requiring such verification)? Yes

2. Is the anchorage free of bent, broken, missing or loose hardware? Yes

3. Is the anchorage free of corrosion that is more than mild surface oxidation? Yes

4. Is the anchorage free of visible cracks in the concrete near the anchors? Yes

5. Is the anchorage configuration consistent with plant documentation? (Note: This question only applies if the item is one of the 50% for which an anchorage configuration verification is required.) Yes

6. Based on the above anchorage evaluations, is the anchorage free of potentially adverse seismic conditions? Yes

Status: Y N U

Seismic Walkdown Checklist (SWC)

Equipment ID No.: MU-FT-1128

Equipment Class: (18) Instruments on Racks

Equipment Description: HPI THRU MU-V-16C FLOW TRANSMITTER

Interaction Effects


7. Are soft targets free from impact by nearby equipment or structures? Yes
8. Are overhead equipment, distribution systems, ceiling tiles and lighting, and masonry block walls not likely to collapse onto the equipment? Yes
9. Do attached lines have adequate flexibility to avoid damage? Yes
10. Based on the above seismic interaction evaluations, is equipment free of potentially adverse seismic interaction effects? Yes

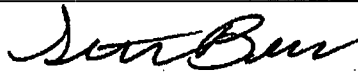
Other Adverse Conditions

11. Have you looked for and found no adverse seismic conditions that could adversely affect the safety functions of the equipment? Yes

Comments

See SQ-T1-MU-FT-1128, Revision 000

Evaluated by:  Mark S. Etre Date: 10/24/2012

 Seth W. Baker 10/24/2012

Status: Y N U

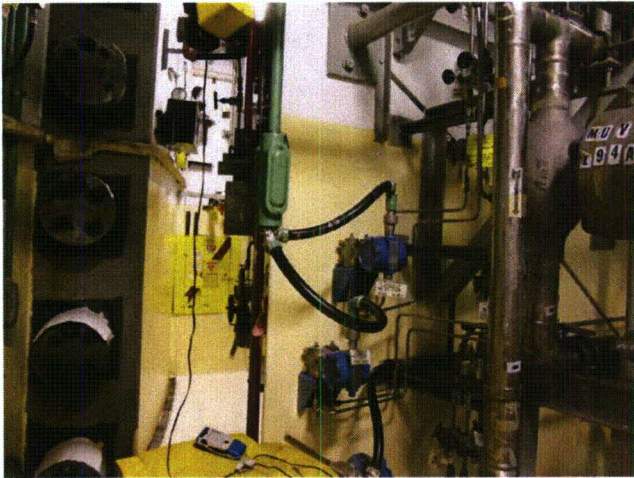
Seismic Walkdown Checklist (SWC)

Equipment ID No.: MU-FT-1128

Equipment Class: (18) Instruments on Racks

Equipment Description: HPI THRU MU-V-16C FLOW TRANSMITTER

Photos



100_3827

Status: Y N U

Seismic Walkdown Checklist (SWC)

Equipment ID No.: MU-FT-1129

Equipment Class: (18) Instruments on Racks

Equipment Description: HPI THROUGH MU-V-16D FLOW TRANSMITTER

Project: TMI SWEL

Location (Bldg, Elev, Room/Area): FB, 281.00 ft, 31 : W WALL 12' N OF SEAL RET CLR

Manufacturer/Model:

Instructions for Completing Checklist

This checklist may be used to document the results of the Seismic Walkdown of an item of equipment on the SWEL. The space below each of the following questions may be used to record the results of judgments and findings. Additional space is provided at the end of this checklist for documenting other comments.

Anchorage

1. Is anchorage configuration verification required (i.e., is the item one of the 50% of SWEL items requiring such verification)? Yes

2. Is the anchorage free of bent, broken, missing or loose hardware? Yes

3. Is the anchorage free of corrosion that is more than mild surface oxidation? Yes

4. Is the anchorage free of visible cracks in the concrete near the anchors? Yes

5. Is the anchorage configuration consistent with plant documentation? (Note: This question only applies if the item is one of the 50% for which an anchorage configuration verification is required.) Yes

6. Based on the above anchorage evaluations, is the anchorage free of potentially adverse seismic conditions? Yes

Status: Y N U

Seismic Walkdown Checklist (SWC)

Equipment ID No.: MU-FT-1129

Equipment Class: (18) Instruments on Racks

Equipment Description: HPI THROUGH MU-V-16D FLOW TRANSMITTER

Interaction Effects

7. Are soft targets free from impact by nearby equipment or structures? Yes
8. Are overhead equipment, distribution systems, ceiling tiles and lighting, and masonry block walls not likely to collapse onto the equipment? Yes
9. Do attached lines have adequate flexibility to avoid damage? Yes
10. Based on the above seismic interaction evaluations, is equipment free of potentially adverse seismic interaction effects? Yes

Other Adverse Conditions

11. Have you looked for and found no adverse seismic conditions that could adversely affect the safety functions of the equipment? Yes

Comments

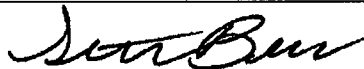
Equipment was verified to be in accordance with Seismic Qualification No. SQ-T1-MU-FT-1129, Rev 000

Evaluated by:



Mark S. Etre

Date: 10/24/2012



Seth W. Baker

10/24/2012

Status: Y N U

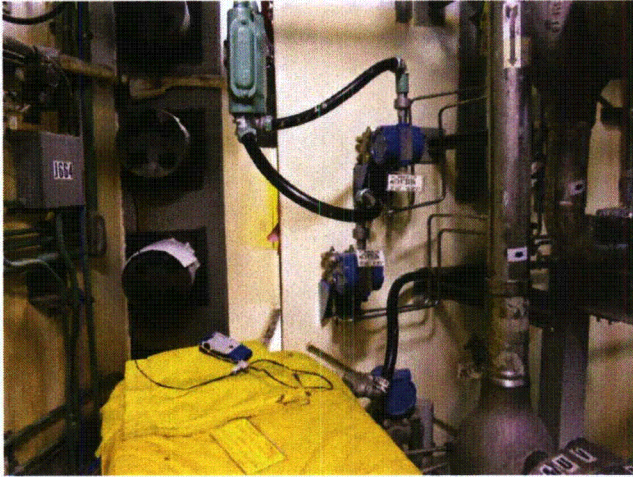
Seismic Walkdown Checklist (SWC)

Equipment ID No.: MU-FT-1129

Equipment Class: (18) Instruments on Racks

Equipment Description: HPI THROUGH MU-V-16D FLOW TRANSMITTER

Photos



100_3353

Status: Y N U

Seismic Walkdown Checklist (SWC)

Equipment ID No.: MU-P-0001B

Equipment Class: (5) Horizontal Pumps

Equipment Description: MAKEUP PUMP 1B

Project: TMI SWEL

Location (Bldg, Elev, Room/Area): AB, 281.00 ft, 14 : MU PUMP RM B

Manufacturer/Model:

Instructions for Completing Checklist

This checklist may be used to document the results of the Seismic Walkdown of an item of equipment on the SWEL. The space below each of the following questions may be used to record the results of judgments and findings. Additional space is provided at the end of this checklist for documenting other comments.

Anchorage

1. Is anchorage configuration verification required (i.e., is the item one of the 50% of SWEL items requiring such verification)? Yes

2. Is the anchorage free of bent, broken, missing or loose hardware? Yes

3. Is the anchorage free of corrosion that is more than mild surface oxidation? Yes

4. Is the anchorage free of visible cracks in the concrete near the anchors? Yes

5. Is the anchorage configuration consistent with plant documentation? (Note: This question only applies if the item is one of the 50% for which an anchorage configuration verification is required.) Yes

6. Based on the above anchorage evaluations, is the anchorage free of potentially adverse seismic conditions? Yes

Status: Y N U

Seismic Walkdown Checklist (SWC)

Equipment ID No.: MU-P-0001B

Equipment Class: (5) Horizontal Pumps

Equipment Description: MAKEUP PUMP 1B

Interaction Effects

- | | |
|---|-----|
| 7. Are soft targets free from impact by nearby equipment or structures? | Yes |
| 8. Are overhead equipment, distribution systems, ceiling tiles and lighting, and masonry block walls not likely to collapse onto the equipment? | Yes |
| 9. Do attached lines have adequate flexibility to avoid damage? | Yes |
| 10. Based on the above seismic interaction evaluations, is equipment free of potentially adverse seismic interaction effects? | Yes |

Other Adverse Conditions

- | | |
|--|-----|
| 11. Have you looked for and found no adverse seismic conditions that could adversely affect the safety functions of the equipment? | Yes |
|--|-----|

Comments

Two linear indications in pad and one on floor is within the ACI-349 acceptance criteria. Not a potential seismic concern.

See SQ-T1-MU-P-0001B, Revision 001

Status: Y N U

Seismic Walkdown Checklist (SWC)

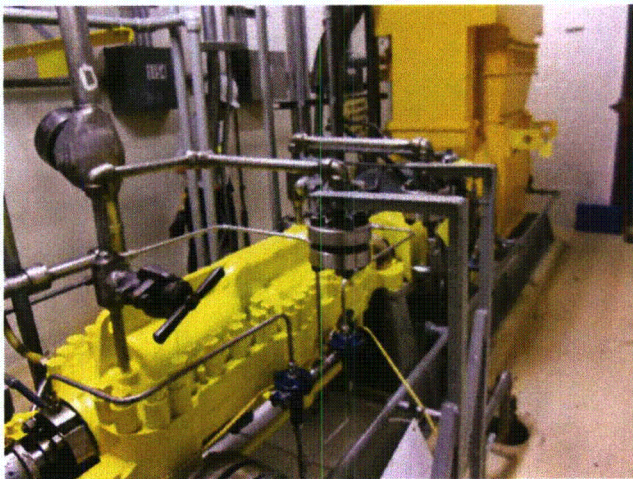
Equipment ID No.: MU-P-0001B

Equipment Class: (5) Horizontal Pumps

Equipment Description: MAKEUP PUMP 1B

Evaluated by: *Mark S. Etre* Mark S. Etre Date: 10/24/2012
Seth W. Baker Seth W. Baker 10/24/2012

Photos



100_3831

Status: Y N U

Seismic Walkdown Checklist (SWC)

Equipment ID No.: MU-V-0003

Equipment Class: (7) Fluid-Operated Valves

Equipment Description: CONTAINMENT ISOL LD COOLER ISOL VLV

Project: TMI SWEL

Location (Bldg, Elev, Room/Area): AB, 281.00 ft, 15 : N ON MEZANINE O

Manufacturer/Model:

Instructions for Completing Checklist

This checklist may be used to document the results of the Seismic Walkdown of an item of equipment on the SWEL. The space below each of the following questions may be used to record the results of judgments and findings. Additional space is provided at the end of this checklist for documenting other comments.

Anchorage

- | | |
|--|----------------|
| 1. Is anchorage configuration verification required (i.e., is the item one of the 50% of SWEL items requiring such verification)? | No |
| 2. Is the anchorage free of bent, broken, missing or loose hardware? | Not Applicable |
| 3. Is the anchorage free of corrosion that is more than mild surface oxidation? | Not Applicable |
| 4. Is the anchorage free of visible cracks in the concrete near the anchors? | Not Applicable |
| 5. Is the anchorage configuration consistent with plant documentation? (Note: This question only applies if the item is one of the 50% for which an anchorage configuration verification is required.) | Not Applicable |
| 6. Based on the above anchorage evaluations, is the anchorage free of potentially adverse seismic conditions? | Yes |

Status: Y N U

Seismic Walkdown Checklist (SWC)

Equipment ID No.: MU-V-0003

Equipment Class: (7) Fluid-Operated Valves

Equipment Description: CONTAINMENT ISOL LD COOLER ISOL VLV

Interaction Effects

- | | |
|---|-----|
| 7. Are soft targets free from impact by nearby equipment or structures? | Yes |
| 8. Are overhead equipment, distribution systems, ceiling tiles and lighting, and masonry block walls not likely to collapse onto the equipment? | Yes |
| 9. Do attached lines have adequate flexibility to avoid damage? | Yes |
| 10. Based on the above seismic interaction evaluations, is equipment free of potentially adverse seismic interaction effects? | Yes |
-

Other Adverse Conditions

- | | |
|--|-----|
| 11. Have you looked for and found no adverse seismic conditions that could adversely affect the safety functions of the equipment? | Yes |
|--|-----|
-

Comments

In-line equipment.

See SQ-T1-MU-V-0003, Revision 002

Status: Y N U

Seismic Walkdown Checklist (SWC)

Equipment ID No.: MU-V-0003

Equipment Class: (7) Fluid-Operated Valves

Equipment Description: CONTAINMENT ISOL LD COOLER ISOL VLV

Evaluated by: *Mark S. Etre* Mark S. Etre Date: 10/24/2012

Seth W. Baker Seth W. Baker 10/24/2012

Photos



100_3859

Status: Y N U

Seismic Walkdown Checklist (SWC)

Equipment ID No.: NR-P-0001B

Equipment Class: (6) Vertical Pumps

Equipment Description: NUC SVC COOL RIVER WATER 'B' PUMP

Project: TMI SWEL

Location (Bldg, Elev, Room/Area): IPH, 308.00 ft, 28 : N PUMP ROOM SOU

Manufacturer/Model:

Instructions for Completing Checklist

This checklist may be used to document the results of the Seismic Walkdown of an item of equipment on the SWEL. The space below each of the following questions may be used to record the results of judgments and findings. Additional space is provided at the end of this checklist for documenting other comments.

Anchorage

1. Is anchorage configuration verification required (i.e., is the item one of the 50% of SWEL items requiring such verification)? Yes

2. Is the anchorage free of bent, broken, missing or loose hardware? Yes

3. Is the anchorage free of corrosion that is more than mild surface oxidation? Yes

4. Is the anchorage free of visible cracks in the concrete near the anchors? Yes

5. Is the anchorage configuration consistent with plant documentation? (Note: This question only applies if the item is one of the 50% for which an anchorage configuration verification is required.) Yes

6. Based on the above anchorage evaluations, is the anchorage free of potentially adverse seismic conditions? Yes

Status: Y N U

Seismic Walkdown Checklist (SWC)

Equipment ID No.: NR-P-0001B

Equipment Class: (6) Vertical Pumps

Equipment Description: NUC SVC COOL RIVER WATER 'B' PUMP

Interaction Effects

- | | |
|---|-----|
| 7. Are soft targets free from impact by nearby equipment or structures? | Yes |
| 8. Are overhead equipment, distribution systems, ceiling tiles and lighting, and masonry block walls not likely to collapse onto the equipment? | Yes |
| 9. Do attached lines have adequate flexibility to avoid damage? | Yes |
| 10. Based on the above seismic interaction evaluations, is equipment free of potentially adverse seismic interaction effects? | Yes |

Other Adverse Conditions

- | | |
|--|-----|
| 11. Have you looked for and found no adverse seismic conditions that could adversely affect the safety functions of the equipment? | Yes |
|--|-----|

Comments

See Calculation FBT-625-001 Rev. 000.

The pumps upper restrains are not required for seismic qualification. They were for thrust purposes and the where removed per ECRs 02-00271, 02-00272, 02-00263 due to the fact that they were not longer needed. The pump seismic qualification is not longer per SQUG (IE: Seismic Qualification No. SQ-T1-NR-P-0001B, Rev 001 is no longer applicable), instead there is a new analysis that was performed (FBT-625-001 R00) during the pump replacement on 2001 (from Peerless to Johnsons Pump) that qualified the new pump to Seismic Class

Status: Y N U

Seismic Walkdown Checklist (SWC)

Equipment ID No.: NR-P-0001B

Equipment Class: (6) Vertical Pumps

Equipment Description: NUC SVC COOL RIVER WATER 'B' PUMP

(1) One, per TMI specification (SP-1101-12-148 Rev. 3).

Documentation for the removal of upper braces was tracked under IR 1401674 and has been determined to be acceptable per Calculation FBT-625-001 Rev. 000.

Three bolts in north brace anchorage per design and SQUG SEWS.

Evaluated by: *Mark S. Etre* Mark S. Etre Date: 10/24/2012

Seth W. Baker Seth W. Baker 10/24/2012

Photos



IMG_1203



IMG_1206

Status: Y N U

Seismic Walkdown Checklist (SWC)

Equipment ID No.: NR-V-0001B

Equipment Class: (8) Motor-Operated and Solenoid-Operated Valves

Equipment Description: NUC PUMP RIVER PUMP B DISCH VLV

Project: TMI SWEL

Location (Bldg, Elev, Room/Area): IPH, 308.00 ft, 28 : NR-P-1B DISCH N

Manufacturer/Model:

Instructions for Completing Checklist

This checklist may be used to document the results of the Seismic Walkdown of an item of equipment on the SWEL. The space below each of the following questions may be used to record the results of judgments and findings. Additional space is provided at the end of this checklist for documenting other comments.

Anchorage

- | | | |
|----|---|----------------|
| 1. | Is anchorage configuration verification required (i.e., is the item one of the 50% of SWEL items requiring such verification)? | No |
| 2. | Is the anchorage free of bent, broken, missing or loose hardware? | Not Applicable |
| 3. | Is the anchorage free of corrosion that is more than mild surface oxidation? | Not Applicable |
| 4. | Is the anchorage free of visible cracks in the concrete near the anchors? | Not Applicable |
| 5. | Is the anchorage configuration consistent with plant documentation? (Note: This question only applies if the item is one of the 50% for which an anchorage configuration verification is required.) | Not Applicable |
| 6. | Based on the above anchorage evaluations, is the anchorage free of potentially adverse seismic conditions? | Yes |

Status: Y N U

Seismic Walkdown Checklist (SWC)

Equipment ID No.: NR-V-0001B

Equipment Class: (8) Motor-Operated and Solenoid-Operated Valves

Equipment Description: NUC PUMP RIVER PUMP B DISCH VLV

Interaction Effects

- | | |
|---|-----|
| 7. Are soft targets free from impact by nearby equipment or structures? | Yes |
| 8. Are overhead equipment, distribution systems, ceiling tiles and lighting, and masonry block walls not likely to collapse onto the equipment? | Yes |
| 9. Do attached lines have adequate flexibility to avoid damage? | Yes |
| 10. Based on the above seismic interaction evaluations, is equipment free of potentially adverse seismic interaction effects? | Yes |
-

Other Adverse Conditions

- | | |
|--|-----|
| 11. Have you looked for and found no adverse seismic conditions that could adversely affect the safety functions of the equipment? | Yes |
|--|-----|
-

Comments

Equipment was verified to be in accordance with Seismic Qualification No. SQ-T1-NR-V-0001B, Rev 000

In-line equipment.

Flexible electrical line is loose at the attachment and is being tracked by IR 1402599. Not an operability issue.

Status: Y N U

Seismic Walkdown Checklist (SWC)

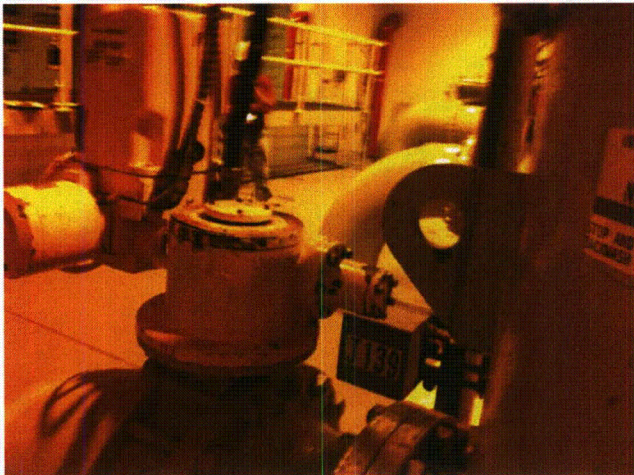
Equipment ID No.: NR-V-0001B

Equipment Class: (8) Motor-Operated and Solenoid-Operated Valves

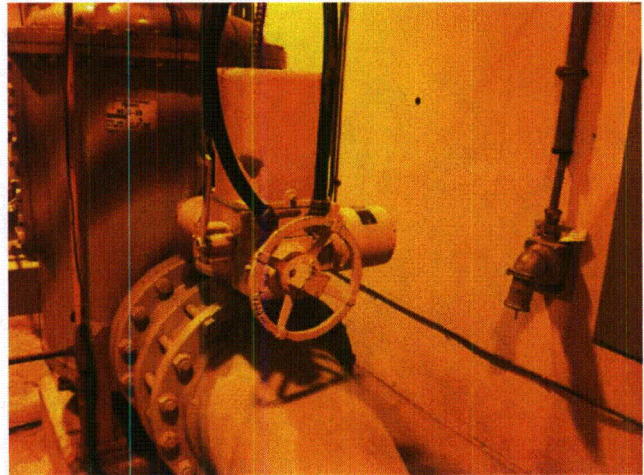
Equipment Description: NUC PUMP RIVER PUMP B DISCH VLV

Evaluated by: *Mark S. Etre* Mark S. Etre Date: 10/24/2012
Seth W. Baker Seth W. Baker 10/24/2012

Photos



IMG_1198



IMG_1199

Status: Y N U

Seismic Walkdown Checklist (SWC)

Equipment ID No.: NR-V-0004B

Equipment Class: (8) Motor-Operated and Solenoid-Operated Valves

Equipment Description: DEICING MU VALVE B

Project: TMI SWEL

Location (Bldg, Elev, Room/Area): AB, 271.00 ft, 16 : HT EX VAULT NW

Manufacturer/Model:

Instructions for Completing Checklist

This checklist may be used to document the results of the Seismic Walkdown of an item of equipment on the SWEL. The space below each of the following questions may be used to record the results of judgments and findings. Additional space is provided at the end of this checklist for documenting other comments.

Anchorage

- | | |
|--|----------------|
| 1. Is anchorage configuration verification required (i.e., is the item one of the 50% of SWEL items requiring such verification)? | No |
| 2. Is the anchorage free of bent, broken, missing or loose hardware? | Not Applicable |
| 3. Is the anchorage free of corrosion that is more than mild surface oxidation? | Not Applicable |
| 4. Is the anchorage free of visible cracks in the concrete near the anchors? | Not Applicable |
| 5. Is the anchorage configuration consistent with plant documentation? (Note: This question only applies if the item is one of the 50% for which an anchorage configuration verification is required.) | Not Applicable |
| 6. Based on the above anchorage evaluations, is the anchorage free of potentially adverse seismic conditions? | Yes |

Status: Y N U

Seismic Walkdown Checklist (SWC)

Equipment ID No.: NR-V-0004B

Equipment Class: (8) Motor-Operated and Solenoid-Operated Valves

Equipment Description: DEICING MU VALVE B

Interaction Effects

- | | |
|---|-----|
| 7. Are soft targets free from impact by nearby equipment or structures? | Yes |
| 8. Are overhead equipment, distribution systems, ceiling tiles and lighting, and masonry block walls not likely to collapse onto the equipment? | Yes |
| 9. Do attached lines have adequate flexibility to avoid damage? | Yes |
| 10. Based on the above seismic interaction evaluations, is equipment free of potentially adverse seismic interaction effects? | Yes |
-

Other Adverse Conditions

- | | |
|--|-----|
| 11. Have you looked for and found no adverse seismic conditions that could adversely affect the safety functions of the equipment? | Yes |
|--|-----|
-

Comments

In-line equipment.

Equipment was verified to be in accordance with Seismic Qualification No. SQ-T1-NR-V-0004B Rev. 0

Status: Y N U

Seismic Walkdown Checklist (SWC)

Equipment ID No.: NR-V-0004B

Equipment Class: (8) Motor-Operated and Solenoid-Operated Valves

Equipment Description: DEICING MU VALVE B

Evaluated by: *Mark S. Etre*

Mark S. Etre

Date: 10/24/2012

Seth W. Baker

Seth W. Baker

10/24/2012

Photos



100_3905

Status: Y N U

Seismic Walkdown Checklist (SWC)

Equipment ID No.: NS-C-0001B

Equipment Class: (21) Tanks and Heat Exchangers

Equipment Description: NUCLEAR SERVICES CLOSED COOLING WATER HEAT EXCHANGER 1B

Project: TMI SWEL

Location (Bldg, Elev, Room/Area): AB, 271.00 ft, 16 : HEAT EXCHANGE VAULT N

Manufacturer/Model:

Instructions for Completing Checklist

This checklist may be used to document the results of the Seismic Walkdown of an item of equipment on the SWEL. The space below each of the following questions may be used to record the results of judgments and findings. Additional space is provided at the end of this checklist for documenting other comments.

Anchorage

1. Is anchorage configuration verification required (i.e., is the item one of the 50% of SWEL items requiring such verification)? Yes

2. Is the anchorage free of bent, broken, missing or loose hardware? Yes

3. Is the anchorage free of corrosion that is more than mild surface oxidation? Yes

4. Is the anchorage free of visible cracks in the concrete near the anchors? Yes

5. Is the anchorage configuration consistent with plant documentation? (Note: This question only applies if the item is one of the 50% for which an anchorage configuration verification is required.) Yes

6. Based on the above anchorage evaluations, is the anchorage free of potentially adverse seismic conditions? Yes

Status: Y N U

Seismic Walkdown Checklist (SWC)

Equipment ID No.: NS-C-0001B

Equipment Class: (21) Tanks and Heat Exchangers

Equipment Description: NUCLEAR SERVICES CLOSED COOLING WATER HEAT EXCHANGER 1B

Interaction Effects

7. Are soft targets free from impact by nearby equipment or structures? Yes
8. Are overhead equipment, distribution systems, ceiling tiles and lighting, and masonry block walls not likely to collapse onto the equipment? Yes
9. Do attached lines have adequate flexibility to avoid damage? Yes
10. Based on the above seismic interaction evaluations, is equipment free of potentially adverse seismic interaction effects? Yes

Other Adverse Conditions

11. Have you looked for and found no adverse seismic conditions that could adversely affect the safety functions of the equipment? Yes

Comments

See SQ-T1-NS-C-0001B, Revision 001

Evaluated by: Mark S. Etre Mark S. Etre Date: 10/24/2012
Seth W. Baker Seth W. Baker 10/24/2012

Status: Y N U

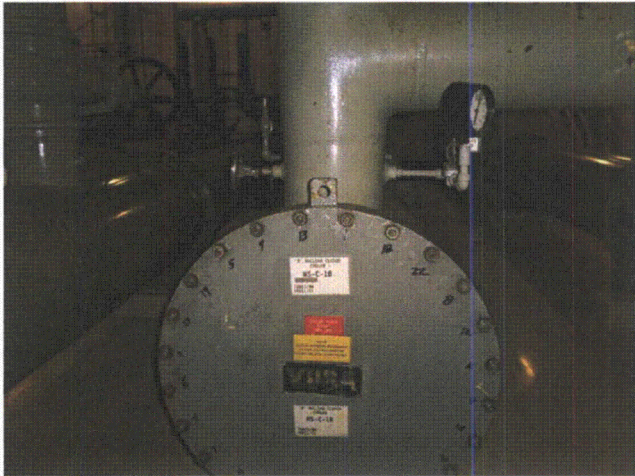
Seismic Walkdown Checklist (SWC)

Equipment ID No.: NS-C-0001B

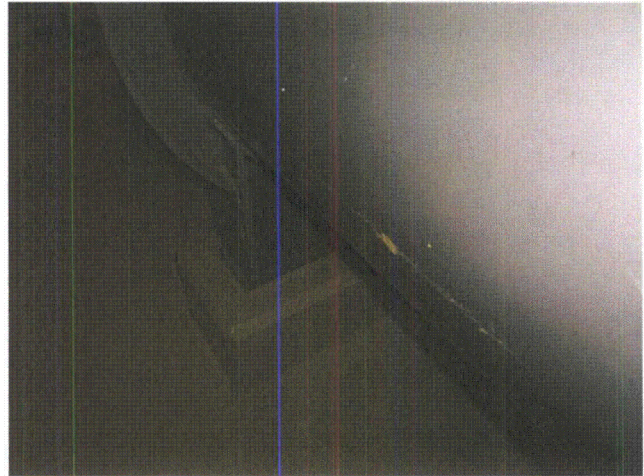
Equipment Class: (21) Tanks and Heat Exchangers

Equipment Description: NUCLEAR SERVICES CLOSED COOLING WATER HEAT EXCHANGER 1B

Photos



100_3889



100_3890

Status: Y N U

Seismic Walkdown Checklist (SWC)

Equipment ID No.: NS-P-0001B

Equipment Class: (5) Horizontal Pumps

Equipment Description: NUC SVC CLOSED COOLING WATER 'B' PUMP

Project: TMI SWEL

Location (Bldg, Elev, Room/Area): AB, 305.00 ft, 11 : NS PUMP CUB M6C

Manufacturer/Model:

Instructions for Completing Checklist

This checklist may be used to document the results of the Seismic Walkdown of an item of equipment on the SWEL. The space below each of the following questions may be used to record the results of judgments and findings. Additional space is provided at the end of this checklist for documenting other comments.

Anchorage

- | | |
|--|-----|
| 1. Is anchorage configuration verification required (i.e., is the item one of the 50% of SWEL items requiring such verification)? | Yes |
| 2. Is the anchorage free of bent, broken, missing or loose hardware? | Yes |
| 3. Is the anchorage free of corrosion that is more than mild surface oxidation? | Yes |
| 4. Is the anchorage free of visible cracks in the concrete near the anchors? | Yes |
| 5. Is the anchorage configuration consistent with plant documentation? (Note: This question only applies if the item is one of the 50% for which an anchorage configuration verification is required.) | Yes |
| 6. Based on the above anchorage evaluations, is the anchorage free of potentially adverse seismic conditions? | Yes |

Status: Y N U

Seismic Walkdown Checklist (SWC)

Equipment ID No.: NS-P-0001B

Equipment Class: (5) Horizontal Pumps

Equipment Description: NUC SVC CLOSED COOLING WATER 'B' PUMP

Interaction Effects

- 7. Are soft targets free from impact by nearby equipment or structures? Yes

- 8. Are overhead equipment, distribution systems, ceiling tiles and lighting, and masonry block walls not likely to collapse onto the equipment? Yes

- 9. Do attached lines have adequate flexibility to avoid damage? Yes

- 10. Based on the above seismic interaction evaluations, is equipment free of potentially adverse seismic interaction effects? Yes

Other Adverse Conditions

- 11. Have you looked for and found no adverse seismic conditions that could adversely affect the safety functions of the equipment? Yes

Comments

Two linear indication on concrete pad which are within the acceptance criteria of ACI-349. Not a potential seismic concern.
See SQ-T1-NS-P-0001B, Revision 000

Status: Y N U

Seismic Walkdown Checklist (SWC)

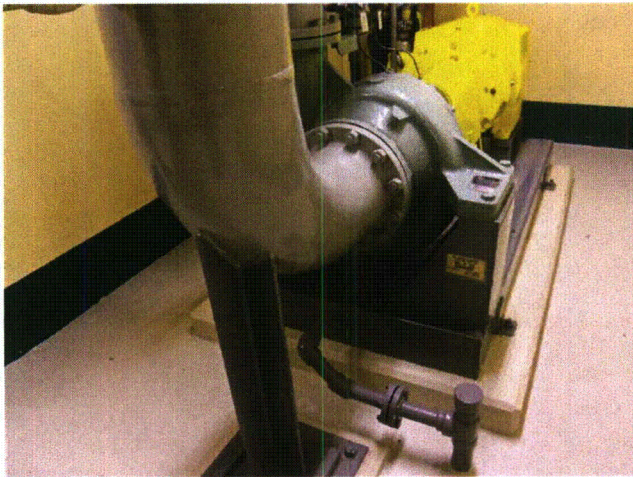
Equipment ID No.: NS-P-0001B

Equipment Class: (5) Horizontal Pumps

Equipment Description: NUC SVC CLOSED COOLING WATER 'B' PUMP

Evaluated by: *Mark S. Etre* Mark S. Etre Date: 10/24/2012
Seth W. Baker Seth W. Baker 10/24/2012

Photos



100_3786

Status: Y N U

Seismic Walkdown Checklist (SWC)

Equipment ID No.: NS-V-0052B

Equipment Class: (7) Fluid-Operated Valves

Equipment Description: CONTAINMENT ISOL AH-E-1B MTR COOLER SUPPLY

Project: TMI SWEL

IB, 295.00 ft, 3 : IB BASEMENT CUBICLE S OF REACT OR RIVER

Location (Bldg, Elev, Room/Area): LOOPS S WALL 8 ABOVE FLR

Manufacturer/Model:

Instructions for Completing Checklist

This checklist may be used to document the results of the Seismic Walkdown of an item of equipment on the SWEL. The space below each of the following questions may be used to record the results of judgments and findings. Additional space is provided at the end of this checklist for documenting other comments.

Anchorage

1. Is anchorage configuration verification required (i.e., is the item one of the 50% of SWEL items requiring such verification)? No

2. Is the anchorage free of bent, broken, missing or loose hardware? Yes

3. Is the anchorage free of corrosion that is more than mild surface oxidation? Yes

4. Is the anchorage free of visible cracks in the concrete near the anchors? Yes

5. Is the anchorage configuration consistent with plant documentation? (Note: This question only applies if the item is one of the 50% for which an anchorage configuration verification is required.) Not Applicable

6. Based on the above anchorage evaluations, is the anchorage free of potentially adverse seismic conditions? Yes

Status: Y N U

Seismic Walkdown Checklist (SWC)

Equipment ID No.: NS-V-0052B

Equipment Class: (7) Fluid-Operated Valves

Equipment Description: CONTAINMENT ISOL AH-E-1B MTR COOLER SUPPLY

Interaction Effects

7. Are soft targets free from impact by nearby equipment or structures? Yes
8. Are overhead equipment, distribution systems, ceiling tiles and lighting, and masonry block walls not likely to collapse onto the equipment? Yes
9. Do attached lines have adequate flexibility to avoid damage? Yes
10. Based on the above seismic interaction evaluations, is equipment free of potentially adverse seismic interaction effects? Yes

Other Adverse Conditions

11. Have you looked for and found no adverse seismic conditions that could adversely affect the safety functions of the equipment? Yes

Comments

See Drawing CP-1690, Rev 01

Evaluated by: Mark S. Etre Mark S. Etre Date: 10/24/2012
Seth W. Baker Seth W. Baker 10/24/2012

Status: Y N U

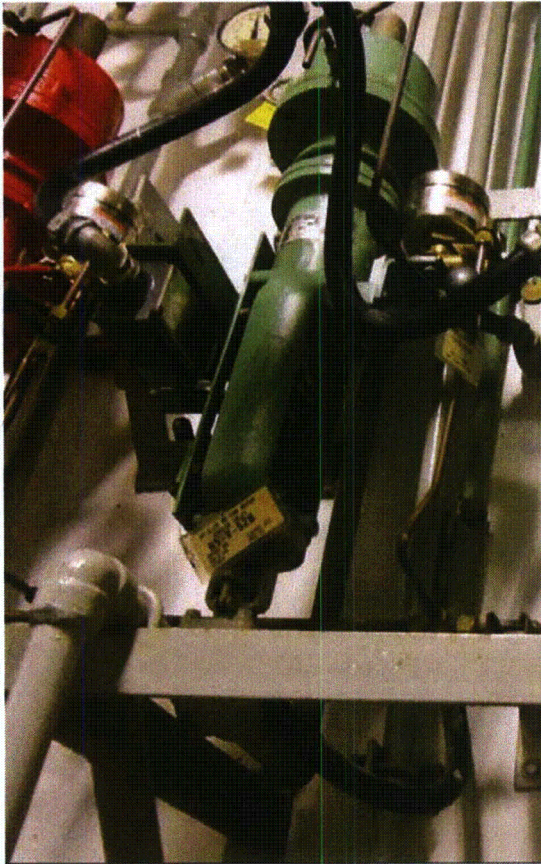
Seismic Walkdown Checklist (SWC)

Equipment ID No.: NS-V-0052B

Equipment Class: (7) Fluid-Operated Valves

Equipment Description: CONTAINMENT ISOL AH-E-1B MTR COOLER SUPPLY

Photos



100_3312_52B

Status: Y N U

Seismic Walkdown Checklist (SWC)

Equipment ID No.: NS-V-0053B

Equipment Class: (7) Fluid-Operated Valves

Equipment Description: CONTAINMENT ISOL AH-E-1B MTR COOLER RETURN

Project: TMI SWEL

Location (Bldg, Elev, Room/Area): IB, 295.00 ft, 3 : N/A

Manufacturer/Model:

Instructions for Completing Checklist

This checklist may be used to document the results of the Seismic Walkdown of an item of equipment on the SWEL. The space below each of the following questions may be used to record the results of judgments and findings. Additional space is provided at the end of this checklist for documenting other comments.

Anchorage

1. Is anchorage configuration verification required (i.e., is the item one of the 50% of SWEL items requiring such verification)? No

2. Is the anchorage free of bent, broken, missing or loose hardware? Yes

3. Is the anchorage free of corrosion that is more than mild surface oxidation? Yes

4. Is the anchorage free of visible cracks in the concrete near the anchors? Yes

5. Is the anchorage configuration consistent with plant documentation? (Note: This question only applies if the item is one of the 50% for which an anchorage configuration verification is required.) Not Applicable

6. Based on the above anchorage evaluations, is the anchorage free of potentially adverse seismic conditions? Yes

Status: Y N U

Seismic Walkdown Checklist (SWC)

Equipment ID No.: NS-V-0053B

Equipment Class: (7) Fluid-Operated Valves

Equipment Description: CONTAINMENT ISOL AH-E-1B MTR COOLER RETURN

Interaction Effects

7. Are soft targets free from impact by nearby equipment or structures? Yes
8. Are overhead equipment, distribution systems, ceiling tiles and lighting, and masonry block walls not likely to collapse onto the equipment? Yes
9. Do attached lines have adequate flexibility to avoid damage? Yes
10. Based on the above seismic interaction evaluations, is equipment free of potentially adverse seismic interaction effects? Yes

Other Adverse Conditions

11. Have you looked for and found no adverse seismic conditions that could adversely affect the safety functions of the equipment? Yes

Comments

Equipment was verified to be in accordance with Seismic Qualification No. SQ-T1-NS-V-0053B, Rev 001

Evaluated by: Mark S. Etre Mark S. Etre Date: 10/24/2012
Seth W. Baker Seth W. Baker 10/24/2012

Status: Y N U

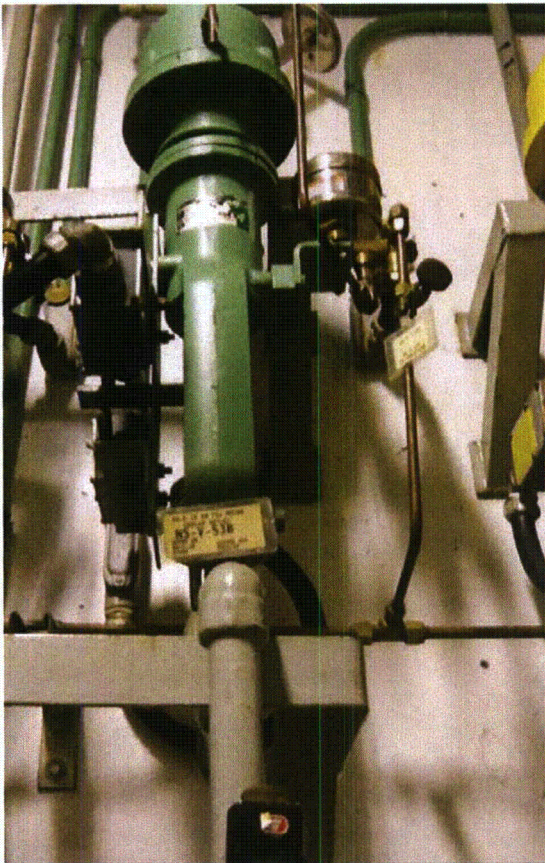
Seismic Walkdown Checklist (SWC)

Equipment ID No.: NS-V-0053B

Equipment Class: (7) Fluid-Operated Valves

Equipment Description: CONTAINMENT ISOL AH-E-1B MTR COOLER RETURN

Photos



100_3312_53B

Status: Y N U

Seismic Walkdown Checklist (SWC)

Equipment ID No.: NS-V-0054B

Equipment Class: (7) Fluid-Operated Valves

Equipment Description: SPENT FUEL POOL PUMP ROOM COOLING COIL FLOW CONTROL VLV

Project: TMI SWEL

Location (Bldg, Elev, Room/Area): FB, 305.00 ft, 33 : IN OVERHEAD BY AIR COOLERS

Manufacturer/Model:

Instructions for Completing Checklist

This checklist may be used to document the results of the Seismic Walkdown of an item of equipment on the SWEL. The space below each of the following questions may be used to record the results of judgments and findings. Additional space is provided at the end of this checklist for documenting other comments.

Anchorage

- | | |
|--|----------------|
| 1. Is anchorage configuration verification required (i.e., is the item one of the 50% of SWEL items requiring such verification)? | No |
| 2. Is the anchorage free of bent, broken, missing or loose hardware? | Not Applicable |
| 3. Is the anchorage free of corrosion that is more than mild surface oxidation? | Not Applicable |
| 4. Is the anchorage free of visible cracks in the concrete near the anchors? | Not Applicable |
| 5. Is the anchorage configuration consistent with plant documentation? (Note: This question only applies if the item is one of the 50% for which an anchorage configuration verification is required.) | Not Applicable |
| 6. Based on the above anchorage evaluations, is the anchorage free of potentially adverse seismic conditions? | Yes |

Status: Y N U

Seismic Walkdown Checklist (SWC)

Equipment ID No.: NS-V-0054B

Equipment Class: (7) Fluid-Operated Valves

Equipment Description: SPENT FUEL POOL PUMP ROOM COOLING COIL FLOW CONTROL VLV

Interaction Effects

- | | |
|---|-----|
| 7. Are soft targets free from impact by nearby equipment or structures? | Yes |
| 8. Are overhead equipment, distribution systems, ceiling tiles and lighting, and masonry block walls not likely to collapse onto the equipment? | Yes |
| 9. Do attached lines have adequate flexibility to avoid damage? | Yes |
| 10. Based on the above seismic interaction evaluations, is equipment free of potentially adverse seismic interaction effects? | Yes |

Other Adverse Conditions

- | | |
|--|-----|
| 11. Have you looked for and found no adverse seismic conditions that could adversely affect the safety functions of the equipment? | Yes |
|--|-----|

Comments

Equipment was verified to be in accordance with Seismic Qualification No. SQ-T1-NS-V-0054B, Rev 000

In-line equipment.

Status: Y N U

Seismic Walkdown Checklist (SWC)

Equipment ID No.: NS-V-0054B

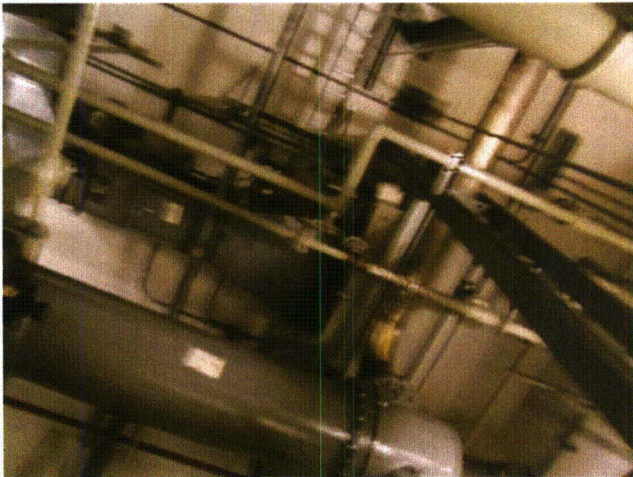
Equipment Class: (7) Fluid-Operated Valves

Equipment Description: SPENT FUEL POOL PUMP ROOM COOLING COIL FLOW CONTROL VLV

Evaluated by: *Mark S. Etre* Mark S. Etre Date: 10/24/2012

Seth W. Baker Seth W. Baker 10/24/2012

Photos



100_3244

Status: Y N U

Seismic Walkdown Checklist (SWC)

Equipment ID No.: RC-RV-0002

Equipment Class: (7) Fluid-Operated Valves

Equipment Description: PILOT OPERATED RELIEF VALVE (PORV)

Project: TMI SWEL

Location (Bldg, Elev, Room/Area): RB, 346.00 ft, 42 : TOP OF PRESSURIZER

Manufacturer/Model:

Instructions for Completing Checklist

This checklist may be used to document the results of the Seismic Walkdown of an item of equipment on the SWEL. The space below each of the following questions may be used to record the results of judgments and findings. Additional space is provided at the end of this checklist for documenting other comments.

Anchorage

- | | |
|--|----------------|
| 1. Is anchorage configuration verification required (i.e., is the item one of the 50% of SWEL items requiring such verification)? | No |
| 2. Is the anchorage free of bent, broken, missing or loose hardware? | Not Applicable |
| 3. Is the anchorage free of corrosion that is more than mild surface oxidation? | Not Applicable |
| 4. Is the anchorage free of visible cracks in the concrete near the anchors? | Not Applicable |
| 5. Is the anchorage configuration consistent with plant documentation? (Note: This question only applies if the item is one of the 50% for which an anchorage configuration verification is required.) | Not Applicable |
| 6. Based on the above anchorage evaluations, is the anchorage free of potentially adverse seismic conditions? | Yes |

Status: Y N U

Seismic Walkdown Checklist (SWC)

Equipment ID No.: RC-RV-0002

Equipment Class: (7) Fluid-Operated Valves

Equipment Description: PILOT OPERATED RELIEF VALVE (PORV)

Interaction Effects

- | | |
|---|-----|
| 7. Are soft targets free from impact by nearby equipment or structures? | Yes |
| 8. Are overhead equipment, distribution systems, ceiling tiles and lighting, and masonry block walls not likely to collapse onto the equipment? | Yes |
| 9. Do attached lines have adequate flexibility to avoid damage? | Yes |
| 10. Based on the above seismic interaction evaluations, is equipment free of potentially adverse seismic interaction effects? | Yes |

Other Adverse Conditions

- | | |
|--|-----|
| 11. Have you looked for and found no adverse seismic conditions that could adversely affect the safety functions of the equipment? | Yes |
|--|-----|

Comments

See SQ-T1-RC-RV-0002 Rev 00

In-Line Valve

Status: Y N U

Seismic Walkdown Checklist (SWC)

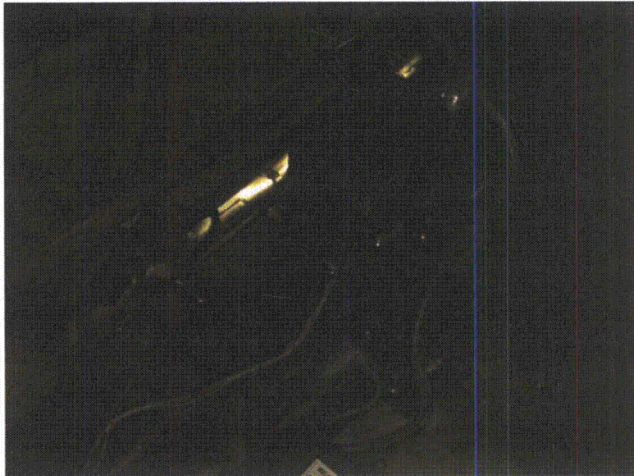
Equipment ID No.: RC-RV-0002

Equipment Class: (7) Fluid-Operated Valves

Equipment Description: PILOT OPERATED RELIEF VALVE (PORV)

Evaluated by: *Mark S. Etre* Mark S. Etre Date: 10/24/2012
Juan Lopez Juan A. López 10/9/12

Photos



100_4082

Status: Y N U

Seismic Walkdown Checklist (SWC)

Equipment ID No.: RC-V-0002

Equipment Class: (8) Motor-Operated and Solenoid-Operated Valves

Equipment Description: PORV BLOCK VALVE

Project: TMI SWEL

Location (Bldg, Elev, Room/Area): RB, 346.00 ft, 42 : TOP OF PZR

Manufacturer/Model:

Instructions for Completing Checklist

This checklist may be used to document the results of the Seismic Walkdown of an item of equipment on the SWEL. The space below each of the following questions may be used to record the results of judgments and findings. Additional space is provided at the end of this checklist for documenting other comments.

Anchorage

- | | |
|--|----------------|
| 1. Is anchorage configuration verification required (i.e., is the item one of the 50% of SWEL items requiring such verification)? | No |
| 2. Is the anchorage free of bent, broken, missing or loose hardware? | Not Applicable |
| 3. Is the anchorage free of corrosion that is more than mild surface oxidation? | Not Applicable |
| 4. Is the anchorage free of visible cracks in the concrete near the anchors? | Not Applicable |
| 5. Is the anchorage configuration consistent with plant documentation? (Note: This question only applies if the item is one of the 50% for which an anchorage configuration verification is required.) | Not Applicable |
| 6. Based on the above anchorage evaluations, is the anchorage free of potentially adverse seismic conditions? | Yes |

Status: Y N U

Seismic Walkdown Checklist (SWC)

Equipment ID No.: RC-V-0002

Equipment Class: (8) Motor-Operated and Solenoid-Operated Valves

Equipment Description: PORV BLOCK VALVE

Interaction Effects

- | | |
|---|-----|
| 7. Are soft targets free from impact by nearby equipment or structures? | Yes |
| 8. Are overhead equipment, distribution systems, ceiling tiles and lighting, and masonry block walls not likely to collapse onto the equipment? | Yes |
| 9. Do attached lines have adequate flexibility to avoid damage? | Yes |
| 10. Based on the above seismic interaction evaluations, is equipment free of potentially adverse seismic interaction effects? | Yes |

Other Adverse Conditions

- | | |
|--|-----|
| 11. Have you looked for and found no adverse seismic conditions that could adversely affect the safety functions of the equipment? | Yes |
|--|-----|

Comments

See SQ-T1-RC-V-0002 Rev 000

In-Line Valve

Status: Y N U

Seismic Walkdown Checklist (SWC)

Equipment ID No.: RC-V-0002

Equipment Class: (8) Motor-Operated and Solenoid-Operated Valves

Equipment Description: PORV BLOCK VALVE

Evaluated by: *Mark S. Etre* Mark S. Etre Date: 10/24/2012

Juan A. López Juan A. López 10/9/12

Photos



100_4080

Status: Y N U

Seismic Walkdown Checklist (SWC)

Equipment ID No.: RR-P-0001B

Equipment Class: (6) Vertical Pumps

Equipment Description: RB EMERG COOL RIVER WTR 'B' PUMP

Project: TMI SWEL

Location (Bldg, Elev, Room/Area): IPH, 308.00 ft, 29 : PUMP ROOM 'B' S

Manufacturer/Model:

Instructions for Completing Checklist

This checklist may be used to document the results of the Seismic Walkdown of an item of equipment on the SWEL. The space below each of the following questions may be used to record the results of judgments and findings. Additional space is provided at the end of this checklist for documenting other comments.

Anchorage

1. Is anchorage configuration verification required (i.e., is the item one of the 50% of SWEL items requiring such verification)? Yes

2. Is the anchorage free of bent, broken, missing or loose hardware? Yes

3. Is the anchorage free of corrosion that is more than mild surface oxidation? Yes

4. Is the anchorage free of visible cracks in the concrete near the anchors? Yes

5. Is the anchorage configuration consistent with plant documentation? (Note: This question only applies if the item is one of the 50% for which an anchorage configuration verification is required.) Yes

6. Based on the above anchorage evaluations, is the anchorage free of potentially adverse seismic conditions? Yes

Status: Y N U

Seismic Walkdown Checklist (SWC)

Equipment ID No.: RR-P-0001B

Equipment Class: (6) Vertical Pumps

Equipment Description: RB EMERG COOL RIVER WTR 'B' PUMP

Interaction Effects

- | | |
|---|-----|
| 7. Are soft targets free from impact by nearby equipment or structures? | Yes |
| 8. Are overhead equipment, distribution systems, ceiling tiles and lighting, and masonry block walls not likely to collapse onto the equipment? | Yes |
| 9. Do attached lines have adequate flexibility to avoid damage? | Yes |
| 10. Based on the above seismic interaction evaluations, is equipment free of potentially adverse seismic interaction effects? | Yes |

Other Adverse Conditions

- | | |
|--|-----|
| 11. Have you looked for and found no adverse seismic conditions that could adversely affect the safety functions of the equipment? | Yes |
|--|-----|

Comments

See Calculation FBT-625-001 Rev. 000 for similarity.

The pumps upper restrains are not required for seismic qualification. The restrains were intended for thrust purposes and were removed.

Equipment was verified to be in accordance with Seismic Qualification No. SQ-T1-RR-P-0001B, Rev 001 with the upper restrains removed.

Status: Y N U

Seismic Walkdown Checklist (SWC)

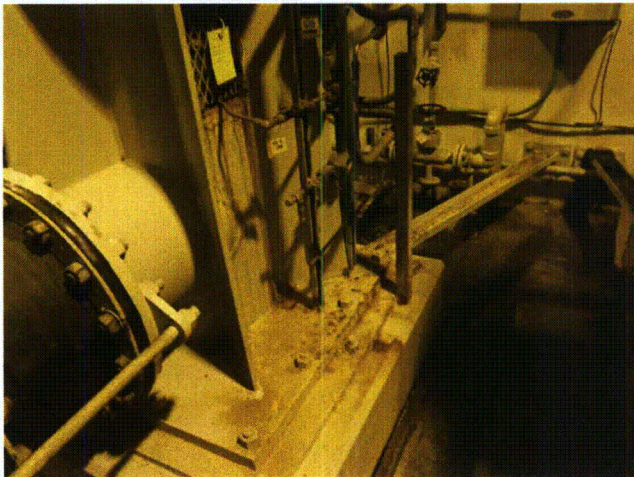
Equipment ID No.: RR-P-0001B

Equipment Class: (6) Vertical Pumps

Equipment Description: RB EMERG COOL RIVER WTR 'B' PUMP

Evaluated by: *Mark S. Etre* Mark S. Etre Date: 10/24/2012
Seth W. Baker Seth W. Baker 10/24/2012

Photos



100_3686



100_3688

Status: Y N U

Seismic Walkdown Checklist (SWC)

Equipment ID No.: RR-S-0001B

Equipment Class: (0) Other

Equipment Description: RB EMERG CLNG RIVER WTR 'B' STRAINER

Project: TMI SWEL

Location (Bldg, Elev, Room/Area): IPH, 308.00 ft, 29 : SOUTH BAY ISPH

Manufacturer/Model:

Instructions for Completing Checklist

This checklist may be used to document the results of the Seismic Walkdown of an item of equipment on the SWEL. The space below each of the following questions may be used to record the results of judgments and findings. Additional space is provided at the end of this checklist for documenting other comments.

Anchorage

1. Is anchorage configuration verification required (i.e., is the item one of the 50% of SWEL items requiring such verification)? Yes

2. Is the anchorage free of bent, broken, missing or loose hardware? Yes

3. Is the anchorage free of corrosion that is more than mild surface oxidation? Yes

4. Is the anchorage free of visible cracks in the concrete near the anchors? Yes

5. Is the anchorage configuration consistent with plant documentation? (Note: This question only applies if the item is one of the 50% for which an anchorage configuration verification is required.) Yes

6. Based on the above anchorage evaluations, is the anchorage free of potentially adverse seismic conditions? Yes

Status: Y N U

Seismic Walkdown Checklist (SWC)

Equipment ID No.: RR-S-0001B

Equipment Class: (0) Other

Equipment Description: RB EMERG CLNG RIVER WTR 'B' STRAINER

Interaction Effects

7. Are soft targets free from impact by nearby equipment or structures? Yes
8. Are overhead equipment, distribution systems, ceiling tiles and lighting, and masonry block walls not likely to collapse onto the equipment? Yes
9. Do attached lines have adequate flexibility to avoid damage? Yes
10. Based on the above seismic interaction evaluations, is equipment free of potentially adverse seismic interaction effects? Yes

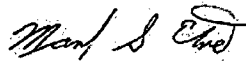
Other Adverse Conditions

11. Have you looked for and found no adverse seismic conditions that could adversely affect the safety functions of the equipment? Yes

Comments

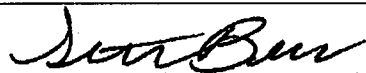
Equipment was verified to be in accordance with Seismic Qualification No. SQ-T1-RR-S-0001B, Rev 000

Evaluated by:



Mark S. Etre

Date: 10/24/2012



Seth W. Baker

10/24/2012

Status: Y N U

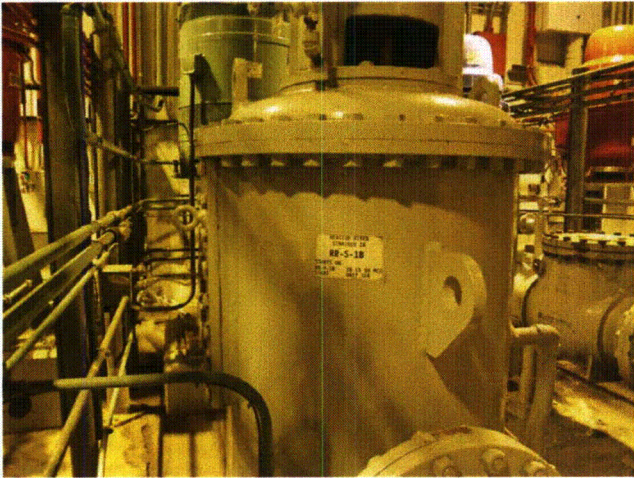
Seismic Walkdown Checklist (SWC)

Equipment ID No.: RR-S-0001B

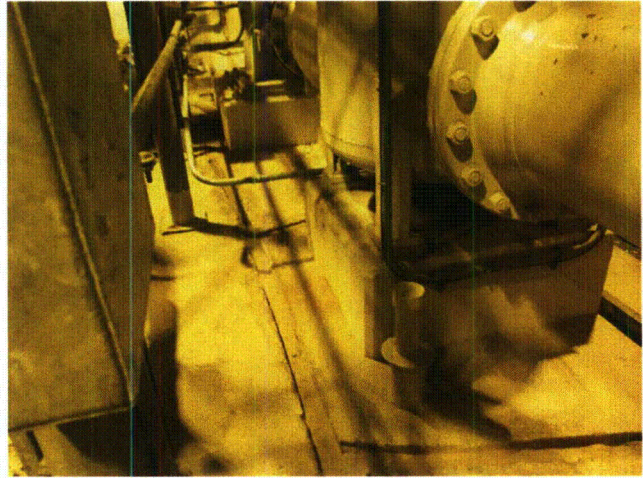
Equipment Class: (0) Other

Equipment Description: RB EMERG CLNG RIVER WTR 'B' STRAINER

Photos



100_3694



100_3697

Status: Y N U

Seismic Walkdown Checklist (SWC)

Equipment ID No.: RR-S-1B

Equipment Class: (20) Instrumentation and Control Panels and Cabinets

Equipment Description: RR-S-1B CONTROL PANEL

Project: TMI SWEL

Location (Bldg, Elev, Room/Area): IPH, 305.00 ft, 29 : RIVER WATER PUMP ROOM 'B' SOUTH CUBICLE

Manufacturer/Model:

Instructions for Completing Checklist

This checklist may be used to document the results of the Seismic Walkdown of an item of equipment on the SWEL. The space below each of the following questions may be used to record the results of judgments and findings. Additional space is provided at the end of this checklist for documenting other comments.

Anchorage

- | | |
|--|----------------|
| 1. Is anchorage configuration verification required (i.e., is the item one of the 50% of SWEL items requiring such verification)? | No |
| 2. Is the anchorage free of bent, broken, missing or loose hardware? | Yes |
| 3. Is the anchorage free of corrosion that is more than mild surface oxidation? | Yes |
| 4. Is the anchorage free of visible cracks in the concrete near the anchors? | Yes |
| 5. Is the anchorage configuration consistent with plant documentation? (Note: This question only applies if the item is one of the 50% for which an anchorage configuration verification is required.) | Not Applicable |
| 6. Based on the above anchorage evaluations, is the anchorage free of potentially adverse seismic conditions? | Yes |

Status: Y N U

Seismic Walkdown Checklist (SWC)

Equipment ID No.: RR-S-1B

Equipment Class: (20) Instrumentation and Control Panels and Cabinets

Equipment Description: RR-S-1B CONTROL PANEL

Interaction Effects

- | | |
|---|-----|
| 7. Are soft targets free from impact by nearby equipment or structures? | Yes |
| 8. Are overhead equipment, distribution systems, ceiling tiles and lighting, and masonry block walls not likely to collapse onto the equipment? | Yes |
| 9. Do attached lines have adequate flexibility to avoid damage? | Yes |
| 10. Based on the above seismic interaction evaluations, is equipment free of potentially adverse seismic interaction effects? | Yes |
-

Other Adverse Conditions

- | | |
|--|-----|
| 11. Have you looked for and found no adverse seismic conditions that could adversely affect the safety functions of the equipment? | Yes |
|--|-----|
-

Comments

Equipment was verified to be in accordance with Seismic Qualification No. SQ-T1-RR-S-001B-PNL, Rev 000

This has External anchorage

Status: Y N U

Seismic Walkdown Checklist (SWC)

Equipment ID No.: RR-S-1B

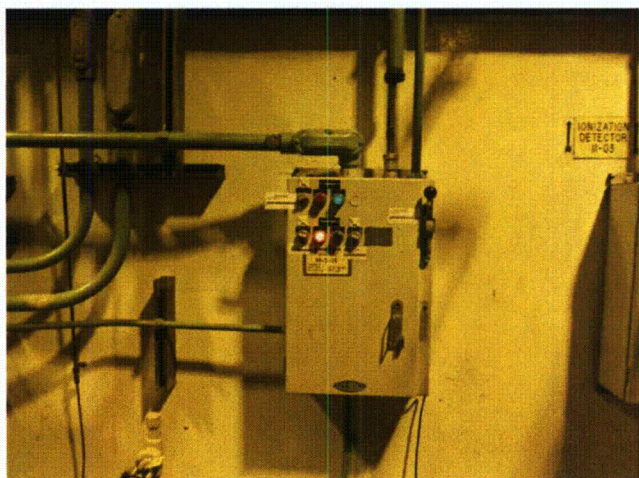
Equipment Class: (20) Instrumentation and Control Panels and Cabinets

Equipment Description: RR-S-1B CONTROL PANEL

Evaluated by: *Mark S. Etre* Mark S. Etre Date: 10/24/2012

Seth W. Baker Seth W. Baker 10/24/2012

Photos



100_3701

Status: Y N U

Seismic Walkdown Checklist (SWC)

Equipment ID No.: RR-V-0003A

Equipment Class: (8) Motor-Operated and Solenoid-Operated Valves

Equipment Description: CONTAINMENT ISOL RBEC COIL 'A' INLET VLV.

Project: TMI SWEL

Location (Bldg, Elev, Room/Area): IB, 295.00 ft, 2 : W OF STAIRWELL

Manufacturer/Model:

Instructions for Completing Checklist

This checklist may be used to document the results of the Seismic Walkdown of an item of equipment on the SWEL. The space below each of the following questions may be used to record the results of judgments and findings. Additional space is provided at the end of this checklist for documenting other comments.

Anchorage

- | | |
|--|----------------|
| 1. Is anchorage configuration verification required (i.e., is the item one of the 50% of SWEL items requiring such verification)? | No |
| 2. Is the anchorage free of bent, broken, missing or loose hardware? | Not Applicable |
| 3. Is the anchorage free of corrosion that is more than mild surface oxidation? | Not Applicable |
| 4. Is the anchorage free of visible cracks in the concrete near the anchors? | Not Applicable |
| 5. Is the anchorage configuration consistent with plant documentation? (Note: This question only applies if the item is one of the 50% for which an anchorage configuration verification is required.) | Not Applicable |
| 6. Based on the above anchorage evaluations, is the anchorage free of potentially adverse seismic conditions? | Yes |

Status: Y N U

Seismic Walkdown Checklist (SWC)

Equipment ID No.: RR-V-0003A

Equipment Class: (8) Motor-Operated and Solenoid-Operated Valves

Equipment Description: CONTAINMENT ISOL RBEC COIL 'A' INLET VLV.

Interaction Effects

- | | |
|---|-----|
| 7. Are soft targets free from impact by nearby equipment or structures? | Yes |
| 8. Are overhead equipment, distribution systems, ceiling tiles and lighting, and masonry block walls not likely to collapse onto the equipment? | Yes |
| 9. Do attached lines have adequate flexibility to avoid damage? | Yes |
| 10. Based on the above seismic interaction evaluations, is equipment free of potentially adverse seismic interaction effects? | Yes |

Other Adverse Conditions

- | | |
|--|-----|
| 11. Have you looked for and found no adverse seismic conditions that could adversely affect the safety functions of the equipment? | Yes |
|--|-----|

Comments

Anchorage check is not applicable because equipment is in-line.

See SQ-T1-RR-V-0003A, Revision 000

Status: Y N U

Seismic Walkdown Checklist (SWC)

Equipment ID No.: RR-V-0003A

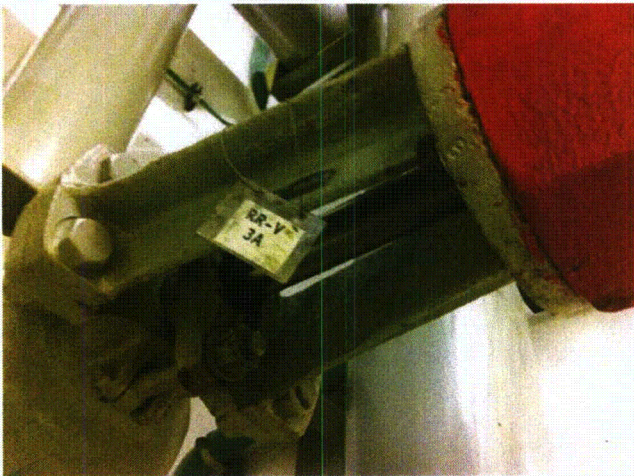
Equipment Class: (8) Motor-Operated and Solenoid-Operated Valves

Equipment Description: CONTAINMENT ISOL RBEC COIL 'A' INLET VLV.

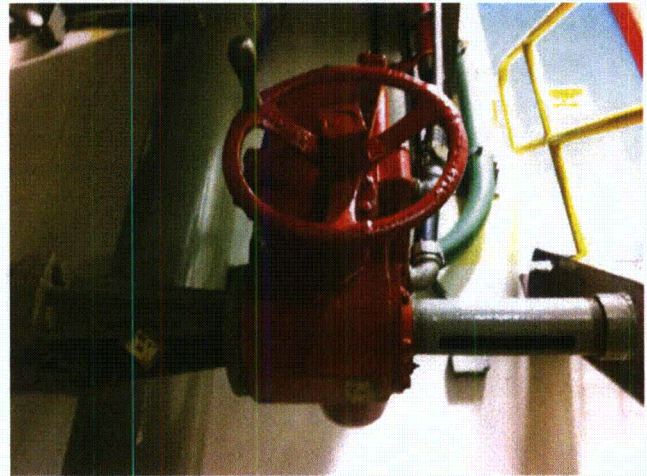
Evaluated by: *Mark S. Etre* Mark S. Etre Date: 10/24/2012

Seth W. Baker Seth W. Baker 10/24/2012

Photos



IMG_1085



IMG_1086

Status: Y N U

Seismic Walkdown Checklist (SWC)

Equipment ID No.: RR-V-0005

Equipment Class: (8) Motor-Operated and Solenoid-Operated Valves

Equipment Description: RR-V-6 RB COOL COIL DISCH BYPASS

Project: TMI SWEL

Location (Bldg, Elev, Room/Area): IB, 295.00 ft, 3 : W OF STAIRWELL

Manufacturer/Model:

Instructions for Completing Checklist

This checklist may be used to document the results of the Seismic Walkdown of an item of equipment on the SWEL. The space below each of the following questions may be used to record the results of judgments and findings. Additional space is provided at the end of this checklist for documenting other comments.

Anchorage

1. Is anchorage configuration verification required (i.e., is the item one of the 50% of SWEL items requiring such verification)? No

2. Is the anchorage free of bent, broken, missing or loose hardware? Not Applicable

3. Is the anchorage free of corrosion that is more than mild surface oxidation? Not Applicable

4. Is the anchorage free of visible cracks in the concrete near the anchors? Not Applicable

5. Is the anchorage configuration consistent with plant documentation? (Note: This question only applies if the item is one of the 50% for which an anchorage configuration verification is required.) Not Applicable

6. Based on the above anchorage evaluations, is the anchorage free of potentially adverse seismic conditions? Yes

Status: Y N U

Seismic Walkdown Checklist (SWC)

Equipment ID No.: RR-V-0005

Equipment Class: (8) Motor-Operated and Solenoid-Operated Valves

Equipment Description: RR-V-6 RB COOL COIL DISCH BYPASS

Interaction Effects

- | | |
|---|-----|
| 7. Are soft targets free from impact by nearby equipment or structures? | Yes |
| 8. Are overhead equipment, distribution systems, ceiling tiles and lighting, and masonry block walls not likely to collapse onto the equipment? | Yes |
| 9. Do attached lines have adequate flexibility to avoid damage? | Yes |
| 10. Based on the above seismic interaction evaluations, is equipment free of potentially adverse seismic interaction effects? | Yes |

Other Adverse Conditions

- | | |
|--|-----|
| 11. Have you looked for and found no adverse seismic conditions that could adversely affect the safety functions of the equipment? | Yes |
|--|-----|

Comments

Equipment was verified to be in accordance with Seismic Qualification No. SQ-T1-RR-V-0005, Rev 001

In-Line component

Status: Y N U

Seismic Walkdown Checklist (SWC)

Equipment ID No.: RR-V-0005

Equipment Class: (8) Motor-Operated and Solenoid-Operated Valves

Equipment Description: RR-V-6 RB COOL COIL DISCH BYPASS

Evaluated by: *Mark S. Etre*

Mark S. Etre

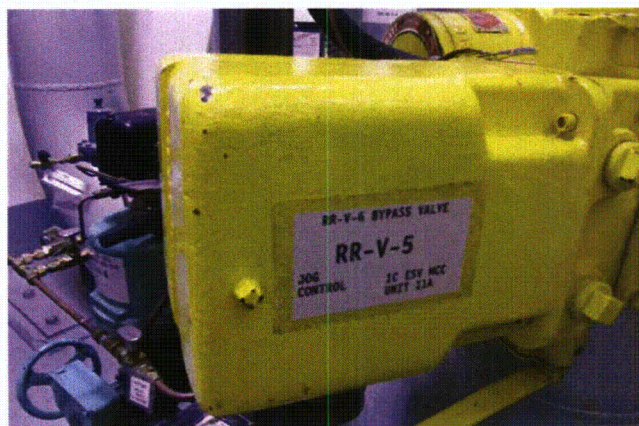
Date: 10/24/2012

Seth W. Baker

Seth W. Baker

10/24/2012

Photos



100_3278



100_3281

Status: Y N U

Seismic Walkdown Checklist (SWC)

Equipment ID No.: RR-V-0006

Equipment Class: (7) Fluid-Operated Valves

Equipment Description: RB EMERG. COOL COIL BACK PRESSURE REGULATOR

Project: TMI SWEL

Location (Bldg, Elev, Room/Area): IB, 295.00 ft, 3 : W OF STAIRWELL

Manufacturer/Model:

Instructions for Completing Checklist

This checklist may be used to document the results of the Seismic Walkdown of an item of equipment on the SWEL. The space below each of the following questions may be used to record the results of judgments and findings. Additional space is provided at the end of this checklist for documenting other comments.

Anchorage

1. Is anchorage configuration verification required (i.e., is the item one of the 50% of SWEL items requiring such verification)? No

2. Is the anchorage free of bent, broken, missing or loose hardware? Not Applicable

3. Is the anchorage free of corrosion that is more than mild surface oxidation? Not Applicable

4. Is the anchorage free of visible cracks in the concrete near the anchors? Not Applicable

5. Is the anchorage configuration consistent with plant documentation? (Note: This question only applies if the item is one of the 50% for which an anchorage configuration verification is required.) Not Applicable

6. Based on the above anchorage evaluations, is the anchorage free of potentially adverse seismic conditions? Yes

Status: Y N U

Seismic Walkdown Checklist (SWC)

Equipment ID No.: RR-V-0006

Equipment Class: (7) Fluid-Operated Valves

Equipment Description: RB EMERG. COOL COIL BACK PRESSURE REGULATOR

Interaction Effects

- | | |
|---|-----|
| 7. Are soft targets free from impact by nearby equipment or structures? | Yes |
| 8. Are overhead equipment, distribution systems, ceiling tiles and lighting, and masonry block walls not likely to collapse onto the equipment? | Yes |
| 9. Do attached lines have adequate flexibility to avoid damage? | Yes |
| 10. Based on the above seismic interaction evaluations, is equipment free of potentially adverse seismic interaction effects? | Yes |

Other Adverse Conditions

- | | |
|--|-----|
| 11. Have you looked for and found no adverse seismic conditions that could adversely affect the safety functions of the equipment? | Yes |
|--|-----|

Comments

Equipment was verified to be in accordance with Seismic Qualification No. SQ-T1-RR-V-0006, Rev 003

In-Line Component

IR 1400293 - RR-V-6 VALVE HANDWHEEL APPEARS TO BE SLIGHTLY BENT is tracking this.

Status: Y N U

Seismic Walkdown Checklist (SWC)

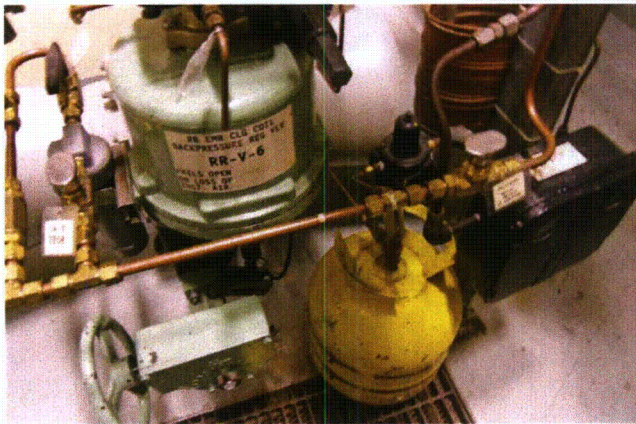
Equipment ID No.: RR-V-0006

Equipment Class: (7) Fluid-Operated Valves

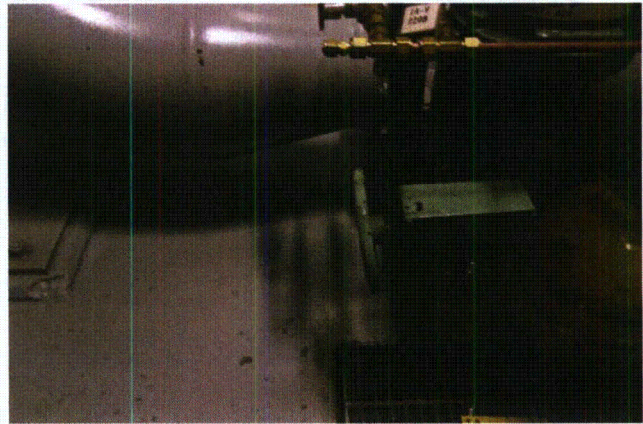
Equipment Description: RB EMERG. COOL COIL BACK PRESSURE REGULATOR

Evaluated by: *Mark S Etre* Mark S. Etre Date: 10/24/2012
Seth W. Baker Seth W. Baker 10/24/2012

Photos



100_3298



100_3301

Status: Y N U

Seismic Walkdown Checklist (SWC)

Equipment ID No.: SF2-DPT

Equipment Class: (18) Instruments on Racks

Equipment Description: SF-P-2 FLOW TRANSMITTER

Project: TMI SWEL

Location (Bldg, Elev, Room/Area): FB, 281.00 ft, 30

Manufacturer/Model:

Instructions for Completing Checklist

This checklist may be used to document the results of the Seismic Walkdown of an item of equipment on the SWEL. The space below each of the following questions may be used to record the results of judgments and findings. Additional space is provided at the end of this checklist for documenting other comments.

Anchorage

1. Is anchorage configuration verification required (i.e., is the item one of the 50% of SWEL items requiring such verification)? Yes

2. Is the anchorage free of bent, broken, missing or loose hardware? Yes

3. Is the anchorage free of corrosion that is more than mild surface oxidation? Yes

4. Is the anchorage free of visible cracks in the concrete near the anchors? Yes

5. Is the anchorage configuration consistent with plant documentation? (Note: This question only applies if the item is one of the 50% for which an anchorage configuration verification is required.) Yes

6. Based on the above anchorage evaluations, is the anchorage free of potentially adverse seismic conditions? Yes

Status: Y N U

Seismic Walkdown Checklist (SWC)

Equipment ID No.: SF2-DPT

Equipment Class: (18) Instruments on Racks

Equipment Description: SF-P-2 FLOW TRANSMITTER

Interaction Effects

7. Are soft targets free from impact by nearby equipment or structures? Yes
8. Are overhead equipment, distribution systems, ceiling tiles and lighting, and masonry block walls not likely to collapse onto the equipment? Yes
9. Do attached lines have adequate flexibility to avoid damage? Yes
10. Based on the above seismic interaction evaluations, is equipment free of potentially adverse seismic interaction effects? Yes

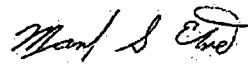
Other Adverse Conditions

11. Have you looked for and found no adverse seismic conditions that could adversely affect the safety functions of the equipment? Yes

Comments

No SQUG Walk down Report exists for this component. However, this installation anchorage and bracket is the same as those documented and evaluated under SQ-T1-SF9DPT2 Rev 000

Evaluated by:



Mark S. Etre

Date: 10/24/2012



Seth W. Baker

10/24/2012

Status: Y N U

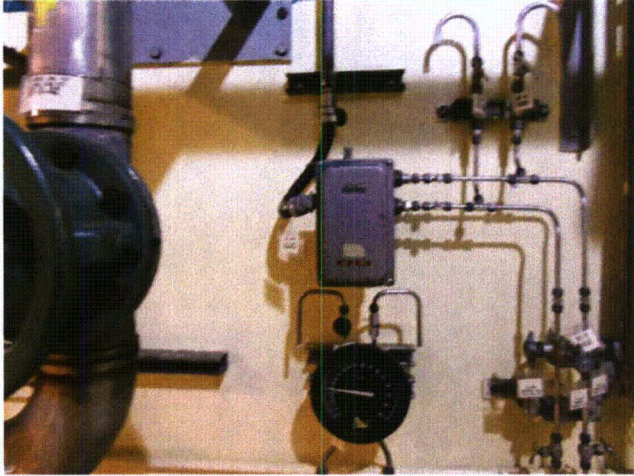
Seismic Walkdown Checklist (SWC)

Equipment ID No.: SF2-DPT

Equipment Class: (18) Instruments on Racks

Equipment Description: SF-P-2 FLOW TRANSMITTER

Photos



100_3316

Status: Y N U

Seismic Walkdown Checklist (SWC)

Equipment ID No.: SF9-DPT-1

Equipment Class: (18) Instruments on Racks

Equipment Description: B SF POOL COOLING WATER FLOW XMTR

Project: TMI SWEL

Location (Bldg, Elev, Room/Area): FB, 281.00 ft, 34 : AB 281 NEUT TANK ROOM SW CORNER OF ROOM
ON S WALL 5 ABOVE FLOOR

Manufacturer/Model:

Instructions for Completing Checklist

This checklist may be used to document the results of the Seismic Walkdown of an item of equipment on the SWEL. The space below each of the following questions may be used to record the results of judgments and findings. Additional space is provided at the end of this checklist for documenting other comments.

Anchorage

1. Is anchorage configuration verification required (i.e., is the item one of the 50% of SWEL items requiring such verification)? Yes

2. Is the anchorage free of bent, broken, missing or loose hardware? Yes

3. Is the anchorage free of corrosion that is more than mild surface oxidation? Yes

4. Is the anchorage free of visible cracks in the concrete near the anchors? Yes

5. Is the anchorage configuration consistent with plant documentation? (Note: This question only applies if the item is one of the 50% for which an anchorage configuration verification is required.) Yes

6. Based on the above anchorage evaluations, is the anchorage free of potentially adverse seismic conditions? Yes

Status: Y N U

Seismic Walkdown Checklist (SWC)

Equipment ID No.: SF9-DPT-1

Equipment Class: (18) Instruments on Racks

Equipment Description: B SF POOL COOLING WATER FLOW XMTR

Interaction Effects

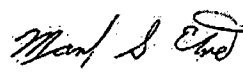
7. Are soft targets free from impact by nearby equipment or structures? Yes
8. Are overhead equipment, distribution systems, ceiling tiles and lighting, and masonry block walls not likely to collapse onto the equipment? Yes
9. Do attached lines have adequate flexibility to avoid damage? Yes
10. Based on the above seismic interaction evaluations, is equipment free of potentially adverse seismic interaction effects? Yes

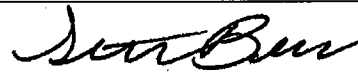
Other Adverse Conditions

11. Have you looked for and found no adverse seismic conditions that could adversely affect the safety functions of the equipment? Yes

Comments

Equipment was verified to be in accordance with Seismic Qualification No. SQ-T1-SF9DPT1, Rev 000

Evaluated by:  Mark S. Etre Date: 10/24/2012

 Seth W. Baker 10/24/2012

Status: Y N U

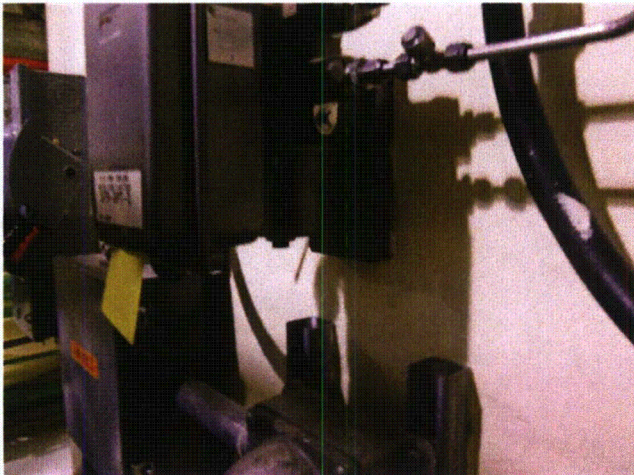
Seismic Walkdown Checklist (SWC)

Equipment ID No.: SF9-DPT-1

Equipment Class: (18) Instruments on Racks

Equipment Description: B SF POOL COOLING WATER FLOW XMTR

Photos



100_3326

Status: Y N U

Seismic Walkdown Checklist (SWC)

Equipment ID No.: SF9-DPT-2

Equipment Class: (18) Instruments on Racks

Equipment Description: A SF POOL COOLING WATER FLOW XMTR

Project: TMI SWEL

Location (Bldg, Elev, Room/Area): FB, 281.00 ft, 34

Manufacturer/Model:

Instructions for Completing Checklist

This checklist may be used to document the results of the Seismic Walkdown of an item of equipment on the SWEL. The space below each of the following questions may be used to record the results of judgments and findings. Additional space is provided at the end of this checklist for documenting other comments.

Anchorage

1. Is anchorage configuration verification required (i.e., is the item one of the 50% of SWEL items requiring such verification)? Yes

2. Is the anchorage free of bent, broken, missing or loose hardware? Yes

3. Is the anchorage free of corrosion that is more than mild surface oxidation? Yes

4. Is the anchorage free of visible cracks in the concrete near the anchors? Yes

5. Is the anchorage configuration consistent with plant documentation? (Note: This question only applies if the item is one of the 50% for which an anchorage configuration verification is required.) Yes

6. Based on the above anchorage evaluations, is the anchorage free of potentially adverse seismic conditions? Yes

Status: Y N U

Seismic Walkdown Checklist (SWC)

Equipment ID No.: SF9-DPT-2

Equipment Class: (18) Instruments on Racks

Equipment Description: A SF POOL COOLING WATER FLOW XMTR

Interaction Effects

- 7. Are soft targets free from impact by nearby equipment or structures? Yes

- 8. Are overhead equipment, distribution systems, ceiling tiles and lighting, and masonry block walls not likely to collapse onto the equipment? Yes

- 9. Do attached lines have adequate flexibility to avoid damage? Yes

- 10. Based on the above seismic interaction evaluations, is equipment free of potentially adverse seismic interaction effects? Yes

Other Adverse Conditions

- 11. Have you looked for and found no adverse seismic conditions that could adversely affect the safety functions of the equipment? Yes

Comments

Equipment was verified to be in accordance with Seismic Qualification No. SQ-T1-SF9DPT2, Rev 000

Evaluated by:

Mark S. Etre

Mark S. Etre

Date: 10/24/2012

Seth W. Baker

Seth W. Baker

10/24/2012

Status: Y N U

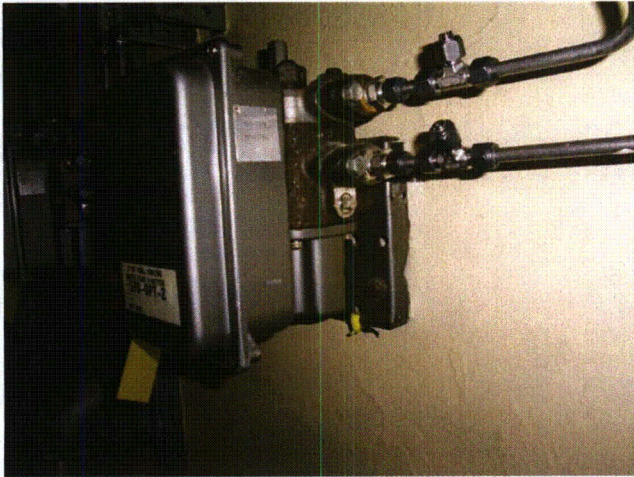
Seismic Walkdown Checklist (SWC)

Equipment ID No.: SF9-DPT-2

Equipment Class: (18) Instruments on Racks

Equipment Description: A SF POOL COOLING WATER FLOW XMTR

Photos



100_3330

Status: Y N U

Seismic Walkdown Checklist (SWC)

Equipment ID No.: SF-C-1B

Equipment Class: (21) Tanks and Heat Exchangers

Equipment Description: B SPENT FUEL COOLER

Project: TMI SWEL

Location (Bldg, Elev, Room/Area): FB, 305.00 ft, 33 : 305' FUEL BLDG IN SF COOLER ROOM

Manufacturer/Model:

Instructions for Completing Checklist

This checklist may be used to document the results of the Seismic Walkdown of an item of equipment on the SWEL. The space below each of the following questions may be used to record the results of judgments and findings. Additional space is provided at the end of this checklist for documenting other comments.

Anchorage

- | | |
|--|-----|
| 1. Is anchorage configuration verification required (i.e., is the item one of the 50% of SWEL items requiring such verification)? | Yes |
| 2. Is the anchorage free of bent, broken, missing or loose hardware? | Yes |
| 3. Is the anchorage free of corrosion that is more than mild surface oxidation? | Yes |
| 4. Is the anchorage free of visible cracks in the concrete near the anchors? | Yes |
| 5. Is the anchorage configuration consistent with plant documentation? (Note: This question only applies if the item is one of the 50% for which an anchorage configuration verification is required.) | Yes |
| 6. Based on the above anchorage evaluations, is the anchorage free of potentially adverse seismic conditions? | Yes |

Status: Y N U

Seismic Walkdown Checklist (SWC)

Equipment ID No.: SF-C-1B

Equipment Class: (21) Tanks and Heat Exchangers

Equipment Description: B SPENT FUEL COOLER

Interaction Effects

- | | |
|---|-----|
| 7. Are soft targets free from impact by nearby equipment or structures? | Yes |
| 8. Are overhead equipment, distribution systems, ceiling tiles and lighting, and masonry block walls not likely to collapse onto the equipment? | Yes |
| 9. Do attached lines have adequate flexibility to avoid damage? | Yes |
| 10. Based on the above seismic interaction evaluations, is equipment free of potentially adverse seismic interaction effects? | Yes |
-

Other Adverse Conditions

- | | |
|--|-----|
| 11. Have you looked for and found no adverse seismic conditions that could adversely affect the safety functions of the equipment? | Yes |
|--|-----|
-

Comments

Equipment was verified to be in accordance with Seismic Qualification No. SQ-T1-SF-C-0001B, Rev 000

Linear indication (cracks) on floor near column base. Judged not to be a potential seismic concern.

Status: Y N U

Seismic Walkdown Checklist (SWC)

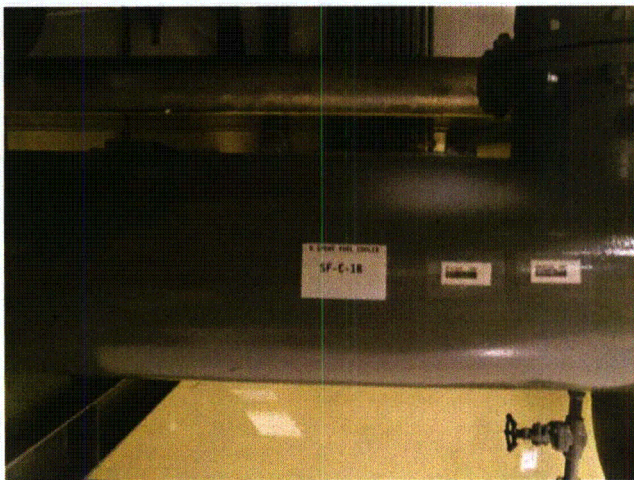
Equipment ID No.: SF-C-1B

Equipment Class: (21) Tanks and Heat Exchangers

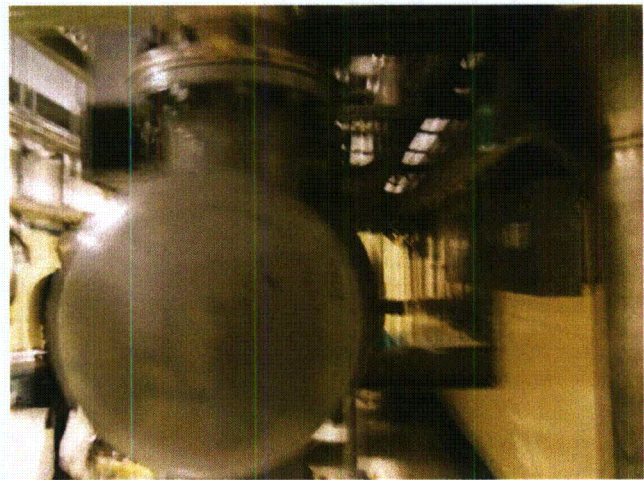
Equipment Description: B SPENT FUEL COOLER

Evaluated by: *Mark S. Etre* Mark S. Etre Date: 10/24/2012
Seth W. Baker Seth W. Baker 10/24/2012

Photos



100_3248



100_3249

Status: Y N U

Seismic Walkdown Checklist (SWC)

Equipment ID No.: SF-P-1B

Equipment Class: (5) Horizontal Pumps

Equipment Description: "B" SPENT FUEL COOLING PUMP

Project: TMI SWEL

Location (Bldg, Elev, Room/Area): FB, 305.00 ft, 33 : 305' FUEL BLDG IN SF COOLER ROOM

Manufacturer/Model:

Instructions for Completing Checklist

This checklist may be used to document the results of the Seismic Walkdown of an item of equipment on the SWEL. The space below each of the following questions may be used to record the results of judgments and findings. Additional space is provided at the end of this checklist for documenting other comments.

Anchorage

1. Is anchorage configuration verification required (i.e., is the item one of the 50% of SWEL items requiring such verification)? Yes

2. Is the anchorage free of bent, broken, missing or loose hardware? Yes

3. Is the anchorage free of corrosion that is more than mild surface oxidation? Yes

4. Is the anchorage free of visible cracks in the concrete near the anchors? Yes

5. Is the anchorage configuration consistent with plant documentation? (Note: This question only applies if the item is one of the 50% for which an anchorage configuration verification is required.) Yes

6. Based on the above anchorage evaluations, is the anchorage free of potentially adverse seismic conditions? Yes

Status: Y N U

Seismic Walkdown Checklist (SWC)

Equipment ID No.: SF-P-1B

Equipment Class: (5) Horizontal Pumps

Equipment Description: "B" SPENT FUEL COOLING PUMP

Interaction Effects

7. Are soft targets free from impact by nearby equipment or structures? Yes
8. Are overhead equipment, distribution systems, ceiling tiles and lighting, and masonry block walls not likely to collapse onto the equipment? Yes
9. Do attached lines have adequate flexibility to avoid damage? Yes
10. Based on the above seismic interaction evaluations, is equipment free of potentially adverse seismic interaction effects? Yes

Other Adverse Conditions

11. Have you looked for and found no adverse seismic conditions that could adversely affect the safety functions of the equipment? Yes

Comments

Equipment was verified to be in accordance with Seismic Qualification No. SQ-T1-SF-P-0001B, Rev 001

Evaluated by: Mark S. Etre Mark S. Etre Date: 10/24/2012
Seth W. Baker Seth W. Baker 10/24/2012

Status: Y N U

Seismic Walkdown Checklist (SWC)

Equipment ID No.: SF-P-1B

Equipment Class: (5) Horizontal Pumps

Equipment Description: "B" SPENT FUEL COOLING PUMP

Photos



100_3208

Status: Y N U

Seismic Walkdown Checklist (SWC)

Equipment ID No.: SF-V-14

Equipment Class: (7) Fluid-Operated Valves

Equipment Description: SF-P1B DISCH ISOL VLV TO B SF POOL

Project: TMI SWEL

Location (Bldg, Elev, Room/Area): FB, 305.00 ft, 33 : SF COOLING PUMP ROOM ABOVE THE B COOLER

Manufacturer/Model:

Instructions for Completing Checklist

This checklist may be used to document the results of the Seismic Walkdown of an item of equipment on the SWEL. The space below each of the following questions may be used to record the results of judgments and findings. Additional space is provided at the end of this checklist for documenting other comments.

Anchorage

- | | |
|--|----------------|
| 1. Is anchorage configuration verification required (i.e., is the item one of the 50% of SWEL items requiring such verification)? | No |
| 2. Is the anchorage free of bent, broken, missing or loose hardware? | Not Applicable |
| 3. Is the anchorage free of corrosion that is more than mild surface oxidation? | Not Applicable |
| 4. Is the anchorage free of visible cracks in the concrete near the anchors? | Not Applicable |
| 5. Is the anchorage configuration consistent with plant documentation? (Note: This question only applies if the item is one of the 50% for which an anchorage configuration verification is required.) | Not Applicable |
| 6. Based on the above anchorage evaluations, is the anchorage free of potentially adverse seismic conditions? | Yes |

Status: Y N U

Seismic Walkdown Checklist (SWC)

Equipment ID No.: SF-V-14

Equipment Class: (7) Fluid-Operated Valves

Equipment Description: SF-P1B DISCH ISOL VLV TO B SF POOL

Interaction Effects

- | | |
|---|-----|
| 7. Are soft targets free from impact by nearby equipment or structures? | Yes |
| 8. Are overhead equipment, distribution systems, ceiling tiles and lighting, and masonry block walls not likely to collapse onto the equipment? | Yes |
| 9. Do attached lines have adequate flexibility to avoid damage? | Yes |
| 10. Based on the above seismic interaction evaluations, is equipment free of potentially adverse seismic interaction effects? | Yes |

Other Adverse Conditions

- | | |
|--|-----|
| 11. Have you looked for and found no adverse seismic conditions that could adversely affect the safety functions of the equipment? | Yes |
|--|-----|

Comments

Equipment was verified to be in accordance with Seismic Qualification No. SQ-T1-SF-V-0014, Rev 000

In-line equipment.

Status: Y N U

Seismic Walkdown Checklist (SWC)

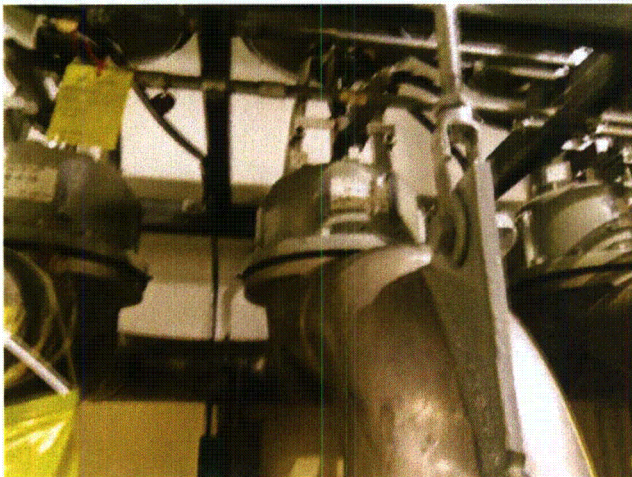
Equipment ID No.: SF-V-14

Equipment Class: (7) Fluid-Operated Valves

Equipment Description: SF-P1B DISCH ISOL VLV TO B SF POOL

Evaluated by: *Mark S. Etre* Mark S. Etre Date: 10/24/2012
Seth W. Baker Seth W. Baker 10/24/2012

Photos



100_3217

Status: Y N U

Seismic Walkdown Checklist (SWC)

Equipment ID No.: SF-V-15

Equipment Class: (7) Fluid-Operated Valves

Equipment Description: SF-P1B DISCH ISOL VLV TO A SF POOL

Project: TMI SWEL

Location (Bldg, Elev, Room/Area): FB, 305.00 ft, 33 : SF COOLING PUMP ROOM ABOVE THE B COOLER

Manufacturer/Model:

Instructions for Completing Checklist

This checklist may be used to document the results of the Seismic Walkdown of an item of equipment on the SWEL. The space below each of the following questions may be used to record the results of judgments and findings. Additional space is provided at the end of this checklist for documenting other comments.

Anchorage

- | | |
|--|----------------|
| 1. Is anchorage configuration verification required (i.e., is the item one of the 50% of SWEL items requiring such verification)? | No |
| 2. Is the anchorage free of bent, broken, missing or loose hardware? | Not Applicable |
| 3. Is the anchorage free of corrosion that is more than mild surface oxidation? | Not Applicable |
| 4. Is the anchorage free of visible cracks in the concrete near the anchors? | Not Applicable |
| 5. Is the anchorage configuration consistent with plant documentation? (Note: This question only applies if the item is one of the 50% for which an anchorage configuration verification is required.) | Not Applicable |
| 6. Based on the above anchorage evaluations, is the anchorage free of potentially adverse seismic conditions? | Yes |

Status: Y N U

Seismic Walkdown Checklist (SWC)

Equipment ID No.: SF-V-15

Equipment Class: (7) Fluid-Operated Valves

Equipment Description: SF-P1B DISCH ISOL VLV TO A SF POOL

Interaction Effects

- | | |
|---|-----|
| 7. Are soft targets free from impact by nearby equipment or structures? | Yes |
| 8. Are overhead equipment, distribution systems, ceiling tiles and lighting, and masonry block walls not likely to collapse onto the equipment? | Yes |
| 9. Do attached lines have adequate flexibility to avoid damage? | Yes |
| 10. Based on the above seismic interaction evaluations, is equipment free of potentially adverse seismic interaction effects? | Yes |

Other Adverse Conditions

- | | |
|--|-----|
| 11. Have you looked for and found no adverse seismic conditions that could adversely affect the safety functions of the equipment? | Yes |
|--|-----|

Comments

In-line equipment.

See SQ-T1-SF-V-0015, Revision 000

Status: Y N U

Seismic Walkdown Checklist (SWC)

Equipment ID No.: SF-V-15

Equipment Class: (7) Fluid-Operated Valves

Equipment Description: SF-P1B DISCH ISOL VLV TO A SF POOL

Evaluated by: *Mark S. Etre* Mark S. Etre Date: 10/24/2012
Seth W. Baker Seth W. Baker 10/24/2012

Photos



100_3221

Status: Y N U

Seismic Walkdown Checklist (SWC)

Equipment ID No.: SF-V-16

Equipment Class: (7) Fluid-Operated Valves

Equipment Description: SF-P1B DISCH ISOL VALVE TO FTC

Project: TMI SWEL

Location (Bldg, Elev, Room/Area): FB, 305.00 ft, 33 : SF COOLING PUMP ROOM ABOVE THE B COOLER

Manufacturer/Model:

Instructions for Completing Checklist

This checklist may be used to document the results of the Seismic Walkdown of an item of equipment on the SWEL. The space below each of the following questions may be used to record the results of judgments and findings. Additional space is provided at the end of this checklist for documenting other comments.

Anchorage

1. Is anchorage configuration verification required (i.e., is the item one of the 50% of SWEL items requiring such verification)? No

2. Is the anchorage free of bent, broken, missing or loose hardware? Not Applicable

3. Is the anchorage free of corrosion that is more than mild surface oxidation? Not Applicable

4. Is the anchorage free of visible cracks in the concrete near the anchors? Not Applicable

5. Is the anchorage configuration consistent with plant documentation? (Note: This question only applies if the item is one of the 50% for which an anchorage configuration verification is required.) Not Applicable

6. Based on the above anchorage evaluations, is the anchorage free of potentially adverse seismic conditions? Yes

Status: Y N U

Seismic Walkdown Checklist (SWC)

Equipment ID No.: SF-V-16

Equipment Class: (7) Fluid-Operated Valves

Equipment Description: SF-P1B DISCH ISOL VALVE TO FTC

Interaction Effects

- | | |
|---|-----|
| 7. Are soft targets free from impact by nearby equipment or structures? | Yes |
| 8. Are overhead equipment, distribution systems, ceiling tiles and lighting, and masonry block walls not likely to collapse onto the equipment? | Yes |
| 9. Do attached lines have adequate flexibility to avoid damage? | Yes |
| 10. Based on the above seismic interaction evaluations, is equipment free of potentially adverse seismic interaction effects? | Yes |

Other Adverse Conditions

- | | |
|--|-----|
| 11. Have you looked for and found no adverse seismic conditions that could adversely affect the safety functions of the equipment? | Yes |
|--|-----|

Comments

Equipment was verified to be in accordance with Seismic Qualification No. SQ-T1-SF-V-0016, Rev 000

In-line equipment.

Status: Y N U

Seismic Walkdown Checklist (SWC)

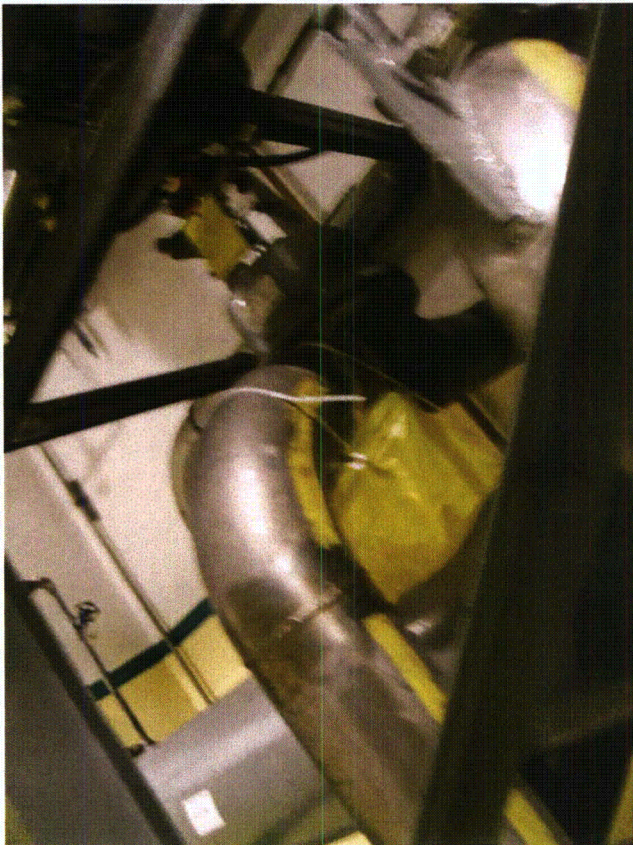
Equipment ID No.: SF-V-16

Equipment Class: (7) Fluid-Operated Valves

Equipment Description: SF-P1B DISCH ISOL VALVE TO FTC

Evaluated by: *Mark S. Etre* Mark S. Etre Date: 10/24/2012
Seth W. Baker Seth W. Baker 10/24/2012

Photos



100_3228

Status: Y N U

Seismic Walkdown Checklist (SWC)

Equipment ID No.: SF-V-37

Equipment Class: (0) Other

Equipment Description: SF-P2 SUCT VLV FROM FUEL POOL A & B

Project: TMI SWEL

Location (Bldg, Elev, Room/Area): FB, 281.00 ft, 30 : FUEL BLDG 281 N OF ELEVATOR ON WEST WALL
NORTH OF SF-P-2

Manufacturer/Model: _____

Instructions for Completing Checklist

This checklist may be used to document the results of the Seismic Walkdown of an item of equipment on the SWEL. The space below each of the following questions may be used to record the results of judgments and findings. Additional space is provided at the end of this checklist for documenting other comments.

Anchorage

1. Is anchorage configuration verification required (i.e., is the item one of the 50% of SWEL items requiring such verification)? No

2. Is the anchorage free of bent, broken, missing or loose hardware? Not Applicable

3. Is the anchorage free of corrosion that is more than mild surface oxidation? Not Applicable

4. Is the anchorage free of visible cracks in the concrete near the anchors? Not Applicable

5. Is the anchorage configuration consistent with plant documentation? (Note: This question only applies if the item is one of the 50% for which an anchorage configuration verification is required.) Not Applicable

6. Based on the above anchorage evaluations, is the anchorage free of potentially adverse seismic conditions? Yes

Status: Y N U

Seismic Walkdown Checklist (SWC)

Equipment ID No.: SF-V-37

Equipment Class: (0) Other

Equipment Description: SF-P2 SUCT VLV FROM FUEL POOL A & B

Interaction Effects

7. Are soft targets free from impact by nearby equipment or structures? Yes
8. Are overhead equipment, distribution systems, ceiling tiles and lighting, and masonry block walls not likely to collapse onto the equipment? Yes
9. Do attached lines have adequate flexibility to avoid damage? Yes
10. Based on the above seismic interaction evaluations, is equipment free of potentially adverse seismic interaction effects? Yes

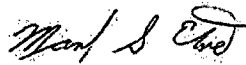
Other Adverse Conditions

11. Have you looked for and found no adverse seismic conditions that could adversely affect the safety functions of the equipment? Yes

Comments

Drawing Number 2466-26-M Rev. 0

Evaluated by:



Mark S. Etre

Date: 10/24/2012



Seth W. Baker

10/24/2012

Status: Y N U

Seismic Walkdown Checklist (SWC)

Equipment ID No.: SF-V-37

Equipment Class: (0) Other

Equipment Description: SF-P2 SUCT VLV FROM FUEL POOL A & B

Photos



100_3302

Status: Y N U

Seismic Walkdown Checklist (SWC)

Equipment ID No.: SF-V-38

Equipment Class: (0) Other

Equipment Description: A SF POOL DRAIN ISOL VALVE

Project: TMI SWEL

Location (Bldg, Elev, Room/Area): FB, 348.00 ft, 32 : SF POOL 3RD FLOOR NORTH END WEST OF POOL

Manufacturer/Model:

Instructions for Completing Checklist

This checklist may be used to document the results of the Seismic Walkdown of an item of equipment on the SWEL. The space below each of the following questions may be used to record the results of judgments and findings. Additional space is provided at the end of this checklist for documenting other comments.

Anchorage

- | | |
|--|----------------|
| 1. Is anchorage configuration verification required (i.e., is the item one of the 50% of SWEL items requiring such verification)? | No |
| 2. Is the anchorage free of bent, broken, missing or loose hardware? | Not Applicable |
| 3. Is the anchorage free of corrosion that is more than mild surface oxidation? | Not Applicable |
| 4. Is the anchorage free of visible cracks in the concrete near the anchors? | Not Applicable |
| 5. Is the anchorage configuration consistent with plant documentation? (Note: This question only applies if the item is one of the 50% for which an anchorage configuration verification is required.) | Not Applicable |
| 6. Based on the above anchorage evaluations, is the anchorage free of potentially adverse seismic conditions? | Yes |

Status: Y N U

Seismic Walkdown Checklist (SWC)

Equipment ID No.: SF-V-38

Equipment Class: (0) Other

Equipment Description: A SF POOL DRAIN ISOL VALVE

Interaction Effects

- | | |
|---|-----|
| 7. Are soft targets free from impact by nearby equipment or structures? | Yes |
| 8. Are overhead equipment, distribution systems, ceiling tiles and lighting, and masonry block walls not likely to collapse onto the equipment? | Yes |
| 9. Do attached lines have adequate flexibility to avoid damage? | Yes |
| 10. Based on the above seismic interaction evaluations, is equipment free of potentially adverse seismic interaction effects? | Yes |

Other Adverse Conditions

- | | |
|--|-----|
| 11. Have you looked for and found no adverse seismic conditions that could adversely affect the safety functions of the equipment? | Yes |
|--|-----|

Comments

Only the operator from the fuel deck is visible. The body is below the floor and would have required a significant amount of Scaffolding to access.

Drawing 2466-26-M Rev. 0

Status: Y N U

Seismic Walkdown Checklist (SWC)

Equipment ID No.: SF-V-38

Equipment Class: (0) Other

Equipment Description: A SF POOL DRAIN ISOL VALVE

Evaluated by: *Mark S. Etre*

Mark S. Etre

Date: 10/24/2012

Seth W. Baker

Seth W. Baker

10/24/2012

Photos



100_3280

Status: Y N U

Seismic Walkdown Checklist (SWC)

Equipment ID No.: SF-V-4

Equipment Class: (7) Fluid-Operated Valves

Equipment Description: SF-P1B SUCT ISOL VLV FROM B SF POOL

Project: TMI SWEL

Location (Bldg, Elev, Room/Area): FB, 305.00 ft, 33 : SPENT FUEL COOLING PUMP ROOM ON WEST WALL AT THE B PUMP

Manufacturer/Model:

Instructions for Completing Checklist

This checklist may be used to document the results of the Seismic Walkdown of an item of equipment on the SWEL. The space below each of the following questions may be used to record the results of judgments and findings. Additional space is provided at the end of this checklist for documenting other comments.

Anchorage

1. Is anchorage configuration verification required (i.e., is the item one of the 50% of SWEL items requiring such verification)? No

2. Is the anchorage free of bent, broken, missing or loose hardware? Not Applicable

3. Is the anchorage free of corrosion that is more than mild surface oxidation? Not Applicable

4. Is the anchorage free of visible cracks in the concrete near the anchors? Not Applicable

5. Is the anchorage configuration consistent with plant documentation? (Note: This question only applies if the item is one of the 50% for which an anchorage configuration verification is required.) Not Applicable

6. Based on the above anchorage evaluations, is the anchorage free of potentially adverse seismic conditions? Yes

Status: Y N U

Seismic Walkdown Checklist (SWC)

Equipment ID No.: SF-V-4

Equipment Class: (7) Fluid-Operated Valves

Equipment Description: SF-P1B SUCT ISOL VLV FROM B SF POOL

Interaction Effects

- | | |
|---|-----|
| 7. Are soft targets free from impact by nearby equipment or structures? | Yes |
| 8. Are overhead equipment, distribution systems, ceiling tiles and lighting, and masonry block walls not likely to collapse onto the equipment? | Yes |
| 9. Do attached lines have adequate flexibility to avoid damage? | Yes |
| 10. Based on the above seismic interaction evaluations, is equipment free of potentially adverse seismic interaction effects? | Yes |

Other Adverse Conditions

- | | |
|--|-----|
| 11. Have you looked for and found no adverse seismic conditions that could adversely affect the safety functions of the equipment? | Yes |
|--|-----|

Comments

Equipment was verified to be in accordance with Seismic Qualification No. SQ-T1-SF-V-0004, Rev 000

In-line equipment.

Localized linear indication (cracks) on floor below valve. Judged not to be a potential seismic concern.

Status: Y N U

Seismic Walkdown Checklist (SWC)

Equipment ID No.: SF-V-4

Equipment Class: (7) Fluid-Operated Valves

Equipment Description: SF-P1B SUCT ISOL VLV FROM B SF POOL

Evaluated by: *Mark S. Etre*

Mark S. Etre

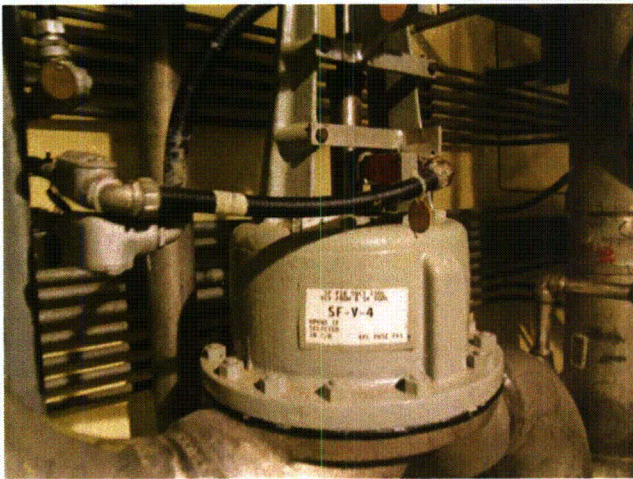
Date: 10/24/2012

Seth W. Baker

Seth W. Baker

10/24/2012

Photos



100_3184

Status: Y N U

Seismic Walkdown Checklist (SWC)

Equipment ID No.: SF-V-48

Equipment Class: (0) Other

Equipment Description: A SF POOL SIPHON BREAKER ISOL VALVE

Project: TMI SWEL

Location (Bldg, Elev, Room/Area): FB, 348.00 ft, 32 : SF POOL 3RD FLOOR NORTH END WEST OF POOL

Manufacturer/Model:

Instructions for Completing Checklist

This checklist may be used to document the results of the Seismic Walkdown of an item of equipment on the SWEL. The space below each of the following questions may be used to record the results of judgments and findings. Additional space is provided at the end of this checklist for documenting other comments.

Anchorage

- | | |
|--|----------------|
| 1. Is anchorage configuration verification required (i.e., is the item one of the 50% of SWEL items requiring such verification)? | No |
| 2. Is the anchorage free of bent, broken, missing or loose hardware? | Not Applicable |
| 3. Is the anchorage free of corrosion that is more than mild surface oxidation? | Not Applicable |
| 4. Is the anchorage free of visible cracks in the concrete near the anchors? | Not Applicable |
| 5. Is the anchorage configuration consistent with plant documentation? (Note: This question only applies if the item is one of the 50% for which an anchorage configuration verification is required.) | Not Applicable |
| 6. Based on the above anchorage evaluations, is the anchorage free of potentially adverse seismic conditions? | Yes |

Status: Y N U

Seismic Walkdown Checklist (SWC)

Equipment ID No.: SF-V-48

Equipment Class: (0) Other

Equipment Description: A SF POOL SIPHON BREAKER ISOL VALVE

Interaction Effects

- | | |
|---|-----|
| 7. Are soft targets free from impact by nearby equipment or structures? | Yes |
| 8. Are overhead equipment, distribution systems, ceiling tiles and lighting, and masonry block walls not likely to collapse onto the equipment? | Yes |
| 9. Do attached lines have adequate flexibility to avoid damage? | Yes |
| 10. Based on the above seismic interaction evaluations, is equipment free of potentially adverse seismic interaction effects? | Yes |

Other Adverse Conditions

- | | |
|--|-----|
| 11. Have you looked for and found no adverse seismic conditions that could adversely affect the safety functions of the equipment? | Yes |
|--|-----|

Comments

In-line equipment.

See drawing 2471-26-M Rev. 0

Status: Y N U

Seismic Walkdown Checklist (SWC)

Equipment ID No.: SF-V-48

Equipment Class: (0) Other

Equipment Description: A SF POOL SIPHON BREAKER ISOL VALVE

Evaluated by: *Mark S. Etre*

Mark S. Etre

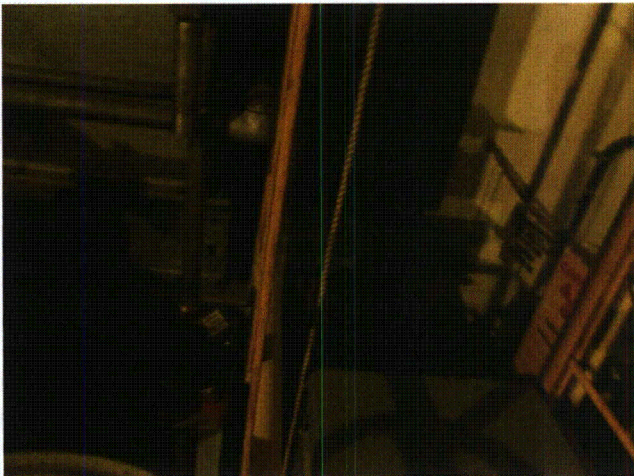
Date: 10/24/2012

Seth W. Baker

Seth W. Baker

10/24/2012

Photos



100_3289

Status: Y N U

Seismic Walkdown Checklist (SWC)

Equipment ID No.: SF-V-5

Equipment Class: (7) Fluid-Operated Valves

Equipment Description: SF-P1B SUCT ISOL VLV FROM A SF POOL

Project: TMI SWEL

Location (Bldg, Elev, Room/Area): FB, 305.00 ft, 33 : SPENT FUEL COOLING PUMP ROOM ON WEST WALL AT THE B PUMP

Manufacturer/Model:

Instructions for Completing Checklist

This checklist may be used to document the results of the Seismic Walkdown of an item of equipment on the SWEL. The space below each of the following questions may be used to record the results of judgments and findings. Additional space is provided at the end of this checklist for documenting other comments.

Anchorage

1. Is anchorage configuration verification required (i.e., is the item one of the 50% of SWEL items requiring such verification)? No

2. Is the anchorage free of bent, broken, missing or loose hardware? Not Applicable

3. Is the anchorage free of corrosion that is more than mild surface oxidation? Not Applicable

4. Is the anchorage free of visible cracks in the concrete near the anchors? Not Applicable

5. Is the anchorage configuration consistent with plant documentation? (Note: This question only applies if the item is one of the 50% for which an anchorage configuration verification is required.) Not Applicable

6. Based on the above anchorage evaluations, is the anchorage free of potentially adverse seismic conditions? Yes

Status: Y N U

Seismic Walkdown Checklist (SWC)

Equipment ID No.: SF-V-5

Equipment Class: (7) Fluid-Operated Valves

Equipment Description: SF-P1B SUCT ISOL VLV FROM A SF POOL

Interaction Effects

- | | |
|---|-----|
| 7. Are soft targets free from impact by nearby equipment or structures? | Yes |
| 8. Are overhead equipment, distribution systems, ceiling tiles and lighting, and masonry block walls not likely to collapse onto the equipment? | Yes |
| 9. Do attached lines have adequate flexibility to avoid damage? | Yes |
| 10. Based on the above seismic interaction evaluations, is equipment free of potentially adverse seismic interaction effects? | Yes |

Other Adverse Conditions

- | | |
|--|-----|
| 11. Have you looked for and found no adverse seismic conditions that could adversely affect the safety functions of the equipment? | Yes |
|--|-----|

Comments

Equipment was verified to be in accordance with Seismic Qualification No. SQ-T1-SF-V-0005, Rev 000

In-line equipment.

Rigid attached air lines are already addressed under SQUG SEWS.

Status: Y N U

Seismic Walkdown Checklist (SWC)

Equipment ID No.: SF-V-5

Equipment Class: (7) Fluid-Operated Valves

Equipment Description: SF-P1B SUCT ISOL VLV FROM A SF POOL

Evaluated by: *Mark S. Etre* Mark S. Etre Date: 10/24/2012
Seth W. Baker Seth W. Baker 10/24/2012

Photos



100_3193

Status: Y N U

Seismic Walkdown Checklist (SWC)

Equipment ID No.: SF-V-6

Equipment Class: (7) Fluid-Operated Valves

Equipment Description: SF-P1B SUCT ISOL VLV FROM FTC

Project: TMI SWEL

FB, 305.00 ft, 33 : SPENT FUEL COOLING PUMP ROOM ON WEST

Location (Bldg, Elev, Room/Area): WALL AT THE B PUMP

Manufacturer/Model:

Instructions for Completing Checklist

This checklist may be used to document the results of the Seismic Walkdown of an item of equipment on the SWEL. The space below each of the following questions may be used to record the results of judgments and findings. Additional space is provided at the end of this checklist for documenting other comments.

Anchorage

- | | |
|--|----------------|
| 1. Is anchorage configuration verification required (i.e., is the item one of the 50% of SWEL items requiring such verification)? | No |
| 2. Is the anchorage free of bent, broken, missing or loose hardware? | Not Applicable |
| 3. Is the anchorage free of corrosion that is more than mild surface oxidation? | Not Applicable |
| 4. Is the anchorage free of visible cracks in the concrete near the anchors? | Not Applicable |
| 5. Is the anchorage configuration consistent with plant documentation? (Note: This question only applies if the item is one of the 50% for which an anchorage configuration verification is required.) | Not Applicable |
| 6. Based on the above anchorage evaluations, is the anchorage free of potentially adverse seismic conditions? | Yes |

Status: Y N U

Seismic Walkdown Checklist (SWC)

Equipment ID No.: SF-V-6

Equipment Class: (7) Fluid-Operated Valves

Equipment Description: SF-P1B SUCT ISOL VLV FROM FTC

Interaction Effects

- | | |
|---|-----|
| 7. Are soft targets free from impact by nearby equipment or structures? | Yes |
| 8. Are overhead equipment, distribution systems, ceiling tiles and lighting, and masonry block walls not likely to collapse onto the equipment? | Yes |
| 9. Do attached lines have adequate flexibility to avoid damage? | Yes |
| 10. Based on the above seismic interaction evaluations, is equipment free of potentially adverse seismic interaction effects? | Yes |

Other Adverse Conditions

- | | |
|--|-----|
| 11. Have you looked for and found no adverse seismic conditions that could adversely affect the safety functions of the equipment? | Yes |
|--|-----|

Comments

This is the same as SF-V-5. See SQ-T1-SF-V-0005, Rev 000

In-line equipment.

Only 1/4" gap between the conduit and the shell of the valve. Low mass of conduit is unlikely to damage the valve and is judged to be acceptable.

Status: Y N U

Seismic Walkdown Checklist (SWC)

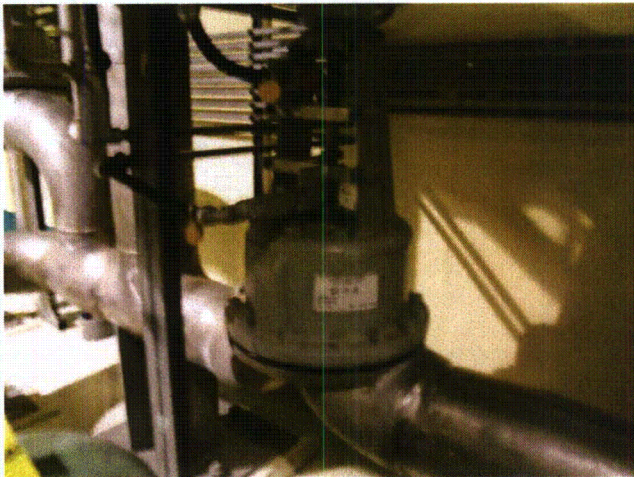
Equipment ID No.: SF-V-6

Equipment Class: (7) Fluid-Operated Valves

Equipment Description: SF-P1B SUCT ISOL VLV FROM FTC

Evaluated by: *Mark S. Etre* Mark S. Etre Date: 10/24/2012
Seth W. Baker Seth W. Baker 10/24/2012

Photos



100_3202

Status: Y N U

Seismic Walkdown Checklist (SWC)

Equipment ID No.: TRB

Equipment Class: (14) Distribution Panels

Equipment Description: 120V REG AC INSTR. POWER TRB

Project: TMI SWEL

Location (Bldg, Elev, Room/Area): CB, 322.00 ft, 24

Manufacturer/Model:

Instructions for Completing Checklist

This checklist may be used to document the results of the Seismic Walkdown of an item of equipment on the SWEL. The space below each of the following questions may be used to record the results of judgments and findings. Additional space is provided at the end of this checklist for documenting other comments.

Anchorage

1. Is anchorage configuration verification required (i.e., is the item one of the 50% of SWEL items requiring such verification)? Yes

2. Is the anchorage free of bent, broken, missing or loose hardware? Yes

3. Is the anchorage free of corrosion that is more than mild surface oxidation? Yes

4. Is the anchorage free of visible cracks in the concrete near the anchors? Yes

5. Is the anchorage configuration consistent with plant documentation? (Note: This question only applies if the item is one of the 50% for which an anchorage configuration verification is required.) Yes

6. Based on the above anchorage evaluations, is the anchorage free of potentially adverse seismic conditions? Yes

Status: Y N U

Seismic Walkdown Checklist (SWC)

Equipment ID No.: TRB

Equipment Class: (14) Distribution Panels

Equipment Description: 120V REG AC INSTR. POWER TRB

Interaction Effects

- 7. Are soft targets free from impact by nearby equipment or structures? Yes

- 8. Are overhead equipment, distribution systems, ceiling tiles and lighting, and masonry block walls not likely to collapse onto the equipment? Yes

- 9. Do attached lines have adequate flexibility to avoid damage? Yes

- 10. Based on the above seismic interaction evaluations, is equipment free of potentially adverse seismic interaction effects? Yes

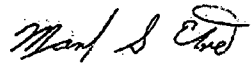
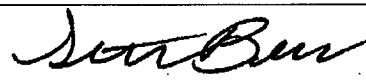
Other Adverse Conditions

- 11. Have you looked for and found no adverse seismic conditions that could adversely affect the safety functions of the equipment? Yes
Internal Inspections for other adverse Seismic conditions has not been performed.

Comments

Equipment was verified to be in accordance with Seismic Qualification No. SQ-T1-TRB, Rev 000

New Anchorage is installed consistent with with modification No. T1-MM-412552-002 and drawings 521-253

Evaluated by:  Mark S. Etre Date: 10/24/2012
 Seth W. Baker 10/24/2012

Status: Y N U

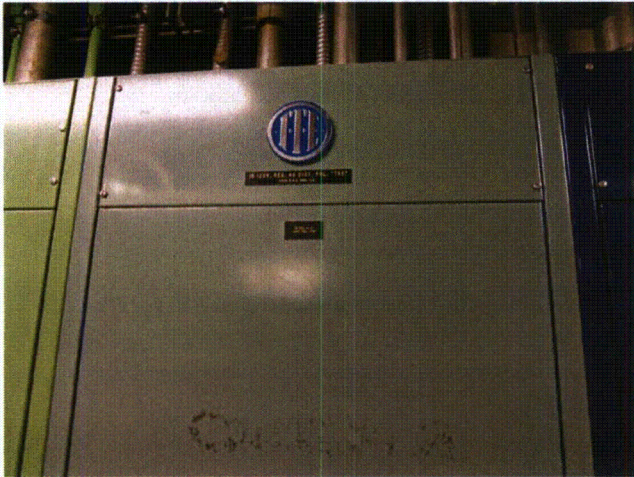
Seismic Walkdown Checklist (SWC)

Equipment ID No.: TRB

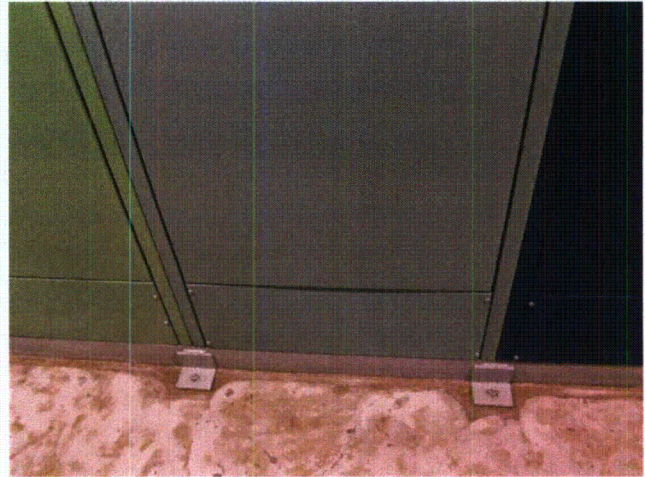
Equipment Class: (14) Distribution Panels

Equipment Description: 120V REG AC INSTR. POWER TRB

Photos



100_3489



100_3490



100_3492

Status: Y N U

Seismic Walkdown Checklist (SWC)

Equipment ID No.: VBD

Equipment Class: (14) Distribution Panels

Equipment Description: 120V VITAL INST DIST PANEL 1D

Project: TMI SWEL

Location (Bldg, Elev, Room/Area): CB, 322.00 ft, 24

Manufacturer/Model:

Instructions for Completing Checklist

This checklist may be used to document the results of the Seismic Walkdown of an item of equipment on the SWEL. The space below each of the following questions may be used to record the results of judgments and findings. Additional space is provided at the end of this checklist for documenting other comments.

Anchorage

1. Is anchorage configuration verification required (i.e., is the item one of the 50% of SWEL items requiring such verification)? Yes

2. Is the anchorage free of bent, broken, missing or loose hardware? Yes

3. Is the anchorage free of corrosion that is more than mild surface oxidation? Yes

4. Is the anchorage free of visible cracks in the concrete near the anchors? Yes

5. Is the anchorage configuration consistent with plant documentation? (Note: This question only applies if the item is one of the 50% for which an anchorage configuration verification is required.) Yes

6. Based on the above anchorage evaluations, is the anchorage free of potentially adverse seismic conditions? Yes

Status: Y N U

Seismic Walkdown Checklist (SWC)

Equipment ID No.: VBD

Equipment Class: (14) Distribution Panels

Equipment Description: 120V VITAL INST DIST PANEL 1D

Interaction Effects

- 7. Are soft targets free from impact by nearby equipment or structures? Yes

- 8. Are overhead equipment, distribution systems, ceiling tiles and lighting, and masonry block walls not likely to collapse onto the equipment? Yes

- 9. Do attached lines have adequate flexibility to avoid damage? Yes

- 10. Based on the above seismic interaction evaluations, is equipment free of potentially adverse seismic interaction effects? Yes

Other Adverse Conditions

- 11. Have you looked for and found no adverse seismic conditions that could adversely affect the safety functions of the equipment? Unknown
Internal Inspections for other adverse Seismic conditions has not been performed.

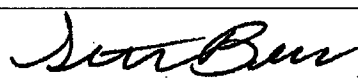
Comments

Equipment was verified to be in accordance with Seismic Qualification No. SQ-T1-VBD, Rev 000

New Anchorage is installed consistent with modification No. T1-MM-412552-002, Rev 000 and drawing 521-253

Rigid conduits on top of cabinet exhibit enough relative flexibility to preclude any adverse seismic interaction.

Evaluated by:  Mark S. Etre Date: 10/24/2012

 Seth W. Baker 10/24/2012

Status: Y N U

Seismic Walkdown Checklist (SWC)

Equipment ID No.: VBD

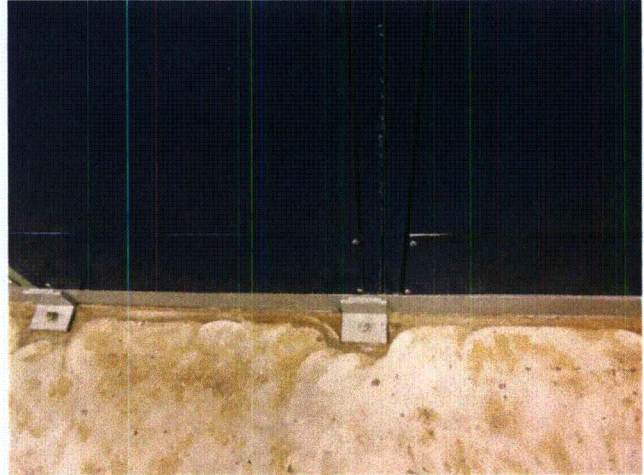
Equipment Class: (14) Distribution Panels

Equipment Description: 120V VITAL INST DIST PANEL 1D

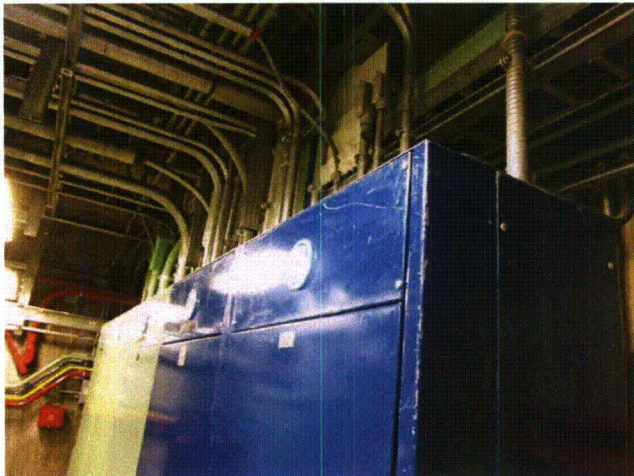
Photos



100_3482



100_3484



100_3487

Status: Y N U

Seismic Walkdown Checklist (SWC)

Equipment ID No.: XCLA

Equipment Class: (20) Instrumentation and Control Panels and Cabinets

Equipment Description: XCLA RELAY PANEL

Project: TMI SWEL

CB, 338.50 ft, 23 : RELAY ROOM,SOUTH OF CRD CONTROL

Location (Bldg, Elev, Room/Area): CABINETS

Manufacturer/Model:

Instructions for Completing Checklist

This checklist may be used to document the results of the Seismic Walkdown of an item of equipment on the SWEL. The space below each of the following questions may be used to record the results of judgments and findings. Additional space is provided at the end of this checklist for documenting other comments.

Anchorage

1. Is anchorage configuration verification required (i.e., is the item one of the 50% of SWEL items requiring such verification)? Yes

2. Is the anchorage free of bent, broken, missing or loose hardware? Yes

3. Is the anchorage free of corrosion that is more than mild surface oxidation? Yes

4. Is the anchorage free of visible cracks in the concrete near the anchors? Yes

5. Is the anchorage configuration consistent with plant documentation? (Note: This question only applies if the item is one of the 50% for which an anchorage configuration verification is required.) Yes

6. Based on the above anchorage evaluations, is the anchorage free of potentially adverse seismic conditions? Yes

Status: Y N U

Seismic Walkdown Checklist (SWC)

Equipment ID No.: XCLA

Equipment Class: (20) Instrumentation and Control Panels and Cabinets

Equipment Description: XCLA RELAY PANEL

Interaction Effects


7. Are soft targets free from impact by nearby equipment or structures? Yes
8. Are overhead equipment, distribution systems, ceiling tiles and lighting, and masonry block walls not likely to collapse onto the equipment? Yes
9. Do attached lines have adequate flexibility to avoid damage? Yes
10. Based on the above seismic interaction evaluations, is equipment free of potentially adverse seismic interaction effects? Yes

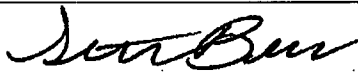
Other Adverse Conditions

11. Have you looked for and found no adverse seismic conditions that could adversely affect the safety functions of the equipment? Yes

Comments

Equipment was verified to be in accordance with Seismic Qualification No. SQ-T1-XCLA, Rev 000

Evaluated by:  Mark S. Etre Date: 10/24/2012

 Seth W. Baker 10/24/2012

Status: Y N U

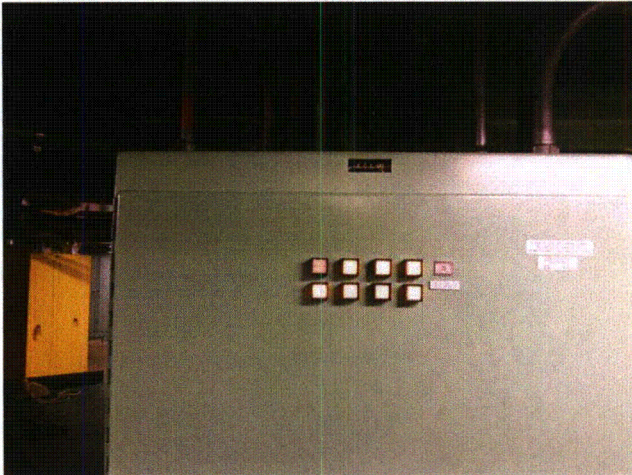
Seismic Walkdown Checklist (SWC)

Equipment ID No.: XCLA

Equipment Class: (20) Instrumentation and Control Panels and Cabinets

Equipment Description: XCLA RELAY PANEL

Photos



100_3577



100_3579