

Status: Y N U

Area Walk-By Checklist (AWC)

Location (Bldg, Elev, Room/Area): AWC-U1-16

Instructions for Completing Checklist

This checklist may be used to document the results of the Area Walk-By near one or more SWEL items. The space below each of the following questions may be used to record the results of judgments and findings. Additional space is provided at the end of this checklist for documenting other comments.

1. Does anchorage of equipment in the area appear to be free of potentially adverse seismic conditions (if visible without necessarily opening cabinets)? Yes

 2. Does anchorage of equipment in the area appear to be free of significant degraded conditions? Yes
Minor lack of thread engagement judged to be acceptable.

 3. Based on a visual inspection from the floor, do the cable/conduit raceways and HVAC ducting appear to be free of potentially adverse seismic conditions (e.g., condition of supports is adequate and fill conditions of cable trays appear to be inside acceptable limits)? Yes

 4. Does it appear that the area is free of potentially adverse seismic spatial interactions with other equipment in the area (e.g., ceiling tiles and lighting)? Yes
Several light fixtures with slightly-open S-hooks; not open enough to allow light fixture to fall from hook. Judged to be acceptable. Identified in IR 1404697.

One light fixture beam clamp oriented incorrectly. Station vertical seismic acceleration is low. Judged to be acceptable. Identified in IR 1404697.

 5. Does it appear that the area is free of potentially adverse seismic interactions that could cause flooding or spray in the area? Yes
Threaded fire piping, room heater, and associated piping well-supported. All other piping is welded.

 6. Does it appear that the area is free of potentially adverse seismic interactions that could cause a fire in the area? Yes
Hydrogen bottles well-supported in rack. Other gas bottles adequately chained.
-

Status: Y N U

Area Walk-By Checklist (AWC)

Location (Bldg, Elev, Room/Area): AWC-U1-16

-
7. Does it appear that the area is free of potentially adverse seismic interactions associated with housekeeping practices, storage of portable equipment, and temporary installations (e.g., scaffolding, lead shielding)? Yes
Valve chained on floor to robust U1 RHR to FPC pipe. Judged to be acceptable.

Spool piece toolbox within 12 inches of robust duct riser. Judged to be acceptable.
8. Have you looked for and found no other seismic conditions that could adversely affect the safety functions of the equipment in the area? Yes
Stanchions relocated to acceptable position during walkdown.
Variety of minor bends in rod hangers all judged to be acceptable.

Comments

Seismic Walkdown Team: D. Carter & J. Griffith - 8/21/2012

Evaluated by: David Carter Date: 10/4/2012

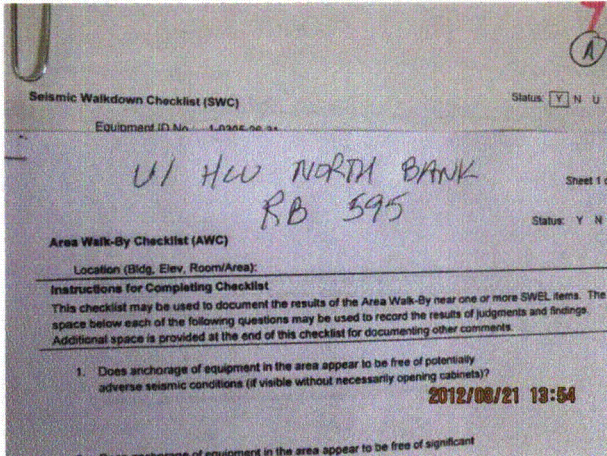
James D. Griffith James Griffith 10/4/2012

Status: Y N U

Area Walk-By Checklist (AWC)

Location (Bldg, Elev, Room/Area): AWC-U1-16

Photos



8-21-12 Quad Cities 222



8-21-12 Quad Cities 223

Status: Y N U

Area Walk-By Checklist (AWC)

Location (Bldg, Elev, Room/Area): AWC-U1-16



8-21-12 Quad Cities 224



8-21-12 Quad Cities 225

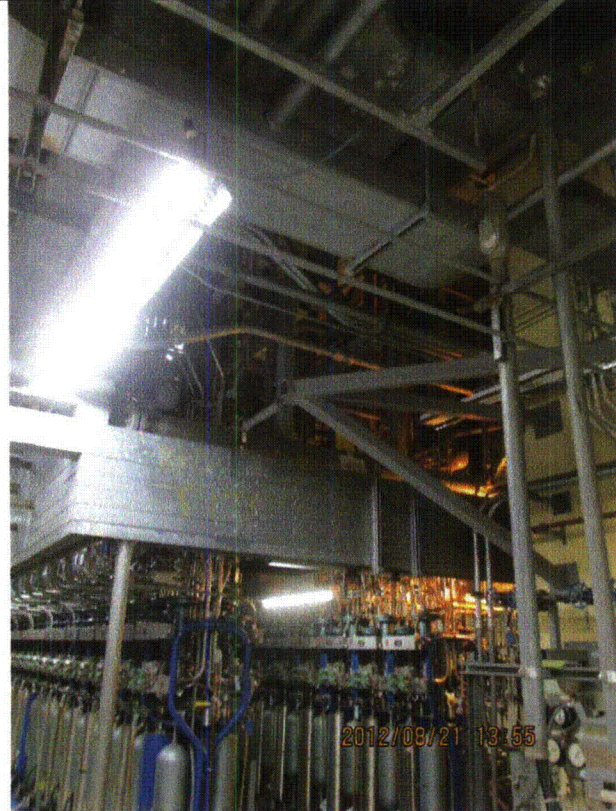
Status: Y N U

Area Walk-By Checklist (AWC)

Location (Bldg, Elev, Room/Area): AWC-U1-16



8-21-12 Quad Cities 226



8-21-12 Quad Cities 227

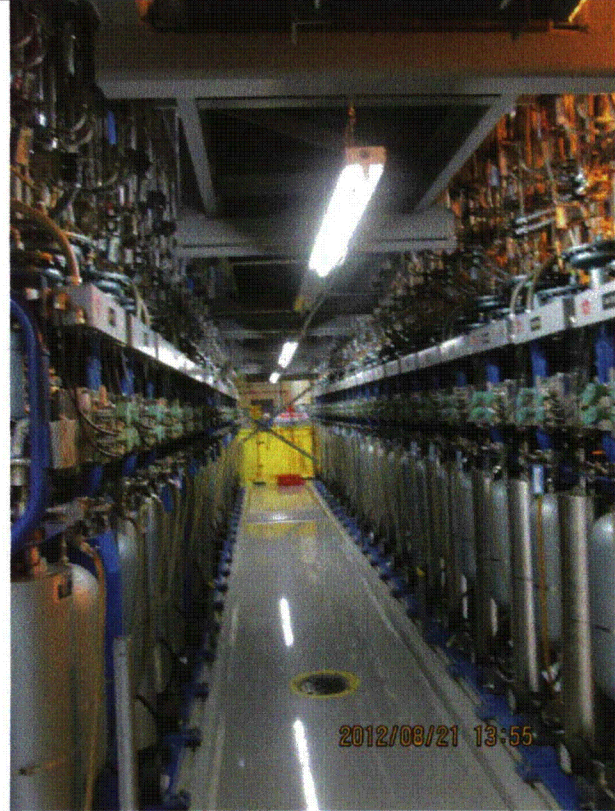
Status: Y N U

Area Walk-By Checklist (AWC)

Location (Bldg, Elev, Room/Area): AWC-U1-16



8-21-12 Quad Cities 228



8-21-12 Quad Cities 229

Status: Y N U

Area Walk-By Checklist (AWC)

Location (Bldg, Elev, Room/Area): AWC-U1-16



8-21-12 Quad Cities 230



8-21-12 Quad Cities 231

Status: Y N U

Area Walk-By Checklist (AWC)

Location (Bldg, Elev, Room/Area): AWC-U1-16



8-21-12 Quad Cities 232



8-21-12 Quad Cities 233

Status: Y N U

Area Walk-By Checklist (AWC)

Location (Bldg, Elev, Room/Area): AWC-U1-16



8-21-12 Quad Cities 234



8-21-12 Quad Cities 235

Status: Y N U

Area Walk-By Checklist (AWC)

Location (Bldg, Elev, Room/Area): AWC-U1-16



8-21-12 Quad Cities 236

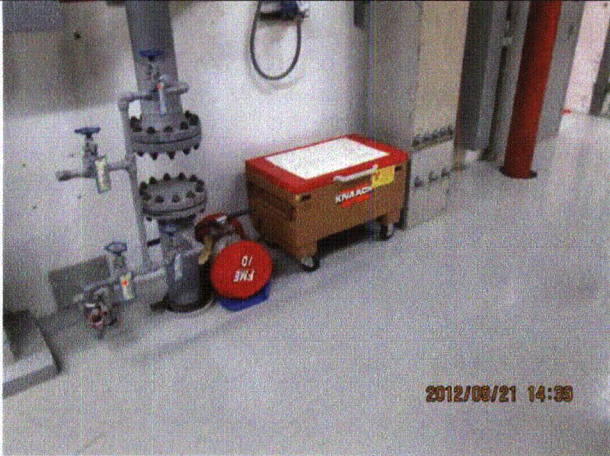


8-21-12 Quad Cities 237

Status: Y N U

Area Walk-By Checklist (AWC)

Location (Bldg, Elev, Room/Area): AWC-U1-16



8-21-12 Quad Cities 238



8-21-12 Quad Cities 239

Status: Y N U

Area Walk-By Checklist (AWC)

Location (Bldg, Elev, Room/Area): AWC-U1-17

Instructions for Completing Checklist

This checklist may be used to document the results of the Area Walk-By near one or more SWEL items. The space below each of the following questions may be used to record the results of judgments and findings. Additional space is provided at the end of this checklist for documenting other comments.

1. Does anchorage of equipment in the area appear to be free of potentially adverse seismic conditions (if visible without necessarily opening cabinets)? Yes

 2. Does anchorage of equipment in the area appear to be free of significant degraded conditions? Yes
Minor lack of thread engagement judged to be acceptable.

 3. Based on a visual inspection from the floor, do the cable/conduit raceways and HVAC ducting appear to be free of potentially adverse seismic conditions (e.g., condition of supports is adequate and fill conditions of cable trays appear to be inside acceptable limits)? Yes

 4. Does it appear that the area is free of potentially adverse seismic spatial interactions with other equipment in the area (e.g., ceiling tiles and lighting)? Yes
Incorrect beam clamp orientation between HCU rows. Station vertical seismic acceleration is small. Judged to be acceptable. Identified in IR 1404697.

Overhead light fixture with slightly-open S-hook. Fixture not able to fall from hook. Identified in IR 1404697.

1 of 2 bolts missing between backs of racks at positions 30-51 and 30-35 at top. Judged to be acceptable. Identified in IR 1403391.

8'x8' 3-sided U-shaped masonry wall (107, 117, and 118 per B-1734, Rev. C) is safety related.
 5. Does it appear that the area is free of potentially adverse seismic interactions that could cause flooding or spray in the area? Yes
Threaded fire pipe is well supported and judged acceptable.

Two room heaters and associated piping well supported and judged to be acceptable.
 6. Does it appear that the area is free of potentially adverse seismic interactions that could cause a fire in the area? Yes
-

Status: Y N U

Area Walk-By Checklist (AWC)

Location (Bldg, Elev, Room/Area): AWC-U1-17

7. Does it appear that the area is free of potentially adverse seismic interactions associated with housekeeping practices, storage of portable equipment, and temporary installations (e.g., scaffolding, lead shielding)? Yes
Gas bottles well supported in rack. No concern.

Seismic storage issue corrected during walkdown. See IR 1405922.

8. Have you looked for and found no other seismic conditions that could adversely affect the safety functions of the equipment in the area? Yes
Minor bends in rod hangers judged to be acceptable.

Interaction between various pipes and conduits judged to be acceptable.

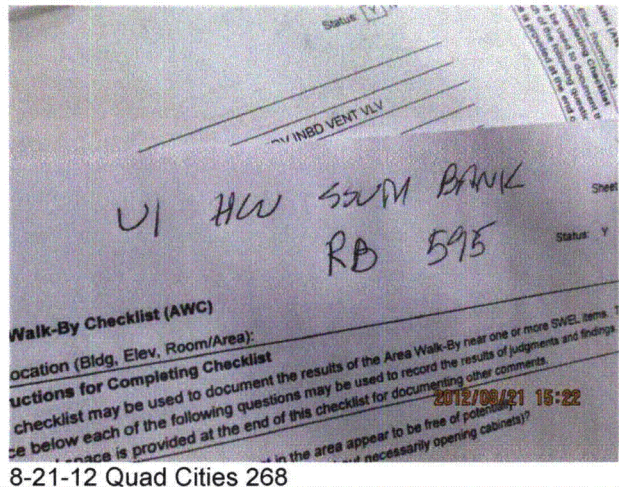
Cabinet 2201-86A with doors open. Per AT#843351-02 and WR#286977: cabinet is not safety-related nor a seismic concern.

Comments

Seismic Walkdown Team: D. Carter & J. Griffith - 8/21/2012

Evaluated by: David Carter Date: 10/4/2012
James Griffith 10/4/2012

Photos

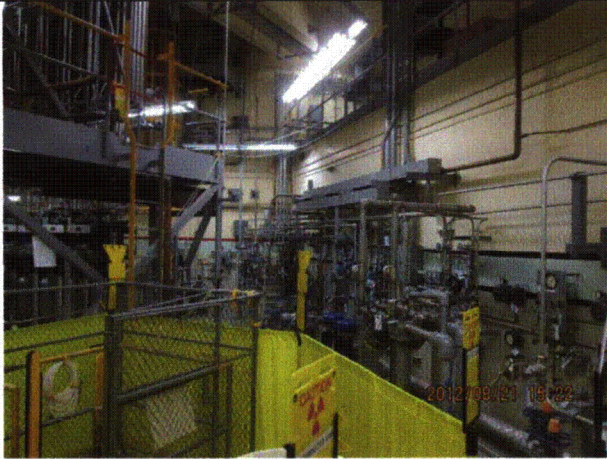


8-21-12 Quad Cities 269

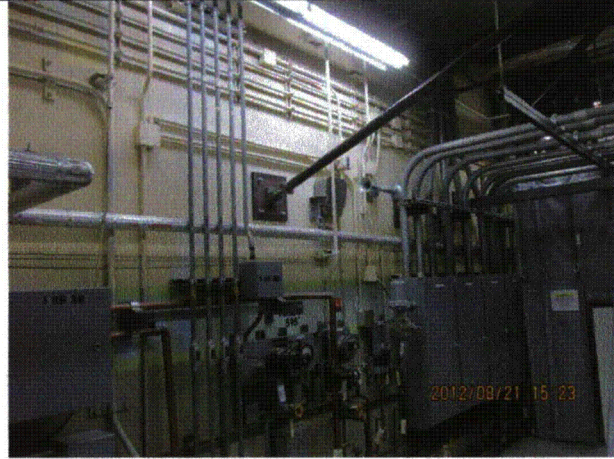
Status: Y N U

Area Walk-By Checklist (AWC)

Location (Bldg, Elev, Room/Area): AWC-U1-17



8-21-12 Quad Cities 270



8-21-12 Quad Cities 271



8-21-12 Quad Cities 272



8-21-12 Quad Cities 273

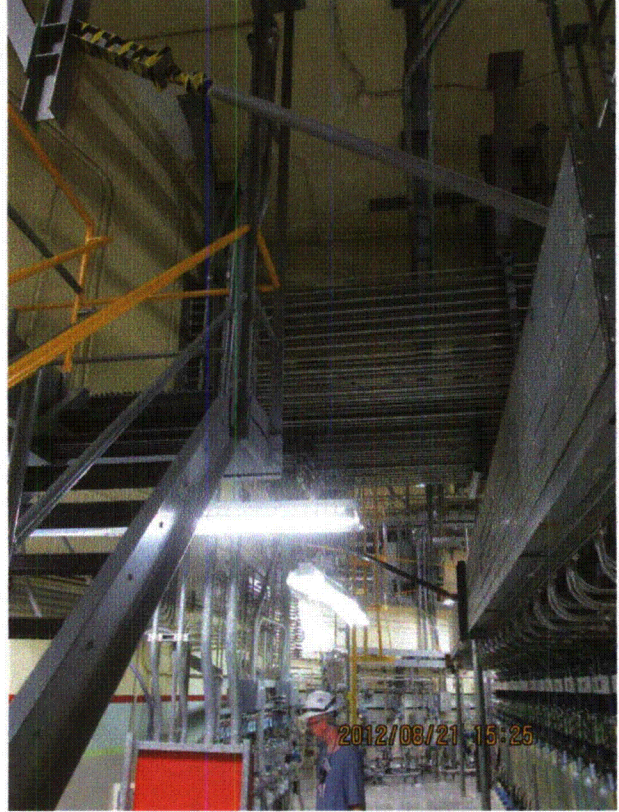
Status: Y N U

Area Walk-By Checklist (AWC)

Location (Bldg, Elev, Room/Area): AWC-U1-17



8-21-12 Quad Cities 274



8-21-12 Quad Cities 275

Status: Y N U

Area Walk-By Checklist (AWC)

Location (Bldg, Elev, Room/Area): AWC-U1-17



8-21-12 Quad Cities 276



8-21-12 Quad Cities 277

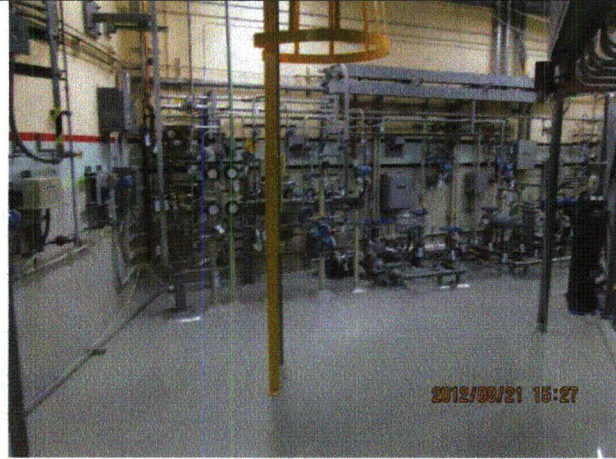
Status: Y N U

Area Walk-By Checklist (AWC)

Location (Bldg, Elev, Room/Area): AWC-U1-17



8-21-12 Quad Cities 278



8-21-12 Quad Cities 279

Status: Y N U

Area Walk-By Checklist (AWC)

Location (Bldg, Elev, Room/Area): AWC-U1-17



8-21-12 Quad Cities 280



8-21-12 Quad Cities 281

Status: Y N U

Area Walk-By Checklist (AWC)

Location (Bldg, Elev, Room/Area): AWC-U1-17



8-21-12 Quad Cities 282



8-21-12 Quad Cities 283

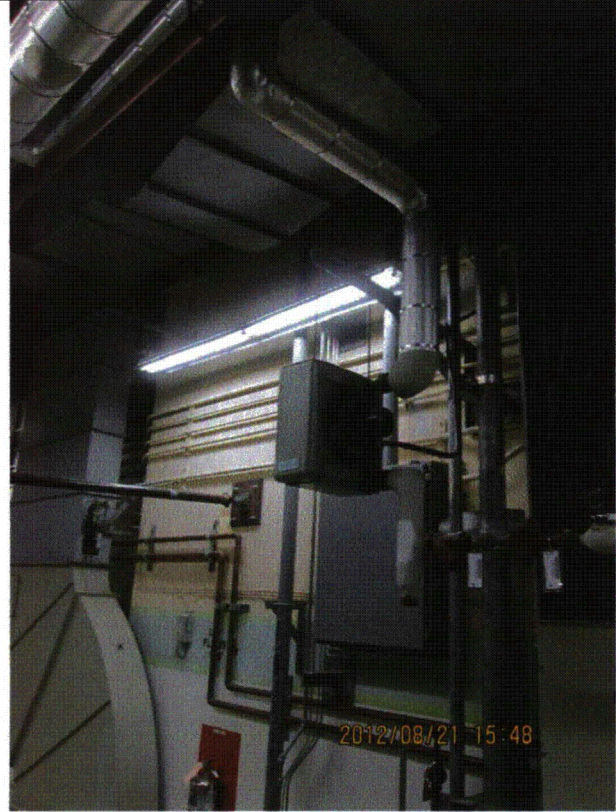
Status: Y N U

Area Walk-By Checklist (AWC)

Location (Bldg, Elev, Room/Area): AWC-U1-17



8-21-12 Quad Cities 284

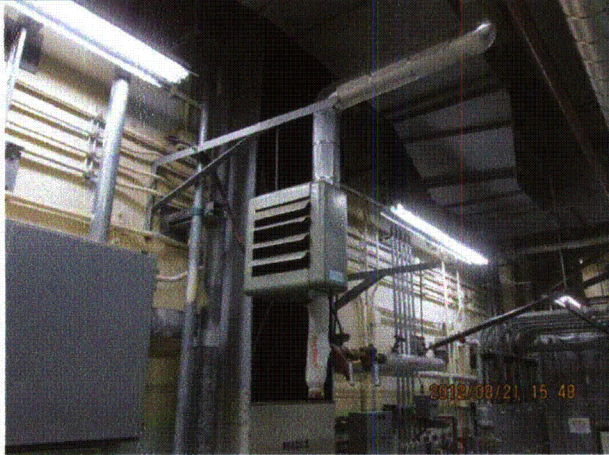


8-21-12 Quad Cities 285

Status: Y N U

Area Walk-By Checklist (AWC)

Location (Bldg, Elev, Room/Area): AWC-U1-17



8-21-12 Quad Cities 286



8-21-12 Quad Cities 287

Status: Y N U

Area Walk-By Checklist (AWC)

Location (Bldg, Elev, Room/Area): AWC-U1-18

Instructions for Completing Checklist

This checklist may be used to document the results of the Area Walk-By near one or more SWEL items. The space below each of the following questions may be used to record the results of judgments and findings. Additional space is provided at the end of this checklist for documenting other comments.

1. Does anchorage of equipment in the area appear to be free of potentially adverse seismic conditions (if visible without necessarily opening cabinets)? Yes

 2. Does anchorage of equipment in the area appear to be free of significant degraded conditions? Yes

 3. Based on a visual inspection from the floor, do the cable/conduit raceways and HVAC ducting appear to be free of potentially adverse seismic conditions (e.g., condition of supports is adequate and fill conditions of cable trays appear to be inside acceptable limits)? Yes
Conduits close to rod hangers with adequate flexibility are judged to be acceptable.

 4. Does it appear that the area is free of potentially adverse seismic spatial interactions with other equipment in the area (e.g., ceiling tiles and lighting)? Yes
IR 1402669:
Overhead light fixtures have open S-hooks. Excessive swing mitigated by conduit, unistrut, etc. Fixtures not judged to disengage from S-hooks and therefore are acceptable. Repaired by FIN team on 8/20/12.

 5. Does it appear that the area is free of potentially adverse seismic interactions that could cause flooding or spray in the area? Yes

 6. Does it appear that the area is free of potentially adverse seismic interactions that could cause a fire in the area? Yes

 7. Does it appear that the area is free of potentially adverse seismic interactions associated with housekeeping practices, storage of portable equipment, and temporary installations (e.g., scaffolding, lead shielding)? Yes
-

Status: Y N U

Area Walk-By Checklist (AWC)

Location (Bldg, Elev, Room/Area): AWC-U1-18

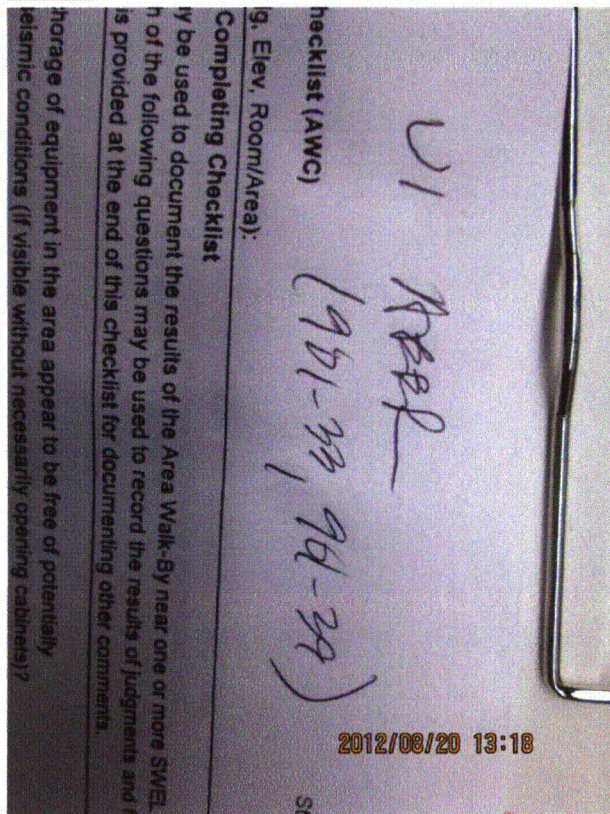
8. Have you looked for and found no other seismic conditions that could adversely affect the safety functions of the equipment in the area? Yes

Comments

Seismic Walkdown Team: D. Carter & J. Griffith - 8/20/2012

Evaluated by: David Carter Date: 10/4/2012
James D Griffith James Griffith 10/4/2012

Photos



8-20-12 Quad Cities 141 (1)



8-20-12 Quad Cities 141 (2)

Status: Y N U

Area Walk-By Checklist (AWC)

Location (Bldg, Elev, Room/Area): AWC-U1-18



8-20-12 Quad Cities 141 (3)

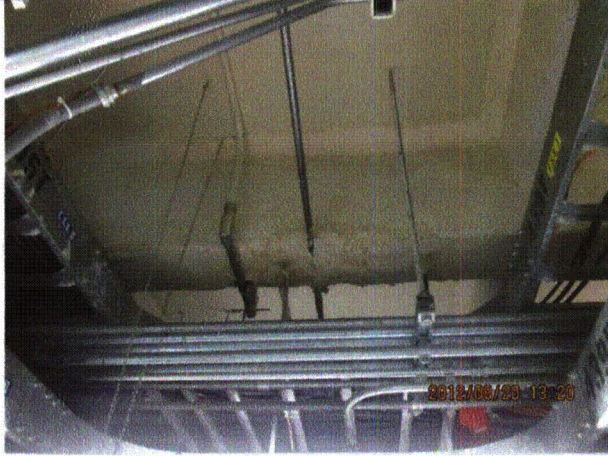


8-20-12 Quad Cities 141 (4)

Status: Y N U

Area Walk-By Checklist (AWC)

Location (Bldg, Elev, Room/Area): AWC-U1-18



8-20-12 Quad Cities 141 (5)



8-20-12 Quad Cities 141 (6)

Status: Y N U

Area Walk-By Checklist (AWC)

Location (Bldg, Elev, Room/Area): AWC-U1-18



8-20-12 Quad Cities 141 (7)

Status: Y N U

Area Walk-By Checklist (AWC)

Location (Bldg, Elev, Room/Area): AWC-U1-19

Instructions for Completing Checklist

This checklist may be used to document the results of the Area Walk-By near one or more SWEL items. The space below each of the following questions may be used to record the results of judgments and findings. Additional space is provided at the end of this checklist for documenting other comments.

1. Does anchorage of equipment in the area appear to be free of potentially adverse seismic conditions (if visible without necessarily opening cabinets)? Yes

 2. Does anchorage of equipment in the area appear to be free of significant degraded conditions? Yes

 3. Based on a visual inspection from the floor, do the cable/conduit raceways and HVAC ducting appear to be free of potentially adverse seismic conditions (e.g., condition of supports is adequate and fill conditions of cable trays appear to be inside acceptable limits)? Yes
Overhead equipment not visible due to drop ceilings outside of cabinet and sheet metal ceiling inside.

 4. Does it appear that the area is free of potentially adverse seismic spatial interactions with other equipment in the area (e.g., ceiling tiles and lighting)? Yes

 5. Does it appear that the area is free of potentially adverse seismic interactions that could cause flooding or spray in the area? Yes

 6. Does it appear that the area is free of potentially adverse seismic interactions that could cause a fire in the area? Yes
-

Status: Y N U

Area Walk-By Checklist (AWC)

Location (Bldg, Elev, Room/Area): AWC-U1-19

7. Does it appear that the area is free of potentially adverse seismic interactions associated with housekeeping practices, storage of portable equipment, and temporary installations (e.g., scaffolding, lead shielding)? Yes
Stored rolling ladder near Panels 901-13 and 943-5. Informed Unit Supervisor to resolve.

Panels 901-55 and 901-56 have small filing cabinets next to each end of cabinets. Filing cabinet orientation acceptable to prevent seismic interaction. Informed Unit Supervisor to correct.

Orientation of file cabinets located behind control boards in north east corner prevents interaction with main control boards.

See IR 1405922.

- Large cabinets anchored to wall and judged to be acceptable.*
8. Have you looked for and found no other seismic conditions that could adversely affect the safety functions of the equipment in the area? Yes

Comments

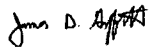
Seismic Walkdown Team: D. Carter & J. Griffith - 8/20/2012

Per Operations, no photos permitted in control room.

Evaluated by:

 David Carter

Date: 10/4/2012

 James Griffith

10/4/2012

Photos

Status: Y N U

Area Walk-By Checklist (AWC)

Location (Bldg, Elev, Room/Area): AWC-U1-20

Instructions for Completing Checklist

This checklist may be used to document the results of the Area Walk-By near one or more SWEL items. The space below each of the following questions may be used to record the results of judgments and findings. Additional space is provided at the end of this checklist for documenting other comments.

1. Does anchorage of equipment in the area appear to be free of potentially adverse seismic conditions (if visible without necessarily opening cabinets)? Yes

 2. Does anchorage of equipment in the area appear to be free of significant degraded conditions? Yes

 3. Based on a visual inspection from the floor, do the cable/conduit raceways and HVAC ducting appear to be free of potentially adverse seismic conditions (e.g., condition of supports is adequate and fill conditions of cable trays appear to be inside acceptable limits)? Yes

 4. Does it appear that the area is free of potentially adverse seismic spatial interactions with other equipment in the area (e.g., ceiling tiles and lighting)? Yes
Trolley on top currently at middle of switchgear 19, away from stops. Current position judged to be acceptable. Pin recommended as permanent fix. Current condition is judged to be acceptable. See IR 1419584.

Adjacent masonry wall at south end near switchgear 19 restrained at top. Judged to be acceptable.

Light fixture at south end of switchgear 18 has open S-hooks; mitigated by position and power cord tether to wall. Judged to be acceptable. Identified in IR 1403072.

Rod-hung conduits in contact with fire protection pipe rod hangers. Conduits and rods are flexible and judged to be acceptable.
 5. Does it appear that the area is free of potentially adverse seismic interactions that could cause flooding or spray in the area? Yes
Threaded fire piping well-supported.

 6. Does it appear that the area is free of potentially adverse seismic interactions that could cause a fire in the area? Yes
-

Status: Y N U

Area Walk-By Checklist (AWC)

Location (Bldg, Elev, Room/Area): AWC-U1-20

7. Does it appear that the area is free of potentially adverse seismic interactions associated with housekeeping practices, storage of portable equipment, and temporary installations (e.g., scaffolding, lead shielding)? Yes
Ladder near abandoned MG set judged to be acceptable. Relocated Operations gang-box during walk-by. See IR 1405922.
8. Have you looked for and found no other seismic conditions that could adversely affect the safety functions of the equipment in the area? Yes

Comments

Seismic Walkdown Team: D. Carter & J. Griffith - 8/20/2012

Evaluated by:

David Carter David Carter

Date: 10/12/2012

James D. Griffith James Griffith

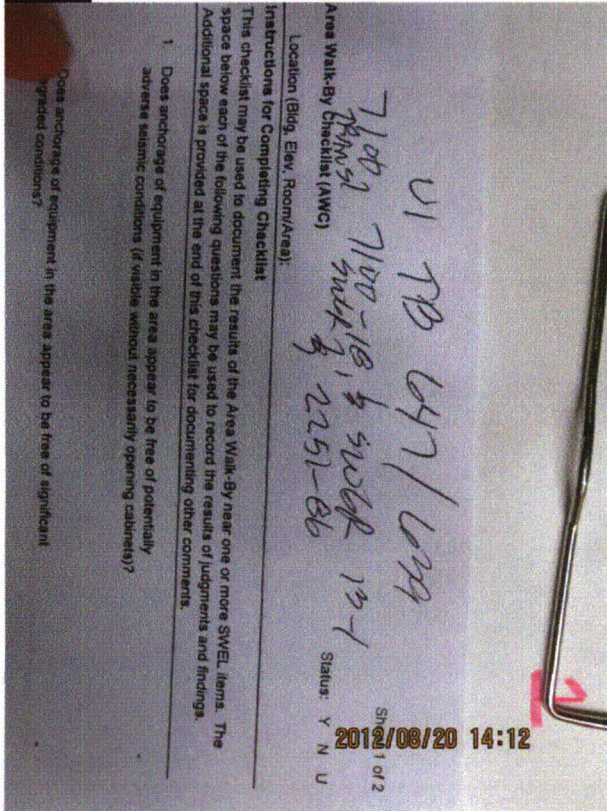
10/12/2012

Status: Y N U

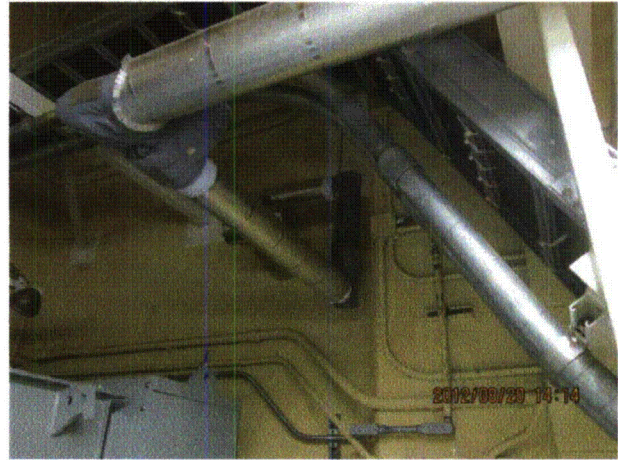
Area Walk-By Checklist (AWC)

Location (Bldg, Elev, Room/Area): AWC-U1-20

Photos



8-20-12 Quad Cities 180 (1)



8-20-12 Quad Cities 180 (10)

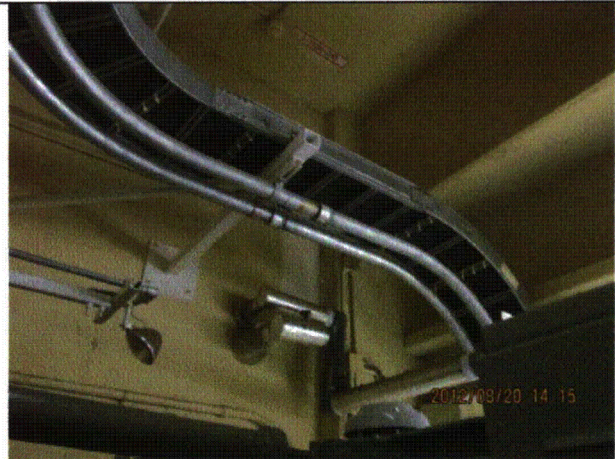
Status: Y N U

Area Walk-By Checklist (AWC)

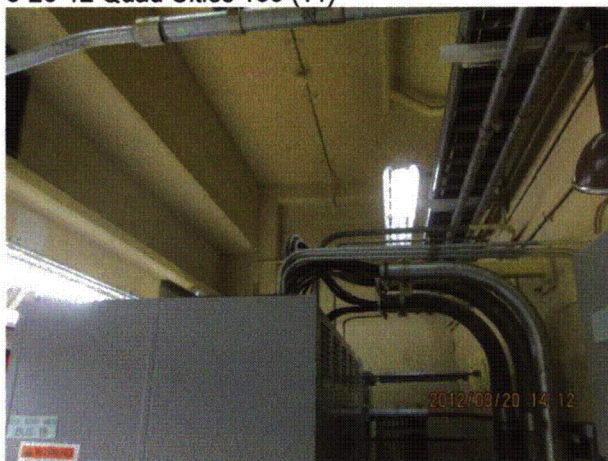
Location (Bldg, Elev, Room/Area): AWC-U1-20



8-20-12 Quad Cities 180 (11)



8-20-12 Quad Cities 180 (12)



8-20-12 Quad Cities 180 (2)



8-20-12 Quad Cities 180 (3)

Status: Y N U

Area Walk-By Checklist (AWC)

Location (Bldg, Elev, Room/Area): AWC-U1-20



8-20-12 Quad Cities 180 (4)



8-20-12 Quad Cities 180 (5)



8-20-12 Quad Cities 180 (6)



8-20-12 Quad Cities 180 (7)

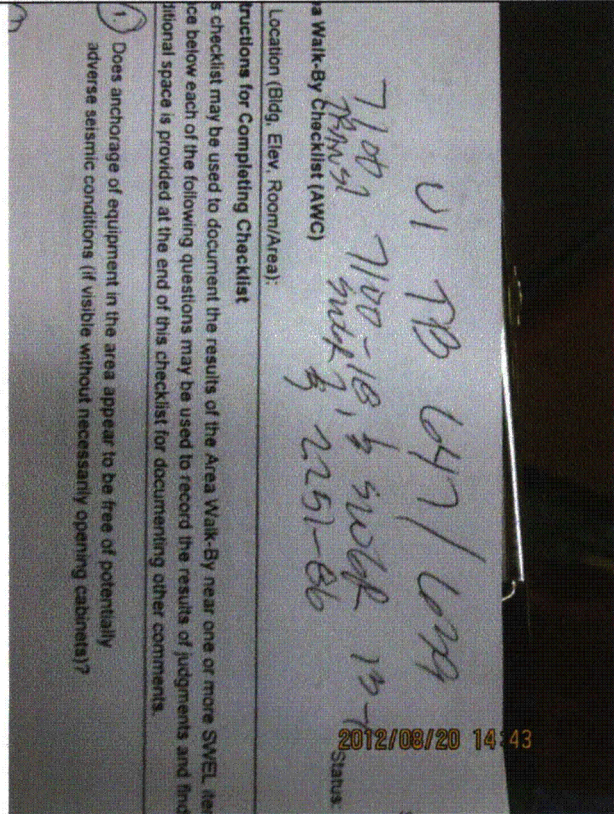
Status: Y N U

Area Walk-By Checklist (AWC)

Location (Bldg, Elev, Room/Area): AWC-U1-20



8-20-12 Quad Cities 180 (8)

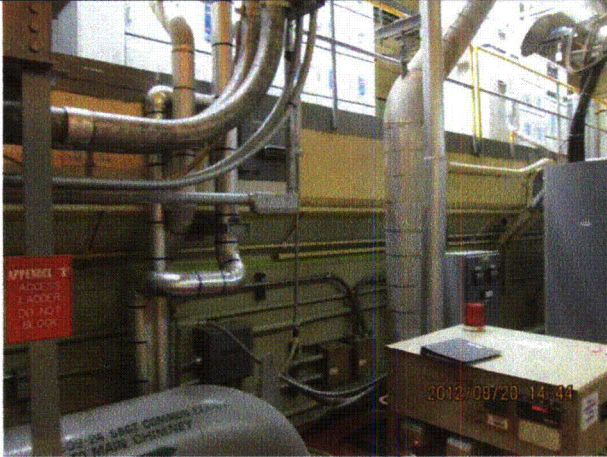


8-20-12 Quad Cities 215 (1)

Status: Y N U

Area Walk-By Checklist (AWC)

Location (Bldg, Elev, Room/Area): AWC-U1-20



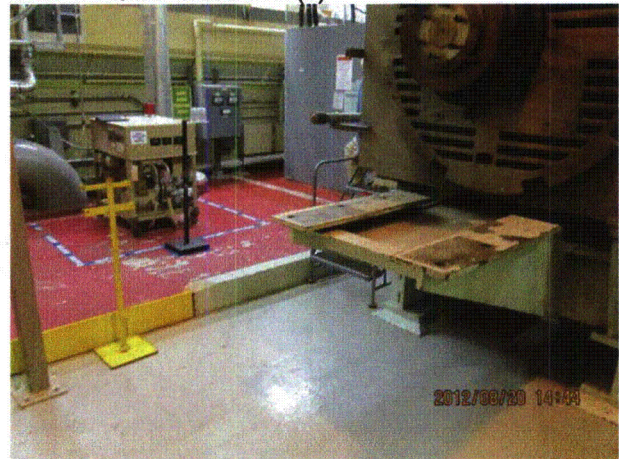
8-20-12 Quad Cities 215 (2)



8-20-12 Quad Cities 215 (3)



8-20-12 Quad Cities 215 (4)



8-20-12 Quad Cities 215 (5)

Status: Y N U

Area Walk-By Checklist (AWC)

Location (Bldg, Elev, Room/Area): AWC-U1-20



8-20-12 Quad Cities 215 (6)



8-20-12 Quad Cities 215 (7)



8-20-12 Quad Cities 215 (8)



8-20-12 Quad Cities 215 (9)

Status: Y N U

Area Walk-By Checklist (AWC)

Location (Bldg, Elev, Room/Area): AWC-U1-21

Instructions for Completing Checklist

This checklist may be used to document the results of the Area Walk-By near one or more SWEL items. The space below each of the following questions may be used to record the results of judgments and findings. Additional space is provided at the end of this checklist for documenting other comments.

1. Does anchorage of equipment in the area appear to be free of potentially adverse seismic conditions (if visible without necessarily opening cabinets)? Yes

 2. Does anchorage of equipment in the area appear to be free of significant degraded conditions? Yes

 3. Based on a visual inspection from the floor, do the cable/conduit raceways and HVAC ducting appear to be free of potentially adverse seismic conditions (e.g., condition of supports is adequate and fill conditions of cable trays appear to be inside acceptable limits)? Yes

 4. Does it appear that the area is free of potentially adverse seismic spatial interactions with other equipment in the area (e.g., ceiling tiles and lighting)? Yes
Masonry wall adjacent to Switchgear 14-1 restrained at top. Judged to be acceptable.

Fire piping in contact with robust portion of light fixture; judged to be acceptable.

Rod-hung conduit in contact with fire protection pipe rod hangers. Conduit and hangers are flexible and judged to be acceptable.
 5. Does it appear that the area is free of potentially adverse seismic interactions that could cause flooding or spray in the area? Yes
Fire piping well-supported.

 6. Does it appear that the area is free of potentially adverse seismic interactions that could cause a fire in the area? Yes
Metal oil rag storage bin with cover judged to be acceptable.
-

Status: Y N U

Area Walk-By Checklist (AWC)

Location (Bldg, Elev, Room/Area): AWC-U1-21

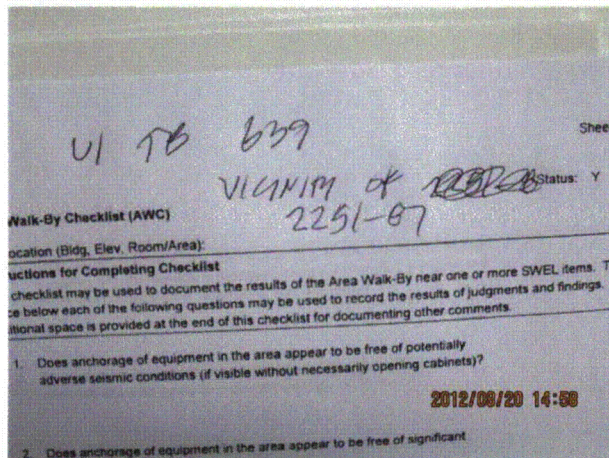
- | | |
|---|-----|
| 7. Does it appear that the area is free of potentially adverse seismic interactions associated with housekeeping practices, storage of portable equipment, and temporary installations (e.g., scaffolding, lead shielding)?
<i>Station ladder near abandoned MG set judged to be acceptable.</i> | Yes |
| 8. Have you looked for and found no other seismic conditions that could adversely affect the safety functions of the equipment in the area? | Yes |

Comments

Seismic Walkdown Team: D. Carter & J. Griffith - 8/20/2012

Evaluated by:	<u><i>David Carter</i></u> David Carter	Date:	<u>10/4/2012</u>
	<u><i>James D Griffith</i></u> James Griffith		<u>10/4/2012</u>

Photos



8-20-12 Quad Cities 231 (1)



8-20-12 Quad Cities 231 (10)

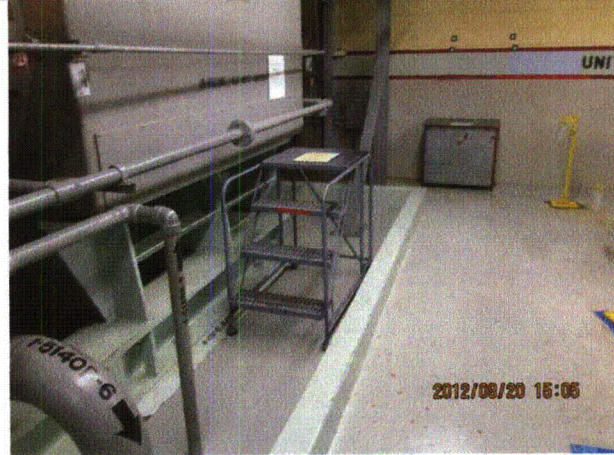
Status: Y N U

Area Walk-By Checklist (AWC)

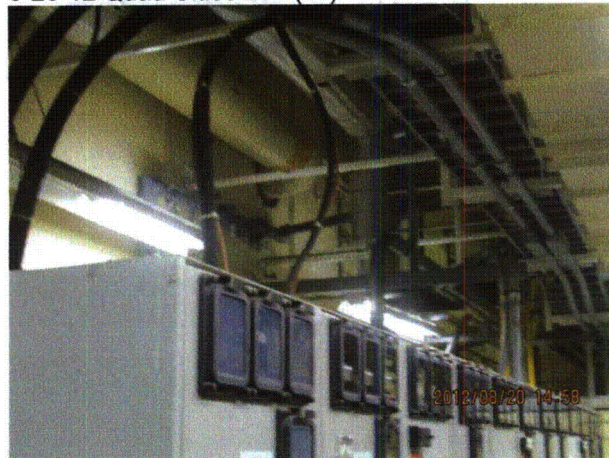
Location (Bldg, Elev, Room/Area): AWC-U1-21



8-20-12 Quad Cities 231 (11)



8-20-12 Quad Cities 231 (12)



8-20-12 Quad Cities 231 (2)

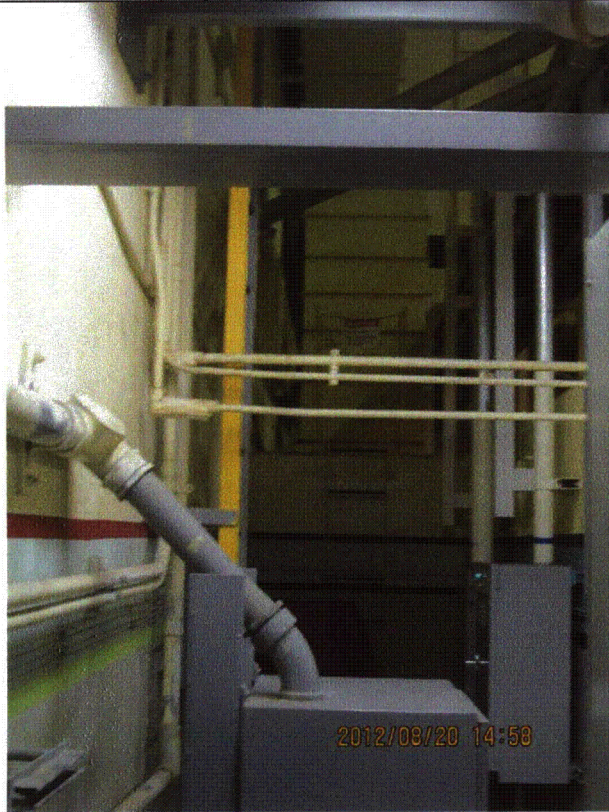


8-20-12 Quad Cities 231 (3)

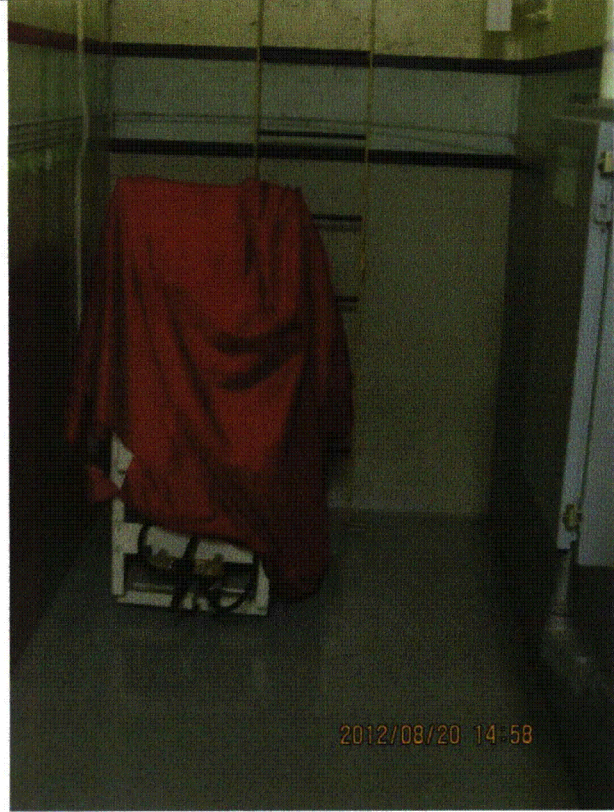
Status: Y N U

Area Walk-By Checklist (AWC)

Location (Bldg, Elev, Room/Area): AWC-U1-21



8-20-12 Quad Cities 231 (4)



8-20-12 Quad Cities 231 (5)

Status: Y N U

Area Walk-By Checklist (AWC)

Location (Bldg, Elev, Room/Area): AWC-U1-21



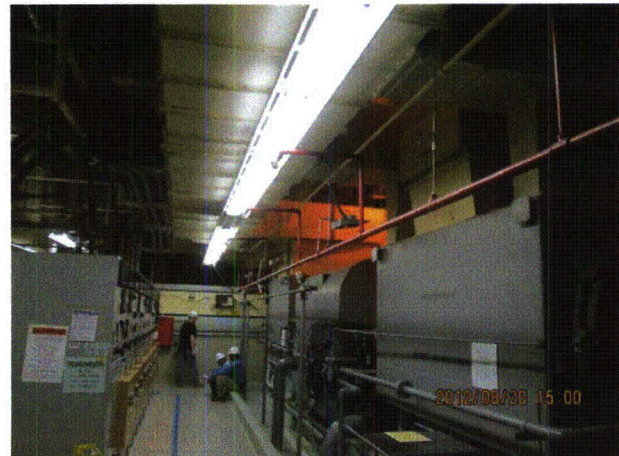
8-20-12 Quad Cities 231 (6)



8-20-12 Quad Cities 231 (7)



8-20-12 Quad Cities 231 (8)



8-20-12 Quad Cities 231 (9)

Status: Y N U

Area Walk-By Checklist (AWC)

Location (Bldg, Elev, Room/Area): AWC-U1-22

Instructions for Completing Checklist

This checklist may be used to document the results of the Area Walk-By near one or more SWEL items. The space below each of the following questions may be used to record the results of judgments and findings. Additional space is provided at the end of this checklist for documenting other comments.

1. Does anchorage of equipment in the area appear to be free of potentially adverse seismic conditions (if visible without necessarily opening cabinets)? Yes

2. Does anchorage of equipment in the area appear to be free of significant degraded conditions? Yes
1-1001-160A PI support corroded on side. Judged to be acceptable for small gauge load.

3. Based on a visual inspection from the floor, do the cable/conduit raceways and HVAC ducting appear to be free of potentially adverse seismic conditions (e.g., condition of supports is adequate and fill conditions of cable trays appear to be inside acceptable limits)? Yes
Bare pipe in contact with insulated pipe at several locations. Judged to be acceptable.

4. Does it appear that the area is free of potentially adverse seismic spatial interactions with other equipment in the area (e.g., ceiling tiles and lighting)? Yes
Overhead light fixtures judged to be acceptable.

5. Does it appear that the area is free of potentially adverse seismic interactions that could cause flooding or spray in the area? Yes
Sump in room. Threaded fire pipe well-supported, all other pipes welded.

6. Does it appear that the area is free of potentially adverse seismic interactions that could cause a fire in the area? Yes

7. Does it appear that the area is free of potentially adverse seismic interactions associated with housekeeping practices, storage of portable equipment, and temporary installations (e.g., scaffolding, lead shielding)? Yes
Humidifier acceptable; no soft targets.

Teletower scaffold with outriggers in place will not overturn. Located near robust targets. Judged to be acceptable. See IR 1405922.

Status: Y N U

Area Walk-By Checklist (AWC)

Location (Bldg, Elev, Room/Area): AWC-U1-22

8. Have you looked for and found no other seismic conditions that could adversely affect the safety functions of the equipment in the area? Yes

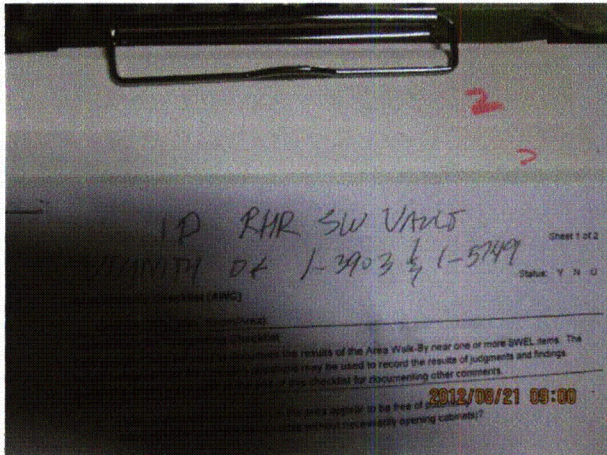
Comments

Seismic Walkdown Team: D. Carter & J. Griffith - 8/22/2012

Evaluated by: *David Carter* David Carter Date: 10/4/2012

James D Griffith James Griffith 10/4/2012

Photos



8-21-12 Quad Cities 055



8-21-12 Quad Cities 056

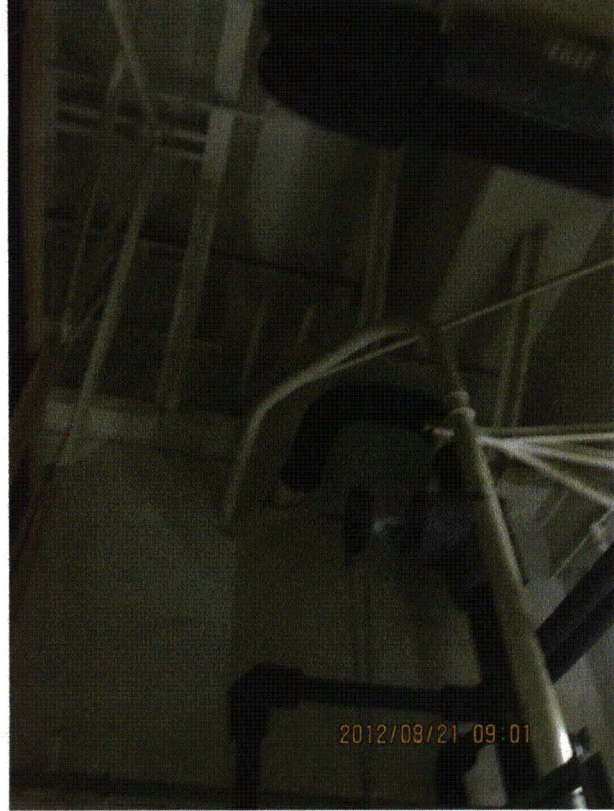
Status: Y N U

Area Walk-By Checklist (AWC)

Location (Bldg, Elev, Room/Area): AWC-U1-22



8-21-12 Quad Cities 057



8-21-12 Quad Cities 058

Status: Y N U

Area Walk-By Checklist (AWC)

Location (Bldg, Elev, Room/Area): AWC-U1-22



8-21-12 Quad Cities 059



8-21-12 Quad Cities 060

Status: Y N U

Area Walk-By Checklist (AWC)

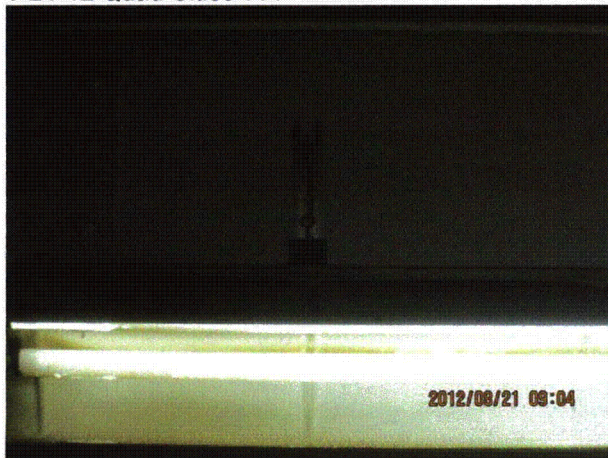
Location (Bldg, Elev, Room/Area): AWC-U1-22



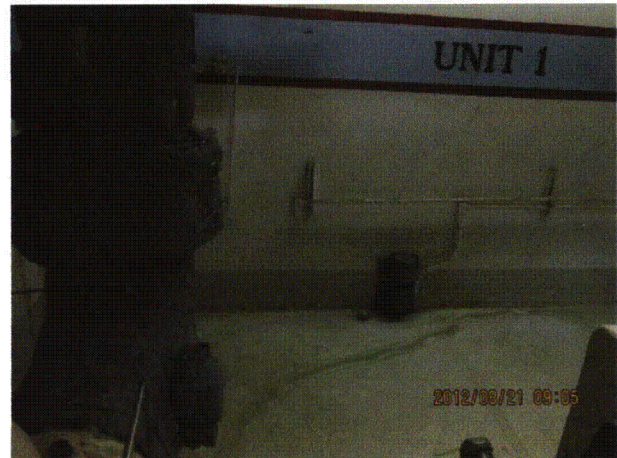
8-21-12 Quad Cities 061



8-21-12 Quad Cities 062



8-21-12 Quad Cities 063



8-21-12 Quad Cities 064

Status: Y N U

Area Walk-By Checklist (AWC)

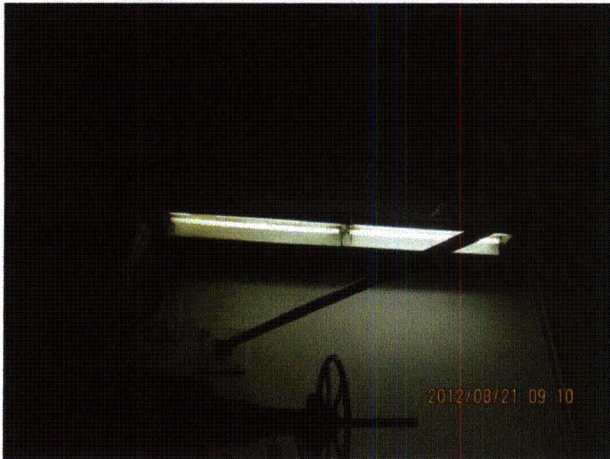
Location (Bldg, Elev, Room/Area): AWC-U1-22



8-21-12 Quad Cities 065



8-21-12 Quad Cities 066



8-21-12 Quad Cities 067



8-21-12 Quad Cities 068

Status: Y N U

Area Walk-By Checklist (AWC)

Location (Bldg, Elev, Room/Area): AWC-U1-23

Instructions for Completing Checklist

This checklist may be used to document the results of the Area Walk-By near one or more SWEL items. The space below each of the following questions may be used to record the results of judgments and findings. Additional space is provided at the end of this checklist for documenting other comments.

1. Does anchorage of equipment in the area appear to be free of potentially adverse seismic conditions (if visible without necessarily opening cabinets)? Yes

 2. Does anchorage of equipment in the area appear to be free of significant degraded conditions? Yes

 3. Based on a visual inspection from the floor, do the cable/conduit raceways and HVAC ducting appear to be free of potentially adverse seismic conditions (e.g., condition of supports is adequate and fill conditions of cable trays appear to be inside acceptable limits)? Yes

 4. Does it appear that the area is free of potentially adverse seismic spatial interactions with other equipment in the area (e.g., ceiling tiles and lighting)?
Overhead light fixtures judged to be acceptable. Yes

 5. Does it appear that the area is free of potentially adverse seismic interactions that could cause flooding or spray in the area?
Fire piping, room heater, and associated piping well-supported judged to be acceptable. Yes

 6. Does it appear that the area is free of potentially adverse seismic interactions that could cause a fire in the area? Yes

 7. Does it appear that the area is free of potentially adverse seismic interactions associated with housekeeping practices, storage of portable equipment, and temporary installations (e.g., scaffolding, lead shielding)? Yes
Scaffold behind MCC 18-3 is restrained against tipping (braces to ceiling) and against movement (brace to wall and contact with robust auxiliary steel). Judged to be acceptable.
-

Status: Y N U

Area Walk-By Checklist (AWC)

Location (Bldg, Elev, Room/Area): AWC-U1-23

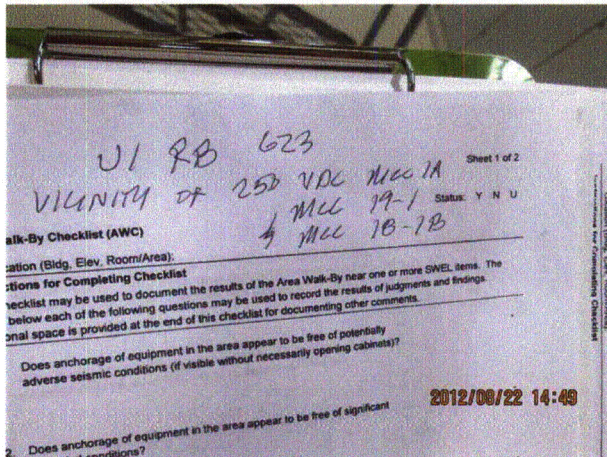
8. Have you looked for and found no other seismic conditions that could adversely affect the safety functions of the equipment in the area? Yes

Comments

Seismic Walkdown Team: D. Carter & J. Griffith on 8/22/12

Evaluated by: *David Carter* David Carter Date: 10/4/2012
James D Griffith James Griffith 10/4/2012

Photos



8-22-12 Quad Cities 182



8-22-12 Quad Cities 183

Status: Y N U

Area Walk-By Checklist (AWC)

Location (Bldg, Elev, Room/Area): AWC-U1-23



8-22-12 Quad Cities 184



8-22-12 Quad Cities 185

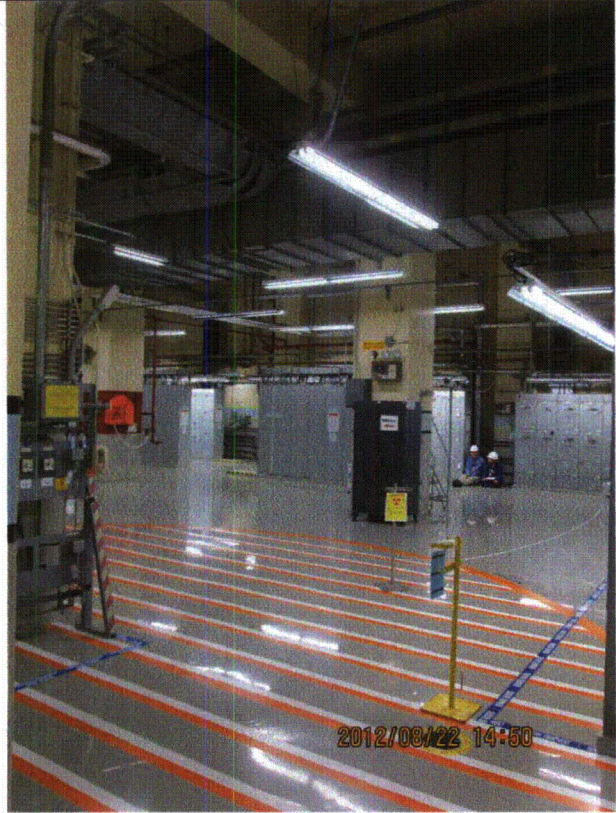
Status: Y N U

Area Walk-By Checklist (AWC)

Location (Bldg, Elev, Room/Area): AWC-U1-23



8-22-12 Quad Cities 186



8-22-12 Quad Cities 187

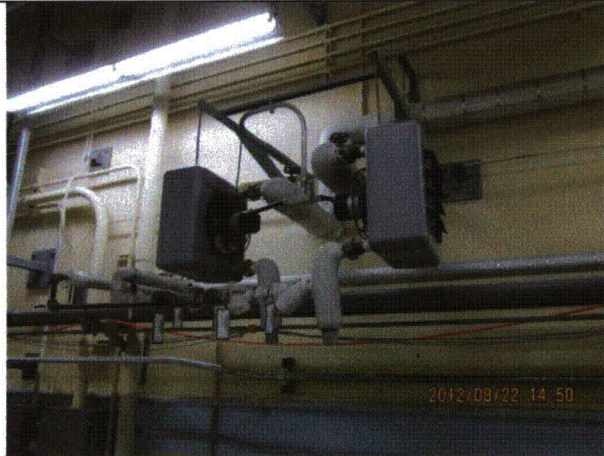
Status: Y N U

Area Walk-By Checklist (AWC)

Location (Bldg, Elev, Room/Area): AWC-U1-23



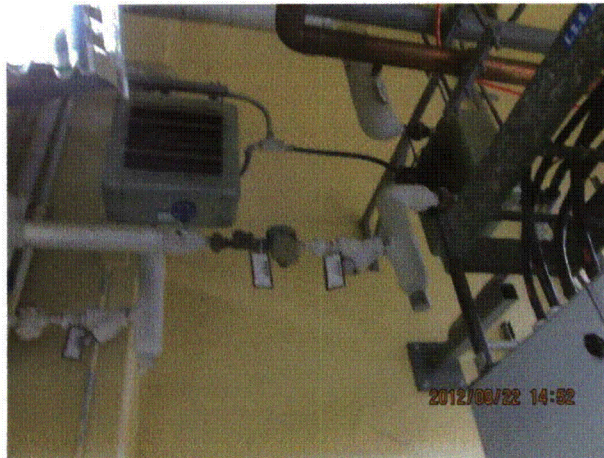
8-22-12 Quad Cities 188



8-22-12 Quad Cities 189



8-22-12 Quad Cities 190

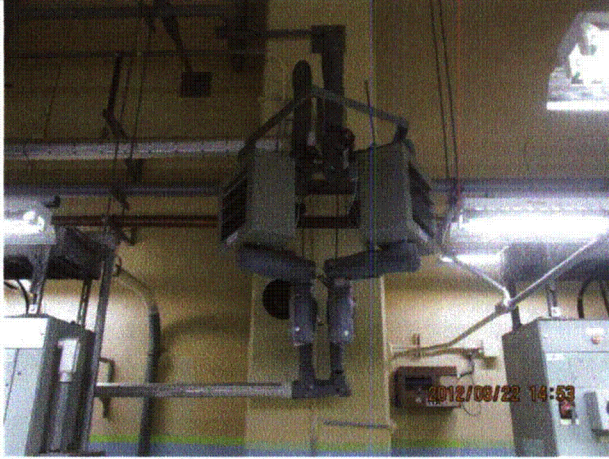


8-22-12 Quad Cities 191

Status: Y N U

Area Walk-By Checklist (AWC)

Location (Bldg, Elev, Room/Area): AWC-U1-23



8-22-12 Quad Cities 192



8-22-12 Quad Cities 193

Status: Y N U

Area Walk-By Checklist (AWC)

Location (Bldg, Elev, Room/Area): AWC-U1-23



8-22-12 Quad Cities 194



8-22-12 Quad Cities 195

Status: Y N U

Area Walk-By Checklist (AWC)

Location (Bldg, Elev, Room/Area): AWC-U1-23



8-22-12 Quad Cities 196

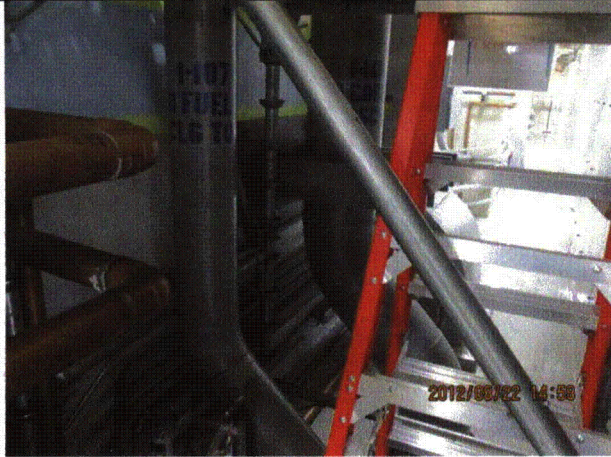


8-22-12 Quad Cities 197

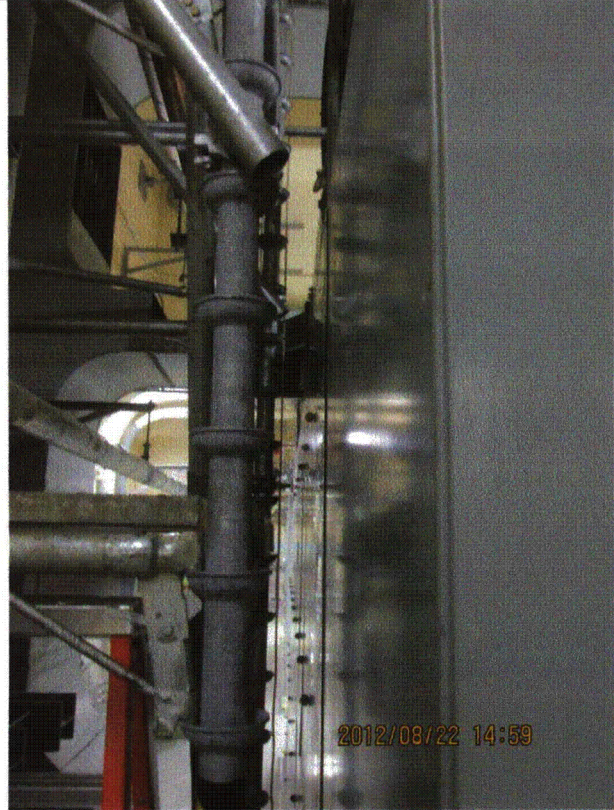
Status: Y N U

Area Walk-By Checklist (AWC)

Location (Bldg, Elev, Room/Area): AWC-U1-23



8-22-12 Quad Cities 198



8-22-12 Quad Cities 199

Status: Y N U

Area Walk-By Checklist (AWC)

Location (Bldg, Elev, Room/Area): AWC-U1-23



8-22-12 Quad Cities 200

Status: Y N U

Area Walk-By Checklist (AWC)

Location (Bldg, Elev, Room/Area): AWC-U1-24

Instructions for Completing Checklist

This checklist may be used to document the results of the Area Walk-By near one or more SWEL items. The space below each of the following questions may be used to record the results of judgments and findings. Additional space is provided at the end of this checklist for documenting other comments.

1. Does anchorage of equipment in the area appear to be free of potentially adverse seismic conditions (if visible without necessarily opening cabinets)? Yes
Pipe support at 1-2301-42 base plate has minor edge gap. Judged to be acceptable.

 2. Does anchorage of equipment in the area appear to be free of significant degraded conditions? Yes
1-2304-3 switch box missing 1 of 4 anchors. Unistruts and anchors with minor corrosion. Judged to be acceptable.

 3. Based on a visual inspection from the floor, do the cable/conduit raceways and HVAC ducting appear to be free of potentially adverse seismic conditions (e.g., condition of supports is adequate and fill conditions of cable trays appear to be inside acceptable limits)? Yes
Minor bends in hanger rods judged to be acceptable. Several contacts between flexible items judged to be acceptable.

 4. Does it appear that the area is free of potentially adverse seismic spatial interactions with other equipment in the area (e.g., ceiling tiles and lighting)? Yes
Overhead light fixtures with slightly-open S-hooks not open enough for fixture to fall from hook. Judged to be acceptable.

 5. Does it appear that the area is free of potentially adverse seismic interactions that could cause flooding or spray in the area? Yes
Threaded fire piping, room heaters, and associated piping well-supported and judged to be acceptable.

 6. Does it appear that the area is free of potentially adverse seismic interactions that could cause a fire in the area? Yes
Covered oil waste can is judged to be acceptable.

 7. Does it appear that the area is free of potentially adverse seismic interactions associated with housekeeping practices, storage of portable equipment, and temporary installations (e.g., scaffolding, lead shielding)? Yes
Ladder chained to rugged pipe at pipe support judged to be acceptable.

Two scaffolds in room are well-restrained.
-

Status: Y N U

Area Walk-By Checklist (AWC)

Location (Bldg, Elev, Room/Area): AWC-U1-24

8. Have you looked for and found no other seismic conditions that could adversely affect the safety functions of the equipment in the area? Yes

Floor grating/gallery supports unanchored at some locations. Walls and edge of slab restrain gallery/gallery laterally. Judged to be acceptable.

Conduit near Valve 1-2301-6-MO missing support attachment judged not to be of seismic concern. Valve 1-2301-3-MO missing 1 of 4 support bolts. Seismic acceleration of basement is low and support is rigidly mounted. Judged to be acceptable. See IR 1404153.

Comments

Seismic Walkdown Team: D. Carter & J. Griffith - 8/23/2012

Evaluated by: David Carter Date: 10/12/2012

James D Griffith James Griffith 10/12/2012

Photos



Quad Cities 047



Quad Cities 048

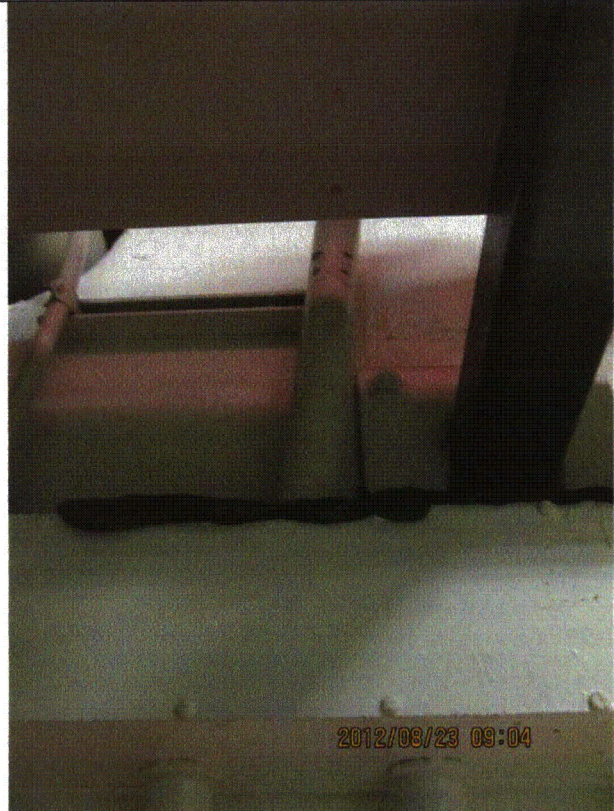
Status: Y N U

Area Walk-By Checklist (AWC)

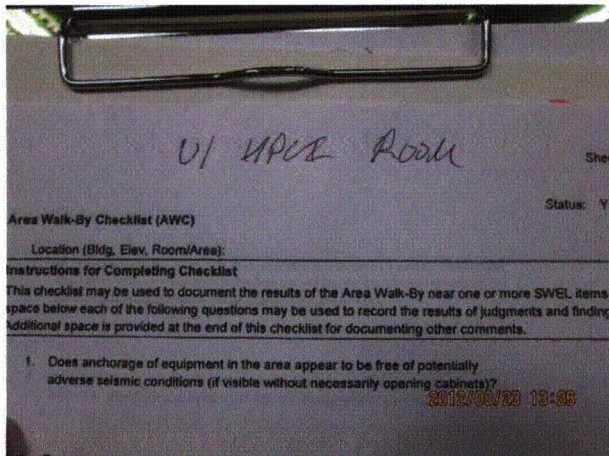
Location (Bldg, Elev, Room/Area): AWC-U1-24



Quad Cities 049



Quad Cities 050



Quad Cities 098

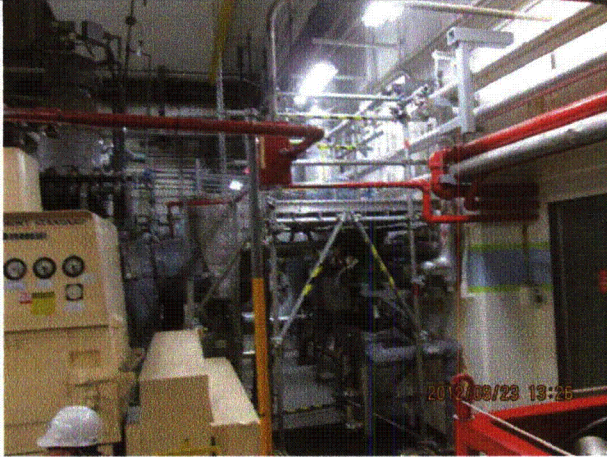


Quad Cities 099

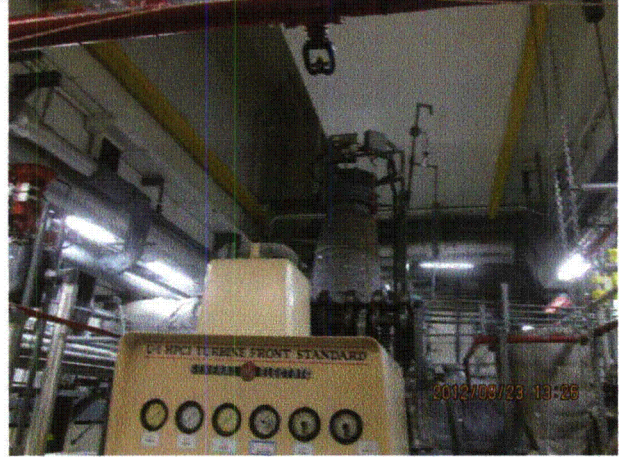
Status: Y N U

Area Walk-By Checklist (AWC)

Location (Bldg, Elev, Room/Area): AWC-U1-24



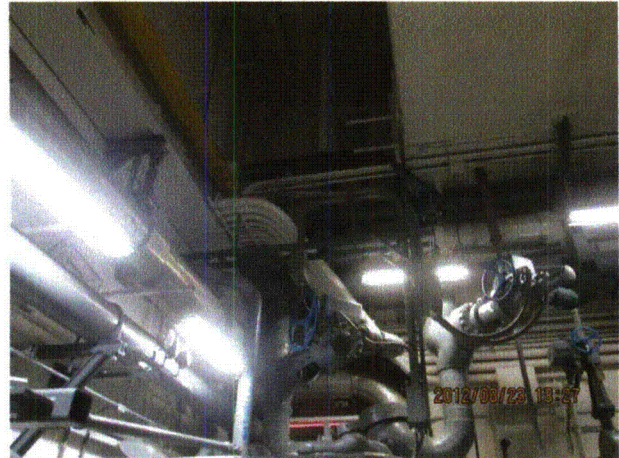
Quad Cities 100



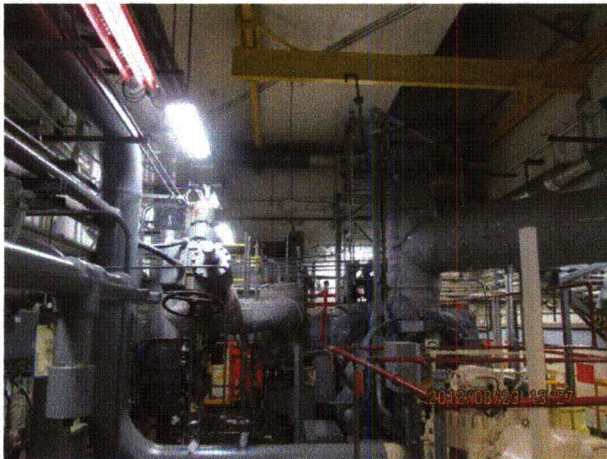
Quad Cities 101



Quad Cities 102



Quad Cities 103



Quad Cities 104

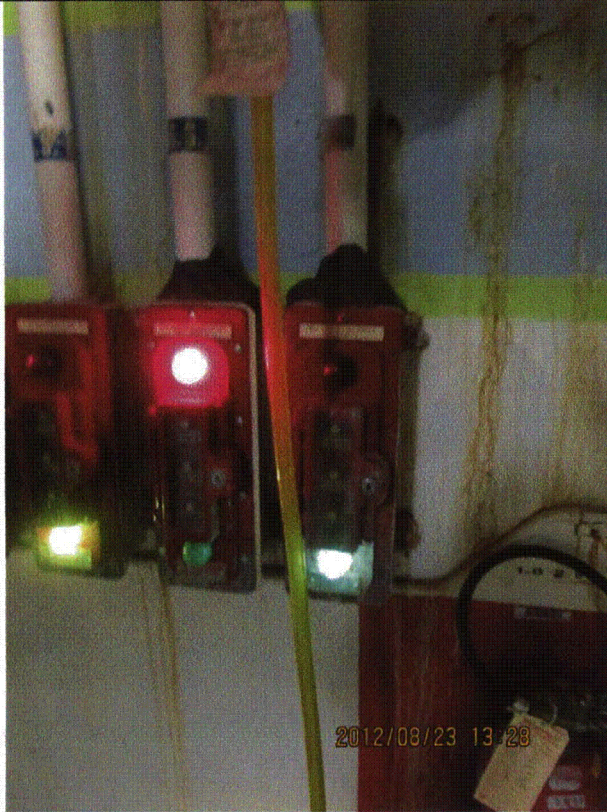


Quad Cities 105

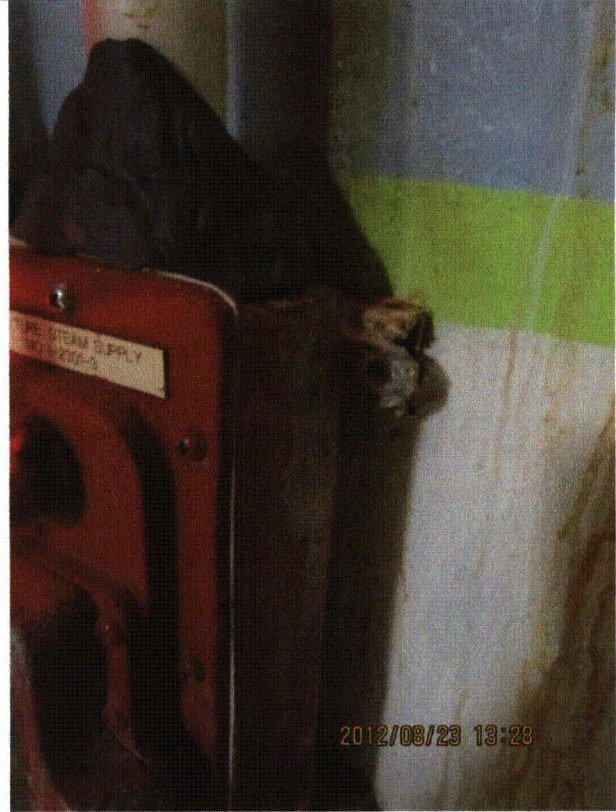
Status: Y N U

Area Walk-By Checklist (AWC)

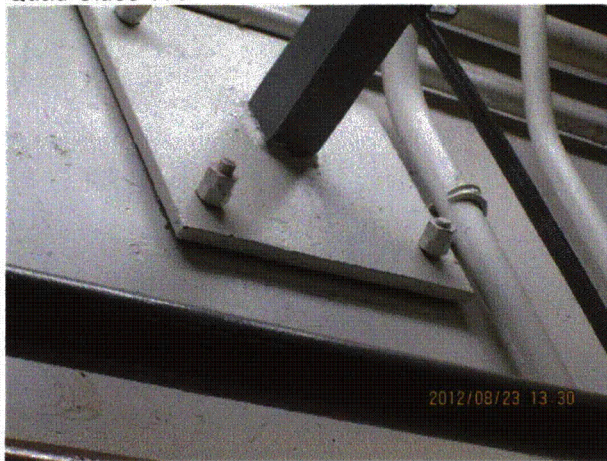
Location (Bldg, Elev, Room/Area): AWC-U1-24



Quad Cities 106



Quad Cities 107



Quad Cities 108



Quad Cities 109

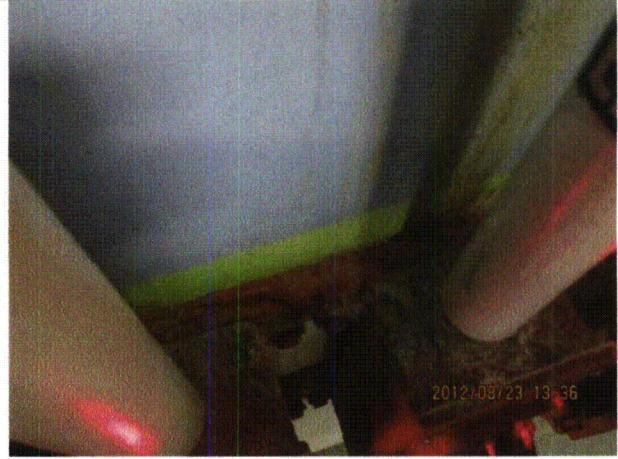
Status: Y N U

Area Walk-By Checklist (AWC)

Location (Bldg, Elev, Room/Area): AWC-U1-24



Quad Cities 110



Quad Cities 111



Quad Cities 112



Quad Cities 113

Status: Y N U

Area Walk-By Checklist (AWC)

Location (Bldg, Elev, Room/Area): AWC-U1-24



Quad Cities 114



Quad Cities 115



Quad Cities 116