

Status: Y N U

Area Walk-By Checklist (AWC)

Location (Bldg, Elev, Room/Area): AWC-U1-10

Instructions for Completing Checklist

This checklist may be used to document the results of the Area Walk-By near one or more SWEL items. The space below each of the following questions may be used to record the results of judgments and findings. Additional space is provided at the end of this checklist for documenting other comments.

1. Does anchorage of equipment in the area appear to be free of potentially adverse seismic conditions (if visible without necessarily opening cabinets)? Yes

 2. Does anchorage of equipment in the area appear to be free of significant degraded conditions? Yes

 3. Based on a visual inspection from the floor, do the cable/conduit raceways and HVAC ducting appear to be free of potentially adverse seismic conditions (e.g., condition of supports is adequate and fill conditions of cable trays appear to be inside acceptable limits)? Yes
Light fixture in contact with fire pipe rod hanger. Judged to be acceptable.

 4. Does it appear that the area is free of potentially adverse seismic spatial interactions with other equipment in the area (e.g., ceiling tiles and lighting)? Yes
Lighting in area ok. See S-hook discussion in 1-7800-18195 for specific issue and IR 1404697.
2 short L-shaped masonry walls (max 7 feet-high) are non-planar with a running-bond corner. Masonry walls are safety related. Judged to be acceptable.

 5. Does it appear that the area is free of potentially adverse seismic interactions that could cause flooding or spray in the area? Yes
Threaded fire piping, room heater, and associated piping well-supported.

 6. Does it appear that the area is free of potentially adverse seismic interactions that could cause a fire in the area? Yes
Hydrogen bottles on rack well-supported.
-

Status: Y N U

Area Walk-By Checklist (AWC)

Location (Bldg, Elev, Room/Area): AWC-U1-10

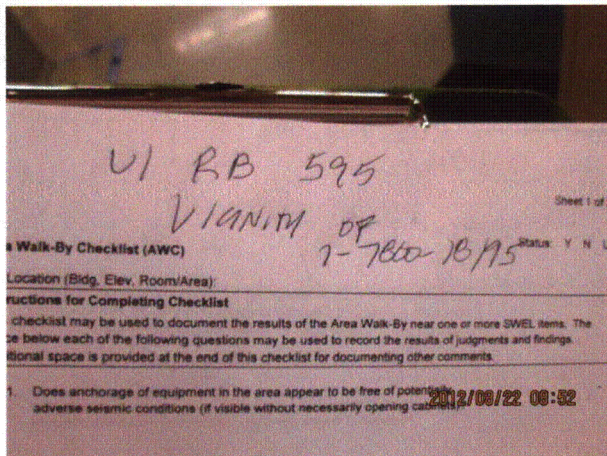
7. Does it appear that the area is free of potentially adverse seismic interactions associated with housekeeping practices, storage of portable equipment, and temporary installations (e.g., scaffolding, lead shielding)? Yes
Cabinet near robust duct judged to be acceptable.
8. Have you looked for and found no other seismic conditions that could adversely affect the safety functions of the equipment in the area? Yes
R3 and R4 cable risers at south wall have missing cover screws (maximum of 3 missing on R4). Judged to be acceptable.

Comments

Seismic Walkdown Team: D. Carter & J. Griffith - 8/22/2012

Evaluated by: David Carter Date: 10/4/2012
James D. Griffith James Griffith 10/4/2012

Photos



8-22-12 Quad Cities 045

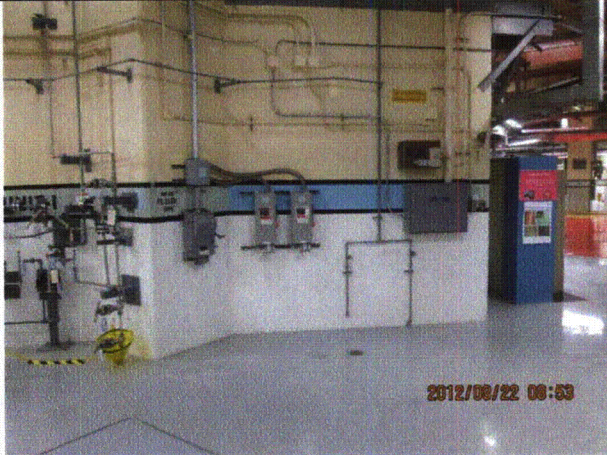


8-22-12 Quad Cities 046

Status: Y N U

Area Walk-By Checklist (AWC)

Location (Bldg, Elev, Room/Area): AWC-U1-10



8-22-12 Quad Cities 047



8-22-12 Quad Cities 048



8-22-12 Quad Cities 049



8-22-12 Quad Cities 050



8-22-12 Quad Cities 051



8-22-12 Quad Cities 052

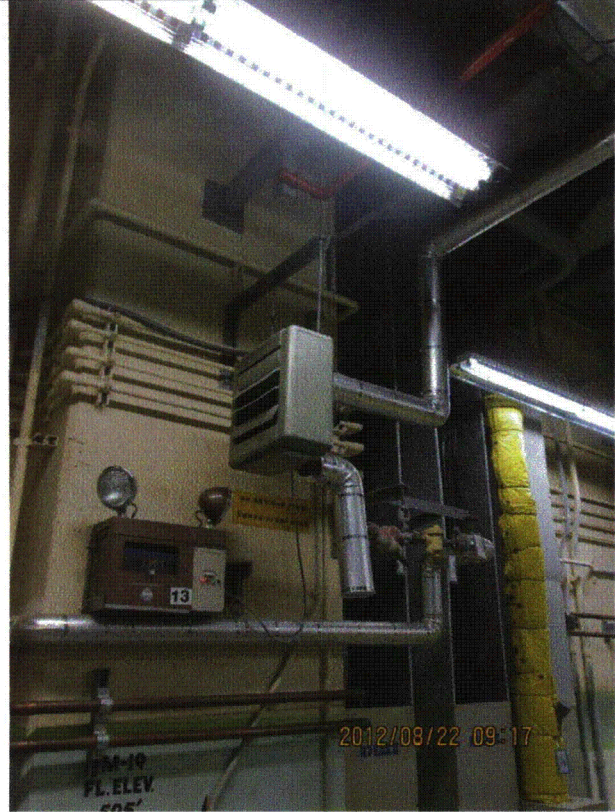
Status: Y N U

Area Walk-By Checklist (AWC)

Location (Bldg, Elev, Room/Area): AWC-U1-10



8-22-12 Quad Cities 053



8-22-12 Quad Cities 054

Status: Y N U

Area Walk-By Checklist (AWC)

Location (Bldg, Elev, Room/Area): AWC-U1-10



8-22-12 Quad Cities 055

Status: Y N U

Area Walk-By Checklist (AWC)

Location (Bldg, Elev, Room/Area): AWC-U1-11

Instructions for Completing Checklist

This checklist may be used to document the results of the Area Walk-By near one or more SWEL items. The space below each of the following questions may be used to record the results of judgments and findings. Additional space is provided at the end of this checklist for documenting other comments.

1. Does anchorage of equipment in the area appear to be free of potentially adverse seismic conditions (if visible without necessarily opening cabinets)? Yes

 2. Does anchorage of equipment in the area appear to be free of significant degraded conditions? Yes
Minor corrosion on some anchors in room, judged to be acceptable.

 3. Based on a visual inspection from the floor, do the cable/conduit raceways and HVAC ducting appear to be free of potentially adverse seismic conditions (e.g., condition of supports is adequate and fill conditions of cable trays appear to be inside acceptable limits)? Yes

 4. Does it appear that the area is free of potentially adverse seismic spatial interactions with other equipment in the area (e.g., ceiling tiles and lighting)? Yes
Overhead light fixtures judged to be acceptable.

 5. Does it appear that the area is free of potentially adverse seismic interactions that could cause flooding or spray in the area? Yes

 6. Does it appear that the area is free of potentially adverse seismic interactions that could cause a fire in the area? Yes
-

Status: Y N U

Area Walk-By Checklist (AWC)

Location (Bldg, Elev, Room/Area): AWC-U1-11

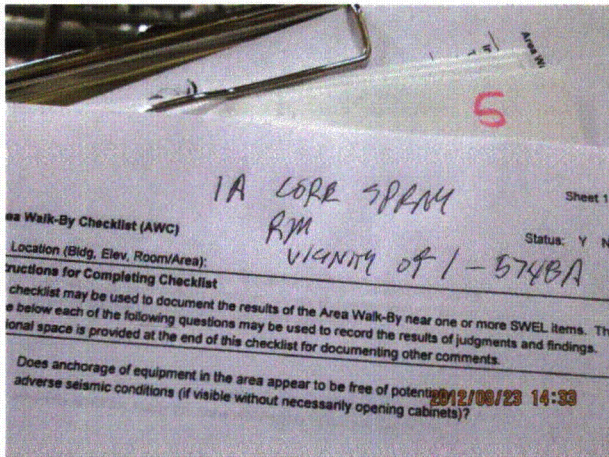
- | | | |
|----|---|-----|
| 7. | Does it appear that the area is free of potentially adverse seismic interactions associated with housekeeping practices, storage of portable equipment, and temporary installations (e.g., scaffolding, lead shielding)?
<i>Ladders leaning against wall. No soft targets in vicinity. Scaffold acts as shield. Judged to be acceptable.</i> | Yes |
| | <i>2 carts and toolbox are at adequate standoff distances.</i> | |
| | <i>Scaffolds in room well-restrained and at adequate stand-off distances.</i> | |
| 8. | Have you looked for and found no other seismic conditions that could adversely affect the safety functions of the equipment in the area? | Yes |

Comments

Seismic Walkdown Team: D. Carter & J. Griffith - 8/23/2012

Evaluated by:	<u>David Carter</u>	Date:	<u>10/4/2012</u>
	<u>James D Griffith</u>		<u>10/4/2012</u>

Photos



Quad Cities 126

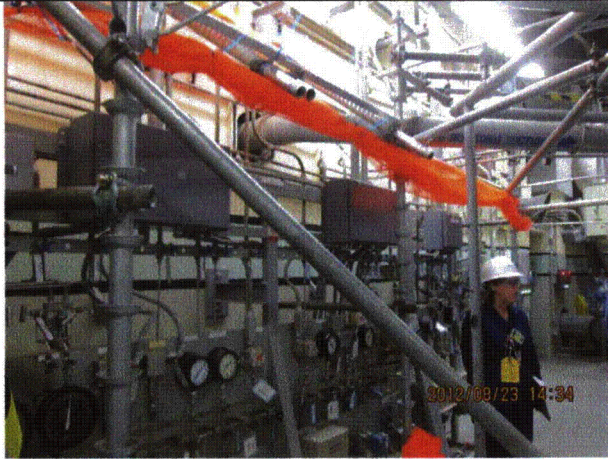


Quad Cities 127

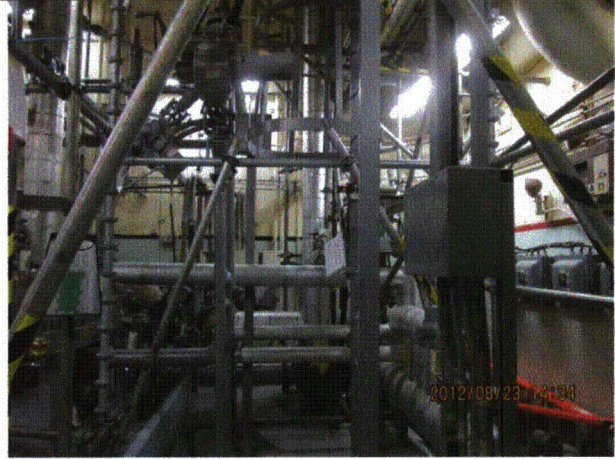
Status: Y N U

Area Walk-By Checklist (AWC)

Location (Bldg, Elev, Room/Area): AWC-U1-11



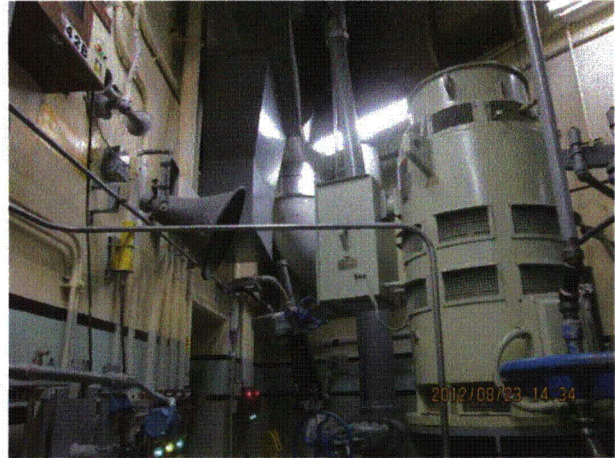
Quad Cities 128



Quad Cities 129



Quad Cities 130



Quad Cities 131

Status: Y N U

Area Walk-By Checklist (AWC)

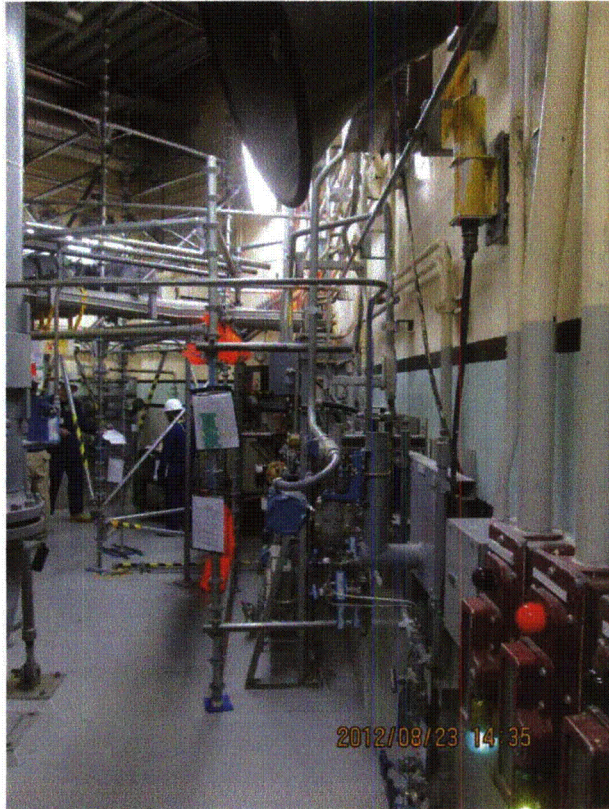
Location (Bldg, Elev, Room/Area): AWC-U1-11



Quad Cities 132



Quad Cities 133



Quad Cities 134

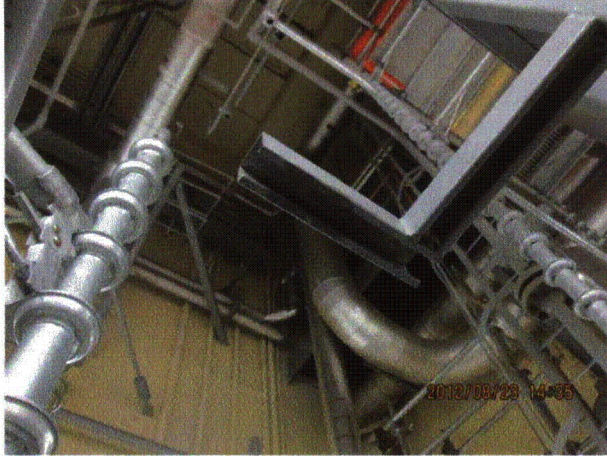


Quad Cities 135

Status: Y N U

Area Walk-By Checklist (AWC)

Location (Bldg, Elev, Room/Area): AWC-U1-11



Quad Cities 136

Status: Y N U

Area Walk-By Checklist (AWC)

Location (Bldg, Elev, Room/Area): AWC-U1-12

Instructions for Completing Checklist

This checklist may be used to document the results of the Area Walk-By near one or more SWEL items. The space below each of the following questions may be used to record the results of judgments and findings. Additional space is provided at the end of this checklist for documenting other comments.

1. Does anchorage of equipment in the area appear to be free of potentially adverse seismic conditions (if visible without necessarily opening cabinets)? Yes

 2. Does anchorage of equipment in the area appear to be free of significant degraded conditions? Yes
1 of 4 anchors (bottom right) missing on massive wall mounted support for 3/4-inch line. Judged to be acceptable.
2 anchors with missing nuts for base plate undergoing bearing from pipe only. Judged to be acceptable.
 3. Based on a visual inspection from the floor, do the cable/conduit raceways and HVAC ducting appear to be free of potentially adverse seismic conditions (e.g., condition of supports is adequate and fill conditions of cable trays appear to be inside acceptable limits)? Yes

 4. Does it appear that the area is free of potentially adverse seismic spatial interactions with other equipment in the area (e.g., ceiling tiles and lighting)? Yes

 5. Does it appear that the area is free of potentially adverse seismic interactions that could cause flooding or spray in the area? Yes

 6. Does it appear that the area is free of potentially adverse seismic interactions that could cause a fire in the area? Yes

 7. Does it appear that the area is free of potentially adverse seismic interactions associated with housekeeping practices, storage of portable equipment, and temporary installations (e.g., scaffolding, lead shielding)? Yes
Cart properly stored away from equipment.
-

Status: Y N U

Area Walk-By Checklist (AWC)

Location (Bldg, Elev, Room/Area): AWC-U1-12

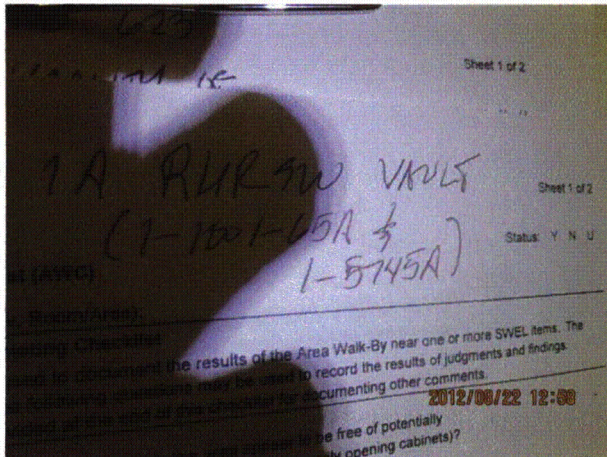
8. Have you looked for and found no other seismic conditions that could adversely affect the safety functions of the equipment in the area? Yes
Insulation off of pipe elbow for pump nearest to rack 2201-59A. General debris in area (tie-wraps, etc.). Not seismic concerns. See IR 1405922.

Comments

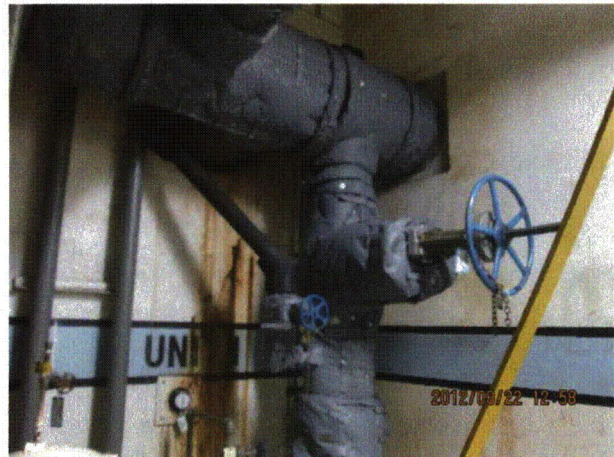
Seismic Walkdown Team: D. Carter & J. Griffith - 8/23/2012

Evaluated by: David Carter Date: 10/16/2012
James D Griffith James Griffith 10/16/2012

Photos



8-22-12 Quad Cities 098



8-22-12 Quad Cities 099

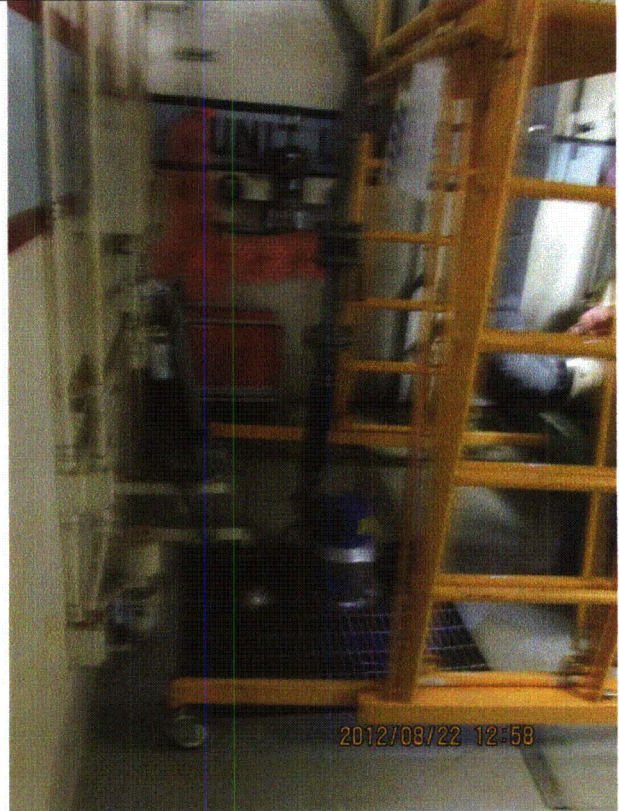
Status: Y N U

Area Walk-By Checklist (AWC)

Location (Bldg, Elev, Room/Area): AWC-U1-12



8-22-12 Quad Cities 100



8-22-12 Quad Cities 101



8-22-12 Quad Cities 102

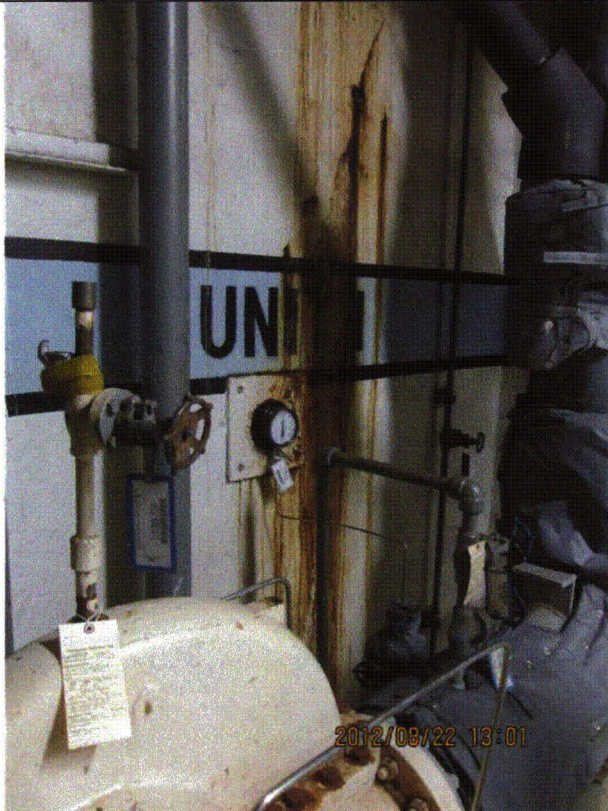


8-22-12 Quad Cities 103

Status: Y N U

Area Walk-By Checklist (AWC)

Location (Bldg, Elev, Room/Area): AWC-U1-12



8-22-12 Quad Cities 104

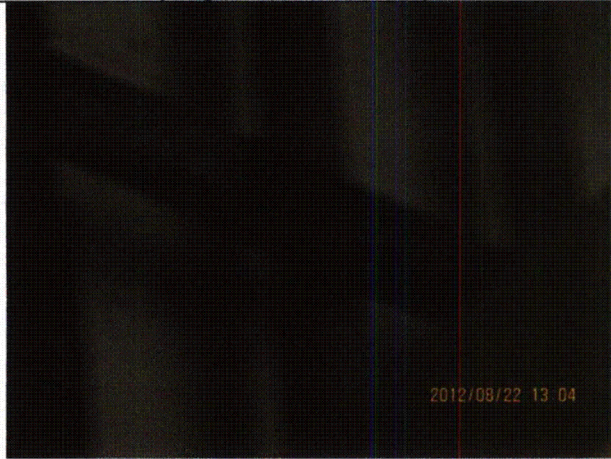


8-22-12 Quad Cities 105

Status: Y N U

Area Walk-By Checklist (AWC)

Location (Bldg, Elev, Room/Area): AWC-U1-12



8-22-12 Quad Cities 106

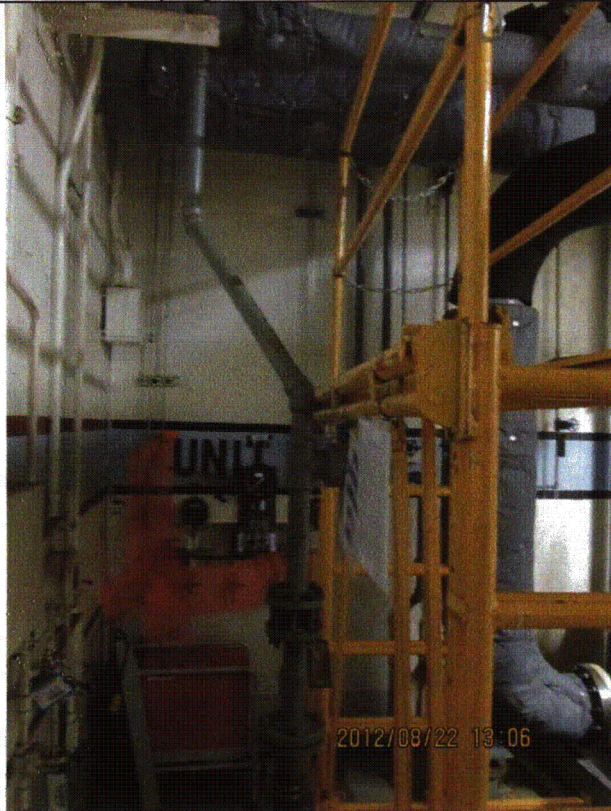


8-22-12 Quad Cities 107

Status: Y N U

Area Walk-By Checklist (AWC)

Location (Bldg, Elev, Room/Area): AWC-U1-12



8-22-12 Quad Cities 108



8-22-12 Quad Cities 109

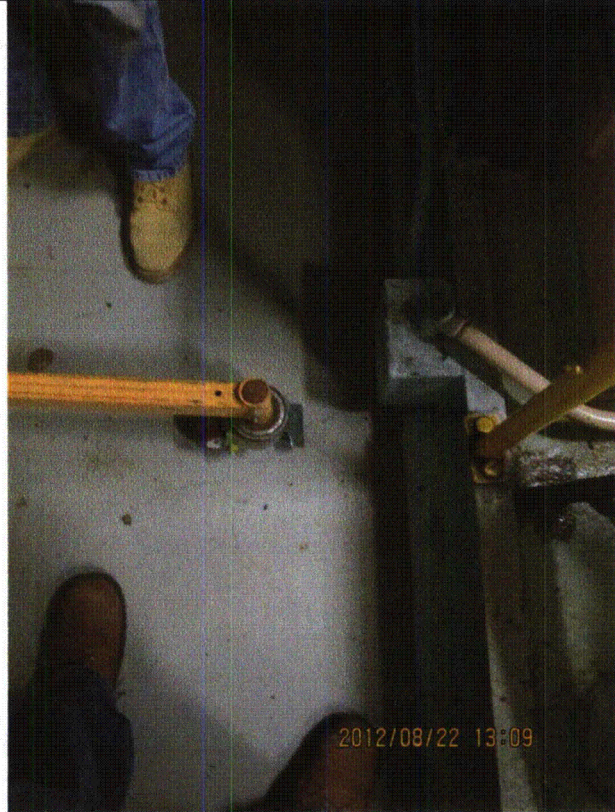
Status: Y N U

Area Walk-By Checklist (AWC)

Location (Bldg, Elev, Room/Area): AWC-U1-12



8-22-12 Quad Cities 110

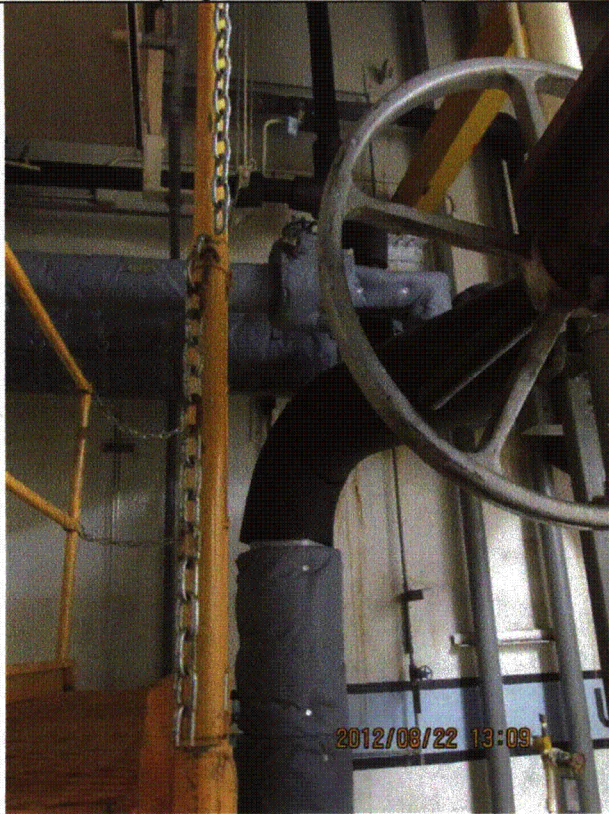


8-22-12 Quad Cities 111

Status: Y N U

Area Walk-By Checklist (AWC)

Location (Bldg, Elev, Room/Area): AWC-U1-12



8-22-12 Quad Cities 112



8-22-12 Quad Cities 113

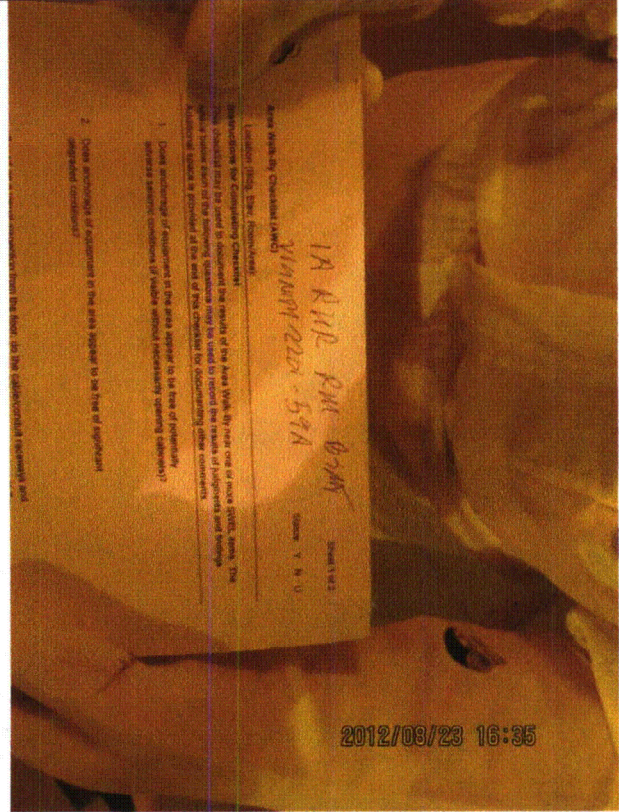
Status: Y N U

Area Walk-By Checklist (AWC)

Location (Bldg, Elev, Room/Area): AWC-U1-12



8-22-12 Quad Cities 114



Quad Cities 223

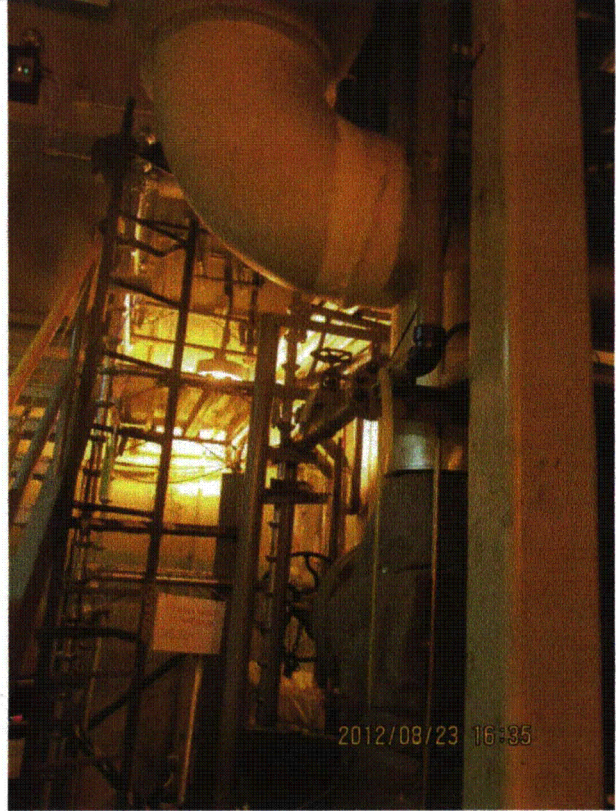
Status: Y N U

Area Walk-By Checklist (AWC)

Location (Bldg, Elev, Room/Area): AWC-U1-12



Quad Cities 224

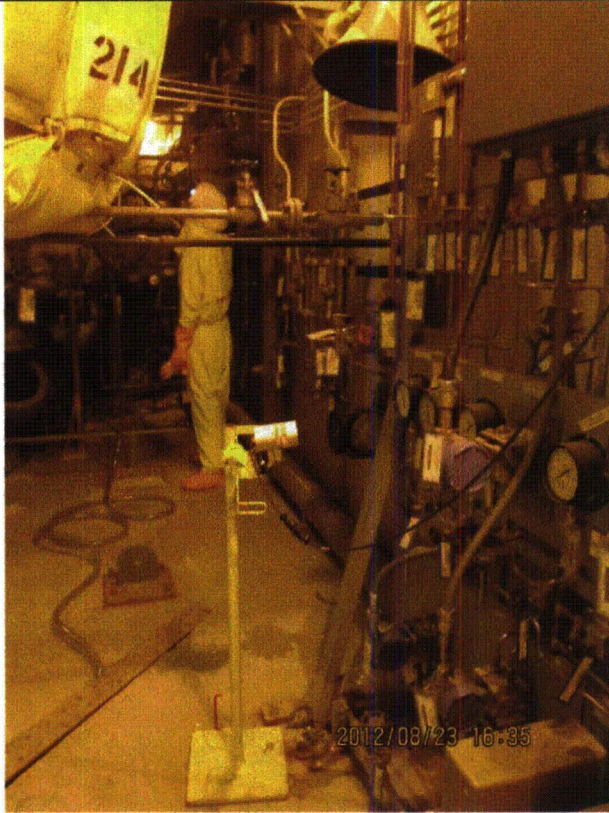


Quad Cities 225

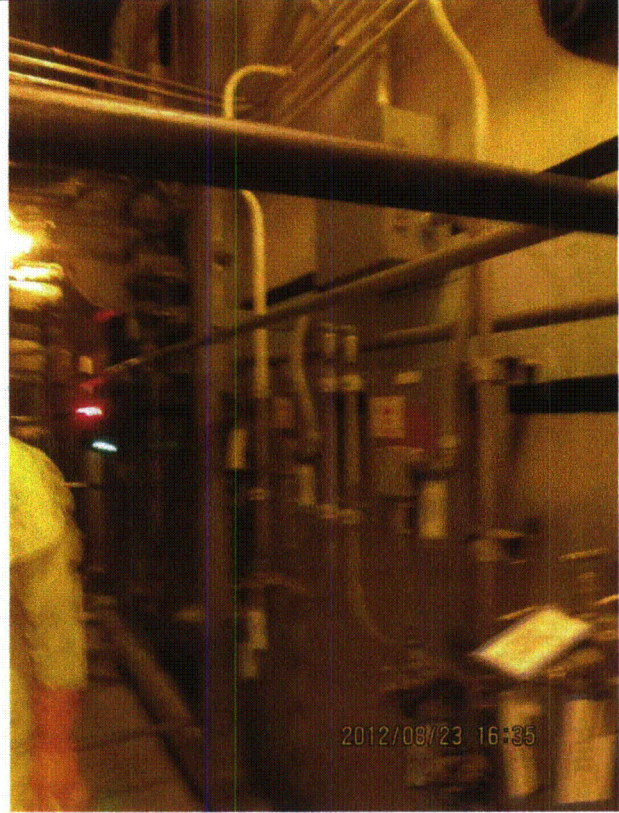
Status: Y N U

Area Walk-By Checklist (AWC)

Location (Bldg, Elev, Room/Area): AWC-U1-12



Quad Cities 227

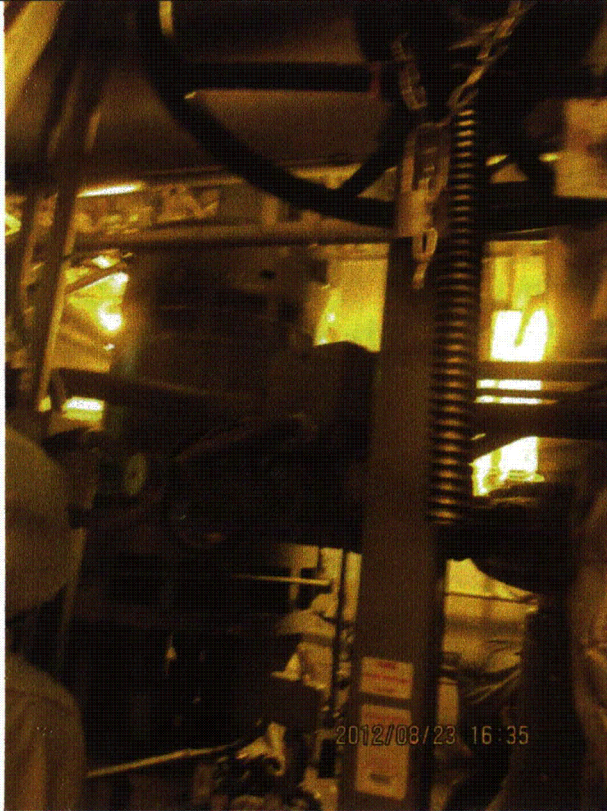


Quad Cities 228

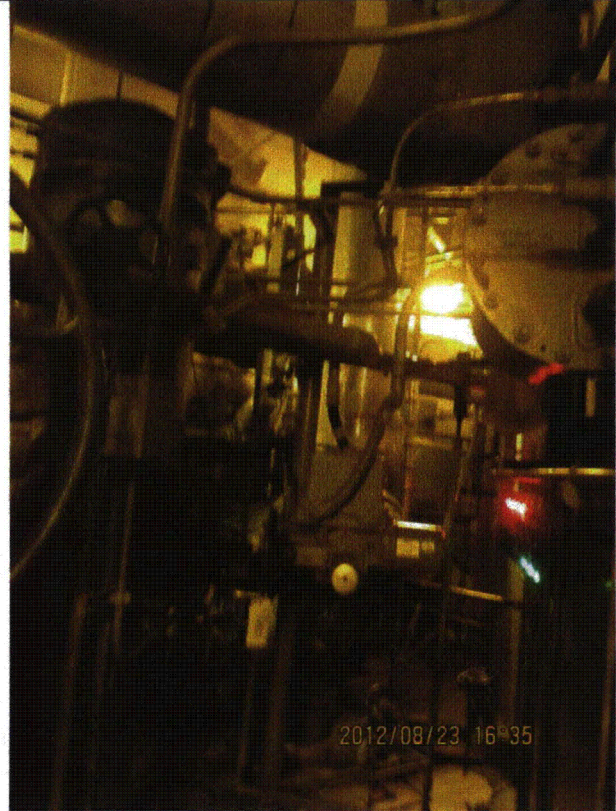
Status: Y N U

Area Walk-By Checklist (AWC)

Location (Bldg, Elev, Room/Area): AWC-U1-12



Quad Cities 229



Quad Cities 230

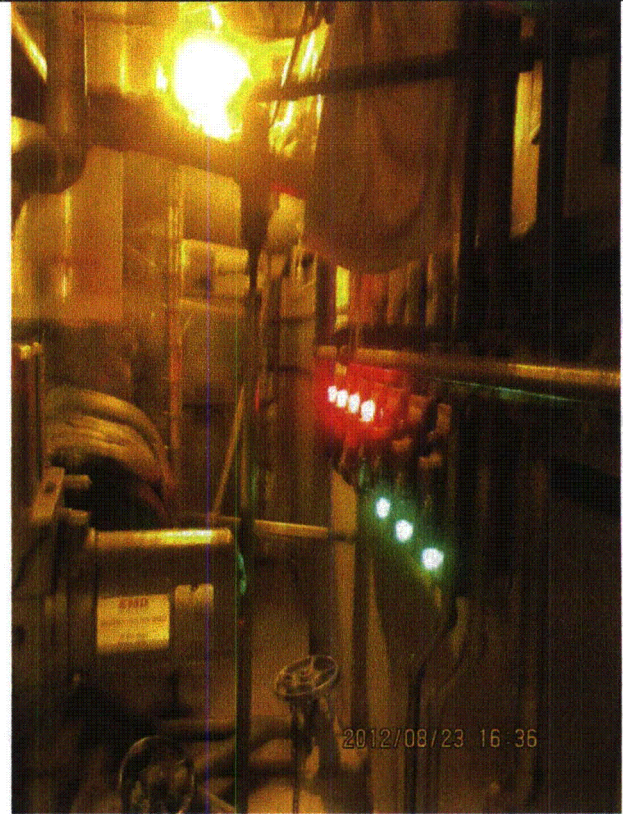
Status: Y N U

Area Walk-By Checklist (AWC)

Location (Bldg, Elev, Room/Area): AWC-U1-12



Quad Cities 231



Quad Cities 232

Status: Y N U

Area Walk-By Checklist (AWC)

Location (Bldg, Elev, Room/Area): AWC-U1-12



Quad Cities 234



Quad Cities 235

Status: Y N U

Area Walk-By Checklist (AWC)

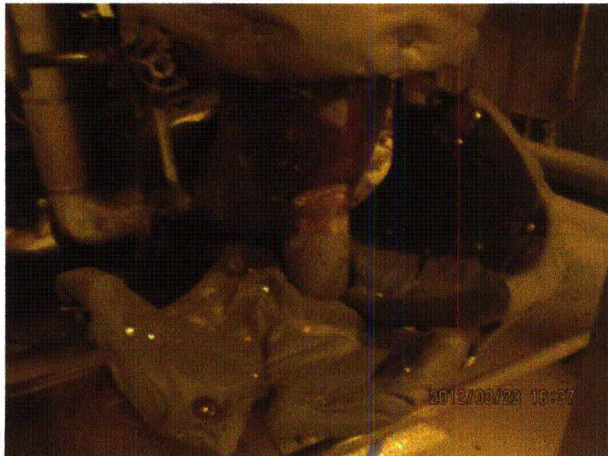
Location (Bldg, Elev, Room/Area): AWC-U1-12



Quad Cities 236



Quad Cities 237



Quad Cities 238



Quad Cities 239

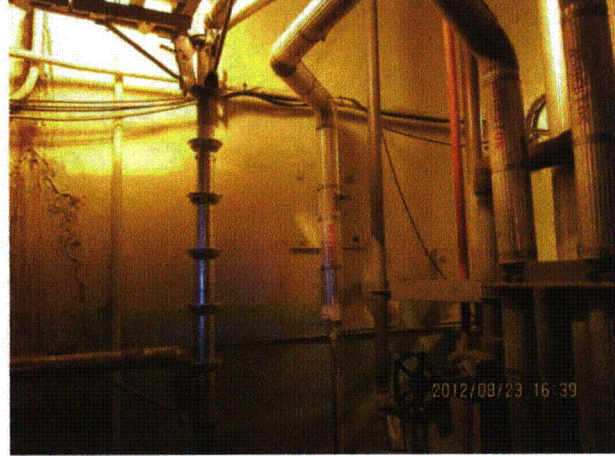
Status: Y N U

Area Walk-By Checklist (AWC)

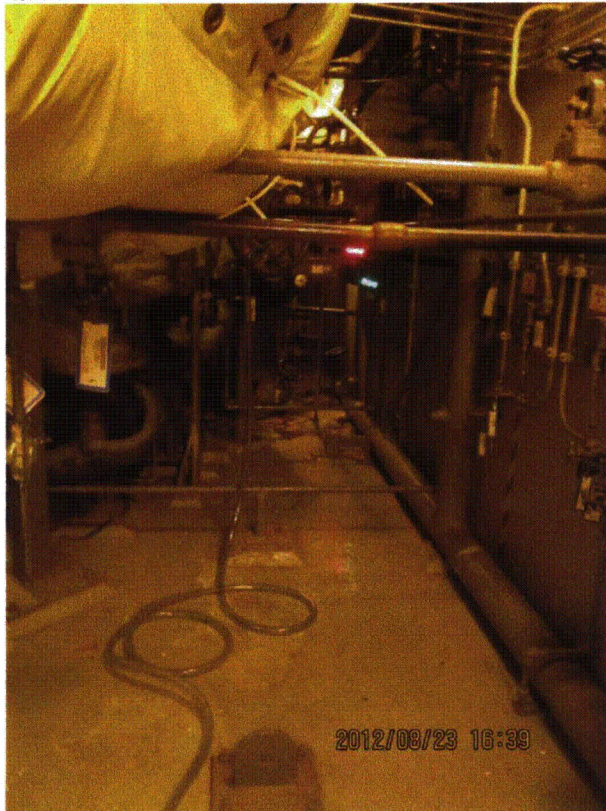
Location (Bldg, Elev, Room/Area): AWC-U1-12



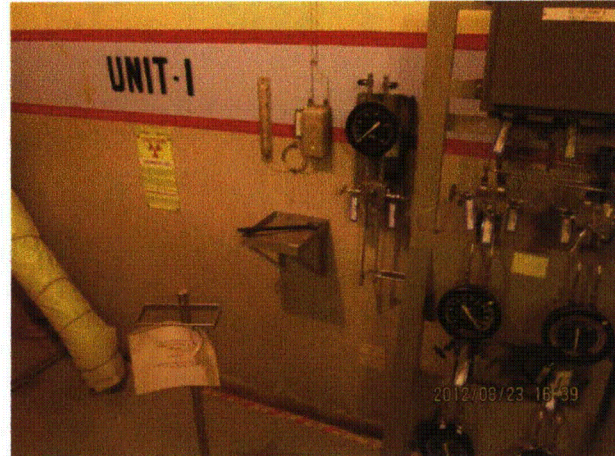
Quad Cities 240



Quad Cities 241



Quad Cities 242



Quad Cities 243

Status: Y N U

Area Walk-By Checklist (AWC)

Location (Bldg, Elev, Room/Area): AWC-U1-12



Quad Cities 244



Quad Cities 245

Status: Y N U

Area Walk-By Checklist (AWC)

Location (Bldg, Elev, Room/Area): AWC-U1-13

Instructions for Completing Checklist

This checklist may be used to document the results of the Area Walk-By near one or more SWEL items. The space below each of the following questions may be used to record the results of judgments and findings. Additional space is provided at the end of this checklist for documenting other comments.

1. Does anchorage of equipment in the area appear to be free of potentially adverse seismic conditions (if visible without necessarily opening cabinets)? Yes

 2. Does anchorage of equipment in the area appear to be free of significant degraded conditions? Yes
A support for one 2-inch conduit and one 3-inch conduit is not anchored to the floor. Support is located the in middle of 20-foot span between anchored supports. The support is resisting vertical downward loads only. Refer to IR 1403393.
 3. Based on a visual inspection from the floor, do the cable/conduit raceways and HVAC ducting appear to be free of potentially adverse seismic conditions (e.g., condition of supports is adequate and fill conditions of cable trays appear to be inside acceptable limits)? Yes

 4. Does it appear that the area is free of potentially adverse seismic spatial interactions with other equipment in the area (e.g., ceiling tiles and lighting)? Yes
Overhead light fixtures judged to be acceptable. Limited clearance between conduits and tray hangers judged to be acceptable.

 5. Does it appear that the area is free of potentially adverse seismic interactions that could cause flooding or spray in the area? Yes
Fire protection is well supported. Judged to be acceptable.

 6. Does it appear that the area is free of potentially adverse seismic interactions that could cause a fire in the area? Yes

 7. Does it appear that the area is free of potentially adverse seismic interactions associated with housekeeping practices, storage of portable equipment, and temporary installations (e.g., scaffolding, lead shielding)? Yes
Storage issue corrected during walkdown, See IR 1405922.
-

Status: Y N U

Area Walk-By Checklist (AWC)

Location (Bldg, Elev, Room/Area): AWC-U1-13

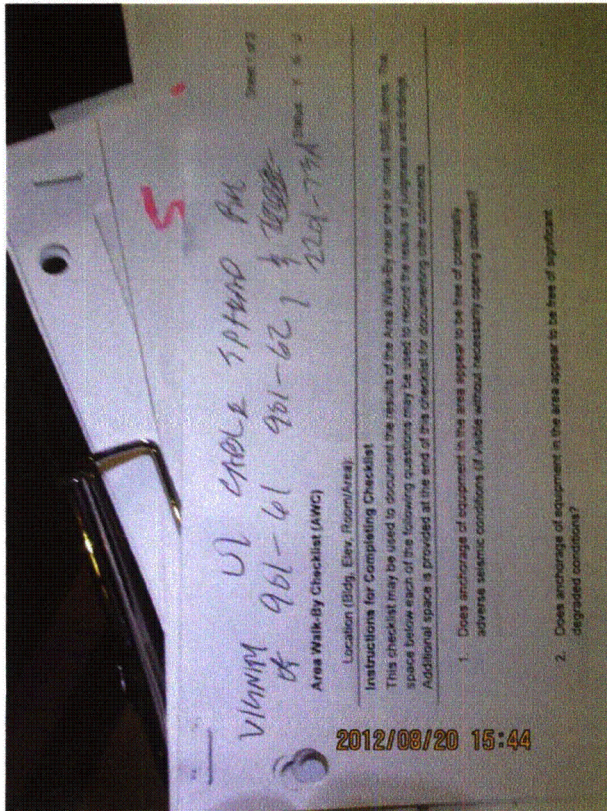
8. Have you looked for and found no other seismic conditions that could adversely affect the safety functions of the equipment in the area? Yes
Masonry wall approximately 10' high. U-Shaped with running bond construction. Located at U1/U2 boundary near panel 2201-89A. Judged to be acceptable.

Comments

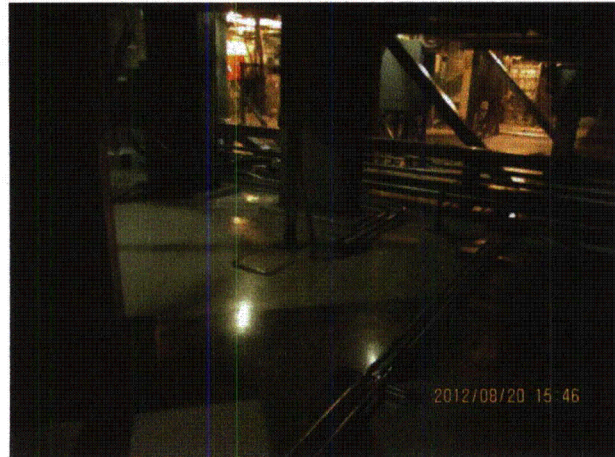
Seismic Walkdown Team: D. Carter & J. Griffith - 8/20/2012

Evaluated by: *David Carter* David Carter Date: 10/4/2012
James D Griffith James Griffith 10/4/2012

Photos



8-20-12 Quad Cities 268 (1)

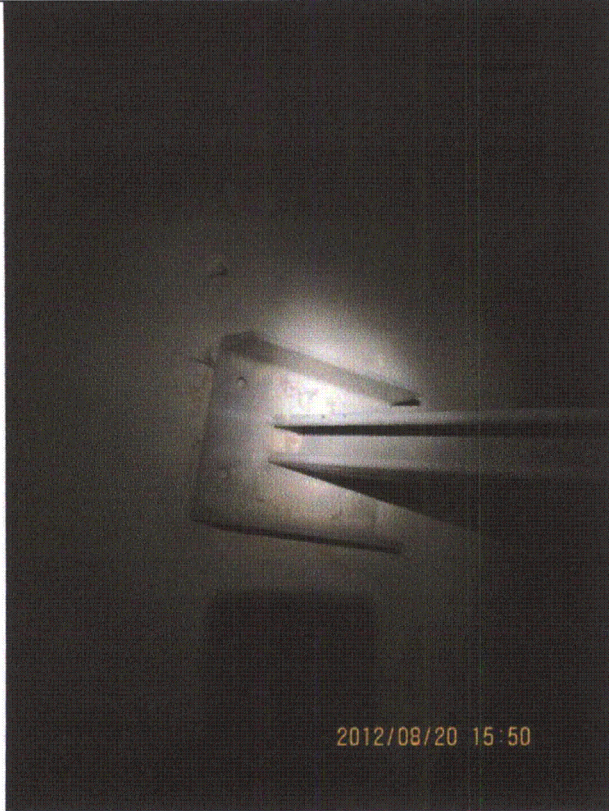


8-20-12 Quad Cities 268 (10)

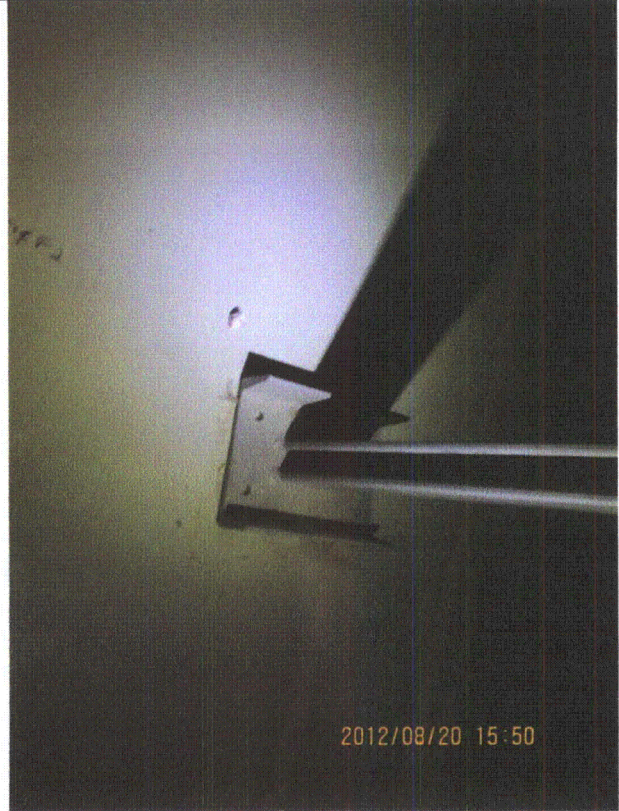
Status: Y N U

Area Walk-By Checklist (AWC)

Location (Bldg, Elev, Room/Area): AWC-U1-13



8-20-12 Quad Cities 268 (11)

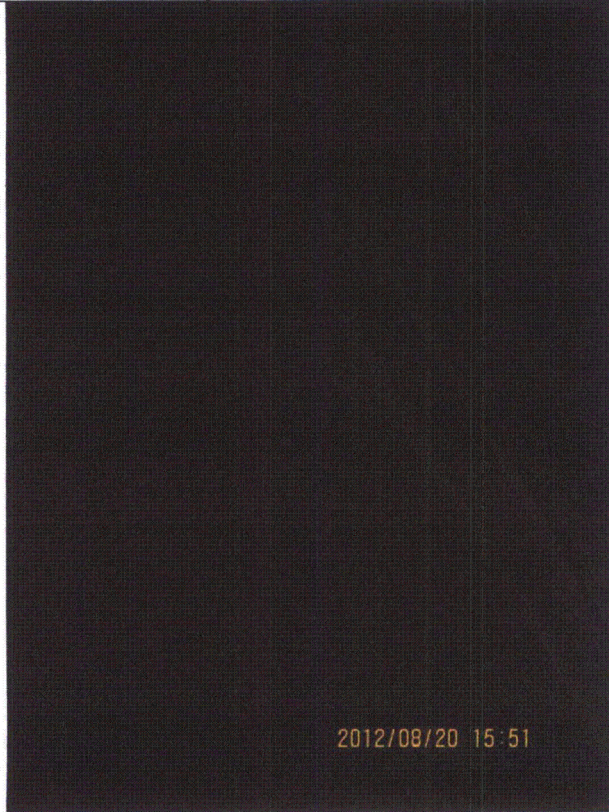


8-20-12 Quad Cities 268 (12)

Status: Y N U

Area Walk-By Checklist (AWC)

Location (Bldg, Elev, Room/Area): AWC-U1-13



8-20-12 Quad Cities 268 (13)

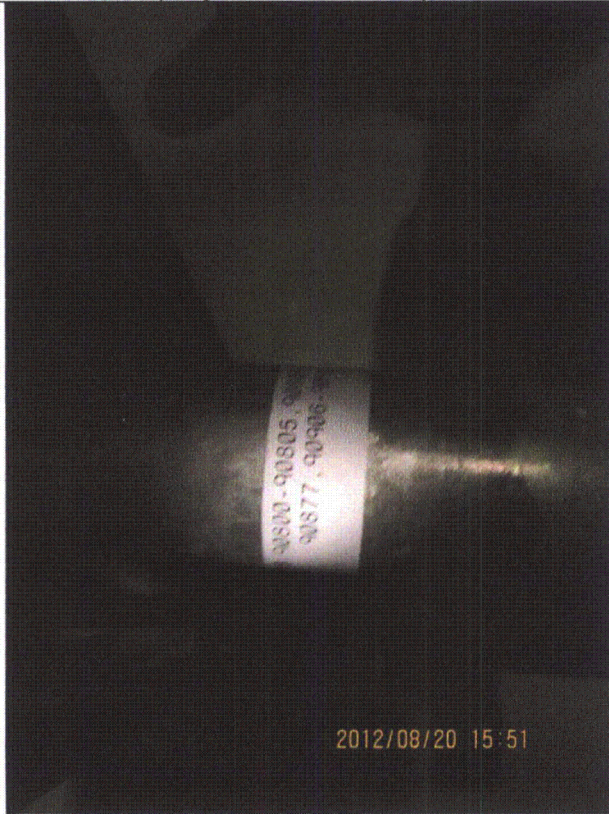


8-20-12 Quad Cities 268 (14)

Status: Y N U

Area Walk-By Checklist (AWC)

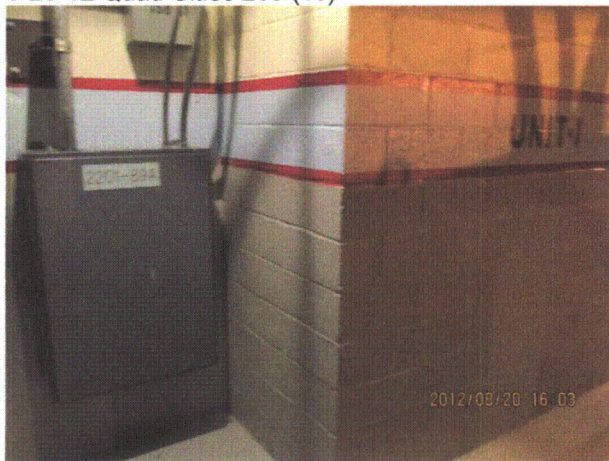
Location (Bldg, Elev, Room/Area): AWC-U1-13



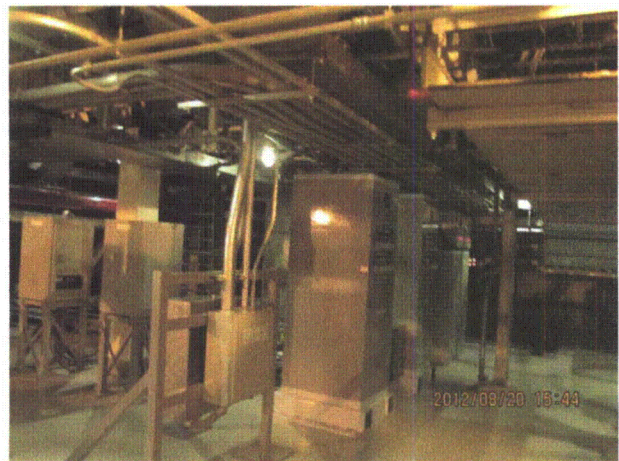
8-20-12 Quad Cities 268 (15)



8-20-12 Quad Cities 268 (16)



8-20-12 Quad Cities 268 (17)

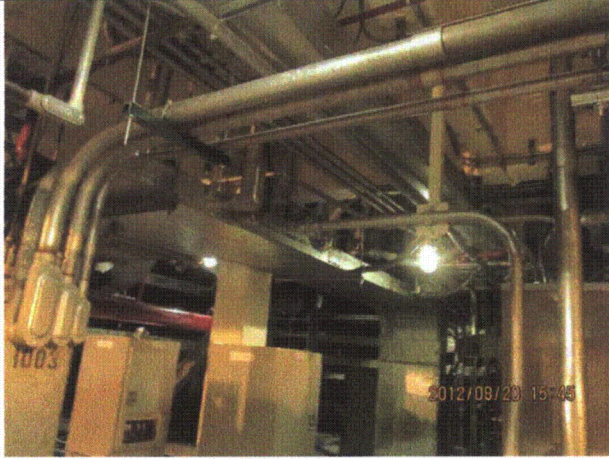


8-20-12 Quad Cities 268 (2)

Status: Y N U

Area Walk-By Checklist (AWC)

Location (Bldg, Elev, Room/Area): AWC-U1-13



8-20-12 Quad Cities 268 (3)



8-20-12 Quad Cities 268 (4)



8-20-12 Quad Cities 268 (5)



8-20-12 Quad Cities 268 (6)

Status: Y N U

Area Walk-By Checklist (AWC)

Location (Bldg, Elev, Room/Area): AWC-U1-13



8-20-12 Quad Cities 268 (7)



8-20-12 Quad Cities 268 (8)



8-20-12 Quad Cities 268 (9)

Status: Y N U

Area Walk-By Checklist (AWC)

Location (Bldg, Elev, Room/Area): AWC-U1-14

Instructions for Completing Checklist

This checklist may be used to document the results of the Area Walk-By near one or more SWEL items. The space below each of the following questions may be used to record the results of judgments and findings. Additional space is provided at the end of this checklist for documenting other comments.

1. Does anchorage of equipment in the area appear to be free of potentially adverse seismic conditions (if visible without necessarily opening cabinets)? Yes
Some missing screws on cable tray riser covers judged to be acceptable.

2. Does anchorage of equipment in the area appear to be free of significant degraded conditions? Yes

3. Based on a visual inspection from the floor, do the cable/conduit raceways and HVAC ducting appear to be free of potentially adverse seismic conditions (e.g., condition of supports is adequate and fill conditions of cable trays appear to be inside acceptable limits)? Yes

4. Does it appear that the area is free of potentially adverse seismic spatial interactions with other equipment in the area (e.g., ceiling tiles and lighting)? Yes
Overhead light fixtures judged to be acceptable. Nearby targets robust and judged to be acceptable.
Masonry wall in vicinity safety-related.
5. Does it appear that the area is free of potentially adverse seismic interactions that could cause flooding or spray in the area? Yes
Welded fire protection line judged to be acceptable.

6. Does it appear that the area is free of potentially adverse seismic interactions that could cause a fire in the area? Yes

7. Does it appear that the area is free of potentially adverse seismic interactions associated with housekeeping practices, storage of portable equipment, and temporary installations (e.g., scaffolding, lead shielding)? Yes
Bottles chained to blockwall: chains located too high on bottles, could slip off. See IR 1403593.

Eyewash station near robust pipes judged to be acceptable.

Status: Y N U

Area Walk-By Checklist (AWC)

Location (Bldg, Elev, Room/Area): AWC-U1-14

8. Have you looked for and found no other seismic conditions that could adversely affect the safety functions of the equipment in the area? Yes

Spalling in concrete beam in ceiling above Penetration X43, 8801A, B & C, and 8802A, B & C valves. Previously identified and evaluated in correction action program. Included in station structures monitoring program. See IR 1404147.

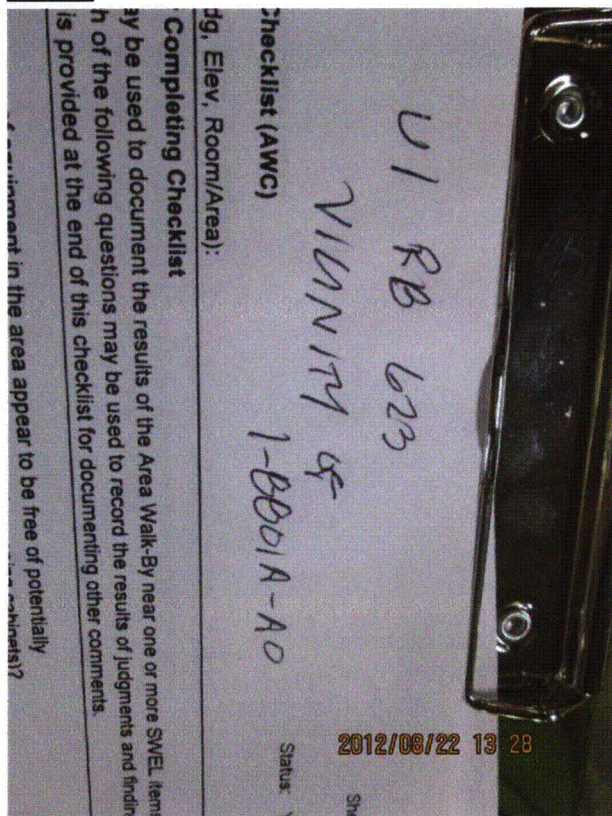
AO-1-8802A, B, and C solenoid valve air lines touch pipe insulation similar to 8801A, B, and C. Valves fail closed. Therefore, interaction is acceptable. See IR 1403596.

Comments

Seismic Walkdown Team: D. Carter & J. Griffith - 8/22/2012

Evaluated by: David Carter Date: 10/4/2012
James D. Griffith James Griffith 10/4/2012

Photos



8-22-12 Quad Cities 115



8-22-12 Quad Cities 116

Status: Y N U

Area Walk-By Checklist (AWC)

Location (Bldg, Elev, Room/Area): AWC-U1-14



8-22-12 Quad Cities 117



8-22-12 Quad Cities 118



8-22-12 Quad Cities 119



8-22-12 Quad Cities 120

Status: Y N U

Area Walk-By Checklist (AWC)

Location (Bldg, Elev, Room/Area): AWC-U1-14



8-22-12 Quad Cities 121



8-22-12 Quad Cities 122



8-22-12 Quad Cities 123

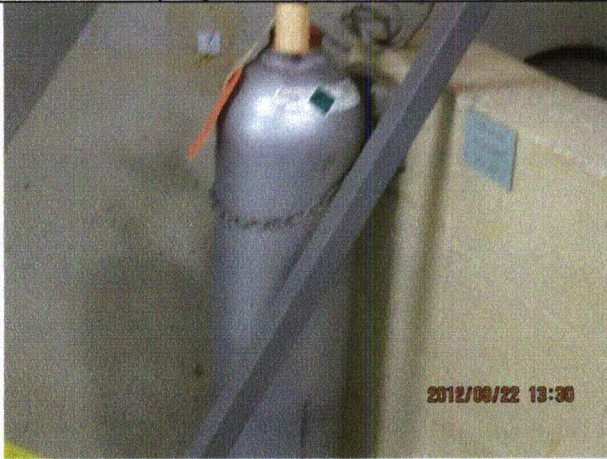


8-22-12 Quad Cities 124

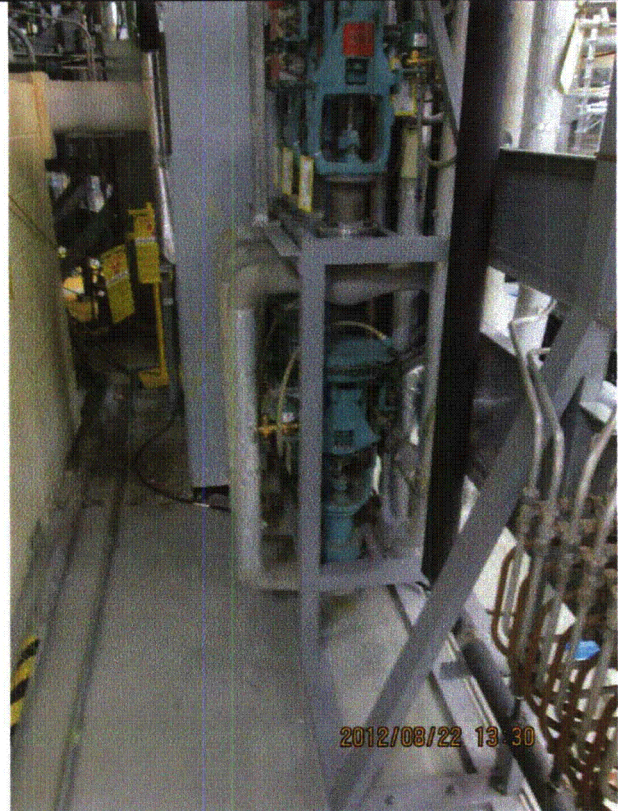
Status: Y N U

Area Walk-By Checklist (AWC)

Location (Bldg, Elev, Room/Area): AWC-U1-14



8-22-12 Quad Cities 125



8-22-12 Quad Cities 126



8-22-12 Quad Cities 127

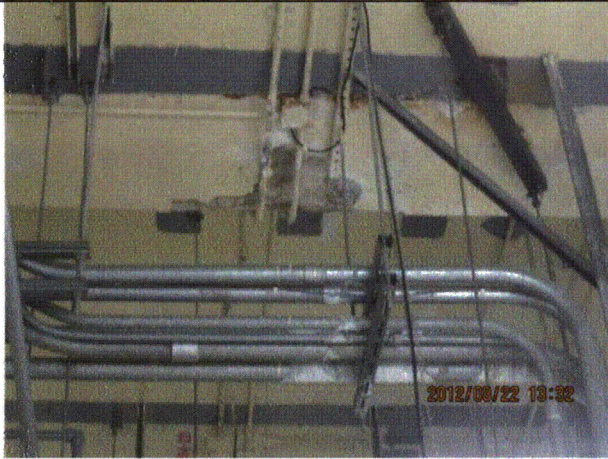


8-22-12 Quad Cities 128

Status: Y N U

Area Walk-By Checklist (AWC)

Location (Bldg, Elev, Room/Area): AWC-U1-14



8-22-12 Quad Cities 129



8-22-12 Quad Cities 130

Status: Y N U

Area Walk-By Checklist (AWC)

Location (Bldg, Elev, Room/Area): AWC-U1-14



8-22-12 Quad Cities 131

Status: Y N U

U1 RB 623
VICINITY OF
1-8001A-A0
2201-32

Area Walk-By Checklist (AWC)
Location (Bldg, Elev, Room/Area):

Instructions for Completing Checklist
This checklist may be used to document the results of the Area Walk-By near one or more SWE. Space below each of the following questions may be used to record the results of judgments and additional space is provided at the end of this checklist for documenting other comments.

Does anchorage of equipment in the area appear to be free or potentially adverse seismic conditions (if visible without necessarily opening cabinets)?

2012/08/22 13:58

8-22-12 Quad Cities 147

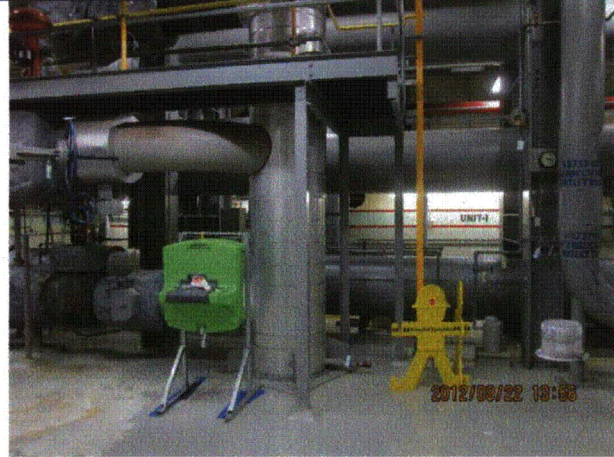
Status: Y N U

Area Walk-By Checklist (AWC)

Location (Bldg, Elev, Room/Area): AWC-U1-14



8-22-12 Quad Cities 148



8-22-12 Quad Cities 149

Status: Y N U

Area Walk-By Checklist (AWC)

Location (Bldg, Elev, Room/Area): AWC-U1-14



8-22-12 Quad Cities 151

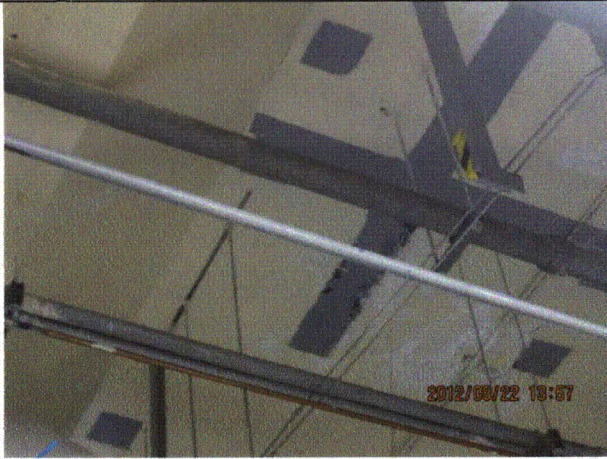


8-22-12 Quad Cities 152

Status: Y N U

Area Walk-By Checklist (AWC)

Location (Bldg, Elev, Room/Area): AWC-U1-14



8-22-12 Quad Cities 153

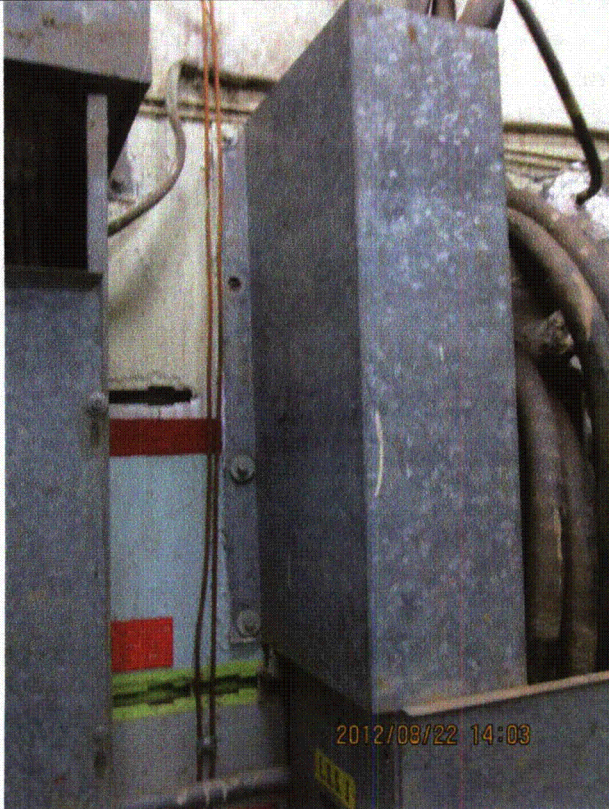


8-22-12 Quad Cities 154

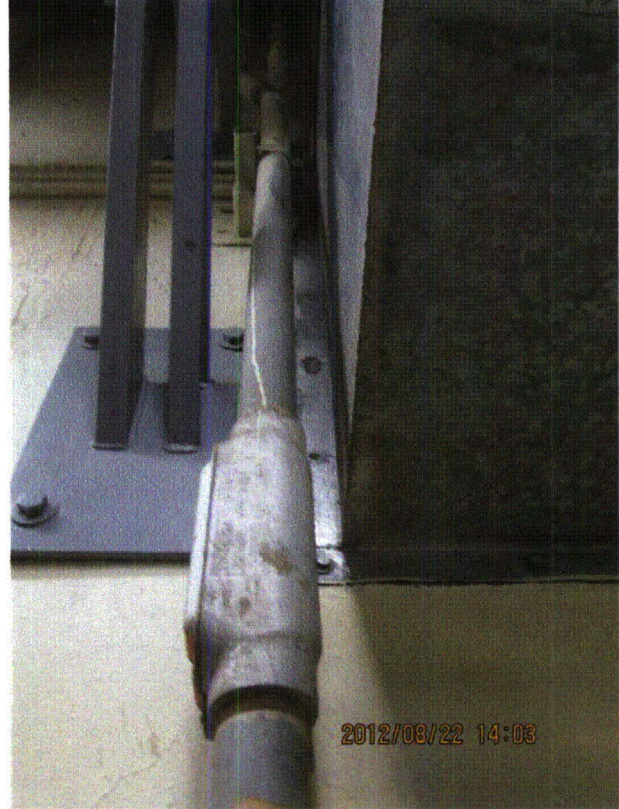
Status: Y N U

Area Walk-By Checklist (AWC)

Location (Bldg, Elev, Room/Area): AWC-U1-14



8-22-12 Quad Cities 155



8-22-12 Quad Cities 156

Status: Y N U

Area Walk-By Checklist (AWC)

Location (Bldg, Elev, Room/Area): AWC-U1-14



8-22-12 Quad Cities 157

Status: Y N U

Area Walk-By Checklist (AWC)

Location (Bldg, Elev, Room/Area): AWC-U1-15

Instructions for Completing Checklist

This checklist may be used to document the results of the Area Walk-By near one or more SWEL items. The space below each of the following questions may be used to record the results of judgments and findings. Additional space is provided at the end of this checklist for documenting other comments.

1. Does anchorage of equipment in the area appear to be free of potentially adverse seismic conditions (if visible without necessarily opening cabinets)? Yes

 2. Does anchorage of equipment in the area appear to be free of significant degraded conditions? Yes
Unistrut support for small line missing 1 anchor. Judged to be acceptable.

 3. Based on a visual inspection from the floor, do the cable/conduit raceways and HVAC ducting appear to be free of potentially adverse seismic conditions (e.g., condition of supports is adequate and fill conditions of cable trays appear to be inside acceptable limits)? Yes

 4. Does it appear that the area is free of potentially adverse seismic spatial interactions with other equipment in the area (e.g., ceiling tiles and lighting)? Yes
Valve 1402-38B handwheel near support steel. Support steel for large-bore pipe with directly adjacent branch line for 38B valve. Seismic movement acts together. Judged to be acceptable.

 5. Does it appear that the area is free of potentially adverse seismic interactions that could cause flooding or spray in the area? Yes

 6. Does it appear that the area is free of potentially adverse seismic interactions that could cause a fire in the area? Yes

 7. Does it appear that the area is free of potentially adverse seismic interactions associated with housekeeping practices, storage of portable equipment, and temporary installations (e.g., scaffolding, lead shielding)? Yes
General debris in area. No seismic concerns.
-

Status: Y N U

Area Walk-By Checklist (AWC)

Location (Bldg, Elev, Room/Area): AWC-U1-15

8. Have you looked for and found no other seismic conditions that could adversely affect the safety functions of the equipment in the area? Yes

Emergency light 42E missing 1 of 2 seismic hold-downs. Judged to be acceptable.

See IR 1405892.

General spalled/incorrectly formed concrete near north entry ladder. No obviously loose pieces. No indication of water damage. Judged to be acceptable.

Comments

Seismic Walkdown Team: D. Carter & J. Griffith - 8/24/2012

Evaluated by:

David Carter David Carter

Date: 10/16/2012

James D. Griffith James Griffith

10/16/2012

Photos

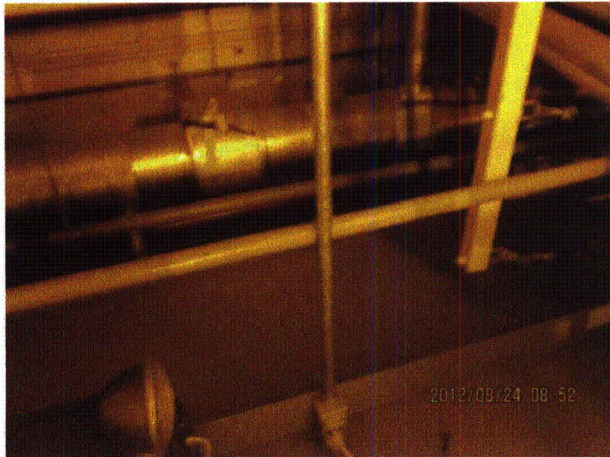


Quad Cities 008

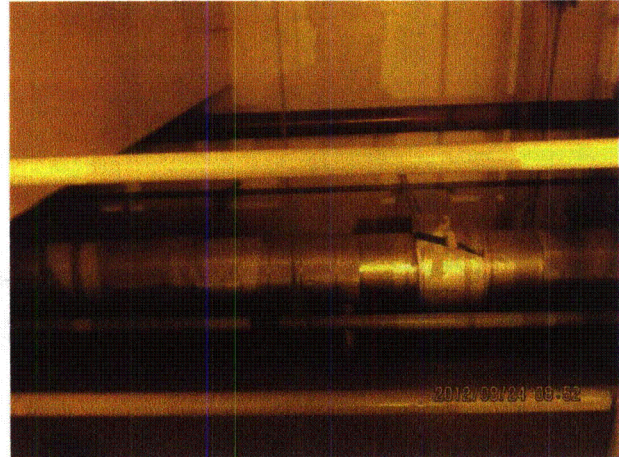
Status: Y N U

Area Walk-By Checklist (AWC)

Location (Bldg, Elev, Room/Area): AWC-U1-15
Quad Cities 007



Quad Cities 009



Quad Cities 010



Quad Cities 011

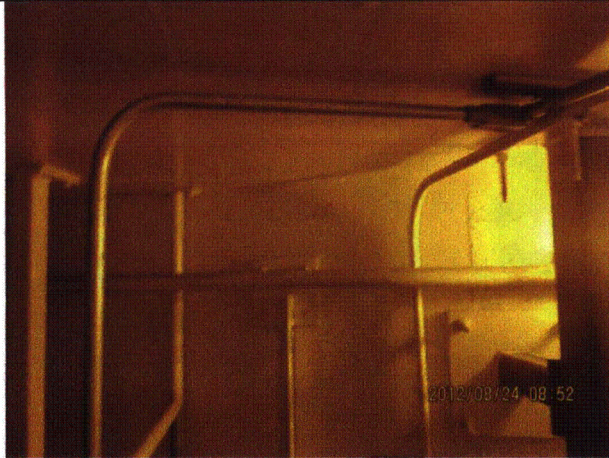


Quad Cities 012

Status: Y N U

Area Walk-By Checklist (AWC)

Location (Bldg, Elev, Room/Area): AWC-U1-15



Quad Cities 013



Quad Cities 014



Quad Cities 015

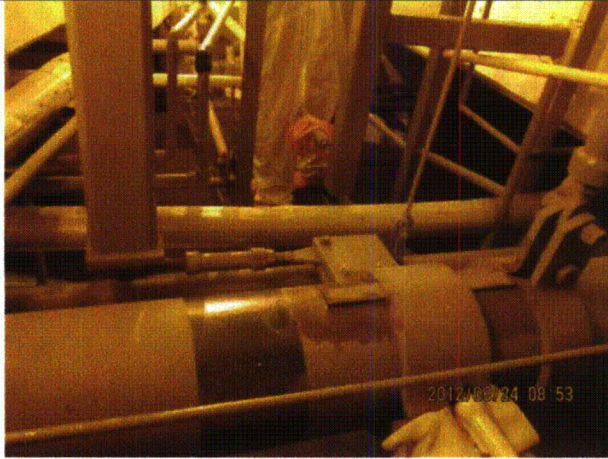


Quad Cities 016

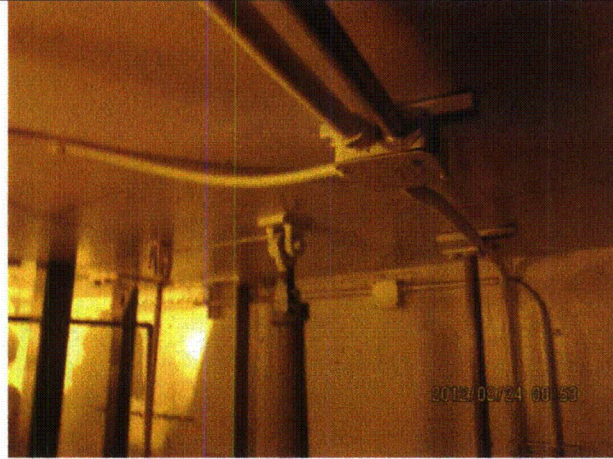
Status: Y N U

Area Walk-By Checklist (AWC)

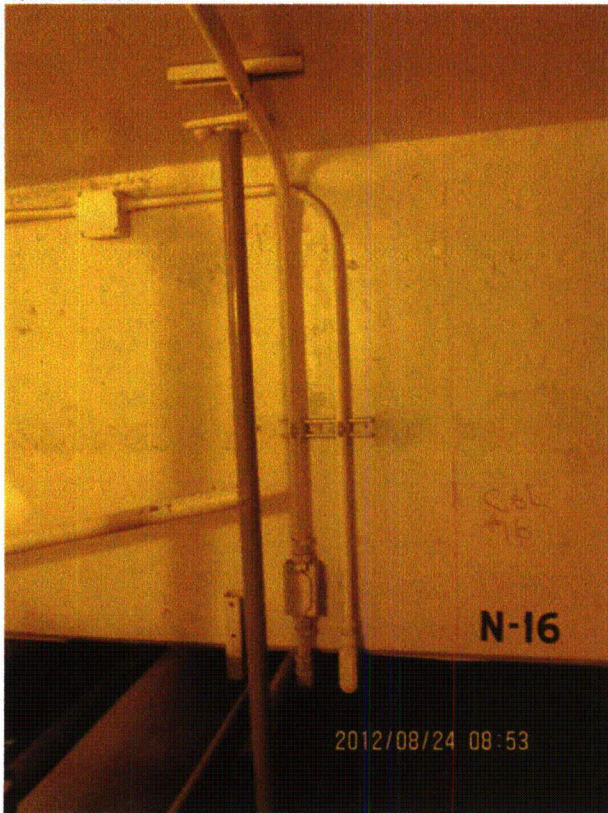
Location (Bldg, Elev, Room/Area): AWC-U1-15



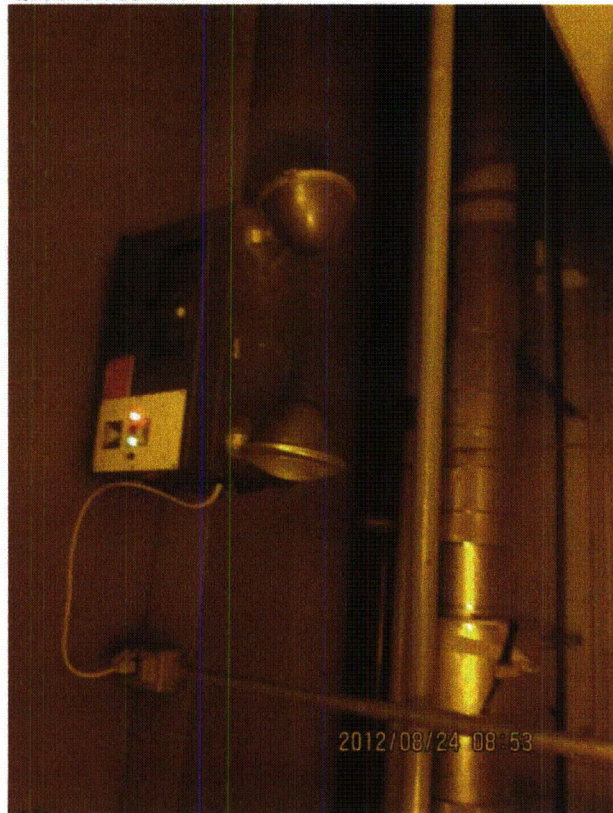
Quad Cities 017



Quad Cities 018



Quad Cities 019



Quad Cities 020

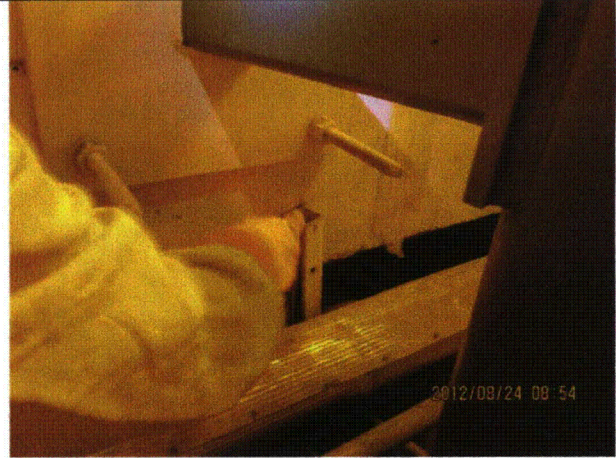
Status: Y N U

Area Walk-By Checklist (AWC)

Location (Bldg, Elev, Room/Area): AWC-U1-15



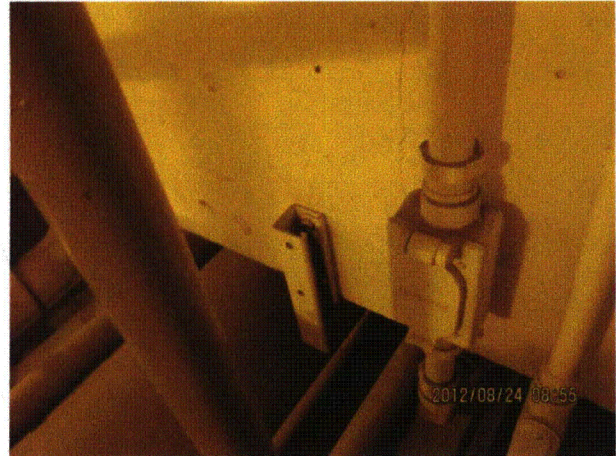
Quad Cities 021



Quad Cities 022



Quad Cities 023

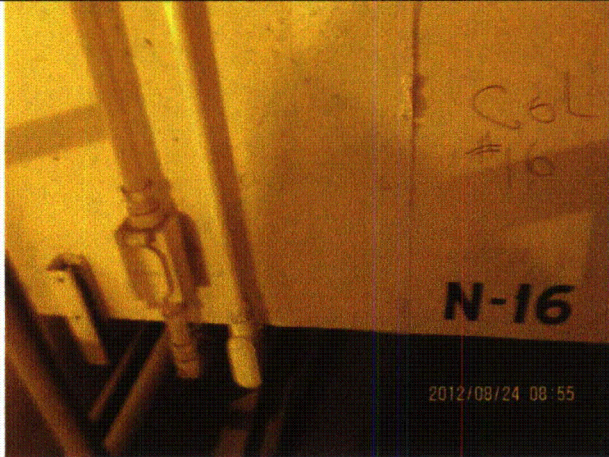


Quad Cities 024

Status: Y N U

Area Walk-By Checklist (AWC)

Location (Bldg, Elev, Room/Area): AWC-U1-15



Quad Cities 025



Quad Cities 026



Quad Cities 027



Quad Cities 028

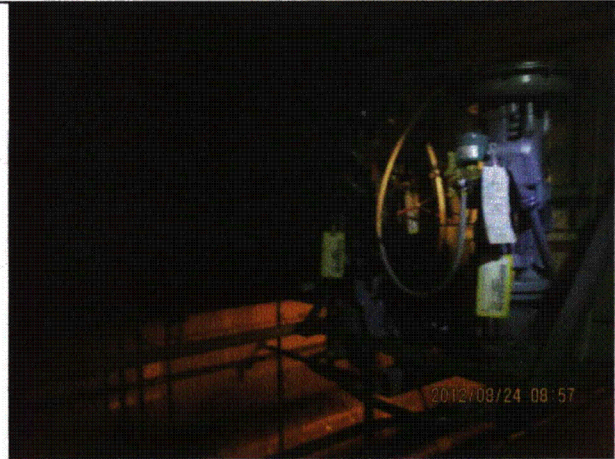
Status: Y N U

Area Walk-By Checklist (AWC)

Location (Bldg, Elev, Room/Area): AWC-U1-15



Quad Cities 029



Quad Cities 030



Quad Cities 031



Quad Cities 032

Status: Y N U

Area Walk-By Checklist (AWC)

Location (Bldg, Elev, Room/Area): AWC-U1-15



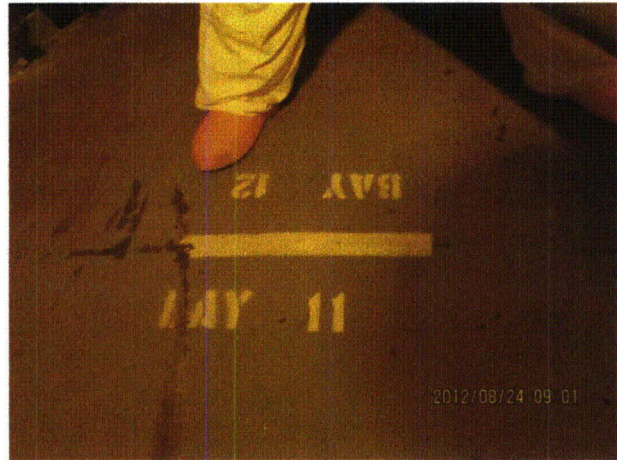
Quad Cities 033



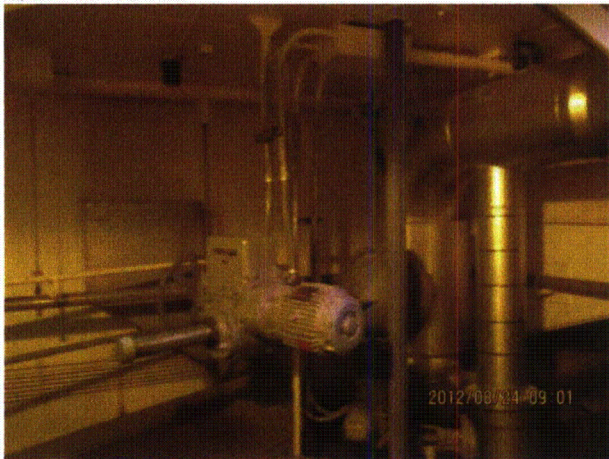
Quad Cities 034



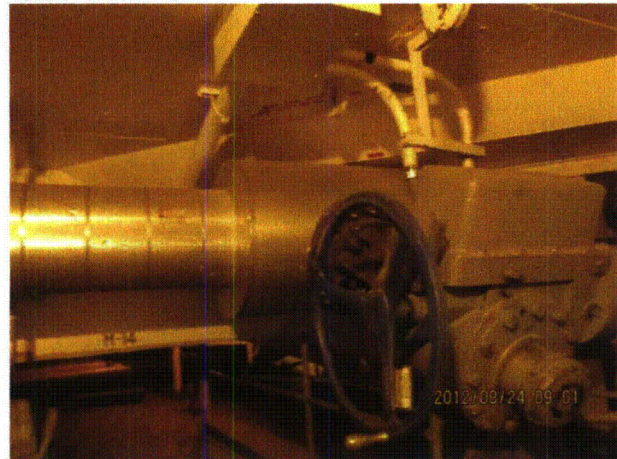
Quad Cities 035



Quad Cities 036



Quad Cities 037

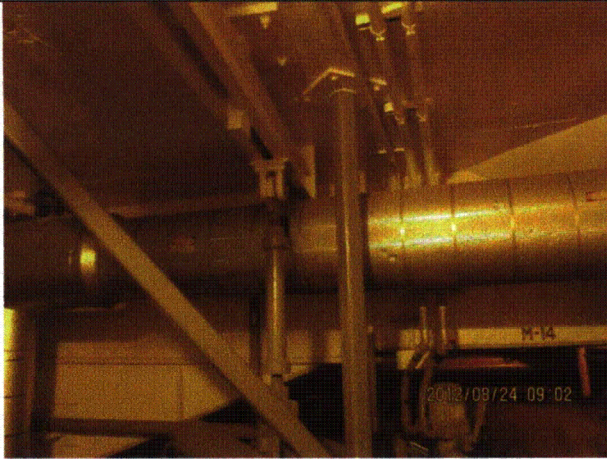


Quad Cities 038

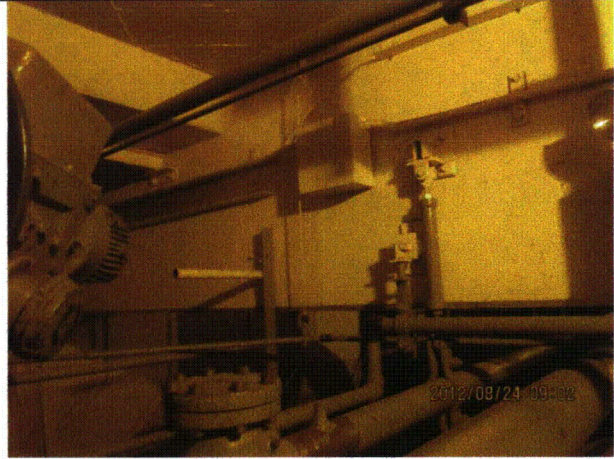
Status: Y N U

Area Walk-By Checklist (AWC)

Location (Bldg, Elev, Room/Area): AWC-U1-15



Quad Cities 039



Quad Cities 040



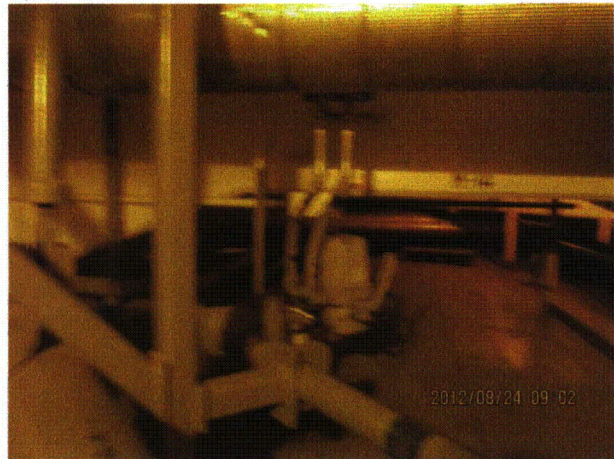
Quad Cities 041



Quad Cities 042



Quad Cities 043



Quad Cities 044

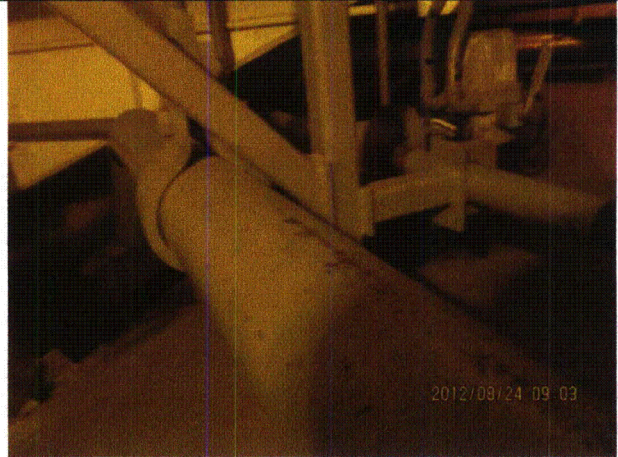
Status: Y N U

Area Walk-By Checklist (AWC)

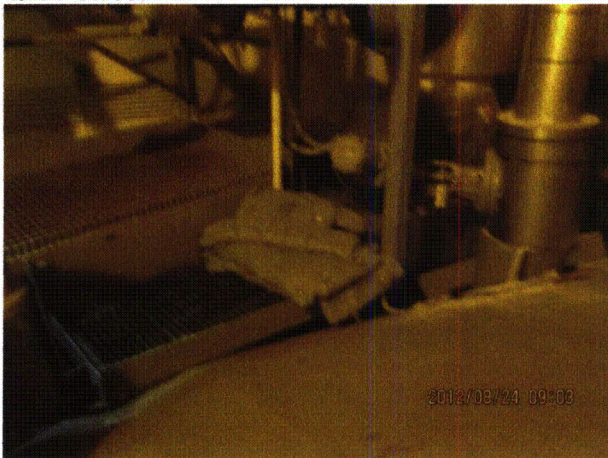
Location (Bldg, Elev, Room/Area): AWC-U1-15



Quad Cities 045



Quad Cities 046



Quad Cities 047

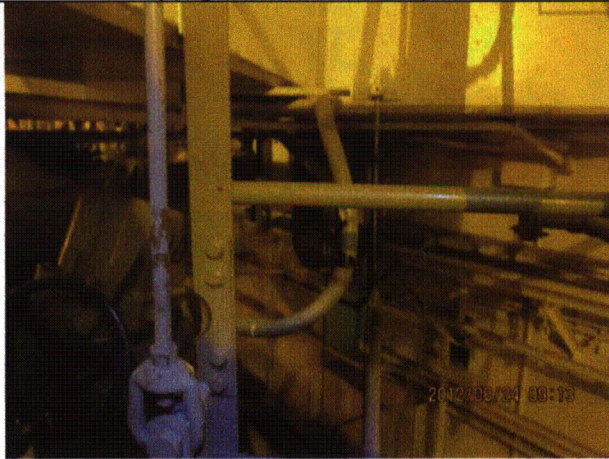


Quad Cities 053

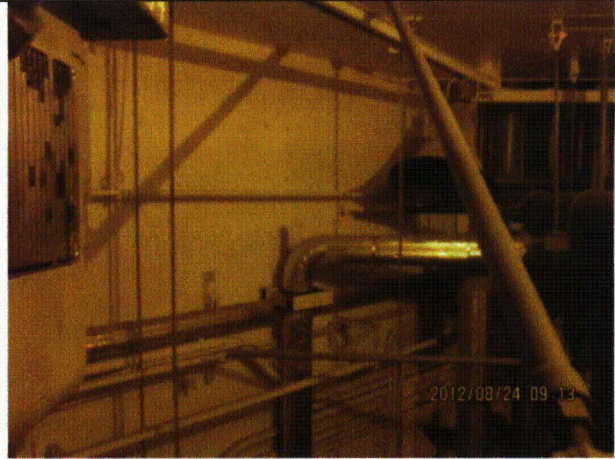
Status: Y N U

Area Walk-By Checklist (AWC)

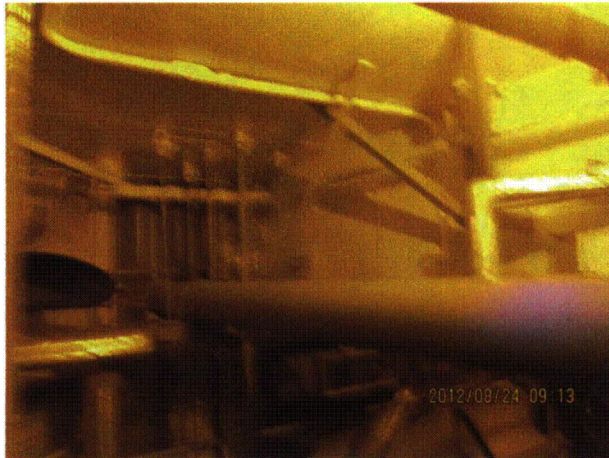
Location (Bldg, Elev, Room/Area): AWC-U1-15



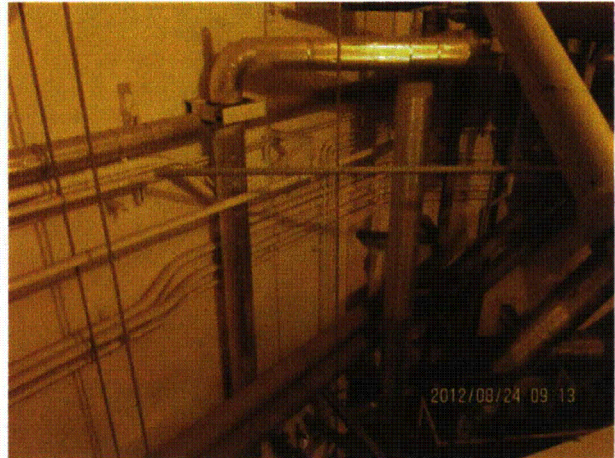
Quad Cities 068



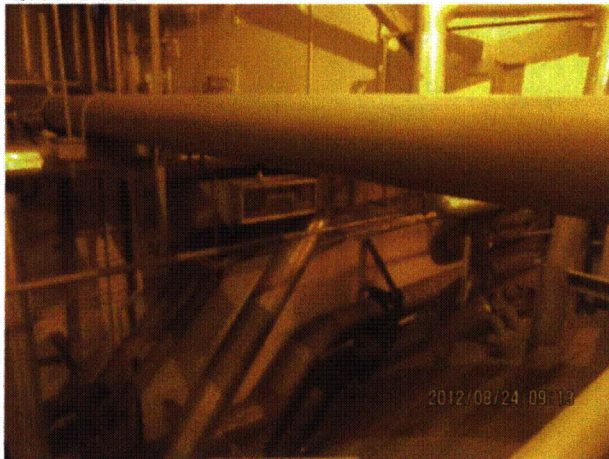
Quad Cities 069



Quad Cities 070



Quad Cities 071



Quad Cities 072



Quad Cities 080

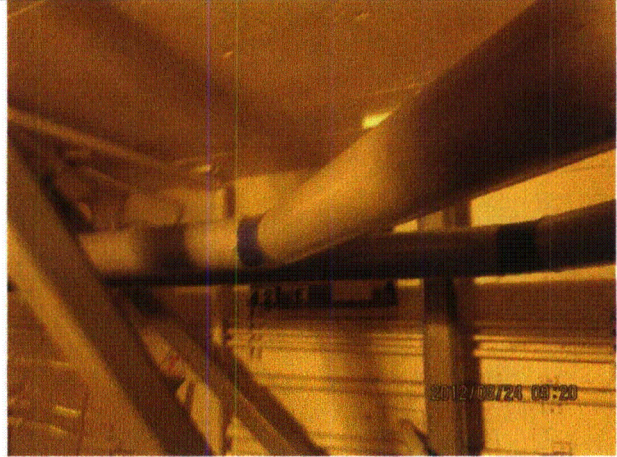
Status: Y N U

Area Walk-By Checklist (AWC)

Location (Bldg, Elev, Room/Area): AWC-U1-15



Quad Cities 081



Quad Cities 082



Quad Cities 083

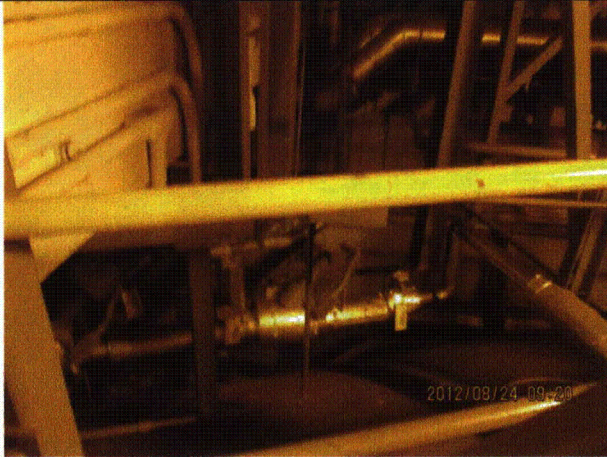


Quad Cities 084

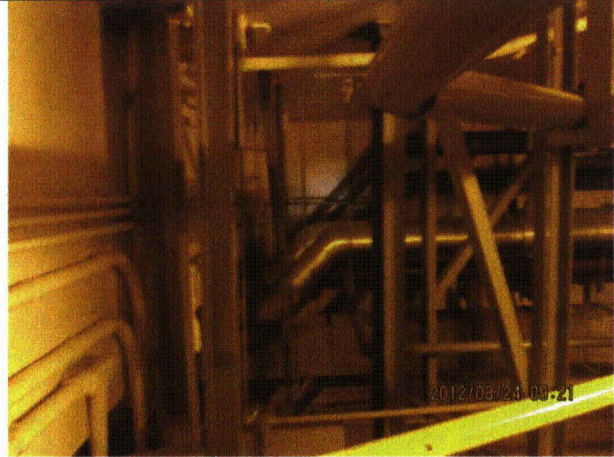
Status: Y N U

Area Walk-By Checklist (AWC)

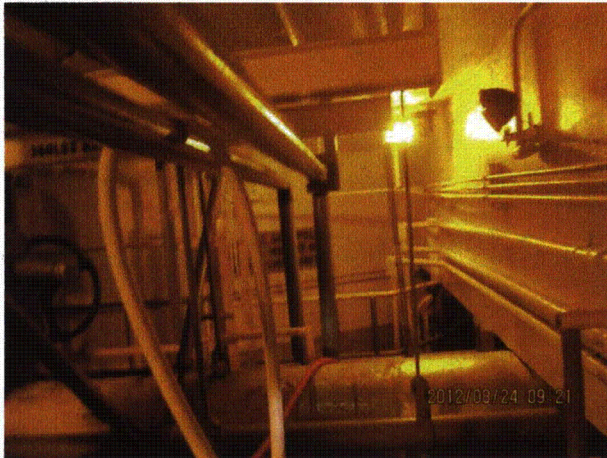
Location (Bldg, Elev, Room/Area): AWC-U1-15



Quad Cities 085



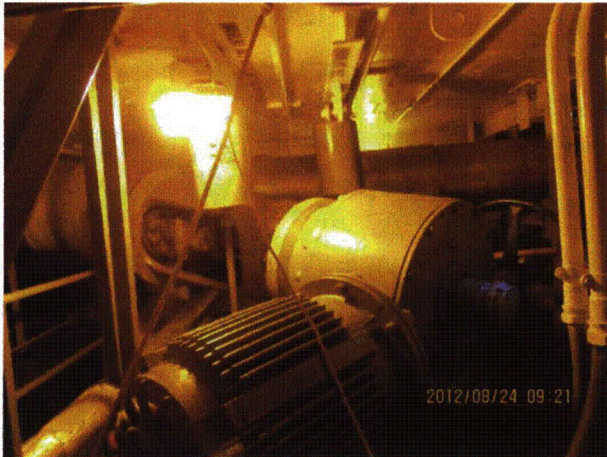
Quad Cities 086



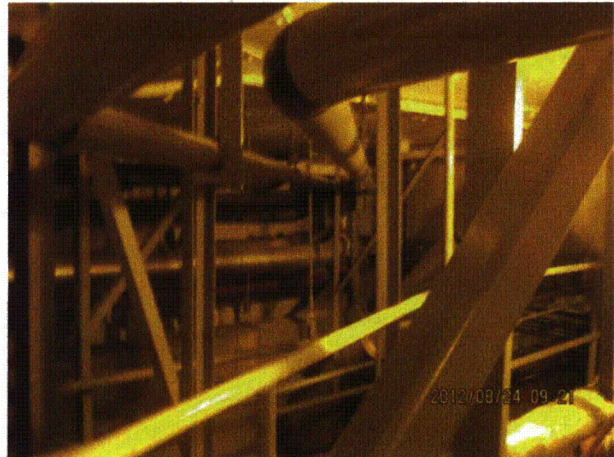
Quad Cities 087



Quad Cities 088



Quad Cities 089

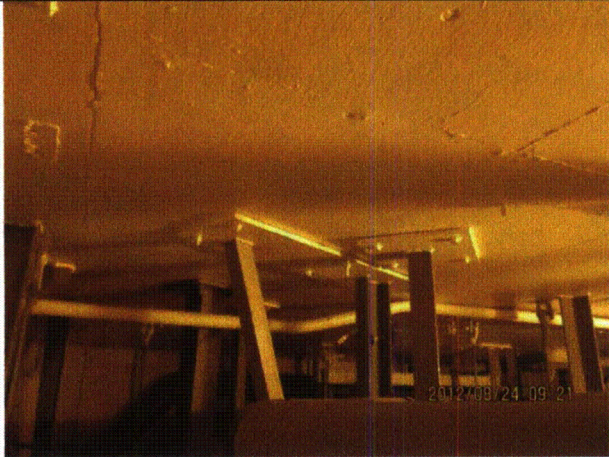


Quad Cities 090

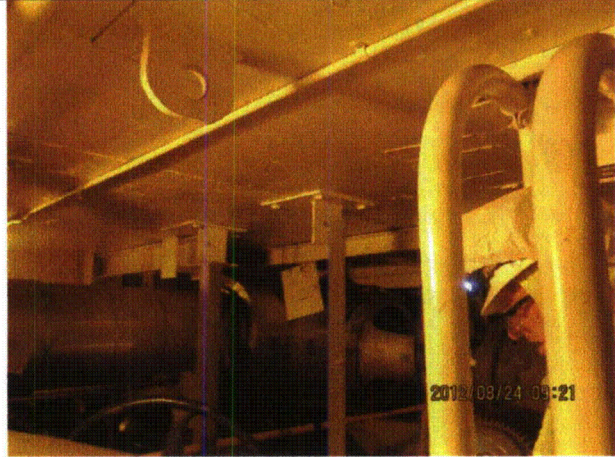
Status: Y N U

Area Walk-By Checklist (AWC)

Location (Bldg, Elev, Room/Area): AWC-U1-15



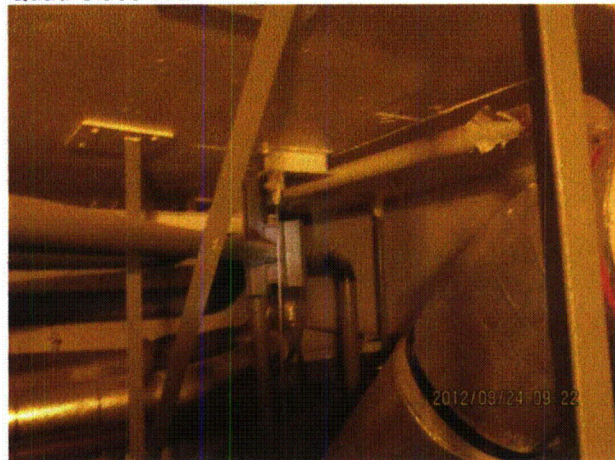
Quad Cities 091



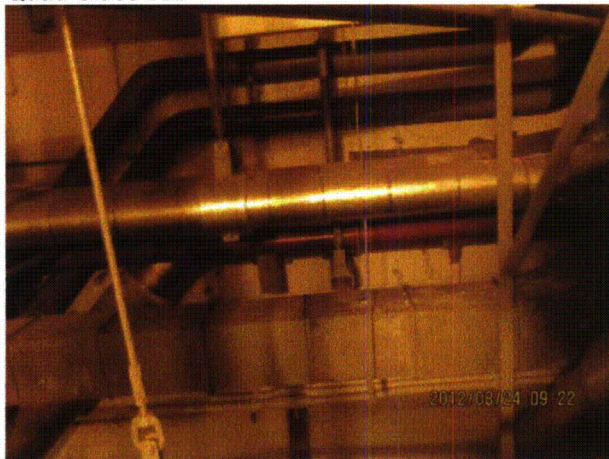
Quad Cities 092



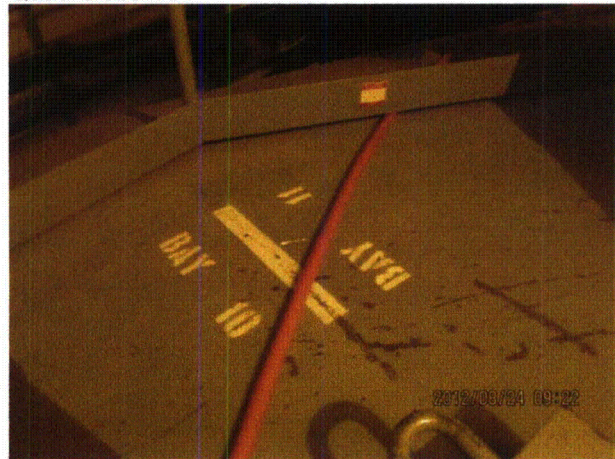
Quad Cities 093



Quad Cities 094



Quad Cities 095

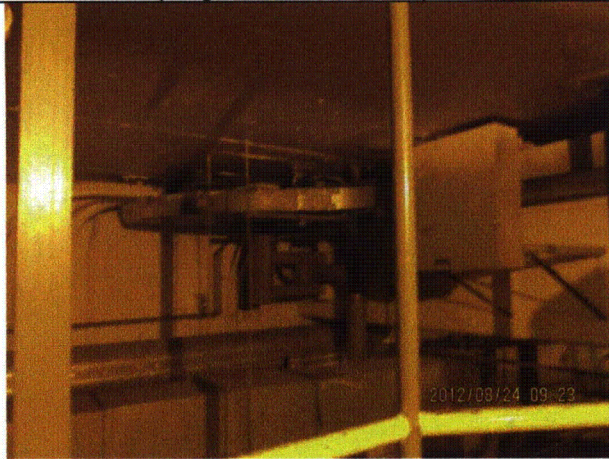


Quad Cities 096

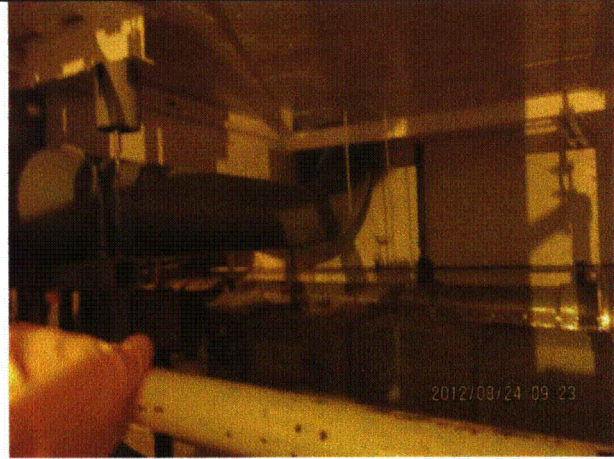
Status: Y N U

Area Walk-By Checklist (AWC)

Location (Bldg, Elev, Room/Area): AWC-U1-15



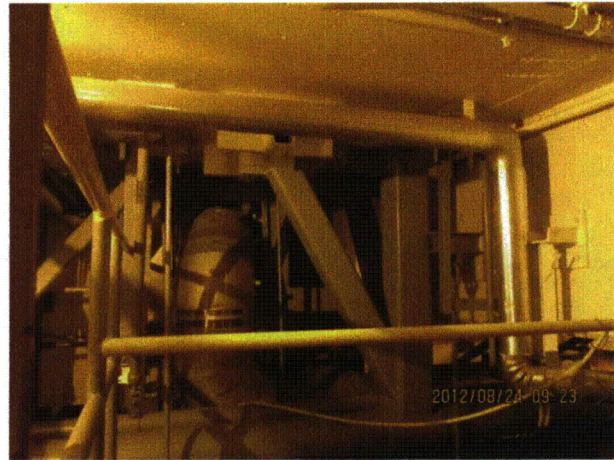
Quad Cities 097



Quad Cities 098



Quad Cities 099



Quad Cities 100



Quad Cities 101