

Status: Y N U

Seismic Walkdown Checklist (SWC)

Equipment ID No.: 901-5

Equipment Class: (20) Instrumentation and Control Panels and Cabinets

Equipment Description: PANEL

Project: Quad Cities 1 SWEL

Location (Bldg, Elev, Room/Area): SB, 623.00 ft, ALL

Manufacturer/Model:

Instructions for Completing Checklist

This checklist may be used to document the results of the Seismic Walkdown of an item of equipment on the SWEL. The space below each of the following questions may be used to record the results of judgments and findings. Additional space is provided at the end of this checklist for documenting other comments.

Anchorage

1. Is anchorage configuration verification required (i.e., is the item one of the 50% of SWEL items requiring such verification)? Yes

2. Is the anchorage free of bent, broken, missing or loose hardware? Yes

3. Is the anchorage free of corrosion that is more than mild surface oxidation? Yes

4. Is the anchorage free of visible cracks in the concrete near the anchors? Yes

5. Is the anchorage configuration consistent with plant documentation? (Note: This question only applies if the item is one of the 50% for which an anchorage configuration verification is required.) Yes

6. Based on the above anchorage evaluations, is the anchorage free of potentially adverse seismic conditions? Yes
Viewed 10 of 14 anchors. Remaining anchors could not be viewed due to cabling and limitation on access. Anchors viewed matched documentation. Thus it is reasonable to conclude that the anchors match plant documentation without further verification.

Status: Y N U

Seismic Walkdown Checklist (SWC)

Equipment ID No.: 901-5

Equipment Class: (20) Instrumentation and Control Panels and Cabinets

Equipment Description: PANEL

Interaction Effects

7. Are soft targets free from impact by nearby equipment or structures? Yes
Moved chairs to satisfactory location per seismic storage procedure. See IR 1405922.
8. Are overhead equipment, distribution systems, ceiling tiles and lighting, and masonry block walls not likely to collapse onto the equipment? Yes
Overhead equipment not visible due to drop ceilings outside of cabinet and sheet metal ceiling inside.
9. Do attached lines have adequate flexibility to avoid damage? Yes
10. Based on the above seismic interaction evaluations, is equipment free of potentially adverse seismic interaction effects? Yes

Other Adverse Conditions

11. Have you looked for and found no adverse seismic conditions that could adversely affect the safety functions of the equipment? Yes
Back of panel was open. No adverse seismic conditions were observed.

Comments

SEWS Anchorage Notes:

Panel 901-5 has 14 welded or bolted friction clips (4 on front, 5 in center and 5 on back) attaching base channel to embedded steel.

Seismic Walkdown Team: D. Carter & J. Griffith - 8/20/2012

Per Operations, no photos permitted in control room.

Status: Y N U

Seismic Walkdown Checklist (SWC)

Equipment ID No.: 901-5

Equipment Class: (20) Instrumentation and Control Panels and Cabinets

Equipment Description: PANEL

Evaluated by: *David Carter* David Carter

Date: 10/4/2012

James D. Griffith James Griffith

10/4/2012

Photos

Status: Y N U

Seismic Walkdown Checklist (SWC)

Equipment ID No.: 901-61

Equipment Class: (14) Distribution Panels

Equipment Description: PNL, CONTROL

Project: Quad Cities 1 SWEL

Location (Bldg, Elev, Room/Area): SB, 609.00 ft, ALL

Manufacturer/Model:

Instructions for Completing Checklist

This checklist may be used to document the results of the Seismic Walkdown of an item of equipment on the SWEL. The space below each of the following questions may be used to record the results of judgments and findings. Additional space is provided at the end of this checklist for documenting other comments.

Anchorage

1. Is anchorage configuration verification required (i.e., is the item one of the 50% of SWEL items requiring such verification)? Yes

2. Is the anchorage free of bent, broken, missing or loose hardware? Yes

3. Is the anchorage free of corrosion that is more than mild surface oxidation? Yes

4. Is the anchorage free of visible cracks in the concrete near the anchors? Yes

5. Is the anchorage configuration consistent with plant documentation? (Note: This question only applies if the item is one of the 50% for which an anchorage configuration verification is required.) Yes

6. Based on the above anchorage evaluations, is the anchorage free of potentially adverse seismic conditions? Yes

Interaction Effects

7. Are soft targets free from impact by nearby equipment or structures? Yes

Status: Y N U

Seismic Walkdown Checklist (SWC)

Equipment ID No.: 901-61

Equipment Class: (14) Distribution Panels

Equipment Description: PNL, CONTROL

8. Are overhead equipment, distribution systems, ceiling tiles and lighting, and masonry block walls not likely to collapse onto the equipment? Yes
9. Do attached lines have adequate flexibility to avoid damage? Yes
10. Based on the above seismic interaction evaluations, is equipment free of potentially adverse seismic interaction effects? Yes

Other Adverse Conditions

11. Have you looked for and found no adverse seismic conditions that could adversely affect the safety functions of the equipment? Yes

Comments

SEWS Anchorage Notes:

Panel is 72" tall x 48"W x 10" deep mounted on 2 legs. Each leg is anchored by eight - 3/8: CEA.

Seismic Walkdown Team: D. Carter & J. Griffith - 8/20/2012

Evaluated by:

David Carter David Carter

Date: 10/4/2012

James D. Griffith James Griffith

10/4/2012

Status: Y N U

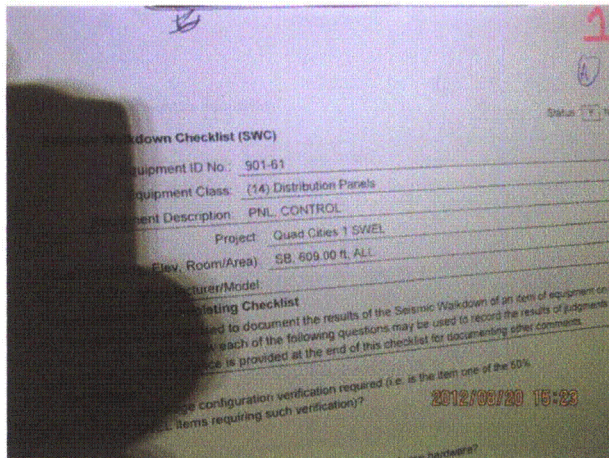
Seismic Walkdown Checklist (SWC)

Equipment ID No.: 901-61

Equipment Class: (14) Distribution Panels

Equipment Description: PNL, CONTROL

Photos



8-20-12 Quad Cities 243 (1)



8-20-12 Quad Cities 243 (2)



8-20-12 Quad Cities 243 (3)



8-20-12 Quad Cities 243 (4)

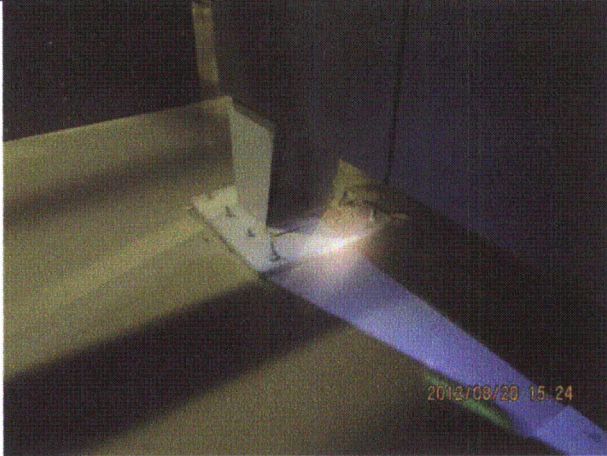
Status: Y N U

Seismic Walkdown Checklist (SWC)

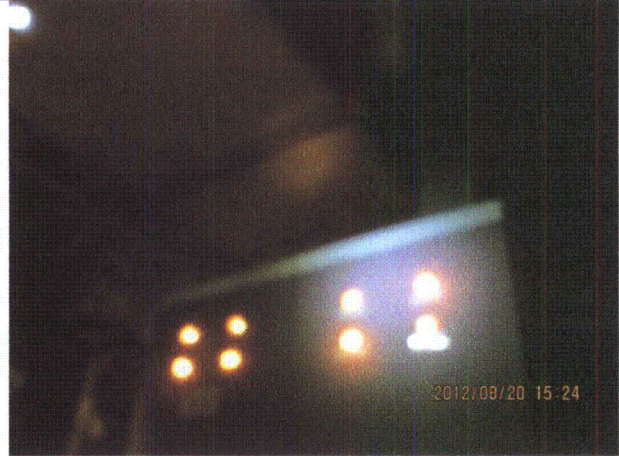
Equipment ID No.: 901-61

Equipment Class: (14) Distribution Panels

Equipment Description: PNL, CONTROL



8-20-12 Quad Cities 243 (5)



8-20-12 Quad Cities 243 (6)



8-20-12 Quad Cities 243 (7)

Status: Y N U

Seismic Walkdown Checklist (SWC)

Equipment ID No.: 901-62

Equipment Class: (14) Distribution Panels

Equipment Description: PNL, CONTROL

Project: Quad Cities 1 SWEL

Location (Bldg, Elev, Room/Area): SB, 609.00 ft, ALL

Manufacturer/Model:

Instructions for Completing Checklist

This checklist may be used to document the results of the Seismic Walkdown of an item of equipment on the SWEL. The space below each of the following questions may be used to record the results of judgments and findings. Additional space is provided at the end of this checklist for documenting other comments.

Anchorage

1. Is anchorage configuration verification required (i.e., is the item one of the 50% of SWEL items requiring such verification)? Yes

2. Is the anchorage free of bent, broken, missing or loose hardware? Yes
Multiple stacked washers at some anchors judged to be acceptable.

3. Is the anchorage free of corrosion that is more than mild surface oxidation? Yes

4. Is the anchorage free of visible cracks in the concrete near the anchors? Yes

5. Is the anchorage configuration consistent with plant documentation? (Note: This question only applies if the item is one of the 50% for which an anchorage configuration verification is required.) Yes

6. Based on the above anchorage evaluations, is the anchorage free of potentially adverse seismic conditions? Yes

Interaction Effects

7. Are soft targets free from impact by nearby equipment or structures? Yes

Status: Y N U

Seismic Walkdown Checklist (SWC)

Equipment ID No.: 901-62

Equipment Class: (14) Distribution Panels

Equipment Description: PNL, CONTROL

8. Are overhead equipment, distribution systems, ceiling tiles and lighting, and masonry block walls not likely to collapse onto the equipment? Yes
9. Do attached lines have adequate flexibility to avoid damage? Yes
10. Based on the above seismic interaction evaluations, is equipment free of potentially adverse seismic interaction effects? Yes

Other Adverse Conditions

11. Have you looked for and found no adverse seismic conditions that could adversely affect the safety functions of the equipment? Yes

Comments

SEWS Anchorage Notes:

Panel is 72" tall x 48"W x 10" deep mounted on 2 legs. Each leg is anchored by eight - 3/8" CEA.

Seismic Walkdown Team: D. Carter & J. Griffith - 8/20/2012

Evaluated by:

David Carter David Carter

Date: 10/4/2012

James D. Griffith James Griffith

10/4/2012

Status: Y N U

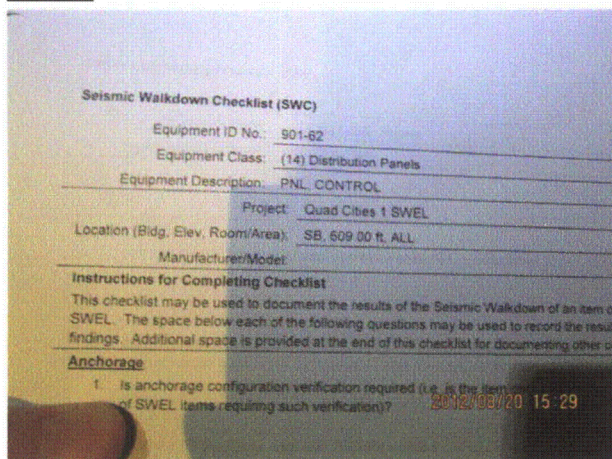
Seismic Walkdown Checklist (SWC)

Equipment ID No.: 901-62

Equipment Class: (14) Distribution Panels

Equipment Description: PNL, CONTROL

Photos



8-20-12 Quad Cities 250 (1)



8-20-12 Quad Cities 250 (2)



8-20-12 Quad Cities 250 (3)



8-20-12 Quad Cities 250 (4)

Status: Y N U

Seismic Walkdown Checklist (SWC)

Equipment ID No.: 901-62

Equipment Class: (14) Distribution Panels

Equipment Description: PNL, CONTROL



8-20-12 Quad Cities 250 (5)



8-20-12 Quad Cities 250 (6)



8-20-12 Quad Cities 250 (7)



8-20-12 Quad Cities 250 (8)

Status: Y N U

Seismic Walkdown Checklist (SWC)

Equipment ID No.: 901-62

Equipment Class: (14) Distribution Panels

Equipment Description: PNL, CONTROL



8-20-12 Quad Cities 250 (9)

D

Area Walk-By Checklists (AWCs)

Table D-1 provides the building, elevation, and location of each area as well as a list of SWEL items associated with each area, and page numbers of each Area Walk-By Checklist.

Table D-1. Summary of Area Walk-By Checklists

| AWC-U1-xx | BUILDING | ELEVATION | LOCATION | BASE COMPONENT ID | PAGE |
|-----------|----------|-----------|----------------------|--|---------|
| 1 | Turbine | 615 | | 1-7800-18-2 | D - 4 |
| 2 | Turbine | 615 | Battery Charger Room | 1-8300-1, 1-8350, 250VDC MCC 1 | D - 10 |
| 3 | Turbine | 628 | Battery Room | 125 VDC BATT 1, 250 VDC BATT 1 | D - 18 |
| 4 | Turbine | 615 | B HVAC Room | 1/2-9400-102 | D - 21 |
| 5 | Reactor | 647 | | 1-1601-23-AO, 1-1601-24-AO | D - 25 |
| 6 | Turbine | 547 | 1D RHRSW Vault | 1-3903, 1-5749 | D - 31 |
| 7 | Reactor | 554 | Torus - Top of Bay 4 | 1-1601-21 | D - 37 |
| 8 | Diesel | 595 | DG Day Tank Room | 1-5202 | D - 45 |
| 9 | Diesel | 595 | DG Room | 1-4600A, 1-4604, 1-4605, 1-4641-42A, 1-4699-226, 1-5203, 1-5727, 1-6601, 1-6654, 1-6661A, 2251-10, 2251-113 | D - 50 |
| 10 | Reactor | 595 | | 1-7800-18195 | D - 57 |
| 11 | Reactor | 554 | 1A CS/RCIC Pump Room | 1-5748A | D - 62 |
| 12 | Reactor | 554 | | 2201-59A | D - 67 |
| 13 | Service | 609 | Cable Spreading Room | 2201-73A, 901-61, 901-62 | D - 84 |
| 14 | Reactor | 623 | | 1-8801A-AO, 2201-32 | D - 91 |
| 15 | Reactor | 554 | Torus | 1-0302-22A, 1-1001-22A, 1-1001-29A, 1-1001-34A, 1-2001-3 | D - 103 |
| 16 | Reactor | 595 | North CRD/HCU Bank | 1-0302-21A, 1-0305-125-34-03, 1-0305-125-34-35, 1-0305-126-34-03, 1-0305-126-34-35, 1-0305-127-34-03, 1-0305-127-34-35, 1-0305-34-03, 1-0305-34-35, 2201-7 | D - 119 |
| 17 | Reactor | 595 | South CRD/HCU Bank | 1-0302-19A, 1-0302-20A, 1-0305-125-26-31, 1-0305-125-30-03, 1-0305-126-26-31, 1-0305-126-30-03, 1-0305-127-26-31, 1-0305-127-30-03, 1-0305-26-31, 1-0305-30-03, 1-1601-57-MO, 2201-8 | D - 130 |
| 18 | Service | 595 | AEER | 901-33, 901-39 | D - 140 |
| 19 | Service | 623 | Control Room | 901-3, 901-5 | D - 145 |
| 20 | Turbine | 639, 647 | | 1-6705-13-1, 1-7100, 1-7100-18, 2251-86 | D - 147 |
| 21 | Turbine | 639 | | 2251-87 | D - 155 |
| 22 | Turbine | 547 | | 1-1001-65A, 1-5745A | D - 160 |
| 23 | Reactor | 623 | | 1-7800-18-1B, 1-7800-19-1, 250VDC MCC 1A | D - 166 |

| AWC-U1-xx | BUILDING | ELEVATION | LOCATION | BASE COMPONENT ID | PAGE |
|-----------|----------|-----------|-------------------------------------|--|---------|
| 24 | Reactor | 554 | HPCI Room | 1-2301-14-MO, 1-2301-29-AO, 1-2301-31-AO, 1-2301-35-MO, 1-2301-3-MO, 1-2301-49-MO, 1-2301-6-MO, 1-2301-9-MO, 1-2302, 1-2304, 1-2308, 1-2310, 1-2399-15-PCV, 1-5747, 2201-29A | D - 176 |
| 25 | Reactor | 580 | 1B RHR Corner Room - Gallery Level | 1-1001-165B, 1-1003B | D - 183 |
| 26 | Reactor | 554 | 1B RHR Corner Room - Basement Level | 1-1001-145C, 1-1001-166B, 1-1001-16B, 1-1002C | D - 190 |
| OUTAGE | --- | --- | | 1-0203-1A-1, 1-0203-3A, 1-0203-4A, 1-0220-45, 1-1201-2, 1-1201-5, 1-1301-16-MO, 1-1301-17-MO, 1-0203-0001AH25 | |

Status: Y N U

Area Walk-By Checklist (AWC)

Location (Bldg, Elev, Room/Area): AWC-U1-01

Instructions for Completing Checklist

This checklist may be used to document the results of the Area Walk-By near one or more SWEL items. The space below each of the following questions may be used to record the results of judgments and findings. Additional space is provided at the end of this checklist for documenting other comments.

1. Does anchorage of equipment in the area appear to be free of potentially adverse seismic conditions (if visible without necessarily opening cabinets)? Yes

 2. Does anchorage of equipment in the area appear to be free of significant degraded conditions? Yes

 3. Based on a visual inspection from the floor, do the cable/conduit raceways and HVAC ducting appear to be free of potentially adverse seismic conditions (e.g., condition of supports is adequate and fill conditions of cable trays appear to be inside acceptable limits)? Yes
Minor bends in hanger rods judged to be acceptable.

 4. Does it appear that the area is free of potentially adverse seismic spatial interactions with other equipment in the area (e.g., ceiling tiles and lighting)? Yes

 5. Does it appear that the area is free of potentially adverse seismic interactions that could cause flooding or spray in the area? Yes
Threaded fire piping well-supported. Judged to be acceptable.

 6. Does it appear that the area is free of potentially adverse seismic interactions that could cause a fire in the area? Yes
Hydrogen piping welded and well-supported; judged to be acceptable. Metal oil rag bin covered and judged to be acceptable.

 7. Does it appear that the area is free of potentially adverse seismic interactions associated with housekeeping practices, storage of portable equipment, and temporary installations (e.g., scaffolding, lead shielding)? Yes
Storage issue corrected during walkdown. See IR 1405922.
-

Status: Y N U

Area Walk-By Checklist (AWC)

Location (Bldg, Elev, Room/Area): AWC-U1-01

8. Have you looked for and found no other seismic conditions that could adversely affect the safety functions of the equipment in the area? Yes

Contact between fire pipe and hydrogen pipe judged to be acceptable due to line flexibility.

Proximity between hydrogen pipe and gray pipe judged to be acceptable due to line flexibility.

Recorder at MCC-15-1 restrained from contact by cable pile; judged to be acceptable.

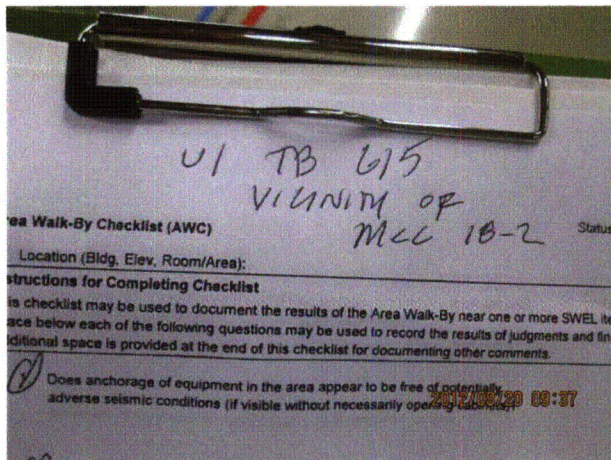
Comments

Seismic Walkdown Team: D. Carter & J. Griffith - 8/20/2012

Evaluated by: David Carter Date: 10/4/2012

James D Griffith James Griffith 10/4/2012

Photos



8-20-12 Quad Cities 011 (1)



8-20-12 Quad Cities 011 (10)

Status: Y N U

Area Walk-By Checklist (AWC)

Location (Bldg, Elev, Room/Area): AWC-U1-01



8-20-12 Quad Cities 011 (11)

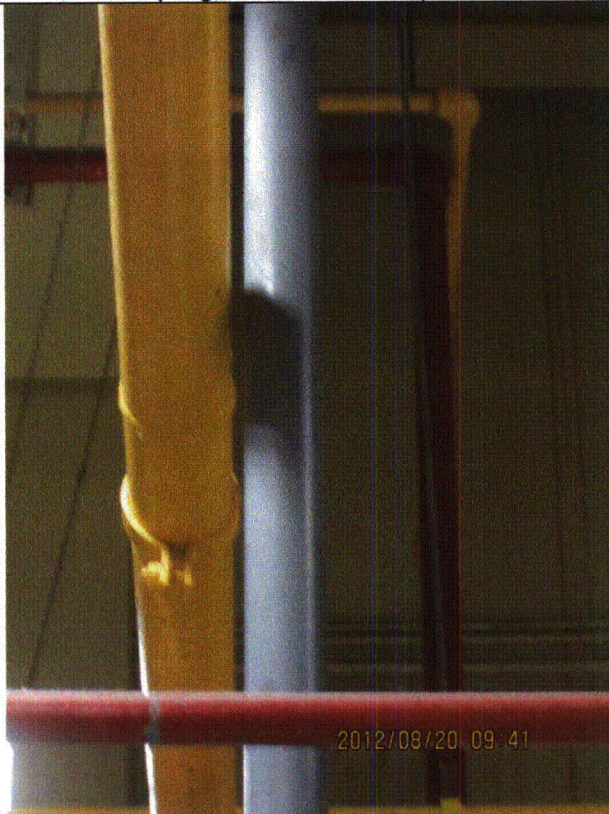


8-20-12 Quad Cities 011 (12)

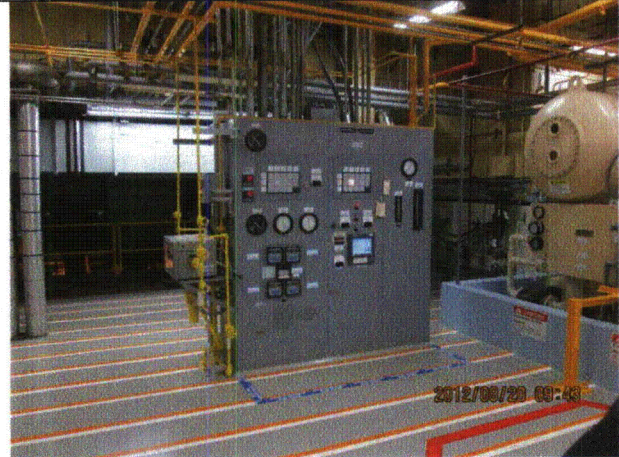
Status: Y N U

Area Walk-By Checklist (AWC)

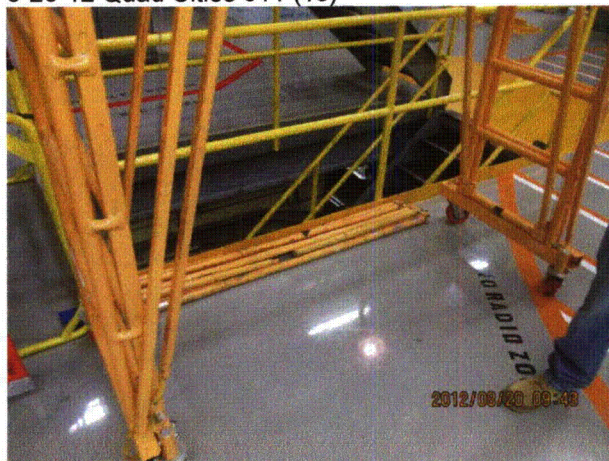
Location (Bldg, Elev, Room/Area): AWC-U1-01



8-20-12 Quad Cities 011 (13)



8-20-12 Quad Cities 011 (14)



8-20-12 Quad Cities 011 (15)

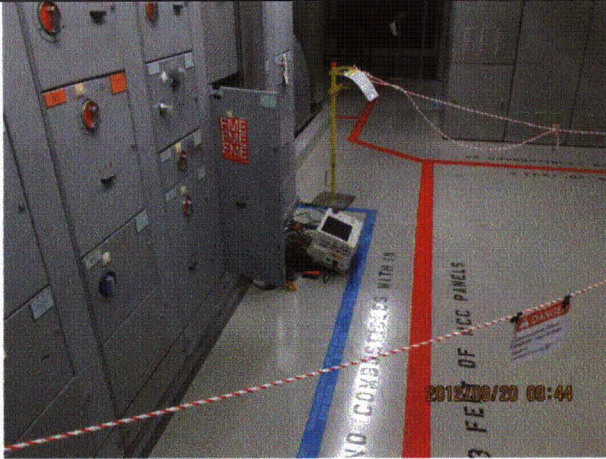


8-20-12 Quad Cities 011 (16)

Status: Y N U

Area Walk-By Checklist (AWC)

Location (Bldg, Elev, Room/Area): AWC-U1-01



8-20-12 Quad Cities 011 (17)



8-20-12 Quad Cities 011 (2)



8-20-12 Quad Cities 011 (3)



8-20-12 Quad Cities 011 (4)



8-20-12 Quad Cities 011 (5)

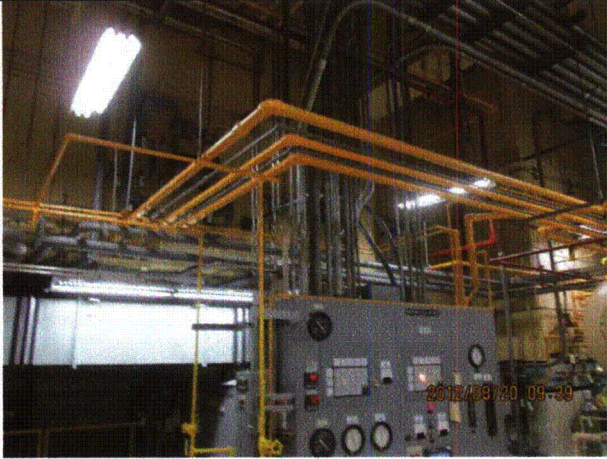


8-20-12 Quad Cities 011 (6)

Status: Y N U

Area Walk-By Checklist (AWC)

Location (Bldg, Elev, Room/Area): AWC-U1-01



8-20-12 Quad Cities 011 (7)



8-20-12 Quad Cities 011 (8)



8-20-12 Quad Cities 011 (9)

Status: Y N U

Area Walk-By Checklist (AWC)

Location (Bldg, Elev, Room/Area): AWC-U1-02

Instructions for Completing Checklist

This checklist may be used to document the results of the Area Walk-By near one or more SWEL items. The space below each of the following questions may be used to record the results of judgments and findings. Additional space is provided at the end of this checklist for documenting other comments.

1. Does anchorage of equipment in the area appear to be free of potentially adverse seismic conditions (if visible without necessarily opening cabinets)? Yes

 2. Does anchorage of equipment in the area appear to be free of significant degraded conditions? Yes
Cracks in floor in vicinity of equipment anchorage. Cracks are sufficient distance to not affect the anchor capacity. Judged to be acceptable.
Crack in floor near anchor for cable tray support. Support is attached to the slab with multiple anchors and judged to be adequate.
 3. Based on a visual inspection from the floor, do the cable/conduit raceways and HVAC ducting appear to be free of potentially adverse seismic conditions (e.g., condition of supports is adequate and fill conditions of cable trays appear to be inside acceptable limits)? Yes

 4. Does it appear that the area is free of potentially adverse seismic spatial interactions with other equipment in the area (e.g., ceiling tiles and lighting)? Yes

 5. Does it appear that the area is free of potentially adverse seismic interactions that could cause flooding or spray in the area? Yes
Heating line well-supported and judged to be acceptable.

 6. Does it appear that the area is free of potentially adverse seismic interactions that could cause a fire in the area? Yes

 7. Does it appear that the area is free of potentially adverse seismic interactions associated with housekeeping practices, storage of portable equipment, and temporary installations (e.g., scaffolding, lead shielding)? Yes
-

Status: Y N U

Area Walk-By Checklist (AWC)

Location (Bldg, Elev, Room/Area): AWC-U1-02

8. Have you looked for and found no other seismic conditions that could adversely affect the safety functions of the equipment in the area? Yes
Most rainhoods for equipment are dented. Dents will not adversely affect the equipment operation.

Several sheet metal screws missing from 1B-1. Sufficient remaining screws in place. Judged to be acceptable. See IR 1403074.

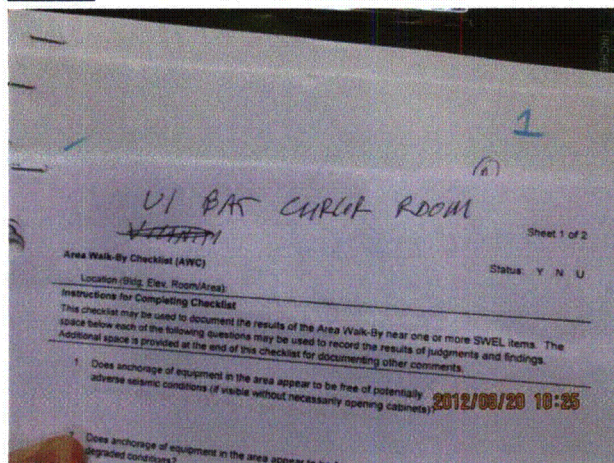
Comments

Seismic Walkdown Team: D. Carter & J. Griffith - 8/20/2012

Evaluated by: David Carter Date: 10/16/2012

James D. Griffith James Griffith 10/16/2012

Photos



8-20-12 Quad Cities 061 (1)



8-20-12 Quad Cities 061 (10)

Status: Y N U

Area Walk-By Checklist (AWC)

Location (Bldg, Elev, Room/Area): AWC-U1-02



8-20-12 Quad Cities 061 (11)



8-20-12 Quad Cities 061 (12)

Status: Y N U

Area Walk-By Checklist (AWC)

Location (Bldg, Elev, Room/Area): AWC-U1-02



8-20-12 Quad Cities 061 (13)



8-20-12 Quad Cities 061 (14)

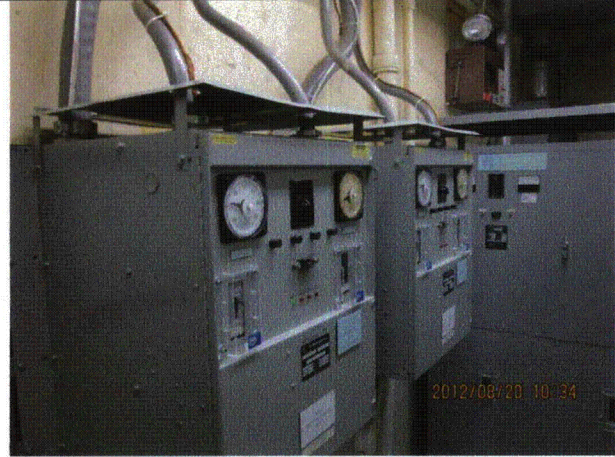
Status: Y N U

Area Walk-By Checklist (AWC)

Location (Bldg, Elev, Room/Area): AWC-U1-02



8-20-12 Quad Cities 061 (15)

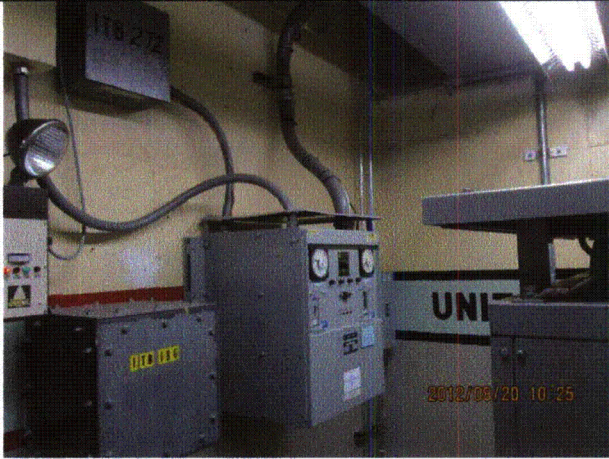


8-20-12 Quad Cities 061 (16)

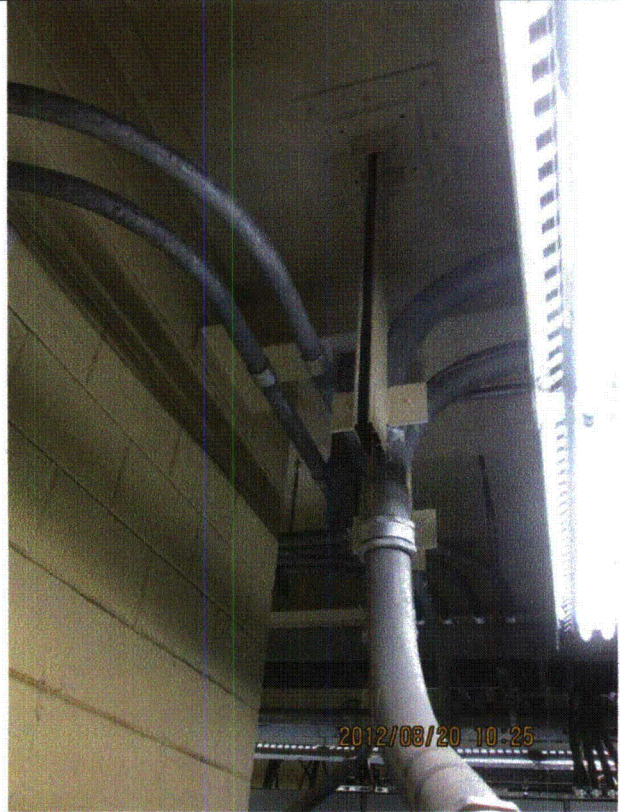
Status: Y N U

Area Walk-By Checklist (AWC)

Location (Bldg, Elev, Room/Area): AWC-U1-02



8-20-12 Quad Cities 061 (2)



8-20-12 Quad Cities 061 (3)

Status: Y N U

Area Walk-By Checklist (AWC)

Location (Bldg, Elev, Room/Area): AWC-U1-02



8-20-12 Quad Cities 061 (4)



8-20-12 Quad Cities 061 (5)



8-20-12 Quad Cities 061 (6)



8-20-12 Quad Cities 061 (7)

Status: Y N U

Area Walk-By Checklist (AWC)

Location (Bldg, Elev, Room/Area): AWC-U1-02



8-20-12 Quad Cities 061 (8)



8-20-12 Quad Cities 061 (9)

Status: Y N U

Area Walk-By Checklist (AWC)

Location (Bldg, Elev, Room/Area): AWC-U1-03

Instructions for Completing Checklist

This checklist may be used to document the results of the Area Walk-By near one or more SWEL items. The space below each of the following questions may be used to record the results of judgments and findings. Additional space is provided at the end of this checklist for documenting other comments.

1. Does anchorage of equipment in the area appear to be free of potentially adverse seismic conditions (if visible without necessarily opening cabinets)? Yes

 2. Does anchorage of equipment in the area appear to be free of significant degraded conditions? Yes

 3. Based on a visual inspection from the floor, do the cable/conduit raceways and HVAC ducting appear to be free of potentially adverse seismic conditions (e.g., condition of supports is adequate and fill conditions of cable trays appear to be inside acceptable limits)? Yes

 4. Does it appear that the area is free of potentially adverse seismic spatial interactions with other equipment in the area (e.g., ceiling tiles and lighting)? Yes

 5. Does it appear that the area is free of potentially adverse seismic interactions that could cause flooding or spray in the area? Yes
Threaded fire piping well-supported. Judged to be adequate.

 6. Does it appear that the area is free of potentially adverse seismic interactions that could cause a fire in the area? Yes

 7. Does it appear that the area is free of potentially adverse seismic interactions associated with housekeeping practices, storage of portable equipment, and temporary installations (e.g., scaffolding, lead shielding)? Yes
-

Status: Y N U

Area Walk-By Checklist (AWC)

Location (Bldg, Elev, Room/Area): AWC-U1-03

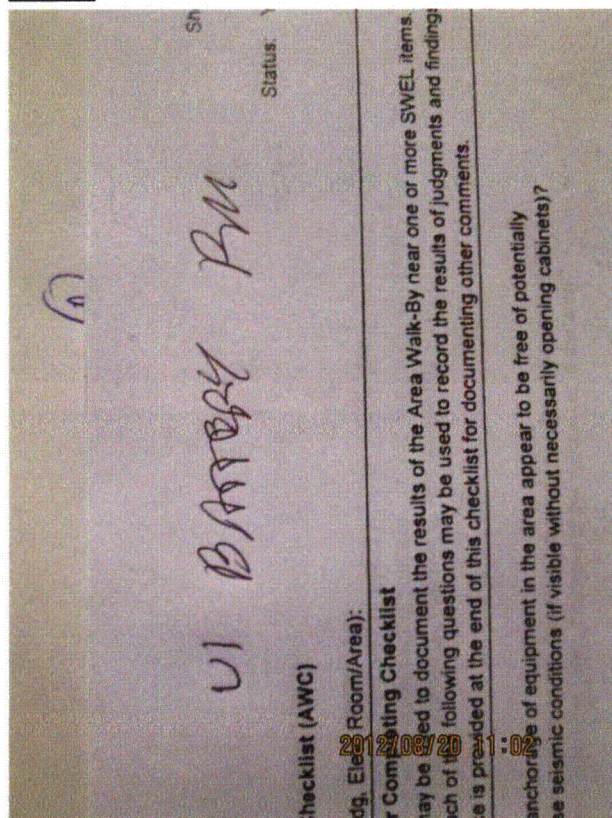
8. Have you looked for and found no other seismic conditions that could adversely affect the safety functions of the equipment in the area? Yes

Comments

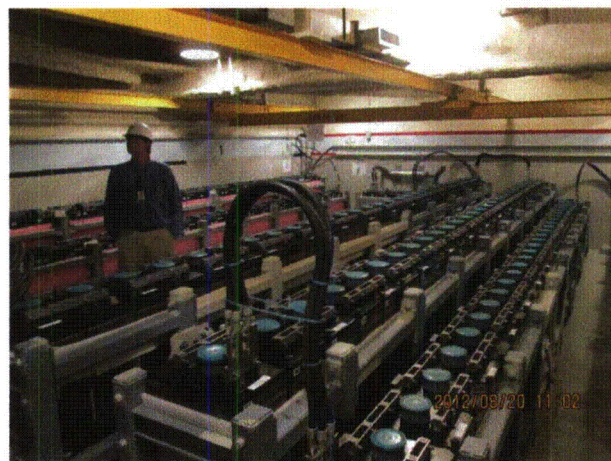
Seismic Walkdown Team: D. Carter & J. Griffith - 8/20/2012

Evaluated by: *David Carter* David Carter Date: 10/4/2012
James D. Griffith James Griffith 10/4/2012

Photos



8-20-12 Quad Cities 094 (1)



8-20-12 Quad Cities 094 (2)

Status: Y N U

Area Walk-By Checklist (AWC)

Location (Bldg, Elev, Room/Area): AWC-U1-03



8-20-12 Quad Cities 094 (3)



8-20-12 Quad Cities 094 (4)



8-20-12 Quad Cities 094 (5)



8-20-12 Quad Cities 094 (6)



8-20-12 Quad Cities 094 (7)



8-20-12 Quad Cities 094 (8)

Status: Y N U

Area Walk-By Checklist (AWC)

Location (Bldg, Elev, Room/Area): AWC-U1-04

Instructions for Completing Checklist

This checklist may be used to document the results of the Area Walk-By near one or more SWEL items. The space below each of the following questions may be used to record the results of judgments and findings. Additional space is provided at the end of this checklist for documenting other comments.

1. Does anchorage of equipment in the area appear to be free of potentially adverse seismic conditions (if visible without necessarily opening cabinets)? Yes

 2. Does anchorage of equipment in the area appear to be free of significant degraded conditions? Yes

 3. Based on a visual inspection from the floor, do the cable/conduit raceways and HVAC ducting appear to be free of potentially adverse seismic conditions (e.g., condition of supports is adequate and fill conditions of cable trays appear to be inside acceptable limits)? Yes

 4. Does it appear that the area is free of potentially adverse seismic spatial interactions with other equipment in the area (e.g., ceiling tiles and lighting)?
Flexible tube near insulated pipe judged to be acceptable. Yes

 5. Does it appear that the area is free of potentially adverse seismic interactions that could cause flooding or spray in the area? Yes

 6. Does it appear that the area is free of potentially adverse seismic interactions that could cause a fire in the area? Yes

 7. Does it appear that the area is free of potentially adverse seismic interactions associated with housekeeping practices, storage of portable equipment, and temporary installations (e.g., scaffolding, lead shielding)?
Storage issue corrected during walk-by. See IR 1405922. Yes
-

Status: Y N U

Area Walk-By Checklist (AWC)

Location (Bldg, Elev, Room/Area): AWC-U1-04

8. Have you looked for and found no other seismic conditions that could adversely affect the safety functions of the equipment in the area? Yes

Comments

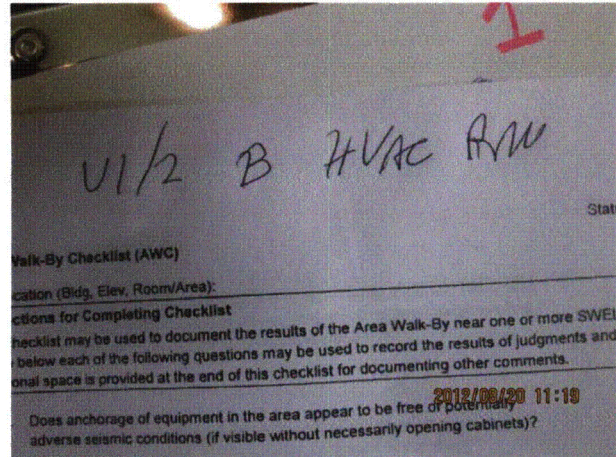
Seismic Walkdown Team: D. Carter & J. Griffith - 8/20/2012

Evaluated by: David Carter Date: 10/4/2012
James D. Griffith James Griffith 10/4/2012

Photos



8-20-12 Quad Cities 112 (1)



8-20-12 Quad Cities 112 (10)

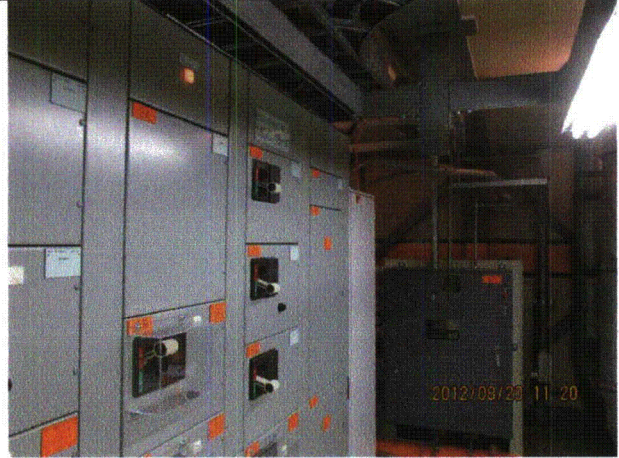
Status: Y N U

Area Walk-By Checklist (AWC)

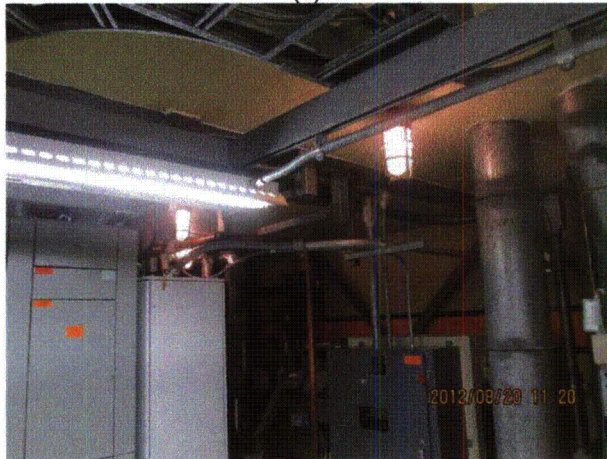
Location (Bldg, Elev, Room/Area): AWC-U1-04



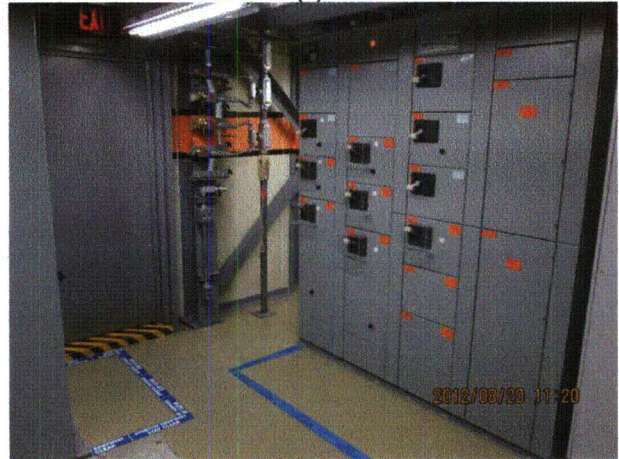
8-20-12 Quad Cities 112 (2)



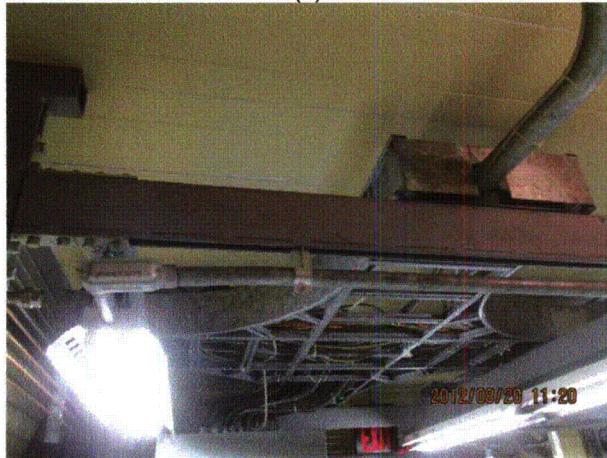
8-20-12 Quad Cities 112 (3)



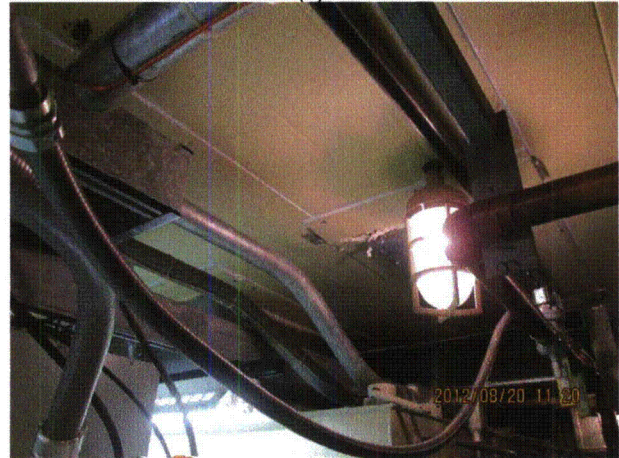
8-20-12 Quad Cities 112 (4)



8-20-12 Quad Cities 112 (5)



8-20-12 Quad Cities 112 (6)

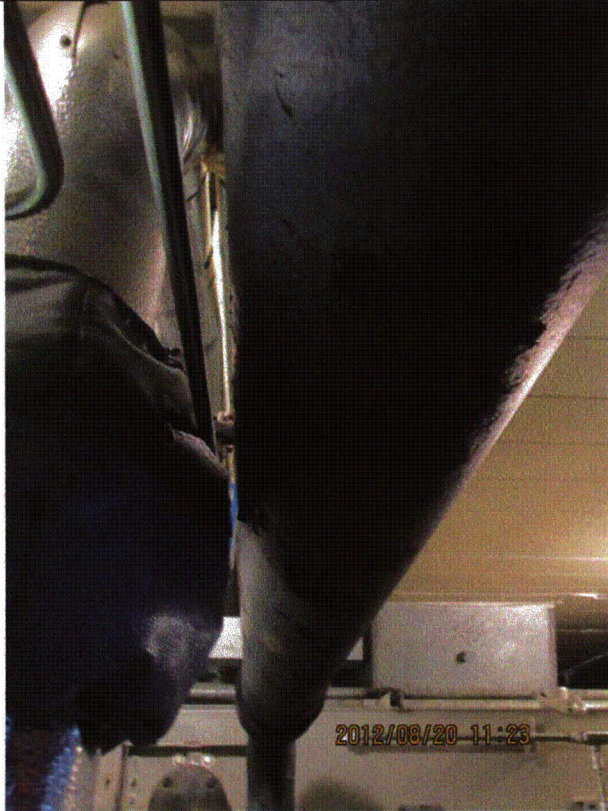


8-20-12 Quad Cities 112 (7)

Status: Y N U

Area Walk-By Checklist (AWC)

Location (Bldg, Elev, Room/Area): AWC-U1-04



8-20-12 Quad Cities 112 (8)



8-20-12 Quad Cities 112 (9)

Status: Y N U

Area Walk-By Checklist (AWC)

Location (Bldg, Elev, Room/Area): AWC-U1-05

Instructions for Completing Checklist

This checklist may be used to document the results of the Area Walk-By near one or more SWEL items. The space below each of the following questions may be used to record the results of judgments and findings. Additional space is provided at the end of this checklist for documenting other comments.

1. Does anchorage of equipment in the area appear to be free of potentially adverse seismic conditions (if visible without necessarily opening cabinets)? Yes

 2. Does anchorage of equipment in the area appear to be free of significant degraded conditions? Yes

 3. Based on a visual inspection from the floor, do the cable/conduit raceways and HVAC ducting appear to be free of potentially adverse seismic conditions (e.g., condition of supports is adequate and fill conditions of cable trays appear to be inside acceptable limits)? Yes

 4. Does it appear that the area is free of potentially adverse seismic spatial interactions with other equipment in the area (e.g., ceiling tiles and lighting)? Yes

 5. Does it appear that the area is free of potentially adverse seismic interactions that could cause flooding or spray in the area? Yes
Fire piping well-supported. Judged to be acceptable.

 6. Does it appear that the area is free of potentially adverse seismic interactions that could cause a fire in the area? Yes

 7. Does it appear that the area is free of potentially adverse seismic interactions associated with housekeeping practices, storage of portable equipment, and temporary installations (e.g., scaffolding, lead shielding)? Yes
Cart with wheels chocked located near sample panel for chemistry (non seismic) judged to be acceptable.
-

Status: Y N U

Area Walk-By Checklist (AWC)

Location (Bldg, Elev, Room/Area): AWC-U1-05

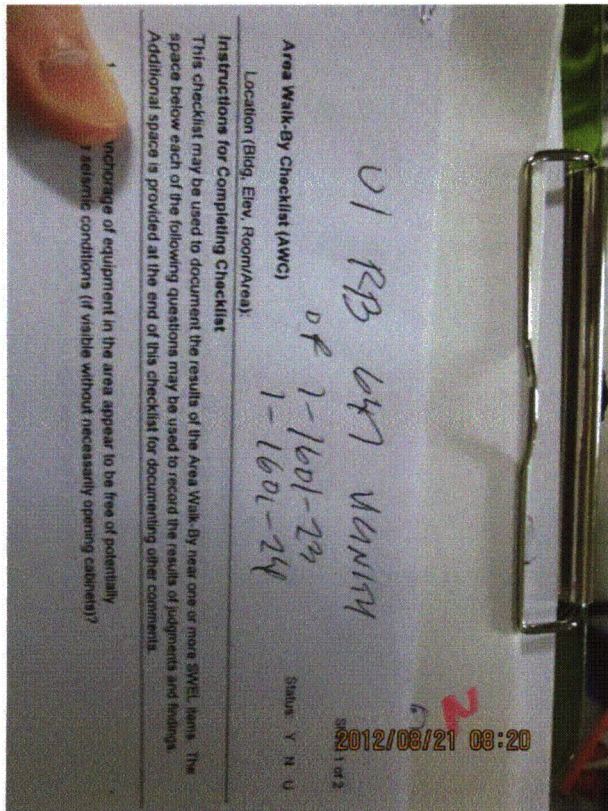
8. Have you looked for and found no other seismic conditions that could adversely affect the safety functions of the equipment in the area? Yes

Comments

Seismic Walkdown Team: D. Carter & J. Griffith - 8/21/2012

Evaluated by: David Carter Date: 10/4/2012
James D Griffith James Griffith 10/4/2012

Photos



8-21-12 Quad Cities 017



8-21-12 Quad Cities 018

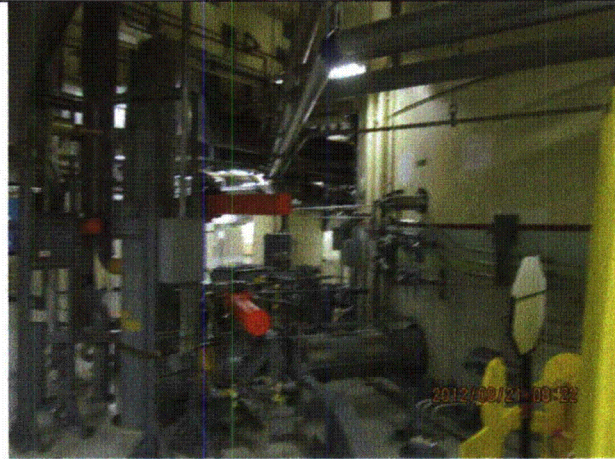
Status: Y N U

Area Walk-By Checklist (AWC)

Location (Bldg, Elev, Room/Area): AWC-U1-05



8-21-12 Quad Cities 019



8-21-12 Quad Cities 020



8-21-12 Quad Cities 021



8-21-12 Quad Cities 022

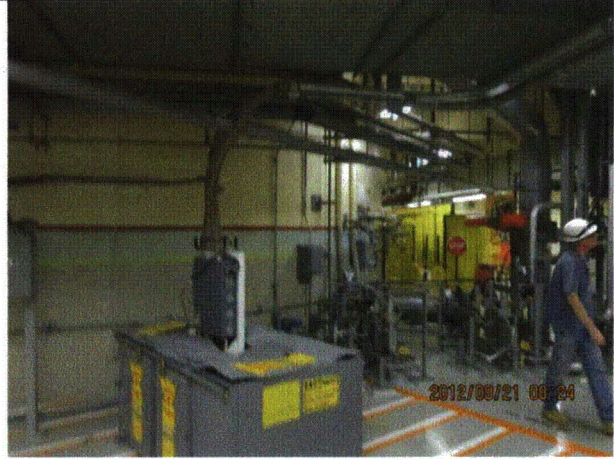
Status: Y N U

Area Walk-By Checklist (AWC)

Location (Bldg, Elev, Room/Area): AWC-U1-05



8-21-12 Quad Cities 023



8-21-12 Quad Cities 024



8-21-12 Quad Cities 025



8-21-12 Quad Cities 026

Status: Y N U

Area Walk-By Checklist (AWC)

Location (Bldg, Elev, Room/Area): AWC-U1-05



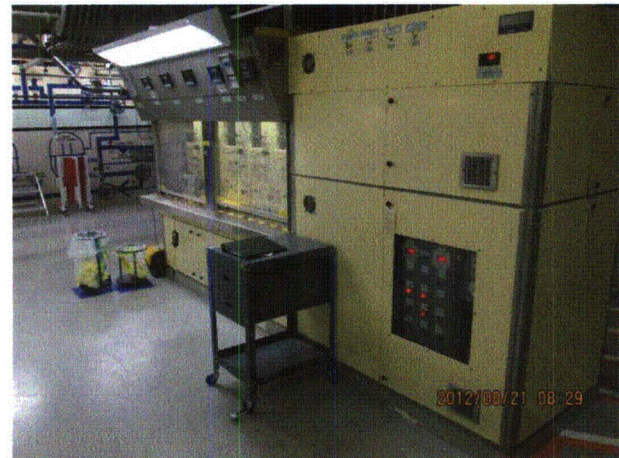
8-21-12 Quad Cities 027



8-21-12 Quad Cities 028



8-21-12 Quad Cities 029



8-21-12 Quad Cities 030

Status: Y N U

Area Walk-By Checklist (AWC)

Location (Bldg, Elev, Room/Area): AWC-U1-05



8-21-12 Quad Cities 031

Status: Y N U

Area Walk-By Checklist (AWC)

Location (Bldg, Elev, Room/Area): AWC-U1-06

Instructions for Completing Checklist

This checklist may be used to document the results of the Area Walk-By near one or more SWEL items. The space below each of the following questions may be used to record the results of judgments and findings. Additional space is provided at the end of this checklist for documenting other comments.

1. Does anchorage of equipment in the area appear to be free of potentially adverse seismic conditions (if visible without necessarily opening cabinets)? Yes

 2. Does anchorage of equipment in the area appear to be free of significant degraded conditions? Yes
Minor corrosion on some anchorage in area. Judged to be acceptable.

 3. Based on a visual inspection from the floor, do the cable/conduit raceways and HVAC ducting appear to be free of potentially adverse seismic conditions (e.g., condition of supports is adequate and fill conditions of cable trays appear to be inside acceptable limits)? Yes

 4. Does it appear that the area is free of potentially adverse seismic spatial interactions with other equipment in the area (e.g., ceiling tiles and lighting)? Yes
Open S-hooks on light fixture above 1-1001-65D. Hard-wired cord at open S-hook end, and swing restrained by robust targets. Judged to be acceptable.

Open S-hooks on light fixture above 1-1001-1D and 1-4941-2C-LS. Both items are robust targets. Strut and power cord would decelerate light fixture movement. Judged to be acceptable.

See IR 1403082.
 5. Does it appear that the area is free of potentially adverse seismic interactions that could cause flooding or spray in the area? Yes
Flood vault with well-supported piping.

 6. Does it appear that the area is free of potentially adverse seismic interactions that could cause a fire in the area? Yes

 7. Does it appear that the area is free of potentially adverse seismic interactions associated with housekeeping practices, storage of portable equipment, and temporary installations (e.g., scaffolding, lead shielding)? Yes
-

Status: Y N U

Area Walk-By Checklist (AWC)

Location (Bldg, Elev, Room/Area): AWC-U1-06

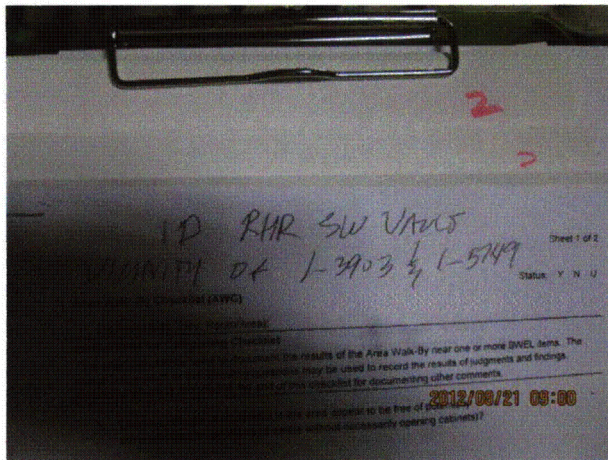
8. Have you looked for and found no other seismic conditions that could adversely affect the safety functions of the equipment in the area? Yes

Comments

Seismic Walkdown Team: D. Carter & J. Griffith - 8/21/2012

Evaluated by: David Carter Date: 10/4/2012
James D Griffith James Griffith 10/4/2012

Photos



8-21-12 Quad Cities 055



8-21-12 Quad Cities 056

Status: Y N U

Area Walk-By Checklist (AWC)

Location (Bldg, Elev, Room/Area): AWC-U1-06



8-21-12 Quad Cities 057



8-21-12 Quad Cities 058

Status: Y N U

Area Walk-By Checklist (AWC)

Location (Bldg, Elev, Room/Area): AWC-U1-06



8-21-12 Quad Cities 059



8-21-12 Quad Cities 060

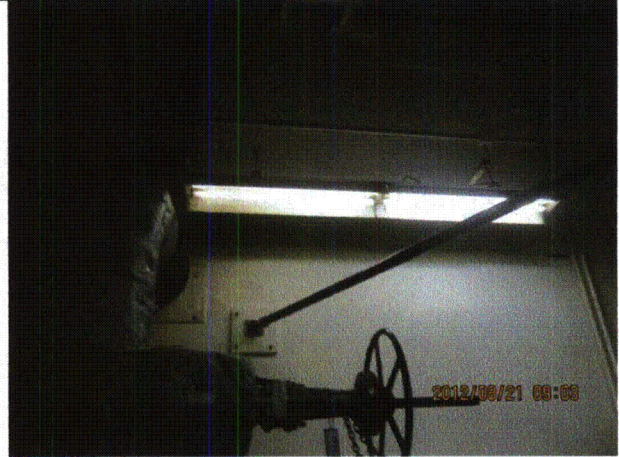
Status: Y N U

Area Walk-By Checklist (AWC)

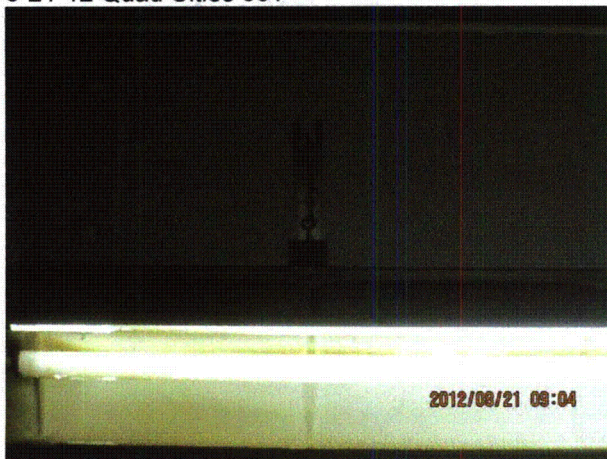
Location (Bldg, Elev, Room/Area): AWC-U1-06



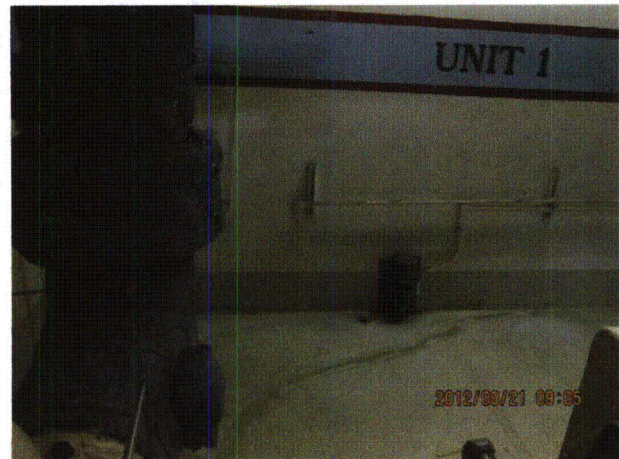
8-21-12 Quad Cities 061



8-21-12 Quad Cities 062



8-21-12 Quad Cities 063



8-21-12 Quad Cities 064

Status: Y N U

Area Walk-By Checklist (AWC)

Location (Bldg, Elev, Room/Area): AWC-U1-06



8-21-12 Quad Cities 065



8-21-12 Quad Cities 066



8-21-12 Quad Cities 067



8-21-12 Quad Cities 068

Status: Y N U

Area Walk-By Checklist (AWC)

Location (Bldg, Elev, Room/Area): AWC-U1-07

Instructions for Completing Checklist

This checklist may be used to document the results of the Area Walk-By near one or more SWEL items. The space below each of the following questions may be used to record the results of judgments and findings. Additional space is provided at the end of this checklist for documenting other comments.

1. Does anchorage of equipment in the area appear to be free of potentially adverse seismic conditions (if visible without necessarily opening cabinets)? Yes

 2. Does anchorage of equipment in the area appear to be free of significant degraded conditions? Yes
Spring hanger is anchored to W-shape beam. The beam has some local torsional warping distortion near the anchorage point. The distortion is small, and the spring hanger itself is not distorted. The distortion is judged to have happened while the stiffener plate was welded to the beam and is not due to the load of the hanging pipe. Beam is judged to be acceptable.
 3. Based on a visual inspection from the floor, do the cable/conduit raceways and HVAC ducting appear to be free of potentially adverse seismic conditions (e.g., condition of supports is adequate and fill conditions of cable trays appear to be inside acceptable limits)? Yes
Rod hangers in contact with insulated pipes in various locations. Hangers flexible, insulation would absorb seismic impact. Judged to be acceptable.
 4. Does it appear that the area is free of potentially adverse seismic spatial interactions with other equipment in the area (e.g., ceiling tiles and lighting)? Yes
Temporary staged light fixtures adequately restrained with zip-ties and would only impact robust targets. Judged to be acceptable.
 5. Does it appear that the area is free of potentially adverse seismic interactions that could cause flooding or spray in the area? Yes
All visible pipes are welded.
 6. Does it appear that the area is free of potentially adverse seismic interactions that could cause a fire in the area? Yes
Staged wooden blocks, plastic trash, and oil rag on gallery floor. Small amount of flammable material judged to be acceptable.
 7. Does it appear that the area is free of potentially adverse seismic interactions associated with housekeeping practices, storage of portable equipment, and temporary installations (e.g., scaffolding, lead shielding)? Yes
Various tools, buckets, etc. lying in staging area on gallery floor. Items would not impact safety-related equipment. Judged to be acceptable.
-

Status: Y N U

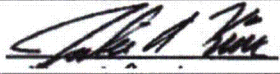
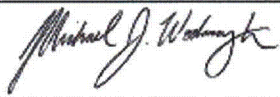
Area Walk-By Checklist (AWC)

Location (Bldg, Elev, Room/Area): AWC-U1-07

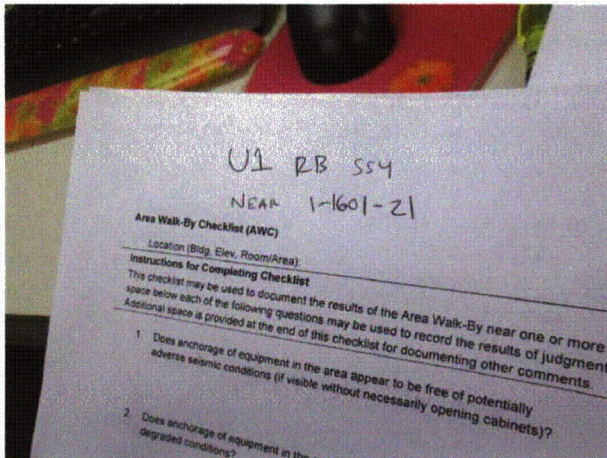
8. Have you looked for and found no other seismic conditions that could adversely affect the safety functions of the equipment in the area? Yes
Various pipes, tubes, and conduits in close proximity with one another. All are flexible. Judged to be acceptable.

Comments

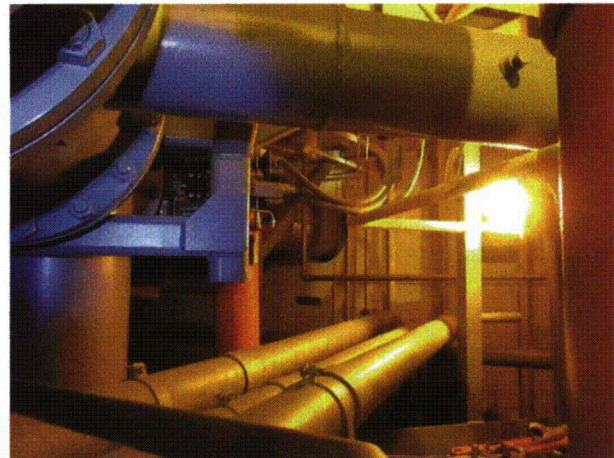
Seismic Walkdown Team: J.Kim & M. Wodarcyk - 9/5/2012

Evaluated by:  J. Kim Date: 10/12/2012
 M. Wodarcyk 10/12/2012

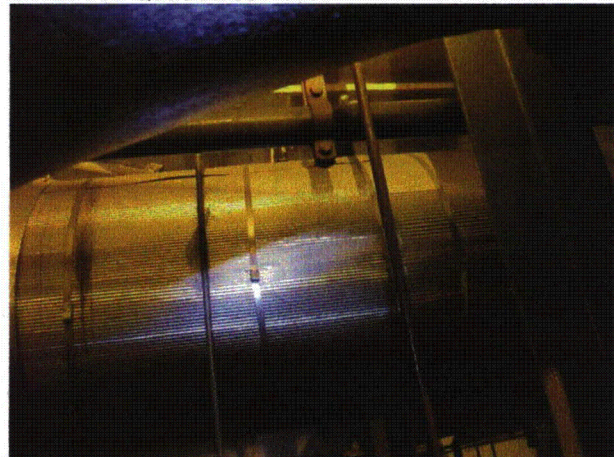
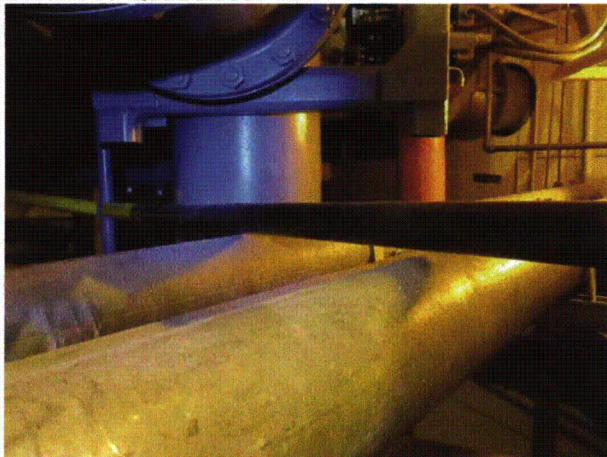
Photos



20120905-QuadCities1 129



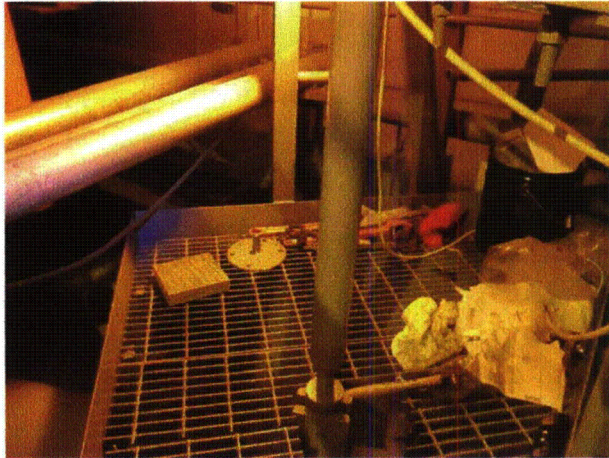
20120905-QuadCities1 133



Status: Y N U

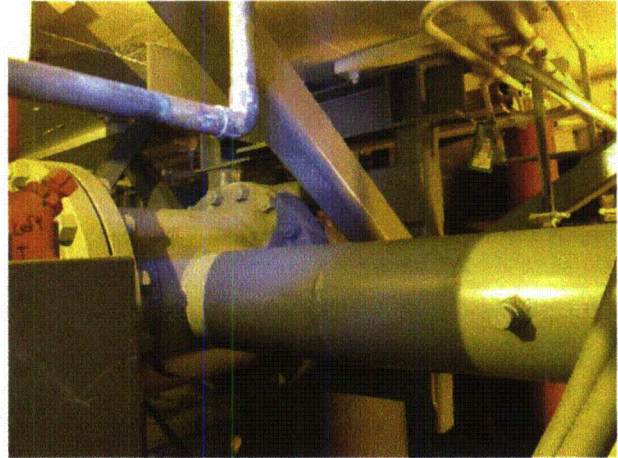
Area Walk-By Checklist (AWC)

Location (Bldg, Elev, Room/Area): AWC-U1-07
20120905-QuadCities1 134

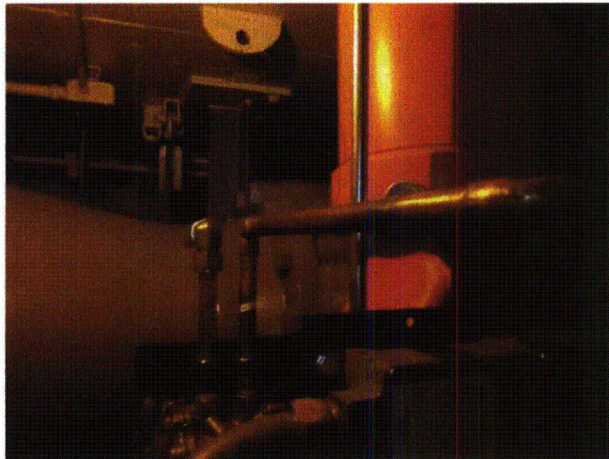


20120905-QuadCities1 136

20120905-QuadCities1 135



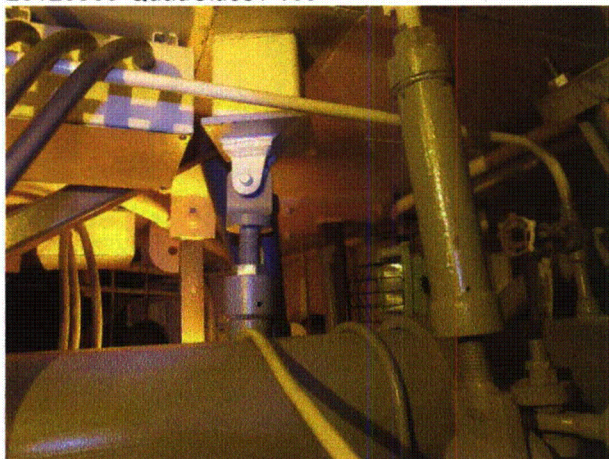
20120905-QuadCities1 137



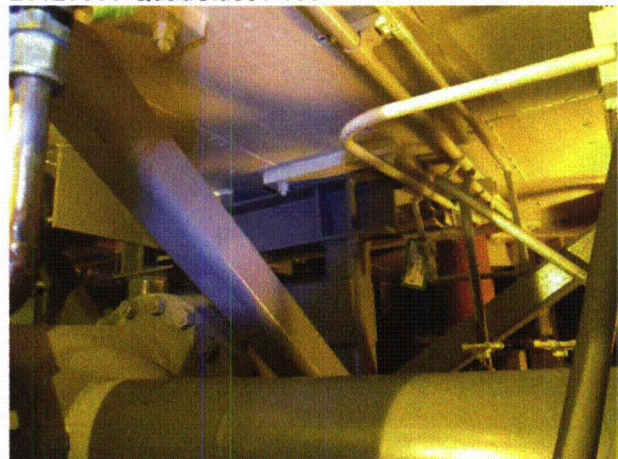
20120905-QuadCities1 138



20120905-QuadCities1 139



20120905-QuadCities1 140

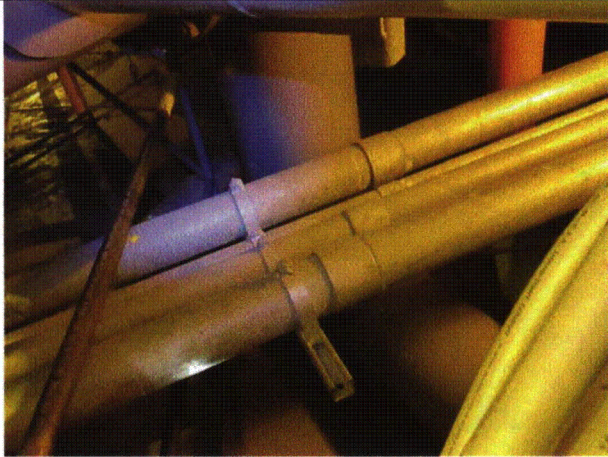


20120905-QuadCities1 141

Status: Y N U

Area Walk-By Checklist (AWC)

Location (Bldg, Elev, Room/Area): AWC-U1-07



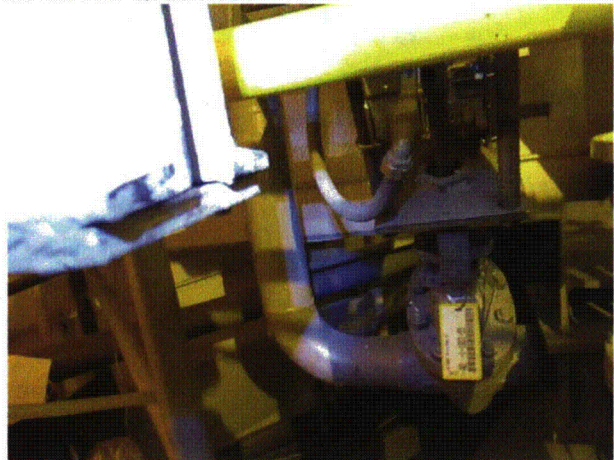
20120905-QuadCities1 142



20120905-QuadCities1 143



20120905-QuadCities1 144



20120905-QuadCities1 145



20120905-QuadCities1 146

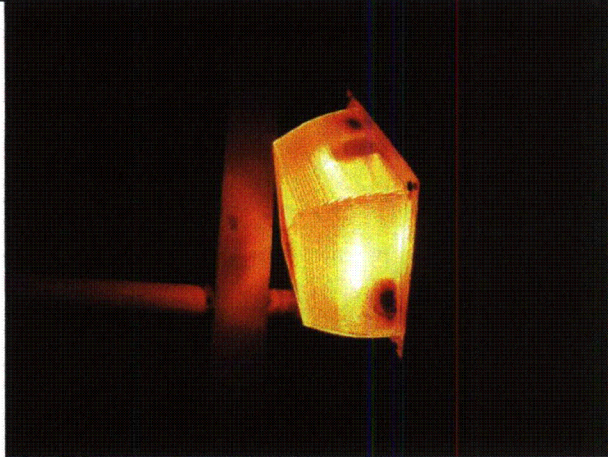


20120905-QuadCities1 147

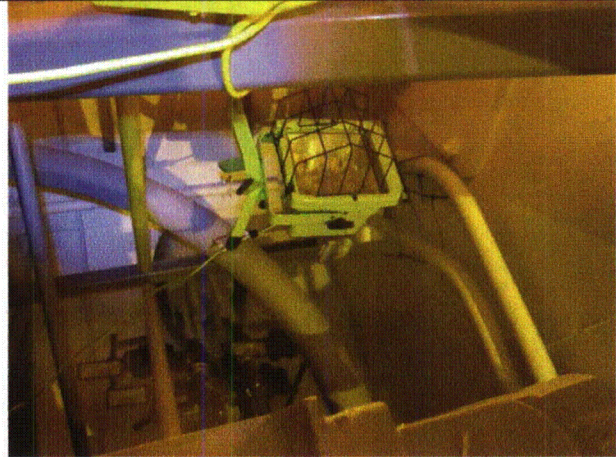
Status: Y N U

Area Walk-By Checklist (AWC)

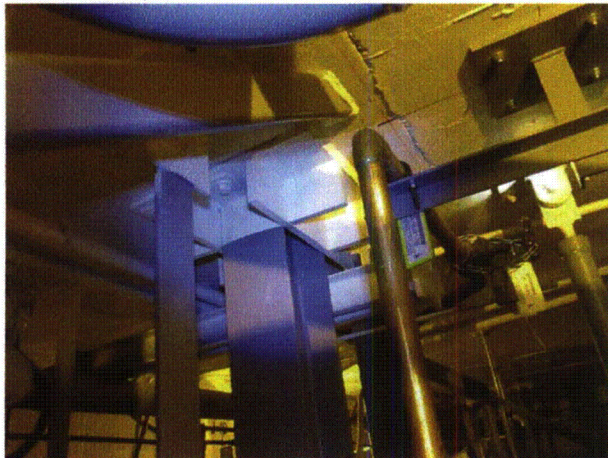
Location (Bldg, Elev, Room/Area): AWC-U1-07



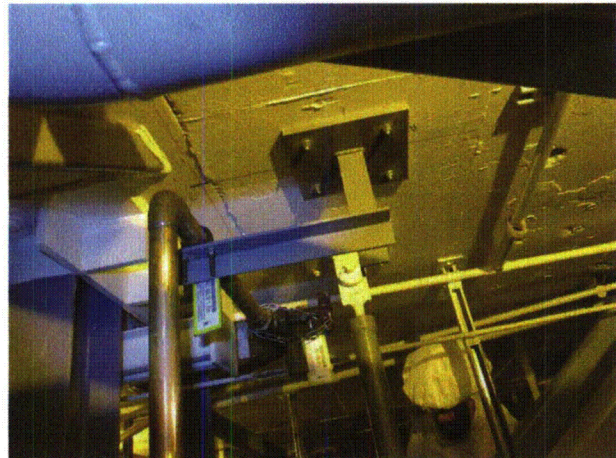
20120905-QuadCities1 148



20120905-QuadCities1 149



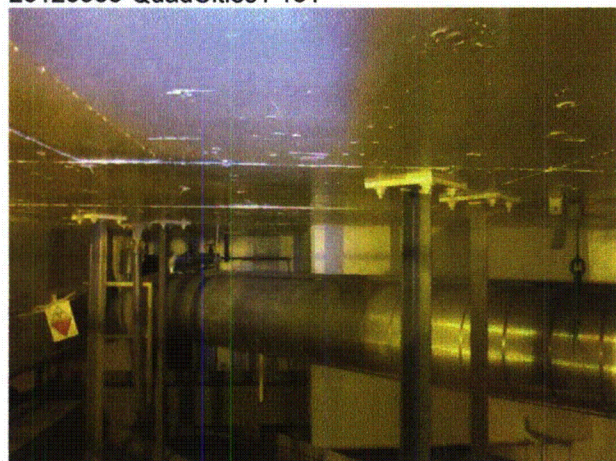
20120905-QuadCities1 150



20120905-QuadCities1 151



20120905-QuadCities1 152

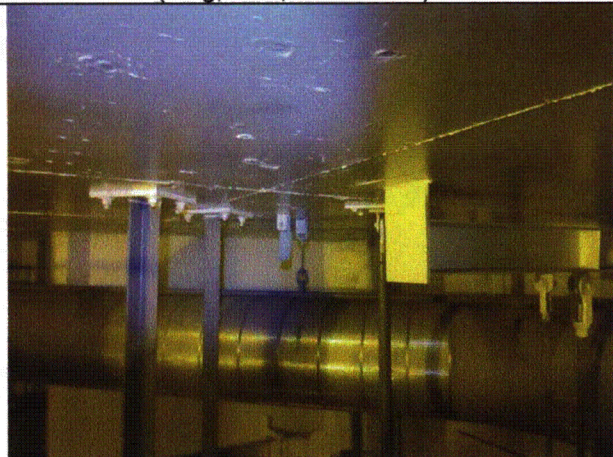


20120905-QuadCities1 153

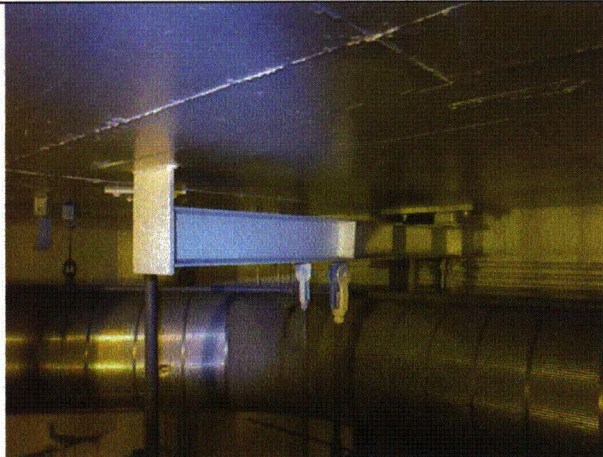
Status: Y N U

Area Walk-By Checklist (AWC)

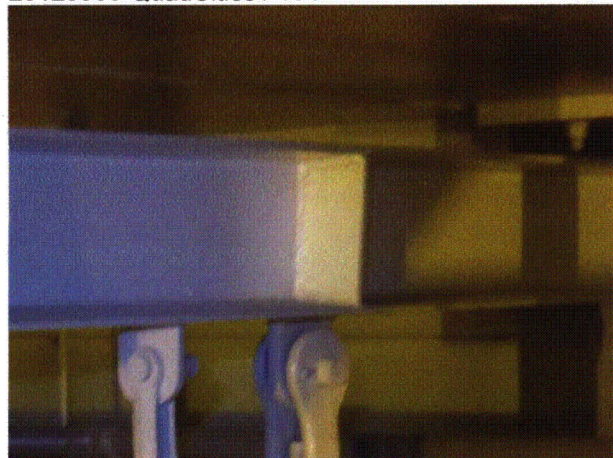
Location (Bldg, Elev, Room/Area): AWC-U1-07



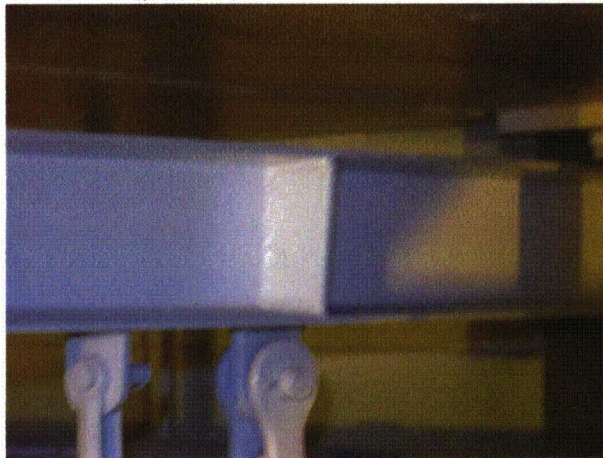
20120905-QuadCities1 154



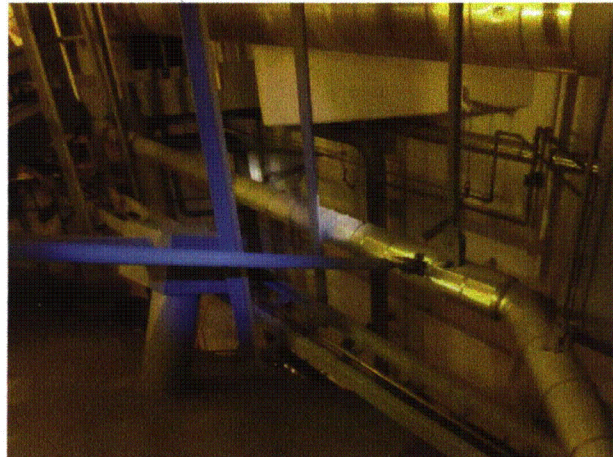
20120905-QuadCities1 155



20120905-QuadCities1 156



20120905-QuadCities1 157



20120905-QuadCities1 158

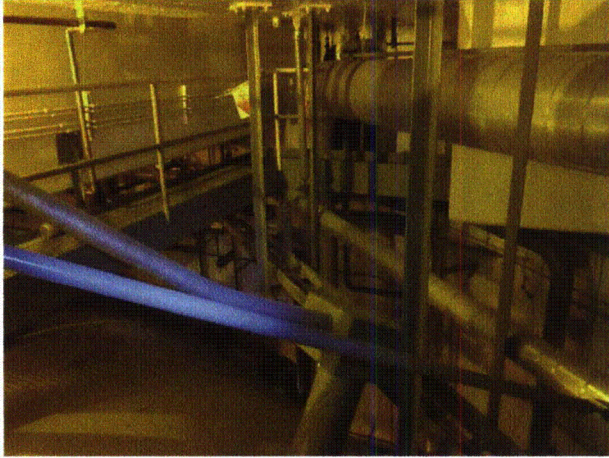


20120905-QuadCities1 159

Status: Y N U

Area Walk-By Checklist (AWC)

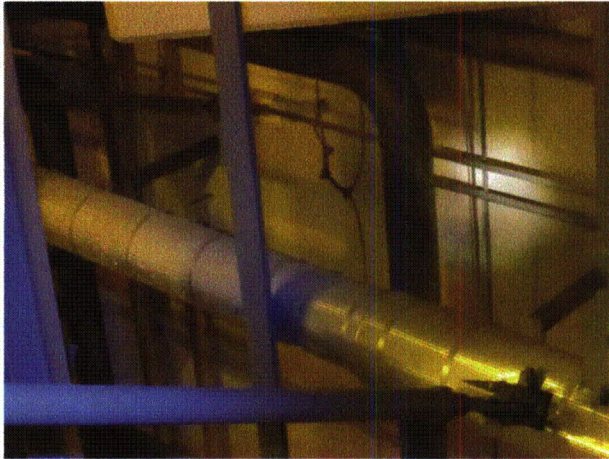
Location (Bldg, Elev, Room/Area): AWC-U1-07



20120905-QuadCities1 160



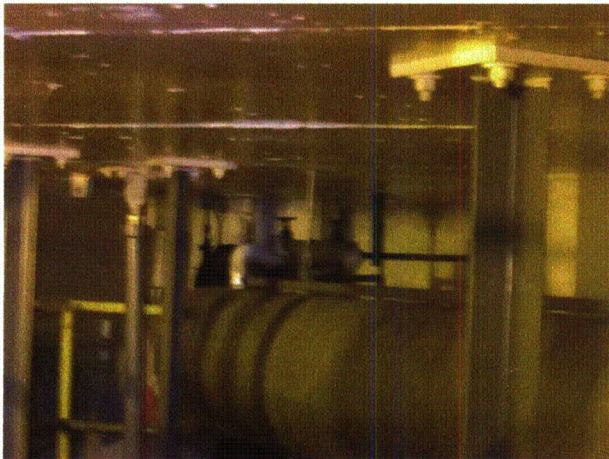
20120905-QuadCities1 161



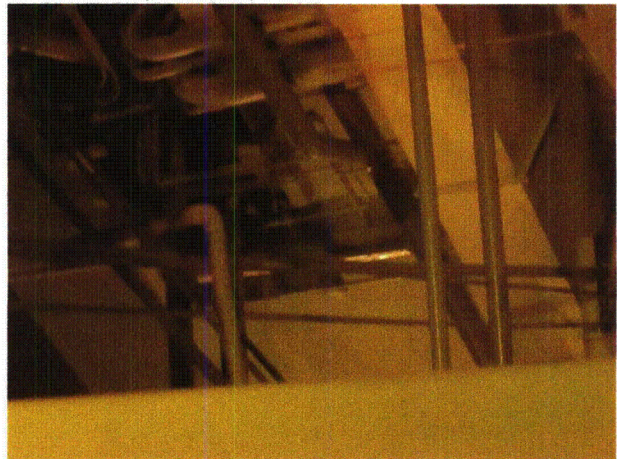
20120905-QuadCities1 162



20120905-QuadCities1 163



20120905-QuadCities1 164

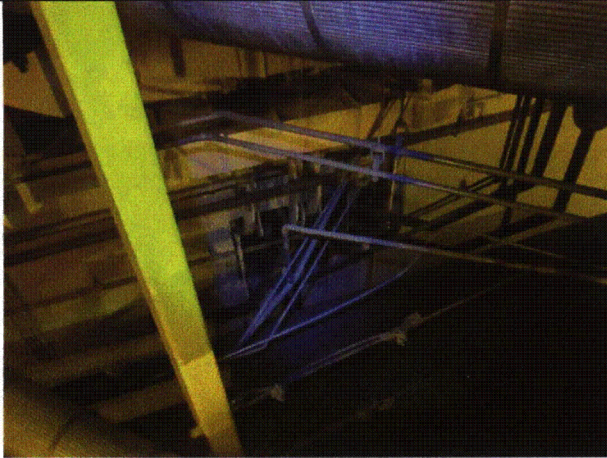


20120905-QuadCities1 165

Status: Y N U

Area Walk-By Checklist (AWC)

Location (Bldg, Elev, Room/Area): AWC-U1-07



20120905-QuadCities1 166



20120905-QuadCities1 167



20120905-QuadCities1 168

Status: Y N U

Area Walk-By Checklist (AWC)

Location (Bldg, Elev, Room/Area): AWC-U1-08

Instructions for Completing Checklist

This checklist may be used to document the results of the Area Walk-By near one or more SWEL items. The space below each of the following questions may be used to record the results of judgments and findings. Additional space is provided at the end of this checklist for documenting other comments.

1. Does anchorage of equipment in the area appear to be free of potentially adverse seismic conditions (if visible without necessarily opening cabinets)? Yes

 2. Does anchorage of equipment in the area appear to be free of significant degraded conditions? Yes

 3. Based on a visual inspection from the floor, do the cable/conduit raceways and HVAC ducting appear to be free of potentially adverse seismic conditions (e.g., condition of supports is adequate and fill conditions of cable trays appear to be inside acceptable limits)? Yes

 4. Does it appear that the area is free of potentially adverse seismic spatial interactions with other equipment in the area (e.g., ceiling tiles and lighting)?
Flexible, rugged pipe in contact with bottom of concrete beam. Judged to be acceptable. Yes

 5. Does it appear that the area is free of potentially adverse seismic interactions that could cause flooding or spray in the area?
Fire piping well-supported with rod hangers that have minor bends. Yes

 6. Does it appear that the area is free of potentially adverse seismic interactions that could cause a fire in the area?
Oil absorbing cloth with minor amount of oil judged to be acceptable. Yes

 7. Does it appear that the area is free of potentially adverse seismic interactions associated with housekeeping practices, storage of portable equipment, and temporary installations (e.g., scaffolding, lead shielding)? Yes
-

Status: Y N U

Area Walk-By Checklist (AWC)

Location (Bldg, Elev, Room/Area): AWC-U1-08

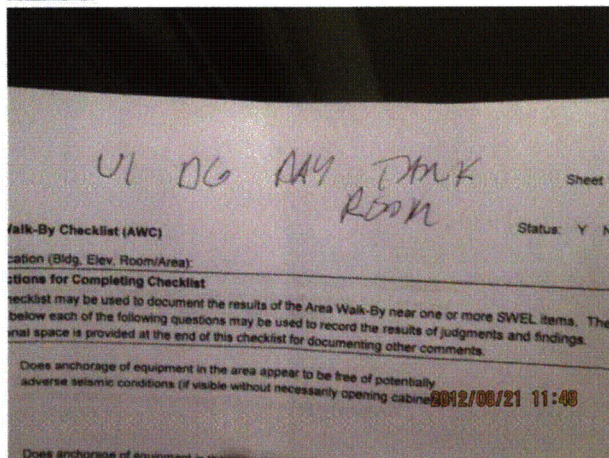
8. Have you looked for and found no other seismic conditions that could adversely affect the safety functions of the equipment in the area? Yes

Comments

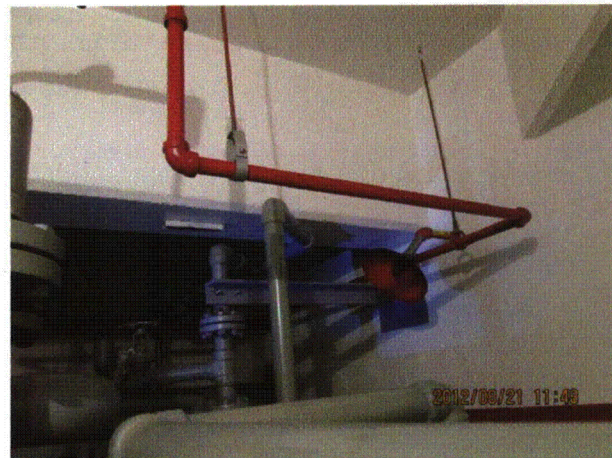
Seismic Walkdown Team: D. Carter & J. Griffith - 8/21/2012

Evaluated by: David Carter Date: 10/4/2012
James D. Griffith James Griffith 10/4/2012

Photos



8-21-12 Quad Cities 164

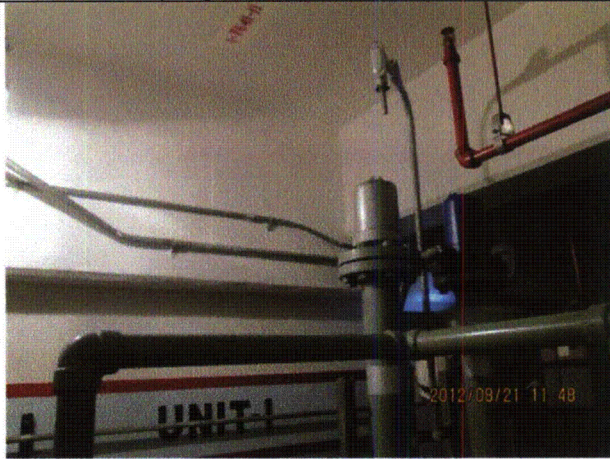


8-21-12 Quad Cities 165

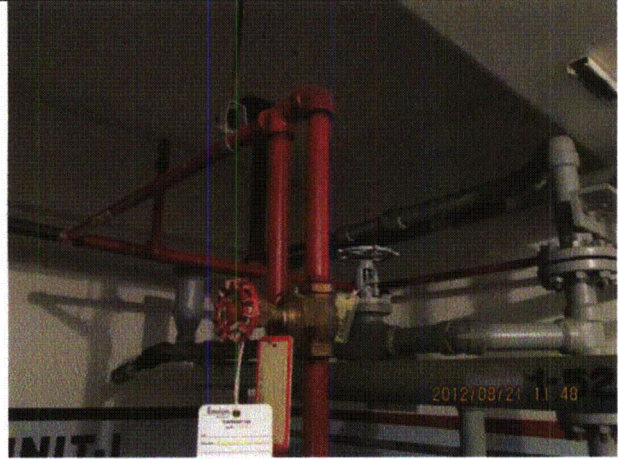
Status: Y N U

Area Walk-By Checklist (AWC)

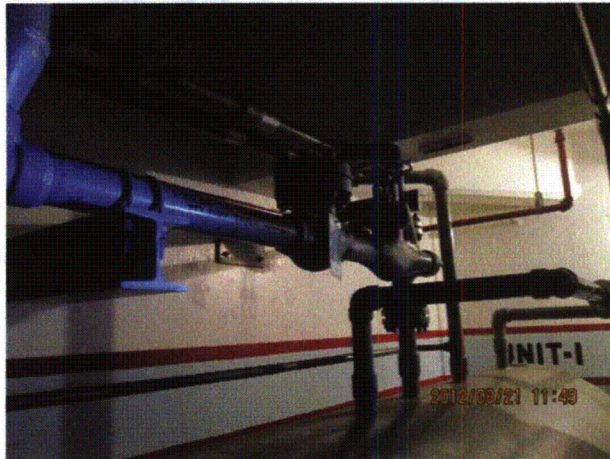
Location (Bldg, Elev, Room/Area): AWC-U1-08



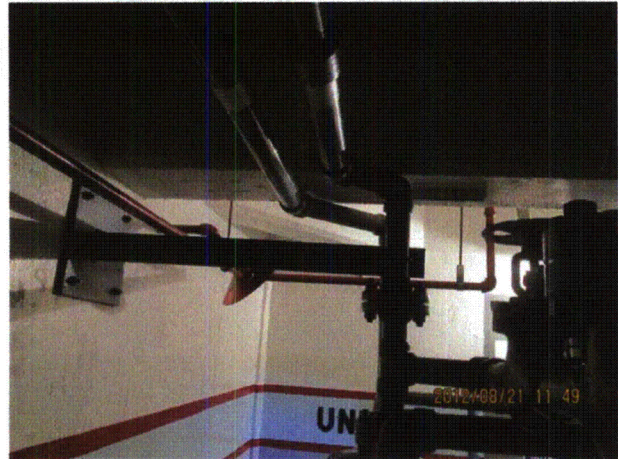
8-21-12 Quad Cities 166



8-21-12 Quad Cities 167



8-21-12 Quad Cities 168

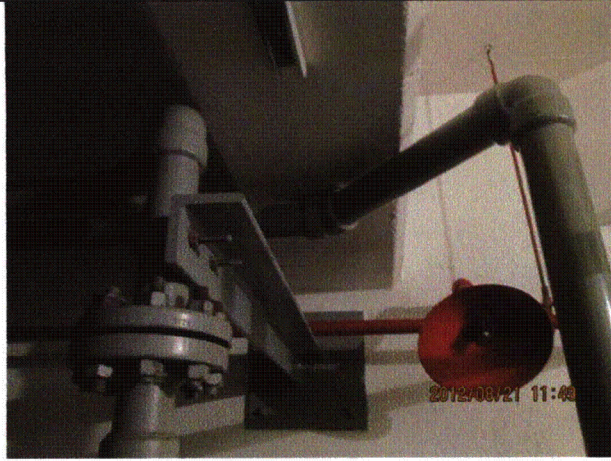


8-21-12 Quad Cities 169

Status: Y N U

Area Walk-By Checklist (AWC)

Location (Bldg, Elev, Room/Area): AWC-U1-08



8-21-12 Quad Cities 170



8-21-12 Quad Cities 171



8-21-12 Quad Cities 172



8-21-12 Quad Cities 173

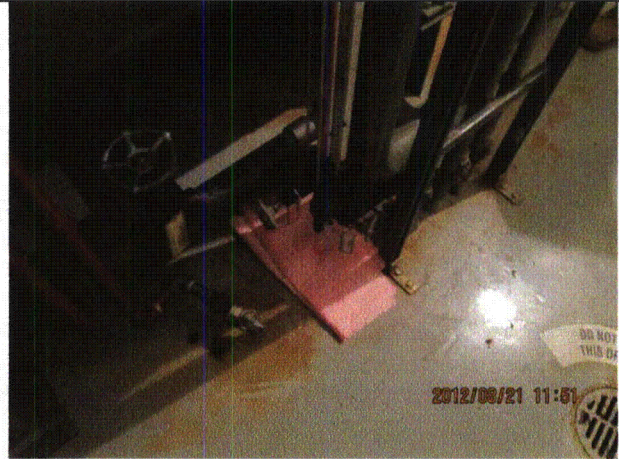
Status: Y N U

Area Walk-By Checklist (AWC)

Location (Bldg, Elev, Room/Area): AWC-U1-08



8-21-12 Quad Cities 174



8-21-12 Quad Cities 175

Status: Y N U

Area Walk-By Checklist (AWC)

Location (Bldg, Elev, Room/Area): AWC-U1-09

Instructions for Completing Checklist

This checklist may be used to document the results of the Area Walk-By near one or more SWEL items. The space below each of the following questions may be used to record the results of judgments and findings. Additional space is provided at the end of this checklist for documenting other comments.

1. Does anchorage of equipment in the area appear to be free of potentially adverse seismic conditions (if visible without necessarily opening cabinets)? Yes

 2. Does anchorage of equipment in the area appear to be free of significant degraded conditions? Yes

 3. Based on a visual inspection from the floor, do the cable/conduit raceways and HVAC ducting appear to be free of potentially adverse seismic conditions (e.g., condition of supports is adequate and fill conditions of cable trays appear to be inside acceptable limits)? Yes

 4. Does it appear that the area is free of potentially adverse seismic spatial interactions with other equipment in the area (e.g., ceiling tiles and lighting)? Yes
Overhead light fixtures judged to be acceptable.
Several instances of flexible, robust pipes and conduits in contact. Judged to be acceptable.
 5. Does it appear that the area is free of potentially adverse seismic interactions that could cause flooding or spray in the area? Yes
Most fire piping is carbon dioxide. Balance of piping is well-supported.

 6. Does it appear that the area is free of potentially adverse seismic interactions that could cause a fire in the area? Yes
Metal oil rag bin with cover judged to be acceptable.

 7. Does it appear that the area is free of potentially adverse seismic interactions associated with housekeeping practices, storage of portable equipment, and temporary installations (e.g., scaffolding, lead shielding)? Yes
Storage issue corrected during walkdown.
-

Status: Y N U

Area Walk-By Checklist (AWC)

Location (Bldg, Elev, Room/Area): AWC-U1-09

8. Have you looked for and found no other seismic conditions that could adversely affect the safety functions of the equipment in the area? Yes
Panel 2251-12 missing 2 rear panel assembly screws. Due to preponderance of remaining fasteners present (15), panel. Judged to be acceptable.

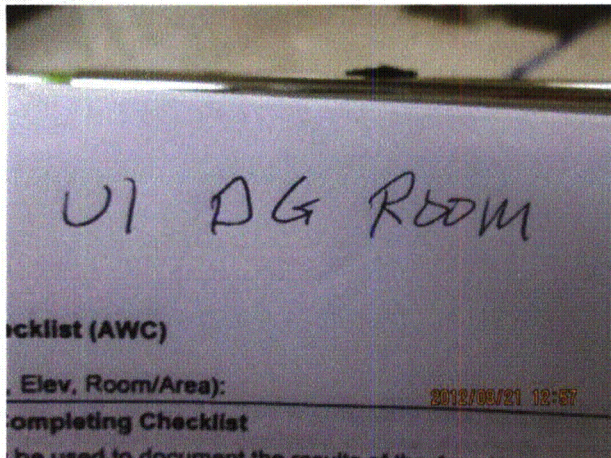
See IR 1403076.

Comments

Seismic Walkdown Team: D. Carter & J. Griffith - 8/21/2012

Evaluated by: David Carter Date: 10/12/2012
James D Griffith James Griffith 10/12/2012

Photos



8-21-12 Quad Cities 176



8-21-12 Quad Cities 177

Status: Y N U

Area Walk-By Checklist (AWC)

Location (Bldg, Elev, Room/Area): AWC-U1-09



8-21-12 Quad Cities 178



8-21-12 Quad Cities 179

Status: Y N U

Area Walk-By Checklist (AWC)

Location (Bldg, Elev, Room/Area): AWC-U1-09



8-21-12 Quad Cities 180



8-21-12 Quad Cities 181

Status: Y N U

Area Walk-By Checklist (AWC)

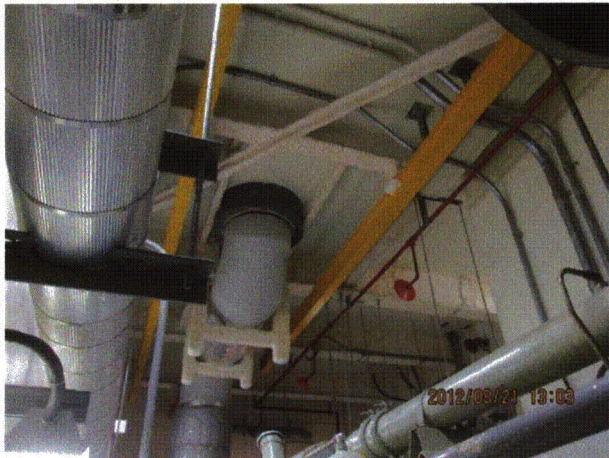
Location (Bldg, Elev, Room/Area): AWC-U1-09



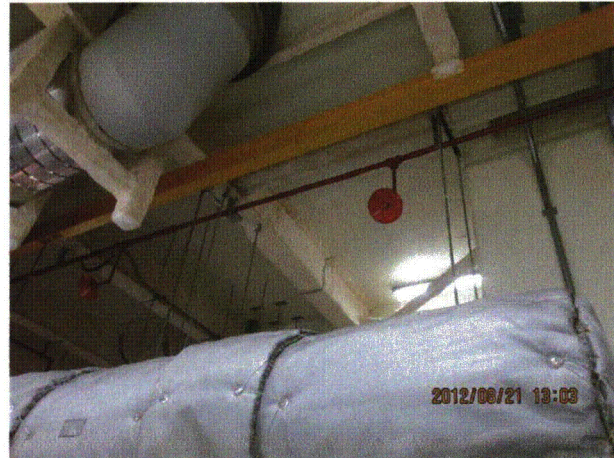
8-21-12 Quad Cities 182



8-21-12 Quad Cities 183



8-21-12 Quad Cities 184

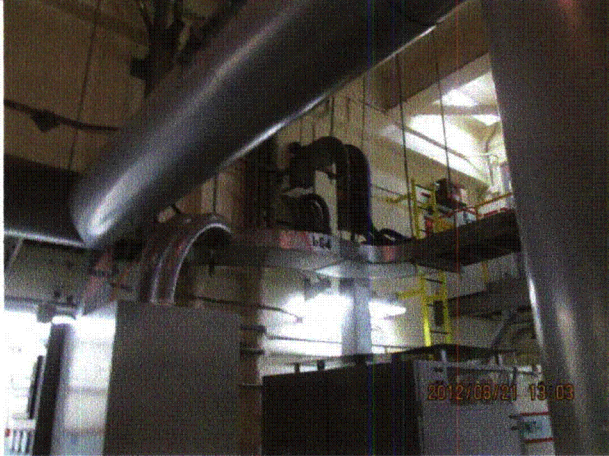


8-21-12 Quad Cities 185

Status: Y N U

Area Walk-By Checklist (AWC)

Location (Bldg, Elev, Room/Area): AWC-U1-09



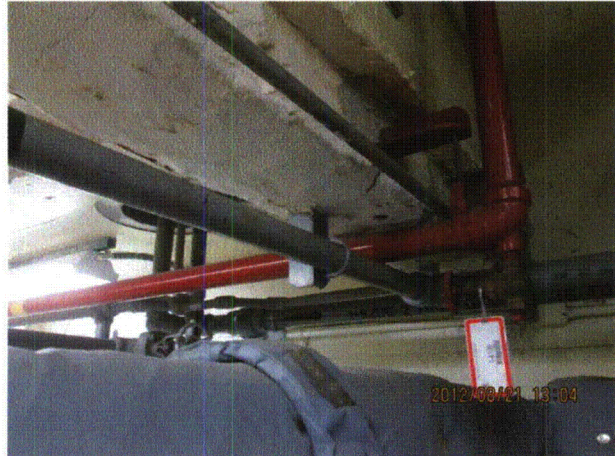
8-21-12 Quad Cities 186



8-21-12 Quad Cities 187



8-21-12 Quad Cities 188

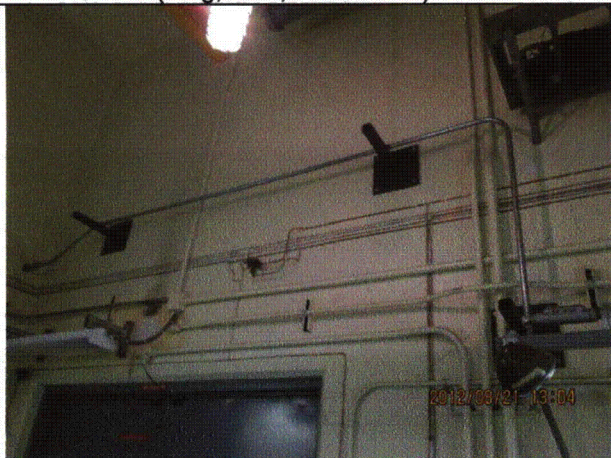


8-21-12 Quad Cities 189

Status: Y N U

Area Walk-By Checklist (AWC)

Location (Bldg, Elev, Room/Area): AWC-U1-09



8-21-12 Quad Cities 190



8-21-12 Quad Cities 191