

Status:  Y  N  U

**Seismic Walkdown Checklist (SWC)**

Equipment ID No.: 1-7100-18

Equipment Class: (2) Low Voltage Switchgear

Equipment Description: SWGR 18

Project: Quad Cities 1 SWEL

Location (Bldg, Elev, Room/Area): RB, 647.00 ft, ALL

Manufacturer/Model:

**Instructions for Completing Checklist**

This checklist may be used to document the results of the Seismic Walkdown of an item of equipment on the SWEL. The space below each of the following questions may be used to record the results of judgments and findings. Additional space is provided at the end of this checklist for documenting other comments.

**Anchorage**

1. Is anchorage configuration verification required (i.e., is the item one of the 50% of SWEL items requiring such verification)? Yes
  
2. Is the anchorage free of bent, broken, missing or loose hardware? Yes
  
3. Is the anchorage free of corrosion that is more than mild surface oxidation? Yes
  
4. Is the anchorage free of visible cracks in the concrete near the anchors? Yes  
*Minor shrinkage cracking in floor judged to be acceptable.*
  
5. Is the anchorage configuration consistent with plant documentation? (Note: This question only applies if the item is one of the 50% for which an anchorage configuration verification is required.) Yes  
*Anchorage shown on drawings 4E-1054A, Rev. L and 4E-1054D, Rev. F.*
  
6. Based on the above anchorage evaluations, is the anchorage free of potentially adverse seismic conditions? Yes

Status:  Y  N  U

**Seismic Walkdown Checklist (SWC)**

Equipment ID No.: 1-7100-18

Equipment Class: (2) Low Voltage Switchgear

Equipment Description: SWGR 18

**Interaction Effects**

7. Are soft targets free from impact by nearby equipment or structures? Yes  
*Trolley on top currently at middle of switchgear, away from stops. Current position judged to be acceptable. Pin recommended as permanent fix.*
8. Are overhead equipment, distribution systems, ceiling tiles and lighting, and masonry block walls not likely to collapse onto the equipment? Yes  
*Adjacent masonry wall at north end restrained at edges.*  
*Light fixture at south end of switchgear 18 has open S-hooks; mitigated by position and power cord tether to wall. Judged to be acceptable. See IR 1403072.*
9. Do attached lines have adequate flexibility to avoid damage? Yes
10. Based on the above seismic interaction evaluations, is equipment free of potentially adverse seismic interaction effects? Yes

**Other Adverse Conditions**

11. Have you looked for and found no adverse seismic conditions that could adversely affect the safety functions of the equipment? Yes

**Comments**

Seismic Walkdown Team:  
D. Carter & J. Griffith - 8/20/2012  
K. Hall & J. Kim - 9/17/2012

Evaluated by: David Carter *David Carter* James Griffith *James D. Griffith* Date: 10/4/12  
Kevin Hall & Julie Kim *Julie Kim* *K. Hall* 10/5/12

Status:  Y  N  U

**Seismic Walkdown Checklist (SWC)**

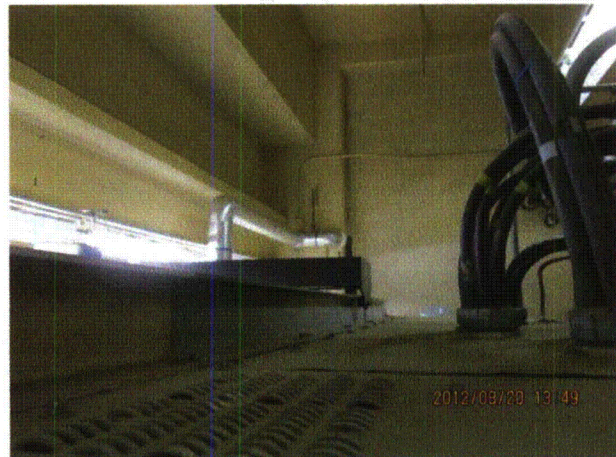
Equipment ID No.: 1-7100-18

Equipment Class: (2) Low Voltage Switchgear

Equipment Description: SWGR 18

**Photos**

**Seismic Walkdown Checklist (SWC)**  
Equipment ID No.: 1-7100-18  
Equipment Class: (2) Low Voltage Switchgear  
Equipment Description: SWGR 18  
Project: Quad Cities 1 SWEL  
Elev. Room/Area): RB, 647.00 ft, ALL  
Manufacturer/Model:  
**Completing Checklist**  
This checklist may be used to document the results of the Seismic Walkdown of an item. The space below each of the following questions may be used to record the results. Additional space is provided at the end of this checklist for documenting other observations.



8-20-12 Quad Cities 148 (10)



8-20-12 Quad Cities 148 (11)



8-20-12 Quad Cities 148 (12)

Status:  Y  N  U

**Seismic Walkdown Checklist (SWC)**

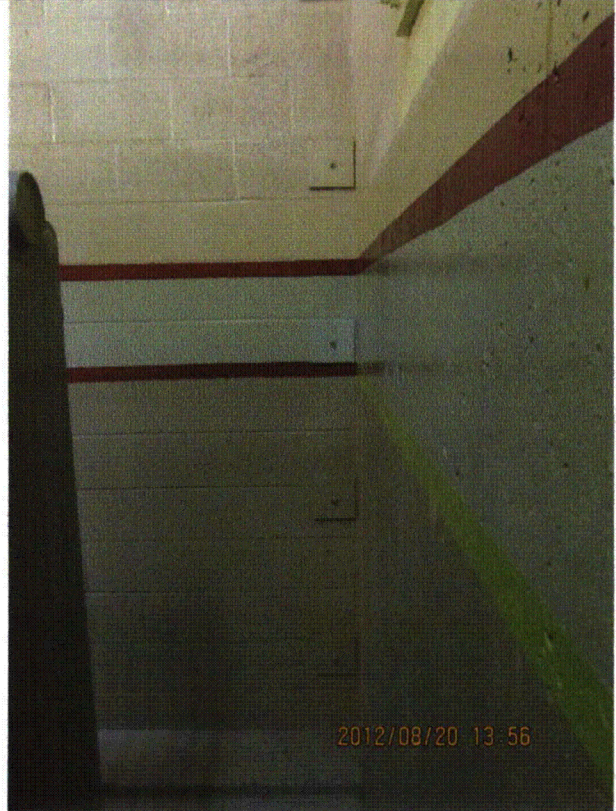
Equipment ID No.: 1-7100-18

Equipment Class: (2) Low Voltage Switchgear

Equipment Description: SWGR 18



8-20-12 Quad Cities 148 (13)



8-20-12 Quad Cities 148 (14)

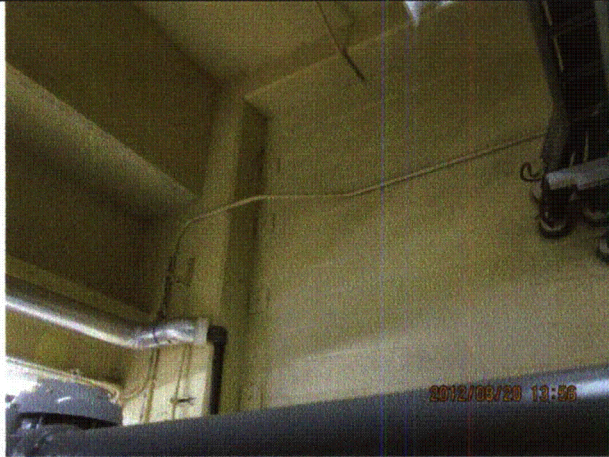
Status:  Y  N  U

**Seismic Walkdown Checklist (SWC)**

Equipment ID No.: 1-7100-18

Equipment Class: (2) Low Voltage Switchgear

Equipment Description: SWGR 18



8-20-12 Quad Cities 148 (15)



8-20-12 Quad Cities 148 (16)



8-20-12 Quad Cities 148 (2)



8-20-12 Quad Cities 148 (3)

Status:  Y  N  U

**Seismic Walkdown Checklist (SWC)**

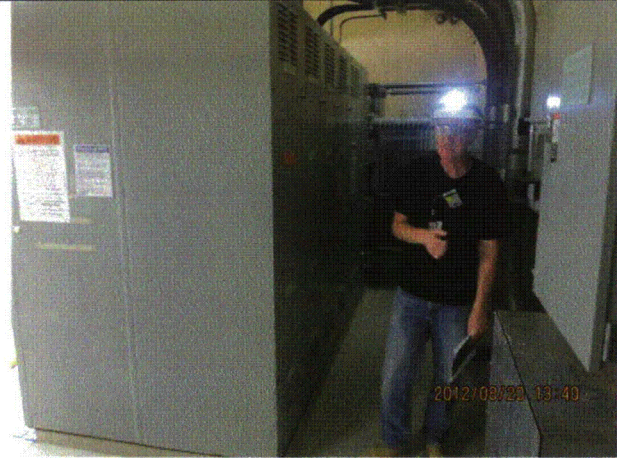
Equipment ID No.: 1-7100-18

Equipment Class: (2) Low Voltage Switchgear

Equipment Description: SWGR 18



8-20-12 Quad Cities 148 (4)



8-20-12 Quad Cities 148 (5)



8-20-12 Quad Cities 148 (6)

Status:  Y  N  U

**Seismic Walkdown Checklist (SWC)**

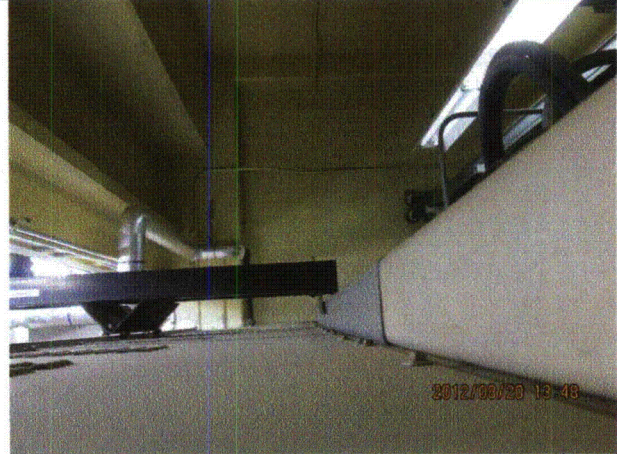
Equipment ID No.: 1-7100-18

Equipment Class: (2) Low Voltage Switchgear

Equipment Description: SWGR 18



8-20-12 Quad Cities 148 (8)



8-20-12 Quad Cities 148 (9)



MG 7257



MG 7258

Status:  Y  N  U

**Seismic Walkdown Checklist (SWC)**

Equipment ID No.: 1-7100-18

Equipment Class: (2) Low Voltage Switchgear

Equipment Description: SWGR 18



MG\_7260



MG\_7261



MG\_7262



MG\_7263



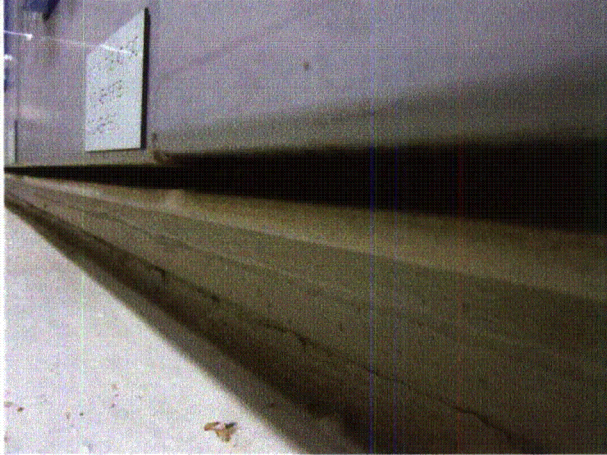
Status:  Y  N  U

**Seismic Walkdown Checklist (SWC)**

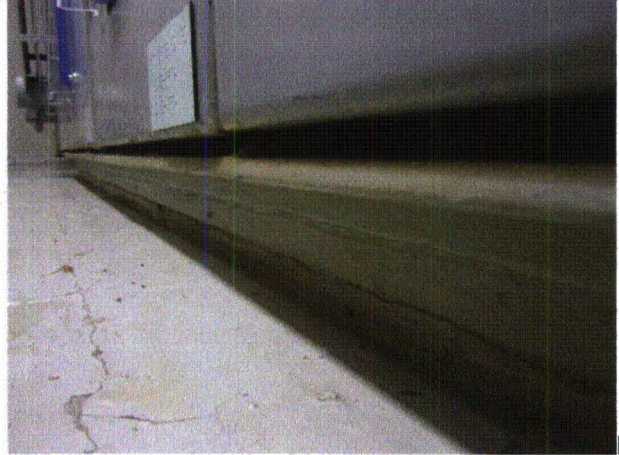
Equipment ID No.: 1-7100-18

Equipment Class: (2) Low Voltage Switchgear

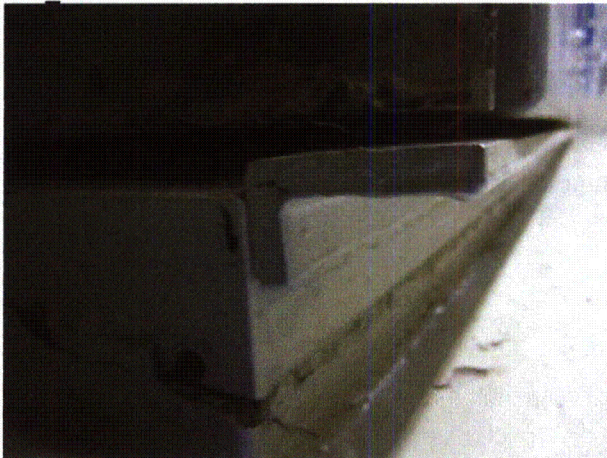
Equipment Description: SWGR 18



MG\_7264



MG\_7265



MG\_7266

Status:  Y  N  U

**Seismic Walkdown Checklist (SWC)**

Equipment ID No.: 1-7800-18195

Equipment Class: (1) Motor Control Centers

Equipment Description: MCC -MCC 18/19-5

Project: Quad Cities 1 SWEL

Location (Bldg, Elev, Room/Area): RB, 595.00 ft, ALL

Manufacturer/Model:

**Instructions for Completing Checklist**

This checklist may be used to document the results of the Seismic Walkdown of an item of equipment on the SWEL. The space below each of the following questions may be used to record the results of judgments and findings. Additional space is provided at the end of this checklist for documenting other comments.

**Anchorage**

1. Is anchorage configuration verification required (i.e., is the item one of the 50% of SWEL items requiring such verification)? No
  
2. Is the anchorage free of bent, broken, missing or loose hardware? Yes
  
3. Is the anchorage free of corrosion that is more than mild surface oxidation? Yes
  
4. Is the anchorage free of visible cracks in the concrete near the anchors? Yes
  
5. Is the anchorage configuration consistent with plant documentation? (Note: This question only applies if the item is one of the 50% for which an anchorage configuration verification is required.) Not Applicable
  
6. Based on the above anchorage evaluations, is the anchorage free of potentially adverse seismic conditions? Yes

**Interaction Effects**

7. Are soft targets free from impact by nearby equipment or structures? Yes

Status:  Y  N  U

**Seismic Walkdown Checklist (SWC)**

Equipment ID No.: 1-7800-18195

Equipment Class: (1) Motor Control Centers

Equipment Description: MCC -MCC 18/19-5

8. Are overhead equipment, distribution systems, ceiling tiles and lighting, and masonry block walls not likely to collapse onto the equipment? Yes  
*Light fixture at south end of MCC has an open S-hook each end. See IR 1404697.*
9. Do attached lines have adequate flexibility to avoid damage? Yes
10. Based on the above seismic interaction evaluations, is equipment free of potentially adverse seismic interaction effects? Yes

**Other Adverse Conditions**

11. Have you looked for and found no adverse seismic conditions that could adversely affect the safety functions of the equipment? Yes

**Comments**

Seismic Walkdown Team: D. Carter & J. Griffith - 8/22/2012

Evaluated by: *David Carter* David Carter Date: 10/4/2012

*James D. Griffith* James Griffith 10/4/2012

Status:  Y  N  U

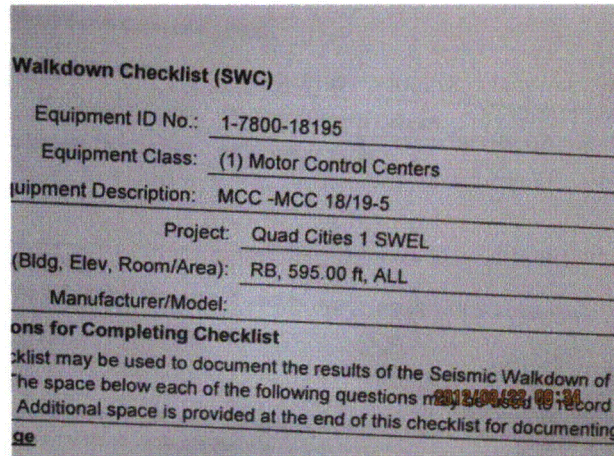
**Seismic Walkdown Checklist (SWC)**

Equipment ID No.: 1-7800-18195

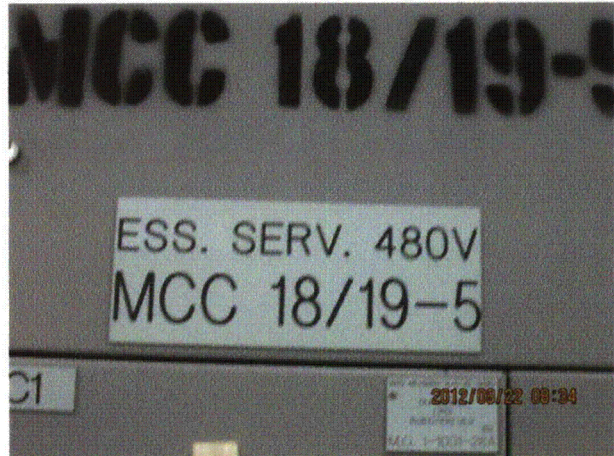
Equipment Class: (1) Motor Control Centers

Equipment Description: MCC -MCC 18/19-5

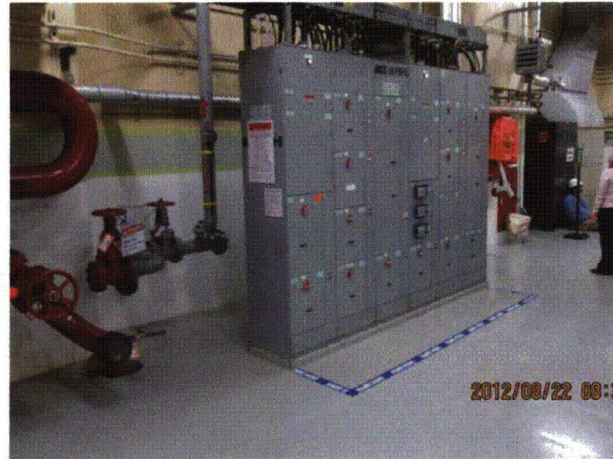
**Photos**



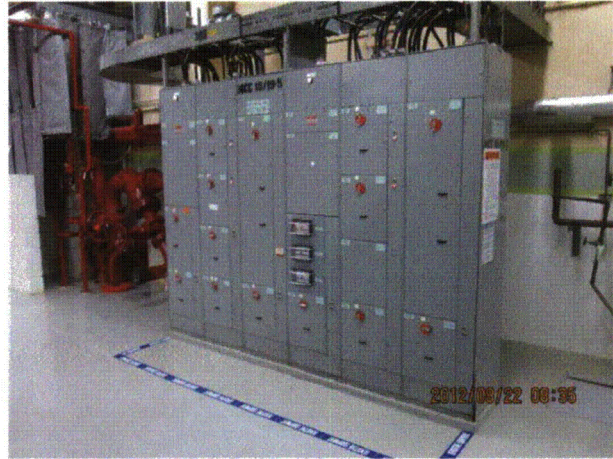
8-22-12 Quad Cities 034



8-22-12 Quad Cities 035



8-22-12 Quad Cities 036



8-22-12 Quad Cities 037

Status:  Y  N  U

**Seismic Walkdown Checklist (SWC)**

Equipment ID No.: 1-7800-18195

Equipment Class: (1) Motor Control Centers

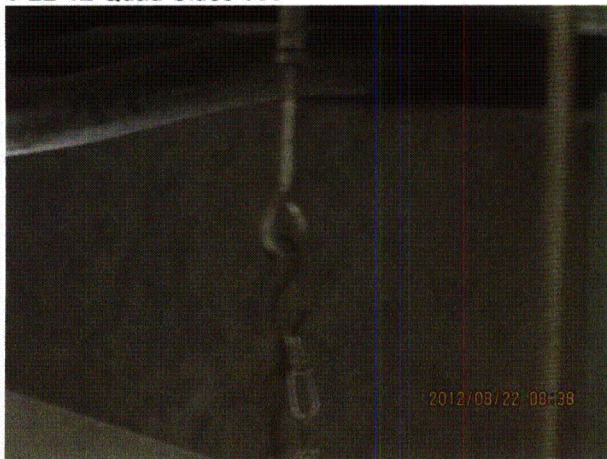
Equipment Description: MCC -MCC 18/19-5



8-22-12 Quad Cities 038



8-22-12 Quad Cities 039



8-22-12 Quad Cities 040



8-22-12 Quad Cities 041

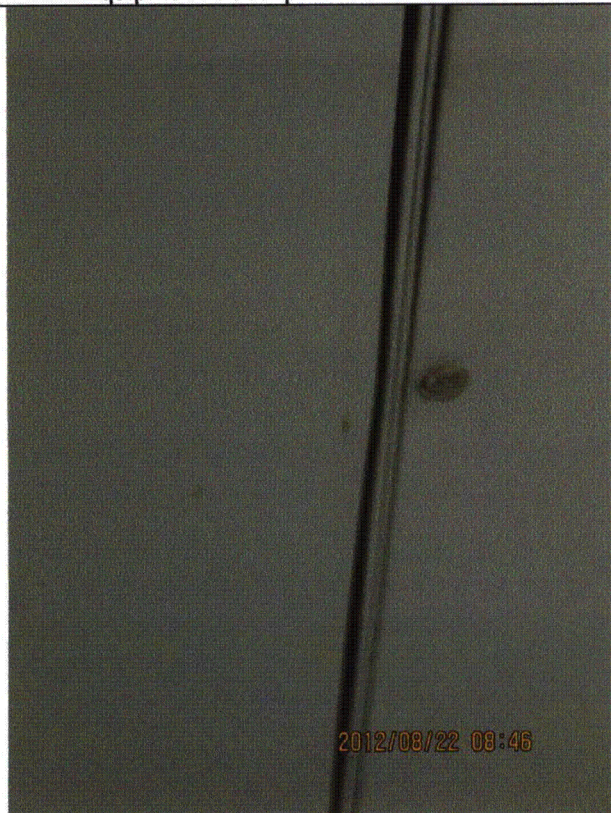
Status:  Y  N  U

**Seismic Walkdown Checklist (SWC)**

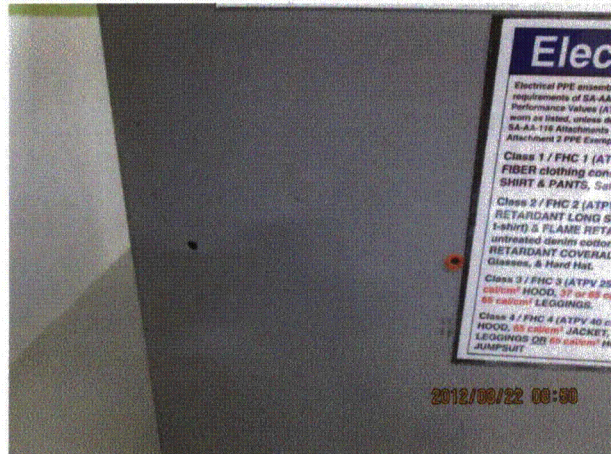
Equipment ID No.: 1-7800-18195

Equipment Class: (1) Motor Control Centers

Equipment Description: MCC -MCC 18/19-5



8-22-12 Quad Cities 042



8-22-12 Quad Cities 044

Status:  Y  N  U

**Seismic Walkdown Checklist (SWC)**

Equipment ID No.: 1-7800-18-1B

Equipment Class: (1) Motor Control Centers

Equipment Description: MCC - MCC 18-1B

Project: Quad Cities 1 SWEL

Location (Bldg, Elev, Room/Area): RB, 623.00 ft, ALL

Manufacturer/Model:

**Instructions for Completing Checklist**

This checklist may be used to document the results of the Seismic Walkdown of an item of equipment on the SWEL. The space below each of the following questions may be used to record the results of judgments and findings. Additional space is provided at the end of this checklist for documenting other comments.

**Anchorage**

1. Is anchorage configuration verification required (i.e., is the item one of the 50% of SWEL items requiring such verification)? No
  
2. Is the anchorage free of bent, broken, missing or loose hardware? Yes
  
3. Is the anchorage free of corrosion that is more than mild surface oxidation? Yes
  
4. Is the anchorage free of visible cracks in the concrete near the anchors? Yes
  
5. Is the anchorage configuration consistent with plant documentation? (Note: This question only applies if the item is one of the 50% for which an anchorage configuration verification is required.) Not Applicable
  
6. Based on the above anchorage evaluations, is the anchorage free of potentially adverse seismic conditions? Yes

Status:  Y  N  U

**Seismic Walkdown Checklist (SWC)**

Equipment ID No.: 1-7800-18-1B

Equipment Class: (1) Motor Control Centers

Equipment Description: MCC - MCC 18-1B

**Interaction Effects**

7. Are soft targets free from impact by nearby equipment or structures? Yes

*There is a small gap between MCC 18-1B and 18-1A. The tray run and supports on attached to the top of MCCs mitigate potential seismic interaction between 18-1B and 18-1A.*

8. Are overhead equipment, distribution systems, ceiling tiles and lighting, and masonry block walls not likely to collapse onto the equipment? Yes

*Overhead light fixtures judged to be acceptable.*

9. Do attached lines have adequate flexibility to avoid damage? Yes


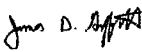
10. Based on the above seismic interaction evaluations, is equipment free of potentially adverse seismic interaction effects? Yes

**Other Adverse Conditions**

11. Have you looked for and found no adverse seismic conditions that could adversely affect the safety functions of the equipment? Yes

**Comments**

Seismic Walkdown Team: D. Carter & J. Griffith - 8/22/2012

Evaluated by:  David Carter Date: 10/16/2012  
 James Griffith 10/16/2012



Status:  Y  N  U

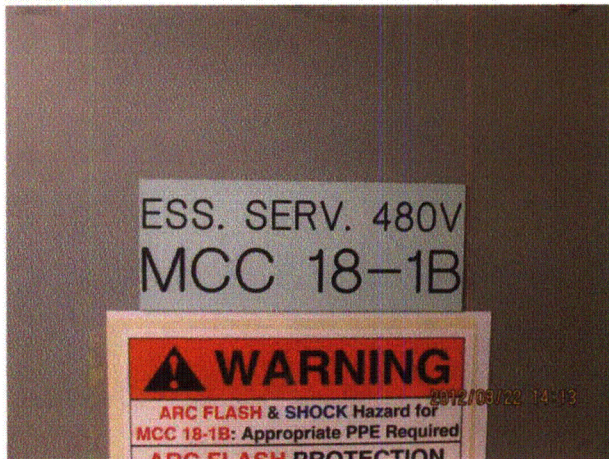
**Seismic Walkdown Checklist (SWC)**

Equipment ID No.: 1-7800-18-1B

Equipment Class: (1) Motor Control Centers

Equipment Description: MCC - MCC 18-1B

**Photos**



8-22-12 Quad Cities 159



8-22-12 Quad Cities 160



8-22-12 Quad Cities 161



8-22-12 Quad Cities 162

Status:  Y  N  U

**Seismic Walkdown Checklist (SWC)**

Equipment ID No.: 1-7800-18-1B

Equipment Class: (1) Motor Control Centers

Equipment Description: MCC - MCC 18-1B



8-22-12 Quad Cities 165



8-22-12 Quad Cities 166



8-22-12 Quad Cities 167

Status:  Y  N  U

**Seismic Walkdown Checklist (SWC)**

Equipment ID No.: 1-7800-18-2

Equipment Class: (1) Motor Control Centers

Equipment Description: MCC - MCC 18-2

Project: Quad Cities 1 SWEL

Location (Bldg, Elev, Room/Area): TB, 615.00 ft, ALL

Manufacturer/Model:

**Instructions for Completing Checklist**

This checklist may be used to document the results of the Seismic Walkdown of an item of equipment on the SWEL. The space below each of the following questions may be used to record the results of judgments and findings. Additional space is provided at the end of this checklist for documenting other comments.

**Anchorage**

1. Is anchorage configuration verification required (i.e., is the item one of the 50% of SWEL items requiring such verification)? No  
*1-inch long, 1/4-inch fillet stitch welds*
  
2. Is the anchorage free of bent, broken, missing or loose hardware? Yes  
*Only one weld at back of cabinet on east end. Judged to be acceptable due to abundance of welds elsewhere (13 stitches on front of cabinet, 11 on back).*
  
3. Is the anchorage free of corrosion that is more than mild surface oxidation? Yes
  
4. Is the anchorage free of visible cracks in the concrete near the anchors? Yes
  
5. Is the anchorage configuration consistent with plant documentation? (Note: This question only applies if the item is one of the 50% for which an anchorage configuration verification is required.) Not Applicable
  
6. Based on the above anchorage evaluations, is the anchorage free of potentially adverse seismic conditions? Yes

Status:  Y  N  U

**Seismic Walkdown Checklist (SWC)**

Equipment ID No.: 1-7800-18-2

Equipment Class: (1) Motor Control Centers

Equipment Description: MCC - MCC 18-2

**Interaction Effects**

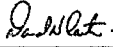
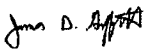
7. Are soft targets free from impact by nearby equipment or structures? Yes  
*Conduit associated with phone box attached to MCC has sufficient flexibility.*
8. Are overhead equipment, distribution systems, ceiling tiles and lighting, and masonry block walls not likely to collapse onto the equipment? Yes  
*Overhead light fixtures judged to be acceptable.*
9. Do attached lines have adequate flexibility to avoid damage? Yes
10. Based on the above seismic interaction evaluations, is equipment free of potentially adverse seismic interaction effects? Yes

**Other Adverse Conditions**

11. Have you looked for and found no adverse seismic conditions that could adversely affect the safety functions of the equipment? Yes  
*Adjacent teletower scaffold greater than its height + 1-ft from the MCC and judged to be acceptable. Loose components on top of teletower were relocated to the floor.*

**Comments**

Seismic Walkdown Team: D. Carter & J. Griffith - 8/20/2012

Evaluated by:  David Carter Date: 10/4/2012  
 James Griffith 10/4/2012

Status:  Y  N  U

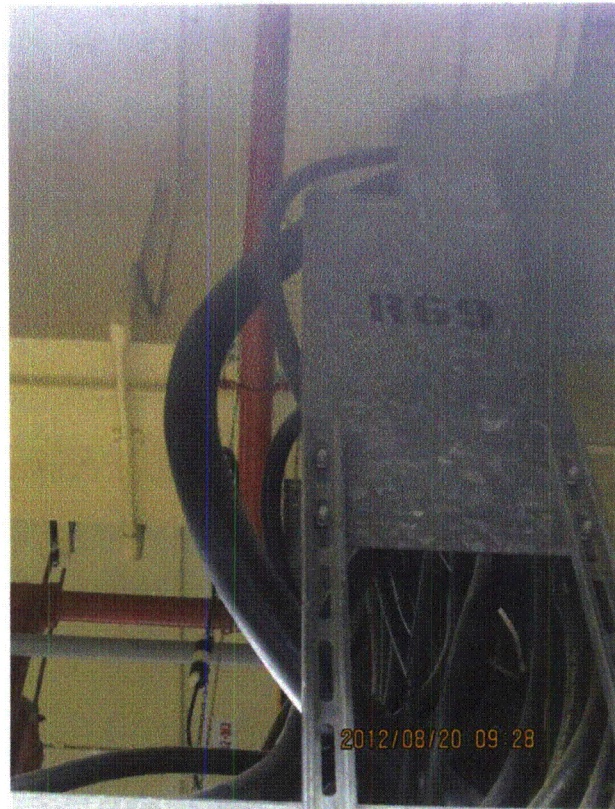
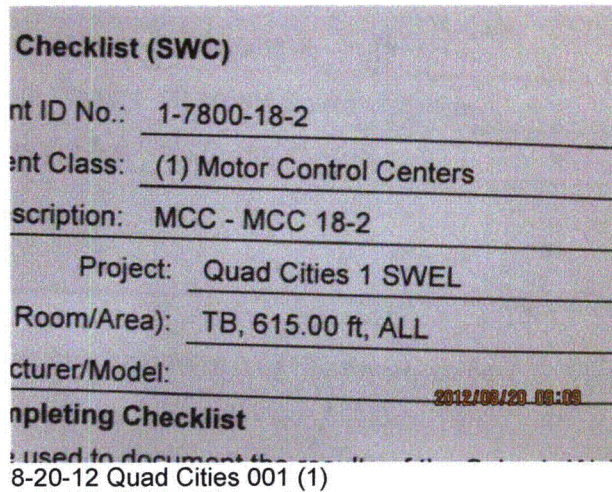
**Seismic Walkdown Checklist (SWC)**

Equipment ID No.: 1-7800-18-2

Equipment Class: (1) Motor Control Centers

Equipment Description: MCC - MCC 18-2

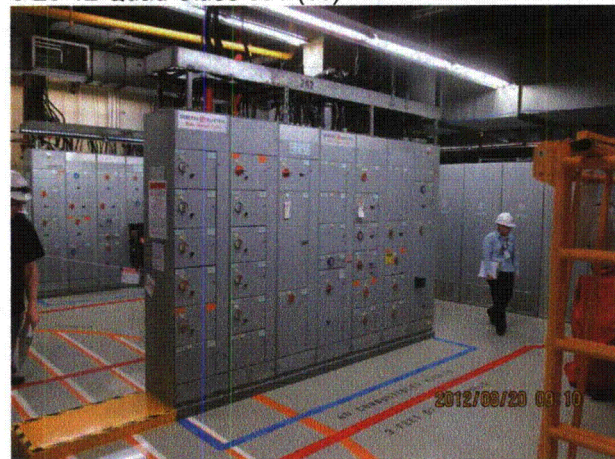
**Photos**



8-20-12 Quad Cities 001 (10)



8-20-12 Quad Cities 001 (2)



8-20-12 Quad Cities 001 (3)

Status:  Y  N  U

**Seismic Walkdown Checklist (SWC)**

Equipment ID No.: 1-7800-18-2

Equipment Class: (1) Motor Control Centers

Equipment Description: MCC - MCC 18-2



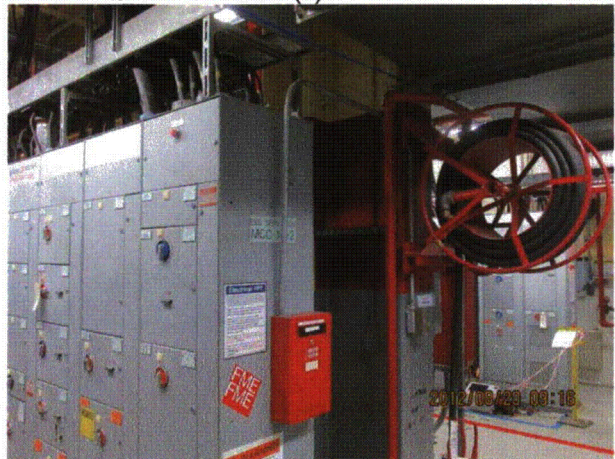
8-20-12 Quad Cities 001 (4)



8-20-12 Quad Cities 001 (5)



8-20-12 Quad Cities 001 (6)



8-20-12 Quad Cities 001 (7)

Status:  Y  N  U

**Seismic Walkdown Checklist (SWC)**

Equipment ID No.: 1-7800-18-2

Equipment Class: (1) Motor Control Centers

Equipment Description: MCC - MCC 18-2



8-20-12 Quad Cities 001 (8)



8-20-12 Quad Cities 001 (9)

Status:  Y  N  U

**Seismic Walkdown Checklist (SWC)**

Equipment ID No.: 1-7800-19-1

Equipment Class: (1) Motor Control Centers

Equipment Description: MCC - MCC 19-1

Project: Quad Cities 1 SWEL

Location (Bldg, Elev, Room/Area): RB, 623.00 ft, ALL

Manufacturer/Model:

**Instructions for Completing Checklist**

This checklist may be used to document the results of the Seismic Walkdown of an item of equipment on the SWEL. The space below each of the following questions may be used to record the results of judgments and findings. Additional space is provided at the end of this checklist for documenting other comments.

**Anchorage**

- |    |   |                |
|----|---|----------------|
| 1. | Is anchorage configuration verification required (i.e., is the item one of the 50% of SWEL items requiring such verification)?  | No             |
| 2. | Is the anchorage free of bent, broken, missing or loose hardware?   | Yes            |
| 3. | Is the anchorage free of corrosion that is more than mild surface oxidation?  | Yes            |
| 4. | Is the anchorage free of visible cracks in the concrete near the anchors?   | Yes            |
| 5. | Is the anchorage configuration consistent with plant documentation? (Note: This question only applies if the item is one of the 50% for which an anchorage configuration verification is required.) | Not Applicable |
| 6. | Based on the above anchorage evaluations, is the anchorage free of potentially adverse seismic conditions?  | Yes            |

**Interaction Effects**

- |    |  |     |
|----|--|-----|
| 7. | Are soft targets free from impact by nearby equipment or structures? | Yes |
|----|--|-----|



Status:  Y  N  U

**Seismic Walkdown Checklist (SWC)**

Equipment ID No.: 1-7800-19-1

Equipment Class: (1) Motor Control Centers

Equipment Description: MCC - MCC 19-1

8. Are overhead equipment, distribution systems, ceiling tiles and lighting, and masonry block walls not likely to collapse onto the equipment? Yes
9. Do attached lines have adequate flexibility to avoid damage? Yes
10. Based on the above seismic interaction evaluations, is equipment free of potentially adverse seismic interaction effects? Yes

**Other Adverse Conditions**

11. Have you looked for and found no adverse seismic conditions that could adversely affect the safety functions of the equipment? Yes.

**Comments**

Seismic Walkdown Team: D. Carter & J. Griffith - 8/22/2012

Evaluated by: *David Carter* David Carter Date: 10/4/2012  
*James D. Griffith* James Griffith 10/4/2012

Status:  Y  N  U

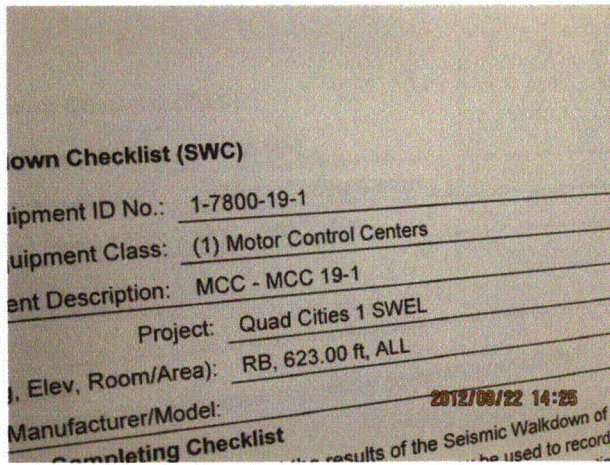
**Seismic Walkdown Checklist (SWC)**

Equipment ID No.: 1-7800-19-1

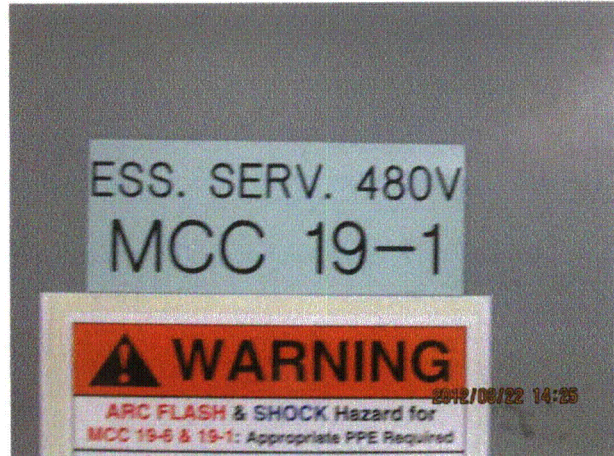
Equipment Class: (1) Motor Control Centers

Equipment Description: MCC - MCC 19-1

**Photos**



8-22-12 Quad Cities 168



8-22-12 Quad Cities 169



8-22-12 Quad Cities 170



8-22-12 Quad Cities 171

Status:  Y  N  U

**Seismic Walkdown Checklist (SWC)**

Equipment ID No.: 1-8300-1

Equipment Class: (16) Battery Chargers and Inverters

Equipment Description: CHRGR #1, 125V

Project: Quad Cities 1 SWEL

Location (Bldg, Elev, Room/Area): TB, 615.00 ft, ALL

Manufacturer/Model:

**Instructions for Completing Checklist**

This checklist may be used to document the results of the Seismic Walkdown of an item of equipment on the SWEL. The space below each of the following questions may be used to record the results of judgments and findings. Additional space is provided at the end of this checklist for documenting other comments.

**Anchorage**

1. Is anchorage configuration verification required (i.e., is the item one of the 50% of SWEL items requiring such verification)? Yes
  
2. Is the anchorage free of bent, broken, missing or loose hardware? Yes
  
3. Is the anchorage free of corrosion that is more than mild surface oxidation? Yes
  
4. Is the anchorage free of visible cracks in the concrete near the anchors? Yes  
*Minor shrinkage cracking in floor. Judged to be acceptable.*
  
5. Is the anchorage configuration consistent with plant documentation? (Note: This question only applies if the item is one of the 50% for which an anchorage configuration verification is required.) Yes
  
6. Based on the above anchorage evaluations, is the anchorage free of potentially adverse seismic conditions? Yes

**Interaction Effects**

7. Are soft targets free from impact by nearby equipment or structures? Yes

Status:  Y  N  U

**Seismic Walkdown Checklist (SWC)**

Equipment ID No.: 1-8300-1

Equipment Class: (16) Battery Chargers and Inverters

Equipment Description: CHRGR #1, 125V

8. Are overhead equipment, distribution systems, ceiling tiles and lighting, and masonry block walls not likely to collapse onto the equipment? Yes  
*Overhead light fixtures judged to be acceptable.*  
  
*Adjacent masonry wall restrained at top indicating that the wall was designed to resist lateral loads. Therefore it is judged to be seismically adequate.*  
  
*Emergency light 16B has loose nuts on the hold down rods. The light is still restrained and will not become an interaction concern. See IR 1403065.*
9. Do attached lines have adequate flexibility to avoid damage? Yes
10. Based on the above seismic interaction evaluations, is equipment free of potentially adverse seismic interaction effects? Yes

**Other Adverse Conditions**

11. Have you looked for and found no adverse seismic conditions that could adversely affect the safety functions of the equipment? Yes

**Comments**

SEWS Anchorage Notes:

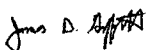
Angles are welded to the base channel to accommodate anchorage. There are three angle tabs welded to the base channel on each side of the charger. Each angle tab is bolted to the floor with a 3/8" dia. expansion anchor.

\*\*\*\*\*

Seismic Walkdown Team: D. Carter & J. Griffith - 8/20/2012

Evaluated by:  David Carter

Date: 10/4/2012

 James D. Griffith

10/4/2012

Status:  Y  N  U

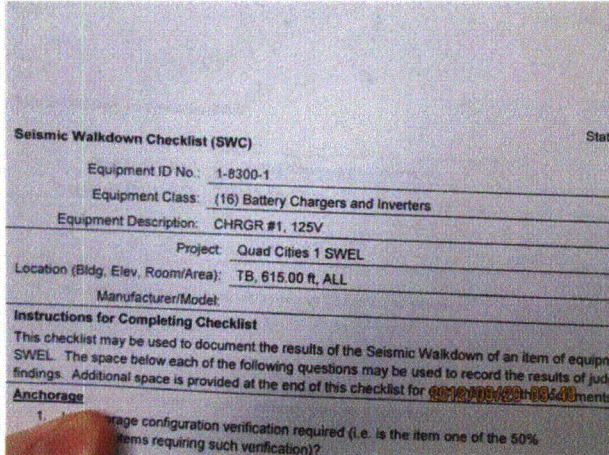
### Seismic Walkdown Checklist (SWC)

Equipment ID No.: 1-8300-1

Equipment Class: (16) Battery Chargers and Inverters

Equipment Description: CHRGR #1, 125V

### Photos



8-20-12 Quad Cities 028 (1)



8-20-12 Quad Cities 028 (10)

Status:  Y  N  U

**Seismic Walkdown Checklist (SWC)**

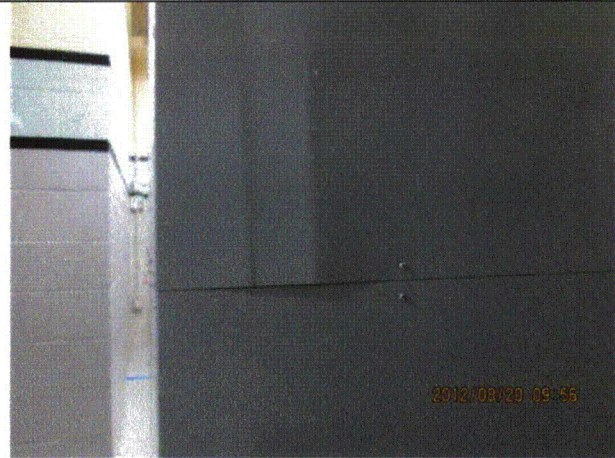
Equipment ID No.: 1-8300-1

Equipment Class: (16) Battery Chargers and Inverters

Equipment Description: CHRGR #1, 125V



8-20-12 Quad Cities 028 (11)



8-20-12 Quad Cities 028 (12)

Status:  Y  N  U

**Seismic Walkdown Checklist (SWC)**

Equipment ID No.: 1-8300-1

Equipment Class: (16) Battery Chargers and Inverters

Equipment Description: CHRGR #1, 125V



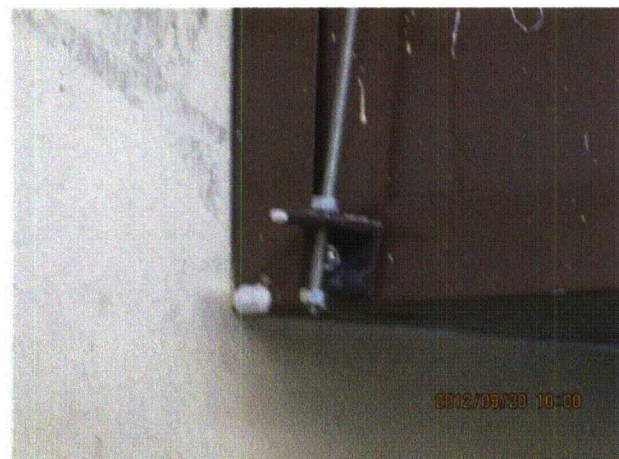
8-20-12 Quad Cities 028 (13)



8-20-12 Quad Cities 028 (14)



8-20-12 Quad Cities 028 (15)



8-20-12 Quad Cities 028 (16)

Status:  Y  N  U

**Seismic Walkdown Checklist (SWC)**

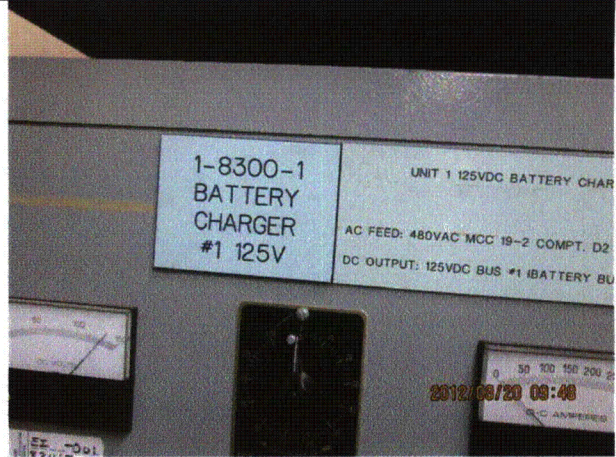
Equipment ID No.: 1-8300-1

Equipment Class: (16) Battery Chargers and Inverters

Equipment Description: CHRGR #1, 125V



8-20-12 Quad Cities 028 (17)



8-20-12 Quad Cities 028 (2)



8-20-12 Quad Cities 028 (3)



8-20-12 Quad Cities 028 (4)



Status:  Y  N  U

**Seismic Walkdown Checklist (SWC)**

Equipment ID No.: 1-8300-1

Equipment Class: (16) Battery Chargers and Inverters

Equipment Description: CHRGR #1, 125V



8-20-12 Quad Cities 028 (5)



8-20-12 Quad Cities 028 (6)

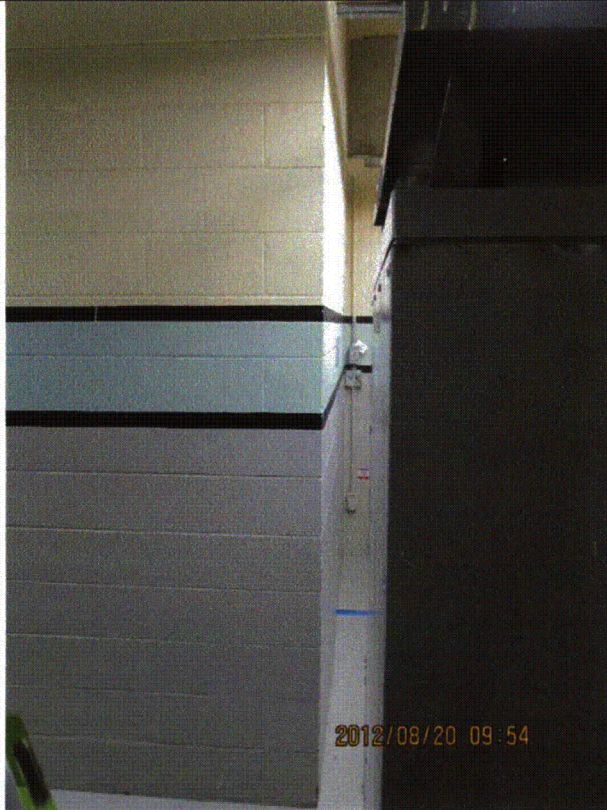
Status:  Y  N  U

**Seismic Walkdown Checklist (SWC)**

Equipment ID No.: 1-8300-1

Equipment Class: (16) Battery Chargers and Inverters

Equipment Description: CHRGR #1, 125V



8-20-12 Quad Cities 028 (7)



8-20-12 Quad Cities 028 (8)



8-20-12 Quad Cities 028 (9)

Status:  Y  N  U

**Seismic Walkdown Checklist (SWC)**

Equipment ID No.: 1-8350

Equipment Class: (16) Battery Chargers and Inverters

Equipment Description: CHRGR #1, 250V

Project: Quad Cities 1 SWEL

Location (Bldg, Elev, Room/Area): TB, 615.00 ft, ALL

Manufacturer/Model:

**Instructions for Completing Checklist**

This checklist may be used to document the results of the Seismic Walkdown of an item of equipment on the SWEL. The space below each of the following questions may be used to record the results of judgments and findings. Additional space is provided at the end of this checklist for documenting other comments.

**Anchorage**

1. Is anchorage configuration verification required (i.e., is the item one of the 50% of SWEL items requiring such verification)? Yes
  
2. Is the anchorage free of bent, broken, missing or loose hardware? Yes
  
3. Is the anchorage free of corrosion that is more than mild surface oxidation? Yes
  
4. Is the anchorage free of visible cracks in the concrete near the anchors? Yes  
*Shrinkage crack in floor near anchor. Crack is sufficient distance to not affect the anchor capacity. Judged to be acceptable.*
  
5. Is the anchorage configuration consistent with plant documentation? (Note: This question only applies if the item is one of the 50% for which an anchorage configuration verification is required.) Yes
  
6. Based on the above anchorage evaluations, is the anchorage free of potentially adverse seismic conditions? Yes

**Interaction Effects**

7. Are soft targets free from impact by nearby equipment or structures? Yes

Status:  Y  N  U

**Seismic Walkdown Checklist (SWC)**

Equipment ID No.: 1-8350

Equipment Class: (16) Battery Chargers and Inverters

Equipment Description: CHRGR #1, 250V

8. Are overhead equipment, distribution systems, ceiling tiles and lighting, and masonry block walls not likely to collapse onto the equipment? Yes  
*Overhead light fixtures judged to be acceptable,*  
*Adjacent masonry wall restrained at top indicating that the wall was designed to resist lateral loads. Therefore it is judged to be seismically adequate.*
9. Do attached lines have adequate flexibility to avoid damage? Yes
10. Based on the above seismic interaction evaluations, is equipment free of potentially adverse seismic interaction effects? Yes

**Other Adverse Conditions**

11. Have you looked for and found no adverse seismic conditions that could adversely affect the safety functions of the equipment? Yes  
*IR 1403079:*

*During the Seismic Walkdowns it was identified that there are three screws missing (two on the right side and one on the left side) and 1 screw loose (on the left side) of the 250VDC Charger. Based on Engineering Judgment the significant number of remaining screws per side are adequate to maintain the connection of the panel during a seismic event, thus preventing any adverse impact to the charger or surrounding equipment.*

**Comments**

SEWS Anchorage Notes:

Angles are welded to the base channel to accommodate anchorage. There are three angle tabs welded to the base channel on each side of the charger. Each angle tab is bolted to the floor with a 3/8" dia. expansion anchor.

\*\*\*\*\*

Seismic Walkdown Team: D. Carter & J. Griffith - 8/20/2012

Status:  Y  N  U

**Seismic Walkdown Checklist (SWC)**

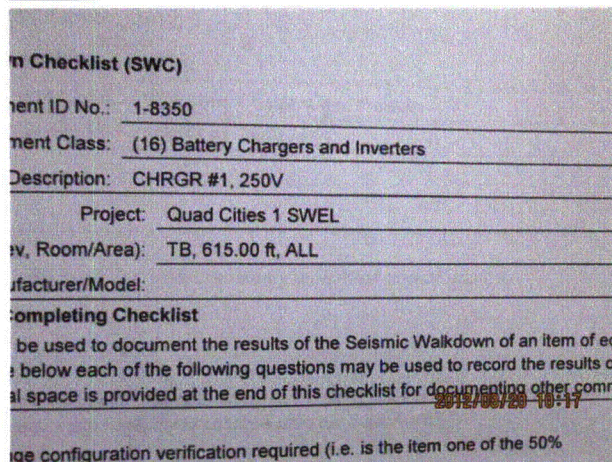
Equipment ID No.: 1-8350

Equipment Class: (16) Battery Chargers and Inverters

Equipment Description: CHRGR #1, 250V

Evaluated by: *David Carter* David Carter Date: 10/4/2012  
*James D Griffith* James Griffith 10/4/2012

**Photos**



8-20-12 Quad Cities 055 (1)



8-20-12 Quad Cities 055 (2)

Status:  Y  N  U

**Seismic Walkdown Checklist (SWC)**

Equipment ID No.: 1-8350

Equipment Class: (16) Battery Chargers and Inverters

Equipment Description: CHRGR #1, 250V



8-20-12 Quad Cities 055 (3)



8-20-12 Quad Cities 055 (4)



8-20-12 Quad Cities 055 (5)



8-20-12 Quad Cities 055 (6)

Status:  Y  N  U

**Seismic Walkdown Checklist (SWC)**

Equipment ID No.: 1-8801A-AO

Equipment Class: (7) Fluid-Operated Valves

Equipment Description: VALVE, PNEUMATIC - U-1 CONTAINMENT 1G DW COOLER UPSTREAM  
AIR SMPL VLV

Project: Quad Cities 1 SWEL

Location (Bldg, Elev, Room/Area): RB, 623.00 ft, ALL

Manufacturer/Model:

**Instructions for Completing Checklist**

This checklist may be used to document the results of the Seismic Walkdown of an item of equipment on the SWEL. The space below each of the following questions may be used to record the results of judgments and findings. Additional space is provided at the end of this checklist for documenting other comments.

**Anchorage**

1. Is anchorage configuration verification required (i.e., is the item one of the 50% of SWEL items requiring such verification)? No
  
2. Is the anchorage free of bent, broken, missing or loose hardware? Not Applicable
  
3. Is the anchorage free of corrosion that is more than mild surface oxidation? Not Applicable
  
4. Is the anchorage free of visible cracks in the concrete near the anchors? Not Applicable
  
5. Is the anchorage configuration consistent with plant documentation? (Note: This question only applies if the item is one of the 50% for which an anchorage configuration verification is required.) Not Applicable
  
6. Based on the above anchorage evaluations, is the anchorage free of potentially adverse seismic conditions? Yes

Status:  Y  N  U

**Seismic Walkdown Checklist (SWC)**

Equipment ID No.: 1-8801A-AO

Equipment Class: (7) Fluid-Operated Valves

Equipment Description: VALVE, PNEUMATIC - U-1 CONTAINMENT 1G DW COOLER UPSTREAM  
AIR SMPL VLV

**Interaction Effects**

7. Are soft targets free from impact by nearby equipment or structures? Yes

*Air lines for solenoid valves associated with 8801A, B, and C are in contact with pipe insulation. Valves fail closed and are judged to be acceptable. See IR 1403596.*

8. Are overhead equipment, distribution systems, ceiling tiles and lighting, and masonry block walls not likely to collapse onto the equipment? Yes

*Masonry wall with stacked bond approximately 5'-6" high in vicinity of valve. Wall is safety-related per B-1734 (Walls 42, 43, and 44).*

9. Do attached lines have adequate flexibility to avoid damage? Yes

10. Based on the above seismic interaction evaluations, is equipment free of potentially adverse seismic interaction effects? Yes

**Other Adverse Conditions**

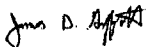
11. Have you looked for and found no adverse seismic conditions that could adversely affect the safety functions of the equipment? Yes

**Comments**

Seismic Walkdown Team: D. Carter & J. Griffith - 8/22/2012

Evaluated by:  David Carter

Date: 10/4/2012

 James Griffith

10/4/2012



Status:  Y  N  U

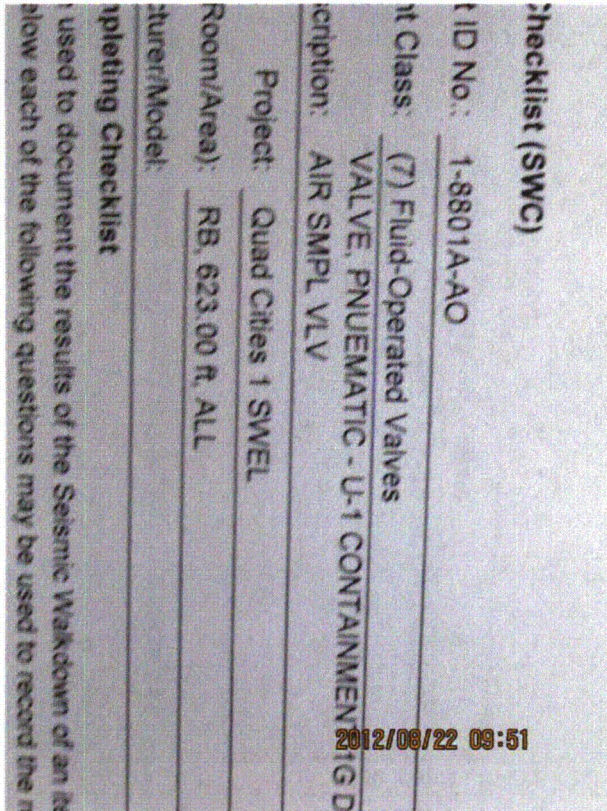
**Seismic Walkdown Checklist (SWC)**

Equipment ID No.: 1-8801A-AO

Equipment Class: (7) Fluid-Operated Valves

VALVE, PNEUMATIC - U-1 CONTAINMENT 1G DW COOLER UPSTREAM  
Equipment Description: AIR SMPL VLV

**Photos**



8-22-12 Quad Cities 072



8-22-12 Quad Cities 073

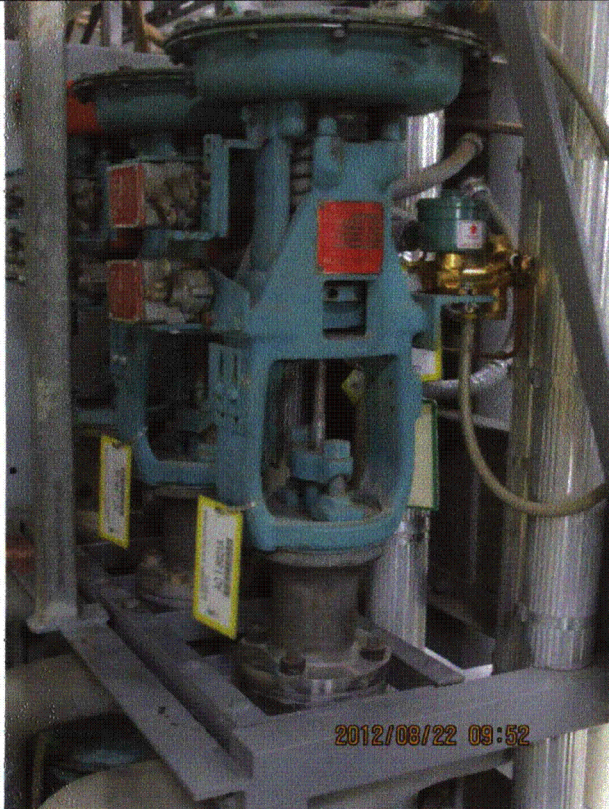
Status:  Y  N  U

**Seismic Walkdown Checklist (SWC)**

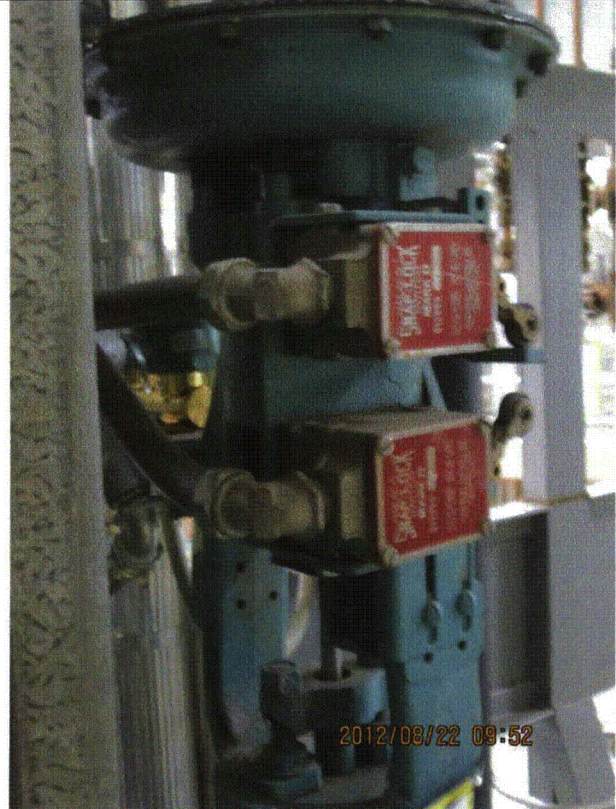
Equipment ID No.: 1-8801A-AO

Equipment Class: (7) Fluid-Operated Valves

Equipment Description: VALVE, PNUEMATIC - U-1 CONTAINMENT 1G DW COOLER UPSTREAM  
AIR SMPL VLV



8-22-12 Quad Cities 074



8-22-12 Quad Cities 075

Status:  Y  N  U

**Seismic Walkdown Checklist (SWC)**

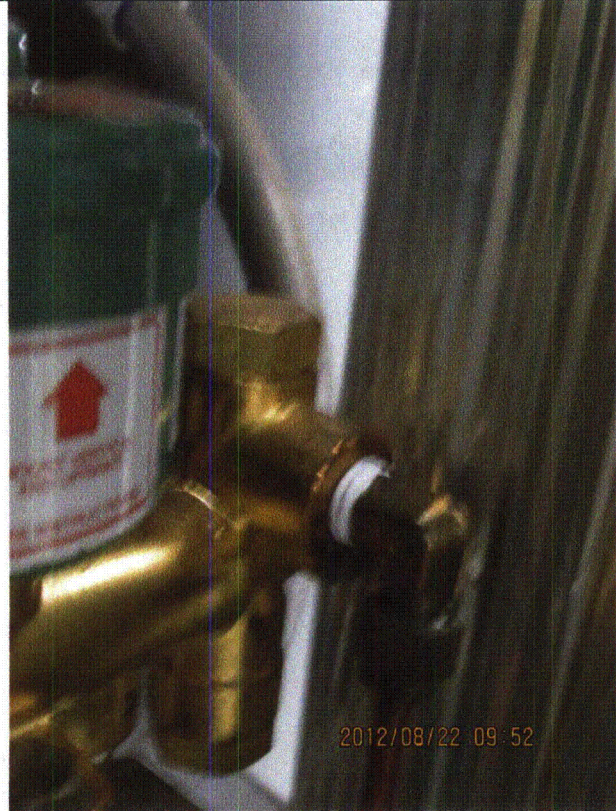
Equipment ID No.: 1-8801A-AO

Equipment Class: (7) Fluid-Operated Valves

Equipment Description: VALVE, PNEUMATIC - U-1 CONTAINMENT 1G DW COOLER UPSTREAM  
AIR SMPL VLV



8-22-12 Quad Cities 076



8-22-12 Quad Cities 077

Status:  Y  N  U

**Seismic Walkdown Checklist (SWC)**

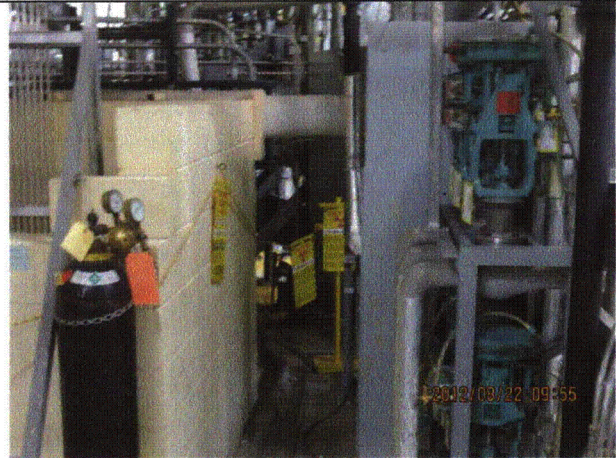
Equipment ID No.: 1-8801A-AO

Equipment Class: (7) Fluid-Operated Valves

Equipment Description: VALVE, PNEUMATIC - U-1 CONTAINMENT 1G DW COOLER UPSTREAM  
AIR SMPL VLV



8-22-12 Quad Cities 078



8-22-12 Quad Cities 079

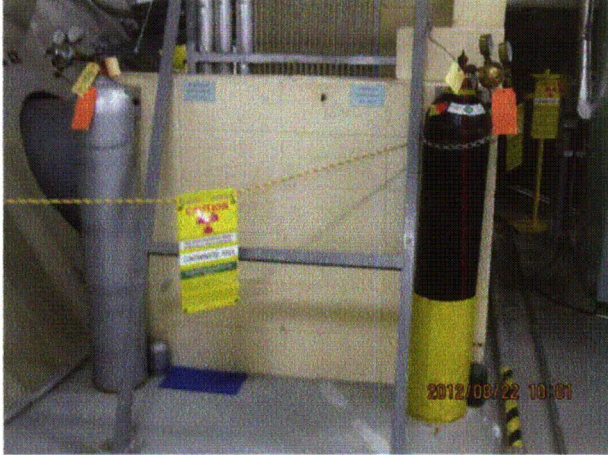
Status:  Y  N  U

**Seismic Walkdown Checklist (SWC)**

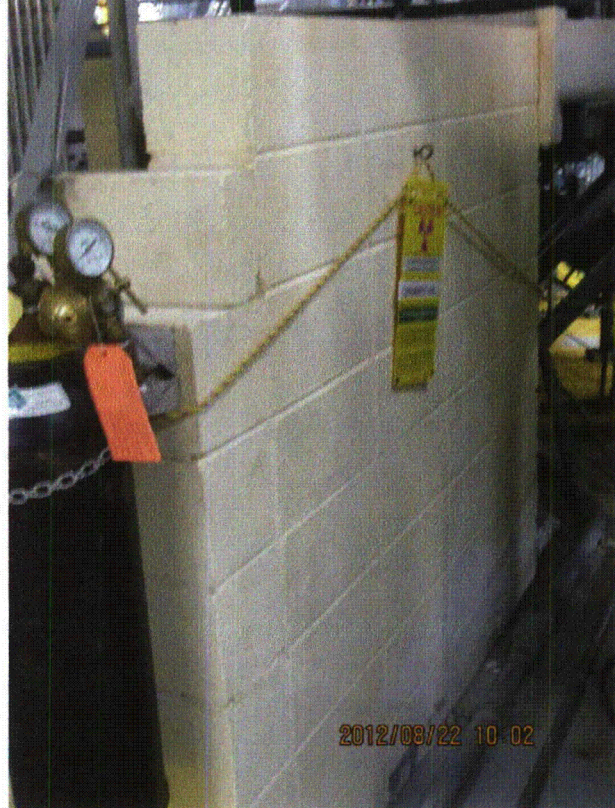
Equipment ID No.: 1-8801A-AO

Equipment Class: (7) Fluid-Operated Valves

Equipment Description: VALVE, PNUEMATIC - U-1 CONTAINMENT 1G DW COOLER UPSTREAM  
AIR SMPL VLV



8-22-12 Quad Cities 080



8-22-12 Quad Cities 081

Status:  Y  N  U

**Seismic Walkdown Checklist (SWC)**

Equipment ID No.: 1-8801A-AO

Equipment Class: (7) Fluid-Operated Valves

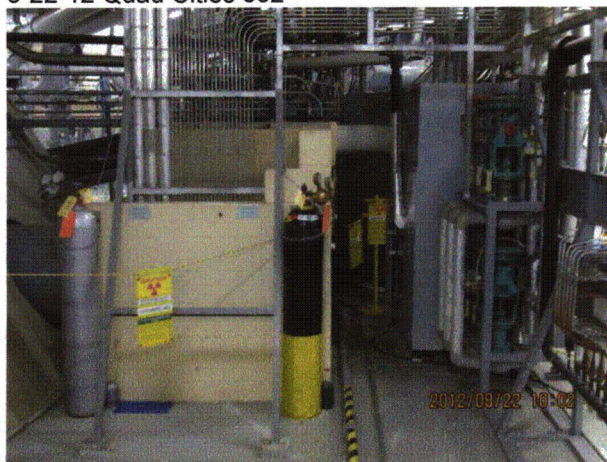
Equipment Description: VALVE, PNUEMATIC - U-1 CONTAINMENT 1G DW COOLER UPSTREAM  
AIR SMPL VLV



8-22-12 Quad Cities 082



8-22-12 Quad Cities 083



8-22-12 Quad Cities 084

Status:  Y  N  U

**Seismic Walkdown Checklist (SWC)**

Equipment ID No.: 2201-29A

Equipment Class: (18) Instruments on Racks

Equipment Description: INSTR RACK 2201-29A

Project: Quad Cities 1 SWEL

Location (Bldg, Elev, Room/Area): RB, 554.00 ft, ALL

Manufacturer/Model:

**Instructions for Completing Checklist**

This checklist may be used to document the results of the Seismic Walkdown of an item of equipment on the SWEL. The space below each of the following questions may be used to record the results of judgments and findings. Additional space is provided at the end of this checklist for documenting other comments.

**Anchorage**

1. Is anchorage configuration verification required (i.e., is the item one of the 50% of SWEL items requiring such verification)? Yes
  
2. Is the anchorage free of bent, broken, missing or loose hardware? Yes
  
3. Is the anchorage free of corrosion that is more than mild surface oxidation? Yes
  
4. Is the anchorage free of visible cracks in the concrete near the anchors? Yes  
*Minor shrinkage cracks in wall judged to be acceptable.*
  
5. Is the anchorage configuration consistent with plant documentation? (Note: This question only applies if the item is one of the 50% for which an anchorage configuration verification is required.) Yes
  
6. Based on the above anchorage evaluations, is the anchorage free of potentially adverse seismic conditions? Yes

Status:  Y  N  U

**Seismic Walkdown Checklist (SWC)**

Equipment ID No.: 2201-29A

Equipment Class: (18) Instruments on Racks

Equipment Description: INSTR RACK 2201-29A

**Interaction Effects**

7. Are soft targets free from impact by nearby equipment or structures? Yes  
*Flexible conduits touch duct judged to be acceptable.*  
*Minimum of 3/4-inch clearance between tubes to duct behind rack judged to be acceptable.*
8. Are overhead equipment, distribution systems, ceiling tiles and lighting, and masonry block walls not likely to collapse onto the equipment? Yes
9. Do attached lines have adequate flexibility to avoid damage? Yes
10. Based on the above seismic interaction evaluations, is equipment free of potentially adverse seismic interaction effects? Yes

**Other Adverse Conditions**

11. Have you looked for and found no adverse seismic conditions that could adversely affect the safety functions of the equipment? Yes  
*Tube in contact with 2 insulated pipes. Adequate flexibility throughout. Judged to be acceptable.*

**Comments**

SEWS Anchorage Notes:

Rack is braced back to reinforced concrete wall and anchored by 1/2" diameter concrete expansion anchors.

\*\*\*\*\*

Seismic Walkdown Team: D. Carter & J. Griffith - 8/23/2012

Evaluated by:  David Carter

Date: 10/16/2012

 James D. Griffith

10/16/2012



Status:  Y  N  U

**Seismic Walkdown Checklist (SWC)**

Equipment ID No.: 2201-29A

Equipment Class: (18) Instruments on Racks

Equipment Description: INSTR RACK 2201-29A

**Photos**



Quad Cities 025



Quad Cities 026



Quad Cities 028

Status:  Y  N  U

**Seismic Walkdown Checklist (SWC)**

Equipment ID No.: 2201-29A

Equipment Class: (18) Instruments on Racks

Equipment Description: INSTR RACK 2201-29A

Quad Cities 027



Quad Cities 029



Quad Cities 030



Quad Cities 031



Quad Cities 035

Status:  Y  N  U

**Seismic Walkdown Checklist (SWC)**

Equipment ID No.: 2201-29A

Equipment Class: (18) Instruments on Racks

Equipment Description: INSTR RACK 2201-29A



Quad Cities 036



Quad Cities 037

Status:  Y  N  U

**Seismic Walkdown Checklist (SWC)**

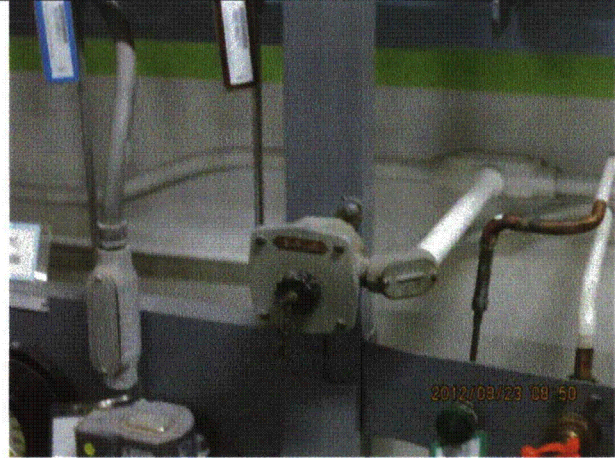
Equipment ID No.: 2201-29A

Equipment Class: (18) Instruments on Racks

Equipment Description: INSTR RACK 2201-29A



Quad Cities 038



Quad Cities 039

Status:  Y  N  U

**Seismic Walkdown Checklist (SWC)**

Equipment ID No.: 2201-32

Equipment Class: (18) Instruments on Racks

Equipment Description: RACK, AUTO BLOWDOWN

Project: Quad Cities 1 SWEL

Location (Bldg, Elev, Room/Area): RB, 623.00 ft, ALL

Manufacturer/Model:

**Instructions for Completing Checklist**

This checklist may be used to document the results of the Seismic Walkdown of an item of equipment on the SWEL. The space below each of the following questions may be used to record the results of judgments and findings. Additional space is provided at the end of this checklist for documenting other comments.

**Anchorage**

1. Is anchorage configuration verification required (i.e., is the item one of the 50% of SWEL items requiring such verification)? No
  
2. Is the anchorage free of bent, broken, missing or loose hardware? Yes  
*One anchor had a gap as identified in the SQUG notes. Braces to dry well wall added to resolve concern. Anchorage judged to be acceptable.*
  
3. Is the anchorage free of corrosion that is more than mild surface oxidation? Yes
  
4. Is the anchorage free of visible cracks in the concrete near the anchors? Yes
  
5. Is the anchorage configuration consistent with plant documentation? (Note: This question only applies if the item is one of the 50% for which an anchorage configuration verification is required.) Not Applicable
  
6. Based on the above anchorage evaluations, is the anchorage free of potentially adverse seismic conditions? Yes

Status:  Y  N  U

**Seismic Walkdown Checklist (SWC)**

Equipment ID No.: 2201-32

Equipment Class: (18) Instruments on Racks

Equipment Description: RACK, AUTO BLOWDOWN

**Interaction Effects**

7. Are soft targets free from impact by nearby equipment or structures? Yes

*Gap to adjacent rack 2201-5 approximately 1/8-inch at top brace. Cabinet 32 and Rack 5 are stiff longitudinally. It is judged that the cabinet and rack will not deflect sufficiently during a seismic event to cause an interaction concern.*

8. Are overhead equipment, distribution systems, ceiling tiles and lighting, and masonry block walls not likely to collapse onto the equipment? Yes

*Minor concrete damage in ceiling above judged to not be a threat at this time. Tracked by station structures monitoring program. See IR 1404147.*

9. Do attached lines have adequate flexibility to avoid damage? Yes

10. Based on the above seismic interaction evaluations, is equipment free of potentially adverse seismic interaction effects? Yes

**Other Adverse Conditions**

11. Have you looked for and found no adverse seismic conditions that could adversely affect the safety functions of the equipment? Yes

**Comments**

\*\*\*\*\*

Seismic Walkdown Team: D. Carter & J. Griffith - 8/22/2012

Evaluated by: David Carter

Date: 10/4/2012

James D. Griffith  
James Griffith

10/4/2012

Status:  Y  N  U

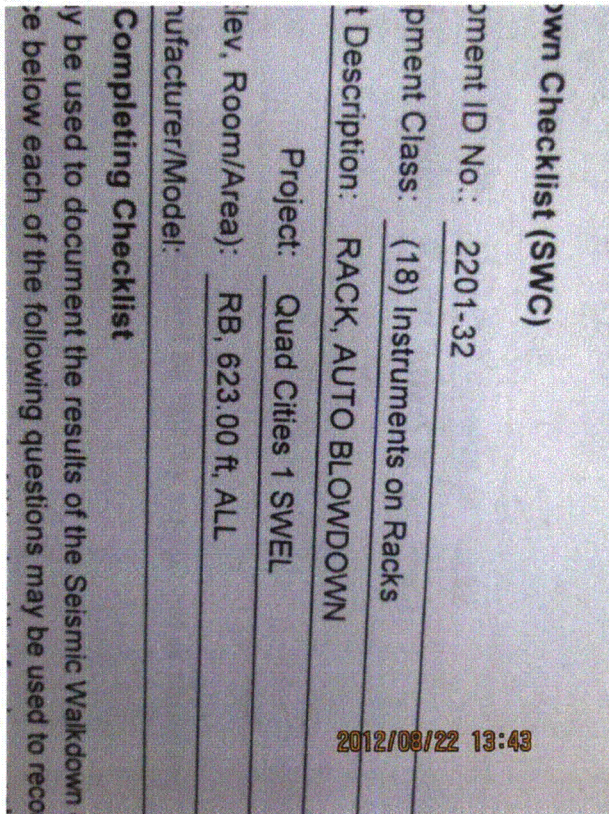
**Seismic Walkdown Checklist (SWC)**

Equipment ID No.: 2201-32

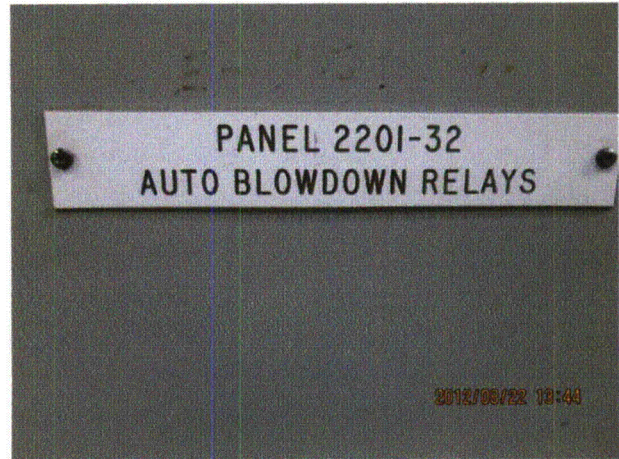
Equipment Class: (18) Instruments on Racks

Equipment Description: RACK, AUTO BLOWDOWN

**Photos**



8-22-12 Quad Cities 132



8-22-12 Quad Cities 133

Status:  Y  N  U

**Seismic Walkdown Checklist (SWC)**

Equipment ID No.: 2201-32

Equipment Class: (18) Instruments on Racks

Equipment Description: RACK, AUTO BLOWDOWN



8-22-12 Quad Cities 134



8-22-12 Quad Cities 135



8-22-12 Quad Cities 136



8-22-12 Quad Cities 137



Status:  Y  N  U

**Seismic Walkdown Checklist (SWC)**

Equipment ID No.: 2201-32

Equipment Class: (18) Instruments on Racks

Equipment Description: RACK, AUTO BLOWDOWN



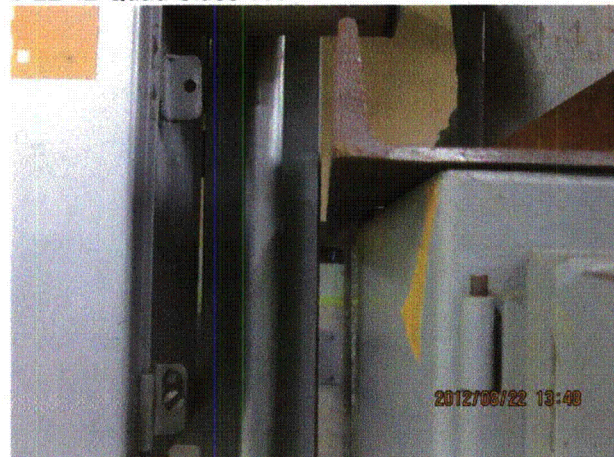
8-22-12 Quad Cities 138



8-22-12 Quad Cities 139



8-22-12 Quad Cities 140



8-22-12 Quad Cities 141

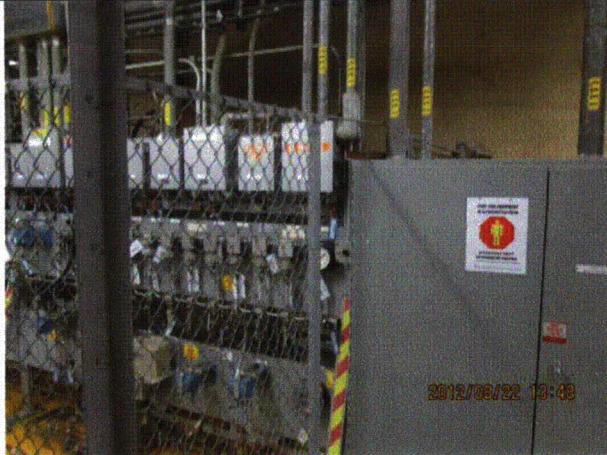
Status:  Y  N  U

**Seismic Walkdown Checklist (SWC)**

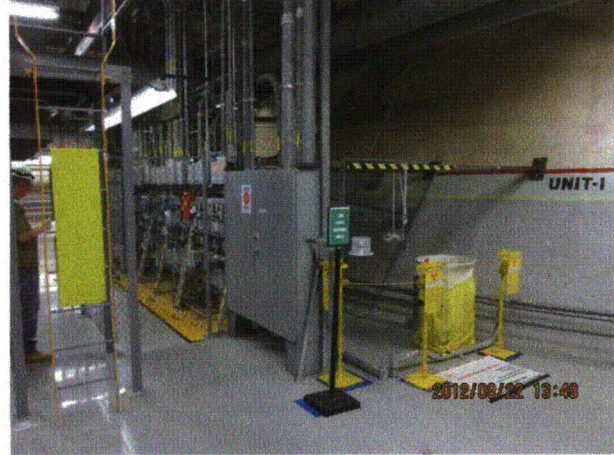
Equipment ID No.: 2201-32

Equipment Class: (18) Instruments on Racks

Equipment Description: RACK, AUTO BLOWDOWN



8-22-12 Quad Cities 142



8-22-12 Quad Cities 143



8-22-12 Quad Cities 144



8-22-12 Quad Cities 145

Status:  Y  N  U

**Seismic Walkdown Checklist (SWC)**

Equipment ID No.: 2201-32

Equipment Class: (18) Instruments on Racks

Equipment Description: RACK, AUTO BLOWDOWN



8-22-12 Quad Cities 146

Status:  Y  N  U

**Seismic Walkdown Checklist (SWC)**

Equipment ID No.: 2201-59A

Equipment Class: (18) Instruments on Racks

Equipment Description: RACK

Project: Quad Cities 1 SWEL

Location (Bldg, Elev, Room/Area): RB, 554.00 ft, ALL

Manufacturer/Model:

**Instructions for Completing Checklist**

This checklist may be used to document the results of the Seismic Walkdown of an item of equipment on the SWEL. The space below each of the following questions may be used to record the results of judgments and findings. Additional space is provided at the end of this checklist for documenting other comments.

**Anchorage**

1. Is anchorage configuration verification required (i.e., is the item one of the 50% of SWEL items requiring such verification)? Yes
  
2. Is the anchorage free of bent, broken, missing or loose hardware? Yes  
*Minor corrosion judged to be acceptable. Several anchors with minor lack of thread engagement. Judged to be acceptable.*
  
3. Is the anchorage free of corrosion that is more than mild surface oxidation? Yes
  
4. Is the anchorage free of visible cracks in the concrete near the anchors? Yes  
*Minor shrinkage cracks in floor judged to be acceptable.*
  
5. Is the anchorage configuration consistent with plant documentation? (Note: This question only applies if the item is one of the 50% for which an anchorage configuration verification is required.) Yes
  
6. Based on the above anchorage evaluations, is the anchorage free of potentially adverse seismic conditions? Yes

**Interaction Effects**

7. Are soft targets free from impact by nearby equipment or structures? Yes

Status:  Y  N  U

**Seismic Walkdown Checklist (SWC)**

Equipment ID No.: 2201-59A

Equipment Class: (18) Instruments on Racks

Equipment Description: RACK

8. Are overhead equipment, distribution systems, ceiling tiles and lighting, and masonry block walls not likely to collapse onto the equipment?  
*Overhead light fixtures judged to be acceptable.* Yes
9. Do attached lines have adequate flexibility to avoid damage? Yes
10. Based on the above seismic interaction evaluations, is equipment free of potentially adverse seismic interaction effects? Yes

**Other Adverse Conditions**

11. Have you looked for and found no adverse seismic conditions that could adversely affect the safety functions of the equipment? Yes


**Comments**

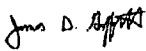
SEWS Anchorage Notes:

Instrument rack anchored by 1/2" concrete expansion anchors on floor and braced back to R/C wall by 1/2" concrete expansion anchors.

\*\*\*\*\*

Seismic Walkdown Team: D. Carter & J. Griffith - 8/23/2012

Evaluated by:  David Carter Date: 10/4/2012

 James D. Griffith 10/4/2012

Status:  Y  N  U

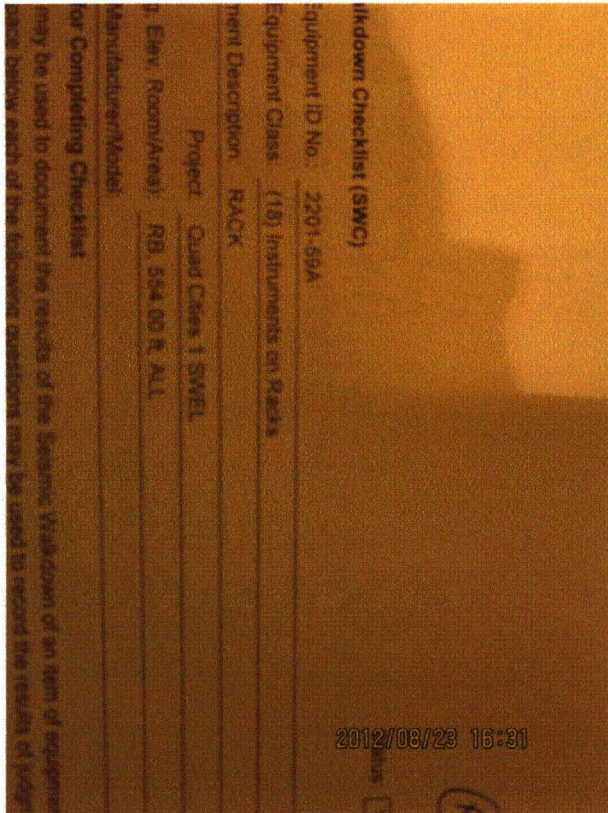
**Seismic Walkdown Checklist (SWC)**

Equipment ID No.: 2201-59A

Equipment Class: (18) Instruments on Racks

Equipment Description: RACK

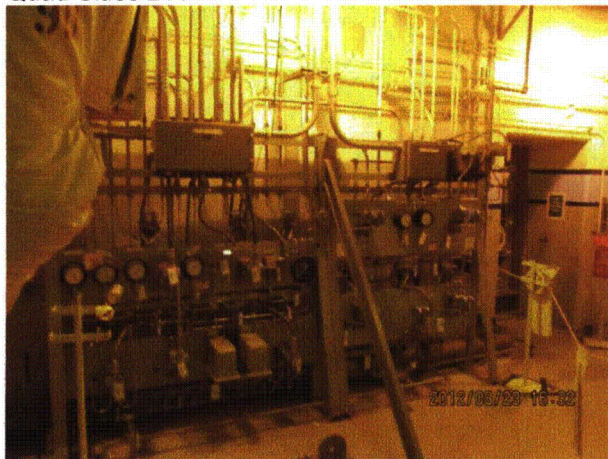
**Photos**



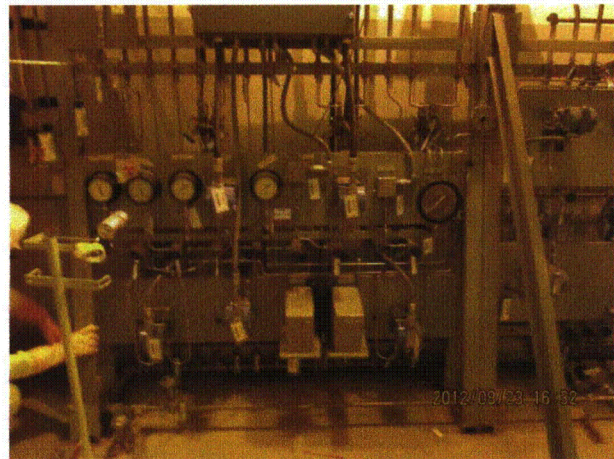
Quad Cities 211



Quad Cities 212



Quad Cities 213



Quad Cities 214

Status:  Y  N  U

**Seismic Walkdown Checklist (SWC)**

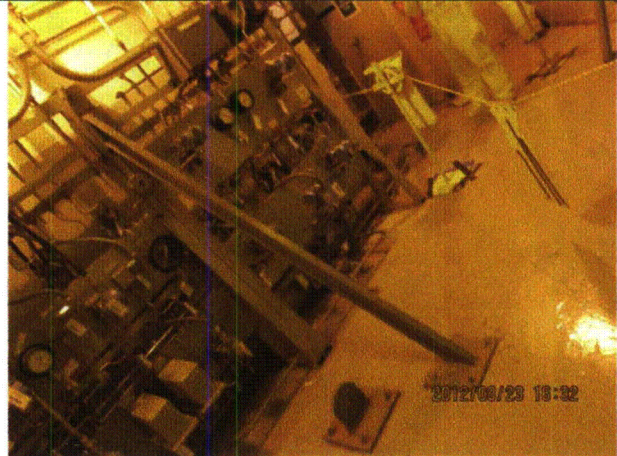
Equipment ID No.: 2201-59A

Equipment Class: (18) Instruments on Racks

Equipment Description: RACK



Quad Cities 215



Quad Cities 216



Quad Cities 217



Quad Cities 218

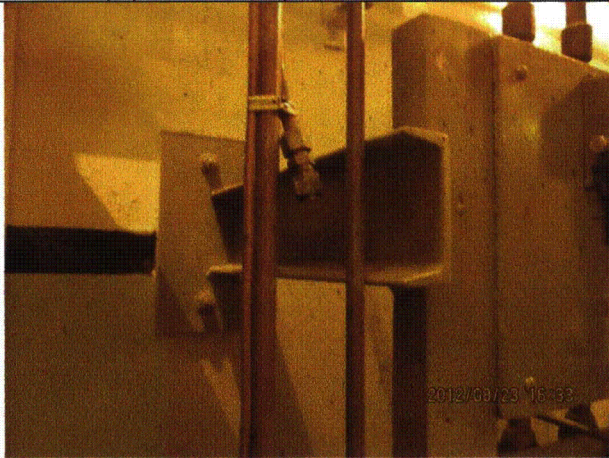
Status:  Y  N  U

**Seismic Walkdown Checklist (SWC)**

Equipment ID No.: 2201-59A

Equipment Class: (18) Instruments on Racks

Equipment Description: RACK



Quad Cities 219



Quad Cities 220



Quad Cities 221



Quad Cities 222



Status:  Y  N  U

**Seismic Walkdown Checklist (SWC)**

Equipment ID No.: 2201-7

Equipment Class: (18) Instruments on Racks

Equipment Description: RACK

Project: Quad Cities 1 SWEL

Location (Bldg, Elev, Room/Area): RB, 595.00 ft, ALL

Manufacturer/Model:

**Instructions for Completing Checklist**

This checklist may be used to document the results of the Seismic Walkdown of an item of equipment on the SWEL. The space below each of the following questions may be used to record the results of judgments and findings. Additional space is provided at the end of this checklist for documenting other comments.

**Anchorage**

1. Is anchorage configuration verification required (i.e., is the item one of the 50% of SWEL items requiring such verification)? Yes
  
2. Is the anchorage free of bent, broken, missing or loose hardware? Yes  
*Minor lack of thread engagement on one anchor judged to be acceptable.*
  
3. Is the anchorage free of corrosion that is more than mild surface oxidation? Yes
  
4. Is the anchorage free of visible cracks in the concrete near the anchors? Yes  
*Minor shrinkage cracks in wall judged to be acceptable.*
  
5. Is the anchorage configuration consistent with plant documentation? (Note: This question only applies if the item is one of the 50% for which an anchorage configuration verification is required.) Yes
  
6. Based on the above anchorage evaluations, is the anchorage free of potentially adverse seismic conditions? Yes

Status:  Y  N  U

**Seismic Walkdown Checklist (SWC)**

Equipment ID No.: 2201-7

Equipment Class: (18) Instruments on Racks

Equipment Description: RACK

**Interaction Effects**

7. Are soft targets free from impact by nearby equipment or structures? Yes  
*Phone attached to rack with receiver in cradle. Rack is rigid and vertical seismic acceleration is minimal, therefore receiver will not jump off of cradle. Phone judged to be acceptable.*
8. Are overhead equipment, distribution systems, ceiling tiles and lighting, and masonry block walls not likely to collapse onto the equipment? Yes
9. Do attached lines have adequate flexibility to avoid damage? Yes
10. Based on the above seismic interaction evaluations, is equipment free of potentially adverse seismic interaction effects? Yes

**Other Adverse Conditions**

11. Have you looked for and found no adverse seismic conditions that could adversely affect the safety functions of the equipment? Yes  
*Adjacent rack 2251-30A has 1/4-inch gap to rack 2201-7 at top. Racks stiff in longitudinal direction. Interaction due to deflection judged to be not credible.*

**Comments**

SEWS Anchorage Notes:

Instrument rack composed of angle iron and anchored by concrete expansion anchors and braced back to a reinforced concrete wall by structural rolled shapes.

\*\*\*\*\*

Seismic Walkdown Team: D. Carter & J. Griffith - 8/22/2012

Status:  Y  N  U

**Seismic Walkdown Checklist (SWC)**

Equipment ID No.: 2201-7

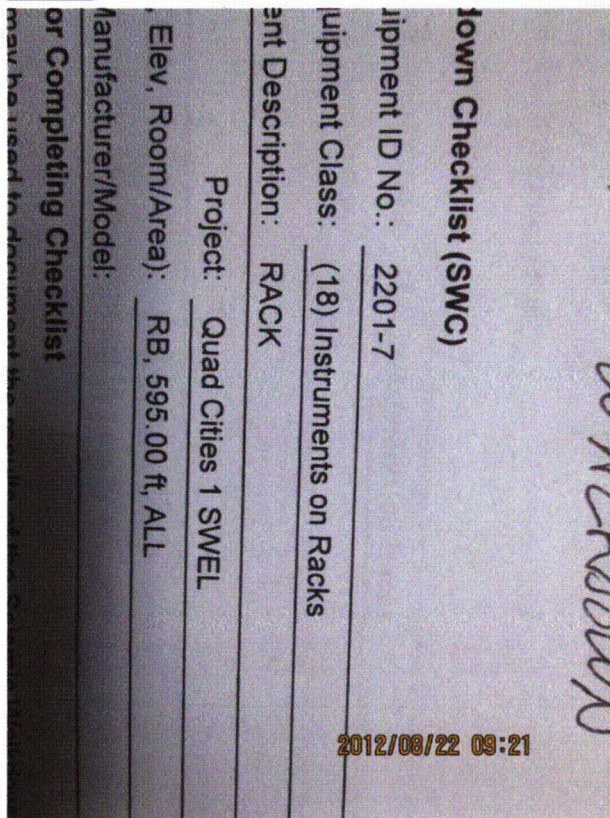
Equipment Class: (18) Instruments on Racks

Equipment Description: RACK

Evaluated by: *David Carter* David Carter Date: 10/4/2012

*James D. Griffith* James Griffith 10/4/2012

**Photos**



8-22-12 Quad Cities 056



8-22-12 Quad Cities 057

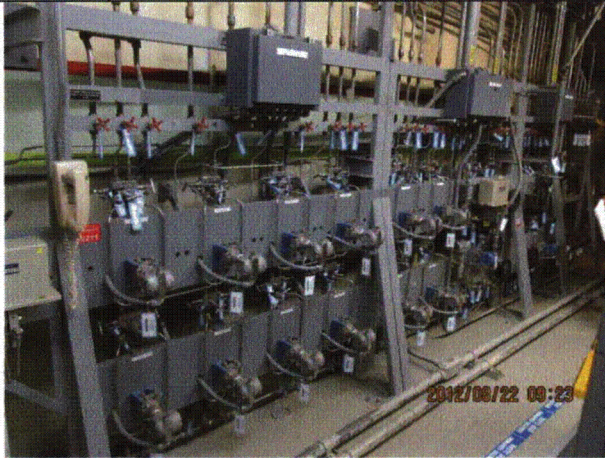
Status:  Y  N  U

**Seismic Walkdown Checklist (SWC)**

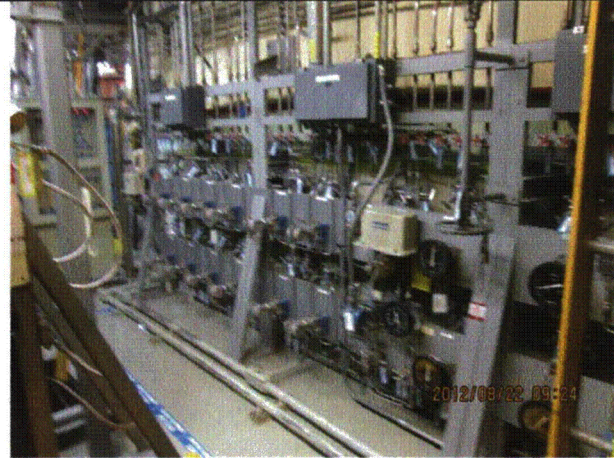
Equipment ID No.: 2201-7

Equipment Class: (18) Instruments on Racks

Equipment Description: RACK



8-22-12 Quad Cities 058



8-22-12 Quad Cities 059



8-22-12 Quad Cities 060



8-22-12 Quad Cities 061

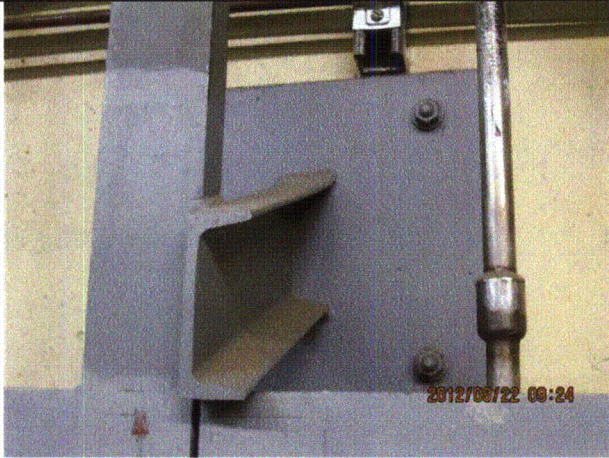
Status:  Y  N  U

**Seismic Walkdown Checklist (SWC)**

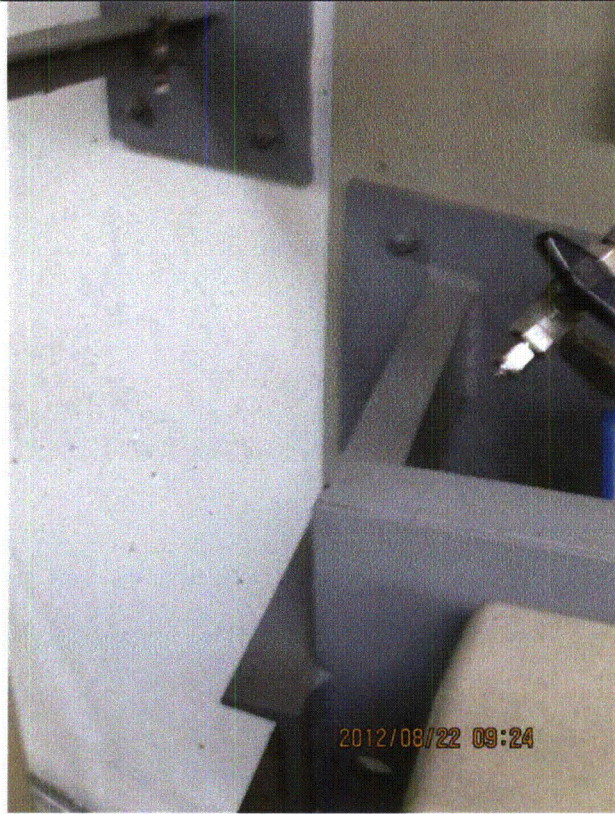
Equipment ID No.: 2201-7

Equipment Class: (18) Instruments on Racks

Equipment Description: RACK



8-22-12 Quad Cities 062



8-22-12 Quad Cities 063

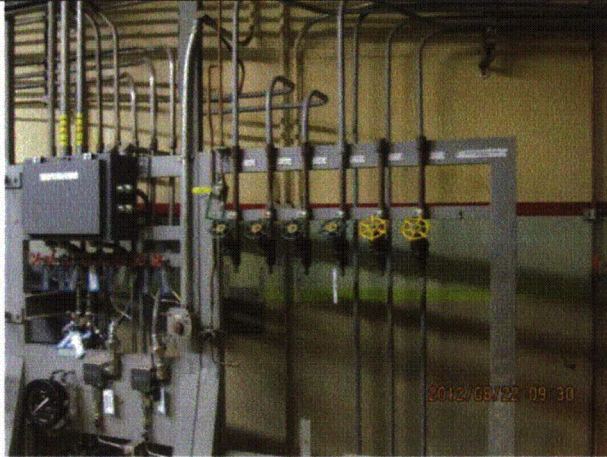
Status:  Y  N  U

**Seismic Walkdown Checklist (SWC)**

Equipment ID No.: 2201-7

Equipment Class: (18) Instruments on Racks

Equipment Description: RACK



8-22-12 Quad Cities 064



8-22-12 Quad Cities 065