

Status: Y N U

Seismic Walkdown Checklist (SWC)

Equipment ID No.: 1-2308

Equipment Class: (6) Vertical Pumps

Equipment Description: UNIT 1 HPCI AUX OIL PUMP

Project: Quad Cities 1 SWEL

Location (Bldg, Elev, Room/Area): RB, 554.00 ft, ALL

Manufacturer/Model:

Instructions for Completing Checklist

This checklist may be used to document the results of the Seismic Walkdown of an item of equipment on the SWEL. The space below each of the following questions may be used to record the results of judgments and findings. Additional space is provided at the end of this checklist for documenting other comments.

Anchorage

- | | | |
|----|---|----------------|
| 1. | Is anchorage configuration verification required (i.e., is the item one of the 50% of SWEL items requiring such verification)? | No |
| 2. | Is the anchorage free of bent, broken, missing or loose hardware? | Yes |
| 3. | Is the anchorage free of corrosion that is more than mild surface oxidation? | Yes |
| 4. | Is the anchorage free of visible cracks in the concrete near the anchors?
<i>Mounted to checkered plate.</i> | Not Applicable |
| 5. | Is the anchorage configuration consistent with plant documentation? (Note: This question only applies if the item is one of the 50% for which an anchorage configuration verification is required.) | Not Applicable |
| 6. | Based on the above anchorage evaluations, is the anchorage free of potentially adverse seismic conditions? | Yes |

Interaction Effects

- | | | |
|----|--|-----|
| 7. | Are soft targets free from impact by nearby equipment or structures? | Yes |
|----|--|-----|

Status: Y N U

Seismic Walkdown Checklist (SWC)

Equipment ID No.: 1-2308

Equipment Class: (6) Vertical Pumps

Equipment Description: UNIT 1 HPCI AUX OIL PUMP

8. Are overhead equipment, distribution systems, ceiling tiles and lighting, and masonry block walls not likely to collapse onto the equipment? Yes
9. Do attached lines have adequate flexibility to avoid damage? Yes
10. Based on the above seismic interaction evaluations, is equipment free of potentially adverse seismic interaction effects? Yes

Other Adverse Conditions

11. Have you looked for and found no adverse seismic conditions that could adversely affect the safety functions of the equipment? Yes

Comments

Seismic Walkdown Team: D. Carter & J. Griffith - 8/23/2012

Only motor is accessible. Pump is submerged in oil.

Evaluated by:  David Carter

Date: 10/4/2012

 James Griffith

10/4/2012

Status: Y N U

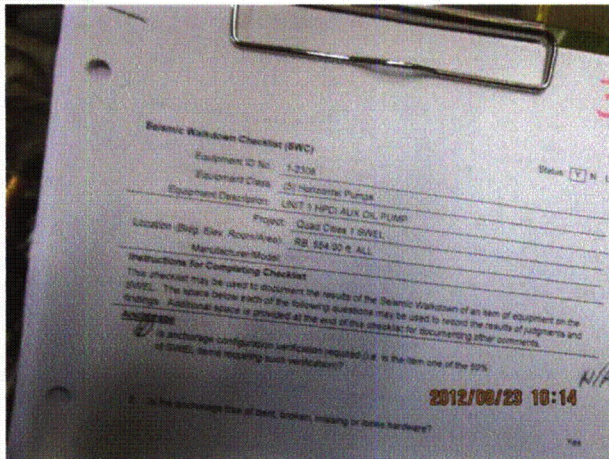
Seismic Walkdown Checklist (SWC)

Equipment ID No.: 1-2308

Equipment Class: (6) Vertical Pumps

Equipment Description: UNIT 1 HPCI AUX OIL PUMP

Photos



Quad Cities 081



Quad Cities 082

Status: Y N U

Seismic Walkdown Checklist (SWC)

Equipment ID No.: 1-2308

Equipment Class: (6) Vertical Pumps

Equipment Description: UNIT 1 HPCI AUX OIL PUMP



Quad Cities 083



Quad Cities 084

Status: Y N U

Seismic Walkdown Checklist (SWC)

Equipment ID No.: 1-2310

Equipment Class: (21) Tanks and Heat Exchangers

Equipment Description: COOLER U-1 HPCI OIL

Project: Quad Cities 1 SWEL

Location (Bldg, Elev, Room/Area): RB, 554.00 ft, ALL

Manufacturer/Model:

Instructions for Completing Checklist

This checklist may be used to document the results of the Seismic Walkdown of an item of equipment on the SWEL. The space below each of the following questions may be used to record the results of judgments and findings. Additional space is provided at the end of this checklist for documenting other comments.

Anchorage

1. Is anchorage configuration verification required (i.e., is the item one of the 50% of SWEL items requiring such verification)? No
Supported from brackets from turbine skid via a U-bolt at each end.

2. Is the anchorage free of bent, broken, missing or loose hardware? Yes

3. Is the anchorage free of corrosion that is more than mild surface oxidation? Yes

4. Is the anchorage free of visible cracks in the concrete near the anchors? Yes

5. Is the anchorage configuration consistent with plant documentation? (Note: This question only applies if the item is one of the 50% for which an anchorage configuration verification is required.) Not Applicable

6. Based on the above anchorage evaluations, is the anchorage free of potentially adverse seismic conditions? Yes

Interaction Effects

7. Are soft targets free from impact by nearby equipment or structures? Yes

Status: Y N U

Seismic Walkdown Checklist (SWC)

Equipment ID No.: 1-2310

Equipment Class: (21) Tanks and Heat Exchangers

Equipment Description: COOLER U-1 HPCI OIL

8. Are overhead equipment, distribution systems, ceiling tiles and lighting, and masonry block walls not likely to collapse onto the equipment? Yes
9. Do attached lines have adequate flexibility to avoid damage? Yes
10. Based on the above seismic interaction evaluations, is equipment free of potentially adverse seismic interaction effects? Yes

Other Adverse Conditions

11. Have you looked for and found no adverse seismic conditions that could adversely affect the safety functions of the equipment? Yes
1 pipe (approximately 3-inch diameter) contacts grating support. Pipe is robust. Judged to be acceptable.

Comments

Seismic Walkdown Team: D. Carter & J. Griffith - 8/23/2012

Evaluated by: *David Carter* David Carter Date: 10/4/2012

James D. Griffith James Griffith 10/4/2012

Status: Y N U

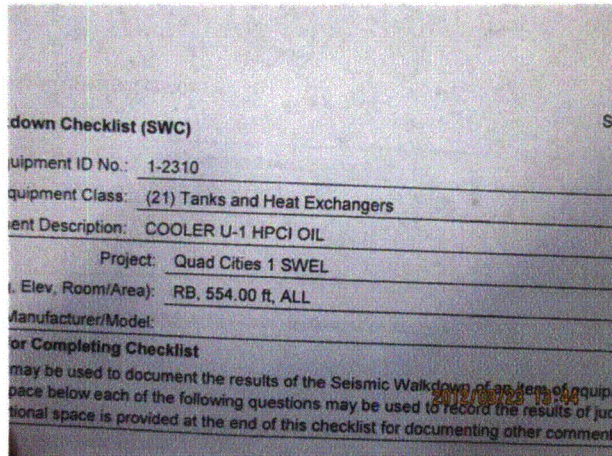
Seismic Walkdown Checklist (SWC)

Equipment ID No.: 1-2310

Equipment Class: (21) Tanks and Heat Exchangers

Equipment Description: COOLER U-1 HPCI OIL

Photos



Quad Cities 117



Quad Cities 119



Quad Cities 118



Quad Cities 120

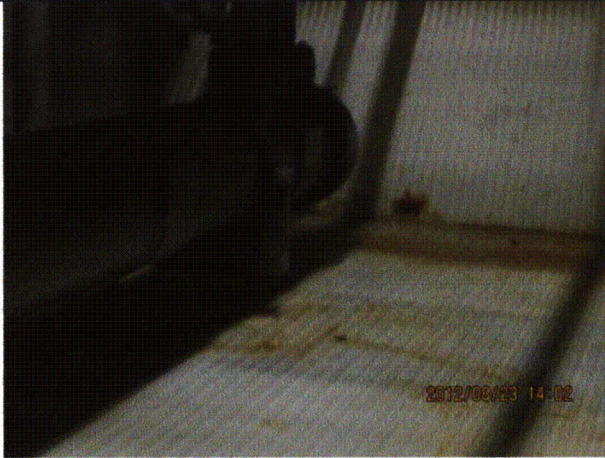
Status: Y N U

Seismic Walkdown Checklist (SWC)

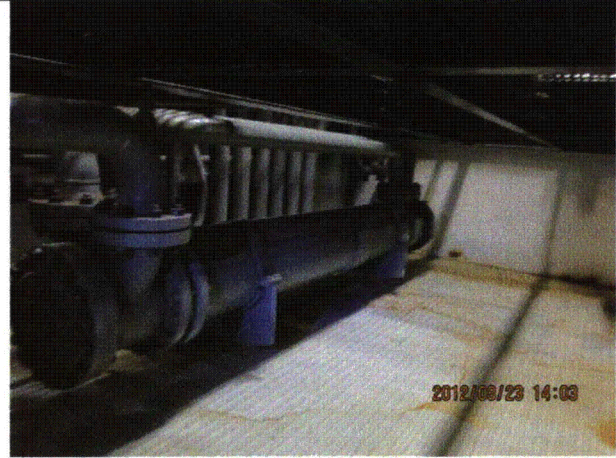
Equipment ID No.: 1-2310

Equipment Class: (21) Tanks and Heat Exchangers

Equipment Description: COOLER U-1 HPCI OIL



Quad Cities 121



Quad Cities 122



Quad Cities 123

Status: Y N U

Seismic Walkdown Checklist (SWC)

Equipment ID No.: 1-2399-15-PCV

Equipment Class: (7) Fluid-Operated Valves

Equipment Description: U-1 HPCI GL SEAL CONDENSER COND PMP DSCH PCV

Project: Quad Cities 1 SWEL

Location (Bldg, Elev, Room/Area): RB, 554.00 ft, ALL

Manufacturer/Model:

Instructions for Completing Checklist

This checklist may be used to document the results of the Seismic Walkdown of an item of equipment on the SWEL. The space below each of the following questions may be used to record the results of judgments and findings. Additional space is provided at the end of this checklist for documenting other comments.

Anchorage

1. Is anchorage configuration verification required (i.e., is the item one of the 50% of SWEL items requiring such verification)? No

2. Is the anchorage free of bent, broken, missing or loose hardware? Not Applicable

3. Is the anchorage free of corrosion that is more than mild surface oxidation? Not Applicable

4. Is the anchorage free of visible cracks in the concrete near the anchors? Not Applicable

5. Is the anchorage configuration consistent with plant documentation? (Note: This question only applies if the item is one of the 50% for which an anchorage configuration verification is required.) Not Applicable

6. Based on the above anchorage evaluations, is the anchorage free of potentially adverse seismic conditions? Yes

Status: Y N U

Seismic Walkdown Checklist (SWC)

Equipment ID No.: 1-2399-15-PCV

Equipment Class: (7) Fluid-Operated Valves

Equipment Description: U-1 HPCI GL SEAL CONDENSER COND PMP DSCH PCV

Interaction Effects

7. Are soft targets free from impact by nearby equipment or structures? Yes
3/4-inch clearance between operator and gallery judged to be acceptable.
8. Are overhead equipment, distribution systems, ceiling tiles and lighting, and masonry block walls not likely to collapse onto the equipment? Yes
9. Do attached lines have adequate flexibility to avoid damage? Yes
10. Based on the above seismic interaction evaluations, is equipment free of potentially adverse seismic interaction effects? Yes

Other Adverse Conditions

11. Have you looked for and found no adverse seismic conditions that could adversely affect the safety functions of the equipment? Yes

Comments

Seismic Walkdown Team: D. Carter & J. Griffith - 8/23/2012

Evaluated by:  David Carter

Date: 10/4/2012

 James Griffith

10/4/2012

Status: Y N U

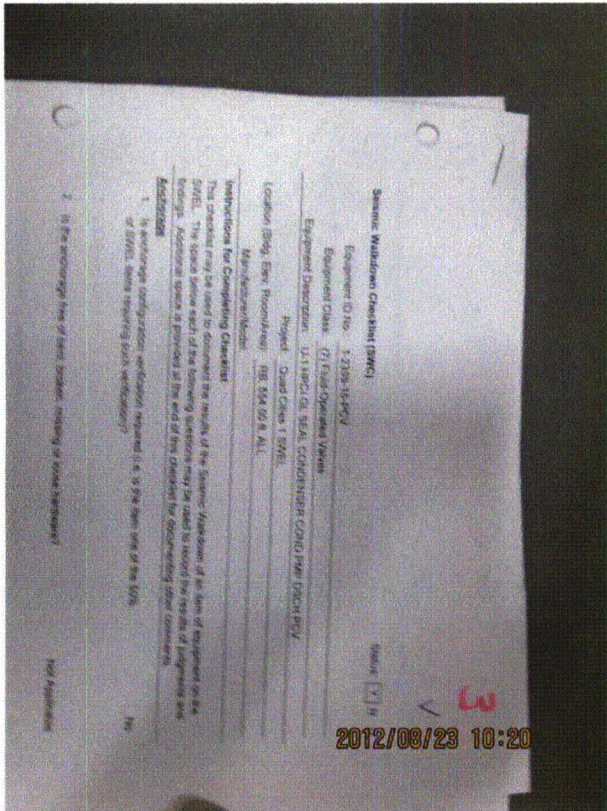
Seismic Walkdown Checklist (SWC)

Equipment ID No.: 1-2399-15-PCV

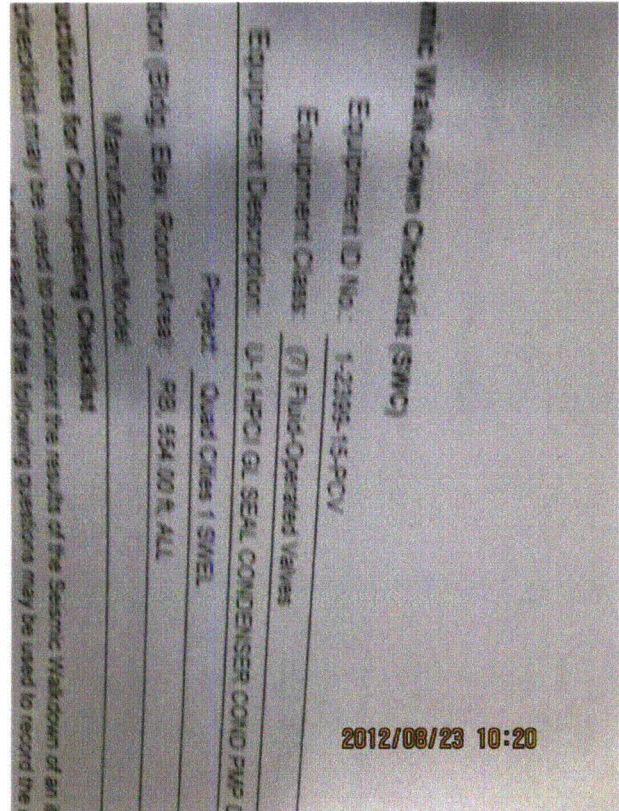
Equipment Class: (7) Fluid-Operated Valves

Equipment Description: U-1 HPCI GL SEAL CONDENSER COND PMP DSCH PCV

Photos



Quad Cities 085



Quad Cities 086

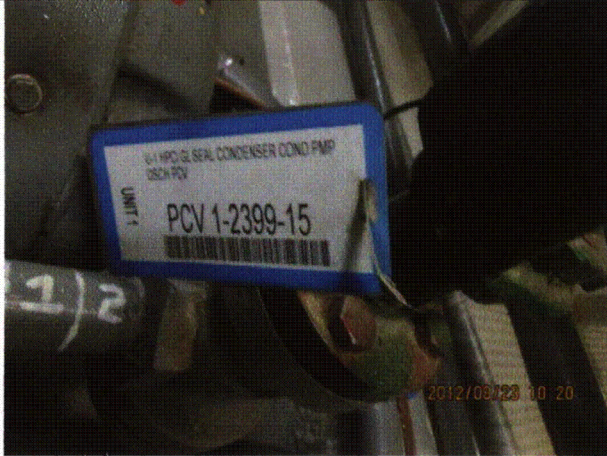
Status: Y N U

Seismic Walkdown Checklist (SWC)

Equipment ID No.: 1-2399-15-PCV

Equipment Class: (7) Fluid-Operated Valves

Equipment Description: U-1 HPCI GL SEAL CONDENSER COND PMP DSCH PCV



Quad Cities 087



Quad Cities 088

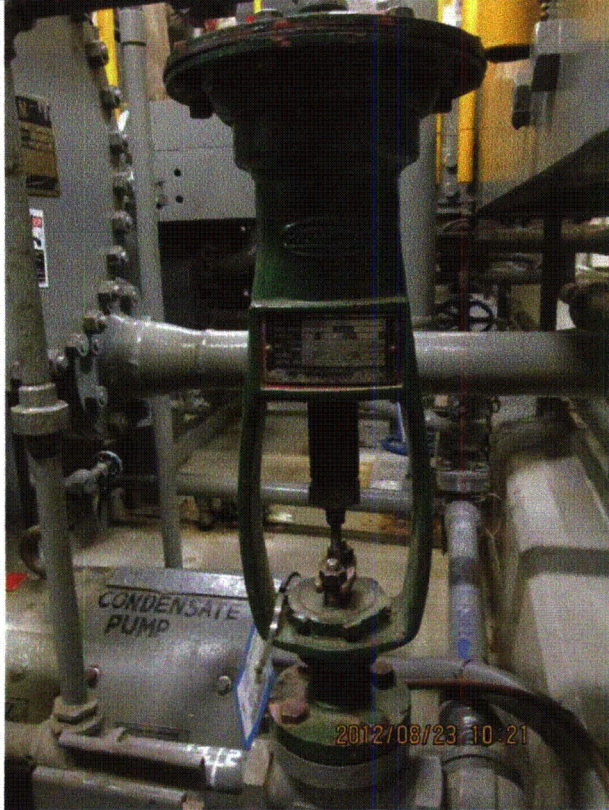
Status: Y N U

Seismic Walkdown Checklist (SWC)

Equipment ID No.: 1-2399-15-PCV

Equipment Class: (7) Fluid-Operated Valves

Equipment Description: U-1 HPCI GL SEAL CONDENSER COND PMP DSCH PCV



Quad Cities 089

Status: Y N U

Seismic Walkdown Checklist (SWC)

Equipment ID No.: 125 VDC BATT 1

Equipment Class: (15) Batteries on Racks

Equipment Description: BATTERY, 125V

Project: Quad Cities 1 SWEL

Location (Bldg, Elev, Room/Area): TB, 628.00 ft, ALL

Manufacturer/Model:

Instructions for Completing Checklist

This checklist may be used to document the results of the Seismic Walkdown of an item of equipment on the SWEL. The space below each of the following questions may be used to record the results of judgments and findings. Additional space is provided at the end of this checklist for documenting other comments.

Anchorage

1. Is anchorage configuration verification required (i.e., is the item one of the 50% of SWEL items requiring such verification)? Yes

2. Is the anchorage free of bent, broken, missing or loose hardware? Yes

3. Is the anchorage free of corrosion that is more than mild surface oxidation? Yes

4. Is the anchorage free of visible cracks in the concrete near the anchors? Yes
Minor shrinkage cracks judged to be acceptable.

5. Is the anchorage configuration consistent with plant documentation? (Note: This question only applies if the item is one of the 50% for which an anchorage configuration verification is required.) Yes

6. Based on the above anchorage evaluations, is the anchorage free of potentially adverse seismic conditions? Yes

Status: Y N U

Seismic Walkdown Checklist (SWC)

Equipment ID No.: 125 VDC BATT 1

Equipment Class: (15) Batteries on Racks

Equipment Description: BATTERY, 125V

Interaction Effects

7. Are soft targets free from impact by nearby equipment or structures? Yes
Softeners in place between batteries and between the batteries and racks in place to mitigate impacts.
8. Are overhead equipment, distribution systems, ceiling tiles and lighting, and masonry block walls not likely to collapse onto the equipment? Yes
9. Do attached lines have adequate flexibility to avoid damage? Yes
10. Based on the above seismic interaction evaluations, is equipment free of potentially adverse seismic interaction effects? Yes

Other Adverse Conditions

11. Have you looked for and found no adverse seismic conditions that could adversely affect the safety functions of the equipment? Yes

Comments

SEWS Anchorage Notes:

Each leg anchored by a single 3/8" Wedge type expansion anchor through a 3x3x1/4" clip angle that is thru-bolted thru the tube leg.

Seismic Walkdown Team: D. Carter & J. Griffith - 8/20/2012

Evaluated by: David Carter

Date: 10/4/2012

James D. Griffith
James Griffith

10/4/2012

Status: Y N U

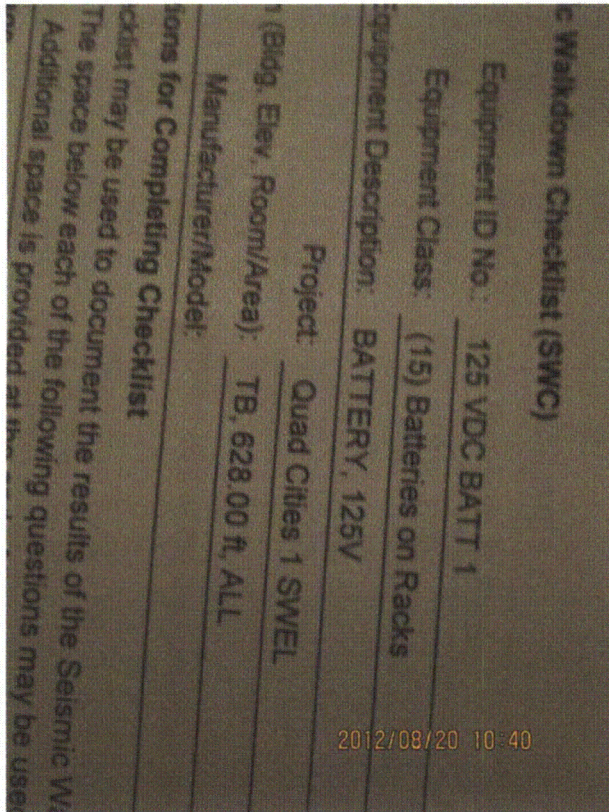
Seismic Walkdown Checklist (SWC)

Equipment ID No.: 125 VDC BATT 1

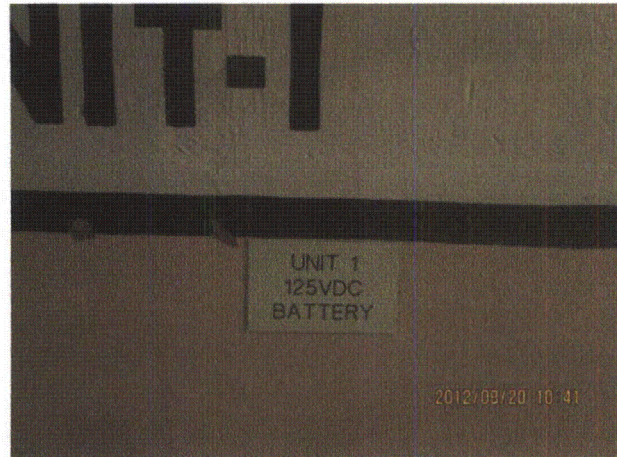
Equipment Class: (15) Batteries on Racks

Equipment Description: BATTERY, 125V

Photos



8-20-12 Quad Cities 077 (1)



8-20-12 Quad Cities 077 (2)

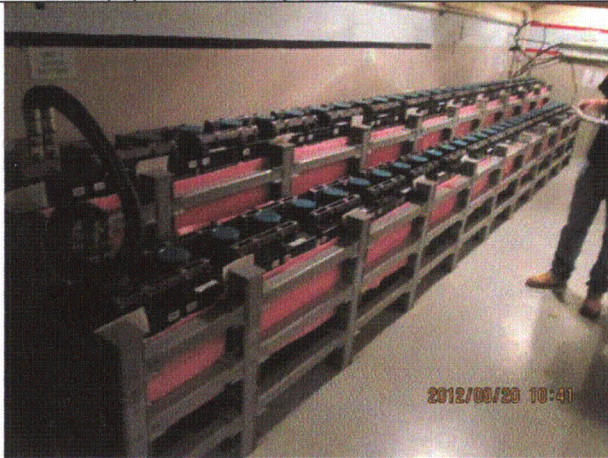
Status: Y N U

Seismic Walkdown Checklist (SWC)

Equipment ID No.: 125 VDC BATT 1

Equipment Class: (15) Batteries on Racks

Equipment Description: BATTERY, 125V



8-20-12 Quad Cities 077 (3)



8-20-12 Quad Cities 077 (4)



8-20-12 Quad Cities 077 (5)



8-20-12 Quad Cities 077 (6)

Status: Y N U

Seismic Walkdown Checklist (SWC)

Equipment ID No.: 125 VDC BATT 1

Equipment Class: (15) Batteries on Racks

Equipment Description: BATTERY, 125V



8-20-12 Quad Cities 077 (7)



8-20-12 Quad Cities 077 (8)



8-20-12 Quad Cities 077 (9)

Status: Y N U

Seismic Walkdown Checklist (SWC)

Equipment ID No.: 1-3903

Equipment Class: (5) Horizontal Pumps

Equipment Description: PUMP, DG COOLING - U1 DIESEL GENERATOR COOLING WATER PUMP

Project: Quad Cities 1 SWEL

Location (Bldg, Elev, Room/Area): TB, 547.00 ft, ALL

Manufacturer/Model:

Instructions for Completing Checklist

This checklist may be used to document the results of the Seismic Walkdown of an item of equipment on the SWEL. The space below each of the following questions may be used to record the results of judgments and findings. Additional space is provided at the end of this checklist for documenting other comments.

Anchorage

1. Is anchorage configuration verification required (i.e., is the item one of the 50% of SWEL items requiring such verification)? Yes

2. Is the anchorage free of bent, broken, missing or loose hardware? Yes

3. Is the anchorage free of corrosion that is more than mild surface oxidation? Yes

4. Is the anchorage free of visible cracks in the concrete near the anchors? Yes

5. Is the anchorage configuration consistent with plant documentation? (Note: This question only applies if the item is one of the 50% for which an anchorage configuration verification is required.) Yes

6. Based on the above anchorage evaluations, is the anchorage free of potentially adverse seismic conditions? Yes

Interaction Effects

7. Are soft targets free from impact by nearby equipment or structures? Yes

Status: Y N U

Seismic Walkdown Checklist (SWC)

Equipment ID No.: 1-3903

Equipment Class: (5) Horizontal Pumps

Equipment Description: PUMP, DG COOLING - U1 DIESEL GENERATOR COOLING WATER PUMP

8. Are overhead equipment, distribution systems, ceiling tiles and lighting, and masonry block walls not likely to collapse onto the equipment? Yes
9. Do attached lines have adequate flexibility to avoid damage? Yes
10. Based on the above seismic interaction evaluations, is equipment free of potentially adverse seismic interaction effects? Yes

Other Adverse Conditions

11. Have you looked for and found no adverse seismic conditions that could adversely affect the safety functions of the equipment? Yes

Comments

SEWS Anchorage Notes:

Pump anchored by six - 7/8" (3 per side) cast-in-place anchors.

Seismic Walkdown Team: D. Carter & J. Griffith - 8/21/2012

Evaluated by: *D. Carter* David Carter Date: 10/4/2012

James D. Griffith James Griffith 10/4/2012

Status: Y N U

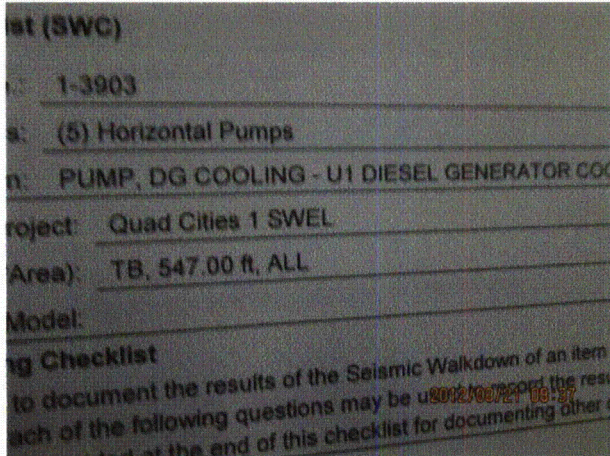
Seismic Walkdown Checklist (SWC)

Equipment ID No.: 1-3903

Equipment Class: (5) Horizontal Pumps

Equipment Description: PUMP, DG COOLING - U1 DIESEL GENERATOR COOLING WATER PUMP

Photos



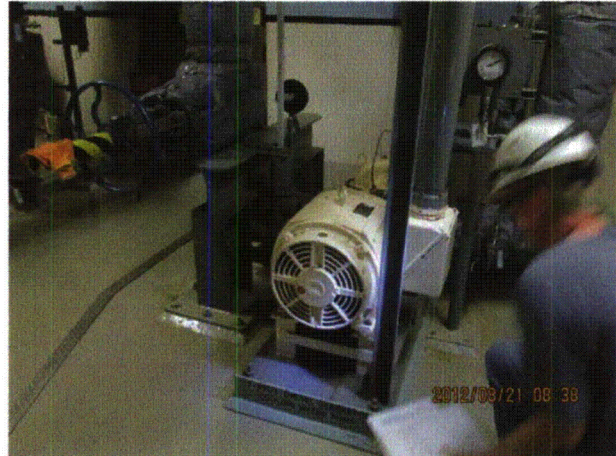
8-21-12 Quad Cities 032



8-21-12 Quad Cities 033



8-21-12 Quad Cities 034



8-21-12 Quad Cities 035

Status: Y N U

Seismic Walkdown Checklist (SWC)

Equipment ID No.: 1-3903

Equipment Class: (5) Horizontal Pumps

Equipment Description: PUMP, DG COOLING - U1 DIESEL GENERATOR COOLING WATER PUMP



8-21-12 Quad Cities 036



8-21-12 Quad Cities 037



8-21-12 Quad Cities 038



8-21-12 Quad Cities 039

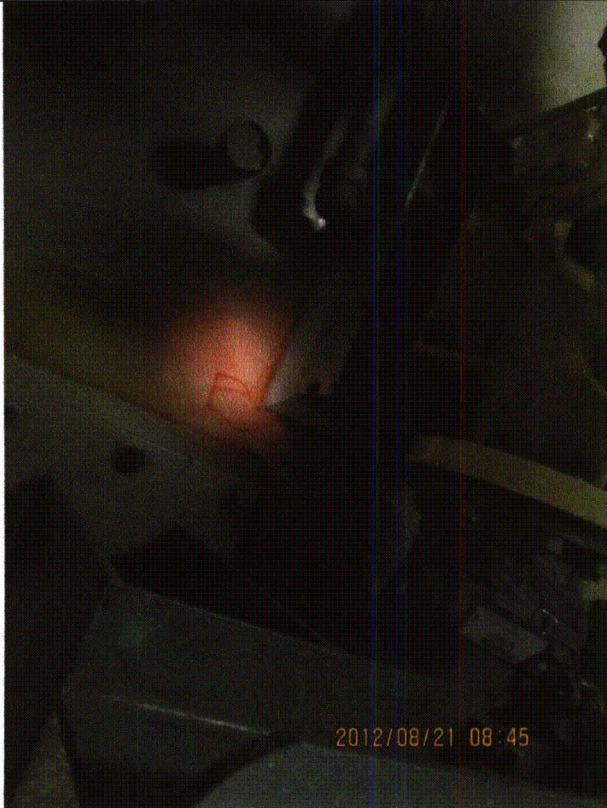
Status: Y N U

Seismic Walkdown Checklist (SWC)

Equipment ID No.: 1-3903

Equipment Class: (5) Horizontal Pumps

Equipment Description: PUMP, DG COOLING - U1 DIESEL GENERATOR COOLING WATER PUMP



8-21-12 Quad Cities 040



8-21-12 Quad Cities 041



8-21-12 Quad Cities 042

Status: Y N U

Seismic Walkdown Checklist (SWC)

Equipment ID No.: 1-4600A

Equipment Class: (12) Air Compressors

Equipment Description: TANK, AIR RECEIVER - RECEIVER GAS (IDNS PRESSURE VESSEL)

Project: Quad Cities 1 SWEL

Location (Bldg, Elev, Room/Area): DG, 595.00 ft, ALL

Manufacturer/Model:

Instructions for Completing Checklist

This checklist may be used to document the results of the Seismic Walkdown of an item of equipment on the SWEL. The space below each of the following questions may be used to record the results of judgments and findings. Additional space is provided at the end of this checklist for documenting other comments.

Anchorage

1. Is anchorage configuration verification required (i.e., is the item one of the 50% of SWEL items requiring such verification)? No

2. Is the anchorage free of bent, broken, missing or loose hardware? Yes

3. Is the anchorage free of corrosion that is more than mild surface oxidation? Yes

4. Is the anchorage free of visible cracks in the concrete near the anchors? Not Applicable
Mounted on the air start skid.

5. Is the anchorage configuration consistent with plant documentation? (Note: This question only applies if the item is one of the 50% for which an anchorage configuration verification is required.) Not Applicable

6. Based on the above anchorage evaluations, is the anchorage free of potentially adverse seismic conditions? Yes

Interaction Effects

7. Are soft targets free from impact by nearby equipment or structures? Yes

Status: Y N U

Seismic Walkdown Checklist (SWC)

Equipment ID No.: 1-4600A

Equipment Class: (12) Air Compressors

Equipment Description: TANK, AIR RECEIVER - RECEIVER GAS (IDNS PRESSURE VESSEL)

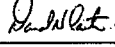
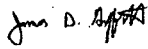
8. Are overhead equipment, distribution systems, ceiling tiles and lighting, and masonry block walls not likely to collapse onto the equipment? Yes
9. Do attached lines have adequate flexibility to avoid damage? Yes
All lines driven by air start skid.
10. Based on the above seismic interaction evaluations, is equipment free of potentially adverse seismic interaction effects? Yes

Other Adverse Conditions

11. Have you looked for and found no adverse seismic conditions that could adversely affect the safety functions of the equipment? Yes

Comments

Seismic Walkdown Team: D. Carter & J. Griffith - 8/21/2012

Evaluated by:  David Carter Date: 10/4/2012
 James Griffith 10/4/2012

Status: Y N U

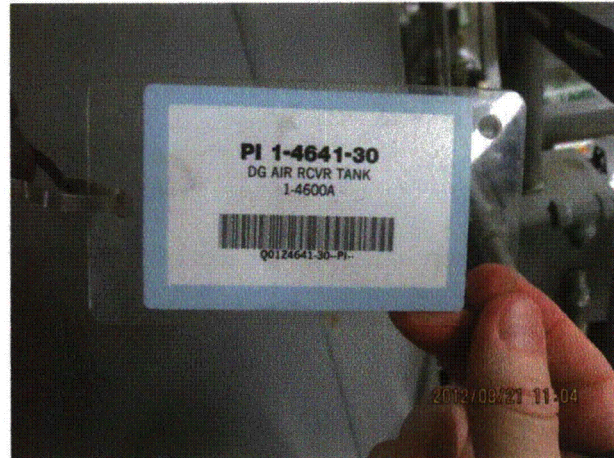
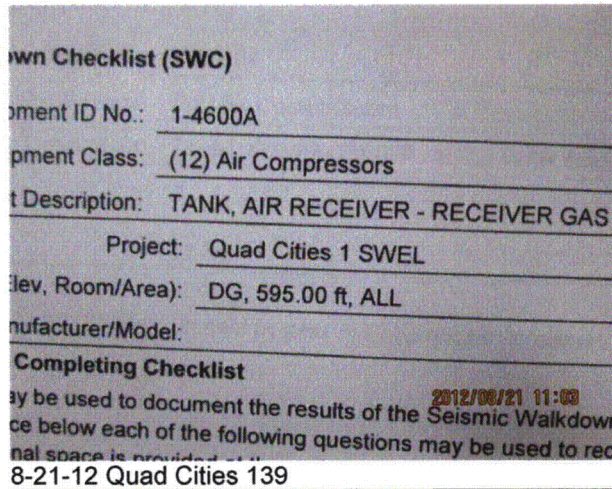
Seismic Walkdown Checklist (SWC)

Equipment ID No.: 1-4600A

Equipment Class: (12) Air Compressors

Equipment Description: TANK, AIR RECEIVER - RECEIVER GAS (IDNS PRESSURE VESSEL)

Photos



Status: Y N U

Seismic Walkdown Checklist (SWC)

Equipment ID No.: 1-4600A

Equipment Class: (12) Air Compressors

Equipment Description: TANK, AIR RECEIVER - RECEIVER GAS (IDNS PRESSURE VESSEL)



8-21-12 Quad Cities 143



8-21-12 Quad Cities 144

Status: Y N U

Seismic Walkdown Checklist (SWC)

Equipment ID No.: 1-4604

Equipment Class: (0) Other

Equipment Description: DRYER, AIR

Project: Quad Cities 1 SWEL

Location (Bldg, Elev, Room/Area): DG, 595.00 ft, ALL

Manufacturer/Model:

Instructions for Completing Checklist

This checklist may be used to document the results of the Seismic Walkdown of an item of equipment on the SWEL. The space below each of the following questions may be used to record the results of judgments and findings. Additional space is provided at the end of this checklist for documenting other comments.

Anchorage

1. Is anchorage configuration verification required (i.e., is the item one of the 50% of SWEL items requiring such verification)? No

2. Is the anchorage free of bent, broken, missing or loose hardware? Not Applicable

3. Is the anchorage free of corrosion that is more than mild surface oxidation? Not Applicable

4. Is the anchorage free of visible cracks in the concrete near the anchors? Not Applicable

5. Is the anchorage configuration consistent with plant documentation? (Note: This question only applies if the item is one of the 50% for which an anchorage configuration verification is required.) Not Applicable

6. Based on the above anchorage evaluations, is the anchorage free of potentially adverse seismic conditions? Yes
Component is mounted in the piping. The piping is well supported.

Interaction Effects

7. Are soft targets free from impact by nearby equipment or structures? Not Applicable

Status: Y N U

Seismic Walkdown Checklist (SWC)

Equipment ID No.: 1-4604

Equipment Class: (0) Other

Equipment Description: DRYER, AIR

8. Are overhead equipment, distribution systems, ceiling tiles and lighting, and masonry block walls not likely to collapse onto the equipment?
Overhead light fixtures judged to be acceptable. Yes
9. Do attached lines have adequate flexibility to avoid damage? Yes
10. Based on the above seismic interaction evaluations, is equipment free of potentially adverse seismic interaction effects? Yes

Other Adverse Conditions

11. Have you looked for and found no adverse seismic conditions that could adversely affect the safety functions of the equipment? Yes

Comments

Seismic Walkdown Team: D. Carter & J. Griffith - 8/21/2012

Evaluated by: *David Carter* David Carter Date: 10/4/2012
James D. Griffith James Griffith 10/4/2012

Status: Y N U

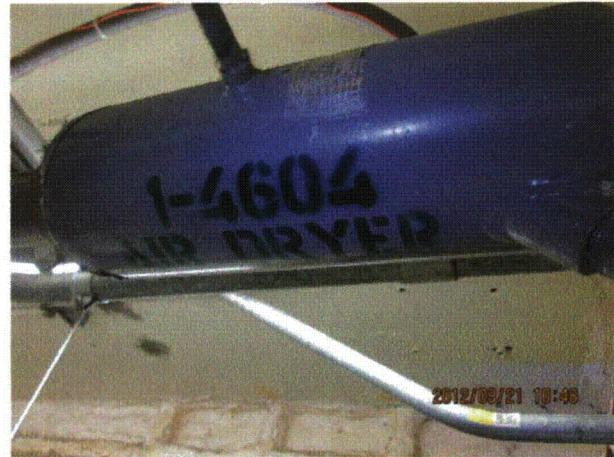
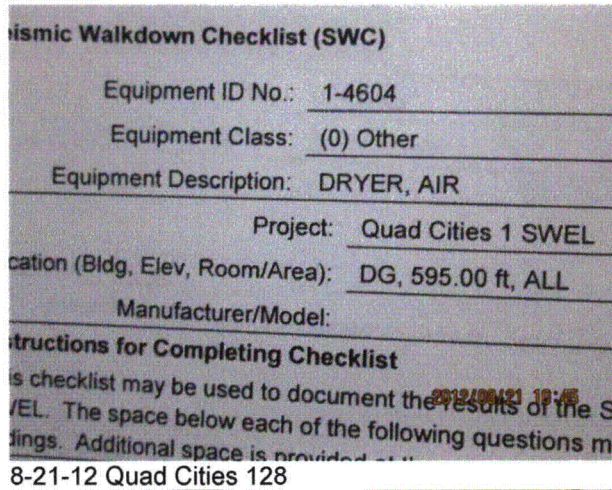
Seismic Walkdown Checklist (SWC)

Equipment ID No.: 1-4604

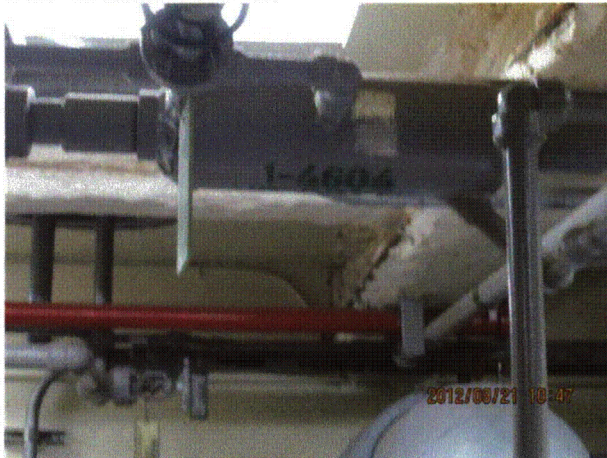
Equipment Class: (0) Other

Equipment Description: DRYER, AIR

Photos



8-21-12 Quad Cities 129



8-21-12 Quad Cities 130



8-21-12 Quad Cities 131

Status: Y N U

Seismic Walkdown Checklist (SWC)

Equipment ID No.: 1-4605

Equipment Class: (21) Tanks and Heat Exchangers

Equipment Description: TANK, BLOWDOWN

Project: Quad Cities 1 SWEL

Location (Bldg, Elev, Room/Area): DG, 595.00 ft, ALL

Manufacturer/Model: _____

Instructions for Completing Checklist

This checklist may be used to document the results of the Seismic Walkdown of an item of equipment on the SWEL. The space below each of the following questions may be used to record the results of judgments and findings. Additional space is provided at the end of this checklist for documenting other comments.

Anchorage

1. Is anchorage configuration verification required (i.e., is the item one of the 50% of SWEL items requiring such verification)? Yes

2. Is the anchorage free of bent, broken, missing or loose hardware? Yes

3. Is the anchorage free of corrosion that is more than mild surface oxidation? Yes

4. Is the anchorage free of visible cracks in the concrete near the anchors? Yes

5. Is the anchorage configuration consistent with plant documentation? (Note: This question only applies if the item is one of the 50% for which an anchorage configuration verification is required.) Yes

6. Based on the above anchorage evaluations, is the anchorage free of potentially adverse seismic conditions? Yes

Interaction Effects

7. Are soft targets free from impact by nearby equipment or structures? Yes

Status: Y N U

Seismic Walkdown Checklist (SWC)

Equipment ID No.: 1-4605

Equipment Class: (21) Tanks and Heat Exchangers

Equipment Description: TANK, BLOWDOWN

Project: Quad Cities 1 SWEL

Location (Bldg, Elev, Room/Area): DG, 595.00 ft, ALL

Manufacturer/Model: _____

Instructions for Completing Checklist

This checklist may be used to document the results of the Seismic Walkdown of an item of equipment on the SWEL. The space below each of the following questions may be used to record the results of judgments and findings. Additional space is provided at the end of this checklist for documenting other comments.

Anchorage

1. Is anchorage configuration verification required (i.e., is the item one of the 50% of SWEL items requiring such verification)? Yes

2. Is the anchorage free of bent, broken, missing or loose hardware? Yes

3. Is the anchorage free of corrosion that is more than mild surface oxidation? Yes

4. Is the anchorage free of visible cracks in the concrete near the anchors? Yes

5. Is the anchorage configuration consistent with plant documentation? (Note: This question only applies if the item is one of the 50% for which an anchorage configuration verification is required.) Yes

6. Based on the above anchorage evaluations, is the anchorage free of potentially adverse seismic conditions? Yes

Interaction Effects

7. Are soft targets free from impact by nearby equipment or structures? Yes

Status: Y N U

Seismic Walkdown Checklist (SWC)

Equipment ID No.: 1-4605

Equipment Class: (21) Tanks and Heat Exchangers

Equipment Description: TANK, BLOWDOWN

8. Are overhead equipment, distribution systems, ceiling tiles and lighting, and masonry block walls not likely to collapse onto the equipment? Yes
Overhead light fixtures judged to be acceptable.
9. Do attached lines have adequate flexibility to avoid damage? Yes
10. Based on the above seismic interaction evaluations, is equipment free of potentially adverse seismic interaction effects? Yes

Other Adverse Conditions

11. Have you looked for and found no adverse seismic conditions that could adversely affect the safety functions of the equipment? Yes

Comments

SEWS Anchorage Notes:

Anchorage: 36" L x 6 1/2" OD tank on two trunnion supports 2" Dia. X 28" Ht. One trunnion is welded to the air receiver skid and the other trunnion is attached to a base plate which is bolted to floor with four 3/8" CEA.

Seismic Walkdown Team: D. Carter & J. Griffith - 8/21/2012

Evaluated by:

David Carter David Carter

Date: 10/12/2012

James D. Griffith James Griffith

10/12/2012

Status: Y N U

Seismic Walkdown Checklist (SWC)

Equipment ID No.: 1-4605

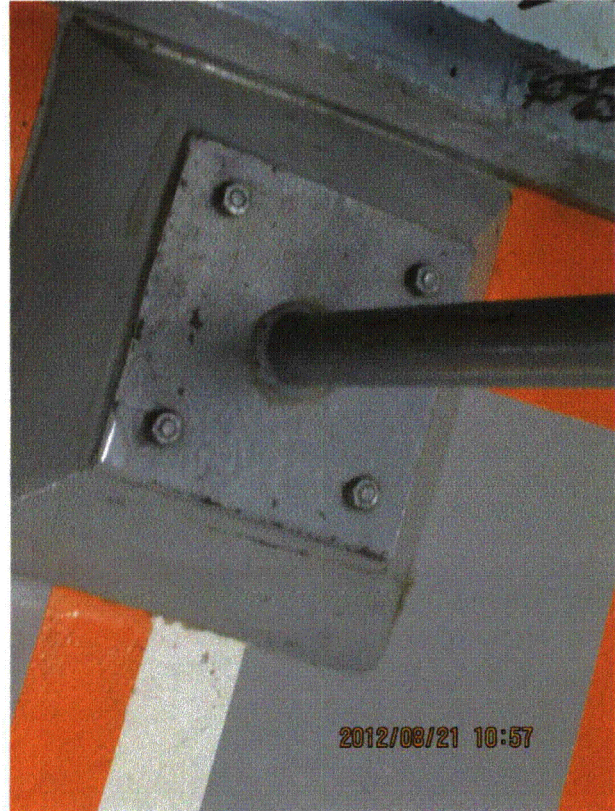
Equipment Class: (21) Tanks and Heat Exchangers

Equipment Description: TANK, BLOWDOWN

Photos



8-21-12 Quad Cities 133



8-21-12 Quad Cities 134

Status: Y N U

Seismic Walkdown Checklist (SWC)

Equipment ID No.: 1-4605

Equipment Class: (21) Tanks and Heat Exchangers

Equipment Description: TANK, BLOWDOWN



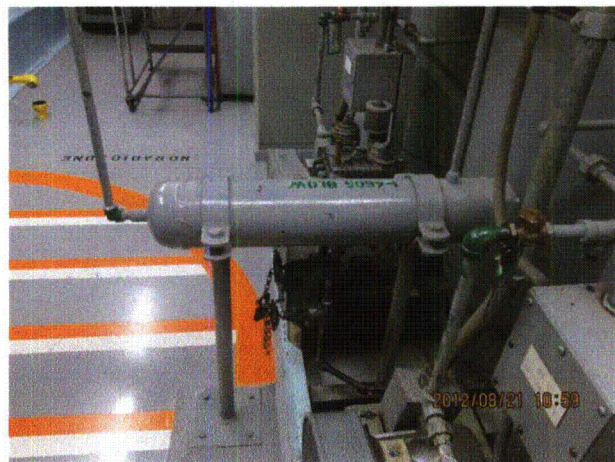
8-21-12 Quad Cities 135



8-21-12 Quad Cities 136



8-21-12 Quad Cities 137



8-21-12 Quad Cities 138

Status: Y N U

Seismic Walkdown Checklist (SWC)

Equipment ID No.: 1-4641-42A

Equipment Class: (18) Instruments on Racks

Equipment Description: SWITCH, PRESS. - *U1 DG PS 1-4641-42A SHUTOFF VLV

Project: Quad Cities 1 SWEL

Location (Bldg, Elev, Room/Area): DG, 595.00 ft, ALL

Manufacturer/Model:

Instructions for Completing Checklist

This checklist may be used to document the results of the Seismic Walkdown of an item of equipment on the SWEL. The space below each of the following questions may be used to record the results of judgments and findings. Additional space is provided at the end of this checklist for documenting other comments.

Anchorage

- | | | |
|----|---|----------------|
| 1. | Is anchorage configuration verification required (i.e., is the item one of the 50% of SWEL items requiring such verification)? | No |
| 2. | Is the anchorage free of bent, broken, missing or loose hardware? | Yes |
| 3. | Is the anchorage free of corrosion that is more than mild surface oxidation? | Yes |
| 4. | Is the anchorage free of visible cracks in the concrete near the anchors? | Yes |
| 5. | Is the anchorage configuration consistent with plant documentation? (Note: This question only applies if the item is one of the 50% for which an anchorage configuration verification is required.) | Not Applicable |
| 6. | Based on the above anchorage evaluations, is the anchorage free of potentially adverse seismic conditions? | Yes |

Interaction Effects

- | | | |
|----|--|-----|
| 7. | Are soft targets free from impact by nearby equipment or structures? | Yes |
|----|--|-----|

Status: Y N U

Seismic Walkdown Checklist (SWC)

Equipment ID No.: 1-4641-42A

Equipment Class: (18) Instruments on Racks

Equipment Description: SWITCH, PRESS. - *U1 DG PS 1-4641-42A SHUTOFF VLV

8. Are overhead equipment, distribution systems, ceiling tiles and lighting, and masonry block walls not likely to collapse onto the equipment? Yes
Overhead light fixtures judged to be acceptable.
9. Do attached lines have adequate flexibility to avoid damage? Yes
10. Based on the above seismic interaction evaluations, is equipment free of potentially adverse seismic interaction effects? Yes

Other Adverse Conditions

11. Have you looked for and found no adverse seismic conditions that could adversely affect the safety functions of the equipment? Yes

Comments

Seismic Walkdown Team: D. Carter & J. Griffith - 8/21/2012

Evaluated by: *David Carter* David Carter

Date: 10/4/2012

James D. Griffith James Griffith

10/4/2012

Status: Y N U

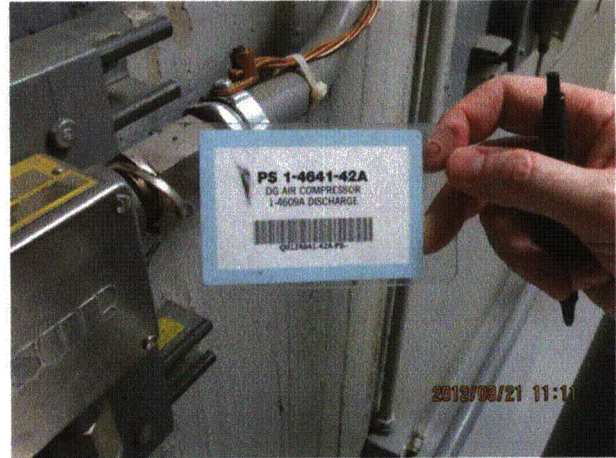
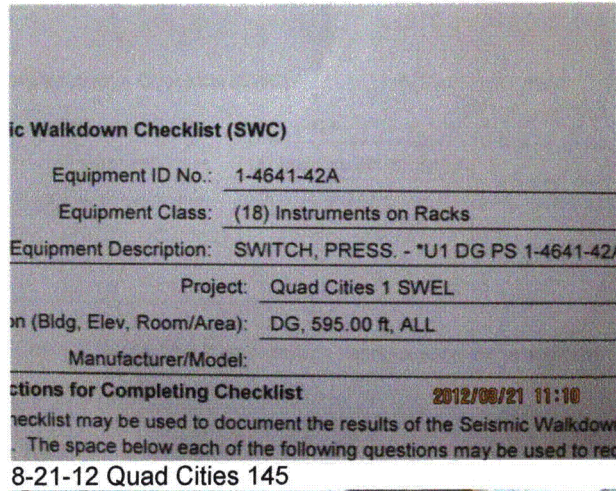
Seismic Walkdown Checklist (SWC)

Equipment ID No.: 1-4641-42A

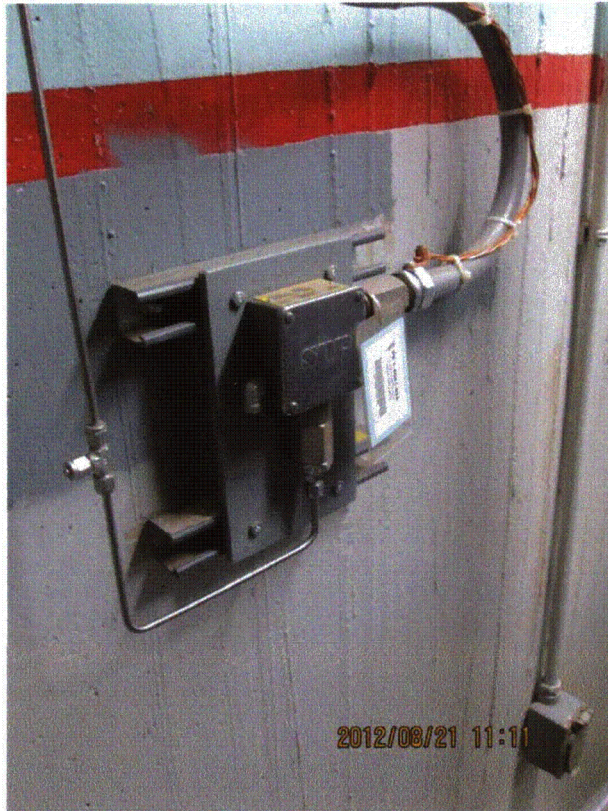
Equipment Class: (18) Instruments on Racks

Equipment Description: SWITCH, PRESS. - *U1 DG PS 1-4641-42A SHUTOFF VLV

Photos



8-21-12 Quad Cities 146



8-21-12 Quad Cities 147



8-21-12 Quad Cities 148

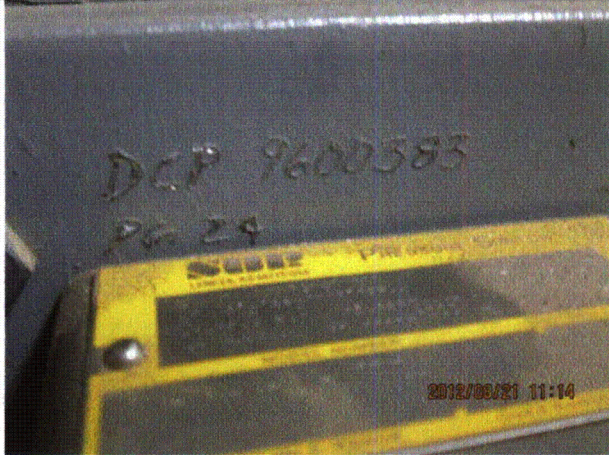
Status: Y N U

Seismic Walkdown Checklist (SWC)

Equipment ID No.: 1-4641-42A

Equipment Class: (18) Instruments on Racks

Equipment Description: SWITCH, PRESS. - *U1 DG PS 1-4641-42A SHUTOFF VLV



8-21-12 Quad Cities 149

Status: Y N U

Seismic Walkdown Checklist (SWC)

Equipment ID No.: 1-4699-226

Equipment Class: (7) Fluid-Operated Valves

Equipment Description: VALVE, AIR START RELAY - AIR LINE TO U-1 DG AIR START MOTOR AO

Project: Quad Cities 1 SWEL

Location (Bldg, Elev, Room/Area): DG, 595.00 ft, ALL

Manufacturer/Model:

Instructions for Completing Checklist

This checklist may be used to document the results of the Seismic Walkdown of an item of equipment on the SWEL. The space below each of the following questions may be used to record the results of judgments and findings. Additional space is provided at the end of this checklist for documenting other comments.

Anchorage

1. Is anchorage configuration verification required (i.e., is the item one of the 50% of SWEL items requiring such verification)? No

2. Is the anchorage free of bent, broken, missing or loose hardware? Not Applicable

3. Is the anchorage free of corrosion that is more than mild surface oxidation? Not Applicable

4. Is the anchorage free of visible cracks in the concrete near the anchors? Not Applicable

5. Is the anchorage configuration consistent with plant documentation? (Note: This question only applies if the item is one of the 50% for which an anchorage configuration verification is required.) Not Applicable

6. Based on the above anchorage evaluations, is the anchorage free of potentially adverse seismic conditions? Yes

Status: Y N U

Seismic Walkdown Checklist (SWC)

Equipment ID No.: 1-4699-226

Equipment Class: (7) Fluid-Operated Valves

Equipment Description: VALVE, AIR START RELAY - AIR LINE TO U-1 DG AIR START MOTOR AO

Interaction Effects

7. Are soft targets free from impact by nearby equipment or structures? Yes

PI 1-4641-44 has 1/4-inch clearance to DG skid. There is a possibility that during a seismic event, the gauge could displace and contact the EDG skid. Due to the minimal weight of the gauge, the seismic displacement and inertia gained will be minimal. As such, the gauge impact with the skid will not cause significant damage to the gauge. Any damage to the gauge would be limit to minor surface damage. The gauge would not break apart, nor would it become unconnected from the air line. Therefore there is no concern that the equipment would be effected during a seismic event.

Judged to be acceptable.

See IR 1403063.

8. Are overhead equipment, distribution systems, ceiling tiles and lighting, and masonry block walls not likely to collapse onto the equipment? Yes

Overhead light fixtures judged to be acceptable.

9. Do attached lines have adequate flexibility to avoid damage? Yes

10. Based on the above seismic interaction evaluations, is equipment free of potentially adverse seismic interaction effects? Yes

Other Adverse Conditions

11. Have you looked for and found no adverse seismic conditions that could adversely affect the safety functions of the equipment? Yes

Comments

Seismic Walkdown Team: D. Carter & J. Griffith - 8/21/2012

Status: Y N U

Seismic Walkdown Checklist (SWC)

Equipment ID No.: 1-4699-226

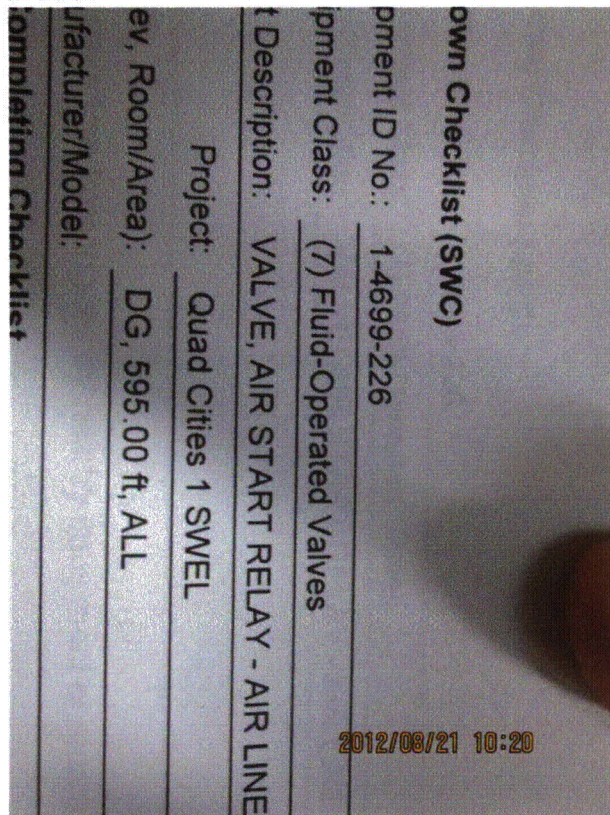
Equipment Class: (7) Fluid-Operated Valves

Equipment Description: VALVE, AIR START RELAY - AIR LINE TO U-1 DG AIR START MOTOR AO

Evaluated by: *David Carter* David Carter Date: 10/4/2012

James D Griffith James Griffith 10/4/2012

Photos



8-21-12 Quad Cities 111



8-21-12 Quad Cities 112

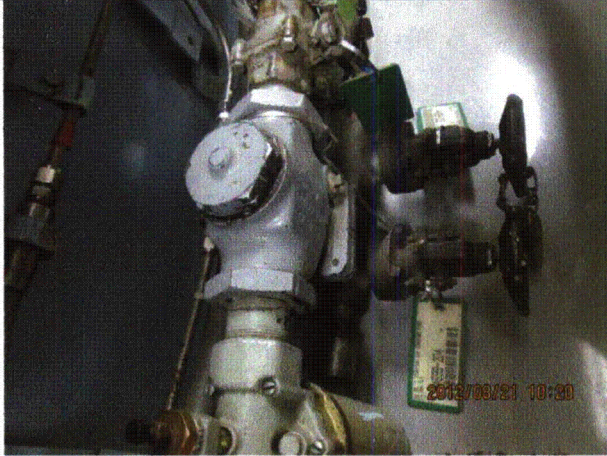
Status: Y N U

Seismic Walkdown Checklist (SWC)

Equipment ID No.: 1-4699-226

Equipment Class: (7) Fluid-Operated Valves

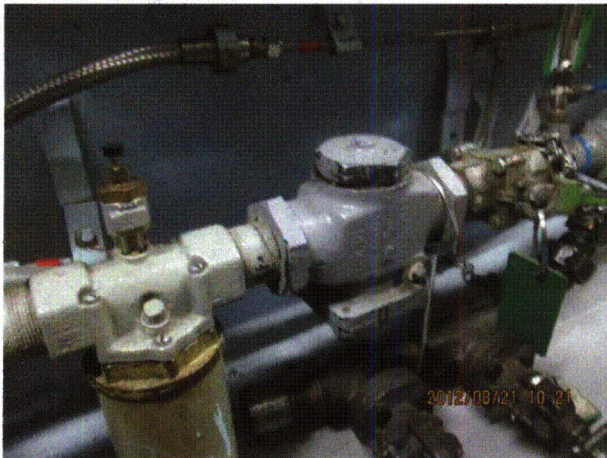
Equipment Description: VALVE, AIR START RELAY - AIR LINE TO U-1 DG AIR START MOTOR AO



8-21-12 Quad Cities 113



8-21-12 Quad Cities 114



8-21-12 Quad Cities 115



8-21-12 Quad Cities 116

Status: Y N U

Seismic Walkdown Checklist (SWC)

Equipment ID No.: 1-4699-226

Equipment Class: (7) Fluid-Operated Valves

Equipment Description: VALVE, AIR START RELAY - AIR LINE TO U-1 DG AIR START MOTOR AO



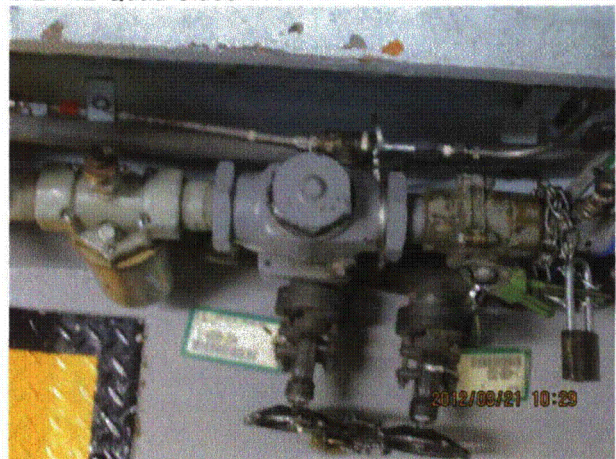
8-21-12 Quad Cities 117



8-21-12 Quad Cities 118



8-21-12 Quad Cities 119



8-21-12 Quad Cities 120

Status: Y N U

Seismic Walkdown Checklist (SWC)

Equipment ID No.: 1-5202

Equipment Class: (21) Tanks and Heat Exchangers

Equipment Description: TANK, FUEL OIL DAY

Project: Quad Cities 1 SWEL

Location (Bldg, Elev, Room/Area): DG, 595.00 ft, ALL

Manufacturer/Model:

Instructions for Completing Checklist

This checklist may be used to document the results of the Seismic Walkdown of an item of equipment on the SWEL. The space below each of the following questions may be used to record the results of judgments and findings. Additional space is provided at the end of this checklist for documenting other comments.

Anchorage

1. Is anchorage configuration verification required (i.e., is the item one of the 50% of SWEL items requiring such verification)? Yes
2. Is the anchorage free of bent, broken, missing or loose hardware? Yes
2 bolts with minor lack of thread engagement judged to be acceptable.
Shims stacked between saddle and W18 at west support. Judged to be acceptable.
3. Is the anchorage free of corrosion that is more than mild surface oxidation? Yes
Minor surface corrosion on W18 judged to be acceptable.
4. Is the anchorage free of visible cracks in the concrete near the anchors? Not Applicable
Attached to W18s not anchored to concrete.
5. Is the anchorage configuration consistent with plant documentation? (Note: This question only applies if the item is one of the 50% for which an anchorage configuration verification is required.) Yes
6. Based on the above anchorage evaluations, is the anchorage free of potentially adverse seismic conditions? Yes

Status: Y N U

Seismic Walkdown Checklist (SWC)

Equipment ID No.: 1-5202

Equipment Class: (21) Tanks and Heat Exchangers

Equipment Description: TANK, FUEL OIL DAY

Interaction Effects

- | | |
|---|-----|
| 7. Are soft targets free from impact by nearby equipment or structures? | Yes |
| 8. Are overhead equipment, distribution systems, ceiling tiles and lighting, and masonry block walls not likely to collapse onto the equipment? | Yes |
| 9. Do attached lines have adequate flexibility to avoid damage? | Yes |
| 10. Based on the above seismic interaction evaluations, is equipment free of potentially adverse seismic interaction effects? | Yes |

Other Adverse Conditions

- | | |
|--|-----|
| 11. Have you looked for and found no adverse seismic conditions that could adversely affect the safety functions of the equipment? | Yes |
|--|-----|

Comments

SEWS Anchorage Notes:

This 750 gal. capacity diesel fuel oil day tank is mounted on 2 saddles. Each saddle is anchored to a WF beam 18" in depth by 4 - 7/8" steel to steel bolts. The WF beam is then attached to floor beam and the bottom 5" of the WF is buried in concrete.

Seismic Walkdown Team: D. Carter & J. Griffith on 8/21/12

Evaluated by:  David Carter Date: 10/4/2012

 James D. Griffith 10/4/2012

Status: Y N U

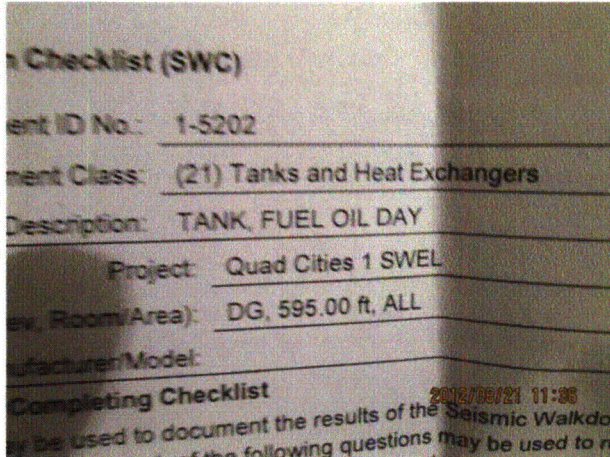
Seismic Walkdown Checklist (SWC)

Equipment ID No.: 1-5202

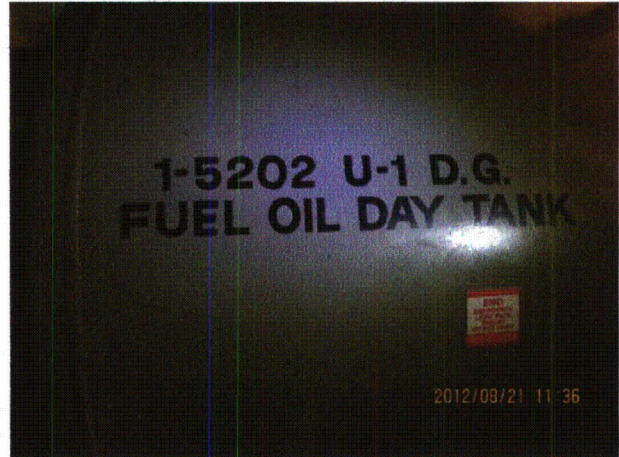
Equipment Class: (21) Tanks and Heat Exchangers

Equipment Description: TANK, FUEL OIL DAY

Photos



8-21-12 Quad Cities 157



8-21-12 Quad Cities 158

Status: Y N U

Seismic Walkdown Checklist (SWC)

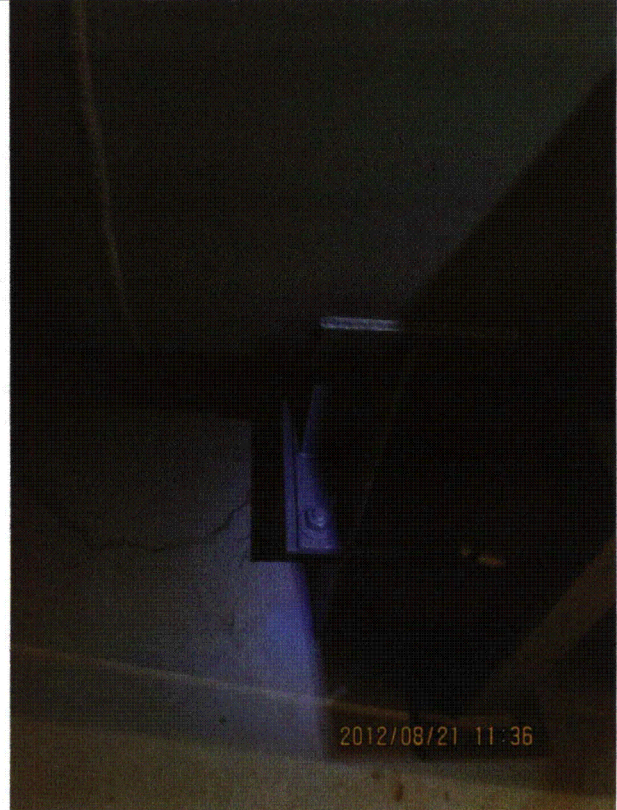
Equipment ID No.: 1-5202

Equipment Class: (21) Tanks and Heat Exchangers

Equipment Description: TANK, FUEL OIL DAY



8-21-12 Quad Cities 159



8-21-12 Quad Cities 160



8-21-12 Quad Cities 161



8-21-12 Quad Cities 162

Status: Y N U

Seismic Walkdown Checklist (SWC)

Equipment ID No.: 1-5202

Equipment Class: (21) Tanks and Heat Exchangers

Equipment Description: TANK, FUEL OIL DAY



8-21-12 Quad Cities 163

Status: Y N U

Seismic Walkdown Checklist (SWC)

Equipment ID No.: 1-5203

Equipment Class: (5) Horizontal Pumps

Equipment Description: PUMP, FUEL OIL TRANSF

Project: Quad Cities 1 SWEL

Location (Bldg, Elev, Room/Area): DG, 595.00 ft, ALL

Manufacturer/Model:

Instructions for Completing Checklist

This checklist may be used to document the results of the Seismic Walkdown of an item of equipment on the SWEL. The space below each of the following questions may be used to record the results of judgments and findings. Additional space is provided at the end of this checklist for documenting other comments.

Anchorage

1. Is anchorage configuration verification required (i.e., is the item one of the 50% of SWEL items requiring such verification)? Yes

2. Is the anchorage free of bent, broken, missing or loose hardware? Yes

3. Is the anchorage free of corrosion that is more than mild surface oxidation? Yes

4. Is the anchorage free of visible cracks in the concrete near the anchors? Yes

5. Is the anchorage configuration consistent with plant documentation? (Note: This question only applies if the item is one of the 50% for which an anchorage configuration verification is required.) Yes

6. Based on the above anchorage evaluations, is the anchorage free of potentially adverse seismic conditions? Yes

Status: Y N U

Seismic Walkdown Checklist (SWC)

Equipment ID No.: 1-5203

Equipment Class: (5) Horizontal Pumps

Equipment Description: PUMP, FUEL OIL TRANSF

Interaction Effects

7. Are soft targets free from impact by nearby equipment or structures? Yes
8. Are overhead equipment, distribution systems, ceiling tiles and lighting, and masonry block walls not likely to collapse onto the equipment? Yes
Overhead light fixtures judged to be acceptable.
9. Do attached lines have adequate flexibility to avoid damage? Yes
10. Based on the above seismic interaction evaluations, is equipment free of potentially adverse seismic interaction effects? Yes

Other Adverse Conditions

11. Have you looked for and found no adverse seismic conditions that could adversely affect the safety functions of the equipment? Yes

Comments

SEWS Anchorage Notes:

Small pump on a 27" long by 12" wide skid that is anchored through a 2-1/2" high grout pad w/ four 1/2" Dia. cast in place bolts.

Seismic Walkdown Team: D. Carter & J. Griffith - 8/21/2012

Evaluated by: David Carter

Date: 10/4/2012

James D. Griffith
James Griffith

10/4/2012

Status: Y N U

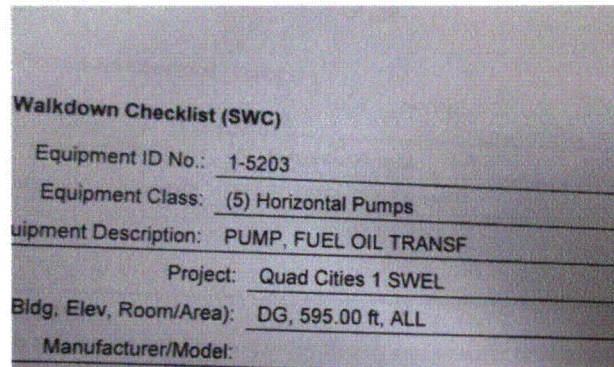
Seismic Walkdown Checklist (SWC)

Equipment ID No.: 1-5203

Equipment Class: (5) Horizontal Pumps

Equipment Description: PUMP, FUEL OIL TRANSF

Photos



Instructions for Completing Checklist 2012/08/21 10:04
This checklist may be used to document the results of the Seismic Walkdown. The space below each of the following questions may be used to record observations.
8-21-12 Quad Cities 095



8-21-12 Quad Cities 096

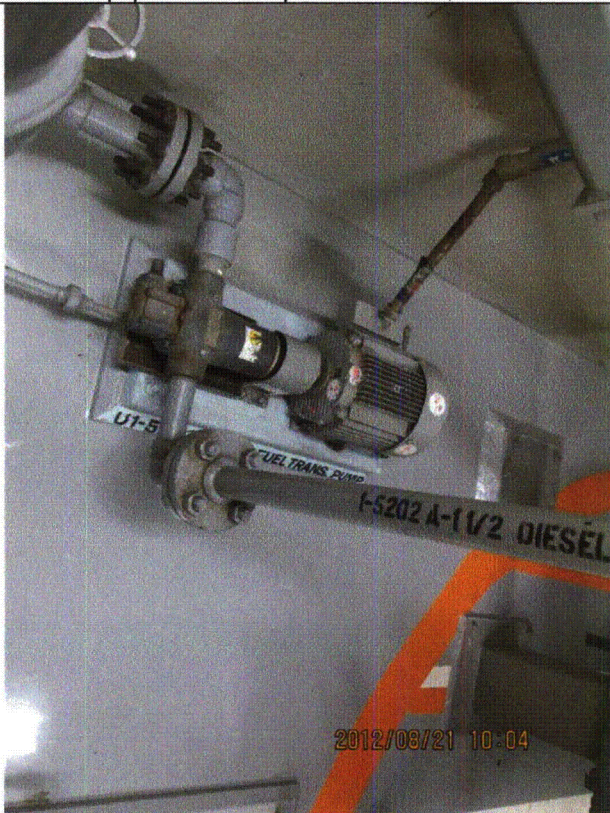
Status: Y N U

Seismic Walkdown Checklist (SWC)

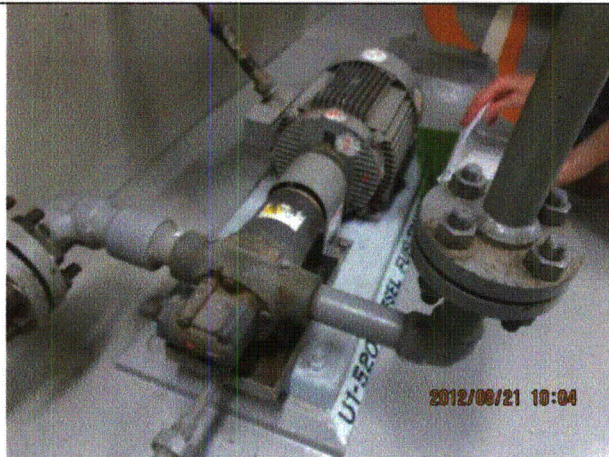
Equipment ID No.: 1-5203

Equipment Class: (5) Horizontal Pumps

Equipment Description: PUMP, FUEL OIL TRANSF



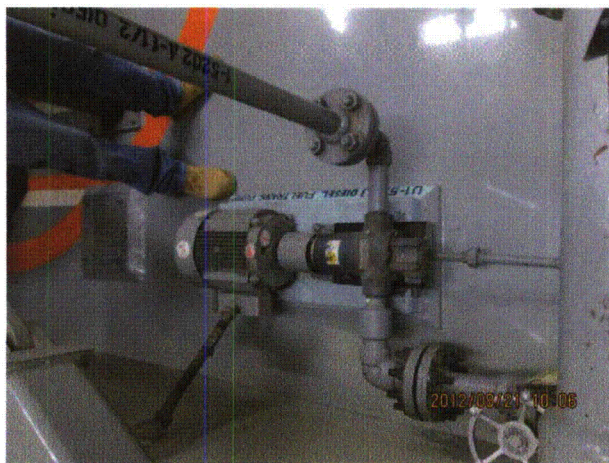
8-21-12 Quad Cities 097



8-21-12 Quad Cities 098



8-21-12 Quad Cities 099



8-21-12 Quad Cities 100

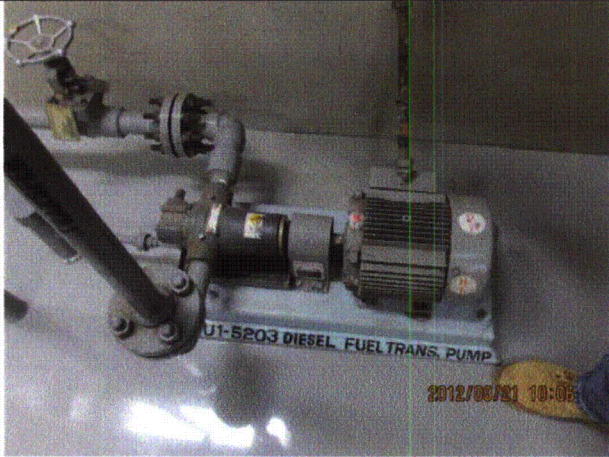
Status: Y N U

Seismic Walkdown Checklist (SWC)

Equipment ID No.: 1-5203

Equipment Class: (5) Horizontal Pumps

Equipment Description: PUMP, FUEL OIL TRANSF



8-21-12 Quad Cities 101

Status: Y N U

Seismic Walkdown Checklist (SWC)

Equipment ID No.: 1-5727

Equipment Class: (9) Fans

Equipment Description: FAN, ROOM VENTILAT - DG ROOM VENT FAN

Project: Quad Cities 1 SWEL

Location (Bldg, Elev, Room/Area): DG, 595.00 ft, ALL

Manufacturer/Model:

Instructions for Completing Checklist

This checklist may be used to document the results of the Seismic Walkdown of an item of equipment on the SWEL. The space below each of the following questions may be used to record the results of judgments and findings. Additional space is provided at the end of this checklist for documenting other comments.

Anchorage

1. Is anchorage configuration verification required (i.e., is the item one of the 50% of SWEL items requiring such verification)? Yes

2. Is the anchorage free of bent, broken, missing or loose hardware? Yes
Minor bends in 3 longer rod hangers judged to be acceptable.

3. Is the anchorage free of corrosion that is more than mild surface oxidation? Yes

4. Is the anchorage free of visible cracks in the concrete near the anchors? Not Applicable
Hung from steel above.

5. Is the anchorage configuration consistent with plant documentation? (Note: This question only applies if the item is one of the 50% for which an anchorage configuration verification is required.) Yes

6. Based on the above anchorage evaluations, is the anchorage free of potentially adverse seismic conditions? Yes

Interaction Effects

7. Are soft targets free from impact by nearby equipment or structures? Yes

Status: Y N U

Seismic Walkdown Checklist (SWC)

Equipment ID No.: 1-5727

Equipment Class: (9) Fans

Equipment Description: FAN, ROOM VENTILAT - DG ROOM VENT FAN

8. Are overhead equipment, distribution systems, ceiling tiles and lighting, and masonry block walls not likely to collapse onto the equipment? Yes
9. Do attached lines have adequate flexibility to avoid damage? Yes
10. Based on the above seismic interaction evaluations, is equipment free of potentially adverse seismic interaction effects? Yes

Other Adverse Conditions

11. Have you looked for and found no adverse seismic conditions that could adversely affect the safety functions of the equipment? Yes

Comments

SEWS Anchorage Notes:

Fan within large duct supported by 4 rod hangers from ceiling, one hanger is shorter than the others.

Seismic Walkdown Team: D. Carter & J. Griffith - 8/21/2012

Evaluated by: *David Carter* David Carter Date: 10/4/2012
James D. Griffith James Griffith 10/4/2012

Status: Y N U

Seismic Walkdown Checklist (SWC)

Equipment ID No.: 1-5727

Equipment Class: (9) Fans

Equipment Description: FAN, ROOM VENTILAT - DG ROOM VENT FAN

Photos



8-21-12 Quad Cities 151



8-21-12 Quad Cities 152

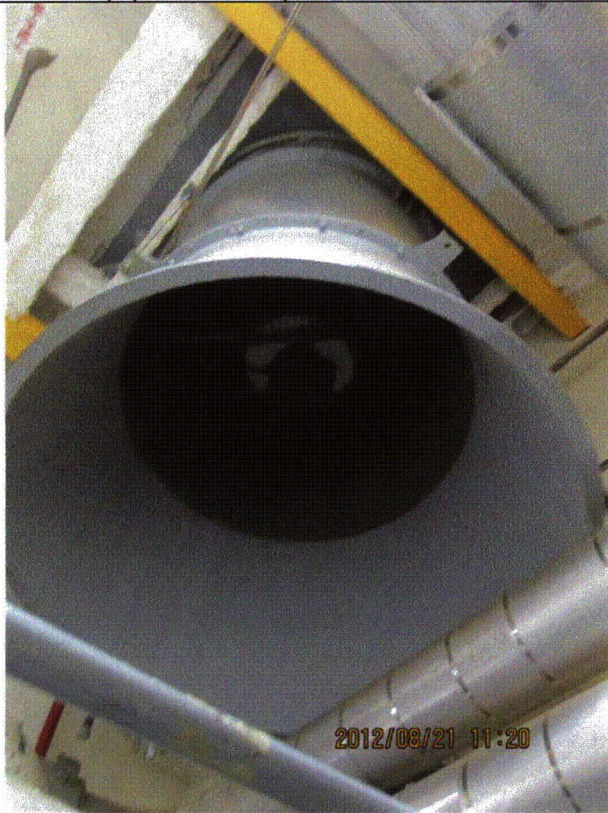
Status: Y N U

Seismic Walkdown Checklist (SWC)

Equipment ID No.: 1-5727

Equipment Class: (9) Fans

Equipment Description: FAN, ROOM VENTILAT - DG ROOM VENT FAN



8-21-12 Quad Cities 153



8-21-12 Quad Cities 154

Status: Y N U

Seismic Walkdown Checklist (SWC)

Equipment ID No.: 1-5727

Equipment Class: (9) Fans

Equipment Description: FAN, ROOM VENTILAT - DG ROOM VENT FAN



8-21-12 Quad Cities 155



8-21-12 Quad Cities 156

Status: Y N U

Seismic Walkdown Checklist (SWC)

Equipment ID No.: 1-5745A

Equipment Class: (10) Air Handlers

Equipment Description: COOLER, CUBICLE - 1A RHRSW PMP CUBICAL COOLER

Project: Quad Cities 1 SWEL

Location (Bldg, Elev, Room/Area): TB, 547.00 ft, ALL

Manufacturer/Model:

Instructions for Completing Checklist

This checklist may be used to document the results of the Seismic Walkdown of an item of equipment on the SWEL. The space below each of the following questions may be used to record the results of judgments and findings. Additional space is provided at the end of this checklist for documenting other comments.

Anchorage

1. Is anchorage configuration verification required (i.e., is the item one of the 50% of SWEL items requiring such verification)? No

2. Is the anchorage free of bent, broken, missing or loose hardware? Yes

3. Is the anchorage free of corrosion that is more than mild surface oxidation? Yes

4. Is the anchorage free of visible cracks in the concrete near the anchors? Yes

5. Is the anchorage configuration consistent with plant documentation? (Note: This question only applies if the item is one of the 50% for which an anchorage configuration verification is required.) Not Applicable

6. Based on the above anchorage evaluations, is the anchorage free of potentially adverse seismic conditions? Yes
Viewed 3 of 4 anchors in each anchored leg from floor. Welded legs appear to be acceptable. Remaining anchors could not be viewed due visibility from floor. Visible anchors inspection leads to the conclusion all anchors are acceptable.

Status: Y N U

Seismic Walkdown Checklist (SWC)

Equipment ID No.: 1-5745A

Equipment Class: (10) Air Handlers

Equipment Description: COOLER, CUBICLE - 1A RHRSW PMP CUBICAL COOLER

Interaction Effects

7. Are soft targets free from impact by nearby equipment or structures? Yes
Tubes in contact with one another. Flexible and judged to be acceptable.
8. Are overhead equipment, distribution systems, ceiling tiles and lighting, and masonry block walls not likely to collapse onto the equipment? Yes
9. Do attached lines have adequate flexibility to avoid damage? Yes
10. Based on the above seismic interaction evaluations, is equipment free of potentially adverse seismic interaction effects? Yes

Other Adverse Conditions

11. Have you looked for and found no adverse seismic conditions that could adversely affect the safety functions of the equipment? Yes

Comments

Seismic Walkdown Team: D. Carter & J. Griffith - 8/22/2012

Evaluated by:

David Carter David Carter

Date: 10/4/2012

James D. Griffith James Griffith

10/4/2012

Status: Y N U

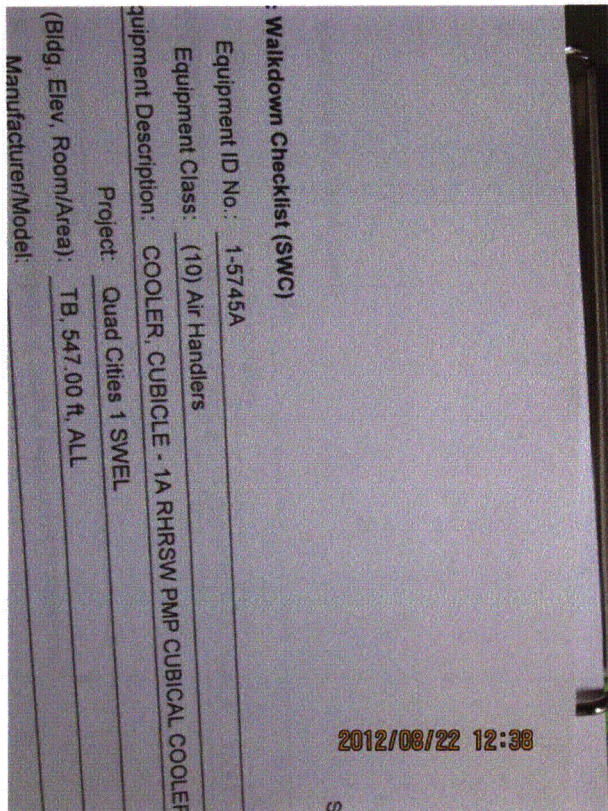
Seismic Walkdown Checklist (SWC)

Equipment ID No.: 1-5745A

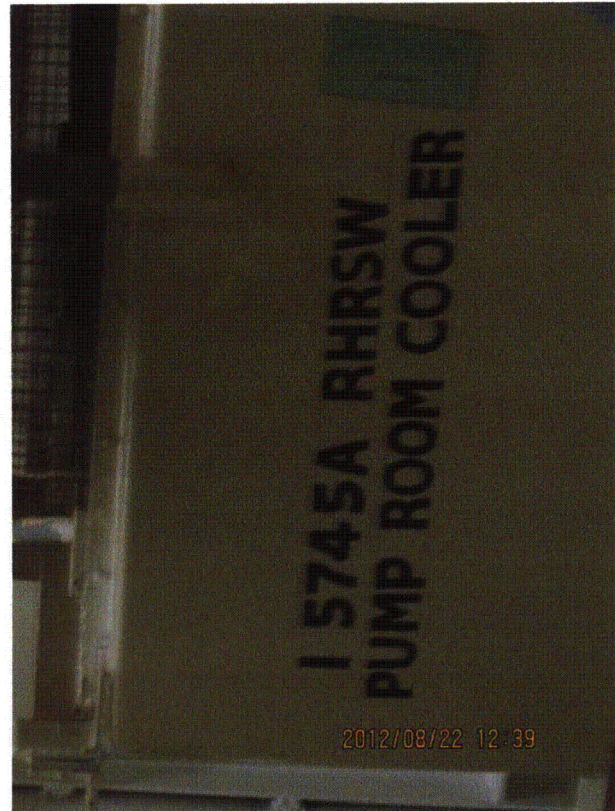
Equipment Class: (10) Air Handlers

Equipment Description: COOLER, CUBICLE - 1A RHRSW PMP CUBICAL COOLER

Photos



8-22-12 Quad Cities 092



8-22-12 Quad Cities 093

Status: Y N U

Seismic Walkdown Checklist (SWC)

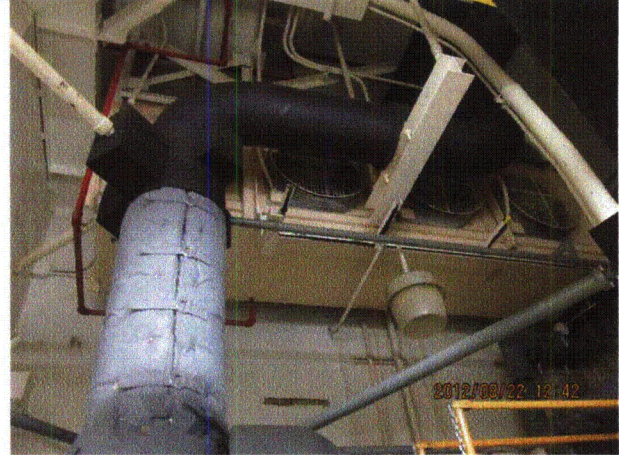
Equipment ID No.: 1-5745A

Equipment Class: (10) Air Handlers

Equipment Description: COOLER, CUBICLE - 1A RHRSW PMP CUBICAL COOLER



8-22-12 Quad Cities 094



8-22-12 Quad Cities 095

Status: Y N U

Seismic Walkdown Checklist (SWC)

Equipment ID No.: 1-5745A

Equipment Class: (10) Air Handlers

Equipment Description: COOLER, CUBICLE - 1A RHRSW PMP CUBICAL COOLER



8-22-12 Quad Cities 096



8-22-12 Quad Cities 097

Status: Y N U

Seismic Walkdown Checklist (SWC)

Equipment ID No.: 1-5747

Equipment Class: (10) Air Handlers

Equipment Description: COOLER, CUBICLE - U1 HPCI ROOM EMERGENCY COOLER

Project: Quad Cities 1 SWEL

Location (Bldg, Elev, Room/Area): TB, 554.00 ft, ALL

Manufacturer/Model:

Instructions for Completing Checklist

This checklist may be used to document the results of the Seismic Walkdown of an item of equipment on the SWEL. The space below each of the following questions may be used to record the results of judgments and findings. Additional space is provided at the end of this checklist for documenting other comments.

Anchorage

1. Is anchorage configuration verification required (i.e., is the item one of the 50% of SWEL items requiring such verification)? Yes

2. Is the anchorage free of bent, broken, missing or loose hardware? Yes
A minor bend in hanger rod judged to be acceptable.

3. Is the anchorage free of corrosion that is more than mild surface oxidation? Yes

4. Is the anchorage free of visible cracks in the concrete near the anchors? Yes

5. Is the anchorage configuration consistent with plant documentation? (Note: This question only applies if the item is one of the 50% for which an anchorage configuration verification is required.) Yes

6. Based on the above anchorage evaluations, is the anchorage free of potentially adverse seismic conditions? Yes

Status: Y N U

Seismic Walkdown Checklist (SWC)

Equipment ID No.: 1-5747

Equipment Class: (10) Air Handlers

Equipment Description: COOLER, CUBICLE - U1 HPCI ROOM EMERGENCY COOLER

Interaction Effects

7. Are soft targets free from impact by nearby equipment or structures? Yes

8. Are overhead equipment, distribution systems, ceiling tiles and lighting, and masonry block walls not likely to collapse onto the equipment? Yes

9. Do attached lines have adequate flexibility to avoid damage? Yes

Cooler is restrained to wall. The cooler is restrained to prevent damage due to relative movement between the cooler and the attached piping.

10. Based on the above seismic interaction evaluations, is equipment free of potentially adverse seismic interaction effects? Yes

Other Adverse Conditions

11. Have you looked for and found no adverse seismic conditions that could adversely affect the safety functions of the equipment? Yes

Comments

SEWS Anchorage Notes:

Cooler hung on 5 - 5/8" rods. Each rod is anchored by 4 - 1/2" concrete expansion anchors.

Seismic Walkdown Team: D. Carter & J. Griffith - 8/23/2012

Evaluated by: David Carter

Date: 10/4/2012

James D. Griffith
James Griffith

10/4/2012

Status: Y N U

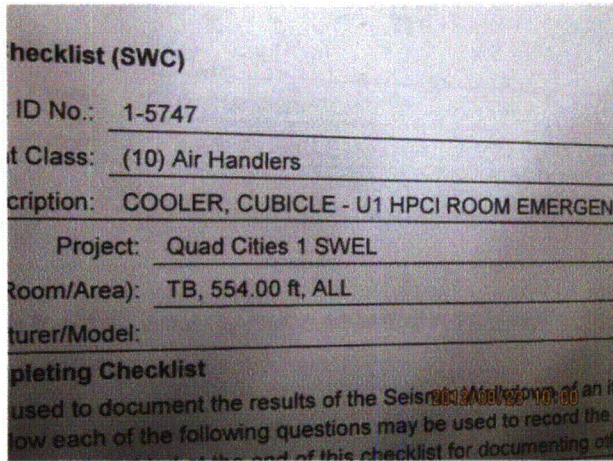
Seismic Walkdown Checklist (SWC)

Equipment ID No.: 1-5747

Equipment Class: (10) Air Handlers

Equipment Description: COOLER, CUBICLE - U1 HPCI ROOM EMERGENCY COOLER

Photos



Quad Cities 070



Quad Cities 071

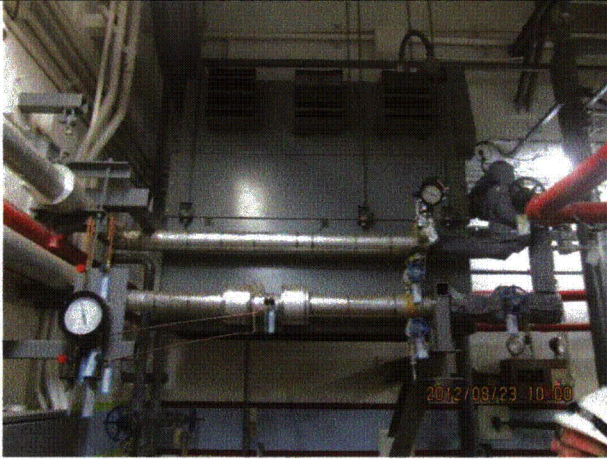
Status: Y N U

Seismic Walkdown Checklist (SWC)

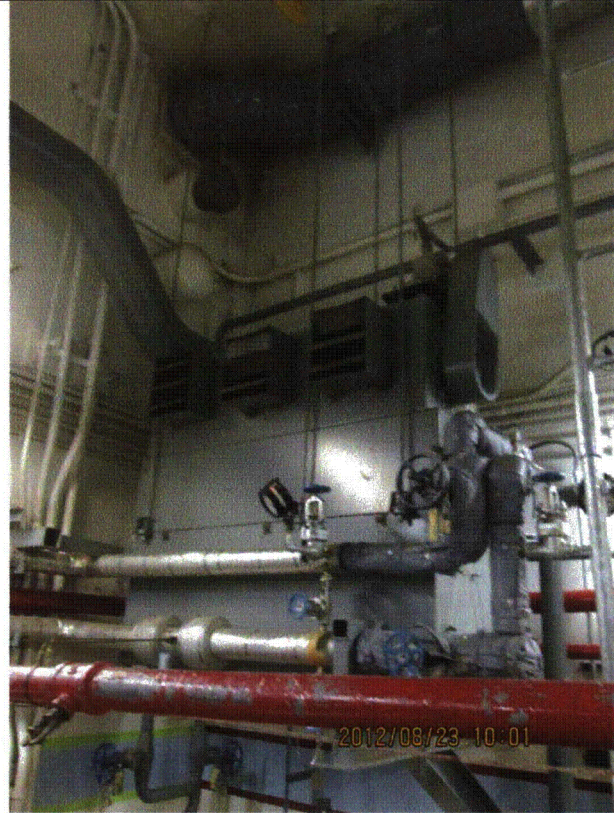
Equipment ID No.: 1-5747

Equipment Class: (10) Air Handlers

Equipment Description: COOLER, CUBICLE - U1 HPCI ROOM EMERGENCY COOLER



Quad Cities 072



Quad Cities 073



Quad Cities 074



Quad Cities 075

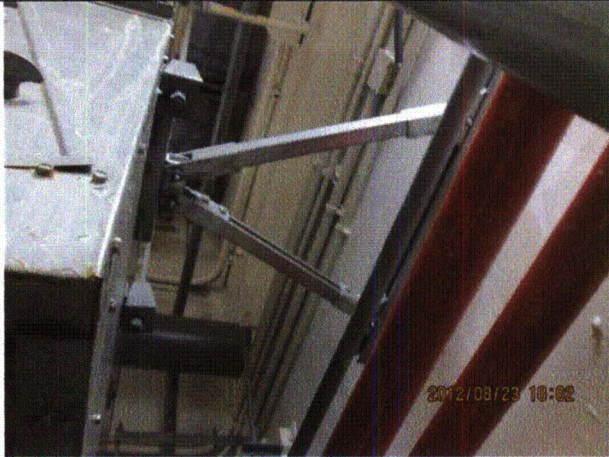
Status: Y N U

Seismic Walkdown Checklist (SWC)

Equipment ID No.: 1-5747

Equipment Class: (10) Air Handlers

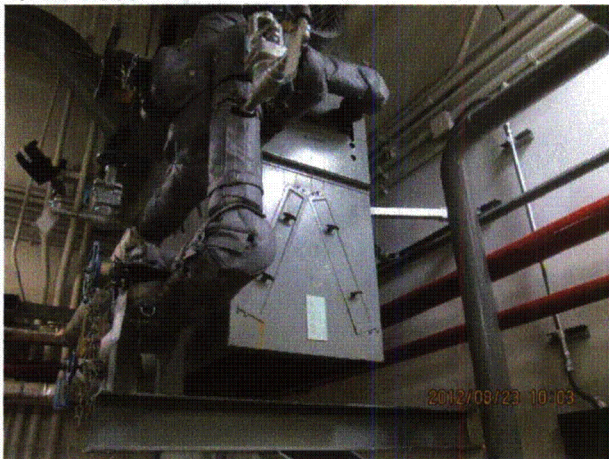
Equipment Description: COOLER, CUBICLE - U1 HPCI ROOM EMERGENCY COOLER



Quad Cities 076



Quad Cities 077



Quad Cities 078



Quad Cities 079

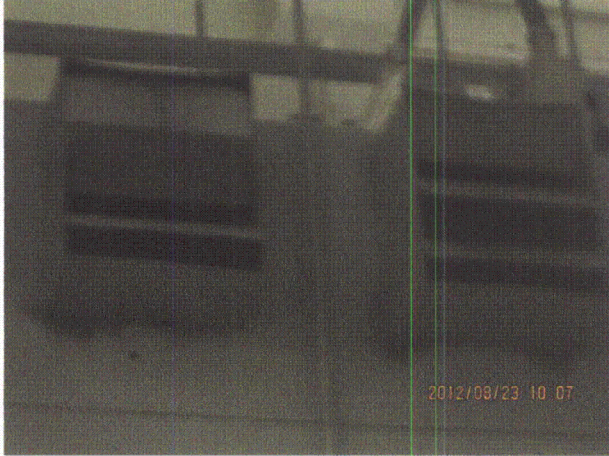
Status: Y N U

Seismic Walkdown Checklist (SWC)

Equipment ID No.: 1-5747

Equipment Class: (10) Air Handlers

Equipment Description: COOLER, CUBICLE - U1 HPCI ROOM EMERGENCY COOLER



Quad Cities 080

Status: Y N U

Seismic Walkdown Checklist (SWC)

Equipment ID No.: 1-5748A

Equipment Class: (10) Air Handlers

Equipment Description: COOLER, CUBICLE - 1A CS/RCIC PMP RM COOLER

Project: Quad Cities 1 SWEL

Location (Bldg, Elev, Room/Area): RB, 560.00 ft, ALL

Manufacturer/Model:

Instructions for Completing Checklist

This checklist may be used to document the results of the Seismic Walkdown of an item of equipment on the SWEL. The space below each of the following questions may be used to record the results of judgments and findings. Additional space is provided at the end of this checklist for documenting other comments.

Anchorage

1. Is anchorage configuration verification required (i.e., is the item one of the 50% of SWEL items requiring such verification)? Yes

2. Is the anchorage free of bent, broken, missing or loose hardware? Yes

3. Is the anchorage free of corrosion that is more than mild surface oxidation? Yes

4. Is the anchorage free of visible cracks in the concrete near the anchors? Yes

5. Is the anchorage configuration consistent with plant documentation? (Note: This question only applies if the item is one of the 50% for which an anchorage configuration verification is required.) Yes

6. Based on the above anchorage evaluations, is the anchorage free of potentially adverse seismic conditions? Yes

Interaction Effects

7. Are soft targets free from impact by nearby equipment or structures? Yes

Status: Y N U

Seismic Walkdown Checklist (SWC)

Equipment ID No.: 1-5748A

Equipment Class: (10) Air Handlers

Equipment Description: COOLER, CUBICLE - 1A CS/RCIC PMP RM COOLER

8. Are overhead equipment, distribution systems, ceiling tiles and lighting, and masonry block walls not likely to collapse onto the equipment? Yes
9. Do attached lines have adequate flexibility to avoid damage? Yes
Cooler is restrained to wall. The cooler is restrained to prevent damage due to relative movement between the cooler and the attached piping.
10. Based on the above seismic interaction evaluations, is equipment free of potentially adverse seismic interaction effects? Yes

Other Adverse Conditions

11. Have you looked for and found no adverse seismic conditions that could adversely affect the safety functions of the equipment? Yes

Comments

SEWS Anchorage Notes:

Cooler hung on 6 - 5/8" rods. Each rod is anchored by 4 - 1/2" concrete expansion anchors.

Seismic Walkdown Team: D. Carter & J. Griffith - 8/23/2012

Evaluated by:

David Carter David Carter

Date: 10/4/2012

James D. Griffith James Griffith

10/4/2012

Status: Y N U

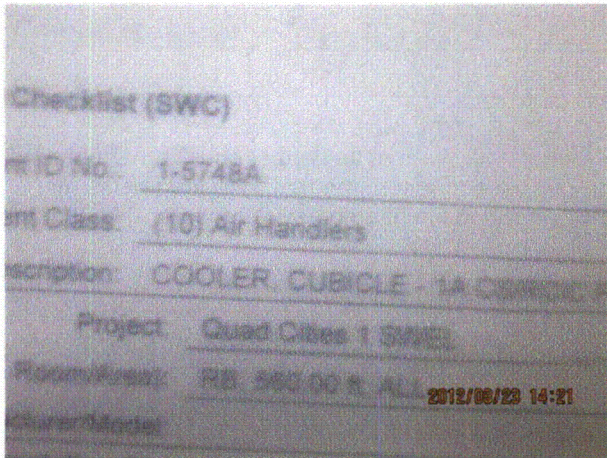
Seismic Walkdown Checklist (SWC)

Equipment ID No.: 1-5748A

Equipment Class: (10) Air Handlers

Equipment Description: COOLER, CUBICLE - 1A CS/RCIC PMP RM COOLER

Photos



Quad Cities 125

Status: Y N U

Seismic Walkdown Checklist (SWC)

Equipment ID No.: 1-5749

Equipment Class: (10) Air Handlers

Equipment Description: COOLER, CUBICLE - 1DG CW PMP CUB COOLER

Project: Quad Cities 1 SWEL

Location (Bldg, Elev, Room/Area): TB, 547.00 ft, ALL

Manufacturer/Model:

Instructions for Completing Checklist

This checklist may be used to document the results of the Seismic Walkdown of an item of equipment on the SWEL. The space below each of the following questions may be used to record the results of judgments and findings. Additional space is provided at the end of this checklist for documenting other comments.

Anchorage

1. Is anchorage configuration verification required (i.e., is the item one of the 50% of SWEL items requiring such verification)? No

2. Is the anchorage free of bent, broken, missing or loose hardware? Yes

3. Is the anchorage free of corrosion that is more than mild surface oxidation? Yes

4. Is the anchorage free of visible cracks in the concrete near the anchors? Yes

5. Is the anchorage configuration consistent with plant documentation? (Note: This question only applies if the item is one of the 50% for which an anchorage configuration verification is required.) Not Applicable

6. Based on the above anchorage evaluations, is the anchorage free of potentially adverse seismic conditions? Yes

Status: Y N U

Seismic Walkdown Checklist (SWC)

Equipment ID No.: 1-5749

Equipment Class: (10) Air Handlers

Equipment Description: COOLER, CUBICLE - 1DG CW PMP CUB COOLER

Interaction Effects

7. Are soft targets free from impact by nearby equipment or structures? Yes

Tube in contact with pipe insulation. Judged to be acceptable.

8. Are overhead equipment, distribution systems, ceiling tiles and lighting, and masonry block walls not likely to collapse onto the equipment? Yes

9. Do attached lines have adequate flexibility to avoid damage? Yes

10. Based on the above seismic interaction evaluations, is equipment free of potentially adverse seismic interaction effects? Yes

Other Adverse Conditions

11. Have you looked for and found no adverse seismic conditions that could adversely affect the safety functions of the equipment? Yes

Comments

Seismic Walkdown Team: D. Carter & J. Griffith - 8/21/2012

Evaluated by:

David Carter David Carter

Date: 10/4/2012

James D. Griffith James Griffith

10/4/2012

Status: Y N U

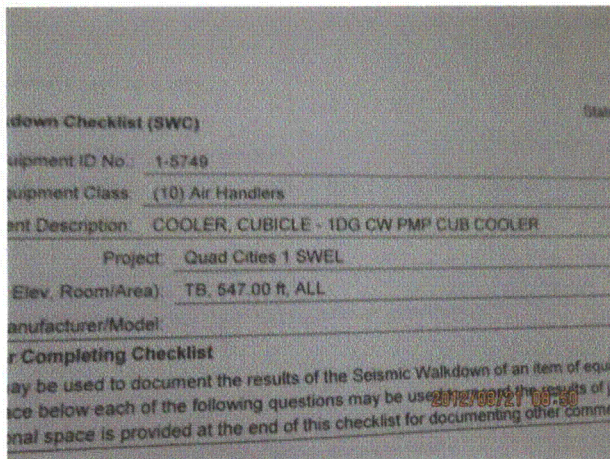
Seismic Walkdown Checklist (SWC)

Equipment ID No.: 1-5749

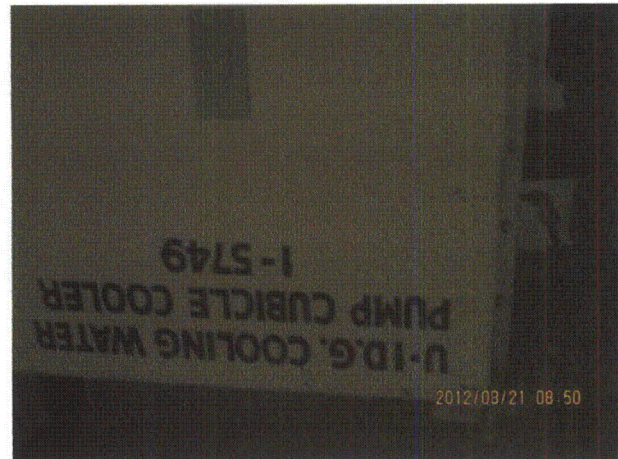
Equipment Class: (10) Air Handlers

Equipment Description: COOLER, CUBICLE - 1DG CW PMP CUB COOLER

Photos



8-21-12 Quad Cities 043



8-21-12 Quad Cities 044



8-21-12 Quad Cities 045



8-21-12 Quad Cities 046

Status: Y N U

Seismic Walkdown Checklist (SWC)

Equipment ID No.: 1-5749

Equipment Class: (10) Air Handlers

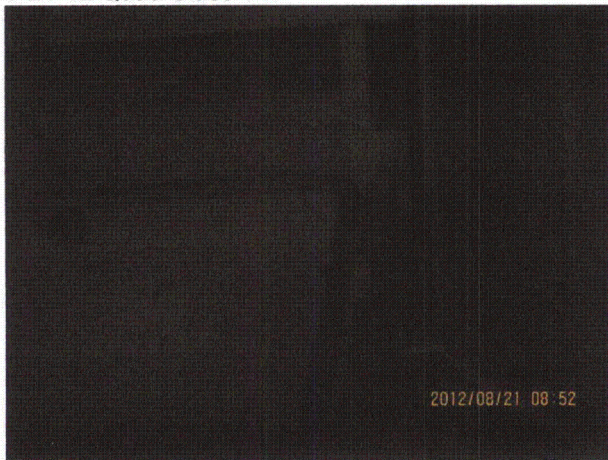
Equipment Description: COOLER, CUBICLE - 1DG CW PMP CUB COOLER



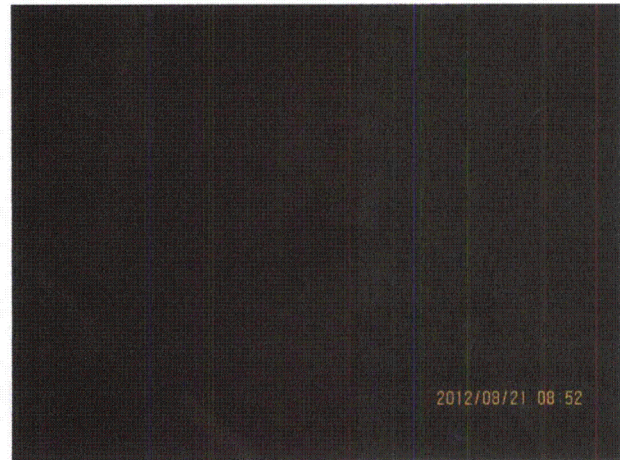
8-21-12 Quad Cities 047



8-21-12 Quad Cities 048



8-21-12 Quad Cities 049



8-21-12 Quad Cities 050

Status: Y N U

Seismic Walkdown Checklist (SWC)

Equipment ID No.: 1-5749

Equipment Class: (10) Air Handlers

Equipment Description: COOLER, CUBICLE - 1DG CW PMP CUB COOLER



8-21-12 Quad Cities 051



8-21-12 Quad Cities 052

Status: Y N U

Seismic Walkdown Checklist (SWC)

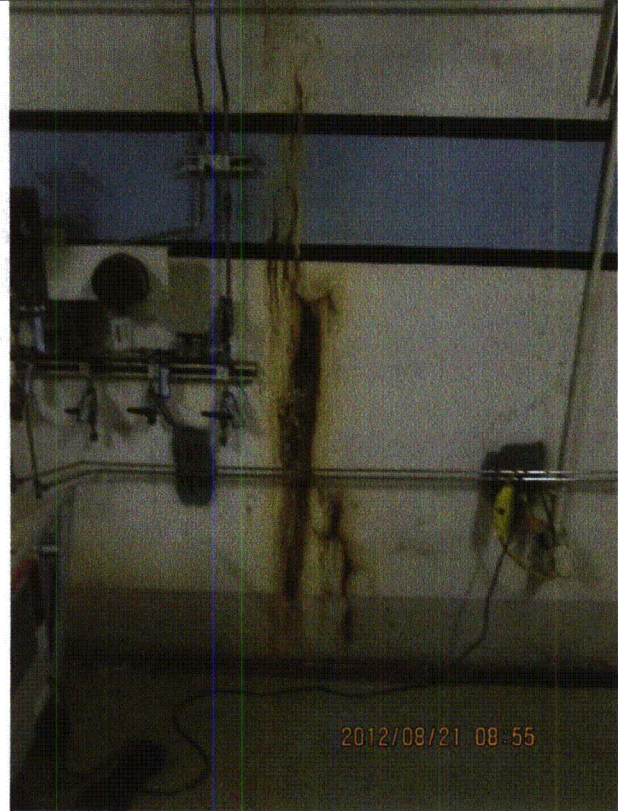
Equipment ID No.: 1-5749

Equipment Class: (10) Air Handlers

Equipment Description: COOLER, CUBICLE - 1DG CW PMP CUB COOLER



8-21-12 Quad Cities 053



8-21-12 Quad Cities 054

Status: Y N U

Seismic Walkdown Checklist (SWC)

Equipment ID No.: 1-6601

Equipment Class: (17) Engine-Generators

Equipment Description: DG, UNIT 1

Project: Quad Cities 1 SWEL

Location (Bldg, Elev, Room/Area): DG, 595.00 ft, ALL

Manufacturer/Model:

Instructions for Completing Checklist

This checklist may be used to document the results of the Seismic Walkdown of an item of equipment on the SWEL. The space below each of the following questions may be used to record the results of judgments and findings. Additional space is provided at the end of this checklist for documenting other comments.

Anchorage

1. Is anchorage configuration verification required (i.e., is the item one of the 50% of SWEL items requiring such verification)? Yes

2. Is the anchorage free of bent, broken, missing or loose hardware? Yes

3. Is the anchorage free of corrosion that is more than mild surface oxidation? Yes

4. Is the anchorage free of visible cracks in the concrete near the anchors? Yes
Minor spalling in grout pads judged to be acceptable.

5. Is the anchorage configuration consistent with plant documentation? (Note: This question only applies if the item is one of the 50% for which an anchorage configuration verification is required.) Yes

6. Based on the above anchorage evaluations, is the anchorage free of potentially adverse seismic conditions? Yes

Interaction Effects

7. Are soft targets free from impact by nearby equipment or structures? Yes

Status: Y N U

Seismic Walkdown Checklist (SWC)

Equipment ID No.: 1-6601

Equipment Class: (17) Engine-Generators

Equipment Description: DG, UNIT 1

8. Are overhead equipment, distribution systems, ceiling tiles and lighting, and masonry block walls not likely to collapse onto the equipment?
Light fixtures judged to be acceptable. Yes
9. Do attached lines have adequate flexibility to avoid damage? Yes
10. Based on the above seismic interaction evaluations, is equipment free of potentially adverse seismic interaction effects? Yes

Other Adverse Conditions

11. Have you looked for and found no adverse seismic conditions that could adversely affect the safety functions of the equipment? Yes

Comments

SEWS Anchorage Notes:

Anchored by 14 cast-in-place 1.25" diameter bolts.

Seismic Walkdown Team: D. Carter & J. Griffith - 8/21/2012

Evaluated by:  David Carter Date: 10/4/2012

 James Griffith 10/4/2012

Status: Y N U

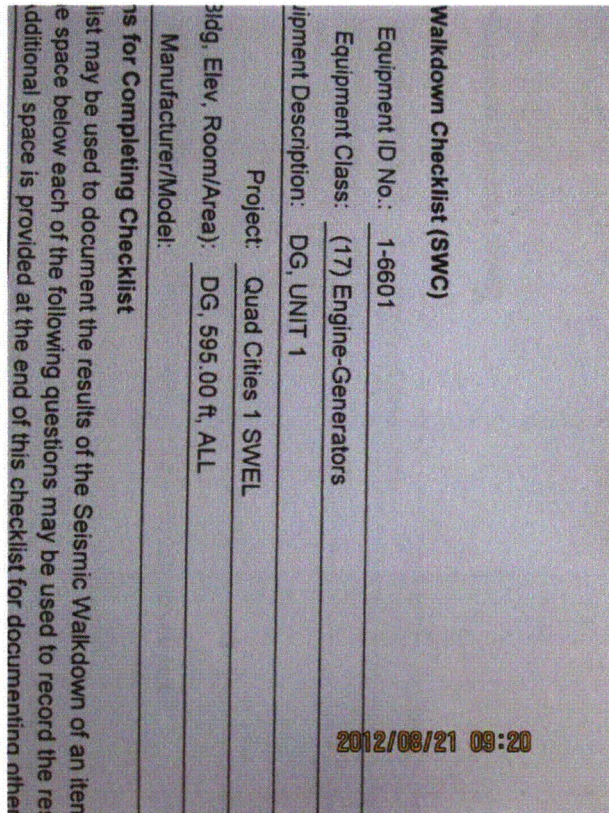
Seismic Walkdown Checklist (SWC)

Equipment ID No.: 1-6601

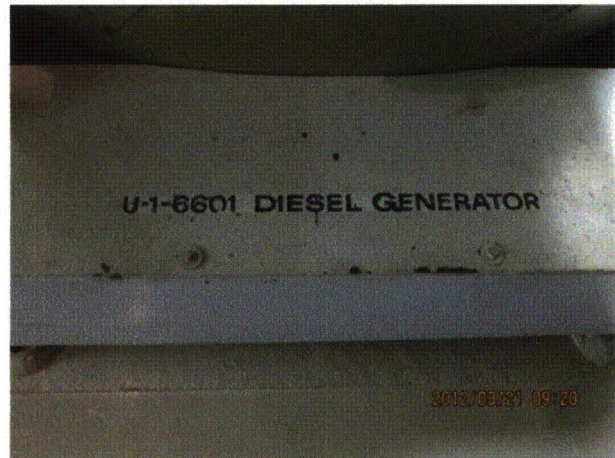
Equipment Class: (17) Engine-Generators

Equipment Description: DG, UNIT 1

Photos



8-21-12 Quad Cities 069



8-21-12 Quad Cities 070



8-21-12 Quad Cities 071



8-21-12 Quad Cities 072

Status: Y N U

Seismic Walkdown Checklist (SWC)

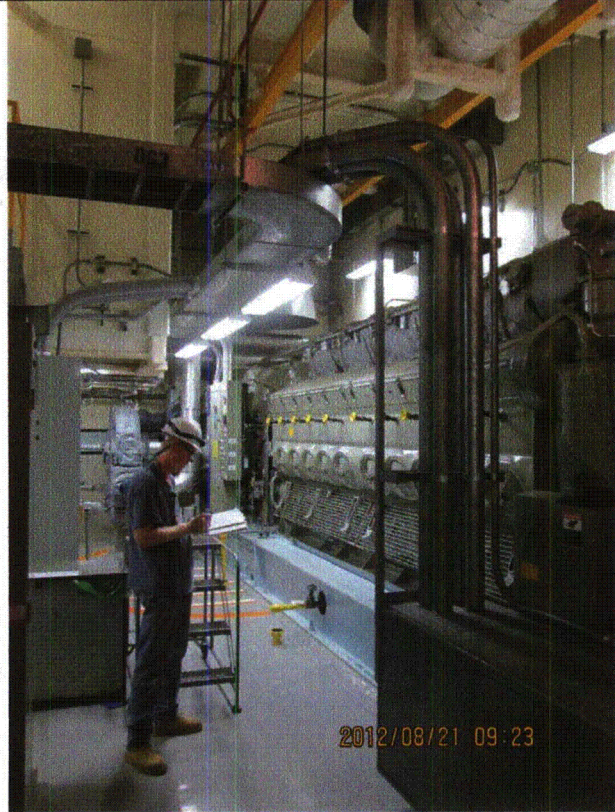
Equipment ID No.: 1-6601

Equipment Class: (17) Engine-Generators

Equipment Description: DG, UNIT 1



8-21-12 Quad Cities 073



8-21-12 Quad Cities 074

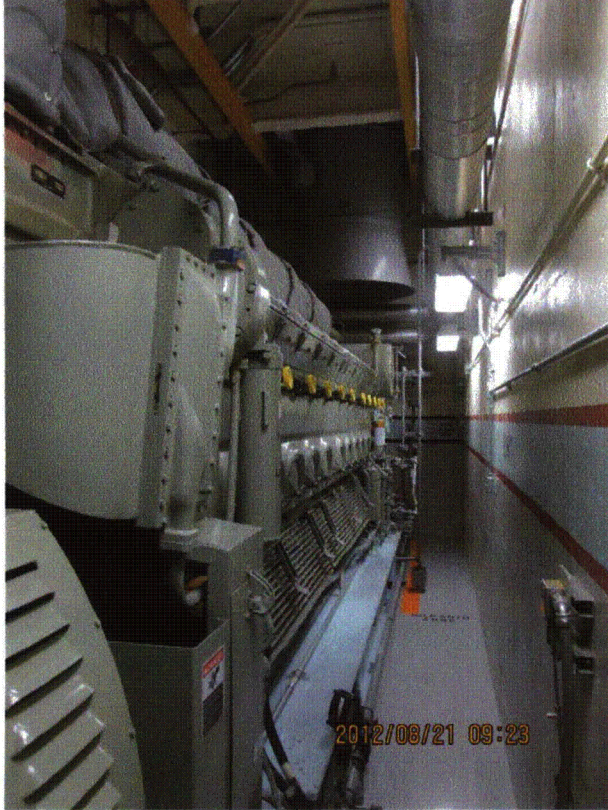
Status: Y N U

Seismic Walkdown Checklist (SWC)

Equipment ID No.: 1-6601

Equipment Class: (17) Engine-Generators

Equipment Description: DG, UNIT 1



8-21-12 Quad Cities 075



8-21-12 Quad Cities 076

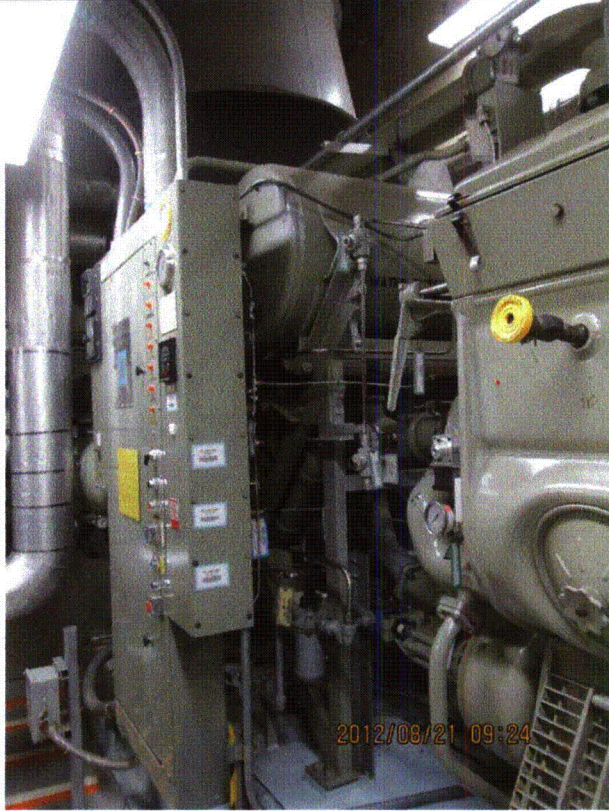
Status: Y N U

Seismic Walkdown Checklist (SWC)

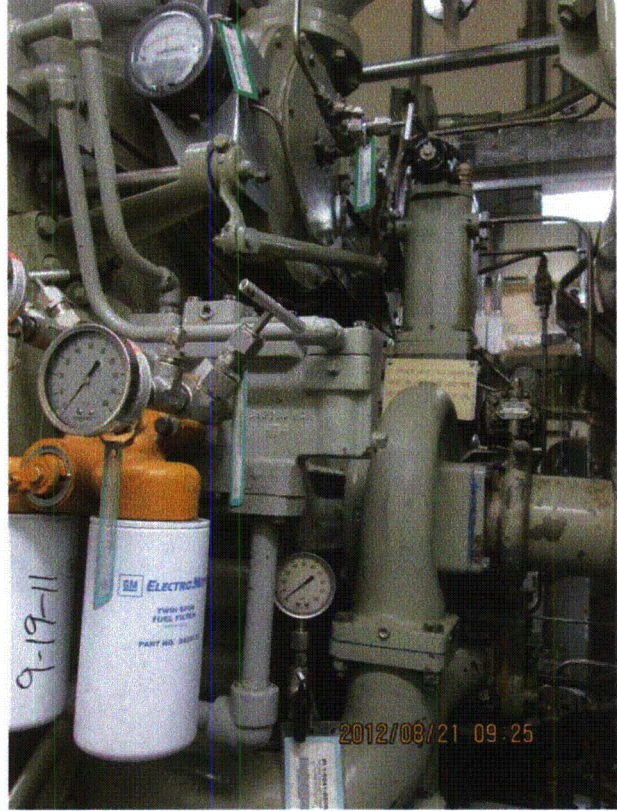
Equipment ID No.: 1-6601

Equipment Class: (17) Engine-Generators

Equipment Description: DG, UNIT 1



8-21-12 Quad Cities 077



8-21-12 Quad Cities 078

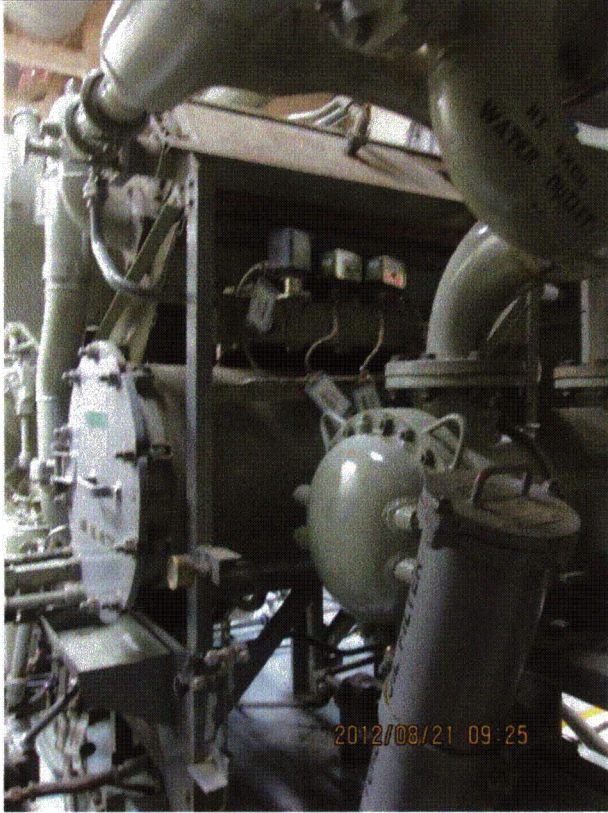
Status: Y N U

Seismic Walkdown Checklist (SWC)

Equipment ID No.: 1-6601

Equipment Class: (17) Engine-Generators

Equipment Description: DG, UNIT 1



8-21-12 Quad Cities 079

Status: Y N U

Seismic Walkdown Checklist (SWC)

Equipment ID No.: 1-6654

Equipment Class: (21) Tanks and Heat Exchangers

Equipment Description: HX, DG LUBE OIL

Project: Quad Cities 1 SWEL

Location (Bldg, Elev, Room/Area): DG, 595.00 ft, ALL

Manufacturer/Model:

Instructions for Completing Checklist

This checklist may be used to document the results of the Seismic Walkdown of an item of equipment on the SWEL. The space below each of the following questions may be used to record the results of judgments and findings. Additional space is provided at the end of this checklist for documenting other comments.

Anchorage

1. Is anchorage configuration verification required (i.e., is the item one of the 50% of SWEL items requiring such verification)? No

2. Is the anchorage free of bent, broken, missing or loose hardware? Yes
Top clamped and bottom bolted to frame attached to DG skid.

3. Is the anchorage free of corrosion that is more than mild surface oxidation? Yes

4. Is the anchorage free of visible cracks in the concrete near the anchors? Not Applicable
Attached to frame on DG skid.

5. Is the anchorage configuration consistent with plant documentation? (Note: This question only applies if the item is one of the 50% for which an anchorage configuration verification is required.) Not Applicable

6. Based on the above anchorage evaluations, is the anchorage free of potentially adverse seismic conditions? Yes

Status: Y N U

Seismic Walkdown Checklist (SWC)

Equipment ID No.: 1-6654

Equipment Class: (21) Tanks and Heat Exchangers

Equipment Description: HX, DG LUBE OIL

Interaction Effects

7. Are soft targets free from impact by nearby equipment or structures? Not Applicable

Heat exchanger has no soft targets.

8. Are overhead equipment, distribution systems, ceiling tiles and lighting, and masonry block walls not likely to collapse onto the equipment? Yes

9. Do attached lines have adequate flexibility to avoid damage? Yes

All pipes are mounted on the same DG skid the heat exchanger. No relative movement that will result in adverse condition.

10. Based on the above seismic interaction evaluations, is equipment free of potentially adverse seismic interaction effects? Yes

Other Adverse Conditions

11. Have you looked for and found no adverse seismic conditions that could adversely affect the safety functions of the equipment? Yes

Comments

Seismic Walkdown Team: D. Carter & J. Griffith - 8/21/2012

Evaluated by:  David Carter Date: 10/4/2012

 James D. Griffith 10/4/2012

Status: Y N U

Seismic Walkdown Checklist (SWC)

Equipment ID No.: 1-6654

Equipment Class: (21) Tanks and Heat Exchangers

Equipment Description: HX, DG LUBE OIL

Photos

Seismic Walkdown Checklist (SWC)

Equipment ID No.: 1-6654

Equipment Class: (21) Tanks and Heat Exchangers

Equipment Description: HX, DG LUBE OIL

Project: Quad Cities 1 SWEL

Location (Bldg, Elev, Room/Area): DG, 596.00 ft, ALL

Manufacturer/Model:

Instructions for Completing Checklist

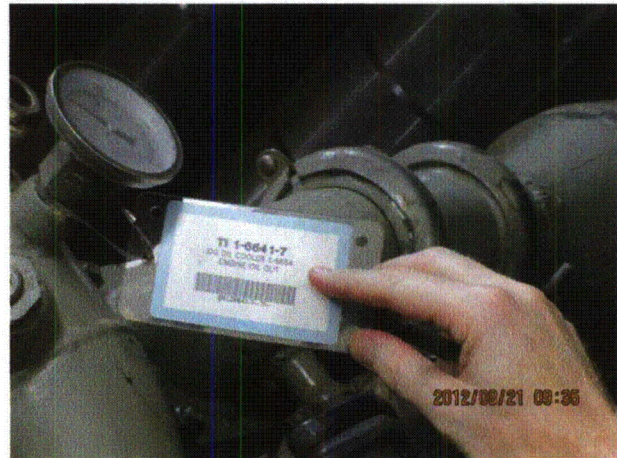
The checklist may be used to document the results of the Seismic Walkdown of an item of equipment (SWEL). The space below each of the following questions may be used to record the results of judgment. Additional space is provided at the end of this checklist for documenting other comments.

Anchorages

2012/08/21 09:36

Is anchorage configuration verification required (i.e. is the item one of the 50% of SWEL items requiring such verification)?

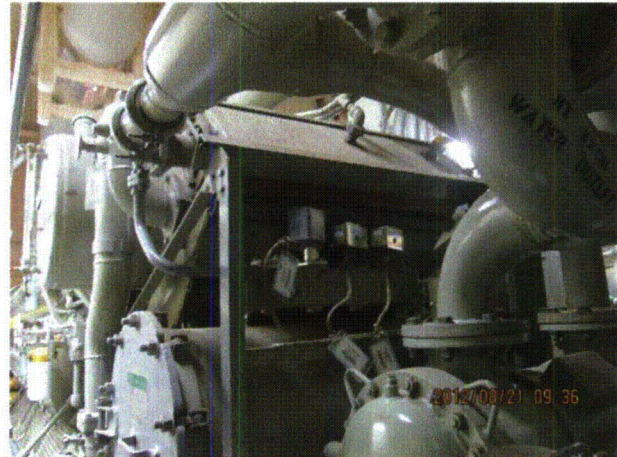
8-21-12 Quad Cities 080



8-21-12 Quad Cities 081



8-21-12 Quad Cities 082



8-21-12 Quad Cities 083

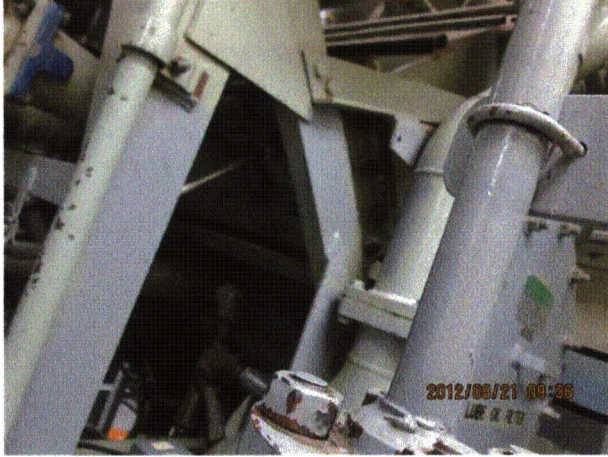
Status: Y N U

Seismic Walkdown Checklist (SWC)

Equipment ID No.: 1-6654

Equipment Class: (21) Tanks and Heat Exchangers

Equipment Description: HX, DG LUBE OIL



8-21-12 Quad Cities 084

Status: Y N U

Seismic Walkdown Checklist (SWC)

Equipment ID No.: 1-6661A

Equipment Class: (21) Tanks and Heat Exchangers

Equipment Description: HX, DG COOLING

Project: Quad Cities 1 SWEL

Location (Bldg, Elev, Room/Area): DG, 595.00 ft, ALL

Manufacturer/Model:

Instructions for Completing Checklist

This checklist may be used to document the results of the Seismic Walkdown of an item of equipment on the SWEL. The space below each of the following questions may be used to record the results of judgments and findings. Additional space is provided at the end of this checklist for documenting other comments.

Anchorage

- | | | |
|----|---|----------------|
| 1. | Is anchorage configuration verification required (i.e., is the item one of the 50% of SWEL items requiring such verification)? | No |
| 2. | Is the anchorage free of bent, broken, missing or loose hardware?

<i>Two U-bolts to support brackets that are bolted to frame which is attached to DG skid.</i> | Yes |
| 3. | Is the anchorage free of corrosion that is more than mild surface oxidation? | Yes |
| 4. | Is the anchorage free of visible cracks in the concrete near the anchors?

<i>Heat exchanger mounted to DG skid.</i> | Not Applicable |
| 5. | Is the anchorage configuration consistent with plant documentation? (Note: This question only applies if the item is one of the 50% for which an anchorage configuration verification is required.) | Not Applicable |
| 6. | Based on the above anchorage evaluations, is the anchorage free of potentially adverse seismic conditions? | Yes |

Interaction Effects

- | | | |
|----|--|-----|
| 7. | Are soft targets free from impact by nearby equipment or structures? | Yes |
|----|--|-----|

Status: Y N U

Seismic Walkdown Checklist (SWC)

Equipment ID No.: 1-6661A

Equipment Class: (21) Tanks and Heat Exchangers

Equipment Description: HX, DG COOLING

8. Are overhead equipment, distribution systems, ceiling tiles and lighting, and masonry block walls not likely to collapse onto the equipment? Yes
9. Do attached lines have adequate flexibility to avoid damage? Yes
10. Based on the above seismic interaction evaluations, is equipment free of potentially adverse seismic interaction effects? Yes

Other Adverse Conditions

11. Have you looked for and found no adverse seismic conditions that could adversely affect the safety functions of the equipment? Yes

Comments

Seismic Walkdown Team: D. Carter & J. Griffith - 8/21/2012

Evaluated by: *David Carter* David Carter Date: 10/4/2012

James D. Griffith James Griffith 10/4/2012

Status: Y N U

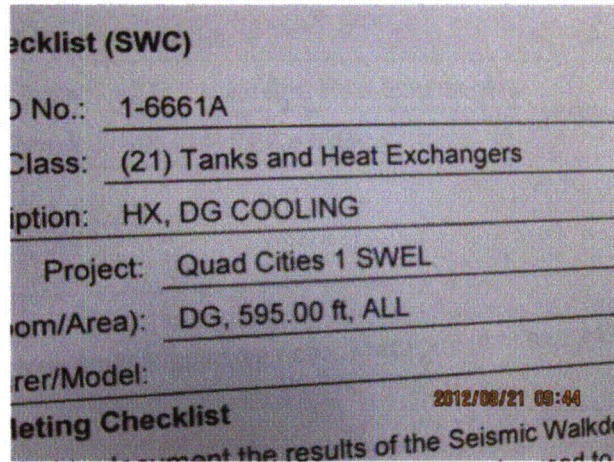
Seismic Walkdown Checklist (SWC)

Equipment ID No.: 1-6661A

Equipment Class: (21) Tanks and Heat Exchangers

Equipment Description: HX, DG COOLING

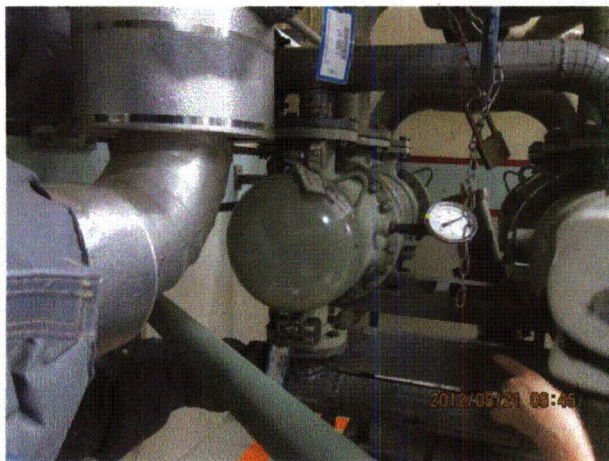
Photos



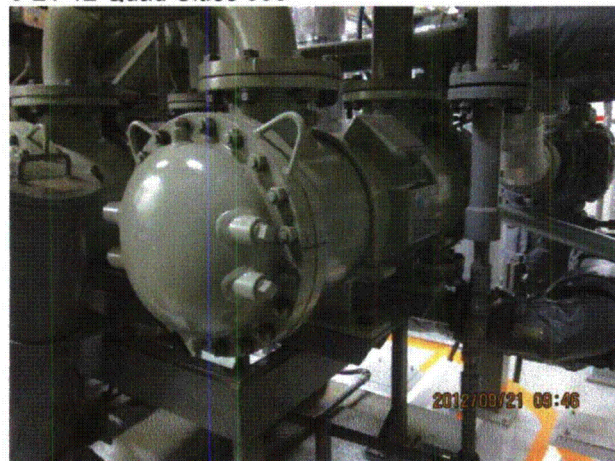
8-21-12 Quad Cities 085



8-21-12 Quad Cities 086



8-21-12 Quad Cities 087



8-21-12 Quad Cities 088

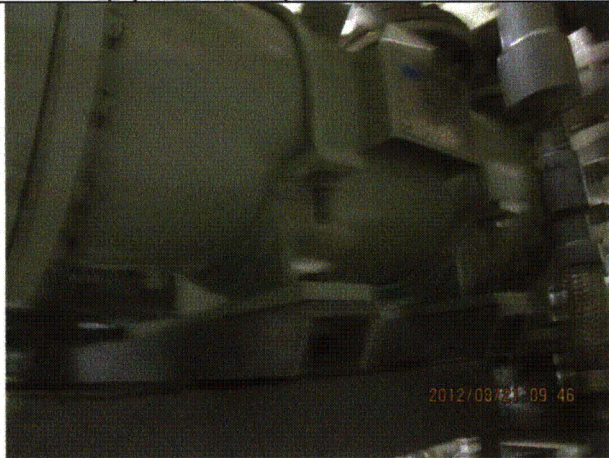
Status: Y N U

Seismic Walkdown Checklist (SWC)

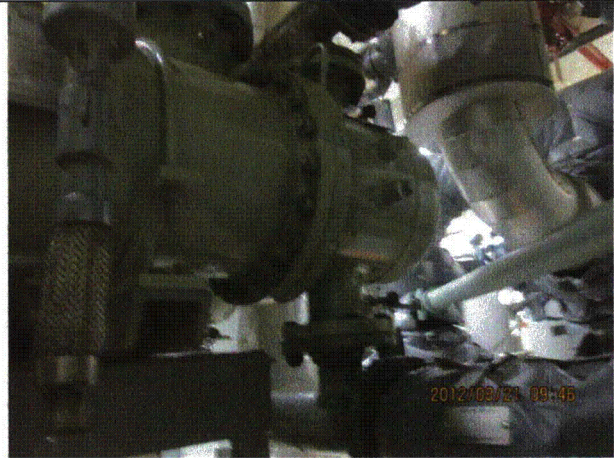
Equipment ID No.: 1-6661A

Equipment Class: (21) Tanks and Heat Exchangers

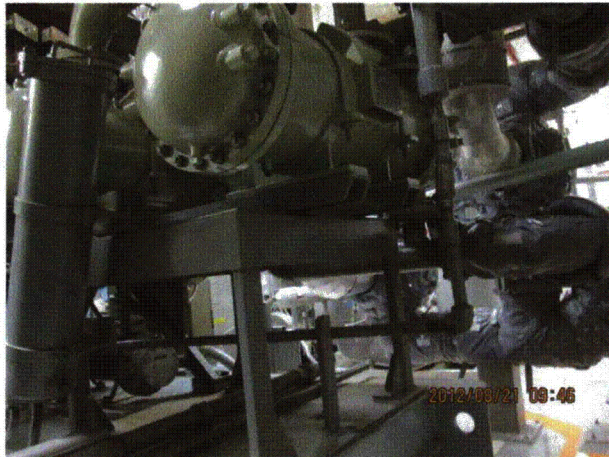
Equipment Description: HX, DG COOLING



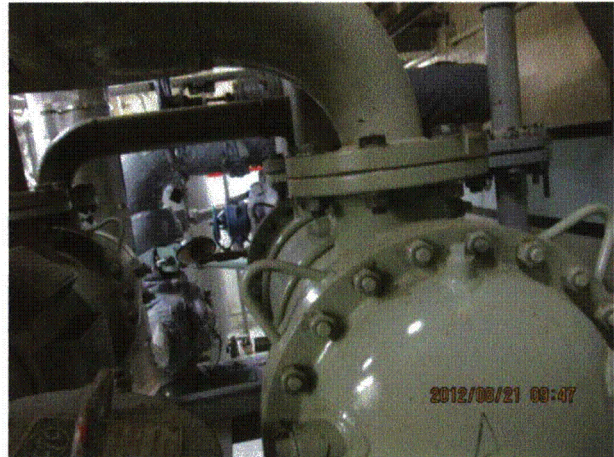
8-21-12 Quad Cities 089



8-21-12 Quad Cities 090



8-21-12 Quad Cities 091



8-21-12 Quad Cities 092

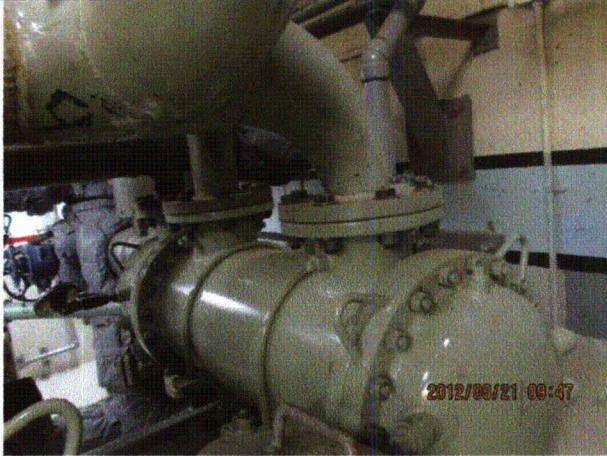
Status: Y N U

Seismic Walkdown Checklist (SWC)

Equipment ID No.: 1-6661A

Equipment Class: (21) Tanks and Heat Exchangers

Equipment Description: HX, DG COOLING



8-21-12 Quad Cities 093

Status: Y N U

Seismic Walkdown Checklist (SWC)

Equipment ID No.: 1-6705-13-1

Equipment Class: (3) Medium Voltage Switchgear

Equipment Description: SWGR 13-1

Project: Quad Cities 1 SWEL

Location (Bldg, Elev, Room/Area): TB, 639.00 ft, ALL

Manufacturer/Model:

Instructions for Completing Checklist

This checklist may be used to document the results of the Seismic Walkdown of an item of equipment on the SWEL. The space below each of the following questions may be used to record the results of judgments and findings. Additional space is provided at the end of this checklist for documenting other comments.

Anchorage

1. Is anchorage configuration verification required (i.e., is the item one of the 50% of SWEL items requiring such verification)? No

2. Is the anchorage free of bent, broken, missing or loose hardware? Unknown
Exterior base anchorage at south end observed. Top east-west wall braces observed. No anchorages observed at north (exterior) end. See original SQUG notes for anchorage.

3. Is the anchorage free of corrosion that is more than mild surface oxidation? Yes

4. Is the anchorage free of visible cracks in the concrete near the anchors? Yes

5. Is the anchorage configuration consistent with plant documentation? (Note: This question only applies if the item is one of the 50% for which an anchorage configuration verification is required.) Not Applicable

6. Based on the above anchorage evaluations, is the anchorage free of potentially adverse seismic conditions? Yes

Interaction Effects

7. Are soft targets free from impact by nearby equipment or structures? Yes

Status: Y N U

Seismic Walkdown Checklist (SWC)

Equipment ID No.: 1-6705-13-1

Equipment Class: (3) Medium Voltage Switchgear

Equipment Description: SWGR 13-1

8. Are overhead equipment, distribution systems, ceiling tiles and lighting, and masonry block walls not likely to collapse onto the equipment? Yes
Overhead light fixtures judged to be acceptable. Masonry wall restrained at top.
9. Do attached lines have adequate flexibility to avoid damage? Yes
10. Based on the above seismic interaction evaluations, is equipment free of potentially adverse seismic interaction effects? Yes

Other Adverse Conditions

11. Have you looked for and found no adverse seismic conditions that could adversely affect the safety functions of the equipment? Yes

Comments

Seismic Walkdown Team: D. Carter & J. Griffith - 8/20/2012

Per Operations, switchgear door was not opened.

Evaluated by: *David Carter* David Carter Date: 10/4/2012
James D. Griffith James Griffith 10/4/2012

Status: Y N U

Seismic Walkdown Checklist (SWC)

Equipment ID No.: 1-6705-13-1

Equipment Class: (3) Medium Voltage Switchgear

Equipment Description: SWGR 13-1

Photos

Seismic Walkdown Checklist (SWC)

Equipment ID No.: 1-6705-13-1

Equipment Class: (3) Medium Voltage Switchgear

Equipment Description: SWGR 13-1

Project: Quad Cities 1 SWEL

Edg. Elev. Room/Area: TB, 639.00 ft, ALL

Manufacturer/Model:

Instructions for Completing Checklist

This checklist may be used to document the results of the Seismic Walkdown of a piece of equipment. The space below each of the following questions must be used to record the results. Additional space is provided at the end of this checklist for documenting any other observations.

2012/08/20 14:22

8-20-12 Quad Cities 193 (1)



8-20-12 Quad Cities 193 (10)



8-20-12 Quad Cities 193 (11)



8-20-12 Quad Cities 193 (12)

Status: Y N U

Seismic Walkdown Checklist (SWC)

Equipment ID No.: 1-6705-13-1

Equipment Class: (3) Medium Voltage Switchgear

Equipment Description: SWGR 13-1



8-20-12 Quad Cities 193 (13)



8-20-12 Quad Cities 193 (2)



8-20-12 Quad Cities 193 (3)



8-20-12 Quad Cities 193 (4)

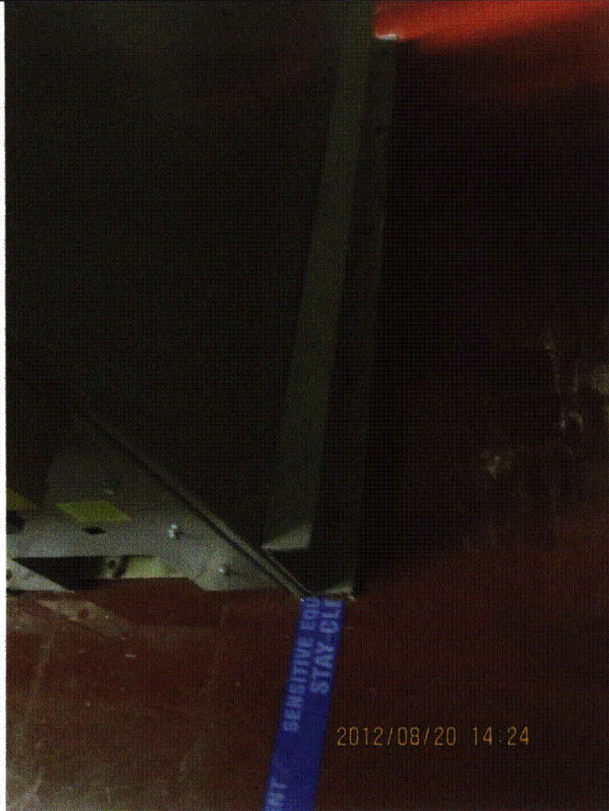
Status: Y N U

Seismic Walkdown Checklist (SWC)

Equipment ID No.: 1-6705-13-1

Equipment Class: (3) Medium Voltage Switchgear

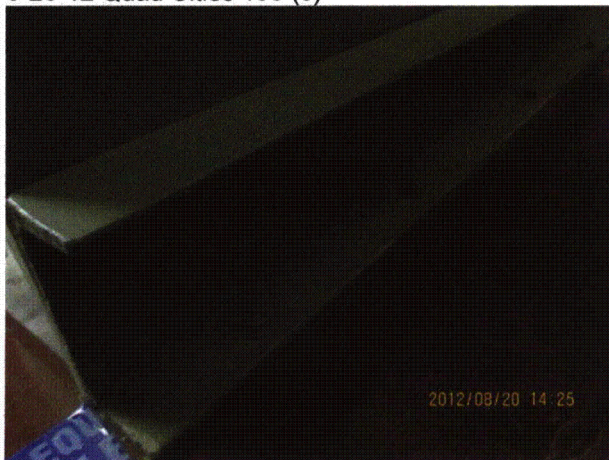
Equipment Description: SWGR 13-1



8-20-12 Quad Cities 193 (5)



8-20-12 Quad Cities 193 (6)



8-20-12 Quad Cities 193 (7)



8-20-12 Quad Cities 193 (8)

Status: Y N U

Seismic Walkdown Checklist (SWC)

Equipment ID No.: 1-6705-13-1

Equipment Class: (3) Medium Voltage Switchgear

Equipment Description: SWGR 13-1



8-20-12 Quad Cities 193 (9)

Status: Y N U

Seismic Walkdown Checklist (SWC)

Equipment ID No.: 1-7100

Equipment Class: (4) Transformers

Equipment Description: TRANSFORMER 18 4160V-480V

Project: Quad Cities 1 SWEL

Location (Bldg, Elev, Room/Area): TB, 639.00 ft, ALL

Manufacturer/Model:

Instructions for Completing Checklist

This checklist may be used to document the results of the Seismic Walkdown of an item of equipment on the SWEL. The space below each of the following questions may be used to record the results of judgments and findings. Additional space is provided at the end of this checklist for documenting other comments.

Anchorage

1. Is anchorage configuration verification required (i.e., is the item one of the 50% of SWEL items requiring such verification)? No
Bears against the foundation at floor, braced to wall. Will not move laterally.

2. Is the anchorage free of bent, broken, missing or loose hardware? Yes

3. Is the anchorage free of corrosion that is more than mild surface oxidation? Yes

4. Is the anchorage free of visible cracks in the concrete near the anchors? Yes

5. Is the anchorage configuration consistent with plant documentation? (Note: This question only applies if the item is one of the 50% for which an anchorage configuration verification is required.) Not Applicable

6. Based on the above anchorage evaluations, is the anchorage free of potentially adverse seismic conditions? Yes

Interaction Effects

7. Are soft targets free from impact by nearby equipment or structures? Yes

Status: Y N U

Seismic Walkdown Checklist (SWC)

Equipment ID No.: 1-7100

Equipment Class: (4) Transformers

Equipment Description: TRANSFORMER 18 4160V-480V

8. Are overhead equipment, distribution systems, ceiling tiles and lighting, and masonry block walls not likely to collapse onto the equipment? Yes
Overhead light fixtures judged to be acceptable. Masonry wall restrained at edges and judged to be acceptable.
9. Do attached lines have adequate flexibility to avoid damage? Yes
10. Based on the above seismic interaction evaluations, is equipment free of potentially adverse seismic interaction effects? Yes

Other Adverse Conditions

11. Have you looked for and found no adverse seismic conditions that could adversely affect the safety functions of the equipment? Yes

Comments

Seismic Walkdown Team: D. Carter & J. Griffith - 8/20/2012

Transformer has been replaced since SQUG walkdown.

Evaluated by: *David Carter* David Carter

Date: 10/4/2012

James D. Griffith James Griffith

10/4/2012

Status: Y N U

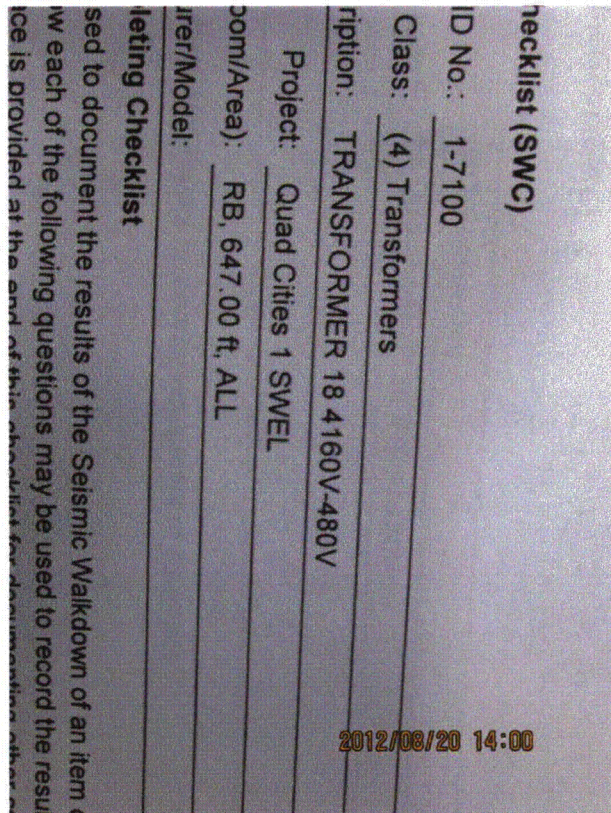
Seismic Walkdown Checklist (SWC)

Equipment ID No.: 1-7100

Equipment Class: (4) Transformers

Equipment Description: TRANSFORMER 18 4160V-480V

Photos



8-20-12 Quad Cities 164 (1)



8-20-12 Quad Cities 164 (10)



8-20-12 Quad Cities 164 (11)



8-20-12 Quad Cities 164 (12)

Status: Y N U

Seismic Walkdown Checklist (SWC)

Equipment ID No.: 1-7100

Equipment Class: (4) Transformers

Equipment Description: TRANSFORMER 18 4160V-480V



8-20-12 Quad Cities 164 (13)



8-20-12 Quad Cities 164 (14)



8-20-12 Quad Cities 164 (15)



8-20-12 Quad Cities 164 (16)

Status: Y N U

Seismic Walkdown Checklist (SWC)

Equipment ID No.: 1-7100

Equipment Class: (4) Transformers

Equipment Description: TRANSFORMER 18 4160V-480V



8-20-12 Quad Cities 164 (2)



8-20-12 Quad Cities 164 (3)

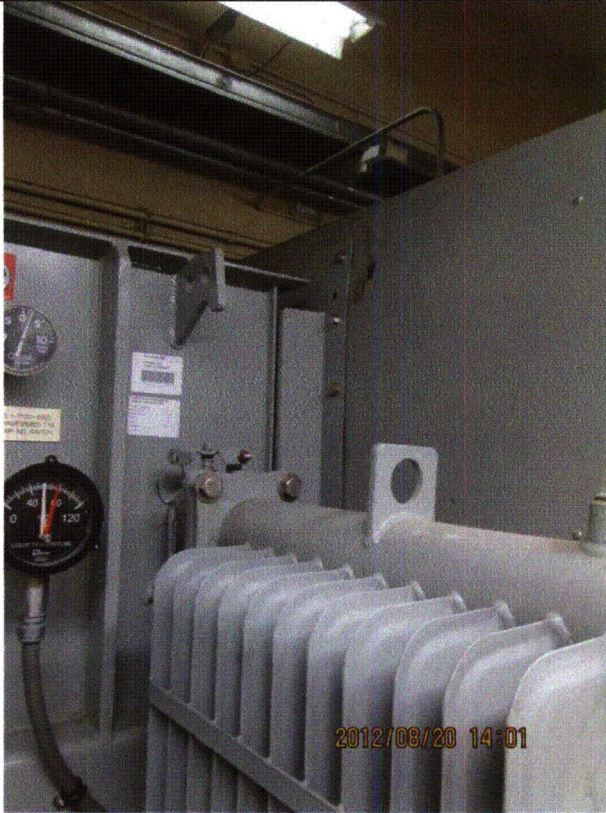
Status: Y N U

Seismic Walkdown Checklist (SWC)

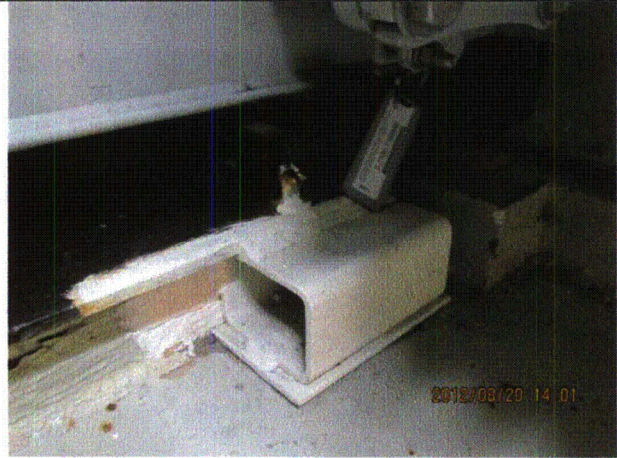
Equipment ID No.: 1-7100

Equipment Class: (4) Transformers

Equipment Description: TRANSFORMER 18 4160V-480V



8-20-12 Quad Cities 164 (4)



8-20-12 Quad Cities 164 (5)



8-20-12 Quad Cities 164 (6)



8-20-12 Quad Cities 164 (7)

Status: Y N U

Seismic Walkdown Checklist (SWC)

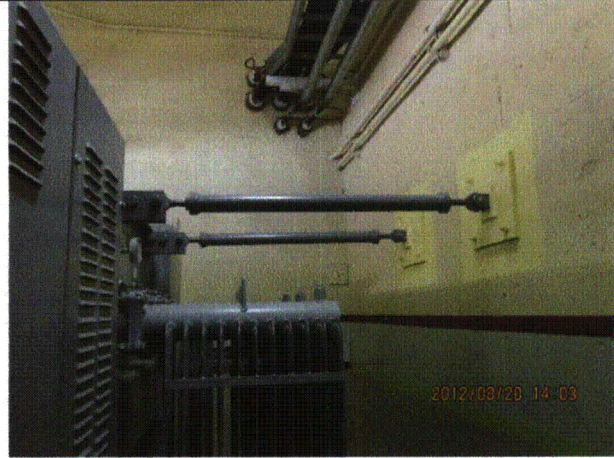
Equipment ID No.: 1-7100

Equipment Class: (4) Transformers

Equipment Description: TRANSFORMER 18 4160V-480V



8-20-12 Quad Cities 164 (8)



8-20-12 Quad Cities 164 (9)