

Status:  Y  N  U

**Seismic Walkdown Checklist (SWC)**

Equipment ID No.: 1-1001-166B

Equipment Class: (7) Fluid-Operated Valves

Equipment Description: VALVE, RELIEF - 1B RHR HX SHELL SIDE RV

Project: Quad Cities 1 SWEL

Location (Bldg, Elev, Room/Area): RB, 554.00 ft, ALL

Manufacturer/Model:

**Instructions for Completing Checklist**

This checklist may be used to document the results of the Seismic Walkdown of an item of equipment on the SWEL. The space below each of the following questions may be used to record the results of judgments and findings. Additional space is provided at the end of this checklist for documenting other comments.

**Anchorage**

1. Is anchorage configuration verification required (i.e., is the item one of the 50% of SWEL items requiring such verification)? No
  
2. Is the anchorage free of bent, broken, missing or loose hardware? Not Applicable
  
3. Is the anchorage free of corrosion that is more than mild surface oxidation? Not Applicable
  
4. Is the anchorage free of visible cracks in the concrete near the anchors? Not Applicable
  
5. Is the anchorage configuration consistent with plant documentation? (Note: This question only applies if the item is one of the 50% for which an anchorage configuration verification is required.) Not Applicable
  
6. Based on the above anchorage evaluations, is the anchorage free of potentially adverse seismic conditions? Yes

**Interaction Effects**

7. Are soft targets free from impact by nearby equipment or structures? Yes

Status:  Y  N  U

**Seismic Walkdown Checklist (SWC)**

Equipment ID No.: 1-1001-166B

Equipment Class: (7) Fluid-Operated Valves

Equipment Description: VALVE, RELIEF - 1B RHR HX SHELL SIDE RV

8. Are overhead equipment, distribution systems, ceiling tiles and lighting, and masonry block walls not likely to collapse onto the equipment? Yes
9. Do attached lines have adequate flexibility to avoid damage? Yes
10. Based on the above seismic interaction evaluations, is equipment free of potentially adverse seismic interaction effects? Yes

**Other Adverse Conditions**

11. Have you looked for and found no adverse seismic conditions that could adversely affect the safety functions of the equipment? Yes  
*Lead blanket chain in tension in contact with robust relief valve. Chain not expected to move due to tension. Judged to be acceptable.*

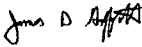
**Comments**

\*\*\*\*\*

Seismic Walkdown Team: D. Carter & J. Griffith - 8/23/2012

Evaluated by:  David Carter

Date: 10/4/2012

 James Griffith

10/4/2012



Status:  Y  N  U

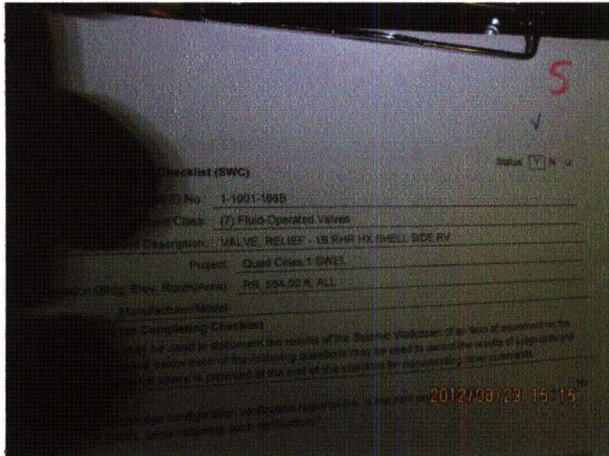
**Seismic Walkdown Checklist (SWC)**

Equipment ID No.: 1-1001-166B

Equipment Class: (7) Fluid-Operated Valves

Equipment Description: VALVE, RELIEF - 1B RHR HX SHELL SIDE RV

**Photos**



Quad Cities 158



Quad Cities 159

Status:  Y  N  U

**Seismic Walkdown Checklist (SWC)**

Equipment ID No.: 1-1001-166B

Equipment Class: (7) Fluid-Operated Valves

Equipment Description: VALVE, RELIEF - 1B RHR HX SHELL SIDE RV



Quad Cities 160

Status:  Y  N  U

**Seismic Walkdown Checklist (SWC)**

Equipment ID No.: 1-1001-16B

Equipment Class: (8) Motor-Operated and Solenoid-Operated Valves

Equipment Description: VALVE, HX 3B BYPASS - 1B RHR HX BYP VLV

Project: Quad Cities 1 SWEL

Location (Bldg, Elev, Room/Area): RB, 554.00 ft, ALL

Manufacturer/Model:

**Instructions for Completing Checklist**

This checklist may be used to document the results of the Seismic Walkdown of an item of equipment on the SWEL. The space below each of the following questions may be used to record the results of judgments and findings. Additional space is provided at the end of this checklist for documenting other comments.

**Anchorage**

1. Is anchorage configuration verification required (i.e., is the item one of the 50% of SWEL items requiring such verification)? No
  
2. Is the anchorage free of bent, broken, missing or loose hardware? Not Applicable
  
3. Is the anchorage free of corrosion that is more than mild surface oxidation? Not Applicable
  
4. Is the anchorage free of visible cracks in the concrete near the anchors? Not Applicable
  
5. Is the anchorage configuration consistent with plant documentation? (Note: This question only applies if the item is one of the 50% for which an anchorage configuration verification is required.) Not Applicable
  
6. Based on the above anchorage evaluations, is the anchorage free of potentially adverse seismic conditions? Yes

**Interaction Effects**

7. Are soft targets free from impact by nearby equipment or structures? Yes

Status:  Y  N  U

**Seismic Walkdown Checklist (SWC)**

Equipment ID No.: 1-1001-16B

Equipment Class: (8) Motor-Operated and Solenoid-Operated Valves

Equipment Description: VALVE, HX 3B BYPASS - 1B RHR HX BYP VLV

8. Are overhead equipment, distribution systems, ceiling tiles and lighting, and masonry block walls not likely to collapse onto the equipment? Yes
9. Do attached lines have adequate flexibility to avoid damage? Yes
10. Based on the above seismic interaction evaluations, is equipment free of potentially adverse seismic interaction effects? Yes

**Other Adverse Conditions**

11. Have you looked for and found no adverse seismic conditions that could adversely affect the safety functions of the equipment? Yes

**Comments**

\*\*\*\*\*

Seismic Walkdown Team: D. Carter & J. Griffith - 8/23/2012

Evaluated by: *David Carter* David Carter

Date: 10/4/2012

*James D. Griffith* James Griffith

10/4/2012



Status:  Y  N  U

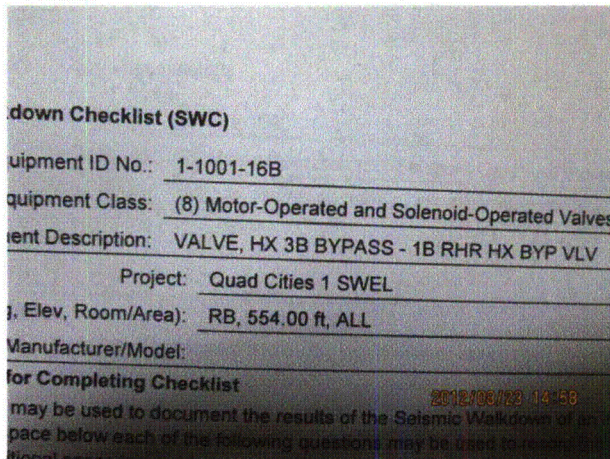
**Seismic Walkdown Checklist (SWC)**

Equipment ID No.: 1-1001-16B

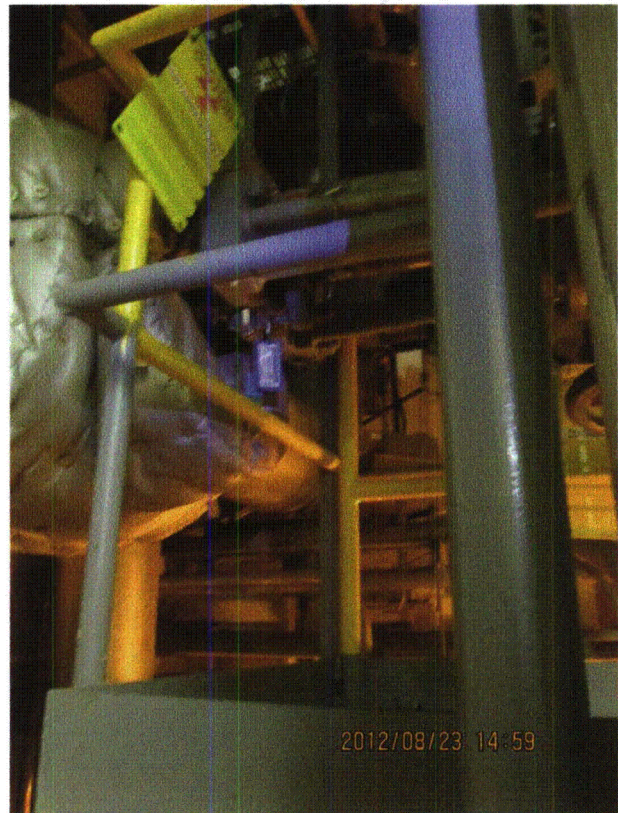
Equipment Class: (8) Motor-Operated and Solenoid-Operated Valves

Equipment Description: VALVE, HX 3B BYPASS - 1B RHR HX BYP VLV

**Photos**



Quad Cities 137



Quad Cities 138

Status:  Y  N  U

**Seismic Walkdown Checklist (SWC)**

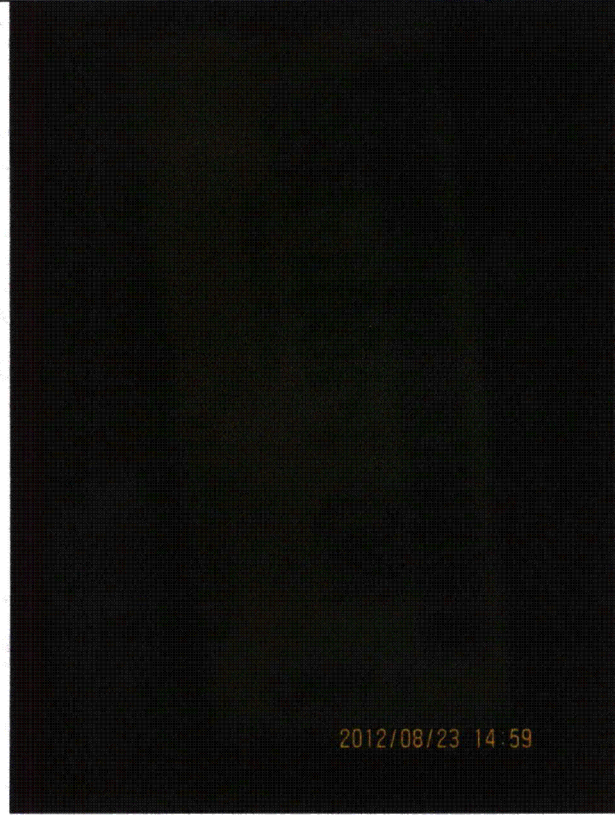
Equipment ID No.: 1-1001-16B

Equipment Class: (8) Motor-Operated and Solenoid-Operated Valves

Equipment Description: VALVE, HX 3B BYPASS - 1B RHR HX BYP VLV



Quad Cities 139



Quad Cities 140



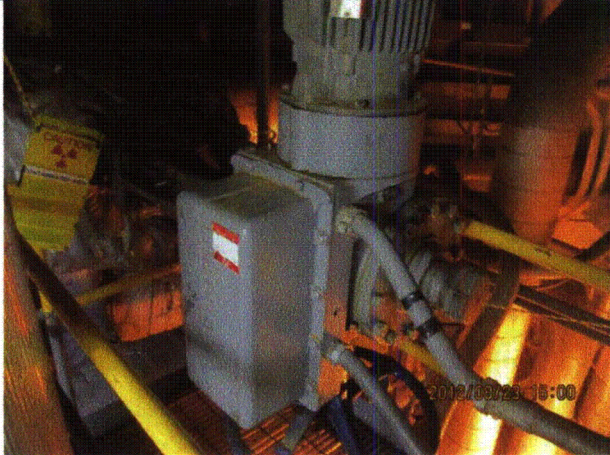
Status:  Y  N  U

**Seismic Walkdown Checklist (SWC)**

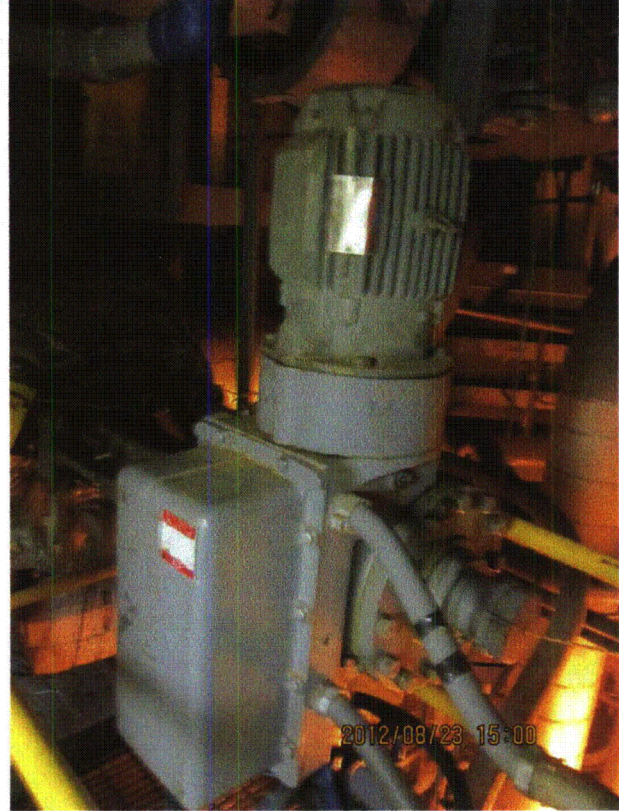
Equipment ID No.: 1-1001-16B

Equipment Class: (8) Motor-Operated and Solenoid-Operated Valves

Equipment Description: VALVE, HX 3B BYPASS - 1B RHR HX BYP VLV



Quad Cities 141



Quad Cities 142

Status:  Y  N  U

**Seismic Walkdown Checklist (SWC)**

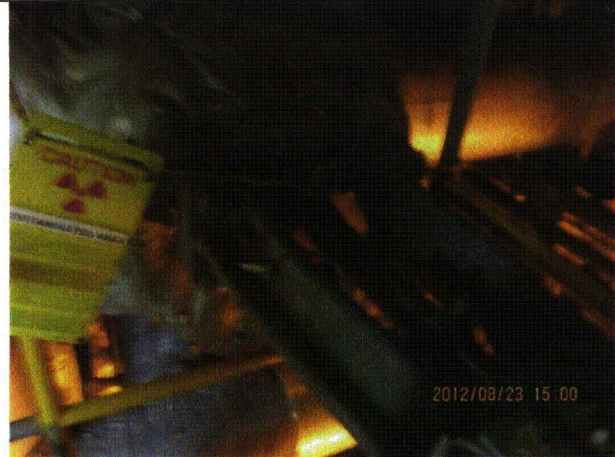
Equipment ID No.: 1-1001-16B

Equipment Class: (8) Motor-Operated and Solenoid-Operated Valves

Equipment Description: VALVE, HX 3B BYPASS - 1B RHR HX BYP VLV



Quad Cities 143



Quad Cities 144



Quad Cities 145



Status:  Y  N  U

**Seismic Walkdown Checklist (SWC)**

Equipment ID No.: 1-1001-22A

Equipment Class: (7) Fluid-Operated Valves

Equipment Description: VALVE, RELIEF - 1A LPCI LOOP RV

Project: Quad Cities 1 SWEL

Location (Bldg, Elev, Room/Area): RB, 554.00 ft, ALL

Manufacturer/Model:

**Instructions for Completing Checklist**

This checklist may be used to document the results of the Seismic Walkdown of an item of equipment on the SWEL. The space below each of the following questions may be used to record the results of judgments and findings. Additional space is provided at the end of this checklist for documenting other comments.

**Anchorage**

1. Is anchorage configuration verification required (i.e., is the item one of the 50% of SWEL items requiring such verification)? No
  
2. Is the anchorage free of bent, broken, missing or loose hardware? Not Applicable
  
3. Is the anchorage free of corrosion that is more than mild surface oxidation? Not Applicable
  
4. Is the anchorage free of visible cracks in the concrete near the anchors? Not Applicable
  
5. Is the anchorage configuration consistent with plant documentation? (Note: This question only applies if the item is one of the 50% for which an anchorage configuration verification is required.) Not Applicable
  
6. Based on the above anchorage evaluations, is the anchorage free of potentially adverse seismic conditions? Yes

**Interaction Effects**

7. Are soft targets free from impact by nearby equipment or structures? Yes

Status:  Y  N  U

**Seismic Walkdown Checklist (SWC)**

Equipment ID No.: 1-1001-22A

Equipment Class: (7) Fluid-Operated Valves

Equipment Description: VALVE, RELIEF - 1A LPCI LOOP RV

8. Are overhead equipment, distribution systems, ceiling tiles and lighting, and masonry block walls not likely to collapse onto the equipment? Yes  
*Overhead light fixtures judged to be acceptable.*
9. Do attached lines have adequate flexibility to avoid damage? Yes
10. Based on the above seismic interaction evaluations, is equipment free of potentially adverse seismic interaction effects? Yes

**Other Adverse Conditions**

11. Have you looked for and found no adverse seismic conditions that could adversely affect the safety functions of the equipment? Yes

**Comments**

\*\*\*\*\*

Seismic Walkdown Team: D. Carter & J. Griffith - 8/24/2012

Evaluated by: *David Carter* David Carter Date: 10/16/2012

*James D. Griffith* James Griffith 10/16/2012

Status:  Y  N  U

**Seismic Walkdown Checklist (SWC)**

Equipment ID No.: 1-1001-22A

Equipment Class: (7) Fluid-Operated Valves

Equipment Description: VALVE, RELIEF - 1A LPCI LOOP RV

**Photos**



Quad Cities 049



Quad Cities 051

Status:  Y  N  U

**Seismic Walkdown Checklist (SWC)**

Equipment ID No.: 1-1001-22A

Equipment Class: (7) Fluid-Operated Valves

Equipment Description: VALVE, RELIEF - 1A LPCI LOOP RV



Quad Cities 059



Quad Cities 061

Status:  Y  N  U

**Seismic Walkdown Checklist (SWC)**

Equipment ID No.: 1-1001-29A

Equipment Class: (8) Motor-Operated and Solenoid-Operated Valves

Equipment Description: VALVE, LOOP A INBRD - 1A LPCI LOOP DWNSTRM VALVE GATE MOTOR OPERATED

Project: Quad Cities 1 SWEL

Location (Bldg, Elev, Room/Area): RB, 554.00 ft, ALL

Manufacturer/Model:

**Instructions for Completing Checklist**

This checklist may be used to document the results of the Seismic Walkdown of an item of equipment on the SWEL. The space below each of the following questions may be used to record the results of judgments and findings. Additional space is provided at the end of this checklist for documenting other comments.

**Anchorage**

1. Is anchorage configuration verification required (i.e., is the item one of the 50% of SWEL items requiring such verification)? No
  
2. Is the anchorage free of bent, broken, missing or loose hardware? Not Applicable
  
3. Is the anchorage free of corrosion that is more than mild surface oxidation? Not Applicable
  
4. Is the anchorage free of visible cracks in the concrete near the anchors? Not Applicable
  
5. Is the anchorage configuration consistent with plant documentation? (Note: This question only applies if the item is one of the 50% for which an anchorage configuration verification is required.) Not Applicable
  
6. Based on the above anchorage evaluations, is the anchorage free of potentially adverse seismic conditions? Yes

Status:  Y  N  U

**Seismic Walkdown Checklist (SWC)**

Equipment ID No.: 1-1001-29A

Equipment Class: (8) Motor-Operated and Solenoid-Operated Valves

Equipment Description: VALVE, LOOP A INBRD - 1A LPCI LOOP DWNSTRM VALVE GATE MOTOR OPERATED

**Interaction Effects**

7. Are soft targets free from impact by nearby equipment or structures? Yes
8. Are overhead equipment, distribution systems, ceiling tiles and lighting, and masonry block walls not likely to collapse onto the equipment? Yes  
*Overhead light fixtures judged to be acceptable.*
9. Do attached lines have adequate flexibility to avoid damage? Yes
10. Based on the above seismic interaction evaluations, is equipment free of potentially adverse seismic interaction effects? Yes

**Other Adverse Conditions**

11. Have you looked for and found no adverse seismic conditions that could adversely affect the safety functions of the equipment? Yes

**Comments**

\*\*\*\*\*

Seismic Walkdown Team: D. Carter & J. Griffith - 8/24/2012

Evaluated by:

David Carter David Carter

Date: 10/16/2012

James D. Griffith James Griffith

10/16/2012



Status:  Y  N  U

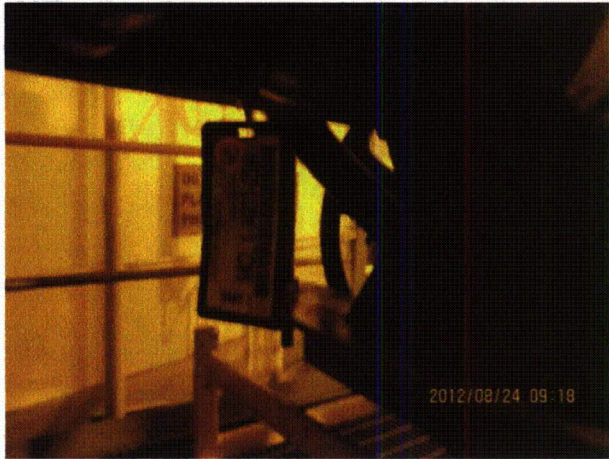
**Seismic Walkdown Checklist (SWC)**

Equipment ID No.: 1-1001-29A

Equipment Class: (8) Motor-Operated and Solenoid-Operated Valves

Equipment Description: VALVE, LOOP A INBRD - 1A LPCI LOOP DWNSTRM VALVE GATE MOTOR OPERATED

**Photos**



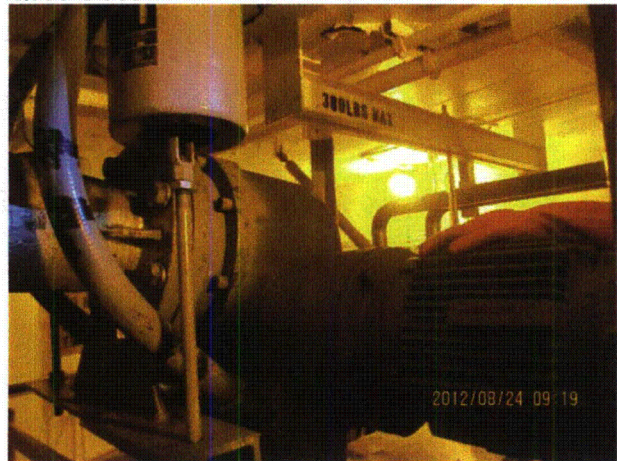
Quad Cities 073



Quad Cities 074



Quad Cities 075



Quad Cities 076

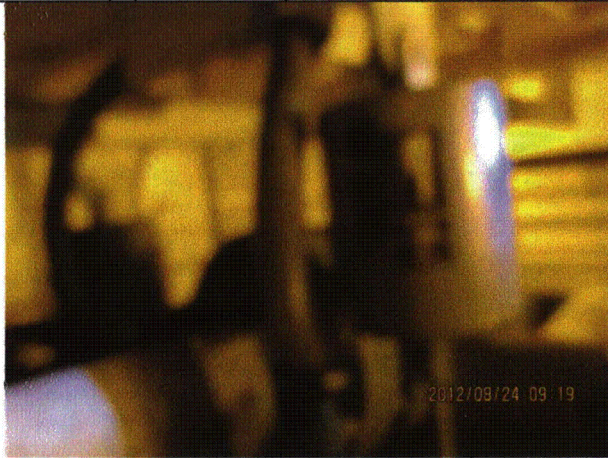
Status:  Y  N  U

**Seismic Walkdown Checklist (SWC)**

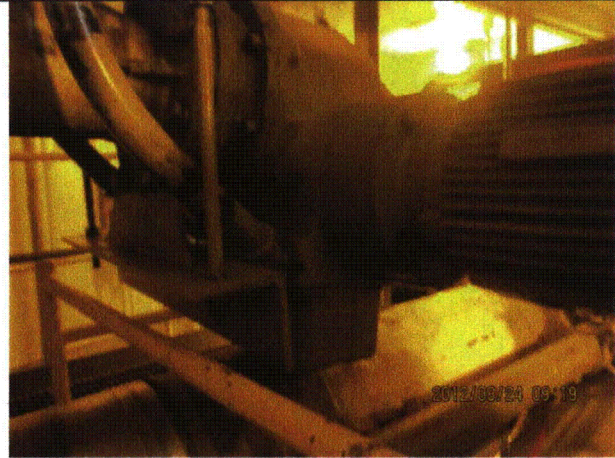
Equipment ID No.: 1-1001-29A

Equipment Class: (8) Motor-Operated and Solenoid-Operated Valves

Equipment Description: VALVE, LOOP A INBRD - 1A LPCI LOOP DWNSTRM VALVE GATE MOTOR OPERATED



Quad Cities 078



Quad Cities 079



Status:  Y  N  U

**Seismic Walkdown Checklist (SWC)**

Equipment ID No.: 1-1001-34A

Equipment Class: (8) Motor-Operated and Solenoid-Operated Valves

Equipment Description: VALVE, TORUS CLG - 1A TORUS SPRAY/CLG SV

Project: Quad Cities 1 SWEL

Location (Bldg, Elev, Room/Area): RB, 554.00 ft, ALL

Manufacturer/Model:

**Instructions for Completing Checklist**

This checklist may be used to document the results of the Seismic Walkdown of an item of equipment on the SWEL. The space below each of the following questions may be used to record the results of judgments and findings. Additional space is provided at the end of this checklist for documenting other comments.

**Anchorage**

1. Is anchorage configuration verification required (i.e., is the item one of the 50% of SWEL items requiring such verification)? No
  
2. Is the anchorage free of bent, broken, missing or loose hardware? Not Applicable
  
3. Is the anchorage free of corrosion that is more than mild surface oxidation? Not Applicable
  
4. Is the anchorage free of visible cracks in the concrete near the anchors? Not Applicable
  
5. Is the anchorage configuration consistent with plant documentation? (Note: This question only applies if the item is one of the 50% for which an anchorage configuration verification is required.) Not Applicable
  
6. Based on the above anchorage evaluations, is the anchorage free of potentially adverse seismic conditions? Yes

**Interaction Effects**

7. Are soft targets free from impact by nearby equipment or structures? Yes

Status:  Y  N  U

**Seismic Walkdown Checklist (SWC)**

Equipment ID No.: 1-1001-34A

Equipment Class: (8) Motor-Operated and Solenoid-Operated Valves

Equipment Description: VALVE, TORUS CLG - 1A TORUS SPRAY/CLG SV

8. Are overhead equipment, distribution systems, ceiling tiles and lighting, and masonry block walls not likely to collapse onto the equipment? Yes  
*Overhead light fixtures judged to be acceptable.*
9. Do attached lines have adequate flexibility to avoid damage? Yes
10. Based on the above seismic interaction evaluations, is equipment free of potentially adverse seismic interaction effects? Yes

**Other Adverse Conditions**

11. Have you looked for and found no adverse seismic conditions that could adversely affect the safety functions of the equipment? Yes  
*Duct hanger rod contacts valve yoke. Judged to be acceptable.*

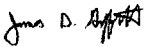
**Comments**

\*\*\*\*\*

Seismic Walkdown Team: D. Carter & J. Griffith - 8/24/2012

Evaluated by:  David Carter

Date: 10/4/2012

 James Griffith

10/4/2012

Status:  Y  N  U

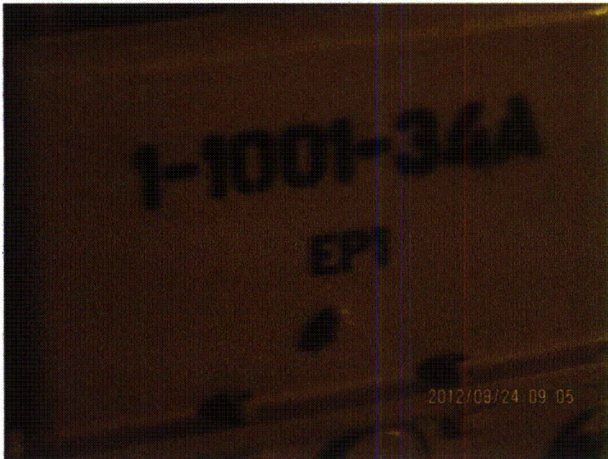
**Seismic Walkdown Checklist (SWC)**

Equipment ID No.: 1-1001-34A

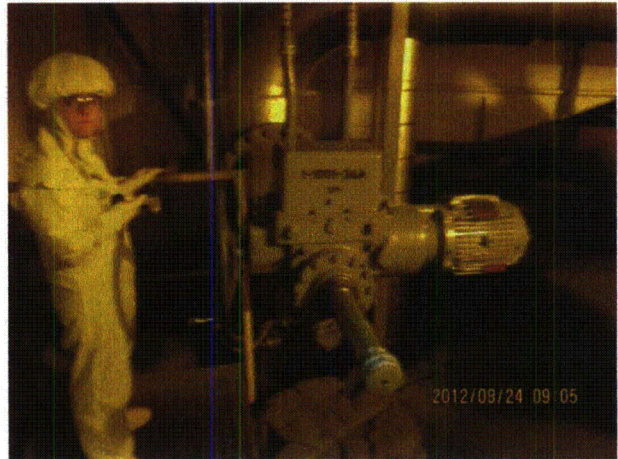
Equipment Class: (8) Motor-Operated and Solenoid-Operated Valves

Equipment Description: VALVE, TORUS CLG - 1A TORUS SPRAY/CLG SV

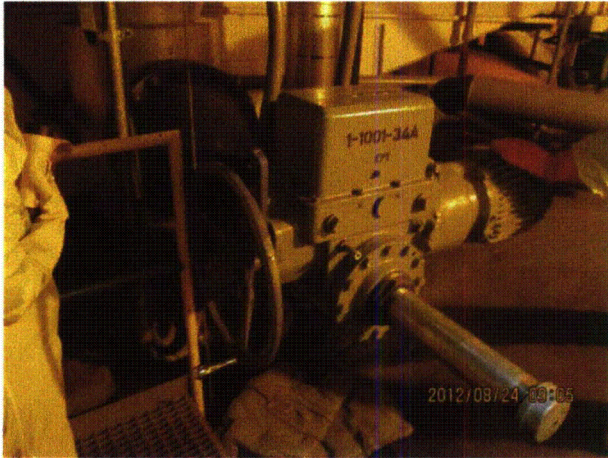
**Photos**



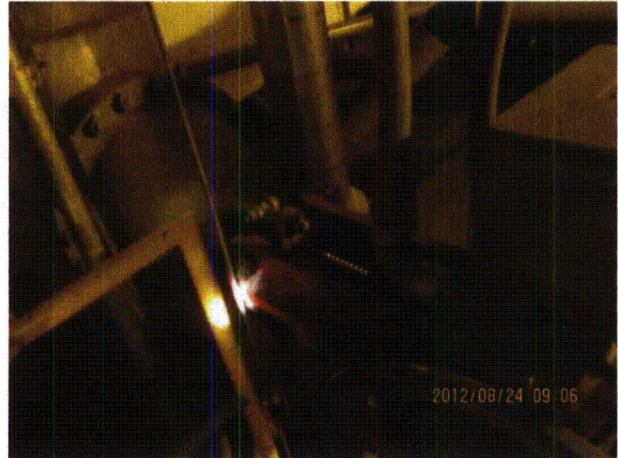
Quad Cities 054



Quad Cities 055



Quad Cities 056



Quad Cities 057



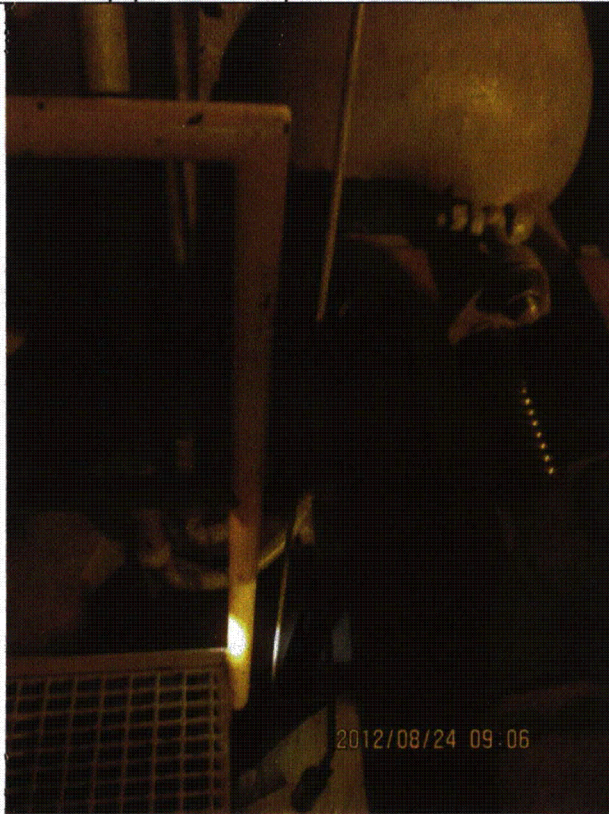
Status:  Y  N  U

**Seismic Walkdown Checklist (SWC)**

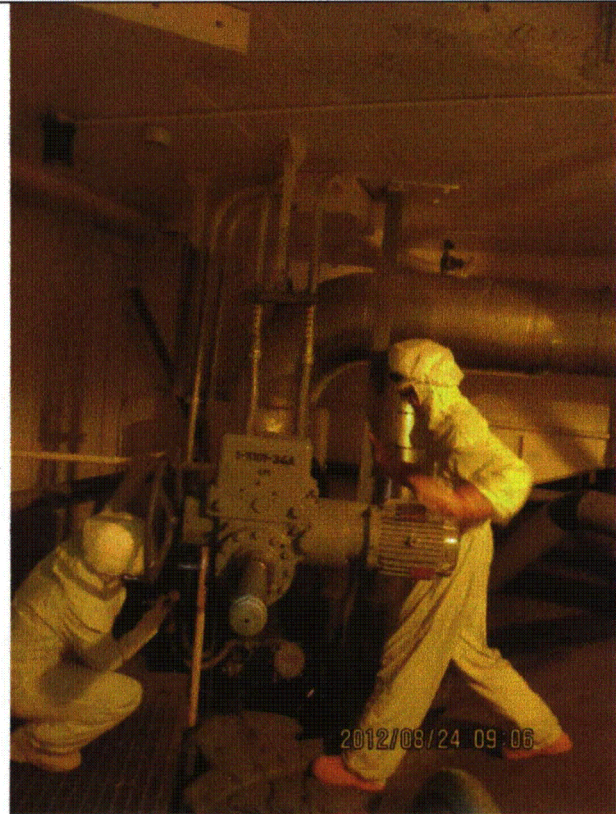
Equipment ID No.: 1-1001-34A

Equipment Class: (8) Motor-Operated and Solenoid-Operated Valves

Equipment Description: VALVE, TORUS CLG - 1A TORUS SPRAY/CLG SV



Quad Cities 058



Quad Cities 060

Status:  Y  N  U

**Seismic Walkdown Checklist (SWC)**

Equipment ID No.: 1-1001-65A

Equipment Class: (5) Horizontal Pumps

Equipment Description: 1A RHR SERVICE WATER MAIN PUMP

Project: Quad Cities 1 SWEL

Location (Bldg, Elev, Room/Area): TB, 547.00 ft, ALL

Manufacturer/Model:

**Instructions for Completing Checklist**

This checklist may be used to document the results of the Seismic Walkdown of an item of equipment on the SWEL. The space below each of the following questions may be used to record the results of judgments and findings. Additional space is provided at the end of this checklist for documenting other comments.

**Anchorage**

1. Is anchorage configuration verification required (i.e., is the item one of the 50% of SWEL items requiring such verification)? Yes
  
2. Is the anchorage free of bent, broken, missing or loose hardware? Yes
  
3. Is the anchorage free of corrosion that is more than mild surface oxidation? Yes  
*Minor corrosion on skid judged to be acceptable.*
  
4. Is the anchorage free of visible cracks in the concrete near the anchors? Yes  
*Minor spalling on grout pad judged to be acceptable.*
  
5. Is the anchorage configuration consistent with plant documentation? (Note: This question only applies if the item is one of the 50% for which an anchorage configuration verification is required.) Yes
  
6. Based on the above anchorage evaluations, is the anchorage free of potentially adverse seismic conditions? Yes

**Interaction Effects**

7. Are soft targets free from impact by nearby equipment or structures? Yes

Status:  Y  N  U

**Seismic Walkdown Checklist (SWC)**

Equipment ID No.: 1-1001-65A

Equipment Class: (5) Horizontal Pumps

Equipment Description: 1A RHR SERVICE WATER MAIN PUMP

8. Are overhead equipment, distribution systems, ceiling tiles and lighting, and masonry block walls not likely to collapse onto the equipment? Yes  
*Overhead light fixtures judged to be acceptable.*
9. Do attached lines have adequate flexibility to avoid damage? Yes
10. Based on the above seismic interaction evaluations, is equipment free of potentially adverse seismic interaction effects? Yes

**Other Adverse Conditions**

11. Have you looked for and found no adverse seismic conditions that could adversely affect the safety functions of the equipment? Yes

**Comments**

SEWS Anchorage Notes:

Residual Heat Removal system Water Pump anchored by 10 - 3/4" (5 per side) cast-in-place anchors.

\*\*\*\*\*

Seismic Walkdown Team: D. Carter & J. Griffith - 8/22/2012

Evaluated by:

David Carter David Carter

Date: 10/4/2012

James D. Griffith James Griffith

10/4/2012



Status:  Y  N  U

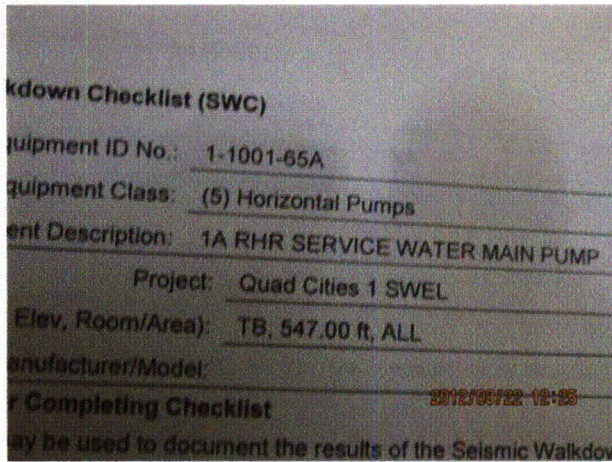
**Seismic Walkdown Checklist (SWC)**

Equipment ID No.: 1-1001-65A

Equipment Class: (5) Horizontal Pumps

Equipment Description: 1A RHR SERVICE WATER MAIN PUMP

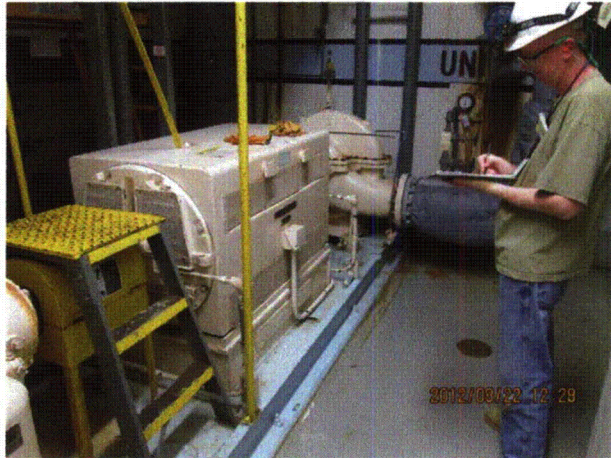
**Photos**



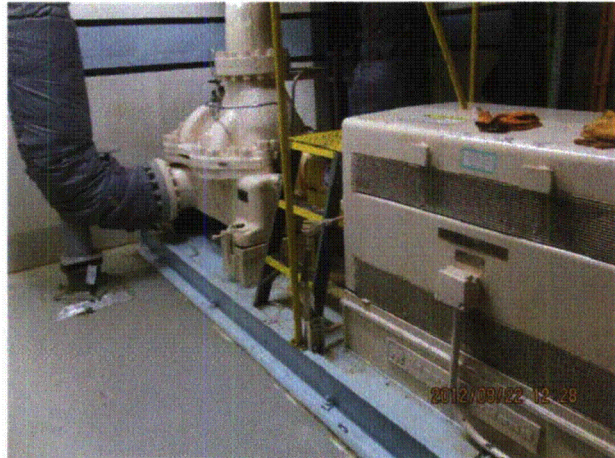
8-22-12 Quad Cities 085



8-22-12 Quad Cities 086



8-22-12 Quad Cities 087



8-22-12 Quad Cities 088



Status:  Y  N  U

**Seismic Walkdown Checklist (SWC)**

Equipment ID No.: 1-1001-65A

Equipment Class: (5) Horizontal Pumps

Equipment Description: 1A RHR SERVICE WATER MAIN PUMP



8-22-12 Quad Cities 089



8-22-12 Quad Cities 090



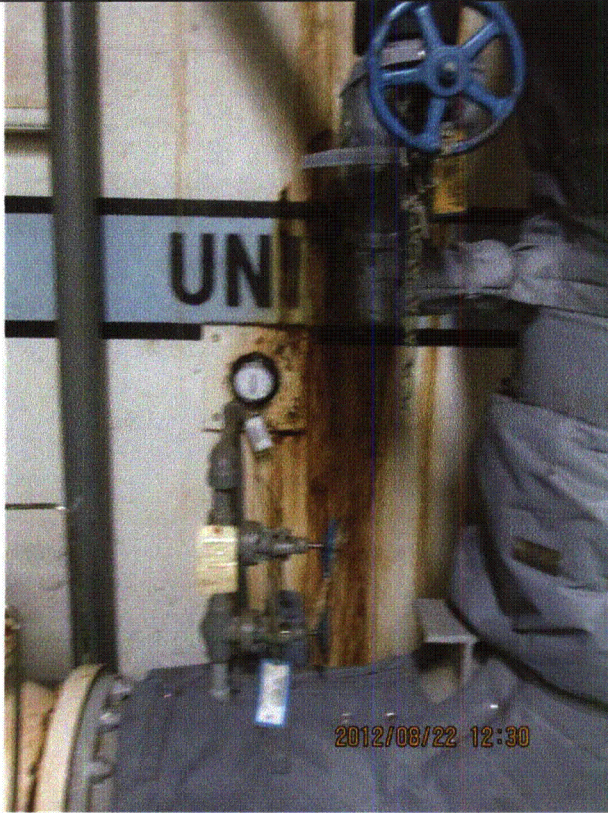
Status:  Y  N  U

**Seismic Walkdown Checklist (SWC)**

Equipment ID No.: 1-1001-65A

Equipment Class: (5) Horizontal Pumps

Equipment Description: 1A RHR SERVICE WATER MAIN PUMP



8-22-12 Quad Cities 091

Status:  Y  N  U

**Seismic Walkdown Checklist (SWC)**

Equipment ID No.: 1-1002C

Equipment Class: (6) Vertical Pumps

Equipment Description: PUMP, 1C - RHR PUMP

Project: Quad Cities 1 SWEL

Location (Bldg, Elev, Room/Area): RB, 554.00 ft, ALL

Manufacturer/Model:

**Instructions for Completing Checklist**

This checklist may be used to document the results of the Seismic Walkdown of an item of equipment on the SWEL. The space below each of the following questions may be used to record the results of judgments and findings. Additional space is provided at the end of this checklist for documenting other comments.

**Anchorage**

1. Is anchorage configuration verification required (i.e., is the item one of the 50% of SWEL items requiring such verification)? Yes
  
2. Is the anchorage free of bent, broken, missing or loose hardware? Yes
  
3. Is the anchorage free of corrosion that is more than mild surface oxidation? Yes
  
4. Is the anchorage free of visible cracks in the concrete near the anchors? Yes  
*Minor spalling on grout pad judged to be acceptable.*
  
5. Is the anchorage configuration consistent with plant documentation? (Note: This question only applies if the item is one of the 50% for which an anchorage configuration verification is required.) Yes
  
6. Based on the above anchorage evaluations, is the anchorage free of potentially adverse seismic conditions? Yes

Status:  Y  N  U

**Seismic Walkdown Checklist (SWC)**

Equipment ID No.: 1-1002C

Equipment Class: (6) Vertical Pumps

Equipment Description: PUMP, 1C - RHR PUMP

**Interaction Effects**

7. Are soft targets free from impact by nearby equipment or structures? Yes  
*Sight glass has adequate clearance.*
8. Are overhead equipment, distribution systems, ceiling tiles and lighting, and masonry block walls not likely to collapse onto the equipment? Yes
9. Do attached lines have adequate flexibility to avoid damage? Yes
10. Based on the above seismic interaction evaluations, is equipment free of potentially adverse seismic interaction effects? Yes

**Other Adverse Conditions**

11. Have you looked for and found no adverse seismic conditions that could adversely affect the safety functions of the equipment? Yes

**Comments**

SEWS Anchorage Notes:

The pump is anchored with four 1" Cast-in-Place bolts.

\*\*\*\*\*

Seismic Walkdown Team: D. Carter & J. Griffith - 8/23/2012

Evaluated by: David Carter David Carter

Date: 10/4/2012

James D. Griffith James Griffith

10/4/2012

Status:  Y  N  U

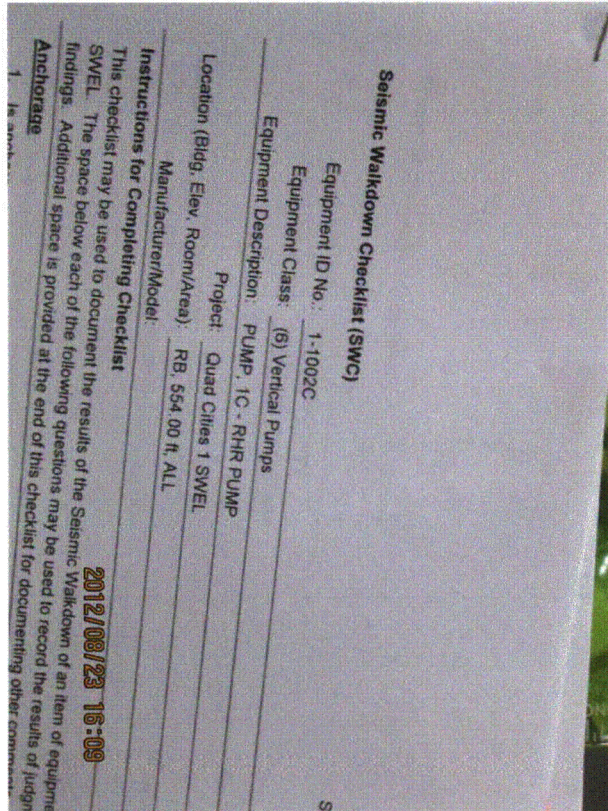
**Seismic Walkdown Checklist (SWC)**

Equipment ID No.: 1-1002C

Equipment Class: (6) Vertical Pumps

Equipment Description: PUMP, 1C - RHR PUMP

**Photos**



Quad Cities 210

Status:  Y  N  U

**Seismic Walkdown Checklist (SWC)**

Equipment ID No.: 1-1003B

Equipment Class: (21) Tanks and Heat Exchangers

Equipment Description: HX, 1B RHR

Project: Quad Cities 1 SWEL

Location (Bldg, Elev, Room/Area): RB, 554.00 ft, ALL

Manufacturer/Model:

**Instructions for Completing Checklist**

This checklist may be used to document the results of the Seismic Walkdown of an item of equipment on the SWEL. The space below each of the following questions may be used to record the results of judgments and findings. Additional space is provided at the end of this checklist for documenting other comments.

**Anchorage**

1. Is anchorage configuration verification required (i.e., is the item one of the 50% of SWEL items requiring such verification)? Yes
  
2. Is the anchorage free of bent, broken, missing or loose hardware? Yes
  
3. Is the anchorage free of corrosion that is more than mild surface oxidation? Yes
  
4. Is the anchorage free of visible cracks in the concrete near the anchors? Not Applicable  
*Attached to structural steel.*
  
5. Is the anchorage configuration consistent with plant documentation? (Note: This question only applies if the item is one of the 50% for which an anchorage configuration verification is required.) Yes
  
6. Based on the above anchorage evaluations, is the anchorage free of potentially adverse seismic conditions? Yes

Status:  Y  N  U

**Seismic Walkdown Checklist (SWC)**

Equipment ID No.: 1-1003B

Equipment Class: (21) Tanks and Heat Exchangers

Equipment Description: HX, 1B RHR

**Interaction Effects**

7. Are soft targets free from impact by nearby equipment or structures? Yes  
*Heat exchanger is covered by well-restrained lead shielding. Not soft target concerns.*
8. Are overhead equipment, distribution systems, ceiling tiles and lighting, and masonry block walls not likely to collapse onto the equipment? Yes
9. Do attached lines have adequate flexibility to avoid damage? Yes
10. Based on the above seismic interaction evaluations, is equipment free of potentially adverse seismic interaction effects? Yes

**Other Adverse Conditions**

11. Have you looked for and found no adverse seismic conditions that could adversely affect the safety functions of the equipment? Yes

**Comments**

SEWS Anchorage Notes:

Large vertical HX hung on four feet at quadrant points near the top of the HX. Each foot is anchored by approx. 1.25" bolts into structural steel platform and the platform is at Elev. 580'.

\*\*\*\*\*

Seismic Walkdown Team: D. Carter & J. Griffith - 8/23/2012

Evaluated by:  David Carter Date: 10/4/2012

 James Griffith 10/4/2012



Status:  Y  N  U

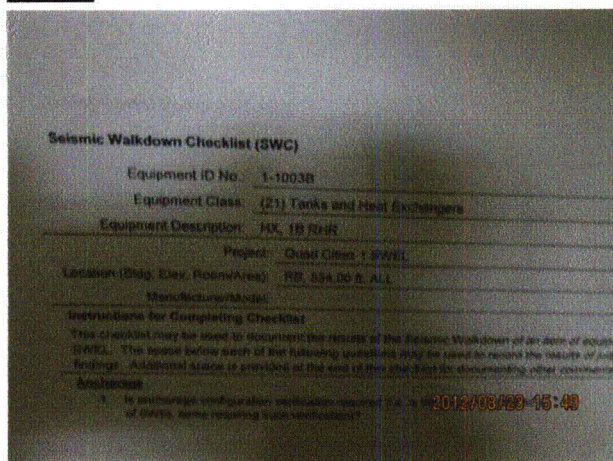
**Seismic Walkdown Checklist (SWC)**

Equipment ID No.: 1-1003B

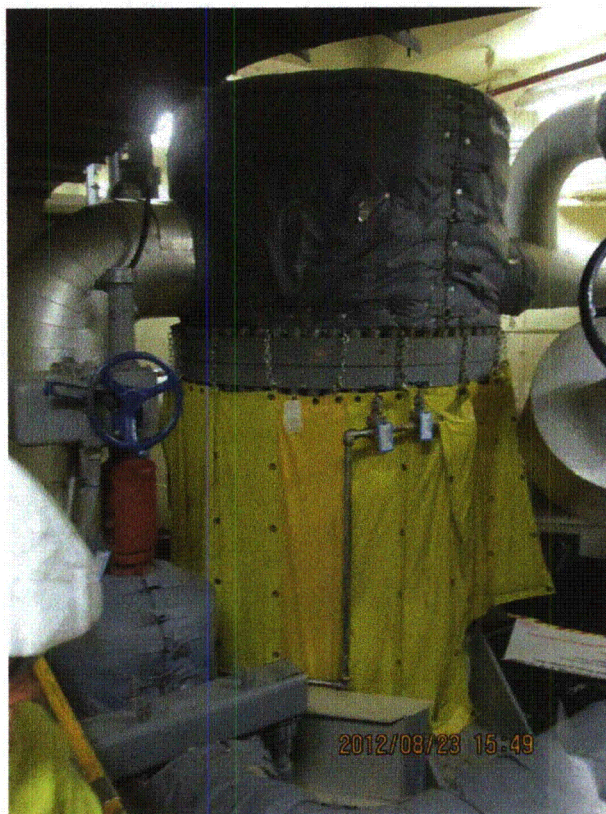
Equipment Class: (21) Tanks and Heat Exchangers

Equipment Description: HX, 1B RHR

**Photos**



Quad Cities 184



Quad Cities 185

Status:  Y  N  U

**Seismic Walkdown Checklist (SWC)**

Equipment ID No.: 1-1003B

Equipment Class: (21) Tanks and Heat Exchangers

Equipment Description: HX, 1B RHR



Quad Cities 186



Status:  Y  N  U

**Seismic Walkdown Checklist (SWC)**

Equipment ID No.: 1-1601-21

Equipment Class: (7) Fluid-Operated Valves

Equipment Description: VALVE, BUTTERFLY ISO, FC - SOLENOID U1 B TORUS VACUUM BKR

Project: Quad Cities 1 SWEL

Location (Bldg, Elev, Room/Area): RB, 554.00 ft, ALL

Manufacturer/Model:

**Instructions for Completing Checklist**

This checklist may be used to document the results of the Seismic Walkdown of an item of equipment on the SWEL. The space below each of the following questions may be used to record the results of judgments and findings. Additional space is provided at the end of this checklist for documenting other comments.

**Anchorage**

1. Is anchorage configuration verification required (i.e., is the item one of the 50% of SWEL items requiring such verification)? No
  
2. Is the anchorage free of bent, broken, missing or loose hardware? Not Applicable
  
3. Is the anchorage free of corrosion that is more than mild surface oxidation? Not Applicable
  
4. Is the anchorage free of visible cracks in the concrete near the anchors? Not Applicable
  
5. Is the anchorage configuration consistent with plant documentation? (Note: This question only applies if the item is one of the 50% for which an anchorage configuration verification is required.) Not Applicable
  
6. Based on the above anchorage evaluations, is the anchorage free of potentially adverse seismic conditions? Yes

Status:  Y  N  U

**Seismic Walkdown Checklist (SWC)**

Equipment ID No.: 1-1601-21

Equipment Class: (7) Fluid-Operated Valves

Equipment Description: VALVE, BUTTERFLY ISO, FC - SOLENOID U1 B TORUS VACUUM BKR

**Interaction Effects**

7. Are soft targets free from impact by nearby equipment or structures? Yes

*Air line for valve has 1/8-inch gap to plate on same valve that supports electrical connection box. Judged to be acceptable.*

8. Are overhead equipment, distribution systems, ceiling tiles and lighting, and masonry block walls not likely to collapse onto the equipment? Yes

*Overhead light fixture judged to be acceptable.*

9. Do attached lines have adequate flexibility to avoid damage? Yes

10. Based on the above seismic interaction evaluations, is equipment free of potentially adverse seismic interaction effects? Yes

**Other Adverse Conditions**

11. Have you looked for and found no adverse seismic conditions that could adversely affect the safety functions of the equipment? Yes

*Air operator has a 3/4-inch gap to ceiling. Judged to be acceptable.*

**Comments**

\*\*\*\*\*

Seismic Walkdown Team: D. Carter & J. Griffith - 8/24/2012

Evaluated by:  David Carter

Date: 10/4/2012

 James D. Griffith

10/4/2012

Status:  Y  N  U

**Seismic Walkdown Checklist (SWC)**

Equipment ID No.: 1-1601-21

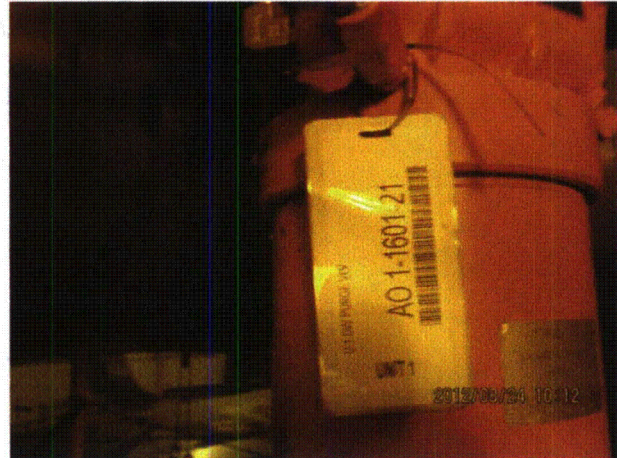
Equipment Class: (7) Fluid-Operated Valves

Equipment Description: VALVE, BUTTERFLY ISO, FC - SOLENOID U1 B TORUS VACUUM BKR

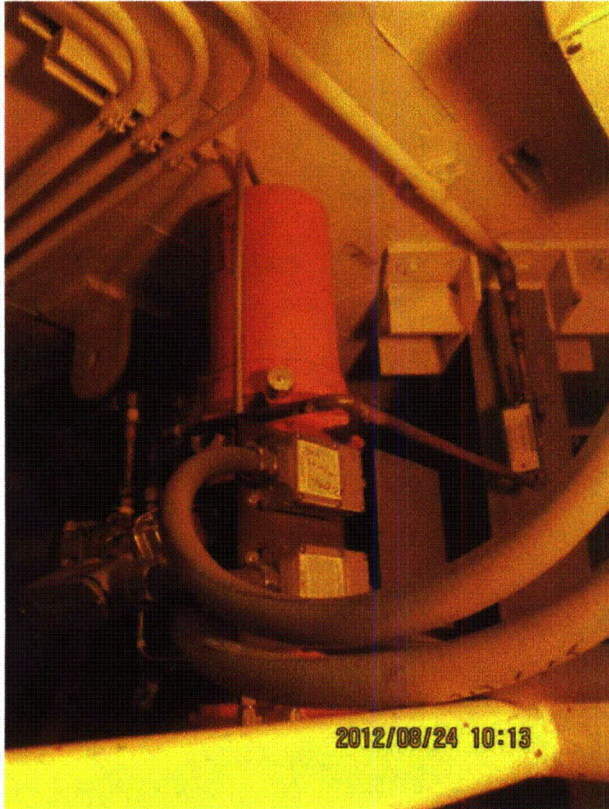
**Photos**



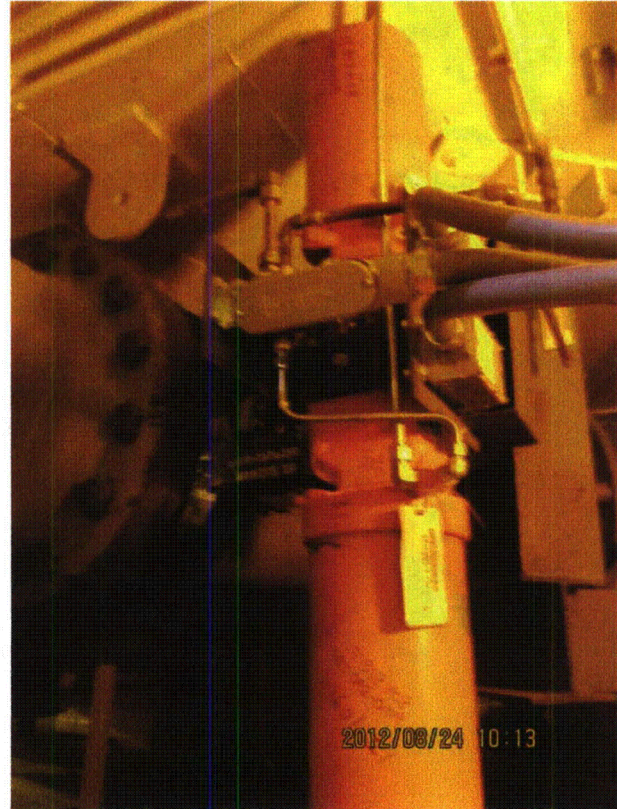
Quad Cities 103



Quad Cities 104



Quad Cities 105



Quad Cities 106



Status:  Y  N  U

**Seismic Walkdown Checklist (SWC)**

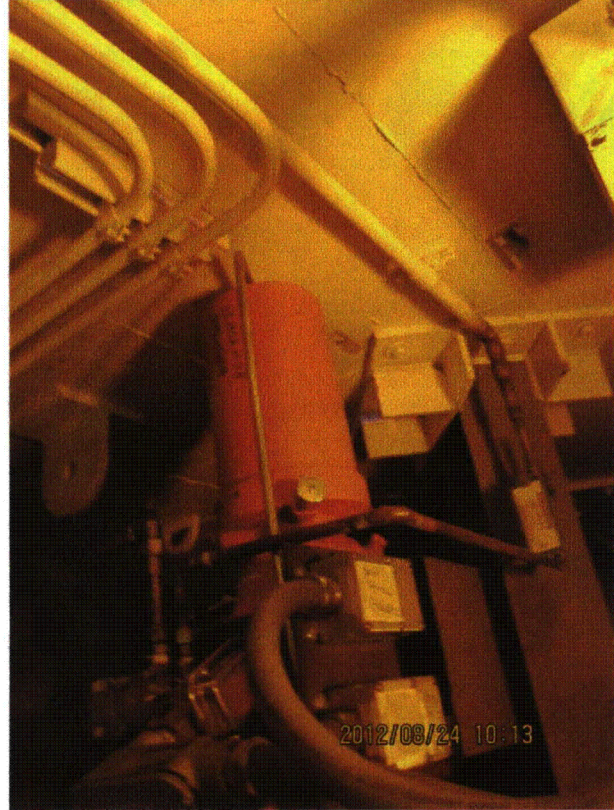
Equipment ID No.: 1-1601-21

Equipment Class: (7) Fluid-Operated Valves

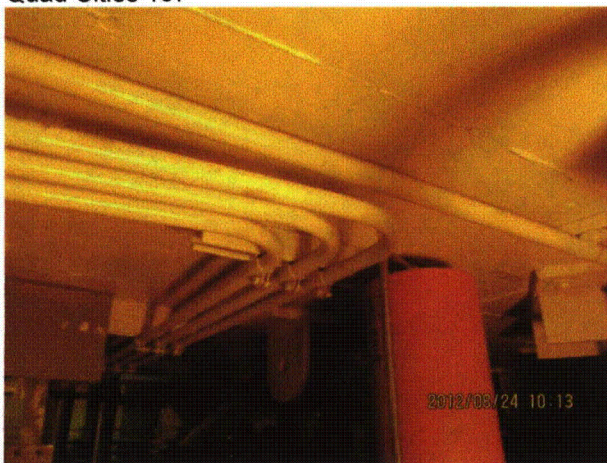
Equipment Description: VALVE, BUTTERFLY ISO, FC - SOLENOID U1 B TORUS VACUUM BKR



Quad Cities 107



Quad Cities 108



Quad Cities 109



Status:  Y  N  U

**Seismic Walkdown Checklist (SWC)**

Equipment ID No.: 1-1601-23-AO

Equipment Class: (7) Fluid-Operated Valves

Equipment Description: VLV, 18", +3', DRYWELL VENT - U-1 DW VENT VLV

Project: Quad Cities 1 SWEL

Location (Bldg, Elev, Room/Area): RB, 647.00 ft, ALL

Manufacturer/Model:

**Instructions for Completing Checklist**

This checklist may be used to document the results of the Seismic Walkdown of an item of equipment on the SWEL. The space below each of the following questions may be used to record the results of judgments and findings. Additional space is provided at the end of this checklist for documenting other comments.

**Anchorage**

- |  |                |
|--|----------------|
| 1. Is anchorage configuration verification required (i.e., is the item one of the 50% of SWEL items requiring such verification)?  | No             |
| 2. Is the anchorage free of bent, broken, missing or loose hardware?   | Not Applicable |
| 3. Is the anchorage free of corrosion that is more than mild surface oxidation?  | Not Applicable |
| 4. Is the anchorage free of visible cracks in the concrete near the anchors?   | Not Applicable |
| 5. Is the anchorage configuration consistent with plant documentation? (Note: This question only applies if the item is one of the 50% for which an anchorage configuration verification is required.) | Not Applicable |
| 6. Based on the above anchorage evaluations, is the anchorage free of potentially adverse seismic conditions?  | Yes            |

**Interaction Effects**

- |   |     |
|---|-----|
| 7. Are soft targets free from impact by nearby equipment or structures? | Yes |
|---|-----|

Status:  Y  N  U

**Seismic Walkdown Checklist (SWC)**

Equipment ID No.: 1-1601-23-AO

Equipment Class: (7) Fluid-Operated Valves

Equipment Description: VLV, 18", +3', DRYWELL VENT - U-1 DW VENT VLV

8. Are overhead equipment, distribution systems, ceiling tiles and lighting, and masonry block walls not likely to collapse onto the equipment?  
*Overhead light fixtures judged to be acceptable.* Yes
9. Do attached lines have adequate flexibility to avoid damage? Yes
10. Based on the above seismic interaction evaluations, is equipment free of potentially adverse seismic interaction effects? Yes

**Other Adverse Conditions**

11. Have you looked for and found no adverse seismic conditions that could adversely affect the safety functions of the equipment? Yes

**Comments**

\*\*\*\*\*

Seismic Walkdown Team: D. Carter & J. Griffith - 8/21/2012

Evaluated by:

David Carter David Carter

Date: 10/4/2012

James D. Griffith James Griffith

10/4/2012

Status:  Y  N  U

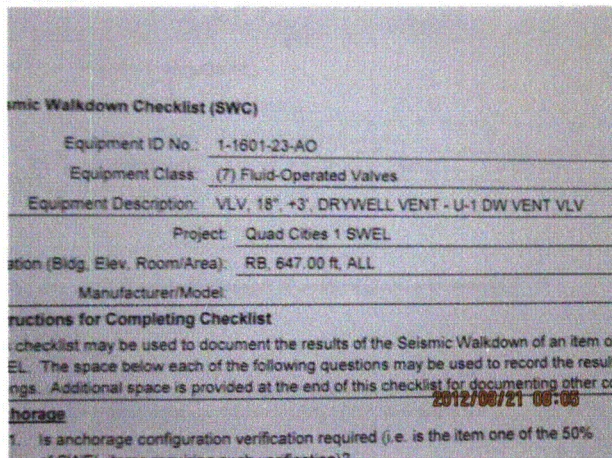
**Seismic Walkdown Checklist (SWC)**

Equipment ID No.: 1-1601-23-AO

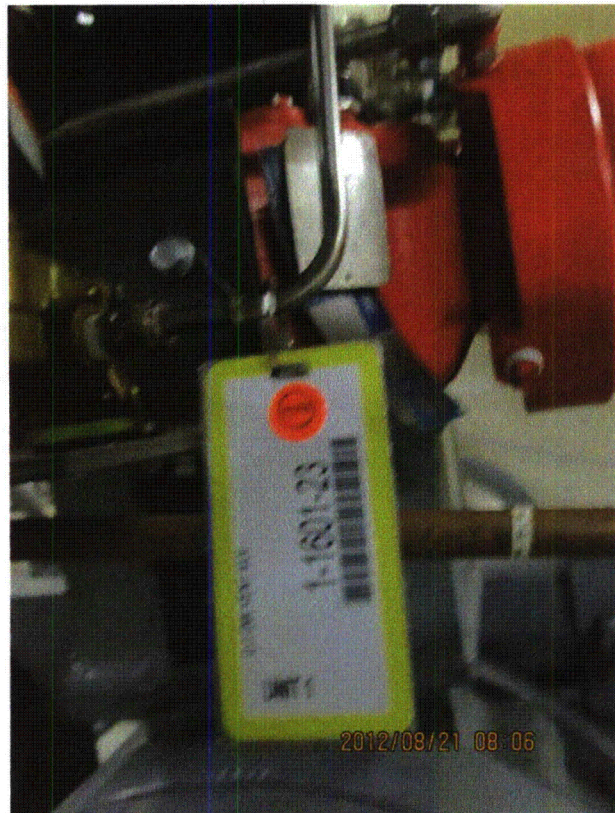
Equipment Class: (7) Fluid-Operated Valves

Equipment Description: VLV, 18", +3', DRYWELL VENT - U-1 DW VENT VLV

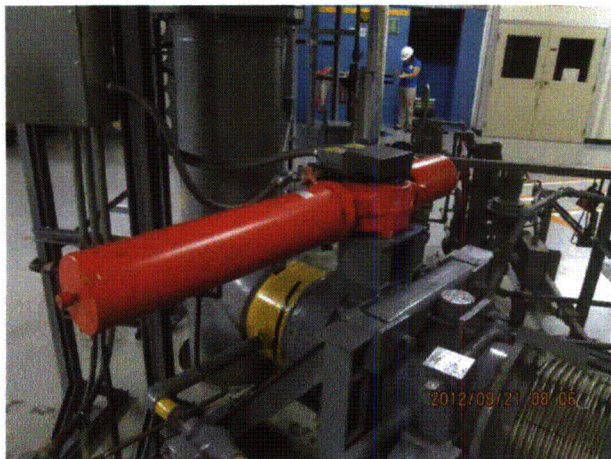
**Photos**



8-21-12 Quad Cities 001



8-21-12 Quad Cities 003



8-21-12 Quad Cities 004



8-21-12 Quad Cities 005



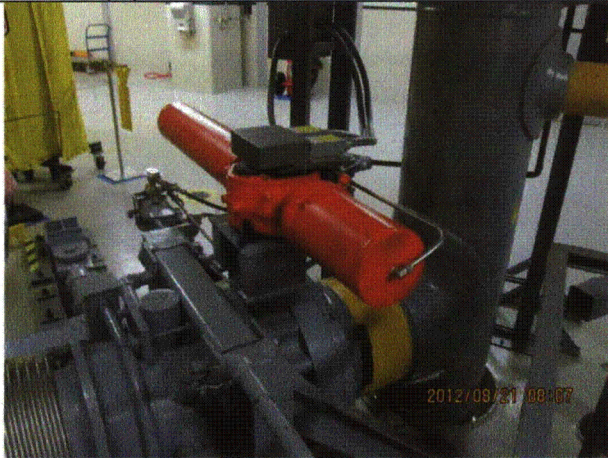
Status:  Y  N  U

**Seismic Walkdown Checklist (SWC)**

Equipment ID No.: 1-1601-23-AO

Equipment Class: (7) Fluid-Operated Valves

Equipment Description: VLV, 18", +3', DRYWELL VENT - U-1 DW VENT VLV



8-21-12 Quad Cities 006



Status:  Y  N  U

**Seismic Walkdown Checklist (SWC)**

Equipment ID No.: 1-1601-24-AO

Equipment Class: (7) Fluid-Operated Valves

Equipment Description: VLV, 18", +5', U-1 CONTAINMENT RX BLDG EXH - ASSY - U-1 CNMT RX  
BLDG EXH VENT VLV

Project: Quad Cities 1 SWEL

Location (Bldg, Elev, Room/Area): RB, 647.00 ft, ALL

Manufacturer/Model:

**Instructions for Completing Checklist**

This checklist may be used to document the results of the Seismic Walkdown of an item of equipment on the SWEL. The space below each of the following questions may be used to record the results of judgments and findings. Additional space is provided at the end of this checklist for documenting other comments.

**Anchorage**

1. Is anchorage configuration verification required (i.e., is the item one of the 50% of SWEL items requiring such verification)? No
  
2. Is the anchorage free of bent, broken, missing or loose hardware? Not Applicable
  
3. Is the anchorage free of corrosion that is more than mild surface oxidation? Not Applicable
  
4. Is the anchorage free of visible cracks in the concrete near the anchors? Not Applicable
  
5. Is the anchorage configuration consistent with plant documentation? (Note: This question only applies if the item is one of the 50% for which an anchorage configuration verification is required.) Not Applicable
  
6. Based on the above anchorage evaluations, is the anchorage free of potentially adverse seismic conditions? Yes

Status:  Y  N  U

**Seismic Walkdown Checklist (SWC)**

Equipment ID No.: 1-1601-24-AO

Equipment Class: (7) Fluid-Operated Valves

Equipment Description: VLV, 18", +5', U-1 CONTAINMENT RX BLDG EXH - ASSY - U-1 CNMT RX  
BLDG EXH VENT VLV

**Interaction Effects**

7. Are soft targets free from impact by nearby equipment or structures? Yes  
*Flexible conduit in contact with valve supply air tubing. Judged to be acceptable.*
8. Are overhead equipment, distribution systems, ceiling tiles and lighting, and masonry block walls not likely to collapse onto the equipment? Yes  
*Overhead light fixtures judged to be acceptable.*
9. Do attached lines have adequate flexibility to avoid damage? Yes
10. Based on the above seismic interaction evaluations, is equipment free of potentially adverse seismic interaction effects? Yes

**Other Adverse Conditions**

11. Have you looked for and found no adverse seismic conditions that could adversely affect the safety functions of the equipment? Yes

**Comments**

\*\*\*\*\*

Seismic Walkdown Team: D. Carter & J. Griffith - 8/21/2012

Evaluated by:

David Carter David Carter

Date: 10/4/2012

James D. Griffith James Griffith

10/4/2012

Status:  Y  N  U

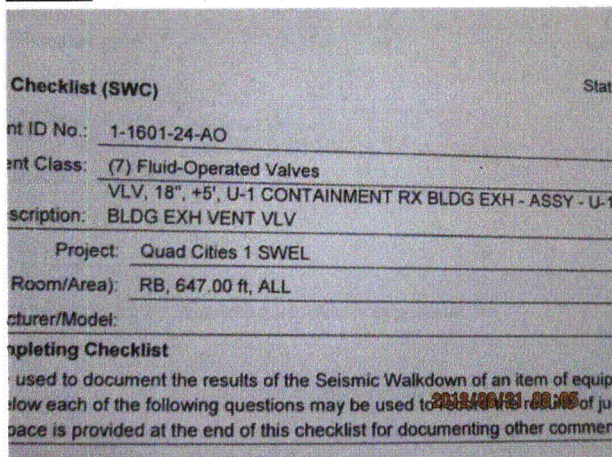
**Seismic Walkdown Checklist (SWC)**

Equipment ID No.: 1-1601-24-AO

Equipment Class: (7) Fluid-Operated Valves

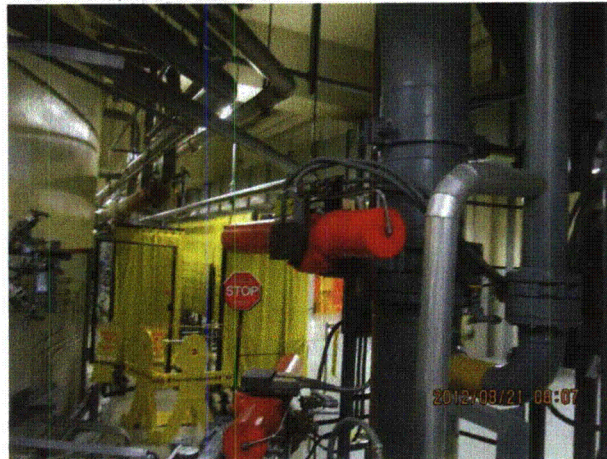
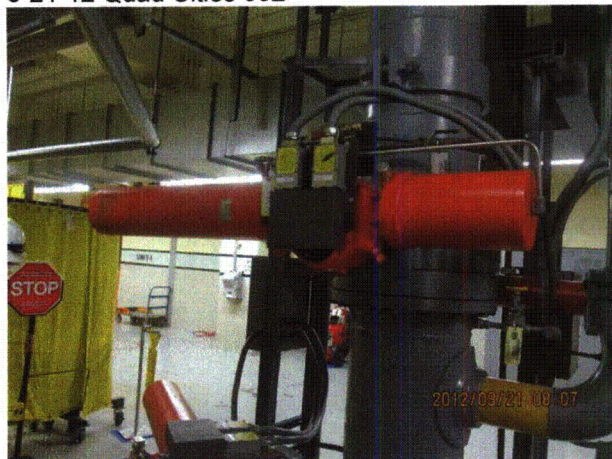
Equipment Description: VLV, 18", +5', U-1 CONTAINMENT RX BLDG EXH - ASSY - U-1 CNMT RX BLDG EXH VENT VLV

**Photos**



8-21-12 Quad Cities 002

8-21-12 Quad Cities 007



8-21-12 Quad Cities 008

8-21-12 Quad Cities 009



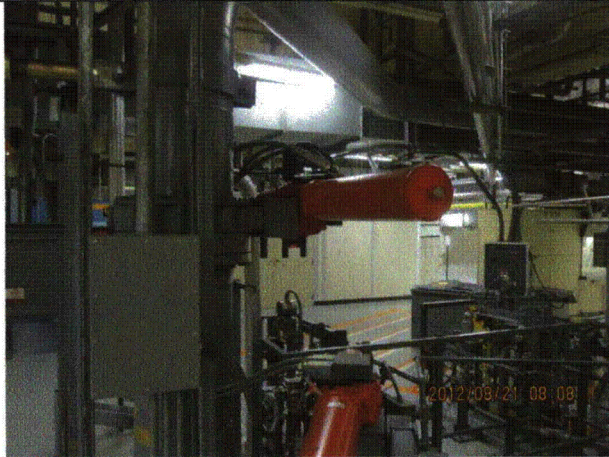
Status:  Y  N  U

**Seismic Walkdown Checklist (SWC)**

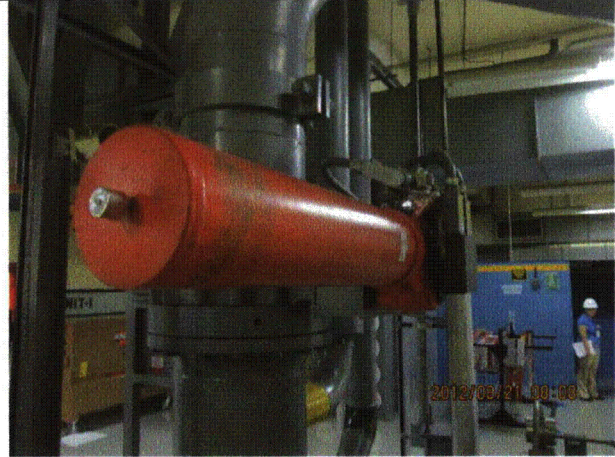
Equipment ID No.: 1-1601-24-AO

Equipment Class: (7) Fluid-Operated Valves

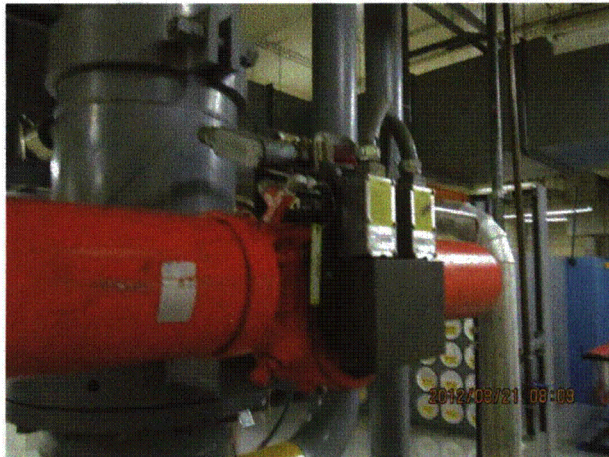
Equipment Description: VLV, 18", +5', U-1 CONTAINMENT RX BLDG EXH - ASSY - U-1 CNMT RX  
BLDG EXH VENT VLV



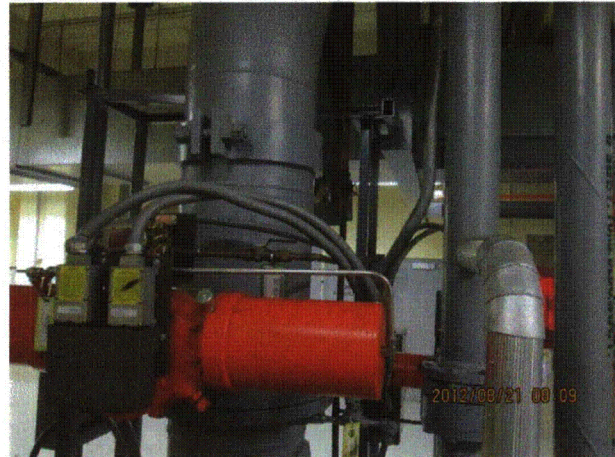
8-21-12 Quad Cities 010



8-21-12 Quad Cities 011



8-21-12 Quad Cities 012



8-21-12 Quad Cities 013



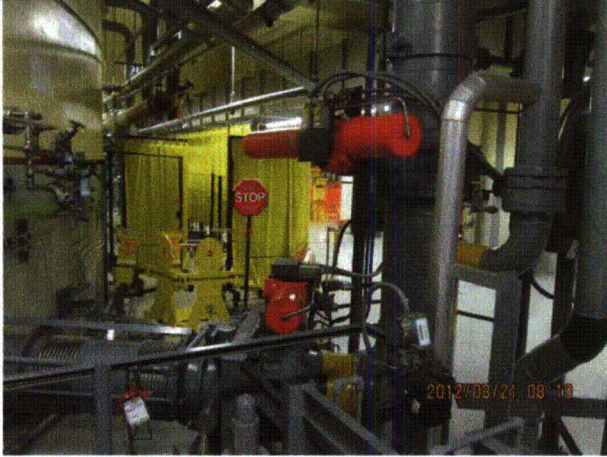
Status:  Y  N  U

**Seismic Walkdown Checklist (SWC)**

Equipment ID No.: 1-1601-24-AO

Equipment Class: (7) Fluid-Operated Valves

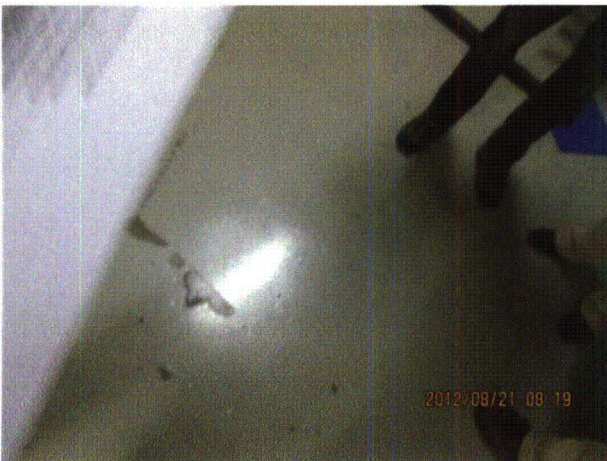
VLV, 18", +5', U-1 CONTAINMENT RX BLDG EXH - ASSY - U-1 CNMT RX  
Equipment Description: BLDG EXH VENT VLV



8-21-12 Quad Cities 014



8-21-12 Quad Cities 015



8-21-12 Quad Cities 016

Status:  Y  N  U

**Seismic Walkdown Checklist (SWC)**

Equipment ID No.: 1-1601-57-MO

Equipment Class: (8) Motor-Operated and Solenoid-Operated Valves

Equipment Description: VLV, 1", +1', N2 MAKEUP TO CONTAINMENT - U-1 N2 MU FROM TO CNMT  
DOWNSTREAM SV

Project: Quad Cities 1 SWEL

Location (Bldg, Elev, Room/Area): RB, 595.00 ft, ALL

Manufacturer/Model: \_\_\_\_\_

**Instructions for Completing Checklist**

This checklist may be used to document the results of the Seismic Walkdown of an item of equipment on the SWEL. The space below each of the following questions may be used to record the results of judgments and findings. Additional space is provided at the end of this checklist for documenting other comments.

**Anchorage**

1. Is anchorage configuration verification required (i.e., is the item one of the 50% of SWEL items requiring such verification)? No
  
2. Is the anchorage free of bent, broken, missing or loose hardware? Not Applicable
  
3. Is the anchorage free of corrosion that is more than mild surface oxidation? Not Applicable
  
4. Is the anchorage free of visible cracks in the concrete near the anchors? Not Applicable
  
5. Is the anchorage configuration consistent with plant documentation? (Note: This question only applies if the item is one of the 50% for which an anchorage configuration verification is required.) Not Applicable
  
6. Based on the above anchorage evaluations, is the anchorage free of potentially adverse seismic conditions? Yes



Status:  Y  N  U

**Seismic Walkdown Checklist (SWC)**

Equipment ID No.: 1-1601-57-MO

Equipment Class: (8) Motor-Operated and Solenoid-Operated Valves

Equipment Description: VLV, 1", +1', N2 MAKEUP TO CONTAINMENT - U-1 N2 MU FROM TO CNMT  
DOWNSTREAM SV

**Interaction Effects**

7. Are soft targets free from impact by nearby equipment or structures? Yes
8. Are overhead equipment, distribution systems, ceiling tiles and lighting, and masonry block walls not likely to collapse onto the equipment? Yes
9. Do attached lines have adequate flexibility to avoid damage? Yes
10. Based on the above seismic interaction evaluations, is equipment free of potentially adverse seismic interaction effects? Yes

**Other Adverse Conditions**

11. Have you looked for and found no adverse seismic conditions that could adversely affect the safety functions of the equipment? Yes

**Comments**

\*\*\*\*\*

Seismic Walkdown Team: D. Carter & J. Griffith - 8/22/2012

See South CRD Bank area walk-by for further notes.

Evaluated by: *David Carter* David Carter Date: 10/4/2012  
*James D. Griffith* James Griffith 10/4/2012

Status:  Y  N  U

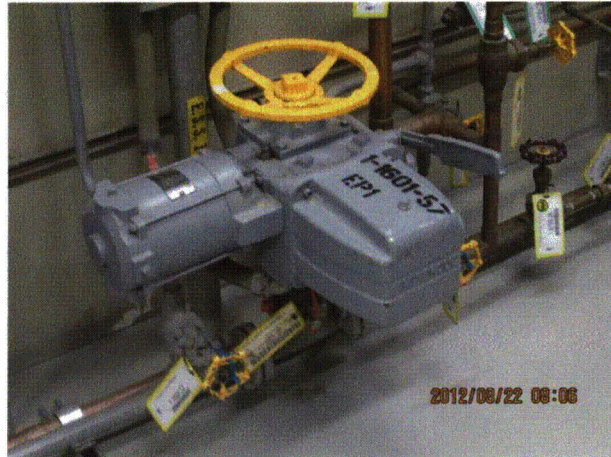
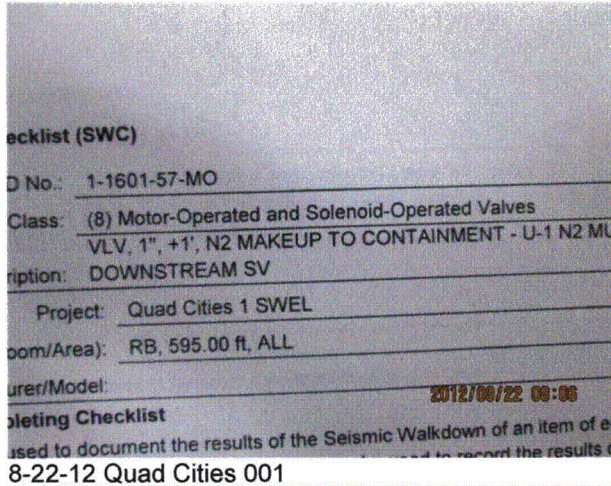
**Seismic Walkdown Checklist (SWC)**

Equipment ID No.: 1-1601-57-MO

Equipment Class: (8) Motor-Operated and Solenoid-Operated Valves

Equipment Description: VLV, 1", +1', N2 MAKEUP TO CONTAINMENT - U-1 N2 MU FROM TO CNMT  
DOWNSTREAM SV

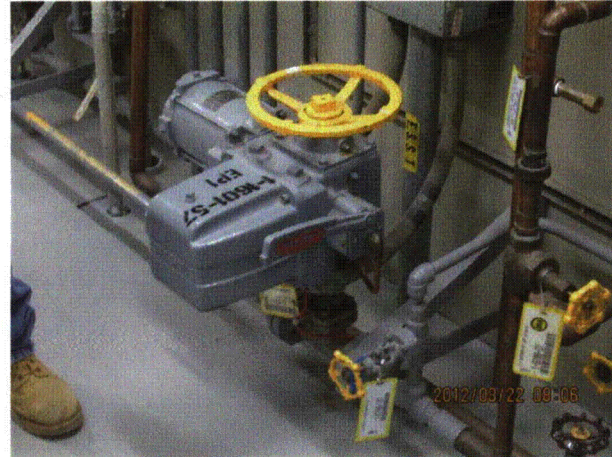
**Photos**



8-22-12 Quad Cities 003



8-22-12 Quad Cities 002



8-22-12 Quad Cities 004



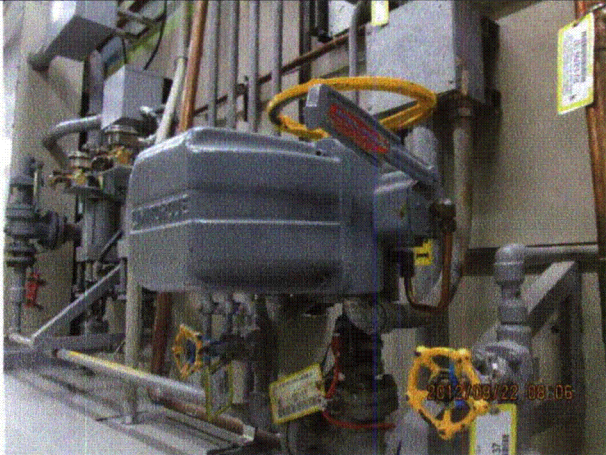
Status:  Y  N  U

**Seismic Walkdown Checklist (SWC)**

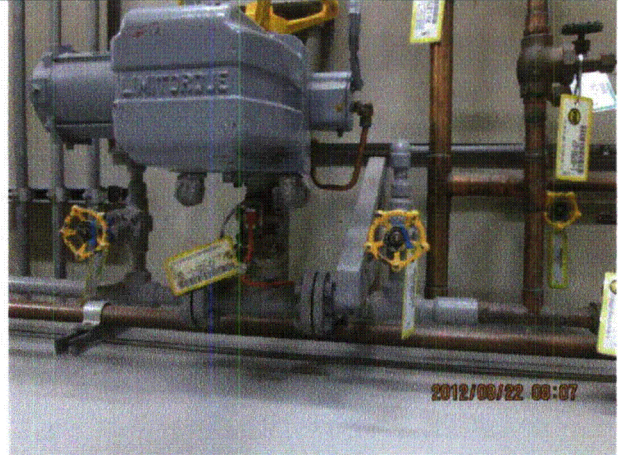
Equipment ID No.: 1-1601-57-MO

Equipment Class: (8) Motor-Operated and Solenoid-Operated Valves  
VLV, 1", +1', N2 MAKEUP TO CONTAINMENT - U-1 N2 MU FROM TO CNMT

Equipment Description: DOWNSTREAM SV



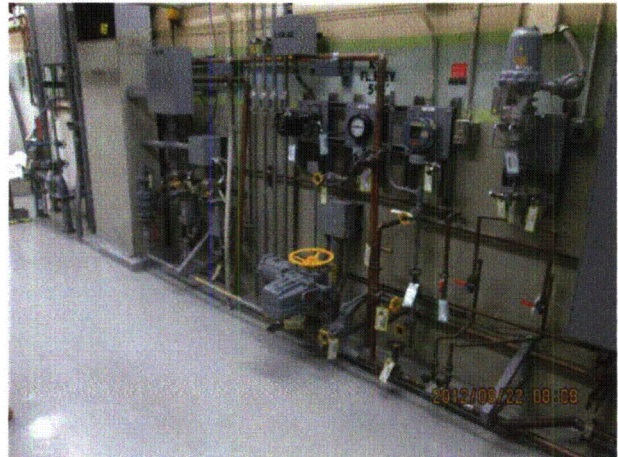
8-22-12 Quad Cities 005



8-22-12 Quad Cities 006



8-22-12 Quad Cities 007



8-22-12 Quad Cities 008



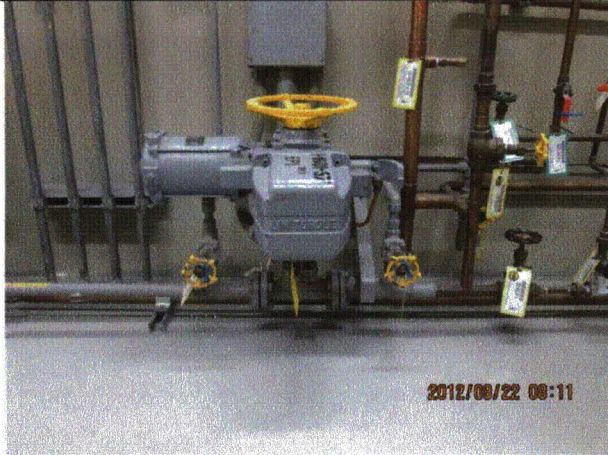
Status:  Y  N  U

**Seismic Walkdown Checklist (SWC)**

Equipment ID No.: 1-1601-57-MO

Equipment Class: (8) Motor-Operated and Solenoid-Operated Valves

Equipment Description: VLV, 1", +1', N2 MAKEUP TO CONTAINMENT - U-1 N2 MU FROM TO CNMT  
DOWNSTREAM SV



8-22-12 Quad Cities 009



8-22-12 Quad Cities 010

Status:  Y  N  U

**Seismic Walkdown Checklist (SWC)**

Equipment ID No.: 1-2001-3

Equipment Class: (7) Fluid-Operated Valves

Equipment Description: VALVE, PNEUMATIC - U-1 DW FLR DRN SUMP PMP UPSTREAM DSCH  
VLV

Project: Quad Cities 1 SWEL

Location (Bldg, Elev, Room/Area): RB, 554.00 ft, ALL

Manufacturer/Model:

**Instructions for Completing Checklist**

This checklist may be used to document the results of the Seismic Walkdown of an item of equipment on the SWEL. The space below each of the following questions may be used to record the results of judgments and findings. Additional space is provided at the end of this checklist for documenting other comments.

**Anchorage**

1. Is anchorage configuration verification required (i.e., is the item one of the 50% of SWEL items requiring such verification)? No
  
2. Is the anchorage free of bent, broken, missing or loose hardware? Not Applicable
  
3. Is the anchorage free of corrosion that is more than mild surface oxidation? Not Applicable
  
4. Is the anchorage free of visible cracks in the concrete near the anchors? Not Applicable
  
5. Is the anchorage configuration consistent with plant documentation? (Note: This question only applies if the item is one of the 50% for which an anchorage configuration verification is required.) Not Applicable
  
6. Based on the above anchorage evaluations, is the anchorage free of potentially adverse seismic conditions? Yes

Status:  Y  N  U

**Seismic Walkdown Checklist (SWC)**

Equipment ID No.: 1-2001-3

Equipment Class: (7) Fluid-Operated Valves

Equipment Description: VALVE, PNEUMATIC - U-1 DW FLR DRN SUMP PMP UPSTREAM DSCH  
VLV

**Interaction Effects**

7. Are soft targets free from impact by nearby equipment or structures? Yes
8. Are overhead equipment, distribution systems, ceiling tiles and lighting, and masonry block walls not likely to collapse onto the equipment? Yes
9. Do attached lines have adequate flexibility to avoid damage? Yes
10. Based on the above seismic interaction evaluations, is equipment free of potentially adverse seismic interaction effects? Yes

**Other Adverse Conditions**

11. Have you looked for and found no adverse seismic conditions that could adversely affect the safety functions of the equipment? Yes

**Comments**

\*\*\*\*\*

Seismic Walkdown Team: D. Carter & J. Griffith - 8/24/2012

Evaluated by:

David Carter David Carter

Date: 10/4/2012

James D. Griffith James Griffith

10/4/2012



Status:  Y  N  U

**Seismic Walkdown Checklist (SWC)**

Equipment ID No.: 1-2001-3

Equipment Class: (7) Fluid-Operated Valves

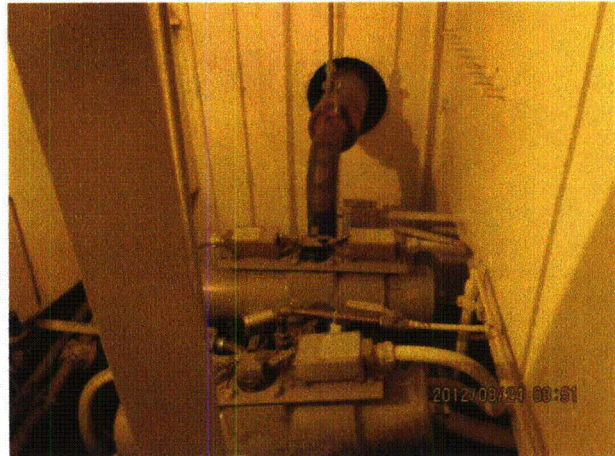
VALVE, PNEUMATIC - U-1 DW FLR DRN SUMP PMP UPSTREAM DSCH

Equipment Description: VLV

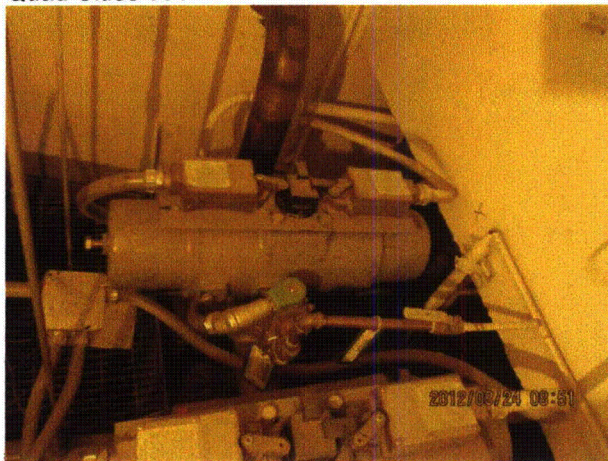
**Photos**



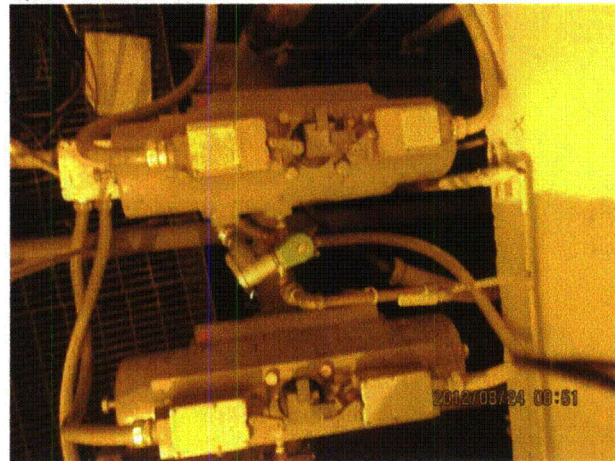
Quad Cities 001



Quad Cities 002



Quad Cities 003



Quad Cities 005

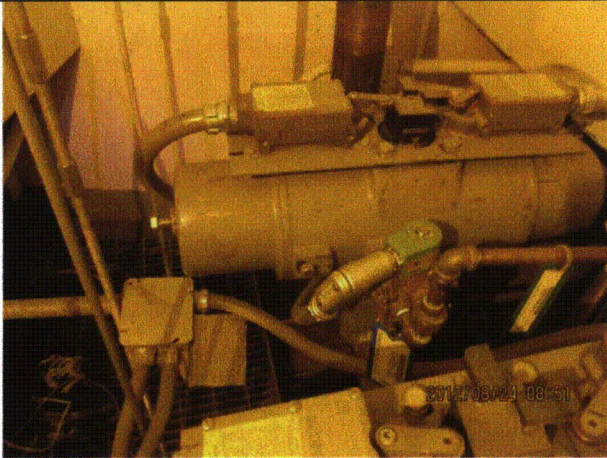
Status:  Y  N  U

**Seismic Walkdown Checklist (SWC)**

Equipment ID No.: 1-2001-3

Equipment Class: (7) Fluid-Operated Valves

Equipment Description: VALVE, PNEUMATIC - U-1 DW FLR DRN SUMP PMP UPSTREAM DSCH  
VLV



Quad Cities 006

Status:  Y  N  U

**Seismic Walkdown Checklist (SWC)**

Equipment ID No.: 1-2301-14-MO

Equipment Class: (8) Motor-Operated and Solenoid-Operated Valves

Equipment Description: U-1 HPCI PMP MIN FLOW VLV

Project: Quad Cities 1 SWEL

Location (Bldg, Elev, Room/Area): RB, 554.00 ft, ALL

Manufacturer/Model:

**Instructions for Completing Checklist**

This checklist may be used to document the results of the Seismic Walkdown of an item of equipment on the SWEL. The space below each of the following questions may be used to record the results of judgments and findings. Additional space is provided at the end of this checklist for documenting other comments.

**Anchorage**

- |  |                |
|--|----------------|
| 1. Is anchorage configuration verification required (i.e., is the item one of the 50% of SWEL items requiring such verification)?  | No             |
| 2. Is the anchorage free of bent, broken, missing or loose hardware?   | Not Applicable |
| 3. Is the anchorage free of corrosion that is more than mild surface oxidation?  | Not Applicable |
| 4. Is the anchorage free of visible cracks in the concrete near the anchors?   | Not Applicable |
| 5. Is the anchorage configuration consistent with plant documentation? (Note: This question only applies if the item is one of the 50% for which an anchorage configuration verification is required.) | Not Applicable |
| 6. Based on the above anchorage evaluations, is the anchorage free of potentially adverse seismic conditions?  | Yes            |

**Interaction Effects**

- |   |     |
|---|-----|
| 7. Are soft targets free from impact by nearby equipment or structures? | Yes |
|---|-----|



Status:  Y  N  U

**Seismic Walkdown Checklist (SWC)**

Equipment ID No.: 1-2301-14-MO

Equipment Class: (8) Motor-Operated and Solenoid-Operated Valves

Equipment Description: U-1 HPCI PMP MIN FLOW VLV

8. Are overhead equipment, distribution systems, ceiling tiles and lighting, and masonry block walls not likely to collapse onto the equipment? Yes
9. Do attached lines have adequate flexibility to avoid damage? Yes
10. Based on the above seismic interaction evaluations, is equipment free of potentially adverse seismic interaction effects? Yes

**Other Adverse Conditions**

11. Have you looked for and found no adverse seismic conditions that could adversely affect the safety functions of the equipment? Yes

**Comments**

\*\*\*\*\*

Seismic Walkdown Team: D. Carter & J. Griffith - 8/23/2012

Evaluated by:  David Carter Date: 10/4/2012

 James D. Griffith 10/4/2012

Status:  Y  N  U

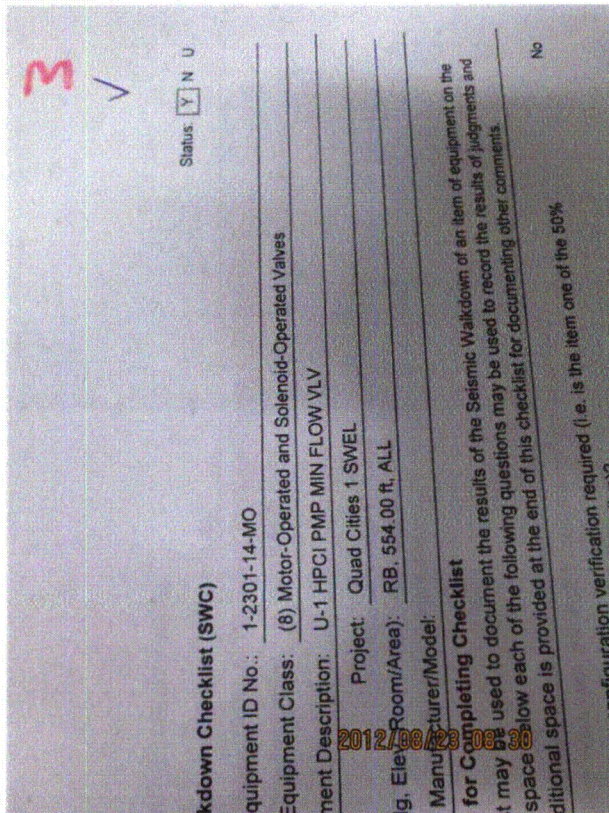
**Seismic Walkdown Checklist (SWC)**

Equipment ID No.: 1-2301-14-MO

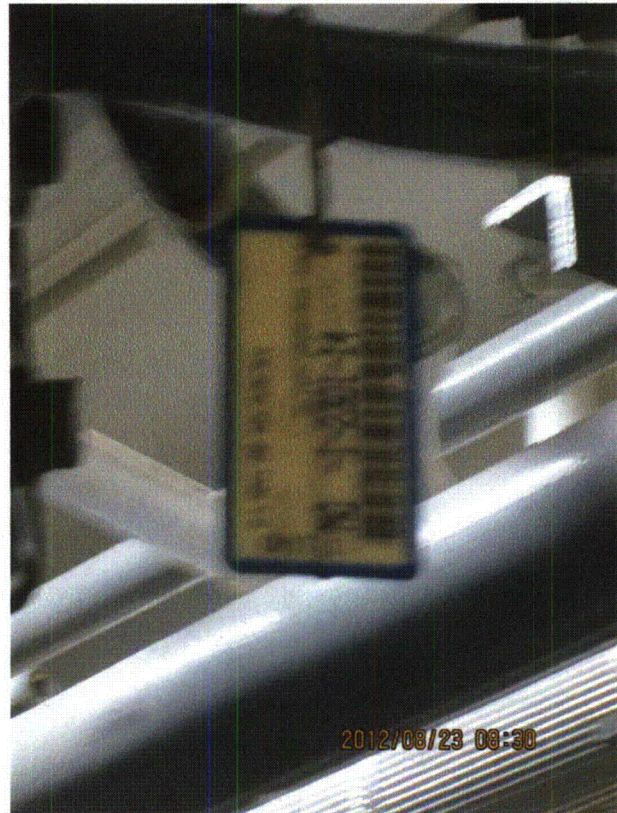
Equipment Class: (8) Motor-Operated and Solenoid-Operated Valves

Equipment Description: U-1 HPCI PMP MIN FLOW VLV

**Photos**



Quad Cities 018



Quad Cities 019



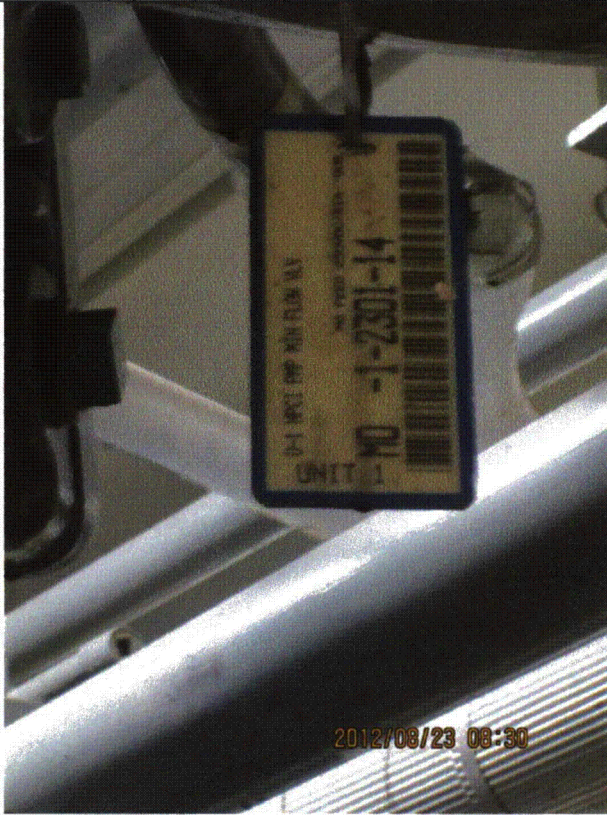
Status:  Y  N  U

**Seismic Walkdown Checklist (SWC)**

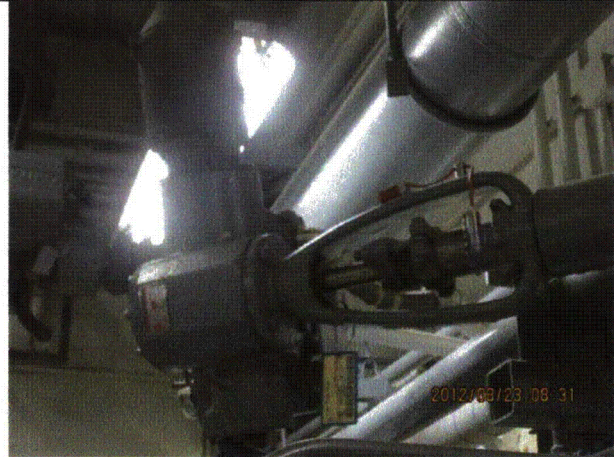
Equipment ID No.: 1-2301-14-MO

Equipment Class: (8) Motor-Operated and Solenoid-Operated Valves

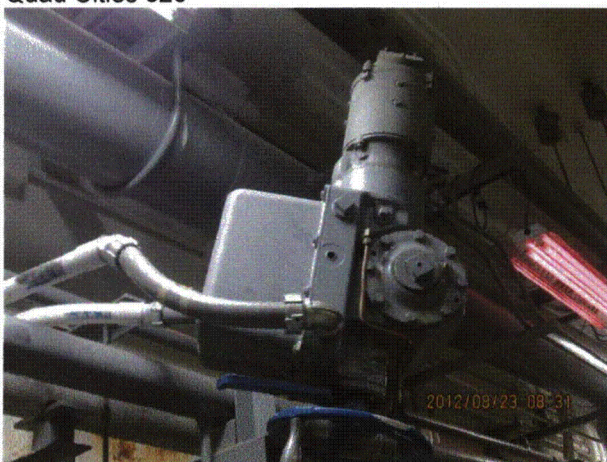
Equipment Description: U-1 HPCI PMP MIN FLOW VLV



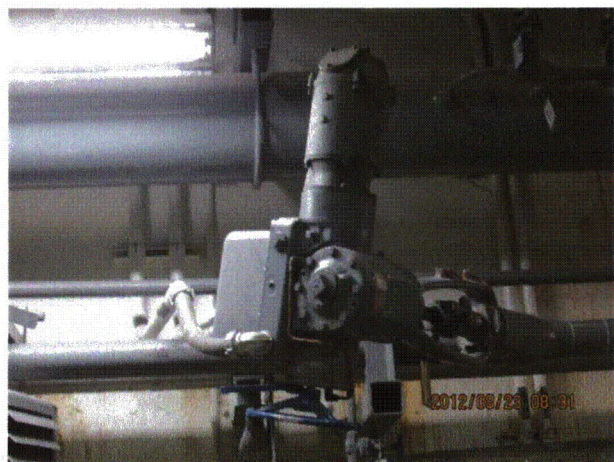
Quad Cities 020



Quad Cities 021



Quad Cities 022



Quad Cities 023



Status:  Y  N  U

**Seismic Walkdown Checklist (SWC)**

Equipment ID No.: 1-2301-29-AO

Equipment Class: (7) Fluid-Operated Valves

Equipment Description: U-1 HPCI STM LINE TO CONDENSER UPSTREAM DRN VLV

Project: Quad Cities 1 SWEL

Location (Bldg, Elev, Room/Area): RB, 554.00 ft, ALL

Manufacturer/Model:

**Instructions for Completing Checklist**

This checklist may be used to document the results of the Seismic Walkdown of an item of equipment on the SWEL. The space below each of the following questions may be used to record the results of judgments and findings. Additional space is provided at the end of this checklist for documenting other comments.

**Anchorage**

1. Is anchorage configuration verification required (i.e., is the item one of the 50% of SWEL items requiring such verification)? No
  
2. Is the anchorage free of bent, broken, missing or loose hardware? Not Applicable
  
3. Is the anchorage free of corrosion that is more than mild surface oxidation? Not Applicable
  
4. Is the anchorage free of visible cracks in the concrete near the anchors? Not Applicable
  
5. Is the anchorage configuration consistent with plant documentation? (Note: This question only applies if the item is one of the 50% for which an anchorage configuration verification is required.) Not Applicable
  
6. Based on the above anchorage evaluations, is the anchorage free of potentially adverse seismic conditions? Yes

Status:  Y  N  U

**Seismic Walkdown Checklist (SWC)**

Equipment ID No.: 1-2301-29-AO

Equipment Class: (7) Fluid-Operated Valves

Equipment Description: U-1 HPCI STM LINE TO CONDENSER UPSTREAM DRN VLV

**Interaction Effects**

7. Are soft targets free from impact by nearby equipment or structures? Yes

*Support for valve is braced in each orthogonal direction. Valve operator in contact with separate conduit support. Conduit support can only move away from valve operator. Judged to be acceptable.*

*Gauge within 3/16-inch of separate conduit support. Air line for gauge attached to valve nearby and thus will not move appreciably to cause interaction. Judged to be acceptable.*

8. Are overhead equipment, distribution systems, ceiling tiles and lighting, and masonry block walls not likely to collapse onto the equipment? Yes

9. Do attached lines have adequate flexibility to avoid damage? Yes

10. Based on the above seismic interaction evaluations, is equipment free of potentially adverse seismic interaction effects? Yes


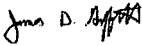
**Other Adverse Conditions**

11. Have you looked for and found no adverse seismic conditions that could adversely affect the safety functions of the equipment? Yes

**Comments**

\*\*\*\*\*

Seismic Walkdown Team: D. Carter & J. Griffith - 8/23/2012

Evaluated by:  David Carter Date: 10/4/2012  
 James Griffith 10/4/2012

Status:  Y  N  U

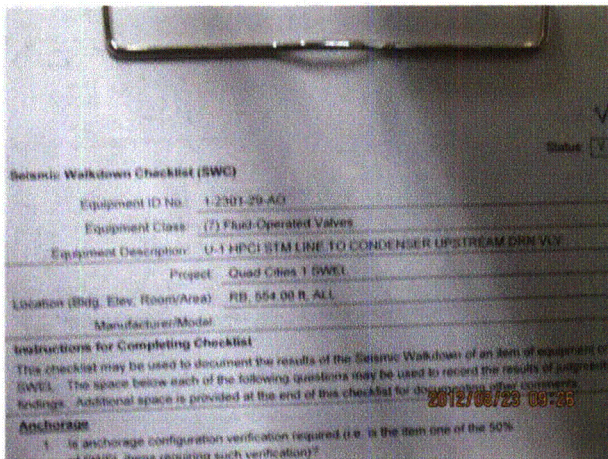
**Seismic Walkdown Checklist (SWC)**

Equipment ID No.: 1-2301-29-AO

Equipment Class: (7) Fluid-Operated Valves

Equipment Description: U-1 HPCI STM LINE TO CONDENSER UPSTREAM DRN VLV

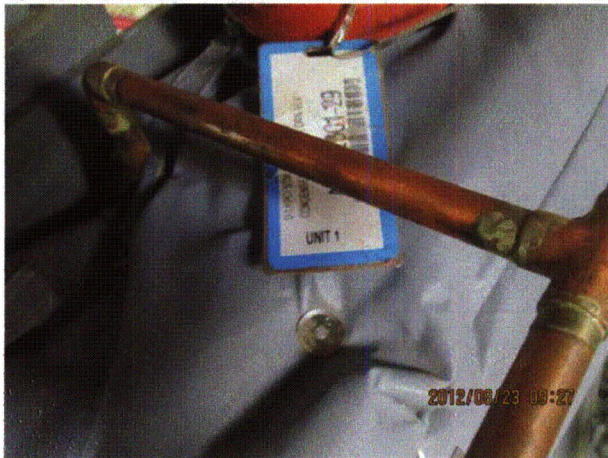
**Photos**



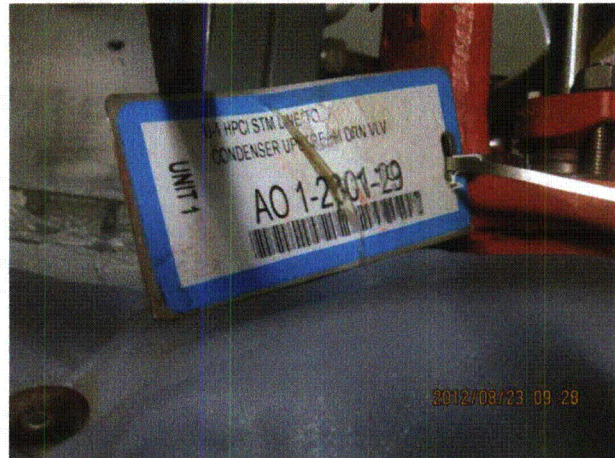
Quad Cities 058



Quad Cities 059



Quad Cities 060



Quad Cities 061



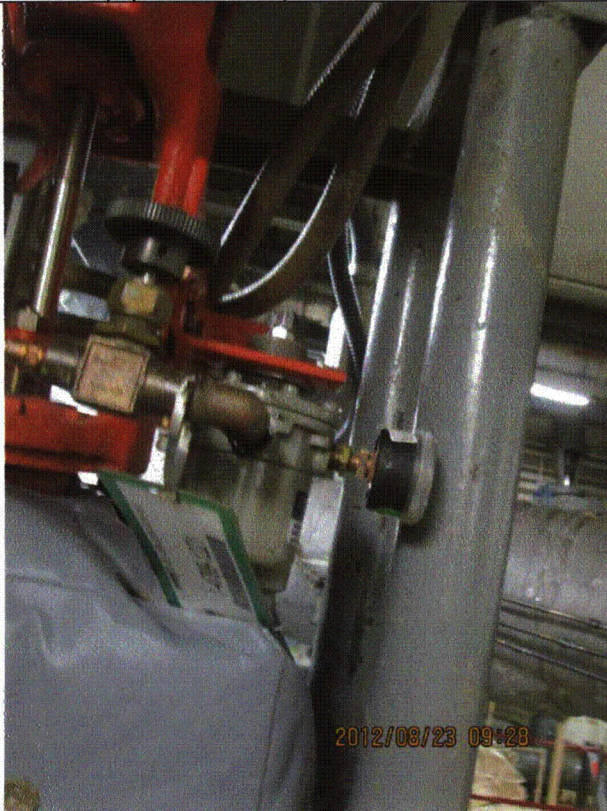
Status:  Y  N  U

**Seismic Walkdown Checklist (SWC)**

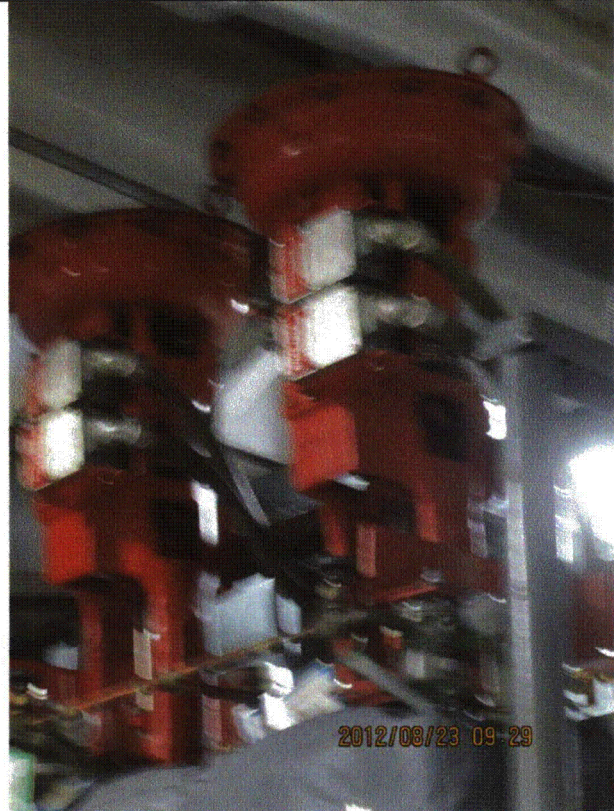
Equipment ID No.: 1-2301-29-AO

Equipment Class: (7) Fluid-Operated Valves

Equipment Description: U-1 HPCI STM LINE TO CONDENSER UPSTREAM DRN VLV



Quad Cities 062



Quad Cities 063



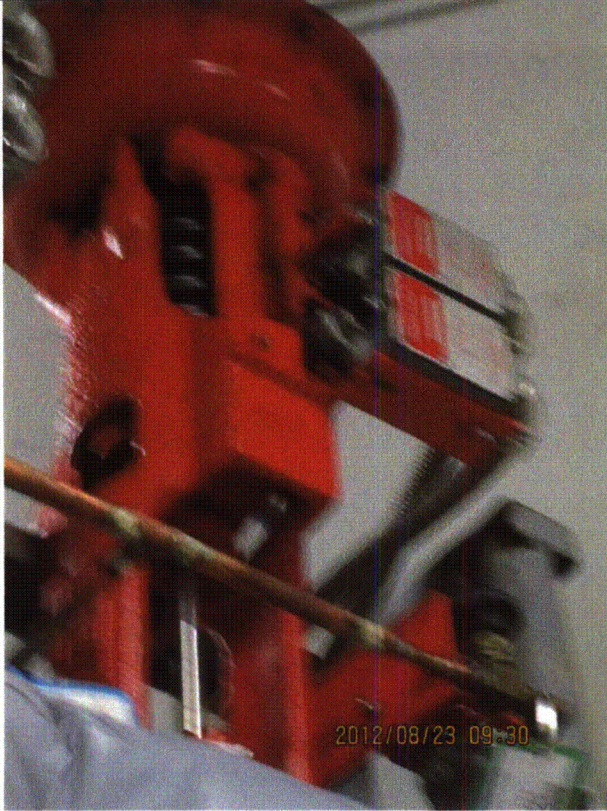
Status:  Y  N  U

**Seismic Walkdown Checklist (SWC)**

Equipment ID No.: 1-2301-29-AO

Equipment Class: (7) Fluid-Operated Valves

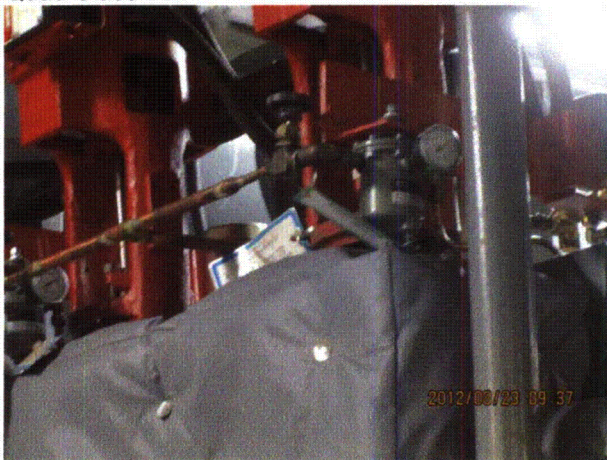
Equipment Description: U-1 HPCI STM LINE TO CONDENSER UPSTREAM DRN VLV



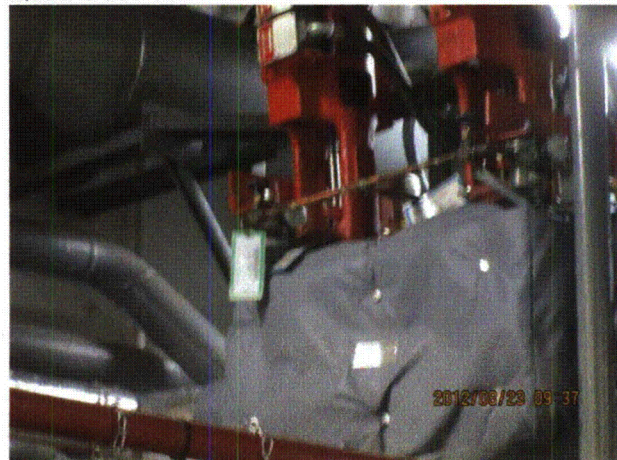
Quad Cities 064



Quad Cities 065



Quad Cities 066



Quad Cities 067



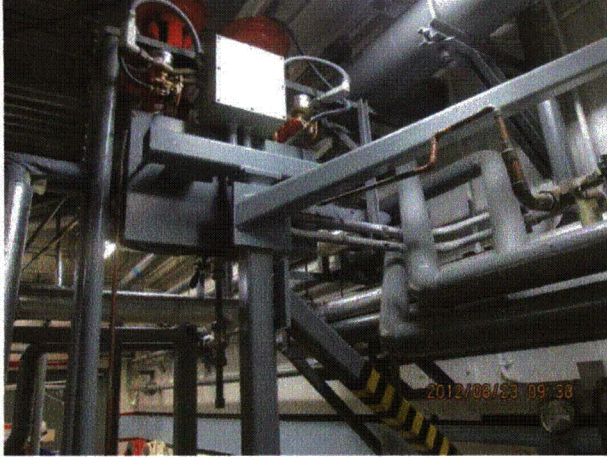
Status:  Y  N  U

**Seismic Walkdown Checklist (SWC)**

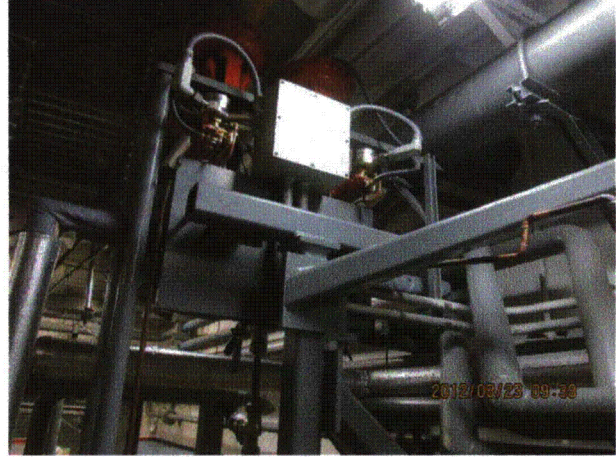
Equipment ID No.: 1-2301-29-AO

Equipment Class: (7) Fluid-Operated Valves

Equipment Description: U-1 HPCI STM LINE TO CONDENSER UPSTREAM DRN VLV



Quad Cities 068



Quad Cities 069



Status:  Y  N  U

**Seismic Walkdown Checklist (SWC)**

Equipment ID No.: 1-2301-31-AO

Equipment Class: (7) Fluid-Operated Valves

Equipment Description: U-1 HPCI STM LINE DRN LINE STM TRAP BYP VLV

Project: Quad Cities 1 SWEL

Location (Bldg, Elev, Room/Area): RB, 554.00 ft, ALL

Manufacturer/Model:

**Instructions for Completing Checklist**

This checklist may be used to document the results of the Seismic Walkdown of an item of equipment on the SWEL. The space below each of the following questions may be used to record the results of judgments and findings. Additional space is provided at the end of this checklist for documenting other comments.

**Anchorage**

1. Is anchorage configuration verification required (i.e., is the item one of the 50% of SWEL items requiring such verification)? No
  
2. Is the anchorage free of bent, broken, missing or loose hardware? Not Applicable
  
3. Is the anchorage free of corrosion that is more than mild surface oxidation? Not Applicable
  
4. Is the anchorage free of visible cracks in the concrete near the anchors? Not Applicable
  
5. Is the anchorage configuration consistent with plant documentation? (Note: This question only applies if the item is one of the 50% for which an anchorage configuration verification is required.) Not Applicable
  
6. Based on the above anchorage evaluations, is the anchorage free of potentially adverse seismic conditions? Yes

Status:  Y  N  U

**Seismic Walkdown Checklist (SWC)**

Equipment ID No.: 1-2301-31-AO

Equipment Class: (7) Fluid-Operated Valves

Equipment Description: U-1 HPCI STM LINE DRN LINE STM TRAP BYP VLV

**Interaction Effects**

7. Are soft targets free from impact by nearby equipment or structures? Yes

*Tube rests on pipe support tube near Valve 1-4799-1217 judged to be acceptable.*

8. Are overhead equipment, distribution systems, ceiling tiles and lighting, and masonry block walls not likely to collapse onto the equipment? Yes

*Overhead light fixtures judged to be acceptable.*

9. Do attached lines have adequate flexibility to avoid damage? Yes

10. Based on the above seismic interaction evaluations, is equipment free of potentially adverse seismic interaction effects? Yes

**Other Adverse Conditions**

11. Have you looked for and found no adverse seismic conditions that could adversely affect the safety functions of the equipment? Yes

**Comments**

\*\*\*\*\*

Seismic Walkdown Team: D. Carter & J. Griffith - 8/22/2012

Evaluated by:

David Carter David Carter

Date: 10/4/2012

James D. Griffith James Griffith

10/4/2012

Status:  Y  N  U

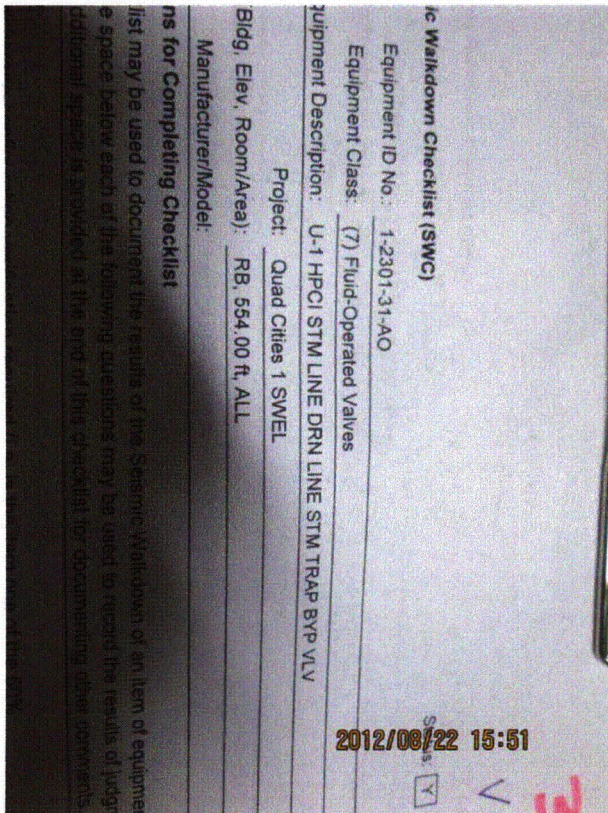
**Seismic Walkdown Checklist (SWC)**

Equipment ID No.: 1-2301-31-AO

Equipment Class: (7) Fluid-Operated Valves

Equipment Description: U-1 HPCI STM LINE DRN LINE STM TRAP BYP VLV

**Photos**



8-22-12 Quad Cities 223



8-22-12 Quad Cities 224



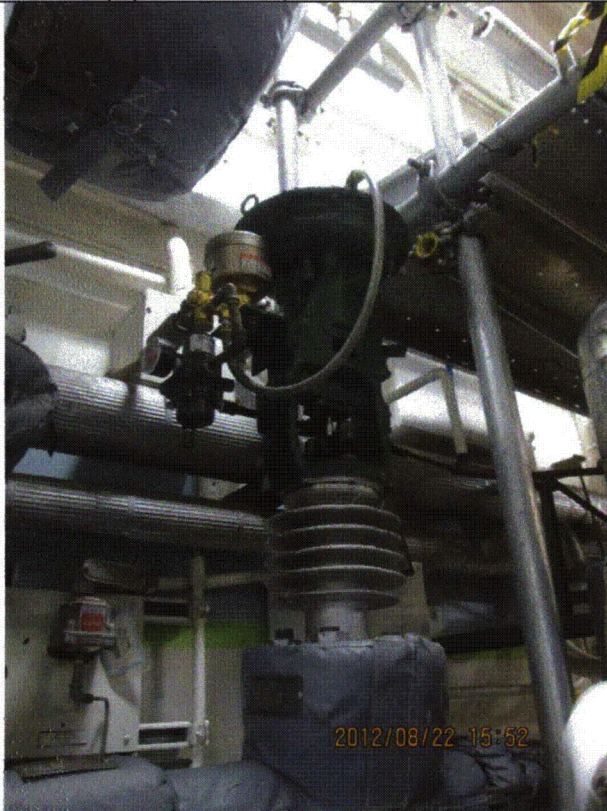
Status:  Y  N  U

**Seismic Walkdown Checklist (SWC)**

Equipment ID No.: 1-2301-31-AO

Equipment Class: (7) Fluid-Operated Valves

Equipment Description: U-1 HPCI STM LINE DRN LINE STM TRAP BYP VLV



8-22-12 Quad Cities 225



8-22-12 Quad Cities 226

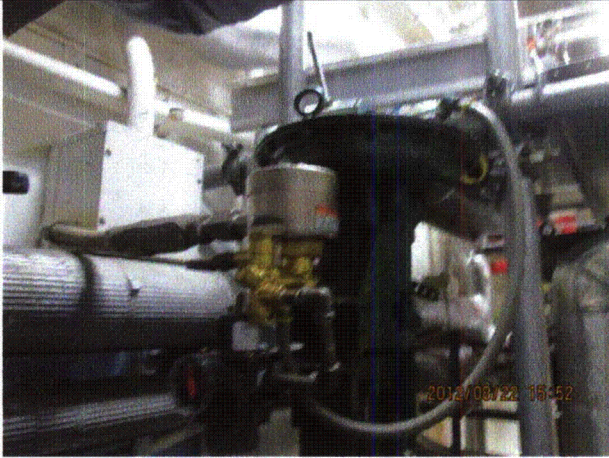
Status:  Y  N  U

**Seismic Walkdown Checklist (SWC)**

Equipment ID No.: 1-2301-31-AO

Equipment Class: (7) Fluid-Operated Valves

Equipment Description: U-1 HPCI STM LINE DRN LINE STM TRAP BYP VLV



8-22-12 Quad Cities 227



8-22-12 Quad Cities 228



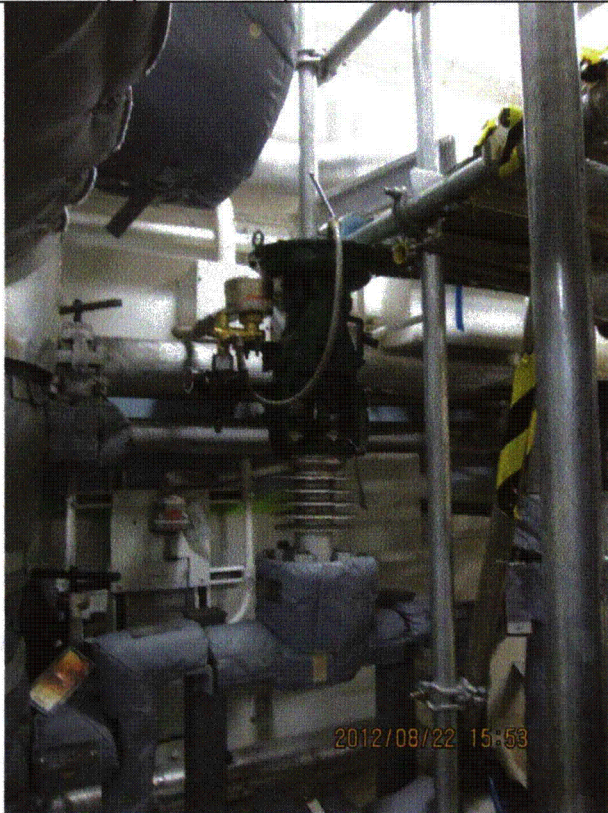
Status:  Y  N  U

**Seismic Walkdown Checklist (SWC)**

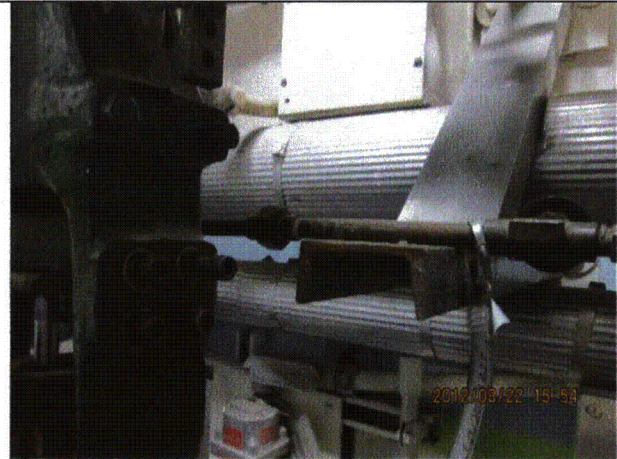
Equipment ID No.: 1-2301-31-AO

Equipment Class: (7) Fluid-Operated Valves

Equipment Description: U-1 HPCI STM LINE DRN LINE STM TRAP BYP VLV



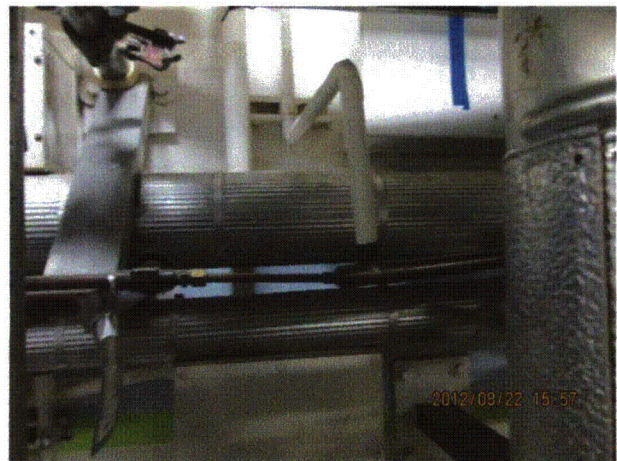
8-22-12 Quad Cities 229



8-22-12 Quad Cities 230



8-22-12 Quad Cities 231



8-22-12 Quad Cities 232



Status:  Y  N  U

**Seismic Walkdown Checklist (SWC)**

Equipment ID No.: 1-2301-35-MO

Equipment Class: (8) Motor-Operated and Solenoid-Operated Valves

Equipment Description: U-1 HPCI PMP DOWNSTREAM TORUS SUCT VLV

Project: Quad Cities 1 SWEL

Location (Bldg, Elev, Room/Area): RB, 554.00 ft, ALL

Manufacturer/Model:

**Instructions for Completing Checklist**

This checklist may be used to document the results of the Seismic Walkdown of an item of equipment on the SWEL. The space below each of the following questions may be used to record the results of judgments and findings. Additional space is provided at the end of this checklist for documenting other comments.

**Anchorage**

- |  |                |
|--|----------------|
| 1. Is anchorage configuration verification required (i.e., is the item one of the 50% of SWEL items requiring such verification)?  | No             |
| 2. Is the anchorage free of bent, broken, missing or loose hardware?   | Not Applicable |
| 3. Is the anchorage free of corrosion that is more than mild surface oxidation?  | Not Applicable |
| 4. Is the anchorage free of visible cracks in the concrete near the anchors?   | Not Applicable |
| 5. Is the anchorage configuration consistent with plant documentation? (Note: This question only applies if the item is one of the 50% for which an anchorage configuration verification is required.) | Not Applicable |
| 6. Based on the above anchorage evaluations, is the anchorage free of potentially adverse seismic conditions?  | Yes            |

Status:  Y  N  U

**Seismic Walkdown Checklist (SWC)**

Equipment ID No.: 1-2301-35-MO

Equipment Class: (8) Motor-Operated and Solenoid-Operated Valves

Equipment Description: U-1 HPCI PMP DOWNSTREAM TORUS SUCT VLV

**Interaction Effects**

7. Are soft targets free from impact by nearby equipment or structures? Yes

*Conduits in contact with insulation pipe. Flexible conduit in contact with valve yoke. Judged to be acceptable.*

8. Are overhead equipment, distribution systems, ceiling tiles and lighting, and masonry block walls not likely to collapse onto the equipment? Yes

9. Do attached lines have adequate flexibility to avoid damage? Yes

10. Based on the above seismic interaction evaluations, is equipment free of potentially adverse seismic interaction effects? Yes

**Other Adverse Conditions**

11. Have you looked for and found no adverse seismic conditions that could adversely affect the safety functions of the equipment? Yes

**Comments**

\*\*\*\*\*

Seismic Walkdown Team: D. Carter & J. Griffith - 8/22/2012

Evaluated by: David Carter Date: 10/4/2012

James D. Griffith James Griffith 10/4/2012

Status:  Y  N  U

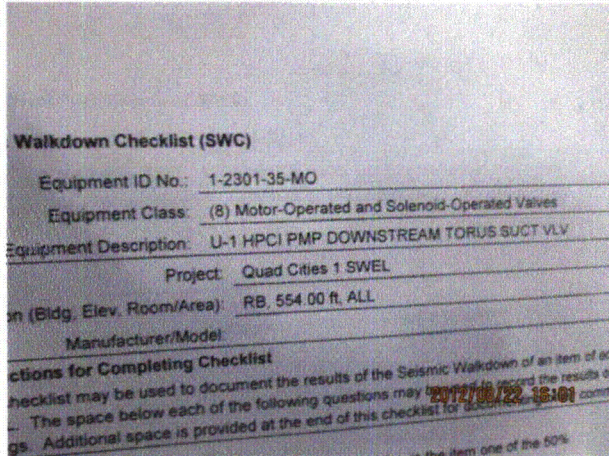
**Seismic Walkdown Checklist (SWC)**

Equipment ID No.: 1-2301-35-MO

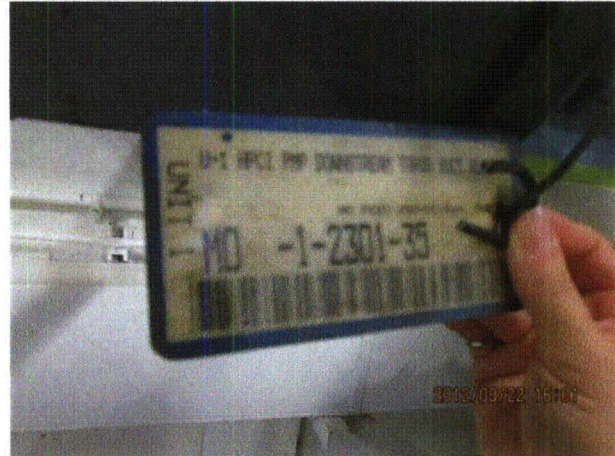
Equipment Class: (8) Motor-Operated and Solenoid-Operated Valves

Equipment Description: U-1 HPCI PMP DOWNSTREAM TORUS SUCT VLV

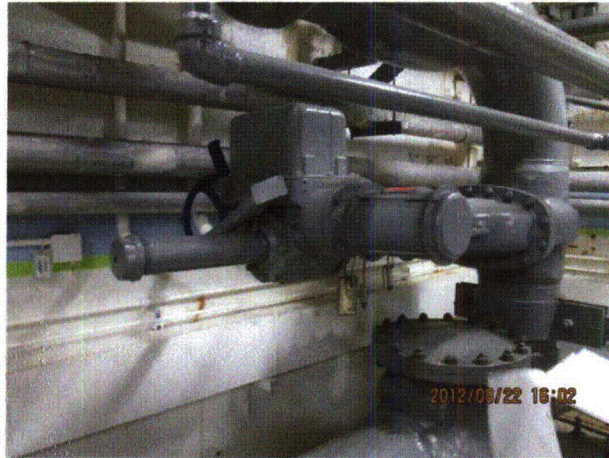
**Photos**



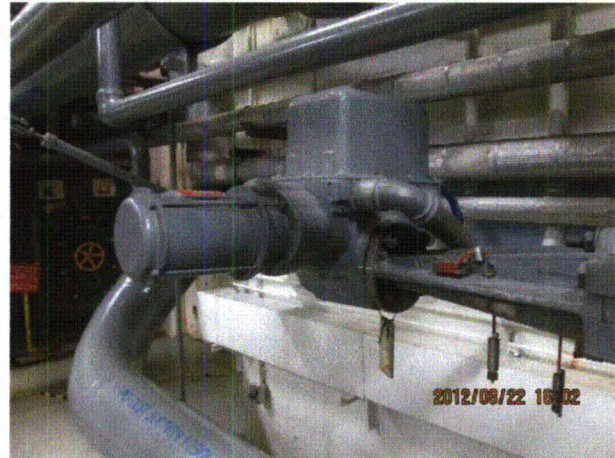
8-22-12 Quad Cities 233



8-22-12 Quad Cities 234



8-22-12 Quad Cities 235



8-22-12 Quad Cities 236



Status:  Y  N  U

**Seismic Walkdown Checklist (SWC)**

Equipment ID No.: 1-2301-35-MO

Equipment Class: (8) Motor-Operated and Solenoid-Operated Valves

Equipment Description: U-1 HPCI PMP DOWNSTREAM TORUS SUCT VLV



8-22-12 Quad Cities 237

Status:  Y  N  U

**Seismic Walkdown Checklist (SWC)**

Equipment ID No.: 1-2301-3-MO

Equipment Class: (8) Motor-Operated and Solenoid-Operated Valves

Equipment Description: U1 HPCI TURB INLET VLV (HW)

Project: Quad Cities 1 SWEL

Location (Bldg, Elev, Room/Area): RB, 554.00 ft, ALL

Manufacturer/Model:

**Instructions for Completing Checklist**

This checklist may be used to document the results of the Seismic Walkdown of an item of equipment on the SWEL. The space below each of the following questions may be used to record the results of judgments and findings. Additional space is provided at the end of this checklist for documenting other comments.

**Anchorage**

1. Is anchorage configuration verification required (i.e., is the item one of the 50% of SWEL items requiring such verification)? No
  
2. Is the anchorage free of bent, broken, missing or loose hardware? Not Applicable
  
3. Is the anchorage free of corrosion that is more than mild surface oxidation? Not Applicable
  
4. Is the anchorage free of visible cracks in the concrete near the anchors? Not Applicable
  
5. Is the anchorage configuration consistent with plant documentation? (Note: This question only applies if the item is one of the 50% for which an anchorage configuration verification is required.) Not Applicable
  
6. Based on the above anchorage evaluations, is the anchorage free of potentially adverse seismic conditions? Yes

**Interaction Effects**

7. Are soft targets free from impact by nearby equipment or structures? Yes

Status:  Y  N  U

**Seismic Walkdown Checklist (SWC)**

Equipment ID No.: 1-2301-3-MO

Equipment Class: (8) Motor-Operated and Solenoid-Operated Valves

Equipment Description: U1 HPCI TURB INLET VLV (HW)

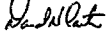
8. Are overhead equipment, distribution systems, ceiling tiles and lighting, and masonry block walls not likely to collapse onto the equipment?  
*Overhead light fixtures judged to be acceptable.* Yes
9. Do attached lines have adequate flexibility to avoid damage? Yes
10. Based on the above seismic interaction evaluations, is equipment free of potentially adverse seismic interaction effects? Yes

**Other Adverse Conditions**

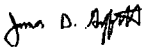
11. Have you looked for and found no adverse seismic conditions that could adversely affect the safety functions of the equipment? Yes

**Comments**

Seismic Walkdown Team: D. Carter & J. Griffith - 8/22/2012

Evaluated by:  David Carter

Date: 10/16/2012

 James Griffith

10/16/2012



Status:  Y  N  U

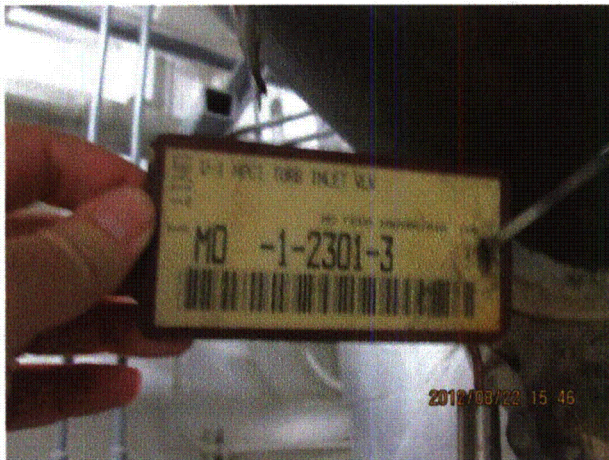
**Seismic Walkdown Checklist (SWC)**

Equipment ID No.: 1-2301-3-MO

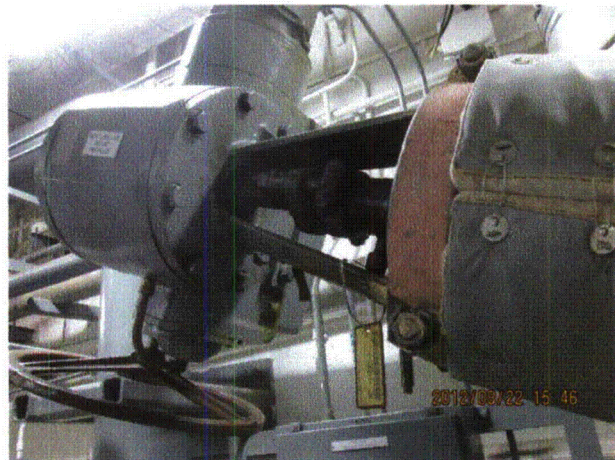
Equipment Class: (8) Motor-Operated and Solenoid-Operated Valves

Equipment Description: U1 HPCI TURB INLET VLV (HW)

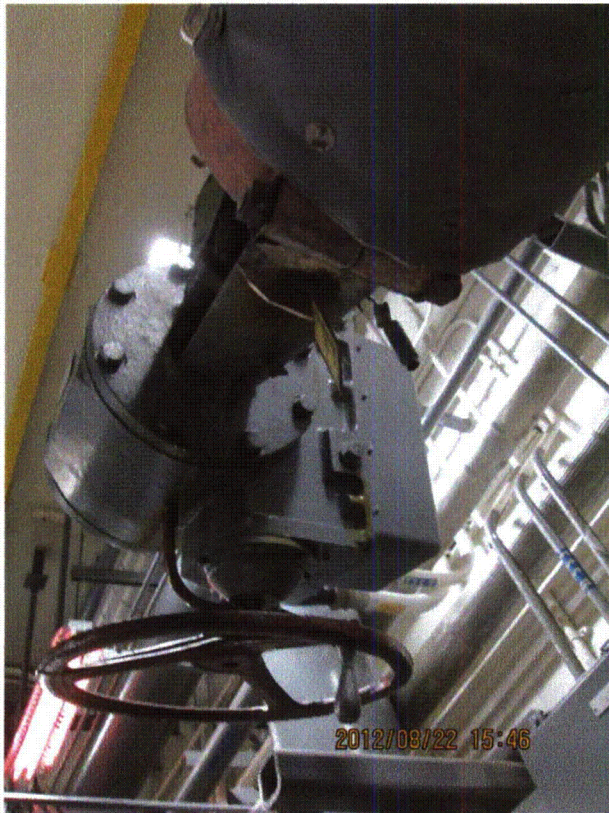
**Photos**



8-22-12 Quad Cities 216



8-22-12 Quad Cities 217



8-22-12 Quad Cities 218



8-22-12 Quad Cities 220



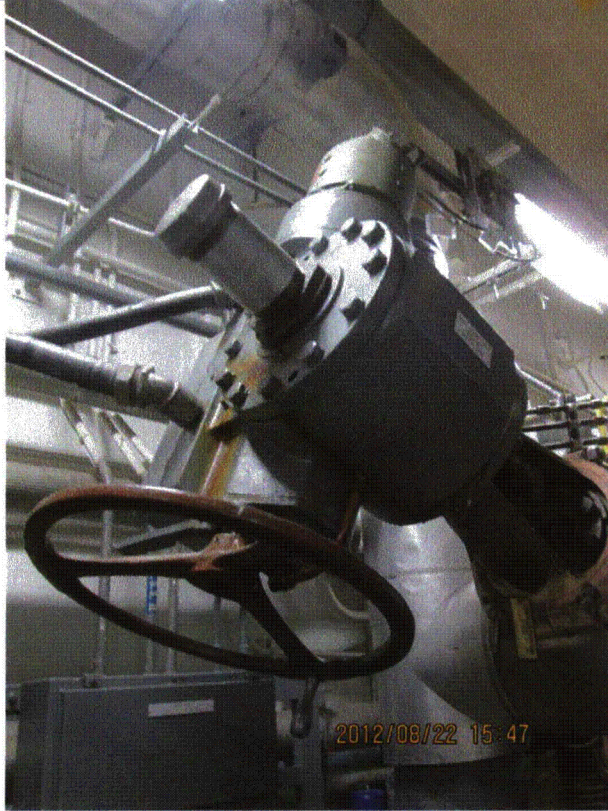
Status:  Y  N  U

**Seismic Walkdown Checklist (SWC)**

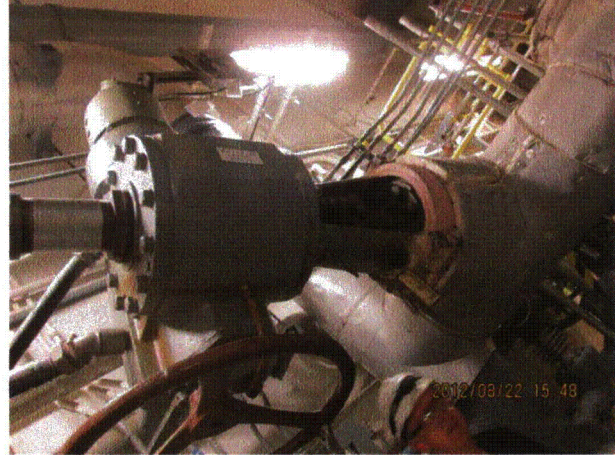
Equipment ID No.: 1-2301-3-MO

Equipment Class: (8) Motor-Operated and Solenoid-Operated Valves

Equipment Description: U1 HPCI TURB INLET VLV (HW)



8-22-12 Quad Cities 221



8-22-12 Quad Cities 222

Status:  Y  N  U

**Seismic Walkdown Checklist (SWC)**

Equipment ID No.: 1-2301-49-MO

Equipment Class: (8) Motor-Operated and Solenoid-Operated Valves

Equipment Description: U-1 HPCI CLG WTR PMP TEST VLV

Project: Quad Cities 1 SWEL

Location (Bldg, Elev, Room/Area): RB, 554.00 ft, ALL

Manufacturer/Model:

**Instructions for Completing Checklist**

This checklist may be used to document the results of the Seismic Walkdown of an item of equipment on the SWEL. The space below each of the following questions may be used to record the results of judgments and findings. Additional space is provided at the end of this checklist for documenting other comments.

**Anchorage**

1. Is anchorage configuration verification required (i.e., is the item one of the 50% of SWEL items requiring such verification)? No
  
2. Is the anchorage free of bent, broken, missing or loose hardware? Not Applicable
  
3. Is the anchorage free of corrosion that is more than mild surface oxidation? Not Applicable
  
4. Is the anchorage free of visible cracks in the concrete near the anchors? Not Applicable
  
5. Is the anchorage configuration consistent with plant documentation? (Note: This question only applies if the item is one of the 50% for which an anchorage configuration verification is required.) Not Applicable
  
6. Based on the above anchorage evaluations, is the anchorage free of potentially adverse seismic conditions? Yes

**Interaction Effects**

7. Are soft targets free from impact by nearby equipment or structures? Yes



Status:  Y  N  U

**Seismic Walkdown Checklist (SWC)**

Equipment ID No.: 1-2301-49-MO

Equipment Class: (8) Motor-Operated and Solenoid-Operated Valves

Equipment Description: U-1 HPCI CLG WTR PMP TEST VLV

8. Are overhead equipment, distribution systems, ceiling tiles and lighting, and masonry block walls not likely to collapse onto the equipment? Yes
9. Do attached lines have adequate flexibility to avoid damage? Yes
10. Based on the above seismic interaction evaluations, is equipment free of potentially adverse seismic interaction effects? Yes

**Other Adverse Conditions**

11. Have you looked for and found no adverse seismic conditions that could adversely affect the safety functions of the equipment? Yes

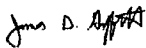
**Comments**

\*\*\*\*\*

Seismic Walkdown Team: D. Carter & J. Griffith - 8/23/2012

Evaluated by:  David Carter

Date: 10/4/2012

 James D. Griffith

10/4/2012

Status:  Y  N  U

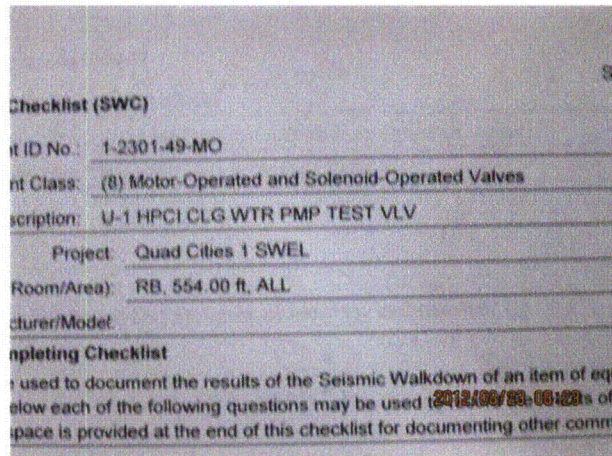
**Seismic Walkdown Checklist (SWC)**

Equipment ID No.: 1-2301-49-MO

Equipment Class: (8) Motor-Operated and Solenoid-Operated Valves

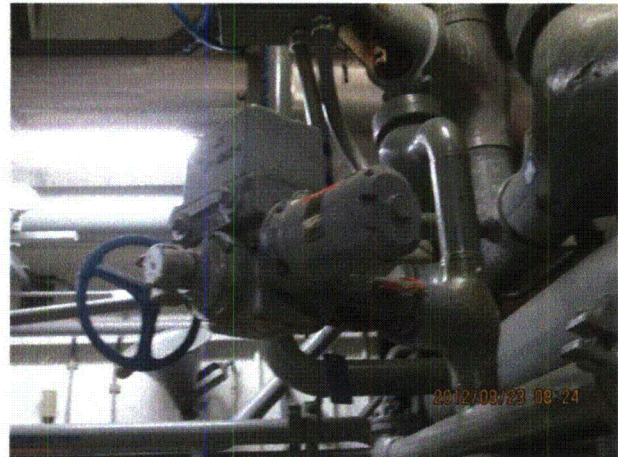
Equipment Description: U-1 HPCI CLG WTR PMP TEST VLV

**Photos**



Quad Cities 012

Quad Cities 013



Quad Cities 014

Quad Cities 015

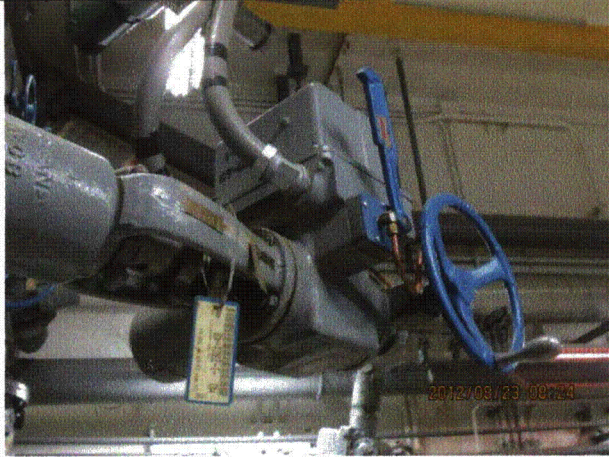
Status:  Y  N  U

**Seismic Walkdown Checklist (SWC)**

Equipment ID No.: 1-2301-49-MO

Equipment Class: (8) Motor-Operated and Solenoid-Operated Valves

Equipment Description: U-1 HPCI CLG WTR PMP TEST VLV



Quad Cities 016



Quad Cities 017



Status:  Y  N  U

**Seismic Walkdown Checklist (SWC)**

Equipment ID No.: 1-2301-6-MO

Equipment Class: (8) Motor-Operated and Solenoid-Operated Valves

Equipment Description: U-1 HPCI PMP CCST SUCT VLV

Project: Quad Cities 1 SWEL

Location (Bldg, Elev, Room/Area): RB, 554.00 ft, ALL

Manufacturer/Model:

**Instructions for Completing Checklist**

This checklist may be used to document the results of the Seismic Walkdown of an item of equipment on the SWEL. The space below each of the following questions may be used to record the results of judgments and findings. Additional space is provided at the end of this checklist for documenting other comments.

**Anchorage**

- |    |   |                |
|----|---|----------------|
| 1. | Is anchorage configuration verification required (i.e., is the item one of the 50% of SWEL items requiring such verification)?  | No             |
| 2. | Is the anchorage free of bent, broken, missing or loose hardware?   | Not Applicable |
| 3. | Is the anchorage free of corrosion that is more than mild surface oxidation?  | Not Applicable |
| 4. | Is the anchorage free of visible cracks in the concrete near the anchors?   | Not Applicable |
| 5. | Is the anchorage configuration consistent with plant documentation? (Note: This question only applies if the item is one of the 50% for which an anchorage configuration verification is required.) | Not Applicable |
| 6. | Based on the above anchorage evaluations, is the anchorage free of potentially adverse seismic conditions?  | Yes            |

**Interaction Effects**

- |    |  |     |
|----|--|-----|
| 7. | Are soft targets free from impact by nearby equipment or structures? | Yes |
|----|--|-----|

Status:  Y  N  U

**Seismic Walkdown Checklist (SWC)**

Equipment ID No.: 1-2301-6-MO

Equipment Class: (8) Motor-Operated and Solenoid-Operated Valves

Equipment Description: U-1 HPCI PMP CCST SUCT VLV

8. Are overhead equipment, distribution systems, ceiling tiles and lighting, and masonry block walls not likely to collapse onto the equipment? Yes
9. Do attached lines have adequate flexibility to avoid damage? Yes
10. Based on the above seismic interaction evaluations, is equipment free of potentially adverse seismic interaction effects? Yes

**Other Adverse Conditions**

11. Have you looked for and found no adverse seismic conditions that could adversely affect the safety functions of the equipment? Yes  
*One of the conduits for this valve is missing a clamp at the first unistrut support from the valve. The flexible portion of the same conduit is split on the side. The conduit run from the valve to the junction box is short and within allowable conduit spans. The split conduit is not a seismic concern.*

**Comments**

\*\*\*\*\*

Seismic Walkdown Team: D. Carter & J. Griffith - 8/23/2012

Evaluated by: David Carter

Date: 10/4/2012

James D. Griffith  
James Griffith

10/4/2012

Status:  Y  N  U

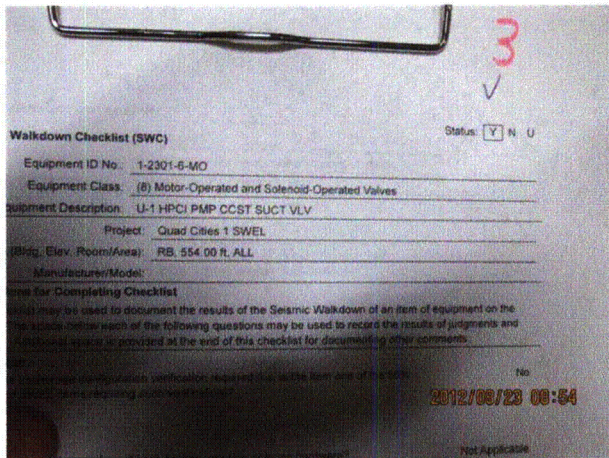
**Seismic Walkdown Checklist (SWC)**

Equipment ID No.: 1-2301-6-MO

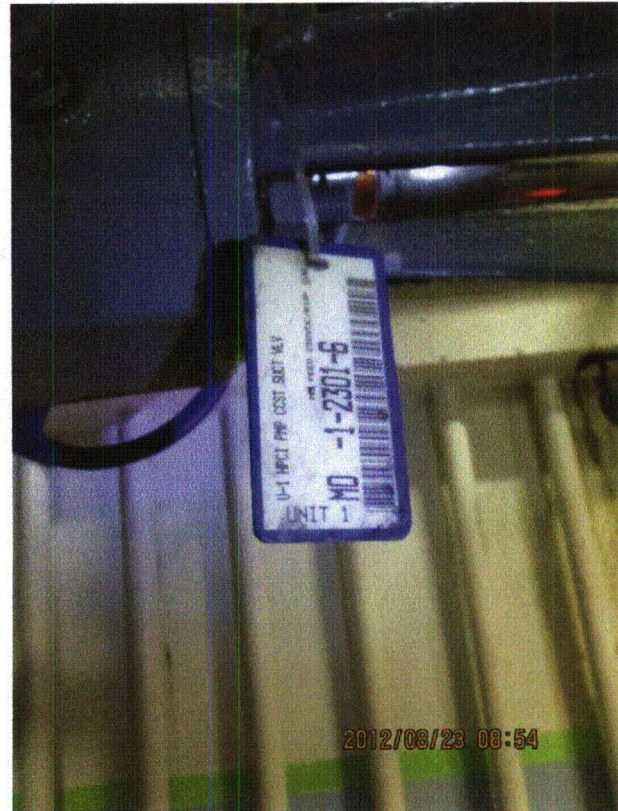
Equipment Class: (8) Motor-Operated and Solenoid-Operated Valves

Equipment Description: U-1 HPCI PMP CCST SUCT VLV

**Photos**



Quad Cities 040



Quad Cities 041



Status:  Y  N  U

**Seismic Walkdown Checklist (SWC)**

Equipment ID No.: 1-2301-6-MO

Equipment Class: (8) Motor-Operated and Solenoid-Operated Valves

Equipment Description: U-1 HPCI PMP CCST SUCT VLV



Quad Cities 042



Quad Cities 043



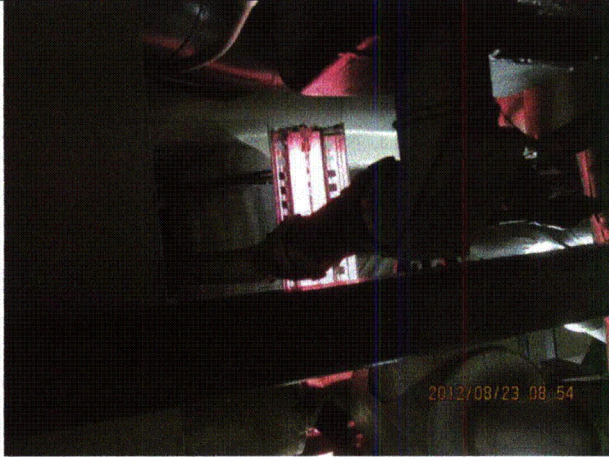
Status:  Y  N  U

**Seismic Walkdown Checklist (SWC)**

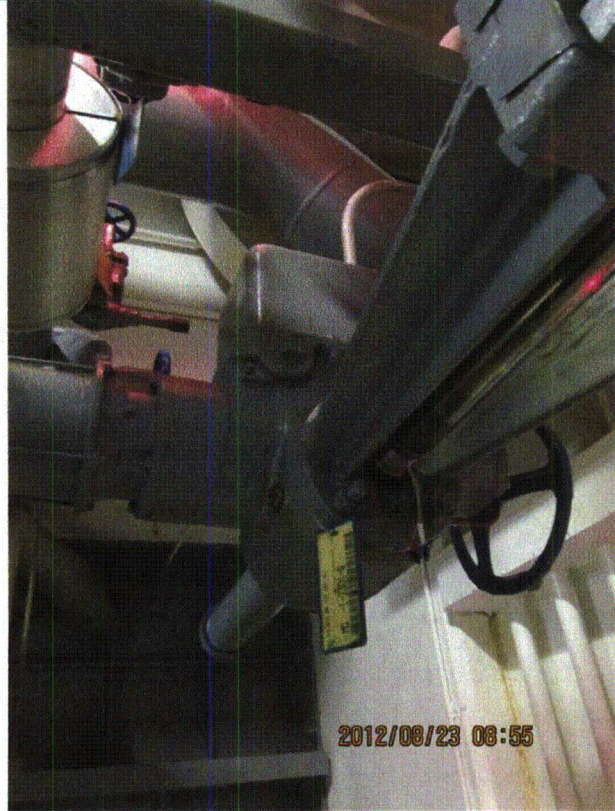
Equipment ID No.: 1-2301-6-MO

Equipment Class: (8) Motor-Operated and Solenoid-Operated Valves

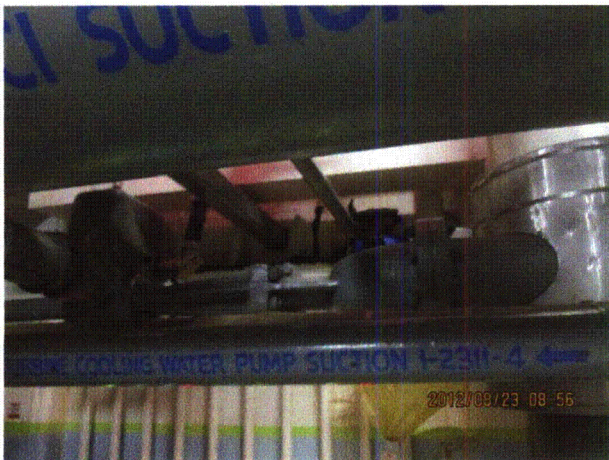
Equipment Description: U-1 HPCI PMP CCST SUCT VLV



Quad Cities 044



Quad Cities 045



Quad Cities 046

Status:  Y  N  U

**Seismic Walkdown Checklist (SWC)**

Equipment ID No.: 1-2301-9-MO

Equipment Class: (8) Motor-Operated and Solenoid-Operated Valves

Equipment Description: U-1 HPCI PMP DSCH VLV

Project: Quad Cities 1 SWEL

Location (Bldg, Elev, Room/Area): RB, 554.00 ft, ALL

Manufacturer/Model:

**Instructions for Completing Checklist**

This checklist may be used to document the results of the Seismic Walkdown of an item of equipment on the SWEL. The space below each of the following questions may be used to record the results of judgments and findings. Additional space is provided at the end of this checklist for documenting other comments.

**Anchorage**

1. Is anchorage configuration verification required (i.e., is the item one of the 50% of SWEL items requiring such verification)? No
  
2. Is the anchorage free of bent, broken, missing or loose hardware? Not Applicable
  
3. Is the anchorage free of corrosion that is more than mild surface oxidation? Not Applicable
  
4. Is the anchorage free of visible cracks in the concrete near the anchors? Not Applicable
  
5. Is the anchorage configuration consistent with plant documentation? (Note: This question only applies if the item is one of the 50% for which an anchorage configuration verification is required.) Not Applicable
  
6. Based on the above anchorage evaluations, is the anchorage free of potentially adverse seismic conditions? Yes



Status:  Y  N  U

**Seismic Walkdown Checklist (SWC)**

Equipment ID No.: 1-2301-9-MO

Equipment Class: (8) Motor-Operated and Solenoid-Operated Valves

Equipment Description: U-1 HPCI PMP DSCH VLV

**Interaction Effects**

7. Are soft targets free from impact by nearby equipment or structures? Yes  
*valve operator approximately 2 inches from pipe, approximately 4 inches from small valves. Judged to be acceptable.*
8. Are overhead equipment, distribution systems, ceiling tiles and lighting, and masonry block walls not likely to collapse onto the equipment? Yes
9. Do attached lines have adequate flexibility to avoid damage? Yes
10. Based on the above seismic interaction evaluations, is equipment free of potentially adverse seismic interaction effects? Yes

**Other Adverse Conditions**

11. Have you looked for and found no adverse seismic conditions that could adversely affect the safety functions of the equipment? Yes

**Comments**

\*\*\*\*\*

Seismic Walkdown Team: D. Carter & J. Griffith - 8/23/2012

Evaluated by:

David Carter David Carter

Date: 10/4/2012

James D. Griffith James Griffith

10/4/2012

Status:  Y  N  U

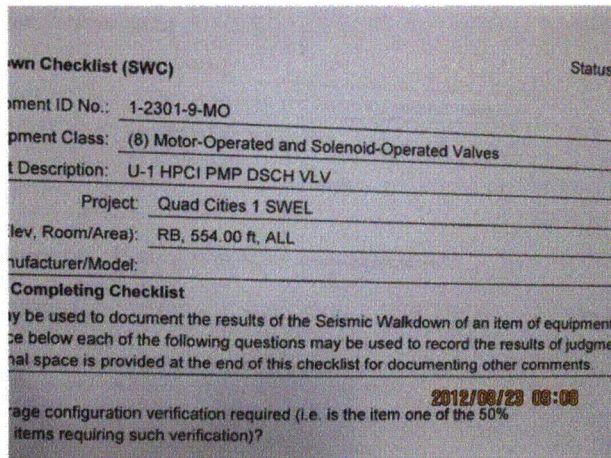
**Seismic Walkdown Checklist (SWC)**

Equipment ID No.: 1-2301-9-MO

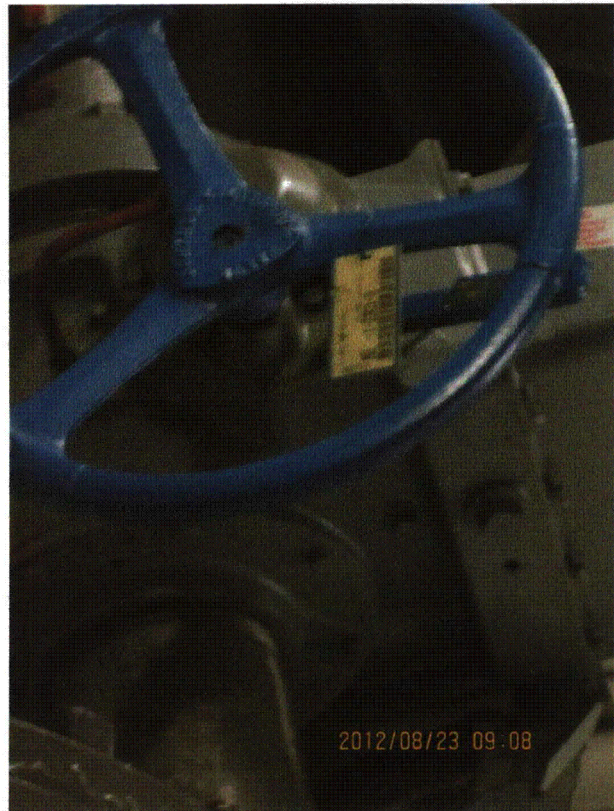
Equipment Class: (8) Motor-Operated and Solenoid-Operated Valves

Equipment Description: U-1 HPCI PMP DSCH VLV

**Photos**



Quad Cities 051



Quad Cities 052



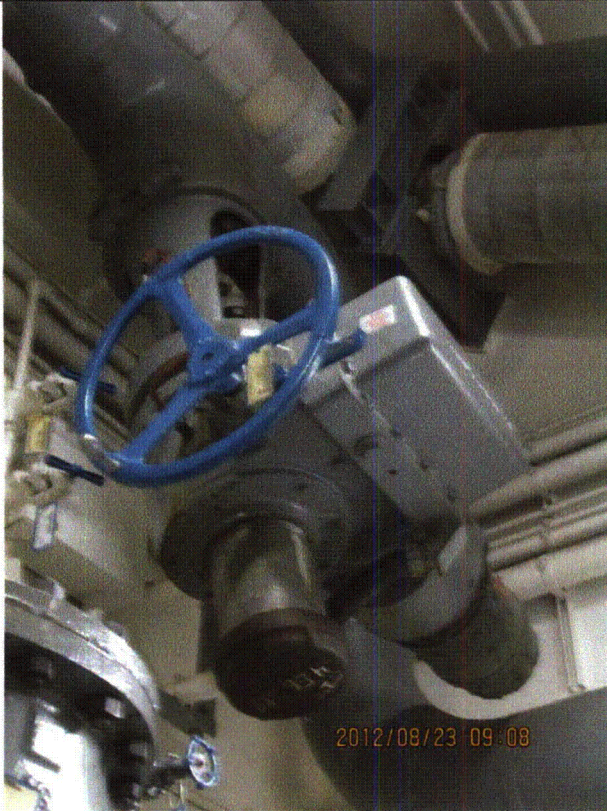
Status:  Y  N  U

**Seismic Walkdown Checklist (SWC)**

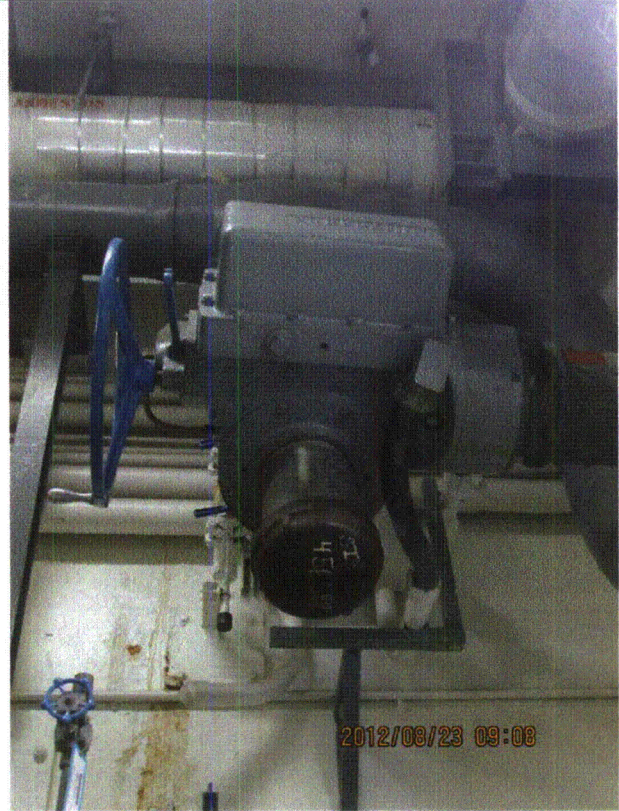
Equipment ID No.: 1-2301-9-MO

Equipment Class: (8) Motor-Operated and Solenoid-Operated Valves

Equipment Description: U-1 HPCI PMP DSCH VLV



Quad Cities 053



Quad Cities 054



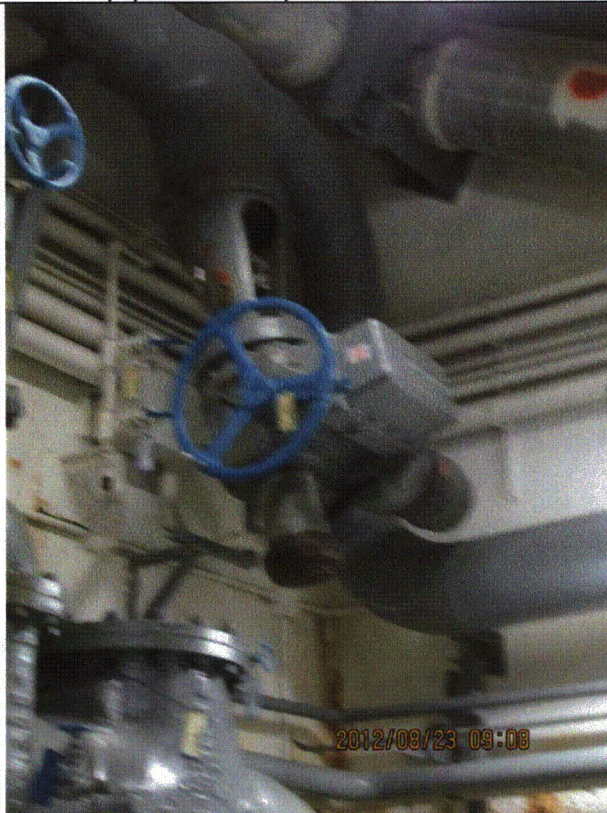
Status:  Y  N  U

**Seismic Walkdown Checklist (SWC)**

Equipment ID No.: 1-2301-9-MO

Equipment Class: (8) Motor-Operated and Solenoid-Operated Valves

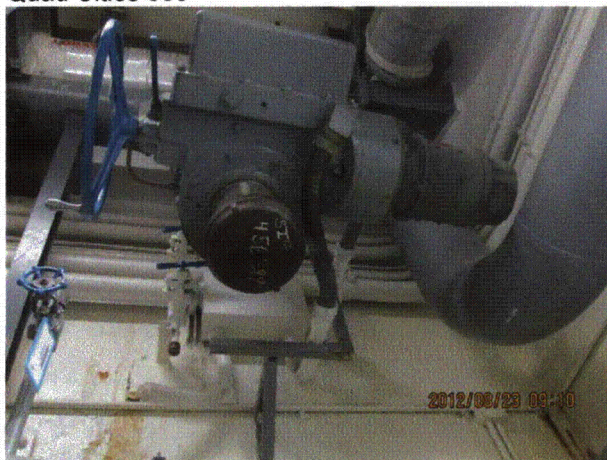
Equipment Description: U-1 HPCI PMP DSCH VLV



Quad Cities 055



Quad Cities 056



Quad Cities 057

Status:  Y  N  U

**Seismic Walkdown Checklist (SWC)**

Equipment ID No.: 1-2302

Equipment Class: (5) Horizontal Pumps

Equipment Description: HPCI/ HPCI Pump

Project: Quad Cities 1 SWEL

Location (Bldg, Elev, Room/Area): RB, 554.00 ft, ALL

Manufacturer/Model:

**Instructions for Completing Checklist**

This checklist may be used to document the results of the Seismic Walkdown of an item of equipment on the SWEL. The space below each of the following questions may be used to record the results of judgments and findings. Additional space is provided at the end of this checklist for documenting other comments.

**Anchorage**

1. Is anchorage configuration verification required (i.e., is the item one of the 50% of SWEL items requiring such verification)? Yes
  
2. Is the anchorage free of bent, broken, missing or loose hardware? Yes
  
3. Is the anchorage free of corrosion that is more than mild surface oxidation? Yes  
*Minor corrosion on skid judged to be acceptable.*
  
4. Is the anchorage free of visible cracks in the concrete near the anchors? Yes  
*Minor grout pad spalling judged to be acceptable.*
  
5. Is the anchorage configuration consistent with plant documentation? (Note: This question only applies if the item is one of the 50% for which an anchorage configuration verification is required.) Yes  
*Anchorage shown on drawing M-347, Rev. M and M-358, Rev. J*
  
6. Based on the above anchorage evaluations, is the anchorage free of potentially adverse seismic conditions? Yes

**Interaction Effects**

7. Are soft targets free from impact by nearby equipment or structures? Yes

Status:  Y  N  U

**Seismic Walkdown Checklist (SWC)**

Equipment ID No.: 1-2302

Equipment Class: (5) Horizontal Pumps

Equipment Description: HPCI/ HPCI Pump

8. Are overhead equipment, distribution systems, ceiling tiles and lighting, and masonry block walls not likely to collapse onto the equipment? Yes
9. Do attached lines have adequate flexibility to avoid damage? Yes
10. Based on the above seismic interaction evaluations, is equipment free of potentially adverse seismic interaction effects? Yes

**Other Adverse Conditions**

11. Have you looked for and found no adverse seismic conditions that could adversely affect the safety functions of the equipment? Yes

**Comments**

Seismic Walkdown Team: D. Carter & J. Griffith - 8/23/2012

Evaluated by: *David Carter* David Carter Date: 10/4/2012

*James D. Griffith* James Griffith 10/4/2012



Status:  Y  N  U

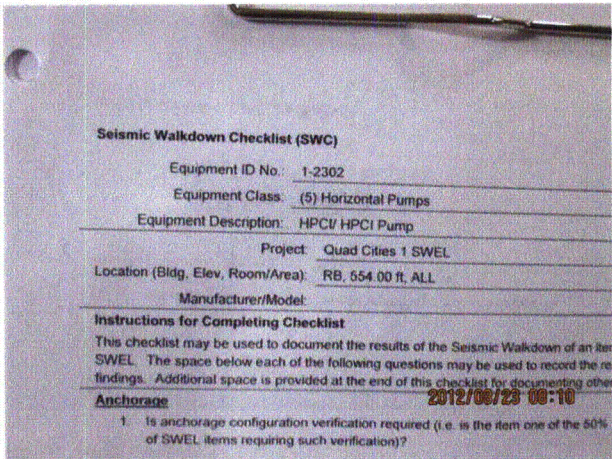
**Seismic Walkdown Checklist (SWC)**

Equipment ID No.: 1-2302

Equipment Class: (5) Horizontal Pumps

Equipment Description: HPCI/ HPCI Pump

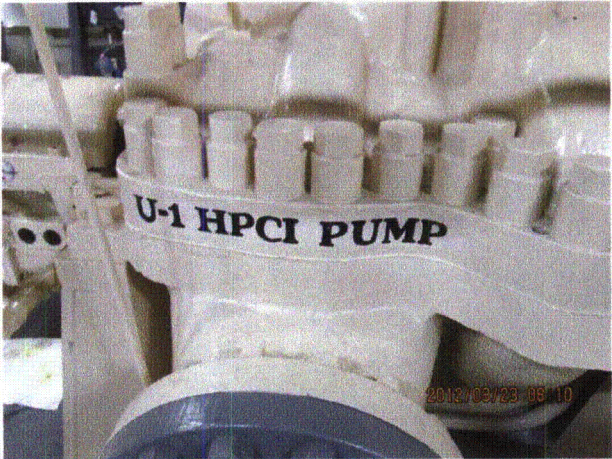
**Photos**



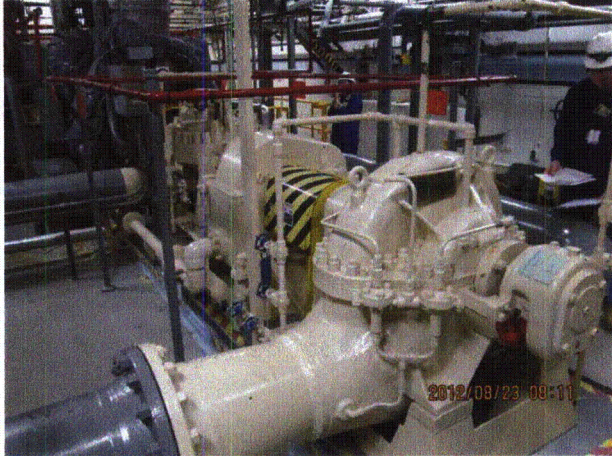
Quad Cities 001



Quad Cities 003



Quad Cities 002



Quad Cities 004



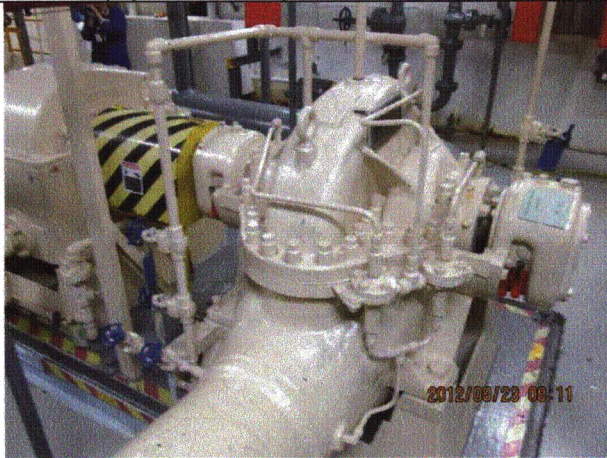
Status:  Y  N  U

**Seismic Walkdown Checklist (SWC)**

Equipment ID No.: 1-2302

Equipment Class: (5) Horizontal Pumps

Equipment Description: HPCI/ HPCI Pump



Quad Cities 005



Quad Cities 006



Quad Cities 007



Quad Cities 008



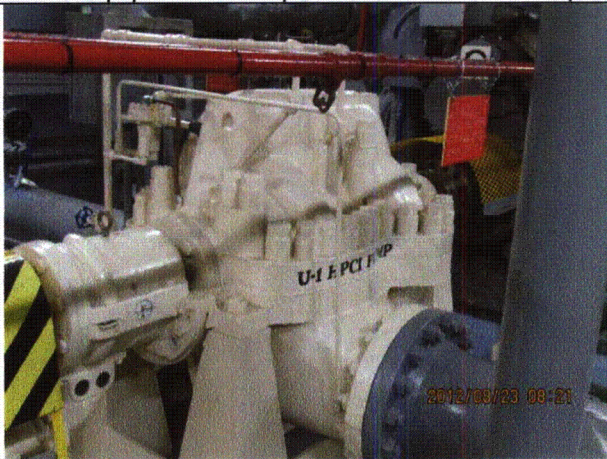
Status:  Y  N  U

**Seismic Walkdown Checklist (SWC)**

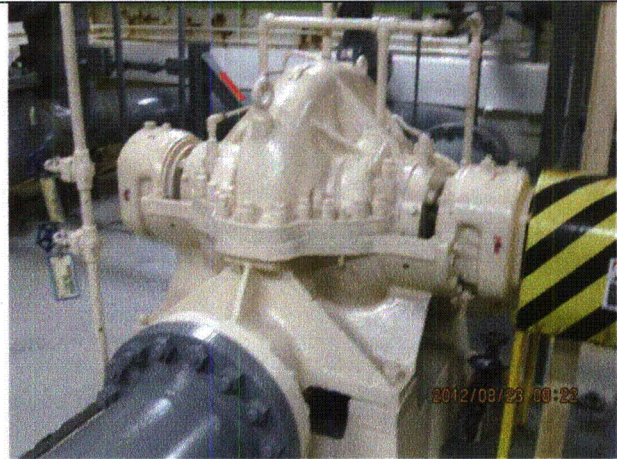
Equipment ID No.: 1-2302

Equipment Class: (5) Horizontal Pumps

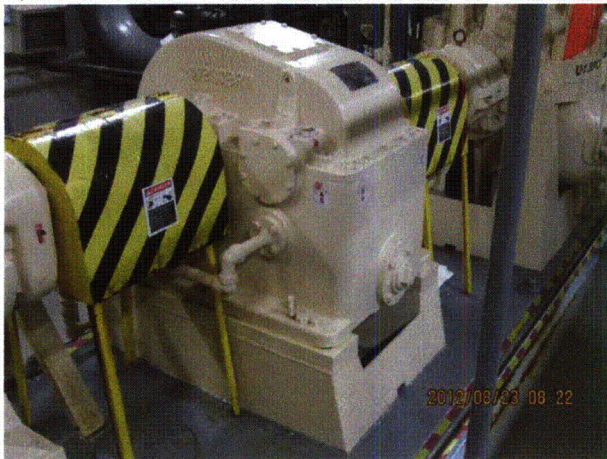
Equipment Description: HPCI/ HPCI Pump



Quad Cities 009



Quad Cities 010



Quad Cities 011



Status:  Y  N  U

**Seismic Walkdown Checklist (SWC)**

Equipment ID No.: 1-2304

Equipment Class: (5) Horizontal Pumps

Equipment Description: PUMP U- HPCI CONDENSATE

Project: Quad Cities 1 SWEL

Location (Bldg, Elev, Room/Area): RB, 554.00 ft, ALL

Manufacturer/Model: \_\_\_\_\_

**Instructions for Completing Checklist**

This checklist may be used to document the results of the Seismic Walkdown of an item of equipment on the SWEL. The space below each of the following questions may be used to record the results of judgments and findings. Additional space is provided at the end of this checklist for documenting other comments.

**Anchorage**

1. Is anchorage configuration verification required (i.e., is the item one of the 50% of SWEL items requiring such verification)? No  
*Pump skid anchored to floor at one end and supported by 2 U-bolts from gland seal condenser at other end.*
  
2. Is the anchorage free of bent, broken, missing or loose hardware? Yes
  
3. Is the anchorage free of corrosion that is more than mild surface oxidation? Yes  
*Minor corrosion on anchors and on pump and motor hold-down bolts judged to be acceptable.*
  
4. Is the anchorage free of visible cracks in the concrete near the anchors? Yes
  
5. Is the anchorage configuration consistent with plant documentation? (Note: This question only applies if the item is one of the 50% for which an anchorage configuration verification is required.) Not Applicable
  
6. Based on the above anchorage evaluations, is the anchorage free of potentially adverse seismic conditions? Yes

Status:  Y  N  U

**Seismic Walkdown Checklist (SWC)**

Equipment ID No.: 1-2304

Equipment Class: (5) Horizontal Pumps

Equipment Description: PUMP U- HPCI CONDENSATE

**Interaction Effects**

7. Are soft targets free from impact by nearby equipment or structures? Yes  
*Flexible conduit from pump motor rests on pipe; judged to be acceptable.*
8. Are overhead equipment, distribution systems, ceiling tiles and lighting, and masonry block walls not likely to collapse onto the equipment? Yes
9. Do attached lines have adequate flexibility to avoid damage? Yes
10. Based on the above seismic interaction evaluations, is equipment free of potentially adverse seismic interaction effects? Yes

**Other Adverse Conditions**

11. Have you looked for and found no adverse seismic conditions that could adversely affect the safety functions of the equipment? Yes

**Comments**

\*\*\*\*\*

Seismic Walkdown Team: D. Carter & J. Griffith - 8/23/2012

Evaluated by: *David Carter* David Carter

Date: 10/4/2012

*James D. Griffith* James Griffith

10/4/2012

Status:  Y  N  U

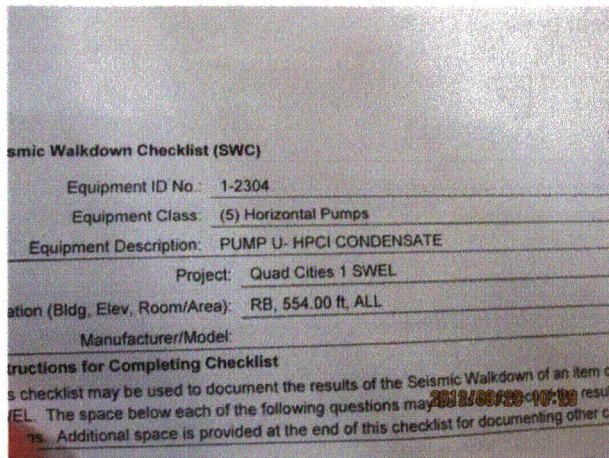
### Seismic Walkdown Checklist (SWC)

Equipment ID No.: 1-2304

Equipment Class: (5) Horizontal Pumps

Equipment Description: PUMP U- HPCI CONDENSATE

#### Photos



Quad Cities 090



Quad Cities 092



Quad Cities 091



Quad Cities 093



Status:  Y  N  U

**Seismic Walkdown Checklist (SWC)**

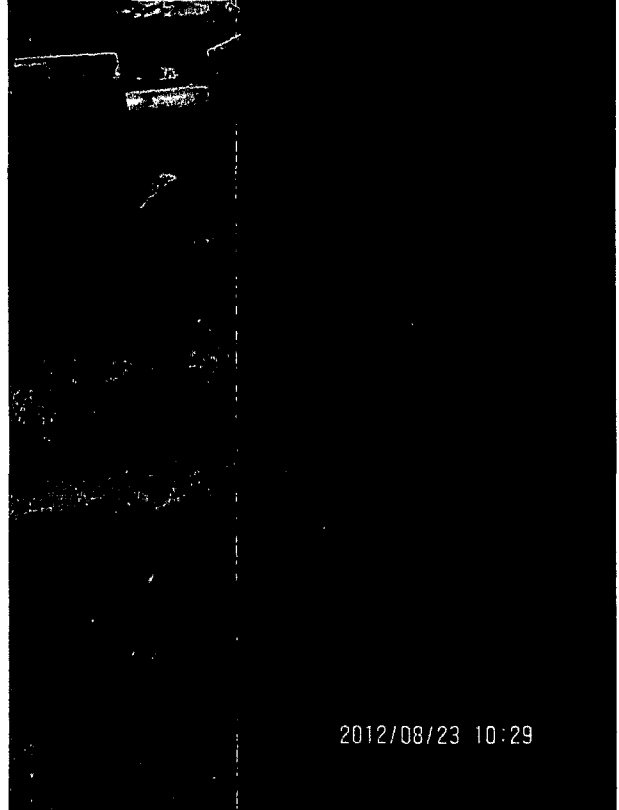
Equipment ID No.: 1-2304

Equipment Class: (5) Horizontal Pumps

Equipment Description: PUMP U- HPCI CONDENSATE



Quad Cities 094



Quad Cities 095

Status:  Y  N  U

**Seismic Walkdown Checklist (SWC)**

Equipment ID No.: 1-2304

Equipment Class: (5) Horizontal Pumps

Equipment Description: PUMP U- HPCI CONDENSATE



Quad Cities 096



Quad Cities 097