

Status: Y N U

Area Walk-By Checklist (AWC)

Location (Bldg, Elev, Room/Area): AWC-U2-06

Instructions for Completing Checklist

This checklist may be used to document the results of the Area Walk-By near one or more SWEL items. The space below each of the following questions may be used to record the results of judgments and findings. Additional space is provided at the end of this checklist for documenting other comments.

1. Does anchorage of equipment in the area appear to be free of potentially adverse seismic conditions (if visible without necessarily opening cabinets)? Yes

 2. Does anchorage of equipment in the area appear to be free of significant degraded conditions? Yes

 3. Based on a visual inspection from the floor, do the cable/conduit raceways and HVAC ducting appear to be free of potentially adverse seismic conditions (e.g., condition of supports is adequate and fill conditions of cable trays appear to be inside acceptable limits)? Yes
Minor bends in rod hangers judged to be acceptable.

 4. Does it appear that the area is free of potentially adverse seismic spatial interactions with other equipment in the area (e.g., ceiling tiles and lighting)? Yes
L-shaped short masonry wall near robust core-spray pipe and abandoned fire piping judged to be acceptable.

 5. Does it appear that the area is free of potentially adverse seismic interactions that could cause flooding or spray in the area? Yes
Fire piping well-supported and judged to be acceptable.

 6. Does it appear that the area is free of potentially adverse seismic interactions that could cause a fire in the area? Yes

 7. Does it appear that the area is free of potentially adverse seismic interactions associated with housekeeping practices, storage of portable equipment, and temporary installations (e.g., scaffolding, lead shielding)? Yes
-

Status: Y N U

Area Walk-By Checklist (AWC)

Location (Bldg, Elev, Room/Area): AWC-U2-06

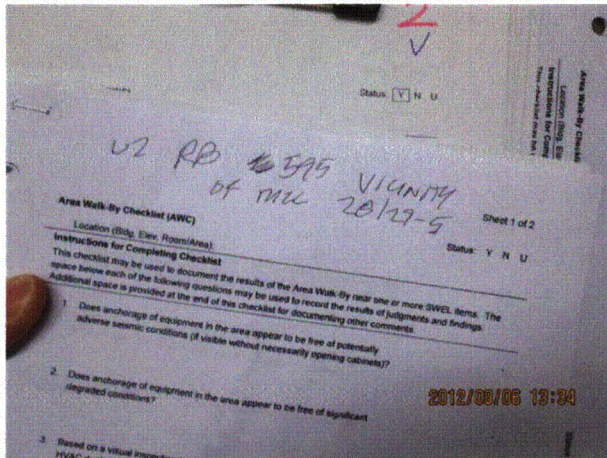
8. Have you looked for and found no other seismic conditions that could adversely affect the safety functions of the equipment in the area? Yes

Comments

Seismic Walkdown Team: J. Griffith & M. Wodarczyk - 8/6/2012

Evaluated by: James D. Griffith James Griffith Date: 10/4/2012
Michael J. Wodarczyk Michael Wodarczyk 10/4/2012

Photos



20120806-QuadCities-2 272



20120806-QuadCities-2 273

Status: Y N U

Area Walk-By Checklist (AWC)

Location (Bldg, Elev, Room/Area): AWC-U2-06



20120806-QuadCities-2 274



20120806-QuadCities-2 275



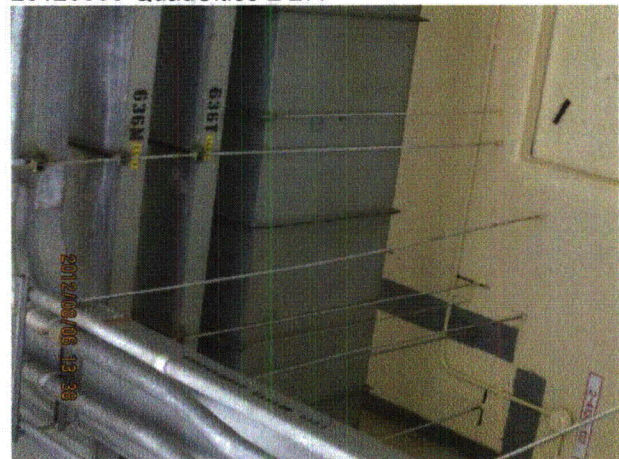
20120806-QuadCities-2 276



20120806-QuadCities-2 277



20120806-QuadCities-2 278

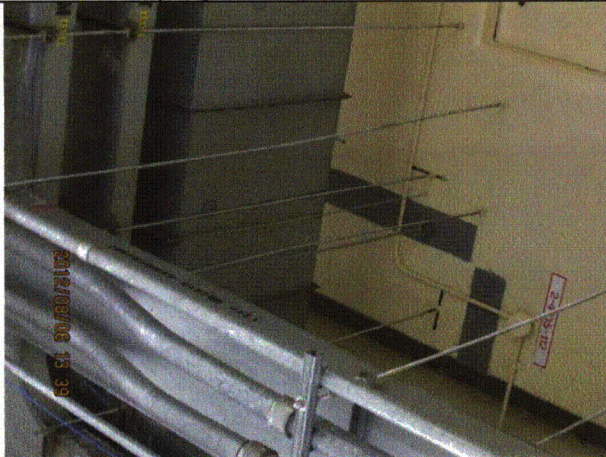


20120806-QuadCities-2 279

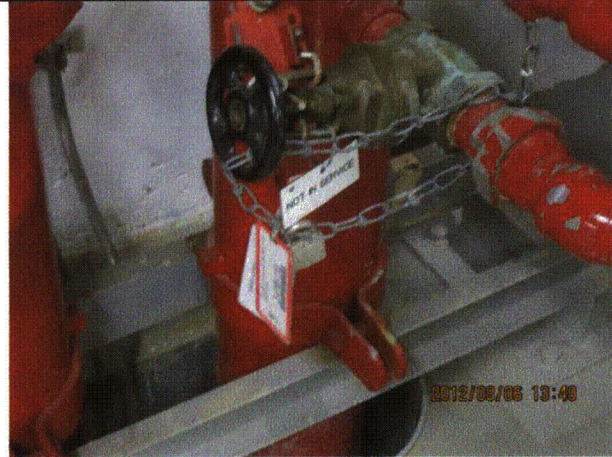
Status: Y N U

Area Walk-By Checklist (AWC)

Location (Bldg, Elev, Room/Area): AWC-U2-06



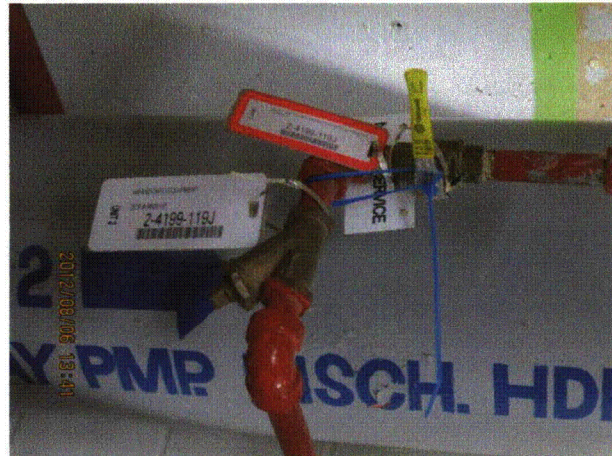
20120806-QuadCities-2 280



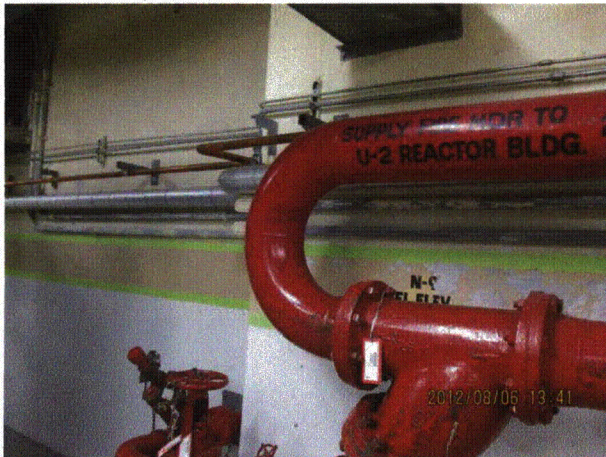
20120806-QuadCities-2 281



20120806-QuadCities-2 282



20120806-QuadCities-2 283



20120806-QuadCities-2 284

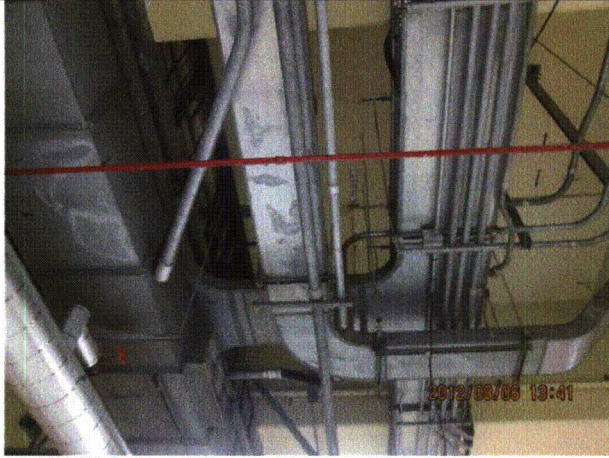


20120806-QuadCities-2 285

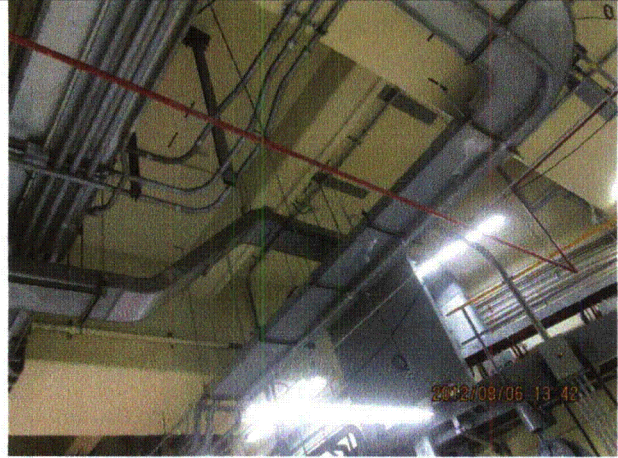
Status: Y N U

Area Walk-By Checklist (AWC)

Location (Bldg, Elev, Room/Area): AWC-U2-06



20120806-QuadCities-2 286



20120806-QuadCities-2 287

Status: Y N U

Area Walk-By Checklist (AWC)

Location (Bldg, Elev, Room/Area): AWC-U2-07

Instructions for Completing Checklist

This checklist may be used to document the results of the Area Walk-By near one or more SWEL items. The space below each of the following questions may be used to record the results of judgments and findings. Additional space is provided at the end of this checklist for documenting other comments.

1. Does anchorage of equipment in the area appear to be free of potentially adverse seismic conditions (if visible without necessarily opening cabinets)? Yes

 2. Does anchorage of equipment in the area appear to be free of significant degraded conditions? Yes
Minor surface corrosion judged to be acceptable. One of four abandoned support base plate anchors missing nut; judged to be acceptable.
Wall-mounted wireway supports missing side anchors but judged to be acceptable.
 3. Based on a visual inspection from the floor, do the cable/conduit raceways and HVAC ducting appear to be free of potentially adverse seismic conditions (e.g., condition of supports is adequate and fill conditions of cable trays appear to be inside acceptable limits)? Yes

 4. Does it appear that the area is free of potentially adverse seismic spatial interactions with other equipment in the area (e.g., ceiling tiles and lighting)? Yes
Pipes, tubes, and conduits in close proximity at several locations. Items are flexible and judged to be acceptable.

 5. Does it appear that the area is free of potentially adverse seismic interactions that could cause flooding or spray in the area? Yes
Threaded fire piping, unit heater, and associated piping well-supported.

 6. Does it appear that the area is free of potentially adverse seismic interactions that could cause a fire in the area? Yes
Gas bottles adequately chained.

 7. Does it appear that the area is free of potentially adverse seismic interactions associated with housekeeping practices, storage of portable equipment, and temporary installations (e.g., scaffolding, lead shielding)? Yes
Scaffolds restrained adequately.
-

Status: Y N U

Area Walk-By Checklist (AWC)

Location (Bldg, Elev, Room/Area): AWC-U2-07

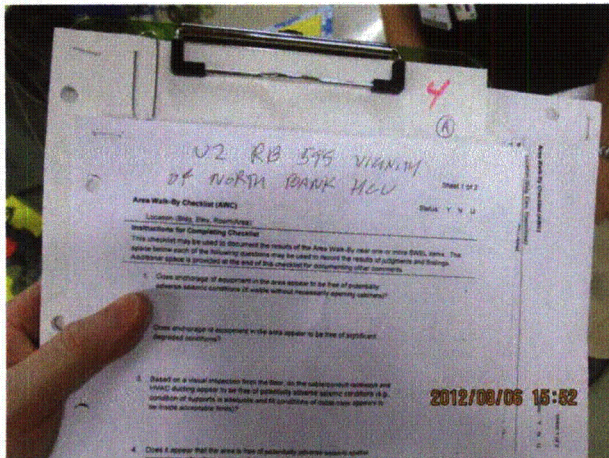
8. Have you looked for and found no other seismic conditions that could adversely affect the safety functions of the equipment in the area? Yes
Short, L-shaped masonry walls (98 and 99 per B-1734, Rev. C) near robust items are safety-related.

Comments

Seismic Walkdown Team: J. Griffith & M. Wodarczyk - 8/6/2012

Evaluated by: James D. Griffith James Griffith Date: 10/4/2012
Michael J. Wodarczyk Michael Wodarczyk 10/4/2012

Photos



20120806-QuadCities-2 433



20120806-QuadCities-2 434

Status: Y N U

Area Walk-By Checklist (AWC)

Location (Bldg, Elev, Room/Area): AWC-U2-07



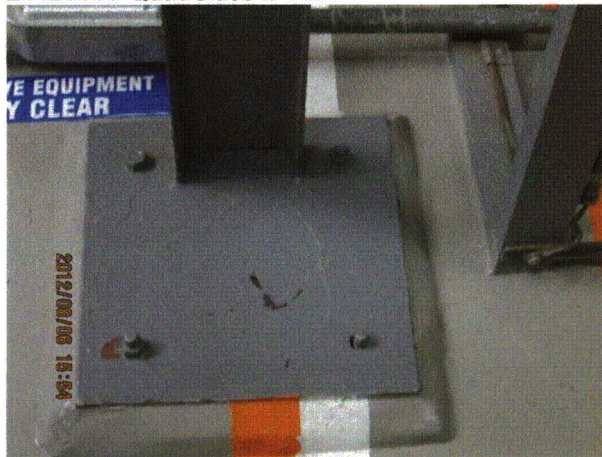
20120806-QuadCities-2 435



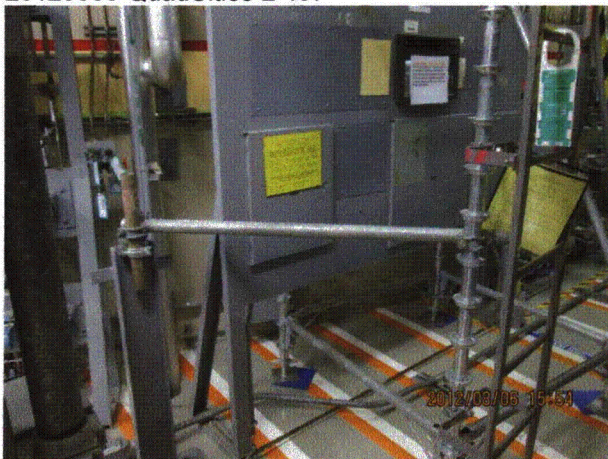
20120806-QuadCities-2 436



20120806-QuadCities-2 437



20120806-QuadCities-2 438



20120806-QuadCities-2 439



20120806-QuadCities-2 440

Status: Y N U

Area Walk-By Checklist (AWC)

Location (Bldg, Elev, Room/Area): AWC-U2-07



20120806-QuadCities-2 441



20120806-QuadCities-2 442



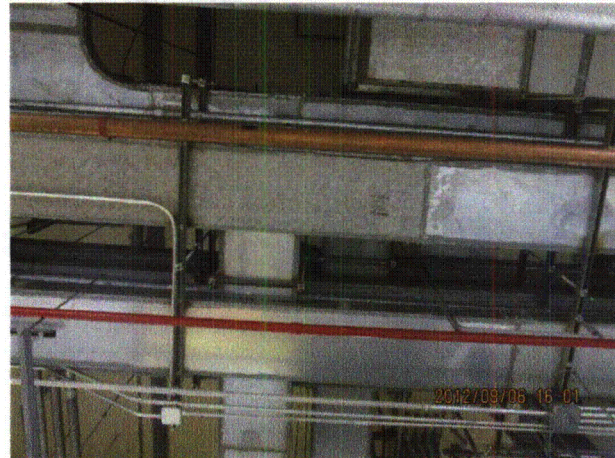
20120806-QuadCities-2 443



20120806-QuadCities-2 444



20120806-QuadCities-2 445



20120806-QuadCities-2 446

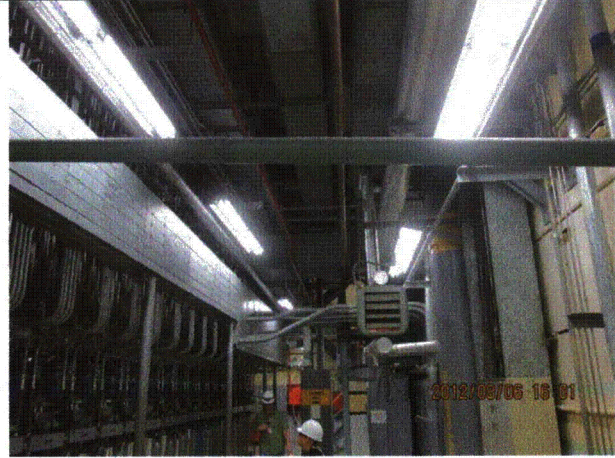
Status: Y N U

Area Walk-By Checklist (AWC)

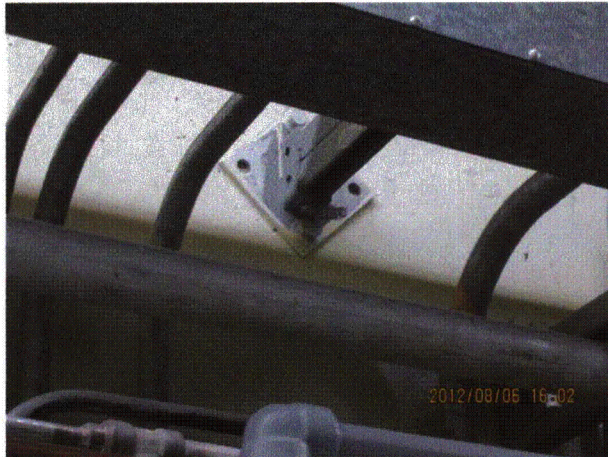
Location (Bldg, Elev, Room/Area): AWC-U2-07



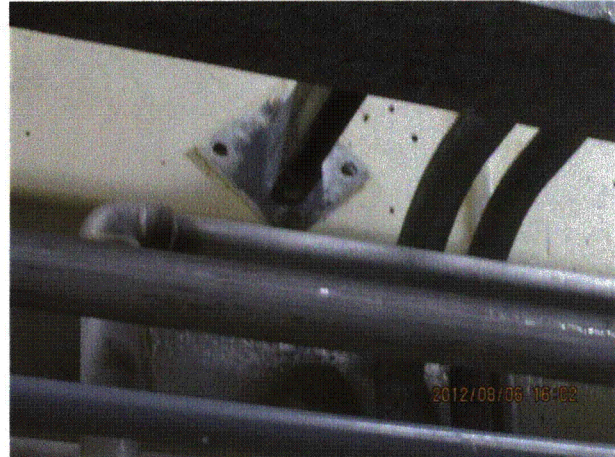
20120806-QuadCities-2 447



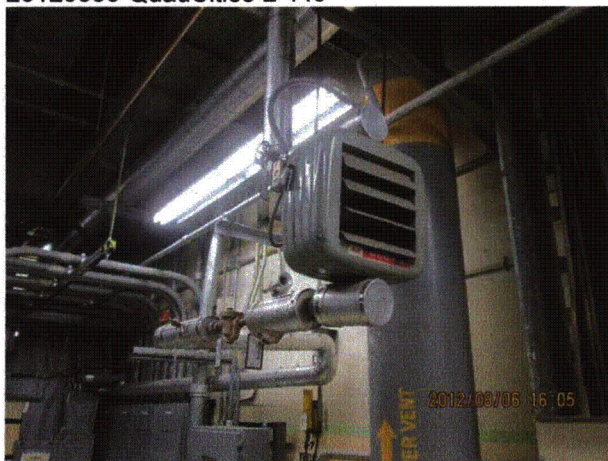
20120806-QuadCities-2 448



20120806-QuadCities-2 449



20120806-QuadCities-2 450



20120806-QuadCities-2 451

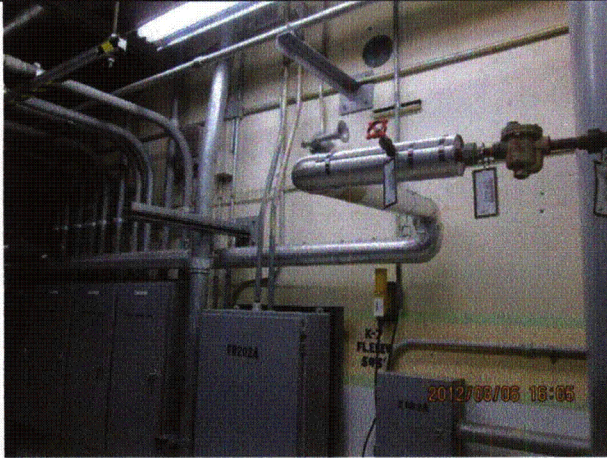


20120806-QuadCities-2 452

Status: Y N U

Area Walk-By Checklist (AWC)

Location (Bldg, Elev, Room/Area): AWC-U2-07



20120806-QuadCities-2 453



20120806-QuadCities-2 454



20120806-QuadCities-2 455



20120806-QuadCities-2 456



20120806-QuadCities-2 457



20120806-QuadCities-2 458

Status: Y N U

Area Walk-By Checklist (AWC)

Location (Bldg, Elev, Room/Area): AWC-U2-07



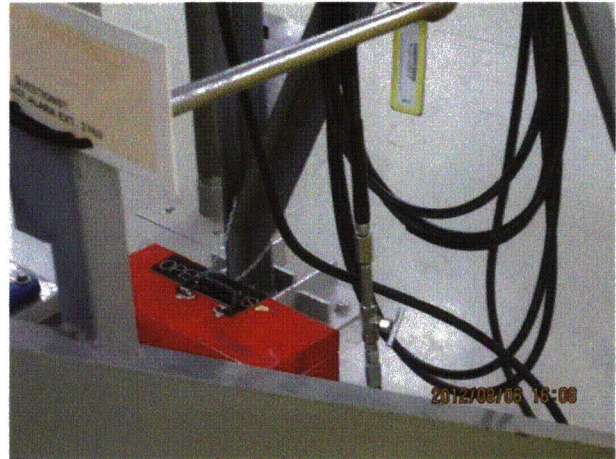
20120806-QuadCities-2 459



20120806-QuadCities-2 460



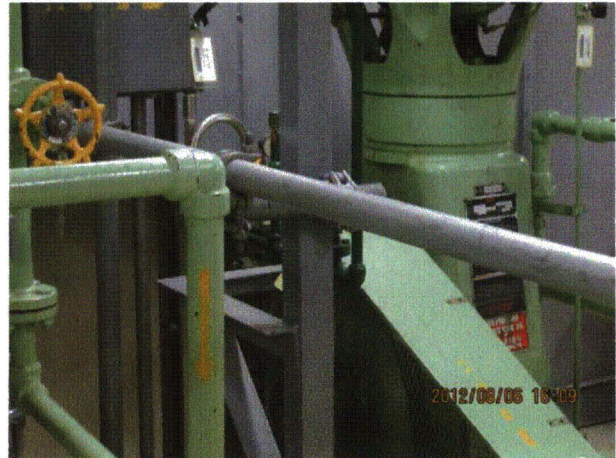
20120806-QuadCities-2 461



20120806-QuadCities-2 462



20120806-QuadCities-2 463

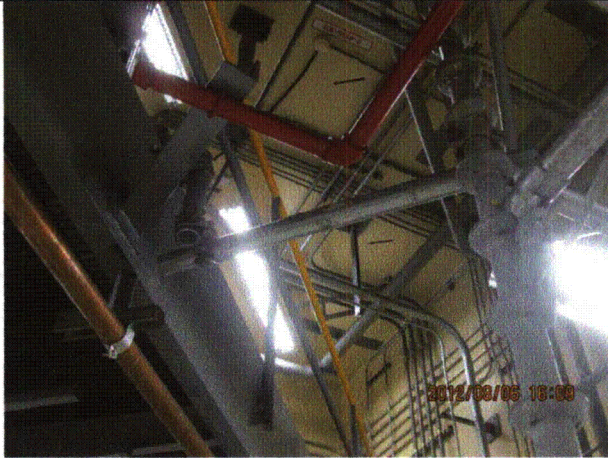


20120806-QuadCities-2 464

Status: Y N U

Area Walk-By Checklist (AWC)

Location (Bldg, Elev, Room/Area): AWC-U2-07



20120806-QuadCities-2 465



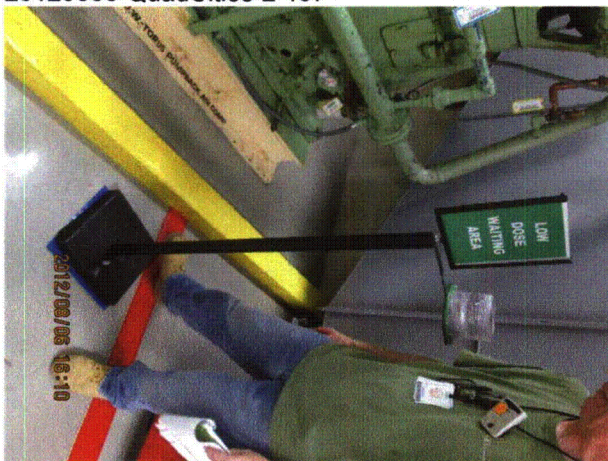
20120806-QuadCities-2 466



20120806-QuadCities-2 467



20120806-QuadCities-2 468



20120806-QuadCities-2 469



20120806-QuadCities-2 470

Status: Y N U

Area Walk-By Checklist (AWC)

Location (Bldg, Elev, Room/Area): AWC-U2-08

Instructions for Completing Checklist

This checklist may be used to document the results of the Area Walk-By near one or more SWEL items. The space below each of the following questions may be used to record the results of judgments and findings. Additional space is provided at the end of this checklist for documenting other comments.

1. Does anchorage of equipment in the area appear to be free of potentially adverse seismic conditions (if visible without necessarily opening cabinets)? Yes

 2. Does anchorage of equipment in the area appear to be free of significant degraded conditions? Yes
Minor corrosion on some anchors judged to be acceptable.
1 hanger for 2 tubes missing top anchor. Short spans between adjacent hangers, therefore tubes are judged to be acceptable. See IR 1398048.
 3. Based on a visual inspection from the floor, do the cable/conduit raceways and HVAC ducting appear to be free of potentially adverse seismic conditions (e.g., condition of supports is adequate and fill conditions of cable trays appear to be inside acceptable limits)? Yes
Tubes, pipes, and conduits in close proximity at several locations. Items are flexible and judged to be acceptable.

 4. Does it appear that the area is free of potentially adverse seismic spatial interactions with other equipment in the area (e.g., ceiling tiles and lighting)? Yes
Light fixture beam clamp oriented incorrectly. Judged to be acceptable due to low station vertical seismic acceleration and light weight of fixture. See IR 1398051.

 5. Does it appear that the area is free of potentially adverse seismic interactions that could cause flooding or spray in the area? Yes
Threaded fire piping, room heater, and associated piping well-supported and judged to be acceptable.

 6. Does it appear that the area is free of potentially adverse seismic interactions that could cause a fire in the area? Yes
Gas bottles chained and judged to be acceptable.

 7. Does it appear that the area is free of potentially adverse seismic interactions associated with housekeeping practices, storage of portable equipment, and temporary installations (e.g., scaffolding, lead shielding)? Yes
Storage issue corrected during walkdown.
-

Status: Y N U

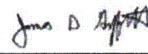
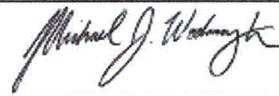
Area Walk-By Checklist (AWC)

Location (Bldg, Elev, Room/Area): AWC-U2-08

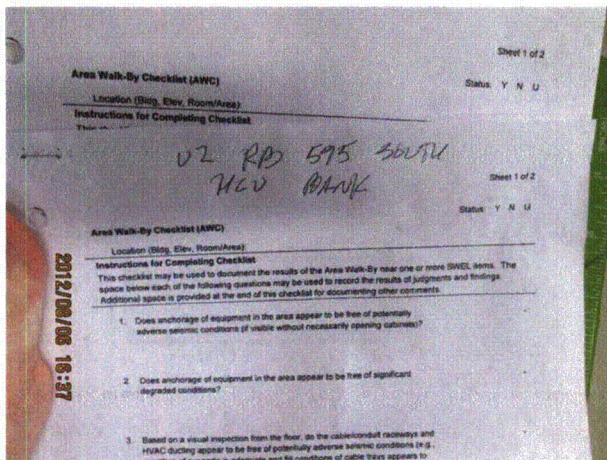
8. Have you looked for and found no other seismic conditions that could adversely affect the safety functions of the equipment in the area? Yes

Comments

Seismic Walkdown Team: J. Griffith & M. Wodarczyk - 8/6/2012

Evaluated by:  James Griffith Date: 10/4/2012
 Michael Wodarczyk 10/4/2012

Photos



20120806-QuadCities-2 504



20120806-QuadCities-2 505

Status: Y N U

Area Walk-By Checklist (AWC)

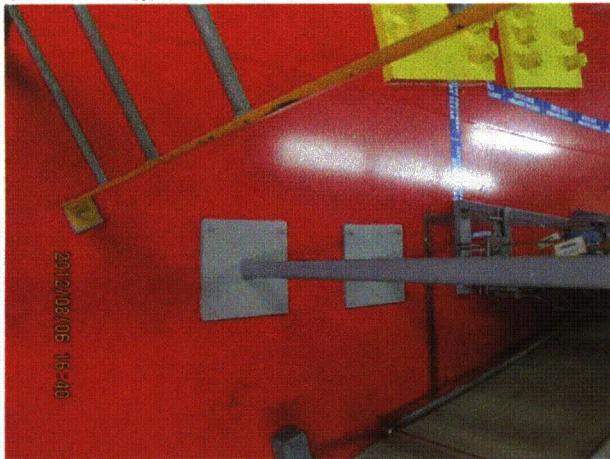
Location (Bldg, Elev, Room/Area): AWC-U2-08



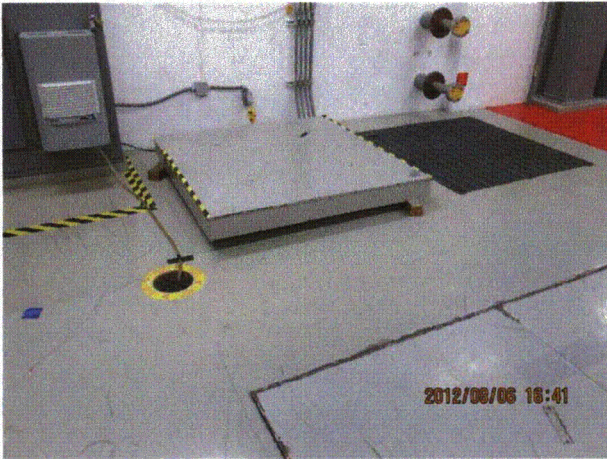
20120806-QuadCities-2 506



20120806-QuadCities-2 507



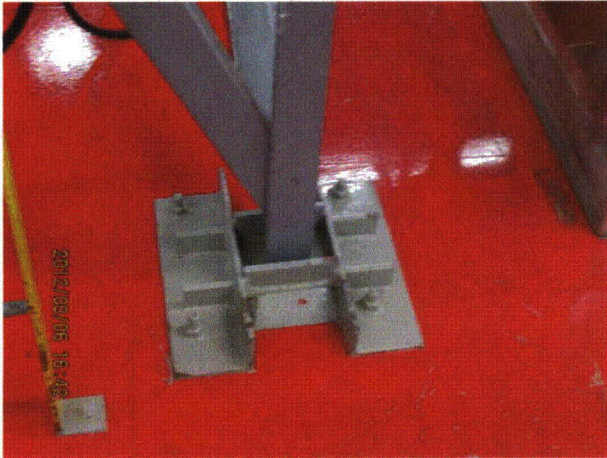
20120806-QuadCities-2 508



20120806-QuadCities-2 509



20120806-QuadCities-2 510

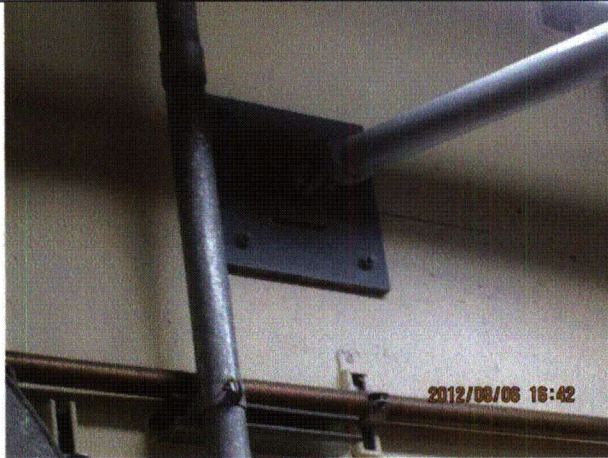


20120806-QuadCities-2 511

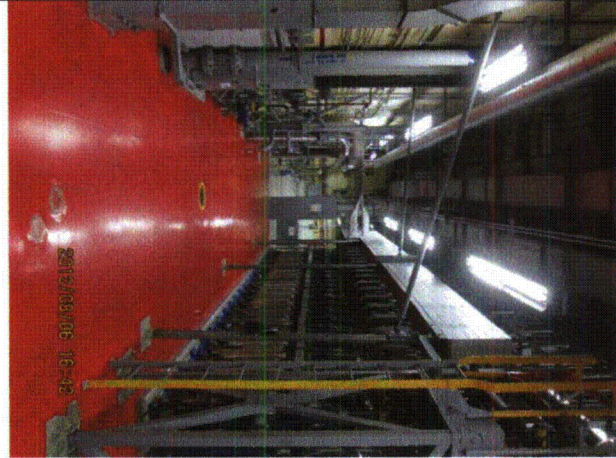
Status: Y N U

Area Walk-By Checklist (AWC)

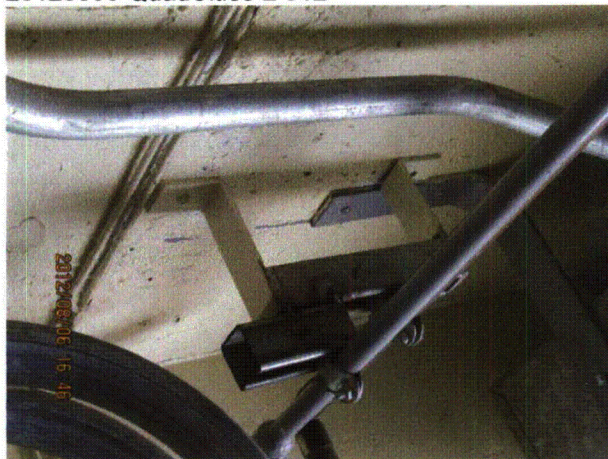
Location (Bldg, Elev, Room/Area): AWC-U2-08



20120806-QuadCities-2 512



20120806-QuadCities-2 513



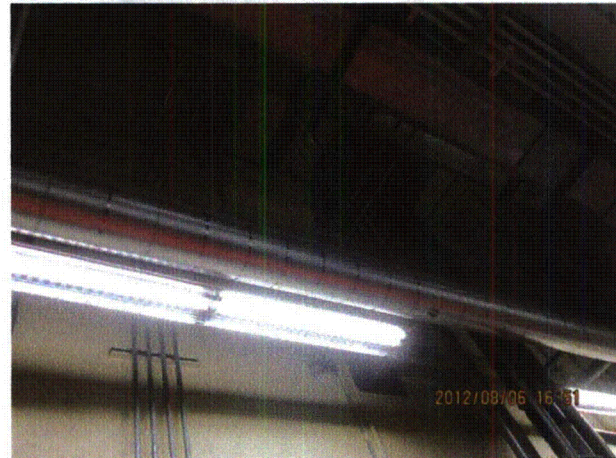
20120806-QuadCities-2 514



20120806-QuadCities-2 515



20120806-QuadCities-2 516

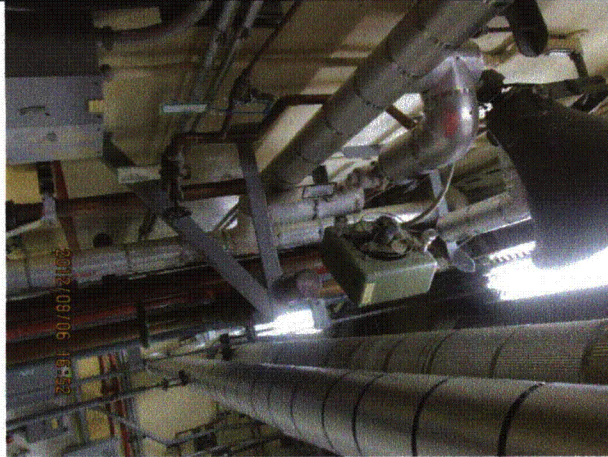


20120806-QuadCities-2 517

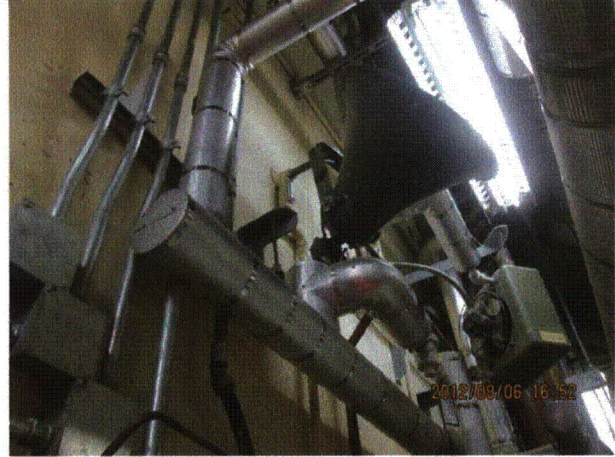
Status: Y N U

Area Walk-By Checklist (AWC)

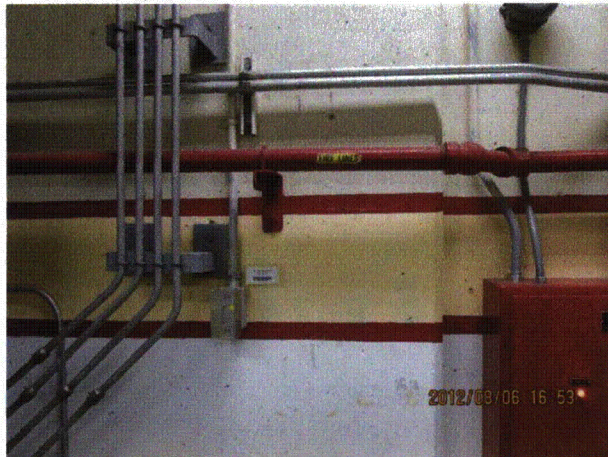
Location (Bldg, Elev, Room/Area): AWC-U2-08



20120806-QuadCities-2 518



20120806-QuadCities-2 519



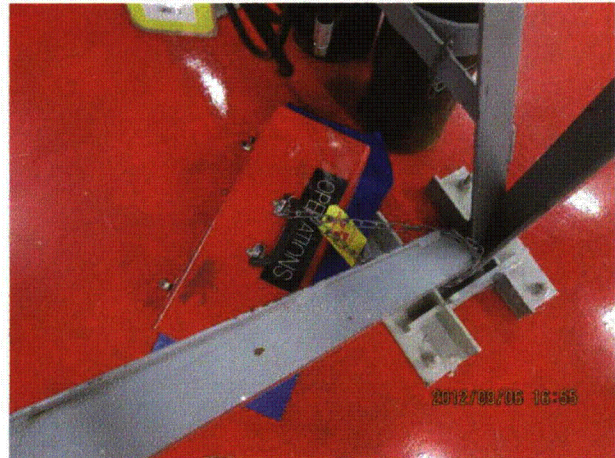
20120806-QuadCities-2 520



20120806-QuadCities-2 521



20120806-QuadCities-2 522

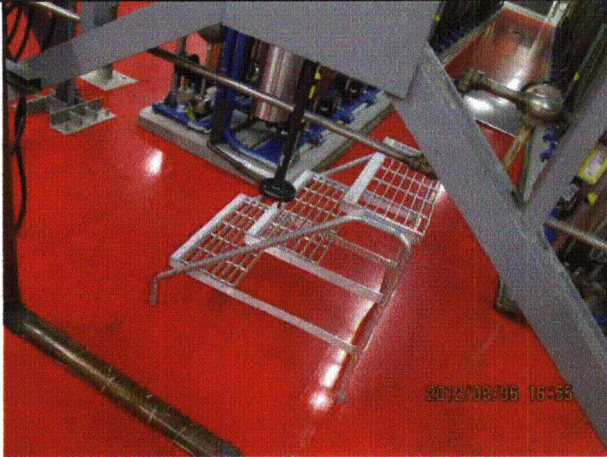


20120806-QuadCities-2 523

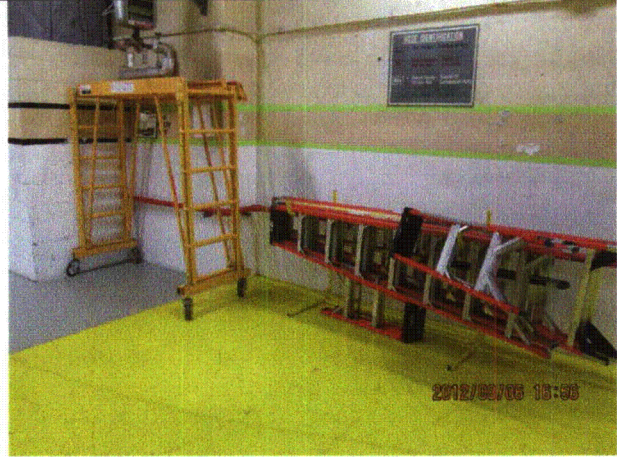
Status: Y N U

Area Walk-By Checklist (AWC)

Location (Bldg, Elev, Room/Area): AWC-U2-08



20120806-QuadCities-2 524



20120806-QuadCities-2 525

Status: Y N U

Area Walk-By Checklist (AWC)

Location (Bldg, Elev, Room/Area): AWC-U2-09

Instructions for Completing Checklist

This checklist may be used to document the results of the Area Walk-By near one or more SWEL items. The space below each of the following questions may be used to record the results of judgments and findings. Additional space is provided at the end of this checklist for documenting other comments.

1. Does anchorage of equipment in the area appear to be free of potentially adverse seismic conditions (if visible without necessarily opening cabinets)? Yes

 2. Does anchorage of equipment in the area appear to be free of significant degraded conditions? Yes
Minor surface corrosion judged to be acceptable.

 3. Based on a visual inspection from the floor, do the cable/conduit raceways and HVAC ducting appear to be free of potentially adverse seismic conditions (e.g., condition of supports is adequate and fill conditions of cable trays appear to be inside acceptable limits)? Yes
Minor bends in hanger rods judged to be acceptable.

 4. Does it appear that the area is free of potentially adverse seismic spatial interactions with other equipment in the area (e.g., ceiling tiles and lighting)? Yes
Tubes, conduits, and pipes in close proximity are flexible and judged to be acceptable.

 5. Does it appear that the area is free of potentially adverse seismic interactions that could cause flooding or spray in the area? Yes
Deluge system near masonry wall dry in present state; requires signal to activate. Judged to be acceptable.

Threaded fire pipe, unit heater, and associated piping well-supported and judged to be acceptable.

Flexible pipe and rigid duct in contact; judged to be acceptable.
 6. Does it appear that the area is free of potentially adverse seismic interactions that could cause a fire in the area? Yes
Metal oily rag bin with cover judged to be acceptable.

 7. Does it appear that the area is free of potentially adverse seismic interactions associated with housekeeping practices, storage of portable equipment, and temporary installations (e.g., scaffolding, lead shielding)? Yes
-

Status: Y N U

Area Walk-By Checklist (AWC)

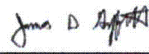
Location (Bldg, Elev, Room/Area): AWC-U2-09

8. Have you looked for and found no other seismic conditions that could adversely affect the safety functions of the equipment in the area? Yes

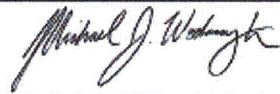
Comments

Seismic Walkdown Team: J. Griffith & M. Wodarczyk - 8/7/2012

Evaluated by:

 James Griffith

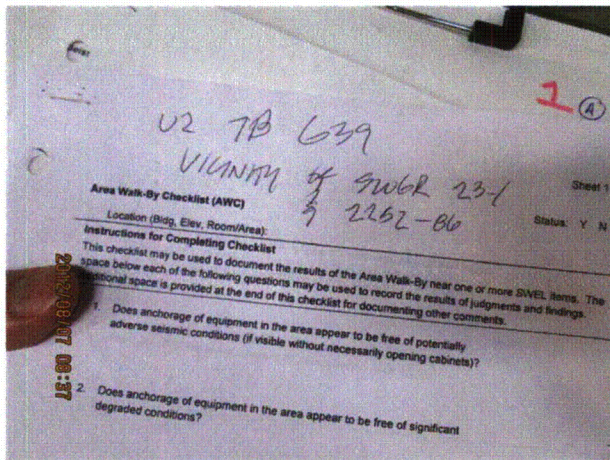
Date: 10/4/2012



Michael Wodarczyk

10/4/2012

Photos



20120807-QuadCities-2 042



20120807-QuadCities-2 043

Status: Y N U

Area Walk-By Checklist (AWC)

Location (Bldg, Elev, Room/Area): AWC-U2-09



20120807-QuadCities-2 044



20120807-QuadCities-2 045



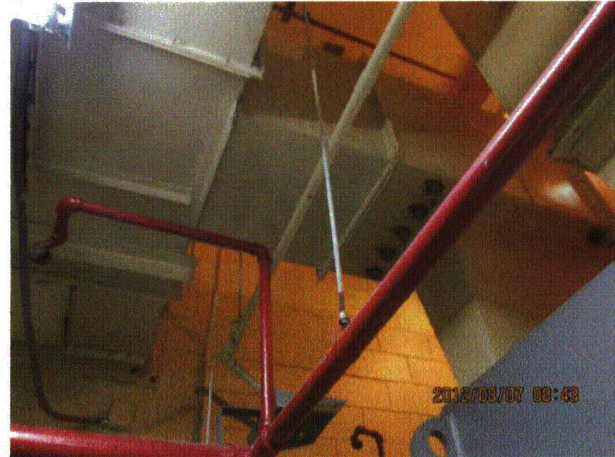
20120807-QuadCities-2 046



20120807-QuadCities-2 047



20120807-QuadCities-2 048



20120807-QuadCities-2 049

Status: Y N U

Area Walk-By Checklist (AWC)

Location (Bldg, Elev, Room/Area): AWC-U2-09



20120807-QuadCities-2 056



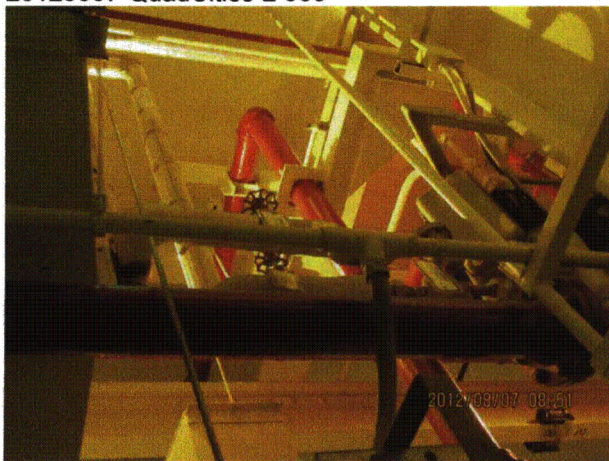
20120807-QuadCities-2 057



20120807-QuadCities-2 058



20120807-QuadCities-2 059



20120807-QuadCities-2 060



20120807-QuadCities-2 061

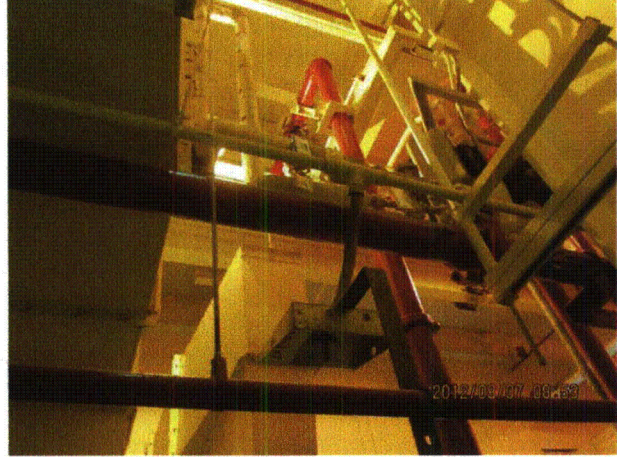
Status: Y N U

Area Walk-By Checklist (AWC)

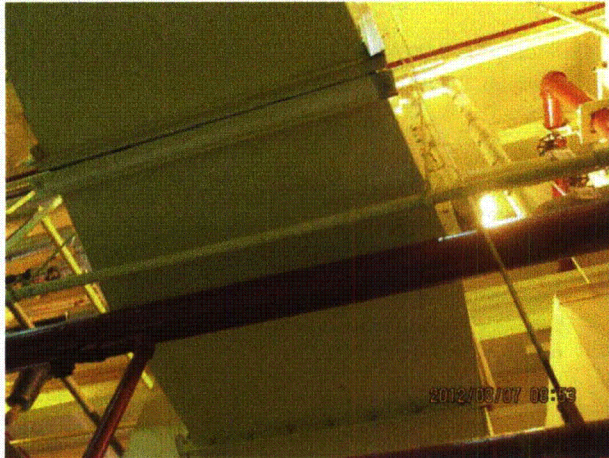
Location (Bldg, Elev, Room/Area): AWC-U2-09



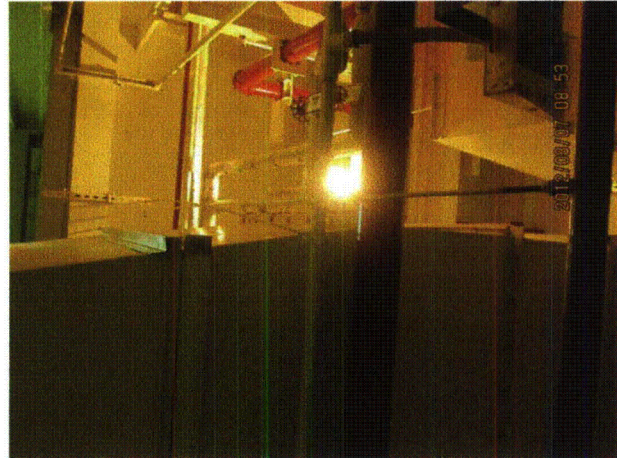
20120807-QuadCities-2 062



20120807-QuadCities-2 063



20120807-QuadCities-2 064



20120807-QuadCities-2 065

Status: Y N U

Area Walk-By Checklist (AWC)

Location (Bldg, Elev, Room/Area): AWC-U2-10

Instructions for Completing Checklist

This checklist may be used to document the results of the Area Walk-By near one or more SWEL items. The space below each of the following questions may be used to record the results of judgments and findings. Additional space is provided at the end of this checklist for documenting other comments.

1. Does anchorage of equipment in the area appear to be free of potentially adverse seismic conditions (if visible without necessarily opening cabinets)? Yes

2. Does anchorage of equipment in the area appear to be free of significant degraded conditions? Yes
Open anchor hole for Switchgear 24-1 base angle. No hole in concrete and no broken anchor; judged to be acceptable.

3. Based on a visual inspection from the floor, do the cable/conduit raceways and HVAC ducting appear to be free of potentially adverse seismic conditions (e.g., condition of supports is adequate and fill conditions of cable trays appear to be inside acceptable limits)? Yes
Minor bends in rod hangers judged to be acceptable.

4. Does it appear that the area is free of potentially adverse seismic spatial interactions with other equipment in the area (e.g., ceiling tiles and lighting)? Yes
Hanger rods and pipes in close proximity and judged to be acceptable.

5. Does it appear that the area is free of potentially adverse seismic interactions that could cause flooding or spray in the area? Yes
Threaded fire piping well-supported and judged to be acceptable.

6. Does it appear that the area is free of potentially adverse seismic interactions that could cause a fire in the area? Yes

7. Does it appear that the area is free of potentially adverse seismic interactions associated with housekeeping practices, storage of portable equipment, and temporary installations (e.g., scaffolding, lead shielding)? Yes
Robust scaffold barrier tied off adequately.

Storage issue corrected during walkdown.

Status: Y N U

Area Walk-By Checklist (AWC)

Location (Bldg, Elev, Room/Area): AWC-U2-10

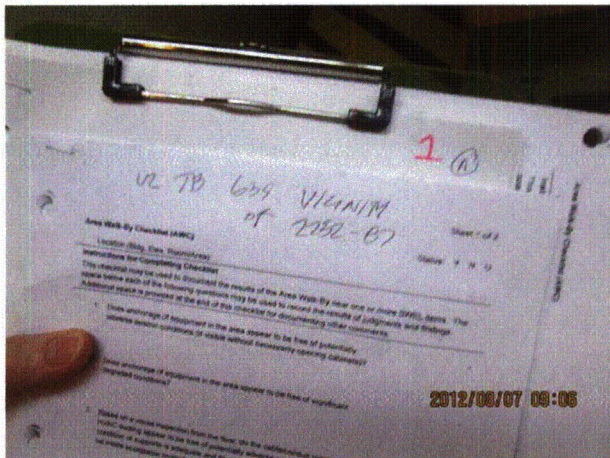
8. Have you looked for and found no other seismic conditions that could adversely affect the safety functions of the equipment in the area? Yes
Masonry wall with top restraint obscured by fireproofing on this side. No soft targets on this side of wall. Opposite side of masonry wall has restraint at top. Judged to be acceptable.

Comments

Seismic Walkdown Team: J. Griffith & M. Wodarczyk - 8/7/2012

Evaluated by: James D. Griffith James Griffith Date: 10/4/2012
Michael J. Wodarczyk Michael Wodarczyk 10/4/2012

Photos



20120807-QuadCities-2 084

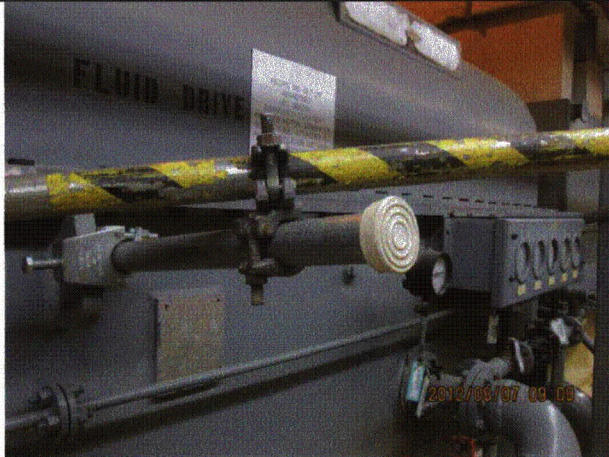


20120807-QuadCities-2 085

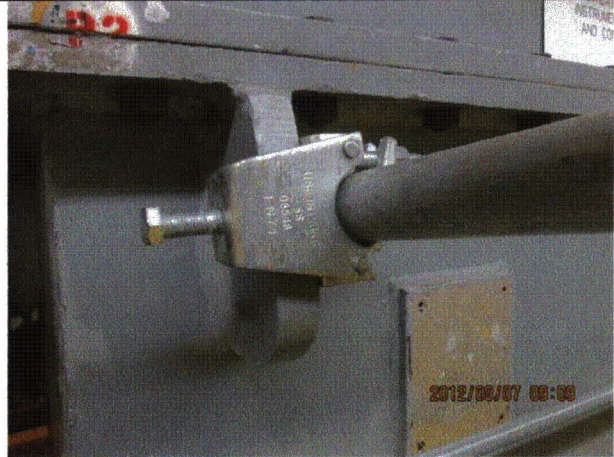
Status: Y N U

Area Walk-By Checklist (AWC)

Location (Bldg, Elev, Room/Area): AWC-U2-10



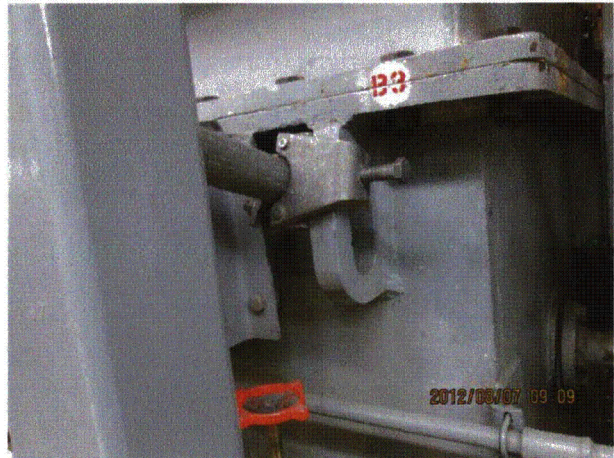
20120807-QuadCities-2 086



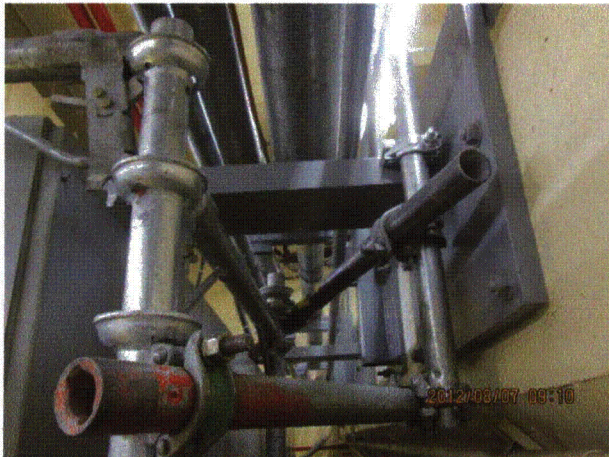
20120807-QuadCities-2 087



20120807-QuadCities-2 088



20120807-QuadCities-2 089



20120807-QuadCities-2 090



20120807-QuadCities-2 091

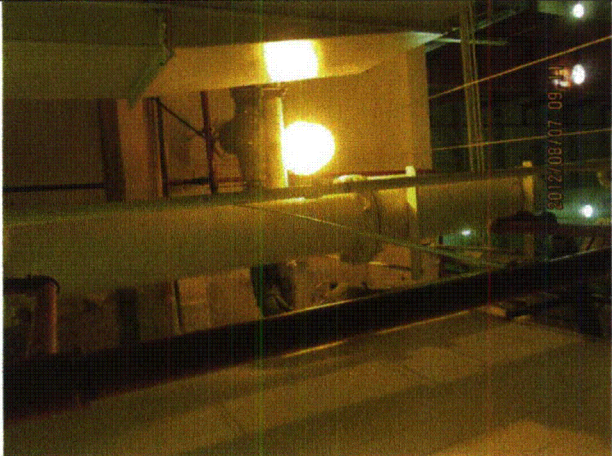
Status: Y N U

Area Walk-By Checklist (AWC)

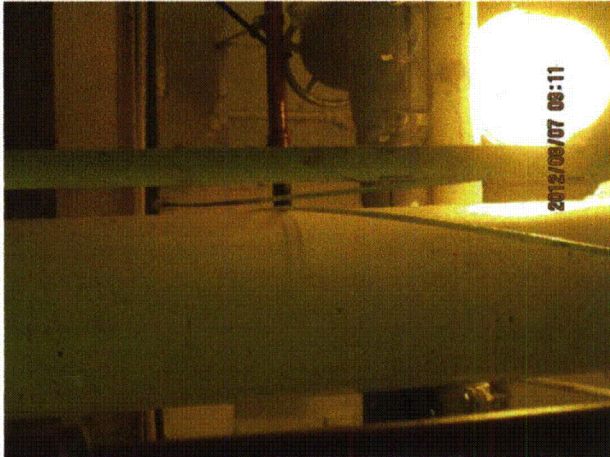
Location (Bldg, Elev, Room/Area): AWC-U2-10



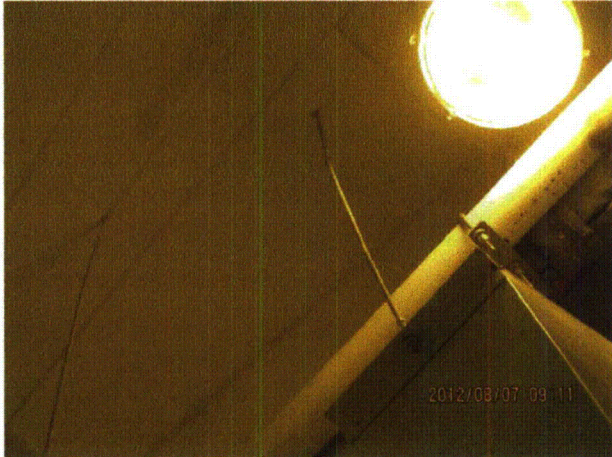
20120807-QuadCities-2 092



20120807-QuadCities-2 093



20120807-QuadCities-2 094



20120807-QuadCities-2 095



20120807-QuadCities-2 096



20120807-QuadCities-2 097

Status: Y N U

Area Walk-By Checklist (AWC)

Location (Bldg, Elev, Room/Area): AWC-U2-10



20120807-QuadCities-2 098



20120807-QuadCities-2 099



20120807-QuadCities-2 100



20120807-QuadCities-2 101



20120807-QuadCities-2 102



20120807-QuadCities-2 103

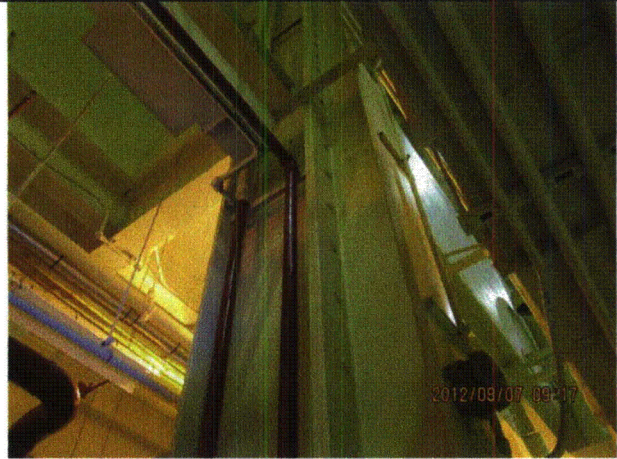
Status: Y N U

Area Walk-By Checklist (AWC)

Location (Bldg, Elev, Room/Area): AWC-U2-10



20120807-QuadCities-2 104



20120807-QuadCities-2 105

Status: Y N U

Area Walk-By Checklist (AWC)

Location (Bldg, Elev, Room/Area): AWC-U2-11

Instructions for Completing Checklist

This checklist may be used to document the results of the Area Walk-By near one or more SWEL items. The space below each of the following questions may be used to record the results of judgments and findings. Additional space is provided at the end of this checklist for documenting other comments.

1. Does anchorage of equipment in the area appear to be free of potentially adverse seismic conditions (if visible without necessarily opening cabinets)? Yes

2. Does anchorage of equipment in the area appear to be free of significant degraded conditions? Yes

3. Based on a visual inspection from the floor, do the cable/conduit raceways and HVAC ducting appear to be free of potentially adverse seismic conditions (e.g., condition of supports is adequate and fill conditions of cable trays appear to be inside acceptable limits)? Yes
Minor bends in pipe hangers judged to be acceptable.
Duct support near end of duct not attached to duct. Duct may separate from support during seismic event. No soft targets in area, therefore the duct is judged to be acceptable.
4. Does it appear that the area is free of potentially adverse seismic spatial interactions with other equipment in the area (e.g., ceiling tiles and lighting)? Yes
Overhead light fixtures with open S-hooks in 2 places. No soft targets below lights, therefore fixtures are judged to be acceptable.
Light fixture beam clamp oriented incorrectly on duct stiffeners above Bus 23. Judged to be acceptable based on low vertical seismic acceleration of station. See IR 1398049.
5. Does it appear that the area is free of potentially adverse seismic interactions that could cause flooding or spray in the area? Yes
Fire deluge station judged to be acceptable. Threaded fire piping well-supported and judged to be acceptable.

6. Does it appear that the area is free of potentially adverse seismic interactions that could cause a fire in the area? Yes
Gas bottles adequately restrained. Metal oily rag bin with cover judged to be acceptable. Welded hydrogen piping is well-supported and judged to be acceptable.

7. Does it appear that the area is free of potentially adverse seismic interactions associated with housekeeping practices, storage of portable equipment, and temporary installations (e.g., scaffolding, lead shielding)? Yes

Status: Y N U

Area Walk-By Checklist (AWC)

Location (Bldg, Elev, Room/Area): AWC-U2-11

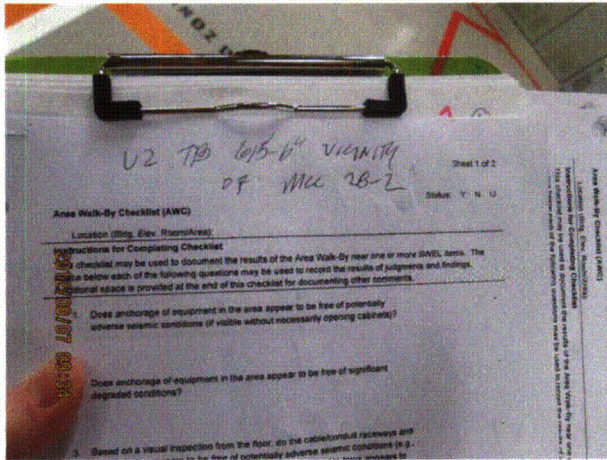
8. Have you looked for and found no other seismic conditions that could adversely affect the safety functions of the equipment in the area? Yes

Comments

Seismic Walkdown Team: J. Griffith & M. Wodarczyk - 8/7/2012

Evaluated by: *James D. Griffith* James Griffith Date: 10/16/2012
Michael J. Wodarczyk Michael Wodarczyk 10/16/2012

Photos



20120807-QuadCities-2 127

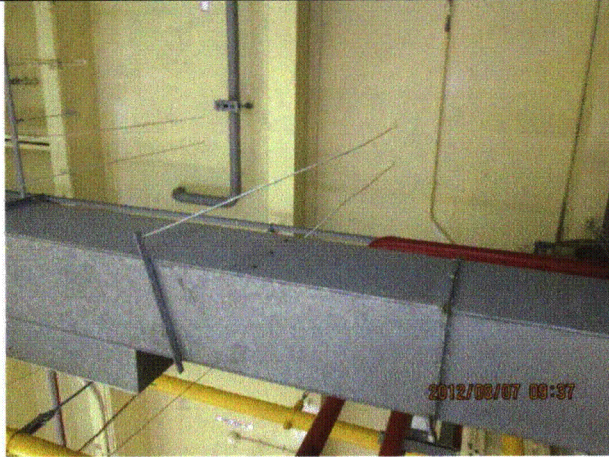


20120807-QuadCities-2 128

Status: Y N U

Area Walk-By Checklist (AWC)

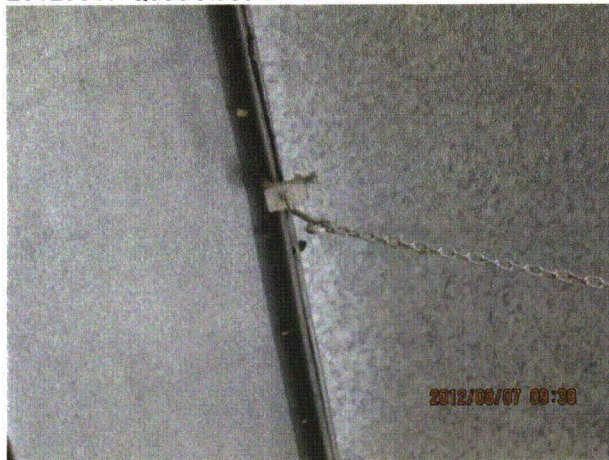
Location (Bldg, Elev, Room/Area): AWC-U2-11



20120807-QuadCities-2 129



20120807-QuadCities-2 130



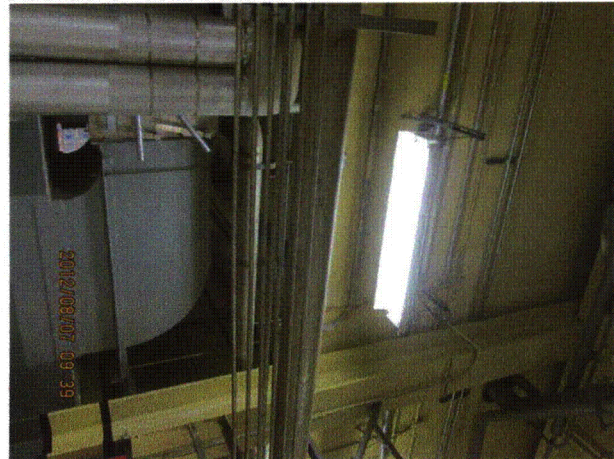
20120807-QuadCities-2 131



20120807-QuadCities-2 133



20120807-QuadCities-2 134

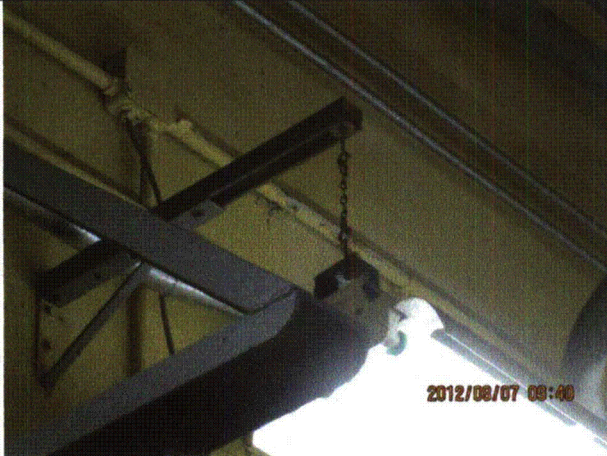


20120807-QuadCities-2 135

Status: Y N U

Area Walk-By Checklist (AWC)

Location (Bldg, Elev, Room/Area): AWC-U2-11



20120807-QuadCities-2 136



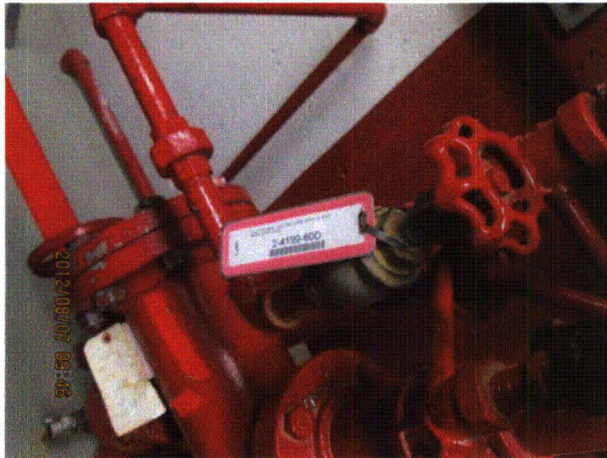
20120807-QuadCities-2 137



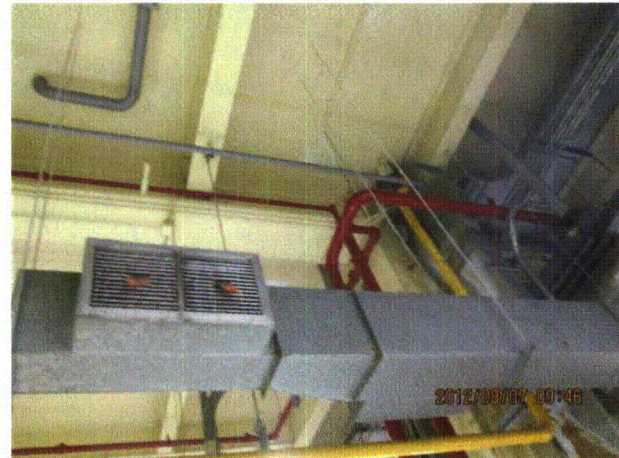
20120807-QuadCities-2 138



20120807-QuadCities-2 139



20120807-QuadCities-2 140



20120807-QuadCities-2 141

Status: Y N U

Area Walk-By Checklist (AWC)

Location (Bldg, Elev, Room/Area): AWC-U2-11



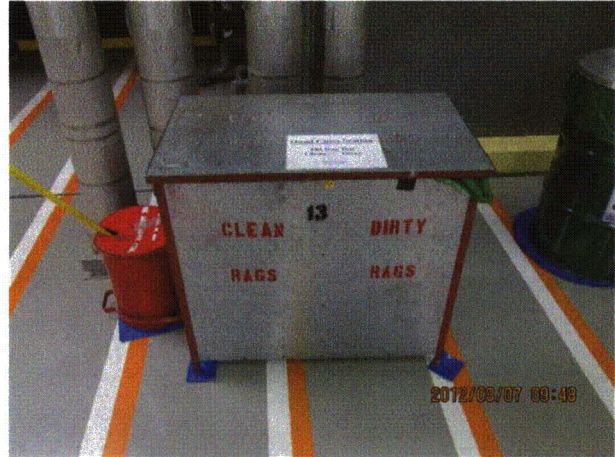
20120807-QuadCities-2 142



20120807-QuadCities-2 143



20120807-QuadCities-2 144



20120807-QuadCities-2 145



20120807-QuadCities-2 146



20120807-QuadCities-2 147

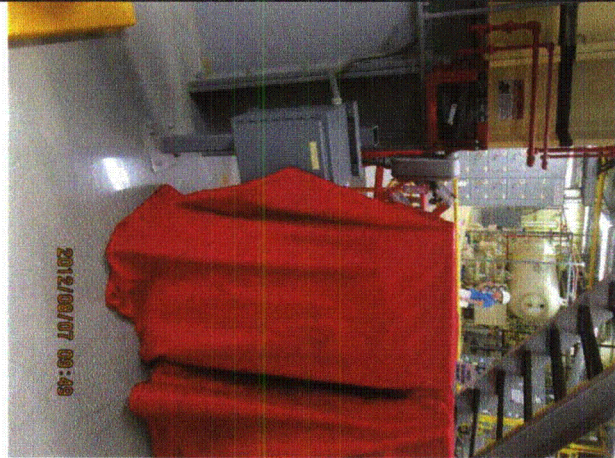
Status: Y N U

Area Walk-By Checklist (AWC)

Location (Bldg, Elev, Room/Area): AWC-U2-11



20120807-QuadCities-2 148



20120807-QuadCities-2 149



20120807-QuadCities-2 150



20120807-QuadCities-2 151

Status: Y N U

Area Walk-By Checklist (AWC)

Location (Bldg, Elev, Room/Area): AWC-U2-11



20120807-QuadCities-2 152

Status: Y N U

Area Walk-By Checklist (AWC)

Location (Bldg, Elev, Room/Area): AWC-U2-12

Instructions for Completing Checklist

This checklist may be used to document the results of the Area Walk-By near one or more SWEL items. The space below each of the following questions may be used to record the results of judgments and findings. Additional space is provided at the end of this checklist for documenting other comments.

1. Does anchorage of equipment in the area appear to be free of potentially adverse seismic conditions (if visible without necessarily opening cabinets)? Yes

 2. Does anchorage of equipment in the area appear to be free of significant degraded conditions? Yes

 3. Based on a visual inspection from the floor, do the cable/conduit raceways and HVAC ducting appear to be free of potentially adverse seismic conditions (e.g., condition of supports is adequate and fill conditions of cable trays appear to be inside acceptable limits)? Yes

 4. Does it appear that the area is free of potentially adverse seismic spatial interactions with other equipment in the area (e.g., ceiling tiles and lighting)? Yes
Overhead light fixture with open S-hook will not impact soft targets because pendulum effect is limited due to wall proximity. See IR 1398046.

 5. Does it appear that the area is free of potentially adverse seismic interactions that could cause flooding or spray in the area? Yes
Room heater and associated piping well-supported; judged to be acceptable.

 6. Does it appear that the area is free of potentially adverse seismic interactions that could cause a fire in the area? Yes

 7. Does it appear that the area is free of potentially adverse seismic interactions associated with housekeeping practices, storage of portable equipment, and temporary installations (e.g., scaffolding, lead shielding)? Yes
-

Status: Y N U

Area Walk-By Checklist (AWC)

Location (Bldg, Elev, Room/Area): AWC-U2-12

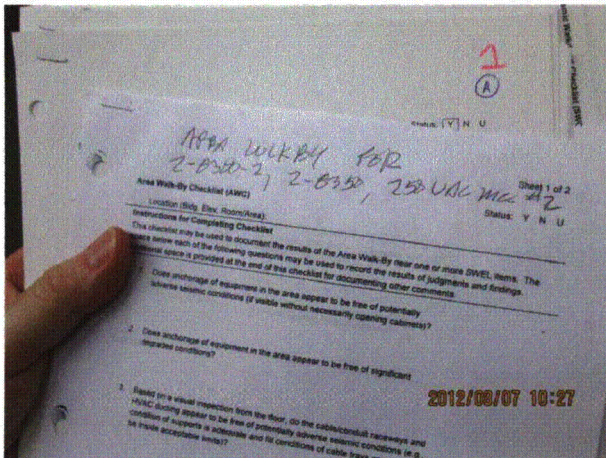
8. Have you looked for and found no other seismic conditions that could adversely affect the safety functions of the equipment in the area? Yes

Comments

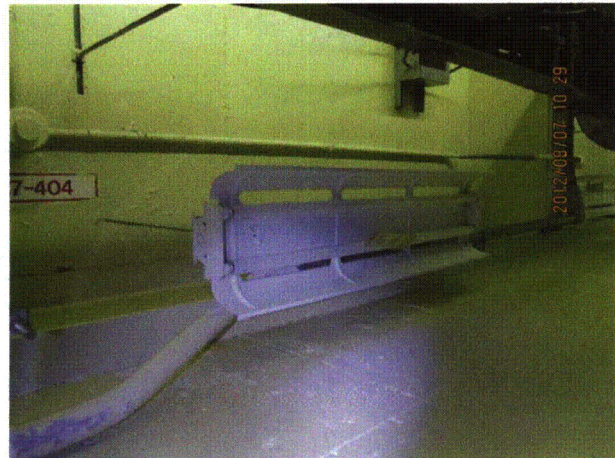
Seismic Walkdown Team: J. Griffith & M. Wodarczyk - 8/7/2012

Evaluated by: James D Griffith James Griffith Date: 10/4/2012
Michael J. Wodarczyk Michael Wodarczyk 10/4/2012

Photos



20120807-QuadCities-2 212



20120807-QuadCities-2 213

Status: Y N U

Area Walk-By Checklist (AWC)

Location (Bldg, Elev, Room/Area): AWC-U2-12



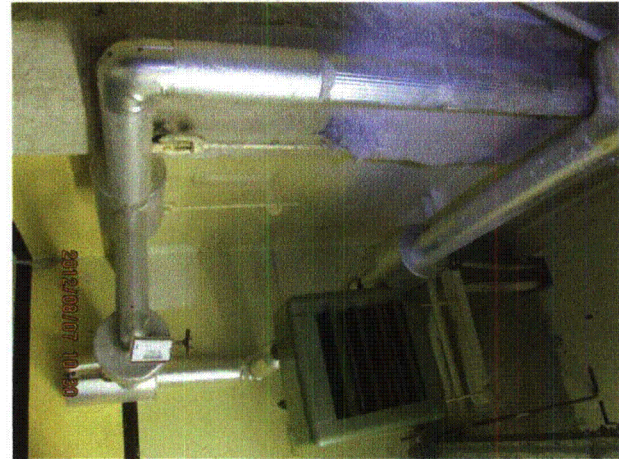
20120807-QuadCities-2 214



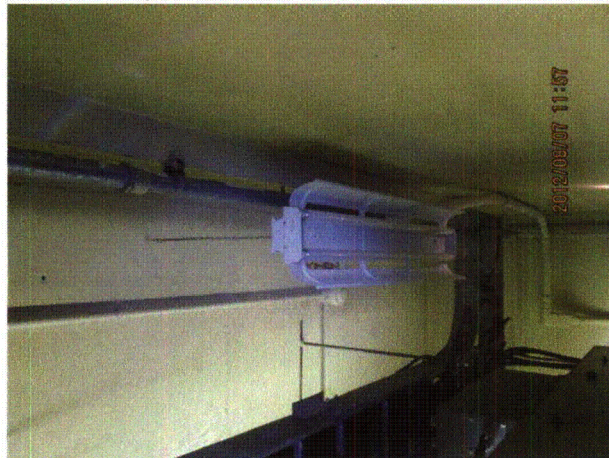
20120807-QuadCities-2 215



20120807-QuadCities-2 216



20120807-QuadCities-2 217



20120807-QuadCities-2 218

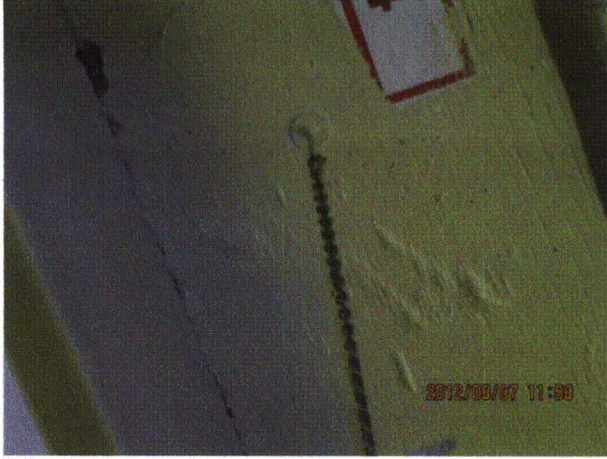


20120807-QuadCities-2 219

Status: Y N U

Area Walk-By Checklist (AWC)

Location (Bldg, Elev, Room/Area): AWC-U2-12



20120807-QuadCities-2 220

Status: Y N U

Area Walk-By Checklist (AWC)

Location (Bldg, Elev, Room/Area): AWC-U2-13

Instructions for Completing Checklist

This checklist may be used to document the results of the Area Walk-By near one or more SWEL items. The space below each of the following questions may be used to record the results of judgments and findings. Additional space is provided at the end of this checklist for documenting other comments.

1. Does anchorage of equipment in the area appear to be free of potentially adverse seismic conditions (if visible without necessarily opening cabinets)? Yes

 2. Does anchorage of equipment in the area appear to be free of significant degraded conditions? Yes
Shrinkage cracks at ceiling conduit strap support (at 1 of 2 anchors). Judged to be acceptable.

 3. Based on a visual inspection from the floor, do the cable/conduit raceways and HVAC ducting appear to be free of potentially adverse seismic conditions (e.g., condition of supports is adequate and fill conditions of cable trays appear to be inside acceptable limits)? Yes

 4. Does it appear that the area is free of potentially adverse seismic spatial interactions with other equipment in the area (e.g., ceiling tiles and lighting)? Yes

 5. Does it appear that the area is free of potentially adverse seismic interactions that could cause flooding or spray in the area? Yes
Heater piping well-supported and judged to be acceptable.

 6. Does it appear that the area is free of potentially adverse seismic interactions that could cause a fire in the area? Yes

 7. Does it appear that the area is free of potentially adverse seismic interactions associated with housekeeping practices, storage of portable equipment, and temporary installations (e.g., scaffolding, lead shielding)? Yes
-

Status: Y N U

Area Walk-By Checklist (AWC)

Location (Bldg, Elev, Room/Area): AWC-U2-13

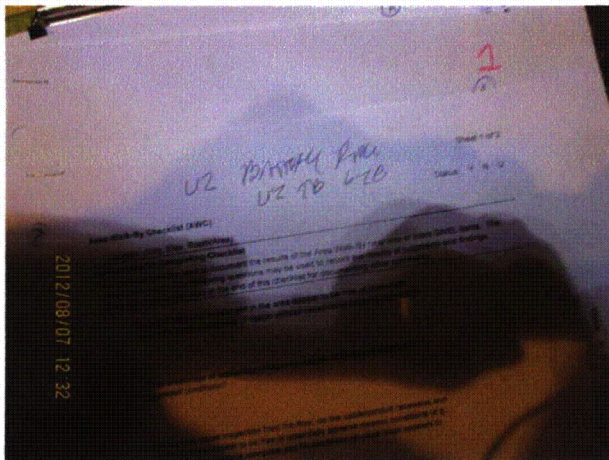
8. Have you looked for and found no other seismic conditions that could adversely affect the safety functions of the equipment in the area? Yes

Comments

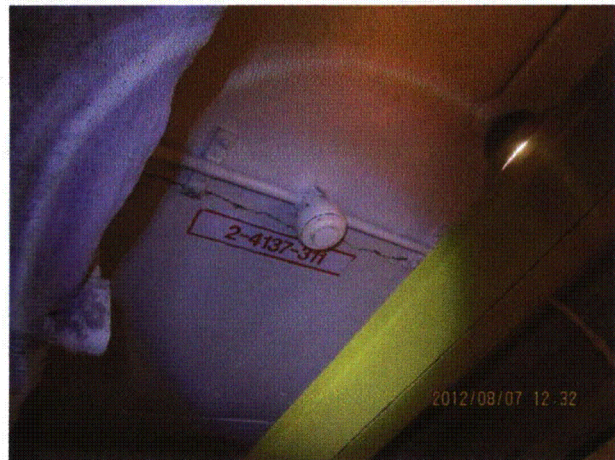
Seismic Walkdown Team: J. Griffith & M. Wodarczyk - 8/7/2012

Evaluated by: James D. Griffith James Griffith Date: 10/4/2012
Michael J. Wodarczyk Michael Wodarczyk 10/4/2012

Photos



20120807-QuadCities-2 264



20120807-QuadCities-2 265

Status: Y N U

Area Walk-By Checklist (AWC)

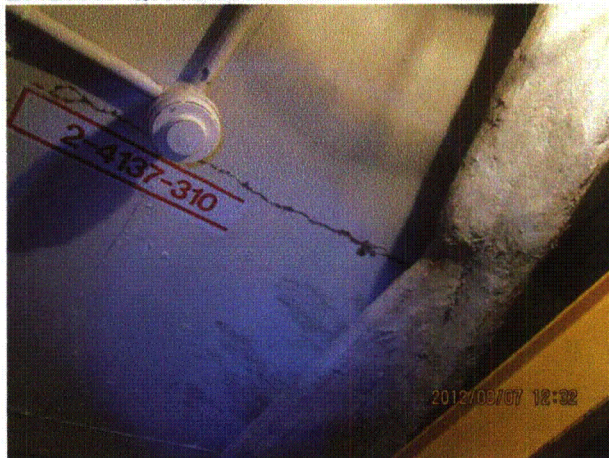
Location (Bldg, Elev, Room/Area): AWC-U2-13



20120807-QuadCities-2 266



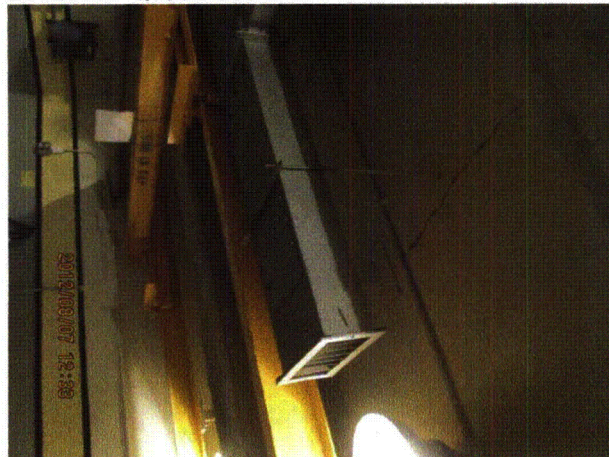
20120807-QuadCities-2 267



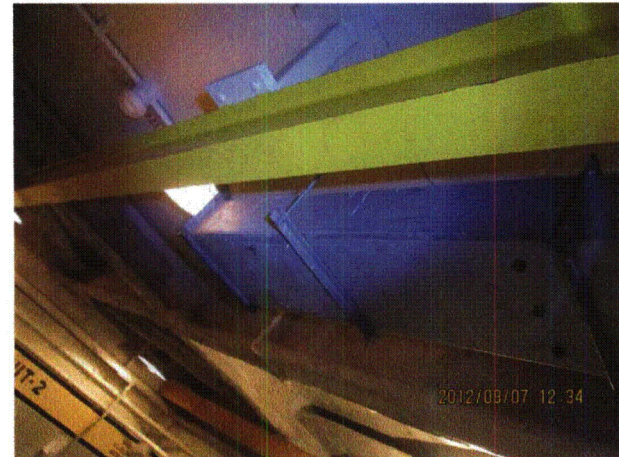
20120807-QuadCities-2 268



20120807-QuadCities-2 269



20120807-QuadCities-2 270

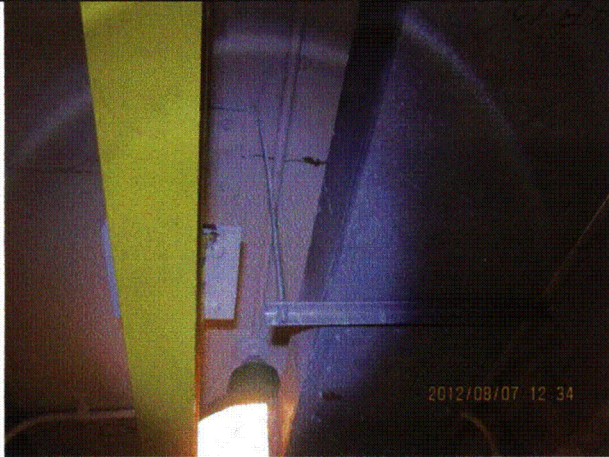


20120807-QuadCities-2 271

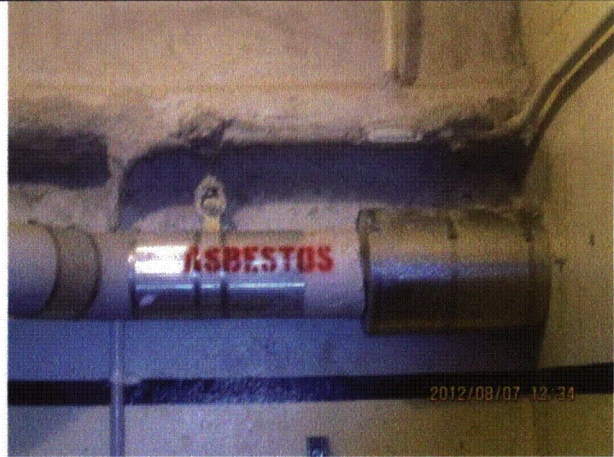
Status: Y N U

Area Walk-By Checklist (AWC)

Location (Bldg, Elev, Room/Area): AWC-U2-13



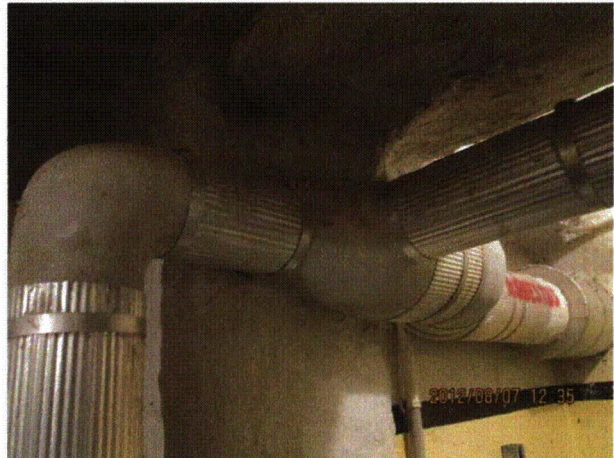
20120807-QuadCities-2 272



20120807-QuadCities-2 273



20120807-QuadCities-2 274



20120807-QuadCities-2 275



20120807-QuadCities-2 276



20120807-QuadCities-2 277

Status: Y N U

Area Walk-By Checklist (AWC)

Location (Bldg, Elev, Room/Area): AWC-U2-14

Instructions for Completing Checklist

This checklist may be used to document the results of the Area Walk-By near one or more SWEL items. The space below each of the following questions may be used to record the results of judgments and findings. Additional space is provided at the end of this checklist for documenting other comments.

1. Does anchorage of equipment in the area appear to be free of potentially adverse seismic conditions (if visible without necessarily opening cabinets)? Yes
Panel 902-76 missing one anchor; appears to be per design because the anchor hole has been covered with welded plate. Judged to be acceptable.

 2. Does anchorage of equipment in the area appear to be free of significant degraded conditions? Yes

 3. Based on a visual inspection from the floor, do the cable/conduit raceways and HVAC ducting appear to be free of potentially adverse seismic conditions (e.g., condition of supports is adequate and fill conditions of cable trays appear to be inside acceptable limits)? Yes
Minor bends in hanger rods judged to be acceptable.

 4. Does it appear that the area is free of potentially adverse seismic spatial interactions with other equipment in the area (e.g., ceiling tiles and lighting)? Yes
Typical open eyebolts attached to overhead light fixture. Opening of bolt at bottom: not credible that fixture will rotate sufficiently to fall from chain. Judged to be acceptable.

 5. Does it appear that the area is free of potentially adverse seismic interactions that could cause flooding or spray in the area? Yes

 6. Does it appear that the area is free of potentially adverse seismic interactions that could cause a fire in the area? Yes

 7. Does it appear that the area is free of potentially adverse seismic interactions associated with housekeeping practices, storage of portable equipment, and temporary installations (e.g., scaffolding, lead shielding)? Yes
-

Status: Y N U

Area Walk-By Checklist (AWC)

Location (Bldg, Elev, Room/Area): AWC-U2-14

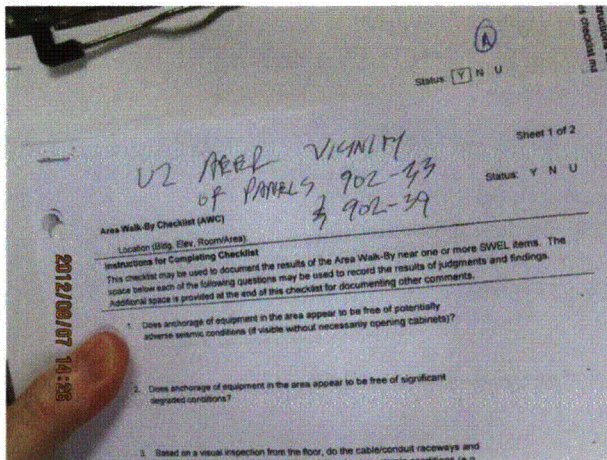
8. Have you looked for and found no other seismic conditions that could adversely affect the safety functions of the equipment in the area? Yes
Masonry wall in vicinity restrained at top; judged to be acceptable.

Comments

Seismic Walkdown Team: J. Griffith & M. Wodarczyk - 8/7/2012

Evaluated by: James D Griffith James Griffith Date: 10/4/2012
Michael J. Wodarczyk Michael Wodarczyk 10/4/2012

Photos



20120807-QuadCities-2 322



20120807-QuadCities-2 323



Status: Y N U

Area Walk-By Checklist (AWC)

Location (Bldg, Elev, Room/Area): AWC-U2-14
20120807-QuadCities-2 324



20120807-QuadCities-2 325



20120807-QuadCities-2 326



20120807-QuadCities-2 327



20120807-QuadCities-2 328



20120807-QuadCities-2 329



20120807-QuadCities-2 330

20120807-QuadCities-2 331

Status: Y N U

Area Walk-By Checklist (AWC)

Location (Bldg, Elev, Room/Area): AWC-U2-15

Instructions for Completing Checklist

This checklist may be used to document the results of the Area Walk-By near one or more SWEL items. The space below each of the following questions may be used to record the results of judgments and findings. Additional space is provided at the end of this checklist for documenting other comments.

1. Does anchorage of equipment in the area appear to be free of potentially adverse seismic conditions (if visible without necessarily opening cabinets)? Yes

 2. Does anchorage of equipment in the area appear to be free of significant degraded conditions? Yes

 3. Based on a visual inspection from the floor, do the cable/conduit raceways and HVAC ducting appear to be free of potentially adverse seismic conditions (e.g., condition of supports is adequate and fill conditions of cable trays appear to be inside acceptable limits)? Yes

 4. Does it appear that the area is free of potentially adverse seismic spatial interactions with other equipment in the area (e.g., ceiling tiles and lighting)? Yes
Many overhead-supported items in contact. Items are flexible and have same driver. Judged to be acceptable.

 5. Does it appear that the area is free of potentially adverse seismic interactions that could cause flooding or spray in the area? Yes
Threaded fire piping is well-supported and judged to be acceptable.

 6. Does it appear that the area is free of potentially adverse seismic interactions that could cause a fire in the area? Yes

 7. Does it appear that the area is free of potentially adverse seismic interactions associated with housekeeping practices, storage of portable equipment, and temporary installations (e.g., scaffolding, lead shielding)? Yes
Temporary ladder moved away from fire pipe during walk-by. See IR 1400948.
-

Status: Y N U

Area Walk-By Checklist (AWC)

Location (Bldg, Elev, Room/Area): AWC-U2-15

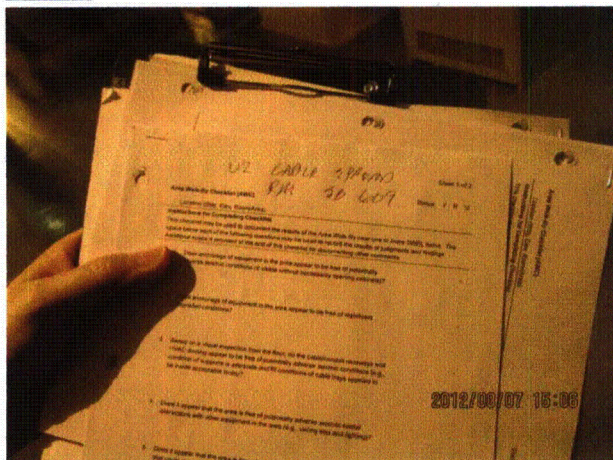
8. Have you looked for and found no other seismic conditions that could adversely affect the safety functions of the equipment in the area? Yes

Comments

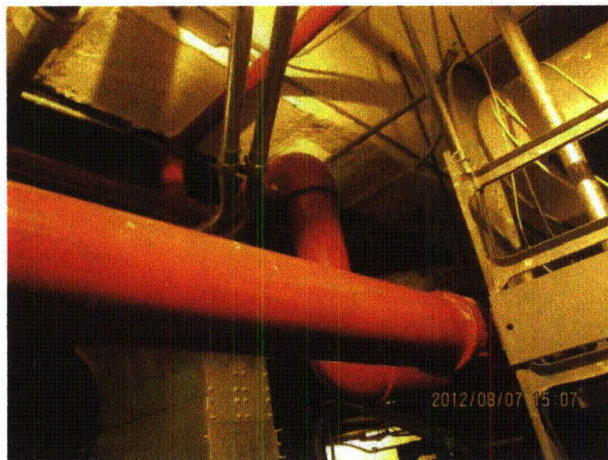
Seismic Walkdown Team: J. Griffith & M. Wodarczyk - 8/7/2012

Evaluated by: James D. Griffith James Griffith Date: 10/4/2012
Michael J. Wodarczyk Michael Wodarczyk 10/4/2012

Photos



20120807-QuadCities-2 379

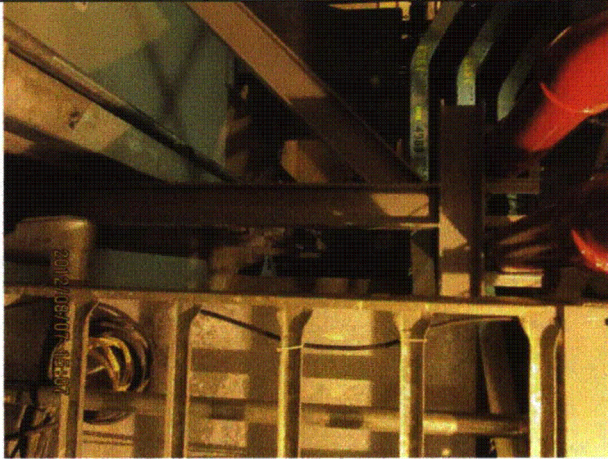


20120807-QuadCities-2 380

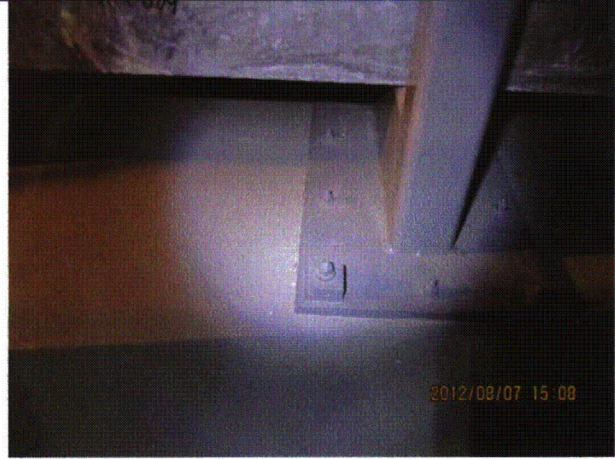
Status: Y N U

Area Walk-By Checklist (AWC)

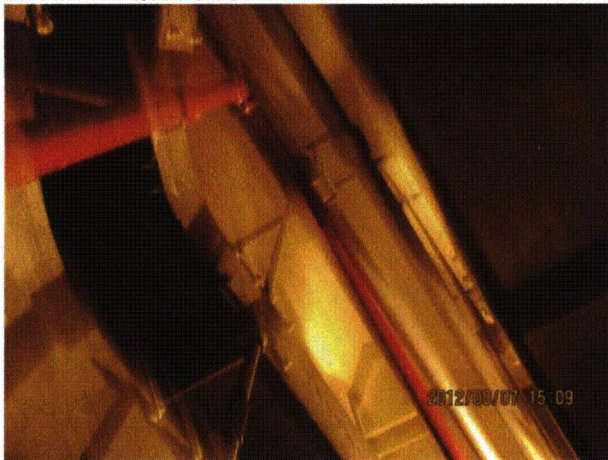
Location (Bldg, Elev, Room/Area): AWC-U2-15



20120807-QuadCities-2 381



20120807-QuadCities-2 382



20120807-QuadCities-2 383



20120807-QuadCities-2 384



20120807-QuadCities-2 385

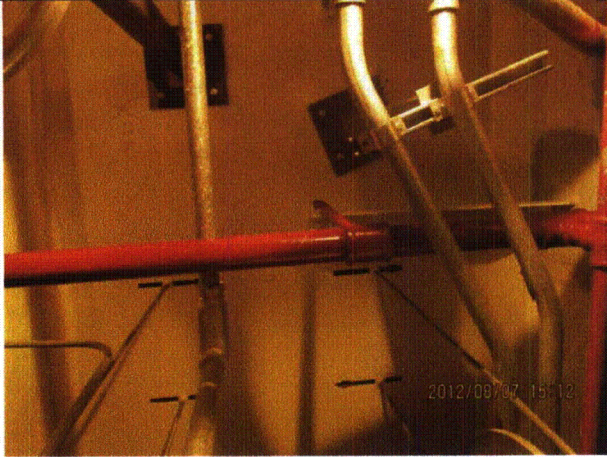


20120807-QuadCities-2 386

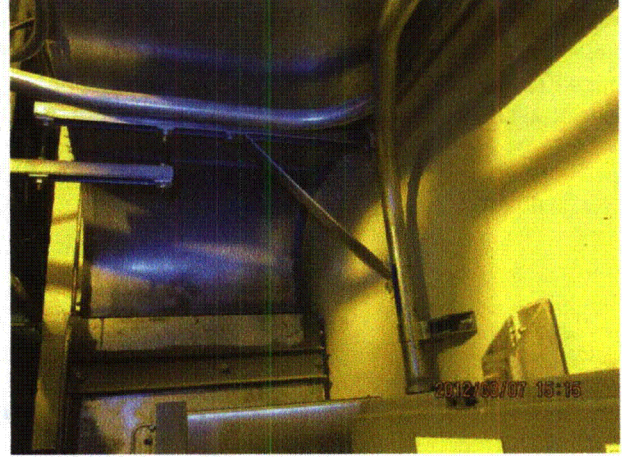
Status: Y N U

Area Walk-By Checklist (AWC)

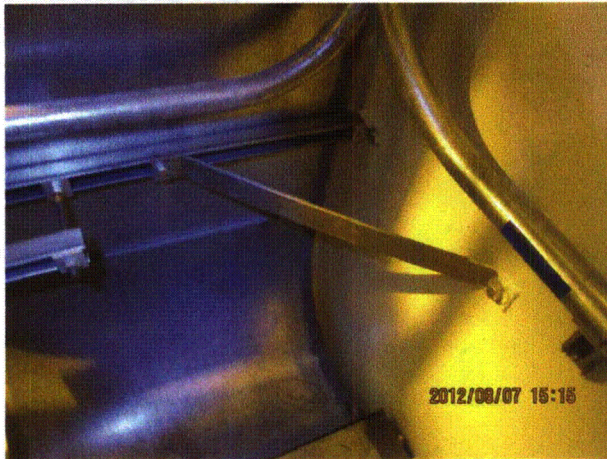
Location (Bldg, Elev, Room/Area): AWC-U2-15



20120807-QuadCities-2 387



20120807-QuadCities-2 388



20120807-QuadCities-2 389

Status: Y N U

Area Walk-By Checklist (AWC)

Location (Bldg, Elev, Room/Area): AWC-U2-16

Instructions for Completing Checklist

This checklist may be used to document the results of the Area Walk-By near one or more SWEL items. The space below each of the following questions may be used to record the results of judgments and findings. Additional space is provided at the end of this checklist for documenting other comments.

1. Does anchorage of equipment in the area appear to be free of potentially adverse seismic conditions (if visible without necessarily opening cabinets)? Yes

2. Does anchorage of equipment in the area appear to be free of significant degraded conditions? Yes
Minor corrosion and minor cracking in grout pads judged to be acceptable.

3. Based on a visual inspection from the floor, do the cable/conduit raceways and HVAC ducting appear to be free of potentially adverse seismic conditions (e.g., condition of supports is adequate and fill conditions of cable trays appear to be inside acceptable limits)? Yes

4. Does it appear that the area is free of potentially adverse seismic spatial interactions with other equipment in the area (e.g., ceiling tiles and lighting)? Yes
Tubes in close proximity are flexible and judged to be acceptable.

5. Does it appear that the area is free of potentially adverse seismic interactions that could cause flooding or spray in the area? Yes
Welded pipe judged to be acceptable.

6. Does it appear that the area is free of potentially adverse seismic interactions that could cause a fire in the area? Yes

7. Does it appear that the area is free of potentially adverse seismic interactions associated with housekeeping practices, storage of portable equipment, and temporary installations (e.g., scaffolding, lead shielding)? Yes
Operations' camera tripod has one leg not resting on floor. Tripod leaning against junction box. Suggested that Operations rearrange tripod to put all legs on floor or tie-off tripod to robust auxiliary steel. See IR 1400948.

Wrenches lying in area not of concern.

Status: Y N U

Area Walk-By Checklist (AWC)

Location (Bldg, Elev, Room/Area): AWC-U2-16

8. Have you looked for and found no other seismic conditions that could adversely affect the safety functions of the equipment in the area? Yes
Minor bends in various copper tubes judged to be acceptable.

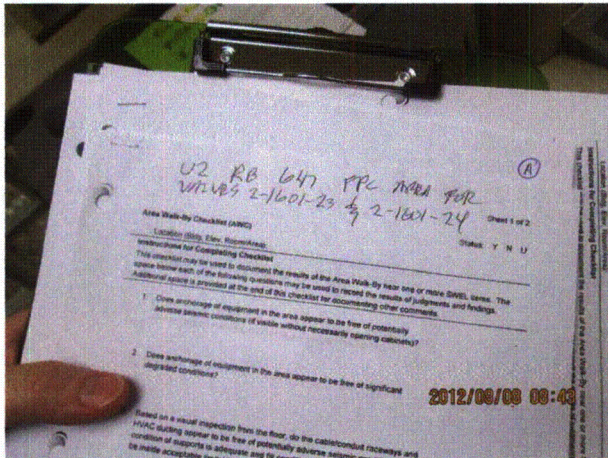
Comments

Seismic Walkdown Team: J. Griffith & M. Wodarczyk - 8/8/2012

Area walk-by limited due to dose considerations.

Evaluated by: James D. Griffith James Griffith Date: 10/4/2012
Michael J. Wodarczyk Michael Wodarczyk 10/4/2012

Photos



20120808-QuadCities-2 033

Status: Y N U

Area Walk-By Checklist (AWC)

Location (Bldg, Elev, Room/Area): AWC-U2-17

Instructions for Completing Checklist

This checklist may be used to document the results of the Area Walk-By near one or more SWEL items. The space below each of the following questions may be used to record the results of judgments and findings. Additional space is provided at the end of this checklist for documenting other comments.

1. Does anchorage of equipment in the area appear to be free of potentially adverse seismic conditions (if visible without necessarily opening cabinets)? Yes

 2. Does anchorage of equipment in the area appear to be free of significant degraded conditions? Yes

 3. Based on a visual inspection from the floor, do the cable/conduit raceways and HVAC ducting appear to be free of potentially adverse seismic conditions (e.g., condition of supports is adequate and fill conditions of cable trays appear to be inside acceptable limits)? Yes
Only fire piping supported from ceiling, judged to be acceptable.

 4. Does it appear that the area is free of potentially adverse seismic spatial interactions with other equipment in the area (e.g., ceiling tiles and lighting)? Yes
Overhead light fixture judged to be acceptable.

 5. Does it appear that the area is free of potentially adverse seismic interactions that could cause flooding or spray in the area? Yes
Threaded fire piping well-supported and judged to be acceptable. All other piping is welded.

 6. Does it appear that the area is free of potentially adverse seismic interactions that could cause a fire in the area? Yes

 7. Does it appear that the area is free of potentially adverse seismic interactions associated with housekeeping practices, storage of portable equipment, and temporary installations (e.g., scaffolding, lead shielding)? Yes
-

Status: Y N U

Area Walk-By Checklist (AWC)

Location (Bldg, Elev, Room/Area): AWC-U2-17

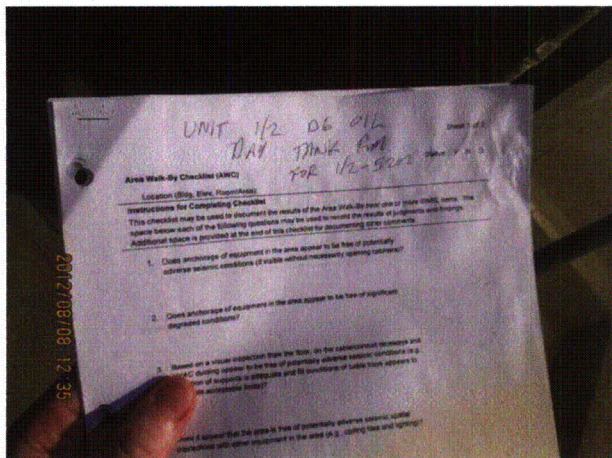
8. Have you looked for and found no other seismic conditions that could adversely affect the safety functions of the equipment in the area? Yes

Comments

Seismic Walkdown Team: J. Griffith & M. Wodarczyk - 8/8/2012

Evaluated by: James D. Griffith James Griffith Date: 10/4/2012
Michael J. Wodarczyk Michael Wodarczyk 10/4/2012

Photos



20120808-QuadCities-2 251



20120808-QuadCities-2 252

Status: Y N U

Area Walk-By Checklist (AWC)

Location (Bldg, Elev, Room/Area): AWC-U2-17



20120808-QuadCities-2 253



20120808-QuadCities-2 254