

Status: Y N U

Seismic Walkdown Checklist (SWC)

Equipment ID No.: 2-7800-28-1B

Equipment Class: (1) Motor Control Centers

Equipment Description: MCC - MCC 28-1B

Project: Quad Cities 2 SWEL

Location (Bldg, Elev, Room/Area): RB, 623.00 ft, ALL

Manufacturer/Model:

Instructions for Completing Checklist

This checklist may be used to document the results of the Seismic Walkdown of an item of equipment on the SWEL. The space below each of the following questions may be used to record the results of judgments and findings. Additional space is provided at the end of this checklist for documenting other comments.

Anchorage

1. Is anchorage configuration verification required (i.e., is the item one of the 50% of SWEL items requiring such verification)? No

2. Is the anchorage free of bent, broken, missing or loose hardware? Yes

3. Is the anchorage free of corrosion that is more than mild surface oxidation? Yes

4. Is the anchorage free of visible cracks in the concrete near the anchors? Yes

5. Is the anchorage configuration consistent with plant documentation? (Note: This question only applies if the item is one of the 50% for which an anchorage configuration verification is required.) Not Applicable

6. Based on the above anchorage evaluations, is the anchorage free of potentially adverse seismic conditions? Yes

Status: Y N U

Seismic Walkdown Checklist (SWC)

Equipment ID No.: 2-7800-28-1B

Equipment Class: (1) Motor Control Centers

Equipment Description: MCC - MCC 28-1B

Interaction Effects

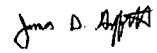
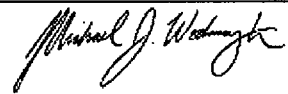
7. Are soft targets free from impact by nearby equipment or structures? Yes
One door slightly askew but adequately latched; judged to be acceptable.
8. Are overhead equipment, distribution systems, ceiling tiles and lighting, and masonry block walls not likely to collapse onto the equipment? Yes
Overhead light fixture with an open S-hook. Hard targets mitigate effect of fixture; judged to be acceptable.
9. Do attached lines have adequate flexibility to avoid damage? Yes
10. Based on the above seismic interaction evaluations, is equipment free of potentially adverse seismic interaction effects? Yes

Other Adverse Conditions

11. Have you looked for and found no adverse seismic conditions that could adversely affect the safety functions of the equipment? Yes

Comments

Seismic Walkdown Team: J. Griffith & M. Wodarcyk - 8/6/2012

Evaluated by:  James Griffith Date: 10/4/2012
 Michael Wodarcyk 10/4/2012

Status: Y N U

Seismic Walkdown Checklist (SWC)

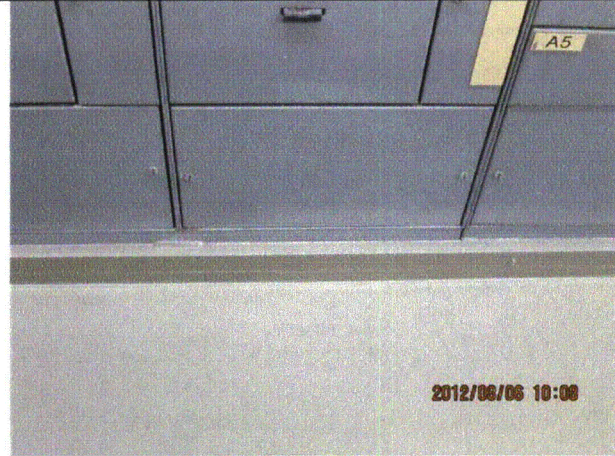
Equipment ID No.: 2-7800-28-1B

Equipment Class: (1) Motor Control Centers

Equipment Description: MCC - MCC 28-1B



20120806-QuadCities-2 078



20120806-QuadCities-2 079



20120806-QuadCities-2 080



20120806-QuadCities-2 081

Status: Y N U

Seismic Walkdown Checklist (SWC)

Equipment ID No.: 2-7800-28-1B

Equipment Class: (1) Motor Control Centers

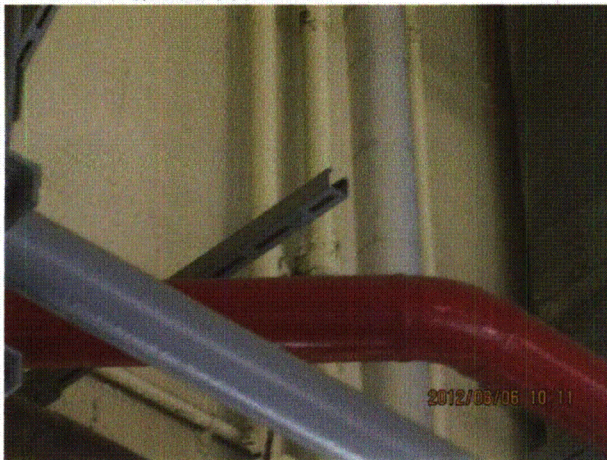
Equipment Description: MCC - MCC 28-1B



20120806-QuadCities-2 082



20120806-QuadCities-2 083



20120806-QuadCities-2 084



20120806-QuadCities-2 085

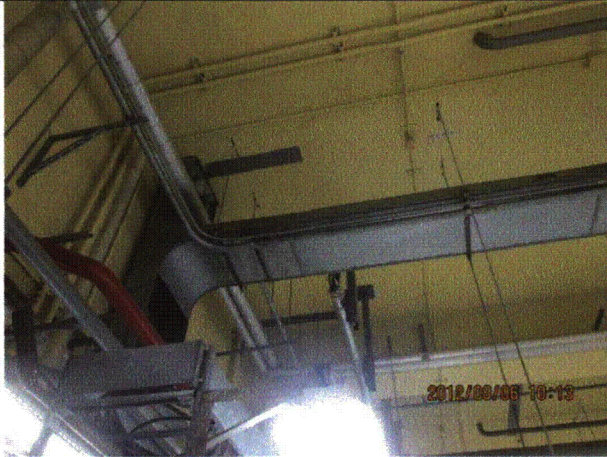
Status: Y N U

Seismic Walkdown Checklist (SWC)

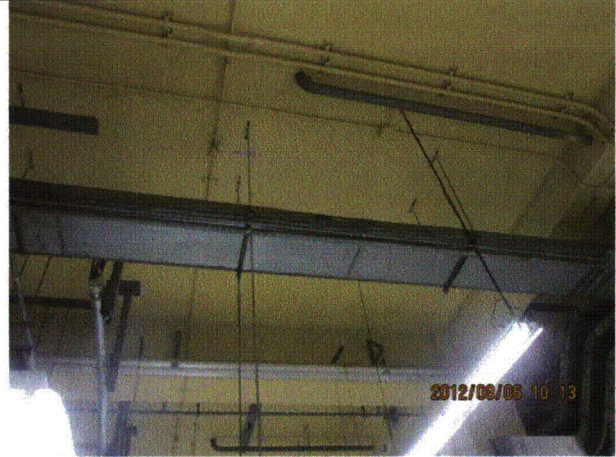
Equipment ID No.: 2-7800-28-1B

Equipment Class: (1) Motor Control Centers

Equipment Description: MCC - MCC 28-1B



20120806-QuadCities-2 086



20120806-QuadCities-2 087



20120806-QuadCities-2 088



20120806-QuadCities-2 089

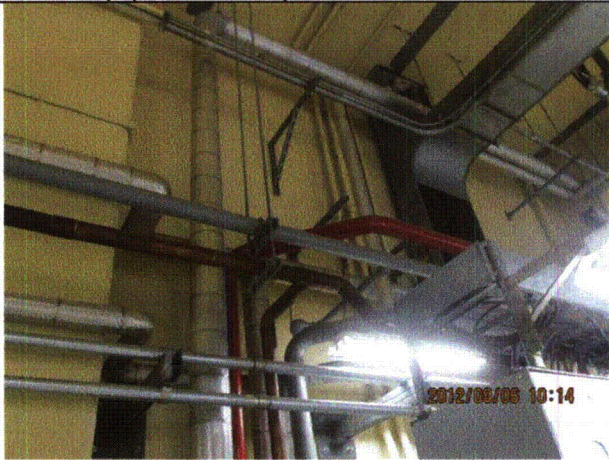
Status: Y N U

Seismic Walkdown Checklist (SWC)

Equipment ID No.: 2-7800-28-1B

Equipment Class: (1) Motor Control Centers

Equipment Description: MCC - MCC 28-1B



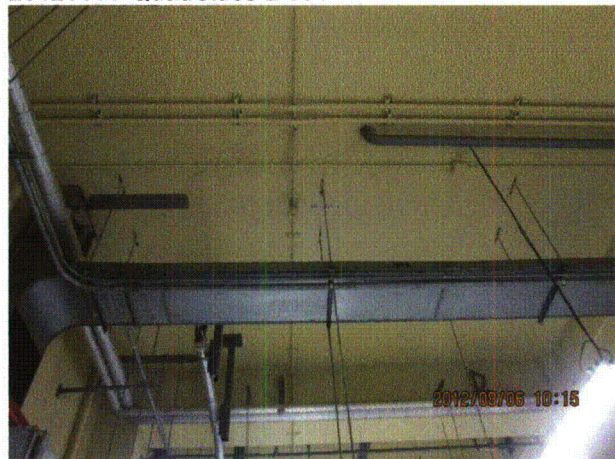
20120806-QuadCities-2 090



20120806-QuadCities-2 091



20120806-QuadCities-2 092



20120806-QuadCities-2 093

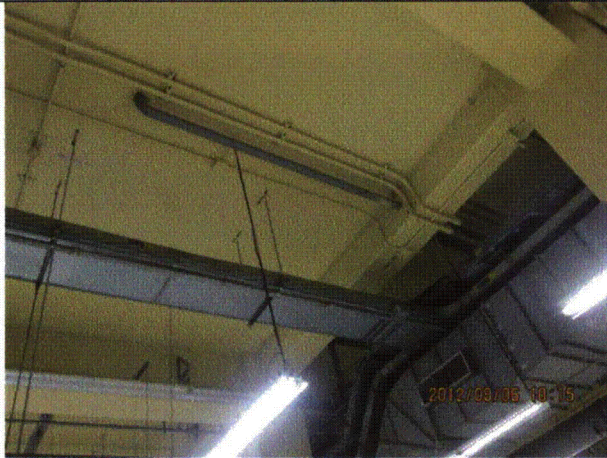
Status: Y N U

Seismic Walkdown Checklist (SWC)

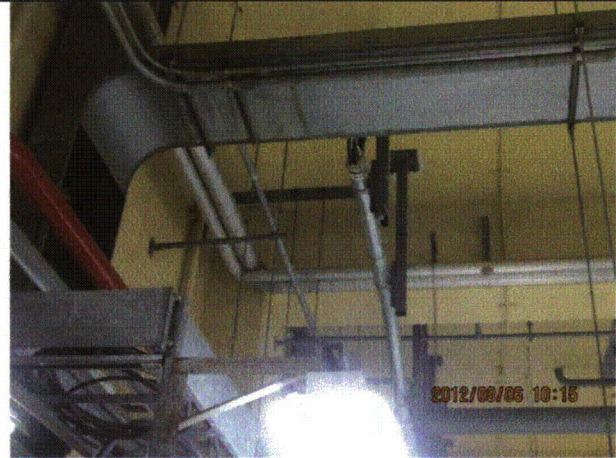
Equipment ID No.: 2-7800-28-1B

Equipment Class: (1) Motor Control Centers

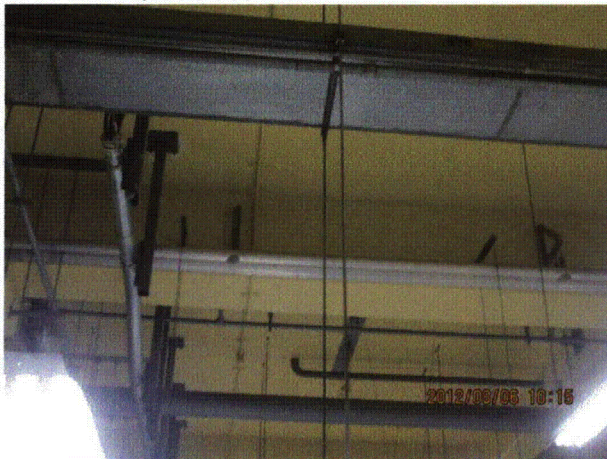
Equipment Description: MCC - MCC 28-1B



20120806-QuadCities-2 094



20120806-QuadCities-2 095



20120806-QuadCities-2 096



20120806-QuadCities-2 097

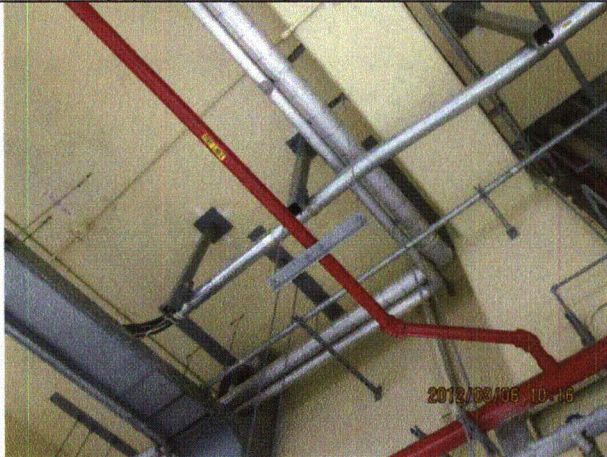
Status: Y N U

Seismic Walkdown Checklist (SWC)

Equipment ID No.: 2-7800-28-1B

Equipment Class: (1) Motor Control Centers

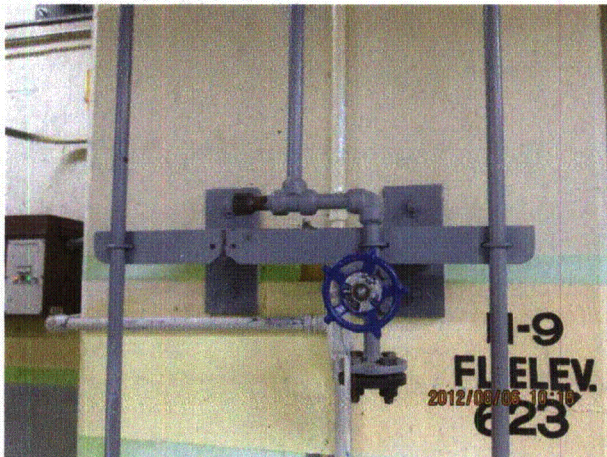
Equipment Description: MCC - MCC 28-1B



20120806-QuadCities-2 098



20120806-QuadCities-2 099



20120806-QuadCities-2 100



20120806-QuadCities-2 101

Status: Y N U

Seismic Walkdown Checklist (SWC)

Equipment ID No.: 2-7800-28-1B

Equipment Class: (1) Motor Control Centers

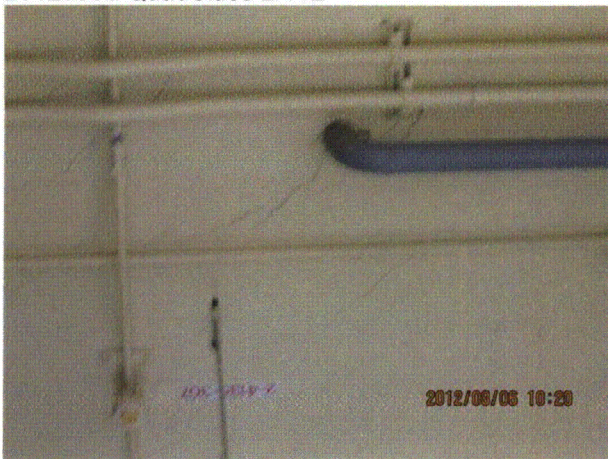
Equipment Description: MCC - MCC 28-1B



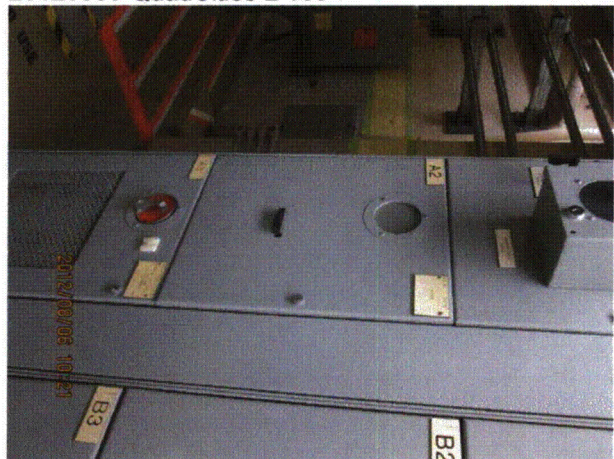
20120806-QuadCities-2 102



20120806-QuadCities-2 103



20120806-QuadCities-2 104



20120806-QuadCities-2 105

Status: Y N U

Seismic Walkdown Checklist (SWC)

Equipment ID No.: 2-7800-28-1B

Equipment Class: (1) Motor Control Centers

Equipment Description: MCC - MCC 28-1B



20120806-QuadCities-2 106

Status: Y N U

Seismic Walkdown Checklist (SWC)

Equipment ID No.: 2-7800-28-2

Equipment Class: (1) Motor Control Centers

Equipment Description: MCC - MCC 28-2

Project: Quad Cities 2 SWEL

Location (Bldg, Elev, Room/Area): TB, 615.00 ft, ALL

Manufacturer/Model:

Instructions for Completing Checklist

This checklist may be used to document the results of the Seismic Walkdown of an item of equipment on the SWEL. The space below each of the following questions may be used to record the results of judgments and findings. Additional space is provided at the end of this checklist for documenting other comments.

Anchorage

1. Is anchorage configuration verification required (i.e., is the item one of the 50% of SWEL items requiring such verification)? No

2. Is the anchorage free of bent, broken, missing or loose hardware? Yes

3. Is the anchorage free of corrosion that is more than mild surface oxidation? Yes

4. Is the anchorage free of visible cracks in the concrete near the anchors? Yes

5. Is the anchorage configuration consistent with plant documentation? (Note: This question only applies if the item is one of the 50% for which an anchorage configuration verification is required.) Not Applicable

6. Based on the above anchorage evaluations, is the anchorage free of potentially adverse seismic conditions? Yes

Status: Y N U

Seismic Walkdown Checklist (SWC)

Equipment ID No.: 2-7800-28-2

Equipment Class: (1) Motor Control Centers

Equipment Description: MCC - MCC 28-2

Interaction Effects

7. Are soft targets free from impact by nearby equipment or structures? Yes
Emergency phone box conduit rigid and well-supported. Conduit 1/2-inch from MCC. Judged to be acceptable.
One door slightly bent at bottom. Door is adequately latched and judged to be acceptable.
8. Are overhead equipment, distribution systems, ceiling tiles and lighting, and masonry block walls not likely to collapse onto the equipment? Yes
9. Do attached lines have adequate flexibility to avoid damage? Yes
10. Based on the above seismic interaction evaluations, is equipment free of potentially adverse seismic interaction effects? Yes

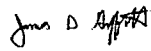
Other Adverse Conditions

11. Have you looked for and found no adverse seismic conditions that could adversely affect the safety functions of the equipment? Yes

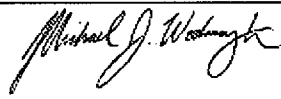
Comments

Seismic Walkdown Team: J. Griffith & M. Wodarczyk - 8/7/2012

Evaluated by:

 James Griffith

Date: 10/4/2012


Michael Wodarczyk

10/4/2012

Status: Y N U

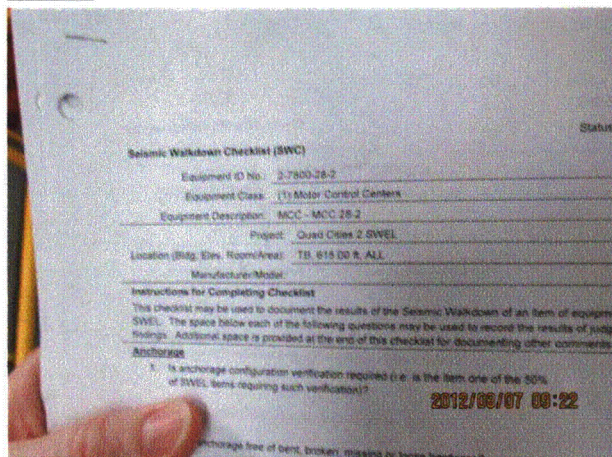
Seismic Walkdown Checklist (SWC)

Equipment ID No.: 2-7800-28-2

Equipment Class: (1) Motor Control Centers

Equipment Description: MCC - MCC 28-2

Photos



20120807-QuadCities-2 106



20120807-QuadCities-2 107



20120807-QuadCities-2 108



20120807-QuadCities-2 109

Status: Y N U

Seismic Walkdown Checklist (SWC)

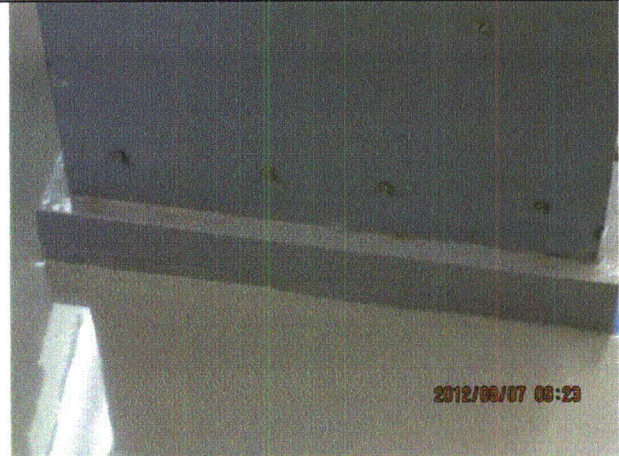
Equipment ID No.: 2-7800-28-2

Equipment Class: (1) Motor Control Centers

Equipment Description: MCC - MCC 28-2



20120807-QuadCities-2 110



20120807-QuadCities-2 111



20120807-QuadCities-2 112



20120807-QuadCities-2 113

Status: Y N U

Seismic Walkdown Checklist (SWC)

Equipment ID No.: 2-7800-28-2

Equipment Class: (1) Motor Control Centers

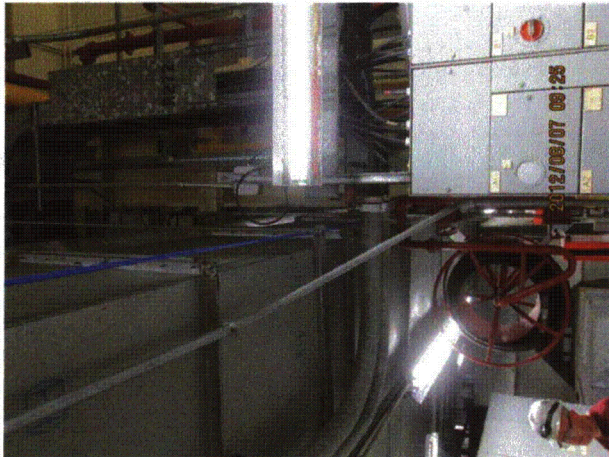
Equipment Description: MCC - MCC 28-2



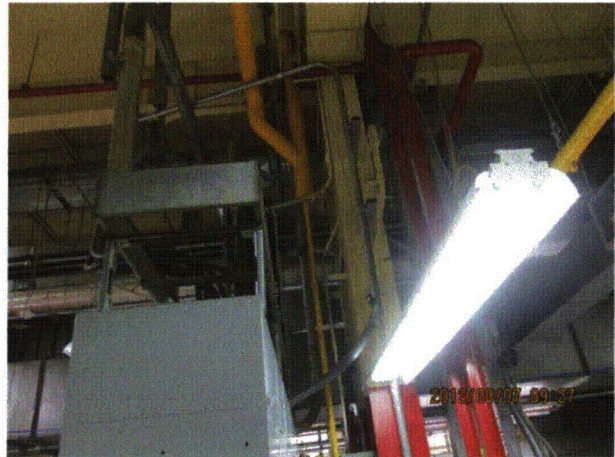
20120807-QuadCities-2 114



20120807-QuadCities-2 115



20120807-QuadCities-2 116



20120807-QuadCities-2 117

Status: Y N U

Seismic Walkdown Checklist (SWC)

Equipment ID No.: 2-7800-28-2

Equipment Class: (1) Motor Control Centers

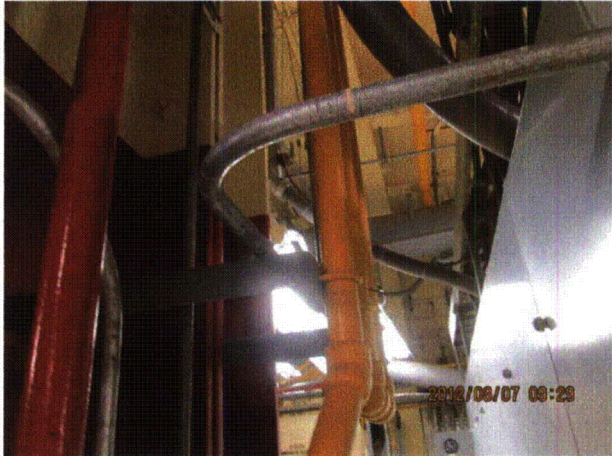
Equipment Description: MCC - MCC 28-2



20120807-QuadCities-2 118



20120807-QuadCities-2 119



20120807-QuadCities-2 120



20120807-QuadCities-2 121

Status: Y N U

Seismic Walkdown Checklist (SWC)

Equipment ID No.: 2-7800-28-2

Equipment Class: (1) Motor Control Centers

Equipment Description: MCC - MCC 28-2



20120807-QuadCities-2 122



20120807-QuadCities-2 123



20120807-QuadCities-2 124



20120807-QuadCities-2 125

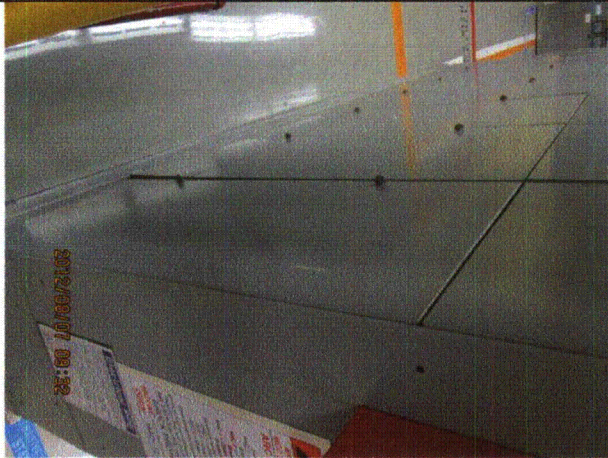
Status: Y N U

Seismic Walkdown Checklist (SWC)

Equipment ID No.: 2-7800-28-2

Equipment Class: (1) Motor Control Centers

Equipment Description: MCC - MCC 28-2



20120807-QuadCities-2 126

Status: Y N U

Seismic Walkdown Checklist (SWC)

Equipment ID No.: 2-7800-28295

Equipment Class: (1) Motor Control Centers

Equipment Description: MCC - MCC 28/29-5

Project: Quad Cities 2 SWEL

Location (Bldg, Elev, Room/Area): RB, 595.00 ft, ALL

Manufacturer/Model:

Instructions for Completing Checklist

This checklist may be used to document the results of the Seismic Walkdown of an item of equipment on the SWEL. The space below each of the following questions may be used to record the results of judgments and findings. Additional space is provided at the end of this checklist for documenting other comments.

Anchorage

1. Is anchorage configuration verification required (i.e., is the item one of the 50% of SWEL items requiring such verification)? No

2. Is the anchorage free of bent, broken, missing or loose hardware? Yes

3. Is the anchorage free of corrosion that is more than mild surface oxidation? Yes

4. Is the anchorage free of visible cracks in the concrete near the anchors? Yes

5. Is the anchorage configuration consistent with plant documentation? (Note: This question only applies if the item is one of the 50% for which an anchorage configuration verification is required.) Not Applicable

6. Based on the above anchorage evaluations, is the anchorage free of potentially adverse seismic conditions? Yes

Status: Y N U

Seismic Walkdown Checklist (SWC)

Equipment ID No.: 2-7800-28295

Equipment Class: (1) Motor Control Centers

Equipment Description: MCC - MCC 28/29-5

Interaction Effects

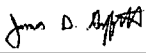

7. Are soft targets free from impact by nearby equipment or structures? Yes
Minor deformation in bottom of one door. Latches are adequately engaged; door is judged to be acceptable.
8. Are overhead equipment, distribution systems, ceiling tiles and lighting, and masonry block walls not likely to collapse onto the equipment? Yes
9. Do attached lines have adequate flexibility to avoid damage? Yes
10. Based on the above seismic interaction evaluations, is equipment free of potentially adverse seismic interaction effects? Yes

Other Adverse Conditions

11. Have you looked for and found no adverse seismic conditions that could adversely affect the safety functions of the equipment? Yes

Comments

Seismic Walkdown Team: J. Griffith & M. Wodarcyk - 8/6/2012

Evaluated by:  James Griffith Date: 10/4/2012
 Michael Wodarcyk 10/4/2012

Status: Y N U

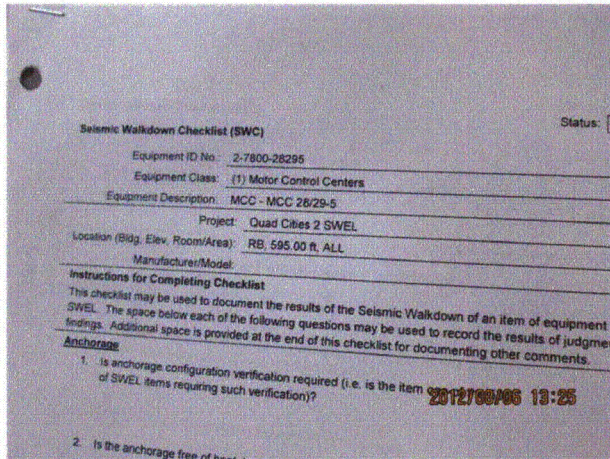
Seismic Walkdown Checklist (SWC)

Equipment ID No.: 2-7800-28295

Equipment Class: (1) Motor Control Centers

Equipment Description: MCC - MCC 28/29-5

Photos



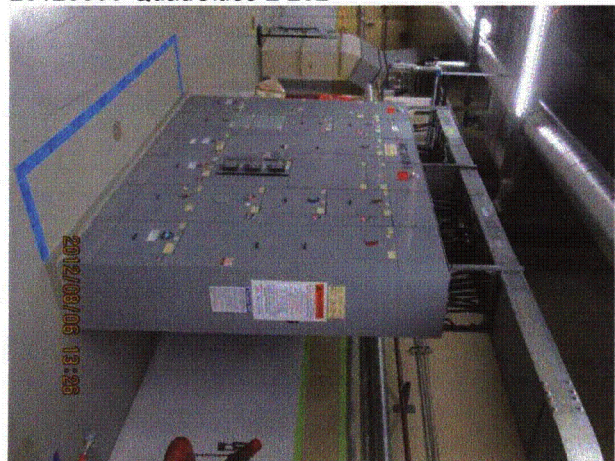
20120806-QuadCities-2 251



20120806-QuadCities-2 252



20120806-QuadCities-2 253



20120806-QuadCities-2 254

Status: Y N U

Seismic Walkdown Checklist (SWC)

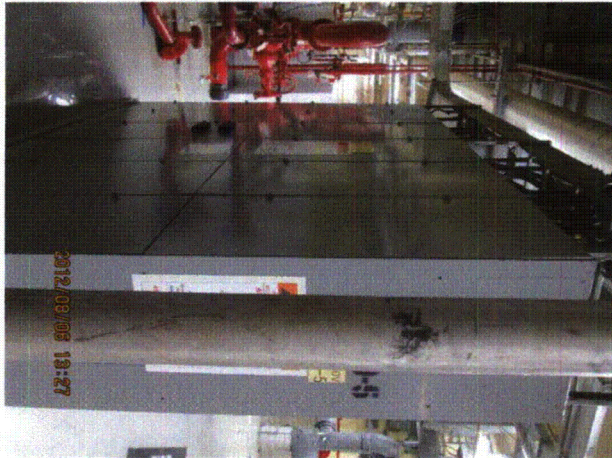
Equipment ID No.: 2-7800-28295

Equipment Class: (1) Motor Control Centers

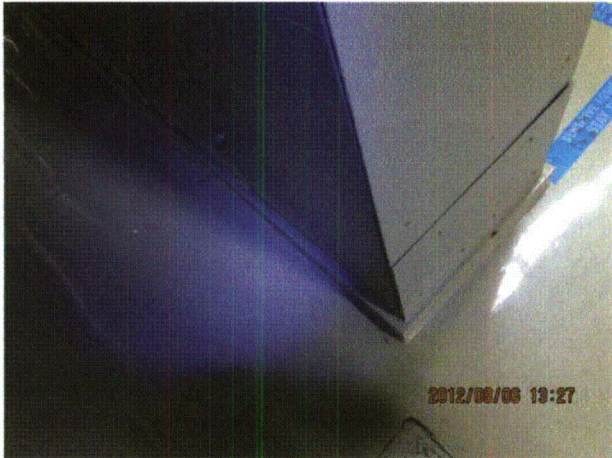
Equipment Description: MCC - MCC 28/29-5



20120806-QuadCities-2 255



20120806-QuadCities-2 257



20120806-QuadCities-2 258

Status: Y N U

Seismic Walkdown Checklist (SWC)

Equipment ID No.: 2-7800-28295

Equipment Class: (1) Motor Control Centers

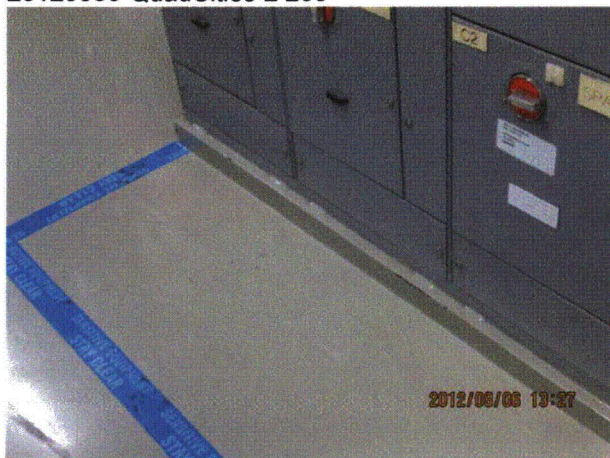
Equipment Description: MCC - MCC 28/29-5



20120806-QuadCities-2 259



20120806-QuadCities-2 260



20120806-QuadCities-2 261



20120806-QuadCities-2 262

Status: Y N U

Seismic Walkdown Checklist (SWC)

Equipment ID No.: 2-7800-28295

Equipment Class: (1) Motor Control Centers

Equipment Description: MCC - MCC 28/29-5



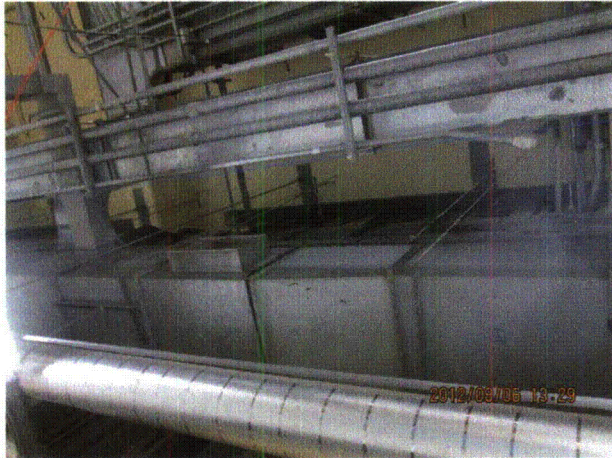
20120806-QuadCities-2 263



20120806-QuadCities-2 264



20120806-QuadCities-2 265



20120806-QuadCities-2 266

Status: Y N U

Seismic Walkdown Checklist (SWC)

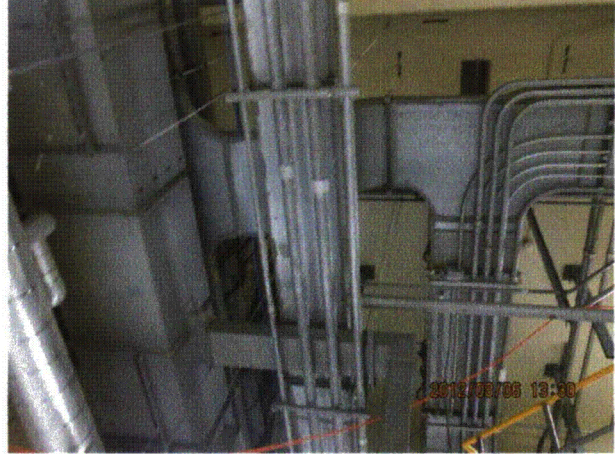
Equipment ID No.: 2-7800-28295

Equipment Class: (1) Motor Control Centers

Equipment Description: MCC - MCC 28/29-5



20120806-QuadCities-2 267



20120806-QuadCities-2 268



20120806-QuadCities-2 269



20120806-QuadCities-2 270

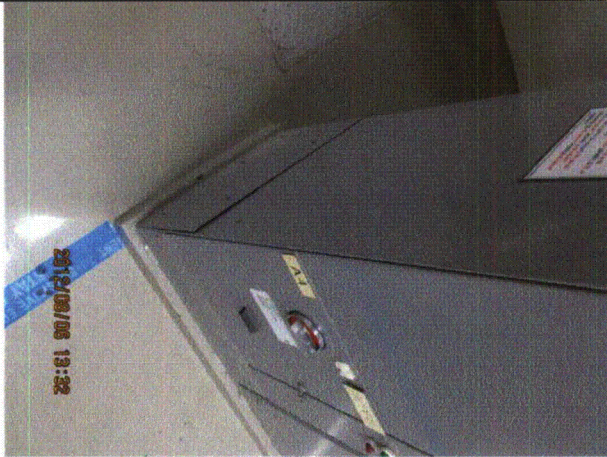
Status: Y N U

Seismic Walkdown Checklist (SWC)

Equipment ID No.: 2-7800-28295

Equipment Class: (1) Motor Control Centers

Equipment Description: MCC - MCC 28/29-5



20120806-QuadCities-2 271

Status: Y N U

Seismic Walkdown Checklist (SWC)

Equipment ID No.: 2-7800-29-1

Equipment Class: (1) Motor Control Centers

Equipment Description: MCC - MCC 29-1

Project: Quad Cities 2 SWEL

Location (Bldg, Elev, Room/Area): RB, 623.00 ft, ALL

Manufacturer/Model:

Instructions for Completing Checklist

This checklist may be used to document the results of the Seismic Walkdown of an item of equipment on the SWEL. The space below each of the following questions may be used to record the results of judgments and findings. Additional space is provided at the end of this checklist for documenting other comments.

Anchorage

1. Is anchorage configuration verification required (i.e., is the item one of the 50% of SWEL items requiring such verification)? No

2. Is the anchorage free of bent, broken, missing or loose hardware? Yes

3. Is the anchorage free of corrosion that is more than mild surface oxidation? Yes

4. Is the anchorage free of visible cracks in the concrete near the anchors? Yes

5. Is the anchorage configuration consistent with plant documentation? (Note: This question only applies if the item is one of the 50% for which an anchorage configuration verification is required.) Not Applicable

6. Based on the above anchorage evaluations, is the anchorage free of potentially adverse seismic conditions? Yes

Status: Y N U

Seismic Walkdown Checklist (SWC)

Equipment ID No.: 2-7800-29-1

Equipment Class: (1) Motor Control Centers

Equipment Description: MCC - MCC 29-1

Interaction Effects

- | | |
|---|-----|
| 7. Are soft targets free from impact by nearby equipment or structures? | Yes |
| 8. Are overhead equipment, distribution systems, ceiling tiles and lighting, and masonry block walls not likely to collapse onto the equipment? | Yes |
| 9. Do attached lines have adequate flexibility to avoid damage? | Yes |
| 10. Based on the above seismic interaction evaluations, is equipment free of potentially adverse seismic interaction effects? | Yes |

Other Adverse Conditions

- | | |
|--|-----|
| 11. Have you looked for and found no adverse seismic conditions that could adversely affect the safety functions of the equipment?
<i>IR 1397864:</i> | Yes |
|--|-----|

During the Seismic Walkdowns it was identified that one of the two latches on MCC 29-1 was not secured. The other latch is secured. The concern with unlatched door panels is that during a seismic event the door could open. If the door were to open, the doors could bang against the MCC and the impact could cause components within to change states. The other issue with open doors is that when the door is open the stiffness of the panel is reduced. Because this MCC is not a tall MCC, as long as one of the latches is functional, the seismic acceptability of the MCC is not compromised.

Comments

Seismic Walkdown Team: J. Griffith & M. Wodarczyk - 8/6/2012

Status: Y N U

Seismic Walkdown Checklist (SWC)

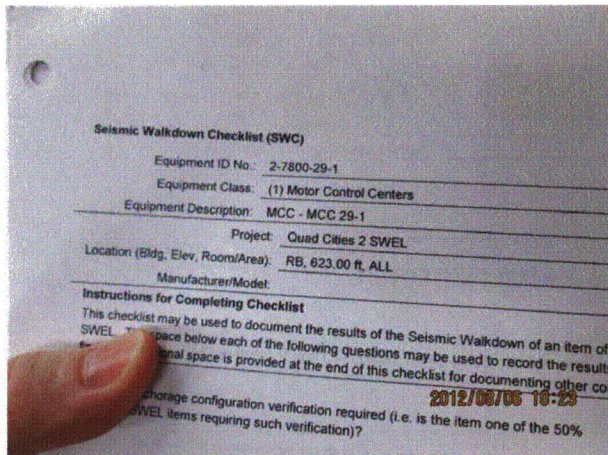
Equipment ID No.: 2-7800-29-1

Equipment Class: (1) Motor Control Centers

Equipment Description: MCC - MCC 29-1

Evaluated by: *James D. Griffith* James Griffith Date: 10/4/2012
Michael J. Wodarczyk Michael Wodarczyk 10/4/2012

Photos



20120806-QuadCities-2 107



20120806-QuadCities-2 108



20120806-QuadCities-2 109



20120806-QuadCities-2 110

Status: Y N U

Seismic Walkdown Checklist (SWC)

Equipment ID No.: 2-7800-29-1

Equipment Class: (1) Motor Control Centers

Equipment Description: MCC - MCC 29-1



20120806-QuadCities-2 111



20120806-QuadCities-2 112



20120806-QuadCities-2 113



20120806-QuadCities-2 114

Status: Y N U

Seismic Walkdown Checklist (SWC)

Equipment ID No.: 2-7800-29-1

Equipment Class: (1) Motor Control Centers

Equipment Description: MCC - MCC 29-1



20120806-QuadCities-2 115



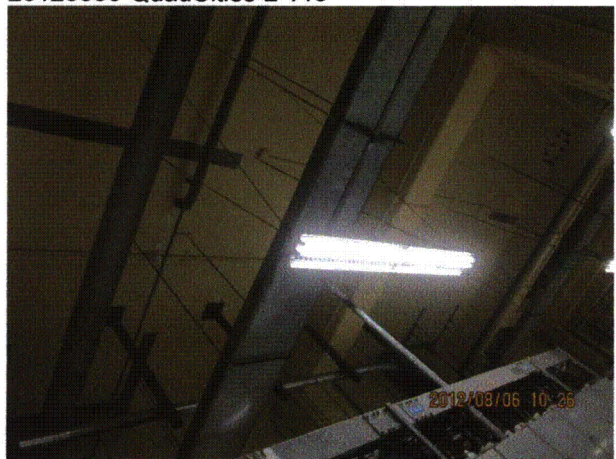
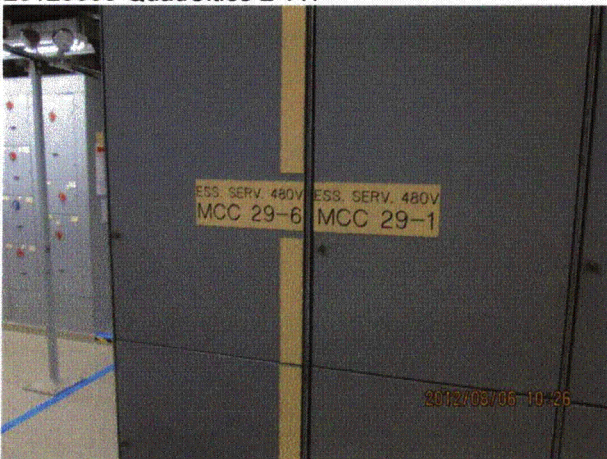
20120806-QuadCities-2 116



20120806-QuadCities-2 117



20120806-QuadCities-2 118



Status: Y N U

Seismic Walkdown Checklist (SWC)

Equipment ID No.: 2-7800-29-1

Equipment Class: (1) Motor Control Centers

Equipment Description: MCC - MCC 29-1

20120806-QuadCities-2 119

20120806-QuadCities-2 120



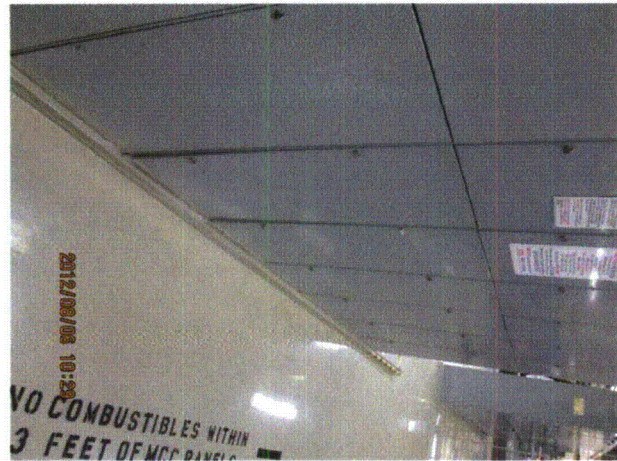
20120806-QuadCities-2 121



20120806-QuadCities-2 122



20120806-QuadCities-2 123



20120806-QuadCities-2 124

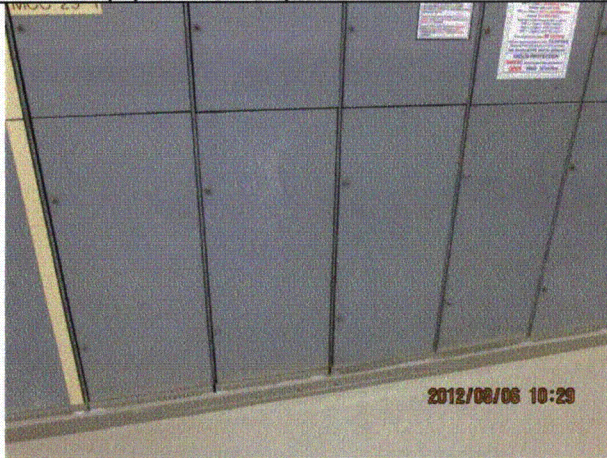
Status: Y N U

Seismic Walkdown Checklist (SWC)

Equipment ID No.: 2-7800-29-1

Equipment Class: (1) Motor Control Centers

Equipment Description: MCC - MCC 29-1



20120806-QuadCities-2 125

Status: Y N U

Seismic Walkdown Checklist (SWC)

Equipment ID No.: 2-8300-2

Equipment Class: (16) Battery Chargers and Inverters

Equipment Description: CHRGR #2, 125V

Project: Quad Cities 2 SWEL

Location (Bldg, Elev, Room/Area): TB, 615.00 ft, ALL

Manufacturer/Model:

Instructions for Completing Checklist

This checklist may be used to document the results of the Seismic Walkdown of an item of equipment on the SWEL. The space below each of the following questions may be used to record the results of judgments and findings. Additional space is provided at the end of this checklist for documenting other comments.

Anchorage

1. Is anchorage configuration verification required (i.e., is the item one of the 50% of SWEL items requiring such verification)? Yes

2. Is the anchorage free of bent, broken, missing or loose hardware? Yes

3. Is the anchorage free of corrosion that is more than mild surface oxidation? Yes

4. Is the anchorage free of visible cracks in the concrete near the anchors? Yes
Shrinkage crack in floor judged to be acceptable.

5. Is the anchorage configuration consistent with plant documentation? (Note: This question only applies if the item is one of the 50% for which an anchorage configuration verification is required.) Yes

6. Based on the above anchorage evaluations, is the anchorage free of potentially adverse seismic conditions? Yes

Status: Y N U

Seismic Walkdown Checklist (SWC)

Equipment ID No.: 2-8300-2

Equipment Class: (16) Battery Chargers and Inverters

Equipment Description: CHRGR #2, 125V

Interaction Effects

7. Are soft targets free from impact by nearby equipment or structures? Yes
Door slightly sprung such that it could rattle at bottom. Operations confirmed that there are no relays in the battery charger. Judged to be acceptable. See IR 1419533.
8. Are overhead equipment, distribution systems, ceiling tiles and lighting, and masonry block walls not likely to collapse onto the equipment? Yes
Overhead light fixtures judged to be acceptable. Masonry wall in vicinity restrained at top and judged to be acceptable.
9. Do attached lines have adequate flexibility to avoid damage? Yes
10. Based on the above seismic interaction evaluations, is equipment free of potentially adverse seismic interaction effects? Yes

Other Adverse Conditions

11. Have you looked for and found no adverse seismic conditions that could adversely affect the safety functions of the equipment? Yes

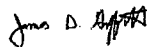
Comments

SEWS Anchorage Notes:

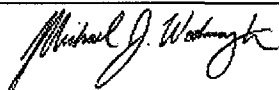
Angles are welded to the base channel to accommodate anchorage. Each of the six angles is bolted to the floor with one 3/8" dia. non shell expansion bolt.

Seismic Walkdown Team: J. Griffith & M. Wodarczyk - 8/7/2012

Evaluated by:

 James Griffith

Date: 10/12/2012



Michael Wodarczyk

10/12/2012

Status: Y N U

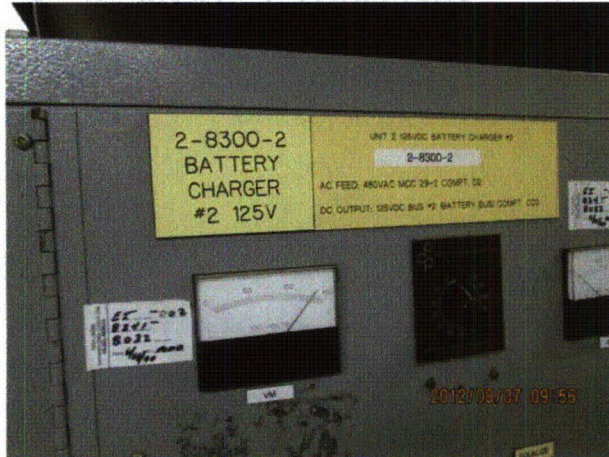
Seismic Walkdown Checklist (SWC)

Equipment ID No.: 2-8300-2

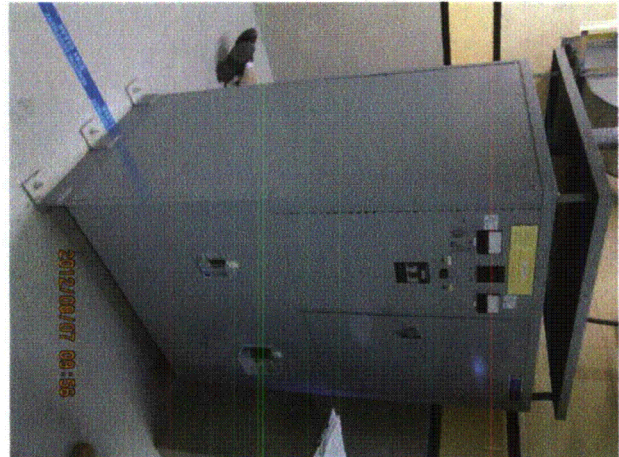
Equipment Class: (16) Battery Chargers and Inverters

Equipment Description: CHRGR #2, 125V

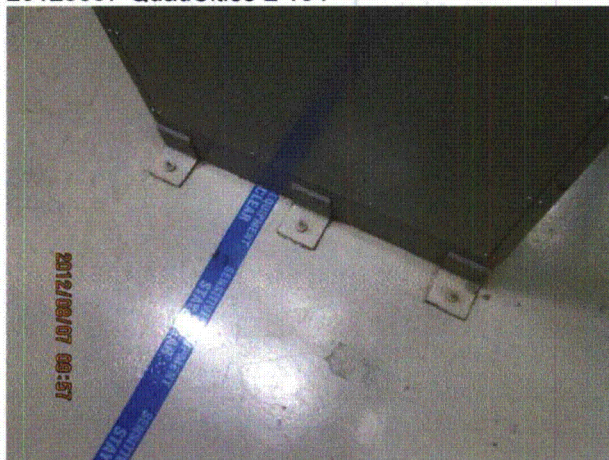
Photos



20120807-QuadCities-2 154



20120807-QuadCities-2 155



20120807-QuadCities-2 156



20120807-QuadCities-2 157

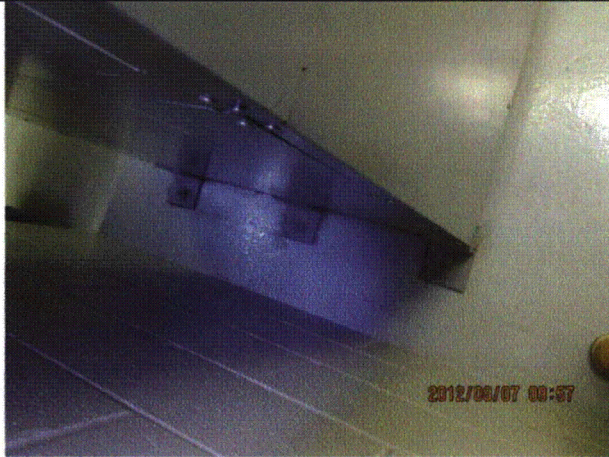
Status: Y N U

Seismic Walkdown Checklist (SWC)

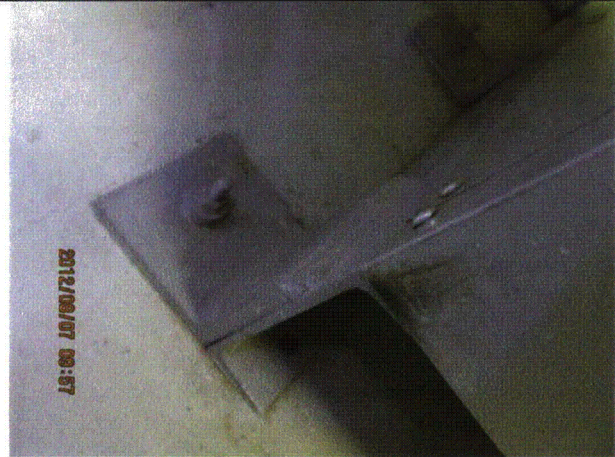
Equipment ID No.: 2-8300-2

Equipment Class: (16) Battery Chargers and Inverters

Equipment Description: CHRGR #2, 125V



20120807-QuadCities-2 158



20120807-QuadCities-2 159



20120807-QuadCities-2 160



20120807-QuadCities-2 161

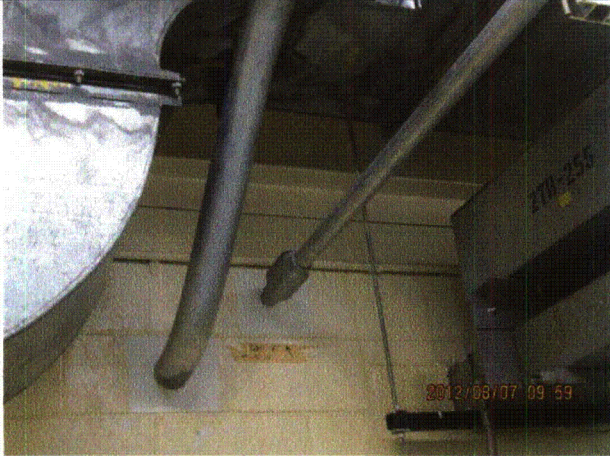
Status: Y N U

Seismic Walkdown Checklist (SWC)

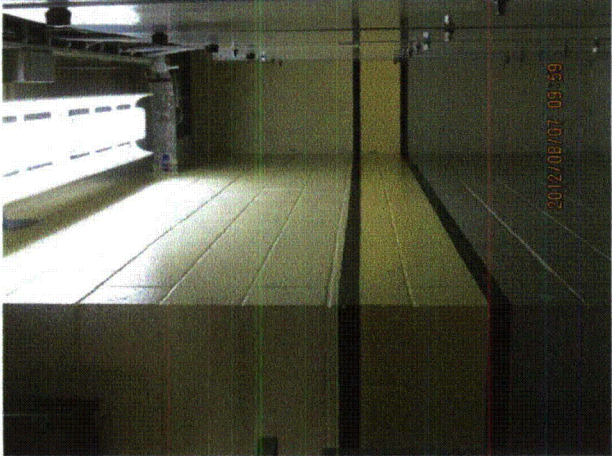
Equipment ID No.: 2-8300-2

Equipment Class: (16) Battery Chargers and Inverters

Equipment Description: CHRGR #2, 125V



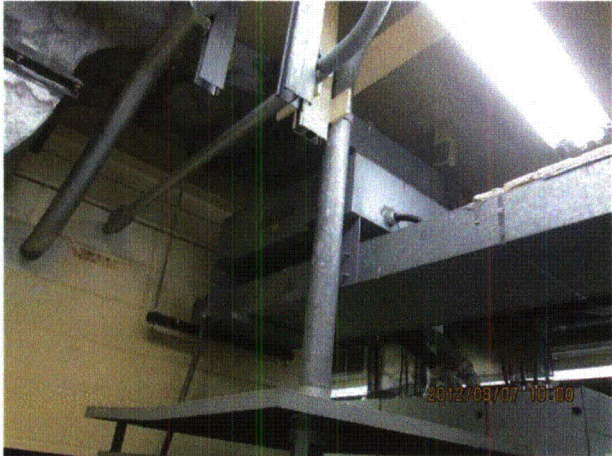
20120807-QuadCities-2 162



20120807-QuadCities-2 163



20120807-QuadCities-2 164



20120807-QuadCities-2 165

Status: Y N U

Seismic Walkdown Checklist (SWC)

Equipment ID No.: 2-8300-2

Equipment Class: (16) Battery Chargers and Inverters

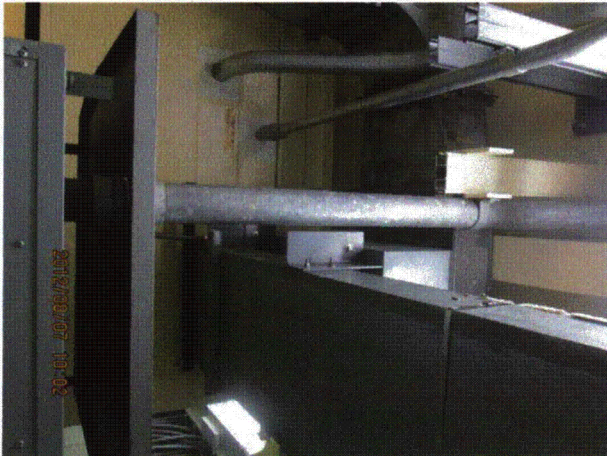
Equipment Description: CHRGR #2, 125V



20120807-QuadCities-2 166



20120807-QuadCities-2 167



20120807-QuadCities-2 168



20120807-QuadCities-2 169

Status: Y N U

Seismic Walkdown Checklist (SWC)

Equipment ID No.: 2-8300-2

Equipment Class: (16) Battery Chargers and Inverters

Equipment Description: CHRGR #2, 125V



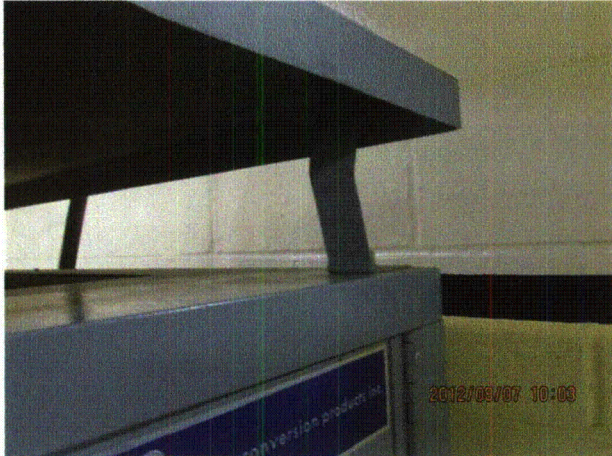
20120807-QuadCities-2 170



20120807-QuadCities-2 171



20120807-QuadCities-2 172



20120807-QuadCities-2 173

Status: Y N U

Seismic Walkdown Checklist (SWC)

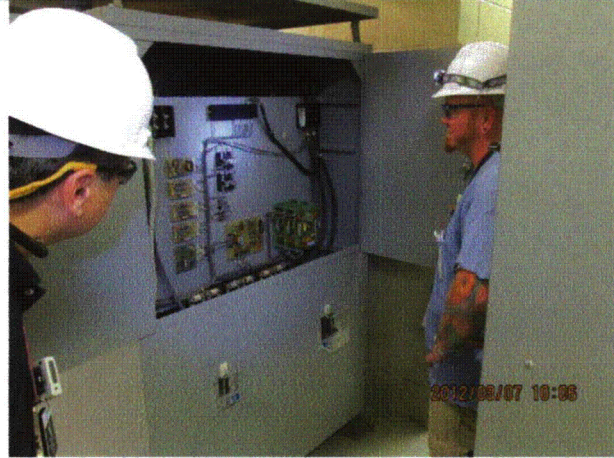
Equipment ID No.: 2-8300-2

Equipment Class: (16) Battery Chargers and Inverters

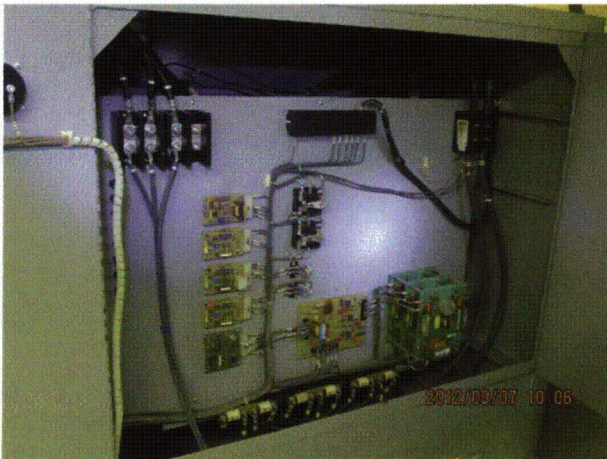
Equipment Description: CHRGR #2, 125V



20120807-QuadCities-2 174



20120807-QuadCities-2 175



20120807-QuadCities-2 176



20120807-QuadCities-2 213

Status: Y N U

Seismic Walkdown Checklist (SWC)

Equipment ID No.: 2-8300-2

Equipment Class: (16) Battery Chargers and Inverters

Equipment Description: CHRGR #2, 125V



20120807-QuadCities-2 214



20120807-QuadCities-2 215



20120807-QuadCities-2 216



20120807-QuadCities-2 217

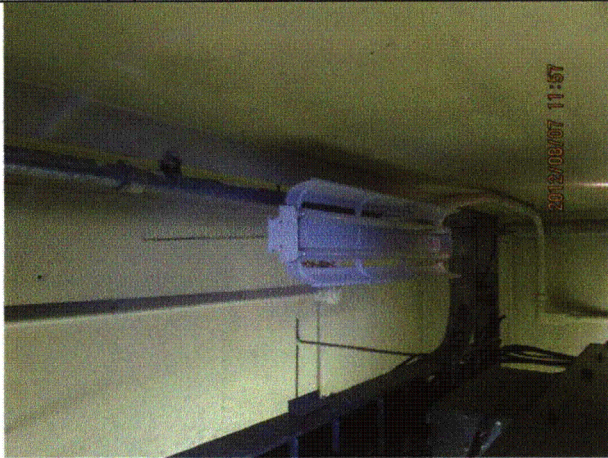
Status: Y N U

Seismic Walkdown Checklist (SWC)

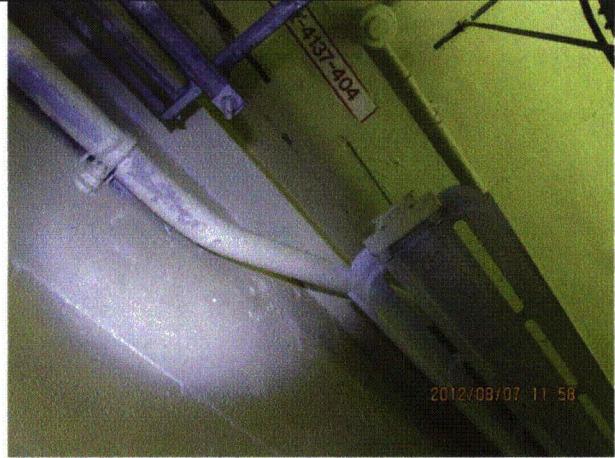
Equipment ID No.: 2-8300-2

Equipment Class: (16) Battery Chargers and Inverters

Equipment Description: CHRGR #2, 125V



20120807-QuadCities-2 218



20120807-QuadCities-2 219



20120807-QuadCities-2 220

Status: Y N U

Seismic Walkdown Checklist (SWC)

Equipment ID No.: 2-8350

Equipment Class: (16) Battery Chargers and Inverters

Equipment Description: CHRGR #2, 250V

Project: Quad Cities 2 SWEL

Location (Bldg, Elev, Room/Area): TB, 615.00 ft, ALL

Manufacturer/Model:

Instructions for Completing Checklist

This checklist may be used to document the results of the Seismic Walkdown of an item of equipment on the SWEL. The space below each of the following questions may be used to record the results of judgments and findings. Additional space is provided at the end of this checklist for documenting other comments.

Anchorage

1. Is anchorage configuration verification required (i.e., is the item one of the 50% of SWEL items requiring such verification)? No

2. Is the anchorage free of bent, broken, missing or loose hardware? Yes

3. Is the anchorage free of corrosion that is more than mild surface oxidation? Yes
Minor surface corrosion judged to be acceptable.

4. Is the anchorage free of visible cracks in the concrete near the anchors? Yes
Minor shrinkage cracks in floor judged to be acceptable.

5. Is the anchorage configuration consistent with plant documentation? (Note: This question only applies if the item is one of the 50% for which an anchorage configuration verification is required.) Not Applicable

6. Based on the above anchorage evaluations, is the anchorage free of potentially adverse seismic conditions? Yes

Status: Y N U

Seismic Walkdown Checklist (SWC)

Equipment ID No.: 2-8350

Equipment Class: (16) Battery Chargers and Inverters

Equipment Description: CHRGR #2, 250V

Interaction Effects

7. Are soft targets free from impact by nearby equipment or structures? Yes
8. Are overhead equipment, distribution systems, ceiling tiles and lighting, and masonry block walls not likely to collapse onto the equipment? Yes
Overhead light fixtures judged to be acceptable.
9. Do attached lines have adequate flexibility to avoid damage? Yes
10. Based on the above seismic interaction evaluations, is equipment free of potentially adverse seismic interaction effects? Yes

Other Adverse Conditions

11. Have you looked for and found no adverse seismic conditions that could adversely affect the safety functions of the equipment? Yes

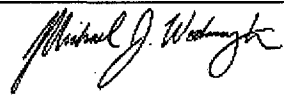
Comments

Seismic Walkdown Team: J. Griffith & M. Wodarcyk - 8/7/2012

Evaluated by:

 James Griffith

Date: 10/4/2012


Michael Wodarcyk

10/4/2012

Status: Y N U

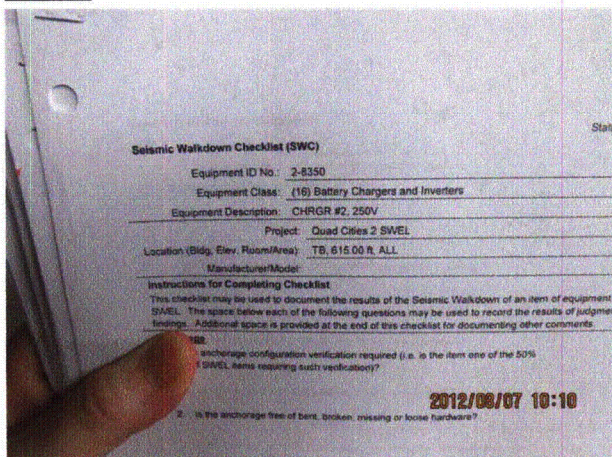
Seismic Walkdown Checklist (SWC)

Equipment ID No.: 2-8350

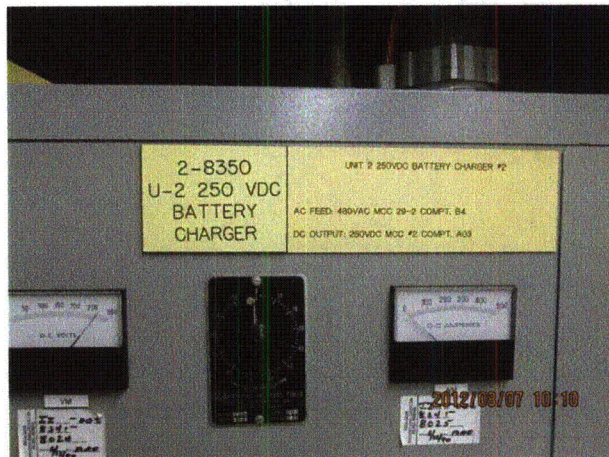
Equipment Class: (16) Battery Chargers and Inverters

Equipment Description: CHRGR #2, 250V

Photos



20120807-QuadCities-2 177



20120807-QuadCities-2 178



20120807-QuadCities-2 179



20120807-QuadCities-2 180

Status: Y N U

Seismic Walkdown Checklist (SWC)

Equipment ID No.: 2-8350

Equipment Class: (16) Battery Chargers and Inverters

Equipment Description: CHRGR #2, 250V



20120807-QuadCities-2 181



20120807-QuadCities-2 182



20120807-QuadCities-2 183



20120807-QuadCities-2 184

Status: Y N U

Seismic Walkdown Checklist (SWC)

Equipment ID No.: 2-8350

Equipment Class: (16) Battery Chargers and Inverters

Equipment Description: CHRGR #2, 250V



20120807-QuadCities-2 185



20120807-QuadCities-2 186



20120807-QuadCities-2 187



20120807-QuadCities-2 188

Status: Y N U

Seismic Walkdown Checklist (SWC)

Equipment ID No.: 2-8350

Equipment Class: (16) Battery Chargers and Inverters

Equipment Description: CHRGR #2, 250V



20120807-QuadCities-2 189



20120807-QuadCities-2 190



20120807-QuadCities-2 191



20120807-QuadCities-2 192

Status: Y N U

Seismic Walkdown Checklist (SWC)

Equipment ID No.: 2-8350

Equipment Class: (16) Battery Chargers and Inverters

Equipment Description: CHRGR #2, 250V



20120807-QuadCities-2 193

Status: Y N U

Seismic Walkdown Checklist (SWC)

Equipment ID No.: 2-8801A-AO

Equipment Class: (7) Fluid-Operated Valves

Equipment Description: VLV, PNEUMATIC, 3/4 - CONTAINMENT 2G DW COOLER UPSTREAM AIR
SMPL VLV

Project: Quad Cities 2 SWEL

Location (Bldg, Elev, Room/Area): RB, 623.00 ft, ALL

Manufacturer/Model:

Instructions for Completing Checklist

This checklist may be used to document the results of the Seismic Walkdown of an item of equipment on the SWEL. The space below each of the following questions may be used to record the results of judgments and findings. Additional space is provided at the end of this checklist for documenting other comments.

Anchorage

1. Is anchorage configuration verification required (i.e., is the item one of the 50% of SWEL items requiring such verification)? No

2. Is the anchorage free of bent, broken, missing or loose hardware? Not Applicable

3. Is the anchorage free of corrosion that is more than mild surface oxidation? Not Applicable

4. Is the anchorage free of visible cracks in the concrete near the anchors? Not Applicable

5. Is the anchorage configuration consistent with plant documentation? (Note: This question only applies if the item is one of the 50% for which an anchorage configuration verification is required.) Not Applicable

6. Based on the above anchorage evaluations, is the anchorage free of potentially adverse seismic conditions? Yes

Status: Y N U

Seismic Walkdown Checklist (SWC)

Equipment ID No.: 2-8801A-AO

Equipment Class: (7) Fluid-Operated Valves

Equipment Description: VLV, PNEUMATIC, 3/4 - CONTAINMENT 2G DW COOLER UPSTREAM AIR
SMPL VLV

Interaction Effects

7. Are soft targets free from impact by nearby equipment or structures? Yes
8. Are overhead equipment, distribution systems, ceiling tiles and lighting, and masonry block walls not likely to collapse onto the equipment? Yes
9. Do attached lines have adequate flexibility to avoid damage? Yes
10. Based on the above seismic interaction evaluations, is equipment free of potentially adverse seismic interaction effects? Yes

Other Adverse Conditions

11. Have you looked for and found no adverse seismic conditions that could adversely affect the safety functions of the equipment? Yes
Associated solenoid valve touches solid pipe insulation (typical for 2-8801A, B, and C valves). Valves fail closed upon loss of air per System Engineering. Judged to be acceptable. See IR 1397616.

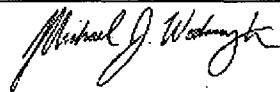
Comments

Seismic Walkdown Team: J. Griffith & M. Wodarczyk - 8/6/2012

Evaluated by:

 James Griffith

Date: 10/4/2012



Michael Wodarczyk

10/4/2012

Status: Y N U

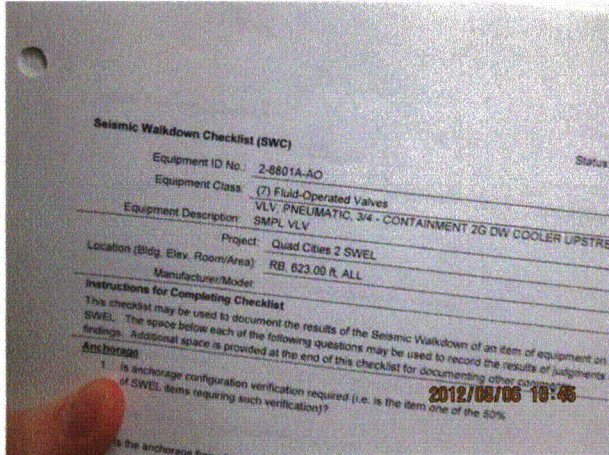
Seismic Walkdown Checklist (SWC)

Equipment ID No.: 2-8801A-AO

Equipment Class: (7) Fluid-Operated Valves

Equipment Description: VLV, PNEUMATIC, 3/4 - CONTAINMENT 2G DW COOLER UPSTREAM AIR
SMPL VLV

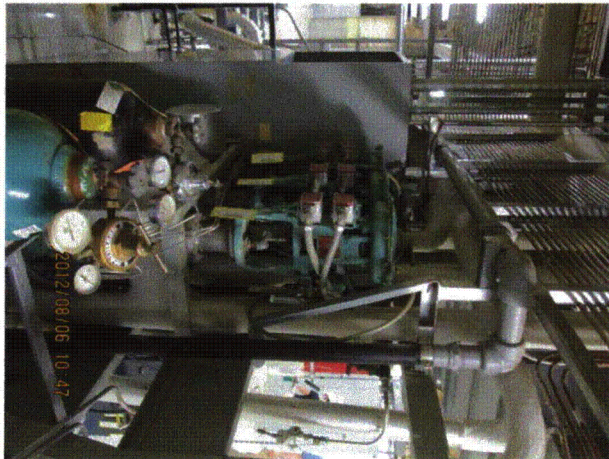
Photos



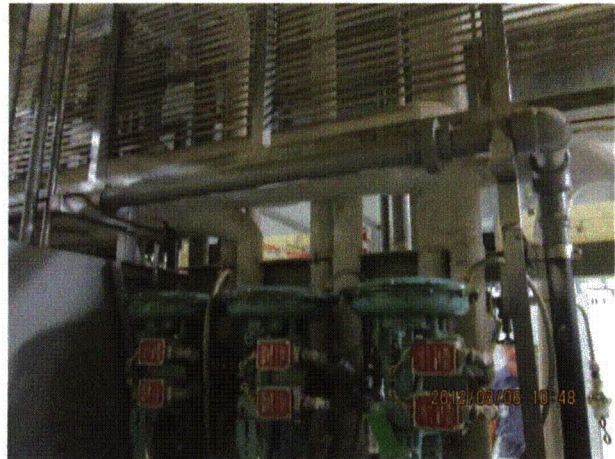
20120806-QuadCities-2 143



20120806-QuadCities-2 144



20120806-QuadCities-2 145



20120806-QuadCities-2 146

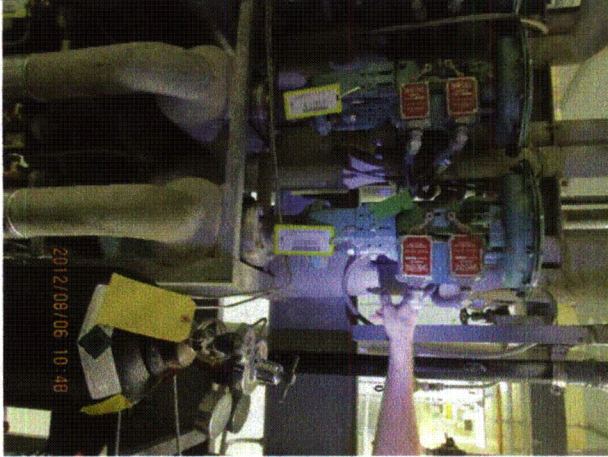
Status: Y N U

Seismic Walkdown Checklist (SWC)

Equipment ID No.: 2-8801A-AO

Equipment Class: (7) Fluid-Operated Valves

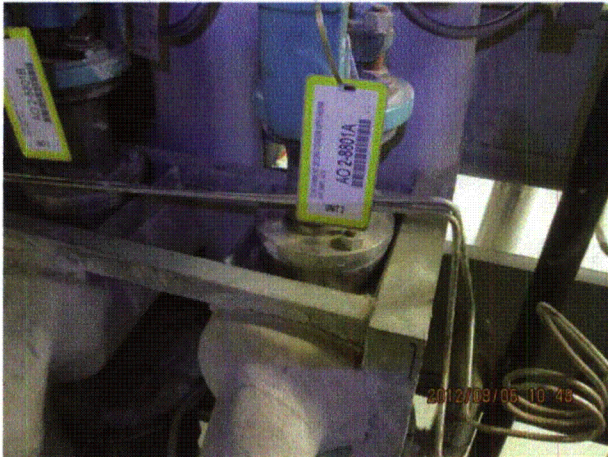
Equipment Description: VLV, PNEUMATIC, 3/4 - CONTAINMENT 2G DW COOLER UPSTREAM AIR
SMPL VLV



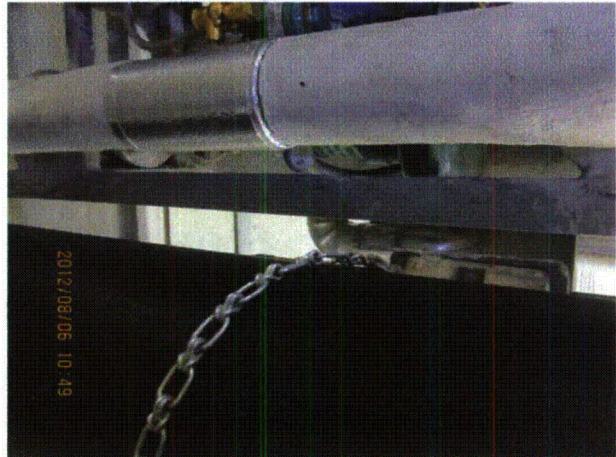
20120806-QuadCities-2 147



20120806-QuadCities-2 148



20120806-QuadCities-2 149



20120806-QuadCities-2 150

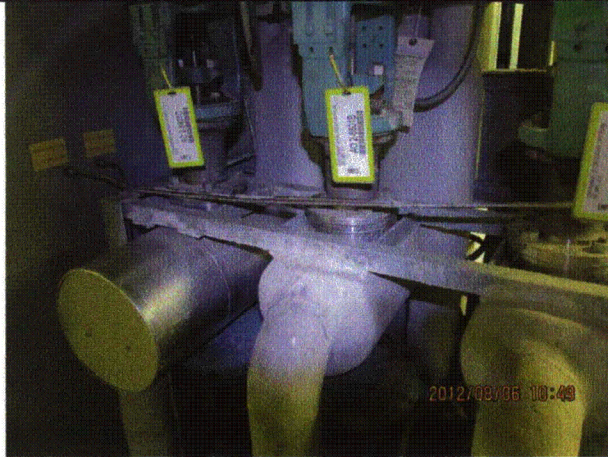
Status: Y N U

Seismic Walkdown Checklist (SWC)

Equipment ID No.: 2-8801A-AO

Equipment Class: (7) Fluid-Operated Valves

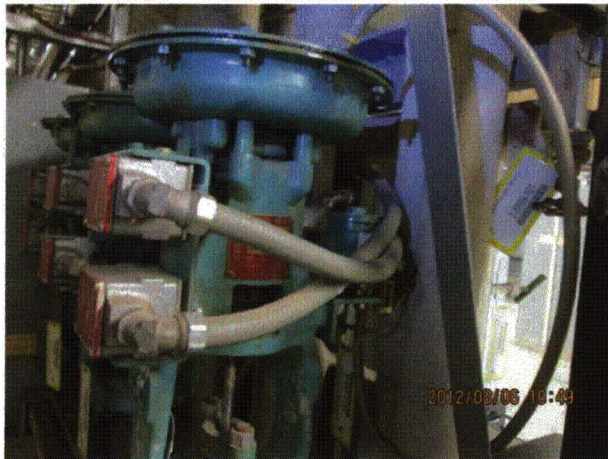
Equipment Description: VLV, PNEUMATIC, 3/4 - CONTAINMENT 2G DW COOLER UPSTREAM AIR
SMPL VLV



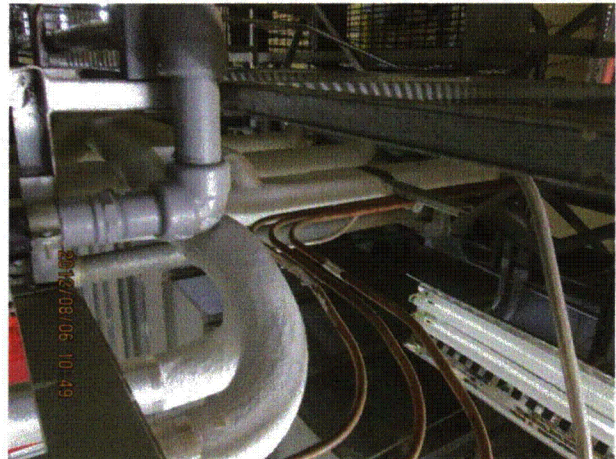
20120806-QuadCities-2 151



20120806-QuadCities-2 152



20120806-QuadCities-2 153



20120806-QuadCities-2 154

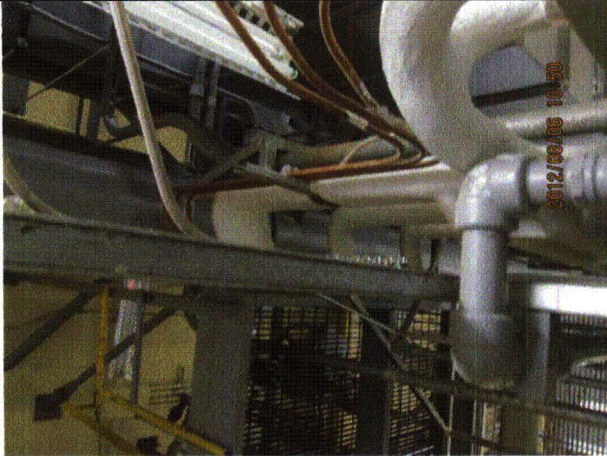
Status: Y N U

Seismic Walkdown Checklist (SWC)

Equipment ID No.: 2-8801A-AO

Equipment Class: (7) Fluid-Operated Valves

Equipment Description: VLV, PNEUMATIC, 3/4 - CONTAINMENT 2G DW COOLER UPSTREAM AIR
SMPL VLV



20120806-QuadCities-2 155



20120806-QuadCities-2 156



20120806-QuadCities-2 157



20120806-QuadCities-2 158

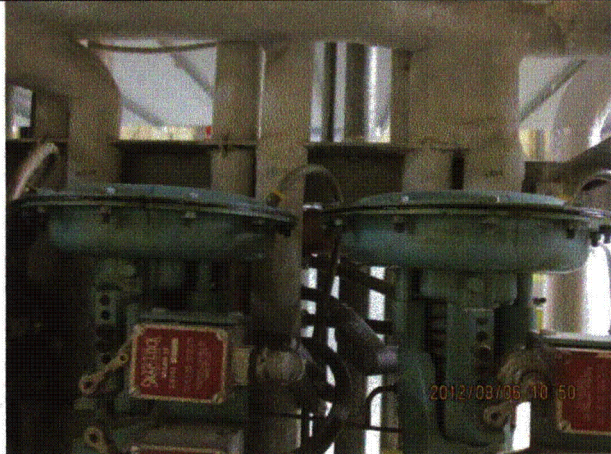
Status: Y N U

Seismic Walkdown Checklist (SWC)

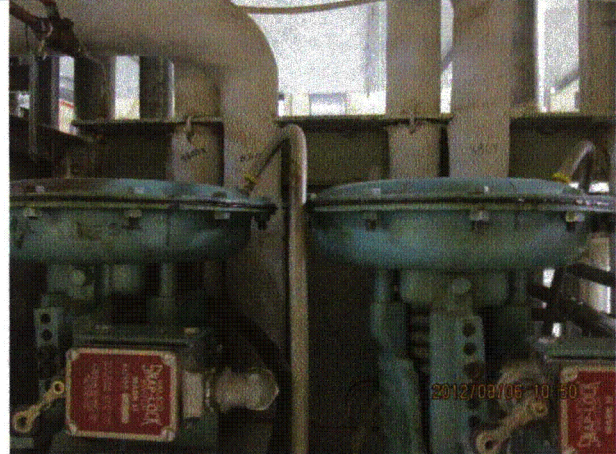
Equipment ID No.: 2-8801A-AO

Equipment Class: (7) Fluid-Operated Valves

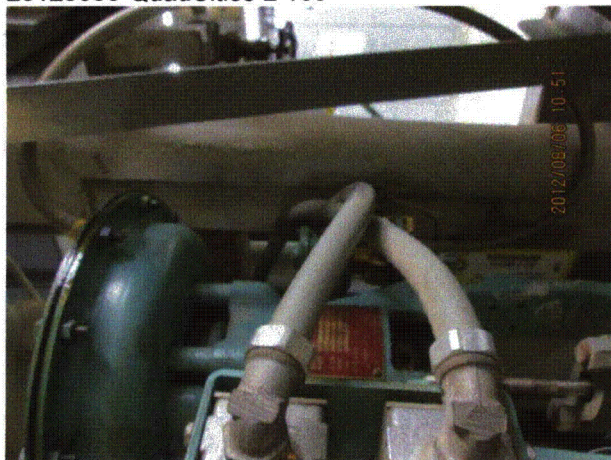
Equipment Description: VLV, PNEUMATIC, 3/4 - CONTAINMENT 2G DW COOLER UPSTREAM AIR
SMPL VLV



20120806-QuadCities-2 159



20120806-QuadCities-2 160



20120806-QuadCities-2 161



20120806-QuadCities-2 162

Status: Y N U

Seismic Walkdown Checklist (SWC)

Equipment ID No.: 2-8801A-AO

Equipment Class: (7) Fluid-Operated Valves

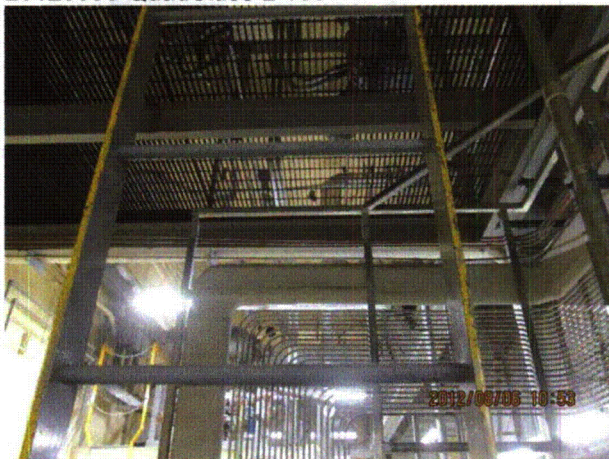
Equipment Description: VLV, PNEUMATIC, 3/4 - CONTAINMENT 2G DW COOLER UPSTREAM AIR
SMPL VLV



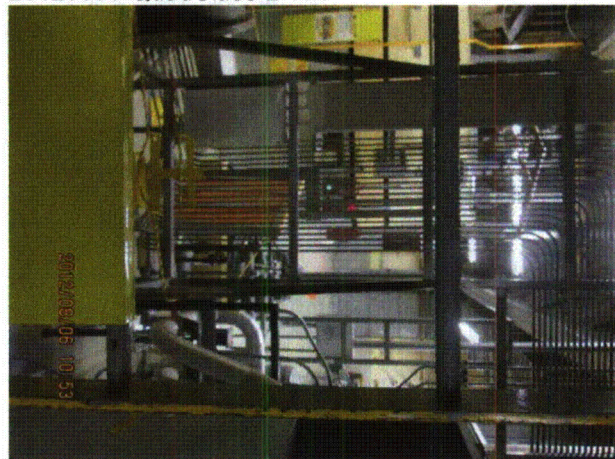
20120806-QuadCities-2 163



20120806-QuadCities-2 164



20120806-QuadCities-2 165



20120806-QuadCities-2 166

Status: Y N U

Seismic Walkdown Checklist (SWC)

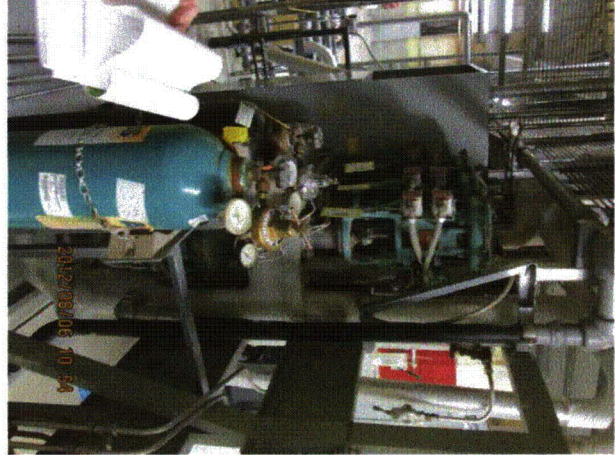
Equipment ID No.: 2-8801A-AO

Equipment Class: (7) Fluid-Operated Valves

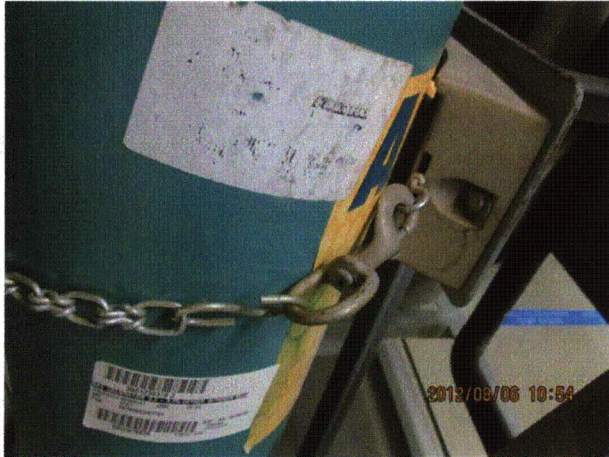
Equipment Description: VLV, PNEUMATIC, 3/4 - CONTAINMENT 2G DW COOLER UPSTREAM AIR
SMPL VLV



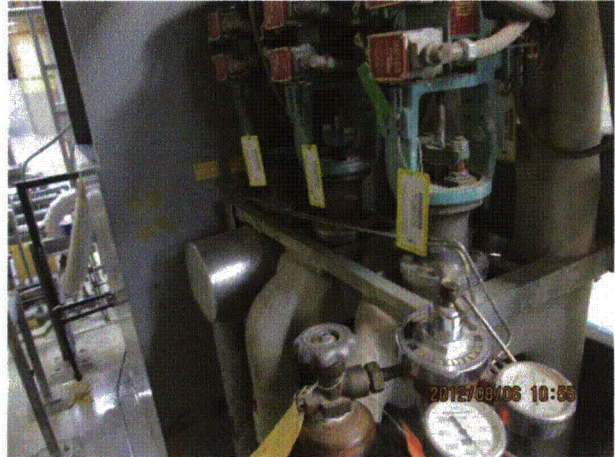
20120806-QuadCities-2 167



20120806-QuadCities-2 168



20120806-QuadCities-2 169



20120806-QuadCities-2 170

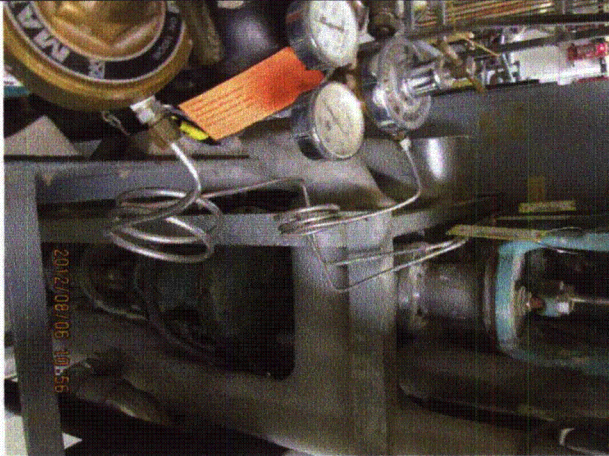
Status: Y N U

Seismic Walkdown Checklist (SWC)

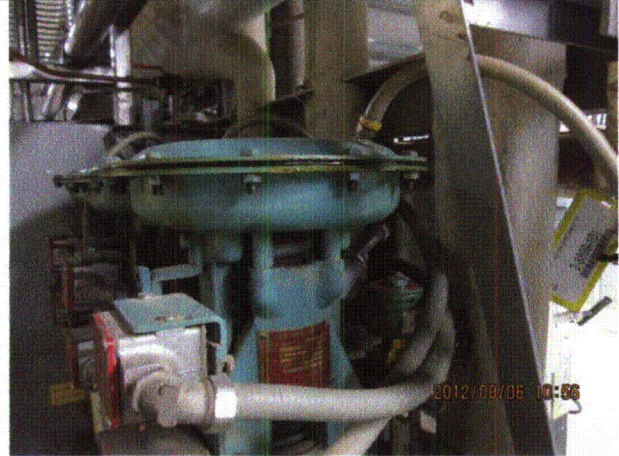
Equipment ID No.: 2-8801A-AO

Equipment Class: (7) Fluid-Operated Valves

Equipment Description: VLV, PNEUMATIC, 3/4 - CONTAINMENT 2G DW COOLER UPSTREAM AIR
SMPL VLV



20120806-QuadCities-2 171



20120806-QuadCities-2 172



20120806-QuadCities-2 173

Status: Y N U

Seismic Walkdown Checklist (SWC)

Equipment ID No.: 902-3

Equipment Class: (20) Instrumentation and Control Panels and Cabinets

Equipment Description: PANEL

Project: Quad Cities 2 SWEL

Location (Bldg, Elev, Room/Area): SB, 623.00 ft, ALL

Manufacturer/Model:

Instructions for Completing Checklist

This checklist may be used to document the results of the Seismic Walkdown of an item of equipment on the SWEL. The space below each of the following questions may be used to record the results of judgments and findings. Additional space is provided at the end of this checklist for documenting other comments.

Anchorage

1. Is anchorage configuration verification required (i.e., is the item one of the 50% of SWEL items requiring such verification)? Yes

2. Is the anchorage free of bent, broken, missing or loose hardware? Yes

3. Is the anchorage free of corrosion that is more than mild surface oxidation? Yes

4. Is the anchorage free of visible cracks in the concrete near the anchors? Yes

5. Is the anchorage configuration consistent with plant documentation? (Note: This question only applies if the item is one of the 50% for which an anchorage configuration verification is required.) Yes

6. Based on the above anchorage evaluations, is the anchorage free of potentially adverse seismic conditions? Yes
Viewed 6 anchors of 9 total. Remaining anchors could not be viewed due to cabling and limitations on access. Anchors viewed matched documentation, therefore it is reasonable to conclude that the anchors match plant documentation without further verification.

Status: Y N U

Seismic Walkdown Checklist (SWC)

Equipment ID No.: 902-3

Equipment Class: (20) Instrumentation and Control Panels and Cabinets

Equipment Description: PANEL

Interaction Effects

- | | |
|---|-----|
| 7. Are soft targets free from impact by nearby equipment or structures? | Yes |
| 8. Are overhead equipment, distribution systems, ceiling tiles and lighting, and masonry block walls not likely to collapse onto the equipment?
<i>Sheet metal ceiling inside cabinet and drop-panel ceiling outside cabinet prevent overhead access/visibility.</i> | Yes |
| 9. Do attached lines have adequate flexibility to avoid damage? | Yes |
| 10. Based on the above seismic interaction evaluations, is equipment free of potentially adverse seismic interaction effects? | Yes |

Other Adverse Conditions

- | | |
|---|-----|
| 11. Have you looked for and found no adverse seismic conditions that could adversely affect the safety functions of the equipment?
<i>Back of control panel was open. No adverse conditions were observed.</i> | Yes |
|---|-----|

Comments

SEWS Anchorage Notes:

Panel 902-3 has 9 welded or bolted friction clips (5 on front, 2 in center and 2 on back) attaching base channel to embedded steel.

Seismic Walkdown Team: J. Griffith & M. Wodarczyk - 8/7/2012

No photos permitted per Operations.

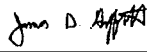
Status: Y N U

Seismic Walkdown Checklist (SWC)

Equipment ID No.: 902-3

Equipment Class: (20) Instrumentation and Control Panels and Cabinets

Equipment Description: PANEL

Evaluated by:  James Griffith Date: 10/4/2012

 Michael Wodarczyk 10/4/2012

Photos