

Status:  Y  N  U

**Seismic Walkdown Checklist (SWC)**

Equipment ID No.: 2-5749

Equipment Class: (10) Air Handlers

Equipment Description: COOLER, CUBICLE - 2DG CW PMP CUB COOLER

Project: Quad Cities 2 SWEL

Location (Bldg, Elev, Room/Area): TB, 547.00 ft, ALL

Manufacturer/Model:

**Instructions for Completing Checklist**

This checklist may be used to document the results of the Seismic Walkdown of an item of equipment on the SWEL. The space below each of the following questions may be used to record the results of judgments and findings. Additional space is provided at the end of this checklist for documenting other comments.

**Anchorage**

1. Is anchorage configuration verification required (i.e., is the item one of the 50% of SWEL items requiring such verification)? No
  
2. Is the anchorage free of bent, broken, missing or loose hardware? Yes
  
3. Is the anchorage free of corrosion that is more than mild surface oxidation? Yes
  
4. Is the anchorage free of visible cracks in the concrete near the anchors? Yes
  
5. Is the anchorage configuration consistent with plant documentation? (Note: This question only applies if the item is one of the 50% for which an anchorage configuration verification is required.) Not Applicable
  
6. Based on the above anchorage evaluations, is the anchorage free of potentially adverse seismic conditions? Yes

Status:  Y  N  U

**Seismic Walkdown Checklist (SWC)**

Equipment ID No.: 2-5749

Equipment Class: (10) Air Handlers

Equipment Description: COOLER, CUBICLE - 2DG CW PMP CUB COOLER

**Interaction Effects**

7. Are soft targets free from impact by nearby equipment or structures? Yes
8. Are overhead equipment, distribution systems, ceiling tiles and lighting, and masonry block walls not likely to collapse onto the equipment? Yes  
*Overhead light fixtures judged to be acceptable.*
9. Do attached lines have adequate flexibility to avoid damage? Yes
10. Based on the above seismic interaction evaluations, is equipment free of potentially adverse seismic interaction effects? Yes

**Other Adverse Conditions**

11. Have you looked for and found no adverse seismic conditions that could adversely affect the safety functions of the equipment? Yes

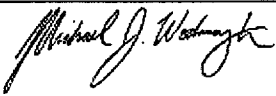
**Comments**

Seismic Walkdown Team: J. Griffith & M. Wodarczyk - 8/8/2012

Evaluated by:

 James Griffith

Date: 10/4/2012

  
Michael Wodarczyk

10/4/2012

Status:  Y  N  U

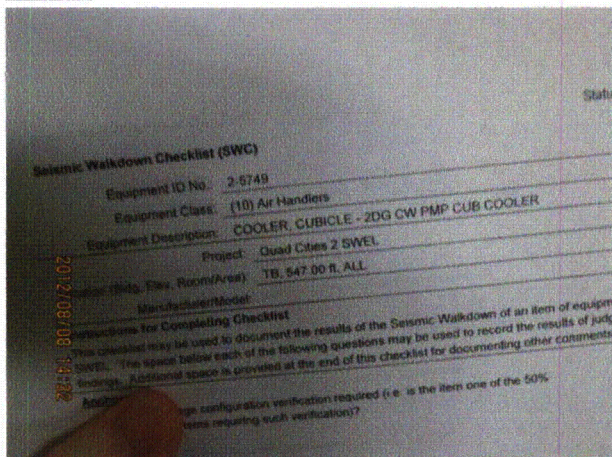
**Seismic Walkdown Checklist (SWC)**

Equipment ID No.: 2-5749

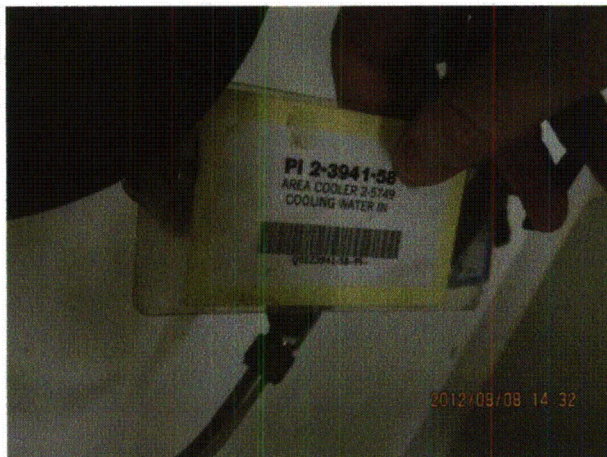
Equipment Class: (10) Air Handlers

Equipment Description: COOLER, CUBICLE - 2DG CW PMP CUB COOLER

**Photos**



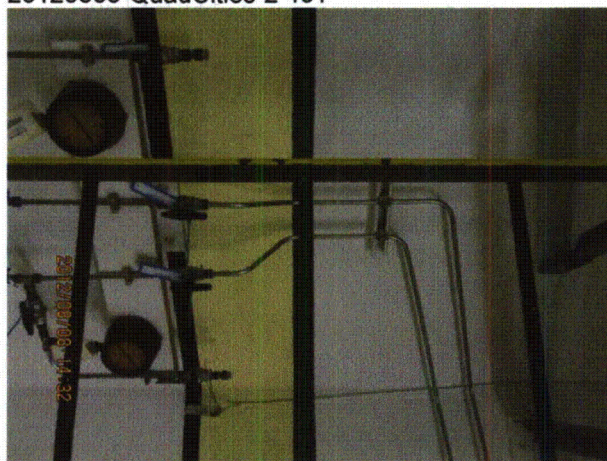
20120808-QuadCities-2 400



20120808-QuadCities-2 401



20120808-QuadCities-2 402



20120808-QuadCities-2 403

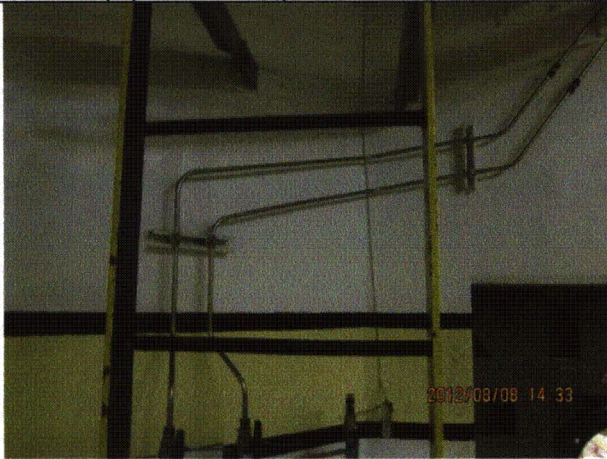
Status:  Y  N  U

**Seismic Walkdown Checklist (SWC)**

Equipment ID No.: 2-5749

Equipment Class: (10) Air Handlers

Equipment Description: COOLER, CUBICLE - 2DG CW PMP CUB COOLER



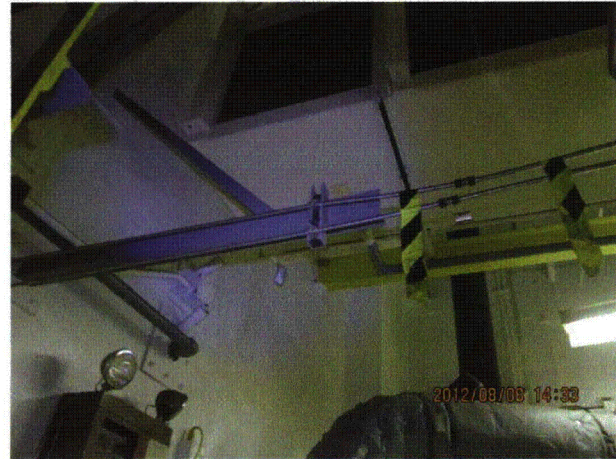
20120808-QuadCities-2 404



20120808-QuadCities-2 405



20120808-QuadCities-2 406



20120808-QuadCities-2 407

Status:  Y  N  U

**Seismic Walkdown Checklist (SWC)**

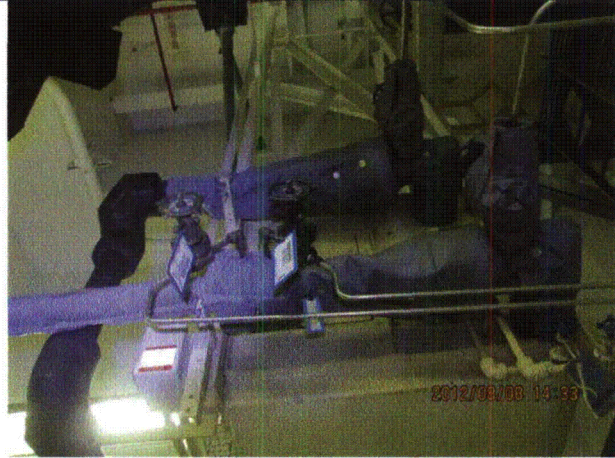
Equipment ID No.: 2-5749

Equipment Class: (10) Air Handlers

Equipment Description: COOLER, CUBICLE - 2DG CW PMP CUB COOLER



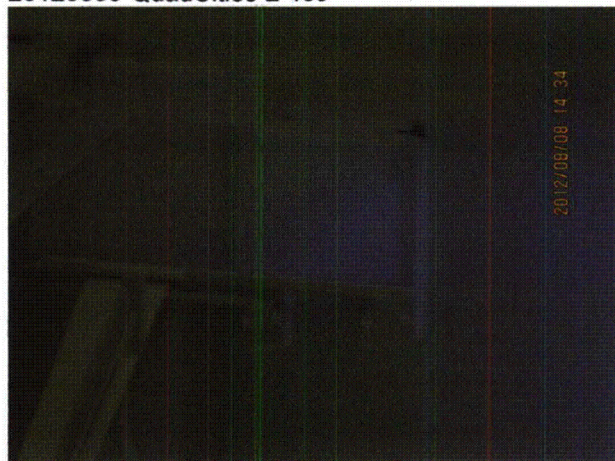
20120808-QuadCities-2 408



20120808-QuadCities-2 409



20120808-QuadCities-2 410



20120808-QuadCities-2 411

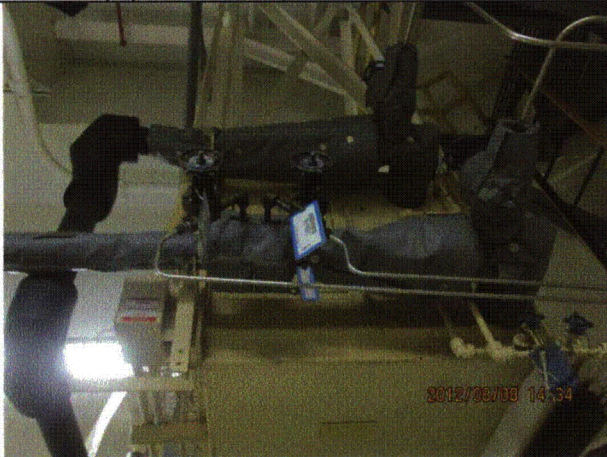
Status:  Y  N  U

**Seismic Walkdown Checklist (SWC)**

Equipment ID No.: 2-5749

Equipment Class: (10) Air Handlers

Equipment Description: COOLER, CUBICLE - 2DG CW PMP CUB COOLER



20120808-QuadCities-2 412



20120808-QuadCities-2 413



20120808-QuadCities-2 414



20120808-QuadCities-2 415

Status:  Y  N  U

**Seismic Walkdown Checklist (SWC)**

Equipment ID No.: 2-5749

Equipment Class: (10) Air Handlers

Equipment Description: COOLER, CUBICLE - 2DG CW PMP CUB COOLER



20120808-QuadCities-2 416



20120808-QuadCities-2 417



20120808-QuadCities-2 418



20120808-QuadCities-2 419

Status:  Y  N  U

**Seismic Walkdown Checklist (SWC)**

Equipment ID No.: 2-5749

Equipment Class: (10) Air Handlers

Equipment Description: COOLER, CUBICLE - 2DG CW PMP CUB COOLER



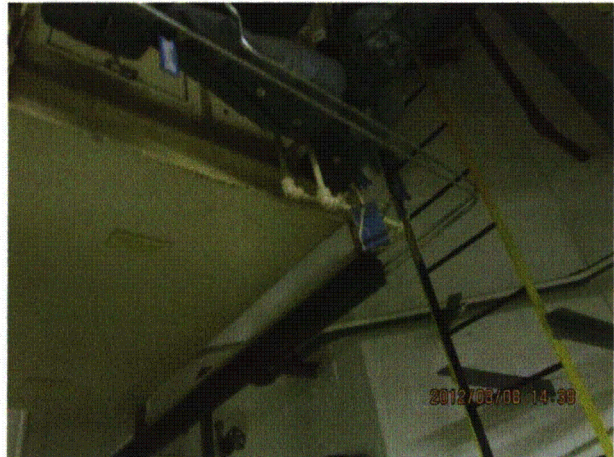
20120808-QuadCities-2 420



20120808-QuadCities-2 421



20120808-QuadCities-2 422



20120808-QuadCities-2 423



Status:  Y  N  U

**Seismic Walkdown Checklist (SWC)**

Equipment ID No.: 2-6705-23-1

Equipment Class: (3) Medium Voltage Switchgear

Equipment Description: SWGR 23-1

Project: Quad Cities 2 SWEL

Location (Bldg, Elev, Room/Area): TB, 639.00 ft, ALL

Manufacturer/Model:

**Instructions for Completing Checklist**

This checklist may be used to document the results of the Seismic Walkdown of an item of equipment on the SWEL. The space below each of the following questions may be used to record the results of judgments and findings. Additional space is provided at the end of this checklist for documenting other comments.

**Anchorage**

1. Is anchorage configuration verification required (i.e., is the item one of the 50% of SWEL items requiring such verification)? No
  
2. Is the anchorage free of bent, broken, missing or loose hardware? Yes
  
3. Is the anchorage free of corrosion that is more than mild surface oxidation? Yes
  
4. Is the anchorage free of visible cracks in the concrete near the anchors? Yes  
*Minor shrinkage cracks in floor and wall judged to be acceptable.*
  
5. Is the anchorage configuration consistent with plant documentation? (Note: This question only applies if the item is one of the 50% for which an anchorage configuration verification is required.) Not Applicable
  
6. Based on the above anchorage evaluations, is the anchorage free of potentially adverse seismic conditions? Yes

Status:  Y  N  U

**Seismic Walkdown Checklist (SWC)**

Equipment ID No.: 2-6705-23-1

Equipment Class: (3) Medium Voltage Switchgear

Equipment Description: SWGR 23-1

**Interaction Effects**

7. Are soft targets free from impact by nearby equipment or structures? Yes
8. Are overhead equipment, distribution systems, ceiling tiles and lighting, and masonry block walls not likely to collapse onto the equipment? Yes  
*Overhead light fixtures judged to be acceptable. Masonry wall in vicinity restrained at top and judged to be acceptable.*
9. Do attached lines have adequate flexibility to avoid damage? Yes
10. Based on the above seismic interaction evaluations, is equipment free of potentially adverse seismic interaction effects? Yes

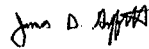
**Other Adverse Conditions**

11. Have you looked for and found no adverse seismic conditions that could adversely affect the safety functions of the equipment? Yes

**Comments**

Seismic Walkdown Team: J. Griffith & M. Wodarcyk - 8/7/2012

Evaluated by:



James Griffith

Date: 10/4/2012



Michael Wodarcyk

10/4/2012

Status:  Y  N  U

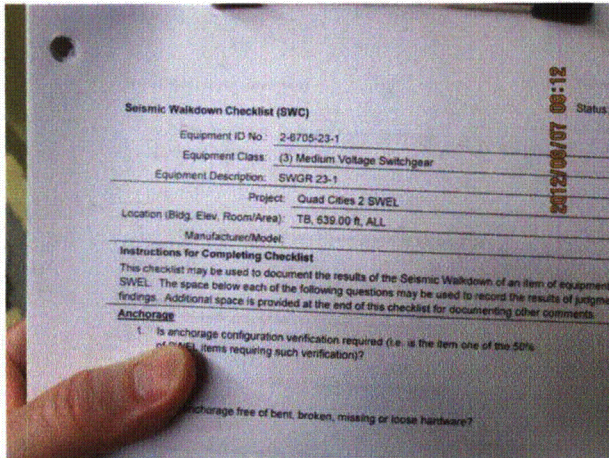
### Seismic Walkdown Checklist (SWC)

Equipment ID No.: 2-6705-23-1

Equipment Class: (3) Medium Voltage Switchgear

Equipment Description: SWGR 23-1

#### Photos



20120807-QuadCities-2 001



20120807-QuadCities-2 002



20120807-QuadCities-2 003



20120807-QuadCities-2 004

Status:  Y  N  U

**Seismic Walkdown Checklist (SWC)**

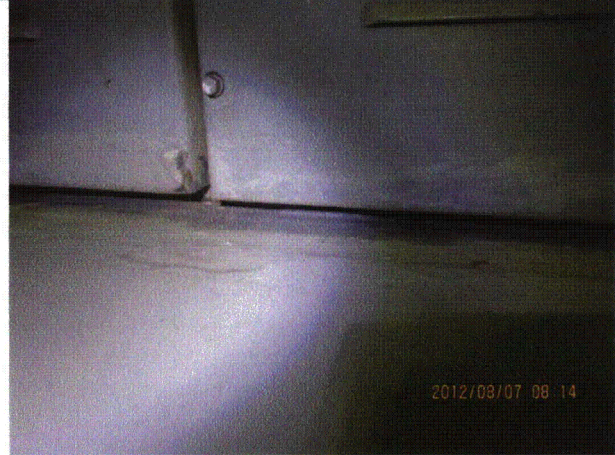
Equipment ID No.: 2-6705-23-1

Equipment Class: (3) Medium Voltage Switchgear

Equipment Description: SWGR 23-1



20120807-QuadCities-2 005



20120807-QuadCities-2 006



20120807-QuadCities-2 007



20120807-QuadCities-2 008

Status:  Y  N  U

**Seismic Walkdown Checklist (SWC)**

Equipment ID No.: 2-6705-23-1

Equipment Class: (3) Medium Voltage Switchgear

Equipment Description: SWGR 23-1



20120807-QuadCities-2 009



20120807-QuadCities-2 010



20120807-QuadCities-2 011



20120807-QuadCities-2 012

Status:  Y  N  U

**Seismic Walkdown Checklist (SWC)**

Equipment ID No.: 2-6705-23-1

Equipment Class: (3) Medium Voltage Switchgear

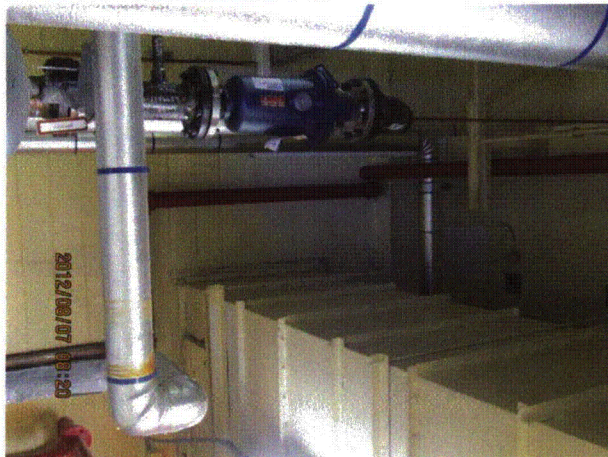
Equipment Description: SWGR 23-1



20120807-QuadCities-2 013



20120807-QuadCities-2 014



20120807-QuadCities-2 015



20120807-QuadCities-2 016

Status:  Y  N  U

**Seismic Walkdown Checklist (SWC)**

Equipment ID No.: 2-6705-23-1

Equipment Class: (3) Medium Voltage Switchgear

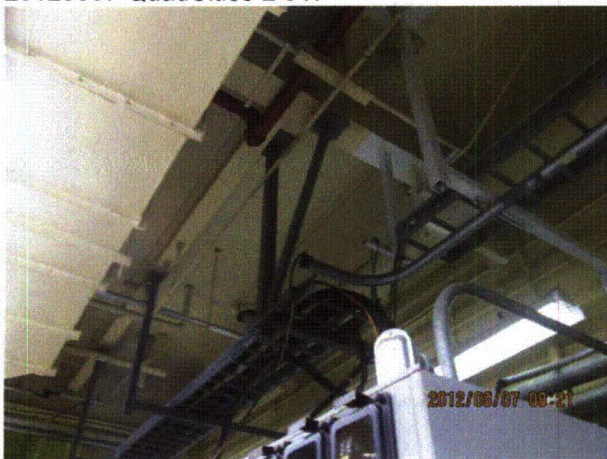
Equipment Description: SWGR 23-1



20120807-QuadCities-2 017



20120807-QuadCities-2 018



20120807-QuadCities-2 019



20120807-QuadCities-2 020

Status:  Y  N  U

**Seismic Walkdown Checklist (SWC)**

Equipment ID No.: 2-6705-23-1

Equipment Class: (3) Medium Voltage Switchgear

Equipment Description: SWGR 23-1



20120807-QuadCities-2 021



20120807-QuadCities-2 022



20120807-QuadCities-2 023



20120807-QuadCities-2 024



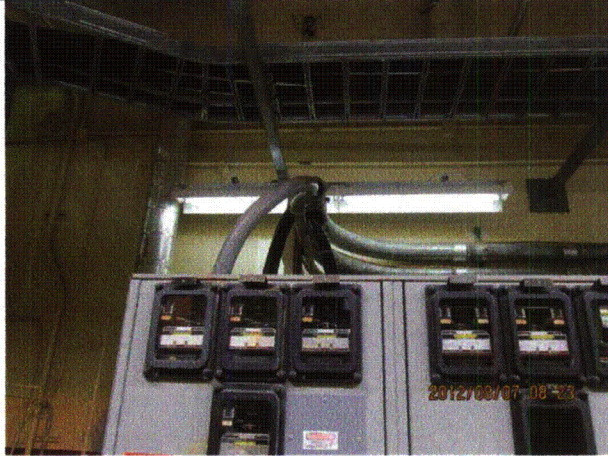
Status:  Y  N  U

**Seismic Walkdown Checklist (SWC)**

Equipment ID No.: 2-6705-23-1

Equipment Class: (3) Medium Voltage Switchgear

Equipment Description: SWGR 23-1



20120807-QuadCities-2 025

Status:  Y  N  U

**Seismic Walkdown Checklist (SWC)**

Equipment ID No.: 2-7100

Equipment Class: (4) Transformers

Equipment Description: TRANSFORMER T28 4160V-480V

Project: Quad Cities 2 SWEL

Location (Bldg, Elev, Room/Area): TB, 647.50 ft, ALL

Manufacturer/Model:

**Instructions for Completing Checklist**

This checklist may be used to document the results of the Seismic Walkdown of an item of equipment on the SWEL. The space below each of the following questions may be used to record the results of judgments and findings. Additional space is provided at the end of this checklist for documenting other comments.

**Anchorage**

1. Is anchorage configuration verification required (i.e., is the item one of the 50% of SWEL items requiring such verification)? No
  
2. Is the anchorage free of bent, broken, missing or loose hardware? Yes
  
3. Is the anchorage free of corrosion that is more than mild surface oxidation? Yes
  
4. Is the anchorage free of visible cracks in the concrete near the anchors? Yes  
*Minor shrinkage cracks in floor judged to be acceptable.*
  
5. Is the anchorage configuration consistent with plant documentation? (Note: This question only applies if the item is one of the 50% for which an anchorage configuration verification is required.) Not Applicable
  
6. Based on the above anchorage evaluations, is the anchorage free of potentially adverse seismic conditions? Yes

Status:  Y  N  U

**Seismic Walkdown Checklist (SWC)**

Equipment ID No.: 2-7100

Equipment Class: (4) Transformers

Equipment Description: TRANSFORMER T28 4160V-480V

**Interaction Effects**

7. Are soft targets free from impact by nearby equipment or structures? Yes
8. Are overhead equipment, distribution systems, ceiling tiles and lighting, and masonry block walls not likely to collapse onto the equipment? Yes
9. Do attached lines have adequate flexibility to avoid damage? Yes
10. Based on the above seismic interaction evaluations, is equipment free of potentially adverse seismic interaction effects? Yes

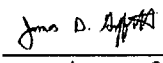
**Other Adverse Conditions**

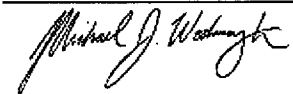
11. Have you looked for and found no adverse seismic conditions that could adversely affect the safety functions of the equipment? Yes

**Comments**

Seismic Walkdown Team: J. Griffith & M. Wodarczyk - 8/6/2012

Transformer has been replaced since SQUG walkdown.

Evaluated by:  James Griffith Date: 10/4/2012

 Michael Wodarczyk 10/4/2012

Status:  Y  N  U

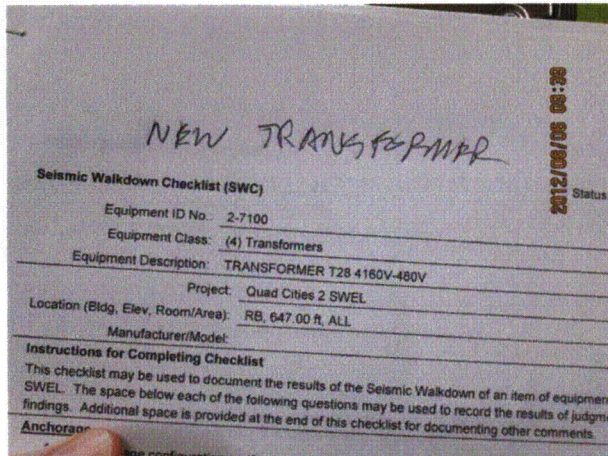
**Seismic Walkdown Checklist (SWC)**

Equipment ID No.: 2-7100

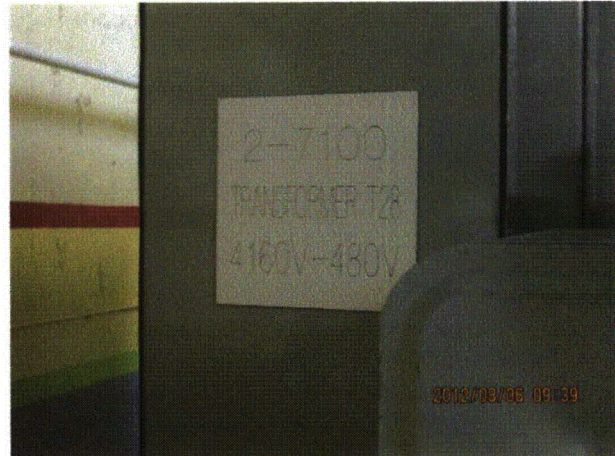
Equipment Class: (4) Transformers

Equipment Description: TRANSFORMER T28 4160V-480V

**Photos**



20120806-QuadCities-2 028



20120806-QuadCities-2 029



20120806-QuadCities-2 030



20120806-QuadCities-2 031

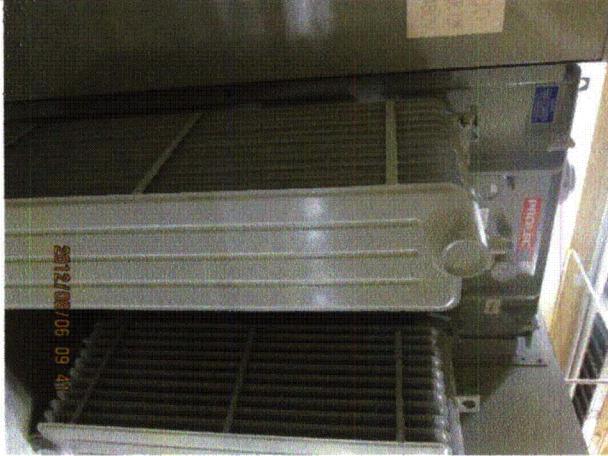
Status:  Y  N  U

**Seismic Walkdown Checklist (SWC)**

Equipment ID No.: 2-7100

Equipment Class: (4) Transformers

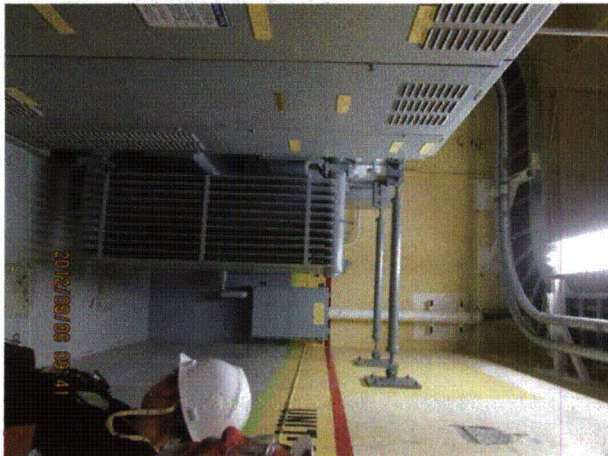
Equipment Description: TRANSFORMER T28 4160V-480V



20120806-QuadCities-2 032



20120806-QuadCities-2 033



20120806-QuadCities-2 034



20120806-QuadCities-2 035

Status:  Y  N  U

**Seismic Walkdown Checklist (SWC)**

Equipment ID No.: 2-7100

Equipment Class: (4) Transformers

Equipment Description: TRANSFORMER T28 4160V-480V



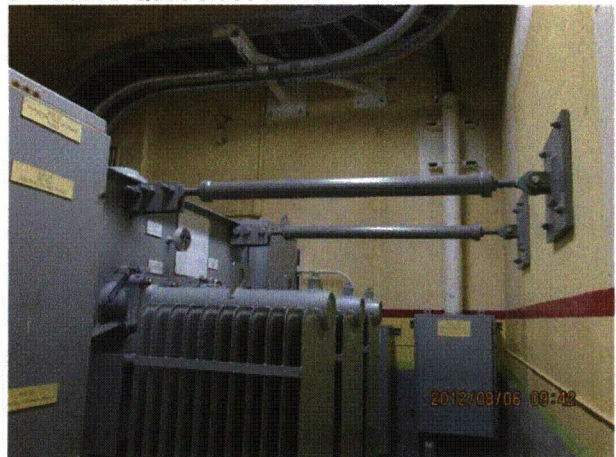
20120806-QuadCities-2 036



20120806-QuadCities-2 037



20120806-QuadCities-2 038



20120806-QuadCities-2 039

Status:  Y  N  U

**Seismic Walkdown Checklist (SWC)**

Equipment ID No.: 2-7100

Equipment Class: (4) Transformers

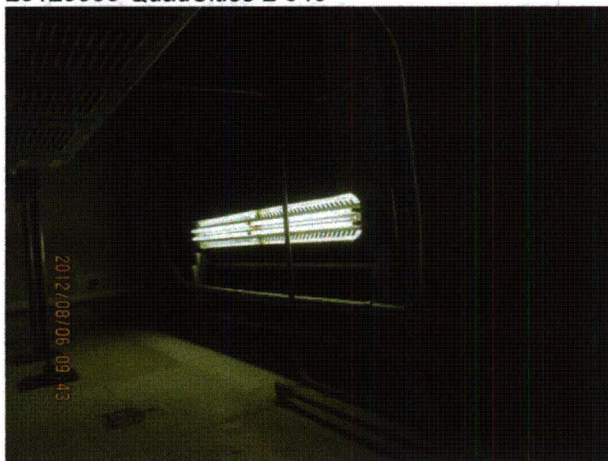
Equipment Description: TRANSFORMER T28 4160V-480V



20120806-QuadCities-2 040



20120806-QuadCities-2 041



20120806-QuadCities-2 042



20120806-QuadCities-2 043

Status:  Y  N  U

**Seismic Walkdown Checklist (SWC)**

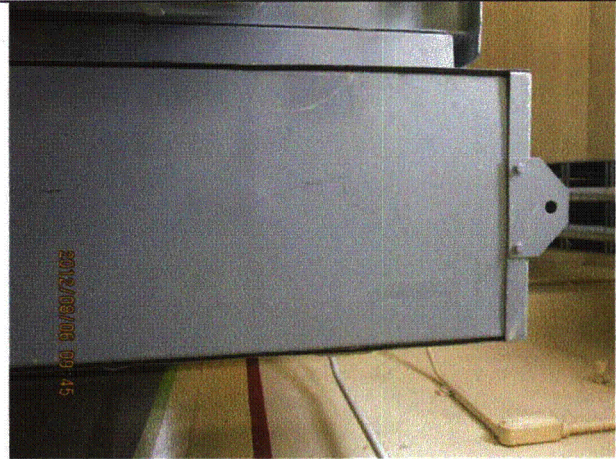
Equipment ID No.: 2-7100

Equipment Class: (4) Transformers

Equipment Description: TRANSFORMER T28 4160V-480V



20120806-QuadCities-2 044



20120806-QuadCities-2 045



20120806-QuadCities-2 046



20120806-QuadCities-2 047



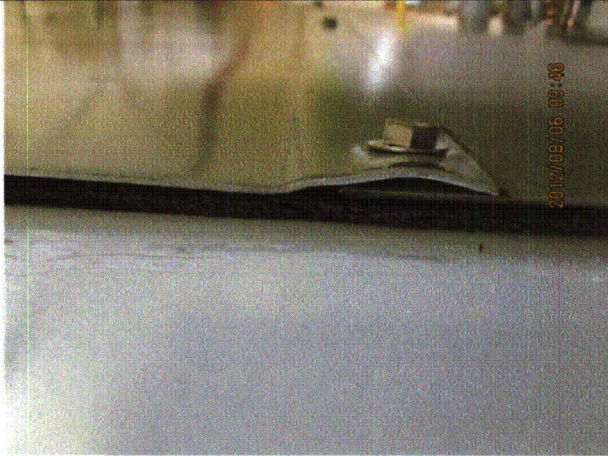
Status:  Y  N  U

**Seismic Walkdown Checklist (SWC)**

Equipment ID No.: 2-7100

Equipment Class: (4) Transformers

Equipment Description: TRANSFORMER T28 4160V-480V



20120806-QuadCities-2 048

Status:  Y  N  U

**Seismic Walkdown Checklist (SWC)**

Equipment ID No.: 2-7100-28

Equipment Class: (2) Low Voltage Switchgear

Equipment Description: SWGR 28

Project: Quad Cities 2 SWEL

Location (Bldg, Elev, Room/Area): TB, 647.50 ft, ALL

Manufacturer/Model:

**Instructions for Completing Checklist**

This checklist may be used to document the results of the Seismic Walkdown of an item of equipment on the SWEL. The space below each of the following questions may be used to record the results of judgments and findings. Additional space is provided at the end of this checklist for documenting other comments.

**Anchorage**

1. Is anchorage configuration verification required (i.e., is the item one of the 50% of SWEL items requiring such verification)? Yes
  
2. Is the anchorage free of bent, broken, missing or loose hardware? Yes
  
3. Is the anchorage free of corrosion that is more than mild surface oxidation? Yes
  
4. Is the anchorage free of visible cracks in the concrete near the anchors? Yes  
*Minor shrinkage cracking in floor judged to be acceptable.*
  
5. Is the anchorage configuration consistent with plant documentation? (Note: This question only applies if the item is one of the 50% for which an anchorage configuration verification is required.) Yes  
*Anchorage is shown on drawings 4E-2054A, Rev. I and 4E-2054D, Rev. G.*
  
6. Based on the above anchorage evaluations, is the anchorage free of potentially adverse seismic conditions? Yes

**Interaction Effects**

7. Are soft targets free from impact by nearby equipment or structures? Yes

Status:  Y  N  U

**Seismic Walkdown Checklist (SWC)**

Equipment ID No.: 2-7100-28

Equipment Class: (2) Low Voltage Switchgear

Equipment Description: SWGR 28

8. Are overhead equipment, distribution systems, ceiling tiles and lighting, and masonry block walls not likely to collapse onto the equipment? Yes
9. Do attached lines have adequate flexibility to avoid damage? Yes
10. Based on the above seismic interaction evaluations, is equipment free of potentially adverse seismic interaction effects? Yes

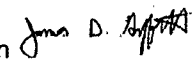
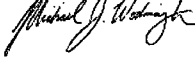
**Other Adverse Conditions**

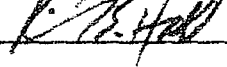
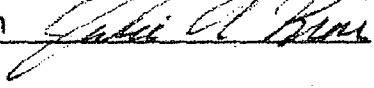
11. Have you looked for and found no adverse seismic conditions that could adversely affect the safety functions of the equipment? Yes  
*Trolley on top of switchgear free to roll; not pinned against movement. Trolley place in middle of switchgear away from end stops to mitigate vibration effects due to hitting stop. See IR 1397866.*

**Comments**

Seismic Walkdown Team:  
J. Griffith & M. Wodarczyk - 8/6/2012  
K. Hall & J. Kim - 9/17/2012

Evaluated  
by:

J. Griffith  M. Wodarczyk  Date: 10/4/12

Kevin Hall  Julie Kim  10/5/12

Status:  Y  N  U

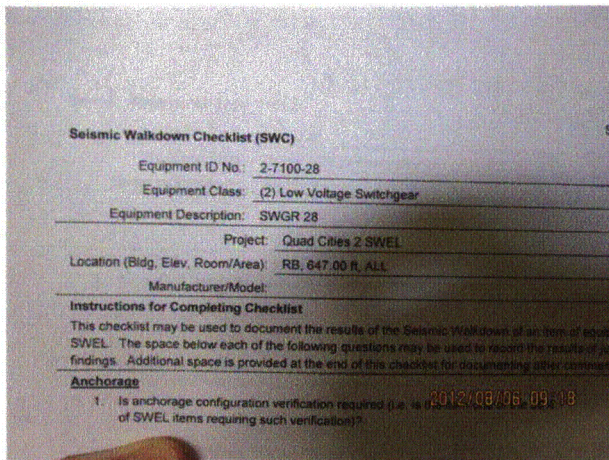
### Seismic Walkdown Checklist (SWC)

Equipment ID No.: 2-7100-28

Equipment Class: (2) Low Voltage Switchgear

Equipment Description: SWGR 28

### Photos



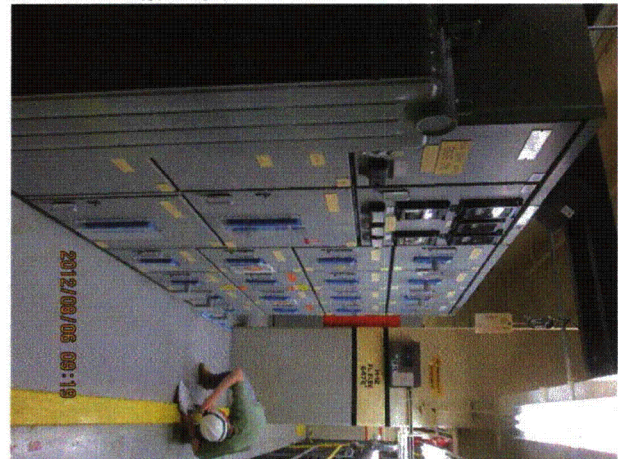
20120806-QuadCities-2 001



20120806-QuadCities-2 002



20120806-QuadCities-2 003



20120806-QuadCities-2 004

Status:  Y  N  U

**Seismic Walkdown Checklist (SWC)**

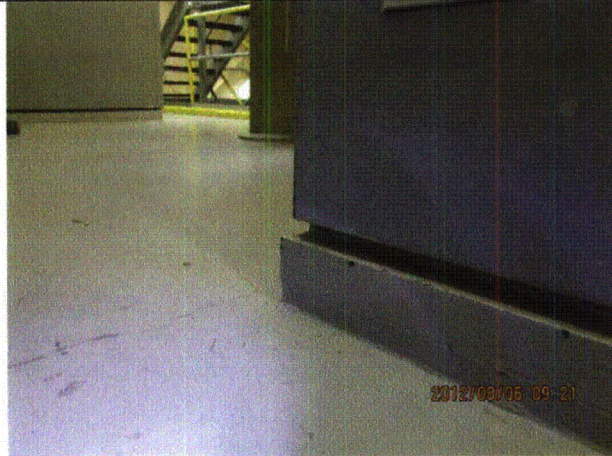
Equipment ID No.: 2-7100-28

Equipment Class: (2) Low Voltage Switchgear

Equipment Description: SWGR 28



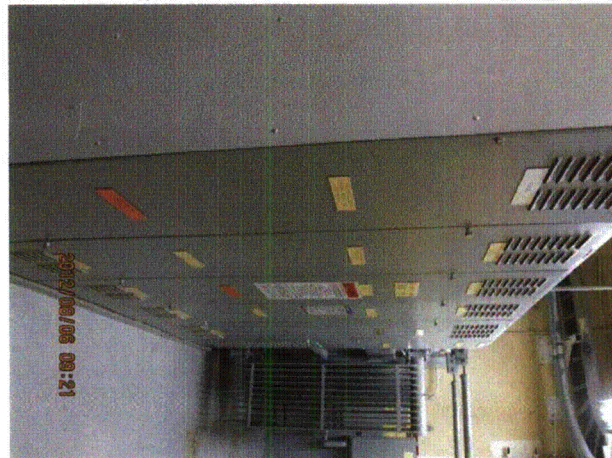
20120806-QuadCities-2 005



20120806-QuadCities-2 006



20120806-QuadCities-2 007



20120806-QuadCities-2 008

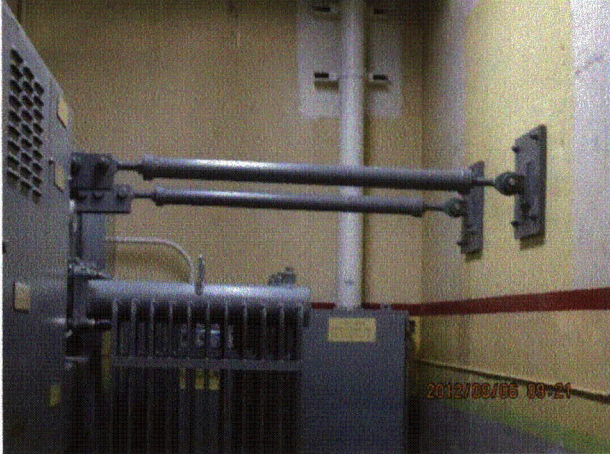
Status:  Y  N  U

**Seismic Walkdown Checklist (SWC)**

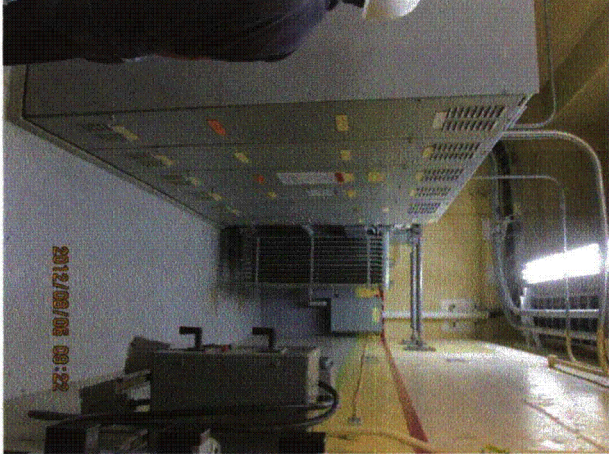
Equipment ID No.: 2-7100-28

Equipment Class: (2) Low Voltage Switchgear

Equipment Description: SWGR 28



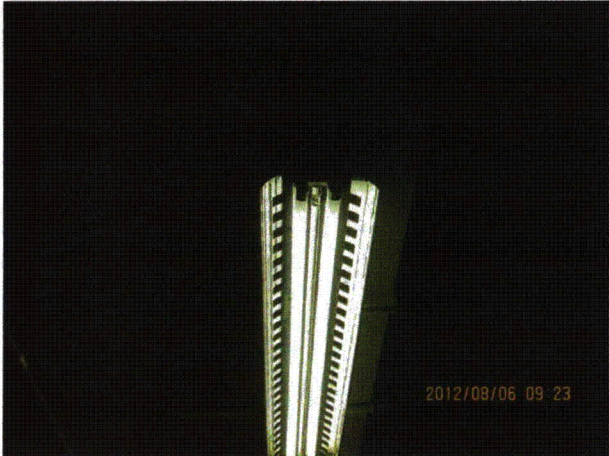
20120806-QuadCities-2 009



20120806-QuadCities-2 010



20120806-QuadCities-2 011



20120806-QuadCities-2 012

Status:  Y  N  U

**Seismic Walkdown Checklist (SWC)**

Equipment ID No.: 2-7100-28

Equipment Class: (2) Low Voltage Switchgear

Equipment Description: SWGR 28



20120806-QuadCities-2 013



20120806-QuadCities-2 014



20120806-QuadCities-2 015



20120806-QuadCities-2 016

Status:  Y  N  U

**Seismic Walkdown Checklist (SWC)**

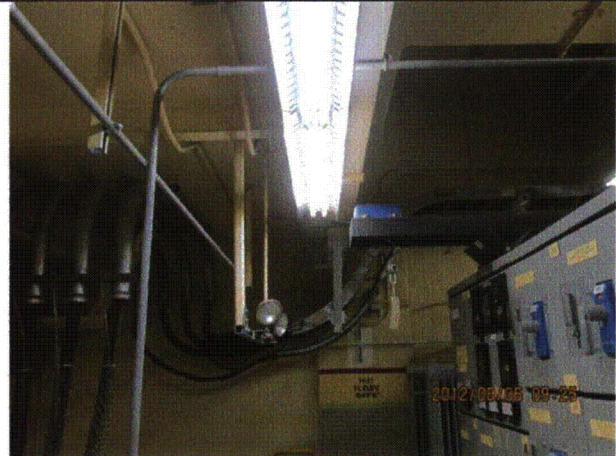
Equipment ID No.: 2-7100-28

Equipment Class: (2) Low Voltage Switchgear

Equipment Description: SWGR 28



20120806-QuadCities-2 017



20120806-QuadCities-2 018



20120806-QuadCities-2 019



20120806-QuadCities-2 020



Status:  Y  N  U

**Seismic Walkdown Checklist (SWC)**

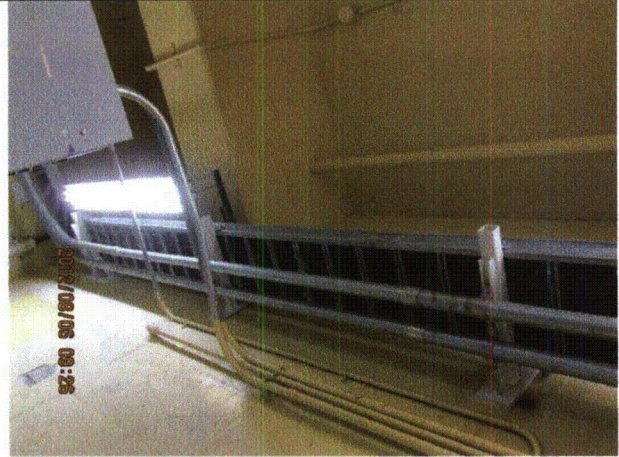
Equipment ID No.: 2-7100-28

Equipment Class: (2) Low Voltage Switchgear

Equipment Description: SWGR 28



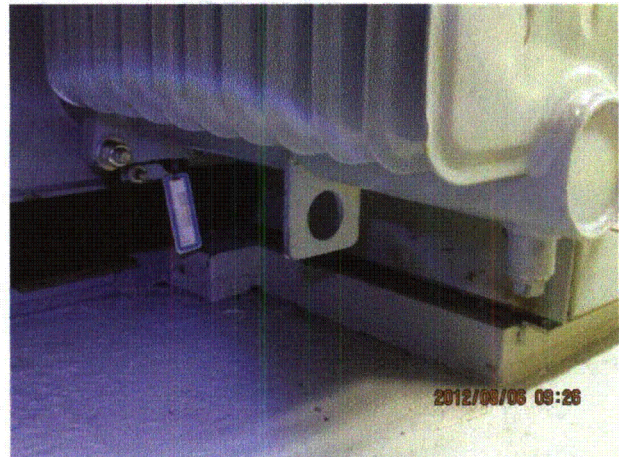
20120806-QuadCities-2 021



20120806-QuadCities-2 022



20120806-QuadCities-2 023



20120806-QuadCities-2 024

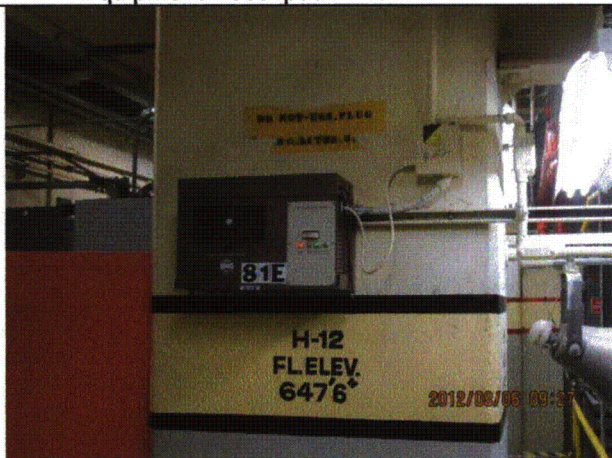
Status:  Y  N  U

**Seismic Walkdown Checklist (SWC)**

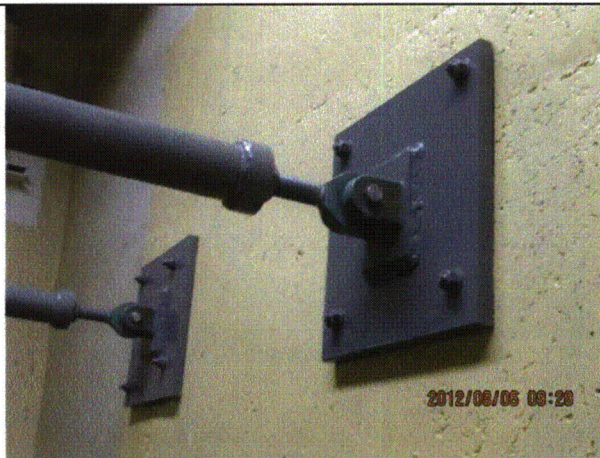
Equipment ID No.: 2-7100-28

Equipment Class: (2) Low Voltage Switchgear

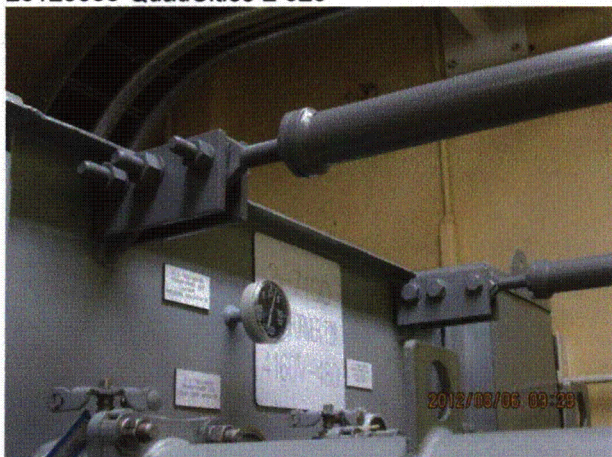
Equipment Description: SWGR 28



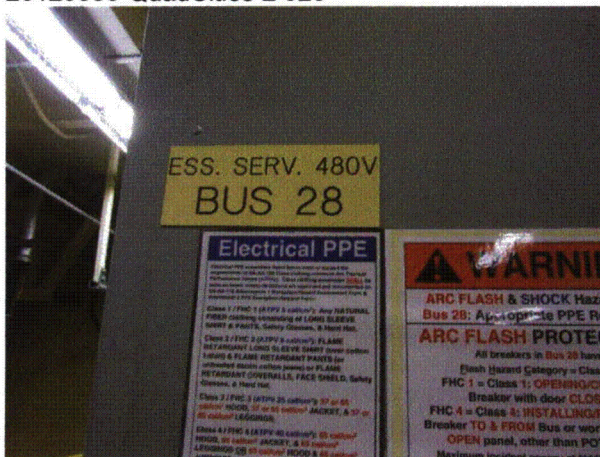
20120806-QuadCities-2 025



20120806-QuadCities-2 026



20120806-QuadCities-2 027



MG\_7242

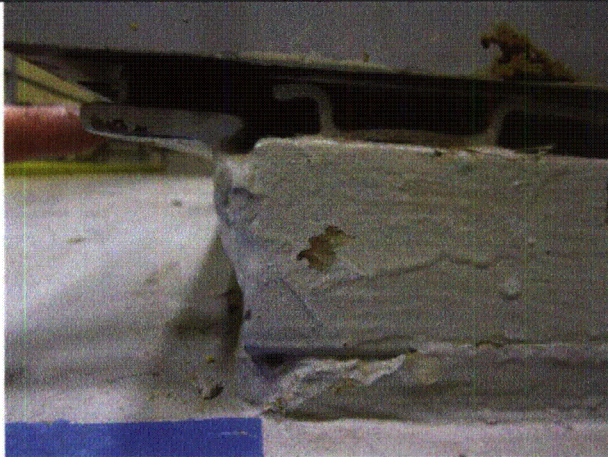
Status:  Y  N  U

**Seismic Walkdown Checklist (SWC)**

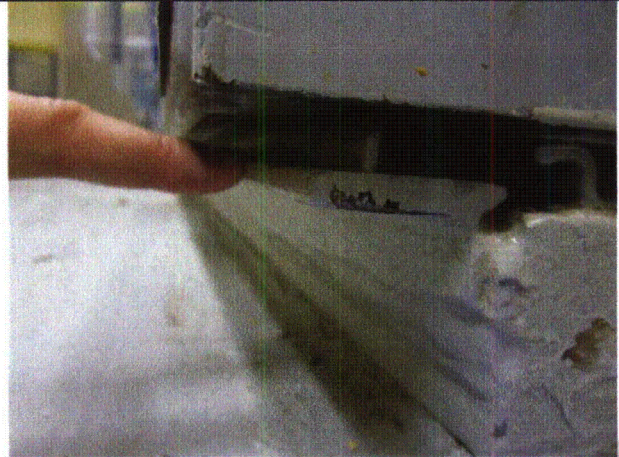
Equipment ID No.: 2-7100-28

Equipment Class: (2) Low Voltage Switchgear

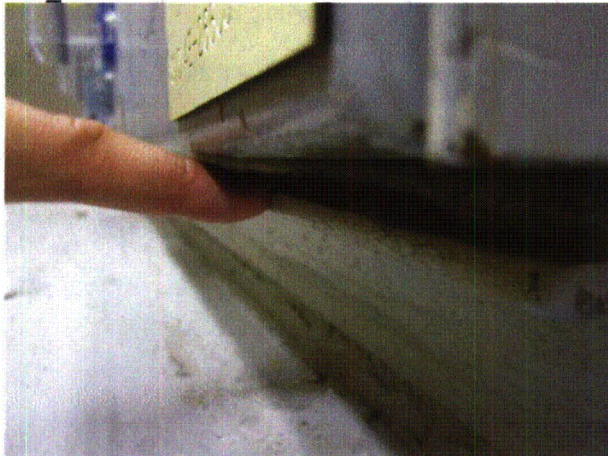
Equipment Description: SWGR 28



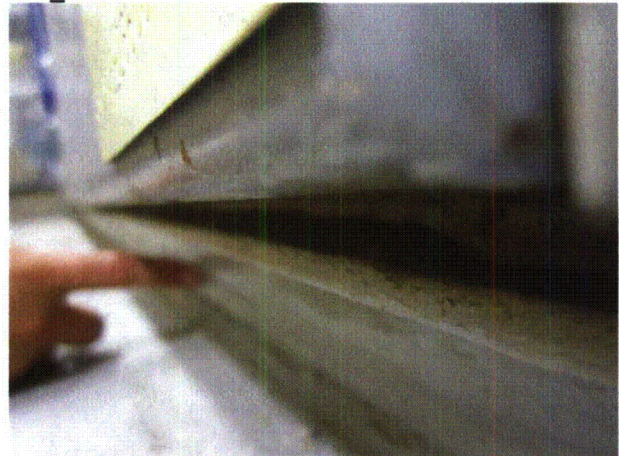
MG\_7243



MG\_7244



MG\_7245



MG\_7246

Status:  Y  N  U

**Seismic Walkdown Checklist (SWC)**

Equipment ID No.: 2-7100-28

Equipment Class: (2) Low Voltage Switchgear

Equipment Description: SWGR 28



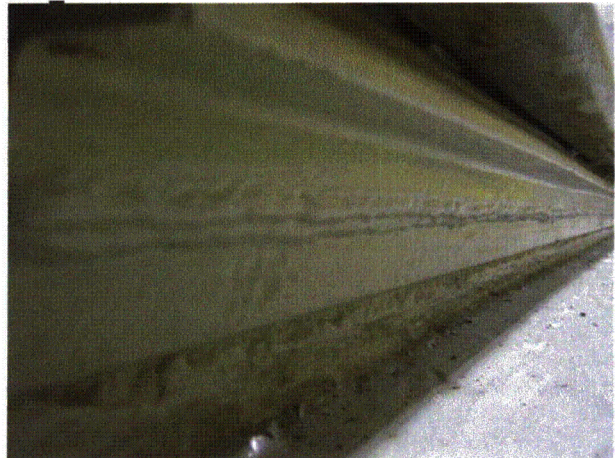
MG\_7247



MG\_7248



MG\_7249



MG\_7251

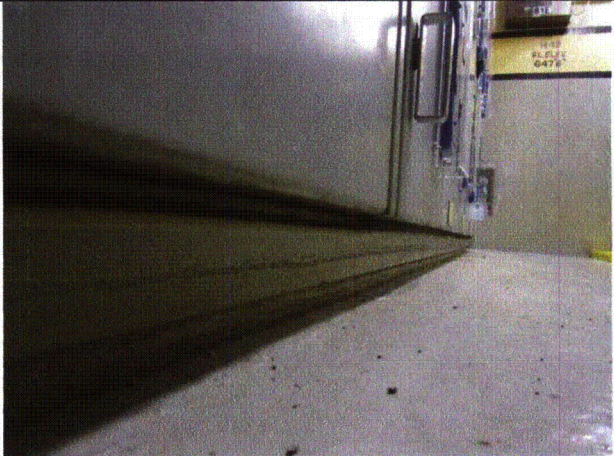
Status:  Y  N  U

**Seismic Walkdown Checklist (SWC)**

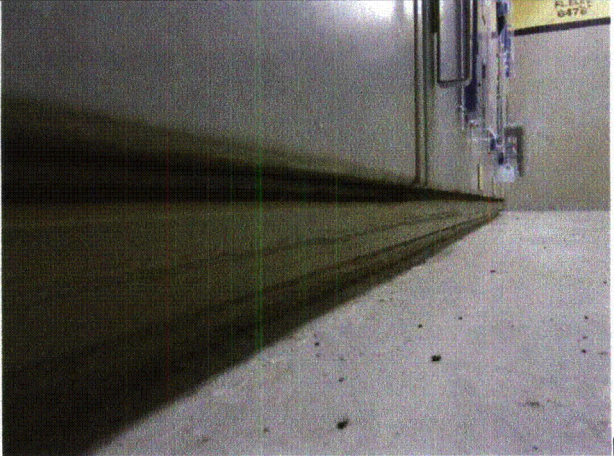
Equipment ID No.: 2-7100-28

Equipment Class: (2) Low Voltage Switchgear

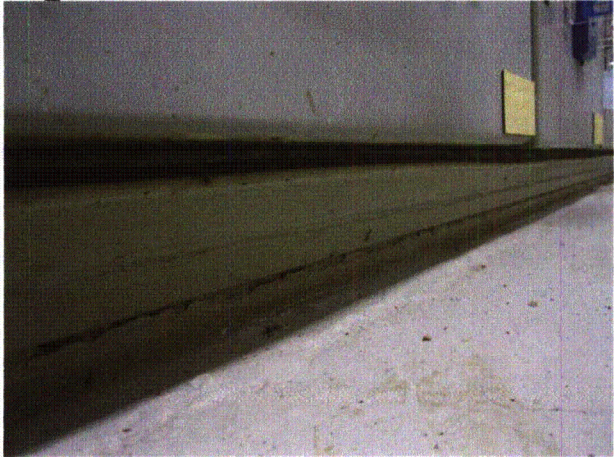
Equipment Description: SWGR 28



MG\_7252



MG\_7253



MG\_7254



MG\_7255

Status:  Y  N  U

**Seismic Walkdown Checklist (SWC)**

Equipment ID No.: 2-7100-28

Equipment Class: (2) Low Voltage Switchgear

Equipment Description: SWGR 28



MG\_7256