

Status: Y N U

Seismic Walkdown Checklist (SWC)

Equipment ID No.: 2-2001-3-AO

Equipment Class: (7) Fluid-Operated Valves

Equipment Description: VLV, DW FLOOR DRAIN SUMP - U-2 DW FLR DRN SUMP PMP UPSTREAM
DSCH VLV

Project: Quad Cities 2 SWEL

Location (Bldg, Elev, Room/Area): RB, 554.00 ft, ALL

Manufacturer/Model:

Instructions for Completing Checklist

This checklist may be used to document the results of the Seismic Walkdown of an item of equipment on the SWEL. The space below each of the following questions may be used to record the results of judgments and findings. Additional space is provided at the end of this checklist for documenting other comments.

Anchorage

1. Is anchorage configuration verification required (i.e., is the item one of the 50% of SWEL items requiring such verification)? No

2. Is the anchorage free of bent, broken, missing or loose hardware? Not Applicable

3. Is the anchorage free of corrosion that is more than mild surface oxidation? Not Applicable

4. Is the anchorage free of visible cracks in the concrete near the anchors? Not Applicable

5. Is the anchorage configuration consistent with plant documentation? (Note: This question only applies if the item is one of the 50% for which an anchorage configuration verification is required.) Not Applicable

6. Based on the above anchorage evaluations, is the anchorage free of potentially adverse seismic conditions? Yes

Status: Y N U

Seismic Walkdown Checklist (SWC)

Equipment ID No.: 2-2001-3-AO

Equipment Class: (7) Fluid-Operated Valves

Equipment Description: VLV, DW FLOOR DRAIN SUMP - U-2 DW FLR DRN SUMP PMP UPSTREAM
DSCH VLV

Interaction Effects

7. Are soft targets free from impact by nearby equipment or structures? Yes
8. Are overhead equipment, distribution systems, ceiling tiles and lighting, and masonry block walls not likely to collapse onto the equipment? Yes
9. Do attached lines have adequate flexibility to avoid damage? Yes
10. Based on the above seismic interaction evaluations, is equipment free of potentially adverse seismic interaction effects? Yes

Other Adverse Conditions

11. Have you looked for and found no adverse seismic conditions that could adversely affect the safety functions of the equipment? Yes

Comments

Seismic Walkdown Team: J. Griffith & M. Wodarczyk - 8/10/2012

Evaluated by:

 James Griffith

Date: 10/4/2012



Michael Wodarczyk

10/4/2012

Status: Y N U

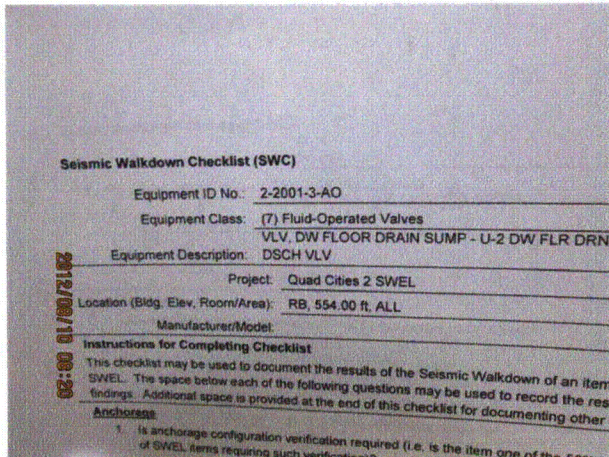
Seismic Walkdown Checklist (SWC)

Equipment ID No.: 2-2001-3-AO

Equipment Class: (7) Fluid-Operated Valves

Equipment Description: VLV, DW FLOOR DRAIN SUMP - U-2 DW FLR DRN SUMP PMP UPSTREAM DSCH VLV

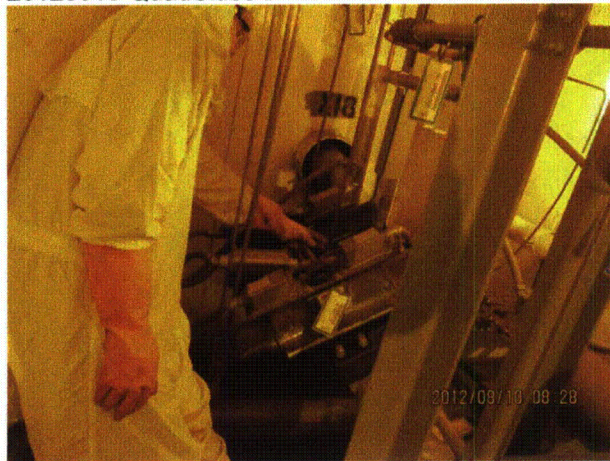
Photos



20120810-QuadCities-2 005



20120810-QuadCities-2 007



20120810-QuadCities-2 008



20120810-QuadCities-2 009

Status: Y N U

Seismic Walkdown Checklist (SWC)

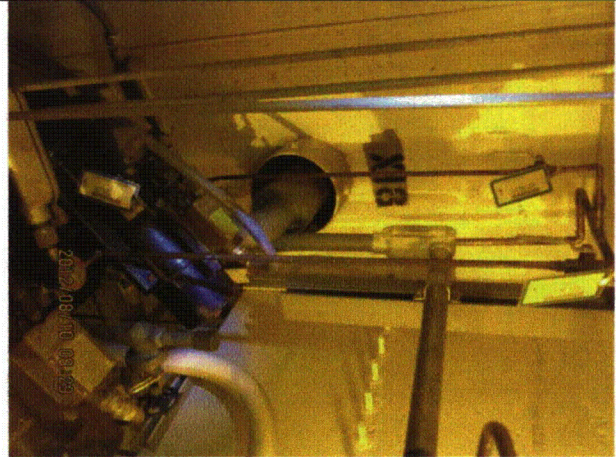
Equipment ID No.: 2-2001-3-AO

Equipment Class: (7) Fluid-Operated Valves

Equipment Description: VLV, DW FLOOR DRAIN SUMP - U-2 DW FLR DRN SUMP PMP UPSTREAM
DSCH VLV



20120810-QuadCities-2 010



20120810-QuadCities-2 011



20120810-QuadCities-2 012



20120810-QuadCities-2 013

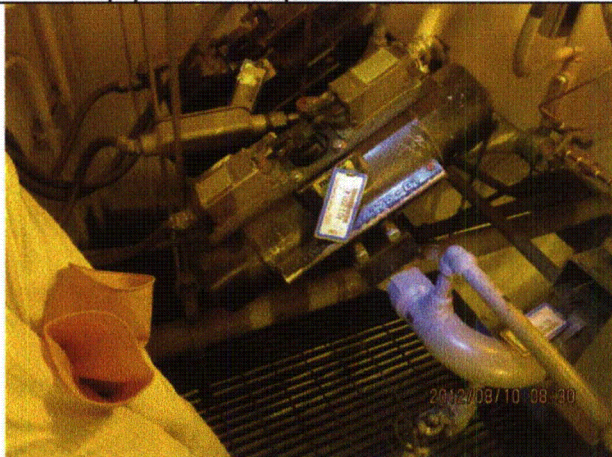
Status: Y N U

Seismic Walkdown Checklist (SWC)

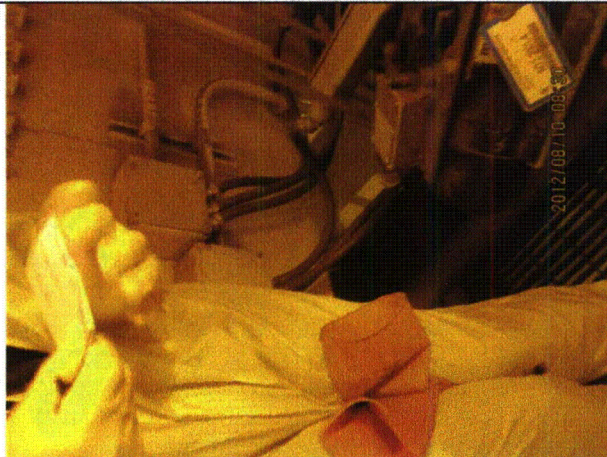
Equipment ID No.: 2-2001-3-AO

Equipment Class: (7) Fluid-Operated Valves

Equipment Description: VLV, DW FLOOR DRAIN SUMP - U-2 DW FLR DRN SUMP PMP UPSTREAM
DSCH VLV



20120810-QuadCities-2 014



20120810-QuadCities-2 015

Status: Y N U

Seismic Walkdown Checklist (SWC)

Equipment ID No.: 2202-29A

Equipment Class: (18) Instruments on Racks

Equipment Description: INSTR RACK 2202-29A

Project: Quad Cities 2 SWEL

Location (Bldg, Elev, Room/Area): RB, 554.00 ft, ALL

Manufacturer/Model:

Instructions for Completing Checklist

This checklist may be used to document the results of the Seismic Walkdown of an item of equipment on the SWEL. The space below each of the following questions may be used to record the results of judgments and findings. Additional space is provided at the end of this checklist for documenting other comments.

Anchorage

1. Is anchorage configuration verification required (i.e., is the item one of the 50% of SWEL items requiring such verification)? Yes
Racks 2202-29A and 2202-29B tied together via the anchorage and braces. Therefore, there is no seismic interaction concern due to the racks acting independently. Judged to be acceptable.

2. Is the anchorage free of bent, broken, missing or loose hardware? Yes

3. Is the anchorage free of corrosion that is more than mild surface oxidation? Yes
Mild corrosion judged to be acceptable.

4. Is the anchorage free of visible cracks in the concrete near the anchors? Yes
Minor shrinkage cracks in wall judged to be acceptable.

5. Is the anchorage configuration consistent with plant documentation? (Note: This question only applies if the item is one of the 50% for which an anchorage configuration verification is required.) Yes

6. Based on the above anchorage evaluations, is the anchorage free of potentially adverse seismic conditions? Yes

Status: Y N U

Seismic Walkdown Checklist (SWC)

Equipment ID No.: 2202-29A

Equipment Class: (18) Instruments on Racks

Equipment Description: INSTR RACK 2202-29A

Interaction Effects

7. Are soft targets free from impact by nearby equipment or structures? Yes
8. Are overhead equipment, distribution systems, ceiling tiles and lighting, and masonry block walls not likely to collapse onto the equipment? Yes
Overhead light fixtures with open S-hooks. Fixture will not impact rack due to hard targets (pipes, etc.) in between light fixture and rack.
9. Do attached lines have adequate flexibility to avoid damage? Yes
10. Based on the above seismic interaction evaluations, is equipment free of potentially adverse seismic interaction effects? Yes

Other Adverse Conditions

11. Have you looked for and found no adverse seismic conditions that could adversely affect the safety functions of the equipment? Yes

Comments

SEWS Anchorage Notes:

Rack is braced back to reinforced concrete wall and anchored by 1/2" diameter concrete expansion anchors.

Seismic Walkdown Team: J. Griffith & M. Wodarczyk - 8/9/2012

Evaluated by:

James D. Griffith James Griffith

Date: 10/4/2012

Michael J. Wodarczyk
Michael Wodarczyk

10/4/2012

Status: Y N U

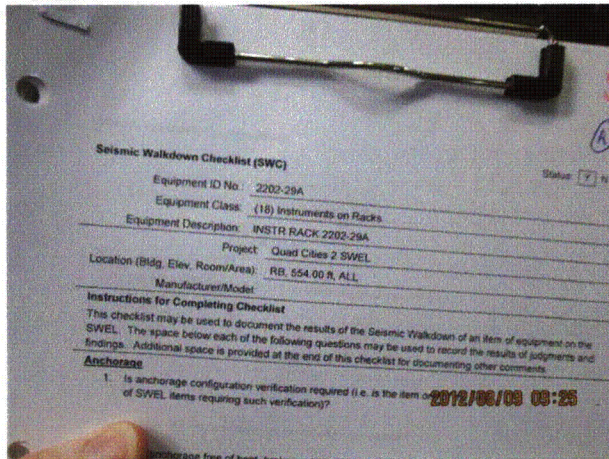
Seismic Walkdown Checklist (SWC)

Equipment ID No.: 2202-29A

Equipment Class: (18) Instruments on Racks

Equipment Description: INSTR RACK 2202-29A

Photos



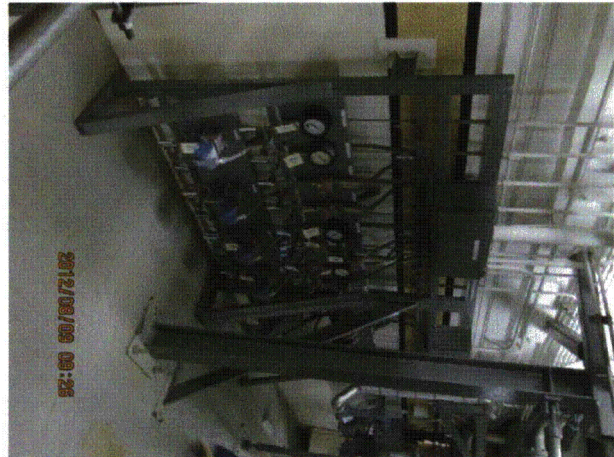
20120809-QuadCities-2 106



20120809-QuadCities-2 107



20120809-QuadCities-2 108



20120809-QuadCities-2 109

Status: Y N U

Seismic Walkdown Checklist (SWC)

Equipment ID No.: 2202-29A

Equipment Class: (18) Instruments on Racks

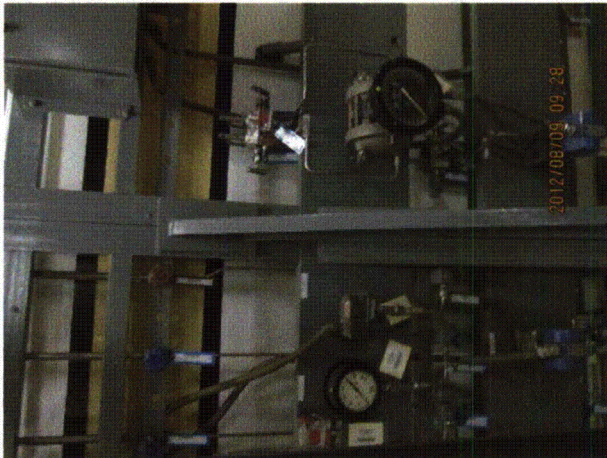
Equipment Description: INSTR RACK 2202-29A



20120809-QuadCities-2 110



20120809-QuadCities-2 111



20120809-QuadCities-2 112



20120809-QuadCities-2 113

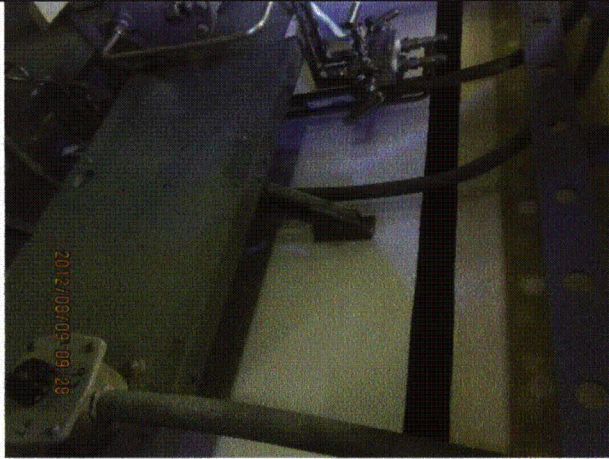
Status: Y N U

Seismic Walkdown Checklist (SWC)

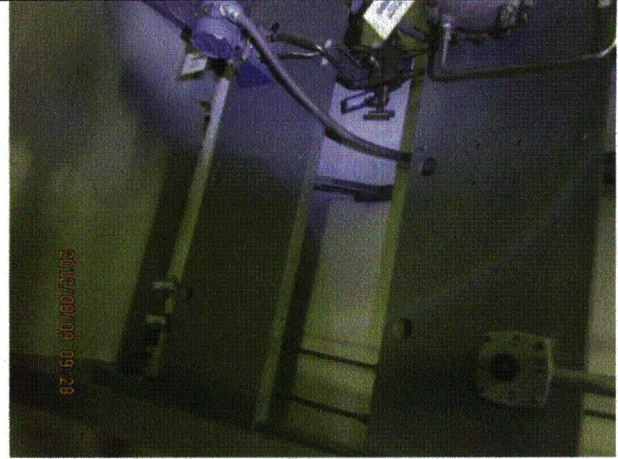
Equipment ID No.: 2202-29A

Equipment Class: (18) Instruments on Racks

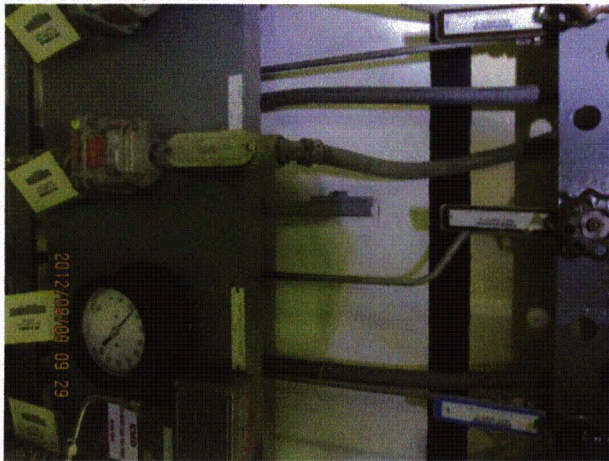
Equipment Description: INSTR RACK 2202-29A



20120809-QuadCities-2 114



20120809-QuadCities-2 115



20120809-QuadCities-2 116



20120809-QuadCities-2 117

Status: Y N U

Seismic Walkdown Checklist (SWC)

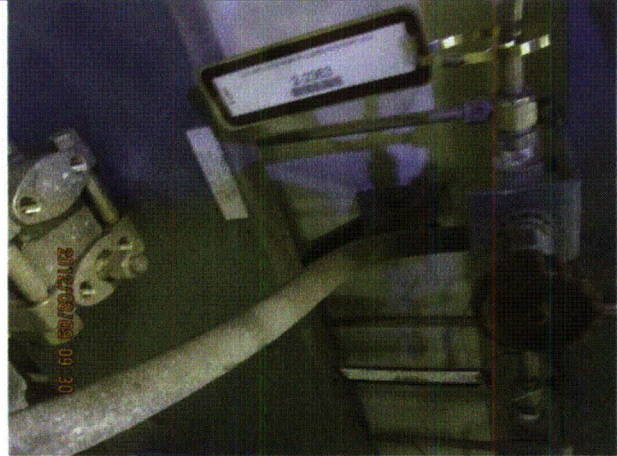
Equipment ID No.: 2202-29A

Equipment Class: (18) Instruments on Racks

Equipment Description: INSTR RACK 2202-29A



20120809-QuadCities-2 118



20120809-QuadCities-2 119



20120809-QuadCities-2 120



20120809-QuadCities-2 121

Status: Y N U

Seismic Walkdown Checklist (SWC)

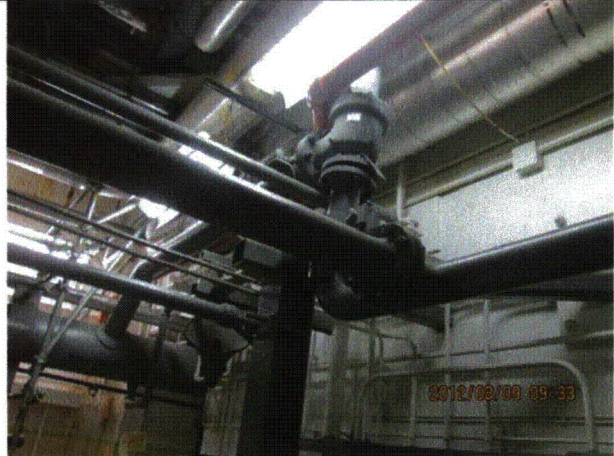
Equipment ID No.: 2202-29A

Equipment Class: (18) Instruments on Racks

Equipment Description: INSTR RACK 2202-29A



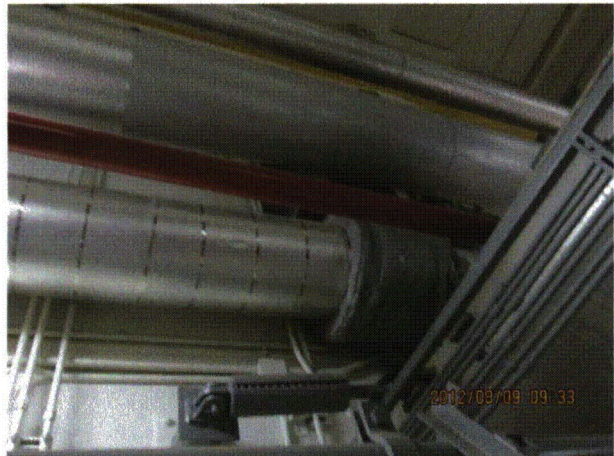
20120809-QuadCities-2 122



20120809-QuadCities-2 123



20120809-QuadCities-2 124



20120809-QuadCities-2 125

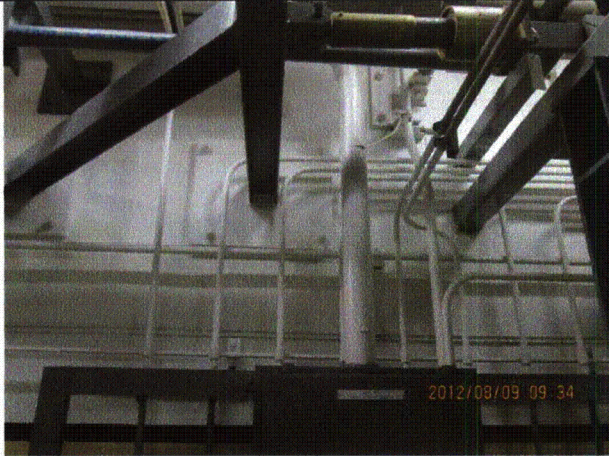
Status: Y N U

Seismic Walkdown Checklist (SWC)

Equipment ID No.: 2202-29A

Equipment Class: (18) Instruments on Racks

Equipment Description: INSTR RACK 2202-29A



20120809-QuadCities-2 126



20120809-QuadCities-2 128

Status: Y N U

Seismic Walkdown Checklist (SWC)

Equipment ID No.: 2202-32

Equipment Class: (18) Instruments on Racks

Equipment Description: RACK, AUTO BLOWDOWN

Project: Quad Cities 2 SWEL

Location (Bldg, Elev, Room/Area): RB, 623.00 ft, ALL

Manufacturer/Model:

Instructions for Completing Checklist

This checklist may be used to document the results of the Seismic Walkdown of an item of equipment on the SWEL. The space below each of the following questions may be used to record the results of judgments and findings. Additional space is provided at the end of this checklist for documenting other comments.

Anchorage

1. Is anchorage configuration verification required (i.e., is the item one of the 50% of SWEL items requiring such verification)? Yes

2. Is the anchorage free of bent, broken, missing or loose hardware? Yes

3. Is the anchorage free of corrosion that is more than mild surface oxidation? Yes

4. Is the anchorage free of visible cracks in the concrete near the anchors? Yes

5. Is the anchorage configuration consistent with plant documentation? (Note: This question only applies if the item is one of the 50% for which an anchorage configuration verification is required.) Yes

6. Based on the above anchorage evaluations, is the anchorage free of potentially adverse seismic conditions? Yes
Rack is also braced to wall at top.

Status: Y N U

Seismic Walkdown Checklist (SWC)

Equipment ID No.: 2202-32

Equipment Class: (18) Instruments on Racks

Equipment Description: RACK, AUTO BLOWDOWN

Interaction Effects

7. Are soft targets free from impact by nearby equipment or structures? Yes
8. Are overhead equipment, distribution systems, ceiling tiles and lighting, and masonry block walls not likely to collapse onto the equipment? Yes
Overhead light fixtures judged to be acceptable.
9. Do attached lines have adequate flexibility to avoid damage? Yes
10. Based on the above seismic interaction evaluations, is equipment free of potentially adverse seismic interaction effects? Yes

Other Adverse Conditions

11. Have you looked for and found no adverse seismic conditions that could adversely affect the safety functions of the equipment? Yes

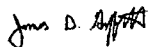
Comments

SEWS Anchorage Notes:

Instrument panel on 13" base plate (legs). Panel itself is 60" high and 60" wide and 12" deep. Each leg has an 1/8" thick baseplate 11.5" deep by 8" wide. Each leg anchored by two 1/2" CEAs.

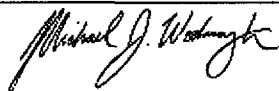
Seismic Walkdown Team: J. Griffith & M. Wodarcyk - 8/6/2012

Evaluated by:



James Griffith

Date: 10/4/2012



Michael Wodarcyk

10/4/2012

Status: Y N U

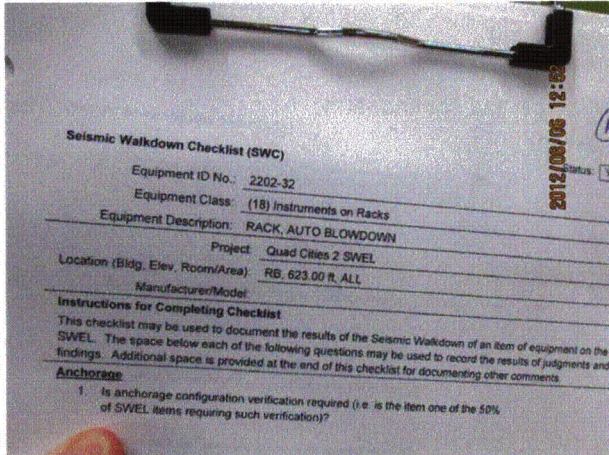
Seismic Walkdown Checklist (SWC)

Equipment ID No.: 2202-32

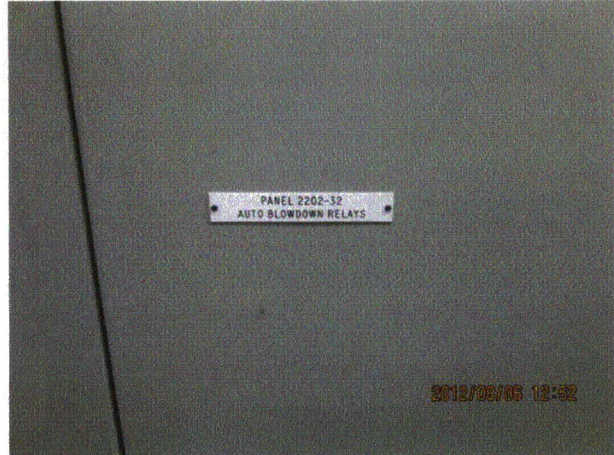
Equipment Class: (18) Instruments on Racks

Equipment Description: RACK, AUTO BLOWDOWN

Photos



20120806-QuadCities-2 215



20120806-QuadCities-2 216



20120806-QuadCities-2 217



20120806-QuadCities-2 218

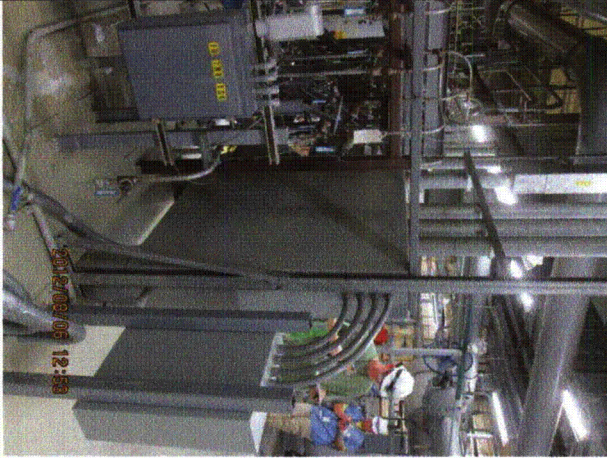
Status: Y N U

Seismic Walkdown Checklist (SWC)

Equipment ID No.: 2202-32

Equipment Class: (18) Instruments on Racks

Equipment Description: RACK, AUTO BLOWDOWN



20120806-QuadCities-2 219



20120806-QuadCities-2 220



20120806-QuadCities-2 221



20120806-QuadCities-2 222

Status: Y N U

Seismic Walkdown Checklist (SWC)

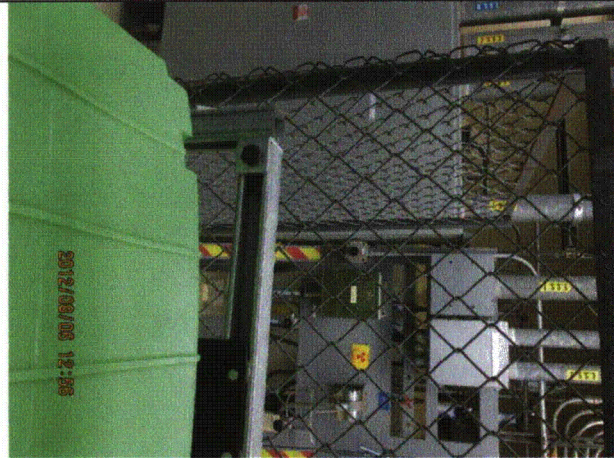
Equipment ID No.: 2202-32

Equipment Class: (18) Instruments on Racks

Equipment Description: RACK, AUTO BLOWDOWN



20120806-QuadCities-2 223



20120806-QuadCities-2 224



20120806-QuadCities-2 225



20120806-QuadCities-2 226

Status: Y N U

Seismic Walkdown Checklist (SWC)

Equipment ID No.: 2202-32

Equipment Class: (18) Instruments on Racks

Equipment Description: RACK, AUTO BLOWDOWN



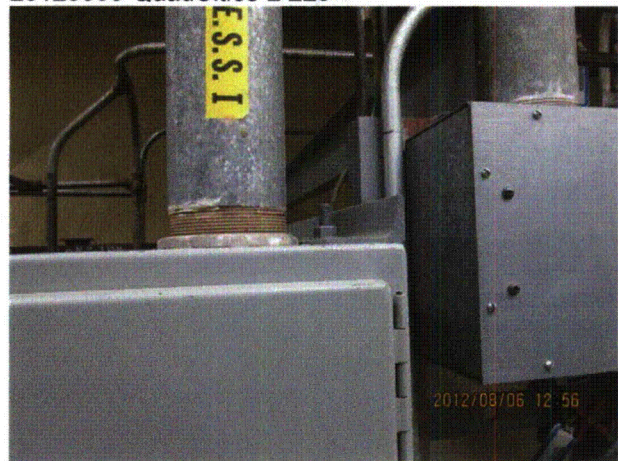
20120806-QuadCities-2 227



20120806-QuadCities-2 228



20120806-QuadCities-2 229



20120806-QuadCities-2 230

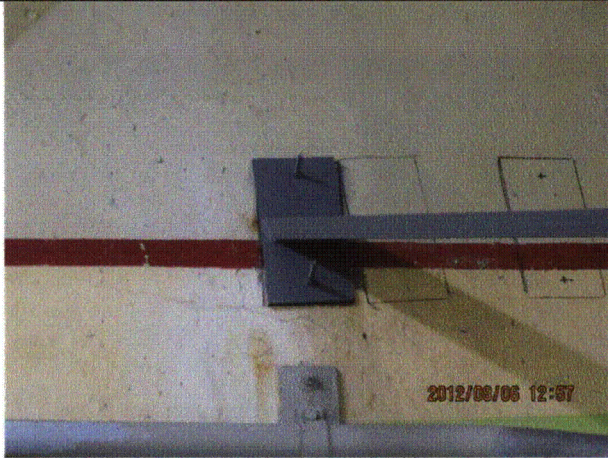
Status: Y N U

Seismic Walkdown Checklist (SWC)

Equipment ID No.: 2202-32

Equipment Class: (18) Instruments on Racks

Equipment Description: RACK, AUTO BLOWDOWN



20120806-QuadCities-2 231



20120806-QuadCities-2 232



20120806-QuadCities-2 233



20120806-QuadCities-2 234

Status: Y N U

Seismic Walkdown Checklist (SWC)

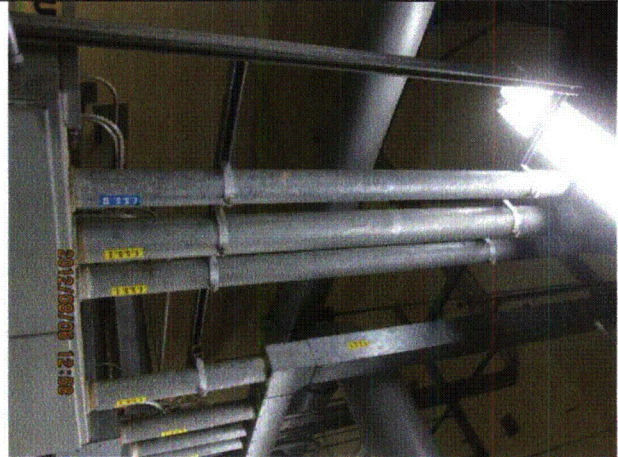
Equipment ID No.: 2202-32

Equipment Class: (18) Instruments on Racks

Equipment Description: RACK, AUTO BLOWDOWN



20120806-QuadCities-2 235



20120806-QuadCities-2 236



20120806-QuadCities-2 237



20120806-QuadCities-2 238

Status: Y N U

Seismic Walkdown Checklist (SWC)

Equipment ID No.: 2202-59A

Equipment Class: (18) Instruments on Racks

Equipment Description: RACK

Project: Quad Cities 2 SWEL

Location (Bldg, Elev, Room/Area): RB, 554.00 ft, ALL

Manufacturer/Model:

Instructions for Completing Checklist

This checklist may be used to document the results of the Seismic Walkdown of an item of equipment on the SWEL. The space below each of the following questions may be used to record the results of judgments and findings. Additional space is provided at the end of this checklist for documenting other comments.

Anchorage

1. Is anchorage configuration verification required (i.e., is the item one of the 50% of SWEL items requiring such verification)? Yes

2. Is the anchorage free of bent, broken, missing or loose hardware? Yes

3. Is the anchorage free of corrosion that is more than mild surface oxidation? Yes
2 anchors more corroded than others. Scale only; no separation of material observed. Judged to be acceptable.

4. Is the anchorage free of visible cracks in the concrete near the anchors? Yes
Minor shrinkage cracks in wall judged to be acceptable.

5. Is the anchorage configuration consistent with plant documentation? (Note: This question only applies if the item is one of the 50% for which an anchorage configuration verification is required.) Yes

6. Based on the above anchorage evaluations, is the anchorage free of potentially adverse seismic conditions? Yes

Status: Y N U

Seismic Walkdown Checklist (SWC)

Equipment ID No.: 2202-59A

Equipment Class: (18) Instruments on Racks

Equipment Description: RACK

Interaction Effects

7. Are soft targets free from impact by nearby equipment or structures? Yes
Cage roof protects soft targets. Tubes touch cage support structure. Tubes are flexible, cage is rigid. Judged to be acceptable.
8. Are overhead equipment, distribution systems, ceiling tiles and lighting, and masonry block walls not likely to collapse onto the equipment? Yes
Overhead light fixtures judged to be acceptable.
9. Do attached lines have adequate flexibility to avoid damage? Yes
10. Based on the above seismic interaction evaluations, is equipment free of potentially adverse seismic interaction effects? Yes

Other Adverse Conditions

11. Have you looked for and found no adverse seismic conditions that could adversely affect the safety functions of the equipment? Yes

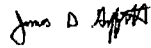
Comments

SEWS Anchorage Notes:

Anchorage: Instrument rack anchored by 1/2" concrete expansion anchors on floor and braced back to R/C wall by 1/2" concrete expansion anchors.

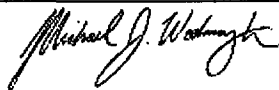
Seismic Walkdown Team: J. Griffith & M. Wodarczyk - 8/9/2012

Evaluated by:



James Griffith

Date: 10/4/2012



Michael Wodarczyk

10/4/2012

Status: Y N U

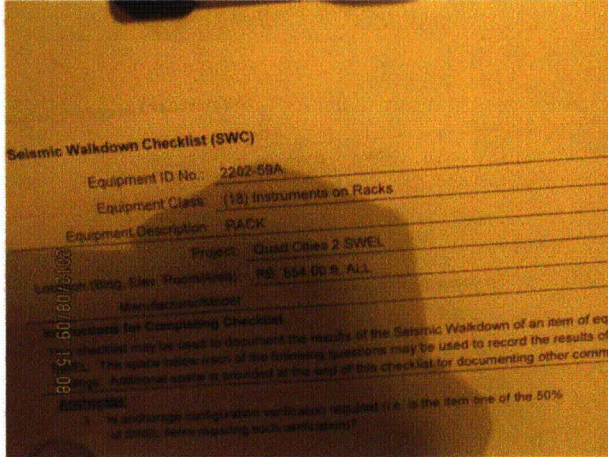
Seismic Walkdown Checklist (SWC)

Equipment ID No.: 2202-59A

Equipment Class: (18) Instruments on Racks

Equipment Description: RACK

Photos



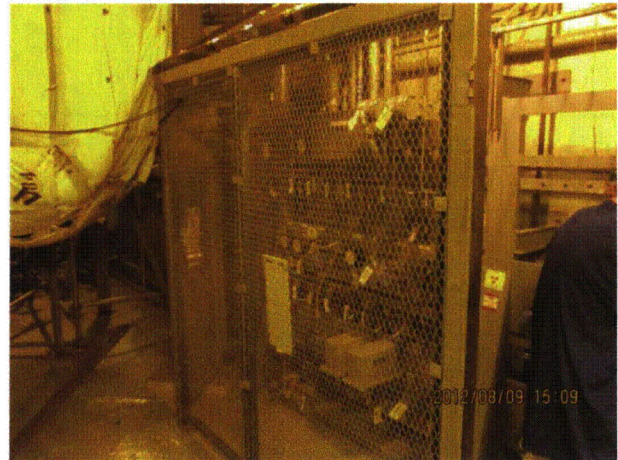
20120809-QuadCities-2 413



20120809-QuadCities-2 414



20120809-QuadCities-2 415



20120809-QuadCities-2 416

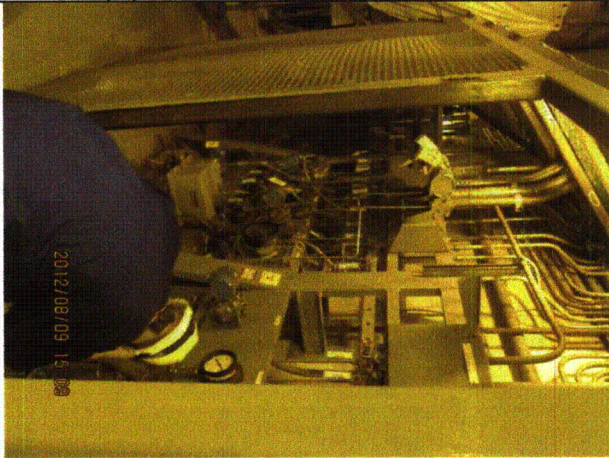
Status: Y N U

Seismic Walkdown Checklist (SWC)

Equipment ID No.: 2202-59A

Equipment Class: (18) Instruments on Racks

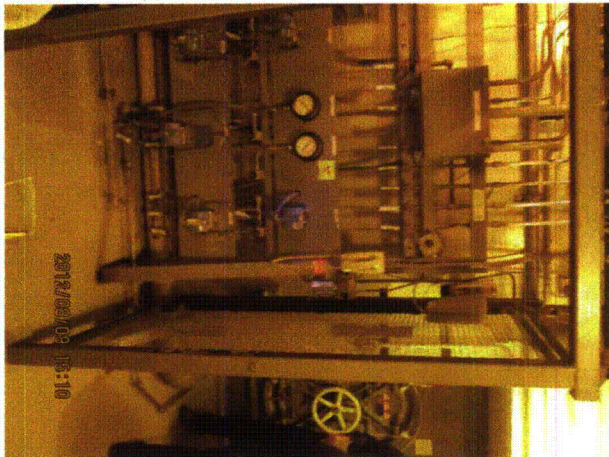
Equipment Description: RACK



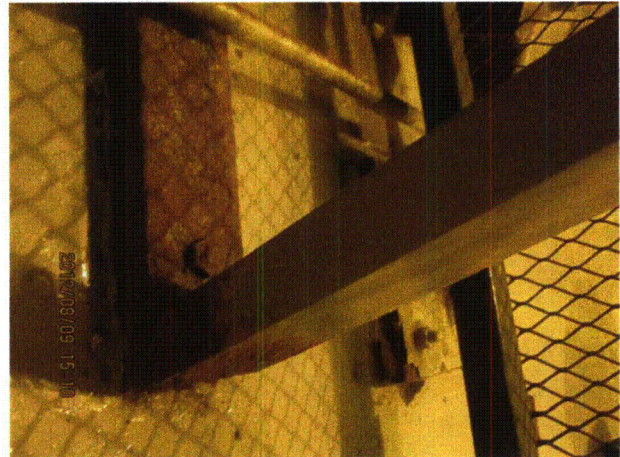
20120809-QuadCities-2 417



20120809-QuadCities-2 418



20120809-QuadCities-2 419



20120809-QuadCities-2 420

Status: Y N U

Seismic Walkdown Checklist (SWC)

Equipment ID No.: 2202-59A

Equipment Class: (18) Instruments on Racks

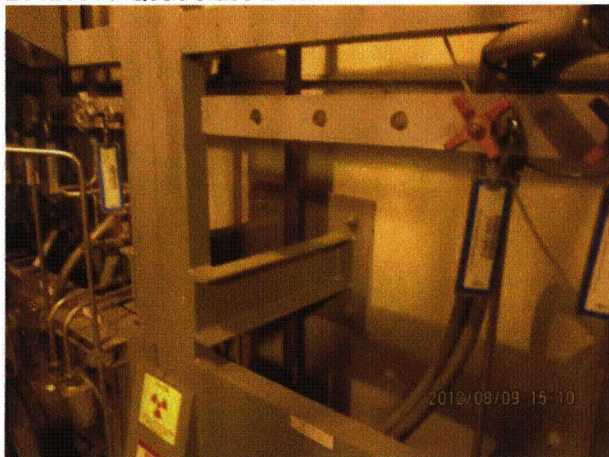
Equipment Description: RACK



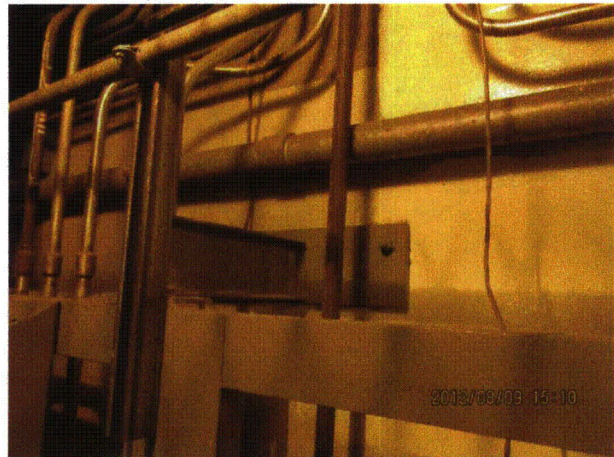
20120809-QuadCities-2 421



20120809-QuadCities-2 422



20120809-QuadCities-2 423



20120809-QuadCities-2 424

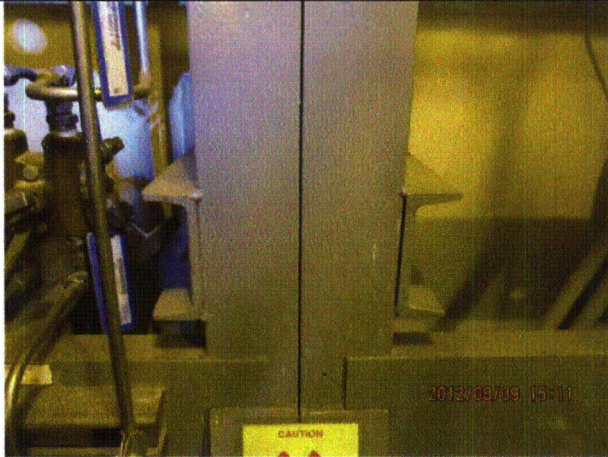
Status: Y N U

Seismic Walkdown Checklist (SWC)

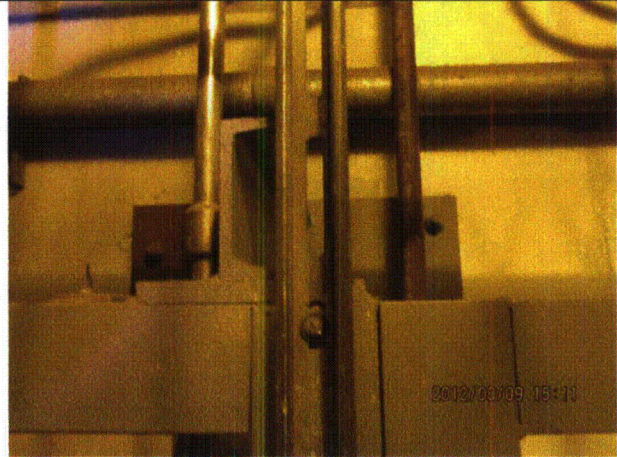
Equipment ID No.: 2202-59A

Equipment Class: (18) Instruments on Racks

Equipment Description: RACK



20120809-QuadCities-2 425



20120809-QuadCities-2 426



20120809-QuadCities-2 427



20120809-QuadCities-2 428

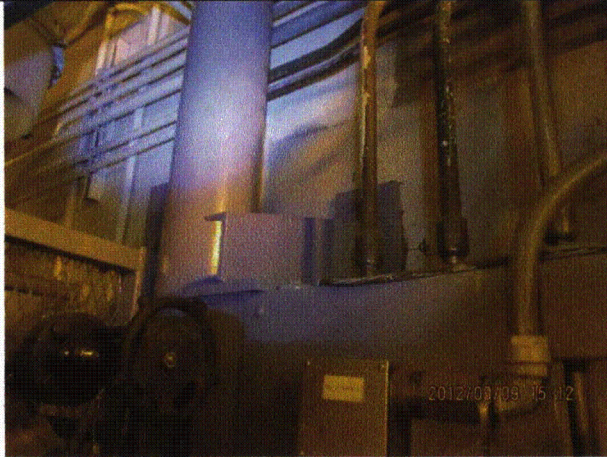
Status: Y N U

Seismic Walkdown Checklist (SWC)

Equipment ID No.: 2202-59A

Equipment Class: (18) Instruments on Racks

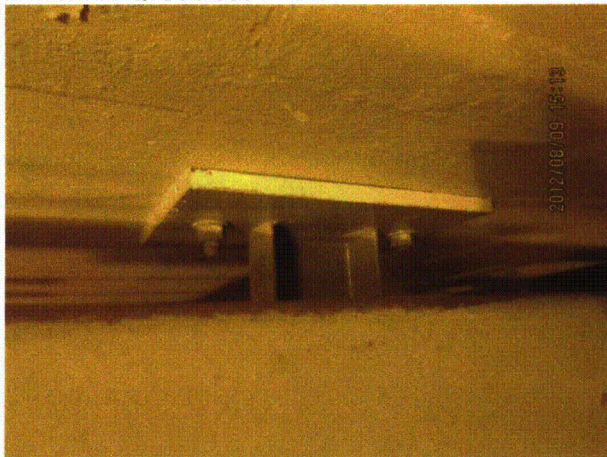
Equipment Description: RACK



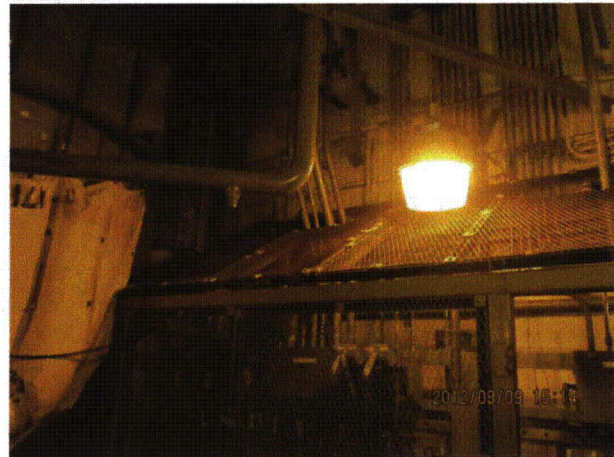
20120809-QuadCities-2 429



20120809-QuadCities-2 430



20120809-QuadCities-2 431



20120809-QuadCities-2 432

Status: Y N U

Seismic Walkdown Checklist (SWC)

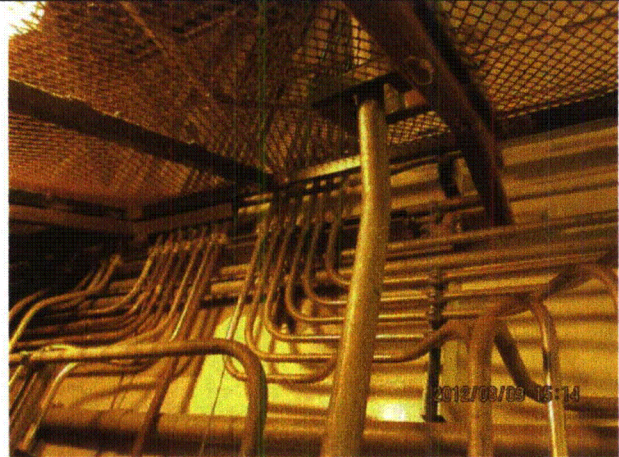
Equipment ID No.: 2202-59A

Equipment Class: (18) Instruments on Racks

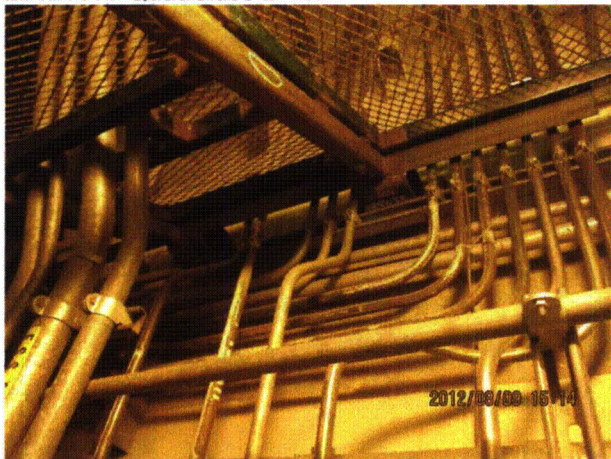
Equipment Description: RACK



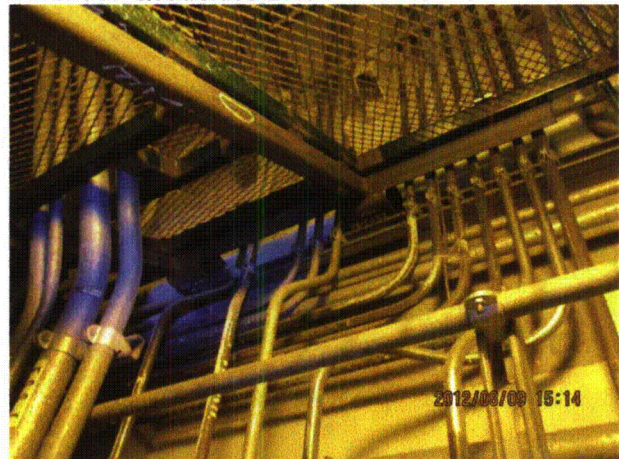
20120809-QuadCities-2 433



20120809-QuadCities-2 434



20120809-QuadCities-2 435



20120809-QuadCities-2 436

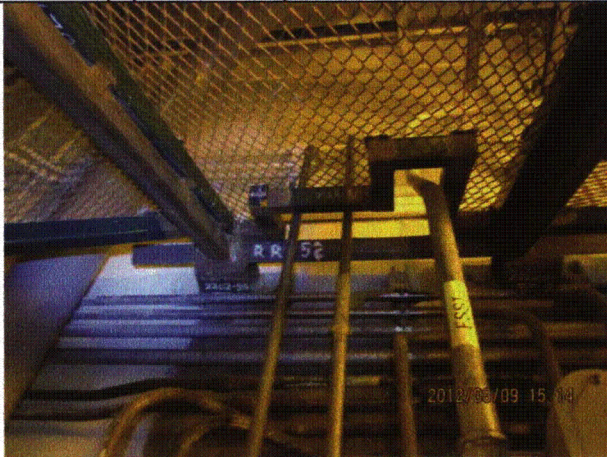
Status: Y N U

Seismic Walkdown Checklist (SWC)

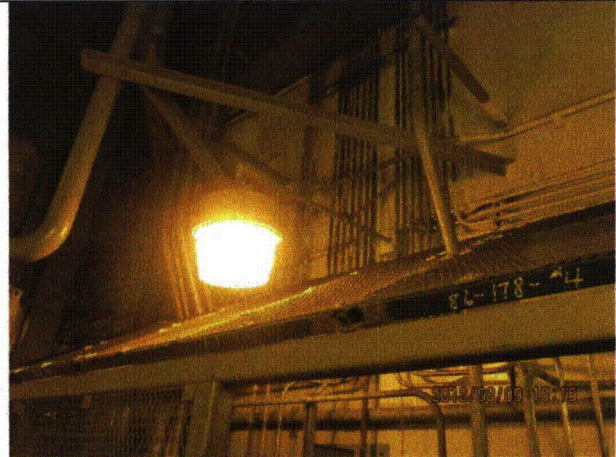
Equipment ID No.: 2202-59A

Equipment Class: (18) Instruments on Racks

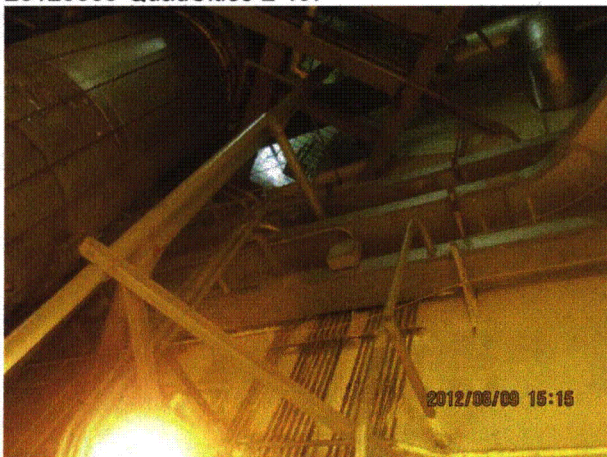
Equipment Description: RACK



20120809-QuadCities-2 437



20120809-QuadCities-2 438



20120809-QuadCities-2 439



20120809-QuadCities-2 440

Status: Y N U

Seismic Walkdown Checklist (SWC)

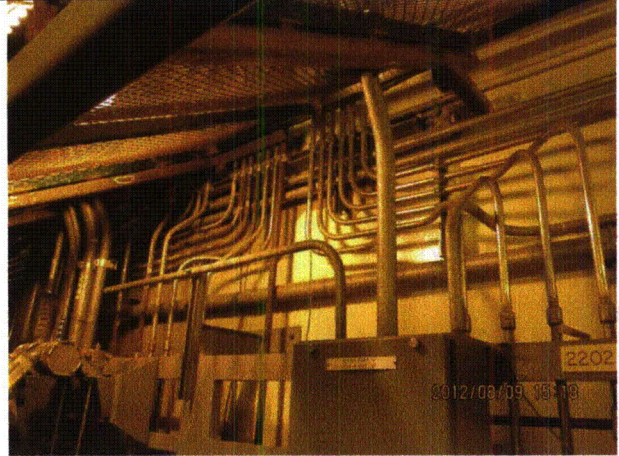
Equipment ID No.: 2202-59A

Equipment Class: (18) Instruments on Racks

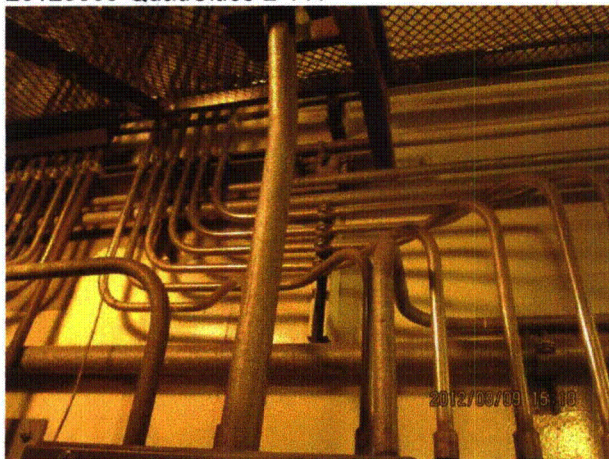
Equipment Description: RACK



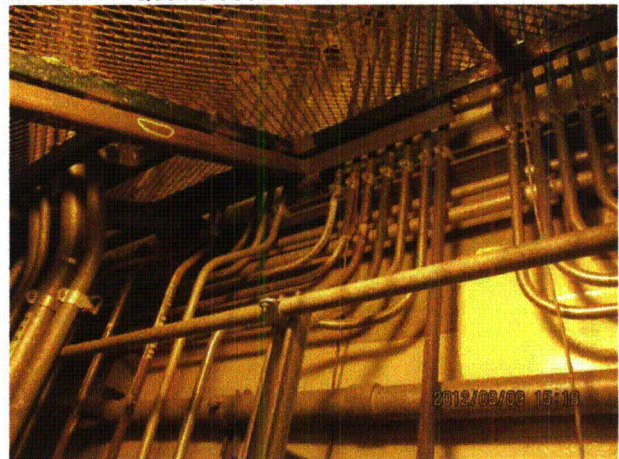
20120809-QuadCities-2 441



20120809-QuadCities-2 442



20120809-QuadCities-2 443



20120809-QuadCities-2 444

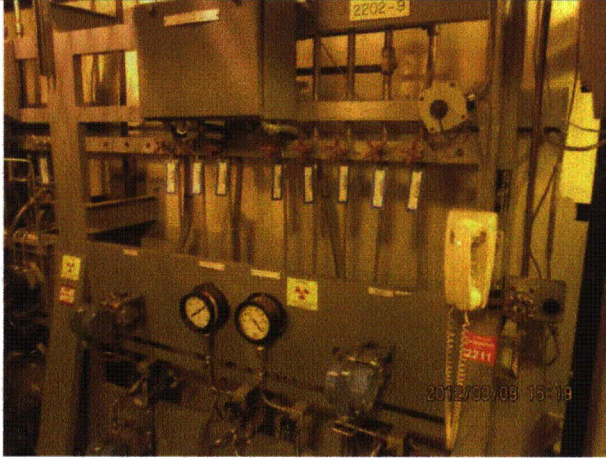
Status: Y N U

Seismic Walkdown Checklist (SWC)

Equipment ID No.: 2202-59A

Equipment Class: (18) Instruments on Racks

Equipment Description: RACK



20120809-QuadCities-2 445

Status: Y N U

Seismic Walkdown Checklist (SWC)

Equipment ID No.: 2202-7

Equipment Class: (18) Instruments on Racks

Equipment Description: RACK

Project: Quad Cities 2 SWEL

Location (Bldg, Elev, Room/Area): RB, 595.00 ft, ALL

Manufacturer/Model:

Instructions for Completing Checklist

This checklist may be used to document the results of the Seismic Walkdown of an item of equipment on the SWEL. The space below each of the following questions may be used to record the results of judgments and findings. Additional space is provided at the end of this checklist for documenting other comments.

Anchorage

1. Is anchorage configuration verification required (i.e., is the item one of the 50% of SWEL items requiring such verification)? Yes

2. Is the anchorage free of bent, broken, missing or loose hardware? Yes

3. Is the anchorage free of corrosion that is more than mild surface oxidation? Yes

4. Is the anchorage free of visible cracks in the concrete near the anchors? Yes
Minor shrinkage cracks in wall and floor judged to be acceptable.

5. Is the anchorage configuration consistent with plant documentation? (Note: This question only applies if the item is one of the 50% for which an anchorage configuration verification is required.) Yes

6. Based on the above anchorage evaluations, is the anchorage free of potentially adverse seismic conditions? Yes

Status: Y N U

Seismic Walkdown Checklist (SWC)

Equipment ID No.: 2202-7

Equipment Class: (18) Instruments on Racks

Equipment Description: RACK

Interaction Effects

7. Are soft targets free from impact by nearby equipment or structures? Yes

Phone attached to rack. Rack is rigid and vertical seismic acceleration is minimal, therefore receiver will not jump off of cradle. Phone judged to be acceptable.

8. Are overhead equipment, distribution systems, ceiling tiles and lighting, and masonry block walls not likely to collapse onto the equipment? Yes

9. Do attached lines have adequate flexibility to avoid damage? Yes

10. Based on the above seismic interaction evaluations, is equipment free of potentially adverse seismic interaction effects? Yes

Other Adverse Conditions

11. Have you looked for and found no adverse seismic conditions that could adversely affect the safety functions of the equipment? Yes

Comments

SEWS Anchorage Notes:

Instrument rack composed of angle iron and anchored by concrete expansion anchors and braced back to a reinforced concrete wall by structural rolled shapes.

Seismic Walkdown Team: J. Griffith & M. Wodarczyk - 8/6/2012

See north HCU bank area walk-by for further notes.

Status: Y N U

Seismic Walkdown Checklist (SWC)

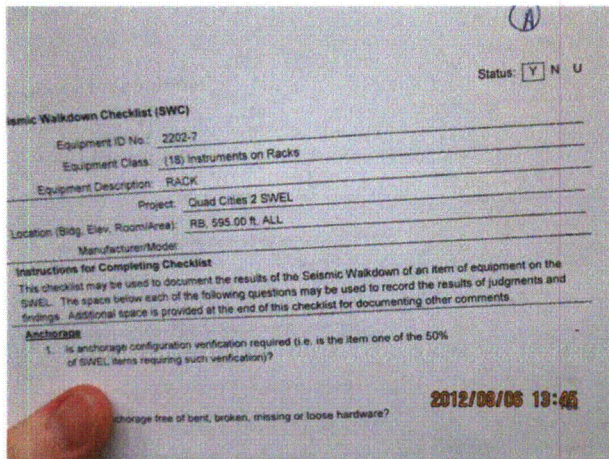
Equipment ID No.: 2202-7

Equipment Class: (18) Instruments on Racks

Equipment Description: RACK

Evaluated by: James D. Griffith James Griffith Date: 10/4/2012
Michael J. Wodarczyk Michael Wodarczyk 10/4/2012

Photos



20120806-QuadCities-2 288



20120806-QuadCities-2 289



20120806-QuadCities-2 290



20120806-QuadCities-2 291

Status: Y N U

Seismic Walkdown Checklist (SWC)

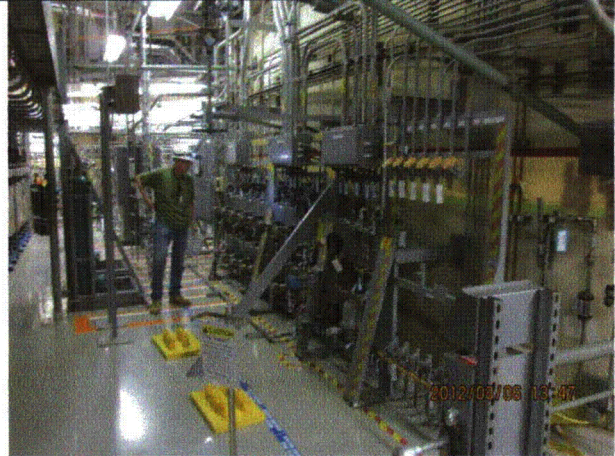
Equipment ID No.: 2202-7

Equipment Class: (18) Instruments on Racks

Equipment Description: RACK



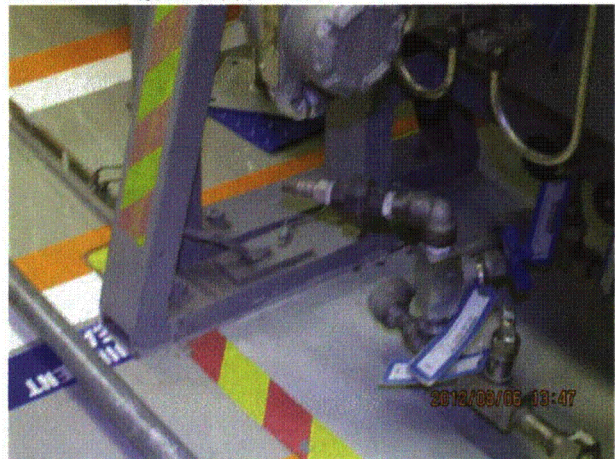
20120806-QuadCities-2 292



20120806-QuadCities-2 293



20120806-QuadCities-2 294



20120806-QuadCities-2 295

Status: Y N U

Seismic Walkdown Checklist (SWC)

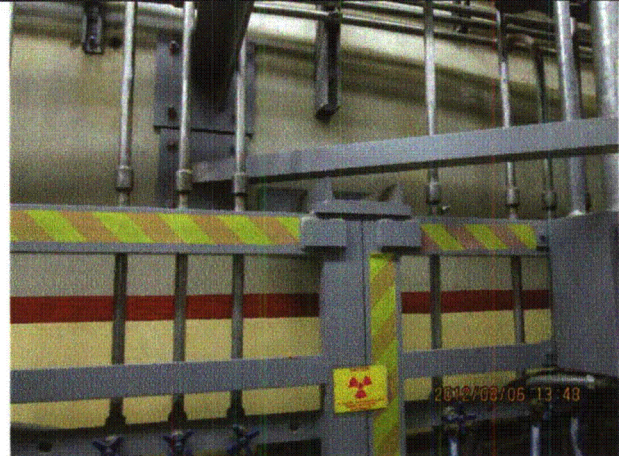
Equipment ID No.: 2202-7

Equipment Class: (18) Instruments on Racks

Equipment Description: RACK



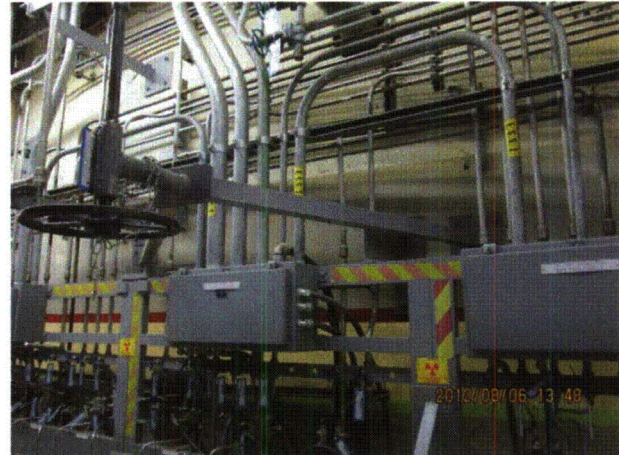
20120806-QuadCities-2 296



20120806-QuadCities-2 297



20120806-QuadCities-2 298



20120806-QuadCities-2 299

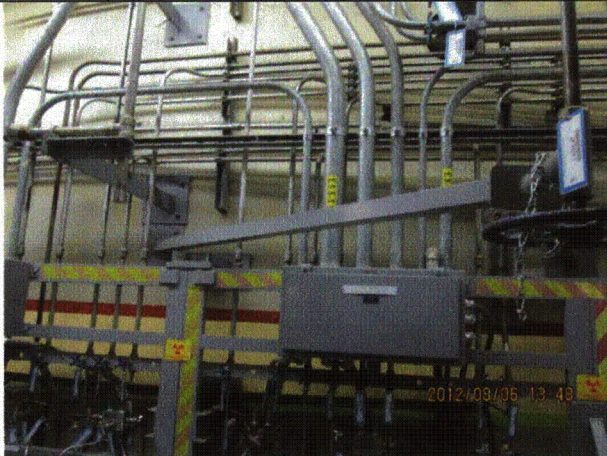
Status: Y N U

Seismic Walkdown Checklist (SWC)

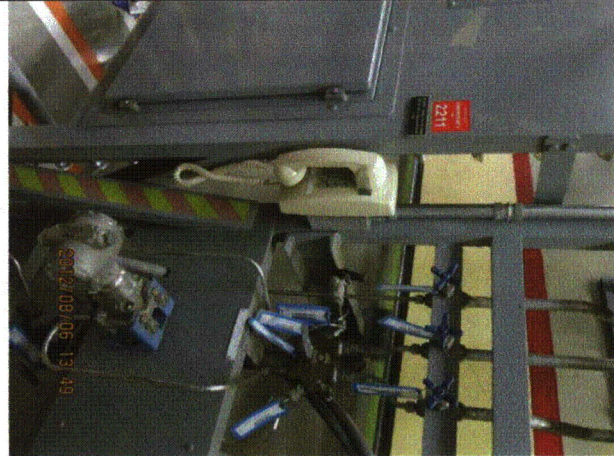
Equipment ID No.: 2202-7

Equipment Class: (18) Instruments on Racks

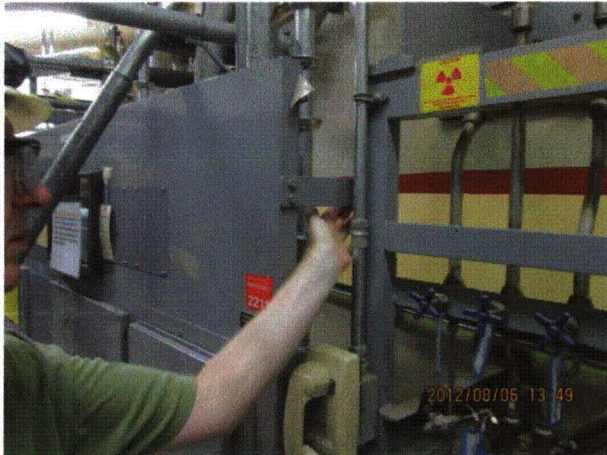
Equipment Description: RACK



20120806-QuadCities-2 300



20120806-QuadCities-2 301



20120806-QuadCities-2 302



20120806-QuadCities-2 303

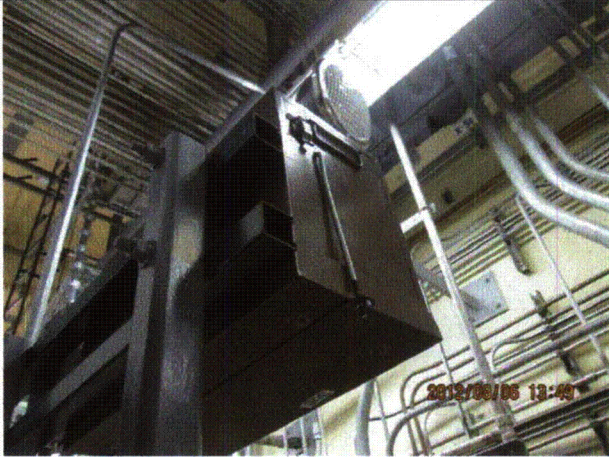
Status: Y N U

Seismic Walkdown Checklist (SWC)

Equipment ID No.: 2202-7

Equipment Class: (18) Instruments on Racks

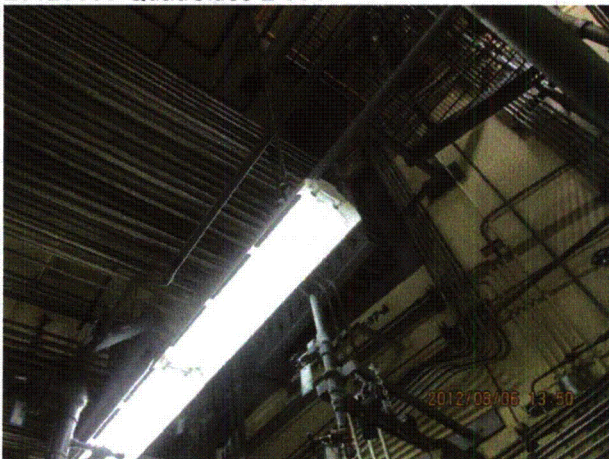
Equipment Description: RACK



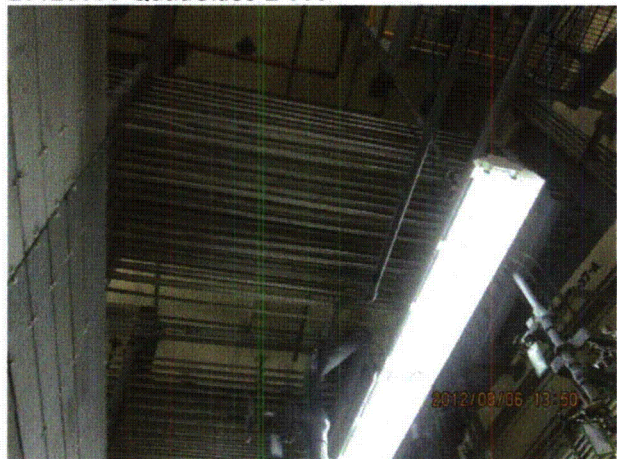
20120806-QuadCities-2 304



20120806-QuadCities-2 305



20120806-QuadCities-2 306



20120806-QuadCities-2 307

Status: Y N U

Seismic Walkdown Checklist (SWC)

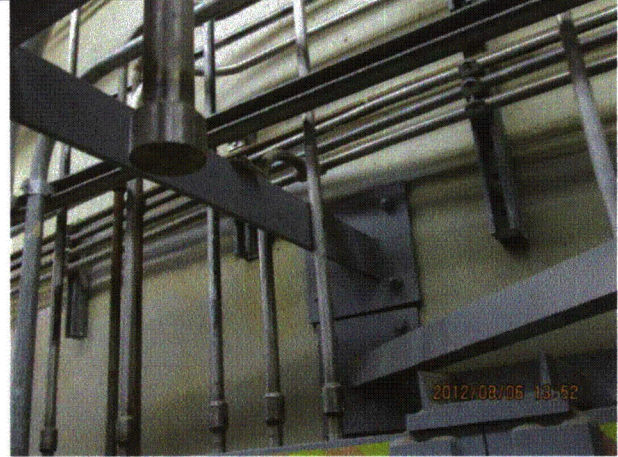
Equipment ID No.: 2202-7

Equipment Class: (18) Instruments on Racks

Equipment Description: RACK



20120806-QuadCities-2 308



20120806-QuadCities-2 309



20120806-QuadCities-2 310

Status: Y N U

Seismic Walkdown Checklist (SWC)

Equipment ID No.: 2202-73A

Equipment Class: (18) Instruments on Racks

Equipment Description: RACK, ANALOG TRIP

Project: Quad Cities 2 SWEL

Location (Bldg, Elev, Room/Area): SB, 609.00 ft, ALL

Manufacturer/Model: _____

Instructions for Completing Checklist

This checklist may be used to document the results of the Seismic Walkdown of an item of equipment on the SWEL. The space below each of the following questions may be used to record the results of judgments and findings. Additional space is provided at the end of this checklist for documenting other comments.

Anchorage

1. Is anchorage configuration verification required (i.e., is the item one of the 50% of SWEL items requiring such verification)? Yes

2. Is the anchorage free of bent, broken, missing or loose hardware? Yes

3. Is the anchorage free of corrosion that is more than mild surface oxidation? Yes

4. Is the anchorage free of visible cracks in the concrete near the anchors? Yes

5. Is the anchorage configuration consistent with plant documentation? (Note: This question only applies if the item is one of the 50% for which an anchorage configuration verification is required.) Yes

6. Based on the above anchorage evaluations, is the anchorage free of potentially adverse seismic conditions? Yes

Status: Y N U

Seismic Walkdown Checklist (SWC)

Equipment ID No.: 2202-73A

Equipment Class: (18) Instruments on Racks

Equipment Description: RACK, ANALOG TRIP

Interaction Effects

7. Are soft targets free from impact by nearby equipment or structures? Yes
8. Are overhead equipment, distribution systems, ceiling tiles and lighting, and masonry block walls not likely to collapse onto the equipment? Yes
9. Do attached lines have adequate flexibility to avoid damage? Yes
10. Based on the above seismic interaction evaluations, is equipment free of potentially adverse seismic interaction effects? Yes

Other Adverse Conditions

11. Have you looked for and found no adverse seismic conditions that could adversely affect the safety functions of the equipment? Yes

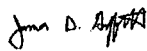
Comments

SEWS Anchorage Notes:

Panel welded to massive base plate assembly. Base plate anchored by six 1/2" concrete expansion anchors.

Seismic Walkdown Team: J. Griffith & M. Wodarczyk - 8/7/2012

Evaluated by:



James Griffith

Date: 10/4/2012



Michael Wodarczyk

10/4/2012

Status: Y N U

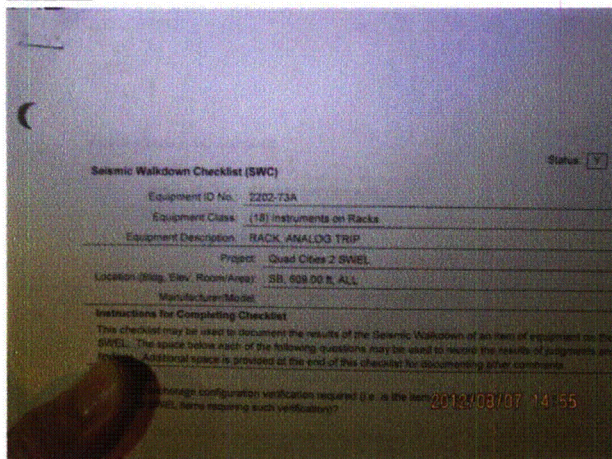
Seismic Walkdown Checklist (SWC)

Equipment ID No.: 2202-73A

Equipment Class: (18) Instruments on Racks

Equipment Description: RACK, ANALOG TRIP

Photos



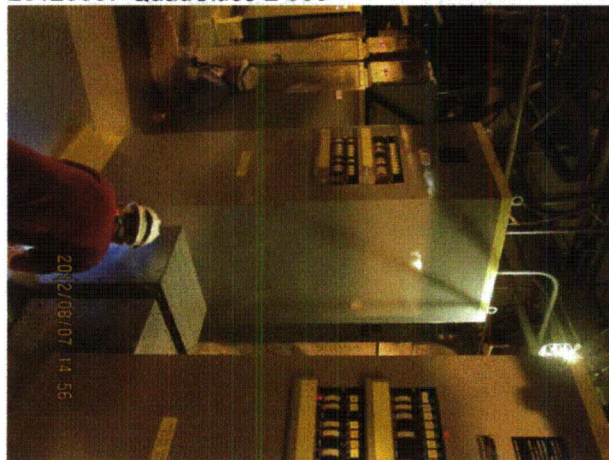
20120807-QuadCities-2 355



20120807-QuadCities-2 356



20120807-QuadCities-2 357



20120807-QuadCities-2 358

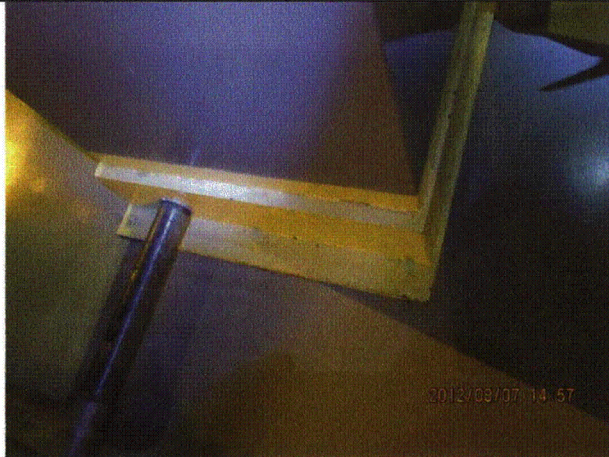
Status: Y N U

Seismic Walkdown Checklist (SWC)

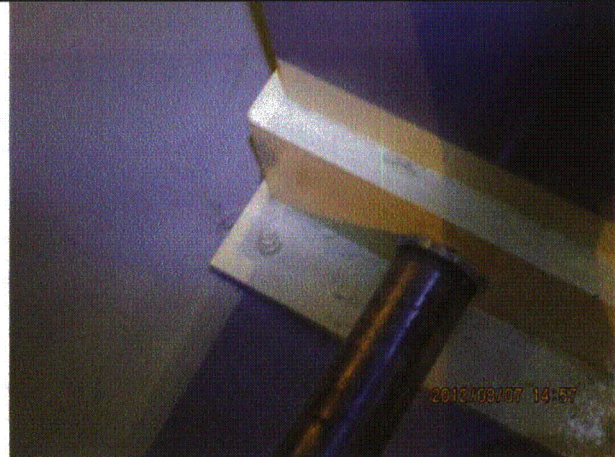
Equipment ID No.: 2202-73A

Equipment Class: (18) Instruments on Racks

Equipment Description: RACK, ANALOG TRIP



20120807-QuadCities-2 359



20120807-QuadCities-2 360



20120807-QuadCities-2 361



20120807-QuadCities-2 362

Status: Y N U

Seismic Walkdown Checklist (SWC)

Equipment ID No.: 2202-73A

Equipment Class: (18) Instruments on Racks

Equipment Description: RACK, ANALOG TRIP



20120807-QuadCities-2 363



20120807-QuadCities-2 364



20120807-QuadCities-2 365



20120807-QuadCities-2 366

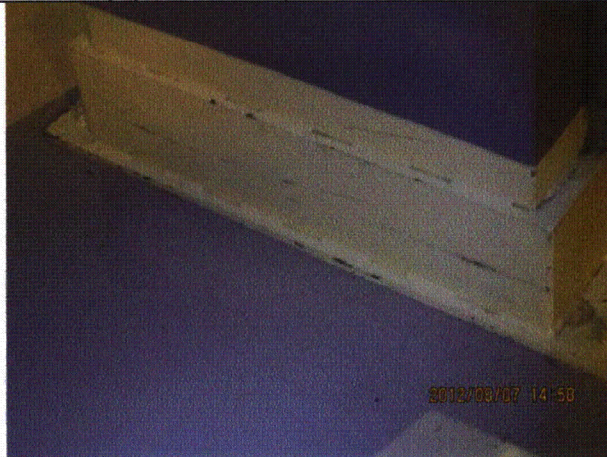
Status: Y N U

Seismic Walkdown Checklist (SWC)

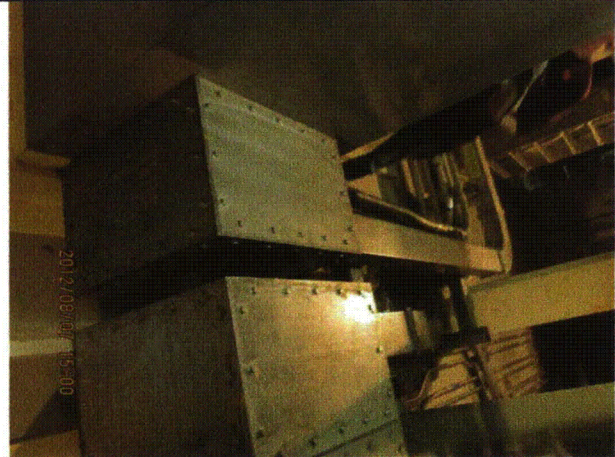
Equipment ID No.: 2202-73A

Equipment Class: (18) Instruments on Racks

Equipment Description: RACK, ANALOG TRIP



20120807-QuadCities-2 367



20120807-QuadCities-2 368



20120807-QuadCities-2 369



20120807-QuadCities-2 370

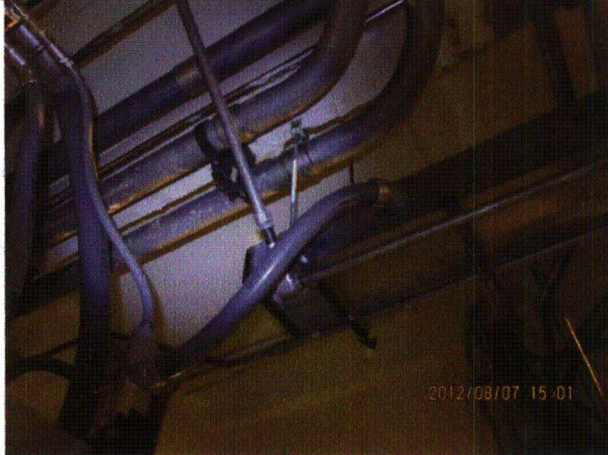
Status: Y N U

Seismic Walkdown Checklist (SWC)

Equipment ID No.: 2202-73A

Equipment Class: (18) Instruments on Racks

Equipment Description: RACK, ANALOG TRIP



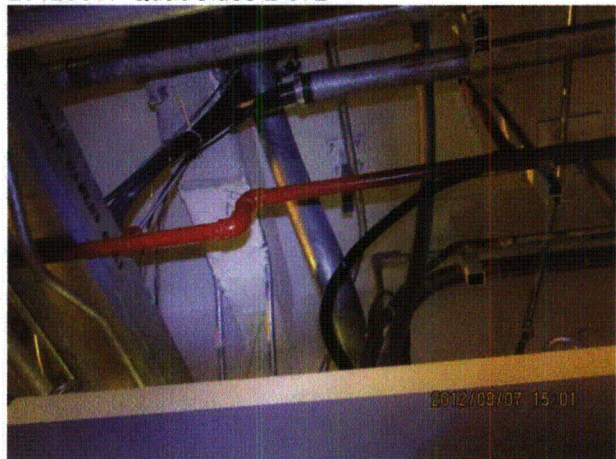
20120807-QuadCities-2 371



20120807-QuadCities-2 372



20120807-QuadCities-2 373



20120807-QuadCities-2 374

Status: Y N U

Seismic Walkdown Checklist (SWC)

Equipment ID No.: 2202-73A

Equipment Class: (18) Instruments on Racks

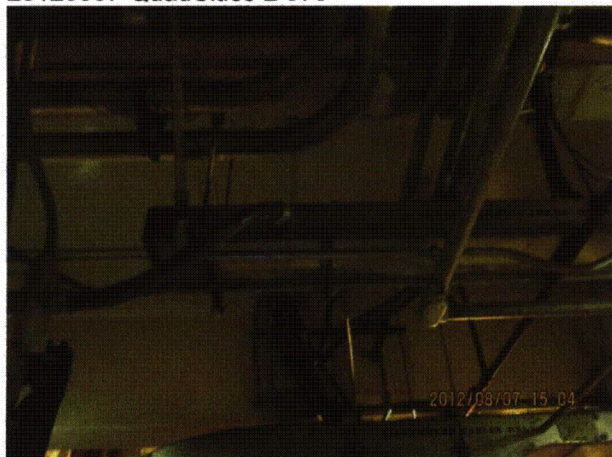
Equipment Description: RACK, ANALOG TRIP



20120807-QuadCities-2 375



20120807-QuadCities-2 376



20120807-QuadCities-2 377



20120807-QuadCities-2 378

Status: Y N U

Seismic Walkdown Checklist (SWC)

Equipment ID No.: 2202-8

Equipment Class: (18) Instruments on Racks

Equipment Description: RACK

Project: Quad Cities 2 SWEL

Location (Bldg, Elev, Room/Area): RB, 595.00 ft, ALL

Manufacturer/Model:

Instructions for Completing Checklist

This checklist may be used to document the results of the Seismic Walkdown of an item of equipment on the SWEL. The space below each of the following questions may be used to record the results of judgments and findings. Additional space is provided at the end of this checklist for documenting other comments.

Anchorage

1. Is anchorage configuration verification required (i.e., is the item one of the 50% of SWEL items requiring such verification)? Yes

2. Is the anchorage free of bent, broken, missing or loose hardware? Yes

3. Is the anchorage free of corrosion that is more than mild surface oxidation? Yes

4. Is the anchorage free of visible cracks in the concrete near the anchors? Yes
Minor shrinkage cracks in wall judged to be acceptable.

5. Is the anchorage configuration consistent with plant documentation? (Note: This question only applies if the item is one of the 50% for which an anchorage configuration verification is required.) Yes

6. Based on the above anchorage evaluations, is the anchorage free of potentially adverse seismic conditions? Yes

Status: Y N U

Seismic Walkdown Checklist (SWC)

Equipment ID No.: 2202-8

Equipment Class: (18) Instruments on Racks

Equipment Description: RACK

Interaction Effects

7. Are soft targets free from impact by nearby equipment or structures? Yes
Phone attached to rack. Rack is rigid and vertical seismic acceleration is minimal, therefore receiver will not jump off of cradle. Phone judged to be acceptable.
8. Are overhead equipment, distribution systems, ceiling tiles and lighting, and masonry block walls not likely to collapse onto the equipment? Yes
Overhead light fixture with slightly-open S-hook at east end of fixture. Fixture will not fall because hard-wired power cord is also at the east end of the fixture. Judged to be acceptable.
9. Do attached lines have adequate flexibility to avoid damage? Yes
10. Based on the above seismic interaction evaluations, is equipment free of potentially adverse seismic interaction effects? Yes

Other Adverse Conditions

11. Have you looked for and found no adverse seismic conditions that could adversely affect the safety functions of the equipment? Yes

Comments

SEWS Anchorage Notes:

Instrument rack composed of angle iron and anchored by concrete expansion anchors and braced back to a reinforced concrete wall by structural rolled shapes.

Seismic Walkdown Team: J. Griffith & M. Wodarcyk - 8/6/2012

See south HCU bank area walk-by for further notes.

Status: Y N U

Seismic Walkdown Checklist (SWC)

Equipment ID No.: 2202-8

Equipment Class: (18) Instruments on Racks

Equipment Description: RACK

Evaluated by: James D. Griffith James Griffith

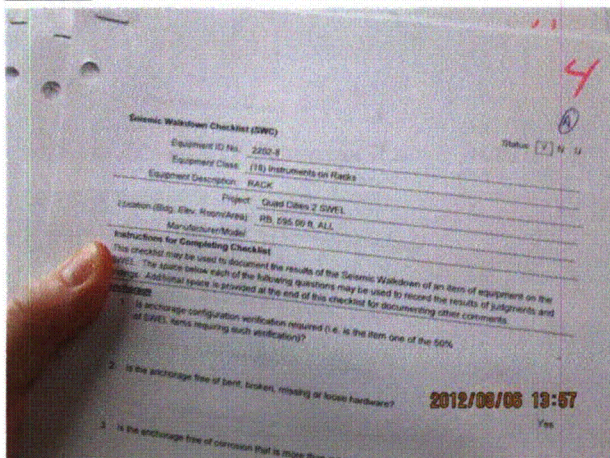
Date: 10/4/2012

Michael J. Wodarczyk

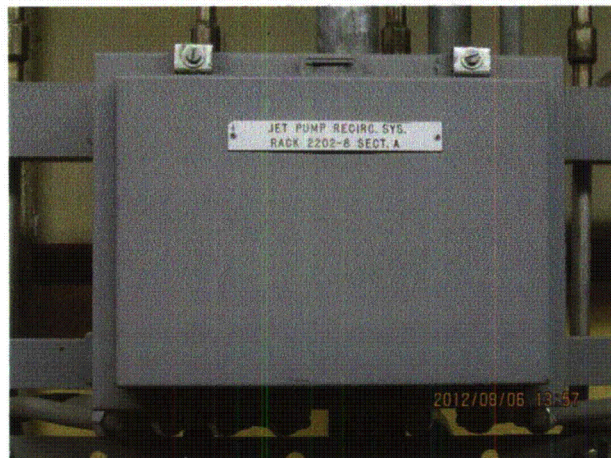
Michael Wodarczyk

10/4/2012

Photos



20120806-QuadCities-2 311



20120806-QuadCities-2 312



20120806-QuadCities-2 313



20120806-QuadCities-2 314

Status: Y N U

Seismic Walkdown Checklist (SWC)

Equipment ID No.: 2202-8

Equipment Class: (18) Instruments on Racks

Equipment Description: RACK



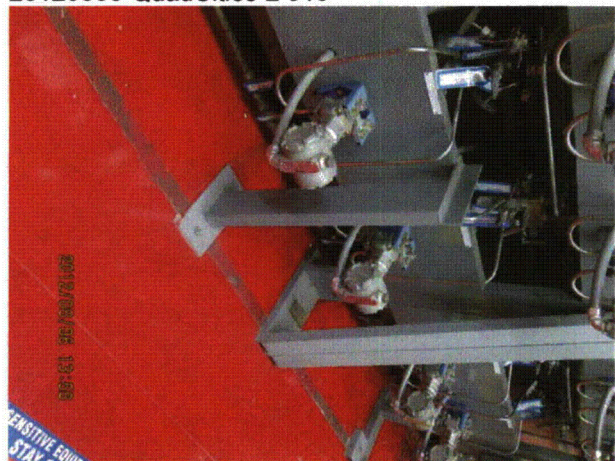
20120806-QuadCities-2 315



20120806-QuadCities-2 316



20120806-QuadCities-2 317



20120806-QuadCities-2 318

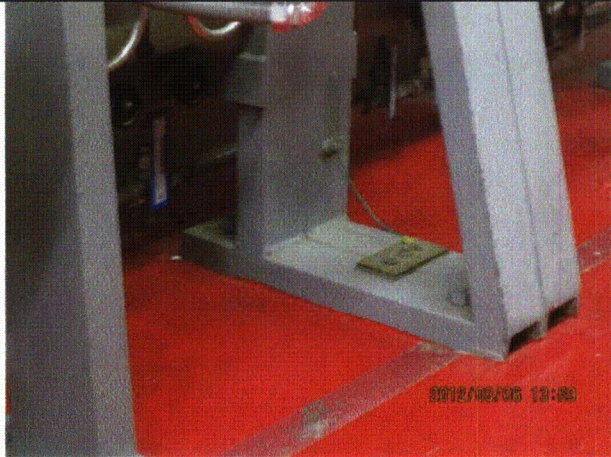
Status: Y N U

Seismic Walkdown Checklist (SWC)

Equipment ID No.: 2202-8

Equipment Class: (18) Instruments on Racks

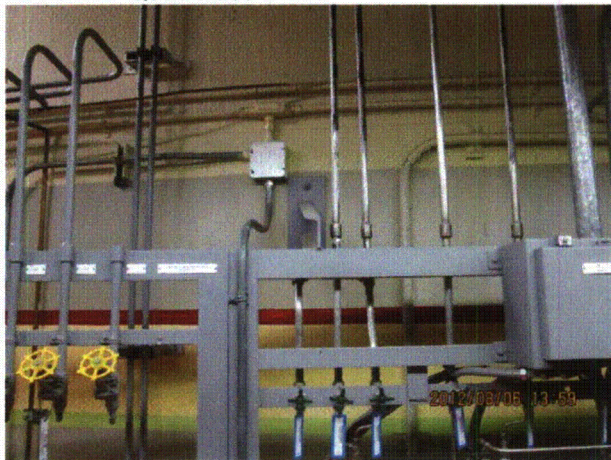
Equipment Description: RACK



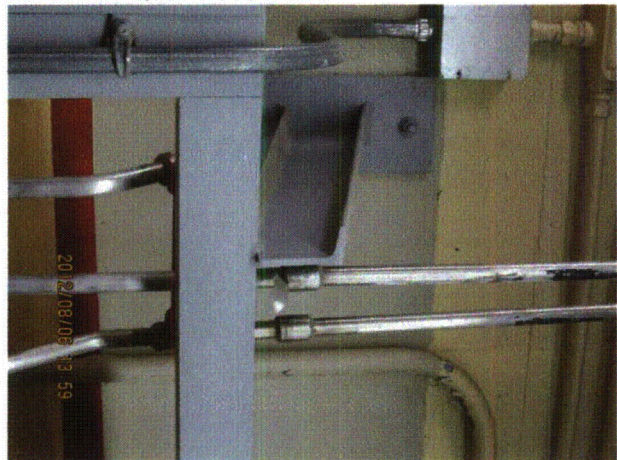
20120806-QuadCities-2 319



20120806-QuadCities-2 320



20120806-QuadCities-2 321



20120806-QuadCities-2 322

Status: Y N U

Seismic Walkdown Checklist (SWC)

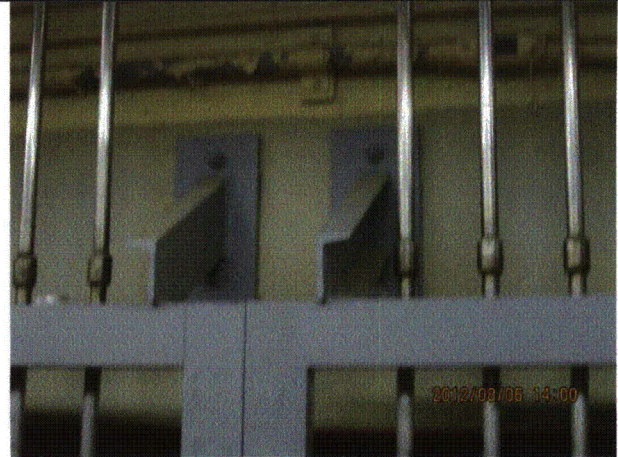
Equipment ID No.: 2202-8

Equipment Class: (18) Instruments on Racks

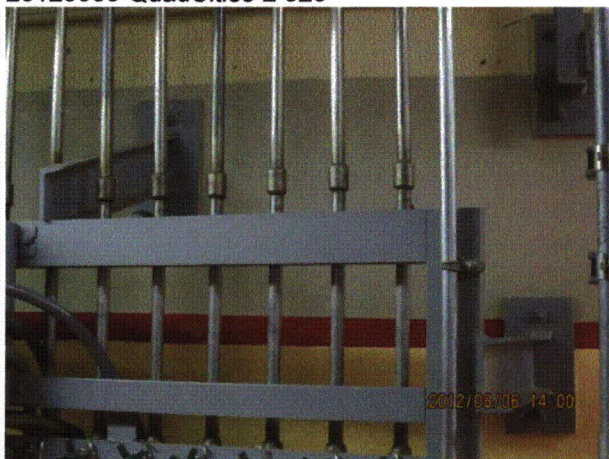
Equipment Description: RACK



20120806-QuadCities-2 323



20120806-QuadCities-2 324



20120806-QuadCities-2 325



20120806-QuadCities-2 326

Status: Y N U

Seismic Walkdown Checklist (SWC)

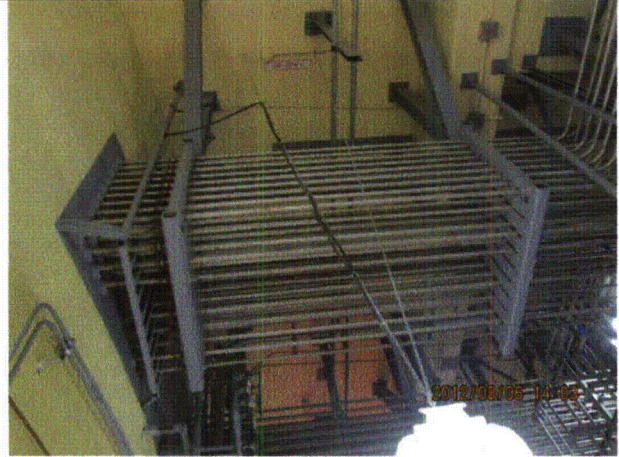
Equipment ID No.: 2202-8

Equipment Class: (18) Instruments on Racks

Equipment Description: RACK



20120806-QuadCities-2 327



20120806-QuadCities-2 328



20120806-QuadCities-2 329



20120806-QuadCities-2 330

Status: Y N U

Seismic Walkdown Checklist (SWC)

Equipment ID No.: 2202-8

Equipment Class: (18) Instruments on Racks

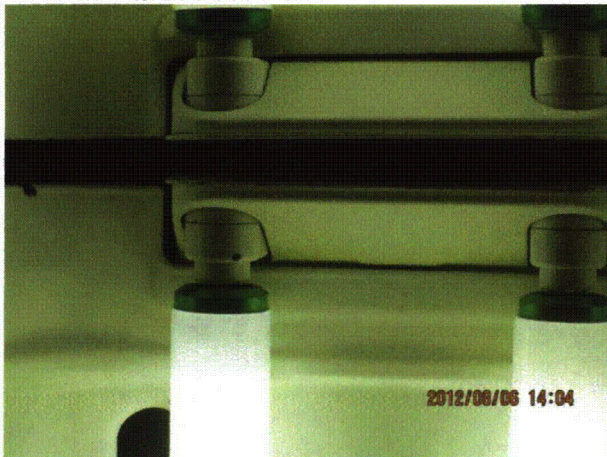
Equipment Description: RACK



20120806-QuadCities-2 331



20120806-QuadCities-2 332



20120806-QuadCities-2 333



20120806-QuadCities-2 334

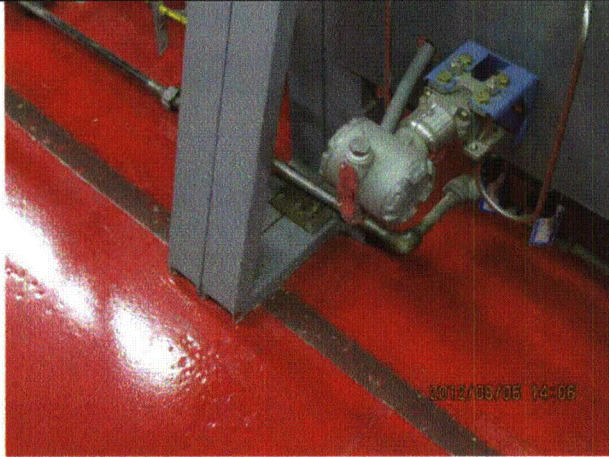
Status: Y N U

Seismic Walkdown Checklist (SWC)

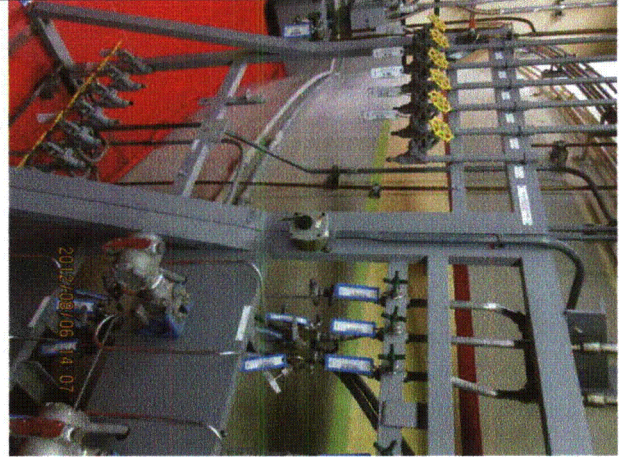
Equipment ID No.: 2202-8

Equipment Class: (18) Instruments on Racks

Equipment Description: RACK



20120806-QuadCities-2 335



20120806-QuadCities-2 336

Status: Y N U

Seismic Walkdown Checklist (SWC)

Equipment ID No.: 2212-125

Equipment Class: (18) Instruments on Racks

Equipment Description: RACK, 1/2 DG ENGINE CONTROL

Project: Quad Cities 2 SWEL

Location (Bldg, Elev, Room/Area): DG, 595.00 ft, ALL

Manufacturer/Model:

Instructions for Completing Checklist

This checklist may be used to document the results of the Seismic Walkdown of an item of equipment on the SWEL. The space below each of the following questions may be used to record the results of judgments and findings. Additional space is provided at the end of this checklist for documenting other comments.

Anchorage

1. Is anchorage configuration verification required (i.e., is the item one of the 50% of SWEL items requiring such verification)? No

2. Is the anchorage free of bent, broken, missing or loose hardware? Yes

3. Is the anchorage free of corrosion that is more than mild surface oxidation? Yes

4. Is the anchorage free of visible cracks in the concrete near the anchors? Not Applicable
Bottom of panel has brackets welded to DG skid. Top of panel has bracket bolted to water expansion tank.

5. Is the anchorage configuration consistent with plant documentation? (Note: This question only applies if the item is one of the 50% for which an anchorage configuration verification is required.) Not Applicable

6. Based on the above anchorage evaluations, is the anchorage free of potentially adverse seismic conditions? Yes

Status: Y N U

Seismic Walkdown Checklist (SWC)

Equipment ID No.: 2212-125

Equipment Class: (18) Instruments on Racks

Equipment Description: RACK, 1/2 DG ENGINE CONTROL

Interaction Effects

7. Are soft targets free from impact by nearby equipment or structures? Yes
8. Are overhead equipment, distribution systems, ceiling tiles and lighting, and masonry block walls not likely to collapse onto the equipment? Yes
Overhead light fixtures judged to be acceptable.
9. Do attached lines have adequate flexibility to avoid damage? Yes
10. Based on the above seismic interaction evaluations, is equipment free of potentially adverse seismic interaction effects? Yes

Other Adverse Conditions

11. Have you looked for and found no adverse seismic conditions that could adversely affect the safety functions of the equipment? Yes
1 of 26 sheet metal screws missing. Remaining 25 are judged to be adequate. See IR 1400100.

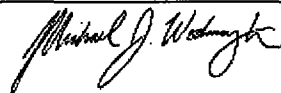
Comments

Seismic Walkdown Team: J. Griffith & M. Wodarcyk - 8/8/2012

Evaluated by:

 James Griffith

Date: 10/4/2012



Michael Wodarcyk

10/4/2012

Status: Y N U

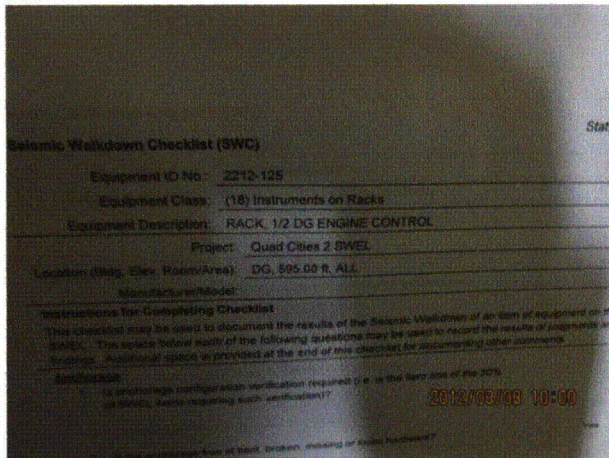
Seismic Walkdown Checklist (SWC)

Equipment ID No.: 2212-125

Equipment Class: (18) Instruments on Racks

Equipment Description: RACK, 1/2 DG ENGINE CONTROL

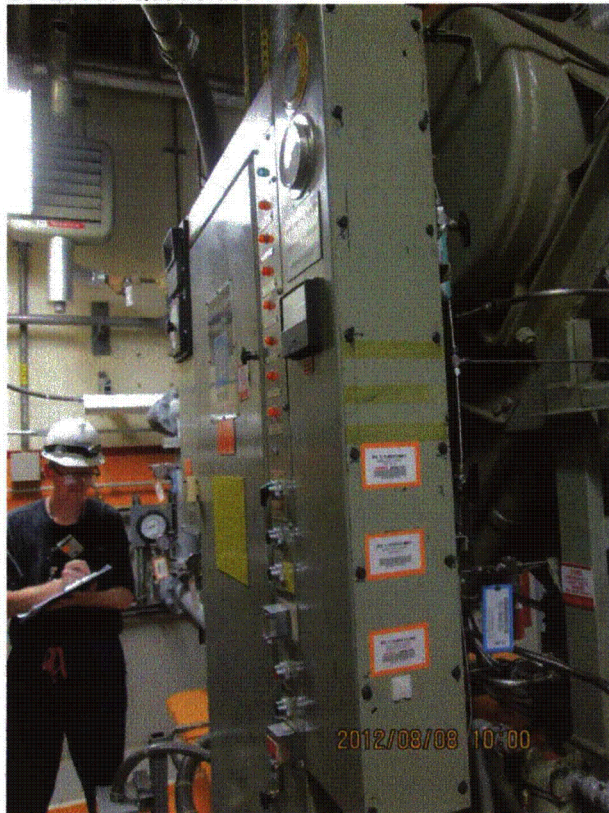
Photos



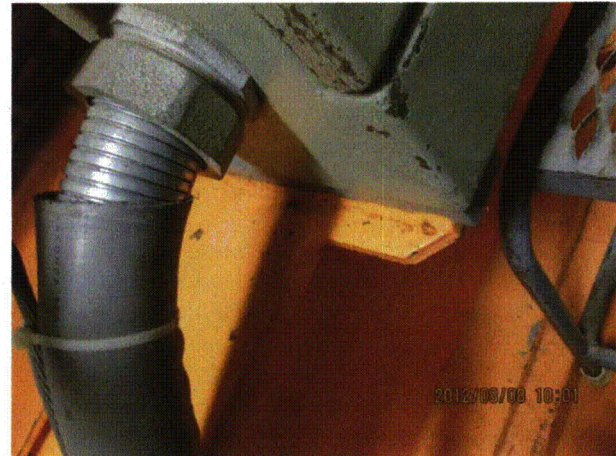
20120808-QuadCities-2 134



20120808-QuadCities-2 135



20120808-QuadCities-2 136



20120808-QuadCities-2 137

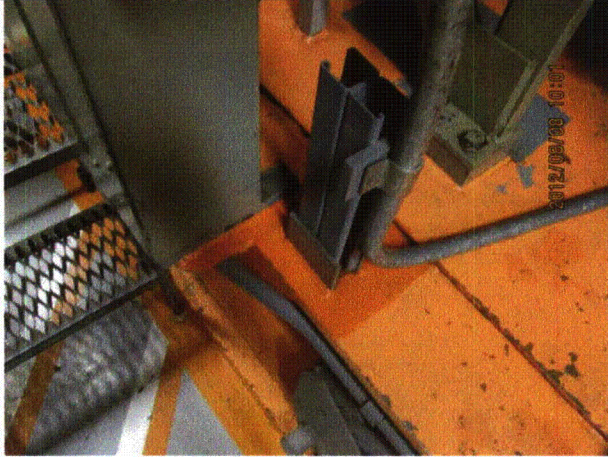
Status: Y N U

Seismic Walkdown Checklist (SWC)

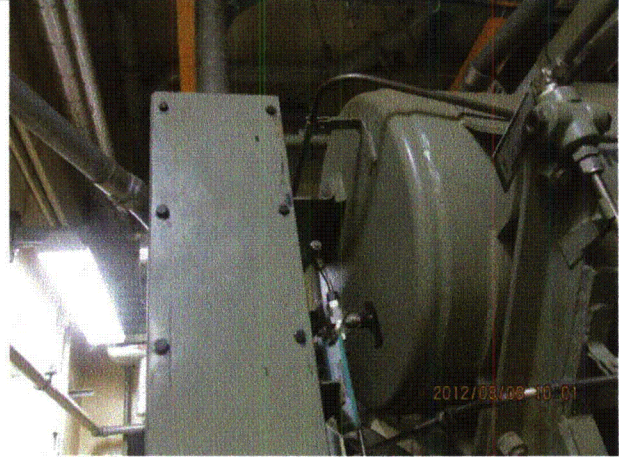
Equipment ID No.: 2212-125

Equipment Class: (18) Instruments on Racks

Equipment Description: RACK, 1/2 DG ENGINE CONTROL



20120808-QuadCities-2 138



20120808-QuadCities-2 139



20120808-QuadCities-2 140



20120808-QuadCities-2 141

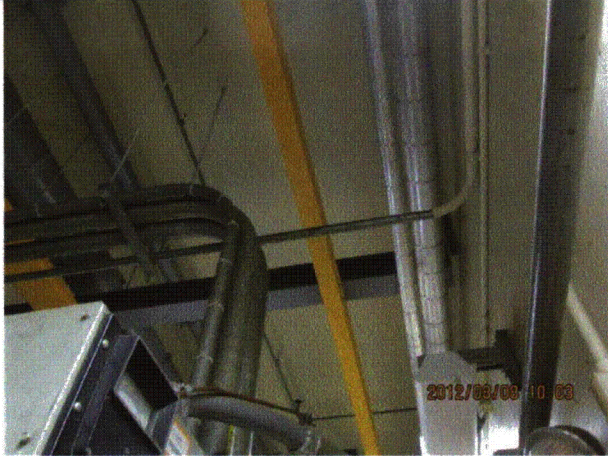
Status: Y N U

Seismic Walkdown Checklist (SWC)

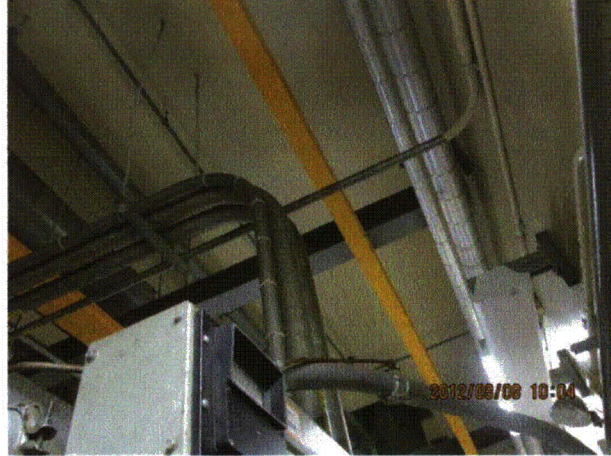
Equipment ID No.: 2212-125

Equipment Class: (18) Instruments on Racks

Equipment Description: RACK, 1/2 DG ENGINE CONTROL



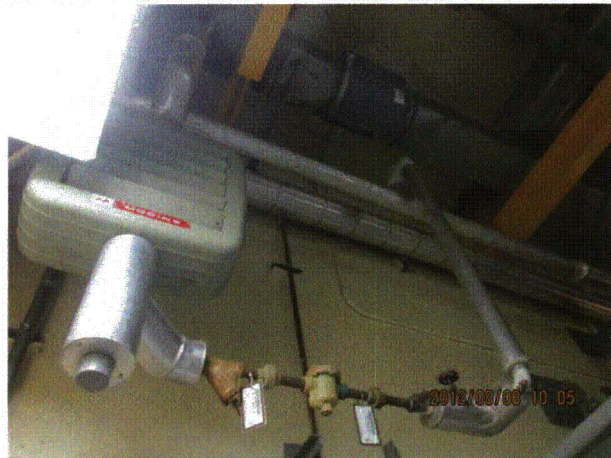
20120808-QuadCities-2 142



20120808-QuadCities-2 143



20120808-QuadCities-2 144



20120808-QuadCities-2 145

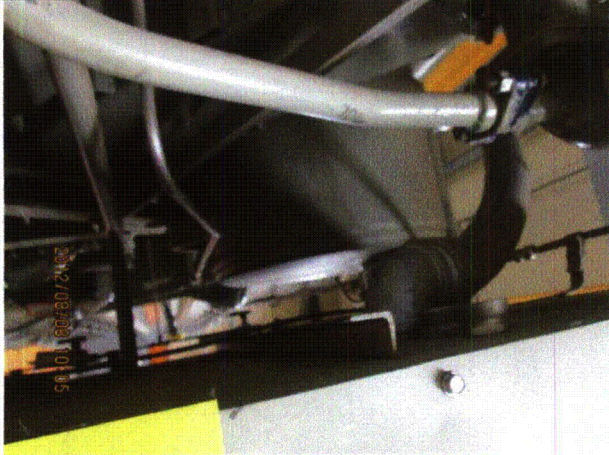
Status: Y N U

Seismic Walkdown Checklist (SWC)

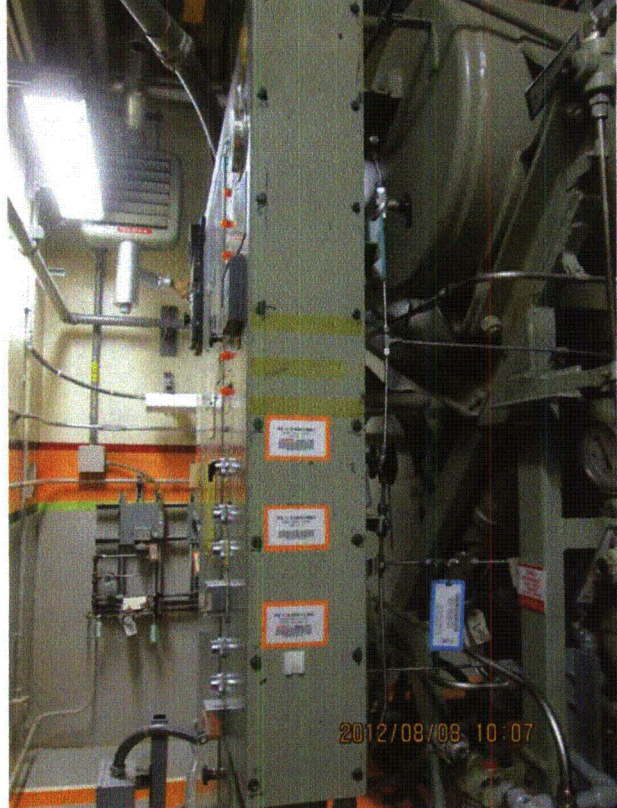
Equipment ID No.: 2212-125

Equipment Class: (18) Instruments on Racks

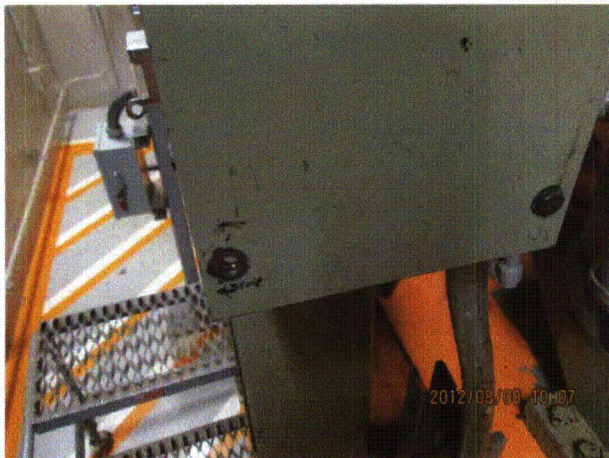
Equipment Description: RACK, 1/2 DG ENGINE CONTROL



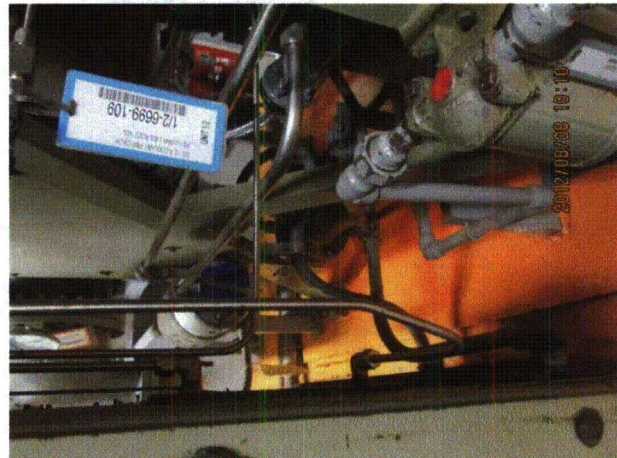
20120808-QuadCities-2 146



20120808-QuadCities-2 147



20120808-QuadCities-2 148



20120808-QuadCities-2 149

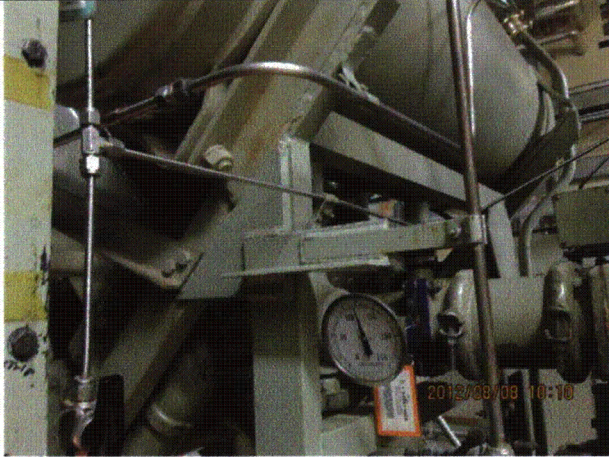
Status: Y N U

Seismic Walkdown Checklist (SWC)

Equipment ID No.: 2212-125

Equipment Class: (18) Instruments on Racks

Equipment Description: RACK, 1/2 DG ENGINE CONTROL



20120808-QuadCities-2 150