

Status: Y N U

Seismic Walkdown Checklist (SWC)

Equipment ID No.: 2-1001-65C

Equipment Class: (5) Horizontal Pumps

Equipment Description: 2C RHR SERVICE WATER PUMP MOTOR

Project: Quad Cities 2 SWEL

Location (Bldg, Elev, Room/Area): TB, 547.00 ft, ALL

Manufacturer/Model:

Instructions for Completing Checklist

This checklist may be used to document the results of the Seismic Walkdown of an item of equipment on the SWEL. The space below each of the following questions may be used to record the results of judgments and findings. Additional space is provided at the end of this checklist for documenting other comments.

Anchorage

1. Is anchorage configuration verification required (i.e., is the item one of the 50% of SWEL items requiring such verification)? Yes

2. Is the anchorage free of bent, broken, missing or loose hardware? Yes

3. Is the anchorage free of corrosion that is more than mild surface oxidation? Yes
Skid has some surface corrosion; judged to be acceptable.

4. Is the anchorage free of visible cracks in the concrete near the anchors? Yes
Minor shrinkage cracks in floor judged to be acceptable.

5. Is the anchorage configuration consistent with plant documentation? (Note: This question only applies if the item is one of the 50% for which an anchorage configuration verification is required.) Yes

6. Based on the above anchorage evaluations, is the anchorage free of potentially adverse seismic conditions? Yes

Interaction Effects

7. Are soft targets free from impact by nearby equipment or structures? Yes

Status: Y N U

Seismic Walkdown Checklist (SWC)

Equipment ID No.: 2-1001-65C

Equipment Class: (5) Horizontal Pumps

Equipment Description: 2C RHR SERVICE WATER PUMP MOTOR

8. Are overhead equipment, distribution systems, ceiling tiles and lighting, and masonry block walls not likely to collapse onto the equipment? Yes
Overhead light fixtures judged to be acceptable.
9. Do attached lines have adequate flexibility to avoid damage? Yes
10. Based on the above seismic interaction evaluations, is equipment free of potentially adverse seismic interaction effects? Yes

Other Adverse Conditions

11. Have you looked for and found no adverse seismic conditions that could adversely affect the safety functions of the equipment? Yes

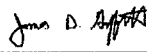
Comments

SEWS Anchorage Notes:

Residual Heat Removal System Water Pump anchored by ten 3/4" (5 per side) cast-in-place anchors.

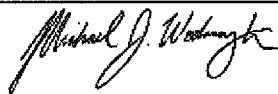
Seismic Walkdown Team: J. Griffith & M. Wodarczyk - 8/8/2012

Evaluated by:



James Griffith

Date: 10/16/2012



Michael Wodarczyk

10/16/2012

Status: Y N U

Seismic Walkdown Checklist (SWC)

Equipment ID No.: 2-1001-65C

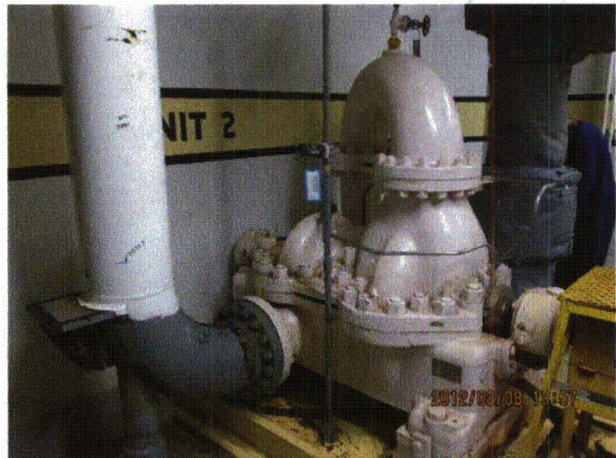
Equipment Class: (5) Horizontal Pumps

Equipment Description: 2C RHR SERVICE WATER PUMP MOTOR

Photos



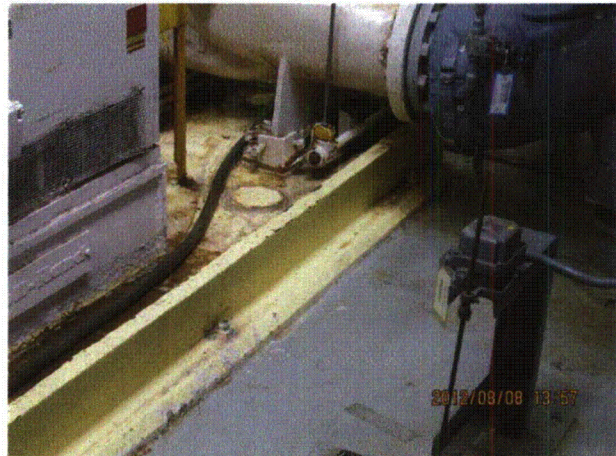
20120808-QuadCities-2 322



20120808-QuadCities-2 323



20120808-QuadCities-2 324



20120808-QuadCities-2 325

Status: Y N U

Seismic Walkdown Checklist (SWC)

Equipment ID No.: 2-1001-65C

Equipment Class: (5) Horizontal Pumps

Equipment Description: 2C RHR SERVICE WATER PUMP MOTOR



20120808-QuadCities-2 326



20120808-QuadCities-2 327



20120808-QuadCities-2 328



20120808-QuadCities-2 330

Status: Y N U

Seismic Walkdown Checklist (SWC)

Equipment ID No.: 2-1001-65C

Equipment Class: (5) Horizontal Pumps

Equipment Description: 2C RHR SERVICE WATER PUMP MOTOR



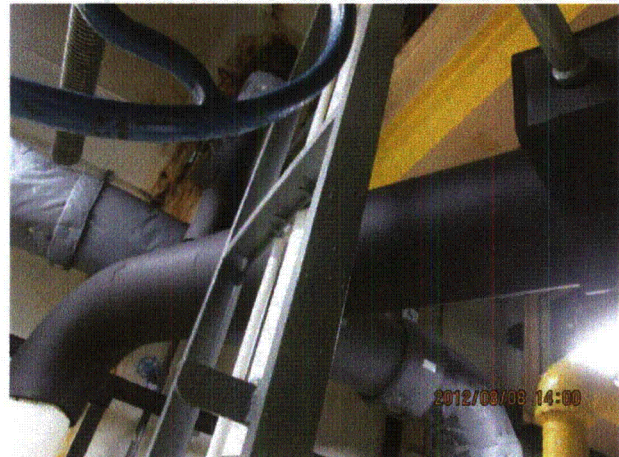
20120808-QuadCities-2 331



20120808-QuadCities-2 332



20120808-QuadCities-2 333



20120808-QuadCities-2 334

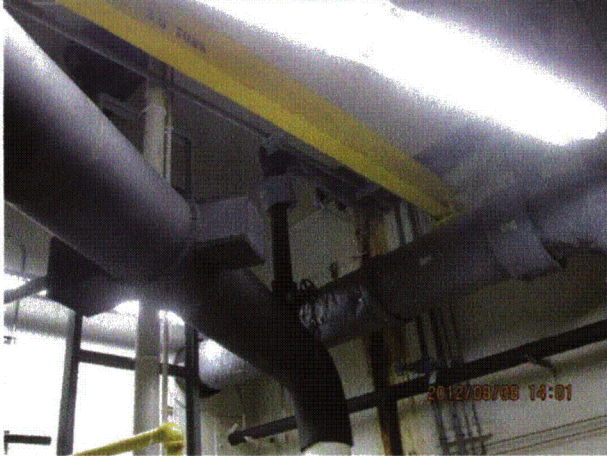
Status: Y N U

Seismic Walkdown Checklist (SWC)

Equipment ID No.: 2-1001-65C

Equipment Class: (5) Horizontal Pumps

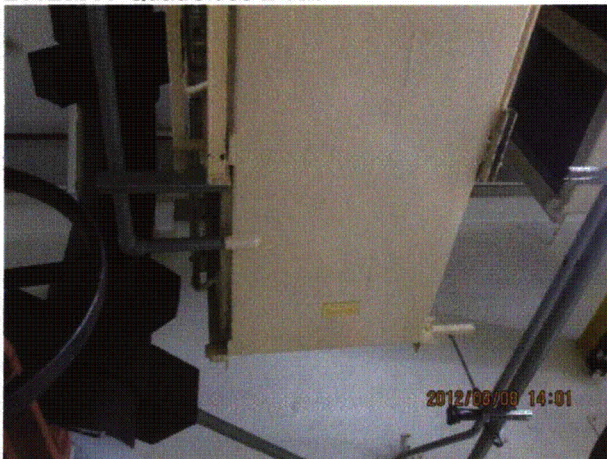
Equipment Description: 2C RHR SERVICE WATER PUMP MOTOR



20120808-QuadCities-2 335



20120808-QuadCities-2 336



20120808-QuadCities-2 337



20120808-QuadCities-2 338

Status: Y N U

Seismic Walkdown Checklist (SWC)

Equipment ID No.: 2-1001-65C

Equipment Class: (5) Horizontal Pumps

Equipment Description: 2C RHR SERVICE WATER PUMP MOTOR



20120808-QuadCities-2 339



20120808-QuadCities-2 340



20120808-QuadCities-2 341



20120808-QuadCities-2 342

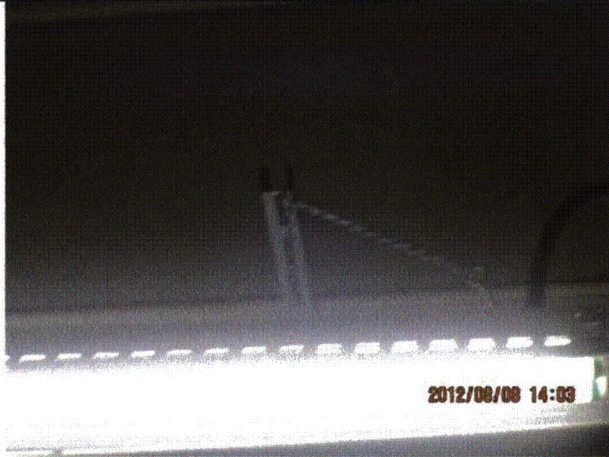
Status: Y N U

Seismic Walkdown Checklist (SWC)

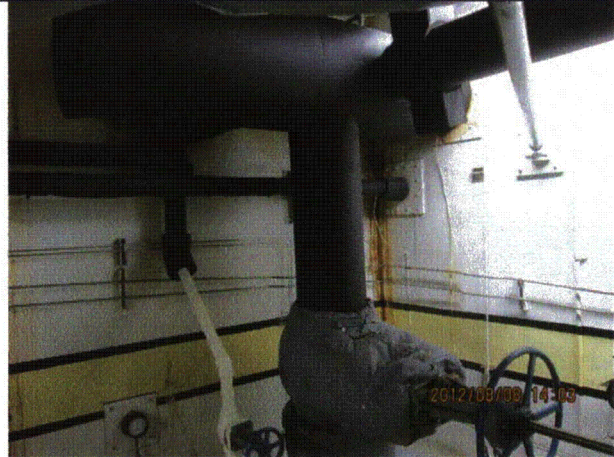
Equipment ID No.: 2-1001-65C

Equipment Class: (5) Horizontal Pumps

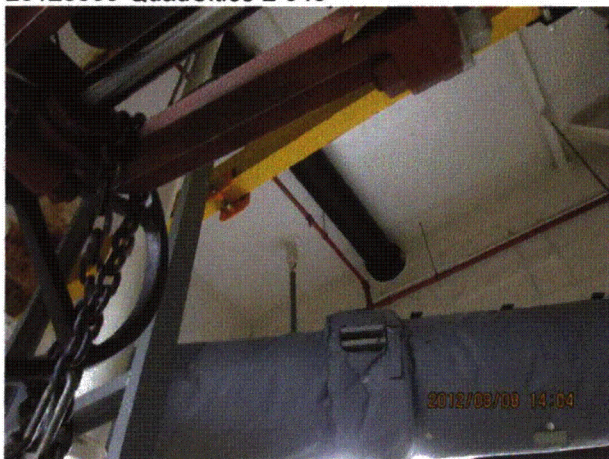
Equipment Description: 2C RHR SERVICE WATER PUMP MOTOR



20120808-QuadCities-2 343



20120808-QuadCities-2 344



20120808-QuadCities-2 345



20120808-QuadCities-2 346

Status: Y N U

Seismic Walkdown Checklist (SWC)

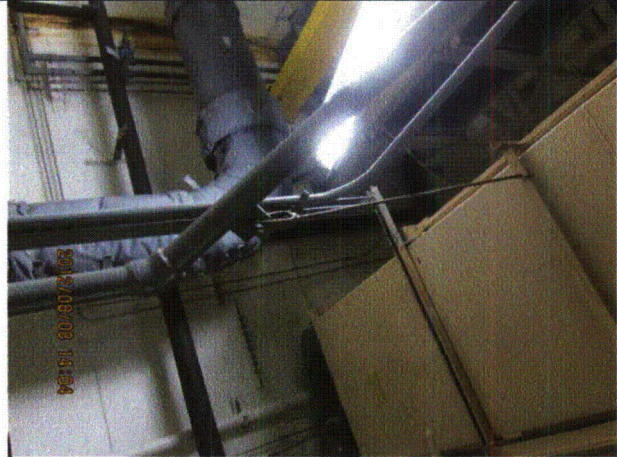
Equipment ID No.: 2-1001-65C

Equipment Class: (5) Horizontal Pumps

Equipment Description: 2C RHR SERVICE WATER PUMP MOTOR



20120808-QuadCities-2 347



20120808-QuadCities-2 348



20120808-QuadCities-2 349



20120808-QuadCities-2 350

Status: Y N U

Seismic Walkdown Checklist (SWC)

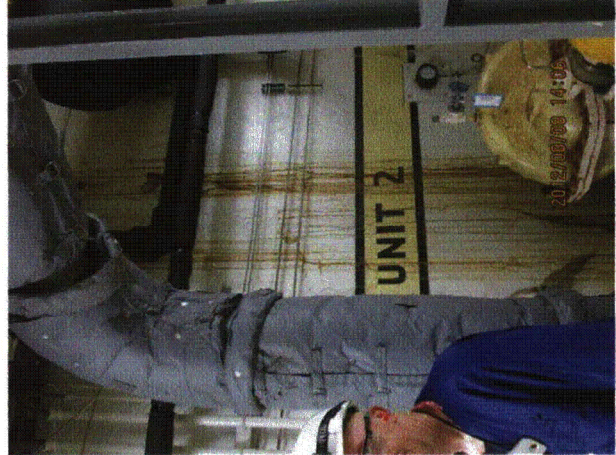
Equipment ID No.: 2-1001-65C

Equipment Class: (5) Horizontal Pumps

Equipment Description: 2C RHR SERVICE WATER PUMP MOTOR



20120808-QuadCities-2 351



20120808-QuadCities-2 352



20120808-QuadCities-2 353



20120808-QuadCities-2 354

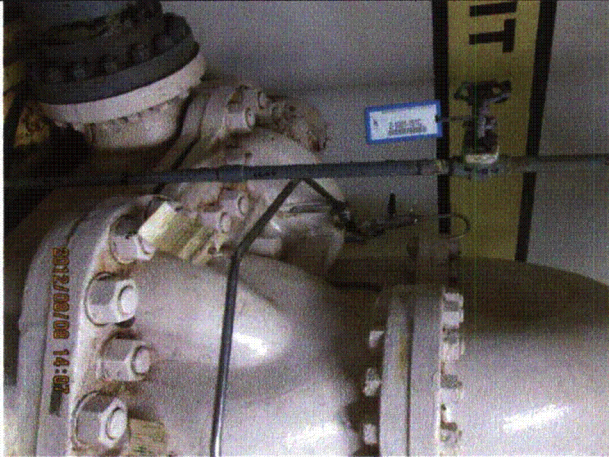
Status: Y N U

Seismic Walkdown Checklist (SWC)

Equipment ID No.: 2-1001-65C

Equipment Class: (5) Horizontal Pumps

Equipment Description: 2C RHR SERVICE WATER PUMP MOTOR



20120808-QuadCities-2 355

Status: Y N U

Seismic Walkdown Checklist (SWC)

Equipment ID No.: 2-1002A

Equipment Class: (6) Vertical Pumps

Equipment Description: PUMP, 2A

Project: Quad Cities 2 SWEL

Location (Bldg, Elev, Room/Area): RB, 554.00 ft, ALL

Manufacturer/Model:

Instructions for Completing Checklist

This checklist may be used to document the results of the Seismic Walkdown of an item of equipment on the SWEL. The space below each of the following questions may be used to record the results of judgments and findings. Additional space is provided at the end of this checklist for documenting other comments.

Anchorage

1. Is anchorage configuration verification required (i.e., is the item one of the 50% of SWEL items requiring such verification)? Yes

2. Is the anchorage free of bent, broken, missing or loose hardware? Yes

3. Is the anchorage free of corrosion that is more than mild surface oxidation? Yes
Minor surface corrosion judged to be acceptable.

4. Is the anchorage free of visible cracks in the concrete near the anchors? Yes
Minor shrinkage cracks in grout pad and floor judged to be acceptable.

5. Is the anchorage configuration consistent with plant documentation? (Note: This question only applies if the item is one of the 50% for which an anchorage configuration verification is required.) Yes

6. Based on the above anchorage evaluations, is the anchorage free of potentially adverse seismic conditions? Yes

Interaction Effects

7. Are soft targets free from impact by nearby equipment or structures? Yes

Status: Y N U

Seismic Walkdown Checklist (SWC)

Equipment ID No.: 2-1002A

Equipment Class: (6) Vertical Pumps

Equipment Description: PUMP, 2A

8. Are overhead equipment, distribution systems, ceiling tiles and lighting, and masonry block walls not likely to collapse onto the equipment? Yes
Overhead light fixtures judged to be acceptable.
9. Do attached lines have adequate flexibility to avoid damage? Yes
10. Based on the above seismic interaction evaluations, is equipment free of potentially adverse seismic interaction effects? Yes

Other Adverse Conditions

11. Have you looked for and found no adverse seismic conditions that could adversely affect the safety functions of the equipment? Yes

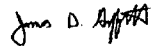
Comments

SEWS Anchorage Notes:

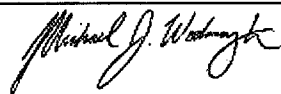
Pump is anchored with four 1" Cast-in-Place bolts.

Seismic Walkdown Team: J. Griffith & M. Wodarczyk - 8/10/2012

Evaluated by:

 James Griffith

Date: 10/4/2012



Michael Wodarczyk

10/4/2012

Status: Y N U

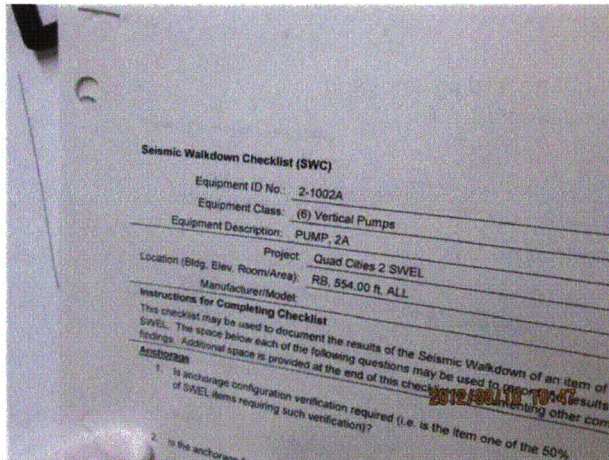
Seismic Walkdown Checklist (SWC)

Equipment ID No.: 2-1002A

Equipment Class: (6) Vertical Pumps

Equipment Description: PUMP, 2A

Photos



20120810-QuadCities-2 150

Status: Y N U

Seismic Walkdown Checklist (SWC)

Equipment ID No.: 2-1003A

Equipment Class: (21) Tanks and Heat Exchangers

Equipment Description: HX, 2A RHR

Project: Quad Cities 2 SWEL

Location (Bldg, Elev, Room/Area): RB, 554.00 ft, ALL

Manufacturer/Model:

Instructions for Completing Checklist

This checklist may be used to document the results of the Seismic Walkdown of an item of equipment on the SWEL. The space below each of the following questions may be used to record the results of judgments and findings. Additional space is provided at the end of this checklist for documenting other comments.

Anchorage

1. Is anchorage configuration verification required (i.e., is the item one of the 50% of SWEL items requiring such verification)? Yes
Two bolts were observed at each of the 4 trunnion support points on the gallery steel.

2. Is the anchorage free of bent, broken, missing or loose hardware? Yes

3. Is the anchorage free of corrosion that is more than mild surface oxidation? Yes

4. Is the anchorage free of visible cracks in the concrete near the anchors? Not Applicable
Heat exchanger supported from gallery steel.

5. Is the anchorage configuration consistent with plant documentation? (Note: This question only applies if the item is one of the 50% for which an anchorage configuration verification is required.) Yes

6. Based on the above anchorage evaluations, is the anchorage free of potentially adverse seismic conditions? Yes

Interaction Effects

7. Are soft targets free from impact by nearby equipment or structures? Yes

Status: Y N U

Seismic Walkdown Checklist (SWC)

Equipment ID No.: 2-1003A

Equipment Class: (21) Tanks and Heat Exchangers

Equipment Description: HX, 2A RHR

Some of heat exchanger not visible due to lead shielding blankets.

Lead shielding supported with taut chains and is not expected to move laterally into any soft targets. Judged to be acceptable.

8. Are overhead equipment, distribution systems, ceiling tiles and lighting, and masonry block walls not likely to collapse onto the equipment? Yes
Overhead light fixtures judged to be acceptable.
9. Do attached lines have adequate flexibility to avoid damage? Yes
10. Based on the above seismic interaction evaluations, is equipment free of potentially adverse seismic interaction effects? Yes

Other Adverse Conditions

11. Have you looked for and found no adverse seismic conditions that could adversely affect the safety functions of the equipment? Yes

Comments

SEWS Anchorage Notes:

Large vertical HX hung on four feet at quadrant points near the top of the HX. Each foot is anchored by approx. 1.25" bolts into structural steel platform and the platform is at Elev. 580'.

Seismic Walkdown Team: J. Griffith & M. Wodarcyk - 8/10/2012

Evaluated by:

James D. Griffith James Griffith

Date: 10/4/2012

Michael J. Wodarcyk

Michael Wodarcyk

10/4/2012

Status: Y N U

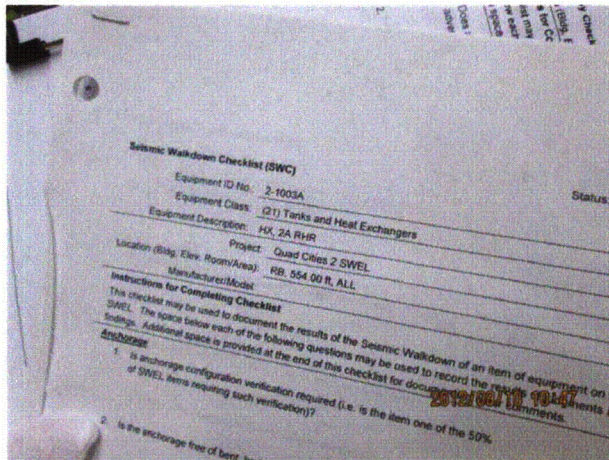
Seismic Walkdown Checklist (SWC)

Equipment ID No.: 2-1003A

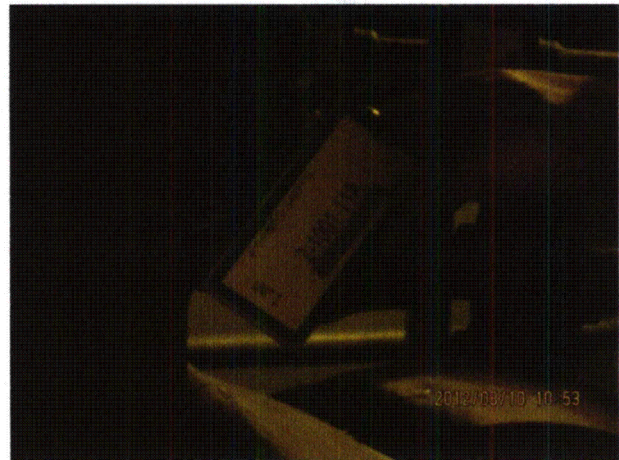
Equipment Class: (21) Tanks and Heat Exchangers

Equipment Description: HX, 2A RHR

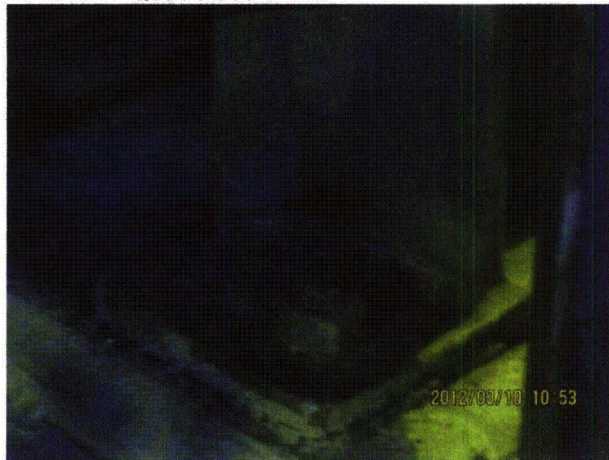
Photos



20120810-QuadCities-2 152



20120810-QuadCities-2 153



20120810-QuadCities-2 154



20120810-QuadCities-2 155

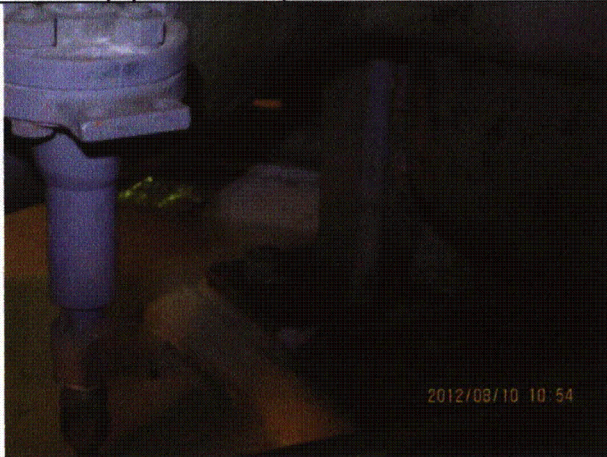
Status: Y N U

Seismic Walkdown Checklist (SWC)

Equipment ID No.: 2-1003A

Equipment Class: (21) Tanks and Heat Exchangers

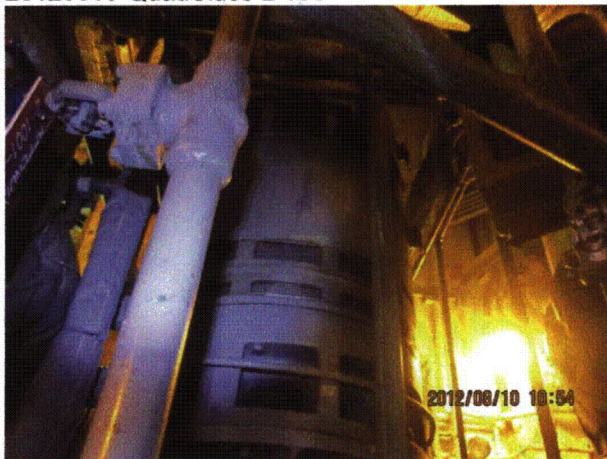
Equipment Description: HX, 2A RHR



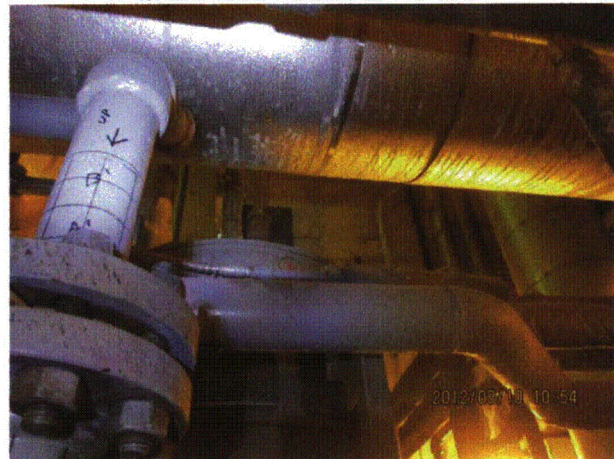
20120810-QuadCities-2 156



20120810-QuadCities-2 157



20120810-QuadCities-2 158



20120810-QuadCities-2 159

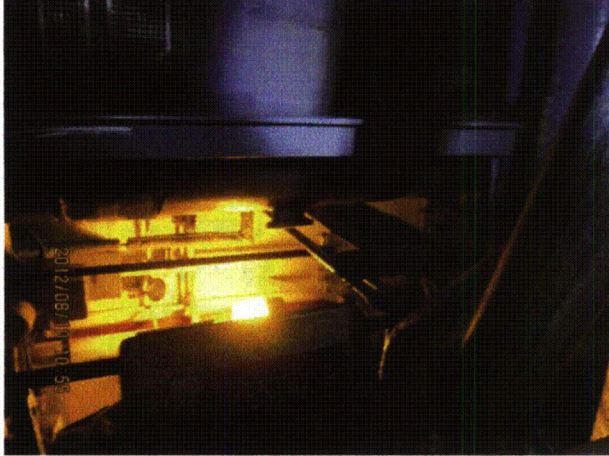
Status: Y N U

Seismic Walkdown Checklist (SWC)

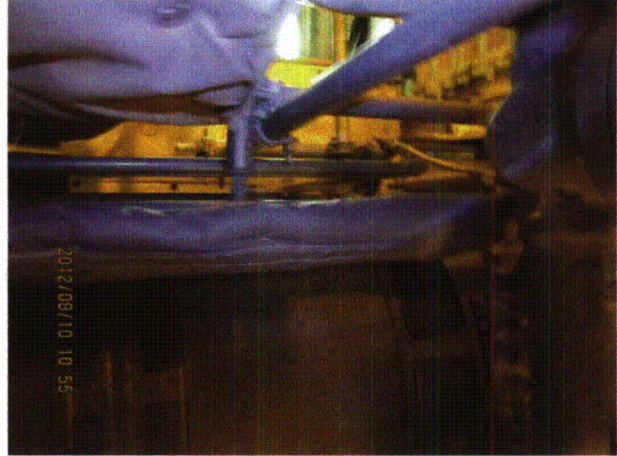
Equipment ID No.: 2-1003A

Equipment Class: (21) Tanks and Heat Exchangers

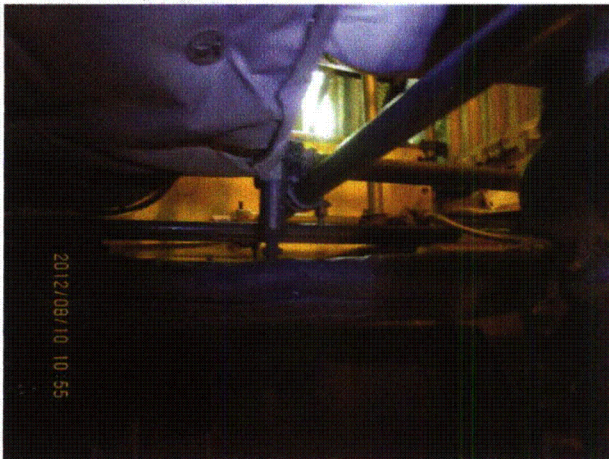
Equipment Description: HX, 2A RHR



20120810-QuadCities-2 160



20120810-QuadCities-2 161



20120810-QuadCities-2 162



20120810-QuadCities-2 187

Status: Y N U

Seismic Walkdown Checklist (SWC)

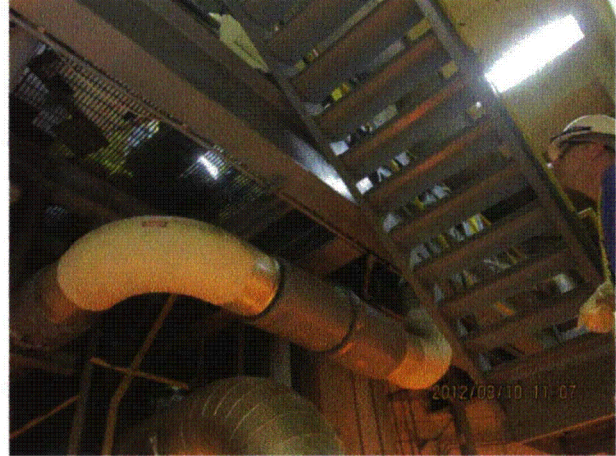
Equipment ID No.: 2-1003A

Equipment Class: (21) Tanks and Heat Exchangers

Equipment Description: HX, 2A RHR



20120810-QuadCities-2 188



20120810-QuadCities-2 189



20120810-QuadCities-2 190



20120810-QuadCities-2 191

Status: Y N U

Seismic Walkdown Checklist (SWC)

Equipment ID No.: 2-1003A

Equipment Class: (21) Tanks and Heat Exchangers

Equipment Description: HX, 2A RHR



20120810-QuadCities-2 192



20120810-QuadCities-2 193



20120810-QuadCities-2 194



20120810-QuadCities-2 195

Status: Y N U

Seismic Walkdown Checklist (SWC)

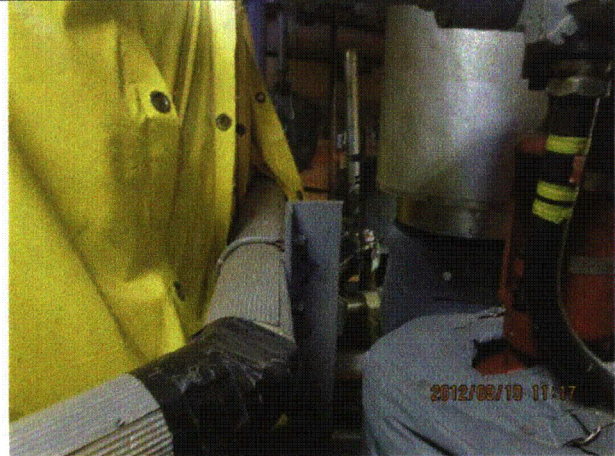
Equipment ID No.: 2-1003A

Equipment Class: (21) Tanks and Heat Exchangers

Equipment Description: HX, 2A RHR



20120810-QuadCities-2 196



20120810-QuadCities-2 197



20120810-QuadCities-2 198



20120810-QuadCities-2 199

Status: Y N U

Seismic Walkdown Checklist (SWC)

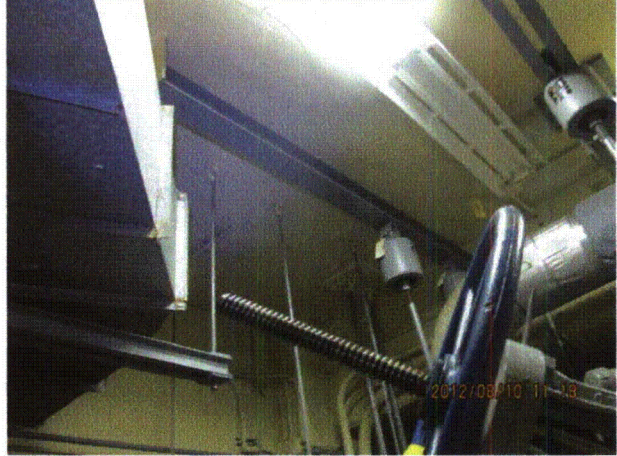
Equipment ID No.: 2-1003A

Equipment Class: (21) Tanks and Heat Exchangers

Equipment Description: HX, 2A RHR



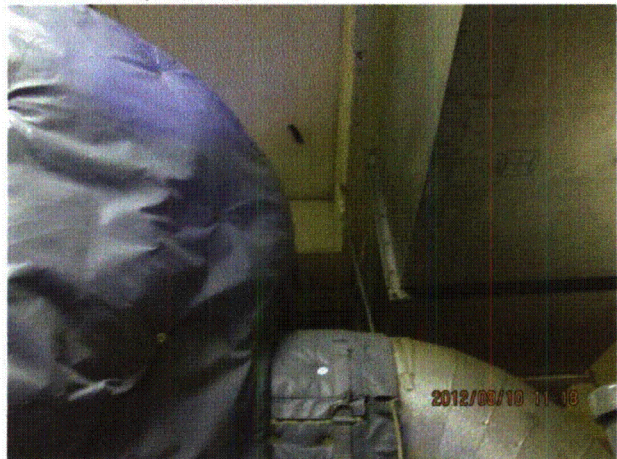
20120810-QuadCities-2 200



20120810-QuadCities-2 201



20120810-QuadCities-2 202



20120810-QuadCities-2 203

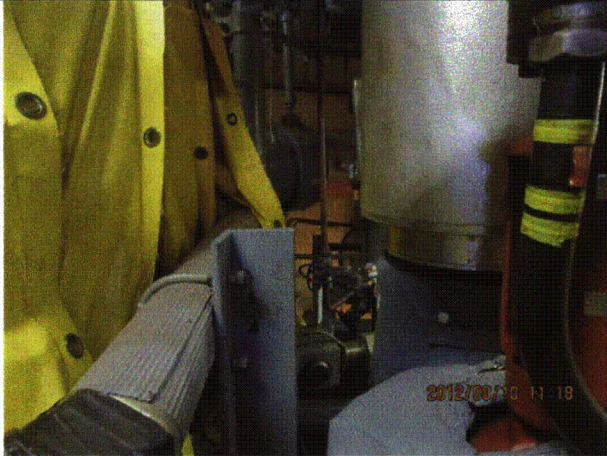
Status: Y N U

Seismic Walkdown Checklist (SWC)

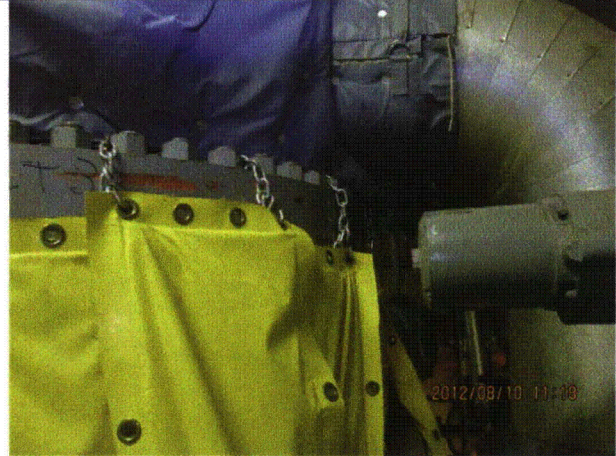
Equipment ID No.: 2-1003A

Equipment Class: (21) Tanks and Heat Exchangers

Equipment Description: HX, 2A RHR



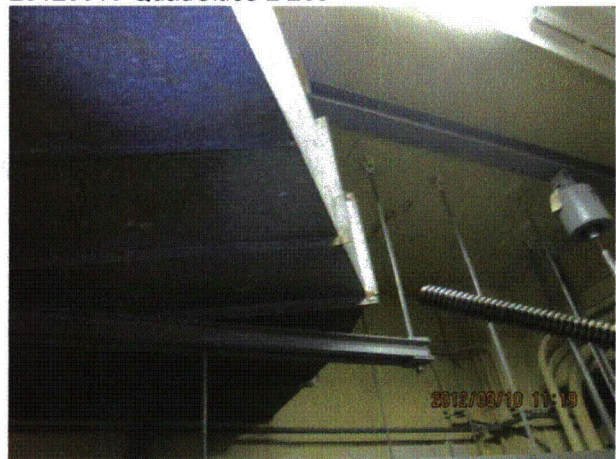
20120810-QuadCities-2 204



20120810-QuadCities-2 205



20120810-QuadCities-2 206



20120810-QuadCities-2 207

Status: Y N U

Seismic Walkdown Checklist (SWC)

Equipment ID No.: 2-1003A

Equipment Class: (21) Tanks and Heat Exchangers

Equipment Description: HX, 2A RHR



20120810-QuadCities-2 208



20120810-QuadCities-2 228

Status: Y N U

Seismic Walkdown Checklist (SWC)

Equipment ID No.: 2-1601-21-AO

Equipment Class: (7) Fluid-Operated Valves

Equipment Description: PSS DRYWELL PURGE AIR-OP VALVE 1601-21

Project: Quad Cities 2 SWEL

Location (Bldg, Elev, Room/Area): RB, 554.00 ft, ALL

Manufacturer/Model:

Instructions for Completing Checklist

This checklist may be used to document the results of the Seismic Walkdown of an item of equipment on the SWEL. The space below each of the following questions may be used to record the results of judgments and findings. Additional space is provided at the end of this checklist for documenting other comments.

Anchorage

1. Is anchorage configuration verification required (i.e., is the item one of the 50% of SWEL items requiring such verification)? No

2. Is the anchorage free of bent, broken, missing or loose hardware? Not Applicable

3. Is the anchorage free of corrosion that is more than mild surface oxidation? Not Applicable

4. Is the anchorage free of visible cracks in the concrete near the anchors? Not Applicable

5. Is the anchorage configuration consistent with plant documentation? (Note: This question only applies if the item is one of the 50% for which an anchorage configuration verification is required.) Not Applicable

6. Based on the above anchorage evaluations, is the anchorage free of potentially adverse seismic conditions? Yes

Status: Y N U

Seismic Walkdown Checklist (SWC)

Equipment ID No.: 2-1601-21-AO

Equipment Class: (7) Fluid-Operated Valves

Equipment Description: PSS DRYWELL PURGE AIR-OP VALVE 1601-21

Interaction Effects

7. Are soft targets free from impact by nearby equipment or structures? Yes
Copper tubing next to flexible conduits judged to be acceptable.
Small valve 2-4799-1281 has adequate horizontal separation to conduit support and small vertical separation. Station vertical seismic acceleration is small; therefore, vertical separation is judged to be acceptable.
8. Are overhead equipment, distribution systems, ceiling tiles and lighting, and masonry block walls not likely to collapse onto the equipment? Yes
9. Do attached lines have adequate flexibility to avoid damage? Yes
10. Based on the above seismic interaction evaluations, is equipment free of potentially adverse seismic interaction effects? Yes

Other Adverse Conditions

11. Have you looked for and found no adverse seismic conditions that could adversely affect the safety functions of the equipment? Yes
Light fixture near valve with broken cover. Broken pieces were removed during walkdown. No seismic interaction concern. See IR 1400092.


Comments

Seismic Walkdown Team: J. Griffith & M. Wodarczyk - 8/10/2012

Evaluated by:

 James Griffith

Date: 10/4/2012


Michael Wodarczyk

10/4/2012

Status: Y N U

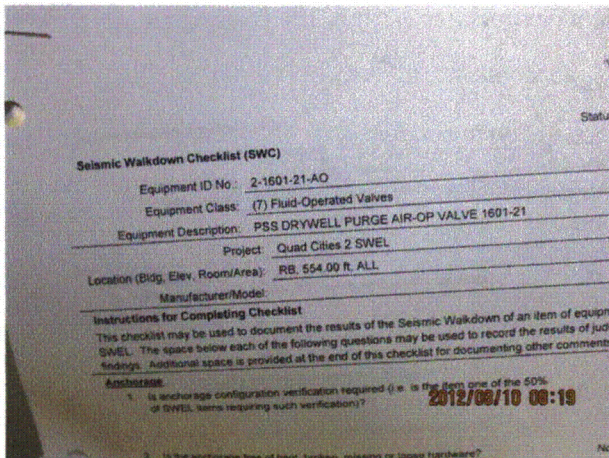
Seismic Walkdown Checklist (SWC)

Equipment ID No.: 2-1601-21-AO

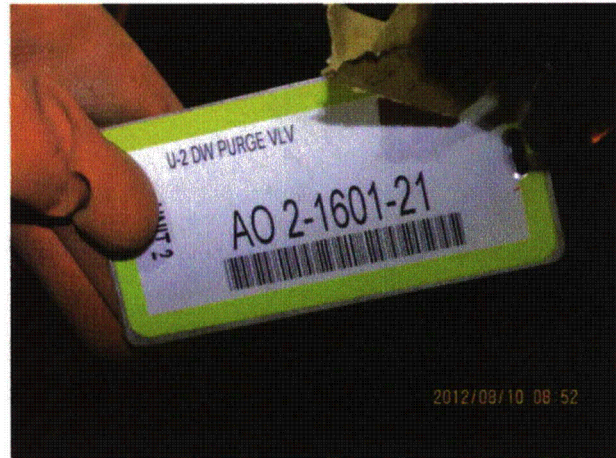
Equipment Class: (7) Fluid-Operated Valves

Equipment Description: PSS DRYWELL PURGE AIR-OP VALVE 1601-21

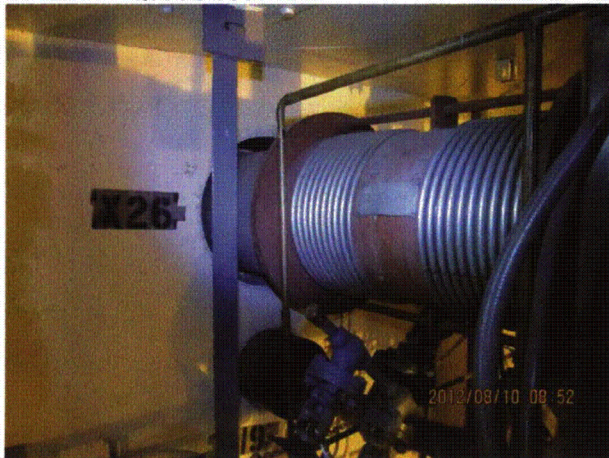
Photos



20120810-QuadCities-2 002



20120810-QuadCities-2 071



20120810-QuadCities-2 072



20120810-QuadCities-2 073

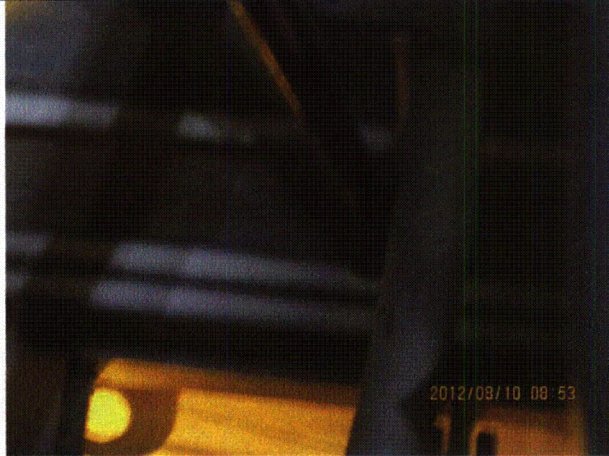
Status: Y N U

Seismic Walkdown Checklist (SWC)

Equipment ID No.: 2-1601-21-AO

Equipment Class: (7) Fluid-Operated Valves

Equipment Description: PSS DRYWELL PURGE AIR-OP VALVE 1601-21



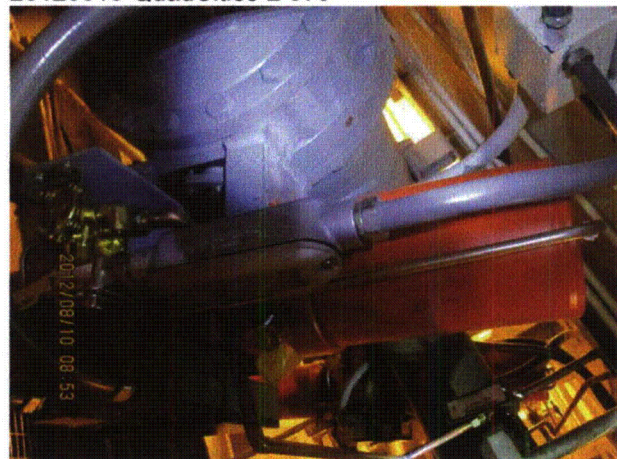
20120810-QuadCities-2 074



20120810-QuadCities-2 075



20120810-QuadCities-2 076



20120810-QuadCities-2 077

Status: Y N U

Seismic Walkdown Checklist (SWC)

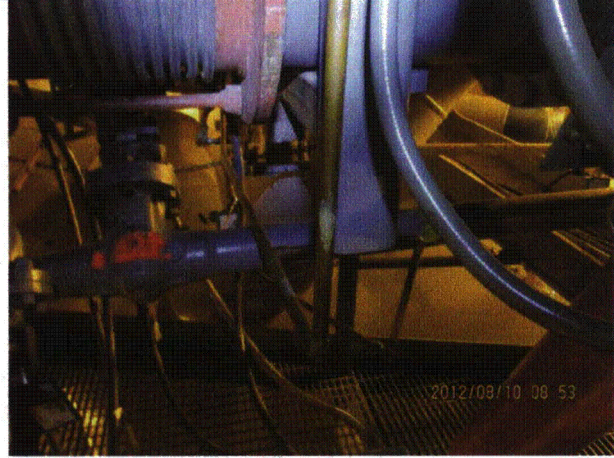
Equipment ID No.: 2-1601-21-AO

Equipment Class: (7) Fluid-Operated Valves

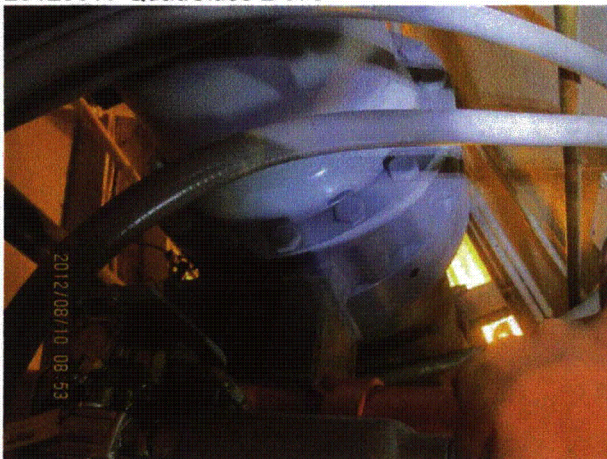
Equipment Description: PSS DRYWELL PURGE AIR-OP VALVE 1601-21



20120810-QuadCities-2 078



20120810-QuadCities-2 079



20120810-QuadCities-2 080



20120810-QuadCities-2 081

Status: Y N U

Seismic Walkdown Checklist (SWC)

Equipment ID No.: 2-1601-21-AO

Equipment Class: (7) Fluid-Operated Valves

Equipment Description: PSS DRYWELL PURGE AIR-OP VALVE 1601-21



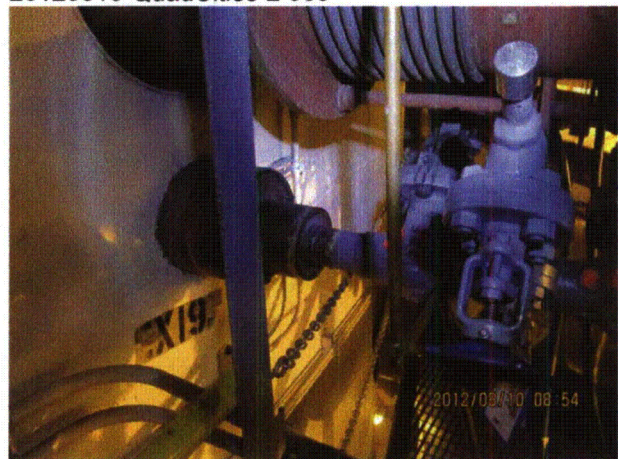
20120810-QuadCities-2 082



20120810-QuadCities-2 083



20120810-QuadCities-2 084



20120810-QuadCities-2 085

Status: Y N U

Seismic Walkdown Checklist (SWC)

Equipment ID No.: 2-1601-23-AO

Equipment Class: (7) Fluid-Operated Valves

Equipment Description: VLV, BUTTERFLY ISO, 18 - PSS DRYWELL VENT TO STANDBY GAS
TREATMENT AND RB EXH SYS AO VLV 1

Project: Quad Cities 2 SWEL

Location (Bldg, Elev, Room/Area): RB, 647.00 ft, ALL

Manufacturer/Model: _____

Instructions for Completing Checklist

This checklist may be used to document the results of the Seismic Walkdown of an item of equipment on the SWEL. The space below each of the following questions may be used to record the results of judgments and findings. Additional space is provided at the end of this checklist for documenting other comments.

Anchorage

1. Is anchorage configuration verification required (i.e., is the item one of the 50% of SWEL items requiring such verification)? No

2. Is the anchorage free of bent, broken, missing or loose hardware? Not Applicable

3. Is the anchorage free of corrosion that is more than mild surface oxidation? Not Applicable

4. Is the anchorage free of visible cracks in the concrete near the anchors? Not Applicable

5. Is the anchorage configuration consistent with plant documentation? (Note: This question only applies if the item is one of the 50% for which an anchorage configuration verification is required.) Not Applicable

6. Based on the above anchorage evaluations, is the anchorage free of potentially adverse seismic conditions? Yes

Status: Y N U

Seismic Walkdown Checklist (SWC)

Equipment ID No.: 2-1601-23-AO

Equipment Class: (7) Fluid-Operated Valves

Equipment Description: VLV, BUTTERFLY ISO, 18 - PSS DRYWELL VENT TO STANDBY GAS
TREATMENT AND RB EXH SYS AO VLV 1

Interaction Effects

7. Are soft targets free from impact by nearby equipment or structures? Yes
Tubes for valve in close proximity are flexible and judged to be acceptable.
8. Are overhead equipment, distribution systems, ceiling tiles and lighting, and masonry block walls not likely to collapse onto the equipment? Yes
Overhead light fixture judged to be acceptable.
9. Do attached lines have adequate flexibility to avoid damage? Yes
10. Based on the above seismic interaction evaluations, is equipment free of potentially adverse seismic interaction effects? Yes

Other Adverse Conditions

11. Have you looked for and found no adverse seismic conditions that could adversely affect the safety functions of the equipment? Yes

Comments

Seismic Walkdown Team: J. Griffith & M. Wodarczyk - 8/8/2012

Evaluated by:

 James Griffith

Date: 10/4/2012



Michael Wodarczyk

10/4/2012

Status: Y N U

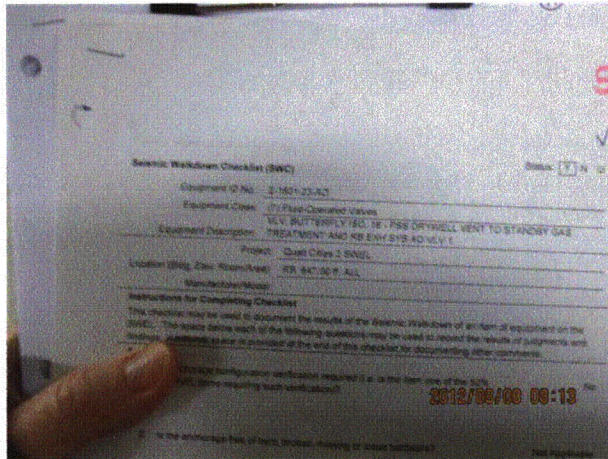
Seismic Walkdown Checklist (SWC)

Equipment ID No.: 2-1601-23-AO

Equipment Class: (7) Fluid-Operated Valves

Equipment Description: VLV, BUTTERFLY ISO, 18 - PSS DRYWELL VENT TO STANDBY GAS
TREATMENT AND RB EXH SYS AO VLV 1

Photos



20120808-QuadCities-2 001

Status: Y N U

Seismic Walkdown Checklist (SWC)

Equipment ID No.: 2-1601-24-AO

Equipment Class: (7) Fluid-Operated Valves

Equipment Description: VLV, BUTTERFLY ISO, 18 - U-2 CNMT RX BLDG EXH VENT VLV

Project: Quad Cities 2 SWEL

Location (Bldg, Elev, Room/Area): RB, 647.00 ft, ALL

Manufacturer/Model: _____

Instructions for Completing Checklist

This checklist may be used to document the results of the Seismic Walkdown of an item of equipment on the SWEL. The space below each of the following questions may be used to record the results of judgments and findings. Additional space is provided at the end of this checklist for documenting other comments.

Anchorage

1. Is anchorage configuration verification required (i.e., is the item one of the 50% of SWEL items requiring such verification)? No

2. Is the anchorage free of bent, broken, missing or loose hardware? Not Applicable

3. Is the anchorage free of corrosion that is more than mild surface oxidation? Not Applicable

4. Is the anchorage free of visible cracks in the concrete near the anchors? Not Applicable

5. Is the anchorage configuration consistent with plant documentation? (Note: This question only applies if the item is one of the 50% for which an anchorage configuration verification is required.) Not Applicable

6. Based on the above anchorage evaluations, is the anchorage free of potentially adverse seismic conditions? Yes

Status: Y N U

Seismic Walkdown Checklist (SWC)

Equipment ID No.: 2-1601-24-AO

Equipment Class: (7) Fluid-Operated Valves

Equipment Description: VLV, BUTTERFLY ISO, 18 - U-2 CNMT RX BLDG EXH VENT VLV

Interaction Effects

7. Are soft targets free from impact by nearby equipment or structures? Yes
8. Are overhead equipment, distribution systems, ceiling tiles and lighting, and masonry block walls not likely to collapse onto the equipment? Yes
Overhead light fixtures judged to be acceptable.
9. Do attached lines have adequate flexibility to avoid damage? Yes
10. Based on the above seismic interaction evaluations, is equipment free of potentially adverse seismic interaction effects? Yes

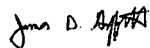
Other Adverse Conditions

11. Have you looked for and found no adverse seismic conditions that could adversely affect the safety functions of the equipment? Yes

Comments

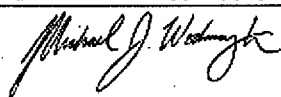
Seismic Walkdown Team: J. Griffith & M. Wodarcyk - 8/8/2012

Evaluated by:



James Griffith

Date: 10/4/2012



Michael Wodarcyk

10/4/2012

Status: Y N U

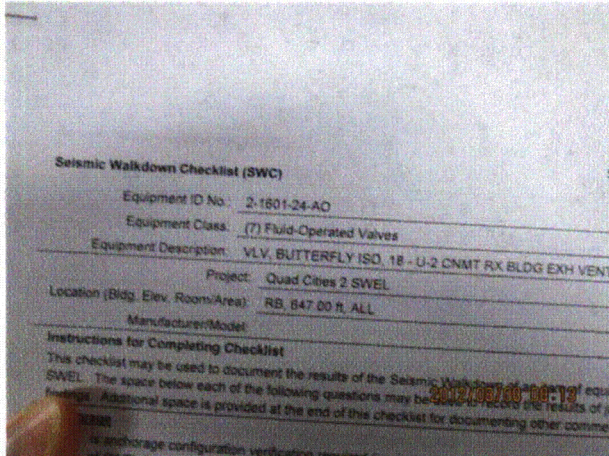
Seismic Walkdown Checklist (SWC)

Equipment ID No.: 2-1601-24-AO

Equipment Class: (7) Fluid-Operated Valves

Equipment Description: VLV, BUTTERFLY ISO, 18 - U-2 CNMT RX BLDG EXH VENT VLV

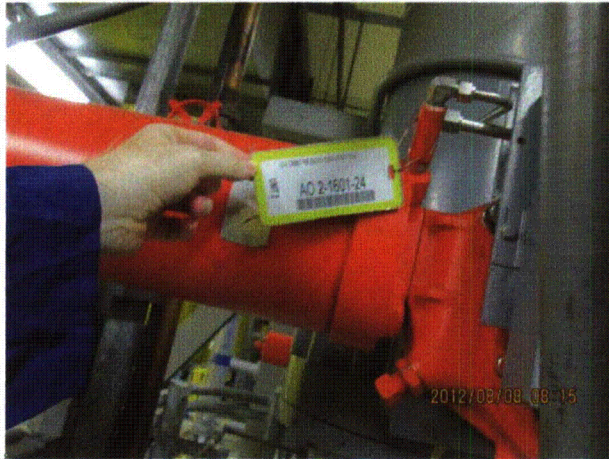
Photos



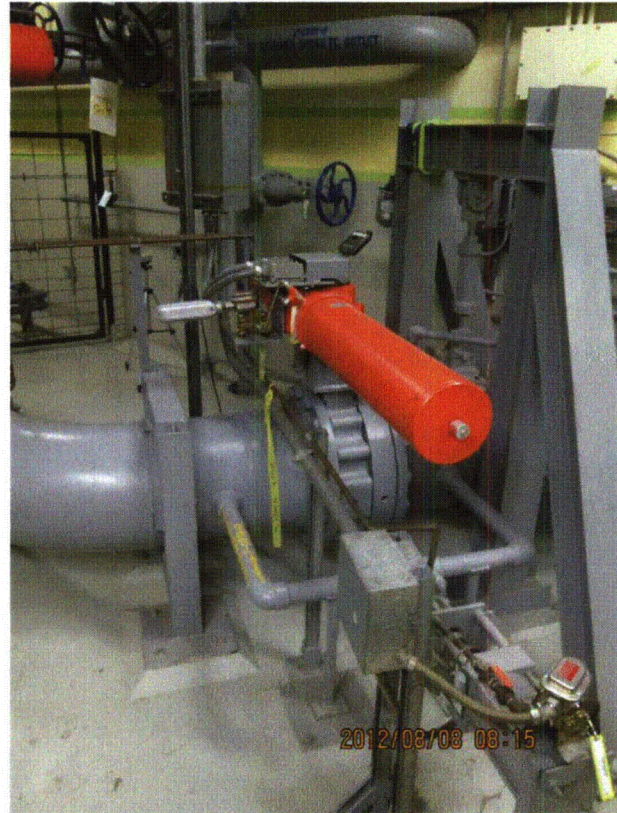
20120808-QuadCities-2 002



20120808-QuadCities-2 003



20120808-QuadCities-2 004



20120808-QuadCities-2 005

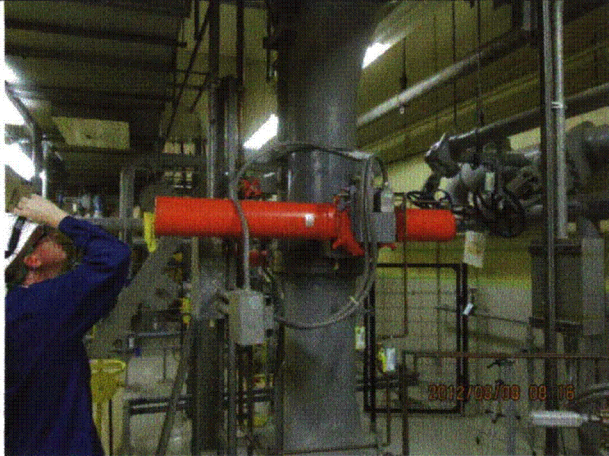
Status: Y N U

Seismic Walkdown Checklist (SWC)

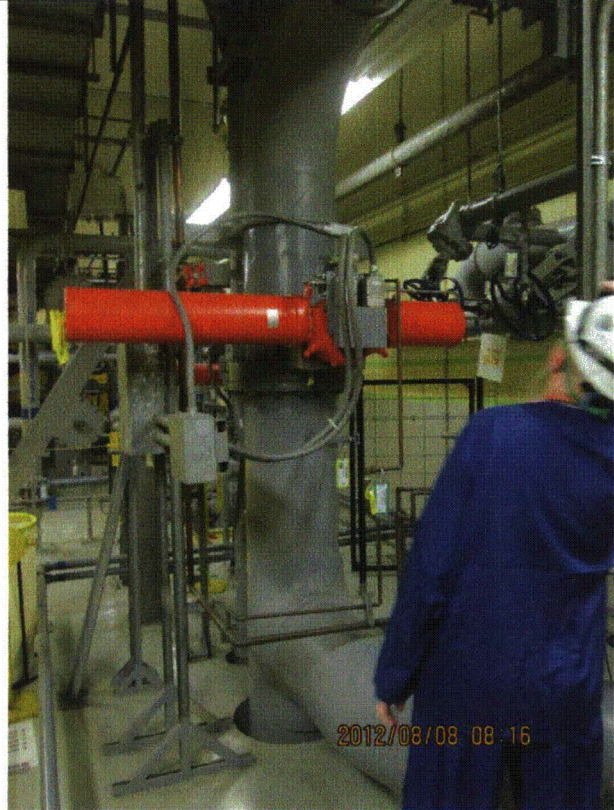
Equipment ID No.: 2-1601-24-AO

Equipment Class: (7) Fluid-Operated Valves

Equipment Description: VLV, BUTTERFLY ISO, 18 - U-2 CNMT RX BLDG EXH VENT VLV



20120808-QuadCities-2 006



20120808-QuadCities-2 007

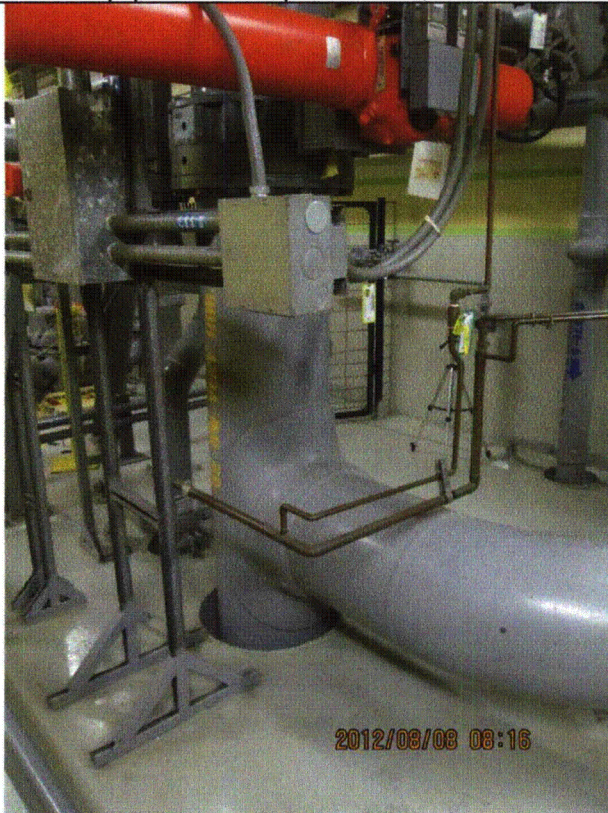
Status: Y N U

Seismic Walkdown Checklist (SWC)

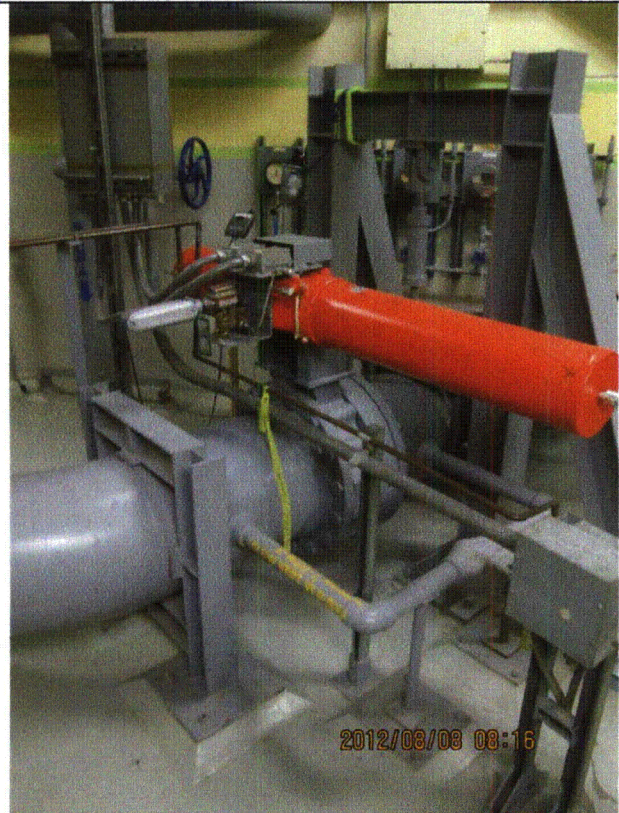
Equipment ID No.: 2-1601-24-AO

Equipment Class: (7) Fluid-Operated Valves

Equipment Description: VLV, BUTTERFLY ISO, 18 - U-2 CNMT RX BLDG EXH VENT VLV



20120808-QuadCities-2 008



20120808-QuadCities-2 009

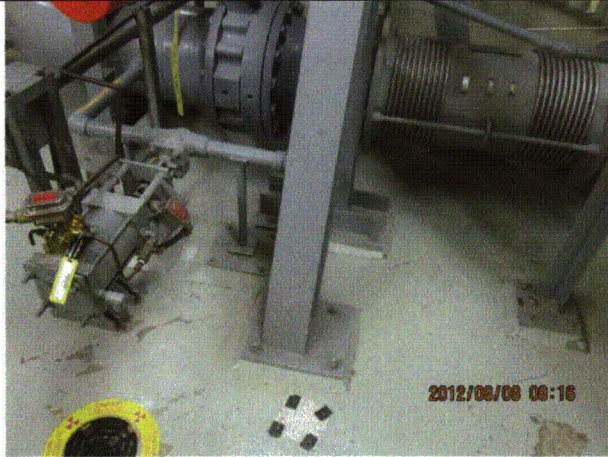
Status: Y N U

Seismic Walkdown Checklist (SWC)

Equipment ID No.: 2-1601-24-AO

Equipment Class: (7) Fluid-Operated Valves

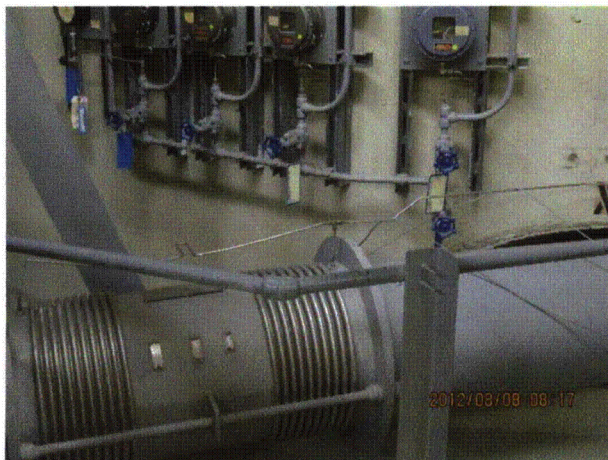
Equipment Description: VLV, BUTTERFLY ISO, 18 - U-2 CNMT RX BLDG EXH VENT VLV



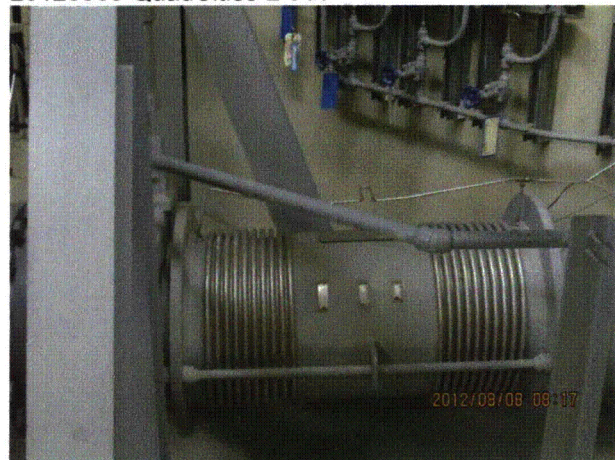
20120808-QuadCities-2 010



20120808-QuadCities-2 011



20120808-QuadCities-2 012



20120808-QuadCities-2 013

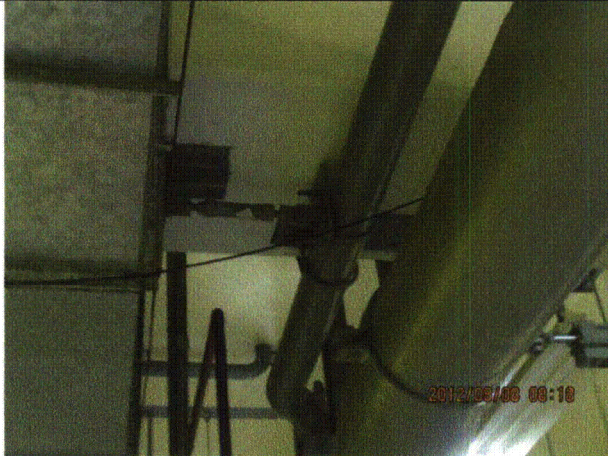
Status: Y N U

Seismic Walkdown Checklist (SWC)

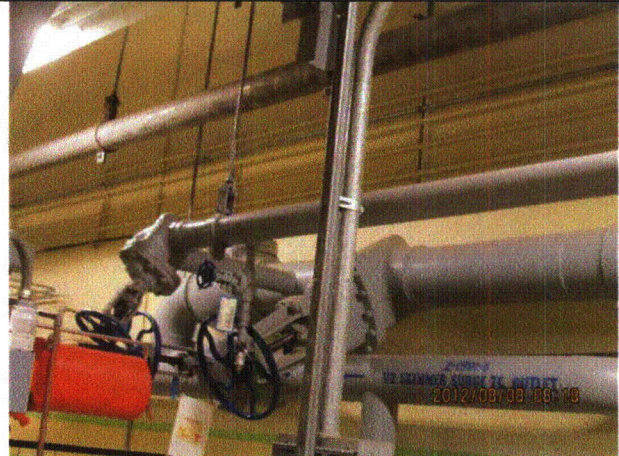
Equipment ID No.: 2-1601-24-AO

Equipment Class: (7) Fluid-Operated Valves

Equipment Description: VLV, BUTTERFLY ISO, 18 - U-2 CNMT RX BLDG EXH VENT VLV



20120808-QuadCities-2 014



20120808-QuadCities-2 015



20120808-QuadCities-2 016



20120808-QuadCities-2 017

Status: Y N U

Seismic Walkdown Checklist (SWC)

Equipment ID No.: 2-1601-24-AO

Equipment Class: (7) Fluid-Operated Valves

Equipment Description: VLV, BUTTERFLY ISO, 18 - U-2 CNMT RX BLDG EXH VENT VLV



20120808-QuadCities-2 018



20120808-QuadCities-2 019

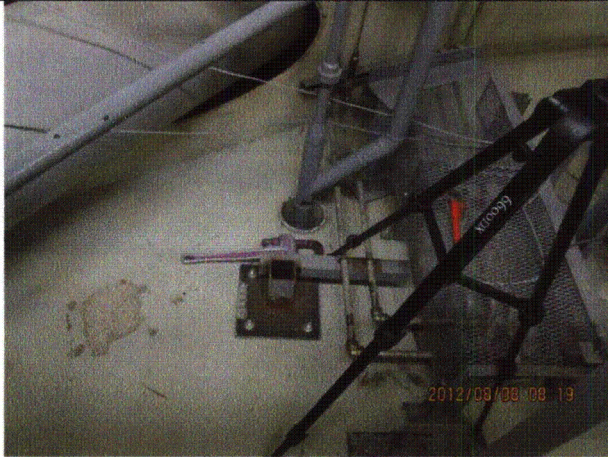
Status: Y N U

Seismic Walkdown Checklist (SWC)

Equipment ID No.: 2-1601-24-AO

Equipment Class: (7) Fluid-Operated Valves

Equipment Description: VLV, BUTTERFLY ISO, 18 - U-2 CNMT RX BLDG EXH VENT VLV



20120808-QuadCities-2 020



20120808-QuadCities-2 021

Status: Y N U

Seismic Walkdown Checklist (SWC)

Equipment ID No.: 2-1601-24-AO

Equipment Class: (7) Fluid-Operated Valves

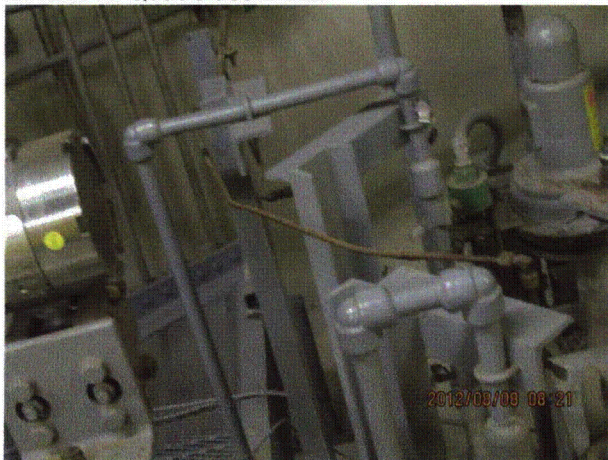
Equipment Description: VLV, BUTTERFLY ISO, 18 - U-2 CNMT RX BLDG EXH VENT VLV



20120808-QuadCities-2 022



20120808-QuadCities-2 023



20120808-QuadCities-2 024



20120808-QuadCities-2 025

Status: Y N U

Seismic Walkdown Checklist (SWC)

Equipment ID No.: 2-1601-24-AO

Equipment Class: (7) Fluid-Operated Valves

Equipment Description: VLV, BUTTERFLY ISO, 18 - U-2 CNMT RX BLDG EXH VENT VLV



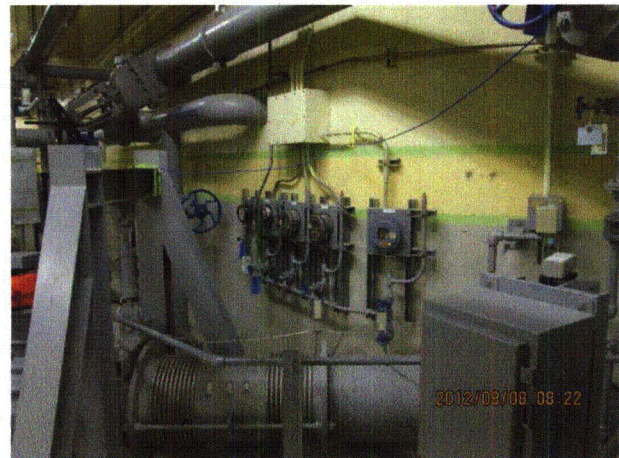
20120808-QuadCities-2 026



20120808-QuadCities-2 027



20120808-QuadCities-2 028



20120808-QuadCities-2 029

Status: Y N U

Seismic Walkdown Checklist (SWC)

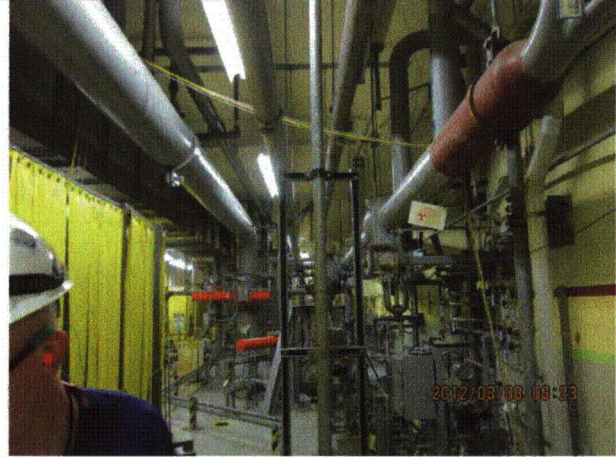
Equipment ID No.: 2-1601-24-AO

Equipment Class: (7) Fluid-Operated Valves

Equipment Description: VLV, BUTTERFLY ISO, 18 - U-2 CNMT RX BLDG EXH VENT VLV



20120808-QuadCities-2 030



20120808-QuadCities-2 031



20120808-QuadCities-2 032

Status: Y N U

Seismic Walkdown Checklist (SWC)

Equipment ID No.: 2-1601-57-MO

Equipment Class: (8) Motor-Operated and Solenoid-Operated Valves

VLV, ISO, 1", N2 MAKEUP TO CONTAINMENT - U-2 N2 MU TO CNMT

Equipment Description: DOWNSTREAM SV HANDWHEEL

Project: Quad Cities 2 SWEL

Location (Bldg, Elev, Room/Area): RB, 595.00 ft, ALL

Manufacturer/Model:

Instructions for Completing Checklist

This checklist may be used to document the results of the Seismic Walkdown of an item of equipment on the SWEL. The space below each of the following questions may be used to record the results of judgments and findings. Additional space is provided at the end of this checklist for documenting other comments.

Anchorage

1. Is anchorage configuration verification required (i.e., is the item one of the 50% of SWEL items requiring such verification)? No

2. Is the anchorage free of bent, broken, missing or loose hardware? Not Applicable

3. Is the anchorage free of corrosion that is more than mild surface oxidation? Not Applicable

4. Is the anchorage free of visible cracks in the concrete near the anchors? Not Applicable

5. Is the anchorage configuration consistent with plant documentation? (Note: This question only applies if the item is one of the 50% for which an anchorage configuration verification is required.) Not Applicable

6. Based on the above anchorage evaluations, is the anchorage free of potentially adverse seismic conditions? Yes

Status: Y N U

Seismic Walkdown Checklist (SWC)

Equipment ID No.: 2-1601-57-MO

Equipment Class: (8) Motor-Operated and Solenoid-Operated Valves

VLV, ISO, 1", N2 MAKEUP TO CONTAINMENT - U-2 N2 MU TO CNMT
Equipment Description: DOWNSTREAM SV HANDWHEEL

Interaction Effects

7. Are soft targets free from impact by nearby equipment or structures? Yes

Small pipe near rugged MOV motor judged to be acceptable.

8. Are overhead equipment, distribution systems, ceiling tiles and lighting, and masonry block walls not likely to collapse onto the equipment? Yes

9. Do attached lines have adequate flexibility to avoid damage? Yes

10. Based on the above seismic interaction evaluations, is equipment free of potentially adverse seismic interaction effects? Yes

Other Adverse Conditions

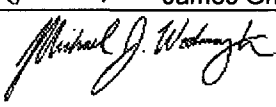
11. Have you looked for and found no adverse seismic conditions that could adversely affect the safety functions of the equipment? Yes

Comments

Seismic Walkdown Team: J. Griffith & M. Wodarcyk - 8/6/2012

See south HCU bank area walk-by for further notes.

Evaluated by:  James Griffith Date: 10/4/2012

 Michael Wodarcyk 10/4/2012

Status: Y N U

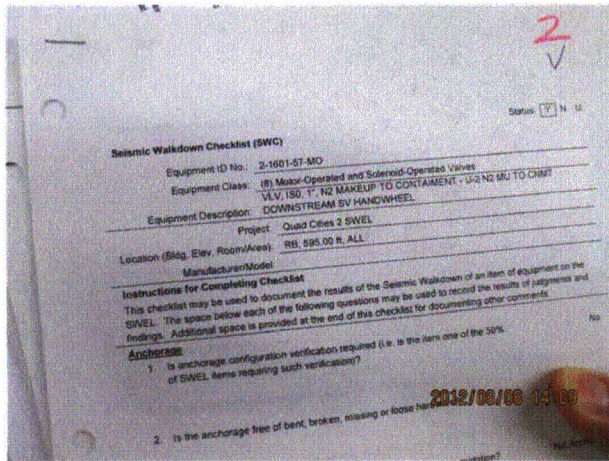
Seismic Walkdown Checklist (SWC)

Equipment ID No.: 2-1601-57-MO

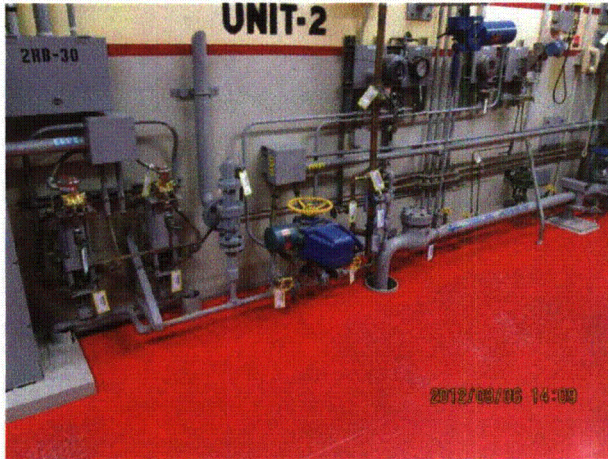
Equipment Class: (8) Motor-Operated and Solenoid-Operated Valves

Equipment Description: VLV, ISO, 1", N2 MAKEUP TO CONTAINMENT - U-2 N2 MU TO CNMT
DOWNSTREAM SV HANDWHEEL

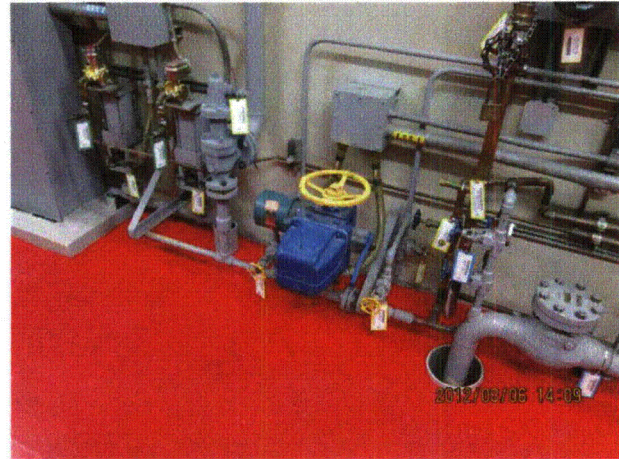
Photos



20120806-QuadCities-2 337



20120806-QuadCities-2 339



20120806-QuadCities-2 340

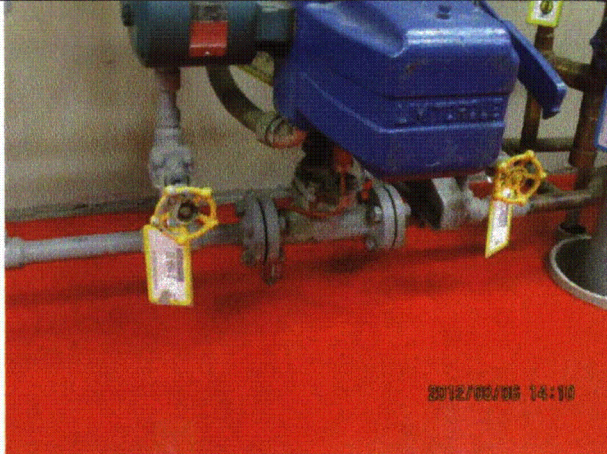
Status: Y N U

Seismic Walkdown Checklist (SWC)

Equipment ID No.: 2-1601-57-MO

Equipment Class: (8) Motor-Operated and Solenoid-Operated Valves

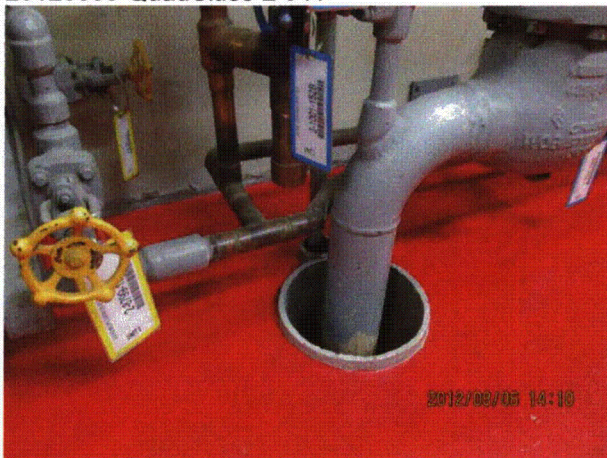
Equipment Description: VLV, ISO, 1", N2 MAKEUP TO CONTAINMENT - U-2 N2 MU TO CNMT
DOWNSTREAM SV HANDWHEEL



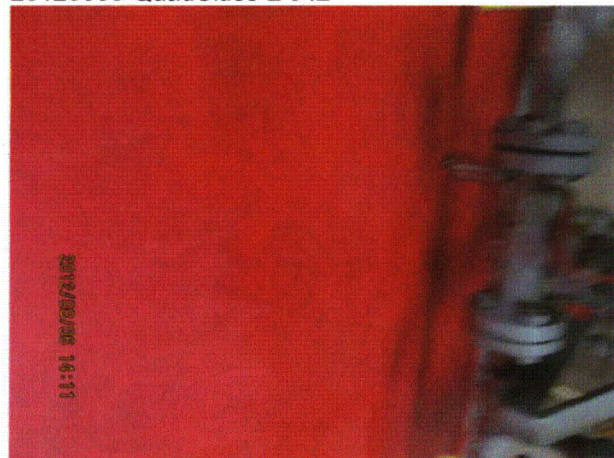
20120806-QuadCities-2 341



20120806-QuadCities-2 342



20120806-QuadCities-2 343



20120806-QuadCities-2 344

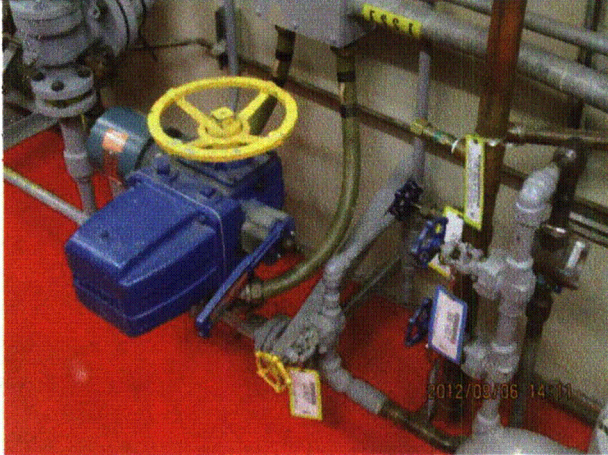
Status: Y N U

Seismic Walkdown Checklist (SWC)

Equipment ID No.: 2-1601-57-MO

Equipment Class: (8) Motor-Operated and Solenoid-Operated Valves

Equipment Description: VLV, ISO, 1", N2 MAKEUP TO CONTAINMENT - U-2 N2 MU TO CNMT
DOWNSTREAM SV HANDWHEEL



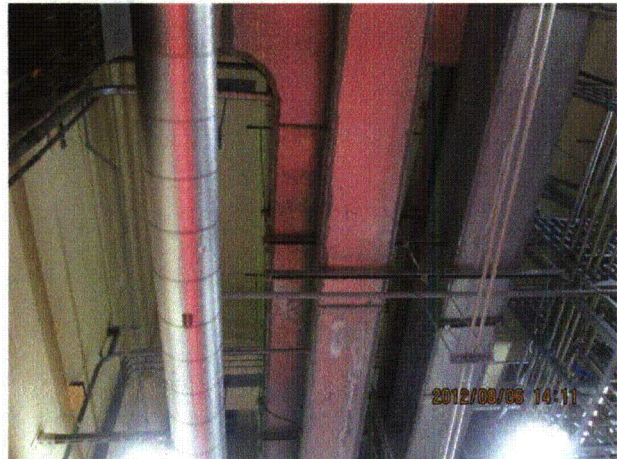
20120806-QuadCities-2 345



20120806-QuadCities-2 346



20120806-QuadCities-2 347



20120806-QuadCities-2 348

Status: Y N U

Seismic Walkdown Checklist (SWC)

Equipment ID No.: 2-1601-57-MO

Equipment Class: (8) Motor-Operated and Solenoid-Operated Valves

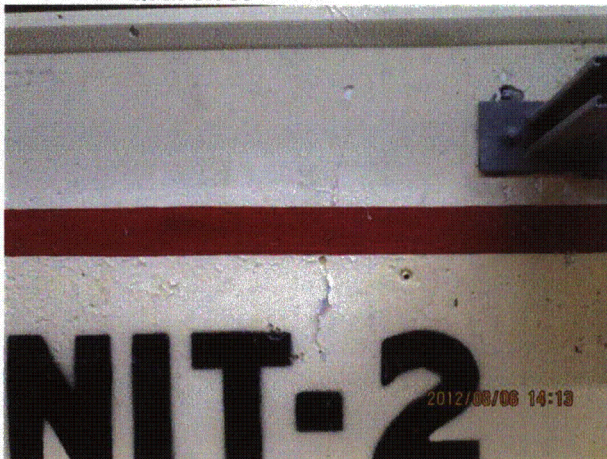
Equipment Description: VLV, ISO, 1", N2 MAKEUP TO CONTAINMENT - U-2 N2 MU TO CNMT
DOWNSTREAM SV HANDWHEEL



20120806-QuadCities-2 349



20120806-QuadCities-2 350



20120806-QuadCities-2 351