

**Seismic Walkdown Checklist (SWC)**Equipment ID No. 2X41-C010A Equip. Class<sup>1</sup> 9Equipment Description DG 2C ROOM FAN 2ALocation: Bldg. DIESEL Floor El. 150 Room, Area ROOF

Manufacturer, Model, Etc. (optional but recommended) \_\_\_\_\_

**Instructions for Completing Checklist**

This checklist may be used to document the results of the Seismic Walkdown of an item of equipment on the SWEL. The space below each of the following questions may be used to record the results of judgments and findings. Additional space is provided at the end of this checklist for documenting other comments.

**Anchorage**

1. Is the anchorage configuration verification required (i.e., is the item one of the 50% of SWEL items requiring such verification)? Y  N
  
2. Is the anchorage free of bent, broken, missing or loose hardware?  
*Viewed anchorage from underside of roof slab and on the roof.* Y  N  U  N/A
  
3. Is the anchorage free of corrosion that is more than mild surface oxidation? Y  N  U  N/A
  
4. Is the anchorage free of visible cracks in the concrete near the anchors? Y  N  U  N/A
  
5. Is the anchorage configuration consistent with plant documentation?  
(Note: This question only applies if the item is one of the 50% for which an anchorage configuration verification is required.)  
*Anchorage is consistent with SEWS package dated 02/18/1994 and H-12350, Rev. 5.* Y  N  U  N/A
  
6. Based on the above anchorage evaluations, is the anchorage free of potentially adverse seismic conditions? Y  N  U

<sup>1</sup> Enter the equipment class name from Appendix B: Classes of Equipment.

Status: Y  N  U

**Seismic Walkdown Checklist (SWC)**

Equipment ID No. 2X41-C010A Equip. Class<sup>1</sup> 9

Equipment Description DG 2C ROOM FAN 2A

**Interaction Effects**

7. Are soft targets free from impact by nearby equipment or structures? Y  N  U  N/A

8. Are overhead equipment, distribution systems, ceiling tiles and lighting, and masonry block walls not likely to collapse onto the equipment? Y  N  U  N/A

9. Do attached lines have adequate flexibility to avoid damage? Y  N  U  N/A

10. Based on the above seismic interaction evaluations, is equipment free of potentially adverse seismic interaction effects? Y  N  U

**Other Adverse Conditions**

11. Have you looked for and found no other seismic conditions that could adversely affect the safety functions of the equipment? Y  N  U

*A screw on the east side cover plate that the head has been sheared off (see photograph 4). There are three other screws supporting the plate, which is judged to be adequate to secure it in place. The damaged screw is not a seismic concern. CR 523328 has been written to replace the screw.*

**Comments** (Additional pages may be added as necessary)

None.

Evaluated by: Juan Vizcaya  Date: 09/24/2012

Patrick Kelly  09/24/2012

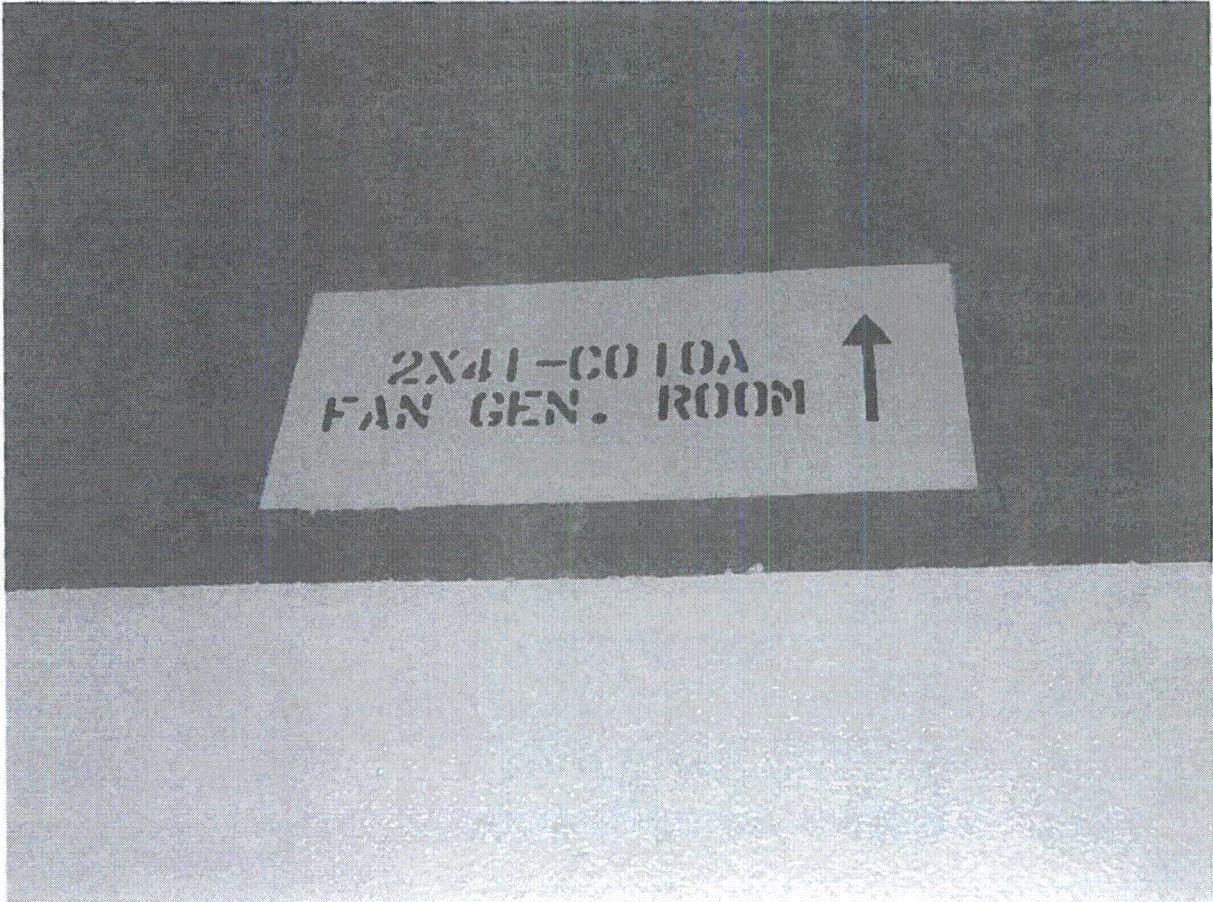
Status: Y  N  U

**Seismic Walkdown Checklist (SWC)**

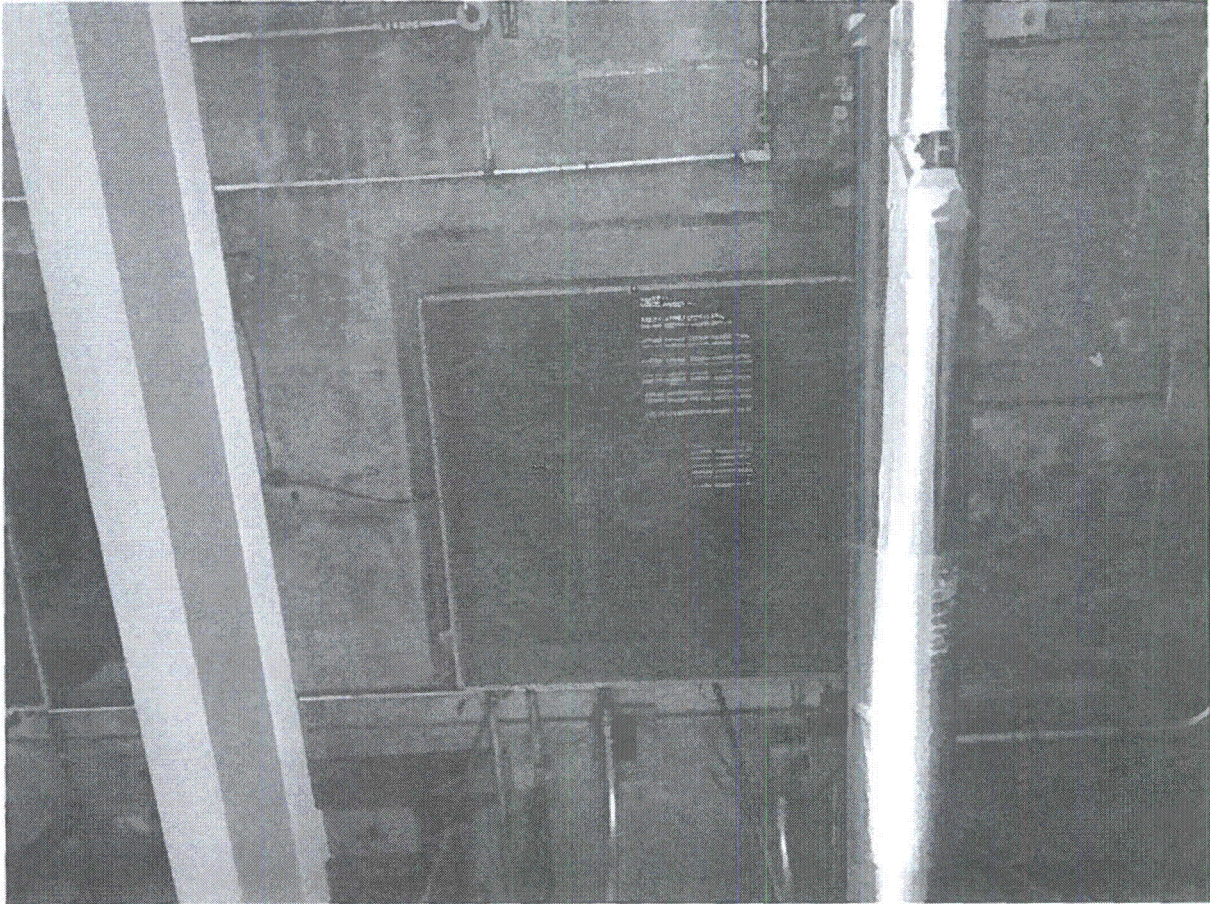
Equipment ID No. 2X41-C010A Equip. Class<sup>1</sup> 9

Equipment Description DG 2C ROOM FAN 2A

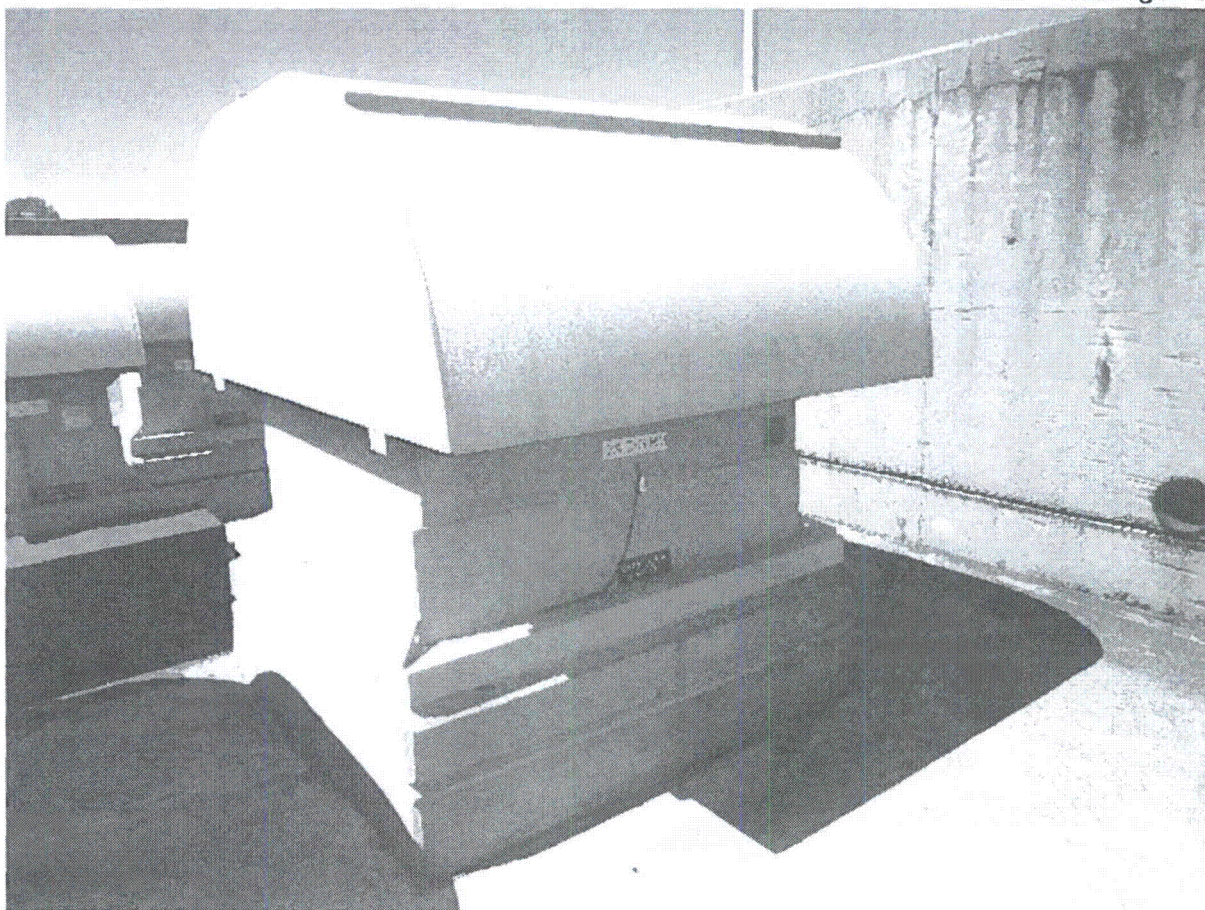
**Photographs**



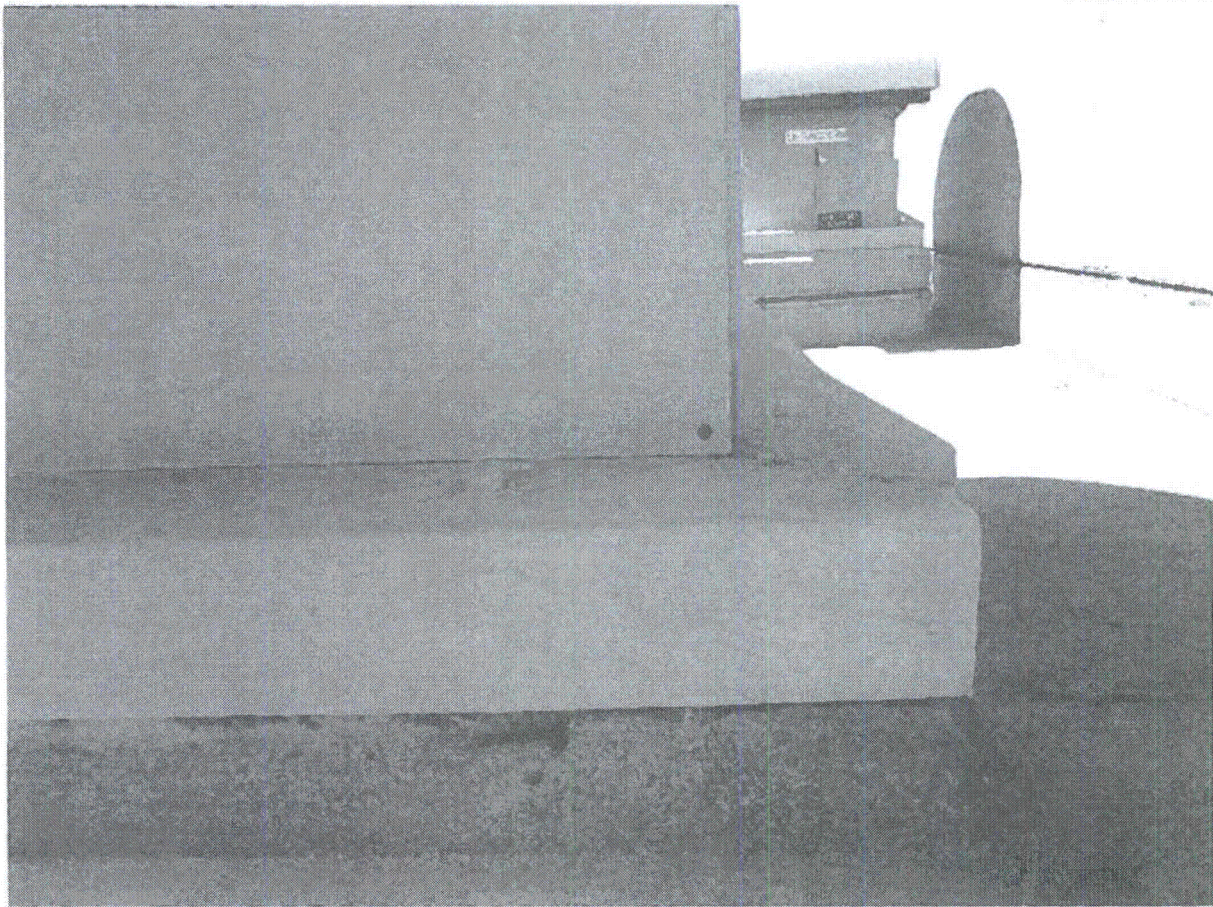
1: Equipment MPL# (2X41-C010A)



2: Equipment from Below Roof (2X41-C010A)



3: Equipment from Above Roof (2X41-C010A)



4: Cover Plate with Sheared Screw Head (2X41-C010A)

**Seismic Walkdown Checklist (SWC)**

Equipment ID No. 2X41-C016A Equip. Class<sup>1</sup> 9

Equipment Description BATTERY ROOM FAN

Location: Bldg. DIESEL Floor El. 150 Room, Area ROOF

Manufacturer, Model, Etc. (optional but recommended) \_\_\_\_\_

**Instructions for Completing Checklist**

This checklist may be used to document the results of the Seismic Walkdown of an item of equipment on the SWEL. The space below each of the following questions may be used to record the results of judgments and findings. Additional space is provided at the end of this checklist for documenting other comments.

**Anchorage**

- 1. Is the anchorage configuration verification required (i.e., is the item one of the 50% of SWEL items requiring such verification)? Y  N
  
- 2. Is the anchorage free of bent, broken, missing or loose hardware? Y  N  U  N/A   
*Bolt is replaced for housing enclosure below the roof slab as noted in SEWS package date 02/18/1994.*
  
- 3. Is the anchorage free of corrosion that is more than mild surface oxidation? Y  N  U  N/A
  
- 4. Is the anchorage free of visible cracks in the concrete near the anchors? Y  N  U  N/A
  
- 5. Is the anchorage configuration consistent with plant documentation? Y  N  U  N/A   
 (Note: This question only applies if the item is one of the 50% for which an anchorage configuration verification is required.)  
*Anchorage is consistent with SEWS package dated 02/18/1994 and drawing H-12349, Rev. 3.*
  
- 6. Based on the above anchorage evaluations, is the anchorage free of potentially adverse seismic conditions? Y  N  U

<sup>1</sup> Enter the equipment class name from Appendix B: Classes of Equipment.

**Seismic Walkdown Checklist (SWC)**Equipment ID No. 2X41-C016A Equip. Class: 9Equipment Description BATTERY ROOM FAN**Interaction Effects**

7. Are soft targets free from impact by nearby equipment or structures? Y  N  U  N/A
8. Are overhead equipment, distribution systems, ceiling tiles and lighting, and masonry block walls not likely to collapse onto the equipment? Y  N  U  N/A
9. Do attached lines have adequate flexibility to avoid damage? Y  N  U  N/A
10. Based on the above seismic interaction evaluations, is equipment free of potentially adverse seismic interaction effects? Y  N  U

**Other Adverse Conditions**

11. Have you looked for and found no other seismic conditions that could adversely affect the safety functions of the equipment? Y  N  U   
*Minor concrete surface cracks from the concrete curb supporting the fan at the roof elevation. These cracks are not severe in nature and are not judged to be a seismic concern.*

**Comments** (Additional pages may be added as necessary)*See 2X41-C010A for AWC information.*Evaluated by: Juan VizcayaDate: 09/25/2012Patrick Kelly09/25/2012



**Seismic Walkdown Checklist (SWC)**

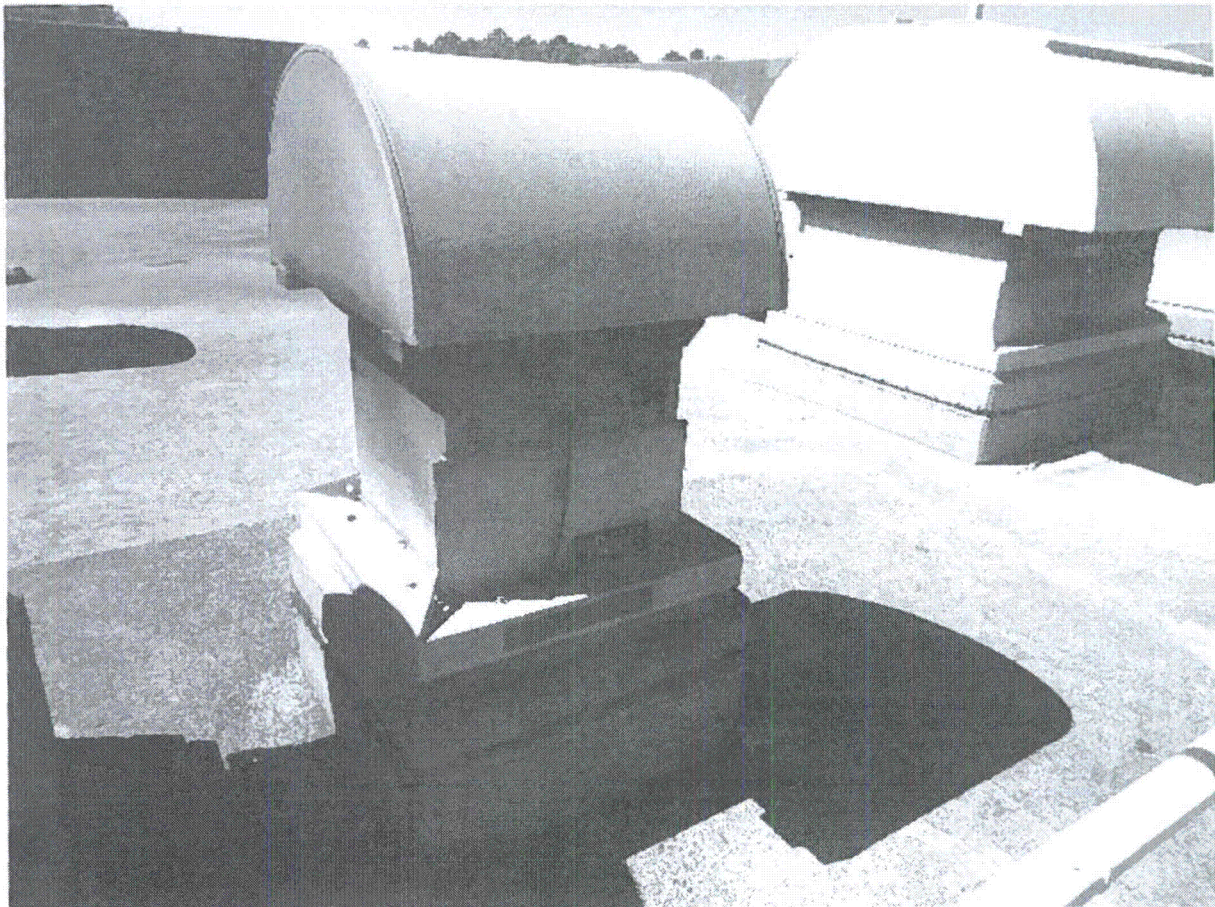
Equipment ID No. 2X41-C016A Equip. Class<sup>1</sup> 9

Equipment Description BATTERY ROOM FAN

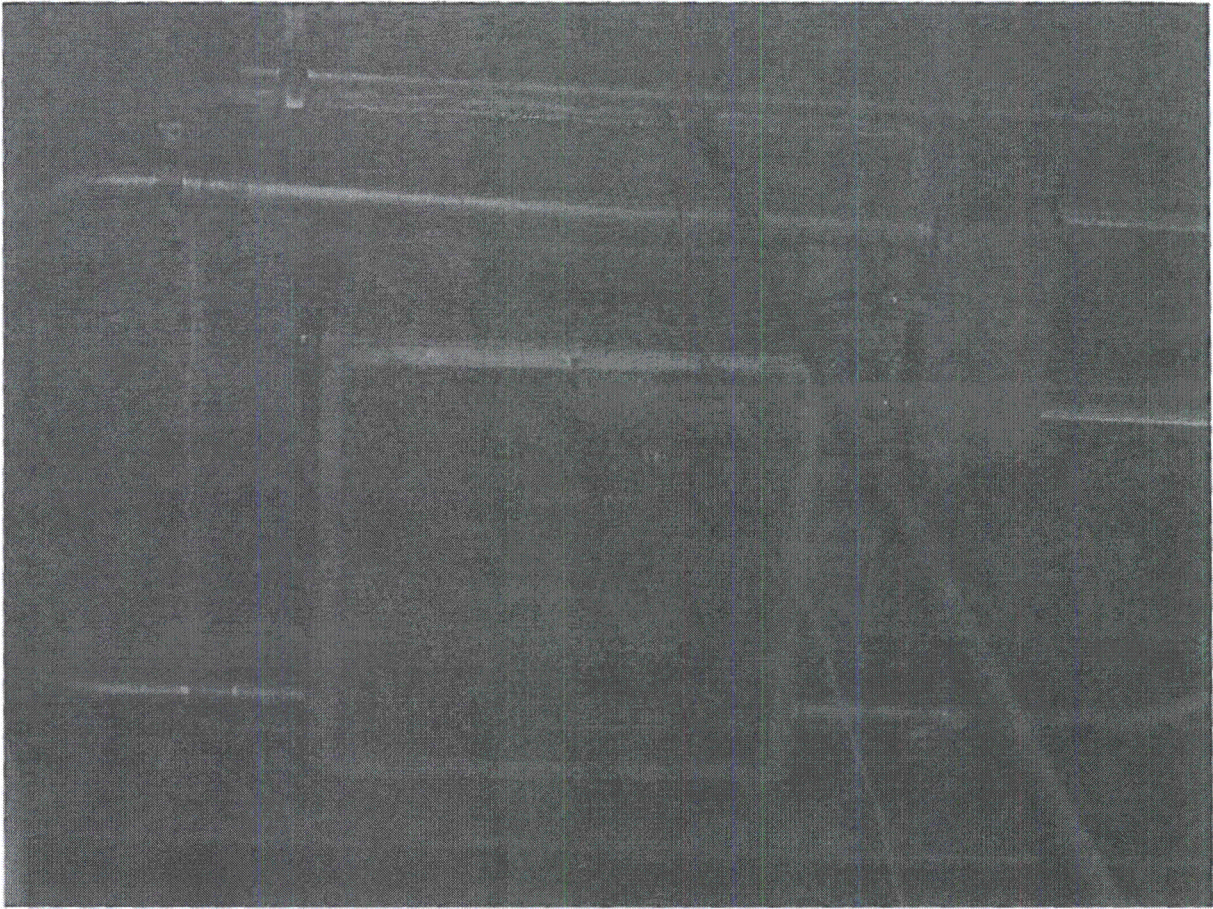
**Photographs**



1: Equipment MPL# (2X41-C016A)



2: Equipment Elevation (2X41-C016A)



3: Equipment From Below Roof (2X41-C016A)

**Seismic Walkdown Checklist (SWC)**Equipment ID No. 2E41-B001 Equip. Class<sup>1</sup> 10Equipment Description HPCI LUBE OIL COOLERLocation: Bldg. REACTOR Floor El. 87 Room, Area HPCI Room

Manufacturer, Model, Etc. (optional but recommended) \_\_\_\_\_

**Instructions for Completing Checklist**

This checklist may be used to document the results of the Seismic Walkdown of an item of equipment on the SWEL. The space below each of the following questions may be used to record the results of judgments and findings. Additional space is provided at the end of this checklist for documenting other comments.

**Anchorage**

1. Is the anchorage configuration verification required (i.e., is the item one of the 50% of SWEL items requiring such verification)? Y  N
2. Is the anchorage free of bent, broken, missing or loose hardware? Y  N  U  N/A
3. Is the anchorage free of corrosion that is more than mild surface oxidation? Y  N  U  N/A
4. Is the anchorage free of visible cracks in the concrete near the anchors? Y  N  U  N/A
5. Is the anchorage configuration consistent with plant documentation? Y  N  U  N/A   
(Note: This question only applies if the item is one of the 50% for which an anchorage configuration verification is required.)
6. Based on the above anchorage evaluations, is the anchorage free of potentially adverse seismic conditions? Y  N  U

<sup>1</sup> Enter the equipment class name from Appendix B: Classes of Equipment.

**Seismic Walkdown Checklist (SWC)**

Equipment ID No. 2E41-B001 Equip. Class<sup>1</sup> 10

Equipment Description HPCI LUBE OIL COOLER

**Interaction Effects**

7. Are soft targets free from impact by nearby equipment or structures? Y  N  U  N/A   
*The overhead crane was evaluated during SQUG walkdowns for the item in this room (2E41-C002) and found to be seismically adequate.*

8. Are overhead equipment, distribution systems, ceiling tiles and lighting, and masonry block walls not likely to collapse onto the equipment? Y  N  U  N/A

9. Do attached lines have adequate flexibility to avoid damage? Y  N  U  N/A

10. Based on the above seismic interaction evaluations, is equipment free of potentially adverse seismic interaction effects? Y  N  U

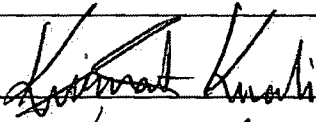
**Other Adverse Conditions**

11. Have you looked for and found no other seismic conditions that could adversely affect the safety functions of the equipment? Y  N  U

**Comments** (Additional pages may be added as necessary)

*No washers are found for 2 of the 4 bolts in the anchorage. However, SWEs judged this not to be a seismic concern since the washers are not critical anchorage items when the holes are not oversized.*

*Area walkby was performed within the package for 2E21-C001B.*

Evaluated by: KURSAT KINALI  Date: 9/24/2012

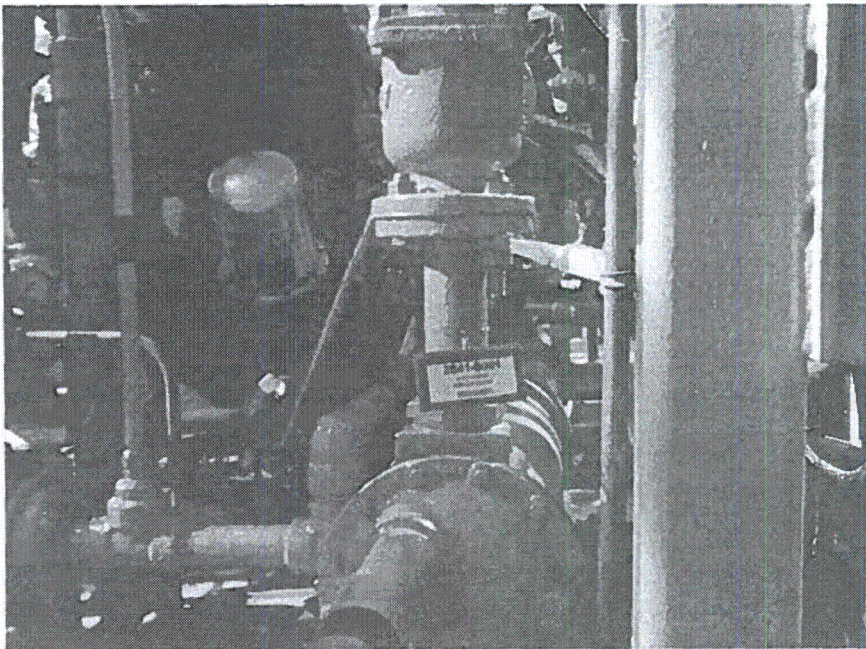
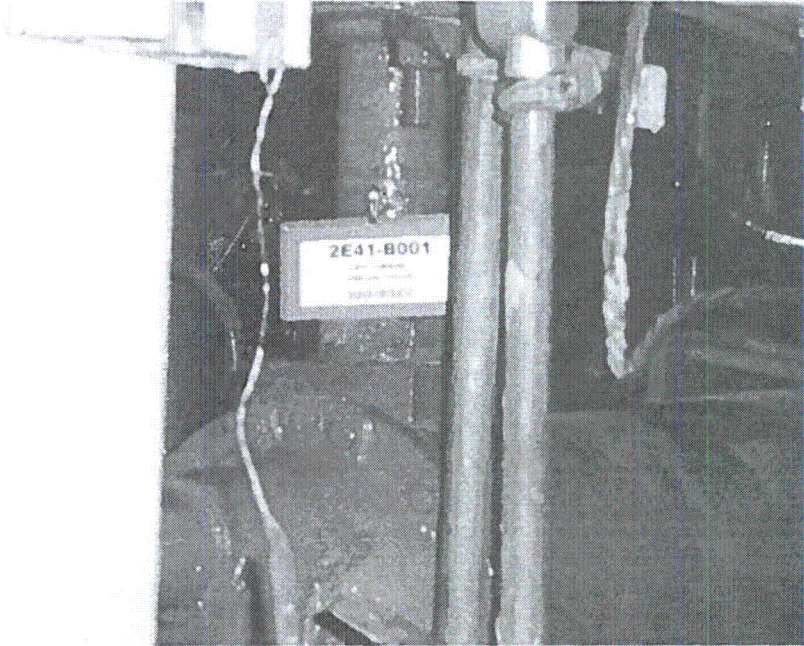
WESLEY WILLIAMS  9/24/2012

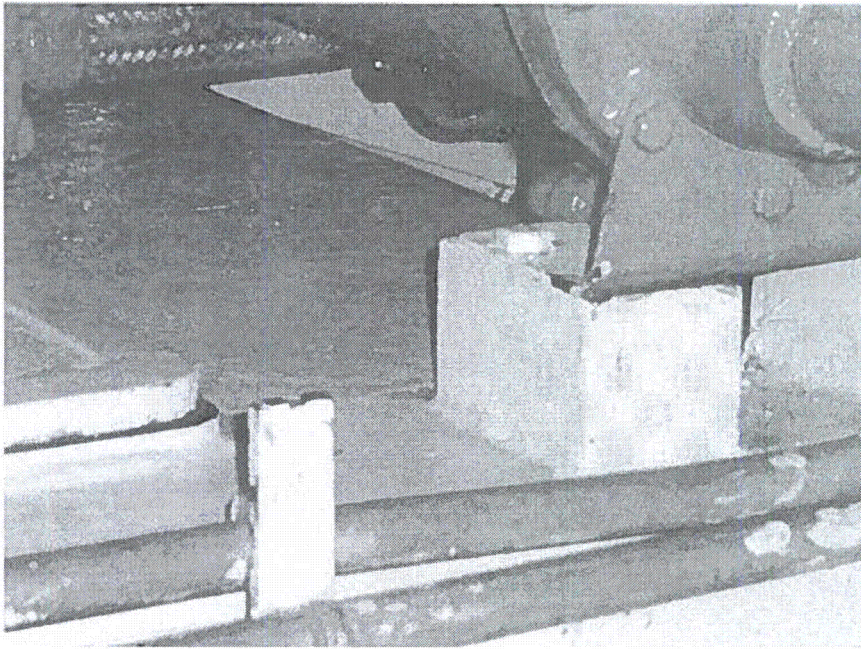
**Seismic Walkdown Checklist (SWC)**

Equipment ID No. 2E41-B001 Equip. Class<sup>1</sup> 10

Equipment Description HPCI LUBE OIL COOLER

**Photographs**





**Seismic Walkdown Checklist (SWC)**Equipment ID No. 2T41-B003B Equip. Class<sup>1</sup> 10Equipment Description RHR/CS Pump Room Cooler BLocation: Bldg. REACTOR Floor El. 110 Room, Area NE Diagonal Unit 2

Manufacturer, Model, Etc. (optional but recommended) \_\_\_\_\_

**Instructions for Completing Checklist**

This checklist may be used to document the results of the Seismic Walkdown of an item of equipment on the SWEL. The space below each of the following questions may be used to record the results of judgments and findings. Additional space is provided at the end of this checklist for documenting other comments.

**Anchorage**

1. Is the anchorage configuration verification required (i.e., is the item one of the 50% of SWEL items requiring such verification)? Y  N
2. Is the anchorage free of bent, broken, missing or loose hardware? Y  N  U  N/A
3. Is the anchorage free of corrosion that is more than mild surface oxidation? Y  N  U  N/A
4. Is the anchorage free of visible cracks in the concrete near the anchors? Y  N  U  N/A
5. Is the anchorage configuration consistent with plant documentation?  
(Note: This question only applies if the item is one of the 50% for which an anchorage configuration verification is required.) Y  N  U  N/A
6. Based on the above anchorage evaluations, is the anchorage free of potentially adverse seismic conditions? Y  N  U

<sup>1</sup> Enter the equipment class name from Appendix B: Classes of Equipment.



Status: Y  N  U

**Seismic Walkdown Checklist (SWC)**

Equipment ID No. 2T41-B003B Equip. Class<sup>1</sup> 10

Equipment Description RHR/CS Pump Room Cooler B

**Interaction Effects**

7. Are soft targets free from impact by nearby equipment or structures? Y  N  U  N/A

8. Are overhead equipment, distribution systems, ceiling tiles and lighting, and masonry block walls not likely to collapse onto the equipment? Y  N  U  N/A

9. Do attached lines have adequate flexibility to avoid damage? Y  N  U  N/A

10. Based on the above seismic interaction evaluations, is equipment free of potentially adverse seismic interaction effects? Y  N  U

**Other Adverse Conditions**

11. Have you looked for and found no other seismic conditions that could adversely affect the safety functions of the equipment? Y  N  U

**Comments** (Additional pages may be added as necessary)

*There is a small section of grating broken near the corner of the 2T41-B003B RHR/CS Pump Room Cooler. The section of grating is extremely small and is welded to the kick plate around the pipe going through the grating at that location. The grating is not in immediate danger of separating and becoming an impact hazard and does not affect the larger grating panel's ability to support load. Therefore, it has been judged to be seismically adequate.*

*See Component 2E11-B001A for the Area Walk-by Checklist.*

Evaluated by: John McFarland  Date: 09/12/2012

Jeff Horton  09/12/2012

**Seismic Walkdown Checklist (SWC)**

Equipment ID No. 2T41-B003B Equip. Class<sup>1</sup> 10

Equipment Description RHR/CS Pump Room Cooler B

**Photographs**



Figure 1 – Equipment ID No (2T41-B003B)

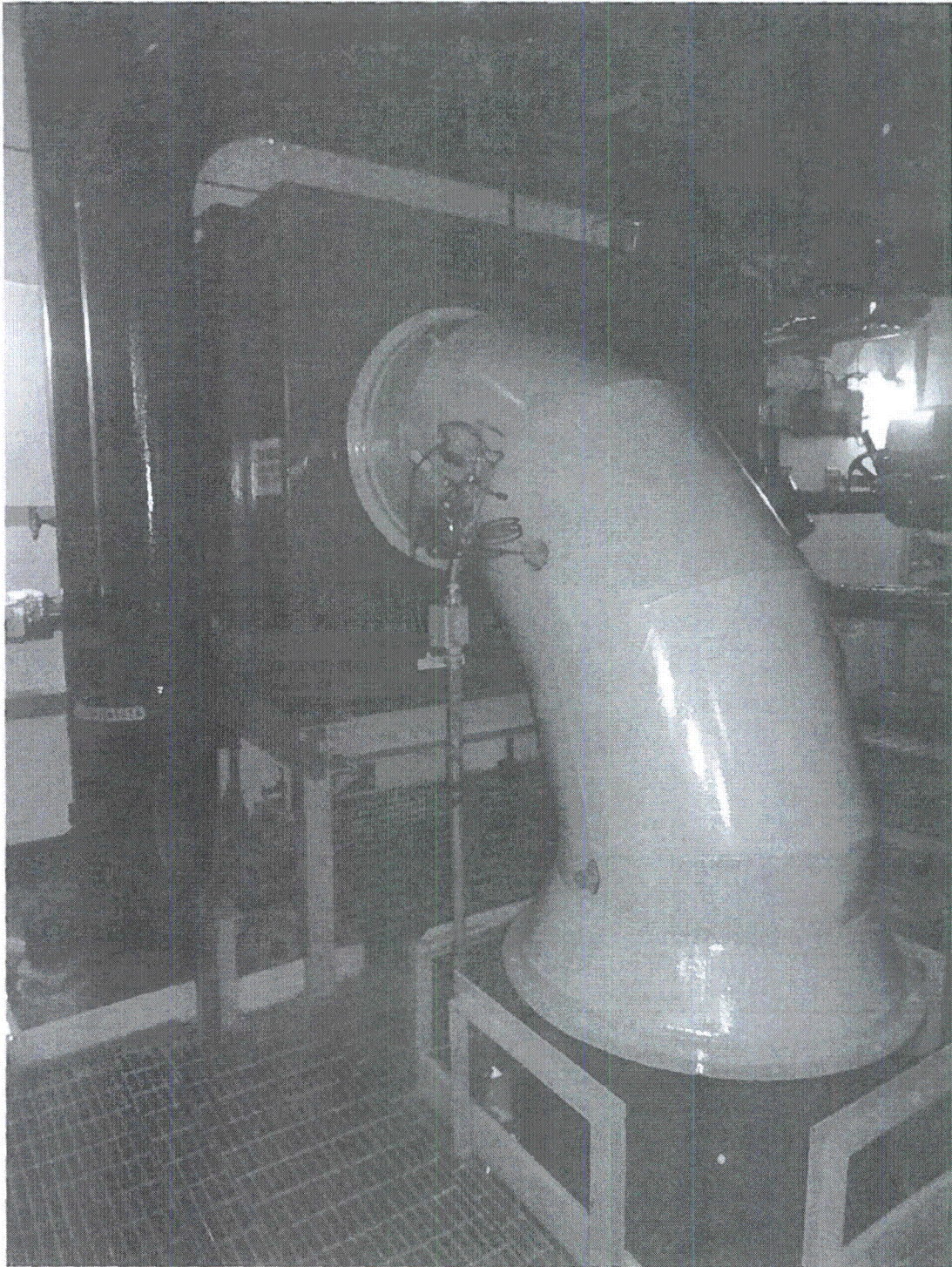


Figure 2 – Equipment Elevation (2T41-B003B)

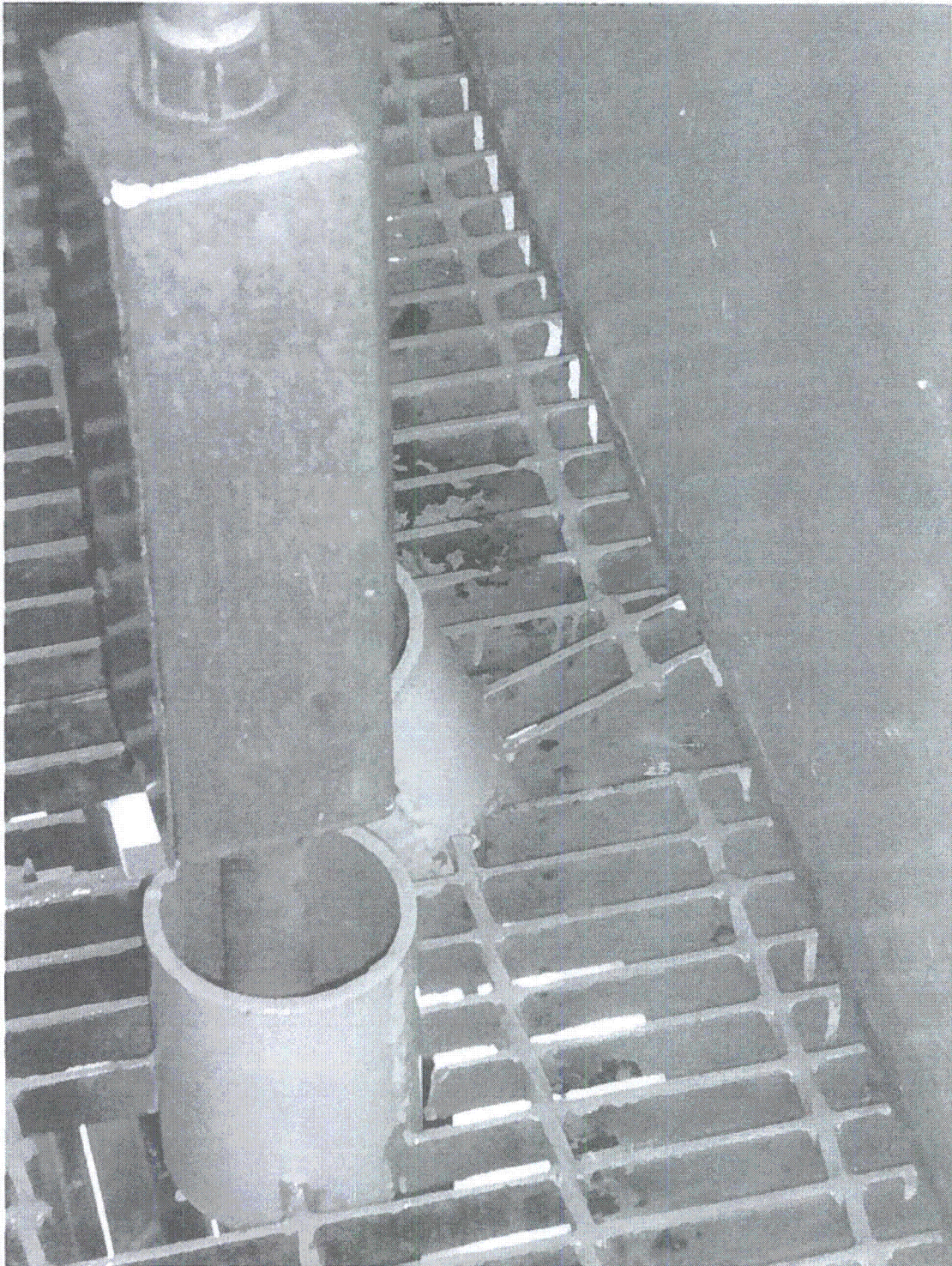


Figure 3 – Broken Grating Section (2T41-B003B)

Status: Y  N  U **Seismic Walkdown Checklist (SWC)**Equipment ID No. 2T41-B003A Equip. Class<sup>1</sup> 10Equipment Description RHR/CS PUMP ROOM COOLER ALocation: Bldg. REACTOR Floor El. 119' Room, Area NE Diagonal Room

Manufacturer, Model, Etc. (optional but recommended) \_\_\_\_\_

**Instructions for Completing Checklist**

This checklist may be used to document the results of the Seismic Walkdown of an item of equipment on the SWEL. The space below each of the following questions may be used to record the results of judgments and findings. Additional space is provided at the end of this checklist for documenting other comments.

**Anchorage**

1. Is the anchorage configuration verification required (i.e., is the item one of the 50% of SWEL items requiring such verification)? Y  N
  
2. Is the anchorage free of bent, broken, missing or loose hardware? Y  N  U  N/A   
*Holes with missing anchors but replaced with tabs and new anchors. SWE's have determined that this configuration is acceptable and consistent with anchorage shown in SQUG package based on referenced SEWS package and Calculation*
  
3. Is the anchorage free of corrosion that is more than mild surface oxidation? Y  N  U  N/A
  
4. Is the anchorage free of visible cracks in the concrete near the anchors? Y  N  U  N/A   
*Component anchored to Platform supporting steel.*
  
5. Is the anchorage configuration consistent with plant documentation? Y  N  U  N/A   
 (Note: This question only applies if the item is one of the 50% for which an anchorage configuration verification is required.)  
*SEWS Package 2T41-B003A, Dated 2/15/1994 and Calc SCNH-11-007, Dated 4/19/2012*
  
6. Based on the above anchorage evaluations, is the anchorage free of potentially adverse seismic conditions? Y  N  U

<sup>1</sup> Enter the equipment class name from Appendix B: Classes of Equipment.

Status: Y  N  U **Seismic Walkdown Checklist (SWC)**Equipment ID No. 2T41-B003A Equip. Class<sup>1</sup> 10Equipment Description RHR/GS PUMP ROOM COOLER A**Interaction Effects**

7. Are soft targets free from impact by nearby equipment or structures? Y  N  U  N/A
8. Are overhead equipment, distribution systems, ceiling tiles and lighting, and masonry block walls not likely to collapse onto the equipment? Y  N  U  N/A
9. Do attached lines have adequate flexibility to avoid damage? Y  N  U  N/A
10. Based on the above seismic interaction evaluations, is equipment free of potentially adverse seismic interaction effects? Y  N  U

**Other Adverse Conditions**

11. Have you looked for and found no other seismic conditions that could adversely affect the safety functions of the equipment? Y  N  U

**Comments** (Additional pages may be added as necessary)

*There are missing housing cap screws these cap screws have no matching hole in the mating flange to place a screw. Therefore, the missing cap screws do not pose a seismic issue for the component.*

*In addition, the Area Walk-by is performed for component 2T41-N021A.*

Evaluated by: John McFarlandDate: 09/24/2012Jeff Horton09/24/2012

Status: Y  N  U

**Seismic Walkdown Checklist (SWC)**

Equipment ID No. 2T41-B003A Equip. Class<sup>1</sup> 10

Equipment Description RHR/CS PUMP ROOM COOLER A

**Photographs**

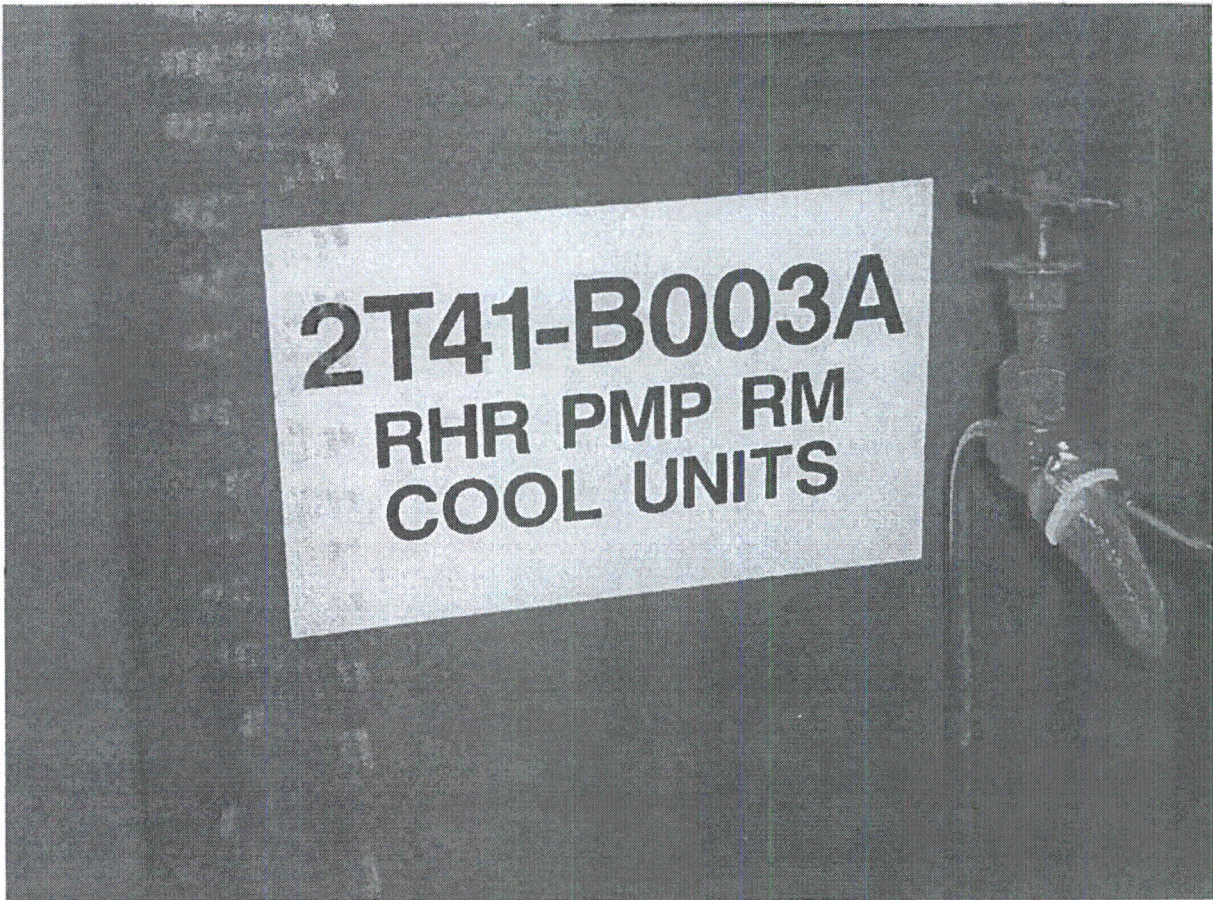


Figure 1 Equipment ID: 2T41-B003A

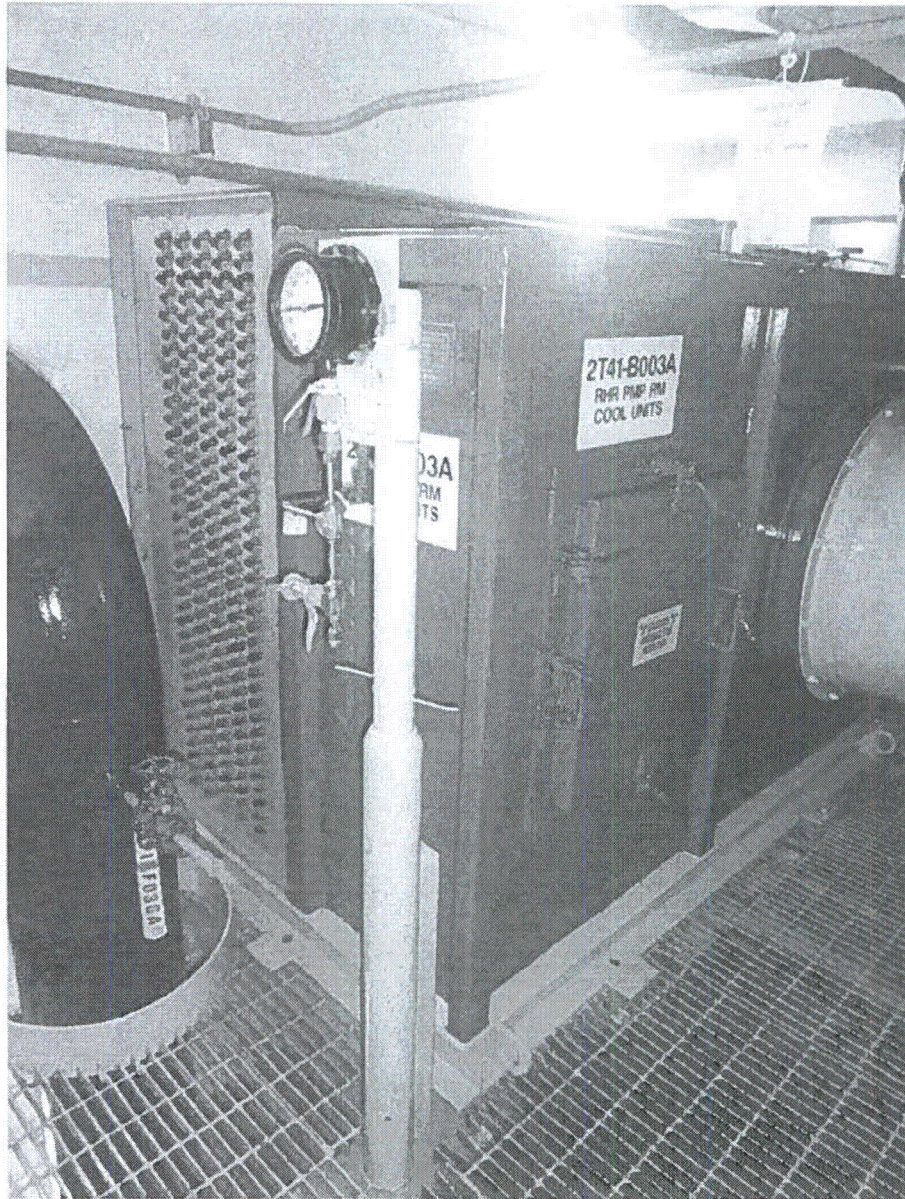


Figure 2 Component Picture



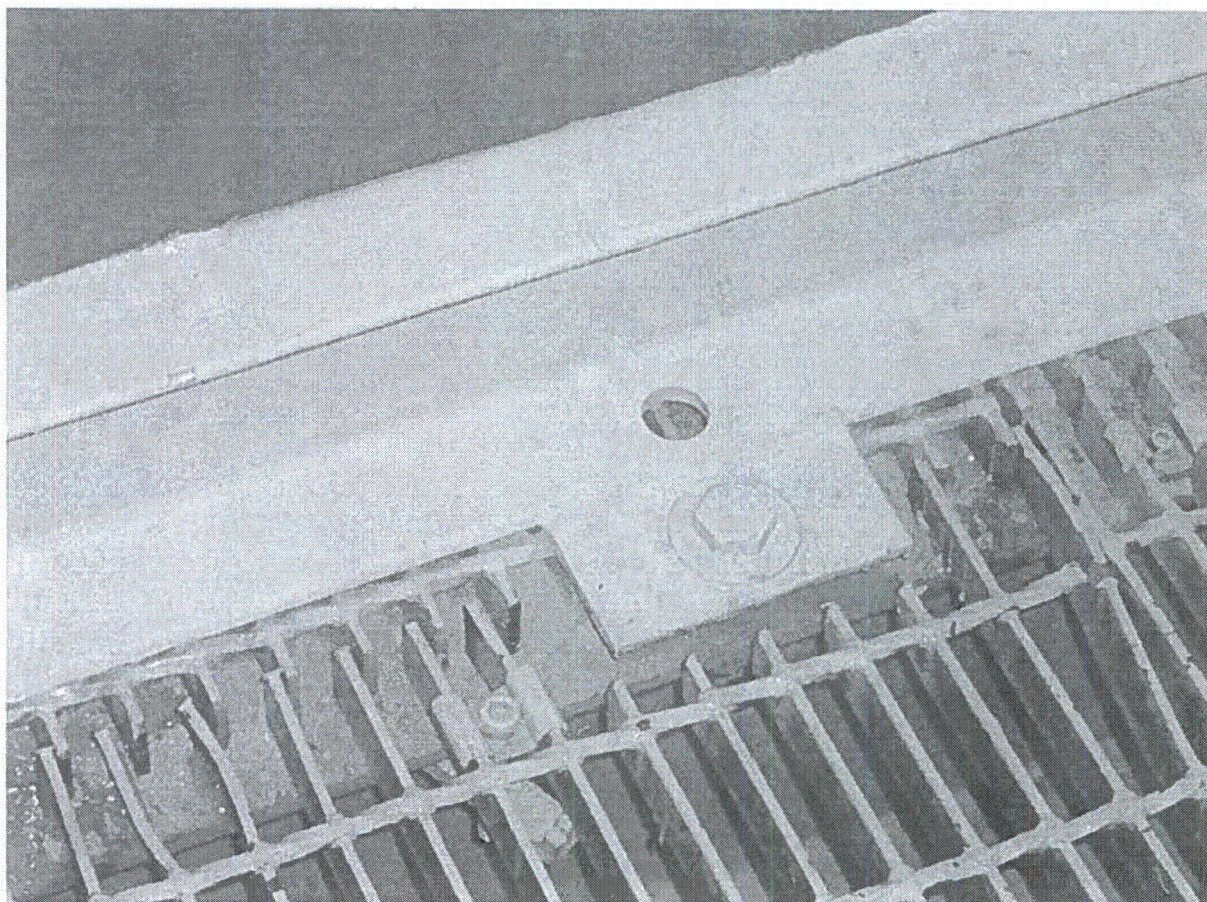


Figure 3 Typical View of Anchor Configuration of Component

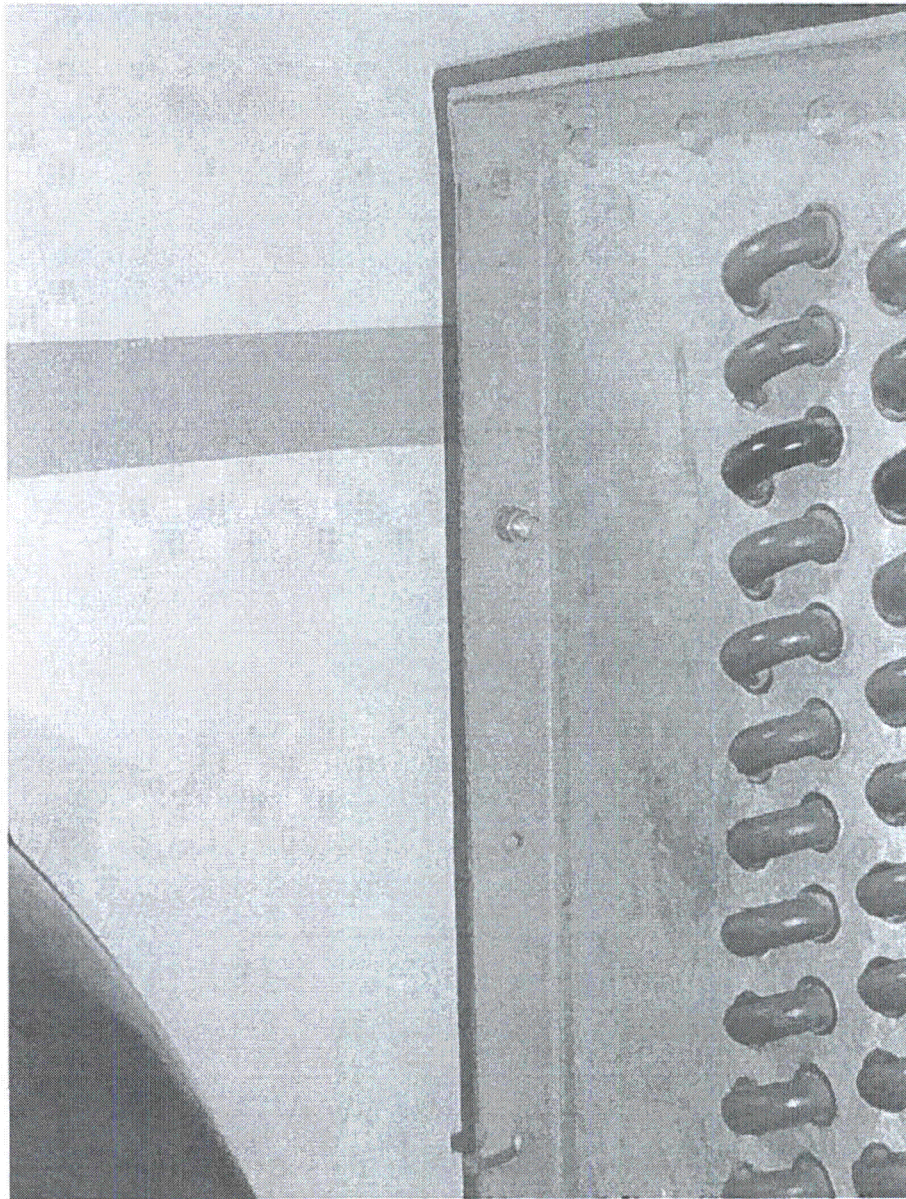


Figure 4 View of Casing Missing Cap Screws

**Seismic Walkdown Checklist (SWC)**Equipment ID No. 2T41-B005B Equip. Class<sup>1</sup> 10Equipment Description HPCI Room CoolerLocation: Bldg. REACTOR Floor El. 87 Room, Area HPCI Room

Manufacturer, Model, Etc. (optional but recommended) \_\_\_\_\_

**Instructions for Completing Checklist**

This checklist may be used to document the results of the Seismic Walkdown of an item of equipment on the SWEL. The space below each of the following questions may be used to record the results of judgments and findings. Additional space is provided at the end of this checklist for documenting other comments.

**Anchorage**

1. Is the anchorage configuration verification required (i.e., is the item one of the 50% of SWEL items requiring such verification)? Y  N
2. Is the anchorage free of bent, broken, missing or loose hardware? Y  N  U  N/A
3. Is the anchorage free of corrosion that is more than mild surface oxidation? Y  N  U  N/A
4. Is the anchorage free of visible cracks in the concrete near the anchors? Y  N  U  N/A   
*Equipment is mounted on a platform so there is no concrete.*
5. Is the anchorage configuration consistent with plant documentation? Y  N  U  N/A   
(Note: This question only applies if the item is one of the 50% for which an anchorage configuration verification is required.)
6. Based on the above anchorage evaluations, is the anchorage free of potentially adverse seismic conditions? Y  N  U

<sup>1</sup> Enter the equipment class name from Appendix B: Classes of Equipment.

Status: Y N U

**Seismic Walkdown Checklist (SWC)**

Equipment ID No. 2T41-B005B Equip. Class: 10

Equipment Description HPCI Room Cooler

**Interaction Effects**

7. Are soft targets free from impact by nearby equipment or structures? Y N U N/A

8. Are overhead equipment, distribution systems, ceiling tiles and lighting, and masonry block walls not likely to collapse onto the equipment? Y N U N/A

9. Do attached lines have adequate flexibility to avoid damage? Y N U N/A

10. Based on the above seismic interaction evaluations, is equipment free of potentially adverse seismic interaction effects? Y N U

**Other Adverse Conditions**

11. Have you looked for and found no other seismic conditions that could adversely affect the safety functions of the equipment? Y N U

**Comments** (Additional pages may be added as necessary)

*See Component P41-F035B for Area Walk-by Checklist. The instrument H01 shown in Figure 2 is discussed in the Area Walk-By Checklist for component P41-F035B. IPEEE open item modification to the HVAC duct supports addressed in Calculation SCNH95-002 and DCP 94-017 has been verified as installed by this walk-down.*

Note: P41-F035B refers to MPL # 2P41-F035B

Evaluated by: John McFarland  Date: 09/27/2012

Jeff Horton  09/27/2012

**Seismic Walkdown Checklist (SWC)**

Equipment ID No. 2T41-B005B Equip. Class<sup>1</sup> 10

Equipment Description HPCI Room Cooler

**Photographs**



Figure 1 – Equipment ID No (2T41-B005B)

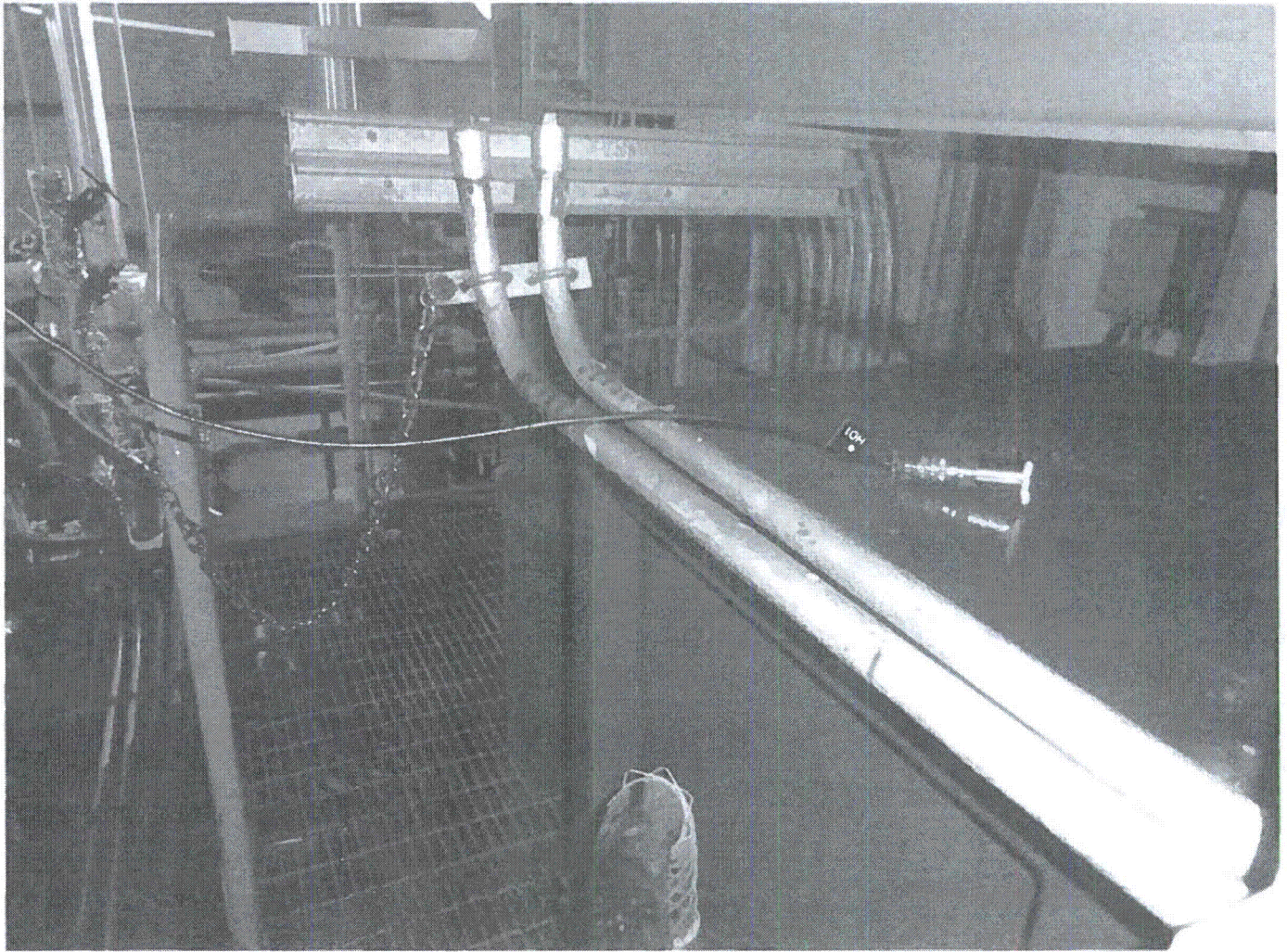


Figure 2 – Equipment Elevation (2T41-B005B)

**Seismic Walkdown Checklist (SWC)**

Equipment ID No. 2T46-D001B Equip. Class<sup>1</sup> 10

Equipment Description SBGT FILTER TRAIN

Location: Bldg. REACTOR Floor El. 185 Room, Area 2R303

Manufacturer, Model, Etc. (optional but recommended) \_\_\_\_\_

**Instructions for Completing Checklist**

This checklist may be used to document the results of the Seismic Walkdown of an item of equipment on the SWEL. The space below each of the following questions may be used to record the results of judgments and findings. Additional space is provided at the end of this checklist for documenting other comments.

**Anchorage**

1. Is the anchorage configuration verification required (i.e., is the item one of the 50% of SWEL items requiring such verification)? Y  N
  
2. Is the anchorage free of bent, broken, missing or loose hardware? Y  N  U  N/A   
*One of the 18 bolts anchoring the train to the concrete is missing or cut. A CR has been initiated for this purpose (CR515744).*
  
3. Is the anchorage free of corrosion that is more than mild surface oxidation? Y  N  U  N/A
  
4. Is the anchorage free of visible cracks in the concrete near the anchors? Y  N  U  N/A
  
5. Is the anchorage configuration consistent with plant documentation? Y  N  U  N/A   
 (Note: This question only applies if the item is one of the 50% for which an anchorage configuration verification is required.)
  
6. Based on the above anchorage evaluations, is the anchorage free of potentially adverse seismic conditions? Y  N  U

<sup>1</sup> Enter the equipment class name from Appendix B: Classes of Equipment.

**Seismic Walkdown Checklist (SWC)**

Equipment ID No. 2T46-D001B Equip. Class: 10

Equipment Description SBGT FILTER TRAIN

**Interaction Effects**

- 7. Are soft targets free from impact by nearby equipment or structures? Y  N  U  N/A
- 8. Are overhead equipment, distribution systems, ceiling tiles and lighting, and masonry block walls not likely to collapse onto the equipment? Y  N  U  N/A
- 9. Do attached lines have adequate flexibility to avoid damage? Y  N  U  N/A
- 10. Based on the above seismic interaction evaluations, is equipment free of potentially adverse seismic interaction effects? Y  N  U

**Other Adverse Conditions**

- 11. Have you looked for and found no other seismic conditions that could adversely affect the safety functions of the equipment? Y  N  U

**Comments** (Additional pages may be added as necessary)

*In some locations under the train, there are gaps between the steel plate and the concrete (<0.25"). However, the bolts are engaging and they are in tension. Therefore, these existing gaps do not pose a seismically adverse condition. The equipment has very heavy and has a large footprint. Therefore, the existing gaps do not pose a seismically adverse condition.*

*Housekeeping issues: Flange blinds spotted loose on the train. Two washers are found near the train. These loose items are not seismic concerns and can not impact sensitive equipment.*

*Cut cable was spotted above the panel for the train. A CR has been initiated to identify the cable and cap it (CR516629).*

*Unistrut support framing carrying cables over the train seems to have surface corrosion. Since the loads are light and corrosion is mild, this is judged not to be an adverse seismic condition.*

Evaluated by: KURSAT KINALI *Kursat Kinali* Date: 9/11/2012

WESLEY WILLIAMS *Wesley A. Williams* 9/11/2012

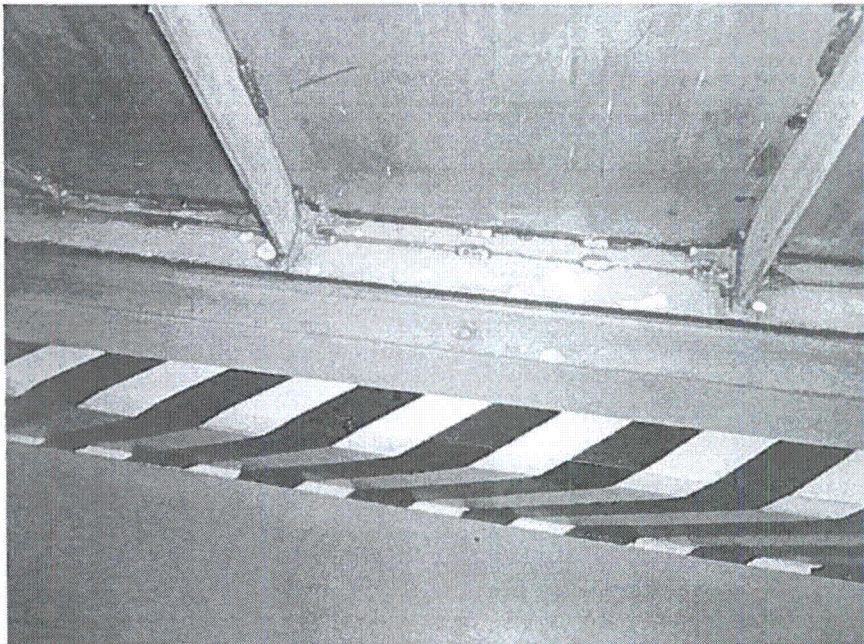


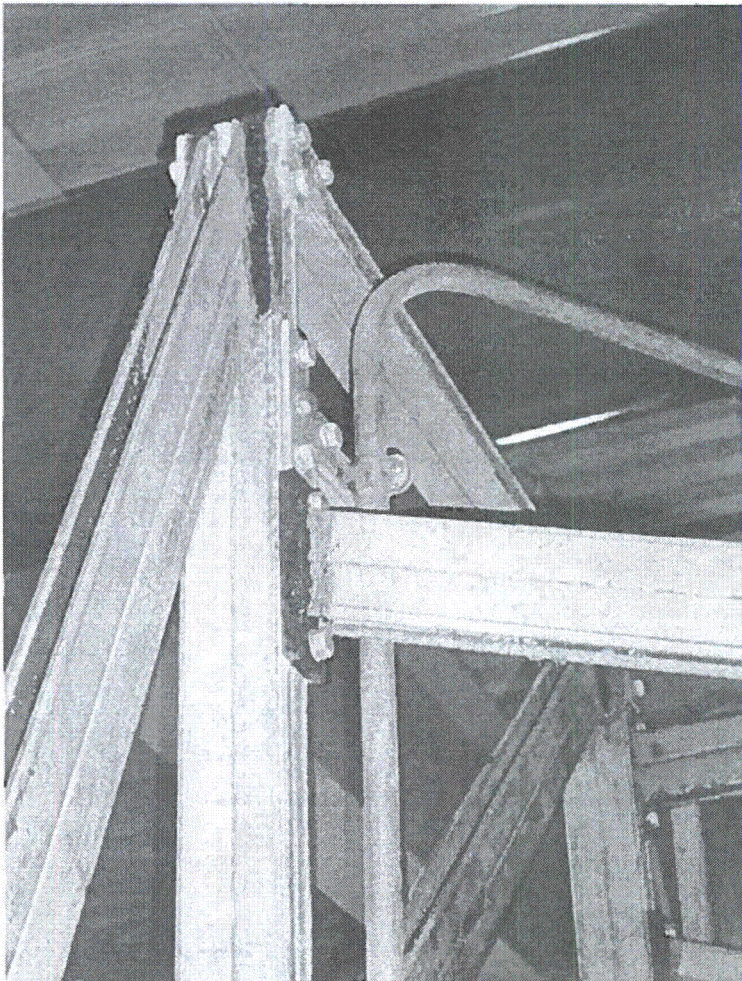
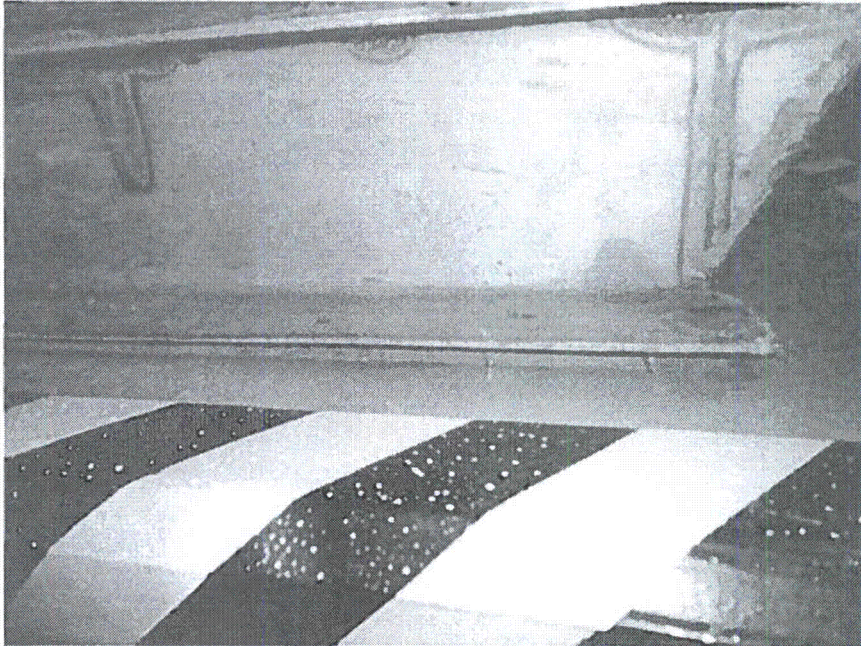
**Seismic Walkdown Checklist (SWC)**

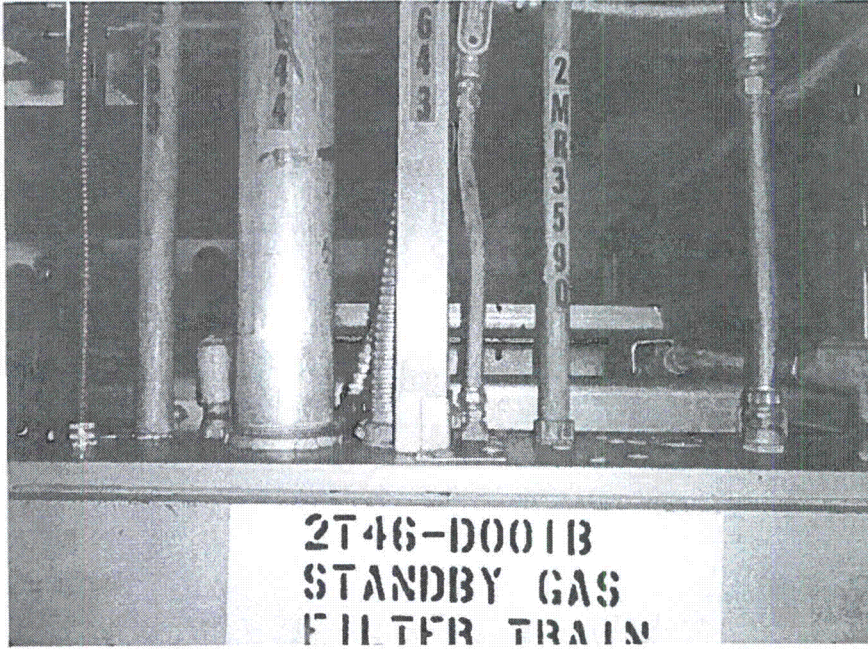
Equipment ID No. 2T46-D001B Equip. Class<sup>1</sup> 10

Equipment Description SBGT FILTER TRAIN

**Photographs**







Cut cable shown coming from the panel.

**Seismic Walkdown Checklist (SWC)**Equipment ID No. 2P33-B001B Equip. Class<sup>1</sup> 11Equipment Description H2/O2 Analyzer Sample ChillerLocation: Bldg. REACTOR Floor El. 158 Room, Area Near Equipment Hatch

Manufacturer, Model, Etc. (optional but recommended) \_\_\_\_\_

**Instructions for Completing Checklist**

This checklist may be used to document the results of the Seismic Walkdown of an item of equipment on the SWEL. The space below each of the following questions may be used to record the results of judgments and findings. Additional space is provided at the end of this checklist for documenting other comments.

**Anchorage**

1. Is the anchorage configuration verification required (i.e., is the item one of the 50% of SWEL items requiring such verification)? Y  N   
*Anchorage is located inside the cabinet and cannot be reviewed without opening the cabinet.*
2. Is the anchorage free of bent, broken, missing or loose hardware? Y  N  U  N/A
3. Is the anchorage free of corrosion that is more than mild surface oxidation? Y  N  U  N/A
4. Is the anchorage free of visible cracks in the concrete near the anchors? Y  N  U  N/A
5. Is the anchorage configuration consistent with plant documentation? Y  N  U  N/A   
(Note: This question only applies if the item is one of the 50% for which an anchorage configuration verification is required.)
6. Based on the above anchorage evaluations, is the anchorage free of potentially adverse seismic conditions? Y  N  U

<sup>1</sup> Enter the equipment class name from Appendix B: Classes of Equipment.

**Seismic Walkdown Checklist (SWC)**

Equipment ID No. 2P33-B001B Equip. Class<sup>1</sup> 11

Equipment Description H2/02 Analyzer Sample Chiller

**Interaction Effects**

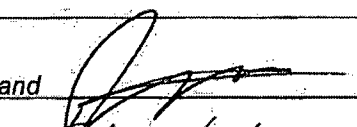
- 7. Are soft targets free from impact by nearby equipment or structures? Y  N  U  N/A   
*Panel 2D11-P010 sits next to H2/02 Analyzer Sample Chiller-2P33-B001B. There is between a 1/16" and a 1/8" gap between the two components, and the components are not tied together. During a seismic event, it is likely that the two will impact one another. However, per conversations with a recent former systems engineer for this system, there are no essential relays or similar sensitive equipment inside either cabinet, so the impact does not have the potential to create a condition that is adverse to plant safety. The impact between the cabinets will not have enough force to damage the rugged cabinets, so it is judged that there is no potentially adverse seismic condition.*
- 8. Are overhead equipment, distribution systems, ceiling tiles and lighting, and masonry block walls not likely to collapse onto the equipment? Y  N  U  N/A
- 9. Do attached lines have adequate flexibility to avoid damage? Y  N  U  N/A
- 10. Based on the above seismic interaction evaluations, is equipment free of potentially adverse seismic interaction effects? Y  N  U

**Other Adverse Conditions**

- 11. Have you looked for and found no other seismic conditions that could adversely affect the safety functions of the equipment? Y  N  U

**Comments** (Additional pages may be added as necessary)

*None*

Evaluated by: John McFarland  Date: 09/11/2012

Jeff Horton  09/11/2012

**Seismic Walkdown Checklist (SWC)**

Equipment ID No. 2P33-B001B Equip. Class<sup>1</sup> 11

Equipment Description H2/O2 Analyzer Sample Chiller

**Photographs**

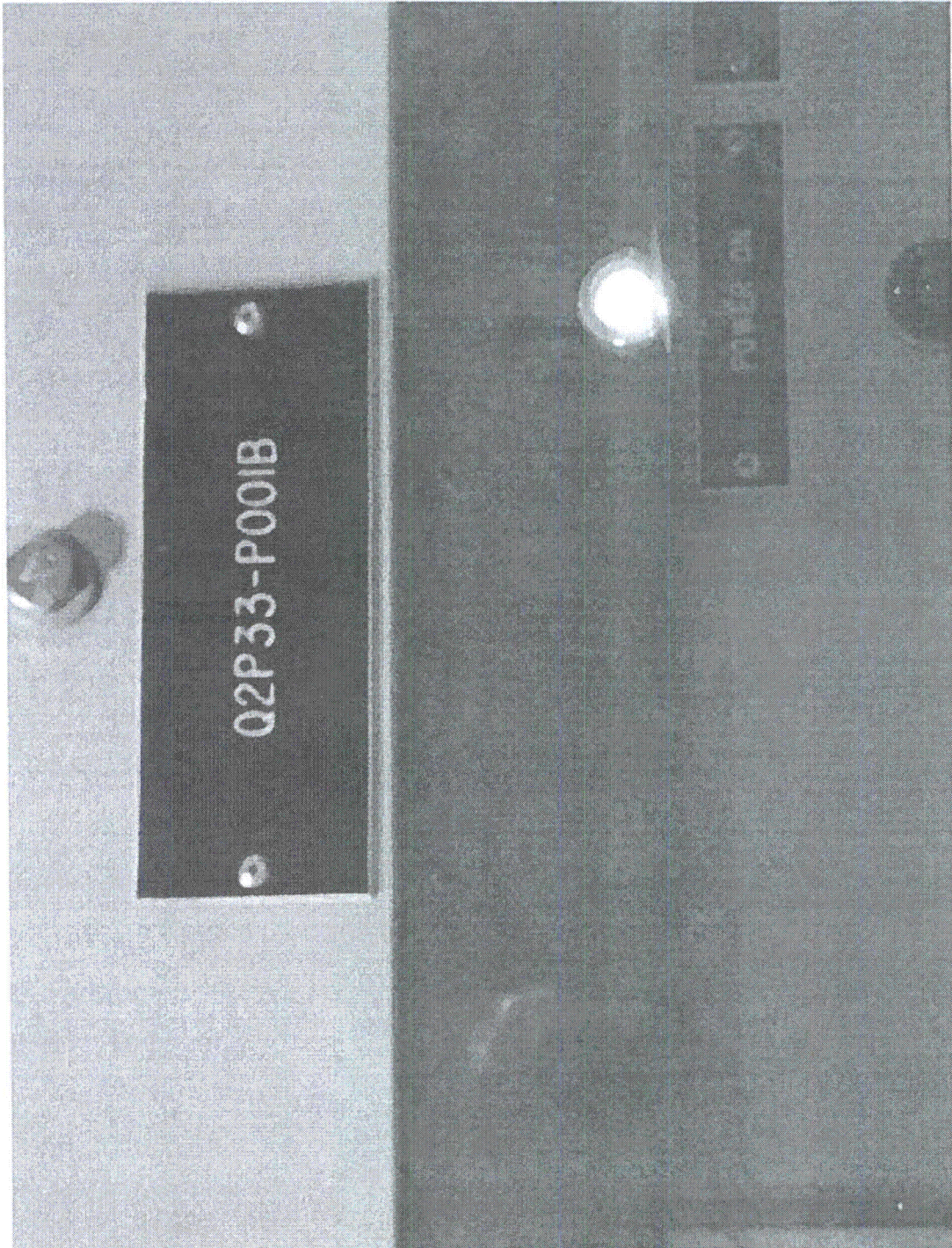


Figure 1 – Equipment ID No (2P33-B001B)

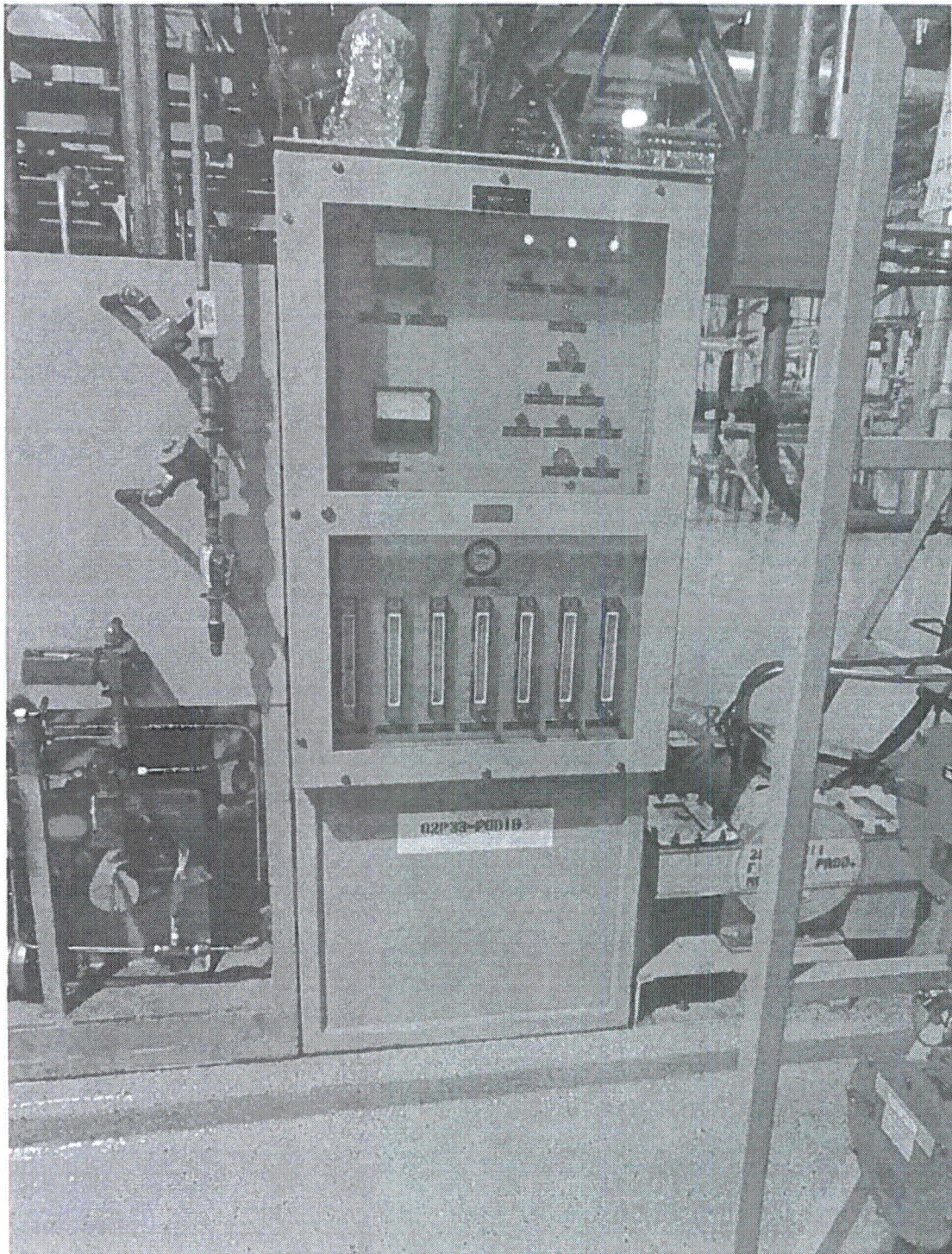


Figure 2 – Equipment Elevation (2P33-B001B)

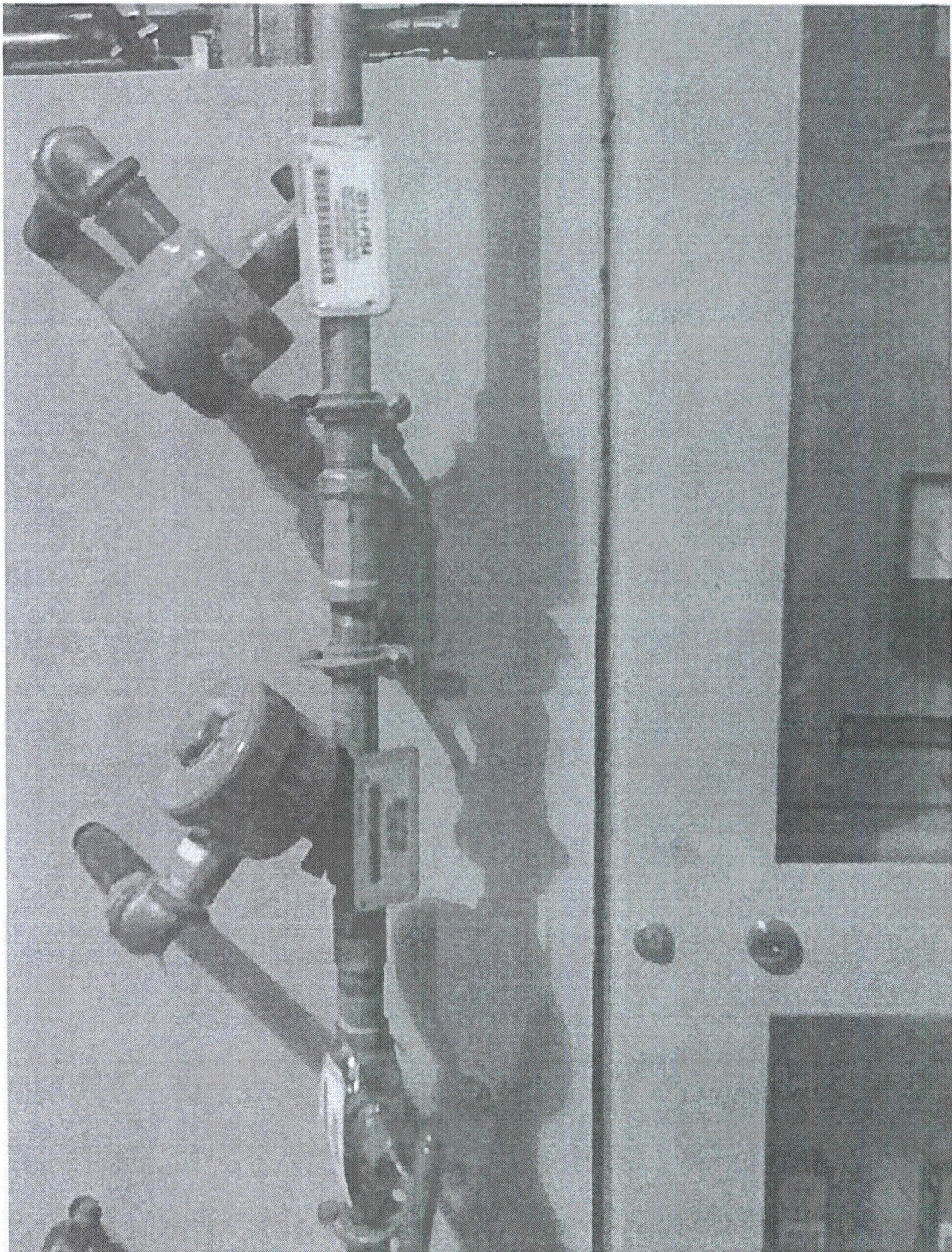


Figure 3 – Small Gap between Panels (2P33-B001B)



**Seismic Walkdown Checklist (SWC)**Equipment ID No. 2R43-C006A Equip. Class<sup>1</sup> 12Equipment Description DG 2A AIR COMPRESSORLocation: Bldg. DIESEL Floor El. 130 Room, Area 2A

Manufacturer, Model, Etc. (optional but recommended) \_\_\_\_\_

**Instructions for Completing Checklist**

This checklist may be used to document the results of the Seismic Walkdown of an item of equipment on the SWEL. The space below each of the following questions may be used to record the results of judgments and findings. Additional space is provided at the end of this checklist for documenting other comments.

**Anchorage**

1. Is the anchorage configuration verification required (i.e., is the item one of the 50% of SWEL items requiring such verification)? Y  N
2. Is the anchorage free of bent, broken, missing or loose hardware? Y  N  U  N/A
3. Is the anchorage free of corrosion that is more than mild surface oxidation? Y  N  U  N/A
4. Is the anchorage free of visible cracks in the concrete near the anchors? Y  N  U  N/A
5. Is the anchorage configuration consistent with plant documentation?  
(Note: This question only applies if the item is one of the 50% for which an anchorage configuration verification is required.) Y  N  U  N/A
6. Based on the above anchorage evaluations, is the anchorage free of potentially adverse seismic conditions? Y  N  U

<sup>1</sup>Enter the equipment class name from Appendix B: Classes of Equipment.

**Seismic Walkdown Checklist (SWC)**

Equipment ID No. 2R43-C006A Equip. Class<sup>1</sup> 12

Equipment Description DG 2A AIR COMPRESSOR

**Interaction Effects**

7. Are soft targets free from impact by nearby equipment or structures? Y N U N/A

8. Are overhead equipment, distribution systems, ceiling tiles and lighting, and masonry block walls not likely to collapse onto the equipment? Y N U N/A  
*Fluorescent light bulbs may fall on top of the equipment. However, the damage was judged to be non-significant since the bulb is very light and the equipment is relatively rugged.*

9. Do attached lines have adequate flexibility to avoid damage? Y N U N/A

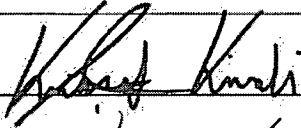
10. Based on the above seismic interaction evaluations, is equipment free of potentially adverse seismic interaction effects? Y N U

**Other Adverse Conditions**

11. Have you looked for and found no other seismic conditions that could adversely affect the safety functions of the equipment? Y N U

**Comments** (Additional pages may be added as necessary)

*Area walk by is included with the package of generator 2A, 2R43-S001A.*

Evaluated by: Kursat Kinali  Date: 9/7/2012

Wesley Williams  9/7/2012

**Seismic Walkdown Checklist (SWC)**

Equipment ID No. 2R43-C006A Equip. Class<sup>1</sup> 12

Equipment Description DG 2A AIR COMPRESSOR

**Photographs**

