

Status: Y N U

Seismic Walkdown Checklist (SWC)

Equipment ID No.: 1FC133

Equipment Class: (0) Other

Equipment Description: FUEL POOL RHR SUCT SUPPLY HEADER DRAIN VALVE

Project: LaSalle 1 SWEL

Location (Bldg, Elev, Room/Area): RB, 673.00 ft, ALL

Manufacturer/Model: _____

Instructions for Completing Checklist

This checklist may be used to document the results of the Seismic Walkdown of an item of equipment on the SWEL. The space below each of the following questions may be used to record the results of judgments and findings. Additional space is provided at the end of this checklist for documenting other comments.

Anchorage

1. Is anchorage configuration verification required (i.e., is the item one of the 50% of SWEL items requiring such verification)? No

2. Is the anchorage free of bent, broken, missing or loose hardware? Not Applicable

3. Is the anchorage free of corrosion that is more than mild surface oxidation? Not Applicable

4. Is the anchorage free of visible cracks in the concrete near the anchors? Not Applicable

5. Is the anchorage configuration consistent with plant documentation? (Note: This question only applies if the item is one of the 50% for which an anchorage configuration verification is required.) Not Applicable

6. Based on the above anchorage evaluations, is the anchorage free of potentially adverse seismic conditions? Yes

Status: Y N U

Seismic Walkdown Checklist (SWC)

Equipment ID No.: 1FC133

Equipment Class: (0) Other

Equipment Description: FUEL POOL RHR SUCT SUPPLY HEADER DRAIN VALVE

Interaction Effects

7. Are soft targets free from impact by nearby equipment or structures? Yes
8. Are overhead equipment, distribution systems, ceiling tiles and lighting, and masonry block walls not likely to collapse onto the equipment? Yes
Overhead light fixtures judged to be acceptable.
9. Do attached lines have adequate flexibility to avoid damage? Yes
10. Based on the above seismic interaction evaluations, is equipment free of potentially adverse seismic interaction effects? Yes

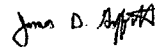
Other Adverse Conditions

11. Have you looked for and found no adverse seismic conditions that could adversely affect the safety functions of the equipment? Yes


Comments

Seismic Walkdown Team: J. Griffith & M. Wodarczyk - 9/14/2012

Evaluated by:

 James Griffith

Date: 10/25/2012

 Michael Wodarczyk

10/25/2012

Status: Y N U

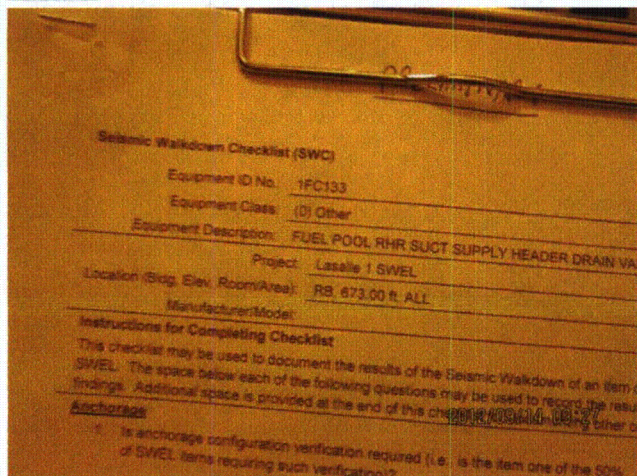
Seismic Walkdown Checklist (SWC)

Equipment ID No.: 1FC133

Equipment Class: (0) Other

Equipment Description: FUEL POOL RHR SUCT SUPPLY HEADER DRAIN VALVE

Photos



20120914-Lasalle 013



20120914-Lasalle 014



20120914-Lasalle 015



20120914-Lasalle 016

Status: Y N U

Seismic Walkdown Checklist (SWC)

Equipment ID No.: 1FC133

Equipment Class: (0) Other

Equipment Description: FUEL POOL RHR SUCT SUPPLY HEADER DRAIN VALVE



20120914-Lasalle 017



20120914-Lasalle 018



20120914-Lasalle 019

Status: Y N U

Seismic Walkdown Checklist (SWC)

Equipment ID No.: 1FC140

Equipment Class: (0) Other

Equipment Description: FUEL POOL RHR SUCT SUPPLY VALVE

Project: LaSalle 1 SWEL 2

Location (Bldg, Elev, Room/Area): RB, 807.00 ft, ALL

Manufacturer/Model:

Instructions for Completing Checklist

This checklist may be used to document the results of the Seismic Walkdown of an item of equipment on the SWEL. The space below each of the following questions may be used to record the results of judgments and findings. Additional space is provided at the end of this checklist for documenting other comments.

Anchorage

1. Is anchorage configuration verification required (i.e., is the item one of the 50% of SWEL items requiring such verification)? No

2. Is the anchorage free of bent, broken, missing or loose hardware? Not Applicable

3. Is the anchorage free of corrosion that is more than mild surface oxidation? Not Applicable

4. Is the anchorage free of visible cracks in the concrete near the anchors? Not Applicable

5. Is the anchorage configuration consistent with plant documentation? (Note: This question only applies if the item is one of the 50% for which an anchorage configuration verification is required.) Not Applicable

6. Based on the above anchorage evaluations, is the anchorage free of potentially adverse seismic conditions? Yes

Status: Y N U

Seismic Walkdown Checklist (SWC)

Equipment ID No.: 1FC140

Equipment Class: (0) Other

Equipment Description: FUEL POOL RHR SUCT SUPPLY VALVE

Interaction Effects

7. Are soft targets free from impact by nearby equipment or structures? Yes
8. Are overhead equipment, distribution systems, ceiling tiles and lighting, and masonry block walls not likely to collapse onto the equipment? Yes
Overhead light fixtures judged to be acceptable.
9. Do attached lines have adequate flexibility to avoid damage? Yes
10. Based on the above seismic interaction evaluations, is equipment free of potentially adverse seismic interaction effects? Yes

Other Adverse Conditions

11. Have you looked for and found no adverse seismic conditions that could adversely affect the safety functions of the equipment? Yes

Comments

Seismic Walkdown Team: J. Griffith & M. Wodarczyk - 9/14/2012

Evaluated by:  James Griffith Date: 10/17/2012

 Michael Wodarczyk 10/17/2012

Status: Y N U

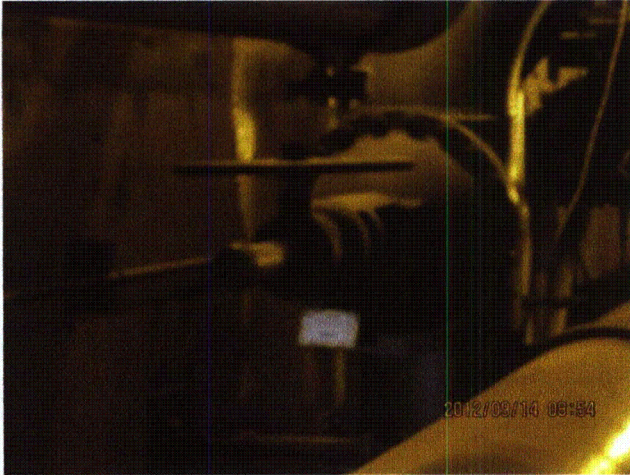
Seismic Walkdown Checklist (SWC)

Equipment ID No.: 1FC140

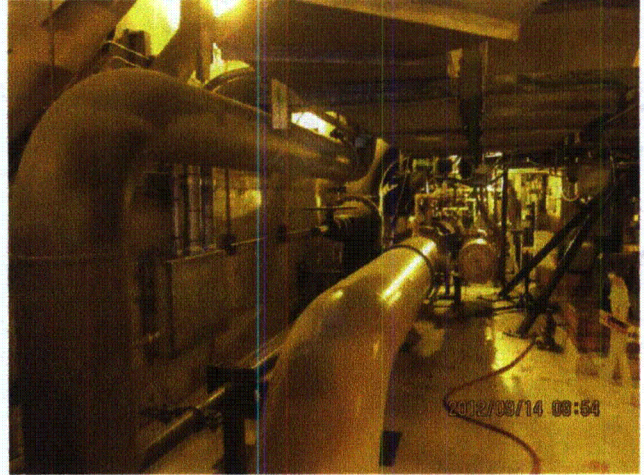
Equipment Class: (0) Other

Equipment Description: FUEL POOL RHR SUCT SUPPLY VALVE

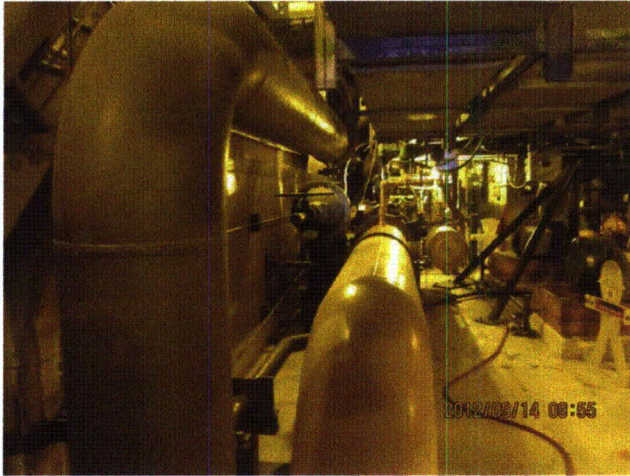
Photos



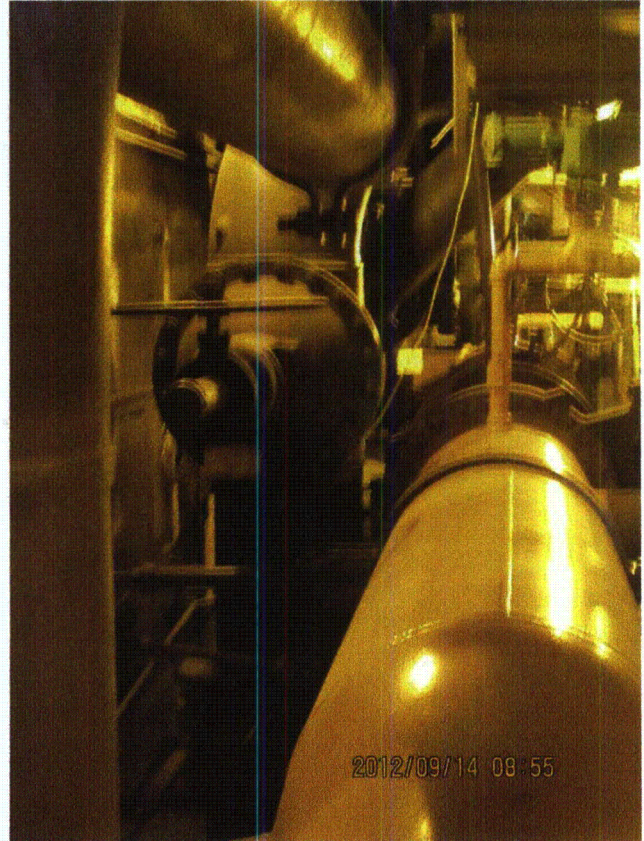
20120914-Lasalle 001



20120914-Lasalle 002



20120914-Lasalle 003



20120914-Lasalle 004

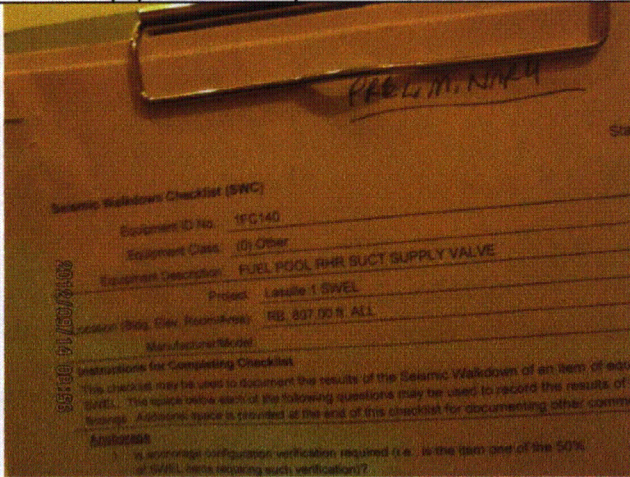
Status: Y N U

Seismic Walkdown Checklist (SWC)

Equipment ID No.: 1FC140

Equipment Class: (0) Other

Equipment Description: FUEL POOL RHR SUCT SUPPLY VALVE



20120914-Lasalle 005

Status: Y N U

Seismic Walkdown Checklist (SWC)

Equipment ID No.: 1H13-P601

Equipment Class: (20) Instrumentation and Control Panels and Cabinets

Equipment Description: ASSY - PANEL, EMERG CORE COOL SYST

Project: LaSalle 1 SWEL

Location (Bldg, Elev, Room/Area): MCR, 768.00 ft, ALL

Manufacturer/Model:

Instructions for Completing Checklist

This checklist may be used to document the results of the Seismic Walkdown of an item of equipment on the SWEL. The space below each of the following questions may be used to record the results of judgments and findings. Additional space is provided at the end of this checklist for documenting other comments.

Anchorage

1. Is anchorage configuration verification required (i.e., is the item one of the 50% of SWEL items requiring such verification)? No

2. Is the anchorage free of bent, broken, missing or loose hardware? Yes

3. Is the anchorage free of corrosion that is more than mild surface oxidation? Yes

4. Is the anchorage free of visible cracks in the concrete near the anchors? Yes

5. Is the anchorage configuration consistent with plant documentation? (Note: This question only applies if the item is one of the 50% for which an anchorage configuration verification is required.) Not Applicable

6. Based on the above anchorage evaluations, is the anchorage free of potentially adverse seismic conditions? Yes
Existing foam and sealant in bottom of panel prohibit observation of welds between base channel and embedded floor steel. Bolts between panel base and base channel were observed to be acceptable.

Because the control panel anchorage is shown on safety-related drawings 1E-1-3465, Rev. X and 1E-1-3466, Rev. F, and the control room maintains a

Status: Y N U

Seismic Walkdown Checklist (SWC)

Equipment ID No.: 1H13-P601

Equipment Class: (20) Instrumentation and Control Panels and Cabinets

Equipment Description: ASSY - PANEL, EMERG CORE COOL SYST

constant climate not subject to excessive moisture, there is no reason to suspect that any of the anchorage welds are missing, damaged, or corroded. Therefore, the anchorage welds can be considered adequate.

Interaction Effects

7. Are soft targets free from impact by nearby equipment or structures? Yes
8. Are overhead equipment, distribution systems, ceiling tiles and lighting, and masonry block walls not likely to collapse onto the equipment? Yes
The control room ceiling diffuser configuration is shown on drawings 1E-0-3754A, Rev. A and 1E-0-3712, Rev. AA. The ceiling diffusers (egg-crates) are not individually fastened to the tee track supporting structure. However, as shown in LaSalle Calculation Nos. 777 and 8126-02EO, the ceiling support system is laterally restrained at the control room walls and at the control panel valences, the ceiling support system horizontal displacement is less than 3/8" during a seismic event, and the ceiling support system for the diffusers remains structurally adequate during a seismic event. Therefore, the diffusers' falling through the ceiling support system during a seismic event is judged to be not credible.
- Overhead light fixtures judged to be acceptable.*
9. Do attached lines have adequate flexibility to avoid damage? Yes
10. Based on the above seismic interaction evaluations, is equipment free of potentially adverse seismic interaction effects? Yes

Other Adverse Conditions

11. Have you looked for and found no adverse seismic conditions that could adversely affect the safety functions of the equipment? Yes
Backs of control panels were open during walkdown. No adverse seismic conditions were observed.

Comments

Seismic Walkdown Team: J. Griffith & M. Wodarcyk - 9/14/2012

Status: Y N U

Seismic Walkdown Checklist (SWC)

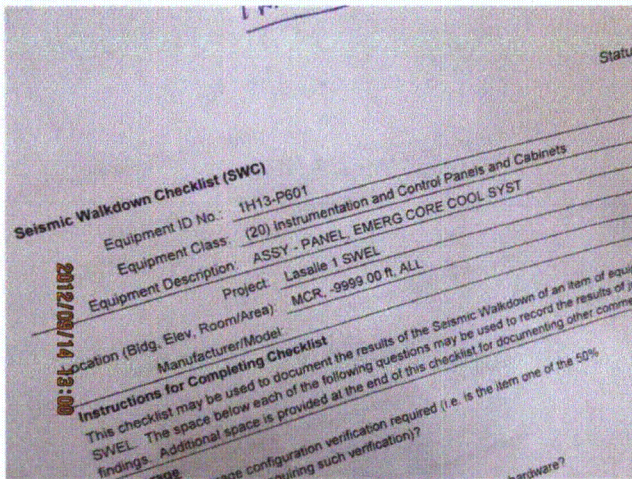
Equipment ID No.: 1H13-P601

Equipment Class: (20) Instrumentation and Control Panels and Cabinets

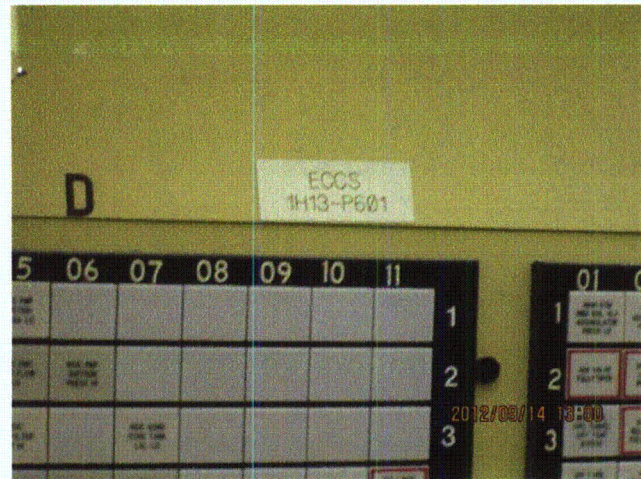
Equipment Description: ASSY - PANEL, EMERG CORE COOL SYST

Evaluated by: *James D. Griffith* James Griffith Date: 10/17/2012
Michael J. Wodarcyk Michael Wodarcyk 10/17/2012

Photos



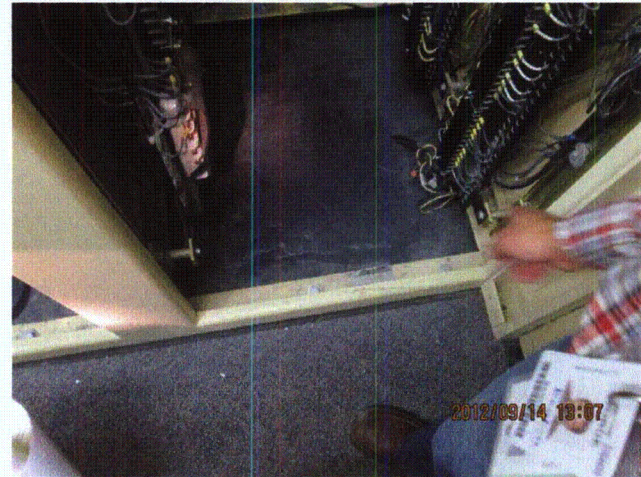
20120914-Lasalle 060



20120914-Lasalle 062



20120914-Lasalle 076



20120914-Lasalle 077

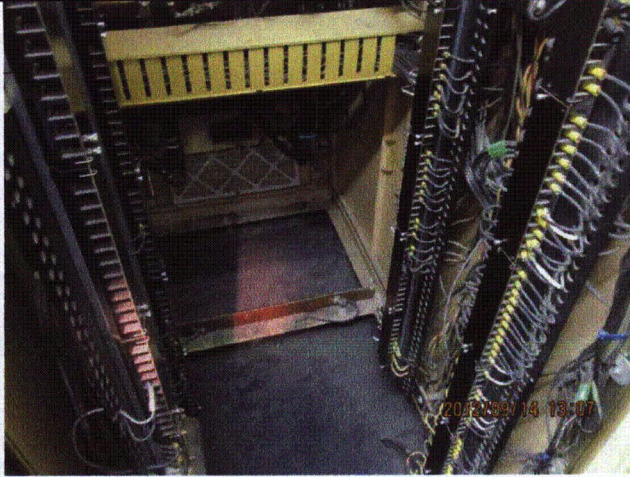
Status: Y N U

Seismic Walkdown Checklist (SWC)

Equipment ID No.: 1H13-P601

Equipment Class: (20) Instrumentation and Control Panels and Cabinets

Equipment Description: ASSY - PANEL, EMERG CORE COOL SYST



20120914-Lasalle 078

Status: Y N U

Seismic Walkdown Checklist (SWC)

Equipment ID No.: 1H13-P602

Equipment Class: (20) Instrumentation and Control Panels and Cabinets

Equipment Description: ASSY - PANEL, RWCU/RX RECIRC CONTROL

Project: LaSalle 1 SWEL

Location (Bldg, Elev, Room/Area): MCR, 768.00 ft, ALL

Manufacturer/Model:

Instructions for Completing Checklist

This checklist may be used to document the results of the Seismic Walkdown of an item of equipment on the SWEL. The space below each of the following questions may be used to record the results of judgments and findings. Additional space is provided at the end of this checklist for documenting other comments.

Anchorage

1. Is anchorage configuration verification required (i.e., is the item one of the 50% of SWEL items requiring such verification)? No

2. Is the anchorage free of bent, broken, missing or loose hardware? Yes

3. Is the anchorage free of corrosion that is more than mild surface oxidation? Yes

4. Is the anchorage free of visible cracks in the concrete near the anchors? Yes

5. Is the anchorage configuration consistent with plant documentation? (Note: This question only applies if the item is one of the 50% for which an anchorage configuration verification is required.) Not Applicable

6. Based on the above anchorage evaluations, is the anchorage free of potentially adverse seismic conditions? Yes
Existing foam and sealant in bottom of panel prohibit observation of welds between base channel and embedded floor steel. Bolts between panel base and base channel were observed to be acceptable.

Because the control panel anchorage is shown on safety-related drawings 1E-1-3465, Rev. X and 1E-1-3466, Rev. F, and the control room maintains a

Status: Y N U

Seismic Walkdown Checklist (SWC)

Equipment ID No.: 1H13-P602

Equipment Class: (20) Instrumentation and Control Panels and Cabinets

Equipment Description: ASSY - PANEL, RWCU/RX RECIRC CONTROL

constant climate not subject to excessive moisture, there is no reason to suspect that any of the anchorage welds are missing, damaged, or corroded. Therefore, the anchorage welds can be considered adequate.

Interaction Effects

7. Are soft targets free from impact by nearby equipment or structures? Yes
8. Are overhead equipment, distribution systems, ceiling tiles and lighting, and masonry block walls not likely to collapse onto the equipment? Yes
The control room ceiling diffuser configuration is shown on drawings 1E-0-3754A, Rev. A and 1E-0-3712, Rev. AA. The ceiling diffusers (egg-crates) are not individually fastened to the tee track supporting structure. However, as shown in LaSalle Calculation Nos. 777 and 8126-02EO, the ceiling support system is laterally restrained at the control room walls and at the control panel valences, the ceiling support system horizontal displacement is less than 3/8" during a seismic event, and the ceiling support system for the diffusers remains structurally adequate during a seismic event. Therefore, the diffusers' falling through the ceiling support system during a seismic event is judged to be not credible.
- Overhead light fixtures judged to be acceptable.*
9. Do attached lines have adequate flexibility to avoid damage? Yes
10. Based on the above seismic interaction evaluations, is equipment free of potentially adverse seismic interaction effects? Yes

Other Adverse Conditions

11. Have you looked for and found no adverse seismic conditions that could adversely affect the safety functions of the equipment? Yes
Backs of control panels were open during walkdown. No adverse seismic conditions were observed.

Comments

Seismic Walkdown Team: J. Griffith & M. Wodarczyk - 9/14/2012

Status: Y N U

Seismic Walkdown Checklist (SWC)

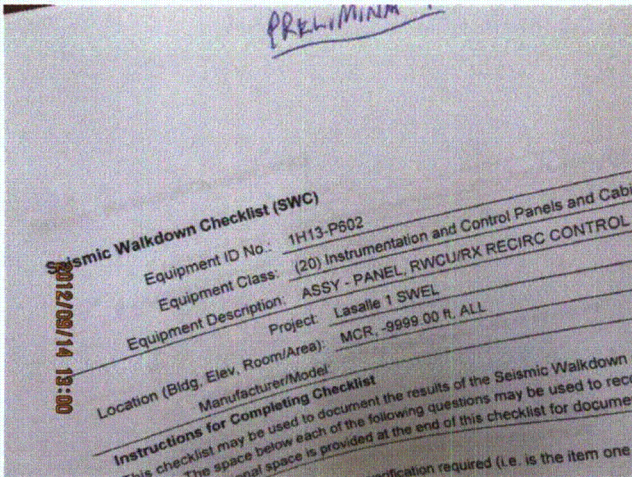
Equipment ID No.: 1H13-P602

Equipment Class: (20) Instrumentation and Control Panels and Cabinets

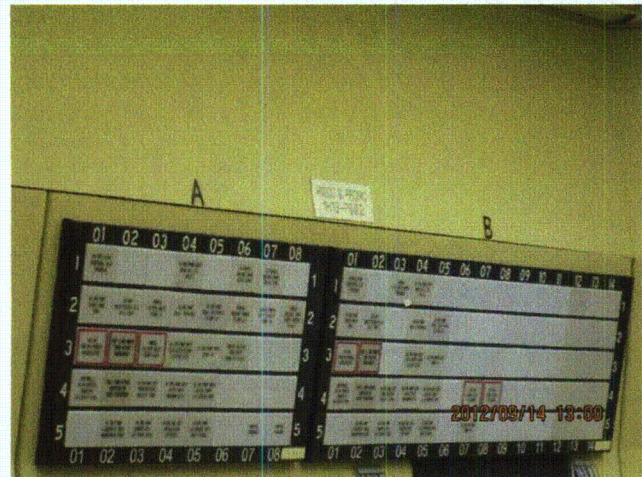
Equipment Description: ASSY - PANEL, RWCU/RX RECIRC CONTROL

Evaluated by: *James D Griffith* James Griffith Date: 10/17/2012
Michael J. Wodarczyk Michael Wodarczyk 10/17/2012

Photos



20120914-Lasalle 061



20120914-Lasalle 063

Status: Y N U

Seismic Walkdown Checklist (SWC)

Equipment ID No.: 1H13-P602

Equipment Class: (20) Instrumentation and Control Panels and Cabinets

Equipment Description: ASSY - PANEL, RWCU/RX RECIRC CONTROL



20120914-Lasalle 064

Status: Y N U

Seismic Walkdown Checklist (SWC)

Equipment ID No.: 1HG001A

Equipment Class: (8) Motor-Operated and Solenoid-Operated Valves

Equipment Description: H2 RECOMB 1HG01A U-1 DW SUCT. VLV

Project: LaSalle 1 SWEL

Location (Bldg, Elev, Room/Area): RB, 786.00 ft, ALL

Manufacturer/Model:

Instructions for Completing Checklist

This checklist may be used to document the results of the Seismic Walkdown of an item of equipment on the SWEL. The space below each of the following questions may be used to record the results of judgments and findings. Additional space is provided at the end of this checklist for documenting other comments.

Anchorage

1. Is anchorage configuration verification required (i.e., is the item one of the 50% of SWEL items requiring such verification)? No

2. Is the anchorage free of bent, broken, missing or loose hardware? Not Applicable

3. Is the anchorage free of corrosion that is more than mild surface oxidation? Not Applicable

4. Is the anchorage free of visible cracks in the concrete near the anchors? Not Applicable

5. Is the anchorage configuration consistent with plant documentation? (Note: This question only applies if the item is one of the 50% for which an anchorage configuration verification is required.) Not Applicable

6. Based on the above anchorage evaluations, is the anchorage free of potentially adverse seismic conditions? Yes

Status: Y N U

Seismic Walkdown Checklist (SWC)

Equipment ID No.: 1HG001A

Equipment Class: (8) Motor-Operated and Solenoid-Operated Valves

Equipment Description: H2 RECOMB 1HG01A U-1 DW SUCT. VLV

Interaction Effects

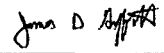
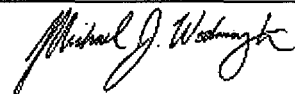
7. Are soft targets free from impact by nearby equipment or structures? Yes
8. Are overhead equipment, distribution systems, ceiling tiles and lighting, and masonry block walls not likely to collapse onto the equipment? Yes
Overhead light fixtures judged to be acceptable.
9. Do attached lines have adequate flexibility to avoid damage? Yes
10. Based on the above seismic interaction evaluations, is equipment free of potentially adverse seismic interaction effects? Yes

Other Adverse Conditions

11. Have you looked for and found no adverse seismic conditions that could adversely affect the safety functions of the equipment? Yes

Comments

Seismic Walkdown Team: J. Griffith & M. Wodarczyk - 9/10/2012

Evaluated by:  James Griffith Date: 10/17/2012
 Michael Wodarczyk 10/17/2012

Status: Y N U

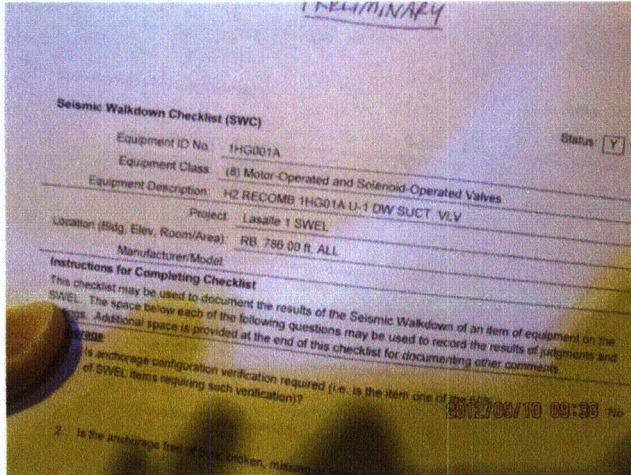
Seismic Walkdown Checklist (SWC)

Equipment ID No.: 1HG001A

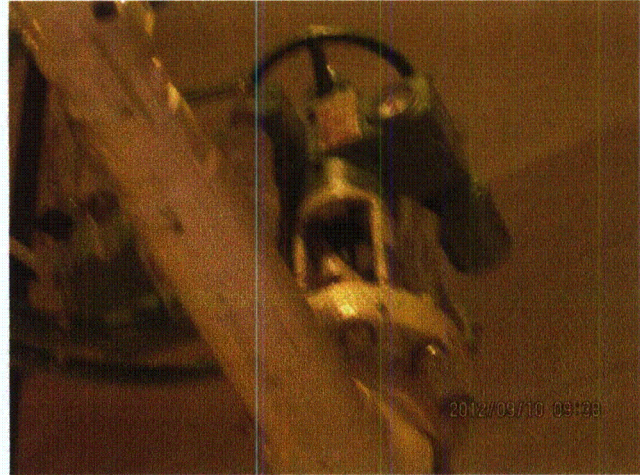
Equipment Class: (8) Motor-Operated and Solenoid-Operated Valves

Equipment Description: H2 RECOMB 1HG01A U-1 DW SUCT. VLV

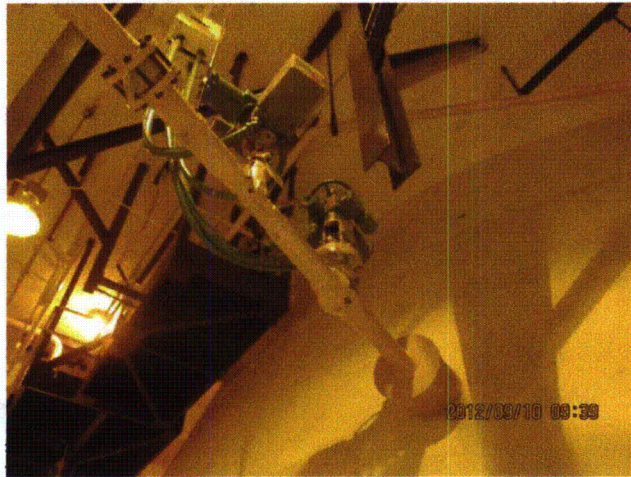
Photos



20120910-Lasalle 060



20120910-Lasalle 061



20120910-Lasalle 062



20120910-Lasalle 063

Status: Y N U

Seismic Walkdown Checklist (SWC)

Equipment ID No.: 1HG001A

Equipment Class: (8) Motor-Operated and Solenoid-Operated Valves

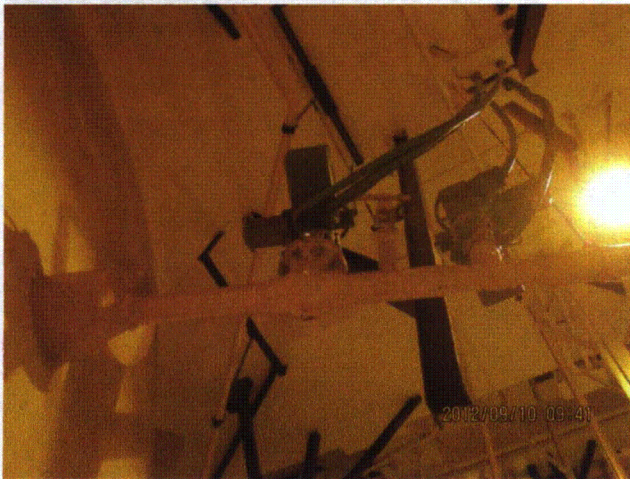
Equipment Description: H2 RECOMB 1HG01A U-1 DW SUCT. VLV



20120910-Lasalle 064



20120910-Lasalle 065



20120910-Lasalle 066

Status: Y N U

Seismic Walkdown Checklist (SWC)

Equipment ID No.: 1HG005A

Equipment Class: (8) Motor-Operated and Solenoid-Operated Valves

Equipment Description: H2 RECOMB 1HG01A U-1 SUP POOL DIS VLV

Project: LaSalle 1 SWEL

Location (Bldg, Elev, Room/Area): RB, 710.00 ft, ALL

Manufacturer/Model:

Instructions for Completing Checklist

This checklist may be used to document the results of the Seismic Walkdown of an item of equipment on the SWEL. The space below each of the following questions may be used to record the results of judgments and findings. Additional space is provided at the end of this checklist for documenting other comments.

Anchorage

1. Is anchorage configuration verification required (i.e., is the item one of the 50% of SWEL items requiring such verification)? No

2. Is the anchorage free of bent, broken, missing or loose hardware? Not Applicable

3. Is the anchorage free of corrosion that is more than mild surface oxidation? Not Applicable

4. Is the anchorage free of visible cracks in the concrete near the anchors? Not Applicable

5. Is the anchorage configuration consistent with plant documentation? (Note: This question only applies if the item is one of the 50% for which an anchorage configuration verification is required.) Not Applicable

6. Based on the above anchorage evaluations, is the anchorage free of potentially adverse seismic conditions? Yes

Status: Y N U

Seismic Walkdown Checklist (SWC)

Equipment ID No.: 1HG005A

Equipment Class: (8) Motor-Operated and Solenoid-Operated Valves

Equipment Description: H2 RECOMB 1HG01A U-1 SUP POOL DIS VLV

Interaction Effects

7. Are soft targets free from impact by nearby equipment or structures? Yes

Flexible conduits in contact with valve motor judged to be acceptable.

8. Are overhead equipment, distribution systems, ceiling tiles and lighting, and masonry block walls not likely to collapse onto the equipment? Yes

9. Do attached lines have adequate flexibility to avoid damage? Yes

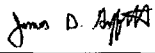

10. Based on the above seismic interaction evaluations, is equipment free of potentially adverse seismic interaction effects? Yes

Other Adverse Conditions

11. Have you looked for and found no adverse seismic conditions that could adversely affect the safety functions of the equipment? Yes

Comments

Seismic Walkdown Team: J. Griffith & M. Wodarczyk - 9/10/2012

Evaluated by:  James Griffith Date: 10/17/2012
 Michael Wodarczyk 10/17/2012

Photos

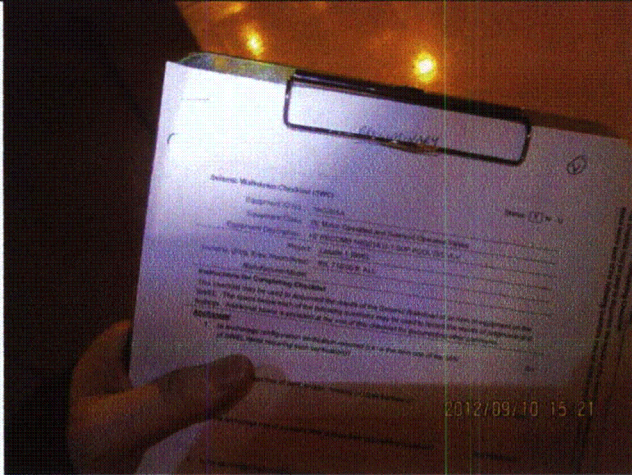
Status: Y N U

Seismic Walkdown Checklist (SWC)

Equipment ID No.: 1HG005A

Equipment Class: (8) Motor-Operated and Solenoid-Operated Valves

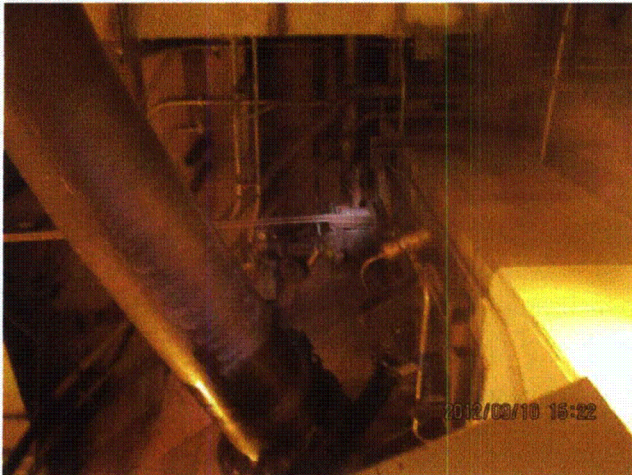
Equipment Description: H2 RECOMB 1HG01A U-1 SUP POOL DIS VLV



20120910-Lasalle 310



20120910-Lasalle 311



20120910-Lasalle 312



20120910-Lasalle 313

Status: Y N U

Seismic Walkdown Checklist (SWC)

Equipment ID No.: 1HG005A

Equipment Class: (8) Motor-Operated and Solenoid-Operated Valves

Equipment Description: H2 RECOMB 1HG01A U-1 SUP POOL DIS VLV



20120910-Lasalle 314

Status: Y N U

Seismic Walkdown Checklist (SWC)

Equipment ID No.: 1HG01A

Equipment Class: (9) Fans

Equipment Description: ASSY - BLOWER, H2 RECOMBINER

Project: LaSalle 1 SWEL

Location (Bldg, Elev, Room/Area): RB, 786.00 ft, ALL

Manufacturer/Model:

Instructions for Completing Checklist

This checklist may be used to document the results of the Seismic Walkdown of an item of equipment on the SWEL. The space below each of the following questions may be used to record the results of judgments and findings. Additional space is provided at the end of this checklist for documenting other comments.

Anchorage

1. Is anchorage configuration verification required (i.e., is the item one of the 50% of SWEL items requiring such verification)? No

2. Is the anchorage free of bent, broken, missing or loose hardware? Yes

3. Is the anchorage free of corrosion that is more than mild surface oxidation? Yes

4. Is the anchorage free of visible cracks in the concrete near the anchors? Yes
Minor shrinkage cracking in grout pad judged to be acceptable.

5. Is the anchorage configuration consistent with plant documentation? (Note: This question only applies if the item is one of the 50% for which an anchorage configuration verification is required.) Not Applicable

6. Based on the above anchorage evaluations, is the anchorage free of potentially adverse seismic conditions? Yes

Status: Y N U

Seismic Walkdown Checklist (SWC)

Equipment ID No.: 1HG01A

Equipment Class: (9) Fans

Equipment Description: ASSY - BLOWER, H2 RECOMBINER

Interaction Effects

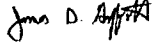
7. Are soft targets free from impact by nearby equipment or structures? Yes
8. Are overhead equipment, distribution systems, ceiling tiles and lighting, and masonry block walls not likely to collapse onto the equipment? Yes
Overhead light fixtures judged to be acceptable.
9. Do attached lines have adequate flexibility to avoid damage? Yes
10. Based on the above seismic interaction evaluations, is equipment free of potentially adverse seismic interaction effects? Yes


Other Adverse Conditions

11. Have you looked for and found no adverse seismic conditions that could adversely affect the safety functions of the equipment? Yes
Scaffold leg in contact with robust valve body for valve 1HG025. Scaffold restrained nearby. Judged to be acceptable.
- Small pipe is in contact with pipe support pipe collar. Small pipe has flexibility (elbow in span). No obvious damage to pipe. Judged to be acceptable.*

Comments

Seismic Walkdown Team: J. Griffith & M. Wodarczyk - 9/10/2012

Evaluated by:  James Griffith Date: 10/17/2012

 Michael Wodarczyk 10/17/2012

Status: Y N U

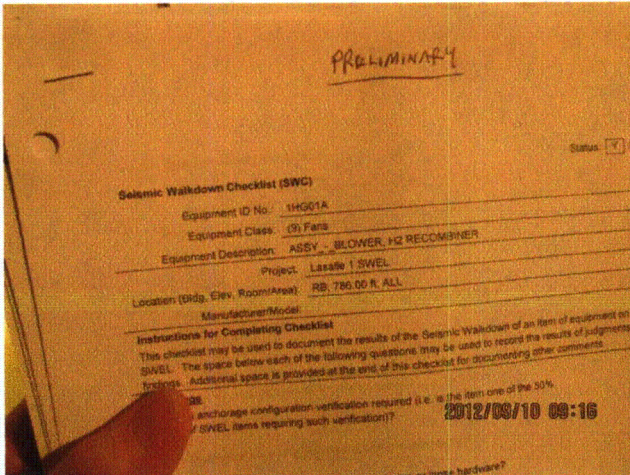
Seismic Walkdown Checklist (SWC)

Equipment ID No.: 1HG01A

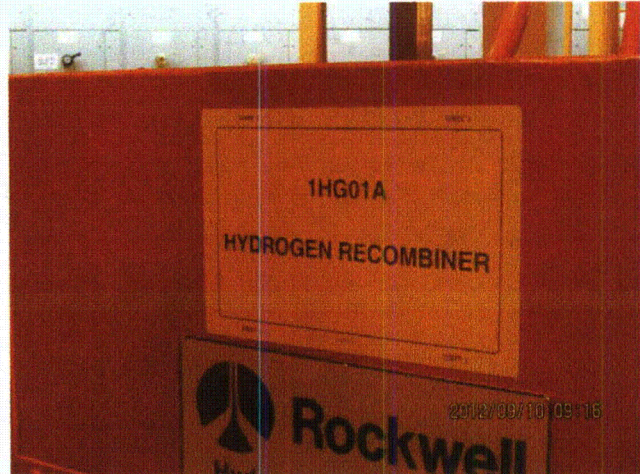
Equipment Class: (9) Fans

Equipment Description: ASSY - BLOWER, H2 RECOMBINER

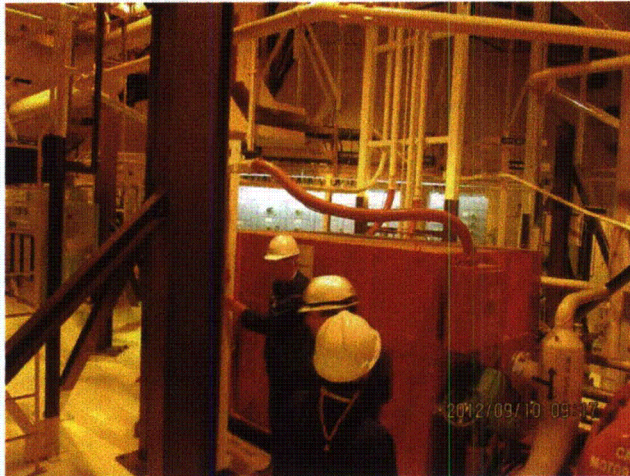
Photos



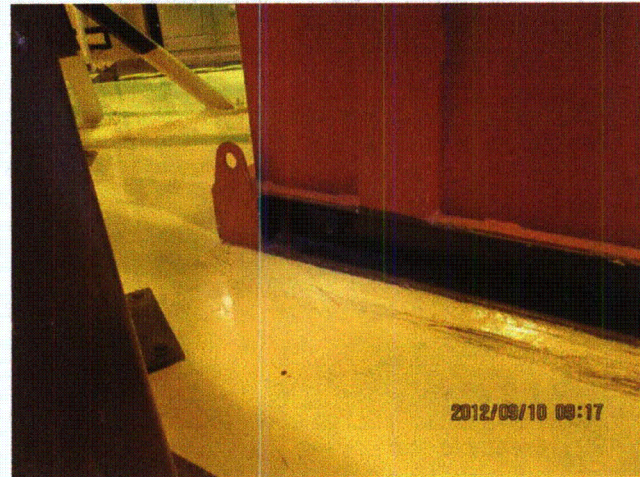
20120910-Lasalle 032



20120910-Lasalle 033



20120910-Lasalle 034



20120910-Lasalle 035

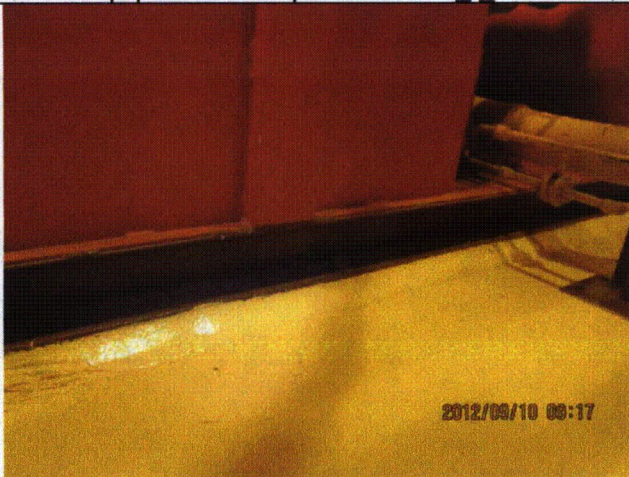
Status: Y N U

Seismic Walkdown Checklist (SWC)

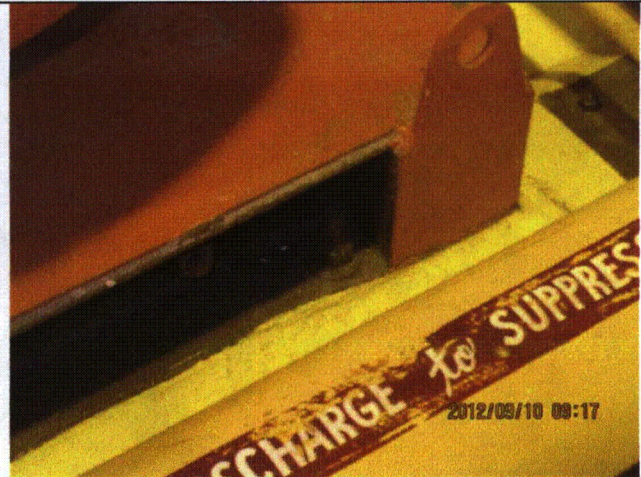
Equipment ID No.: 1HG01A

Equipment Class: (9) Fans

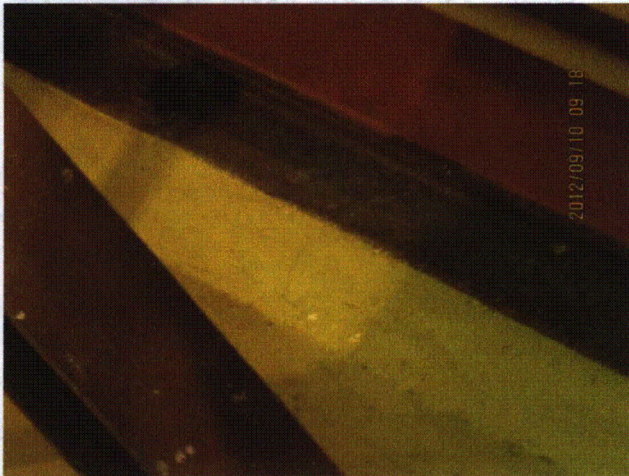
Equipment Description: ASSY - BLOWER, H2 RECOMBINER



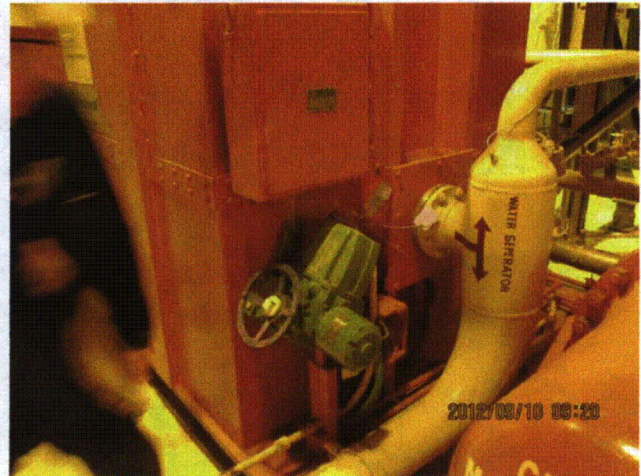
20120910-Lasalle 036



20120910-Lasalle 037



20120910-Lasalle 038



20120910-Lasalle 039

Status: Y N U

Seismic Walkdown Checklist (SWC)

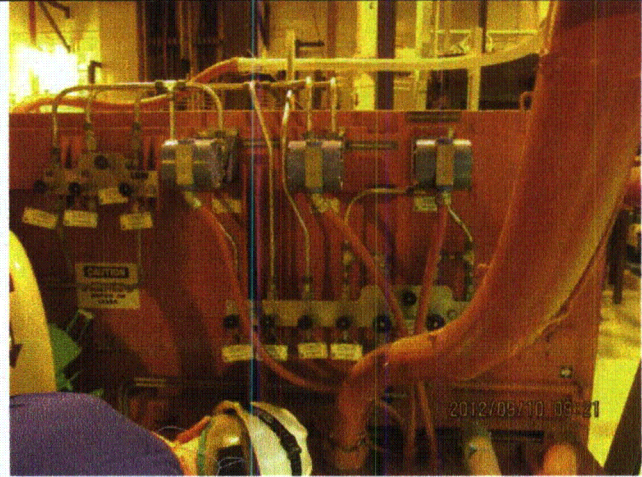
Equipment ID No.: 1HG01A

Equipment Class: (9) Fans

Equipment Description: ASSY - BLOWER, H2 RECOMBINER



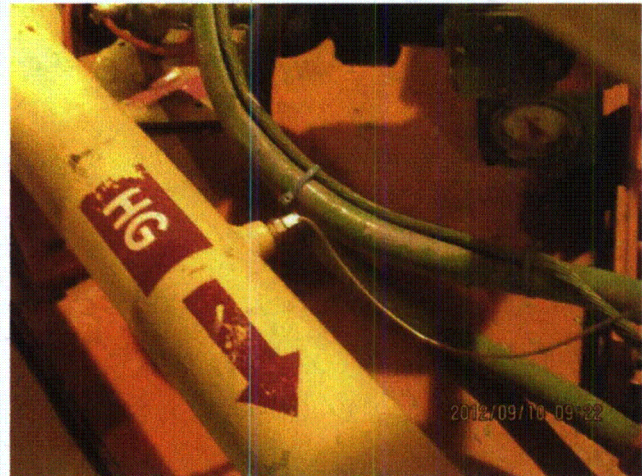
20120910-Lasalle 040



20120910-Lasalle 041



20120910-Lasalle 042



20120910-Lasalle 043

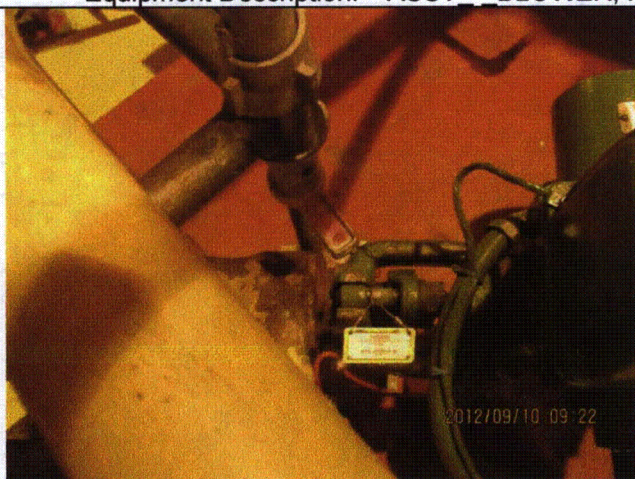
Status: Y N U

Seismic Walkdown Checklist (SWC)

Equipment ID No.: 1HG01A

Equipment Class: (9) Fans

Equipment Description: ASSY - BLOWER, H2 RECOMBINER



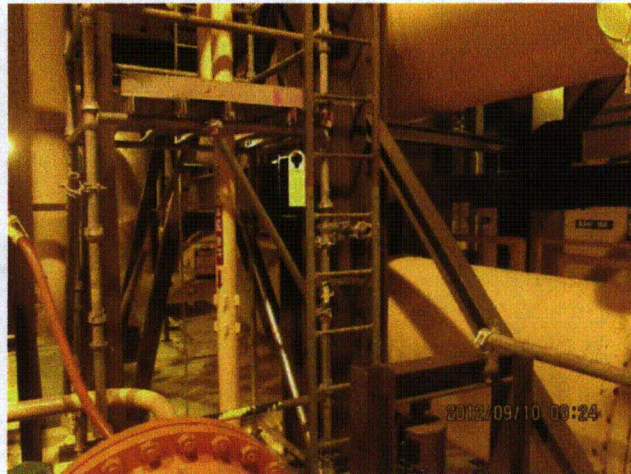
20120910-Lasalle 044



20120910-Lasalle 045



20120910-Lasalle 046



20120910-Lasalle 047

Status: Y N U

Seismic Walkdown Checklist (SWC)

Equipment ID No.: 1HG01A

Equipment Class: (9) Fans

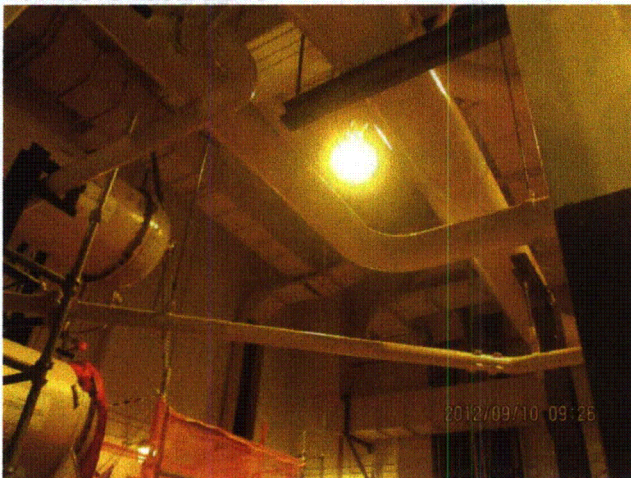
Equipment Description: ASSY - BLOWER, H2 RECOMBINER



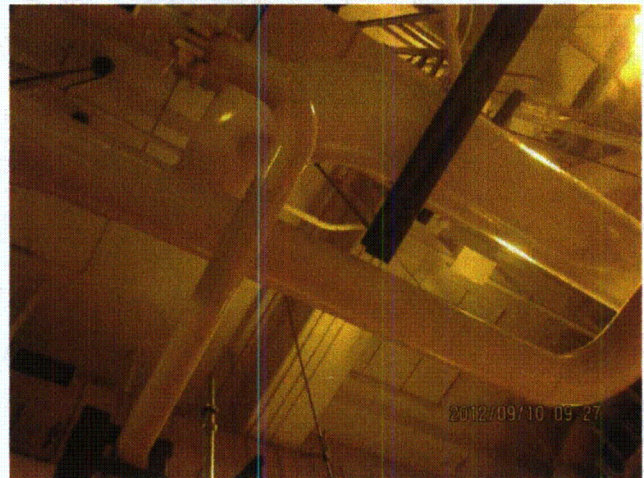
20120910-Lasalle 048



20120910-Lasalle 049



20120910-Lasalle 050



20120910-Lasalle 051

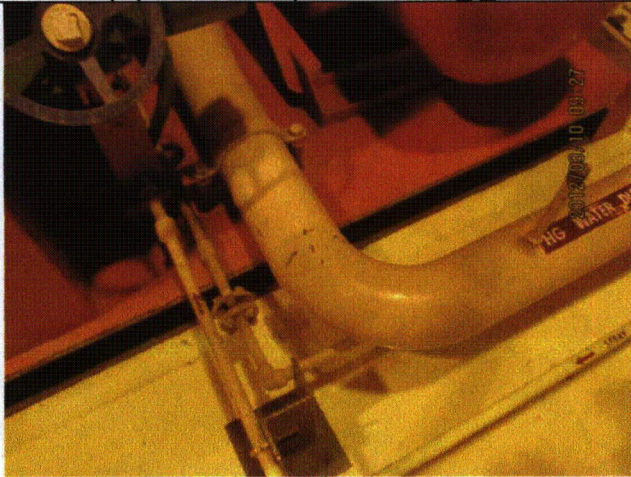
Status: Y N U

Seismic Walkdown Checklist (SWC)

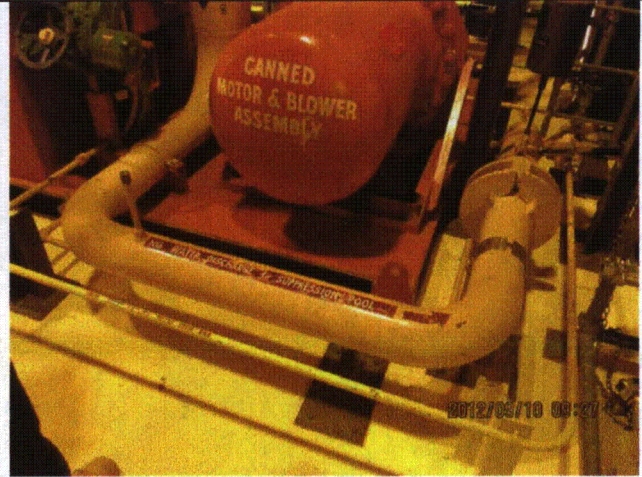
Equipment ID No.: 1HG01A

Equipment Class: (9) Fans

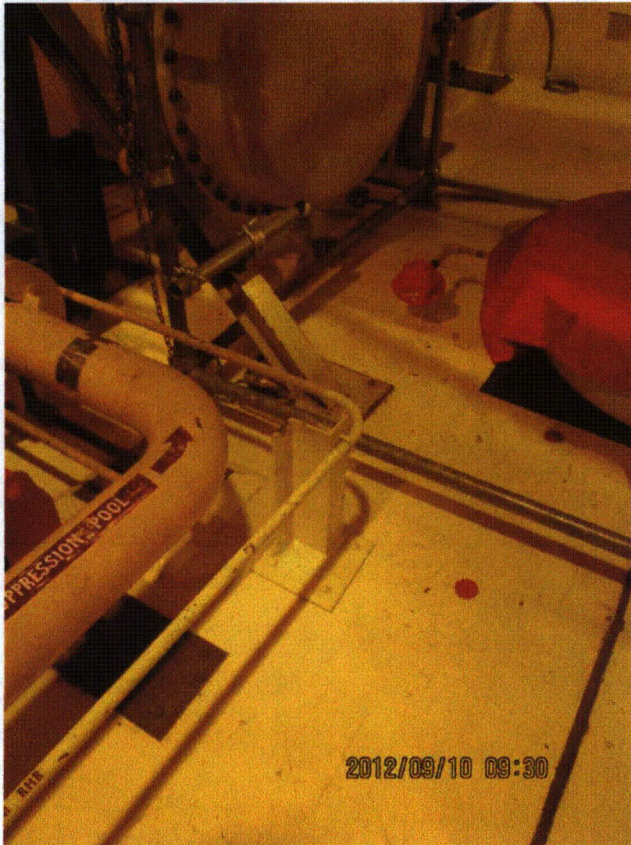
Equipment Description: ASSY - BLOWER, H2 RECOMBINER



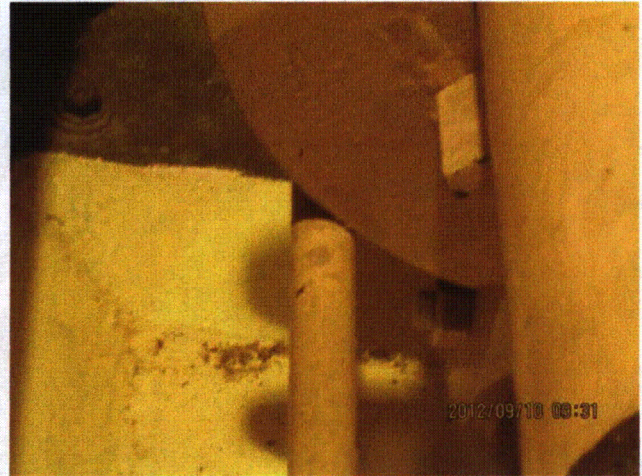
20120910-Lasalle 052



20120910-Lasalle 053



20120910-Lasalle 054



20120910-Lasalle 055

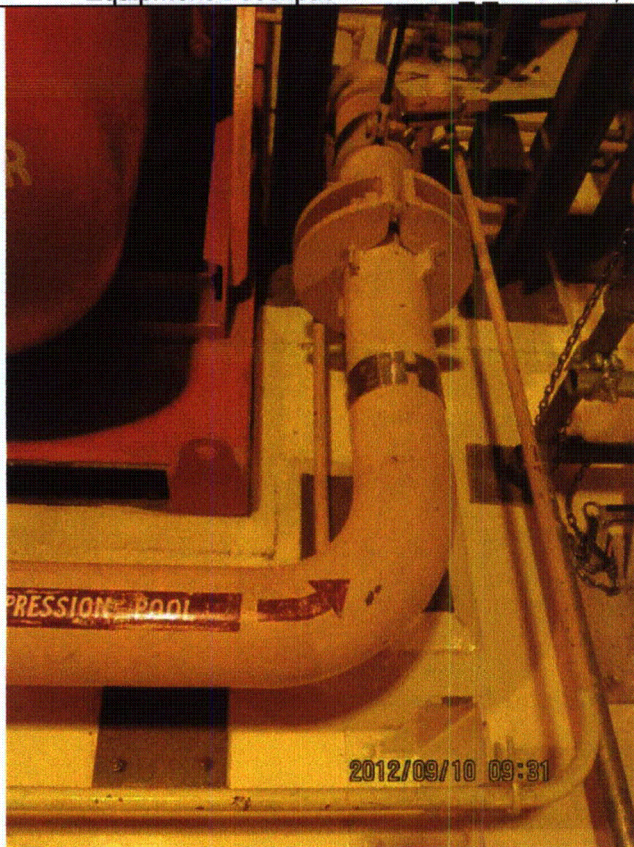
Status: Y N U

Seismic Walkdown Checklist (SWC)

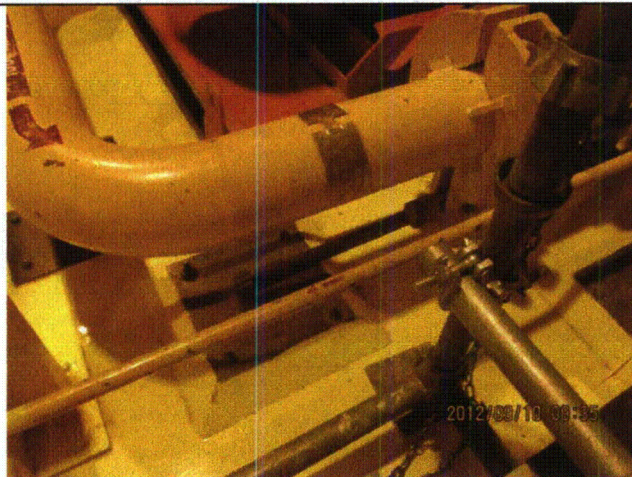
Equipment ID No.: 1HG01A

Equipment Class: (9) Fans

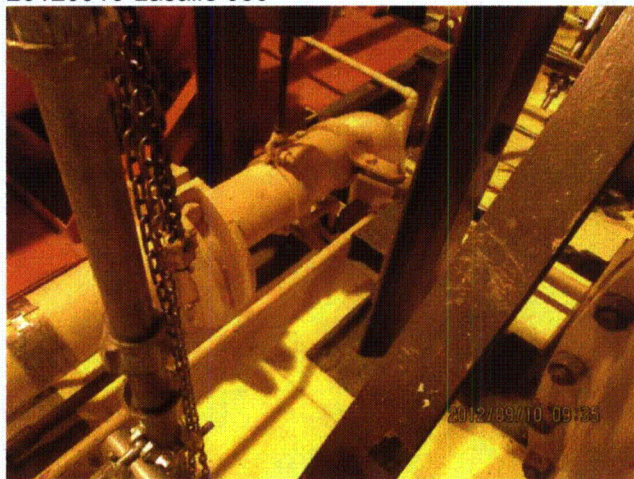
Equipment Description: ASSY - BLOWER, H2 RECOMBINER



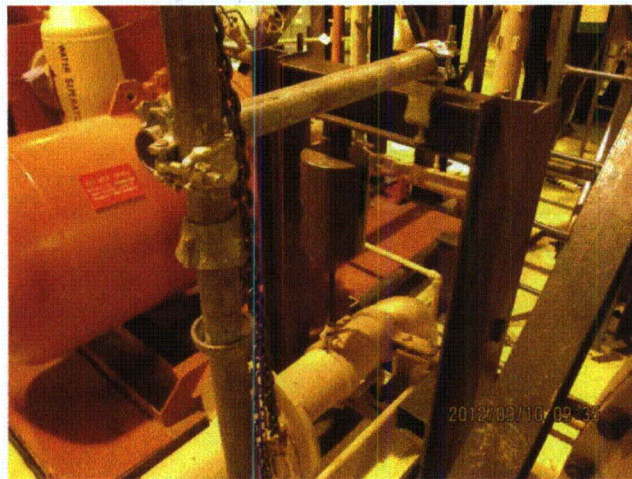
20120910-Lasalle 056



20120910-Lasalle 057



20120910-Lasalle 058



20120910-Lasalle 059

Status: Y N U

Seismic Walkdown Checklist (SWC)

Equipment ID No.: 1PI-DG094

Equipment Class: (18) Instruments on Racks

Equipment Description: 1A DG A AIR RECEIVER

Project: LaSalle 1 SWEL

Location (Bldg, Elev, Room/Area): DG, 710.00 ft, ALL

Manufacturer/Model:

Instructions for Completing Checklist

This checklist may be used to document the results of the Seismic Walkdown of an item of equipment on the SWEL. The space below each of the following questions may be used to record the results of judgments and findings. Additional space is provided at the end of this checklist for documenting other comments.

Anchorage

1. Is anchorage configuration verification required (i.e., is the item one of the 50% of SWEL items requiring such verification)? No
*Gauge is at end of piping run that emerges from 1DG08TA receiver tank.
Gauge is considered to behave as an in-line component.*

2. Is the anchorage free of bent, broken, missing or loose hardware? Not Applicable

3. Is the anchorage free of corrosion that is more than mild surface oxidation? Not Applicable

4. Is the anchorage free of visible cracks in the concrete near the anchors? Not Applicable

5. Is the anchorage configuration consistent with plant documentation? (Note: This question only applies if the item is one of the 50% for which an anchorage configuration verification is required.) Not Applicable

6. Based on the above anchorage evaluations, is the anchorage free of potentially adverse seismic conditions? Yes

Status: Y N U

Seismic Walkdown Checklist (SWC)

Equipment ID No.: 1PI-DG094

Equipment Class: (18) Instruments on Racks

Equipment Description: 1A DG A AIR RECEIVER

Interaction Effects

7. Are soft targets free from impact by nearby equipment or structures? Yes
8. Are overhead equipment, distribution systems, ceiling tiles and lighting, and masonry block walls not likely to collapse onto the equipment? Yes
Overhead light fixtures judged to be acceptable.
Day tank room masonry walls are safety-related per drawing A-276, Rev. S.
9. Do attached lines have adequate flexibility to avoid damage? Yes
10. Based on the above seismic interaction evaluations, is equipment free of potentially adverse seismic interaction effects? Yes

Other Adverse Conditions

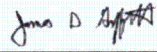
11. Have you looked for and found no adverse seismic conditions that could adversely affect the safety functions of the equipment? Yes

Comments

Seismic Walkdown Team: J. Griffith & M. Wodarczyk - 9/13/2012

Item located at end of tube attached to 1A Air Receiver Tank.

Evaluated by:

 James Griffith

Date: 10/17/2012



Michael Wodarczyk

10/17/2012

Status: Y N U

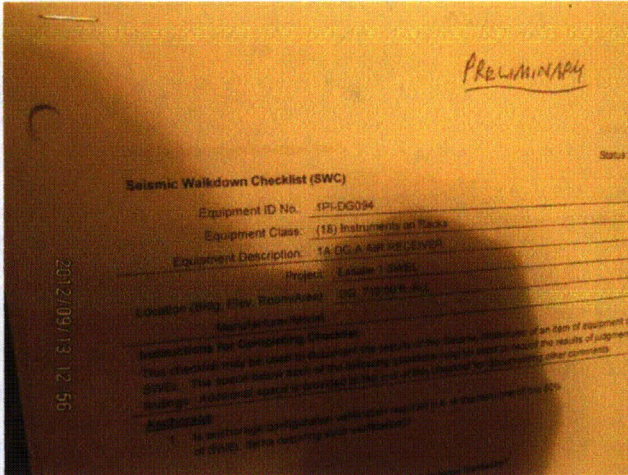
Seismic Walkdown Checklist (SWC)

Equipment ID No.: 1PI-DG094

Equipment Class: (18) Instruments on Racks

Equipment Description: 1A DG A AIR RECEIVER

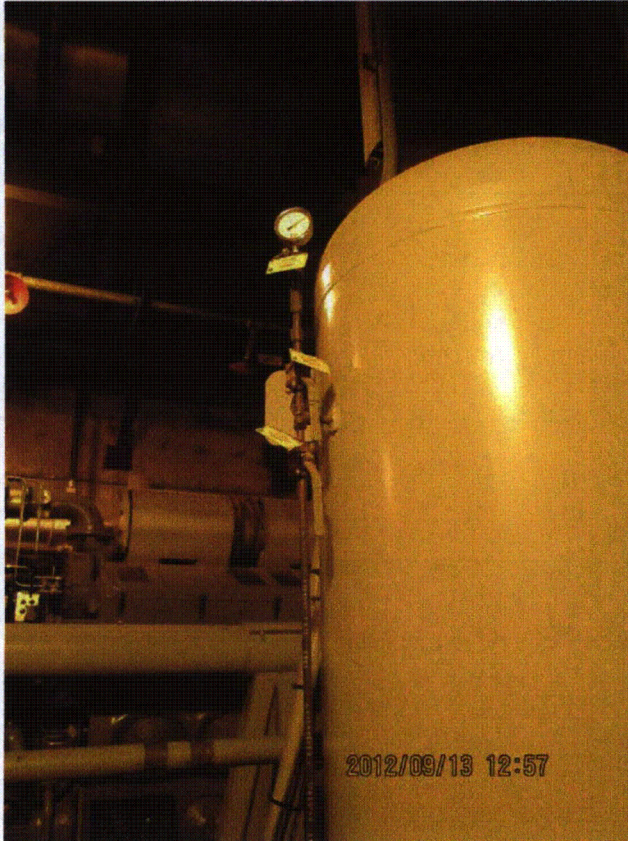
Photos



20120913-Lasalle 167



20120913-Lasalle 168



20120913-Lasalle 169



20120913-Lasalle 170

Status: Y N U

Seismic Walkdown Checklist (SWC)

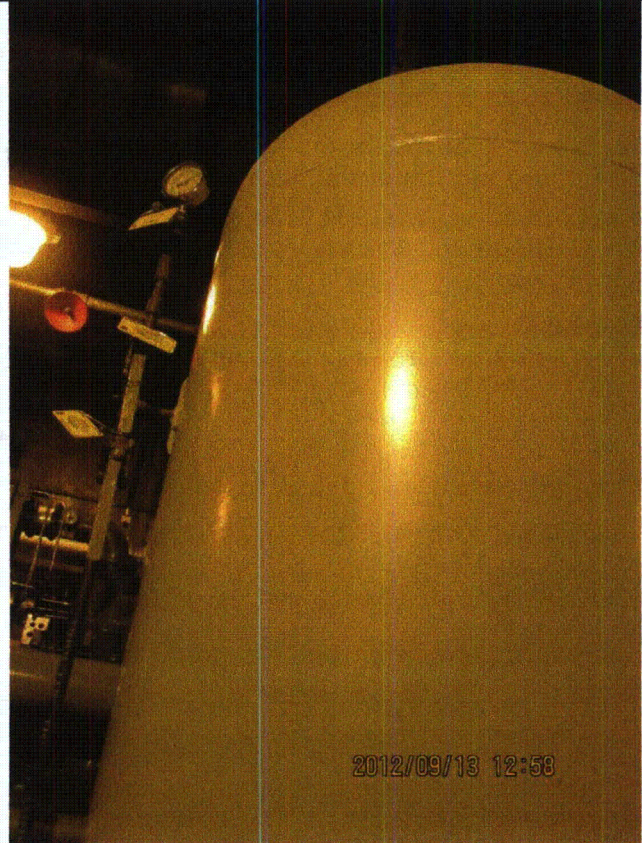
Equipment ID No.: 1PI-DG094

Equipment Class: (18) Instruments on Racks

Equipment Description: 1A DG A AIR RECEIVER



20120913-Lasalle 171



20120913-Lasalle 172

Status: Y N U

Seismic Walkdown Checklist (SWC)

Equipment ID No.: 1PL33J

Equipment Class: (20) Instrumentation and Control Panels and Cabinets

Equipment Description: B/C RHR PUMP ROOM VENTILATION PANEL

Project: Lasalle 1 SWEL

Location (Bldg, Elev, Room/Area): RB, 694.00 ft, ALL

Manufacturer/Model:

Instructions for Completing Checklist

This checklist may be used to document the results of the Seismic Walkdown of an item of equipment on the SWEL. The space below each of the following questions may be used to record the results of judgments and findings. Additional space is provided at the end of this checklist for documenting other comments.

Anchorage

1. Is anchorage configuration verification required (i.e., is the item one of the 50% of SWEL items requiring such verification)? Yes

2. Is the anchorage free of bent, broken, missing or loose hardware? Yes

3. Is the anchorage free of corrosion that is more than mild surface oxidation? Yes

4. Is the anchorage free of visible cracks in the concrete near the anchors? Yes

5. Is the anchorage configuration consistent with plant documentation? (Note: This question only applies if the item is one of the 50% for which an anchorage configuration verification is required.) Yes
Anchorage shown on drawing 1E-1-3508, Rev. AM.

6. Based on the above anchorage evaluations, is the anchorage free of potentially adverse seismic conditions? Yes

Status: Y N U

Seismic Walkdown Checklist (SWC)

Equipment ID No.: 1PL33J

Equipment Class: (20) Instrumentation and Control Panels and Cabinets

Equipment Description: B/C RHR PUMP ROOM VENTILATION PANEL

Interaction Effects

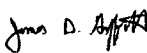

7. Are soft targets free from impact by nearby equipment or structures? Yes
8. Are overhead equipment, distribution systems, ceiling tiles and lighting, and masonry block walls not likely to collapse onto the equipment? Yes
Overhead light fixtures judged to be acceptable.
9. Do attached lines have adequate flexibility to avoid damage? Yes
Panel 1PL33J and attached conduits to 1st support away from panel are all mounted to same wall and judged to be acceptable.
10. Based on the above seismic interaction evaluations, is equipment free of potentially adverse seismic interaction effects? Yes

Other Adverse Conditions

11. Have you looked for and found no adverse seismic conditions that could adversely affect the safety functions of the equipment? Yes

Comments

Seismic Walkdown Team: J. Griffith & M. Wodarczyk - 9/12/2012

Evaluated by:  James Griffith Date: 10/17/2012
 Michael Wodarczyk 10/17/2012

Status: Y N U

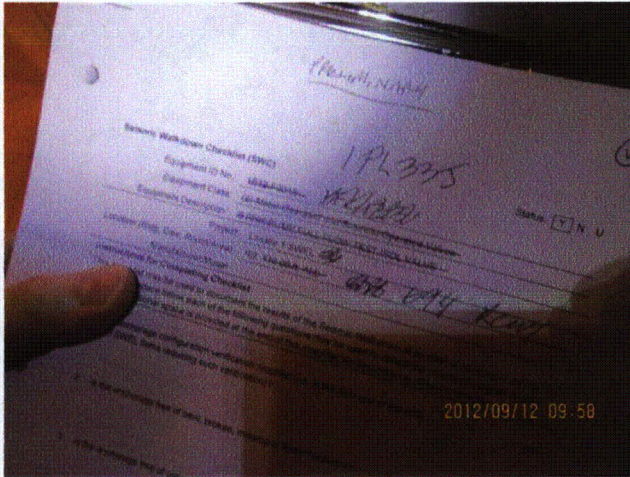
Seismic Walkdown Checklist (SWC)

Equipment ID No.: 1PL33J

Equipment Class: (20) Instrumentation and Control Panels and Cabinets

Equipment Description: B/C RHR PUMP ROOM VENTILATION PANEL

Photos



20120912-Lasalle 127



20120912-Lasalle 128

Status: Y N U

Seismic Walkdown Checklist (SWC)

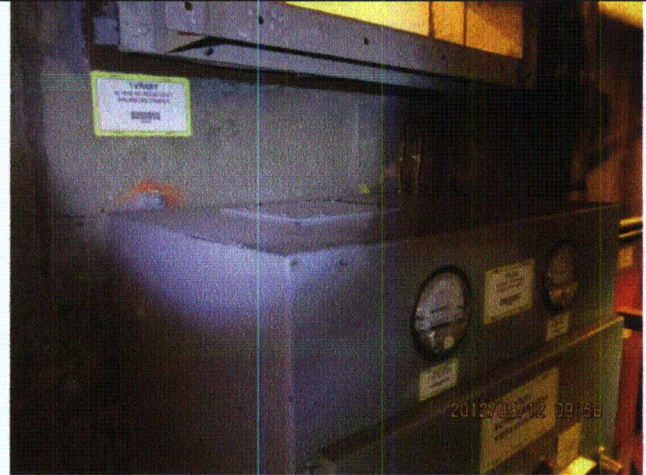
Equipment ID No.: 1PL33J

Equipment Class: (20) Instrumentation and Control Panels and Cabinets

Equipment Description: B/C RHR PUMP ROOM VENTILATION PANEL



20120912-Lasalle 129



20120912-Lasalle 130

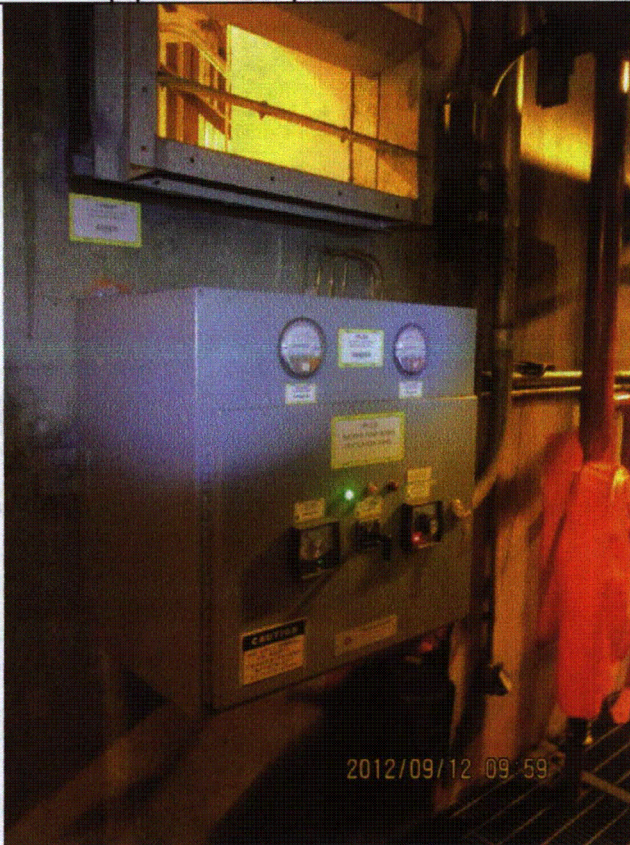
Status: Y N U

Seismic Walkdown Checklist (SWC)

Equipment ID No.: 1PL33J

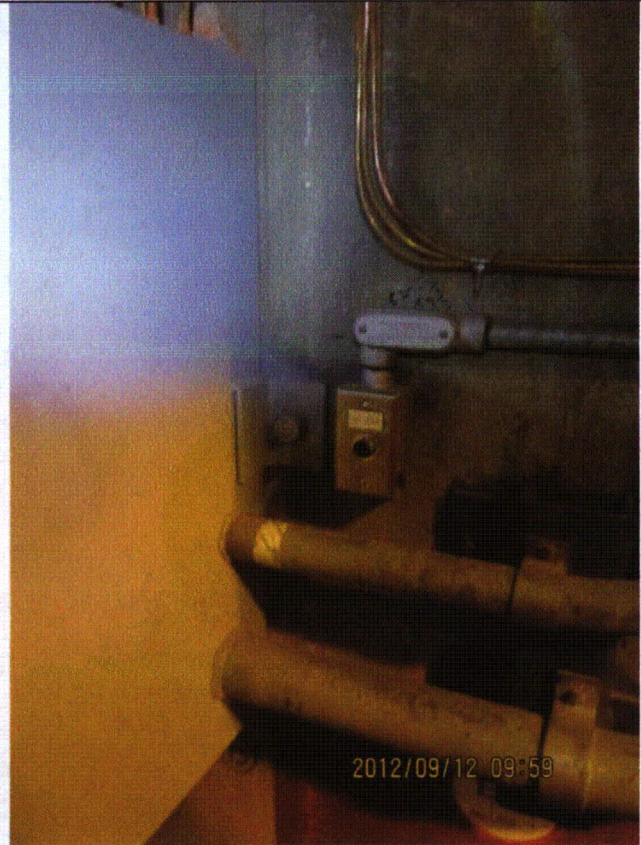
Equipment Class: (20) Instrumentation and Control Panels and Cabinets

Equipment Description: B/C RHR PUMP ROOM VENTILATION PANEL



2012/09/12 09:59

20120912-Lasalle 131



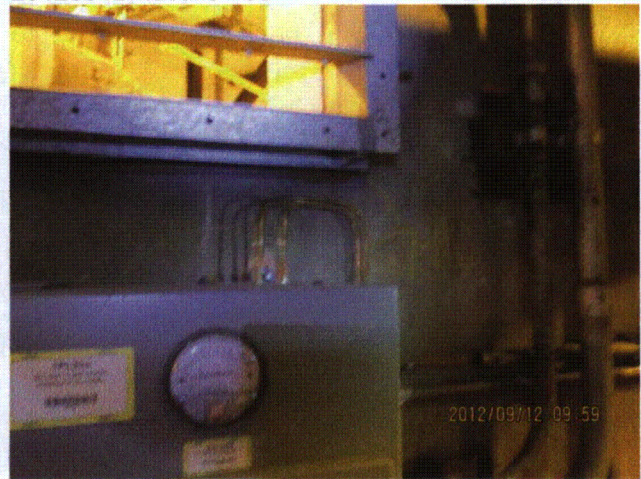
2012/09/12 09:59

20120912-Lasalle 132



2012/09/12 09:59

20120912-Lasalle 133



2012/09/12 09:59

20120912-Lasalle 134

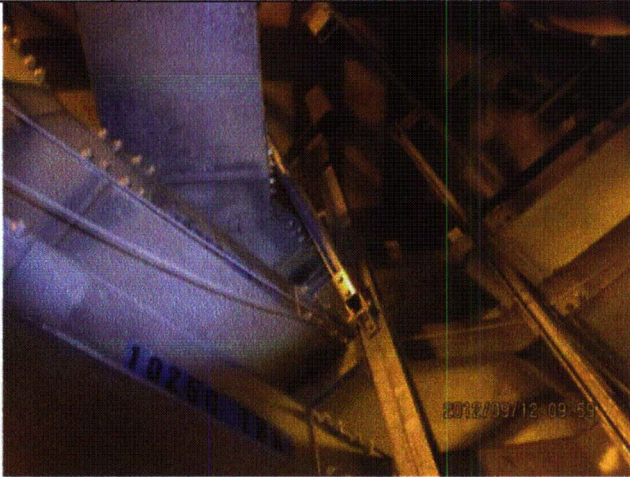
Status: Y N U

Seismic Walkdown Checklist (SWC)

Equipment ID No.: 1PL33J

Equipment Class: (20) Instrumentation and Control Panels and Cabinets

Equipment Description: B/C RHR PUMP ROOM VENTILATION PANEL



20120912-Lasalle 135

Status: Y N U

Seismic Walkdown Checklist (SWC)

Equipment ID No.: 1PL34J

Equipment Class: (20) Instrumentation and Control Panels and Cabinets

Equipment Description: A RHR PUMP ROOM VENTILATION PANEL

Project: LaSalle 1 SWEL

Location (Bldg, Elev, Room/Area): RB, 694.00 ft, ALL

Manufacturer/Model:

Instructions for Completing Checklist

This checklist may be used to document the results of the Seismic Walkdown of an item of equipment on the SWEL. The space below each of the following questions may be used to record the results of judgments and findings. Additional space is provided at the end of this checklist for documenting other comments.

Anchorage

1. Is anchorage configuration verification required (i.e., is the item one of the 50% of SWEL items requiring such verification)? Yes

2. Is the anchorage free of bent, broken, missing or loose hardware? Yes

3. Is the anchorage free of corrosion that is more than mild surface oxidation? Yes

4. Is the anchorage free of visible cracks in the concrete near the anchors? Yes
Minor shrinkage cracks in wall judged to be acceptable.

5. Is the anchorage configuration consistent with plant documentation? (Note: This question only applies if the item is one of the 50% for which an anchorage configuration verification is required.) Yes
Anchorage verified per drawing 1E-1-3507, Rev. AP.

6. Based on the above anchorage evaluations, is the anchorage free of potentially adverse seismic conditions? Yes

Status: Y N U

Seismic Walkdown Checklist (SWC)

Equipment ID No.: 1PL34J

Equipment Class: (20) Instrumentation and Control Panels and Cabinets

Equipment Description: A RHR PUMP ROOM VENTILATION PANEL

Interaction Effects

7. Are soft targets free from impact by nearby equipment or structures? Yes
8. Are overhead equipment, distribution systems, ceiling tiles and lighting, and masonry block walls not likely to collapse onto the equipment? Yes
9. Do attached lines have adequate flexibility to avoid damage? Yes
10. Based on the above seismic interaction evaluations, is equipment free of potentially adverse seismic interaction effects? Yes

Other Adverse Conditions

11. Have you looked for and found no adverse seismic conditions that could adversely affect the safety functions of the equipment? Yes

Comments

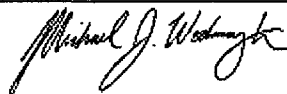
Seismic Walkdown Team: M. Etre & M. Wodarczyk - 9/17/2012

Evaluated by:



Mark Etre

Date: 10/17/2012



Michael Wodarczyk

10/17/2012

Status: Y N U

Seismic Walkdown Checklist (SWC)

Equipment ID No.: 1PL34J

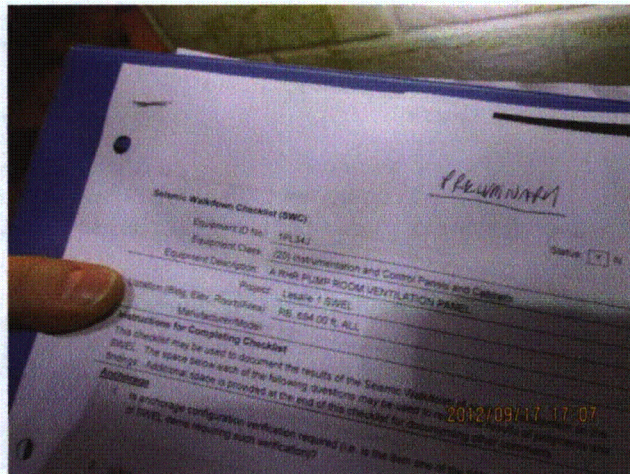
Equipment Class: (20) Instrumentation and Control Panels and Cabinets

Equipment Description: A RHR PUMP ROOM VENTILATION PANEL

Photos



20120917-Lasalle 319



20120917-Lasalle 320



20120917-Lasalle 321



20120917-Lasalle 322

Status: Y N U

Seismic Walkdown Checklist (SWC)

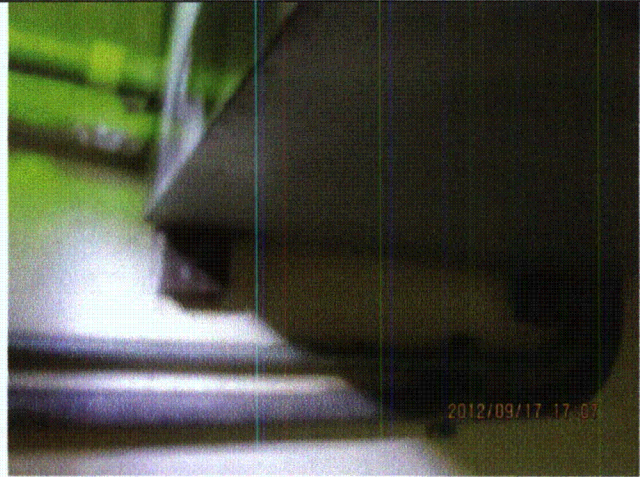
Equipment ID No.: 1PL34J

Equipment Class: (20) Instrumentation and Control Panels and Cabinets

Equipment Description: A RHR PUMP ROOM VENTILATION PANEL



20120917-Lasalle 323



20120917-Lasalle 324

Status: Y N U

Seismic Walkdown Checklist (SWC)

Equipment ID No.: 1PL35J

Equipment Class: (20) Instrumentation and Control Panels and Cabinets

Equipment Description: LPCS PUMP ROOM VENTILATION PANEL

Project: LaSalle 1 SWEL

Location (Bldg, Elev, Room/Area): RB, 694.00 ft, ALL

Manufacturer/Model: _____

Instructions for Completing Checklist

This checklist may be used to document the results of the Seismic Walkdown of an item of equipment on the SWEL. The space below each of the following questions may be used to record the results of judgments and findings. Additional space is provided at the end of this checklist for documenting other comments.

Anchorage

1. Is anchorage configuration verification required (i.e., is the item one of the 50% of SWEL items requiring such verification)? No

2. Is the anchorage free of bent, broken, missing or loose hardware? Yes
Minor lack of thread engagement at top anchor bolts. Angles at side of panels provide additional support. Judged to be acceptable.

3. Is the anchorage free of corrosion that is more than mild surface oxidation? Yes

4. Is the anchorage free of visible cracks in the concrete near the anchors? Yes
Minor shrinkage cracks and pop-outs in wall judged to be acceptable.

5. Is the anchorage configuration consistent with plant documentation? (Note: This question only applies if the item is one of the 50% for which an anchorage configuration verification is required.) Not Applicable

6. Based on the above anchorage evaluations, is the anchorage free of potentially adverse seismic conditions? Yes

Status: Y N U

Seismic Walkdown Checklist (SWC)

Equipment ID No.: 1PL35J

Equipment Class: (20) Instrumentation and Control Panels and Cabinets

Equipment Description: LPCS PUMP ROOM VENTILATION PANEL

Interaction Effects

7. Are soft targets free from impact by nearby equipment or structures? Yes
8. Are overhead equipment, distribution systems, ceiling tiles and lighting, and masonry block walls not likely to collapse onto the equipment?
Overhead light fixtures judged to be acceptable. Yes
9. Do attached lines have adequate flexibility to avoid damage? Yes
10. Based on the above seismic interaction evaluations, is equipment free of potentially adverse seismic interaction effects? Yes

Other Adverse Conditions

11. Have you looked for and found no adverse seismic conditions that could adversely affect the safety functions of the equipment? Yes

Comments

Seismic Walkdown Team: M. Etre & M. Wodarczyk - 9/17/2012

Evaluated by:



Mark Etre

Date: 10/17/2012



Michael Wodarczyk

10/17/2012

Status: Y N U

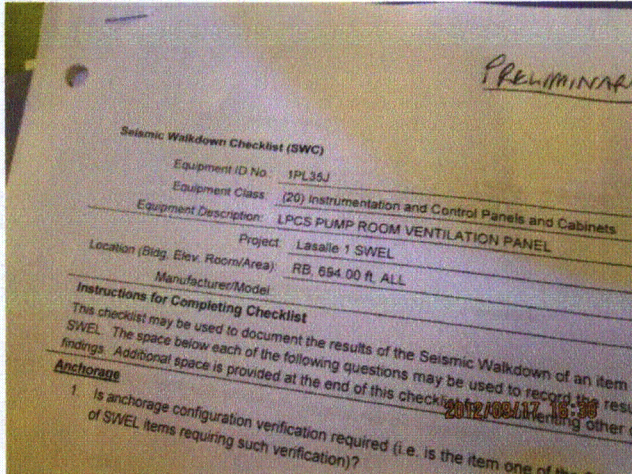
Seismic Walkdown Checklist (SWC)

Equipment ID No.: 1PL35J

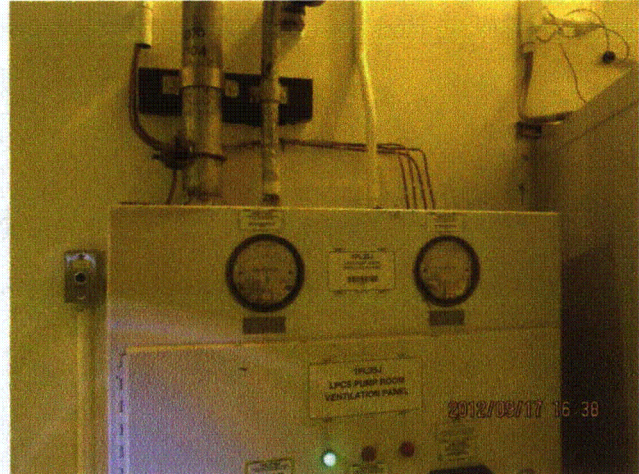
Equipment Class: (20) Instrumentation and Control Panels and Cabinets

Equipment Description: LPCS PUMP ROOM VENTILATION PANEL

Photos



20120917-Lasalle 288



20120917-Lasalle 289



20120917-Lasalle 290



20120917-Lasalle 291

Status: Y N U

Seismic Walkdown Checklist (SWC)

Equipment ID No.: 1PL35J

Equipment Class: (20) Instrumentation and Control Panels and Cabinets

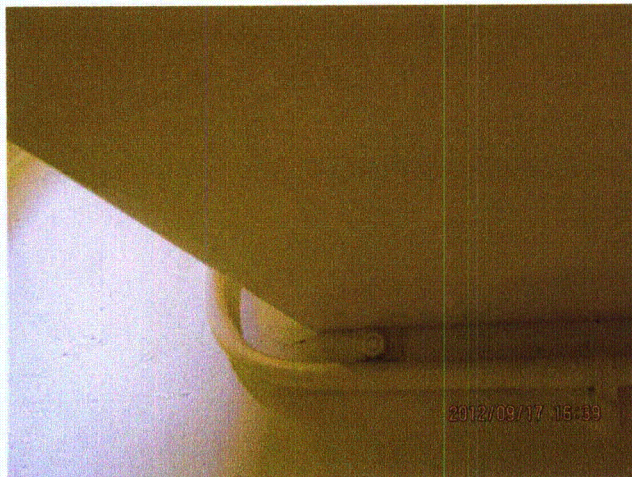
Equipment Description: LPCS PUMP ROOM VENTILATION PANEL



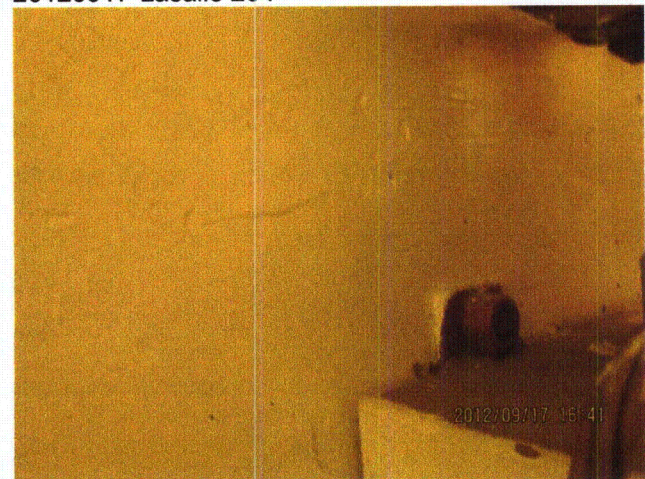
20120917-Lasalle 292



20120917-Lasalle 294



20120917-Lasalle 295



20120917-Lasalle 296

Status: Y N U

Seismic Walkdown Checklist (SWC)

Equipment ID No.: 1TE-HG015A

Equipment Class: (19) Temperature Sensors

Equipment Description: HYDROGEN RECOMBINER BLWR INL GAS (TE-2A)

Project: LaSalle 1 SWEL

Location (Bldg, Elev, Room/Area): RB, 786.00 ft, ALL

Manufacturer/Model:

Instructions for Completing Checklist

This checklist may be used to document the results of the Seismic Walkdown of an item of equipment on the SWEL. The space below each of the following questions may be used to record the results of judgments and findings. Additional space is provided at the end of this checklist for documenting other comments.

Anchorage

1. Is anchorage configuration verification required (i.e., is the item one of the 50% of SWEL items requiring such verification)? No

2. Is the anchorage free of bent, broken, missing or loose hardware? Not Applicable

3. Is the anchorage free of corrosion that is more than mild surface oxidation? Not Applicable

4. Is the anchorage free of visible cracks in the concrete near the anchors? Not Applicable

5. Is the anchorage configuration consistent with plant documentation? (Note: This question only applies if the item is one of the 50% for which an anchorage configuration verification is required.) Not Applicable

6. Based on the above anchorage evaluations, is the anchorage free of potentially adverse seismic conditions? Yes

Status: Y N U

Seismic Walkdown Checklist (SWC)

Equipment ID No.: 1TE-HG015A

Equipment Class: (19) Temperature Sensors

Equipment Description: HYDROGEN RECOMBINER BLWR INL GAS (TE-2A)

Interaction Effects

7. Are soft targets free from impact by nearby equipment or structures? Yes
8. Are overhead equipment, distribution systems, ceiling tiles and lighting, and masonry block walls not likely to collapse onto the equipment? Yes
Overhead light fixtures judged to be acceptable.
9. Do attached lines have adequate flexibility to avoid damage? Yes
10. Based on the above seismic interaction evaluations, is equipment free of potentially adverse seismic interaction effects? Yes

Other Adverse Conditions

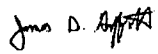
11. Have you looked for and found no adverse seismic conditions that could adversely affect the safety functions of the equipment? Yes

Comments


Seismic Walkdown Team: J. Griffith & M. Wodarczyk - 9/10/2012

EPN tag not present. Correct item verified by Operations via P&ID drawing.

Evaluated by:

 James Griffith

Date: 10/17/2012


Michael Wodarczyk

10/17/2012

Status: Y N U

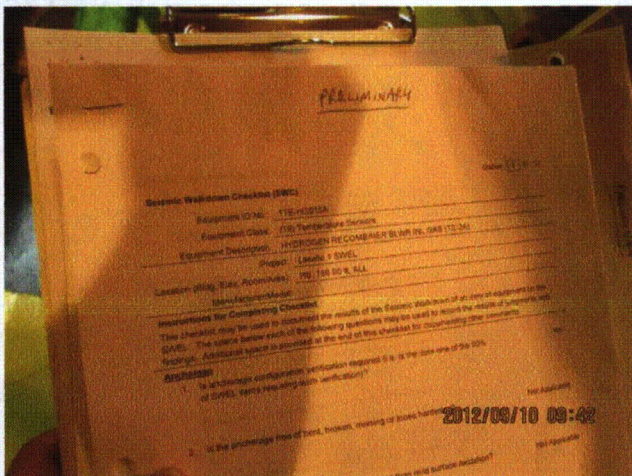
Seismic Walkdown Checklist (SWC)

Equipment ID No.: 1TE-HG015A

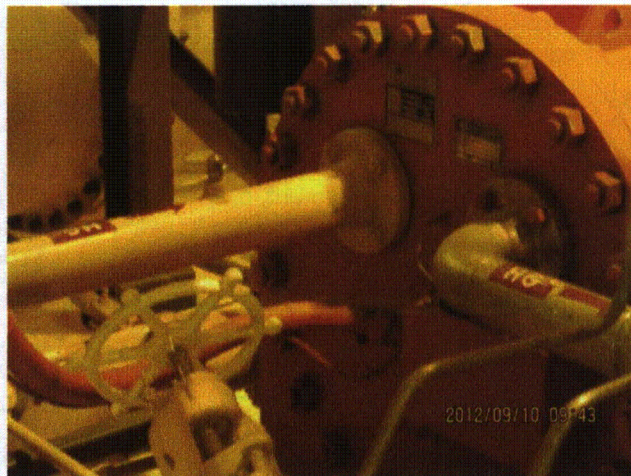
Equipment Class: (19) Temperature Sensors

Equipment Description: HYDROGEN RECOMBINER BLWR INL GAS (TE-2A)

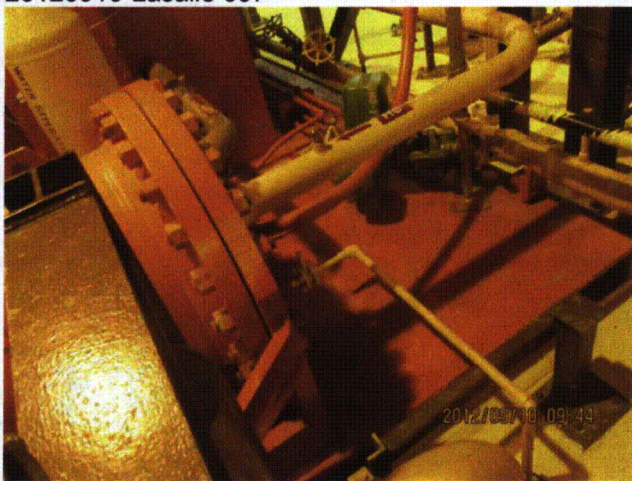
Photos



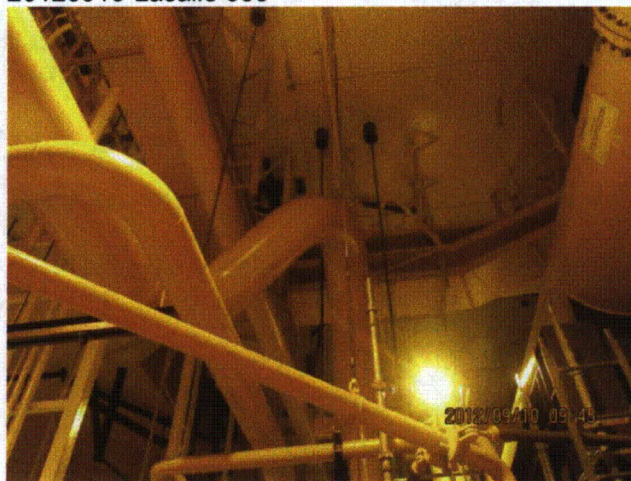
20120910-Lasalle 067



20120910-Lasalle 068



20120910-Lasalle 069



20120910-Lasalle 070

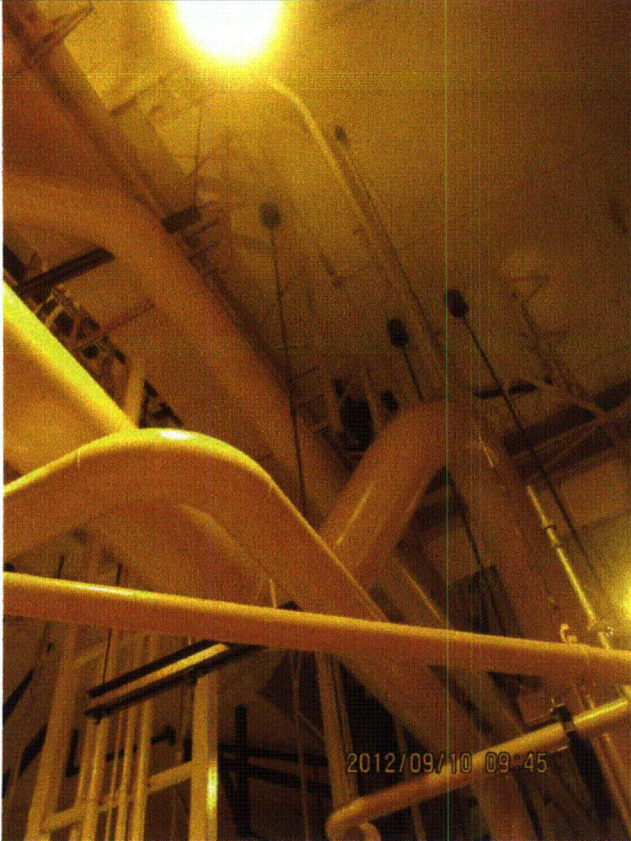
Status: Y N U

Seismic Walkdown Checklist (SWC)

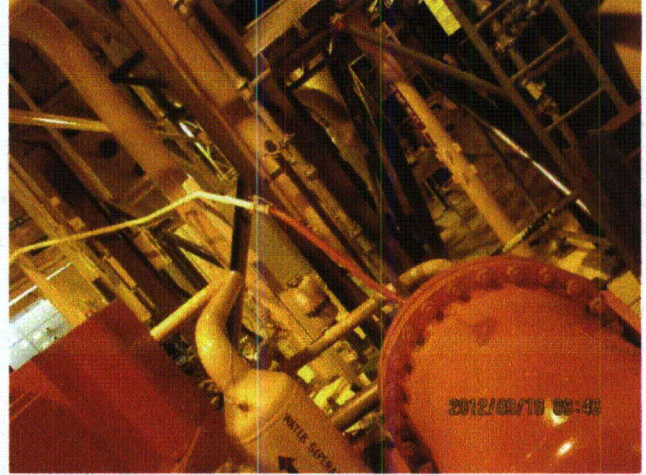
Equipment ID No.: 1TE-HG015A

Equipment Class: (19) Temperature Sensors

Equipment Description: HYDROGEN RECOMBINER BLWR INL GAS (TE-2A)



20120910-Lasalle 071



20120910-Lasalle 072

Status: Y N U

Seismic Walkdown Checklist (SWC)

Equipment ID No.: 1VQ029

Equipment Class: (7) Fluid-Operated Valves

Equipment Description: DW VENT/PURGE FROM RX BLDG UPSTRM ISOL

Project: LaSalle 1 SWEL

Location (Bldg, Elev, Room/Area): RB, 740.00 ft, ALL

Manufacturer/Model: _____

Instructions for Completing Checklist

This checklist may be used to document the results of the Seismic Walkdown of an item of equipment on the SWEL. The space below each of the following questions may be used to record the results of judgments and findings. Additional space is provided at the end of this checklist for documenting other comments.

Anchorage

1. Is anchorage configuration verification required (i.e., is the item one of the 50% of SWEL items requiring such verification)? No

2. Is the anchorage free of bent, broken, missing or loose hardware? Not Applicable

3. Is the anchorage free of corrosion that is more than mild surface oxidation? Not Applicable

4. Is the anchorage free of visible cracks in the concrete near the anchors? Not Applicable

5. Is the anchorage configuration consistent with plant documentation? (Note: This question only applies if the item is one of the 50% for which an anchorage configuration verification is required.) Not Applicable

6. Based on the above anchorage evaluations, is the anchorage free of potentially adverse seismic conditions? Yes

Status: Y N U

Seismic Walkdown Checklist (SWC)

Equipment ID No.: 1VQ029

Equipment Class: (7) Fluid-Operated Valves

Equipment Description: DW VENT/PURGE FROM RX BLDG UPSTRM ISOL

Interaction Effects

7. Are soft targets free from impact by nearby equipment or structures? Yes
8. Are overhead equipment, distribution systems, ceiling tiles and lighting, and masonry block walls not likely to collapse onto the equipment? Yes
9. Do attached lines have adequate flexibility to avoid damage? Yes
10. Based on the above seismic interaction evaluations, is equipment free of potentially adverse seismic interaction effects? Yes

Other Adverse Conditions

11. Have you looked for and found no adverse seismic conditions that could adversely affect the safety functions of the equipment? Yes

Comments

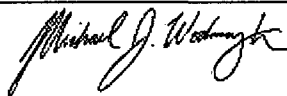
Seismic Walkdown Team: M. Etre & M. Wodarczyk - 9/17/2012

Evaluated by:



Mark Etre

Date: 10/17/2012



Michael Wodarczyk

10/17/2012

Status: Y N U

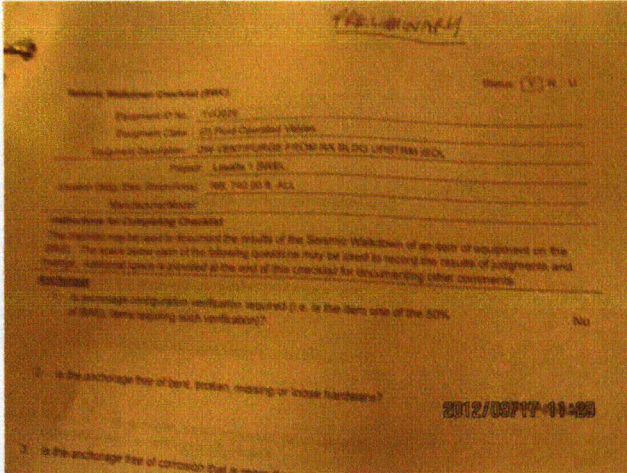
Seismic Walkdown Checklist (SWC)

Equipment ID No.: 1VQ029

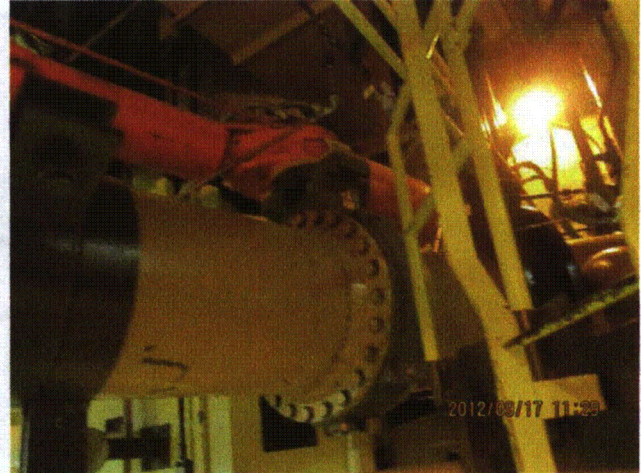
Equipment Class: (7) Fluid-Operated Valves

Equipment Description: DW VENT/PURGE FROM RX BLDG UPSTRM ISOL

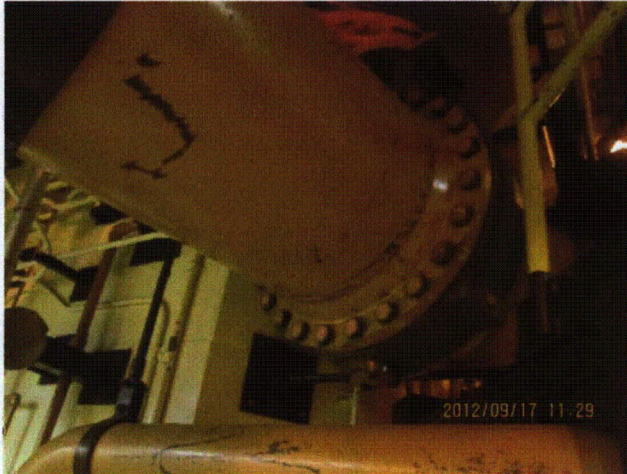
Photos



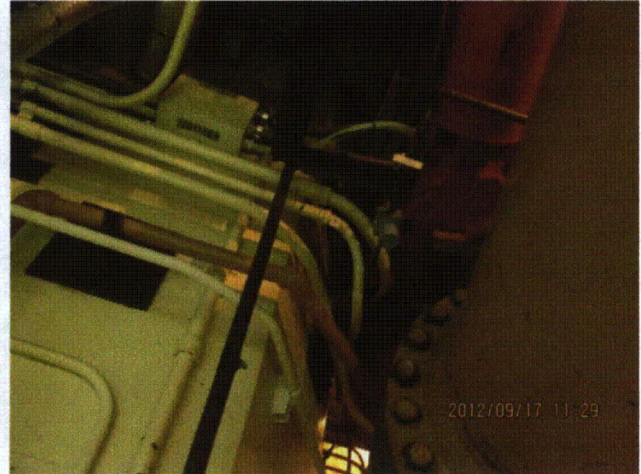
20120917-Lasalle 171



20120917-Lasalle 172



20120917-Lasalle 173



20120917-Lasalle 174

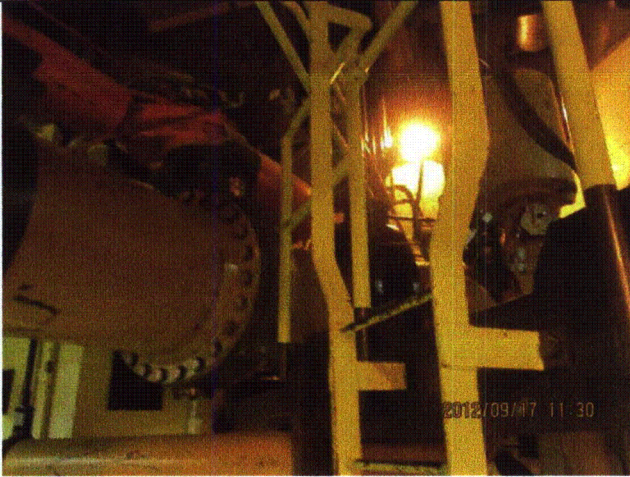
Status: Y N U

Seismic Walkdown Checklist (SWC)

Equipment ID No.: 1VQ029

Equipment Class: (7) Fluid-Operated Valves

Equipment Description: DW VENT/PURGE FROM RX BLDG UPSTRM ISOL



20120917-Lasalle 175

Status: Y N U

Seismic Walkdown Checklist (SWC)

Equipment ID No.: 1VQ030

Equipment Class: (7) Fluid-Operated Valves

Equipment Description: DW VENT/PURGE INLET DWNST ISOL VALVE

Project: LaSalle 1 SWEL

Location (Bldg, Elev, Room/Area): RB, 740.00 ft, ALL

Manufacturer/Model:

Instructions for Completing Checklist

This checklist may be used to document the results of the Seismic Walkdown of an item of equipment on the SWEL. The space below each of the following questions may be used to record the results of judgments and findings. Additional space is provided at the end of this checklist for documenting other comments.

Anchorage

- | | |
|--|----------------|
| 1. Is anchorage configuration verification required (i.e., is the item one of the 50% of SWEL items requiring such verification)? | No |
| 2. Is the anchorage free of bent, broken, missing or loose hardware? | Not Applicable |
| 3. Is the anchorage free of corrosion that is more than mild surface oxidation? | Not Applicable |
| 4. Is the anchorage free of visible cracks in the concrete near the anchors? | Not Applicable |
| 5. Is the anchorage configuration consistent with plant documentation? (Note: This question only applies if the item is one of the 50% for which an anchorage configuration verification is required.) | Not Applicable |
| 6. Based on the above anchorage evaluations, is the anchorage free of potentially adverse seismic conditions? | Yes |

Status: Y N U

Seismic Walkdown Checklist (SWC)

Equipment ID No.: 1VQ030

Equipment Class: (7) Fluid-Operated Valves

Equipment Description: DW VENT/PURGE INLET DWNST ISOL VALVE

Interaction Effects

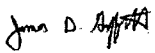
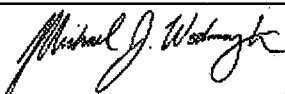
- | | |
|---|-----|
| 7. Are soft targets free from impact by nearby equipment or structures? | Yes |
| 8. Are overhead equipment, distribution systems, ceiling tiles and lighting, and masonry block walls not likely to collapse onto the equipment? | Yes |
| 9. Do attached lines have adequate flexibility to avoid damage? | Yes |
| 10. Based on the above seismic interaction evaluations, is equipment free of potentially adverse seismic interaction effects? | Yes |

Other Adverse Conditions

- | | |
|--|-----|
| 11. Have you looked for and found no adverse seismic conditions that could adversely affect the safety functions of the equipment? | Yes |
|--|-----|

Comments

Seismic Walkdown Team: J. Griffith & M. Wodarczyk - 9/10/2012

Evaluated by:	<u></u> James Griffith	Date:	<u>10/17/2012</u>
	<u></u> Michael Wodarczyk		<u>10/17/2012</u>

Status: Y N U

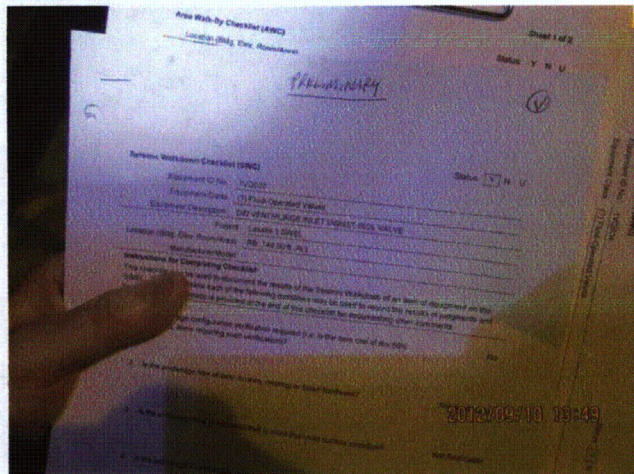
Seismic Walkdown Checklist (SWC)

Equipment ID No.: 1VQ030

Equipment Class: (7) Fluid-Operated Valves

Equipment Description: DW VENT/PURGE INLET DWNST ISOL VALVE

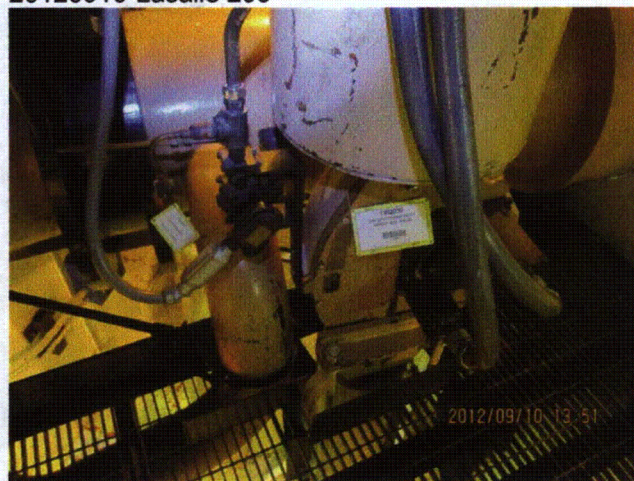
Photos



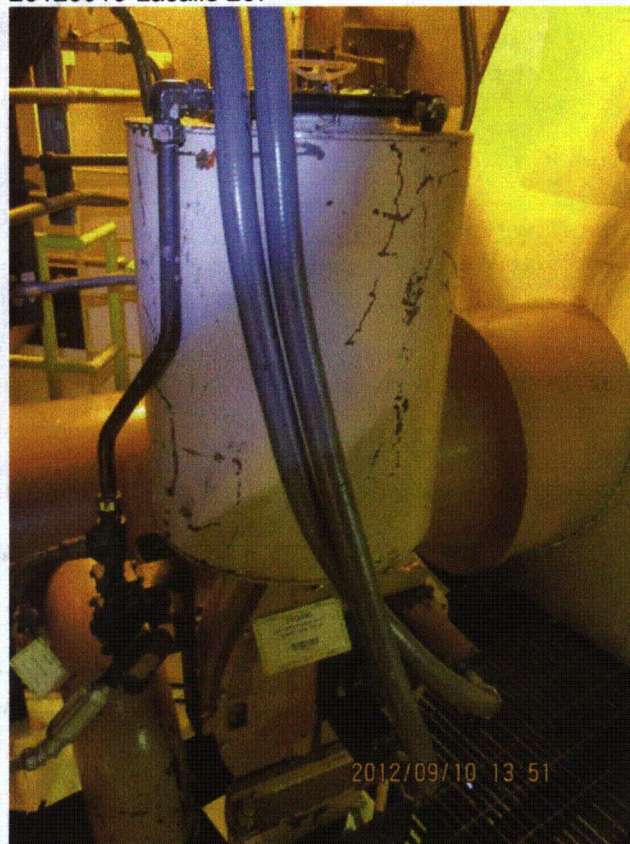
20120910-Lasalle 206



20120910-Lasalle 207



20120910-Lasalle 208



20120910-Lasalle 209

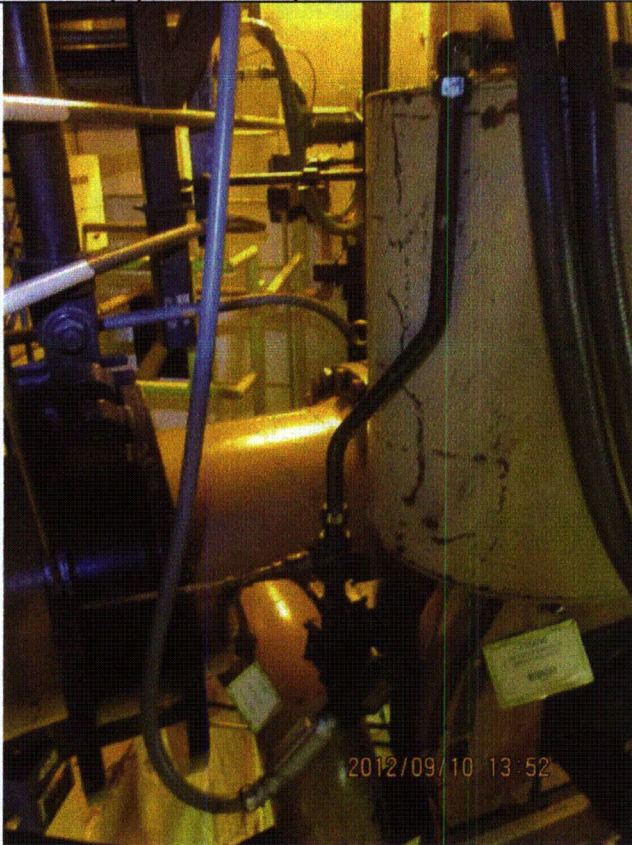
Status: Y N U

Seismic Walkdown Checklist (SWC)

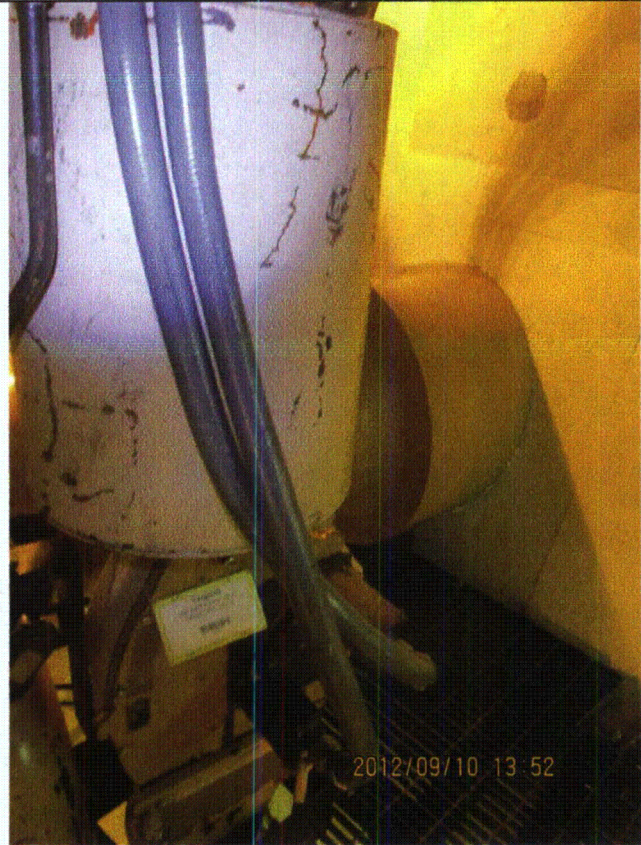
Equipment ID No.: 1VQ030

Equipment Class: (7) Fluid-Operated Valves

Equipment Description: DW VENT/PURGE INLET DWNST ISOL VALVE



20120910-Lasalle 210



20120910-Lasalle 211

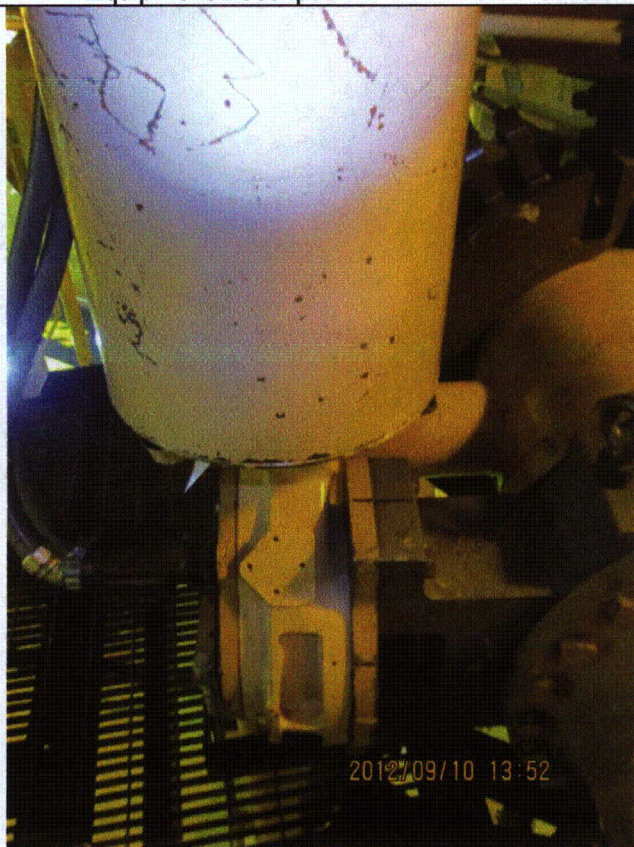
Status: Y N U

Seismic Walkdown Checklist (SWC)

Equipment ID No.: 1VQ030

Equipment Class: (7) Fluid-Operated Valves

Equipment Description: DW VENT/PURGE INLET DWNST ISOL VALVE



2012/09/10 13:52

20120910-Lasalle 212



2012/09/10 13:52

20120910-Lasalle 213



2012/09/10 13:52

20120910-Lasalle 214



2012/09/10 13:53

20120910-Lasalle 215

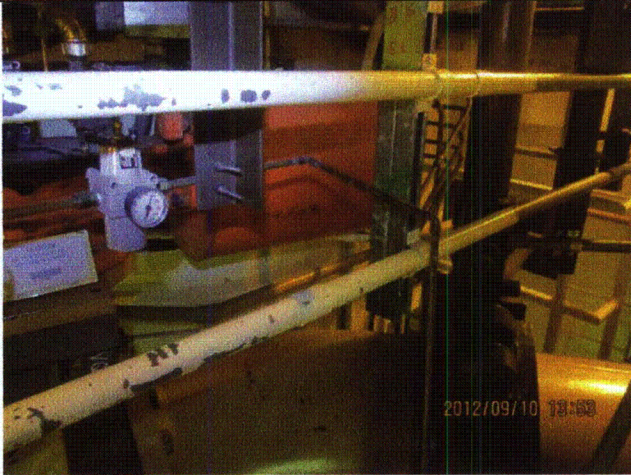
Status: Y N U

Seismic Walkdown Checklist (SWC)

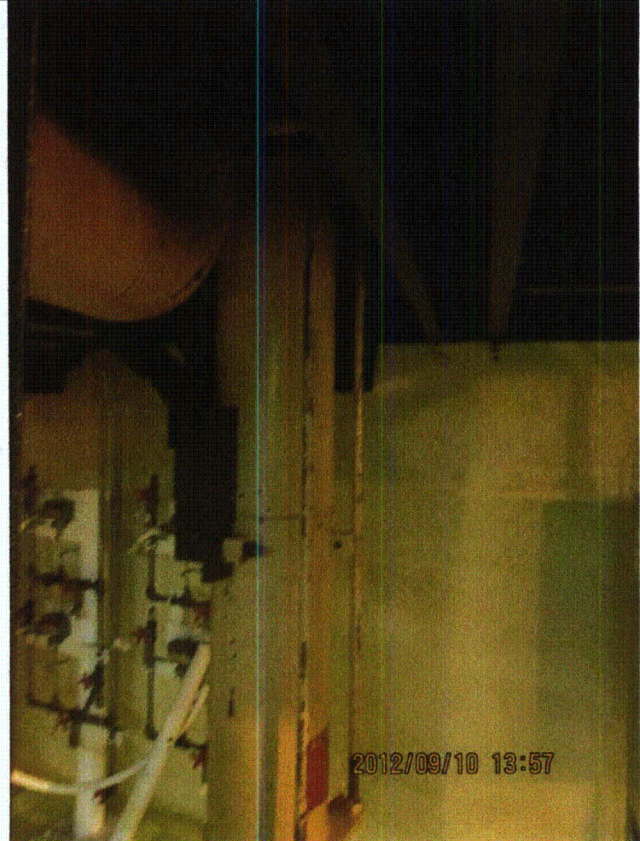
Equipment ID No.: 1VQ030

Equipment Class: (7) Fluid-Operated Valves

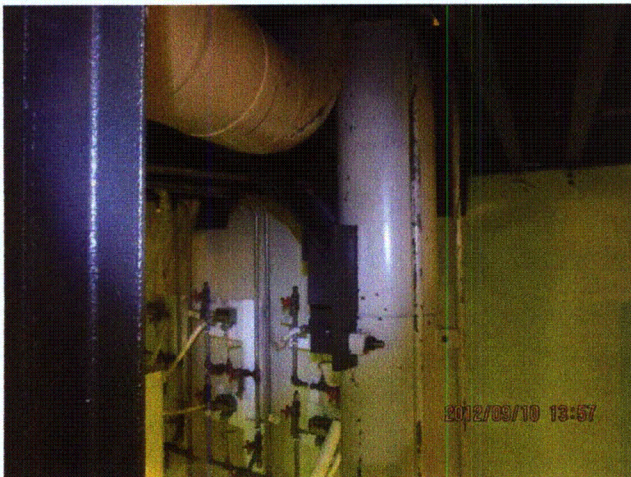
Equipment Description: DW VENT/PURGE INLET DWNST ISOL VALVE



20120910-Lasalle 216



20120910-Lasalle 217



20120910-Lasalle 218

Status: Y N U

Seismic Walkdown Checklist (SWC)

Equipment ID No.: 1VQ031

Equipment Class: (7) Fluid-Operated Valves

Equipment Description: SUP POOL VENT/PURGE OTLT UPSTRM ISOL

Project: LaSalle 1 SWEL

Location (Bldg, Elev, Room/Area): RB, 710.00 ft, ALL

Manufacturer/Model:

Instructions for Completing Checklist

This checklist may be used to document the results of the Seismic Walkdown of an item of equipment on the SWEL. The space below each of the following questions may be used to record the results of judgments and findings. Additional space is provided at the end of this checklist for documenting other comments.

Anchorage

1. Is anchorage configuration verification required (i.e., is the item one of the 50% of SWEL items requiring such verification)? No

2. Is the anchorage free of bent, broken, missing or loose hardware? Not Applicable

3. Is the anchorage free of corrosion that is more than mild surface oxidation? Not Applicable

4. Is the anchorage free of visible cracks in the concrete near the anchors? Not Applicable

5. Is the anchorage configuration consistent with plant documentation? (Note: This question only applies if the item is one of the 50% for which an anchorage configuration verification is required.) Not Applicable

6. Based on the above anchorage evaluations, is the anchorage free of potentially adverse seismic conditions? Yes

Status: Y N U

Seismic Walkdown Checklist (SWC)

Equipment ID No.: 1VQ031

Equipment Class: (7) Fluid-Operated Valves

Equipment Description: SUP POOL VENT/PURGE OTLT UPSTRM ISOL.

Interaction Effects

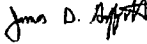
7. Are soft targets free from impact by nearby equipment or structures? Yes
- Valve 1VQ031 limit switch conduit fitting is in contact with cable tray hanger. Pipe containing valve 1VQ031 is large, robust, and welded to drywell penetration nearby. Cable tray run has longitudinally-braced hangers nearby. Movement of either the valve or tray hanger during a seismic event is judged to not be significant and therefore is not an interaction concern.*
8. Are overhead equipment, distribution systems, ceiling tiles and lighting, and masonry block walls not likely to collapse onto the equipment? Yes
9. Do attached lines have adequate flexibility to avoid damage? Yes
10. Based on the above seismic interaction evaluations, is equipment free of potentially adverse seismic interaction effects? Yes


Other Adverse Conditions

11. Have you looked for and found no adverse seismic conditions that could adversely affect the safety functions of the equipment? Yes

Comments

Seismic Walkdown Team: J. Griffith & M. Wodarczyk - 9/10/2012

Evaluated by:  James Griffith Date: 10/17/2012

 Michael Wodarczyk 10/17/2012

Status: Y N U

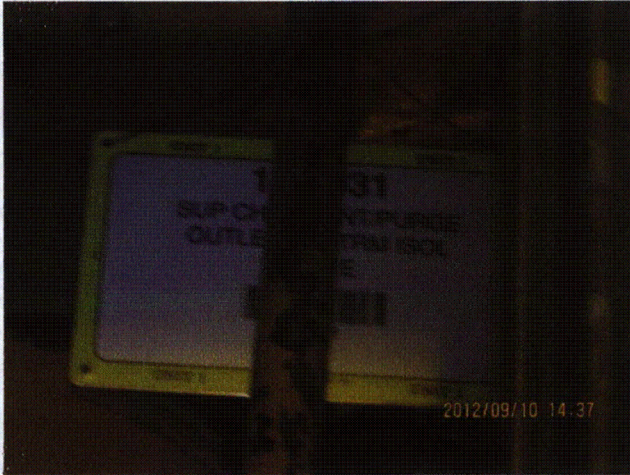
Seismic Walkdown Checklist (SWC)

Equipment ID No.: 1VQ031

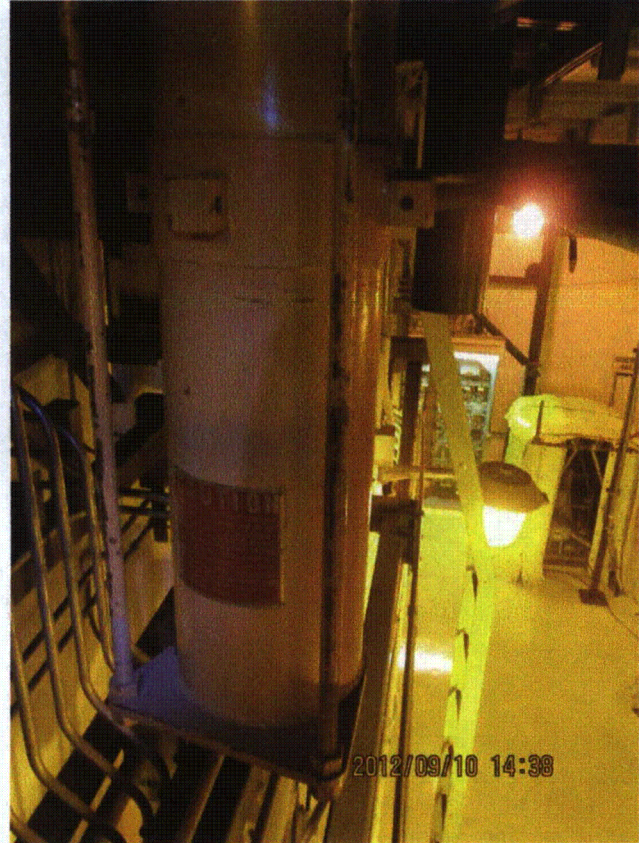
Equipment Class: (7) Fluid-Operated Valves

Equipment Description: SUP POOL VENT/PURGE OTLT UPSTRM ISOL

Photos



20120910-Lasalle 261



20120910-Lasalle 262

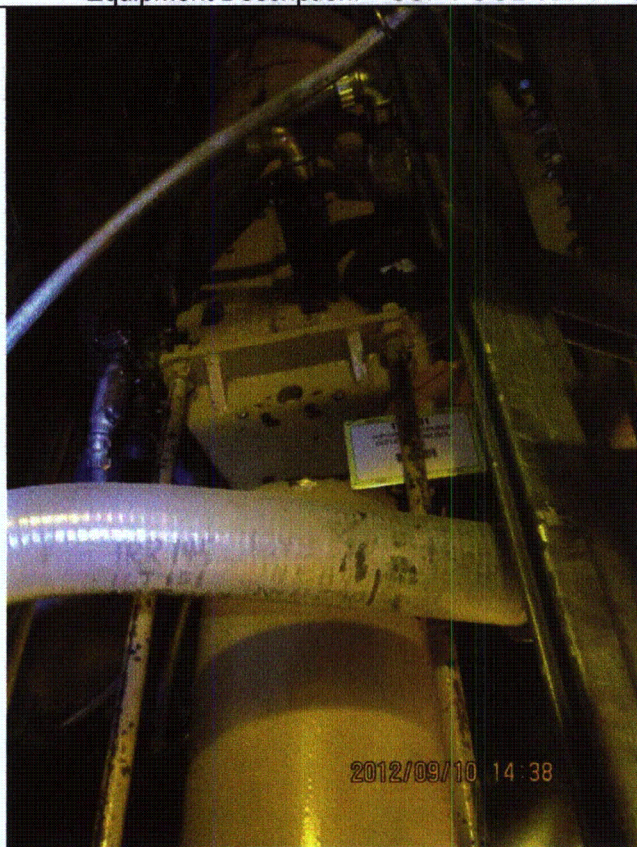
Status: Y N U

Seismic Walkdown Checklist (SWC)

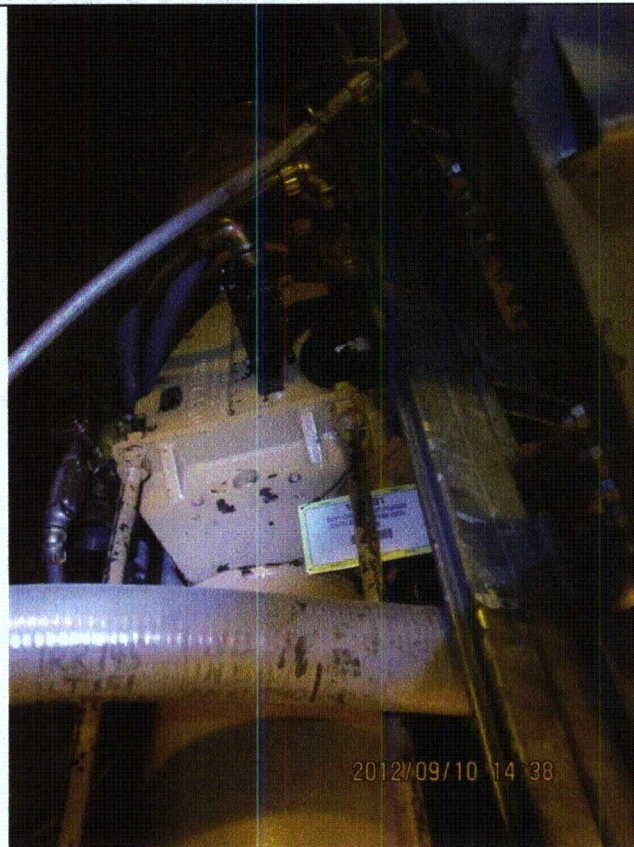
Equipment ID No.: 1VQ031

Equipment Class: (7) Fluid-Operated Valves

Equipment Description: SUP POOL VENT/PURGE OTLT UPSTRM ISOL



20120910-Lasalle 263



20120910-Lasalle 264

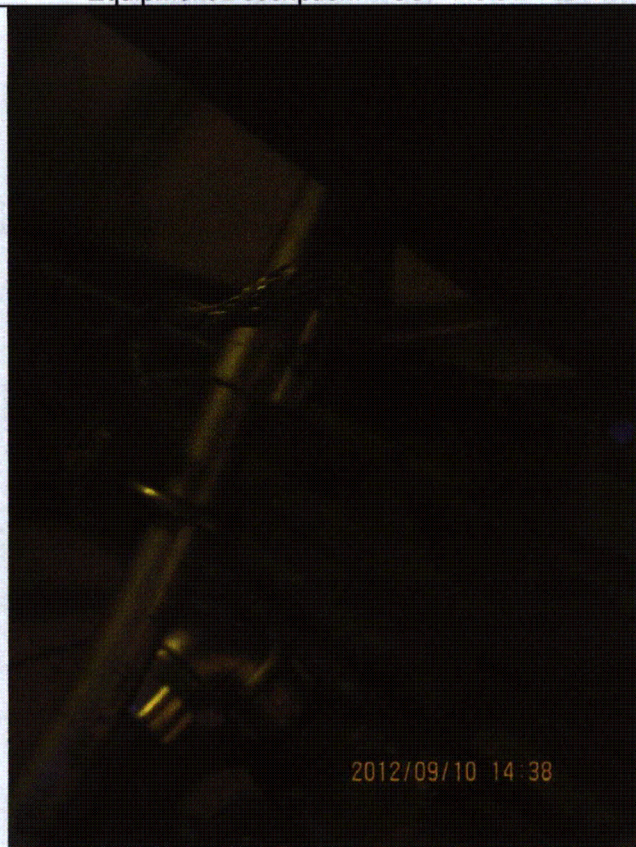
Status: Y N U

Seismic Walkdown Checklist (SWC)

Equipment ID No.: 1VQ031

Equipment Class: (7) Fluid-Operated Valves

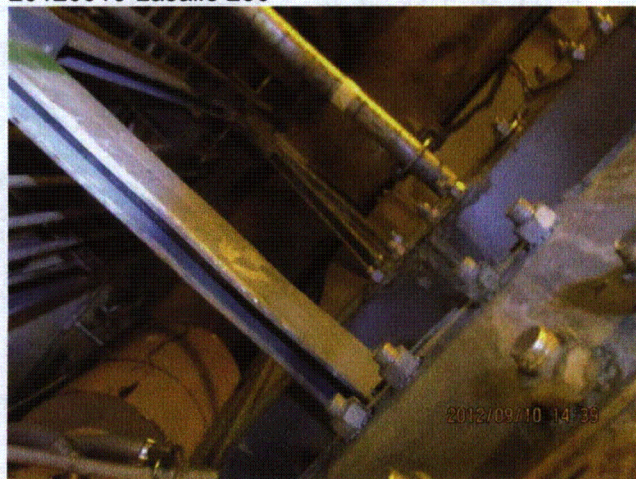
Equipment Description: SUP POOL VENT/PURGE OTLT UPSTRM ISOL



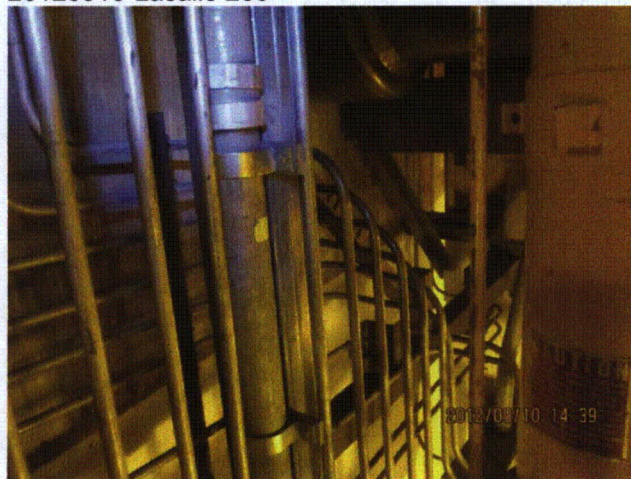
20120910-Lasalle 265



20120910-Lasalle 266



20120910-Lasalle 267



20120910-Lasalle 268

Status: Y N U

Seismic Walkdown Checklist (SWC)

Equipment ID No.: 1VQ031

Equipment Class: (7) Fluid-Operated Valves

Equipment Description: SUP POOL VENT/PURGE OTLT UPSTRM ISOL

PRELIMINARY

Seismic Walkdown Checklist (SWC)

Equipment ID No.: 1VQ031 Status: Y

Equipment Class: (7) Fluid-Operated Valves

Equipment Description: SUP POOL VENT/PURGE OTLT UPSTRM ISOL

Project: Lasalle 1 SWEL

Location (Bldg, Elev, Room/Area): RB, 710.00 ft, ALL

Manufacturer/Model:

Instructions for Completing Checklist
This checklist may be used to document the results of the Seismic Walkdown of an item of equipment on the SWEL. The space below each of the following questions may be used to document the results of the findings. Additional space is provided at the end of this checklist for documenting other comments.

Anchorage

1. Is anchorage configuration verification required (i.e. is the item one of the 50% of SWEL items requiring such verification)?

20120910-Lasalle 282

Status: Y N U

Seismic Walkdown Checklist (SWC)

Equipment ID No.: 1VQ032

Equipment Class: (8) Motor-Operated and Solenoid-Operated Valves

Equipment Description: SUP POOL VENT/PURGE OTLT UPSTRM ISOL BYP-20 FT.OVHD

Project: LaSalle 1 SWEL

Location (Bldg, Elev, Room/Area): RB, 710.00 ft, ALL

Manufacturer/Model:

Instructions for Completing Checklist

This checklist may be used to document the results of the Seismic Walkdown of an item of equipment on the SWEL. The space below each of the following questions may be used to record the results of judgments and findings. Additional space is provided at the end of this checklist for documenting other comments.

Anchorage

1. Is anchorage configuration verification required (i.e., is the item one of the 50% of SWEL items requiring such verification)? No

2. Is the anchorage free of bent, broken, missing or loose hardware? Not Applicable

3. Is the anchorage free of corrosion that is more than mild surface oxidation? Not Applicable

4. Is the anchorage free of visible cracks in the concrete near the anchors? Not Applicable

5. Is the anchorage configuration consistent with plant documentation? (Note: This question only applies if the item is one of the 50% for which an anchorage configuration verification is required.) Not Applicable

6. Based on the above anchorage evaluations, is the anchorage free of potentially adverse seismic conditions? Yes

Status: Y N U

Seismic Walkdown Checklist (SWC)

Equipment ID No.: 1VQ032

Equipment Class: (8) Motor-Operated and Solenoid-Operated Valves

Equipment Description: SUP POOL VENT/PURGE OTLT UPSTRM ISOL BYP-20 FT.OVHD

Interaction Effects

7. Are soft targets free from impact by nearby equipment or structures? Yes

Flexible conduit near valve in air line. Contact between valve handle and conduit during seismic event cannot close valve from its operating position due to the orientation of the valve handle. Judged to be acceptable.

8. Are overhead equipment, distribution systems, ceiling tiles and lighting, and masonry block walls not likely to collapse onto the equipment? Yes

9. Do attached lines have adequate flexibility to avoid damage? Yes

10. Based on the above seismic interaction evaluations, is equipment free of potentially adverse seismic interaction effects? Yes


Other Adverse Conditions

11. Have you looked for and found no adverse seismic conditions that could adversely affect the safety functions of the equipment? Yes

Comments

Seismic Walkdown Team: J. Griffith & M. Wodarcyk - 9/10/2012

Evaluated by:  James Griffith Date: 10/17/2012

 Michael Wodarcyk 10/17/2012

Status: Y N U

Seismic Walkdown Checklist (SWC)

Equipment ID No.: 1VQ032

Equipment Class: (8) Motor-Operated and Solenoid-Operated Valves

Equipment Description: SUP POOL VENT/PURGE OTLT UPSTRM ISOL BYP-20 FT.OVHD

Photos



20120910-Lasalle 270



20120910-Lasalle 271

Status: Y N U

Seismic Walkdown Checklist (SWC)

Equipment ID No.: 1VQ032

Equipment Class: (8) Motor-Operated and Solenoid-Operated Valves

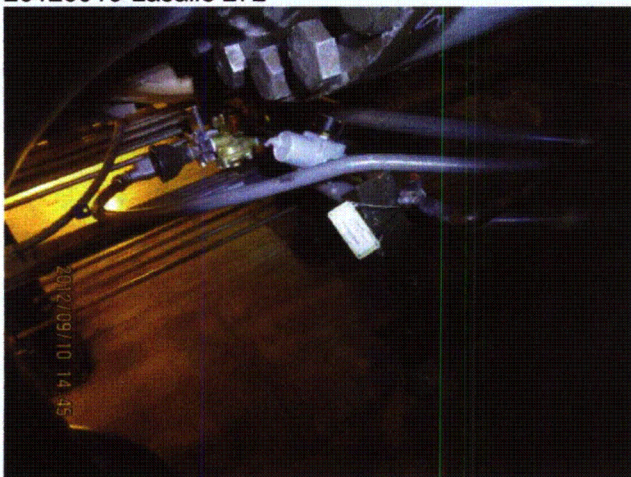
Equipment Description: SUP POOL VENT/PURGE OTLT UPSTRM ISOL BYP-20 FT.OVHD



20120910-Lasalle 272



20120910-Lasalle 273



20120910-Lasalle 274



20120910-Lasalle 275

Status: Y N U

Seismic Walkdown Checklist (SWC)

Equipment ID No.: 1VQ032

Equipment Class: (8) Motor-Operated and Solenoid-Operated Valves

Equipment Description: SUP POOL VENT/PURGE OTLT UPSTRM ISOL BYP-20 FT.OVHD



20120910-Lasalle 276



20120910-Lasalle 277

Status: Y N U

Seismic Walkdown Checklist (SWC)

Equipment ID No.: 1VQ032

Equipment Class: (8) Motor-Operated and Solenoid-Operated Valves

Equipment Description: SUP POOL VENT/PURGE OTLT UPSTRM ISOL BYP-20 FT.OVHD



20120910-Lasalle 278



20120910-Lasalle 279

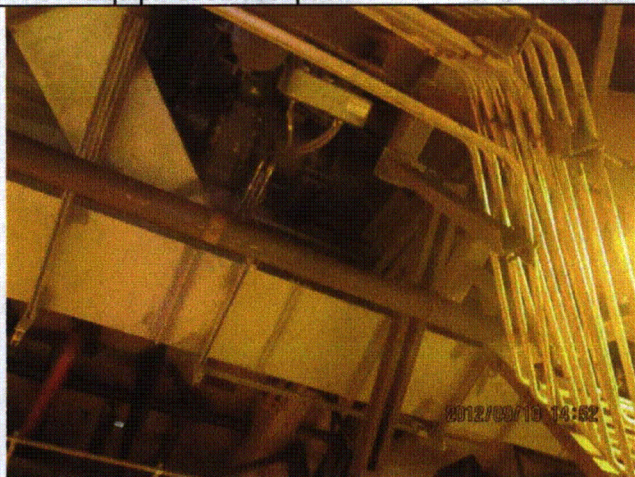
Status: Y N U

Seismic Walkdown Checklist (SWC)

Equipment ID No.: 1VQ032

Equipment Class: (8) Motor-Operated and Solenoid-Operated Valves

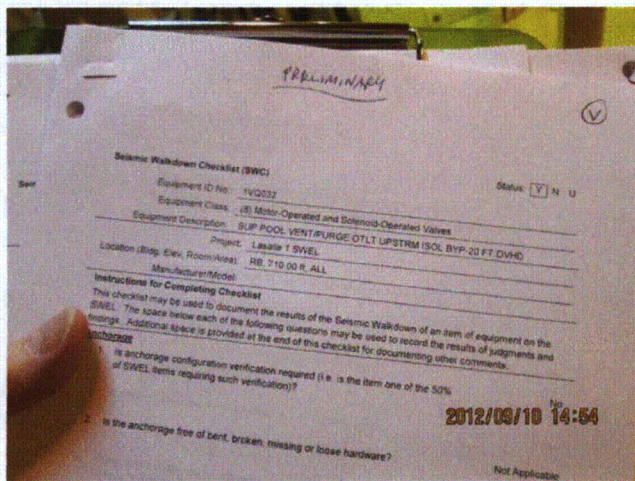
Equipment Description: SUP POOL VENT/PURGE OTLT UPSTRM ISOL BYP-20 FT.OVHD



20120910-Lasalle 280



20120910-Lasalle 281



20120910-Lasalle 283



20120910-Lasalle 284