

Status: Y N U

Seismic Walkdown Checklist (SWC)

Equipment ID No.: 1E12-N027B

Equipment Class: (19) Temperature Sensors

Equipment Description: B RHR HX OUTLET TEMPERATURE ELEMENT

Project: LaSalle 1 SWEL

Location (Bldg, Elev, Room/Area): RB, 694.00 ft, ALL

Manufacturer/Model:

Instructions for Completing Checklist

This checklist may be used to document the results of the Seismic Walkdown of an item of equipment on the SWEL. The space below each of the following questions may be used to record the results of judgments and findings. Additional space is provided at the end of this checklist for documenting other comments.

Anchorage

1. Is anchorage configuration verification required (i.e., is the item one of the 50% of SWEL items requiring such verification)? No

2. Is the anchorage free of bent, broken, missing or loose hardware? Not Applicable

3. Is the anchorage free of corrosion that is more than mild surface oxidation? Not Applicable

4. Is the anchorage free of visible cracks in the concrete near the anchors? Not Applicable

5. Is the anchorage configuration consistent with plant documentation? (Note: This question only applies if the item is one of the 50% for which an anchorage configuration verification is required.) Not Applicable

6. Based on the above anchorage evaluations, is the anchorage free of potentially adverse seismic conditions? Yes

Status: Y N U

Seismic Walkdown Checklist (SWC)

Equipment ID No.: 1E12-N027B

Equipment Class: (19) Temperature Sensors

Equipment Description: B RHR HX OUTLET TEMPERATURE ELEMENT

Interaction Effects

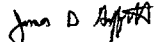
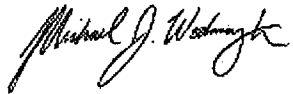
7. Are soft targets free from impact by nearby equipment or structures? Yes
8. Are overhead equipment, distribution systems, ceiling tiles and lighting, and masonry block walls not likely to collapse onto the equipment?
Overhead light fixtures judged to be acceptable. Yes
9. Do attached lines have adequate flexibility to avoid damage? Yes
10. Based on the above seismic interaction evaluations, is equipment free of potentially adverse seismic interaction effects? Yes

Other Adverse Conditions

11. Have you looked for and found no adverse seismic conditions that could adversely affect the safety functions of the equipment? Yes

Comments

Seismic Walkdown Team: J. Griffith & M. Wodarczyk - 9/12/2012

Evaluated by:  James Griffith Date: 10/17/2012
 Michael Wodarczyk 10/17/2012

Status: Y N U

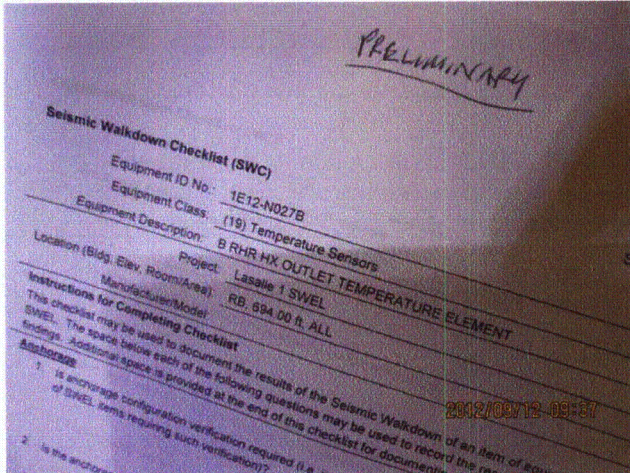
Seismic Walkdown Checklist (SWC)

Equipment ID No.: 1E12-N027B

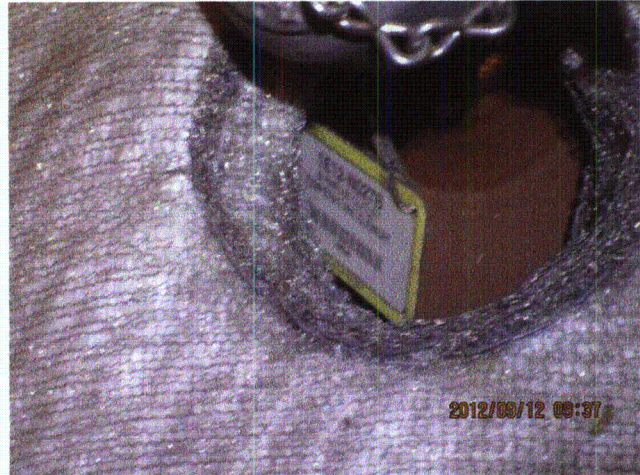
Equipment Class: (19) Temperature Sensors

Equipment Description: B RHR HX OUTLET TEMPERATURE ELEMENT

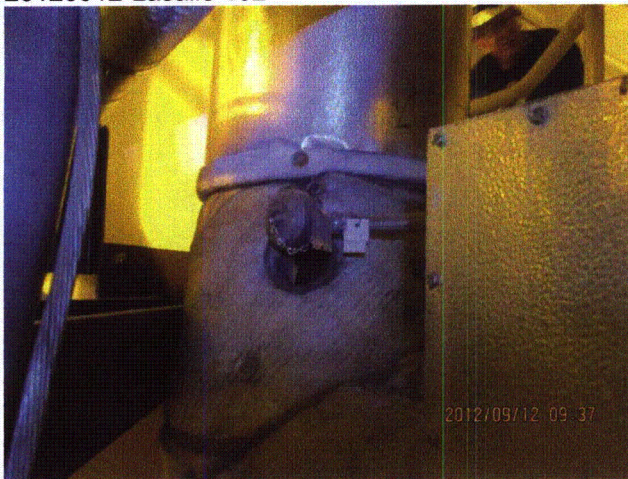
Photos



20120912-Lasalle 102



20120912-Lasalle 103



20120912-Lasalle 104

Status: Y N U

Seismic Walkdown Checklist (SWC)

Equipment ID No.: 1E21-C001

Equipment Class: (6) Vertical Pumps

Equipment Description: LPCS PUMP

Project: LaSalle 1 SWEL

Location (Bldg, Elev, Room/Area): RB, 673.00 ft, ALL

Manufacturer/Model:

Instructions for Completing Checklist

This checklist may be used to document the results of the Seismic Walkdown of an item of equipment on the SWEL. The space below each of the following questions may be used to record the results of judgments and findings. Additional space is provided at the end of this checklist for documenting other comments.

Anchorage

1. Is anchorage configuration verification required (i.e., is the item one of the 50% of SWEL items requiring such verification)? Yes

2. Is the anchorage free of bent, broken, missing or loose hardware? Yes
Minor lack of thread engagement judged to be acceptable.

3. Is the anchorage free of corrosion that is more than mild surface oxidation? Yes

4. Is the anchorage free of visible cracks in the concrete near the anchors? Yes
Minor shrinkage cracks in pedestal and grout pad judged to be acceptable.

5. Is the anchorage configuration consistent with plant documentation? (Note: This question only applies if the item is one of the 50% for which an anchorage configuration verification is required.) Yes
Anchorage verified per drawing M-1572, Rev. R and M-1590, Sheet 3, Rev. M.

6. Based on the above anchorage evaluations, is the anchorage free of potentially adverse seismic conditions? Yes

Status: Y N U

Seismic Walkdown Checklist (SWC)

Equipment ID No.: 1E21-C001

Equipment Class: (6) Vertical Pumps

Equipment Description: LPCS PUMP

Interaction Effects

7. Are soft targets free from impact by nearby equipment or structures? Yes
8. Are overhead equipment, distribution systems, ceiling tiles and lighting, and masonry block walls not likely to collapse onto the equipment? Yes
9. Do attached lines have adequate flexibility to avoid damage? Yes
10. Based on the above seismic interaction evaluations, is equipment free of potentially adverse seismic interaction effects? Yes

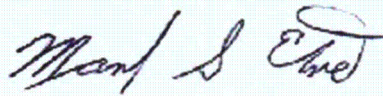
Other Adverse Conditions

11. Have you looked for and found no adverse seismic conditions that could adversely affect the safety functions of the equipment? Yes

Comments

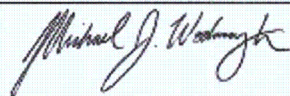
Seismic Walkdown Team: M. Etre & M. Wodarcyk - 9/18/2012

Evaluated by:



Mark Etre

Date: 10/17/2012



Michael Wodarcyk

10/17/2012

Status: Y N U

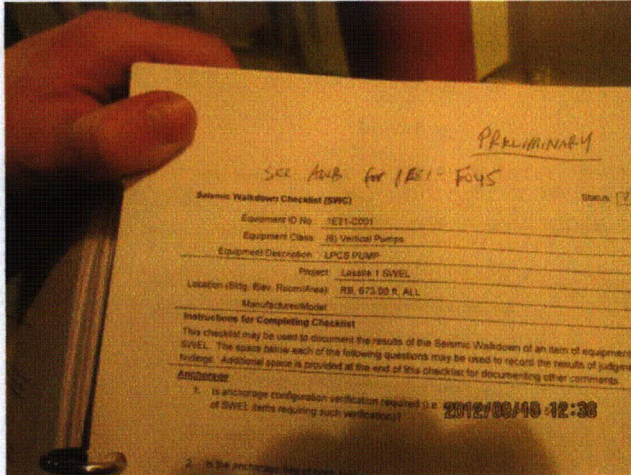
Seismic Walkdown Checklist (SWC)

Equipment ID No.: 1E21-C001

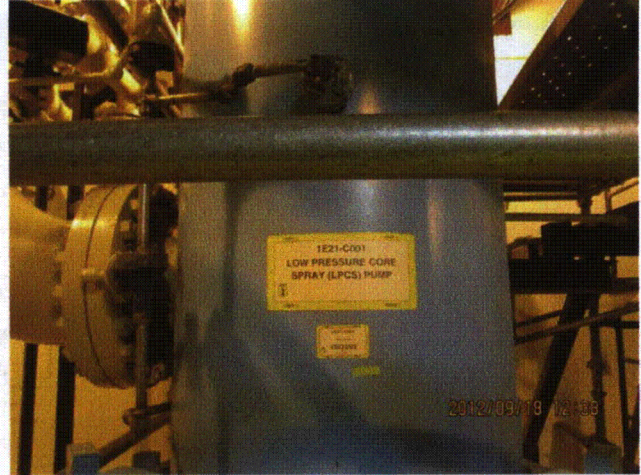
Equipment Class: (6) Vertical Pumps

Equipment Description: LPCS PUMP

Photos



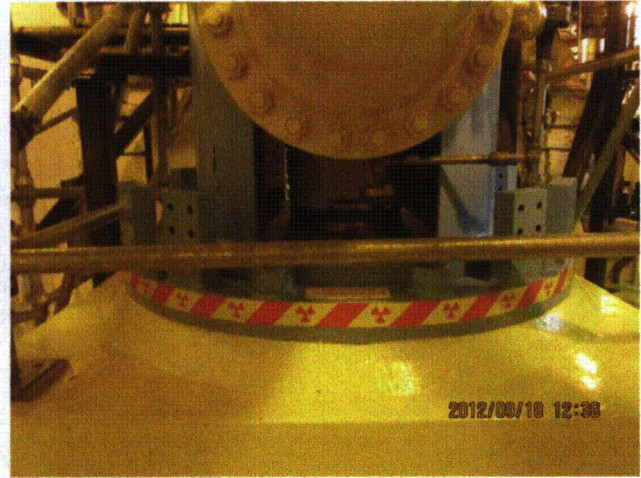
20120918-Lasalle 182



20120918-Lasalle 183



20120918-Lasalle 184



20120918-Lasalle 185

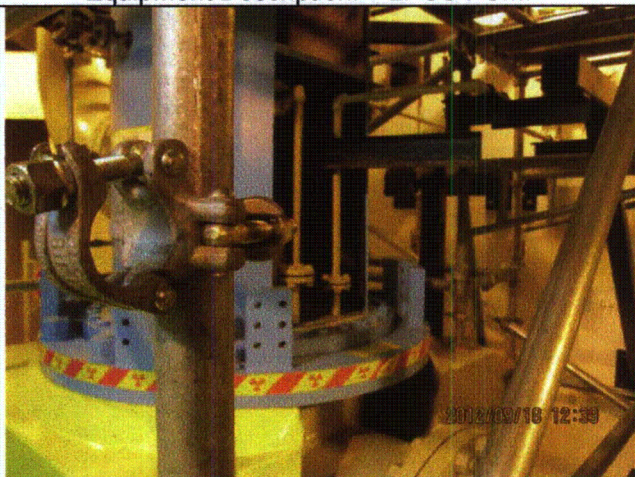
Status: Y N U

Seismic Walkdown Checklist (SWC)

Equipment ID No.: 1E21-C001

Equipment Class: (6) Vertical Pumps

Equipment Description: LPCS PUMP



20120918-Lasalle 186



20120918-Lasalle 187

Status: Y N U

Seismic Walkdown Checklist (SWC)

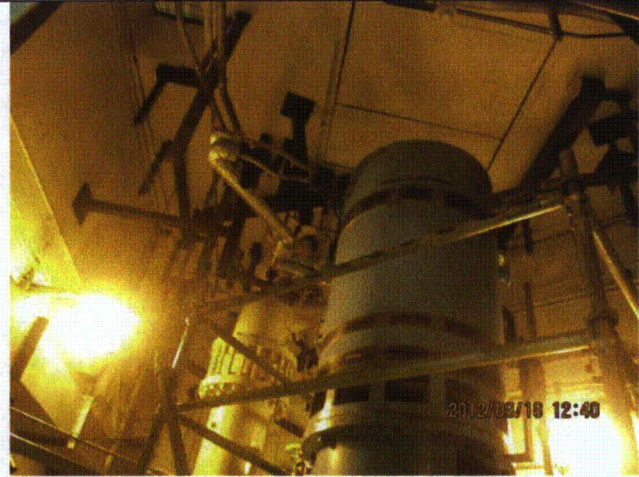
Equipment ID No.: 1E21-C001

Equipment Class: (6) Vertical Pumps

Equipment Description: LPCS PUMP



20120918-Lasalle 188



20120918-Lasalle 189

Status: Y N U

Seismic Walkdown Checklist (SWC)

Equipment ID No.: 1E21-N003

Equipment Class: (18) Instruments on Racks

Equipment Description: LPCS PP DISCH FLOW XMITTER

Project: LaSalle 1 SWEL

Location (Bldg, Elev, Room/Area): RB, 673.00 ft, ALL

Manufacturer/Model:

Instructions for Completing Checklist

This checklist may be used to document the results of the Seismic Walkdown of an item of equipment on the SWEL. The space below each of the following questions may be used to record the results of judgments and findings. Additional space is provided at the end of this checklist for documenting other comments.

Anchorage

1. Is anchorage configuration verification required (i.e., is the item one of the 50% of SWEL items requiring such verification)? No

2. Is the anchorage free of bent, broken, missing or loose hardware? Yes

3. Is the anchorage free of corrosion that is more than mild surface oxidation? Yes

4. Is the anchorage free of visible cracks in the concrete near the anchors? Yes

5. Is the anchorage configuration consistent with plant documentation? (Note: This question only applies if the item is one of the 50% for which an anchorage configuration verification is required.) Not Applicable

6. Based on the above anchorage evaluations, is the anchorage free of potentially adverse seismic conditions? Yes

Status: Y N U

Seismic Walkdown Checklist (SWC)

Equipment ID No.: 1E21-N003

Equipment Class: (18) Instruments on Racks

Equipment Description: LPCS PP DISCH FLOW XMITTER

Interaction Effects

7. Are soft targets free from impact by nearby equipment or structures? Yes
8. Are overhead equipment, distribution systems, ceiling tiles and lighting, and masonry block walls not likely to collapse onto the equipment? Yes
Overhead light fixture judged to be acceptable.
9. Do attached lines have adequate flexibility to avoid damage? Yes
10. Based on the above seismic interaction evaluations, is equipment free of potentially adverse seismic interaction effects? Yes

Other Adverse Conditions

11. Have you looked for and found no adverse seismic conditions that could adversely affect the safety functions of the equipment? Yes

Comments

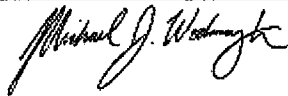
Seismic Walkdown Team: M. Etre & M. Wodarczyk - 9/18/2012

Evaluated by:



Mark Etre

Date: 10/17/2012



Michael Wodarczyk

10/17/2012

Status: Y N U

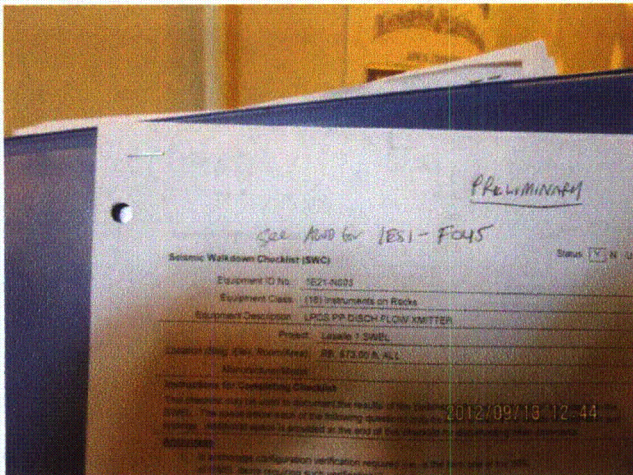
Seismic Walkdown Checklist (SWC)

Equipment ID No.: 1E21-N003

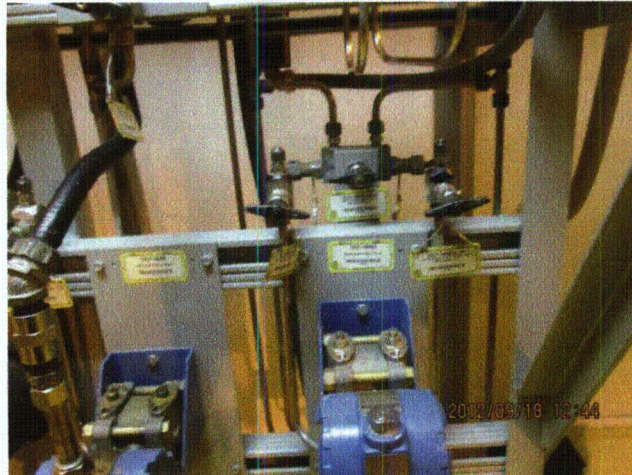
Equipment Class: (18) Instruments on Racks

Equipment Description: LPCS PP DISCH FLOW XMITTER

Photos



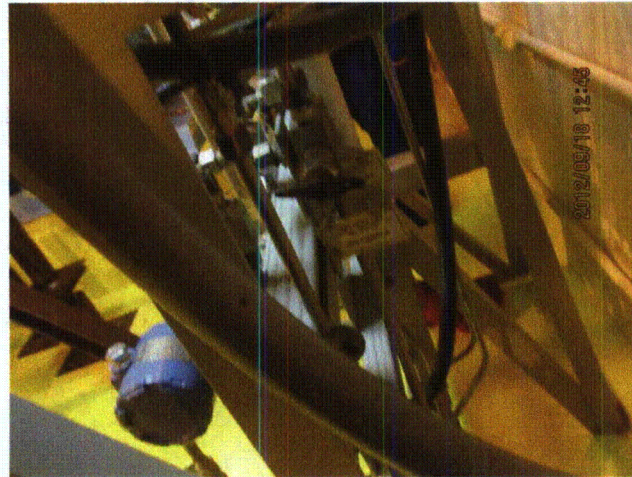
20120918-Lasalle 190



20120918-Lasalle 191



20120918-Lasalle 192



20120918-Lasalle 193

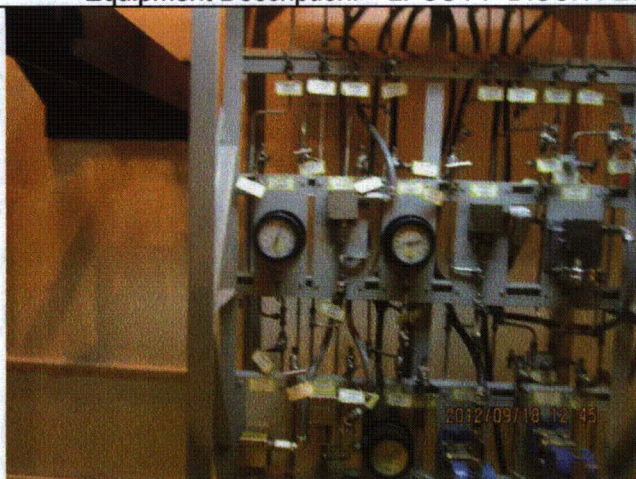
Status: Y N U

Seismic Walkdown Checklist (SWC)

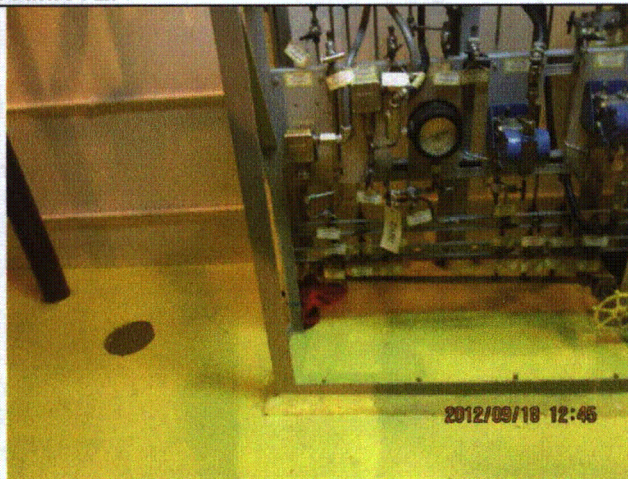
Equipment ID No.: 1E21-N003

Equipment Class: (18) Instruments on Racks

Equipment Description: LPCS PP DISCH FLOW XMITTER



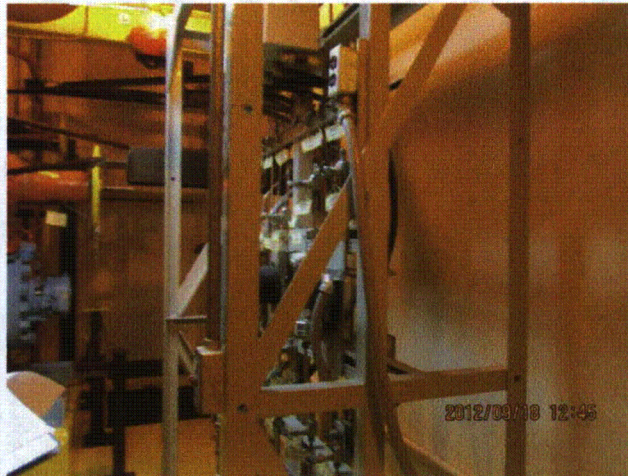
20120918-Lasalle 194



20120918-Lasalle 195



20120918-Lasalle 196



20120918-Lasalle 197

Status: Y N U

Seismic Walkdown Checklist (SWC)

Equipment ID No.: 1E22-C001

Equipment Class: (6) Vertical Pumps

Equipment Description: PMP HI PRESS CORE SPRAY

Project: LaSalle 1 SWEL

Location (Bldg, Elev, Room/Area): RB, 673.00 ft, ALL

Manufacturer/Model:

Instructions for Completing Checklist

This checklist may be used to document the results of the Seismic Walkdown of an item of equipment on the SWEL. The space below each of the following questions may be used to record the results of judgments and findings. Additional space is provided at the end of this checklist for documenting other comments.

Anchorage

1. Is anchorage configuration verification required (i.e., is the item one of the 50% of SWEL items requiring such verification)? Yes

2. Is the anchorage free of bent, broken, missing or loose hardware? Yes

3. Is the anchorage free of corrosion that is more than mild surface oxidation? Yes

4. Is the anchorage free of visible cracks in the concrete near the anchors? Yes

5. Is the anchorage configuration consistent with plant documentation? (Note: This question only applies if the item is one of the 50% for which an anchorage configuration verification is required.) Yes
Anchorage shown on drawings M-1572, Rev. R and M-1590, Sheet 3, Rev. M.

6. Based on the above anchorage evaluations, is the anchorage free of potentially adverse seismic conditions? Yes

Status: Y N U

Seismic Walkdown Checklist (SWC)

Equipment ID No.: 1E22-C001

Equipment Class: (6) Vertical Pumps

Equipment Description: PMP HI PRESS CORE SPRAY

Interaction Effects


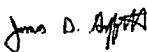
7. Are soft targets free from impact by nearby equipment or structures? Yes
8. Are overhead equipment, distribution systems, ceiling tiles and lighting, and masonry block walls not likely to collapse onto the equipment? Yes
Overhead light fixtures judged to be acceptable.
Adjacent masonry walls are safety-related per drawing A-218, Rev. T.
9. Do attached lines have adequate flexibility to avoid damage? Yes
10. Based on the above seismic interaction evaluations, is equipment free of potentially adverse seismic interaction effects? Yes

Other Adverse Conditions

11. Have you looked for and found no adverse seismic conditions that could adversely affect the safety functions of the equipment? Yes

Comments

Seismic Walkdown Team: D. Carter & J. Griffith - 9/4/2012

Evaluated by:  David Carter Date: 10/17/2012
 James Griffith 10/17/2012

Status: Y N U

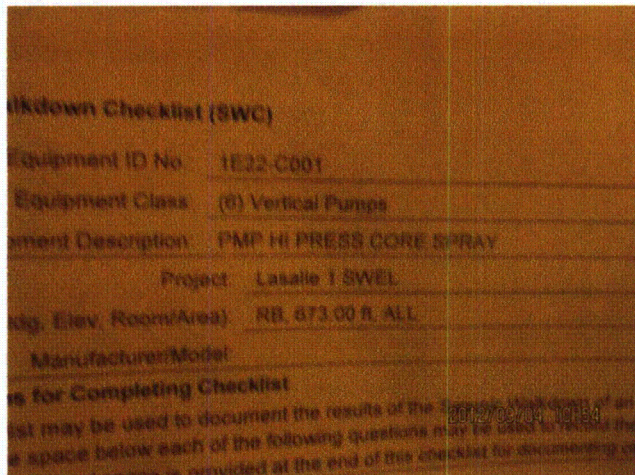
Seismic Walkdown Checklist (SWC)

Equipment ID No.: 1E22-C001

Equipment Class: (6) Vertical Pumps

Equipment Description: PMP HI PRESS CORE SPRAY

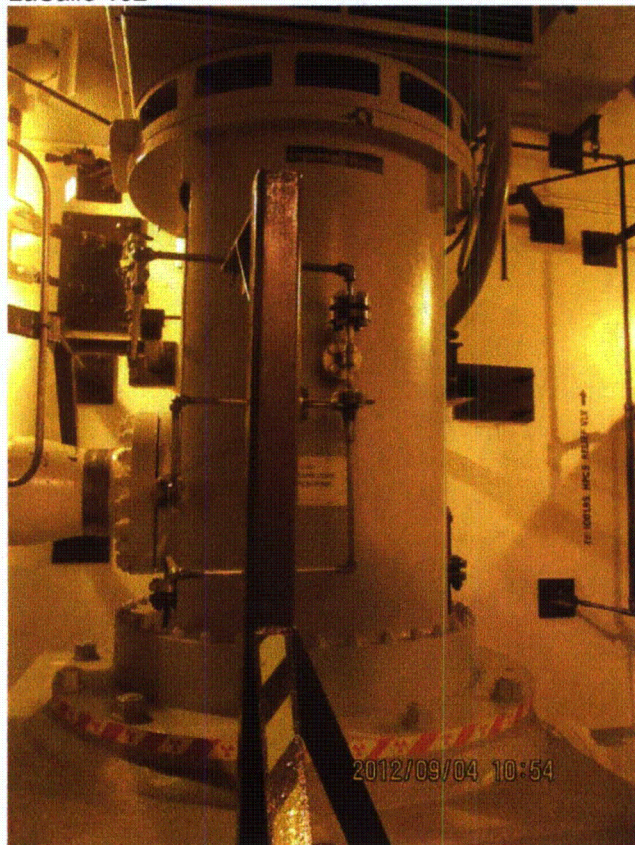
Photos



LaSalle 132



LaSalle 133



LaSalle 134



LaSalle 135

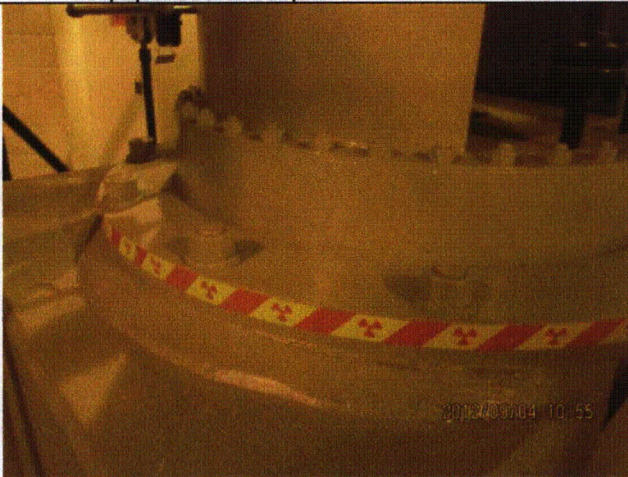
Status: Y N U

Seismic Walkdown Checklist (SWC)

Equipment ID No.: 1E22-C001

Equipment Class: (6) Vertical Pumps

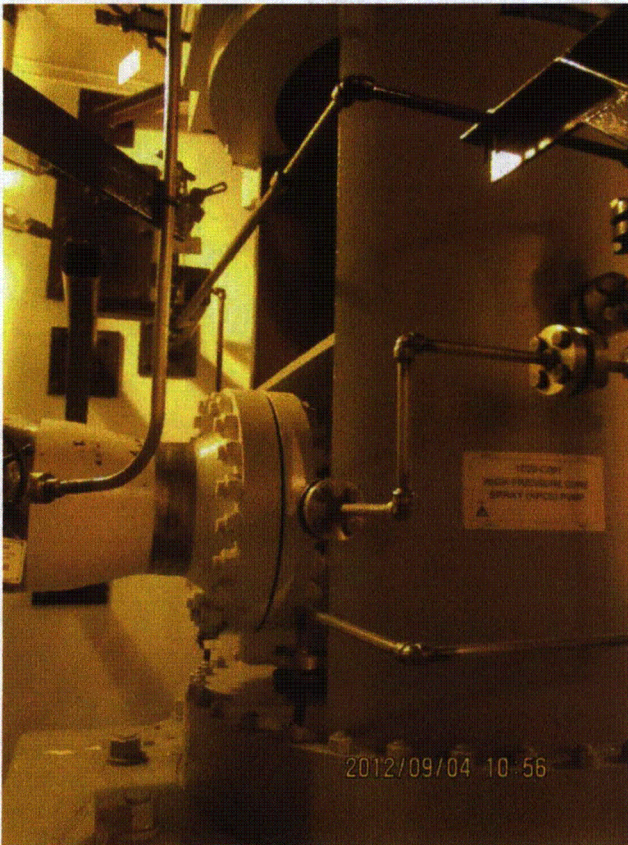
Equipment Description: PMP HI PRESS CORE SPRAY



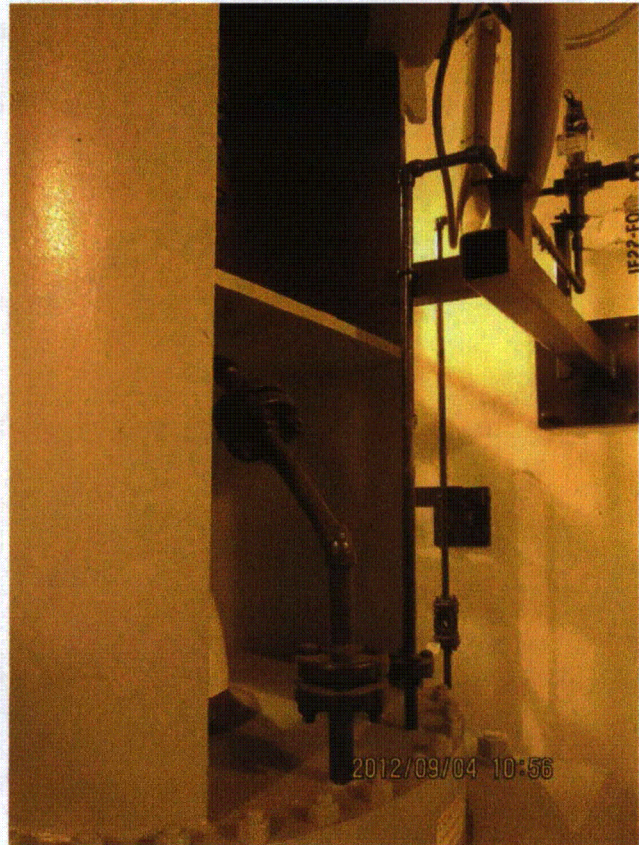
LaSalle 136



LaSalle 137



LaSalle 138



LaSalle 139

Status: Y N U

Seismic Walkdown Checklist (SWC)

Equipment ID No.: 1E22-F004

Equipment Class: (8) Motor-Operated and Solenoid-Operated Valves

Equipment Description: HPCS INJECTION ISOL VALVE

Project: LaSalle 1 SWEL

Location (Bldg, Elev, Room/Area): RB, 761.00 ft, ALL

Manufacturer/Model:

Instructions for Completing Checklist

This checklist may be used to document the results of the Seismic Walkdown of an item of equipment on the SWEL. The space below each of the following questions may be used to record the results of judgments and findings. Additional space is provided at the end of this checklist for documenting other comments.

Anchorage

1. Is anchorage configuration verification required (i.e., is the item one of the 50% of SWEL items requiring such verification)? No

2. Is the anchorage free of bent, broken, missing or loose hardware? Not Applicable

3. Is the anchorage free of corrosion that is more than mild surface oxidation? Not Applicable

4. Is the anchorage free of visible cracks in the concrete near the anchors? Not Applicable

5. Is the anchorage configuration consistent with plant documentation? (Note: This question only applies if the item is one of the 50% for which an anchorage configuration verification is required.) Not Applicable

6. Based on the above anchorage evaluations, is the anchorage free of potentially adverse seismic conditions? Yes

Status: Y N U

Seismic Walkdown Checklist (SWC)

Equipment ID No.: 1E22-F004

Equipment Class: (8) Motor-Operated and Solenoid-Operated Valves

Equipment Description: HPCS INJECTION ISOL VALVE

Interaction Effects

7. Are soft targets free from impact by nearby equipment or structures? Yes
8. Are overhead equipment, distribution systems, ceiling tiles and lighting, and masonry block walls not likely to collapse onto the equipment? Yes
Overhead light fixture with open S-hooks. Each end of fixture tethered by flexible conduit. No soft targets below. Judged to be acceptable.
9. Do attached lines have adequate flexibility to avoid damage? Yes
10. Based on the above seismic interaction evaluations, is equipment free of potentially adverse seismic interaction effects? Yes

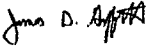
Other Adverse Conditions

11. Have you looked for and found no adverse seismic conditions that could adversely affect the safety functions of the equipment? Yes

Comments

Seismic Walkdown Team: D. Carter & J. Griffith - 9/4/2012

Evaluated by:  David Carter Date: 10/17/2012

 James D. Griffith 10/17/2012

Status: Y N U

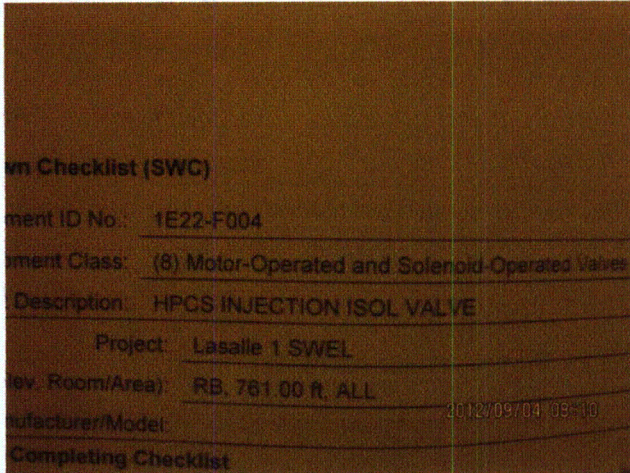
Seismic Walkdown Checklist (SWC)

Equipment ID No.: 1E22-F004

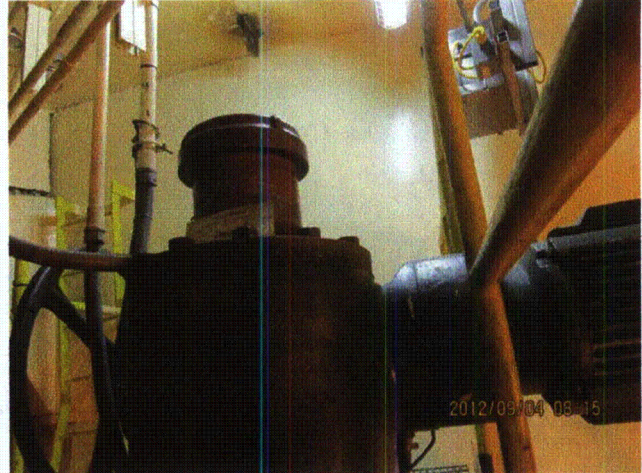
Equipment Class: (8) Motor-Operated and Solenoid-Operated Valves

Equipment Description: HPCS INJECTION ISOL VALVE

Photos



LaSalle 001



LaSalle 002



LaSalle 003



LaSalle 004

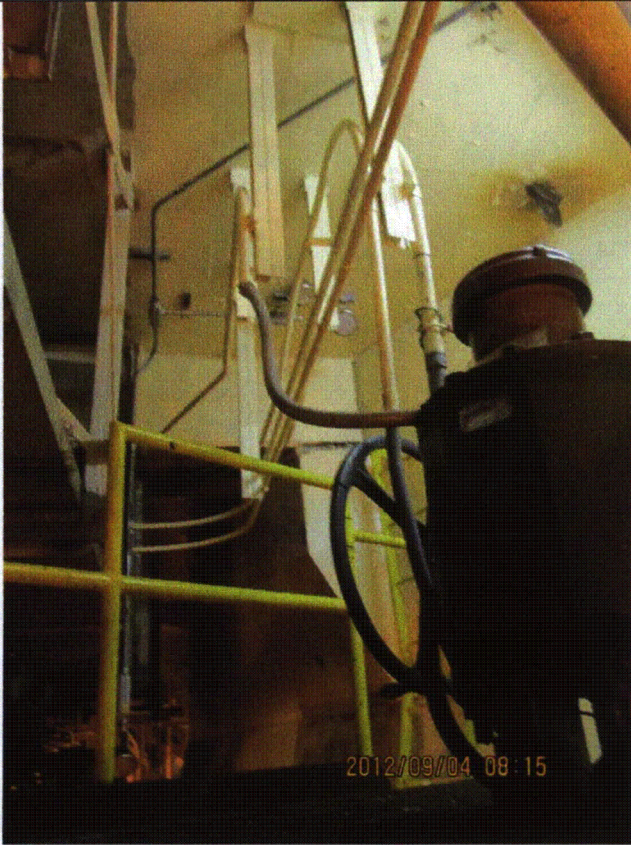
Status: Y N U

Seismic Walkdown Checklist (SWC)

Equipment ID No.: 1E22-F004

Equipment Class: (8) Motor-Operated and Solenoid-Operated Valves

Equipment Description: HPCS INJECTION ISOL VALVE



LaSalle 005



LaSalle 006

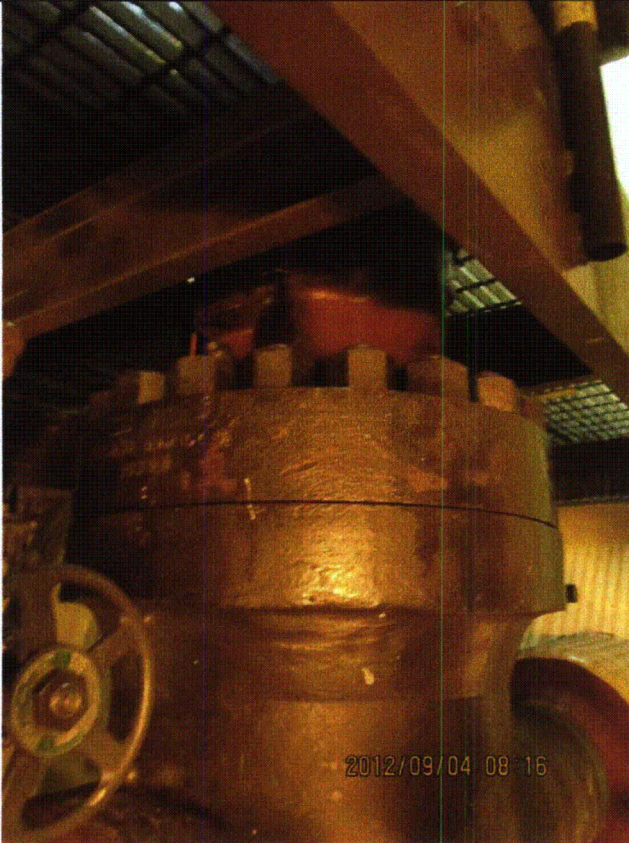
Status: Y N U

Seismic Walkdown Checklist (SWC)

Equipment ID No.: 1E22-F004

Equipment Class: (8) Motor-Operated and Solenoid-Operated Valves

Equipment Description: HPCS INJECTION ISOL VALVE



LaSalle 007



LaSalle 008

Status: Y N U

Seismic Walkdown Checklist (SWC)

Equipment ID No.: 1E22-F015

Equipment Class: (8) Motor-Operated and Solenoid-Operated Valves

Equipment Description: HPCS PUMP SUP POOL SUCT ISOL VALVE

Project: LaSalle 1 SWEL

Location (Bldg, Elev, Room/Area): RB, 673.00 ft, ALL

Manufacturer/Model:

Instructions for Completing Checklist

This checklist may be used to document the results of the Seismic Walkdown of an item of equipment on the SWEL. The space below each of the following questions may be used to record the results of judgments and findings. Additional space is provided at the end of this checklist for documenting other comments.

Anchorage

1. Is anchorage configuration verification required (i.e., is the item one of the 50% of SWEL items requiring such verification)? No

2. Is the anchorage free of bent, broken, missing or loose hardware? Not Applicable

3. Is the anchorage free of corrosion that is more than mild surface oxidation? Not Applicable

4. Is the anchorage free of visible cracks in the concrete near the anchors? Not Applicable

5. Is the anchorage configuration consistent with plant documentation? (Note: This question only applies if the item is one of the 50% for which an anchorage configuration verification is required.) Not Applicable

6. Based on the above anchorage evaluations, is the anchorage free of potentially adverse seismic conditions? Yes

Status: Y N U

Seismic Walkdown Checklist (SWC)

Equipment ID No.: 1E22-F015

Equipment Class: (8) Motor-Operated and Solenoid-Operated Valves

Equipment Description: HPCS PUMP SUP POOL SUCT ISOL VALVE

Interaction Effects

7. Are soft targets free from impact by nearby equipment or structures? Yes
8. Are overhead equipment, distribution systems, ceiling tiles and lighting, and masonry block walls not likely to collapse onto the equipment? Yes
Overhead light fixtures judged to be acceptable.
9. Do attached lines have adequate flexibility to avoid damage? Yes
10. Based on the above seismic interaction evaluations, is equipment free of potentially adverse seismic interaction effects? Yes

Other Adverse Conditions

11. Have you looked for and found no adverse seismic conditions that could adversely affect the safety functions of the equipment? Yes

Comments

Seismic Walkdown Team: D. Carter & J. Griffith - 9/4/2012

Evaluated by: *David Carter* David Carter Date: 10/17/2012
James D. Griffith James Griffith 10/17/2012

Status: Y N U

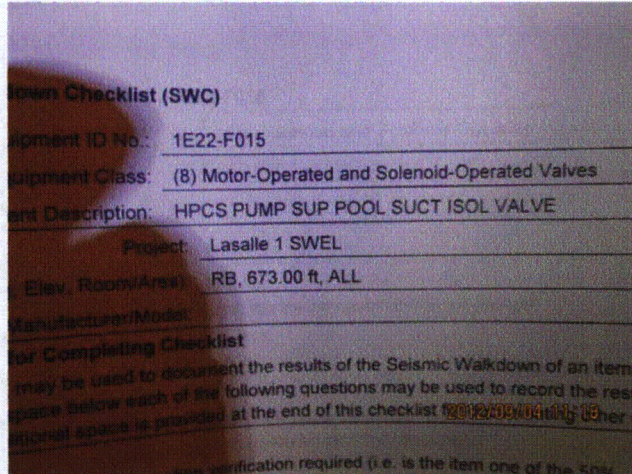
Seismic Walkdown Checklist (SWC)

Equipment ID No.: 1E22-F015

Equipment Class: (8) Motor-Operated and Solenoid-Operated Valves

Equipment Description: HPCS PUMP SUP POOL SUCT ISOL VALVE

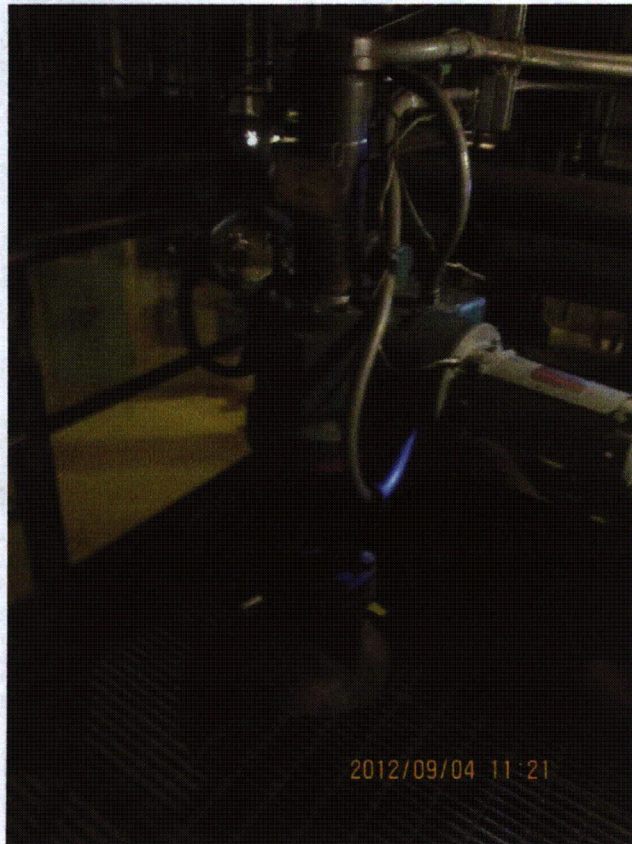
Photos



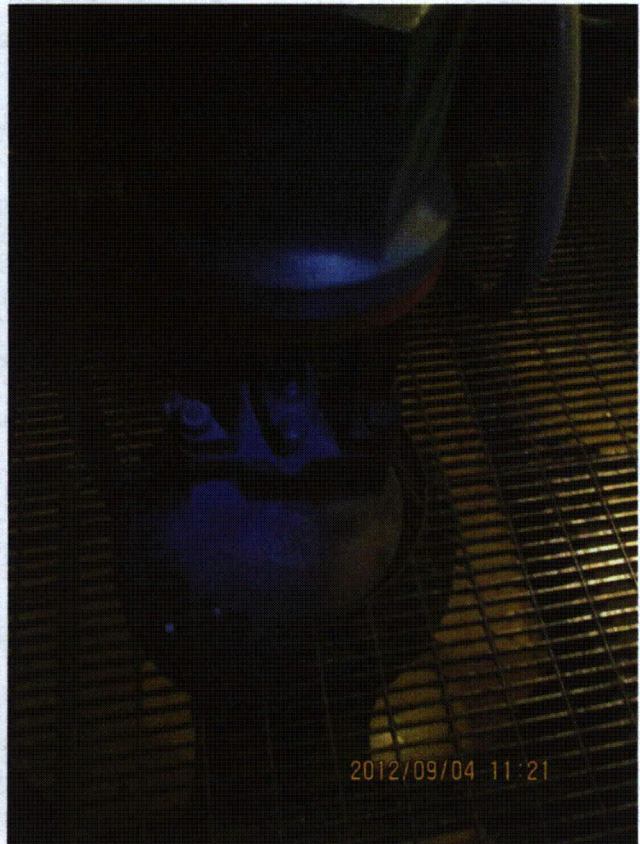
LaSalle 167



LaSalle 168



LaSalle 169



LaSalle 170

Status: Y N U

Seismic Walkdown Checklist (SWC)

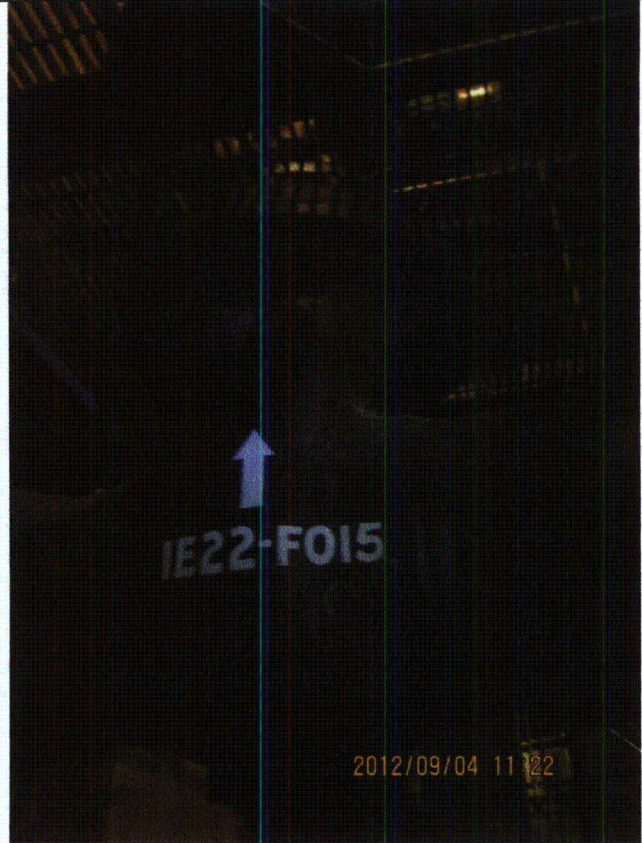
Equipment ID No.: 1E22-F015

Equipment Class: (8) Motor-Operated and Solenoid-Operated Valves

Equipment Description: HPCS PUMP SUP POOL SUCT ISOL VALVE



LaSalle 171



LaSalle 172

Status: Y N U

Seismic Walkdown Checklist (SWC)

Equipment ID No.: 1E22-F023

Equipment Class: (8) Motor-Operated and Solenoid-Operated Valves

Equipment Description: HPCS FULL FLOW TEST ISOL VALVE

Project: LaSalle 1 SWEL

Location (Bldg, Elev, Room/Area): RB, 694.00 ft, ALL

Manufacturer/Model:

Instructions for Completing Checklist

This checklist may be used to document the results of the Seismic Walkdown of an item of equipment on the SWEL. The space below each of the following questions may be used to record the results of judgments and findings. Additional space is provided at the end of this checklist for documenting other comments.

Anchorage

1. Is anchorage configuration verification required (i.e., is the item one of the 50% of SWEL items requiring such verification)? No

2. Is the anchorage free of bent, broken, missing or loose hardware? Not Applicable

3. Is the anchorage free of corrosion that is more than mild surface oxidation? Not Applicable

4. Is the anchorage free of visible cracks in the concrete near the anchors? Not Applicable

5. Is the anchorage configuration consistent with plant documentation? (Note: This question only applies if the item is one of the 50% for which an anchorage configuration verification is required.) Not Applicable

6. Based on the above anchorage evaluations, is the anchorage free of potentially adverse seismic conditions? Yes

Status: Y N U

Seismic Walkdown Checklist (SWC)

Equipment ID No.: 1E22-F023

Equipment Class: (8) Motor-Operated and Solenoid-Operated Valves

Equipment Description: HPCS FULL FLOW TEST ISOL VALVE

Interaction Effects

7. Are soft targets free from impact by nearby equipment or structures? Yes
8. Are overhead equipment, distribution systems, ceiling tiles and lighting, and masonry block walls not likely to collapse onto the equipment? Yes
9. Do attached lines have adequate flexibility to avoid damage? Yes
10. Based on the above seismic interaction evaluations, is equipment free of potentially adverse seismic interaction effects? Yes

Other Adverse Conditions

11. Have you looked for and found no adverse seismic conditions that could adversely affect the safety functions of the equipment? Yes

Comments

Seismic Walkdown Team: D. Carter & J. Griffith - 9/4/2012

Evaluated by: *David Carter* David Carter Date: 10/17/2012
James D. Griffith James Griffith 10/17/2012

Status: Y N U

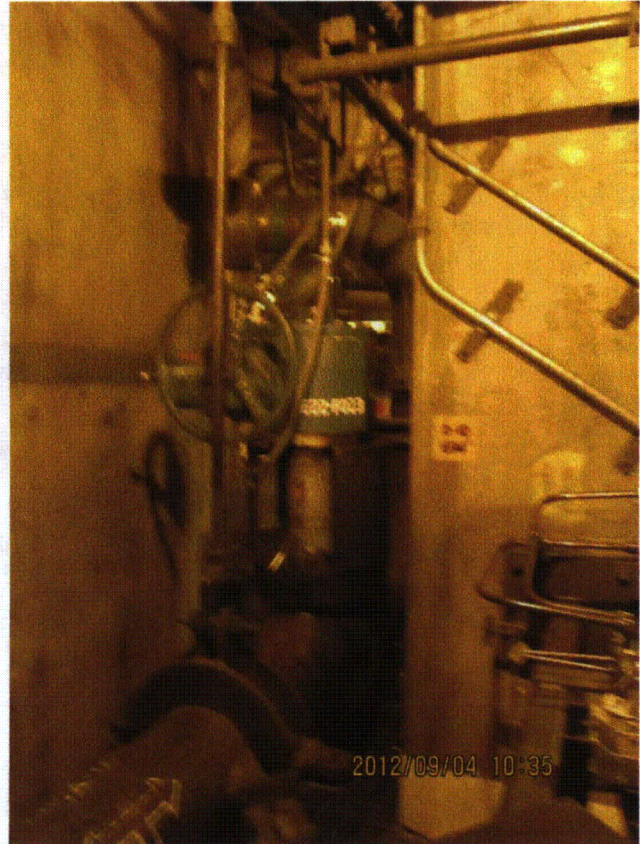
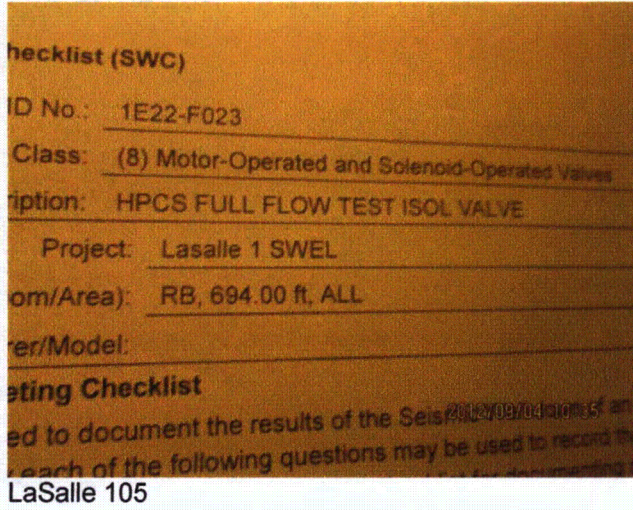
Seismic Walkdown Checklist (SWC)

Equipment ID No.: 1E22-F023

Equipment Class: (8) Motor-Operated and Solenoid-Operated Valves

Equipment Description: HPCS FULL FLOW TEST ISOL VALVE

Photos



LaSalle 106

Status: Y N U

Seismic Walkdown Checklist (SWC)

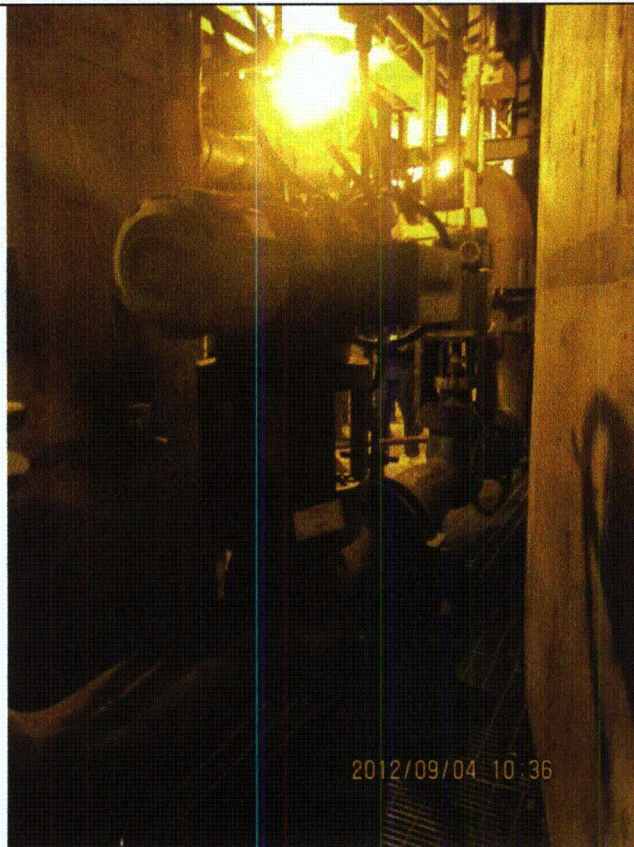
Equipment ID No.: 1E22-F023

Equipment Class: (8) Motor-Operated and Solenoid-Operated Valves

Equipment Description: HPCS FULL FLOW TEST ISOL VALVE



LaSalle 107



LaSalle 108

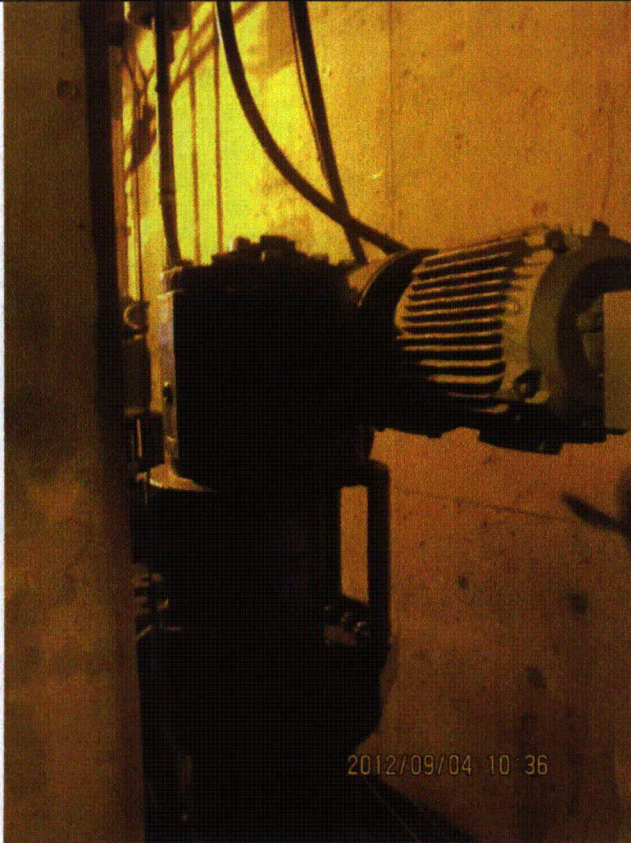
Status: Y N U

Seismic Walkdown Checklist (SWC)

Equipment ID No.: 1E22-F023

Equipment Class: (8) Motor-Operated and Solenoid-Operated Valves

Equipment Description: HPCS FULL FLOW TEST ISOL VALVE



LaSalle 109



LaSalle 110

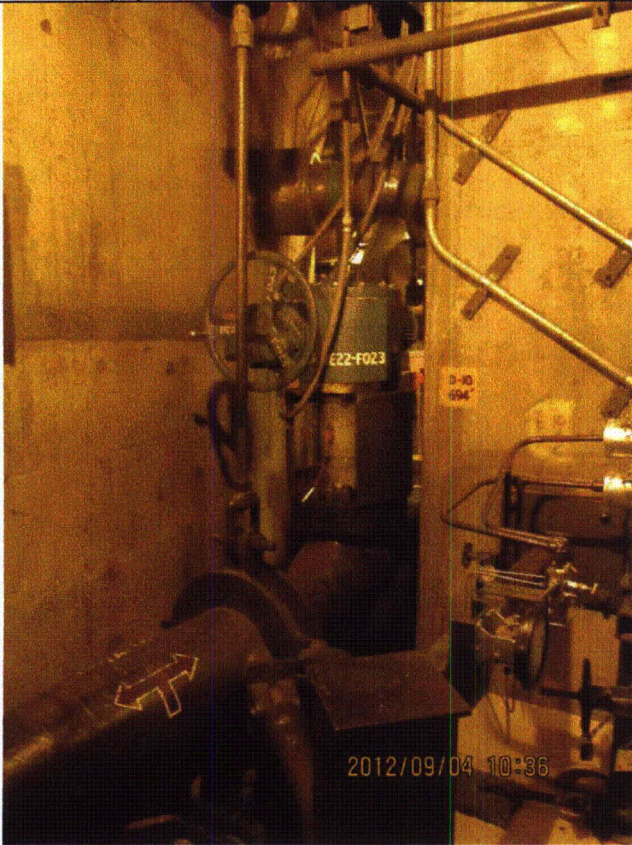
Status: Y N U

Seismic Walkdown Checklist (SWC)

Equipment ID No.: 1E22-F023

Equipment Class: (8) Motor-Operated and Solenoid-Operated Valves

Equipment Description: HPCS FULL FLOW TEST ISOL VALVE



LaSalle 111

Status: Y N U

Seismic Walkdown Checklist (SWC)

Equipment ID No.: 1E22-N004

Equipment Class: (18) Instruments on Racks

Equipment Description: HPCS PUMP DSCH PRESS

Project: LaSalle 1 SWEL

Location (Bldg, Elev, Room/Area): RB, 673.00 ft, ALL

Manufacturer/Model:

Instructions for Completing Checklist

This checklist may be used to document the results of the Seismic Walkdown of an item of equipment on the SWEL. The space below each of the following questions may be used to record the results of judgments and findings. Additional space is provided at the end of this checklist for documenting other comments.

Anchorage

1. Is anchorage configuration verification required (i.e., is the item one of the 50% of SWEL items requiring such verification)? No
Rack anchored to floor with 8 anchors (4 front, 4 rear).

2. Is the anchorage free of bent, broken, missing or loose hardware? Yes

3. Is the anchorage free of corrosion that is more than mild surface oxidation? Yes

4. Is the anchorage free of visible cracks in the concrete near the anchors? Yes

5. Is the anchorage configuration consistent with plant documentation? (Note: This question only applies if the item is one of the 50% for which an anchorage configuration verification is required.) Not Applicable

6. Based on the above anchorage evaluations, is the anchorage free of potentially adverse seismic conditions? Yes

Status: Y N U

Seismic Walkdown Checklist (SWC)

Equipment ID No.: 1E22-N004

Equipment Class: (18) Instruments on Racks

Equipment Description: HPCS PUMP DSCH PRESS

Interaction Effects

7. Are soft targets free from impact by nearby equipment or structures? Yes
8. Are overhead equipment, distribution systems, ceiling tiles and lighting, and masonry block walls not likely to collapse onto the equipment? Yes
Overhead light fixtures judged to be acceptable.
Adjacent masonry walls are safety-related per drawing A-218, Rev. T.
9. Do attached lines have adequate flexibility to avoid damage? Yes
Adjacent supports near rack but clearances are judged to be acceptable.
10. Based on the above seismic interaction evaluations, is equipment free of potentially adverse seismic interaction effects? Yes


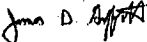
Other Adverse Conditions

11. Have you looked for and found no adverse seismic conditions that could adversely affect the safety functions of the equipment? Yes

Comments

Seismic Walkdown Team: D. Carter & J. Griffith - 9/4/2012

Instrument located on Rack 1H22-P024.

Evaluated by:  David Carter Date: 10/25/2012
 James Griffith 10/25/2012

Status: Y N U

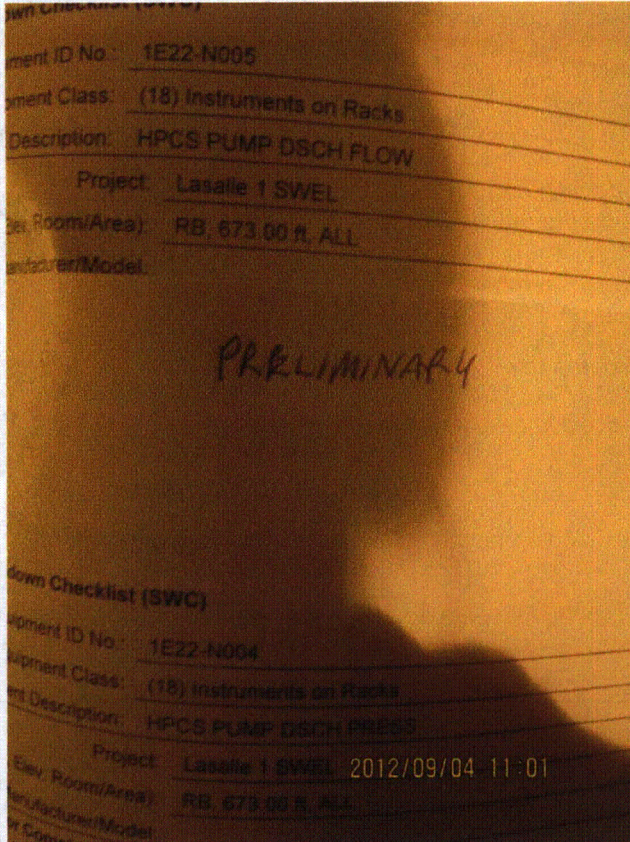
Seismic Walkdown Checklist (SWC)

Equipment ID No.: 1E22-N004

Equipment Class: (18) Instruments on Racks

Equipment Description: HPCS PUMP DSCH PRESS

Photos



LaSalle 140



LaSalle 141



LaSalle 142



LaSalle 143

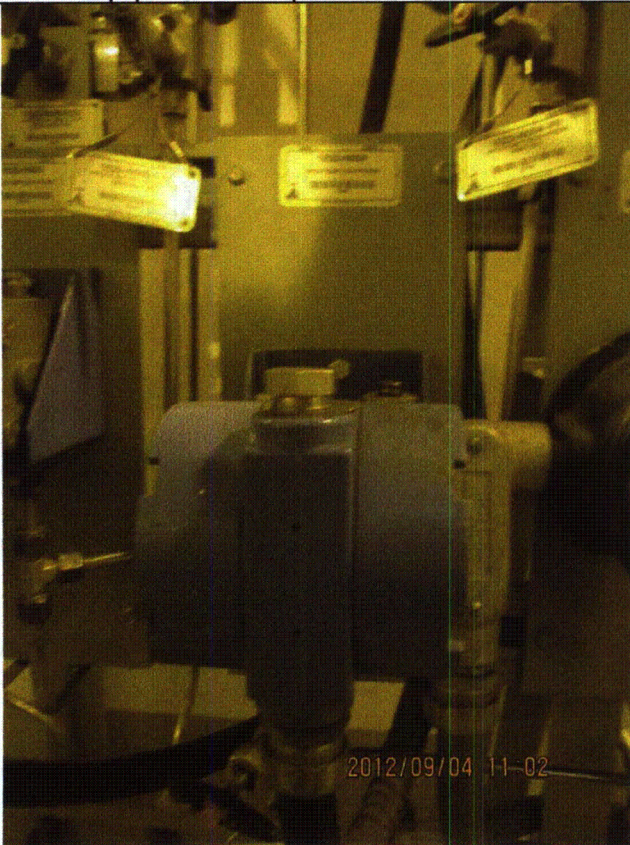
Status: Y N U

Seismic Walkdown Checklist (SWC)

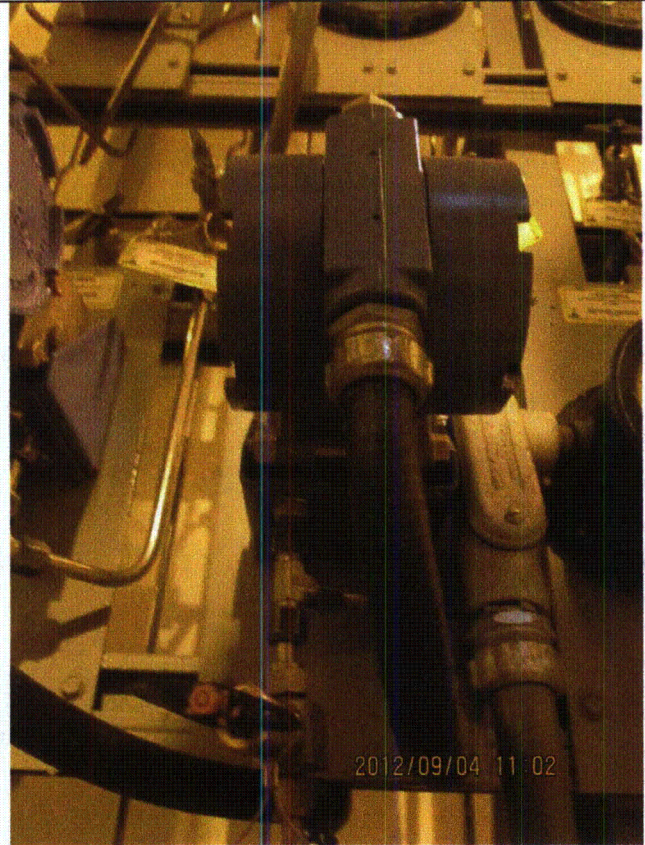
Equipment ID No.: 1E22-N004

Equipment Class: (18) Instruments on Racks

Equipment Description: HPCS PUMP DSCH PRESS



LaSalle 144



LaSalle 145

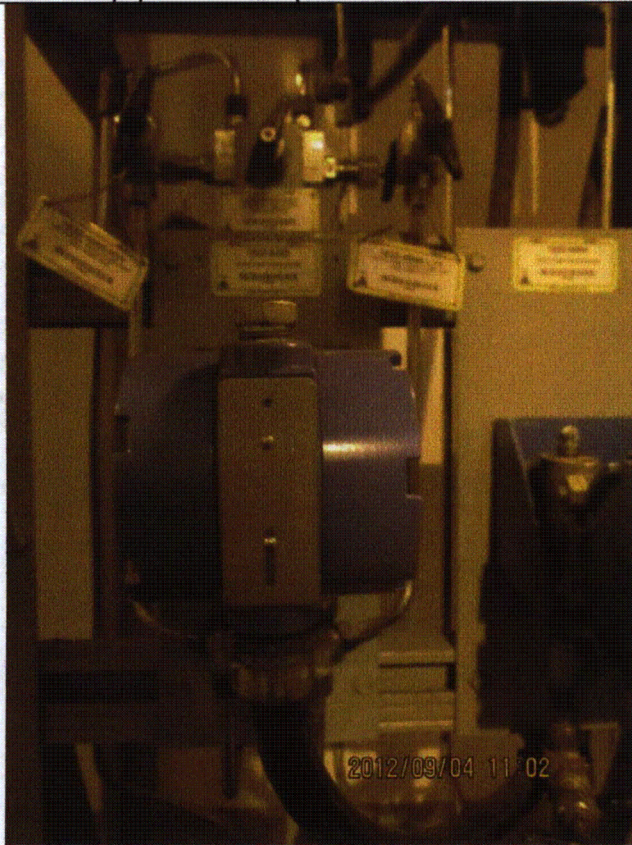
Status: Y N U

Seismic Walkdown Checklist (SWC)

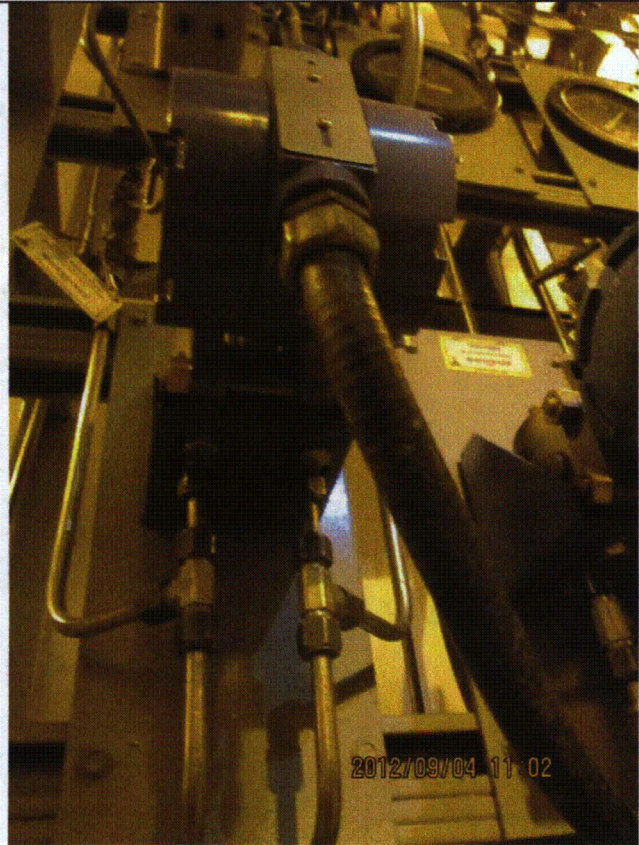
Equipment ID No.: 1E22-N004

Equipment Class: (18) Instruments on Racks

Equipment Description: HPCS PUMP DSCH PRESS



LaSalle 146



LaSalle 147

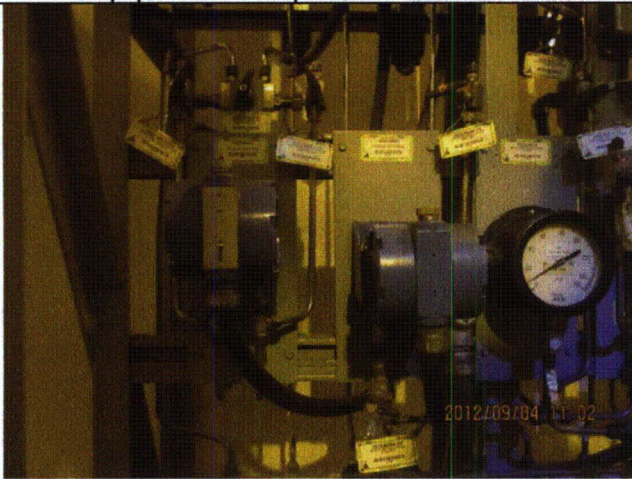
Status: Y N U

Seismic Walkdown Checklist (SWC)

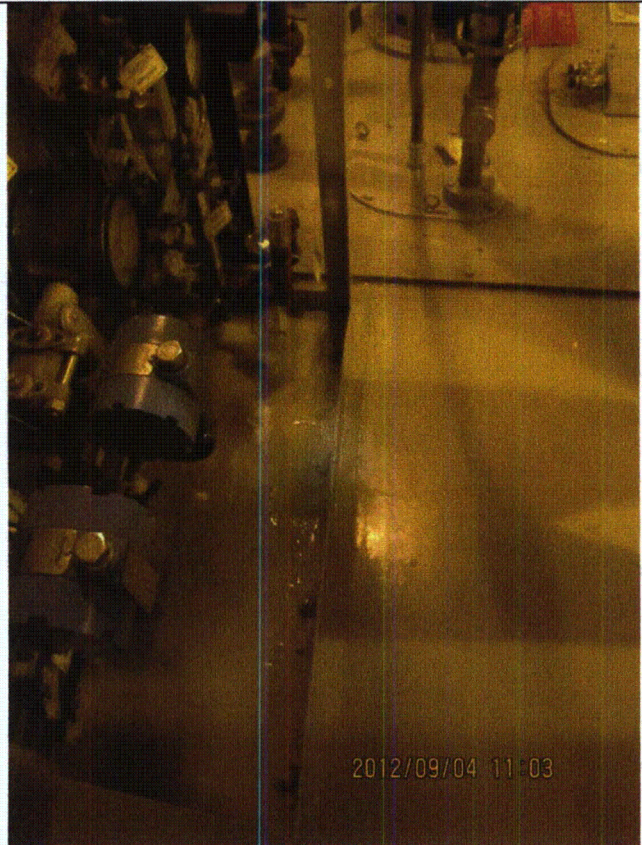
Equipment ID No.: 1E22-N004

Equipment Class: (18) Instruments on Racks

Equipment Description: HPCS PUMP DSCH PRESS



LaSalle 148



LaSalle 149

Status: Y N U

Seismic Walkdown Checklist (SWC)

Equipment ID No.: 1E22-N004

Equipment Class: (18) Instruments on Racks

Equipment Description: HPCS PUMP DSCH PRESS



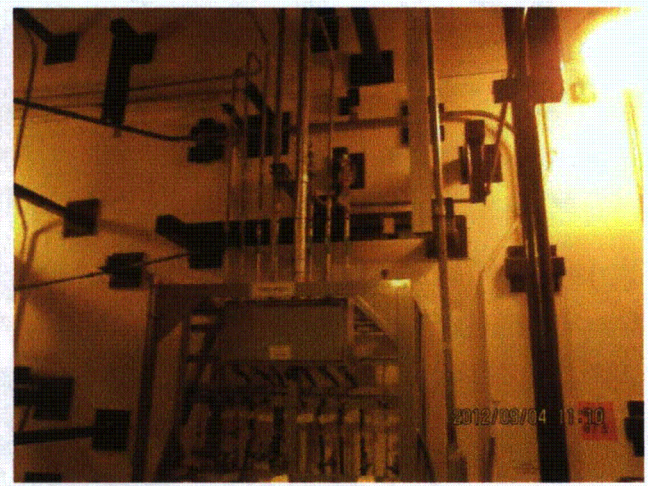
LaSalle 150



LaSalle 152



LaSalle 153



LaSalle 154

Status: Y N U

Seismic Walkdown Checklist (SWC)

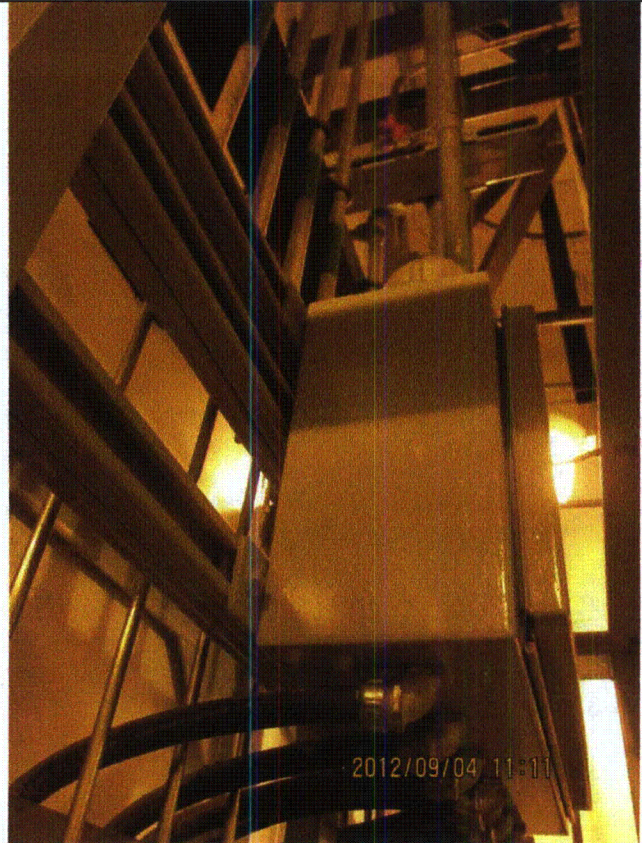
Equipment ID No.: 1E22-N004

Equipment Class: (18) Instruments on Racks

Equipment Description: HPCS PUMP DSCH PRESS



LaSalle 155



LaSalle 156

Status: Y N U

Seismic Walkdown Checklist (SWC)

Equipment ID No.: 1E22-N005

Equipment Class: (18) Instruments on Racks

Equipment Description: HPCS PUMP DSCH FLOW

Project: LaSalle 1 SWEL

Location (Bldg, Elev, Room/Area): RB, 673.00 ft, ALL

Manufacturer/Model:

Instructions for Completing Checklist

This checklist may be used to document the results of the Seismic Walkdown of an item of equipment on the SWEL. The space below each of the following questions may be used to record the results of judgments and findings. Additional space is provided at the end of this checklist for documenting other comments.

Anchorage

1. Is anchorage configuration verification required (i.e., is the item one of the 50% of SWEL items requiring such verification)? No
Rack anchored to floor with 8 anchors (4 front, 4 rear).

2. Is the anchorage free of bent, broken, missing or loose hardware? Yes

3. Is the anchorage free of corrosion that is more than mild surface oxidation? Yes

4. Is the anchorage free of visible cracks in the concrete near the anchors? Yes

5. Is the anchorage configuration consistent with plant documentation? (Note: This question only applies if the item is one of the 50% for which an anchorage configuration verification is required.) Not Applicable

6. Based on the above anchorage evaluations, is the anchorage free of potentially adverse seismic conditions? Yes

Status: Y N U

Seismic Walkdown Checklist (SWC)

Equipment ID No.: 1E22-N005

Equipment Class: (18) Instruments on Racks

Equipment Description: HPCS PUMP DSCH FLOW

Interaction Effects

7. Are soft targets free from impact by nearby equipment or structures? Yes
8. Are overhead equipment, distribution systems, ceiling tiles and lighting, and masonry block walls not likely to collapse onto the equipment? Yes
Overhead light fixtures judged to be acceptable.
Adjacent masonry walls are safety-related per drawing A-218, Rev. T.
9. Do attached lines have adequate flexibility to avoid damage? Yes
Adjacent supports near rack but clearances are judged to be acceptable.
10. Based on the above seismic interaction evaluations, is equipment free of potentially adverse seismic interaction effects? Yes

Other Adverse Conditions

11. Have you looked for and found no adverse seismic conditions that could adversely affect the safety functions of the equipment? Yes

Comments

Seismic Walkdown Team: D. Carter & J. Griffith - 9/4/2012

Instrument located on Rack 1H22-P024.

For photographs, see SWC for 1E22-N004.

Evaluated by: David Carter Date: 10/17/2012

James D. Griffith James Griffith 10/17/2012

Photos

Status: Y N U

Seismic Walkdown Checklist (SWC)

Equipment ID No.: 1E51-C001

Equipment Class: (5) Horizontal Pumps

Equipment Description: RCIC PUMP

Project: LaSalle 1 SWEL

Location (Bldg, Elev, Room/Area): RB, 673.00 ft, ALL

Manufacturer/Model:

Instructions for Completing Checklist

This checklist may be used to document the results of the Seismic Walkdown of an item of equipment on the SWEL. The space below each of the following questions may be used to record the results of judgments and findings. Additional space is provided at the end of this checklist for documenting other comments.

Anchorage

1. Is anchorage configuration verification required (i.e., is the item one of the 50% of SWEL items requiring such verification)? Yes

2. Is the anchorage free of bent, broken, missing or loose hardware? Yes

3. Is the anchorage free of corrosion that is more than mild surface oxidation? Yes

4. Is the anchorage free of visible cracks in the concrete near the anchors? Yes
Minor separations between grout pads and pedestal judged to be acceptable.

5. Is the anchorage configuration consistent with plant documentation? (Note: This question only applies if the item is one of the 50% for which an anchorage configuration verification is required.) Yes
Anchorage shown on drawings M-1572, Rev. R and M-1590, Sheet 3, Rev. M.

6. Based on the above anchorage evaluations, is the anchorage free of potentially adverse seismic conditions? Yes

Status: Y N U

Seismic Walkdown Checklist (SWC)

Equipment ID No.: 1E51-C001

Equipment Class: (5) Horizontal Pumps

Equipment Description: RCIC PUMP

Interaction Effects

7. Are soft targets free from impact by nearby equipment or structures? Yes
8. Are overhead equipment, distribution systems, ceiling tiles and lighting, and masonry block walls not likely to collapse onto the equipment? Yes
Overhead light fixtures judged to be acceptable.
Adjacent masonry wall at stairwell is safety-related per drawing A-217, Rev. R.
9. Do attached lines have adequate flexibility to avoid damage? Yes
10. Based on the above seismic interaction evaluations, is equipment free of potentially adverse seismic interaction effects? Yes

Other Adverse Conditions

11. Have you looked for and found no adverse seismic conditions that could adversely affect the safety functions of the equipment? Yes

Comments

Seismic Walkdown Team: D. Carter & J. Griffith - 8/29/2012

Evaluated by:  David Carter Date: 10/17/2012
 James Griffith 10/17/2012

Status: Y N U

Seismic Walkdown Checklist (SWC)

Equipment ID No.: 1E51-C001

Equipment Class: (5) Horizontal Pumps

Equipment Description: RCIC PUMP

Photos

Equipment ID No.: 1E51-C001
Equipment Class: (5) Horizontal Pumps
Equipment Description: RCIC PUMP
Project: Lasalle 1 SWEL
Location, Room/Area: RB, 673.00 ft, ALL
Manufacturer/Model:
Completing Checklist
This form is to be used to document the results of the Seismic Walkdown. Please answer the following questions and provide photos where appropriate. Additional space is provided at the end of this checklist for documentation.

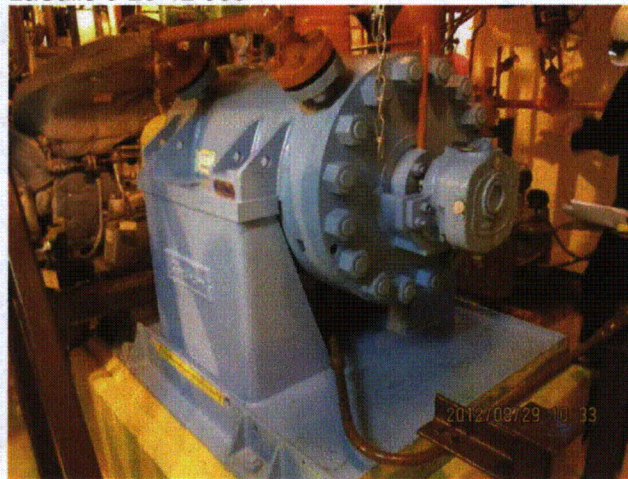
LaSalle 8-29-12 058



LaSalle 8-29-12 060



LaSalle 8-29-12 059



LaSalle 8-29-12 061

Status: Y N U

Seismic Walkdown Checklist (SWC)

Equipment ID No.: 1E51-C001

Equipment Class: (5) Horizontal Pumps

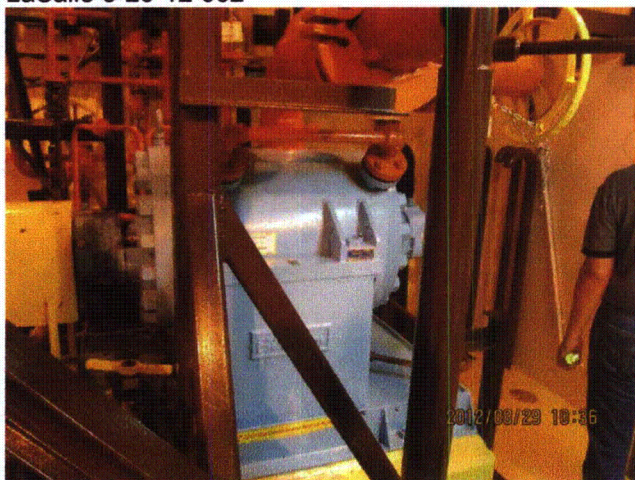
Equipment Description: RCIC PUMP



LaSalle 8-29-12 062



LaSalle 8-29-12 063



LaSalle 8-29-12 064

Status: Y N U

Seismic Walkdown Checklist (SWC)

Equipment ID No.: 1E51-F013

Equipment Class: (8) Motor-Operated and Solenoid-Operated Valves

Equipment Description: RCIC INJECTION OTBD ISOL VALVE

Project: LaSalle 1 SWEL

Location (Bldg, Elev, Room/Area): RB, 740.00 ft, ALL

Manufacturer/Model:

Instructions for Completing Checklist

This checklist may be used to document the results of the Seismic Walkdown of an item of equipment on the SWEL. The space below each of the following questions may be used to record the results of judgments and findings. Additional space is provided at the end of this checklist for documenting other comments.

Anchorage

- | | |
|--|----------------|
| 1. Is anchorage configuration verification required (i.e., is the item one of the 50% of SWEL items requiring such verification)? | No |
| 2. Is the anchorage free of bent, broken, missing or loose hardware? | Not Applicable |
| 3. Is the anchorage free of corrosion that is more than mild surface oxidation? | Not Applicable |
| 4. Is the anchorage free of visible cracks in the concrete near the anchors? | Not Applicable |
| 5. Is the anchorage configuration consistent with plant documentation? (Note: This question only applies if the item is one of the 50% for which an anchorage configuration verification is required.) | Not Applicable |
| 6. Based on the above anchorage evaluations, is the anchorage free of potentially adverse seismic conditions? | Yes |

Status: Y N U

Seismic Walkdown Checklist (SWC)

Equipment ID No.: 1E51-F013

Equipment Class: (8) Motor-Operated and Solenoid-Operated Valves

Equipment Description: RCIC INJECTION OTBD ISOL VALVE

Interaction Effects

7. Are soft targets free from impact by nearby equipment or structures? Yes
8. Are overhead equipment, distribution systems, ceiling tiles and lighting, and masonry block walls not likely to collapse onto the equipment? Yes
Adjacent masonry wall is safety-related per drawing A-230, Rev. Y.
9. Do attached lines have adequate flexibility to avoid damage? Yes
10. Based on the above seismic interaction evaluations, is equipment free of potentially adverse seismic interaction effects? Yes

Other Adverse Conditions

11. Have you looked for and found no adverse seismic conditions that could adversely affect the safety functions of the equipment? Yes

Comments

Seismic Walkdown Team: D. Carter & J. Griffith - 8/29/2012

No photographs were taken of this item.

Evaluated by: David Carter Date: 10/17/2012
James D. Griffith James Griffith 10/17/2012

Photos

Status: Y N U

Seismic Walkdown Checklist (SWC)

Equipment ID No.: 1E51-F031

Equipment Class: (8) Motor-Operated and Solenoid-Operated Valves

Equipment Description: RCIC PUMP SUP POOL SUCT ISOL VALVE

Project: LaSalle 1 SWEL

Location (Bldg, Elev, Room/Area): RB, 673.00 ft, ALL

Manufacturer/Model:

Instructions for Completing Checklist

This checklist may be used to document the results of the Seismic Walkdown of an item of equipment on the SWEL. The space below each of the following questions may be used to record the results of judgments and findings. Additional space is provided at the end of this checklist for documenting other comments.

Anchorage

1. Is anchorage configuration verification required (i.e., is the item one of the 50% of SWEL items requiring such verification)? No

2. Is the anchorage free of bent, broken, missing or loose hardware? Not Applicable

3. Is the anchorage free of corrosion that is more than mild surface oxidation? Not Applicable

4. Is the anchorage free of visible cracks in the concrete near the anchors? Not Applicable

5. Is the anchorage configuration consistent with plant documentation? (Note: This question only applies if the item is one of the 50% for which an anchorage configuration verification is required.) Not Applicable

6. Based on the above anchorage evaluations, is the anchorage free of potentially adverse seismic conditions? Yes

Status: Y N U

Seismic Walkdown Checklist (SWC)

Equipment ID No.: 1E51-F031

Equipment Class: (8) Motor-Operated and Solenoid-Operated Valves

Equipment Description: RCIC PUMP SUP POOL SUCT ISOL VALVE

Interaction Effects


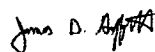
7. Are soft targets free from impact by nearby equipment or structures? Yes
Light fixture may contact motor-operated valve clutch lever but not in a direction to actuate the MOV. Judged to be of no concern.
8. Are overhead equipment, distribution systems, ceiling tiles and lighting, and masonry block walls not likely to collapse onto the equipment? Yes
9. Do attached lines have adequate flexibility to avoid damage? Yes
10. Based on the above seismic interaction evaluations, is equipment free of potentially adverse seismic interaction effects? Yes

Other Adverse Conditions

11. Have you looked for and found no adverse seismic conditions that could adversely affect the safety functions of the equipment? Yes

Comments

Seismic Walkdown Team: D. Carter & J. Griffith - 8/29/2012

Evaluated by:  David Carter Date: 10/25/2012
 James D. Griffith James Griffith 10/25/2012

Status: Y N U

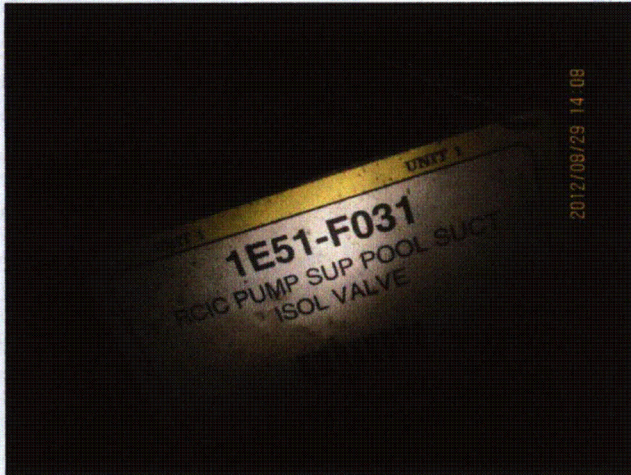
Seismic Walkdown Checklist (SWC)

Equipment ID No.: 1E51-F031

Equipment Class: (8) Motor-Operated and Solenoid-Operated Valves

Equipment Description: RCIC PUMP SUP POOL SUCT ISOL VALVE

Photos



LaSalle 8-29-12 141



LaSalle 8-29-12 142



LaSalle 8-29-12 143



LaSalle 8-29-12 144

Status: Y N U

Seismic Walkdown Checklist (SWC)

Equipment ID No.: 1E51-F031

Equipment Class: (8) Motor-Operated and Solenoid-Operated Valves

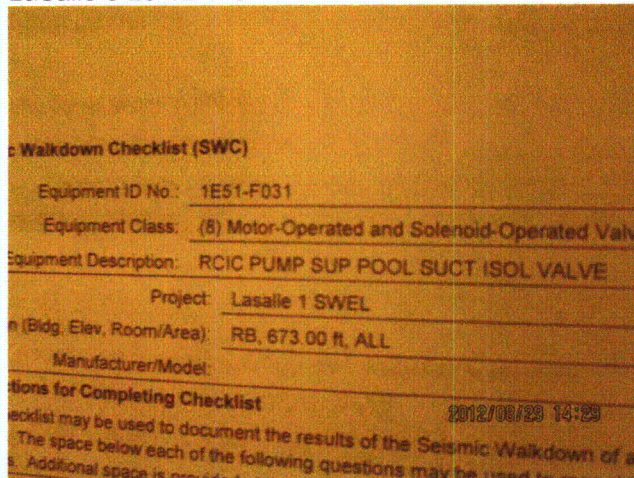
Equipment Description: RCIC PUMP SUP POOL SUCT ISOL VALVE



LaSalle 8-29-12 145



LaSalle 8-29-12 146



LaSalle 8-29-12 156

Status: Y N U

Seismic Walkdown Checklist (SWC)

Equipment ID No.: 1E51-F045

Equipment Class: (8) Motor-Operated and Solenoid-Operated Valves

Equipment Description: RCIC TURBINE STEAM SUPPLY VALVE

Project: LaSalle 1 SWEL

Location (Bldg, Elev, Room/Area): RB, 673.00 ft, ALL

Manufacturer/Model:

Instructions for Completing Checklist

This checklist may be used to document the results of the Seismic Walkdown of an item of equipment on the SWEL. The space below each of the following questions may be used to record the results of judgments and findings. Additional space is provided at the end of this checklist for documenting other comments.

Anchorage

1. Is anchorage configuration verification required (i.e., is the item one of the 50% of SWEL items requiring such verification)? No

2. Is the anchorage free of bent, broken, missing or loose hardware? Not Applicable

3. Is the anchorage free of corrosion that is more than mild surface oxidation? Not Applicable

4. Is the anchorage free of visible cracks in the concrete near the anchors? Not Applicable

5. Is the anchorage configuration consistent with plant documentation? (Note: This question only applies if the item is one of the 50% for which an anchorage configuration verification is required.) Not Applicable

6. Based on the above anchorage evaluations, is the anchorage free of potentially adverse seismic conditions? Yes

Status: Y N U

Seismic Walkdown Checklist (SWC)

Equipment ID No.: 1E51-F045

Equipment Class: (8) Motor-Operated and Solenoid-Operated Valves

Equipment Description: RCIC TURBINE STEAM SUPPLY VALVE

Interaction Effects

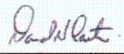
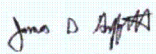
7. Are soft targets free from impact by nearby equipment or structures? Yes
8. Are overhead equipment, distribution systems, ceiling tiles and lighting, and masonry block walls not likely to collapse onto the equipment? Yes
Adjacent masonry wall at stairwell is safety-related per drawing A-217, Rev. R.
9. Do attached lines have adequate flexibility to avoid damage? Yes
10. Based on the above seismic interaction evaluations, is equipment free of potentially adverse seismic interaction effects? Yes

Other Adverse Conditions

11. Have you looked for and found no adverse seismic conditions that could adversely affect the safety functions of the equipment? Yes

Comments

Seismic Walkdown Team: D. Carter & J. Griffith - 8/29/2012

Evaluated by:  David Carter Date: 10/25/2012
 James Griffith 10/25/2012

Status: Y N U

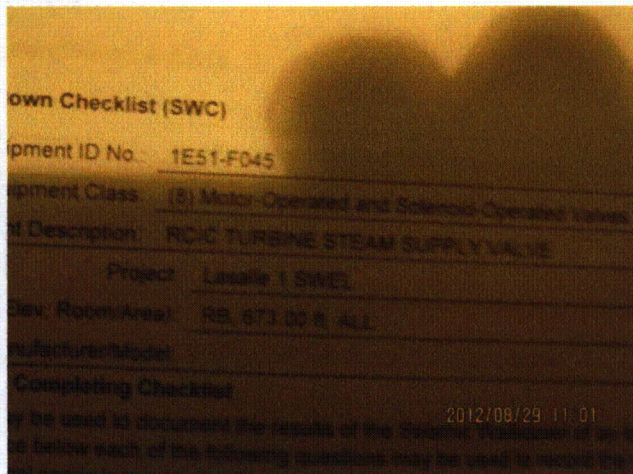
Seismic Walkdown Checklist (SWC)

Equipment ID No.: 1E51-F045

Equipment Class: (8) Motor-Operated and Solenoid-Operated Valves

Equipment Description: RCIC TURBINE STEAM SUPPLY VALVE

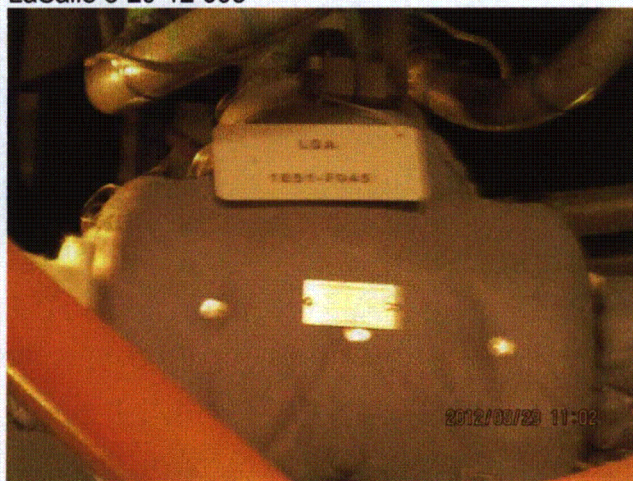
Photos



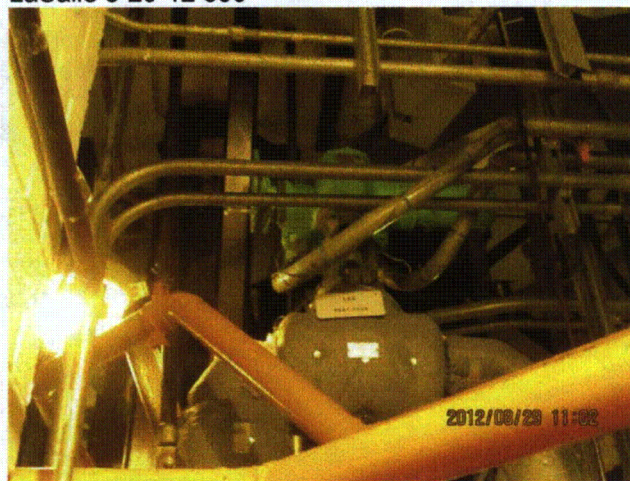
LaSalle 8-29-12 098



LaSalle 8-29-12 099



LaSalle 8-29-12 101



LaSalle 8-29-12 102

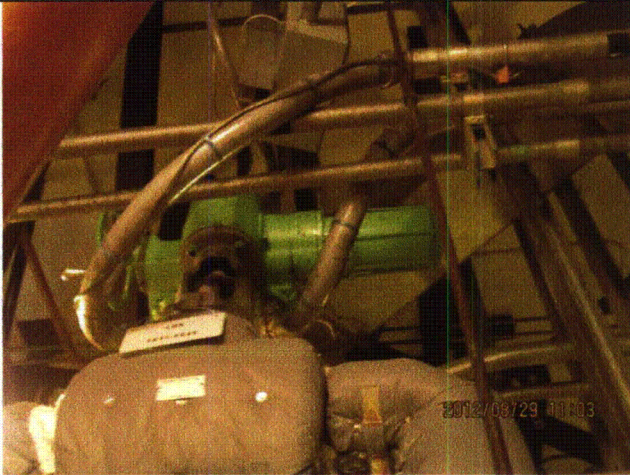
Status: Y N U

Seismic Walkdown Checklist (SWC)

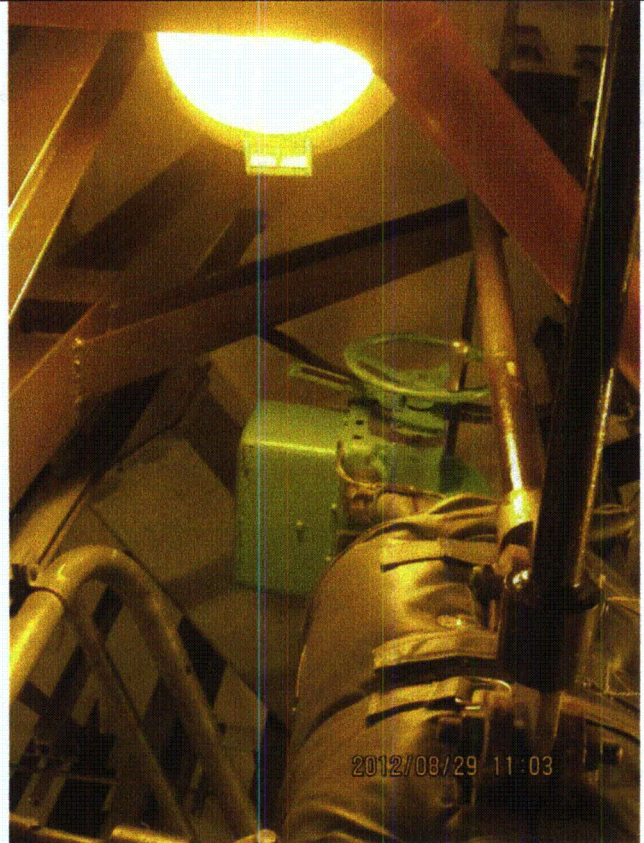
Equipment ID No.: 1E51-F045

Equipment Class: (8) Motor-Operated and Solenoid-Operated Valves

Equipment Description: RCIC TURBINE STEAM SUPPLY VALVE



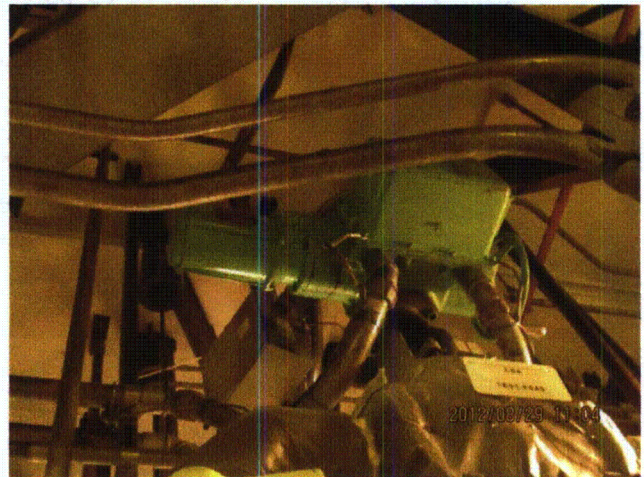
LaSalle 8-29-12 103



LaSalle 8-29-12 104



LaSalle 8-29-12 105



LaSalle 8-29-12 106

Status: Y N U

Seismic Walkdown Checklist (SWC)

Equipment ID No.: 1E51-N004

Equipment Class: (18) Instruments on Racks

Equipment Description: RCIC PUMP DSCH PRESS

Project: LaSalle 1 SWEL

Location (Bldg, Elev, Room/Area): RB, 673.00 ft, ALL

Manufacturer/Model:

Instructions for Completing Checklist

This checklist may be used to document the results of the Seismic Walkdown of an item of equipment on the SWEL. The space below each of the following questions may be used to record the results of judgments and findings. Additional space is provided at the end of this checklist for documenting other comments.

Anchorage

1. Is anchorage configuration verification required (i.e., is the item one of the 50% of SWEL items requiring such verification)? No

2. Is the anchorage free of bent, broken, missing or loose hardware? Yes

3. Is the anchorage free of corrosion that is more than mild surface oxidation? Yes

4. Is the anchorage free of visible cracks in the concrete near the anchors? Yes
Minor shrinkage cracking in grout pad judged to be acceptable.

5. Is the anchorage configuration consistent with plant documentation? (Note: This question only applies if the item is one of the 50% for which an anchorage configuration verification is required.) Not Applicable

6. Based on the above anchorage evaluations, is the anchorage free of potentially adverse seismic conditions? Yes

Status: Y N U

Seismic Walkdown Checklist (SWC)

Equipment ID No.: 1E51-N004

Equipment Class: (18) Instruments on Racks

Equipment Description: RCIC PUMP DSCH PRESS

Interaction Effects

7. Are soft targets free from impact by nearby equipment or structures? Yes

Back of rack is close to wall. However, rack is well-braced in the direction perpendicular to the wall. By judgment, if rack were to deflect during a seismic event, any contact with the wall would result in insignificant force applied to the rack.

8. Are overhead equipment, distribution systems, ceiling tiles and lighting, and masonry block walls not likely to collapse onto the equipment? Yes

Overhead light fixtures judged to be acceptable.

9. Do attached lines have adequate flexibility to avoid damage? Yes

10. Based on the above seismic interaction evaluations, is equipment free of potentially adverse seismic interaction effects? Yes

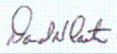
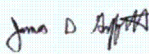
Other Adverse Conditions

11. Have you looked for and found no adverse seismic conditions that could adversely affect the safety functions of the equipment? Yes

Comments

Seismic Walkdown Team: D. Carter & J. Griffith - 8/29/2012

Instrument mounted to Rack 1H22-P017.

Evaluated by:  David Carter Date: 10/25/2012
 James Griffith 10/25/2012

Status: Y N U

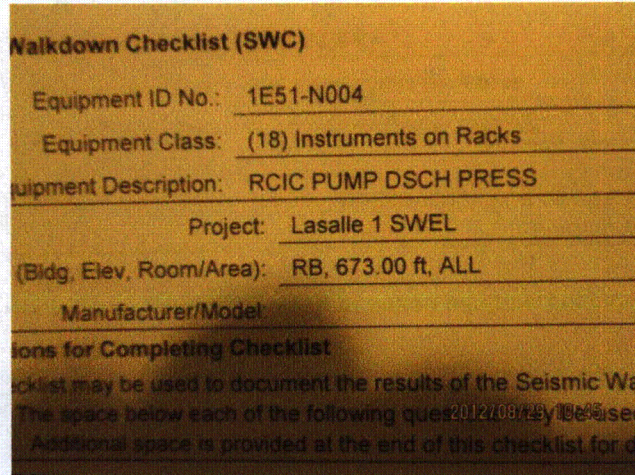
Seismic Walkdown Checklist (SWC)

Equipment ID No.: 1E51-N004

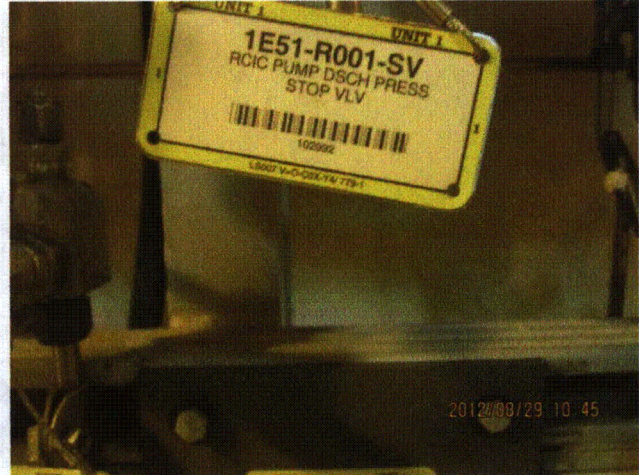
Equipment Class: (18) Instruments on Racks

Equipment Description: RCIC PUMP DSCH PRESS

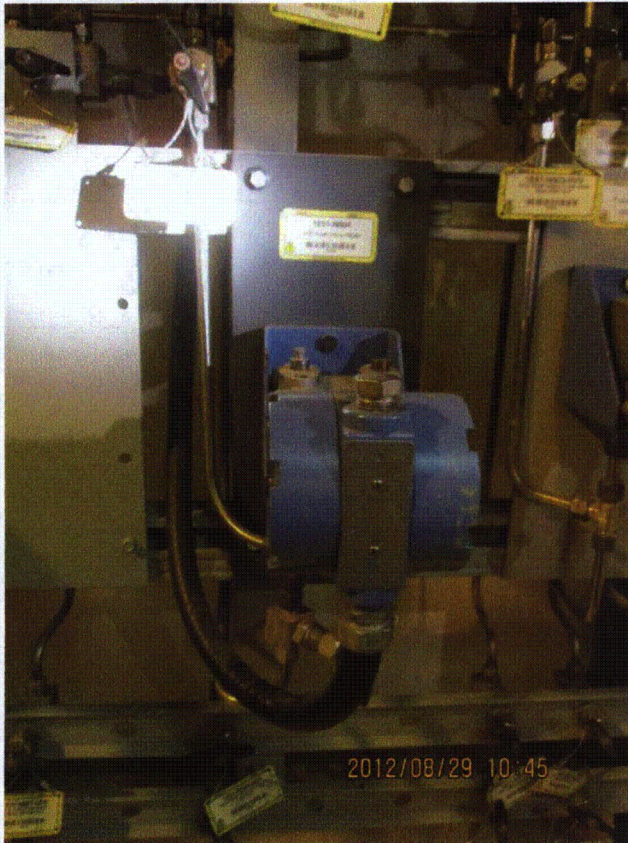
Photos



LaSalle 8-29-12 065



LaSalle 8-29-12 066



LaSalle 8-29-12 067



LaSalle 8-29-12 068

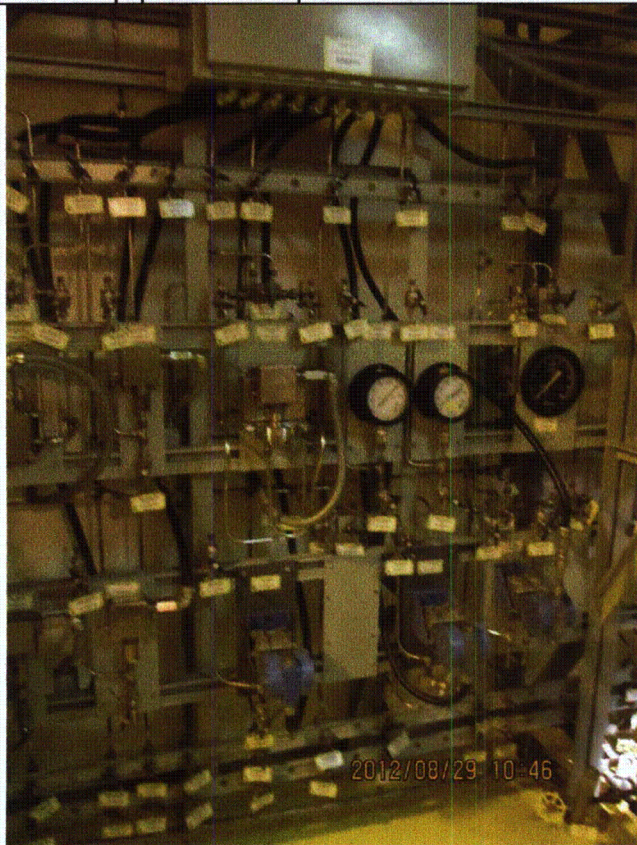
Status: Y N U

Seismic Walkdown Checklist (SWC)

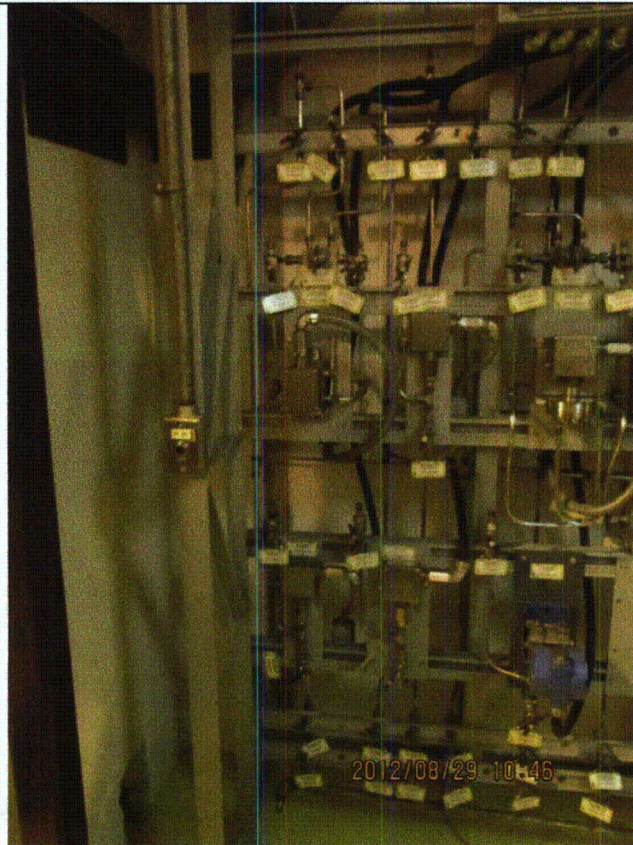
Equipment ID No.: 1E51-N004

Equipment Class: (18) Instruments on Racks

Equipment Description: RCIC PUMP DSCH PRESS



LaSalle 8-29-12 069



LaSalle 8-29-12 070

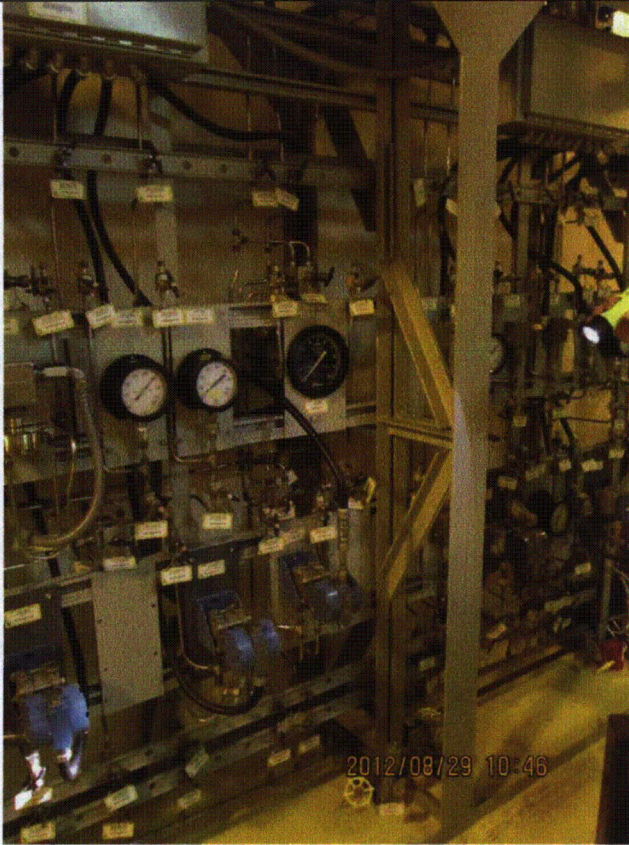
Status: Y N U

Seismic Walkdown Checklist (SWC)

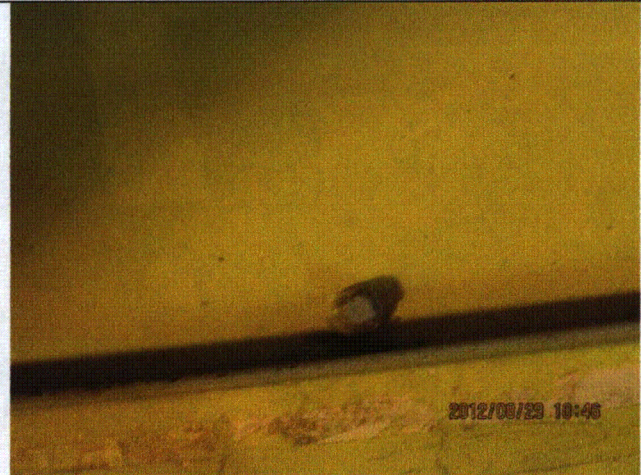
Equipment ID No.: 1E51-N004

Equipment Class: (18) Instruments on Racks

Equipment Description: RCIC PUMP DSCH PRESS



LaSalle 8-29-12 071



LaSalle 8-29-12 072

Status: Y N U

Seismic Walkdown Checklist (SWC)

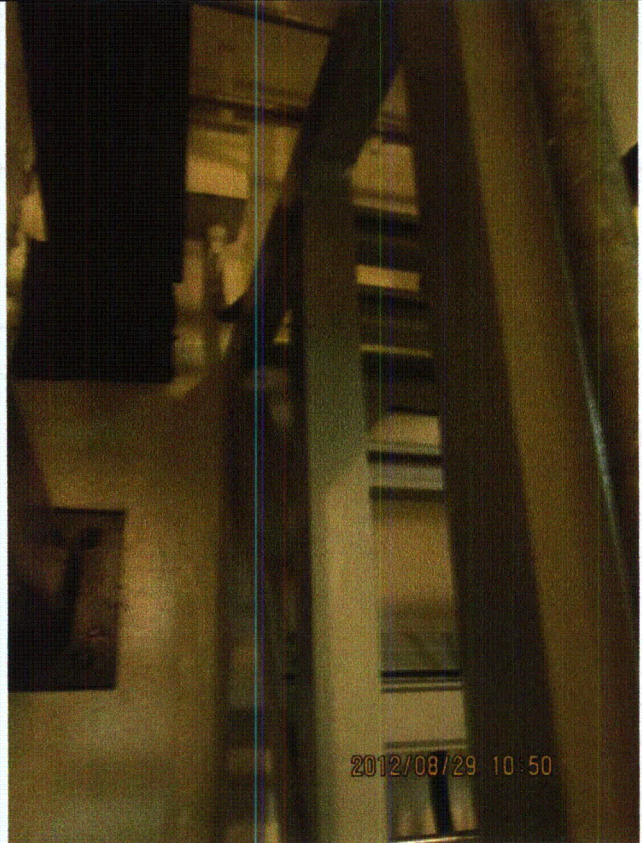
Equipment ID No.: 1E51-N004

Equipment Class: (18) Instruments on Racks

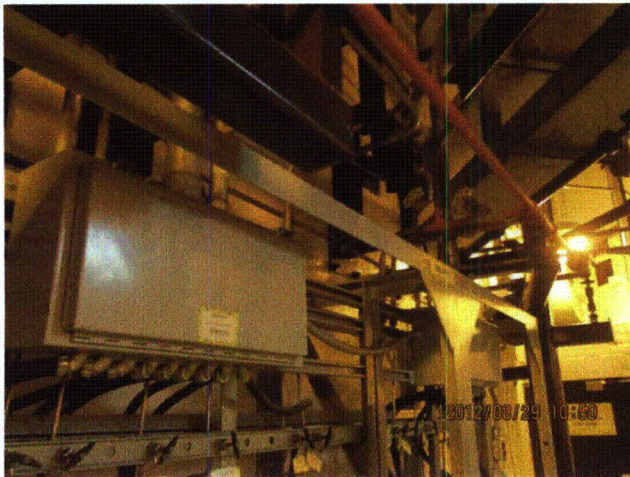
Equipment Description: RCIC PUMP DSCH PRESS



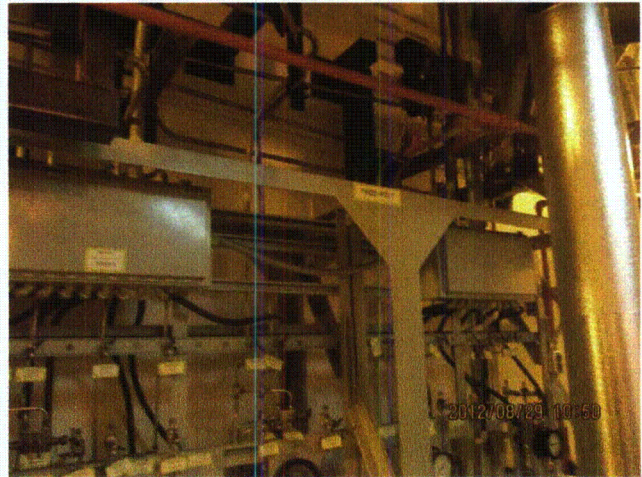
LaSalle 8-29-12 073



LaSalle 8-29-12 074



LaSalle 8-29-12 075



LaSalle 8-29-12 076

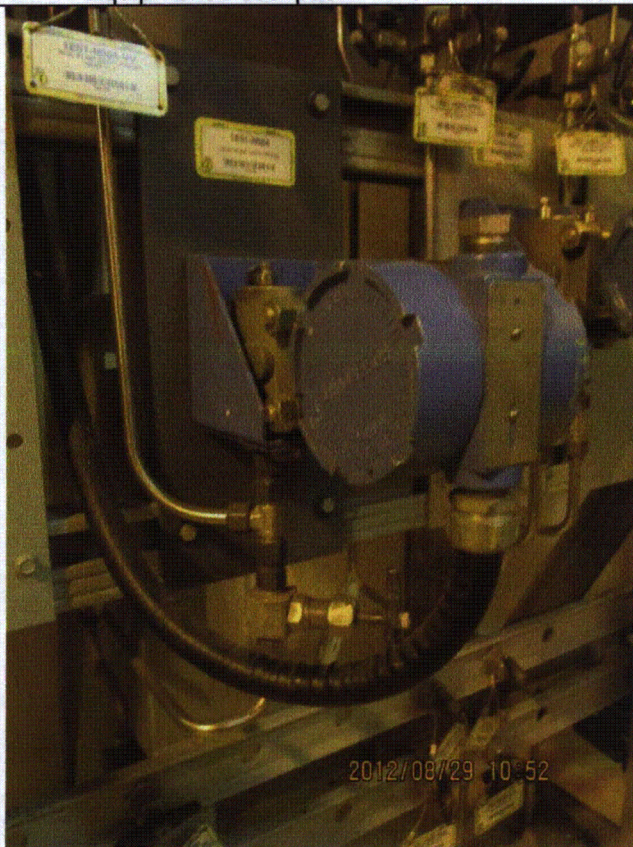
Status: Y N U

Seismic Walkdown Checklist (SWC)

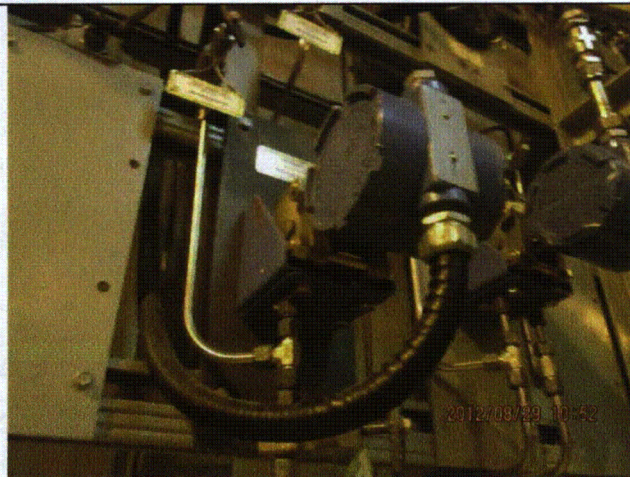
Equipment ID No.: 1E51-N004

Equipment Class: (18) Instruments on Racks

Equipment Description: RCIC PUMP DSCH PRESS



LaSalle 8-29-12 084



LaSalle 8-29-12 085

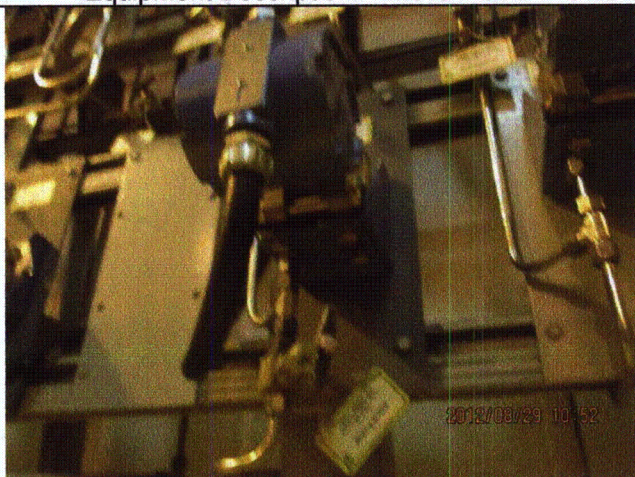
Status: Y N U

Seismic Walkdown Checklist (SWC)

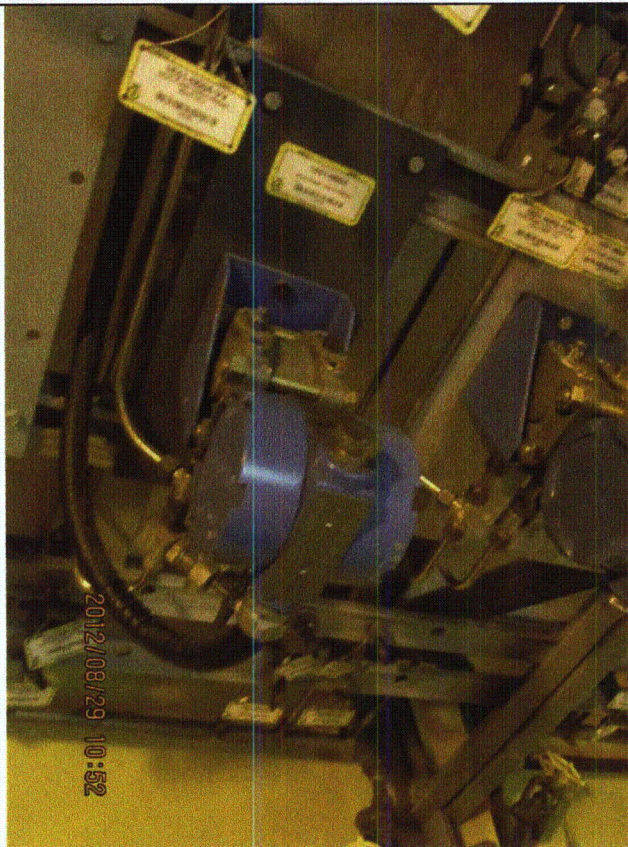
Equipment ID No.: 1E51-N004

Equipment Class: (18) Instruments on Racks

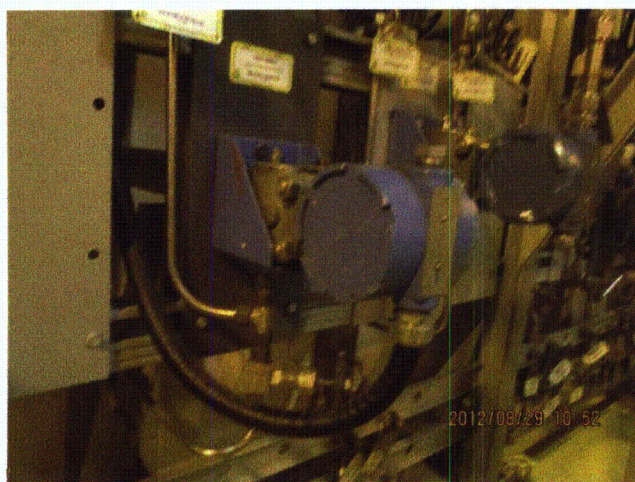
Equipment Description: RCIC PUMP DSCH PRESS



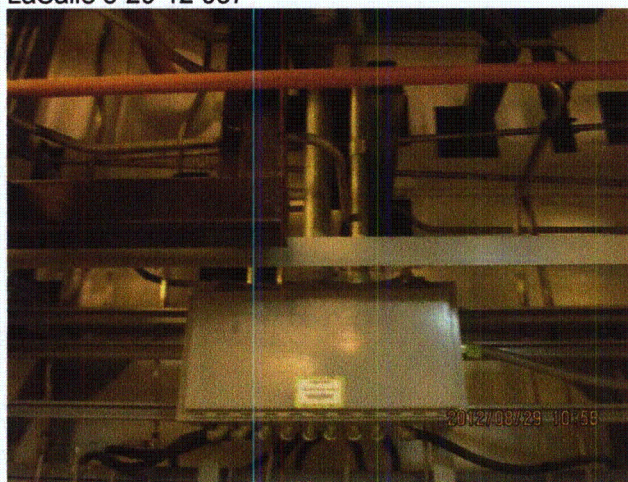
LaSalle 8-29-12 086



LaSalle 8-29-12 087



LaSalle 8-29-12 088



LaSalle 8-29-12 089

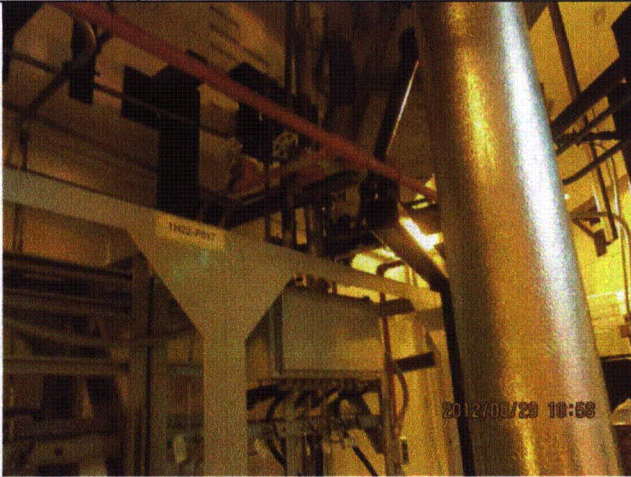
Status: Y N U

Seismic Walkdown Checklist (SWC)

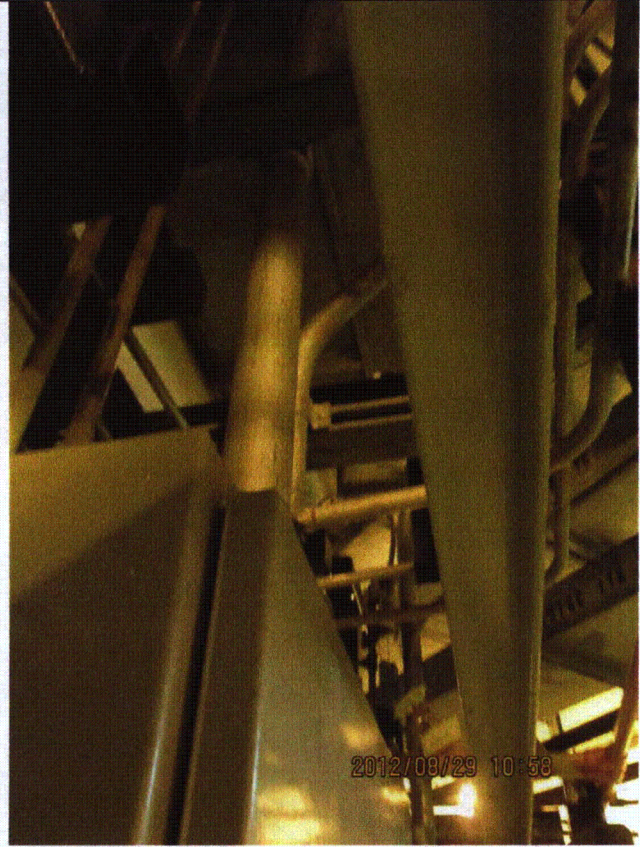
Equipment ID No.: 1E51-N004

Equipment Class: (18) Instruments on Racks

Equipment Description: RCIC PUMP DSCH PRESS



LaSalle 8-29-12 090



LaSalle 8-29-12 091

Status: Y N U

Seismic Walkdown Checklist (SWC)

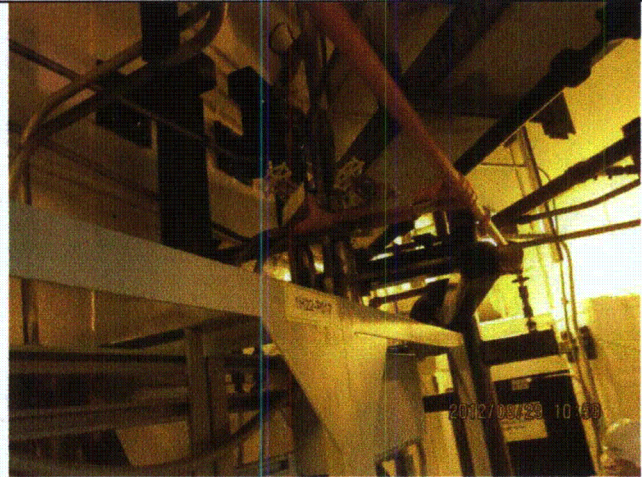
Equipment ID No.: 1E51-N004

Equipment Class: (18) Instruments on Racks

Equipment Description: RCIC PUMP DSCH PRESS



LaSalle 8-29-12 092



LaSalle 8-29-12 093

Status: Y N U

Seismic Walkdown Checklist (SWC)

Equipment ID No.: 1E51-N004

Equipment Class: (18) Instruments on Racks

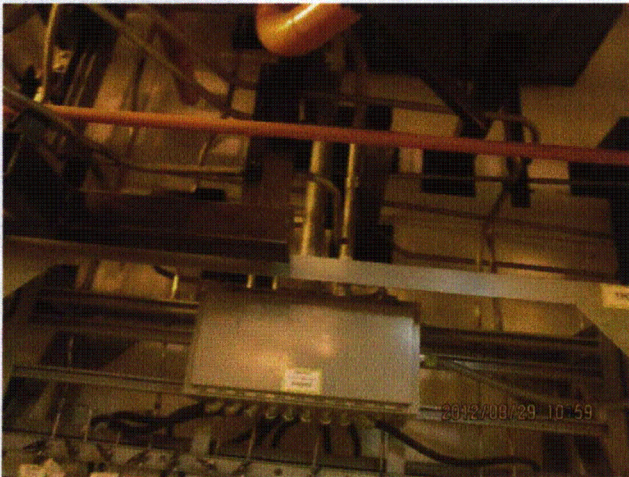
Equipment Description: RCIC PUMP DSCH PRESS



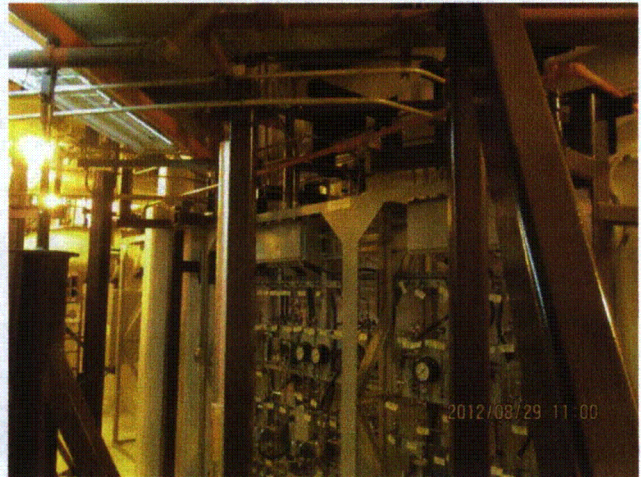
LaSalle 8-29-12 094



LaSalle 8-29-12 095



LaSalle 8-29-12 096



LaSalle 8-29-12 097