

Status: Y N U

Seismic Walkdown Checklist (SWC)

Equipment ID No.: 1DO01P

Equipment Class: (5) Horizontal Pumps

Equipment Description: PUMP, DIESEL OILTRANSFER

Project: LaSalle 1 SWEL

Location (Bldg, Elev, Room/Area): DG, 674.00 ft, ALL

Manufacturer/Model:

Instructions for Completing Checklist

This checklist may be used to document the results of the Seismic Walkdown of an item of equipment on the SWEL. The space below each of the following questions may be used to record the results of judgments and findings. Additional space is provided at the end of this checklist for documenting other comments.

Anchorage

1. Is anchorage configuration verification required (i.e., is the item one of the 50% of SWEL items requiring such verification)? Yes

2. Is the anchorage free of bent, broken, missing or loose hardware? Yes

3. Is the anchorage free of corrosion that is more than mild surface oxidation? Yes

4. Is the anchorage free of visible cracks in the concrete near the anchors? Yes
Approximately 12" of sloped portion of grout pad past edge of pump base has been chipped away. All anchorage still engaged; judged to be acceptable.

5. Is the anchorage configuration consistent with plant documentation? (Note: This question only applies if the item is one of the 50% for which an anchorage configuration verification is required.) Yes
Anchorage shown on drawings M-1572, Rev. R and M-1591, Sheet 5, Rev. E.

6. Based on the above anchorage evaluations, is the anchorage free of potentially adverse seismic conditions? Yes

Status: Y N U

Seismic Walkdown Checklist (SWC)

Equipment ID No.: 1DO01P

Equipment Class: (5) Horizontal Pumps

Equipment Description: PUMP, DIESEL OILTRANSFER

Interaction Effects

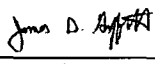

7. Are soft targets free from impact by nearby equipment or structures? Yes
8. Are overhead equipment, distribution systems, ceiling tiles and lighting, and masonry block walls not likely to collapse onto the equipment? Yes
Overhead light fixtures judged to be acceptable.
9. Do attached lines have adequate flexibility to avoid damage? Yes
10. Based on the above seismic interaction evaluations, is equipment free of potentially adverse seismic interaction effects? Yes

Other Adverse Conditions

11. Have you looked for and found no adverse seismic conditions that could adversely affect the safety functions of the equipment? Yes

Comments

Seismic Walkdown Team: J. Griffith & M. Wodarczyk - 9/13/2012

Evaluated by:  James Griffith Date: 10/17/2012
 Michael Wodarczyk 10/17/2012

Status: Y N U

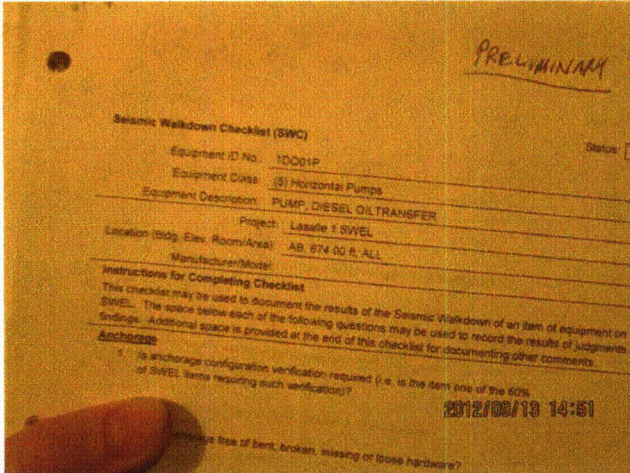
Seismic Walkdown Checklist (SWC)

Equipment ID No.: 1DO01P

Equipment Class: (5) Horizontal Pumps

Equipment Description: PUMP, DIESEL OILTRANSFER

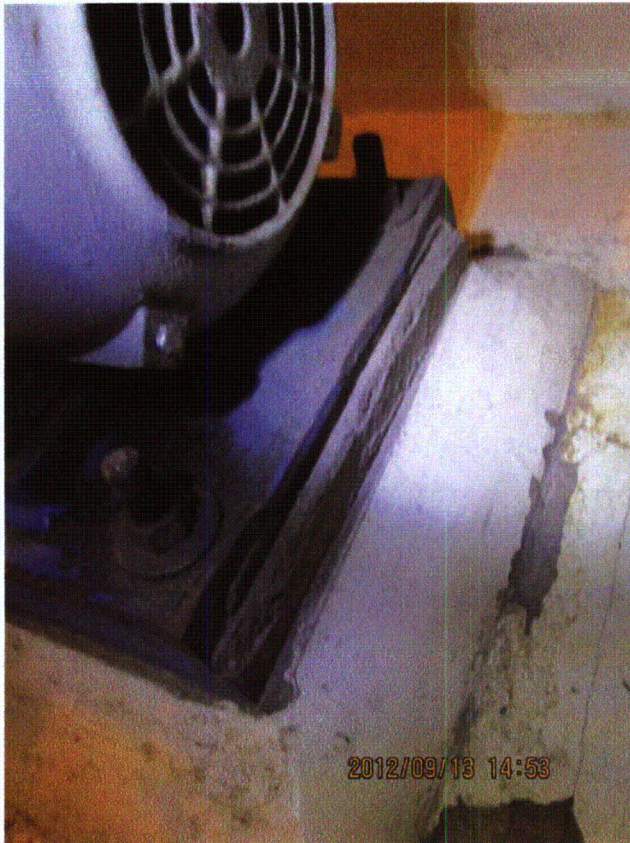
Photos



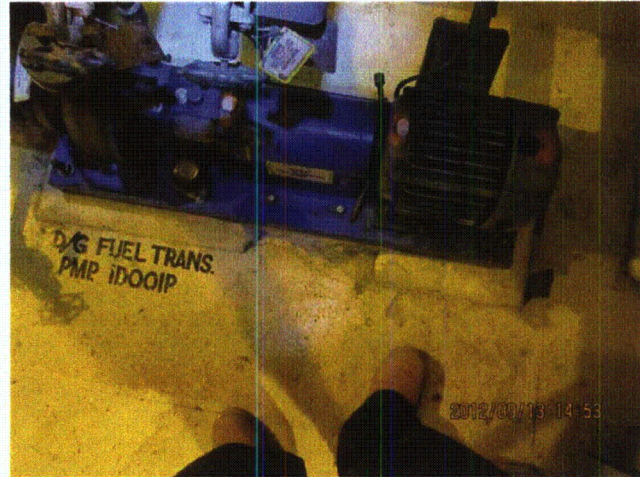
20120913-Lasalle 263



20120913-Lasalle 265



20120913-Lasalle 266



20120913-Lasalle 267

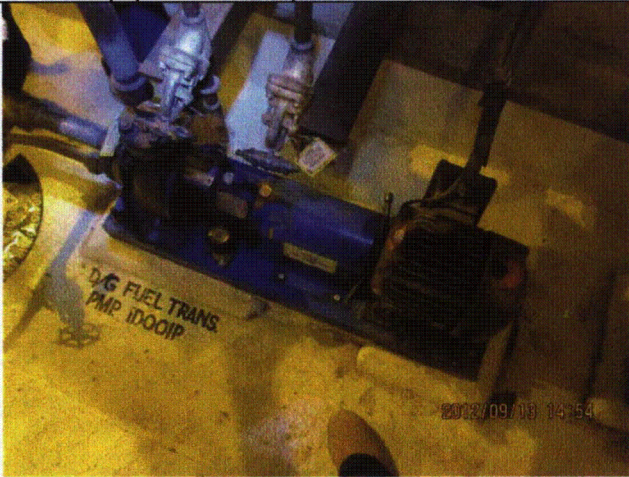
Status: Y N U

Seismic Walkdown Checklist (SWC)

Equipment ID No.: 1DO01P

Equipment Class: (5) Horizontal Pumps

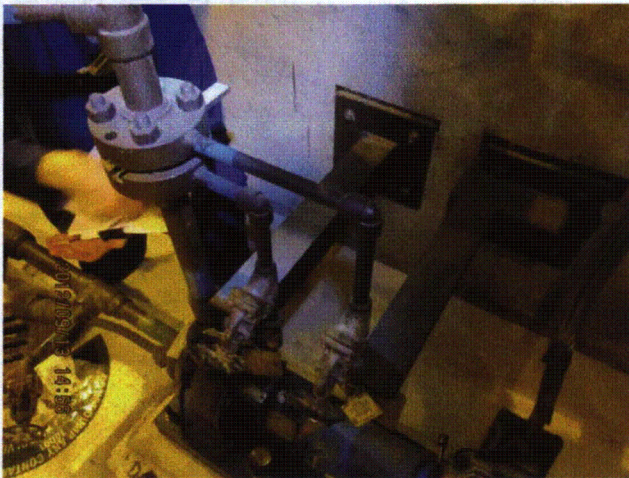
Equipment Description: PUMP, DIESEL OILTRANSFER



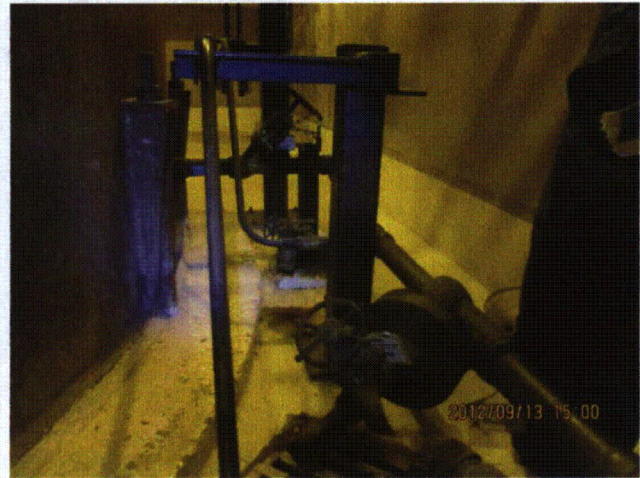
20120913-Lasalle 268



20120913-Lasalle 269



20120913-Lasalle 270



20120913-Lasalle 271

Status: Y N U

Seismic Walkdown Checklist (SWC)

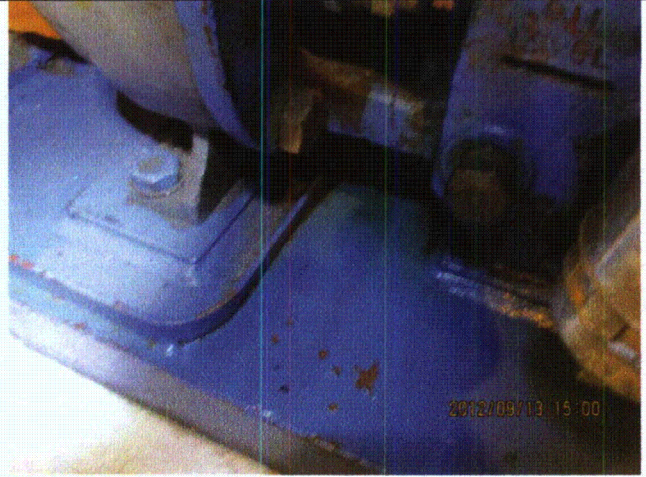
Equipment ID No.: 1DO01P

Equipment Class: (5) Horizontal Pumps

Equipment Description: PUMP, DIESEL OILTRANSFER



20120913-Lasalle 272



20120913-Lasalle 273

Status: Y N U

Seismic Walkdown Checklist (SWC)

Equipment ID No.: 1E12-B001B

Equipment Class: (21) Tanks and Heat Exchangers

Equipment Description: B RHR HEAT EXCHANGER

Project: LaSalle 1 SWEL

Location (Bldg, Elev, Room/Area): RB, 710.00 ft, ALL

Manufacturer/Model:

Instructions for Completing Checklist

This checklist may be used to document the results of the Seismic Walkdown of an item of equipment on the SWEL. The space below each of the following questions may be used to record the results of judgments and findings. Additional space is provided at the end of this checklist for documenting other comments.

Anchorage

1. Is anchorage configuration verification required (i.e., is the item one of the 50% of SWEL items requiring such verification)? Yes

2. Is the anchorage free of bent, broken, missing or loose hardware? Yes

3. Is the anchorage free of corrosion that is more than mild surface oxidation? Yes

4. Is the anchorage free of visible cracks in the concrete near the anchors? Not Applicable
Heat Exchanger supported from grating platform.

5. Is the anchorage configuration consistent with plant documentation? (Note: This question only applies if the item is one of the 50% for which an anchorage configuration verification is required.) Yes
Anchorage shown on drawings S-319A, Rev. G and S-899, Rev. L.

6. Based on the above anchorage evaluations, is the anchorage free of potentially adverse seismic conditions? Yes

Status: Y N U

Seismic Walkdown Checklist (SWC)

Equipment ID No.: 1E12-B001B

Equipment Class: (21) Tanks and Heat Exchangers

Equipment Description: B RHR HEAT EXCHANGER

Interaction Effects

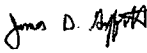
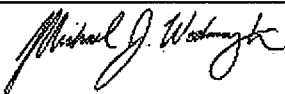
7. Are soft targets free from impact by nearby equipment or structures? Yes
8. Are overhead equipment, distribution systems, ceiling tiles and lighting, and masonry block walls not likely to collapse onto the equipment? Yes
1B RHR Heat Exchanger Room masonry walls are safety-related per drawing A-225, Rev. Y.
9. Do attached lines have adequate flexibility to avoid damage? Yes
10. Based on the above seismic interaction evaluations, is equipment free of potentially adverse seismic interaction effects? Yes

Other Adverse Conditions

11. Have you looked for and found no adverse seismic conditions that could adversely affect the safety functions of the equipment? Yes

Comments

Seismic Walkdown Team: J. Griffith & M. Wodarczyk - 9/12/2012

Evaluated by:  James Griffith Date: 10/17/2012
 Michael Wodarczyk 10/17/2012

Status: Y N U

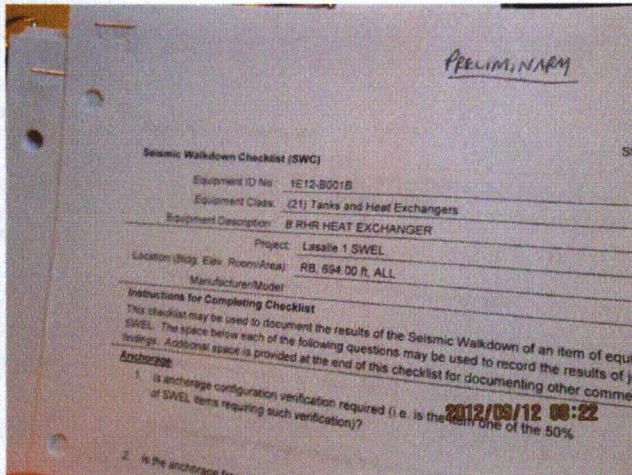
Seismic Walkdown Checklist (SWC)

Equipment ID No.: 1E12-B001B

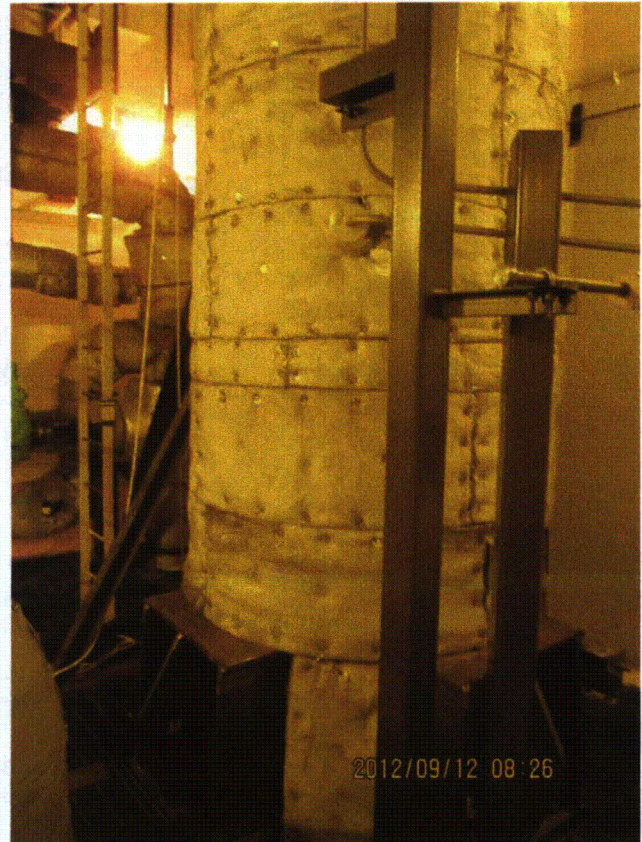
Equipment Class: (21) Tanks and Heat Exchangers

Equipment Description: B RHR HEAT EXCHANGER

Photos



20120912-Lasalle 001



20120912-Lasalle 013

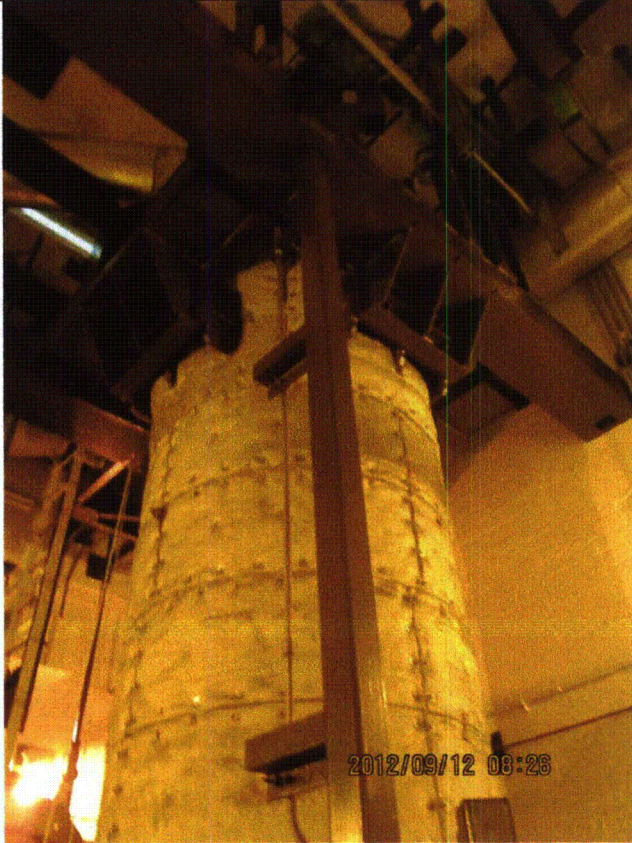
Status: Y N U

Seismic Walkdown Checklist (SWC)

Equipment ID No.: 1E12-B001B

Equipment Class: (21) Tanks and Heat Exchangers

Equipment Description: B RHR HEAT EXCHANGER



2012/09/12 08:26

20120912-Lasalle 014



2012/09/12 08:27

20120912-Lasalle 015



2012/09/12 08:27

20120912-Lasalle 016



2012/09/12 08:31

20120912-Lasalle 017

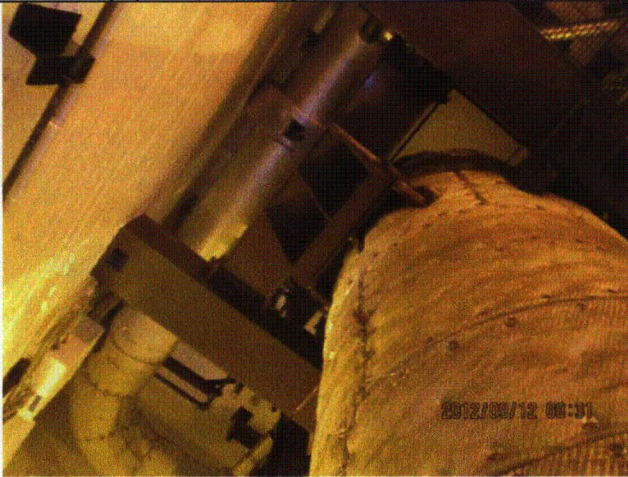
Status: Y N U

Seismic Walkdown Checklist (SWC)

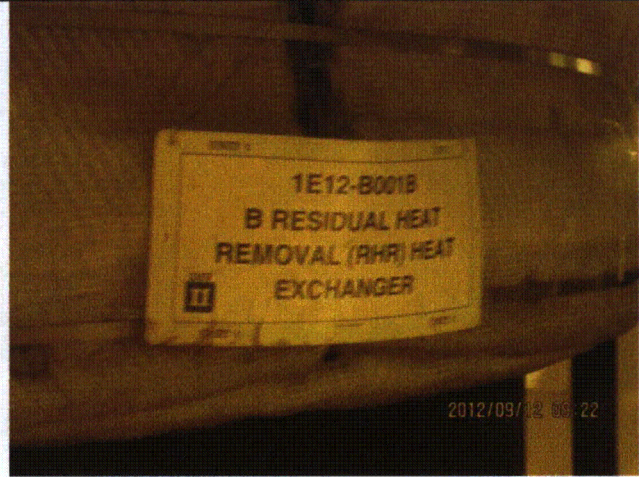
Equipment ID No.: 1E12-B001B

Equipment Class: (21) Tanks and Heat Exchangers

Equipment Description: B RHR HEAT EXCHANGER



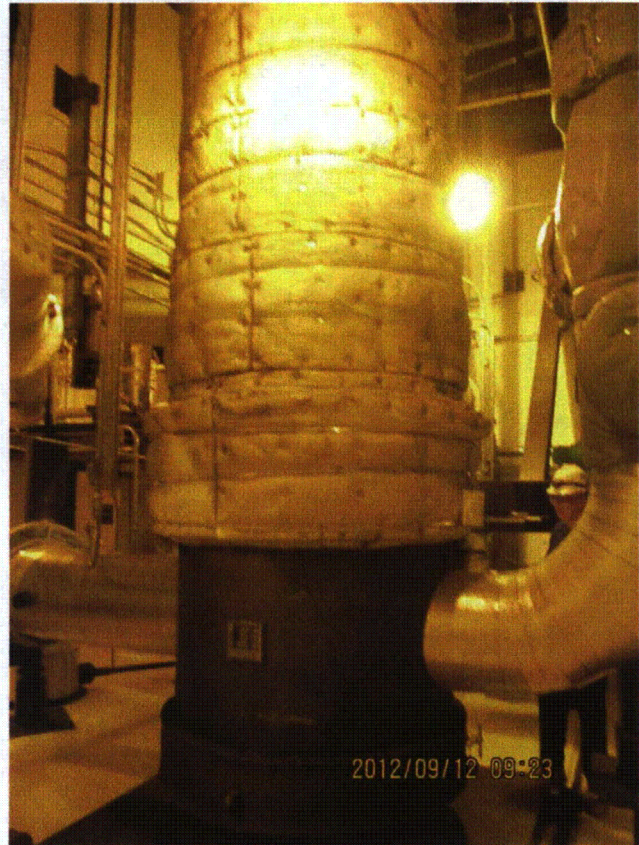
20120912-Lasalle 018



20120912-Lasalle 076



20120912-Lasalle 077



20120912-Lasalle 078

Status: Y N U

Seismic Walkdown Checklist (SWC)

Equipment ID No.: 1E12-C002B

Equipment Class: (6) Vertical Pumps

Equipment Description: 1B RESIDUAL HEAT REMOVAL PMP

Project: LaSalle 1 SWEL

Location (Bldg, Elev, Room/Area): RB, 673.00 ft, ALL

Manufacturer/Model:

Instructions for Completing Checklist

This checklist may be used to document the results of the Seismic Walkdown of an item of equipment on the SWEL. The space below each of the following questions may be used to record the results of judgments and findings. Additional space is provided at the end of this checklist for documenting other comments.

Anchorage

1. Is anchorage configuration verification required (i.e., is the item one of the 50% of SWEL items requiring such verification)? Yes

2. Is the anchorage free of bent, broken, missing or loose hardware? Yes

3. Is the anchorage free of corrosion that is more than mild surface oxidation? Yes

4. Is the anchorage free of visible cracks in the concrete near the anchors? Yes
Minor shrinkage cracks in grout pad judged to be acceptable.
Top edge of pump pedestal has minor spalling; judged to be acceptable.
5. Is the anchorage configuration consistent with plant documentation? (Note: This question only applies if the item is one of the 50% for which an anchorage configuration verification is required.) Yes
Anchorage is shown on drawings M-1572, Rev. R and M-1590, Sheet 3, Rev. M.

6. Based on the above anchorage evaluations, is the anchorage free of potentially adverse seismic conditions? Yes

Status: Y N U

Seismic Walkdown Checklist (SWC)

Equipment ID No.: 1E12-C002B

Equipment Class: (6) Vertical Pumps

Equipment Description: 1B RESIDUAL HEAT REMOVAL PMP

Interaction Effects

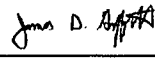
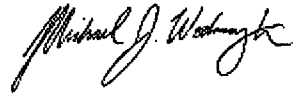
7. Are soft targets free from impact by nearby equipment or structures? Yes
Strut in contact with insulation on test valve. Insulation is flexible; judged to be acceptable.
8. Are overhead equipment, distribution systems, ceiling tiles and lighting, and masonry block walls not likely to collapse onto the equipment? Yes
Temperature gauge in contact with flexible insulation; judged to be acceptable.
9. Do attached lines have adequate flexibility to avoid damage? Yes
10. Based on the above seismic interaction evaluations, is equipment free of potentially adverse seismic interaction effects? Yes

Other Adverse Conditions

11. Have you looked for and found no adverse seismic conditions that could adversely affect the safety functions of the equipment? Yes

Comments

Seismic Walkdown Team: J. Griffith & M. Wodarczyk - 9/11/2012

Evaluated by:  James Griffith Date: 10/17/2012
 Michael Wodarczyk 10/17/2012

Status: Y N U

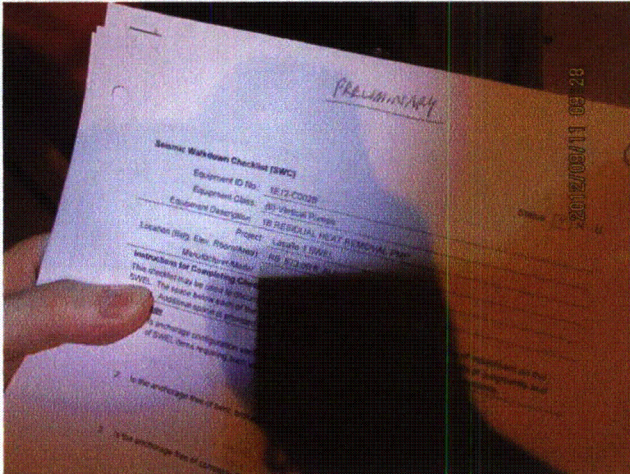
Seismic Walkdown Checklist (SWC)

Equipment ID No.: 1E12-C002B

Equipment Class: (6) Vertical Pumps

Equipment Description: 1B RESIDUAL HEAT REMOVAL PMP

Photos



20120911-Lasalle 044



20120911-Lasalle 045



20120911-Lasalle 046



20120911-Lasalle 047

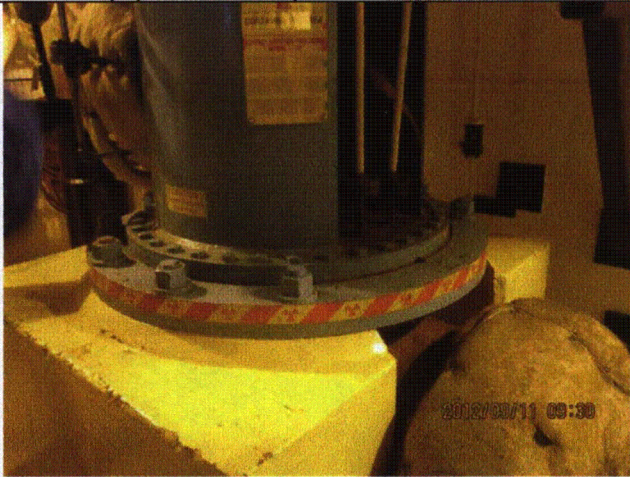
Status: Y N U

Seismic Walkdown Checklist (SWC)

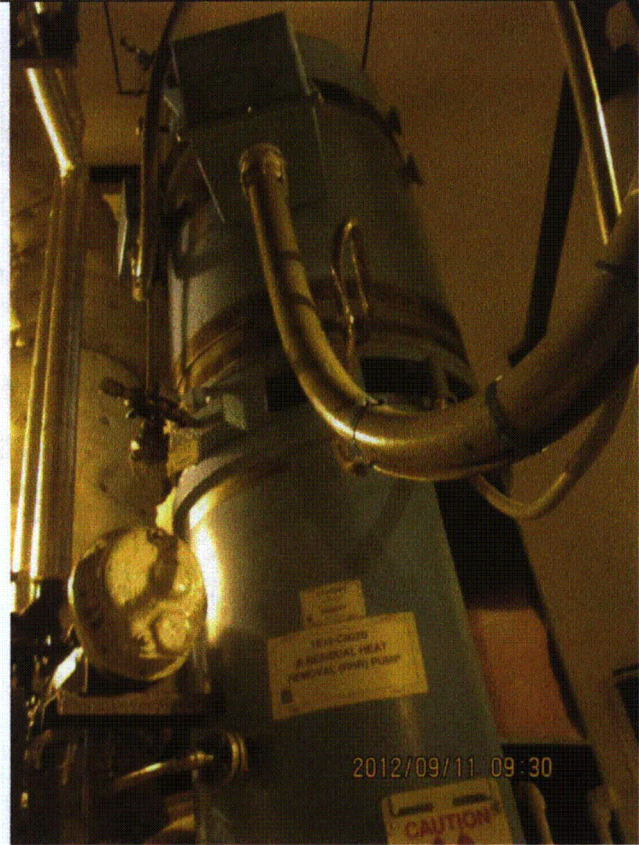
Equipment ID No.: 1E12-C002B

Equipment Class: (6) Vertical Pumps

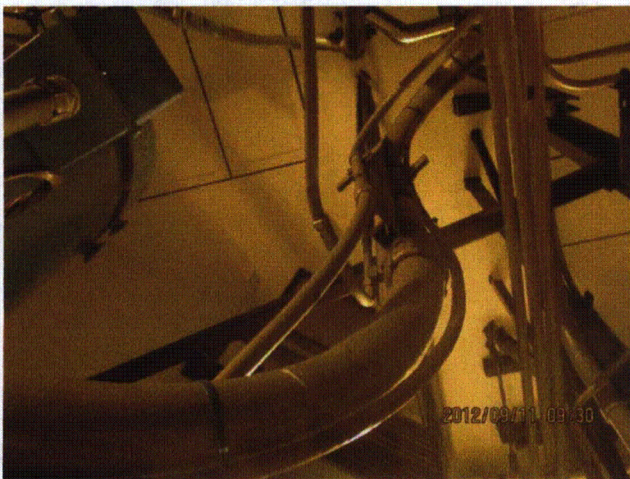
Equipment Description: 1B RESIDUAL HEAT REMOVAL PMP



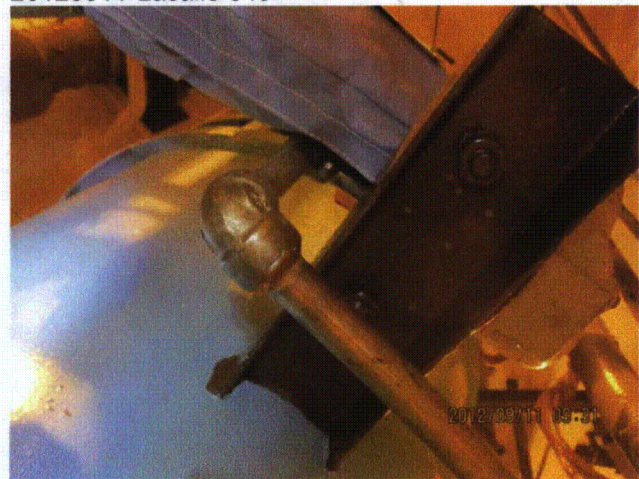
20120911-Lasalle 048



20120911-Lasalle 049



20120911-Lasalle 050



20120911-Lasalle 051

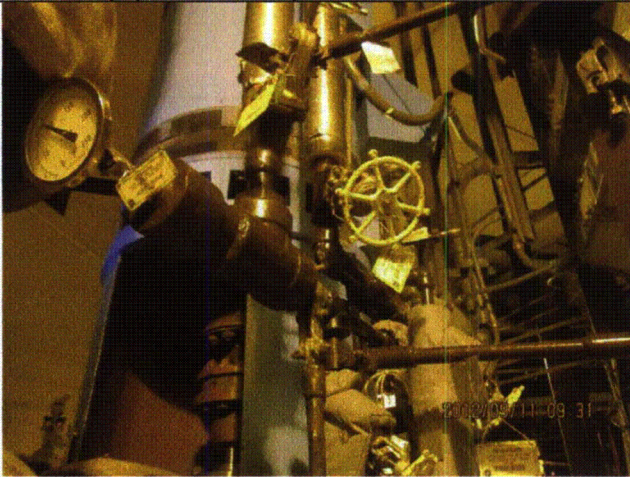
Status: Y N U

Seismic Walkdown Checklist (SWC)

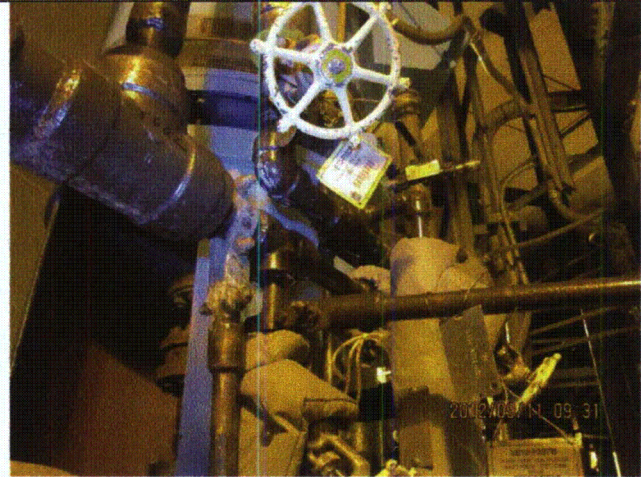
Equipment ID No.: 1E12-C002B

Equipment Class: (6) Vertical Pumps

Equipment Description: 1B RESIDUAL HEAT REMOVAL PMP



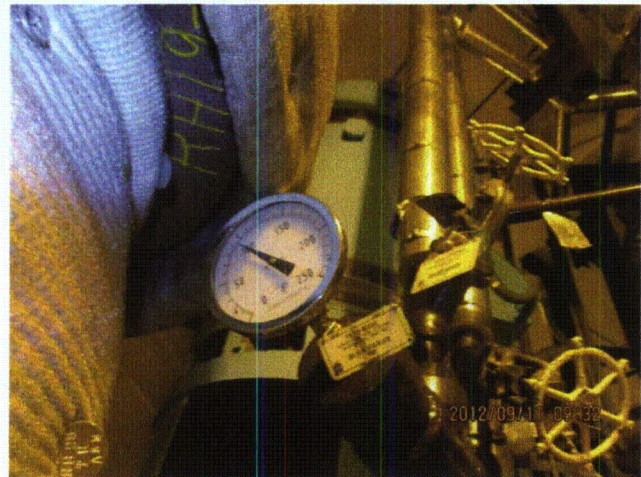
20120911-Lasalle 052



20120911-Lasalle 053



20120911-Lasalle 054



20120911-Lasalle 055

Status: Y N U

Seismic Walkdown Checklist (SWC)

Equipment ID No.: 1E12-C300B

Equipment Class: (5) Horizontal Pumps

Equipment Description: B RHR SERVICE WATER PUMP

Project: LaSalle 1 SWEL

Location (Bldg, Elev, Room/Area): DG, 674.00 ft, ALL

Manufacturer/Model:

Instructions for Completing Checklist

This checklist may be used to document the results of the Seismic Walkdown of an item of equipment on the SWEL. The space below each of the following questions may be used to record the results of judgments and findings. Additional space is provided at the end of this checklist for documenting other comments.

Anchorage

1. Is anchorage configuration verification required (i.e., is the item one of the 50% of SWEL items requiring such verification)? Yes

2. Is the anchorage free of bent, broken, missing or loose hardware? Yes

3. Is the anchorage free of corrosion that is more than mild surface oxidation? Yes

4. Is the anchorage free of visible cracks in the concrete near the anchors? Yes
Minor shrinkage cracks in pedestal judged to be acceptable.

5. Is the anchorage configuration consistent with plant documentation? (Note: This question only applies if the item is one of the 50% for which an anchorage configuration verification is required.) Yes
Anchorage verified per drawings M-1572, Rev. R and M-1592, Sheet 10, Rev. P.

6. Based on the above anchorage evaluations, is the anchorage free of potentially adverse seismic conditions? Yes

Status: Y N U

Seismic Walkdown Checklist (SWC)

Equipment ID No.: 1E12-C300B

Equipment Class: (5) Horizontal Pumps

Equipment Description: B RHR SERVICE WATER PUMP

Interaction Effects

- | | |
|---|-----|
| 7. Are soft targets free from impact by nearby equipment or structures? | Yes |
| 8. Are overhead equipment, distribution systems, ceiling tiles and lighting, and masonry block walls not likely to collapse onto the equipment? | Yes |
| 9. Do attached lines have adequate flexibility to avoid damage? | Yes |
| 10. Based on the above seismic interaction evaluations, is equipment free of potentially adverse seismic interaction effects? | Yes |

Other Adverse Conditions

- | | |
|--|-----|
| 11. Have you looked for and found no adverse seismic conditions that could adversely affect the safety functions of the equipment? | Yes |
|--|-----|

Comments

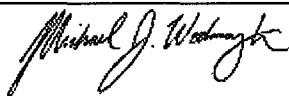
Seismic Walkdown Team: M. Etre & M. Wodarcyk - 9/17/2012

Evaluated by:



Mark Etre

Date: 10/17/2012



Michael Wodarcyk

10/17/2012

Status: Y N U

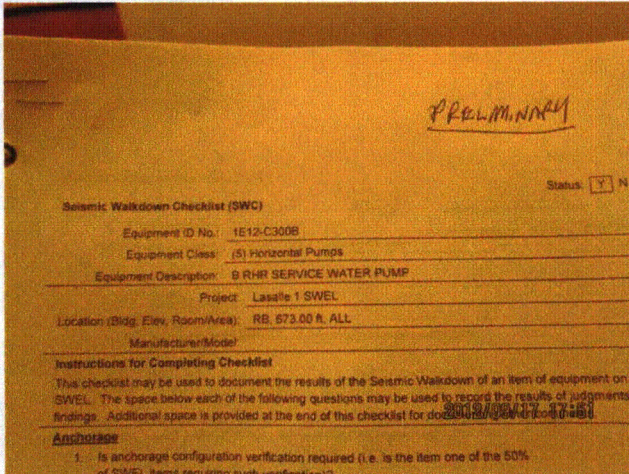
Seismic Walkdown Checklist (SWC)

Equipment ID No.: 1E12-C300B

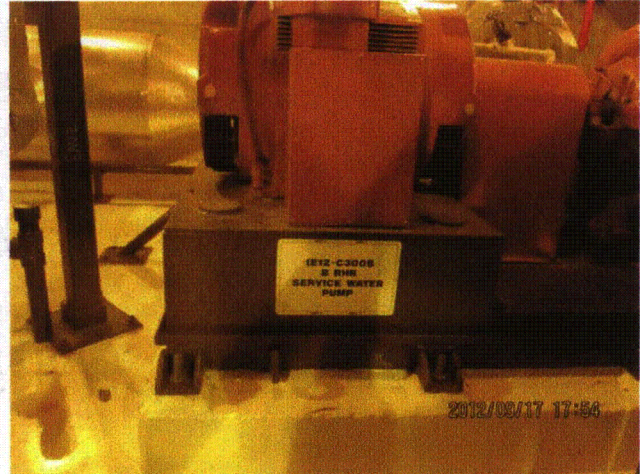
Equipment Class: (5) Horizontal Pumps

Equipment Description: B RHR SERVICE WATER PUMP

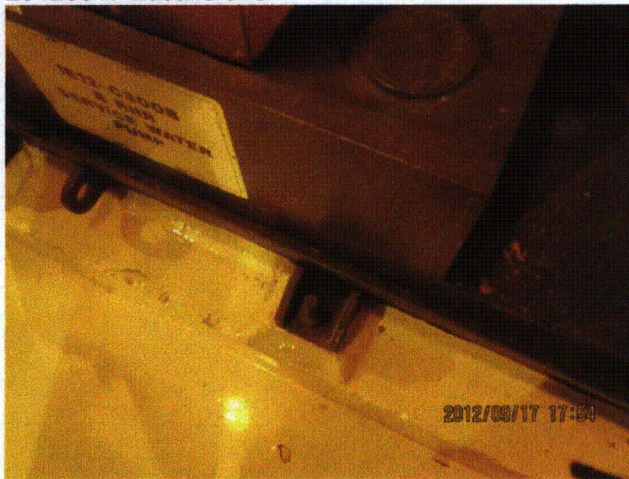
Photos



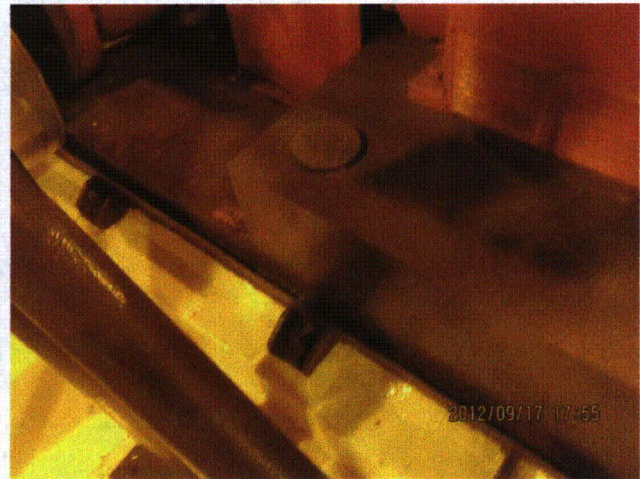
20120917-Lasalle 348



20120917-Lasalle 351



20120917-Lasalle 352



20120917-Lasalle 353

Status: Y N U

Seismic Walkdown Checklist (SWC)

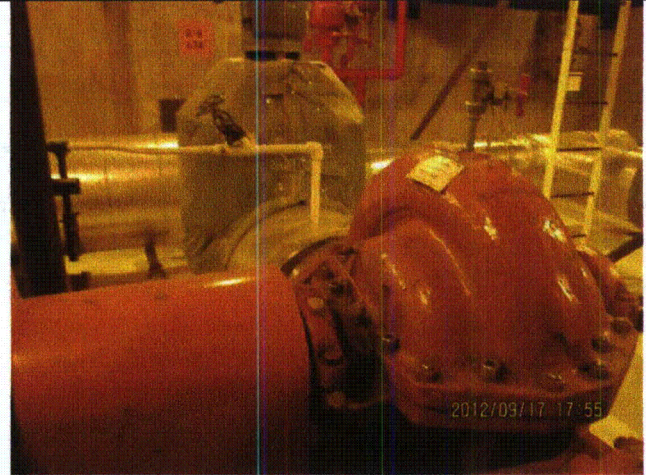
Equipment ID No.: 1E12-C300B

Equipment Class: (5) Horizontal Pumps

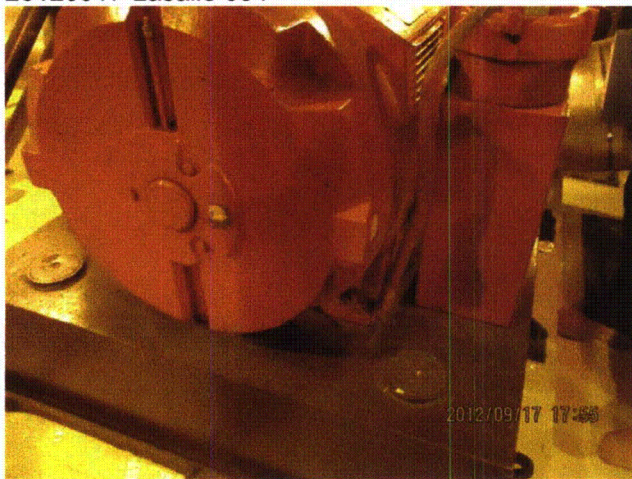
Equipment Description: B RHR SERVICE WATER PUMP



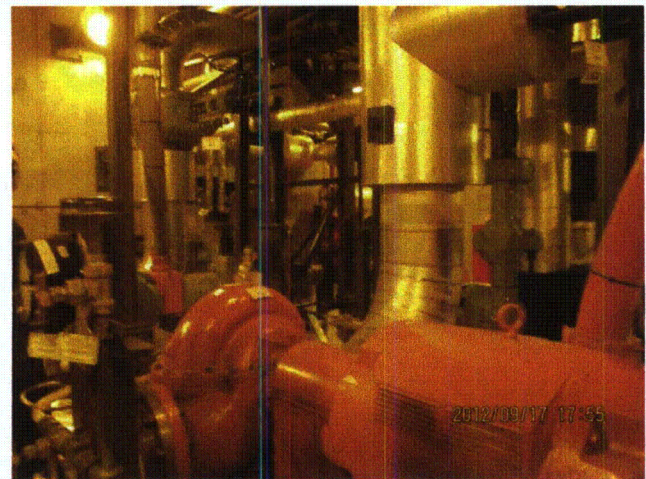
20120917-Lasalle 354



20120917-Lasalle 355



20120917-Lasalle 356



20120917-Lasalle 357

Status: Y N U

Seismic Walkdown Checklist (SWC)

Equipment ID No.: 1E12-D300B

Equipment Class: (0) Other

Equipment Description: B RHR SERVICE WATER STRAINER

Project: LaSalle 1 SWEL

Location (Bldg, Elev, Room/Area): DG, 674.00 ft, ALL

Manufacturer/Model:

Instructions for Completing Checklist

This checklist may be used to document the results of the Seismic Walkdown of an item of equipment on the SWEL. The space below each of the following questions may be used to record the results of judgments and findings. Additional space is provided at the end of this checklist for documenting other comments.

Anchorage

1. Is anchorage configuration verification required (i.e., is the item one of the 50% of SWEL items requiring such verification)? Yes

2. Is the anchorage free of bent, broken, missing or loose hardware? Yes

3. Is the anchorage free of corrosion that is more than mild surface oxidation? Yes

4. Is the anchorage free of visible cracks in the concrete near the anchors? Yes

5. Is the anchorage configuration consistent with plant documentation? (Note: This question only applies if the item is one of the 50% for which an anchorage configuration verification is required.) Yes
Anchorage shown on drawings M-1572, Rev. R and M-1591, Sheet 11, Rev.E.

6. Based on the above anchorage evaluations, is the anchorage free of potentially adverse seismic conditions? Yes

Status: Y N U

Seismic Walkdown Checklist (SWC)

Equipment ID No.: 1E12-D300B

Equipment Class: (0) Other

Equipment Description: B RHR SERVICE WATER STRAINER

Interaction Effects

7. Are soft targets free from impact by nearby equipment or structures? Yes

Tubes near flexible strainer insulation judged to be acceptable.

8. Are overhead equipment, distribution systems, ceiling tiles and lighting, and masonry block walls not likely to collapse onto the equipment? Yes

Overhead light fixtures judged to be acceptable.

9. Do attached lines have adequate flexibility to avoid damage? Yes

10. Based on the above seismic interaction evaluations, is equipment free of potentially adverse seismic interaction effects? Yes

Other Adverse Conditions

11. Have you looked for and found no adverse seismic conditions that could adversely affect the safety functions of the equipment? Yes

Comments

Seismic Walkdown Team: J. Griffith & M. Wodarczyk - 9/13/2012

Evaluated by:  James Griffith Date: 10/17/2012

 Michael Wodarczyk 10/17/2012

Status: Y N U

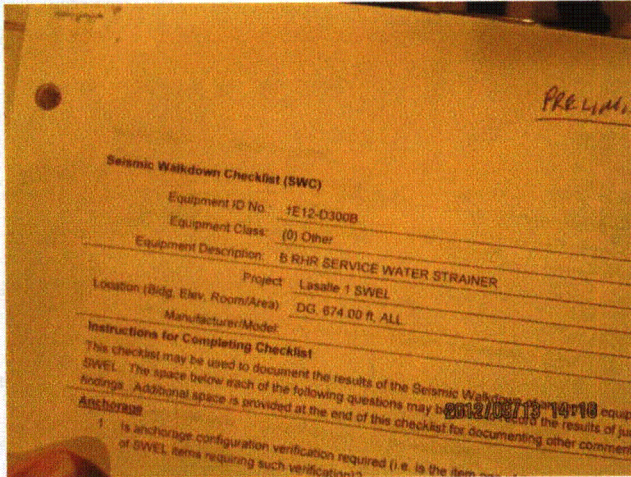
Seismic Walkdown Checklist (SWC)

Equipment ID No.: 1E12-D300B

Equipment Class: (0) Other

Equipment Description: B RHR SERVICE WATER STRAINER

Photos



20120913-Lasalle 234



20120913-Lasalle 235



20120913-Lasalle 236



20120913-Lasalle 237

Status: Y N U

Seismic Walkdown Checklist (SWC)

Equipment ID No.: 1E12-D300B

Equipment Class: (0) Other

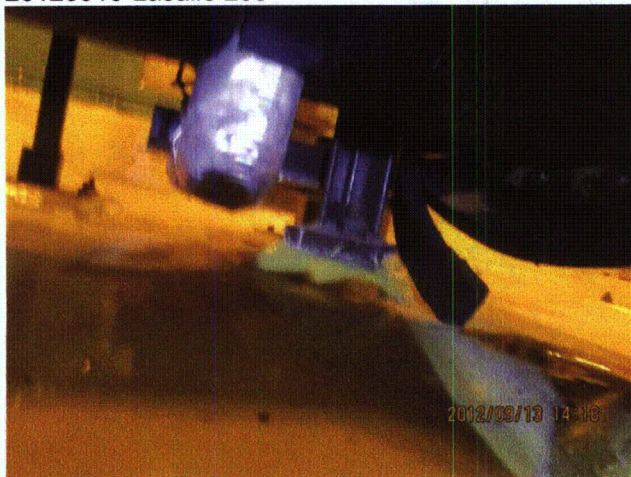
Equipment Description: B RHR SERVICE WATER STRAINER



20120913-Lasalle 238



20120913-Lasalle 239



20120913-Lasalle 240



20120913-Lasalle 241

Status: Y N U

Seismic Walkdown Checklist (SWC)

Equipment ID No.: 1E12-D300B

Equipment Class: (0) Other

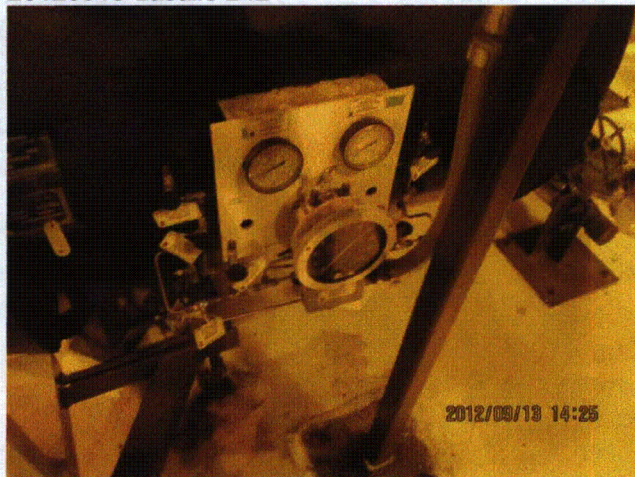
Equipment Description: B RHR SERVICE WATER STRAINER



20120913-Lasalle 242



20120913-Lasalle 243



20120913-Lasalle 244



20120913-Lasalle 245

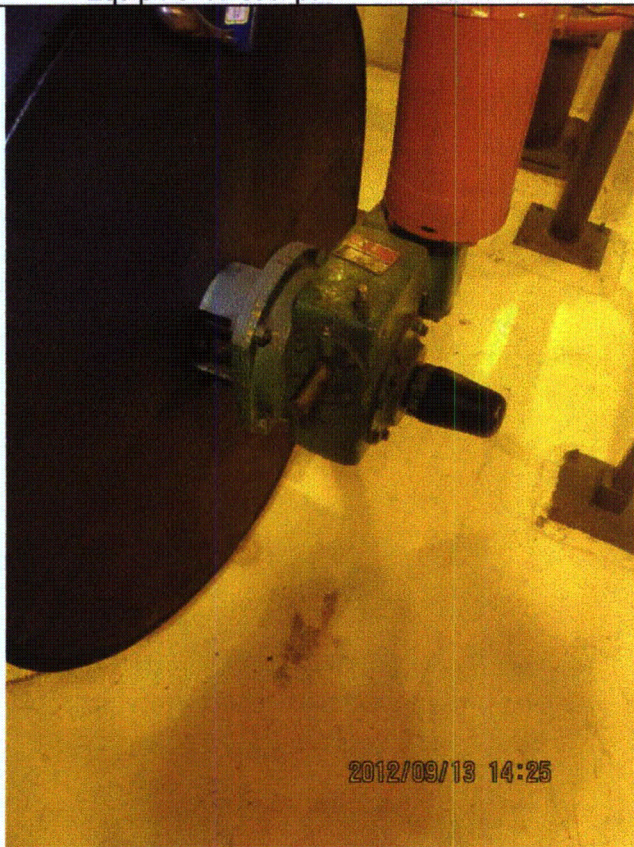
Status: Y N U

Seismic Walkdown Checklist (SWC)

Equipment ID No.: 1E12-D300B

Equipment Class: (0) Other

Equipment Description: B RHR SERVICE WATER STRAINER



20120913-Lasalle 246

Status: Y N U

Seismic Walkdown Checklist (SWC)

Equipment ID No.: 1E12-F003B

Equipment Class: (8) Motor-Operated and Solenoid-Operated Valves

Equipment Description: B RHR HX OUTLET VALVE

Project: LaSalle 1 SWEL

Location (Bldg, Elev, Room/Area): RB, 694.00 ft, ALL

Manufacturer/Model: _____

Instructions for Completing Checklist

This checklist may be used to document the results of the Seismic Walkdown of an item of equipment on the SWEL. The space below each of the following questions may be used to record the results of judgments and findings. Additional space is provided at the end of this checklist for documenting other comments.

Anchorage

- | | |
|--|----------------|
| 1. Is anchorage configuration verification required (i.e., is the item one of the 50% of SWEL items requiring such verification)? | No |
| 2. Is the anchorage free of bent, broken, missing or loose hardware? | Not Applicable |
| 3. Is the anchorage free of corrosion that is more than mild surface oxidation? | Not Applicable |
| 4. Is the anchorage free of visible cracks in the concrete near the anchors? | Not Applicable |
| 5. Is the anchorage configuration consistent with plant documentation? (Note: This question only applies if the item is one of the 50% for which an anchorage configuration verification is required.) | Not Applicable |
| 6. Based on the above anchorage evaluations, is the anchorage free of potentially adverse seismic conditions? | Yes |

Status: Y N U

Seismic Walkdown Checklist (SWC)

Equipment ID No.: 1E12-F003B

Equipment Class: (8) Motor-Operated and Solenoid-Operated Valves

Equipment Description: B RHR HX OUTLET VALVE

Interaction Effects

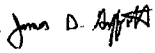
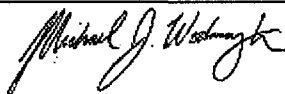
7. Are soft targets free from impact by nearby equipment or structures? Yes
8. Are overhead equipment, distribution systems, ceiling tiles and lighting, and masonry block walls not likely to collapse onto the equipment? Yes
Overhead light fixtures judged to be acceptable.
9. Do attached lines have adequate flexibility to avoid damage? Yes
10. Based on the above seismic interaction evaluations, is equipment free of potentially adverse seismic interaction effects? Yes

Other Adverse Conditions

11. Have you looked for and found no adverse seismic conditions that could adversely affect the safety functions of the equipment? Yes

Comments

Seismic Walkdown Team: J. Griffith & M. Wodarczyk - 9/12/2012

Evaluated by:  James Griffith Date: 10/17/2012
 Michael Wodarczyk 10/17/2012

Status: Y N U

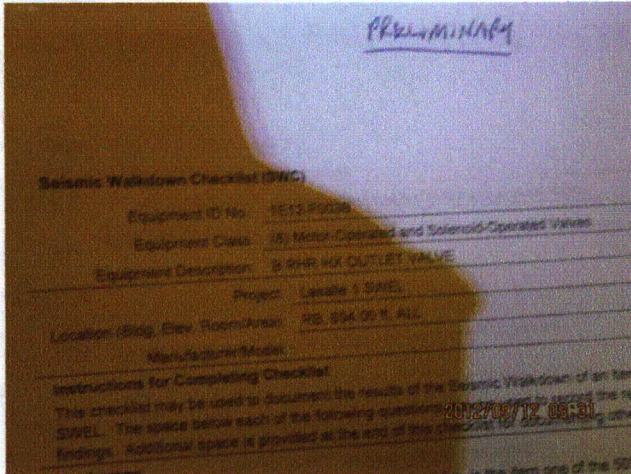
Seismic Walkdown Checklist (SWC)

Equipment ID No.: 1E12-F003B

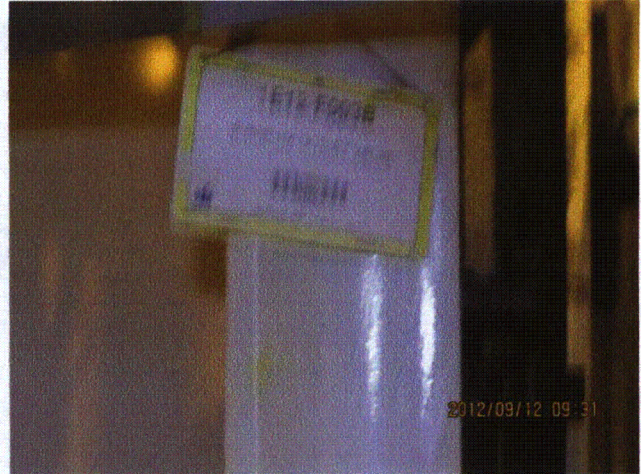
Equipment Class: (8) Motor-Operated and Solenoid-Operated Valves

Equipment Description: B RHR HX OUTLET VALVE

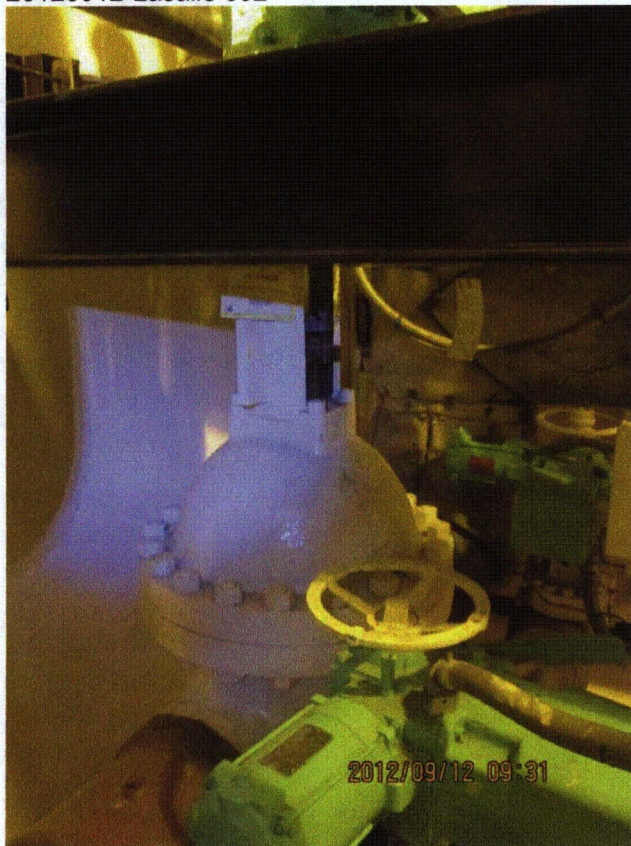
Photos



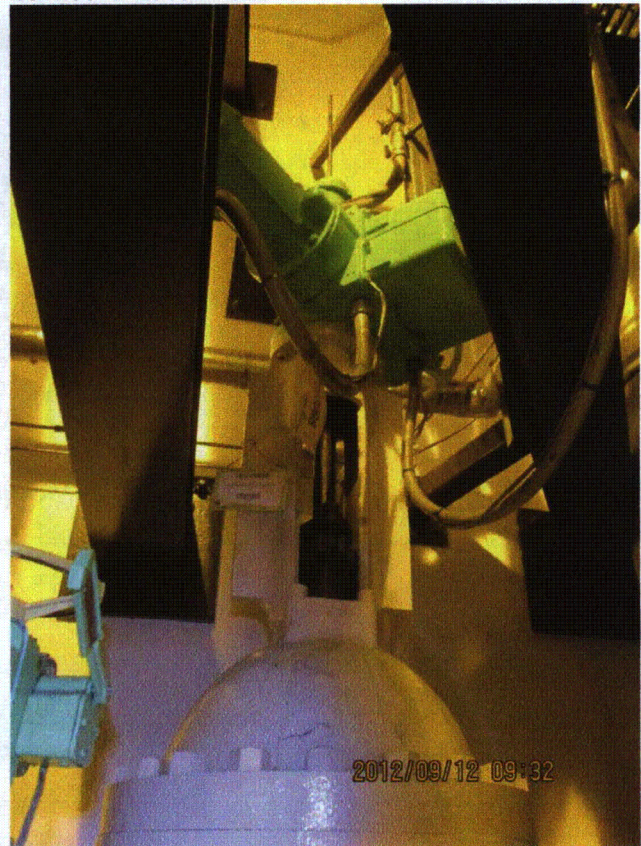
20120912-Lasalle 092



20120912-Lasalle 093



20120912-Lasalle 094



20120912-Lasalle 095

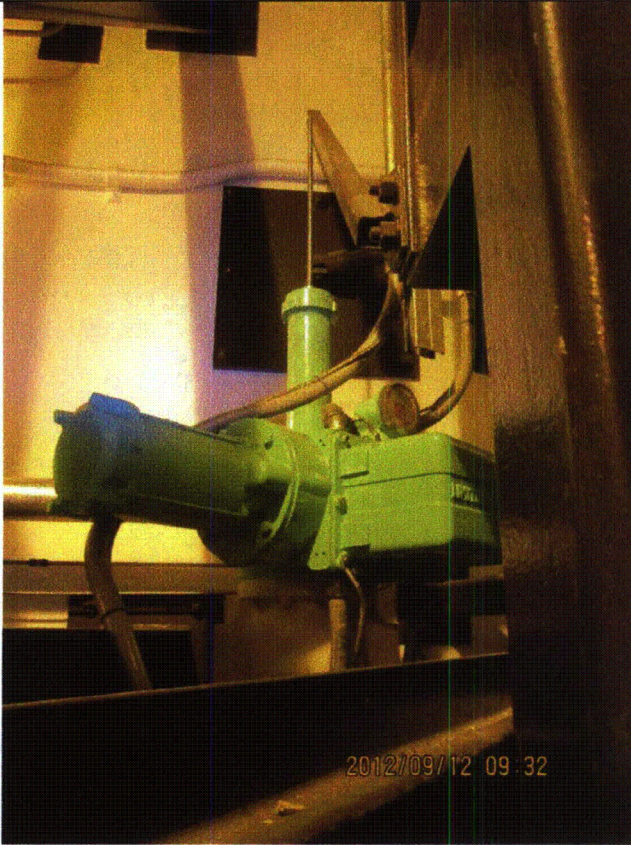
Status: Y N U

Seismic Walkdown Checklist (SWC)

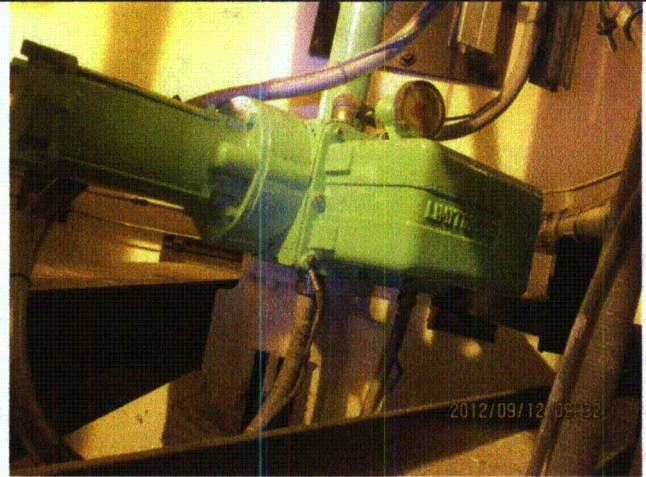
Equipment ID No.: 1E12-F003B

Equipment Class: (8) Motor-Operated and Solenoid-Operated Valves

Equipment Description: B RHR HX OUTLET VALVE



20120912-Lasalle 096



20120912-Lasalle 097

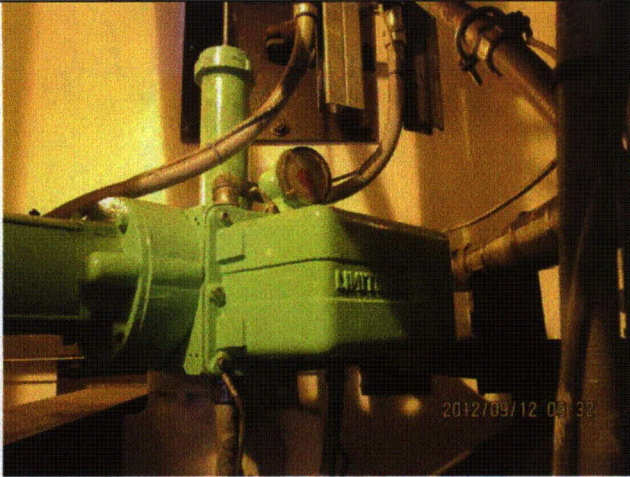
Status: Y N U

Seismic Walkdown Checklist (SWC)

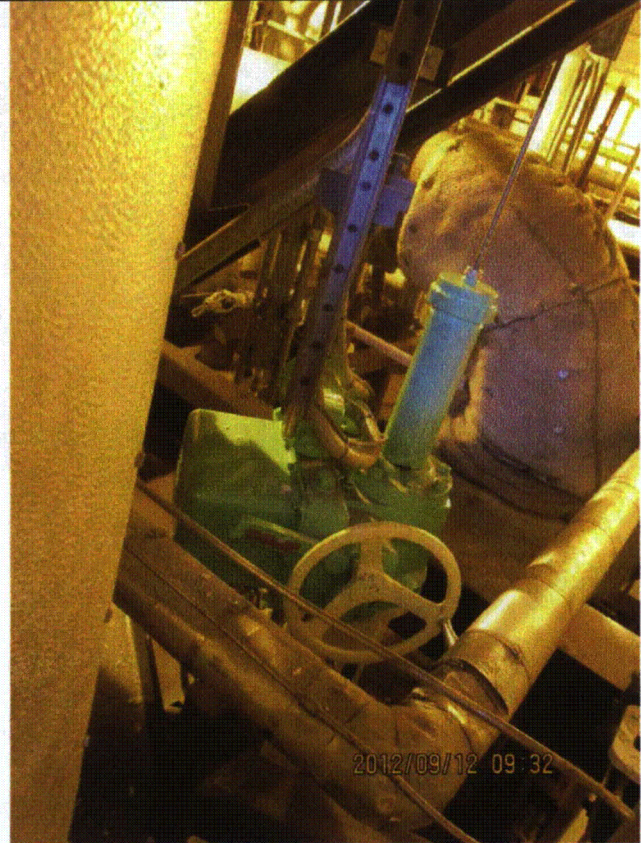
Equipment ID No.: 1E12-F003B

Equipment Class: (8) Motor-Operated and Solenoid-Operated Valves

Equipment Description: B RHR HX OUTLET VALVE



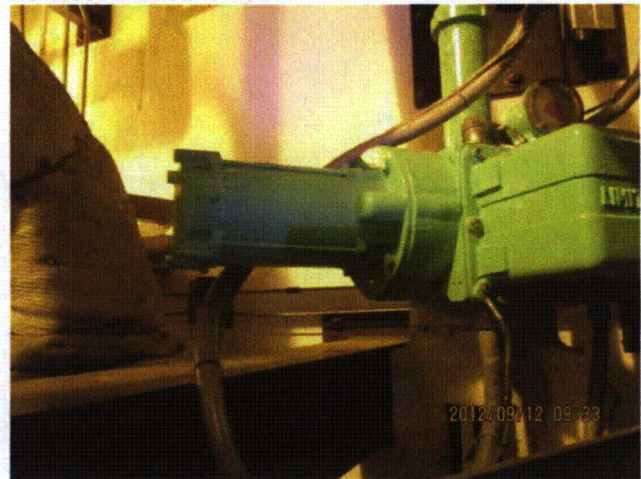
20120912-Lasalle 098



20120912-Lasalle 099



20120912-Lasalle 100



20120912-Lasalle 101

Status: Y N U

Seismic Walkdown Checklist (SWC)

Equipment ID No.: 1E12-F004B

Equipment Class: (8) Motor-Operated and Solenoid-Operated Valves

Equipment Description: B RHR PUMP SUP POOL SUCT ISOL VALVE

Project: LaSalle 1 SWEL

Location (Bldg, Elev, Room/Area): RB, 673.00 ft, ALL

Manufacturer/Model: _____

Instructions for Completing Checklist

This checklist may be used to document the results of the Seismic Walkdown of an item of equipment on the SWEL. The space below each of the following questions may be used to record the results of judgments and findings. Additional space is provided at the end of this checklist for documenting other comments.

Anchorage

1. Is anchorage configuration verification required (i.e., is the item one of the 50% of SWEL items requiring such verification)? No

2. Is the anchorage free of bent, broken, missing or loose hardware? Not Applicable

3. Is the anchorage free of corrosion that is more than mild surface oxidation? Not Applicable

4. Is the anchorage free of visible cracks in the concrete near the anchors? Not Applicable

5. Is the anchorage configuration consistent with plant documentation? (Note: This question only applies if the item is one of the 50% for which an anchorage configuration verification is required.) Not Applicable

6. Based on the above anchorage evaluations, is the anchorage free of potentially adverse seismic conditions? Yes

Status: Y N U

Seismic Walkdown Checklist (SWC)

Equipment ID No.: 1E12-F004B

Equipment Class: (8) Motor-Operated and Solenoid-Operated Valves

Equipment Description: B RHR PUMP SUP POOL SUCT ISOL VALVE

Interaction Effects

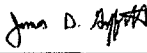

7. Are soft targets free from impact by nearby equipment or structures? Yes
8. Are overhead equipment, distribution systems, ceiling tiles and lighting, and masonry block walls not likely to collapse onto the equipment? Yes
9. Do attached lines have adequate flexibility to avoid damage? Yes
10. Based on the above seismic interaction evaluations, is equipment free of potentially adverse seismic interaction effects? Yes

Other Adverse Conditions

11. Have you looked for and found no adverse seismic conditions that could adversely affect the safety functions of the equipment? Yes

Comments

Seismic Walkdown Team: J. Griffith & M. Wodarczyk - 9/11/2012

Evaluated by:  James Griffith Date: 10/17/2012
 Michael Wodarczyk 10/17/2012

Status: Y N U

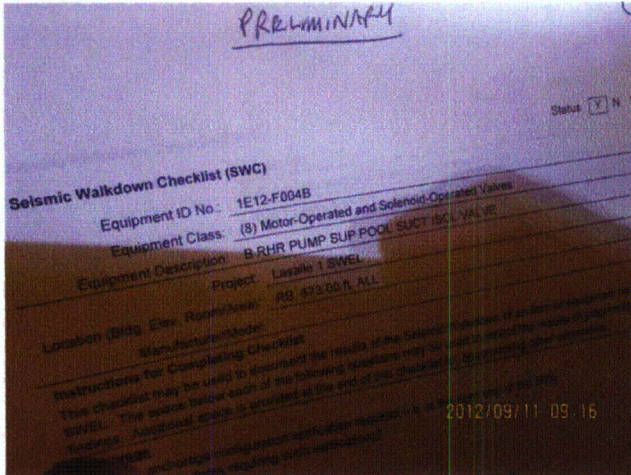
Seismic Walkdown Checklist (SWC)

Equipment ID No.: 1E12-F004B

Equipment Class: (8) Motor-Operated and Solenoid-Operated Valves

Equipment Description: B RHR PUMP SUP POOL SUCT ISOL VALVE

Photos



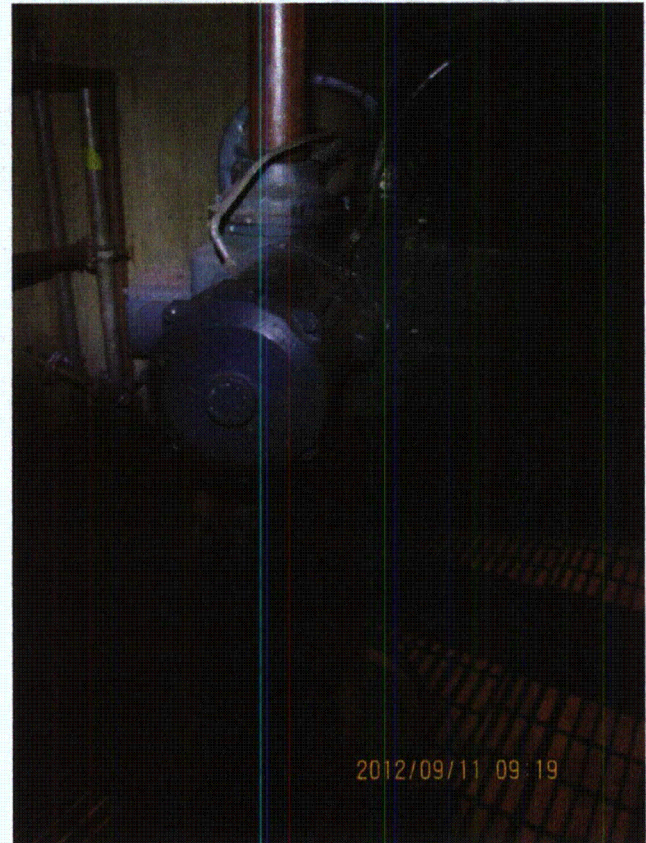
20120911-Lasalle 029



20120911-Lasalle 030



20120911-Lasalle 031



20120911-Lasalle 032

Status: Y N U

Seismic Walkdown Checklist (SWC)

Equipment ID No.: 1E12-F004B

Equipment Class: (8) Motor-Operated and Solenoid-Operated Valves

Equipment Description: B RHR PUMP SUP POOL SUCT ISOL VALVE



20120911-Lasalle 033



20120911-Lasalle 034



20120911-Lasalle 035



20120911-Lasalle 036

Status: Y N U

Seismic Walkdown Checklist (SWC)

Equipment ID No.: 1E12-F004B

Equipment Class: (8) Motor-Operated and Solenoid-Operated Valves

Equipment Description: B RHR PUMP SUP POOL SUCT ISOL VALVE



20120911-Lasalle 037



20120911-Lasalle 038

Status: Y N U

Seismic Walkdown Checklist (SWC)

Equipment ID No.: 1E12-F011B

Equipment Class: (8) Motor-Operated and Solenoid-Operated Valves

Equipment Description: B RHR HX STEAM CONDENSING SUP POOL RETURN ISOL VALVE

Project: LaSalle 1 SWEL

Location (Bldg, Elev, Room/Area): RB, 694.00 ft, ALL

Manufacturer/Model:

Instructions for Completing Checklist

This checklist may be used to document the results of the Seismic Walkdown of an item of equipment on the SWEL. The space below each of the following questions may be used to record the results of judgments and findings. Additional space is provided at the end of this checklist for documenting other comments.

Anchorage

1. Is anchorage configuration verification required (i.e., is the item one of the 50% of SWEL items requiring such verification)? No

2. Is the anchorage free of bent, broken, missing or loose hardware? Not Applicable

3. Is the anchorage free of corrosion that is more than mild surface oxidation? Not Applicable

4. Is the anchorage free of visible cracks in the concrete near the anchors? Not Applicable

5. Is the anchorage configuration consistent with plant documentation? (Note: This question only applies if the item is one of the 50% for which an anchorage configuration verification is required.) Not Applicable

6. Based on the above anchorage evaluations, is the anchorage free of potentially adverse seismic conditions? Yes

Status: Y N U

Seismic Walkdown Checklist (SWC)

Equipment ID No.: 1E12-F011B

Equipment Class: (8) Motor-Operated and Solenoid-Operated Valves

Equipment Description: B RHR HX STEAM CONDENSING SUP POOL RETURN ISOL VALVE

Interaction Effects

7. Are soft targets free from impact by nearby equipment or structures? Yes

Gallery opening has banding at flexible conduits. The gallery has no sharp edges. Therefore, there is no interaction concern between the gallery and flexible conduits.

8. Are overhead equipment, distribution systems, ceiling tiles and lighting, and masonry block walls not likely to collapse onto the equipment? Yes

Adjacent masonry wall is safety-related per drawing A-221, Rev. R.

9. Do attached lines have adequate flexibility to avoid damage? Yes

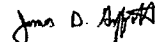

10. Based on the above seismic interaction evaluations, is equipment free of potentially adverse seismic interaction effects? Yes

Other Adverse Conditions

11. Have you looked for and found no adverse seismic conditions that could adversely affect the safety functions of the equipment? Yes

Comments

Seismic Walkdown Team: J. Griffith & M. Wodarczyk - 9/12/2012

Evaluated by:  James Griffith Date: 10/17/2012
 Michael Wodarczyk 10/17/2012

Status: Y N U

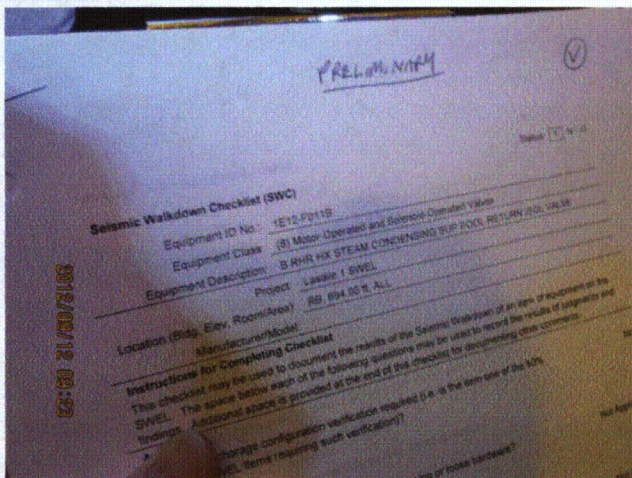
Seismic Walkdown Checklist (SWC)

Equipment ID No.: 1E12-F011B

Equipment Class: (8) Motor-Operated and Solenoid-Operated Valves

Equipment Description: B RHR HX STEAM CONDENSING SUP POOL RETURN ISOL VALVE

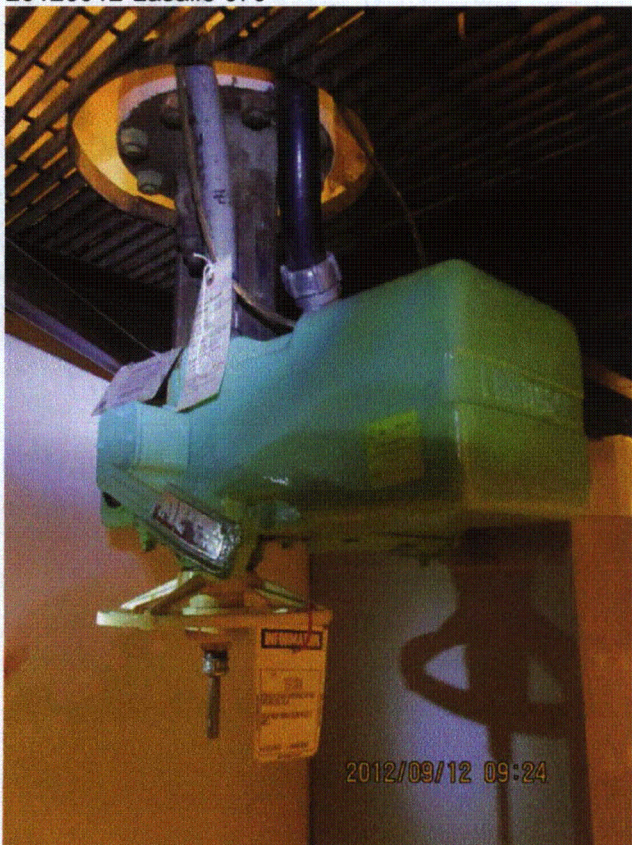
Photos



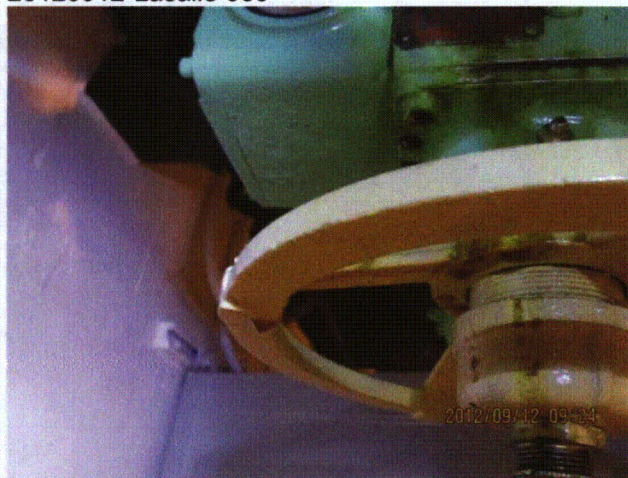
20120912-Lasalle 079



20120912-Lasalle 080



20120912-Lasalle 081



20120912-Lasalle 082

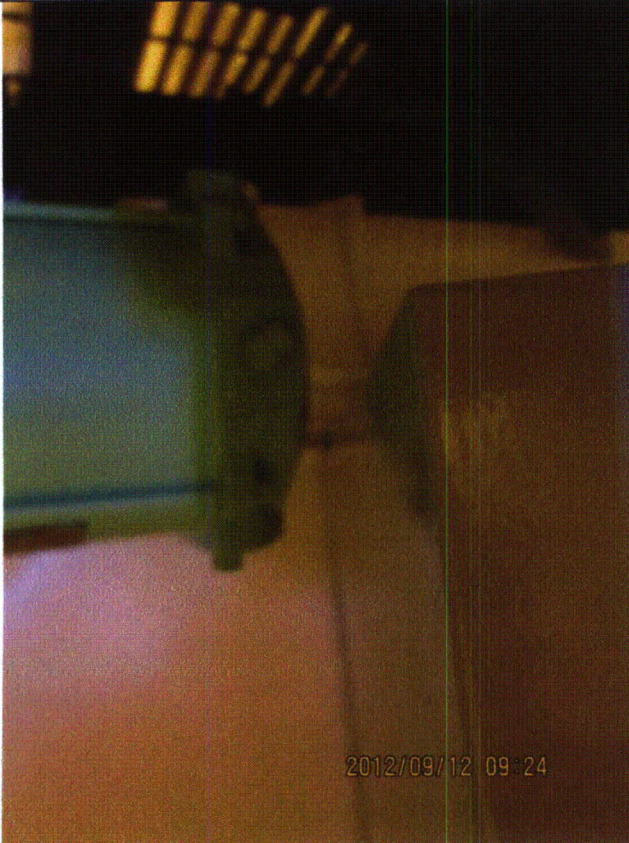
Status: Y N U

Seismic Walkdown Checklist (SWC)

Equipment ID No.: 1E12-F011B

Equipment Class: (8) Motor-Operated and Solenoid-Operated Valves

Equipment Description: B RHR HX STEAM CONDENSING SUP POOL RETURN ISOL VALVE



20120912-Lasalle 083



20120912-Lasalle 084

Status: Y N U

Seismic Walkdown Checklist (SWC)

Equipment ID No.: 1E12-F024B

Equipment Class: (8) Motor-Operated and Solenoid-Operated Valves

Equipment Description: B RHR PUMP FULL FLOW TEST ISOL VALVE

Project: LaSalle 1 SWEL

Location (Bldg, Elev, Room/Area): RB, 710.00 ft, ALL

Manufacturer/Model:

Instructions for Completing Checklist

This checklist may be used to document the results of the Seismic Walkdown of an item of equipment on the SWEL. The space below each of the following questions may be used to record the results of judgments and findings. Additional space is provided at the end of this checklist for documenting other comments.

Anchorage

1. Is anchorage configuration verification required (i.e., is the item one of the 50% of SWEL items requiring such verification)? No

2. Is the anchorage free of bent, broken, missing or loose hardware? Not Applicable

3. Is the anchorage free of corrosion that is more than mild surface oxidation? Not Applicable

4. Is the anchorage free of visible cracks in the concrete near the anchors? Not Applicable

5. Is the anchorage configuration consistent with plant documentation? (Note: This question only applies if the item is one of the 50% for which an anchorage configuration verification is required.) Not Applicable

6. Based on the above anchorage evaluations, is the anchorage free of potentially adverse seismic conditions? Yes

Status: Y N U

Seismic Walkdown Checklist (SWC)

Equipment ID No.: 1E12-F024B

Equipment Class: (8) Motor-Operated and Solenoid-Operated Valves

Equipment Description: B RHR PUMP FULL FLOW TEST ISOL VALVE

Interaction Effects

7. Are soft targets free from impact by nearby equipment or structures? Yes
8. Are overhead equipment, distribution systems, ceiling tiles and lighting, and masonry block walls not likely to collapse onto the equipment? Yes
Overhead light fixtures judged to be acceptable.
- 1B RHR Heat Exchanger Room masonry walls are safety-related per drawing A-225, Rev. Y.*
9. Do attached lines have adequate flexibility to avoid damage? Yes
10. Based on the above seismic interaction evaluations, is equipment free of potentially adverse seismic interaction effects? Yes

Other Adverse Conditions

11. Have you looked for and found no adverse seismic conditions that could adversely affect the safety functions of the equipment? Yes

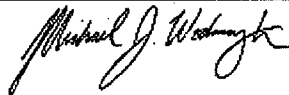
Comments

Seismic Walkdown Team: J. Griffith & M. Wodarczyk - 9/12/2012

Evaluated by:

 James Griffith

Date: 10/17/2012



Michael Wodarczyk

10/17/2012

Status: Y N U

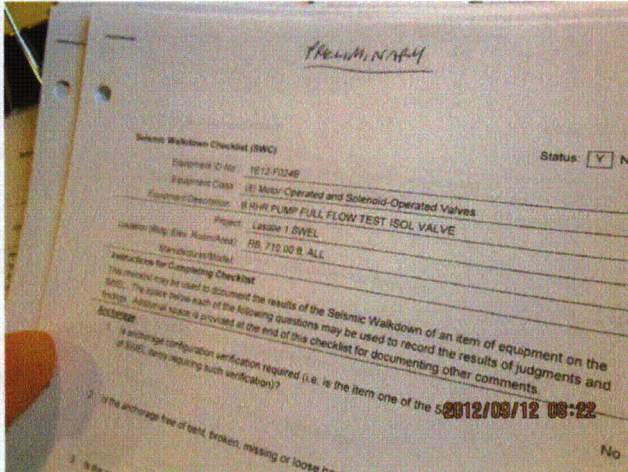
Seismic Walkdown Checklist (SWC)

Equipment ID No.: 1E12-F024B

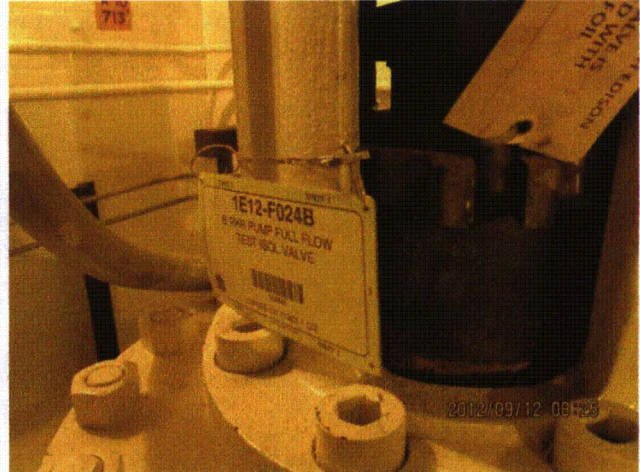
Equipment Class: (8) Motor-Operated and Solenoid-Operated Valves

Equipment Description: B RHR PUMP FULL FLOW TEST ISOL VALVE

Photos



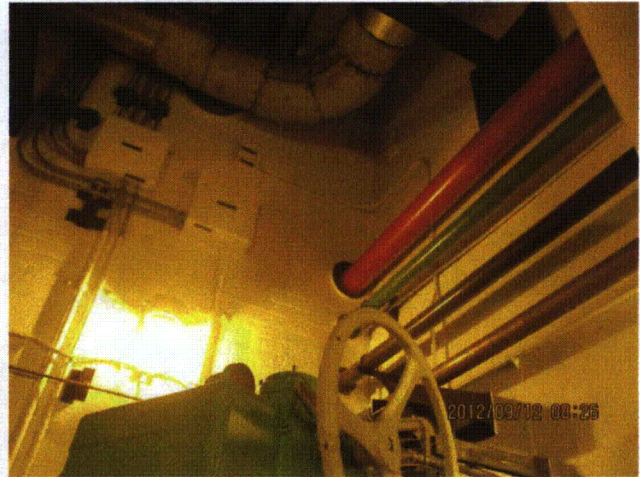
20120912-Lasalle 002



20120912-Lasalle 009



20120912-Lasalle 010



20120912-Lasalle 011

Status: Y N U

Seismic Walkdown Checklist (SWC)

Equipment ID No.: 1E12-F036B

Equipment Class: (7) Fluid-Operated Valves

Equipment Description: B RHR HX STEAM CONDENSING RCIC RETURN HDR RELIEF VALVE

Project: LaSalle 1 SWEL

Location (Bldg, Elev, Room/Area): RB, 694.00 ft, ALL

Manufacturer/Model:

Instructions for Completing Checklist

This checklist may be used to document the results of the Seismic Walkdown of an item of equipment on the SWEL. The space below each of the following questions may be used to record the results of judgments and findings. Additional space is provided at the end of this checklist for documenting other comments.

Anchorage

1. Is anchorage configuration verification required (i.e., is the item one of the 50% of SWEL items requiring such verification)? No

2. Is the anchorage free of bent, broken, missing or loose hardware? Not Applicable

3. Is the anchorage free of corrosion that is more than mild surface oxidation? Not Applicable

4. Is the anchorage free of visible cracks in the concrete near the anchors? Not Applicable

5. Is the anchorage configuration consistent with plant documentation? (Note: This question only applies if the item is one of the 50% for which an anchorage configuration verification is required.) Not Applicable

6. Based on the above anchorage evaluations, is the anchorage free of potentially adverse seismic conditions? Yes

Status: Y N U

Seismic Walkdown Checklist (SWC)

Equipment ID No.: 1E12-F036B

Equipment Class: (7) Fluid-Operated Valves

Equipment Description: B RHR HX STEAM CONDENSING RCIC RETURN HDR RELIEF VALVE

Interaction Effects

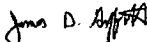
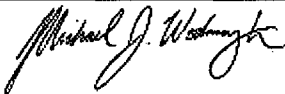
7. Are soft targets free from impact by nearby equipment or structures? Yes
8. Are overhead equipment, distribution systems, ceiling tiles and lighting, and masonry block walls not likely to collapse onto the equipment? Yes
9. Do attached lines have adequate flexibility to avoid damage? Yes
10. Based on the above seismic interaction evaluations, is equipment free of potentially adverse seismic interaction effects? Yes

Other Adverse Conditions

11. Have you looked for and found no adverse seismic conditions that could adversely affect the safety functions of the equipment? Yes

Comments

Seismic Walkdown Team: J. Griffith & M. Wodarczyk - 9/12/2012

Evaluated by:  James Griffith Date: 10/17/2012
 Michael Wodarczyk 10/17/2012

Status: Y N U

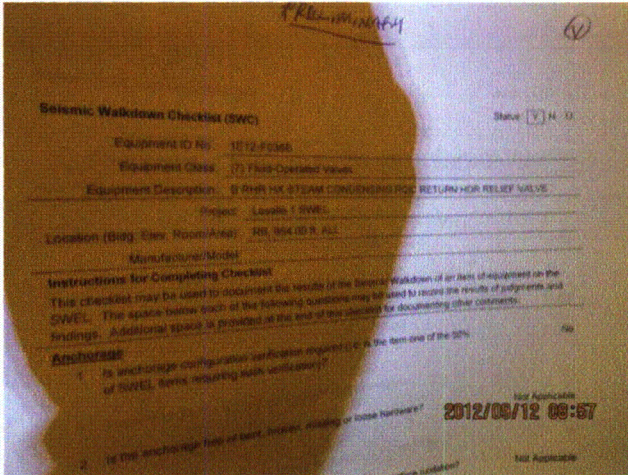
Seismic Walkdown Checklist (SWC)

Equipment ID No.: 1E12-F036B

Equipment Class: (7) Fluid-Operated Valves

Equipment Description: B RHR HX STEAM CONDENSING RCIC RETURN HDR RELIEF VALVE

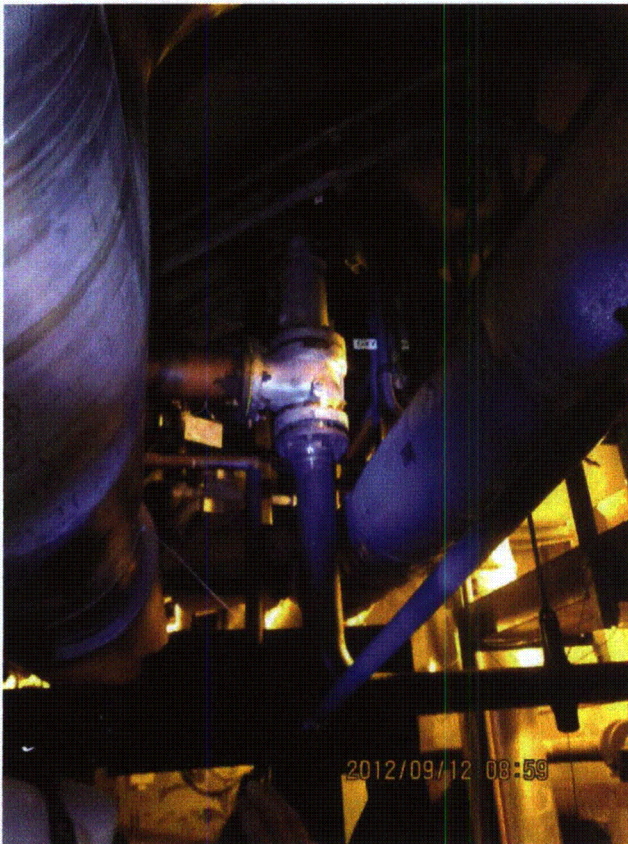
Photos



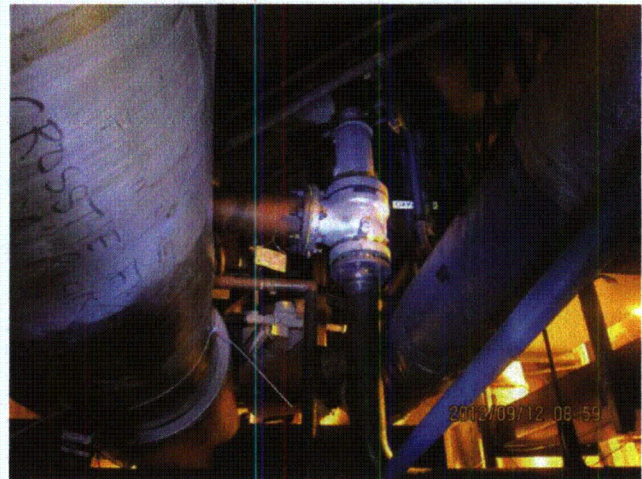
20120912-Lasalle 037



20120912-Lasalle 038



20120912-Lasalle 039



20120912-Lasalle 040

Status: Y N U

Seismic Walkdown Checklist (SWC)

Equipment ID No.: 1E12-F048B

Equipment Class: (8) Motor-Operated and Solenoid-Operated Valves

Equipment Description: B RHR HX BYPASS VALVE

Project: LaSalle 1 SWEL

Location (Bldg, Elev, Room/Area): RB, 694.00 ft, ALL

Manufacturer/Model:

Instructions for Completing Checklist

This checklist may be used to document the results of the Seismic Walkdown of an item of equipment on the SWEL. The space below each of the following questions may be used to record the results of judgments and findings. Additional space is provided at the end of this checklist for documenting other comments.

Anchorage

1. Is anchorage configuration verification required (i.e., is the item one of the 50% of SWEL items requiring such verification)? No

2. Is the anchorage free of bent, broken, missing or loose hardware? Not Applicable

3. Is the anchorage free of corrosion that is more than mild surface oxidation? Not Applicable

4. Is the anchorage free of visible cracks in the concrete near the anchors? Not Applicable

5. Is the anchorage configuration consistent with plant documentation? (Note: This question only applies if the item is one of the 50% for which an anchorage configuration verification is required.) Not Applicable

6. Based on the above anchorage evaluations, is the anchorage free of potentially adverse seismic conditions? Yes

Status: Y N U

Seismic Walkdown Checklist (SWC)

Equipment ID No.: 1E12-F048B

Equipment Class: (8) Motor-Operated and Solenoid-Operated Valves

Equipment Description: B RHR HX BYPASS VALVE

Interaction Effects

7. Are soft targets free from impact by nearby equipment or structures? Yes
8. Are overhead equipment, distribution systems, ceiling tiles and lighting, and masonry block walls not likely to collapse onto the equipment? Yes
Overhead light fixtures judged to be acceptable.
9. Do attached lines have adequate flexibility to avoid damage? Yes
10. Based on the above seismic interaction evaluations, is equipment free of potentially adverse seismic interaction effects? Yes

Other Adverse Conditions

11. Have you looked for and found no adverse seismic conditions that could adversely affect the safety functions of the equipment? Yes

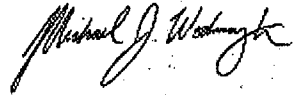
Comments

Seismic Walkdown Team: J. Griffith & M. Wodarczyk - 9/12/2012

Evaluated by:

 James Griffith

Date: 10/17/2012

 Michael Wodarczyk

10/17/2012

Status: Y N U

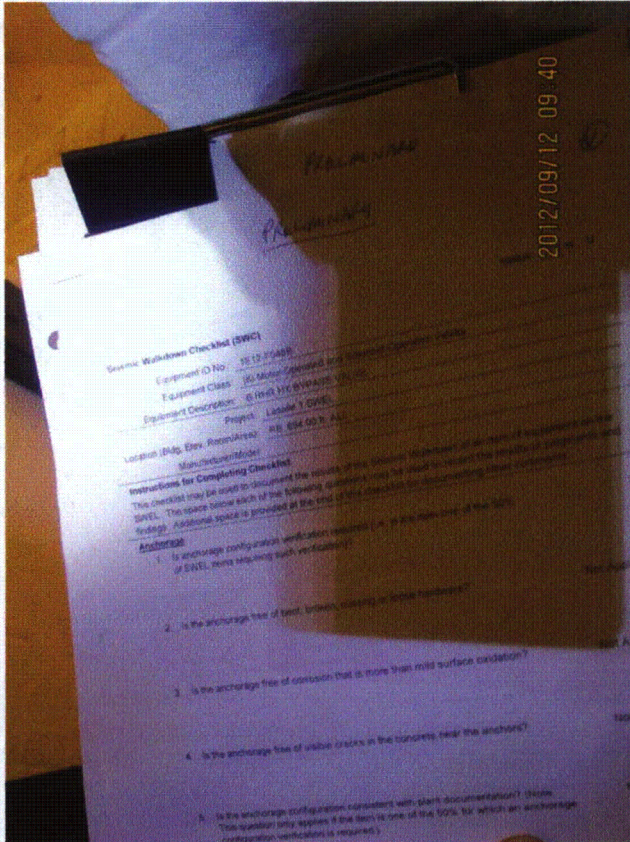
Seismic Walkdown Checklist (SWC)

Equipment ID No.: 1E12-F048B

Equipment Class: (8) Motor-Operated and Solenoid-Operated Valves

Equipment Description: B RHR HX BYPASS VALVE

Photos



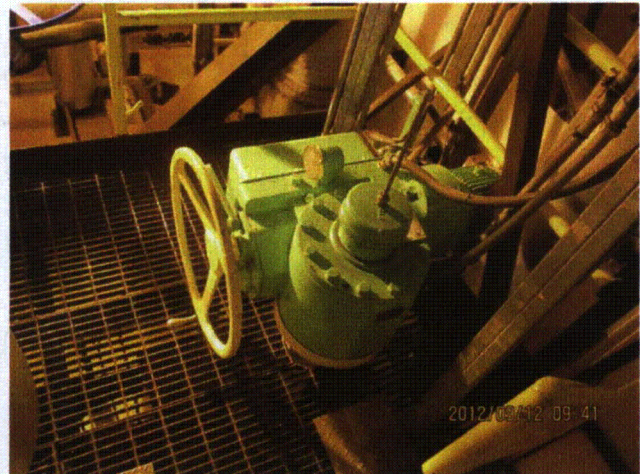
20120912-Lasalle 107



20120912-Lasalle 108



20120912-Lasalle 109



20120912-Lasalle 110

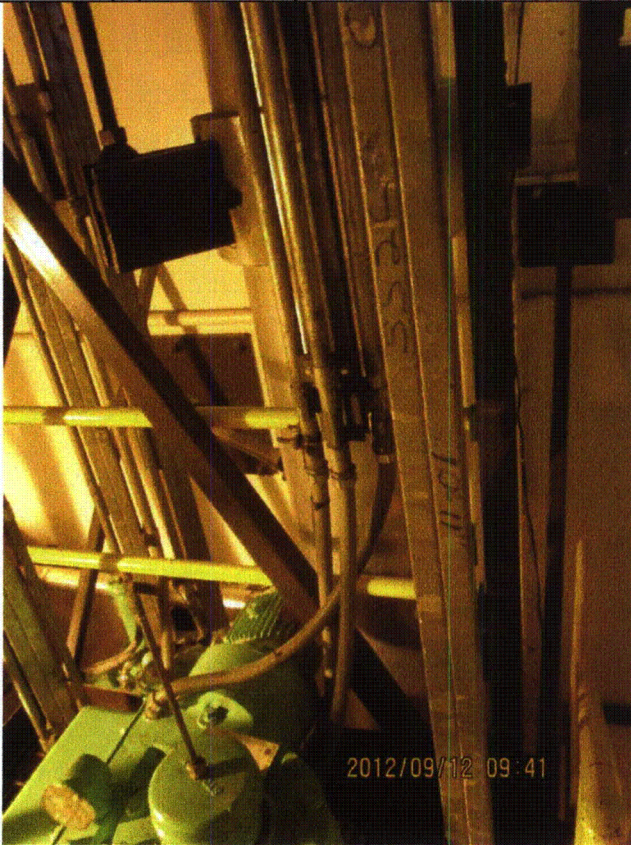
Status: Y N U

Seismic Walkdown Checklist (SWC)

Equipment ID No.: 1E12-F048B

Equipment Class: (8) Motor-Operated and Solenoid-Operated Valves

Equipment Description: B RHR HX BYPASS VALVE



20120912-Lasalle 111

Status: Y N U

Seismic Walkdown Checklist (SWC)

Equipment ID No.: 1E12-F051B

Equipment Class: (7) Fluid-Operated Valves

Equipment Description: B RHR HX RCIC STEAM INLET PRESS CONT VALVE

Project: LaSalle 1 SWEL

Location (Bldg, Elev, Room/Area): RB, 710.00 ft, ALL

Manufacturer/Model:

Instructions for Completing Checklist

This checklist may be used to document the results of the Seismic Walkdown of an item of equipment on the SWEL. The space below each of the following questions may be used to record the results of judgments and findings. Additional space is provided at the end of this checklist for documenting other comments.

Anchorage

1. Is anchorage configuration verification required (i.e., is the item one of the 50% of SWEL items requiring such verification)? No

2. Is the anchorage free of bent, broken, missing or loose hardware? Not Applicable

3. Is the anchorage free of corrosion that is more than mild surface oxidation? Not Applicable

4. Is the anchorage free of visible cracks in the concrete near the anchors? Not Applicable

5. Is the anchorage configuration consistent with plant documentation? (Note: This question only applies if the item is one of the 50% for which an anchorage configuration verification is required.) Not Applicable

6. Based on the above anchorage evaluations, is the anchorage free of potentially adverse seismic conditions? Yes

Status: Y N U

Seismic Walkdown Checklist (SWC)

Equipment ID No.: 1E12-F051B

Equipment Class: (7) Fluid-Operated Valves

Equipment Description: B RHR HX RCIC STEAM INLET PRESS CONT VALVE

Interaction Effects

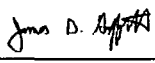
7. Are soft targets free from impact by nearby equipment or structures? Yes
8. Are overhead equipment, distribution systems, ceiling tiles and lighting, and masonry block walls not likely to collapse onto the equipment? Yes
Overhead light fixtures judged to be acceptable.
- 1B RHR Heat Exchanger Room masonry walls are safety-related per drawing A-225, Rev. Y.*
9. Do attached lines have adequate flexibility to avoid damage? Yes
10. Based on the above seismic interaction evaluations, is equipment free of potentially adverse seismic interaction effects? Yes


Other Adverse Conditions

11. Have you looked for and found no adverse seismic conditions that could adversely affect the safety functions of the equipment? Yes
Hairline crack in valve gauge cover judged not to affect functionality of valve per Engineering. Judged to be acceptable. See IR 1412094.

Comments

Seismic Walkdown Team: J. Griffith & M. Wodarcyk - 9/12/2012

Evaluated by:  James Griffith Date: 10/17/2012

 Michael Wodarcyk 10/17/2012

Status: Y N U

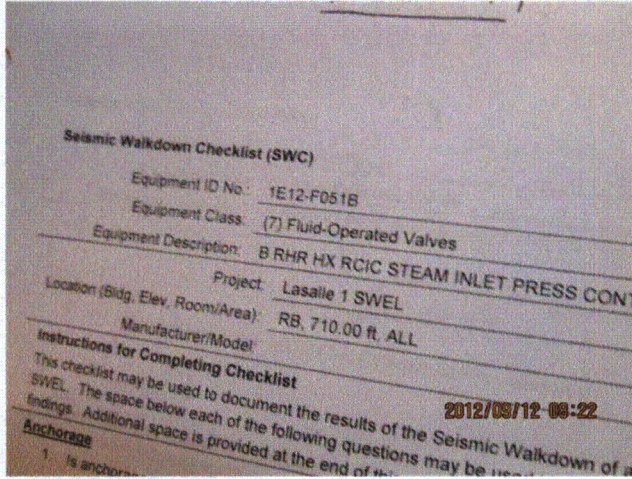
Seismic Walkdown Checklist (SWC)

Equipment ID No.: 1E12-F051B

Equipment Class: (7) Fluid-Operated Valves

Equipment Description: B RHR HX RCIC STEAM INLET PRESS CONT VALVE

Photos



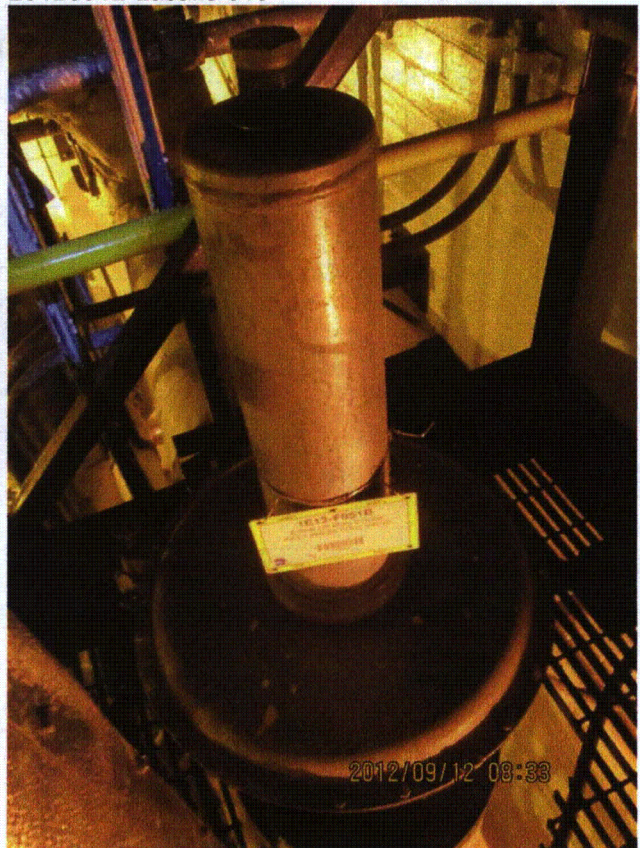
20120912-Lasalle 004



20120912-Lasalle 019



20120912-Lasalle 020



20120912-Lasalle 021

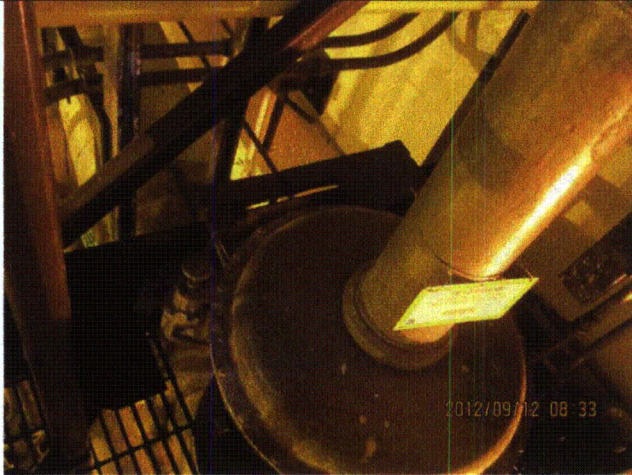
Status: Y N U

Seismic Walkdown Checklist (SWC)

Equipment ID No.: 1E12-F051B

Equipment Class: (7) Fluid-Operated Valves

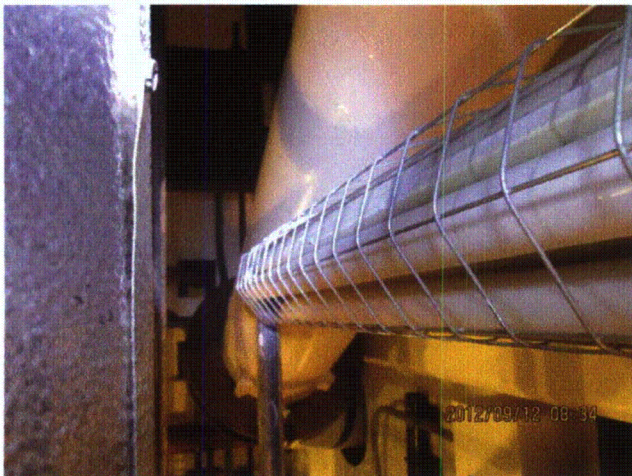
Equipment Description: B RHR HX RCIC STEAM INLET PRESS CONT VALVE



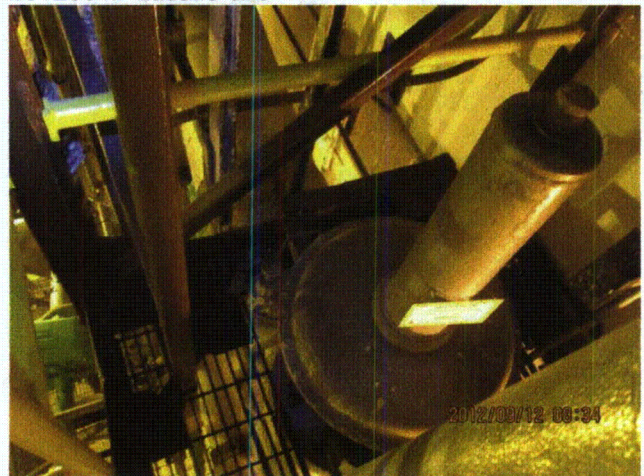
20120912-Lasalle 022



20120912-Lasalle 023



20120912-Lasalle 024



20120912-Lasalle 025

Status: Y N U

Seismic Walkdown Checklist (SWC)

Equipment ID No.: 1E12-F051B

Equipment Class: (7) Fluid-Operated Valves

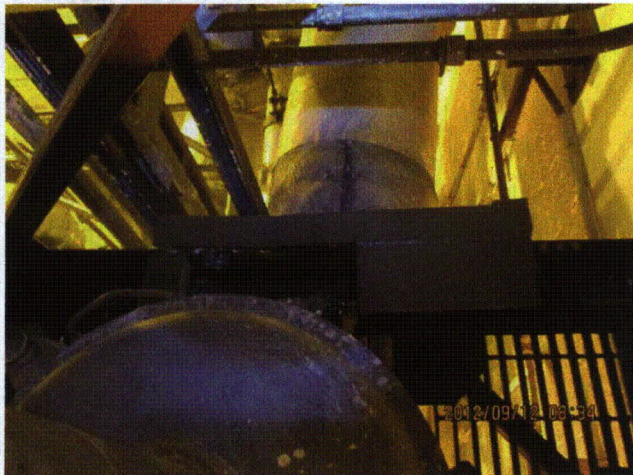
Equipment Description: B RHR HX RCIC STEAM INLET PRESS CONT VALVE



20120912-Lasalle 026



20120912-Lasalle 027



20120912-Lasalle 028

Status: Y N U

Seismic Walkdown Checklist (SWC)

Equipment ID No.: 1E12-F055B

Equipment Class: (7) Fluid-Operated Valves

Equipment Description: B RHR HX RCIC STEAM INLET HEADER RELIEF VALVE

Project: LaSalle 1 SWEL

Location (Bldg, Elev, Room/Area): RB, 710.00 ft, ALL

Manufacturer/Model: _____

Instructions for Completing Checklist

This checklist may be used to document the results of the Seismic Walkdown of an item of equipment on the SWEL. The space below each of the following questions may be used to record the results of judgments and findings. Additional space is provided at the end of this checklist for documenting other comments.

Anchorage

1. Is anchorage configuration verification required (i.e., is the item one of the 50% of SWEL items requiring such verification)? No

2. Is the anchorage free of bent, broken, missing or loose hardware? Not Applicable

3. Is the anchorage free of corrosion that is more than mild surface oxidation? Not Applicable

4. Is the anchorage free of visible cracks in the concrete near the anchors? Not Applicable

5. Is the anchorage configuration consistent with plant documentation? (Note: This question only applies if the item is one of the 50% for which an anchorage configuration verification is required.) Not Applicable

6. Based on the above anchorage evaluations, is the anchorage free of potentially adverse seismic conditions? Yes

Status: Y N U

Seismic Walkdown Checklist (SWC)

Equipment ID No.: 1E12-F055B

Equipment Class: (7) Fluid-Operated Valves

Equipment Description: B RHR HX RCIC STEAM INLET HEADER RELIEF VALVE

Interaction Effects

7. Are soft targets free from impact by nearby equipment or structures? Yes
8. Are overhead equipment, distribution systems, ceiling tiles and lighting, and masonry block walls not likely to collapse onto the equipment? Yes
Overhead light fixtures judged to be acceptable.
- 1B RHR Heat Exchanger Room masonry walls are safety-related per drawing A-225, Rev. Y.*
9. Do attached lines have adequate flexibility to avoid damage? Yes
10. Based on the above seismic interaction evaluations, is equipment free of potentially adverse seismic interaction effects? Yes

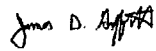
Other Adverse Conditions

11. Have you looked for and found no adverse seismic conditions that could adversely affect the safety functions of the equipment? Yes
Valve located near insulated pipe. Pipe insulation is flexible; therefore, there is no interaction concern.

Comments

Seismic Walkdown Team: J. Griffith & M. Wodarczyk - 9/12/2012

Evaluated by:

 James Griffith

Date: 10/17/2012



Michael Wodarczyk

10/17/2012

Status: Y N U

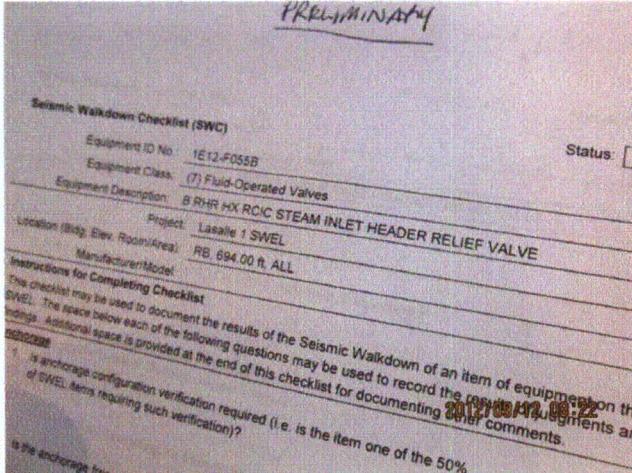
Seismic Walkdown Checklist (SWC)

Equipment ID No.: 1E12-F055B

Equipment Class: (7) Fluid-Operated Valves

Equipment Description: B RHR HX RCIC STEAM INLET HEADER RELIEF VALVE

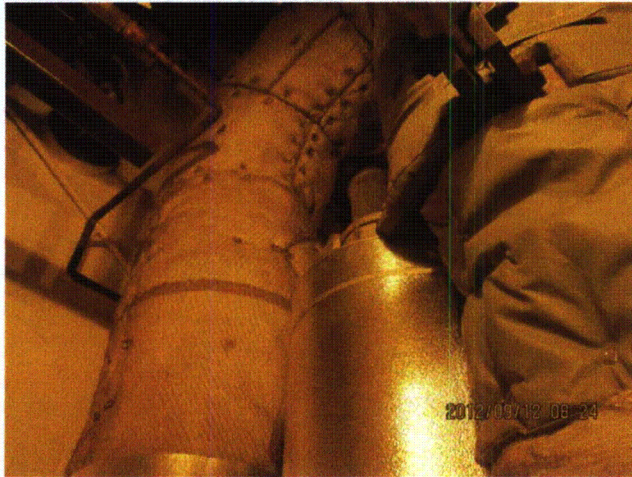
Photos



20120912-Lasalle 003



20120912-Lasalle 005



20120912-Lasalle 006



20120912-Lasalle 007

Status: Y N U

Seismic Walkdown Checklist (SWC)

Equipment ID No.: 1E12-F055B

Equipment Class: (7) Fluid-Operated Valves

Equipment Description: B RHR HX RCIC STEAM INLET HEADER RELIEF VALVE



20120912-Lasalle 008

Status: Y N U

Seismic Walkdown Checklist (SWC)

Equipment ID No.: 1E12-F068A

Equipment Class: (8) Motor-Operated and Solenoid-Operated Valves

Equipment Description: A RHR HX SERVICE WATER OUTLET VALVE

Project: LaSalle 1 SWEL

Location (Bldg, Elev, Room/Area): RB, 673.00 ft, ALL

Manufacturer/Model:

Instructions for Completing Checklist

This checklist may be used to document the results of the Seismic Walkdown of an item of equipment on the SWEL. The space below each of the following questions may be used to record the results of judgments and findings. Additional space is provided at the end of this checklist for documenting other comments.

Anchorage

1. Is anchorage configuration verification required (i.e., is the item one of the 50% of SWEL items requiring such verification)? No

2. Is the anchorage free of bent, broken, missing or loose hardware? Not Applicable

3. Is the anchorage free of corrosion that is more than mild surface oxidation? Not Applicable

4. Is the anchorage free of visible cracks in the concrete near the anchors? Not Applicable

5. Is the anchorage configuration consistent with plant documentation? (Note: This question only applies if the item is one of the 50% for which an anchorage configuration verification is required.) Not Applicable

6. Based on the above anchorage evaluations, is the anchorage free of potentially adverse seismic conditions? Yes

Status: Y N U

Seismic Walkdown Checklist (SWC)

Equipment ID No.: 1E12-F068A

Equipment Class: (8) Motor-Operated and Solenoid-Operated Valves

Equipment Description: A RHR HX SERVICE WATER OUTLET VALVE

Interaction Effects

7. Are soft targets free from impact by nearby equipment or structures? Yes
Scaffold adequately restrained.
8. Are overhead equipment, distribution systems, ceiling tiles and lighting, and masonry block walls not likely to collapse onto the equipment? Yes
9. Do attached lines have adequate flexibility to avoid damage? Yes
10. Based on the above seismic interaction evaluations, is equipment free of potentially adverse seismic interaction effects? Yes

Other Adverse Conditions

11. Have you looked for and found no adverse seismic conditions that could adversely affect the safety functions of the equipment? Yes
Valve has significant leakage and corrosion of mounting hardware from valve motor to valve body. Per Operations, leak has been addressed with a catch basin and a work order (WO 01432087) has been issued for repair of the corroded items.

Comments

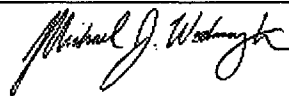
Seismic Walkdown Team: M. Etre & M. Wodarczyk - 9/17/2012

Evaluated by:



Mark Etre

Date: 10/17/2012



Michael Wodarczyk

10/17/2012

Status: Y N U

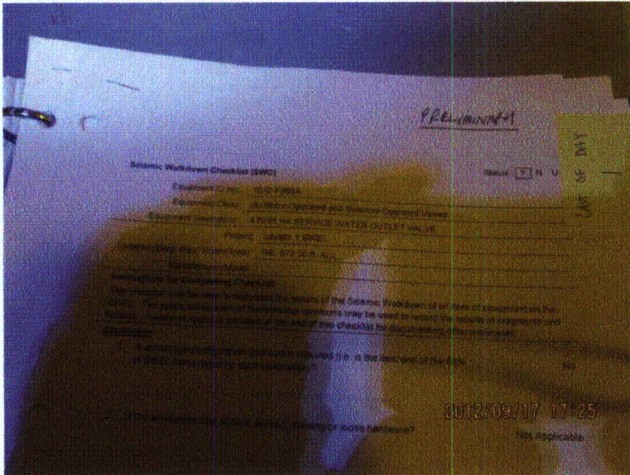
Seismic Walkdown Checklist (SWC)

Equipment ID No.: 1E12-F068A

Equipment Class: (8) Motor-Operated and Solenoid-Operated Valves

Equipment Description: A RHR HX SERVICE WATER OUTLET VALVE

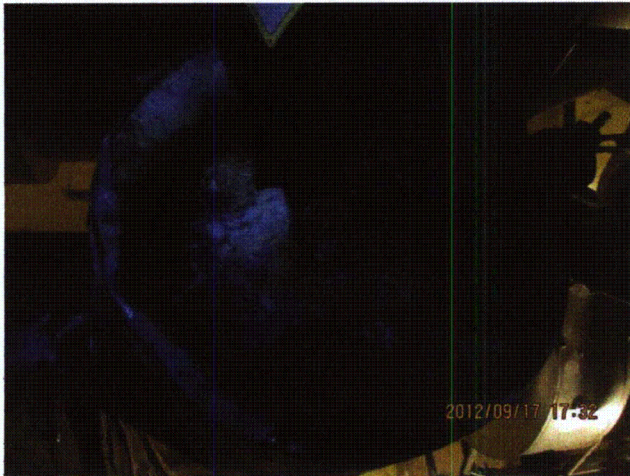
Photos



20120917-Lasalle 332



20120917-Lasalle 333



20120917-Lasalle 334



20120917-Lasalle 335

Status: Y N U

Seismic Walkdown Checklist (SWC)

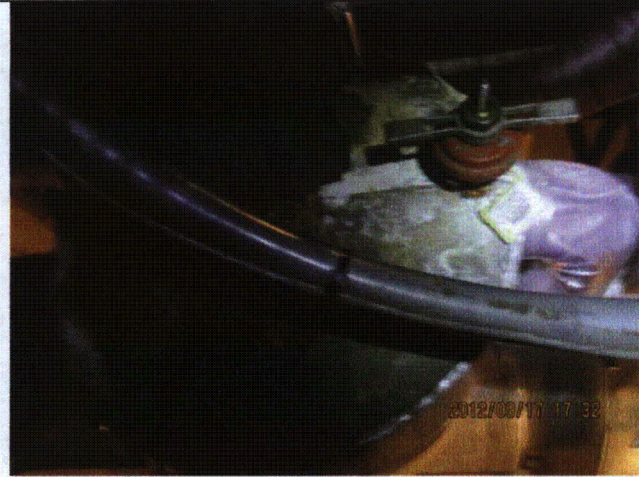
Equipment ID No.: 1E12-F068A

Equipment Class: (8) Motor-Operated and Solenoid-Operated Valves

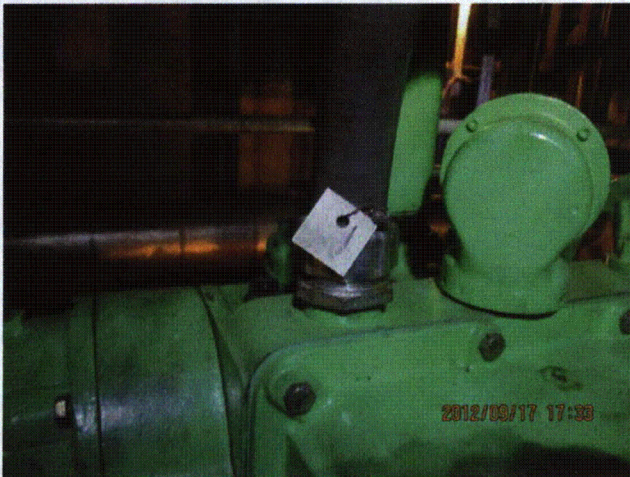
Equipment Description: A RHR HX SERVICE WATER OUTLET VALVE



20120917-Lasalle 336



20120917-Lasalle 338



20120917-Lasalle 339

Status: Y N U

Seismic Walkdown Checklist (SWC)

Equipment ID No.: 1E12-F068B

Equipment Class: (8) Motor-Operated and Solenoid-Operated Valves

Equipment Description: B RHR HX SERVICE WATER OUTLET VALVE

Project: LaSalle 1 SWEL

Location (Bldg, Elev, Room/Area): RB, 673.00 ft, ALL

Manufacturer/Model:

Instructions for Completing Checklist

This checklist may be used to document the results of the Seismic Walkdown of an item of equipment on the SWEL. The space below each of the following questions may be used to record the results of judgments and findings. Additional space is provided at the end of this checklist for documenting other comments.

Anchorage

1. Is anchorage configuration verification required (i.e., is the item one of the 50% of SWEL items requiring such verification)? No

2. Is the anchorage free of bent, broken, missing or loose hardware? Not Applicable

3. Is the anchorage free of corrosion that is more than mild surface oxidation? Not Applicable

4. Is the anchorage free of visible cracks in the concrete near the anchors? Not Applicable

5. Is the anchorage configuration consistent with plant documentation? (Note: This question only applies if the item is one of the 50% for which an anchorage configuration verification is required.) Not Applicable

6. Based on the above anchorage evaluations, is the anchorage free of potentially adverse seismic conditions? Yes

Status: Y N U

Seismic Walkdown Checklist (SWC)

Equipment ID No.: 1E12-F068B

Equipment Class: (8) Motor-Operated and Solenoid-Operated Valves

Equipment Description: B RHR HX SERVICE WATER OUTLET VALVE

Interaction Effects

7. Are soft targets free from impact by nearby equipment or structures? Yes
8. Are overhead equipment, distribution systems, ceiling tiles and lighting, and masonry block walls not likely to collapse onto the equipment? Yes
Overhead light fixtures judged to be acceptable.
9. Do attached lines have adequate flexibility to avoid damage? Yes
10. Based on the above seismic interaction evaluations, is equipment free of potentially adverse seismic interaction effects? Yes

Other Adverse Conditions

11. Have you looked for and found no adverse seismic conditions that could adversely affect the safety functions of the equipment? Yes

Comments

Seismic Walkdown Team: J. Griffith & M. Wodarczyk - 9/12/2012

Evaluated by:  James Griffith Date: 10/17/2012

 Michael Wodarczyk 10/17/2012

Status: Y N U

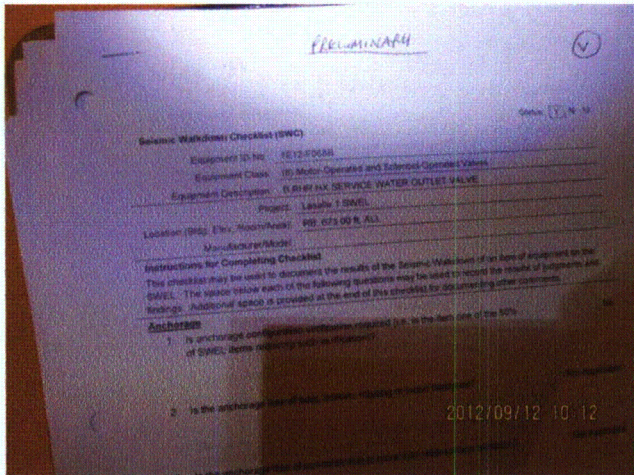
Seismic Walkdown Checklist (SWC)

Equipment ID No.: 1E12-F068B

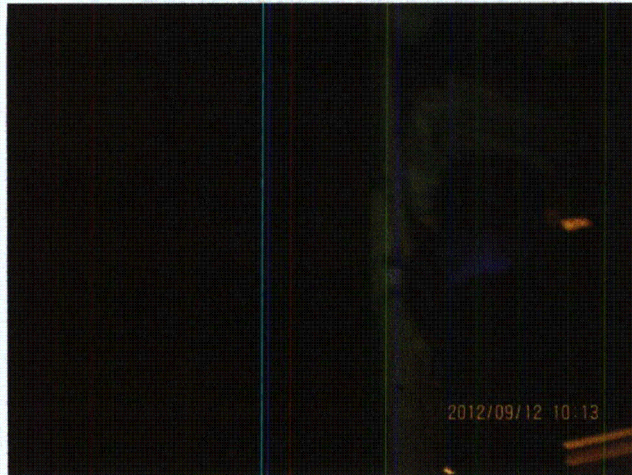
Equipment Class: (8) Motor-Operated and Solenoid-Operated Valves

Equipment Description: B RHR HX SERVICE WATER OUTLET VALVE

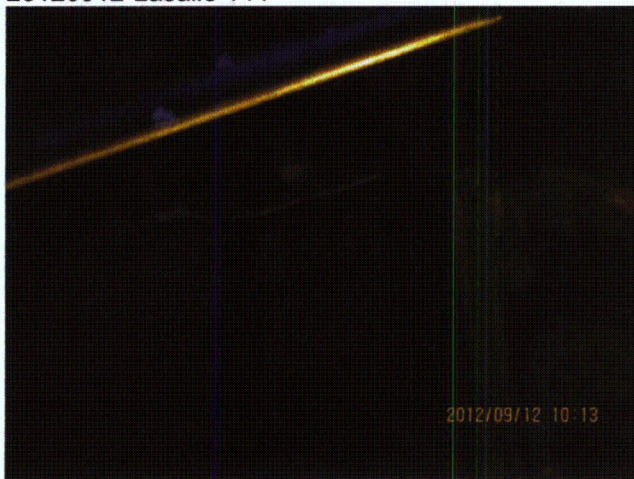
Photos



20120912-Lasalle 144



20120912-Lasalle 145



20120912-Lasalle 146



20120912-Lasalle 147

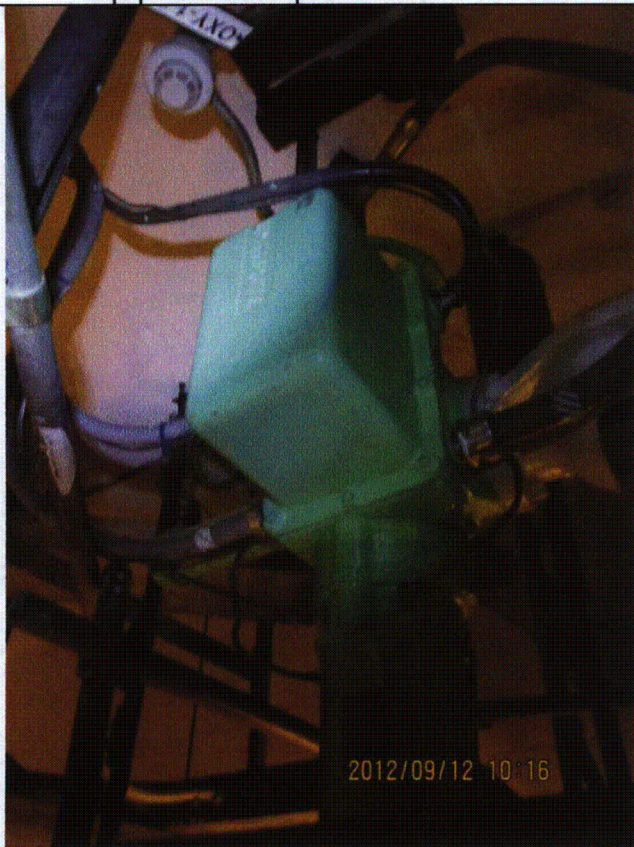
Status: Y N U

Seismic Walkdown Checklist (SWC)

Equipment ID No.: 1E12-F068B

Equipment Class: (8) Motor-Operated and Solenoid-Operated Valves

Equipment Description: B RHR HX SERVICE WATER OUTLET VALVE



20120912-Lasalle 148

Status: Y N U

Seismic Walkdown Checklist (SWC)

Equipment ID No.: 1E12-N005B

Equipment Class: (19) Temperature Sensors

Equipment Description: B RHR HX SERVICE WATER DSCH TEMP ELEMENT

Project: LaSalle 1 SWEL

Location (Bldg, Elev, Room/Area): RB, 694.00 ft, ALL

Manufacturer/Model:

Instructions for Completing Checklist

This checklist may be used to document the results of the Seismic Walkdown of an item of equipment on the SWEL. The space below each of the following questions may be used to record the results of judgments and findings. Additional space is provided at the end of this checklist for documenting other comments.

Anchorage

1. Is anchorage configuration verification required (i.e., is the item one of the 50% of SWEL items requiring such verification)? No

2. Is the anchorage free of bent, broken, missing or loose hardware? Not Applicable

3. Is the anchorage free of corrosion that is more than mild surface oxidation? Not Applicable

4. Is the anchorage free of visible cracks in the concrete near the anchors? Not Applicable

5. Is the anchorage configuration consistent with plant documentation? (Note: This question only applies if the item is one of the 50% for which an anchorage configuration verification is required.) Not Applicable

6. Based on the above anchorage evaluations, is the anchorage free of potentially adverse seismic conditions? Yes

Status: Y N U

Seismic Walkdown Checklist (SWC)

Equipment ID No.: 1E12-N005B

Equipment Class: (19) Temperature Sensors

Equipment Description: B RHR HX SERVICE WATER DSCH TEMP ELEMENT

Interaction Effects

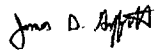
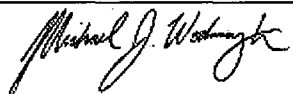
7. Are soft targets free from impact by nearby equipment or structures? Yes
8. Are overhead equipment, distribution systems, ceiling tiles and lighting, and masonry block walls not likely to collapse onto the equipment? Yes
Overhead light fixtures judged to be acceptable.
9. Do attached lines have adequate flexibility to avoid damage? Yes
10. Based on the above seismic interaction evaluations, is equipment free of potentially adverse seismic interaction effects? Yes

Other Adverse Conditions

11. Have you looked for and found no adverse seismic conditions that could adversely affect the safety functions of the equipment? Yes

Comments

Seismic Walkdown Team: J. Griffith & M. Wodarczyk - 9/12/2012

Evaluated by:  James Griffith Date: 10/17/2012
 Michael Wodarczyk 10/17/2012

Status: Y N U

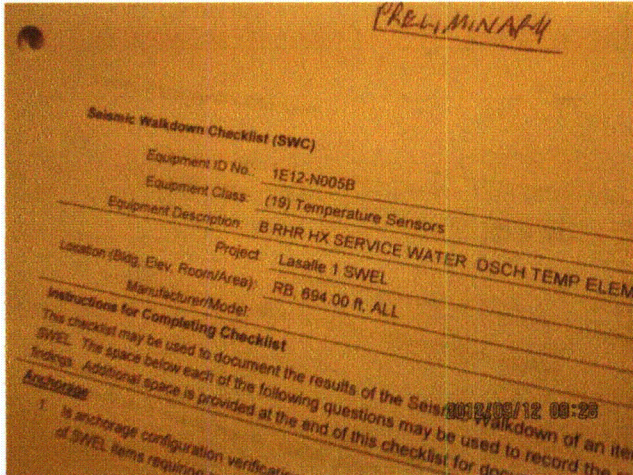
Seismic Walkdown Checklist (SWC)

Equipment ID No.: 1E12-N005B

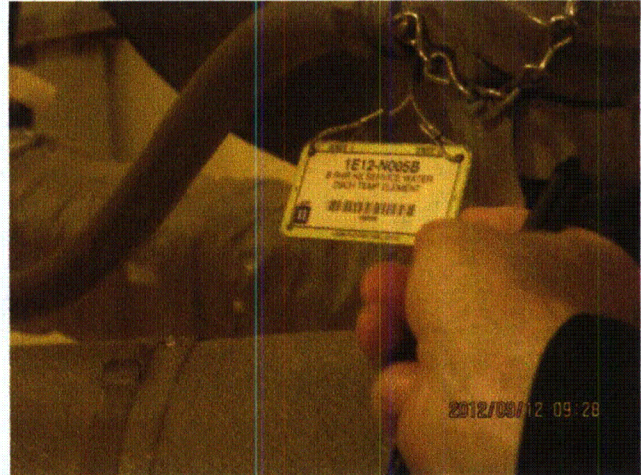
Equipment Class: (19) Temperature Sensors

Equipment Description: B RHR HX SERVICE WATER DSCH TEMP ELEMENT

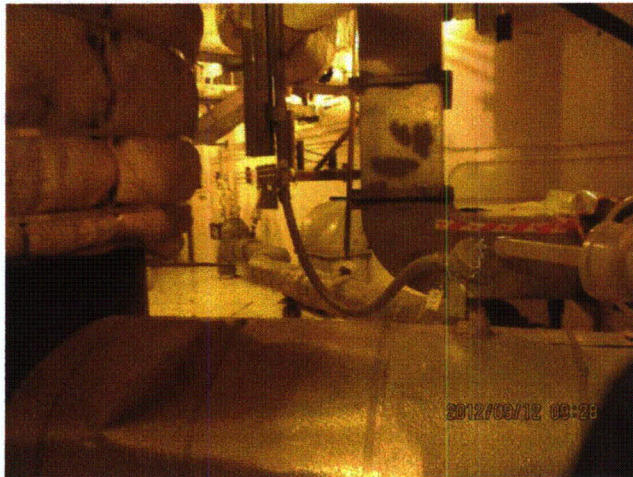
Photos



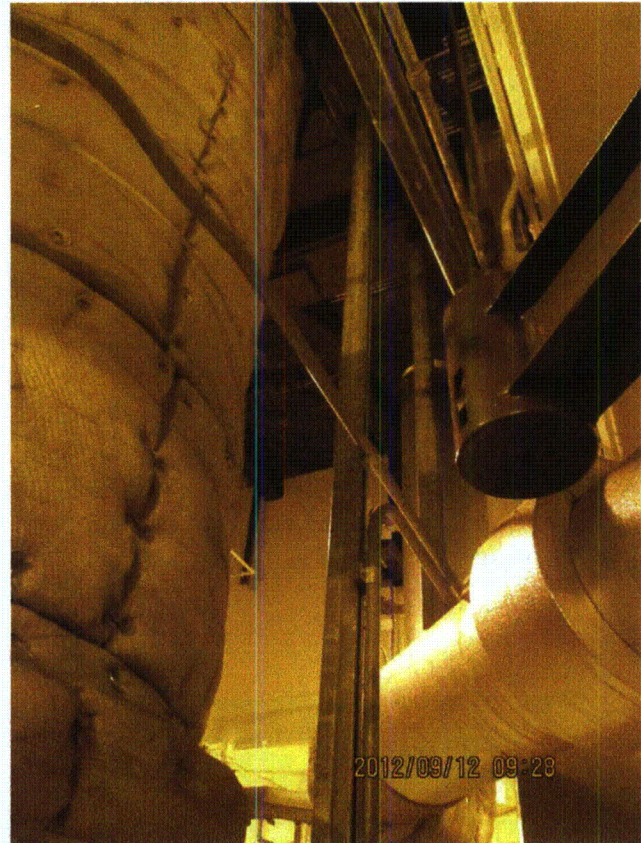
20120912-Lasalle 088



20120912-Lasalle 089



20120912-Lasalle 090



20120912-Lasalle 091

Status: Y N U

Seismic Walkdown Checklist (SWC)

Equipment ID No.: 1E12-N007B

Equipment Class: (18) Instruments on Racks

Equipment Description: B RHR HX SERVICE WATER INLET FLOW

Project: LaSalle 1 SWEL

Location (Bldg, Elev, Room/Area): RB, 673.00 ft, ALL

Manufacturer/Model:

Instructions for Completing Checklist

This checklist may be used to document the results of the Seismic Walkdown of an item of equipment on the SWEL. The space below each of the following questions may be used to record the results of judgments and findings. Additional space is provided at the end of this checklist for documenting other comments.

Anchorage

1. Is anchorage configuration verification required (i.e., is the item one of the 50% of SWEL items requiring such verification)? No

2. Is the anchorage free of bent, broken, missing or loose hardware? Yes

3. Is the anchorage free of corrosion that is more than mild surface oxidation? Yes

4. Is the anchorage free of visible cracks in the concrete near the anchors? Yes
Minor shrinkage cracking in grout pad judged to be acceptable.

5. Is the anchorage configuration consistent with plant documentation? (Note: This question only applies if the item is one of the 50% for which an anchorage configuration verification is required.) Not Applicable

6. Based on the above anchorage evaluations, is the anchorage free of potentially adverse seismic conditions? Yes

Status: Y N U

Seismic Walkdown Checklist (SWC)

Equipment ID No.: 1E12-N007B

Equipment Class: (18) Instruments on Racks

Equipment Description: B RHR HX SERVICE WATER INLET FLOW

Interaction Effects

7. Are soft targets free from impact by nearby equipment or structures? Yes
Tubes and flexible conduits in contact at several locations. Judged to be acceptable due to flexibility of items.
8. Are overhead equipment, distribution systems, ceiling tiles and lighting, and masonry block walls not likely to collapse onto the equipment? Yes
Overhead light fixtures judged to be acceptable.
9. Do attached lines have adequate flexibility to avoid damage? Yes
10. Based on the above seismic interaction evaluations, is equipment free of potentially adverse seismic interaction effects? Yes

Other Adverse Conditions

11. Have you looked for and found no adverse seismic conditions that could adversely affect the safety functions of the equipment? Yes
Rack 1H22-P021 is in contact with existing pipe support auxiliary steel.

Rack frame member in contact with support is flexible: instruments on rack are mounted away from the point of contact and therefore any impact force will have dissipated before reaching instruments. Factor of safety between instruments' tested seismic capacities and station seismic acceleration is significant. Pipe support is relatively flexible.

Judged to be acceptable. See IR 1411614.

Comments

Seismic Walkdown Team: J. Griffith & M. Wodarczyk - 9/11/2012 & 9/12/2012

Instrument located on Rack 1H22-P021.

Evaluated by: James D. Griffith James Griffith

Date: 10/17/2012

Michael J. Wodarczyk

Michael Wodarczyk

10/17/2012

Status: Y N U

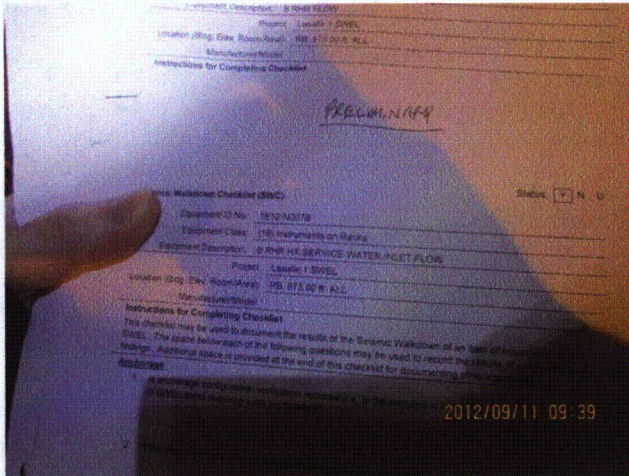
Seismic Walkdown Checklist (SWC)

Equipment ID No.: 1E12-N007B

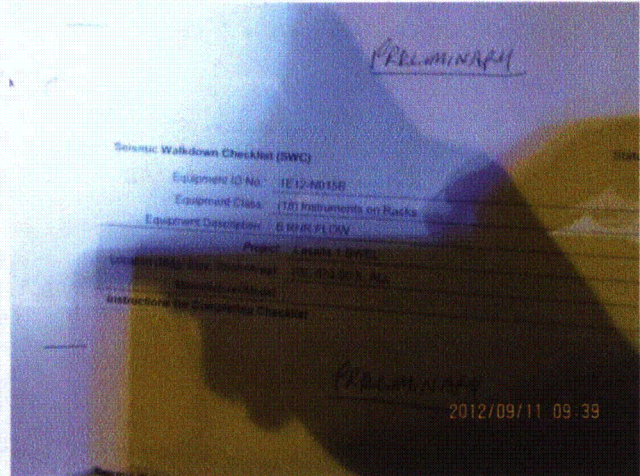
Equipment Class: (18) Instruments on Racks

Equipment Description: B RHR HX SERVICE WATER INLET FLOW

Photos



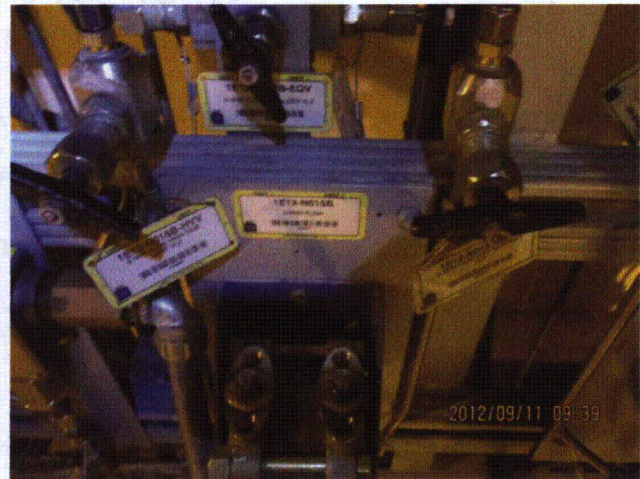
20120911-Lasalle 056



20120911-Lasalle 057



20120911-Lasalle 058



20120911-Lasalle 059

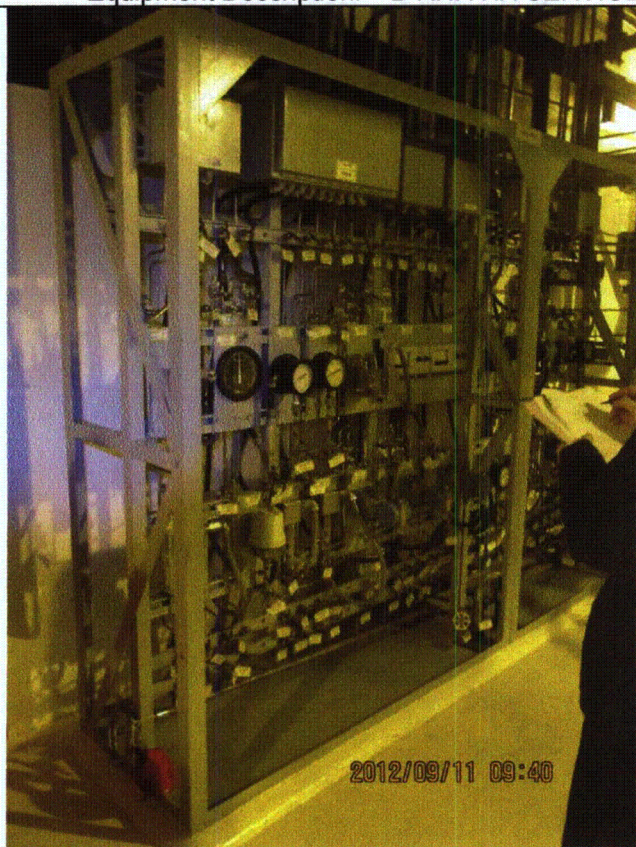
Status: Y N U

Seismic Walkdown Checklist (SWC)

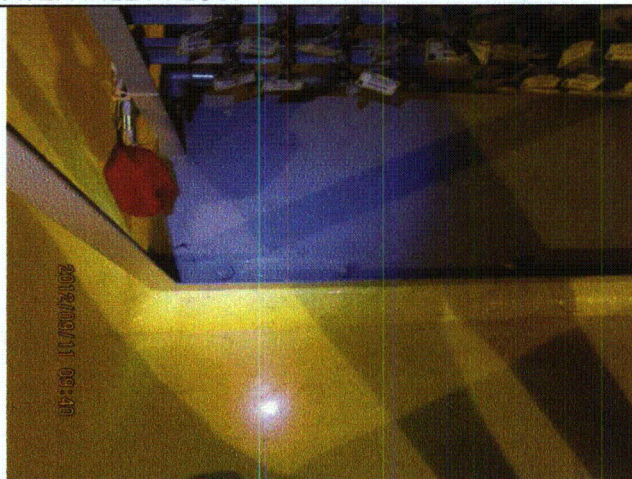
Equipment ID No.: 1E12-N007B

Equipment Class: (18) Instruments on Racks

Equipment Description: B RHR HX SERVICE WATER INLET FLOW



20120911-Lasalle 060



20120911-Lasalle 061

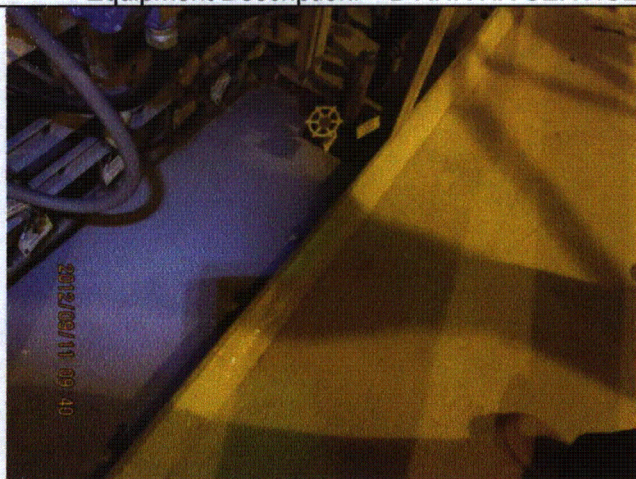
Status: Y N U

Seismic Walkdown Checklist (SWC)

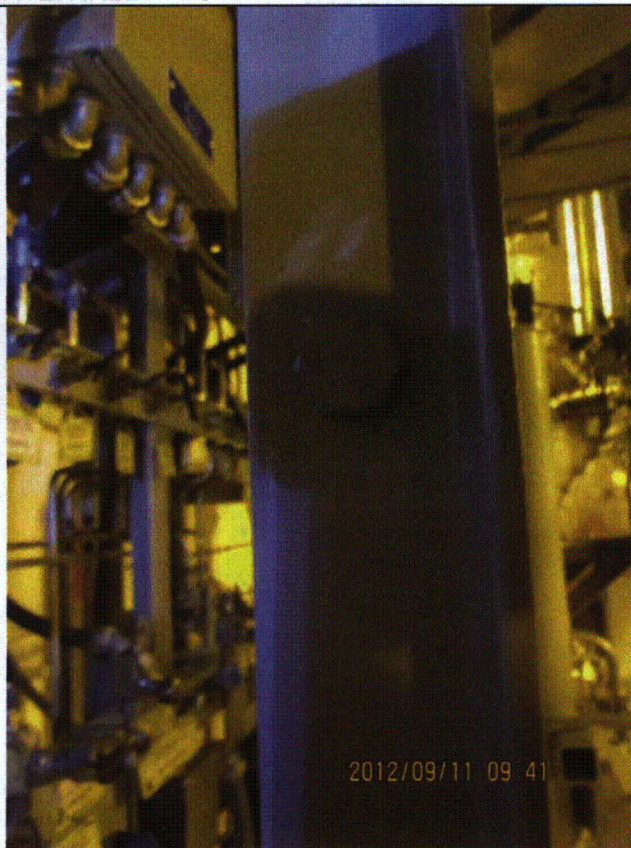
Equipment ID No.: 1E12-N007B

Equipment Class: (18) Instruments on Racks

Equipment Description: B RHR HX SERVICE WATER INLET FLOW



20120911-Lasalle 062



20120911-Lasalle 063

Status: Y N U

Seismic Walkdown Checklist (SWC)

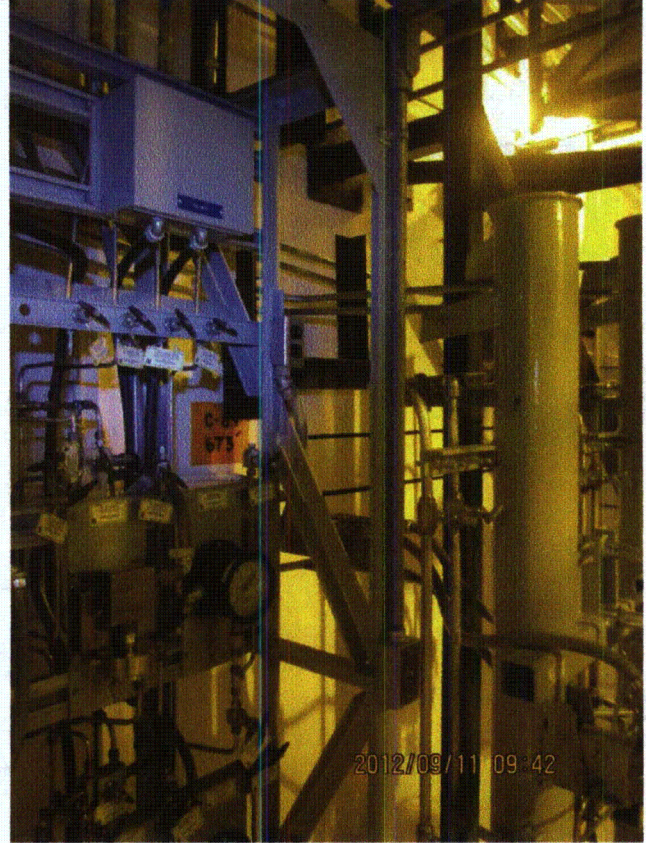
Equipment ID No.: 1E12-N007B

Equipment Class: (18) Instruments on Racks

Equipment Description: B RHR HX SERVICE WATER INLET FLOW



20120911-Lasalle 064



20120911-Lasalle 065

Status: Y N U

Seismic Walkdown Checklist (SWC)

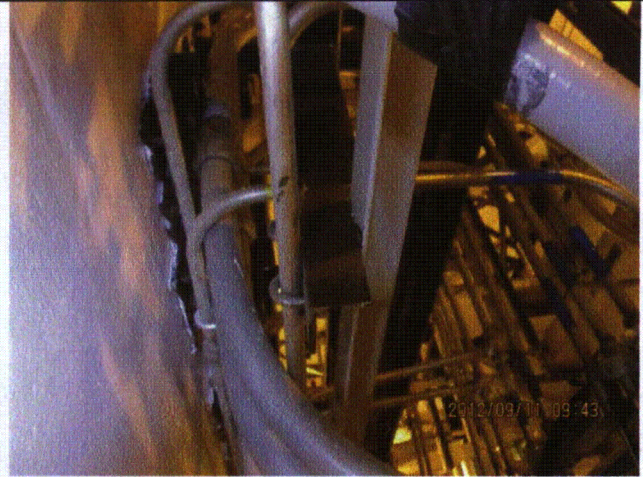
Equipment ID No.: 1E12-N007B

Equipment Class: (18) Instruments on Racks

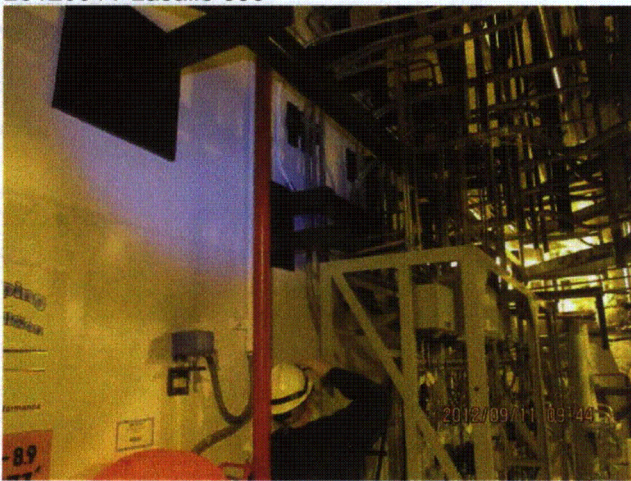
Equipment Description: B RHR HX SERVICE WATER INLET FLOW



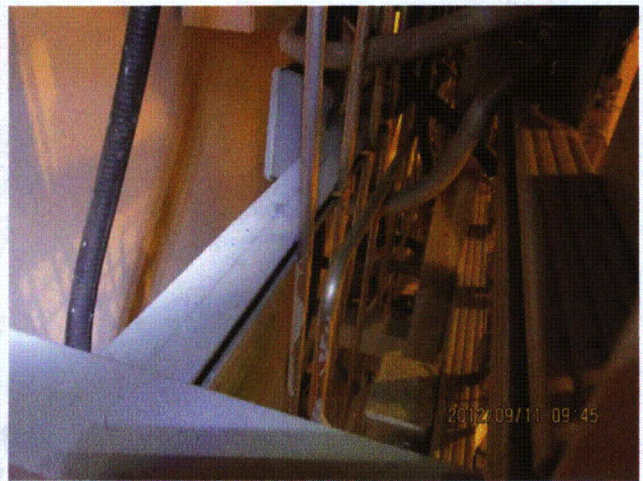
20120911-Lasalle 066



20120911-Lasalle 067



20120911-Lasalle 068



20120911-Lasalle 069

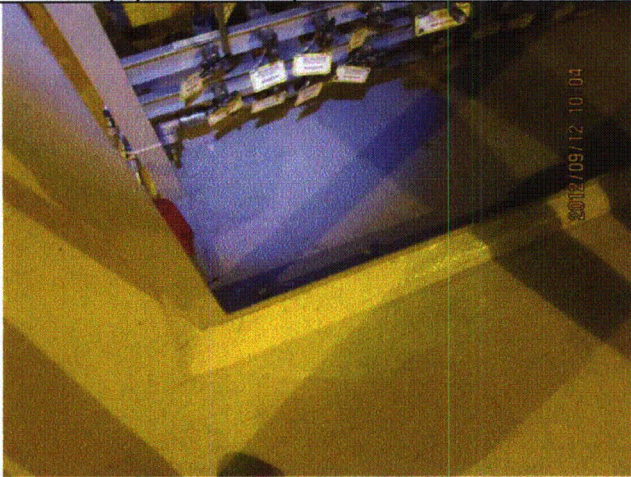
Status: Y N U

Seismic Walkdown Checklist (SWC)

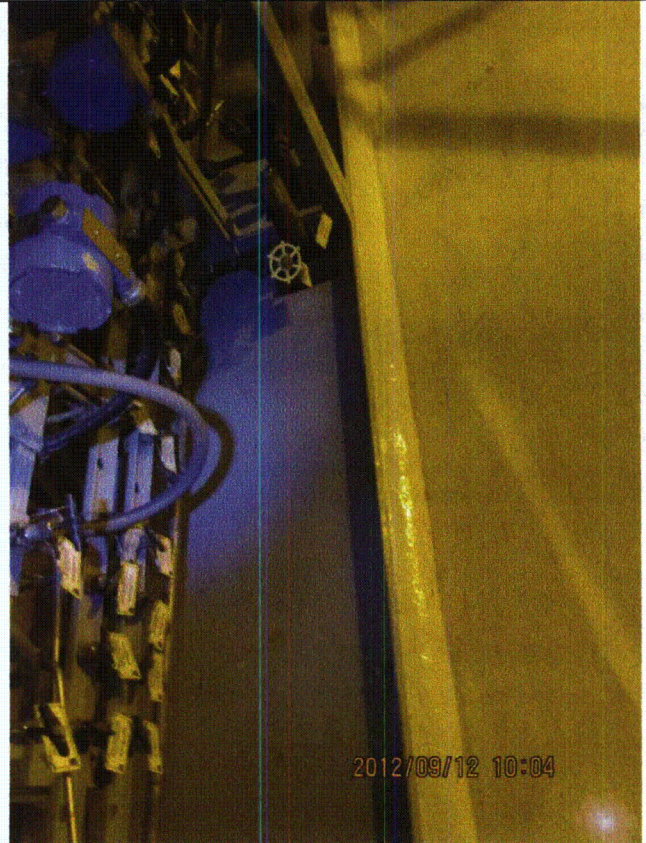
Equipment ID No.: 1E12-N007B

Equipment Class: (18) Instruments on Racks

Equipment Description: B RHR HX SERVICE WATER INLET FLOW



20120912-Lasalle 137



20120912-Lasalle 138

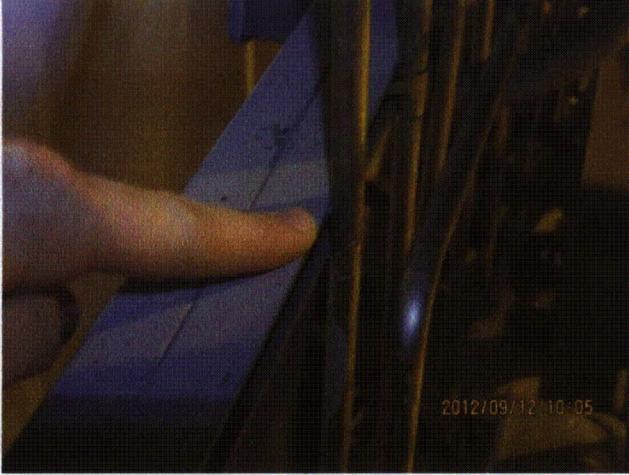
Status: Y N U

Seismic Walkdown Checklist (SWC)

Equipment ID No.: 1E12-N007B

Equipment Class: (18) Instruments on Racks

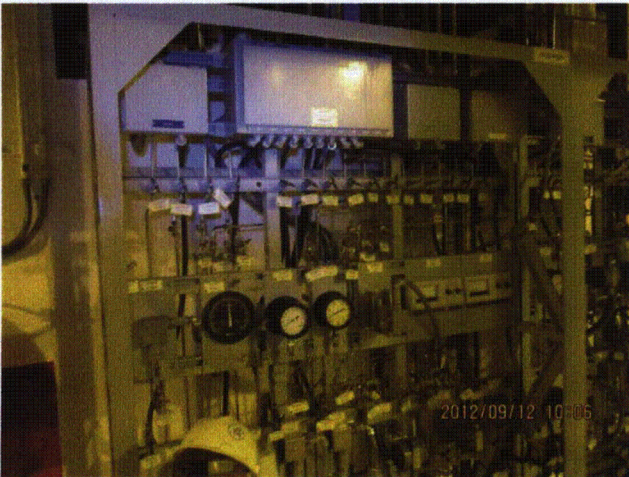
Equipment Description: B RHR HX SERVICE WATER INLET FLOW



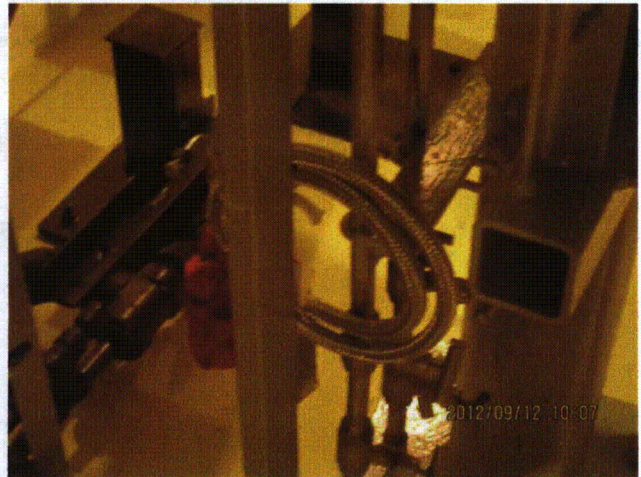
20120912-Lasalle 139



20120912-Lasalle 140



20120912-Lasalle 141



20120912-Lasalle 142

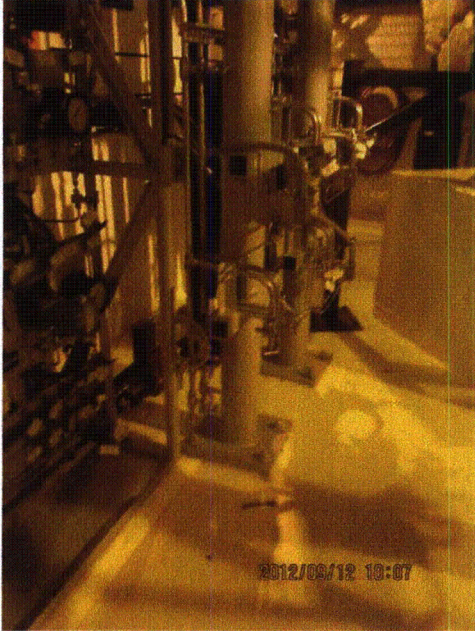
Status: Y N U

Seismic Walkdown Checklist (SWC)

Equipment ID No.: 1E12-N007B

Equipment Class: (18) Instruments on Racks

Equipment Description: B RHR HX SERVICE WATER INLET FLOW



20120912-Lasalle 143

Status: Y N U

Seismic Walkdown Checklist (SWC)

Equipment ID No.: 1E12-N015B

Equipment Class: (18) Instruments on Racks

Equipment Description: B RHR FLOW

Project: LaSalle 1 SWEL

Location (Bldg, Elev, Room/Area): RB, 673.00 ft, ALL

Manufacturer/Model:

Instructions for Completing Checklist

This checklist may be used to document the results of the Seismic Walkdown of an item of equipment on the SWEL. The space below each of the following questions may be used to record the results of judgments and findings. Additional space is provided at the end of this checklist for documenting other comments.

Anchorage

1. Is anchorage configuration verification required (i.e., is the item one of the 50% of SWEL items requiring such verification)? No

2. Is the anchorage free of bent, broken, missing or loose hardware? Yes

3. Is the anchorage free of corrosion that is more than mild surface oxidation? Yes

4. Is the anchorage free of visible cracks in the concrete near the anchors? Yes
Minor shrinkage cracking in grout pad judged to be acceptable.

5. Is the anchorage configuration consistent with plant documentation? (Note: This question only applies if the item is one of the 50% for which an anchorage configuration verification is required.) Not Applicable

6. Based on the above anchorage evaluations, is the anchorage free of potentially adverse seismic conditions? Yes

Status: Y N U

Seismic Walkdown Checklist (SWC)

Equipment ID No.: 1E12-N015B

Equipment Class: (18) Instruments on Racks

Equipment Description: B RHR FLOW

Interaction Effects

7. Are soft targets free from impact by nearby equipment or structures? Yes

Tubes and flexible conduits in contact at several locations. Judged to be acceptable due to flexibility of items.

8. Are overhead equipment, distribution systems, ceiling tiles and lighting, and masonry block walls not likely to collapse onto the equipment? Yes

Overhead light fixtures judged to be acceptable.

9. Do attached lines have adequate flexibility to avoid damage? Yes

10. Based on the above seismic interaction evaluations, is equipment free of potentially adverse seismic interaction effects? Yes

Other Adverse Conditions

11. Have you looked for and found no adverse seismic conditions that could adversely affect the safety functions of the equipment? Yes

Rack 1H22-P021 is in contact with existing pipe support auxiliary steel.

Rack frame member in contact with support is flexible: instruments on rack are mounted away from the point of contact and therefore any impact force will have dissipated before reaching instruments. Factor of safety between instruments' tested seismic capacities and station seismic acceleration is significant. Pipe support is relatively flexible.

Judged to be acceptable. See IR 1411614.

Comments

Seismic Walkdown Team: J. Griffith & M. Wodarcyk - 9/11/2012 & 9/12/2012

Instrument on Rack 1H22-P021.

For photographs, see SWC for 1E12-N007B.

Status: Y N U

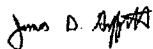
Seismic Walkdown Checklist (SWC)

Equipment ID No.: 1E12-N015B

Equipment Class: (18) Instruments on Racks

Equipment Description: B RHR FLOW

Evaluated by:



James Griffith

Date: 10/17/2012



Michael Wodarczyk

10/17/2012

Photos