

Status: Y N U

Seismic Walkdown Checklist (SWC)

Equipment ID No.: 1DC14E

Equipment Class: (15) Batteries on Racks

Equipment Description: DIV II 125VDC BATTERY

Project: LaSalle 1 SWEL

Location (Bldg, Elev, Room/Area): AB, 731.00 ft, ALL

Manufacturer/Model:

Instructions for Completing Checklist

This checklist may be used to document the results of the Seismic Walkdown of an item of equipment on the SWEL. The space below each of the following questions may be used to record the results of judgments and findings. Additional space is provided at the end of this checklist for documenting other comments.

Anchorage

1. Is anchorage configuration verification required (i.e., is the item one of the 50% of SWEL items requiring such verification)? Yes

2. Is the anchorage free of bent, broken, missing or loose hardware? Yes

3. Is the anchorage free of corrosion that is more than mild surface oxidation? Yes

4. Is the anchorage free of visible cracks in the concrete near the anchors? Yes

5. Is the anchorage configuration consistent with plant documentation? (Note: This question only applies if the item is one of the 50% for which an anchorage configuration verification is required.) Yes
Anchorage shown on drawings 1E-1-3445C, Rev. C.

6. Based on the above anchorage evaluations, is the anchorage free of potentially adverse seismic conditions? Yes

Status: Y N U

Seismic Walkdown Checklist (SWC)

Equipment ID No.: 1DC14E

Equipment Class: (15) Batteries on Racks

Equipment Description: DIV II 125VDC BATTERY

Interaction Effects

7. Are soft targets free from impact by nearby equipment or structures? Yes

Styrofoam softeners in place between batteries. No gaps between rack members and batteries.

8. Are overhead equipment, distribution systems, ceiling tiles and lighting, and masonry block walls not likely to collapse onto the equipment? Yes

Overhead light fixtures judged to be acceptable.

Battery room masonry walls are safety-related per drawing A-186, Rev. AR.

9. Do attached lines have adequate flexibility to avoid damage? Yes

10. Based on the above seismic interaction evaluations, is equipment free of potentially adverse seismic interaction effects? Yes

Other Adverse Conditions

11. Have you looked for and found no adverse seismic conditions that could adversely affect the safety functions of the equipment? Yes

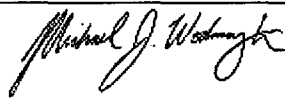
Comments

Seismic Walkdown Team: J. Griffith & M. Wodarczyk - 9/12/2012

Evaluated by:

 James Griffith

Date: 10/17/2012


Michael Wodarczyk

10/17/2012

Status: Y N U

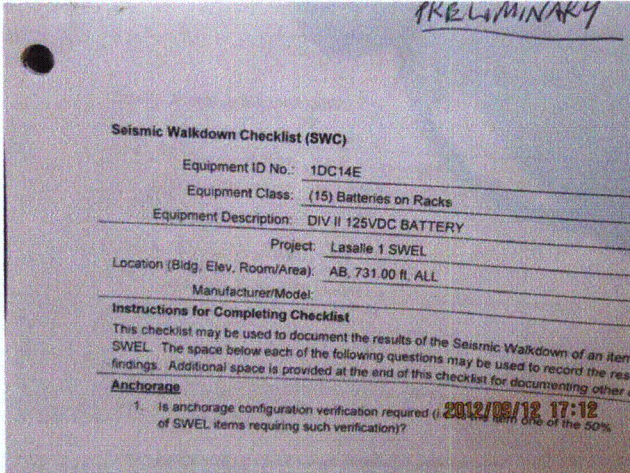
Seismic Walkdown Checklist (SWC)

Equipment ID No.: 1DC14E

Equipment Class: (15) Batteries on Racks

Equipment Description: DIV II 125VDC BATTERY

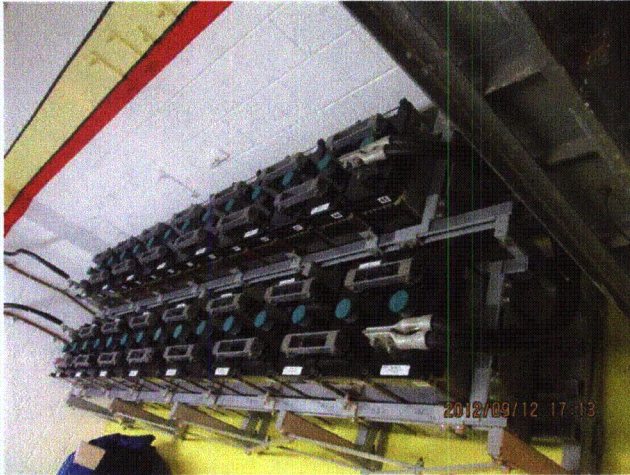
Photos



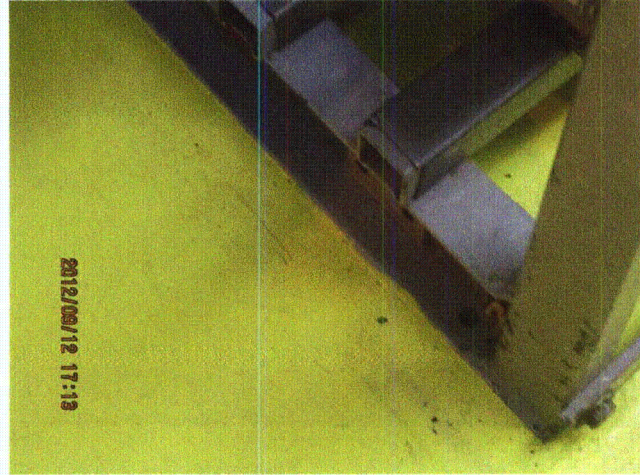
20120912-Lasalle 321



20120912-Lasalle 322



20120912-Lasalle 323



20120912-Lasalle 324

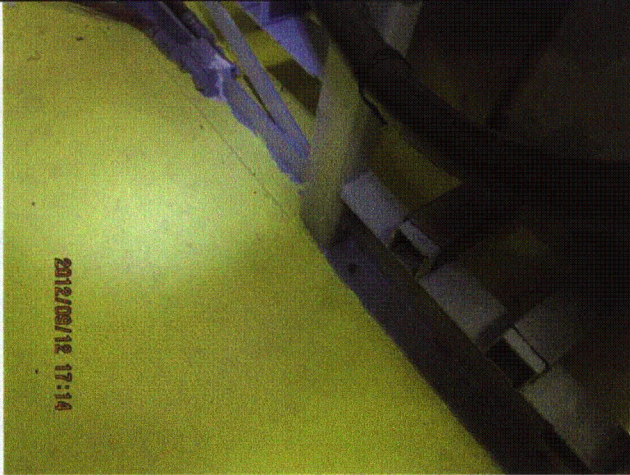
Status: Y N U

Seismic Walkdown Checklist (SWC)

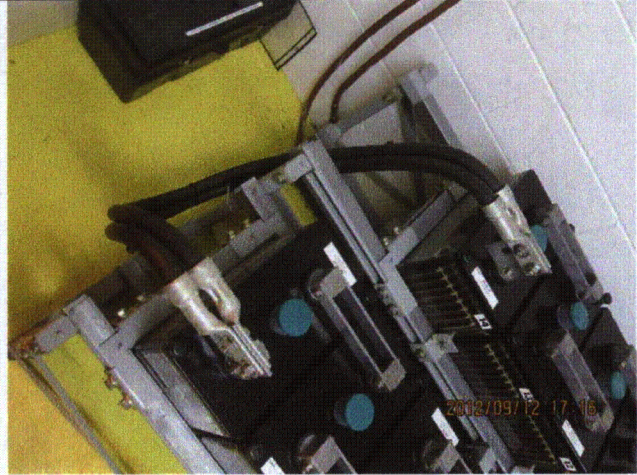
Equipment ID No.: 1DC14E

Equipment Class: (15) Batteries on Racks

Equipment Description: DIV II 125VDC BATTERY



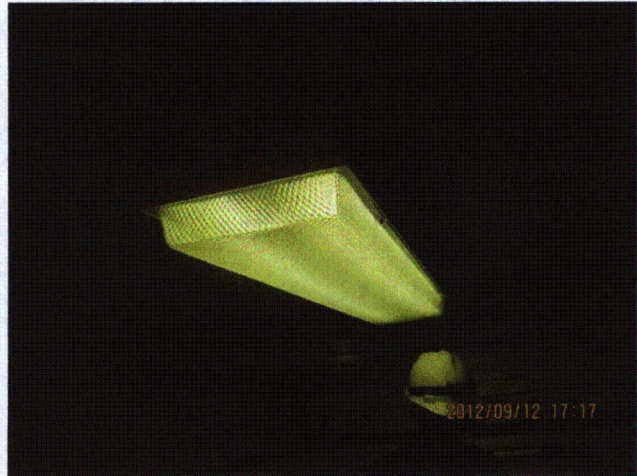
20120912-Lasalle 325



20120912-Lasalle 326



20120912-Lasalle 327



20120912-Lasalle 328

Status: Y N U

Seismic Walkdown Checklist (SWC)

Equipment ID No.: 1DC14E

Equipment Class: (15) Batteries on Racks

Equipment Description: DIV II 125VDC BATTERY



20120912-Lasalle 329

Status: Y N U

Seismic Walkdown Checklist (SWC)

Equipment ID No.: 1DC15E

Equipment Class: (14) Distribution Panels

Equipment Description: DIV II 125VDC DISTRIBUTION BUS 1B

Project: LaSalle 1 SWEL

Location (Bldg, Elev, Room/Area): AB, 731.00 ft, ALL

Manufacturer/Model: _____

Instructions for Completing Checklist

This checklist may be used to document the results of the Seismic Walkdown of an item of equipment on the SWEL. The space below each of the following questions may be used to record the results of judgments and findings. Additional space is provided at the end of this checklist for documenting other comments.

Anchorage

1. Is anchorage configuration verification required (i.e., is the item one of the 50% of SWEL items requiring such verification)? Yes

2. Is the anchorage free of bent, broken, missing or loose hardware? Yes

3. Is the anchorage free of corrosion that is more than mild surface oxidation? Yes

4. Is the anchorage free of visible cracks in the concrete near the anchors? Yes

5. Is the anchorage configuration consistent with plant documentation? (Note: This question only applies if the item is one of the 50% for which an anchorage configuration verification is required.) Yes
Anchorage shown on drawings 1E-1-3444, Sheet 1, Rev. A and 1E-1-3434, Sheet 2, Rev. L.

6. Based on the above anchorage evaluations, is the anchorage free of potentially adverse seismic conditions? Yes

Status: Y N U

Seismic Walkdown Checklist (SWC)

Equipment ID No.: 1DC15E

Equipment Class: (14) Distribution Panels

Equipment Description: DIV II 125VDC DISTRIBUTION BUS 1B

Interaction Effects

7. Are soft targets free from impact by nearby equipment or structures? Yes
8. Are overhead equipment, distribution systems, ceiling tiles and lighting, and masonry block walls not likely to collapse onto the equipment? Yes
Overhead light fixture in front of MCC on chains. Swinging toward MCC is mitigated by attached flexible conduit feed and a rigid conduit between the MCC and the light fixture, both of which dampen pendulum motion of the light fixture during a seismic event.
9. Do attached lines have adequate flexibility to avoid damage? Yes
10. Based on the above seismic interaction evaluations, is equipment free of potentially adverse seismic interaction effects? Yes

Other Adverse Conditions

11. Have you looked for and found no adverse seismic conditions that could adversely affect the safety functions of the equipment? Yes

Comments

Seismic Walkdown Team: J. Griffith & M. Wodarczyk - 9/12/2012

Evaluated by:

 James Griffith

Date: 10/17/2012


Michael Wodarczyk

10/17/2012

Status: Y N U

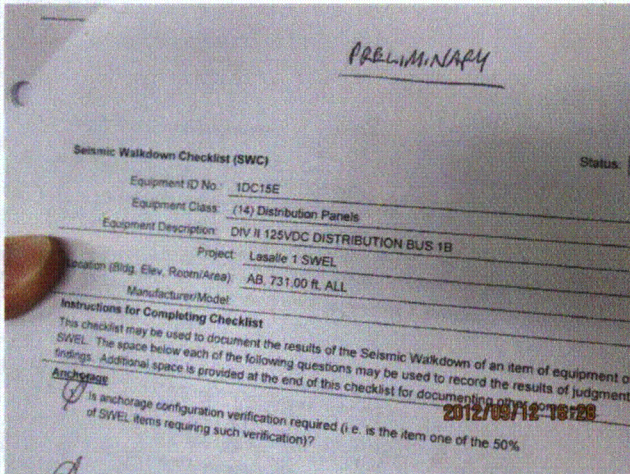
Seismic Walkdown Checklist (SWC)

Equipment ID No.: 1DC15E

Equipment Class: (14) Distribution Panels

Equipment Description: DIV II 125VDC DISTRIBUTION BUS 1B

Photos



20120912-Lasalle 282



20120912-Lasalle 283



20120912-Lasalle 284



20120912-Lasalle 285

Status: Y N U

Seismic Walkdown Checklist (SWC)

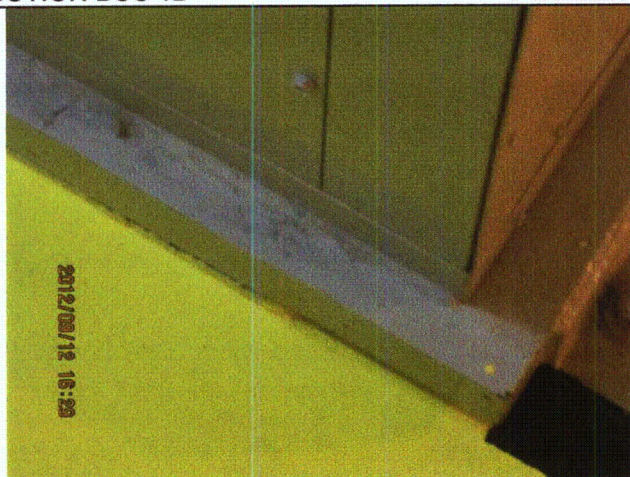
Equipment ID No.: 1DC15E

Equipment Class: (14) Distribution Panels

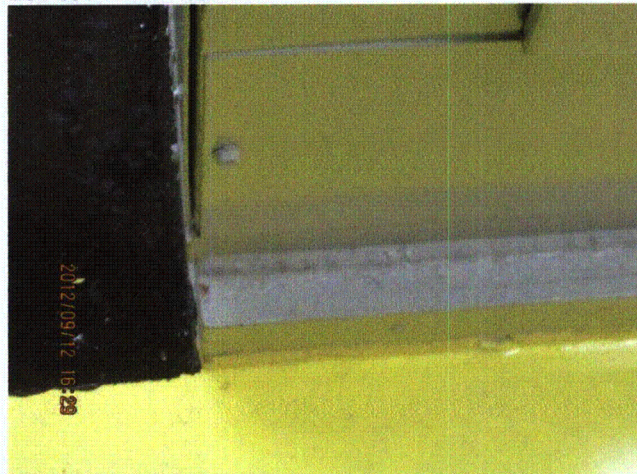
Equipment Description: DIV II 125VDC DISTRIBUTION BUS 1B



20120912-Lasalle 286



20120912-Lasalle 287



20120912-Lasalle 288



20120912-Lasalle 289

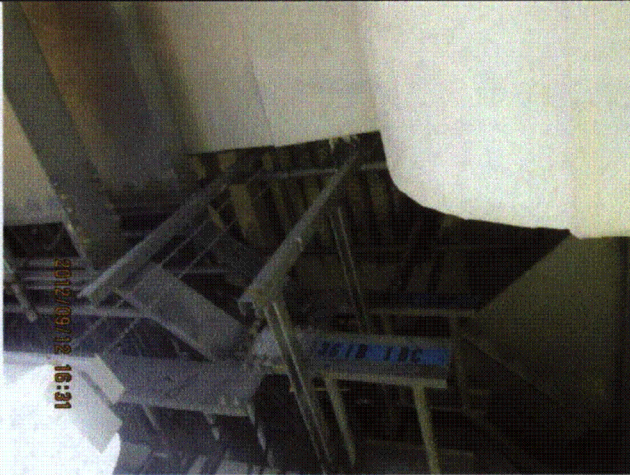
Status: Y N U

Seismic Walkdown Checklist (SWC)

Equipment ID No.: 1DC15E

Equipment Class: (14) Distribution Panels

Equipment Description: DIV II 125VDC DISTRIBUTION BUS 1B



20120912-Lasalle 290



20120912-Lasalle 291



20120912-Lasalle 292



20120912-Lasalle 293

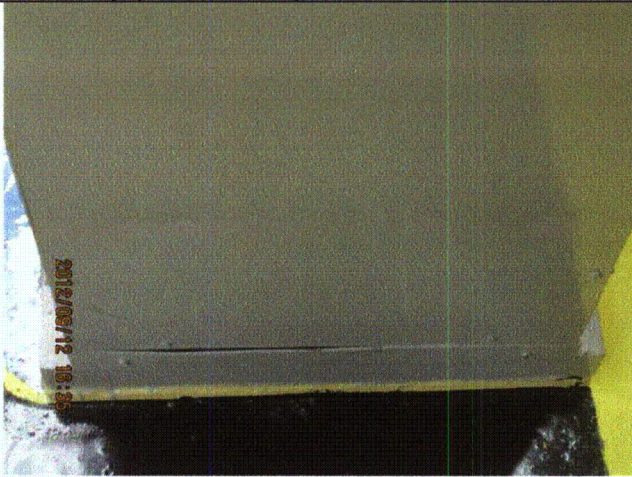
Status: Y N U

Seismic Walkdown Checklist (SWC)

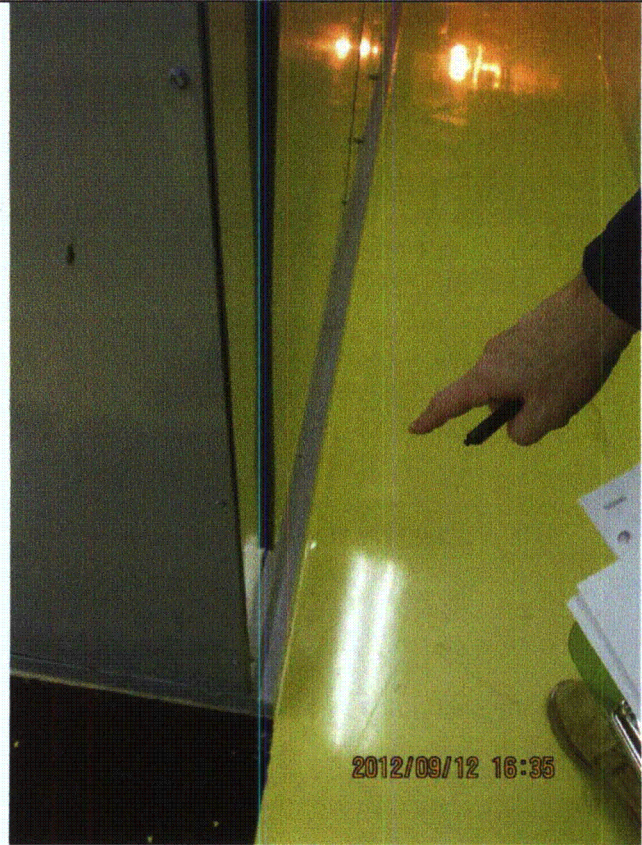
Equipment ID No.: 1DC15E

Equipment Class: (14) Distribution Panels

Equipment Description: DIV II 125VDC DISTRIBUTION BUS 1B



20120912-Lasalle 294



20120912-Lasalle 295



20120912-Lasalle 296

Status: Y N U

Seismic Walkdown Checklist (SWC)

Equipment ID No.: 1DC16E

Equipment Class: (16) Inverters

Equipment Description: 125V DC BATTERY CHARGER NO. 1B

Project: LaSalle 1 SWEL

Location (Bldg, Elev, Room/Area): AB, 731.00 ft, ALL

Manufacturer/Model:

Instructions for Completing Checklist

This checklist may be used to document the results of the Seismic Walkdown of an item of equipment on the SWEL. The space below each of the following questions may be used to record the results of judgments and findings. Additional space is provided at the end of this checklist for documenting other comments.

Anchorage

1. Is anchorage configuration verification required (i.e., is the item one of the 50% of SWEL items requiring such verification)? Yes

2. Is the anchorage free of bent, broken, missing or loose hardware? Yes

3. Is the anchorage free of corrosion that is more than mild surface oxidation? Yes

4. Is the anchorage free of visible cracks in the concrete near the anchors? Yes

5. Is the anchorage configuration consistent with plant documentation? (Note: This question only applies if the item is one of the 50% for which an anchorage configuration verification is required.) Yes
Anchorage verified per drawing 1E-1-3445, Rev. AV.

6. Based on the above anchorage evaluations, is the anchorage free of potentially adverse seismic conditions? Yes

Status: Y N U

Seismic Walkdown Checklist (SWC)

Equipment ID No.: 1DC16E

Equipment Class: (16) Inverters

Equipment Description: 125V DC BATTERY CHARGER NO. 1B

Interaction Effects

7. Are soft targets free from impact by nearby equipment or structures? Yes

Gap between charger and wall/conduit behind charger is approximately 1/2" and judged to be acceptable.

8. Are overhead equipment, distribution systems, ceiling tiles and lighting, and masonry block walls not likely to collapse onto the equipment? Yes

Overhead light fixtures judged to be acceptable.

Adjacent masonry walls are safety-related per drawing A-186, Rev. AR.

9. Do attached lines have adequate flexibility to avoid damage? Yes

10. Based on the above seismic interaction evaluations, is equipment free of potentially adverse seismic interaction effects? Yes

Other Adverse Conditions

11. Have you looked for and found no adverse seismic conditions that could adversely affect the safety functions of the equipment? Yes


Comments

Seismic Walkdown Team: J. Griffith & M. Wodarczyk - 9/13/2012

Evaluated by:

 James Griffith

Date: 10/17/2012

 Michael Wodarczyk

10/17/2012

Status: Y N U

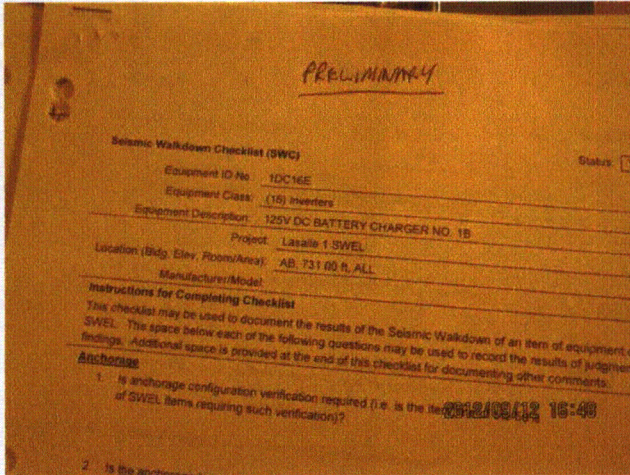
Seismic Walkdown Checklist (SWC)

Equipment ID No.: 1DC16E

Equipment Class: (16) Inverters

Equipment Description: 125V DC BATTERY CHARGER NO. 1B

Photos



20120912-Lasalle 311



20120912-Lasalle 312



20120913-Lasalle 044



20120913-Lasalle 045

Status: Y N U

Seismic Walkdown Checklist (SWC)

Equipment ID No.: 1DC16E

Equipment Class: (16) Inverters

Equipment Description: 125V DC BATTERY CHARGER NO. 1B



20120913-Lasalle 046



20120913-Lasalle 047

Status: Y N U

Seismic Walkdown Checklist (SWC)

Equipment ID No.: 1DC16E

Equipment Class: (16) Inverters

Equipment Description: 125V DC BATTERY CHARGER NO. 1B



20120913-Lasalle 048



20120913-Lasalle 049

Status: Y N U

Seismic Walkdown Checklist (SWC)

Equipment ID No.: 1DC16E

Equipment Class: (16) Inverters

Equipment Description: 125V DC BATTERY CHARGER NO. 1B



20120913-Lasalle 050



20120913-Lasalle 051



20120913-Lasalle 153

Status: Y N U

Seismic Walkdown Checklist (SWC)

Equipment ID No.: 1DG011

Equipment Class: (8) Motor-Operated and Solenoid-Operated Valves

Equipment Description: 1A DG COOLING WTR STRAINER BACKWASH VALVE

Project: LaSalle 1 SWEL

Location (Bldg, Elev, Room/Area): DG, 674.00 ft, ALL

Manufacturer/Model:

Instructions for Completing Checklist

This checklist may be used to document the results of the Seismic Walkdown of an item of equipment on the SWEL. The space below each of the following questions may be used to record the results of judgments and findings. Additional space is provided at the end of this checklist for documenting other comments.

Anchorage

1. Is anchorage configuration verification required (i.e., is the item one of the 50% of SWEL items requiring such verification)? No

2. Is the anchorage free of bent, broken, missing or loose hardware? Not Applicable

3. Is the anchorage free of corrosion that is more than mild surface oxidation? Not Applicable

4. Is the anchorage free of visible cracks in the concrete near the anchors? Not Applicable

5. Is the anchorage configuration consistent with plant documentation? (Note: This question only applies if the item is one of the 50% for which an anchorage configuration verification is required.) Not Applicable

6. Based on the above anchorage evaluations, is the anchorage free of potentially adverse seismic conditions? Yes

Status: Y N U

Seismic Walkdown Checklist (SWC)

Equipment ID No.: 1DG011

Equipment Class: (8) Motor-Operated and Solenoid-Operated Valves

Equipment Description: 1A DG COOLING WTR STRAINER BACKWASH VALVE

Interaction Effects

7. Are soft targets free from impact by nearby equipment or structures? Yes
8. Are overhead equipment, distribution systems, ceiling tiles and lighting, and masonry block walls not likely to collapse onto the equipment? Yes
Overhead light fixtures judged to be acceptable.
9. Do attached lines have adequate flexibility to avoid damage? Yes
10. Based on the above seismic interaction evaluations, is equipment free of potentially adverse seismic interaction effects? Yes

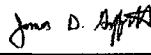
Other Adverse Conditions

11. Have you looked for and found no adverse seismic conditions that could adversely affect the safety functions of the equipment? Yes

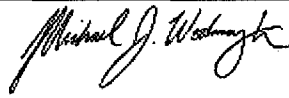
Comments

Seismic Walkdown Team: J. Griffith & M. Wodarczyk - 9/13/2012

Evaluated by:

 James Griffith

Date: 10/17/2012

 Michael Wodarczyk

10/17/2012

Status: Y N U

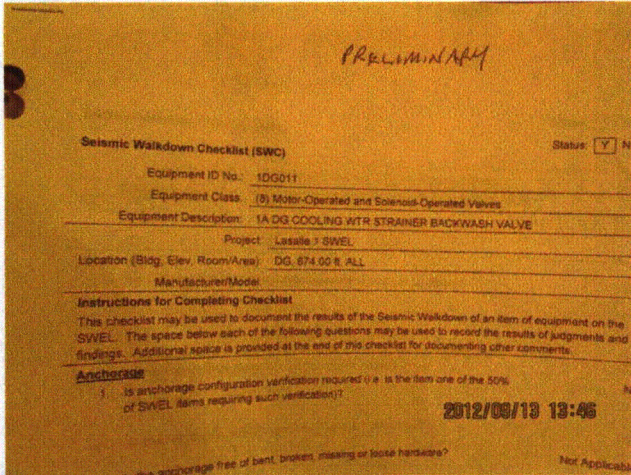
Seismic Walkdown Checklist (SWC)

Equipment ID No.: 1DG011

Equipment Class: (8) Motor-Operated and Solenoid-Operated Valves

Equipment Description: 1A DG COOLING WTR STRAINER BACKWASH VALVE

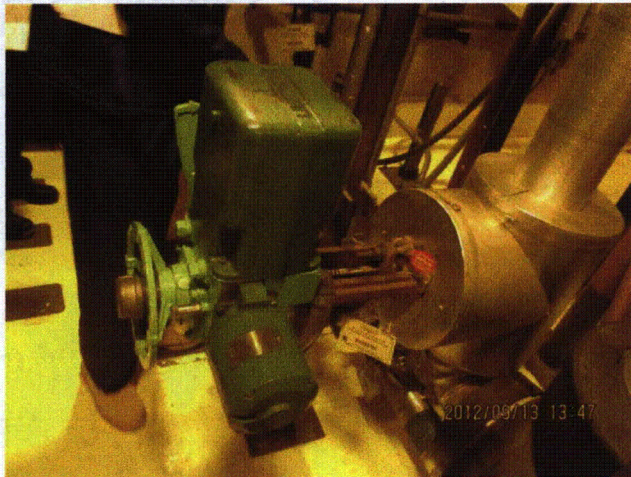
Photos



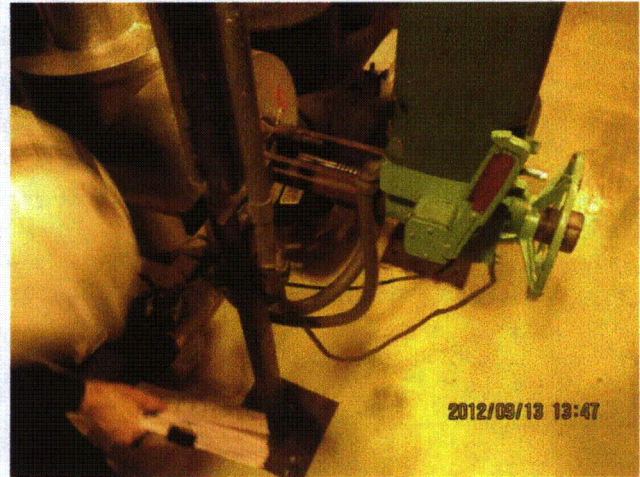
20120913-Lasalle 210



20120913-Lasalle 211



20120913-Lasalle 212



20120913-Lasalle 213

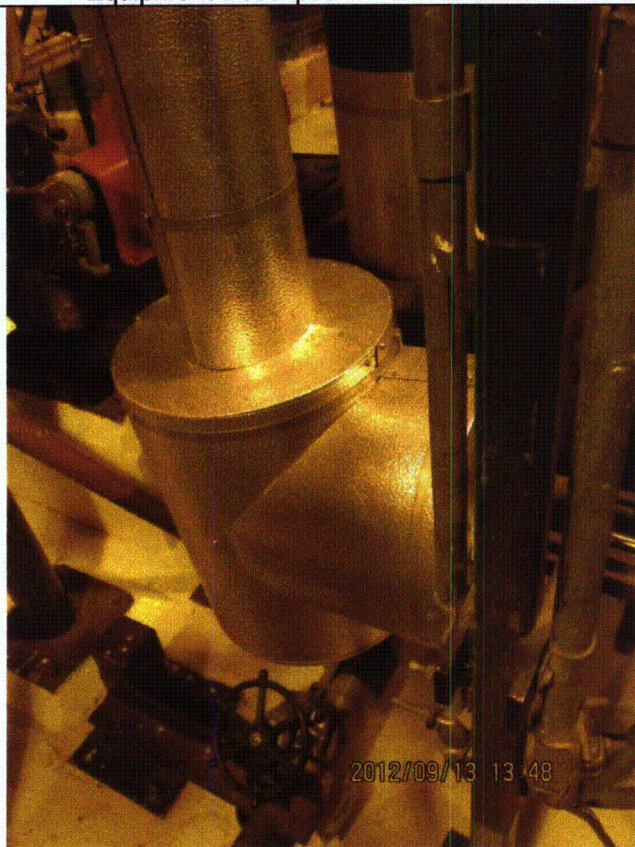
Status: Y N U

Seismic Walkdown Checklist (SWC)

Equipment ID No.: 1DG011

Equipment Class: (8) Motor-Operated and Solenoid-Operated Valves

Equipment Description: 1A DG COOLING WTR STRAINER BACKWASH VALVE



20120913-Lasalle 214

Status: Y N U

Seismic Walkdown Checklist (SWC)

Equipment ID No.: 1DG01A

Equipment Class: (21) Tanks and Heat Exchangers

Equipment Description: 1A DG COOLER

Project: LaSalle 1 SWEL

Location (Bldg, Elev, Room/Area): DG, 710.00 ft, ALL

Manufacturer/Model:

Instructions for Completing Checklist

This checklist may be used to document the results of the Seismic Walkdown of an item of equipment on the SWEL. The space below each of the following questions may be used to record the results of judgments and findings. Additional space is provided at the end of this checklist for documenting other comments.

Anchorage

1. Is anchorage configuration verification required (i.e., is the item one of the 50% of SWEL items requiring such verification)? No
Attached to DG skid with bolted bracket at each end.

2. Is the anchorage free of bent, broken, missing or loose hardware? Yes

3. Is the anchorage free of corrosion that is more than mild surface oxidation? Yes

4. Is the anchorage free of visible cracks in the concrete near the anchors? Not Applicable
Attached to DG skid.

5. Is the anchorage configuration consistent with plant documentation? (Note: This question only applies if the item is one of the 50% for which an anchorage configuration verification is required.) Not Applicable

6. Based on the above anchorage evaluations, is the anchorage free of potentially adverse seismic conditions? Yes

Status: Y N U

Seismic Walkdown Checklist (SWC)

Equipment ID No.: 1DG01A

Equipment Class: (21) Tanks and Heat Exchangers

Equipment Description: 1A DG COOLER

Interaction Effects

7. Are soft targets free from impact by nearby equipment or structures? Yes
8. Are overhead equipment, distribution systems, ceiling tiles and lighting, and masonry block walls not likely to collapse onto the equipment? Yes
Overhead light fixtures judged to be acceptable.
9. Do attached lines have adequate flexibility to avoid damage? Yes
10. Based on the above seismic interaction evaluations, is equipment free of potentially adverse seismic interaction effects? Yes

Other Adverse Conditions

11. Have you looked for and found no adverse seismic conditions that could adversely affect the safety functions of the equipment? Yes

Comments

Seismic Walkdown Team: J. Griffith & M. Wodarczyk - 9/13/2012

Evaluated by:

 James Griffith

Date: 10/17/2012


Michael Wodarczyk

10/17/2012

Status: Y N U

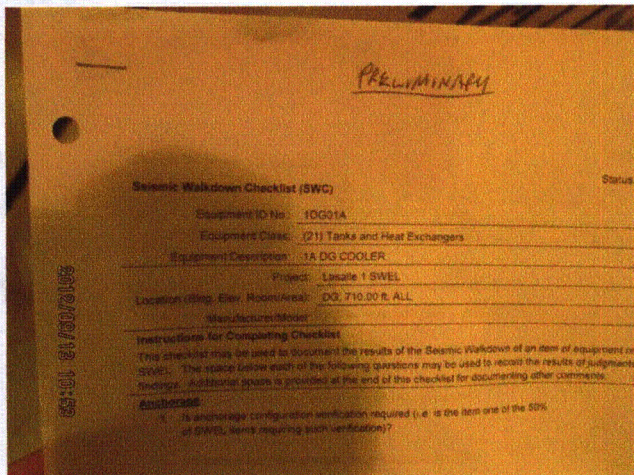
Seismic Walkdown Checklist (SWC)

Equipment ID No.: 1DG01A

Equipment Class: (21) Tanks and Heat Exchangers

Equipment Description: 1A DG COOLER

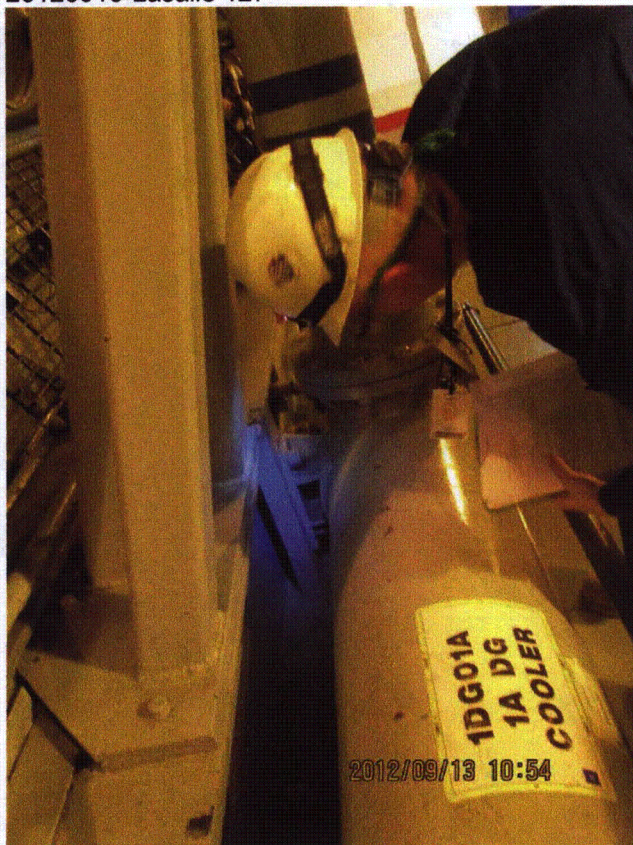
Photos



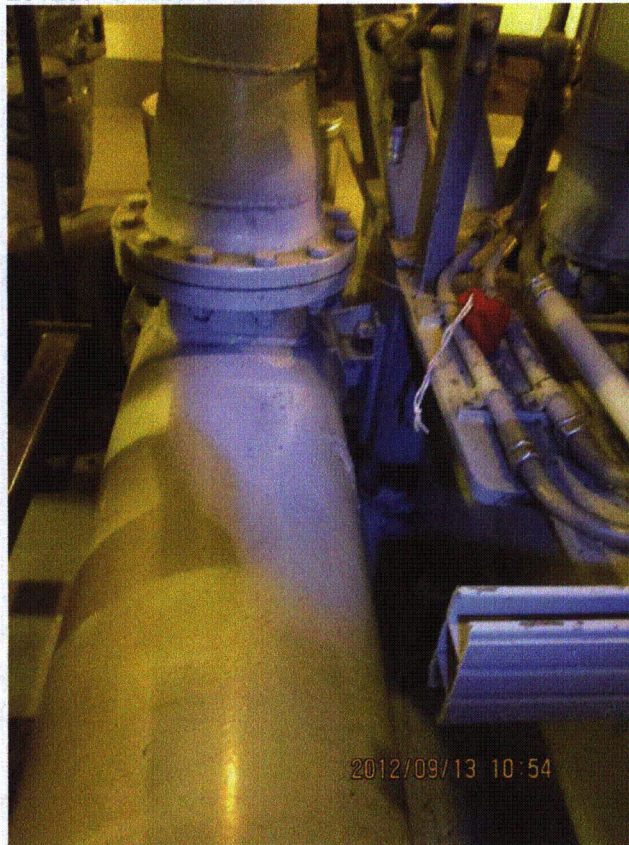
20120913-Lasalle 127



20120913-Lasalle 128



20120913-Lasalle 129



20120913-Lasalle 130

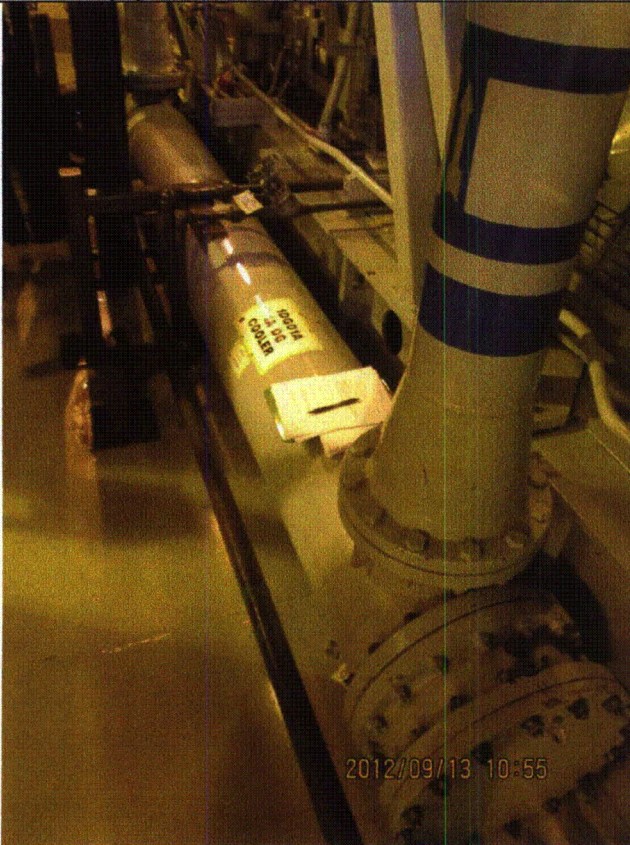
Status: Y N U

Seismic Walkdown Checklist (SWC)

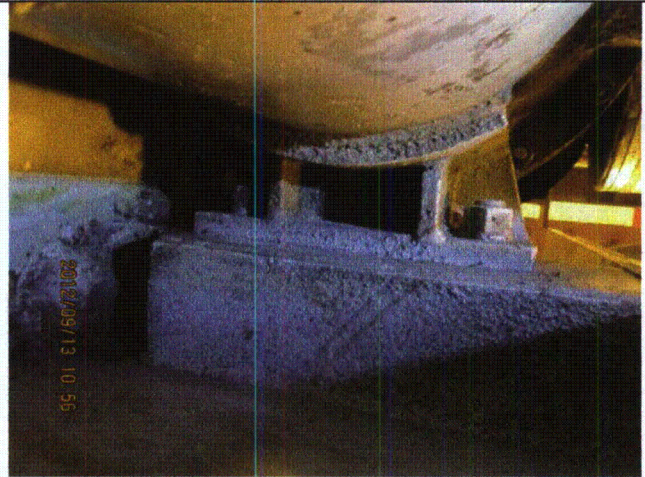
Equipment ID No.: 1DG01A

Equipment Class: (21) Tanks and Heat Exchangers

Equipment Description: 1A DG COOLER



20120913-Lasalle 131



20120913-Lasalle 132

Status: Y N U

Seismic Walkdown Checklist (SWC)

Equipment ID No.: 1DG01A

Equipment Class: (21) Tanks and Heat Exchangers

Equipment Description: 1A DG COOLER



20120913-Lasalle 133



20120913-Lasalle 134

Status: Y N U

Seismic Walkdown Checklist (SWC)

Equipment ID No.: 1DG01F

Equipment Class: (0) Other

Equipment Description: 1A DG COOLING WATER STRAINER

Project: LaSalle 1 SWEL

Location (Bldg, Elev, Room/Area): DG, 674.00 ft, ALL

Manufacturer/Model:

Instructions for Completing Checklist

This checklist may be used to document the results of the Seismic Walkdown of an item of equipment on the SWEL. The space below each of the following questions may be used to record the results of judgments and findings. Additional space is provided at the end of this checklist for documenting other comments.

Anchorage

1. Is anchorage configuration verification required (i.e., is the item one of the 50% of SWEL items requiring such verification)? Yes

2. Is the anchorage free of bent, broken, missing or loose hardware? Yes

3. Is the anchorage free of corrosion that is more than mild surface oxidation? Yes

4. Is the anchorage free of visible cracks in the concrete near the anchors? Yes
Minor shrinkage cracking in grout pad judged to be acceptable.

5. Is the anchorage configuration consistent with plant documentation? (Note: This question only applies if the item is one of the 50% for which an anchorage configuration verification is required.) Yes
Anchorage shown on drawings M-1572, Rev. R and M-1591, Sheet 11, Rev. E.

6. Based on the above anchorage evaluations, is the anchorage free of potentially adverse seismic conditions? Yes

Status: Y N U

Seismic Walkdown Checklist (SWC)

Equipment ID No.: 1DG01F

Equipment Class: (0) Other

Equipment Description: 1A DG COOLING WATER STRAINER

Interaction Effects

7. Are soft targets free from impact by nearby equipment or structures? Yes

*Tubes on front of strainer in contact with flexible insulation on strainer.
Judged to be acceptable.*

*Strainer tube from valve 1PI-DG036A-VV in contact with front plate of strainer.
Tube is flexible relative to the front plate and is judged to be acceptable.*

8. Are overhead equipment, distribution systems, ceiling tiles and lighting, and masonry block walls not likely to collapse onto the equipment? Yes

Overhead light fixtures judged to be acceptable.

9. Do attached lines have adequate flexibility to avoid damage? Yes

10. Based on the above seismic interaction evaluations, is equipment free of potentially adverse seismic interaction effects? Yes

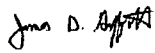
Other Adverse Conditions

11. Have you looked for and found no adverse seismic conditions that could adversely affect the safety functions of the equipment? Yes

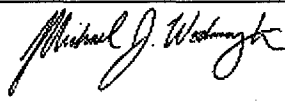
Comments

Seismic Walkdown Team: J. Griffith & M. Wodarczyk - 9/13/2012

Evaluated by:

 James Griffith

Date: 10/17/2012


Michael Wodarczyk

10/17/2012

Status: Y N U

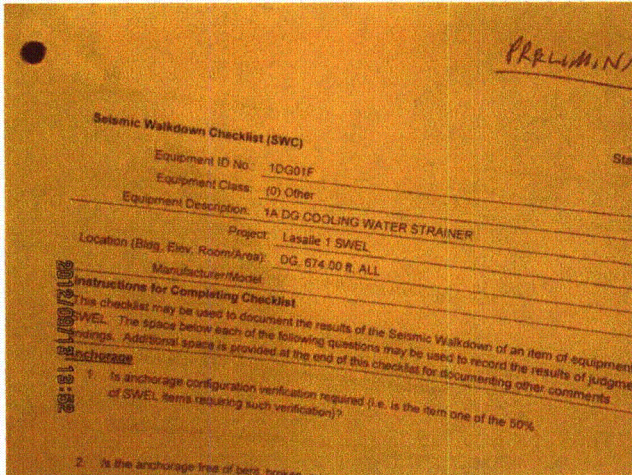
Seismic Walkdown Checklist (SWC)

Equipment ID No.: 1DG01F

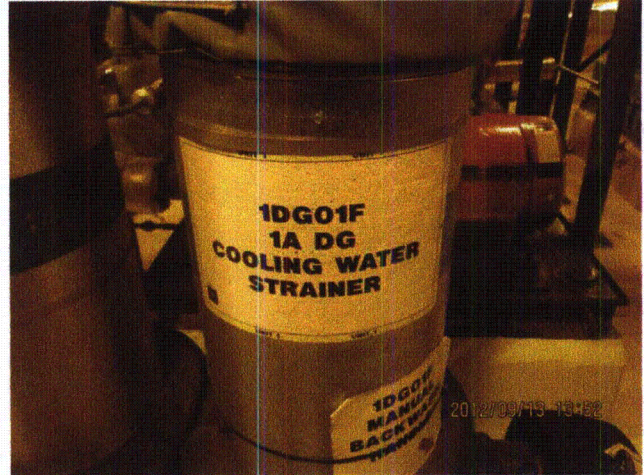
Equipment Class: (0) Other

Equipment Description: 1A DG COOLING WATER STRAINER

Photos



20120913-Lasalle 215



20120913-Lasalle 216



20120913-Lasalle 217



20120913-Lasalle 218

Status: Y N U

Seismic Walkdown Checklist (SWC)

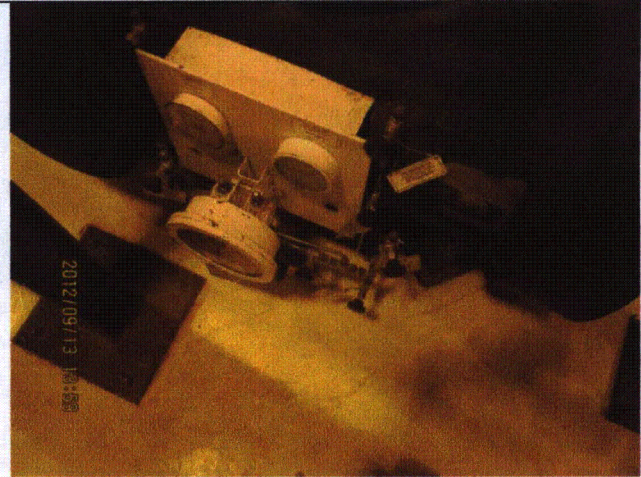
Equipment ID No.: 1DG01F

Equipment Class: (0) Other

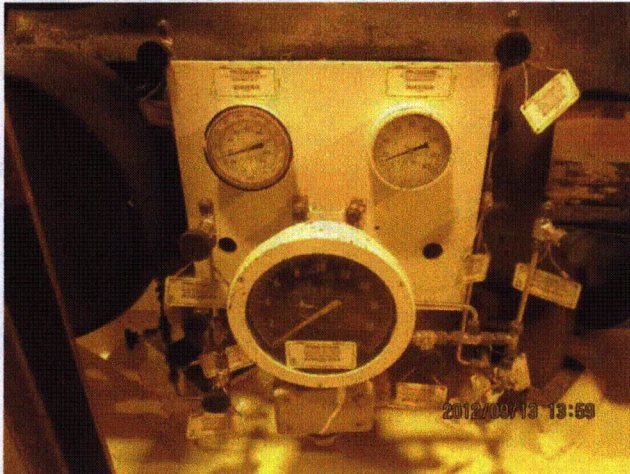
Equipment Description: 1A DG COOLING WATER STRAINER



20120913-Lasalle 219



20120913-Lasalle 220



20120913-Lasalle 221



20120913-Lasalle 222

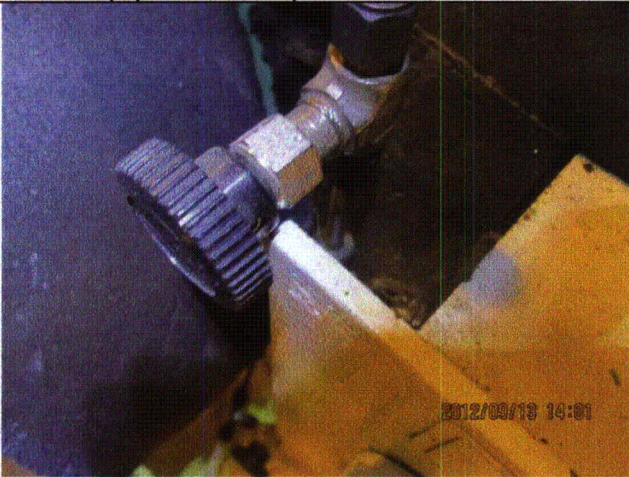
Status: Y N U

Seismic Walkdown Checklist (SWC)

Equipment ID No.: 1DG01F

Equipment Class: (0) Other

Equipment Description: 1A DG COOLING WATER STRAINER



20120913-Lasalle 223

Status: Y N U

Seismic Walkdown Checklist (SWC)

Equipment ID No.: 1DG01K

Equipment Class: (17) Engine-Generators

Equipment Description: 1A DIESEL GENERATOR

Project: LaSalle 1 SWEL

Location (Bldg, Elev, Room/Area): DG, 710.00 ft, ALL

Manufacturer/Model:

Instructions for Completing Checklist

This checklist may be used to document the results of the Seismic Walkdown of an item of equipment on the SWEL. The space below each of the following questions may be used to record the results of judgments and findings. Additional space is provided at the end of this checklist for documenting other comments.

Anchorage

1. Is anchorage configuration verification required (i.e., is the item one of the 50% of SWEL items requiring such verification)? Yes

2. Is the anchorage free of bent, broken, missing or loose hardware? Yes
One 1-1/2" anchor with 3/8" lack of thread engagement. Based on the size of the anchor and number of threads per inch, the anchor is judged to have adequate thread engagement.
3. Is the anchorage free of corrosion that is more than mild surface oxidation? Yes

4. Is the anchorage free of visible cracks in the concrete near the anchors? Yes
Minor cracking in grout pad away from anchors; judged to be acceptable.
5. Is the anchorage configuration consistent with plant documentation? (Note: This question only applies if the item is one of the 50% for which an anchorage configuration verification is required.) Yes
Anchorage shown on drawings M-1568, Rev. M and M-1591, Sheet 4, Rev. J.

6. Based on the above anchorage evaluations, is the anchorage free of potentially adverse seismic conditions? Yes

Status: Y N U

Seismic Walkdown Checklist (SWC)

Equipment ID No.: 1DG01K

Equipment Class: (17) Engine-Generators

Equipment Description: 1A DIESEL GENERATOR

Interaction Effects

7. Are soft targets free from impact by nearby equipment or structures? Yes
8. Are overhead equipment, distribution systems, ceiling tiles and lighting, and masonry block walls not likely to collapse onto the equipment? Yes
Overhead light fixtures judged to be acceptable.
Adjacent masonry column pilaster (column J-6) with running bond construction judged to be acceptable.
9. Do attached lines have adequate flexibility to avoid damage? Yes
10. Based on the above seismic interaction evaluations, is equipment free of potentially adverse seismic interaction effects? Yes

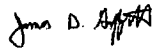
Other Adverse Conditions

11. Have you looked for and found no adverse seismic conditions that could adversely affect the safety functions of the equipment? Yes

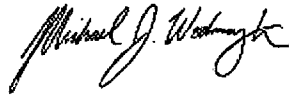
Comments

Seismic Walkdown Team: J. Griffith & M. Wodarczyk - 9/13/2012

Evaluated by:

 James Griffith

Date: 10/17/2012



Michael Wodarczyk

10/17/2012

Status: Y N U

Seismic Walkdown Checklist (SWC)

Equipment ID No.: 1DG01K

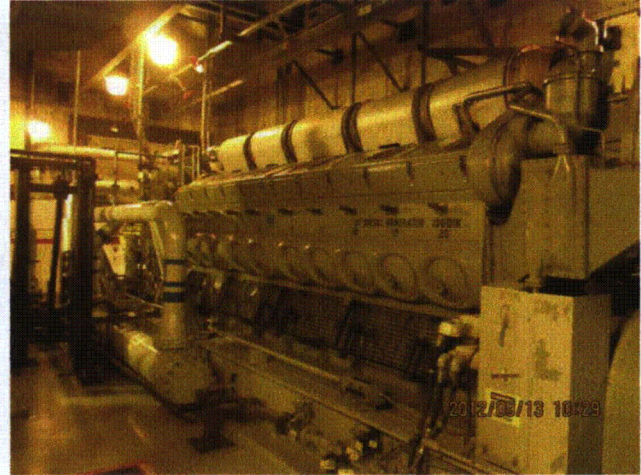
Equipment Class: (17) Engine-Generators

Equipment Description: 1A DIESEL GENERATOR

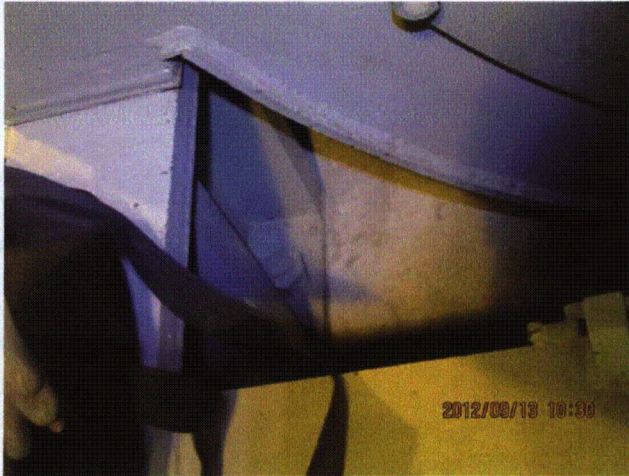
Photos



20120913-Lasalle 109



20120913-Lasalle 110



20120913-Lasalle 111



20120913-Lasalle 112

Status: Y N U

Seismic Walkdown Checklist (SWC)

Equipment ID No.: 1DG01K

Equipment Class: (17) Engine-Generators

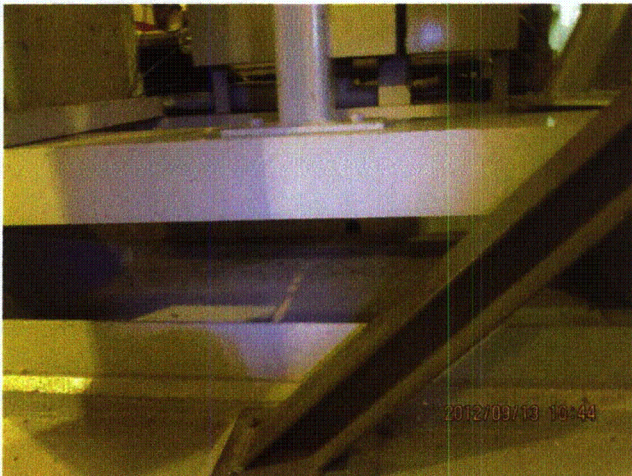
Equipment Description: 1A DIESEL GENERATOR



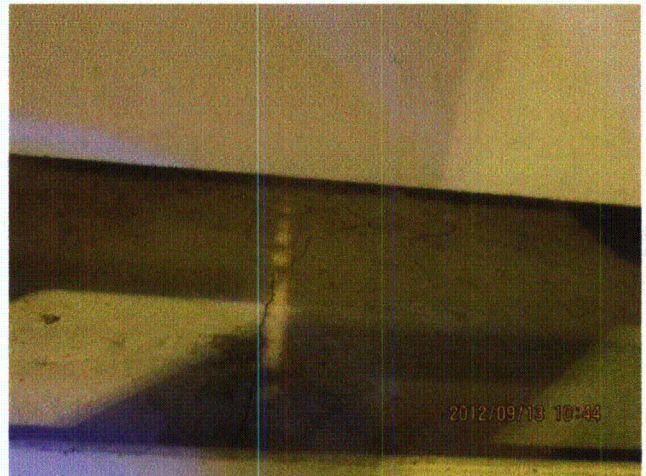
20120913-Lasalle 113



20120913-Lasalle 114



20120913-Lasalle 115



20120913-Lasalle 116

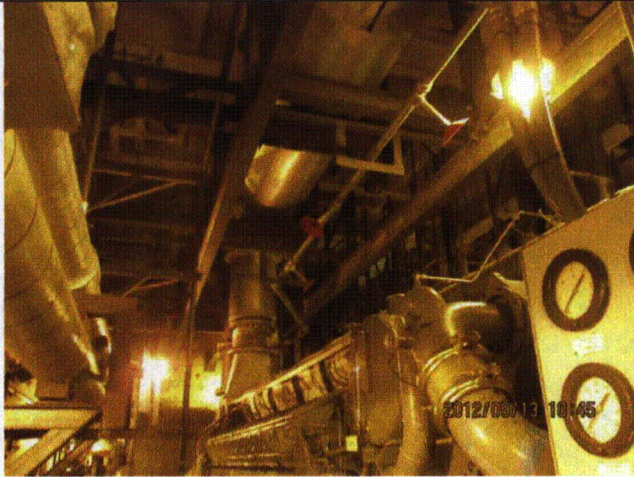
Status: Y N U

Seismic Walkdown Checklist (SWC)

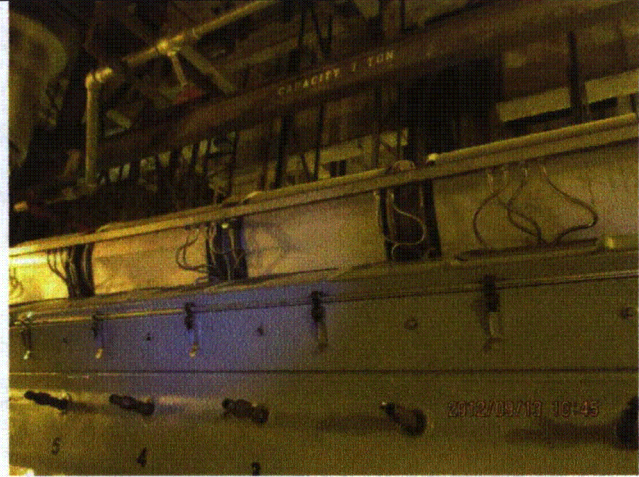
Equipment ID No.: 1DG01K

Equipment Class: (17) Engine-Generators

Equipment Description: 1A DIESEL GENERATOR



20120913-Lasalle 117



20120913-Lasalle 118



20120913-Lasalle 119



20120913-Lasalle 120

Status: Y N U

Seismic Walkdown Checklist (SWC)

Equipment ID No.: 1DG01K

Equipment Class: (17) Engine-Generators

Equipment Description: 1A DIESEL GENERATOR



20120913-Lasalle 121



20120913-Lasalle 122

Status: Y N U

Seismic Walkdown Checklist (SWC)

Equipment ID No.: 1DG01K

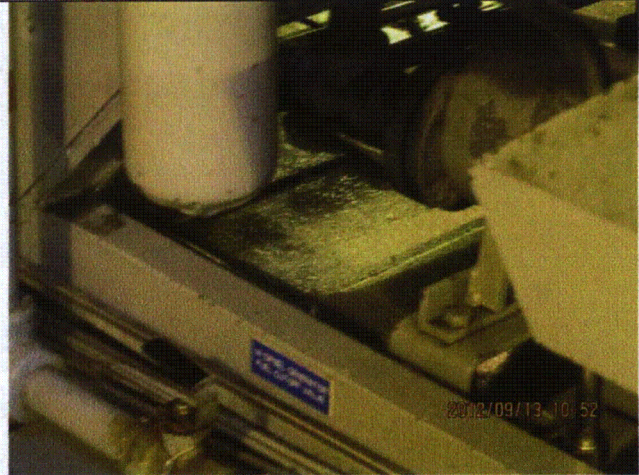
Equipment Class: (17) Engine-Generators

Equipment Description: 1A DIESEL GENERATOR



2012/09/13 10:47

20120913-Lasalle 123



2012/09/13 10:52

20120913-Lasalle 124

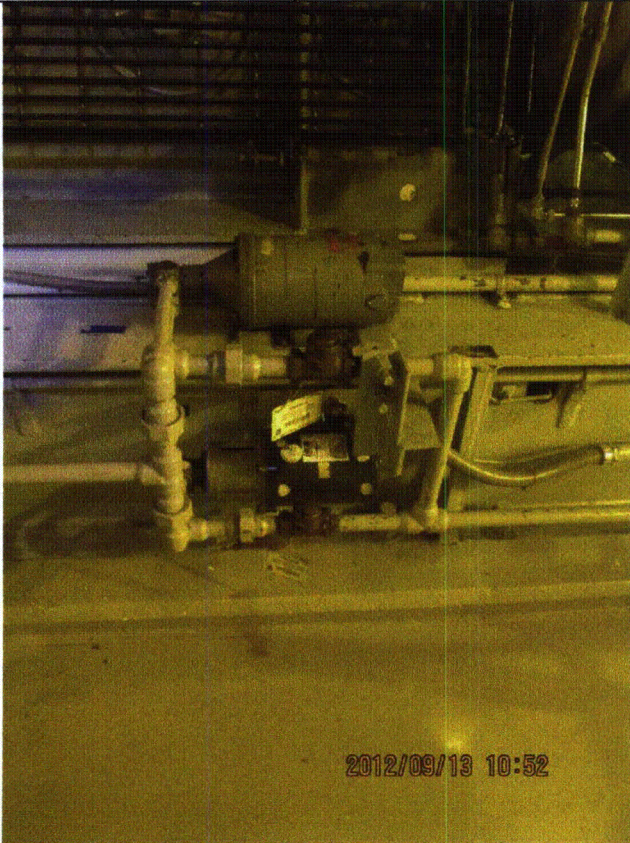
Status: Y N U

Seismic Walkdown Checklist (SWC)

Equipment ID No.: 1DG01K

Equipment Class: (17) Engine-Generators

Equipment Description: 1A DIESEL GENERATOR



20120913-Lasalle 125



20120913-Lasalle 126

Status: Y N U

Seismic Walkdown Checklist (SWC)

Equipment ID No.: 1DG01P

Equipment Class: (5) Horizontal Pumps

Equipment Description: 1A DG COOLING WATER PUMP

Project: LaSalle 1 SWEL

Location (Bldg, Elev, Room/Area): DG, 674.00 ft, ALL

Manufacturer/Model:

Instructions for Completing Checklist

This checklist may be used to document the results of the Seismic Walkdown of an item of equipment on the SWEL. The space below each of the following questions may be used to record the results of judgments and findings. Additional space is provided at the end of this checklist for documenting other comments.

Anchorage

1. Is anchorage configuration verification required (i.e., is the item one of the 50% of SWEL items requiring such verification)? Yes

2. Is the anchorage free of bent, broken, missing or loose hardware? Yes

3. Is the anchorage free of corrosion that is more than mild surface oxidation? Yes

4. Is the anchorage free of visible cracks in the concrete near the anchors? Yes

5. Is the anchorage configuration consistent with plant documentation? (Note: This question only applies if the item is one of the 50% for which an anchorage configuration verification is required.) Yes
Anchorage shown on drawings M-1572, Rev. R and M-1591, Sheet 3, Rev. U.

6. Based on the above anchorage evaluations, is the anchorage free of potentially adverse seismic conditions? Yes

Status: Y N U

Seismic Walkdown Checklist (SWC)

Equipment ID No.: 1DG01P

Equipment Class: (5) Horizontal Pumps

Equipment Description: 1A DG COOLING WATER PUMP

Interaction Effects

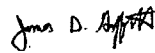
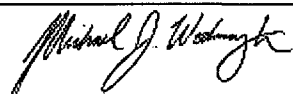
7. Are soft targets free from impact by nearby equipment or structures? Yes
8. Are overhead equipment, distribution systems, ceiling tiles and lighting, and masonry block walls not likely to collapse onto the equipment? Yes
Overhead light fixtures judged to be acceptable.
9. Do attached lines have adequate flexibility to avoid damage? Yes
10. Based on the above seismic interaction evaluations, is equipment free of potentially adverse seismic interaction effects? Yes

Other Adverse Conditions

11. Have you looked for and found no adverse seismic conditions that could adversely affect the safety functions of the equipment? Yes

Comments

Seismic Walkdown Team: J. Griffith & M. Wodarcyk - 9/13/2012

Evaluated by:  James Griffith Date: 10/17/2012
 Michael Wodarcyk 10/17/2012

Status: Y N U

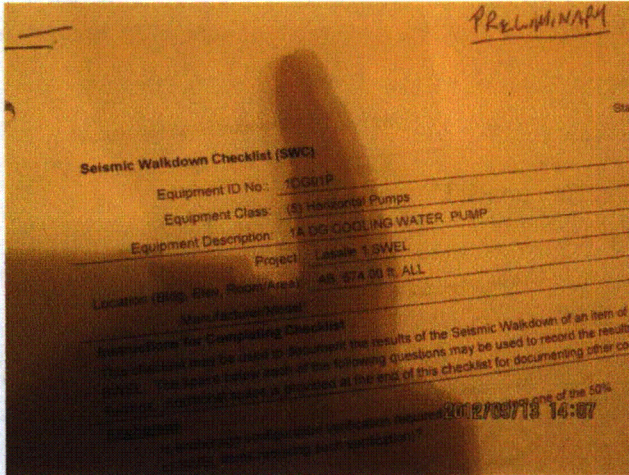
Seismic Walkdown Checklist (SWC)

Equipment ID No.: 1DG01P

Equipment Class: (5) Horizontal Pumps

Equipment Description: 1A DG COOLING WATER PUMP

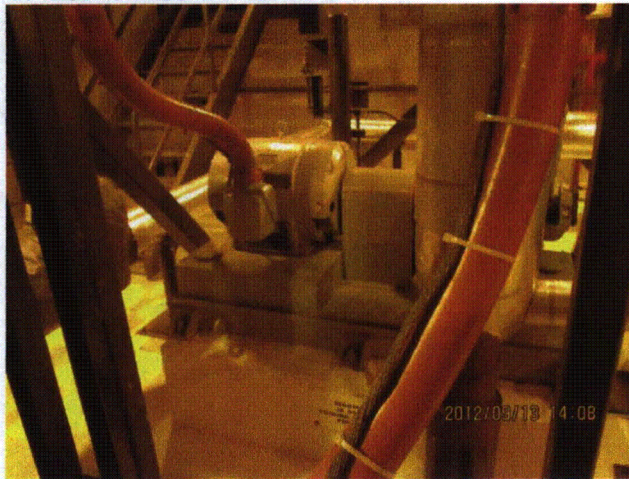
Photos



20120913-Lasalle 224



20120913-Lasalle 225



20120913-Lasalle 226



20120913-Lasalle 227

Status: Y N U

Seismic Walkdown Checklist (SWC)

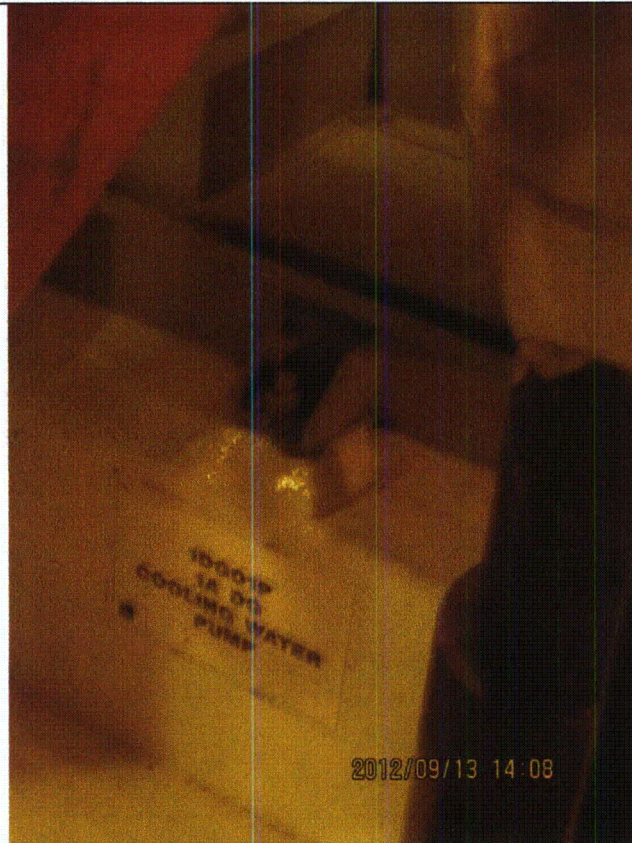
Equipment ID No.: 1DG01P

Equipment Class: (5) Horizontal Pumps

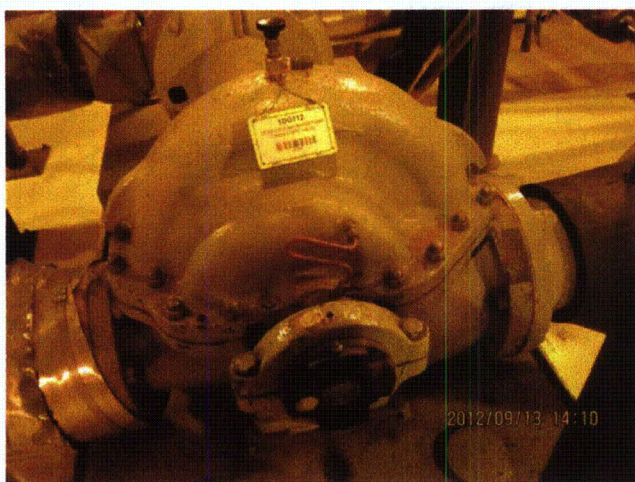
Equipment Description: 1A DG COOLING WATER PUMP



20120913-Lasalle 228



20120913-Lasalle 229



20120913-Lasalle 230



20120913-Lasalle 231

Status: Y N U

Seismic Walkdown Checklist (SWC)

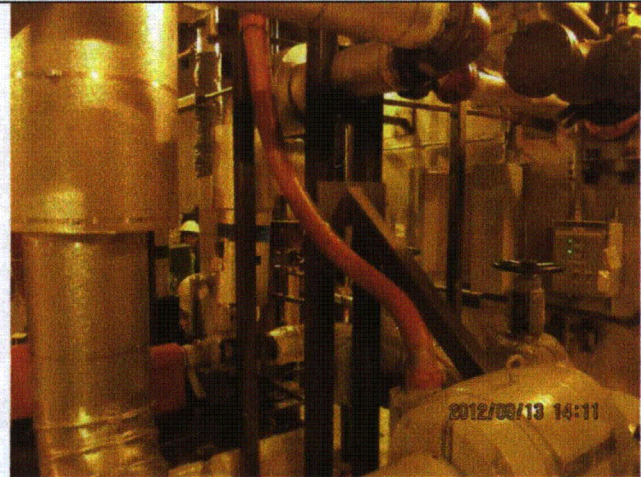
Equipment ID No.: 1DG01P

Equipment Class: (5) Horizontal Pumps

Equipment Description: 1A DG COOLING WATER PUMP



20120913-Lasalle 232



20120913-Lasalle 233

Status: Y N U

Seismic Walkdown Checklist (SWC)

Equipment ID No.: 1DG01S

Equipment Class: (12) Air Compressors

Equipment Description: 1A DG STARTING AIR COMPRESSOR PACKAGE

Project: LaSalle 1 SWEL

Location (Bldg, Elev, Room/Area): DG, 710.00 ft, ALL

Manufacturer/Model:

Instructions for Completing Checklist

This checklist may be used to document the results of the Seismic Walkdown of an item of equipment on the SWEL. The space below each of the following questions may be used to record the results of judgments and findings. Additional space is provided at the end of this checklist for documenting other comments.

Anchorage

1. Is anchorage configuration verification required (i.e., is the item one of the 50% of SWEL items requiring such verification)? Yes

2. Is the anchorage free of bent, broken, missing or loose hardware? Yes

3. Is the anchorage free of corrosion that is more than mild surface oxidation? Yes

4. Is the anchorage free of visible cracks in the concrete near the anchors? Yes

5. Is the anchorage configuration consistent with plant documentation? (Note: This question only applies if the item is one of the 50% for which an anchorage configuration verification is required.) Yes
Anchorage shown on drawings M-1568, Rev. M and M-1591, Sheet 4, Rev. J.

6. Based on the above anchorage evaluations, is the anchorage free of potentially adverse seismic conditions? Yes

Status: Y N U

Seismic Walkdown Checklist (SWC)

Equipment ID No.: 1DG01S

Equipment Class: (12) Air Compressors

Equipment Description: 1A DG STARTING AIR COMPRESSOR PACKAGE

Interaction Effects

7. Are soft targets free from impact by nearby equipment or structures? Yes
8. Are overhead equipment, distribution systems, ceiling tiles and lighting, and masonry block walls not likely to collapse onto the equipment? Yes
Overhead light fixtures judged to be acceptable.
Adjacent masonry column pilaster (column J-6) with running bond construction judged to be acceptable.
9. Do attached lines have adequate flexibility to avoid damage? Yes
Day tank room masonry walls are safety-related per drawing A-276, Rev. S.
10. Based on the above seismic interaction evaluations, is equipment free of potentially adverse seismic interaction effects? Yes

Other Adverse Conditions

11. Have you looked for and found no adverse seismic conditions that could adversely affect the safety functions of the equipment? Yes

Comments

Seismic Walkdown Team: J. Griffith & M. Wodarczyk - 9/13/2012

Evaluated by:

 James Griffith

Date: 10/17/2012


Michael Wodarczyk

10/17/2012

Status: Y N U

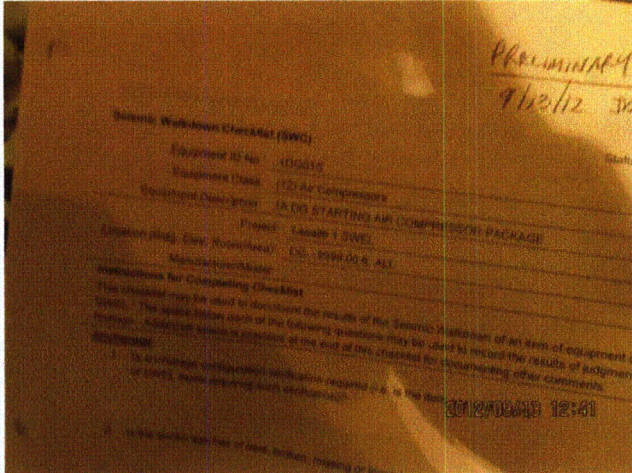
Seismic Walkdown Checklist (SWC)

Equipment ID No.: 1DG01S

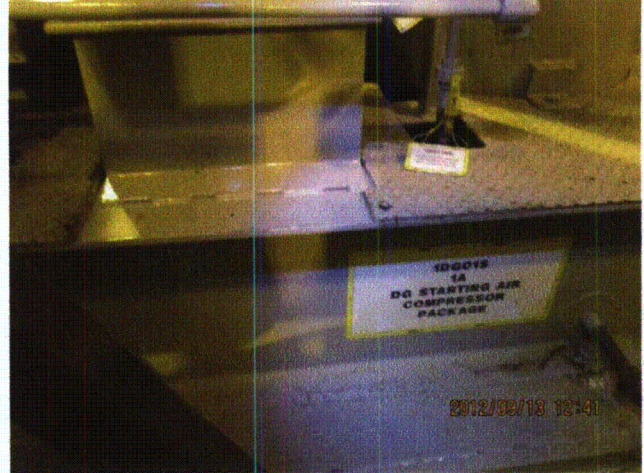
Equipment Class: (12) Air Compressors

Equipment Description: 1A DG STARTING AIR COMPRESSOR PACKAGE

Photos



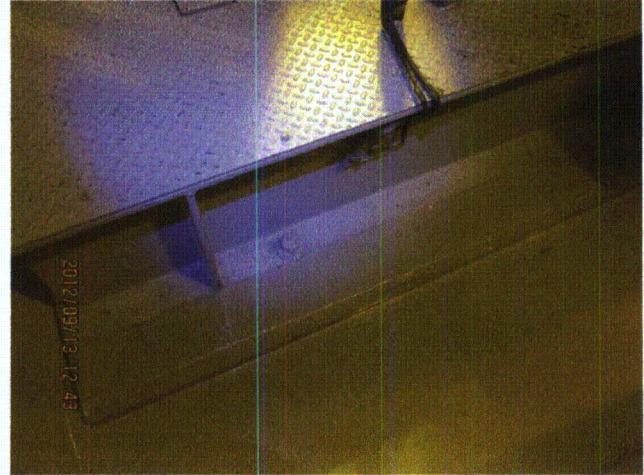
20120913-Lasalle 154



20120913-Lasalle 155



20120913-Lasalle 156



20120913-Lasalle 157

Status: Y N U

Seismic Walkdown Checklist (SWC)

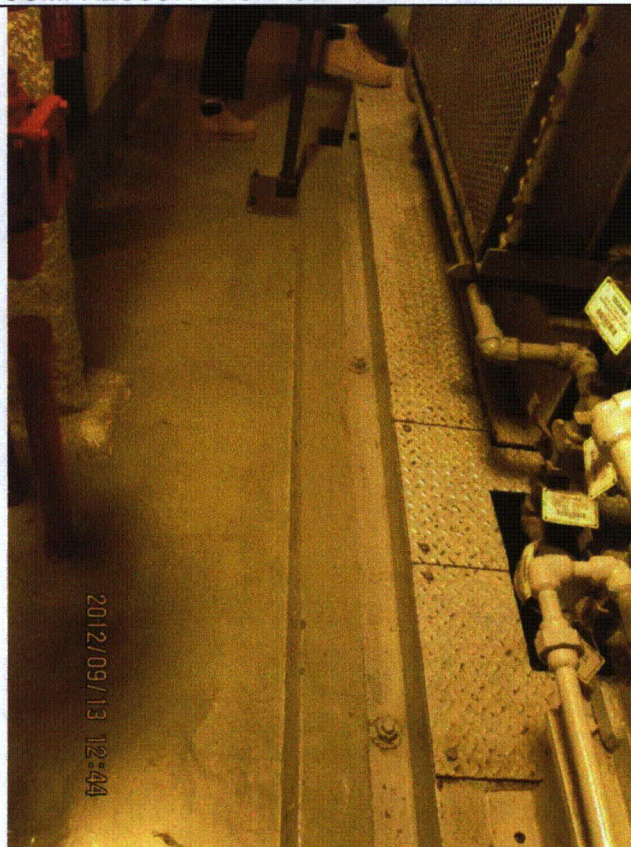
Equipment ID No.: 1DG01S

Equipment Class: (12) Air Compressors

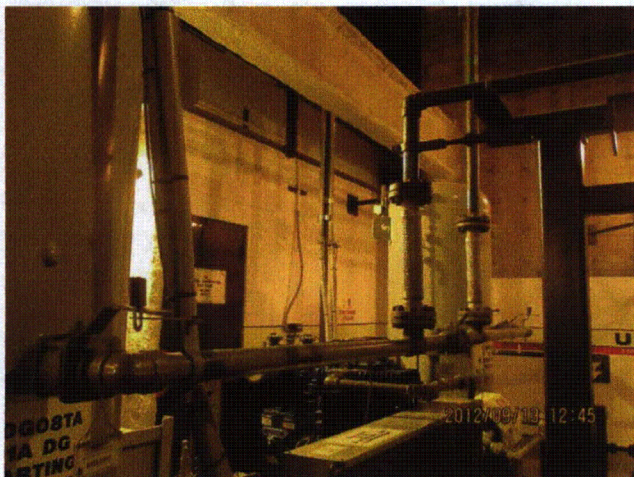
Equipment Description: 1A DG STARTING AIR COMPRESSOR PACKAGE



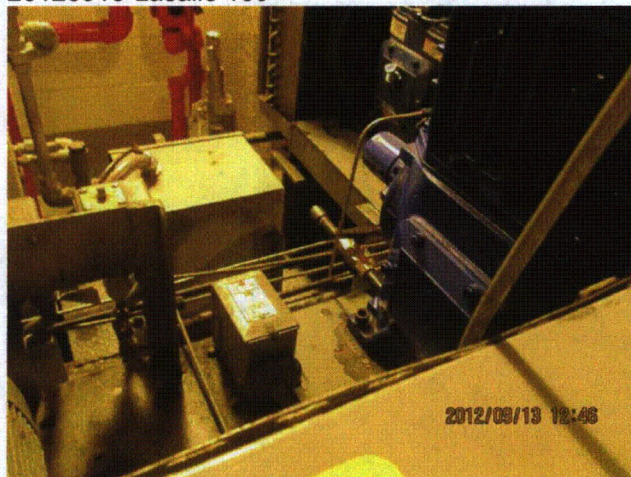
20120913-Lasalle 158



20120913-Lasalle 159



20120913-Lasalle 160



20120913-Lasalle 161

Status: Y N U

Seismic Walkdown Checklist (SWC)

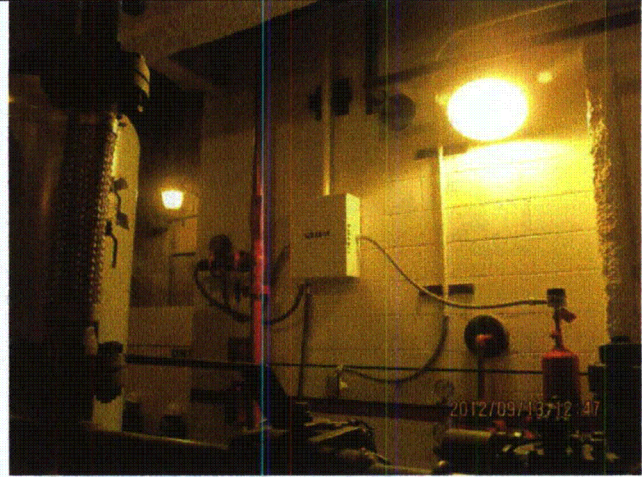
Equipment ID No.: 1DG01S

Equipment Class: (12) Air Compressors

Equipment Description: 1A DG STARTING AIR COMPRESSOR PACKAGE



20120913-Lasalle 162



20120913-Lasalle 163

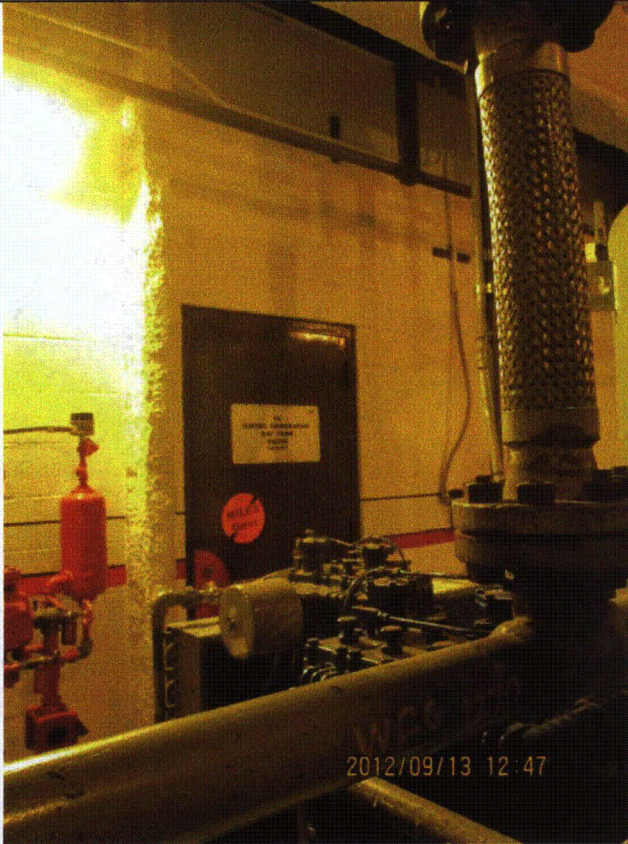
Status: Y N U

Seismic Walkdown Checklist (SWC)

Equipment ID No.: 1DG01S

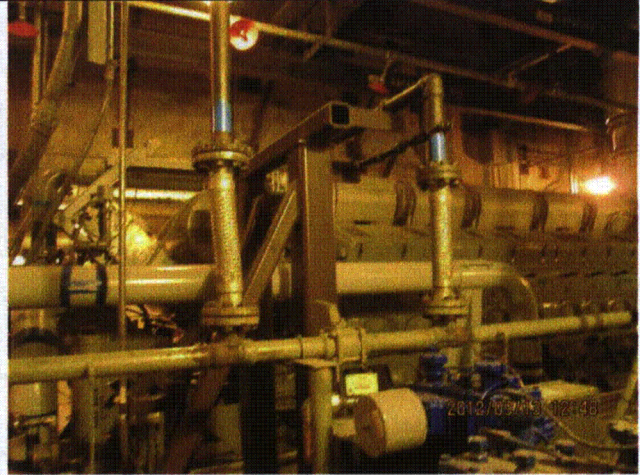
Equipment Class: (12) Air Compressors

Equipment Description: 1A DG STARTING AIR COMPRESSOR PACKAGE



2012/09/13 12:47

20120913-Lasalle 164



2012/09/13 12:48

20120913-Lasalle 165

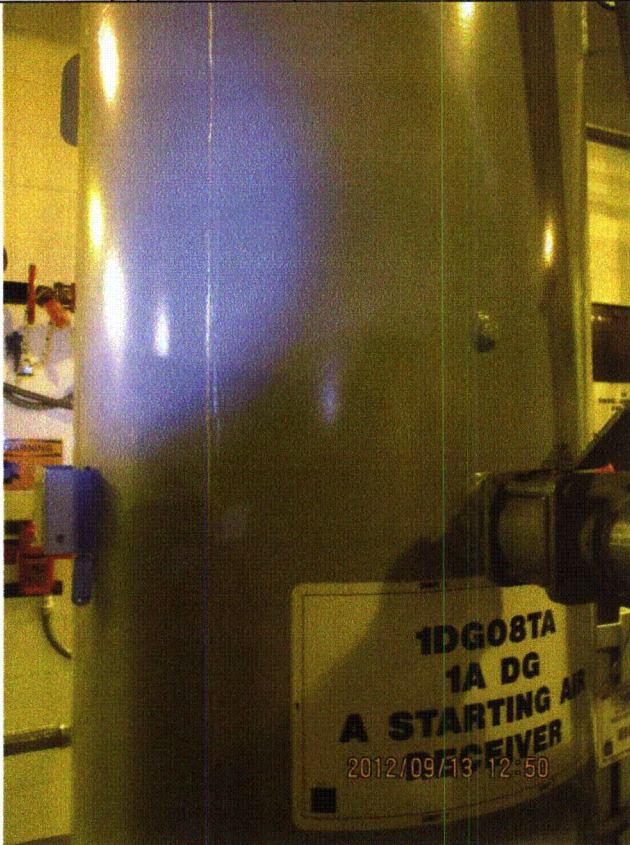
Status: Y N U

Seismic Walkdown Checklist (SWC)

Equipment ID No.: 1DG01S

Equipment Class: (12) Air Compressors

Equipment Description: 1A DG STARTING AIR COMPRESSOR PACKAGE



20120913-Lasalle 166

Status: Y N U

Seismic Walkdown Checklist (SWC)

Equipment ID No.: 1DG02JA

Equipment Class: (20) Instrumentation and Control Panels and Cabinets

Equipment Description: 1A DG A GENERATOR CONTROL PANEL

Project: LaSalle 1 SWEL

Location (Bldg, Elev, Room/Area): DG, 710.00 ft, ALL

Manufacturer/Model:

Instructions for Completing Checklist

This checklist may be used to document the results of the Seismic Walkdown of an item of equipment on the SWEL. The space below each of the following questions may be used to record the results of judgments and findings. Additional space is provided at the end of this checklist for documenting other comments.

Anchorage

1. Is anchorage configuration verification required (i.e., is the item one of the 50% of SWEL items requiring such verification)? Yes

2. Is the anchorage free of bent, broken, missing or loose hardware? Yes

3. Is the anchorage free of corrosion that is more than mild surface oxidation? Yes

4. Is the anchorage free of visible cracks in the concrete near the anchors? Yes
Chip on south edge of concrete pedestal judged to be acceptable.

5. Is the anchorage configuration consistent with plant documentation? (Note: This question only applies if the item is one of the 50% for which an anchorage configuration verification is required.) Yes
Anchorage shown on drawings 1E-1-3433, Sheet 1, Rev. AV and 1E-1-3433, Sheet 2, Rev. T.

6. Based on the above anchorage evaluations, is the anchorage free of potentially adverse seismic conditions? Yes

Status: Y N U

Seismic Walkdown Checklist (SWC)

Equipment ID No.: 1DG02JA

Equipment Class: (20) Instrumentation and Control Panels and Cabinets

Equipment Description: 1A DG A GENERATOR CONTROL PANEL

Interaction Effects

7. Are soft targets free from impact by nearby equipment or structures? Yes
Panel door is sprung at top and bottom. However, all latches are securely engaged. Therefore, there is no seismic interaction concern.
8. Are overhead equipment, distribution systems, ceiling tiles and lighting, and masonry block walls not likely to collapse onto the equipment? Yes
Overhead light fixtures judged to be acceptable.
Adjacent masonry column pilaster (column J-8) with running bond construction judged to be acceptable.
9. Do attached lines have adequate flexibility to avoid damage? Yes
10. Based on the above seismic interaction evaluations, is equipment free of potentially adverse seismic interaction effects? Yes

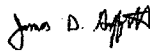
Other Adverse Conditions

11. Have you looked for and found no adverse seismic conditions that could adversely affect the safety functions of the equipment? Yes
All panel doors were opened. No adverse seismic conditions were observed.

Comments

Seismic Walkdown Team: J. Griffith & M. Wodarczyk - 9/13/2012

Evaluated by:

 James Griffith

Date: 10/17/2012


Michael Wodarczyk

10/17/2012

Status: Y N U

Seismic Walkdown Checklist (SWC)

Equipment ID No.: 1DG02JA

Equipment Class: (20) Instrumentation and Control Panels and Cabinets

Equipment Description: 1A DG A GENERATOR CONTROL PANEL

Photos



20120913-Lasalle 135



20120913-Lasalle 136

PRELIM

Seismic Walkdown Checklist (SWC)
Equipment ID No.: 1DG02JA
Equipment Class: (20) Instrumentation and Control Panels and Cabinets
Equipment Description: 1A DG A GENERATOR CONTROL PANEL
Project: Lasalle 1 SWEL
Location (Bldg, Elev, Room/Area): DG, 710.00 ft. ALL
Manufacturer/Model:

Instructions for Completing Checklist
This checklist may be used to document the results of the Seismic Walkdown of any item of equipment (SWEL). The space below each of the following questions may be used to record the results of findings. Additional space is provided at the end of this checklist for documenting other comments.

Anchorage
1. Is anchorage configuration verification required (i.e. is the item a SWEL item requiring such verification)?

2012/09/13 11:08

20120913-Lasalle 137

PA

Seismic Walkdown Checklist (SWC)
Equipment ID No.: 1DG03J
Equipment Class: (20) Instrumentation and Control Panels and Cabinets
Equipment Description: 1A DG ENGINE CONTROL PANEL
Project: Lasalle 1 SWEL
Location (Bldg, Elev, Room/Area): DG, 710.00 ft. ALL
Manufacturer/Model:

Instructions for Completing Checklist
This checklist may be used to document the results of the Seismic Walkdown of any item of equipment (SWEL). The space below each of the following questions may be used to record the results of findings. Additional space is provided at the end of this checklist for documenting other comments.

Anchorage
1. Is anchorage configuration verification required (i.e. is the item a SWEL item requiring such verification)?

2012/09/13 11:08

20120913-Lasalle 138

Status: Y N U

Seismic Walkdown Checklist (SWC)

Equipment ID No.: 1DG02JA

Equipment Class: (20) Instrumentation and Control Panels and Cabinets

Equipment Description: 1A DG A GENERATOR CONTROL PANEL



20120913-Lasalle 139



20120913-Lasalle 140



20120913-Lasalle 141



20120913-Lasalle 142

Status: Y N U

Seismic Walkdown Checklist (SWC)

Equipment ID No.: 1DG02JA

Equipment Class: (20) Instrumentation and Control Panels and Cabinets

Equipment Description: 1A DG A GENERATOR CONTROL PANEL



20120913-Lasalle 143



20120913-Lasalle 144



20120913-Lasalle 145



20120913-Lasalle 146

Status: Y N U

Seismic Walkdown Checklist (SWC)

Equipment ID No.: 1DG02JA

Equipment Class: (20) Instrumentation and Control Panels and Cabinets

Equipment Description: 1A DG A GENERATOR CONTROL PANEL



20120913-Lasalle 147



20120913-Lasalle 148

Status: Y N U

Seismic Walkdown Checklist (SWC)

Equipment ID No.: 1DG02JA

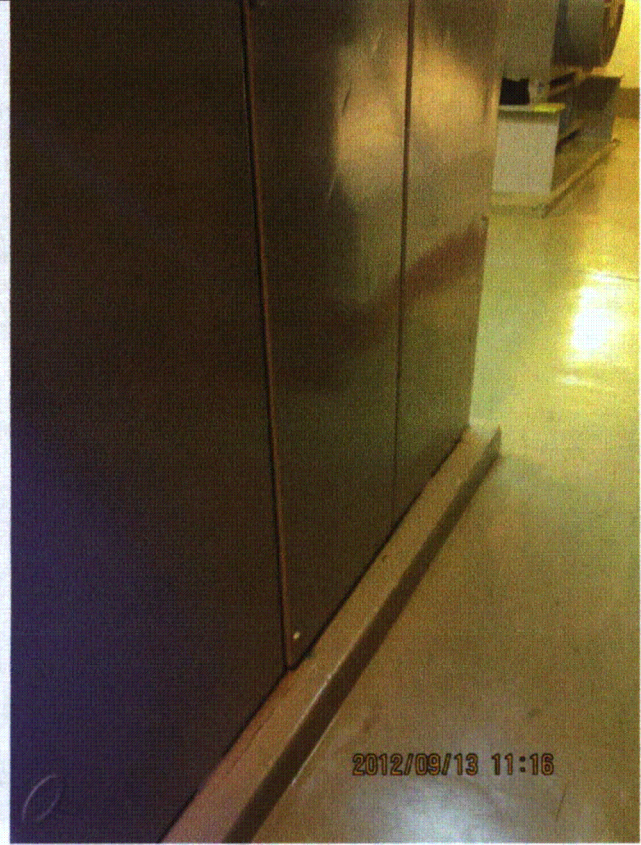
Equipment Class: (20) Instrumentation and Control Panels and Cabinets

Equipment Description: 1A DG A GENERATOR CONTROL PANEL



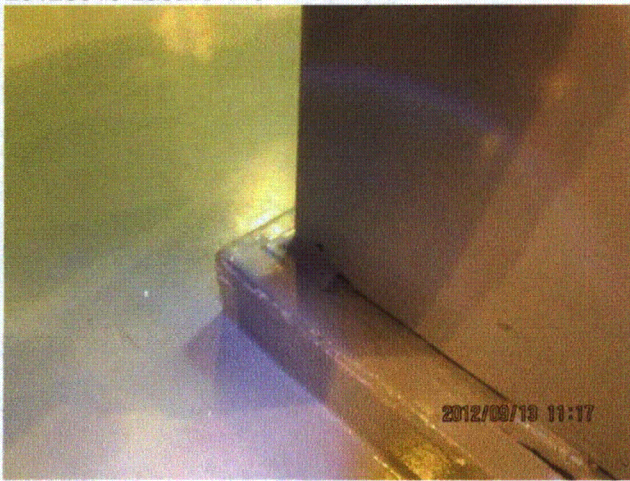
2012/09/13 11:16

20120913-Lasalle 149



2012/09/13 11:16

20120913-Lasalle 150



2012/09/13 11:17

20120913-Lasalle 151

Status: Y N U

Seismic Walkdown Checklist (SWC)

Equipment ID No.: 1DG035

Equipment Class: (8) Motor-Operated and Solenoid-Operated Valves

Equipment Description: LPCS PUMP MOTOR COOLER UPSTRM INLET VALVE

Project: LaSalle 1 SWEL

Location (Bldg, Elev, Room/Area): RB, 694.00 ft, ALL

Manufacturer/Model:

Instructions for Completing Checklist

This checklist may be used to document the results of the Seismic Walkdown of an item of equipment on the SWEL. The space below each of the following questions may be used to record the results of judgments and findings. Additional space is provided at the end of this checklist for documenting other comments.

Anchorage

1. Is anchorage configuration verification required (i.e., is the item one of the 50% of SWEL items requiring such verification)? No

2. Is the anchorage free of bent, broken, missing or loose hardware? Not Applicable

3. Is the anchorage free of corrosion that is more than mild surface oxidation? Not Applicable

4. Is the anchorage free of visible cracks in the concrete near the anchors? Not Applicable

5. Is the anchorage configuration consistent with plant documentation? (Note: This question only applies if the item is one of the 50% for which an anchorage configuration verification is required.) Not Applicable

6. Based on the above anchorage evaluations, is the anchorage free of potentially adverse seismic conditions? Yes

Status: Y N U

Seismic Walkdown Checklist (SWC)

Equipment ID No.: 1DG035

Equipment Class: (8) Motor-Operated and Solenoid-Operated Valves

Equipment Description: LPCS PUMP MOTOR COOLER UPSTRM INLET VALVE

Interaction Effects

7. Are soft targets free from impact by nearby equipment or structures? Yes
8. Are overhead equipment, distribution systems, ceiling tiles and lighting, and masonry block walls not likely to collapse onto the equipment? Yes
9. Do attached lines have adequate flexibility to avoid damage? Yes
10. Based on the above seismic interaction evaluations, is equipment free of potentially adverse seismic interaction effects? Yes

Other Adverse Conditions

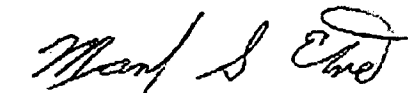
11. Have you looked for and found no adverse seismic conditions that could adversely affect the safety functions of the equipment? Yes

Comments

Seismic Walkdown Team: M. Etre & M. Wodarczyk - 9/17/2012

Item abandoned in place per tag and Operations.

Evaluated by:



Mark Etre

Date: 10/17/2012



Michael Wodarczyk

10/17/2012

Status: Y N U

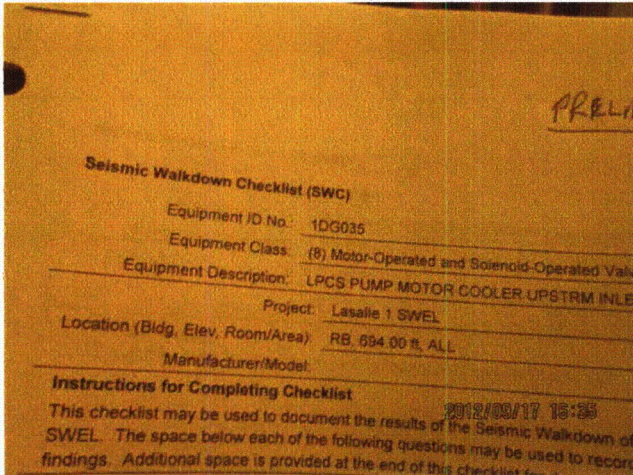
Seismic Walkdown Checklist (SWC)

Equipment ID No.: 1DG035

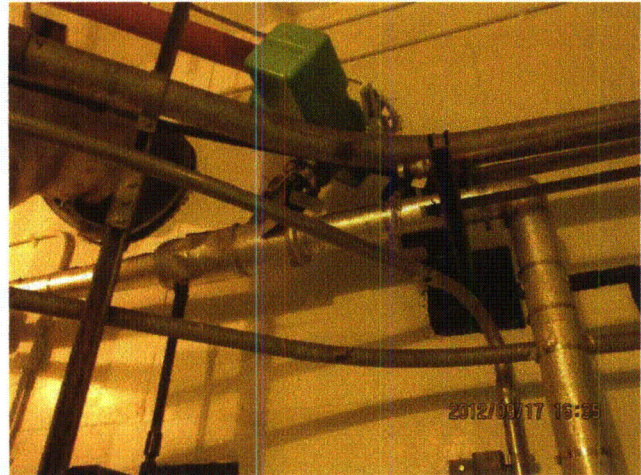
Equipment Class: (8) Motor-Operated and Solenoid-Operated Valves

Equipment Description: LPCS PUMP MOTOR COOLER UPSTRM INLET VALVE

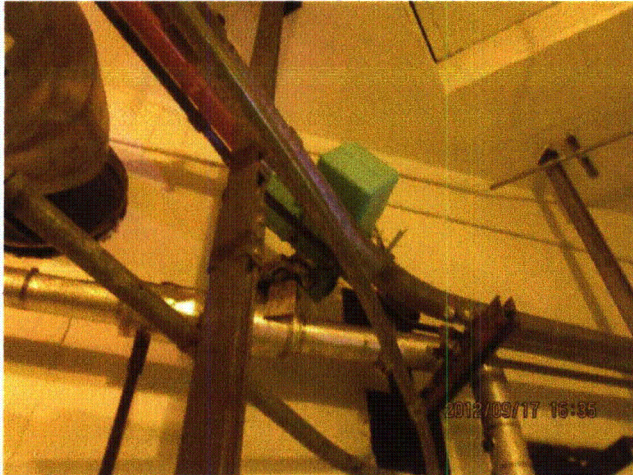
Photos



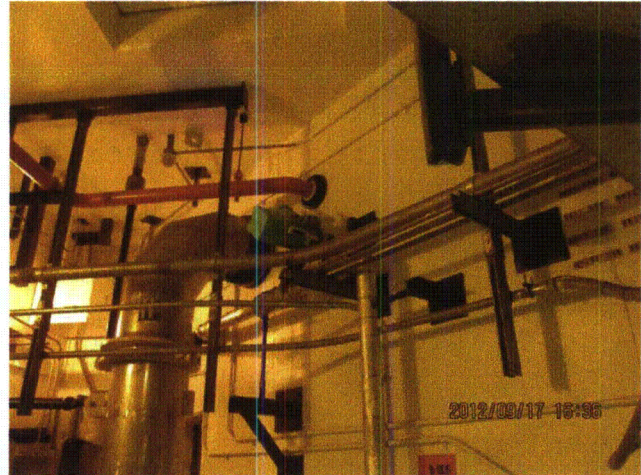
20120917-Lasalle 284



20120917-Lasalle 285



20120917-Lasalle 286



20120917-Lasalle 287

Status: Y N U

Seismic Walkdown Checklist (SWC)

Equipment ID No.: 1DG03J

Equipment Class: (20) Instrumentation and Control Panels and Cabinets

Equipment Description: 1A DG ENGINE CONTROL PANEL

Project: LaSalle 1 SWEL

Location (Bldg, Elev, Room/Area): DG, 710.00 ft, ALL

Manufacturer/Model: _____

Instructions for Completing Checklist

This checklist may be used to document the results of the Seismic Walkdown of an item of equipment on the SWEL. The space below each of the following questions may be used to record the results of judgments and findings. Additional space is provided at the end of this checklist for documenting other comments.

Anchorage

1. Is anchorage configuration verification required (i.e., is the item one of the 50% of SWEL items requiring such verification)? Yes

2. Is the anchorage free of bent, broken, missing or loose hardware? Yes

3. Is the anchorage free of corrosion that is more than mild surface oxidation? Yes

4. Is the anchorage free of visible cracks in the concrete near the anchors? Yes
Chip on south edge of concrete pedestal judged to be acceptable.

5. Is the anchorage configuration consistent with plant documentation? (Note: This question only applies if the item is one of the 50% for which an anchorage configuration verification is required.) Yes
Anchorage shown on drawings 1E-1-3433, Sheet 1, Rev. AV and 1E-1-3433, Sheet 2, Rev. T.

6. Based on the above anchorage evaluations, is the anchorage free of potentially adverse seismic conditions? Yes

Status: Y N U

Seismic Walkdown Checklist (SWC)

Equipment ID No.: 1DG03J

Equipment Class: (20) Instrumentation and Control Panels and Cabinets

Equipment Description: 1A DG ENGINE CONTROL PANEL

Interaction Effects

7. Are soft targets free from impact by nearby equipment or structures? Yes

Panel door is sprung at top and bottom. However, all latches are securely engaged. Therefore, there is no seismic interaction concern.

8. Are overhead equipment, distribution systems, ceiling tiles and lighting, and masonry block walls not likely to collapse onto the equipment? Yes

Overhead light fixtures judged to be acceptable.

Adjacent masonry column pilaster (column J-8) with running bond construction judged to be acceptable.

9. Do attached lines have adequate flexibility to avoid damage? Yes

10. Based on the above seismic interaction evaluations, is equipment free of potentially adverse seismic interaction effects? Yes

Other Adverse Conditions

11. Have you looked for and found no adverse seismic conditions that could adversely affect the safety functions of the equipment? Yes

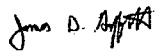
All panel doors were opened. No adverse seismic conditions were observed.

Comments

Seismic Walkdown Team: J. Griffith & M. Wodarczyk - 9/13/2012

For photographs, see the SWC for 1DG02JA.

Evaluated by:



James Griffith

Date: 10/17/2012



Michael Wodarczyk

10/17/2012

Photos

Status: Y N U

Seismic Walkdown Checklist (SWC)

Equipment ID No.: 1DG061A

Equipment Class: (7) Fluid-Operated Valves

Equipment Description: ASSY - VALVE, 1A D/G BANK A STARTER AIR SUPPLY

Project: LaSalle 1 SWEL

Location (Bldg, Elev, Room/Area): DG, 710.00 ft, ALL

Manufacturer/Model:

Instructions for Completing Checklist

This checklist may be used to document the results of the Seismic Walkdown of an item of equipment on the SWEL. The space below each of the following questions may be used to record the results of judgments and findings. Additional space is provided at the end of this checklist for documenting other comments.

Anchorage

1. Is anchorage configuration verification required (i.e., is the item one of the 50% of SWEL items requiring such verification)? No

2. Is the anchorage free of bent, broken, missing or loose hardware? Not Applicable

3. Is the anchorage free of corrosion that is more than mild surface oxidation? Not Applicable

4. Is the anchorage free of visible cracks in the concrete near the anchors? Not Applicable

5. Is the anchorage configuration consistent with plant documentation? (Note: This question only applies if the item is one of the 50% for which an anchorage configuration verification is required.) Not Applicable

6. Based on the above anchorage evaluations, is the anchorage free of potentially adverse seismic conditions? Yes

Status: Y N U

Seismic Walkdown Checklist (SWC)

Equipment ID No.: 1DG061A

Equipment Class: (7) Fluid-Operated Valves

Equipment Description: ASSY - VALVE, 1A D/G BANK A STARTER AIR SUPPLY

Interaction Effects

7. Are soft targets free from impact by nearby equipment or structures? Yes
8. Are overhead equipment, distribution systems, ceiling tiles and lighting, and masonry block walls not likely to collapse onto the equipment? Yes
Overhead light fixtures judged to be acceptable.
Adjacent masonry column pilaster (column J-8) with running bond construction judged to be acceptable.
9. Do attached lines have adequate flexibility to avoid damage? Yes
10. Based on the above seismic interaction evaluations, is equipment free of potentially adverse seismic interaction effects? Yes

Other Adverse Conditions

11. Have you looked for and found no adverse seismic conditions that could adversely affect the safety functions of the equipment? Yes
2 tubes from valve in contact. Tubes have flexibility and are judged to be acceptable.

Comments

Seismic Walkdown Team: J. Griffith & M. Wodarczyk - 9/13/2012

Evaluated by:

 James Griffith

Date: 10/17/2012



Michael Wodarczyk

10/17/2012

Status: Y N U

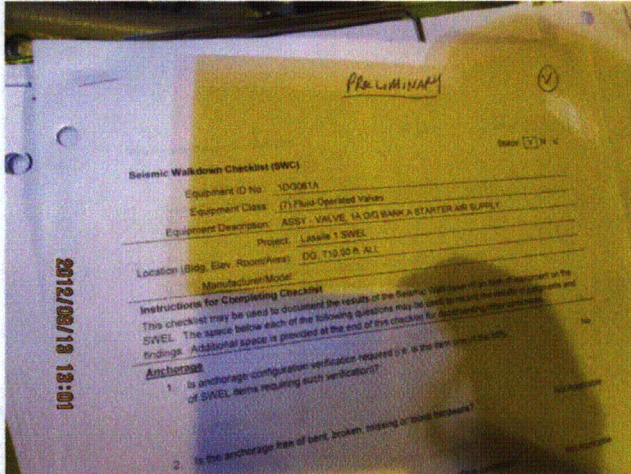
Seismic Walkdown Checklist (SWC)

Equipment ID No.: 1DG061A

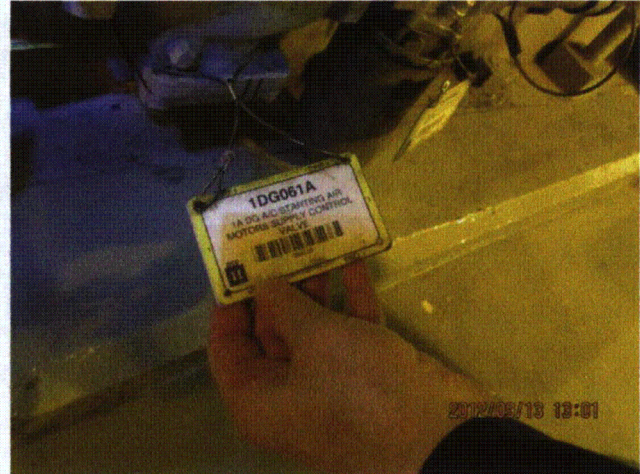
Equipment Class: (7) Fluid-Operated Valves

Equipment Description: ASSY - VALVE, 1A D/G BANK A STARTER AIR SUPPLY

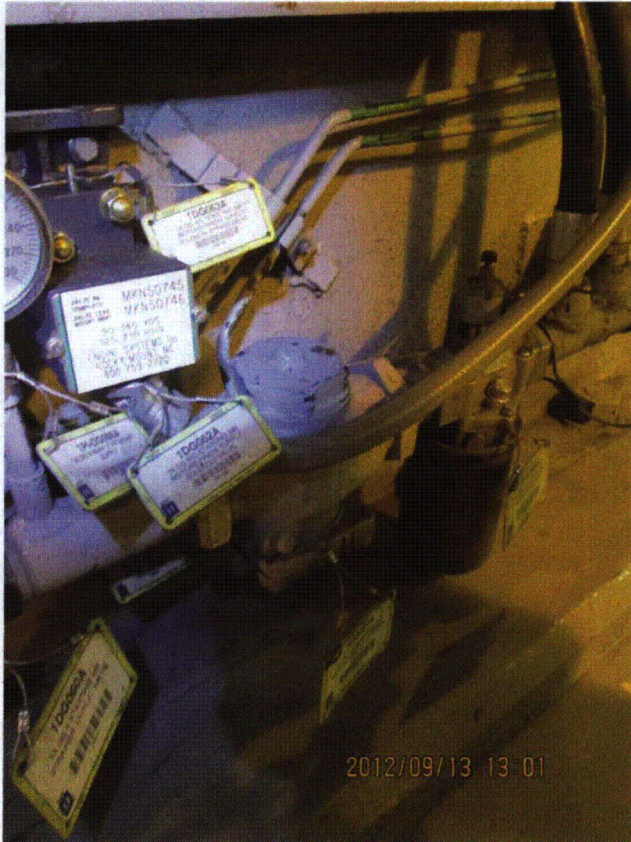
Photos



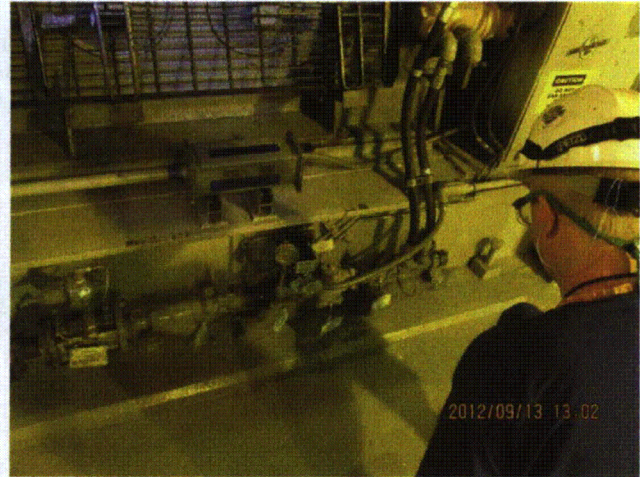
20120913-Lasalle 174



20120913-Lasalle 175



20120913-Lasalle 176



20120913-Lasalle 177

Status: Y N U

Seismic Walkdown Checklist (SWC)

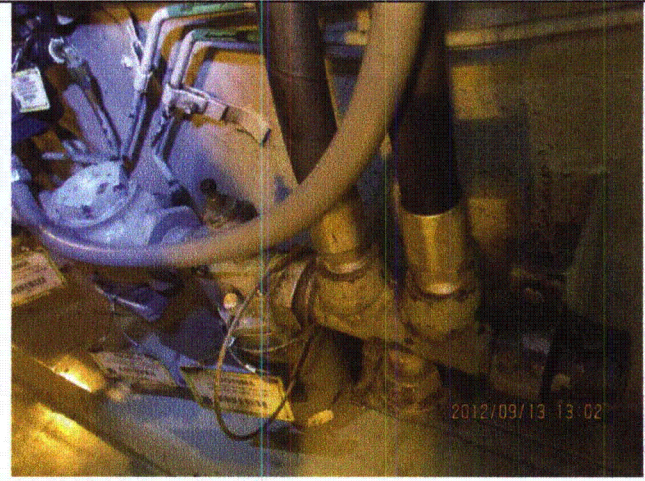
Equipment ID No.: 1DG061A

Equipment Class: (7) Fluid-Operated Valves

Equipment Description: ASSY - VALVE, 1A D/G BANK A STARTER AIR SUPPLY



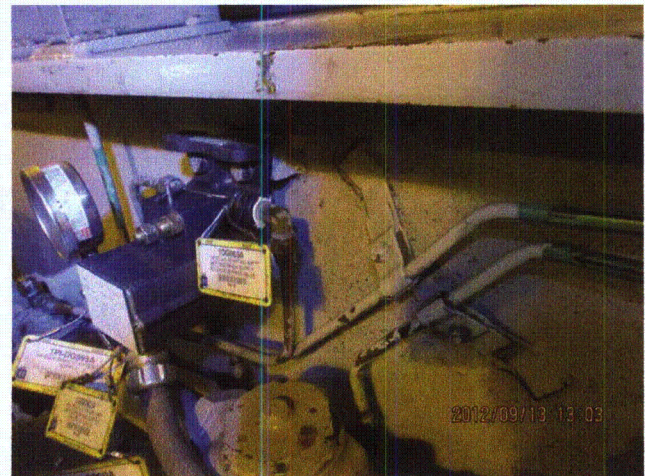
20120913-Lasalle 178



20120913-Lasalle 179



20120913-Lasalle 180



20120913-Lasalle 181

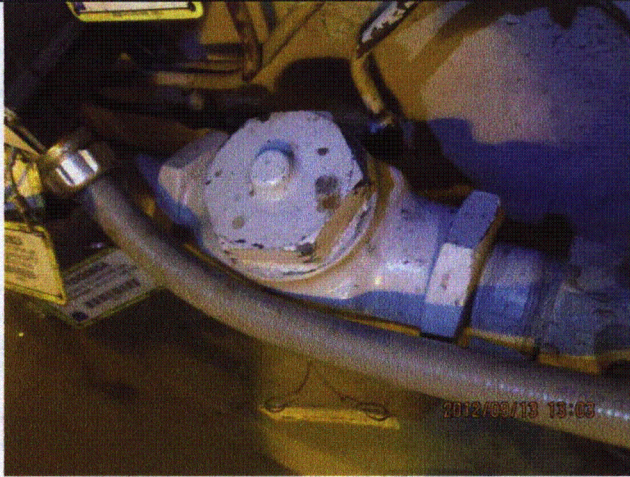
Status: Y N U

Seismic Walkdown Checklist (SWC)

Equipment ID No.: 1DG061A

Equipment Class: (7) Fluid-Operated Valves

Equipment Description: ASSY - VALVE, 1A D/G BANK A STARTER AIR SUPPLY



20120913-Lasalle 182

Status: Y N U

Seismic Walkdown Checklist (SWC)

Equipment ID No.: 1DO005T

Equipment Class: (21) Tanks and Heat Exchangers

Equipment Description: DG 1A DAY TK

Project: LaSalle 1 SWEL

Location (Bldg, Elev, Room/Area): DG, 710.00 ft, ALL

Manufacturer/Model:

Instructions for Completing Checklist

This checklist may be used to document the results of the Seismic Walkdown of an item of equipment on the SWEL. The space below each of the following questions may be used to record the results of judgments and findings. Additional space is provided at the end of this checklist for documenting other comments.

Anchorage

1. Is anchorage configuration verification required (i.e., is the item one of the 50% of SWEL items requiring such verification)? Yes

2. Is the anchorage free of bent, broken, missing or loose hardware? Yes

3. Is the anchorage free of corrosion that is more than mild surface oxidation? Yes

4. Is the anchorage free of visible cracks in the concrete near the anchors? Yes

5. Is the anchorage configuration consistent with plant documentation? (Note: This question only applies if the item is one of the 50% for which an anchorage configuration verification is required.) Yes
Anchorage shown on drawings M-1568, Rev. M and M-1591, Sheet 3, Rev. U.

6. Based on the above anchorage evaluations, is the anchorage free of potentially adverse seismic conditions? Yes

Status: Y N U

Seismic Walkdown Checklist (SWC)

Equipment ID No.: 1DO005T

Equipment Class: (21) Tanks and Heat Exchangers

Equipment Description: DG 1A DAY TK

Interaction Effects



7. Are soft targets free from impact by nearby equipment or structures? Yes
8. Are overhead equipment, distribution systems, ceiling tiles and lighting, and masonry block walls not likely to collapse onto the equipment? Yes
Overhead light fixtures judged to be acceptable.
Day tank room masonry walls are safety-related per drawing A-276, Rev. S.
9. Do attached lines have adequate flexibility to avoid damage? Yes
10. Based on the above seismic interaction evaluations, is equipment free of potentially adverse seismic interaction effects? Yes

Other Adverse Conditions

11. Have you looked for and found no adverse seismic conditions that could adversely affect the safety functions of the equipment? Yes

Comments

Seismic Walkdown Team: J. Griffith & M. Wodarczyk - 9/13/2012

Evaluated by:  James Griffith Date: 10/17/2012
 Michael Wodarczyk 10/17/2012

Status: Y N U

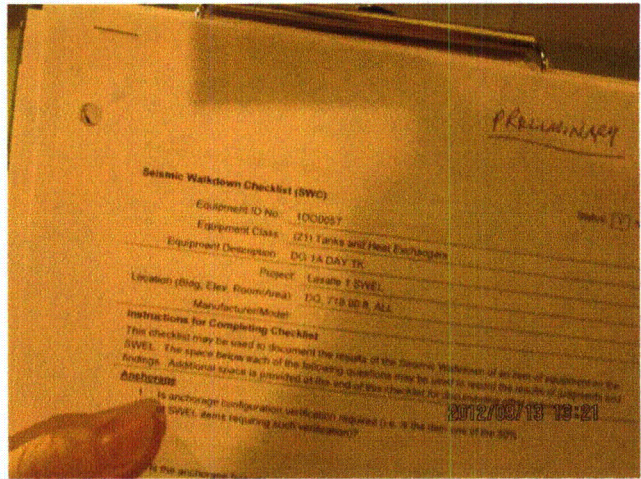
Seismic Walkdown Checklist (SWC)

Equipment ID No.: 1DO005T

Equipment Class: (21) Tanks and Heat Exchangers

Equipment Description: DG 1A DAY TK

Photos



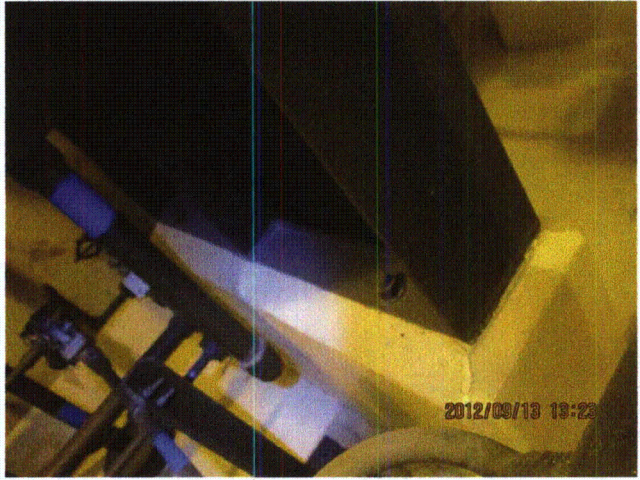
20120913-Lasalle 196



20120913-Lasalle 197



20120913-Lasalle 198



20120913-Lasalle 199

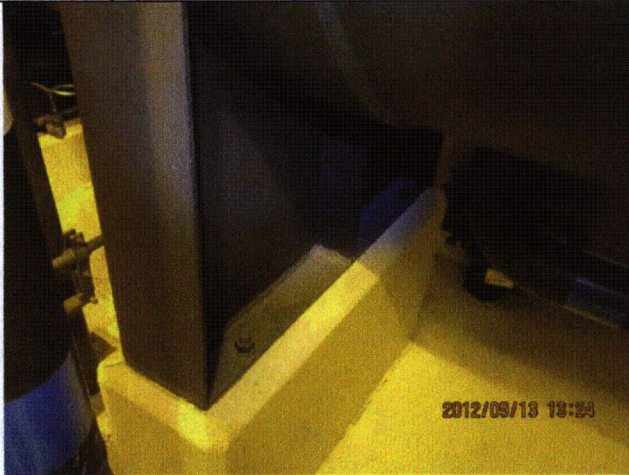
Status: Y N U

Seismic Walkdown Checklist (SWC)

Equipment ID No.: 1DO005T

Equipment Class: (21) Tanks and Heat Exchangers

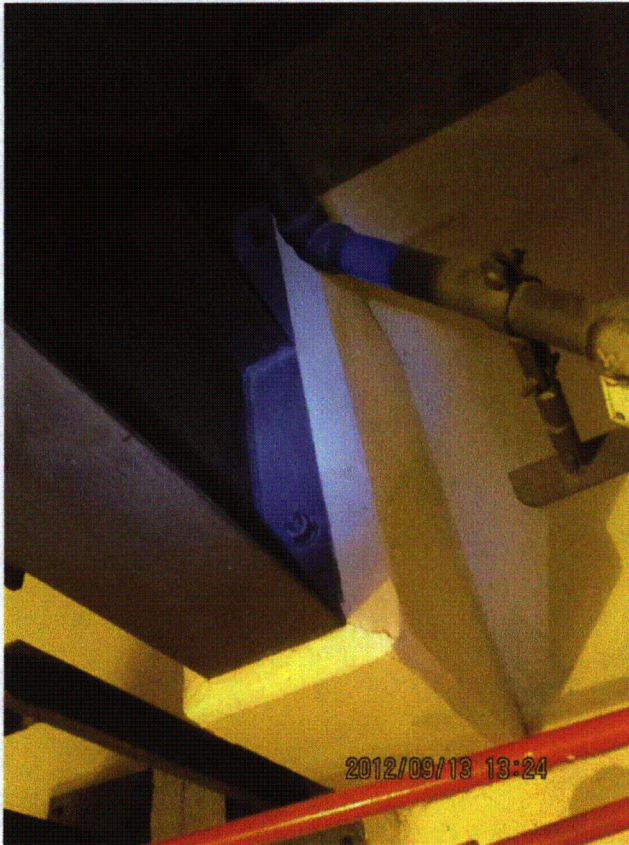
Equipment Description: DG 1A DAY TK



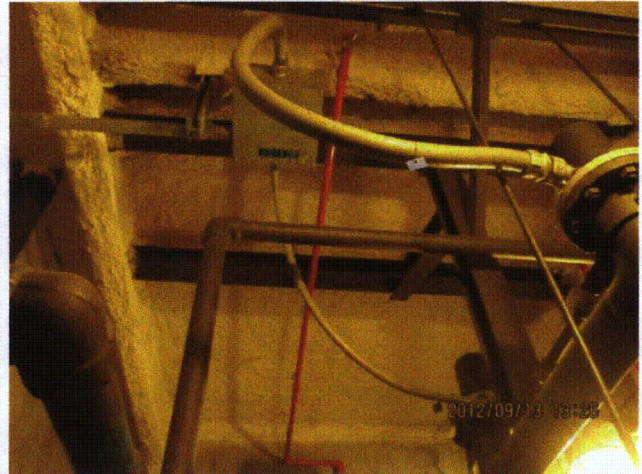
20120913-Lasalle 200



20120913-Lasalle 201



20120913-Lasalle 202



20120913-Lasalle 203