

Status: Y N U

Seismic Walkdown Checklist (SWC)

Equipment ID No.: 2VQ035

Equipment Class: (8) Motor-Operated and Solenoid-Operated Valves

Equipment Description: DW VENT/PURGE OTLT UPSTRM ISOL BYP

Project: LaSalle 2 SWEL

Location (Bldg, Elev, Room/Area): RB, 786.00 ft, ALL

Manufacturer/Model:

Instructions for Completing Checklist

This checklist may be used to document the results of the Seismic Walkdown of an item of equipment on the SWEL. The space below each of the following questions may be used to record the results of judgments and findings. Additional space is provided at the end of this checklist for documenting other comments.

Anchorage

1. Is anchorage configuration verification required (i.e., is the item one of the 50% of SWEL items requiring such verification)? No

2. Is the anchorage free of bent, broken, missing or loose hardware? Not Applicable

3. Is the anchorage free of corrosion that is more than mild surface oxidation? Not Applicable

4. Is the anchorage free of visible cracks in the concrete near the anchors? Not Applicable

5. Is the anchorage configuration consistent with plant documentation? (Note: This question only applies if the item is one of the 50% for which an anchorage configuration verification is required.) Not Applicable

6. Based on the above anchorage evaluations, is the anchorage free of potentially adverse seismic conditions? Yes

Status: Y N U

Seismic Walkdown Checklist (SWC)

Equipment ID No.: 2VQ035

Equipment Class: (8) Motor-Operated and Solenoid-Operated Valves

Equipment Description: DW VENT/PURGE OTLT UPSTRM ISOL BYP

Interaction Effects

7. Are soft targets free from impact by nearby equipment or structures? Yes

Clearance between valve and adjacent ladder fall-protection cage judged to be acceptable.

8. Are overhead equipment, distribution systems, ceiling tiles and lighting, and masonry block walls not likely to collapse onto the equipment? Yes

Overhead light fixtures judged to be acceptable.

9. Do attached lines have adequate flexibility to avoid damage? Yes

10. Based on the above seismic interaction evaluations, is equipment free of potentially adverse seismic interaction effects? Yes

Other Adverse Conditions

11. Have you looked for and found no adverse seismic conditions that could adversely affect the safety functions of the equipment? Yes

Comments

Seismic Walkdown Team: D. Carter & J. Griffith - 8/28/2012

EPN tag not visible. Location verified by Project Management.

Evaluated by:  David Carter Date: 10/17/2012

 James Griffith 10/17/2012

Status: Y N U

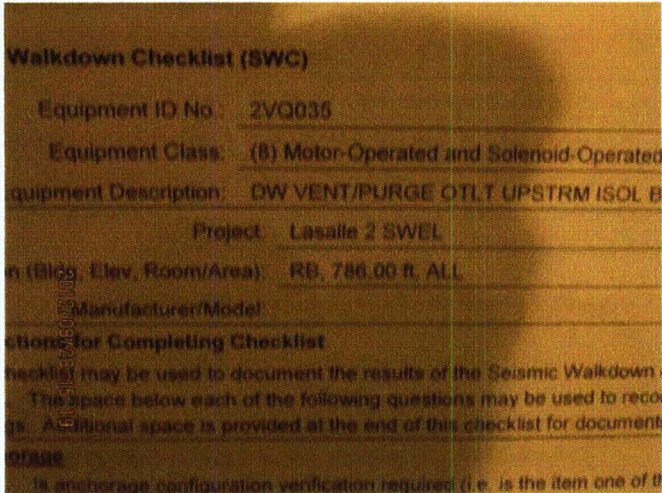
Seismic Walkdown Checklist (SWC)

Equipment ID No.: 2VQ035

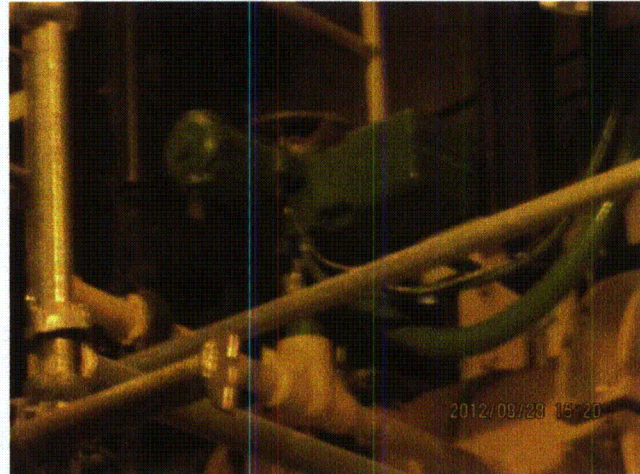
Equipment Class: (8) Motor-Operated and Solenoid-Operated Valves

Equipment Description: DW VENT/PURGE OTLT UPSTRM ISOL BYP

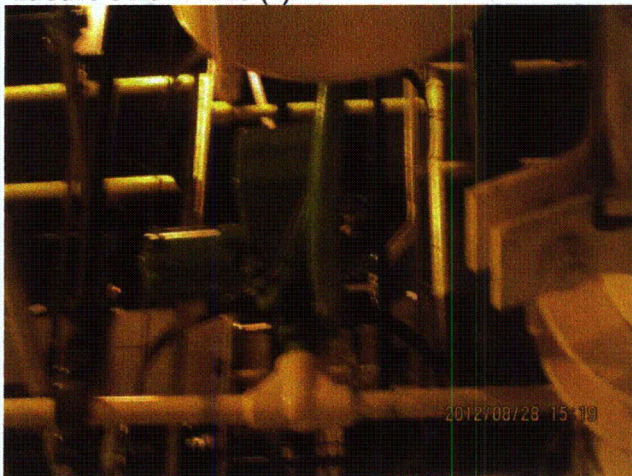
Photos



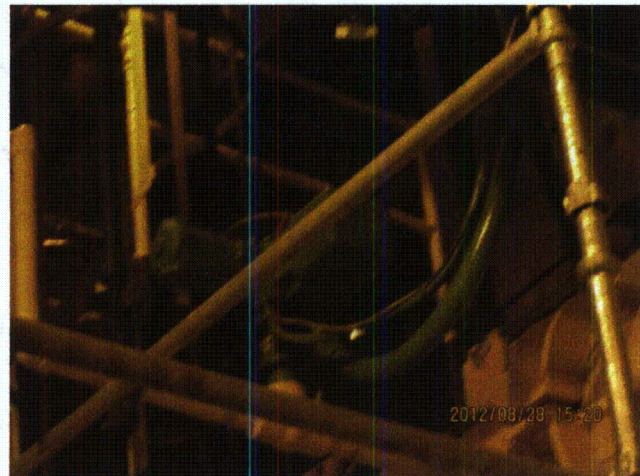
LaSalle 8-28-12 220 (1)



LaSalle 8-28-12 220 (5)



LaSalle 8-28-12 220 (3)



LaSalle 8-28-12 220 (4)

Status: Y N U

Seismic Walkdown Checklist (SWC)

Equipment ID No.: 2VQ036

Equipment Class: (7) Fluid-Operated Valves

Equipment Description: DW VENT/PURGE OTLT DWNST ISOL

Project: LaSalle 2 SWEL

Location (Bldg, Elev,

Room/Area): RB, 786.00 ft, ALL

Manufacturer/Model:

Instructions for Completing Checklist

This checklist may be used to document the results of the Seismic Walkdown of an item of equipment on the SWEL. The space below each of the following questions may be used to record the results of judgments and findings. Additional space is provided at the end of this checklist for documenting other comments.

Anchorage

1. Is anchorage configuration verification required (i.e., is the item one of the 50% of SWEL items requiring such verification)? No

2. Is the anchorage free of bent, broken, missing or loose hardware? Not Applicable

3. Is the anchorage free of corrosion that is more than mild surface oxidation? Not Applicable

4. Is the anchorage free of visible cracks in the concrete near the anchors? Not Applicable

5. Is the anchorage configuration consistent with plant documentation? (Note: This question only applies if the item is one of the 50% for which an anchorage configuration verification is required.) Not Applicable

6. Based on the above anchorage evaluations, is the anchorage free of potentially adverse seismic conditions? Yes

Status: Y N U

Seismic Walkdown Checklist (SWC)

Equipment ID No.: 2VQ036

Equipment Class: (7) Fluid-Operated Valves

Equipment Description: DW VENT/PURGE OTLT DWNST ISOL

Interaction Effects

7. Are soft targets free from impact by nearby equipment or structures? Yes
8. Are overhead equipment, distribution systems, ceiling tiles and lighting, and masonry block walls not likely to collapse onto the equipment? Yes
9. Do attached lines have adequate flexibility to avoid damage? Yes
10. Based on the above seismic interaction evaluations, is equipment free of potentially adverse seismic interaction effects? Yes

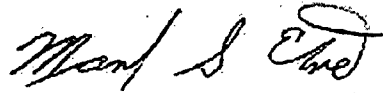
Other Adverse Conditions

11. Have you looked for and found no adverse seismic conditions that could adversely affect the safety functions of the equipment? Yes

Comments

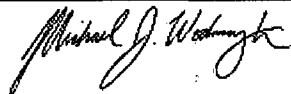
Seismic Walkdown Team: M. Etre & M. Wodarczyk - 9/17/2012

Evaluated by:



Mark Etre

Date: 10/19/2012



Michael Wodarczyk

10/19/2012

Status: Y N U

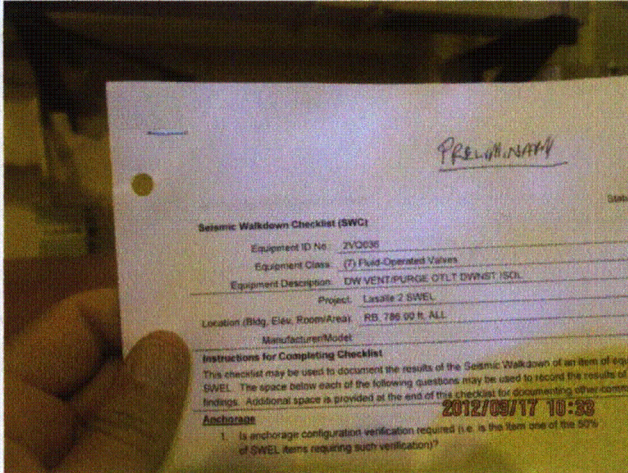
Seismic Walkdown Checklist (SWC)

Equipment ID No.: 2VQ036

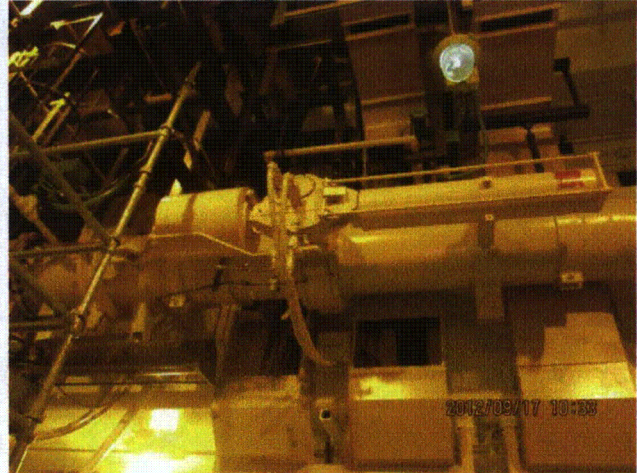
Equipment Class: (7) Fluid-Operated Valves

Equipment Description: DW VENT/PURGE OTLT DWNST ISOL

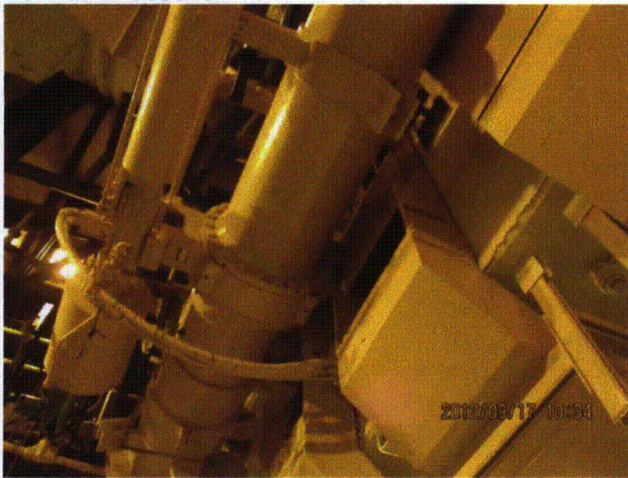
Photos



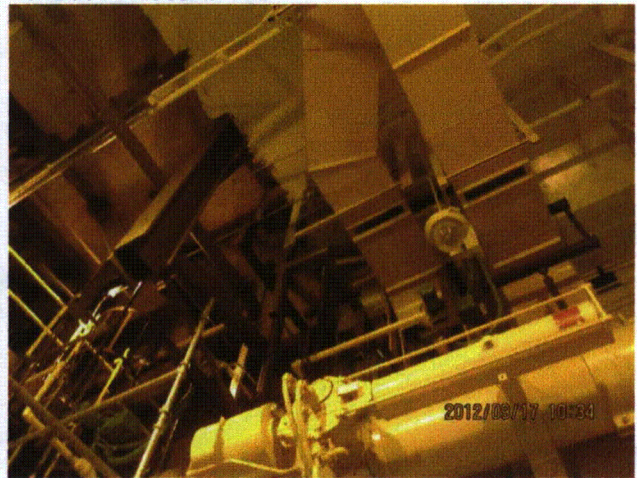
20120917-Lasalle 119



20120917-Lasalle 120



20120917-Lasalle 122



20120917-Lasalle 123

Status: Y N U

Seismic Walkdown Checklist (SWC)

Equipment ID No.: 2VQ040

Equipment Class: (7) Fluid-Operated Valves

Equipment Description: SUP POOL VENT/PURGE OTLT DWNST ISOL

Project: LaSalle 2 SWEL

Location (Bldg, Elev,

Room/Area): RB, 710.00 ft, ALL

Manufacturer/Model:

Instructions for Completing Checklist

This checklist may be used to document the results of the Seismic Walkdown of an item of equipment on the SWEL. The space below each of the following questions may be used to record the results of judgments and findings. Additional space is provided at the end of this checklist for documenting other comments.

Anchorage

1. Is anchorage configuration verification required (i.e., is the item one of the 50% of SWEL items requiring such verification)? No

2. Is the anchorage free of bent, broken, missing or loose hardware? Not Applicable

3. Is the anchorage free of corrosion that is more than mild surface oxidation? Not Applicable

4. Is the anchorage free of visible cracks in the concrete near the anchors? Not Applicable

5. Is the anchorage configuration consistent with plant documentation? (Note: This question only applies if the item is one of the 50% for which an anchorage configuration verification is required.) Not Applicable

6. Based on the above anchorage evaluations, is the anchorage free of potentially adverse seismic conditions? Yes

Status: Y N U

Seismic Walkdown Checklist (SWC)

Equipment ID No.: 2VQ040

Equipment Class: (7) Fluid-Operated Valves

Equipment Description: SUP POOL VENT/PURGE OTLT DWNST ISOL

Interaction Effects

7. Are soft targets free from impact by nearby equipment or structures? Yes
8. Are overhead equipment, distribution systems, ceiling tiles and lighting, and masonry block walls not likely to collapse onto the equipment? Yes
Valve mounted high overhead; few overhead items can impact valve. Judged to be acceptable.
9. Do attached lines have adequate flexibility to avoid damage? Yes
10. Based on the above seismic interaction evaluations, is equipment free of potentially adverse seismic interaction effects? Yes


Other Adverse Conditions


11. Have you looked for and found no adverse seismic conditions that could adversely affect the safety functions of the equipment? Yes

Comments

Seismic Walkdown Team: M. Etre & M. Wodarczyk - 9/17/2012

EPN tag obscured. Correct item verified by Operations.

Evaluated by:  Mark Etre Date: 10/19/2012

 Michael Wodarczyk 10/19/2012

Status: Y N U

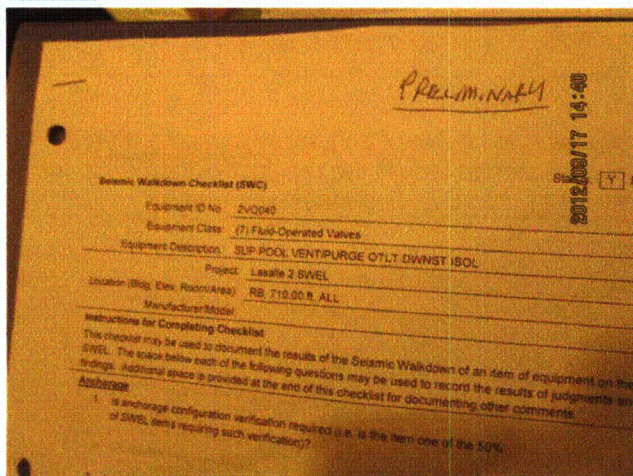
Seismic Walkdown Checklist (SWC)

Equipment ID No.: 2VQ040

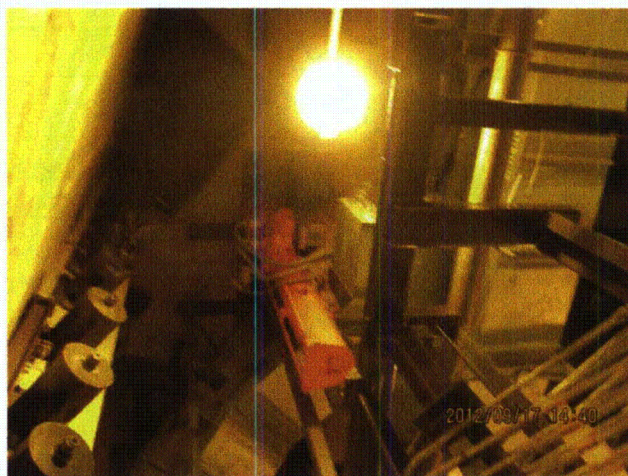
Equipment Class: (7) Fluid-Operated Valves

Equipment Description: SUP POOL VENT/PURGE OTLT DWNST ISOL

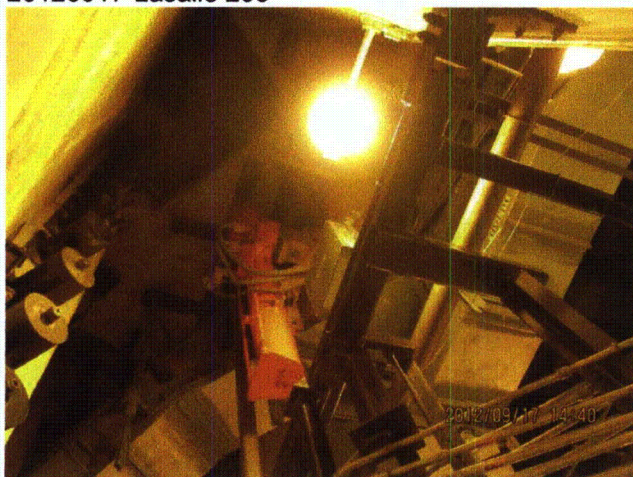
Photos



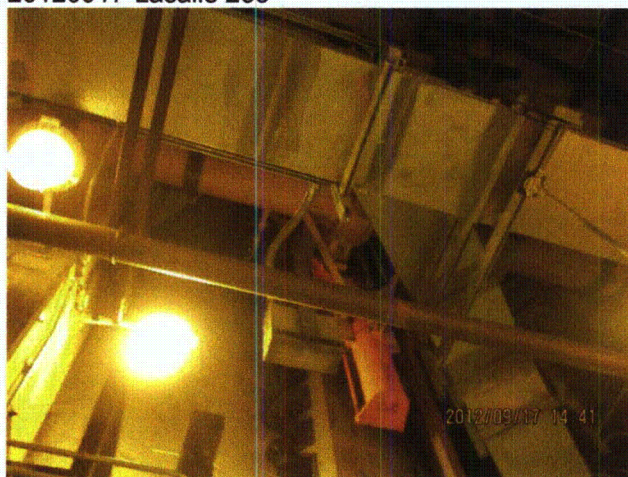
20120917-Lasalle 235



20120917-Lasalle 236



20120917-Lasalle 237



20120917-Lasalle 238

Status: Y N U

Seismic Walkdown Checklist (SWC)

Equipment ID No.: 2VX04C

Equipment Class: (9) Fans

Equipment Description: FAN, ESS SWGR DIV-2 VENT SUPPLY

Project: LaSalle 2 SWEL

Location (Bldg, Elev, Room/Area): AB, 731.00 ft, ALL

Manufacturer/Model:

Instructions for Completing Checklist

This checklist may be used to document the results of the Seismic Walkdown of an item of equipment on the SWEL. The space below each of the following questions may be used to record the results of judgments and findings. Additional space is provided at the end of this checklist for documenting other comments.

Anchorage

1. Is anchorage configuration verification required (i.e., is the item one of the 50% of SWEL items requiring such verification)? Yes

2. Is the anchorage free of bent, broken, missing or loose hardware? Yes

3. Is the anchorage free of corrosion that is more than mild surface oxidation? Yes

4. Is the anchorage free of visible cracks in the concrete near the anchors? Yes

5. Is the anchorage configuration consistent with plant documentation? (Note: This question only applies if the item is one of the 50% for which an anchorage configuration verification is required.) Yes
Anchorage shown on drawings M-1567, Rev. D and M-1592, Sheet 19, Rev. E.

6. Based on the above anchorage evaluations, is the anchorage free of potentially adverse seismic conditions? Yes

Status: Y N U

Seismic Walkdown Checklist (SWC)

Equipment ID No.: 2VX04C

Equipment Class: (9) Fans

Equipment Description: FAN, ESS SWGR DIV-2 VENT SUPPLY

Interaction Effects

7. Are soft targets free from impact by nearby equipment or structures? Yes
8. Are overhead equipment, distribution systems, ceiling tiles and lighting, and masonry block walls not likely to collapse onto the equipment? Yes
Overhead light fixtures judged to be acceptable.
Adjacent masonry column pilaster with running bond construction judged to be acceptable.
9. Do attached lines have adequate flexibility to avoid damage? Yes
10. Based on the above seismic interaction evaluations, is equipment free of potentially adverse seismic interaction effects? Yes

Other Adverse Conditions

11. Have you looked for and found no adverse seismic conditions that could adversely affect the safety functions of the equipment? Yes

Comments

Seismic Walkdown Team: D. Carter & J. Griffith - 8/27/2012

Evaluated by: *David Carter* David Carter Date: 10/17/2012
James D. Griffith James Griffith 10/17/2012

Status: Y N U

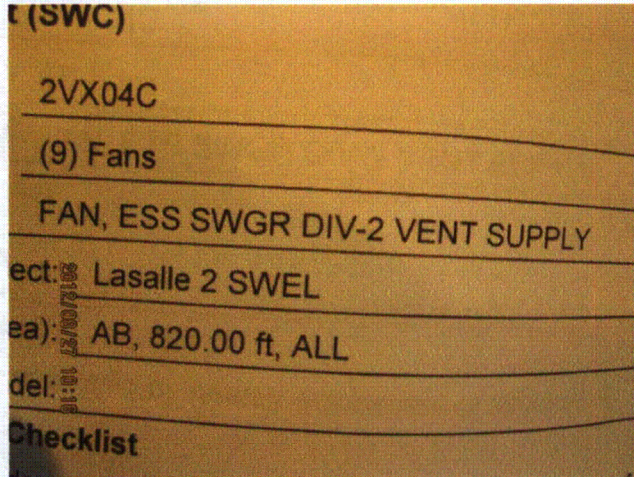
Seismic Walkdown Checklist (SWC)

Equipment ID No.: 2VX04C

Equipment Class: (9) Fans

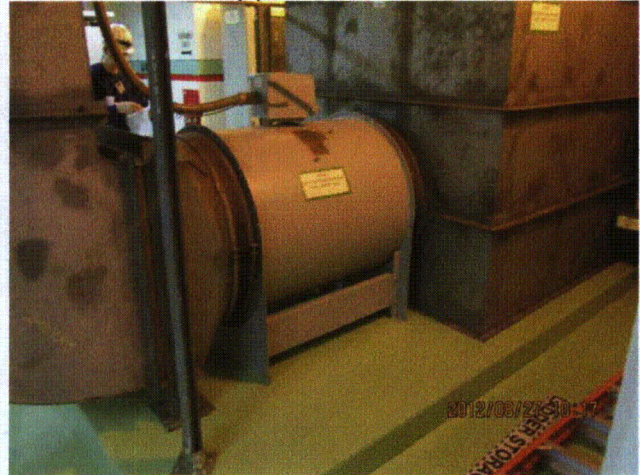
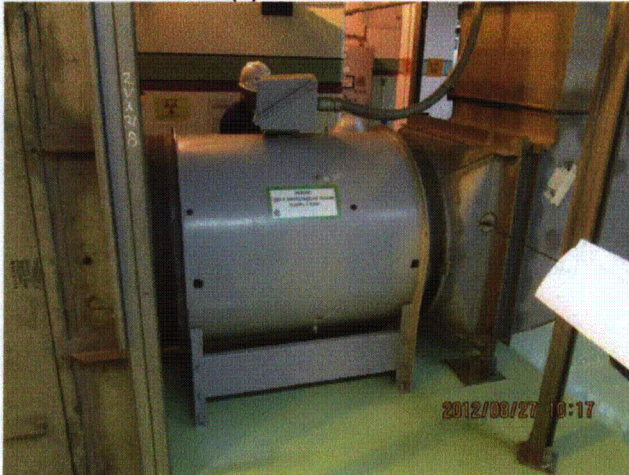
Equipment Description: FAN, ESS SWGR DIV-2 VENT SUPPLY

Photos



LaSalle Unit 2 018 (1)

LaSalle Unit 2 018 (2)



LaSalle Unit 2 018 (3)

LaSalle Unit 2 018 (4)

Status: Y N U

Seismic Walkdown Checklist (SWC)

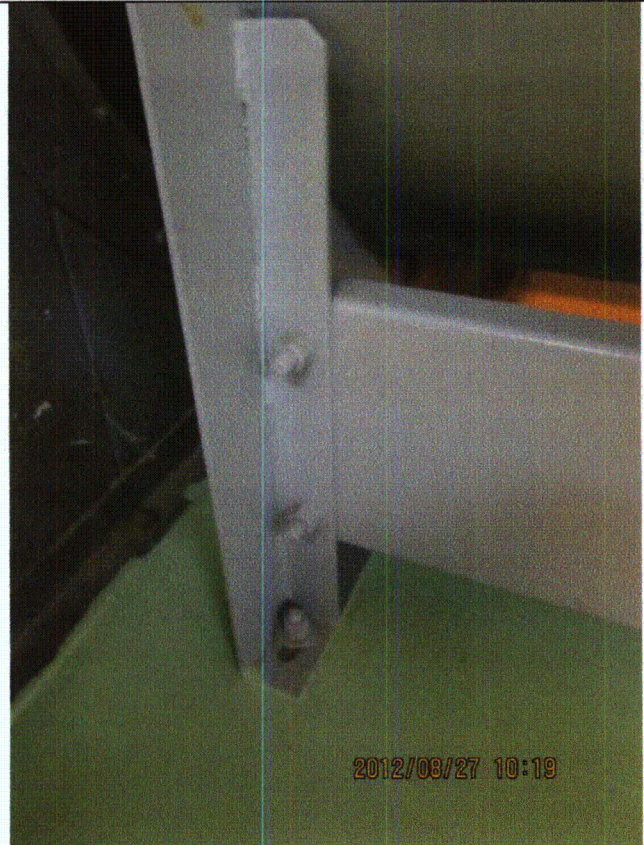
Equipment ID No.: 2VX04C

Equipment Class: (9) Fans

Equipment Description: FAN, ESS SWGR DIV-2 VENT SUPPLY



LaSalle Unit 2 018 (5)



LaSalle Unit 2 018 (6)

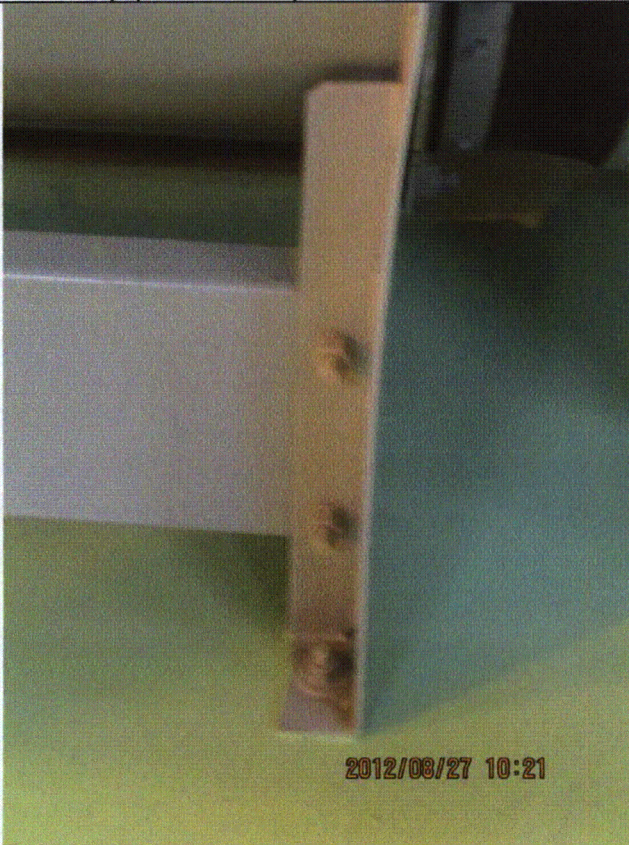
Status: Y N U

Seismic Walkdown Checklist (SWC)

Equipment ID No.: 2VX04C

Equipment Class: (9) Fans

Equipment Description: FAN, ESS SWGR DIV-2 VENT SUPPLY



LaSalle Unit 2 018 (7)

Status: Y N U

Seismic Walkdown Checklist (SWC)

Equipment ID No.: 2VX05C

Equipment Class: (9) Fans

Equipment Description: FAN, ESS SWGR DIV-2 BATT ROOM EXH

Project: LaSalle 2 SWEL

Location (Bldg, Elev, Room/Area): AB, 731.00 ft, ALL

Manufacturer/Model:

Instructions for Completing Checklist

This checklist may be used to document the results of the Seismic Walkdown of an item of equipment on the SWEL. The space below each of the following questions may be used to record the results of judgments and findings. Additional space is provided at the end of this checklist for documenting other comments.

Anchorage

1. Is anchorage configuration verification required (i.e., is the item one of the 50% of SWEL items requiring such verification)? No
Fan has 4 anchors.

2. Is the anchorage free of bent, broken, missing or loose hardware? Yes

3. Is the anchorage free of corrosion that is more than mild surface oxidation? Yes

4. Is the anchorage free of visible cracks in the concrete near the anchors? Yes

5. Is the anchorage configuration consistent with plant documentation? (Note: This question only applies if the item is one of the 50% for which an anchorage configuration verification is required.) Not Applicable

6. Based on the above anchorage evaluations, is the anchorage free of potentially adverse seismic conditions? Yes

Status: Y N U

Seismic Walkdown Checklist (SWC)

Equipment ID No.: 2VX05C

Equipment Class: (9) Fans

Equipment Description: FAN, ESS SWGR DIV-2 BATT ROOM EXH

Interaction Effects

7. Are soft targets free from impact by nearby equipment or structures? Yes
8. Are overhead equipment, distribution systems, ceiling tiles and lighting, and masonry block walls not likely to collapse onto the equipment? Yes
Adjacent masonry walls are safety-related per drawing A-187, Rev. AR.
9. Do attached lines have adequate flexibility to avoid damage? Yes
10. Based on the above seismic interaction evaluations, is equipment free of potentially adverse seismic interaction effects? Yes

Other Adverse Conditions

11. Have you looked for and found no adverse seismic conditions that could adversely affect the safety functions of the equipment? Yes

Comments

Seismic Walkdown Team: D. Carter & J. Griffith - 8/27/2012

Evaluated by:  David Carter Date: 10/17/2012
 James D. Griffith 10/17/2012

Status: Y N U

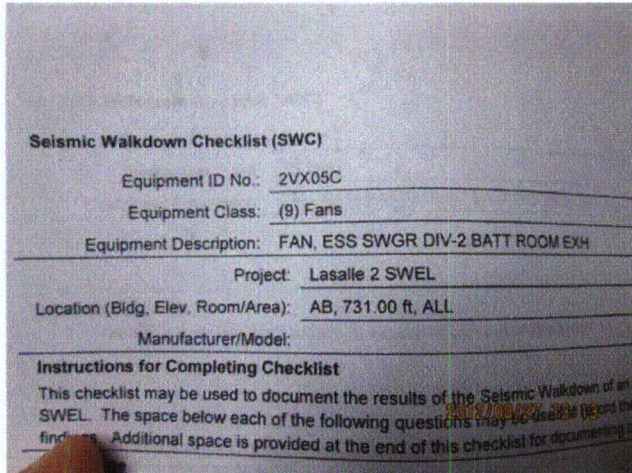
Seismic Walkdown Checklist (SWC)

Equipment ID No.: 2VX05C

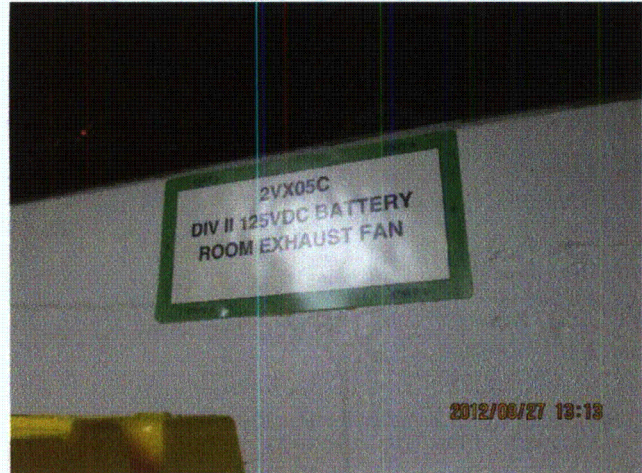
Equipment Class: (9) Fans

Equipment Description: FAN, ESS SWGR DIV-2 BATT ROOM EXH

Photos



LaSalle Unit 2 084 (1)



LaSalle Unit 2 084 (2)



LaSalle Unit 2 084 (3)



LaSalle Unit 2 084 (4)

Status: Y N U

Seismic Walkdown Checklist (SWC)

Equipment ID No.: 2VX05C

Equipment Class: (9) Fans

Equipment Description: FAN, ESS SWGR DIV-2 BATT ROOM EXH



LaSalle Unit 2 084 (5)



LaSalle Unit 2 084 (6)

Status: Y N U

Seismic Walkdown Checklist (SWC)

Equipment ID No.: 2VY02C

Equipment Class: (10) Air Handlers

Equipment Description: ASSY - FAN, CSCS EQUIP HPCS PP CUBICAL SUPPLY

Project: LaSalle 2 SWEL

Location (Bldg, Elev, Room/Area): RB, 694.00 ft, ALL

Manufacturer/Model:

Instructions for Completing Checklist

This checklist may be used to document the results of the Seismic Walkdown of an item of equipment on the SWEL. The space below each of the following questions may be used to record the results of judgments and findings. Additional space is provided at the end of this checklist for documenting other comments.

Anchorage

1. Is anchorage configuration verification required (i.e., is the item one of the 50% of SWEL items requiring such verification)? Yes

2. Is the anchorage free of bent, broken, missing or loose hardware? Yes

3. Is the anchorage free of corrosion that is more than mild surface oxidation? Yes

4. Is the anchorage free of visible cracks in the concrete near the anchors? Yes

5. Is the anchorage configuration consistent with plant documentation? (Note: This question only applies if the item is one of the 50% for which an anchorage configuration verification is required.) Yes
Anchorage shown on drawings M-1571, Rev. F and M-1590, Sheet 7, Rev. J.

6. Based on the above anchorage evaluations, is the anchorage free of potentially adverse seismic conditions? Yes

Status: Y N U

Seismic Walkdown Checklist (SWC)

Equipment ID No.: 2VY02C

Equipment Class: (10) Air Handlers

Equipment Description: ASSY - FAN, CSCS EQUIP HPCS PP CUBICAL SUPPLY

Interaction Effects

7. Are soft targets free from impact by nearby equipment or structures? Yes
8. Are overhead equipment, distribution systems, ceiling tiles and lighting, and masonry block walls not likely to collapse onto the equipment? Yes
9. Do attached lines have adequate flexibility to avoid damage? Yes
10. Based on the above seismic interaction evaluations, is equipment free of potentially adverse seismic interaction effects? Yes

Other Adverse Conditions

11. Have you looked for and found no adverse seismic conditions that could adversely affect the safety functions of the equipment? Yes

Comments

Seismic Walkdown Team: D. Carter & J. Griffith - 9/4/2012

Evaluated by: *David Carter* David Carter Date: 10/17/2012
James D. Griffith James Griffith 10/17/2012

Status: Y N U

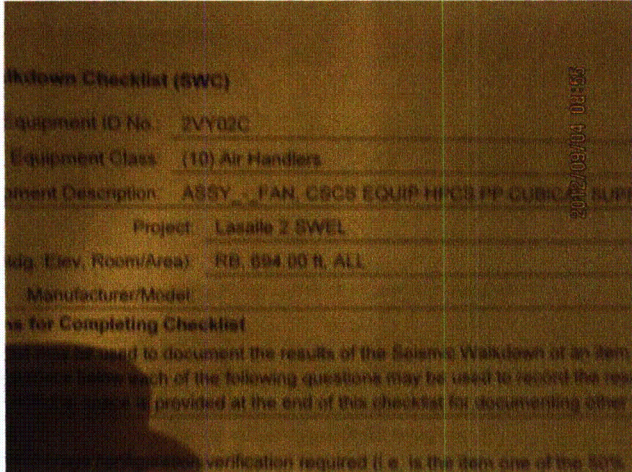
Seismic Walkdown Checklist (SWC)

Equipment ID No.: 2VY02C

Equipment Class: (10) Air Handlers

Equipment Description: ASSY - FAN, CSCS EQUIP HPCS PP CUBICAL SUPPLY

Photos



LaSalle 035



LaSalle 036



LaSalle 037



LaSalle 038

Status: Y N U

Seismic Walkdown Checklist (SWC)

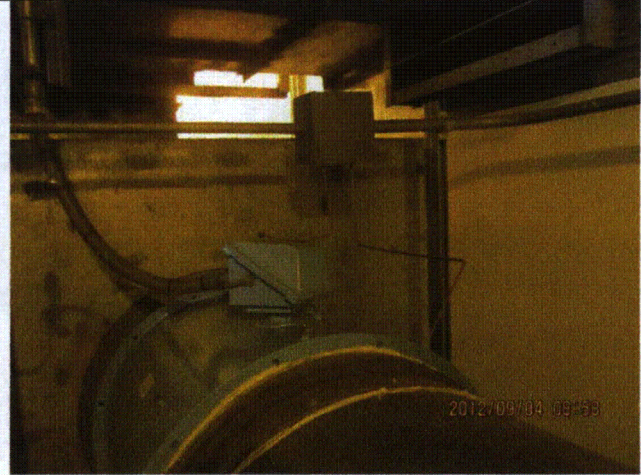
Equipment ID No.: 2VY02C

Equipment Class: (10) Air Handlers

Equipment Description: ASSY - FAN, CSCS EQUIP HPCS PP CUBICAL SUPPLY



LaSalle 039



LaSalle 040

Status: Y N U

Seismic Walkdown Checklist (SWC)

Equipment ID No.: 2VY03C

Equipment Class: (10) Air Handlers

Equipment Description: ASSY - FAN, RHR PUMP B/C ROOM COOLING FAN

Project: LaSalle 2 SWEL

Location (Bldg, Elev, Room/Area): RB, 694.00 ft, ALL

Manufacturer/Model:

Instructions for Completing Checklist

This checklist may be used to document the results of the Seismic Walkdown of an item of equipment on the SWEL. The space below each of the following questions may be used to record the results of judgments and findings. Additional space is provided at the end of this checklist for documenting other comments.

Anchorage

1. Is anchorage configuration verification required (i.e., is the item one of the 50% of SWEL items requiring such verification)? No
3 anchors at each end of fan.

2. Is the anchorage free of bent, broken, missing or loose hardware? Yes

3. Is the anchorage free of corrosion that is more than mild surface oxidation? Yes

4. Is the anchorage free of visible cracks in the concrete near the anchors? Yes

5. Is the anchorage configuration consistent with plant documentation? (Note: This question only applies if the item is one of the 50% for which an anchorage configuration verification is required.) Not Applicable

6. Based on the above anchorage evaluations, is the anchorage free of potentially adverse seismic conditions? Yes

Status: Y N U

Seismic Walkdown Checklist (SWC)

Equipment ID No.: 2VY03C

Equipment Class: (10) Air Handlers

Equipment Description: ASSY - FAN, RHR PUMP B/C ROOM COOLING FAN

Interaction Effects

7. Are soft targets free from impact by nearby equipment or structures? Yes
8. Are overhead equipment, distribution systems, ceiling tiles and lighting, and masonry block walls not likely to collapse onto the equipment? Yes
Overhead light fixtures judged to be acceptable.
9. Do attached lines have adequate flexibility to avoid damage? Yes
10. Based on the above seismic interaction evaluations, is equipment free of potentially adverse seismic interaction effects? Yes

Other Adverse Conditions

11. Have you looked for and found no adverse seismic conditions that could adversely affect the safety functions of the equipment? Yes

Comments

Seismic Walkdown Team: D. Carter & J. Griffith - 8/29/2012

Evaluated by:  David Carter Date: 10/17/2012

 James D. Griffith 10/17/2012

Status: Y N U

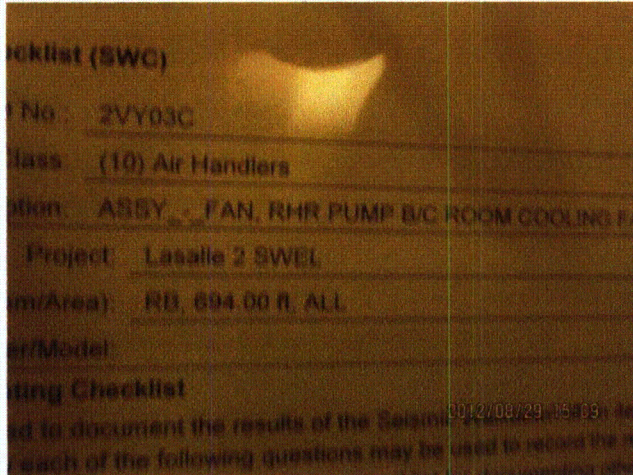
Seismic Walkdown Checklist (SWC)

Equipment ID No.: 2VY03C

Equipment Class: (10) Air Handlers

Equipment Description: ASSY - FAN, RHR PUMP B/C ROOM COOLING FAN

Photos



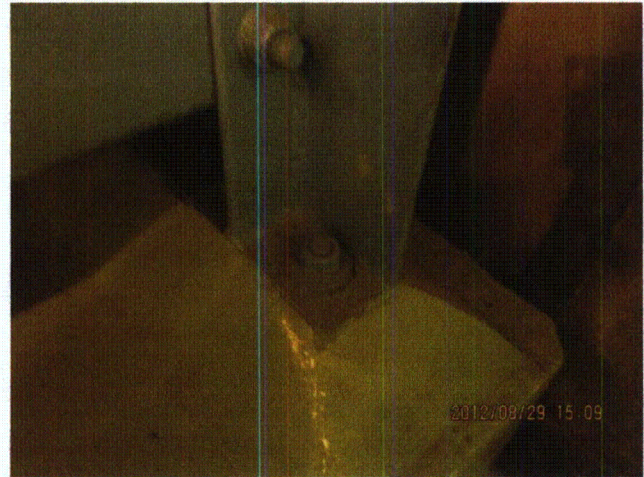
LaSalle 8-29-12 158



LaSalle 8-29-12 159



LaSalle 8-29-12 160



LaSalle 8-29-12 161

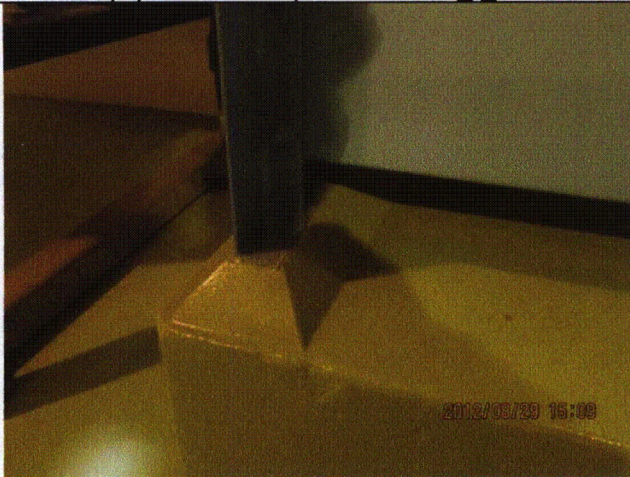
Status: Y N U

Seismic Walkdown Checklist (SWC)

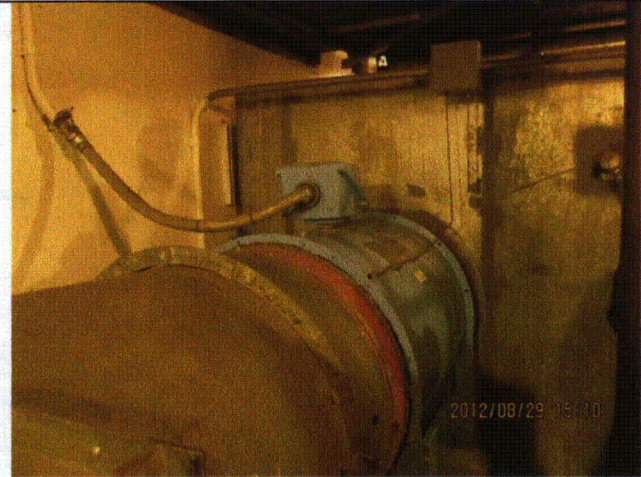
Equipment ID No.: 2VY03C

Equipment Class: (10) Air Handlers

Equipment Description: ASSY - FAN, RHR PUMP B/C ROOM COOLING FAN



LaSalle 8-29-12 162



LaSalle 8-29-12 163

Status: Y N U

Seismic Walkdown Checklist (SWC)

Equipment ID No.: 2VY04C

Equipment Class: (10) Air Handlers

Equipment Description: ASSY - FAN, LPCS PUMP ROOM COOLING

Project: LaSalle 2 SWEL

Location (Bldg, Elev, Room/Area): RB, 694.00 ft, ALL

Manufacturer/Model: _____

Instructions for Completing Checklist

This checklist may be used to document the results of the Seismic Walkdown of an item of equipment on the SWEL. The space below each of the following questions may be used to record the results of judgments and findings. Additional space is provided at the end of this checklist for documenting other comments.

Anchorage

1. Is anchorage configuration verification required (i.e., is the item one of the 50% of SWEL items requiring such verification)? Yes

2. Is the anchorage free of bent, broken, missing or loose hardware? Yes

3. Is the anchorage free of corrosion that is more than mild surface oxidation? Yes

4. Is the anchorage free of visible cracks in the concrete near the anchors? Yes

5. Is the anchorage configuration consistent with plant documentation? (Note: This question only applies if the item is one of the 50% for which an anchorage configuration verification is required.) Yes
Anchorage verified per drawings M-1571, Rev. F and M-1590, Sheet 8, Rev. L.

6. Based on the above anchorage evaluations, is the anchorage free of potentially adverse seismic conditions? Yes

Status: Y N U

Seismic Walkdown Checklist (SWC)

Equipment ID No.: 2VY04C

Equipment Class: (10) Air Handlers

Equipment Description: ASSY - FAN, LPCS PUMP ROOM COOLING

Interaction Effects

7. Are soft targets free from impact by nearby equipment or structures? Yes
8. Are overhead equipment, distribution systems, ceiling tiles and lighting, and masonry block walls not likely to collapse onto the equipment? Yes
9. Do attached lines have adequate flexibility to avoid damage? Yes
10. Based on the above seismic interaction evaluations, is equipment free of potentially adverse seismic interaction effects? Yes

Other Adverse Conditions

11. Have you looked for and found no adverse seismic conditions that could adversely affect the safety functions of the equipment? Yes

Comments

Seismic Walkdown Team: M. Etre & M. Wodarcyk - 9/17/2012

Evaluated by:



Mark Etre

Date: 10/25/2012



Michael Wodarcyk

10/25/2012

Status: Y N U

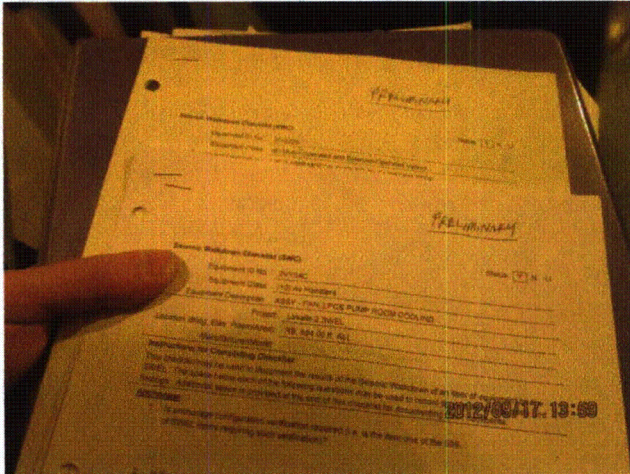
Seismic Walkdown Checklist (SWC)

Equipment ID No.: 2VY04C

Equipment Class: (10) Air Handlers

Equipment Description: ASSY - FAN, LPCS PUMP ROOM COOLING

Photos



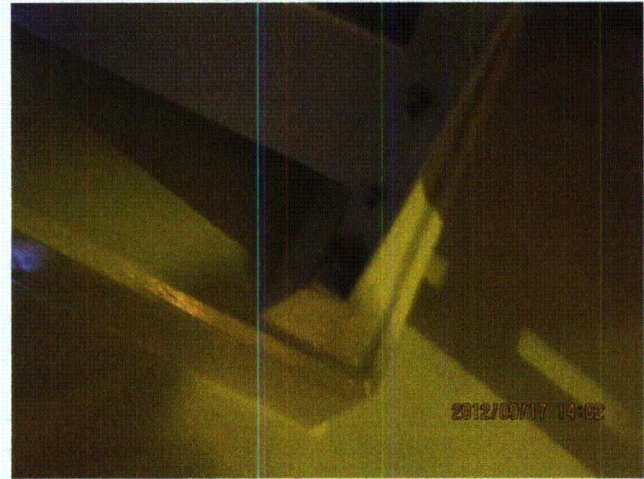
20120917-Lasalle 210



20120917-Lasalle 211



20120917-Lasalle 212



20120917-Lasalle 213

Status: Y N U

Seismic Walkdown Checklist (SWC)

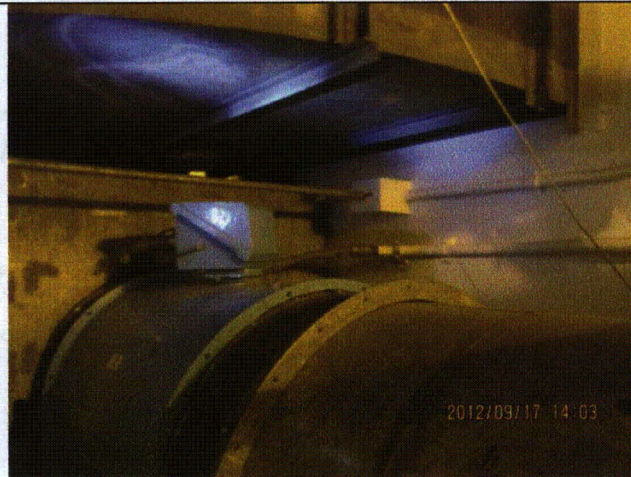
Equipment ID No.: 2VY04C

Equipment Class: (10) Air Handlers

Equipment Description: ASSY - FAN, LPCS PUMP ROOM COOLING



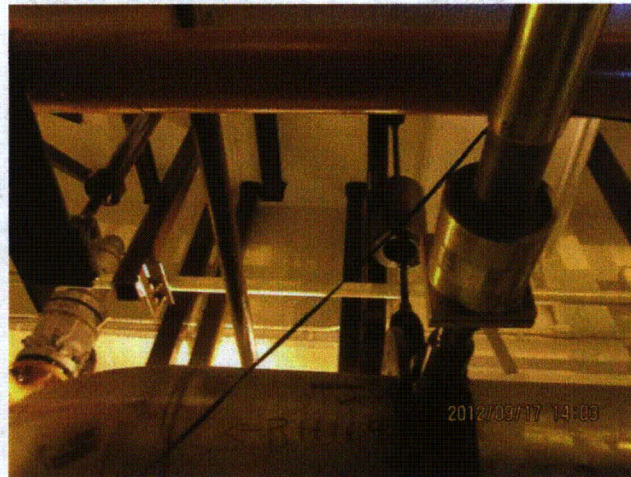
20120917-Lasalle 214



20120917-Lasalle 215



20120917-Lasalle 216



20120917-Lasalle 217

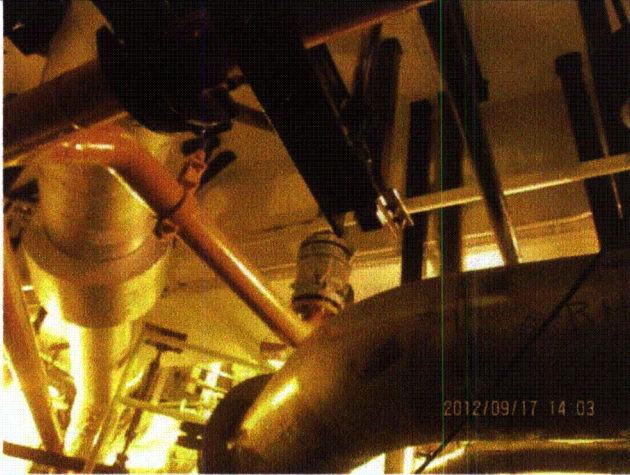
Status: Y N U

Seismic Walkdown Checklist (SWC)

Equipment ID No.: 2VY04C

Equipment Class: (10) Air Handlers

Equipment Description: ASSY - FAN, LPCS PUMP ROOM COOLING



20120917-Lasalle 218



20120917-Lasalle 219

Status: Y N U

Seismic Walkdown Checklist (SWC)

Equipment ID No.: 2VY05C

Equipment Class: (10) Air Handlers

Equipment Description: DIV I CSCS PUMP ROOM SUPPLY FAN

Project: LaSalle 2 SWEL

Location (Bldg, Elev,

Room/Area): DG, 736.00 ft, ALL

Manufacturer/Model:

Instructions for Completing Checklist

This checklist may be used to document the results of the Seismic Walkdown of an item of equipment on the SWEL. The space below each of the following questions may be used to record the results of judgments and findings. Additional space is provided at the end of this checklist for documenting other comments.

Anchorage

1. Is anchorage configuration verification required (i.e., is the item one of the 50% of SWEL items requiring such verification)? No

2. Is the anchorage free of bent, broken, missing or loose hardware? Yes

3. Is the anchorage free of corrosion that is more than mild surface oxidation? Yes

4. Is the anchorage free of visible cracks in the concrete near the anchors? Yes
Minor shrinkage cracks in grout pad and pedestal judged to be acceptable.

5. Is the anchorage configuration consistent with plant documentation? (Note: This question only applies if the item is one of the 50% for which an anchorage configuration verification is required.) Not Applicable

6. Based on the above anchorage evaluations, is the anchorage free of potentially adverse seismic conditions? Yes

Status: Y N U

Seismic Walkdown Checklist (SWC)

Equipment ID No.: 2VY05C

Equipment Class: (10) Air Handlers

Equipment Description: DIV I CSCS PUMP ROOM SUPPLY FAN

Interaction Effects

7. Are soft targets free from impact by nearby equipment or structures? Yes
8. Are overhead equipment, distribution systems, ceiling tiles and lighting, and masonry block walls not likely to collapse onto the equipment? Yes
Overhead light fixtures restrained to HVAC hangers and auxiliary steel; fixtures judged to be acceptable.
9. Do attached lines have adequate flexibility to avoid damage? Yes
10. Based on the above seismic interaction evaluations, is equipment free of potentially adverse seismic interaction effects? Yes

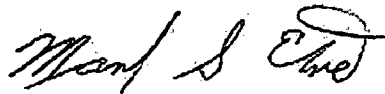
Other Adverse Conditions

11. Have you looked for and found no adverse seismic conditions that could adversely affect the safety functions of the equipment? Yes

Comments

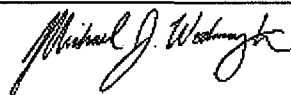
Seismic Walkdown Team: M. Etre & M. Wodarczyk - 9/18/2012

Evaluated by:



Mark Etre

Date: 10/19/2012



Michael Wodarczyk

10/19/2012

Status: Y N U

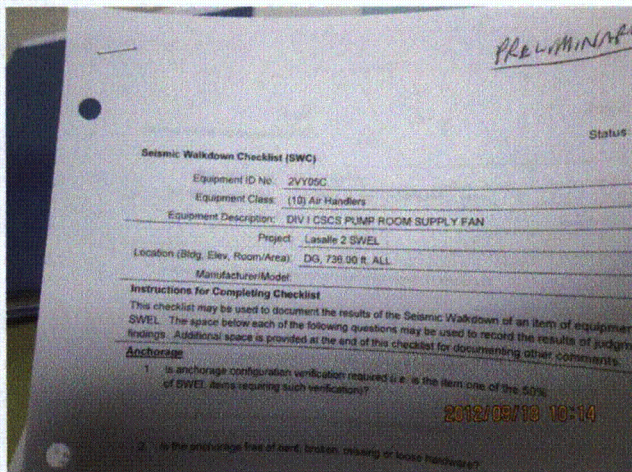
Seismic Walkdown Checklist (SWC)

Equipment ID No.: 2VY05C

Equipment Class: (10) Air Handlers

Equipment Description: DIV I CSCS PUMP ROOM SUPPLY FAN

Photos



20120918-Lasalle 103



20120918-Lasalle 104



20120918-Lasalle 105



20120918-Lasalle 106

Status: Y N U

Seismic Walkdown Checklist (SWC)

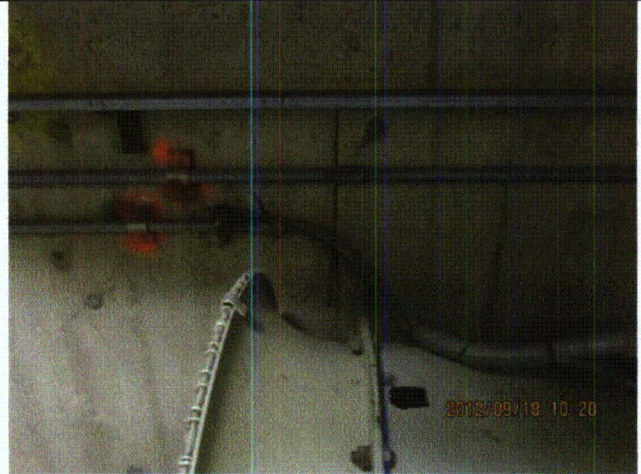
Equipment ID No.: 2VY05C

Equipment Class: (10) Air Handlers

Equipment Description: DIV I CSCS PUMP ROOM SUPPLY FAN



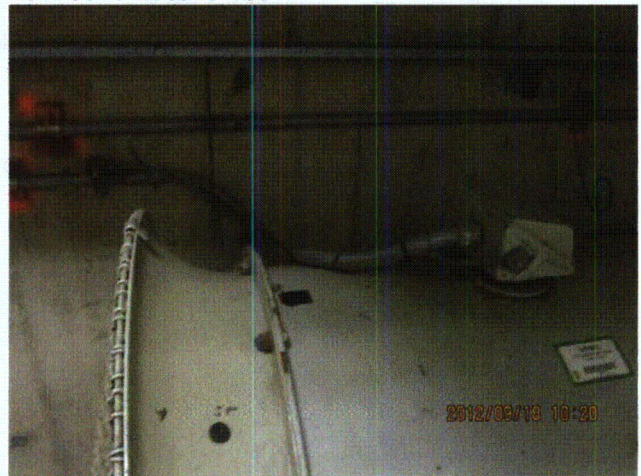
20120918-Lasalle 107



20120918-Lasalle 108



20120918-Lasalle 109



20120918-Lasalle 110

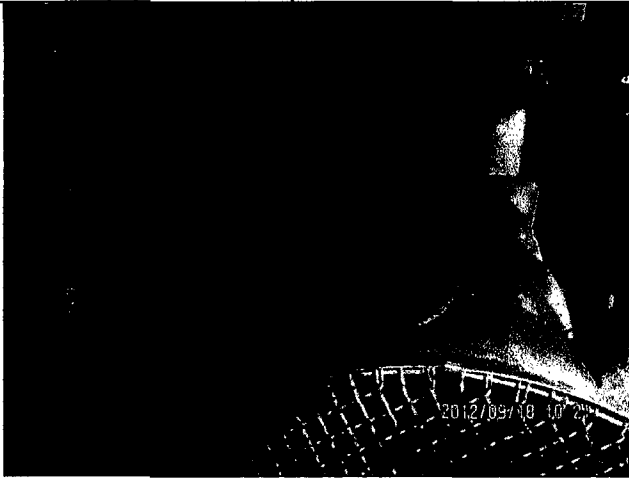
Status: Y N U

Seismic Walkdown Checklist (SWC)

Equipment ID No.: 2VY05C

Equipment Class: (10) Air Handlers

Equipment Description: DIV I CSCS PUMP ROOM SUPPLY FAN



20120918-Lasalle 111

Status: Y N U

Seismic Walkdown Checklist (SWC)

Equipment ID No.: 2VY06C

Equipment Class: (10) Air Handlers

Equipment Description: ASSY - FAN, CSCS EQUIP RHR WS PP 2C-2B CUBE SUP

Project: LaSalle 2 SWEL

Location (Bldg, Elev, Room/Area): DG, 736.00 ft, ALL

Manufacturer/Model:

Instructions for Completing Checklist

This checklist may be used to document the results of the Seismic Walkdown of an item of equipment on the SWEL. The space below each of the following questions may be used to record the results of judgments and findings. Additional space is provided at the end of this checklist for documenting other comments.

Anchorage

1. Is anchorage configuration verification required (i.e., is the item one of the 50% of SWEL items requiring such verification)? No

2. Is the anchorage free of bent, broken, missing or loose hardware? Yes

3. Is the anchorage free of corrosion that is more than mild surface oxidation? Yes

4. Is the anchorage free of visible cracks in the concrete near the anchors? Yes
Minor shrinkage cracking in floor judged to be acceptable.

5. Is the anchorage configuration consistent with plant documentation? (Note: This question only applies if the item is one of the 50% for which an anchorage configuration verification is required.) Not Applicable

6. Based on the above anchorage evaluations, is the anchorage free of potentially adverse seismic conditions? Yes

Status: Y N U

Seismic Walkdown Checklist (SWC)

Equipment ID No.: 2VY06C

Equipment Class: (10) Air Handlers

Equipment Description: ASSY - FAN, CSCS EQUIP RHR WS PP 2C-2B CUBE SUP

Interaction Effects

7. Are soft targets free from impact by nearby equipment or structures? Yes
8. Are overhead equipment, distribution systems, ceiling tiles and lighting, and masonry block walls not likely to collapse onto the equipment? Yes
Adjacent masonry walls are safety-related per drawing A-281, Rev. Z.
Overhead light fixtures with open S-hooks are laterally restrained by rods and judged to be acceptable. See IR 1406922.
9. Do attached lines have adequate flexibility to avoid damage? Yes
10. Based on the above seismic interaction evaluations, is equipment free of potentially adverse seismic interaction effects? Yes

Other Adverse Conditions

11. Have you looked for and found no adverse seismic conditions that could adversely affect the safety functions of the equipment? Yes

Comments

Seismic Walkdown Team: D. Carter & J. Griffith - 8/27/2012

Evaluated by:  David Carter

Date: 10/17/2012

 James D. Griffith

10/17/2012

Status: Y N U

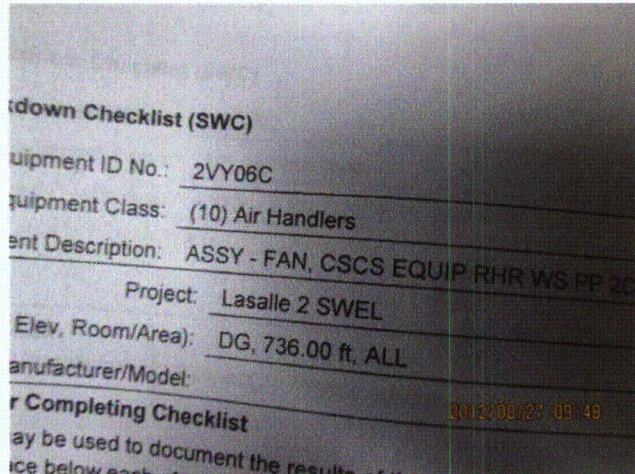
Seismic Walkdown Checklist (SWC)

Equipment ID No.: 2VY06C

Equipment Class: (10) Air Handlers

Equipment Description: ASSY - FAN, CSCS EQUIP RHR WS PP 2C-2B CUBE SUP

Photos



LaSalle Unit 2 001 (1)



LaSalle Unit 2 001 (2)



LaSalle Unit 2 001 (3)



LaSalle Unit 2 001 (4)

Status: Y N U

Seismic Walkdown Checklist (SWC)

Equipment ID No.: 2VY06C

Equipment Class: (10) Air Handlers

Equipment Description: ASSY - FAN, CSCS EQUIP RHR WS PP 2C-2B CUBE SUP



LaSalle Unit 2 001 (5)



LaSalle Unit 2 001 (6)

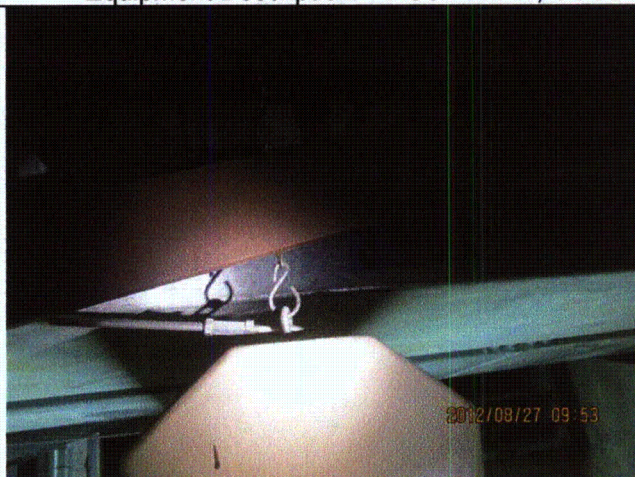
Status: Y N U

Seismic Walkdown Checklist (SWC)

Equipment ID No.: 2VY06C

Equipment Class: (10) Air Handlers

Equipment Description: ASSY - FAN, CSCS EQUIP RHR WS PP 2C-2B CUBE SUP



LaSalle Unit 2 001 (7)



LaSalle Unit 2 001 (8)



LaSalle Unit 2 001 (9)

Status: Y N U

Seismic Walkdown Checklist (SWC)

Equipment ID No.: 2WR029

Equipment Class: (8) Motor-Operated and Solenoid-Operated Valves

Equipment Description: DW EQUIP RBCCW INLT OTBD ISOL STOP

Project: LaSalle 2 SWEL

Location (Bldg, Elev,

Room/Area): RB, 740.00 ft, ALL

Manufacturer/Model:

Instructions for Completing Checklist

This checklist may be used to document the results of the Seismic Walkdown of an item of equipment on the SWEL. The space below each of the following questions may be used to record the results of judgments and findings. Additional space is provided at the end of this checklist for documenting other comments.

Anchorage

1. Is anchorage configuration verification required (i.e., is the item one of the 50% of SWEL items requiring such verification)? No

2. Is the anchorage free of bent, broken, missing or loose hardware? Not Applicable

3. Is the anchorage free of corrosion that is more than mild surface oxidation? Not Applicable

4. Is the anchorage free of visible cracks in the concrete near the anchors? Not Applicable

5. Is the anchorage configuration consistent with plant documentation? (Note: This question only applies if the item is one of the 50% for which an anchorage configuration verification is required.) Not Applicable

6. Based on the above anchorage evaluations, is the anchorage free of potentially adverse seismic conditions? Yes

Status: Y N U

Seismic Walkdown Checklist (SWC)

Equipment ID No.: 2WR029

Equipment Class: (8) Motor-Operated and Solenoid-Operated Valves

Equipment Description: DW EQUIP RBCCW INLT OTBD ISOL STOP

Interaction Effects

7. Are soft targets free from impact by nearby equipment or structures? Yes

Valve motor indicator box approximately 1/4" above adjacent pipe support. Indicator box not essential to motor operation. No vertical deflection of pipe per Calculation 027082(EMD), Rev. 01F. Judged to be acceptable.

8. Are overhead equipment, distribution systems, ceiling tiles and lighting, and masonry block walls not likely to collapse onto the equipment? Yes

Overhead grating protects valve from impact.

9. Do attached lines have adequate flexibility to avoid damage? Yes

10. Based on the above seismic interaction evaluations, is equipment free of potentially adverse seismic interaction effects? Yes

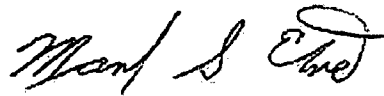
Other Adverse Conditions

11. Have you looked for and found no adverse seismic conditions that could adversely affect the safety functions of the equipment? Yes

Comments

Seismic Walkdown Team: M. Etre & M. Wodarcyk - 9/17/2012

Evaluated by:



Mark Etre

Date: 10/19/2012



Michael Wodarcyk

10/19/2012

Status: Y N U

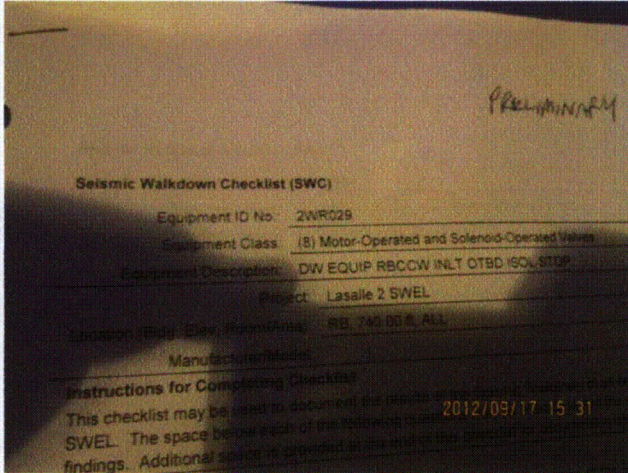
Seismic Walkdown Checklist (SWC)

Equipment ID No.: 2WR029

Equipment Class: (8) Motor-Operated and Solenoid-Operated Valves

Equipment Description: DW EQUIP RBCCW INLT OTBD ISOL STOP

Photos



20120917-Lasalle 266



20120917-Lasalle 267



20120917-Lasalle 269



20120917-Lasalle 270

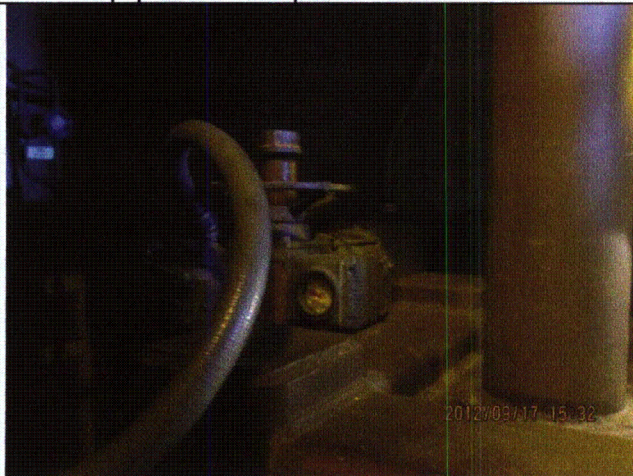
Status: Y N U

Seismic Walkdown Checklist (SWC)

Equipment ID No.: 2WR029

Equipment Class: (8) Motor-Operated and Solenoid-Operated Valves

Equipment Description: DW EQUIP RBCCW INLT OTBD ISOL STOP



20120917-Lasalle 271

Status: Y N U

Seismic Walkdown Checklist (SWC)

Equipment ID No.: 2WR040

Equipment Class: (8) Motor-Operated and Solenoid-Operated Valves

Equipment Description: DW EQUIP RBCCW OTLT OTBD ISOL STOP

Project: LaSalle 2 SWEL

Location (Bldg, Elev,

Room/Area): RB, 786.00 ft, ALL

Manufacturer/Model:

Instructions for Completing Checklist

This checklist may be used to document the results of the Seismic Walkdown of an item of equipment on the SWEL. The space below each of the following questions may be used to record the results of judgments and findings. Additional space is provided at the end of this checklist for documenting other comments.

Anchorage

1. Is anchorage configuration verification required (i.e., is the item one of the 50% of SWEL items requiring such verification)? No

2. Is the anchorage free of bent, broken, missing or loose hardware? Not Applicable

3. Is the anchorage free of corrosion that is more than mild surface oxidation? Not Applicable

4. Is the anchorage free of visible cracks in the concrete near the anchors? Not Applicable

5. Is the anchorage configuration consistent with plant documentation? (Note: This question only applies if the item is one of the 50% for which an anchorage configuration verification is required.) Not Applicable

6. Based on the above anchorage evaluations, is the anchorage free of potentially adverse seismic conditions? Yes

Status: Y N U

Seismic Walkdown Checklist (SWC)

Equipment ID No.: 2WR040

Equipment Class: (8) Motor-Operated and Solenoid-Operated Valves

Equipment Description: DW EQUIP RBCCW OTLT OTBD ISOL STOP

Interaction Effects

7. Are soft targets free from impact by nearby equipment or structures? Yes
8. Are overhead equipment, distribution systems, ceiling tiles and lighting, and masonry block walls not likely to collapse onto the equipment? Yes
Masonry wall adequately restrained.
9. Do attached lines have adequate flexibility to avoid damage? Yes
10. Based on the above seismic interaction evaluations, is equipment free of potentially adverse seismic interaction effects? Yes

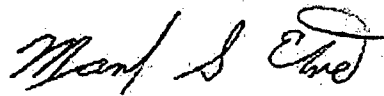
Other Adverse Conditions

11. Have you looked for and found no adverse seismic conditions that could adversely affect the safety functions of the equipment? Yes

Comments

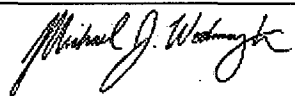
Seismic Walkdown Team: M. Etre & M. Wodarczyk - 9/17/2012

Evaluated by:



Mark Etre

Date: 10/19/2012



Michael Wodarczyk

10/19/2012

Status: Y N U

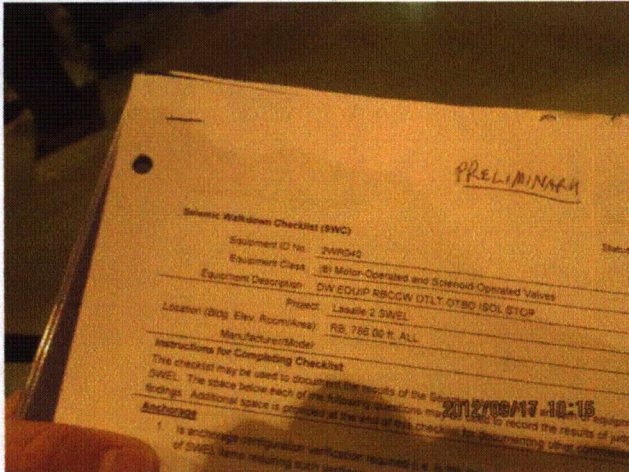
Seismic Walkdown Checklist (SWC)

Equipment ID No.: 2WR040

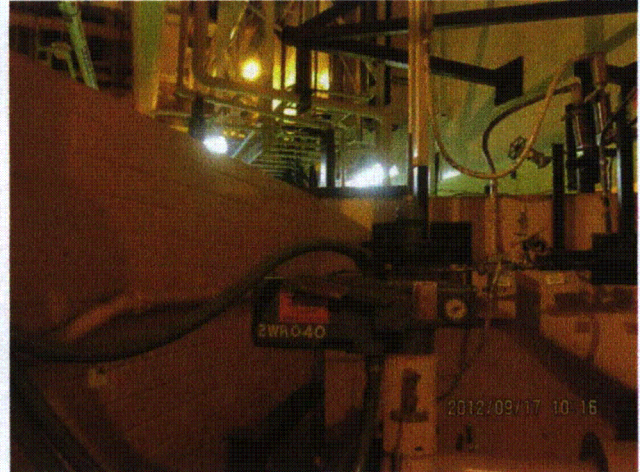
Equipment Class: (8) Motor-Operated and Solenoid-Operated Valves

Equipment Description: DW EQUIP RBCCW OTLT OTBD ISOL STOP

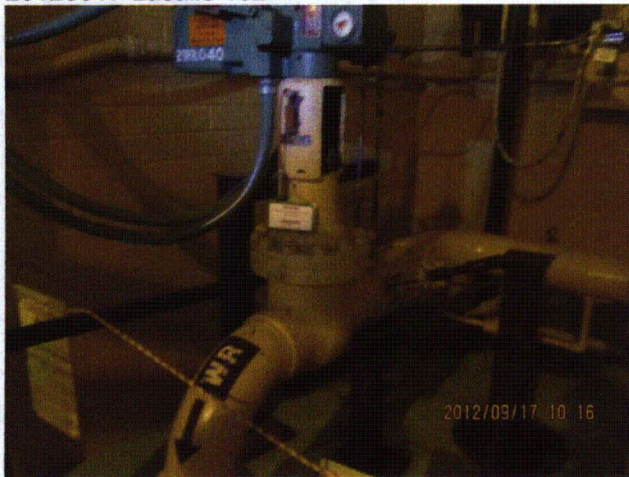
Photos



20120917-Lasalle 102



20120917-Lasalle 103



20120917-Lasalle 104



20120917-Lasalle 105