

Status:  Y  N  U

**Seismic Walkdown Checklist (SWC)**

Equipment ID No.: 2E51-F045

Equipment Class: (8) Motor-Operated and Solenoid-Operated Valves

Equipment Description: RCIC TURB STM SPLY STOP

Project: LaSalle 2 SWEL

Location (Bldg, Elev,  
Room/Area): RB, 673.00 ft, ALL

Manufacturer/Model:

**Instructions for Completing Checklist**

This checklist may be used to document the results of the Seismic Walkdown of an item of equipment on the SWEL. The space below each of the following questions may be used to record the results of judgments and findings. Additional space is provided at the end of this checklist for documenting other comments.

**Anchorage**

1. Is anchorage configuration verification required (i.e., is the item one of the 50% of SWEL items requiring such verification)? No
  
2. Is the anchorage free of bent, broken, missing or loose hardware? Not Applicable
  
3. Is the anchorage free of corrosion that is more than mild surface oxidation? Not Applicable
  
4. Is the anchorage free of visible cracks in the concrete near the anchors? Not Applicable
  
5. Is the anchorage configuration consistent with plant documentation? (Note: This question only applies if the item is one of the 50% for which an anchorage configuration verification is required.) Not Applicable
  
6. Based on the above anchorage evaluations, is the anchorage free of potentially adverse seismic conditions? Yes

Status:  Y  N  U

**Seismic Walkdown Checklist (SWC)**

Equipment ID No.: 2E51-F045

Equipment Class: (8) Motor-Operated and Solenoid-Operated Valves

Equipment Description: RCIC TURB STM SPLY STOP

**Interaction Effects**

7. Are soft targets free from impact by nearby equipment or structures? Yes
8. Are overhead equipment, distribution systems, ceiling tiles and lighting, and masonry block walls not likely to collapse onto the equipment? Yes  
*Adjacent masonry walls are safety-related per drawing A-219, Rev. M.*
9. Do attached lines have adequate flexibility to avoid damage? Yes
10. Based on the above seismic interaction evaluations, is equipment free of potentially adverse seismic interaction effects? Yes

**Other Adverse Conditions**

11. Have you looked for and found no adverse seismic conditions that could adversely affect the safety functions of the equipment? Yes

**Comments**

Seismic Walkdown Team: J. Griffith & M. Wodarczyk - 9/11/2012

Evaluated by:

 James Griffith

Date: 10/19/2012



Michael Wodarczyk

10/19/2012

Status:  Y  N  U

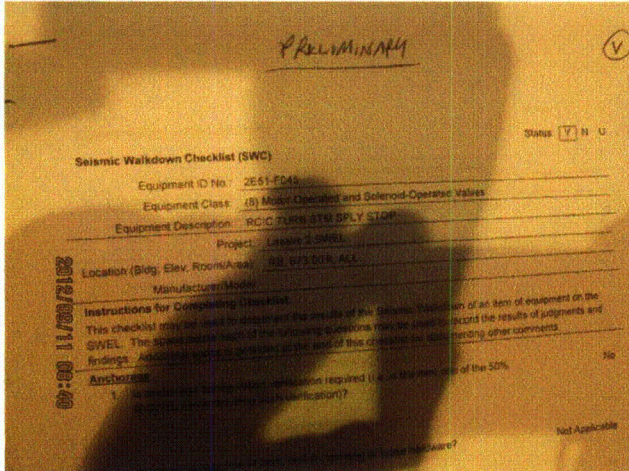
### Seismic Walkdown Checklist (SWC)

Equipment ID No.: 2E51-F045

Equipment Class: (8) Motor-Operated and Solenoid-Operated Valves

Equipment Description: RCIC TURB STM SPLY STOP

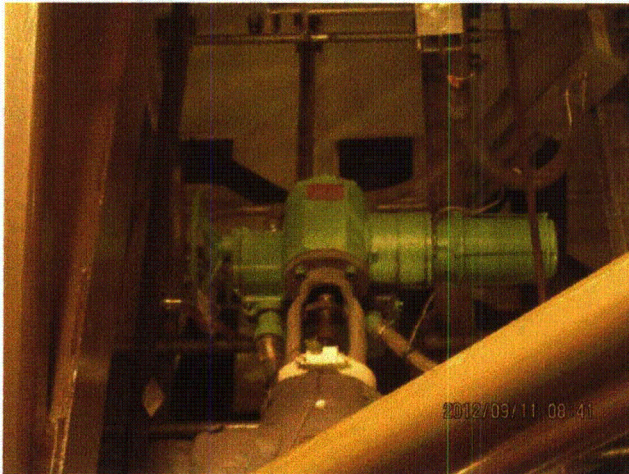
### Photos



20120911-Lasalle 015



20120911-Lasalle 016



20120911-Lasalle 017



20120911-Lasalle 018

Status:  Y  N  U

**Seismic Walkdown Checklist (SWC)**

Equipment ID No.: 2E51-F045

Equipment Class: (8) Motor-Operated and Solenoid-Operated Valves

Equipment Description: RCIC TURB STM SPLY STOP



20120911-Lasalle 019

Status:  Y  N  U

**Seismic Walkdown Checklist (SWC)**

Equipment ID No.: 2FC133

Equipment Class: (0) Other

Equipment Description: FUEL POOL COOLING PUMP SUCT HDR TORHR SYS DRN STOP

Project: LaSalle 2 SWEL 2

Location (Bldg, Elev,

Room/Area): RB, 673.00 ft, ALL

Manufacturer/Model:

**Instructions for Completing Checklist**

This checklist may be used to document the results of the Seismic Walkdown of an item of equipment on the SWEL. The space below each of the following questions may be used to record the results of judgments and findings. Additional space is provided at the end of this checklist for documenting other comments.

**Anchorage**

1. Is anchorage configuration verification required (i.e., is the item one of the 50% of SWEL items requiring such verification)? No
  
2. Is the anchorage free of bent, broken, missing or loose hardware? Not Applicable
  
3. Is the anchorage free of corrosion that is more than mild surface oxidation? Not Applicable
  
4. Is the anchorage free of visible cracks in the concrete near the anchors? Not Applicable
  
5. Is the anchorage configuration consistent with plant documentation? (Note: This question only applies if the item is one of the 50% for which an anchorage configuration verification is required.) Not Applicable
  
6. Based on the above anchorage evaluations, is the anchorage free of potentially adverse seismic conditions? Yes

Status:  Y  N  U

**Seismic Walkdown Checklist (SWC)**

Equipment ID No.: 2FC133

Equipment Class: (0) Other

Equipment Description: FUEL POOL COOLING PUMP SUCT HDR TORHR SYS DRN STOP

**Interaction Effects**

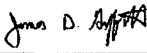

7. Are soft targets free from impact by nearby equipment or structures? Yes
8. Are overhead equipment, distribution systems, ceiling tiles and lighting, and masonry block walls not likely to collapse onto the equipment? Yes  
*Overhead light fixtures judged to be acceptable.*
9. Do attached lines have adequate flexibility to avoid damage? Yes
10. Based on the above seismic interaction evaluations, is equipment free of potentially adverse seismic interaction effects? Yes

**Other Adverse Conditions**

11. Have you looked for and found no adverse seismic conditions that could adversely affect the safety functions of the equipment? Yes

**Comments**

Seismic Walkdown Team: J. Griffith & M. Wodarczyk - 9/14/2012

Evaluated by:  James Griffith Date: 10/19/2012  
 Michael Wodarczyk 10/19/2012

Status:  Y  N  U

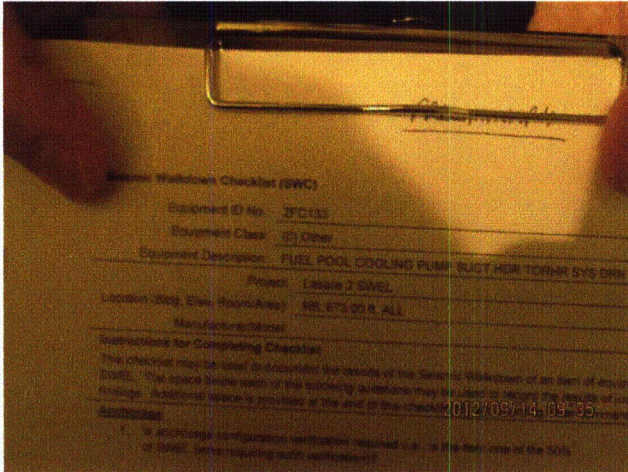
**Seismic Walkdown Checklist (SWC)**

Equipment ID No.: 2FC133

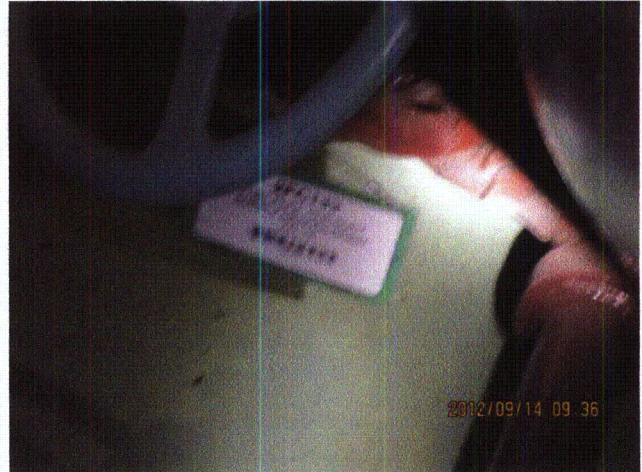
Equipment Class: (0) Other

Equipment Description: FUEL POOL COOLING PUMP SUCT HDR TORHR SYS DRN STOP

**Photos**



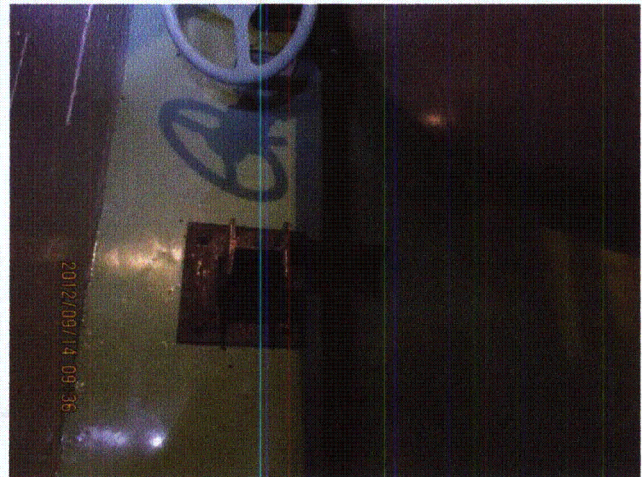
20120914-Lasalle 024



20120914-Lasalle 025



20120914-Lasalle 026



20120914-Lasalle 027

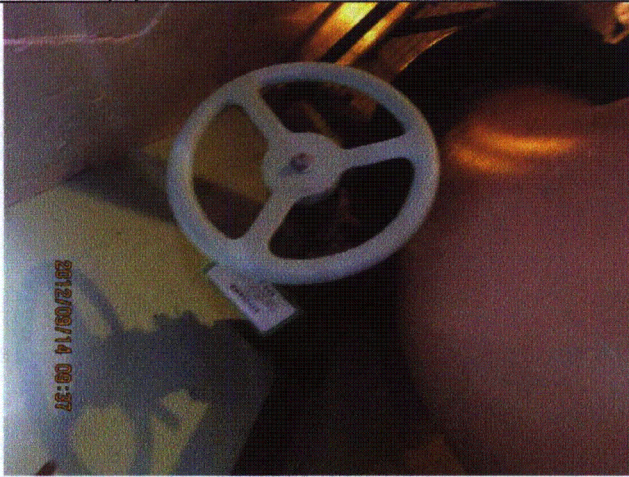
Status:  Y  N  U

**Seismic Walkdown Checklist (SWC)**

Equipment ID No.: 2FC133

Equipment Class: (0) Other

Equipment Description: FUEL POOL COOLING PUMP SUCT HDR TORHR SYS DRN STOP



20120914-Lasalle 028



Status:  Y  N  U

**Seismic Walkdown Checklist (SWC)**

Equipment ID No.: 2FC140

Equipment Class: (0) Other

Equipment Description: FUEL POOL SYS TO RHR SUCT STOP

Project: LaSalle 2 SWEL 2

Location (Bldg, Elev,

Room/Area): RB, 807.00 ft, ALL

Manufacturer/Model:

**Instructions for Completing Checklist**

This checklist may be used to document the results of the Seismic Walkdown of an item of equipment on the SWEL. The space below each of the following questions may be used to record the results of judgments and findings. Additional space is provided at the end of this checklist for documenting other comments.

**Anchorage**

1. Is anchorage configuration verification required (i.e., is the item one of the 50% of SWEL items requiring such verification)? No
  
2. Is the anchorage free of bent, broken, missing or loose hardware? Not Applicable
  
3. Is the anchorage free of corrosion that is more than mild surface oxidation? Not Applicable
  
4. Is the anchorage free of visible cracks in the concrete near the anchors? Not Applicable
  
5. Is the anchorage configuration consistent with plant documentation? (Note: This question only applies if the item is one of the 50% for which an anchorage configuration verification is required.) Not Applicable
  
6. Based on the above anchorage evaluations, is the anchorage free of potentially adverse seismic conditions? Yes

Status:  Y  N  U

**Seismic Walkdown Checklist (SWC)**

Equipment ID No.: 2FC140

Equipment Class: (0) Other

Equipment Description: FUEL POOL SYS TO RHR SUCT STOP

**Interaction Effects**

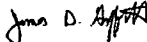
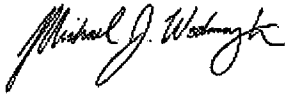
7. Are soft targets free from impact by nearby equipment or structures? Yes
8. Are overhead equipment, distribution systems, ceiling tiles and lighting, and masonry block walls not likely to collapse onto the equipment? Yes  
*Overhead light fixtures judged to be acceptable.*
9. Do attached lines have adequate flexibility to avoid damage? Yes
10. Based on the above seismic interaction evaluations, is equipment free of potentially adverse seismic interaction effects? Yes

**Other Adverse Conditions**

11. Have you looked for and found no adverse seismic conditions that could adversely affect the safety functions of the equipment? Yes

**Comments**

Seismic Walkdown Team: J. Griffith & M. Wodarczyk - 9/14/2012

Evaluated by:  James Griffith Date: 10/19/2012  
 Michael Wodarczyk 10/19/2012

Status:  Y  N  U

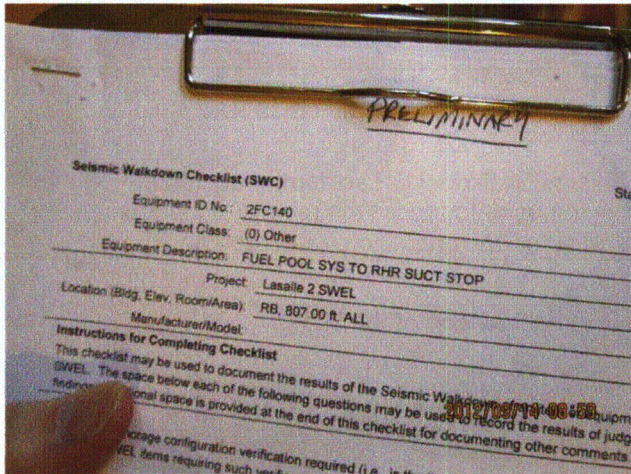
### Seismic Walkdown Checklist (SWC)

Equipment ID No.: 2FC140

Equipment Class: (0) Other

Equipment Description: FUEL POOL SYS TO RHR SUCT STOP

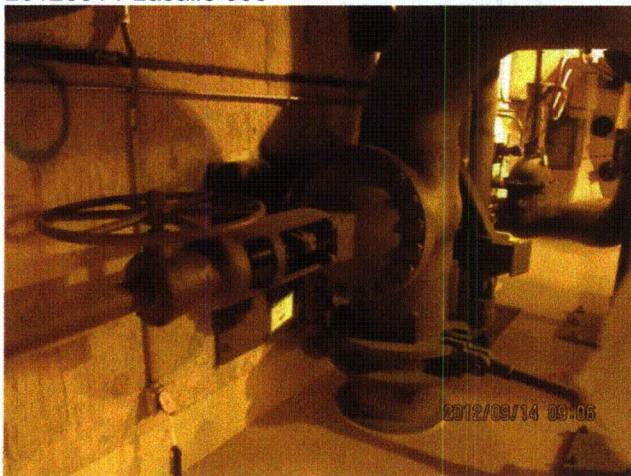
#### Photos



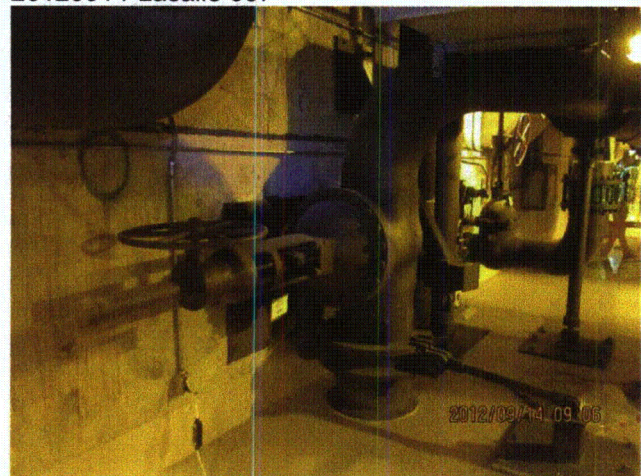
20120914-Lasalle 006



20120914-Lasalle 007



20120914-Lasalle 008



20120914-Lasalle 009

Status:  Y  N  U

### Seismic Walkdown Checklist (SWC)

Equipment ID No.: 2H13-P601

Equipment Class: (20) Instrumentation and Control Panels and Cabinets

Equipment Description: ASSY - PANEL, EMERG CORE COOL SYST

Project: LaSalle 2 SWEL

Location (Bldg, Elev,

Room/Area): MCR, 768.00 ft, ALL

Manufacturer/Model:

#### Instructions for Completing Checklist

This checklist may be used to document the results of the Seismic Walkdown of an item of equipment on the SWEL. The space below each of the following questions may be used to record the results of judgments and findings. Additional space is provided at the end of this checklist for documenting other comments.

#### Anchorage

1. Is anchorage configuration verification required (i.e., is the item one of the 50% of SWEL items requiring such verification)? No
  
2. Is the anchorage free of bent, broken, missing or loose hardware? Yes
  
3. Is the anchorage free of corrosion that is more than mild surface oxidation? Yes
  
4. Is the anchorage free of visible cracks in the concrete near the anchors? Yes
  
5. Is the anchorage configuration consistent with plant documentation? (Note: This question only applies if the item is one of the 50% for which an anchorage configuration verification is required.) Not Applicable
  
6. Based on the above anchorage evaluations, is the anchorage free of potentially adverse seismic conditions? Yes  
*Existing foam and sealant in bottom of panel prohibit observation of welds between base channel and embedded floor steel. Bolts between panel base and base channel were observed to be acceptable.*

*Because the control panel anchorage is shown on safety-related drawings 1E-*

Status:  Y  N  U

### Seismic Walkdown Checklist (SWC)

Equipment ID No.: 2H13-P601

Equipment Class: (20) Instrumentation and Control Panels and Cabinets

Equipment Description: ASSY - PANEL, EMERG CORE COOL SYST

*2-3465, Rev. Y and 1E-1-3466, Rev. F, and the control room maintains a constant climate not subject to excessive moisture, there is no reason to suspect that any of the anchorage welds are missing, damaged, or corroded. Therefore, the anchorage welds can be considered adequate.*

#### Interaction Effects

7. Are soft targets free from impact by nearby equipment or structures? Yes
8. Are overhead equipment, distribution systems, ceiling tiles and lighting, and masonry block walls not likely to collapse onto the equipment? Yes  
*The control room ceiling diffuser configuration is shown on drawings 1E-0-3754A, Rev. A and 1E-0-3712, Rev. AA. The ceiling diffusers (egg-crates) are not individually fastened to the tee track supporting structure. However, as shown in LaSalle Calculation Nos. 777 and 8126-02EO, the ceiling support system is laterally restrained at the control room walls and at the control panel valences, the ceiling support system horizontal displacement is less than 3/8" during a seismic event, and the ceiling support system for the diffusers remains structurally adequate during a seismic event. Therefore, the diffusers' falling through the ceiling support system during a seismic event is judged to be not credible.*
- Overhead light fixtures judged to be acceptable.*
9. Do attached lines have adequate flexibility to avoid damage? Yes
10. Based on the above seismic interaction evaluations, is equipment free of potentially adverse seismic interaction effects? Yes

#### Other Adverse Conditions

11. Have you looked for and found no adverse seismic conditions that could adversely affect the safety functions of the equipment? Yes  
*Backs of control panels were open during walkdown. No adverse seismic conditions were observed.*

#### Comments

Seismic Walkdown Team: J. Griffith & M. Wodarczyk - 9/14/2012

Status:  Y  N  U

**Seismic Walkdown Checklist (SWC)**

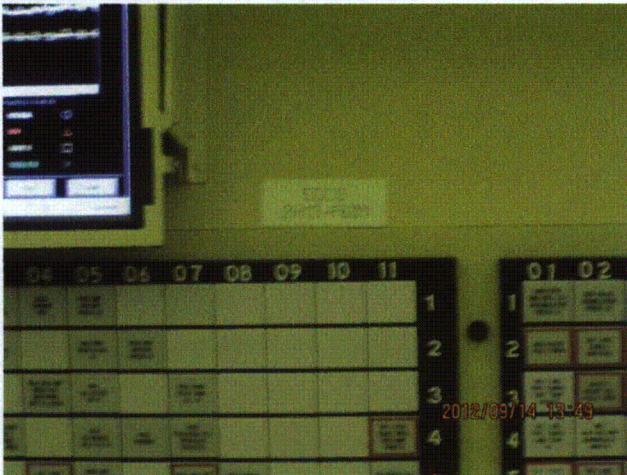
Equipment ID No.: 2H13-P601

Equipment Class: (20) Instrumentation and Control Panels and Cabinets

Equipment Description: ASSY - PANEL, EMERG CORE COOL SYST

Evaluated by: *James D. Griffith* James Griffith Date: 10/19/2012  
*Michael J. Wodarczyk* Michael Wodarczyk 10/19/2012

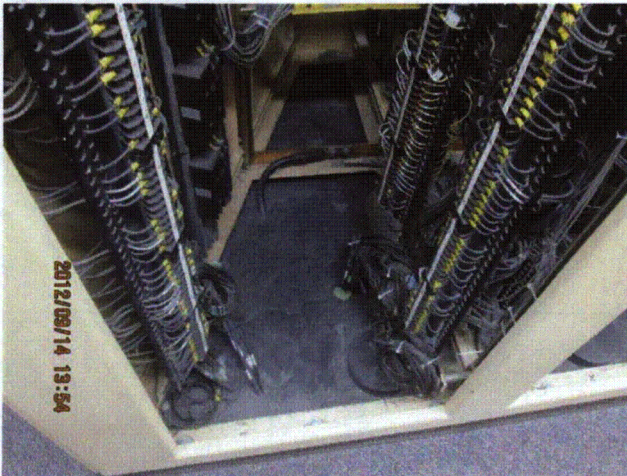
**Photos**



20120914-Lasalle 092



20120914-Lasalle 101



20120914-Lasalle 104



20120914-Lasalle 105

Status:  Y  N  U

**Seismic Walkdown Checklist (SWC)**

Equipment ID No.: 2H13-P602

Equipment Class: (20) Instrumentation and Control Panels and Cabinets

Equipment Description: ASSY - PANEL, RWCU/RX RECIRC CONTROL

Project: LaSalle 2 SWEL

Location (Bldg, Elev,

Room/Area): MCR, 768.00 ft, ALL

Manufacturer/Model:

**Instructions for Completing Checklist**

This checklist may be used to document the results of the Seismic Walkdown of an item of equipment on the SWEL. The space below each of the following questions may be used to record the results of judgments and findings. Additional space is provided at the end of this checklist for documenting other comments.

**Anchorage**

1. Is anchorage configuration verification required (i.e., is the item one of the 50% of SWEL items requiring such verification)? No
  
2. Is the anchorage free of bent, broken, missing or loose hardware? Yes
  
3. Is the anchorage free of corrosion that is more than mild surface oxidation? Yes
  
4. Is the anchorage free of visible cracks in the concrete near the anchors? Yes
  
5. Is the anchorage configuration consistent with plant documentation? (Note: This question only applies if the item is one of the 50% for which an anchorage configuration verification is required.) Not Applicable
  
6. Based on the above anchorage evaluations, is the anchorage free of potentially adverse seismic conditions? Yes  
*Existing foam and sealant in bottom of panel prohibit observation of welds between base channel and embedded floor steel. Bolts between panel base and base channel were observed to be acceptable.*

*Because the control panel anchorage is shown on safety-related drawings 1E-*

Status:  Y  N  U

### Seismic Walkdown Checklist (SWC)

Equipment ID No.: 2H13-P602

Equipment Class: (20) Instrumentation and Control Panels and Cabinets

Equipment Description: ASSY - PANEL, RWCURX RECIRC CONTROL

*2-3465, Rev. Y and 1E-1-3466, Rev. F, and the control room maintains a constant climate not subject to excessive moisture, there is no reason to suspect that any of the anchorage welds are missing, damaged, or corroded. Therefore, the anchorage welds can be considered adequate.*

#### Interaction Effects

7. Are soft targets free from impact by nearby equipment or structures? Yes
8. Are overhead equipment, distribution systems, ceiling tiles and lighting, and masonry block walls not likely to collapse onto the equipment? Yes  
*The control room ceiling diffuser configuration is shown on drawings 1E-0-3754A, Rev. A and 1E-0-3712, Rev. AA. The ceiling diffusers (egg-crates) are not individually fastened to the tee track supporting structure. However, as shown in LaSalle Calculation Nos. 777 and 8126-02EO, the ceiling support system is laterally restrained at the control room walls and at the control panel valences, the ceiling support system horizontal displacement is less than 3/8" during a seismic event, and the ceiling support system for the diffusers remains structurally adequate during a seismic event. Therefore, the diffusers' falling through the ceiling support system during a seismic event is judged to be not credible.*  
*Overhead light fixtures judged to be acceptable.*
9. Do attached lines have adequate flexibility to avoid damage? Yes
10. Based on the above seismic interaction evaluations, is equipment free of potentially adverse seismic interaction effects? Yes

#### Other Adverse Conditions

11. Have you looked for and found no adverse seismic conditions that could adversely affect the safety functions of the equipment? Yes  
*Backs of control panels were open during walkdown. No adverse seismic conditions were observed.*

#### Comments

Seismic Walkdown Team: J. Griffith & M. Wodarczyk - 9/14/2012



Status:  Y  N  U

**Seismic Walkdown Checklist (SWC)**

Equipment ID No.: 2H13-P602

Equipment Class: (20) Instrumentation and Control Panels and Cabinets

Equipment Description: ASSY - PANEL, RWCU/RX RECIRC CONTROL

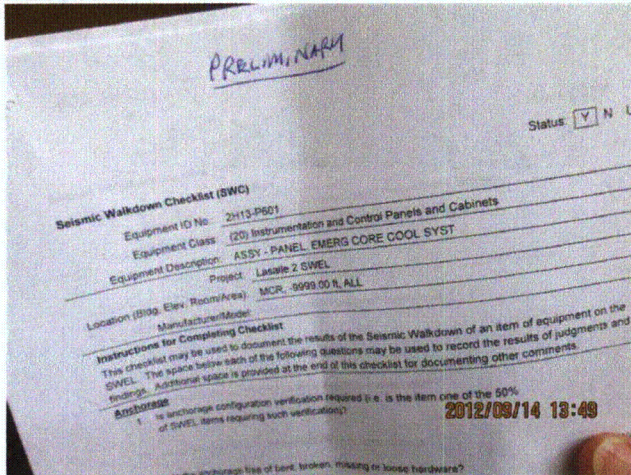
Evaluated by: *James D Griffith* James Griffith

Date: 10/19/2012

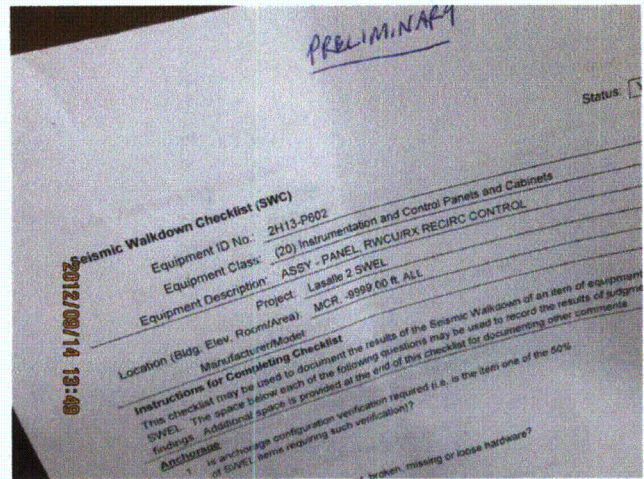
*Michael J. Wodarczyk*  
 Michael Wodarczyk

10/19/2012

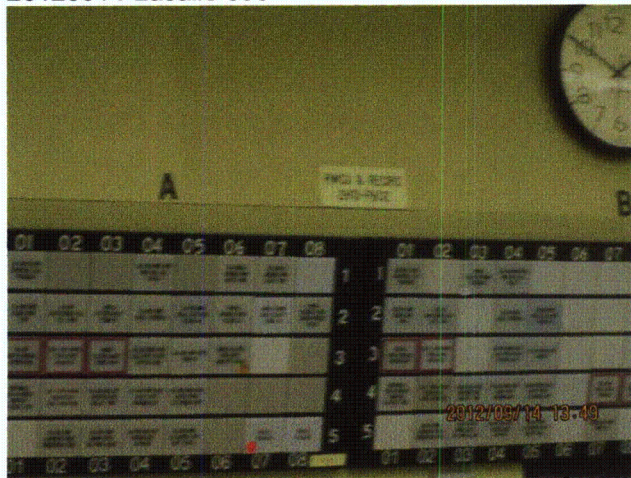
**Photos**



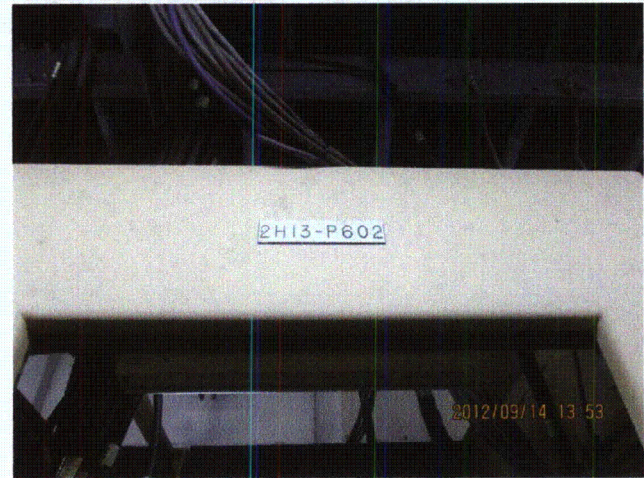
20120914-Lasalle 090



20120914-Lasalle 091



20120914-Lasalle 093



20120914-Lasalle 102

Status:  Y  N  U

**Seismic Walkdown Checklist (SWC)**

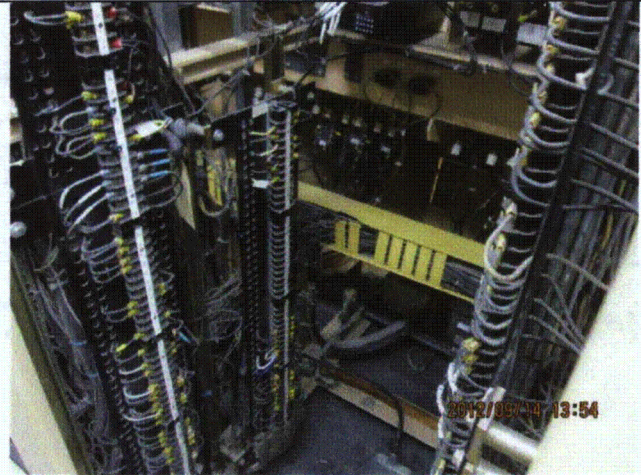
Equipment ID No.: 2H13-P602

Equipment Class: (20) Instrumentation and Control Panels and Cabinets

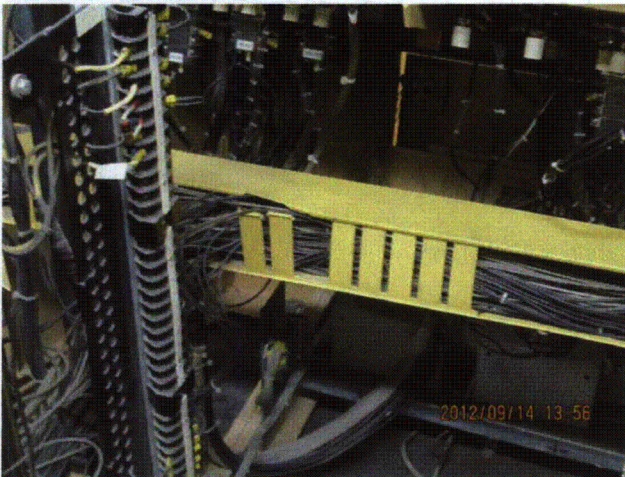
Equipment Description: ASSY - PANEL, RWCU/RX RECIRC CONTROL



20120914-Lasalle 106



20120914-Lasalle 107



20120914-Lasalle 108

Status:  Y  N  U

**Seismic Walkdown Checklist (SWC)**

Equipment ID No.: 2HG001A

Equipment Class: (8) Motor-Operated and Solenoid-Operated Valves

Equipment Description: H2 RECOMB 2HG01A U-2 DW SUCT. VLV

Project: LaSalle 2 SWEL

Location (Bldg, Elev, Room/Area): RB, 786.00 ft, ALL

Manufacturer/Model:

**Instructions for Completing Checklist**

This checklist may be used to document the results of the Seismic Walkdown of an item of equipment on the SWEL. The space below each of the following questions may be used to record the results of judgments and findings. Additional space is provided at the end of this checklist for documenting other comments.

**Anchorage**

1. Is anchorage configuration verification required (i.e., is the item one of the 50% of SWEL items requiring such verification)? No
  
2. Is the anchorage free of bent, broken, missing or loose hardware? Not Applicable
  
3. Is the anchorage free of corrosion that is more than mild surface oxidation? Not Applicable
  
4. Is the anchorage free of visible cracks in the concrete near the anchors? Not Applicable
  
5. Is the anchorage configuration consistent with plant documentation? (Note: This question only applies if the item is one of the 50% for which an anchorage configuration verification is required.) Not Applicable
  
6. Based on the above anchorage evaluations, is the anchorage free of potentially adverse seismic conditions? Yes

Status:  Y  N  U

**Seismic Walkdown Checklist (SWC)**

Equipment ID No.: 2HG001A

Equipment Class: (8) Motor-Operated and Solenoid-Operated Valves

Equipment Description: H2 RECOMB 2HG01A U-2 DW SUCT. VLV

**Interaction Effects**

7. Are soft targets free from impact by nearby equipment or structures? Yes
8. Are overhead equipment, distribution systems, ceiling tiles and lighting, and masonry block walls not likely to collapse onto the equipment? Yes
9. Do attached lines have adequate flexibility to avoid damage? Yes
10. Based on the above seismic interaction evaluations, is equipment free of potentially adverse seismic interaction effects? Yes

**Other Adverse Conditions**

11. Have you looked for and found no adverse seismic conditions that could adversely affect the safety functions of the equipment? Yes

**Comments**

Seismic Walkdown Team: D. Carter & J. Griffith - 8/28/2012

Evaluated by: *David Carter* David Carter Date: 10/17/2012

*James D. Griffith* James Griffith 10/17/2012

Status:  Y  N  U

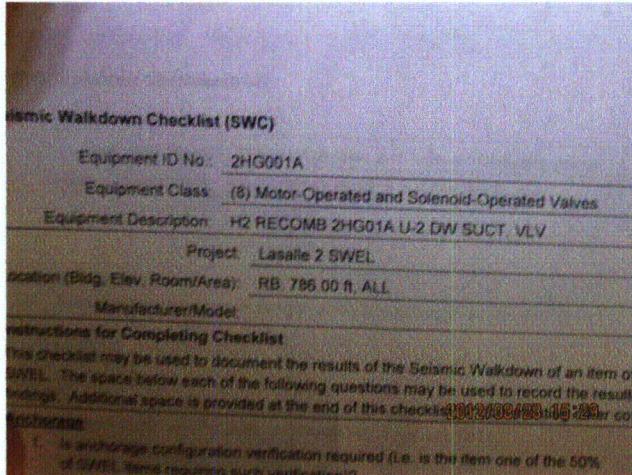
**Seismic Walkdown Checklist (SWC)**

Equipment ID No.: 2HG001A

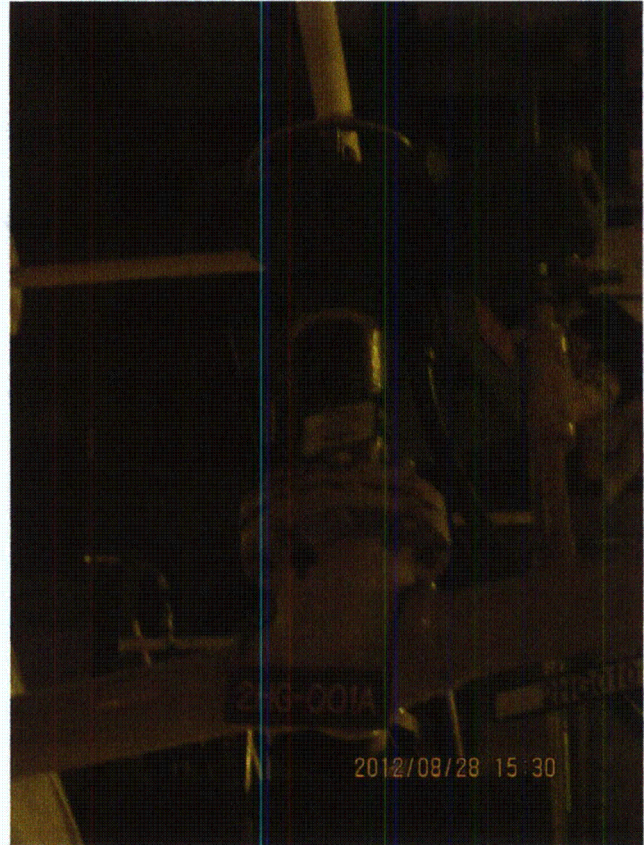
Equipment Class: (8) Motor-Operated and Solenoid-Operated Valves

Equipment Description: H2 RECOMB 2HG01A U-2 DW SUCT. VLV

**Photos**



LaSalle 8-28-12 225 (1)



LaSalle 8-28-12 225 (2)

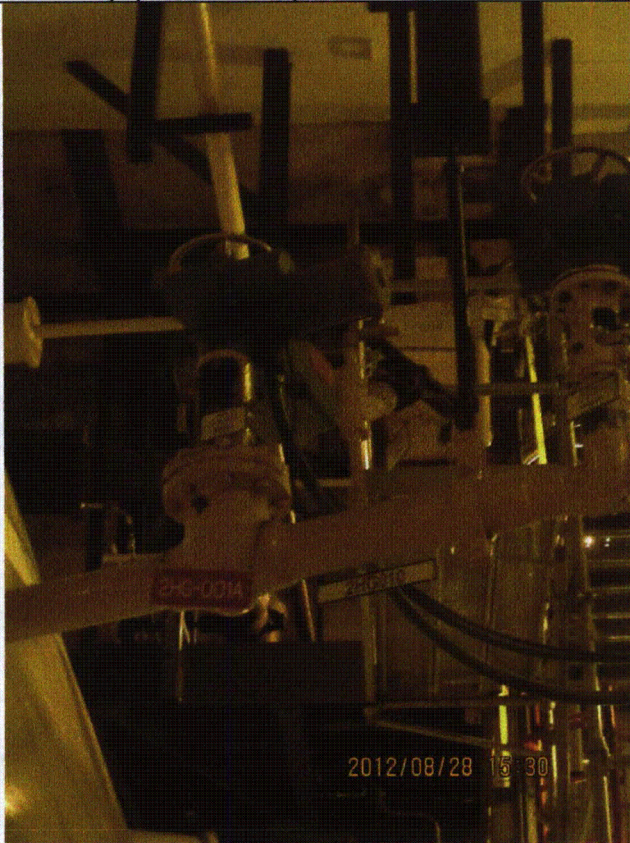
Status:  Y  N  U

**Seismic Walkdown Checklist (SWC)**

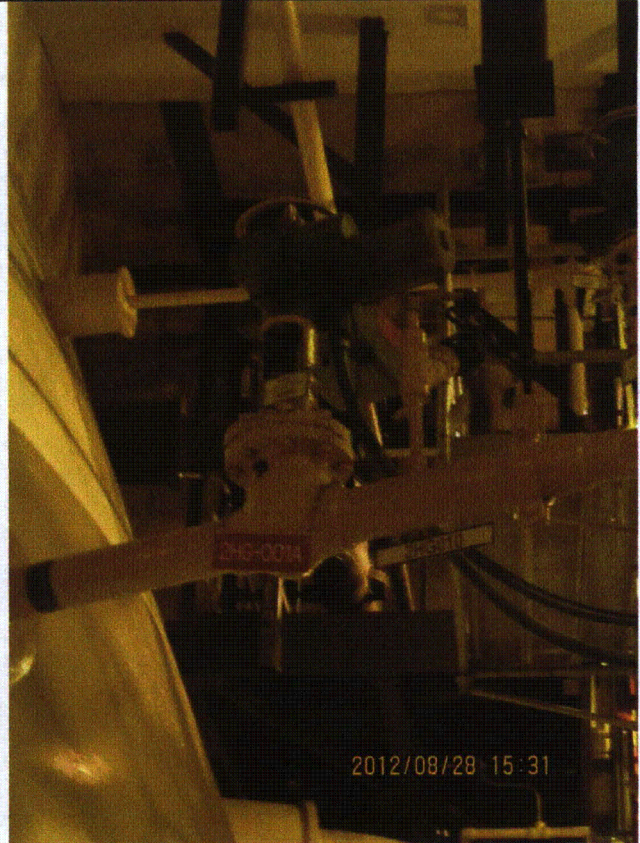
Equipment ID No.: 2HG001A

Equipment Class: (8) Motor-Operated and Solenoid-Operated Valves

Equipment Description: H2 RECOMB 2HG01A U-2 DW SUCT. VLV



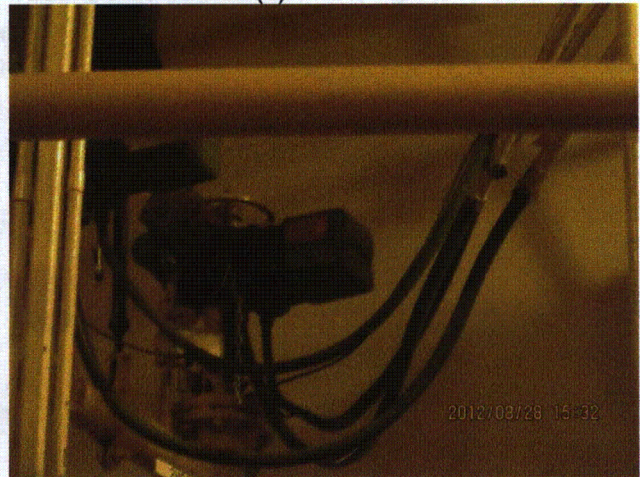
LaSalle 8-28-12 225 (3)



LaSalle 8-28-12 225 (4)



LaSalle 8-28-12 225 (5)



LaSalle 8-28-12 225 (6)

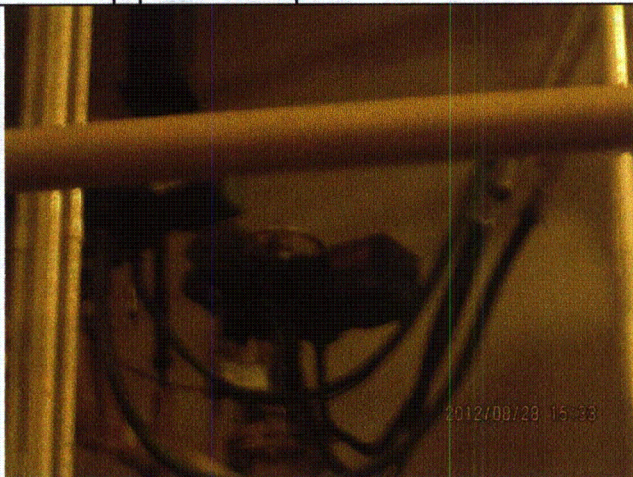
Status:  Y  N  U

**Seismic Walkdown Checklist (SWC)**

Equipment ID No.: 2HG001A

Equipment Class: (8) Motor-Operated and Solenoid-Operated Valves

Equipment Description: H2 RECOMB 2HG01A U-2 DW SUCT. VLV



LaSalle 8-28-12 225 (7)

Status:  Y  N  U

**Seismic Walkdown Checklist (SWC)**

Equipment ID No.: 2HG005A

Equipment Class: (8) Motor-Operated and Solenoid-Operated Valves

Equipment Description: H2 RECOMB 2HG01A U-2 SUP POOL DIS VLV-OVHD AT 210'

Project: LaSalle 2 SWEL

Location (Bldg, Elev, Room/Area): RB, 710.00 ft, ALL

Manufacturer/Model:

**Instructions for Completing Checklist**

This checklist may be used to document the results of the Seismic Walkdown of an item of equipment on the SWEL. The space below each of the following questions may be used to record the results of judgments and findings. Additional space is provided at the end of this checklist for documenting other comments.

**Anchorage**

1. Is anchorage configuration verification required (i.e., is the item one of the 50% of SWEL items requiring such verification)? No
  
2. Is the anchorage free of bent, broken, missing or loose hardware? Not Applicable
  
3. Is the anchorage free of corrosion that is more than mild surface oxidation? Not Applicable
  
4. Is the anchorage free of visible cracks in the concrete near the anchors? Not Applicable
  
5. Is the anchorage configuration consistent with plant documentation? (Note: This question only applies if the item is one of the 50% for which an anchorage configuration verification is required.) Not Applicable
  
6. Based on the above anchorage evaluations, is the anchorage free of potentially adverse seismic conditions? Yes



Status:  Y  N  U

**Seismic Walkdown Checklist (SWC)**

Equipment ID No.: 2HG005A

Equipment Class: (8) Motor-Operated and Solenoid-Operated Valves

Equipment Description: H2 RECOMB 2HG01A U-2 SUP POOL DIS VLV-OVHD AT 210'

**Interaction Effects**

7. Are soft targets free from impact by nearby equipment or structures? Yes
8. Are overhead equipment, distribution systems, ceiling tiles and lighting, and masonry block walls not likely to collapse onto the equipment?  
*Overhead light fixtures judged to be acceptable.* Yes
9. Do attached lines have adequate flexibility to avoid damage? Yes
10. Based on the above seismic interaction evaluations, is equipment free of potentially adverse seismic interaction effects? Yes

**Other Adverse Conditions**

11. Have you looked for and found no adverse seismic conditions that could adversely affect the safety functions of the equipment? Yes

**Comments**

Seismic Walkdown Team: D. Carter & J. Griffith - 8/29/2012

Evaluated by: *David Carter* David Carter Date: 10/17/2012  
*James D. Griffith* James Griffith 10/17/2012

Status:  Y  N  U

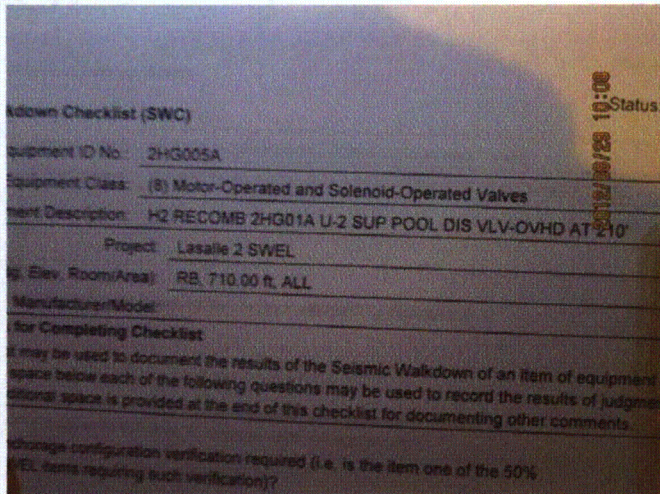
### Seismic Walkdown Checklist (SWC)

Equipment ID No.: 2HG005A

Equipment Class: (8) Motor-Operated and Solenoid-Operated Valves

Equipment Description: H2 RECOMB 2HG01A U-2 SUP POOL DIS VLV-OVHD AT 210'

#### Photos



LaSalle 8-29-12 041



LaSalle 8-29-12 042



LaSalle 8-29-12 043



LaSalle 8-29-12 044

Status:  Y  N  U

**Seismic Walkdown Checklist (SWC)**

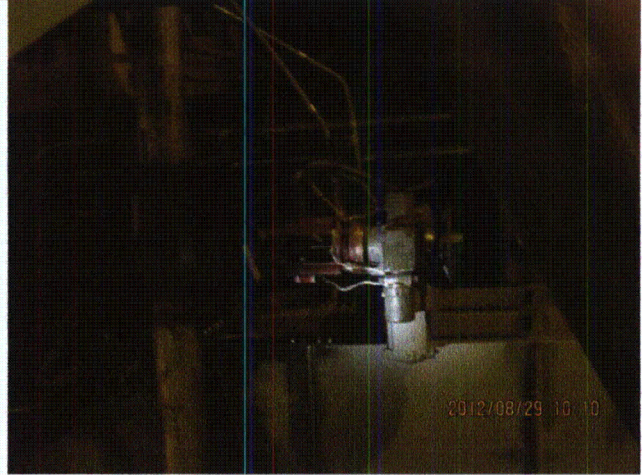
Equipment ID No.: 2HG005A

Equipment Class: (8) Motor-Operated and Solenoid-Operated Valves

Equipment Description: H2 RECOMB 2HG01A U-2 SUP POOL DIS VLV-OVHD AT 210'



LaSalle 8-29-12 045



LaSalle 8-29-12 046

Status:  Y  N  U

**Seismic Walkdown Checklist (SWC)**

Equipment ID No.: 2HG01A

Equipment Class: (9) Fans

Equipment Description: ASSY - BLOWER, H2 RECOMBINER

Project: LaSalle 2 SWEL

Location (Bldg, Elev, Room/Area): RB, 761.00 ft, ALL

Manufacturer/Model:

**Instructions for Completing Checklist**

This checklist may be used to document the results of the Seismic Walkdown of an item of equipment on the SWEL. The space below each of the following questions may be used to record the results of judgments and findings. Additional space is provided at the end of this checklist for documenting other comments.

**Anchorage**

1. Is anchorage configuration verification required (i.e., is the item one of the 50% of SWEL items requiring such verification)? No
  
2. Is the anchorage free of bent, broken, missing or loose hardware? Yes
  
3. Is the anchorage free of corrosion that is more than mild surface oxidation? Yes
  
4. Is the anchorage free of visible cracks in the concrete near the anchors? Yes  
*Grout pad chipped out and formed around handrail holes. Judged to be acceptable.*
  
5. Is the anchorage configuration consistent with plant documentation? (Note: This question only applies if the item is one of the 50% for which an anchorage configuration verification is required.) Not Applicable
  
6. Based on the above anchorage evaluations, is the anchorage free of potentially adverse seismic conditions? Yes

Status:  Y  N  U

**Seismic Walkdown Checklist (SWC)**

Equipment ID No.: 2HG01A

Equipment Class: (9) Fans

Equipment Description: ASSY - BLOWER, H2 RECOMBINER

**Interaction Effects**

7. Are soft targets free from impact by nearby equipment or structures? Yes
8. Are overhead equipment, distribution systems, ceiling tiles and lighting, and masonry block walls not likely to collapse onto the equipment? Yes  
*Overhead light fixtures judged to be acceptable.*
9. Do attached lines have adequate flexibility to avoid damage? Yes
10. Based on the above seismic interaction evaluations, is equipment free of potentially adverse seismic interaction effects? Yes

**Other Adverse Conditions**

11. Have you looked for and found no adverse seismic conditions that could adversely affect the safety functions of the equipment? Yes

**Comments**

Seismic Walkdown Team: D. Carter & J. Griffith - 8/28/2012

Evaluated by: *David Carter* David Carter Date: 10/17/2012  
*James D. Griffith* James Griffith 10/17/2012

Status:  Y  N  U

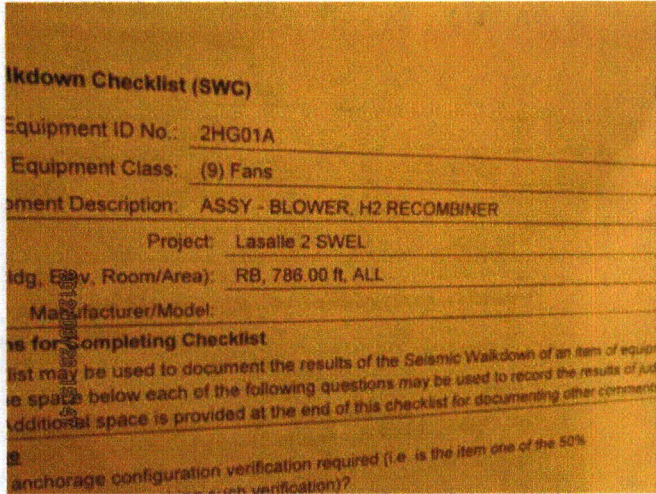
**Seismic Walkdown Checklist (SWC)**

Equipment ID No.: 2HG01A

Equipment Class: (9) Fans

Equipment Description: ASSY - BLOWER, H2 RECOMBINER

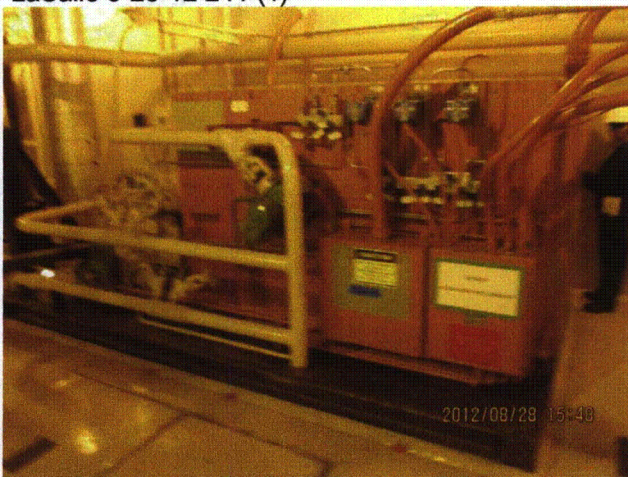
**Photos**



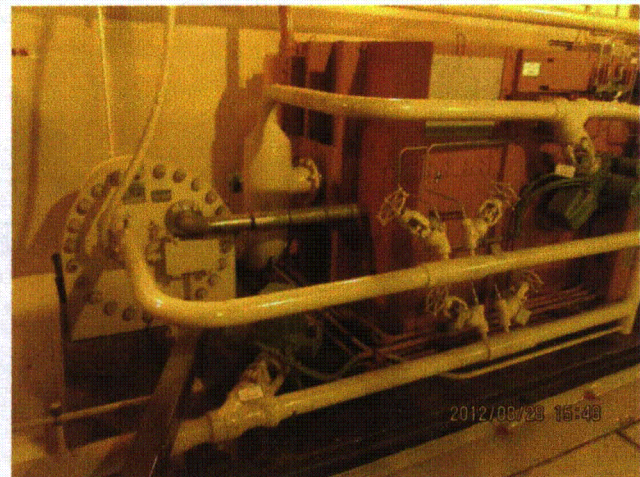
LaSalle 8-28-12 241 (1)



LaSalle 8-28-12 241 (2)



LaSalle 8-28-12 241 (3)



LaSalle 8-28-12 241 (4)

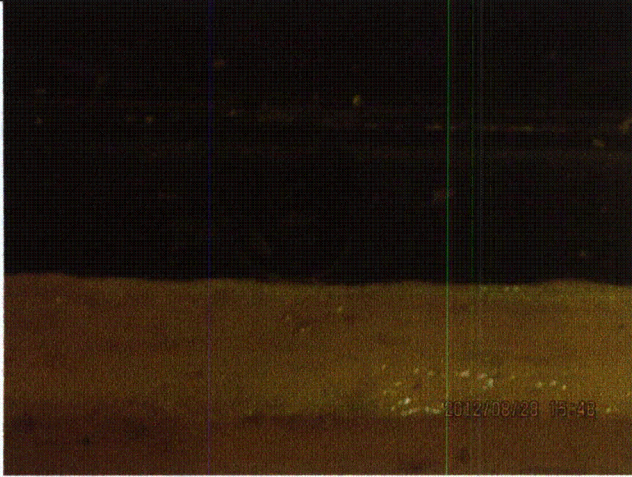
Status:  Y  N  U

**Seismic Walkdown Checklist (SWC)**

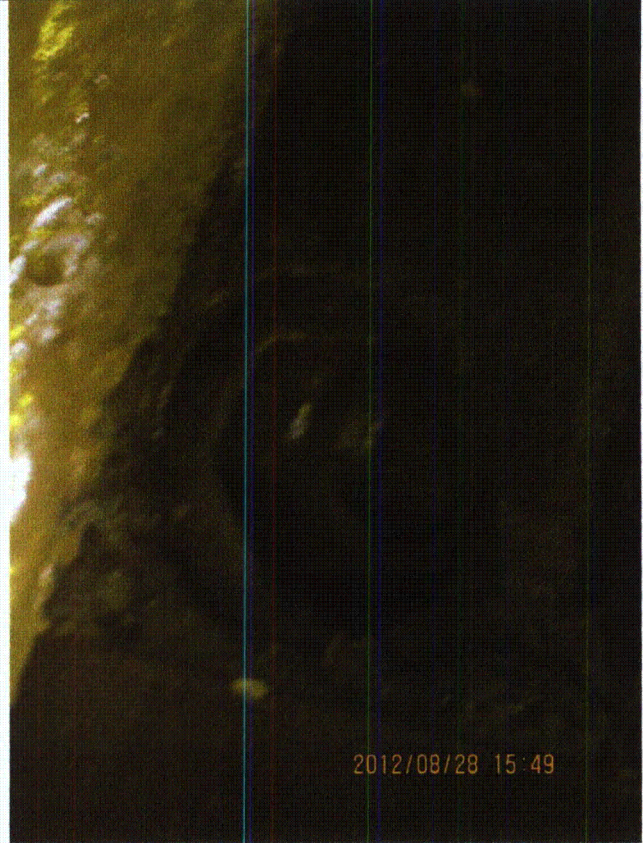
Equipment ID No.: 2HG01A

Equipment Class: (9) Fans

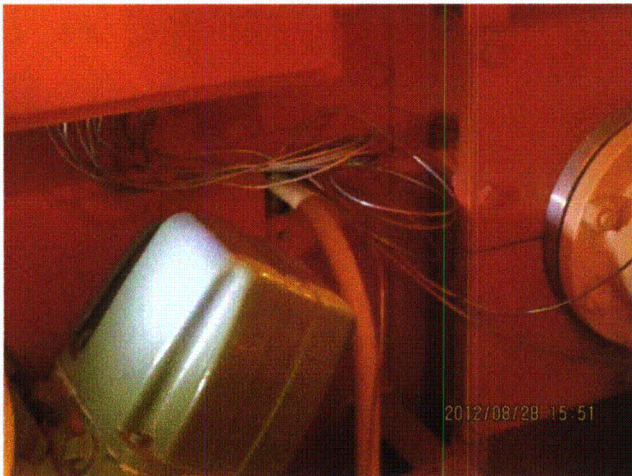
Equipment Description: ASSY - BLOWER, H2 RECOMBINER



LaSalle 8-28-12 241 (5)



LaSalle 8-28-12 241 (6)



LaSalle 8-28-12 241 (7)



LaSalle 8-28-12 241 (8)

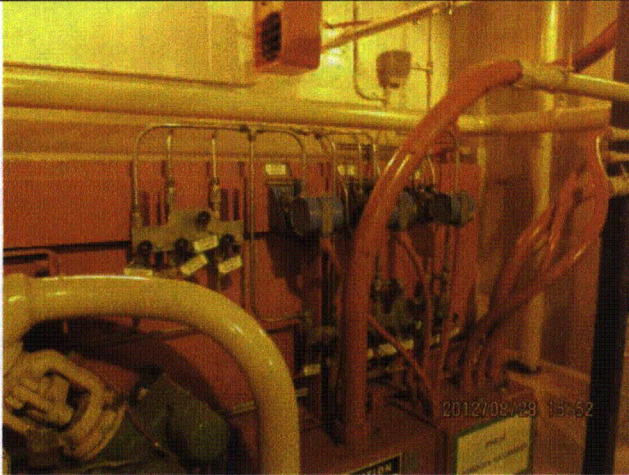
Status:  Y  N  U

**Seismic Walkdown Checklist (SWC)**

Equipment ID No.: 2HG01A

Equipment Class: (9) Fans

Equipment Description: ASSY - BLOWER, H2 RECOMBINER



LaSalle 8-28-12 241 (9)



Status:  Y  N  U

**Seismic Walkdown Checklist (SWC)**

Equipment ID No.: 2PI-DG094

Equipment Class: (18) Instruments on Racks

Equipment Description: 2A DG A AIR RECEIVER PRESS

Project: LaSalle 2 SWEL

Location (Bldg, Elev, Room/Area): DG, 710.00 ft, ALL

Manufacturer/Model:

**Instructions for Completing Checklist**

This checklist may be used to document the results of the Seismic Walkdown of an item of equipment on the SWEL. The space below each of the following questions may be used to record the results of judgments and findings. Additional space is provided at the end of this checklist for documenting other comments.

**Anchorage**

1. Is anchorage configuration verification required (i.e., is the item one of the 50% of SWEL items requiring such verification)? No  
*Gauge is at end of piping run that emerges from 2DG08TA receiver tank.  
Gauge is considered to behave as an in-line component.*
  
2. Is the anchorage free of bent, broken, missing or loose hardware? Not Applicable
  
3. Is the anchorage free of corrosion that is more than mild surface oxidation? Not Applicable
  
4. Is the anchorage free of visible cracks in the concrete near the anchors? Not Applicable
  
5. Is the anchorage configuration consistent with plant documentation? (Note: This question only applies if the item is one of the 50% for which an anchorage configuration verification is required.) Not Applicable
  
6. Based on the above anchorage evaluations, is the anchorage free of potentially adverse seismic conditions? Yes

Status:  Y  N  U

**Seismic Walkdown Checklist (SWC)**

Equipment ID No.: 2PI-DG094

Equipment Class: (18) Instruments on Racks

Equipment Description: 2A DG A AIR RECEIVER PRESS

**Interaction Effects**


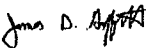
7. Are soft targets free from impact by nearby equipment or structures? Yes
8. Are overhead equipment, distribution systems, ceiling tiles and lighting, and masonry block walls not likely to collapse onto the equipment? Yes  
*Overhead light fixtures judged to be acceptable.*  
*Adjacent masonry column pilaster with running bond construction judged to be acceptable.*
9. Do attached lines have adequate flexibility to avoid damage? Yes
10. Based on the above seismic interaction evaluations, is equipment free of potentially adverse seismic interaction effects? Yes

**Other Adverse Conditions**

11. Have you looked for and found no adverse seismic conditions that could adversely affect the safety functions of the equipment? Yes

**Comments**

Seismic Walkdown Team: D. Carter & J. Griffith - 8/28/2012

Evaluated by:  David Carter Date: 10/17/2012  
 James D. Griffith 10/17/2012

Status:  Y  N  U

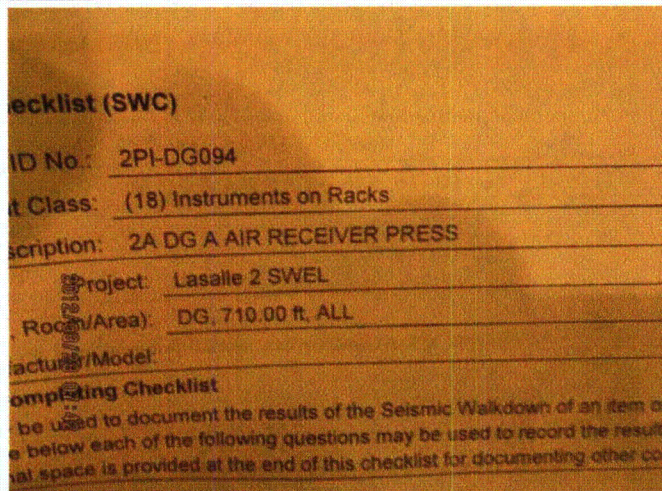
### Seismic Walkdown Checklist (SWC)

Equipment ID No.: 2PI-DG094

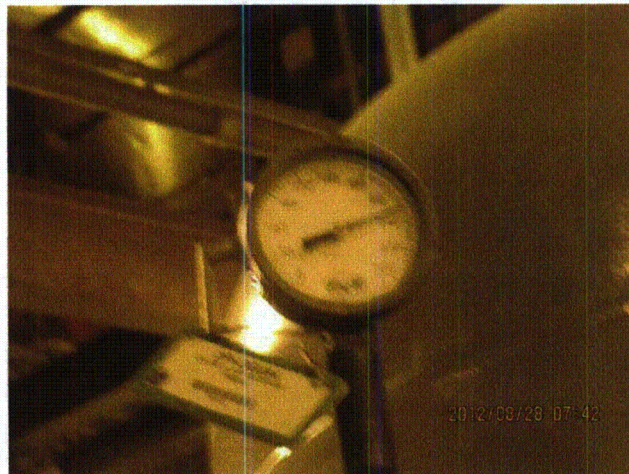
Equipment Class: (18) Instruments on Racks

Equipment Description: 2A DG A AIR RECEIVER PRESS

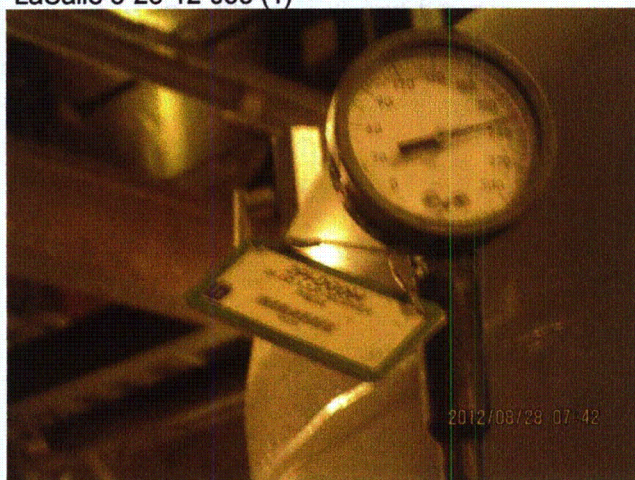
#### Photos



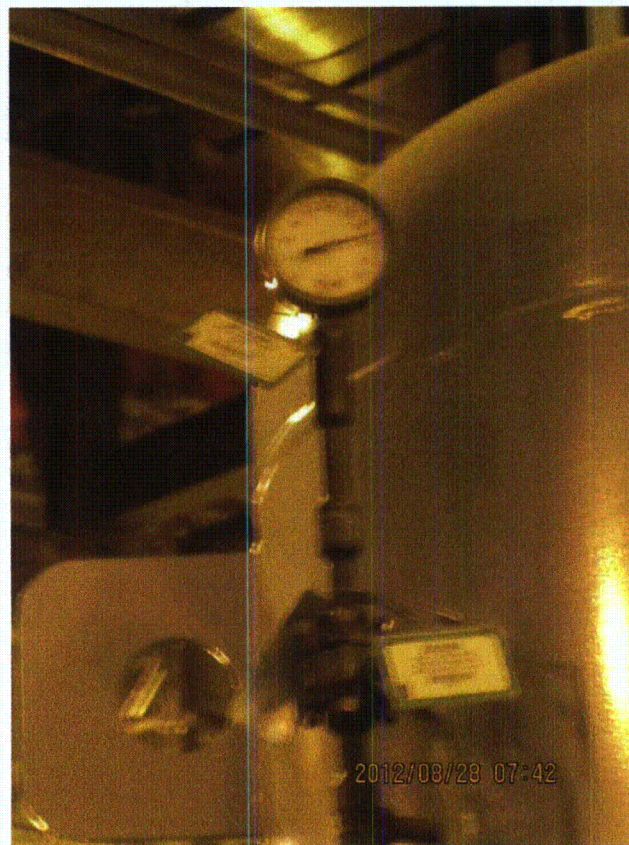
LaSalle 8-28-12 038 (1)



LaSalle 8-28-12 038 (2)



LaSalle 8-28-12 038 (3)



LaSalle 8-28-12 038 (4)

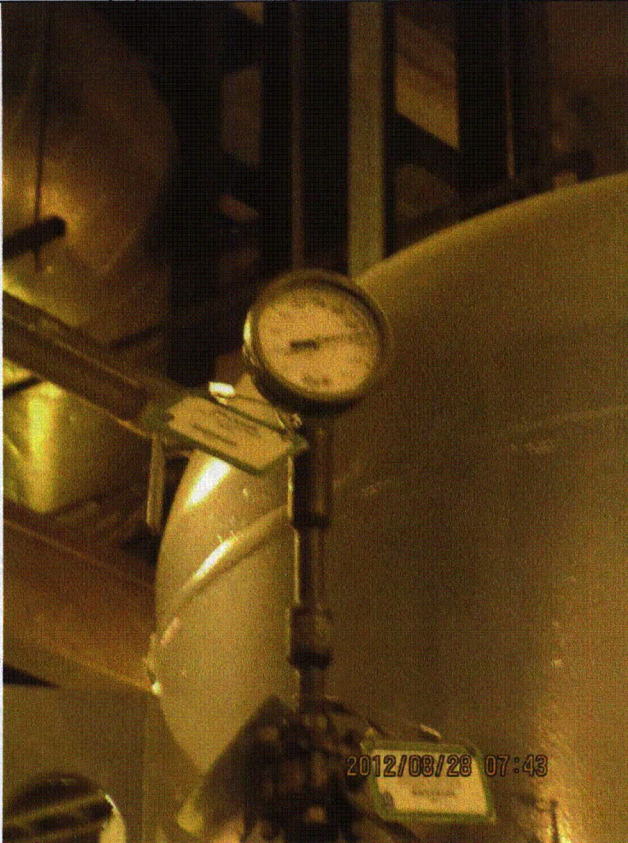
Status:  Y  N  U

**Seismic Walkdown Checklist (SWC)**

Equipment ID No.: 2PI-DG094

Equipment Class: (18) Instruments on Racks

Equipment Description: 2A DG A AIR RECEIVER PRESS



LaSalle 8-28-12 038 (5)



LaSalle 8-28-12 038 (6)

Status:  Y  N  U

**Seismic Walkdown Checklist (SWC)**

Equipment ID No.: 2PI-DG094

Equipment Class: (18) Instruments on Racks

Equipment Description: 2A DG A AIR RECEIVER PRESS



LaSalle 8-28-12 038 (7)



LaSalle 8-28-12 038 (8)

Status:  Y  N  U

### Seismic Walkdown Checklist (SWC)

Equipment ID No.: 2PL33J

Equipment Class: (20) Instrumentation and Control Panels and Cabinets

Equipment Description: ASSY - PANEL, RHR B/C CUBE VENT

Project: LaSalle 2 SWEL

Location (Bldg, Elev, Room/Area): RB, 694.00 ft, ALL

Manufacturer/Model:

#### Instructions for Completing Checklist

This checklist may be used to document the results of the Seismic Walkdown of an item of equipment on the SWEL. The space below each of the following questions may be used to record the results of judgments and findings. Additional space is provided at the end of this checklist for documenting other comments.

#### Anchorage

1. Is anchorage configuration verification required (i.e., is the item one of the 50% of SWEL items requiring such verification)? Yes
  
2. Is the anchorage free of bent, broken, missing or loose hardware? Yes  
*Stacked shims under 2 top anchors judged to be acceptable.*
  
3. Is the anchorage free of corrosion that is more than mild surface oxidation? Yes
  
4. Is the anchorage free of visible cracks in the concrete near the anchors? Yes
  
5. Is the anchorage configuration consistent with plant documentation? (Note: This question only applies if the item is one of the 50% for which an anchorage configuration verification is required.) Yes  
*Anchorage shown on 1E-2-3508, Rev. AN.*
  
6. Based on the above anchorage evaluations, is the anchorage free of potentially adverse seismic conditions? Yes

Status:  Y  N  U

**Seismic Walkdown Checklist (SWC)**

Equipment ID No.: 2PL33J

Equipment Class: (20) Instrumentation and Control Panels and Cabinets

Equipment Description: ASSY - PANEL, RHR B/C CUBE VENT

**Interaction Effects**

7. Are soft targets free from impact by nearby equipment or structures? Yes
8. Are overhead equipment, distribution systems, ceiling tiles and lighting, and masonry block walls not likely to collapse onto the equipment? Yes  
*Overhead light fixtures judged to be acceptable.*  
*Adjacent masonry wall is safety-related per drawing A-223, Rev. N.*
9. Do attached lines have adequate flexibility to avoid damage? Yes
10. Based on the above seismic interaction evaluations, is equipment free of potentially adverse seismic interaction effects? Yes

**Other Adverse Conditions**

11. Have you looked for and found no adverse seismic conditions that could adversely affect the safety functions of the equipment? Yes

**Comments**

Seismic Walkdown Team: D. Carter & J. Griffith - 8/29/2012

Evaluated by: *David Carter* David Carter Date: 10/17/2012  
*James D. Griffith* James Griffith 10/17/2012

Status:  Y  N  U

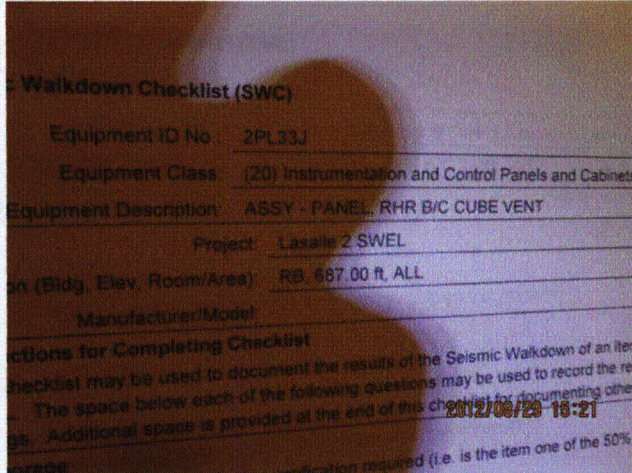
**Seismic Walkdown Checklist (SWC)**

Equipment ID No.: 2PL33J

Equipment Class: (20) Instrumentation and Control Panels and Cabinets

Equipment Description: ASSY - PANEL, RHR B/C CUBE VENT

**Photos**



LaSalle 8-29-12 172



LaSalle 8-29-12 173



LaSalle 8-29-12 174



LaSalle 8-29-12 175



Status:  Y  N  U

**Seismic Walkdown Checklist (SWC)**

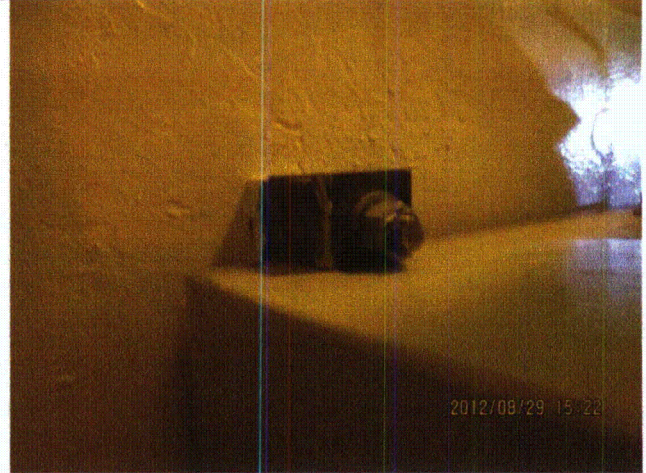
Equipment ID No.: 2PL33J

Equipment Class: (20) Instrumentation and Control Panels and Cabinets

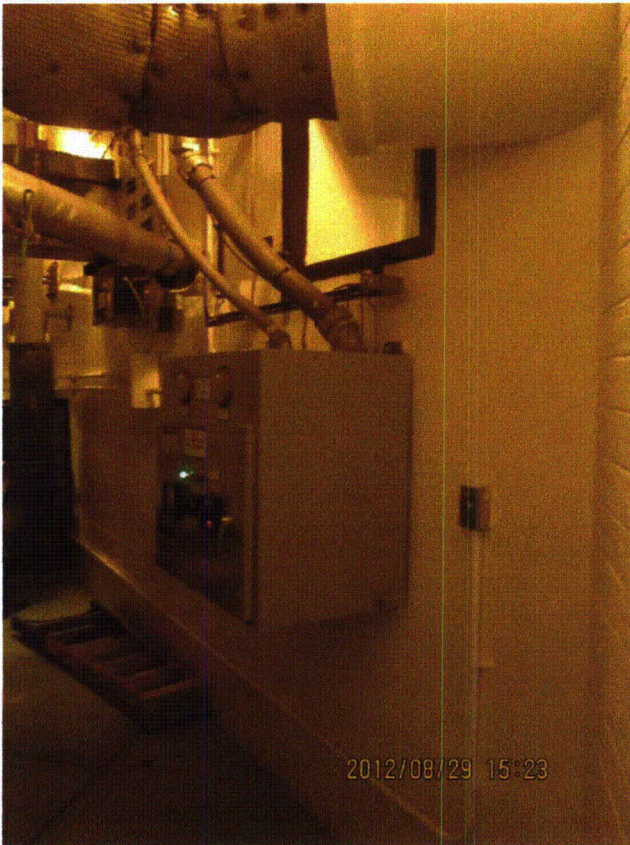
Equipment Description: ASSY - PANEL, RHR B/C CUBE VENT



LaSalle 8-29-12 176



LaSalle 8-29-12 177



LaSalle 8-29-12 178

Status:  Y  N  U

**Seismic Walkdown Checklist (SWC)**

Equipment ID No.: 2PL34J

Equipment Class: (20) Instrumentation and Control Panels and Cabinets

Equipment Description: ASSY - PANEL, RHR A CUBE VENT

Project: LaSalle 2 SWEL

Location (Bldg, Elev,

Room/Area): RB, 694.00 ft, ALL

Manufacturer/Model:

**Instructions for Completing Checklist**

This checklist may be used to document the results of the Seismic Walkdown of an item of equipment on the SWEL. The space below each of the following questions may be used to record the results of judgments and findings. Additional space is provided at the end of this checklist for documenting other comments.

**Anchorage**

1. Is anchorage configuration verification required (i.e., is the item one of the 50% of SWEL items requiring such verification)? Yes
  
2. Is the anchorage free of bent, broken, missing or loose hardware? Yes
  
3. Is the anchorage free of corrosion that is more than mild surface oxidation? Yes
  
4. Is the anchorage free of visible cracks in the concrete near the anchors? Yes
  
5. Is the anchorage configuration consistent with plant documentation? (Note: This question only applies if the item is one of the 50% for which an anchorage configuration verification is required.) Yes  
*Anchorage verified per drawing 1E-2-3507, Rev. BC.*
  
6. Based on the above anchorage evaluations, is the anchorage free of potentially adverse seismic conditions? Yes

Status:  Y  N  U

**Seismic Walkdown Checklist (SWC)**

Equipment ID No.: 2PL34J

Equipment Class: (20) Instrumentation and Control Panels and Cabinets

Equipment Description: ASSY - PANEL, RHR A CUBE VENT

**Interaction Effects**

7. Are soft targets free from impact by nearby equipment or structures? Yes
8. Are overhead equipment, distribution systems, ceiling tiles and lighting, and masonry block walls not likely to collapse onto the equipment? Yes  
*Masonry wall in vicinity is adequately restrained.*
9. Do attached lines have adequate flexibility to avoid damage? Yes
10. Based on the above seismic interaction evaluations, is equipment free of potentially adverse seismic interaction effects? Yes

**Other Adverse Conditions**

11. Have you looked for and found no adverse seismic conditions that could adversely affect the safety functions of the equipment? Yes

**Comments**

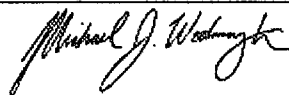
Seismic Walkdown Team: M. Etre & M. Wodarcyk - 9/17/2012

Evaluated by:



Mark Etre

Date: 10/19/2012



Michael Wodarcyk

10/19/2012

Status:  Y  N  U

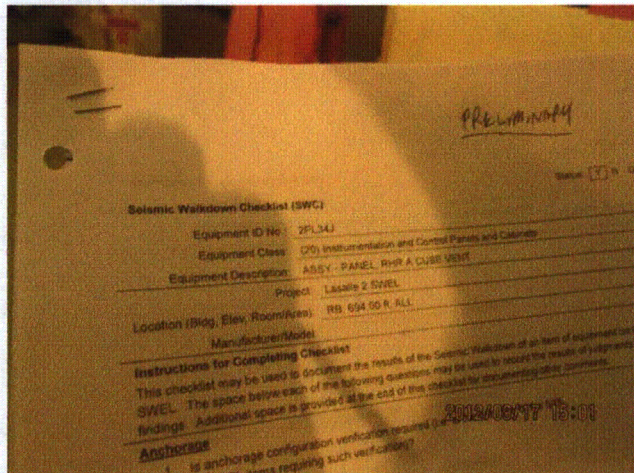
### Seismic Walkdown Checklist (SWC)

Equipment ID No.: 2PL34J

Equipment Class: (20) Instrumentation and Control Panels and Cabinets

Equipment Description: ASSY - PANEL, RHR A CUBE VENT

#### Photos



20120917-Lasalle 246



20120917-Lasalle 247



20120917-Lasalle 248



20120917-Lasalle 249

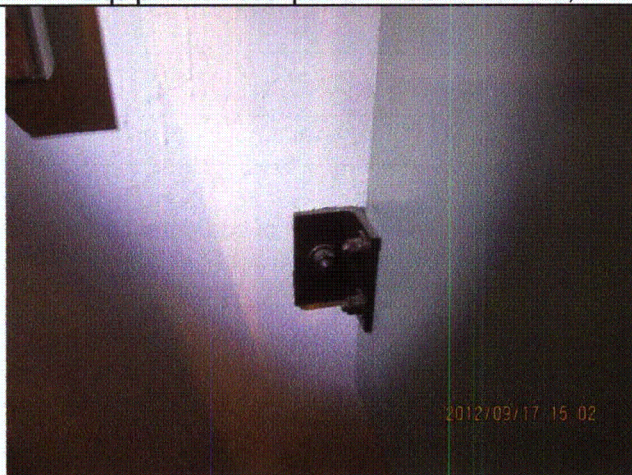
Status:  Y  N  U

**Seismic Walkdown Checklist (SWC)**

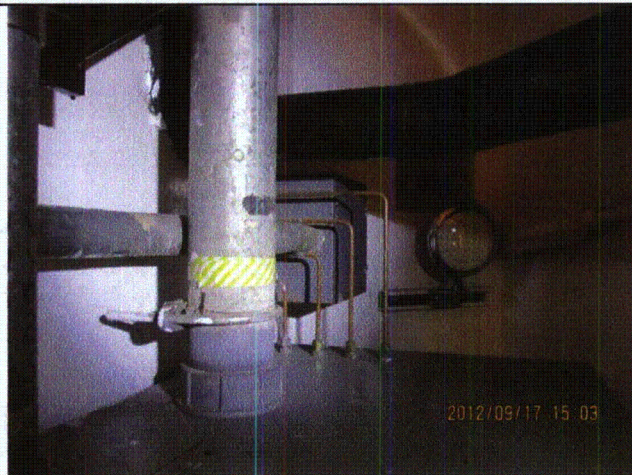
Equipment ID No.: 2PL34J

Equipment Class: (20) Instrumentation and Control Panels and Cabinets

Equipment Description: ASSY - PANEL, RHR A CUBE VENT



20120917-Lasalle 250



20120917-Lasalle 251



20120917-Lasalle 252

Status:  Y  N  U

**Seismic Walkdown Checklist (SWC)**

Equipment ID No.: 2PL35J

Equipment Class: (20) Instrumentation and Control Panels and Cabinets

Equipment Description: ASSY - PANEL, LPCS CUBE VENT

Project: LaSalle 2 SWEL

Location (Bldg, Elev,

Room/Area): RB, 694.00 ft, ALL

Manufacturer/Model:

**Instructions for Completing Checklist**

This checklist may be used to document the results of the Seismic Walkdown of an item of equipment on the SWEL. The space below each of the following questions may be used to record the results of judgments and findings. Additional space is provided at the end of this checklist for documenting other comments.

**Anchorage**

1. Is anchorage configuration verification required (i.e., is the item one of the 50% of SWEL items requiring such verification)? Yes
  
2. Is the anchorage free of bent, broken, missing or loose hardware? Yes
  
3. Is the anchorage free of corrosion that is more than mild surface oxidation? Yes
  
4. Is the anchorage free of visible cracks in the concrete near the anchors? Yes
  
5. Is the anchorage configuration consistent with plant documentation? (Note: This question only applies if the item is one of the 50% for which an anchorage configuration verification is required.) Yes  
*Anchorage verified per drawing 1E-2-3509, Rev. AJ.*
  
6. Based on the above anchorage evaluations, is the anchorage free of potentially adverse seismic conditions? Yes

Status:  Y  N  U

**Seismic Walkdown Checklist (SWC)**

Equipment ID No.: 2PL35J

Equipment Class: (20) Instrumentation and Control Panels and Cabinets

Equipment Description: ASSY - PANEL, LPCS CUBE VENT

**Interaction Effects**

7. Are soft targets free from impact by nearby equipment or structures? Yes
8. Are overhead equipment, distribution systems, ceiling tiles and lighting, and masonry block walls not likely to collapse onto the equipment? Yes  
*Overhead light fixtures judged to be acceptable.*
9. Do attached lines have adequate flexibility to avoid damage? Yes
10. Based on the above seismic interaction evaluations, is equipment free of potentially adverse seismic interaction effects? Yes

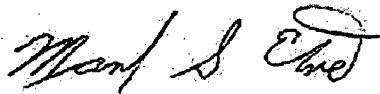
**Other Adverse Conditions**

11. Have you looked for and found no adverse seismic conditions that could adversely affect the safety functions of the equipment? Yes

**Comments**

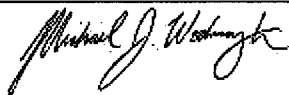
Seismic Walkdown Team: M. Etre & M. Wodarczyk - 9/17/2012

Evaluated by:



Mark Etre

Date: 10/19/2012



Michael Wodarczyk

10/19/2012





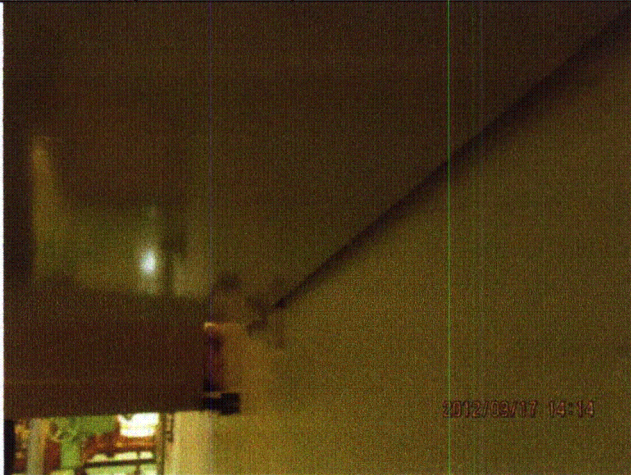
Status:  Y  N  U

**Seismic Walkdown Checklist (SWC)**

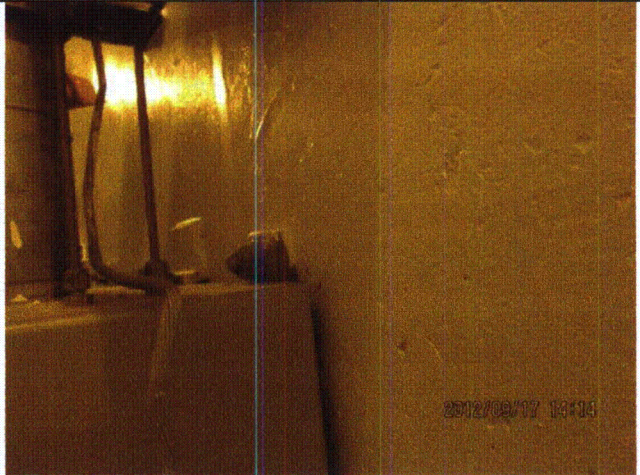
Equipment ID No.: 2PL35J

Equipment Class: (20) Instrumentation and Control Panels and Cabinets

Equipment Description: ASSY - PANEL, LPCS CUBE VENT



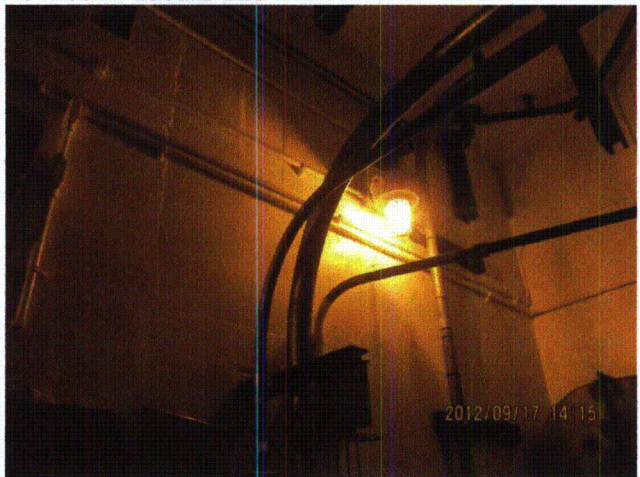
20120917-Lasalle 224



20120917-Lasalle 225



20120917-Lasalle 226



20120917-Lasalle 227

Status:  Y  N  U

**Seismic Walkdown Checklist (SWC)**

Equipment ID No.: 2TE-HG014A

Equipment Class: (19) Temperature Sensors

Equipment Description: HYDROGEN RECOMBINER GAS INLET (TE-1A)

Project: LaSalle 2 SWEL

Location (Bldg, Elev, Room/Area): RB, 761.00 ft, ALL

Manufacturer/Model:

**Instructions for Completing Checklist**

This checklist may be used to document the results of the Seismic Walkdown of an item of equipment on the SWEL. The space below each of the following questions may be used to record the results of judgments and findings. Additional space is provided at the end of this checklist for documenting other comments.

**Anchorage**

1. Is anchorage configuration verification required (i.e., is the item one of the 50% of SWEL items requiring such verification)? No
  
2. Is the anchorage free of bent, broken, missing or loose hardware? Not Applicable
  
3. Is the anchorage free of corrosion that is more than mild surface oxidation? Not Applicable
  
4. Is the anchorage free of visible cracks in the concrete near the anchors? Not Applicable
  
5. Is the anchorage configuration consistent with plant documentation? (Note: This question only applies if the item is one of the 50% for which an anchorage configuration verification is required.) Not Applicable
  
6. Based on the above anchorage evaluations, is the anchorage free of potentially adverse seismic conditions? Yes

Status:  Y  N  U

**Seismic Walkdown Checklist (SWC)**

Equipment ID No.: 2TE-HG014A

Equipment Class: (19) Temperature Sensors

Equipment Description: HYDROGEN RECOMBINER GAS INLET (TE-1A)

**Interaction Effects**

7. Are soft targets free from impact by nearby equipment or structures? Yes

*Flexible conduit could come into contact with instrument line. Operations placed tie-wrap on flexible conduit to prevent interaction. No longer a seismic interaction concern.*

8. Are overhead equipment, distribution systems, ceiling tiles and lighting, and masonry block walls not likely to collapse onto the equipment? Yes

*Overhead light fixtures judged to be acceptable.*

9. Do attached lines have adequate flexibility to avoid damage? Yes

10. Based on the above seismic interaction evaluations, is equipment free of potentially adverse seismic interaction effects? Yes

**Other Adverse Conditions**

11. Have you looked for and found no adverse seismic conditions that could adversely affect the safety functions of the equipment? Yes

**Comments**

Seismic Walkdown Team: D. Carter & J. Griffith - 8/29/2012

Item confirmed by Operations as shown on drawing M-130, Sheet 2.

Evaluated by:  David Carter Date: 10/17/2012

 James D. Griffith 10/17/2012

Status:  Y  N  U

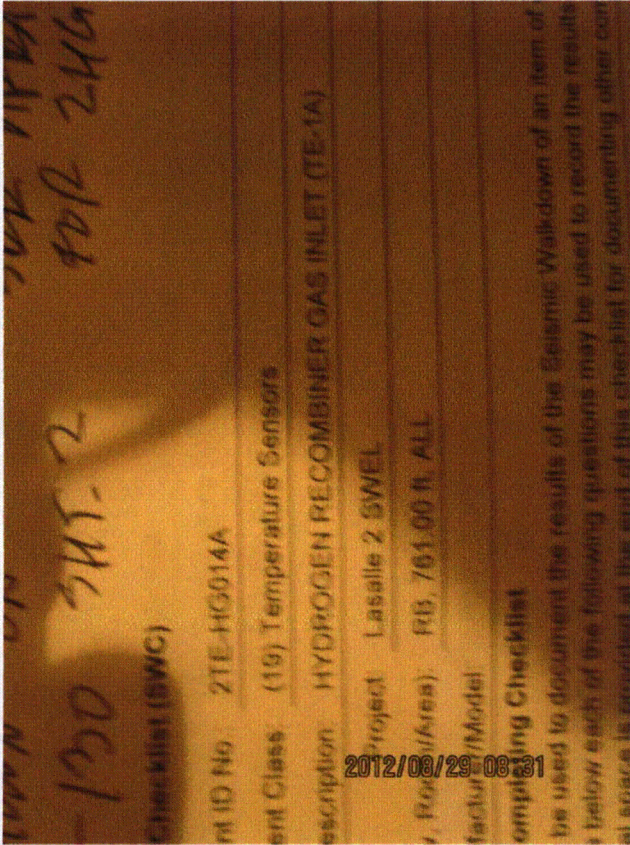
### Seismic Walkdown Checklist (SWC)

Equipment ID No.: 2TE-HG014A

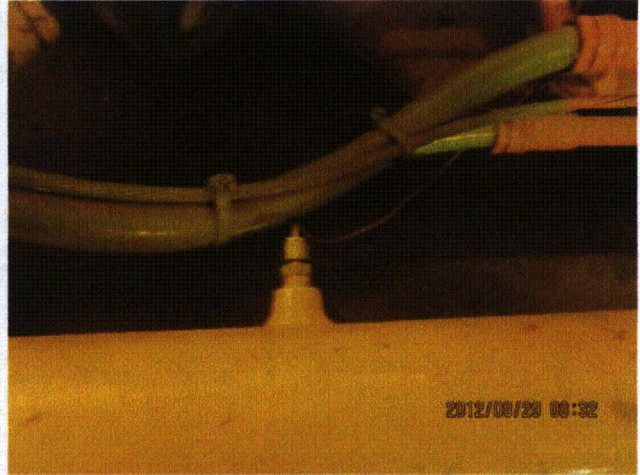
Equipment Class: (19) Temperature Sensors

Equipment Description: HYDROGEN RECOMBINER GAS INLET (TE-1A)

#### Photos



LaSalle 8-29-12 001



LaSalle 8-29-12 002

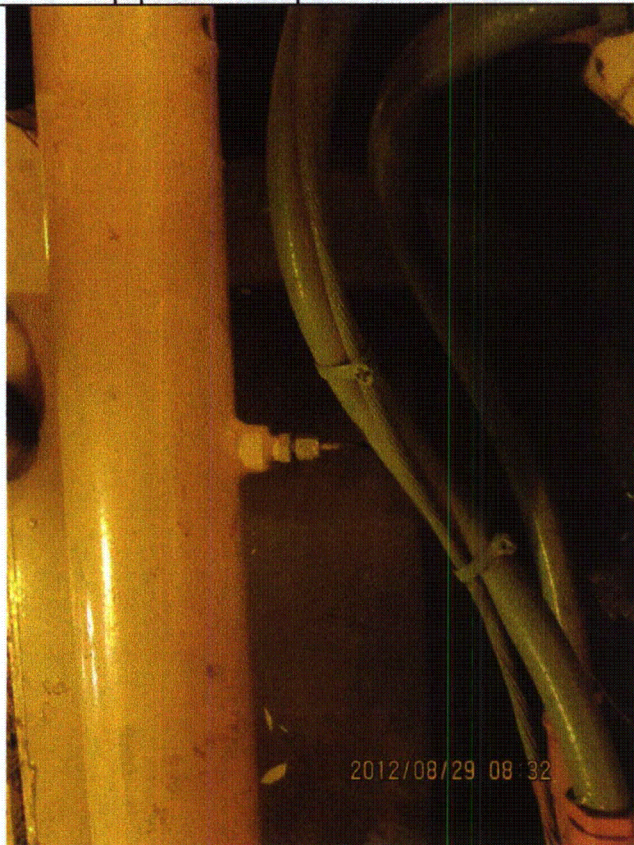
Status:  Y  N  U

**Seismic Walkdown Checklist (SWC)**

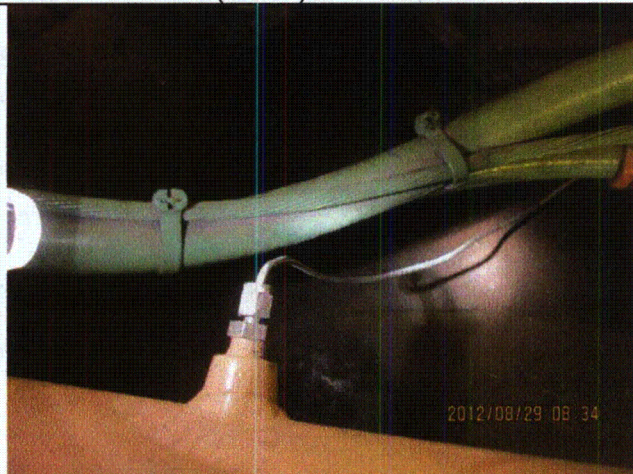
Equipment ID No.: 2TE-HG014A

Equipment Class: (19) Temperature Sensors

Equipment Description: HYDROGEN RECOMBINER GAS INLET (TE-1A)



LaSalle 8-29-12 003



LaSalle 8-29-12 004



LaSalle 8-29-12 005



LaSalle 8-29-12 006

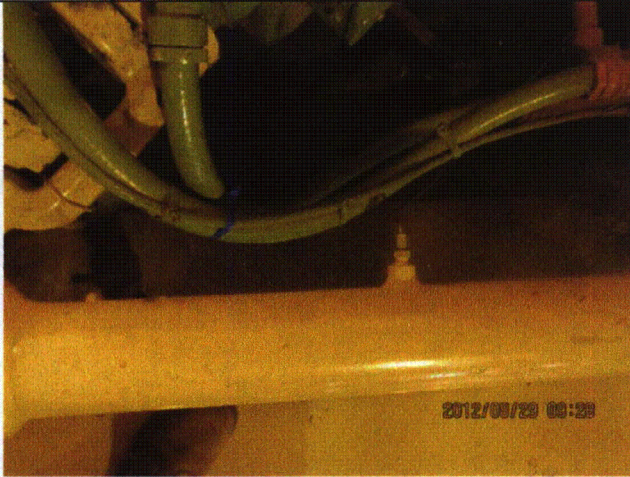
Status:  Y  N  U

**Seismic Walkdown Checklist (SWC)**

Equipment ID No.: 2TE-HG014A

Equipment Class: (19) Temperature Sensors

Equipment Description: HYDROGEN RECOMBINER GAS INLET (TE-1A)



LaSalle 8-29-12 025

Status:  Y  N  U

**Seismic Walkdown Checklist (SWC)**

Equipment ID No.: 2VQ029

Equipment Class: (7) Fluid-Operated Valves

Equipment Description: DW VENT/PURGE FROM RX BLDG UPSTRM ISOL

Project: LaSalle 2 SWEL

Location (Bldg, Elev,

Room/Area): RB, 740.00 ft, ALL

Manufacturer/Model:

**Instructions for Completing Checklist**

This checklist may be used to document the results of the Seismic Walkdown of an item of equipment on the SWEL. The space below each of the following questions may be used to record the results of judgments and findings. Additional space is provided at the end of this checklist for documenting other comments.

**Anchorage**

1. Is anchorage configuration verification required (i.e., is the item one of the 50% of SWEL items requiring such verification)? No
  
2. Is the anchorage free of bent, broken, missing or loose hardware? Not Applicable
  
3. Is the anchorage free of corrosion that is more than mild surface oxidation? Not Applicable
  
4. Is the anchorage free of visible cracks in the concrete near the anchors? Not Applicable
  
5. Is the anchorage configuration consistent with plant documentation? (Note: This question only applies if the item is one of the 50% for which an anchorage configuration verification is required.) Not Applicable
  
6. Based on the above anchorage evaluations, is the anchorage free of potentially adverse seismic conditions? Yes

Status:  Y  N  U

**Seismic Walkdown Checklist (SWC)**

Equipment ID No.: 2VQ029

Equipment Class: (7) Fluid-Operated Valves

Equipment Description: DW VENT/PURGE FROM RX BLDG UPSTRM ISOL

**Interaction Effects**

7. Are soft targets free from impact by nearby equipment or structures? Yes

*Conduits near valve body. Conduits are flexible and part of the same valve. Judged to be acceptable.*

8. Are overhead equipment, distribution systems, ceiling tiles and lighting, and masonry block walls not likely to collapse onto the equipment? Yes

9. Do attached lines have adequate flexibility to avoid damage? Yes

10. Based on the above seismic interaction evaluations, is equipment free of potentially adverse seismic interaction effects? Yes

**Other Adverse Conditions**

11. Have you looked for and found no adverse seismic conditions that could adversely affect the safety functions of the equipment? Yes

**Comments**

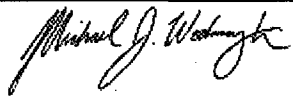
Seismic Walkdown Team: M. Etre & M. Wodarczyk - 9/17/2012

Evaluated by:



Mark Etre

Date: 10/19/2012



Michael Wodarczyk

10/19/2012



Status:  Y  N  U

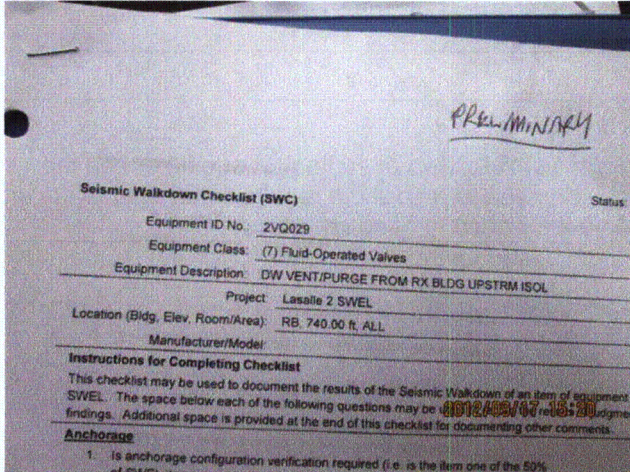
### Seismic Walkdown Checklist (SWC)

Equipment ID No.: 2VQ029

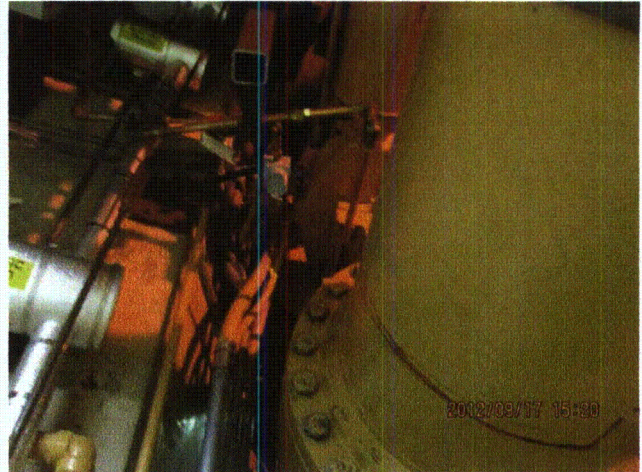
Equipment Class: (7) Fluid-Operated Valves

Equipment Description: DW VENT/PURGE FROM RX BLDG UPSTRM ISOL

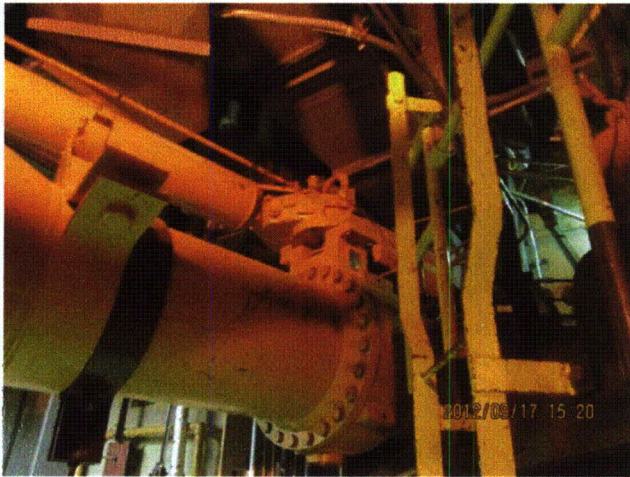
### Photos



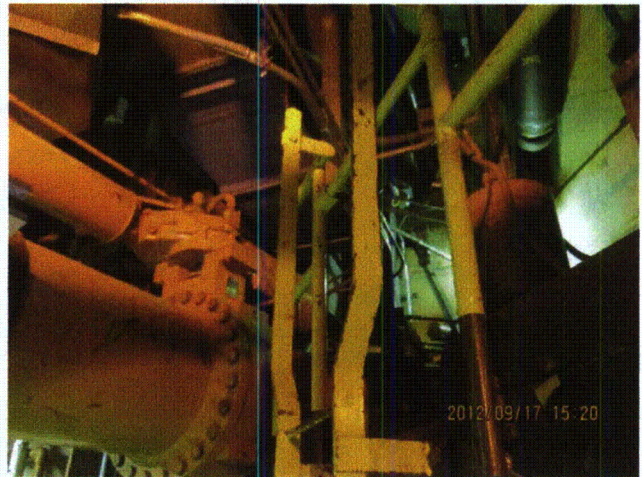
20120917-Lasalle 261



20120917-Lasalle 262



20120917-Lasalle 263



20120917-Lasalle 264

Status:  Y  N  U

**Seismic Walkdown Checklist (SWC)**

Equipment ID No.: 2VQ030

Equipment Class: (7) Fluid-Operated Valves

Equipment Description: DW VENT/PURGE FROM RX BLDG DWNST ISOL

Project: LaSalle 2 SWEL

Location (Bldg, Elev, Room/Area): RB, 740.00 ft, ALL

Manufacturer/Model:

**Instructions for Completing Checklist**

This checklist may be used to document the results of the Seismic Walkdown of an item of equipment on the SWEL. The space below each of the following questions may be used to record the results of judgments and findings. Additional space is provided at the end of this checklist for documenting other comments.

**Anchorage**

1. Is anchorage configuration verification required (i.e., is the item one of the 50% of SWEL items requiring such verification)? No
  
2. Is the anchorage free of bent, broken, missing or loose hardware? Not Applicable
  
3. Is the anchorage free of corrosion that is more than mild surface oxidation? Not Applicable
  
4. Is the anchorage free of visible cracks in the concrete near the anchors? Not Applicable
  
5. Is the anchorage configuration consistent with plant documentation? (Note: This question only applies if the item is one of the 50% for which an anchorage configuration verification is required.) Not Applicable
  
6. Based on the above anchorage evaluations, is the anchorage free of potentially adverse seismic conditions? Yes

**Interaction Effects**

7. Are soft targets free from impact by nearby equipment or structures? Yes

Status:  Y  N  U

**Seismic Walkdown Checklist (SWC)**

Equipment ID No.: 2VQ030

Equipment Class: (7) Fluid-Operated Valves

Equipment Description: DW VENT/PURGE FROM RX BLDG DWNST ISOL

8. Are overhead equipment, distribution systems, ceiling tiles and lighting, and masonry block walls not likely to collapse onto the equipment? Yes
9. Do attached lines have adequate flexibility to avoid damage? Yes
10. Based on the above seismic interaction evaluations, is equipment free of potentially adverse seismic interaction effects? Yes

**Other Adverse Conditions**

11. Have you looked for and found no adverse seismic conditions that could adversely affect the safety functions of the equipment? Yes

**Comments**

Seismic Walkdown Team: D. Carter & J. Griffith - 8/29/2012

Evaluated by: *David Carter* David Carter Date: 10/17/2012

*James D. Griffith* James Griffith 10/17/2012

Status:  Y  N  U

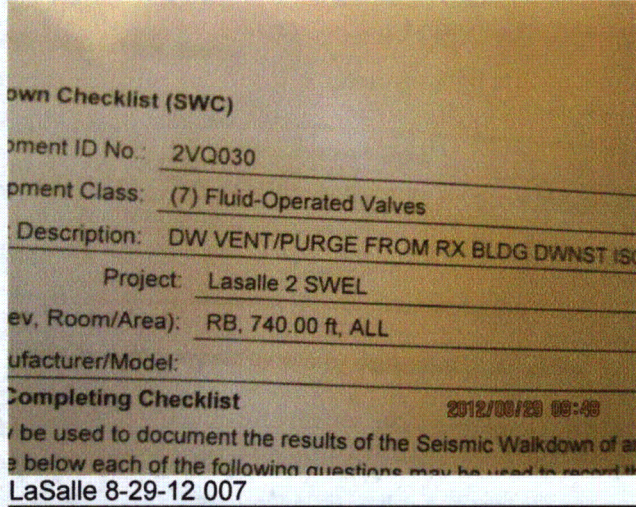
**Seismic Walkdown Checklist (SWC)**

Equipment ID No.: 2VQ030

Equipment Class: (7) Fluid-Operated Valves

Equipment Description: DW VENT/PURGE FROM RX BLDG DWNST ISOL

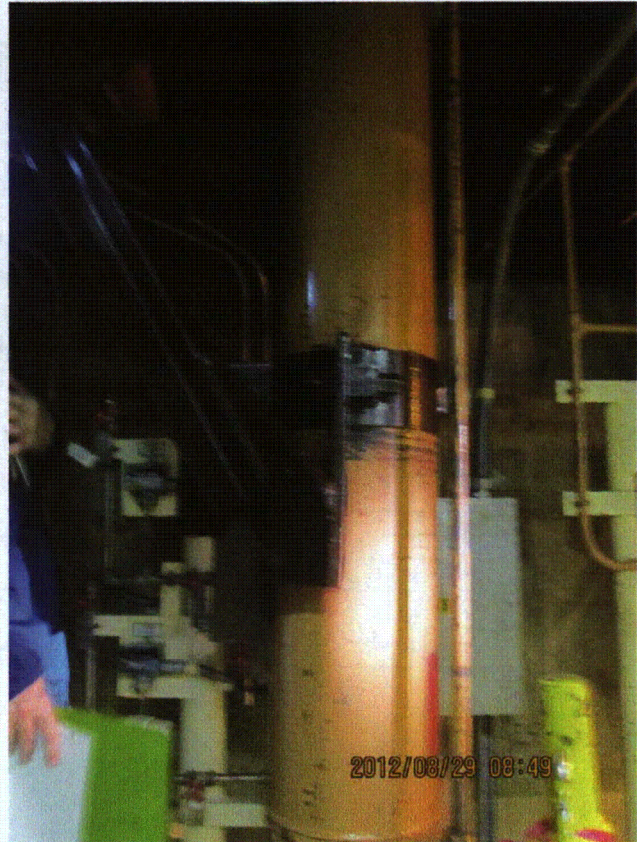
**Photos**



LaSalle 8-29-12 008



LaSalle 8-29-12 009



LaSalle 8-29-12 010

Status:  Y  N  U

**Seismic Walkdown Checklist (SWC)**

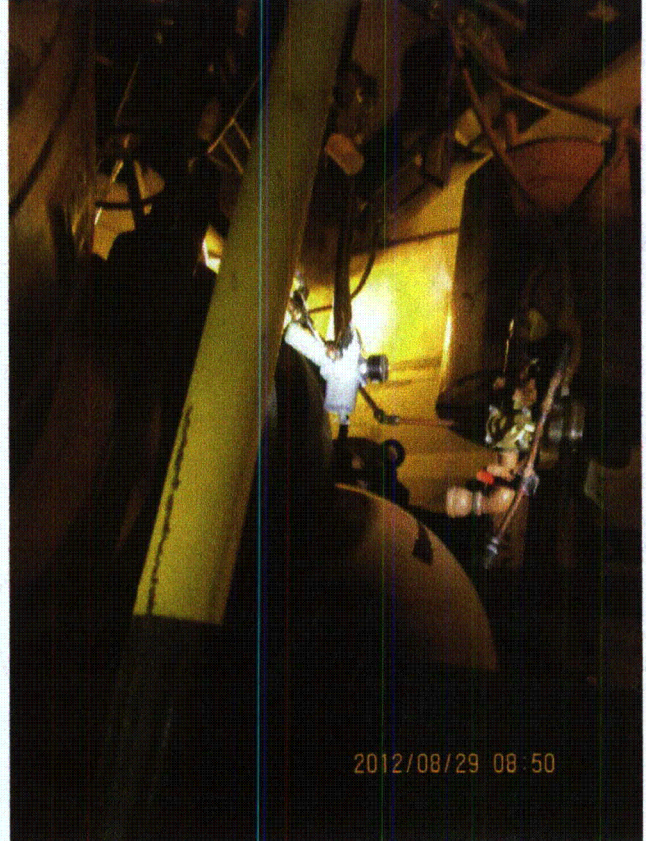
Equipment ID No.: 2VQ030

Equipment Class: (7) Fluid-Operated Valves

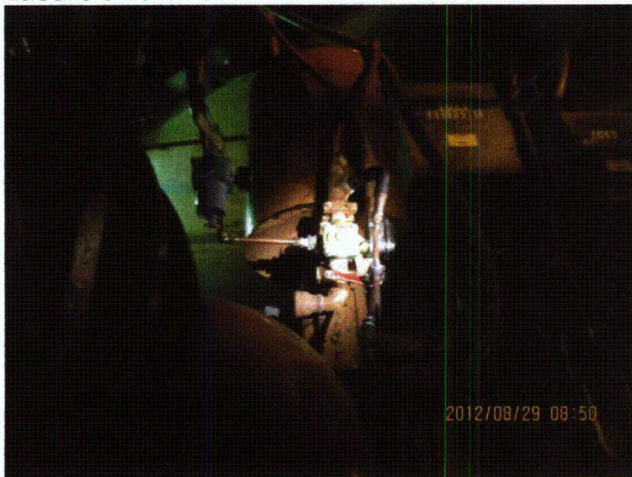
Equipment Description: DW VENT/PURGE FROM RX BLDG DWNST ISOL



LaSalle 8-29-12 011



LaSalle 8-29-12 012



LaSalle 8-29-12 013



LaSalle 8-29-12 014

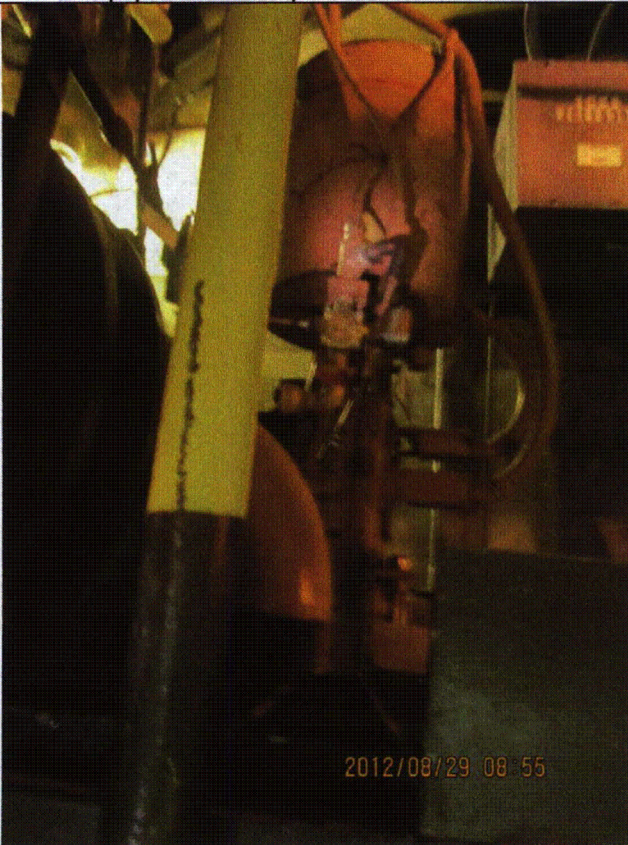
Status:  Y  N  U

**Seismic Walkdown Checklist (SWC)**

Equipment ID No.: 2VQ030

Equipment Class: (7) Fluid-Operated Valves

Equipment Description: DW VENT/PURGE FROM RX BLDG DWNST ISOL



LaSalle 8-29-12 015



LaSalle 8-29-12 016

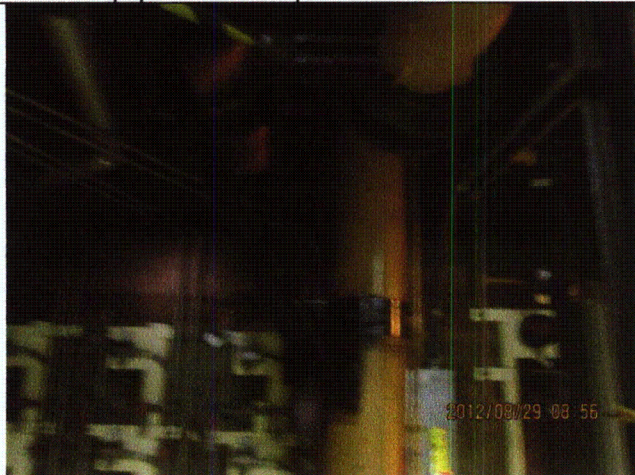
Status:  Y  N  U

**Seismic Walkdown Checklist (SWC)**

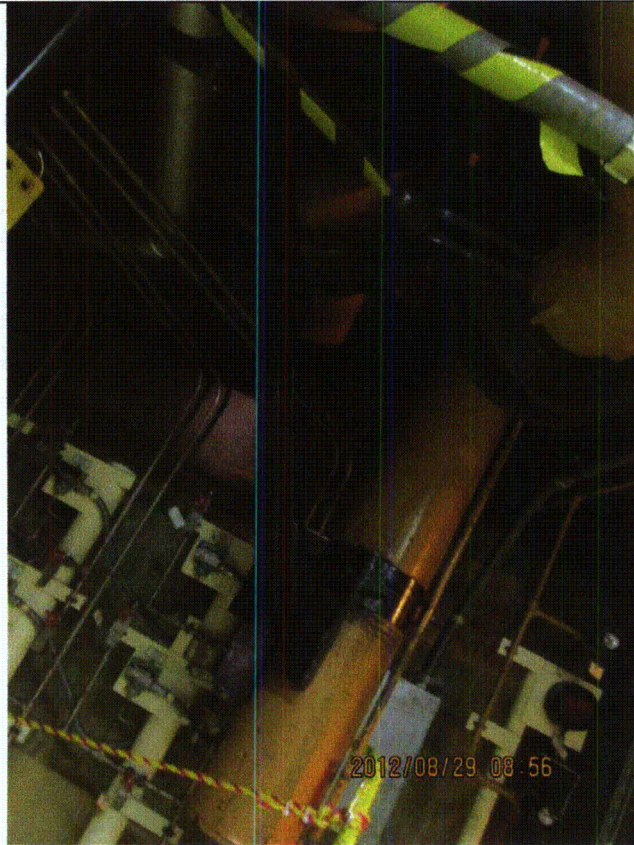
Equipment ID No.: 2VQ030

Equipment Class: (7) Fluid-Operated Valves

Equipment Description: DW VENT/PURGE FROM RX BLDG DWNST ISOL



LaSalle 8-29-12 017



LaSalle 8-29-12 018

Status:  Y  N  U

**Seismic Walkdown Checklist (SWC)**

Equipment ID No.: 2VQ031

Equipment Class: (7) Fluid-Operated Valves

Equipment Description: SUP POOL VENT/PURGE OTLT UPSTRM ISOL

Project: LaSalle 2 SWEL

Location (Bldg, Elev, Room/Area): RB, 710.00 ft, ALL

Manufacturer/Model:

**Instructions for Completing Checklist**

This checklist may be used to document the results of the Seismic Walkdown of an item of equipment on the SWEL. The space below each of the following questions may be used to record the results of judgments and findings. Additional space is provided at the end of this checklist for documenting other comments.

**Anchorage**

1. Is anchorage configuration verification required (i.e., is the item one of the 50% of SWEL items requiring such verification)? No
  
2. Is the anchorage free of bent, broken, missing or loose hardware? Not Applicable
  
3. Is the anchorage free of corrosion that is more than mild surface oxidation? Not Applicable
  
4. Is the anchorage free of visible cracks in the concrete near the anchors? Not Applicable
  
5. Is the anchorage configuration consistent with plant documentation? (Note: This question only applies if the item is one of the 50% for which an anchorage configuration verification is required.) Not Applicable
  
6. Based on the above anchorage evaluations, is the anchorage free of potentially adverse seismic conditions? Yes



Status:  Y  N  U

**Seismic Walkdown Checklist (SWC)**

Equipment ID No.: 2VQ031

Equipment Class: (7) Fluid-Operated Valves

Equipment Description: SUP POOL VENT/PURGE OTLT UPSTRM ISOL

**Interaction Effects**


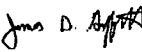
7. Are soft targets free from impact by nearby equipment or structures? Yes  
*Approximately 1-1/2" gap between tubing for valve and cable tray supports judged to be acceptable.*
8. Are overhead equipment, distribution systems, ceiling tiles and lighting, and masonry block walls not likely to collapse onto the equipment? Yes
9. Do attached lines have adequate flexibility to avoid damage? Yes
10. Based on the above seismic interaction evaluations, is equipment free of potentially adverse seismic interaction effects? Yes

**Other Adverse Conditions**

11. Have you looked for and found no adverse seismic conditions that could adversely affect the safety functions of the equipment? Yes  
*Approximately 1-1/2" gap between valve operator and adjacent support auxiliary steel judged to be acceptable.*

**Comments**

Seismic Walkdown Team: D. Carter & J. Griffith - 8/29/2012

Evaluated by:  David Carter Date: 10/17/2012  
 James Griffith 10/17/2012

Status:  Y  N  U

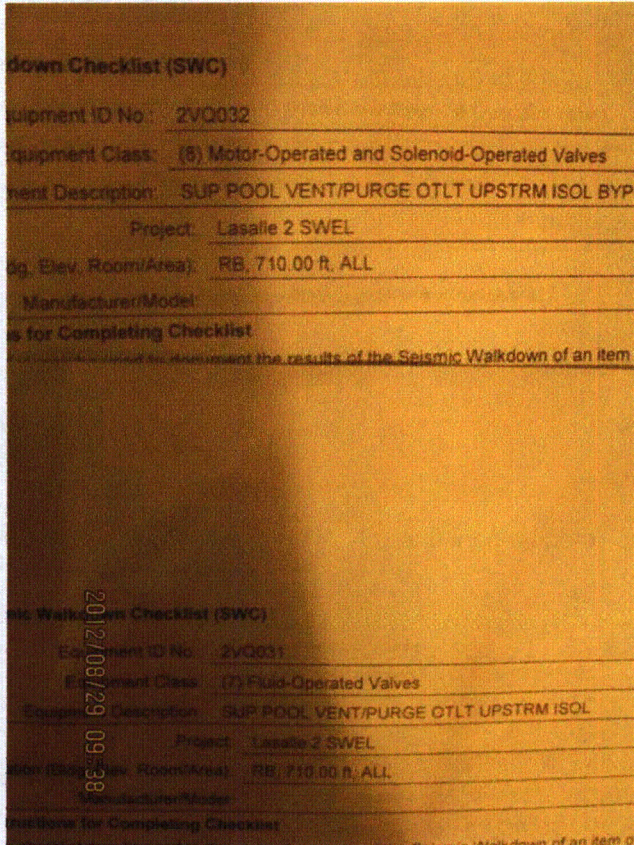
**Seismic Walkdown Checklist (SWC)**

Equipment ID No.: 2VQ031

Equipment Class: (7) Fluid-Operated Valves

Equipment Description: SUP POOL VENT/PURGE OTLT UPSTRM ISOL

**Photos**



LaSalle 8-29-12 026



LaSalle 8-29-12 027

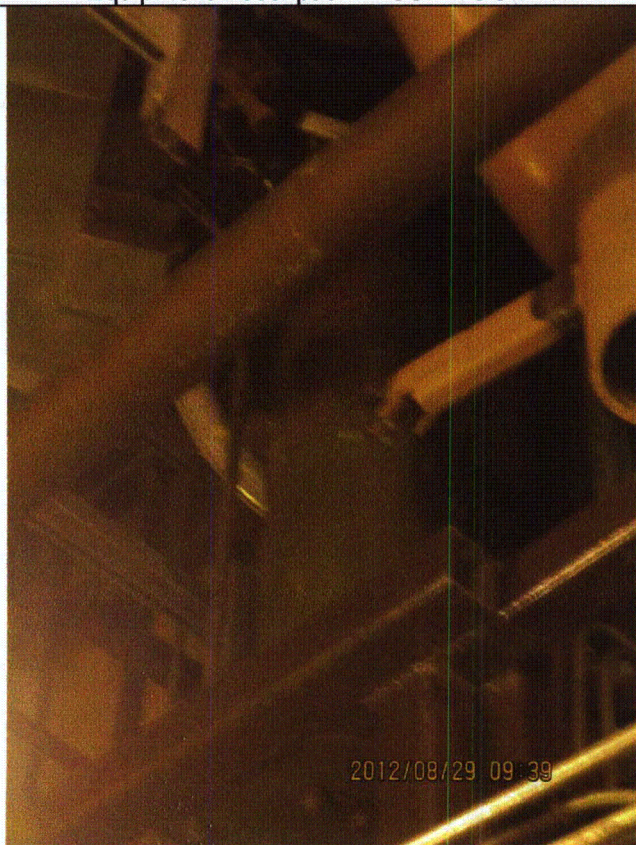
Status:  Y  N  U

**Seismic Walkdown Checklist (SWC)**

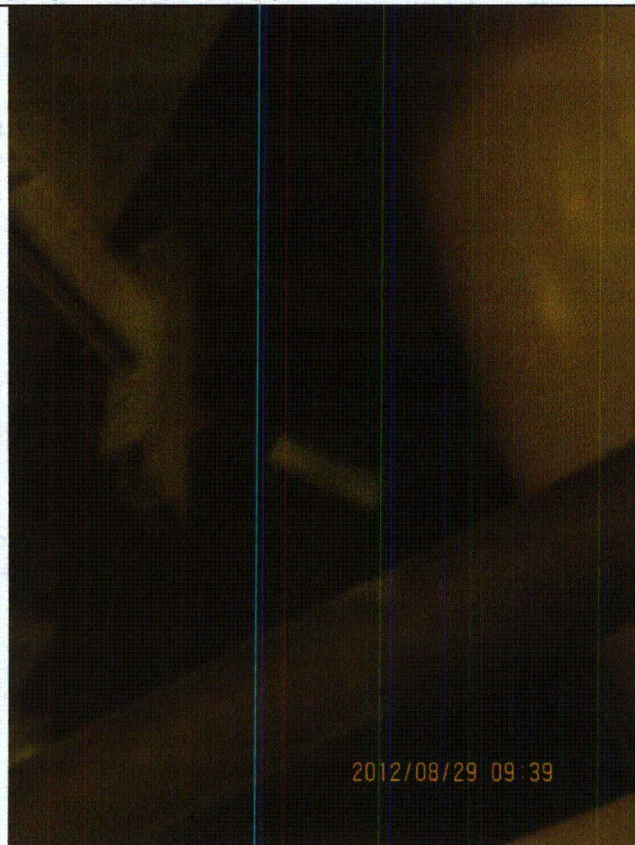
Equipment ID No.: 2VQ031

Equipment Class: (7) Fluid-Operated Valves

Equipment Description: SUP POOL VENT/PURGE OTLT UPSTRM ISOL



LaSalle 8-29-12 028



LaSalle 8-29-12 029

Status:  Y  N  U

**Seismic Walkdown Checklist (SWC)**

Equipment ID No.: 2VQ032

Equipment Class: (8) Motor-Operated and Solenoid-Operated Valves

Equipment Description: SUP POOL VENT/PURGE OTLT UPSTRM ISOL BYP

Project: LaSalle 2 SWEL

Location (Bldg, Elev, Room/Area): RB, 710.00 ft, ALL

Manufacturer/Model:

**Instructions for Completing Checklist**

This checklist may be used to document the results of the Seismic Walkdown of an item of equipment on the SWEL. The space below each of the following questions may be used to record the results of judgments and findings. Additional space is provided at the end of this checklist for documenting other comments.

**Anchorage**

1. Is anchorage configuration verification required (i.e., is the item one of the 50% of SWEL items requiring such verification)? No
  
2. Is the anchorage free of bent, broken, missing or loose hardware? Not Applicable
  
3. Is the anchorage free of corrosion that is more than mild surface oxidation? Not Applicable
  
4. Is the anchorage free of visible cracks in the concrete near the anchors? Not Applicable
  
5. Is the anchorage configuration consistent with plant documentation? (Note: This question only applies if the item is one of the 50% for which an anchorage configuration verification is required.) Not Applicable
  
6. Based on the above anchorage evaluations, is the anchorage free of potentially adverse seismic conditions? Yes

Status:  Y  N  U

**Seismic Walkdown Checklist (SWC)**

Equipment ID No.: 2VQ032

Equipment Class: (8) Motor-Operated and Solenoid-Operated Valves

Equipment Description: SUP POOL VENT/PURGE OTLT UPSTRM ISOL BYP

**Interaction Effects**

7. Are soft targets free from impact by nearby equipment or structures? Yes
8. Are overhead equipment, distribution systems, ceiling tiles and lighting, and masonry block walls not likely to collapse onto the equipment? Yes
9. Do attached lines have adequate flexibility to avoid damage? Yes
10. Based on the above seismic interaction evaluations, is equipment free of potentially adverse seismic interaction effects? Yes

**Other Adverse Conditions**

11. Have you looked for and found no adverse seismic conditions that could adversely affect the safety functions of the equipment? Yes

**Comments**

Seismic Walkdown Team: D. Carter & J. Griffith - 8/29/2012

Evaluated by: *David Carter* David Carter Date: 10/17/2012  
*James D. Griffith* James Griffith 10/17/2012

Status:  Y  N  U

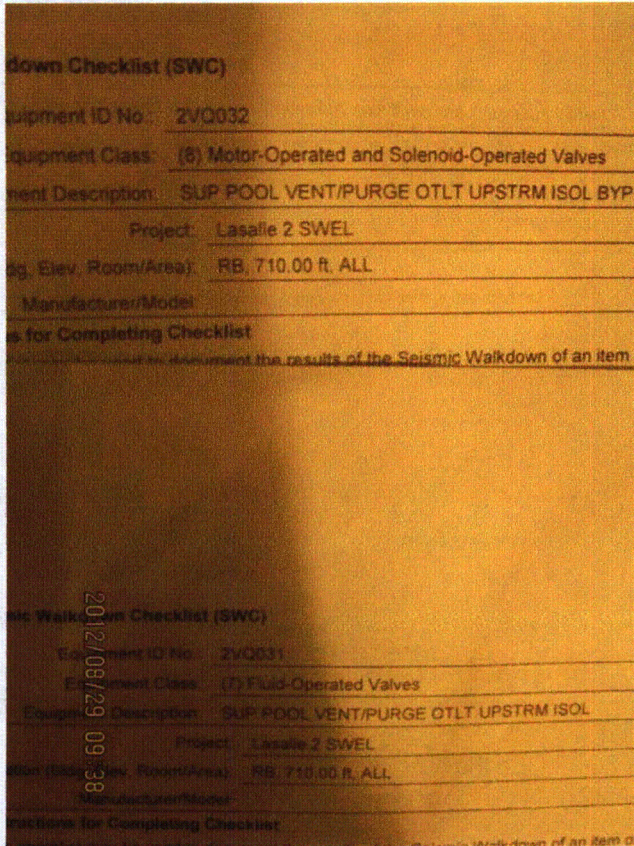
### Seismic Walkdown Checklist (SWC)

Equipment ID No.: 2VQ032

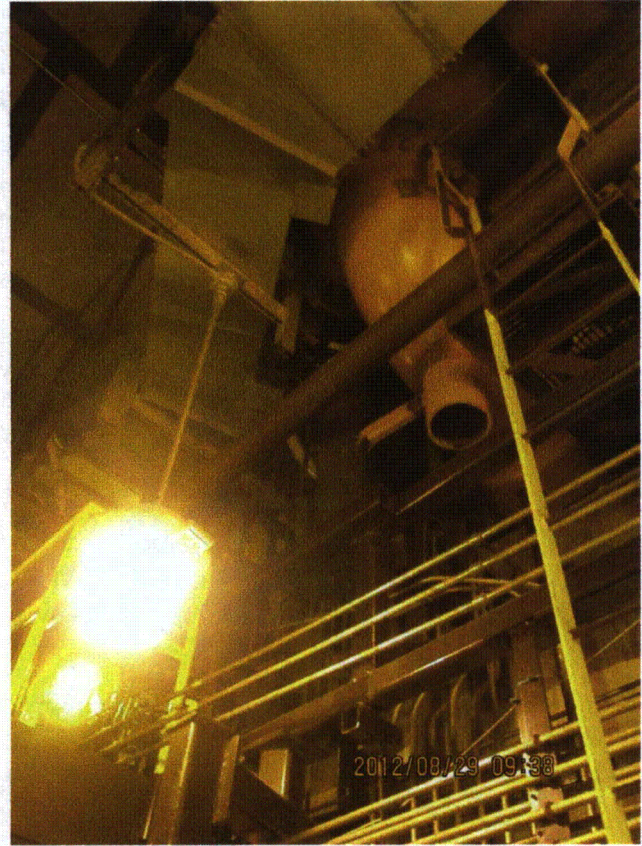
Equipment Class: (8) Motor-Operated and Solenoid-Operated Valves

Equipment Description: SUP POOL VENT/PURGE OTLT UPSTRM ISOL BYP

#### Photos



LaSalle 8-29-12 026



LaSalle 8-29-12 027

Status:  Y  N  U

**Seismic Walkdown Checklist (SWC)**

Equipment ID No.: 2VQ032

Equipment Class: (8) Motor-Operated and Solenoid-Operated Valves

Equipment Description: SUP POOL VENT/PURGE OTLT UPSTRM ISOL BYP



LaSalle 8-29-12 028



LaSalle 8-29-12 029

Status:  Y  N  U

**Seismic Walkdown Checklist (SWC)**

Equipment ID No.: 2VQ034

Equipment Class: (7) Fluid-Operated Valves

Equipment Description: DW VENT/PURGE OTLT UPSTRM ISOL

Project: LaSalle 2 SWEL

Location (Bldg, Elev, Room/Area): RB, 786.00 ft, ALL

Manufacturer/Model: \_\_\_\_\_

**Instructions for Completing Checklist**

This checklist may be used to document the results of the Seismic Walkdown of an item of equipment on the SWEL. The space below each of the following questions may be used to record the results of judgments and findings. Additional space is provided at the end of this checklist for documenting other comments.

**Anchorage**

1. Is anchorage configuration verification required (i.e., is the item one of the 50% of SWEL items requiring such verification)? No
  
2. Is the anchorage free of bent, broken, missing or loose hardware? Not Applicable
  
3. Is the anchorage free of corrosion that is more than mild surface oxidation? Not Applicable
  
4. Is the anchorage free of visible cracks in the concrete near the anchors? Not Applicable
  
5. Is the anchorage configuration consistent with plant documentation? (Note: This question only applies if the item is one of the 50% for which an anchorage configuration verification is required.) Not Applicable
  
6. Based on the above anchorage evaluations, is the anchorage free of potentially adverse seismic conditions? Yes



Status:  Y  N  U

**Seismic Walkdown Checklist (SWC)**

Equipment ID No.: 2VQ034

Equipment Class: (7) Fluid-Operated Valves

Equipment Description: DW VENT/PURGE OTLT UPSTRM ISOL

**Interaction Effects**

7. Are soft targets free from impact by nearby equipment or structures? Yes

*End of rugged operator approximately 1/2" from cable riser. Both items are robust and judged to be acceptable.*

8. Are overhead equipment, distribution systems, ceiling tiles and lighting, and masonry block walls not likely to collapse onto the equipment? Yes

*Valve operator hangs under large, well-supported pipe; judged to be acceptable.*

*Overhead light fixtures judged to be acceptable.*

9. Do attached lines have adequate flexibility to avoid damage? Yes

10. Based on the above seismic interaction evaluations, is equipment free of potentially adverse seismic interaction effects? Yes

**Other Adverse Conditions**

11. Have you looked for and found no adverse seismic conditions that could adversely affect the safety functions of the equipment? Yes

**Comments**

Seismic Walkdown Team: D. Carter & J. Griffith - 8/28/2012

Evaluated by: David Carter Date: 10/17/2012

James D. Griffith James Griffith 10/17/2012

Status:  Y  N  U

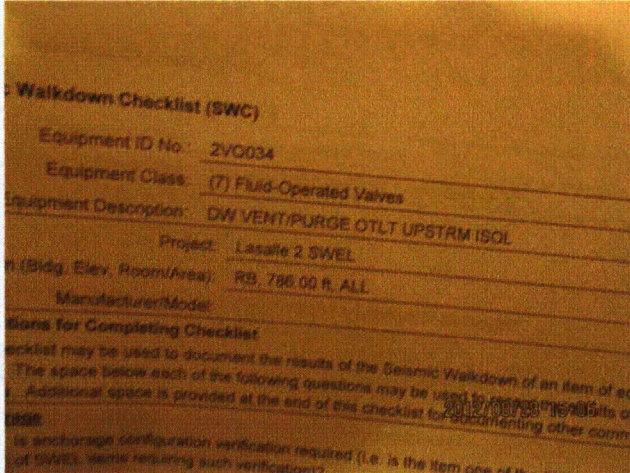
**Seismic Walkdown Checklist (SWC)**

Equipment ID No.: 2VQ034

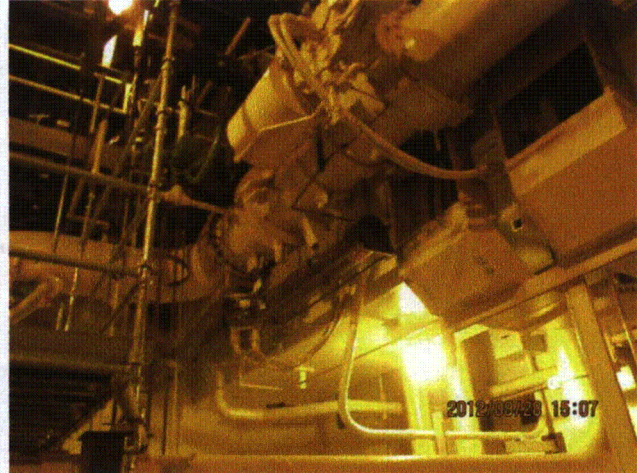
Equipment Class: (7) Fluid-Operated Valves

Equipment Description: DW VENT/PURGE OTLT UPSTRM ISOL

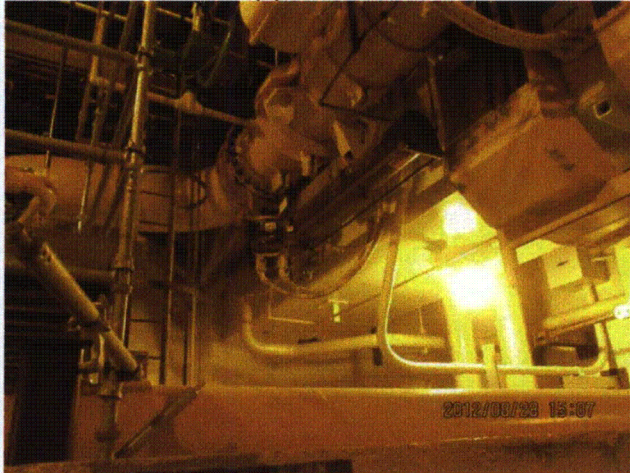
**Photos**



LaSalle 8-28-12 211 (1)



LaSalle 8-28-12 211 (2)



LaSalle 8-28-12 211 (3)



LaSalle 8-28-12 211 (4)

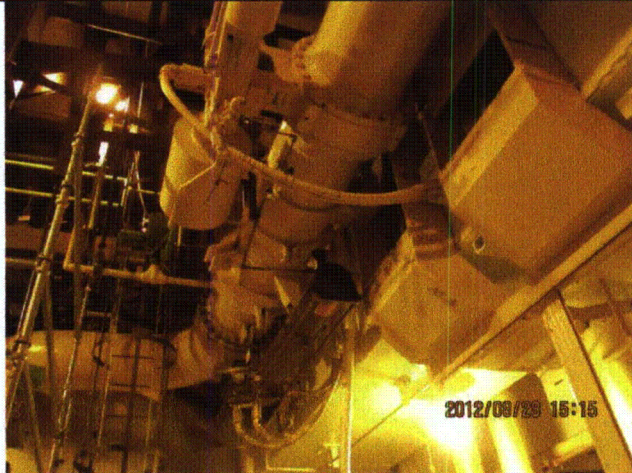
Status:  Y  N  U

**Seismic Walkdown Checklist (SWC)**

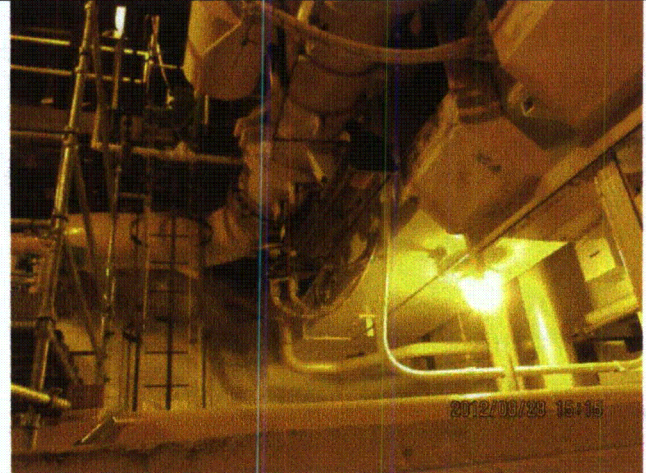
Equipment ID No.: 2VQ034

Equipment Class: (7) Fluid-Operated Valves

Equipment Description: DW VENT/PURGE OTLT UPSTRM ISOL



LaSalle 8-28-12 211 (5)



LaSalle 8-28-12 211 (6)



LaSalle 8-28-12 211 (7)



LaSalle 8-28-12 211 (8)

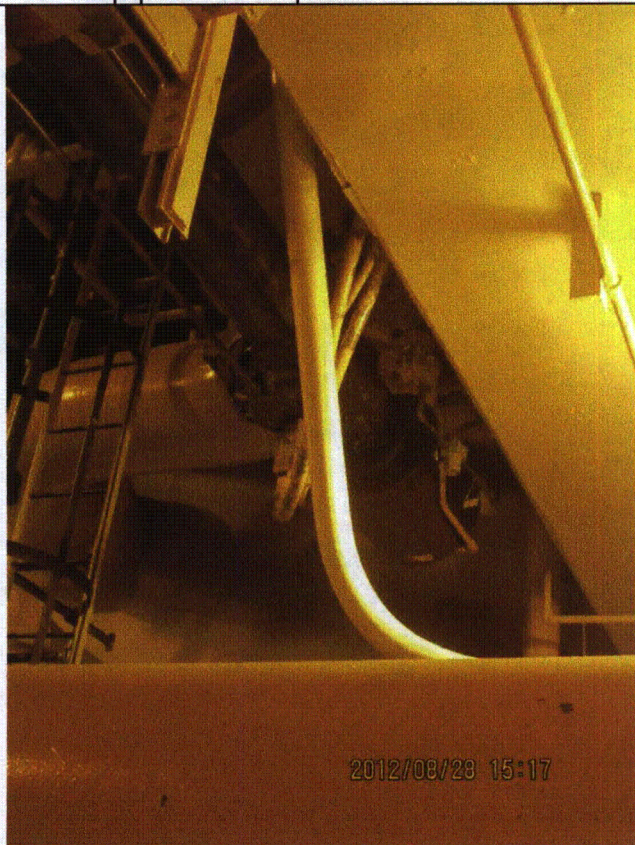
Status:  Y  N  U

**Seismic Walkdown Checklist (SWC)**

Equipment ID No.: 2VQ034

Equipment Class: (7) Fluid-Operated Valves

Equipment Description: DW VENT/PURGE OTLT UPSTRM ISOL



LaSalle 8-28-12 211 (9)