

Status:  Y  N  U

**Seismic Walkdown Checklist (SWC)**

Equipment ID No.: 2E21-N003

Equipment Class: (18) Instruments on Racks

Equipment Description: LPCS PP DISCH FLOW XMITTER

Project: LaSalle 2 SWEL

Location (Bldg, Elev,

Room/Area): RB, 673.00 ft, ALL

Manufacturer/Model:

**Instructions for Completing Checklist**

This checklist may be used to document the results of the Seismic Walkdown of an item of equipment on the SWEL. The space below each of the following questions may be used to record the results of judgments and findings. Additional space is provided at the end of this checklist for documenting other comments.

**Anchorage**

1. Is anchorage configuration verification required (i.e., is the item one of the 50% of SWEL items requiring such verification)? No
  
2. Is the anchorage free of bent, broken, missing or loose hardware? Yes
  
3. Is the anchorage free of corrosion that is more than mild surface oxidation? Yes
  
4. Is the anchorage free of visible cracks in the concrete near the anchors? Yes
  
5. Is the anchorage configuration consistent with plant documentation? (Note: This question only applies if the item is one of the 50% for which an anchorage configuration verification is required.) Not Applicable
  
6. Based on the above anchorage evaluations, is the anchorage free of potentially adverse seismic conditions? Yes

Status:  Y  N  U

**Seismic Walkdown Checklist (SWC)**

Equipment ID No.: 2E21-N003

Equipment Class: (18) Instruments on Racks

Equipment Description: LPCS PP DISCH FLOW XMITTER

**Interaction Effects**

7. Are soft targets free from impact by nearby equipment or structures? Yes
8. Are overhead equipment, distribution systems, ceiling tiles and lighting, and masonry block walls not likely to collapse onto the equipment?  
*Overhead light fixtures judged to be acceptable.* Yes
9. Do attached lines have adequate flexibility to avoid damage? Yes
10. Based on the above seismic interaction evaluations, is equipment free of potentially adverse seismic interaction effects? Yes

**Other Adverse Conditions**

11. Have you looked for and found no adverse seismic conditions that could adversely affect the safety functions of the equipment? Yes

**Comments**

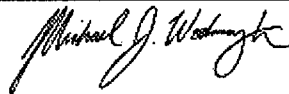
Seismic Walkdown Team: M. Etre & M. Wodarcyk - 9/18/2012

Evaluated by:



Mark Etre

Date: 10/19/2012



Michael Wodarcyk

10/19/2012



Status:  Y  N  U

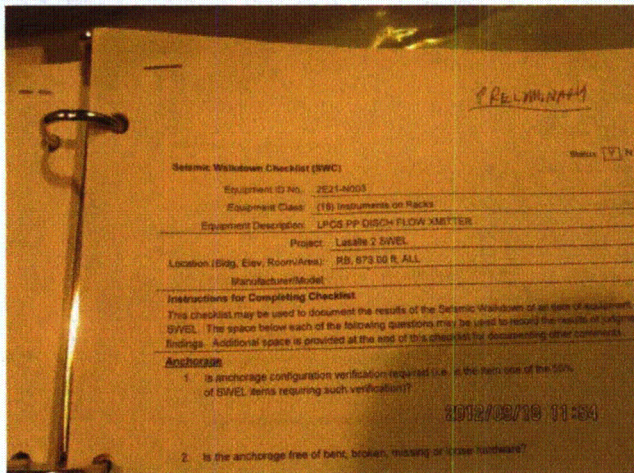
### Seismic Walkdown Checklist (SWC)

Equipment ID No.: 2E21-N003

Equipment Class: (18) Instruments on Racks

Equipment Description: LPCS PP DISCH FLOW XMITTER

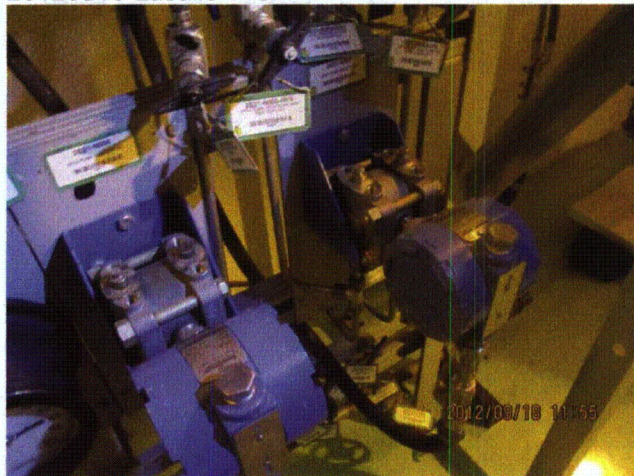
#### Photos



20120918-Lasalle 148



20120918-Lasalle 149



20120918-Lasalle 150



20120918-Lasalle 151



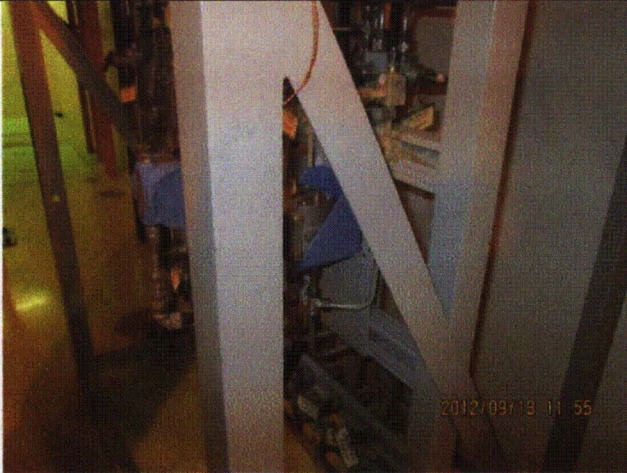
Status:  Y  N  U

**Seismic Walkdown Checklist (SWC)**

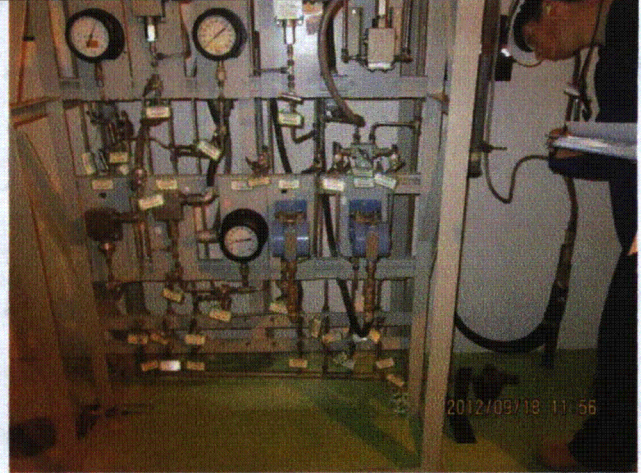
Equipment ID No.: 2E21-N003

Equipment Class: (18) Instruments on Racks

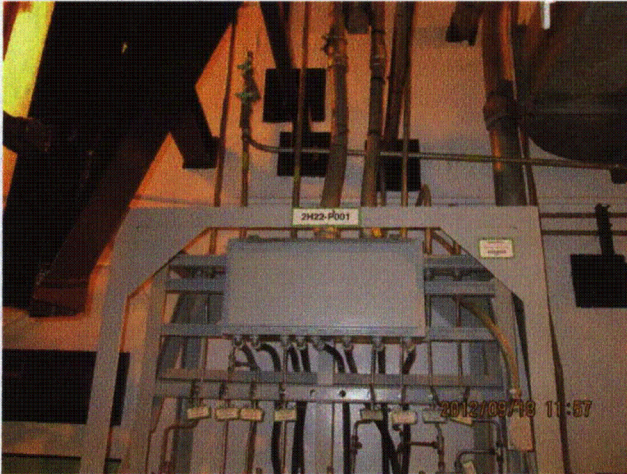
Equipment Description: LPCS PP DISCH FLOW XMITTER



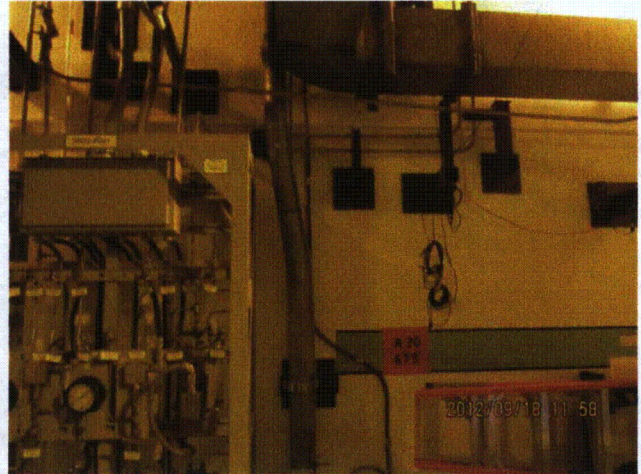
20120918-Lasalle 152



20120918-Lasalle 153



20120918-Lasalle 154



20120918-Lasalle 155



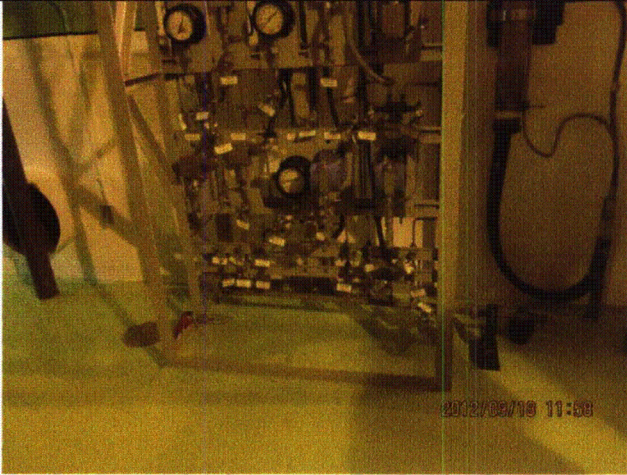
Status:  Y  N  U

**Seismic Walkdown Checklist (SWC)**

Equipment ID No.: 2E21-N003

Equipment Class: (18) Instruments on Racks

Equipment Description: LPCS PP DISCH FLOW XMITTER



20120918-Lasalle 156

Status:  Y  N  U

**Seismic Walkdown Checklist (SWC)**

Equipment ID No.: 2E22-C001

Equipment Class: (6) Vertical Pumps

Equipment Description: PMP HI PRESS CORE SPRAY

Project: LaSalle 2 SWEL

Location (Bldg, Elev, Room/Area): RB, 673.00 ft, ALL

Manufacturer/Model:

**Instructions for Completing Checklist**

This checklist may be used to document the results of the Seismic Walkdown of an item of equipment on the SWEL. The space below each of the following questions may be used to record the results of judgments and findings. Additional space is provided at the end of this checklist for documenting other comments.

**Anchorage**

1. Is anchorage configuration verification required (i.e., is the item one of the 50% of SWEL items requiring such verification)? Yes
  
2. Is the anchorage free of bent, broken, missing or loose hardware? Yes
  
3. Is the anchorage free of corrosion that is more than mild surface oxidation? Yes
  
4. Is the anchorage free of visible cracks in the concrete near the anchors? Yes
  
5. Is the anchorage configuration consistent with plant documentation? (Note: This question only applies if the item is one of the 50% for which an anchorage configuration verification is required.) Yes  
*Anchorage shown on drawings M-1573, Rev. G and M-1590, Sheet 3, Rev. M.*
  
6. Based on the above anchorage evaluations, is the anchorage free of potentially adverse seismic conditions? Yes

Status:  Y  N  U

**Seismic Walkdown Checklist (SWC)**

Equipment ID No.: 2E22-C001

Equipment Class: (6) Vertical Pumps

Equipment Description: PMP HI PRESS CORE SPRAY

**Interaction Effects**


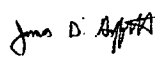
7. Are soft targets free from impact by nearby equipment or structures? Yes
8. Are overhead equipment, distribution systems, ceiling tiles and lighting, and masonry block walls not likely to collapse onto the equipment? Yes  
*Overhead light fixtures judged to be acceptable.*  
*Adjacent masonry walls are safety-related per drawing A-220, Rev. N.*
9. Do attached lines have adequate flexibility to avoid damage? Yes
10. Based on the above seismic interaction evaluations, is equipment free of potentially adverse seismic interaction effects? Yes

**Other Adverse Conditions**

11. Have you looked for and found no adverse seismic conditions that could adversely affect the safety functions of the equipment? Yes

**Comments**

Seismic Walkdown Team: D. Carter & J. Griffith - 9/4/2012

Evaluated by:  David Carter Date: 10/17/2012  
 James D. Griffith 10/17/2012



Status:  Y  N  U

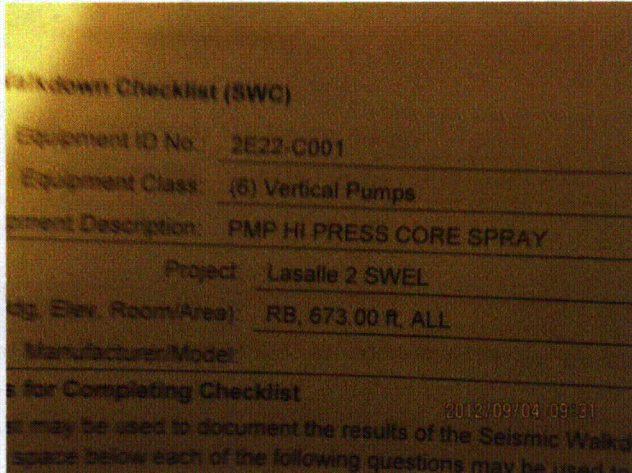
**Seismic Walkdown Checklist (SWC)**

Equipment ID No.: 2E22-C001

Equipment Class: (6) Vertical Pumps

Equipment Description: PMP HI PRESS CORE SPRAY

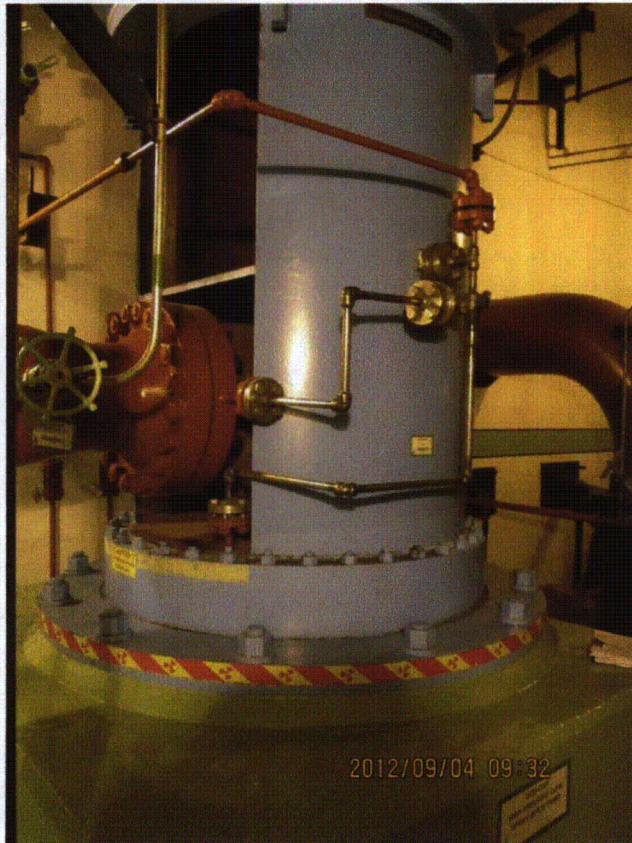
**Photos**



LaSalle 073



LaSalle 074



LaSalle 075



LaSalle 076



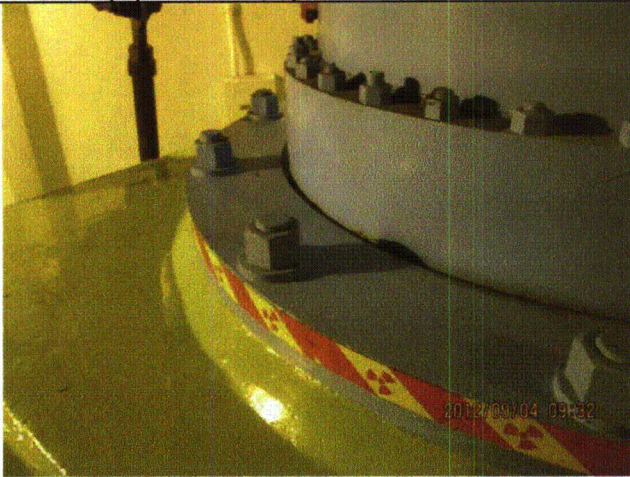
Status:  Y  N  U

**Seismic Walkdown Checklist (SWC)**

Equipment ID No.: 2E22-C001

Equipment Class: (6) Vertical Pumps

Equipment Description: PMP HI PRESS CORE SPRAY



LaSalle 077



LaSalle 078



Status:  Y  N  U

**Seismic Walkdown Checklist (SWC)**

Equipment ID No.: 2E22-C001

Equipment Class: (6) Vertical Pumps

Equipment Description: PMP HI PRESS CORE SPRAY



LaSalle 079



LaSalle 080



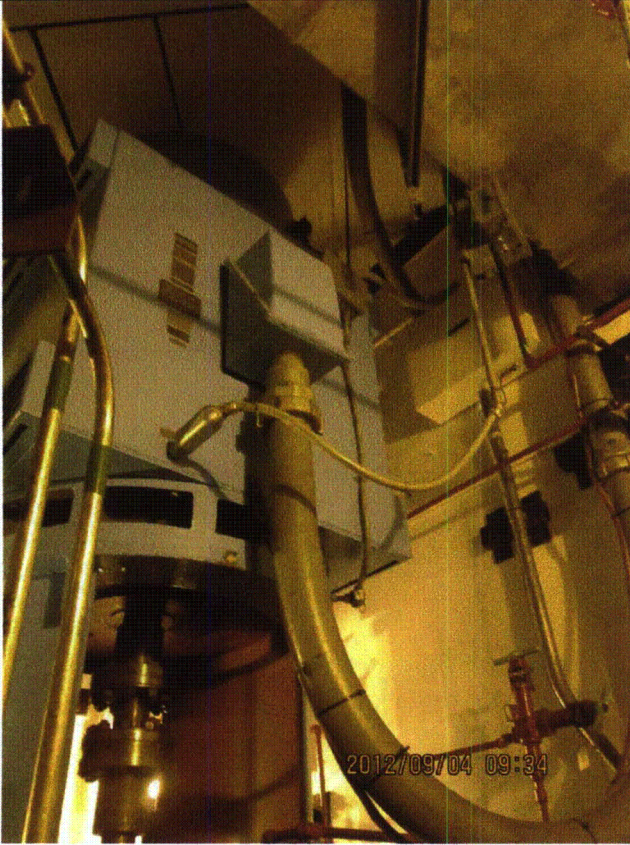
Status:  Y  N  U

**Seismic Walkdown Checklist (SWC)**

Equipment ID No.: 2E22-C001

Equipment Class: (6) Vertical Pumps

Equipment Description: PMP HI PRESS CORE SPRAY



LaSalle 081

Status:  Y  N  U

**Seismic Walkdown Checklist (SWC)**

Equipment ID No.: 2E22-F004

Equipment Class: (8) Motor-Operated and Solenoid-Operated Valves

Equipment Description: HPCS INJECTION ISOL VALVE

Project: LaSalle 2 SWEL

Location (Bldg, Elev, Room/Area): RB, 761.00 ft, ALL

Manufacturer/Model: \_\_\_\_\_

**Instructions for Completing Checklist**

This checklist may be used to document the results of the Seismic Walkdown of an item of equipment on the SWEL. The space below each of the following questions may be used to record the results of judgments and findings. Additional space is provided at the end of this checklist for documenting other comments.

**Anchorage**

1. Is anchorage configuration verification required (i.e., is the item one of the 50% of SWEL items requiring such verification)? No
  
2. Is the anchorage free of bent, broken, missing or loose hardware? Not Applicable
  
3. Is the anchorage free of corrosion that is more than mild surface oxidation? Not Applicable
  
4. Is the anchorage free of visible cracks in the concrete near the anchors? Not Applicable
  
5. Is the anchorage configuration consistent with plant documentation? (Note: This question only applies if the item is one of the 50% for which an anchorage configuration verification is required.) Not Applicable
  
6. Based on the above anchorage evaluations, is the anchorage free of potentially adverse seismic conditions? Yes

Status:  Y  N  U

**Seismic Walkdown Checklist (SWC)**

Equipment ID No.: 2E22-F004

Equipment Class: (8) Motor-Operated and Solenoid-Operated Valves

Equipment Description: HPCS INJECTION ISOL VALVE

**Interaction Effects**

7. Are soft targets free from impact by nearby equipment or structures? Yes
8. Are overhead equipment, distribution systems, ceiling tiles and lighting, and masonry block walls not likely to collapse onto the equipment? Yes
9. Do attached lines have adequate flexibility to avoid damage? Yes
10. Based on the above seismic interaction evaluations, is equipment free of potentially adverse seismic interaction effects? Yes

**Other Adverse Conditions**

11. Have you looked for and found no adverse seismic conditions that could adversely affect the safety functions of the equipment? Yes

**Comments**

Seismic Walkdown Team: D. Carter & J. Griffith - 9/4/2012

Evaluated by: *David Carter* David Carter Date: 10/17/2012  
*James D. Griffith* James Griffith 10/17/2012



Status:  Y  N  U

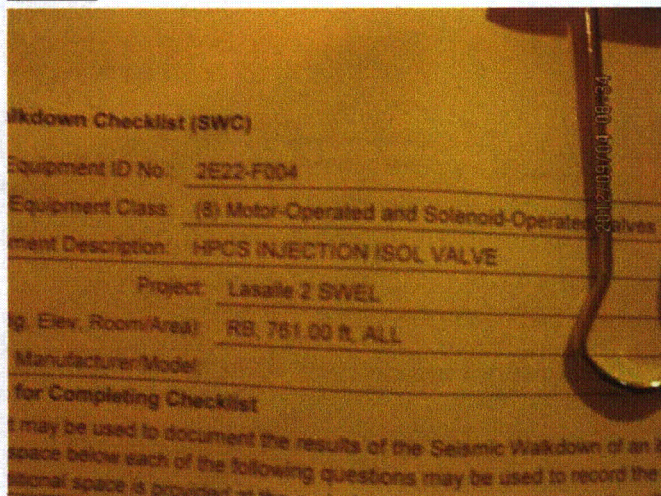
**Seismic Walkdown Checklist (SWC)**

Equipment ID No.: 2E22-F004

Equipment Class: (8) Motor-Operated and Solenoid-Operated Valves

Equipment Description: HPCS INJECTION ISOL VALVE

**Photos**



LaSalle 022



LaSalle 023



Status:  Y  N  U

**Seismic Walkdown Checklist (SWC)**

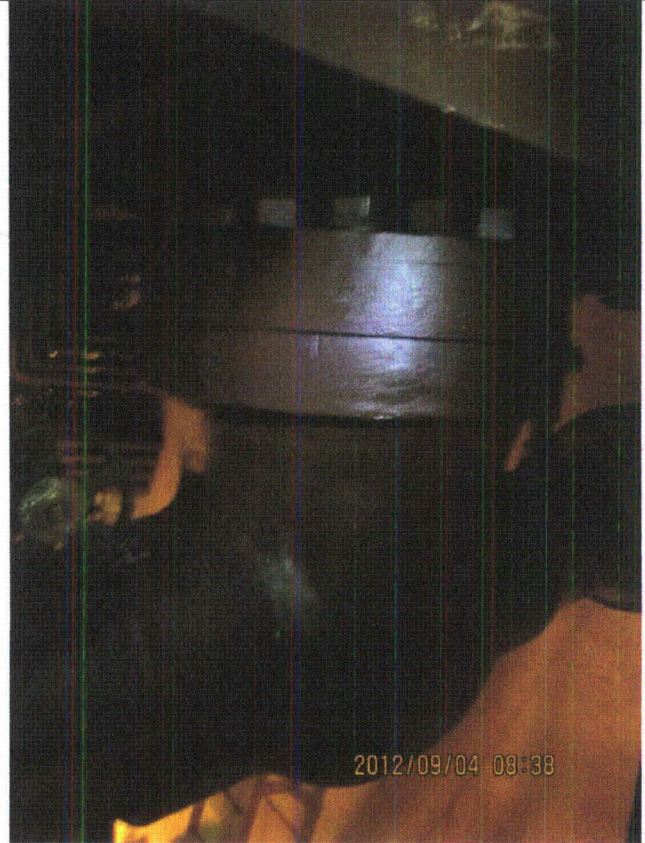
Equipment ID No.: 2E22-F004

Equipment Class: (8) Motor-Operated and Solenoid-Operated Valves

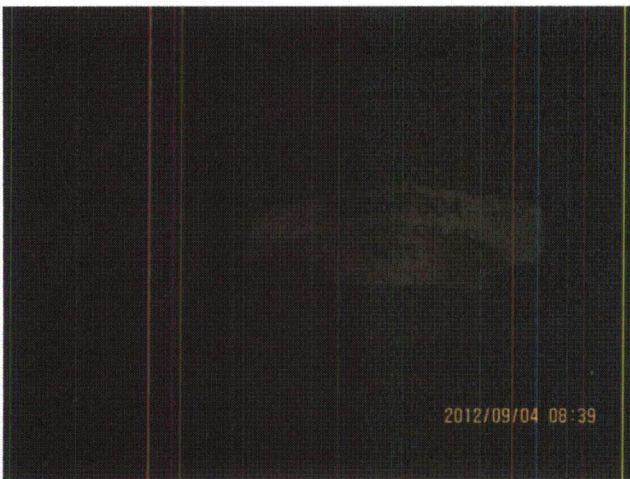
Equipment Description: HPCS INJECTION ISOL VALVE



LaSalle 024



LaSalle 025



LaSalle 026



LaSalle 027

Status:  Y  N  U

**Seismic Walkdown Checklist (SWC)**

Equipment ID No.: 2E22-F015

Equipment Class: (8) Motor-Operated and Solenoid-Operated Valves

Equipment Description: HPCS PUMP SUP POOL SUCT ISOL VALVE

Project: LaSalle 2 SWEL

Location (Bldg, Elev, Room/Area): RB, 673.00 ft, ALL

Manufacturer/Model:

**Instructions for Completing Checklist**

This checklist may be used to document the results of the Seismic Walkdown of an item of equipment on the SWEL. The space below each of the following questions may be used to record the results of judgments and findings. Additional space is provided at the end of this checklist for documenting other comments.

**Anchorage**

1. Is anchorage configuration verification required (i.e., is the item one of the 50% of SWEL items requiring such verification)? No
  
2. Is the anchorage free of bent, broken, missing or loose hardware? Not Applicable
  
3. Is the anchorage free of corrosion that is more than mild surface oxidation? Not Applicable
  
4. Is the anchorage free of visible cracks in the concrete near the anchors? Not Applicable
  
5. Is the anchorage configuration consistent with plant documentation? (Note: This question only applies if the item is one of the 50% for which an anchorage configuration verification is required.) Not Applicable
  
6. Based on the above anchorage evaluations, is the anchorage free of potentially adverse seismic conditions? Yes

Status:  Y  N  U

**Seismic Walkdown Checklist (SWC)**

Equipment ID No.: 2E22-F015

Equipment Class: (8) Motor-Operated and Solenoid-Operated Valves

Equipment Description: HPCS PUMP SUP POOL SUCT ISOL VALVE

**Interaction Effects**

- |   |     |
|---|-----|
| 7. Are soft targets free from impact by nearby equipment or structures?   | Yes |
| 8. Are overhead equipment, distribution systems, ceiling tiles and lighting, and masonry block walls not likely to collapse onto the equipment? | Yes |
| 9. Do attached lines have adequate flexibility to avoid damage?   | Yes |
| 10. Based on the above seismic interaction evaluations, is equipment free of potentially adverse seismic interaction effects?                   | Yes |

**Other Adverse Conditions**

- |  |     |
|--|-----|
| 11. Have you looked for and found no adverse seismic conditions that could adversely affect the safety functions of the equipment? | Yes |
|--|-----|

**Comments**

Seismic Walkdown Team: D. Carter & J. Griffith - 9/4/2012

Evaluated by:	<u>David Carter</u>	Date:	<u>10/17/2012</u>
	<u>James D. Griffith</u>		<u>10/17/2012</u>



Status:  Y  N  U

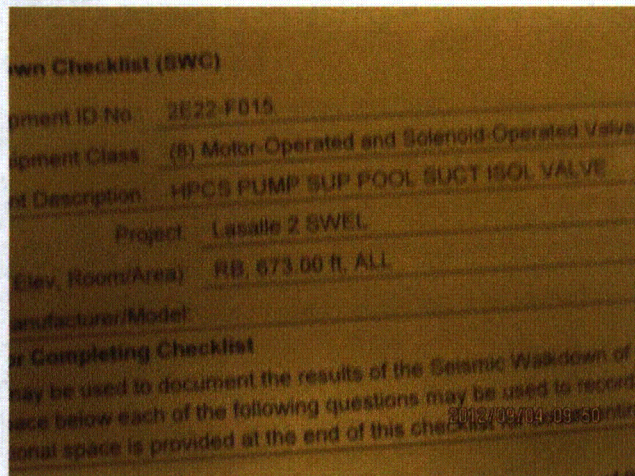
### Seismic Walkdown Checklist (SWC)

Equipment ID No.: 2E22-F015

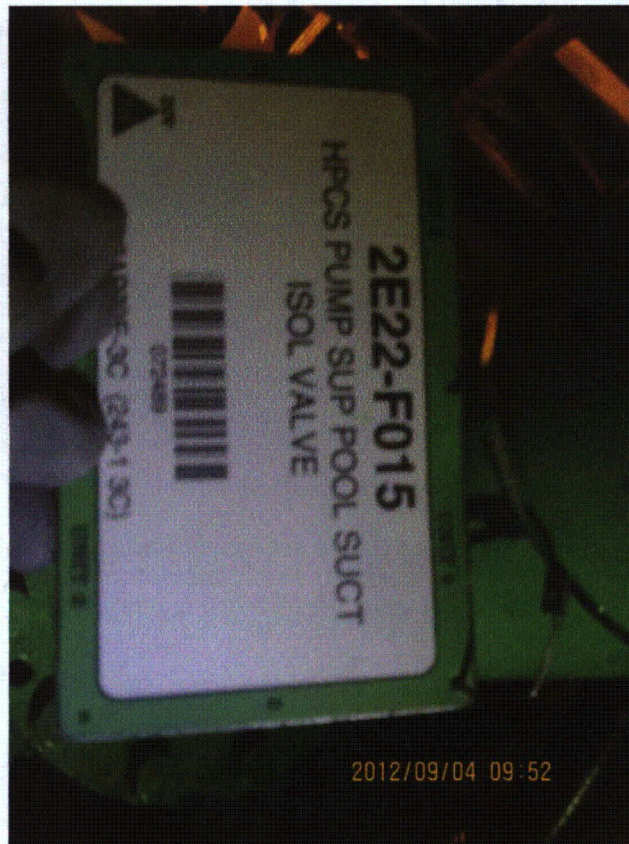
Equipment Class: (8) Motor-Operated and Solenoid-Operated Valves

Equipment Description: HPCS PUMP SUP POOL SUCT ISOL VALVE

#### Photos



LaSalle 094



LaSalle 095



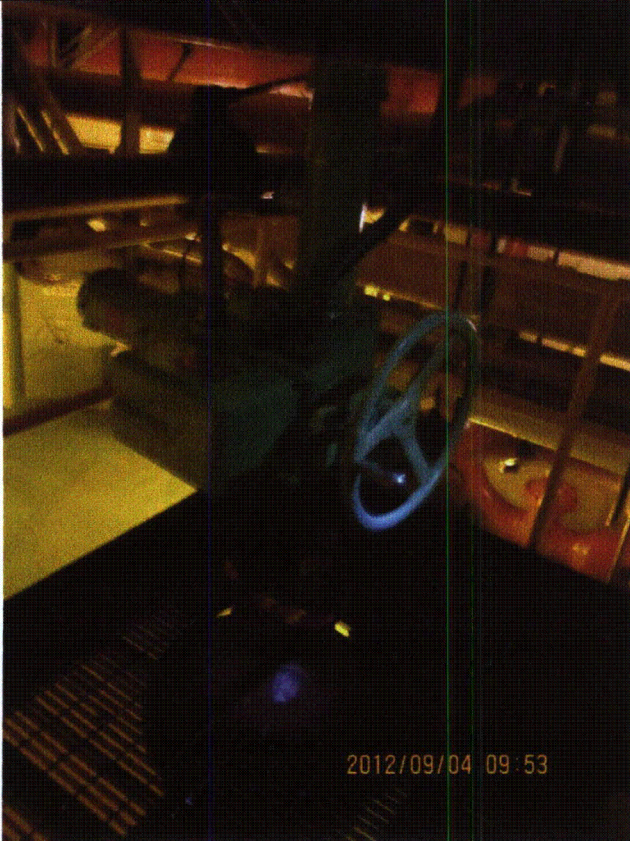
Status:  Y  N  U

**Seismic Walkdown Checklist (SWC)**

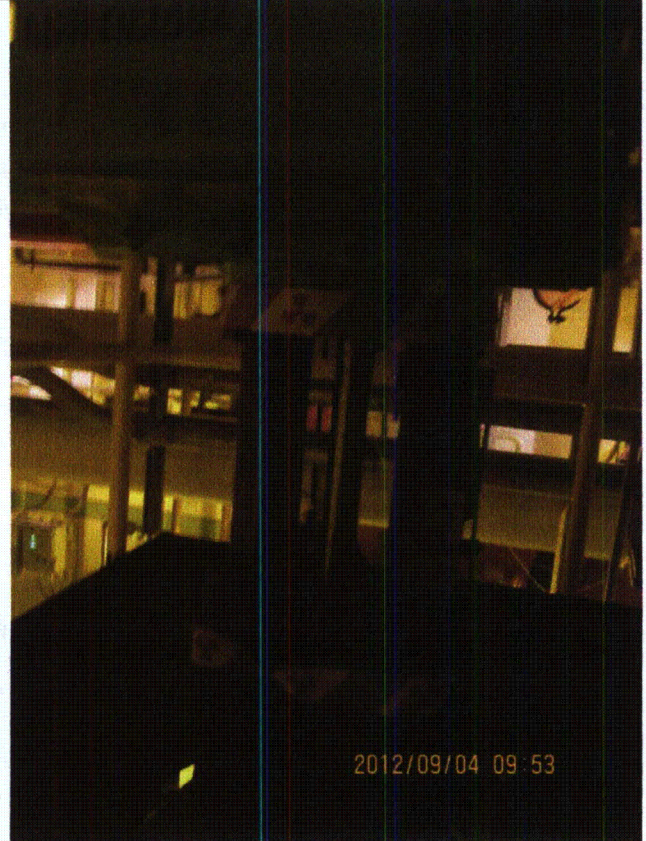
Equipment ID No.: 2E22-F015

Equipment Class: (8) Motor-Operated and Solenoid-Operated Valves

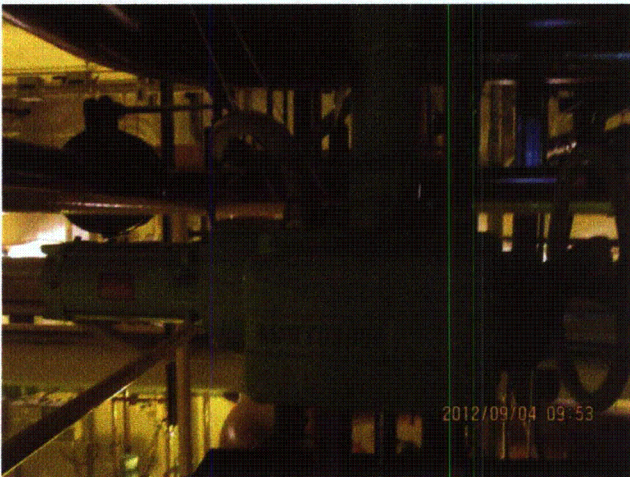
Equipment Description: HPCS PUMP SUP POOL SUCT ISOL VALVE



LaSalle 096



LaSalle 097



LaSalle 098

Status:  Y  N  U

**Seismic Walkdown Checklist (SWC)**

Equipment ID No.: 2E22-F023

Equipment Class: (8) Motor-Operated and Solenoid-Operated Valves

Equipment Description: HPCS FULL FLOW TEST ISOL VALVE

Project: LaSalle 2 SWEL

Location (Bldg, Elev, Room/Area): RB, 694.00 ft, ALL

Manufacturer/Model: \_\_\_\_\_

**Instructions for Completing Checklist**

This checklist may be used to document the results of the Seismic Walkdown of an item of equipment on the SWEL. The space below each of the following questions may be used to record the results of judgments and findings. Additional space is provided at the end of this checklist for documenting other comments.

**Anchorage**

1. Is anchorage configuration verification required (i.e., is the item one of the 50% of SWEL items requiring such verification)? No
  
2. Is the anchorage free of bent, broken, missing or loose hardware? Not Applicable
  
3. Is the anchorage free of corrosion that is more than mild surface oxidation? Not Applicable
  
4. Is the anchorage free of visible cracks in the concrete near the anchors? Not Applicable
  
5. Is the anchorage configuration consistent with plant documentation? (Note: This question only applies if the item is one of the 50% for which an anchorage configuration verification is required.) Not Applicable
  
6. Based on the above anchorage evaluations, is the anchorage free of potentially adverse seismic conditions? Yes

**Interaction Effects**

7. Are soft targets free from impact by nearby equipment or structures? Yes

Status:  Y  N  U

**Seismic Walkdown Checklist (SWC)**

Equipment ID No.: 2E22-F023

Equipment Class: (8) Motor-Operated and Solenoid-Operated Valves

Equipment Description: HPCS FULL FLOW TEST ISOL VALVE

8. Are overhead equipment, distribution systems, ceiling tiles and lighting, and masonry block walls not likely to collapse onto the equipment?  
*Overhead light fixtures judged to be acceptable.* Yes
9. Do attached lines have adequate flexibility to avoid damage? Yes
10. Based on the above seismic interaction evaluations, is equipment free of potentially adverse seismic interaction effects? Yes

**Other Adverse Conditions**

11. Have you looked for and found no adverse seismic conditions that could adversely affect the safety functions of the equipment? Yes

**Comments**

Seismic Walkdown Team: D. Carter & J. Griffith - 9/4/2012

Evaluated by: *David Carter* David Carter Date: 10/17/2012  
*James D. Griffith* James Griffith 10/17/2012



Status:  Y  N  U

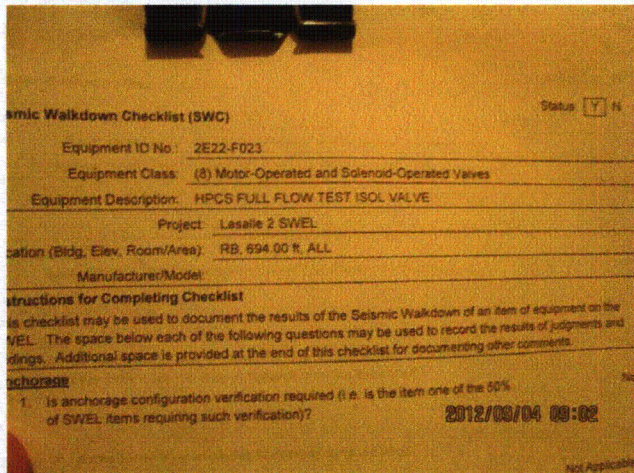
### Seismic Walkdown Checklist (SWC)

Equipment ID No.: 2E22-F023

Equipment Class: (8) Motor-Operated and Solenoid-Operated Valves

Equipment Description: HPCS FULL FLOW TEST ISOL VALVE

#### Photos



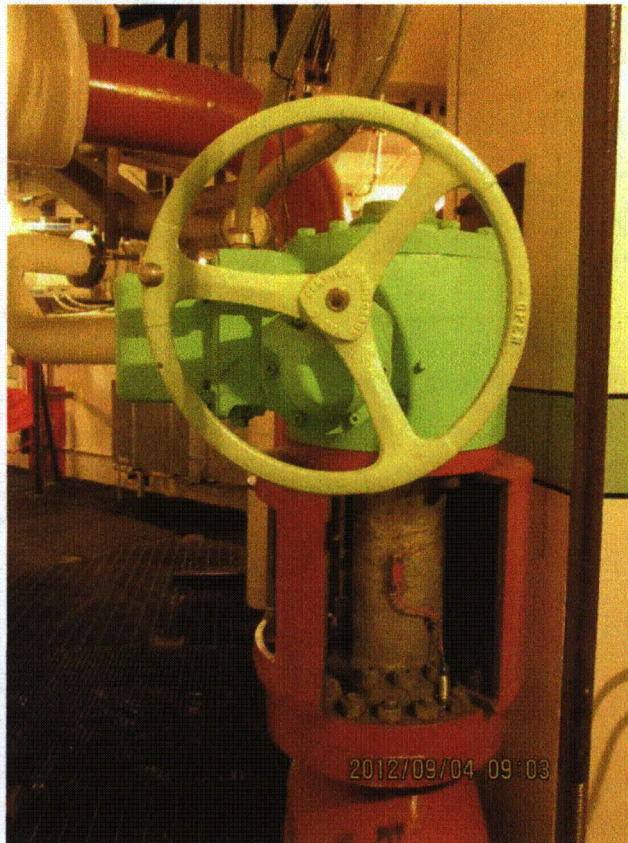
LaSalle 041



LaSalle 042



LaSalle 043



LaSalle 044



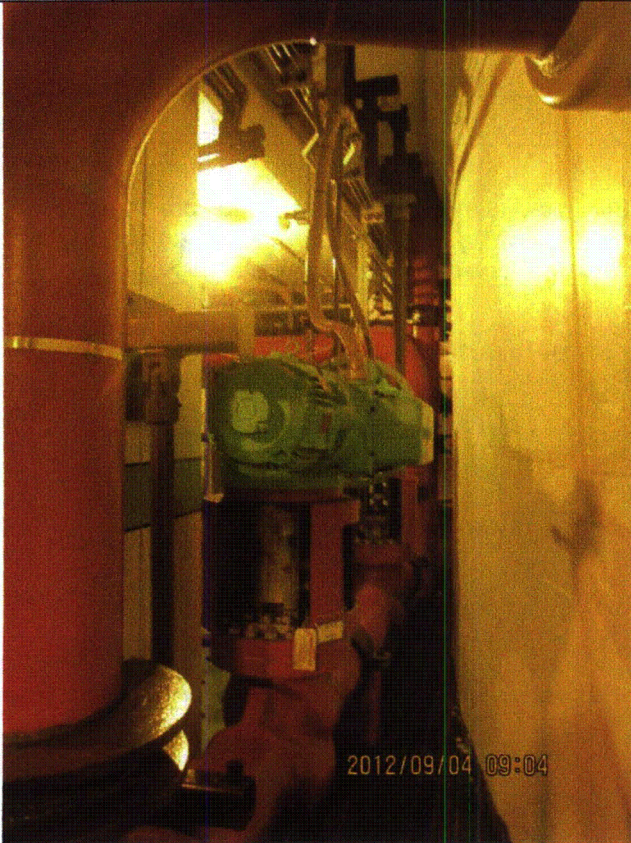
Status:  Y  N  U

**Seismic Walkdown Checklist (SWC)**

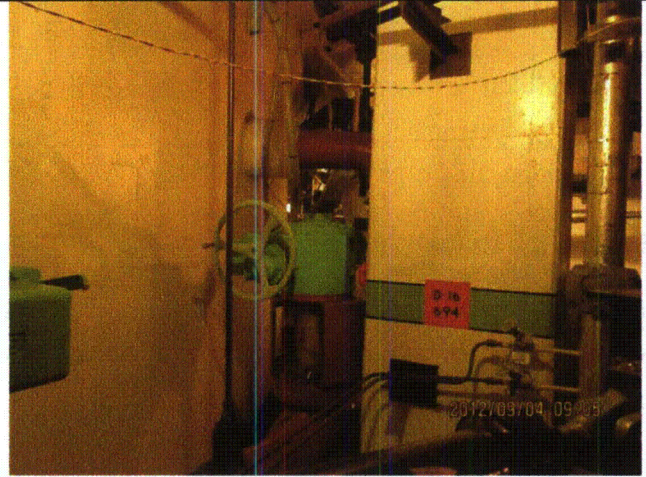
Equipment ID No.: 2E22-F023

Equipment Class: (8) Motor-Operated and Solenoid-Operated Valves

Equipment Description: HPCS FULL FLOW TEST ISOL VALVE



LaSalle 045



LaSalle 046

Status:  Y  N  U

**Seismic Walkdown Checklist (SWC)**

Equipment ID No.: 2E22-N004

Equipment Class: (18) Instruments on Racks

Equipment Description: HPCS PP DISCH PRESS XMITTER

Project: LaSalle 2 SWEL

Location (Bldg, Elev, Room/Area): RB, 673.00 ft, ALL

Manufacturer/Model:

**Instructions for Completing Checklist**

This checklist may be used to document the results of the Seismic Walkdown of an item of equipment on the SWEL. The space below each of the following questions may be used to record the results of judgments and findings. Additional space is provided at the end of this checklist for documenting other comments.

**Anchorage**

1. Is anchorage configuration verification required (i.e., is the item one of the 50% of SWEL items requiring such verification)? No  
*Rack anchored to floor with 8 anchors (4 front, 4 rear).*
  
2. Is the anchorage free of bent, broken, missing or loose hardware? Yes
  
3. Is the anchorage free of corrosion that is more than mild surface oxidation? Yes
  
4. Is the anchorage free of visible cracks in the concrete near the anchors? Yes
  
5. Is the anchorage configuration consistent with plant documentation? (Note: This question only applies if the item is one of the 50% for which an anchorage configuration verification is required.) Not Applicable
  
6. Based on the above anchorage evaluations, is the anchorage free of potentially adverse seismic conditions? Yes

Status:  Y  N  U

**Seismic Walkdown Checklist (SWC)**

Equipment ID No.: 2E22-N004

Equipment Class: (18) Instruments on Racks

Equipment Description: HPCS PP DISCH PRESS XMITTER

**Interaction Effects**

7. Are soft targets free from impact by nearby equipment or structures? Yes
8. Are overhead equipment, distribution systems, ceiling tiles and lighting, and masonry block walls not likely to collapse onto the equipment? Yes  
*Overhead light fixtures judged to be acceptable.*  
*Adjacent masonry walls are safety related per drawing A-220, Rev. N.*
9. Do attached lines have adequate flexibility to avoid damage? Yes  
*Contact between tubes and flexible conduits is judged to be acceptable.*
10. Based on the above seismic interaction evaluations, is equipment free of potentially adverse seismic interaction effects? Yes

**Other Adverse Conditions**

11. Have you looked for and found no adverse seismic conditions that could adversely affect the safety functions of the equipment? Yes  
*Missing clamp for tube at first support location above valve 2E22-N005-HRR.  
Span between valve and first acceptable support is relatively short. As-found condition judged to be acceptable. See IR 1419068.*

**Comments**

Seismic Walkdown Team: D. Carter & J. Griffith - 9/4/2012

Instrument located on Rack 2H22-P024.

Evaluated by: *David Carter* David Carter Date: 10/17/2012  
*James D. Griffith* James Griffith 10/17/2012



Status:  Y  N  U

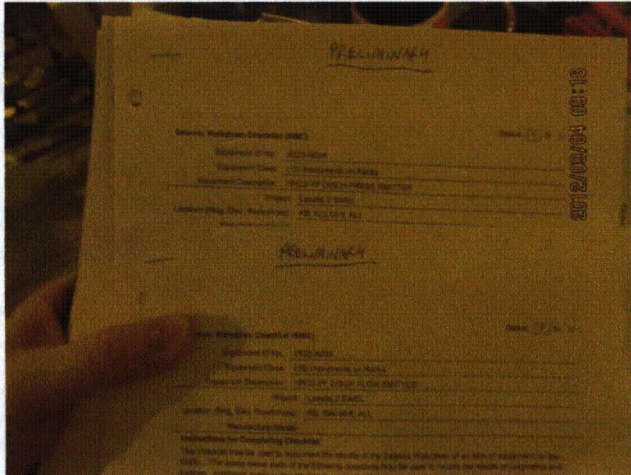
**Seismic Walkdown Checklist (SWC)**

Equipment ID No.: 2E22-N004

Equipment Class: (18) Instruments on Racks

Equipment Description: HPCS PP DISCH PRESS XMITTER

**Photos**



LaSalle 058



LaSalle 059



LaSalle 060



LaSalle 061



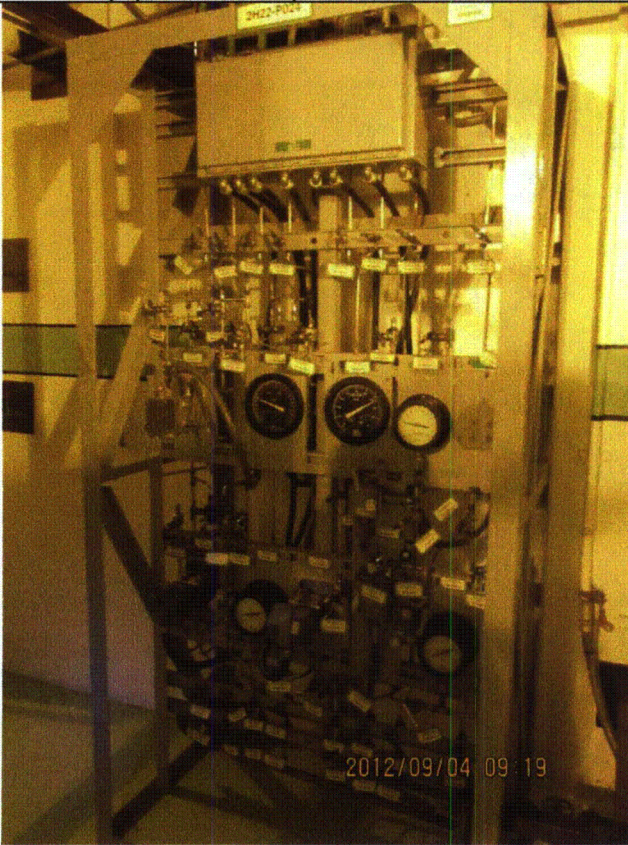
Status:  Y  N  U

**Seismic Walkdown Checklist (SWC)**

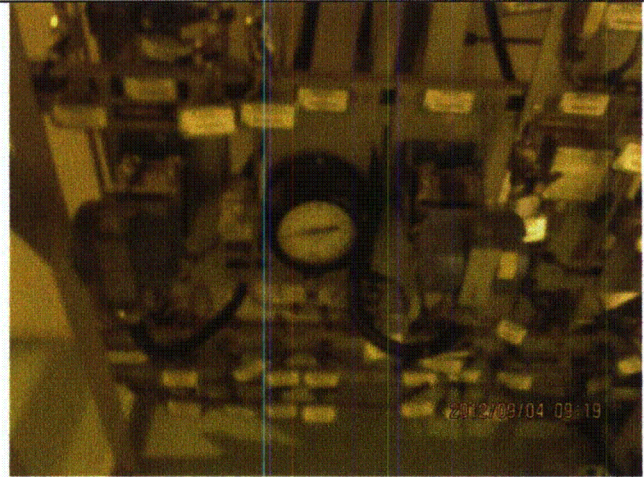
Equipment ID No.: 2E22-N004

Equipment Class: (18) Instruments on Racks

Equipment Description: HPCS PP DISCH PRESS XMITTER



LaSalle 062



LaSalle 063



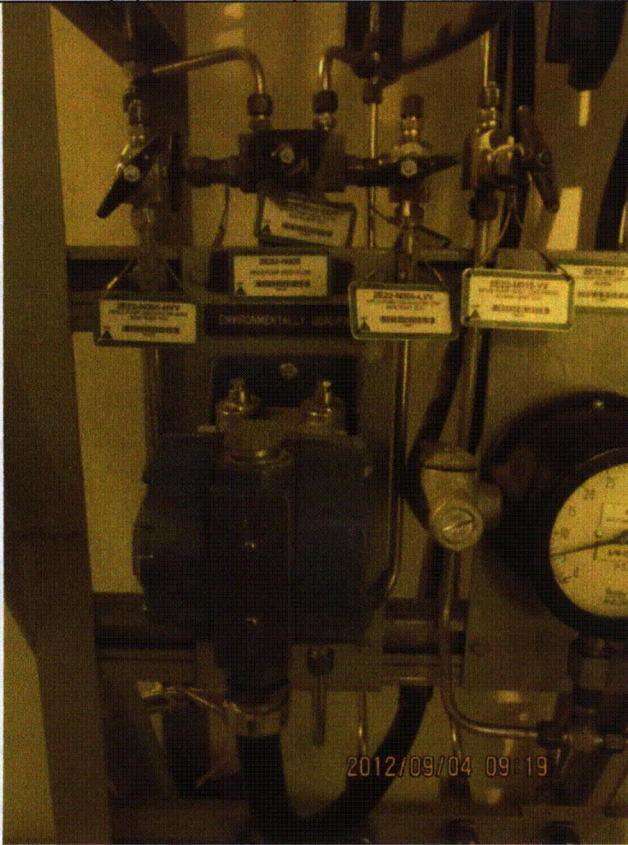
Status:  Y  N  U

**Seismic Walkdown Checklist (SWC)**

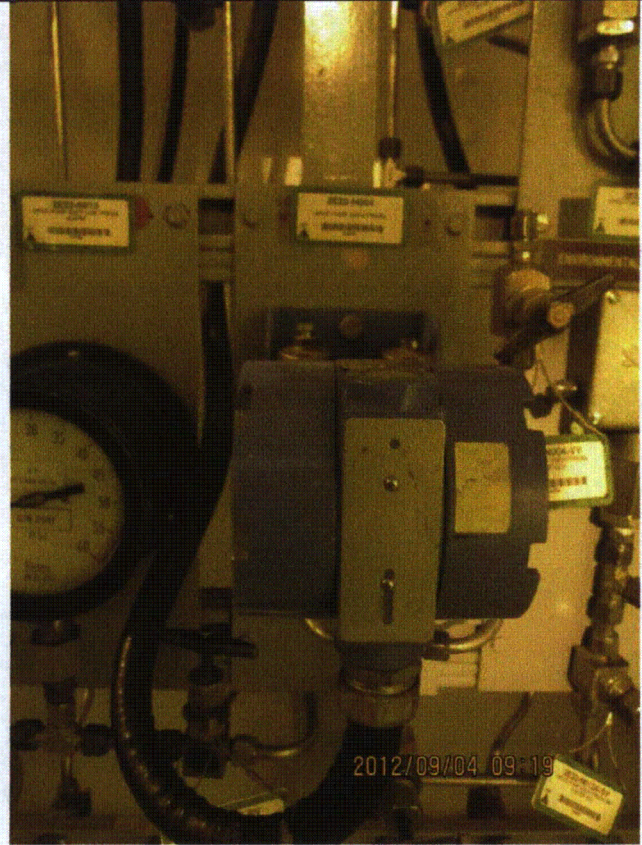
Equipment ID No.: 2E22-N004

Equipment Class: (18) Instruments on Racks

Equipment Description: HPCS PP DISCH PRESS XMITER



LaSalle 064



LaSalle 065



Status:  Y  N  U

**Seismic Walkdown Checklist (SWC)**

Equipment ID No.: 2E22-N004

Equipment Class: (18) Instruments on Racks

Equipment Description: HPCS PP DISCH PRESS XMITTER



LaSalle 066



LaSalle 067



Status:  Y  N  U

**Seismic Walkdown Checklist (SWC)**

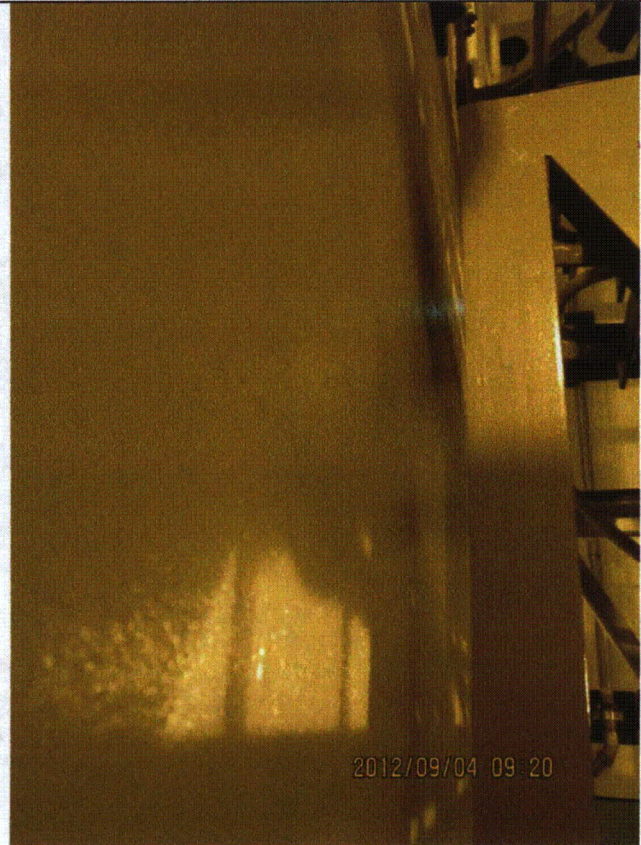
Equipment ID No.: 2E22-N004

Equipment Class: (18) Instruments on Racks

Equipment Description: HPCS PP DISCH PRESS XMITTER



LaSalle 068



LaSalle 069



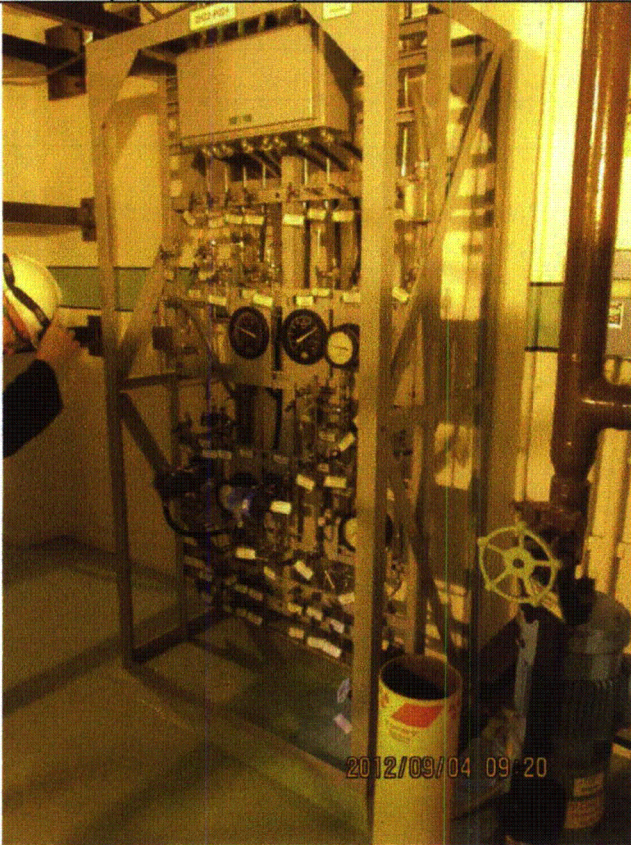
Status:  Y  N  U

**Seismic Walkdown Checklist (SWC)**

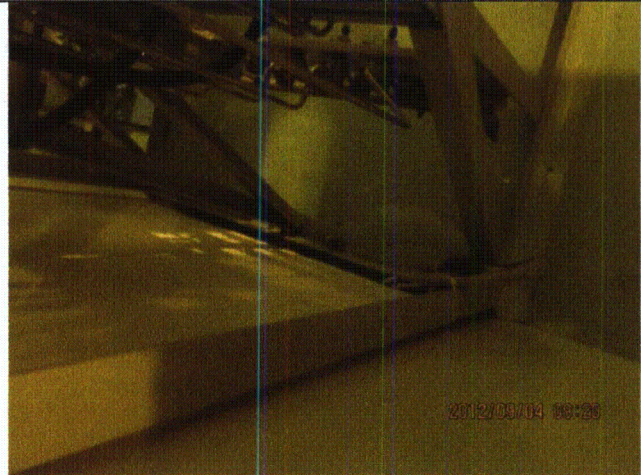
Equipment ID No.: 2E22-N004

Equipment Class: (18) Instruments on Racks

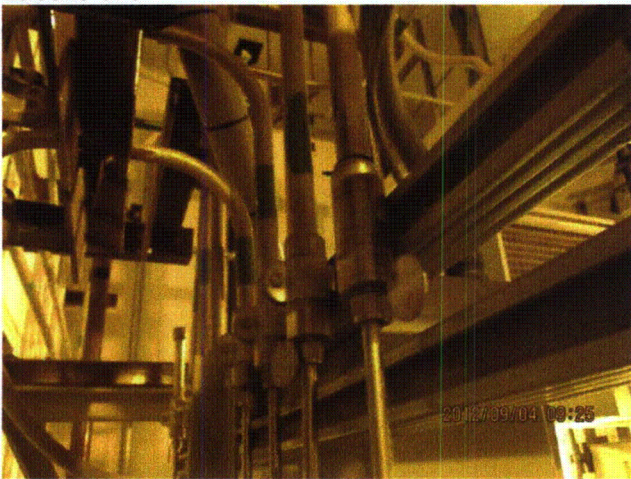
Equipment Description: HPCS PP DISCH PRESS XMITTER



LaSalle 070



LaSalle 071



LaSalle 072

Status:  Y  N  U

**Seismic Walkdown Checklist (SWC)**

Equipment ID No.: 2E22-N005

Equipment Class: (18) Instruments on Racks

Equipment Description: HPCS PP DISCH FLOW XMITTER

Project: LaSalle 2 SWEL

Location (Bldg, Elev, Room/Area): RB, 673.00 ft, ALL

Manufacturer/Model:

**Instructions for Completing Checklist**

This checklist may be used to document the results of the Seismic Walkdown of an item of equipment on the SWEL. The space below each of the following questions may be used to record the results of judgments and findings. Additional space is provided at the end of this checklist for documenting other comments.

**Anchorage**

1. Is anchorage configuration verification required (i.e., is the item one of the 50% of SWEL items requiring such verification)? No  
*Rack anchored to floor with 8 anchors (4 front, 4 rear).*
  
2. Is the anchorage free of bent, broken, missing or loose hardware? Yes
  
3. Is the anchorage free of corrosion that is more than mild surface oxidation? Yes
  
4. Is the anchorage free of visible cracks in the concrete near the anchors? Yes
  
5. Is the anchorage configuration consistent with plant documentation? (Note: This question only applies if the item is one of the 50% for which an anchorage configuration verification is required.) Not Applicable
  
6. Based on the above anchorage evaluations, is the anchorage free of potentially adverse seismic conditions? Yes

Status:  Y  N  U

**Seismic Walkdown Checklist (SWC)**

Equipment ID No.: 2E22-N005

Equipment Class: (18) Instruments on Racks

Equipment Description: HPCS PP DISCH FLOW XMITTER

**Interaction Effects**

7. Are soft targets free from impact by nearby equipment or structures? Yes
8. Are overhead equipment, distribution systems, ceiling tiles and lighting, and masonry block walls not likely to collapse onto the equipment? Yes  
*Overhead light fixtures judged to be acceptable.*  
*Adjacent masonry walls are safety related per drawing A-220, Rev. N.*
9. Do attached lines have adequate flexibility to avoid damage? Yes  
*Contact between tubes and flexible conduits is judged to be acceptable.*
10. Based on the above seismic interaction evaluations, is equipment free of potentially adverse seismic interaction effects? Yes

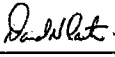
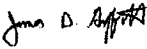
**Other Adverse Conditions**

11. Have you looked for and found no adverse seismic conditions that could adversely affect the safety functions of the equipment? Yes  
*Missing clamp for tube at first support location above valve 2E22-N005-HRR.*  
*Span between valve and first acceptable support is relatively short. As-found condition judged to be acceptable. See IR 1419068.*

**Comments**

Seismic Walkdown Team: D. Carter & J. Griffith - 9/4/2012

Instrument located on Rack 2H22-P024.

Evaluated by:  David Carter Date: 10/17/2012  
 James Griffith 10/17/2012



Status:  Y  N  U

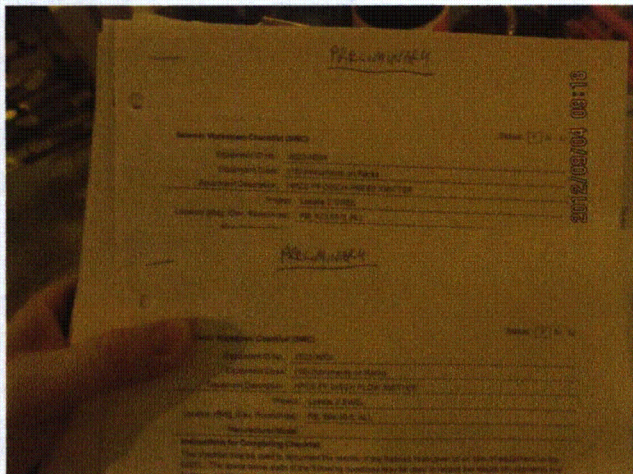
### Seismic Walkdown Checklist (SWC)

Equipment ID No.: 2E22-N005

Equipment Class: (18) Instruments on Racks

Equipment Description: HPCS PP DISCH FLOW XMITTER

#### Photos



LaSalle 058



LaSalle 059



LaSalle 060



LaSalle 061



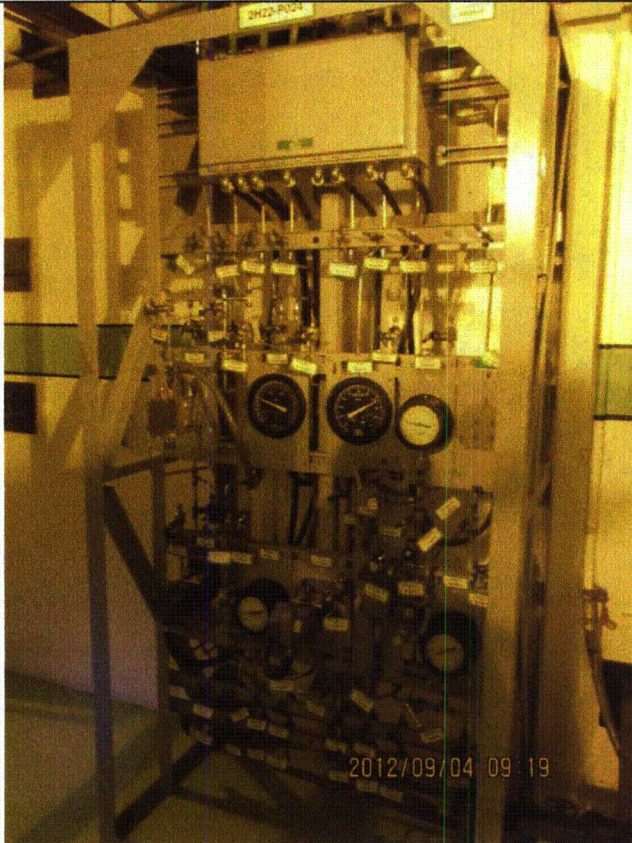
Status:  Y  N  U

**Seismic Walkdown Checklist (SWC)**

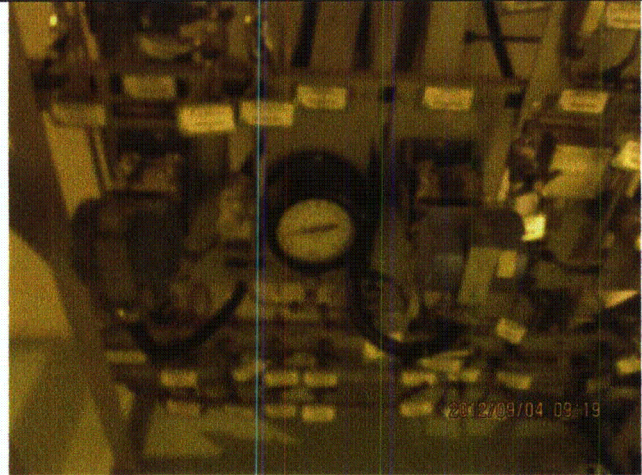
Equipment ID No.: 2E22-N005

Equipment Class: (18) Instruments on Racks

Equipment Description: HPCS PP DISCH FLOW XMITTER



LaSalle 062



LaSalle 063



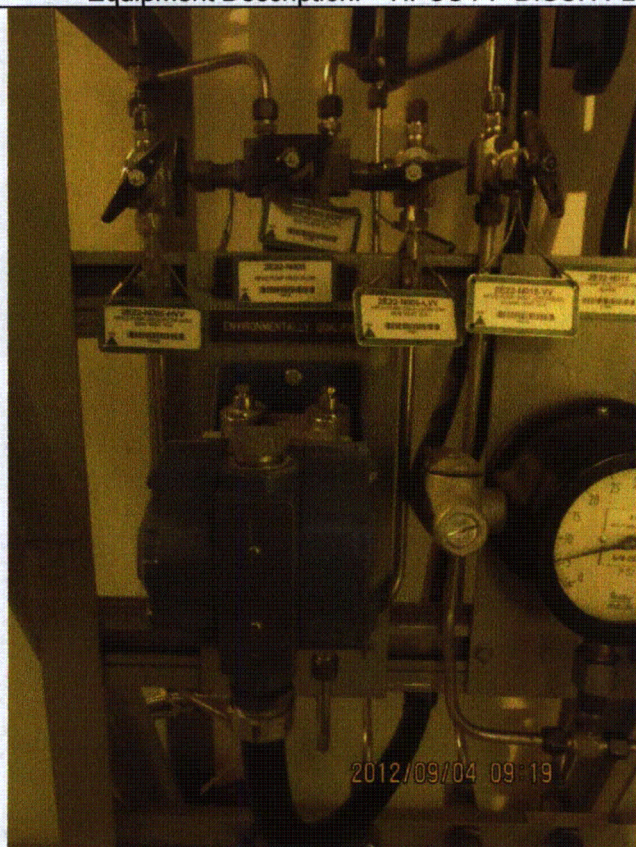
Status:  Y  N  U

**Seismic Walkdown Checklist (SWC)**

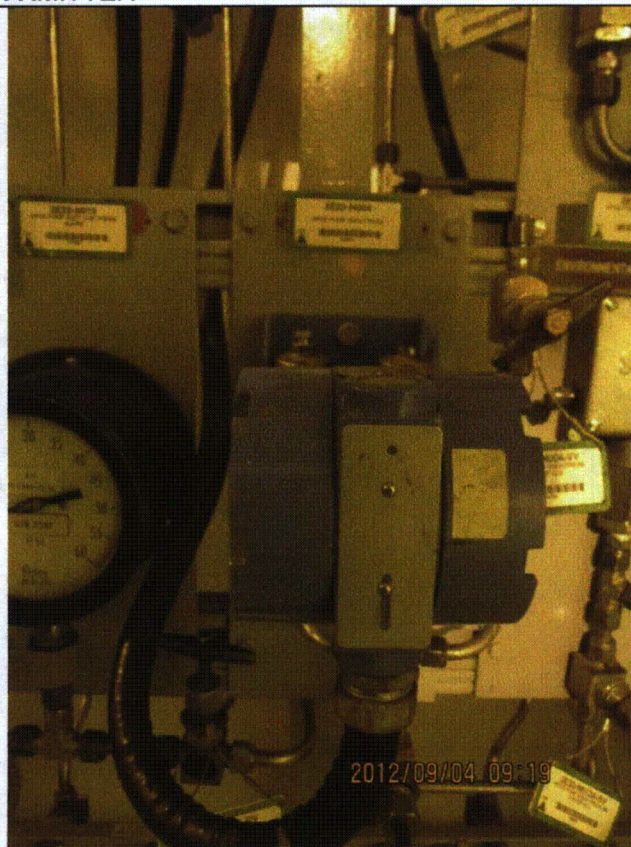
Equipment ID No.: 2E22-N005

Equipment Class: (18) Instruments on Racks

Equipment Description: HPCS PP DISCH FLOW XMITTER



LaSalle 064



LaSalle 065



Status:  Y  N  U

**Seismic Walkdown Checklist (SWC)**

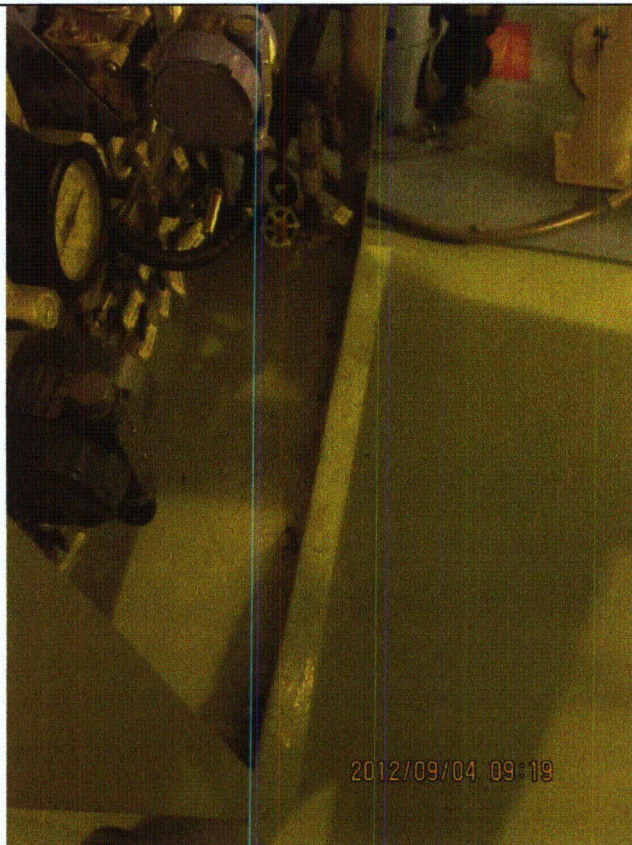
Equipment ID No.: 2E22-N005

Equipment Class: (18) Instruments on Racks

Equipment Description: HPCS PP DISCH FLOW XMITTER



LaSalle 066



LaSalle 067



Status:  Y  N  U

**Seismic Walkdown Checklist (SWC)**

Equipment ID No.: 2E22-N005

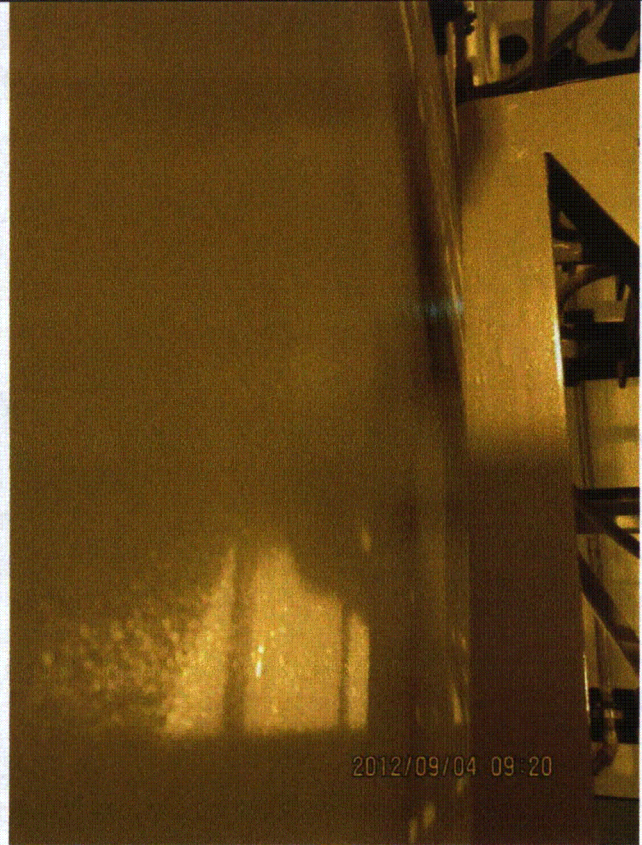
Equipment Class: (18) Instruments on Racks

Equipment Description: HPCS PP DISCH FLOW XMITTER



2012/09/04 09:19

LaSalle 068



2012/09/04 09:20

LaSalle 069



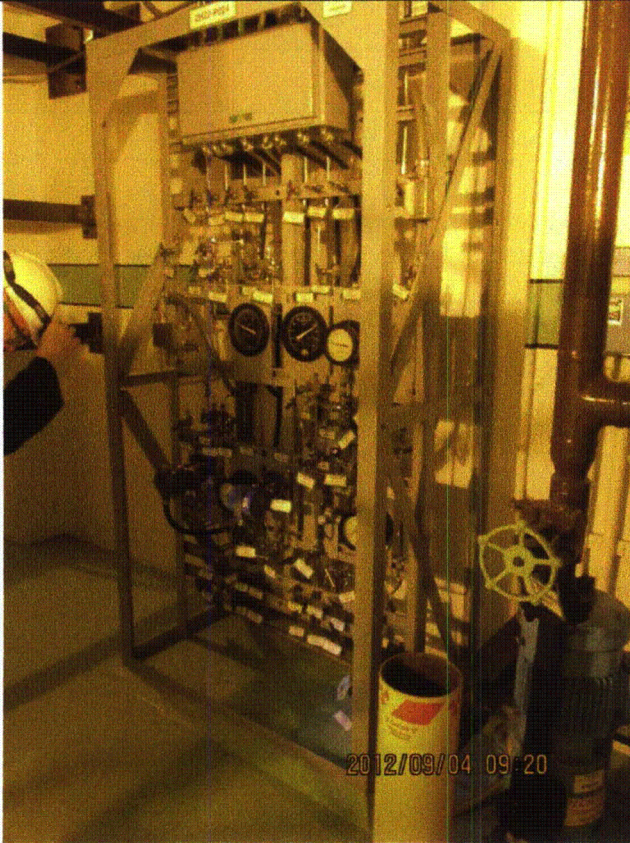
Status:  Y  N  U

**Seismic Walkdown Checklist (SWC)**

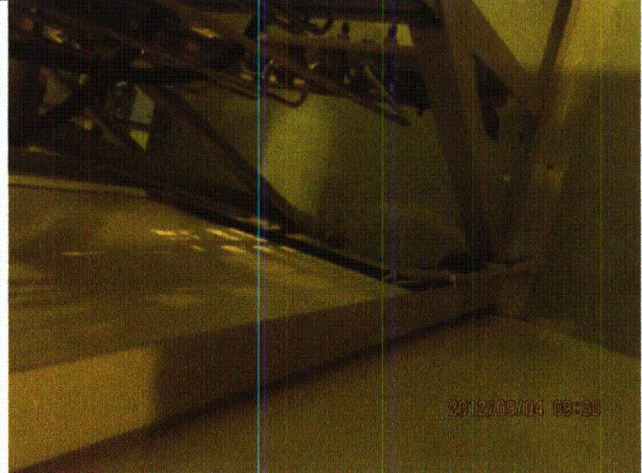
Equipment ID No.: 2E22-N005

Equipment Class: (18) Instruments on Racks

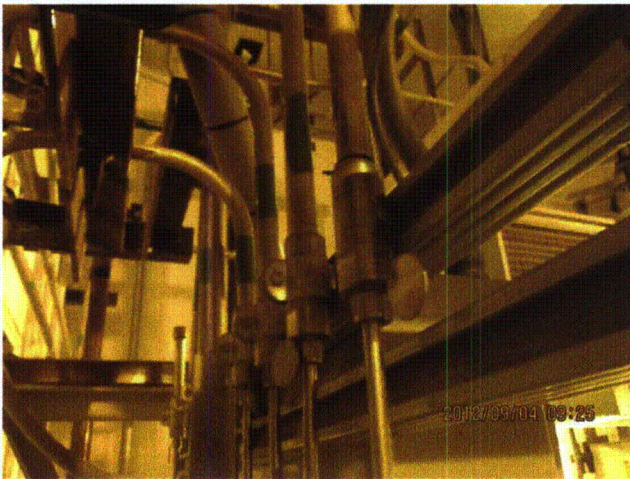
Equipment Description: HPCS PP DISCH FLOW XMITTER



LaSalle 070



LaSalle 071



LaSalle 072



Status:  Y  N  U

**Seismic Walkdown Checklist (SWC)**

Equipment ID No.: 2E51-C001

Equipment Class: (5) Horizontal Pumps

Equipment Description: RX CORE ISOL COOLING PMP

Project: LaSalle 2 SWEL

Location (Bldg, Elev,  
Room/Area): RB, 673.00 ft, ALL

Manufacturer/Model:

**Instructions for Completing Checklist**

This checklist may be used to document the results of the Seismic Walkdown of an item of equipment on the SWEL. The space below each of the following questions may be used to record the results of judgments and findings. Additional space is provided at the end of this checklist for documenting other comments.

**Anchorage**

1. Is anchorage configuration verification required (i.e., is the item one of the 50% of SWEL items requiring such verification)? Yes
  
2. Is the anchorage free of bent, broken, missing or loose hardware? Yes
  
3. Is the anchorage free of corrosion that is more than mild surface oxidation? Yes
  
4. Is the anchorage free of visible cracks in the concrete near the anchors? Yes
  
5. Is the anchorage configuration consistent with plant documentation? (Note: This question only applies if the item is one of the 50% for which an anchorage configuration verification is required.) Yes  
*Anchorage shown on drawings M-1573, Rev. G and M-1590, Sheet 3, Rev. M.*
  
6. Based on the above anchorage evaluations, is the anchorage free of potentially adverse seismic conditions? Yes



Status:  Y  N  U

**Seismic Walkdown Checklist (SWC)**

Equipment ID No.: 2E51-C001

Equipment Class: (5) Horizontal Pumps

Equipment Description: RX CORE ISOL COOLING PMP

**Interaction Effects**

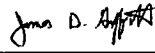
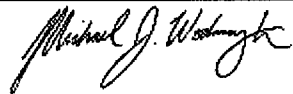
7. Are soft targets free from impact by nearby equipment or structures? Yes
8. Are overhead equipment, distribution systems, ceiling tiles and lighting, and masonry block walls not likely to collapse onto the equipment? Yes  
*Overhead light fixtures judged to be acceptable.*  
*Adjacent masonry walls are safety-related per drawing A-219, Rev. M.*
9. Do attached lines have adequate flexibility to avoid damage? Yes
10. Based on the above seismic interaction evaluations, is equipment free of potentially adverse seismic interaction effects? Yes

**Other Adverse Conditions**

11. Have you looked for and found no adverse seismic conditions that could adversely affect the safety functions of the equipment? Yes

**Comments**

Seismic Walkdown Team: J. Griffith & M. Wodarczyk - 9/11/2012

Evaluated by:  James Griffith Date: 10/19/2012  
 Michael Wodarczyk 10/19/2012

Status:  Y  N  U

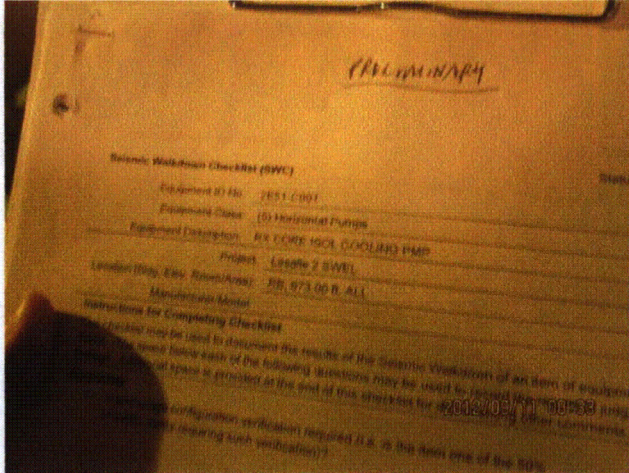
**Seismic Walkdown Checklist (SWC)**

Equipment ID No.: 2E51-C001

Equipment Class: (5) Horizontal Pumps

Equipment Description: RX CORE ISOL COOLING PMP

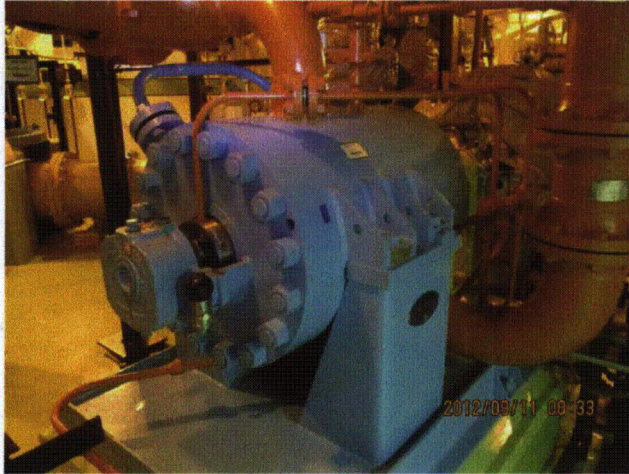
**Photos**



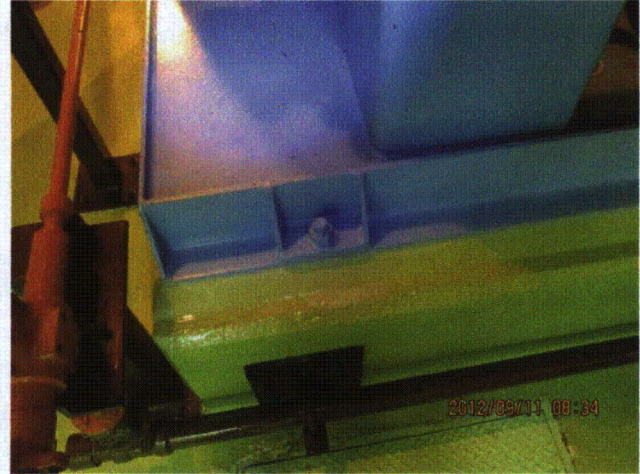
20120911-Lasalle 001



20120911-Lasalle 002



20120911-Lasalle 003



20120911-Lasalle 004



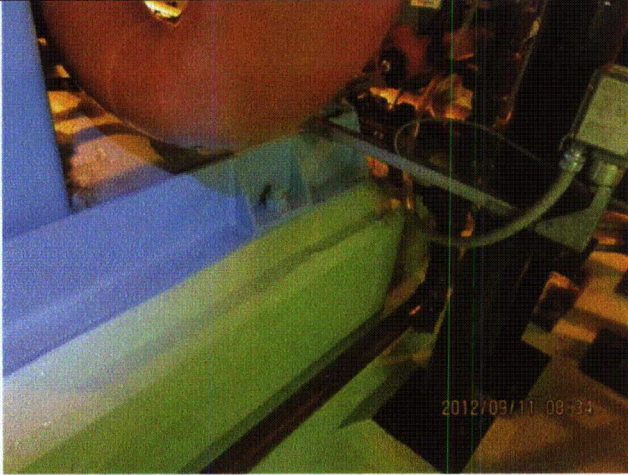
Status:  Y  N  U

**Seismic Walkdown Checklist (SWC)**

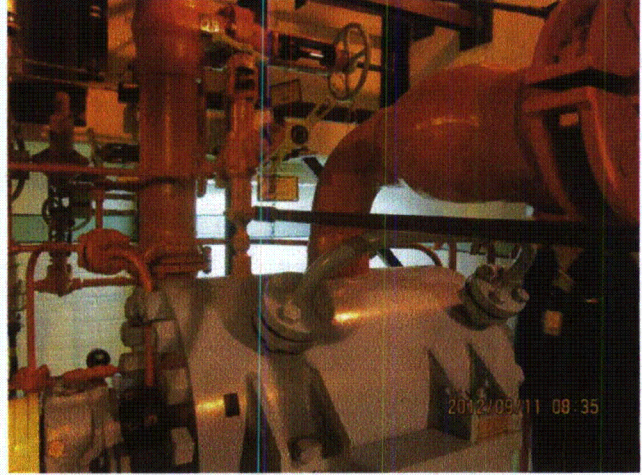
Equipment ID No.: 2E51-C001

Equipment Class: (5) Horizontal Pumps

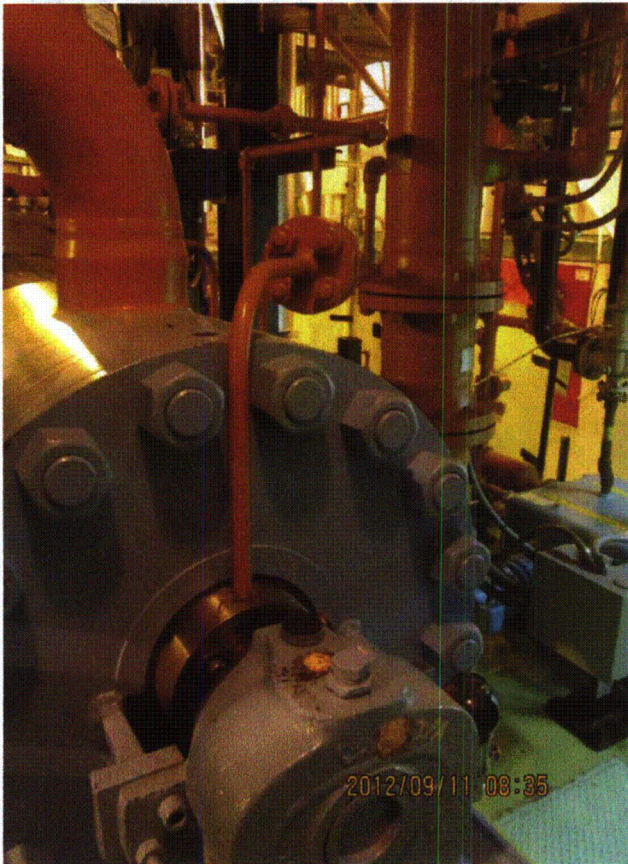
Equipment Description: RX CORE ISOL COOLING PMP



20120911-Lasalle 005



20120911-Lasalle 006



20120911-Lasalle 007



20120911-Lasalle 008



Status:  Y  N  U

**Seismic Walkdown Checklist (SWC)**

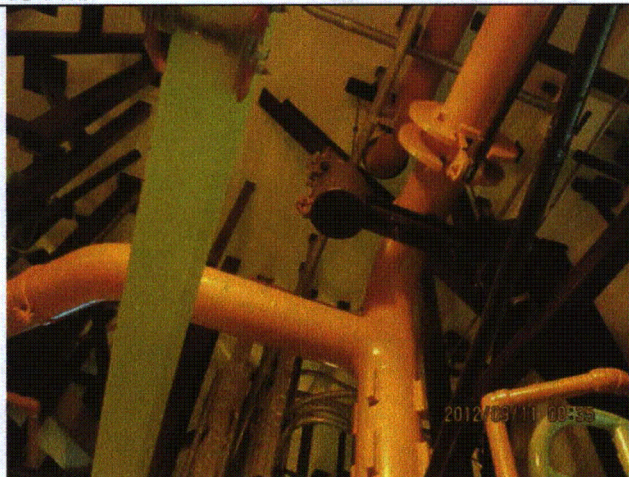
Equipment ID No.: 2E51-C001

Equipment Class: (5) Horizontal Pumps

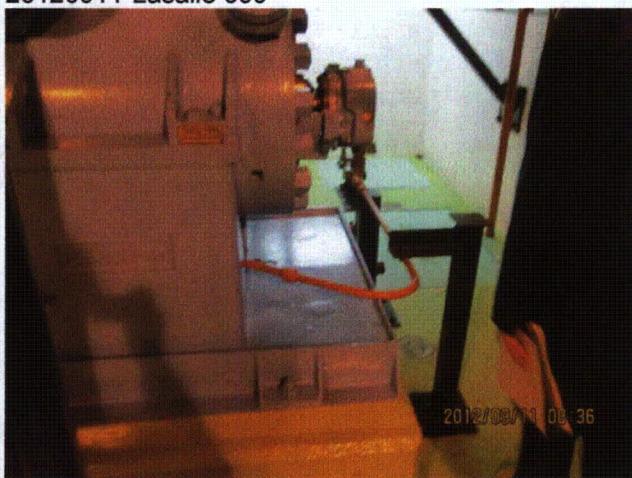
Equipment Description: RX CORE ISOL COOLING PMP



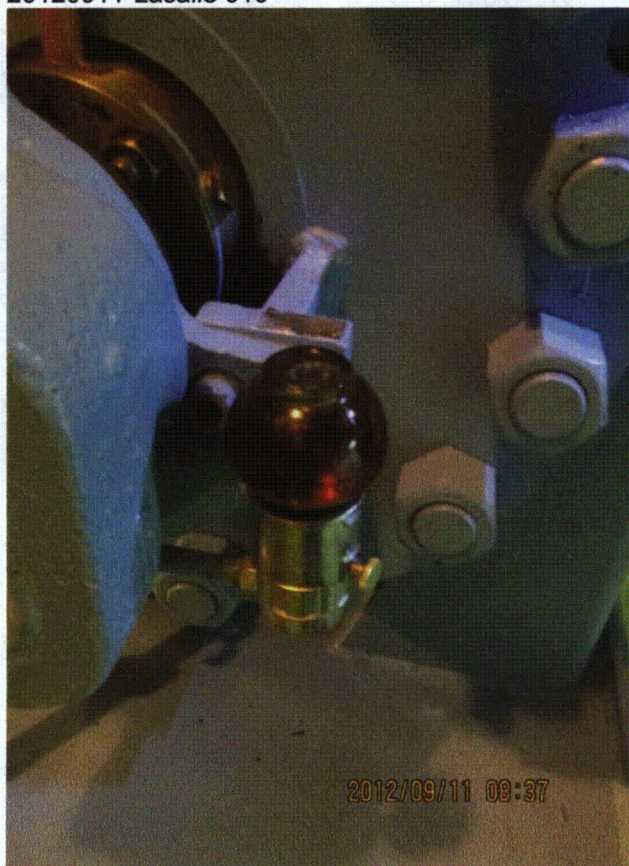
20120911-Lasalle 009



20120911-Lasalle 010



20120911-Lasalle 011



20120911-Lasalle 012



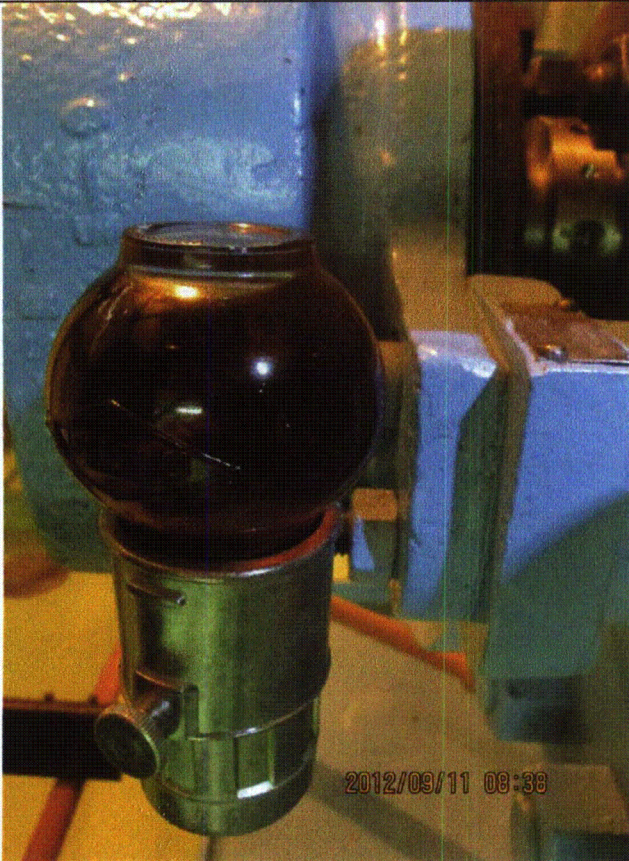
Status:  Y  N  U

**Seismic Walkdown Checklist (SWC)**

Equipment ID No.: 2E51-C001

Equipment Class: (5) Horizontal Pumps

Equipment Description: RX CORE ISOL COOLING PMP



20120911-Lasalle 013



20120911-Lasalle 014



Status:  Y  N  U

**Seismic Walkdown Checklist (SWC)**

Equipment ID No.: 2E51-F013

Equipment Class: (8) Motor-Operated and Solenoid-Operated Valves

Equipment Description: RCIC INJECTION STOP

Project: LaSalle 2 SWEL

Location (Bldg, Elev,

Room/Area): RB, 740.00 ft, ALL

Manufacturer/Model:

**Instructions for Completing Checklist**

This checklist may be used to document the results of the Seismic Walkdown of an item of equipment on the SWEL. The space below each of the following questions may be used to record the results of judgments and findings. Additional space is provided at the end of this checklist for documenting other comments.

**Anchorage**

1. Is anchorage configuration verification required (i.e., is the item one of the 50% of SWEL items requiring such verification)? No
  
2. Is the anchorage free of bent, broken, missing or loose hardware? Not Applicable
  
3. Is the anchorage free of corrosion that is more than mild surface oxidation? Not Applicable
  
4. Is the anchorage free of visible cracks in the concrete near the anchors? Not Applicable
  
5. Is the anchorage configuration consistent with plant documentation? (Note: This question only applies if the item is one of the 50% for which an anchorage configuration verification is required.) Not Applicable
  
6. Based on the above anchorage evaluations, is the anchorage free of potentially adverse seismic conditions? Yes



Status:  Y  N  U

**Seismic Walkdown Checklist (SWC)**

Equipment ID No.: 2E51-F013

Equipment Class: (8) Motor-Operated and Solenoid-Operated Valves

Equipment Description: RCIC INJECTION STOP

**Interaction Effects**

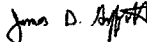

7. Are soft targets free from impact by nearby equipment or structures? Yes
8. Are overhead equipment, distribution systems, ceiling tiles and lighting, and masonry block walls not likely to collapse onto the equipment? Yes  
*Overhead light fixtures judged to be acceptable.*  
*Adjacent masonry wall is safety-related per drawing A-232, Rev. A1.*
9. Do attached lines have adequate flexibility to avoid damage? Yes
10. Based on the above seismic interaction evaluations, is equipment free of potentially adverse seismic interaction effects? Yes

**Other Adverse Conditions**

11. Have you looked for and found no adverse seismic conditions that could adversely affect the safety functions of the equipment? Yes

**Comments**

Seismic Walkdown Team: J. Griffith & M. Wodarczyk - 9/10/2012

Evaluated by:  James Griffith Date: 10/19/2012  
 Michael Wodarczyk 10/19/2012



Status:  Y  N  U

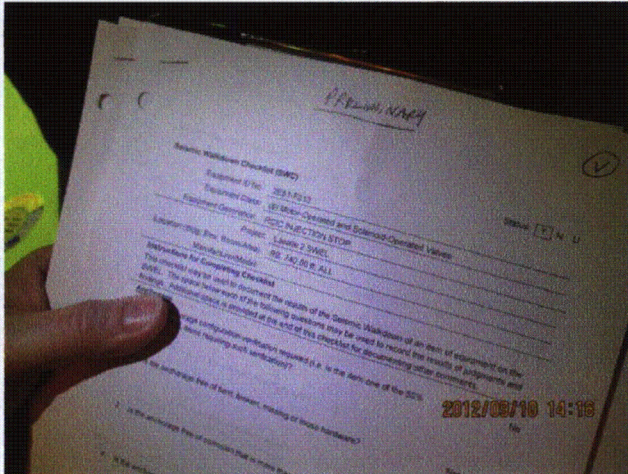
**Seismic Walkdown Checklist (SWC)**

Equipment ID No.: 2E51-F013

Equipment Class: (8) Motor-Operated and Solenoid-Operated Valves

Equipment Description: RCIC INJECTION STOP

**Photos**



20120910-Lasalle 244



20120910-Lasalle 245



20120910-Lasalle 246



20120910-Lasalle 247



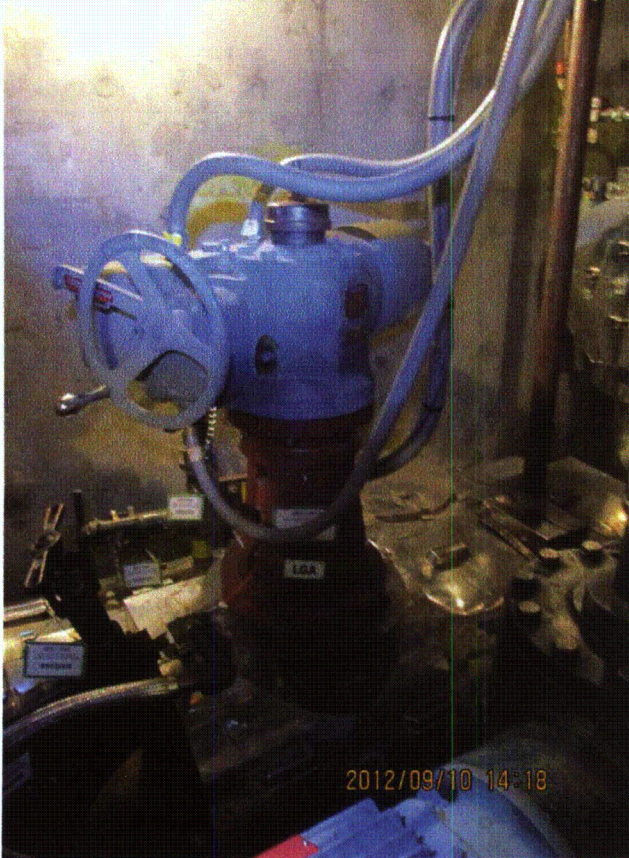
Status:  Y  N  U

**Seismic Walkdown Checklist (SWC)**

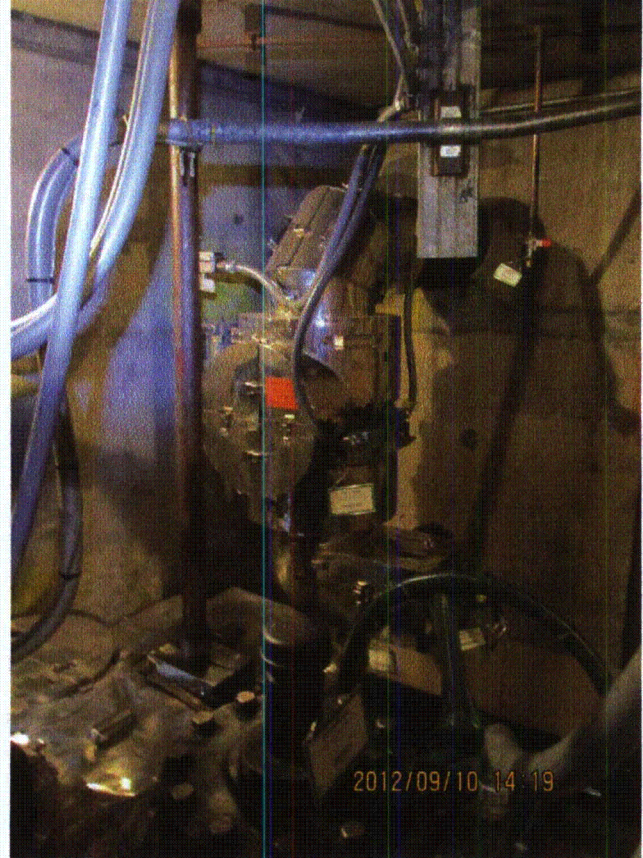
Equipment ID No.: 2E51-F013

Equipment Class: (8) Motor-Operated and Solenoid-Operated Valves

Equipment Description: RCIC INJECTION STOP



20120910-Lasalle 248



20120910-Lasalle 249



Status:  Y  N  U

**Seismic Walkdown Checklist (SWC)**

Equipment ID No.: 2E51-F031

Equipment Class: (8) Motor-Operated and Solenoid-Operated Valves

Equipment Description: RCIC PMP SUCT FROM SUP POOL STOP

Project: LaSalle 2 SWEL

Location (Bldg, Elev,  
Room/Area): RB, 673.00 ft, ALL

Manufacturer/Model:

**Instructions for Completing Checklist**

This checklist may be used to document the results of the Seismic Walkdown of an item of equipment on the SWEL. The space below each of the following questions may be used to record the results of judgments and findings. Additional space is provided at the end of this checklist for documenting other comments.

**Anchorage**

1. Is anchorage configuration verification required (i.e., is the item one of the 50% of SWEL items requiring such verification)? No
  
2. Is the anchorage free of bent, broken, missing or loose hardware? Not Applicable
  
3. Is the anchorage free of corrosion that is more than mild surface oxidation? Not Applicable
  
4. Is the anchorage free of visible cracks in the concrete near the anchors? Not Applicable
  
5. Is the anchorage configuration consistent with plant documentation? (Note: This question only applies if the item is one of the 50% for which an anchorage configuration verification is required.) Not Applicable
  
6. Based on the above anchorage evaluations, is the anchorage free of potentially adverse seismic conditions? Yes



Status:  Y  N  U

**Seismic Walkdown Checklist (SWC)**

Equipment ID No.: 2E51-F031

Equipment Class: (8) Motor-Operated and Solenoid-Operated Valves

Equipment Description: RCIC PMP SUCT FROM SUP POOL STOP

**Interaction Effects**

7. Are soft targets free from impact by nearby equipment or structures? Yes
8. Are overhead equipment, distribution systems, ceiling tiles and lighting, and masonry block walls not likely to collapse onto the equipment? Yes  
*Overhead light fixtures judged to be acceptable.*
9. Do attached lines have adequate flexibility to avoid damage? Yes
10. Based on the above seismic interaction evaluations, is equipment free of potentially adverse seismic interaction effects? Yes

**Other Adverse Conditions**

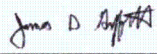
11. Have you looked for and found no adverse seismic conditions that could adversely affect the safety functions of the equipment? Yes

**Comments**

Seismic Walkdown Team: J. Griffith & M. Wodarczyk - 9/11/2012

EPN tag obscured. Correct item verified by Operations.

Evaluated by:

 James Griffith

Date: 10/19/2012



Michael Wodarczyk

10/19/2012



Status:  Y  N  U

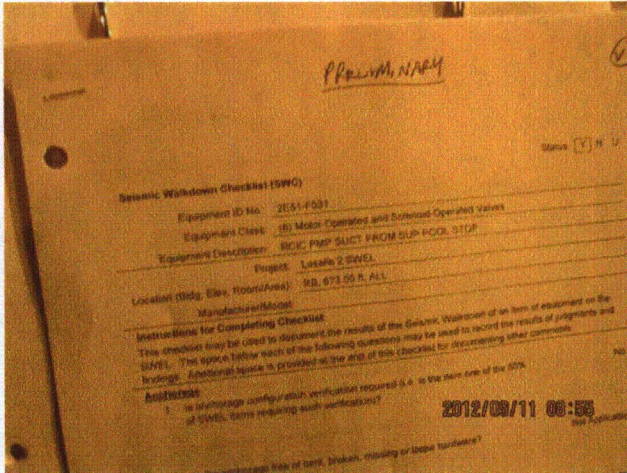
### Seismic Walkdown Checklist (SWC)

Equipment ID No.: 2E51-F031

Equipment Class: (8) Motor-Operated and Solenoid-Operated Valves

Equipment Description: RCIC PMP SUCT FROM SUP POOL STOP

#### Photos



20120911-Lasalle 024



20120911-Lasalle 025



20120911-Lasalle 026



20120911-Lasalle 027