

Status: Y N U

Seismic Walkdown Checklist (SWC)

Equipment ID No.: 2E12-F051B

Equipment Class: (7) Fluid-Operated Valves

Equipment Description: B RHR HX STM INLT PRESS CONT VLV

Project: LaSalle 2 SWEL

Location (Bldg, Elev, Room/Area): RB, 710.00 ft, ALL

Manufacturer/Model:

Instructions for Completing Checklist

This checklist may be used to document the results of the Seismic Walkdown of an item of equipment on the SWEL. The space below each of the following questions may be used to record the results of judgments and findings. Additional space is provided at the end of this checklist for documenting other comments.

Anchorage

1. Is anchorage configuration verification required (i.e., is the item one of the 50% of SWEL items requiring such verification)? No

2. Is the anchorage free of bent, broken, missing or loose hardware? Not Applicable

3. Is the anchorage free of corrosion that is more than mild surface oxidation? Not Applicable

4. Is the anchorage free of visible cracks in the concrete near the anchors? Not Applicable

5. Is the anchorage configuration consistent with plant documentation? (Note: This question only applies if the item is one of the 50% for which an anchorage configuration verification is required.) Not Applicable

6. Based on the above anchorage evaluations, is the anchorage free of potentially adverse seismic conditions? Yes

Status: Y N U

Seismic Walkdown Checklist (SWC)

Equipment ID No.: 2E12-F051B

Equipment Class: (7) Fluid-Operated Valves

Equipment Description: B RHR HX STM INLT PRESS CONT VLV

Interaction Effects

7. Are soft targets free from impact by nearby equipment or structures? Yes

Solenoid valve in contact with crushable insulation is judged to be acceptable.

Gap between tubing and adjacent grating below is approximately 1/8". Significant vertical movement in the tubing during a seismic event is judged to be not credible, therefore the gap is judged to be acceptable.

8. Are overhead equipment, distribution systems, ceiling tiles and lighting, and masonry block walls not likely to collapse onto the equipment? Yes

Overhead light fixtures judged to be acceptable.

Adjacent masonry walls are safety-related per drawing A-227, Rev. V.

9. Do attached lines have adequate flexibility to avoid damage? Yes


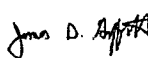
10. Based on the above seismic interaction evaluations, is equipment free of potentially adverse seismic interaction effects? Yes

Other Adverse Conditions

11. Have you looked for and found no adverse seismic conditions that could adversely affect the safety functions of the equipment? Yes

Comments

Seismic Walkdown Team: D. Carter & J. Griffith - 8/29/2012

Evaluated by:  David Carter Date: 10/17/2012
 James Griffith 10/17/2012

Status: Y N U

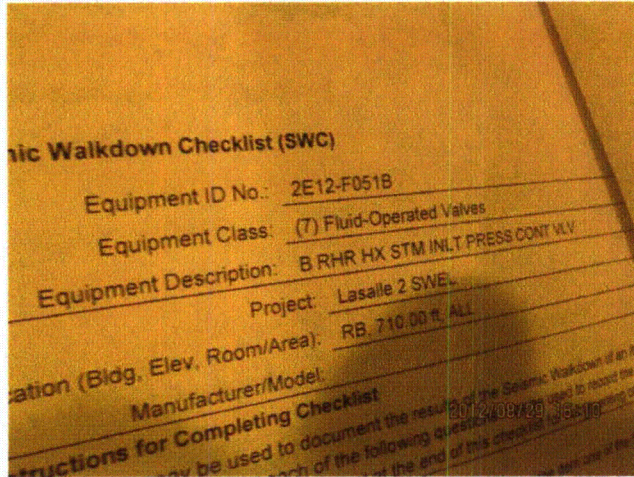
Seismic Walkdown Checklist (SWC)

Equipment ID No.: 2E12-F051B

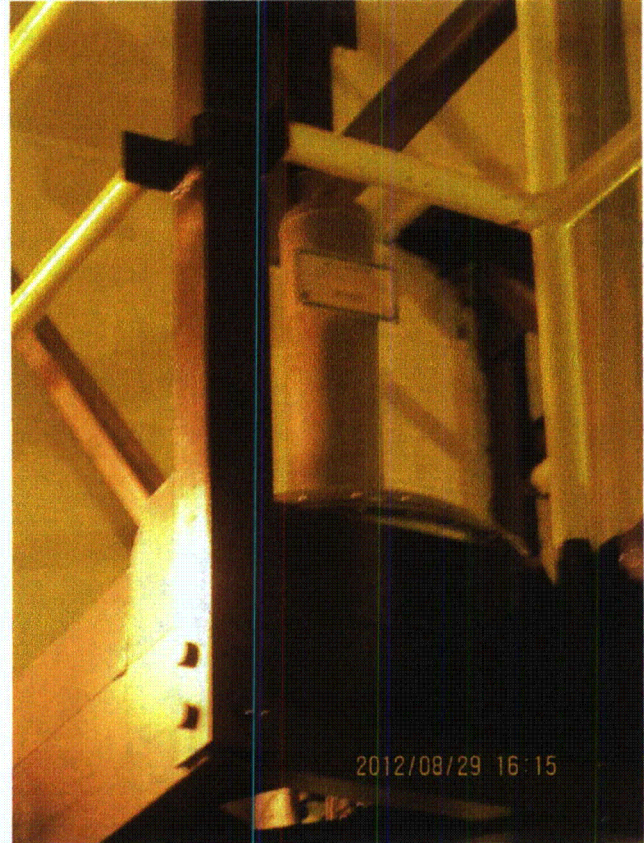
Equipment Class: (7) Fluid-Operated Valves

Equipment Description: B RHR HX STM INLT PRESS CONT VLV

Photos



LaSalle 8-29-12 236



LaSalle 8-29-12 256

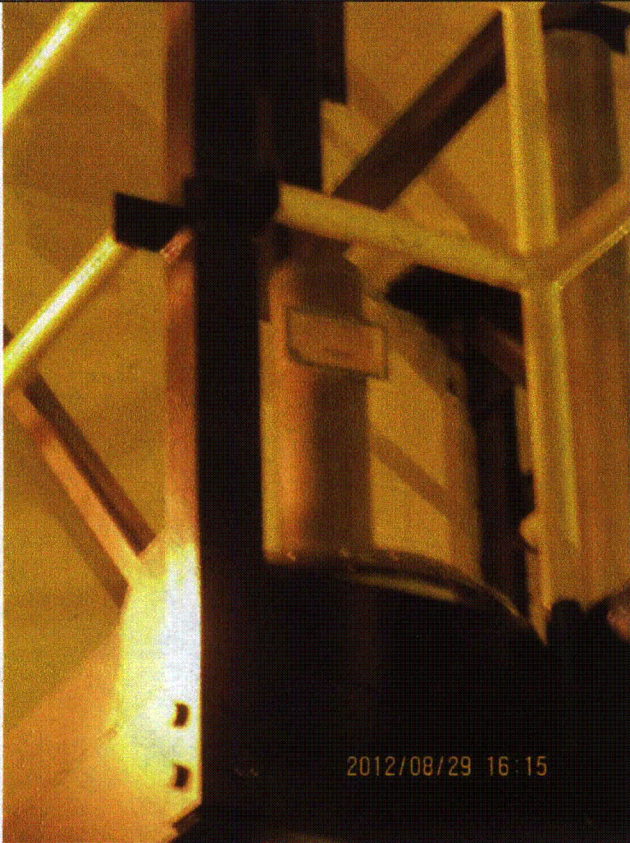
Status: Y N U

Seismic Walkdown Checklist (SWC)

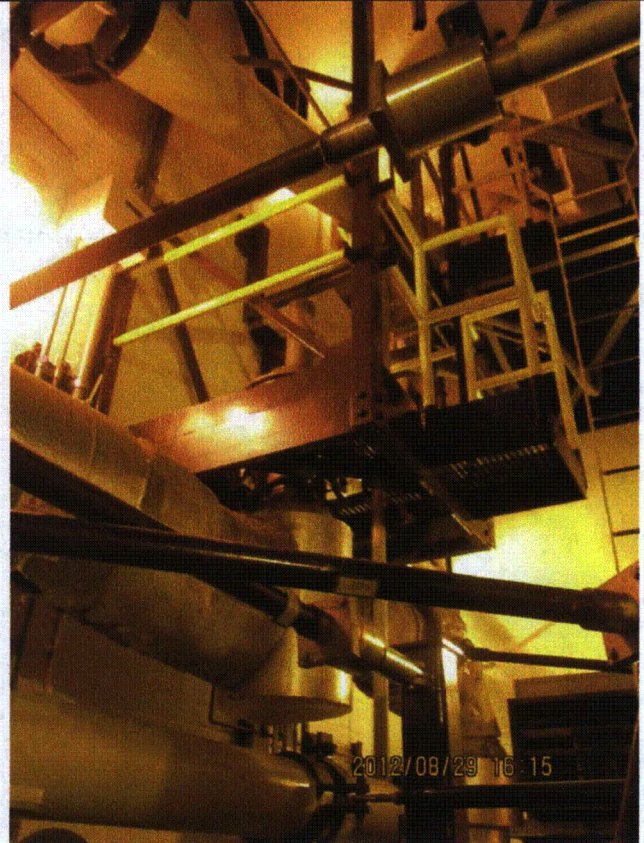
Equipment ID No.: 2E12-F051B

Equipment Class: (7) Fluid-Operated Valves

Equipment Description: B RHR HX STM INLT PRESS CONT VLV



LaSalle 8-29-12 257



LaSalle 8-29-12 258

Status: Y N U

Seismic Walkdown Checklist (SWC)

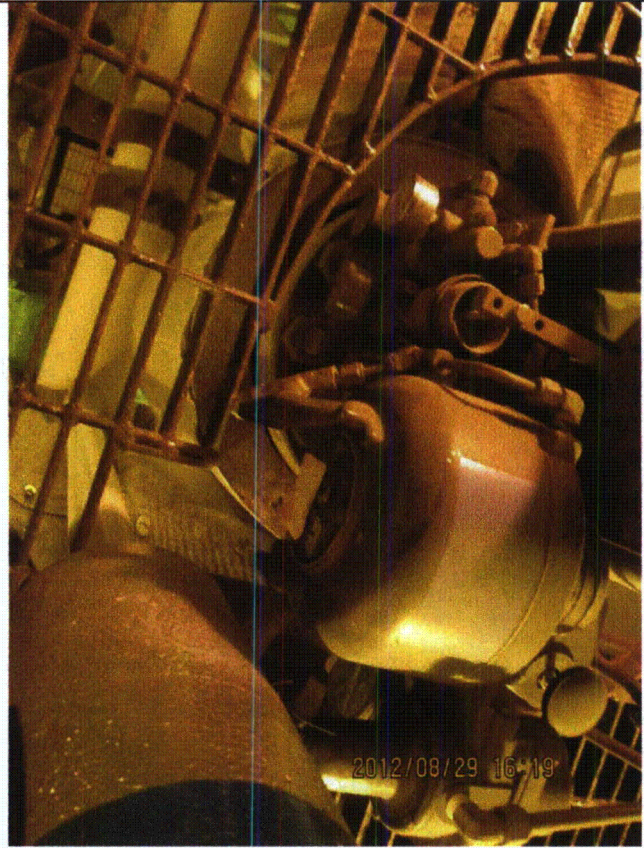
Equipment ID No.: 2E12-F051B

Equipment Class: (7) Fluid-Operated Valves

Equipment Description: B RHR HX STM INLT PRESS CONT VLV



LaSalle 8-29-12 259



LaSalle 8-29-12 260

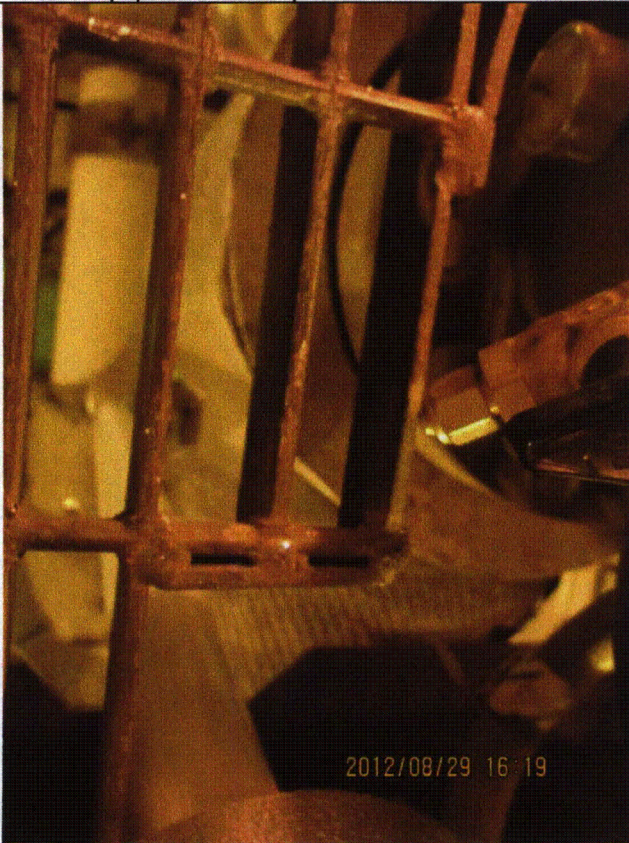
Status: Y N U

Seismic Walkdown Checklist (SWC)

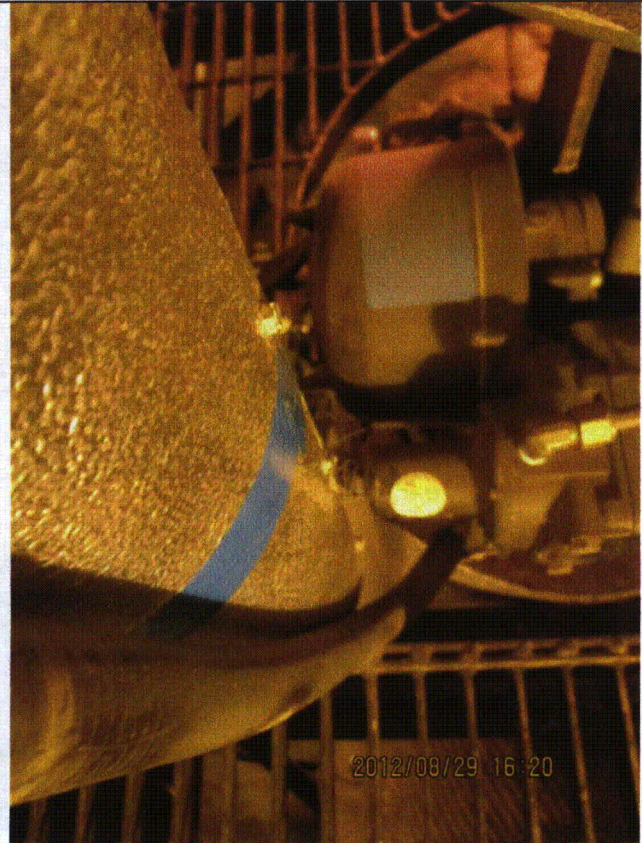
Equipment ID No.: 2E12-F051B

Equipment Class: (7) Fluid-Operated Valves

Equipment Description: B RHR HX STM INLT PRESS CONT VLV



LaSalle 8-29-12 261



LaSalle 8-29-12 262

Status: Y N U

Seismic Walkdown Checklist (SWC)

Equipment ID No.: 2E12-F051B

Equipment Class: (7) Fluid-Operated Valves

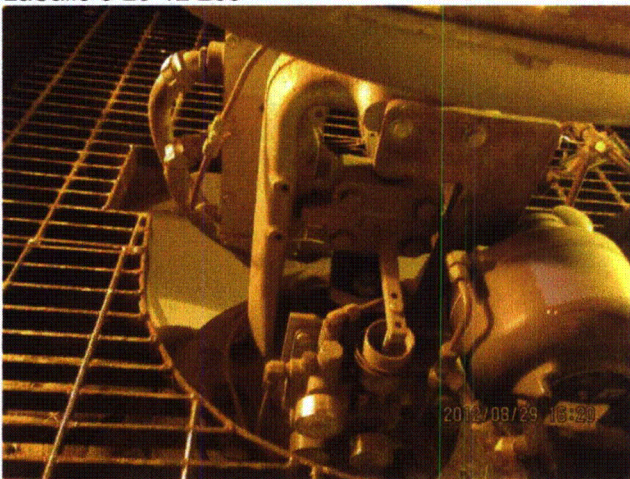
Equipment Description: B RHR HX STM INLT PRESS CONT VLV



LaSalle 8-29-12 263



LaSalle 8-29-12 264



LaSalle 8-29-12 265

Status: Y N U

Seismic Walkdown Checklist (SWC)

Equipment ID No.: 2E12-F055B

Equipment Class: (7) Fluid-Operated Valves

Equipment Description: VALVE, RI DISCH LINE RELIEF

Project: LaSalle 2 SWEL

Location (Bldg, Elev, Room/Area): RB, 710.00 ft, ALL

Manufacturer/Model:

Instructions for Completing Checklist

This checklist may be used to document the results of the Seismic Walkdown of an item of equipment on the SWEL. The space below each of the following questions may be used to record the results of judgments and findings. Additional space is provided at the end of this checklist for documenting other comments.

Anchorage

1. Is anchorage configuration verification required (i.e., is the item one of the 50% of SWEL items requiring such verification)? No

2. Is the anchorage free of bent, broken, missing or loose hardware? Not Applicable

3. Is the anchorage free of corrosion that is more than mild surface oxidation? Not Applicable

4. Is the anchorage free of visible cracks in the concrete near the anchors? Not Applicable

5. Is the anchorage configuration consistent with plant documentation? (Note: This question only applies if the item is one of the 50% for which an anchorage configuration verification is required.) Not Applicable

6. Based on the above anchorage evaluations, is the anchorage free of potentially adverse seismic conditions? Yes

Status: Y N U

Seismic Walkdown Checklist (SWC)

Equipment ID No.: 2E12-F055B

Equipment Class: (7) Fluid-Operated Valves

Equipment Description: VALVE, RI DISCH LINE RELIEF

Interaction Effects

7. Are soft targets free from impact by nearby equipment or structures? Yes

Robust valve body in contact with adjacent pipe judged to be acceptable.

8. Are overhead equipment, distribution systems, ceiling tiles and lighting, and masonry block walls not likely to collapse onto the equipment? Yes

Overhead light fixtures judged to be acceptable.

Adjacent masonry walls are safety-related per drawing A-227, Rev. V.

9. Do attached lines have adequate flexibility to avoid damage? Yes

10. Based on the above seismic interaction evaluations, is equipment free of potentially adverse seismic interaction effects? Yes

Other Adverse Conditions

11. Have you looked for and found no adverse seismic conditions that could adversely affect the safety functions of the equipment? Yes

Comments

Seismic Walkdown Team: D. Carter & J. Griffith - 8/29/2012

Evaluated by: *David Carter* David Carter Date: 10/17/2012

James D. Griffith James Griffith 10/17/2012

Status: Y N U

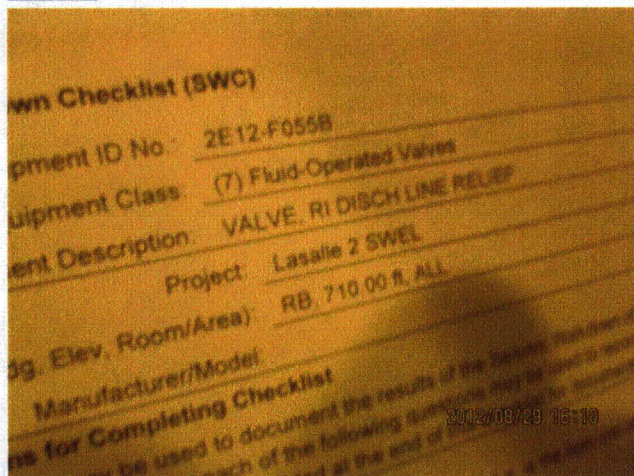
Seismic Walkdown Checklist (SWC)

Equipment ID No.: 2E12-F055B

Equipment Class: (7) Fluid-Operated Valves

Equipment Description: VALVE, RI DISCH LINE RELIEF

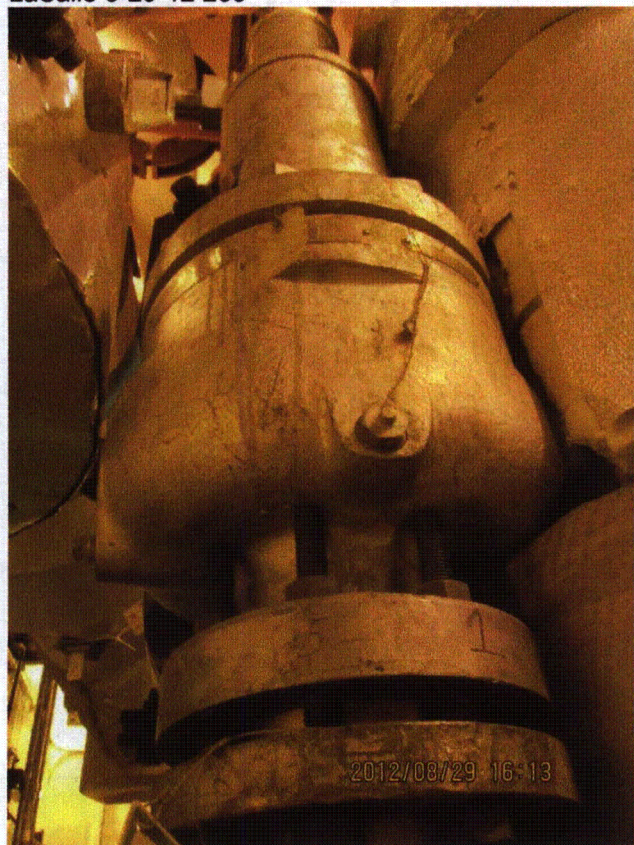
Photos



LaSalle 8-29-12 235



LaSalle 8-29-12 243



LaSalle 8-29-12 244



LaSalle 8-29-12 245

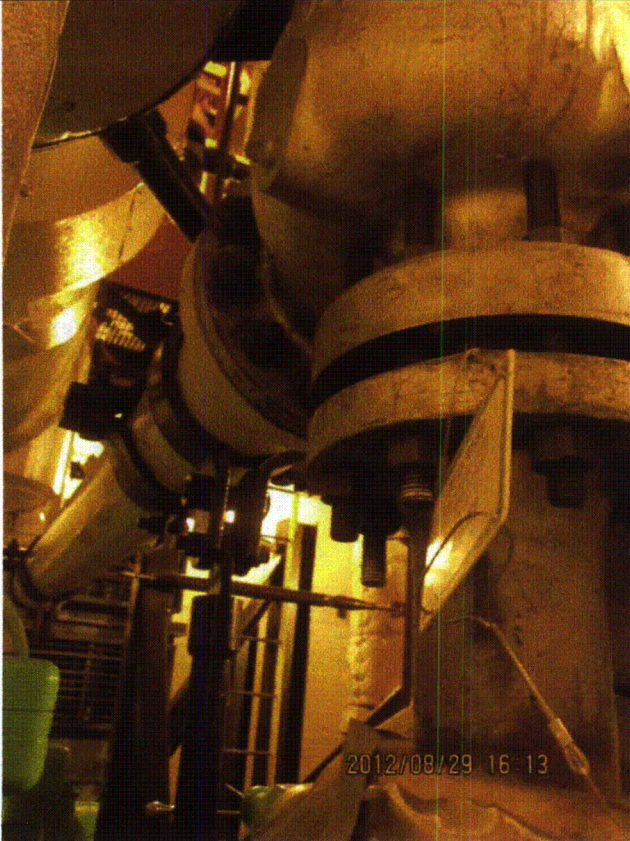
Status: Y N U

Seismic Walkdown Checklist (SWC)

Equipment ID No.: 2E12-F055B

Equipment Class: (7) Fluid-Operated Valves

Equipment Description: VALVE, RI DISCH LINE RELIEF



LaSalle 8-29-12 246



LaSalle 8-29-12 247

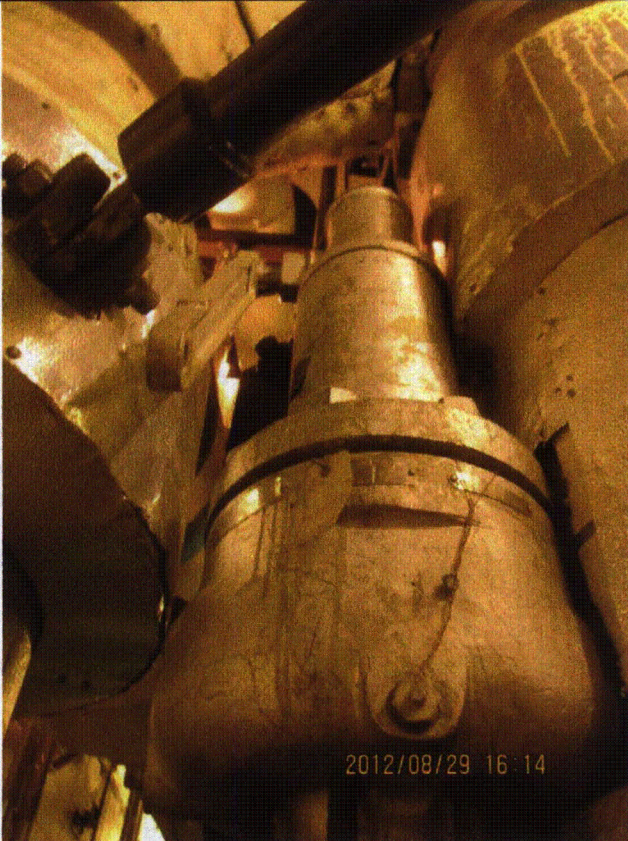
Status: Y N U

Seismic Walkdown Checklist (SWC)

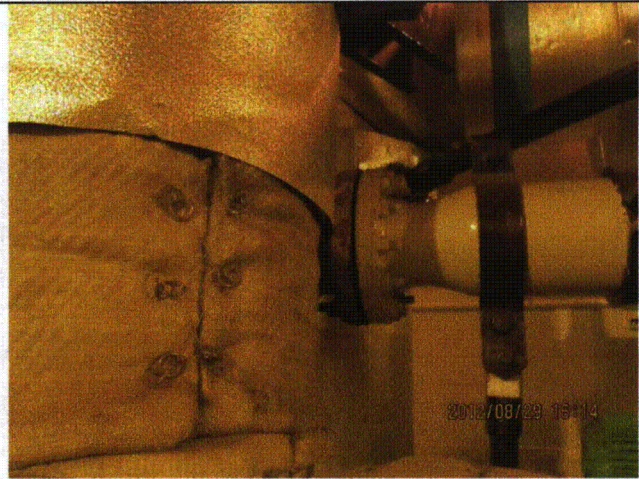
Equipment ID No.: 2E12-F055B

Equipment Class: (7) Fluid-Operated Valves

Equipment Description: VALVE, RI DISCH LINE RELIEF



LaSalle 8-29-12 248



LaSalle 8-29-12 249

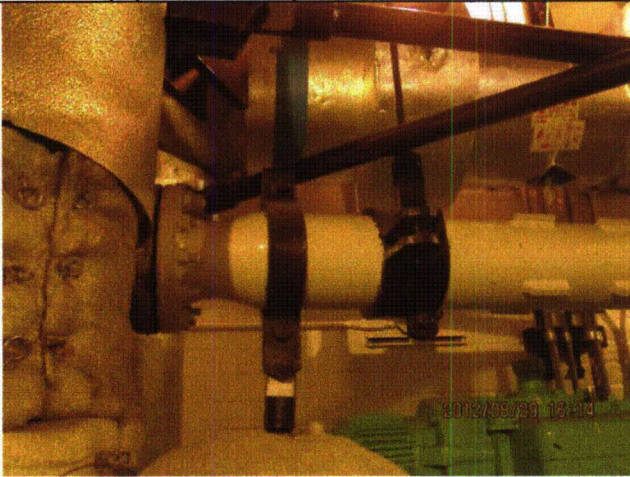
Status: Y N U

Seismic Walkdown Checklist (SWC)

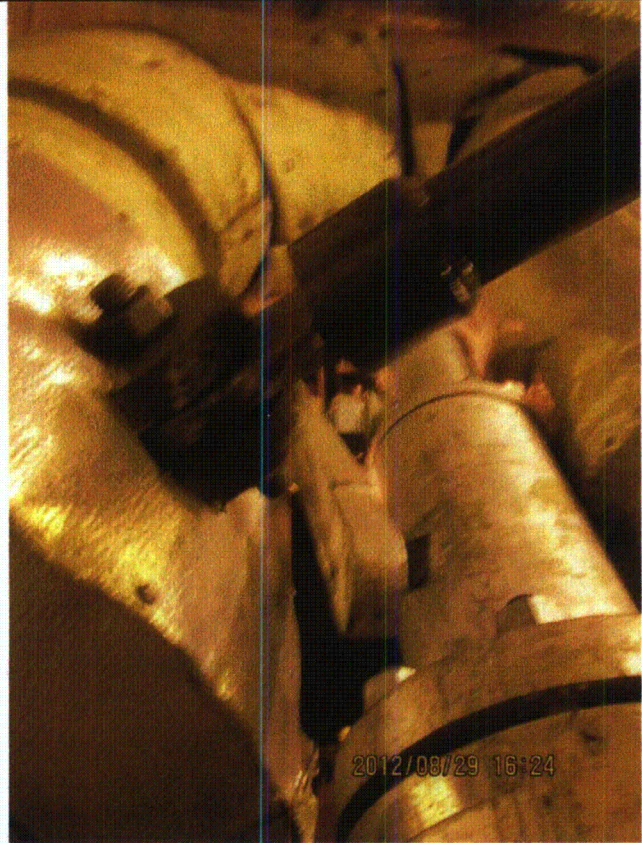
Equipment ID No.: 2E12-F055B

Equipment Class: (7) Fluid-Operated Valves

Equipment Description: VALVE, RI DISCH LINE RELIEF



LaSalle 8-29-12 250



LaSalle 8-29-12 275

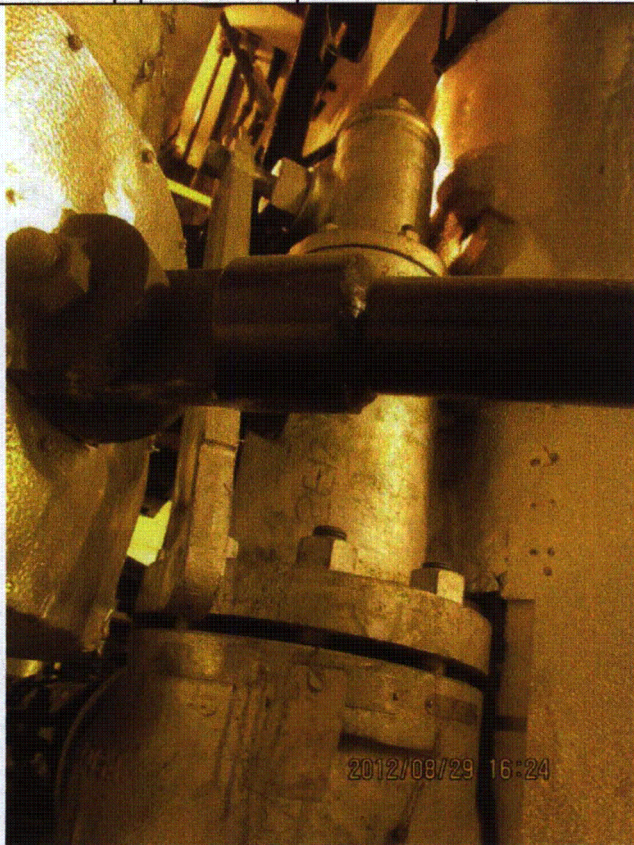
Status: Y N U

Seismic Walkdown Checklist (SWC)

Equipment ID No.: 2E12-F055B

Equipment Class: (7) Fluid-Operated Valves

Equipment Description: VALVE, RI DISCH LINE RELIEF



LaSalle 8-29-12 276

Status: Y N U

Seismic Walkdown Checklist (SWC)

Equipment ID No.: 2E12-F068A

Equipment Class: (8) Motor-Operated and Solenoid-Operated Valves

Equipment Description: A RHR HEAT EXCH OTLT

Project: LaSalle 2 SWEL

Location (Bldg, Elev,

Room/Area): RB, 673.00 ft, ALL

Manufacturer/Model:

Instructions for Completing Checklist

This checklist may be used to document the results of the Seismic Walkdown of an item of equipment on the SWEL. The space below each of the following questions may be used to record the results of judgments and findings. Additional space is provided at the end of this checklist for documenting other comments.

Anchorage

1. Is anchorage configuration verification required (i.e., is the item one of the 50% of SWEL items requiring such verification)? No

2. Is the anchorage free of bent, broken, missing or loose hardware? Not Applicable

3. Is the anchorage free of corrosion that is more than mild surface oxidation? Not Applicable

4. Is the anchorage free of visible cracks in the concrete near the anchors? Not Applicable

5. Is the anchorage configuration consistent with plant documentation? (Note: This question only applies if the item is one of the 50% for which an anchorage configuration verification is required.) Not Applicable

6. Based on the above anchorage evaluations, is the anchorage free of potentially adverse seismic conditions? Yes

Status: Y N U

Seismic Walkdown Checklist (SWC)

Equipment ID No.: 2E12-F068A

Equipment Class: (8) Motor-Operated and Solenoid-Operated Valves

Equipment Description: A RHR HEAT EXCH OTLT

Interaction Effects

7. Are soft targets free from impact by nearby equipment or structures? Yes
8. Are overhead equipment, distribution systems, ceiling tiles and lighting, and masonry block walls not likely to collapse onto the equipment? Yes
Valve mounted high overhead; few overhead items can impact valve.
9. Do attached lines have adequate flexibility to avoid damage? Yes
10. Based on the above seismic interaction evaluations, is equipment free of potentially adverse seismic interaction effects? Yes

Other Adverse Conditions

11. Have you looked for and found no adverse seismic conditions that could adversely affect the safety functions of the equipment? Yes
Minor corrosion in mounting bolts from motor to valve judged to be acceptable.

Comments

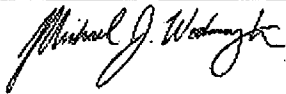
Seismic Walkdown Team: M. Etre & M. Wodarczyk - 9/18/2012

Evaluated by:



Mark Etre

Date: 10/19/2012



Michael Wodarczyk

10/19/2012

Status: Y N U

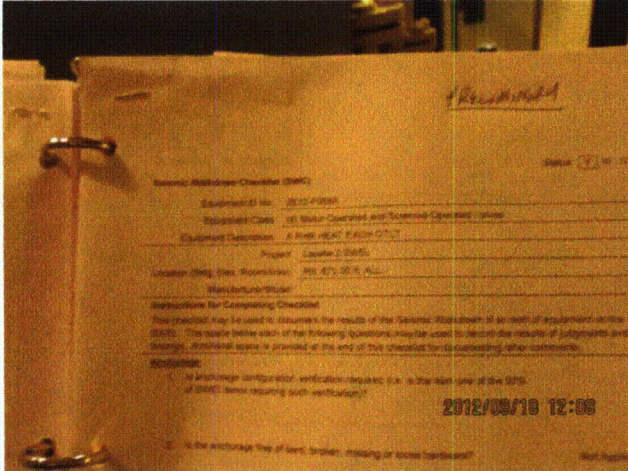
Seismic Walkdown Checklist (SWC)

Equipment ID No.: 2E12-F068A

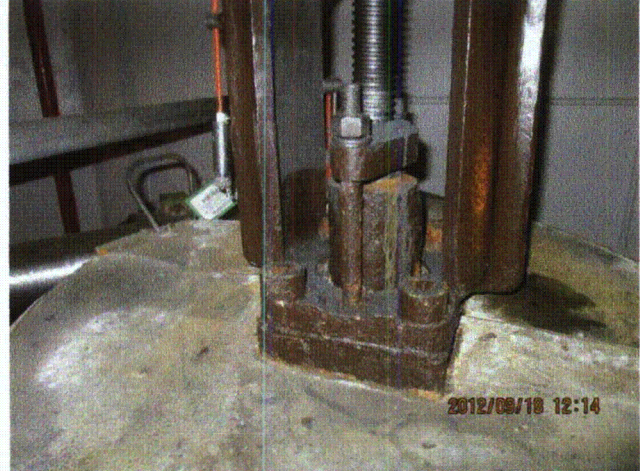
Equipment Class: (8) Motor-Operated and Solenoid-Operated Valves

Equipment Description: A RHR HEAT EXCH OTLT

Photos



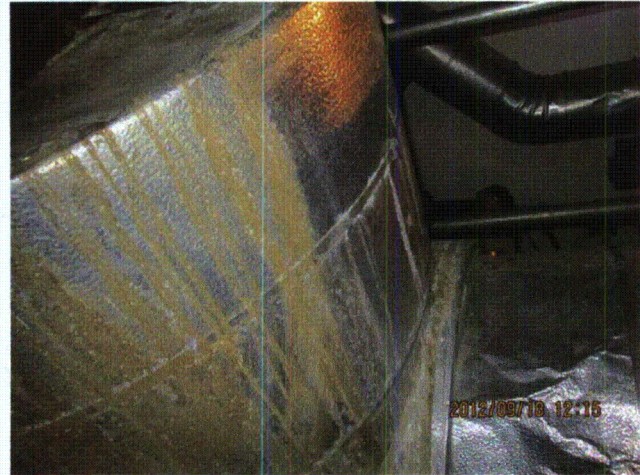
20120918-Lasalle 169



20120918-Lasalle 170



20120918-Lasalle 171



20120918-Lasalle 172

Status: Y N U

Seismic Walkdown Checklist (SWC)

Equipment ID No.: 2E12-F068A

Equipment Class: (8) Motor-Operated and Solenoid-Operated Valves

Equipment Description: A RHR HEAT EXCH OTLT



20120918-Lasalle 173



20120918-Lasalle 174



20120918-Lasalle 175



20120918-Lasalle 176

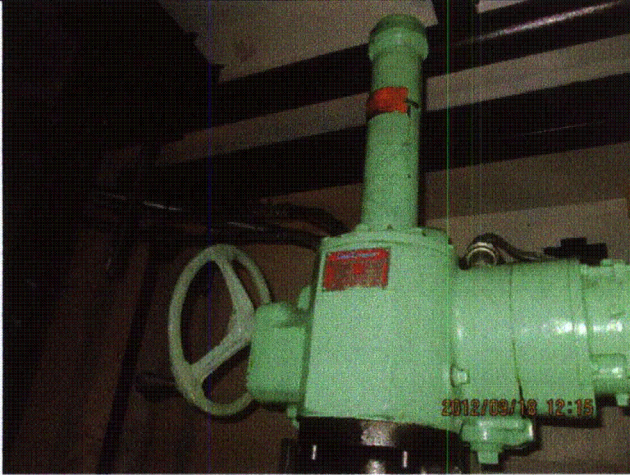
Status: Y N U

Seismic Walkdown Checklist (SWC)

Equipment ID No.: 2E12-F068A

Equipment Class: (8) Motor-Operated and Solenoid-Operated Valves

Equipment Description: A RHR HEAT EXCH OTLT



20120918-Lasalle 177

Status: Y N U

Seismic Walkdown Checklist (SWC)

Equipment ID No.: 2E12-F068B

Equipment Class: (8) Motor-Operated and Solenoid-Operated Valves

Equipment Description: B RHR HEAT EXCH OTLT STOP VLV

Project: LaSalle 2 SWEL

Location (Bldg, Elev, Room/Area): RB, 673.00 ft, ALL

Manufacturer/Model:

Instructions for Completing Checklist

This checklist may be used to document the results of the Seismic Walkdown of an item of equipment on the SWEL. The space below each of the following questions may be used to record the results of judgments and findings. Additional space is provided at the end of this checklist for documenting other comments.

Anchorage

1. Is anchorage configuration verification required (i.e., is the item one of the 50% of SWEL items requiring such verification)? No

2. Is the anchorage free of bent, broken, missing or loose hardware? Not Applicable

3. Is the anchorage free of corrosion that is more than mild surface oxidation? Not Applicable

4. Is the anchorage free of visible cracks in the concrete near the anchors? Not Applicable

5. Is the anchorage configuration consistent with plant documentation? (Note: This question only applies if the item is one of the 50% for which an anchorage configuration verification is required.) Not Applicable

6. Based on the above anchorage evaluations, is the anchorage free of potentially adverse seismic conditions? Yes

Status: Y N U

Seismic Walkdown Checklist (SWC)

Equipment ID No.: 2E12-F068B

Equipment Class: (8) Motor-Operated and Solenoid-Operated Valves

Equipment Description: B RHR HEAT EXCH OTLT STOP VLV

Interaction Effects

7. Are soft targets free from impact by nearby equipment or structures? Yes
8. Are overhead equipment, distribution systems, ceiling tiles and lighting, and masonry block walls not likely to collapse onto the equipment? Yes
Overhead light fixtures judged to be acceptable.
9. Do attached lines have adequate flexibility to avoid damage? Yes
10. Based on the above seismic interaction evaluations, is equipment free of potentially adverse seismic interaction effects? Yes

Other Adverse Conditions

11. Have you looked for and found no adverse seismic conditions that could adversely affect the safety functions of the equipment? Yes

Comments

Seismic Walkdown Team: D. Carter & J. Griffith - 8/30/2012

No photographs of this item were taken.

Evaluated by:  David Carter

Date: 10/17/2012

 James Griffith

10/17/2012

Status: Y N U

Seismic Walkdown Checklist (SWC)

Equipment ID No.: 2E12-N005B

Equipment Class: (19) Temperature Sensors

Equipment Description: RHR HE 2B SERV WTR DISCH TEMP

Project: LaSalle 2 SWEL

Location (Bldg, Elev, Room/Area): RB, 694.00 ft, ALL

Manufacturer/Model:

Instructions for Completing Checklist

This checklist may be used to document the results of the Seismic Walkdown of an item of equipment on the SWEL. The space below each of the following questions may be used to record the results of judgments and findings. Additional space is provided at the end of this checklist for documenting other comments.

Anchorage

1. Is anchorage configuration verification required (i.e., is the item one of the 50% of SWEL items requiring such verification)? No

2. Is the anchorage free of bent, broken, missing or loose hardware? Not Applicable

3. Is the anchorage free of corrosion that is more than mild surface oxidation? Not Applicable

4. Is the anchorage free of visible cracks in the concrete near the anchors? Not Applicable

5. Is the anchorage configuration consistent with plant documentation? (Note: This question only applies if the item is one of the 50% for which an anchorage configuration verification is required.) Not Applicable

6. Based on the above anchorage evaluations, is the anchorage free of potentially adverse seismic conditions? Yes

Status: Y N U

Seismic Walkdown Checklist (SWC)

Equipment ID No.: 2E12-N005B

Equipment Class: (19) Temperature Sensors

Equipment Description: RHR HE 2B SERV WTR DISCH TEMP

Interaction Effects

7. Are soft targets free from impact by nearby equipment or structures? Yes
8. Are overhead equipment, distribution systems, ceiling tiles and lighting, and masonry block walls not likely to collapse onto the equipment? Yes
9. Do attached lines have adequate flexibility to avoid damage? Yes
10. Based on the above seismic interaction evaluations, is equipment free of potentially adverse seismic interaction effects? Yes

Other Adverse Conditions

11. Have you looked for and found no adverse seismic conditions that could adversely affect the safety functions of the equipment? Yes

Comments

Seismic Walkdown Team: D. Carter & J. Griffith - 8/29/2012

Located in pipe just above floor.

Evaluated by: *David Carter* David Carter Date: 10/17/2012

James D. Griffith James Griffith 10/17/2012

Status: Y N U

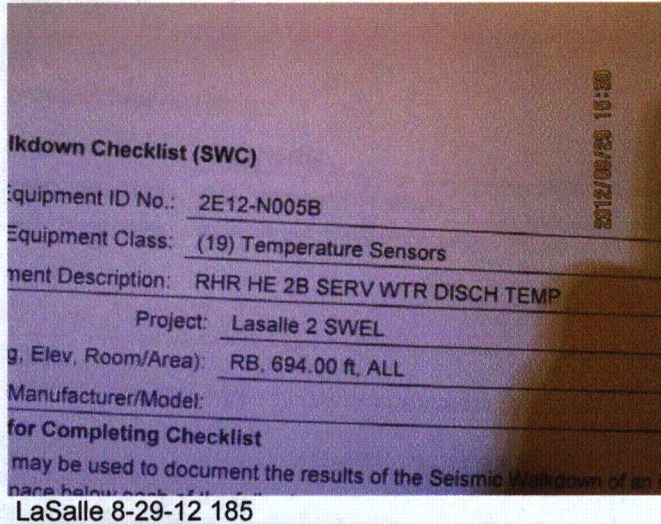
Seismic Walkdown Checklist (SWC)

Equipment ID No.: 2E12-N005B

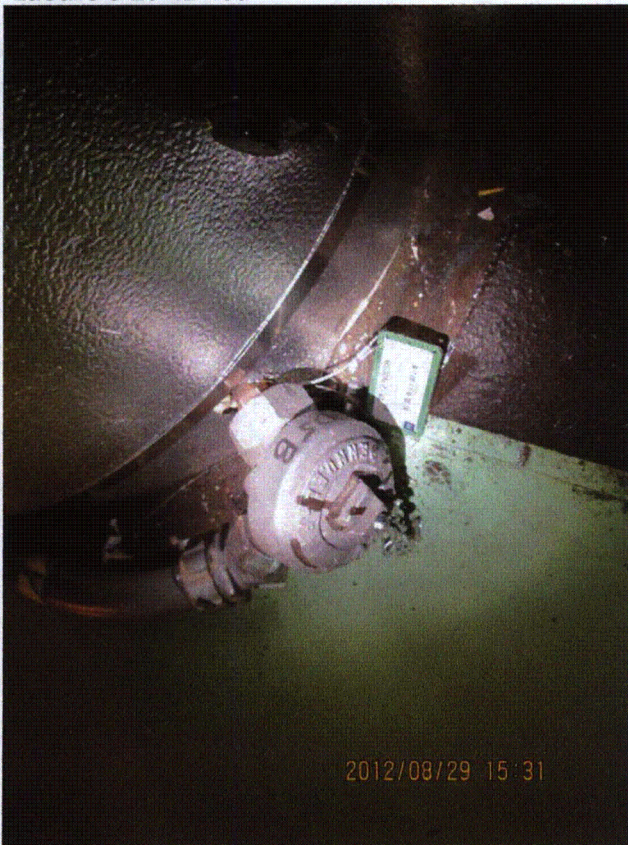
Equipment Class: (19) Temperature Sensors

Equipment Description: RHR HE 2B SERV WTR DISCH TEMP

Photos



LaSalle 8-29-12 186



LaSalle 8-29-12 187

Status: Y N U

Seismic Walkdown Checklist (SWC)

Equipment ID No.: 2E12-N007B

Equipment Class: (18) Instruments on Racks

Equipment Description: RHR HE 2B SERV WTR INLET FLOW

Project: LaSalle 2 SWEL

Location (Bldg, Elev, Room/Area): RB, 673.00 ft, ALL

Manufacturer/Model:

Instructions for Completing Checklist

This checklist may be used to document the results of the Seismic Walkdown of an item of equipment on the SWEL. The space below each of the following questions may be used to record the results of judgments and findings. Additional space is provided at the end of this checklist for documenting other comments.

Anchorage

1. Is anchorage configuration verification required (i.e., is the item one of the 50% of SWEL items requiring such verification)? No
Rack anchored to floor at front and rear with shell- and wedge-type anchors.

2. Is the anchorage free of bent, broken, missing or loose hardware? Yes

3. Is the anchorage free of corrosion that is more than mild surface oxidation? Yes

4. Is the anchorage free of visible cracks in the concrete near the anchors? Yes

5. Is the anchorage configuration consistent with plant documentation? (Note: This question only applies if the item is one of the 50% for which an anchorage configuration verification is required.) Not Applicable

6. Based on the above anchorage evaluations, is the anchorage free of potentially adverse seismic conditions? Yes

Status: Y N U

Seismic Walkdown Checklist (SWC)

Equipment ID No.: 2E12-N007B

Equipment Class: (18) Instruments on Racks

Equipment Description: RHR HE 2B SERV WTR INLET FLOW

Interaction Effects

7. Are soft targets free from impact by nearby equipment or structures? Yes
Approximate 1" gap between rear of panel and wall judged to be acceptable.
8. Are overhead equipment, distribution systems, ceiling tiles and lighting, and masonry block walls not likely to collapse onto the equipment? Yes
Overhead light fixtures judged to be acceptable.
9. Do attached lines have adequate flexibility to avoid damage? Yes
10. Based on the above seismic interaction evaluations, is equipment free of potentially adverse seismic interaction effects? Yes

Other Adverse Conditions

11. Have you looked for and found no adverse seismic conditions that could adversely affect the safety functions of the equipment? Yes
Approximate 1/4" clearance between bottom of pipe support horizontal member and top of rack judged to be acceptable.

Comments

Seismic Walkdown Team: D. Carter & J. Griffith - 8/30/2012

Instrument located on Rack 2H22-P021.

Evaluated by:  David Carter Date: 10/17/2012

 James D. Griffith 10/17/2012

Status: Y N U

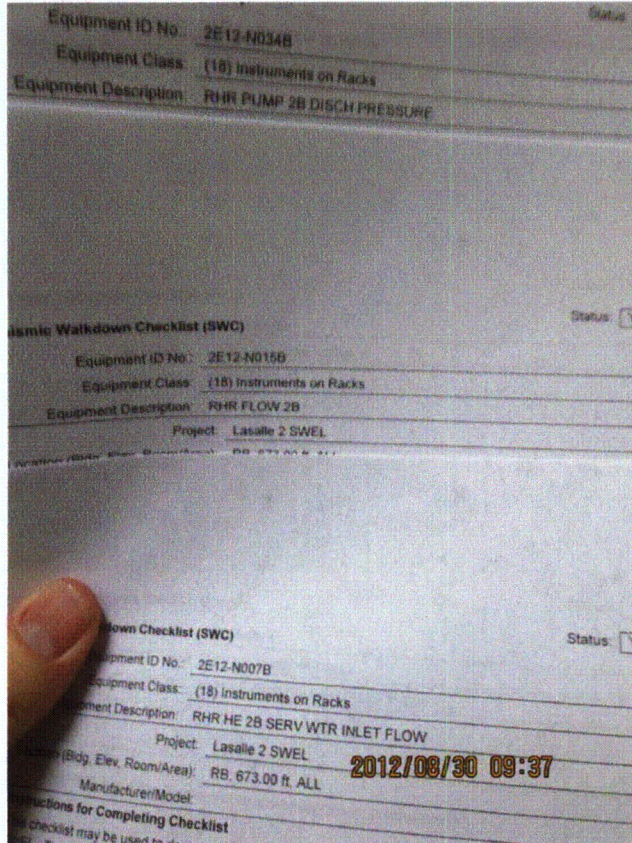
Seismic Walkdown Checklist (SWC)

Equipment ID No.: 2E12-N007B

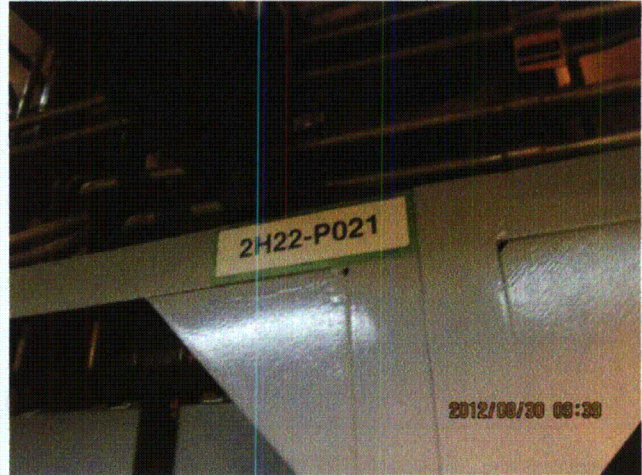
Equipment Class: (18) Instruments on Racks

Equipment Description: RHR HE 2B SERV WTR INLET FLOW

Photos



LaSalle 8-30-12 052



LaSalle 8-30-12 053



LaSalle 8-30-12 054



LaSalle 8-30-12 055

Status: Y N U

Seismic Walkdown Checklist (SWC)

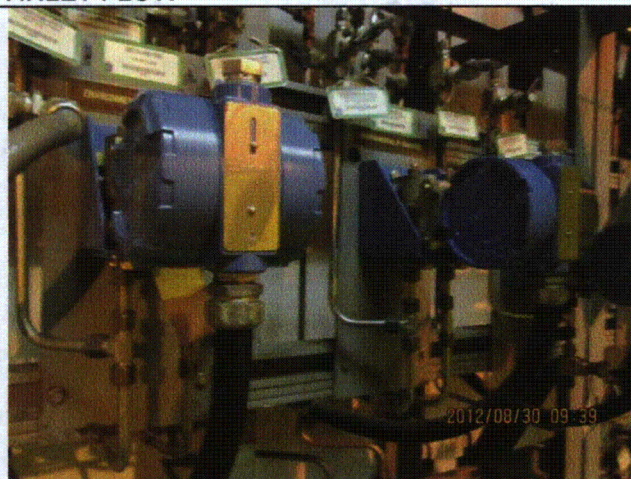
Equipment ID No.: 2E12-N007B

Equipment Class: (18) Instruments on Racks

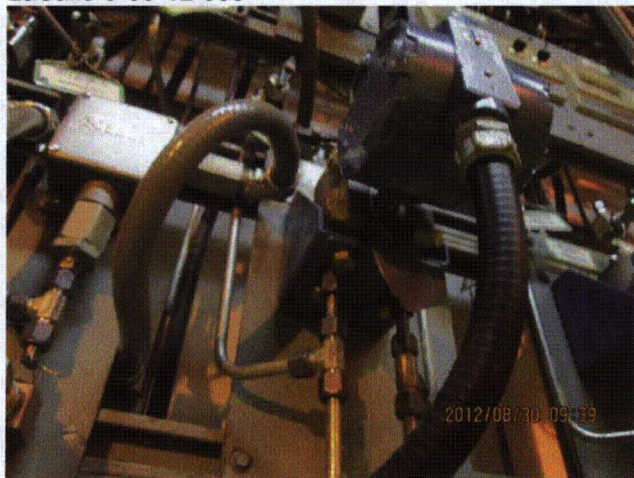
Equipment Description: RHR HE 2B SERV WTR INLET FLOW



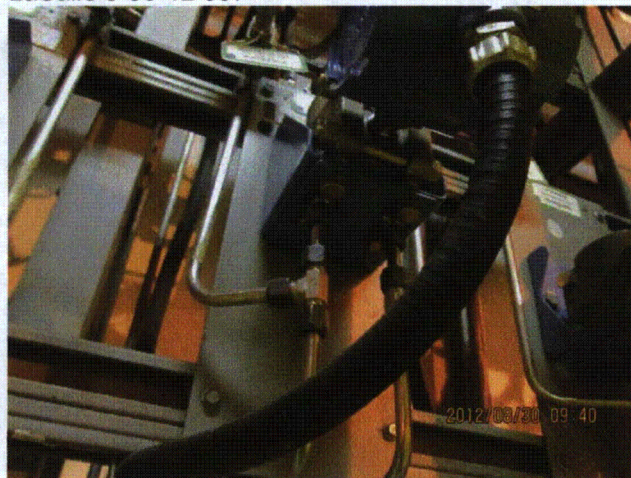
LaSalle 8-30-12 056



LaSalle 8-30-12 057



LaSalle 8-30-12 058



LaSalle 8-30-12 059

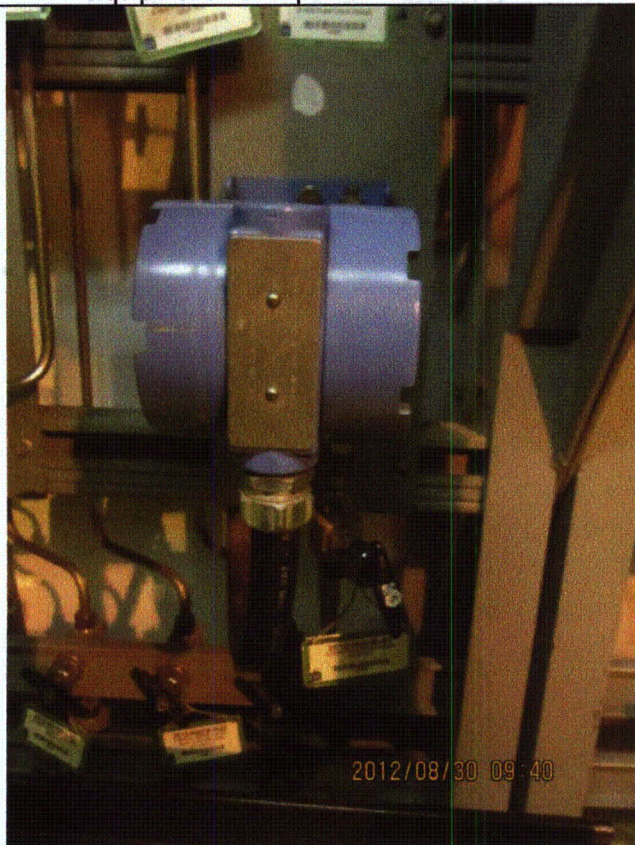
Status: Y N U

Seismic Walkdown Checklist (SWC)

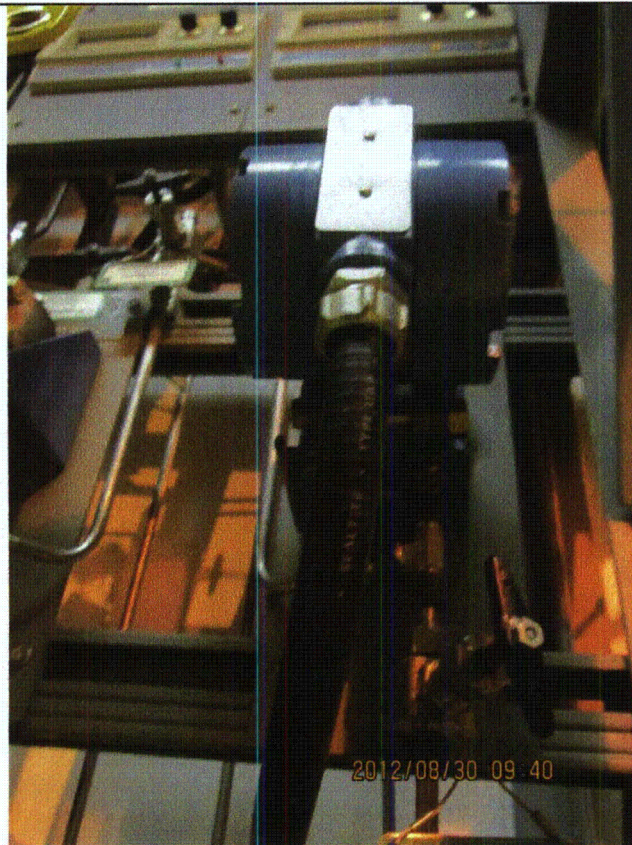
Equipment ID No.: 2E12-N007B

Equipment Class: (18) Instruments on Racks

Equipment Description: RHR HE 2B SERV WTR INLET FLOW



LaSalle 8-30-12 060



LaSalle 8-30-12 061

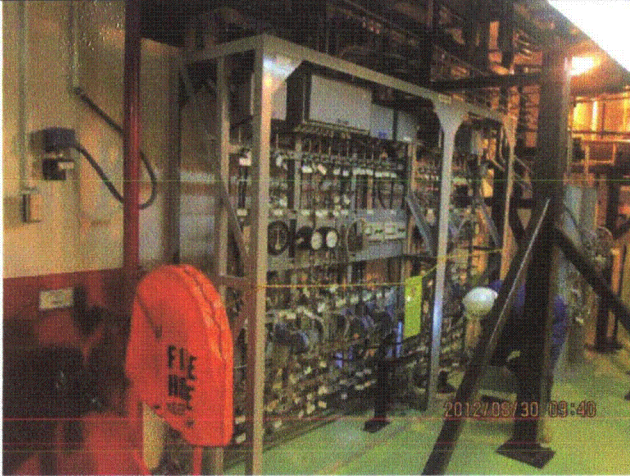
Status: Y N U

Seismic Walkdown Checklist (SWC)

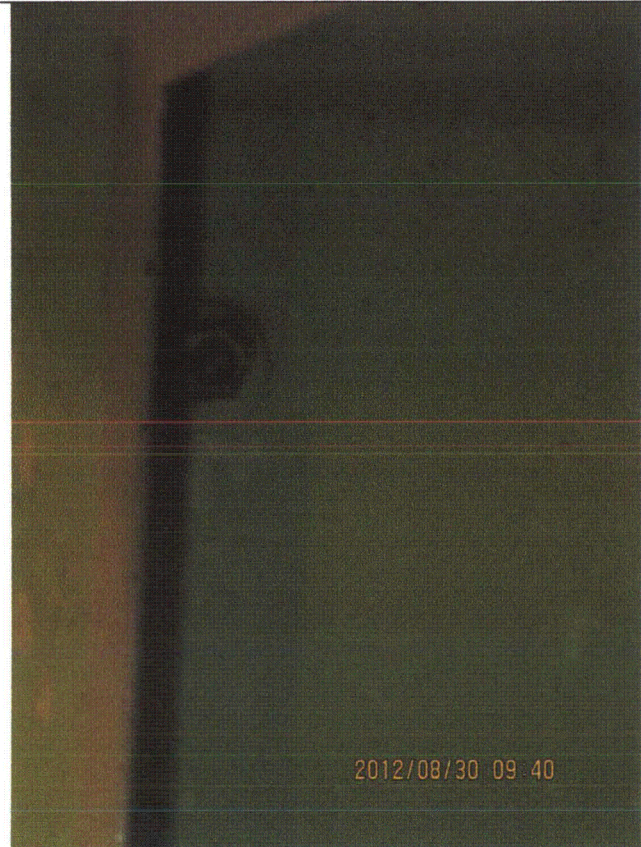
Equipment ID No.: 2E12-N007B

Equipment Class: (18) Instruments on Racks

Equipment Description: RHR HE 2B SERV WTR INLET FLOW



LaSalle 8-30-12 062



LaSalle 8-30-12 063

Status: Y N U

Seismic Walkdown Checklist (SWC)

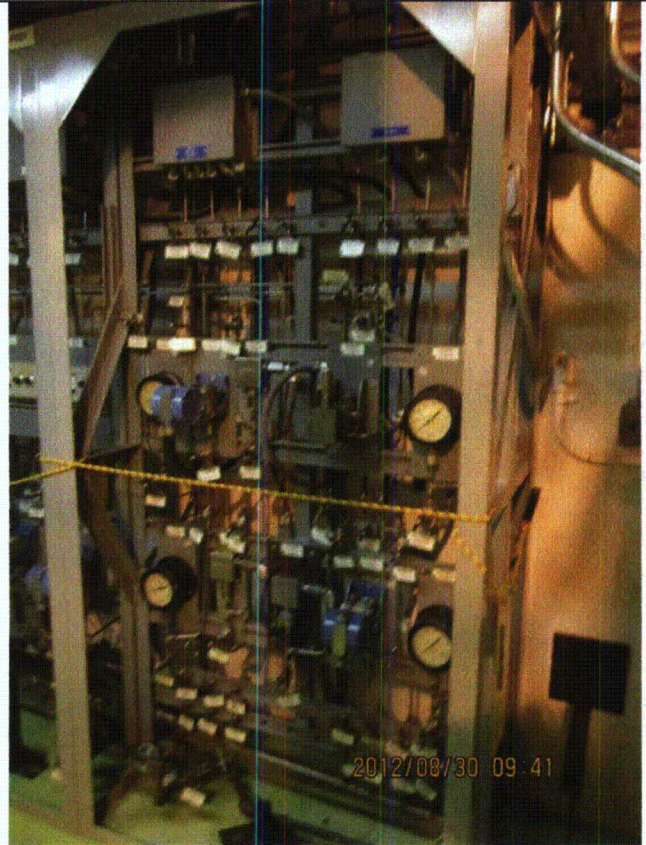
Equipment ID No.: 2E12-N007B

Equipment Class: (18) Instruments on Racks

Equipment Description: RHR HE 2B SERV WTR INLET FLOW



LaSalle 8-30-12 064



LaSalle 8-30-12 065

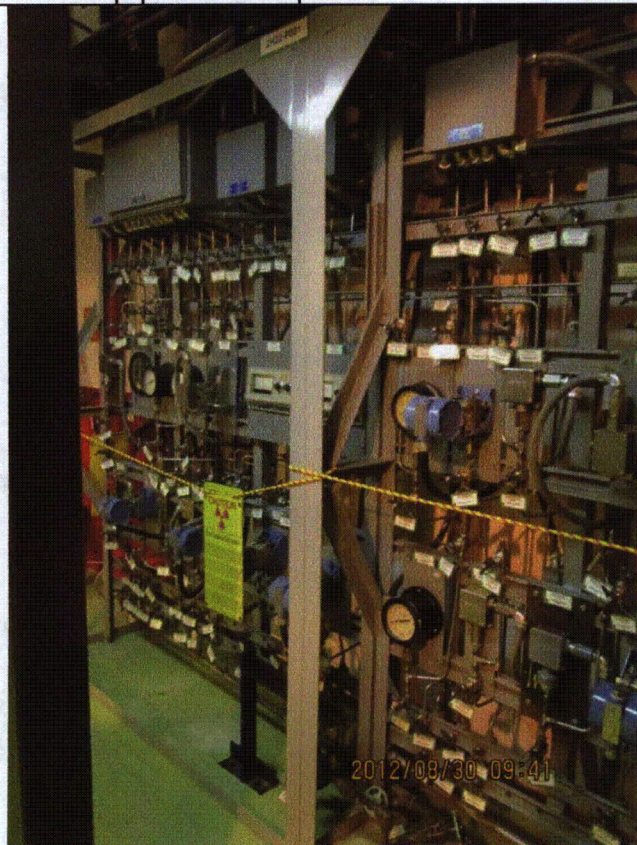
Status: Y N U

Seismic Walkdown Checklist (SWC)

Equipment ID No.: 2E12-N007B

Equipment Class: (18) Instruments on Racks

Equipment Description: RHR HE 2B SERV WTR INLET FLOW



LaSalle 8-30-12 066



LaSalle 8-30-12 067

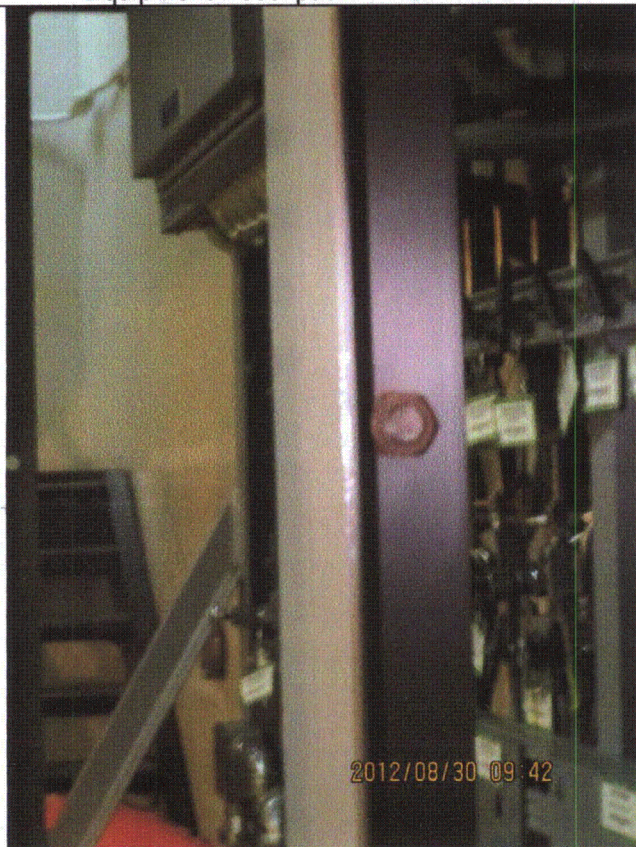
Status: Y N U

Seismic Walkdown Checklist (SWC)

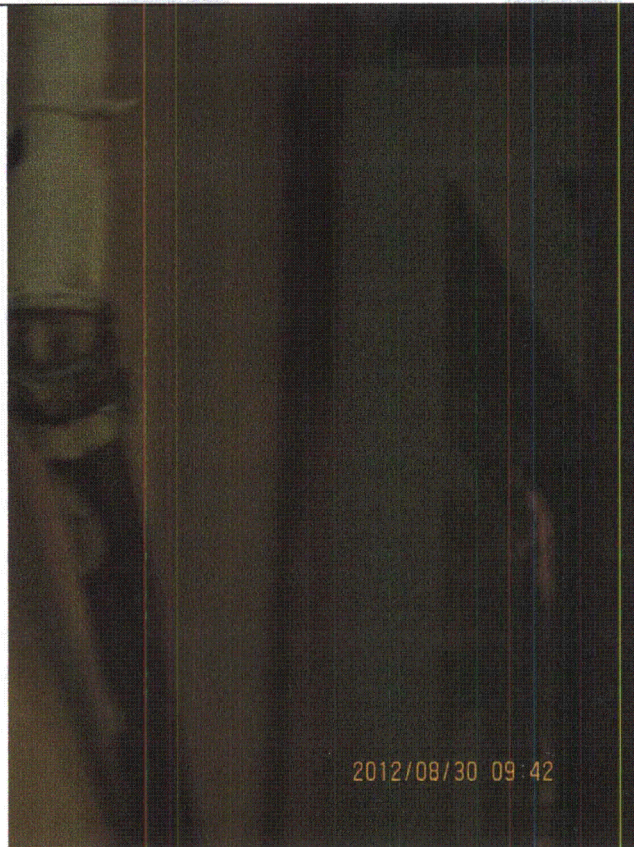
Equipment ID No.: 2E12-N007B

Equipment Class: (18) Instruments on Racks

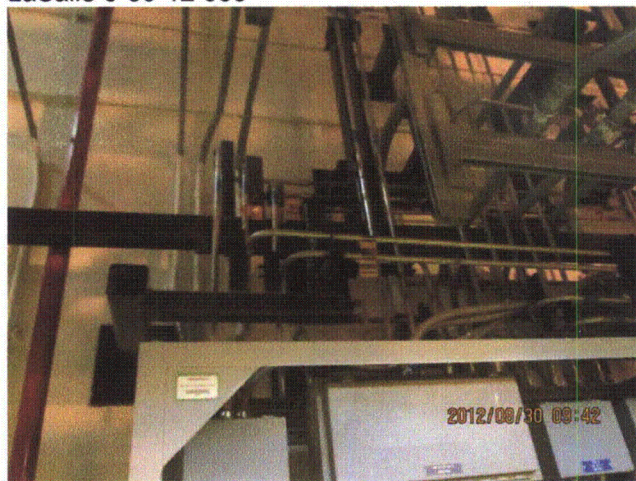
Equipment Description: RHR HE 2B SERV WTR INLET FLOW



LaSalle 8-30-12 068



LaSalle 8-30-12 069



LaSalle 8-30-12 071



LaSalle 8-30-12 072

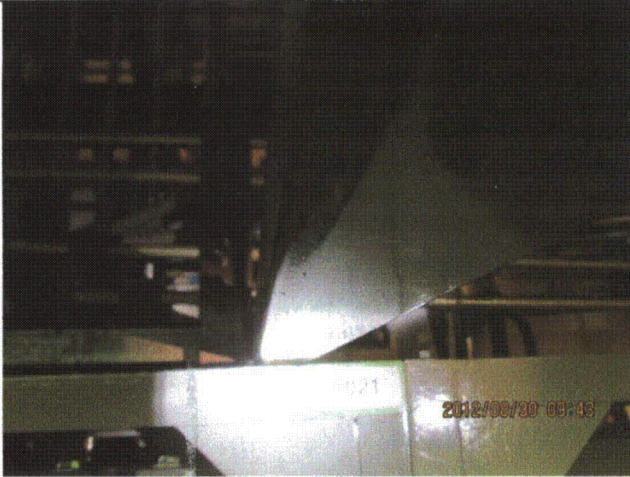
Status: Y N U

Seismic Walkdown Checklist (SWC)

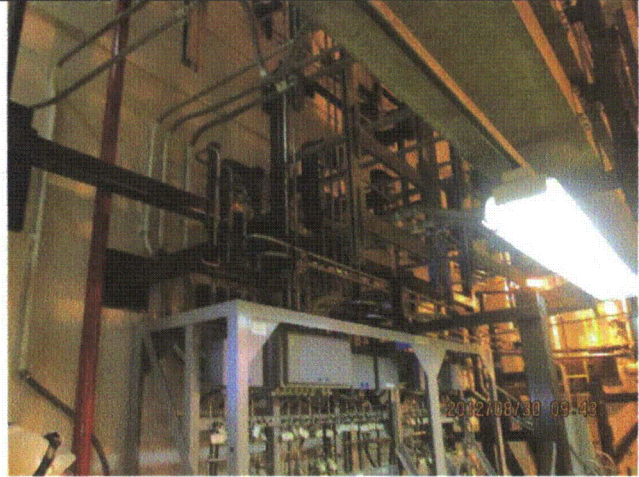
Equipment ID No.: 2E12-N007B

Equipment Class: (18) Instruments on Racks

Equipment Description: RHR HE 2B SERV WTR INLET FLOW



LaSalle 8-30-12 073



LaSalle 8-30-12 074



LaSalle 8-30-12 075



LaSalle 8-30-12 076

Status: Y N U

Seismic Walkdown Checklist (SWC)

Equipment ID No.: 2E12-N015B

Equipment Class: (18) Instruments on Racks

Equipment Description: RHR FLOW 2B

Project: LaSalle 2 SWEL

Location (Bldg, Elev, Room/Area): RB, 673.00 ft, ALL

Manufacturer/Model:

Instructions for Completing Checklist

This checklist may be used to document the results of the Seismic Walkdown of an item of equipment on the SWEL. The space below each of the following questions may be used to record the results of judgments and findings. Additional space is provided at the end of this checklist for documenting other comments.

Anchorage

1. Is anchorage configuration verification required (i.e., is the item one of the 50% of SWEL items requiring such verification)? No
Rack anchored to floor at front and rear with shell- and wedge-type anchors.

2. Is the anchorage free of bent, broken, missing or loose hardware? Yes

3. Is the anchorage free of corrosion that is more than mild surface oxidation? Yes

4. Is the anchorage free of visible cracks in the concrete near the anchors? Yes

5. Is the anchorage configuration consistent with plant documentation? (Note: This question only applies if the item is one of the 50% for which an anchorage configuration verification is required.) Not Applicable

6. Based on the above anchorage evaluations, is the anchorage free of potentially adverse seismic conditions? Yes

Status: Y N U

Seismic Walkdown Checklist (SWC)

Equipment ID No.: 2E12-N015B

Equipment Class: (18) Instruments on Racks

Equipment Description: RHR FLOW 2B

Interaction Effects

7. Are soft targets free from impact by nearby equipment or structures? Yes
Approximate 1" gap between rear of panel and wall judged to be acceptable.
8. Are overhead equipment, distribution systems, ceiling tiles and lighting, and masonry block walls not likely to collapse onto the equipment? Yes
Overhead light fixtures judged to be acceptable.
9. Do attached lines have adequate flexibility to avoid damage? Yes
10. Based on the above seismic interaction evaluations, is equipment free of potentially adverse seismic interaction effects? Yes

Other Adverse Conditions

11. Have you looked for and found no adverse seismic conditions that could adversely affect the safety functions of the equipment? Yes
Approximate 1/4" clearance between bottom of pipe support horizontal member and top of rack judged to be acceptable.

Comments

Seismic Walkdown Team: D. Carter & J. Griffith - 8/30/2012

Instrument located on Rack 2H22-P021.

For photographs, see SWC for 2E12-N007B.

Evaluated by: David Carter Date: 10/17/2012
James D. Griffith James Griffith 10/17/2012

Photos

Status: Y N U

Seismic Walkdown Checklist (SWC)

Equipment ID No.: 2E12-N027B

Equipment Class: (19) Temperature Sensors

Equipment Description: RHR HE 2B DISCH TO RX VESSEL TEMP

Project: LaSalle 2 SWEL

Location (Bldg, Elev, Room/Area): RB, 694.00 ft, ALL

Manufacturer/Model:

Instructions for Completing Checklist

This checklist may be used to document the results of the Seismic Walkdown of an item of equipment on the SWEL. The space below each of the following questions may be used to record the results of judgments and findings. Additional space is provided at the end of this checklist for documenting other comments.

Anchorage

1. Is anchorage configuration verification required (i.e., is the item one of the 50% of SWEL items requiring such verification)? No

2. Is the anchorage free of bent, broken, missing or loose hardware? Not Applicable

3. Is the anchorage free of corrosion that is more than mild surface oxidation? Not Applicable

4. Is the anchorage free of visible cracks in the concrete near the anchors? Not Applicable

5. Is the anchorage configuration consistent with plant documentation? (Note: This question only applies if the item is one of the 50% for which an anchorage configuration verification is required.) Not Applicable

6. Based on the above anchorage evaluations, is the anchorage free of potentially adverse seismic conditions? Yes

Status: Y N U

Seismic Walkdown Checklist (SWC)

Equipment ID No.: 2E12-N027B

Equipment Class: (19) Temperature Sensors

Equipment Description: RHR HE 2B DISCH TO RX VESSEL TEMP

Interaction Effects

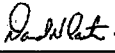
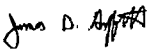
7. Are soft targets free from impact by nearby equipment or structures? Yes
8. Are overhead equipment, distribution systems, ceiling tiles and lighting, and masonry block walls not likely to collapse onto the equipment?
Overhead light fixtures judged to be acceptable. Yes
9. Do attached lines have adequate flexibility to avoid damage? Yes
10. Based on the above seismic interaction evaluations, is equipment free of potentially adverse seismic interaction effects? Yes

Other Adverse Conditions

11. Have you looked for and found no adverse seismic conditions that could adversely affect the safety functions of the equipment? Yes

Comments

Seismic Walkdown Team: D. Carter & J. Griffith - 8/30/2012

Evaluated by:  David Carter Date: 10/17/2012
 James Griffith 10/17/2012

Status: Y N U

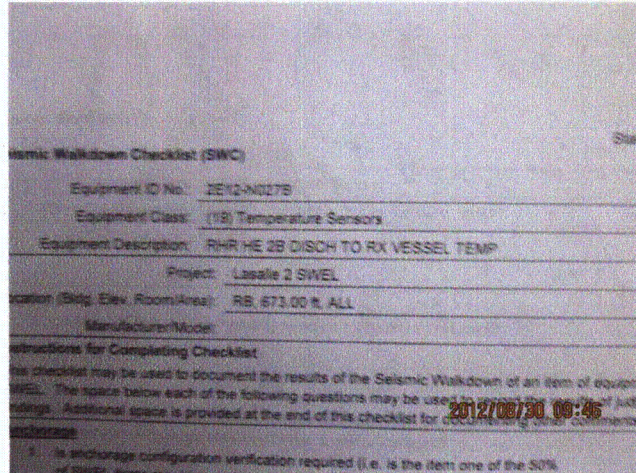
Seismic Walkdown Checklist (SWC)

Equipment ID No.: 2E12-N027B

Equipment Class: (19) Temperature Sensors

Equipment Description: RHR HE 2B DISCH TO RX VESSEL TEMP

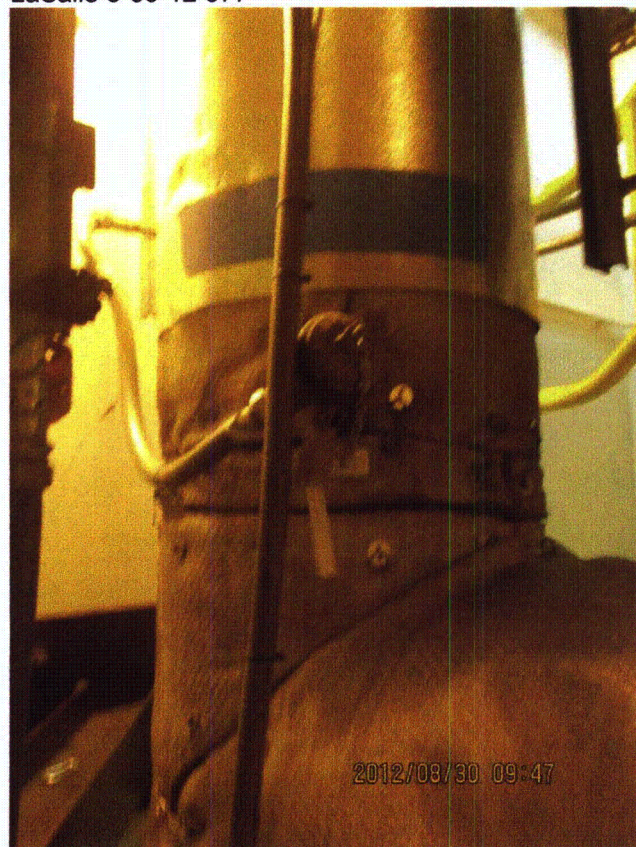
Photos



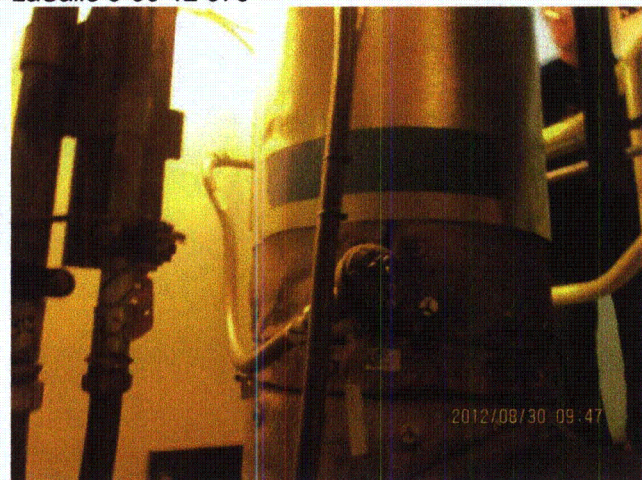
LaSalle 8-30-12 077



LaSalle 8-30-12 078



LaSalle 8-30-12 079



LaSalle 8-30-12 080

Status: Y N U

Seismic Walkdown Checklist (SWC)

Equipment ID No.: 2E12-N027B

Equipment Class: (19) Temperature Sensors

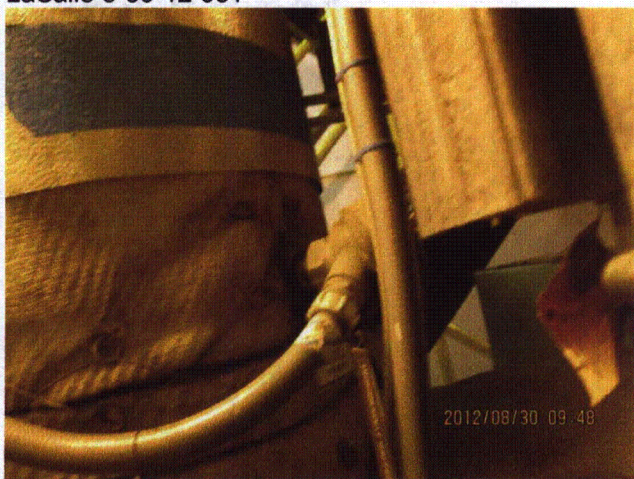
Equipment Description: RHR HE 2B DISCH TO RX VESSEL TEMP



LaSalle 8-30-12 081



LaSalle 8-30-12 082



LaSalle 8-30-12 083

Status: Y N U

Seismic Walkdown Checklist (SWC)

Equipment ID No.: 2E12-N034B

Equipment Class: (18) Instruments on Racks

Equipment Description: RHR PUMP 2B DISCH PRESSURE

Project: LaSalle 2 SWEL

Location (Bldg, Elev, Room/Area): RB, 673.00 ft, ALL

Manufacturer/Model:

Instructions for Completing Checklist

This checklist may be used to document the results of the Seismic Walkdown of an item of equipment on the SWEL. The space below each of the following questions may be used to record the results of judgments and findings. Additional space is provided at the end of this checklist for documenting other comments.

Anchorage

1. Is anchorage configuration verification required (i.e., is the item one of the 50% of SWEL items requiring such verification)? No
Rack anchored to floor at front and rear with shell- and wedge-type anchors.

2. Is the anchorage free of bent, broken, missing or loose hardware? Yes

3. Is the anchorage free of corrosion that is more than mild surface oxidation? Yes

4. Is the anchorage free of visible cracks in the concrete near the anchors? Yes

5. Is the anchorage configuration consistent with plant documentation? (Note: This question only applies if the item is one of the 50% for which an anchorage configuration verification is required.) Not Applicable

6. Based on the above anchorage evaluations, is the anchorage free of potentially adverse seismic conditions? Yes

Status: Y N U

Seismic Walkdown Checklist (SWC)

Equipment ID No.: 2E12-N034B

Equipment Class: (18) Instruments on Racks

Equipment Description: RHR PUMP 2B DISCH PRESSURE

Interaction Effects

7. Are soft targets free from impact by nearby equipment or structures? Yes
Approximate 1" gap between rear of panel and wall judged to be acceptable.
8. Are overhead equipment, distribution systems, ceiling tiles and lighting, and masonry block walls not likely to collapse onto the equipment? Yes
Overhead light fixtures judged to be acceptable.
9. Do attached lines have adequate flexibility to avoid damage? Yes
10. Based on the above seismic interaction evaluations, is equipment free of potentially adverse seismic interaction effects? Yes

Other Adverse Conditions


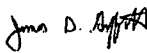
11. Have you looked for and found no adverse seismic conditions that could adversely affect the safety functions of the equipment? Yes
Approximate 1/4" clearance between bottom of pipe support horizontal member and top of rack judged to be acceptable.

Comments

Seismic Walkdown Team: D. Carter & J. Griffith - 8/30/2012

Instrument located on Rack 2H22-P021.

For photographs, see SWC for 2E12-N007B.

Evaluated by:  David Carter Date: 10/17/2012
 James D. Griffith 10/17/2012

Photos

Status: Y N U

Seismic Walkdown Checklist (SWC)

Equipment ID No.: 2E21-C001

Equipment Class: (6) Vertical Pumps

Equipment Description: PMP LO PRESS CORE SPRAY

Project: LaSalle 2 SWEL

Location (Bldg, Elev,
Room/Area): RB, 673.00 ft, ALL

Manufacturer/Model:

Instructions for Completing Checklist

This checklist may be used to document the results of the Seismic Walkdown of an item of equipment on the SWEL. The space below each of the following questions may be used to record the results of judgments and findings. Additional space is provided at the end of this checklist for documenting other comments.

Anchorage

1. Is anchorage configuration verification required (i.e., is the item one of the 50% of SWEL items requiring such verification)? Yes

2. Is the anchorage free of bent, broken, missing or loose hardware? Yes

3. Is the anchorage free of corrosion that is more than mild surface oxidation? Yes

4. Is the anchorage free of visible cracks in the concrete near the anchors? Yes
Minor chips and shrinkage cracks in grout pad and pedestal judged to be acceptable.

5. Is the anchorage configuration consistent with plant documentation? (Note: This question only applies if the item is one of the 50% for which an anchorage configuration verification is required.) Yes
Anchorage verified per drawing M-1573, Rev. G and M-1590, Sheet 3, Rev. M.

6. Based on the above anchorage evaluations, is the anchorage free of potentially adverse seismic conditions? Yes

Status: Y N U

Seismic Walkdown Checklist (SWC)

Equipment ID No.: 2E21-C001

Equipment Class: (6) Vertical Pumps

Equipment Description: PMP LO PRESS CORE SPRAY

Interaction Effects

7. Are soft targets free from impact by nearby equipment or structures? Yes
8. Are overhead equipment, distribution systems, ceiling tiles and lighting, and masonry block walls not likely to collapse onto the equipment? Yes
9. Do attached lines have adequate flexibility to avoid damage? Yes
10. Based on the above seismic interaction evaluations, is equipment free of potentially adverse seismic interaction effects? Yes

Other Adverse Conditions

11. Have you looked for and found no adverse seismic conditions that could adversely affect the safety functions of the equipment? Yes

Comments

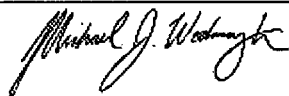
Seismic Walkdown Team: M. Etre & M. Wodarcyk - 9/18/2012

Evaluated by:



Mark Etre

Date: 10/19/2012



Michael Wodarcyk

10/19/2012

Status: Y N U

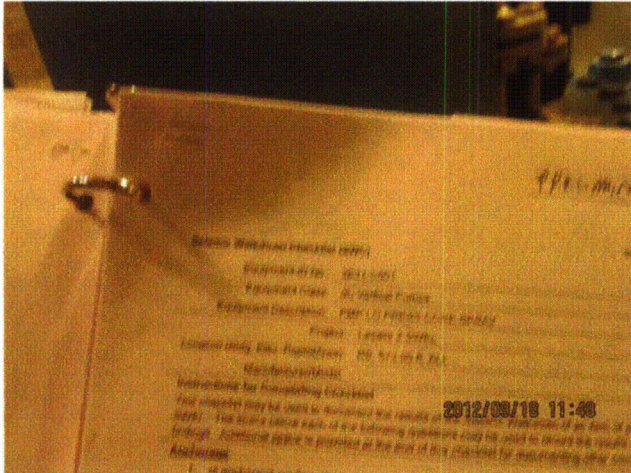
Seismic Walkdown Checklist (SWC)

Equipment ID No.: 2E21-C001

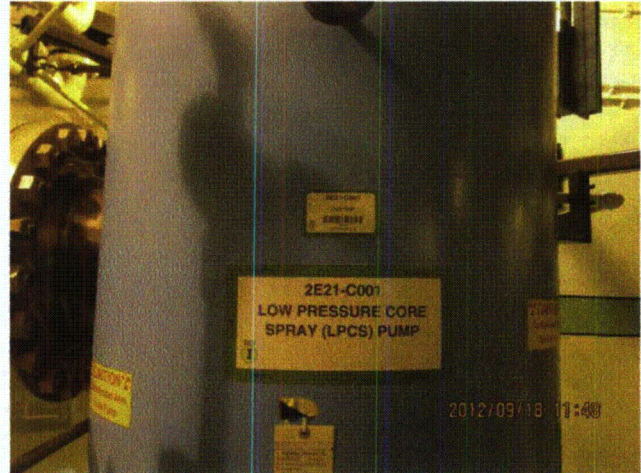
Equipment Class: (6) Vertical Pumps

Equipment Description: PMP LO PRESS CORE SPRAY

Photos



20120918-Lasalle 141



20120918-Lasalle 142



20120918-Lasalle 143



20120918-Lasalle 144

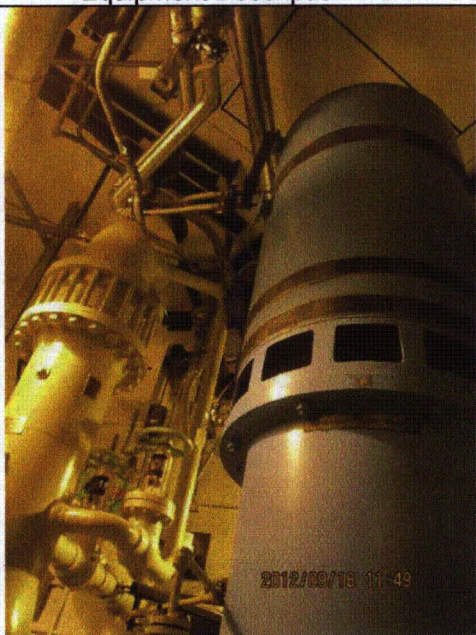
Status: Y N U

Seismic Walkdown Checklist (SWC)

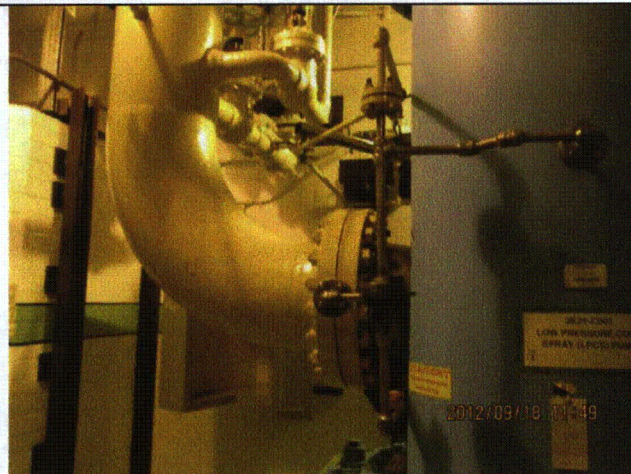
Equipment ID No.: 2E21-C001

Equipment Class: (6) Vertical Pumps

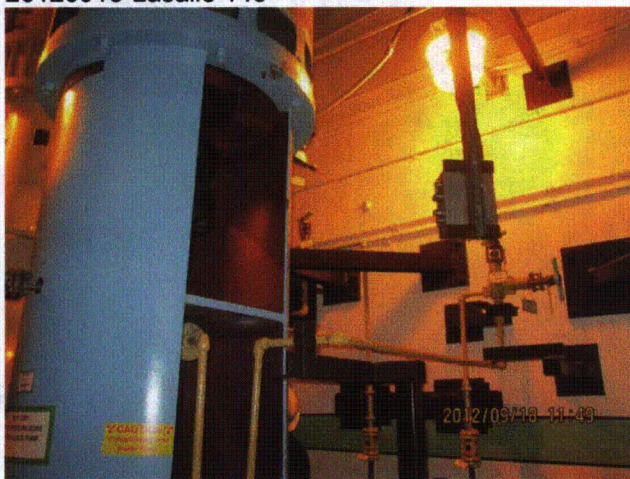
Equipment Description: PMP LO PRESS CORE SPRAY



20120918-Lasalle 145



20120918-Lasalle 146



20120918-Lasalle 147