

Status: Y N U

Seismic Walkdown Checklist (SWC)

Equipment ID No.: 2E12-C002B

Equipment Class: (6) Vertical Pumps

Equipment Description: 2B RESIDUAL HEAT REMOVAL PMP

Project: LaSalle 2 SWEL

Location (Bldg, Elev, Room/Area): RB, 673.00 ft, ALL

Manufacturer/Model:

Instructions for Completing Checklist

This checklist may be used to document the results of the Seismic Walkdown of an item of equipment on the SWEL. The space below each of the following questions may be used to record the results of judgments and findings. Additional space is provided at the end of this checklist for documenting other comments.

Anchorage

1. Is anchorage configuration verification required (i.e., is the item one of the 50% of SWEL items requiring such verification)? Yes

2. Is the anchorage free of bent, broken, missing or loose hardware? Yes

3. Is the anchorage free of corrosion that is more than mild surface oxidation? Yes

4. Is the anchorage free of visible cracks in the concrete near the anchors? Yes
Minor shrinkage cracking near front edge of pump pedestal judged to be acceptable based on depth of cast-in-place anchors.

5. Is the anchorage configuration consistent with plant documentation? (Note: This question only applies if the item is one of the 50% for which an anchorage configuration verification is required.) Yes
Anchorage shown on drawings M-1573, Rev. G and M-1590, Sheet 3, Rev. M.

6. Based on the above anchorage evaluations, is the anchorage free of potentially adverse seismic conditions? Yes

Status: Y N U

Seismic Walkdown Checklist (SWC)

Equipment ID No.: 2E12-C002B

Equipment Class: (6) Vertical Pumps

Equipment Description: 2B RESIDUAL HEAT REMOVAL PMP

Interaction Effects

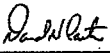
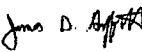
7. Are soft targets free from impact by nearby equipment or structures? Yes
8. Are overhead equipment, distribution systems, ceiling tiles and lighting, and masonry block walls not likely to collapse onto the equipment? Yes
Overhead light fixtures judged to be acceptable.
9. Do attached lines have adequate flexibility to avoid damage? Yes
Small line supported from adjacent wall. Deflection during seismic event judged not to be significant.
10. Based on the above seismic interaction evaluations, is equipment free of potentially adverse seismic interaction effects? Yes

Other Adverse Conditions

11. Have you looked for and found no adverse seismic conditions that could adversely affect the safety functions of the equipment? Yes

Comments

Seismic Walkdown Team: D. Carter & J. Griffith - 8/30/2012

Evaluated by:  David Carter Date: 10/17/2012
 James Griffith 10/17/2012

Status: Y N U

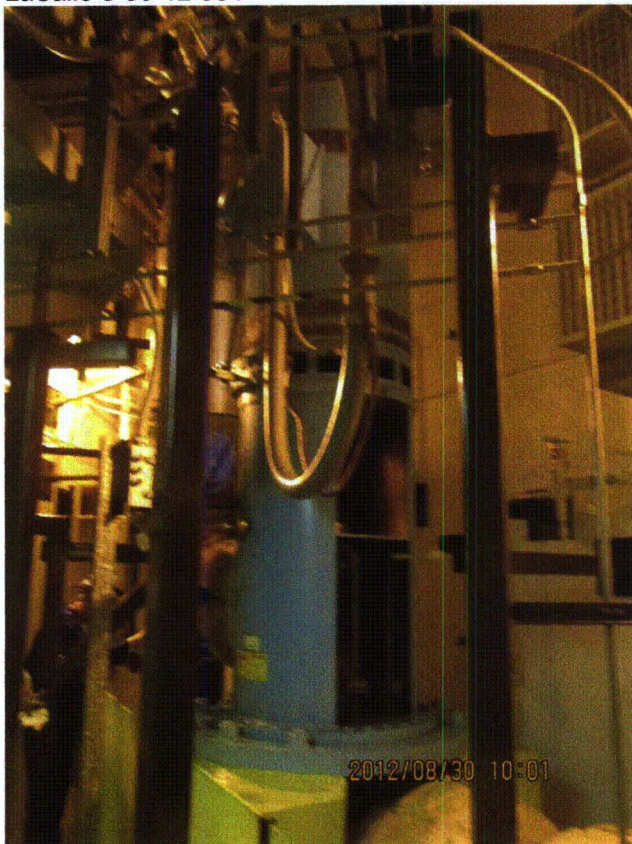
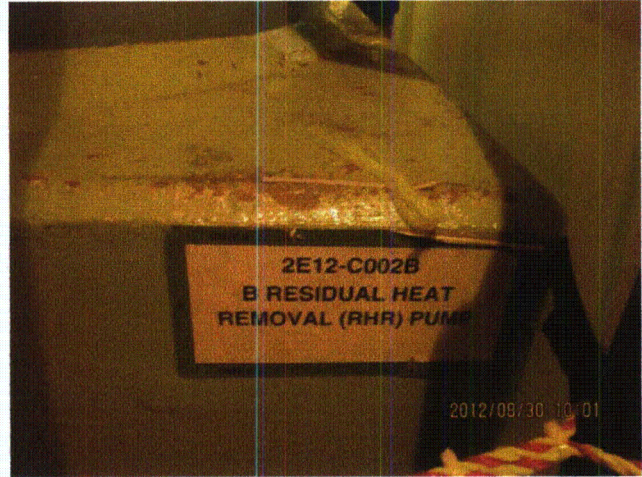
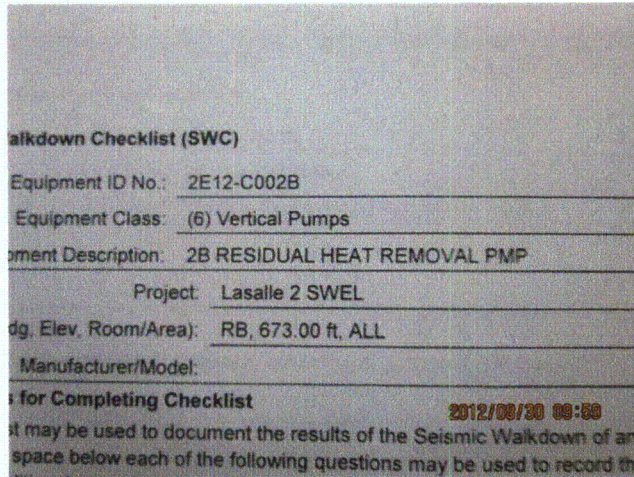
Seismic Walkdown Checklist (SWC)

Equipment ID No.: 2E12-C002B

Equipment Class: (6) Vertical Pumps

Equipment Description: 2B RESIDUAL HEAT REMOVAL PMP

Photos



Status: Y N U

Seismic Walkdown Checklist (SWC)

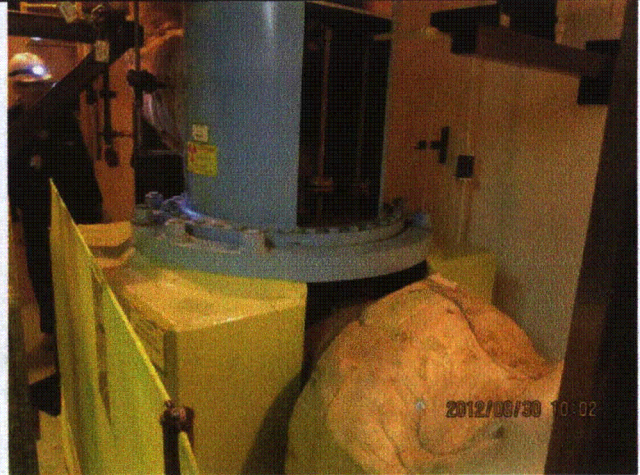
Equipment ID No.: 2E12-C002B

Equipment Class: (6) Vertical Pumps

Equipment Description: 2B RESIDUAL HEAT REMOVAL PMP



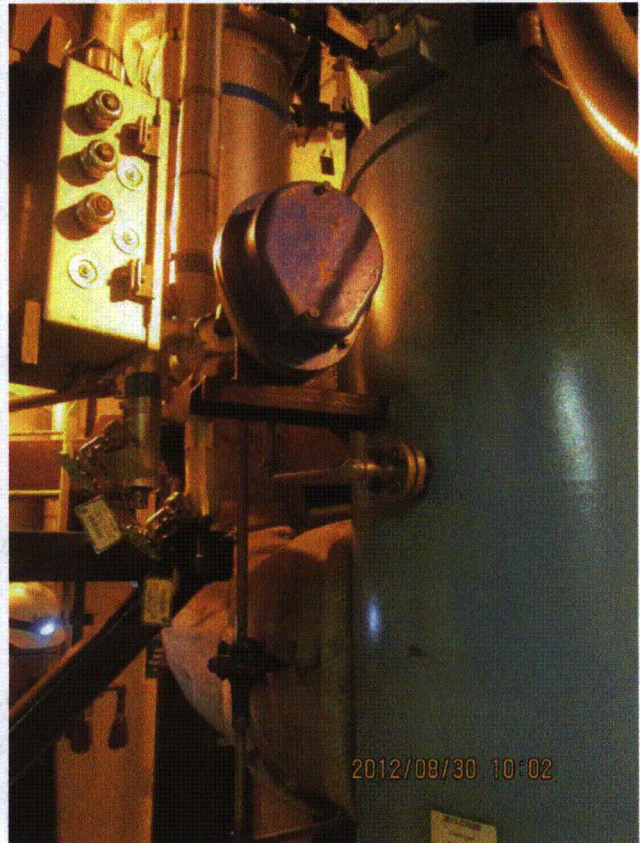
LaSalle 8-30-12 088



LaSalle 8-30-12 089



LaSalle 8-30-12 090



LaSalle 8-30-12 091

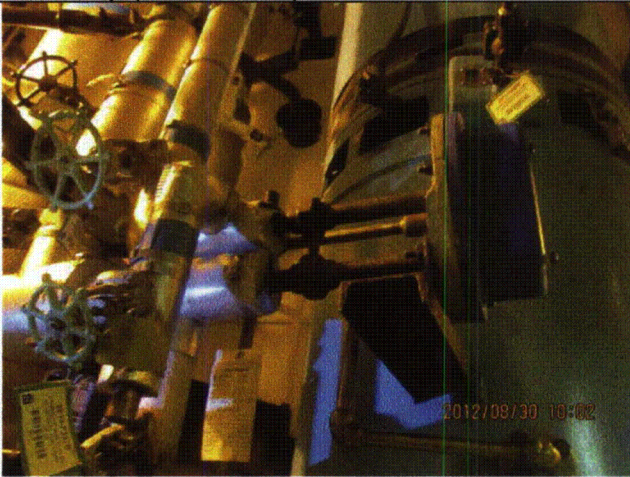
Status: Y N U

Seismic Walkdown Checklist (SWC)

Equipment ID No.: 2E12-C002B

Equipment Class: (6) Vertical Pumps

Equipment Description: 2B RESIDUAL HEAT REMOVAL PMP



LaSalle 8-30-12 092



LaSalle 8-30-12 093

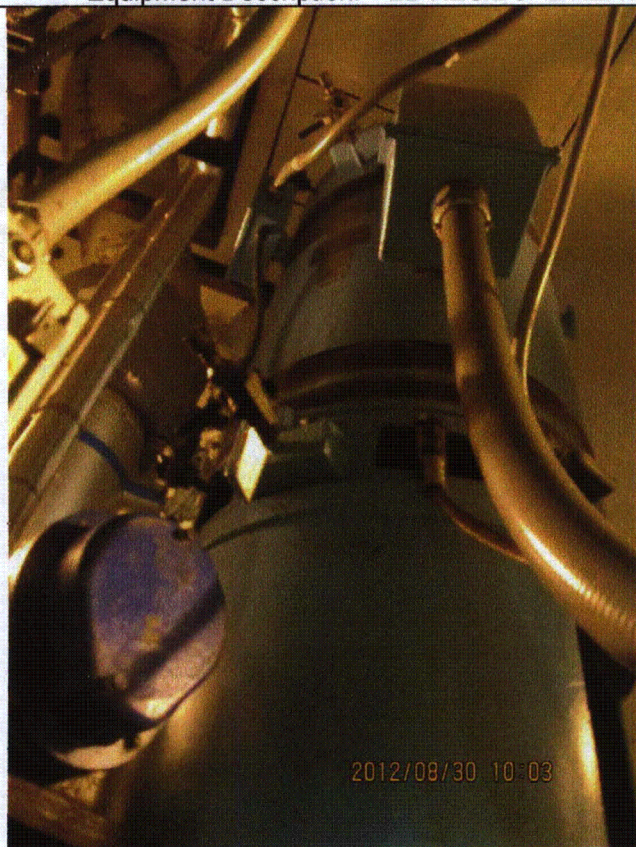
Status: Y N U

Seismic Walkdown Checklist (SWC)

Equipment ID No.: 2E12-C002B

Equipment Class: (6) Vertical Pumps

Equipment Description: 2B RESIDUAL HEAT REMOVAL PMP



LaSalle 8-30-12 094



LaSalle 8-30-12 095

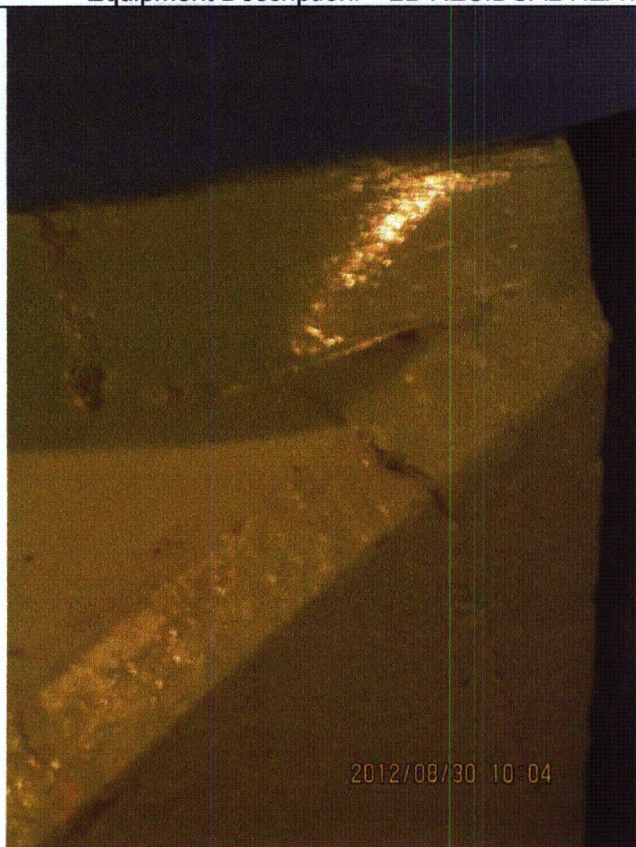
Status: Y N U

Seismic Walkdown Checklist (SWC)

Equipment ID No.: 2E12-C002B

Equipment Class: (6) Vertical Pumps

Equipment Description: 2B RESIDUAL HEAT REMOVAL PMP



LaSalle 8-30-12 097

Status: Y N U

Seismic Walkdown Checklist (SWC)

Equipment ID No.: 2E12-C300B

Equipment Class: (5) Horizontal Pumps

Equipment Description: B RHR SERVICE WATER PUMP

Project: LaSalle 2 SWEL

Location (Bldg, Elev,

Room/Area): DG, 674.00 ft, ALL

Manufacturer/Model:

Instructions for Completing Checklist

This checklist may be used to document the results of the Seismic Walkdown of an item of equipment on the SWEL. The space below each of the following questions may be used to record the results of judgments and findings. Additional space is provided at the end of this checklist for documenting other comments.

Anchorage

1. Is anchorage configuration verification required (i.e., is the item one of the 50% of SWEL items requiring such verification)? Yes

2. Is the anchorage free of bent, broken, missing or loose hardware? Yes

3. Is the anchorage free of corrosion that is more than mild surface oxidation? Yes

4. Is the anchorage free of visible cracks in the concrete near the anchors? Yes
Minor shrinkage cracks in pedestal judged to be acceptable.

5. Is the anchorage configuration consistent with plant documentation? (Note: This question only applies if the item is one of the 50% for which an anchorage configuration verification is required.) Yes
Anchorage verified per drawings M-1573, Rev. G and M-1592, Sheet 10, Rev. P.

6. Based on the above anchorage evaluations, is the anchorage free of potentially adverse seismic conditions? Yes

Status: Y N U

Seismic Walkdown Checklist (SWC)

Equipment ID No.: 2E12-C300B

Equipment Class: (5) Horizontal Pumps

Equipment Description: B RHR SERVICE WATER PUMP

Interaction Effects

7. Are soft targets free from impact by nearby equipment or structures? Yes
8. Are overhead equipment, distribution systems, ceiling tiles and lighting, and masonry block walls not likely to collapse onto the equipment? Yes
Overhead light fixtures judged to be acceptable.
9. Do attached lines have adequate flexibility to avoid damage? Yes
10. Based on the above seismic interaction evaluations, is equipment free of potentially adverse seismic interaction effects? Yes

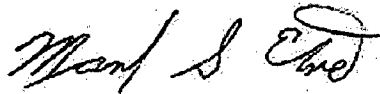
Other Adverse Conditions

11. Have you looked for and found no adverse seismic conditions that could adversely affect the safety functions of the equipment? Yes

Comments

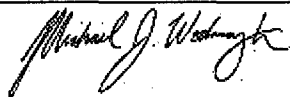
Seismic Walkdown Team: M. Etre & M. Wodarcyk - 9/18/2012

Evaluated by:



Mark Etre

Date: 10/19/2012



Michael Wodarcyk

10/19/2012

Status: Y N U

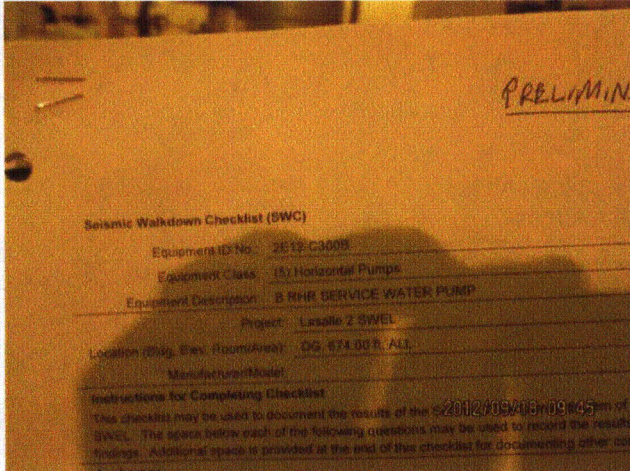
Seismic Walkdown Checklist (SWC)

Equipment ID No.: 2E12-C300B

Equipment Class: (5) Horizontal Pumps

Equipment Description: B RHR SERVICE WATER PUMP

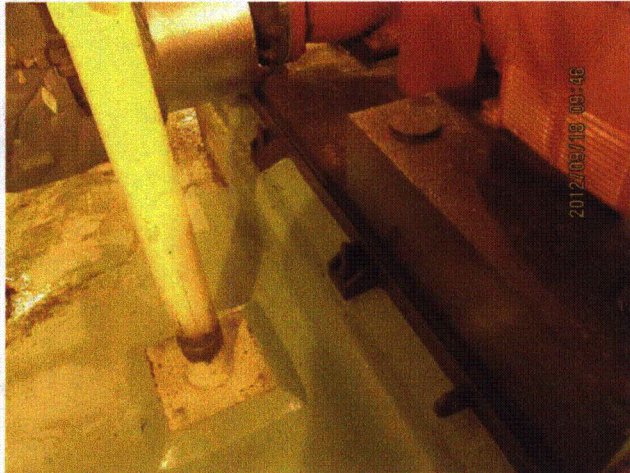
Photos



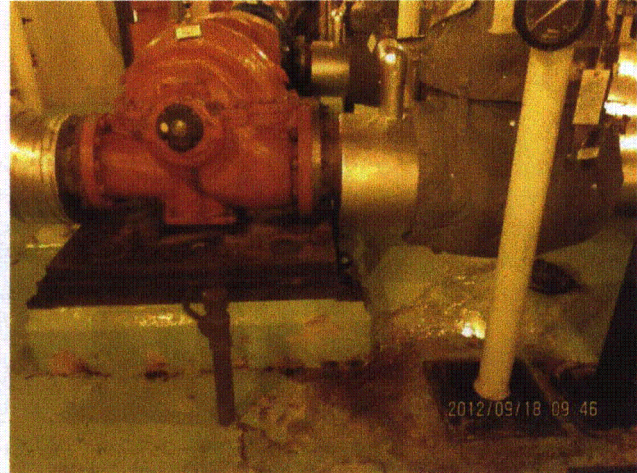
20120918-Lasalle 089



20120918-Lasalle 090



20120918-Lasalle 091



20120918-Lasalle 092

Status: Y N U

Seismic Walkdown Checklist (SWC)

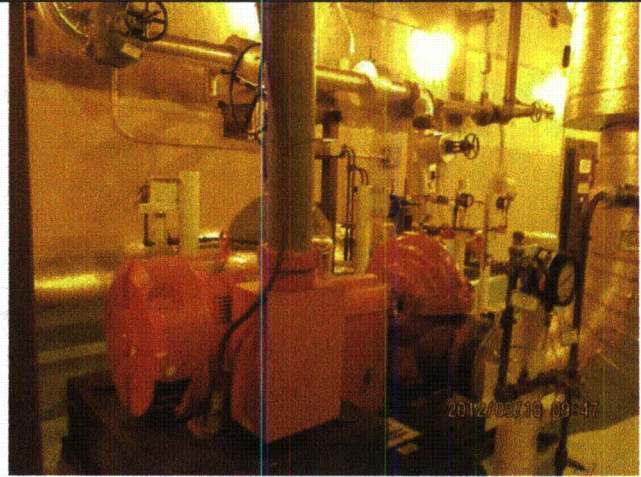
Equipment ID No.: 2E12-C300B

Equipment Class: (5) Horizontal Pumps

Equipment Description: B RHR SERVICE WATER PUMP



20120918-Lasalle 093



20120918-Lasalle 094

Status: Y N U

Seismic Walkdown Checklist (SWC)

Equipment ID No.: 2E12-D300B

Equipment Class: (0) Other

Equipment Description: B RHR SERVICE WATER STRAINER

Project: Lasalle 2 SWEL

Location (Bldg, Elev, Room/Area): DG, 674.00 ft, ALL

Manufacturer/Model:

Instructions for Completing Checklist

This checklist may be used to document the results of the Seismic Walkdown of an item of equipment on the SWEL. The space below each of the following questions may be used to record the results of judgments and findings. Additional space is provided at the end of this checklist for documenting other comments.

Anchorage

1. Is anchorage configuration verification required (i.e., is the item one of the 50% of SWEL items requiring such verification)? Yes

2. Is the anchorage free of bent, broken, missing or loose hardware? Yes
2 anchors at end bell (south) end with nut not tightened against base plate (maximum 1/2" gap between bottom of nut and top of base plate). Judged to be acceptable per station Engineering department. Station Maintenance department tightened nuts against base plates. See IR 1406061.
3. Is the anchorage free of corrosion that is more than mild surface oxidation? Yes

4. Is the anchorage free of visible cracks in the concrete near the anchors? Yes
Minor spalling in grout pads judged to be acceptable.

5. Is the anchorage configuration consistent with plant documentation? (Note: This question only applies if the item is one of the 50% for which an anchorage configuration verification is required.) Yes
Anchorage shown on drawings M-1573, Rev. G and M-1591, Sheet 11, Rev. E.

6. Based on the above anchorage evaluations, is the anchorage free of potentially adverse seismic conditions? Yes

Status: Y N U

Seismic Walkdown Checklist (SWC)

Equipment ID No.: 2E12-D300B

Equipment Class: (0) Other

Equipment Description: B RHR SERVICE WATER STRAINER

Interaction Effects

7. Are soft targets free from impact by nearby equipment or structures? Yes
8. Are overhead equipment, distribution systems, ceiling tiles and lighting, and masonry block walls not likely to collapse onto the equipment? Yes
Overhead light fixtures judged to be acceptable.
9. Do attached lines have adequate flexibility to avoid damage? Yes
10. Based on the above seismic interaction evaluations, is equipment free of potentially adverse seismic interaction effects? Yes

Other Adverse Conditions

11. Have you looked for and found no adverse seismic conditions that could adversely affect the safety functions of the equipment? Yes

Comments

Seismic Walkdown Team: D. Carter & J. Griffith - 8/28/2012

Evaluated by: *David Carter* David Carter Date: 10/17/2012
James D. Griffith James Griffith 10/17/2012

Status: Y N U

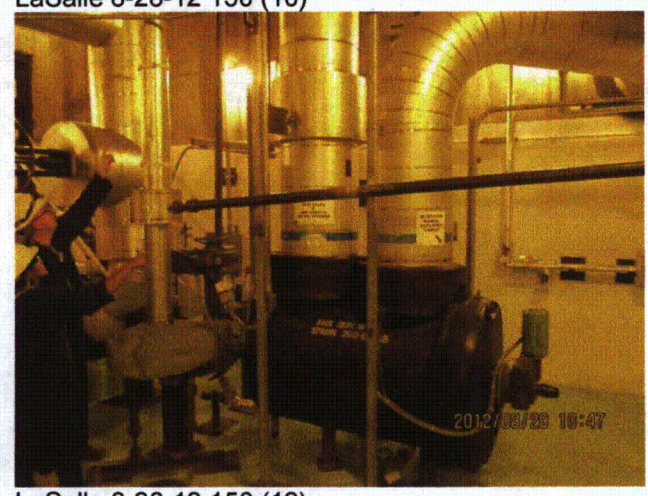
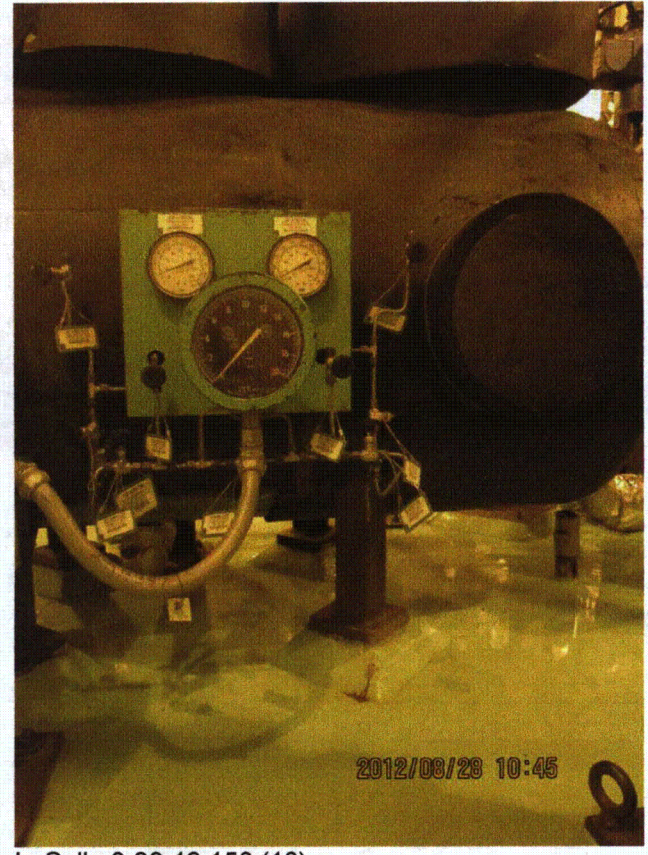
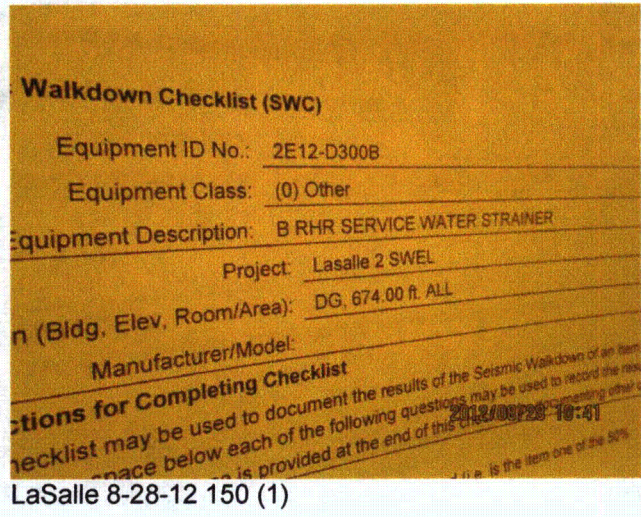
Seismic Walkdown Checklist (SWC)

Equipment ID No.: 2E12-D300B

Equipment Class: (0) Other

Equipment Description: B RHR SERVICE WATER STRAINER

Photos



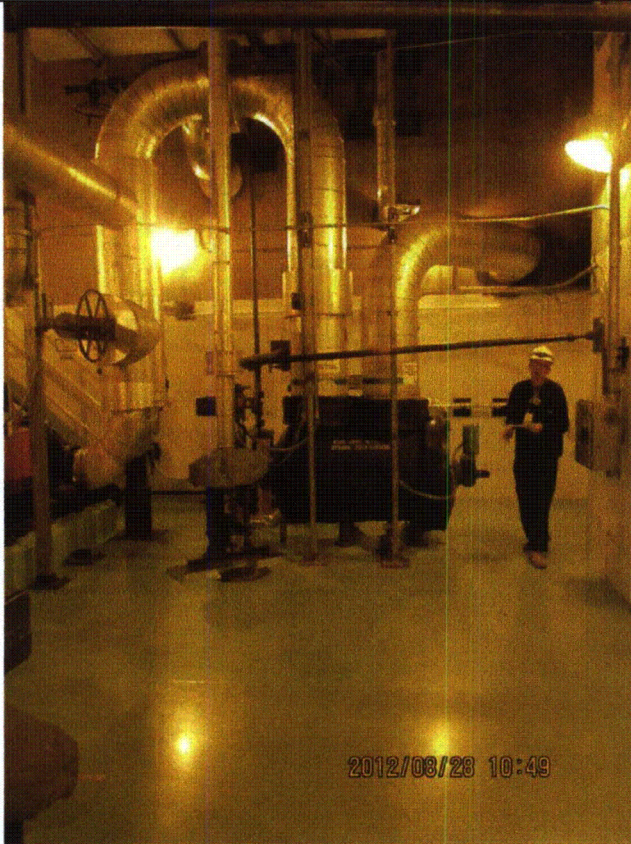
Status: Y N U

Seismic Walkdown Checklist (SWC)

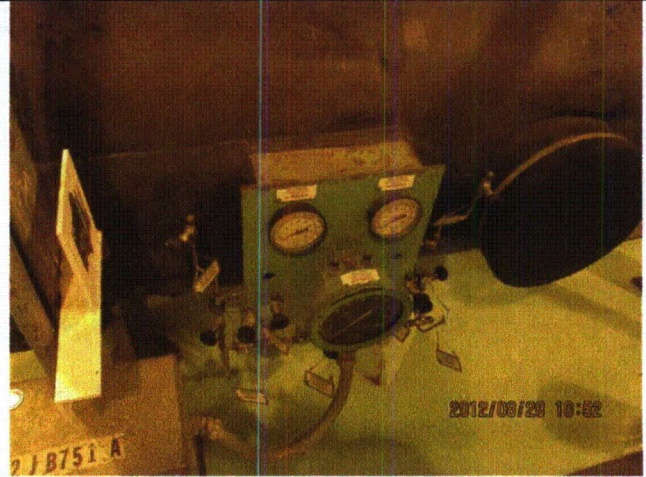
Equipment ID No.: 2E12-D300B

Equipment Class: (0) Other

Equipment Description: B RHR SERVICE WATER STRAINER



LaSalle 8-28-12 150 (13)



LaSalle 8-28-12 150 (14)



LaSalle 8-28-12 150 (2)



LaSalle 8-28-12 150 (3)

Status: Y N U

Seismic Walkdown Checklist (SWC)

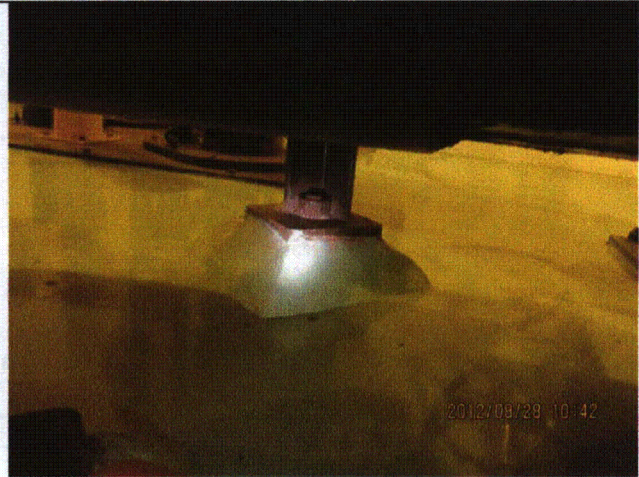
Equipment ID No.: 2E12-D300B

Equipment Class: (0) Other

Equipment Description: B RHR SERVICE WATER STRAINER



LaSalle 8-28-12 150 (4)



LaSalle 8-28-12 150 (5)



LaSalle 8-28-12 150 (6)



LaSalle 8-28-12 150 (7)

Status: Y N U

Seismic Walkdown Checklist (SWC)

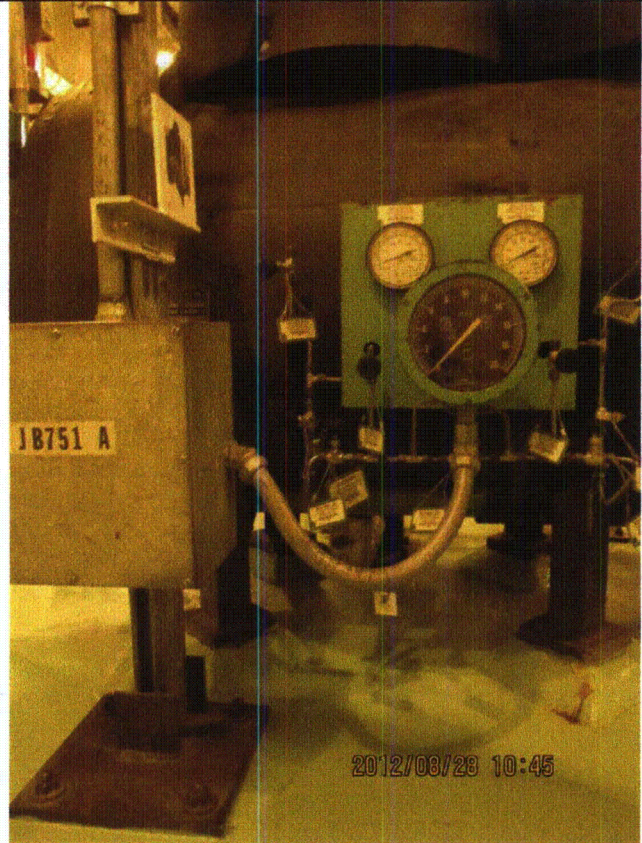
Equipment ID No.: 2E12-D300B

Equipment Class: (0) Other

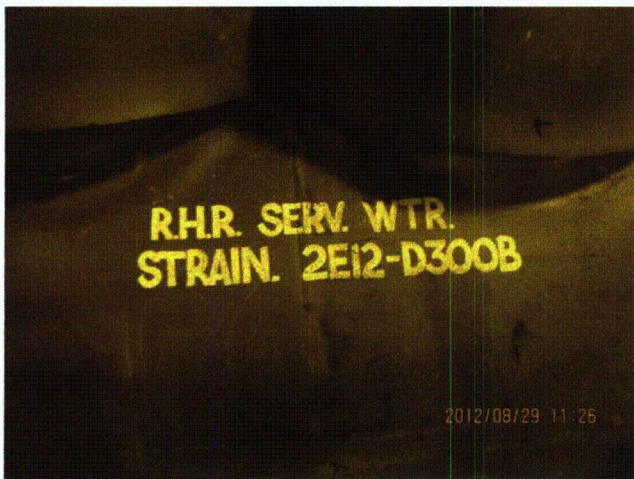
Equipment Description: B RHR SERVICE WATER STRAINER



LaSalle 8-28-12 150 (8)



LaSalle 8-28-12 150 (9)



LaSalle 8-29-12 135



LaSalle 8-29-12 136

Status: Y N U

Seismic Walkdown Checklist (SWC)

Equipment ID No.: 2E12-D300B

Equipment Class: (0) Other

Equipment Description: B RHR SERVICE WATER STRAINER



LaSalle 8-29-12 139

Status: Y N U

Seismic Walkdown Checklist (SWC)

Equipment ID No.: 2E12-F003B

Equipment Class: (8) Motor-Operated and Solenoid-Operated Valves

Equipment Description: B RHR HX OTLT STOP

Project: LaSalle 2 SWEL

Location (Bldg, Elev, Room/Area): RB, 694.00 ft, ALL

Manufacturer/Model:

Instructions for Completing Checklist

This checklist may be used to document the results of the Seismic Walkdown of an item of equipment on the SWEL. The space below each of the following questions may be used to record the results of judgments and findings. Additional space is provided at the end of this checklist for documenting other comments.

Anchorage

1. Is anchorage configuration verification required (i.e., is the item one of the 50% of SWEL items requiring such verification)? No

2. Is the anchorage free of bent, broken, missing or loose hardware? Not Applicable

3. Is the anchorage free of corrosion that is more than mild surface oxidation? Not Applicable

4. Is the anchorage free of visible cracks in the concrete near the anchors? Not Applicable

5. Is the anchorage configuration consistent with plant documentation? (Note: This question only applies if the item is one of the 50% for which an anchorage configuration verification is required.) Not Applicable

6. Based on the above anchorage evaluations, is the anchorage free of potentially adverse seismic conditions? Yes

Status: Y N U

Seismic Walkdown Checklist (SWC)

Equipment ID No.: 2E12-F003B

Equipment Class: (8) Motor-Operated and Solenoid-Operated Valves

Equipment Description: B RHR HX OTLT STOP

Interaction Effects

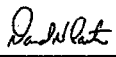
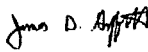
- | | |
|--|-----|
| 7. Are soft targets free from impact by nearby equipment or structures? | Yes |
| 8. Are overhead equipment, distribution systems, ceiling tiles and lighting, and masonry block walls not likely to collapse onto the equipment?
<i>Overhead light fixtures judged to be acceptable.</i> | Yes |
| 9. Do attached lines have adequate flexibility to avoid damage? | Yes |
| 10. Based on the above seismic interaction evaluations, is equipment free of potentially adverse seismic interaction effects? | Yes |

Other Adverse Conditions

- | | |
|--|-----|
| 11. Have you looked for and found no adverse seismic conditions that could adversely affect the safety functions of the equipment? | Yes |
|--|-----|

Comments

Seismic Walkdown Team: D. Carter & J. Griffith - 8/29/2012

Evaluated by:	<u> David Carter</u>	Date:	<u>10/17/2012</u>
	<u> James Griffith</u>		<u>10/17/2012</u>

Status: Y N U

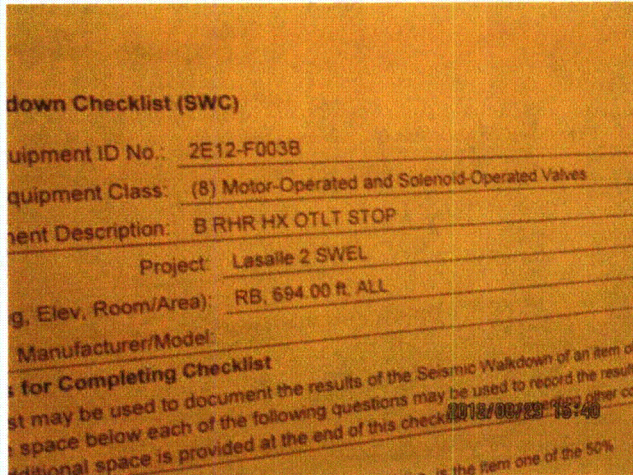
Seismic Walkdown Checklist (SWC)

Equipment ID No.: 2E12-F003B

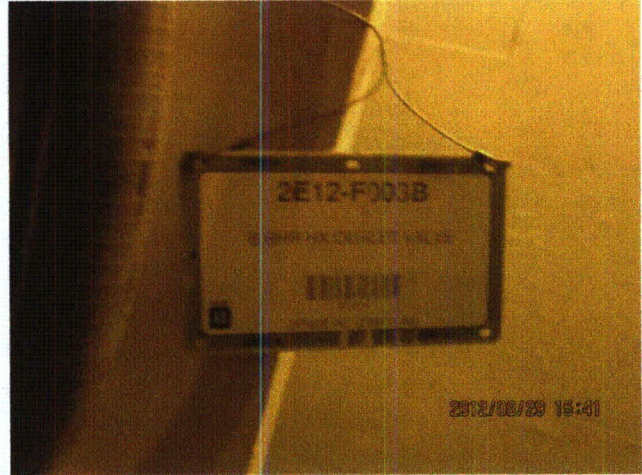
Equipment Class: (8) Motor-Operated and Solenoid-Operated Valves

Equipment Description: B RHR HX OTLT STOP

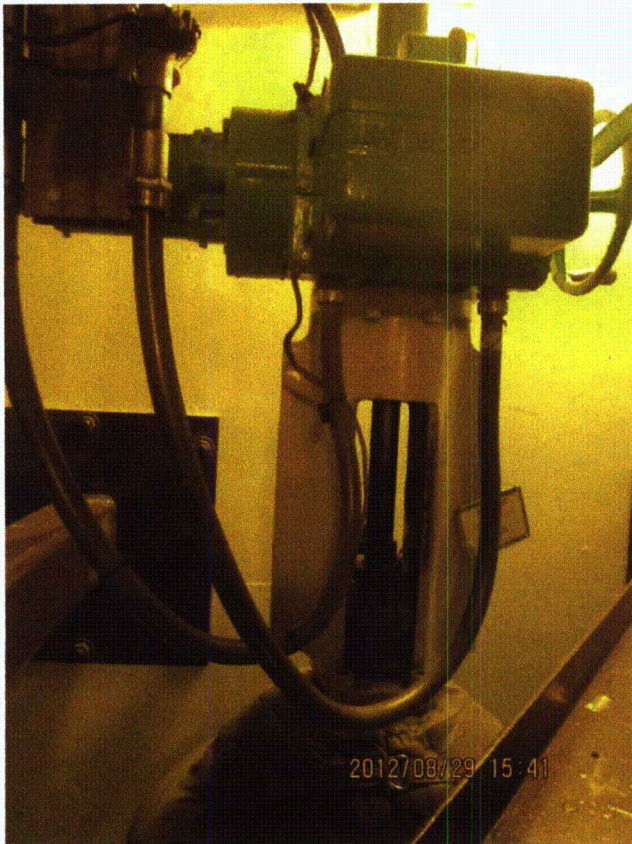
Photos



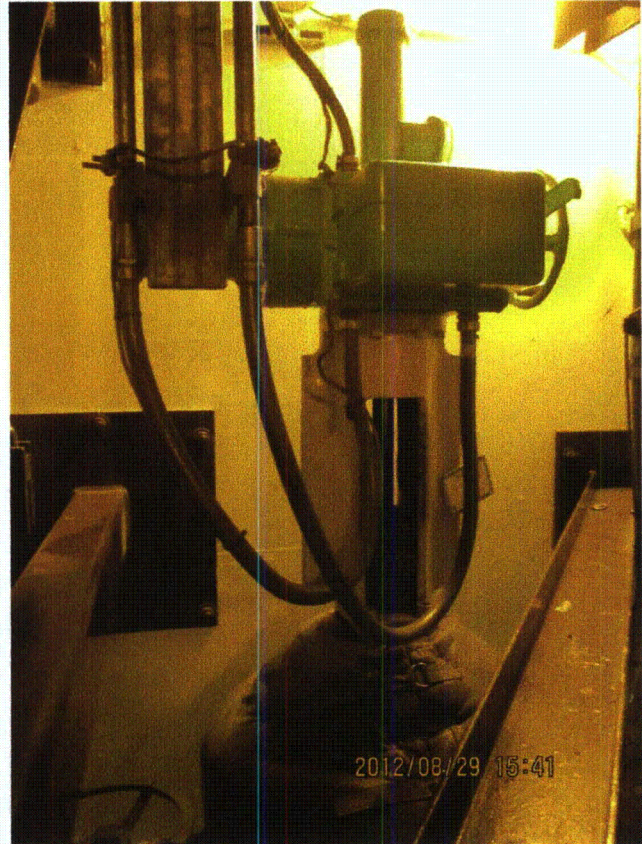
LaSalle 8-29-12 196



LaSalle 8-29-12 197



LaSalle 8-29-12 198



LaSalle 8-29-12 199

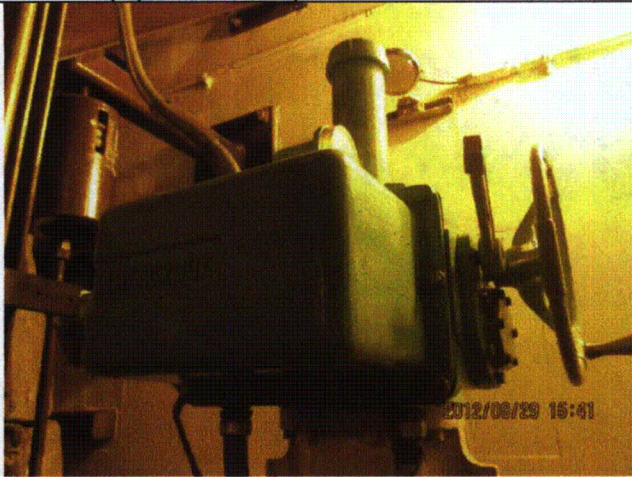
Status: Y N U

Seismic Walkdown Checklist (SWC)

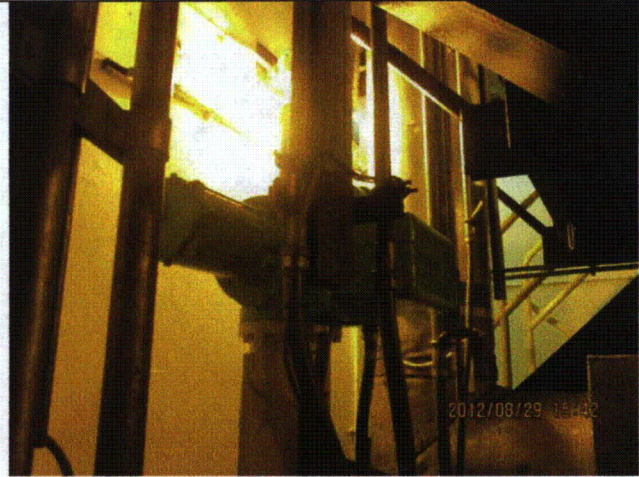
Equipment ID No.: 2E12-F003B

Equipment Class: (8) Motor-Operated and Solenoid-Operated Valves

Equipment Description: B RHR HX OTLT STOP



LaSalle 8-29-12 200



LaSalle 8-29-12 201

Status: Y N U

Seismic Walkdown Checklist (SWC)

Equipment ID No.: 2E12-F004B

Equipment Class: (8) Motor-Operated and Solenoid-Operated Valves

Equipment Description: B RHR PMP SUCT FROM SUP POOLSTOP

Project: LaSalle 2 SWEL

Location (Bldg, Elev, Room/Area): RB, 673.00 ft, ALL

Manufacturer/Model:

Instructions for Completing Checklist

This checklist may be used to document the results of the Seismic Walkdown of an item of equipment on the SWEL. The space below each of the following questions may be used to record the results of judgments and findings. Additional space is provided at the end of this checklist for documenting other comments.

Anchorage

1. Is anchorage configuration verification required (i.e., is the item one of the 50% of SWEL items requiring such verification)? No

2. Is the anchorage free of bent, broken, missing or loose hardware? Not Applicable

3. Is the anchorage free of corrosion that is more than mild surface oxidation? Not Applicable

4. Is the anchorage free of visible cracks in the concrete near the anchors? Not Applicable

5. Is the anchorage configuration consistent with plant documentation? (Note: This question only applies if the item is one of the 50% for which an anchorage configuration verification is required.) Not Applicable

6. Based on the above anchorage evaluations, is the anchorage free of potentially adverse seismic conditions? Yes

Interaction Effects

7. Are soft targets free from impact by nearby equipment or structures? Yes

Status: Y N U

Seismic Walkdown Checklist (SWC)

Equipment ID No.: 2E12-F004B

Equipment Class: (8) Motor-Operated and Solenoid-Operated Valves

Equipment Description: B RHR PMP SUCT FROM SUP POOLSTOP


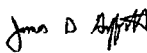
8. Are overhead equipment, distribution systems, ceiling tiles and lighting, and masonry block walls not likely to collapse onto the equipment? Yes
9. Do attached lines have adequate flexibility to avoid damage? Yes
10. Based on the above seismic interaction evaluations, is equipment free of potentially adverse seismic interaction effects? Yes

Other Adverse Conditions

11. Have you looked for and found no adverse seismic conditions that could adversely affect the safety functions of the equipment? Yes
Clearance between valve yoke and adjacent gallery grating is judged to be adequate.

Comments

Seismic Walkdown Team: D. Carter & J. Griffith - 8/30/2012

Evaluated by:  David Carter Date: 10/17/2012
 James D. Griffith 10/17/2012

Status: Y N U

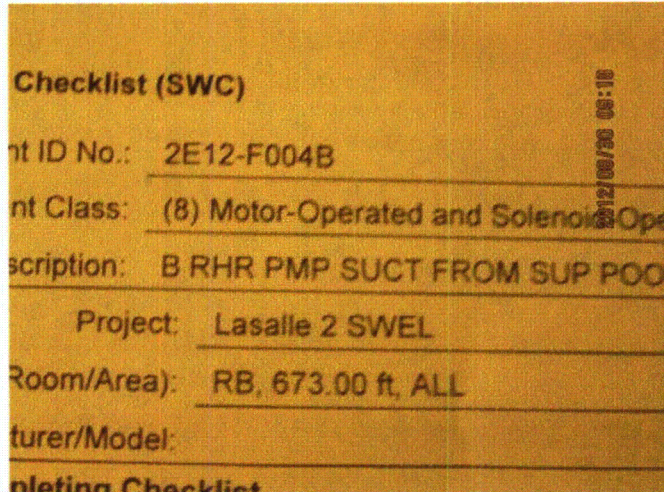
Seismic Walkdown Checklist (SWC)

Equipment ID No.: 2E12-F004B

Equipment Class: (8) Motor-Operated and Solenoid-Operated Valves

Equipment Description: B RHR PMP SUCT FROM SUP POOLSTOP

Photos



LaSalle 8-30-12 026



LaSalle 8-30-12 027



LaSalle 8-30-12 028



LaSalle 8-30-12 029

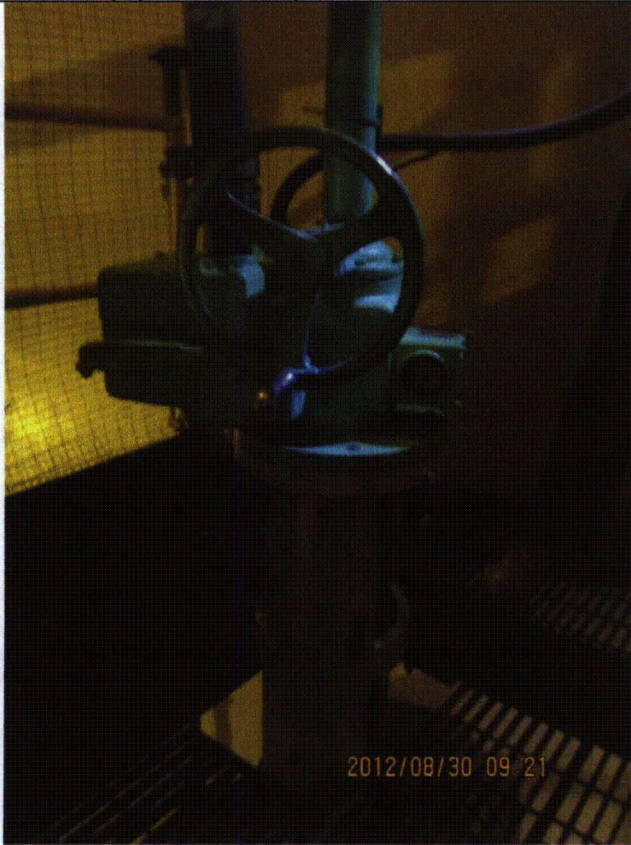
Status: Y N U

Seismic Walkdown Checklist (SWC)

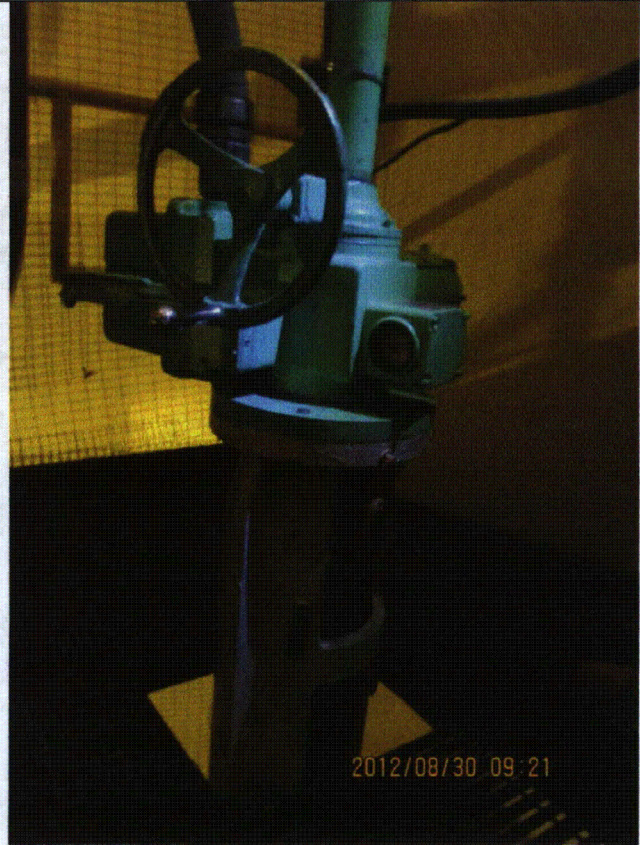
Equipment ID No.: 2E12-F004B

Equipment Class: (8) Motor-Operated and Solenoid-Operated Valves

Equipment Description: B RHR PMP SUCT FROM SUP POOLSTOP



LaSalle 8-30-12 030



LaSalle 8-30-12 031

Status: Y N U

Seismic Walkdown Checklist (SWC)

Equipment ID No.: 2E12-F004B

Equipment Class: (8) Motor-Operated and Solenoid-Operated Valves

Equipment Description: B RHR PMP SUCT FROM SUP POOLSTOP



LaSalle 8-30-12 032

Status: Y N U

Seismic Walkdown Checklist (SWC)

Equipment ID No.: 2E12-F011B

Equipment Class: (8) Motor-Operated and Solenoid-Operated Valves

Equipment Description: B RHR HX STM COND TO SUP CHBR STOP

Project: LaSalle 2 SWEL

Location (Bldg, Elev, Room/Area): RB, 694.00 ft, ALL

Manufacturer/Model:

Instructions for Completing Checklist

This checklist may be used to document the results of the Seismic Walkdown of an item of equipment on the SWEL. The space below each of the following questions may be used to record the results of judgments and findings. Additional space is provided at the end of this checklist for documenting other comments.

Anchorage

1. Is anchorage configuration verification required (i.e., is the item one of the 50% of SWEL items requiring such verification)? No

2. Is the anchorage free of bent, broken, missing or loose hardware? Not Applicable

3. Is the anchorage free of corrosion that is more than mild surface oxidation? Not Applicable

4. Is the anchorage free of visible cracks in the concrete near the anchors? Not Applicable

5. Is the anchorage configuration consistent with plant documentation? (Note: This question only applies if the item is one of the 50% for which an anchorage configuration verification is required.) Not Applicable

6. Based on the above anchorage evaluations, is the anchorage free of potentially adverse seismic conditions? Yes

Interaction Effects

7. Are soft targets free from impact by nearby equipment or structures? Yes

Status: Y N U

Seismic Walkdown Checklist (SWC)

Equipment ID No.: 2E12-F011B

Equipment Class: (8) Motor-Operated and Solenoid-Operated Valves

Equipment Description: B RHR HX STM COND TO SUP CHBR STOP

8. Are overhead equipment, distribution systems, ceiling tiles and lighting, and masonry block walls not likely to collapse onto the equipment? Yes
9. Do attached lines have adequate flexibility to avoid damage? Yes
10. Based on the above seismic interaction evaluations, is equipment free of potentially adverse seismic interaction effects? Yes

Other Adverse Conditions

11. Have you looked for and found no adverse seismic conditions that could adversely affect the safety functions of the equipment? Yes

Comments

Seismic Walkdown Team: D. Carter & J. Griffith - 8/29/2012

Evaluated by: *David Carter* David Carter Date: 10/17/2012

James D. Griffith James Griffith 10/17/2012

Status: Y N U

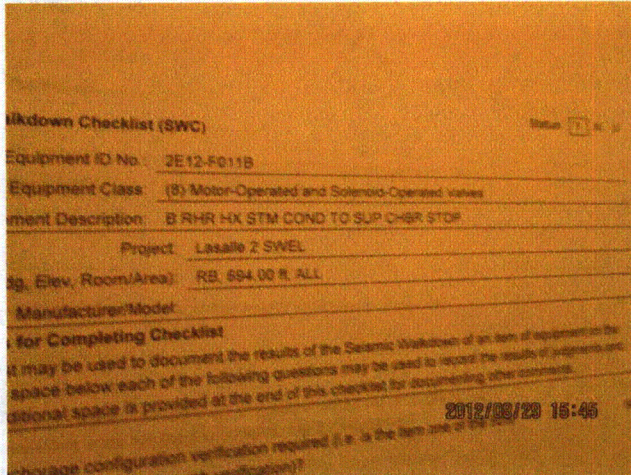
Seismic Walkdown Checklist (SWC)

Equipment ID No.: 2E12-F011B

Equipment Class: (8) Motor-Operated and Solenoid-Operated Valves

Equipment Description: B RHR HX STM COND TO SUP CHBR STOP

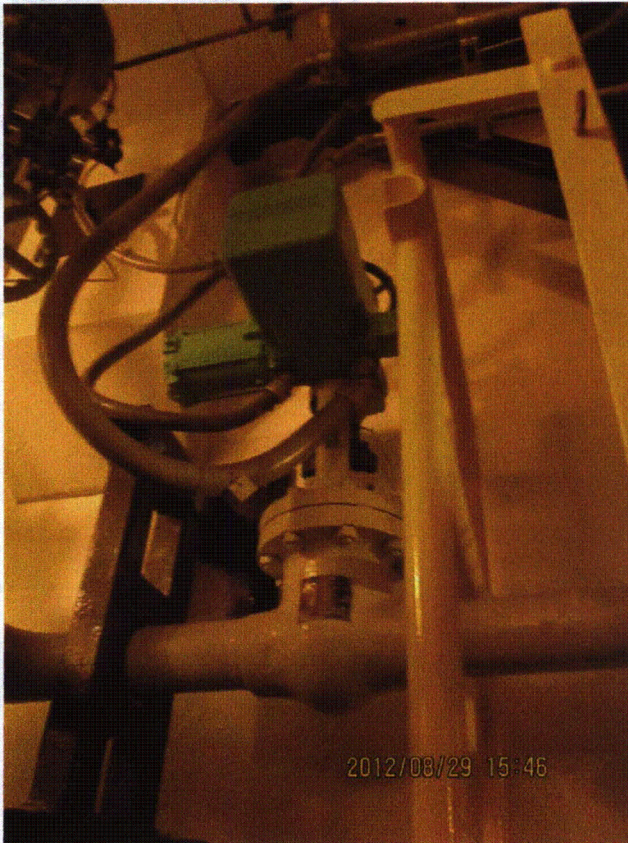
Photos



LaSalle 8-29-12 202



LaSalle 8-29-12 203



LaSalle 8-29-12 204



LaSalle 8-29-12 205

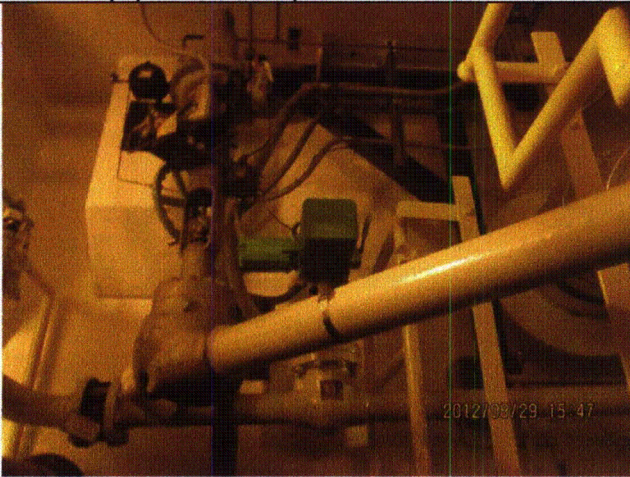
Status: Y N U

Seismic Walkdown Checklist (SWC)

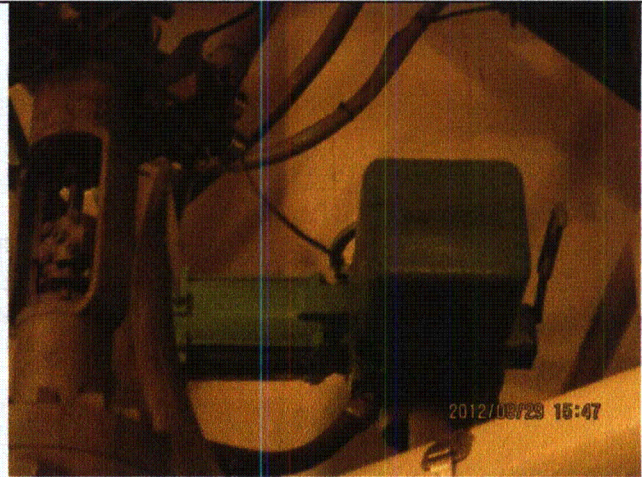
Equipment ID No.: 2E12-F011B

Equipment Class: (8) Motor-Operated and Solenoid-Operated Valves

Equipment Description: B RHR HX STM COND TO SUP CHBR STOP



LaSalle 8-29-12 206



LaSalle 8-29-12 207

Status: Y N U

Seismic Walkdown Checklist (SWC)

Equipment ID No.: 2E12-F026B

Equipment Class: (8) Motor-Operated and Solenoid-Operated Valves

Equipment Description: B RHR HX STM COND OTLT TO RCIC STOP

Project: LaSalle 2 SWEL

Location (Bldg, Elev, Room/Area): RB, 694.00 ft, ALL

Manufacturer/Model:

Instructions for Completing Checklist

This checklist may be used to document the results of the Seismic Walkdown of an item of equipment on the SWEL. The space below each of the following questions may be used to record the results of judgments and findings. Additional space is provided at the end of this checklist for documenting other comments.

Anchorage

1. Is anchorage configuration verification required (i.e., is the item one of the 50% of SWEL items requiring such verification)? No

2. Is the anchorage free of bent, broken, missing or loose hardware? Not Applicable

3. Is the anchorage free of corrosion that is more than mild surface oxidation? Not Applicable

4. Is the anchorage free of visible cracks in the concrete near the anchors? Not Applicable

5. Is the anchorage configuration consistent with plant documentation? (Note: This question only applies if the item is one of the 50% for which an anchorage configuration verification is required.) Not Applicable

6. Based on the above anchorage evaluations, is the anchorage free of potentially adverse seismic conditions? Yes

Status: Y N U

Seismic Walkdown Checklist (SWC)

Equipment ID No.: 2E12-F026B

Equipment Class: (8) Motor-Operated and Solenoid-Operated Valves

Equipment Description: B RHR HX STM COND OTLT TO RCIC STOP

Interaction Effects

7. Are soft targets free from impact by nearby equipment or structures? Yes
8. Are overhead equipment, distribution systems, ceiling tiles and lighting, and masonry block walls not likely to collapse onto the equipment? Yes
9. Do attached lines have adequate flexibility to avoid damage? Yes
10. Based on the above seismic interaction evaluations, is equipment free of potentially adverse seismic interaction effects? Yes

Other Adverse Conditions

11. Have you looked for and found no adverse seismic conditions that could adversely affect the safety functions of the equipment? Yes

Comments

Seismic Walkdown Team: D. Carter & J. Griffith - 8/29/2012

Evaluated by: *David Carter* David Carter Date: 10/17/2012
James D. Griffith James Griffith 10/17/2012

Status: Y N U

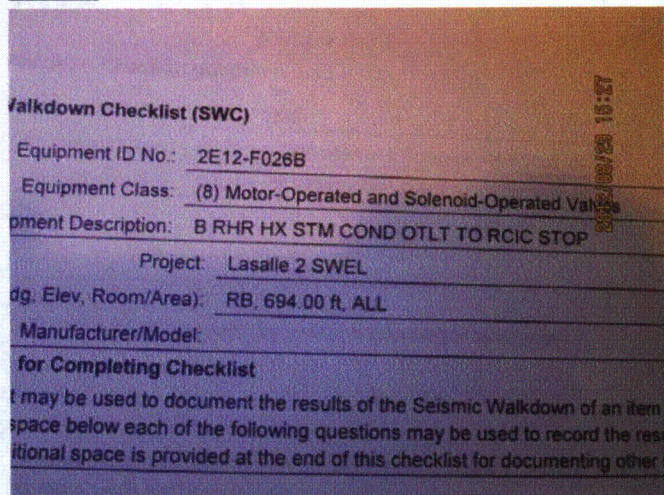
Seismic Walkdown Checklist (SWC)

Equipment ID No.: 2E12-F026B

Equipment Class: (8) Motor-Operated and Solenoid-Operated Valves

Equipment Description: B RHR HX STM COND OTLT TO RCIC STOP

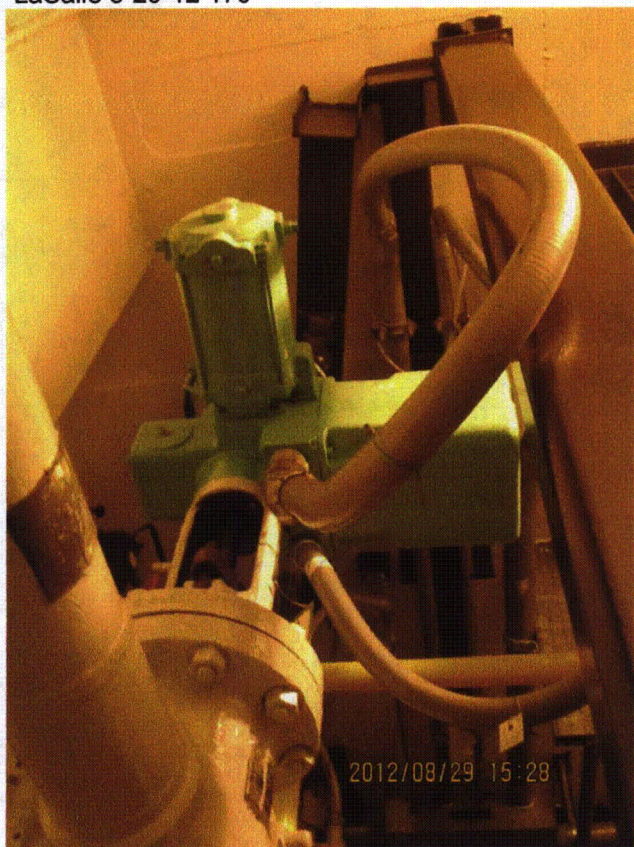
Photos



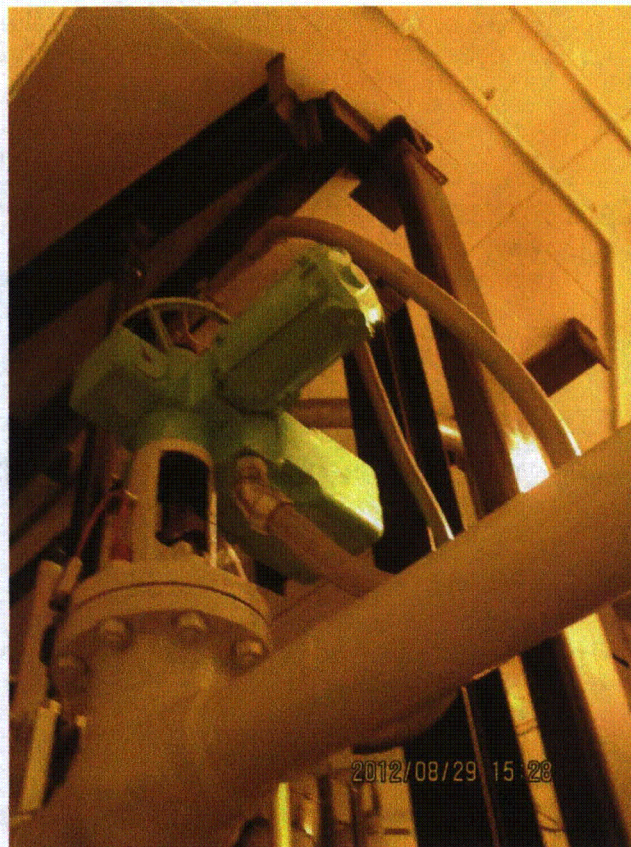
LaSalle 8-29-12 179



LaSalle 8-29-12 180



LaSalle 8-29-12 181



LaSalle 8-29-12 182

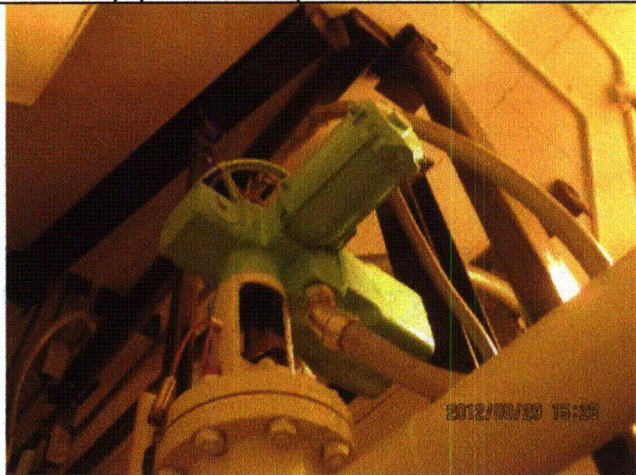
Status: Y N U

Seismic Walkdown Checklist (SWC)

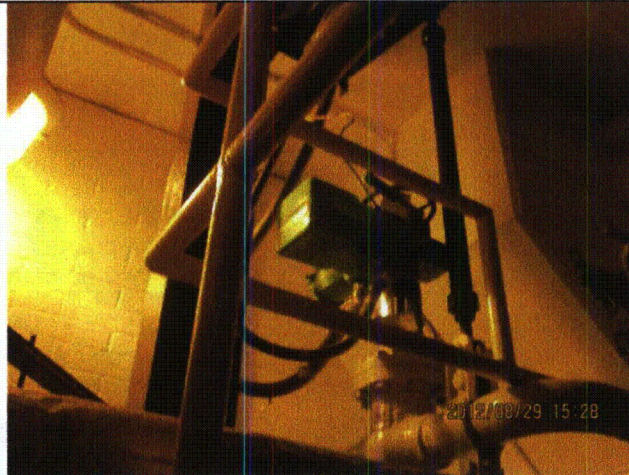
Equipment ID No.: 2E12-F026B

Equipment Class: (8) Motor-Operated and Solenoid-Operated Valves

Equipment Description: B RHR HX STM COND OTLT TO RCIC STOP



LaSalle 8-29-12 183



LaSalle 8-29-12 184

Status: Y N U

Seismic Walkdown Checklist (SWC)

Equipment ID No.: 2E12-F036B

Equipment Class: (7) Fluid-Operated Valves

Equipment Description: VALVE, RHR RI PP SUCT LINE RELIEF

Project: LaSalle 2 SWEL

Location (Bldg, Elev, Room/Area): RB, 694.00 ft, ALL

Manufacturer/Model: _____

Instructions for Completing Checklist

This checklist may be used to document the results of the Seismic Walkdown of an item of equipment on the SWEL. The space below each of the following questions may be used to record the results of judgments and findings. Additional space is provided at the end of this checklist for documenting other comments.

Anchorage

1. Is anchorage configuration verification required (i.e., is the item one of the 50% of SWEL items requiring such verification)? No

2. Is the anchorage free of bent, broken, missing or loose hardware? Not Applicable

3. Is the anchorage free of corrosion that is more than mild surface oxidation? Not Applicable

4. Is the anchorage free of visible cracks in the concrete near the anchors? Not Applicable

5. Is the anchorage configuration consistent with plant documentation? (Note: This question only applies if the item is one of the 50% for which an anchorage configuration verification is required.) Not Applicable

6. Based on the above anchorage evaluations, is the anchorage free of potentially adverse seismic conditions? Yes

Status: Y N U

Seismic Walkdown Checklist (SWC)

Equipment ID No.: 2E12-F036B

Equipment Class: (7) Fluid-Operated Valves

Equipment Description: VALVE, RHR RI PP SUCT LINE RELIEF

Interaction Effects

7. Are soft targets free from impact by nearby equipment or structures? Yes
8. Are overhead equipment, distribution systems, ceiling tiles and lighting, and masonry block walls not likely to collapse onto the equipment?
Overhead light fixtures judged to be acceptable. Yes
9. Do attached lines have adequate flexibility to avoid damage? Yes
10. Based on the above seismic interaction evaluations, is equipment free of potentially adverse seismic interaction effects? Yes

Other Adverse Conditions

11. Have you looked for and found no adverse seismic conditions that could adversely affect the safety functions of the equipment? Yes

Comments

Seismic Walkdown Team: D. Carter & J. Griffith - 8/30/2012

Evaluated by:  David Carter Date: 10/17/2012

 James D. Griffith 10/17/2012

Status: Y N U

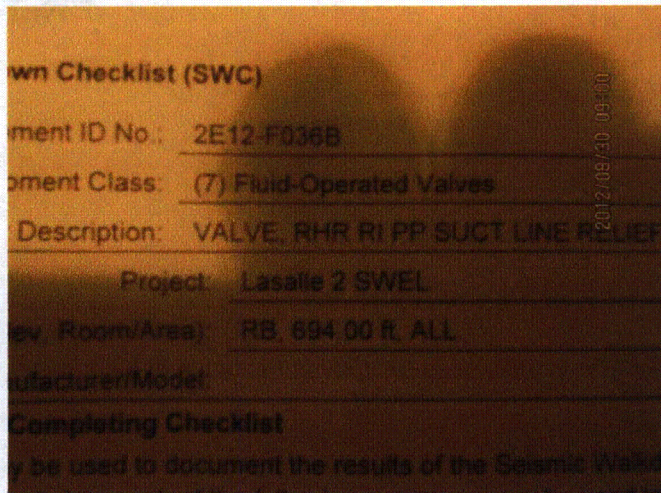
Seismic Walkdown Checklist (SWC)

Equipment ID No.: 2E12-F036B

Equipment Class: (7) Fluid-Operated Valves

Equipment Description: VALVE, RHR RI PP SUCT LINE RELIEF

Photos



LaSalle 8-30-12 001



LaSalle 8-30-12 002

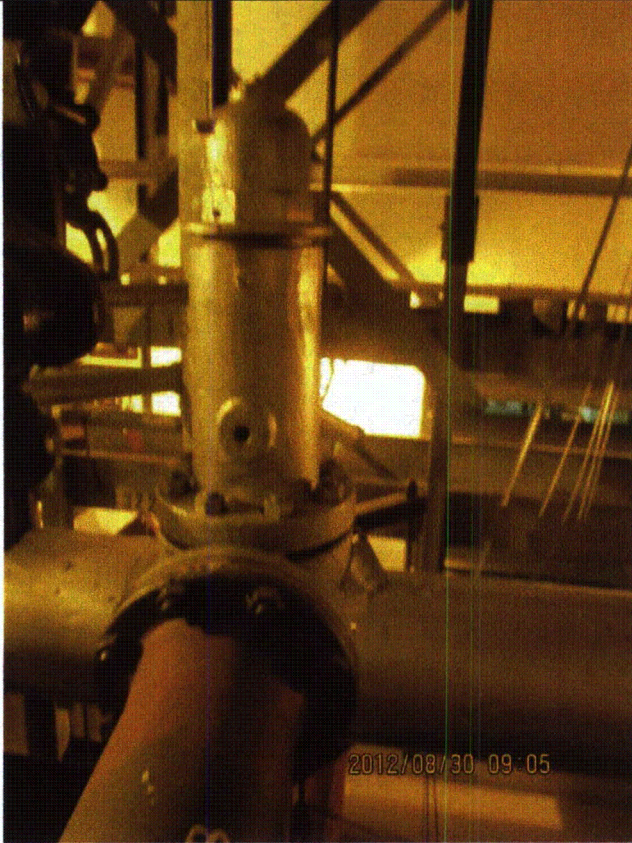
Status: Y N U

Seismic Walkdown Checklist (SWC)

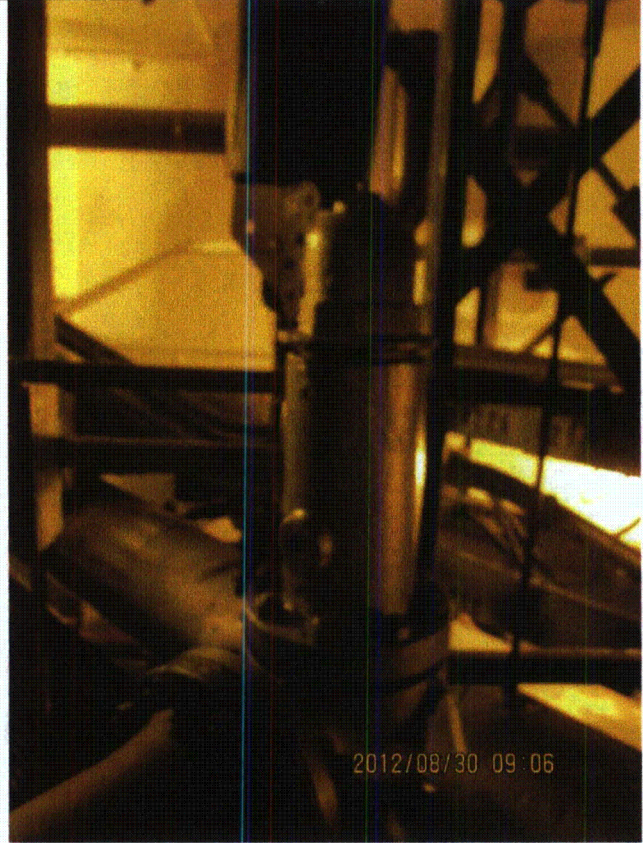
Equipment ID No.: 2E12-F036B

Equipment Class: (7) Fluid-Operated Valves

Equipment Description: VALVE, RHR RI PP SUCT LINE RELIEF



LaSalle 8-30-12 003



LaSalle 8-30-12 004

Status: Y N U

Seismic Walkdown Checklist (SWC)

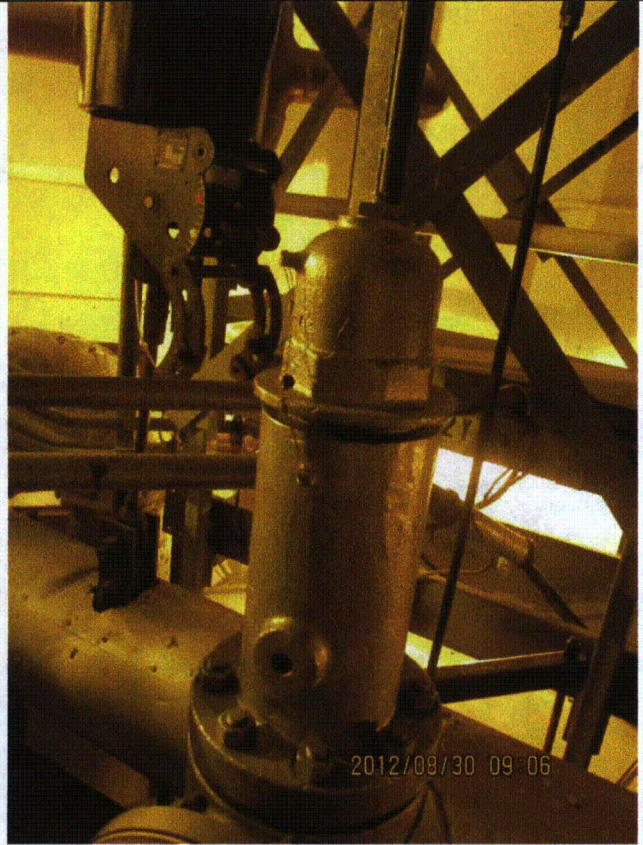
Equipment ID No.: 2E12-F036B

Equipment Class: (7) Fluid-Operated Valves

Equipment Description: VALVE, RHR RI PP SUCT LINE RELIEF



LaSalle 8-30-12 005



LaSalle 8-30-12 006

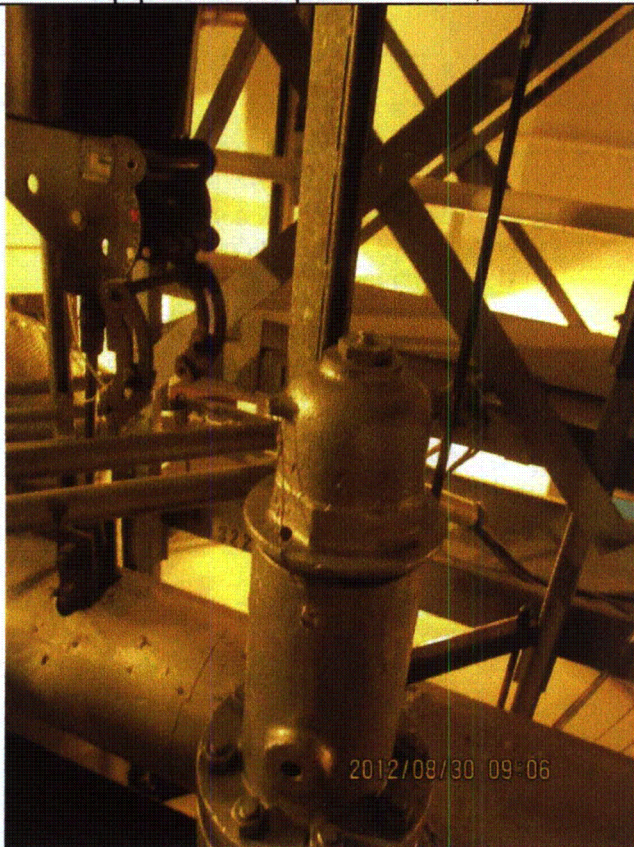
Status: Y N U

Seismic Walkdown Checklist (SWC)

Equipment ID No.: 2E12-F036B

Equipment Class: (7) Fluid-Operated Valves

Equipment Description: VALVE, RHR RI PP SUCT LINE RELIEF



LaSalle 8-30-12 007

Status: Y N U

Seismic Walkdown Checklist (SWC)

Equipment ID No.: 2E12-F048B

Equipment Class: (8) Motor-Operated and Solenoid-Operated Valves

Equipment Description: B RHR HX BYP STOP

Project: LaSalle 2 SWEL

Location (Bldg, Elev, Room/Area): RB, 694.00 ft, ALL

Manufacturer/Model:

Instructions for Completing Checklist

This checklist may be used to document the results of the Seismic Walkdown of an item of equipment on the SWEL. The space below each of the following questions may be used to record the results of judgments and findings. Additional space is provided at the end of this checklist for documenting other comments.

Anchorage

1. Is anchorage configuration verification required (i.e., is the item one of the 50% of SWEL items requiring such verification)? No

2. Is the anchorage free of bent, broken, missing or loose hardware? Not Applicable

3. Is the anchorage free of corrosion that is more than mild surface oxidation? Not Applicable

4. Is the anchorage free of visible cracks in the concrete near the anchors? Not Applicable

5. Is the anchorage configuration consistent with plant documentation? (Note: This question only applies if the item is one of the 50% for which an anchorage configuration verification is required.) Not Applicable

6. Based on the above anchorage evaluations, is the anchorage free of potentially adverse seismic conditions? Yes

Status: Y N U

Seismic Walkdown Checklist (SWC)

Equipment ID No.: 2E12-F048B

Equipment Class: (8) Motor-Operated and Solenoid-Operated Valves

Equipment Description: B RHR HX BYP STOP

Interaction Effects

- | | |
|---|-----|
| 7. Are soft targets free from impact by nearby equipment or structures? | Yes |
| 8. Are overhead equipment, distribution systems, ceiling tiles and lighting, and masonry block walls not likely to collapse onto the equipment? | Yes |
| 9. Do attached lines have adequate flexibility to avoid damage? | Yes |
| 10. Based on the above seismic interaction evaluations, is equipment free of potentially adverse seismic interaction effects? | Yes |

Other Adverse Conditions

- | | |
|--|-----|
| 11. Have you looked for and found no adverse seismic conditions that could adversely affect the safety functions of the equipment? | Yes |
|--|-----|

Comments

Seismic Walkdown Team: D. Carter & J. Griffith - 8/29/2012

Evaluated by:	<u><i>David Carter</i></u> David Carter	Date:	<u>10/17/2012</u>
	<u><i>James D. Griffith</i></u> James Griffith		<u>10/17/2012</u>

Status: Y N U

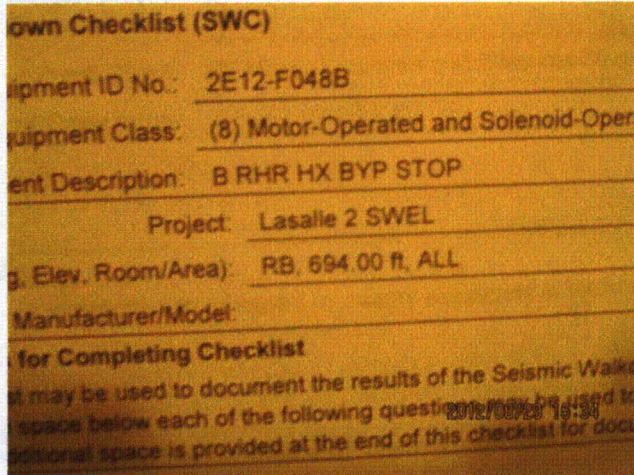
Seismic Walkdown Checklist (SWC)

Equipment ID No.: 2E12-F048B

Equipment Class: (8) Motor-Operated and Solenoid-Operated Valves

Equipment Description: B RHR HX BYP STOP

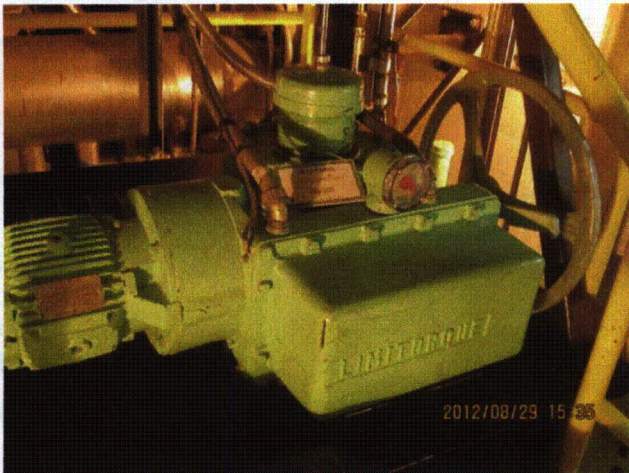
Photos



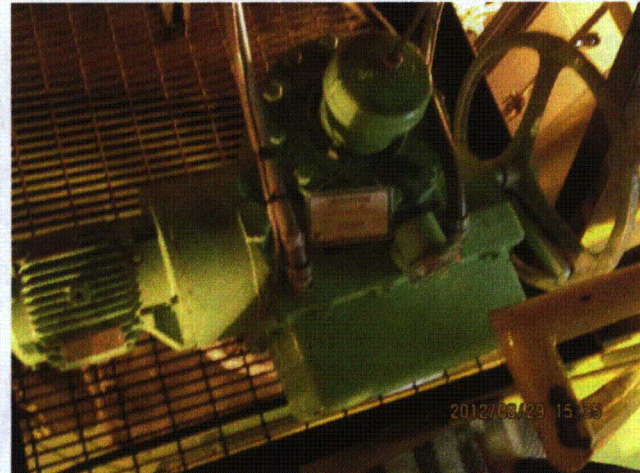
LaSalle 8-29-12 188



LaSalle 8-29-12 189



LaSalle 8-29-12 190



LaSalle 8-29-12 191

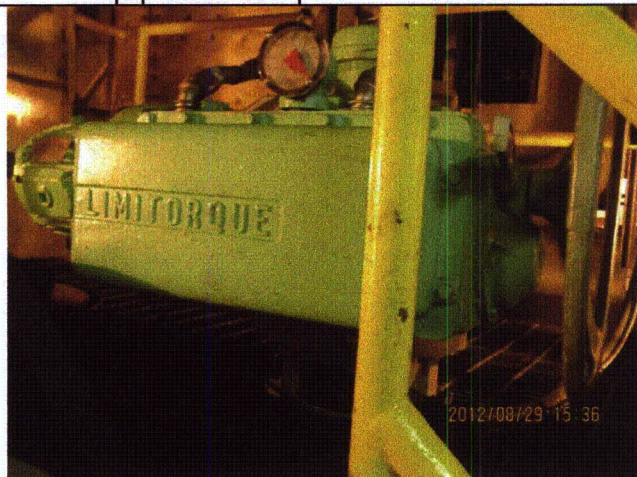
Status: Y N U

Seismic Walkdown Checklist (SWC)

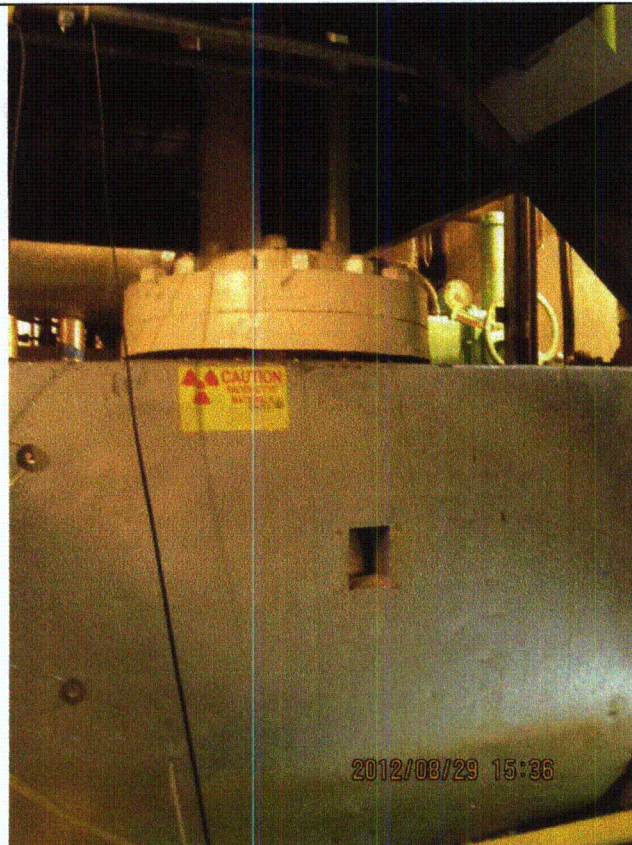
Equipment ID No.: 2E12-F048B

Equipment Class: (8) Motor-Operated and Solenoid-Operated Valves

Equipment Description: B RHR HX BYP STOP



LaSalle 8-29-12 192



LaSalle 8-29-12 193

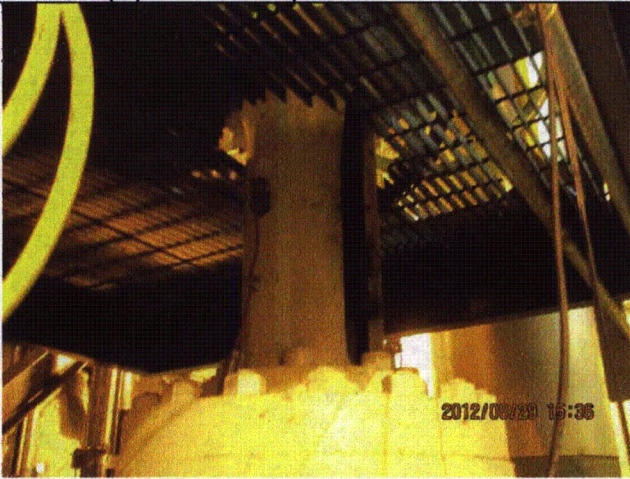
Status: Y N U

Seismic Walkdown Checklist (SWC)

Equipment ID No.: 2E12-F048B

Equipment Class: (8) Motor-Operated and Solenoid-Operated Valves

Equipment Description: B RHR HX BYP STOP



LaSalle 8-29-12 194



LaSalle 8-29-12 195