

Status: Y N U

Seismic Walkdown Checklist (SWC)

Equipment ID No.: 2AP78E

Equipment Class: (1) Motor Control Centers

Equipment Description: DIV II 480V MCC 236X-1

Project: LaSalle 2 SWEL

Location (Bldg, Elev, Room/Area): RB, 820.00 ft, ALL

Manufacturer/Model:

Instructions for Completing Checklist

This checklist may be used to document the results of the Seismic Walkdown of an item of equipment on the SWEL. The space below each of the following questions may be used to record the results of judgments and findings. Additional space is provided at the end of this checklist for documenting other comments.

Anchorage

1. Is anchorage configuration verification required (i.e., is the item one of the 50% of SWEL items requiring such verification)? Yes

2. Is the anchorage free of bent, broken, missing or loose hardware? Yes

3. Is the anchorage free of corrosion that is more than mild surface oxidation? Yes

4. Is the anchorage free of visible cracks in the concrete near the anchors? Yes
Minor shrinkage cracking in floor judged to be acceptable.

5. Is the anchorage configuration consistent with plant documentation? (Note: This question only applies if the item is one of the 50% for which an anchorage configuration verification is required.) Yes
Anchorage shown on drawings 1E-2-3538, Sheet 1, Rev. AE and 1E-2-3509, Rev. AJ.

6. Based on the above anchorage evaluations, is the anchorage free of potentially adverse seismic conditions? Yes

Interaction Effects

7. Are soft targets free from impact by nearby equipment or structures? Yes

Status: Y N U

Seismic Walkdown Checklist (SWC)

Equipment ID No.: 2AP78E

Equipment Class: (1) Motor Control Centers

Equipment Description: DIV II 480V MCC 236X-1

8. Are overhead equipment, distribution systems, ceiling tiles and lighting, and masonry block walls not likely to collapse onto the equipment?
Overhead light fixtures judged to be acceptable. Yes
9. Do attached lines have adequate flexibility to avoid damage? Yes
10. Based on the above seismic interaction evaluations, is equipment free of potentially adverse seismic interaction effects? Yes

Other Adverse Conditions

11. Have you looked for and found no adverse seismic conditions that could adversely affect the safety functions of the equipment? Yes

Comments

Seismic Walkdown Team: D. Carter & J. Griffith - 8/28/2012

Evaluated by: *David Carter* David Carter Date: 10/17/2012
James D. Griffith James Griffith 10/17/2012

Status: Y N U

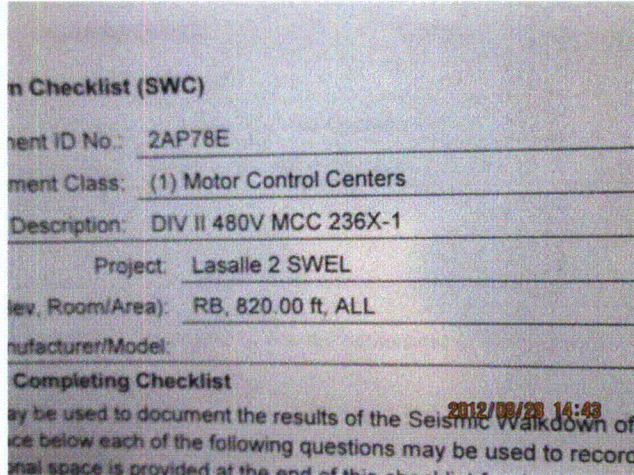
Seismic Walkdown Checklist (SWC)

Equipment ID No.: 2AP78E

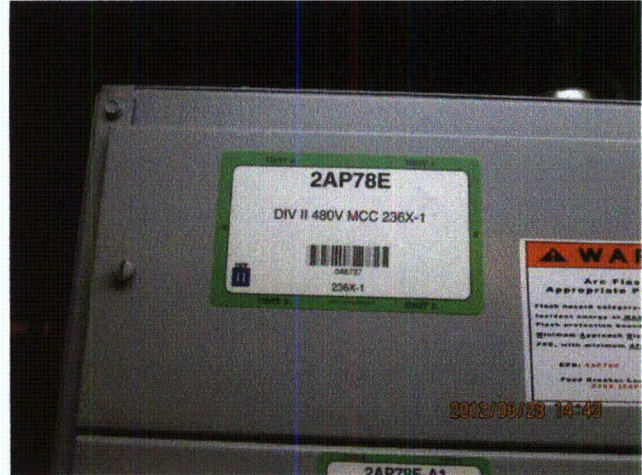
Equipment Class: (1) Motor Control Centers

Equipment Description: DIV II 480V MCC 236X-1

Photos



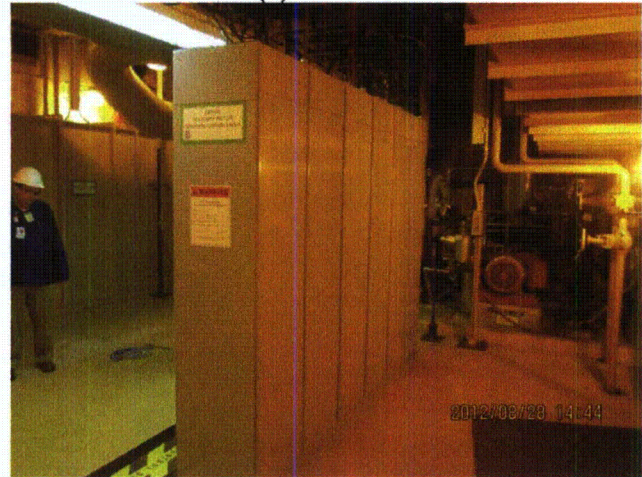
LaSalle 8-28-12 196 (1)



LaSalle 8-28-12 196 (2)



LaSalle 8-28-12 196 (3)



LaSalle 8-28-12 196 (4)

Status: Y N U

Seismic Walkdown Checklist (SWC)

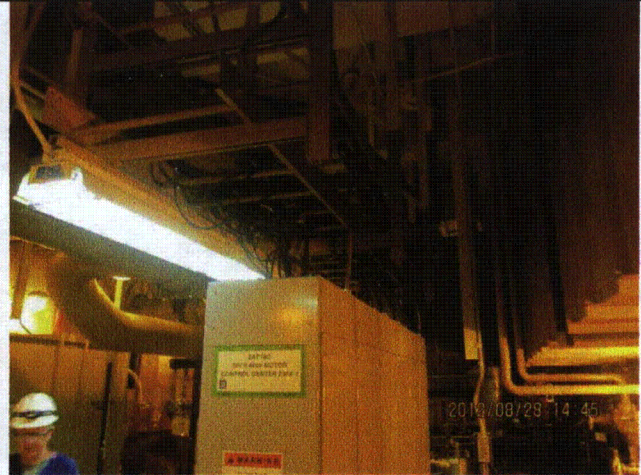
Equipment ID No.: 2AP78E

Equipment Class: (1) Motor Control Centers

Equipment Description: DIV II 480V MCC 236X-1



LaSalle 8-28-12 196 (5)



LaSalle 8-28-12 196 (6)

Status: Y N U

Seismic Walkdown Checklist (SWC)

Equipment ID No.: 2AP81E

Equipment Class: (1) Motor Control Centers

Equipment Description: DIV II 480V MCC 236X-3

Project: LaSalle 2 SWEL

Location (Bldg, Elev, Room/Area): AB, 731.00 ft, ALL

Manufacturer/Model: _____

Instructions for Completing Checklist

This checklist may be used to document the results of the Seismic Walkdown of an item of equipment on the SWEL. The space below each of the following questions may be used to record the results of judgments and findings. Additional space is provided at the end of this checklist for documenting other comments.

Anchorage

1. Is anchorage configuration verification required (i.e., is the item one of the 50% of SWEL items requiring such verification)? Yes

2. Is the anchorage free of bent, broken, missing or loose hardware? Yes

3. Is the anchorage free of corrosion that is more than mild surface oxidation? Yes

4. Is the anchorage free of visible cracks in the concrete near the anchors? Yes

5. Is the anchorage configuration consistent with plant documentation? (Note: This question only applies if the item is one of the 50% for which an anchorage configuration verification is required.) Yes
Anchorage verified per drawing 1E-2-3444, Sheet 1, Rev. B and 1E-2-3434, Sheet 2, Rev. X.

6. Based on the above anchorage evaluations, is the anchorage free of potentially adverse seismic conditions? Yes

Status: Y N U

Seismic Walkdown Checklist (SWC)

Equipment ID No.: 2AP81E

Equipment Class: (1) Motor Control Centers

Equipment Description: DIV II 480V MCC 236X-3

Interaction Effects

7. Are soft targets free from impact by nearby equipment or structures? Yes

Gap between adjacent MCCs 80E & 81E is approximately 1/8" to 1/2". MCC's are stiff in the longitudinal direction. Therefore, significant displacement in the longitudinal direction is judged to not be credible, and gap is judged to be acceptable.

8. Are overhead equipment, distribution systems, ceiling tiles and lighting, and masonry block walls not likely to collapse onto the equipment? Yes

Overhead light fixtures judged to be acceptable.

Adjacent masonry wall is safety-related per drawing A-187, Rev. AR.

9. Do attached lines have adequate flexibility to avoid damage? Yes


10. Based on the above seismic interaction evaluations, is equipment free of potentially adverse seismic interaction effects? Yes

Other Adverse Conditions

11. Have you looked for and found no adverse seismic conditions that could adversely affect the safety functions of the equipment? Yes

Comments

Seismic Walkdown Team: D. Carter & J. Griffith - 8/27/2012

Evaluated by:  David Carter

Date: 10/17/2012

 James D. Griffith

10/17/2012

Status: Y N U

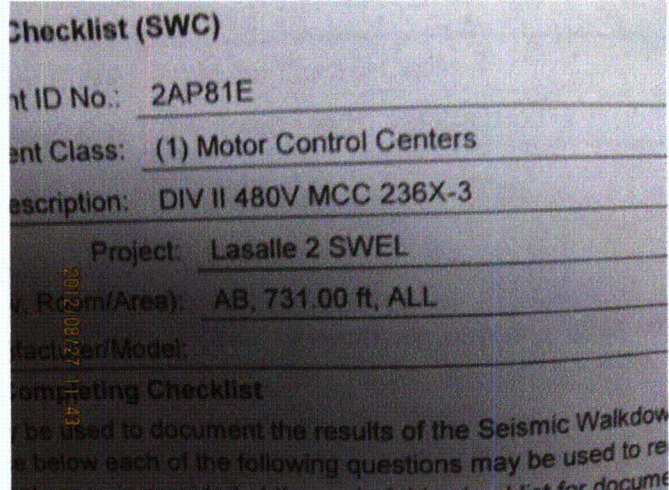
Seismic Walkdown Checklist (SWC)

Equipment ID No.: 2AP81E

Equipment Class: (1) Motor Control Centers

Equipment Description: DIV II 480V MCC 236X-3

Photos



LaSalle Unit 2 056 (1)



LaSalle Unit 2 056 (2)



LaSalle Unit 2 056 (3)



LaSalle Unit 2 056 (4)

Status: Y N U

Seismic Walkdown Checklist (SWC)

Equipment ID No.: 2AP81E

Equipment Class: (1) Motor Control Centers

Equipment Description: DIV II 480V MCC 236X-3



LaSalle Unit 2 056 (5)



LaSalle Unit 2 056 (6)

Status: Y N U

Seismic Walkdown Checklist (SWC)

Equipment ID No.: 2C11-D001002

Equipment Class: (0) Other

Equipment Description: CONTROL UNIT CRD HYDRAULIC 22-59

Project: LaSalle 2 SWEL

Location (Bldg, Elev,

Room/Area): RB, 761.00 ft, ALL

Manufacturer/Model:

Instructions for Completing Checklist

This checklist may be used to document the results of the Seismic Walkdown of an item of equipment on the SWEL. The space below each of the following questions may be used to record the results of judgments and findings. Additional space is provided at the end of this checklist for documenting other comments.

Anchorage

1. Is anchorage configuration verification required (i.e., is the item one of the 50% of SWEL items requiring such verification)? Yes

2. Is the anchorage free of bent, broken, missing or loose hardware? Yes

3. Is the anchorage free of corrosion that is more than mild surface oxidation? Yes

4. Is the anchorage free of visible cracks in the concrete near the anchors? Yes

5. Is the anchorage configuration consistent with plant documentation? (Note: This question only applies if the item is one of the 50% for which an anchorage configuration verification is required.) Yes
Anchorage shown on drawings M-1563, Rev. F and M-1590, Sheet 4, Rev. N.

6. Based on the above anchorage evaluations, is the anchorage free of potentially adverse seismic conditions? Yes
Scram valves and accumulator well-supported on HCU framework.

Status: Y N U

Seismic Walkdown Checklist (SWC)

Equipment ID No.: 2C11-D001002

Equipment Class: (0) Other

Equipment Description: CONTROL UNIT CRD HYDRAULIC 22-59

Interaction Effects

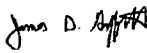
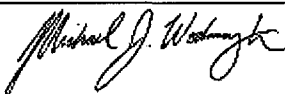
7. Are soft targets free from impact by nearby equipment or structures? Yes
8. Are overhead equipment, distribution systems, ceiling tiles and lighting, and masonry block walls not likely to collapse onto the equipment? Yes
Each fixture support point has 2 chains installed at an angle. Chains are taut; therefore, fixtures cannot swing and fall from S-hooks. Judged to be acceptable. See IR 1406922.
9. Do attached lines have adequate flexibility to avoid damage? Yes
10. Based on the above seismic interaction evaluations, is equipment free of potentially adverse seismic interaction effects? Yes

Other Adverse Conditions

11. Have you looked for and found no adverse seismic conditions that could adversely affect the safety functions of the equipment? Yes

Comments

Seismic Walkdown Team: J. Griffith & M. Wodarczyk - 9/10/2012

Evaluated by:  James Griffith Date: 10/19/2012
 Michael Wodarczyk 10/19/2012

Status: Y N U

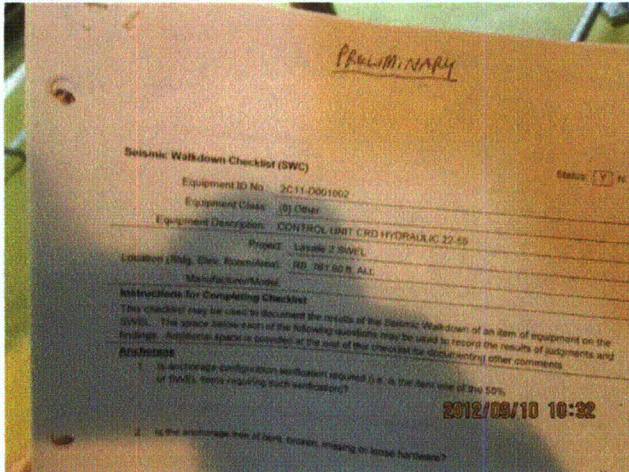
Seismic Walkdown Checklist (SWC)

Equipment ID No.: 2C11-D001002

Equipment Class: (0) Other

Equipment Description: CONTROL UNIT CRD HYDRAULIC 22-59

Photos



20120910-Lasalle 117



20120910-Lasalle 118



20120910-Lasalle 119



20120910-Lasalle 120

Status: Y N U

Seismic Walkdown Checklist (SWC)

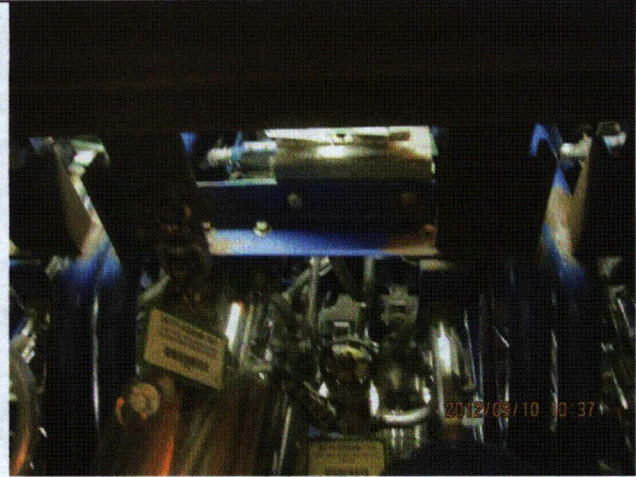
Equipment ID No.: 2C11-D001002

Equipment Class: (0) Other

Equipment Description: CONTROL UNIT CRD HYDRAULIC 22-59



20120910-Lasalle 121



20120910-Lasalle 122



20120910-Lasalle 123



20120910-Lasalle 124

Status: Y N U

Seismic Walkdown Checklist (SWC)

Equipment ID No.: 2C11-D001002

Equipment Class: (0) Other

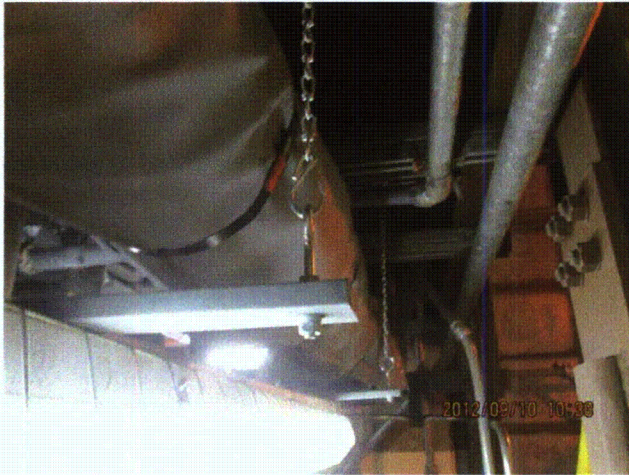
Equipment Description: CONTROL UNIT CRD HYDRAULIC 22-59



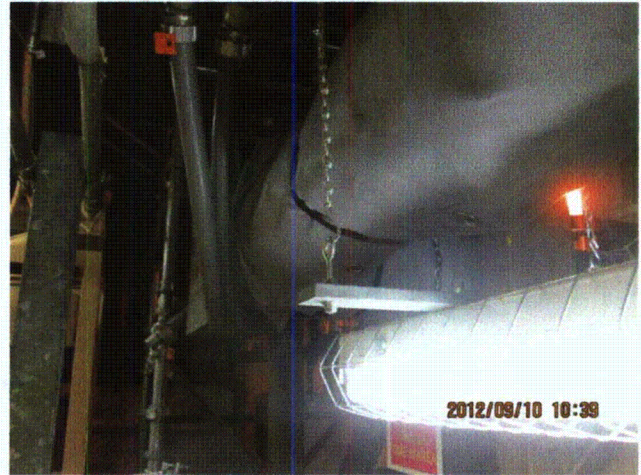
20120910-Lasalle 125



20120910-Lasalle 126



20120910-Lasalle 127



20120910-Lasalle 128

Status: Y N U

Seismic Walkdown Checklist (SWC)

Equipment ID No.: 2C11-D001090

Equipment Class: (0) Other

Equipment Description: CONTROL UNIT CRD HYDRAULIC 26-03

Project: LaSalle 2 SWEL

Location (Bldg, Elev,

Room/Area): RB, 761.00 ft, ALL

Manufacturer/Model:

Instructions for Completing Checklist

This checklist may be used to document the results of the Seismic Walkdown of an item of equipment on the SWEL. The space below each of the following questions may be used to record the results of judgments and findings. Additional space is provided at the end of this checklist for documenting other comments.

Anchorage

1. Is anchorage configuration verification required (i.e., is the item one of the 50% of SWEL items requiring such verification)? Yes

2. Is the anchorage free of bent, broken, missing or loose hardware? Yes

3. Is the anchorage free of corrosion that is more than mild surface oxidation? Yes

4. Is the anchorage free of visible cracks in the concrete near the anchors? Yes

5. Is the anchorage configuration consistent with plant documentation? (Note: This question only applies if the item is one of the 50% for which an anchorage configuration verification is required.) Yes
Anchorage verified per drawings M-1563, Rev. F and M-1590, Sheet 4, Rev. N.

6. Based on the above anchorage evaluations, is the anchorage free of potentially adverse seismic conditions? Yes
Scram valves and accumulator well-supported on HCU framework.

Status: Y N U

Seismic Walkdown Checklist (SWC)

Equipment ID No.: 2C11-D001090

Equipment Class: (0) Other

Equipment Description: CONTROL UNIT CRD HYDRAULIC 26-03

Interaction Effects

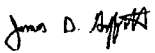
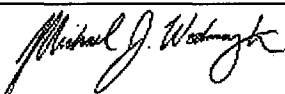
7. Are soft targets free from impact by nearby equipment or structures? Yes
8. Are overhead equipment, distribution systems, ceiling tiles and lighting, and masonry block walls not likely to collapse onto the equipment? Yes
Each fixture support point has 2 chains installed at an angle. Chains are taut; therefore, fixtures cannot swing and fall from S-hooks. Judged to be acceptable. See IR 1406922.
9. Do attached lines have adequate flexibility to avoid damage? Yes
10. Based on the above seismic interaction evaluations, is equipment free of potentially adverse seismic interaction effects? Yes

Other Adverse Conditions

11. Have you looked for and found no adverse seismic conditions that could adversely affect the safety functions of the equipment? Yes

Comments

Seismic Walkdown Team: J. Griffith & M. Wodarczyk - 9/10/2012

Evaluated by:  James Griffith Date: 10/19/2012
 Michael Wodarczyk 10/19/2012

Status: Y N U

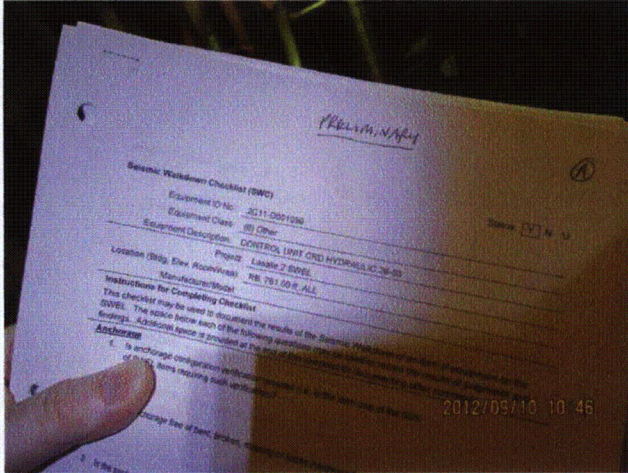
Seismic Walkdown Checklist (SWC)

Equipment ID No.: 2C11-D001090

Equipment Class: (0) Other

Equipment Description: CONTROL UNIT CRD HYDRAULIC 26-03

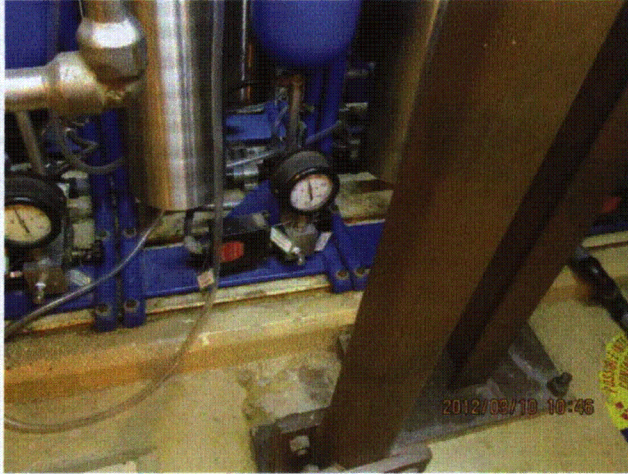
Photos



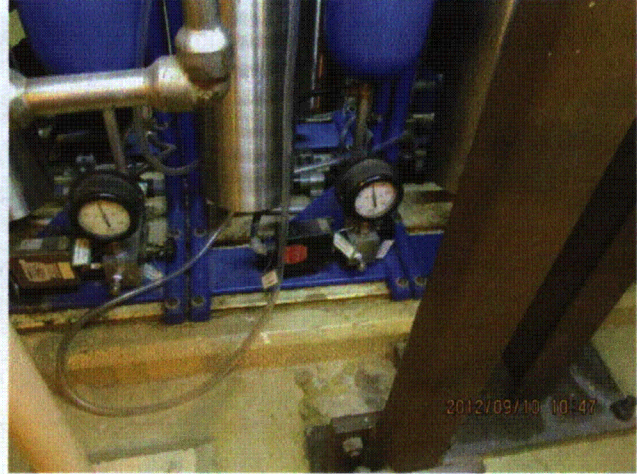
20120910-Lasalle 139



20120910-Lasalle 140



20120910-Lasalle 141



20120910-Lasalle 142

Status: Y N U

Seismic Walkdown Checklist (SWC)

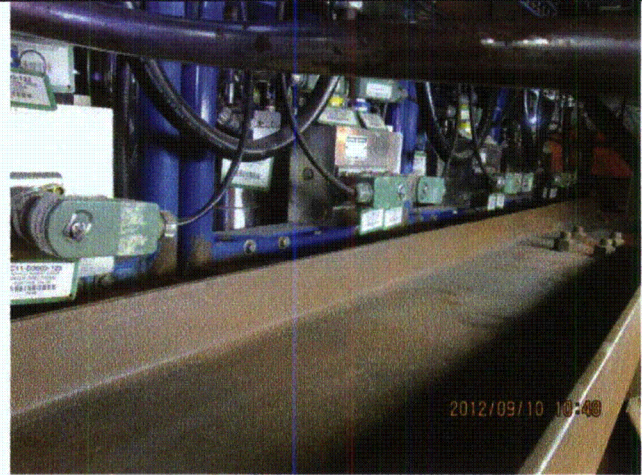
Equipment ID No.: 2C11-D001090

Equipment Class: (0) Other

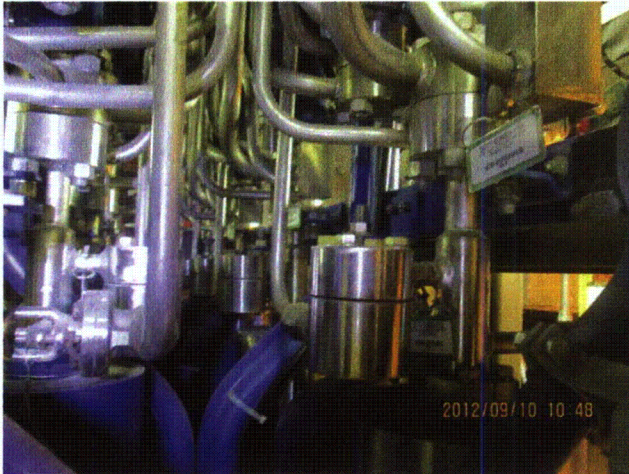
Equipment Description: CONTROL UNIT CRD HYDRAULIC 26-03



20120910-Lasalle 143



20120910-Lasalle 144



20120910-Lasalle 145

Status: Y N U

Seismic Walkdown Checklist (SWC)

Equipment ID No.: 2C11-D001095

Equipment Class: (0) Other

Equipment Description: CONTROL UNIT CRD HYDRAULIC 34-59

Project: LaSalle 2 SWEL

Location (Bldg, Elev,

Room/Area): RB, 761.00 ft, ALL

Manufacturer/Model:

Instructions for Completing Checklist

This checklist may be used to document the results of the Seismic Walkdown of an item of equipment on the SWEL. The space below each of the following questions may be used to record the results of judgments and findings. Additional space is provided at the end of this checklist for documenting other comments.

Anchorage

1. Is anchorage configuration verification required (i.e., is the item one of the 50% of SWEL items requiring such verification)? Yes

2. Is the anchorage free of bent, broken, missing or loose hardware? Yes

3. Is the anchorage free of corrosion that is more than mild surface oxidation? Yes

4. Is the anchorage free of visible cracks in the concrete near the anchors? Yes

5. Is the anchorage configuration consistent with plant documentation? (Note: This question only applies if the item is one of the 50% for which an anchorage configuration verification is required.) Yes
Anchorage verified per drawings M-1563, Rev. F and M-1590, Sheet 4, Rev. N.

6. Based on the above anchorage evaluations, is the anchorage free of potentially adverse seismic conditions? Yes
Scram valves and accumulator well-supported on HCU framework.

Status: Y N U

Seismic Walkdown Checklist (SWC)

Equipment ID No.: 2C11-D001095

Equipment Class: (0) Other

Equipment Description: CONTROL UNIT CRD HYDRAULIC 34-59

Interaction Effects

7. Are soft targets free from impact by nearby equipment or structures? Yes
8. Are overhead equipment, distribution systems, ceiling tiles and lighting, and masonry block walls not likely to collapse onto the equipment? Yes
Each fixture support point has 2 chains installed at an angle. Chains are taut; therefore, fixtures cannot swing and fall from S-hooks. Judged to be acceptable. See IR 1406922.
- One light fixture missing one chain support at north end. Flexible conduit feed supports the fixture. Judged to be acceptable. See IR 1411336.*
9. Do attached lines have adequate flexibility to avoid damage? Yes
10. Based on the above seismic interaction evaluations, is equipment free of potentially adverse seismic interaction effects? Yes

Other Adverse Conditions

11. Have you looked for and found no adverse seismic conditions that could adversely affect the safety functions of the equipment? Yes


Comments

Seismic Walkdown Team: J. Griffith & M. Wodarczyk - 9/10/2012

Evaluated by:

 James Griffith

Date: 10/19/2012


Michael Wodarczyk

10/19/2012

Status: Y N U

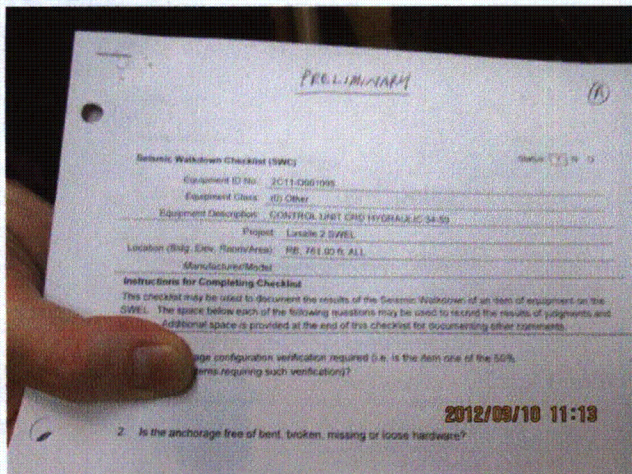
Seismic Walkdown Checklist (SWC)

Equipment ID No.: 2C11-D001095

Equipment Class: (0) Other

Equipment Description: CONTROL UNIT CRD HYDRAULIC 34-59

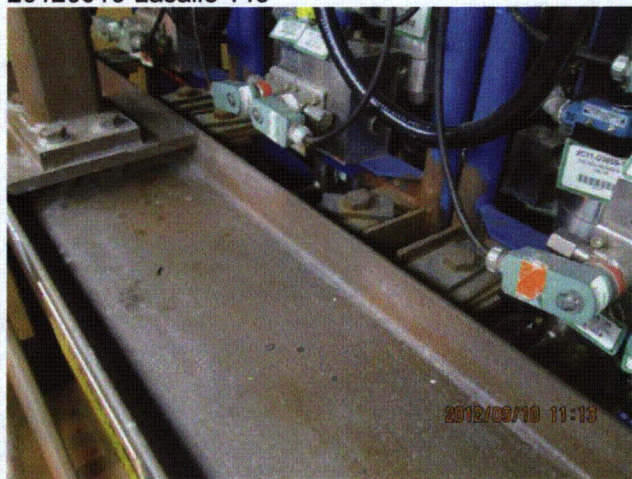
Photos



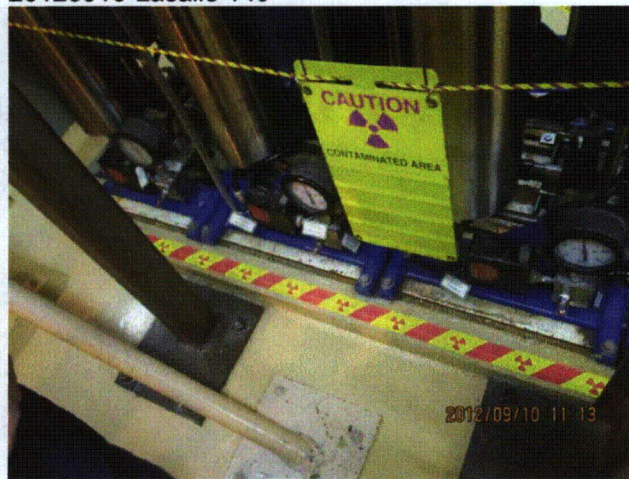
20120910-Lasalle 148



20120910-Lasalle 149



20120910-Lasalle 150



20120910-Lasalle 151

Status: Y N U

Seismic Walkdown Checklist (SWC)

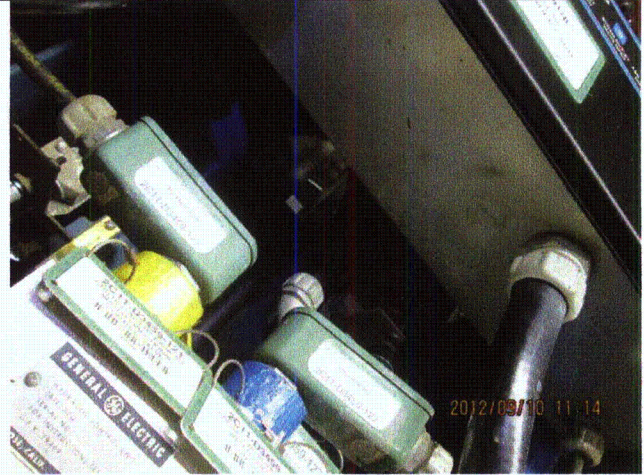
Equipment ID No.: 2C11-D001095

Equipment Class: (0) Other

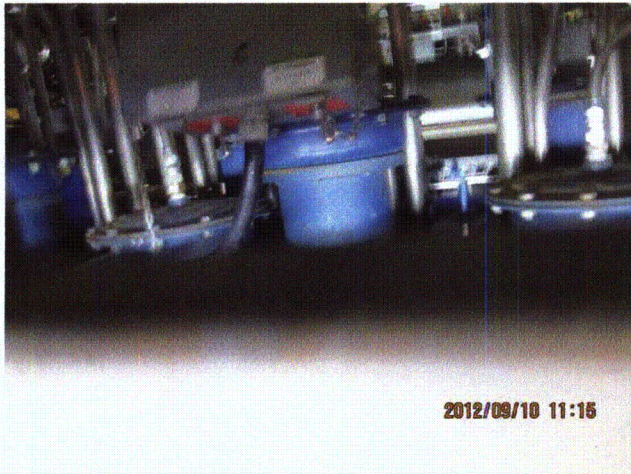
Equipment Description: CONTROL UNIT CRD HYDRAULIC 34-59



20120910-Lasalle 152



20120910-Lasalle 153



20120910-Lasalle 154



20120910-Lasalle 155

Status: Y N U

Seismic Walkdown Checklist (SWC)

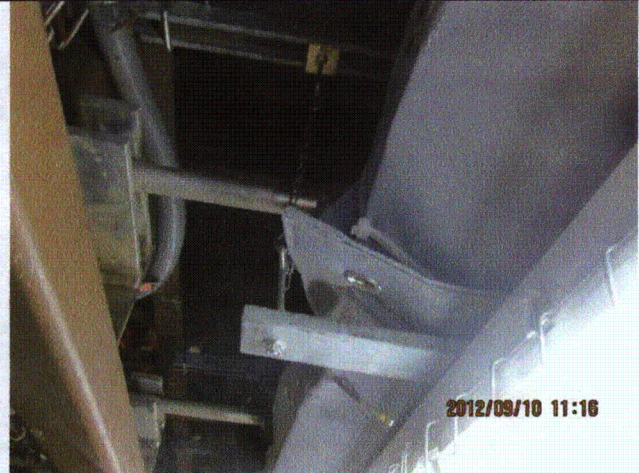
Equipment ID No.: 2C11-D001095

Equipment Class: (0) Other

Equipment Description: CONTROL UNIT CRD HYDRAULIC 34-59



20120910-Lasalle 156



20120910-Lasalle 157



20120910-Lasalle 158

Status: Y N U

Seismic Walkdown Checklist (SWC)

Equipment ID No.: 2C11-D001184

Equipment Class: (0) Other

Equipment Description: CONTROL UNIT CRD HYDRAULIC 38-07

Project: LaSalle 2 SWEL

Location (Bldg, Elev,

Room/Area): RB, 761.00 ft, ALL

Manufacturer/Model:

Instructions for Completing Checklist

This checklist may be used to document the results of the Seismic Walkdown of an item of equipment on the SWEL. The space below each of the following questions may be used to record the results of judgments and findings. Additional space is provided at the end of this checklist for documenting other comments.

Anchorage

1. Is anchorage configuration verification required (i.e., is the item one of the 50% of SWEL items requiring such verification)? Yes

2. Is the anchorage free of bent, broken, missing or loose hardware? Yes

3. Is the anchorage free of corrosion that is more than mild surface oxidation? Yes

4. Is the anchorage free of visible cracks in the concrete near the anchors? Yes

5. Is the anchorage configuration consistent with plant documentation? (Note: This question only applies if the item is one of the 50% for which an anchorage configuration verification is required.) Yes
Anchorage verified per drawings M-1563, Rev. F and M-1590, Sheet 4, Rev. N.

6. Based on the above anchorage evaluations, is the anchorage free of potentially adverse seismic conditions? Yes
Scram valves and accumulator well-supported on HCU framework.

Status: Y N U

Seismic Walkdown Checklist (SWC)

Equipment ID No.: 2C11-D001184

Equipment Class: (0) Other

Equipment Description: CONTROL UNIT CRD HYDRAULIC 38-07

Interaction Effects

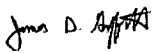
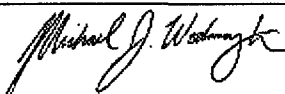
7. Are soft targets free from impact by nearby equipment or structures? Yes
8. Are overhead equipment, distribution systems, ceiling tiles and lighting, and masonry block walls not likely to collapse onto the equipment? Yes
Each fixture support point has 2 chains installed at an angle. Chains are taut; therefore, fixtures cannot swing and fall from S-hooks. Judged to be acceptable. See IR 1406922.
9. Do attached lines have adequate flexibility to avoid damage? Yes
10. Based on the above seismic interaction evaluations, is equipment free of potentially adverse seismic interaction effects? Yes

Other Adverse Conditions

11. Have you looked for and found no adverse seismic conditions that could adversely affect the safety functions of the equipment? Yes

Comments

Seismic Walkdown Team: J. Griffith & M. Wodarczyk - 9/10/2012

Evaluated by:  James Griffith Date: 10/19/2012
 Michael Wodarczyk 10/19/2012

Status: Y N U

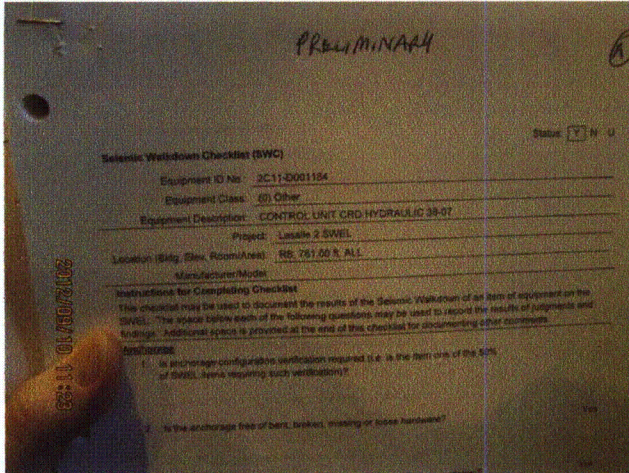
Seismic Walkdown Checklist (SWC)

Equipment ID No.: 2C11-D001184

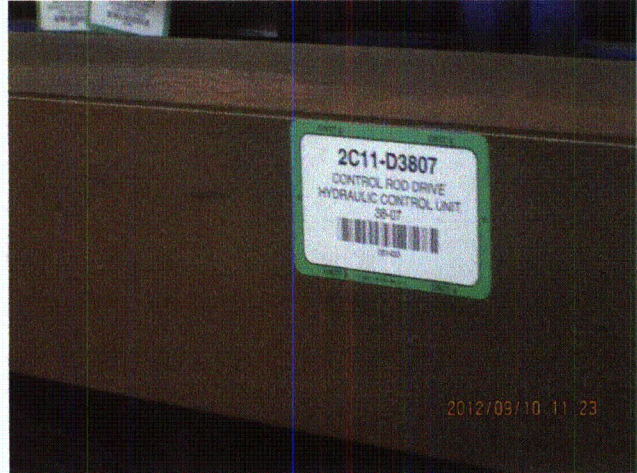
Equipment Class: (0) Other

Equipment Description: CONTROL UNIT CRD HYDRAULIC 38-07

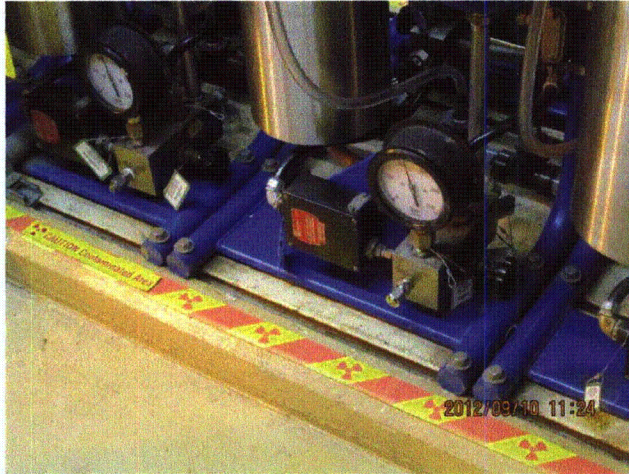
Photos



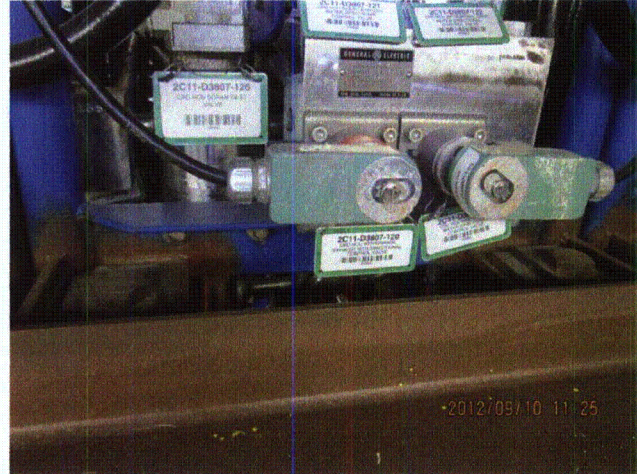
20120910-Lasalle 166



20120910-Lasalle 167



20120910-Lasalle 168



20120910-Lasalle 169

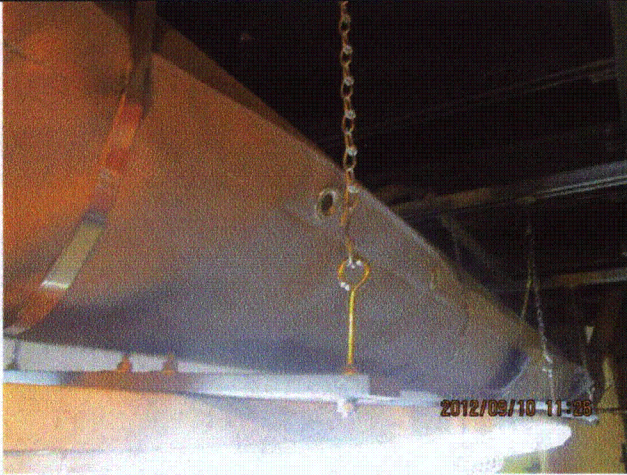
Status: Y N U

Seismic Walkdown Checklist (SWC)

Equipment ID No.: 2C11-D001184

Equipment Class: (0) Other

Equipment Description: CONTROL UNIT CRD HYDRAULIC 38-07



20120910-Lasalle 170



20120910-Lasalle 171



20120910-Lasalle 172

Status: Y N U

Seismic Walkdown Checklist (SWC)

Equipment ID No.: 2C11-D2259-125

Equipment Class: (21) Tanks and Heat Exchangers

Equipment Description: CRD HCU SCRAM WATER ACCUMULATOR

Project: LaSalle 2 SWEL

Location (Bldg, Elev,

Room/Area): RB, 761.00 ft, ALL

Manufacturer/Model:

Instructions for Completing Checklist

This checklist may be used to document the results of the Seismic Walkdown of an item of equipment on the SWEL. The space below each of the following questions may be used to record the results of judgments and findings. Additional space is provided at the end of this checklist for documenting other comments.

Anchorage

1. Is anchorage configuration verification required (i.e., is the item one of the 50% of SWEL items requiring such verification)? No

2. Is the anchorage free of bent, broken, missing or loose hardware? Not Applicable

3. Is the anchorage free of corrosion that is more than mild surface oxidation? Not Applicable

4. Is the anchorage free of visible cracks in the concrete near the anchors? Not Applicable

5. Is the anchorage configuration consistent with plant documentation? (Note: This question only applies if the item is one of the 50% for which an anchorage configuration verification is required.) Not Applicable

6. Based on the above anchorage evaluations, is the anchorage free of potentially adverse seismic conditions? Yes
The scram water accumulator is an in-line component that is adequately restrained to the CRD/HCU support frame.

Status: Y N U

Seismic Walkdown Checklist (SWC)

Equipment ID No.: 2C11-D2259-125

Equipment Class: (21) Tanks and Heat Exchangers

Equipment Description: CRD HCU SCRAM WATER ACCUMULATOR

Interaction Effects

7. Are soft targets free from impact by nearby equipment or structures? Yes
8. Are overhead equipment, distribution systems, ceiling tiles and lighting, and masonry block walls not likely to collapse onto the equipment? Yes
Each fixture support point has 2 chains installed at an angle. Chains are taut; therefore, fixtures cannot swing and fall from S-hooks. Judged to be acceptable. See IR 1406922.
9. Do attached lines have adequate flexibility to avoid damage? Yes
10. Based on the above seismic interaction evaluations, is equipment free of potentially adverse seismic interaction effects? Yes

Other Adverse Conditions

11. Have you looked for and found no adverse seismic conditions that could adversely affect the safety functions of the equipment? Yes

Comments

Seismic Walkdown Team: J. Griffith & M. Wodarczyk - 9/10/2012

For photographs, see SWC for 2C11-D001002.

Evaluated by:

 James Griffith

Date: 10/19/2012



Michael Wodarczyk

10/19/2012

Photos

Status: Y N U

Seismic Walkdown Checklist (SWC)

Equipment ID No.: 2C11-D2259-126

Equipment Class: (7) Fluid-Operated Valves

Equipment Description: CRD HCU SCRAM INLET VALVE

Project: LaSalle 2 SWEL

Location (Bldg, Elev,

Room/Area): RB, 761.00 ft, ALL

Manufacturer/Model:

Instructions for Completing Checklist

This checklist may be used to document the results of the Seismic Walkdown of an item of equipment on the SWEL. The space below each of the following questions may be used to record the results of judgments and findings. Additional space is provided at the end of this checklist for documenting other comments.

Anchorage

1. Is anchorage configuration verification required (i.e., is the item one of the 50% of SWEL items requiring such verification)? No

2. Is the anchorage free of bent, broken, missing or loose hardware? Not Applicable

3. Is the anchorage free of corrosion that is more than mild surface oxidation? Not Applicable

4. Is the anchorage free of visible cracks in the concrete near the anchors? Not Applicable

5. Is the anchorage configuration consistent with plant documentation? (Note: This question only applies if the item is one of the 50% for which an anchorage configuration verification is required.) Not Applicable

6. Based on the above anchorage evaluations, is the anchorage free of potentially adverse seismic conditions? Yes
The scram inlet valve is an in-line component with the operator adequately restrained to the CRD/HCU support frame.

Status: Y N U

Seismic Walkdown Checklist (SWC)

Equipment ID No.: 2C11-D2259-126

Equipment Class: (7) Fluid-Operated Valves

Equipment Description: CRD HCU SCRAM INLET VALVE

Interaction Effects

7. Are soft targets free from impact by nearby equipment or structures? Yes
8. Are overhead equipment, distribution systems, ceiling tiles and lighting, and masonry block walls not likely to collapse onto the equipment? Yes
Each fixture support point has 2 chains installed at an angle. Chains are taut; therefore, fixtures cannot swing and fall from S-hooks. Judged to be acceptable. See IR 1406922.
9. Do attached lines have adequate flexibility to avoid damage? Yes
10. Based on the above seismic interaction evaluations, is equipment free of potentially adverse seismic interaction effects? Yes

Other Adverse Conditions

11. Have you looked for and found no adverse seismic conditions that could adversely affect the safety functions of the equipment? Yes

Comments

Seismic Walkdown Team: J. Griffith & M. Wodarczyk - 9/10/2012

For photographs, see SWC for 2C11-D001002.

Evaluated by:  James Griffith Date: 10/19/2012

 Michael Wodarczyk 10/19/2012

Photos

Status: Y N U

Seismic Walkdown Checklist (SWC)

Equipment ID No.: 2C11-D2259-127

Equipment Class: (7) Fluid-Operated Valves

Equipment Description: CRD HCU SCRAM OUTLET VALVE

Project: LaSalle 2 SWEL

Location (Bldg, Elev,

Room/Area): RB, 761.00 ft, ALL

Manufacturer/Model:

Instructions for Completing Checklist

This checklist may be used to document the results of the Seismic Walkdown of an item of equipment on the SWEL. The space below each of the following questions may be used to record the results of judgments and findings. Additional space is provided at the end of this checklist for documenting other comments.

Anchorage

1. Is anchorage configuration verification required (i.e., is the item one of the 50% of SWEL items requiring such verification)? No

2. Is the anchorage free of bent, broken, missing or loose hardware? Not Applicable

3. Is the anchorage free of corrosion that is more than mild surface oxidation? Not Applicable

4. Is the anchorage free of visible cracks in the concrete near the anchors? Not Applicable

5. Is the anchorage configuration consistent with plant documentation? (Note: This question only applies if the item is one of the 50% for which an anchorage configuration verification is required.) Not Applicable

6. Based on the above anchorage evaluations, is the anchorage free of potentially adverse seismic conditions? Yes
The scram outlet valve is an in-line component with the operator adequately restrained to the CRD/HCU support frame.

Status: Y N U

Seismic Walkdown Checklist (SWC)

Equipment ID No.: 2C11-D2259-127

Equipment Class: (7) Fluid-Operated Valves

Equipment Description: CRD HCU SCRAM OUTLET VALVE

Interaction Effects

7. Are soft targets free from impact by nearby equipment or structures? Yes
8. Are overhead equipment, distribution systems, ceiling tiles and lighting, and masonry block walls not likely to collapse onto the equipment? Yes
Each fixture support point has 2 chains installed at an angle. Chains are taut; therefore, fixtures cannot swing and fall from S-hooks. Judged to be acceptable. See IR 1406922.
9. Do attached lines have adequate flexibility to avoid damage? Yes
10. Based on the above seismic interaction evaluations, is equipment free of potentially adverse seismic interaction effects? Yes

Other Adverse Conditions

11. Have you looked for and found no adverse seismic conditions that could adversely affect the safety functions of the equipment? Yes

Comments

Seismic Walkdown Team: J. Griffith & M. Wodarczyk - 9/10/2012

For photographs, see SWC for 2C11-D001002.

Evaluated by:

 James Griffith

Date: 10/19/2012



Michael Wodarczyk

10/19/2012

Photos

Status: Y N U

Seismic Walkdown Checklist (SWC)

Equipment ID No.: 2C11-D2603-125

Equipment Class: (21) Tanks and Heat Exchangers

Equipment Description: CRD HCU SCRAM WATER ACCUMULATOR

Project: LaSalle 2 SWEL

Location (Bldg, Elev,

Room/Area): RB, 761.00 ft, ALL

Manufacturer/Model:

Instructions for Completing Checklist

This checklist may be used to document the results of the Seismic Walkdown of an item of equipment on the SWEL. The space below each of the following questions may be used to record the results of judgments and findings. Additional space is provided at the end of this checklist for documenting other comments.

Anchorage

1. Is anchorage configuration verification required (i.e., is the item one of the 50% of SWEL items requiring such verification)? No

2. Is the anchorage free of bent, broken, missing or loose hardware? Not Applicable

3. Is the anchorage free of corrosion that is more than mild surface oxidation? Not Applicable

4. Is the anchorage free of visible cracks in the concrete near the anchors? Not Applicable

5. Is the anchorage configuration consistent with plant documentation? (Note: This question only applies if the item is one of the 50% for which an anchorage configuration verification is required.) Not Applicable

6. Based on the above anchorage evaluations, is the anchorage free of potentially adverse seismic conditions? Yes
The scram water accumulator is an in-line component that is adequately restrained to the CRD/HCU support frame.

Status: Y N U

Seismic Walkdown Checklist (SWC)

Equipment ID No.: 2C11-D2603-125

Equipment Class: (21) Tanks and Heat Exchangers

Equipment Description: CRD HCU SCRAM WATER ACCUMULATOR

Interaction Effects

7. Are soft targets free from impact by nearby equipment or structures? Yes
8. Are overhead equipment, distribution systems, ceiling tiles and lighting, and masonry block walls not likely to collapse onto the equipment? Yes
Each fixture support point has 2 chains installed at an angle. Chains are taut; therefore, fixtures cannot swing and fall from S-hooks. Judged to be acceptable. See IR 1406922.
9. Do attached lines have adequate flexibility to avoid damage? Yes
10. Based on the above seismic interaction evaluations, is equipment free of potentially adverse seismic interaction effects? Yes

Other Adverse Conditions

11. Have you looked for and found no adverse seismic conditions that could adversely affect the safety functions of the equipment? Yes

Comments

Seismic Walkdown Team: J. Griffith & M. Wodarczyk - 9/10/2012

For photographs, see SWC for 2C11-D001090.

Evaluated by:

 James Griffith

Date: 10/19/2012


Michael Wodarczyk

10/19/2012

Photos

Status: Y N U

Seismic Walkdown Checklist (SWC)

Equipment ID No.: 2C11-D2603-126

Equipment Class: (7) Fluid-Operated Valves

Equipment Description: CRD HCU SCRAM INLET VALVE

Project: LaSalle 2 SWEL

Location (Bldg, Elev,

Room/Area): RB, 761.00 ft, ALL

Manufacturer/Model:

Instructions for Completing Checklist

This checklist may be used to document the results of the Seismic Walkdown of an item of equipment on the SWEL. The space below each of the following questions may be used to record the results of judgments and findings. Additional space is provided at the end of this checklist for documenting other comments.

Anchorage

1. Is anchorage configuration verification required (i.e., is the item one of the 50% of SWEL items requiring such verification)? No

2. Is the anchorage free of bent, broken, missing or loose hardware? Not Applicable

3. Is the anchorage free of corrosion that is more than mild surface oxidation? Not Applicable

4. Is the anchorage free of visible cracks in the concrete near the anchors? Not Applicable

5. Is the anchorage configuration consistent with plant documentation? (Note: This question only applies if the item is one of the 50% for which an anchorage configuration verification is required.) Not Applicable

6. Based on the above anchorage evaluations, is the anchorage free of potentially adverse seismic conditions? Yes
The scram inlet valve is an in-line component with the operator adequately restrained to the CRD/HCU support frame.

Status: Y N U

Seismic Walkdown Checklist (SWC)

Equipment ID No.: 2C11-D2603-126

Equipment Class: (7) Fluid-Operated Valves

Equipment Description: CRD HCU SCRAM INLET VALVE

Interaction Effects

7. Are soft targets free from impact by nearby equipment or structures? Yes
8. Are overhead equipment, distribution systems, ceiling tiles and lighting, and masonry block walls not likely to collapse onto the equipment? Yes
Each fixture support point has 2 chains installed at an angle. Chains are taut; therefore, fixtures cannot swing and fall from S-hooks. Judged to be acceptable. See IR 1406922.
9. Do attached lines have adequate flexibility to avoid damage? Yes
10. Based on the above seismic interaction evaluations, is equipment free of potentially adverse seismic interaction effects? Yes

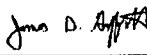
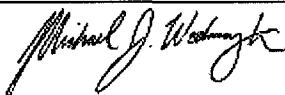
Other Adverse Conditions

11. Have you looked for and found no adverse seismic conditions that could adversely affect the safety functions of the equipment? Yes

Comments

Seismic Walkdown Team: J. Griffith & M. Wodarczyk - 9/10/2012

For photographs, see SWC for 2C11-D001090.

Evaluated by:  James Griffith Date: 10/19/2012
 Michael Wodarczyk 10/19/2012

Photos

Status: Y N U

Seismic Walkdown Checklist (SWC)

Equipment ID No.: 2C11-D2603-127

Equipment Class: (7) Fluid-Operated Valves

Equipment Description: CRD HCU SCRAM OUTLET VALVE

Project: LaSalle 2 SWEL

Location (Bldg, Elev,

Room/Area): RB, 761.00 ft, ALL

Manufacturer/Model:

Instructions for Completing Checklist

This checklist may be used to document the results of the Seismic Walkdown of an item of equipment on the SWEL. The space below each of the following questions may be used to record the results of judgments and findings. Additional space is provided at the end of this checklist for documenting other comments.

Anchorage

1. Is anchorage configuration verification required (i.e., is the item one of the 50% of SWEL items requiring such verification)? No

2. Is the anchorage free of bent, broken, missing or loose hardware? Not Applicable

3. Is the anchorage free of corrosion that is more than mild surface oxidation? Not Applicable

4. Is the anchorage free of visible cracks in the concrete near the anchors? Not Applicable

5. Is the anchorage configuration consistent with plant documentation? (Note: This question only applies if the item is one of the 50% for which an anchorage configuration verification is required.) Not Applicable

6. Based on the above anchorage evaluations, is the anchorage free of potentially adverse seismic conditions? Yes
The scram outlet valve is an in-line component with the operator adequately restrained to the CRD/HCU support frame.

Status: Y N U

Seismic Walkdown Checklist (SWC)

Equipment ID No.: 2C11-D2603-127

Equipment Class: (7) Fluid-Operated Valves

Equipment Description: CRD HCU SCRAM OUTLET VALVE

Interaction Effects

7. Are soft targets free from impact by nearby equipment or structures? Yes
8. Are overhead equipment, distribution systems, ceiling tiles and lighting, and masonry block walls not likely to collapse onto the equipment? Yes
Each fixture support point has 2 chains installed at an angle. Chains are taut; therefore, fixtures cannot swing and fall from S-hooks. Judged to be acceptable. See IR 1406922.
9. Do attached lines have adequate flexibility to avoid damage? Yes
10. Based on the above seismic interaction evaluations, is equipment free of potentially adverse seismic interaction effects? Yes

Other Adverse Conditions

11. Have you looked for and found no adverse seismic conditions that could adversely affect the safety functions of the equipment? Yes

Comments


Seismic Walkdown Team: J. Griffith & M. Wodarczyk - 9/10/2012

For photographs, see SWC for 2C11-D001090.

Evaluated by:

 James Griffith

Date: 10/19/2012



Michael Wodarczyk

10/19/2012

Photos

Status: Y N U

Seismic Walkdown Checklist (SWC)

Equipment ID No.: 2C11-D3459-125

Equipment Class: (21) Tanks and Heat Exchangers

Equipment Description: CRD HCU SCRAM WATER ACCUMULATOR

Project: LaSalle 2 SWEL

Location (Bldg, Elev,

Room/Area): RB, 761.00 ft, ALL

Manufacturer/Model:

Instructions for Completing Checklist

This checklist may be used to document the results of the Seismic Walkdown of an item of equipment on the SWEL. The space below each of the following questions may be used to record the results of judgments and findings. Additional space is provided at the end of this checklist for documenting other comments.

Anchorage

1. Is anchorage configuration verification required (i.e., is the item one of the 50% of SWEL items requiring such verification)? No

2. Is the anchorage free of bent, broken, missing or loose hardware? Not Applicable

3. Is the anchorage free of corrosion that is more than mild surface oxidation? Not Applicable

4. Is the anchorage free of visible cracks in the concrete near the anchors? Not Applicable

5. Is the anchorage configuration consistent with plant documentation? (Note: This question only applies if the item is one of the 50% for which an anchorage configuration verification is required.) Not Applicable

6. Based on the above anchorage evaluations, is the anchorage free of potentially adverse seismic conditions? Yes
The scram water accumulator is an in-line component that is adequately restrained to the CRD/HCU support frame.

Status: Y N U

Seismic Walkdown Checklist (SWC)

Equipment ID No.: 2C11-D3459-125

Equipment Class: (21) Tanks and Heat Exchangers

Equipment Description: CRD HCU SCRAM WATER ACCUMULATOR

Interaction Effects

7. Are soft targets free from impact by nearby equipment or structures? Yes
8. Are overhead equipment, distribution systems, ceiling tiles and lighting, and masonry block walls not likely to collapse onto the equipment? Yes
Each fixture support point has 2 chains installed at an angle. Chains are taut; therefore, fixtures cannot swing and fall from S-hooks. Judged to be acceptable. See IR 1406922.
One light fixture missing one chain support at north end. Flexible conduit feed supports the fixture. Judged to be acceptable. See IR 1411336.
9. Do attached lines have adequate flexibility to avoid damage? Yes
10. Based on the above seismic interaction evaluations, is equipment free of potentially adverse seismic interaction effects? Yes

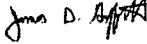

Other Adverse Conditions

11. Have you looked for and found no adverse seismic conditions that could adversely affect the safety functions of the equipment? Yes

Comments

Seismic Walkdown Team: J. Griffith & M. Wodarczyk - 9/10/2012

For photographs, see SWC for 2C11-D001095.

Evaluated by:  James Griffith Date: 10/19/2012
 Michael Wodarczyk 10/19/2012

Photos

Status: Y N U

Seismic Walkdown Checklist (SWC)

Equipment ID No.: 2C11-D3459-126

Equipment Class: (7) Fluid-Operated Valves

Equipment Description: CRD HCU SCRAM INLET VALVE

Project: Lasalle 2 SWEL

Location (Bldg, Elev,

Room/Area): RB, 761.00 ft, ALL

Manufacturer/Model:

Instructions for Completing Checklist

This checklist may be used to document the results of the Seismic Walkdown of an item of equipment on the SWEL. The space below each of the following questions may be used to record the results of judgments and findings. Additional space is provided at the end of this checklist for documenting other comments.

Anchorage

1. Is anchorage configuration verification required (i.e., is the item one of the 50% of SWEL items requiring such verification)? No

2. Is the anchorage free of bent, broken, missing or loose hardware? Not Applicable

3. Is the anchorage free of corrosion that is more than mild surface oxidation? Not Applicable

4. Is the anchorage free of visible cracks in the concrete near the anchors? Not Applicable

5. Is the anchorage configuration consistent with plant documentation? (Note: This question only applies if the item is one of the 50% for which an anchorage configuration verification is required.) Not Applicable

6. Based on the above anchorage evaluations, is the anchorage free of potentially adverse seismic conditions? Yes
The scram inlet valve is an in-line component with the operator adequately restrained to the CRD/HCU support frame.

Status: Y N U

Seismic Walkdown Checklist (SWC)

Equipment ID No.: 2C11-D3459-126

Equipment Class: (7) Fluid-Operated Valves

Equipment Description: CRD HCU SCRAM INLET VALVE

Interaction Effects

7. Are soft targets free from impact by nearby equipment or structures? Yes
8. Are overhead equipment, distribution systems, ceiling tiles and lighting, and masonry block walls not likely to collapse onto the equipment? Yes
Each fixture support point has 2 chains installed at an angle. Chains are taut; therefore, fixtures cannot swing and fall from S-hooks. Judged to be acceptable. See IR 1406922.
One light fixture missing one chain support at north end. Flexible conduit feed supports the fixture. Judged to be acceptable. See IR 1411336.
9. Do attached lines have adequate flexibility to avoid damage? Yes
10. Based on the above seismic interaction evaluations, is equipment free of potentially adverse seismic interaction effects? Yes

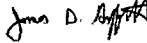
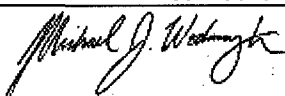
Other Adverse Conditions

11. Have you looked for and found no adverse seismic conditions that could adversely affect the safety functions of the equipment? Yes

Comments

Seismic Walkdown Team: J. Griffith & M. Wodarczyk - 9/10/2012

For photographs, see SWC for 2C11-D001095.

Evaluated by:  James Griffith Date: 10/19/2012
 Michael Wodarczyk 10/19/2012

Photos

Status: Y N U

Seismic Walkdown Checklist (SWC)

Equipment ID No.: 2C11-D3459-127

Equipment Class: (7) Fluid-Operated Valves

Equipment Description: CRD HCU SCRAM OUTLET VALVE

Project: Lasalle 2 SWEL

Location (Bldg, Elev,

Room/Area): RB, 761.00 ft, ALL

Manufacturer/Model:

Instructions for Completing Checklist

This checklist may be used to document the results of the Seismic Walkdown of an item of equipment on the SWEL. The space below each of the following questions may be used to record the results of judgments and findings. Additional space is provided at the end of this checklist for documenting other comments.

Anchorage

1. Is anchorage configuration verification required (i.e., is the item one of the 50% of SWEL items requiring such verification)? No

2. Is the anchorage free of bent, broken, missing or loose hardware? Not Applicable

3. Is the anchorage free of corrosion that is more than mild surface oxidation? Not Applicable

4. Is the anchorage free of visible cracks in the concrete near the anchors? Not Applicable

5. Is the anchorage configuration consistent with plant documentation? (Note: This question only applies if the item is one of the 50% for which an anchorage configuration verification is required.) Not Applicable

6. Based on the above anchorage evaluations, is the anchorage free of potentially adverse seismic conditions? Yes
The scram outlet valve is an in-line component with the operator adequately restrained to the CRD/HCU support frame.

Status: Y N U

Seismic Walkdown Checklist (SWC)

Equipment ID No.: 2C11-D3459-127

Equipment Class: (7) Fluid-Operated Valves

Equipment Description: CRD HCU SCRAM OUTLET VALVE

Interaction Effects

7. Are soft targets free from impact by nearby equipment or structures? Yes
8. Are overhead equipment, distribution systems, ceiling tiles and lighting, and masonry block walls not likely to collapse onto the equipment? Yes
Each fixture support point has 2 chains installed at an angle. Chains are taut; therefore, fixtures cannot swing and fall from S-hooks. Judged to be acceptable. See IR 1406922.
One light fixture missing one chain support at north end. Flexible conduit feed supports the fixture. Judged to be acceptable. See IR 1411336.
9. Do attached lines have adequate flexibility to avoid damage? Yes
10. Based on the above seismic interaction evaluations, is equipment free of potentially adverse seismic interaction effects? Yes

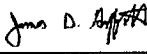
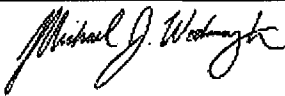
Other Adverse Conditions

11. Have you looked for and found no adverse seismic conditions that could adversely affect the safety functions of the equipment? Yes

Comments

Seismic Walkdown Team: J. Griffith & M. Wodarczyk - 9/10/2012

For photographs, see SWC for 2C11-D001095.

Evaluated by:  James Griffith Date: 10/19/2012
 Michael Wodarczyk 10/19/2012

Photos

Status: Y N U

Seismic Walkdown Checklist (SWC)

Equipment ID No.: 2C11-D3807-125

Equipment Class: (21) Tanks and Heat Exchangers

Equipment Description: CRD HCU SCRAM WATER ACCUMULATOR

Project: LaSalle 2 SWEL

Location (Bldg, Elev,

Room/Area): RB, 761.00 ft, ALL

Manufacturer/Model:

Instructions for Completing Checklist

This checklist may be used to document the results of the Seismic Walkdown of an item of equipment on the SWEL. The space below each of the following questions may be used to record the results of judgments and findings. Additional space is provided at the end of this checklist for documenting other comments.

Anchorage

1. Is anchorage configuration verification required (i.e., is the item one of the 50% of SWEL items requiring such verification)? No

2. Is the anchorage free of bent, broken, missing or loose hardware? Not Applicable

3. Is the anchorage free of corrosion that is more than mild surface oxidation? Not Applicable

4. Is the anchorage free of visible cracks in the concrete near the anchors? Not Applicable

5. Is the anchorage configuration consistent with plant documentation? (Note: This question only applies if the item is one of the 50% for which an anchorage configuration verification is required.) Not Applicable

6. Based on the above anchorage evaluations, is the anchorage free of potentially adverse seismic conditions? Yes
The scram water accumulator is an in-line component that is adequately restrained to the CRD/HCU support frame.

Status: Y N U

Seismic Walkdown Checklist (SWC)

Equipment ID No.: 2C11-D3807-125

Equipment Class: (21) Tanks and Heat Exchangers

Equipment Description: CRD HCU SCRAM WATER ACCUMULATOR

Interaction Effects

7. Are soft targets free from impact by nearby equipment or structures? Yes
8. Are overhead equipment, distribution systems, ceiling tiles and lighting, and masonry block walls not likely to collapse onto the equipment? Yes
Each fixture support point has 2 chains installed at an angle. Chains are taut; therefore, fixtures cannot swing and fall from S-hooks. Judged to be acceptable. See IR 1406922.
9. Do attached lines have adequate flexibility to avoid damage? Yes
10. Based on the above seismic interaction evaluations, is equipment free of potentially adverse seismic interaction effects? Yes

Other Adverse Conditions

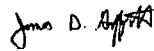
11. Have you looked for and found no adverse seismic conditions that could adversely affect the safety functions of the equipment? Yes

Comments

Seismic Walkdown Team: J. Griffith & M. Wodarczyk - 9/10/2012

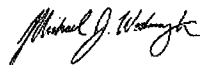
For photographs, see SWC for 2C11-D001184.

Evaluated by:



James Griffith

Date: 10/19/2012



Michael Wodarczyk

10/19/2012

Photos

Status: Y N U

Seismic Walkdown Checklist (SWC)

Equipment ID No.: 2C11-D3807-126

Equipment Class: (7) Fluid-Operated Valves

Equipment Description: CRD HCU SCRAM INLET VALVE

Project: LaSalle 2 SWEL

Location (Bldg, Elev,

Room/Area): RB, 761.00 ft, ALL

Manufacturer/Model:

Instructions for Completing Checklist

This checklist may be used to document the results of the Seismic Walkdown of an item of equipment on the SWEL. The space below each of the following questions may be used to record the results of judgments and findings. Additional space is provided at the end of this checklist for documenting other comments.

Anchorage

1. Is anchorage configuration verification required (i.e., is the item one of the 50% of SWEL items requiring such verification)? No

2. Is the anchorage free of bent, broken, missing or loose hardware? Not Applicable

3. Is the anchorage free of corrosion that is more than mild surface oxidation? Not Applicable

4. Is the anchorage free of visible cracks in the concrete near the anchors? Not Applicable

5. Is the anchorage configuration consistent with plant documentation? (Note: This question only applies if the item is one of the 50% for which an anchorage configuration verification is required.) Not Applicable

6. Based on the above anchorage evaluations, is the anchorage free of potentially adverse seismic conditions? Yes
The scram inlet valve is an in-line component with the operator adequately restrained to the CRD/HCU support frame.

Status: Y N U

Seismic Walkdown Checklist (SWC)

Equipment ID No.: 2C11-D3807-126

Equipment Class: (7) Fluid-Operated Valves

Equipment Description: CRD HCU SCRAM INLET VALVE

Interaction Effects

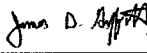

7. Are soft targets free from impact by nearby equipment or structures? Yes
8. Are overhead equipment, distribution systems, ceiling tiles and lighting, and masonry block walls not likely to collapse onto the equipment? Yes
Each fixture support point has 2 chains installed at an angle. Chains are taut; therefore, fixtures cannot swing and fall from S-hooks. Judged to be acceptable. See IR 1406922.
9. Do attached lines have adequate flexibility to avoid damage? Yes
10. Based on the above seismic interaction evaluations, is equipment free of potentially adverse seismic interaction effects? Yes

Other Adverse Conditions

11. Have you looked for and found no adverse seismic conditions that could adversely affect the safety functions of the equipment? Yes

Comments

Seismic Walkdown Team: J. Griffith & M. Wodarczyk - 9/10/2012
For photographs, see SWC for 2C11-D001184.

Evaluated by:  James Griffith Date: 10/19/2012
 Michael Wodarczyk 10/19/2012

Photos

Status: Y N U

Seismic Walkdown Checklist (SWC)

Equipment ID No.: 2C11-D3807-127

Equipment Class: (7) Fluid-Operated Valves

Equipment Description: CRD HCU SCRAM OUTLET VALVE

Project: LaSalle 2 SWEL

Location (Bldg, Elev,

Room/Area): RB, 761.00 ft, ALL

Manufacturer/Model:

Instructions for Completing Checklist

This checklist may be used to document the results of the Seismic Walkdown of an item of equipment on the SWEL. The space below each of the following questions may be used to record the results of judgments and findings. Additional space is provided at the end of this checklist for documenting other comments.

Anchorage

1. Is anchorage configuration verification required (i.e., is the item one of the 50% of SWEL items requiring such verification)? No

2. Is the anchorage free of bent, broken, missing or loose hardware? Not Applicable

3. Is the anchorage free of corrosion that is more than mild surface oxidation? Not Applicable

4. Is the anchorage free of visible cracks in the concrete near the anchors? Not Applicable

5. Is the anchorage configuration consistent with plant documentation? (Note: This question only applies if the item is one of the 50% for which an anchorage configuration verification is required.) Not Applicable

6. Based on the above anchorage evaluations, is the anchorage free of potentially adverse seismic conditions? Yes
The scram outlet valve is an in-line component with the operator adequately restrained to the CRD/HCU support frame.

Status: Y N U

Seismic Walkdown Checklist (SWC)

Equipment ID No.: 2C11-D3807-127

Equipment Class: (7) Fluid-Operated Valves

Equipment Description: CRD HCU SCRAM OUTLET VALVE

Interaction Effects

7. Are soft targets free from impact by nearby equipment or structures? Yes
8. Are overhead equipment, distribution systems, ceiling tiles and lighting, and masonry block walls not likely to collapse onto the equipment? Yes
Each fixture support point has 2 chains installed at an angle. Chains are taut; therefore, fixtures cannot swing and fall from S-hooks. Judged to be acceptable. See IR 1406922.
9. Do attached lines have adequate flexibility to avoid damage? Yes
10. Based on the above seismic interaction evaluations, is equipment free of potentially adverse seismic interaction effects? Yes

Other Adverse Conditions

11. Have you looked for and found no adverse seismic conditions that could adversely affect the safety functions of the equipment? Yes

Comments


Seismic Walkdown Team: J. Griffith & M. Wodarczyk - 9/10/2012

For photographs, see SWC for 2C11-D001184.

Evaluated by:

 James Griffith

Date: 10/19/2012



Michael Wodarczyk

10/19/2012

Photos

Status: Y N U

Seismic Walkdown Checklist (SWC)

Equipment ID No.: 2C41-A001

Equipment Class: (21) Tanks and Heat Exchangers

Equipment Description: TNK STBY LIQUID CONT SOLUTION

Project: Lasalle 2 SWEL

Location (Bldg, Elev,

Room/Area): RB, 820.00 ft, ALL

Manufacturer/Model:

Instructions for Completing Checklist

This checklist may be used to document the results of the Seismic Walkdown of an item of equipment on the SWEL. The space below each of the following questions may be used to record the results of judgments and findings. Additional space is provided at the end of this checklist for documenting other comments.

Anchorage

1. Is anchorage configuration verification required (i.e., is the item one of the 50% of SWEL items requiring such verification)? Yes

2. Is the anchorage free of bent, broken, missing or loose hardware? Yes

3. Is the anchorage free of corrosion that is more than mild surface oxidation? Yes

4. Is the anchorage free of visible cracks in the concrete near the anchors? Yes

5. Is the anchorage configuration consistent with plant documentation? (Note: This question only applies if the item is one of the 50% for which an anchorage configuration verification is required.) Yes
Anchorage verified per drawings M-1557, Rev. K and M-1590, Sheet 7, Rev. J.

6. Based on the above anchorage evaluations, is the anchorage free of potentially adverse seismic conditions? Yes

Status: Y N U

Seismic Walkdown Checklist (SWC)

Equipment ID No.: 2C41-A001

Equipment Class: (21) Tanks and Heat Exchangers

Equipment Description: TNK STBY LIQUID CONT SOLUTION

Interaction Effects

7. Are soft targets free from impact by nearby equipment or structures? Yes

Scaffold nearby adequately restrained to tank.

8. Are overhead equipment, distribution systems, ceiling tiles and lighting, and masonry block walls not likely to collapse onto the equipment? Yes

9. Do attached lines have adequate flexibility to avoid damage? Yes

10. Based on the above seismic interaction evaluations, is equipment free of potentially adverse seismic interaction effects? Yes

Duct is approximately 1/2" from Tank. Tank is rigid, Duct is rigidly supported, both are robust. Seismic energy insufficient to cause interaction.

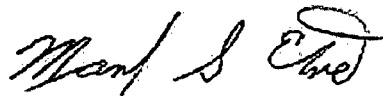
Other Adverse Conditions

11. Have you looked for and found no adverse seismic conditions that could adversely affect the safety functions of the equipment? Yes

Comments

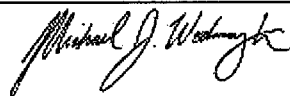
Seismic Walkdown Team: M. Etre & M. Wodarcyk - 9/17/2012

Evaluated by:



Mark Etre

Date: 10/19/2012



Michael Wodarcyk

10/19/2012

Status: Y N U

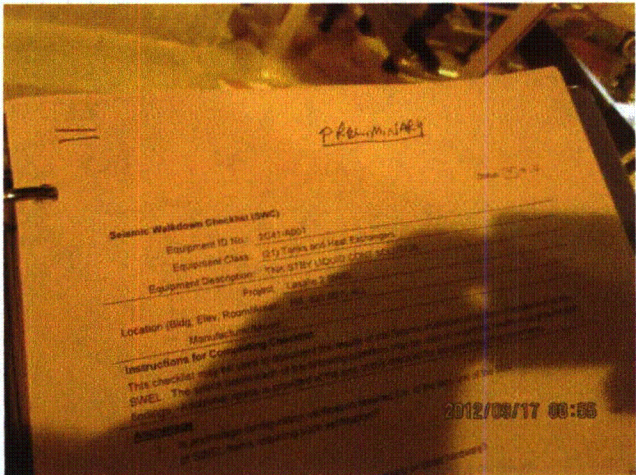
Seismic Walkdown Checklist (SWC)

Equipment ID No.: 2C41-A001

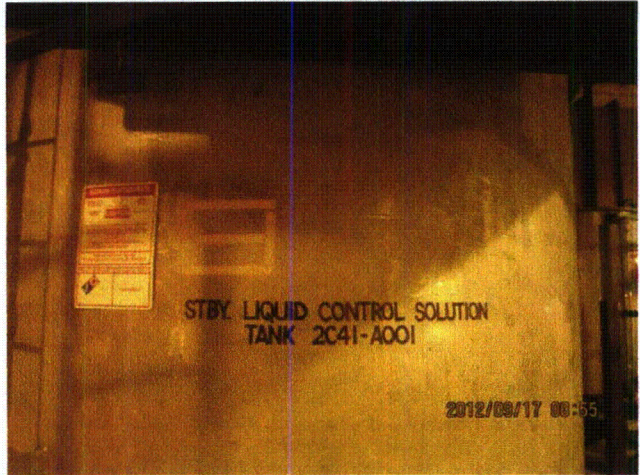
Equipment Class: (21) Tanks and Heat Exchangers

Equipment Description: TNK STBY LIQUID CONT SOLUTION

Photos



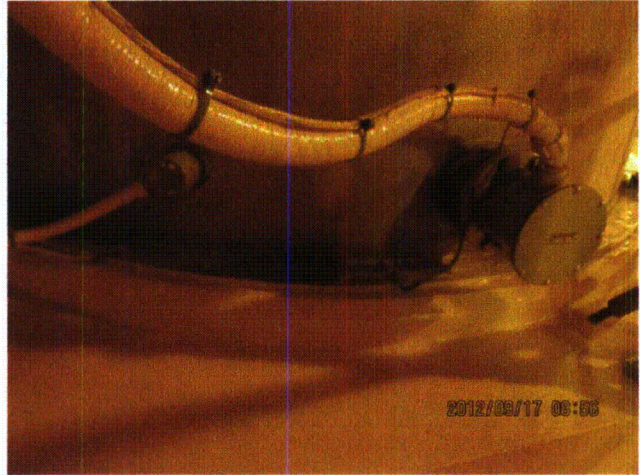
20120917-Lasalle 038



20120917-Lasalle 039



20120917-Lasalle 040



20120917-Lasalle 041

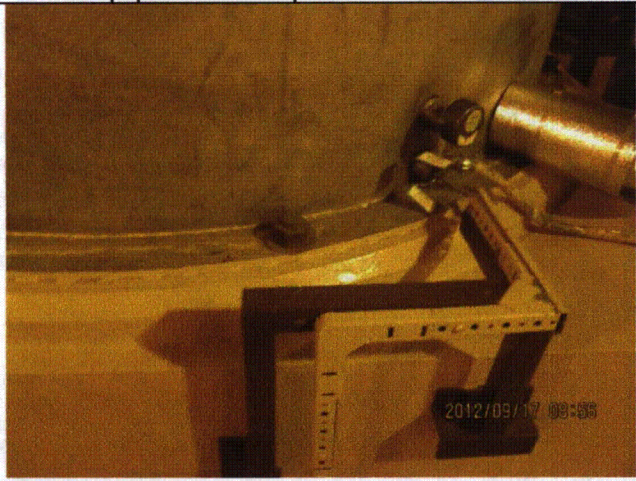
Status: Y N U

Seismic Walkdown Checklist (SWC)

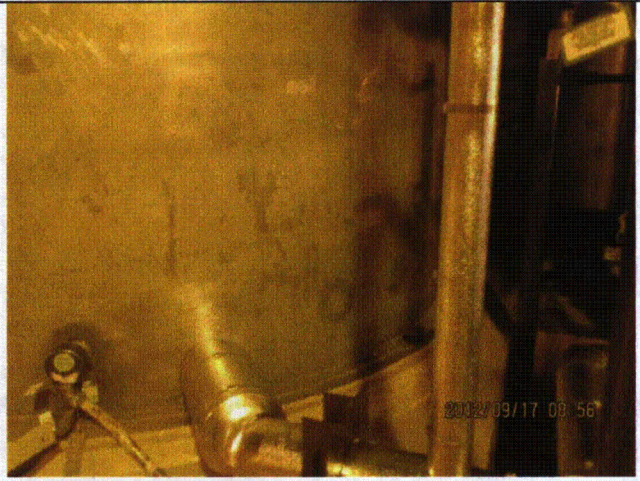
Equipment ID No.: 2C41-A001

Equipment Class: (21) Tanks and Heat Exchangers

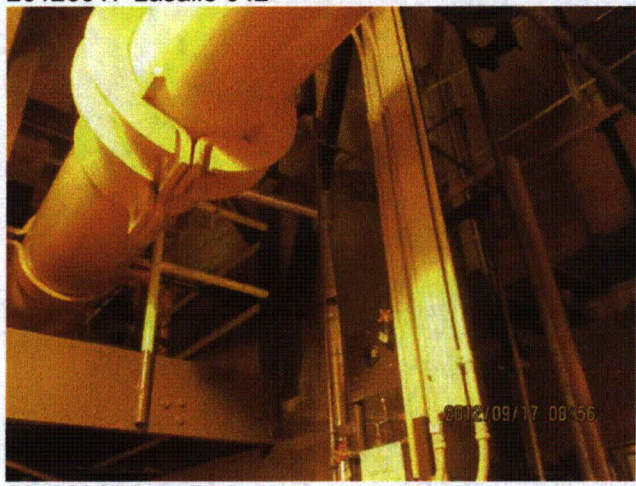
Equipment Description: TNK STBY LIQUID CONT SOLUTION



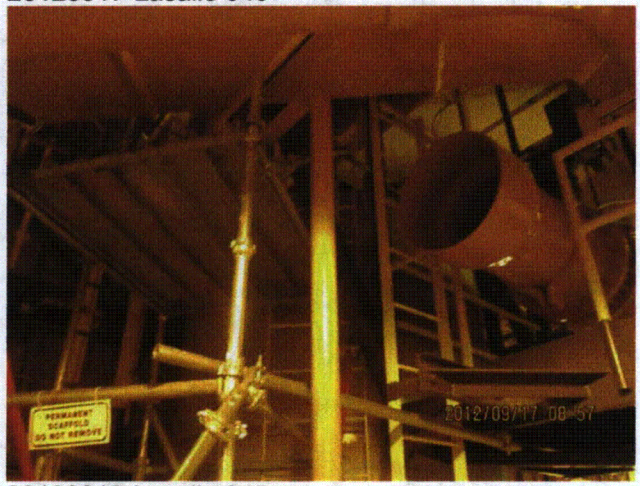
20120917-Lasalle 042



20120917-Lasalle 043



20120917-Lasalle 044



20120917-Lasalle 045

Status: Y N U

Seismic Walkdown Checklist (SWC)

Equipment ID No.: 2C41-A001

Equipment Class: (21) Tanks and Heat Exchangers

Equipment Description: TNK STBY LIQUID CONT SOLUTION



20120917-Lasalle 046



20120917-Lasalle 047



20120917-Lasalle 048



20120917-Lasalle 049

Status: Y N U

Seismic Walkdown Checklist (SWC)

Equipment ID No.: 2C41-C001A

Equipment Class: (5) Horizontal Pumps

Equipment Description: SBLC PMP A

Project: LaSalle 2 SWEL

Location (Bldg, Elev,

Room/Area): RB, 820.00 ft, ALL

Manufacturer/Model:

Instructions for Completing Checklist

This checklist may be used to document the results of the Seismic Walkdown of an item of equipment on the SWEL. The space below each of the following questions may be used to record the results of judgments and findings. Additional space is provided at the end of this checklist for documenting other comments.

Anchorage

1. Is anchorage configuration verification required (i.e., is the item one of the 50% of SWEL items requiring such verification)? Yes

2. Is the anchorage free of bent, broken, missing or loose hardware? Yes
Minor lack of engagement on 2 of 7 bolts judged to be acceptable.

3. Is the anchorage free of corrosion that is more than mild surface oxidation? Yes

4. Is the anchorage free of visible cracks in the concrete near the anchors? Yes
Minor chipping at pedestal edge, judged to be acceptable.

5. Is the anchorage configuration consistent with plant documentation? (Note: This question only applies if the item is one of the 50% for which an anchorage configuration verification is required.) Yes
Anchorage verified per drawings M-1557, Rev. K and M-1590, Sheet 3, Rev. M.

6. Based on the above anchorage evaluations, is the anchorage free of potentially adverse seismic conditions? Yes

Status: Y N U

Seismic Walkdown Checklist (SWC)

Equipment ID No.: 2C41-C001A

Equipment Class: (5) Horizontal Pumps

Equipment Description: SBLC PMP A

Interaction Effects

7. Are soft targets free from impact by nearby equipment or structures? Yes
8. Are overhead equipment, distribution systems, ceiling tiles and lighting, and masonry block walls not likely to collapse onto the equipment? Yes
9. Do attached lines have adequate flexibility to avoid damage? Yes
10. Based on the above seismic interaction evaluations, is equipment free of potentially adverse seismic interaction effects? Yes

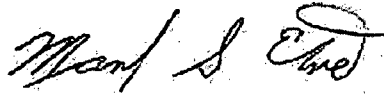
Other Adverse Conditions

11. Have you looked for and found no adverse seismic conditions that could adversely affect the safety functions of the equipment? Yes

Comments

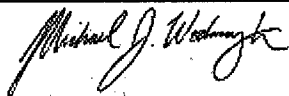
Seismic Walkdown Team: M. Etre & M. Wodarcyk - 9/17/2012

Evaluated by:



Mark Etre

Date: 10/19/2012



Michael Wodarcyk

10/19/2012

Status: Y N U

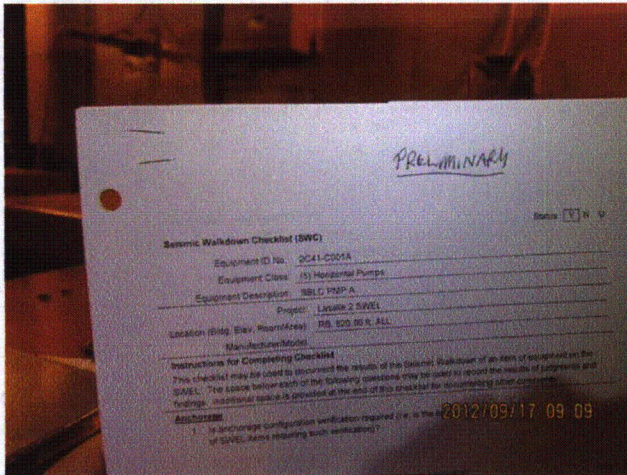
Seismic Walkdown Checklist (SWC)

Equipment ID No.: 2C41-C001A

Equipment Class: (5) Horizontal Pumps

Equipment Description: SBLC PMP A

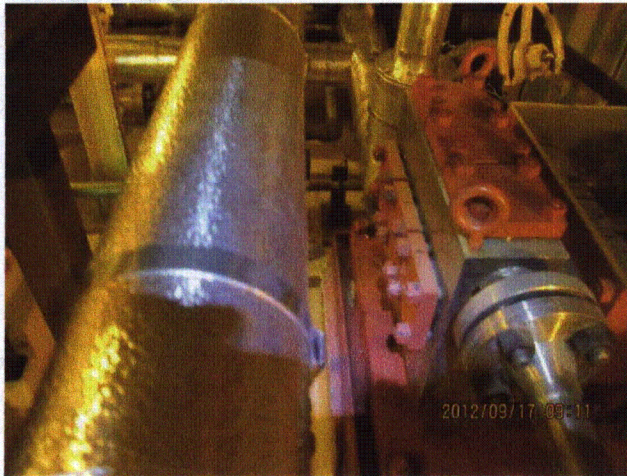
Photos



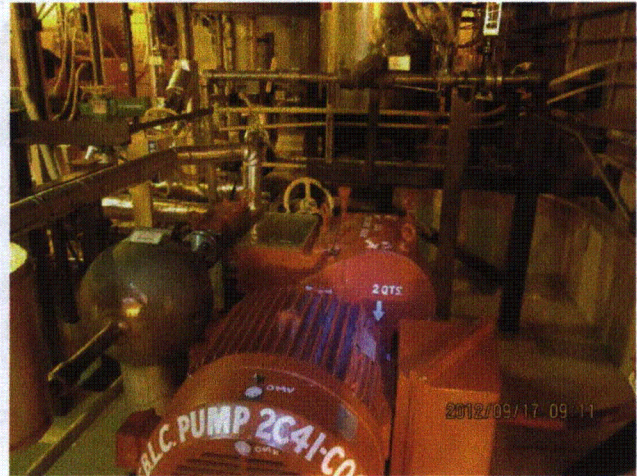
20120917-Lasalle 050



20120917-Lasalle 051



20120917-Lasalle 052



20120917-Lasalle 053

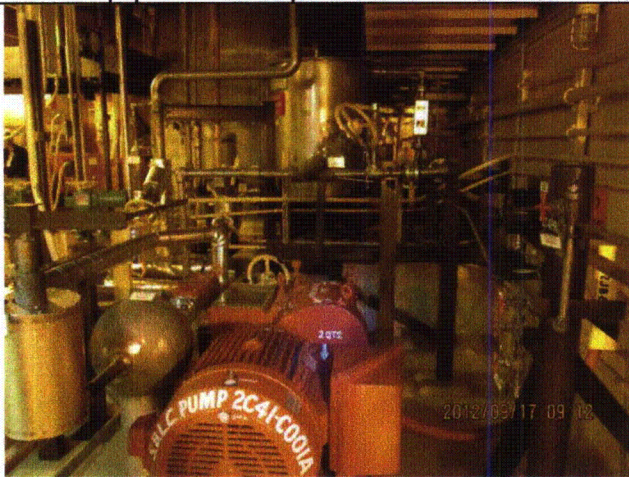
Status: Y N U

Seismic Walkdown Checklist (SWC)

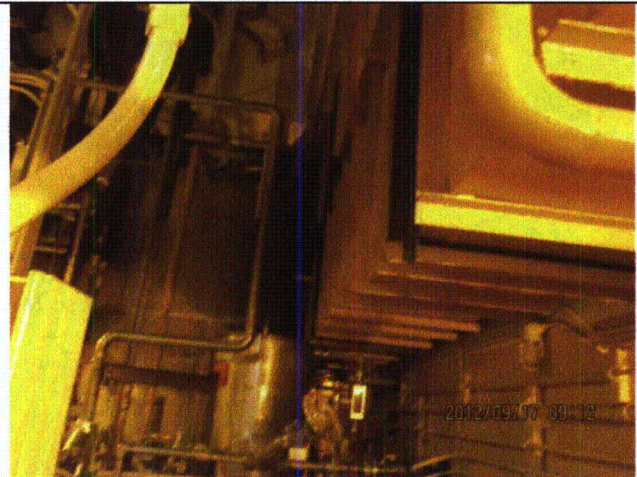
Equipment ID No.: 2C41-C001A

Equipment Class: (5) Horizontal Pumps

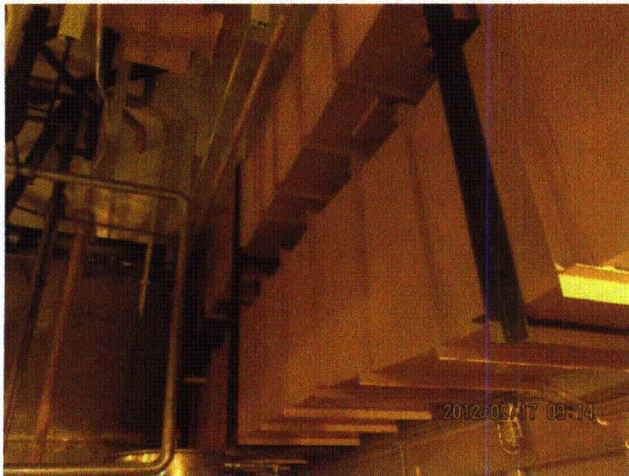
Equipment Description: SBLC PMP A



20120917-Lasalle 054



20120917-Lasalle 055



20120917-Lasalle 056



20120917-Lasalle 057

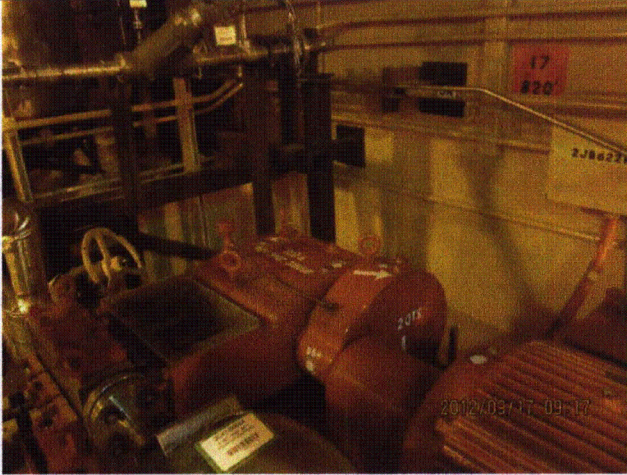
Status: Y N U

Seismic Walkdown Checklist (SWC)

Equipment ID No.: 2C41-C001A

Equipment Class: (5) Horizontal Pumps

Equipment Description: SBLC PMP A



20120917-Lasalle 058