

Status: Y N U **Seismic Walkdown Checklist (SWC) SWEL1- 045**Equipment ID No. SZ51B002A Equip. Class¹ 9 - FansEquipment Description Supply Fan (Control Room A/C Unit Fan)Location: Bldg. CB Floor El. 133 Room, Area OC302, CBManufacturer, Model, Etc. (optional but recommended) Buffalo Forge Co., 730-BLD**Instructions for Completing Checklist**

This checklist may be used to document the results of the Seismic Walkdown of an item of equipment on the SWEL. The space below each of the following questions may be used to record the results of judgments and findings. Additional space is provided at the end of this checklist for documenting other comments.

Anchorage

1. Is the anchorage configuration verification required (i.e., is the item one of the 50% of SWEL items requiring such verification)? Y N

2. Is the anchorage free of bent, broken, missing or loose hardware? Y N U N/A
*Fan skid is mounted to the concrete pedestal with (12) 7/8" dia. anchor bolts.
 No bent, broken, missing or loose hardware found.*

3. Is the anchorage free of corrosion that is more than mild surface oxidation? Y N U N/A
Floor is covered with epoxy coating; no visual indication of corrosion found.

4. Is the anchorage free of visible cracks in the concrete near the anchors? Y N U N/A
Floor is covered with epoxy coating; no visual indication of concrete crack found.

5. Is the anchorage configuration consistent with plant documentation? Y N U N/A
 (Note: This question only applies if the item is one of the 50% for which an anchorage configuration verification is required.)
Anchorage was checked against drawings C-0606 & M622.0-QSZ51B002A-A-1.1-001, and the configuration shown on the drawing matched the field condition.

6. Based on the above anchorage evaluations, is the anchorage free of potentially adverse seismic conditions? Y N U

¹ Enter the equipment class name from EPRI 1025286 Appendix B: Classes of Equipment.

Status: Y N U

Seismic Walkdown Checklist (SWC) SWEL1- 045

Equipment ID No. SZ51B002A Equip. Class: 9 - Fans

Equipment Description Supply Fan (Control Room A/C Unit Fan)

Interaction Effects

7. Are soft targets free from impact by nearby equipment or structures? Y N U N/A
This equipment is not a soft target.

8. Are overhead equipment, distribution systems, ceiling tiles and lighting, and masonry block walls not likely to collapse onto the equipment? Y N U N/A
All overhead items (conduit) are rigidly supported.

9. Do attached lines have adequate flexibility to avoid damage? Y N U N/A
Attached lines (HVAC duct with expansion joint) have sufficient flexibility.

10. Based on the above seismic interaction evaluations, is equipment free of potentially adverse seismic interaction effects? Y N U

Other Adverse Conditions

11. Have you looked for and found no other seismic conditions that could adversely affect the safety functions of the equipment? Y N U

Comments

None

Evaluated by: *Kyong S. (Jason) Pak* *Kyong S. Pak* Date: 10/9/2012

Tori Robinson *Tori Robinson* 10/9/2012

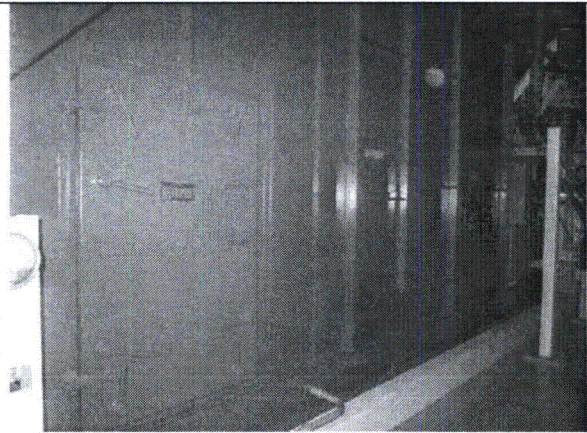
Status: Y N U

Seismic Walkdown Checklist (SWC) SWEL1- 045

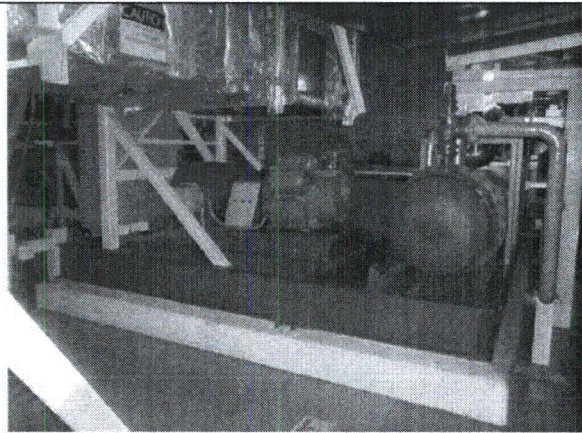
Equipment ID No. SZ51B002A Equip. Class' 9 - Fans

Equipment Description Supply Fan (Control Room A/C Unit Fan)

Photographs



Note: *General view of the equipment*



Note: *General view of the equipment*

Status: Y N U **Seismic Walkdown Checklist (SWC) SWEL1- 046**Equipment ID No. SZ51D002A Equip. Class¹ 9 - FansEquipment Description Fan-40 MW (Control Room Standby Fresh Air Unit Fan)Location: Bldg. CB Floor El. 133 Room, Area OC302, CBManufacturer, Model, Etc. (optional but recommended) Buffalo Forge Co., 40NW**Instructions for Completing Checklist**

This checklist may be used to document the results of the Seismic Walkdown of an item of equipment on the SWEL. The space below each of the following questions may be used to record the results of judgments and findings. Additional space is provided at the end of this checklist for documenting other comments.

Anchorage

1. Is the anchorage configuration verification required (i.e., is the item one of the 50% of SWEL items requiring such verification)? Y N

2. Is the anchorage free of bent, broken, missing or loose hardware? Y N U N/A
*Fan skid is mounted to the concrete pedestal with (24) 3/8" dia. anchor bolts.
 Few anchor bolts are on a slight angle; however, this doesn't pose a seismic concern. See photo.*

3. Is the anchorage free of corrosion that is more than mild surface oxidation? Y N U N/A
Floor is covered with epoxy coating; no visual indication of corrosion found.

4. Is the anchorage free of visible cracks in the concrete near the anchors? Y N U N/A
Floor is covered with epoxy coating; no visual indication of concrete crack found.

5. Is the anchorage configuration consistent with plant documentation? Y N U N/A
 (Note: This question only applies if the item is one of the 50% for which an anchorage configuration verification is required.)
Anchorage was checked against drawings C-0606, M633.0-QSZ51D002A-A-1.1-001 & -002, and the configuration shown on the drawing matched the field condition.

6. Based on the above anchorage evaluations, is the anchorage free of potentially adverse seismic conditions? Y N U

¹ Enter the equipment class name from EPRI 1025286 Appendix B: Classes of Equipment.

Status: Y N U

Seismic Walkdown Checklist (SWC) SWEL1- 046

Equipment ID No. SZ51D002A Equip. Class 9 - Fans

Equipment Description Fan-40 MW (Control Room Standby Fresh Air Unit Fan)

Interaction Effects

- 7. Are soft targets free from impact by nearby equipment or structures? Y N U N/A
This equipment is not a soft target.

- 8. Are overhead equipment, distribution systems, ceiling tiles and lighting, and masonry block walls not likely to collapse onto the equipment? Y N U N/A
All overhead items (HVAC duct, conduit, pipe, elec. box, etc.) are rigidly supported.

- 9. Do attached lines have adequate flexibility to avoid damage? Y N U N/A
Attached lines (tubing, HVAC duct with expansion joint, etc.) have sufficient flexibility.

- 10. Based on the above seismic interaction evaluations, is equipment free of potentially adverse seismic interaction effects? Y N U

Other Adverse Conditions

- 11. Have you looked for and found no other seismic conditions that could adversely affect the safety functions of the equipment? Y N U

Comments

IPEEE enhanced item: The 5/8" dia. bolts securing the motor base were previously observed to have insufficient thread engagement during IPEEE walkdowns. This condition was reported to have been addressed by MNCR 112-94. During NTTF seismic walkdowns, the identified deficiency was confirmed to be secured with full thread engaged bolts.

Evaluated by: Kyong S. (Jason) Pak  Date: 10/9/2012

Tori Robinson  10/9/2012

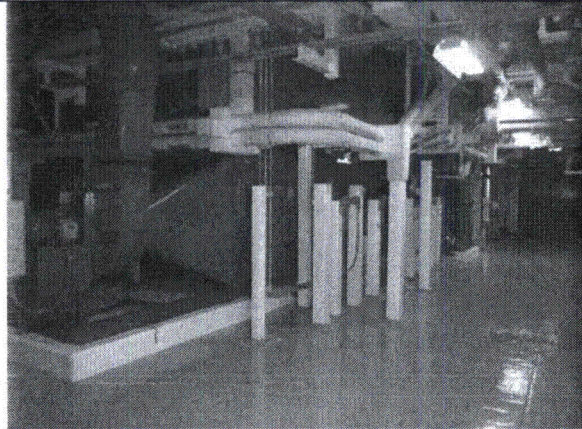
Status: Y N U

Seismic Walkdown Checklist (SWC) SWEL1- 046

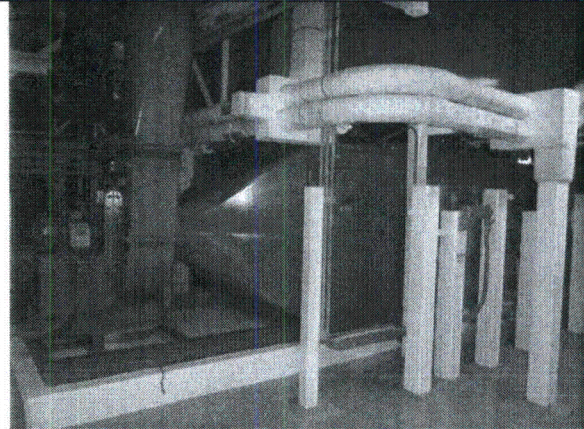
Equipment ID No. SZ51D002A Equip. Class¹ 9 - Fans

Equipment Description Fan-40 MW (Control Room Standby Fresh Air Unit Fan)

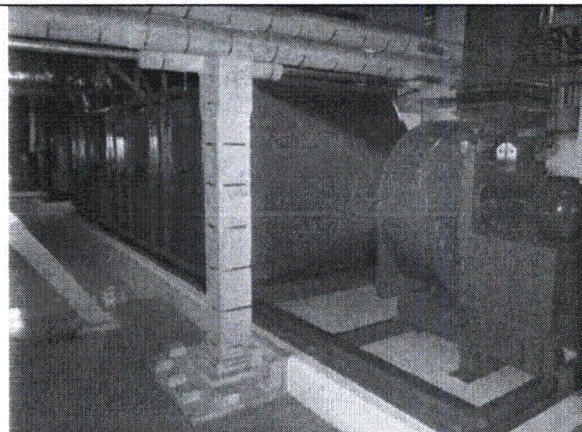
Photographs



Note: General view of the equipment



Note: General view of the equipment



Note: General view of the equipment



Note: Anchor bolt slightly tilted

Status: Y N U

Seismic Walkdown Checklist (SWC) SWEL1- 047

Equipment ID No. T46B001A Equip. Class¹ 10 - Air Handlers

Equipment Description ESF Switchgear Room Cooler w/ Centrifugal Fan (ESF ELEC SWGR Room East Cooling Unit)

Location: Bldg. AB Floor El. 119 Room, Area 1A208.07

Manufacturer, Model, Etc. (optional but recommended) American Air Filter Co., 1650 DWDI

Instructions for Completing Checklist

This checklist may be used to document the results of the Seismic Walkdown of an item of equipment on the SWEL. The space below each of the following questions may be used to record the results of judgments and findings. Additional space is provided at the end of this checklist for documenting other comments.

Anchorage

1. Is the anchorage configuration verification required (i.e., is the item one of the 50% of SWEL items requiring such verification)? Y N

2. Is the anchorage free of bent, broken, missing or loose hardware? Y N U N/A
*Cooler unit is stitch welded to the support structure all around. See photos.
 No bent, broken, missing or loose hardware found.*

3. Is the anchorage free of corrosion that is more than mild surface oxidation? Y N U N/A
Support frame is coated; no visual indication of corrosion found.

4. Is the anchorage free of visible cracks in the concrete near the anchors? Y N U N/A
No concrete connection, mounted in the overhead to structural members.

5. Is the anchorage configuration consistent with plant documentation? Y N U N/A
 (Note: This question only applies if the item is one of the 50% for which an anchorage configuration verification is required.)

6. Based on the above anchorage evaluations, is the anchorage free of potentially adverse seismic conditions? Y N U

¹ Enter the equipment class name from EPRI 1025286 Appendix B: Classes of Equipment.

Status: Y N U

Seismic Walkdown Checklist (SWC) SWEL1- 047

Equipment ID No. T46B001A Equip. Class¹ 10 - Air Handlers

Equipment Description ESF Switchgear Room Cooler w/ Centrifugal Fan (ESF ELEC SWGR Room East Cooling Unit)

Interaction Effects

7. Are soft targets free from impact by nearby equipment or structures? Y N U N/A
This equipment is not a soft target.

8. Are overhead equipment, distribution systems, ceiling tiles and lighting, and masonry block walls not likely to collapse onto the equipment? Y N U N/A
All overhead items (conduit, structural members) are rigidly supported. Nearby masonry block wall is seismically qualified per calculation C-H015.2.

9. Do attached lines have adequate flexibility to avoid damage? Y N U N/A
All attached lines (piping) to the cooler have adequate flexibility.

10. Based on the above seismic interaction evaluations, is equipment free of potentially adverse seismic interaction effects? Y N U

Other Adverse Conditions

11. Have you looked for and found no other seismic conditions that could adversely affect the safety functions of the equipment? Y N U

Comments

None

Evaluated by: Kyong S. (Jason) Pak *Kyong S. Pak* Date: 10/8/2012

Tori Robinson *Tori Robinson* 10/8/2012

Status: Y N U

Seismic Walkdown Checklist (SWC) SWEL1- 047

Equipment ID No. T46B001A Equip. Class¹ 10 - Air Handlers

Equipment Description ESF Switchgear Room Cooler w/ Centrifugal Fan (ESF ELEC SWGR Room East Cooling Unit)

Photographs



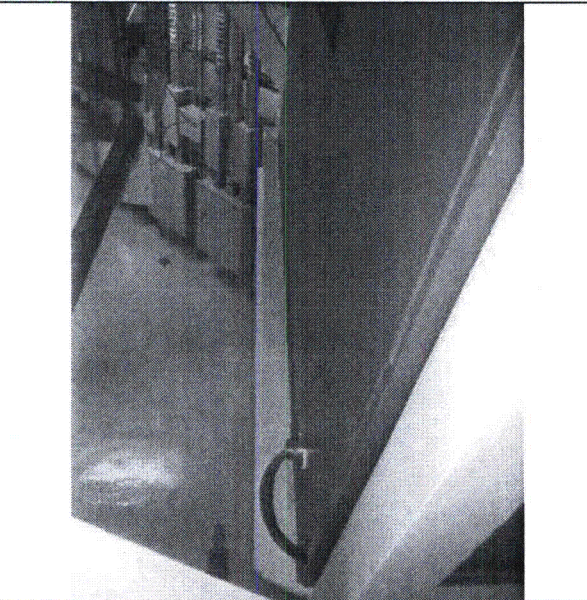
Note: General view of the cooler



Note: General view of the cooler



Note: Cooler unit stitch welded to the support frame



Note: Cooler unit stitch welded to the support frame

Status: Y N U **Seismic Walkdown Checklist (SWC) SWEL1- 048**Equipment ID No. Y47F001A Equip. Class: 10 - Air HandlersEquipment Description Damper/Electrical Actuator (SSW PMP House "A" Exhaust Damper)Location: Bldg. SSW Floor El. 133 Room, Area 1M110, SSWManufacturer, Model, Etc. (optional but recommended) Electric Actuator: Raymond Cont. Sys., MAR-160-8;
Damper: Pacific Air**Instructions for Completing Checklist**

This checklist may be used to document the results of the Seismic Walkdown of an item of equipment on the SWEL. The space below each of the following questions may be used to record the results of judgments and findings. Additional space is provided at the end of this checklist for documenting other comments.

Anchorage

1. Is the anchorage configuration verification required (i.e., is the item one of the 50% of SWEL items requiring such verification)? Y N

2. Is the anchorage free of bent, broken, missing or loose hardware? Y N U N/A
Damper is bolted to the support frame, and the support frame is welded to the embeded plate on the wall.
No bent, broken, missing or loose hardware found.

3. Is the anchorage free of corrosion that is more than mild surface oxidation? Y N U N/A
No visual indication of corrosion found.

4. Is the anchorage free of visible cracks in the concrete near the anchors? Y N U N/A
No visual indication of concrete crack found.

5. Is the anchorage configuration consistent with plant documentation? Y N U N/A
 (Note: This question only applies if the item is one of the 50% for which an anchorage configuration verification is required.)

6. Based on the above anchorage evaluations, is the anchorage free of potentially adverse seismic conditions? Y N U
Above conditions have been observed from distance away with limited access available since the damper / actuator are located close to the ceiling.

¹ Enter the equipment class name from EPRI 1025286 Appendix B: Classes of Equipment.

Status: Y N U

Seismic Walkdown Checklist (SWC) SWEL1- 048

Equipment ID No. Y47F001A Equip. Class: 10 - Air Handlers

Equipment Description Damper/Electrical Actuator (SSW PMP House "A" Exhaust Damper)

Interaction Effects

7. Are soft targets free from impact by nearby equipment or structures? Y N U N/A
This equipment is not a soft target.
8. Are overhead equipment, distribution systems, ceiling tiles and lighting, and masonry block walls not likely to collapse onto the equipment? Y N U N/A
No overhead item found, and HVAC duct nearby is rigidly supported.
9. Do attached lines have adequate flexibility to avoid damage? Y N U N/A
Flex conduit has been used for routing cable to the actuator, therefore attached line has adequate flexibility.
10. Based on the above seismic interaction evaluations, is equipment free of potentially adverse seismic interaction effects? Y N U


Other Adverse Conditions

11. Have you looked for and found no other seismic conditions that could adversely affect the safety functions of the equipment? Y N U

Comments

None

Evaluated by: Kyong S. (Jason) Pak  Date: 9/24/2012

Tori Robinson  9/24/2012

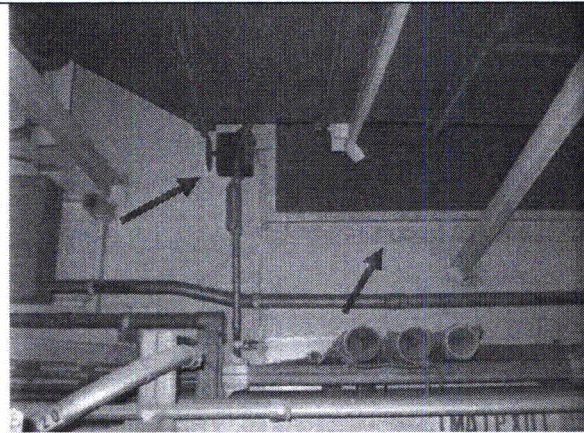
Status: Y N U

Seismic Walkdown Checklist (SWC) SWEL1- 048

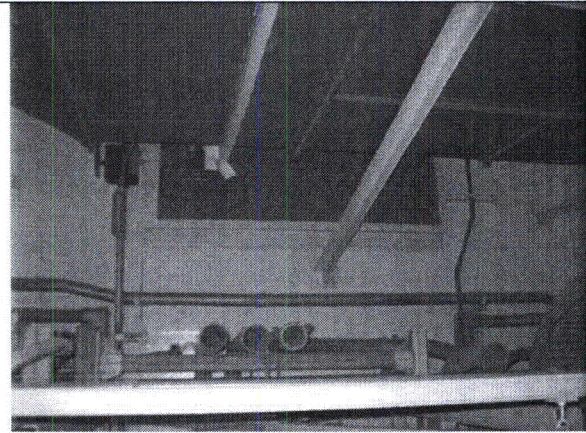
Equipment ID No. Y47F001A Equip. Class¹ 10 - Air Handlers

Equipment Description Damper/Electrical Actuator (SSW PMP House "A" Exhaust Damper)

Photographs



Note: *Damper and Actuator*



Note: *Damper and Actuator*

Status: Y N U **Seismic Walkdown Checklist (SWC) SWEL1- 049**Equipment ID No. X77F001A Equip. Class¹ 10 - Air handlersEquipment Description Damper/Intake Fan Starter 1NR5106 (STBY DSL GEN RM Outside Air Fan Inlet Damper)Location: Bldg. DG Floor El. 158 Room, Area 1D403, DSLManufacturer, Model, Etc. (optional but recommended) Electric Actuator: Raymond Cont. Sys., MAR-250-8-N4; Damper: Pacific Air**Instructions for Completing Checklist**

This checklist may be used to document the results of the Seismic Walkdown of an item of equipment on the SWEL. The space below each of the following questions may be used to record the results of judgments and findings. Additional space is provided at the end of this checklist for documenting other comments.

Anchorage

1. Is the anchorage configuration verification required (i.e., is the item one of the 50% of SWEL items requiring such verification)? Y N

2. Is the anchorage free of bent, broken, missing or loose hardware? Y N U N/A
Damper is bolted to the support frame, and the support frame is welded to the embeded plate on the wall.
No bent, broken, missing or loose hardware found.

3. Is the anchorage free of corrosion that is more than mild surface oxidation? Y N U N/A
No visual indication of corrosion found.

4. Is the anchorage free of visible cracks in the concrete near the anchors? Y N U N/A
No visual indication of concrete crack found.

5. Is the anchorage configuration consistent with plant documentation? Y N U N/A
 (Note: This question only applies if the item is one of the 50% for which an anchorage configuration verification is required.)

6. Based on the above anchorage evaluations, is the anchorage free of potentially adverse seismic conditions? Y N U
Above conditions have been observed with limted access available.

¹ Enter the equipment class name from EPRI 1025286 Appendix B: Classes of Equipment.

Status: Y N U

Seismic Walkdown Checklist (SWC) SWEL1- 049

Equipment ID No. X77F001A Equip. Class: 10 - Air handlers

Equipment Description Damper/Intake Fan Starter 1NR5106 (STBY DSL GEN RM Outside Air Fan Inlet Damper)

Interaction Effects

7. Are soft targets free from impact by nearby equipment or structures? Y N U N/A
This equipment is not a soft target.

8. Are overhead equipment, distribution systems, ceiling tiles and lighting, and masonry block walls not likely to collapse onto the equipment? Y N U N/A
Only overhead item above damper was a fire protection piping, which was supported rigidly to the ceiling.

9. Do attached lines have adequate flexibility to avoid damage? Y N U N/A
Flex connection has been used for duct connected to the damper, therefore it has adequate flexibility.

10. Based on the above seismic interaction evaluations, is equipment free of potentially adverse seismic interaction effects? Y N U
Abandon flex conduit (unsupported ~5') found next to the damper; however it doesn't pose a seismic concern to the damper or other equipments nearby. See photos.

Other Adverse Conditions

11. Have you looked for and found no other seismic conditions that could adversely affect the safety functions of the equipment? Y N U

Comments

None

Evaluated by: Kyong S. (Jason) Pak *Kyong S. Pak* Date: 9/26/2012

Tori Robinson *Tori Robinson* 9/26/2012

Status: Y N U

Seismic Walkdown Checklist (SWC) SWEL1- 049

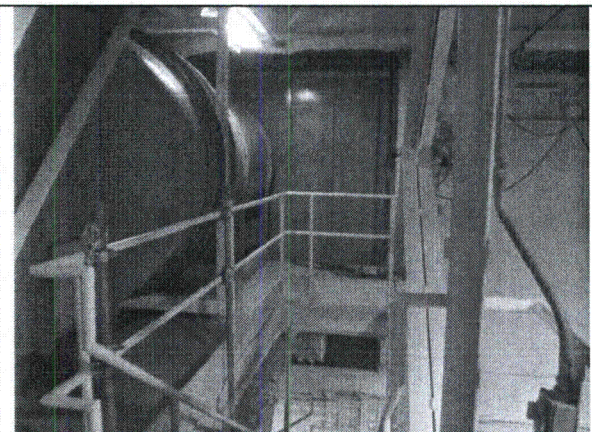
Equipment ID No. X77F001A Equip. Class¹ 10 - Air handlers

Equipment Description Damper/Intake Fan Starter 1NR5106 (STBY DSL GEN RM Outside Air Fan Inlet Damper)

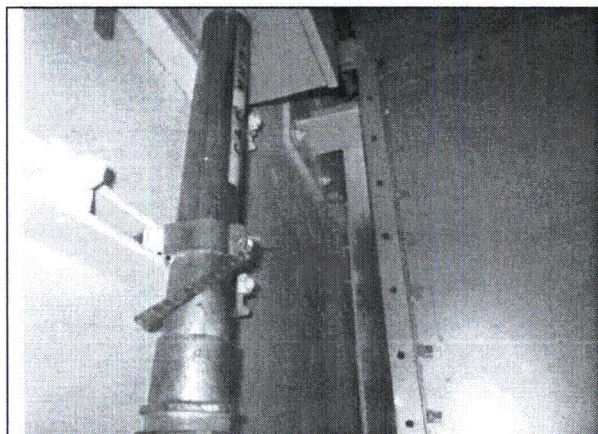
Photographs



Note: View of damper below walking platform



Note: View of damper above walking platform



Note: Abandon flex conduit



Note: Abandon flex conduit

Status: Y N U

Seismic Walkdown Checklist (SWC) SWEL1- 050

Equipment ID No. Z77F030 Equip. Class¹ 10 - Air Handlers

Equipment Description Fire Damper (Division 1 Battery Room Supply Damper)

Location: Bldg. CB Floor El. 111 Room, Area OC207, CB (AS shows OC202)

Manufacturer, Model, Etc. (optional but recommended) AM Warming & Ventilating

Instructions for Completing Checklist

This checklist may be used to document the results of the Seismic Walkdown of an item of equipment on the SWEL. The space below each of the following questions may be used to record the results of judgments and findings. Additional space is provided at the end of this checklist for documenting other comments.

Anchorage

1. Is the anchorage configuration verification required (i.e., is the item one of the 50% of SWEL items requiring such verification)? Y N

2. Is the anchorage free of bent, broken, missing or loose hardware? Y N U N/A

3. Is the anchorage free of corrosion that is more than mild surface oxidation? Y N U N/A

4. Is the anchorage free of visible cracks in the concrete near the anchors? Y N U N/A

5. Is the anchorage configuration consistent with plant documentation? Y N U N/A
 (Note: This question only applies if the item is one of the 50% for which an anchorage configuration verification is required.)

6. Based on the above anchorage evaluations, is the anchorage free of potentially adverse seismic conditions? Y N U
Damper mounted to concrete wall with mounting angles attached to damper sleeve. No anchorage to structural concrete wall.

¹ Enter the equipment class name from EPRI 1025286 Appendix B: Classes of Equipment.

Status: Y N U

Seismic Walkdown Checklist (SWC) SWEL1- 050

Equipment ID No. Z77F030 Equip. Class: 10 - Air Handlers

Equipment Description Fire Damper (Division 1 Battery Room Supply Damper)

Interaction Effects

7. Are soft targets free from impact by nearby equipment or structures? Y N U N/A
Item has no soft targets

8. Are overhead equipment, distribution systems, ceiling tiles and lighting, and masonry block walls not likely to collapse onto the equipment? Y N U N/A

9. Do attached lines have adequate flexibility to avoid damage? Y N U N/A

10. Based on the above seismic interaction evaluations, is equipment free of potentially adverse seismic interaction effects? Y N U

Other Adverse Conditions

11. Have you looked for and found no other seismic conditions that could adversely affect the safety functions of the equipment? Y N U

Comments

IPEEE enhanced item: Missing three of the four screws which secure the grill. Work order issued and subsequent walkdown verified four screws installed. Per Fukushima Walkdown three of four screws were missing inside battery room. CR-GGN-2012-11434.

Evaluated by: Chase Wharton  Date: 10/9/2012

Fred Hopkins  10/9/2012

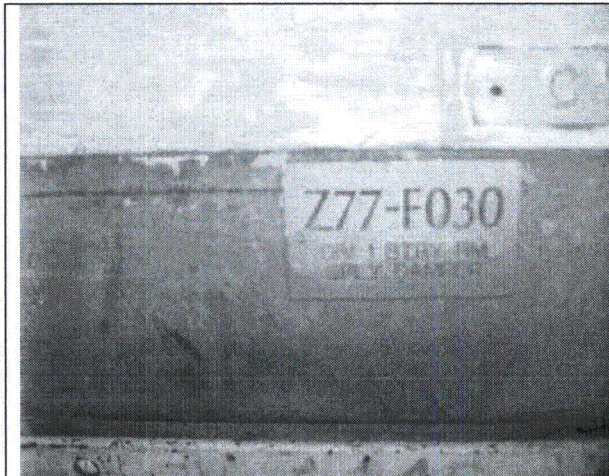
Status: Y N U

Seismic Walkdown Checklist (SWC) SWEL1- 050

Equipment ID No. Z77F030 Equip. Class¹ 10 - Air Handlers

Equipment Description Fire Damper (Division 1 Battery Room Supply Damper)

Photographs



Note:



Note:

Status: Y N U

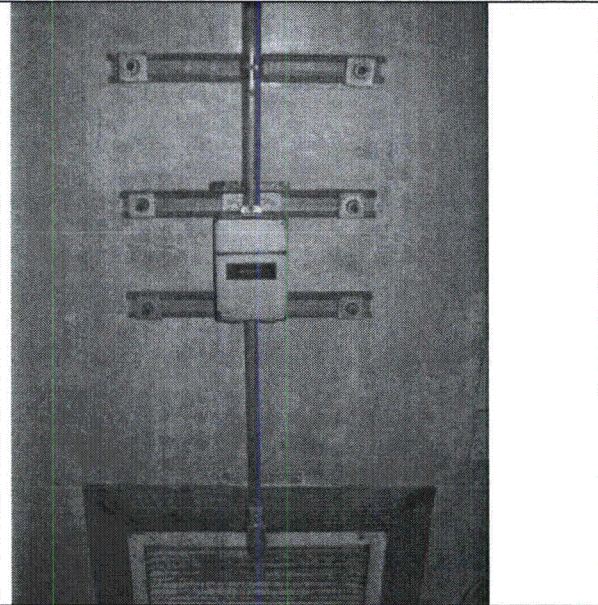
Seismic Walkdown Checklist (SWC) SWEL1- 050

Equipment ID No. Z77F030 Equip. Class¹ 10 - Air Handlers

Equipment Description Fire Damper (Division 1 Battery Room Supply Damper)



Note:



Note:

Status: Y N U

Seismic Walkdown Checklist (SWC) SWEL1- 051

Equipment ID No. E61C001B Equip. Class¹ 12 - Air Compressors

Equipment Description Drywell Purge Compressor

Location: Bldg. CTMT Floor El. 185 Room, Area 1A512, CTMT

Manufacturer, Model, Etc. (optional but recommended) Turbonetics, SC-6

Instructions for Completing Checklist

This checklist may be used to document the results of the Seismic Walkdown of an item of equipment on the SWEL. The space below each of the following questions may be used to record the results of judgments and findings. Additional space is provided at the end of this checklist for documenting other comments.

Anchorage

1. Is the anchorage configuration verification required (i.e., is the item one of the 50% of SWEL items requiring such verification)? Y N

2. Is the anchorage free of bent, broken, missing or loose hardware? Y N U N/A
*Compressor is anchored to the concrete pedestal using (8) 1 1/2" dia. anchor bolts.
 No bent, broken, missing or loose hardware found.*

3. Is the anchorage free of corrosion that is more than mild surface oxidation? Y N U N/A
Floor is covered with epoxy coating; no visual indication of corrosion found

4. Is the anchorage free of visible cracks in the concrete near the anchors? Y N U N/A
Floor/pedestal is coated. Surface hairline crack in coating found at multiple locations. At one location, hairline crack is found to be aligned with the bolt hole. See photo. (CR 2012-11335)

5. Is the anchorage configuration consistent with plant documentation? Y N U N/A
 (Note: This question only applies if the item is one of the 50% for which an anchorage configuration verification is required.)
Anchorage was checked against drawing 413D271, and the configuration shown on the drawing matched the field condition.

6. Based on the above anchorage evaluations, is the anchorage free of potentially adverse seismic conditions? Y N U
See question number 4.

¹ Enter the equipment class name from EPRI 1025286 Appendix B: Classes of Equipment.

Status: Y N U

Seismic Walkdown Checklist (SWC) SWEL1- 051

Equipment ID No. E61C001B Equip. Class: 12 - Air Compressors

Equipment Description Drywell Purge Compressor

Interaction Effects

7. Are soft targets free from impact by nearby equipment or structures? Y N U N/A
This equipment is not a soft target.

8. Are overhead equipment, distribution systems, ceiling tiles and lighting, and masonry block walls not likely to collapse onto the equipment? Y N U N/A
All overhead items (cable tray) are rigidly supported.

9. Do attached lines have adequate flexibility to avoid damage? Y N U N/A
Flex conduits have been used for routing cable to the compressor, therefore attached line has adequate flexibility.

10. Based on the above seismic interaction evaluations, is equipment free of potentially adverse seismic interaction effects? Y N U

Other Adverse Conditions

11. Have you looked for and found no other seismic conditions that could adversely affect the safety functions of the equipment? Y N U

Comments

None

Evaluated by: Kyong S. (Jason) Pak  Date: 10/4/2012

Tori Robinson  10/4/2012

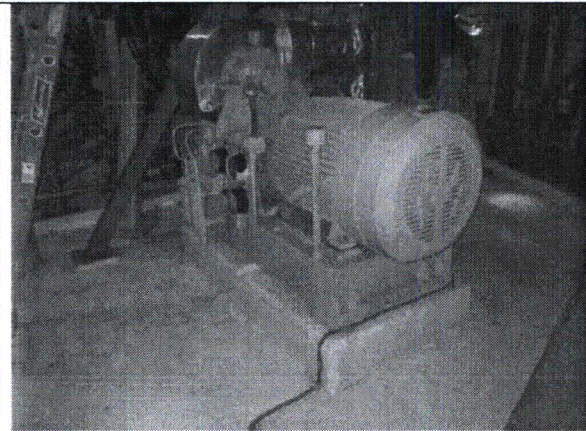
Status: Y N U

Seismic Walkdown Checklist (SWC) SWEL1- 051

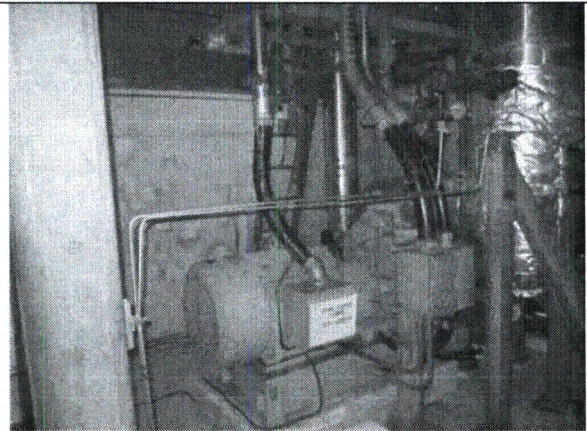
Equipment ID No. E61C001B Equip. Class: 12 - Air Compressors

Equipment Description Drywell Purge Compressor

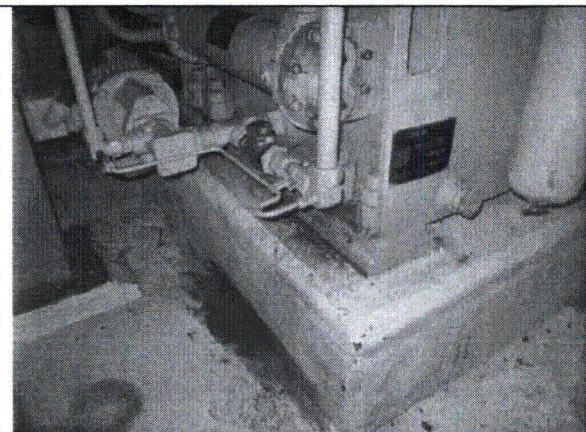
Photographs



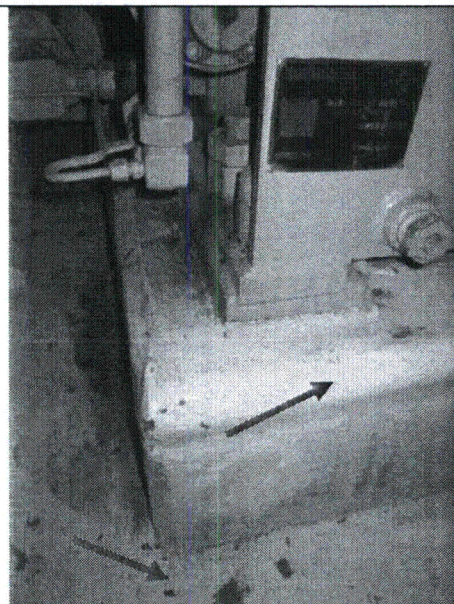
Note: Compressor



Note: Compressor



Note: Anchorage of compressor to the concrete pedestal



Note: Hairline surface crack on the coating

Status: Y N U

Seismic Walkdown Checklist (SWC) SWEL1- 052

Equipment ID No. R28P110-A Equip. Class¹ 14 - Dist. Panels and Automatic Transfer Switches

Equipment Description PWR DISTRIBUTION PANEL 1Y89

Location: Bldg. CB Floor El. 111 Room, Area OC202, CB

Manufacturer, Model, Etc. (optional but recommended) WESTINGHOUSE ELEC CORP,FC-1

Instructions for Completing Checklist

This checklist may be used to document the results of the Seismic Walkdown of an item of equipment on the SWEL. The space below each of the following questions may be used to record the results of judgments and findings. Additional space is provided at the end of this checklist for documenting other comments.

Anchorage

1. Is the anchorage configuration verification required (i.e., is the item one of the 50% of SWEL items requiring such verification)? Y N

2. Is the anchorage free of bent, broken, missing or loose hardware? Y N U N/A
Panel is welded to steel plate. Plate is embedded in concrete.

3. Is the anchorage free of corrosion that is more than mild surface oxidation? Y N U N/A
Mild surface oxidation, but does not affect structural ability

4. Is the anchorage free of visible cracks in the concrete near the anchors? Y N U N/A
No visible cracks

5. Is the anchorage configuration consistent with plant documentation? Y N U N/A
(Note: This question only applies if the item is one of the 50% for which an anchorage configuration verification is required.)

6. Based on the above anchorage evaluations, is the anchorage free of potentially adverse seismic conditions? Y N U

¹ Enter the equipment class name from EPRI 1025286 Appendix B: Classes of Equipment.

Status: Y N U

Seismic Walkdown Checklist (SWC) SWEL1- 052

Equipment ID No. R28P110-A Equip. Class: 14 - Dist. Panels and Automatic Transfer Switches

Equipment Description PWR DISTRIBUTION PANEL 1Y89

Interaction Effects

7. Are soft targets free from impact by nearby equipment or structures? Y N U N/A
Item has no soft targets

8. Are overhead equipment, distribution systems, ceiling tiles and lighting, and masonry block walls not likely to collapse onto the equipment? Y N U N/A
Masonry block wall nearby. No visible cracks in wall. Wall is qualified by Calculation C-T457.1, therefore no adverse seismic condition.

9. Do attached lines have adequate flexibility to avoid damage? Y N U N/A
Flexible conduit is attached to distribution panel with adequate clearance

10. Based on the above seismic interaction evaluations, is equipment free of potentially adverse seismic interaction effects? Y N U

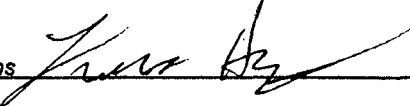
Other Adverse Conditions

11. Have you looked for and found no other seismic conditions that could adversely affect the safety functions of the equipment? Y N U

Comments

Missing screw in panel face CR-GGN-2012-11460

Evaluated by: Chase Wharton  Date: 10/10/2012

Fred Hopkins  10/10/2012

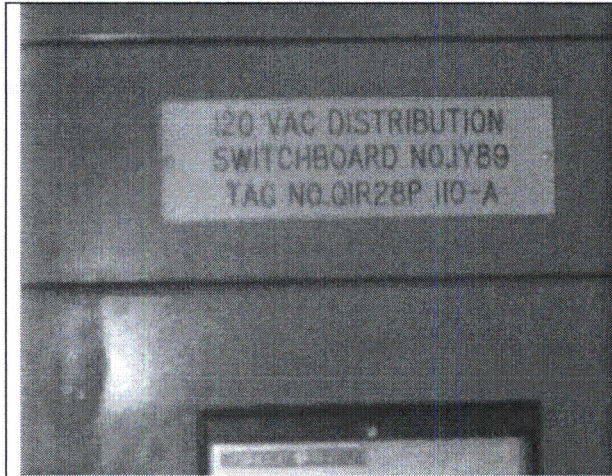
Status: Y N U

Seismic Walkdown Checklist (SWC) SWEL1- 052

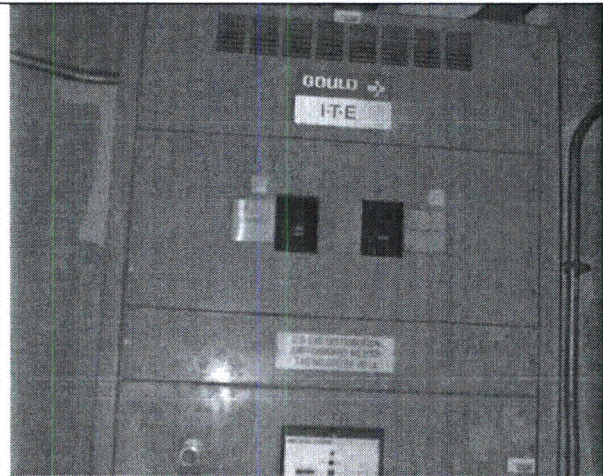
Equipment ID No. R28P110-A Equip. Class: 14 - Dist. Panels and Automatic Transfer Switches

Equipment Description PWR DISTRIBUTION PANEL 1Y89

Photographs



Note:



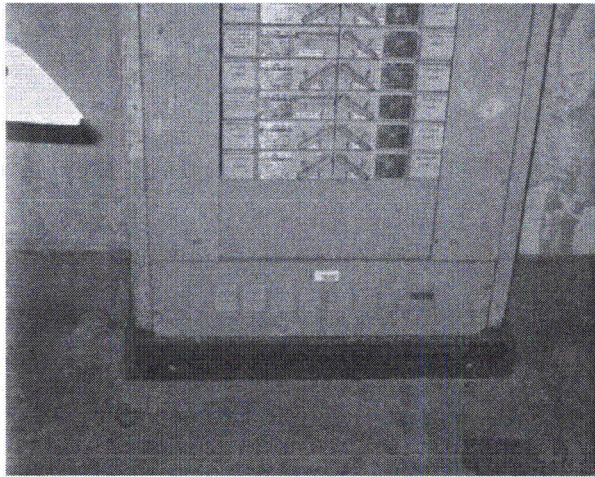
Note:

Status: Y N U

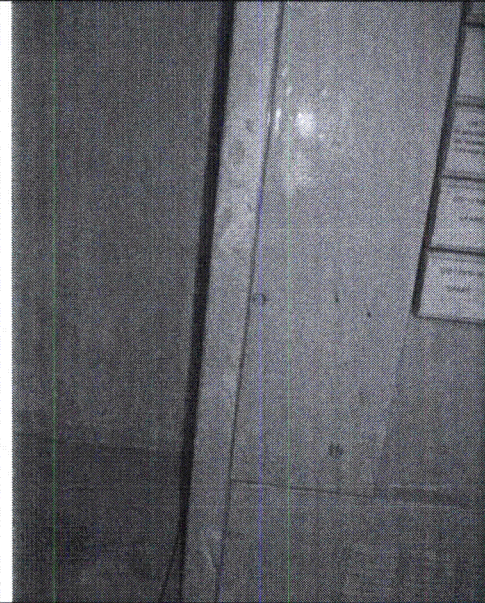
Seismic Walkdown Checklist (SWC) SWEL1- 052

Equipment ID No. R28P110-A Equip. Class¹ 14 - Dist. Panels and Automatic Transfer Switches

Equipment Description PWR DISTRIBUTION PANEL 1Y89



Note:



Note:

Status: Y N U

Seismic Walkdown Checklist (SWC) SWEL1- 053

Equipment ID No. L11S001-1A3 Equip. Class¹ 15 - Battery Racks

Equipment Description STATION DC POWER SUPPLY 125VDC ESF BATTERY 1A3

Location: Bldg. CB Floor El. 111 Room, Area OC207,CB

Manufacturer, Model, Etc. (optional but recommended) C&D CHARTER POWER SYSTEMS,LCR-33

Instructions for Completing Checklist

This checklist may be used to document the results of the Seismic Walkdown of an item of equipment on the SWEL. The space below each of the following questions may be used to record the results of judgments and findings. Additional space is provided at the end of this checklist for documenting other comments.

Anchorage

1. Is the anchorage configuration verification required (i.e., is the item one of the 50% of SWEL items requiring such verification)? Y N

2. Is the anchorage free of bent, broken, missing or loose hardware? Y N U N/A
Batteries are mounted on racks. Racks are bolted to the concrete floor.

3. Is the anchorage free of corrosion that is more than mild surface oxidation? Y N U N/A
No visible corrosion.

4. Is the anchorage free of visible cracks in the concrete near the anchors? Y N U N/A
No visible cracks in structural concrete.

5. Is the anchorage configuration consistent with plant documentation? Y N U N/A
 (Note: This question only applies if the item is one of the 50% for which an anchorage configuration verification is required.)

6. Based on the above anchorage evaluations, is the anchorage free of potentially adverse seismic conditions? Y N U

¹ Enter the equipment class name from EPRI 1025286 Appendix B: Classes of Equipment.

Status: Y N U

Seismic Walkdown Checklist (SWC) SWEL1- 053

Equipment ID No. L11S001-1A3 Equip. Class: 15 - Battery Racks

Equipment Description STATION DC POWER SUPPLY 125VDC ESF BATTERY 1A3

Interaction Effects

7. Are soft targets free from impact by nearby equipment or structures? Y N U N/A
Item has no soft targets

8. Are overhead equipment, distribution systems, ceiling tiles and lighting, and masonry block walls not likely to collapse onto the equipment? Y N U N/A
Masonry block wall near battery racks, no visible cracks. Wall was qualified by C-T457.1, therefore no adverse seismic condition exists

9. Do attached lines have adequate flexibility to avoid damage? Y N U N/A
The cables attached to the batteries have adequate flexibility

10. Based on the above seismic interaction evaluations, is equipment free of potentially adverse seismic interaction effects? Y N U

Other Adverse Conditions

11. Have you looked for and found no other seismic conditions that could adversely affect the safety functions of the equipment? Y N U

Comments

None

Evaluated by: Chase Wharton  Date: 10/9/2012

Fred Hopkins  10/9/2012

Status: Y N U

Seismic Walkdown Checklist (SWC) SWEL1- 053

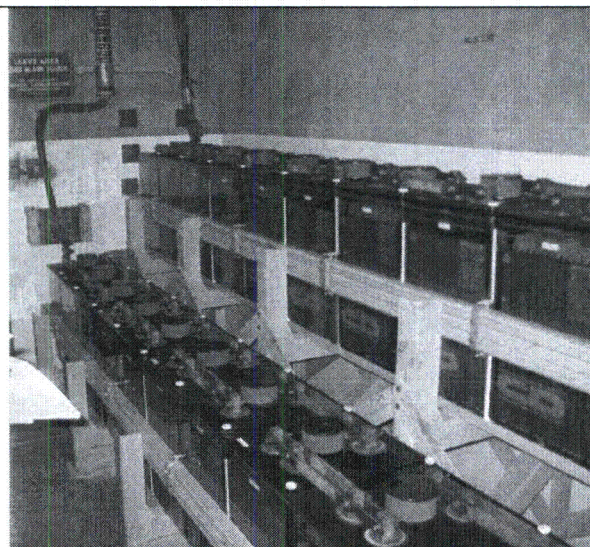
Equipment ID No. L11S001-1A3 Equip. Class¹ 15 - Battery Racks

Equipment Description STATION DC POWER SUPPLY 125VDC ESF BATTERY 1A3

Photographs



Note:



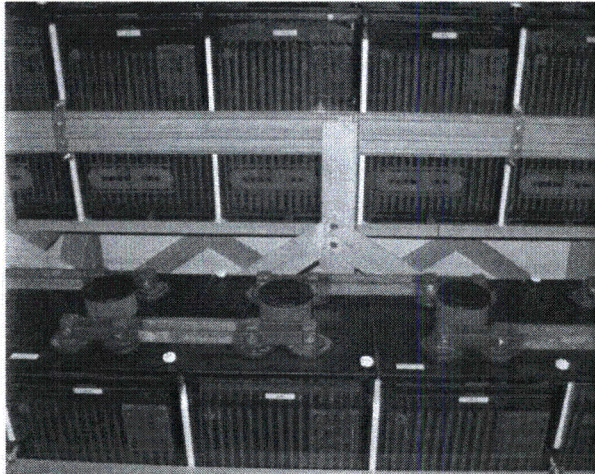
Note:

Status: Y N U

Seismic Walkdown Checklist (SWC) SWEL1- 053

Equipment ID No. L11S001-1A3 Equip. Class¹ 15 - Battery Racks

Equipment Description STATION DC POWER SUPPLY 125VDC ESF BATTERY 1A3



Note:

Note:

Status: Y N U **Seismic Walkdown Checklist (SWC) SWEL1- 054**Equipment ID No. L51S001A Equip. Class¹ 16 - Battery Chargers and InvertersEquipment Description Battery Charger 1DA4Location: Bldg. CB Floor El. 111 Room, Area OC202, CBManufacturer, Model, Etc. (optional but recommended) C&D BATTERIES,ARR130K400**Instructions for Completing Checklist**

This checklist may be used to document the results of the Seismic Walkdown of an item of equipment on the SWEL. The space below each of the following questions may be used to record the results of judgments and findings. Additional space is provided at the end of this checklist for documenting other comments.

Anchorage

1. Is the anchorage configuration verification required (i.e., is the item one of the 50% of SWEL items requiring such verification)? Y N

2. Is the anchorage free of bent, broken, missing or loose hardware? Y N U N/A
Item is anchored to concrete.

3. Is the anchorage free of corrosion that is more than mild surface oxidation? Y N U N/A
Mild surface oxidation, but does not affect structural ability.

4. Is the anchorage free of visible cracks in the concrete near the anchors? Y N U N/A
No visible cracks in concrete.

5. Is the anchorage configuration consistent with plant documentation? Y N U N/A
(Note: This question only applies if the item is one of the 50% for which an anchorage configuration verification is required.)
Anchorage configuration is consistent with JA-1770

6. Based on the above anchorage evaluations, is the anchorage free of potentially adverse seismic conditions? Y N U

¹ Enter the equipment class name from EPRI 1025286 Appendix B: Classes of Equipment.

Status: Y N U

Seismic Walkdown Checklist (SWC) SWEL1- 054

Equipment ID No. L51S001A Equip. Class' 16 - Battery Chargers and Inverters

Equipment Description Battery Charger 1DA4

Interaction Effects

7. Are soft targets free from impact by nearby equipment or structures?
Item has no soft targets Y N U N/A

8. Are overhead equipment, distribution systems, ceiling tiles and lighting,
and masonry block walls not likely to collapse onto the equipment? Y N U N/A

9. Do attached lines have adequate flexibility to avoid damage? Y N U N/A

10. Based on the above seismic interaction evaluations, is equipment free
of potentially adverse seismic interaction effects? Y N U

Other Adverse Conditions

11. Have you looked for and found no other seismic conditions that could
adversely affect the safety functions of the equipment? Y N U

Comments

None

Evaluated by: Chase Wharton  Date: 10/10/2012

Fred Hopkins  10/10/2012

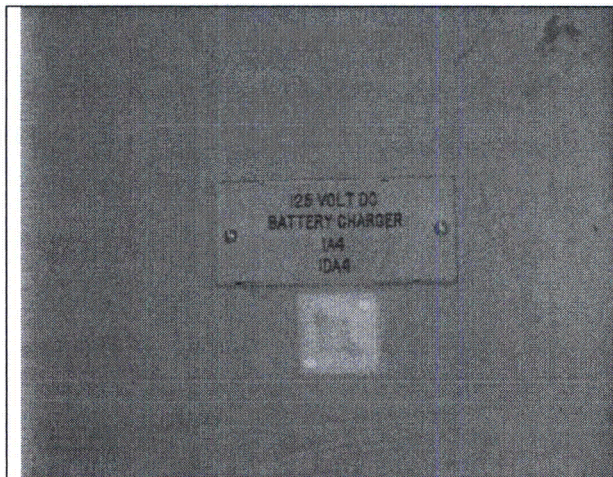
Status: Y N U

Seismic Walkdown Checklist (SWC) SWEL1- 054

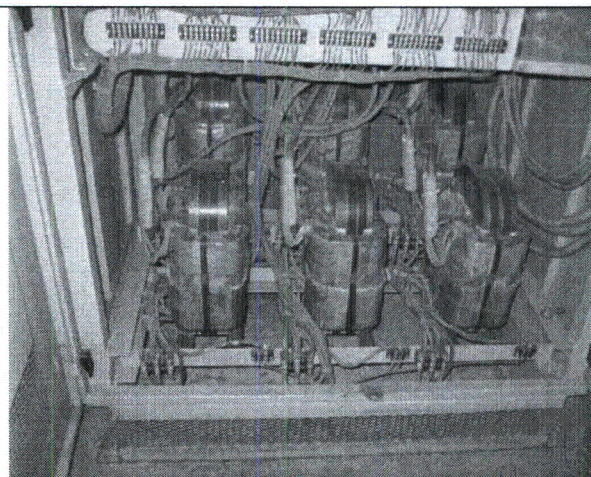
Equipment ID No. L51S001A Equip. Class¹ 16 - Battery Chargers and Inverters

Equipment Description Battery Charger 1DA4

Photographs



Note:



Note:

Status: Y N U

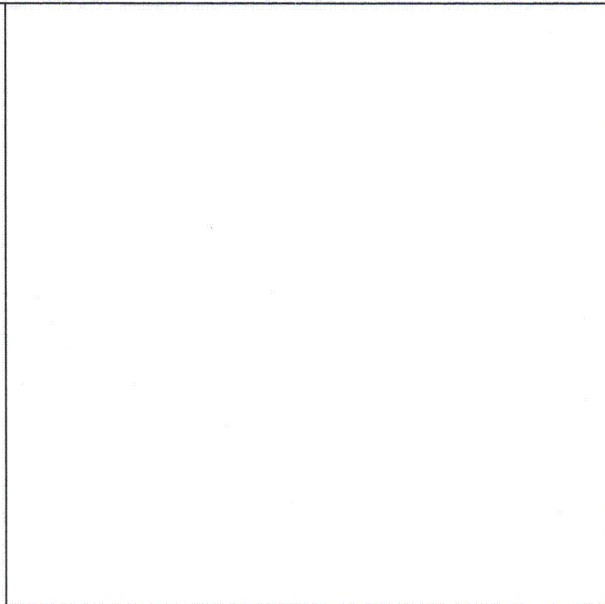
Seismic Walkdown Checklist (SWC) SWEL1- 054

Equipment ID No. L51S001A Equip. Class¹ 16 - Battery Chargers and Inverters

Equipment Description Battery Charger 1DA4



Note:



Note:

Status: Y N U **Seismic Walkdown Checklist (SWC) SWEL1- 055**Equipment ID No. L51S001B Equip. Class¹ 16 - Battery Chargers and InvertersEquipment Description Battery Charger 1DA5Location: Bldg. CB Floor El. 111 Room, Area OC202, CBManufacturer, Model, Etc. (optional but recommended) C&D BATTERIES.ARR130K400**Instructions for Completing Checklist**

This checklist may be used to document the results of the Seismic Walkdown of an item of equipment on the SWEL. The space below each of the following questions may be used to record the results of judgments and findings. Additional space is provided at the end of this checklist for documenting other comments.

Anchorage

1. Is the anchorage configuration verification required (i.e., is the item one of the 50% of SWEL items requiring such verification)? Y N

2. Is the anchorage free of bent, broken, missing or loose hardware? Y N U N/A
Item is anchored to concrete.

3. Is the anchorage free of corrosion that is more than mild surface oxidation? Y N U N/A
Mild surface oxidation, but does not affect structural ability.

4. Is the anchorage free of visible cracks in the concrete near the anchors? Y N U N/A
No visible cracks in concrete.

5. Is the anchorage configuration consistent with plant documentation? Y N U N/A
(Note: This question only applies if the item is one of the 50% for which an anchorage configuration verification is required.)
Anchorage configuration is consistent with JA-1770

6. Based on the above anchorage evaluations, is the anchorage free of potentially adverse seismic conditions? Y N U

¹ Enter the equipment class name from EPRI 1025286 Appendix B: Classes of Equipment.

Status: Y N U

Seismic Walkdown Checklist (SWC) SWEL1- 055

Equipment ID No. L51S001B Equip. Class: 16 - Battery Chargers and Inverters

Equipment Description Battery Charger 1DA5

Interaction Effects

7. Are soft targets free from impact by nearby equipment or structures? Y N U N/A
Item has no soft targets

8. Are overhead equipment, distribution systems, ceiling tiles and lighting, and masonry block walls not likely to collapse onto the equipment? Y N U N/A
Overhead equipment is adequately supported

9. Do attached lines have adequate flexibility to avoid damage? Y N U N/A
Flexible conduit is attached to Battery Charger with adequate clearance

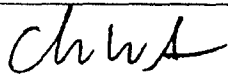
10. Based on the above seismic interaction evaluations, is equipment free of potentially adverse seismic interaction effects? Y N U

Other Adverse Conditions

11. Have you looked for and found no other seismic conditions that could adversely affect the safety functions of the equipment? Y N U

Comments

Tube steel support less than two inches from chargers. The support is very rigid and does not introduce an adverse seismic condition

Evaluated by: Chase Wharton  Date: 10/10/2012

Fred Hopkins  10/10/2012


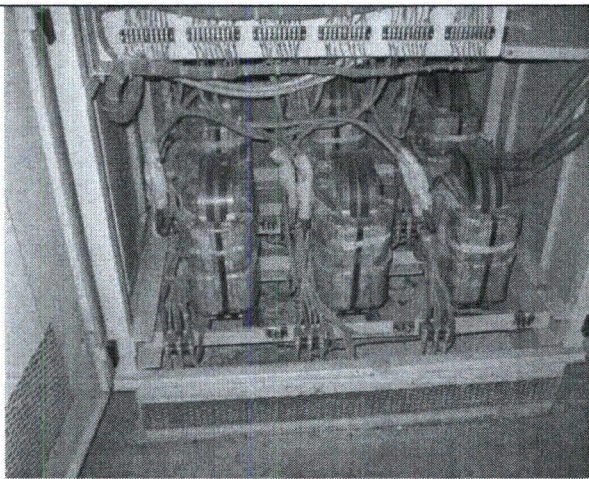
Status: Y N U

Seismic Walkdown Checklist (SWC) SWEL1- 055

Equipment ID No. L51S001B Equip. Class¹ 16 - Battery Chargers and Inverters

Equipment Description Battery Charger 1DA5

Photographs

	
<p>Note:</p>	<p>Note:</p>

Status: Y N U

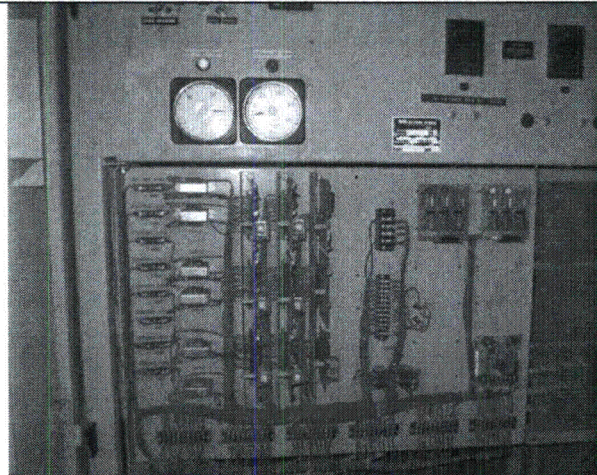
Seismic Walkdown Checklist (SWC) SWEL1- 055

Equipment ID No. L51S001B Equip. Class¹ 16 - Battery Chargers and Inverters

Equipment Description Battery Charger 1DA5



Note:



Note:

Status: Y N U **Seismic Walkdown Checklist (SWC) SWEL1- 056**Equipment ID No. P75E001A Equip. Class¹ 17 - Engine GeneratorEquipment Description Standby Diesel GeneratorLocation: Bldg. DG Floor El. 133 Room, Area 1D310, DSLManufacturer, Model, Etc. (optional but recommended) Transamerica Delaval, DSRV-16-4**Instructions for Completing Checklist**

This checklist may be used to document the results of the Seismic Walkdown of an item of equipment on the SWEL. The space below each of the following questions may be used to record the results of judgments and findings. Additional space is provided at the end of this checklist for documenting other comments.

Anchorage

1. Is the anchorage configuration verification required (i.e., is the item one of the 50% of SWEL items requiring such verification)? Y N

2. Is the anchorage free of bent, broken, missing or loose hardware? Y N U N/A
Item is anchored to a concrete pedestal with imbedded anchor rods.

3. Is the anchorage free of corrosion that is more than mild surface oxidation? Y N U N/A
All anchorage is free from corrosion.

4. Is the anchorage free of visible cracks in the concrete near the anchors? Y N U N/A
Concrete is coated. Surface crack in coating, but no cracks through anchorage. Cracks in grout pedestal, but no cracks in structural concrete. CR-GGN-2012-11077 and CR-GGN-2012-11080

5. Is the anchorage configuration consistent with plant documentation? Y N U N/A
(Note: This question only applies if the item is one of the 50% for which an anchorage configuration verification is required.)
Anchorage is verified in comparison to C1502A

6. Based on the above anchorage evaluations, is the anchorage free of potentially adverse seismic conditions? Y N U

¹ Enter the equipment class name from EPRI 1025286 Appendix B: Classes of Equipment.

Status: Y N U

Seismic Walkdown Checklist (SWC) SWEL1- 056

Equipment ID No. P75E001A Equip. Class: 17 - Engine Generator

Equipment Description Standby Diesel Generator

Interaction Effects

7. Are soft targets free from impact by nearby equipment or structures? Y N U N/A
Item has no soft targets

8. Are overhead equipment, distribution systems, ceiling tiles and lighting, and masonry block walls not likely to collapse onto the equipment? Y N U N/A
All overhead equipment in the vicinity of item is adequately supported.

9. Do attached lines have adequate flexibility to avoid damage? Y N U N/A
Flex conduit, and hose attached have adequate flexibility

10. Based on the above seismic interaction evaluations, is equipment free of potentially adverse seismic interaction effects? Y N U

Other Adverse Conditions

11. Have you looked for and found no other seismic conditions that could adversely affect the safety functions of the equipment? Y N U

Comments

Standing oil found. CR-GGN-2012-11079

Evaluated by: Chase Wharton  Date: 9/26/2012

Fred Hopkins  9/26/2012

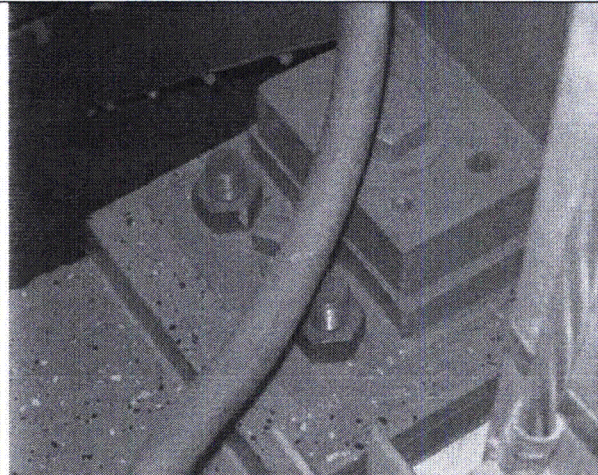
Status: Y N U

Seismic Walkdown Checklist (SWC) SWEL1- 056

Equipment ID No. P75E001A Equip. Class: 17 - Engine Generator

Equipment Description Standby Diesel Generator

Photographs



Note: Diesel Anchorage



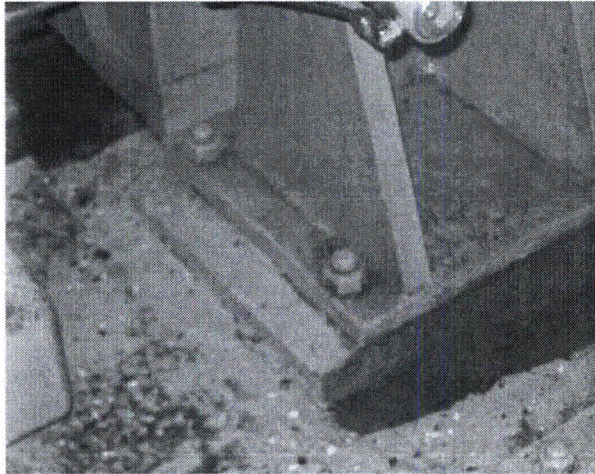
Note: Diesel Anchorage

Status: Y N U

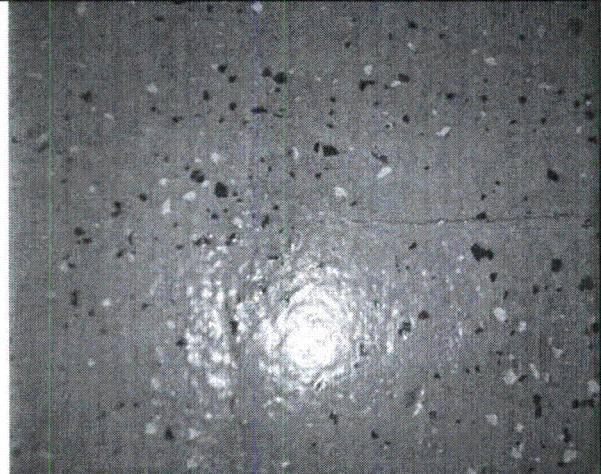
Seismic Walkdown Checklist (SWC) SWEL1- 056

Equipment ID No. P75E001A Equip. Class: 17 - Engine Generator

Equipment Description Standby Diesel Generator



Note: *Pedestal, non-Structural Crack/Chip*



Note: *Surface Cracks*

Status: Y N U **Seismic Walkdown Checklist (SWC) SWEL1- 057**Equipment ID No. E30N003A Equip. Class¹ 18- Instrument RackEquipment Description Level Transmitter (SUPPRESSION POOL WIDE RANGE LEVEL TRANSMITTER)Location: Bldg. AB Floor El. 93 Room, Area 1A115.09Manufacturer, Model, Etc. (optional but recommended) ROSEMOUNT,1153DB5**Instructions for Completing Checklist**

This checklist may be used to document the results of the Seismic Walkdown of an item of equipment on the SWEL. The space below each of the following questions may be used to record the results of judgments and findings. Additional space is provided at the end of this checklist for documenting other comments.

Anchorage

1. Is the anchorage configuration verification required (i.e., is the item one of the 50% of SWEL items requiring such verification)? Y N

2. Is the anchorage free of bent, broken, missing or loose hardware? Y N U N/A
Transmitter mounted to tube steel and anchored to concrete floor.

3. Is the anchorage free of corrosion that is more than mild surface oxidation? Y N U N/A
Anchorage is coated

4. Is the anchorage free of visible cracks in the concrete near the anchors? Y N U N/A
No visible cracks in concrete

5. Is the anchorage configuration consistent with plant documentation? Y N U N/A
(Note: This question only applies if the item is one of the 50% for which an anchorage configuration verification is required.)

6. Based on the above anchorage evaluations, is the anchorage free of potentially adverse seismic conditions? Y N U

¹ Enter the equipment class name from EPRI 1025286 Appendix B: Classes of Equipment.

Status: Y N U

Seismic Walkdown Checklist (SWC) SWEL1- 057

Equipment ID No. E30N003A Equip. Class 18- Instrument Rack

Equipment Description Level Transmitter (SUPPRESSION POOL WIDE RANGE LEVEL TRANSMITTER)

Interaction Effects

7. Are soft targets free from impact by nearby equipment or structures? Y N U N/A

8. Are overhead equipment, distribution systems, ceiling tiles and lighting, and masonry block walls not likely to collapse onto the equipment? Y N U N/A
All overhead equipment was rigidly supported above this transmitter

9. Do attached lines have adequate flexibility to avoid damage? Y N U N/A
Flexible conduit is attached to the valve with adequate clearance.

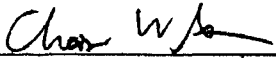
10. Based on the above seismic interaction evaluations, Is equipment free of potentially adverse seismic interaction effects? Y N U

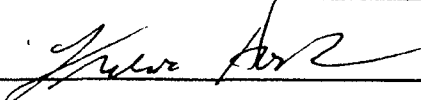
Other Adverse Conditions

11. Have you looked for and found no other seismic conditions that could adversely affect the safety functions of the equipment? Y N U

Comments

Minor surface oxidation was identified on the bolts used to mount the transmitter to the tubesteel, but was determined to have no significant structural effects. The temporary scaffold was seismically restrained in the area, therefore no seismic issues

Evaluated by: Chase Wharton  Date: 10/8/2012

Fred Hopkins  10/8/2012

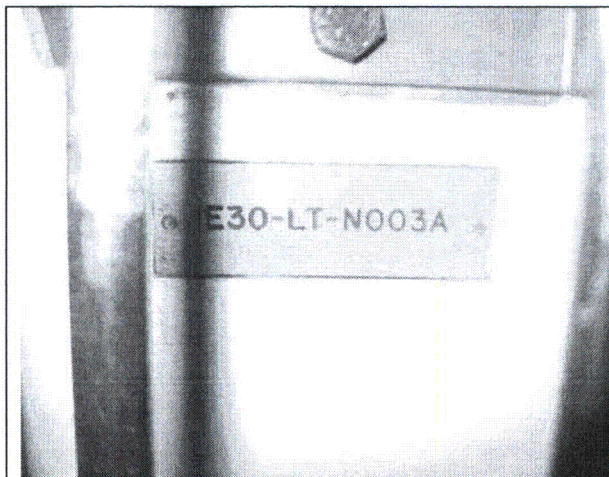
Status: Y N U

Seismic Walkdown Checklist (SWC) SWEL1- 057

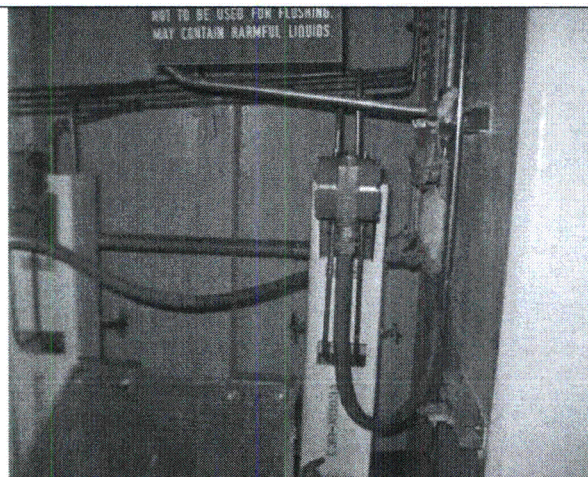
Equipment ID No. E30N003A Equip. Class¹ 18- Instrument Rack

Equipment Description Level Transmitter (SUPPRESSION POOL WIDE RANGE LEVEL TRANSMITTER)

Photographs



Note:



Note:

Status: Y N U **Seismic Walkdown Checklist (SWC) SWEL1- 058**Equipment ID No. C71N050A Equip. Class¹ 18 - Instrument RacksEquipment Description Pressure Transmitter (Drywell Pressure RPS/PDisch A Transmitter)Location: Bldg. CTMT Floor El. 135 Room, Area 1A313, CTMTManufacturer, Model, Etc. (optional but recommended) Rosemount, 1152AP5N22T0280PB**Instructions for Completing Checklist**

This checklist may be used to document the results of the Seismic Walkdown of an item of equipment on the SWEL. The space below each of the following questions may be used to record the results of judgments and findings. Additional space is provided at the end of this checklist for documenting other comments.

Anchorage

1. Is the anchorage configuration verification required (i.e., is the item one of the 50% of SWEL items requiring such verification)? Y N
2. Is the anchorage free of bent, broken, missing or loose hardware? Y N U N/A
*Pressure transmitter is mounted to the panel H22-P004, and panel is welded to the floor beams.
 No bent, broken, missing or loose hardware found.*
3. Is the anchorage free of corrosion that is more than mild surface oxidation? Y N U N/A
No visual indication of corrosion found
4. Is the anchorage free of visible cracks in the concrete near the anchors? Y N U N/A
No concrete connection.
5. Is the anchorage configuration consistent with plant documentation? Y N U N/A
 (Note: This question only applies if the item is one of the 50% for which an anchorage configuration verification is required.)
Pressure transmitter is mounted to the panel/unistrut using 4 bolts. Based on QP 399.00, panel should be stitch welded 2" long every 6". However, it is welded ~2" long every ~12" based on walkdown measurement. Only one side of panel has been reviewed. Additionally, panel should be mounted to the 1" thick plate according to the drawing C-1044A. However, 1" plate couldn't be found and panel is welded straight to the structural steel. (CR 2012-11130)
6. Based on the above anchorage evaluations, is the anchorage free of potentially adverse seismic conditions? Y N U
See question number 5.

¹ Enter the equipment class name from EPRI 1025286 Appendix B: Classes of Equipment.

Status: Y N U

Seismic Walkdown Checklist (SWC) SWEL1- 058

Equipment ID No. C71N050A Equip. Class: 18 - Instrument Racks

Equipment Description Pressure Transmitter (Drywell Pressure RPS/PDisch A Transmitter)

Interaction Effects

7. Are soft targets free from impact by nearby equipment or structures? Y N U N/A
All equipments/structures nearby are rigidly supported.

8. Are overhead equipment, distribution systems, ceiling tiles and lighting, and masonry block walls not likely to collapse onto the equipment? Y N U N/A
All overhead items are rigidly supported.

9. Do attached lines have adequate flexibility to avoid damage? Y N U N/A
Flex conduit has been used for routing cable to the level transmitter, and tubing attached to the transmitter has adequate flexibility.

10. Based on the above seismic interaction evaluations, is equipment free of potentially adverse seismic interaction effects? Y N U

Other Adverse Conditions

11. Have you looked for and found no other seismic conditions that could adversely affect the safety functions of the equipment? Y N U

Comments

None

Evaluated by: Kyong S. (Jason) Pak *Kyong S. Pak* Date: 9/27/2012

Tori Robinson *Tori Robinson* 9/27/2012

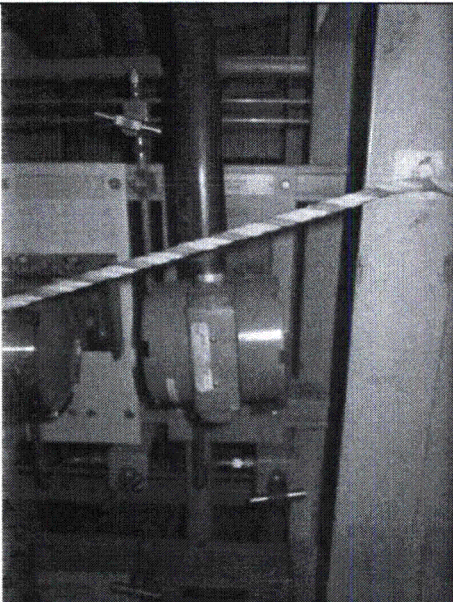
Status: Y N U

Seismic Walkdown Checklist (SWC) SWEL1- 058

Equipment ID No. C71N050A Equip. Class¹ 18 - Instrument Racks

Equipment Description Pressure Transmitter (Drywell Pressure RPS/PDisch A Transmitter)

Photographs



Note: Pressure Transmitter



Note: Pressure Transmitter

Status: Y N U

Seismic Walkdown Checklist (SWC) SWEL1- 059

Equipment ID No. E30N004B Equip. Class¹ 18 - Instrument Racks

Equipment Description Level Transmitter (Suppression Pool Narrow Range Level Transmitter)

Location: Bldg. AB Floor El. 93 Room, Area 1A116, 10

Manufacturer, Model, Etc. (optional but recommended) Rosemount, 1153DB3

Instructions for Completing Checklist

This checklist may be used to document the results of the Seismic Walkdown of an item of equipment on the SWEL. The space below each of the following questions may be used to record the results of judgments and findings. Additional space is provided at the end of this checklist for documenting other comments.

Anchorage

1. Is the anchorage configuration verification required (i.e., is the item one of the 50% of SWEL items requiring such verification)? Y N

2. Is the anchorage free of bent, broken, missing or loose hardware? Y N U N/A
Level Transmitter mounting bracket is attached to TS 6x6 vertical post using four bolts, and TS 6x6 vertical post is anchored to the floor using (4) 1/2" dia. anchor bolts. See photo.
No bent, broken, missing or loose hardware found.

3. Is the anchorage free of corrosion that is more than mild surface oxidation? Y N U N/A
Floor is covered with epoxy coating; no visual indication of corrosion found.

4. Is the anchorage free of visible cracks in the concrete near the anchors? Y N U N/A
Floor is covered with epoxy coating; no visual indication of concrete crack found.

5. Is the anchorage configuration consistent with plant documentation? Y N U N/A
 (Note: This question only applies if the item is one of the 50% for which an anchorage configuration verification is required.)
Anchorage was checked against drawing FSK-I-0127G-825-B Rev. 4, and the configuration shown on the drawing matched the field condition.

6. Based on the above anchorage evaluations, is the anchorage free of potentially adverse seismic conditions? Y N U

¹ Enter the equipment class name from EPRI 1025286 Appendix B: Classes of Equipment.

Status: Y N U

Seismic Walkdown Checklist (SWC) SWEL1- 059

Equipment ID No. E30N004B Equip. Class¹ 18 - Instrument Racks

Equipment Description Level Transmitter (Suppression Pool Narrow Range Level Transmitter)

Interaction Effects

7. Are soft targets free from impact by nearby equipment or structures? Y N U N/A
All equipment/structures are rigidly supported.

8. Are overhead equipment, distribution systems, ceiling tiles and lighting, and masonry block walls not likely to collapse onto the equipment? Y N U N/A
All overhead items are rigidly supported.

9. Do attached lines have adequate flexibility to avoid damage? Y N U N/A
Flex conduit has been used for routing cable to the level transmitter, and tubing attached to the transmitter has adequate flexibility.

10. Based on the above seismic interaction evaluations, is equipment free of potentially adverse seismic interaction effects? Y N U

Other Adverse Conditions

11. Have you looked for and found no other seismic conditions that could adversely affect the safety functions of the equipment? Y N U
Rope is attached loosely from scaffolding to the TS member; it is judged to have no seismic concern. See photo.

Comments

Contaminated Area - Dress Out

Evaluated by: Kyong S. (Jason) Pak *Kyong S. Pak* Date: 10/3/2012

Tori Robinson *Tori Robinson* 10/3/2012

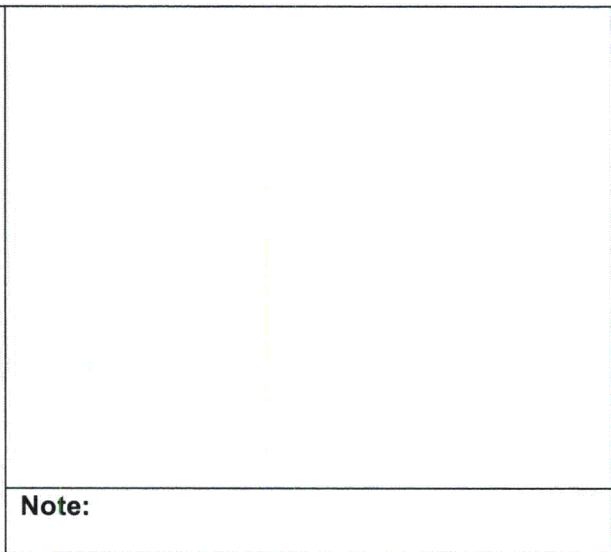
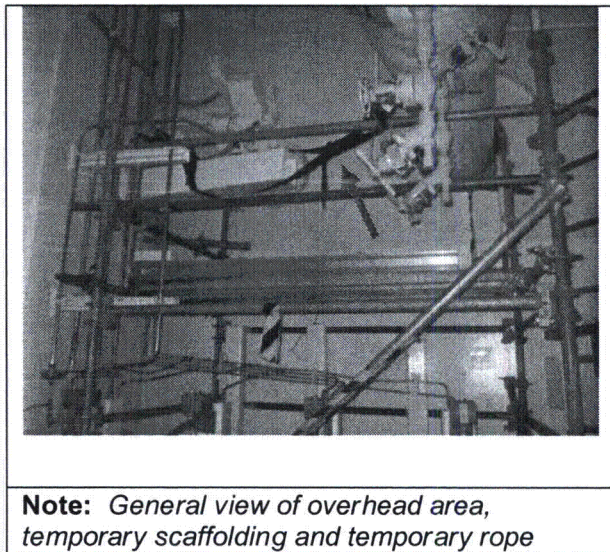
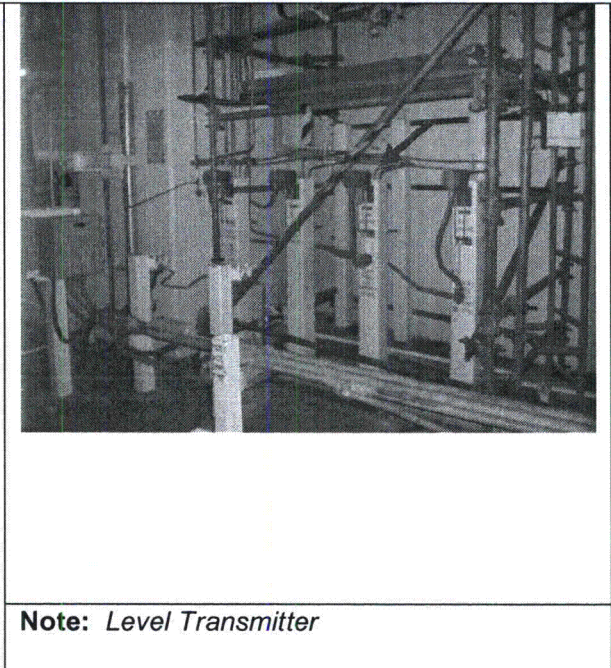
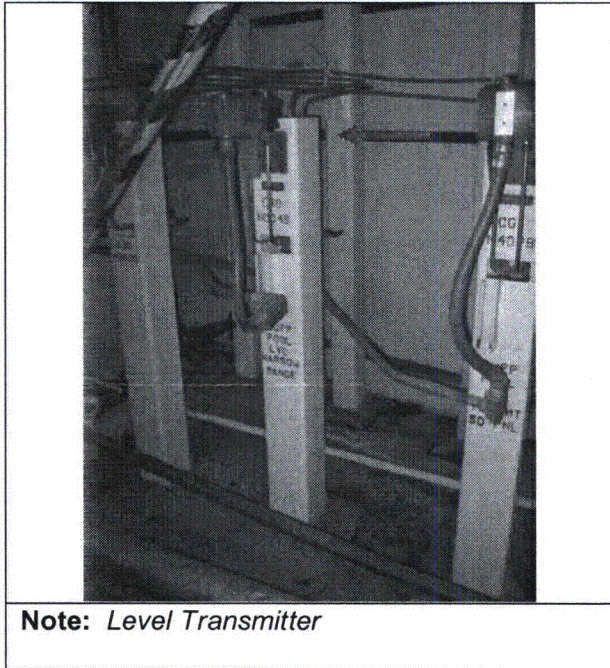
Status: Y N U

Seismic Walkdown Checklist (SWC) SWEL1- 059

Equipment ID No. E30N004B Equip. Class¹ 18 - Instrument Racks

Equipment Description Level Transmitter (Suppression Pool Narrow Range Level Transmitter)

Photographs



Status: Y N U **Seismic Walkdown Checklist (SWC) SWEL1- 060**Equipment ID No. E31N086A Equip. Class¹ 18 - Instrument RacksEquipment Description Differential Pressure Transmitter (Main Steam Line A Flow A (PCIS) Transmitter)Location: Bldg. CTMT Floor El. 135 Room, Area 1A313, CTMTManufacturer, Model, Etc. (optional but recommended) Rosemount, 1152DP7N22T0280PB**Instructions for Completing Checklist**

This checklist may be used to document the results of the Seismic Walkdown of an item of equipment on the SWEL. The space below each of the following questions may be used to record the results of judgments and findings. Additional space is provided at the end of this checklist for documenting other comments.

Anchorage

1. Is the anchorage configuration verification required (i.e., is the item one of the 50% of SWEL items requiring such verification)? Y N

2. Is the anchorage free of bent, broken, missing or loose hardware? Y N U N/A
*Pressure transmitter is mounted to the panel H22-P015.
 No bent, broken, missing or loose hardware found.*

3. Is the anchorage free of corrosion that is more than mild surface oxidation? Y N U N/A
No visual corrosion has been observed.

4. Is the anchorage free of visible cracks in the concrete near the anchors? Y N U N/A
No concrete connection.

5. Is the anchorage configuration consistent with plant documentation? Y N U N/A
 (Note: This question only applies if the item is one of the 50% for which an anchorage configuration verification is required.)
Based on QP 398.00, panel should be welded to the structural steel 2" long every 6". However, it is welded ~2" long every ~12" based on walkdown measurement. (CR 2012-11130)

6. Based on the above anchorage evaluations, is the anchorage free of potentially adverse seismic conditions? Y N U
See question number 5.

¹ Enter the equipment class name from EPRI 1025286 Appendix B: Classes of Equipment.

Status: Y N U

Seismic Walkdown Checklist (SWC) SWEL1- 060

Equipment ID No. E31N086A Equip. Class¹ 18 - Instrument Racks

Equipment Description Differential Pressure Transmitter (Main Steam Line A Flow A (PCIS) Transmitter)

Interaction Effects

7. Are soft targets free from impact by nearby equipment or structures? Y N U N/A
All equipments or structures nearby are rigidly supported.

8. Are overhead equipment, distribution systems, ceiling tiles and lighting, and masonry block walls not likely to collapse onto the equipment? Y N U N/A
All overhead items are rigidly supported.

9. Do attached lines have adequate flexibility to avoid damage? Y N U N/A
Flex conduit has been used for routing cable to the level transmitter, and tubing attached to the transmitter has adequate flexibility.

10. Based on the above seismic interaction evaluations, is equipment free of potentially adverse seismic interaction effects? Y N U

Other Adverse Conditions

11. Have you looked for and found no other seismic conditions that could adversely affect the safety functions of the equipment? Y N U

Comments

None

Evaluated by: Kyong S. (Jason) Pak *Kyong S. Pak* Date: 9/27/2012

Tori Robinson *Tori Robinson* 9/27/2012

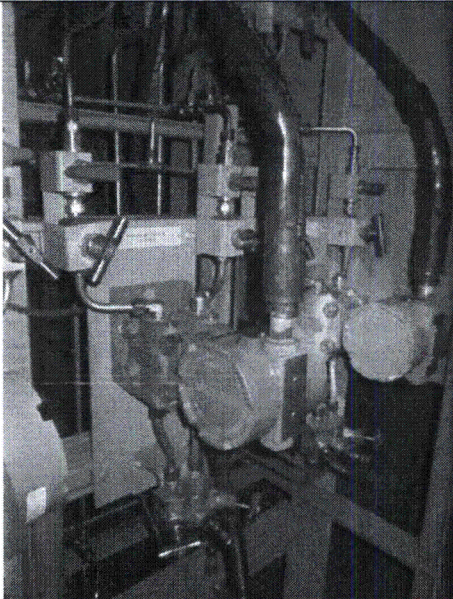
Status: Y N U

Seismic Walkdown Checklist (SWC) SWEL1- 060

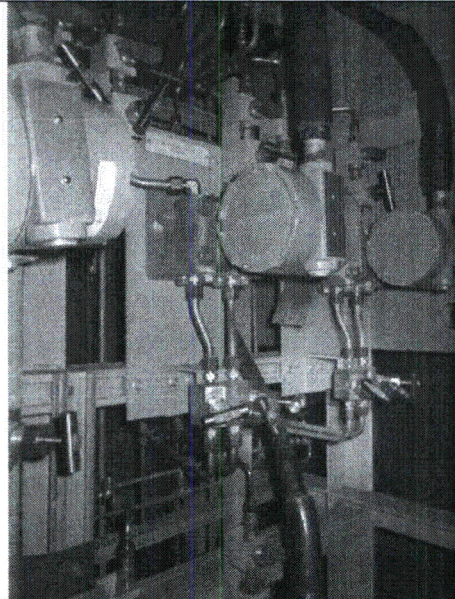
Equipment ID No. E31N086A Equip. Class' 18 - Instrument Racks

Equipment Description Differential Pressure Transmitter (Main Steam Line A Flow A (PCIS) Transmitter)

Photographs



Note: *Pressure Transmitter*



Note: *Pressure Transmitter*

Status: Y N U **Seismic Walkdown Checklist (SWC) SWEL1- 061**Equipment ID No. E51N050 Equip. Class¹ 18 - Instrument RacksEquipment Description Pressure Transmitter (RCIC Pump Discharge)Location: Bldg. AB Floor El. 103 Room, Area 1A121, 07Manufacturer, Model, Etc. (optional but recommended) Rosemount, 1153B**Instructions for Completing Checklist**

This checklist may be used to document the results of the Seismic Walkdown of an item of equipment on the SWEL. The space below each of the following questions may be used to record the results of judgments and findings. Additional space is provided at the end of this checklist for documenting other comments.

Anchorage

1. Is the anchorage configuration verification required (i.e., is the item one of the 50% of SWEL items requiring such verification)? Y N

2. Is the anchorage free of bent, broken, missing or loose hardware? Y N U N/A
Pressure transmitter is bolted to a plate that is bolted to the panel. There are no missing, bent or broken bolts. Panel is stitch welded to beams.

3. Is the anchorage free of corrosion that is more than mild surface oxidation? Y N U N/A
No surface oxidation found

4. Is the anchorage free of visible cracks in the concrete near the anchors? Y N U N/A
Item is anchored to steel

5. Is the anchorage configuration consistent with plant documentation? Y N U N/A
 (Note: This question only applies if the item is one of the 50% for which an anchorage configuration verification is required.)
Stitch welded to steel beam at bolt hole location. ~12" OC. Inconsistent with QP 406 ~6" OC CR-GGN-2012-11130.

6. Based on the above anchorage evaluations, is the anchorage free of potentially adverse seismic conditions? Y N U
See number 5

¹ Enter the equipment class name from EPRI 1025286 Appendix B: Classes of Equipment.

Status: Y N U

Seismic Walkdown Checklist (SWC) SWEL1- 061

Equipment ID No. E51N050 Equip. Class: 18 - Instrument Racks

Equipment Description Pressure Transmitter (RCIC Pump Discharge)

Interaction Effects

7. Are soft targets free from impact by nearby equipment or structures? Y N U N/A

All tubing attached to the transmitter and panel is rigidly supported with adequate clearance.

8. Are overhead equipment, distribution systems, ceiling tiles and lighting, and masonry block walls not likely to collapse onto the equipment? Y N U N/A

Corrugated panels are supported by beams and lighting is supported, therefore no seismic concerns.

9. Do attached lines have adequate flexibility to avoid damage? Y N U N/A

Flexible conduit and tubing is attached to transmitter and panel with adequate clearance

10. Based on the above seismic interaction evaluations, is equipment free of potentially adverse seismic interaction effects? Y N U

All tubing and flexible conduit has adequate clearance

Other Adverse Conditions

11. Have you looked for and found no other seismic conditions that could adversely affect the safety functions of the equipment? Y N U

Comments

None

Evaluated by: Chase Wharon  Date: 9/25/2012

Fred Hopkins  9/25/2012

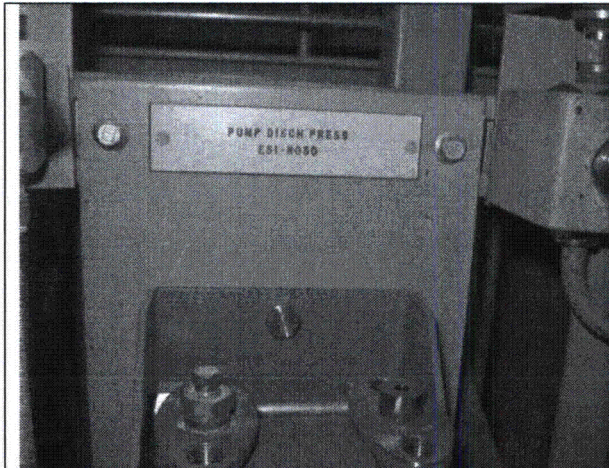
Status: Y N U

Seismic Walkdown Checklist (SWC) SWEL1- 061

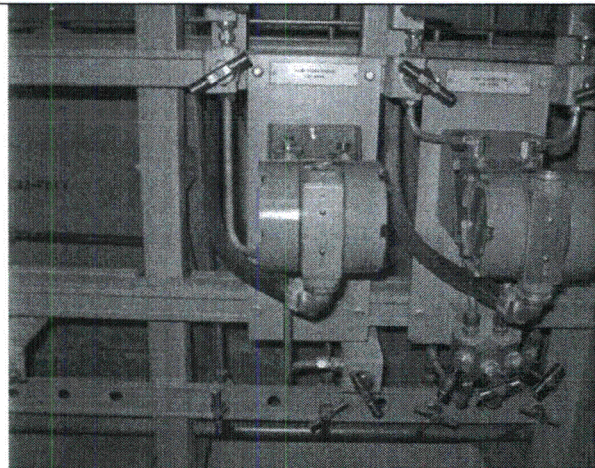
Equipment ID No. E51N050 Equip. Class' 18 - Instrument Racks

Equipment Description Pressure Transmitter (RCIC Pump Discharge)

Photographs



Note:



Note:

Status: Y N U

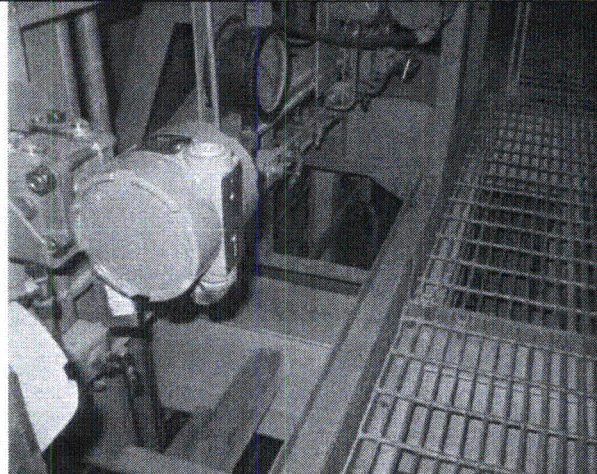
Seismic Walkdown Checklist (SWC) SWEL1- 061

Equipment ID No. E51N050 Equip. Class¹ 18 - Instrument Racks

Equipment Description Pressure Transmitter (RCIC Pump Discharge)



Note: *Stitch weld of panel*



Note: *Panel base supported on beam.*

Status: Y N U **Seismic Walkdown Checklist (SWC) SWEL1- 062**Equipment ID No. P41N018A Equip. Class¹ 18 - Instrument RacksEquipment Description Flow Transmitter (SSW CLG Tower A Return)Location: Bldg. SSW Floor El. 133 Room, Area 1M112, SSWManufacturer, Model, Etc. (optional but recommended) Rosemount, 1153DB3**Instructions for Completing Checklist**

This checklist may be used to document the results of the Seismic Walkdown of an item of equipment on the SWEL. The space below each of the following questions may be used to record the results of judgments and findings. Additional space is provided at the end of this checklist for documenting other comments.

Anchorage

1. Is the anchorage configuration verification required (i.e., is the item one of the 50% of SWEL items requiring such verification)? Y N

2. Is the anchorage free of bent, broken, missing or loose hardware? Y N U N/A
The anchorage was free of damage or missing hardware. Item is mounted on tube steel anchored to the concrete wall

3. Is the anchorage free of corrosion that is more than mild surface oxidation? Y N U N/A
There is very mild surface oxidation judged to have negligible affects on structural ability

4. Is the anchorage free of visible cracks in the concrete near the anchors? Y N U N/A
Concrete is coated with paint. There were no visible cracks near the anchors.

5. Is the anchorage configuration consistent with plant documentation? Y N U N/A
(Note: This question only applies if the item is one of the 50% for which an anchorage configuration verification is required.)

6. Based on the above anchorage evaluations, is the anchorage free of potentially adverse seismic conditions? Y N U
There was very mild oxidation. Mild oxidation does not cause any adverse seismic conditions.

¹ Enter the equipment class name from EPRI 1025286 Appendix B: Classes of Equipment.

Status: Y N U

Seismic Walkdown Checklist (SWC) SWEL1- 062

Equipment ID No. P41N018A Equip. Class: 18 - Instrument Racks

Equipment Description Flow Transmitter (SSW CLG Tower A Return)

Interaction Effects

7. Are soft targets free from impact by nearby equipment or structures? Y N U N/A
Item has no soft targets

8. Are overhead equipment, distribution systems, ceiling tiles and lighting, and masonry block walls not likely to collapse onto the equipment? Y N U N/A
No lighting is directly over head.

9. Do attached lines have adequate flexibility to avoid damage? Y N U N/A
Flex conduit is attached to give adequate flexibility.

10. Based on the above seismic interaction evaluations, is equipment free of potentially adverse seismic interaction effects? Y N U
The tubing is rigid will not cause an adverse seismic condition.

Other Adverse Conditions

11. Have you looked for and found no other seismic conditions that could adversely affect the safety functions of the equipment? Y N U
All over head conduit is adequately supported.

Comments

None

Evaluated by: Chase Wharton *Ch Wha* Date: 9/24/2012

Fred Hopkins *Fred Hopkins* 9/24/2012

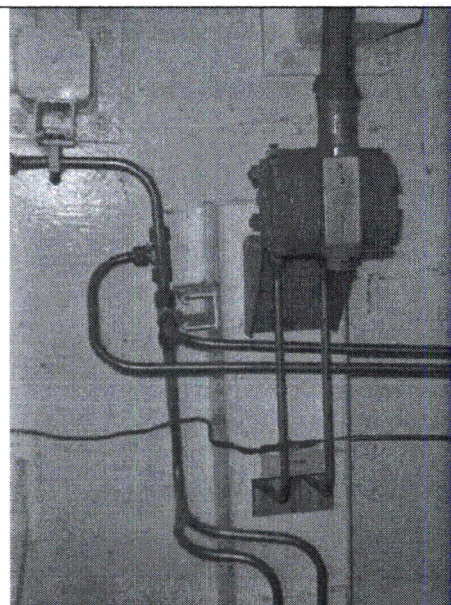
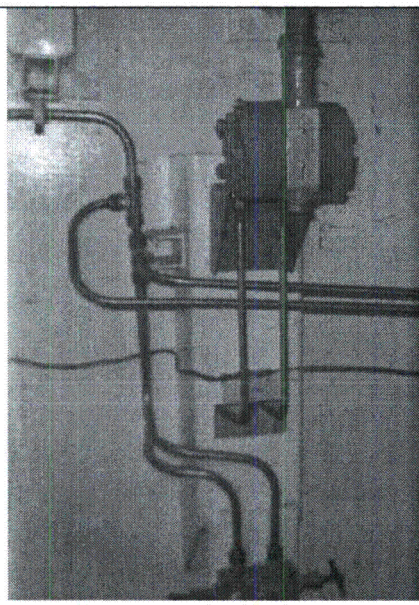
Status: Y N U

Seismic Walkdown Checklist (SWC) SWEL1- 062

Equipment ID No. P41N018A Equip. Class: 18 - Instrument Racks

Equipment Description Flow Transmitter (SSW CLG Tower A Return)

Photographs

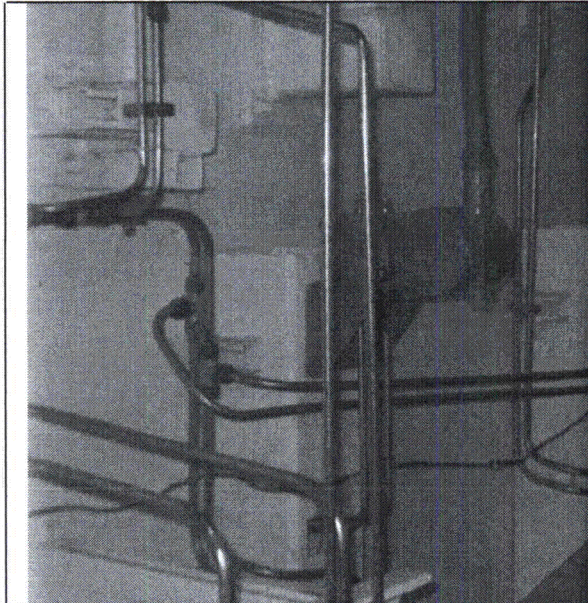
	
<p>Note:</p>	<p>Note:</p>

Status: Y N U

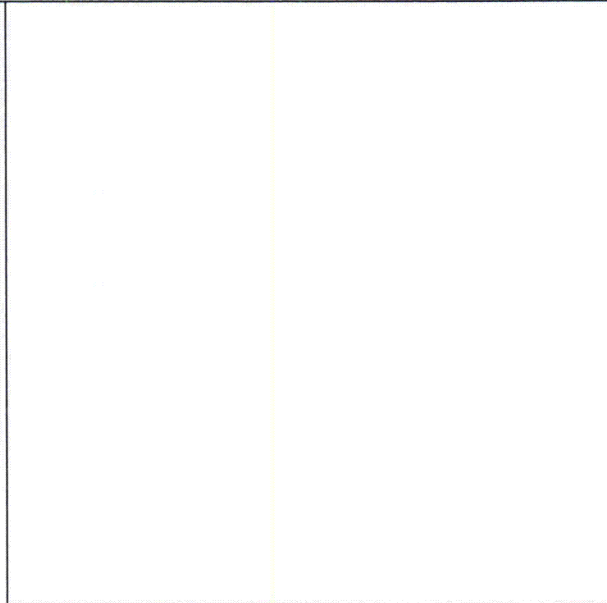
Seismic Walkdown Checklist (SWC) SWEL1- 062

Equipment ID No. P41N018A Equip. Class¹ 18 - Instrument Racks

Equipment Description Flow Transmitter (SSW CLG Tower A Return)



Note: TUBING



Note:

Status: Y N U

Seismic Walkdown Checklist (SWC) SWEL1- 063

Equipment ID No. P75N004A Equip. Class¹ 18 - Instrument Racks

Equipment Description Level Transmitter (Diesel Generator A Day Tank Level Transmitter)

Location: Bldg. DG Floor El. 133 Room, Area 1D302, DSL

Manufacturer, Model, Etc. (optional but recommended) Rosemount, 1153GB4

Instructions for Completing Checklist

This checklist may be used to document the results of the Seismic Walkdown of an item of equipment on the SWEL. The space below each of the following questions may be used to record the results of judgments and findings. Additional space is provided at the end of this checklist for documenting other comments.

Anchorage

1. Is the anchorage configuration verification required (i.e., is the item one of the 50% of SWEL items requiring such verification)? Y N

2. Is the anchorage free of bent, broken, missing or loose hardware? Y N U N/A
*Level Transmitter mounting bracket is attached to TS 6x6 vertical post using four bolts, and TS 6x6 vertical post is anchored to the floor using (4) 1/2" dia. anchor bolts. See photo.
 No bent, broken, missing or loose hardware found.*

3. Is the anchorage free of corrosion that is more than mild surface oxidation? Y N U N/A
Floor is covered with epoxy coating; no visual indication of corrosion found

4. Is the anchorage free of visible cracks in the concrete near the anchors? Y N U N/A
Floor is covered with epoxy coating; no visual indication of concrete crack found

5. Is the anchorage configuration consistent with plant documentation? Y N U N/A
 (Note: This question only applies if the item is one of the 50% for which an anchorage configuration verification is required.)
Anchorage was checked against drawing FSK-I-0127G-951-G, and the configuration shown on the drawing matched the field condition.

6. Based on the above anchorage evaluations, is the anchorage free of potentially adverse seismic conditions? Y N U

¹ Enter the equipment class name from EPRI 1025286 Appendix B: Classes of Equipment.

Status: Y N U

Seismic Walkdown Checklist (SWC) SWEL1- 063

Equipment ID No. P75N004A Equip. Class: 18 - Instrument Racks

Equipment Description Level Transmitter (Diesel Generator A Day Tank Level Transmitter)

Interaction Effects

7. Are soft targets free from impact by nearby equipment or structures? Y N U N/A
Nearby Fuel Oil Day Tank is rigidly supported.

8. Are overhead equipment, distribution systems, ceiling tiles and lighting, and masonry block walls not likely to collapse onto the equipment? Y N U N/A
*All overhead items (cable tray) are rigidly supported.
In the vicinity, light fixtures are hung with chain using S-hook. This condition doesn't pose a seismic concern.*

9. Do attached lines have adequate flexibility to avoid damage? Y N U N/A
Flex conduit has been used for routing cable to the level transmitter, and tubing attached to the transmitter has adequate flexibility.

10. Based on the above seismic interaction evaluations, is equipment free of potentially adverse seismic interaction effects? Y N U
See question number 8.

Other Adverse Conditions

11. Have you looked for and found no other seismic conditions that could adversely affect the safety functions of the equipment? Y N U

Comments

None

Evaluated by: Kyong S. (Jason) Pak *Kyong S. Pak* Date: 9/26/2012

Tori Robinson *Tori Robinson* 9/26/2012

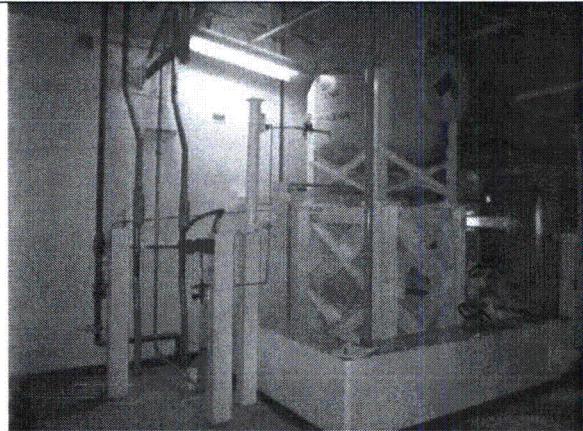
Status: Y N U

Seismic Walkdown Checklist (SWC) SWEL1- 063

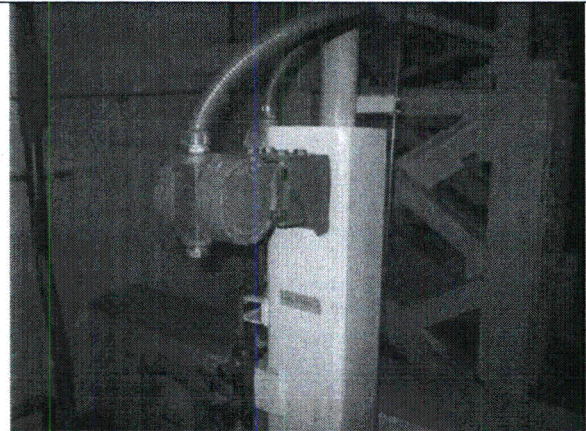
Equipment ID No. P75N004A Equip. Class¹ 18 - Instrument Racks

Equipment Description Level Transmitter (Diesel Generator A Day Tank Level Transmitter)

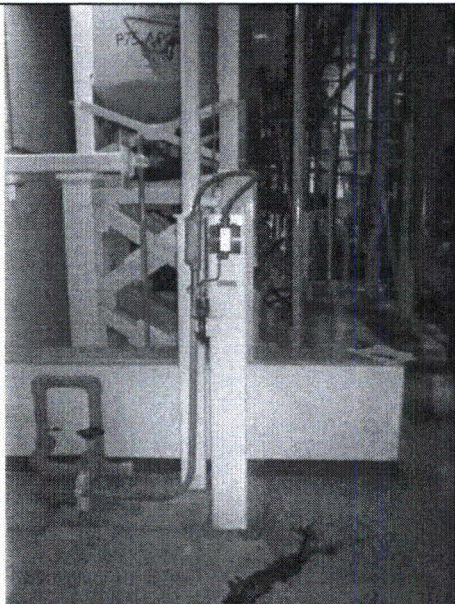
Photographs



Note: *General view of the area*



Note: *Level Transmitter*



Note: *Level Transmitter*

Note:

Status: Y N U **Seismic Walkdown Checklist (SWC) SWEL1- 064**Equipment ID No. B21N150D Equip. Class¹ 18 - Instrument RacksEquipment Description Pressure Switch (SRV 1B21F041D Discharge Pressure High Switch)Location: Bldg. CTMT Floor El. 161 Room, Area 1A445, CTMTManufacturer, Model, Etc. (optional but recommended) Pressure Control Inc., A17-1P**Instructions for Completing Checklist**

This checklist may be used to document the results of the Seismic Walkdown of an item of equipment on the SWEL. The space below each of the following questions may be used to record the results of judgments and findings. Additional space is provided at the end of this checklist for documenting other comments.

Anchorage

1. Is the anchorage configuration verification required (i.e., is the item one of the 50% of SWEL items requiring such verification)? Y N

2. Is the anchorage free of bent, broken, missing or loose hardware? Y N U N/A
U-Bolts and nuts in good condition. U-Bolt is bolted to C-Channel. Channel is mounted to tube steel rack.

3. Is the anchorage free of corrosion that is more than mild surface oxidation? Y N U N/A
There is very mild surface oxidation judged to have negligible affects on structural ability

4. Is the anchorage free of visible cracks in the concrete near the anchors? Y N U N/A
Steel mounted item.

5. Is the anchorage configuration consistent with plant documentation? Y N U N/A
 (Note: This question only applies if the item is one of the 50% for which an anchorage configuration verification is required.)
Configuration consistent with FSK-I-1077C-018-C Sheets 1 and 2

6. Based on the above anchorage evaluations, is the anchorage free of potentially adverse seismic conditions? Y N U

¹ Enter the equipment class name from EPRI 1025286 Appendix B: Classes of Equipment.

Status: Y N U

Seismic Walkdown Checklist (SWC) SWEL1- 064

Equipment ID No. B21N150D Equip. Class: 18 - Instrument Racks

Equipment Description Pressure Switch (SRV 1B21F041D Discharge Pressure High Switch)

Interaction Effects

7. Are soft targets free from impact by nearby equipment or structures? Y N U N/A
Soft targets have adequate clearance and are anchored.

8. Are overhead equipment, distribution systems, ceiling tiles and lighting, and masonry block walls not likely to collapse onto the equipment? Y N U N/A
Cable trays and lines are adequately supported.

9. Do attached lines have adequate flexibility to avoid damage? Y N U N/A
Flex lines are attached.

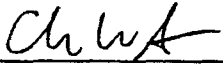
10. Based on the above seismic interaction evaluations, is equipment free of potentially adverse seismic interaction effects? Y N U


Other Adverse Conditions

11. Have you looked for and found no other seismic conditions that could adversely affect the safety functions of the equipment? Y N U

Comments

None

Evaluated by: Chase Wharton  Date: 9/28/2012

Fred Hopkins  9/28/2012

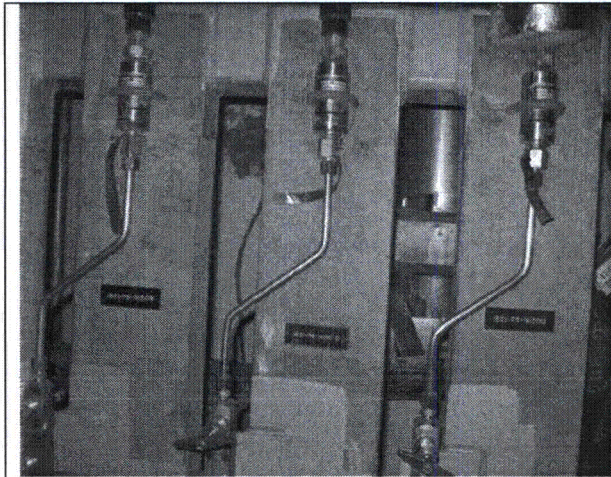
Status: Y N U

Seismic Walkdown Checklist (SWC) SWEL1- 064

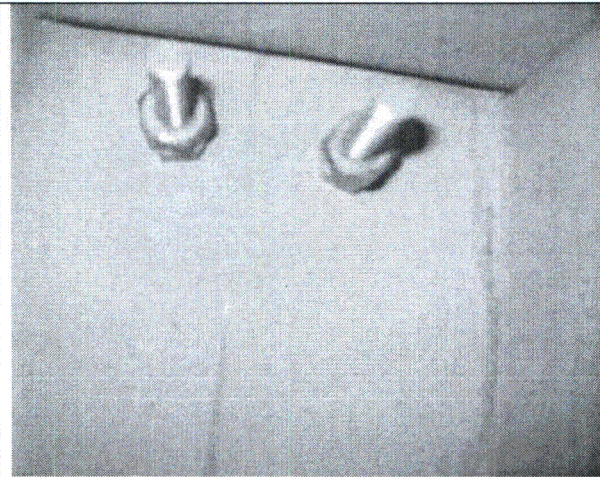
Equipment ID No. B21N150D Equip. Class¹ 18 - Instrument Racks

Equipment Description Pressure Switch (SRV 1B21F041D Discharge Pressure High Switch)

Photographs



Note:



Note:

Status: Y N U **Seismic Walkdown Checklist (SWC) SWEL1- 065**Equipment ID No. H22P025 Equip. Class¹ 18 - Instrument RacksEquipment Description MN ST FLOW INSTRUMENT PANEL BLocation: Bldg. CTMT Floor El. 136 Room, Area 1A311, CTMT

Manufacturer, Model, Etc. (optional but recommended) _____

Instructions for Completing Checklist

This checklist may be used to document the results of the Seismic Walkdown of an item of equipment on the SWEL. The space below each of the following questions may be used to record the results of judgments and findings. Additional space is provided at the end of this checklist for documenting other comments.

Anchorage

1. Is the anchorage configuration verification required (i.e., is the item one of the 50% of SWEL items requiring such verification)? Y N

2. Is the anchorage free of bent, broken, missing or loose hardware? Y N U N/A
Panels is stitch welded to beams

3. Is the anchorage free of corrosion that is more than mild surface oxidation? Y N U N/A
There is mild surface oxidation judged to have negligible affects on structural ability

4. Is the anchorage free of visible cracks in the concrete near the anchors? Y N U N/A
Anchorage is welded to steel beams

5. Is the anchorage configuration consistent with plant documentation? Y N U N/A
(Note: This question only applies if the item is one of the 50% for which an anchorage configuration verification is required.)
Stitch welded to steel beam at bolt hole location. ~12" OC. Inconsistent with QP 398 ~6" OC CR-GGN-2012-11130.

6. Based on the above anchorage evaluations, is the anchorage free of potentially adverse seismic conditions? Y N U

¹ Enter the equipment class name from EPRI 1025286 Appendix B: Classes of Equipment.

Status: Y N U

Seismic Walkdown Checklist (SWC) SWEL1- 065

Equipment ID No. H22P025 Equip. Class: 18 - Instrument Racks

Equipment Description MN ST FLOW INSTRUMENT PANEL B

Interaction Effects

7. Are soft targets free from impact by nearby equipment or structures? Y N U N/A
Adequate clearance is given.

8. Are overhead equipment, distribution systems, ceiling tiles and lighting, and masonry block walls not likely to collapse onto the equipment? Y N U N/A
Cable tray and Structural steel is adequately supported.

9. Do attached lines have adequate flexibility to avoid damage? Y N U N/A
Rack is rigidly mounted, and flexible conduit attached to transmitters on rack.

10. Based on the above seismic interaction evaluations, is equipment free of potentially adverse seismic interaction effects? Y N U


Other Adverse Conditions

11. Have you looked for and found no other seismic conditions that could adversely affect the safety functions of the equipment? Y N U

Comments

None

Evaluated by: Chase Wharton  Date: 9/27/2012

Fred Hopkins  9/27/2012

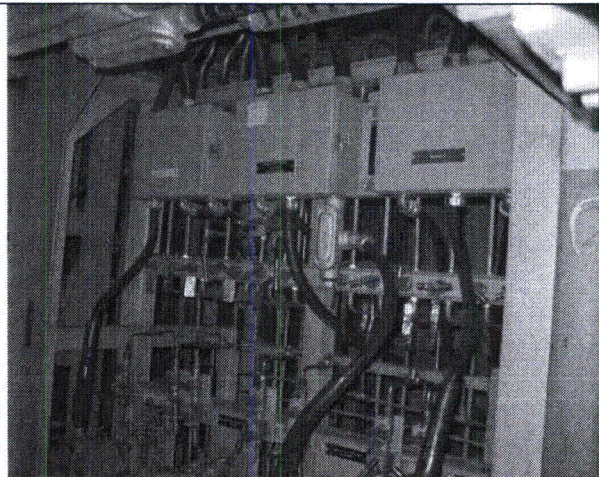
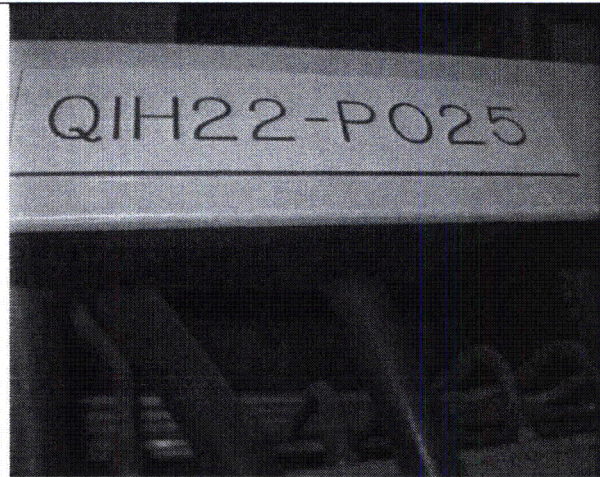
Status: Y N U

Seismic Walkdown Checklist (SWC) SWEL1- 065

Equipment ID No. H22P025 Equip. Class: 18 - Instrument Racks

Equipment Description MN ST FLOW INSTRUMENT PANEL B

Photographs



Note:

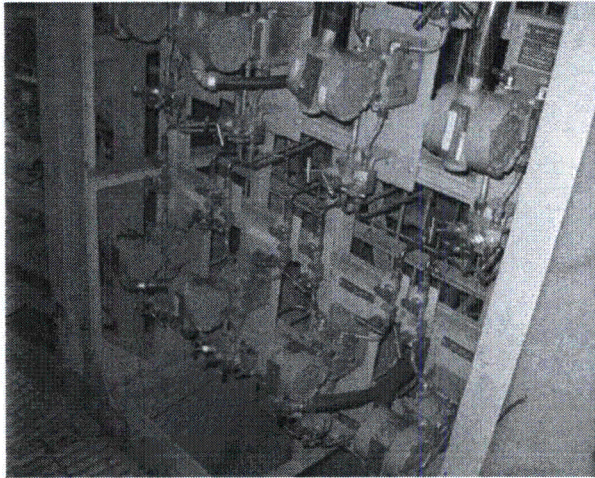
Note:

Status: Y N U

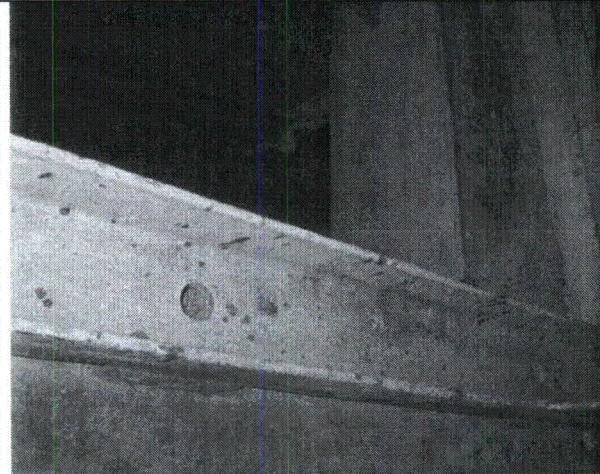
Seismic Walkdown Checklist (SWC) SWEL1- 065

Equipment ID No. H22P025 Equip. Class¹ 18 - Instrument Racks

Equipment Description MN ST FLOW INSTRUMENT PANEL B



Note:



Note:

Status: Y N U

Seismic Walkdown Checklist (SWC) SWEL1- 066

Equipment ID No. M71N027B Equip. Class¹ 18 - Instrument Racks

Equipment Description Temp. Element (Containment Pressure (W/RPAM CH-B) Transmitter)

Location: Bldg. AB Floor El. 166 Room, Area 1A417, 08

Manufacturer, Model, Etc. (optional but recommended) Rosemount, 1153DB6

Instructions for Completing Checklist

This checklist may be used to document the results of the Seismic Walkdown of an item of equipment on the SWEL. The space below each of the following questions may be used to record the results of judgments and findings. Additional space is provided at the end of this checklist for documenting other comments.

Anchorage

- 1. Is the anchorage configuration verification required (i.e., is the item one of the 50% of SWEL items requiring such verification)? Y N

- 2. Is the anchorage free of bent, broken, missing or loose hardware? Y N U N/A
*Pressure Transmitter mounting bracket is attached to TS 6x6 vertical post using four bolts, and TS 6x6 vertical post is anchored to the floor using (4) 1/2" dia. anchor bolts. See photo.
 No bent, broken, missing or loose hardware found.*

- 3. Is the anchorage free of corrosion that is more than mild surface oxidation? Y N U N/A
Floor is covered with epoxy coating; no visual indication of corrosion found.

- 4. Is the anchorage free of visible cracks in the concrete near the anchors? Y N U N/A
Floor is covered with epoxy coating; no visual indication of concrete crack found.

- 5. Is the anchorage configuration consistent with plant documentation? Y N U N/A
 (Note: This question only applies if the item is one of the 50% for which an anchorage configuration verification is required.)
Anchorage was checked against drawing FSK-I-0127G-084-B, and the configuration shown on the drawing matched the field condition.

- 6. Based on the above anchorage evaluations, is the anchorage free of potentially adverse seismic conditions? Y N U

¹ Enter the equipment class name from EPRI 1025286 Appendix B: Classes of Equipment.

Status: Y N U

Seismic Walkdown Checklist (SWC) SWEL1- 066

Equipment ID No. M71N027B Equip. Class: 18 - Instrument Racks

Equipment Description Temp. Element (Containment Pressure (W/ RPAM CH-B) Transmitter)

Interaction Effects

7. Are soft targets free from impact by nearby equipment or structures? Y N U N/A
All equipments/structures nearby are rigidly supported.

8. Are overhead equipment, distribution systems, ceiling tiles and lighting, and masonry block walls not likely to collapse onto the equipment? Y N U N/A
All overhead items (conduit) are rigidly supported.

9. Do attached lines have adequate flexibility to avoid damage? Y N U N/A
Flex conduit has been used for routing cable to the pressure transmitter, and tubing attached to the transmitter has adequate flexibility.

10. Based on the above seismic interaction evaluations, is equipment free of potentially adverse seismic interaction effects? Y N U


Other Adverse Conditions

11. Have you looked for and found no other seismic conditions that could adversely affect the safety functions of the equipment? Y N U

Comments

None

Evaluated by: Kyong S. (Jason) Pak  Date: 9/27/2012

Tori Robinson  9/27/2012

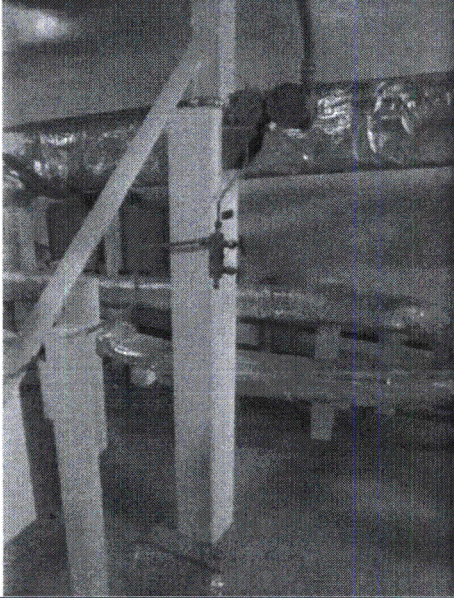

Status: Y N U

Seismic Walkdown Checklist (SWC) SWEL1- 066

Equipment ID No. M71N027B Equip. Class: 18 - Instrument Racks

Equipment Description Temp. Element (Containment Pressure (W/RPAM CH-B) Transmitter)

Photographs

	
<p>Note: <i>Pressure Transmitter</i></p>	<p>Note: <i>Anchorage to the floor</i></p>

Status: Y N U

Seismic Walkdown Checklist (SWC) SWEL1- 067

Equipment ID No. E12N103 Equip. Class¹ 18 - Instrument Rack

Equipment Description Position Switch

Location: Bldg. CTMT Floor El. 120 Room, Area 1A112, CTMT

Manufacturer, Model, Etc. (optional but recommended) LIMITORQUE

Instructions for Completing Checklist

This checklist may be used to document the results of the Seismic Walkdown of an item of equipment on the SWEL. The space below each of the following questions may be used to record the results of judgments and findings. Additional space is provided at the end of this checklist for documenting other comments.

Anchorage

- 1. Is the anchorage configuration verification required (i.e., is the item one of the 50% of SWEL items requiring such verification)? Y N

- 2. Is the anchorage free of bent, broken, missing or loose hardware? Y N U N/A

- 3. Is the anchorage free of corrosion that is more than mild surface oxidation? Y N U N/A

- 4. Is the anchorage free of visible cracks in the concrete near the anchors? Y N U N/A

- 5. Is the anchorage configuration consistent with plant documentation? Y N U N/A
(Note: This question only applies if the item is one of the 50% for which an anchorage configuration verification is required.)

- 6. Based on the above anchorage evaluations, is the anchorage free of potentially adverse seismic conditions? Y N U

¹ Enter the equipment class name from EPRI 1025286 Appendix B: Classes of Equipment.

Status: Y N U

Seismic Walkdown Checklist (SWC) SWEL1- 067

Equipment ID No. E12N103 Equip. Class¹ 18 - Instrument Rack

Equipment Description Position Switch

Interaction Effects

7. Are soft targets free from impact by nearby equipment or structures? Y N U N/A

8. Are overhead equipment, distribution systems, ceiling tiles and lighting, and masonry block walls not likely to collapse onto the equipment? Y N U N/A

9. Do attached lines have adequate flexibility to avoid damage? Y N U N/A

10. Based on the above seismic interaction evaluations, is equipment free of potentially adverse seismic interaction effects? Y N U

Other Adverse Conditions

11. Have you looked for and found no other seismic conditions that could adversely affect the safety functions of the equipment? Y N U

Comments

Evaluated by: _____ Date: _____

Status: Y N U

Seismic Walkdown Checklist (SWC) SWEL1- 067

Equipment ID No. E12N103 Equip. Class: 18 - Instrument Rack

Equipment Description Position Switch

Photographs

Note:	Note:

Status: Y N U

Seismic Walkdown Checklist (SWC) SWEL1- 067

Equipment ID No. E12N103 Equip. Class: 18 - Instrument Rack

Equipment Description Position Switch

Note:	Note:

Status: Y N U

Seismic Walkdown Checklist (SWC) SWEL1- 068

Equipment ID No. E22N054C Equip. Class¹ 18 - Instrument Racks

Equipment Description Differential Pressure Transmitter (Condensate Storage Tank Level Transmitter)

Location: Bldg. AB Floor El. 119 Room, Area 1A201, 07

Manufacturer, Model, Etc. (optional but recommended) Rosemount

Instructions for Completing Checklist

This checklist may be used to document the results of the Seismic Walkdown of an item of equipment on the SWEL. The space below each of the following questions may be used to record the results of judgments and findings. Additional space is provided at the end of this checklist for documenting other comments.

Anchorage

1. Is the anchorage configuration verification required (i.e., is the item one of the 50% of SWEL items requiring such verification)? Y N

2. Is the anchorage free of bent, broken, missing or loose hardware? Y N U N/A
*Level Transmitter mounting bracket is attached to TS 6x6 vertical member using four bolts, and TS 6x6 vertical member is anchored to the wall using (4) 1/2" dia. anchor bolts. See photos.
 No bent, broken, missing or loose hardware found.*

3. Is the anchorage free of corrosion that is more than mild surface oxidation? Y N U N/A
Floor is covered with epoxy coating; no visual indication of corrosion found.

4. Is the anchorage free of visible cracks in the concrete near the anchors? Y N U N/A
Floor is covered with epoxy coating; no visual indication of concrete crack found.

5. Is the anchorage configuration consistent with plant documentation? Y N U N/A
 (Note: This question only applies if the item is one of the 50% for which an anchorage configuration verification is required.)
Anchorage was checked against drawing FSK-I-0127G-034-B Rev. 3, and the configuration shown on the drawing matched the field condition.

6. Based on the above anchorage evaluations, is the anchorage free of potentially adverse seismic conditions? Y N U

¹ Enter the equipment class name from EPRI 1025286 Appendix B: Classes of Equipment.

Status: Y N U

Seismic Walkdown Checklist (SWC) SWEL1- 068

Equipment ID No. E22N054C Equip. Class: 18 - Instrument Racks

Equipment Description Differential Pressure Transmitter (Condensate Storage Tank Level Transmitter)

Interaction Effects

7. Are soft targets free from impact by nearby equipment or structures? Y N U N/A
All equipments/structures nearby are rigidly supported.

8. Are overhead equipment, distribution systems, ceiling tiles and lighting, and masonry block walls not likely to collapse onto the equipment? Y N U N/A
All overhead items are rigidly supported.

9. Do attached lines have adequate flexibility to avoid damage? Y N U N/A
Flex conduit has been used for routing cable to the level transmitter, and tubing attached to the transmitter has adequate flexibility.

10. Based on the above seismic interaction evaluations, is equipment free of potentially adverse seismic interaction effects? Y N U

Other Adverse Conditions

11. Have you looked for and found no other seismic conditions that could adversely affect the safety functions of the equipment? Y N U

Comments

None

Evaluated by: Kyong S. (Jason) Pak *Kyong S. Pak* Date: 9/25/2012

Tori Robinson *Tori Robinson* 9/25/2012

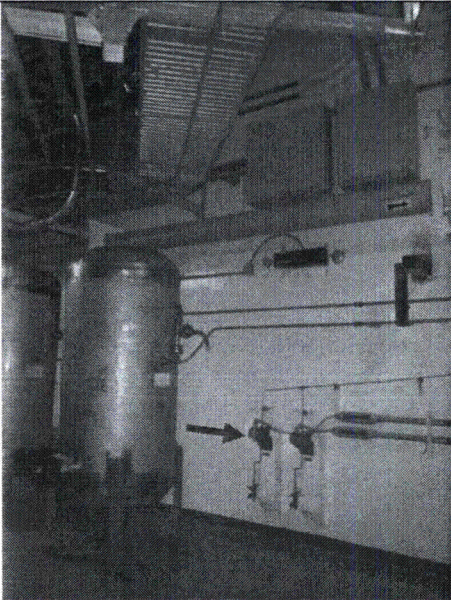
Status: Y N U

Seismic Walkdown Checklist (SWC) SWEL1- 068

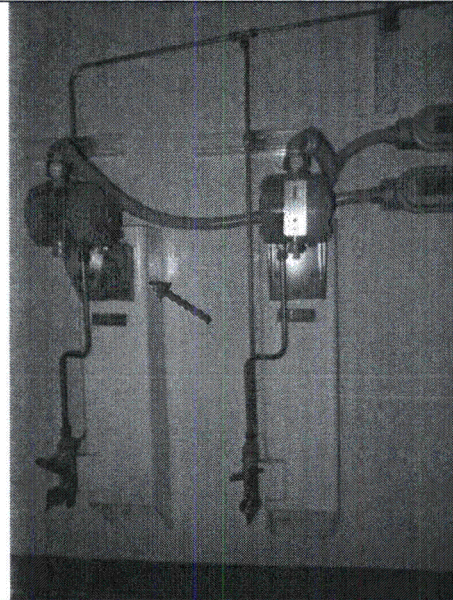
Equipment ID No. E22N054C Equip. Class¹ 18 - Instrument Racks

Equipment Description Differential Pressure Transmitter (Condensate Storage Tank Level Transmitter)

Photographs



Note: General view of the area



Note: Level Transmitter

Status: Y N U

Seismic Walkdown Checklist (SWC) SWEL1- 069

Equipment ID No. E22N054G Equip. Class¹ 18 - Instrument Racks

Equipment Description Differential Pressure Transmitter (Condensate Storage Tank Level Transmitter)

Location: Bldg. AB Floor El. 119 Room, Area 1A201, 07

Manufacturer, Model, Etc. (optional but recommended) Rosemount

Instructions for Completing Checklist

This checklist may be used to document the results of the Seismic Walkdown of an item of equipment on the SWEL. The space below each of the following questions may be used to record the results of judgments and findings. Additional space is provided at the end of this checklist for documenting other comments.

Anchorage

1. Is the anchorage configuration verification required (i.e., is the item one of the 50% of SWEL items requiring such verification)? Y N

2. Is the anchorage free of bent, broken, missing or loose hardware? Y N U N/A
*Level Transmitter mounting bracket is attached to TS 6x6 vertical member using four bolts, and TS 6x6 vertical member is anchored to the wall using (4) 1/2" dia. anchor bolts. See photos.
 No bent, broken, missing or loose hardware found.*

3. Is the anchorage free of corrosion that is more than mild surface oxidation? Y N U N/A
Floor is covered with epoxy coating; no visual indication of corrosion found.

4. Is the anchorage free of visible cracks in the concrete near the anchors? Y N U N/A
Floor is covered with epoxy coating; no visual indication of concrete crack found.

5. Is the anchorage configuration consistent with plant documentation? Y N U N/A
 (Note: This question only applies if the item is one of the 50% for which an anchorage configuration verification is required.)
Anchorage was checked against drawing FSK-I-0127G-035-B Rev. 4, and the configuration shown on the drawing matched the field condition.

6. Based on the above anchorage evaluations, is the anchorage free of potentially adverse seismic conditions? Y N U

¹ Enter the equipment class name from EPRI 1025286 Appendix B: Classes of Equipment.

Status: Y N U

Seismic Walkdown Checklist (SWC) SWEL1- 069

Equipment ID No. E22N054G Equip. Class: 18 - Instrument Racks

Equipment Description Differential Pressure Transmitter (Condensate Storage Tank Level Transmitter)

Interaction Effects

7. Are soft targets free from impact by nearby equipment or structures? Y N U N/A
All equipments/structures nearby are rigidly supported.

8. Are overhead equipment, distribution systems, ceiling tiles and lighting, and masonry block walls not likely to collapse onto the equipment? Y N U N/A
All overhead items are rigidly supported.

9. Do attached lines have adequate flexibility to avoid damage? Y N U N/A
Flex conduit has been used for routing cable to the level transmitter, and tubing attached to the transmitter has adequate flexibility.

10. Based on the above seismic interaction evaluations, is equipment free of potentially adverse seismic interaction effects? Y N U

Other Adverse Conditions

11. Have you looked for and found no other seismic conditions that could adversely affect the safety functions of the equipment? Y N U

Comments

None

Evaluated by: Kyong S. (Jason) Pak *Kyong S. Pak* Date: 9/25/2012

Tori Robinson *Tori Robinson* 9/25/2012

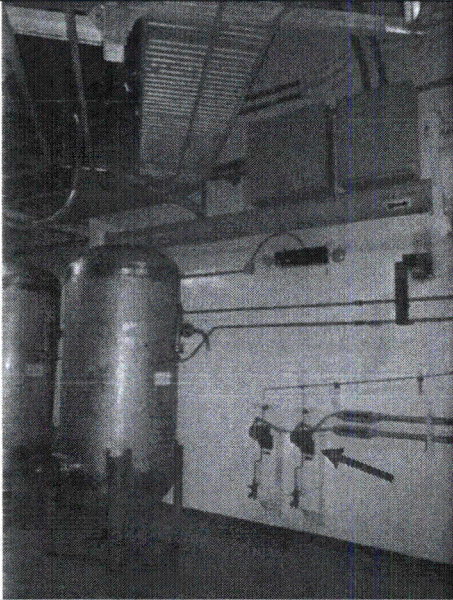
Status: Y N U

Seismic Walkdown Checklist (SWC) SWEL1- 069

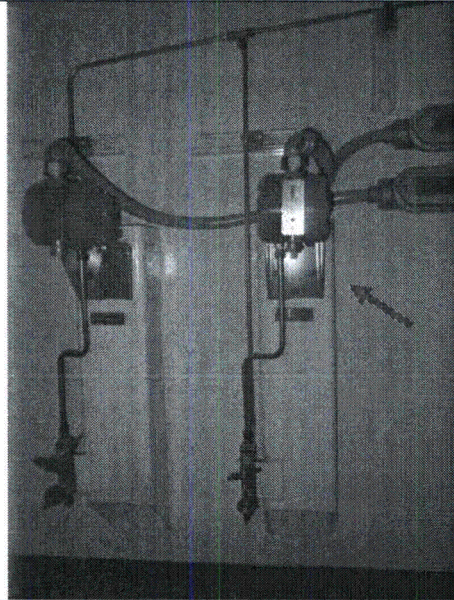
Equipment ID No. E22N054G Equip. Class¹ 18 - Instrument Racks

Equipment Description Differential Pressure Transmitter (Condensate Storage Tank Level Transmitter)

Photographs



Note: *General view of the area*



Note: *Level Transmitter*

Status: Y N U

Seismic Walkdown Checklist (SWC) SWEL1- 070

Equipment ID No. E51N035E Equip. Class¹ 18 - Instrument Racks

Equipment Description Condensate Storage Tank (Condensate Storage Tank (RCIC) Level Transmitter)

Location: Bldg. AB Floor El. 119 Room, Area 1A201, 07

Manufacturer, Model, Etc. (optional but recommended) Rosemount

Instructions for Completing Checklist

This checklist may be used to document the results of the Seismic Walkdown of an item of equipment on the SWEL. The space below each of the following questions may be used to record the results of judgments and findings. Additional space is provided at the end of this checklist for documenting other comments.

Anchorage

1. Is the anchorage configuration verification required (i.e., is the item one of the 50% of SWEL items requiring such verification)? Y N

2. Is the anchorage free of bent, broken, missing or loose hardware? Y N U N/A
Level Transmitter mounting bracket is attached to TS 6x6 vertical post using four bolts, and TS 6x6 vertical post is anchored to the floor using (4) 1/2" dia. anchor bolts. See photos.
No bent, broken, missing or loose hardware found.

3. Is the anchorage free of corrosion that is more than mild surface oxidation? Y N U N/A
Floor is covered with epoxy coating; no visual indication of corrosion found.

4. Is the anchorage free of visible cracks in the concrete near the anchors? Y N U N/A
Floor is covered with epoxy coating; no visual indication of concrete crack found.

5. Is the anchorage configuration consistent with plant documentation? Y N U N/A
 (Note: This question only applies if the item is one of the 50% for which an anchorage configuration verification is required.)
Anchorage was checked against drawing FSK-I-0127G-037-B Rev. 4, and the configuration shown on the drawing matched the field condition.

6. Based on the above anchorage evaluations, is the anchorage free of potentially adverse seismic conditions? Y N U

¹ Enter the equipment class name from EPRI 1025286 Appendix B: Classes of Equipment.

Status: Y N U

Seismic Walkdown Checklist (SWC) SWEL1- 070

Equipment ID No. E51N035E Equip. Class: 18 - Instrument Racks

Equipment Description Condensate Storage Tank (Condensate Storage Tank (RCIC) Level Transmitter)

Interaction Effects

- 7. Are soft targets free from impact by nearby equipment or structures? Y N U N/A
All equipments/structures nearby are rigidly supported.

- 8. Are overhead equipment, distribution systems, ceiling tiles and lighting, and masonry block walls not likely to collapse onto the equipment? Y N U N/A
All overhead items are rigidly supported.

- 9. Do attached lines have adequate flexibility to avoid damage? Y N U N/A
Flex conduit has been used for routing cable to the level transmitter, and tubing attached to the transmitter has adequate flexibility.

- 10. Based on the above seismic interaction evaluations, is equipment free of potentially adverse seismic interaction effects? Y N U

Other Adverse Conditions

- 11. Have you looked for and found no other seismic conditions that could adversely affect the safety functions of the equipment? Y N U
Modem (CA-U1-AUX-119-7) is mounted on overhead cable tray support; however doesn't pose a seismic concern. See photo.

Comments

None

Evaluated by: Kyong S. (Jason) Pak  Date: 9/25/2012

Tori Robinson  9/25/2012

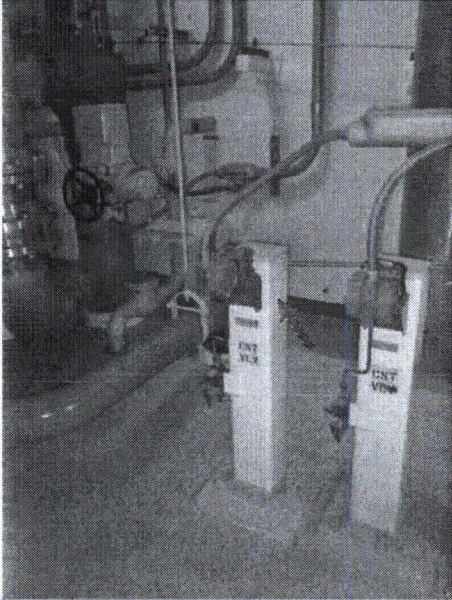
Status: Y N U

Seismic Walkdown Checklist (SWC) SWEL1- 070

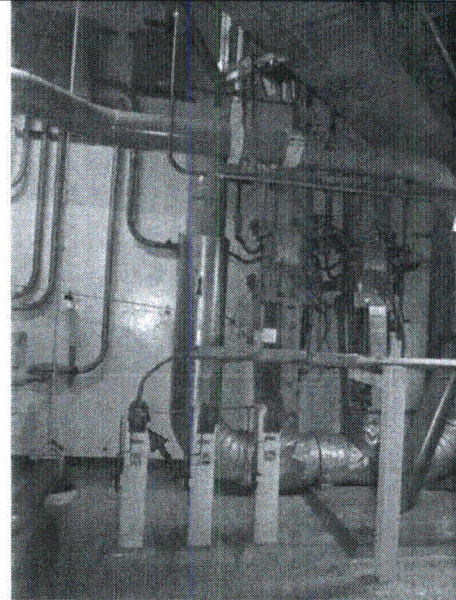
Equipment ID No. E51N035E Equip. Class¹ 18 - Instrument Racks

Equipment Description Condensate Storage Tank (Condensate Storage Tank (RCIC) Level Transmitter)

Photographs



Note: *Level Transmitter*



Note: *RP modem supported from cable tray support*

Status: Y N U **Seismic Walkdown Checklist (SWC) SWEL1- 071**Equipment ID No. E51N035A Equip. Class¹ 18 - Instrument RacksEquipment Description Condensate Storage Tank (Condensate Storage Tank (RCIC) Level Transmitter)Location: Bldg. AB Floor El. 119 Room, Area 1A201, 07Manufacturer, Model, Etc. (optional but recommended) Rosemount**Instructions for Completing Checklist**

This checklist may be used to document the results of the Seismic Walkdown of an item of equipment on the SWEL. The space below each of the following questions may be used to record the results of judgments and findings. Additional space is provided at the end of this checklist for documenting other comments.

Anchorage

1. Is the anchorage configuration verification required (i.e., is the item one of the 50% of SWEL items requiring such verification)? Y N

2. Is the anchorage free of bent, broken, missing or loose hardware? Y N U N/A
Level Transmitter mounting bracket is attached to TS 6x6 vertical post using four bolts, and TS 6x6 vertical post is anchored to the floor using (4) 1/2" dia. anchor bolts. See photos.
No bent, broken, missing or loose hardware found.

3. Is the anchorage free of corrosion that is more than mild surface oxidation? Y N U N/A
Floor is covered with epoxy coating; no visual indication of corrosion found.

4. Is the anchorage free of visible cracks in the concrete near the anchors? Y N U N/A
Floor is covered with epoxy coating; no visual indication of concrete crack found.

5. Is the anchorage configuration consistent with plant documentation? Y N U N/A
 (Note: This question only applies if the item is one of the 50% for which an anchorage configuration verification is required.)
Anchorage was checked against drawing FSK-I-0127G-036-B Rev. 3, and the configuration shown on the drawing matched the field condition.

6. Based on the above anchorage evaluations, is the anchorage free of potentially adverse seismic conditions? Y N U

¹ Enter the equipment class name from EPRI 1025286 Appendix B: Classes of Equipment.

Status: Y N U

Seismic Walkdown Checklist (SWC) SWEL1- 071

Equipment ID No. E51N035A Equip. Class: 18 - Instrument Racks

Equipment Description Condensate Storage Tank (Condensate Storage Tank (RCIC) Level Transmitter)

Interaction Effects

7. Are soft targets free from impact by nearby equipment or structures? Y N U N/A
All equipments/structures nearby are rigidly supported.

8. Are overhead equipment, distribution systems, ceiling tiles and lighting, and masonry block walls not likely to collapse onto the equipment? Y N U N/A
All overhead items are rigidly supported.

9. Do attached lines have adequate flexibility to avoid damage? Y N U N/A
Flex conduit has been used for routing cable to the level transmitter, and tubing attached to the transmitter has adequate flexibility.

10. Based on the above seismic interaction evaluations, is equipment free of potentially adverse seismic interaction effects? Y N U

Other Adverse Conditions

11. Have you looked for and found no other seismic conditions that could adversely affect the safety functions of the equipment? Y N U
Modem (CA-U1-AUX-119-7) is mounted on overhead cable tray support; however doesn't pose a seismic concern. See photo.

Comments

None

Evaluated by: Kyong S. (Jason) Pak  Date: 9/25/2012

Tori Robinson  9/25/2012

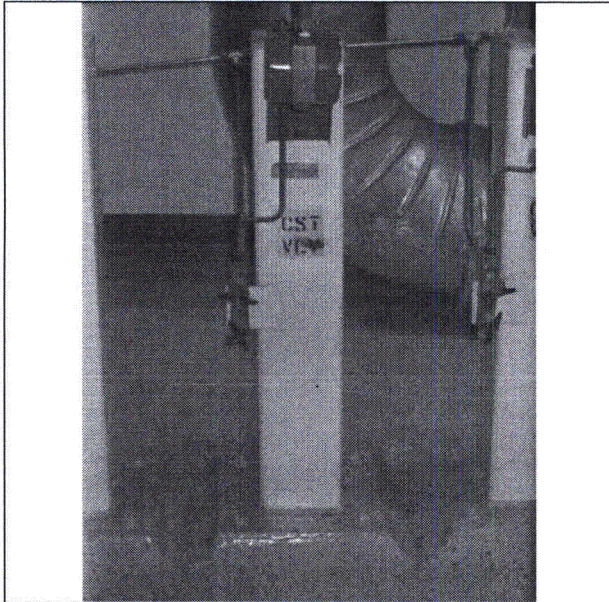
Status: Y N U

Seismic Walkdown Checklist (SWC) SWEL1- 071

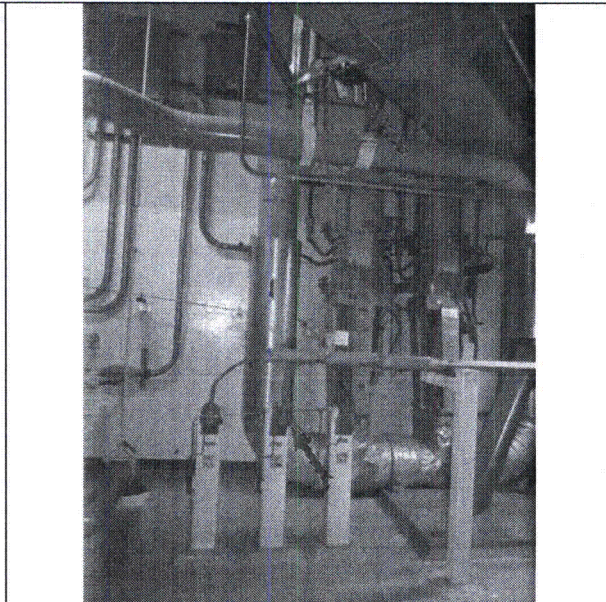
Equipment ID No. E51N035A Equip. Class: 18 - Instrument Racks

Equipment Description Condensate Storage Tank (Condensate Storage Tank (RCIC) Level Transmitter)

Photographs



Note: Level Transmitter



Note: RP modem supported from cable tray support

Status: Y N U **Seismic Walkdown Checklist (SWC) SWEL1- 072**Equipment ID No. E31N001A Equip. Class¹ 19 – Temperature SensorsEquipment Description Air Temperature Element(RHR A EQUIPMENT AREA 2 TEMPERATURE ELEMENT)Location: Bldg. AB Floor El. 93 Room, Area 1A103,07Manufacturer, Model, Etc. (optional but recommended) PYCO INC,102-9039-08-6**Instructions for Completing Checklist**

This checklist may be used to document the results of the Seismic Walkdown of an item of equipment on the SWEL. The space below each of the following questions may be used to record the results of judgments and findings. Additional space is provided at the end of this checklist for documenting other comments.

Anchorage

1. Is the anchorage configuration verification required (i.e., is the item one of the 50% of SWEL items requiring such verification)? Y N

2. Is the anchorage free of bent, broken, missing or loose hardware? Y N U N/A
Item mounted on plate, plate anchored to wall

3. Is the anchorage free of corrosion that is more than mild surface oxidation? Y N U N/A
Anchors coated

4. Is the anchorage free of visible cracks in the concrete near the anchors? Y N U N/A
No visible cracks in concrete

5. Is the anchorage configuration consistent with plant documentation? Y N U N/A
(Note: This question only applies if the item is one of the 50% for which an anchorage configuration verification is required.)

6. Based on the above anchorage evaluations, is the anchorage free of potentially adverse seismic conditions? Y N U

¹ Enter the equipment class name from EPRI 1025286 Appendix B: Classes of Equipment.

Status: Y N U

Seismic Walkdown Checklist (SWC) SWEL1- 072

Equipment ID No. E31N001A Equip. Class: 19 – Temperature Sensors

Equipment Description Air Temperature Element(RHR A EQUIPMENT AREA 2 TEMPERATURE ELEMENT)

Interaction Effects

7. Are soft targets free from impact by nearby equipment or structures? Y N U N/A

8. Are overhead equipment, distribution systems, ceiling tiles and lighting, and masonry block walls not likely to collapse onto the equipment? Y N U N/A

9. Do attached lines have adequate flexibility to avoid damage? Y N U N/A

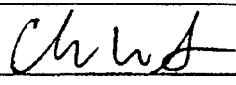
10. Based on the above seismic interaction evaluations, is equipment free of potentially adverse seismic interaction effects? Y N U

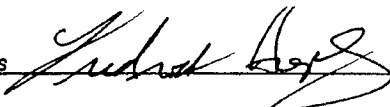
Other Adverse Conditions

11. Have you looked for and found no other seismic conditions that could adversely affect the safety functions of the equipment? Y N U

Comments

The temperature element was visually inspected from the stairway at approximately elevation 97'.

Evaluated by: Chase Wharton  Date: 10/8/2012

Fred Hopkins  10/8/2012

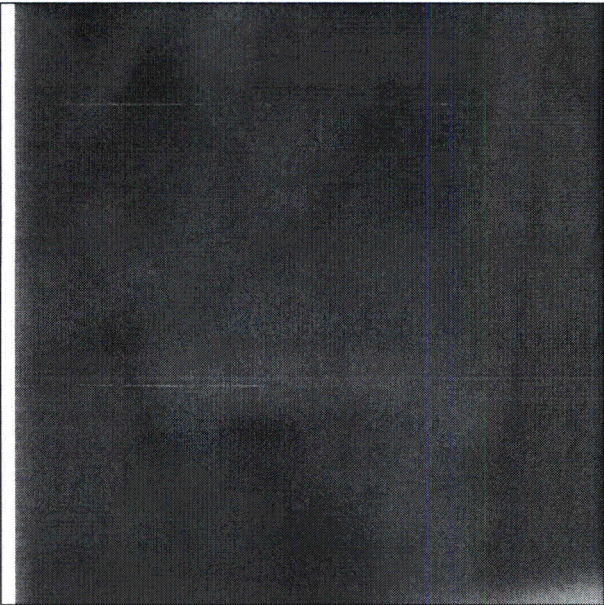
Status: Y N U

Seismic Walkdown Checklist (SWC) SWEL1- 072

Equipment ID No. E31N001A Equip. Class¹ 19 – Temperature Sensors

Equipment Description Air Temperature Element(RHR A EQUIPMENT AREA 2 TEMPERATURE ELEMENT)

Photographs

	
<p>Note:</p>	<p>Note:</p>

Status: Y N U

Seismic Walkdown Checklist (SWC) SWEL1- 073

Equipment ID No. E31N031A Equip. Class¹ 19 - Temperature Sensors

Equipment Description Air Temperature Element (MSL Pipe Tunnel Ambient Temperature Element)

Location: Bldg. AB Floor El. 139 Room, Area 1A305, 08

Manufacturer, Model, Etc. (optional but recommended) Pyco GE, 145C3224

Instructions for Completing Checklist

This checklist may be used to document the results of the Seismic Walkdown of an item of equipment on the SWEL. The space below each of the following questions may be used to record the results of judgments and findings. Additional space is provided at the end of this checklist for documenting other comments.

Anchorage

1. Is the anchorage configuration verification required (i.e., is the item one of the 50% of SWEL items requiring such verification)? Y N

2. Is the anchorage free of bent, broken, missing or loose hardware? Y N U N/A

3. Is the anchorage free of corrosion that is more than mild surface oxidation? Y N U N/A

4. Is the anchorage free of visible cracks in the concrete near the anchors? Y N U N/A

5. Is the anchorage configuration consistent with plant documentation? Y N U N/A
 (Note: This question only applies if the item is one of the 50% for which an anchorage configuration verification is required.)

6. Based on the above anchorage evaluations, is the anchorage free of potentially adverse seismic conditions? Y N U

¹ Enter the equipment class name from EPRI 1025286 Appendix B: Classes of Equipment.

Status: Y N U

Seismic Walkdown Checklist (SWC) SWEL1- 073

Equipment ID No. E31N031A Equip. Class¹ 19 - Temperature Sensors

Equipment Description Air Temperature Element (MSL Pipe Tunnel Ambient Temperature Element)

Interaction Effects

7. Are soft targets free from impact by nearby equipment or structures? Y N U N/A

8. Are overhead equipment, distribution systems, ceiling tiles and lighting, and masonry block walls not likely to collapse onto the equipment? Y N U N/A

9. Do attached lines have adequate flexibility to avoid damage? Y N U N/A

10. Based on the above seismic interaction evaluations, is equipment free of potentially adverse seismic interaction effects? Y N U

Other Adverse Conditions

11. Have you looked for and found no other seismic conditions that could adversely affect the safety functions of the equipment? Y N U

Comments

Evaluated by: _____ Date: _____

Status: Y N U

Seismic Walkdown Checklist (SWC) SWEL1- 073

Equipment ID No. E31N031A Equip. Class: 19 - Temperature Sensors

Equipment Description Air Temperature Element (MSL Pipe Tunnel Ambient Temperature Element)

Photographs

Note:	Note:

Status: Y N U

Seismic Walkdown Checklist (SWC) SWEL1- 073

Equipment ID No. E31N031A Equip. Class' 19 - Temperature Sensors

Equipment Description Air Temperature Element (MSL Pipe Tunnel Ambient Temperature Element)

Note:	Note:

Status: Y N U

Seismic Walkdown Checklist (SWC) SWEL1- 074

Equipment ID No. M71N007A Equip. Class¹ 19 - Temperature Sensors

Equipment Description Temperature Element (CTMT 139 ft Elevation Temperature Element)

Location: Bldg. CTMT Floor El. 135 Room, Area 1A313, CTMT

Manufacturer, Model, Etc. (optional but recommended) Thermo Electric, 27620

Instructions for Completing Checklist

This checklist may be used to document the results of the Seismic Walkdown of an item of equipment on the SWEL. The space below each of the following questions may be used to record the results of judgments and findings. Additional space is provided at the end of this checklist for documenting other comments.

Anchorage

1. Is the anchorage configuration verification required (i.e., is the item one of the 50% of SWEL items requiring such verification)? Y N

2. Is the anchorage free of bent, broken, missing or loose hardware? Y N U N/A
*Angle member supporting temperature element is welded to the structural steel.
 No bent, broken, missing or loose hardware found.*

3. Is the anchorage free of corrosion that is more than mild surface oxidation? Y N U N/A
No visual indication of corrosion found.

4. Is the anchorage free of visible cracks in the concrete near the anchors? Y N U N/A
No concrete connection.

5. Is the anchorage configuration consistent with plant documentation? Y N U N/A
 (Note: This question only applies if the item is one of the 50% for which an anchorage configuration verification is required.)

6. Based on the above anchorage evaluations, is the anchorage free of potentially adverse seismic conditions? Y N U

¹ Enter the equipment class name from EPRI 1025286 Appendix B: Classes of Equipment.

Status: Y N U

Seismic Walkdown Checklist (SWC) SWEL1- 074

Equipment ID No. M71N007A Equip. Class: 19 - Temperature Sensors

Equipment Description Temperature Element (CTMT 139 ft Elevation Temperature Element)

Interaction Effects

7. Are soft targets free from impact by nearby equipment or structures? Y N U N/A
All equipments/structures nearby are rigidly supported.

8. Are overhead equipment, distribution systems, ceiling tiles and lighting, and masonry block walls not likely to collapse onto the equipment? Y N U N/A
All overhead items are rigidly supported.

9. Do attached lines have adequate flexibility to avoid damage? Y N U N/A
Flex conduit has been used for routing cable to the temperature transmitter, therefore attached line has adequate flexibility.

10. Based on the above seismic interaction evaluations, is equipment free of potentially adverse seismic interaction effects? Y N U

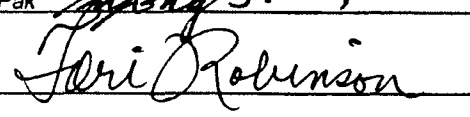
Other Adverse Conditions

11. Have you looked for and found no other seismic conditions that could adversely affect the safety functions of the equipment? Y N U

Comments

None

Evaluated by: Kyong S. (Jason) Pak  Date: 9/27/2012

Tori Robinson  9/27/2012

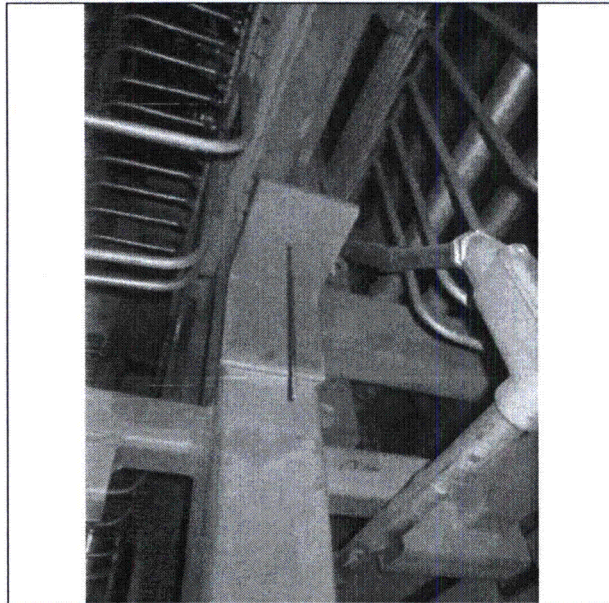
Status: Y N U

Seismic Walkdown Checklist (SWC) SWEL1- 074

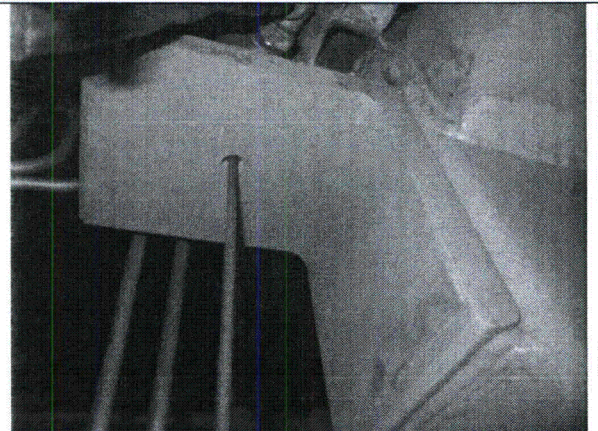
Equipment ID No. M71N007A Equip. Class¹ 19 - Temperature Sensors

Equipment Description Temperature Element (CTMT 139 ft Elevation Temperature Element)

Photographs



Note: *Temperature Element*



Note: *Temperature Element*