

Seismic Walkdown Checklist (SWC)

Equipment ID No. H11P613 Equip. Class¹ 20, Instrumentation & Control Panels

Equipment Description Process Instrument Cabinet Div I

Location: Bldg. AB Floor El. 613'-6" Room, Area Relay Room (B-15), Col. F-16

Manufacturer, Model, Etc. (optional but recommended) N/A

Instructions for Completing Checklist

This checklist may be used to document the results of the Seismic Walkdown of an item of equipment on the SWEL. The space below each of the following questions may be used to record the results of judgments and findings. Additional space is provided at the end of this checklist for documenting other comments.

Anchorage

1. Is the anchorage configuration verification required (i.e., is the item one of the 50% of SWEL items requiring such verification)? Y N U
*All welds visible. Seismic bracing added per EDP 27108.007.
(SEE PICTURES DSC00100, DSC00102) ~ DJK 10/11/12*
2. Is the anchorage free of bent, broken, missing or loose hardware? Y N U N/A
Anchorage is complete.
3. Is the anchorage free of corrosion that is more than mild surface oxidation? Y N U N/A
*Anchorage and welds are clean.
(SEE PICTURE DSC00100) ~ DJK 10/11/12*
4. Is the anchorage free of visible cracks in the concrete near the anchors? Y N U N/A
*Concrete at the base is intact and not cracked.
(SEE PICTURES DSC00104, DSC00105) ~ DJK 10/11/12*
5. Is the anchorage configuration consistent with plant documentation? Y N U N/A
 (Note: This question only applies if the item is one of the 50% for which an anchorage configuration verification is required.)
*Verified base welds as 4"@12" front and 4"@11" rear. (ref. dwg. I-2002-16) Verified seismic bracing per EDP 27108.007. One bolt to adjacent cabinet (H11P617) does not have full thread engagement. Reviewed calculation DC-5734 Vol. I for additional seismic bracing per EDP 27108.007, in which no credit is taken for these bolts. The condition is therefore acceptable. (SEE PICTURES DSC00100, DSC00110) ~ DJK 10/11/12
 ALL DOCUMENTS REFERENCED (LATEST REVISION) WERE REVIEWED ~ DJK 10/12/12
 AND NO APPLICABLE POSTINGS WERE FOUND.*
6. Based on the above anchorage evaluations, is the anchorage free of potentially adverse seismic conditions? Y N U
No adverse seismic conditions were observed.

JMC

¹ Enter the equipment class name from Appendix B: Classes of Equipment

Seismic Walkdown Checklist (SWC)

Equipment ID No. H11P613 Equip. Class¹ 20, Instrumentation & Control Panels

Equipment Description Process Instrument Cabinet Div I

Interaction Effects

7. Are soft targets free from impact by nearby equipment or structures? Y N U N/A
Soft targets are enclosed by the cabinet & door, therefore any soft targets are protected.
8. Are overhead equipment, distribution systems, ceiling tiles and lighting, and masonry block walls not likely to collapse onto the equipment? Y N U N/A
Lights on chains and cables. HVAC ducts, cable trays and conduit are robustly and seismically supported.
9. Do attached lines have adequate flexibility to avoid damage? Y N U N/A
All attached lines have adequate flexibility.
10. Based on the above seismic interaction evaluations, is equipment free of potentially adverse seismic interaction effects? Y N U
-

Other Adverse Conditions

11. Have you looked for and found no other seismic conditions that could adversely affect the safety functions of the equipment? Y N U
Door, internal component mounting & other attachments are all free of adverse seismic conditions. Door at back of cabinet opened.

JML

Seismic Walkdown Checklist (SWC)

Equipment ID No. H11-P613 Equip. Class¹ 20-INSTRUMENTATION & CONTROL PANEL

Equipment Description PROCESS INSTRUMENT CABINET - DIV. I

Comments (Additional pages may be added as necessary)

AT THE CABLE CUTOUT IN THE ROOF OF THE CABINET THE OPENING HAS DUCT TAPE TO RETAIN THE EDGE PROTECTION. AS THE DUCT TAPE AGES AND DRIES OUT IT COULD FALL INTO THE CABINET AND MAY INTERFERE WITH RELAYS AND EQUIPMENT INSIDE THE CABINET.

THIS CONCERN HAS BEEN NOTED IN THE WORK PACKAGE, AND ADDED TO THE OPEN ITEMS LIST AS A HOUSE KEEPING ISSUE.

NOTE: SEE ELECTRICAL ~~SPEC. 3011-12~~ ^{Maintenance Procedure 35.CON.013} ~~JML 09.17.2012~~ § 4.7.2 FOR ACCEPTANCE OF TAPE AS A BUFFER MATERIAL AT THIS LOCATION. JML 09.17.2012

Seismic Engineer Walkdown PSE-53 Qualified

Evaluator #1: David G. Dickerson Date: 15th August 2012

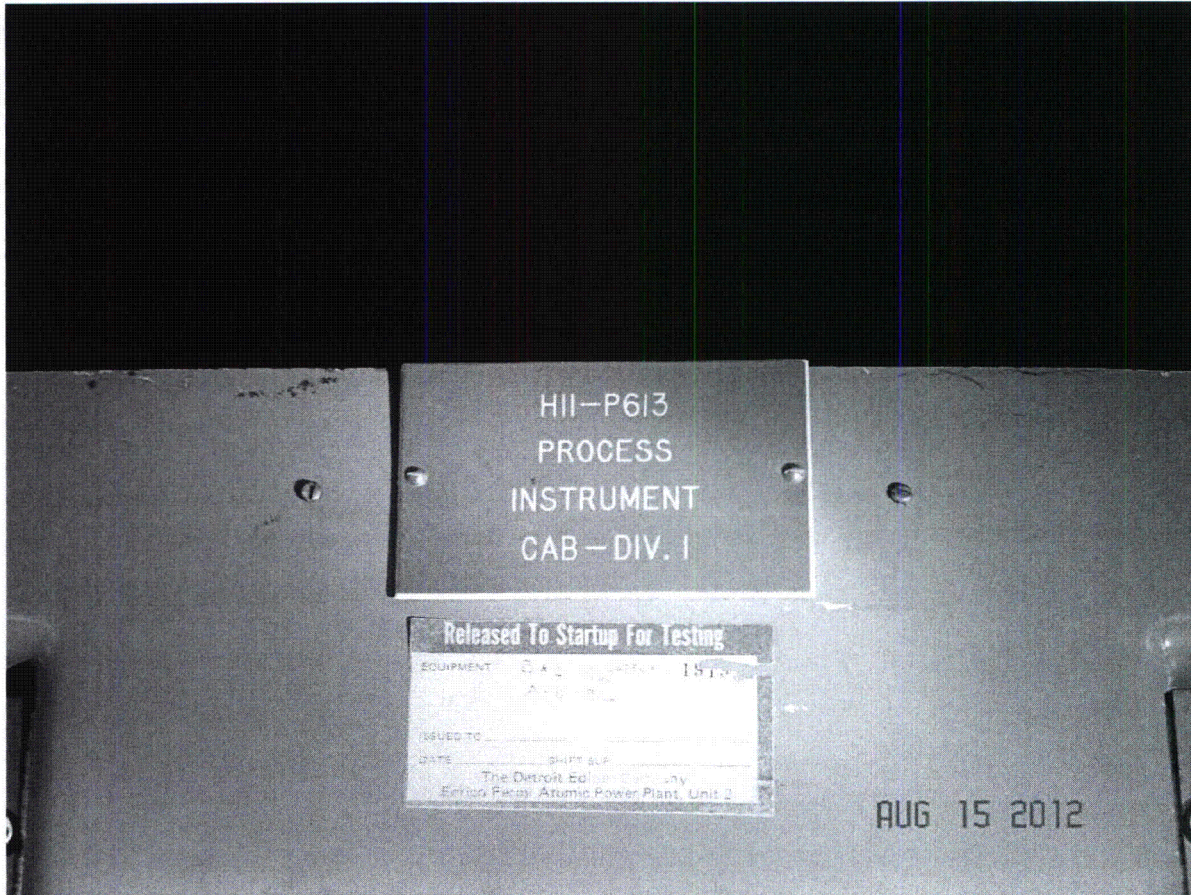
Seismic Engineer Walkdown PSE-53 Qualified

Evaluator #2: Joseph M. Vere Date: 08/15/2012

Seismic Walkdown Pictures

Equipment ID No. H11P613 Equipment Class: 20, Instrumentation & Control Panel

Equipment Description PROCESS INSTRUMENT CABINET – DIV 1

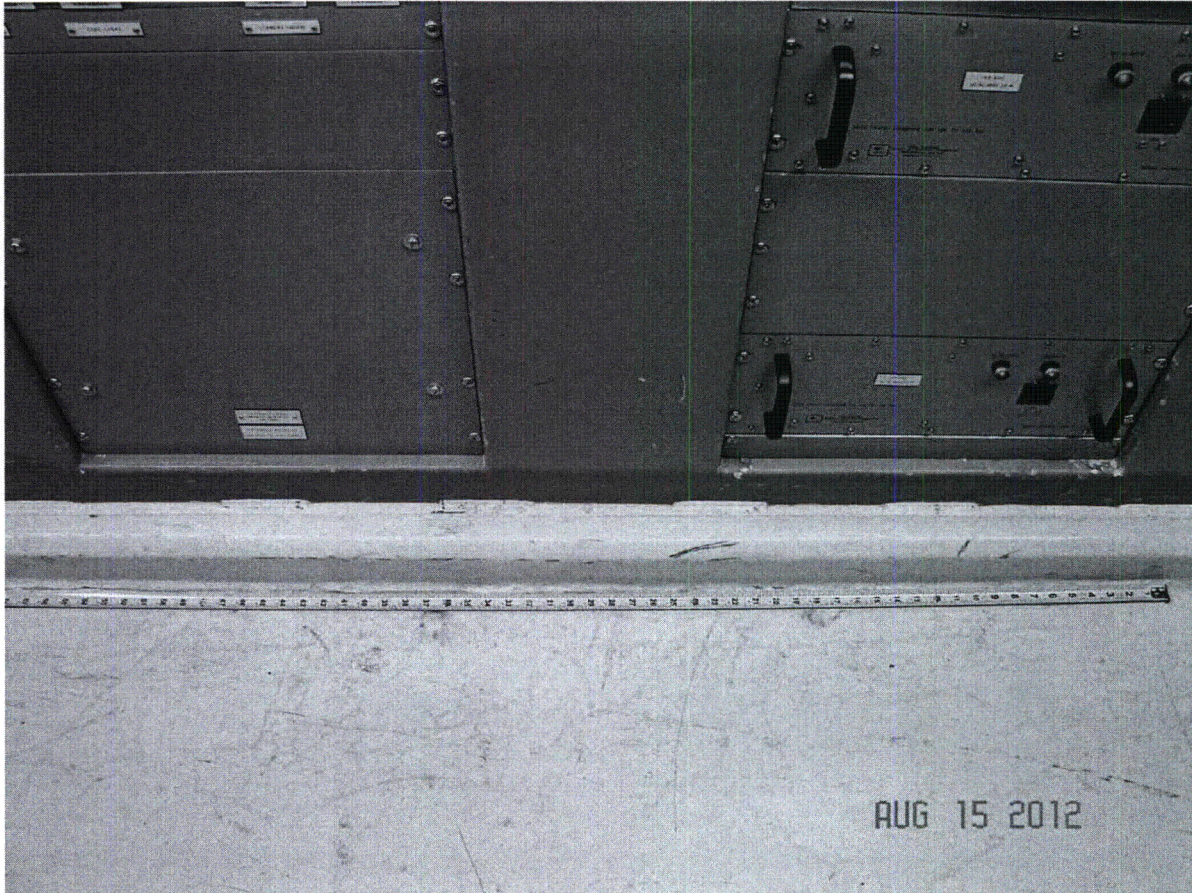


(DSC00099)

Seismic Walkdown Pictures

Equipment ID No. H11P613 Equipment Class: 20, Instrumentation & Control Panel

Equipment Description PROCESS INSTRUMENT CABINET – DIV 1

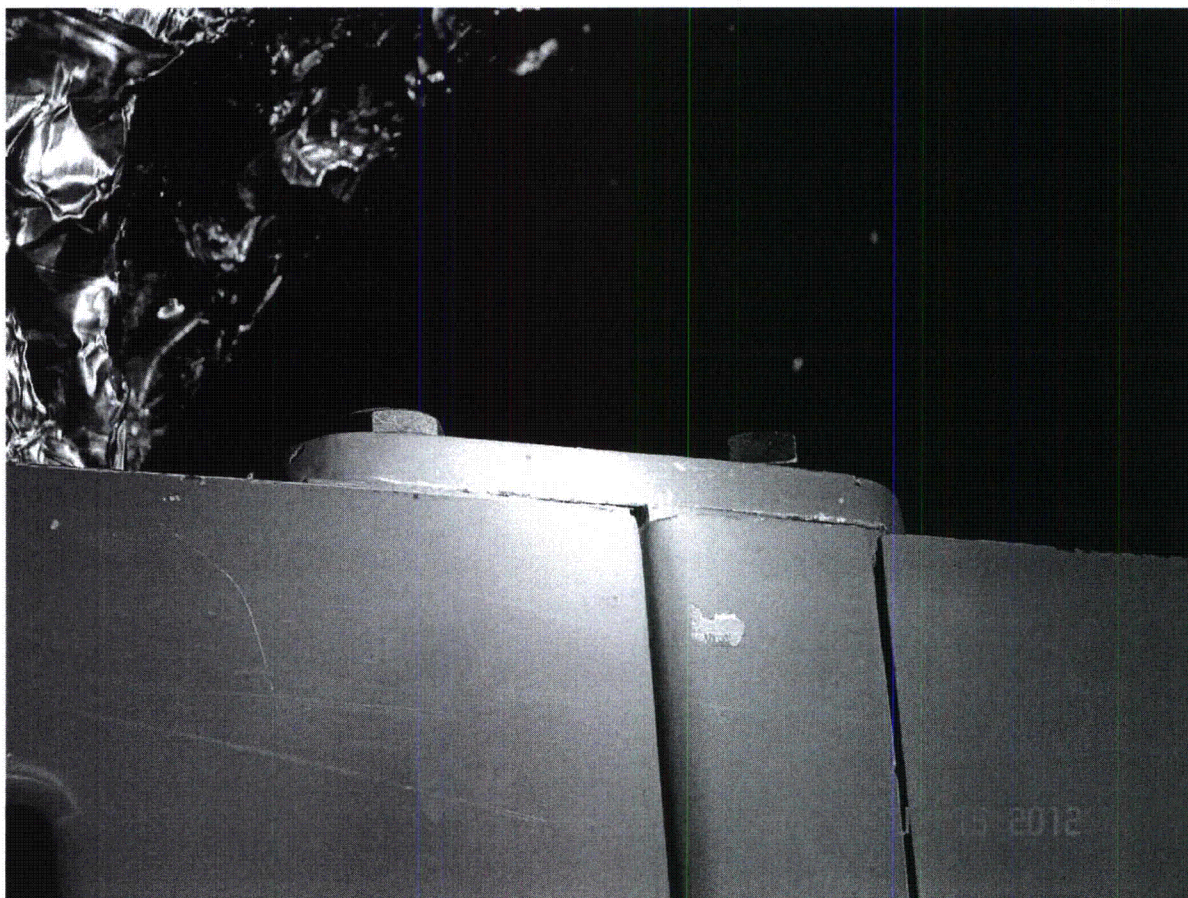


(DSC00100)

Seismic Walkdown Pictures

Equipment ID No. HIIP613 Equipment Class: 20, Instrumentation & Control Panel

Equipment Description PROCESS INSTRUMENT CABINET – DIV 1

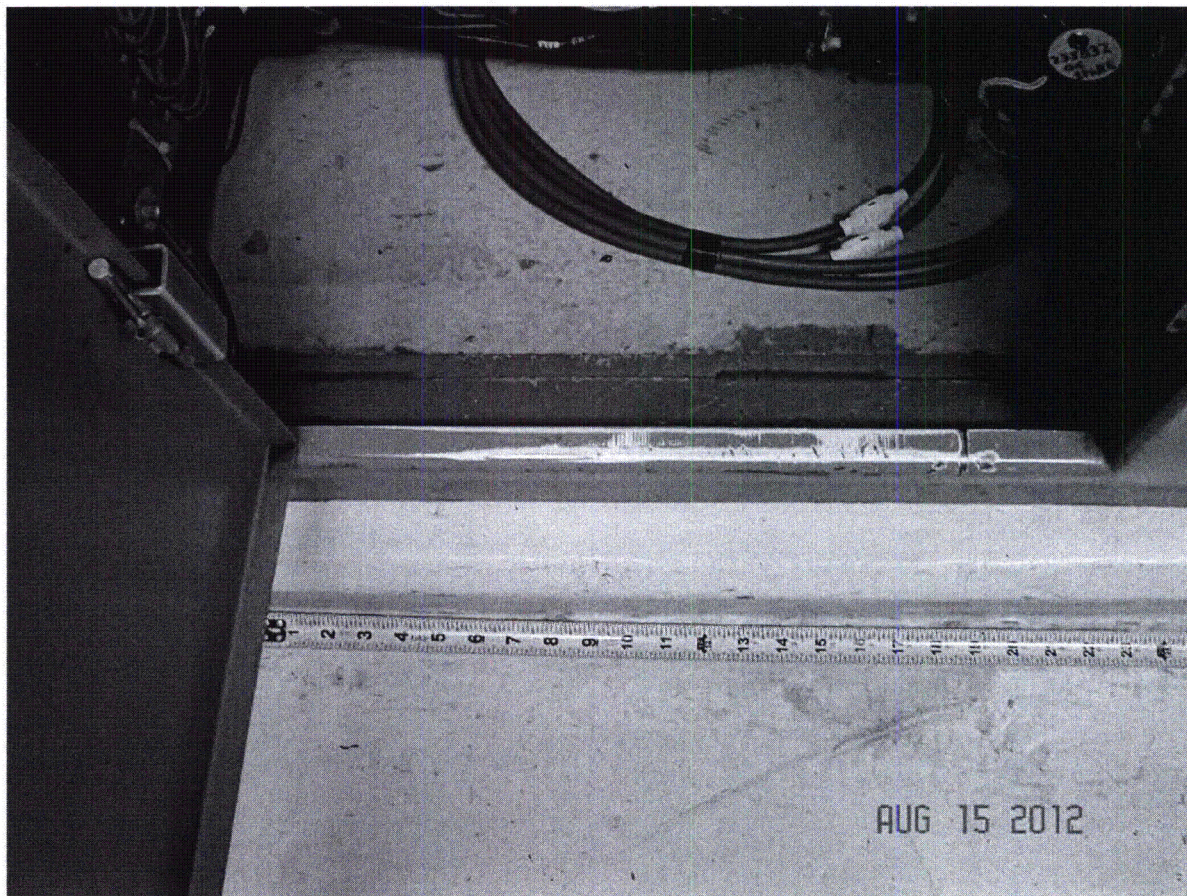


(DSC00102)

Seismic Walkdown Pictures

Equipment ID No. H11P613 Equipment Class: 20, Instrumentation & Control Panel

Equipment Description PROCESS INSTRUMENT CABINET – DIV 1

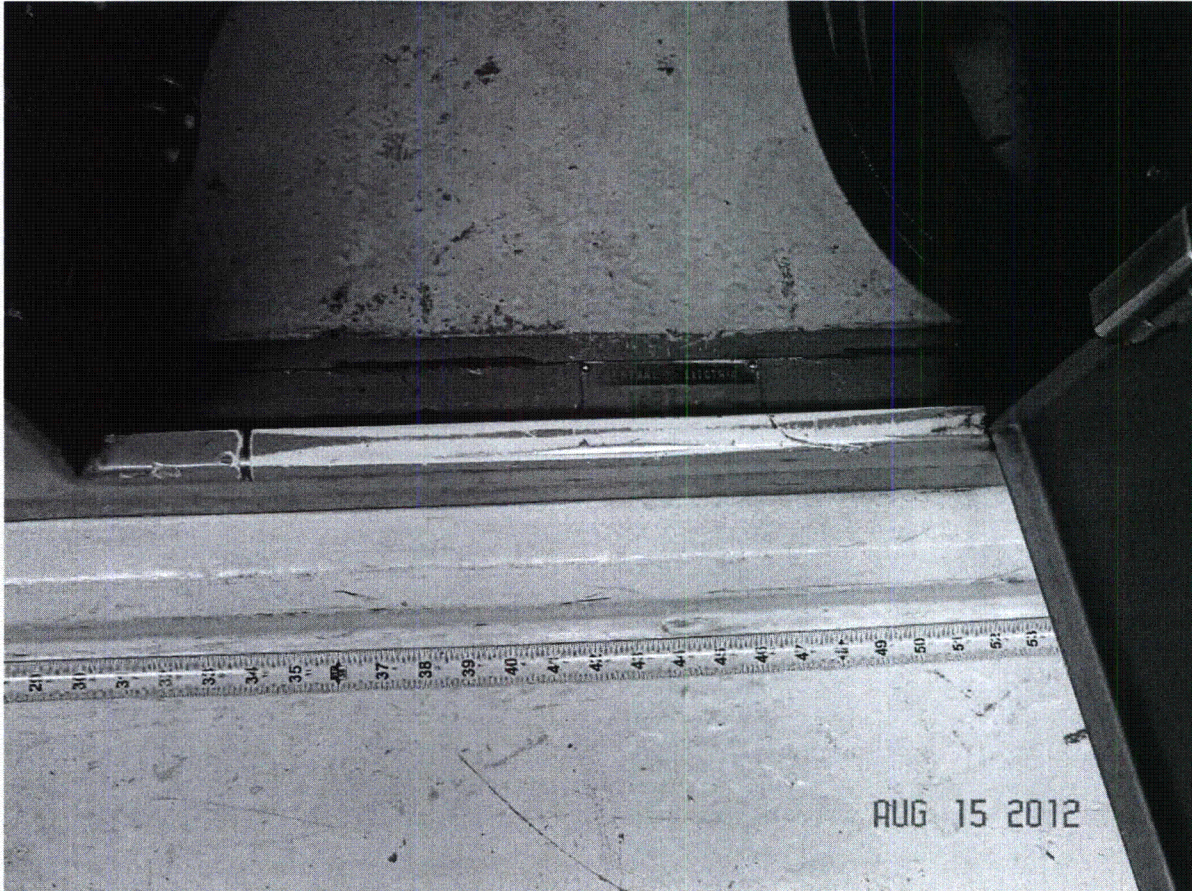


(DSC00104)

Seismic Walkdown Pictures

Equipment ID No. H11P613 Equipment Class: 20, Instrumentation & Control Panel

Equipment Description PROCESS INSTRUMENT CABINET – DIV 1

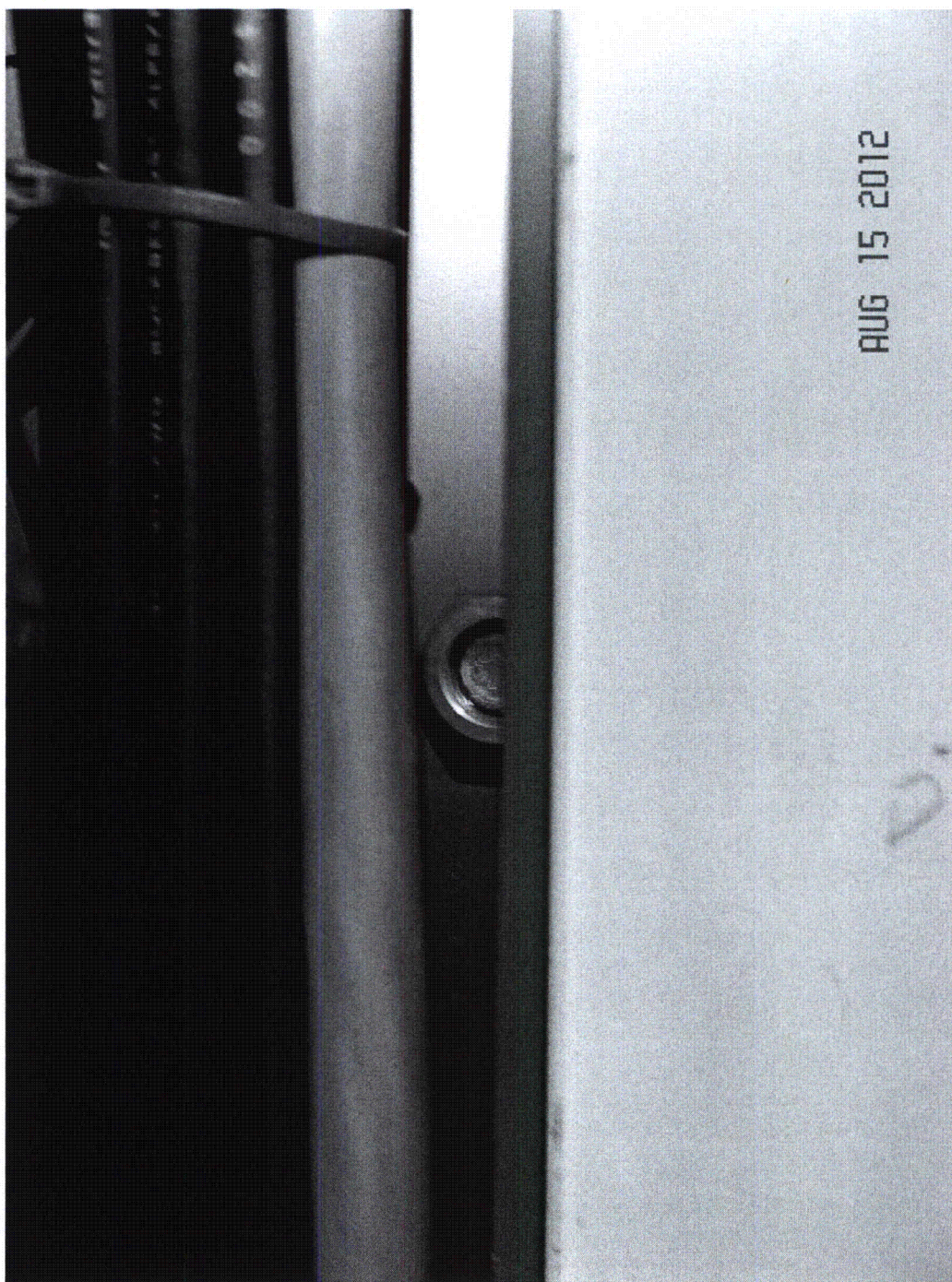


(DSC00105)

Seismic Walkdown Pictures

Equipment ID No. H11P613 Equipment Class: 20, Instrumentation & Control Panel

Equipment Description PROCESS INSTRUMENT CABINET – DIV 1



(DSC00110)

Seismic Walkdown Checklist (SWC)

Equipment ID No. H11P628 Equip. Class¹ 20, Instrumentation & Control Panel

Equipment Description Auto Depress Relay Cab. Div I

Location: Bldg. AB Floor El. 613'-6" Room, Area Relay Room (B-15), Col. G-16

Manufacturer, Model, Etc. (optional but recommended) N/A

Instructions for Completing Checklist

This checklist may be used to document the results of the Seismic Walkdown of an item of equipment on the SWEL. The space below each of the following questions may be used to record the results of judgments and findings. Additional space is provided at the end of this checklist for documenting other comments.

Anchorage

1. Is the anchorage configuration verification required (i.e., is the item one of the 50% of SWEL items requiring such verification)? Y N U
Welds are visible on the inside of the rear of cabinet and on the outside at the front. Seismic brace per EDP 27108.007. Cabinet to cabinet bolting is visible. (SEE PICTURES DSC00091) ~ DJK 10/11/12
2. Is the anchorage free of bent, broken, missing or loose hardware? Y N U N/A
Anchorage is free of bent, broken, missing or loose hardware.
3. Is the anchorage free of corrosion that is more than mild surface oxidation? Y N U N/A
Anchorage is free of corrosion.
4. Is the anchorage free of visible cracks in the concrete near the anchors? Y N U N/A
Concrete at base of Cabinet is free of visible cracks. (SEE PICTURES DSC00088, DSC00092) ~ DJK 10/11/12
5. Is the anchorage configuration consistent with plant documentation? Y N U N/A
 (Note: This question only applies if the item is one of the 50% for which anchorage configuration verification is required.)
Front Welds are 4"@11" and Rear Welds are 5"@12" (ref. dwg. I-2002-16 & EDP 27108.007). Seismic bracing and shims verified. (SEE PICTURES DSC00088, DSC00092, DSC00096, DSC00098) ~ DJK 10/11/12
6. Based on the above anchorage evaluations, is the anchorage free of potentially adverse seismic conditions? Y N U
NO APPLICABLE POSTINGS FOUND AGAINST LATEST REVISION OF REF. DOCUMENTS ~ DJK 10/12/12

JML

¹ Enter the equipment class name from Appendix B: Classes of Equipment

Seismic Walkdown Checklist (SWC)

Equipment ID No. H11P628 Equip. Class¹ 20, Instrumentation & Control Panel

Equipment Description Auto Depress Relay Cab. Div I

Interaction Effects

7. Are soft targets free from impact by nearby equipment or structures? Y N U N/A
Cabinet with door, therefore no soft targets.
8. Are overhead equipment, distribution systems, ceiling tiles and lighting, and masonry block walls not likely to collapse onto the equipment? Y N U N/A
Lights on chains and cables. No block walls close by. Conduit and Cable trays are on robust seismic supports.
9. Do attached lines have adequate flexibility to avoid damage? Y N U N/A
All cabinets have adequate loops.
10. Based on the above seismic interaction evaluations, is equipment free of potentially adverse seismic interaction effects? Y N U
-

Other Adverse Conditions

11. Have you looked for and found no other seismic conditions that could adversely affect the safety functions of the equipment? Y N U
Door at back or cabinet opened. Internal component mounting, door, & other attachments free of adverse seismic conditions.

NJPR-12-0043

Seismic Walkdown Checklist (SWC)

Equipment ID No. H11P628 Equip. Class¹ 20-INSTRUMENTATION & CONTROL PANELS

Equipment Description AUTO DEPRESS RELAY CABINET - DIV. I

Comments (Additional pages may be added as necessary)

AT THE CABLE CUT OUT IN THE ROOF OF THE CABINET THE OPENING HAS DUCT TAPE TO RETAIN THE EDGE PROTECTION. AS THE DUCT TAPE AGES IT AND DRIES OUT IT COULD FALL INTO THE CABINET, AND MAY INTERFERE WITH RELAYS AND EQUIPMENT INSIDE THE CABINET. THIS ISSUE HAS BEEN ADDED TO THE HOUSEKEEPING OPEN ITEMS LIST, ITEM #29.
NOTE: SEE ELECTRICAL SPEC, ~~3071-128~~ Maintenance Procedure 35.CON.013 § 4.7.2 FOR ACCEPTANCE OF TAPE AS BUFFER MATERIAL AT THIS LOCATION. JML 09.17.2012

Seismic Engineer Walkdown PSE-53 Qualified

Evaluator #1: David G. Dickerson Date: 15th August 2012

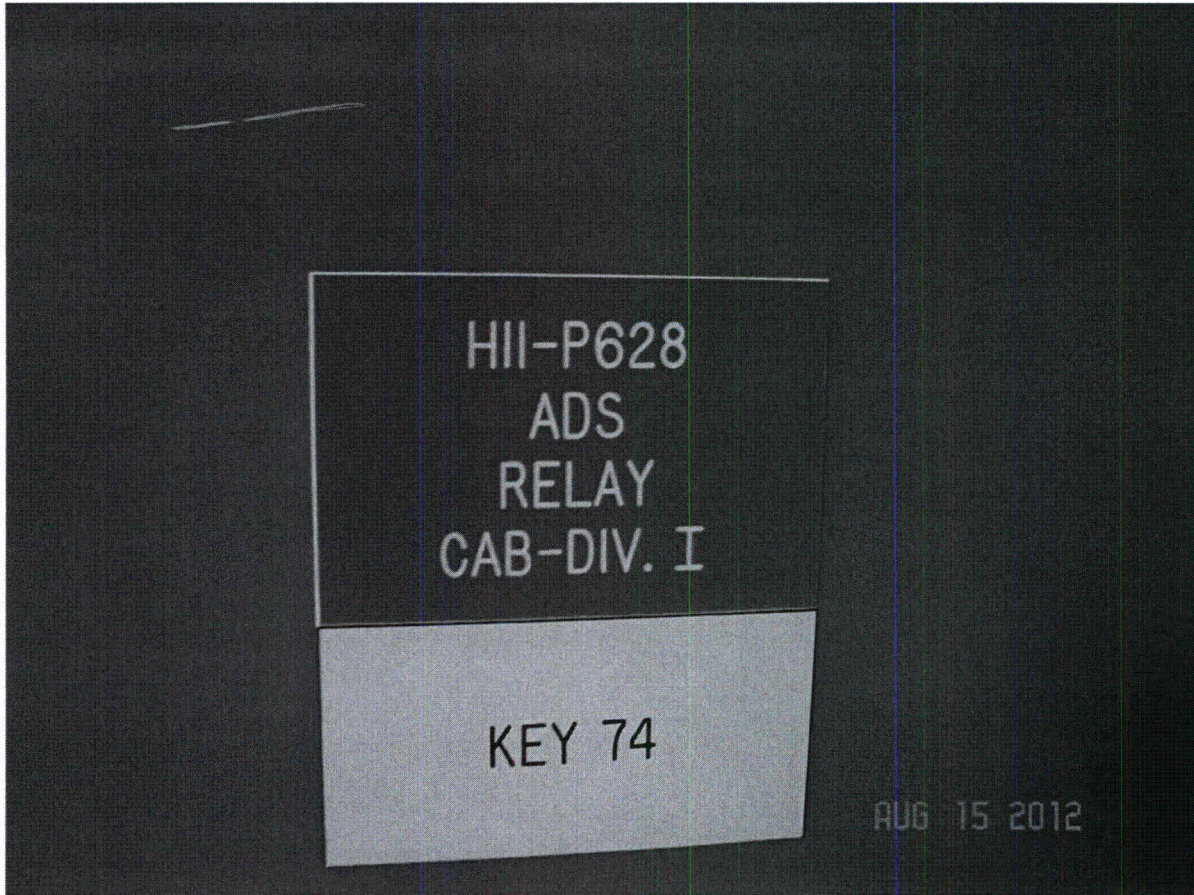
Seismic Engineer Walkdown PSE-53 Qualified

Evaluator #2: Joseph M. Palere Date: 08/15/2012

Seismic Walkdown Pictures

Equipment ID No. H11P628 Equipment Class: 20, Instrument & Control Panel

Equipment Description Auto Depress Relay Cab - DIV I

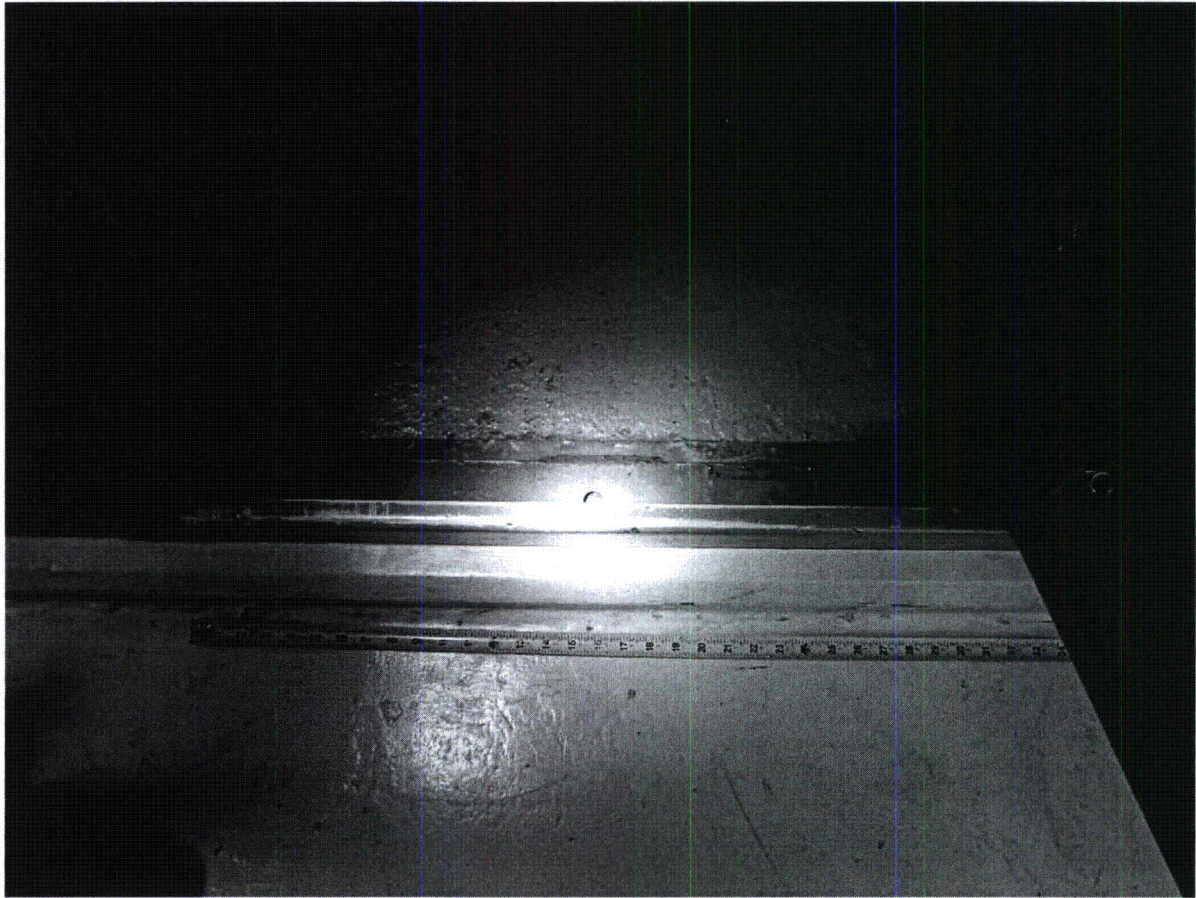


(DSC00087)

Seismic Walkdown Pictures

Equipment ID No. H11P628 Equipment Class: 20, Instrument & Control Panel

Equipment Description Auto Depress Relay Cab – DIV I



(DSC00088)

Seismic Walkdown Pictures

Equipment ID No. H11P628 Equipment Class: 20, Instrument & Control Panel

Equipment Description Auto Depress Relay Cab – DIV I

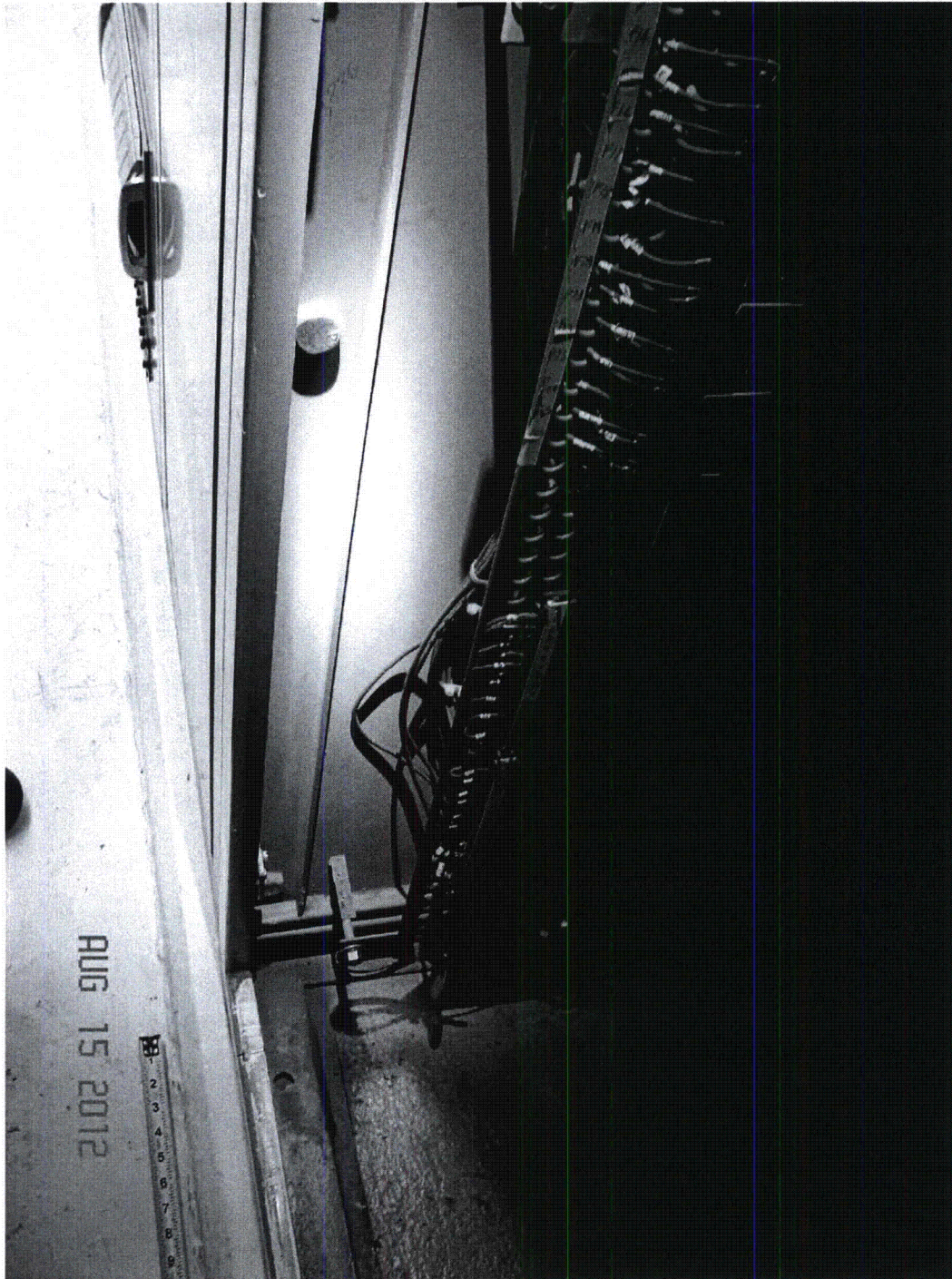


(DSC00091)

Seismic Walkdown Pictures

Equipment ID No. H11P628 Equipment Class: 20, Instrument & Control Panel

Equipment Description Auto Depress Relay Cab – DIV I

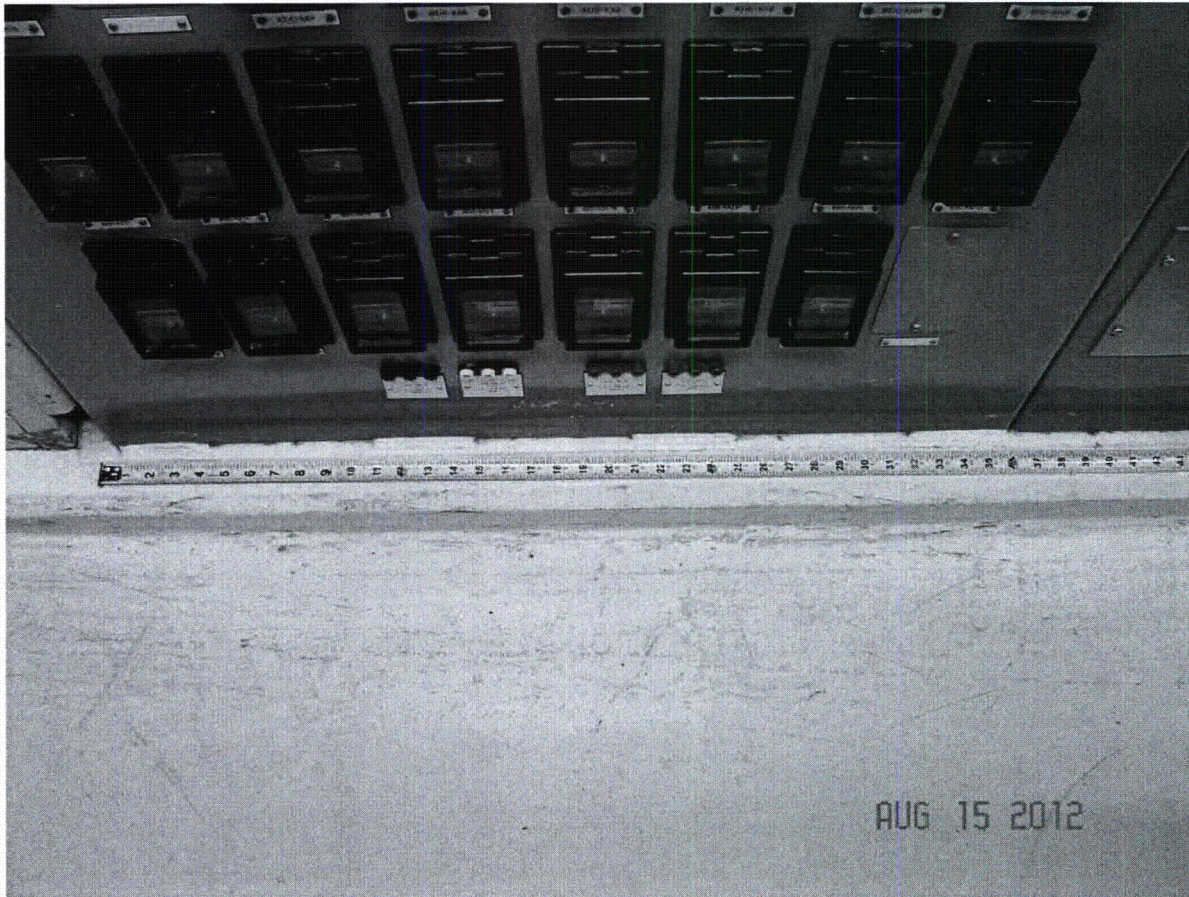


(DSC00092)

Seismic Walkdown Pictures

Equipment ID No. H11P628 Equipment Class: 20, Instrument & Control Panel

Equipment Description Auto Depress Relay Cab – DIV I

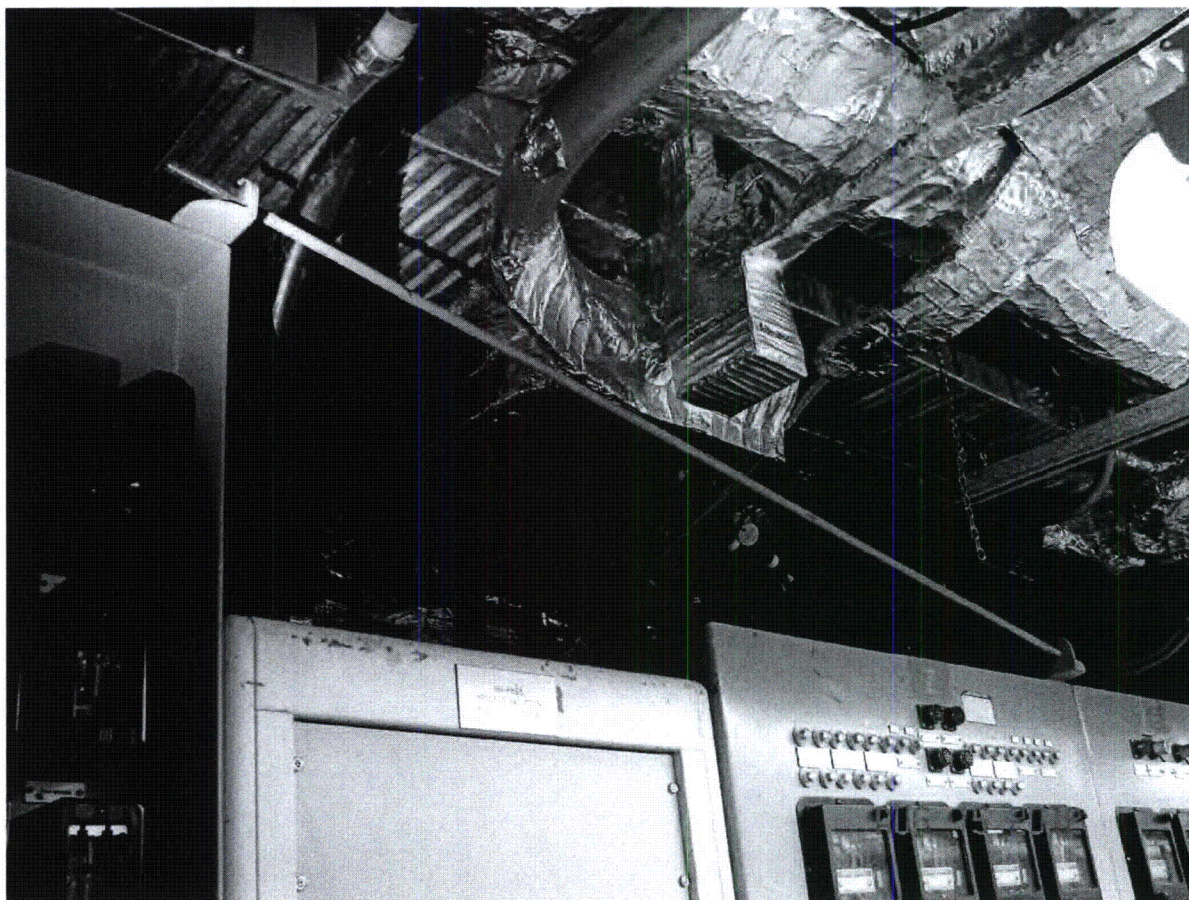


(DSC00096)

Seismic Walkdown Pictures

Equipment ID No. H11P628 Equipment Class: 20, Instrument & Control Panel

Equipment Description Auto Depress Relay Cab - DIV I



(DSC00098)

Fermi 2 Seismic Walkdown Guidance Document
Seismic Walkdown Checklist

NJPR-12-0043

Sheet 1 of 3
Status: (Y) N U

Seismic Walkdown Checklist (SWC)

Equipment ID No. H11P857 Equip. Class¹ 20, Instrumentation & Control Panels

Equipment Description Misc DC Relay Div I Inst Rack

Location: Bldg. AB Floor El. 613'-6" Room, Area Relay Room (B-15), Col. G-16

Manufacturer, Model, Etc. (optional but recommended) N/A

Instructions for Completing Checklist

This checklist may be used to document the results of the Seismic Walkdown of an item of equipment on the SWEL. The space below each of the following questions may be used to record the results of judgments and findings. Additional space is provided at the end of this checklist for documenting other comments.

Anchorage

1. Is the anchorage configuration verification required (i.e., is the item one of the 50% of SWEL items requiring such verification)? Y N U
All welds visible. Seismic bracing visible.
(SEE PICTURES DSCN0679, DSCN0682, DSCN0689) ~ DJK 10/11/12
2. Is the anchorage free of bent, broken, missing or loose hardware? Y N U N/A
All complete.
3. Is the anchorage free of corrosion that is more than mild surface oxidation? Y N U N/A
Welds are clean.
(SEE PICTURE DSCN0679) ~ DJK 10/11/12
4. Is the anchorage free of visible cracks in the concrete near the anchors? Y N U N/A
Concrete at the base is intact and not cracked.
5. Is the anchorage configuration consistent with plant documentation? Y N U N/A
(Note: This question only applies if the item is one of the 50% for which an anchorage configuration verification is required.)
Anchorage as shown on drawings I-2002-16 and EDP 27108.007.
Seismic restraint complete. Adjacent cabinets in contact and restrained by seismic restraints. NO APPLICABLE POSTINGS FOUND AGAINST LATEST REVISION (OF REFERENCED DOCUMENTS. (SEE PICTURE DSCN0679) | DJK 10/12/12
6. Based on the above anchorage evaluations, is the anchorage free of potentially adverse seismic conditions? Y N U
No adverse seismic conditions were observed.

¹ Enter the equipment class name from Appendix B: Classes of Equipment

JML

Seismic Walkdown Checklist (SWC)

Equipment ID No. H11P857 Equip. Class¹ 20, Instrumentation & Control Panels

Equipment Description Misc DC Relay Div I Inst Rack

Interaction Effects

7. Are soft targets free from impact by nearby equipment or structures? Y N U N/A
*Adjacent cabinets seismically braced per EDP 27108.007.
(SEE PICTURE DSCN0682) ~ DJK 10/11/12*
8. Are overhead equipment, distribution systems, ceiling tiles and lighting, and masonry block walls not likely to collapse onto the equipment? Y N U N/A
*Lights hung on chains with redundant cables. Block wall is remote and seismically restrained. Conduit and cable trays are robustly supported.
(SEE PICTURE DSCN0688) ~ DJK 10/11/12*
9. Do attached lines have adequate flexibility to avoid damage? Y N U N/A
*All cables have flexible loops.
(SEE PICTURES DSCN0682, DSCN0683) ~ DJK 10/11/12*
10. Based on the above seismic interaction evaluations, is equipment free of potentially adverse seismic interaction effects? Y N U

Other Adverse Conditions

11. Have you looked for and found no other seismic conditions that could adversely affect the safety functions of the equipment? Y N U
None observed.

JML

NJPR-12-0043

Seismic Walkdown Checklist (SWC)

Equipment ID No. H11P857 Equip. Class¹ 20 - INSTRUMENT & CONTROL PANELS
Equipment Description MISC DC RELAY DIV 1 INST. RACK

Comments (Additional pages may be added as necessary)

**DUCT TAPE AROUND CUT OUT IN THE TOP OF CABINET AT CABLE ENTRY
MAY AGE AND DRY OUT, THEN FALL INSIDE OF THE CABINET. THIS IS NOT
A SEISMIC CONCERN, BUT MAY AFFECT EQUIPMENT OPERATION.**
NOTE: SEE ELECTRICAL ^{Maintenance Procedure 35.CON.013} SPEC. ~~2071-128~~ _{JML 09.17.2012} § 4.7.2
FOR ACCEPTANCE OF TAPE AS A BUFFER MATERIAL AT
THIS LOCATION. JML 09.17.2012
(SEE PICTURE DSCN0690) ~ DJK 10/11/12

Seismic Engineer Walkdown PSE-53 Qualified

Evaluator #1: David C. Picken Date: 8/22/2012

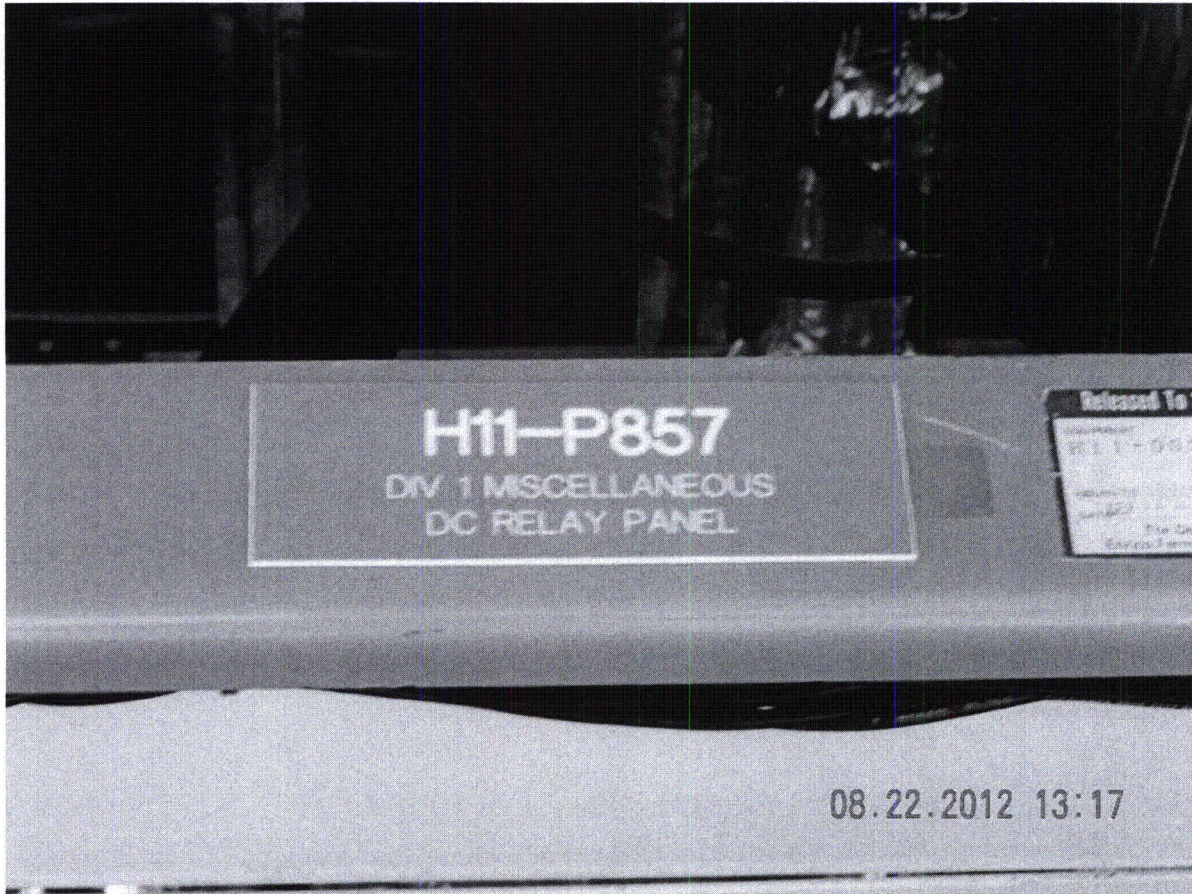
Seismic Engineer Walkdown PSE-53 Qualified

Evaluator #2: Joseph M. Fallero Date: 08.22.2012

Seismic Walkdown Pictures

Equipment ID No. H11P857 Equipment Class: 20, Instrumentation & Control Panel

Equipment Description MISC DC RELAY DIV 1 INSTRUMENT RACK

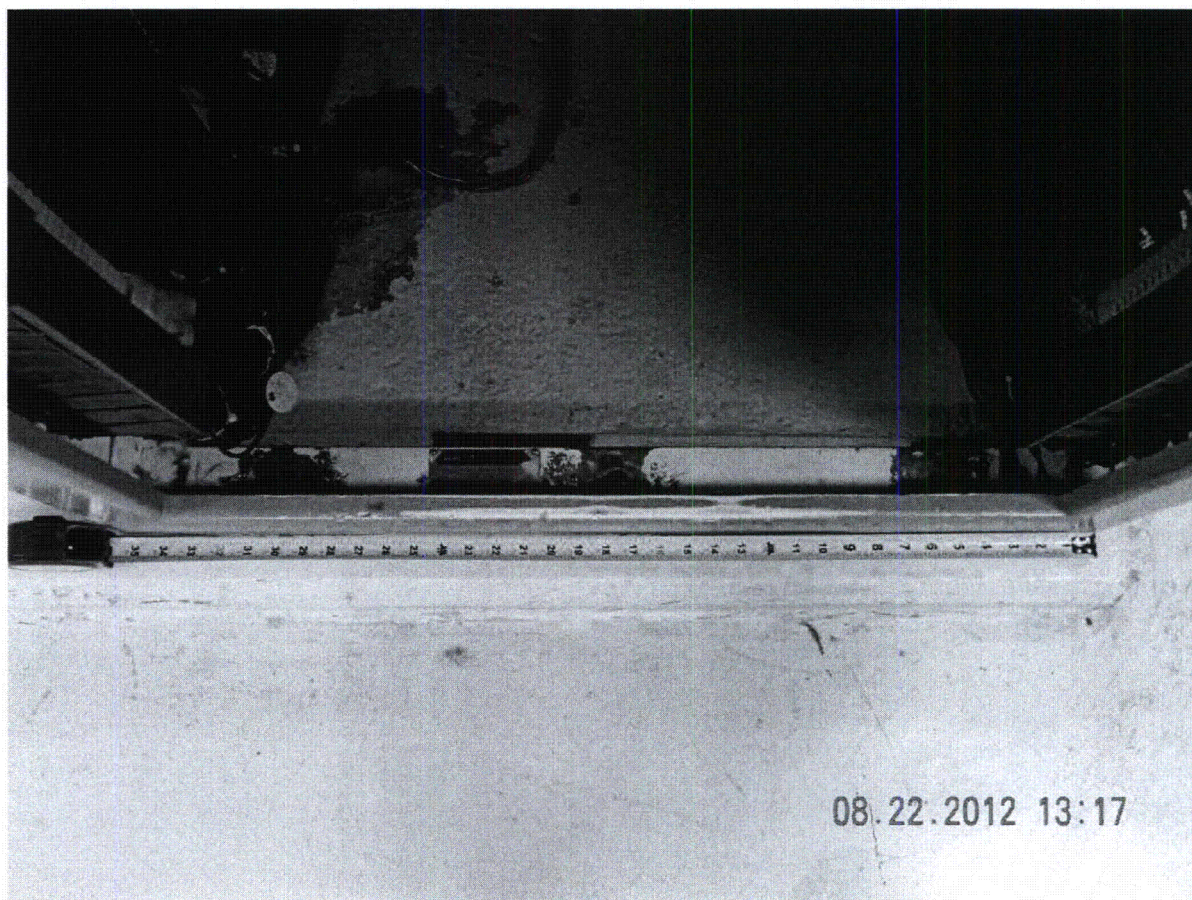


(DSCN0678)

Seismic Walkdown Pictures

Equipment ID No. H11P857 Equipment Class: 20, Instrumentation & Control Panel

Equipment Description MISC DC RELAY DIV 1 INSTRUMENT RACK

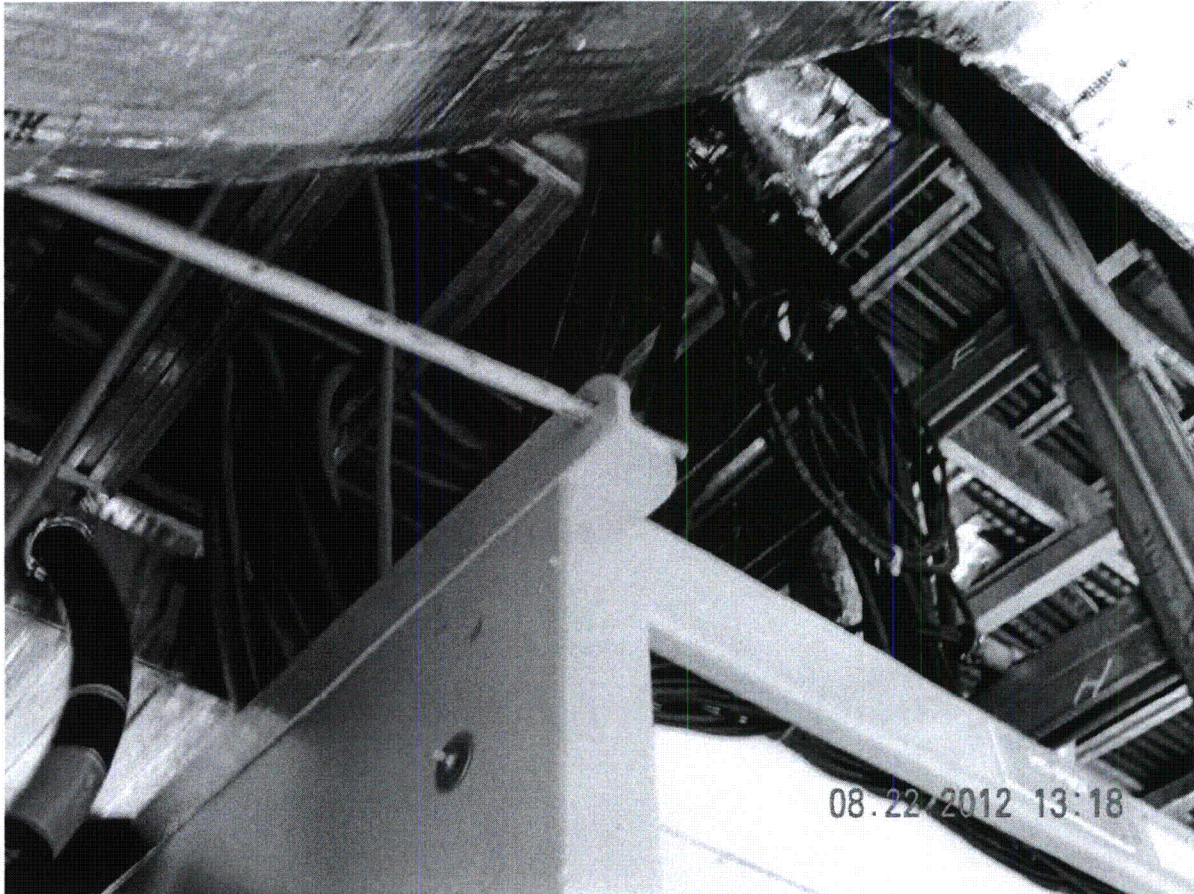


(DSCN0679)

Seismic Walkdown Pictures

Equipment ID No. H11P857 Equipment Class: 20, Instrumentation & Control Panel

Equipment Description MISC DC RELAY DIV 1 INSTRUMENT RACK

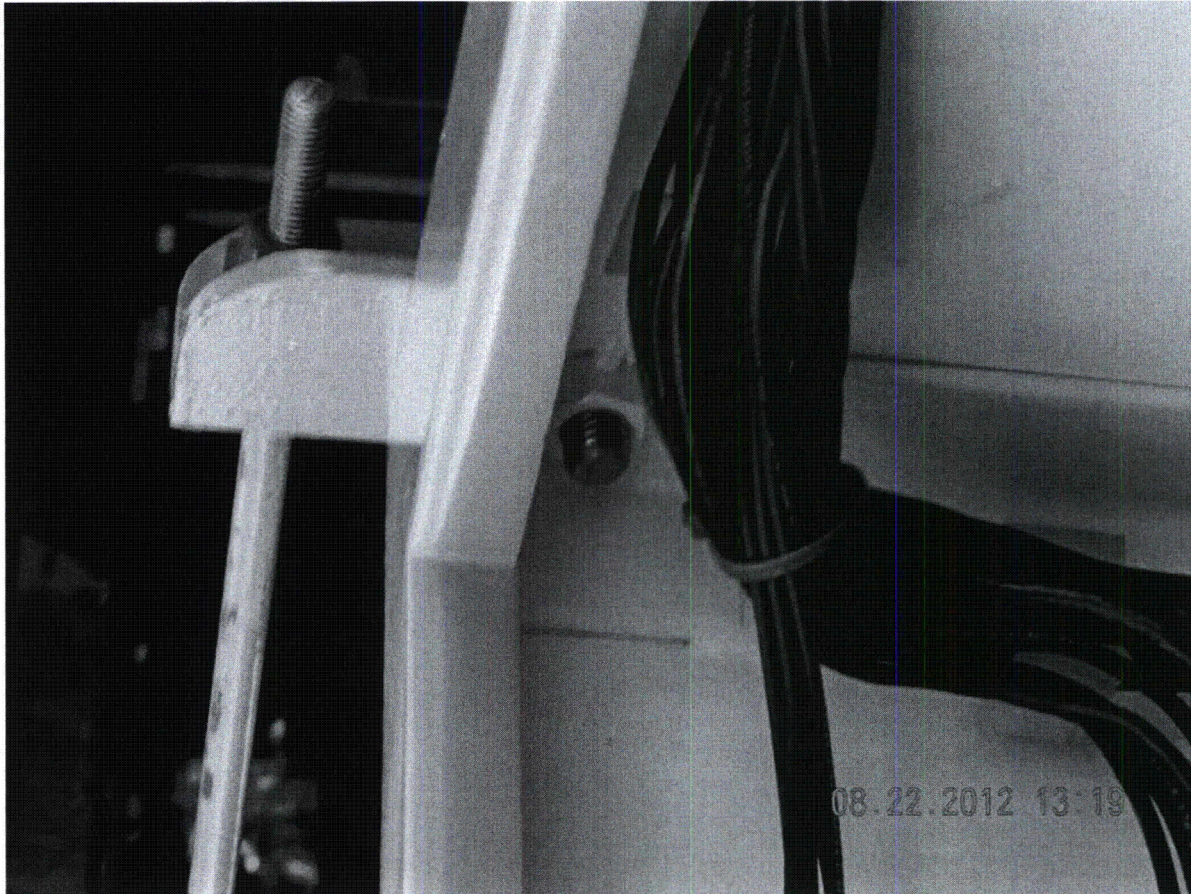


(DSCN0682)

Seismic Walkdown Pictures

Equipment ID No. H11P857 Equipment Class: 20, Instrumentation & Control Panel

Equipment Description MISC DC RELAY DIV 1 INSTRUMENT RACK



(DSCN0683)

Seismic Walkdown Pictures

Equipment ID No. H11P857 Equipment Class: 20, Instrumentation & Control Panel

Equipment Description MISC DC RELAY DIV 1 INSTRUMENT RACK

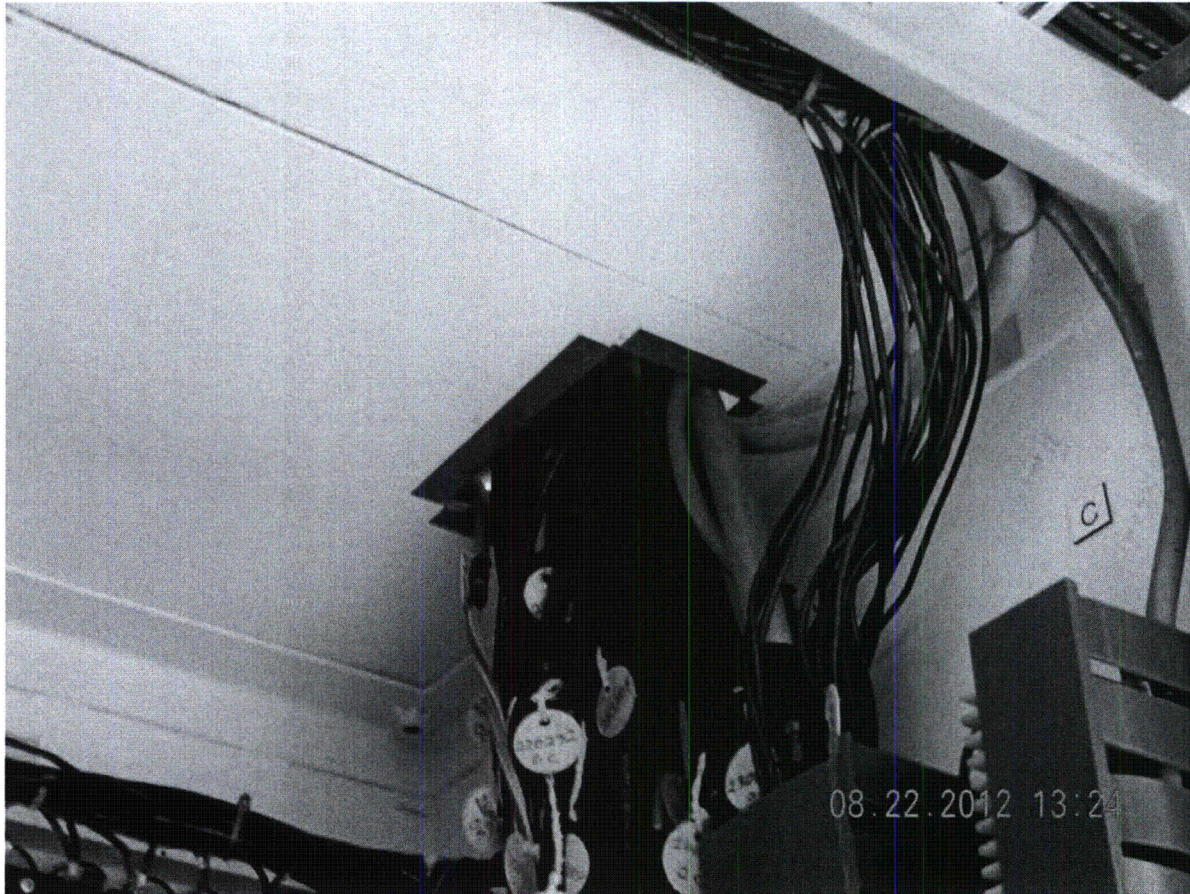


(DSCN0688)

Seismic Walkdown Pictures

Equipment ID No. H11P857 Equipment Class: 20, Instrumentation & Control Panel

Equipment Description MISC DC RELAY DIV 1 INSTRUMENT RACK



(DSCN0690)

Seismic Walkdown Checklist (SWC)

Equipment ID No. H11P870 Equip. Class¹ 20, Instrumentation & Control Panel

Equipment Description Div. 2 Misc. DC Relay Panel

Location: Bldg. AB Floor El. 613'-6" Room, Area Relay Room (B-15), Col. G-14

Manufacturer, Model, Etc. (optional but recommended) N/A

Instructions for Completing Checklist

This checklist may be used to document the results of the Seismic Walkdown of an item of equipment on the SWEL. The space below each of the following questions may be used to record the results of judgments and findings. Additional space is provided at the end of this checklist for documenting other comments.

Anchorage

1. Is the anchorage configuration verification required (i.e., is the item one of the 50% of SWEL items requiring such verification)? Y N
Frame is welded to embedded plates and angle braces are bolted. (See Photos DSCN0080, 0081, 0082 and 0084) JAM 10/8/12
2. Is the anchorage free of bent, broken, missing or loose hardware? Y N U N/A
Anchorage consists of welds and braces which are installed properly.
3. Is the anchorage free of corrosion that is more than mild surface oxidation? Y N U N/A
Welds are painted and bolted bracing is free of corrosion and oxidation.
4. Is the anchorage free of visible cracks in the concrete near the anchors? Y N U N/A
Concrete pad around the asset has no visible cracks.
5. Is the anchorage configuration consistent with plant documentation? Y N U N/A
 (Note: This question only applies if the item is one of the 50% for which anchorage configuration verification is required.)
Frame is plug welded to embedded plate @ 12" c-c 'S. Cabinet seismic retrofit bracing in accordance with ECR-27108-2 page 3 of 4. Top of cabinet braced with 1/2" Ø rods. Attached with angles with 5/8" Ø bolts as shown in ECR 27108-2 page 3 of 4. (See Photos DSCN0082, 0083 and 0084) JAM 10/8/12
6. Based on the above anchorage evaluations, is the anchorage free of potentially adverse seismic conditions? Y N U

¹ Enter the equipment class name from Appendix B: Classes of Equipment

JML

Seismic Walkdown Checklist (SWC)

Equipment ID No. HI1P870 Equip. Class¹ 20, Instrumentation & Control Panel

Equipment Description Div. 2 Misc. DC Relay Panel

Interaction Effects

7. Are soft targets free from impact by nearby equipment or structures? Y N U N/A
Cabinet with door, therefore no soft targets.

8. Are overhead equipment, distribution systems, ceiling tiles and lighting, and masonry block walls not likely to collapse onto the equipment? Y N U N/A
HVAC, cable trays and lighting are adequately supported. No ceilings tiles or block walls.

9. Do attached lines have adequate flexibility to avoid damage? Y N U N/A
Lines have sufficient flexibility.
(See Photos DSCN0082 and 0084) JAM 10/8/12

10. Based on the above seismic interaction evaluations, is equipment free of potentially adverse seismic interaction effects? Y N U

Other Adverse Conditions

11. Have you looked for and found no other seismic conditions that could adversely affect the safety functions of the equipment? Y N U
Door, internal component mounting & other attachments are all free of adverse seismic conditions. Door at front of cabinet opened for visual/physical inspection.

Fermi 2 Seismic Walkdown Guidance Document
Seismic Walkdown Checklist

NJPR-12-0043

Sheet 3 of 3
Status: N U

Seismic Walkdown Checklist (SWC)

Equipment ID No. H11P870 Equip. Class' 20, Instrumentation and Control Panel
Equipment Description DIV. 2 MISC RELAY PANEL

Comments (Additional pages may be added as necessary)

-N/A-

JAM
10/8/12

Seismic Engineer Walkdown PSE-53 Qualified

Evaluator #1: David G. Dickson Date: 8/7/2012

Seismic Engineer Walkdown PSE-53 Qualified

Evaluator #2: Joseph M. Vero Date: 08/07/2012

Seismic Walkdown Pictures

Equipment ID No. H11P870 Equipment Class: 20, Instrumentation & Control Panel

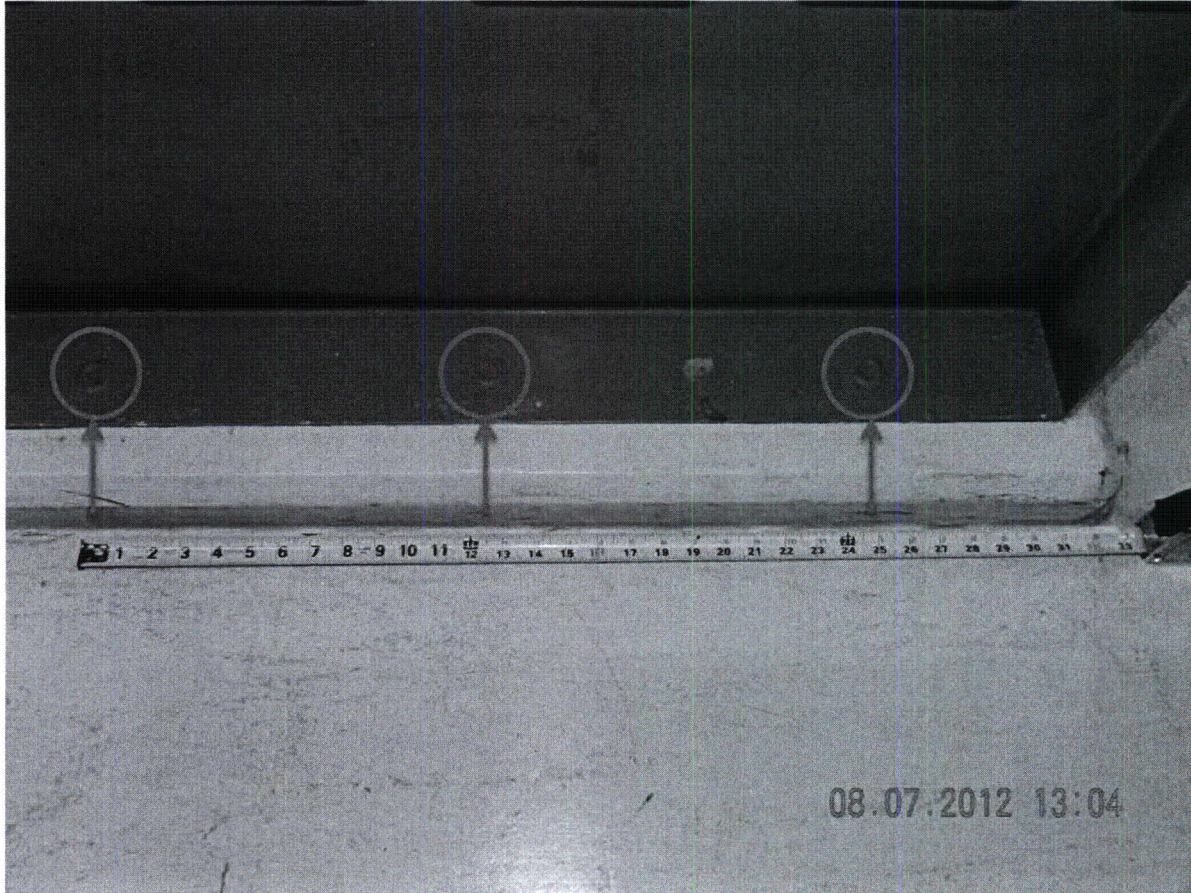
Equipment Description Div. 2 Misc. DC Relay Panel



Seismic Walkdown Pictures

Equipment ID No. H11P870 Equipment Class: 20, Instrumentation & Control Panel

Equipment Description Div. 2 Misc. DC Relay Panel



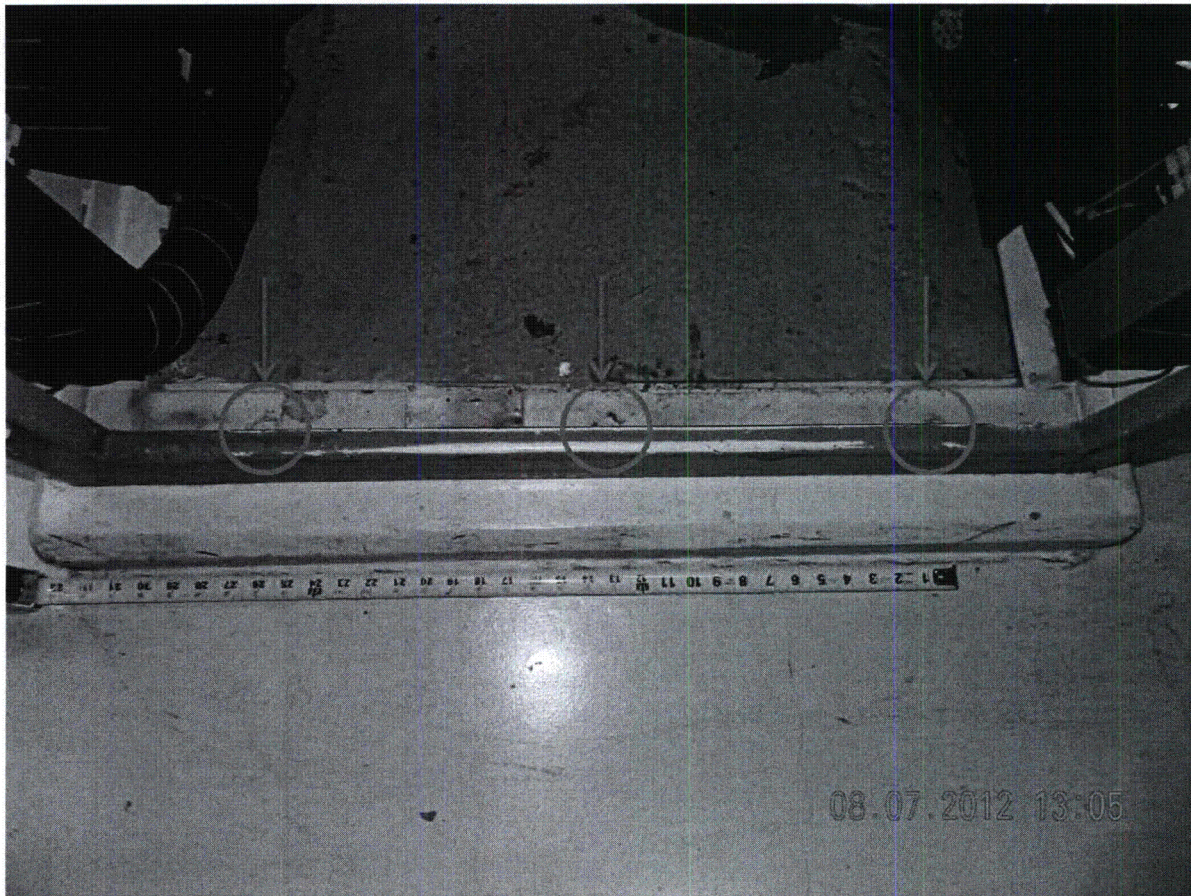
Frame Plug Welds to Embedment (Rear of Cabinet)

(DSCN0080)

Seismic Walkdown Pictures

Equipment ID No. H11P870 Equipment Class: 20, Instrumentation & Control Panel

Equipment Description Div. 2 Misc. DC Relay Panel



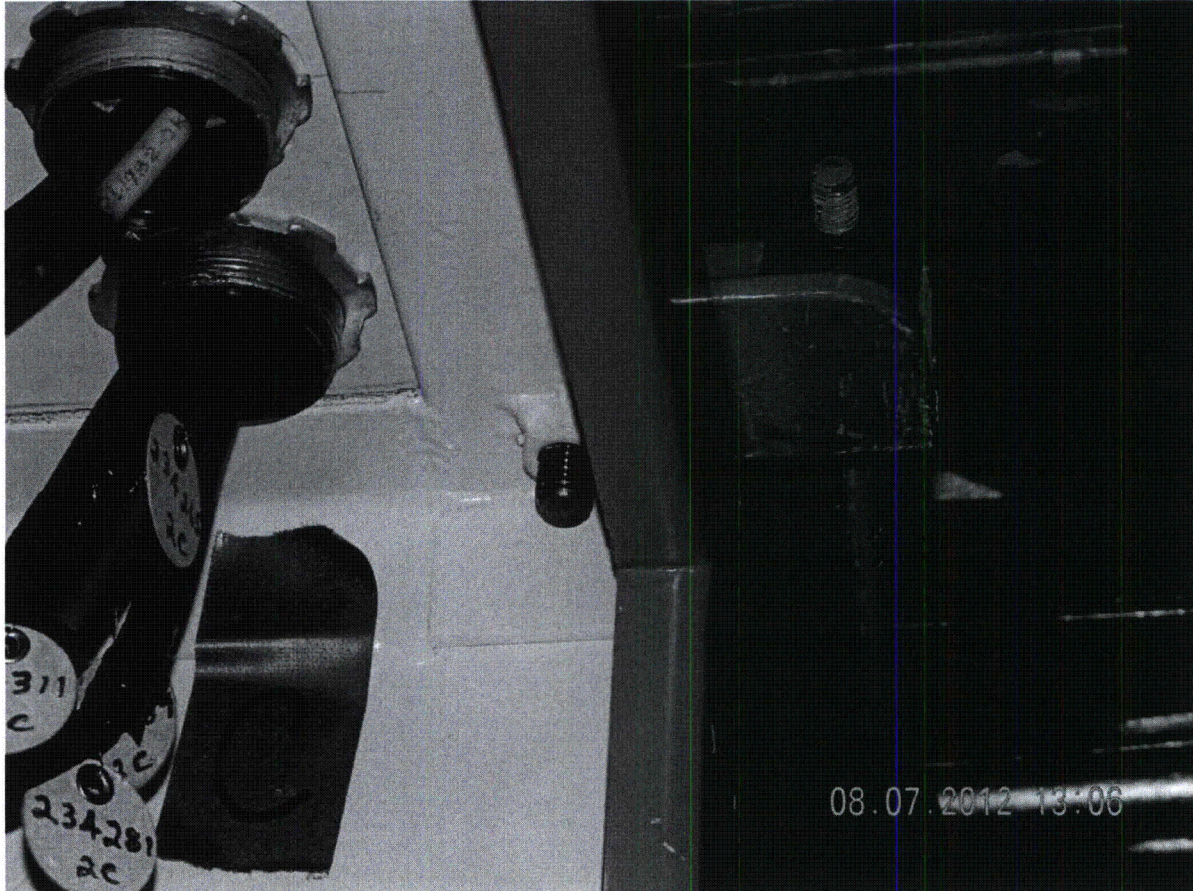
Frame Plug Welds to Embedment (Front of Cabinet)

(DSCN0081)

Seismic Walkdown Pictures

Equipment ID No. H11P870 Equipment Class: 20, Instrumentation & Control Panel

Equipment Description Div. 2 Misc. DC Relay Panel



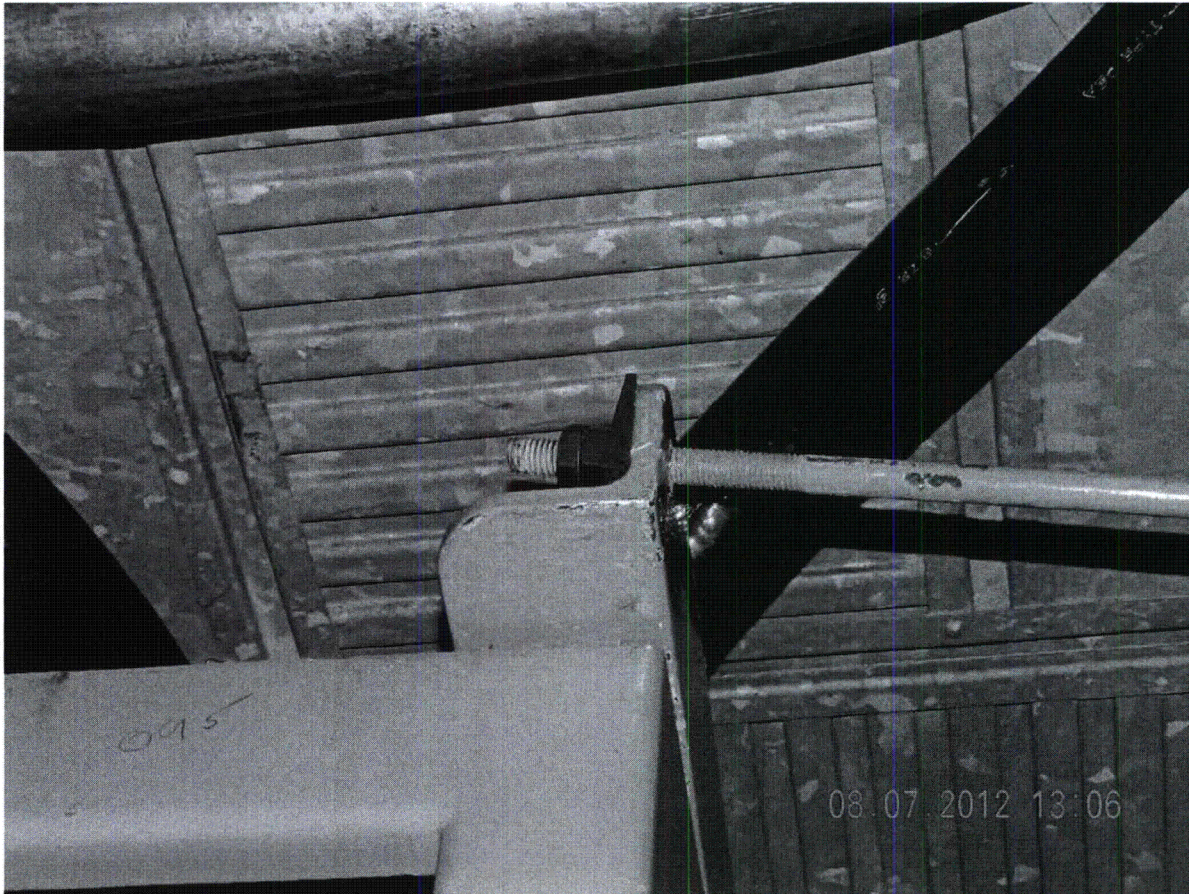
Seismic Bracing Configuration (Front of Cabinet)

(DSCN0082)

Seismic Walkdown Pictures

Equipment ID No. H11P870 Equipment Class: 20, Instrumentation & Control Panel

Equipment Description Div. 2 Misc. DC Relay Panel



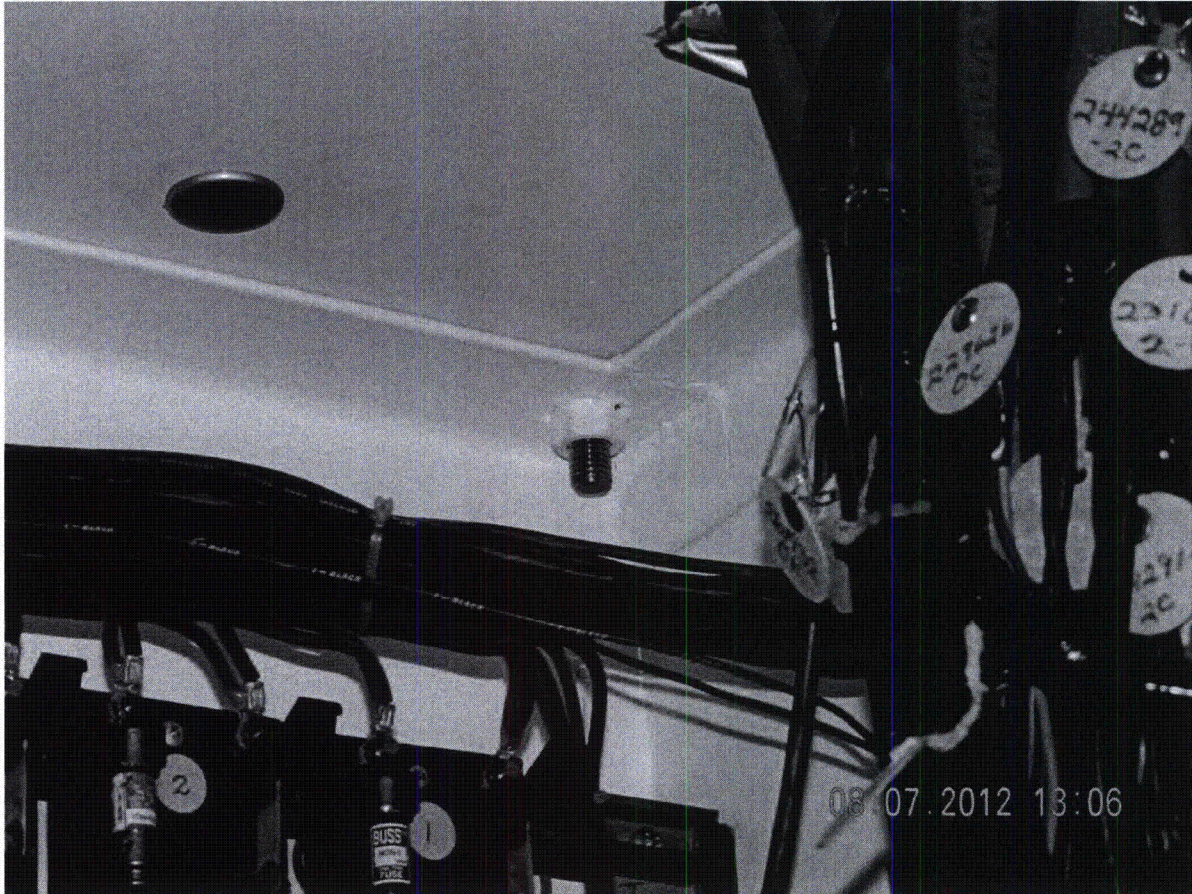
Seismic Bracing Bolt (Top Front of Cabinet)

(DSCN0083)

Seismic Walkdown Pictures

Equipment ID No. H11P870 Equipment Class: 20, Instrumentation & Control Panel

Equipment Description Div. 2 Misc. DC Relay Panel



Internal Cables/Conduits and Seismic Bracing Bolt/Nut

(DSCN0084)

Seismic Walkdown Checklist (SWC)

Equipment ID No. H11P898A Equip. Class¹ 20-Instrumentation & Control Panel

Equipment Description Auto Load Sequencing CAB-DIV 1

Location: Bldg. AB Floor El. 613'-6" Room, Area B-15, Col. G-16

Manufacturer, Model, Etc. (optional but recommended) N/A

Instructions for Completing Checklist

This checklist may be used to document the results of the Seismic Walkdown of an item of equipment on the SWEL. The space below each of the following questions may be used to record the results of judgments and findings. Additional space is provided at the end of this checklist for documenting other comments.

Anchorage

1. Is the anchorage configuration verification required (i.e., is the item one of the 50% of SWEL items requiring such verification)? Y N U
Base welds visible.
Seismic brace between H11609 and H11P886.
(SEE PICTURES DSC00080, DSC00081, DSC00084, DSC00085) ~ DJK 10/11/12
2. Is the anchorage free of bent, broken, missing or loose hardware? Y N U N/A
Welded anchorage. No bent, missing or loose hardware.
(SEE PICTURES DSC00080, DSC00081) ~ DJK 10/11/12
3. Is the anchorage free of corrosion that is more than mild surface oxidation? Y N U N/A
Welds painted and free of oxidation.
(SEE PICTURES DSC00080, DSC00081) ~ DJK 10/11/12
4. Is the anchorage free of visible cracks in the concrete near the anchors? Y N U N/A
Concrete pad around embedded anchorage not cracked.
(SEE PICTURE DSC00080) ~ DJK 10/11/12
5. Is the anchorage configuration consistent with plant documentation? Y N U N/A
(Note: This question only applies if the item is one of the 50% for which anchorage configuration verification is required.)
Verified weld of corner to embedded plate -2"FW - DWG. I-2002-16.
Cabinet to cabinet shim/tie rods verified per EDP 27108.007.
NO APPLICABLE POSTINGS AGAINST I-2002-16, REV. C ~ DJK 10/12/12
6. Based on the above anchorage evaluations, is the anchorage free of potentially adverse seismic conditions? Y N U

JML

¹ Enter the equipment class name from Appendix B: Classes of Equipment

Seismic Walkdown Checklist (SWC)

Equipment ID No. H11P898A Equip. Class¹ 20-Instrumentation & Control Panel

Equipment Description Auto Load Sequencing CAB-DIV 1

Interaction Effects

7. Are soft targets free from impact by nearby equipment or structures? Y N U N/A
Cabinet with door, therefore no soft targets.
8. Are overhead equipment, distribution systems, ceiling tiles and lighting, and masonry block walls not likely to collapse onto the equipment? Y N U N/A
Lights hung by chain and cable. Cable trays and HVAC are robust and seismically supported.
9. Do attached lines have adequate flexibility to avoid damage? Y N U N/A
Top entry cables have adequate flexibility.
10. Based on the above seismic interaction evaluations, is equipment free of potentially adverse seismic interaction effects? Y N U
-

Other Adverse Conditions

11. Have you looked for and found no other seismic conditions that could adversely affect the safety functions of the equipment? Y N U

JML

Fermi 2 Seismic Walkdown Guidance Document
Seismic Walkdown Checklist

NJPR-12-0043

Sheet 3 of 3
Status: Y N U

Seismic Walkdown Checklist (SWC)

Equipment ID No. H11-PB98A Equip. Class 20-INSTRUMENTATION & CONTROL PANEL

Equipment Description AUTO LOAD SEQUENCING CAB - DIV 1

Comments (Additional pages may be added as necessary)

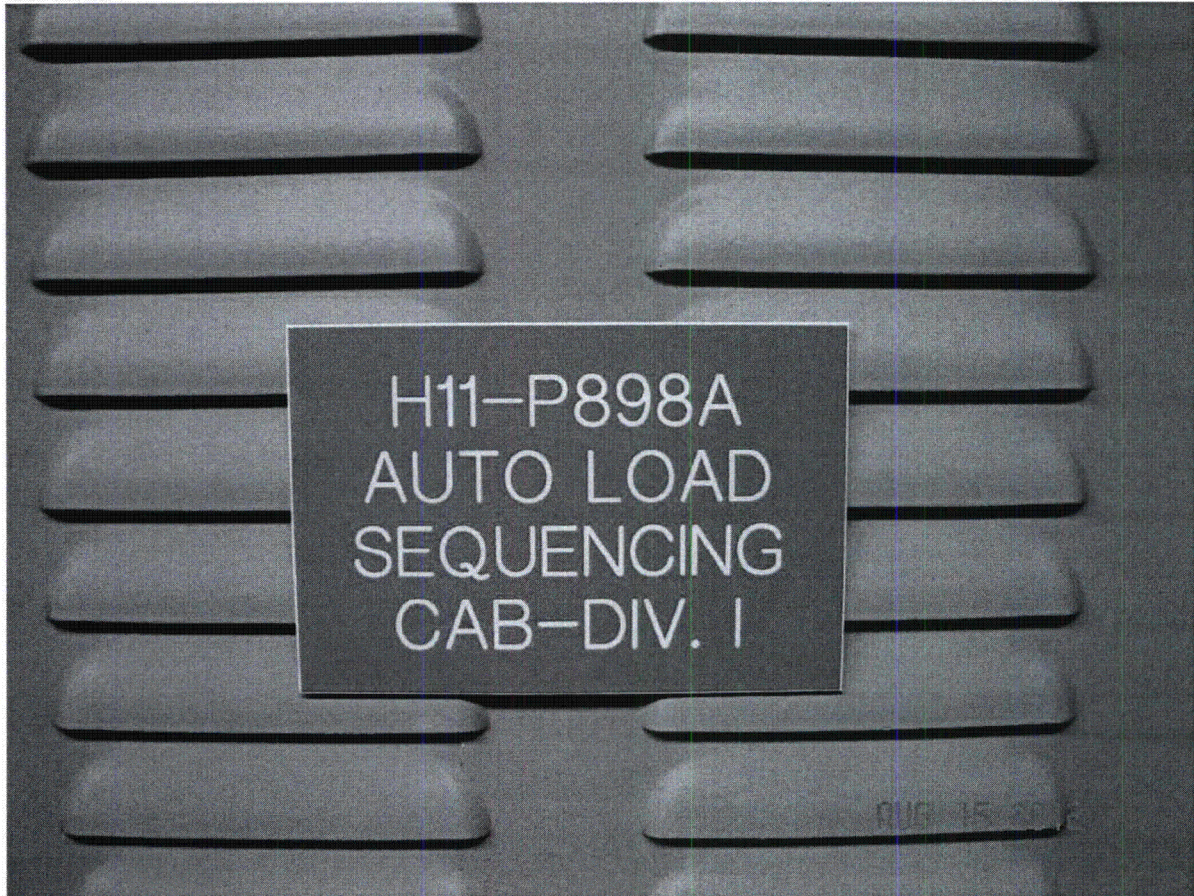
Seismic Engineer Walkdown PSE-53 Qualified
Evaluator #1: David G Decker Date: 8/15/2012

Seismic Engineer Walkdown PSE-53 Qualified
Evaluator #2: Joseph M Baller Date: 08/15/2012

Seismic Walkdown Pictures

Equipment ID No. H11P898A Equipment Class: 20, Instrumentation & Control Panel

Equipment Description Auto Load Sequencing Cab – Div. I



(DSC00079)

Seismic Walkdown Pictures

Equipment ID No. H11P898A Equipment Class: 20, Instrumentation & Control Panel

Equipment Description Auto Load Sequencing Cab – Div. I

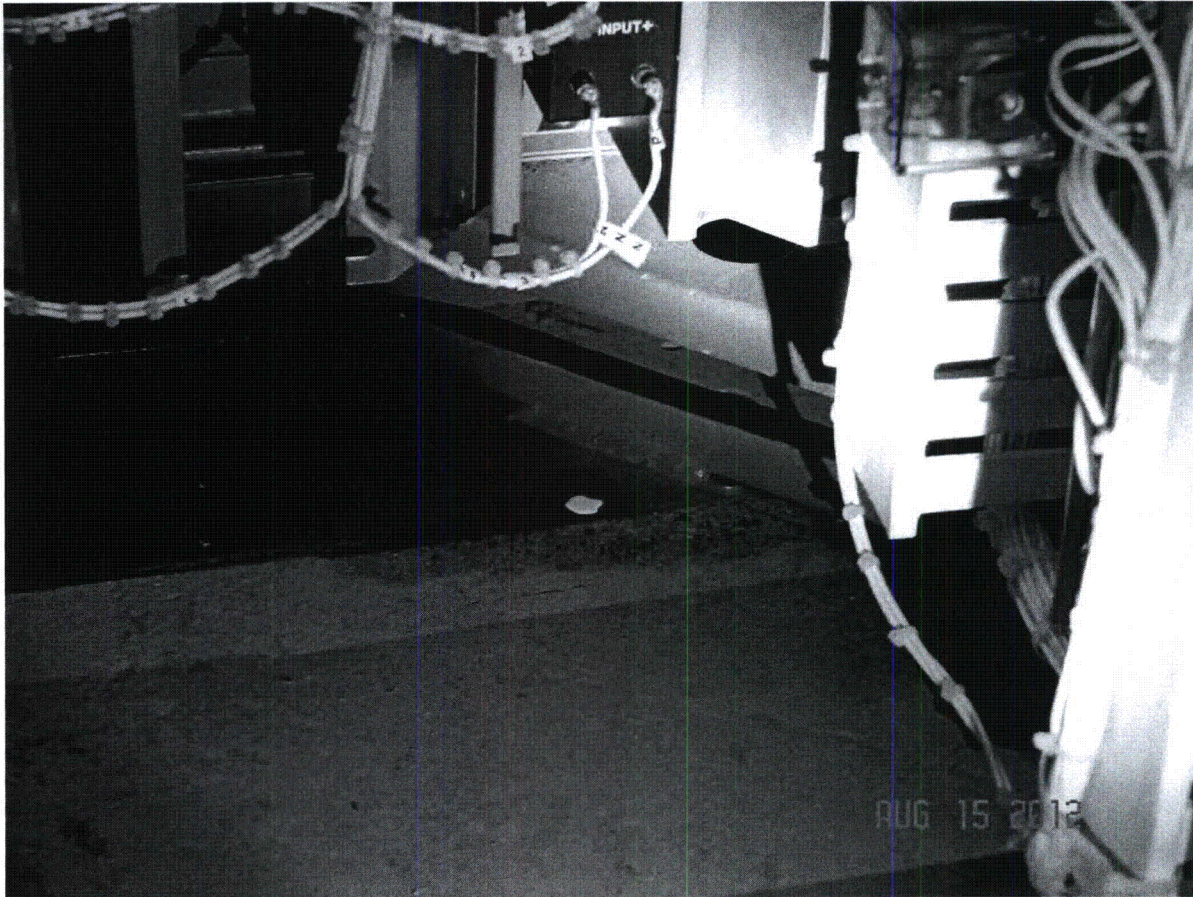


(DSC00080)

Seismic Walkdown Pictures

Equipment ID No. H11P898A Equipment Class: 20, Instrumentation & Control Panel

Equipment Description Auto Load Sequencing Cab – Div. I

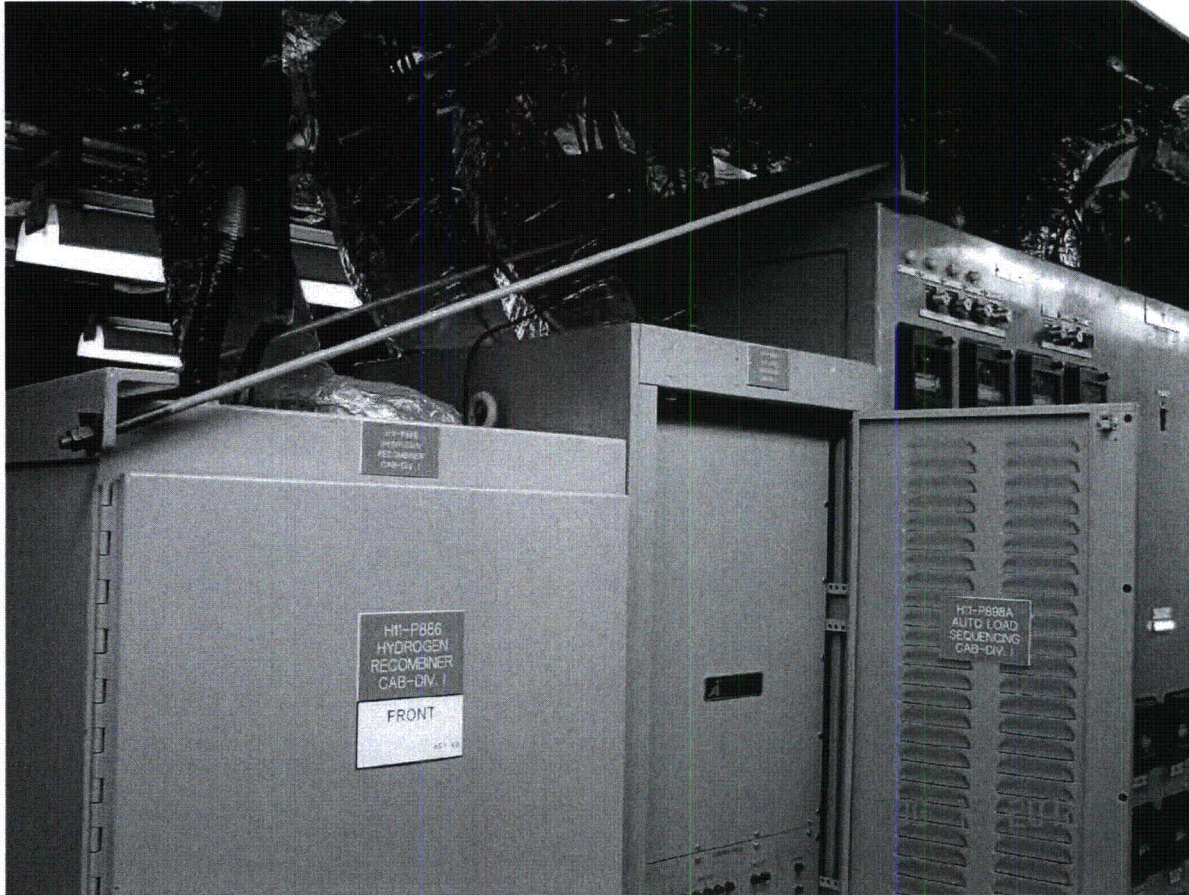


(DSC00081)

Seismic Walkdown Pictures

Equipment ID No. H11P898A Equipment Class: 20, Instrumentation & Control Panel

Equipment Description Auto Load Sequencing Cab – Div. I

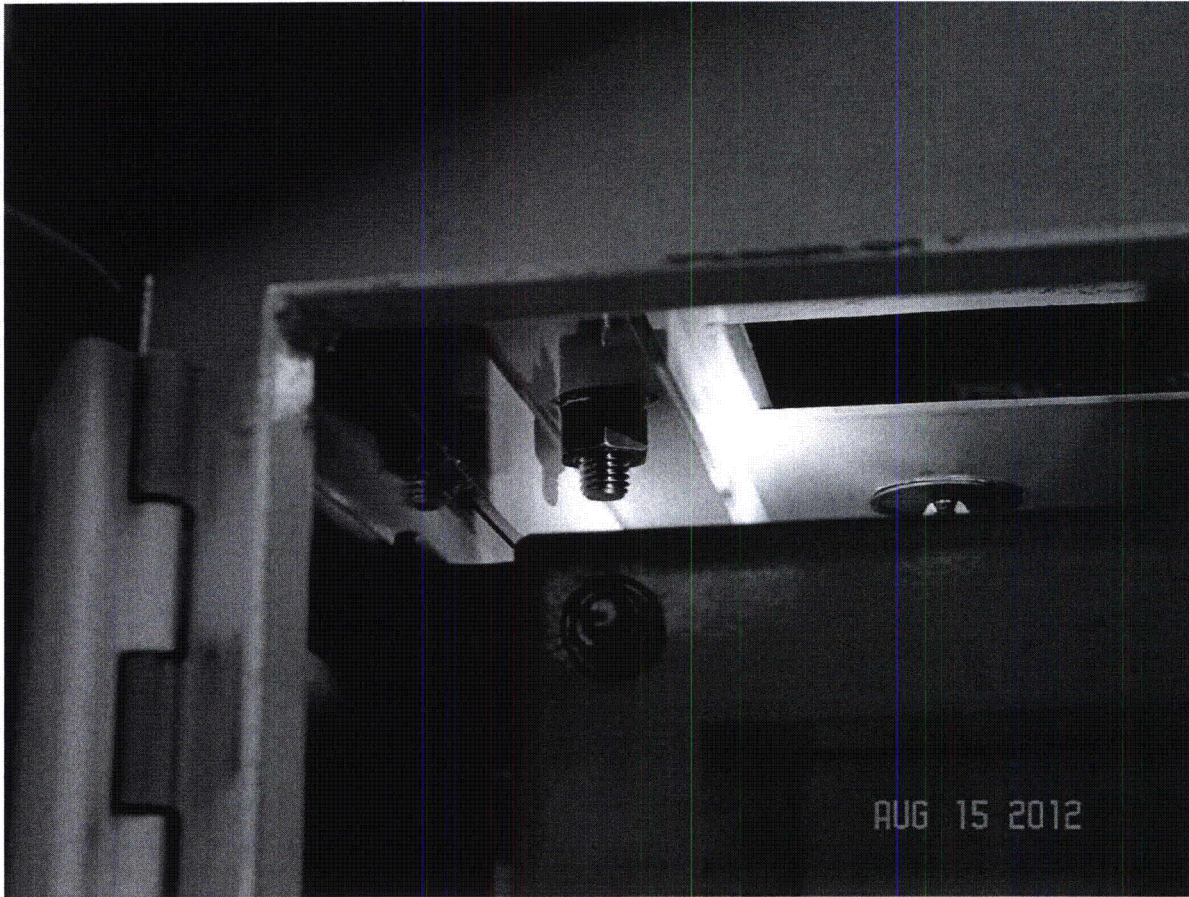


(DSC00084)

Seismic Walkdown Pictures

Equipment ID No. H11P898A Equipment Class: 20, Instrumentation & Control Panel

Equipment Description Auto Load Sequencing Cab – Div. I



(DSC00085)

Seismic Walkdown Checklist (SWC)

Equipment ID No. H11P898B Equip. Class¹ 20, Instrumentation & Control Panel

Equipment Description Div 2 EDG Auto Load Sequencing Cabinet

Location: Bldg. AB Floor El. 613'-6" Room, Area B-15, Col. GG-14

Manufacturer, Model, Etc. (optional but recommended) N/A

Instructions for Completing Checklist

This checklist may be used to document the results of the Seismic Walkdown of an item of equipment on the SWEL. The space below each of the following questions may be used to record the results of judgments and findings. Additional space is provided at the end of this checklist for documenting other comments.

Anchorage

1. Is the anchorage configuration verification required (i.e., is the item one of the 50% of SWEL items requiring such verification)? Y N
*Corner welds to embedded anchorage verified.
(See Photos DSCN0190 and 0192)* JAM 10/8/12
2. Is the anchorage free of bent, broken, missing or loose hardware? Y N U N/A
Welded anchorage. No bent, missing or loose hardware.
3. Is the anchorage free of corrosion that is more than mild surface oxidation? Y N U N/A
Welds painted and free of oxidation.
4. Is the anchorage free of visible cracks in the concrete near the anchors? Y N U N/A
Concrete housekeeping pad around embedded anchorage not cracked.
5. Is the anchorage configuration consistent with plant documentation? Y N U N/A
(Note: This question only applies if the item is one of the 50% for which anchorage configuration verification is required.)
*Yes, anchorage to H11P915 verified (seismic bracing detail). Base diag. frame welded to embedded anchorage.
(See Photos DSCN0107 and 0187 for Seismic Bracing)* JAM 10/8/12
6. Based on the above anchorage evaluations, is the anchorage free of potentially adverse seismic conditions? Y N U

JML

¹ Enter the equipment class name from Appendix B: Classes of Equipment

Seismic Walkdown Checklist (SWC)

Equipment ID No. H11P898B Equip. Class¹ 20, Instrumentation & Control Panel

Equipment Description Div 2 EDG Auto Load Sequencing Cabinet

Interaction Effects

7. Are soft targets free from impact by nearby equipment or structures? Y N U N/A
Cabinet with door, therefore no soft targets. JAM
10/8/12
(See Photo DSCN0187)
8. Are overhead equipment, distribution systems, ceiling tiles and lighting, and masonry block walls not likely to collapse onto the equipment? Y N U N/A
No ceiling tiles. Lights & block walls in area seismically supported.
9. Do attached lines have adequate flexibility to avoid damage? Y N U N/A
Top-fed cabinet, lines have sufficient flexibility. JAM
10/8/12
(See Photo DSCN0189)
10. Based on the above seismic interaction evaluations, is equipment free of potentially adverse seismic interaction effects? Y N U

Other Adverse Conditions

11. Have you looked for and found no other seismic conditions that could adversely affect the safety functions of the equipment? Y N U
Surrounding conditions & attached components by visual inspection do not display any adverse conditions.

JML

Fermi 2 Seismic Walkdown Guidance Document
Seismic Walkdown Checklist

NJPR-12-0043

Sheet 3 of 3
Status: N U

Seismic Walkdown Checklist (SWC)

Equipment ID No. H1P898B Equip. Class¹ 20, Instrumentation and Control Panel

Equipment Description DIV 2 EDG AUTO LOAD SEQUENCING CABINET

Comments (Additional pages may be added as necessary)

- N/A -

JAM
10/8/12

Seismic Engineer Walkdown PSE-53 Qualified

Evaluator #1: David G. Dickie Date: 8/7/2012

Seismic Engineer Walkdown PSE-53 Qualified

Evaluator #2: Joseph M. Falero Date: 08/07/2012

Seismic Walkdown Pictures

Equipment ID No. H11P898B Equipment Class: 20, Instrumentation & Control Panel

Equipment Description Div. 2 EDG Auto Load Sequencing Cabinet



Seismic Walkdown Pictures

Equipment ID No. H11P898B Equipment Class: 20, Instrumentation & Control Panel

Equipment Description Div. 2 EDG Auto Load Sequencing Cabinet



Seismic Bracing Bolt Configuration (Left Rear of Cabinet)

(DSCN0107)

Seismic Walkdown Pictures

Equipment ID No. H11P898B Equipment Class: 20, Instrumentation & Control Panel

Equipment Description Div. 2 EDG Auto Load Sequencing Cabinet



Seismic Bracing Bolt Configuration (Right Rear of Cabinet)

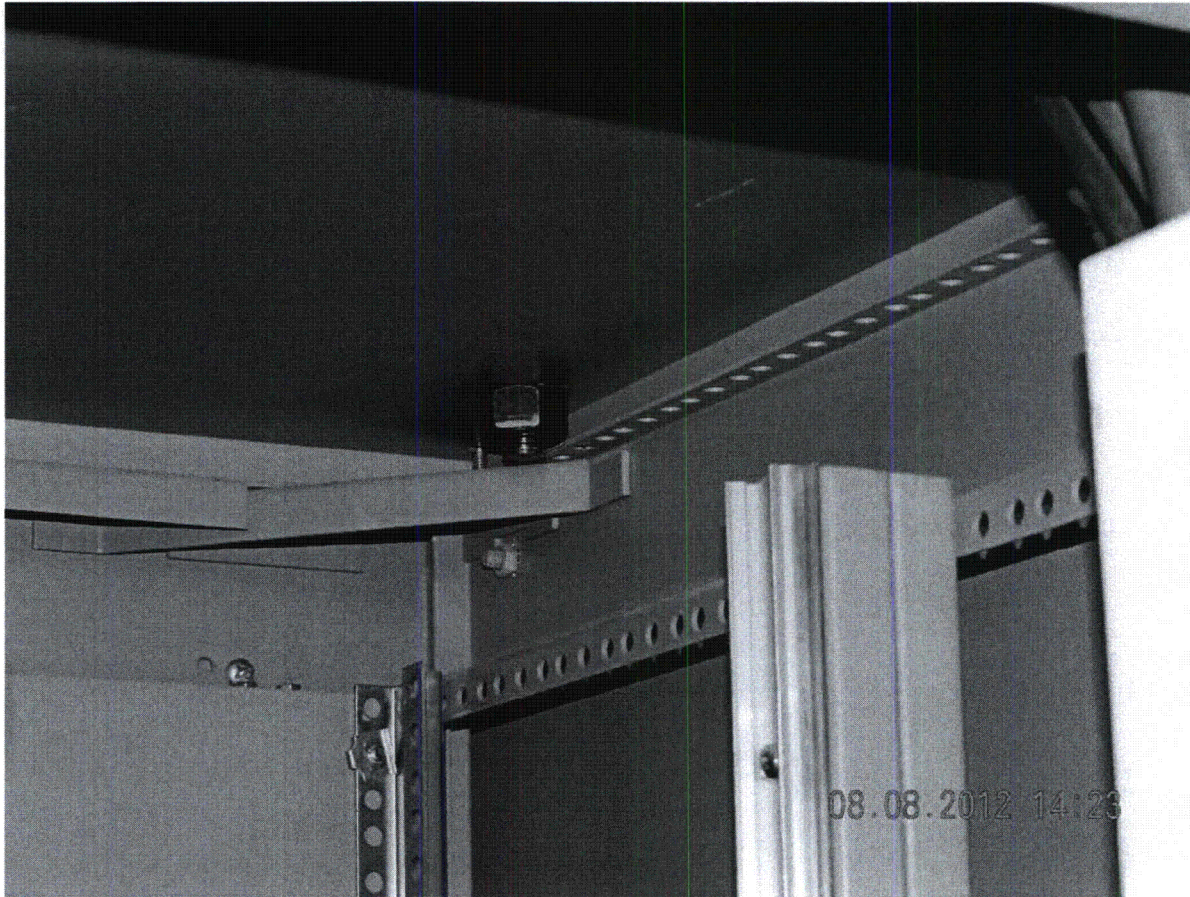
(DSCN0187)

↑
"Door"

Seismic Walkdown Pictures

Equipment ID No. H11P898B Equipment Class: 20, Instrumentation & Control Panel

Equipment Description Div. 2 EDG Auto Load Sequencing Cabinet



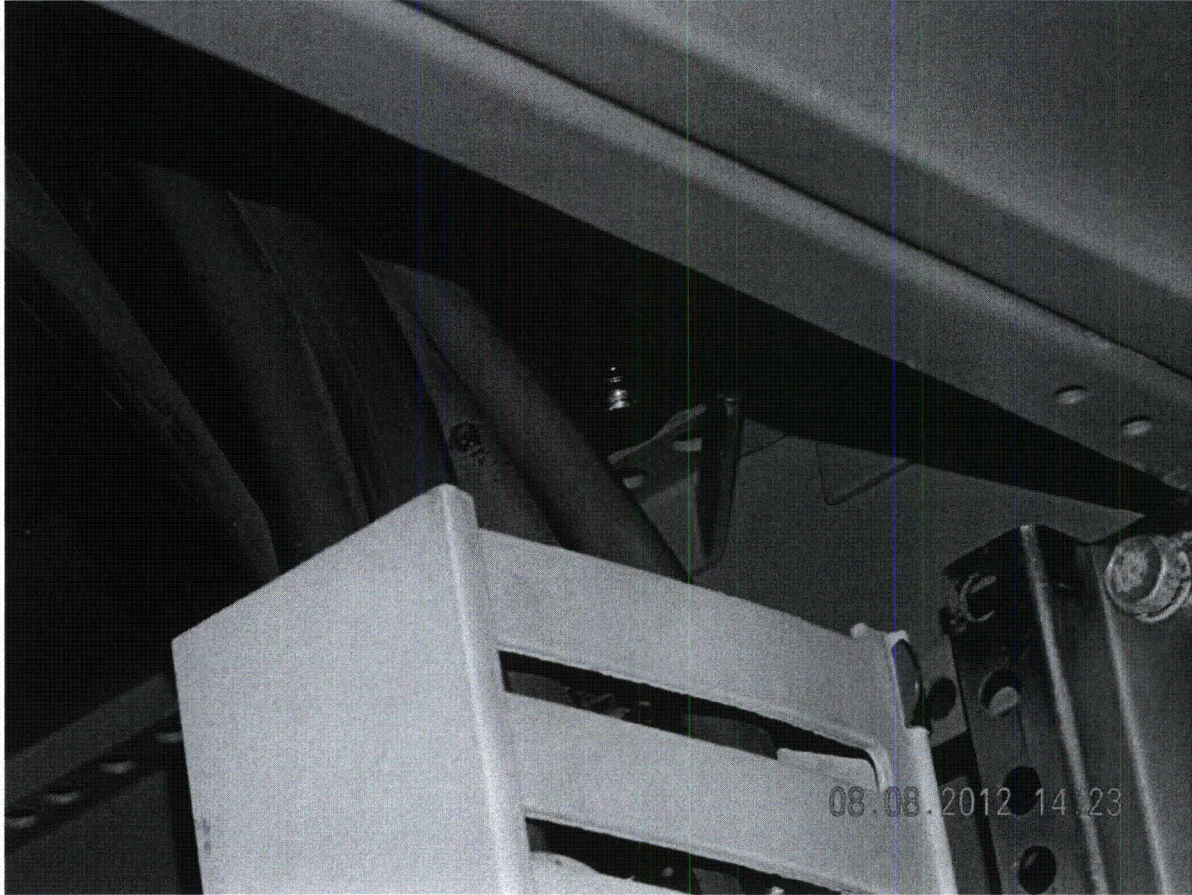
Internal Cabinet Bracing and Mounting

(DSCN0188)

Seismic Walkdown Pictures

Equipment ID No. H11P898B Equipment Class: 20, Instrumentation & Control Panel

Equipment Description Div. 2 EDG Auto Load Sequencing Cabinet



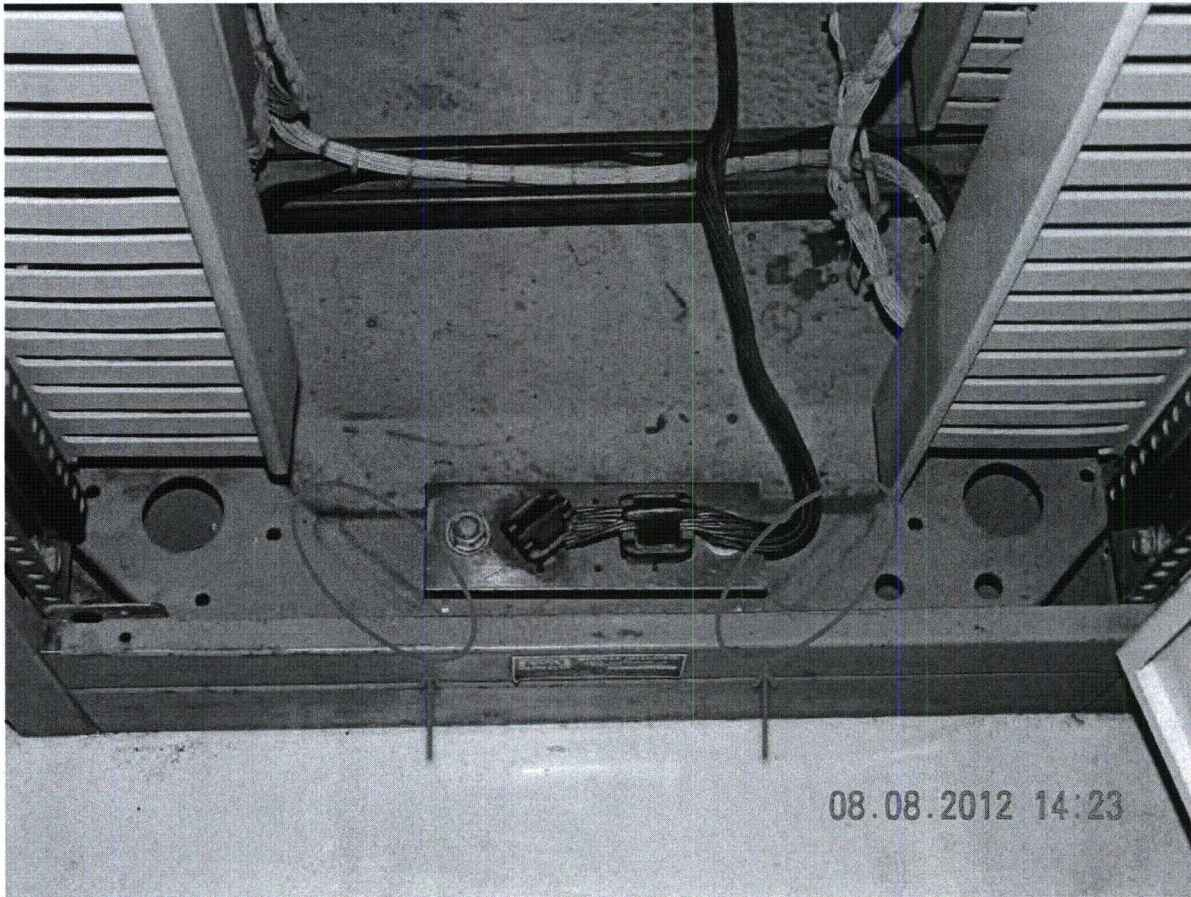
Internal Conduit Wiring Duct

(DSCN0189)

Seismic Walkdown Pictures

Equipment ID No. H11P898B Equipment Class: 20, Instrumentation & Control Panel

Equipment Description Div. 2 EDG Auto Load Sequencing Cabinet



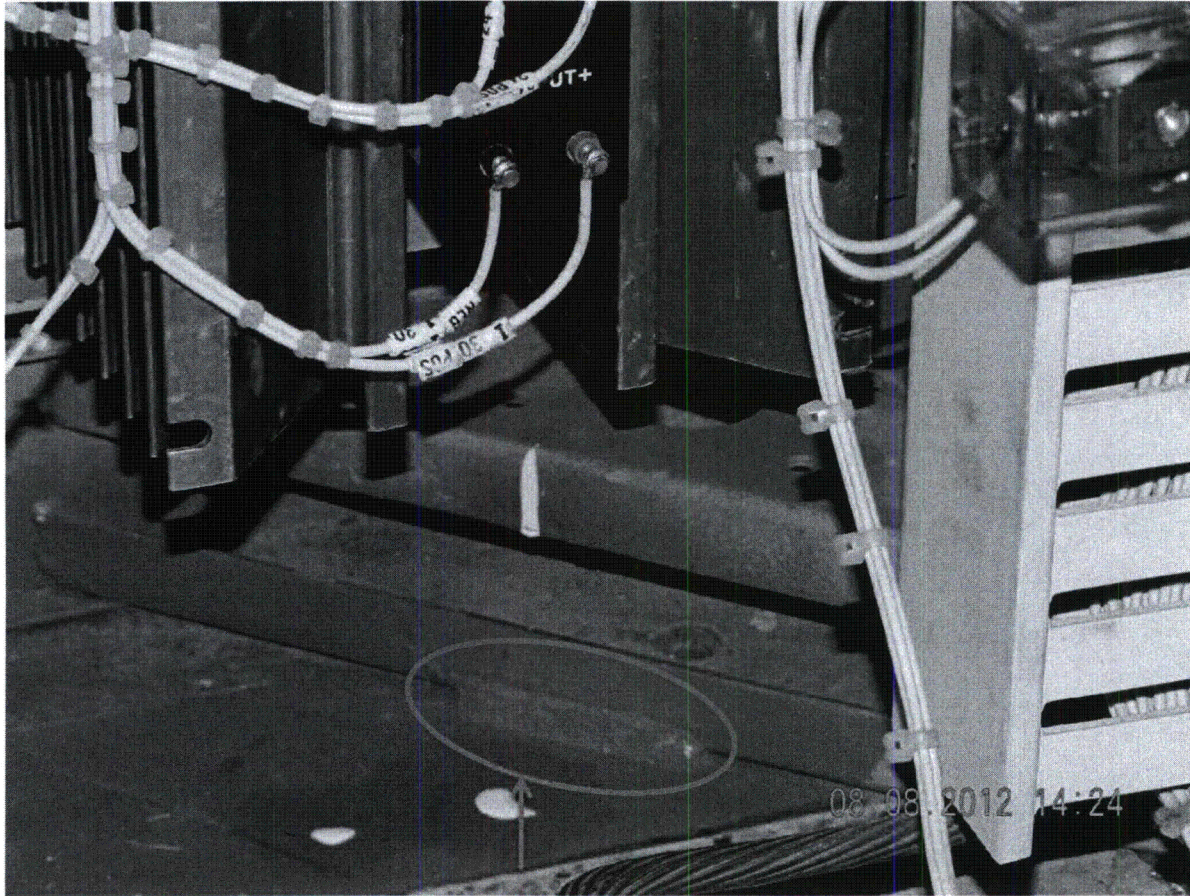
Diagonal Frame Welds to Embedded Anchorage (Rear of Cabinet)

(DSCN0190)

Seismic Walkdown Pictures

Equipment ID No. H11P898B Equipment Class: 20, Instrumentation & Control Panel

Equipment Description Div. 2 EDG Auto Load Sequencing Cabinet



Diagonal Frame Weld to Embedded Anchorage (Front of Cabinet)

(DSCN0192)

Seismic Walkdown Checklist (SWC)

Equipment ID No. H11P903 Equip. Class¹ 14, Distribution Panels & Automatic Transfer Switch

Equipment Description 120 VAC Dist. Panel – Div 2 Inst Rack

Location: Bldg. AB Floor El. 613'-6" Room, Area Relay Room (F-13), Col. B-15

Manufacturer, Model, Etc. (optional but recommended) Square "D", QMB-12-60795-2

Instructions for Completing Checklist

This checklist may be used to document the results of the Seismic Walkdown of an item of equipment on the SWEL. The space below each of the following questions may be used to record the results of judgments and findings. Additional space is provided at the end of this checklist for documenting other comments.

Anchorage

1. Is the anchorage configuration verification required (i.e., is the item one of the 50% of SWEL items requiring such verification)? Y N

2. Is the anchorage free of bent, broken, missing or loose hardware? Y N U N/A
Anchorage is in good condition

3. Is the anchorage free of corrosion that is more than mild surface oxidation? Y N U N/A
No corrosion is evident

4. Is the anchorage free of visible cracks in the concrete near the anchors? Y N U N/A
No visible cracks in the concrete wall near the anchors

5. Is the anchorage configuration consistent with plant documentation? Y N U N/A
(Note: This question only applies if the item is one of the 50% for which an anchorage configuration verification is required.)
Anchorage configuration was compared to Fermi Spec. 3071-128-ED, Standard STD-ED-S7-2, Rev AO (two postings, none relevant to this asset), and Calc. DC-5634, Rev 0, pg. E.9 (two postings, none relevant to this asset) specify 1/2"Ø bolts. Upper two bolts have "I" markings meaning bolt size is 1/2"x5 1/2" and acceptable (see Photo 068). Lower two bolts have "F" markings meaning bolt size is 1/4"x4 1/2" and unacceptable (see Photo 070A).

6. Based on the above anchorage evaluations, is the anchorage free of potentially adverse seismic conditions? Y N U
Per Standard STD-ED-S7-2, 1/2"Ø bolts are required. Since the lower bolts are 1/4"x4 1/2" long, CARD 12-27504 was initiated to investigate and resolve this matter.

¹ Enter the equipment class name from Appendix B: Classes of Equipment

Seismic Walkdown Checklist (SWC)

Equipment ID No. H11P903 Equip. Class¹⁴ Distribution Panels & Automatic Transfer Switch

Equipment Description 120 VAC Dist. Panel – Div 2 Inst Rack

Interaction Effects

7. Are soft targets free from impact by nearby equipment or structures? Y N U N/A
Equipment nearby is adequately supported no impact to the panel is possible. See Photo 064
8. Are overhead equipment, distribution systems, ceiling tiles and lighting, and masonry block walls not likely to collapse onto the equipment? Y N U N/A
HVAC duct, cable trays and lighting are adequately supported. No ceiling tiles or block walls in the area, see Photo 073
9. Do attached lines have adequate flexibility to avoid damage? Y N U N/A
Attached electrical cables have adequate flexibility
10. Based on the above seismic interaction evaluations, is equipment free of potentially adverse seismic interaction effects? Y N U
-

Other Adverse Conditions

11. Have you looked for and found no other seismic conditions that could adversely affect the safety functions of the equipment? Y N U
No other adverse seismic conditions were identified.

Seismic Walkdown Checklist (SWC)

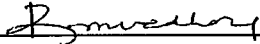
Equipment ID No. H11P903 Equip. Class¹⁴ Distribution Panels & Automatic Transfer Switch

Equipment Description 120 VAC Dist. Panel – Div 2 Inst Rack


Comments (Additional pages may be added as necessary)

None.

Seismic Engineer Walkdown PSE-53 Qualified

Evaluator #1:  Date: 8-31-12

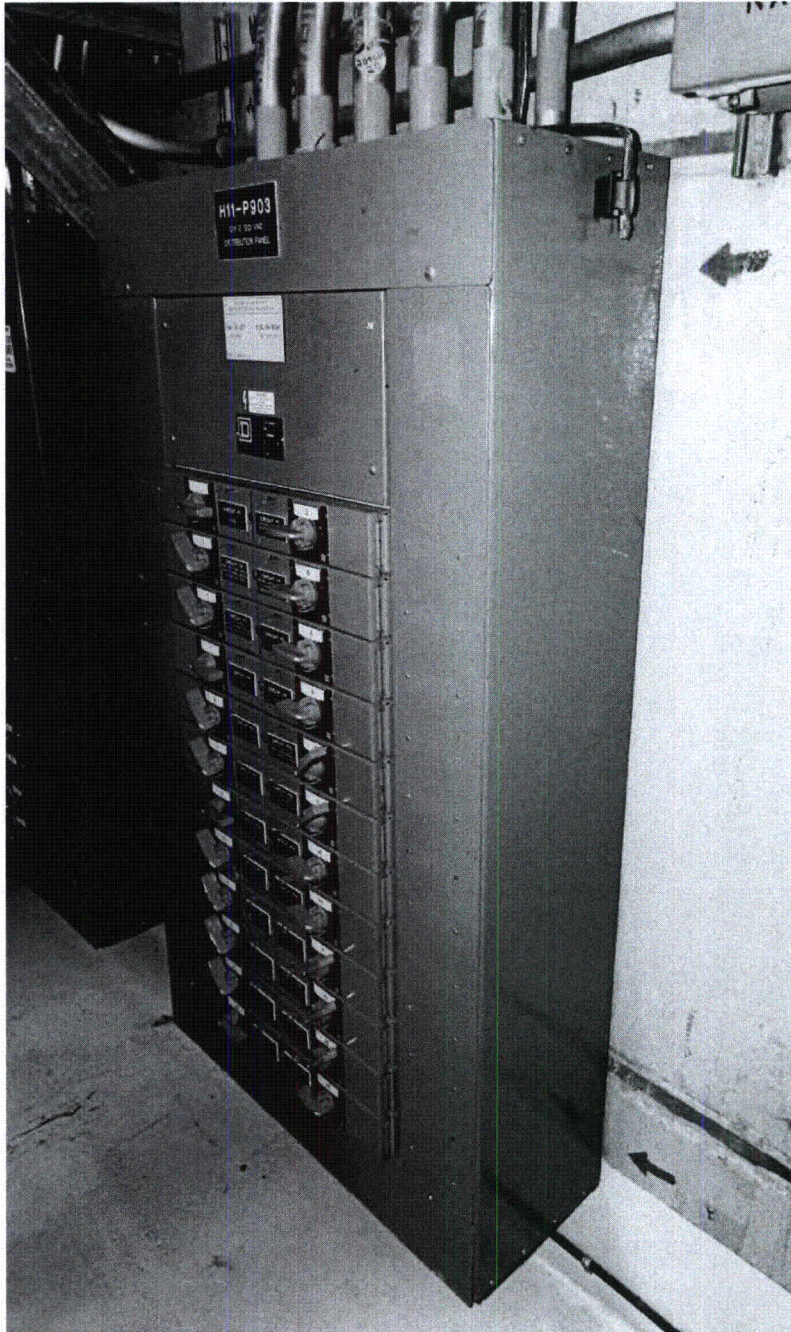
Seismic Engineer Walkdown PSE-53 Qualified

Evaluator #2:  Date: 08/31/12

Seismic Walkdown Pictures

Equipment ID No. H11P903 Equipment Class: 14. Distribution Panels & Automatic Transfer Switch

Equipment Description 120 VAC DIST Panel – DIV 2 Inst. Rack



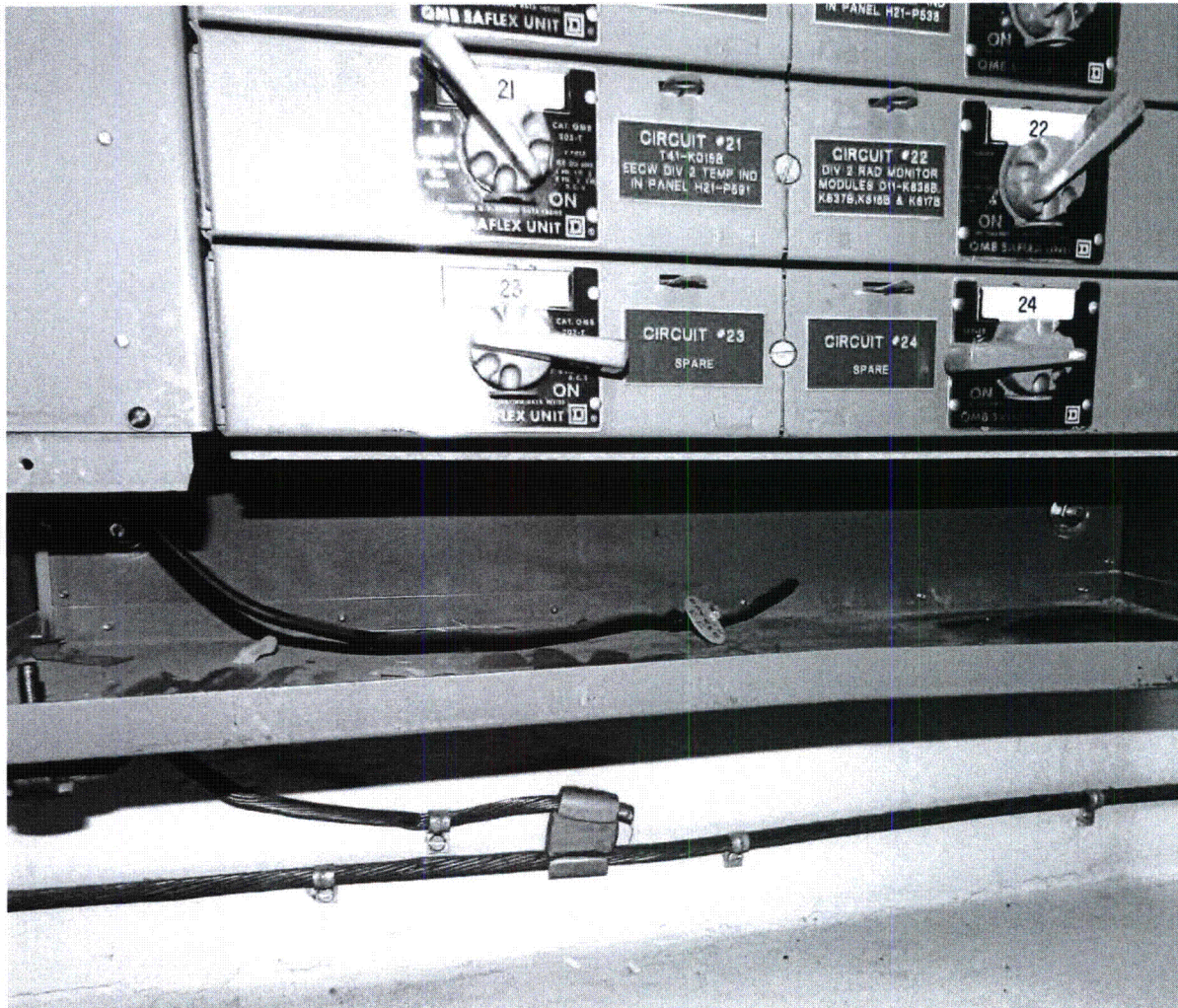
(Photo 064)

“Equipment adjacent to Panel H11P903”

Seismic Walkdown Pictures

Equipment ID No. H11P903 Equipment Class: 14, Distribution Panels & Automatic Transfer Switch

Equipment Description 120 VAC DIST Panel – DIV 2 Inst. Rack



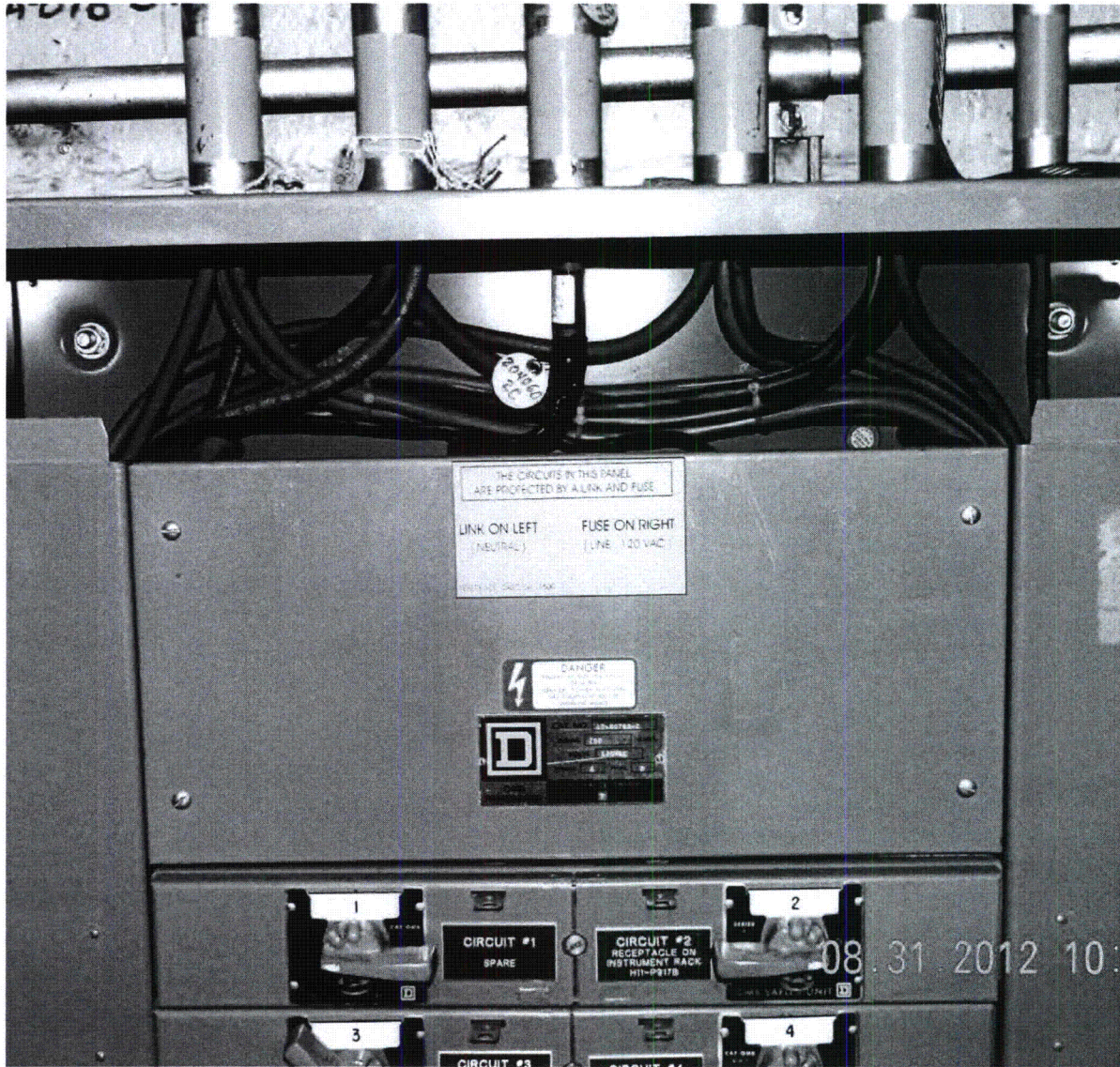
(Photo 070A)

“Anchor Bolts on bottom edge of panel”

Seismic Walkdown Pictures

Equipment ID No. H11P903 Equipment Class: 14, Distribution Panels & Automatic Transfer Switch

Equipment Description 120 VAC DIST Panel – DIV 2 Inst. Rack



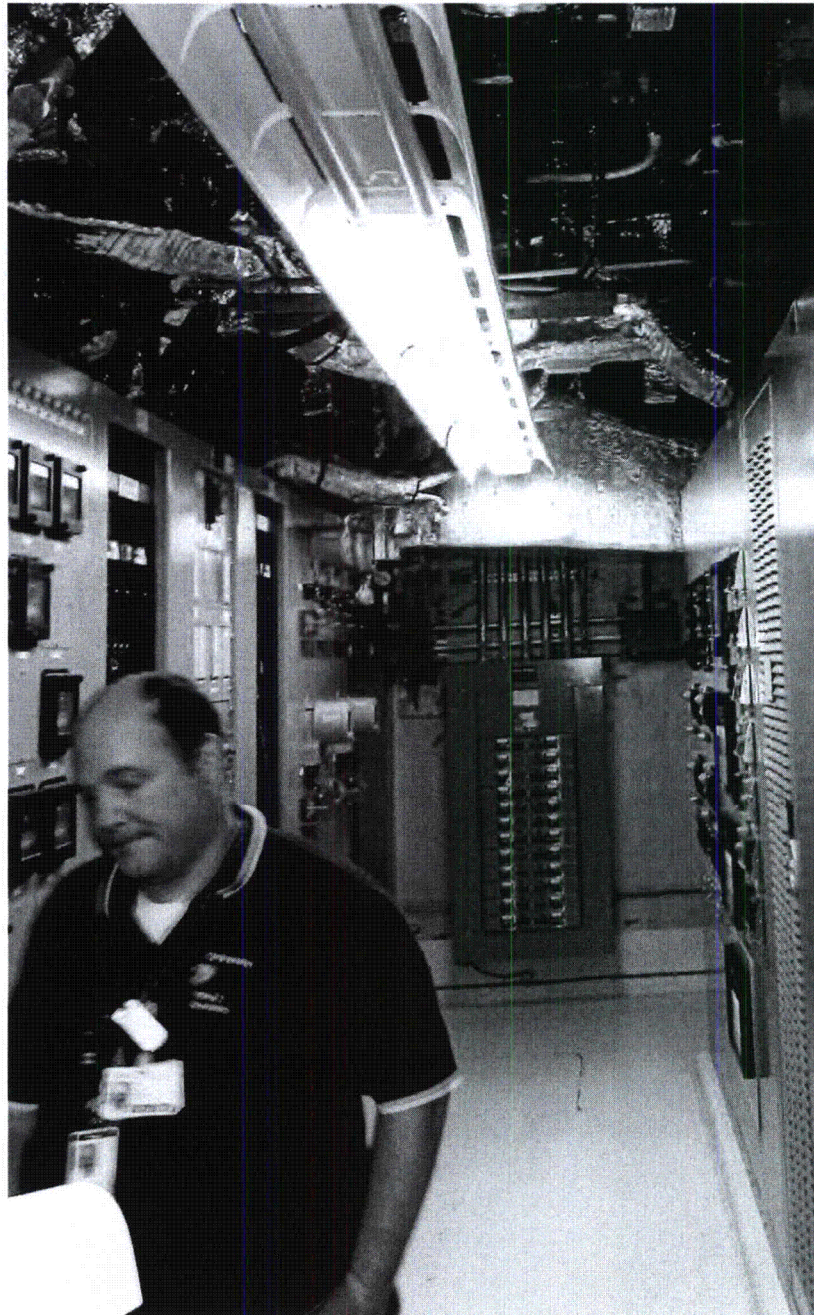
(Photo 068)

“Anchor bolts on top edge of panel”

Seismic Walkdown Pictures

Equipment ID No. H11P903 Equipment Class: 14, Distribution Panels & Automatic Transfer Switch

Equipment Description 120 VAC DIST Panel – DIV 2 Inst. Rack



(Photo 073)

“Overhead equipment near Panel H11P903”

Seismic Walkdown Checklist (SWC)

Equipment ID No. H11P915 Equip. Class¹ 20-Instrumentation & Control Panel

Equipment Description PCMS and Misc. Relay Cab - Div II

Location: Bldg. AB Floor El. 613'-6" Room, Area B-15, Col. G-14

Manufacturer, Model, Etc. (optional but recommended) N/A

Instructions for Completing Checklist

This checklist may be used to document the results of the Seismic Walkdown of an item of equipment on the SWEL. The space below each of the following questions may be used to record the results of judgments and findings. Additional space is provided at the end of this checklist for documenting other comments.

Anchorage

1. Is the anchorage configuration verification required (i.e., is the item one of the 50% of SWEL items requiring such verification)? Y N
*Frame plug welded to embedment in four places.
(See Photos DSCN0109 and 0196)* JAM 10/8/12
2. Is the anchorage free of bent, broken, missing or loose hardware? Y N U N/A
Welded anchorage. No bent, broken, missing or loose hardware.
3. Is the anchorage free of corrosion that is more than mild surface oxidation? Y N U N/A
Welds painted and free of oxidation.
4. Is the anchorage free of visible cracks in the concrete near the anchors? Y N U N/A
Concrete pad around anchorage not cracked.
5. Is the anchorage configuration consistent with plant documentation? Y N U N/A
(Note: This question only applies if the item is one of the 50% for which anchorage configuration verification is required.)
*Anchorage configuration is consistent with plant documentation.
Seismic brace to H11P863.
(See Photos DSCN0110 and 0198)* JAM 10/8/12
6. Based on the above anchorage evaluations, is the anchorage free of potentially adverse seismic conditions? Y N U

¹ Enter the equipment class name from Appendix B: Classes of Equipment

JML

Seismic Walkdown Checklist (SWC)

Equipment ID No. H11P915 Equip. Class¹ 20-Instrumentation & Control Panel

Equipment Description PCMS and Misc. Relay Cab - Div II

Interaction Effects

7. Are soft targets free from impact by nearby equipment or structures? Y N U N/A
Cabinet with door, therefore no soft targets.
(See Photo DSCN0196) JAM 10/8/12
8. Are overhead equipment, distribution systems, ceiling tiles and lighting, and masonry block walls not likely to collapse onto the equipment? Y N U N/A
HVAC, cable trays and lighting are adequately supported. No ceiling tiles or block walls.
9. Do attached lines have adequate flexibility to avoid damage? Y N U N/A
Top-fed cabinet. Lines have sufficient flexibility.
(See Photo DSCN0110) JAM 10/8/12
10. Based on the above seismic interaction evaluations, is equipment free of potentially adverse seismic interaction effects? Y N U

Other Adverse Conditions

11. Have you looked for and found no other seismic conditions that could adversely affect the safety functions of the equipment? Y N U
Door, internal component mounting & other attachments are all free of adverse seismic conditions. Door at front of cabinet opened for visual/physical inspection.

Fermi 2 Seismic Walkdown Guidance Document
Seismic Walkdown Checklist

NJPR-12-0043

Sheet 3 of 3
Status: N U

Seismic Walkdown Checklist (SWC)

Equipment ID No. H11P915 Equip. Class¹ 20, Instrumentation and Control Panel
Equipment Description PCMS AND MISC RELAY CAB DIV. II

Comments (Additional pages may be added as necessary)

- N/A - JAM
10/8/12

Seismic Engineer Walkdown PSE-53 Qualified

Evaluator #1: David G. Dickers Date: 8/7/2012

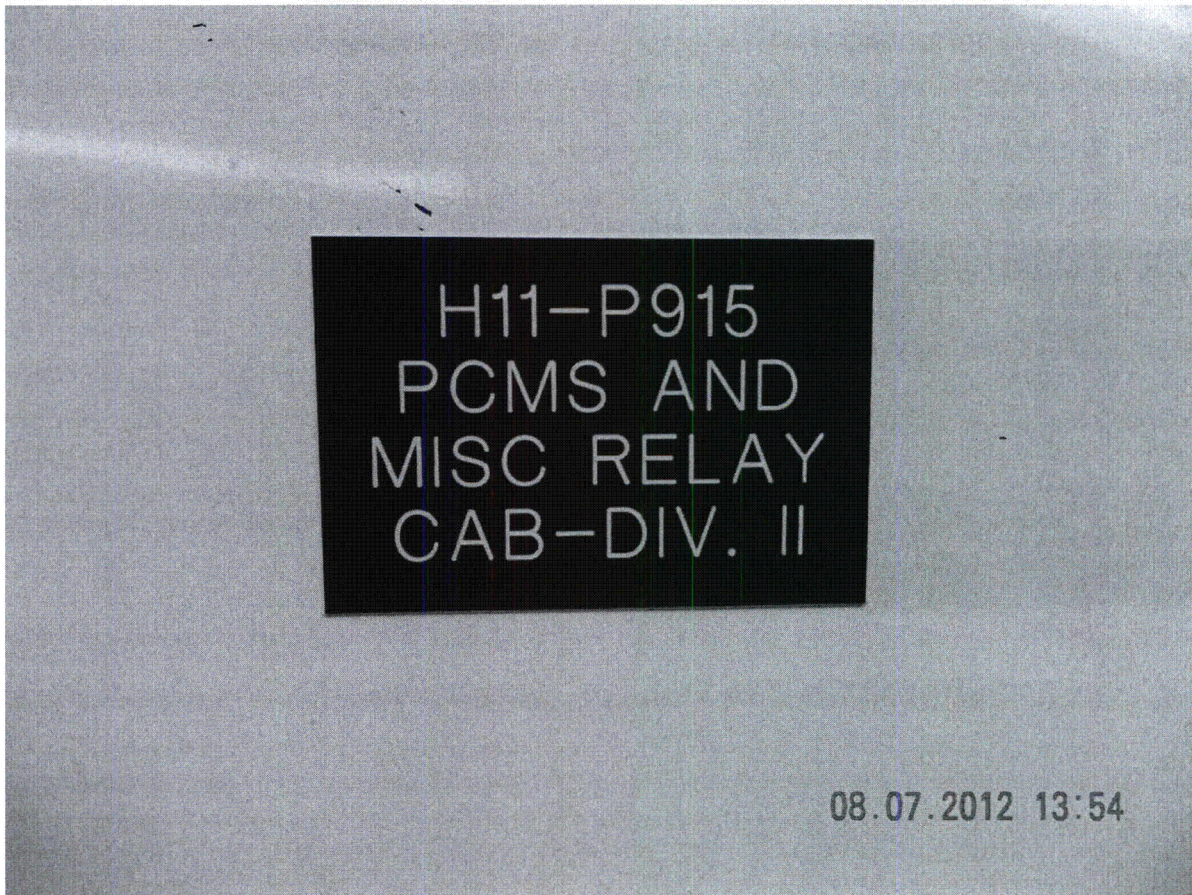
Seismic Engineer Walkdown PSE-53 Qualified

Evaluator #2: Joseph M. Lallere Date: 08/07/2012

Seismic Walkdown Pictures

Equipment ID No. H11P915 Equipment Class: 20, Instrumentation & Control Panel

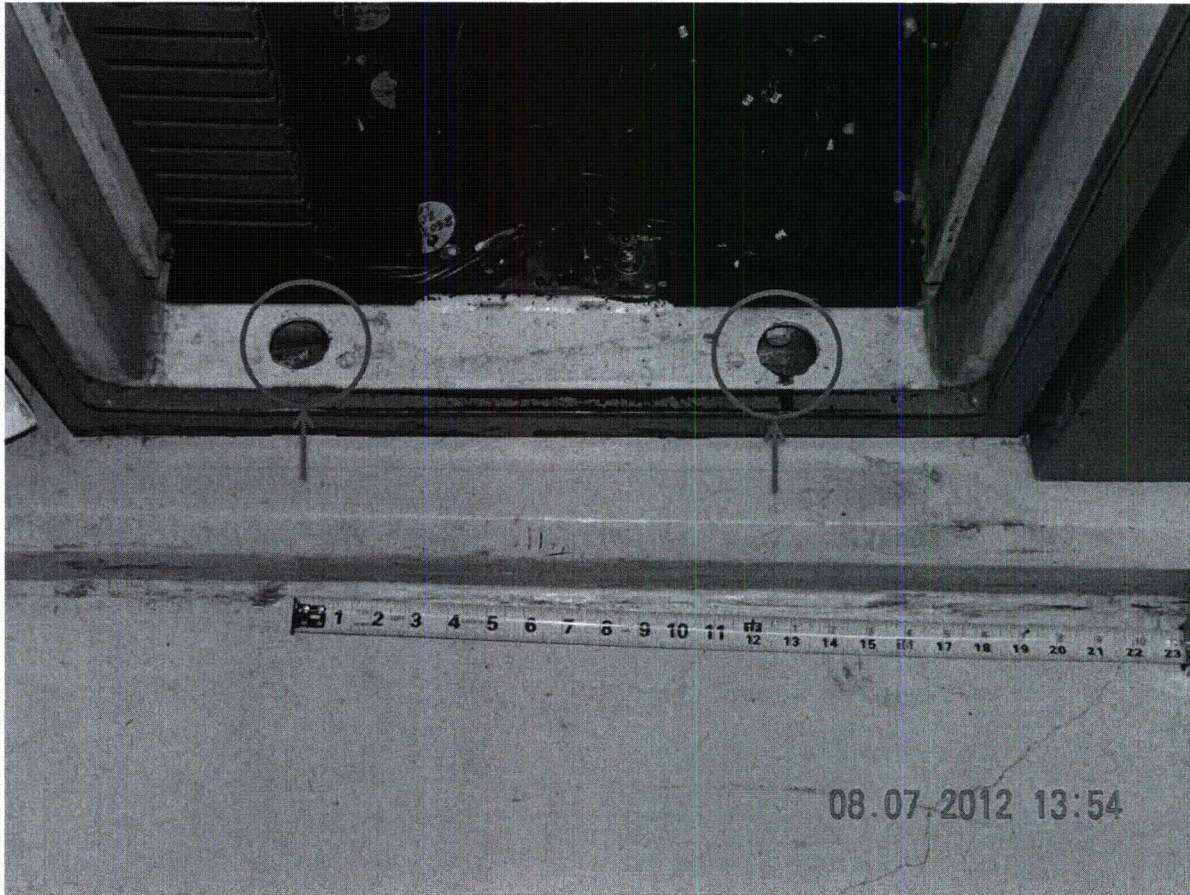
Equipment Description PCMS And Misc. Relay Cab – Div. II



Seismic Walkdown Pictures

Equipment ID No. H11P915 Equipment Class: 20, Instrumentation & Control Panel

Equipment Description PCMS And Misc. Relay Cab – Div. II



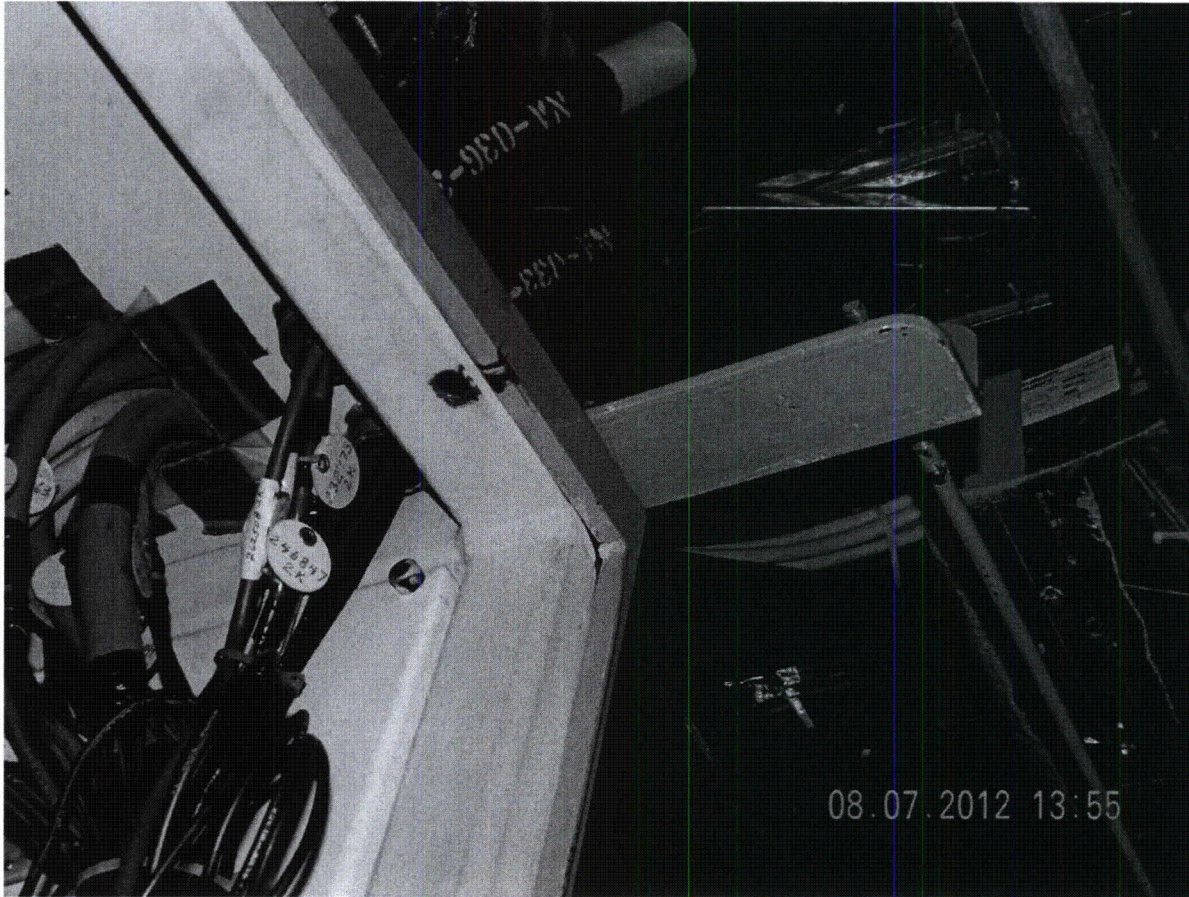
Frame Plug Welds to Embedment (Rear of Cabinet)

(DSCN0109)

Seismic Walkdown Pictures

Equipment ID No. H11P915 Equipment Class: 20, Instrumentation & Control Panel

Equipment Description PCMS And Misc. Relay Cab – Div. II



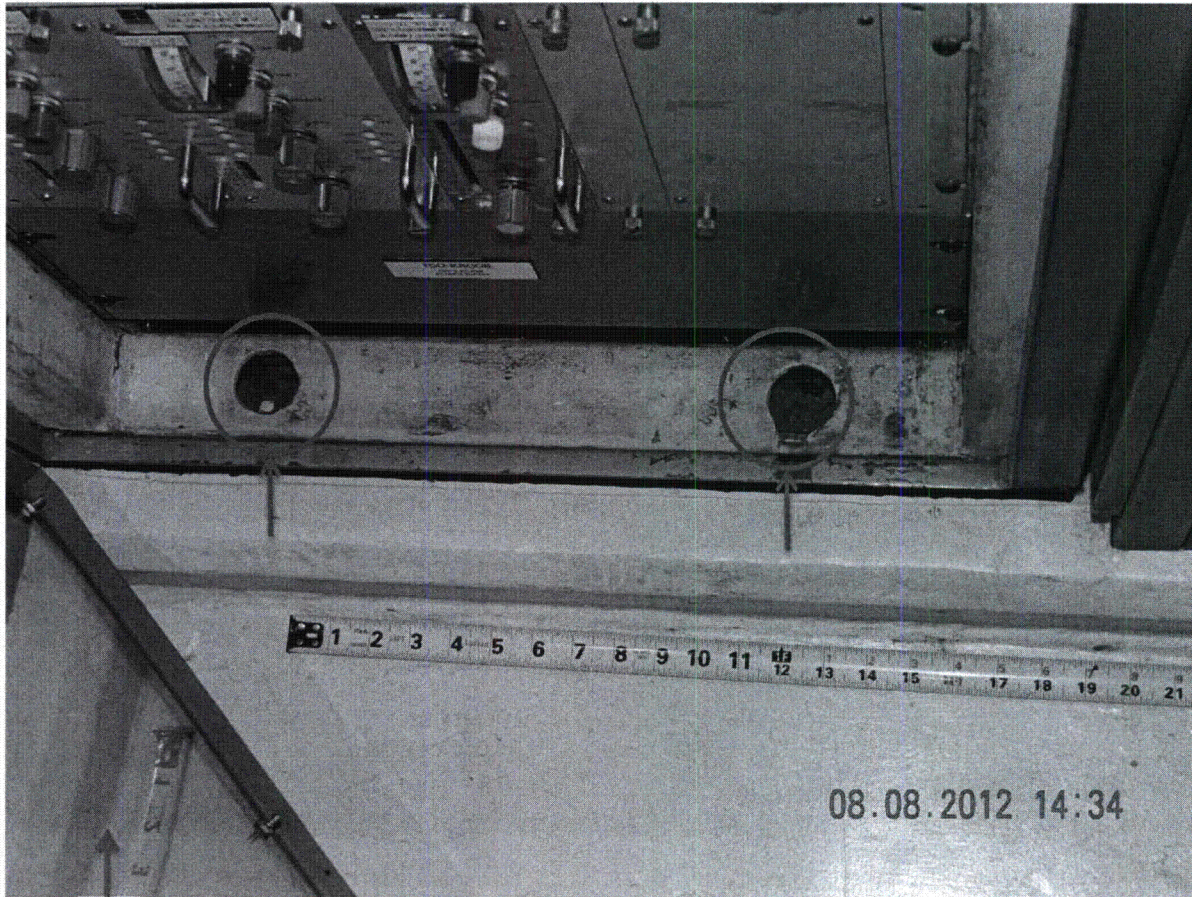
Top-fed Cables Entering Cabinet (Top Rear of Cabinet)

(DSCN0110)

Seismic Walkdown Pictures

Equipment ID No. H11P915 Equipment Class: 20, Instrumentation & Control Panel

Equipment Description PCMS And Misc. Relay Cab – Div. II



↑
"Door"

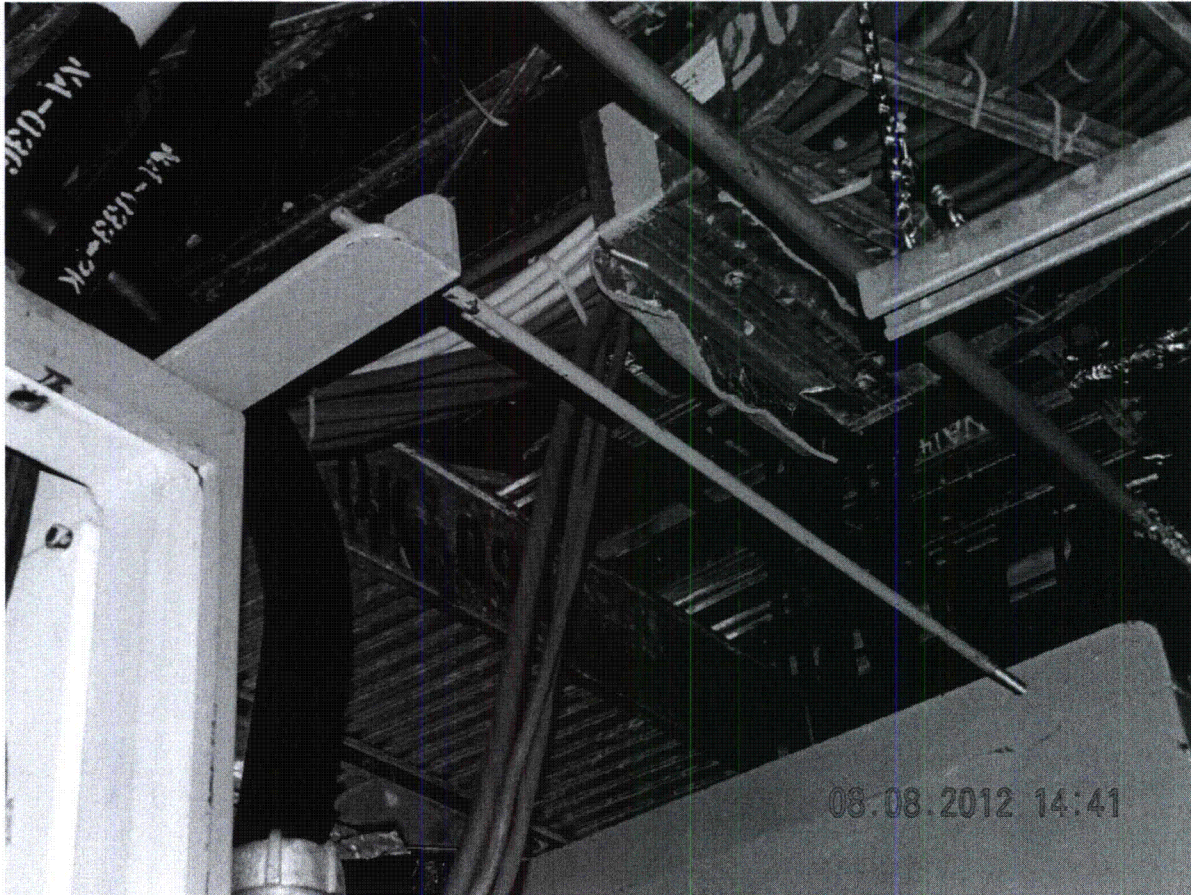
Frame Plug Welds to Embedment (Door Opened on Front of Cabinet)

(DSCN0196)

Seismic Walkdown Pictures

Equipment ID No. H11P915 Equipment Class: 20, Instrumentation & Control Panel

Equipment Description PCMS And Misc. Relay Cab – Div. II



Overhead Conduit/Cable Trays and Seismic Brace to Cabinet H11P869

(DSCN0198)

Seismic Walkdown Checklist (SWC)

Equipment ID No. H11P923 Equip. Class¹ 20, Instrumentation & Control Panels

Equipment Description RCIC Turbine Control Panel Instrument Rack

Location: Bldg. AB Floor El. 613'-6" Room, Area B-15, Col. F-17

Manufacturer, Model, Etc. (optional but recommended) Hoffman Model A-302408LP

Instructions for Completing Checklist

This checklist may be used to document the results of the Seismic Walkdown of an item of equipment on the SWEL. The space below each of the following questions may be used to record the results of judgments and findings. Additional space is provided at the end of this checklist for documenting other comments.

Anchorage

1. Is the anchorage configuration verification required (i.e., is the item one of the 50% of SWEL items requiring such verification)? Y N

All anchors are visible. Four bolts on spring nuts and six wedge anchors confirmed by mirror and flashlight.

(SEE PICTURES D5CN0692 THRU D5CN0695) ~ DSK 10/11/12

2. Is the anchorage free of bent, broken, missing or loose hardware? Y N U N/A

Anchors all in good condition.

(SEE PICTURES D5CN0692 THRU D5CN0695) ~ DSK 10/11/12

3. Is the anchorage free of corrosion that is more than mild surface oxidation? Y N U N/A

No corrosion observed.

(SEE PICTURES D5CN0692 THRU D5CN0695) ~ DSK 10/11/12

4. Is the anchorage free of visible cracks in the concrete near the anchors? Y N U N/A

Concrete is on good condition - no significant cracks. Acceptable as-is

5. Is the anchorage configuration consistent with plant documentation? Y N U N/A

(Note: This question only applies if the item is one of the 50% for which anchorage configuration verification is required.)

Installation conforms to DCR 6450 and Calc. DC-5634, VOL I, REV. 0 (NO APPLICABLE POSTINGS) / DSK 10/12/12

6. Based on the above anchorage evaluations, is the anchorage free of potentially adverse seismic conditions? Y N U

No adverse seismic conditions observed.

¹ Enter the equipment class name from Appendix B: Classes of Equipment

JML

Seismic Walkdown Checklist (SWC)

Equipment ID No. H11P923 Equip. Class¹ 20, Instrumentation & Control Panels

Equipment Description RCIC Turbine Control Panel Instrument Rack

Interaction Effects

7. Are soft targets free from impact by nearby equipment or structures? Y N U N/A
Soft targets are free from impact by nearby equipment. Lights and other miscellaneous equipment are restraining and will not impact the panel.
8. Are overhead equipment, distribution systems, ceiling tiles and lighting, and masonry block walls not likely to collapse onto the equipment? Y N U N/A
Lights are hung by chains with redundant wire cable. Block walls are remote, and seismically reinforced. Overhead cable tray, conduit, and HVAC ducts are robustly supported and appear to meet seismic requirements
9. Do attached lines have adequate flexibility to avoid damage? Y N U N/A
Lines have flexible cables, and conduit is attached to the same wall, eliminating differential movement.
10. Based on the above seismic interaction evaluations, is equipment free of potentially adverse seismic interaction effects? Y N U
-

Other Adverse Conditions

11. Have you looked for and found no other seismic conditions that could adversely affect the safety functions of the equipment? Y N U
None observed.

Fermi 2 Seismic Walkdown Guidance Document
Seismic Walkdown Checklist

NJPR-12-0043

Sheet 3 of 3
Status: Y N U

Seismic Walkdown Checklist (SWC)

Equipment ID No. H1P923 Equip. Class¹ 20 INSTRUMENTATION AND CONTROL PANEL

Equipment Description RCIC TURB. CTRL. PANEL INST. RACK

Comments (Additional pages may be added as necessary)

Seismic Engineer Walkdown PSE-53 Qualified

Evaluator #1: David G. Dickinson Date: 8/22/2012

Seismic Engineer Walkdown PSE-53 Qualified

Evaluator #2: Joseph M. Baller Date: 08/22/2012

Seismic Walkdown Pictures

Equipment ID No. H11P923 Equipment Class: 20, Instrumentation & Control Panel

Equipment Description RCIC Turbine Control Panel Instrument Rack



Seismic Walkdown Pictures

Equipment ID No. H11P923 Equipment Class: 20, Instrumentation & Control Panel

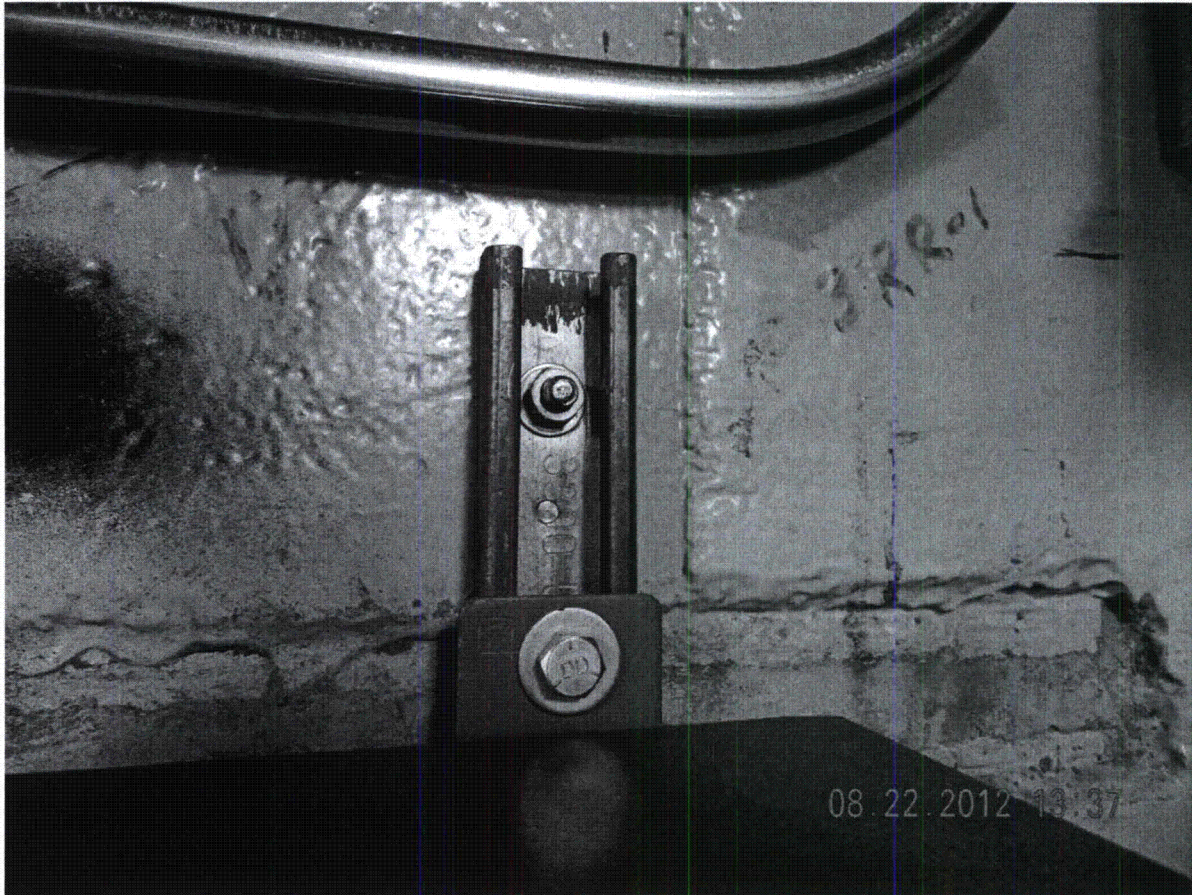
Equipment Description RCIC Turbine Control Panel Instrument Rack



Seismic Walkdown Pictures

Equipment ID No. H11P923 Equipment Class: 20, Instrumentation & Control Panel

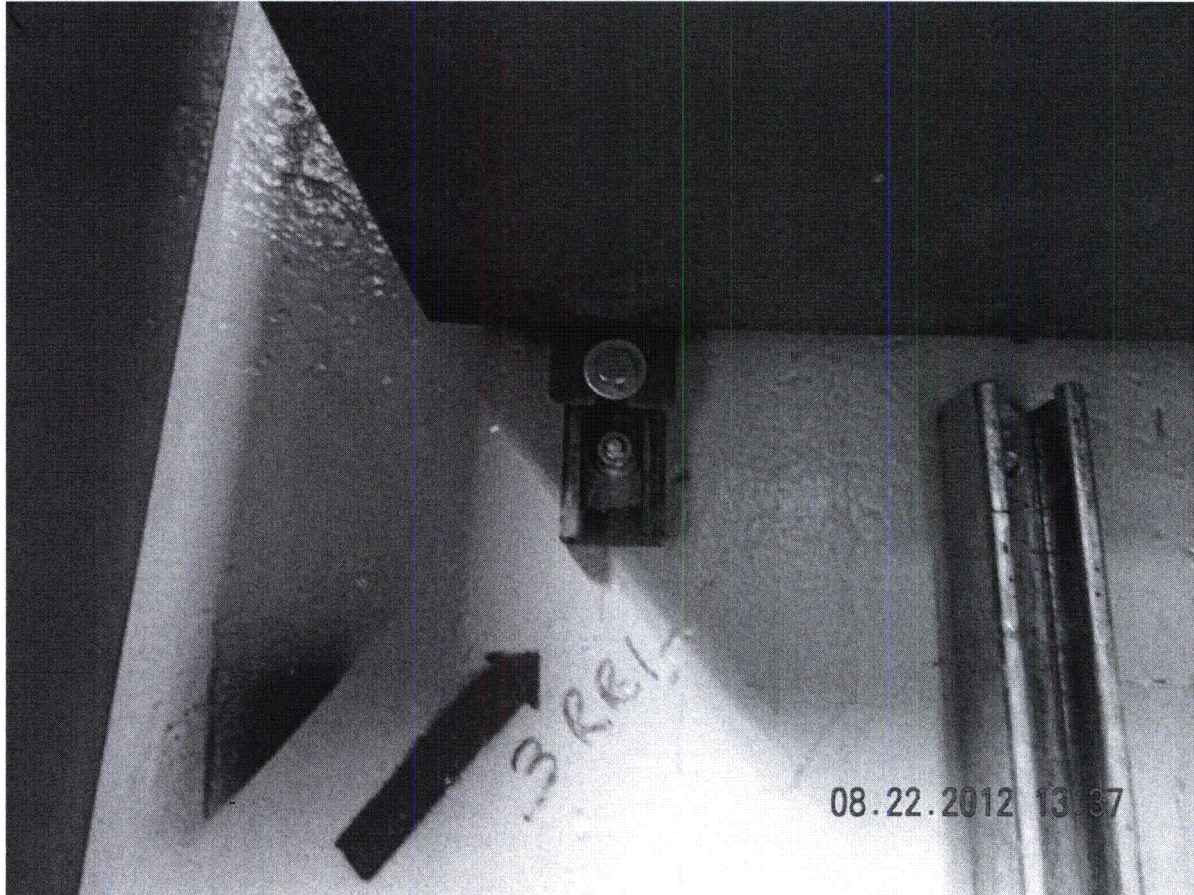
Equipment Description RCIC Turbine Control Panel Instrument Rack



Seismic Walkdown Pictures

Equipment ID No. H11P923 Equipment Class: 20, Instrumentation & Control Panel

Equipment Description RCIC Turbine Control Panel Instrument Rack



Seismic Walkdown Pictures

Equipment ID No. H11P923 Equipment Class: 20, Instrumentation & Control Panel

Equipment Description RCIC Turbine Control Panel Instrument Rack



Seismic Walkdown Checklist (SWC)

Equipment ID No. H21P010 Equip. Class¹ 18, Instrument Racks

Equipment Description Instrument Rack - Jet Pump Rack B

Location: Bldg. RB Floor El. 583'-6" Room, Area Rm A-12, Col. D-10

Manufacturer, Model, Etc. (optional but recommended) DECO, Field Fabricated

Instructions for Completing Checklist

This checklist may be used to document the results of the Seismic Walkdown of an item of equipment on the SWEL. The space below each of the following questions may be used to record the results of judgments and findings. Additional space is provided at the end of this checklist for documenting other comments.

Anchorage

1. Is the anchorage configuration verification required (i.e., is the item one of the 50% of SWEL items requiring such verification)? Y N

2. Is the anchorage free of bent, broken, missing or loose hardware?
Yes, No bend, broken or missing welds (see Photo DSC00184) Y N U N/A

3. Is the anchorage free of corrosion that is more than mild surface oxidation?
No corrosion is evident Y N U N/A

4. Is the anchorage free of visible cracks in the concrete near the anchors?
No concrete cracks found (see Photos, DSC00179 & 180) Y N U N/A

5. Is the anchorage configuration consistent with plant documentation?
(Note: This question only applies if the item is one of the 50% for which an anchorage configuration verification is required.)
Anchorage configuration conforms to Dwg. I-2281-40, Rev B, Detail A. (NO POSTINGS) - DJK 10/12/12 Y N U N/A

6. Based on the above anchorage evaluations, is the anchorage free of potentially adverse seismic conditions?
No adverse conditions were identified. Y N U

¹ Enter the equipment class name from Appendix B: Classes of Equipment

Seismic Walkdown Checklist (SWC)

Equipment ID No. H21P010 Equip. Class¹ 18, Instrument Racks

Equipment Description Instrument Rack – Jet Pump Rack B

Interaction Effects

7. Are soft targets free from impact by nearby equipment or structures? Y N U N/A
No nearby equipment or structures.
8. Are overhead equipment, distribution systems, ceiling tiles and lighting, and masonry block walls not likely to collapse onto the equipment? Y N U N/A
No ceiling tiles, overhead or nearby block walls. Lighting is well-supported.
9. Do attached lines have adequate flexibility to avoid damage? Y N U N/A
Lines have sufficient flexibility (see Photo DSC00184)
10. Based on the above seismic interaction evaluations, is equipment free of potentially adverse seismic interaction effects? Y N U
No potentially adverse effects.
-

Other Adverse Conditions

11. Have you looked for and found no other seismic conditions that could adversely affect the safety functions of the equipment? Y N U
No other potentially adverse conditions were identified.

Fermi 2 Seismic Walkdown Guidance Document
Seismic Walkdown Checklist

NJPR-12-0043

Sheet 3 of 3
Status: Y N U

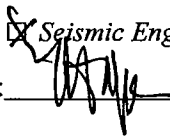
Seismic Walkdown Checklist (SWC)

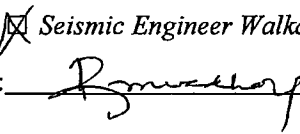
Equipment ID No. H21P010 Equip. Class¹ 18, Instrument Racks

Equipment Description Instrument Rack - Jet Pump Rack B

Comments (Additional pages may be added as necessary)

None.

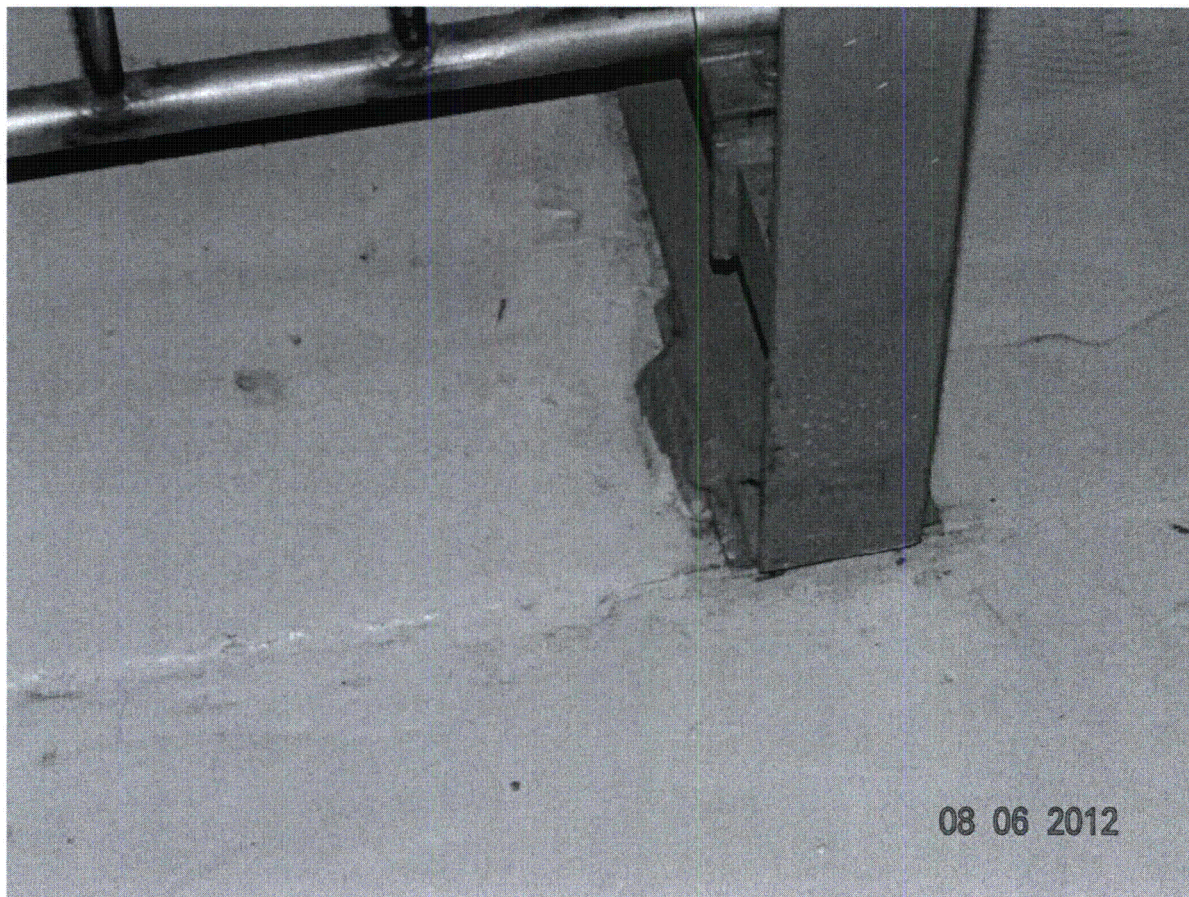
Seismic Engineer Walkdown PSE-53 Qualified
Evaluator #1:  Date: 08/06/12

Seismic Engineer Walkdown PSE-53 Qualified
Evaluator #2:  Date: 8-6-12

Seismic Walkdown Pictures

Equipment ID No. H21P010 Equipment Class: 18, Instrument Rack

Equipment Description Instrument Rack – Jet Pump Rack B

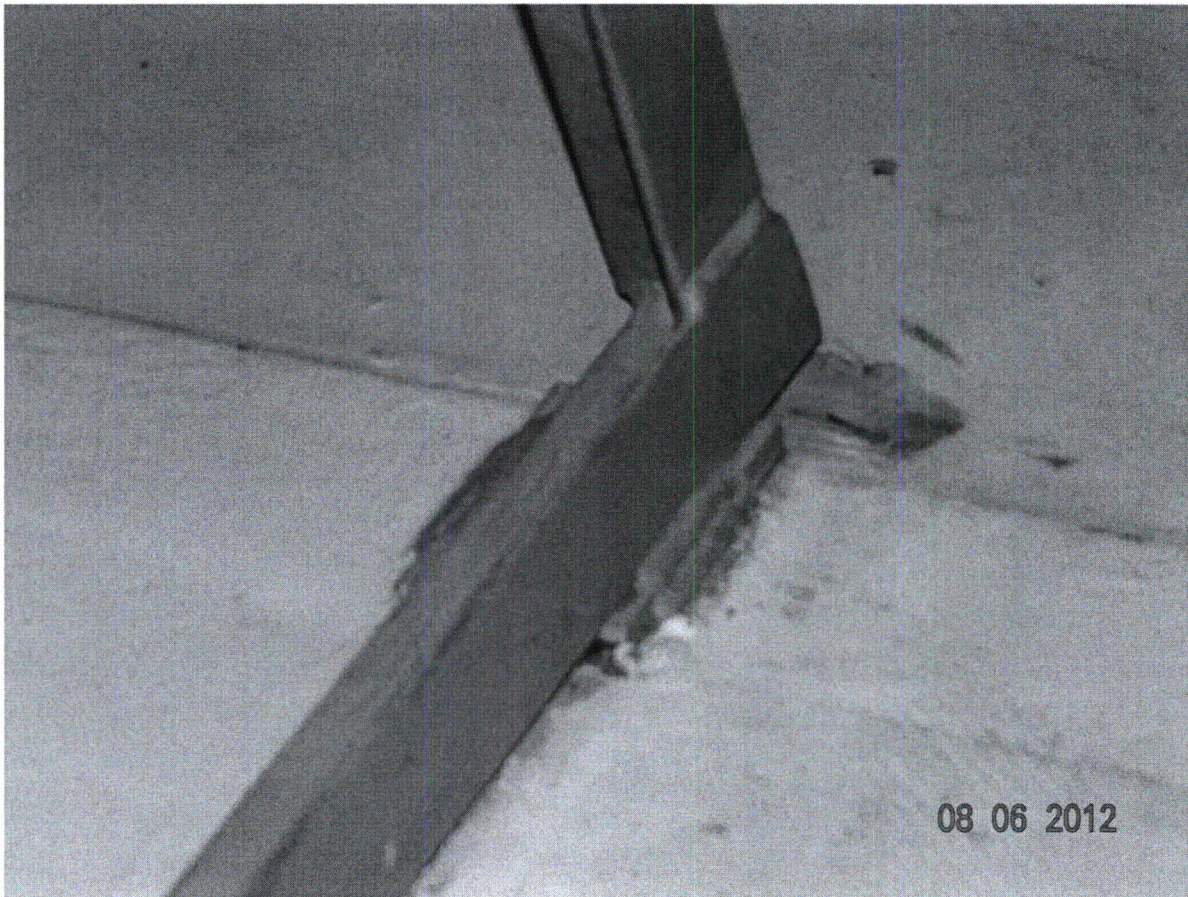


(DSC00179)

Seismic Walkdown Pictures

Equipment ID No. H21P010 Equipment Class: 18, Instrument Rack

Equipment Description Instrument Rack – Jet Pump Rack B

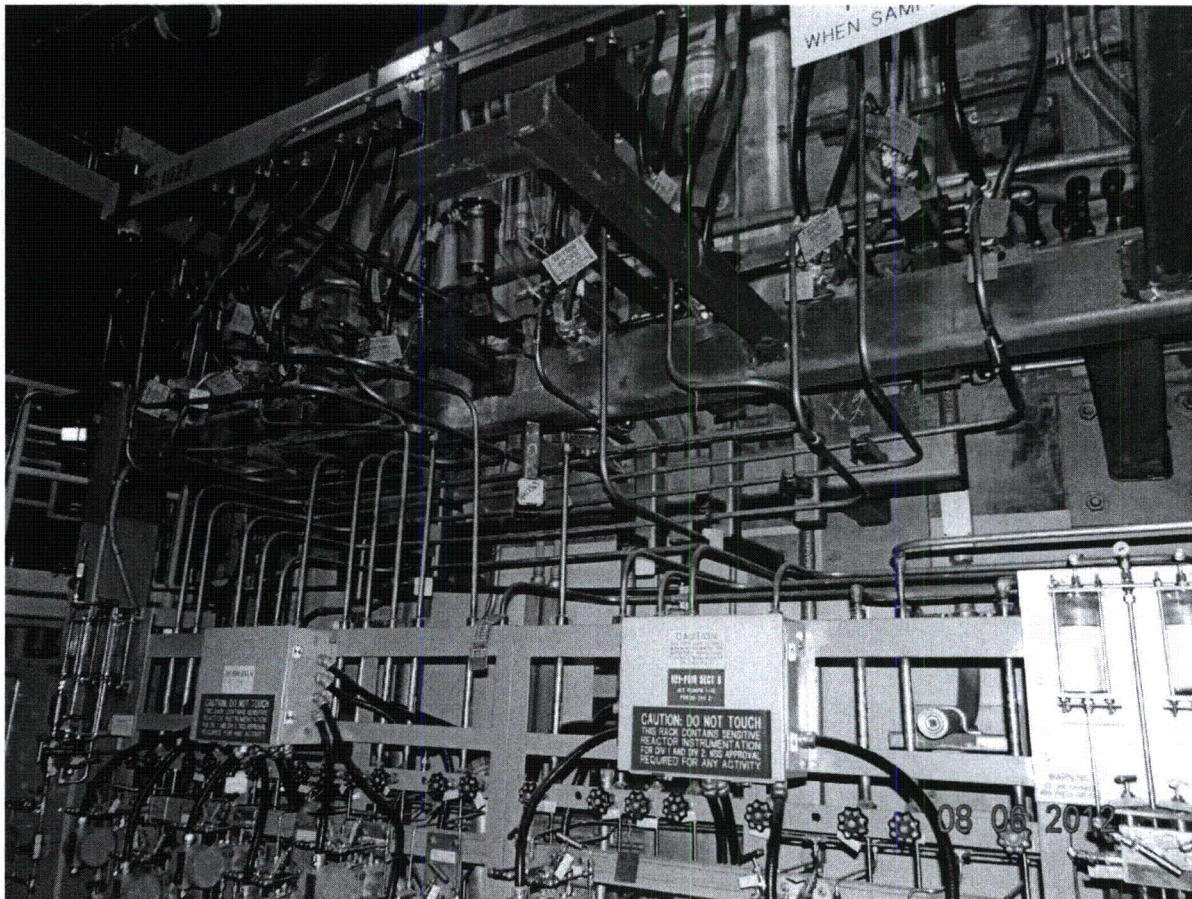


(DSC00180)

Seismic Walkdown Pictures

Equipment ID No. H21P010 Equipment Class: 18, Instrument Rack

Equipment Description Instrument Rack – Jet Pump Rack B



(DSC00184)

Seismic Walkdown Checklist (SWC)

Equipment ID No. H21P080 Equip. Class¹ 20-Implementation & Control Panel

Equipment Description ECCS Trip Unit CAB Div 1 Inst Rack

Location: Bldg. AB Floor El. 659'-6" Room, Area Ventilation Equip. Area (B-24), Col. F-12

Manufacturer, Model, Etc. (optional but recommended) N/A

Instructions for Completing Checklist

This checklist may be used to document the results of the Seismic Walkdown of an item of equipment on the SWEL. The space below each of the following questions may be used to record the results of judgments and findings. Additional space is provided at the end of this checklist for documenting other comments.

Anchorage

1. Is the anchorage configuration verification required (i.e., is the item one of the 50% of SWEL items requiring such verification)? Y N
All bolts visible at base and cabinet to cabinet.
(SEE PICTURES DSCN0451 THRU DSCN0456) ~ DJK 10/11/12
2. Is the anchorage free of bent, broken, missing or loose hardware? Y N U N/A
Anchorage is in good condition and is free of bent, broken, missing or loose hardware
(SEE PICTURES DSCN0451 THRU DSCN0456) ~ DJK 10/11/12
3. Is the anchorage free of corrosion that is more than mild surface oxidation? Y N U N/A
Bolts are shiny and clean.
(SEE PICTURES DSCN0451 THRU DSCN0456) ~ DJK 10/11/12
4. Is the anchorage free of visible cracks in the concrete near the anchors? Y N U N/A
No visible cracks in concrete at base of cabinet.
(SEE PICTURES DSCN0451 THRU DSCN0456) ~ DJK 10/11/12
5. Is the anchorage configuration consistent with plant documentation? Y N U N/A
(Note: This question only applies if the item is one of the 50% for which anchorage configuration verification is required.)
Dwg. I-2525-25 verified. Cabinet to cabinet bolts verified to H21P082. SEE COMMENTS ~ DJK 10/12/12
(SEE PICTURES DSCN0457, DSCN0462 THRU DSCN0464) ~ DJK 10/11/12
6. Based on the above anchorage evaluations, is the anchorage free of potentially adverse seismic conditions? Y N U

¹ Enter the equipment class name from Appendix B: Classes of Equipment

JML

Seismic Walkdown Checklist (SWC)

Equipment ID No. H21P080 Equip. Class¹ 20-Implementation & Control Panel

Equipment Description ECCS Trip Unit CAB Div 1 Inst Rack

Interaction Effects

7. Are soft targets free from impact by nearby equipment or structures? Y N U N/A
Soft targets are free from impact by nearby equipment.
8. Are overhead equipment, distribution systems, ceiling tiles and lighting, and masonry block walls not likely to collapse onto the equipment? Y N U N/A
Adjacent block wall is seismic. Steel angles, columns and through bolts observed.
9. Do attached lines have adequate flexibility to avoid damage? Y N U N/A
Top entry cables have large loops.
10. Based on the above seismic interaction evaluations, is equipment free of potentially adverse seismic interaction effects? Y N U

Other Adverse Conditions

11. Have you looked for and found no other seismic conditions that could adversely affect the safety functions of the equipment? Y N U
No other seismic conditions identified.

Fermi 2 Seismic Walkdown Guidance Document
Seismic Walkdown Checklist

NJPR-12-0043

Sheet 3 of 3
Status: N U

Seismic Walkdown Checklist (SWC)

Equipment ID No. H21-P080 Equip. Class¹ 20-INSTRUMENTATION & CONTROL PANEL
Equipment Description ECCS TRIP UNIT CAB - DIV 1 INST RACK

Comments (Additional pages may be added as necessary)

Dwg. I-2525-25, REV. E HAS NO POSTINGS. ~ DJK 10/12/12

Seismic Engineer Walkdown PSE-53 Qualified

Evaluator #1: David G. Dickie Date: 16th August 2012

Seismic Engineer Walkdown PSE-53 Qualified

Evaluator #2: Joseph M. LeVee Date: 08/16/2012

Seismic Walkdown Pictures

Equipment ID No. H21P080 Equipment Class: 20, Instrumentation and Control Panel

Equipment Description ECCS Trip Unit Cabinet Div 1 Inst. Rack

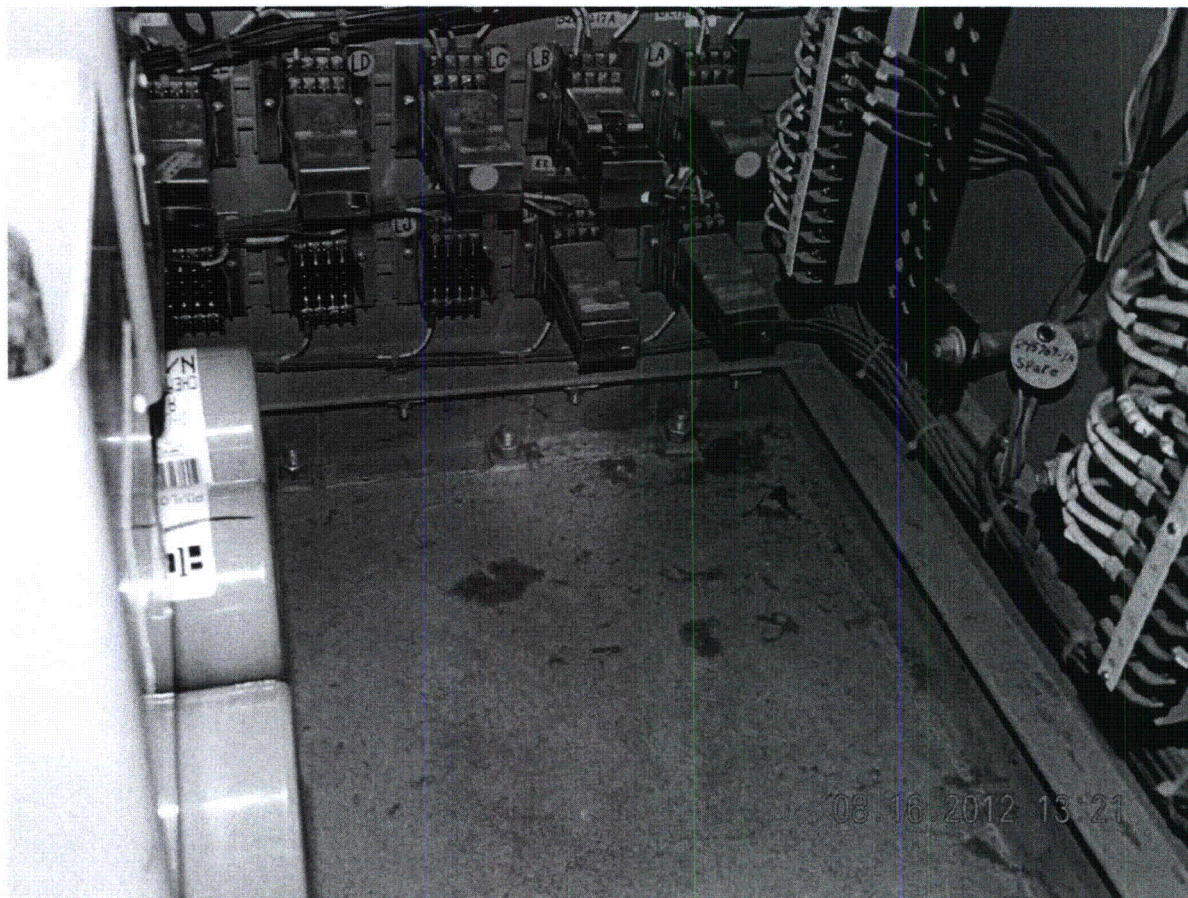


(DSCN0450)

Seismic Walkdown Pictures

Equipment ID No. H21P080 Equipment Class: 20, Instrumentation and Control Panel

Equipment Description ECCS Trip Unit Cabinet Div 1 Inst. Rack

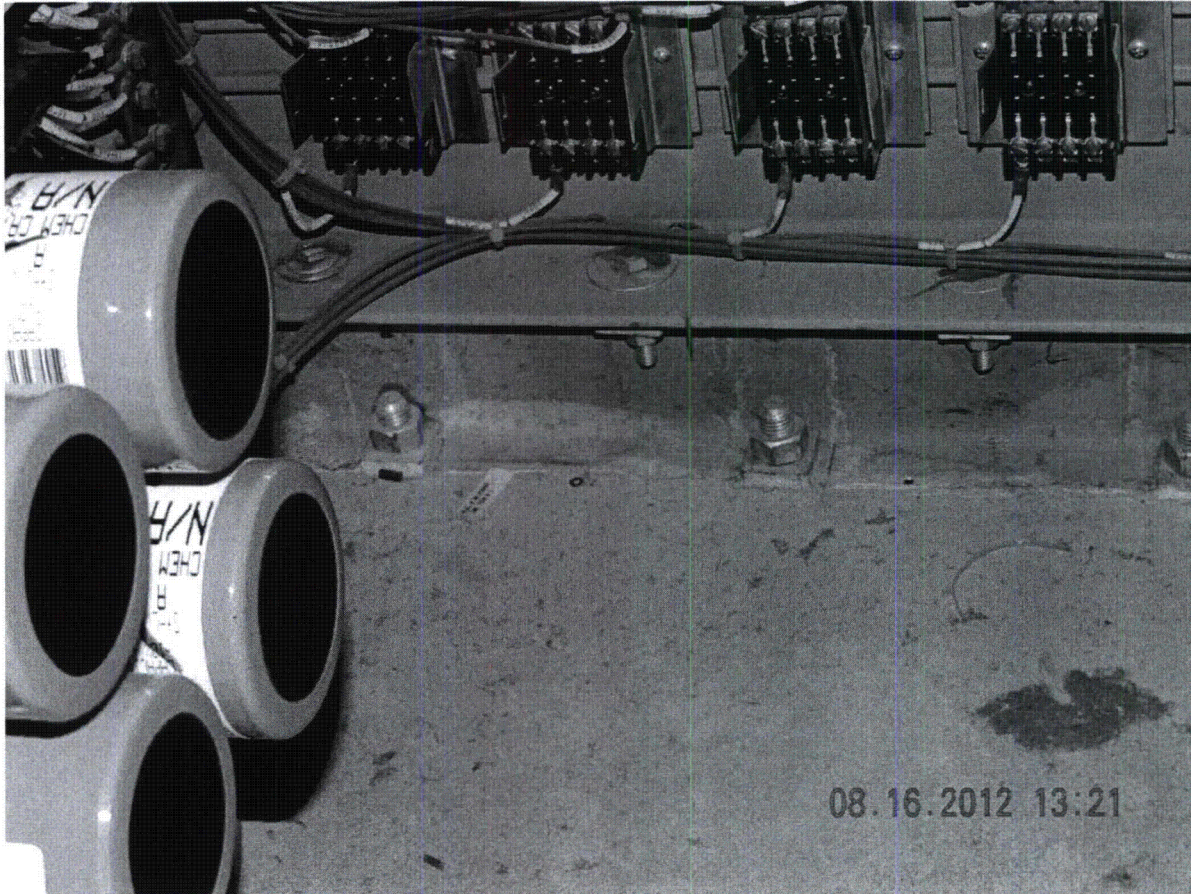


(DSCN0451)

Seismic Walkdown Pictures

Equipment ID No. H21P080 Equipment Class: 20, Instrumentation and Control Panel

Equipment Description ECCS Trip Unit Cabinet Div 1 Inst. Rack



(DSCN0452)

Seismic Walkdown Pictures

Equipment ID No. H21P080 Equipment Class: 20, Instrumentation and Control Panel

Equipment Description ECCS Trip Unit Cabinet Div 1 Inst. Rack

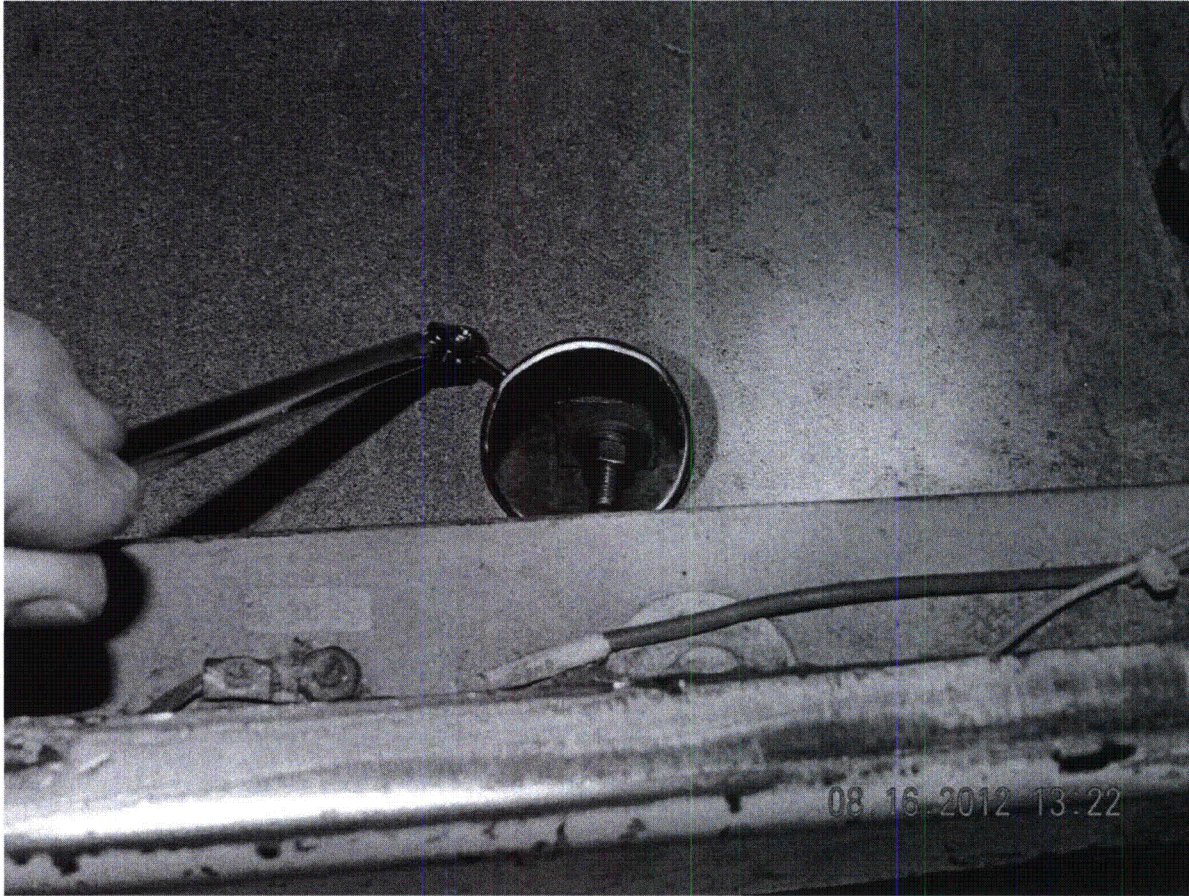


(DSCN0453)

Seismic Walkdown Pictures

Equipment ID No. H21P080 Equipment Class: 20, Instrumentation and Control Panel

Equipment Description ECCS Trip Unit Cabinet Div 1 Inst. Rack



(DSCN0454)

Seismic Walkdown Pictures

Equipment ID No. H21P080 Equipment Class: 20, Instrumentation and Control Panel

Equipment Description ECCS Trip Unit Cabinet Div 1 Inst. Rack

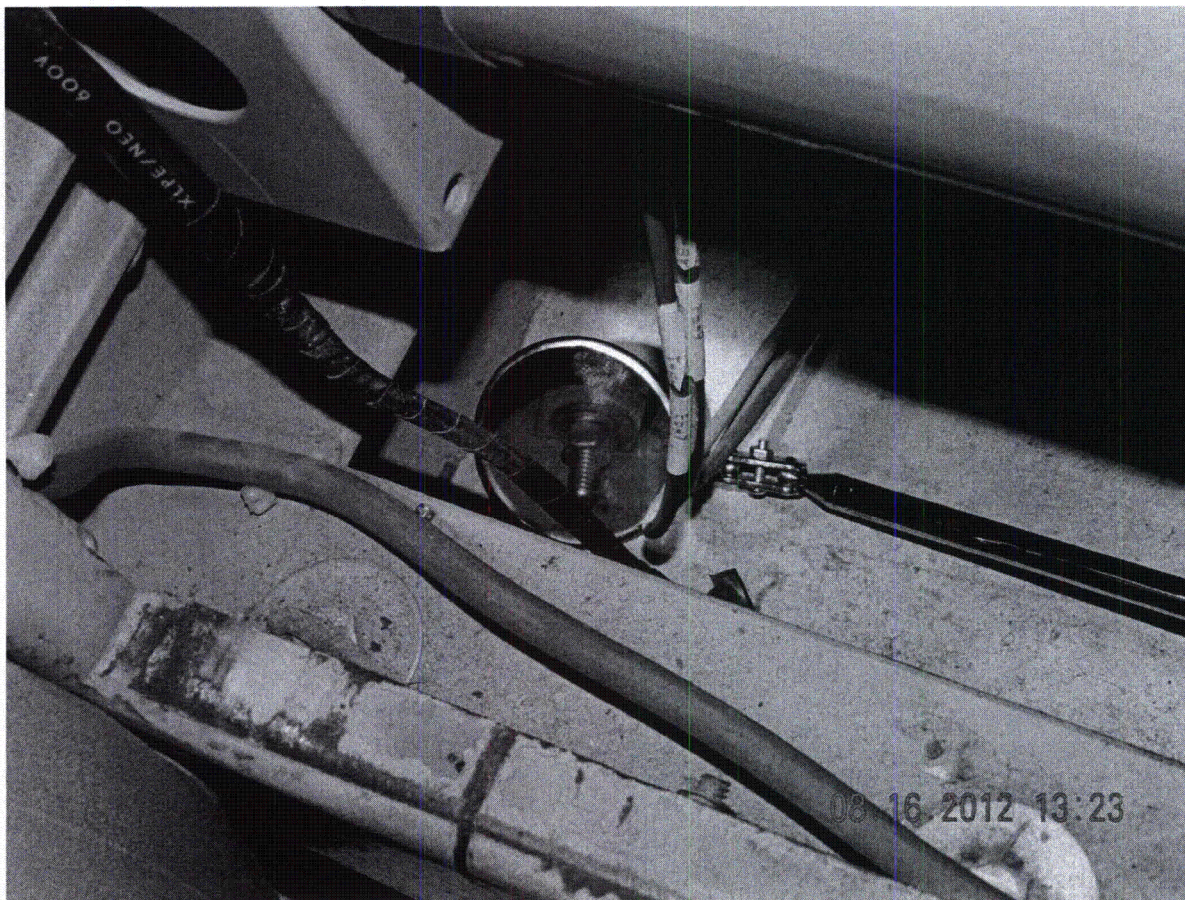


(DSCN0455)

Seismic Walkdown Pictures

Equipment ID No. H21P080 Equipment Class: 20, Instrumentation and Control Panel

Equipment Description ECCS Trip Unit Cabinet Div 1 Inst. Rack

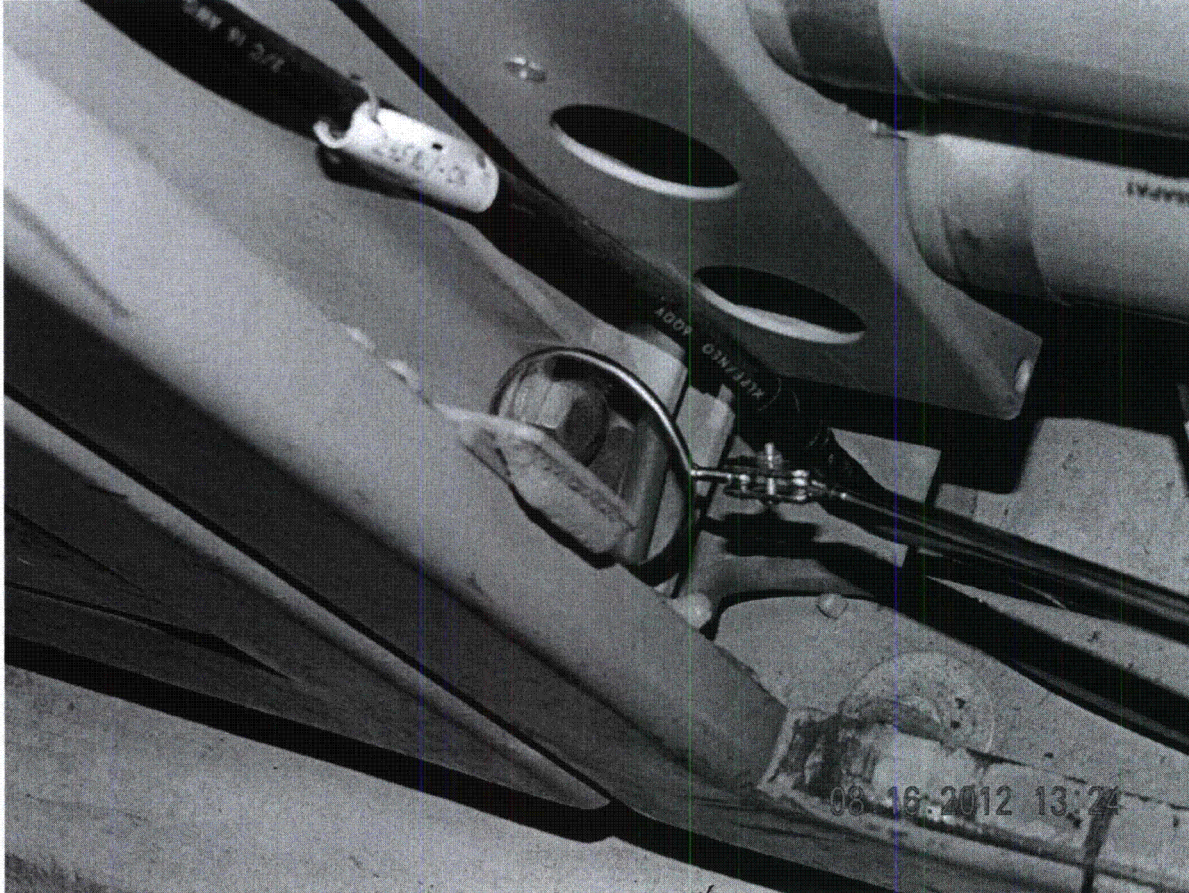


(DSCN0456)

Seismic Walkdown Pictures

Equipment ID No. H21P080 Equipment Class: 20, Instrumentation and Control Panel

Equipment Description ECCS Trip Unit Cabinet Div 1 Inst. Rack

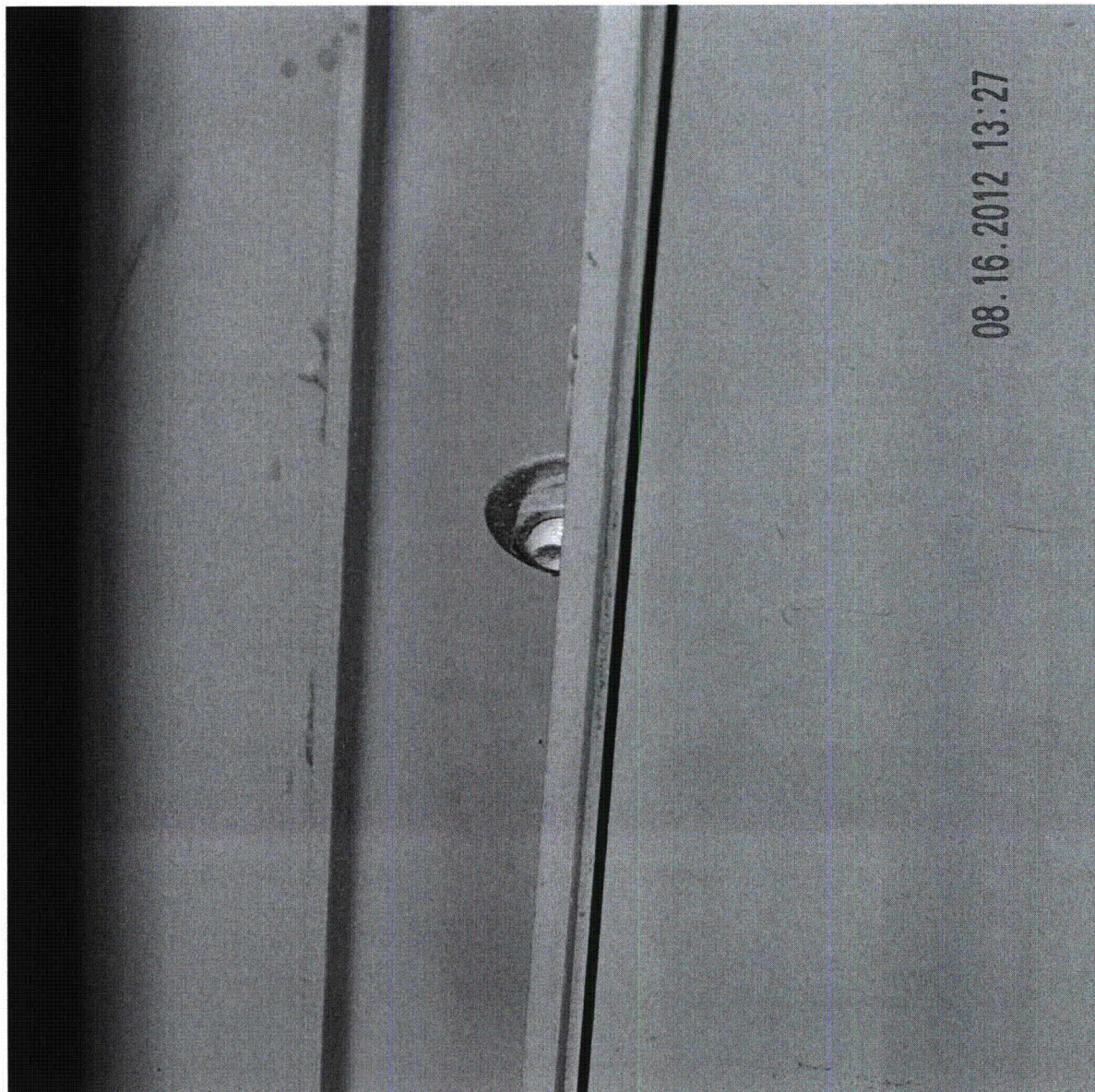


(DSCN0457)

Seismic Walkdown Pictures

Equipment ID No. H21P080 Equipment Class: 20, Instrumentation and Control Panel

Equipment Description ECCS Trip Unit Cabinet Div 1 Inst. Rack



(DSCN0462)

Seismic Walkdown Pictures

Equipment ID No. H21P080 Equipment Class: 20, Instrumentation and Control Panel

Equipment Description ECCS Trip Unit Cabinet Div 1 Inst. Rack

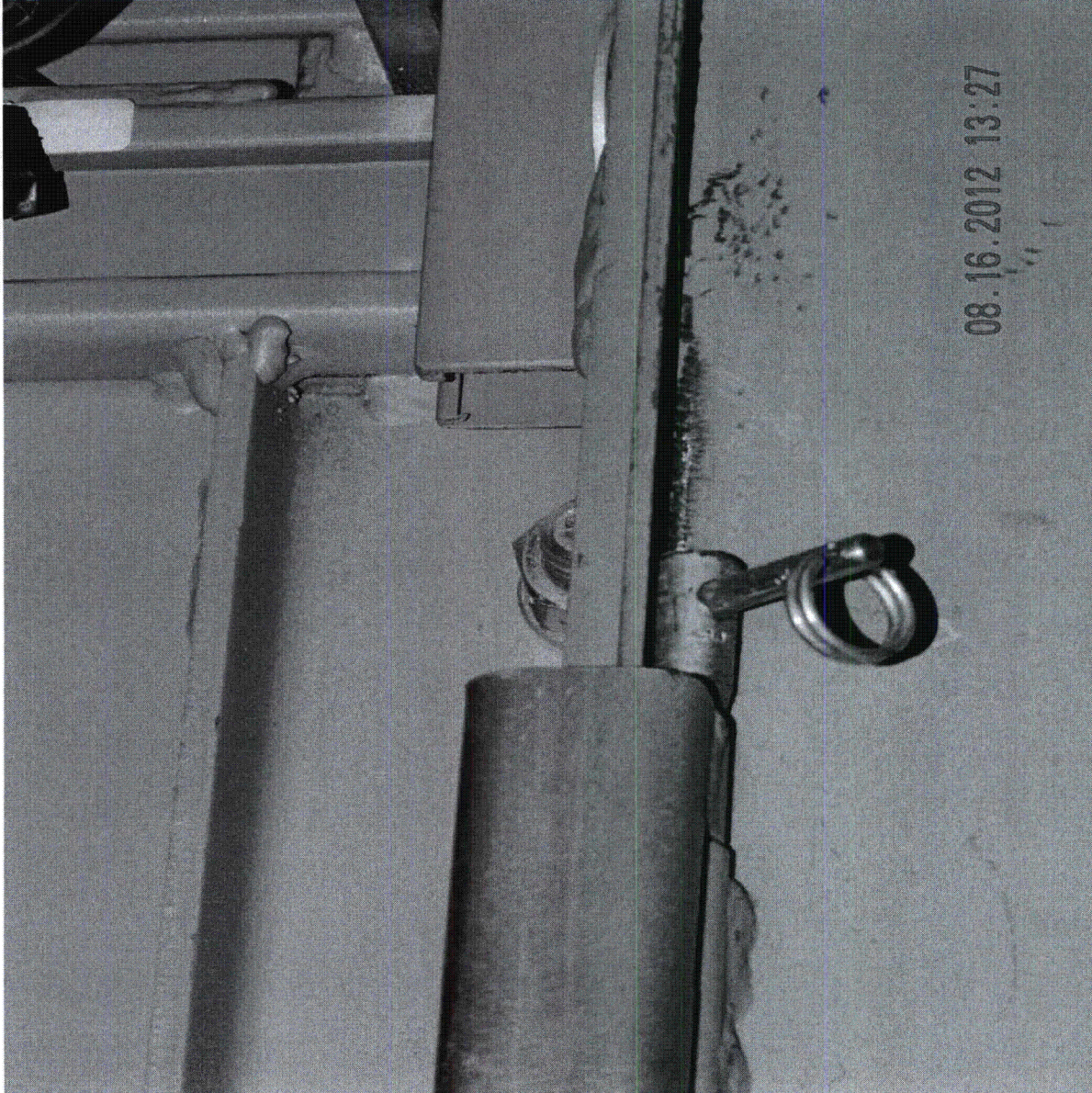


(DSCN0463)

Seismic Walkdown Pictures

Equipment ID No. H21P080 Equipment Class: 20, Instrumentation and Control Panel

Equipment Description ECCS Trip Unit Cabinet Div 1 Inst. Rack



(DSCN0464)