

Status: Y N U

Seismic Walkdown Checklist (SWC)

Equipment ID No.: 1DC11J

Equipment Class: (14) Distribution Panels

Equipment Description: 125V DC FUSE PANEL - DIV. 12

Project: Byron 1 SWEL

Location (Bldg, Elev, Room/Area): Auxiliary, 451.00 ft, ALL

Manufacturer/Model:

Instructions for Completing Checklist

This checklist may be used to document the results of the Seismic Walkdown of an item of equipment on the SWEL. The space below each of the following questions may be used to record the results of judgments and findings. Additional space is provided at the end of this checklist for documenting other comments.

Anchorage

1. Is anchorage configuration verification required (i.e., is the item one of the 50% of SWEL items requiring such verification)? No

2. Is the anchorage free of bent, broken, missing or loose hardware? Yes

3. Is the anchorage free of corrosion that is more than mild surface oxidation? Yes

4. Is the anchorage free of visible cracks in the concrete near the anchors? Yes

5. Is the anchorage configuration consistent with plant documentation? (Note: This question only applies if the item is one of the 50% for which an anchorage configuration verification is required.) Not Applicable

6. Based on the above anchorage evaluations, is the anchorage free of potentially adverse seismic conditions? Yes

Status: Y N U

Seismic Walkdown Checklist (SWC)

Equipment ID No.: 1DC11J

Equipment Class: (14) Distribution Panels

Equipment Description: 125V DC FUSE PANEL - DIV. 12

Interaction Effects

7. Are soft targets free from impact by nearby equipment or structures? Yes
8. Are overhead equipment, distribution systems, ceiling tiles and lighting, and masonry block walls not likely to collapse onto the equipment? Yes
9. Do attached lines have adequate flexibility to avoid damage? Yes
10. Based on the above seismic interaction evaluations, is equipment free of potentially adverse seismic interaction effects? Yes

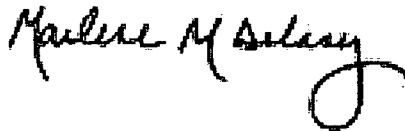
Other Adverse Conditions

11. Have you looked for and found no adverse seismic conditions that could adversely affect the safety functions of the equipment? Yes
No structural/seismic issues

Comments

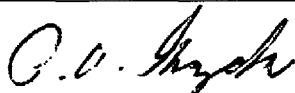
Seismic walkdown team M. Delaney & P. Gazda 8/8/12 pm

Evaluated by:



Marlene Delaney

Date: 10/5/2012



Philip Gazda

10/5/2012

Status: Y N U

Seismic Walkdown Checklist (SWC)

Equipment ID No.: 1DC11J

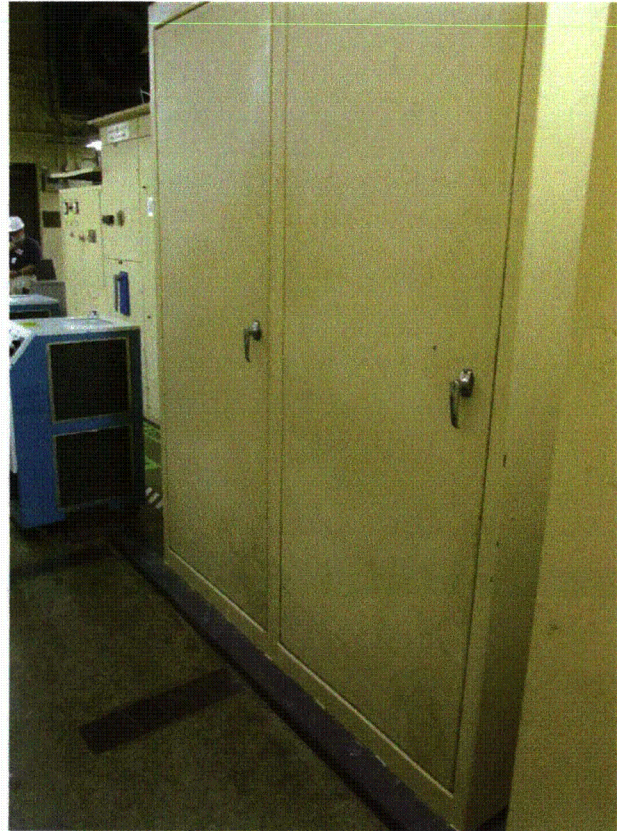
Equipment Class: (14) Distribution Panels

Equipment Description: 125V DC FUSE PANEL - DIV. 12

Photos



1DC11J Byron 1 & 2 8-8-12 016



1DC11J Byron 1 & 2 8-8-12 017

Status: Y N U

Seismic Walkdown Checklist (SWC)

Equipment ID No.: 1DG01KB

Equipment Class: (17) Engine-Generators

Equipment Description: 1B DIESEL GENERATOR

Project: Byron 1 SWEL

Location (Bldg, Elev, Room/Area): Auxiliary, 401.00 ft, ALL

Manufacturer/Model:

Instructions for Completing Checklist

This checklist may be used to document the results of the Seismic Walkdown of an item of equipment on the SWEL. The space below each of the following questions may be used to record the results of judgments and findings. Additional space is provided at the end of this checklist for documenting other comments.

Anchorage

1. Is anchorage configuration verification required (i.e., is the item one of the 50% of SWEL items requiring such verification)? Yes

2. Is the anchorage free of bent, broken, missing or loose hardware? Yes

3. Is the anchorage free of corrosion that is more than mild surface oxidation? Yes

4. Is the anchorage free of visible cracks in the concrete near the anchors? Yes

5. Is the anchorage configuration consistent with plant documentation? (Note: This question only applies if the item is one of the 50% for which an anchorage configuration verification is required.) Yes
Drawing M-1222 Sheet 5 Revision N

6. Based on the above anchorage evaluations, is the anchorage free of potentially adverse seismic conditions? Yes

Status: Y N U

Seismic Walkdown Checklist (SWC)

Equipment ID No.: 1DG01KB

Equipment Class: (17) Engine-Generators

Equipment Description: 1B DIESEL GENERATOR

Interaction Effects

7. Are soft targets free from impact by nearby equipment or structures? Yes
8. Are overhead equipment, distribution systems, ceiling tiles and lighting, and masonry block walls not likely to collapse onto the equipment? Yes
9. Do attached lines have adequate flexibility to avoid damage? Yes
10. Based on the above seismic interaction evaluations, is equipment free of potentially adverse seismic interaction effects? Yes

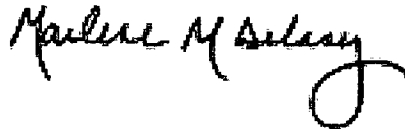
Other Adverse Conditions

11. Have you looked for and found no adverse seismic conditions that could adversely affect the safety functions of the equipment? Yes
No structural/seismic issues

Comments

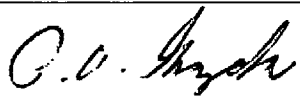
Seismic Walkdown Team P. Gazda & M. Delaney 8-7-12 pm

Evaluated by:



Marlene Delaney

Date: 10/5/2012



Philip Gazda

10/5/2012

Status: Y N U

Seismic Walkdown Checklist (SWC)

Equipment ID No.: 1DG01KB

Equipment Class: (17) Engine-Generators

Equipment Description: 1B DIESEL GENERATOR

Photos



1DG01KB Byron 1 & 2 206



1DG01KB Byron 1 & 2 207

Status: Y N U

Seismic Walkdown Checklist (SWC)

Equipment ID No.: 1DG01KB

Equipment Class: (17) Engine-Generators

Equipment Description: 1B DIESEL GENERATOR



1DG01KB Byron 1 & 2 208

Status: Y N U

Seismic Walkdown Checklist (SWC)

Equipment ID No.: 1DO01TB

Equipment Class: (21) Tanks and Heat Exchangers

Equipment Description: DIESEL OIL STORAGE TANK 1B

Project: Byron 1 SWEL

Location (Bldg, Elev, Room/Area): Auxiliary, 373.00 ft, ALL

Manufacturer/Model:

Instructions for Completing Checklist

This checklist may be used to document the results of the Seismic Walkdown of an item of equipment on the SWEL. The space below each of the following questions may be used to record the results of judgments and findings. Additional space is provided at the end of this checklist for documenting other comments.

Anchorage

1. Is anchorage configuration verification required (i.e., is the item one of the 50% of SWEL items requiring such verification)? Yes

2. Is the anchorage free of bent, broken, missing or loose hardware? Yes

3. Is the anchorage free of corrosion that is more than mild surface oxidation? Yes

4. Is the anchorage free of visible cracks in the concrete near the anchors? Yes
Crack at anchor in pad that does not extend to base slab. Drawing M-1214 Sheet 3 indicate adequate embedment in base slab (1'-3 1/2") so small crack has no structural/seismic issue. IR 1398190 was written to document acceptability
5. Is the anchorage configuration consistent with plant documentation? (Note: This question only applies if the item is one of the 50% for which an anchorage configuration verification is required.) Yes
Drawing M-1214 Sheet 3 Revision W

6. Based on the above anchorage evaluations, is the anchorage free of potentially adverse seismic conditions? Yes

Status: Y N U

Seismic Walkdown Checklist (SWC)

Equipment ID No.: 1DO01TB

Equipment Class: (21) Tanks and Heat Exchangers

Equipment Description: DIESEL OIL STORAGE TANK 1B

Interaction Effects

7. Are soft targets free from impact by nearby equipment or structures? Yes
8. Are overhead equipment, distribution systems, ceiling tiles and lighting, and masonry block walls not likely to collapse onto the equipment? Yes
9. Do attached lines have adequate flexibility to avoid damage? Yes
10. Based on the above seismic interaction evaluations, is equipment free of potentially adverse seismic interaction effects? Yes

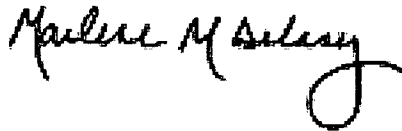
Other Adverse Conditions

11. Have you looked for and found no adverse seismic conditions that could adversely affect the safety functions of the equipment? Yes

Comments

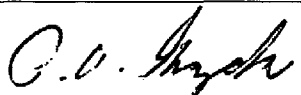
Seismic walkdown team M. Delaney & P. Gazda 8/7/12 pm

Evaluated by:



Marlene Delaney

Date: 10/5/2012



Philip Gazda

10/5/2012

Status: Y N U

Seismic Walkdown Checklist (SWC)

Equipment ID No.: 1DO01TB

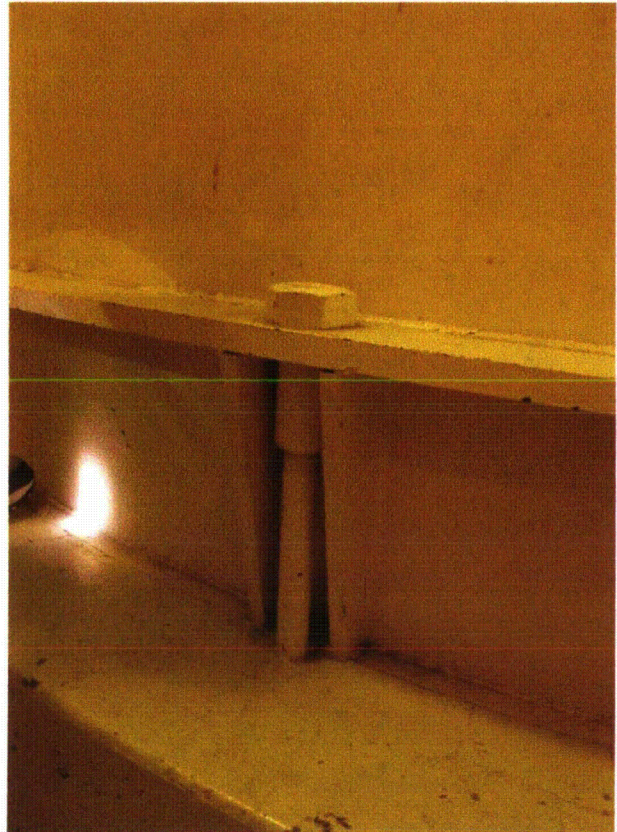
Equipment Class: (21) Tanks and Heat Exchangers

Equipment Description: DIESEL OIL STORAGE TANK 1B

Photos



1DO01TB Byron 1 & 2 227



1DO01TB Byron 1 & 2 228

Status: Y N U

Seismic Walkdown Checklist (SWC)

Equipment ID No.: 1DO01TB

Equipment Class: (21) Tanks and Heat Exchangers

Equipment Description: DIESEL OIL STORAGE TANK 1B



1DO01TB Byron 1 & 2 229

Status: Y N U

Seismic Walkdown Checklist (SWC)

Equipment ID No.: 1DO10T

Equipment Class: (21) Tanks and Heat Exchangers

Equipment Description: 500 GAL DIESEL OIL DAY TANK (AF)

Project: Byron 1 SWEL

Location (Bldg, Elev, Room/Area): Auxiliary, 383.00 ft, ALL

Manufacturer/Model:

Instructions for Completing Checklist

This checklist may be used to document the results of the Seismic Walkdown of an item of equipment on the SWEL. The space below each of the following questions may be used to record the results of judgments and findings. Additional space is provided at the end of this checklist for documenting other comments.

Anchorage

1. Is anchorage configuration verification required (i.e., is the item one of the 50% of SWEL items requiring such verification)? Yes

2. Is the anchorage free of bent, broken, missing or loose hardware? Yes

3. Is the anchorage free of corrosion that is more than mild surface oxidation? Yes

4. Is the anchorage free of visible cracks in the concrete near the anchors? Yes

5. Is the anchorage configuration consistent with plant documentation? (Note: This question only applies if the item is one of the 50% for which an anchorage configuration verification is required.) Yes
M-1220 Sheet 5 Revision R

6. Based on the above anchorage evaluations, is the anchorage free of potentially adverse seismic conditions? Yes

Status: Y N U

Seismic Walkdown Checklist (SWC)

Equipment ID No.: 1DO10T

Equipment Class: (21) Tanks and Heat Exchangers

Equipment Description: 500 GAL DIESEL OIL DAY TANK (AF)

Interaction Effects

7. Are soft targets free from impact by nearby equipment or structures? Yes
8. Are overhead equipment, distribution systems, ceiling tiles and lighting, and masonry block walls not likely to collapse onto the equipment? Yes
9. Do attached lines have adequate flexibility to avoid damage? Yes
10. Based on the above seismic interaction evaluations, is equipment free of potentially adverse seismic interaction effects? Yes

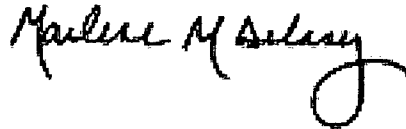
Other Adverse Conditions

11. Have you looked for and found no adverse seismic conditions that could adversely affect the safety functions of the equipment? Yes
No structural/seismic issues

Comments

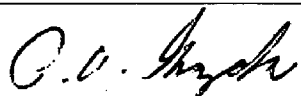
Seismic walkdown team M. Delaney & P. Gazda 8/20/12 am

Evaluated by:



Marlene Delaney

Date: 10/5/2012



Philip Gazda

10/5/2012

Status: Y N U

Seismic Walkdown Checklist (SWC)

Equipment ID No.: 1DO10T

Equipment Class: (21) Tanks and Heat Exchangers

Equipment Description: 500 GAL DIESEL OIL DAY TANK (AF)

Photos



1DO10T Byron 1 & 2 8-20-12 018



1DO10T Byron 1 & 2 8-20-12 019

Status: Y N U

Seismic Walkdown Checklist (SWC)

Equipment ID No.: 1FC010

Equipment Class: (0) Other

Equipment Description: REFUELING WTR PURIF PMP SUCT FROM U-1 REFUEL CAV CNMT ISOL

Project: Byron 1 SWEL

Location (Bldg, Elev, Room/Area): Auxiliary, 364.00 ft, ALL

Manufacturer/Model:

Instructions for Completing Checklist

This checklist may be used to document the results of the Seismic Walkdown of an item of equipment on the SWEL. The space below each of the following questions may be used to record the results of judgments and findings. Additional space is provided at the end of this checklist for documenting other comments.

Anchorage

1. Is anchorage configuration verification required (i.e., is the item one of the 50% of SWEL items requiring such verification)? No

2. Is the anchorage free of bent, broken, missing or loose hardware? Not Applicable

3. Is the anchorage free of corrosion that is more than mild surface oxidation? Not Applicable

4. Is the anchorage free of visible cracks in the concrete near the anchors? Not Applicable

5. Is the anchorage configuration consistent with plant documentation? (Note: This question only applies if the item is one of the 50% for which an anchorage configuration verification is required.) Not Applicable

6. Based on the above anchorage evaluations, is the anchorage free of potentially adverse seismic conditions? Yes

Status: Y N U

Seismic Walkdown Checklist (SWC)

Equipment ID No.: 1FC010

Equipment Class: (0) Other

Equipment Description: REFUELING WTR PURIF PMP SUCT FROM U-1 REFUEL CAV CNMT ISOL

Interaction Effects

7. Are soft targets free from impact by nearby equipment or structures? Yes
8. Are overhead equipment, distribution systems, ceiling tiles and lighting, and masonry block walls not likely to collapse onto the equipment? Yes
9. Do attached lines have adequate flexibility to avoid damage? Yes
10. Based on the above seismic interaction evaluations, is equipment free of potentially adverse seismic interaction effects? Yes

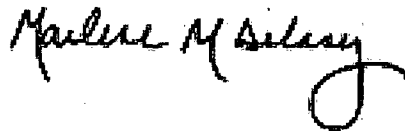
Other Adverse Conditions

11. Have you looked for and found no adverse seismic conditions that could adversely affect the safety functions of the equipment? Yes
No structural/seismic issues

Comments

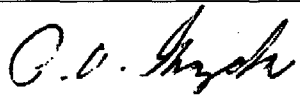
Seismic walkdown team M. Delaney & P. Gazda 8/21/12 am

Evaluated by:



Marlene Delaney

Date: 10/5/2012



Philip Gazda

10/5/2012

Status: Y N U

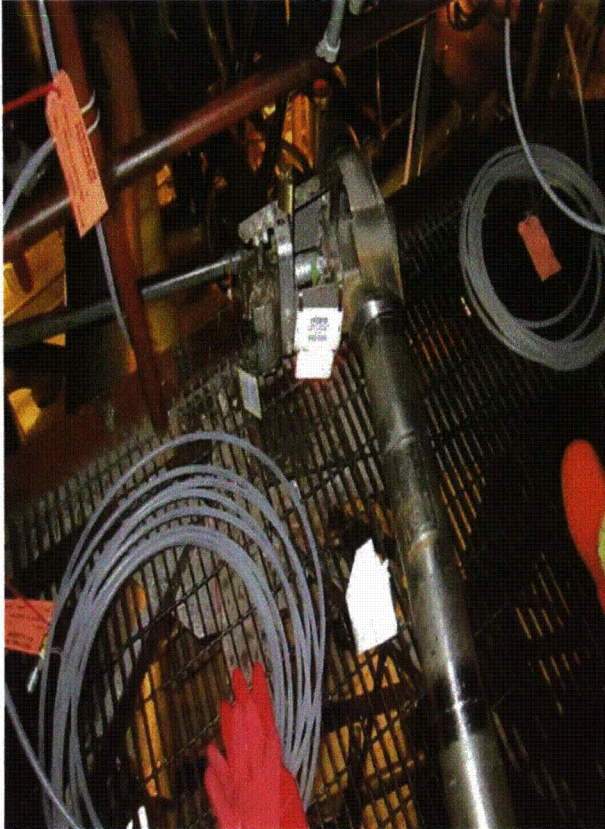
Seismic Walkdown Checklist (SWC)

Equipment ID No.: 1FC010

Equipment Class: (0) Other

Equipment Description: REFUELING WTR PURIF PMP SUCT FROM U-1 REFUEL CAV CNMT ISOL

Photos



1FC010 Byron 1 & 2 8-21-12 008

Status: Y N U

Seismic Walkdown Checklist (SWC)

Equipment ID No.: 1FC01A

Equipment Class: (21) Tanks and Heat Exchangers

Equipment Description: SPENT FUEL PIT HEAT EXCHANGER

Project: Byron 1 SWEL

Location (Bldg, Elev, Room/Area): FH, 401.00 ft, ALL

Manufacturer/Model:

Instructions for Completing Checklist

This checklist may be used to document the results of the Seismic Walkdown of an item of equipment on the SWEL. The space below each of the following questions may be used to record the results of judgments and findings. Additional space is provided at the end of this checklist for documenting other comments.

Anchorage

1. Is anchorage configuration verification required (i.e., is the item one of the 50% of SWEL items requiring such verification)? Yes

2. Is the anchorage free of bent, broken, missing or loose hardware? Yes

3. Is the anchorage free of corrosion that is more than mild surface oxidation? Yes

4. Is the anchorage free of visible cracks in the concrete near the anchors? Yes

5. Is the anchorage configuration consistent with plant documentation? (Note: This question only applies if the item is one of the 50% for which an anchorage configuration verification is required.) Yes
Drawing M-1219 Sheet 3 Revision AH Detail 81

6. Based on the above anchorage evaluations, is the anchorage free of potentially adverse seismic conditions? Yes

Status: Y N U

Seismic Walkdown Checklist (SWC)

Equipment ID No.: 1FC01A

Equipment Class: (21) Tanks and Heat Exchangers

Equipment Description: SPENT FUEL PIT HEAT EXCHANGER

Interaction Effects

7. Are soft targets free from impact by nearby equipment or structures? Yes
8. Are overhead equipment, distribution systems, ceiling tiles and lighting, and masonry block walls not likely to collapse onto the equipment? Yes
9. Do attached lines have adequate flexibility to avoid damage? Yes
10. Based on the above seismic interaction evaluations, is equipment free of potentially adverse seismic interaction effects? Yes

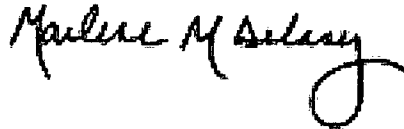
Other Adverse Conditions

11. Have you looked for and found no adverse seismic conditions that could adversely affect the safety functions of the equipment? Yes
No structural/seismic issues

Comments


Seismic walkdown team M. Delaney & P. Gazda 8/9/12 am

Evaluated by:



Marlene Delaney

Date: 10/5/2012



Philip Gazda

10/5/2012

Status: Y N U

Seismic Walkdown Checklist (SWC)

Equipment ID No.: 1FC01A

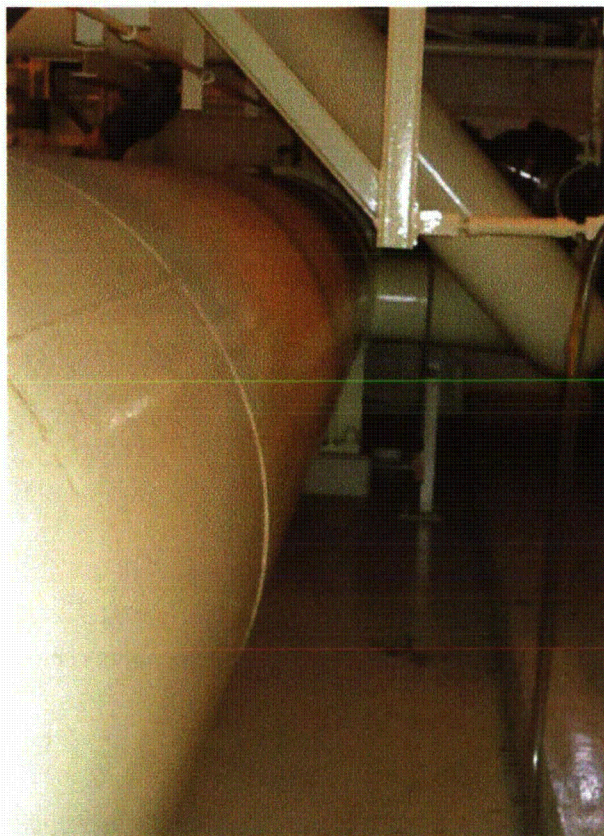
Equipment Class: (21) Tanks and Heat Exchangers

Equipment Description: SPENT FUEL PIT HEAT EXCHANGER

Photos



1FC01A Byron 1 & 2 8-9-12 011



1FC01A Byron 1 & 2 8-9-12 012

Status: Y N U

Seismic Walkdown Checklist (SWC)

Equipment ID No.: 1FC01P

Equipment Class: (5) Horizontal Pumps

Equipment Description: U-1 FUEL POOL COOLING PUMP

Project: Byron 1 SWEL

Location (Bldg, Elev, Room/Area): Auxiliary, 401.00 ft, ALL

Manufacturer/Model:

Instructions for Completing Checklist

This checklist may be used to document the results of the Seismic Walkdown of an item of equipment on the SWEL. The space below each of the following questions may be used to record the results of judgments and findings. Additional space is provided at the end of this checklist for documenting other comments.

Anchorage

1. Is anchorage configuration verification required (i.e., is the item one of the 50% of SWEL items requiring such verification)? Yes

2. Is the anchorage free of bent, broken, missing or loose hardware? Yes

3. Is the anchorage free of corrosion that is more than mild surface oxidation? Yes

4. Is the anchorage free of visible cracks in the concrete near the anchors? Yes

5. Is the anchorage configuration consistent with plant documentation? (Note: This question only applies if the item is one of the 50% for which an anchorage configuration verification is required.) Yes
Drawing M-1219 Sheet 3 Revision AH

6. Based on the above anchorage evaluations, is the anchorage free of potentially adverse seismic conditions? Yes

Status: Y N U

Seismic Walkdown Checklist (SWC)

Equipment ID No.: 1FC01P

Equipment Class: (5) Horizontal Pumps

Equipment Description: U-1 FUEL POOL COOLING PUMP

Interaction Effects

7. Are soft targets free from impact by nearby equipment or structures? Yes
8. Are overhead equipment, distribution systems, ceiling tiles and lighting, and masonry block walls not likely to collapse onto the equipment? Yes
Masonry walls are seismic and would not collapse on equipment
9. Do attached lines have adequate flexibility to avoid damage? Yes
10. Based on the above seismic interaction evaluations, is equipment free of potentially adverse seismic interaction effects? Yes

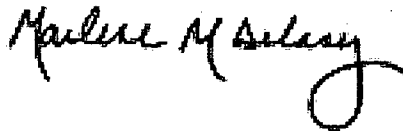
Other Adverse Conditions

11. Have you looked for and found no adverse seismic conditions that could adversely affect the safety functions of the equipment? Yes

Comments

Seismic walkdown team M. Delaney & P. Gazda 8/9/12 am

Evaluated by:



Marlene Delaney

Date: 10/5/2012



Philip Gazda

10/5/2012

Status: Y N U

Seismic Walkdown Checklist (SWC)

Equipment ID No.: 1FC01P

Equipment Class: (5) Horizontal Pumps

Equipment Description: U-1 FUEL POOL COOLING PUMP

Photos



1FC01P Byron 1 & 2 8-9-12 020



1FC01P Byron 1 & 2 8-9-12 021

Status: Y N U

Seismic Walkdown Checklist (SWC)

Equipment ID No.: 1FC01P

Equipment Class: (5) Horizontal Pumps

Equipment Description: U-1 FUEL POOL COOLING PUMP



1FC01P Byron 1 & 2 8-9-12 022

Status: Y N U

Seismic Walkdown Checklist (SWC)

Equipment ID No.: 1FC8756

Equipment Class: (0) Other

Equipment Description: U1 SPENT FUEL PIT PMP SUCTION ISOL

Project: Byron 1 SWEL

Location (Bldg, Elev, Room/Area): FH, 401.00 ft, ALL

Manufacturer/Model:

Instructions for Completing Checklist

This checklist may be used to document the results of the Seismic Walkdown of an item of equipment on the SWEL. The space below each of the following questions may be used to record the results of judgments and findings. Additional space is provided at the end of this checklist for documenting other comments.

Anchorage

1. Is anchorage configuration verification required (i.e., is the item one of the 50% of SWEL items requiring such verification)? No

2. Is the anchorage free of bent, broken, missing or loose hardware? Not Applicable

3. Is the anchorage free of corrosion that is more than mild surface oxidation? Not Applicable

4. Is the anchorage free of visible cracks in the concrete near the anchors? Not Applicable

5. Is the anchorage configuration consistent with plant documentation? (Note: This question only applies if the item is one of the 50% for which an anchorage configuration verification is required.) Not Applicable

6. Based on the above anchorage evaluations, is the anchorage free of potentially adverse seismic conditions? Yes

Status: Y N U

Seismic Walkdown Checklist (SWC)

Equipment ID No.: 1FC8756

Equipment Class: (0) Other

Equipment Description: U1 SPENT FUEL PIT PMP SUCTION ISOL

Interaction Effects

7. Are soft targets free from impact by nearby equipment or structures? Yes
8. Are overhead equipment, distribution systems, ceiling tiles and lighting, and masonry block walls not likely to collapse onto the equipment? Yes
- Masonry walls are seismic and would not collapse on equipment*
9. Do attached lines have adequate flexibility to avoid damage? Yes
10. Based on the above seismic interaction evaluations, is equipment free of potentially adverse seismic interaction effects? Yes

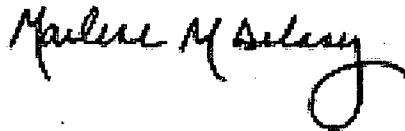
Other Adverse Conditions

11. Have you looked for and found no adverse seismic conditions that could adversely affect the safety functions of the equipment? Yes

Comments

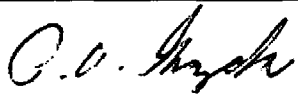
Seismic walkdown team M. Delaney & P. Gazda 8/9/12 am

Evaluated by:



Marlene Delaney

Date: 10/5/2012



Philip Gazda

10/5/2012

Status: Y N U

Seismic Walkdown Checklist (SWC)

Equipment ID No.: 1FC8756

Equipment Class: (0) Other

Equipment Description: U1 SPENT FUEL PIT PMP SUCTION ISOL

Photos



1FC8756 Byron 1 & 2 8-9-12 018



1FC8756 Byron 1 & 2 8-9-12 019

Status: Y N U

Seismic Walkdown Checklist (SWC)

Equipment ID No.: 1FC8758

Equipment Class: (0) Other

Equipment Description: REFUELING WTR PURIF PMP SUCT FROM U-1 RWST

Project: Byron 1 SWEL

Location (Bldg, Elev, Room/Area): Auxiliary, 364.00 ft, ALL

Manufacturer/Model:

Instructions for Completing Checklist

This checklist may be used to document the results of the Seismic Walkdown of an item of equipment on the SWEL. The space below each of the following questions may be used to record the results of judgments and findings. Additional space is provided at the end of this checklist for documenting other comments.

Anchorage

1. Is anchorage configuration verification required (i.e., is the item one of the 50% of SWEL items requiring such verification)? No

2. Is the anchorage free of bent, broken, missing or loose hardware? Not Applicable

3. Is the anchorage free of corrosion that is more than mild surface oxidation? Not Applicable

4. Is the anchorage free of visible cracks in the concrete near the anchors? Not Applicable

5. Is the anchorage configuration consistent with plant documentation? (Note: This question only applies if the item is one of the 50% for which an anchorage configuration verification is required.) Not Applicable

6. Based on the above anchorage evaluations, is the anchorage free of potentially adverse seismic conditions? Yes

Status: Y N U

Seismic Walkdown Checklist (SWC)

Equipment ID No.: 1FC8758

Equipment Class: (0) Other

Equipment Description: REFUELING WTR PURIF PMP SUCT FROM U-1 RWST

Interaction Effects

7. Are soft targets free from impact by nearby equipment or structures? Yes
8. Are overhead equipment, distribution systems, ceiling tiles and lighting, and masonry block walls not likely to collapse onto the equipment? Yes
9. Do attached lines have adequate flexibility to avoid damage? Yes
10. Based on the above seismic interaction evaluations, is equipment free of potentially adverse seismic interaction effects? Yes

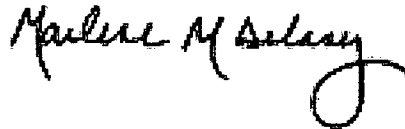
Other Adverse Conditions

11. Have you looked for and found no adverse seismic conditions that could adversely affect the safety functions of the equipment? Yes
No structural/seismic issues

Comments

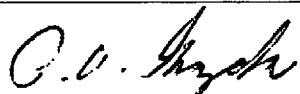
Seismic walkdown team M. Delaney & P. Gazda 8/21/12 am

Evaluated by:



Marlene Delaney

Date: 10/5/2012



Philip Gazda

10/5/2012

Status: Y N U

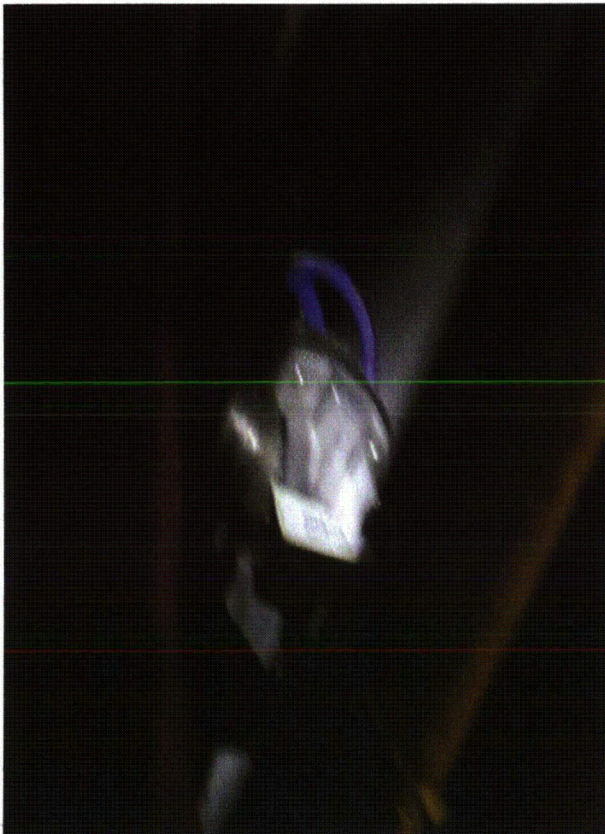
Seismic Walkdown Checklist (SWC)

Equipment ID No.: 1FC8758

Equipment Class: (0) Other

Equipment Description: REFUELING WTR PURIF PMP SUCT FROM U-1 RWST

Photos



1FC8758 Byron 1 & 2 8-21-12 004

Status: Y N U

Seismic Walkdown Checklist (SWC)

Equipment ID No.: 1FC8762A

Equipment Class: (0) Other

Equipment Description: SPENT FUEL PIT HX INLET

Project: Byron 1 SWEL

Location (Bldg, Elev, Room/Area): FH, 401.00 ft, ALL

Manufacturer/Model:

Instructions for Completing Checklist

This checklist may be used to document the results of the Seismic Walkdown of an item of equipment on the SWEL. The space below each of the following questions may be used to record the results of judgments and findings. Additional space is provided at the end of this checklist for documenting other comments.

Anchorage

1. Is anchorage configuration verification required (i.e., is the item one of the 50% of SWEL items requiring such verification)? No

2. Is the anchorage free of bent, broken, missing or loose hardware? Not Applicable

3. Is the anchorage free of corrosion that is more than mild surface oxidation? Not Applicable

4. Is the anchorage free of visible cracks in the concrete near the anchors? Not Applicable

5. Is the anchorage configuration consistent with plant documentation? (Note: This question only applies if the item is one of the 50% for which an anchorage configuration verification is required.) Not Applicable

6. Based on the above anchorage evaluations, is the anchorage free of potentially adverse seismic conditions? Yes

Status: Y N U

Seismic Walkdown Checklist (SWC)

Equipment ID No.: 1FC8762A

Equipment Class: (0) Other

Equipment Description: SPENT FUEL PIT HX INLET

Interaction Effects

7. Are soft targets free from impact by nearby equipment or structures? Yes
8. Are overhead equipment, distribution systems, ceiling tiles and lighting, and masonry block walls not likely to collapse onto the equipment? Yes
- Masonry walls are seismic and would not collapse on equipment*
9. Do attached lines have adequate flexibility to avoid damage? Yes
10. Based on the above seismic interaction evaluations, is equipment free of potentially adverse seismic interaction effects? Yes

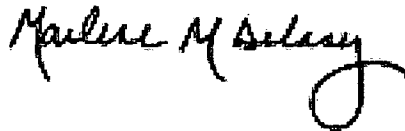
Other Adverse Conditions

11. Have you looked for and found no adverse seismic conditions that could adversely affect the safety functions of the equipment? Yes
- Rugged valve with nearby supports.*

Comments

Seismic walkdown team M. Delaney & P. Gazda 8/9/12 am

Evaluated by:



Marlene Delaney

Date: 10/5/2012



Philip Gazda

10/5/2012

Status: Y N U

Seismic Walkdown Checklist (SWC)

Equipment ID No.: 1FC8762A

Equipment Class: (0) Other

Equipment Description: SPENT FUEL PIT HX INLET

Photos



1FC8762A Byron 1 & 2 8-9-12 004

Status: Y N U

Seismic Walkdown Checklist (SWC)

Equipment ID No.: 1FC8762B

Equipment Class: (0) Other

Equipment Description: U1 SPENT FUEL PIT HX OUTLET

Project: Byron 1 SWEL

Location (Bldg, Elev, Room/Area): FH, 401.00 ft, ALL

Manufacturer/Model:

Instructions for Completing Checklist

This checklist may be used to document the results of the Seismic Walkdown of an item of equipment on the SWEL. The space below each of the following questions may be used to record the results of judgments and findings. Additional space is provided at the end of this checklist for documenting other comments.

Anchorage

1. Is anchorage configuration verification required (i.e., is the item one of the 50% of SWEL items requiring such verification)? No

2. Is the anchorage free of bent, broken, missing or loose hardware? Not Applicable

3. Is the anchorage free of corrosion that is more than mild surface oxidation? Not Applicable

4. Is the anchorage free of visible cracks in the concrete near the anchors? Not Applicable

5. Is the anchorage configuration consistent with plant documentation? (Note: This question only applies if the item is one of the 50% for which an anchorage configuration verification is required.) Not Applicable

6. Based on the above anchorage evaluations, is the anchorage free of potentially adverse seismic conditions? Yes

Status: Y N U

Seismic Walkdown Checklist (SWC)

Equipment ID No.: 1FC8762B

Equipment Class: (0) Other

Equipment Description: U1 SPENT FUEL PIT HX OUTLET

Interaction Effects

7. Are soft targets free from impact by nearby equipment or structures? Yes
8. Are overhead equipment, distribution systems, ceiling tiles and lighting, and masonry block walls not likely to collapse onto the equipment? Yes
9. Do attached lines have adequate flexibility to avoid damage? Yes
10. Based on the above seismic interaction evaluations, is equipment free of potentially adverse seismic interaction effects? Yes

Other Adverse Conditions

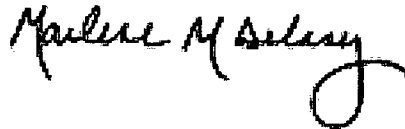
11. Have you looked for and found no adverse seismic conditions that could adversely affect the safety functions of the equipment? Yes

Valve previously tagged for boric acid as part of BACC Program. Not a structural/seismic issue.

Comments

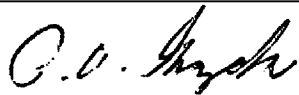
Seismic walkdown team M. Delaney & P. Gazda 8/9/12 am

Evaluated by:



Marlene Delaney

Date: 10/5/2012



Philip Gazda

10/5/2012

Status: Y N U

Seismic Walkdown Checklist (SWC)

Equipment ID No.: 1FC8762B

Equipment Class: (0) Other

Equipment Description: U1 SPENT FUEL PIT HX OUTLET

Photos



1FC8762B Byron 1 & 2 8-9-12 006

Status: Y N U

Seismic Walkdown Checklist (SWC)

Equipment ID No.: 1FC8766

Equipment Class: (0) Other

Equipment Description: SPENT FUEL PIT FLTR DEMIN LOOP RTRN TO U-1 RWST.CHECK VLV

Project: Byron 1 SWEL

Location (Bldg, Elev, Room/Area): Auxiliary, 364.00 ft, ALL

Manufacturer/Model:

Instructions for Completing Checklist

This checklist may be used to document the results of the Seismic Walkdown of an item of equipment on the SWEL. The space below each of the following questions may be used to record the results of judgments and findings. Additional space is provided at the end of this checklist for documenting other comments.

Anchorage

1. Is anchorage configuration verification required (i.e., is the item one of the 50% of SWEL items requiring such verification)? No

2. Is the anchorage free of bent, broken, missing or loose hardware? Not Applicable

3. Is the anchorage free of corrosion that is more than mild surface oxidation? Not Applicable

4. Is the anchorage free of visible cracks in the concrete near the anchors? Not Applicable

5. Is the anchorage configuration consistent with plant documentation? (Note: This question only applies if the item is one of the 50% for which an anchorage configuration verification is required.) Not Applicable

6. Based on the above anchorage evaluations, is the anchorage free of potentially adverse seismic conditions? Yes

Status: Y N U

Seismic Walkdown Checklist (SWC)

Equipment ID No.: 1FC8766

Equipment Class: (0) Other

Equipment Description: SPENT FUEL PIT FLTR DEMIN LOOP RTRN TO U-1 RWST CHECK VLV

Interaction Effects

7. Are soft targets free from impact by nearby equipment or structures? Yes
8. Are overhead equipment, distribution systems, ceiling tiles and lighting, and masonry block walls not likely to collapse onto the equipment? Yes
9. Do attached lines have adequate flexibility to avoid damage? Yes
10. Based on the above seismic interaction evaluations, is equipment free of potentially adverse seismic interaction effects? Yes

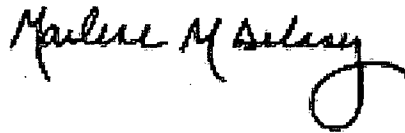
Other Adverse Conditions

11. Have you looked for and found no adverse seismic conditions that could adversely affect the safety functions of the equipment? Yes
No structural/seismic issues

Comments

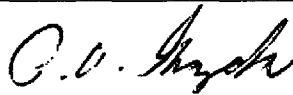
Seismic walkdown team M. Delaney & P. Gazda 8/21/12 am

Evaluated by:



Marlene Delaney

Date: 10/5/2012



Philip Gazda

10/5/2012

Status: Y N U

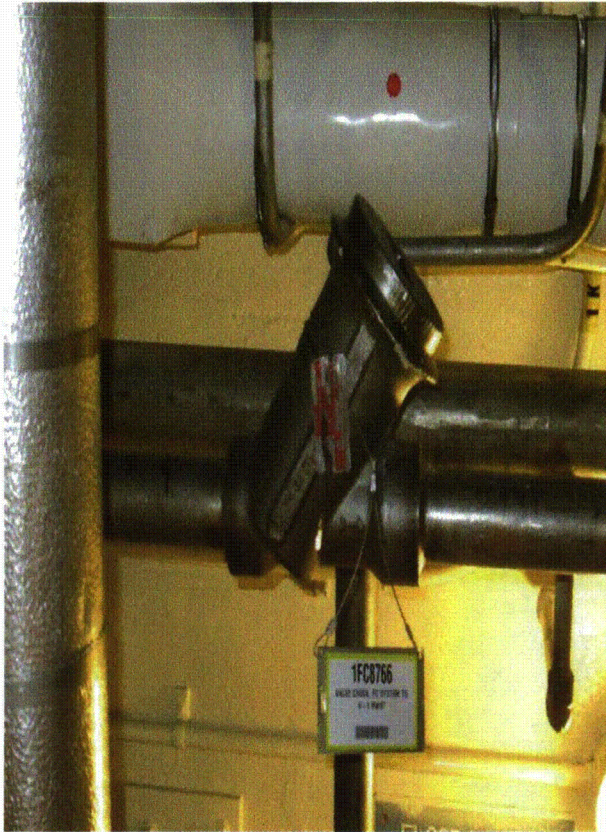
Seismic Walkdown Checklist (SWC)

Equipment ID No.: 1FC8766

Equipment Class: (0) Other

Equipment Description: SPENT FUEL PIT FLTR DEMIN LOOP RTRN TO U-1 RWST CHECK VLV

Photos



1FC8766 Byron 1 & 2 8-21-12 006

Status: Y N U

Seismic Walkdown Checklist (SWC)

Equipment ID No.: 1FC8793

Equipment Class: (0) Other

Equipment Description: SPENT FUEL PIT PMP DISCH CHECK

Project: Byron 1 SWEL

Location (Bldg, Elev, Room/Area): FH, 401.00 ft, ALL

Manufacturer/Model:

Instructions for Completing Checklist

This checklist may be used to document the results of the Seismic Walkdown of an item of equipment on the SWEL. The space below each of the following questions may be used to record the results of judgments and findings. Additional space is provided at the end of this checklist for documenting other comments.

Anchorage

1. Is anchorage configuration verification required (i.e., is the item one of the 50% of SWEL items requiring such verification)? No

2. Is the anchorage free of bent, broken, missing or loose hardware? Not Applicable

3. Is the anchorage free of corrosion that is more than mild surface oxidation? Not Applicable

4. Is the anchorage free of visible cracks in the concrete near the anchors? Not Applicable

5. Is the anchorage configuration consistent with plant documentation? (Note: This question only applies if the item is one of the 50% for which an anchorage configuration verification is required.) Not Applicable

6. Based on the above anchorage evaluations, is the anchorage free of potentially adverse seismic conditions? Yes

Status: Y N U

Seismic Walkdown Checklist (SWC)

Equipment ID No.: 1FC8793

Equipment Class: (0) Other

Equipment Description: SPENT FUEL PIT PMP DISCH CHECK

Interaction Effects

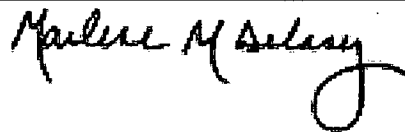
7. Are soft targets free from impact by nearby equipment or structures? Yes
8. Are overhead equipment, distribution systems, ceiling tiles and lighting, and masonry block walls not likely to collapse onto the equipment? Yes
9. Do attached lines have adequate flexibility to avoid damage? Yes
10. Based on the above seismic interaction evaluations, is equipment free of potentially adverse seismic interaction effects? Yes

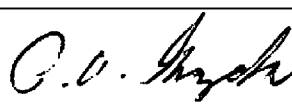
Other Adverse Conditions

11. Have you looked for and found no adverse seismic conditions that could adversely affect the safety functions of the equipment? Yes
No structural/seismic issues

Comments

Seismic walkdown team M. Delaney & P. Gazda 8/9/12 am

Evaluated by:  Marlene Delaney Date: 10/5/2012

 Philip Gazda 10/5/2012

Status: Y N U

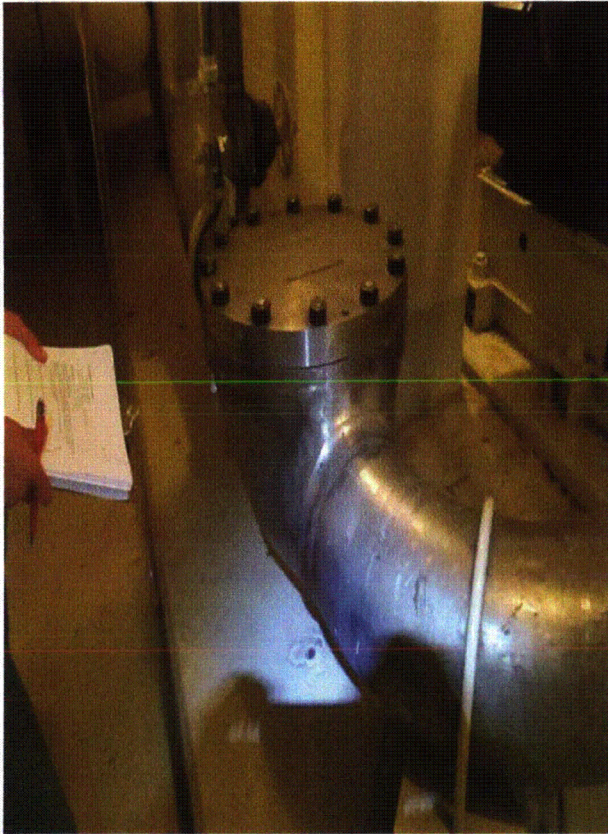
Seismic Walkdown Checklist (SWC)

Equipment ID No.: 1FC8793

Equipment Class: (0) Other

Equipment Description: SPENT FUEL PIT PMP DISCH CHECK

Photos



1FC8793 Byron 1 & 2 8-9-12 008

Status: Y N U

Seismic Walkdown Checklist (SWC)

Equipment ID No.: 1FC8794

Equipment Class: (0) Other

Equipment Description: SPENT FUEL PIT FLTR DEMIN LOOP INLT ISOL

Project: Byron 1 SWEL

Location (Bldg, Elev, Room/Area): FH, 401.00 ft, ALL

Manufacturer/Model:

Instructions for Completing Checklist

This checklist may be used to document the results of the Seismic Walkdown of an item of equipment on the SWEL. The space below each of the following questions may be used to record the results of judgments and findings. Additional space is provided at the end of this checklist for documenting other comments.

Anchorage

1. Is anchorage configuration verification required (i.e., is the item one of the 50% of SWEL items requiring such verification)? No

2. Is the anchorage free of bent, broken, missing or loose hardware? Not Applicable

3. Is the anchorage free of corrosion that is more than mild surface oxidation? Not Applicable

4. Is the anchorage free of visible cracks in the concrete near the anchors? Not Applicable

5. Is the anchorage configuration consistent with plant documentation? (Note: This question only applies if the item is one of the 50% for which an anchorage configuration verification is required.) Not Applicable

6. Based on the above anchorage evaluations, is the anchorage free of potentially adverse seismic conditions? Yes

Status: Y N U

Seismic Walkdown Checklist (SWC)

Equipment ID No.: 1FC8794

Equipment Class: (0) Other

Equipment Description: SPENT FUEL PIT FLTR DEMIN LOOP INLT ISOL

Interaction Effects

7. Are soft targets free from impact by nearby equipment or structures? Yes
8. Are overhead equipment, distribution systems, ceiling tiles and lighting, and masonry block walls not likely to collapse onto the equipment? Yes
Masonry walls are seismic and would not collapse on equipment
9. Do attached lines have adequate flexibility to avoid damage? Yes
10. Based on the above seismic interaction evaluations, is equipment free of potentially adverse seismic interaction effects? Yes

Other Adverse Conditions

11. Have you looked for and found no adverse seismic conditions that could adversely affect the safety functions of the equipment? Yes

Comments

Seismic walkdown team M. Delaney & P. Gazda 8/9/12 am

Evaluated by:

Marlene M Delaney

Marlene Delaney

Date: 10/5/2012

P. O. Gazda

Philip Gazda

10/5/2012

Status: Y N U

Seismic Walkdown Checklist (SWC)

Equipment ID No.: 1FC8794

Equipment Class: (0) Other

Equipment Description: SPENT FUEL PIT FLTR DEMIN LOOP INLT ISOL

Photos



1FC8794 Byron 1 & 2 8-9-12 009

Status: Y N U

Seismic Walkdown Checklist (SWC)

Equipment ID No.: 1FT-0121

Equipment Class: (18) Instruments on Racks

Equipment Description: CHARGING LINE D/P CELL FLOW XMITTR

Project: Byron 1 SWEL

Location (Bldg, Elev, Room/Area): Auxiliary, 364.00 ft, ALL

Manufacturer/Model:

Instructions for Completing Checklist

This checklist may be used to document the results of the Seismic Walkdown of an item of equipment on the SWEL. The space below each of the following questions may be used to record the results of judgments and findings. Additional space is provided at the end of this checklist for documenting other comments.

Anchorage

1. Is anchorage configuration verification required (i.e., is the item one of the 50% of SWEL items requiring such verification)? No

2. Is the anchorage free of bent, broken, missing or loose hardware? Not Applicable

3. Is the anchorage free of corrosion that is more than mild surface oxidation? Not Applicable

4. Is the anchorage free of visible cracks in the concrete near the anchors? Not Applicable

5. Is the anchorage configuration consistent with plant documentation? (Note: This question only applies if the item is one of the 50% for which an anchorage configuration verification is required.) Not Applicable

6. Based on the above anchorage evaluations, is the anchorage free of potentially adverse seismic conditions? Yes
Instrument securely mounted to Rack 1PL97J. Rack is well-braced and anchored with no issues.

Status: Y N U

Seismic Walkdown Checklist (SWC)

Equipment ID No.: 1FT-0121

Equipment Class: (18) Instruments on Racks

Equipment Description: CHARGING LINE D/P CELL FLOW XMITTR

Interaction Effects

7. Are soft targets free from impact by nearby equipment or structures? Yes
8. Are overhead equipment, distribution systems, ceiling tiles and lighting, and masonry block walls not likely to collapse onto the equipment? Yes
- Masonry walls are seismic and would not collapse on equipment*
9. Do attached lines have adequate flexibility to avoid damage? Yes
10. Based on the above seismic interaction evaluations, is equipment free of potentially adverse seismic interaction effects? Yes

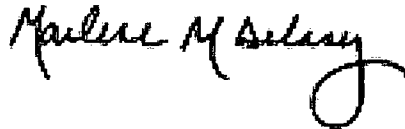
Other Adverse Conditions

11. Have you looked for and found no adverse seismic conditions that could adversely affect the safety functions of the equipment? Yes

Comments

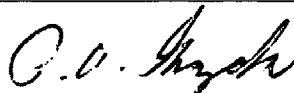
Seismic walkdown team P. Gazda & M. Delaney 8-20-12 pm

Evaluated by:



Marlene Delaney

Date: 10/5/2012



Philip Gazda

10/5/2012

Status: Y N U

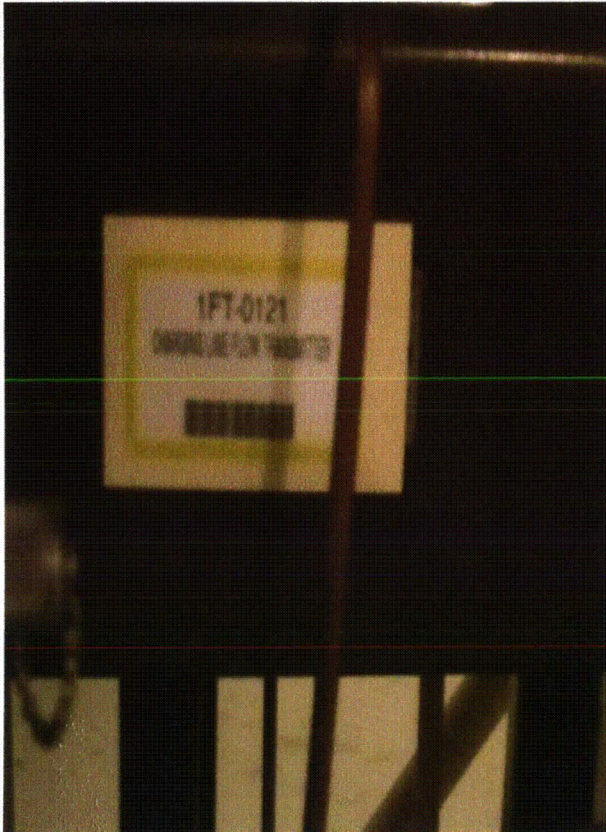
Seismic Walkdown Checklist (SWC)

Equipment ID No.: 1FT-0121

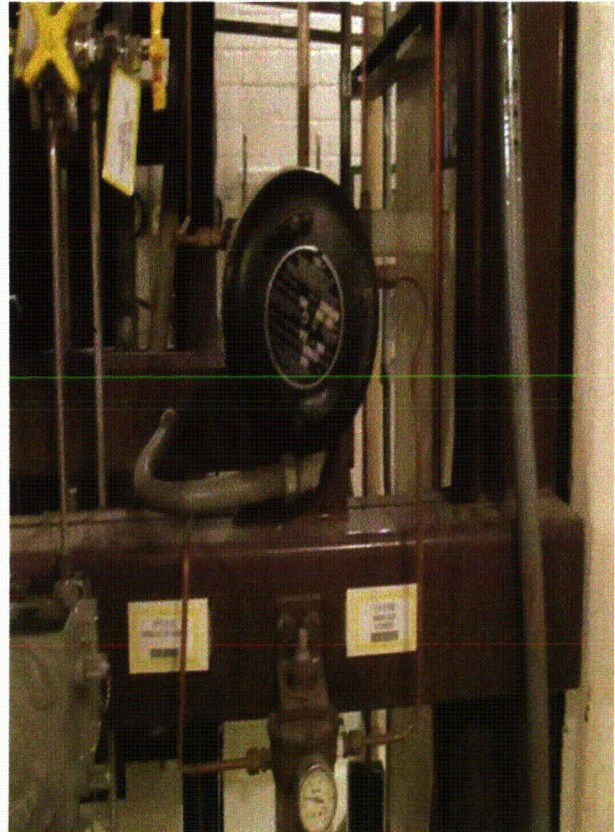
Equipment Class: (18) Instruments on Racks

Equipment Description: CHARGING LINE D/P CELL FLOW XMITTR

Photos



1FT-0121 Byron 1 & 2 8-20-12 060



1FT-0121 Byron 1 & 2 8-20-12 061

Status: Y N U

Seismic Walkdown Checklist (SWC)

Equipment ID No.: 1FT-0132

Equipment Class: (18) Instruments on Racks

Equipment Description: LETDOWN FLOW D/P CELL

Project: Byron 1 SWEL

Location (Bldg, Elev, Room/Area): Auxiliary, 383.00 ft, ALL

Manufacturer/Model:

Instructions for Completing Checklist

This checklist may be used to document the results of the Seismic Walkdown of an item of equipment on the SWEL. The space below each of the following questions may be used to record the results of judgments and findings. Additional space is provided at the end of this checklist for documenting other comments.

Anchorage

1. Is anchorage configuration verification required (i.e., is the item one of the 50% of SWEL items requiring such verification)? No

2. Is the anchorage free of bent, broken, missing or loose hardware? Not Applicable

3. Is the anchorage free of corrosion that is more than mild surface oxidation? Not Applicable

4. Is the anchorage free of visible cracks in the concrete near the anchors? Not Applicable

5. Is the anchorage configuration consistent with plant documentation? (Note: This question only applies if the item is one of the 50% for which an anchorage configuration verification is required.) Not Applicable

6. Based on the above anchorage evaluations, is the anchorage free of potentially adverse seismic conditions? Yes
Instrument securely mounted to rack that is well-anchored to seismic block wall that would not collapse on equipment

Status: Y N U

Seismic Walkdown Checklist (SWC)

Equipment ID No.: 1FT-0132

Equipment Class: (18) Instruments on Racks

Equipment Description: LETDOWN FLOW D/P CELL

Interaction Effects

7. Are soft targets free from impact by nearby equipment or structures? Yes

8. Are overhead equipment, distribution systems, ceiling tiles and lighting, and masonry block walls not likely to collapse onto the equipment? Yes

Masonry walls are seismic and would not collapse on equipment. Removable portion secured by grating.

9. Do attached lines have adequate flexibility to avoid damage? Yes

10. Based on the above seismic interaction evaluations, is equipment free of potentially adverse seismic interaction effects? Yes

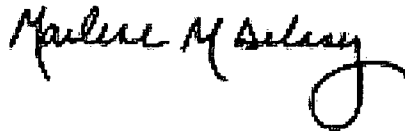
Other Adverse Conditions

11. Have you looked for and found no adverse seismic conditions that could adversely affect the safety functions of the equipment? Yes

Comments

Seismic walkdown team P. Gazda & M. Delaney 8-20-12 pm

Evaluated by:



Marlene Delaney

Date: 10/5/2012



Philip Gazda

10/5/2012

Status: Y N U

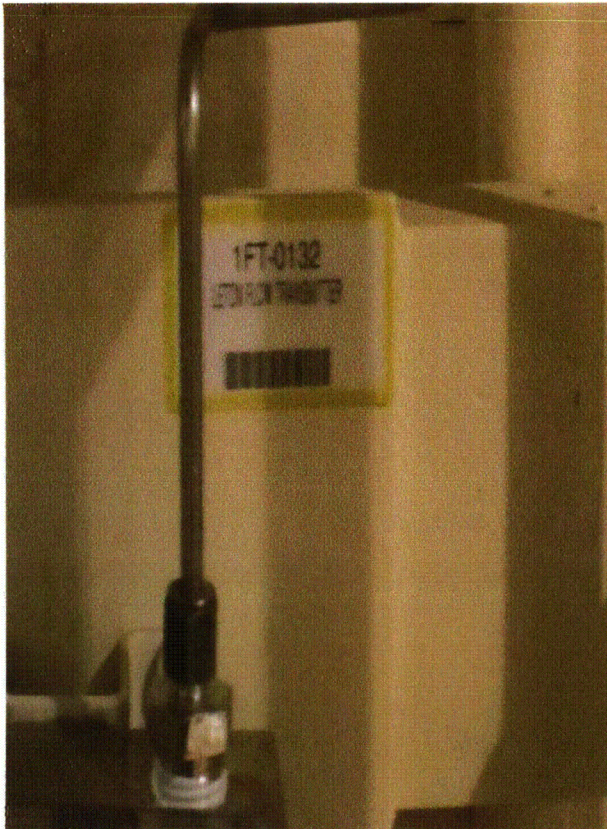
Seismic Walkdown Checklist (SWC)

Equipment ID No.: 1FT-0132

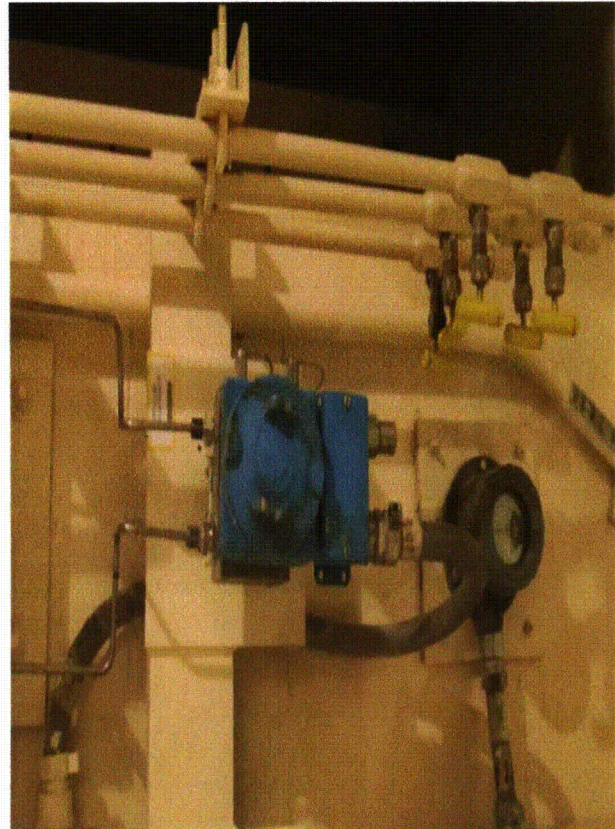
Equipment Class: (18) Instruments on Racks

Equipment Description: LETDOWN FLOW D/P CELL

Photos



1FT0132 Byron 1 & 2 8-20-12 048



1FT0132 Byron 1 & 2 8-20-12 049

Status: Y N U

Seismic Walkdown Checklist (SWC)

Equipment ID No.: 1FT-AF014

Equipment Class: (18) Instruments on Racks

Equipment Description: AF TO SG 1B FLOW TRANSMITTER

Project: Byron 1 SWEL

Location (Bldg, Elev, Room/Area): Auxiliary, 364.00 ft, ALL

Manufacturer/Model:

Instructions for Completing Checklist

This checklist may be used to document the results of the Seismic Walkdown of an item of equipment on the SWEL. The space below each of the following questions may be used to record the results of judgments and findings. Additional space is provided at the end of this checklist for documenting other comments.

Anchorage

1. Is anchorage configuration verification required (i.e., is the item one of the 50% of SWEL items requiring such verification)? No

2. Is the anchorage free of bent, broken, missing or loose hardware? Not Applicable

3. Is the anchorage free of corrosion that is more than mild surface oxidation? Not Applicable

4. Is the anchorage free of visible cracks in the concrete near the anchors? Not Applicable

5. Is the anchorage configuration consistent with plant documentation? (Note: This question only applies if the item is one of the 50% for which an anchorage configuration verification is required.) Not Applicable

6. Based on the above anchorage evaluations, is the anchorage free of potentially adverse seismic conditions? Yes
Instrument is securely attached to Rack 1PL84J which is well-braced and anchored.

Status: Y N U

Seismic Walkdown Checklist (SWC)

Equipment ID No.: 1FT-AF014

Equipment Class: (18) Instruments on Racks

Equipment Description: AF TO SG 1B FLOW TRANSMITTER

Interaction Effects

7. Are soft targets free from impact by nearby equipment or structures? Yes

Robust barrier protecting equipment/rack. Well-braced and anchored. No structural/seismic issues and acceptable.

8. Are overhead equipment, distribution systems, ceiling tiles and lighting, and masonry block walls not likely to collapse onto the equipment? Yes

*Masonry walls are seismic and would not collapse on equipment
Note there is a large crack in the block wall but is not a structural concern since it appears that it is at the end of the wall near the column which is not a location of large stresses. Judged acceptable. Crack justification included in Calculation 16.1.2 Revision 2 page 114A.27*

9. Do attached lines have adequate flexibility to avoid damage? Yes

10. Based on the above seismic interaction evaluations, is equipment free of potentially adverse seismic interaction effects? Yes

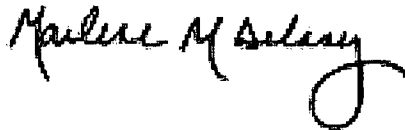
Other Adverse Conditions

11. Have you looked for and found no adverse seismic conditions that could adversely affect the safety functions of the equipment? Yes

Comments

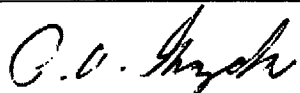
Seismic walkdown team P. Gazda & M. Delaney 8-20-12 pm

Evaluated by:



Marlene Delaney

Date: 10/5/2012



Philip Gazda

10/5/2012

Status: Y N U

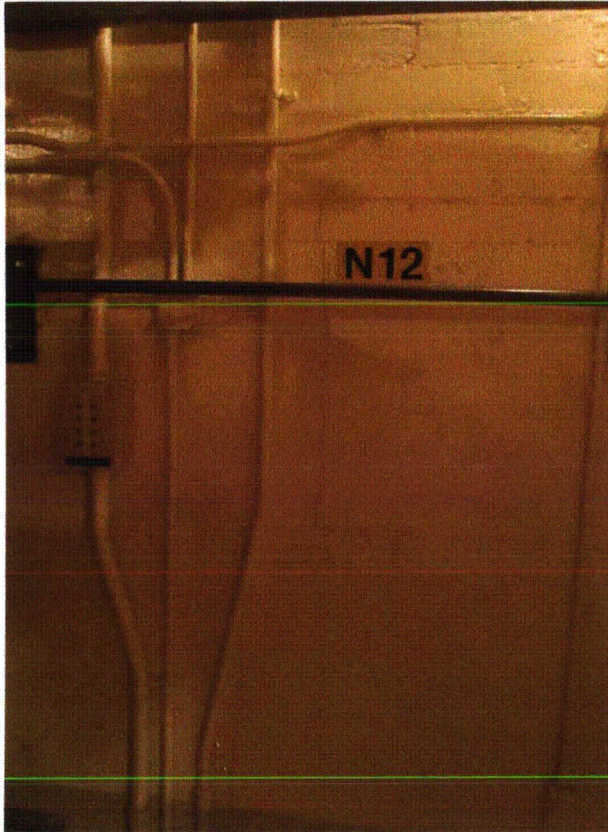
Seismic Walkdown Checklist (SWC)

Equipment ID No.: 1FT-AF014

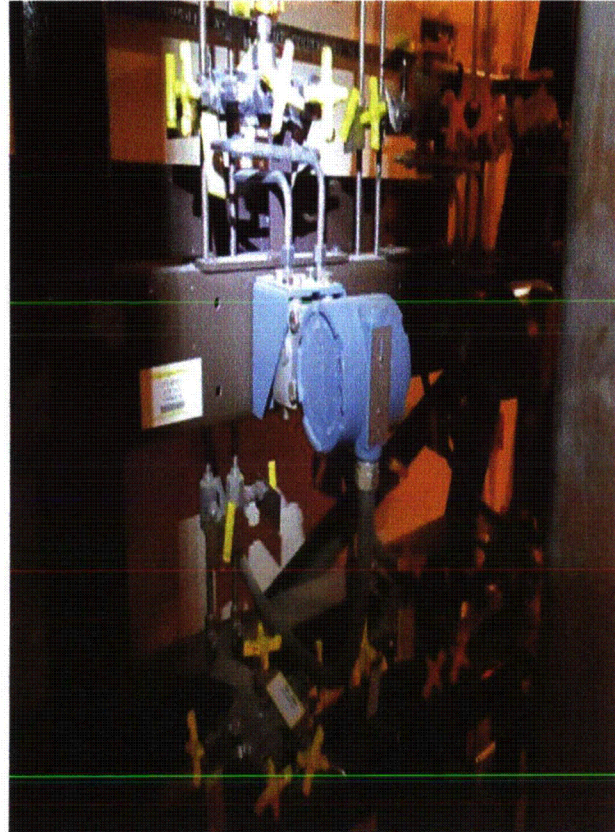
Equipment Class: (18) Instruments on Racks

Equipment Description: AF TO SG 1B FLOW TRANSMITTER

Photos



1FT-AF014 (NP-6695) Byron 1 & 2 8-20-12 059



1FT-AF014 Byron 1 & 2 8-20-12 058

Status: Y N U

Seismic Walkdown Checklist (SWC)

Equipment ID No.: 1HS-FC001

Equipment Class: (18) Instruments on Racks

Equipment Description: SPENT FUEL PIT PUMP C/S Box on wall

Project: Byron 1 SWEL

Location (Bldg, Elev, Room/Area): FH, 401.00 ft, ALL

Manufacturer/Model:

Instructions for Completing Checklist

This checklist may be used to document the results of the Seismic Walkdown of an item of equipment on the SWEL. The space below each of the following questions may be used to record the results of judgments and findings. Additional space is provided at the end of this checklist for documenting other comments.

Anchorage

1. Is anchorage configuration verification required (i.e., is the item one of the 50% of SWEL items requiring such verification)? No

2. Is the anchorage free of bent, broken, missing or loose hardware? Yes

3. Is the anchorage free of corrosion that is more than mild surface oxidation? Yes

4. Is the anchorage free of visible cracks in the concrete near the anchors? Yes

5. Is the anchorage configuration consistent with plant documentation? (Note: This question only applies if the item is one of the 50% for which an anchorage configuration verification is required.) Not Applicable

6. Based on the above anchorage evaluations, is the anchorage free of potentially adverse seismic conditions? Yes
Anchored to seismic block wall that would not collapse on equipment

Status: Y N U

Seismic Walkdown Checklist (SWC)

Equipment ID No.: 1HS-FC001

Equipment Class: (18) Instruments on Racks

Equipment Description: SPENT FUEL PIT PUMP C/S Box on wall

Interaction Effects

7. Are soft targets free from impact by nearby equipment or structures? Yes
8. Are overhead equipment, distribution systems, ceiling tiles and lighting, and masonry block walls not likely to collapse onto the equipment? Yes
- Masonry walls are seismic and would not collapse on equipment*
9. Do attached lines have adequate flexibility to avoid damage? Yes
10. Based on the above seismic interaction evaluations, is equipment free of potentially adverse seismic interaction effects? Yes

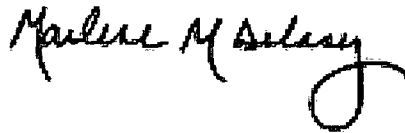
Other Adverse Conditions

11. Have you looked for and found no adverse seismic conditions that could adversely affect the safety functions of the equipment? Yes

Comments

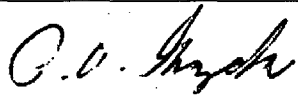
Seismic walkdown team M. Delaney & P. Gazda 8/9/12 am

Evaluated by:



Marlene Delaney

Date: 10/5/2012



Philip Gazda

10/5/2012

Status: Y N U

Seismic Walkdown Checklist (SWC)

Equipment ID No.: 1HS-FC001

Equipment Class: (18) Instruments on Racks

Equipment Description: SPENT FUEL PIT PUMP C/S Box on wall

Photos



1HS-FC001 Byron 1 & 2 8-9-12 023

Status: Y N U

Seismic Walkdown Checklist (SWC)

Equipment ID No.: 1IP05E

Equipment Class: (16) Battery Chargers and Inverters

Equipment Description: INVERTER INST BUS 111 1-3371 AB1

Project: Byron 1 SWEL

Location (Bldg, Elev, Room/Area): Auxiliary, 451.00 ft, ALL

Manufacturer/Model:

Instructions for Completing Checklist

This checklist may be used to document the results of the Seismic Walkdown of an item of equipment on the SWEL. The space below each of the following questions may be used to record the results of judgments and findings. Additional space is provided at the end of this checklist for documenting other comments.

Anchorage

1. Is anchorage configuration verification required (i.e., is the item one of the 50% of SWEL items requiring such verification)? Yes

2. Is the anchorage free of bent, broken, missing or loose hardware? Yes

3. Is the anchorage free of corrosion that is more than mild surface oxidation? Yes

4. Is the anchorage free of visible cracks in the concrete near the anchors? Yes

5. Is the anchorage configuration consistent with plant documentation? (Note: This question only applies if the item is one of the 50% for which an anchorage configuration verification is required.)
Drawing 6E-0-3391C Revision BE

Visually verified anchors through ventilation panel in base of unit. Yes
6. Based on the above anchorage evaluations, is the anchorage free of potentially adverse seismic conditions? Yes

Status: Y N U

Seismic Walkdown Checklist (SWC)

Equipment ID No.: 1IP05E

Equipment Class: (16) Battery Chargers and Inverters

Equipment Description: INVERTER INST BUS 111 1-3371 AB1

Interaction Effects

7. Are soft targets free from impact by nearby equipment or structures? Yes
8. Are overhead equipment, distribution systems, ceiling tiles and lighting, and masonry block walls not likely to collapse onto the equipment? Yes
9. Do attached lines have adequate flexibility to avoid damage? Yes
10. Based on the above seismic interaction evaluations, is equipment free of potentially adverse seismic interaction effects? Yes

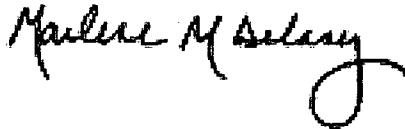
Other Adverse Conditions

11. Have you looked for and found no adverse seismic conditions that could adversely affect the safety functions of the equipment? Yes

Comments

Seismic walkdown team M. Delaney & P. Gazda 8-8-12 am

Evaluated by:



Marlene Delaney

Date: 10/5/2012



Philip Gazda

10/5/2012

Status: Y N U

Seismic Walkdown Checklist (SWC)

Equipment ID No.: 1IP05E

Equipment Class: (16) Battery Chargers and Inverters

Equipment Description: INVERTER INST BUS 111 1-3371 AB1

Photos



1IP05E Byron 1 & 2 8-8-12 004



1IP05E Byron 1 & 2 8-8-12 005

Status: Y N U

Seismic Walkdown Checklist (SWC)

Equipment ID No.: 1IP07E

Equipment Class: (16) Battery Chargers and Inverters

Equipment Description: INVERTER INST BUS 113 1-3371 AB1

Project: Byron 1 SWEL

Location (Bldg, Elev, Room/Area): Auxiliary, 451.00 ft, ALL

Manufacturer/Model:

Instructions for Completing Checklist

This checklist may be used to document the results of the Seismic Walkdown of an item of equipment on the SWEL. The space below each of the following questions may be used to record the results of judgments and findings. Additional space is provided at the end of this checklist for documenting other comments.

Anchorage

1. Is anchorage configuration verification required (i.e., is the item one of the 50% of SWEL items requiring such verification)? Yes

2. Is the anchorage free of bent, broken, missing or loose hardware? Yes

3. Is the anchorage free of corrosion that is more than mild surface oxidation? Yes

4. Is the anchorage free of visible cracks in the concrete near the anchors? Yes

5. Is the anchorage configuration consistent with plant documentation? (Note: This question only applies if the item is one of the 50% for which an anchorage configuration verification is required.) Yes
Drawing 6E-0-3391C Revision BE

Anchorage verified through ventilation grating
6. Based on the above anchorage evaluations, is the anchorage free of potentially adverse seismic conditions? Yes

Status: Y N U

Seismic Walkdown Checklist (SWC)

Equipment ID No.: 1IP07E

Equipment Class: (16) Battery Chargers and Inverters

Equipment Description: INVERTER INST BUS 113 1-3371 AB1

Interaction Effects

7. Are soft targets free from impact by nearby equipment or structures? Yes

Nearby fan secured and judged acceptable

8. Are overhead equipment, distribution systems, ceiling tiles and lighting, and masonry block walls not likely to collapse onto the equipment? Yes

9. Do attached lines have adequate flexibility to avoid damage? Yes

10. Based on the above seismic interaction evaluations, is equipment free of potentially adverse seismic interaction effects? Yes

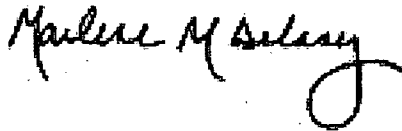
Other Adverse Conditions

11. Have you looked for and found no adverse seismic conditions that could adversely affect the safety functions of the equipment? Yes

Comments

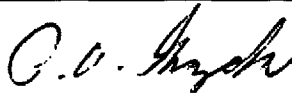
Seismic walkdown team M. Delaney & P. Gazda 8-8-12 am

Evaluated by:



Marlene Delaney

Date: 10/5/2012



Philip Gazda

10/5/2012

Status: Y N U

Seismic Walkdown Checklist (SWC)

Equipment ID No.: 1IP07E

Equipment Class: (16) Battery Chargers and Inverters

Equipment Description: INVERTER INST BUS 113 1-3371 AB1

Photos



1IP07E Byron 1 & 2 8-8-12 006



1IP07E Byron 1 & 2 8-8-12 007

Status: Y N U

Seismic Walkdown Checklist (SWC)

Equipment ID No.: 11P08E

Equipment Class: (16) Battery Chargers and Inverters

Equipment Description: INVERTER INST BUS 114 1-3371 AB1

Project: Byron 1 SWEL

Location (Bldg, Elev, Room/Area): Auxiliary, 451.00 ft, ALL

Manufacturer/Model:

Instructions for Completing Checklist

This checklist may be used to document the results of the Seismic Walkdown of an item of equipment on the SWEL. The space below each of the following questions may be used to record the results of judgments and findings. Additional space is provided at the end of this checklist for documenting other comments.

Anchorage

1. Is anchorage configuration verification required (i.e., is the item one of the 50% of SWEL items requiring such verification)? Yes

2. Is the anchorage free of bent, broken, missing or loose hardware? Yes

3. Is the anchorage free of corrosion that is more than mild surface oxidation? Yes

4. Is the anchorage free of visible cracks in the concrete near the anchors? Yes

5. Is the anchorage configuration consistent with plant documentation? (Note: This question only applies if the item is one of the 50% for which an anchorage configuration verification is required.) Yes
Drawing 6E-0-3391C Revision BE

Anchorage verified through ventilation panel at base of unit.
6. Based on the above anchorage evaluations, is the anchorage free of potentially adverse seismic conditions? Yes

Status: Y N U

Seismic Walkdown Checklist (SWC)

Equipment ID No.: 1IP08E

Equipment Class: (16) Battery Chargers and Inverters

Equipment Description: INVERTER INST BUS 114 1-3371 AB1

Interaction Effects

7. Are soft targets free from impact by nearby equipment or structures? Yes
8. Are overhead equipment, distribution systems, ceiling tiles and lighting, and masonry block walls not likely to collapse onto the equipment? Yes
*Masonry walls are seismic and would not collapse on equipment
Adjacent fan secured and judged acceptable*
9. Do attached lines have adequate flexibility to avoid damage? Yes
10. Based on the above seismic interaction evaluations, is equipment free of potentially adverse seismic interaction effects? Yes

Other Adverse Conditions

11. Have you looked for and found no adverse seismic conditions that could adversely affect the safety functions of the equipment? Yes

Comments

Seismic walkdown team P. Gazda & M. Delaney 8-8-12 am

Evaluated by: Marlene M. Delaney Marlene Delaney Date: 10/5/2012

P. V. Gazda Philip Gazda 10/5/2012

Status: Y N U

Seismic Walkdown Checklist (SWC)

Equipment ID No.: 1IP08E

Equipment Class: (16) Battery Chargers and Inverters

Equipment Description: INVERTER INST BUS 114 1-3371 AB1

Photos



1IP08E Byron 1 & 2 8-8-12 024



1IP08E Byron 1 & 2 8-8-12 025

Status: Y N U

Seismic Walkdown Checklist (SWC)

Equipment ID No.: 1LT-0459

Equipment Class: (18) Instruments on Racks

Equipment Description: EQ PRESSURIZER LEVEL TRANSMITTER

Project: Byron 1 SWEL

Location (Bldg, Elev, Room/Area): Cont, 377.00 ft, ALL

Manufacturer/Model:

Instructions for Completing Checklist

This checklist may be used to document the results of the Seismic Walkdown of an item of equipment on the SWEL. The space below each of the following questions may be used to record the results of judgments and findings. Additional space is provided at the end of this checklist for documenting other comments.

Anchorage

1. Is anchorage configuration verification required (i.e., is the item one of the 50% of SWEL items requiring such verification)? No

2. Is the anchorage free of bent, broken, missing or loose hardware? Not Applicable

3. Is the anchorage free of corrosion that is more than mild surface oxidation? Not Applicable

4. Is the anchorage free of visible cracks in the concrete near the anchors? Not Applicable

5. Is the anchorage configuration consistent with plant documentation? (Note: This question only applies if the item is one of the 50% for which an anchorage configuration verification is required.) Not Applicable

6. Based on the above anchorage evaluations, is the anchorage free of potentially adverse seismic conditions? Yes

Status: Y N U

Seismic Walkdown Checklist (SWC)

Equipment ID No.: 1LT-0459

Equipment Class: (18) Instruments on Racks

Equipment Description: EQ PRESSURIZER LEVEL TRANSMITTER

Interaction Effects

7. Are soft targets free from impact by nearby equipment or structures? Yes
8. Are overhead equipment, distribution systems, ceiling tiles and lighting, and masonry block walls not likely to collapse onto the equipment? Yes
9. Do attached lines have adequate flexibility to avoid damage? Yes
10. Based on the above seismic interaction evaluations, is equipment free of potentially adverse seismic interaction effects? Yes

Other Adverse Conditions

11. Have you looked for and found no adverse seismic conditions that could adversely affect the safety functions of the equipment? Yes

Comments

Seismic Walkdown Team: P. Gazda & J. Griffith - 9/19/2012

Evaluated by:

James D. Griffith James Griffith

Date: 10/5/2012

P. O. Gazda Philip Gazda

10/5/2012

Status: Y N U

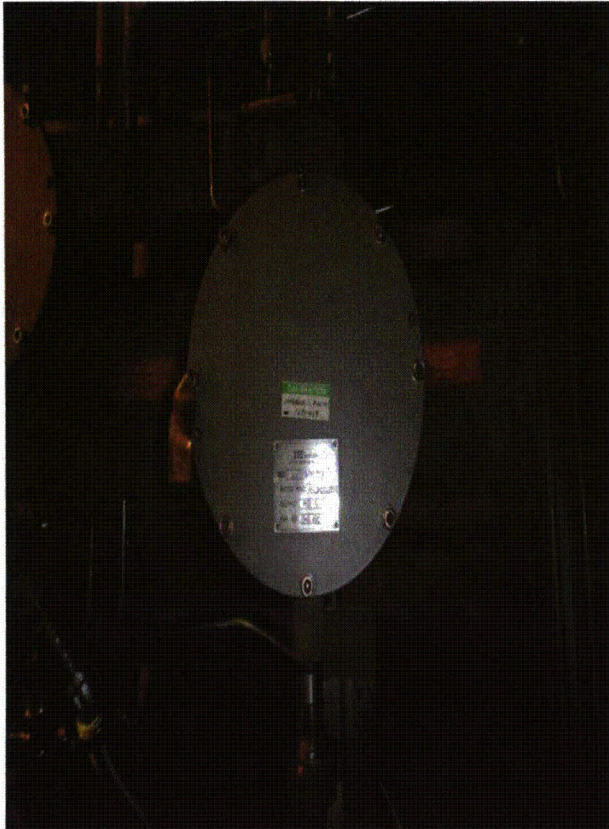
Seismic Walkdown Checklist (SWC)

Equipment ID No.: 1LT-0459

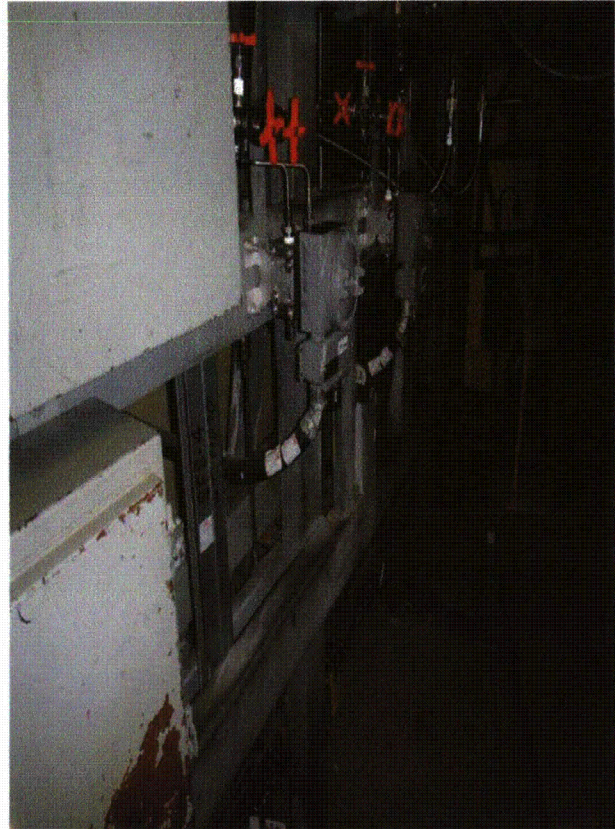
Equipment Class: (18) Instruments on Racks

Equipment Description: EQ PRESSURIZER LEVEL TRANSMITTER

Photos



1LT-0459 BYRON 017



1LT-0459 BYRON 018

Status: Y N U

Seismic Walkdown Checklist (SWC)

Equipment ID No.: 1LT-0518

Equipment Class: (18) Instruments on Racks

Equipment Description: S/G 1A LEVEL LOOP D/P XMTTR 2/FILLED LEG

Project: Byron 1 SWEL

Location (Bldg, Elev, Room/Area): Cont, 412.00 ft, ALL

Manufacturer/Model:

Instructions for Completing Checklist

This checklist may be used to document the results of the Seismic Walkdown of an item of equipment on the SWEL. The space below each of the following questions may be used to record the results of judgments and findings. Additional space is provided at the end of this checklist for documenting other comments.

Anchorage

1. Is anchorage configuration verification required (i.e., is the item one of the 50% of SWEL items requiring such verification)? No

2. Is the anchorage free of bent, broken, missing or loose hardware? Not Applicable

3. Is the anchorage free of corrosion that is more than mild surface oxidation? Not Applicable

4. Is the anchorage free of visible cracks in the concrete near the anchors? Not Applicable

5. Is the anchorage configuration consistent with plant documentation? (Note: This question only applies if the item is one of the 50% for which an anchorage configuration verification is required.) Not Applicable

6. Based on the above anchorage evaluations, is the anchorage free of potentially adverse seismic conditions? Yes
4 mounting bolts from instrument to rack. Rack anchorage to wall is acceptable.

Status: Y N U

Seismic Walkdown Checklist (SWC)

Equipment ID No.: 1LT-0518

Equipment Class: (18) Instruments on Racks

Equipment Description: S/G 1A LEVEL LOOP D/P XMTTR 2/FILLED LEG

Interaction Effects

7. Are soft targets free from impact by nearby equipment or structures? Yes
8. Are overhead equipment, distribution systems, ceiling tiles and lighting, and masonry block walls not likely to collapse onto the equipment? Yes
9. Do attached lines have adequate flexibility to avoid damage? Yes
10. Based on the above seismic interaction evaluations, is equipment free of potentially adverse seismic interaction effects? Yes

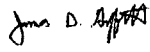
Other Adverse Conditions

11. Have you looked for and found no adverse seismic conditions that could adversely affect the safety functions of the equipment? Yes

Comments

Seismic Walkdown Team: P. Gazda & J. Griffith - 9/19/2012

Evaluated by:

 James Griffith

Date: 10/5/2012

 Philip Gazda

10/5/2012

Photos

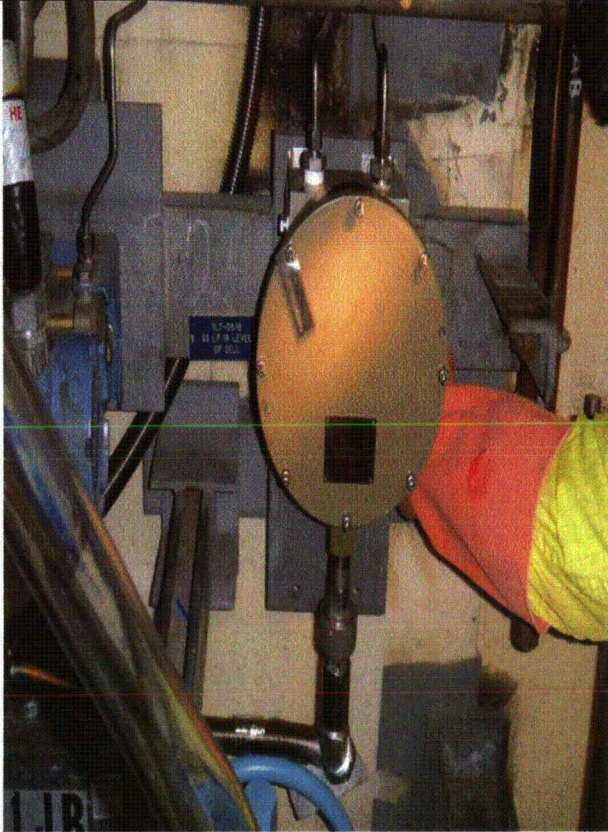
Status: Y N U

Seismic Walkdown Checklist (SWC)

Equipment ID No.: 1LT-0518

Equipment Class: (18) Instruments on Racks

Equipment Description: S/G 1A LEVEL LOOP D/P XMTTR 2/FILLED LEG



1LT-0518 BYRON 010

Status: Y N U

Seismic Walkdown Checklist (SWC)

Equipment ID No.: 1LT-0932

Equipment Class: (18) Instruments on Racks

Equipment Description: REF WTR STG TK LVL D/P XMTTR

Project: Byron 1 SWEL

Location (Bldg, Elev, Room/Area): Auxiliary, 379.00 ft, ALL

Manufacturer/Model:

Instructions for Completing Checklist

This checklist may be used to document the results of the Seismic Walkdown of an item of equipment on the SWEL. The space below each of the following questions may be used to record the results of judgments and findings. Additional space is provided at the end of this checklist for documenting other comments.

Anchorage

1. Is anchorage configuration verification required (i.e., is the item one of the 50% of SWEL items requiring such verification)? No

2. Is the anchorage free of bent, broken, missing or loose hardware? Not Applicable

3. Is the anchorage free of corrosion that is more than mild surface oxidation? Not Applicable

4. Is the anchorage free of visible cracks in the concrete near the anchors? Not Applicable

5. Is the anchorage configuration consistent with plant documentation? (Note: This question only applies if the item is one of the 50% for which an anchorage configuration verification is required.) Not Applicable

6. Based on the above anchorage evaluations, is the anchorage free of potentially adverse seismic conditions? Yes
Instrument is securely attached on rack that is well-anchored to concrete wall.

Status: Y N U

Seismic Walkdown Checklist (SWC)

Equipment ID No.: 1LT-0932

Equipment Class: (18) Instruments on Racks

Equipment Description: REF WTR STG TK LVL D/P XMTR

Interaction Effects

7. Are soft targets free from impact by nearby equipment or structures? Yes
8. Are overhead equipment, distribution systems, ceiling tiles and lighting, and masonry block walls not likely to collapse onto the equipment? Yes
9. Do attached lines have adequate flexibility to avoid damage? Yes
10. Based on the above seismic interaction evaluations, is equipment free of potentially adverse seismic interaction effects? Yes

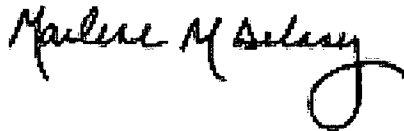
Other Adverse Conditions

11. Have you looked for and found no adverse seismic conditions that could adversely affect the safety functions of the equipment? Yes

Comments

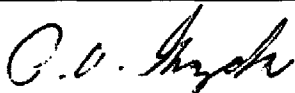
Seismic walkdown team M. Delaney & P. Gazda 8/8/12 pm

Evaluated by:



Marlene Delaney

Date: 10/5/2012



Philip Gazda

10/5/2012

Status: Y N U

Seismic Walkdown Checklist (SWC)

Equipment ID No.: 1LT-0932

Equipment Class: (18) Instruments on Racks

Equipment Description: REF WTR STG TK LVL D/P XMTRR

Photos



1LT-0932 Byron 1 & 2 8-8-12 049

Status: Y N U

Seismic Walkdown Checklist (SWC)

Equipment ID No.: 1MS001A

Equipment Class: (7) Fluid-Operated Valves

Equipment Description: MS ISOL VLV LOOP 1A ASMBLY; 30-1/4"

Project: Byron 1 SWEL

Location (Bldg, Elev, Room/Area): Auxiliary, 377.00 ft, ALL

Manufacturer/Model:

Instructions for Completing Checklist

This checklist may be used to document the results of the Seismic Walkdown of an item of equipment on the SWEL. The space below each of the following questions may be used to record the results of judgments and findings. Additional space is provided at the end of this checklist for documenting other comments.

Anchorage

1. Is anchorage configuration verification required (i.e., is the item one of the 50% of SWEL items requiring such verification)? No

2. Is the anchorage free of bent, broken, missing or loose hardware? Not Applicable

3. Is the anchorage free of corrosion that is more than mild surface oxidation? Not Applicable

4. Is the anchorage free of visible cracks in the concrete near the anchors? Not Applicable

5. Is the anchorage configuration consistent with plant documentation? (Note: This question only applies if the item is one of the 50% for which an anchorage configuration verification is required.) Not Applicable

6. Based on the above anchorage evaluations, is the anchorage free of potentially adverse seismic conditions? Yes

Status: Y N U

Seismic Walkdown Checklist (SWC)

Equipment ID No.: 1MS001A

Equipment Class: (7) Fluid-Operated Valves

Equipment Description: MS ISOL VLV LOOP 1A ASMBLY; 30-1/4"

Interaction Effects

7. Are soft targets free from impact by nearby equipment or structures? Yes
8. Are overhead equipment, distribution systems, ceiling tiles and lighting, and masonry block walls not likely to collapse onto the equipment? Yes
9. Do attached lines have adequate flexibility to avoid damage? Yes
10. Based on the above seismic interaction evaluations, is equipment free of potentially adverse seismic interaction effects? Yes

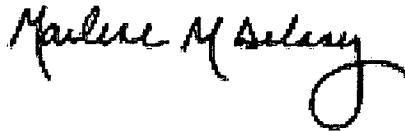
Other Adverse Conditions

11. Have you looked for and found no adverse seismic conditions that could adversely affect the safety functions of the equipment? Yes
Bolt missing at accumulator (top of valve). System Engineer contacted and missing bolts are acceptable since they only used for rigging. Not a structural/seismic issue.

Comments

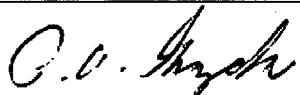
Seismic walkdown team M. Delaney & P. Gazda 8-7-12 am

Evaluated by:



Marlene Delaney

Date: 10/5/2012



Philip Gazda

10/5/2012

Status: Y N U

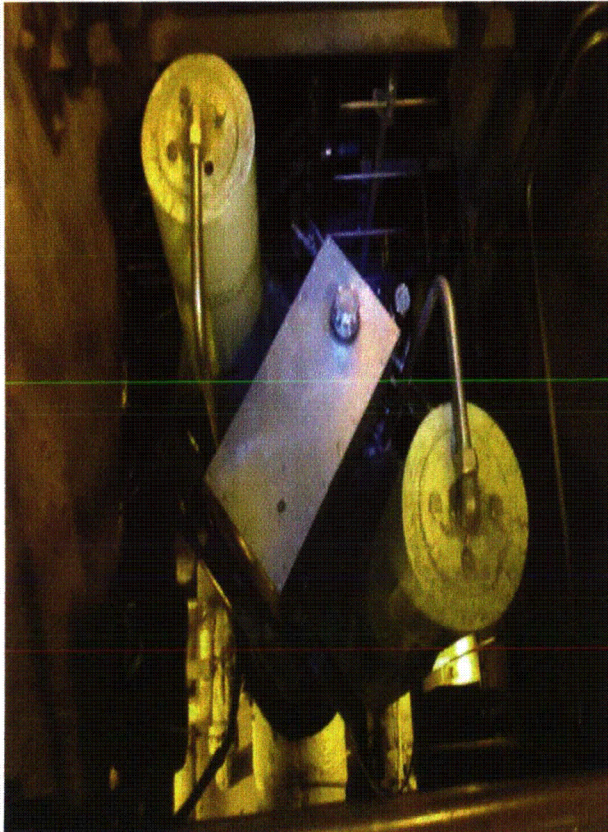
Seismic Walkdown Checklist (SWC)

Equipment ID No.: 1MS001A

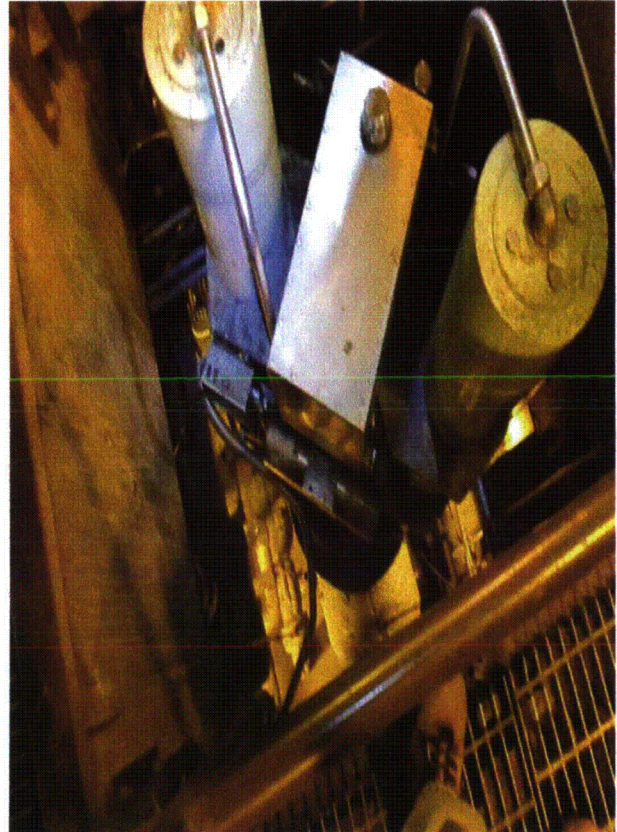
Equipment Class: (7) Fluid-Operated Valves

Equipment Description: MS ISOL VLV LOOP 1A ASMBLY; 30-1/4"

Photos



1MS001A Byron 1 & 2 159



1MS001A Byron 1 & 2 160

Status: Y N U

Seismic Walkdown Checklist (SWC)

Equipment ID No.: 1MS018A

Equipment Class: (8) Motor-Operated and Solenoid-Operated Valves

Equipment Description: S/G 1A PORV ASMBLY; 8"

Project: Byron 1 SWEL

Location (Bldg, Elev, Room/Area): Auxiliary, 401.00 ft, ALL

Manufacturer/Model:

Instructions for Completing Checklist

This checklist may be used to document the results of the Seismic Walkdown of an item of equipment on the SWEL. The space below each of the following questions may be used to record the results of judgments and findings. Additional space is provided at the end of this checklist for documenting other comments.

Anchorage

1. Is anchorage configuration verification required (i.e., is the item one of the 50% of SWEL items requiring such verification)? No

2. Is the anchorage free of bent, broken, missing or loose hardware? Not Applicable

3. Is the anchorage free of corrosion that is more than mild surface oxidation? Not Applicable

4. Is the anchorage free of visible cracks in the concrete near the anchors? Not Applicable

5. Is the anchorage configuration consistent with plant documentation? (Note: This question only applies if the item is one of the 50% for which an anchorage configuration verification is required.) Not Applicable

6. Based on the above anchorage evaluations, is the anchorage free of potentially adverse seismic conditions? Yes

Status: Y N U

Seismic Walkdown Checklist (SWC)

Equipment ID No.: 1MS018A

Equipment Class: (8) Motor-Operated and Solenoid-Operated Valves

Equipment Description: S/G 1A PORV ASMBLY; 8"

Interaction Effects

- | | |
|---|-----|
| 7. Are soft targets free from impact by nearby equipment or structures? | Yes |
| 8. Are overhead equipment, distribution systems, ceiling tiles and lighting, and masonry block walls not likely to collapse onto the equipment? | Yes |
| 9. Do attached lines have adequate flexibility to avoid damage? | Yes |
| 10. Based on the above seismic interaction evaluations, is equipment free of potentially adverse seismic interaction effects? | Yes |

Other Adverse Conditions

- | | |
|---|-----|
| 11. Have you looked for and found no adverse seismic conditions that could adversely affect the safety functions of the equipment?
<i>There is degradation at the joint at the containment. The joints in question are made up of some sort of compressible/flexible material. Since the containment structure is a standalone structure and is analyzed and designed that way there is a gap between it and an adjacent structure (like the MSIV rooms). The gap is sized to allow seismic movements of each structure and is filled with the flexible material. The material is only there to close the opening and has no structural or seismic significance.</i> | Yes |
|---|-----|

Comments

Seismic walkdown team M. Delaney & P. Gazda 8/7/12 am

Status: Y N U

Seismic Walkdown Checklist (SWC)

Equipment ID No.: 1MS018A

Equipment Class: (8) Motor-Operated and Solenoid-Operated Valves

Equipment Description: S/G 1A PORV ASMBLY; 8"

Marlene M Delaney

Evaluated by:

Marlene Delaney

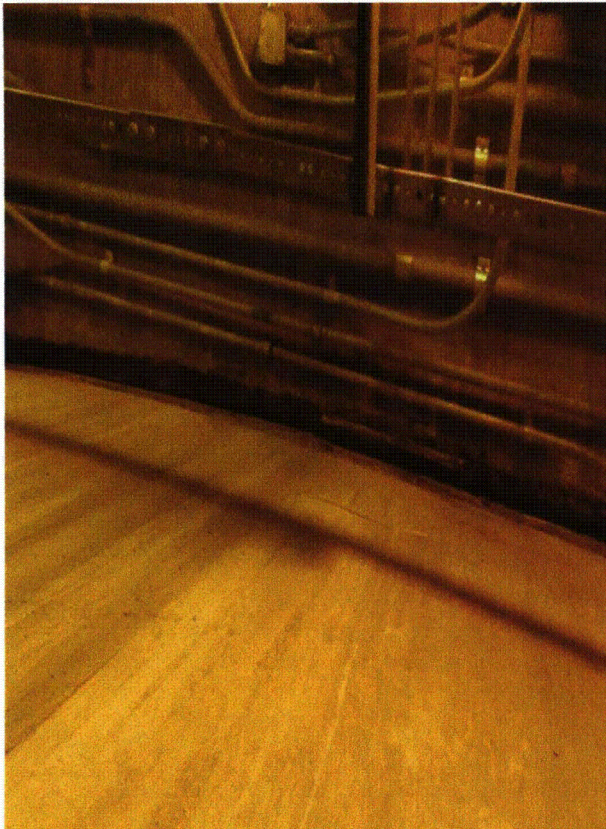
Date: 10/5/2012

P. V. Gazda

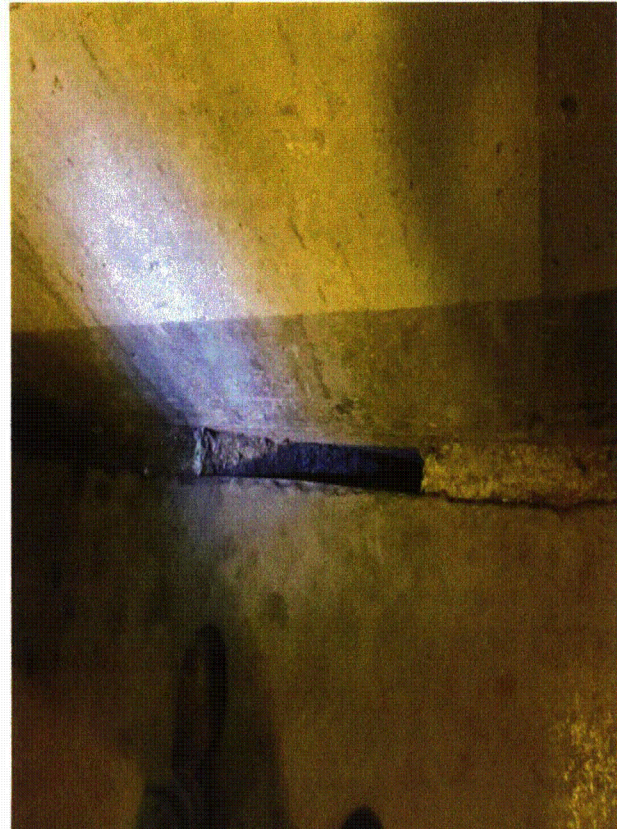
Philip Gazda

10/5/2012

Photos



1MS018A (DEGRADED ISO JOINT) Byron 1 & 2 156



1MS018A (DEGRADED ISO JOINT) Byron 1 & 2 157

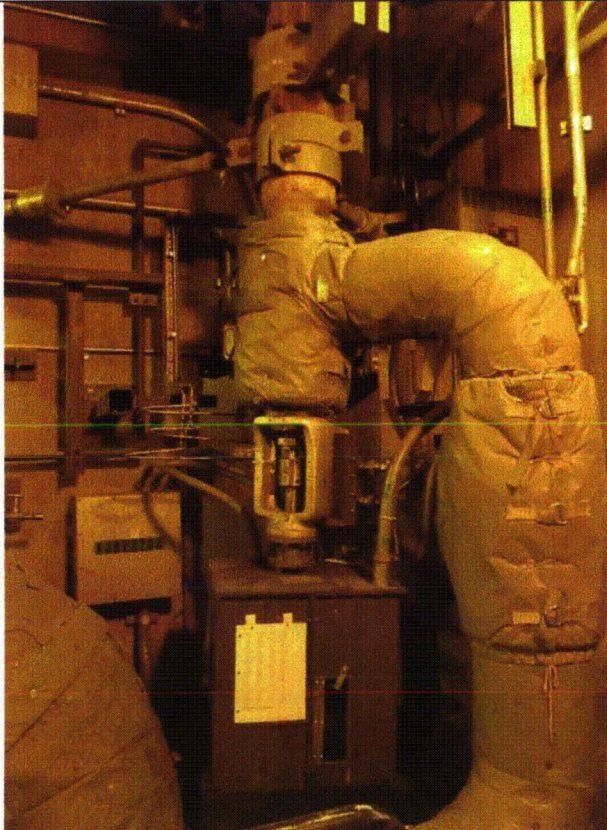
Status: Y N U

Seismic Walkdown Checklist (SWC)

Equipment ID No.: 1MS018A

Equipment Class: (8) Motor-Operated and Solenoid-Operated Valves

Equipment Description: S/G 1A PORV ASMBLY; 8"



1MS018A Byron 1 & 2 155

Status: Y N U

Seismic Walkdown Checklist (SWC)

Equipment ID No.: 1MS018B

Equipment Class: (8) Motor-Operated and Solenoid-Operated Valves

Equipment Description: S/G 1B PORV ASMBLY; 8"

Project: Byron 1 SWEL

Location (Bldg, Elev, Room/Area): Auxiliary, 401.00 ft, ALL

Manufacturer/Model:

Instructions for Completing Checklist

This checklist may be used to document the results of the Seismic Walkdown of an item of equipment on the SWEL. The space below each of the following questions may be used to record the results of judgments and findings. Additional space is provided at the end of this checklist for documenting other comments.

Anchorage

1. Is anchorage configuration verification required (i.e., is the item one of the 50% of SWEL items requiring such verification)? No

2. Is the anchorage free of bent, broken, missing or loose hardware? Not Applicable

3. Is the anchorage free of corrosion that is more than mild surface oxidation? Not Applicable

4. Is the anchorage free of visible cracks in the concrete near the anchors? Not Applicable

5. Is the anchorage configuration consistent with plant documentation? (Note: This question only applies if the item is one of the 50% for which an anchorage configuration verification is required.) Not Applicable

6. Based on the above anchorage evaluations, is the anchorage free of potentially adverse seismic conditions? Yes

Status: Y N U

Seismic Walkdown Checklist (SWC)

Equipment ID No.: 1MS018B

Equipment Class: (8) Motor-Operated and Solenoid-Operated Valves

Equipment Description: S/G 1B PORV ASMBLY; 8"

Interaction Effects

7. Are soft targets free from impact by nearby equipment or structures? Yes
8. Are overhead equipment, distribution systems, ceiling tiles and lighting, and masonry block walls not likely to collapse onto the equipment? Yes
9. Do attached lines have adequate flexibility to avoid damage? Yes
10. Based on the above seismic interaction evaluations, is equipment free of potentially adverse seismic interaction effects? Yes

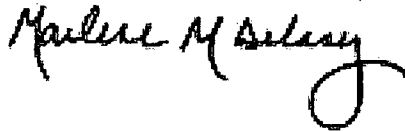
Other Adverse Conditions

11. Have you looked for and found no adverse seismic conditions that could adversely affect the safety functions of the equipment? Yes

Comments

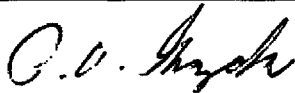
Seismic walkdown team M. Delaney & P. Gazda 8/7/12 am

Evaluated by:



Marlene Delaney

Date: 10/5/2012



Philip Gazda

10/5/2012

Status: Y N U

Seismic Walkdown Checklist (SWC)

Equipment ID No.: 1MS018B

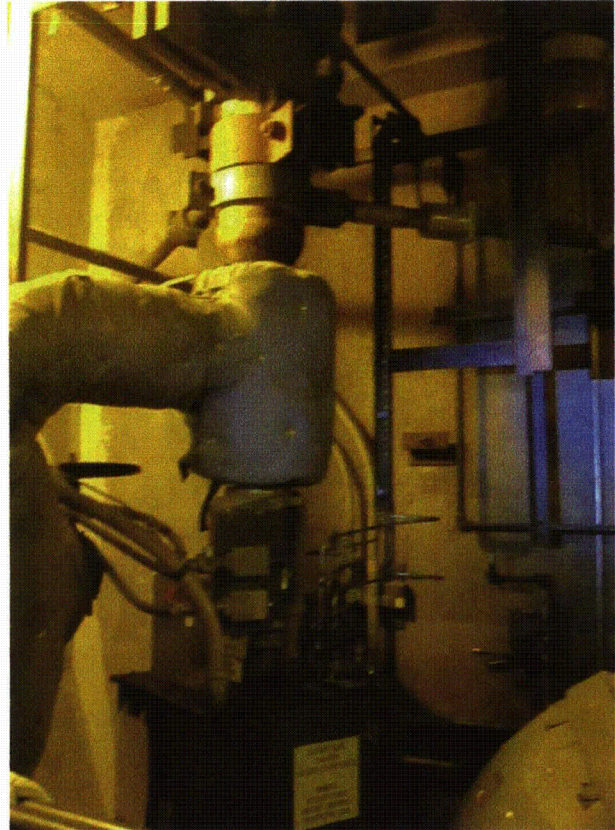
Equipment Class: (8) Motor-Operated and Solenoid-Operated Valves

Equipment Description: S/G 1B PORV ASMBLY; 8"

Photos



1MS018B Byron 1 & 2 152



1MS018B Byron 1 & 2 153

Status: Y N U

Seismic Walkdown Checklist (SWC)

Equipment ID No.: 1PA01J

Equipment Class: (20) Instrumentation and Control Panels and Cabinets

Equipment Description: U-1 PROC I&C RACK PROTECT CH 1 CAB 1

Project: Byron 1 SWEL

Location (Bldg, Elev, Room/Area): Auxiliary, 451.00 ft, ALL

Manufacturer/Model:

Instructions for Completing Checklist

This checklist may be used to document the results of the Seismic Walkdown of an item of equipment on the SWEL. The space below each of the following questions may be used to record the results of judgments and findings. Additional space is provided at the end of this checklist for documenting other comments.

Anchorage

1. Is anchorage configuration verification required (i.e., is the item one of the 50% of SWEL items requiring such verification)? No

2. Is the anchorage free of bent, broken, missing or loose hardware? Yes

3. Is the anchorage free of corrosion that is more than mild surface oxidation? Yes

4. Is the anchorage free of visible cracks in the concrete near the anchors? Yes

5. Is the anchorage configuration consistent with plant documentation? (Note: This question only applies if the item is one of the 50% for which an anchorage configuration verification is required.) Not Applicable

6. Based on the above anchorage evaluations, is the anchorage free of potentially adverse seismic conditions? Yes
See discussion in Section 5 of report to address cove molding at anchorage detail. Anchorage is judged to be acceptable.

Status: Y N U

Seismic Walkdown Checklist (SWC)

Equipment ID No.: 1PA01J

Equipment Class: (20) Instrumentation and Control Panels and Cabinets

Equipment Description: U-1 PROC I&C RACK PROTECT CH 1 CAB 1

Interaction Effects

7. Are soft targets free from impact by nearby equipment or structures? Yes
Cabinets are bolted together to eliminate spatial interaction issues during a seismic event.
8. Are overhead equipment, distribution systems, ceiling tiles and lighting, and masonry block walls not likely to collapse onto the equipment? Yes
Numerous partially open S-hooks identified. It is unlikely that the lights would become disengaged since the hooks are only partially open and not all hooks are open - judged acceptable. IR 1397693 written to inspect and fully close S-hooks.
9. Do attached lines have adequate flexibility to avoid damage? Yes
10. Based on the above seismic interaction evaluations, is equipment free of potentially adverse seismic interaction effects? Yes

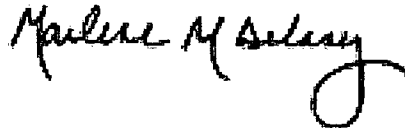
Other Adverse Conditions

11. Have you looked for and found no adverse seismic conditions that could adversely affect the safety functions of the equipment? Yes

Comments

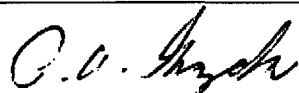
Seismic walkdown team M. Delaney & P. Gazda 8/6/12 pm

Evaluated by:



Marlene Delaney

Date: 10/5/2012



Philip Gazda

10/5/2012

Status: Y N U

Seismic Walkdown Checklist (SWC)

Equipment ID No.: 1PA01J

Equipment Class: (20) Instrumentation and Control Panels and Cabinets

Equipment Description: U-1 PROC I&C RACK PROTECT CH 1 CAB 1

Photos



1PA01J Byron 1 & 2 089



1PA01J Byron 1 & 2 090

Status: Y N U

Seismic Walkdown Checklist (SWC)

Equipment ID No.: 1PA02J

Equipment Class: (20) Instrumentation and Control Panels and Cabinets

Equipment Description: U-1 PROC I&C RACK PROTECT CH 2 CAB 2

Project: Byron 1 SWEL

Location (Bldg, Elev, Room/Area): Auxiliary, 451.00 ft, ALL

Manufacturer/Model:

Instructions for Completing Checklist

This checklist may be used to document the results of the Seismic Walkdown of an item of equipment on the SWEL. The space below each of the following questions may be used to record the results of judgments and findings. Additional space is provided at the end of this checklist for documenting other comments.

Anchorage

1. Is anchorage configuration verification required (i.e., is the item one of the 50% of SWEL items requiring such verification)? No

2. Is the anchorage free of bent, broken, missing or loose hardware? Yes

3. Is the anchorage free of corrosion that is more than mild surface oxidation? Yes

4. Is the anchorage free of visible cracks in the concrete near the anchors? Yes

5. Is the anchorage configuration consistent with plant documentation? (Note: This question only applies if the item is one of the 50% for which an anchorage configuration verification is required.) Not Applicable

6. Based on the above anchorage evaluations, is the anchorage free of potentially adverse seismic conditions? Yes
See discussion in Section 5 of report to address cove molding at anchorage detail. Anchorage is judged to be acceptable.

Status: Y N U

Seismic Walkdown Checklist (SWC)

Equipment ID No.: 1PA02J

Equipment Class: (20) Instrumentation and Control Panels and Cabinets

Equipment Description: U-1 PROC I&C RACK PROTECT CH 2 CAB 2

Interaction Effects

7. Are soft targets free from impact by nearby equipment or structures? Yes

Cabinets are bolted together to eliminate spatial interaction issues during a seismic event.

8. Are overhead equipment, distribution systems, ceiling tiles and lighting, and masonry block walls not likely to collapse onto the equipment? Yes

Numerous partially open S-hooks identified. It is unlikely that the lights would become disengaged since the hooks are only partially open and not all hooks are open - judged acceptable. IR 1397693 written to inspect and fully close S-hooks.

9. Do attached lines have adequate flexibility to avoid damage? Yes

10. Based on the above seismic interaction evaluations, is equipment free of potentially adverse seismic interaction effects? Yes

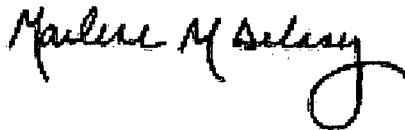
Other Adverse Conditions

11. Have you looked for and found no adverse seismic conditions that could adversely affect the safety functions of the equipment? Yes

Comments

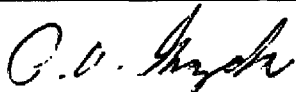
Seismic walkdown team M. Delaney & P. Gazda 8/6/12 pm

Evaluated by:



Marlene Delaney

Date: 10/5/2012



Philip Gazda

10/5/2012

Status: Y N U

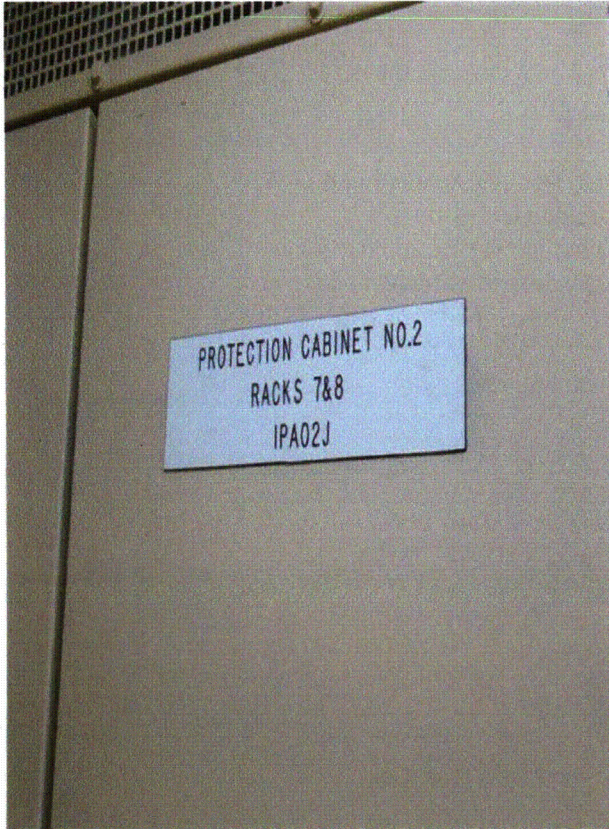
Seismic Walkdown Checklist (SWC)

Equipment ID No.: 1PA02J

Equipment Class: (20) Instrumentation and Control Panels and Cabinets

Equipment Description: U-1 PROC I&C RACK PROTECT CH 2 CAB 2

Photos



1PA02J Byron 1 & 2 091



1PA02J Byron 1 & 2 092

Status: Y N U

Seismic Walkdown Checklist (SWC)

Equipment ID No.: 1PA03J

Equipment Class: (20) Instrumentation and Control Panels and Cabinets

Equipment Description: U-1 PROC I&C RACK PROTECT CH 3 CAB 3

Project: Byron 1 SWEL

Location (Bldg, Elev, Room/Area): Auxiliary, 451.00 ft, ALL

Manufacturer/Model:

Instructions for Completing Checklist

This checklist may be used to document the results of the Seismic Walkdown of an item of equipment on the SWEL. The space below each of the following questions may be used to record the results of judgments and findings. Additional space is provided at the end of this checklist for documenting other comments.

Anchorage

1. Is anchorage configuration verification required (i.e., is the item one of the 50% of SWEL items requiring such verification)? No

2. Is the anchorage free of bent, broken, missing or loose hardware? Yes

3. Is the anchorage free of corrosion that is more than mild surface oxidation? Yes

4. Is the anchorage free of visible cracks in the concrete near the anchors? Yes

5. Is the anchorage configuration consistent with plant documentation? (Note: This question only applies if the item is one of the 50% for which an anchorage configuration verification is required.) Not Applicable

6. Based on the above anchorage evaluations, is the anchorage free of potentially adverse seismic conditions? Yes
See discussion in Section 5 of report to address cove molding at anchorage detail. Anchorage is judged to be acceptable.

Status: Y N U

Seismic Walkdown Checklist (SWC)

Equipment ID No.: 1PA03J

Equipment Class: (20) Instrumentation and Control Panels and Cabinets

Equipment Description: U-1 PROC I&C RACK PROTECT CH 3 CAB 3

Interaction Effects

7. Are soft targets free from impact by nearby equipment or structures? Yes
Cabinets are bolted together to eliminate spatial interaction issues during a seismic event.
8. Are overhead equipment, distribution systems, ceiling tiles and lighting, and masonry block walls not likely to collapse onto the equipment? Yes
Numerous partially open S-hooks identified. It is unlikely that the lights would become disengaged since the hooks are only partially open and not all hooks are open - judged acceptable. IR 1397693 written to inspect and fully close S-hooks.
9. Do attached lines have adequate flexibility to avoid damage? Yes
10. Based on the above seismic interaction evaluations, is equipment free of potentially adverse seismic interaction effects? Yes

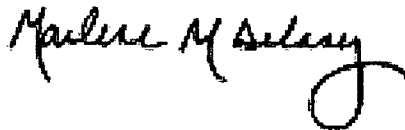
Other Adverse Conditions

11. Have you looked for and found no adverse seismic conditions that could adversely affect the safety functions of the equipment? Yes

Comments

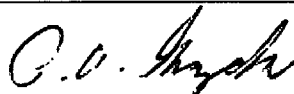
Seismic walkdown team M. Delaney & P. Gazda 8/6/12 pm

Evaluated by:



Marlene Delaney

Date: 10/5/2012



Philip Gazda

10/5/2012

Status: Y N U

Seismic Walkdown Checklist (SWC)

Equipment ID No.: 1PA03J

Equipment Class: (20) Instrumentation and Control Panels and Cabinets

Equipment Description: U-1 PROC I&C RACK PROTECT CH 3 CAB 3

Photos



1PA03J Byron 1 & 2 093



1PA03J Byron 1 & 2 094

Status: Y N U

Seismic Walkdown Checklist (SWC)

Equipment ID No.: 1PA04J

Equipment Class: (20) Instrumentation and Control Panels and Cabinets

Equipment Description: U-1 PROC I&C RACK PROTECT CH 4 CAB 4

Project: Byron 1 SWEL

Location (Bldg, Elev, Room/Area): Auxiliary, 451.00 ft, ALL

Manufacturer/Model:

Instructions for Completing Checklist

This checklist may be used to document the results of the Seismic Walkdown of an item of equipment on the SWEL. The space below each of the following questions may be used to record the results of judgments and findings. Additional space is provided at the end of this checklist for documenting other comments.

Anchorage

1. Is anchorage configuration verification required (i.e., is the item one of the 50% of SWEL items requiring such verification)? No

2. Is the anchorage free of bent, broken, missing or loose hardware? Yes

3. Is the anchorage free of corrosion that is more than mild surface oxidation? Yes

4. Is the anchorage free of visible cracks in the concrete near the anchors? Yes

5. Is the anchorage configuration consistent with plant documentation? (Note: This question only applies if the item is one of the 50% for which an anchorage configuration verification is required.) Not Applicable

6. Based on the above anchorage evaluations, is the anchorage free of potentially adverse seismic conditions? Yes
See discussion in Section 5 of report to address cove molding at anchorage detail. Anchorage is judged to be acceptable.

Status: Y N U

Seismic Walkdown Checklist (SWC)

Equipment ID No.: 1PA04J

Equipment Class: (20) Instrumentation and Control Panels and Cabinets

Equipment Description: U-1 PROC I&C RACK PROTECT CH 4 CAB 4

Interaction Effects

7. Are soft targets free from impact by nearby equipment or structures? Yes
Cabinets are bolted together to eliminate spatial interaction issues during a seismic event.
8. Are overhead equipment, distribution systems, ceiling tiles and lighting, and masonry block walls not likely to collapse onto the equipment? Yes
Numerous partially open S-hooks identified. It is unlikely that the lights would become disengaged since the hooks are only partially open and not all hooks are open - judged acceptable. IR 1397693 written to inspect and fully close S-hooks.
9. Do attached lines have adequate flexibility to avoid damage? Yes
10. Based on the above seismic interaction evaluations, is equipment free of potentially adverse seismic interaction effects? Yes

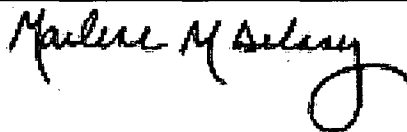
Other Adverse Conditions

11. Have you looked for and found no adverse seismic conditions that could adversely affect the safety functions of the equipment? Yes

Comments

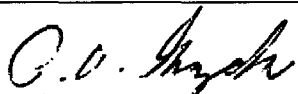
Seismic walkdown team M. Delaney & P. Gazda 8/6/12 pm

Evaluated by:



Marlene Delaney

Date: 10/5/2012



Philip Gazda

10/5/2012

Status: Y N U

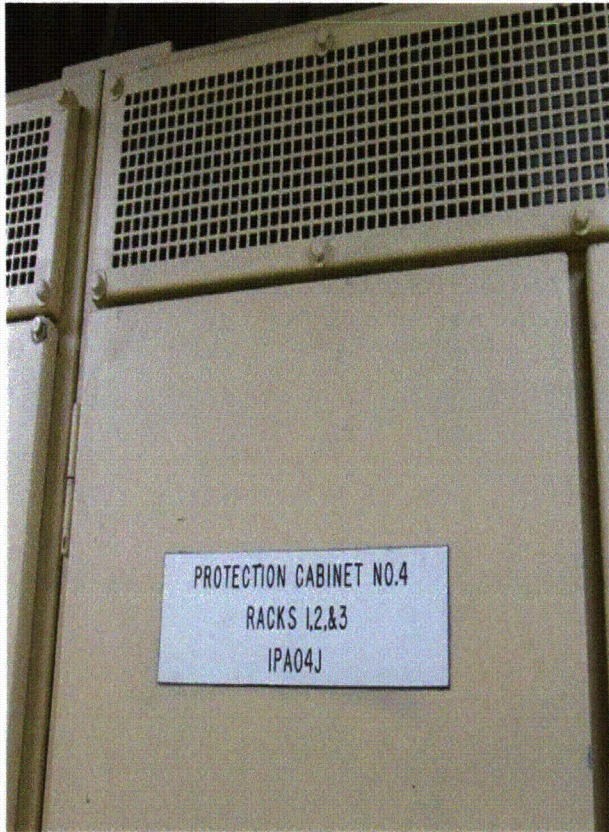
Seismic Walkdown Checklist (SWC)

Equipment ID No.: 1PA04J

Equipment Class: (20) Instrumentation and Control Panels and Cabinets

Equipment Description: U-1 PROC I&C RACK PROTECT CH 4 CAB 4

Photos



1PA04J Byron 1 & 2 095



1PA04J Byron 1 & 2 096

Status: Y N U

Seismic Walkdown Checklist (SWC)

Equipment ID No.: 1PA06J

Equipment Class: (20) Instrumentation and Control Panels and Cabinets

Equipment Description: U-1 PROC I&C RACK CONT GRP 2 CAB 6

Project: Byron 1 SWEL

Location (Bldg, Elev, Room/Area): Auxiliary, 451.00 ft, ALL

Manufacturer/Model:

Instructions for Completing Checklist

This checklist may be used to document the results of the Seismic Walkdown of an item of equipment on the SWEL. The space below each of the following questions may be used to record the results of judgments and findings. Additional space is provided at the end of this checklist for documenting other comments.

Anchorage

1. Is anchorage configuration verification required (i.e., is the item one of the 50% of SWEL items requiring such verification)? No

2. Is the anchorage free of bent, broken, missing or loose hardware? Yes

3. Is the anchorage free of corrosion that is more than mild surface oxidation? Yes

4. Is the anchorage free of visible cracks in the concrete near the anchors? Yes

5. Is the anchorage configuration consistent with plant documentation? (Note: This question only applies if the item is one of the 50% for which an anchorage configuration verification is required.) Not Applicable

6. Based on the above anchorage evaluations, is the anchorage free of potentially adverse seismic conditions? Yes
See discussion in Section 5 of report to address cove molding at anchorage detail. Anchorage is judged to be acceptable.

Status: Y N U

Seismic Walkdown Checklist (SWC)

Equipment ID No.: 1PA06J

Equipment Class: (20) Instrumentation and Control Panels and Cabinets

Equipment Description: U-1 PROC I&C RACK CONT GRP 2 CAB 6

Interaction Effects

7. Are soft targets free from impact by nearby equipment or structures? Yes
*Cabinets are bolted together to eliminate spatial interaction issues during a seismic event.
Cabinet is 1 3/4" away from Column P12. Adequate clearance for string of cabinets bolted together and is judged acceptable.*
8. Are overhead equipment, distribution systems, ceiling tiles and lighting, and masonry block walls not likely to collapse onto the equipment? Yes
Numerous partially open S-hooks identified. It is unlikely that the lights would become disengaged since the hooks are only partially open and not all hooks are open - judged acceptable. IR 1397693 written to inspect and fully close S-hooks.
9. Do attached lines have adequate flexibility to avoid damage? Yes
10. Based on the above seismic interaction evaluations, is equipment free of potentially adverse seismic interaction effects? Yes

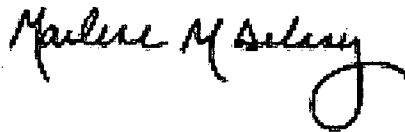
Other Adverse Conditions

11. Have you looked for and found no adverse seismic conditions that could adversely affect the safety functions of the equipment? Yes

Comments

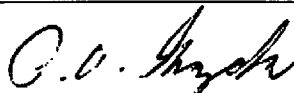
Seismic walkdown team M. Delaney & P. Gazda 8/6/12 pm

Evaluated by:



Marlene Delaney

Date: 10/5/2012



Philip Gazda

10/5/2012

Status: Y N U

Seismic Walkdown Checklist (SWC)

Equipment ID No.: 1PA06J

Equipment Class: (20) Instrumentation and Control Panels and Cabinets

Equipment Description: U-1 PROC I&C RACK CONT GRP 2 CAB 6

Photos



1PA06J Byron 1 & 2 097



1PA06J Byron 1 & 2 098

Status: Y N U

Seismic Walkdown Checklist (SWC)

Equipment ID No.: 1PA07J

Equipment Class: (20) Instrumentation and Control Panels and Cabinets

Equipment Description: PROC I&C RACK CONT GRP 3 CAB 7

Project: Byron 1 SWEL

Location (Bldg, Elev, Room/Area): Auxiliary, 451.00 ft, ALL

Manufacturer/Model:

Instructions for Completing Checklist

This checklist may be used to document the results of the Seismic Walkdown of an item of equipment on the SWEL. The space below each of the following questions may be used to record the results of judgments and findings. Additional space is provided at the end of this checklist for documenting other comments.

Anchorage

1. Is anchorage configuration verification required (i.e., is the item one of the 50% of SWEL items requiring such verification)? No

2. Is the anchorage free of bent, broken, missing or loose hardware? Yes

3. Is the anchorage free of corrosion that is more than mild surface oxidation? Yes

4. Is the anchorage free of visible cracks in the concrete near the anchors? Yes

5. Is the anchorage configuration consistent with plant documentation? (Note: This question only applies if the item is one of the 50% for which an anchorage configuration verification is required.) Not Applicable

6. Based on the above anchorage evaluations, is the anchorage free of potentially adverse seismic conditions? Yes
See discussion in Section 5 of report to address cove molding at anchorage detail. Anchorage is judged to be acceptable.

Status: Y N U

Seismic Walkdown Checklist (SWC)

Equipment ID No.: 1PA07J

Equipment Class: (20) Instrumentation and Control Panels and Cabinets

Equipment Description: PROC I&C RACK CONT GRP 3 CAB 7

Interaction Effects

7. Are soft targets free from impact by nearby equipment or structures? Yes

Cabinets are bolted together to eliminate spatial interaction issues during a seismic event.

8. Are overhead equipment, distribution systems, ceiling tiles and lighting, and masonry block walls not likely to collapse onto the equipment? Yes

Numerous partially open S-hooks identified. It is unlikely that the lights would become disengaged since the hooks are only partially open and not all hooks are open - judged acceptable. IR 1397693 written to inspect and fully close S-hooks.

9. Do attached lines have adequate flexibility to avoid damage? Yes

10. Based on the above seismic interaction evaluations, is equipment free of potentially adverse seismic interaction effects? Yes

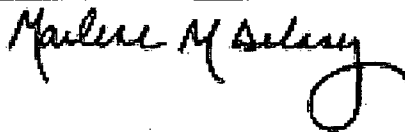
Other Adverse Conditions

11. Have you looked for and found no adverse seismic conditions that could adversely affect the safety functions of the equipment? Yes

Comments

Seismic walkdown team M. Delaney & P. Gazda 8/6/12 pm

Evaluated by:



Marlene Delaney

Date: 10/5/2012



Philip Gazda

10/5/2012

Status: Y N U

Seismic Walkdown Checklist (SWC)

Equipment ID No.: 1PA07J

Equipment Class: (20) Instrumentation and Control Panels and Cabinets

Equipment Description: PROC I&C RACK CONT GRP 3 CAB 7

Photos



1PA07J Byron 1 & 2 099



1PA07J Byron 1 & 2 100

Status: Y N U

Seismic Walkdown Checklist (SWC)

Equipment ID No.: 1PA08J

Equipment Class: (20) Instrumentation and Control Panels and Cabinets

Equipment Description: U-1 PROC I&C RACK

Project: Byron 1 SWEL

Location (Bldg, Elev, Room/Area): Auxiliary, 451.00 ft, ALL

Manufacturer/Model:

Instructions for Completing Checklist

This checklist may be used to document the results of the Seismic Walkdown of an item of equipment on the SWEL. The space below each of the following questions may be used to record the results of judgments and findings. Additional space is provided at the end of this checklist for documenting other comments.

Anchorage

1. Is anchorage configuration verification required (i.e., is the item one of the 50% of SWEL items requiring such verification)? No

2. Is the anchorage free of bent, broken, missing or loose hardware? Yes

3. Is the anchorage free of corrosion that is more than mild surface oxidation? Yes

4. Is the anchorage free of visible cracks in the concrete near the anchors? Yes

5. Is the anchorage configuration consistent with plant documentation? (Note: This question only applies if the item is one of the 50% for which an anchorage configuration verification is required.) Not Applicable

6. Based on the above anchorage evaluations, is the anchorage free of potentially adverse seismic conditions? Yes
See discussion in Section 5 of report to address cove molding at anchorage detail. Anchorage is judged to be acceptable.

Status: Y N U

Seismic Walkdown Checklist (SWC)

Equipment ID No.: 1PA08J

Equipment Class: (20) Instrumentation and Control Panels and Cabinets

Equipment Description: U-1 PROC I&C RACK

Interaction Effects

7. Are soft targets free from impact by nearby equipment or structures? Yes

Cabinets are bolted together to eliminate spatial interaction issues during a seismic event.

8. Are overhead equipment, distribution systems, ceiling tiles and lighting, and masonry block walls not likely to collapse onto the equipment? Yes

Numerous partially open S-hooks identified. It is unlikely that the lights would become disengaged since the hooks are only partially open and not all hooks are open - judged acceptable. IR 1397693 written to inspect and fully close S-hooks.

9. Do attached lines have adequate flexibility to avoid damage? Yes

10. Based on the above seismic interaction evaluations, is equipment free of potentially adverse seismic interaction effects? Yes

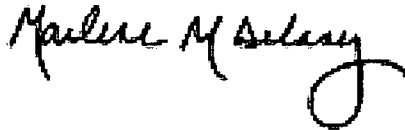
Other Adverse Conditions

11. Have you looked for and found no adverse seismic conditions that could adversely affect the safety functions of the equipment? Yes

Comments

Seismic walkdown team M. Delaney & P. Gazda 8/6/12 pm

Evaluated by:



Marlene Delaney

Date: 10/5/2012



Philip Gazda

10/5/2012

Status: Y N U

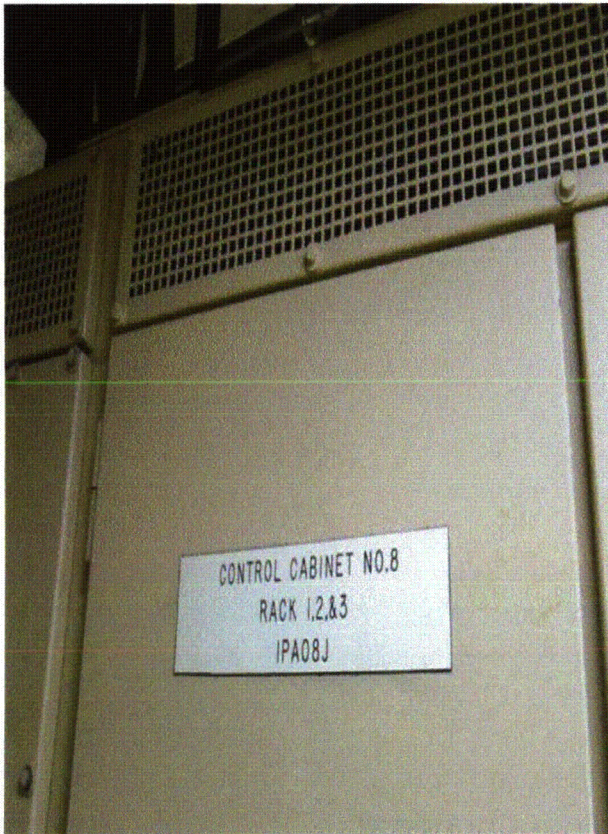
Seismic Walkdown Checklist (SWC)

Equipment ID No.: 1PA08J

Equipment Class: (20) Instrumentation and Control Panels and Cabinets

Equipment Description: U-1 PROC I&C RACK

Photos



1PA08J Byron 1 & 2 101



1PA08J Byron 1 & 2 102

Status: Y N U

Seismic Walkdown Checklist (SWC)

Equipment ID No.: 1PA09J

Equipment Class: (20) Instrumentation and Control Panels and Cabinets

Equipment Description: CAB PROT SYST SOL ST RX/ESF TRN A 0-3371B AB1

Project: Byron 1 SWEL

Location (Bldg, Elev, Room/Area): Auxiliary, 451.00 ft, ALL

Manufacturer/Model:

Instructions for Completing Checklist

This checklist may be used to document the results of the Seismic Walkdown of an item of equipment on the SWEL. The space below each of the following questions may be used to record the results of judgments and findings. Additional space is provided at the end of this checklist for documenting other comments.

Anchorage

1. Is anchorage configuration verification required (i.e., is the item one of the 50% of SWEL items requiring such verification)? No

2. Is the anchorage free of bent, broken, missing or loose hardware? Yes

3. Is the anchorage free of corrosion that is more than mild surface oxidation? Yes

4. Is the anchorage free of visible cracks in the concrete near the anchors? Yes

5. Is the anchorage configuration consistent with plant documentation? (Note: This question only applies if the item is one of the 50% for which an anchorage configuration verification is required.) Not Applicable

6. Based on the above anchorage evaluations, is the anchorage free of potentially adverse seismic conditions? Yes
See discussion in Section 5 of report to address cove molding at anchorage detail. Anchorage is judged to be acceptable.

Status: Y N U

Seismic Walkdown Checklist (SWC)

Equipment ID No.: 1PA09J

Equipment Class: (20) Instrumentation and Control Panels and Cabinets

Equipment Description: CAB PROT SYST SOL ST RX/ESF TRN A 0-3371B AB1

Interaction Effects

7. Are soft targets free from impact by nearby equipment or structures? Yes
- 1PA09J is bolted in the interior to Panel 1PA33J to eliminate seismic interaction during a seismic event.*
At Panel 1PA11J, the panels are bolted together in the back by an exterior arrangement of 4 bolts. At the front, the panels are bolted together with an interior bolt. There is a gap between the cabinets approximately equal to 1/8". IR 1397709 was written. The panels are laterally and torsionally stiff (cabinets bolted together in the line) so movement would be minimal and would not adversely impact the function of the cabinet. Judged acceptable
8. Are overhead equipment, distribution systems, ceiling tiles and lighting, and masonry block walls not likely to collapse onto the equipment? Yes
- Numerous partially open S-hooks identified. It is unlikely that the lights would become disengaged since the hooks are only partially open and not all hooks are open - judged acceptable. IR 1397693 written to inspect and fully close S-hooks.*
9. Do attached lines have adequate flexibility to avoid damage? Yes
10. Based on the above seismic interaction evaluations, is equipment free of potentially adverse seismic interaction effects? Yes

Other Adverse Conditions

11. Have you looked for and found no adverse seismic conditions that could adversely affect the safety functions of the equipment? Yes

Comments

Seismic walkdown team M. Delaney & P. Gazda 8/6/12 pm

Status: Y N U

Seismic Walkdown Checklist (SWC)

Equipment ID No.: 1PA09J

Equipment Class: (20) Instrumentation and Control Panels and Cabinets

Equipment Description: CAB PROT SYST SOL ST RX/ESF TRN A 0-3371B AB1

Marlene M Delaney

Evaluated by:

Marlene Delaney

Date: 10/5/2012

P. V. Gazda

Philip Gazda

10/5/2012

Photos



1PA09J Byron 1 & 2 103



1PA09J Byron 1 & 2 104

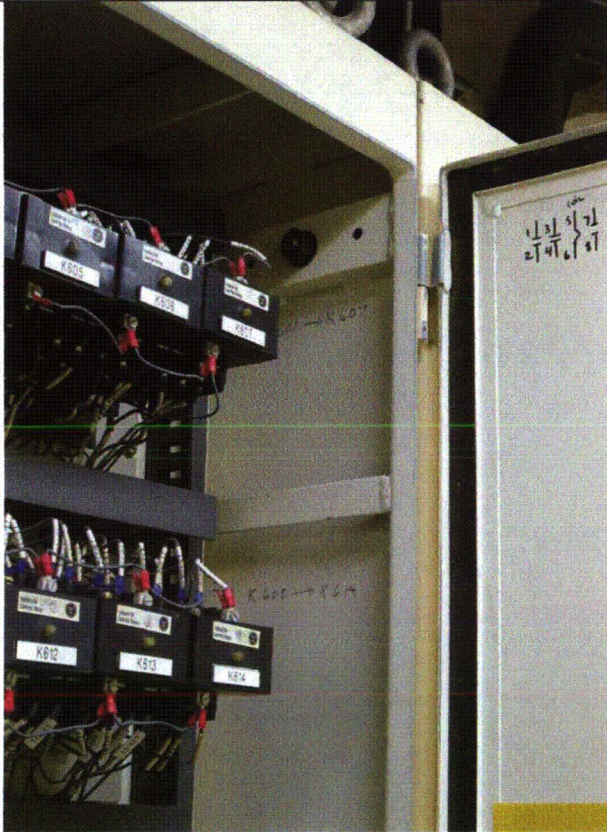
Status: Y N U

Seismic Walkdown Checklist (SWC)

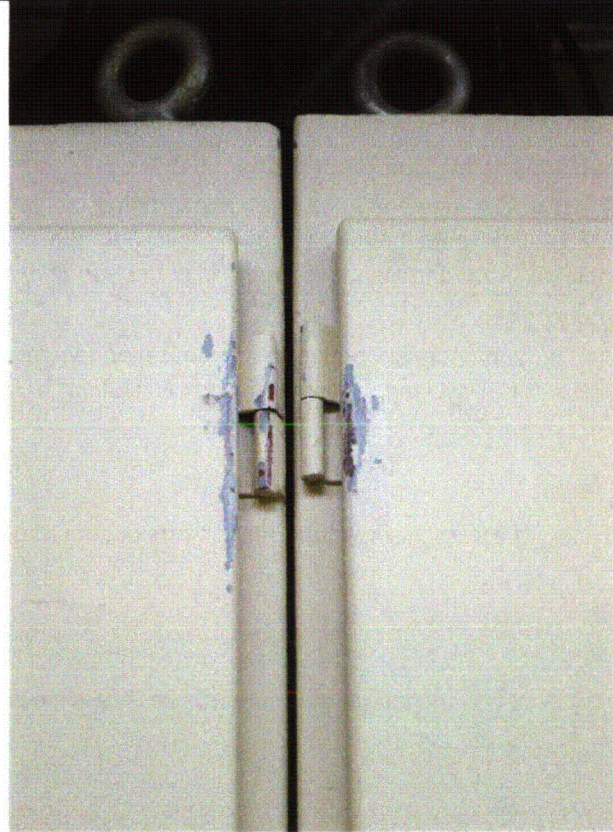
Equipment ID No.: 1PA09J

Equipment Class: (20) Instrumentation and Control Panels and Cabinets

Equipment Description: CAB PROT SYST SOL ST RX/ESF TRN A 0-3371B AB1



1PA09J Byron 1 & 2 105



1PA09J Byron 1 & 2 106

Status: Y N U

Seismic Walkdown Checklist (SWC)

Equipment ID No.: 1PA10J

Equipment Class: (20) Instrumentation and Control Panels and Cabinets

Equipment Description: CAB PROT SYST SOL ST RX/ESF TRN B 0-3371B AB1

Project: Byron 1 SWEL

Location (Bldg, Elev, Room/Area): Auxiliary, 451.00 ft, ALL

Manufacturer/Model:

Instructions for Completing Checklist

This checklist may be used to document the results of the Seismic Walkdown of an item of equipment on the SWEL. The space below each of the following questions may be used to record the results of judgments and findings. Additional space is provided at the end of this checklist for documenting other comments.

Anchorage

1. Is anchorage configuration verification required (i.e., is the item one of the 50% of SWEL items requiring such verification)? No

2. Is the anchorage free of bent, broken, missing or loose hardware? Yes

3. Is the anchorage free of corrosion that is more than mild surface oxidation? Yes

4. Is the anchorage free of visible cracks in the concrete near the anchors? Yes

5. Is the anchorage configuration consistent with plant documentation? (Note: This question only applies if the item is one of the 50% for which an anchorage configuration verification is required.) Not Applicable

6. Based on the above anchorage evaluations, is the anchorage free of potentially adverse seismic conditions? Yes
See discussion in Section 5 of report to address cove molding at anchorage detail. Anchorage is judged to be acceptable.

Status: Y N U

Seismic Walkdown Checklist (SWC)

Equipment ID No.: 1PA10J

Equipment Class: (20) Instrumentation and Control Panels and Cabinets

Equipment Description: CAB PROT SYST SOL ST RX/ESF TRN B 0-3371B AB1

Interaction Effects

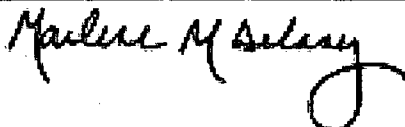
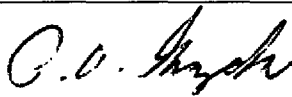
7. Are soft targets free from impact by nearby equipment or structures? Yes
Cabinets are bolted together to eliminate spatial interaction issues during a seismic event.
8. Are overhead equipment, distribution systems, ceiling tiles and lighting, and masonry block walls not likely to collapse onto the equipment? Yes
Numerous partially open S-hooks identified. It is unlikely that the lights would become disengaged since the hooks are only partially open and not all hooks are open - judged acceptable. IR 1397693 written to inspect and fully close S-hooks.
9. Do attached lines have adequate flexibility to avoid damage? Yes
10. Based on the above seismic interaction evaluations, is equipment free of potentially adverse seismic interaction effects? Yes

Other Adverse Conditions

11. Have you looked for and found no adverse seismic conditions that could adversely affect the safety functions of the equipment? Yes

Comments

Seismic walkdown team M. Delaney & P. Gazda 8/6/12 pm

Evaluated by:  Marlene Delaney Date: 10/5/2012
 Philip Gazda 10/5/2012

Status: Y N U

Seismic Walkdown Checklist (SWC)

Equipment ID No.: 1PA10J

Equipment Class: (20) Instrumentation and Control Panels and Cabinets

Equipment Description: CAB PROT SYST SOL ST RX/ESF TRN B 0-3371B AB1

Photos



1PA10J Byron 1 & 2 107



1PA10J Byron 1 & 2 108

Status: Y N U

Seismic Walkdown Checklist (SWC)

Equipment ID No.: 1PA12J

Equipment Class: (20) Instrumentation and Control Panels and Cabinets

Equipment Description: CAB TEST SAFEGUARD TRN B AB1

Project: Byron 1 SWEL

Location (Bldg, Elev, Room/Area): Auxiliary, 451.00 ft, ALL

Manufacturer/Model:

Instructions for Completing Checklist

This checklist may be used to document the results of the Seismic Walkdown of an item of equipment on the SWEL. The space below each of the following questions may be used to record the results of judgments and findings. Additional space is provided at the end of this checklist for documenting other comments.

Anchorage

1. Is anchorage configuration verification required (i.e., is the item one of the 50% of SWEL items requiring such verification)? No

2. Is the anchorage free of bent, broken, missing or loose hardware? Yes

3. Is the anchorage free of corrosion that is more than mild surface oxidation? Yes

4. Is the anchorage free of visible cracks in the concrete near the anchors? Yes

5. Is the anchorage configuration consistent with plant documentation? (Note: This question only applies if the item is one of the 50% for which an anchorage configuration verification is required.) Not Applicable

6. Based on the above anchorage evaluations, is the anchorage free of potentially adverse seismic conditions? Yes
See discussion in Section 5 of report to address cove molding at anchorage detail. Anchorage is judged to be acceptable.

Status: Y N U

Seismic Walkdown Checklist (SWC)

Equipment ID No.: 1PA12J

Equipment Class: (20) Instrumentation and Control Panels and Cabinets

Equipment Description: CAB TEST SAFEGUARD TRN B AB1

Interaction Effects

7. Are soft targets free from impact by nearby equipment or structures? Yes
*Bolted to Panel 1PA10J on the exterior to eliminate spatial interaction during a seismic event.
The gap between Panel 1PA12J and 1PA54J approximately equal to 9/16".
Per Calculation BYR99-091 Rev 3, required gap equals 0.149" therefore the since the existing gap is larger, it is acceptable.*
8. Are overhead equipment, distribution systems, ceiling tiles and lighting, and masonry block walls not likely to collapse onto the equipment? Yes
Numerous partially open S-hooks identified. It is unlikely that the lights would become disengaged since the hooks are only partially open and not all hooks are open - judged acceptable. IR 1397693 written to inspect and fully close S-hooks.
9. Do attached lines have adequate flexibility to avoid damage? Yes
10. Based on the above seismic interaction evaluations, is equipment free of potentially adverse seismic interaction effects? Yes

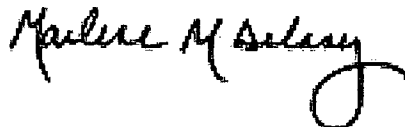
Other Adverse Conditions

11. Have you looked for and found no adverse seismic conditions that could adversely affect the safety functions of the equipment? Yes

Comments

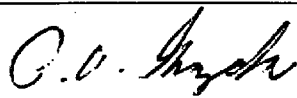
Seismic walkdown team M. Delaney & P. Gazda 8/6/12 pm

Evaluated by:



Marlene Delaney

Date: 10/5/2012



Philip Gazda

10/5/2012

Status: Y N U

Seismic Walkdown Checklist (SWC)

Equipment ID No.: 1PA12J

Equipment Class: (20) Instrumentation and Control Panels and Cabinets

Equipment Description: CAB TEST SAFEGUARD TRN B AB1

Photos



1PA12J Byron 1 & 2 109

Status: Y N U

Seismic Walkdown Checklist (SWC)

Equipment ID No.: 1PA14J

Equipment Class: (20) Instrumentation and Control Panels and Cabinets

Equipment Description: CAB ESF SEQ/ACT TRN B 0-3371B AB1

Project: Byron 1 SWEL

Location (Bldg, Elev, Room/Area): Auxiliary, 451.00 ft, ALL

Manufacturer/Model:

Instructions for Completing Checklist

This checklist may be used to document the results of the Seismic Walkdown of an item of equipment on the SWEL. The space below each of the following questions may be used to record the results of judgments and findings. Additional space is provided at the end of this checklist for documenting other comments.

Anchorage

1. Is anchorage configuration verification required (i.e., is the item one of the 50% of SWEL items requiring such verification)? No

2. Is the anchorage free of bent, broken, missing or loose hardware? Yes

3. Is the anchorage free of corrosion that is more than mild surface oxidation? Yes

4. Is the anchorage free of visible cracks in the concrete near the anchors? Yes

5. Is the anchorage configuration consistent with plant documentation? (Note: This question only applies if the item is one of the 50% for which an anchorage configuration verification is required.) Not Applicable

6. Based on the above anchorage evaluations, is the anchorage free of potentially adverse seismic conditions? Yes
See discussion in Section 5 of report to address cove molding at anchorage detail. Anchorage is judged to be acceptable.

Status: Y N U

Seismic Walkdown Checklist (SWC)

Equipment ID No.: 1PA14J

Equipment Class: (20) Instrumentation and Control Panels and Cabinets

Equipment Description: CAB ESF SEQ/ACT TRN B 0-3371B AB1

Interaction Effects

7. Are soft targets free from impact by nearby equipment or structures? Yes

Cabinets are bolted together to eliminate spatial interaction issues during a seismic event.

8. Are overhead equipment, distribution systems, ceiling tiles and lighting, and masonry block walls not likely to collapse onto the equipment? Yes

Numerous partially open S-hooks identified. It is unlikely that the lights would become disengaged since the hooks are only partially open and not all hooks are open - judged acceptable. IR 1397693 written to inspect and fully close S-hooks.

9. Do attached lines have adequate flexibility to avoid damage? Yes

10. Based on the above seismic interaction evaluations, is equipment free of potentially adverse seismic interaction effects? Yes

Other Adverse Conditions

11. Have you looked for and found no adverse seismic conditions that could adversely affect the safety functions of the equipment? Yes

Comments

Seismic walkdown team M. Delaney & P. Gazda 8/6/12 pm

Evaluated by:

Marlene M Delaney

Marlene Delaney

Date: 10/5/2012

P. Gazda

Philip Gazda

10/5/2012

Status: Y N U

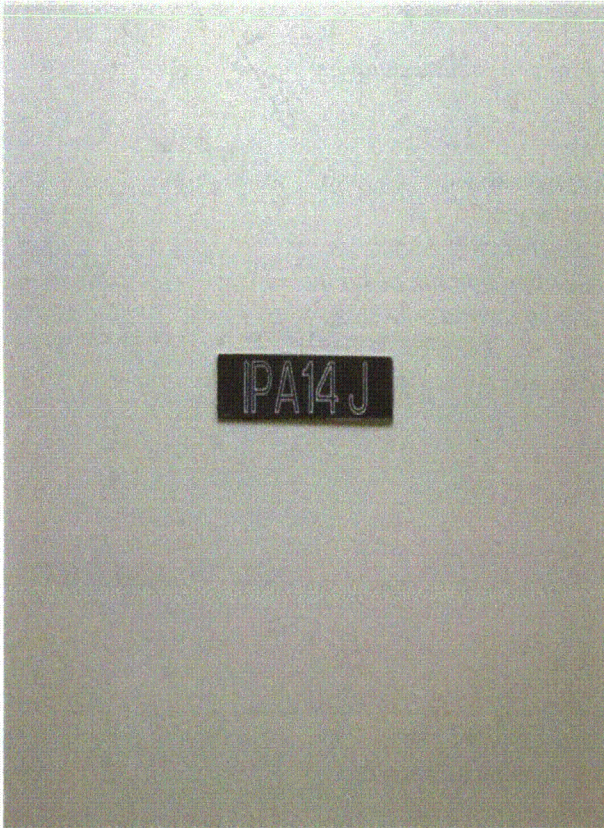
Seismic Walkdown Checklist (SWC)

Equipment ID No.: 1PA14J

Equipment Class: (20) Instrumentation and Control Panels and Cabinets

Equipment Description: CAB ESF SEQ/ACT TRN B 0-3371B AB1

Photos



1PA14J Byron 1 & 2 110



1PA14J Byron 1 & 2 111

Status: Y N U

Seismic Walkdown Checklist (SWC)

Equipment ID No.: 1PA27J

Equipment Class: (20) Instrumentation and Control Panels and Cabinets

Equipment Description: CAB RELAY AUX SAFEGUARD TRN A 0-3371B AB1

Project: Byron 1 SWEL

Location (Bldg, Elev, Room/Area): Auxiliary, 451.00 ft, ALL

Manufacturer/Model:

Instructions for Completing Checklist

This checklist may be used to document the results of the Seismic Walkdown of an item of equipment on the SWEL. The space below each of the following questions may be used to record the results of judgments and findings. Additional space is provided at the end of this checklist for documenting other comments.

Anchorage

1. Is anchorage configuration verification required (i.e., is the item one of the 50% of SWEL items requiring such verification)? No

2. Is the anchorage free of bent, broken, missing or loose hardware? Yes

3. Is the anchorage free of corrosion that is more than mild surface oxidation? Yes

4. Is the anchorage free of visible cracks in the concrete near the anchors? Yes

5. Is the anchorage configuration consistent with plant documentation? (Note: This question only applies if the item is one of the 50% for which an anchorage configuration verification is required.) Not Applicable

6. Based on the above anchorage evaluations, is the anchorage free of potentially adverse seismic conditions? Yes
See discussion in Section 5 of report to address cove molding at anchorage detail. Anchorage is judged to be acceptable.

Status: Y N U

Seismic Walkdown Checklist (SWC)

Equipment ID No.: 1PA27J

Equipment Class: (20) Instrumentation and Control Panels and Cabinets

Equipment Description: CAB RELAY AUX SAFEGUARD TRN A 0-3371B AB1

Interaction Effects

7. Are soft targets free from impact by nearby equipment or structures? Yes
Cabinets are bolted together to eliminate spatial interaction issues during a seismic event.
8. Are overhead equipment, distribution systems, ceiling tiles and lighting, and masonry block walls not likely to collapse onto the equipment? Yes
Numerous partially open S-hooks identified. It is unlikely that the lights would become disengaged since the hooks are only partially open and not all hooks are open - judged acceptable. IR 1397693 written to inspect and fully close S-hooks.
9. Do attached lines have adequate flexibility to avoid damage? Yes
10. Based on the above seismic interaction evaluations, is equipment free of potentially adverse seismic interaction effects? Yes

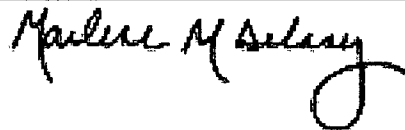
Other Adverse Conditions

11. Have you looked for and found no adverse seismic conditions that could adversely affect the safety functions of the equipment? Yes

Comments

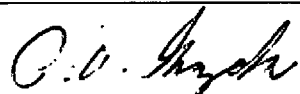
Seismic walkdown team M. Delaney & P. Gazda 8/6/12 pm

Evaluated by:



Marlene Delaney

Date: 10/5/2012



Philip Gazda

10/5/2012

Status: Y N U

Seismic Walkdown Checklist (SWC)

Equipment ID No.: 1PA27J

Equipment Class: (20) Instrumentation and Control Panels and Cabinets

Equipment Description: CAB RELAY AUX SAFEGUARD TRN A 0-3371B AB1

Photos



1PA27J Byron 1 & 2 112



1PA27J Byron 1 & 2 113

Status: Y N U

Seismic Walkdown Checklist (SWC)

Equipment ID No.: 1PA28J

Equipment Class: (20) Instrumentation and Control Panels and Cabinets

Equipment Description: CAB RELAY AUX SAFEGUARD TRN B 0-3371B AB1

Project: Byron 1 SWEL

Location (Bldg, Elev, Room/Area): Auxiliary, 451.00 ft, ALL

Manufacturer/Model:

Instructions for Completing Checklist

This checklist may be used to document the results of the Seismic Walkdown of an item of equipment on the SWEL. The space below each of the following questions may be used to record the results of judgments and findings. Additional space is provided at the end of this checklist for documenting other comments.

Anchorage

1. Is anchorage configuration verification required (i.e., is the item one of the 50% of SWEL items requiring such verification)? No

2. Is the anchorage free of bent, broken, missing or loose hardware? Yes

3. Is the anchorage free of corrosion that is more than mild surface oxidation? Yes

4. Is the anchorage free of visible cracks in the concrete near the anchors? Yes

5. Is the anchorage configuration consistent with plant documentation? (Note: This question only applies if the item is one of the 50% for which an anchorage configuration verification is required.) Not Applicable

6. Based on the above anchorage evaluations, is the anchorage free of potentially adverse seismic conditions? Yes
See discussion in Section 5 of report to address cove molding at anchorage detail. Anchorage is judged to be acceptable.

Status: Y N U

Seismic Walkdown Checklist (SWC)

Equipment ID No.: 1PA28J

Equipment Class: (20) Instrumentation and Control Panels and Cabinets

Equipment Description: CAB RELAY AUX SAFEGUARD TRN B 0-3371B AB1

Interaction Effects

7. Are soft targets free from impact by nearby equipment or structures? Yes
Cabinets are bolted together to eliminate spatial interaction issues during a seismic event.
8. Are overhead equipment, distribution systems, ceiling tiles and lighting, and masonry block walls not likely to collapse onto the equipment? Yes
Numerous partially open S-hooks identified. It is unlikely that the lights would become disengaged since the hooks are only partially open and not all hooks are open - judged acceptable. IR 1397693 written to inspect and fully close S-hooks.
9. Do attached lines have adequate flexibility to avoid damage? Yes
10. Based on the above seismic interaction evaluations, is equipment free of potentially adverse seismic interaction effects? Yes

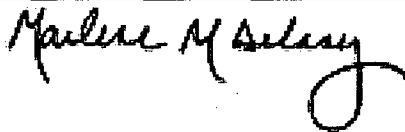
Other Adverse Conditions

11. Have you looked for and found no adverse seismic conditions that could adversely affect the safety functions of the equipment? Yes

Comments

Seismic walkdown team M. Delaney & P. Gazda 8/6/12 pm

Evaluated by:



Marlene Delaney

Date: 10/5/2012



Philip Gazda

10/5/2012

Status: Y N U

Seismic Walkdown Checklist (SWC)

Equipment ID No.: 1PA28J

Equipment Class: (20) Instrumentation and Control Panels and Cabinets

Equipment Description: CAB RELAY AUX SAFEGUARD TRN B 0-3371B AB1

Photos



1PA28J Byron 1 & 2 114



1PA28J Byron 1 & 2 115

Status: Y N U

Seismic Walkdown Checklist (SWC)

Equipment ID No.: 1PA28J

Equipment Class: (20) Instrumentation and Control Panels and Cabinets

Equipment Description: CAB RELAY AUX SAFEGUARD TRN B 0-3371B AB1



1PA28J Byron 1 & 2 116

Status: Y N U

Seismic Walkdown Checklist (SWC)

Equipment ID No.: 1PA33J

Equipment Class: (20) Instrumentation and Control Panels and Cabinets

Equipment Description: CAB CONT SYSTEM ESF 11 0-3371B AB1

Project: Byron 1 SWEL

Location (Bldg, Elev, Room/Area): Auxiliary, 451.00 ft, ALL

Manufacturer/Model:

Instructions for Completing Checklist

This checklist may be used to document the results of the Seismic Walkdown of an item of equipment on the SWEL. The space below each of the following questions may be used to record the results of judgments and findings. Additional space is provided at the end of this checklist for documenting other comments.

Anchorage

1. Is anchorage configuration verification required (i.e., is the item one of the 50% of SWEL items requiring such verification)? No

2. Is the anchorage free of bent, broken, missing or loose hardware? Yes

3. Is the anchorage free of corrosion that is more than mild surface oxidation? Yes

4. Is the anchorage free of visible cracks in the concrete near the anchors? Yes

5. Is the anchorage configuration consistent with plant documentation? (Note: This question only applies if the item is one of the 50% for which an anchorage configuration verification is required.) Not Applicable

6. Based on the above anchorage evaluations, is the anchorage free of potentially adverse seismic conditions? Yes
See discussion in Section 5 of report to address cove molding at anchorage detail. Anchorage is judged to be acceptable.

Status: Y N U

Seismic Walkdown Checklist (SWC)

Equipment ID No.: 1PA33J

Equipment Class: (20) Instrumentation and Control Panels and Cabinets

Equipment Description: CAB CONT SYSTEM ESF 11 0-3371B AB1

Interaction Effects

7. Are soft targets free from impact by nearby equipment or structures? Yes

Cabinets are bolted together to eliminate spatial interaction issues during a seismic event.

8. Are overhead equipment, distribution systems, ceiling tiles and lighting, and masonry block walls not likely to collapse onto the equipment? Yes

Numerous partially open S-hooks identified. It is unlikely that the lights would become disengaged since the hooks are only partially open and not all hooks are open - judged acceptable. IR 1397693 written to inspect and fully close S-hooks.

9. Do attached lines have adequate flexibility to avoid damage? Yes

10. Based on the above seismic interaction evaluations, is equipment free of potentially adverse seismic interaction effects? Yes

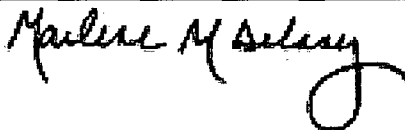
Other Adverse Conditions

11. Have you looked for and found no adverse seismic conditions that could adversely affect the safety functions of the equipment? Yes

Comments

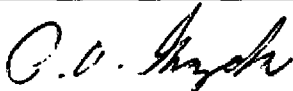
Seismic walkdown team M. Delaney & P. Gazda 8/6/12 pm

Evaluated by:



Marlene Delaney

Date: 10/5/2012



Philip Gazda

10/5/2012

Status: Y N U

Seismic Walkdown Checklist (SWC)

Equipment ID No.: 1PA33J

Equipment Class: (20) Instrumentation and Control Panels and Cabinets

Equipment Description: CAB CONT SYSTEM ESF 11 0-3371B AB1

Photos



1PA33J Byron 1 & 2 117



1PA33J Byron 1 & 2 118

Status: Y N U

Seismic Walkdown Checklist (SWC)

Equipment ID No.: 1PA34J

Equipment Class: (20) Instrumentation and Control Panels and Cabinets

Equipment Description: CAB CONT SYSTEM ESF 12 0-3371B AB1

Project: Byron 1 SWEL

Location (Bldg, Elev, Room/Area): Auxiliary, 451.00 ft, ALL

Manufacturer/Model:

Instructions for Completing Checklist

This checklist may be used to document the results of the Seismic Walkdown of an item of equipment on the SWEL. The space below each of the following questions may be used to record the results of judgments and findings. Additional space is provided at the end of this checklist for documenting other comments.

Anchorage

1. Is anchorage configuration verification required (i.e., is the item one of the 50% of SWEL items requiring such verification)? No

2. Is the anchorage free of bent, broken, missing or loose hardware? Yes

3. Is the anchorage free of corrosion that is more than mild surface oxidation? Yes

4. Is the anchorage free of visible cracks in the concrete near the anchors? Yes

5. Is the anchorage configuration consistent with plant documentation? (Note: This question only applies if the item is one of the 50% for which an anchorage configuration verification is required.) Not Applicable

6. Based on the above anchorage evaluations, is the anchorage free of potentially adverse seismic conditions? Yes
See discussion in Section 5 of report to address cove molding at anchorage detail. Anchorage is judged to be acceptable.

Status: Y N U

Seismic Walkdown Checklist (SWC)

Equipment ID No.: 1PA34J

Equipment Class: (20) Instrumentation and Control Panels and Cabinets

Equipment Description: CAB CONT SYSTEM ESF 12 0-3371B AB1

Interaction Effects

7. Are soft targets free from impact by nearby equipment or structures? Yes

Adjacent cabinets are bolted together (1PA10J, 1PA34J, & 1PA17J) to eliminate spatial interaction issues during a seismic event

8. Are overhead equipment, distribution systems, ceiling tiles and lighting, and masonry block walls not likely to collapse onto the equipment? Yes

Numerous partially open S-hooks identified. It is unlikely that the lights would become disengaged since the hooks are only partially open and not all hooks are open - judged acceptable. IR 1397693 written to inspect and fully close S-hooks.

9. Do attached lines have adequate flexibility to avoid damage? Yes

10. Based on the above seismic interaction evaluations, is equipment free of potentially adverse seismic interaction effects? Yes

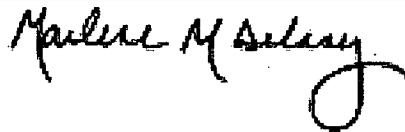
Other Adverse Conditions

11. Have you looked for and found no adverse seismic conditions that could adversely affect the safety functions of the equipment? Yes

Comments

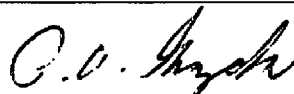
Seismic walkdown team M. Delaney & P. Gazda 8/6/12 pm

Evaluated by:



Marlene Delaney

Date: 10/5/2012



Philip Gazda

10/5/2012

Status: Y N U

Seismic Walkdown Checklist (SWC)

Equipment ID No.: 1PA34J

Equipment Class: (20) Instrumentation and Control Panels and Cabinets

Equipment Description: CAB CONT SYSTEM ESF 12 0-3371B AB1

Photos



1PA34J Byron 1 & 2 119



1PA34J Byron 1 & 2 120

Status: Y N U

Seismic Walkdown Checklist (SWC)

Equipment ID No.: 1PA51J

Equipment Class: (20) Instrumentation and Control Panels and Cabinets

Equipment Description: CAB HJTC RX VESSEL LEVEL CH A 0-3371B AB1

Project: Byron 1 SWEL

Location (Bldg, Elev, Room/Area): Auxiliary, 451.00 ft, ALL

Manufacturer/Model:

Instructions for Completing Checklist

This checklist may be used to document the results of the Seismic Walkdown of an item of equipment on the SWEL. The space below each of the following questions may be used to record the results of judgments and findings. Additional space is provided at the end of this checklist for documenting other comments.

Anchorage

1. Is anchorage configuration verification required (i.e., is the item one of the 50% of SWEL items requiring such verification)? No

2. Is the anchorage free of bent, broken, missing or loose hardware? Yes

3. Is the anchorage free of corrosion that is more than mild surface oxidation? Yes

4. Is the anchorage free of visible cracks in the concrete near the anchors? Yes

5. Is the anchorage configuration consistent with plant documentation? (Note: This question only applies if the item is one of the 50% for which an anchorage configuration verification is required.) Not Applicable

Status: Y N U

Seismic Walkdown Checklist (SWC)

Equipment ID No.: 1PA51J

Equipment Class: (20) Instrumentation and Control Panels and Cabinets

Equipment Description: CAB HJTC RX VESSEL LEVEL CH A 0-3371B AB1

6. Based on the above anchorage evaluations, is the anchorage free of potentially adverse seismic conditions? Yes
Anchorage on front of panel inspected since a panel ventilation grate prevented installation of cove molding. Weld is 2 1/4" in length at approximately 9" spacing. Drawing 6E-0-3391AJ Revision AF specified 1 1/2" at 9". Back was not visible. See discussion in Section 5 of report to address cove molding at anchorage detail. Anchorage is judged to be acceptable.

Interaction Effects

7. Are soft targets free from impact by nearby equipment or structures? Yes
Cabinets are bolted together to eliminate spatial interaction issues during a seismic event.
8. Are overhead equipment, distribution systems, ceiling tiles and lighting, and masonry block walls not likely to collapse onto the equipment? Yes
Numerous partially open S-hooks identified. It is unlikely that the lights would become disengaged since the hooks are only partially open and not all hooks are open - judged acceptable. IR 1397693 written to inspect and fully close S-hooks.
9. Do attached lines have adequate flexibility to avoid damage? Yes
10. Based on the above seismic interaction evaluations, is equipment free of potentially adverse seismic interaction effects? Yes

Other Adverse Conditions

11. Have you looked for and found no adverse seismic conditions that could adversely affect the safety functions of the equipment? Yes

Comments

Seismic walkdown team M. Delaney & P. Gazda 8/6/12 pm

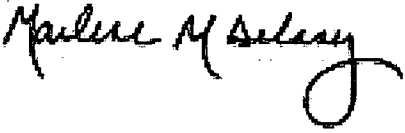
Status: Y N U

Seismic Walkdown Checklist (SWC)

Equipment ID No.: 1PA51J

Equipment Class: (20) Instrumentation and Control Panels and Cabinets

Equipment Description: CAB HJTC RX VESSEL LEVEL CH A 0-3371B AB1

Evaluated by:  Marlene Delaney Date: 10/5/2012

 Philip Gazda 10/5/2012

Photos

None.

Status: Y N U

Seismic Walkdown Checklist (SWC)

Equipment ID No.: 1PA52J

Equipment Class: (20) Instrumentation and Control Panels and Cabinets

Equipment Description: CAB HJTC RX VESSEL LEVEL CH B 0-3371B AB1

Project: Byron 1 SWEL

Location (Bldg, Elev, Room/Area): Auxiliary, 451.00 ft, ALL

Manufacturer/Model:

Instructions for Completing Checklist

This checklist may be used to document the results of the Seismic Walkdown of an item of equipment on the SWEL. The space below each of the following questions may be used to record the results of judgments and findings. Additional space is provided at the end of this checklist for documenting other comments.

Anchorage

1. Is anchorage configuration verification required (i.e., is the item one of the 50% of SWEL items requiring such verification)? No

2. Is the anchorage free of bent, broken, missing or loose hardware? Yes

3. Is the anchorage free of corrosion that is more than mild surface oxidation? Yes

4. Is the anchorage free of visible cracks in the concrete near the anchors? Yes

5. Is the anchorage configuration consistent with plant documentation? (Note: This question only applies if the item is one of the 50% for which an anchorage configuration verification is required.) Not Applicable

Status: Y N U

Seismic Walkdown Checklist (SWC)

Equipment ID No.: 1PA52J

Equipment Class: (20) Instrumentation and Control Panels and Cabinets

Equipment Description: CAB HJTC RX VESSEL LEVEL CH B 0-3371B AB1

-
6. Based on the above anchorage evaluations, is the anchorage free of potentially adverse seismic conditions? Yes
Anchorage on front of panel inspected since a panel ventilation grate prevented installation of cove molding. Weld is 2 1/4" in length at approximately 9" spacing. Drawing 6E-0-3391AJ Revision AF specified 1 1/2" at 9". Back was not visible. See discussion in Section 5 of report to address cove molding at anchorage detail. Anchorage is judged to be acceptable.
-

Interaction Effects

7. Are soft targets free from impact by nearby equipment or structures? Yes
8. Are overhead equipment, distribution systems, ceiling tiles and lighting, and masonry block walls not likely to collapse onto the equipment? Yes
Numerous partially open S-hooks identified. It is unlikely that the lights would become disengaged since the hooks are only partially open and not all hooks are open - judged acceptable. IR 1397693 written to inspect and fully close S-hooks.
9. Do attached lines have adequate flexibility to avoid damage? Yes
10. Based on the above seismic interaction evaluations, is equipment free of potentially adverse seismic interaction effects? Yes
-

Other Adverse Conditions

11. Have you looked for and found no adverse seismic conditions that could adversely affect the safety functions of the equipment? Yes
-

Comments

Seismic walkdown team M. Delaney & P. Gazda 8/6/12 pm

Status: Y N U

Seismic Walkdown Checklist (SWC)

Equipment ID No.: 1PA52J

Equipment Class: (20) Instrumentation and Control Panels and Cabinets

Equipment Description: CAB HJTC RX VESSEL LEVEL CH B 0-3371B AB1

Marlene M Delaney

Evaluated by:

Marlene Delaney

Date: 10/5/2012

P. V. Gazda

Philip Gazda

10/5/2012

Photos



1PA52J Byron 1 & 2 121



1PA52J Byron 1 & 2 122

Status: Y N U

Seismic Walkdown Checklist (SWC)

Equipment ID No.: 1PI-0627

Equipment Class: (18) Instruments on Racks

Equipment Description: SPEND FUEL PUMP DISCHARGE PRESSURE GAGE

Project: Byron 1 SWEL

Location (Bldg, Elev, Room/Area): FH, 401.00 ft, ALL

Manufacturer/Model:

Instructions for Completing Checklist

This checklist may be used to document the results of the Seismic Walkdown of an item of equipment on the SWEL. The space below each of the following questions may be used to record the results of judgments and findings. Additional space is provided at the end of this checklist for documenting other comments.

Anchorage

1. Is anchorage configuration verification required (i.e., is the item one of the 50% of SWEL items requiring such verification)? No

2. Is the anchorage free of bent, broken, missing or loose hardware? Not Applicable

3. Is the anchorage free of corrosion that is more than mild surface oxidation? Not Applicable

4. Is the anchorage free of visible cracks in the concrete near the anchors? Not Applicable

5. Is the anchorage configuration consistent with plant documentation? (Note: This question only applies if the item is one of the 50% for which an anchorage configuration verification is required.) Not Applicable

6. Based on the above anchorage evaluations, is the anchorage free of potentially adverse seismic conditions? Yes
Instrument is securely attached to well-anchored rack

Status: Y N U

Seismic Walkdown Checklist (SWC)

Equipment ID No.: 1PI-0627

Equipment Class: (18) Instruments on Racks

Equipment Description: SPEND FUEL PUMP DISCHARGE PRESSURE GAGE

Interaction Effects

7. Are soft targets free from impact by nearby equipment or structures? Yes
8. Are overhead equipment, distribution systems, ceiling tiles and lighting, and masonry block walls not likely to collapse onto the equipment? Yes
9. Do attached lines have adequate flexibility to avoid damage? Yes
10. Based on the above seismic interaction evaluations, is equipment free of potentially adverse seismic interaction effects? Yes

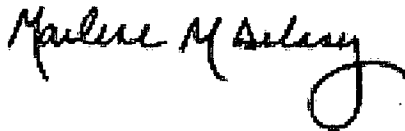
Other Adverse Conditions

11. Have you looked for and found no adverse seismic conditions that could adversely affect the safety functions of the equipment? Yes

Comments

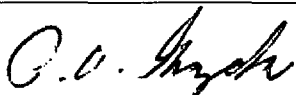
Seismic walkdown team M. Delaney & P. Gazda 8/9/12 am

Evaluated by:



Marlene Delaney

Date: 10/5/2012



Philip Gazda

10/5/2012

Status: Y N U

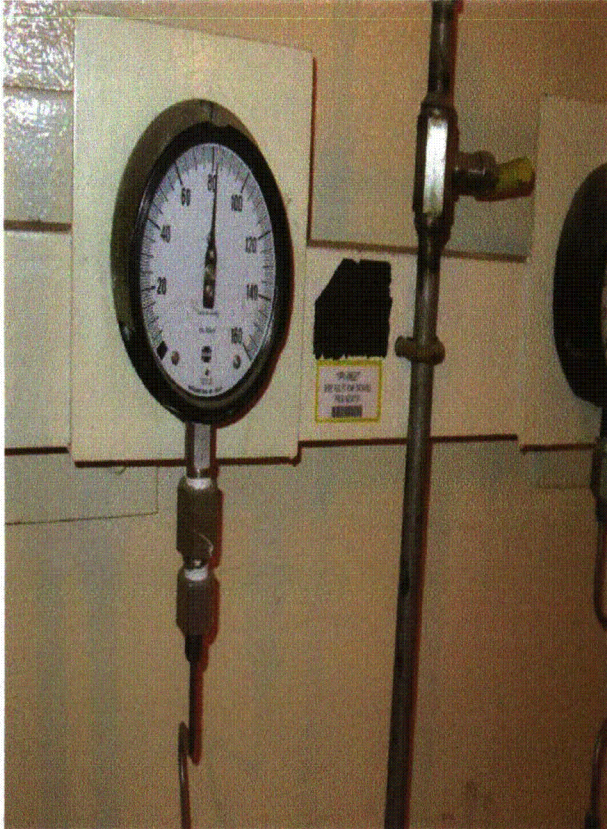
Seismic Walkdown Checklist (SWC)

Equipment ID No.: 1PI-0627

Equipment Class: (18) Instruments on Racks

Equipment Description: SPEND FUEL PUMP DISCHARGE PRESSURE GAGE

Photos



1PI-0627 Byron 1 & 2 8-9-12 052