

Status:  Y  N  U

**Seismic Walkdown Checklist (SWC)**

Equipment ID No.: 0VC15J

Equipment Class: (20) Instrumentation and Control Panels and Cabinets

Equipment Description: MCR U-1 HVAC START PNL

Project: Byron 1 SWEL

Location (Bldg, Elev, Room/Area): Auxiliary, 451.00 ft, ALL

Manufacturer/Model:

**Instructions for Completing Checklist**

This checklist may be used to document the results of the Seismic Walkdown of an item of equipment on the SWEL. The space below each of the following questions may be used to record the results of judgments and findings. Additional space is provided at the end of this checklist for documenting other comments.

**Anchorage**

1. Is anchorage configuration verification required (i.e., is the item one of the 50% of SWEL items requiring such verification)? No
  
2. Is the anchorage free of bent, broken, missing or loose hardware? Yes
  
3. Is the anchorage free of corrosion that is more than mild surface oxidation? Yes
  
4. Is the anchorage free of visible cracks in the concrete near the anchors? Yes
  
5. Is the anchorage configuration consistent with plant documentation? (Note: This question only applies if the item is one of the 50% for which an anchorage configuration verification is required.) Not Applicable
  
6. Based on the above anchorage evaluations, is the anchorage free of potentially adverse seismic conditions? Yes

Status:  Y  N  U

**Seismic Walkdown Checklist (SWC)**

Equipment ID No.: OVC15J

Equipment Class: (20) Instrumentation and Control Panels and Cabinets

Equipment Description: MCR U-1 HVAC START PNL

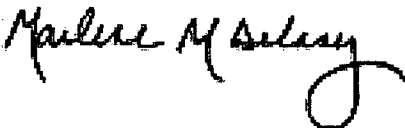
**Interaction Effects**


7. Are soft targets free from impact by nearby equipment or structures? Yes
8. Are overhead equipment, distribution systems, ceiling tiles and lighting, and masonry block walls not likely to collapse onto the equipment? Yes  
*Masonry walls are seismic and would not collapse on equipment*
9. Do attached lines have adequate flexibility to avoid damage? Yes
10. Based on the above seismic interaction evaluations, is equipment free of potentially adverse seismic interaction effects? Yes

**Other Adverse Conditions**

11. Have you looked for and found no adverse seismic conditions that could adversely affect the safety functions of the equipment? Yes

**Comments**

Evaluated by:  Marlene Delaney Date: 10/5/2012

 Philip Gazda 10/5/2012

Status:  Y  N  U

**Seismic Walkdown Checklist (SWC)**

Equipment ID No.: 0VC15J

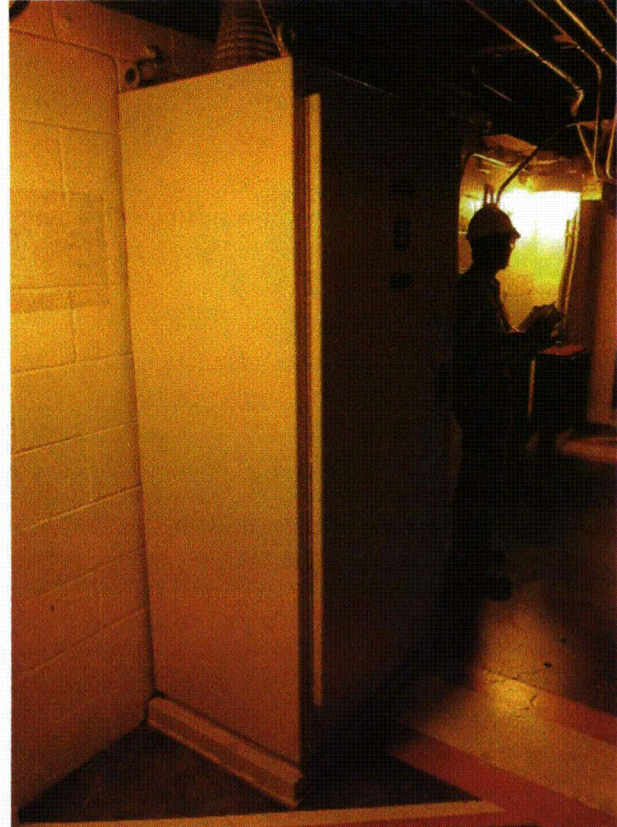
Equipment Class: (20) Instrumentation and Control Panels and Cabinets

Equipment Description: MCR U-1 HVAC START PNL

**Photos**



0VC15J Byron 1 & 2 123



0VC15J Byron 1 & 2 124

Status:  Y  N  U

**Seismic Walkdown Checklist (SWC)**

Equipment ID No.: 0WO01CB

Equipment Class: (11) Chillers

Equipment Description: 0B MCR CHLR

Project: Byron 1 SWEL

Location (Bldg, Elev, Room/Area): Auxiliary, 383.00 ft, ALL

Manufacturer/Model:

**Instructions for Completing Checklist**

This checklist may be used to document the results of the Seismic Walkdown of an item of equipment on the SWEL. The space below each of the following questions may be used to record the results of judgments and findings. Additional space is provided at the end of this checklist for documenting other comments.

**Anchorage**

1. Is anchorage configuration verification required (i.e., is the item one of the 50% of SWEL items requiring such verification)? Yes
  
2. Is the anchorage free of bent, broken, missing or loose hardware? Yes
  
3. Is the anchorage free of corrosion that is more than mild surface oxidation? Yes
  
4. Is the anchorage free of visible cracks in the concrete near the anchors? Yes
  
5. Is the anchorage configuration consistent with plant documentation? (Note: This question only applies if the item is one of the 50% for which an anchorage configuration verification is required.)  
*Drawing M-1214 Sheet 3 Revision W*  
  
*Indication of cracks in grout pad. Anchor embedded in concrete so cracks are cosmetic. Not a structural/seismic issue. IR 1402735 written* Yes
6. Based on the above anchorage evaluations, is the anchorage free of potentially adverse seismic conditions? Yes

Status:  Y  N  U

**Seismic Walkdown Checklist (SWC)**

Equipment ID No.: 0WO01CB

Equipment Class: (11) Chillers

Equipment Description: 0B MCR CHLR

**Interaction Effects**

7. Are soft targets free from impact by nearby equipment or structures? Yes
8. Are overhead equipment, distribution systems, ceiling tiles and lighting, and masonry block walls not likely to collapse onto the equipment?  
*Masonry walls are seismic and would not collapse on equipment* Yes
9. Do attached lines have adequate flexibility to avoid damage? Yes
10. Based on the above seismic interaction evaluations, is equipment free of potentially adverse seismic interaction effects? Yes

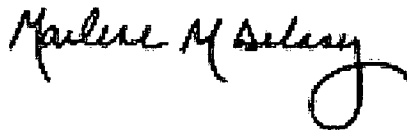
**Other Adverse Conditions**

11. Have you looked for and found no adverse seismic conditions that could adversely affect the safety functions of the equipment? Yes

**Comments**

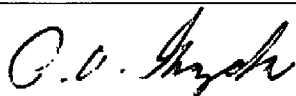
Seismic walkdown team M. Delaney & P. Gazda 8/20/12 pm

Evaluated by:



Marlene Delaney

Date: 10/5/2012



Philip Gazda

10/5/2012

Status:  Y  N  U

**Seismic Walkdown Checklist (SWC)**

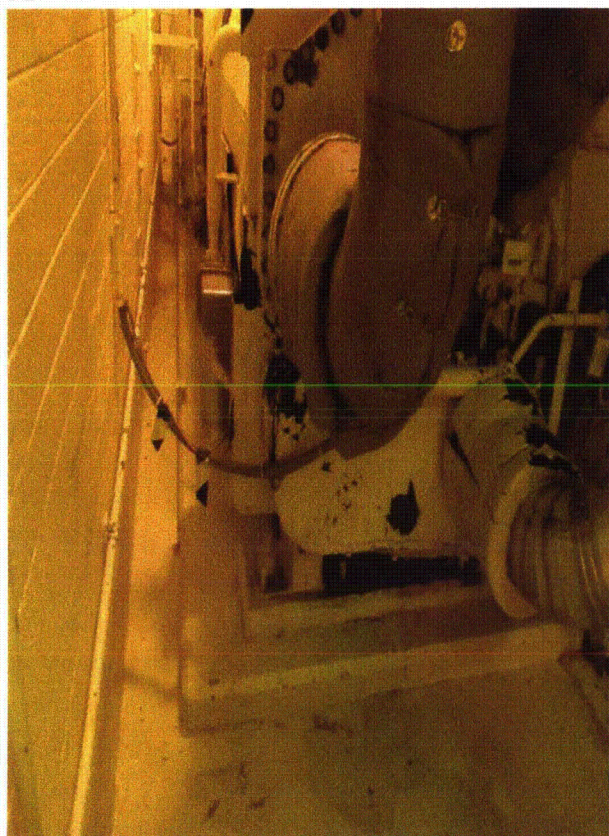
Equipment ID No.: 0WO01CB

Equipment Class: (11) Chillers

Equipment Description: 0B MCR CHLR

---

**Photos**



0WO01CB Byron 1 & 2 8-20-12 079

---

Status:  Y  N  U

**Seismic Walkdown Checklist (SWC)**

Equipment ID No.: 0WW019A

Equipment Class: (7) Fluid-Operated Valves

Equipment Description: ASSY - AOV 0B DEEP WELL PP 0WW01PB TO 0A SXCT LCV

Project: Byron 1 SWEL

Location (Bldg, Elev, Room/Area): ESWCT, 874.00 ft, ALL

Manufacturer/Model:

**Instructions for Completing Checklist**

This checklist may be used to document the results of the Seismic Walkdown of an item of equipment on the SWEL. The space below each of the following questions may be used to record the results of judgments and findings. Additional space is provided at the end of this checklist for documenting other comments.

**Anchorage**

1. Is anchorage configuration verification required (i.e., is the item one of the 50% of SWEL items requiring such verification)? No
  
2. Is the anchorage free of bent, broken, missing or loose hardware? Not Applicable
  
3. Is the anchorage free of corrosion that is more than mild surface oxidation? Not Applicable
  
4. Is the anchorage free of visible cracks in the concrete near the anchors? Not Applicable
  
5. Is the anchorage configuration consistent with plant documentation? (Note: This question only applies if the item is one of the 50% for which an anchorage configuration verification is required.) Not Applicable
  
6. Based on the above anchorage evaluations, is the anchorage free of potentially adverse seismic conditions? Yes

Status:  Y  N  U

**Seismic Walkdown Checklist (SWC)**

Equipment ID No.: 0WW019A

Equipment Class: (7) Fluid-Operated Valves

Equipment Description: ASSY - AOV 0B DEEP WELL PP 0WW01PB TO 0A SXCT LCV

**Interaction Effects**

7. Are soft targets free from impact by nearby equipment or structures? Yes
8. Are overhead equipment, distribution systems, ceiling tiles and lighting, and masonry block walls not likely to collapse onto the equipment? Yes
9. Do attached lines have adequate flexibility to avoid damage? Yes
10. Based on the above seismic interaction evaluations, is equipment free of potentially adverse seismic interaction effects? Yes

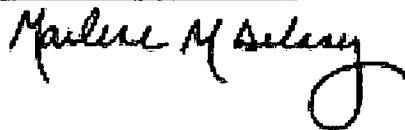
**Other Adverse Conditions**

11. Have you looked for and found no adverse seismic conditions that could adversely affect the safety functions of the equipment? Yes  
*No structural/seismic issues*

**Comments**

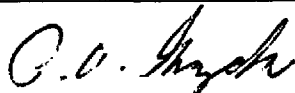
Seismic walkdown team M. Delaney & P. Gazda 8/7/12 am

Evaluated by:



Marlene Delaney

Date: 10/5/2012



Philip Gazda

10/5/2012



Status:  Y  N  U

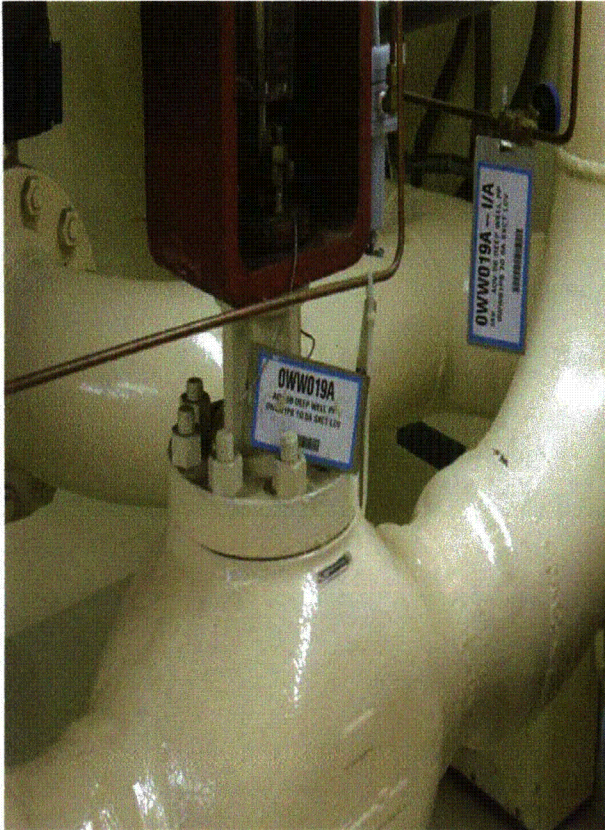
**Seismic Walkdown Checklist (SWC)**

Equipment ID No.: 0WW019A

Equipment Class: (7) Fluid-Operated Valves

Equipment Description: ASSY - AOV 0B DEEP WELL PP 0WW01PB TO 0A SXCT LCV

**Photos**



0WW019A Byron 1 & 2 177



0WW019A Byron 1 & 2 178

Status:  Y  N  U

**Seismic Walkdown Checklist (SWC)**

Equipment ID No.: 1AF005E

Equipment Class: (7) Fluid-Operated Valves

Equipment Description: S/G 1A FLOW CONT VLV ASMBLY; 4"

Project: Byron 1 SWEL

Location (Bldg, Elev, Room/Area): Auxiliary, 364.00 ft, ALL

Manufacturer/Model:

**Instructions for Completing Checklist**

This checklist may be used to document the results of the Seismic Walkdown of an item of equipment on the SWEL. The space below each of the following questions may be used to record the results of judgments and findings. Additional space is provided at the end of this checklist for documenting other comments.

**Anchorage**

1. Is anchorage configuration verification required (i.e., is the item one of the 50% of SWEL items requiring such verification)? No
  
2. Is the anchorage free of bent, broken, missing or loose hardware? Not Applicable
  
3. Is the anchorage free of corrosion that is more than mild surface oxidation? Not Applicable
  
4. Is the anchorage free of visible cracks in the concrete near the anchors? Not Applicable
  
5. Is the anchorage configuration consistent with plant documentation? (Note: This question only applies if the item is one of the 50% for which an anchorage configuration verification is required.) Not Applicable
  
6. Based on the above anchorage evaluations, is the anchorage free of potentially adverse seismic conditions? Yes

Status:  Y  N  U

**Seismic Walkdown Checklist (SWC)**

Equipment ID No.: 1AF005E

Equipment Class: (7) Fluid-Operated Valves

Equipment Description: S/G 1A FLOW CONT VLV ASMBLY; 4"

**Interaction Effects**

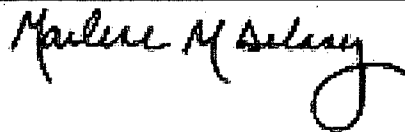
7. Are soft targets free from impact by nearby equipment or structures? Yes  
*Clearance between Valve 1AF005E diaphragm enclosure and adjacent Valve 1AF005G is relatively large and not an issue (~3/4" horizontal and 1 1/2" vertical).*
8. Are overhead equipment, distribution systems, ceiling tiles and lighting, and masonry block walls not likely to collapse onto the equipment? Yes
9. Do attached lines have adequate flexibility to avoid damage? Yes
10. Based on the above seismic interaction evaluations, is equipment free of potentially adverse seismic interaction effects? Yes

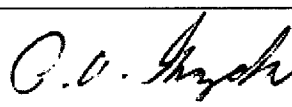
**Other Adverse Conditions**

11. Have you looked for and found no adverse seismic conditions that could adversely affect the safety functions of the equipment? Yes

**Comments**

Seismic walkdown team M. Delaney & P. Gazda 8-10-12 am

Evaluated by:  Marlene Delaney Date: 10/5/2012

 Philip Gazda 10/5/2012

Status:  Y  N  U

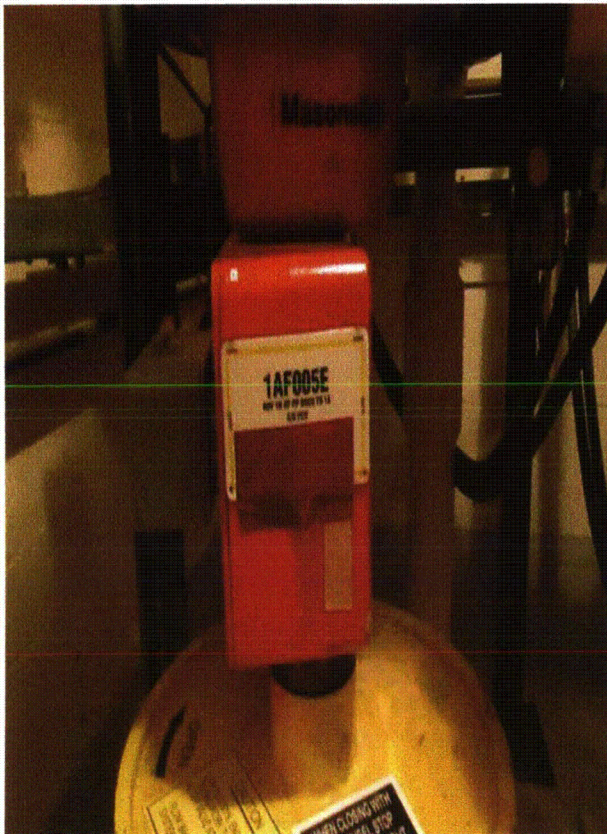
**Seismic Walkdown Checklist (SWC)**

Equipment ID No.: 1AF005E

Equipment Class: (7) Fluid-Operated Valves

Equipment Description: S/G 1A FLOW CONT VLV ASMBLY; 4"

**Photos**



1AF005E Byron 1 & 2 8-10-12 001



1AF005E Byron 1 & 2 8-10-12 002

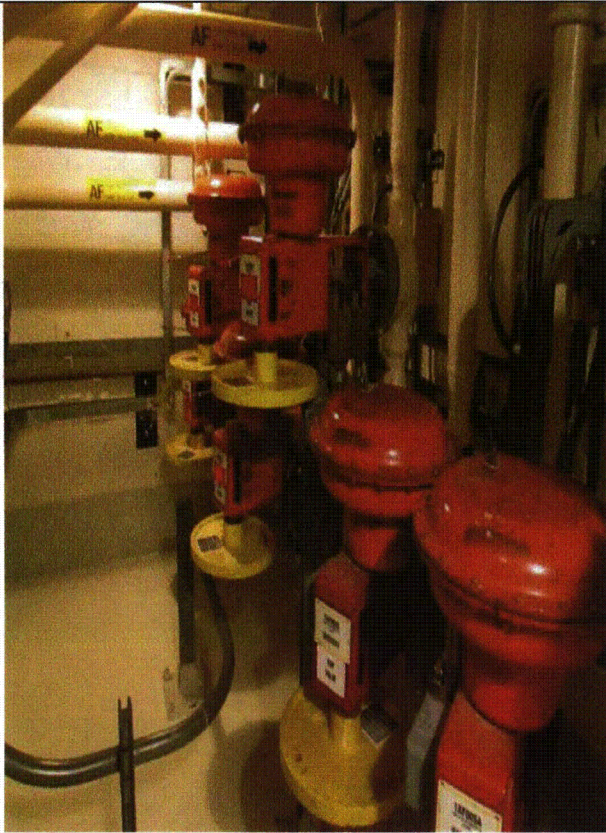
Status:  Y  N  U

**Seismic Walkdown Checklist (SWC)**

Equipment ID No.: 1AF005E

Equipment Class: (7) Fluid-Operated Valves

Equipment Description: S/G 1A FLOW CONT VLV ASMBLY; 4"



1AF005E Byron 1 & 2 8-10-12 003

Status:  Y  N  U

**Seismic Walkdown Checklist (SWC)**

Equipment ID No.: 1AF006B

Equipment Class: (8) Motor-Operated and Solenoid-Operated Valves

Equipment Description: AUXILIARY FEEDWATER PMP 1B SX SUCT VLV ASMBLY; 6"

Project: Byron 1 SWEL

Location (Bldg, Elev, Room/Area): Auxiliary, 383.00 ft, ALL

Manufacturer/Model:

**Instructions for Completing Checklist**

This checklist may be used to document the results of the Seismic Walkdown of an item of equipment on the SWEL. The space below each of the following questions may be used to record the results of judgments and findings. Additional space is provided at the end of this checklist for documenting other comments.

**Anchorage**

1. Is anchorage configuration verification required (i.e., is the item one of the 50% of SWEL items requiring such verification)? No
  
2. Is the anchorage free of bent, broken, missing or loose hardware? Not Applicable
  
3. Is the anchorage free of corrosion that is more than mild surface oxidation? Not Applicable
  
4. Is the anchorage free of visible cracks in the concrete near the anchors? Not Applicable
  
5. Is the anchorage configuration consistent with plant documentation? (Note: This question only applies if the item is one of the 50% for which an anchorage configuration verification is required.) Not Applicable
  
6. Based on the above anchorage evaluations, is the anchorage free of potentially adverse seismic conditions? Yes

Status:  Y  N  U

**Seismic Walkdown Checklist (SWC)**

Equipment ID No.: 1AF006B

Equipment Class: (8) Motor-Operated and Solenoid-Operated Valves

Equipment Description: AUXILIARY FEEDWATER PMP 1B SX SUCT VLV ASMBLY; 6"

**Interaction Effects**

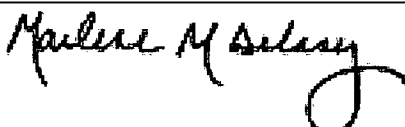
7. Are soft targets free from impact by nearby equipment or structures? Yes
8. Are overhead equipment, distribution systems, ceiling tiles and lighting, and masonry block walls not likely to collapse onto the equipment? Yes
9. Do attached lines have adequate flexibility to avoid damage? Yes
10. Based on the above seismic interaction evaluations, is equipment free of potentially adverse seismic interaction effects? Yes

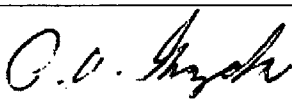
**Other Adverse Conditions**

11. Have you looked for and found no adverse seismic conditions that could adversely affect the safety functions of the equipment? Yes  
*No structural/seismic issues*

**Comments**

Seismic walkdown team 8/20/12 am M. Delaney & P. Gazda

Evaluated by:  Marlene Delaney Date: 10/5/2012

 Philip Gazda 10/5/2012

Status:  Y  N  U

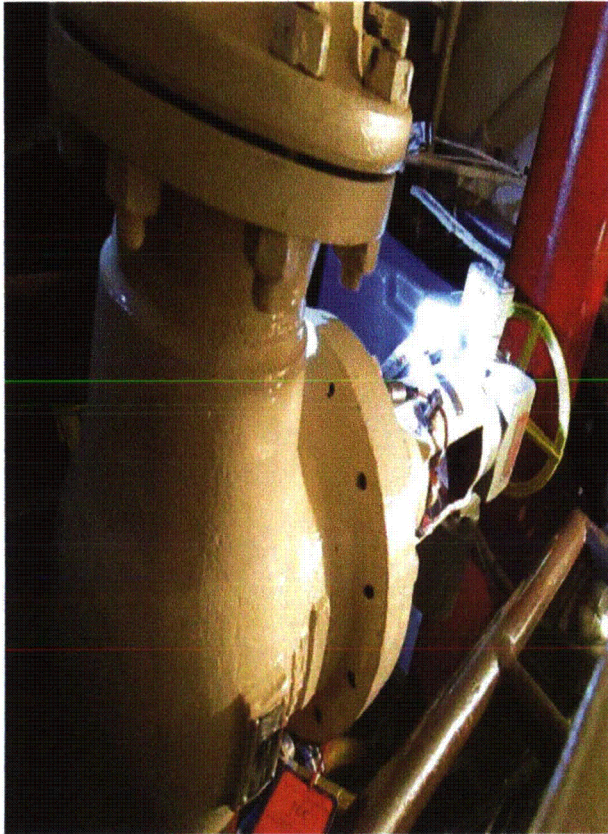
**Seismic Walkdown Checklist (SWC)**

Equipment ID No.: 1AF006B

Equipment Class: (8) Motor-Operated and Solenoid-Operated Valves

Equipment Description: AUXILIARY FEEDWATER PMP 1B SX SUCT VLV ASMBLY; 6"

**Photos**



1AF006B Byron 1 & 2 8-20-12 021



Status:  Y  N  U

**Seismic Walkdown Checklist (SWC)**

Equipment ID No.: 1AF017B

Equipment Class: (8) Motor-Operated and Solenoid-Operated Valves

Equipment Description: AUXILIARY FEEDWATER PMP 1B SX SUCT VLV ASMBLY; 6"

Project: Byron 1 SWEL

Location (Bldg, Elev, Room/Area): Auxiliary, 383.00 ft, ALL

Manufacturer/Model:

**Instructions for Completing Checklist**

This checklist may be used to document the results of the Seismic Walkdown of an item of equipment on the SWEL. The space below each of the following questions may be used to record the results of judgments and findings. Additional space is provided at the end of this checklist for documenting other comments.

**Anchorage**

1. Is anchorage configuration verification required (i.e., is the item one of the 50% of SWEL items requiring such verification)? No
  
2. Is the anchorage free of bent, broken, missing or loose hardware? Not Applicable
  
3. Is the anchorage free of corrosion that is more than mild surface oxidation? Not Applicable
  
4. Is the anchorage free of visible cracks in the concrete near the anchors? Not Applicable
  
5. Is the anchorage configuration consistent with plant documentation? (Note: This question only applies if the item is one of the 50% for which an anchorage configuration verification is required.) Not Applicable
  
6. Based on the above anchorage evaluations, is the anchorage free of potentially adverse seismic conditions? Yes

Status:  Y  N  U

**Seismic Walkdown Checklist (SWC)**

Equipment ID No.: 1AF017B

Equipment Class: (8) Motor-Operated and Solenoid-Operated Valves

Equipment Description: AUXILIARY FEEDWATER PMP 1B SX SUCT VLV ASMBLY; 6"

**Interaction Effects**

7. Are soft targets free from impact by nearby equipment or structures? Yes
8. Are overhead equipment, distribution systems, ceiling tiles and lighting, and masonry block walls not likely to collapse onto the equipment? Yes
9. Do attached lines have adequate flexibility to avoid damage? Yes
10. Based on the above seismic interaction evaluations, is equipment free of potentially adverse seismic interaction effects? Yes

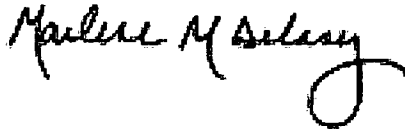
**Other Adverse Conditions**

11. Have you looked for and found no adverse seismic conditions that could adversely affect the safety functions of the equipment? Yes  
*No structural/seismic issues*

**Comments**

Seismic walkdown team 8/20/12 am M Delaney & P Gazda

Evaluated by:



Marlene Delaney

Date: 10/5/2012



Philip Gazda

10/5/2012

Status:  Y  N  U

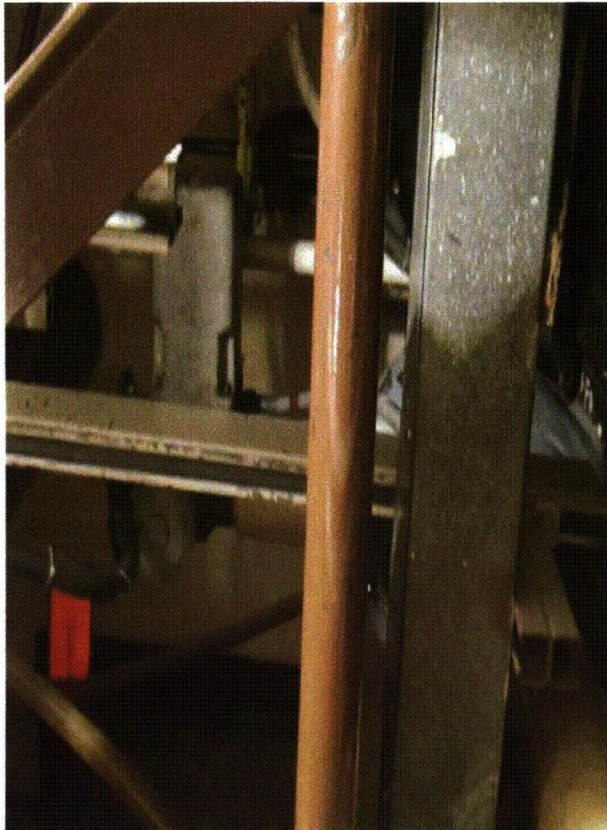
**Seismic Walkdown Checklist (SWC)**

Equipment ID No.: 1AF017B

Equipment Class: (8) Motor-Operated and Solenoid-Operated Valves

Equipment Description: AUXILIARY FEEDWATER PMP 1B SX SUCT VLV ASMBLY; 6"

**Photos**



1AF017B Byron 1 & 2 8-20-12 023

Status:  Y  N  U

**Seismic Walkdown Checklist (SWC)**

Equipment ID No.: 1AF01EA-1

Equipment Class: (16) Battery Chargers and Inverters

Equipment Description: AF PUMP 1B BATTERY CHARGER

Project: Byron 1 SWEL

Location (Bldg, Elev, Room/Area): Auxiliary, 383.00 ft, ALL

Manufacturer/Model:

**Instructions for Completing Checklist**

This checklist may be used to document the results of the Seismic Walkdown of an item of equipment on the SWEL. The space below each of the following questions may be used to record the results of judgments and findings. Additional space is provided at the end of this checklist for documenting other comments.

**Anchorage**

1. Is anchorage configuration verification required (i.e., is the item one of the 50% of SWEL items requiring such verification)? No
  
2. Is the anchorage free of bent, broken, missing or loose hardware? Yes
  
3. Is the anchorage free of corrosion that is more than mild surface oxidation? Yes
  
4. Is the anchorage free of visible cracks in the concrete near the anchors? Yes
  
5. Is the anchorage configuration consistent with plant documentation? (Note: This question only applies if the item is one of the 50% for which an anchorage configuration verification is required.) Not Applicable
  
6. Based on the above anchorage evaluations, is the anchorage free of potentially adverse seismic conditions? Yes

Status:  Y  N  U

**Seismic Walkdown Checklist (SWC)**

Equipment ID No.: 1AF01EA-1

Equipment Class: (16) Battery Chargers and Inverters

Equipment Description: AF PUMP 1B BATTERY CHARGER

**Interaction Effects**

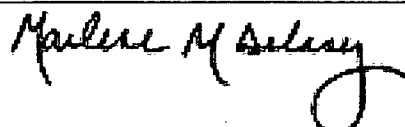
7. Are soft targets free from impact by nearby equipment or structures? Yes
8. Are overhead equipment, distribution systems, ceiling tiles and lighting, and masonry block walls not likely to collapse onto the equipment? Yes
9. Do attached lines have adequate flexibility to avoid damage? Yes
10. Based on the above seismic interaction evaluations, is equipment free of potentially adverse seismic interaction effects? Yes

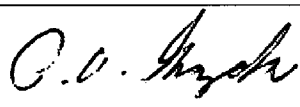
**Other Adverse Conditions**

11. Have you looked for and found no adverse seismic conditions that could adversely affect the safety functions of the equipment? Yes  
*No structural/seismic issues*

**Comments**

Seismic walkdown team M. Delaney & P. Gazda 8/20/12 am

Evaluated by:  Marlene Delaney Date: 10/5/2012

 Philip Gazda 10/5/2012

Status:  Y  N  U

**Seismic Walkdown Checklist (SWC)**

Equipment ID No.: 1AF01EA-1

Equipment Class: (16) Battery Chargers and Inverters

Equipment Description: AF PUMP 1B BATTERY CHARGER

**Photos**



1AF01EA-1 Byron 1 & 2 8-20-12 028

Status:  Y  N  U

**Seismic Walkdown Checklist (SWC)**

Equipment ID No.: 1AF01EB-A

Equipment Class: (15) Batteries on Racks

Equipment Description: AF BATTERY Bank B BATT A AUXILIARY FEEDWATER PUMP 1B

Project: Byron 1 SWEL

Location (Bldg, Elev, Room/Area): Auxiliary, 383.00 ft, ALL

Manufacturer/Model:

**Instructions for Completing Checklist**

This checklist may be used to document the results of the Seismic Walkdown of an item of equipment on the SWEL. The space below each of the following questions may be used to record the results of judgments and findings. Additional space is provided at the end of this checklist for documenting other comments.

**Anchorage**

1. Is anchorage configuration verification required (i.e., is the item one of the 50% of SWEL items requiring such verification)? Yes
  
2. Is the anchorage free of bent, broken, missing or loose hardware? Yes
  
3. Is the anchorage free of corrosion that is more than mild surface oxidation? Yes
  
4. Is the anchorage free of visible cracks in the concrete near the anchors? Yes
  
5. Is the anchorage configuration consistent with plant documentation? (Note: This question only applies if the item is one of the 50% for which an anchorage configuration verification is required.) Yes  
*Drawing 6E-0-3391H Revision AH Note that the drawing specifies 2 details and the anchorage is per Detail 150 and Section A-A (8 bolt detail)*
  
6. Based on the above anchorage evaluations, is the anchorage free of potentially adverse seismic conditions? Yes

Status:  Y  N  U

**Seismic Walkdown Checklist (SWC)**

Equipment ID No.: 1AF01EB-A

Equipment Class: (15) Batteries on Racks

Equipment Description: AF BATTERY Bank B BATT A AUXILIARY FEEDWATER PUMP 1B

**Interaction Effects**

7. Are soft targets free from impact by nearby equipment or structures? Yes
8. Are overhead equipment, distribution systems, ceiling tiles and lighting, and masonry block walls not likely to collapse onto the equipment? Yes
9. Do attached lines have adequate flexibility to avoid damage? Yes
10. Based on the above seismic interaction evaluations, is equipment free of potentially adverse seismic interaction effects? Yes

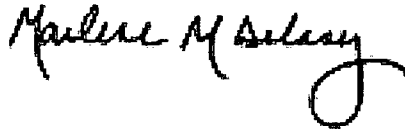
**Other Adverse Conditions**

11. Have you looked for and found no adverse seismic conditions that could adversely affect the safety functions of the equipment? Yes

**Comments**

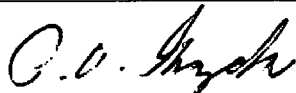
Seismic walkdown team M. Delaney & P. Gazda 8/20/12 am

Evaluated by:



Marlene Delaney

Date: 10/5/2012



Philip Gazda

10/5/2012



Status:  Y  N  U

**Seismic Walkdown Checklist (SWC)**

Equipment ID No.: 1AF01EB-A

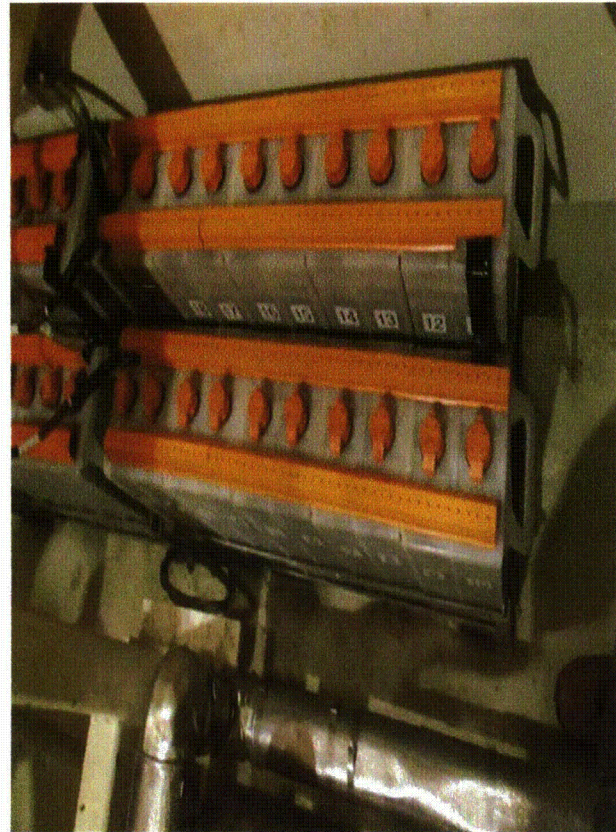
Equipment Class: (15) Batteries on Racks

Equipment Description: AF BATTERY Bank B BATT A AUXILIARY FEEDWATER PUMP 1B

**Photos**



1AF01EB-A Byron 1 & 2 8-20-12 029



1AF01EB-A Byron 1 & 2 8-20-12 030

Status:  Y  N  U

**Seismic Walkdown Checklist (SWC)**

Equipment ID No.: 1AF01PB

Equipment Class: (5) Horizontal Pumps

Equipment Description: DIESEL DRIVEN AUX FEED PUMP 1B\_ASMBLY

Project: Byron 1 SWEL

Location (Bldg, Elev, Room/Area): Auxiliary, 383.00 ft, ALL

Manufacturer/Model:

**Instructions for Completing Checklist**

This checklist may be used to document the results of the Seismic Walkdown of an item of equipment on the SWEL. The space below each of the following questions may be used to record the results of judgments and findings. Additional space is provided at the end of this checklist for documenting other comments.

**Anchorage**

1. Is anchorage configuration verification required (i.e., is the item one of the 50% of SWEL items requiring such verification)? Yes
  
2. Is the anchorage free of bent, broken, missing or loose hardware? Yes
  
3. Is the anchorage free of corrosion that is more than mild surface oxidation? Yes
  
4. Is the anchorage free of visible cracks in the concrete near the anchors? Yes
  
5. Is the anchorage configuration consistent with plant documentation? (Note: This question only applies if the item is one of the 50% for which an anchorage configuration verification is required.) Yes  
*Drawing M-1221 Sheet 2 Revision AD*
  
6. Based on the above anchorage evaluations, is the anchorage free of potentially adverse seismic conditions? Yes

Status:  Y  N  U

**Seismic Walkdown Checklist (SWC)**

Equipment ID No.: 1AF01PB

Equipment Class: (5) Horizontal Pumps

Equipment Description: DIESEL DRIVEN AUX FEED PUMP 1B\_ASMBLY

**Interaction Effects**

7. Are soft targets free from impact by nearby equipment or structures? Yes

*Sight glass is well-supported and protected*

8. Are overhead equipment, distribution systems, ceiling tiles and lighting, and masonry block walls not likely to collapse onto the equipment? Yes

*Masonry walls are seismic and would not collapse on equipment*

9. Do attached lines have adequate flexibility to avoid damage? Yes

10. Based on the above seismic interaction evaluations, is equipment free of potentially adverse seismic interaction effects? Yes

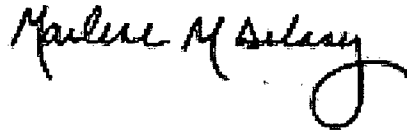
**Other Adverse Conditions**

11. Have you looked for and found no adverse seismic conditions that could adversely affect the safety functions of the equipment? Yes

**Comments**

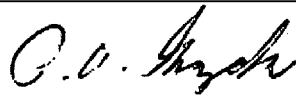
Seismic walkdown team M. Delaney & P. Gazda 8/20/12 am

Evaluated by:



Marlene Delaney

Date: 10/5/2012



Philip Gazda

10/5/2012

Status:  Y  N  U

**Seismic Walkdown Checklist (SWC)**

Equipment ID No.: 1AF01PB

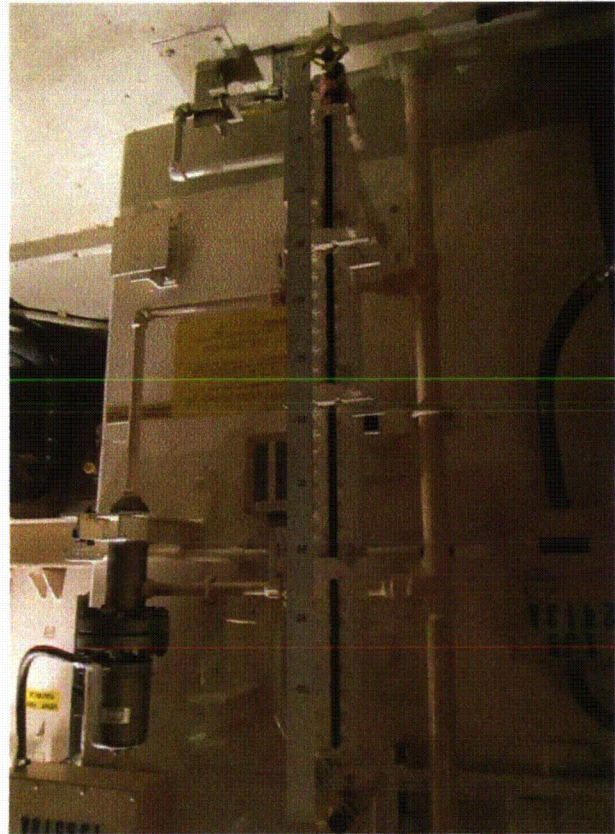
Equipment Class: (5) Horizontal Pumps

Equipment Description: DIESEL DRIVEN AUX FEED PUMP 1B\_ASMBLY

**Photos**



1AF01PB (AWB - SITE GLASS) Byron 1 & 2 8-20-12  
035



1AF01PB (AWB- SITE GLASS) Byron 1 & 2 8-20-12  
036

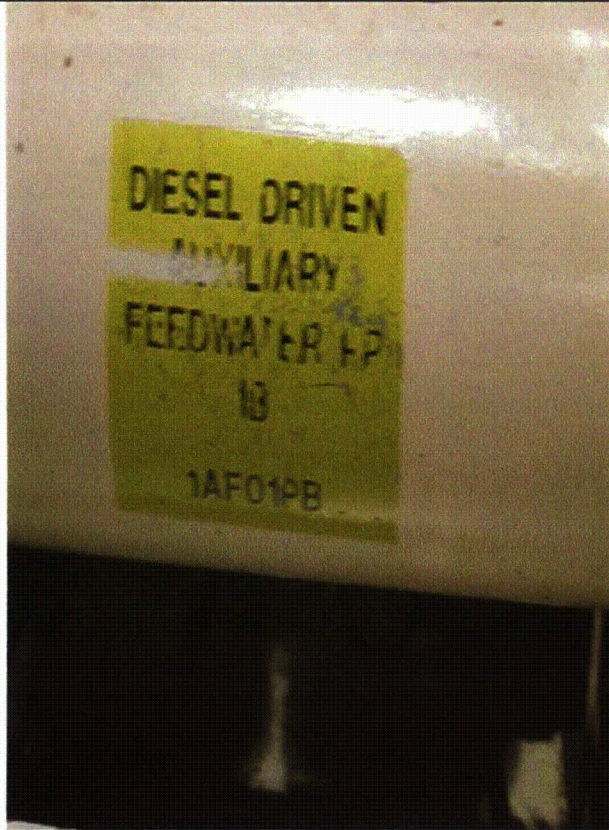
Status:  Y  N  U

**Seismic Walkdown Checklist (SWC)**

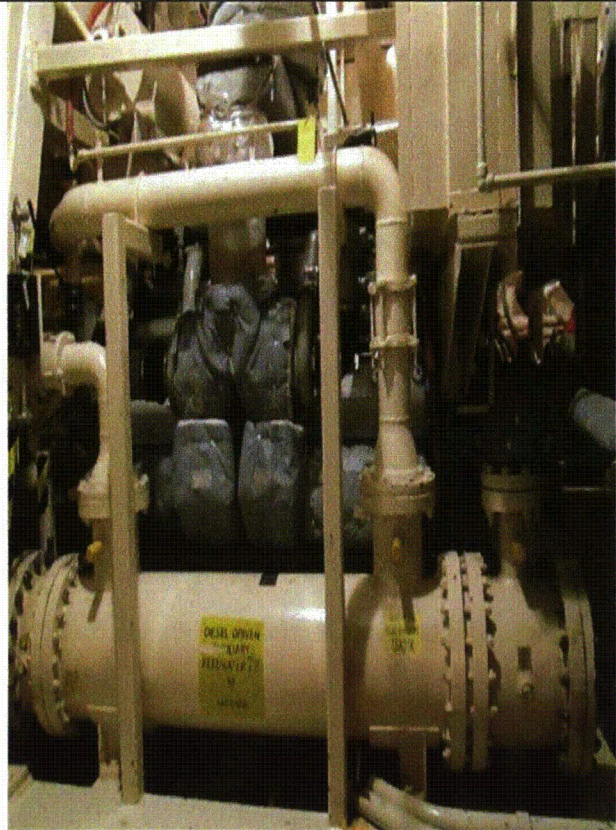
Equipment ID No.: 1AF01PB

Equipment Class: (5) Horizontal Pumps

Equipment Description: DIESEL DRIVEN AUX FEED PUMP 1B\_ASMBLY



1AF01PB Byron 1 & 2 8-20-12 031



1AF01PB Byron 1 & 2 8-20-12 032

Status:  Y  N  U

**Seismic Walkdown Checklist (SWC)**

Equipment ID No.: 1AF024

Equipment Class: (7) Fluid-Operated Valves

Equipment Description: AF PP SX RECIRC VLV\_ASMBLY; 3"

Project: Byron 1 SWEL

Location (Bldg, Elev, Room/Area): Auxiliary, 383.00 ft, ALL

Manufacturer/Model:

**Instructions for Completing Checklist**

This checklist may be used to document the results of the Seismic Walkdown of an item of equipment on the SWEL. The space below each of the following questions may be used to record the results of judgments and findings. Additional space is provided at the end of this checklist for documenting other comments.

**Anchorage**

1. Is anchorage configuration verification required (i.e., is the item one of the 50% of SWEL items requiring such verification)? No
  
2. Is the anchorage free of bent, broken, missing or loose hardware? Not Applicable
  
3. Is the anchorage free of corrosion that is more than mild surface oxidation? Not Applicable
  
4. Is the anchorage free of visible cracks in the concrete near the anchors? Not Applicable
  
5. Is the anchorage configuration consistent with plant documentation? (Note: This question only applies if the item is one of the 50% for which an anchorage configuration verification is required.) Not Applicable
  
6. Based on the above anchorage evaluations, is the anchorage free of potentially adverse seismic conditions? Yes

Status:  Y  N  U

**Seismic Walkdown Checklist (SWC)**

Equipment ID No.: 1AF024

Equipment Class: (7) Fluid-Operated Valves

Equipment Description: AF PP SX RECIRC VLV\_ASMBLY; 3"

**Interaction Effects**

7. Are soft targets free from impact by nearby equipment or structures? Yes
8. Are overhead equipment, distribution systems, ceiling tiles and lighting, and masonry block walls not likely to collapse onto the equipment? Yes
9. Do attached lines have adequate flexibility to avoid damage? Yes
10. Based on the above seismic interaction evaluations, is equipment free of potentially adverse seismic interaction effects? Yes

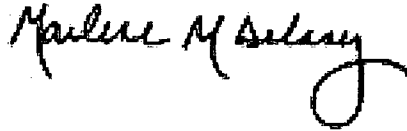
**Other Adverse Conditions**

11. Have you looked for and found no adverse seismic conditions that could adversely affect the safety functions of the equipment? Yes  
*No structural/seismic issues*

**Comments**

Seismic walkdown team M. Delaney & P. Gazda 8-20-12 am

Evaluated by:



Marlene Delaney

Date: 10/5/2012



Philip Gazda

10/5/2012

Status:  Y  N  U

**Seismic Walkdown Checklist (SWC)**

Equipment ID No.: 1AF024

Equipment Class: (7) Fluid-Operated Valves

Equipment Description: AF PP SX RECIRC VLV\_ASMBLY; 3"

**Photos**



1AF024 Byron 1 & 2 8-20-12 034



Status:  Y  N  U

**Seismic Walkdown Checklist (SWC)**

Equipment ID No.: 1AP06E

Equipment Class: (3) Medium Voltage Switchgear

Equipment Description: 4160 VOLT ESF SWITCH BUS 142

Project: Byron 1 SWEL

Location (Bldg, Elev, Room/Area): Auxiliary, 426.00 ft, ALL

Manufacturer/Model:

**Instructions for Completing Checklist**

This checklist may be used to document the results of the Seismic Walkdown of an item of equipment on the SWEL. The space below each of the following questions may be used to record the results of judgments and findings. Additional space is provided at the end of this checklist for documenting other comments.

**Anchorage**

1. Is anchorage configuration verification required (i.e., is the item one of the 50% of SWEL items requiring such verification)? Yes
  
2. Is the anchorage free of bent, broken, missing or loose hardware? Yes
  
3. Is the anchorage free of corrosion that is more than mild surface oxidation? Yes
  
4. Is the anchorage free of visible cracks in the concrete near the anchors? Yes  
*Minor shrinkage cracking in floor judged to be acceptable.*
  
5. Is the anchorage configuration consistent with plant documentation? (Note: This question only applies if the item is one of the 50% for which an anchorage configuration verification is required.) Yes  
*Anchorage shown on drawing 6E-0-3391C, Rev. BE.*

Status:  Y  N  U

**Seismic Walkdown Checklist (SWC)**

Equipment ID No.: 1AP06E

Equipment Class: (3) Medium Voltage Switchgear

Equipment Description: 4160 VOLT ESF SWITCH BUS 142

- 
6. Based on the above anchorage evaluations, is the anchorage free of potentially adverse seismic conditions? Yes

*19 total cubicles. All front doors were opened. All front anchorages were observed.*

*All lower back panels were opened except for 5 cubicles due to electrical limitations. All back anchorages for the 14 opened cubicles were observed.*

*The middle anchorages at 5 cubicles were observed.*

*Remaining anchorages could not be viewed due to electrical limitations. Anchorages viewed matched documentation, therefore it is reasonable to conclude that the unobserved anchorages match plant documentation without further verification.*

---

**Interaction Effects**

7. Are soft targets free from impact by nearby equipment or structures? Yes
8. Are overhead equipment, distribution systems, ceiling tiles and lighting, and masonry block walls not likely to collapse onto the equipment? Yes
9. Do attached lines have adequate flexibility to avoid damage? Yes
10. Based on the above seismic interaction evaluations, is equipment free of potentially adverse seismic interaction effects? Yes
-

Status:  Y  N  U

**Seismic Walkdown Checklist (SWC)**

Equipment ID No.: 1AP06E

Equipment Class: (3) Medium Voltage Switchgear

Equipment Description: 4160 VOLT ESF SWITCH BUS 142

**Other Adverse Conditions**

- 11. Have you looked for and found no adverse seismic conditions that could adversely affect the safety functions of the equipment? Yes  
*All front cubicle doors were opened. All rear back panels except for 5 were opened. No other adverse conditions were observed.*

**Comments**

IPEEE Anchorage Notes:

Panel is plug welded to embedded plate in floor.

\*\*\*\*

Seismic Walkdown Team: P. Gazda & J. Griffith - 9/22/2012

Evaluated by: James D. Griffith James Griffith Date: 10/5/2012

P. P. Gazda Philip Gazda 10/5/2012

Status:  Y  N  U

**Seismic Walkdown Checklist (SWC)**

Equipment ID No.: 1AP06E

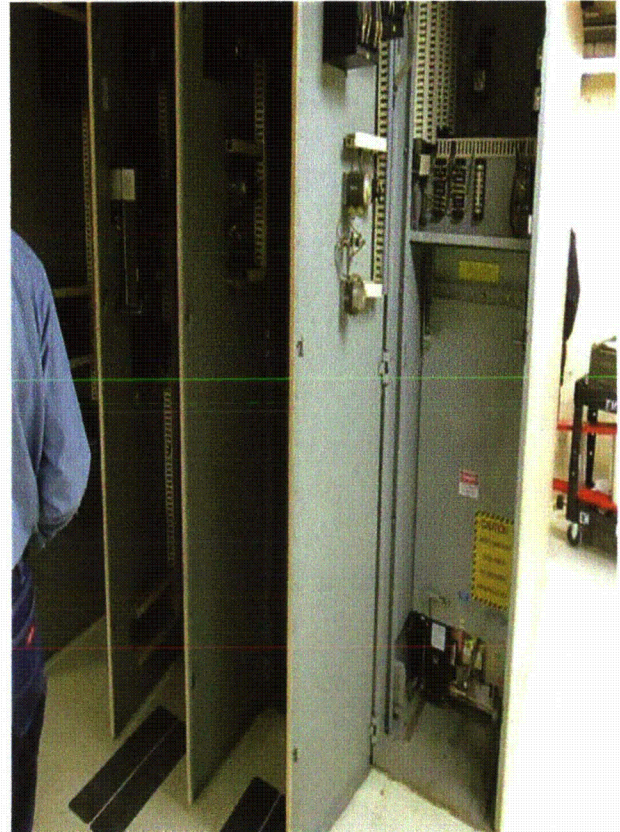
Equipment Class: (3) Medium Voltage Switchgear

Equipment Description: 4160 VOLT ESF SWITCH BUS 142

**Photos**



1AP06E Byron - de-energized Equip 9-22-12 001



1AP06E Byron - de-energized Equip 9-22-12 002

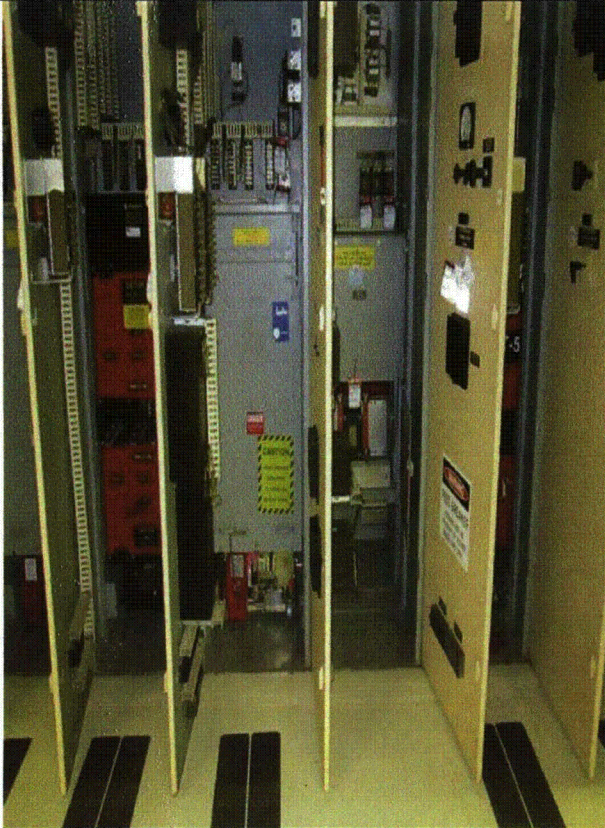
Status:  Y  N  U

**Seismic Walkdown Checklist (SWC)**

Equipment ID No.: 1AP06E

Equipment Class: (3) Medium Voltage Switchgear

Equipment Description: 4160 VOLT ESF SWITCH BUS 142



1AP06E Byron - de-energized Equip 9-22-12 003



1AP06E Byron - de-energized Equip 9-22-12 004

Status:  Y  N  U

**Seismic Walkdown Checklist (SWC)**

Equipment ID No.: 1AP06E

Equipment Class: (3) Medium Voltage Switchgear

Equipment Description: 4160 VOLT ESF SWITCH BUS 142



1AP06E Byron - de-energized Equip 9-22-12 005



1AP06E Byron - de-energized Equip 9-22-12 006

Status:  Y  N  U

**Seismic Walkdown Checklist (SWC)**

Equipment ID No.: 1AP06E

Equipment Class: (3) Medium Voltage Switchgear

Equipment Description: 4160 VOLT ESF SWITCH BUS 142



1AP06E Byron - de-energized Equip 9-22-12 007



1AP06E Byron - de-energized Equip 9-22-12 008

Status:  Y  N  U

**Seismic Walkdown Checklist (SWC)**

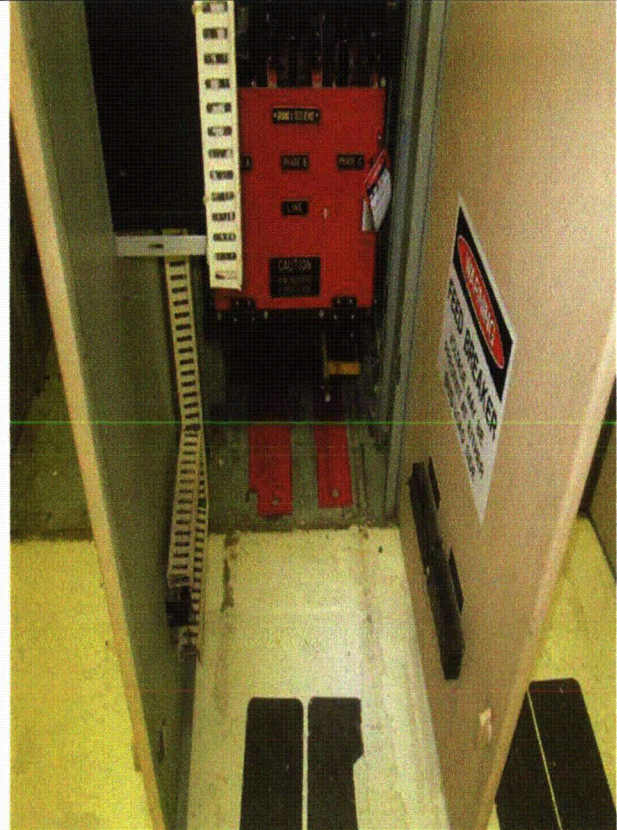
Equipment ID No.: 1AP06E

Equipment Class: (3) Medium Voltage Switchgear

Equipment Description: 4160 VOLT ESF SWITCH BUS 142



1AP06E Byron - de-energized Equip 9-22-12 009



1AP06E Byron - de-energized Equip 9-22-12 010



Status:  Y  N  U

**Seismic Walkdown Checklist (SWC)**

Equipment ID No.: 1AP06E

Equipment Class: (3) Medium Voltage Switchgear

Equipment Description: 4160 VOLT ESF SWITCH BUS 142



1AP06E Byron - de-energized Equip 9-22-12 021



1AP06E Byron - de-energized Equip 9-22-12 022

Status:  Y  N  U

**Seismic Walkdown Checklist (SWC)**

Equipment ID No.: 1AP11E

Equipment Class: (4) Transformers

Equipment Description: EQ 480V ESF UNIT SUB 131X TRANSFORMER 1AP086

Project: Byron 1 SWEL

Location (Bldg, Elev, Room/Area): Auxiliary, 426.00 ft, ALL

Manufacturer/Model:

**Instructions for Completing Checklist**

This checklist may be used to document the results of the Seismic Walkdown of an item of equipment on the SWEL. The space below each of the following questions may be used to record the results of judgments and findings. Additional space is provided at the end of this checklist for documenting other comments.

**Anchorage**

1. Is anchorage configuration verification required (i.e., is the item one of the 50% of SWEL items requiring such verification)? Yes
  
2. Is the anchorage free of bent, broken, missing or loose hardware? Yes
  
3. Is the anchorage free of corrosion that is more than mild surface oxidation? Yes
  
4. Is the anchorage free of visible cracks in the concrete near the anchors? Yes
  
5. Is the anchorage configuration consistent with plant documentation? (Note: This question only applies if the item is one of the 50% for which an anchorage configuration verification is required.) Yes  
*Drawing 6E-0-3391F Revision AJ Detail 121*  
*Weld meets or exceeds drawing requirements*
  
6. Based on the above anchorage evaluations, is the anchorage free of potentially adverse seismic conditions? Yes

Status:  Y  N  U

**Seismic Walkdown Checklist (SWC)**

Equipment ID No.: 1AP11E

Equipment Class: (4) Transformers

Equipment Description: EQ 480V ESF UNIT SUB 131X TRANSFORMER 1AP086

**Interaction Effects**

7. Are soft targets free from impact by nearby equipment or structures? Yes
8. Are overhead equipment, distribution systems, ceiling tiles and lighting, and masonry block walls not likely to collapse onto the equipment? Yes
9. Do attached lines have adequate flexibility to avoid damage? Yes
10. Based on the above seismic interaction evaluations, is equipment free of potentially adverse seismic interaction effects? Yes

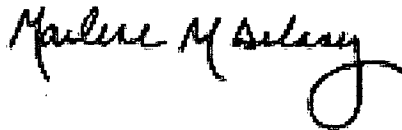
**Other Adverse Conditions**

11. Have you looked for and found no adverse seismic conditions that could adversely affect the safety functions of the equipment? Yes  
*Front panel bent due to equipment configuration and is not a structural/seismic concern*  
*Missing bolts (2) on panel cover - IR 1398659 written. Not a structural/seismic issue since adequate bolts in place*

**Comments**

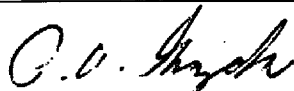
Seismic walkdown team M. Delaney & P. Gazda 8/8/12 am

Evaluated by:



Marlene Delaney

Date: 10/5/2012



Philip Gazda

10/5/2012

Status:  Y  N  U

**Seismic Walkdown Checklist (SWC)**

Equipment ID No.: 1AP11E

Equipment Class: (4) Transformers

Equipment Description: EQ 480V ESF UNIT SUB 131X TRANSFORMER 1AP086

**Photos**



1AP11E Byron 1 & 2 8-8-12 032



1AP11E Byron 1 & 2 8-8-12 033

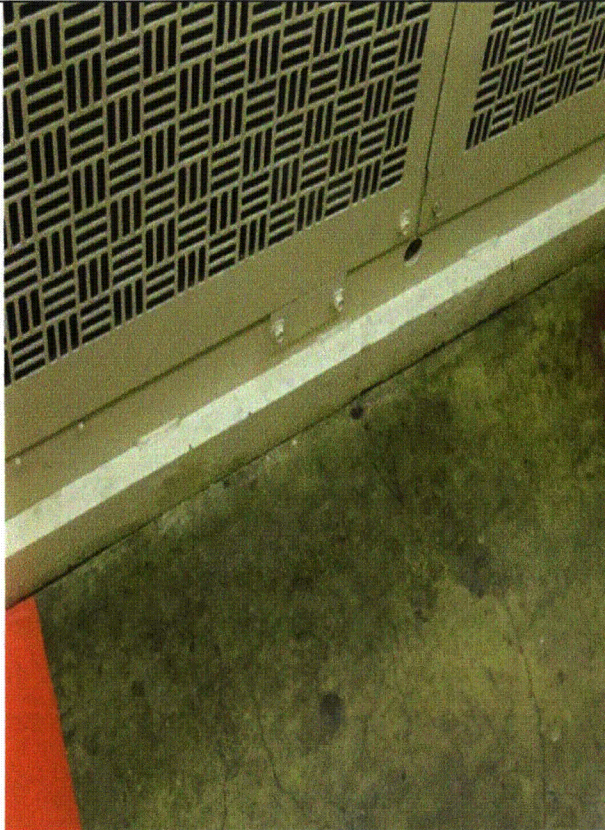
Status:  Y  N  U

**Seismic Walkdown Checklist (SWC)**

Equipment ID No.: 1AP11E

Equipment Class: (4) Transformers

Equipment Description: EQ 480V ESF UNIT SUB 131X TRANSFORMER 1AP086



1AP11E Byron 1 & 2 8-8-12 034

Status:  Y  N  U

**Seismic Walkdown Checklist (SWC)**

Equipment ID No.: 1AP12E

Equipment Class: (2) Low Voltage Switchgear

Equipment Description: ASSY - 480V ESF SWGR 132X

Project: Byron 1 SWEL

Location (Bldg, Elev, Room/Area): Auxiliary, 426.00 ft, ALL

Manufacturer/Model:

**Instructions for Completing Checklist**

This checklist may be used to document the results of the Seismic Walkdown of an item of equipment on the SWEL. The space below each of the following questions may be used to record the results of judgments and findings. Additional space is provided at the end of this checklist for documenting other comments.

**Anchorage**

1. Is anchorage configuration verification required (i.e., is the item one of the 50% of SWEL items requiring such verification)? Yes
  
2. Is the anchorage free of bent, broken, missing or loose hardware? Yes
  
3. Is the anchorage free of corrosion that is more than mild surface oxidation? Yes
  
4. Is the anchorage free of visible cracks in the concrete near the anchors? Yes  
*Minor shrinkage cracking in floor judged to be acceptable.*
  
5. Is the anchorage configuration consistent with plant documentation? (Note: This question only applies if the item is one of the 50% for which an anchorage configuration verification is required.) Yes  
*Anchorage shown on drawing 6E-0-3391C, Rev. BE.*

Status:  Y  N  U

**Seismic Walkdown Checklist (SWC)**

Equipment ID No.: 1AP12E

Equipment Class: (2) Low Voltage Switchgear

Equipment Description: ASSY - 480V ESF SWGR 132X

6. Based on the above anchorage evaluations, is the anchorage free of potentially adverse seismic conditions? Yes

*5 total cubicles. All doors were opened. All rear anchorages were observed.*

*All front anchorages were observed except for 2 cubicles due to electrical limitations.*

*The middle anchorages at 1 cubicle were observed.*

*Remaining anchorages could not be viewed due to electrical limitations. Anchorages viewed matched documentation, therefore it is reasonable to conclude that the unobserved anchorages match plant documentation without further verification.*

**Interaction Effects**

7. Are soft targets free from impact by nearby equipment or structures? Yes

*Welded drain line in vicinity. Pipe movement toward switchgear prevented by pipe penetration (anchor) at masonry wall. Judged to be acceptable.*

8. Are overhead equipment, distribution systems, ceiling tiles and lighting, and masonry block walls not likely to collapse onto the equipment? Yes

*Open S-hooks addressed in IR 1398568. Lights are not directly over equipment so damage is unlikely and S-hooks are partially open - judged to be acceptable.*

*Masonry walls are seismic and would not collapse on equipment.*

9. Do attached lines have adequate flexibility to avoid damage? Yes

10. Based on the above seismic interaction evaluations, is equipment free of potentially adverse seismic interaction effects? Yes

Status:  Y  N  U

**Seismic Walkdown Checklist (SWC)**

Equipment ID No.: 1AP12E

Equipment Class: (2) Low Voltage Switchgear

Equipment Description: ASSY - 480V ESF SWGR 132X

**Other Adverse Conditions**

11. Have you looked for and found no adverse seismic conditions that could adversely affect the safety functions of the equipment? Yes

*All cubicle doors were opened. No other adverse conditions were observed.*

**Comments**

IPEEE Anchorage Notes:

Anchored by 4-1/2" plug welds per cubicle in front & 2 per cubicle in back.

\*\*\*\*\*

Seismic Walkdown Team: P. Gazda & J. Griffith - 9/22/2012

Evaluated by:

*James D. Griffith*

James Griffith

Date: 10/5/2012

*P. O. Gazda*

Philip Gazda

10/5/2012



Status:  Y  N  U

**Seismic Walkdown Checklist (SWC)**

Equipment ID No.: 1AP12E

Equipment Class: (2) Low Voltage Switchgear

Equipment Description: ASSY - 480V ESF SWGR 132X

**Photos**



1AP12E Byron - de-energized Equip 9-22-12 011



1AP12E Byron - de-energized Equip 9-22-12 013

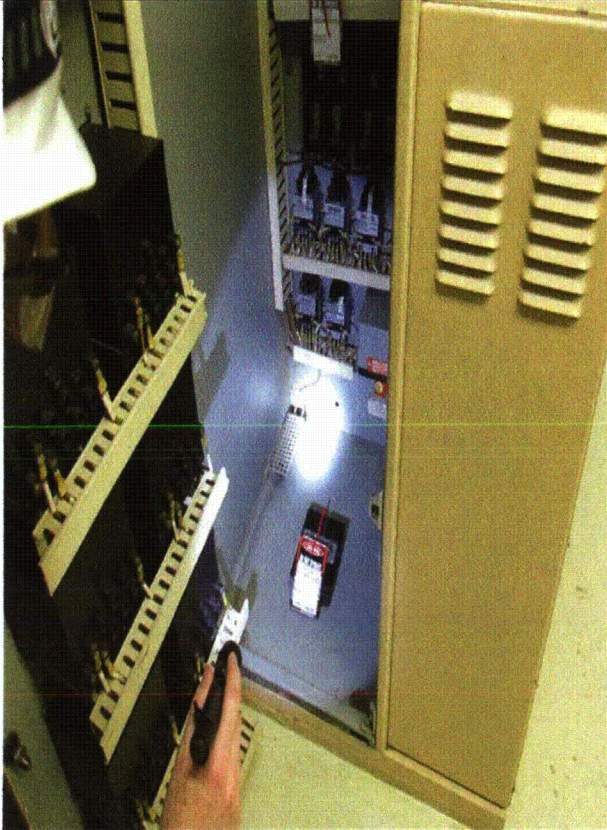
Status:  Y  N  U

**Seismic Walkdown Checklist (SWC)**

Equipment ID No.: 1AP12E

Equipment Class: (2) Low Voltage Switchgear

Equipment Description: ASSY - 480V ESF SWGR 132X



1AP12E Byron - de-energized Equip 9-22-12 014



1AP12E Byron - de-energized Equip 9-22-12 015

Status:  Y  N  U

**Seismic Walkdown Checklist (SWC)**

Equipment ID No.: 1AP12E

Equipment Class: (2) Low Voltage Switchgear

Equipment Description: ASSY - 480V ESF SWGR 132X



1AP12E Byron - de-energized Equip 9-22-12 016



1AP12E Byron - de-energized Equip 9-22-12 017

Status:  Y  N  U

**Seismic Walkdown Checklist (SWC)**

Equipment ID No.: 1AP12E

Equipment Class: (2) Low Voltage Switchgear

Equipment Description: ASSY - 480V ESF SWGR 132X



1AP12E Byron - de-energized Equip 9-22-12 018



1AP12E Byron - de-energized Equip 9-22-12 019

Status:  Y  N  U

**Seismic Walkdown Checklist (SWC)**

Equipment ID No.: 1AP13E

Equipment Class: (4) Transformers

Equipment Description: 480V ESF UNIT SUBSTA 132X XFMR

Project: Byron 1 SWEL

Location (Bldg, Elev, Room/Area): Auxiliary, 426.00 ft, ALL

Manufacturer/Model:

**Instructions for Completing Checklist**

This checklist may be used to document the results of the Seismic Walkdown of an item of equipment on the SWEL. The space below each of the following questions may be used to record the results of judgments and findings. Additional space is provided at the end of this checklist for documenting other comments.

**Anchorage**

1. Is anchorage configuration verification required (i.e., is the item one of the 50% of SWEL items requiring such verification)? Yes
  
2. Is the anchorage free of bent, broken, missing or loose hardware? Yes
  
3. Is the anchorage free of corrosion that is more than mild surface oxidation? Yes
  
4. Is the anchorage free of visible cracks in the concrete near the anchors? Yes
  
5. Is the anchorage configuration consistent with plant documentation? (Note: This question only applies if the item is one of the 50% for which an anchorage configuration verification is required.)  
*Drawing 6E-0-3391F Revision AJ*  
*Weld exceeds drawing requirements* Yes
  
6. Based on the above anchorage evaluations, is the anchorage free of potentially adverse seismic conditions? Yes

Status:  Y  N  U

**Seismic Walkdown Checklist (SWC)**

Equipment ID No.: 1AP13E

Equipment Class: (4) Transformers

Equipment Description: 480V ESF UNIT SUBSTA 132X XFMR

**Interaction Effects**

- |   |     |
|---|-----|
| 7. Are soft targets free from impact by nearby equipment or structures?   | Yes |
| 8. Are overhead equipment, distribution systems, ceiling tiles and lighting, and masonry block walls not likely to collapse onto the equipment? | Yes |
| 9. Do attached lines have adequate flexibility to avoid damage?   | Yes |
| 10. Based on the above seismic interaction evaluations, is equipment free of potentially adverse seismic interaction effects?                   | Yes |

**Other Adverse Conditions**

- |  |     |
|--|-----|
| 11. Have you looked for and found no adverse seismic conditions that could adversely affect the safety functions of the equipment? | Yes |
|--|-----|

**Comments**

Seismic walkdown team M. Delaney & P. Gazda 8/8/12 am

*Marlene M. Delaney*

Evaluated by:

Marlene Delaney

Date: 10/5/2012

*P. Gazda*

Philip Gazda

10/5/2012

Status:  Y  N  U

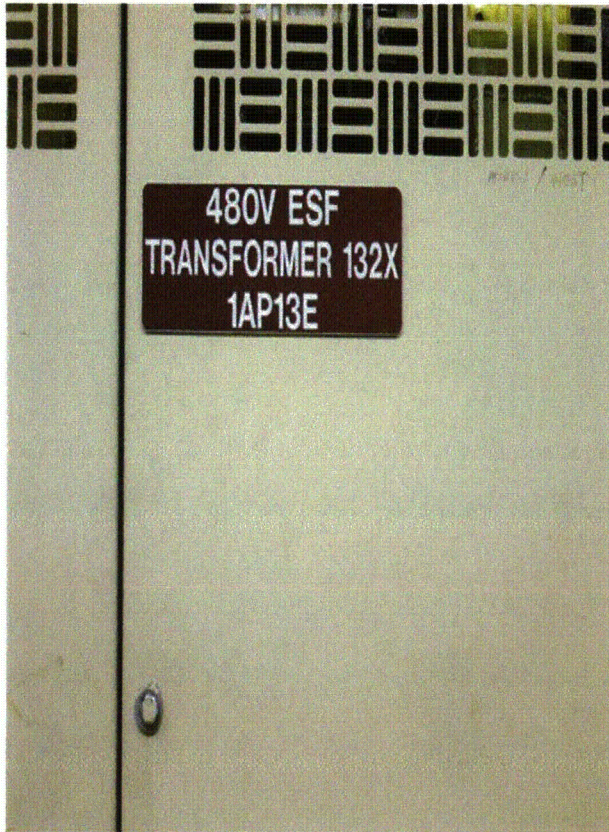
**Seismic Walkdown Checklist (SWC)**

Equipment ID No.: 1AP13E

Equipment Class: (4) Transformers

Equipment Description: 480V ESF UNIT SUBSTA 132X XFMR

**Photos**



1AP13E Byron 1 & 2 8-8-12 029



1AP13E Byron 1 & 2 8-8-12 030

Status:  Y  N  U

**Seismic Walkdown Checklist (SWC)**

Equipment ID No.: 1AP13E

Equipment Class: (4) Transformers

Equipment Description: 480V ESF UNIT SUBSTA 132X XFMR



1AP13E Byron 1 & 2 8-8-12 031



Status: Y  N  U

**Seismic Walkdown Checklist (SWC)**

Equipment ID No.: 1AP21E

Equipment Class: (1) Motor Control Centers

Equipment Description: 480V AUX BLDG ESF MCC 131X1

Project: Byron 1 SWEL

Location (Bldg, Elev, Room/Area): Auxiliary, 364.00 ft, ALL

Manufacturer/Model:

**Instructions for Completing Checklist**

This checklist may be used to document the results of the Seismic Walkdown of an item of equipment on the SWEL. The space below each of the following questions may be used to record the results of judgments and findings. Additional space is provided at the end of this checklist for documenting other comments.

**Anchorage**

1. Is anchorage configuration verification required (i.e., is the item one of the 50% of SWEL items requiring such verification)? Yes
  
2. Is the anchorage free of bent, broken, missing or loose hardware? Yes
  
3. Is the anchorage free of corrosion that is more than mild surface oxidation? Yes
  
4. Is the anchorage free of visible cracks in the concrete near the anchors? Yes
  
5. Is the anchorage configuration consistent with plant documentation? (Note: This question only applies if the item is one of the 50% for which an anchorage configuration verification is required.) Yes  
*Drawing 6E-0-3391C Revision BE*  
*Weld exceeds or is equal to the drawing requirements*
  
6. Based on the above anchorage evaluations, is the anchorage free of potentially adverse seismic conditions? Yes

Status: Y  N  U

**Seismic Walkdown Checklist (SWC)**

Equipment ID No.: 1AP21E

Equipment Class: (1) Motor Control Centers

Equipment Description: 480V AUX BLDG ESF MCC 131X1

**Interaction Effects**

7. Are soft targets free from impact by nearby equipment or structures? Yes  
*Large scaffold supporting lead blankets is near cabinet. Scaffold is well-secured and could not fall into the cabinet in accordance with Exelon Scaffolding Procedure*
8. Are overhead equipment, distribution systems, ceiling tiles and lighting, and masonry block walls not likely to collapse onto the equipment? Yes  
*Masonry walls are seismic and would not collapse on equipment*
9. Do attached lines have adequate flexibility to avoid damage? Yes
10. Based on the above seismic interaction evaluations, is equipment free of potentially adverse seismic interaction effects? No

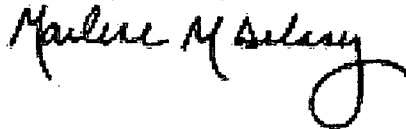
**Other Adverse Conditions**

11. Have you looked for and found no adverse seismic conditions that could adversely affect the safety functions of the equipment? Yes

**Comments**

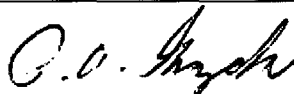
Seismic walkdown team M. Delaney & P. Gazda 8/8/12 pm

Evaluated by:



Marlene Delaney

Date: 10/5/2012



Philip Gazda

10/5/2012

Status: Y  N  U

**Seismic Walkdown Checklist (SWC)**

Equipment ID No.: 1AP21E

Equipment Class: (1) Motor Control Centers

Equipment Description: 480V AUX BLDG ESF MCC 131X1

**Photos**



1AP21E Byron 1 & 2 8-8-12 038



1AP21E Byron 1 & 2 8-8-12 039

Status:  Y  N  U

### Seismic Walkdown Checklist (SWC)

Equipment ID No.: 1AP22E

Equipment Class: (1) Motor Control Centers

Equipment Description: 480V AUX BLDG ESF MCC 131X3 ASMBLY

Project: Byron 1 SWEL

Location (Bldg, Elev, Room/Area): Auxiliary, 383.00 ft, ALL

Manufacturer/Model:

#### Instructions for Completing Checklist

This checklist may be used to document the results of the Seismic Walkdown of an item of equipment on the SWEL. The space below each of the following questions may be used to record the results of judgments and findings. Additional space is provided at the end of this checklist for documenting other comments.

#### Anchorage

1. Is anchorage configuration verification required (i.e., is the item one of the 50% of SWEL items requiring such verification)? Yes
  
2. Is the anchorage free of bent, broken, missing or loose hardware? Yes
  
3. Is the anchorage free of corrosion that is more than mild surface oxidation? Yes
  
4. Is the anchorage free of visible cracks in the concrete near the anchors? Yes
  
5. Is the anchorage configuration consistent with plant documentation? (Note: This question only applies if the item is one of the 50% for which an anchorage configuration verification is required.)  
*Drawing 6E-0-3391C Revision BE*  
*Weld exceeds drawing requirements* Yes
  
6. Based on the above anchorage evaluations, is the anchorage free of potentially adverse seismic conditions? Yes

Status:  Y  N  U

**Seismic Walkdown Checklist (SWC)**

Equipment ID No.: 1AP22E

Equipment Class: (1) Motor Control Centers

Equipment Description: 480V AUX BLDG ESF MCC 131X3 ASMBLY

**Interaction Effects**

7. Are soft targets free from impact by nearby equipment or structures? Yes
8. Are overhead equipment, distribution systems, ceiling tiles and lighting, and masonry block walls not likely to collapse onto the equipment? Yes  
*Masonry walls are seismic and would not collapse on equipment*
9. Do attached lines have adequate flexibility to avoid damage? Yes
10. Based on the above seismic interaction evaluations, is equipment free of potentially adverse seismic interaction effects? Yes

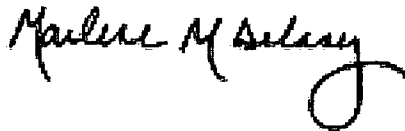
**Other Adverse Conditions**

11. Have you looked for and found no adverse seismic conditions that could adversely affect the safety functions of the equipment? Yes

**Comments**

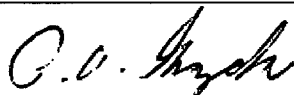
Seismic walkdown team M. Delaney & P. Gazda 8/20/12 pm

Evaluated by:



Marlene Delaney

Date: 10/5/2012



Philip Gazda

10/5/2012

Status:  Y  N  U

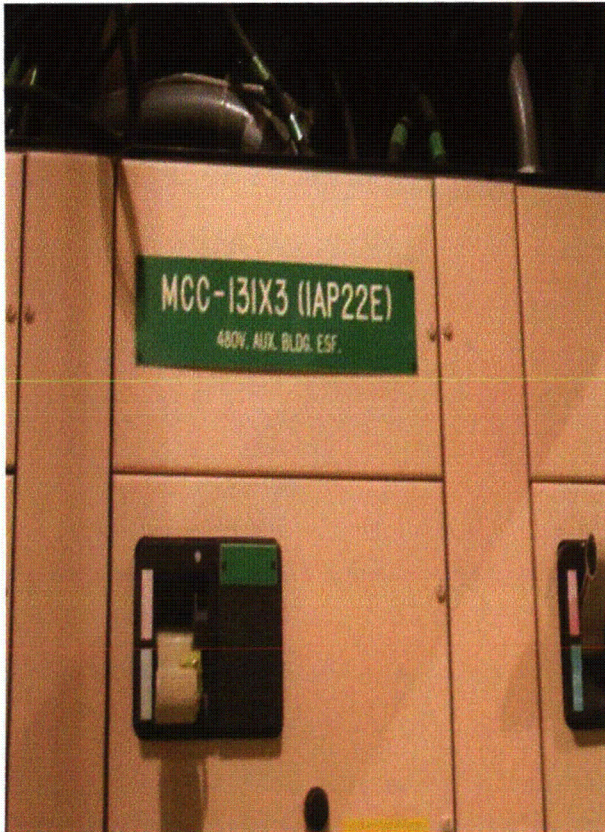
**Seismic Walkdown Checklist (SWC)**

Equipment ID No.: 1AP22E

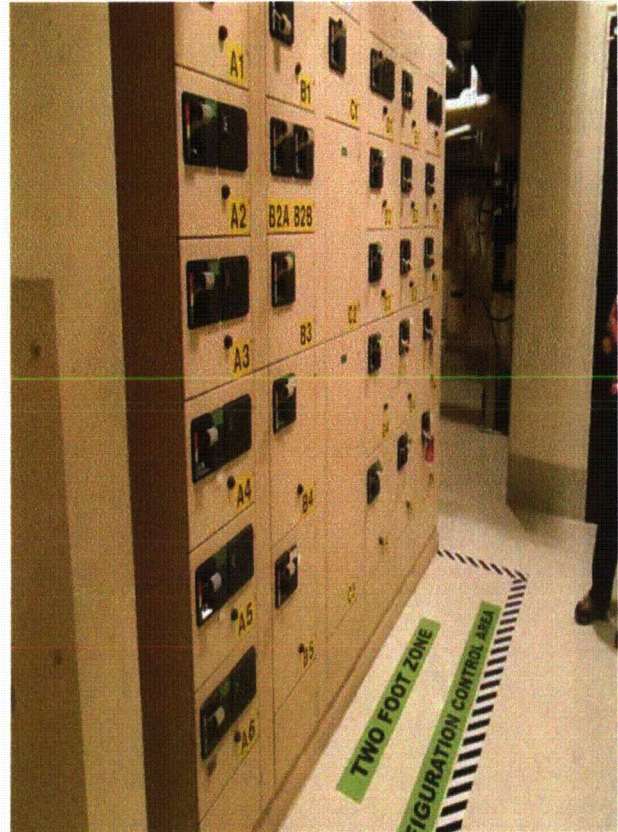
Equipment Class: (1) Motor Control Centers

Equipment Description: 480V AUX BLDG ESF MCC 131X3 ASMBLY

**Photos**



1AP22E Byron 1 & 2 8-20-12 043



1AP22E Byron 1 & 2 8-20-12 044

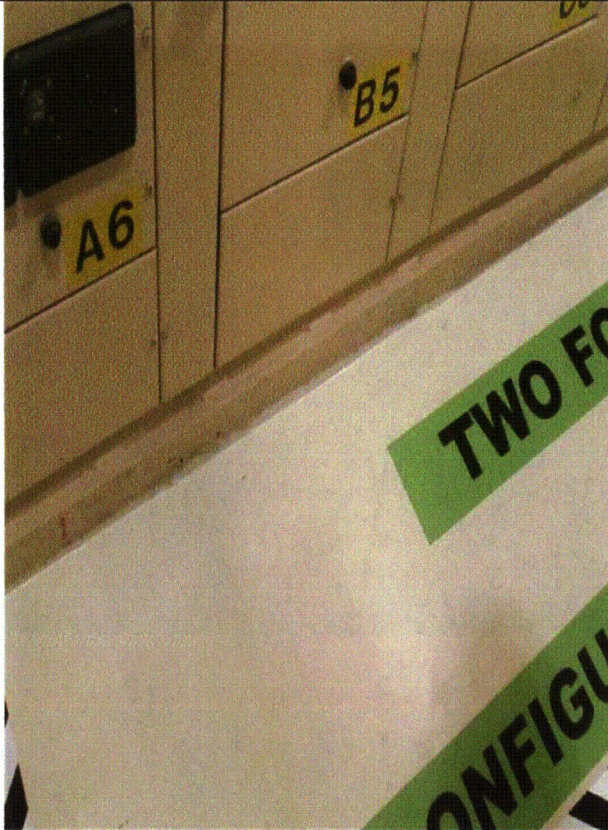
Status:  Y  N  U

**Seismic Walkdown Checklist (SWC)**

Equipment ID No.: 1AP22E

Equipment Class: (1) Motor Control Centers

Equipment Description: 480V AUX BLDG ESF MCC 131X3 ASMBLY



1AP22E Byron 1 & 2 8-20-12 045

Status:  Y  N  U

**Seismic Walkdown Checklist (SWC)**

Equipment ID No.: 1AP24E

Equipment Class: (1) Motor Control Centers

Equipment Description: EQ 480 V AUX BLDG ESF MCC 132X3 ASMBLY

Project: Byron 1 SWEL

Location (Bldg, Elev, Room/Area): Auxiliary, 383.00 ft, ALL

Manufacturer/Model:

**Instructions for Completing Checklist**

This checklist may be used to document the results of the Seismic Walkdown of an item of equipment on the SWEL. The space below each of the following questions may be used to record the results of judgments and findings. Additional space is provided at the end of this checklist for documenting other comments.

**Anchorage**

1. Is anchorage configuration verification required (i.e., is the item one of the 50% of SWEL items requiring such verification)? Yes
  
2. Is the anchorage free of bent, broken, missing or loose hardware? Yes
  
3. Is the anchorage free of corrosion that is more than mild surface oxidation? Yes
  
4. Is the anchorage free of visible cracks in the concrete near the anchors? Yes
  
5. Is the anchorage configuration consistent with plant documentation? (Note: This question only applies if the item is one of the 50% for which an anchorage configuration verification is required.) Yes  
*Drawing 6E-0-3391C Revision BE*  
*Weld exceeds drawing requirements*
  
6. Based on the above anchorage evaluations, is the anchorage free of potentially adverse seismic conditions? Yes



Status:  Y  N  U

**Seismic Walkdown Checklist (SWC)**

Equipment ID No.: 1AP24E

Equipment Class: (1) Motor Control Centers

Equipment Description: EQ 480 V AUX BLDG ESF MCC 132X3 ASMBLY

**Interaction Effects**

7. Are soft targets free from impact by nearby equipment or structures? Yes
8. Are overhead equipment, distribution systems, ceiling tiles and lighting, and masonry block walls not likely to collapse onto the equipment? Yes
9. Do attached lines have adequate flexibility to avoid damage? Yes
10. Based on the above seismic interaction evaluations, is equipment free of potentially adverse seismic interaction effects? Yes

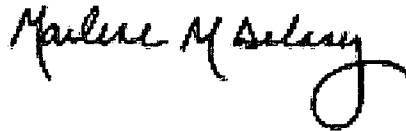
**Other Adverse Conditions**

11. Have you looked for and found no adverse seismic conditions that could adversely affect the safety functions of the equipment? Yes

**Comments**

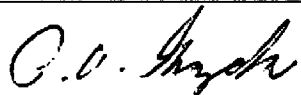
Seismic walkdown team 8/20/12 am M. Delaney & P. Gazda

Evaluated by:



Marlene Delaney

Date: 10/5/2012



Philip Gazda

10/5/2012

Status:  Y  N  U

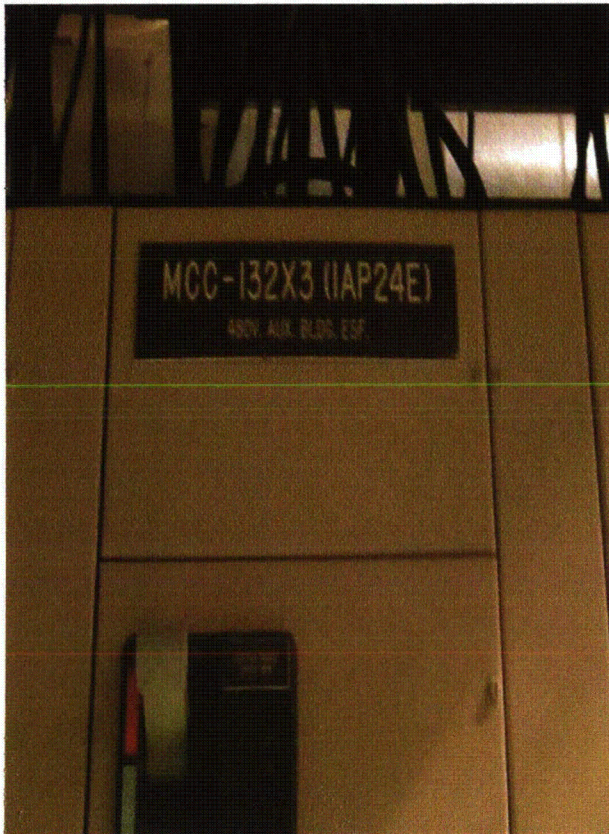
**Seismic Walkdown Checklist (SWC)**

Equipment ID No.: 1AP24E

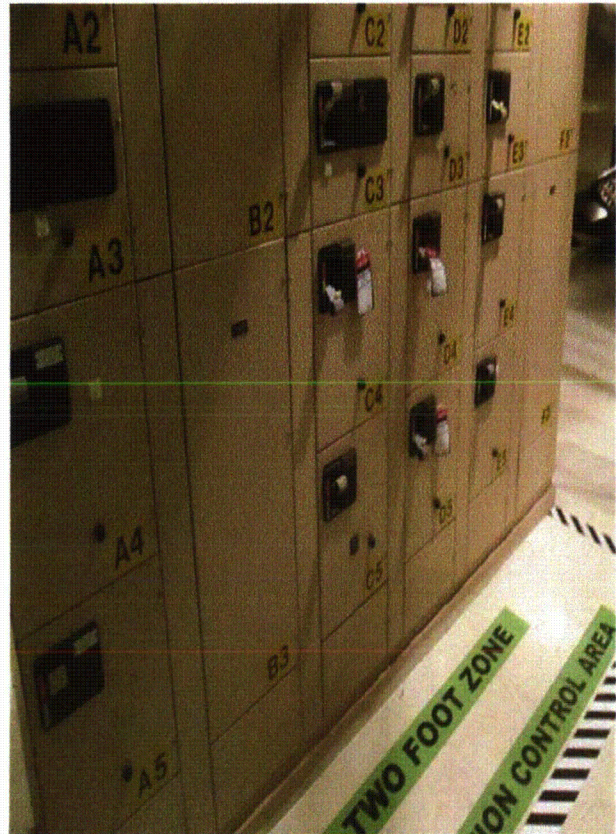
Equipment Class: (1) Motor Control Centers

Equipment Description: EQ 480 V AUX BLDG ESF MCC 132X3 ASMBLY

**Photos**



1AP24E Byron 1 & 2 8-20-12 014



1AP24E Byron 1 & 2 8-20-12 015

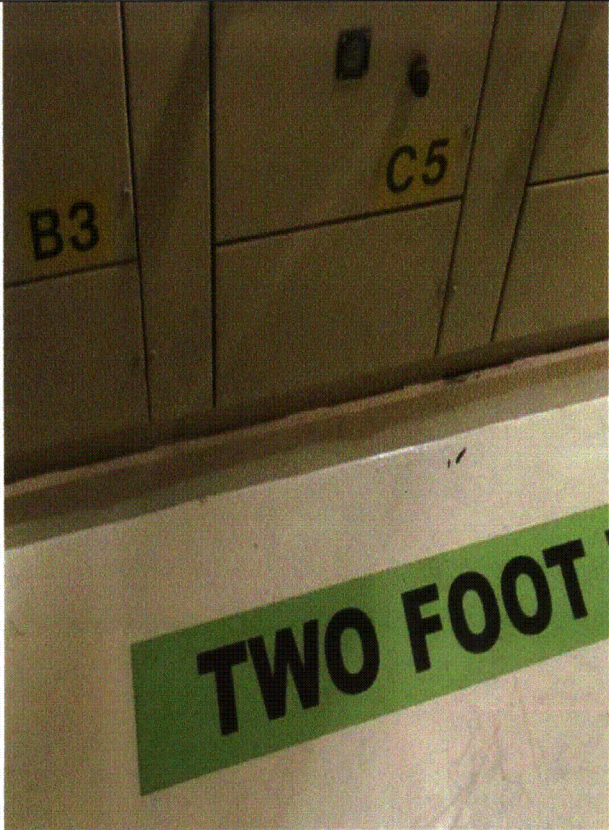
Status:  Y  N  U

**Seismic Walkdown Checklist (SWC)**

Equipment ID No.: 1AP24E

Equipment Class: (1) Motor Control Centers

Equipment Description: EQ 480 V AUX BLDG ESF MCC 132X3 ASMBLY



1AP24E Byron 1 & 2 8-20-12 016

Status:  Y  N  U

**Seismic Walkdown Checklist (SWC)**

Equipment ID No.: 1AP25E

Equipment Class: (1) Motor Control Centers

Equipment Description: ASSY - 480V AUX BLDG ESF MCC 131X2

Project: Byron 1 SWEL

Location (Bldg, Elev, Room/Area): Auxiliary, 414.00 ft, ALL

Manufacturer/Model:

**Instructions for Completing Checklist**

This checklist may be used to document the results of the Seismic Walkdown of an item of equipment on the SWEL. The space below each of the following questions may be used to record the results of judgments and findings. Additional space is provided at the end of this checklist for documenting other comments.

**Anchorage**

1. Is anchorage configuration verification required (i.e., is the item one of the 50% of SWEL items requiring such verification)? Yes
  
2. Is the anchorage free of bent, broken, missing or loose hardware? Yes
  
3. Is the anchorage free of corrosion that is more than mild surface oxidation? Yes
  
4. Is the anchorage free of visible cracks in the concrete near the anchors? Yes
  
5. Is the anchorage configuration consistent with plant documentation? (Note: This question only applies if the item is one of the 50% for which an anchorage configuration verification is required.) Yes  
*SEWS notes - Channel stitched to embeds at 2" at 12"*  
*Weld exceeds or equals specified weld*
  
6. Based on the above anchorage evaluations, is the anchorage free of potentially adverse seismic conditions? Yes

Status:  Y  N  U

**Seismic Walkdown Checklist (SWC)**

Equipment ID No.: 1AP25E

Equipment Class: (1) Motor Control Centers

Equipment Description: ASSY - 480V AUX BLDG ESF MCC 131X2

**Interaction Effects**

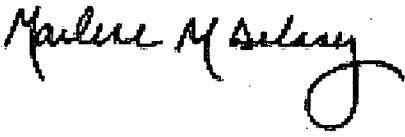
7. Are soft targets free from impact by nearby equipment or structures? Yes  
*Cabinet is bolted to adjacent cabinet 1AP44E to eliminate spatial interaction issues during a seismic event*
8. Are overhead equipment, distribution systems, ceiling tiles and lighting, and masonry block walls not likely to collapse onto the equipment? Yes
9. Do attached lines have adequate flexibility to avoid damage? Yes
10. Based on the above seismic interaction evaluations, is equipment free of potentially adverse seismic interaction effects? Yes

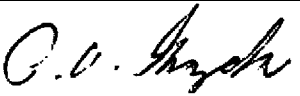
**Other Adverse Conditions**

11. Have you looked for and found no adverse seismic conditions that could adversely affect the safety functions of the equipment? Yes

**Comments**

Seismic walkdown team M. Delaney & P. Gazda 8/20/12 am

Evaluated by:  Marlene Delaney Date: 10/5/2012

 Philip Gazda 10/5/2012

Status:  Y  N  U

**Seismic Walkdown Checklist (SWC)**

Equipment ID No.: 1AP25E

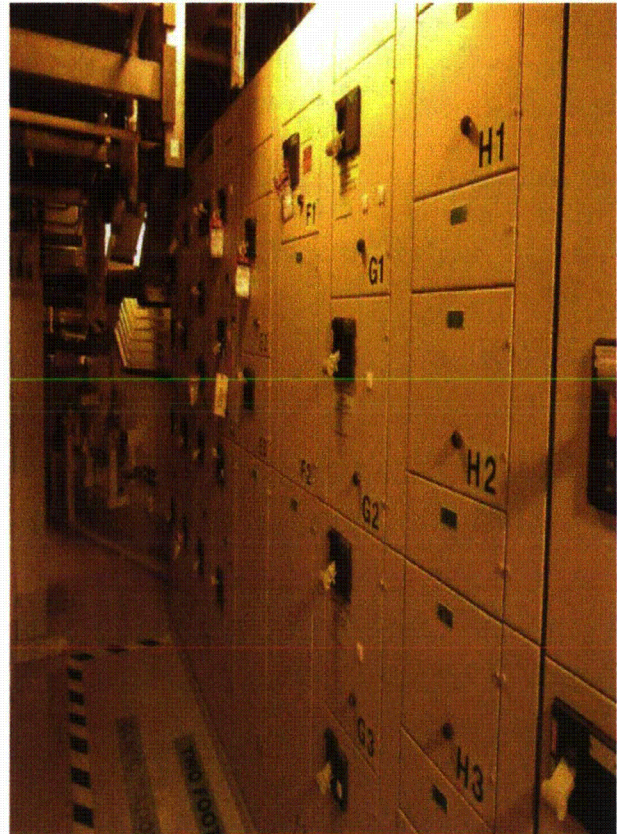
Equipment Class: (1) Motor Control Centers

Equipment Description: ASSY - 480V AUX BLDG ESF MCC 131X2

**Photos**



1AP25E Byron 1 & 2 8-20-12 005



1AP25E Byron 1 & 2 8-20-12 006

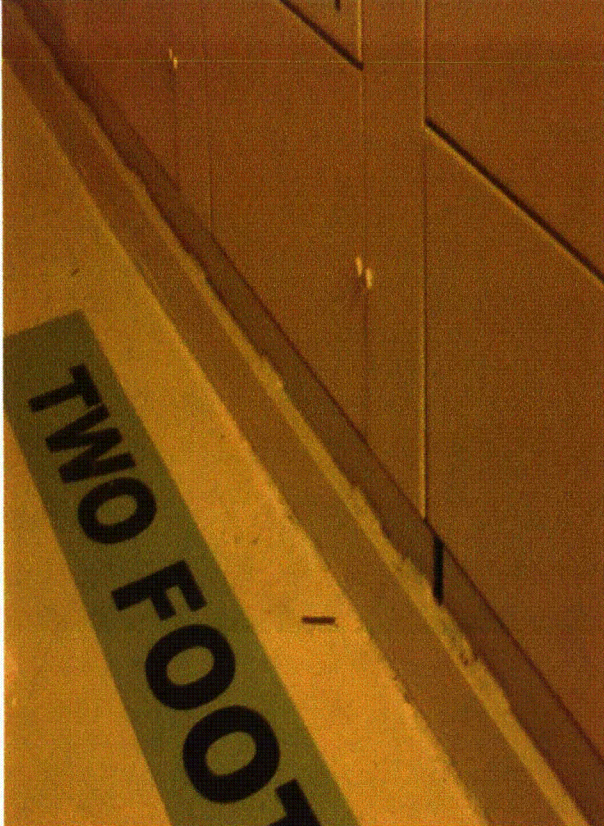
Status:  Y  N  U

**Seismic Walkdown Checklist (SWC)**

Equipment ID No.: 1AP25E

Equipment Class: (1) Motor Control Centers

Equipment Description: ASSY - 480V AUX BLDG ESF MCC 131X2



1AP25E Byron 1 & 2 8-20-12 007

Status:  Y  N  U

**Seismic Walkdown Checklist (SWC)**

Equipment ID No.: 1AP27E

Equipment Class: (1) Motor Control Centers

Equipment Description: EQ 480V AUX BLDG MCC 132X2 ASMBLY

Project: Byron 1 SWEL

Location (Bldg, Elev, Room/Area): Auxiliary, 426.00 ft, ALL

Manufacturer/Model:

**Instructions for Completing Checklist**

This checklist may be used to document the results of the Seismic Walkdown of an item of equipment on the SWEL. The space below each of the following questions may be used to record the results of judgments and findings. Additional space is provided at the end of this checklist for documenting other comments.

**Anchorage**

1. Is anchorage configuration verification required (i.e., is the item one of the 50% of SWEL items requiring such verification)? Yes
  
2. Is the anchorage free of bent, broken, missing or loose hardware? Yes
  
3. Is the anchorage free of corrosion that is more than mild surface oxidation? Yes
  
4. Is the anchorage free of visible cracks in the concrete near the anchors? Yes
  
5. Is the anchorage configuration consistent with plant documentation? (Note: This question only applies if the item is one of the 50% for which an anchorage configuration verification is required.)  
*Drawing 6E-0-3391C Revision BE*  
*Weld exceeds drawing requirements* Yes
  
6. Based on the above anchorage evaluations, is the anchorage free of potentially adverse seismic conditions? Yes



Status:  Y  N  U

**Seismic Walkdown Checklist (SWC)**

Equipment ID No.: 1AP27E

Equipment Class: (1) Motor Control Centers

Equipment Description: EQ 480V AUX BLDG MCC 132X2 ASMBLY

**Interaction Effects**

7. Are soft targets free from impact by nearby equipment or structures? Yes

*Adjacent scaffold is well tied-off in accordance with Exelon Scaffolding Procedure*

*Nearby cart is tied-off (restrained) in accordance with Byron Seismic Housekeeping Procedure*

*Cabinet is bolted to adjacent cabinet 1AP47E to eliminate spatial interaction issues during a seismic event*

8. Are overhead equipment, distribution systems, ceiling tiles and lighting, and masonry block walls not likely to collapse onto the equipment? Yes

9. Do attached lines have adequate flexibility to avoid damage? Yes

10. Based on the above seismic interaction evaluations, is equipment free of potentially adverse seismic interaction effects? Yes

**Other Adverse Conditions**

11. Have you looked for and found no adverse seismic conditions that could adversely affect the safety functions of the equipment? Yes

**Comments**

Seismic walkdown team 8/20/12 am M. Delaney & P. Gazda

Status:  Y  N  U

**Seismic Walkdown Checklist (SWC)**

Equipment ID No.: 1AP27E

Equipment Class: (1) Motor Control Centers

Equipment Description: EQ 480V AUX BLDG MCC 132X2 ASMBLY

*Marlene M Delaney*

Evaluated by:

Marlene Delaney

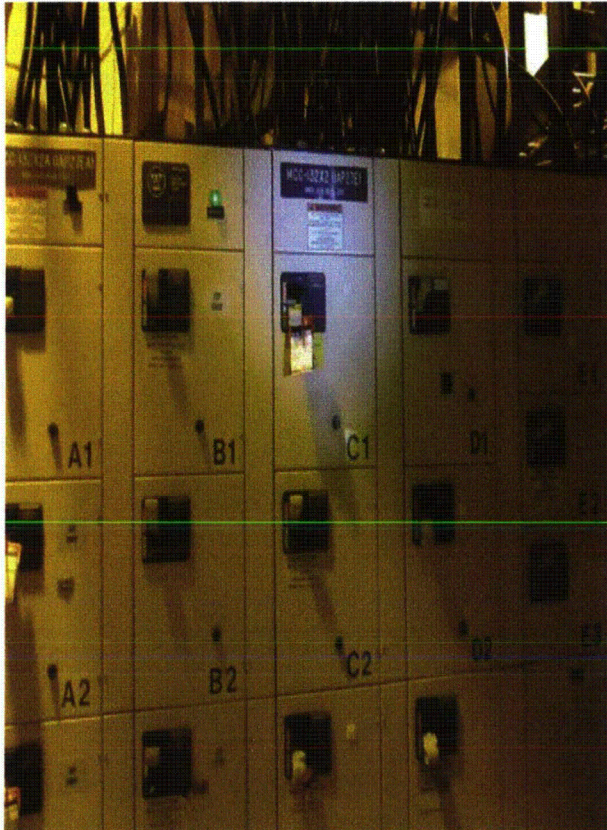
Date: 10/5/2012

*P. V. Gazda*

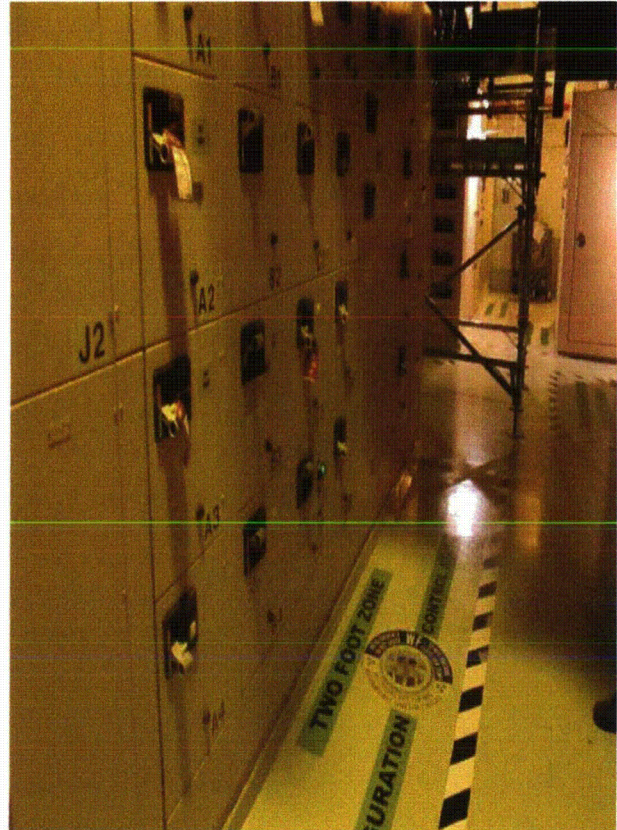
Philip Gazda

10/5/2012

**Photos**



1AP27E Byron 1 & 2 8-20-12 002



1AP27E Byron 1 & 2 8-20-12 003

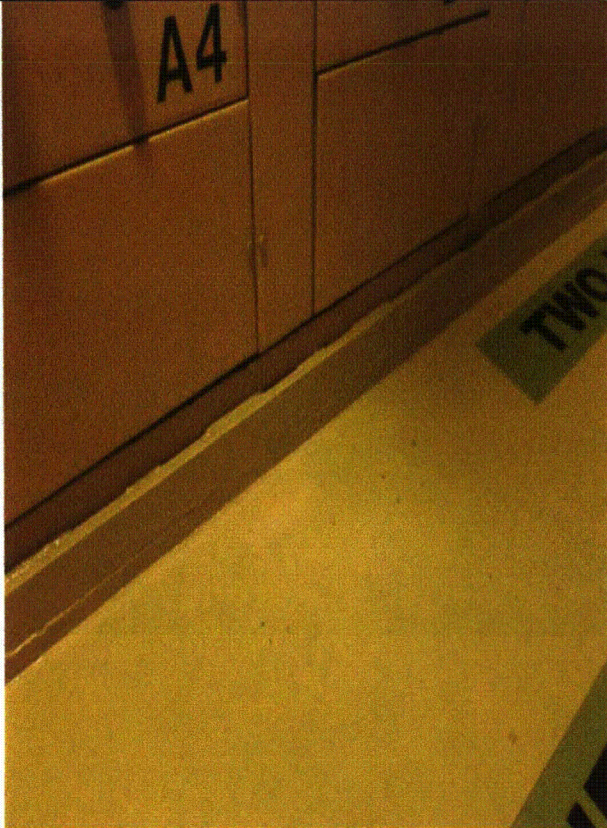
Status:  Y  N  U

**Seismic Walkdown Checklist (SWC)**

Equipment ID No.: 1AP27E

Equipment Class: (1) Motor Control Centers

Equipment Description: EQ 480V AUX BLDG MCC 132X2 ASMBLY



1AP27E Byron 1 & 2 8-20-12 004

Status:  Y  N  U

**Seismic Walkdown Checklist (SWC)**

Equipment ID No.: 1AP38E

Equipment Class: (1) Motor Control Centers

Equipment Description: ASSY - 480V AUX BLDG MCC 133X1A

Project: Byron 1 SWEL

Location (Bldg, Elev, Room/Area): Auxiliary, 346.00 ft, ALL

Manufacturer/Model:

**Instructions for Completing Checklist**

This checklist may be used to document the results of the Seismic Walkdown of an item of equipment on the SWEL. The space below each of the following questions may be used to record the results of judgments and findings. Additional space is provided at the end of this checklist for documenting other comments.

**Anchorage**

1. Is anchorage configuration verification required (i.e., is the item one of the 50% of SWEL items requiring such verification)? Yes
  
2. Is the anchorage free of bent, broken, missing or loose hardware? Yes
  
3. Is the anchorage free of corrosion that is more than mild surface oxidation? Yes
  
4. Is the anchorage free of visible cracks in the concrete near the anchors? Yes
  
5. Is the anchorage configuration consistent with plant documentation? (Note: This question only applies if the item is one of the 50% for which an anchorage configuration verification is required.) Yes  
*Drawing 6E-0-3391C Revision BE*  
*Weld exceeds or meets drawing requirements*
  
6. Based on the above anchorage evaluations, is the anchorage free of potentially adverse seismic conditions? Yes

Status:  Y  N  U

**Seismic Walkdown Checklist (SWC)**

Equipment ID No.: 1AP38E

Equipment Class: (1) Motor Control Centers

Equipment Description: ASSY - 480V AUX BLDG MCC 133X1A

**Interaction Effects**

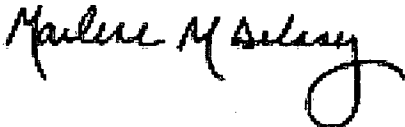
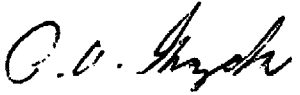
7. Are soft targets free from impact by nearby equipment or structures? Yes  
*A Radiation Protection cart is approximately 1" away from cabinet. IR 1399382 written to move cart.*  
*Adjacent lead blanket storage bin is bolted to the floor and would not interact with adjacent equipment*
8. Are overhead equipment, distribution systems, ceiling tiles and lighting, and masonry block walls not likely to collapse onto the equipment? Yes  
*Masonry walls are seismic and would not collapse on equipment*
9. Do attached lines have adequate flexibility to avoid damage? Yes
10. Based on the above seismic interaction evaluations, is equipment free of potentially adverse seismic interaction effects? Yes

**Other Adverse Conditions**

11. Have you looked for and found no adverse seismic conditions that could adversely affect the safety functions of the equipment? Yes

**Comments**

Seismic walkdown team M. Delaney & P. Gazda 8/10/12 am

Evaluated by:  Marlene Delaney Date: 10/5/2012  
 Philip Gazda 10/5/2012

Status:  Y  N  U

**Seismic Walkdown Checklist (SWC)**

Equipment ID No.: 1AP38E

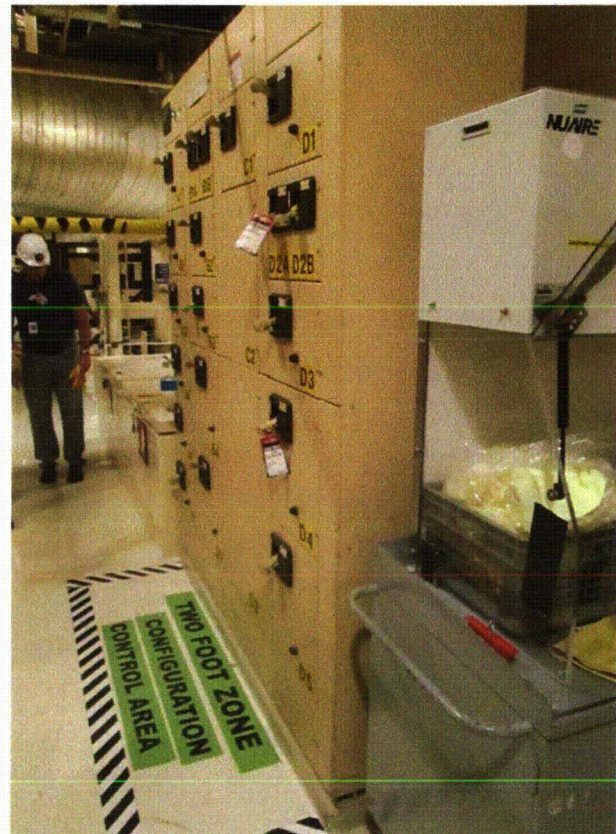
Equipment Class: (1) Motor Control Centers

Equipment Description: ASSY - 480V AUX BLDG MCC 133X1A

**Photos**



1AP38E Byron 1 & 2 8-10-12 012



1AP38E Byron 1 & 2 8-10-12 013

Status:  Y  N  U

**Seismic Walkdown Checklist (SWC)**

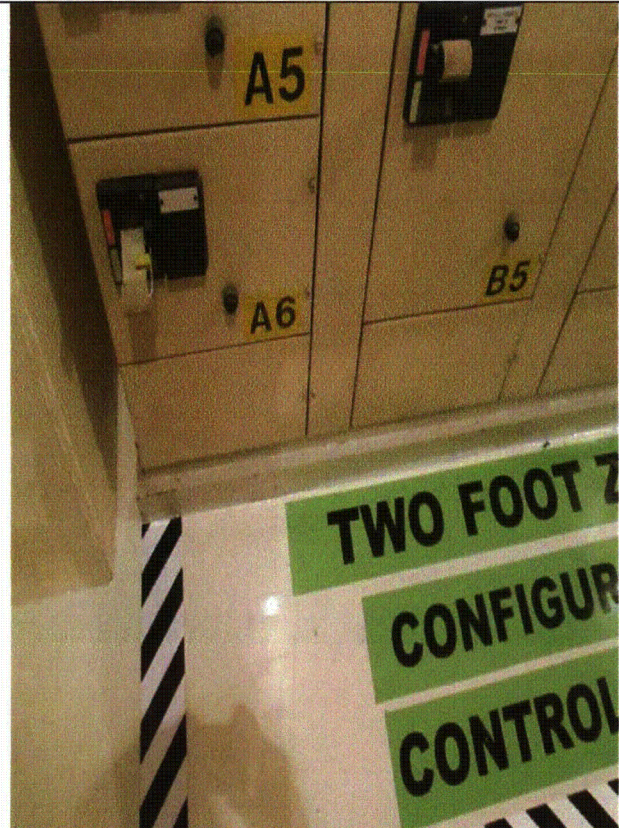
Equipment ID No.: 1AP38E

Equipment Class: (1) Motor Control Centers

Equipment Description: ASSY - 480V AUX BLDG MCC 133X1A



1AP38E Byron 1 & 2 8-10-12 014



1AP38E Byron 1 & 2 8-10-12 015

Status:  Y  N  U

### Seismic Walkdown Checklist (SWC)

Equipment ID No.: 1AP92E

Equipment Class: (1) Motor Control Centers

Equipment Description: ASSY - 480V SXCT MCC 132Z1, SOUTH ELEC RM

Project: Byron 1 SWEL

Location (Bldg, Elev, Room/Area): ESWCT, 874.00 ft, ALL

Manufacturer/Model:

#### Instructions for Completing Checklist

This checklist may be used to document the results of the Seismic Walkdown of an item of equipment on the SWEL. The space below each of the following questions may be used to record the results of judgments and findings. Additional space is provided at the end of this checklist for documenting other comments.

#### Anchorage

1. Is anchorage configuration verification required (i.e., is the item one of the 50% of SWEL items requiring such verification)? Yes
  
2. Is the anchorage free of bent, broken, missing or loose hardware? Yes
  
3. Is the anchorage free of corrosion that is more than mild surface oxidation? Yes
  
4. Is the anchorage free of visible cracks in the concrete near the anchors? Yes
  
5. Is the anchorage configuration consistent with plant documentation? (Note: This question only applies if the item is one of the 50% for which an anchorage configuration verification is required.)  
*Drawing 6E-0-3391C Revision BE*  
*Weld exceeds drawing requirement* Yes
  
6. Based on the above anchorage evaluations, is the anchorage free of potentially adverse seismic conditions? Yes



Status:  Y  N  U

**Seismic Walkdown Checklist (SWC)**

Equipment ID No.: 1AP92E

Equipment Class: (1) Motor Control Centers

Equipment Description: ASSY - 480V SXCT MCC 132Z1, SOUTH ELEC RM

**Interaction Effects**

7. Are soft targets free from impact by nearby equipment or structures? Yes  
*Cabinet is bolted to adjacent cabinet 1AP92E to eliminate spatial interaction issues during a seismic event*
8. Are overhead equipment, distribution systems, ceiling tiles and lighting, and masonry block walls not likely to collapse onto the equipment? Yes
9. Do attached lines have adequate flexibility to avoid damage? Yes
10. Based on the above seismic interaction evaluations, is equipment free of potentially adverse seismic interaction effects? Yes

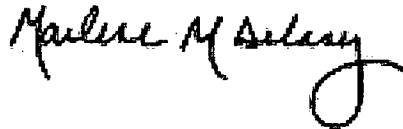
**Other Adverse Conditions**

11. Have you looked for and found no adverse seismic conditions that could adversely affect the safety functions of the equipment? Yes  
*One bolt is missing on one back panel but adequate bolts are in-place and acceptable. Not a structural/seismic issue.*

**Comments**

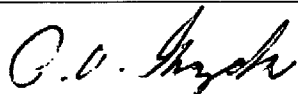
Seismic walkdown team M. Delaney & P. Gazda 8/7/12 am

Evaluated by:



Marlene Delaney

Date: 10/5/2012



Philip Gazda

10/5/2012

Status:  Y  N  U

**Seismic Walkdown Checklist (SWC)**

Equipment ID No.: 1AP92E

Equipment Class: (1) Motor Control Centers

Equipment Description: ASSY - 480V SXCT MCC 132Z1, SOUTH ELEC RM

**Photos**



1AP92E Byron 1 & 2 186



1AP92E Byron 1 & 2 187

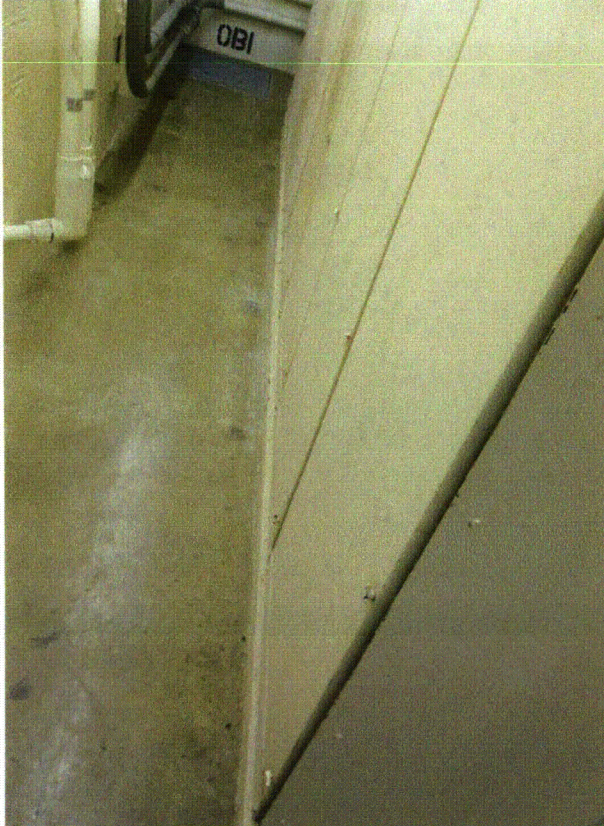
Status:  Y  N  U

**Seismic Walkdown Checklist (SWC)**

Equipment ID No.: 1AP92E

Equipment Class: (1) Motor Control Centers

Equipment Description: ASSY - 480V SXCT MCC 132Z1, SOUTH ELEC RM



1AP92E Byron 1 & 2 188

Status:  Y  N  U

**Seismic Walkdown Checklist (SWC)**

Equipment ID No.: 1AP93E

Equipment Class: (1) Motor Control Centers

Equipment Description: ASSY - 480V SXCT MCC 131Z1, NORTH ELEC RM

Project: Byron 1 SWEL

Location (Bldg, Elev, Room/Area): ESWCT, 874.00 ft, ALL

Manufacturer/Model:

**Instructions for Completing Checklist**

This checklist may be used to document the results of the Seismic Walkdown of an item of equipment on the SWEL. The space below each of the following questions may be used to record the results of judgments and findings. Additional space is provided at the end of this checklist for documenting other comments.

**Anchorage**

1. Is anchorage configuration verification required (i.e., is the item one of the 50% of SWEL items requiring such verification)? Yes
  
2. Is the anchorage free of bent, broken, missing or loose hardware? Yes
  
3. Is the anchorage free of corrosion that is more than mild surface oxidation? Yes
  
4. Is the anchorage free of visible cracks in the concrete near the anchors? Yes
  
5. Is the anchorage configuration consistent with plant documentation? (Note: This question only applies if the item is one of the 50% for which an anchorage configuration verification is required.)  
*Drawing 6E-0-3391C Revision BE*  
*Weld matches or exceeds drawing requirements* Yes
  
6. Based on the above anchorage evaluations, is the anchorage free of potentially adverse seismic conditions? Yes

Status:  Y  N  U

**Seismic Walkdown Checklist (SWC)**

Equipment ID No.: 1AP93E

Equipment Class: (1) Motor Control Centers

Equipment Description: ASSY - 480V SXCT MCC 131Z1, NORTH ELEC RM

**Interaction Effects**

7. Are soft targets free from impact by nearby equipment or structures? Yes  
*Cabinet is bolted to adjacent cabinet 1AP89E to eliminate spatial interaction issues during a seismic event*
8. Are overhead equipment, distribution systems, ceiling tiles and lighting, and masonry block walls not likely to collapse onto the equipment? Yes  
*Partially open S-hooks in room. Unlikely that lights would disengage since the hooks are only slightly open and not all hooks are open. Therefore acceptable. IR 1398127 written to close.*
9. Do attached lines have adequate flexibility to avoid damage? Yes
10. Based on the above seismic interaction evaluations, is equipment free of potentially adverse seismic interaction effects? Yes

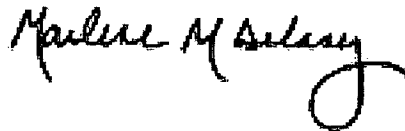
**Other Adverse Conditions**

11. Have you looked for and found no adverse seismic conditions that could adversely affect the safety functions of the equipment? Yes  
*Small hairline cracks in nearby wall judged to be acceptable based on their size. Not a structural/seismic concern.*

**Comments**

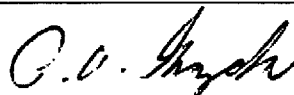
Seismic walkdown team M. Delaney & P. Gazda 8/7/12 am

Evaluated by:



Marlene Delaney

Date: 10/5/2012



Philip Gazda

10/5/2012

Status:  Y  N  U

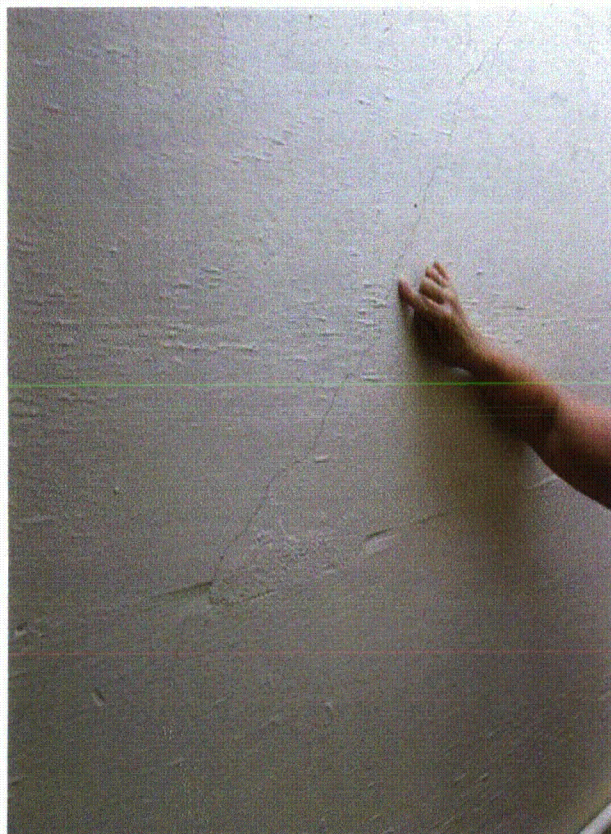
**Seismic Walkdown Checklist (SWC)**

Equipment ID No.: 1AP93E

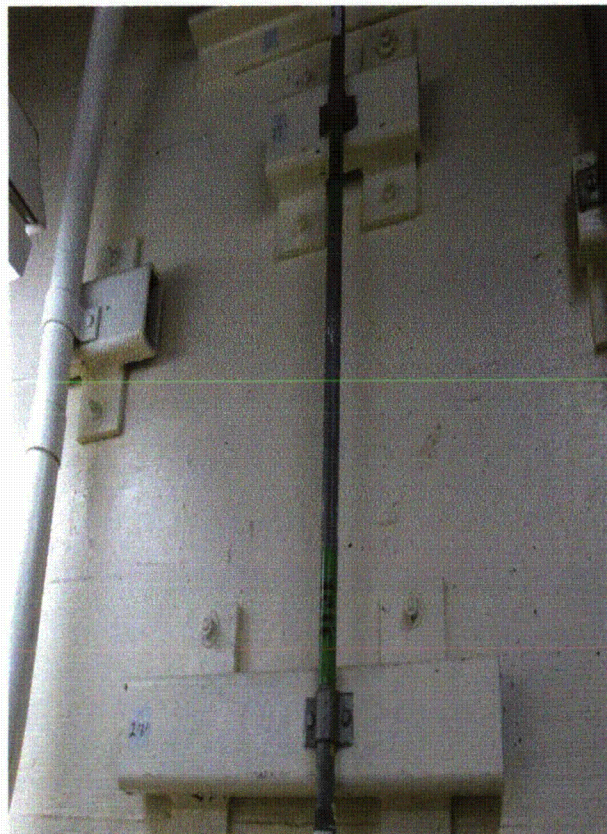
Equipment Class: (1) Motor Control Centers

Equipment Description: ASSY - 480V SXCT MCC 131Z1, NORTH ELEC RM

**Photos**



1AP93E (NP-6695) Byron 1 & 2 170



1AP93E (NP-6695) Byron 1 & 2 171

Status:  Y  N  U

**Seismic Walkdown Checklist (SWC)**

Equipment ID No.: 1AP93E

Equipment Class: (1) Motor Control Centers

Equipment Description: ASSY - 480V SXCT MCC 131Z1, NORTH ELEC RM



1AP93E (NP-6695) Byron 1 & 2 172



1AP93E Byron 1 & 2 167

Status:  Y  N  U

**Seismic Walkdown Checklist (SWC)**

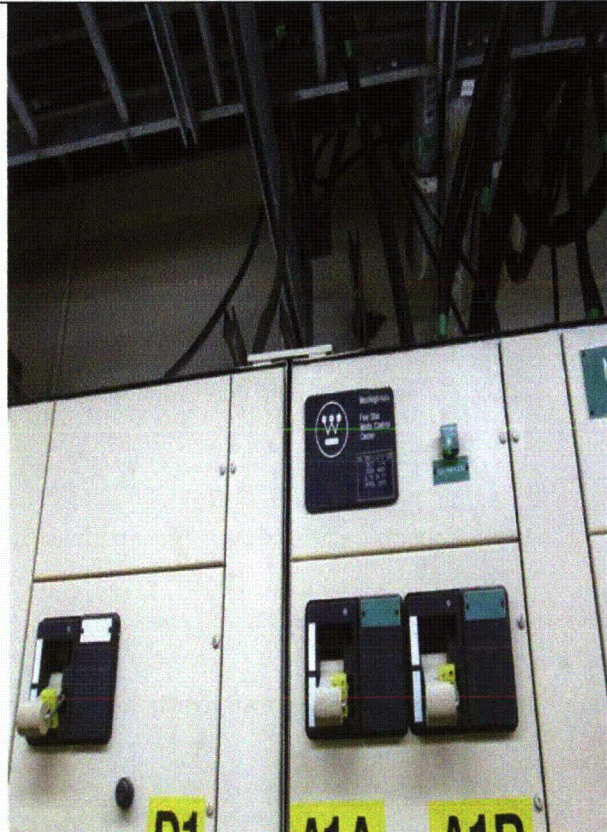
Equipment ID No.: 1AP93E

Equipment Class: (1) Motor Control Centers

Equipment Description: ASSY - 480V SXCT MCC 131Z1, NORTH ELEC RM



1AP93E Byron 1 & 2 168



1AP93E Byron 1 & 2 169



Status:  Y  N  U

**Seismic Walkdown Checklist (SWC)**

Equipment ID No.: 1AP98E

Equipment Class: (1) Motor Control Centers

Equipment Description: ASSY - 480V ESF SXCT UNIT SUBSTA 132Z, SOUTH ELEC RM

Project: Byron 1 SWEL

Location (Bldg, Elev, Room/Area): ESWCT, 874.00 ft, ALL

Manufacturer/Model:

**Instructions for Completing Checklist**

This checklist may be used to document the results of the Seismic Walkdown of an item of equipment on the SWEL. The space below each of the following questions may be used to record the results of judgments and findings. Additional space is provided at the end of this checklist for documenting other comments.

**Anchorage**

1. Is anchorage configuration verification required (i.e., is the item one of the 50% of SWEL items requiring such verification)? Yes
  
2. Is the anchorage free of bent, broken, missing or loose hardware? Yes
  
3. Is the anchorage free of corrosion that is more than mild surface oxidation? Yes
  
4. Is the anchorage free of visible cracks in the concrete near the anchors? Yes
  
5. Is the anchorage configuration consistent with plant documentation? (Note: This question only applies if the item is one of the 50% for which an anchorage configuration verification is required.)  
*Drawing 6E-0-3391C Revision BE  
Weld exceeds drawing requirements* Yes
  
6. Based on the above anchorage evaluations, is the anchorage free of potentially adverse seismic conditions? Yes

Status:  Y  N  U

**Seismic Walkdown Checklist (SWC)**

Equipment ID No.: 1AP98E

Equipment Class: (1) Motor Control Centers

Equipment Description: ASSY - 480V ESF SXCT UNIT SUBSTA 132Z, SOUTH ELEC RM

**Interaction Effects**

7. Are soft targets free from impact by nearby equipment or structures? Yes
8. Are overhead equipment, distribution systems, ceiling tiles and lighting, and masonry block walls not likely to collapse onto the equipment? Yes  
*S-hooks appear closed from floor. IR 1398127 written to inspect and close any S-hooks as an extent of condition based on open S-hooks in other areas of the ESWCT*
9. Do attached lines have adequate flexibility to avoid damage? Yes
10. Based on the above seismic interaction evaluations, is equipment free of potentially adverse seismic interaction effects? Yes

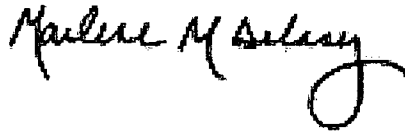
**Other Adverse Conditions**

11. Have you looked for and found no adverse seismic conditions that could adversely affect the safety functions of the equipment? Yes  
*Minor hairline cracks in nearby wall are small and not a structural/seismic concern.*

**Comments**

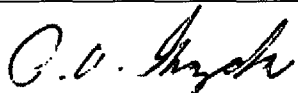
Seismic walkdown team M. Delaney & P. Gazda 8/7/12 am

Evaluated by:



Marlene Delaney

Date: 10/5/2012



Philip Gazda

10/5/2012

Status:  Y  N  U

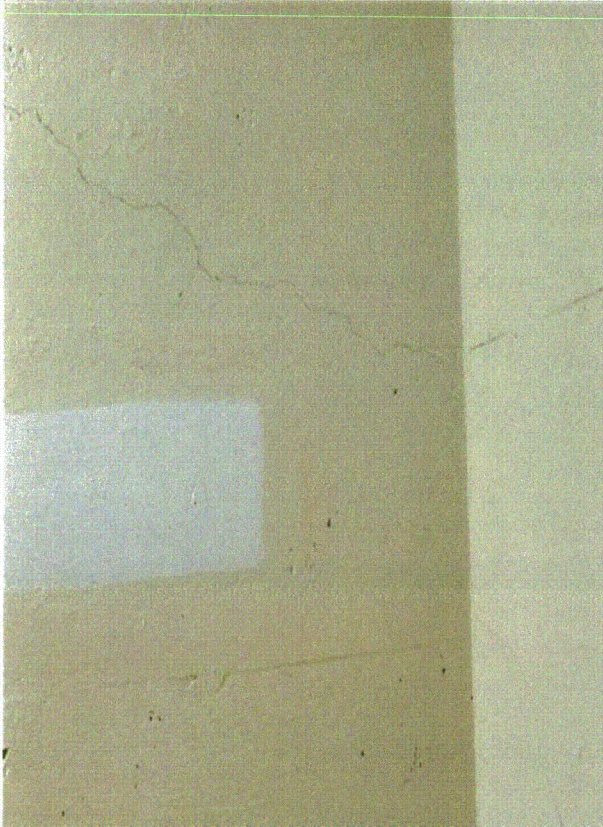
**Seismic Walkdown Checklist (SWC)**

Equipment ID No.: 1AP98E

Equipment Class: (1) Motor Control Centers

Equipment Description: ASSY - 480V ESF SXCT UNIT SUBSTA 132Z, SOUTH ELEC RM

**Photos**



1AP98E (NP-6695) Byron 1 & 2 193



1AP98E Byron 1 & 2 189

Status:  Y  N  U

**Seismic Walkdown Checklist (SWC)**

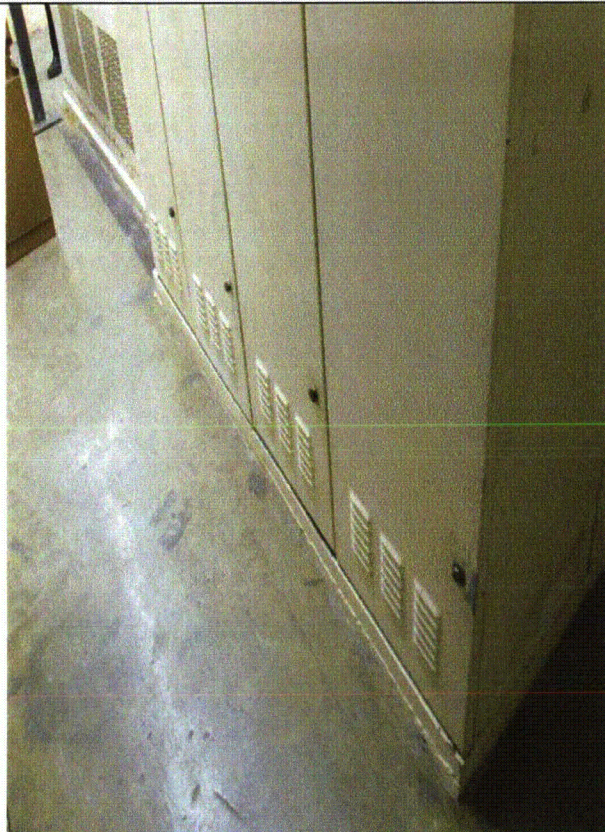
Equipment ID No.: 1AP98E

Equipment Class: (1) Motor Control Centers

Equipment Description: ASSY - 480V ESF SXCT UNIT SUBSTA 132Z, SOUTH ELEC RM



1AP98E Byron 1 & 2 190



1AP98E Byron 1 & 2 191

Status:  Y  N  U

**Seismic Walkdown Checklist (SWC)**

Equipment ID No.: 1AP98E

Equipment Class: (1) Motor Control Centers

Equipment Description: ASSY - 480V ESF SXCT UNIT SUBSTA 132Z, SOUTH ELEC RM



1AP98E Byron 1 & 2 192

Status:  Y  N  U

**Seismic Walkdown Checklist (SWC)**

Equipment ID No.: 1AP99E

Equipment Class: (1) Motor Control Centers

Equipment Description: ASSY - 480V ESF SXCT UNIT SUBSTA 131Z, NORTH ELEC RM

Project: Byron 1 SWEL

Location (Bldg, Elev, Room/Area): ESWCT, 874.00 ft, ALL

Manufacturer/Model:

**Instructions for Completing Checklist**

This checklist may be used to document the results of the Seismic Walkdown of an item of equipment on the SWEL. The space below each of the following questions may be used to record the results of judgments and findings. Additional space is provided at the end of this checklist for documenting other comments.

**Anchorage**

1. Is anchorage configuration verification required (i.e., is the item one of the 50% of SWEL items requiring such verification)? Yes
  
2. Is the anchorage free of bent, broken, missing or loose hardware? Yes
  
3. Is the anchorage free of corrosion that is more than mild surface oxidation? Yes
  
4. Is the anchorage free of visible cracks in the concrete near the anchors? Yes
  
5. Is the anchorage configuration consistent with plant documentation? (Note: This question only applies if the item is one of the 50% for which an anchorage configuration verification is required.) Yes  
*Drawing 6E-0-3391C Revision BE*  
*Weld matches or exceeds what is specified on documentation*
  
6. Based on the above anchorage evaluations, is the anchorage free of potentially adverse seismic conditions? Yes

Status:  Y  N  U

**Seismic Walkdown Checklist (SWC)**

Equipment ID No.: 1AP99E

Equipment Class: (1) Motor Control Centers

Equipment Description: ASSY - 480V ESF SXCT UNIT SUBSTA 131Z, NORTH ELEC RM

**Interaction Effects**

7. Are soft targets free from impact by nearby equipment or structures? Yes
8. Are overhead equipment, distribution systems, ceiling tiles and lighting, and masonry block walls not likely to collapse onto the equipment? Yes  
*Partially open S-hooks in room. Unlikely that lights would disengage since the hooks are only slightly open and not all hooks are open. Therefore acceptable. IR 1398127 written to close.*
9. Do attached lines have adequate flexibility to avoid damage? Yes
10. Based on the above seismic interaction evaluations, is equipment free of potentially adverse seismic interaction effects? Yes

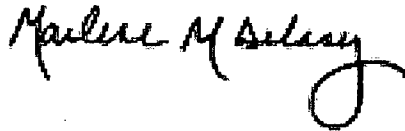
**Other Adverse Conditions**

11. Have you looked for and found no adverse seismic conditions that could adversely affect the safety functions of the equipment? Yes

**Comments**

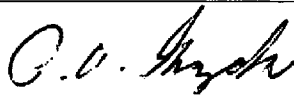
Seismic walkdown team M. Delaney & P. Gazda 8/6/12 pm

Evaluated by:



Marlene Delaney

Date: 10/5/2012



Philip Gazda

10/5/2012

Status:  Y  N  U

**Seismic Walkdown Checklist (SWC)**

Equipment ID No.: 1AP99E

Equipment Class: (1) Motor Control Centers

Equipment Description: ASSY - 480V ESF SXCT UNIT SUBSTA 131Z, NORTH ELEC RM

**Photos**



1AP99E Byron 1 & 2 164



1AP99E Byron 1 & 2 165



Status:  Y  N  U

**Seismic Walkdown Checklist (SWC)**

Equipment ID No.: 1AP99E

Equipment Class: (1) Motor Control Centers

Equipment Description: ASSY - 480V ESF SXCT UNIT SUBSTA 131Z, NORTH ELEC RM



1AP99E Byron 1 & 2 166

Status:  Y  N  U

**Seismic Walkdown Checklist (SWC)**

Equipment ID No.: 1CC01PB

Equipment Class: (5) Horizontal Pumps

Equipment Description: 1B PUMP, COMPONENT COOLING 12X14-18 M66-3 ASMBLY

Project: Byron 1 SWEL

Location (Bldg, Elev, Room/Area): Auxiliary, 364.00 ft, ALL

Manufacturer/Model:

**Instructions for Completing Checklist**

This checklist may be used to document the results of the Seismic Walkdown of an item of equipment on the SWEL. The space below each of the following questions may be used to record the results of judgments and findings. Additional space is provided at the end of this checklist for documenting other comments.

**Anchorage**

1. Is anchorage configuration verification required (i.e., is the item one of the 50% of SWEL items requiring such verification)? Yes
  
2. Is the anchorage free of bent, broken, missing or loose hardware? Yes
  
3. Is the anchorage free of corrosion that is more than mild surface oxidation? Yes
  
4. Is the anchorage free of visible cracks in the concrete near the anchors? Yes
  
5. Is the anchorage configuration consistent with plant documentation? (Note: This question only applies if the item is one of the 50% for which an anchorage configuration verification is required.) Yes  
*Drawing M-1220 Sheet 4 Revision V*
  
6. Based on the above anchorage evaluations, is the anchorage free of potentially adverse seismic conditions? Yes

Status:  Y  N  U

**Seismic Walkdown Checklist (SWC)**

Equipment ID No.: 1CC01PB

Equipment Class: (5) Horizontal Pumps

Equipment Description: 1B PUMP, COMPONENT COOLING 12X14-18 M66-3 ASMBLY

**Interaction Effects**

7. Are soft targets free from impact by nearby equipment or structures? Yes
8. Are overhead equipment, distribution systems, ceiling tiles and lighting, and masonry block walls not likely to collapse onto the equipment? Yes
9. Do attached lines have adequate flexibility to avoid damage? Yes
10. Based on the above seismic interaction evaluations, is equipment free of potentially adverse seismic interaction effects? Yes

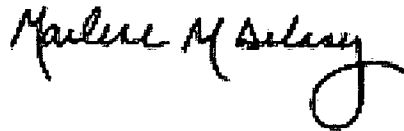
**Other Adverse Conditions**

11. Have you looked for and found no adverse seismic conditions that could adversely affect the safety functions of the equipment? Yes  
*Sight (level) glass is well-protected and acceptable*

**Comments**

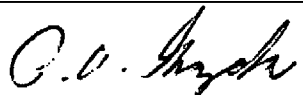
Seismic walkdown team M. Delaney & P. Gazda 8/20/12 pm

Evaluated by:



Marlene Delaney

Date: 10/5/2012



Philip Gazda

10/5/2012

Status:  Y  N  U

**Seismic Walkdown Checklist (SWC)**

Equipment ID No.: 1CC01PB

Equipment Class: (5) Horizontal Pumps

Equipment Description: 1B PUMP, COMPONENT COOLING 12X14-18 M66-3 ASMBLY

**Photos**



1CC01PB Byron 1 & 2 8-20-12 053



1CC01PB Byron 1 & 2 8-20-12 054

Status:  Y  N  U

**Seismic Walkdown Checklist (SWC)**

Equipment ID No.: 1CC685

Equipment Class: (8) Motor-Operated and Solenoid-Operated Valves

Equipment Description: CC FROM RC PMPs THERMAL BARRIER ISOL VLV ASMBLY; 3"

Project: Byron 1 SWEL

Location (Bldg, Elev, Room/Area): Auxiliary, 395.00 ft, ALL

Manufacturer/Model:

**Instructions for Completing Checklist**

This checklist may be used to document the results of the Seismic Walkdown of an item of equipment on the SWEL. The space below each of the following questions may be used to record the results of judgments and findings. Additional space is provided at the end of this checklist for documenting other comments.

**Anchorage**

1. Is anchorage configuration verification required (i.e., is the item one of the 50% of SWEL items requiring such verification)? No
  
2. Is the anchorage free of bent, broken, missing or loose hardware? Not Applicable
  
3. Is the anchorage free of corrosion that is more than mild surface oxidation? Not Applicable
  
4. Is the anchorage free of visible cracks in the concrete near the anchors? Not Applicable
  
5. Is the anchorage configuration consistent with plant documentation? (Note: This question only applies if the item is one of the 50% for which an anchorage configuration verification is required.) Not Applicable
  
6. Based on the above anchorage evaluations, is the anchorage free of potentially adverse seismic conditions? Yes

Status:  Y  N  U

**Seismic Walkdown Checklist (SWC)**

Equipment ID No.: 1CC685

Equipment Class: (8) Motor-Operated and Solenoid-Operated Valves

Equipment Description: CC FROM RC PMPS THERMAL BARRIER ISOL VLV ASMBLY; 3"

**Interaction Effects**

7. Are soft targets free from impact by nearby equipment or structures? Yes
8. Are overhead equipment, distribution systems, ceiling tiles and lighting, and masonry block walls not likely to collapse onto the equipment? Yes
9. Do attached lines have adequate flexibility to avoid damage? Yes
10. Based on the above seismic interaction evaluations, is equipment free of potentially adverse seismic interaction effects? Yes

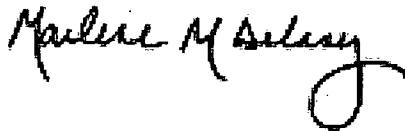
**Other Adverse Conditions**

11. Have you looked for and found no adverse seismic conditions that could adversely affect the safety functions of the equipment? Yes  
*No structural/seismic issues*

**Comments**

Seismic walkdown team 8/8/12 pm M. Delaney & P. Gazda

Evaluated by:



Marlene Delaney

Date: 10/5/2012



Philip Gazda

10/5/2012

Status:  Y  N  U

**Seismic Walkdown Checklist (SWC)**

Equipment ID No.: 1CC685

Equipment Class: (8) Motor-Operated and Solenoid-Operated Valves

Equipment Description: CC FROM RC PMPS THERMAL BARRIER ISOL VLV ASMBLY; 3"

**Photos**



1CC685 Byron 1 & 2 8-8-12 058



1CC685 Byron 1 & 2 8-8-12 059

Status:  Y  N  U

**Seismic Walkdown Checklist (SWC)**

Equipment ID No.: 1CV01PB

Equipment Class: (5) Horizontal Pumps

Equipment Description: PUMP,1B CENTRIFUGAL CHARGING ASMBLY

Project: Byron 1 SWEL

Location (Bldg, Elev, Room/Area): Auxiliary, 364.00 ft, ALL

Manufacturer/Model:

**Instructions for Completing Checklist**

This checklist may be used to document the results of the Seismic Walkdown of an item of equipment on the SWEL. The space below each of the following questions may be used to record the results of judgments and findings. Additional space is provided at the end of this checklist for documenting other comments.

**Anchorage**

1. Is anchorage configuration verification required (i.e., is the item one of the 50% of SWEL items requiring such verification)? Yes
  
2. Is the anchorage free of bent, broken, missing or loose hardware? Yes
  
3. Is the anchorage free of corrosion that is more than mild surface oxidation? Yes
  
4. Is the anchorage free of visible cracks in the concrete near the anchors? Yes
  
5. Is the anchorage configuration consistent with plant documentation? (Note: This question only applies if the item is one of the 50% for which an anchorage configuration verification is required.) Yes  
*Drawing M-1220 Sheet 3 Revision S*
  
6. Based on the above anchorage evaluations, is the anchorage free of potentially adverse seismic conditions? Yes



Status:  Y  N  U

**Seismic Walkdown Checklist (SWC)**

Equipment ID No.: 1CV01PB

Equipment Class: (5) Horizontal Pumps

Equipment Description: PUMP,1B CENTRIFUGAL CHARGING ASMBLY

**Interaction Effects**

7. Are soft targets free from impact by nearby equipment or structures? Yes
8. Are overhead equipment, distribution systems, ceiling tiles and lighting, and masonry block walls not likely to collapse onto the equipment? Yes  
*Masonry walls are seismic and would not collapse on equipment*  
*Removable block walls restrained by grating*
9. Do attached lines have adequate flexibility to avoid damage? Yes
10. Based on the above seismic interaction evaluations, is equipment free of potentially adverse seismic interaction effects? Yes

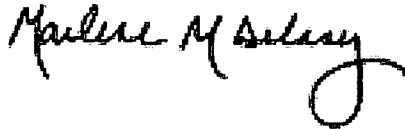
**Other Adverse Conditions**

11. Have you looked for and found no adverse seismic conditions that could adversely affect the safety functions of the equipment? Yes

**Comments**

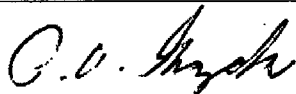
Seismic walkdown team M. Delaney & P. Gazda 8/8/12 pm

Evaluated by:



Marlene Delaney

Date: 10/5/2012



Philip Gazda

10/5/2012

Status:  Y  N  U

**Seismic Walkdown Checklist (SWC)**

Equipment ID No.: 1CV01PB

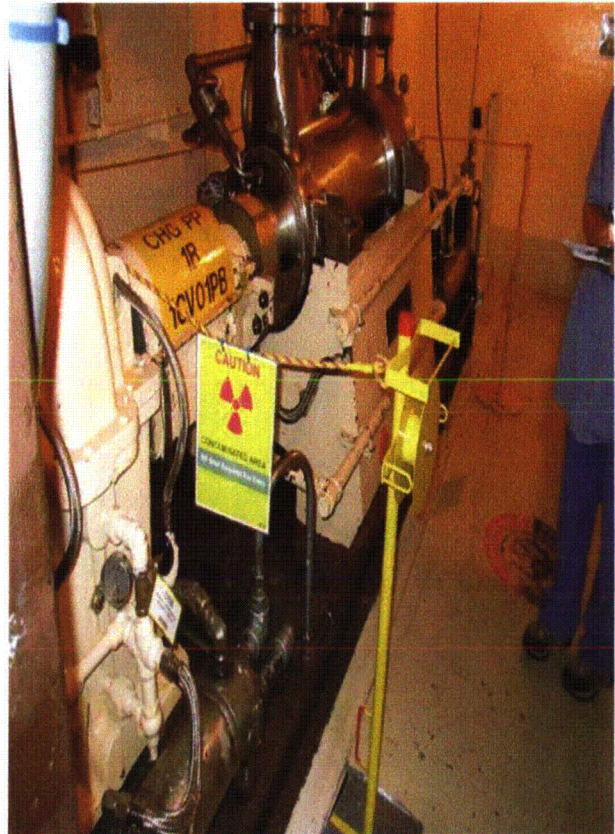
Equipment Class: (5) Horizontal Pumps

Equipment Description: PUMP, 1B CENTRIFUGAL CHARGING ASMBLY

**Photos**



1CV01PB Byron 1 & 2 8-8-12 046



1CV01PB Byron 1 & 2 8-8-12 047

Status:  Y  N  U

**Seismic Walkdown Checklist (SWC)**

Equipment ID No.: 1CV02SB

Equipment Class: (21) Tanks and Heat Exchangers

Equipment Description: 1B CENTRIFUGAL CHARGING PUMP GEAR COOLER

Project: Byron 1 SWEL

Location (Bldg, Elev, Room/Area): Auxiliary, 364.00 ft, ALL

Manufacturer/Model:

**Instructions for Completing Checklist**

This checklist may be used to document the results of the Seismic Walkdown of an item of equipment on the SWEL. The space below each of the following questions may be used to record the results of judgments and findings. Additional space is provided at the end of this checklist for documenting other comments.

**Anchorage**

1. Is anchorage configuration verification required (i.e., is the item one of the 50% of SWEL items requiring such verification)? No
  
2. Is the anchorage free of bent, broken, missing or loose hardware? Yes
  
3. Is the anchorage free of corrosion that is more than mild surface oxidation? Yes
  
4. Is the anchorage free of visible cracks in the concrete near the anchors? Yes
  
5. Is the anchorage configuration consistent with plant documentation? (Note: This question only applies if the item is one of the 50% for which an anchorage configuration verification is required.) Not Applicable
  
6. Based on the above anchorage evaluations, is the anchorage free of potentially adverse seismic conditions? Yes

Status:  Y  N  U

**Seismic Walkdown Checklist (SWC)**

Equipment ID No.: 1CV02SB

Equipment Class: (21) Tanks and Heat Exchangers

Equipment Description: 1B CENTRIFUGAL CHARGING PUMP GEAR COOLER

**Interaction Effects**

7. Are soft targets free from impact by nearby equipment or structures? Yes
8. Are overhead equipment, distribution systems, ceiling tiles and lighting, and masonry block walls not likely to collapse onto the equipment? Yes
9. Do attached lines have adequate flexibility to avoid damage? Yes
10. Based on the above seismic interaction evaluations, is equipment free of potentially adverse seismic interaction effects? Yes

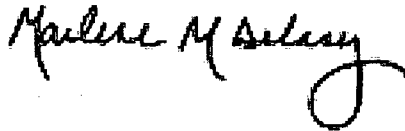
**Other Adverse Conditions**

11. Have you looked for and found no adverse seismic conditions that could adversely affect the safety functions of the equipment? Yes  
*No structural/seismic issues*

**Comments**

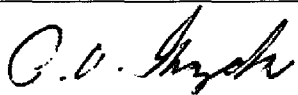
Seismic walkdown team M. Delaney & P. Gazda 8/8/12 pm

Evaluated by:



Marlene Delaney

Date: 10/5/2012



Philip Gazda

10/5/2012

Status:  Y  N  U

**Seismic Walkdown Checklist (SWC)**

Equipment ID No.: 1CV02SB

---

Equipment Class: (21) Tanks and Heat Exchangers

---

Equipment Description: 1B CENTRIFUGAL CHARGING PUMP GEAR COOLER

---

**Photos**

None.

---

Status:  Y  N  U

**Seismic Walkdown Checklist (SWC)**

Equipment ID No.: 1CV112E

Equipment Class: (8) Motor-Operated and Solenoid-Operated Valves

Equipment Description: RWST TO CHG PMPs SUCT VLV (C/S AT 1PM05J) ASMBLY; 8"

Project: Byron 1 SWEL

Location (Bldg, Elev, Room/Area): Auxiliary, 364.00 ft, ALL

Manufacturer/Model:

**Instructions for Completing Checklist**

This checklist may be used to document the results of the Seismic Walkdown of an item of equipment on the SWEL. The space below each of the following questions may be used to record the results of judgments and findings. Additional space is provided at the end of this checklist for documenting other comments.

**Anchorage**

1. Is anchorage configuration verification required (i.e., is the item one of the 50% of SWEL items requiring such verification)? No
  
2. Is the anchorage free of bent, broken, missing or loose hardware? Not Applicable
  
3. Is the anchorage free of corrosion that is more than mild surface oxidation? Not Applicable
  
4. Is the anchorage free of visible cracks in the concrete near the anchors? Not Applicable
  
5. Is the anchorage configuration consistent with plant documentation? (Note: This question only applies if the item is one of the 50% for which an anchorage configuration verification is required.) Not Applicable
  
6. Based on the above anchorage evaluations, is the anchorage free of potentially adverse seismic conditions? Yes

Status:  Y  N  U

**Seismic Walkdown Checklist (SWC)**

Equipment ID No.: 1CV112E

Equipment Class: (8) Motor-Operated and Solenoid-Operated Valves

Equipment Description: RWST TO CHG PMPS SUCT VLV (C/S AT 1PM05J) ASMBLY; 8"

**Interaction Effects**

7. Are soft targets free from impact by nearby equipment or structures? Yes

*Valve is in contact with adjacent pipe. Calculation W000151-Add B (Rev 000B), U004065-Add B (Rev 1D), NED-M-MSD-029 Add A (Rev 0A) address valve clearance issues from IPEEE including valve 1CV 112E.*

8. Are overhead equipment, distribution systems, ceiling tiles and lighting, and masonry block walls not likely to collapse onto the equipment? Yes

9. Do attached lines have adequate flexibility to avoid damage? Yes

10. Based on the above seismic interaction evaluations, is equipment free of potentially adverse seismic interaction effects? Yes

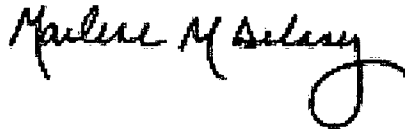
**Other Adverse Conditions**

11. Have you looked for and found no adverse seismic conditions that could adversely affect the safety functions of the equipment? Yes

**Comments**

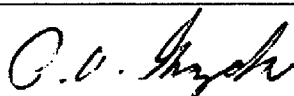
Seismic walkdown team M. Delaney & P. Gazda 8/8/12 pm

Evaluated by:



Marlene Delaney

Date: 10/5/2012



Philip Gazda

10/5/2012

Status:  Y  N  U

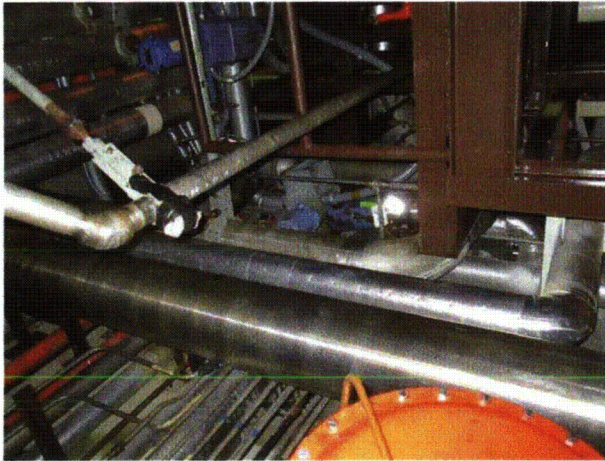
**Seismic Walkdown Checklist (SWC)**

Equipment ID No.: 1CV112E

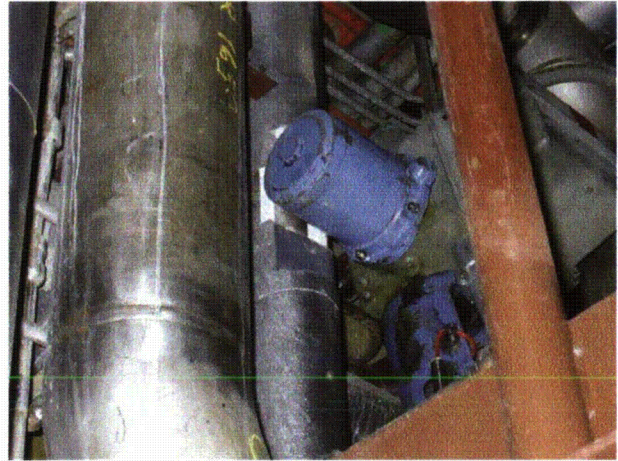
Equipment Class: (8) Motor-Operated and Solenoid-Operated Valves

Equipment Description: RWST TO CHG PMPS SUCT VLV (C/S AT 1PM05J) ASMBLY; 8"

**Photos**



1CV112E Byron 1 & 2 8-8-12 056



1CV112E Byron 1 & 2 8-8-12 057



Status:  Y  N  U

**Seismic Walkdown Checklist (SWC)**

Equipment ID No.: 1CV8152

Equipment Class: (7) Fluid-Operated Valves

Equipment Description: ASSY - AOV U-1 LTDWN HDR ISOL VLV (EOP VLV)

Project: Byron 1 SWEL

Location (Bldg, Elev, Room/Area): Auxiliary, 374.00 ft, ALL

Manufacturer/Model:

**Instructions for Completing Checklist**

This checklist may be used to document the results of the Seismic Walkdown of an item of equipment on the SWEL. The space below each of the following questions may be used to record the results of judgments and findings. Additional space is provided at the end of this checklist for documenting other comments.

**Anchorage**

1. Is anchorage configuration verification required (i.e., is the item one of the 50% of SWEL items requiring such verification)? No
  
2. Is the anchorage free of bent, broken, missing or loose hardware? Not Applicable
  
3. Is the anchorage free of corrosion that is more than mild surface oxidation? Not Applicable
  
4. Is the anchorage free of visible cracks in the concrete near the anchors? Not Applicable
  
5. Is the anchorage configuration consistent with plant documentation? (Note: This question only applies if the item is one of the 50% for which an anchorage configuration verification is required.) Not Applicable
  
6. Based on the above anchorage evaluations, is the anchorage free of potentially adverse seismic conditions? Yes

Status:  Y  N  U

**Seismic Walkdown Checklist (SWC)**

Equipment ID No.: 1CV8152

Equipment Class: (7) Fluid-Operated Valves

Equipment Description: ASSY - AOV U-1 LTDWN HDR ISOL VLV (EOP VLV)

**Interaction Effects**

7. Are soft targets free from impact by nearby equipment or structures? Yes
8. Are overhead equipment, distribution systems, ceiling tiles and lighting, and masonry block walls not likely to collapse onto the equipment? Yes
9. Do attached lines have adequate flexibility to avoid damage? Yes
10. Based on the above seismic interaction evaluations, is equipment free of potentially adverse seismic interaction effects? Yes

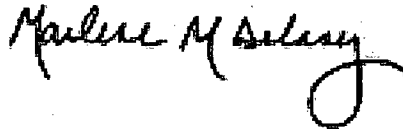
**Other Adverse Conditions**

11. Have you looked for and found no adverse seismic conditions that could adversely affect the safety functions of the equipment? Yes  
*No structural/seismic issues*

**Comments**

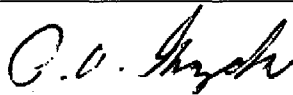
Seismic walkdown team M. Delaney & P. Gazda 8/8/12 pm

Evaluated by:



Marlene Delaney

Date: 10/5/2012



Philip Gazda

10/5/2012

Status:  Y  N  U

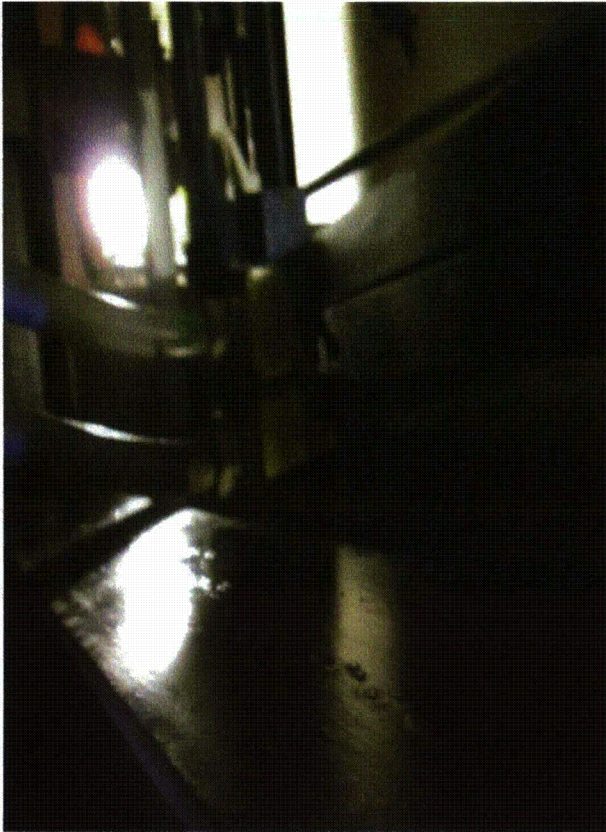
**Seismic Walkdown Checklist (SWC)**

Equipment ID No.: 1CV8152

Equipment Class: (7) Fluid-Operated Valves

Equipment Description: ASSY - AOV U-1 LTDWN HDR ISOL VLV (EOP VLV)

**Photos**



1CV8152 Byron 1 & 2 8-8-12 052

Status:  Y  N  U

**Seismic Walkdown Checklist (SWC)**

Equipment ID No.: 1DC01E

Equipment Class: (15) Batteries on Racks

Equipment Description: 125V BATTERY 111 DIV. 11 AND Rack

Project: Byron 1 SWEL

Location (Bldg, Elev, Room/Area): Auxiliary, 451.00 ft, ALL

Manufacturer/Model:

**Instructions for Completing Checklist**

This checklist may be used to document the results of the Seismic Walkdown of an item of equipment on the SWEL. The space below each of the following questions may be used to record the results of judgments and findings. Additional space is provided at the end of this checklist for documenting other comments.

**Anchorage**

1. Is anchorage configuration verification required (i.e., is the item one of the 50% of SWEL items requiring such verification)? Yes
  
2. Is the anchorage free of bent, broken, missing or loose hardware? Yes
  
3. Is the anchorage free of corrosion that is more than mild surface oxidation? Yes
  
4. Is the anchorage free of visible cracks in the concrete near the anchors? Yes
  
5. Is the anchorage configuration consistent with plant documentation? (Note: This question only applies if the item is one of the 50% for which an anchorage configuration verification is required.) Yes

*Drawing 6E-0-3391AY Revision B*

*Note that one anchor on drawing is noted as having an embedment depth of 7 1/2" with approximately 4 1/4" bolt projection. Other anchors have approximately 3 1/2" bolt projection which would equate to an embedment greater than 8" (Bolt length = 7.5"+4.25"=11.75" therefore 11.75"-3.5"=8.25" which is greater than 8") where 8" minimum embedment is per DCS 24.1.2 Revision 0 page 24 for 1" diameter anchors. It is reasonable to consider all expansion anchors being the same length.*

Status:  Y  N  U

**Seismic Walkdown Checklist (SWC)**

Equipment ID No.: 1DC01E

Equipment Class: (15) Batteries on Racks

Equipment Description: 125V BATTERY 111 DIV. 11 AND Rack

6. Based on the above anchorage evaluations, is the anchorage free of potentially adverse seismic conditions? Yes

**Interaction Effects**

7. Are soft targets free from impact by nearby equipment or structures? Yes

8. Are overhead equipment, distribution systems, ceiling tiles and lighting, and masonry block walls not likely to collapse onto the equipment? Yes

*S hooks appear closed but many are not visible. IR 1399377 written to address extent of condition and follow-up S-hook inspection*

*Masonry walls are seismic and would not collapse on equipment*

9. Do attached lines have adequate flexibility to avoid damage? Yes

10. Based on the above seismic interaction evaluations, is equipment free of potentially adverse seismic interaction effects? Yes

**Other Adverse Conditions**

11. Have you looked for and found no adverse seismic conditions that could adversely affect the safety functions of the equipment? Yes

**Comments**

Seismic walkdown team M. Delaney & P. Gazda 8/8/12 am

Status:  Y  N  U

**Seismic Walkdown Checklist (SWC)**

Equipment ID No.: 1DC01E

Equipment Class: (15) Batteries on Racks

Equipment Description: 125V BATTERY 111 DIV. 11 AND Rack

*Marlene M Delaney*

Evaluated by:

Marlene Delaney

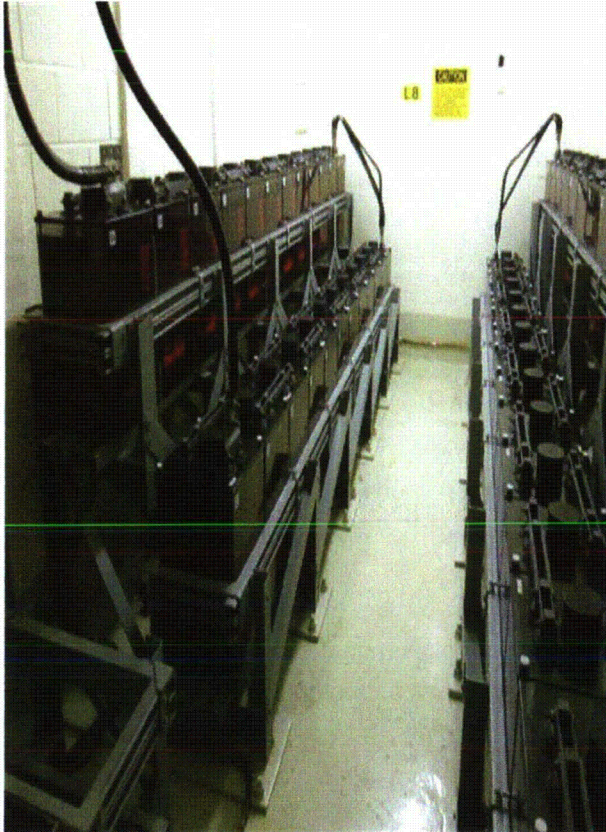
Date: 10/5/2012

*P. O. Gazda*

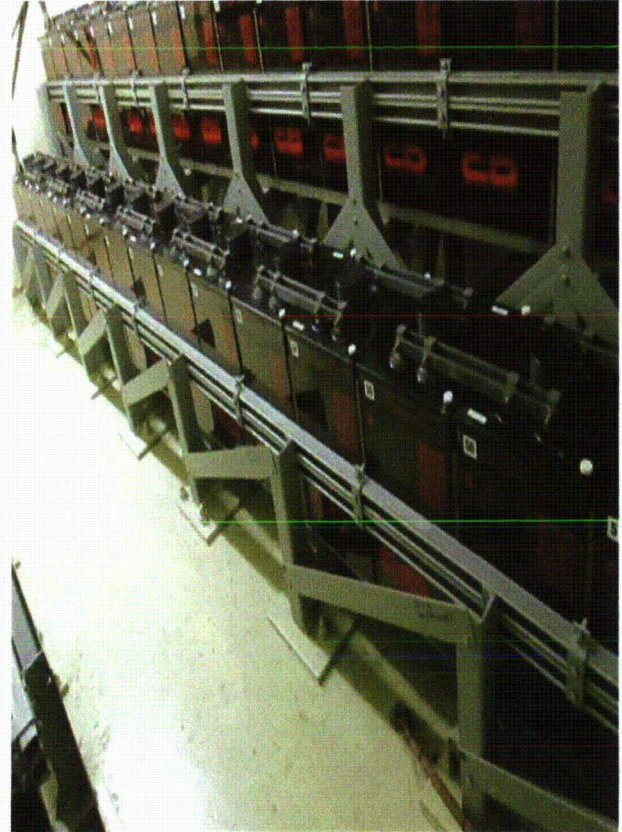
Philip Gazda

10/5/2012

**Photos**



1DC01E Byron 1 & 2 8-8-12 012



1DC01E Byron 1 & 2 8-8-12 013

Status:  Y  N  U

**Seismic Walkdown Checklist (SWC)**

Equipment ID No.: 1DC02E

Equipment Class: (15) Batteries on Racks

Equipment Description: 125V BATTERY 112 DIV. 12 and Rack

Project: Byron 1 SWEL

Location (Bldg, Elev, Room/Area): Auxiliary, 451.00 ft, ALL

Manufacturer/Model:

**Instructions for Completing Checklist**

This checklist may be used to document the results of the Seismic Walkdown of an item of equipment on the SWEL. The space below each of the following questions may be used to record the results of judgments and findings. Additional space is provided at the end of this checklist for documenting other comments.

**Anchorage**

1. Is anchorage configuration verification required (i.e., is the item one of the 50% of SWEL items requiring such verification)? Yes
  
2. Is the anchorage free of bent, broken, missing or loose hardware? Yes
  
3. Is the anchorage free of corrosion that is more than mild surface oxidation? Yes
  
4. Is the anchorage free of visible cracks in the concrete near the anchors? Yes
  
5. Is the anchorage configuration consistent with plant documentation? (Note: This question only applies if the item is one of the 50% for which an anchorage configuration verification is required.)  
*Drawing 6E-0-3391AY Revision B* Yes
  
6. Based on the above anchorage evaluations, is the anchorage free of potentially adverse seismic conditions? Yes

Status:  Y  N  U

**Seismic Walkdown Checklist (SWC)**

Equipment ID No.: 1DC02E

Equipment Class: (15) Batteries on Racks

Equipment Description: 125V BATTERY 112 DIV. 12 and Rack

**Interaction Effects**

7. Are soft targets free from impact by nearby equipment or structures? Yes

8. Are overhead equipment, distribution systems, ceiling tiles and lighting, and masonry block walls not likely to collapse onto the equipment? Yes

*Masonry walls are seismic and would not collapse on equipment*

*S hooks do not appear open however extent of condition IR 1399380 was written to inspect and close S-hooks if found open*

9. Do attached lines have adequate flexibility to avoid damage? Yes

10. Based on the above seismic interaction evaluations, is equipment free of potentially adverse seismic interaction effects? Yes

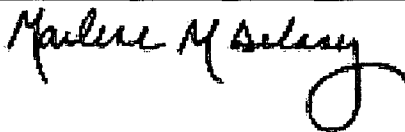
**Other Adverse Conditions**

11. Have you looked for and found no adverse seismic conditions that could adversely affect the safety functions of the equipment? Yes

**Comments**

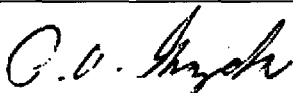
Seismic walkdown team M. Delaney & P. Gazda 8/8/12 am

Evaluated by:



Marlene Delaney

Date: 10/5/2012



Philip Gazda

10/5/2012



Status:  Y  N  U

**Seismic Walkdown Checklist (SWC)**

Equipment ID No.: 1DC02E

Equipment Class: (15) Batteries on Racks

Equipment Description: 125V BATTERY 112 DIV. 12 and Rack

**Photos**



1DC02E Byron 1 & 2 8-8-12 027



1DC02E Byron 1 & 2 8-8-12 028

Status:  Y  N  U

**Seismic Walkdown Checklist (SWC)**

Equipment ID No.: 1DC04E

Equipment Class: (16) Battery Chargers and Inverters

Equipment Description: 125V DC BATT CHGR 112

Project: Byron 1 SWEL

Location (Bldg, Elev, Room/Area): Auxiliary, 451.00 ft, ALL

Manufacturer/Model:

**Instructions for Completing Checklist**

This checklist may be used to document the results of the Seismic Walkdown of an item of equipment on the SWEL. The space below each of the following questions may be used to record the results of judgments and findings. Additional space is provided at the end of this checklist for documenting other comments.

**Anchorage**

1. Is anchorage configuration verification required (i.e., is the item one of the 50% of SWEL items requiring such verification)? Yes
  
2. Is the anchorage free of bent, broken, missing or loose hardware? Yes
  
3. Is the anchorage free of corrosion that is more than mild surface oxidation? Yes
  
4. Is the anchorage free of visible cracks in the concrete near the anchors? Yes
  
5. Is the anchorage configuration consistent with plant documentation? (Note: This question only applies if the item is one of the 50% for which an anchorage configuration verification is required.) Yes
  
6. Based on the above anchorage evaluations, is the anchorage free of potentially adverse seismic conditions? Yes

Status:  Y  N  U

**Seismic Walkdown Checklist (SWC)**

Equipment ID No.: 1DC04E

Equipment Class: (16) Battery Chargers and Inverters

Equipment Description: 125V DC BATT CHGR 112

**Interaction Effects**

7. Are soft targets free from impact by nearby equipment or structures? Yes
8. Are overhead equipment, distribution systems, ceiling tiles and lighting, and masonry block walls not likely to collapse onto the equipment? Yes
9. Do attached lines have adequate flexibility to avoid damage? Yes
10. Based on the above seismic interaction evaluations, is equipment free of potentially adverse seismic interaction effects? Yes

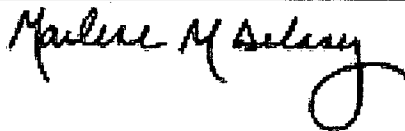
**Other Adverse Conditions**

11. Have you looked for and found no adverse seismic conditions that could adversely affect the safety functions of the equipment? Yes  
*No structural/seismic issues*

**Comments**

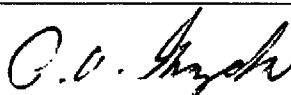
Seismic walkdown team M. Delaney & P. Gazda 8-8-12 am

Evaluated by:



Marlene Delaney

Date: 10/5/2012



Philip Gazda

10/5/2012

Status:  Y  N  U

**Seismic Walkdown Checklist (SWC)**

Equipment ID No.: 1DC04E

Equipment Class: (16) Battery Chargers and Inverters

Equipment Description: 125V DC BATT CHGR 112

**Photos**



1DC04E Byron 1 & 2 8-8-12 022



1DC04E Byron 1 & 2 8-8-12 023

Status:  Y  N  U

**Seismic Walkdown Checklist (SWC)**

Equipment ID No.: 1DC05E

Equipment Class: (14) Distribution Panels

Equipment Description: 125V DC ESF DISTR CENTER BUS 111

Project: Byron 1 SWEL

Location (Bldg, Elev, Room/Area): Auxiliary, 451.00 ft, ALL

Manufacturer/Model:

**Instructions for Completing Checklist**

This checklist may be used to document the results of the Seismic Walkdown of an item of equipment on the SWEL. The space below each of the following questions may be used to record the results of judgments and findings. Additional space is provided at the end of this checklist for documenting other comments.

**Anchorage**

1. Is anchorage configuration verification required (i.e., is the item one of the 50% of SWEL items requiring such verification)? Yes
  
2. Is the anchorage free of bent, broken, missing or loose hardware? Yes
  
3. Is the anchorage free of corrosion that is more than mild surface oxidation? Yes  
*Surface rust (mild surface oxidation) resulting from condensation from adjacent fan 1VE06S, not a structural/seismic issue*
  
4. Is the anchorage free of visible cracks in the concrete near the anchors? Yes
  
5. Is the anchorage configuration consistent with plant documentation? (Note: This question only applies if the item is one of the 50% for which an anchorage configuration verification is required.) Yes  
*Drawing 6E-0-3391C Revision BE*  
*Weld equals or exceeds drawing requirements*
  
6. Based on the above anchorage evaluations, is the anchorage free of potentially adverse seismic conditions? Yes

Status:  Y  N  U

**Seismic Walkdown Checklist (SWC)**

Equipment ID No.: 1DC05E

Equipment Class: (14) Distribution Panels

Equipment Description: 125V DC ESF DISTR CENTER BUS 111

**Interaction Effects**

7. Are soft targets free from impact by nearby equipment or structures? Yes
8. Are overhead equipment, distribution systems, ceiling tiles and lighting, and masonry block walls not likely to collapse onto the equipment? Yes
9. Do attached lines have adequate flexibility to avoid damage? Yes
10. Based on the above seismic interaction evaluations, is equipment free of potentially adverse seismic interaction effects? Yes

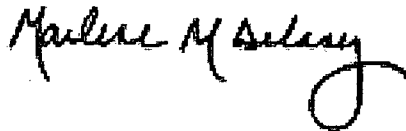
**Other Adverse Conditions**

11. Have you looked for and found no adverse seismic conditions that could adversely affect the safety functions of the equipment? Yes

**Comments**


Seismic walkdown team M. Delaney & P. Gazda 8-8-12 am

Evaluated by:



Marlene Delaney

Date: 10/5/2012



Philip Gazda

10/5/2012

Status:  Y  N  U

**Seismic Walkdown Checklist (SWC)**

Equipment ID No.: 1DC05E

Equipment Class: (14) Distribution Panels

Equipment Description: 125V DC ESF DISTR CENTER BUS 111

**Photos**



1DC05E Byron 1 & 2 8-8-12 008



1DC05E Byron 1 & 2 8-8-12 009

Status:  Y  N  U

**Seismic Walkdown Checklist (SWC)**

Equipment ID No.: 1DC05E

Equipment Class: (14) Distribution Panels

Equipment Description: 125V DC ESF DISTR CENTER BUS 111



1DC05E Byron 1 & 2 8-8-12 010



Status:  Y  N  U

**Seismic Walkdown Checklist (SWC)**

Equipment ID No.: 1DC06E

Equipment Class: (14) Distribution Panels

Equipment Description: 125V DC ESF DISTR CENTER BUS 112

Project: Byron 1 SWEL

Location (Bldg, Elev, Room/Area): Auxiliary, 451.00 ft, ALL

Manufacturer/Model:

**Instructions for Completing Checklist**

This checklist may be used to document the results of the Seismic Walkdown of an item of equipment on the SWEL. The space below each of the following questions may be used to record the results of judgments and findings. Additional space is provided at the end of this checklist for documenting other comments.

**Anchorage**

1. Is anchorage configuration verification required (i.e., is the item one of the 50% of SWEL items requiring such verification)? Yes
  
2. Is the anchorage free of bent, broken, missing or loose hardware? Yes
  
3. Is the anchorage free of corrosion that is more than mild surface oxidation? Yes
  
4. Is the anchorage free of visible cracks in the concrete near the anchors? Yes
  
5. Is the anchorage configuration consistent with plant documentation? (Note: This question only applies if the item is one of the 50% for which an anchorage configuration verification is required.) Yes  
*Drawing 6E-0-3391C Revision BE*  
*Weld exceeds or equals drawing requirements*
6. Based on the above anchorage evaluations, is the anchorage free of potentially adverse seismic conditions? Yes

Status:  Y  N  U

**Seismic Walkdown Checklist (SWC)**

Equipment ID No.: 1DC06E

Equipment Class: (14) Distribution Panels

Equipment Description: 125V DC ESF DISTR CENTER BUS 112

**Interaction Effects**

- |   |     |
|---|-----|
| 7. Are soft targets free from impact by nearby equipment or structures?   | Yes |
| 8. Are overhead equipment, distribution systems, ceiling tiles and lighting, and masonry block walls not likely to collapse onto the equipment? | Yes |
| 9. Do attached lines have adequate flexibility to avoid damage?   | Yes |
| 10. Based on the above seismic interaction evaluations, is equipment free of potentially adverse seismic interaction effects?                   | Yes |

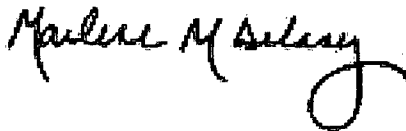
**Other Adverse Conditions**

- |  |     |
|--|-----|
| 11. Have you looked for and found no adverse seismic conditions that could adversely affect the safety functions of the equipment? | Yes |
|--|-----|

**Comments**

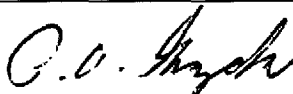
Seismic walkdown team M. Delaney & P. Gazda 8-8-12 am

Evaluated by:



Marlene Delaney

Date: 10/5/2012



Philip Gazda

10/5/2012

Status:  Y  N  U

**Seismic Walkdown Checklist (SWC)**

Equipment ID No.: 1DC06E

Equipment Class: (14) Distribution Panels

Equipment Description: 125V DC ESF DISTR CENTER BUS 112

**Photos**



1DC06E Byron 1 & 2 8-8-12 018



1DC06E Byron 1 & 2 8-8-12 019

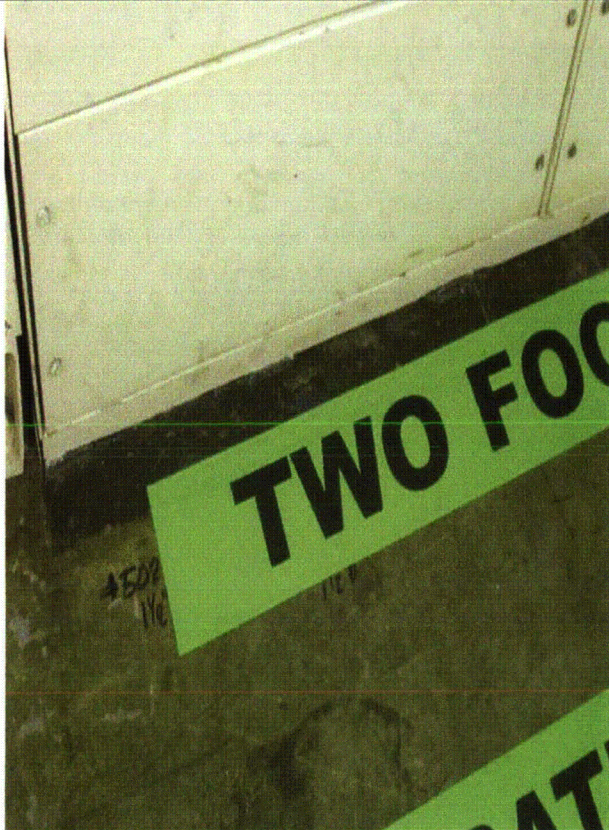
Status:  Y  N  U

**Seismic Walkdown Checklist (SWC)**

Equipment ID No.: 1DC06E

Equipment Class: (14) Distribution Panels

Equipment Description: 125V DC ESF DISTR CENTER BUS 112



1DC06E Byron 1 & 2 8-8-12 020

Status:  Y  N  U

**Seismic Walkdown Checklist (SWC)**

Equipment ID No.: 1DC10J

Equipment Class: (14) Distribution Panels

Equipment Description: 125V DC FUSE PANEL - DIV. 11

Project: Byron 1 SWEL

Location (Bldg, Elev, Room/Area): Auxiliary, 451.00 ft, ALL

Manufacturer/Model:

**Instructions for Completing Checklist**

This checklist may be used to document the results of the Seismic Walkdown of an item of equipment on the SWEL. The space below each of the following questions may be used to record the results of judgments and findings. Additional space is provided at the end of this checklist for documenting other comments.

**Anchorage**

1. Is anchorage configuration verification required (i.e., is the item one of the 50% of SWEL items requiring such verification)? No
  
2. Is the anchorage free of bent, broken, missing or loose hardware? Yes
  
3. Is the anchorage free of corrosion that is more than mild surface oxidation? Yes
  
4. Is the anchorage free of visible cracks in the concrete near the anchors? Yes
  
5. Is the anchorage configuration consistent with plant documentation? (Note: This question only applies if the item is one of the 50% for which an anchorage configuration verification is required.) Not Applicable
  
6. Based on the above anchorage evaluations, is the anchorage free of potentially adverse seismic conditions? Yes

Status:  Y  N  U

**Seismic Walkdown Checklist (SWC)**

Equipment ID No.: 1DC10J

Equipment Class: (14) Distribution Panels

Equipment Description: 125V DC FUSE PANEL - DIV. 11

**Interaction Effects**

7. Are soft targets free from impact by nearby equipment or structures? Yes
8. Are overhead equipment, distribution systems, ceiling tiles and lighting, and masonry block walls not likely to collapse onto the equipment? Yes
9. Do attached lines have adequate flexibility to avoid damage? Yes
10. Based on the above seismic interaction evaluations, is equipment free of potentially adverse seismic interaction effects? Yes

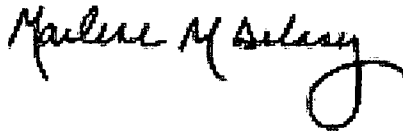
**Other Adverse Conditions**

11. Have you looked for and found no adverse seismic conditions that could adversely affect the safety functions of the equipment? Yes

**Comments**


Seismic walkdown team M. Delaney & P. Gazda 8/8/12 pm

Evaluated by:



Marlene Delaney

Date: 10/5/2012



Philip Gazda

10/5/2012

Status:  Y  N  U

**Seismic Walkdown Checklist (SWC)**

Equipment ID No.: 1DC10J

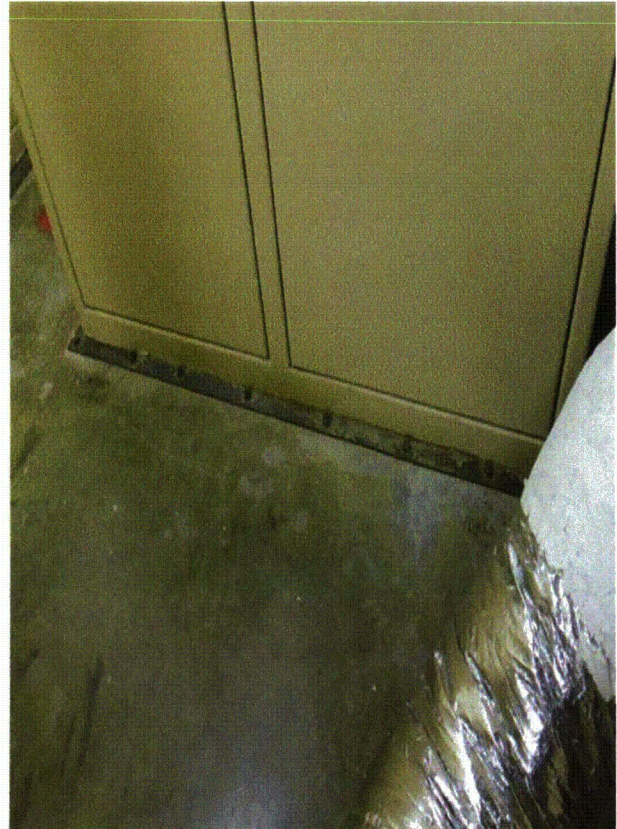
Equipment Class: (14) Distribution Panels

Equipment Description: 125V DC FUSE PANEL - DIV. 11

**Photos**



1DC10J Byron 1 & 2 8-8-12 001



1DC10J Byron 1 & 2 8-8-12 002

Status:  Y  N  U

**Seismic Walkdown Checklist (SWC)**

Equipment ID No.: 1DC10J

Equipment Class: (14) Distribution Panels

Equipment Description: 125V DC FUSE PANEL - DIV. 11



1DC10J Byron 1 & 2 8-8-12 003